

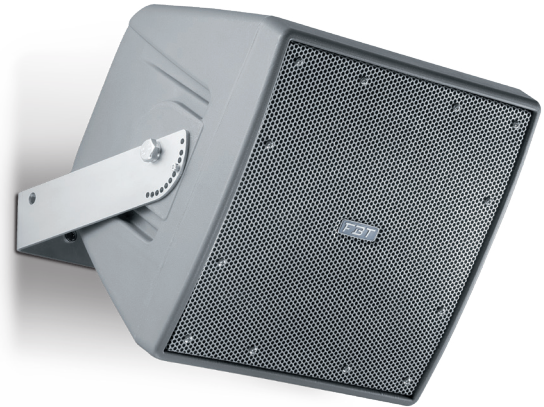
## All Weather Speaker

### MAIN APPLICATIONS

- Convention centers
- Athletic fields
- Stadiums
- Theme parks
- Swimming pools
- Cruise ships
- Malls
- Ballrooms
- Outdoor background music

### MAIN FEATURES

- Subwoofer
- Sturdy molded polyethylene curved enclosure
- 14" woofer with 3" coil
- Line transformer (optional)
- 4 wires cable to select the power tapping
- IP55 weather resistant
- Standard grey finish
- Completely manufactured in Italy



Weather resistant

### DESCRIPTION

The SHADOW 114S is a weatherproof subwoofer loudspeaker system offering substantial power and efficiency for a variety of professional indoor or outdoor applications. The low frequency transducer is a 14" woofer with a 3" voice coil. An optional transformer is also available providing impedance matching to 100V lines with 300W power. The cabinet is a single piece rotational moulded in polyethylene, fully UV protected. The cabinet is equipped with a stainless steel Ubracket. The grille is in custom perforated stainless steel with 3 layers of protection. The SHADOW 114S meets the requirements of IP55 code ( International Protection Rating).

### TECHNICAL SPECIFICATIONS

#### GENERAL

Configuration	way	1
Low frequency woofer	inch	14 - 3 coil
High frequency driver	inch	---

#### ACOUSTIC SPEC.

Frequency response	(@-6dB)	60Hz - 400Hz
Crossover frequency	kHz	External
Sensitivity (@1W,1m)	dB	67
MAX SPL (cont/peak)	dB	125.5 / 129.5
Dispersion	H x V	Omnidirectional
Recommended HP filter	Hz - dB oct.	40 - 24

#### INPUTS & OUTPUTS

Connectors		4 wire cable
------------	--	--------------

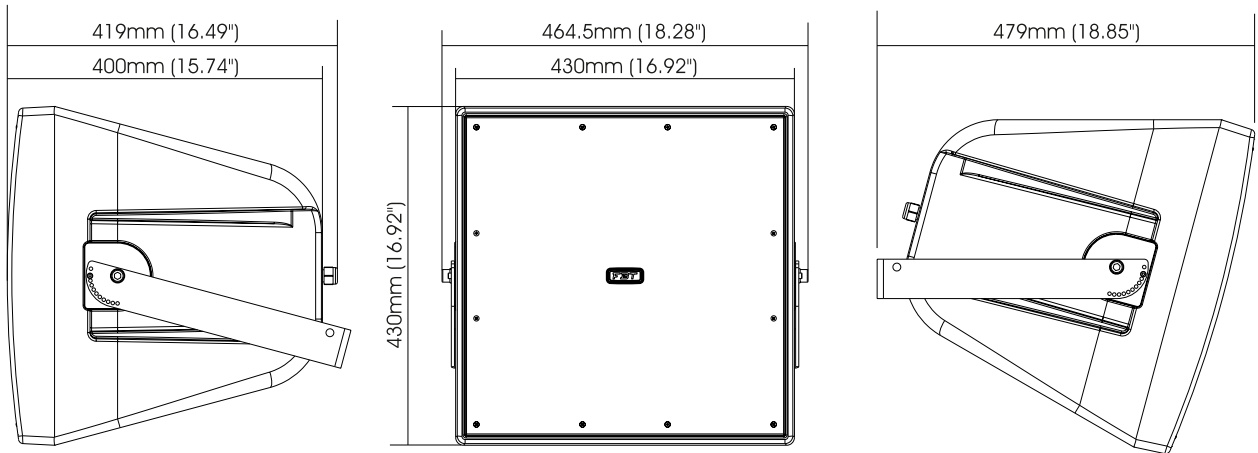
#### AMPLIFIER

Transformer (optional)	V / W	100 / 300 - 150
Recommended amplifier	W RMS	700
Long term power	W	350
Short term power (IEC 268-5)	W	1400
Nominal impedance	Ohm	8

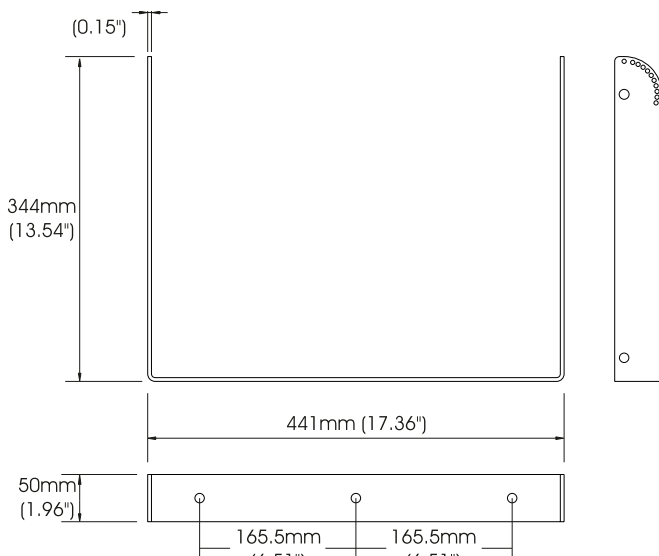
#### MECHANICAL SPEC.

Material		Polyethylene rotomolded
Net dimensions (WxHxD)	mm inch	430 x 430 x 419 16.92 x 16.92 x 16.49
Transport dimensions (WxHxD)	mm inch	582 x 582 x 507 22.91 x 22.91 x 19.96
Net weight	kg lb	15.5 34.17
Transport weight	kg lb	20.5 45.19

## DIMENSIONAL DRAWING



## INCLUDED ACCESSORY



## FREQUENCY RESPONSE DIAGRAM

