

Passive Reinforcement Speaker

MAIN APPLICATIONS

- Bars, pubs & clubs
- Restaurants
- Retail shops
- Entertainment venues
- Fitness centres
- Exhibition centres
- Conference rooms
- Theatres
- Houses of worship

MAIN FEATURES

- 2-way passive sound reinforcement system
- 0.47" baltic birch plywood cabinet
- 1 x 5" custom made LF woofer with rubber surround
- 1 x 1" HF dome tweeter
- 100W continuous pink noise
- 200W continuous program / 400W peak
- Optional line transformer (100V / 50W)
- Multiple M5 threaded rigging points
- Crossover networks equipped with 4 x Euroblock speaker terminals
- Choice of different RAL paint colours and different paint finish
- Completely manufactured in Italy

DESCRIPTION

The loudspeaker shall consist of a 5" low-frequency transducer and a 1" HF dome tweeter; the low-frequency driver's voice coil shall be 1.25" in diameter. Performance specifications of a typical unit shall be as follows: usable frequency response shall extend from 70Hz to 22kHz; nominal impedance shall be 8 ohms; the frequency dividing network shall have a crossover frequency of 3.0 kHz; measured sensitivity shall be at least 89dB (at 1m [3.3ft]). The input shall be switchable for use either at nominal 8 ohms or on a 100V distributed speaker line via transformer (optional). The cabinet shall be constructed of 0.47" baltic birch plywood covered in a scratch- and scuff-resistant black or white finish. ARCHON speakers shall be installed in suspension by wall bracket, on a tripod stand, with adjustable wall support, and simple stack installation.

TECHNICAL SPECIFICATIONS

GENERAL

Code	Black	36250
	White	44553
Configuration	way	2
Low frequency woofer	inch	5 - 1.25 coil
High frequency driver	inch	1 - 1 coil

ACOUSTIC SPECIFICATIONS

Frequency response (@-6dB)	Hz	70 - 22k
MAX SPL (cont/peak) (bi-amp)*	dB	112 / 115
Dispersion	H° x V°	110
Sensitivity (@1W/1mt)	dB	89
Crossover frequency	Hz	3.0k
Recommended HP filter	Hz - dB oct	60 - 24

INPUTS & OUTPUTS

Connectors		4-pin Euroblock
------------	--	-----------------

* CONT. SPL: free space, based on recommended amp rating and LF transducer average sensitivity data, 125mS time average
 PEAK SPL: free space, based on short term applicable power rating and system peak sensitivity, 10mS time average

AMPLIFIER

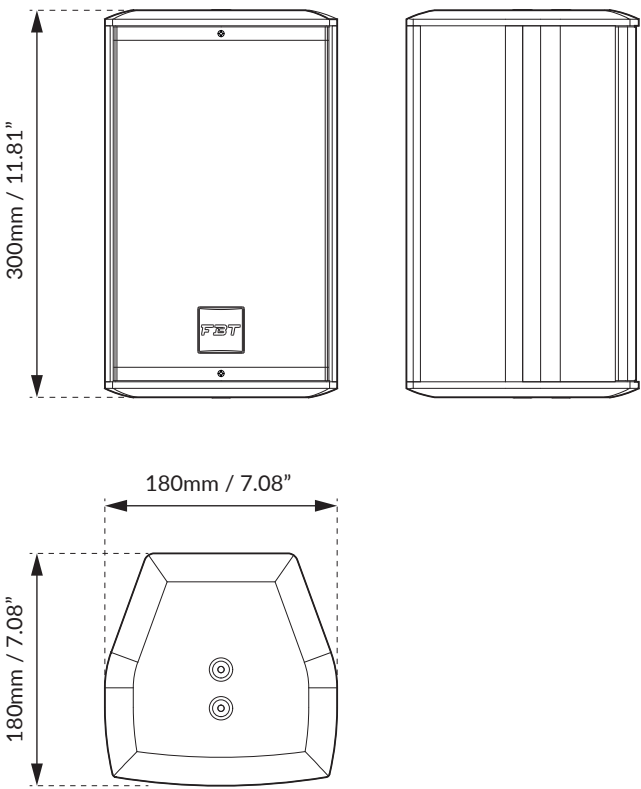
Recommended amplifier	W RMS	200
Transformer (optional)	V / W	100 / 50
Long term power	W	100
Short term power (IEC 268-5)	W	400
Nominal impedance	Ohm	8

MECHANICAL SPECIFICATIONS

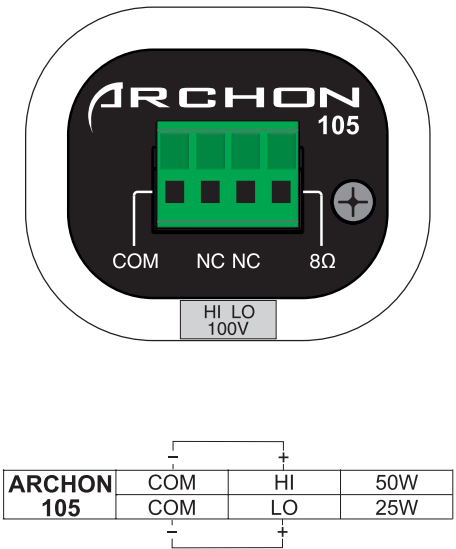
Material	Cabinet	0.47" baltic birch plywood
	Grille	Steel
Net dimensions (WxHxD)	mm	180 x 300 x 180
	inch	7.08 x 11.81 x 7.08
Transport dimensions (WxHxD)	mm	270 x 415 x 270
	inch	10.62 x 16.33 x 10.62
Net weight	kg	4.1
	lb	9.04
Transport weight	kg	5.1
	lb	11.24



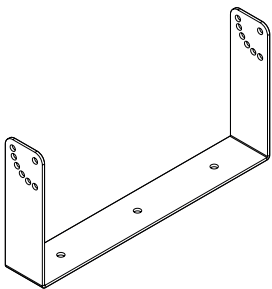
DIMENSIONAL DRAWING



CONTROL PANEL



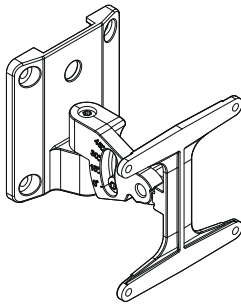
ACCESSORIES



AC-U 105H

Wall Metal Bracket
Black code: 40336
White code: 44556

307 x 50 x 155mm
12.08 x 1.96 x 6.1inch



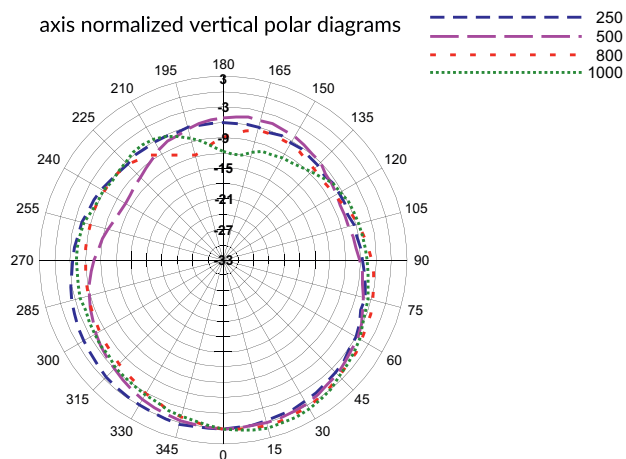
WM-68

Wall Metal Bracket
Black code: 44856
White code: 44865

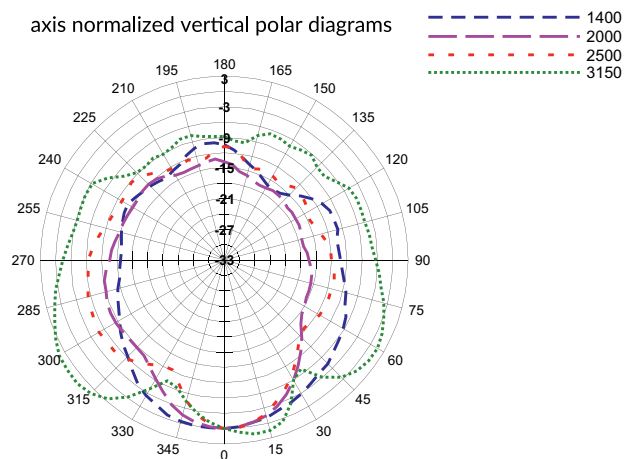
90.5 x 90 x 91.5mm
3.56 x 3.54 x 3.60inch

DIAGRAMS

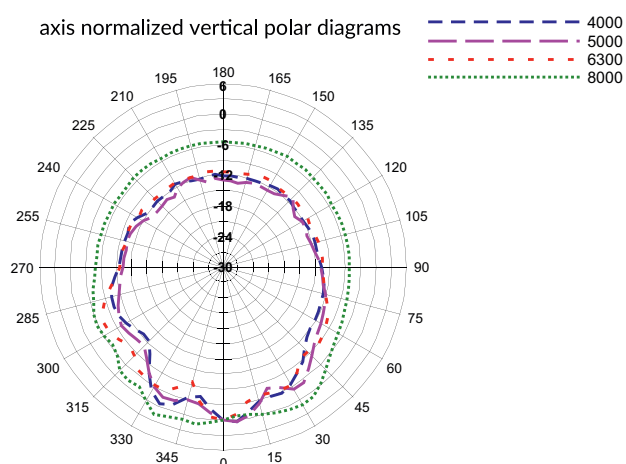
axis normalized vertical polar diagrams



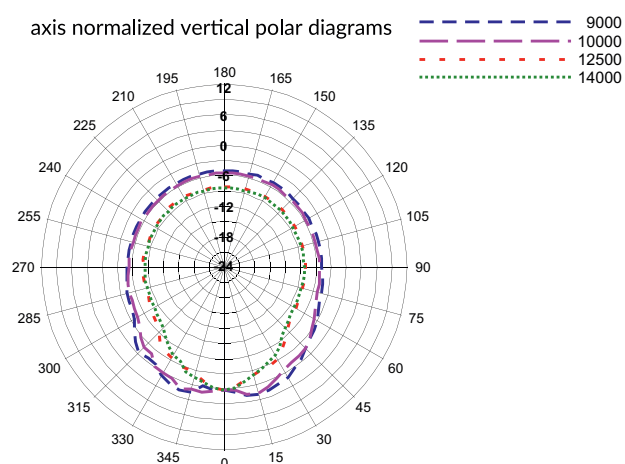
axis normalized vertical polar diagrams



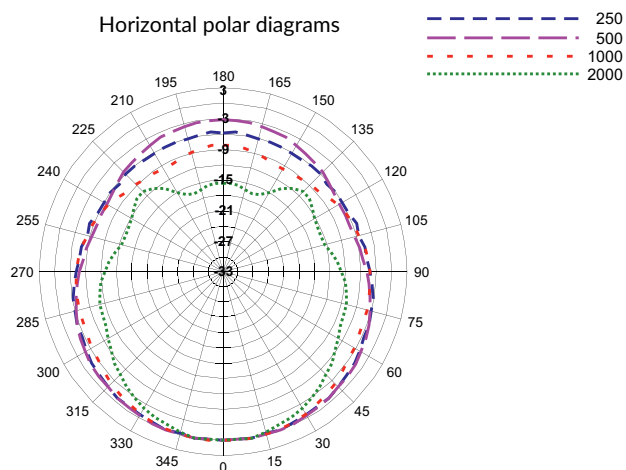
axis normalized vertical polar diagrams



axis normalized vertical polar diagrams



Horizontal polar diagrams



Horizontal polar diagrams

