

Passive Reinforcement Speaker

MAIN APPLICATIONS

- Bars, pubs & clubs
- Restaurants
- Retail shops
- Entertainment venues
- Fitness centres
- Exhibition centres
- Conference rooms
- Theatres
- Houses of worship

MAIN FEATURES

- 2-way passive sound reinforcement system
- 0.47" baltic birch plywood cabinet
- 1 x 8" custom made LF woofer with rubber surround
- 1 x 1.5" HF dome tweeter
- 175W continuous pink noise
- 350W continuous program / 700W peak
- Optional line transformer (100V / 100W)
- Multiple M5 threaded rigging points
- Crossover networks equipped with 4 x Euroblock speaker terminals
- Choice of different RAL paint colours and different paint finish
- Completely manufactured in Italy

DESCRIPTION

The loudspeaker shall consist of a 6.5" low-frequency transducer and a 1" HF dome tweeter; the low-frequency driver's voice coil shall be 1.5" in diameter. Performance specifications of a typical unit shall be as follows: usable frequency response shall extend from 60Hz to 22kHz; nominal impedance shall be 8 ohms; the frequency dividing network shall have a crossover frequency of 2.5 kHz; measured sensitivity shall be at least 91dB (at 1m [3.3ft]). The input shall be switchable for use either at nominal 8 ohms or on a 100V distributed speaker line via transformer (optional). The cabinet shall be constructed of 0.47" baltic birch plywood covered in a scratch- and scuff-resistant black or white finish. ARCHON speakers shall be installed in suspension by wall bracket, on a tripod stand, with adjustable wall support, and simple stack installation.

TECHNICAL SPECIFICATIONS

GENERAL

Code	Black	36252
	White	44555
Configuration	way	2
Low frequency woofer	inch	8 - 1.5 coil
High frequency driver	inch	1.5 - 1.5 coil

ACOUSTIC SPECIFICATIONS

Frequency response (@-6dB)	Hz	55 - 22k
MAX SPL (cont/peak) (bi-amp)*	dB	118 / 121
Dispersion	H° x V°	90
Sensitivity (@1W/1mt)	dB	92.5
Crossover frequency	Hz	2k
Recommended HP filter	Hz - dB oct	40 - 24

INPUTS & OUTPUTS

Connectors		4-pin Euroblock
------------	--	-----------------

* CONT. SPL: free space, based on recommended amp rating and LF transducer average sensitivity data, 125mS time average
 PEAK SPL: free space, based on short term applicable power rating and system peak sensitivity, 10mS time average

AMPLIFIER

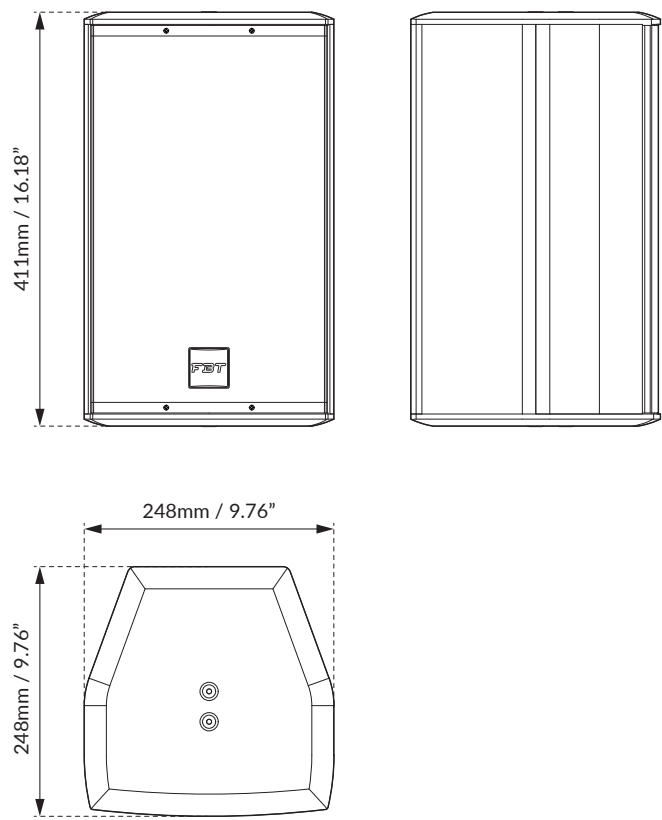
Recommended amplifier	W RMS	350
Transformer (optional)	V / W	100 / 100
Long term power	W	175
Short term power (IEC 268-5)	W	700
Nominal impedance	Ohm	8

MECHANICAL SPECIFICATIONS

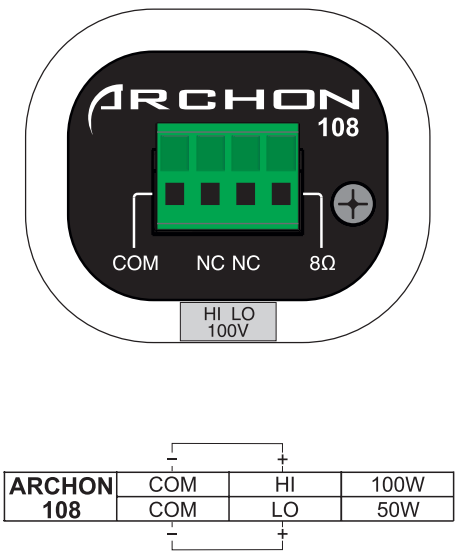
Material	Cabinet	0.47" baltic birch plywood
	Grille	Steel
Net dimensions (WxHxD)	mm	248 x 411 x 248
	inch	9.76 x 16.18 x 9.76
Transport dimensions (WxHxD)	mm	360 x 535 x 315
	inch	14.17 x 21.06 x 12.4
Net weight	kg	8.2
	lb	18.08
Transport weight	kg	9.5
	lb	20.94



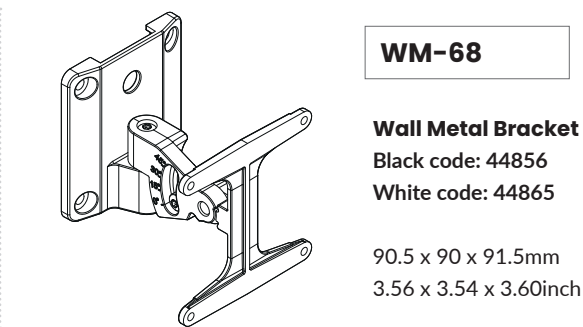
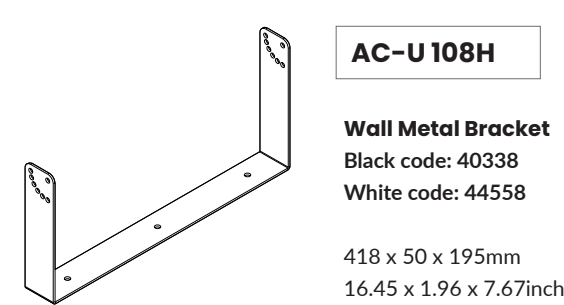
DIMENSIONAL DRAWING



CONTROL PANEL

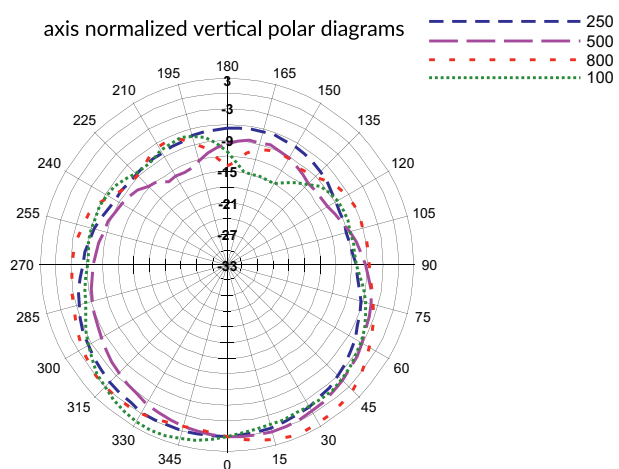


ACCESSORIES

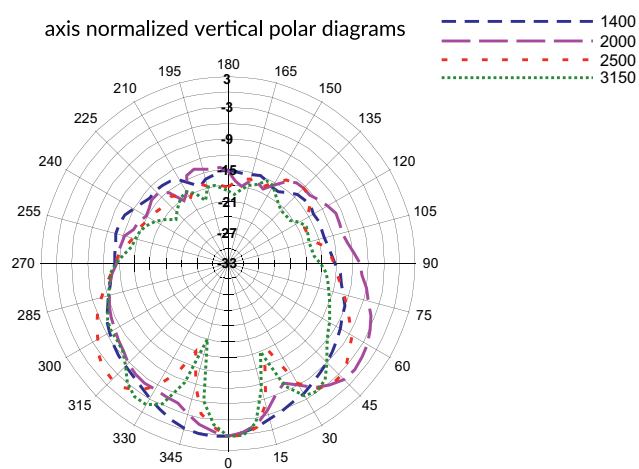


DIAGRAMS

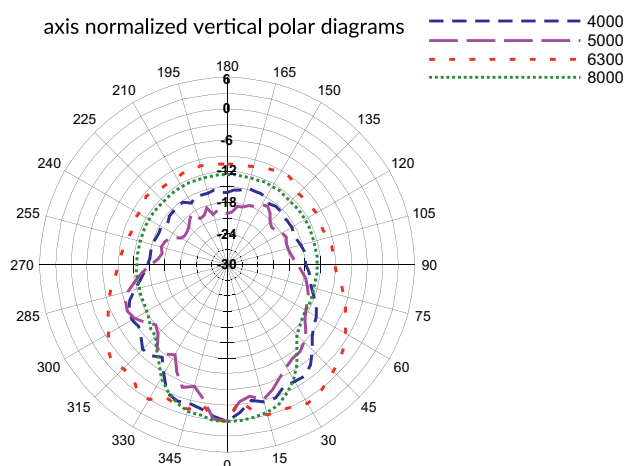
axis normalized vertical polar diagrams



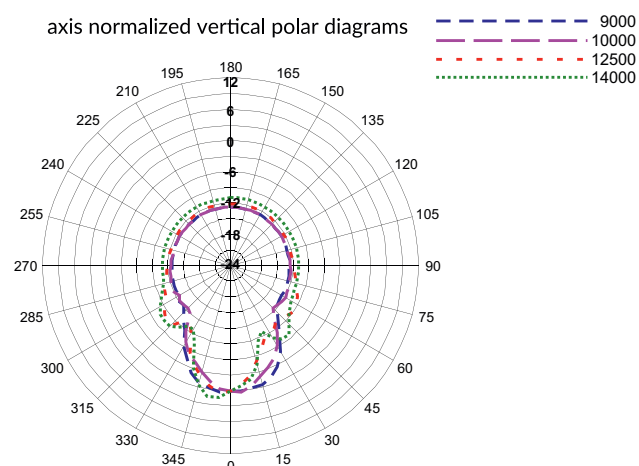
axis normalized vertical polar diagrams



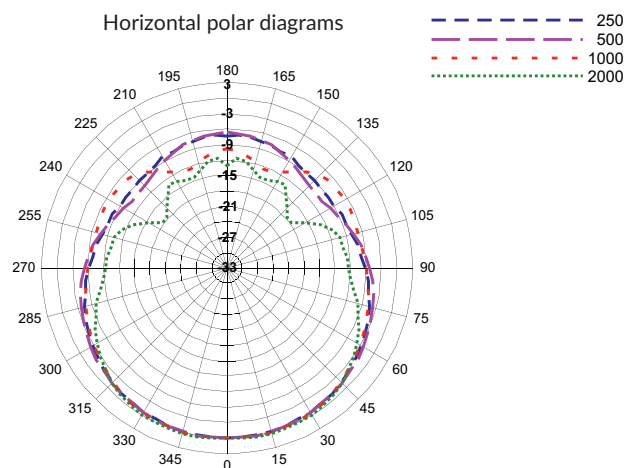
axis normalized vertical polar diagrams



axis normalized vertical polar diagrams



Horizontal polar diagrams



Horizontal polar diagrams

