



ProMAXX 114

Passive Reinforcement Speaker

APPLICATIONS

- Live sound PA system
- Live sound monitor
- DJ system
- School and corporate audio visual sound reinforcement
- Background music/announcements: restaurants, pubs
- Transportation terminals, Clubs, Auditorium, Theatres, Gims, Houses of worship

KEY FEATURES

- 2-way passive sound reinforcement speaker
- 700W RMS recommended amplifier
- Polypropylene cabinet
- Built-in passive crossover
- Control panel features 2 x Speakon NL-4 IN&LINK
- 12°, 40°, 55° monitoring angles
- Completely manufactured in Italy



PRODUCT DESCRIPTION

The FBT PROMAXX 114 has been designed to meet the highest standards in both performance. With a specially developed polypropylene cabinet and stylish full grille aesthetic the FBT PROMAXX 114 represents the next step in the evolution of a portable sound classic. The FBT PROMAXX 114 incorporating a 14" LF neodymium woofer with 3" voice coil, custom made for FBT and 1.4" exit throat B&C HF compression driver with 2.5" voice coil; with a constant directivity horn (90° H x 60° V) ensure accurate coverage and with a frequency range from 50Hz to 18kHz the FBT PROMAXX 114 speaker provide high fidelity sound for both speech and music applications with a maximum SPL of 132dB. Ideal for small, medium fixed installations the FBT PROMAXX 114 speaker system have an impedance of 8 Ohm and the internal crossover is at a fixed frequency of 1.3kHz. Rear panel connections feature 2 x NL4 Neutrik Speakon. The two M10 suspension points along with the optional mounting bracket allow the FBT PROMAXX 114 speaker to be surface mounted on wall or ceiling and a standard 1.38" speaker stand socket allows the FBT PROMAXX 114 to be mounted on speaker stand.

ELECTRICAL SPECIFICATIONS

System Type	2 Way
Recommended amplifier	700W RMS
Long term power *	350W
Short term power (IEC 268-5)**	1400W
Nominal impedance	8 Ohm
Frequency Response	50Hz - 18kHz (@ -6dB)
Sensitivity	100dB (@ 1W / 1mt)
Maximum SPL cont/peak	128 / 132dB
Dispersion	90°H x 60°V
Crossover frequency	1.3kHz
Recommended HP filter	40Hz / 24dB oct

PHYSICAL SPECIFICATIONS

Low Frequency Woofer	14" / 3" coil
High Frequency Driver	1.4" / 2.5" coil
Input Connectors	2 x Speakon
Net Dimensions (WxHxD) inch	15.8 x 25.4 x 13.6
mm	402 x 644 x 345
Net Weight	15kg / 33.06lb
Enclosure Material	Polypropylene

* 100 hour power test, IEC-268-5 standard (display the long term RMS voltage handling, using IEC filtered 6dB crest factor pink noise).

** Based on peak level of 6dB crest factor random noise signal used for test.

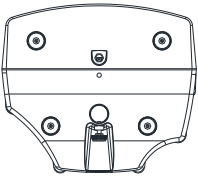


ProMaxX 114

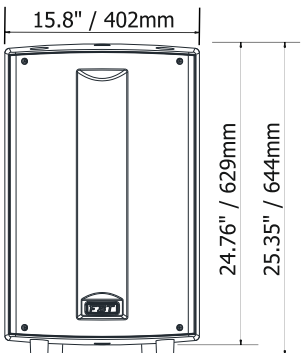
Passive Reinforcement Speaker

DIMENSIONAL DRAWINGS

Bottom view

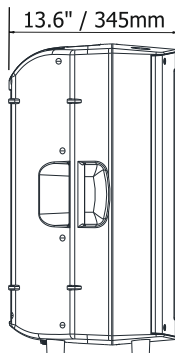


15.8" / 402mm

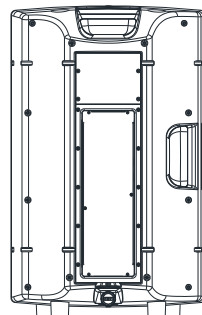


Front view

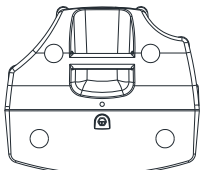
13.6" / 345mm



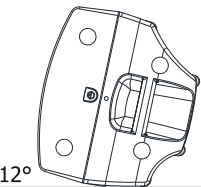
Side view



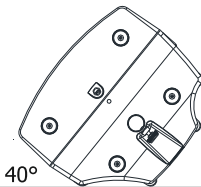
Rear view



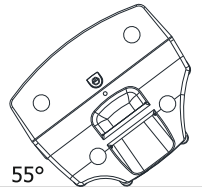
Top view



12°



40°

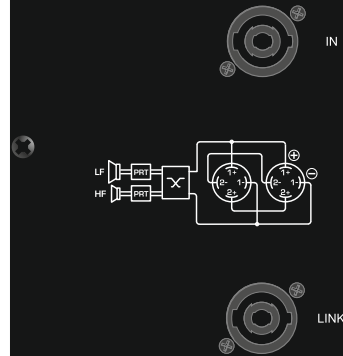


55°

CONTROL PANEL

ProMaxX 114

FBT



CAUTION:
IT IS IMPORTANT TO USE AN AMPLIFIER THAT DOES NOT
EXCEED 700W RMS @8 OHMS.

TECHNICAL SPECIFICATIONS

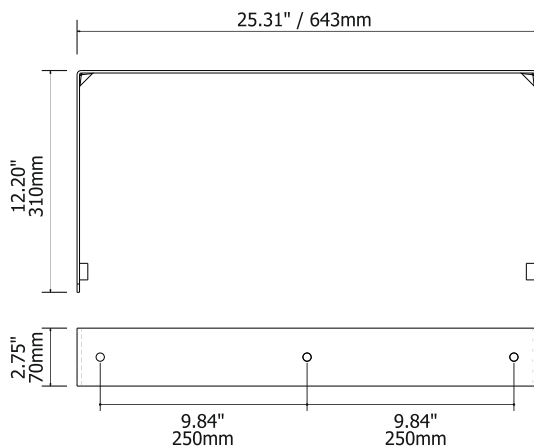
Nominal Impedance:	8 Ohm
Recommended Amplifier:	700 W RMS
Short Term Power:	1400 W
Long Term Power:	350 W
Frequency Response (@-6dB):	50 Hz - 18 kHz
Sensitivity @1W,1m:	100 dB
Max SPL cont./peak:	128 / 132 dB
Dispersion:	90° H x 60° V

FBT elettronica spa - RECANATI (MC)



MADE IN ITALY

ACCESSORIES



60,0°

Caution.



This FBT loudspeaker should be suspended overhead only in accordance with the procedures and limitations specified in the user's manual. This system should be suspended in compliance with local and state overhead suspension ordinances. The PROMAXX speakers use only with FBT mount for wall installation.