

MIDDLE HEAD OVAL AMENITIES

LOCATION PLAN



DRAWING NO.	DRAWING TITLE
A000	COVER PAGE
A010	SITE ANALYSIS
A020	DEMOLITION PLAN
A100	SITE PLAN
A101	GROUND FLOOR PLAN
A102	ROOF PLAN
A201	ELEVATIONS
A301	SECTIONS
A401	SCHEDULE OF MATERIALS
A501	PHOTOMONTAGE

MATERIAL FINISHES KEY	
CR1	PRECAST CONCRETE PANELS, WARM COLOUR
SC1	SLIDING TIMBER BATTEN SCREEN, ALUMINIUM FRAME
GL1	FULL HEIGHT FIXED GLAZING, ALUMINIUM FRAME
GL2	FULL HEIGHT OBSCURE GLAZING, ALUMINIUM FRAME
CR2	CONCRETE SLAB, LIGHT COLOUR
RF1	LIGHTWEIGHT CORRUGATED ROOF
ST1	PREFABRICATED COLUMN AND BEAM STRUCTURE, LIGHT COLOUR

ABBREVIATIONS	
RL	RELATIVE LEVEL
eRL	EXISTING RELATIVE LEVEL
EXG	EXISTING
FFL	FINISHED FLOOR LEVEL
DP	DOWN PIPE
AMB	AMBULANT TOILET
ACC	ACCESSIBLE TOILET
M	MALE
F	FEMALE
U	UNISEX

Notes
THIS DRAWING SHOULD BE READ IN CONJUNCTION WITH ALL RELEVANT CONTRACTS, SPECIFICATION, REPORTS AND DRAWINGS. DO NOT SCALE DRAWINGS. DIMENSIONS GOVERN. ANY DISCREPANCIES OR CONCERNS SHOULD BE NOTIFIED IN WRITING ASAP. VERIFY ALL DIMENSIONS ON SITE BEFORE CONSTRUCTION. COPYRIGHT OF THIS DRAWING IS VESTED IN ARCHER OFFICE PTY LTD. TO USE THIS DOCUMENT FOR ANY PURPOSE WHATSOEVER IS RESTRICTED TO THE TERMS OF THE AGREEMENT.

Rev	Drawn	Checked	Issue Name	Date
A	AOC		DEVELOPMENT APPLICATION	25/2/2024

Acoustic Consultant
Acoustic Logic

Arborist
Earthscape Horticultural Services

BCA Consultant
Design Confidence

Bushfire Consultant
Blacklash Bushfire Consulting

Ecologist
Stantec

Hazmat and Soil Contamination
Tetra Tech Coffey

Heritage Consultant
Heritage 21

Landscape Architect
Studio Rewild with Emily Simpson

Lighting Consultant
Electrolight

Architect
ARCHER OFFICE

Client
Mosman Municipal Council

Project Name
MIDDLE HEAD OVAL AMENITIES

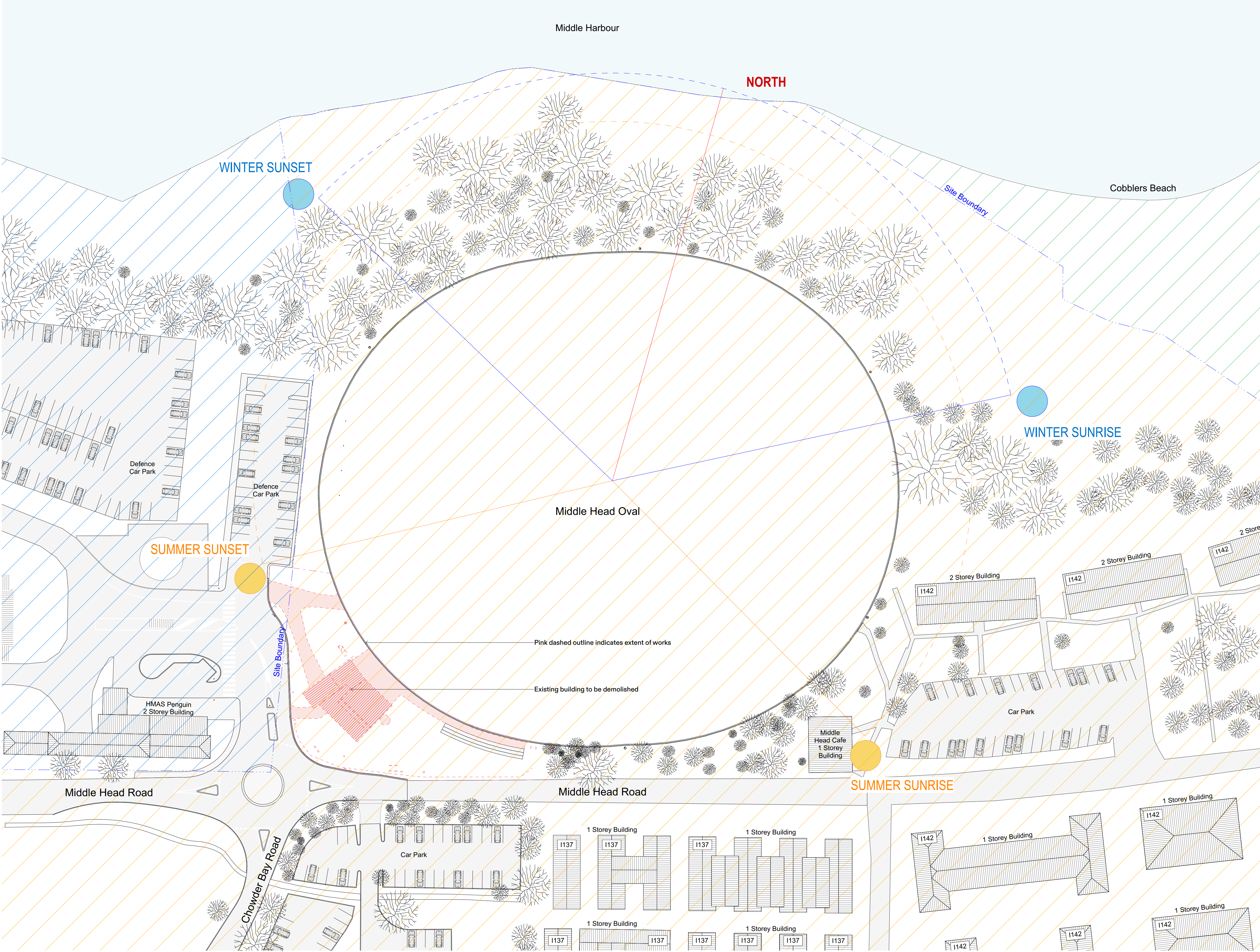
Drawing Name
COVER PAGE

Project Number
1903

Documentation Stage
DEVELOPMENT APPLICATION

Drawing Number
A000

Revision
A

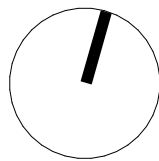


KEY	
Land Zoning taken from the Mosman Local Environmental Plan (2012)	
<div></div> C1	National Parks and Reserves
<div></div> SP2	Sydney Harbour Federation Trust
<div></div> SP2	Defence
Locally Significant Heritage Items (Mosman Local Environmental Plan 2012)	
<div></div> I137	AUSAID Training Centre
<div></div> I142	10 Terminal Regiment HQ

Notes
THIS DRAWING SHOULD BE READ IN CONJUNCTION WITH ALL RELEVANT CONTRACTS, SPECIFICATION, REPORTS AND DRAWINGS. DO NOT SCALE DRAWINGS. DIMENSIONS GOVERN. ANY DISCREPANCIES OR CONCERNS SHOULD BE NOTIFIED IN WRITING ASAP. VERIFY ALL DIMENSIONS ON SITE BEFORE CONSTRUCTION. COPYRIGHT OF THIS DRAWING IS VESTED IN ARCHER OFFICE PTY LTD. TO USE THIS DOCUMENT FOR ANY PURPOSE WHATSOEVER IS RESTRICTED TO THE TERMS OF THE AGREEMENT.

Rev	App	Chk	Issue Name	Date
A	AOC		DEVELOPMENT APPLICATION	2/5/2024

Scale / North Point
1:500 @ A1



Acoustic Consultant
Acoustic Logic

Arborist
Earthscape Horticultural Services

BCA Consultant
Design Confidence

Bushfire Consultant
Blacklash Bushfire Consulting

Ecologist
Slantec

Hazmat and Soil Contamination
Tetra Tech Coffey

Heritage Consultant
Heritage 21

Landscape Architect
Studio Rewild with Emily Simpson

Lighting Consultant
Electrolight

Architect
ARCHER OFFICE

Client
Mosman Municipal Council

Project Name
MIDDLE HEAD OVAL AMENITIES

Drawing Name
SITE ANALYSIS

Project Number
1903

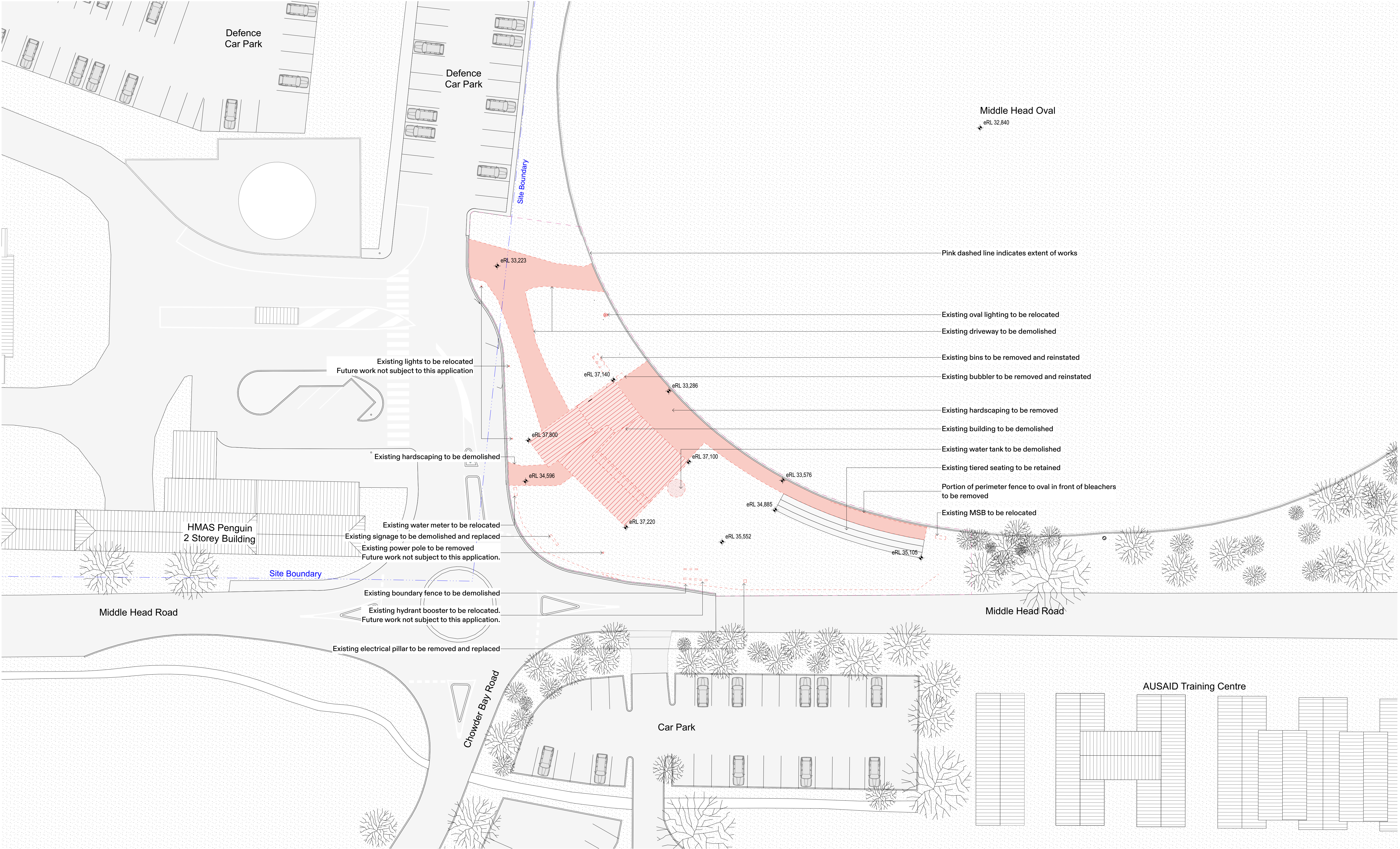
Documentation Stage
DEVELOPMENT APPLICATION

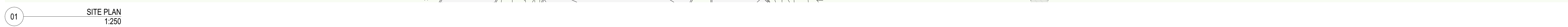
Project Address
1110 MIDDLE HEAD RD,
MOSMAN NSW

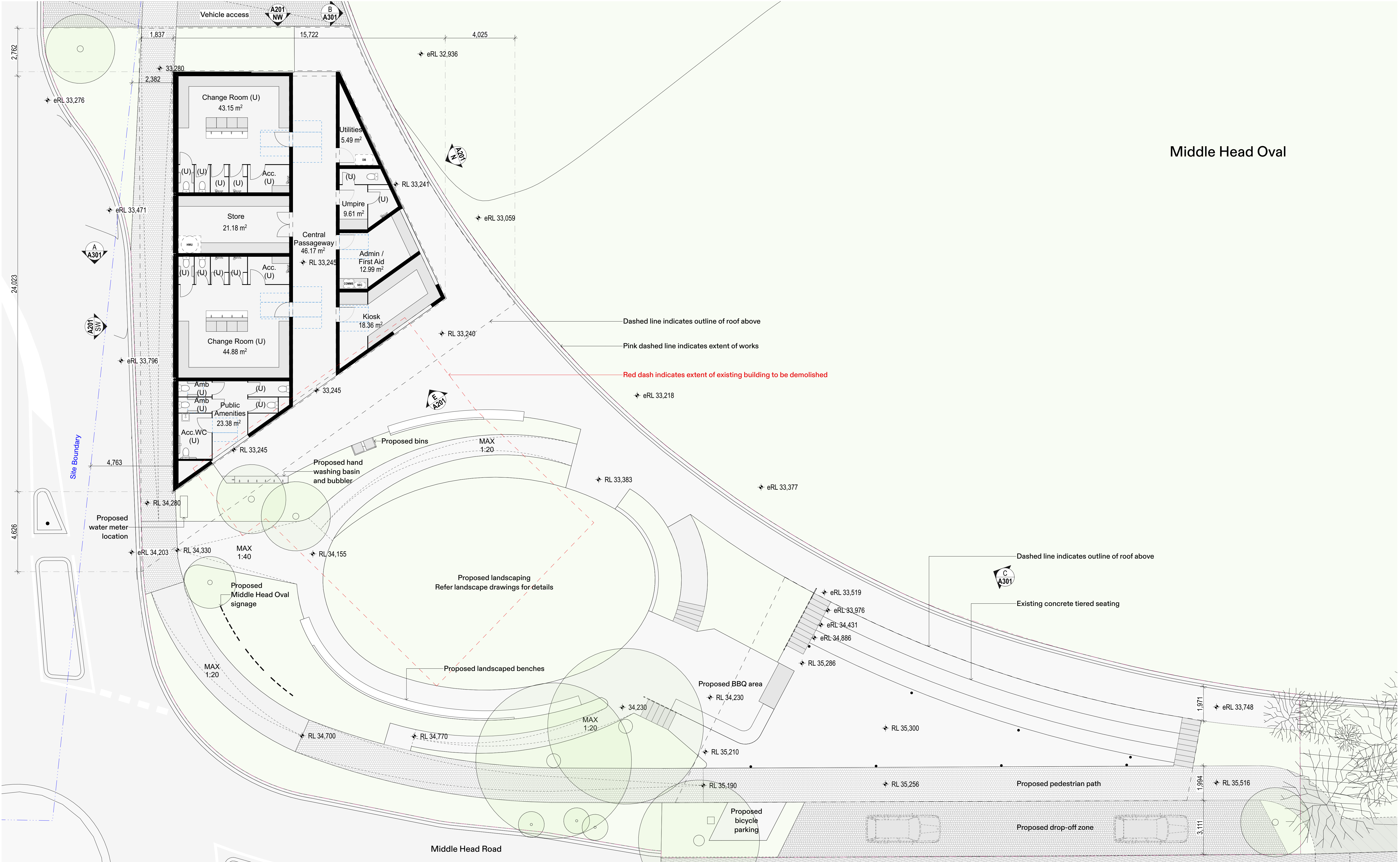
Suite 6, Level 3, 11 Buckingham Street,
Sunny Hills NSW 2210
ABN 78162892293
P: +612 9191 7326
E: studio@archeroffice.com
Nominated Architect:
Tomek Archer 9495

Drawing Number
A010

Revision
A







Middle Head Oval

01

GROUND FLOOR PLAN
1:100

Notes

THIS DRAWING SHOULD BE READ IN CONJUNCTION WITH ALL RELEVANT CONTRACTS, SPECIFICATION, REPORTS AND DRAWINGS. DO NOT SCALE DRAWINGS. DIMENSIONS GOVERN. ANY DISCREPANCIES OR CONCERNS SHOULD BE NOTIFIED IN WRITING ASAP. VERIFY ALL DIMENSIONS ON SITE BEFORE CONSTRUCTION. COPYRIGHT OF THIS DRAWING IS VESTED IN ARCHER OFFICE PTY LTD. TO USE THIS DOCUMENT FOR ANY PURPOSE WHATSOEVER IS RESTRICTED TO THE TERMS OF THE AGREEMENT.

Rev	App	Chk	Issue Name	Date
A	AOC		DEVELOPMENT APPLICATION	2/5/2024

Scale / North Point

1:100 @ A1

Acoustic Consultant Acoustic Logic	Arborist Earthscape Horticultural Services	BCA Consultant Design Confidence	Bushfire Consultant Blacklash Bushfire Consulting	Ecologist Slantec	Hazmat and Soil Contamination Tetra Tech Coffey	Heritage Consultant Heritage 21	Landscape Architect Studio Rewild with Emily Simpson	Lighting Consultant Electrolight
Planning Consultant Gyde Consulting	QS MBM	Services Engineer JHA Consulting Engineers	Stormwater Engineer JHA Consulting Engineers	Structural Engineer PMI Engineers	Surveyor Total Surveying Solutions	Traffic Headway Traffic and Transport	Visualisation Choi Render	Waste Elephants Foot

Architect

ARCHER OFFICE

Suite 6, Level 3, 11 Buckingham Street,
Sunny Hills NSW 2010
ABN 78162692293
P: +612 9191 7326
E: studio@archeroffice.com
Nominated Architect:
Tomek Archer 9495

Client

Mosman Municipal Council

Project Address

1110 MIDDLE HEAD RD,
MOSMAN NSW

Project Name

MIDDLE HEAD OVAL AMENITIES

Drawing Name

GROUND FLOOR PLAN

Project Number

1903

Documentation Stage

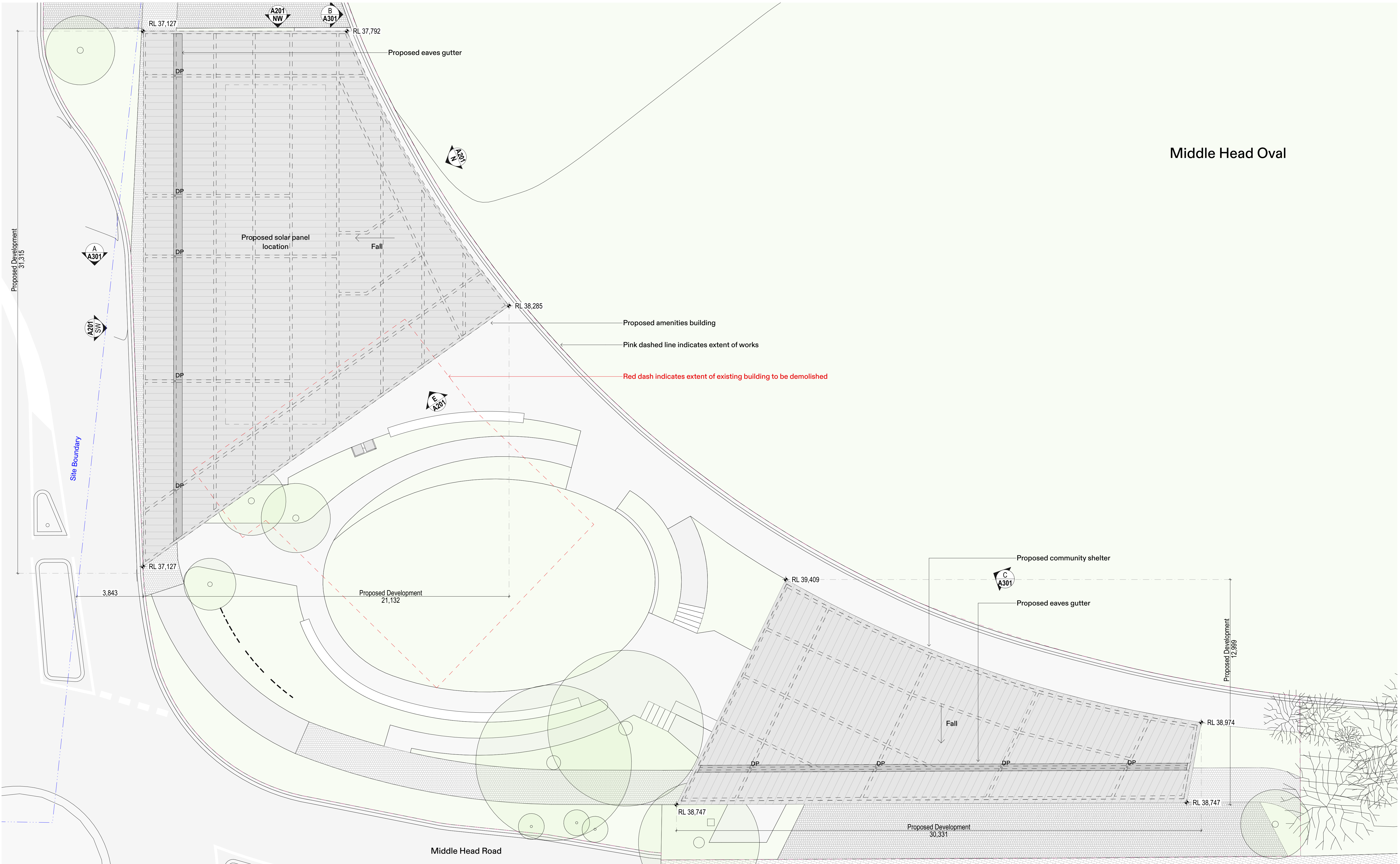
DEVELOPMENT APPLICATION

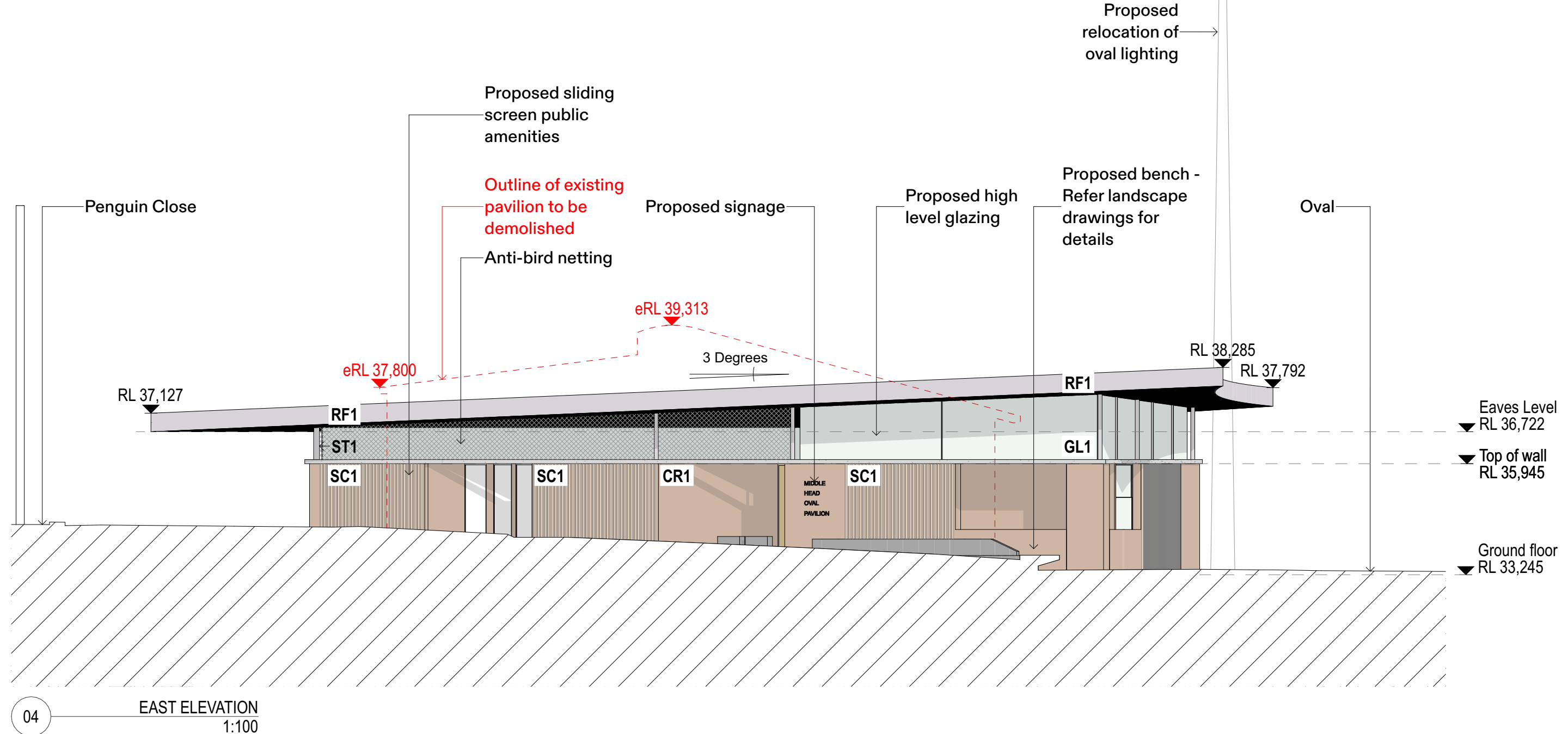
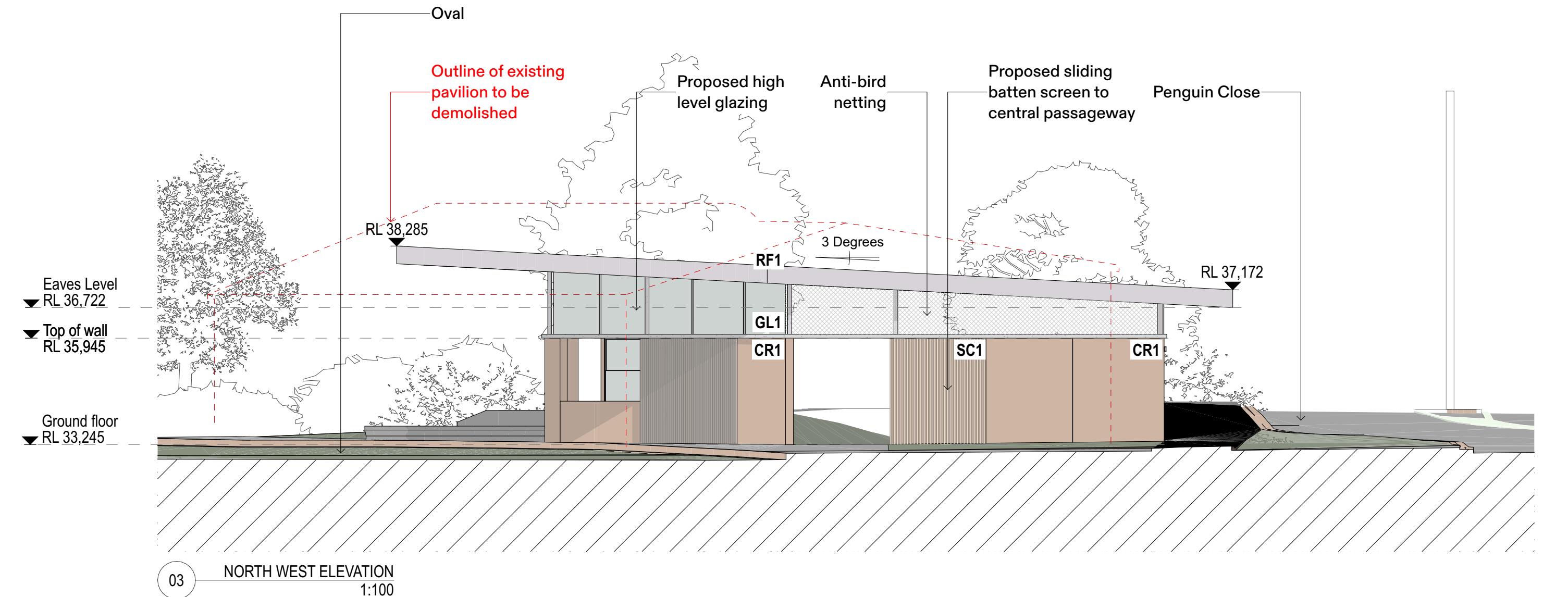
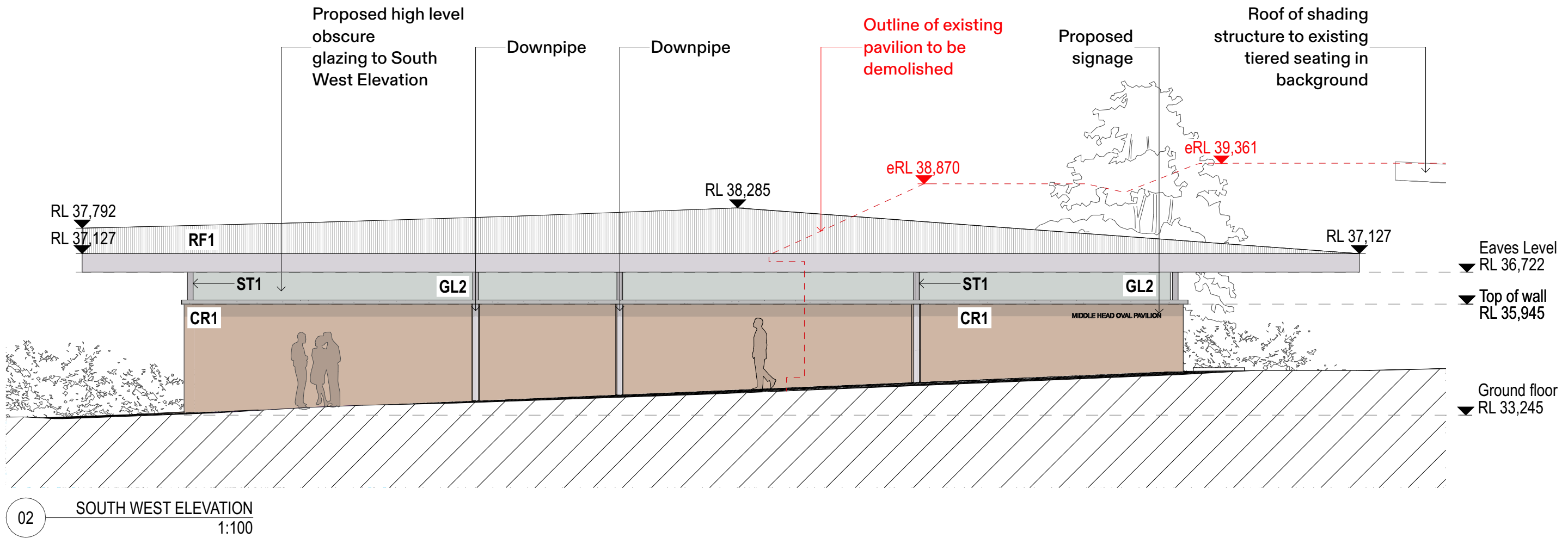
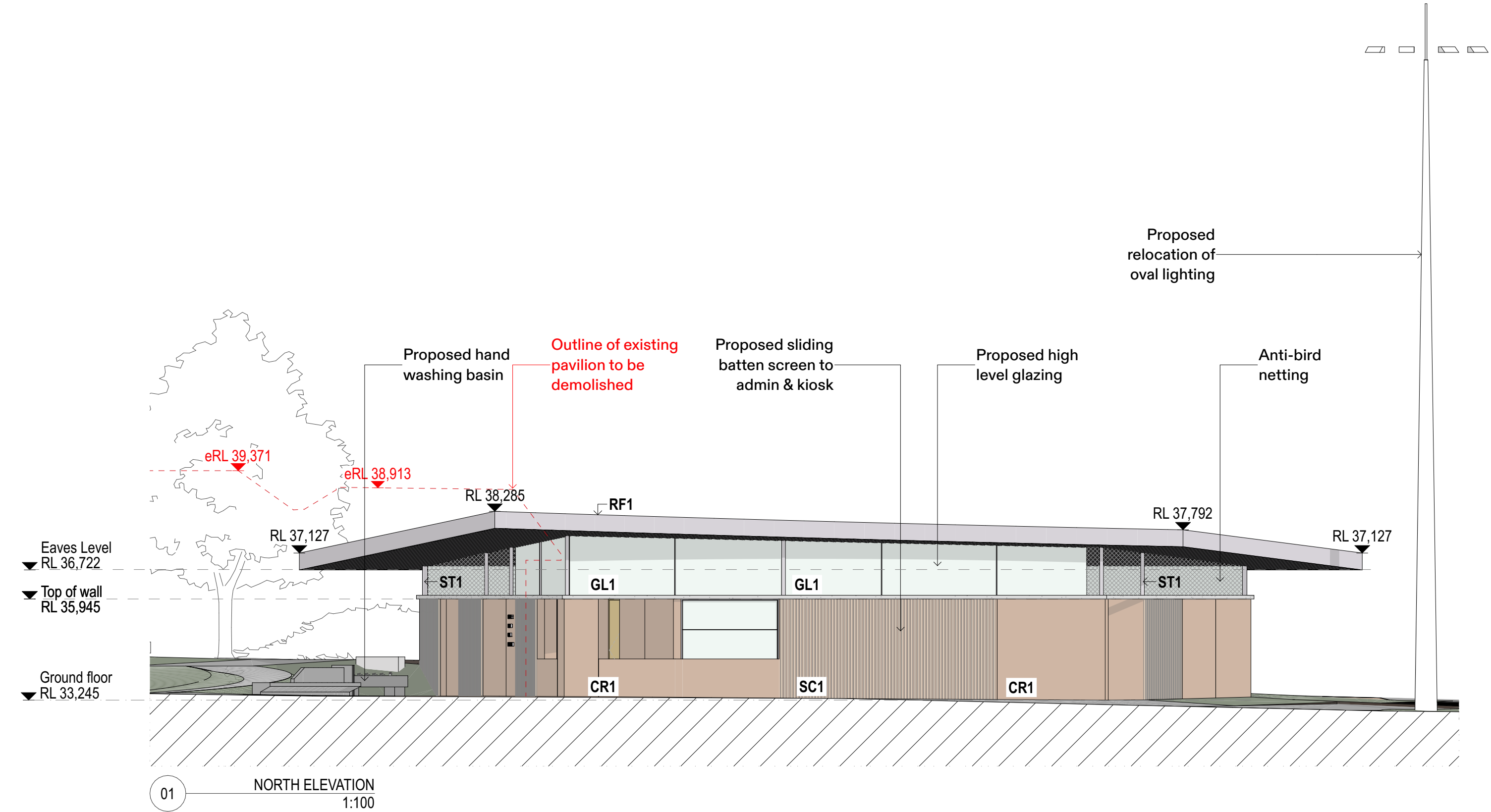
Drawing Number

A101

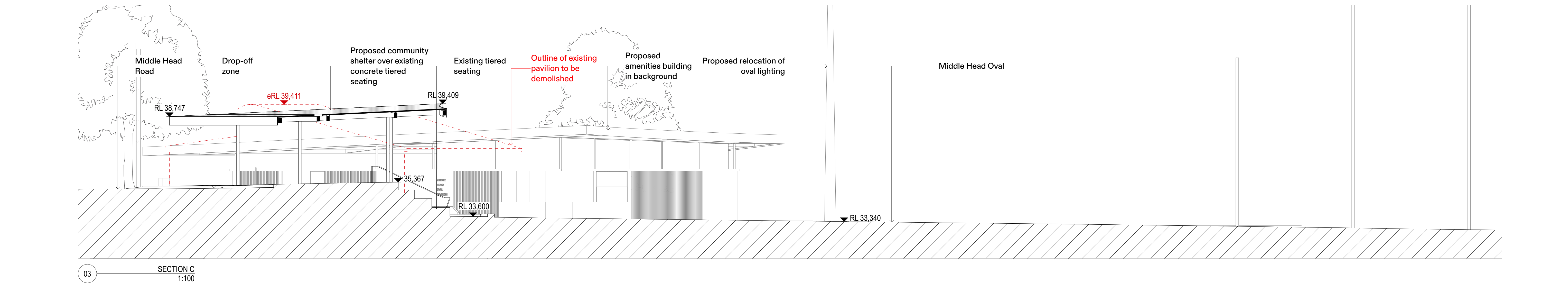
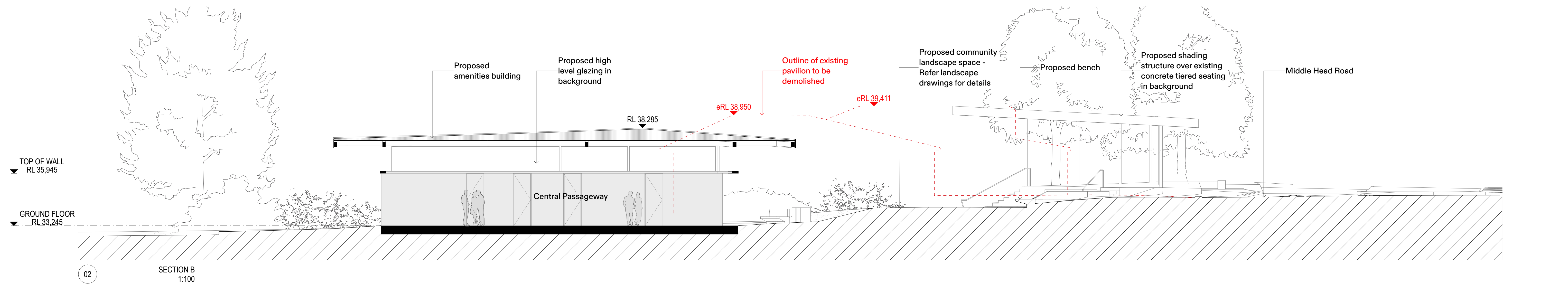
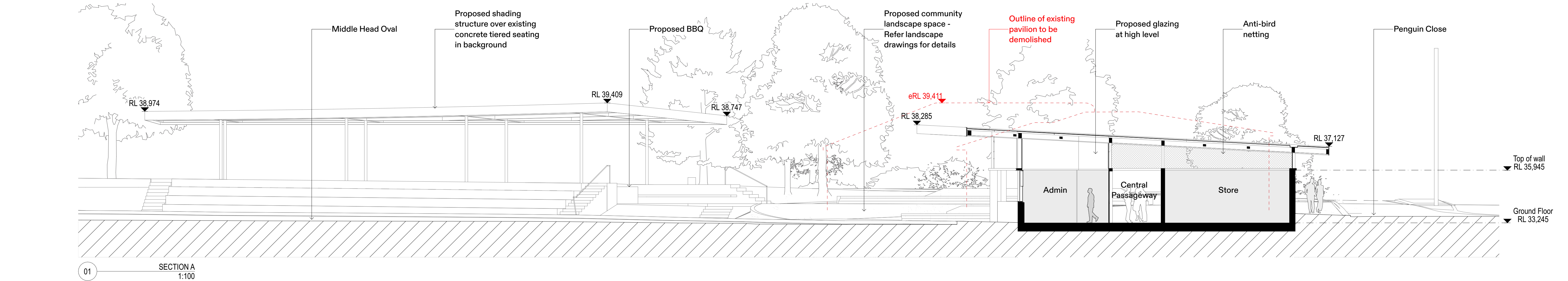
Revision

A





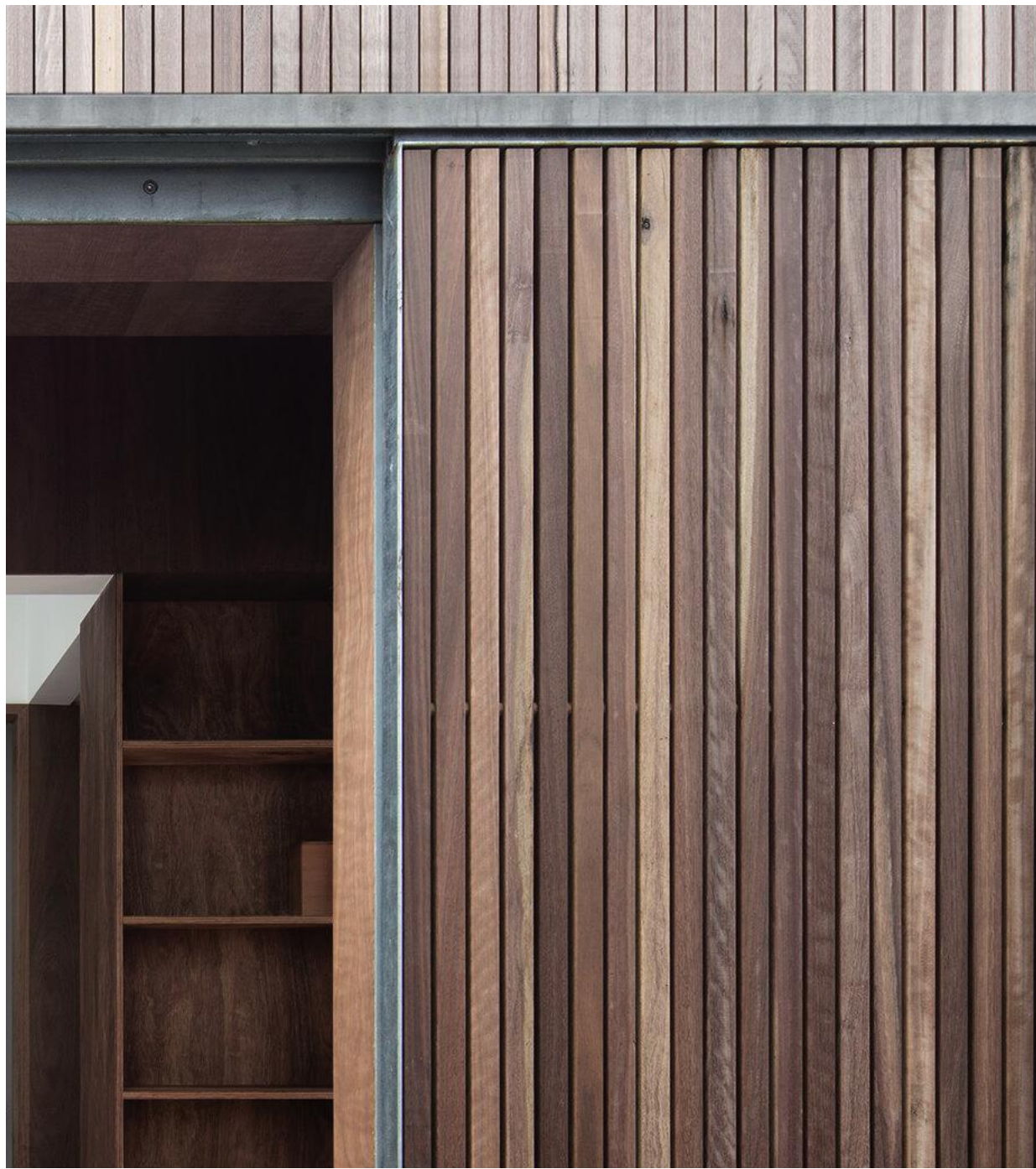
<div>Notes</div> <div>THIS DRAWING SHOULD BE READ IN CONJUNCTION WITH ALL RELEVANT CONTRACTS, SPECIFICATION, REPORTS AND DRAWINGS. DO NOT SCALE DRAWINGS. DIMENSIONS GOVERN. ANY DISCREPANCIES OR CONCERNS SHOULD BE NOTIFIED IN WRITING ASAP. VERIFY ALL DIMENSIONS ON SITE BEFORE CONSTRUCTION. COPYRIGHT OF THIS DRAWING IS VESTED IN ARCHER OFFICE PTY LTD. TO USE THIS DOCUMENT FOR ANY PURPOSE WHATSOEVER IS RESTRICTED TO THE TERMS OF THE AGREEMENT.</div>	Rev	Dwn	Chk	Issue Name	Date				
	A	AOC		DEVELOPMENT APPLICATION	2/5/2024				
<div>Scale / North Point</div> <div>1:100 @ A1</div>									
<div>Acoustic Consultant</div> <div>Acoustic Logic</div>		<div>Arborist</div> <div>Earthscape Horticultural Services</div>		<div>BCA Consultant</div> <div>Design Confidence</div>					
<div>Planning Consultant</div> <div>Gyde Consulting</div>		<div>QS</div> <div>MEM</div>		<div>Services Engineer</div> <div>JHA Consulting Engineers</div>					
				<div>Stormwater Engineer</div> <div>JHA Consulting Engineers</div>					
				<div>Structural Engineer</div> <div>PMI Engineers</div>					
				<div>Surveyor</div> <div>Total Surveying Solutions</div>					
				<div>Traffic</div> <div>Headway Traffic and Transport</div>					
				<div>Visualisation</div> <div>Choi Render</div>					
				<div>Waste</div> <div>Elephants Foot</div>					
<div>Architect</div> <div>ARCHER OFFICE</div> <div>Suite 6, Level 3, 11 Buckingham Street, Surry Hills NSW 2010 ABN 78162692293 P: +612 9191 7326 E: studio@archeroffice.com Nominated Architect: Tomek Archer 9495</div>									
<div>Client</div> <div>Mosman Municipal Council</div> <div>Project Address 1110 MIDDLE HEAD RD, MOSMAN NSW</div>									
<div>Project Name</div> <div>MIDDLE HEAD OVAL AMENITIES</div> <div>Drawing Name</div> <div>ELEVATIONS</div> <div>Project Number</div> <div>1903</div> <div>Documentation Stage</div> <div>DEVELOPMENT APPLICATION</div>									
				<div>Drawing Number</div> <div>A201</div>	<div>Revision</div> <div>A</div>				



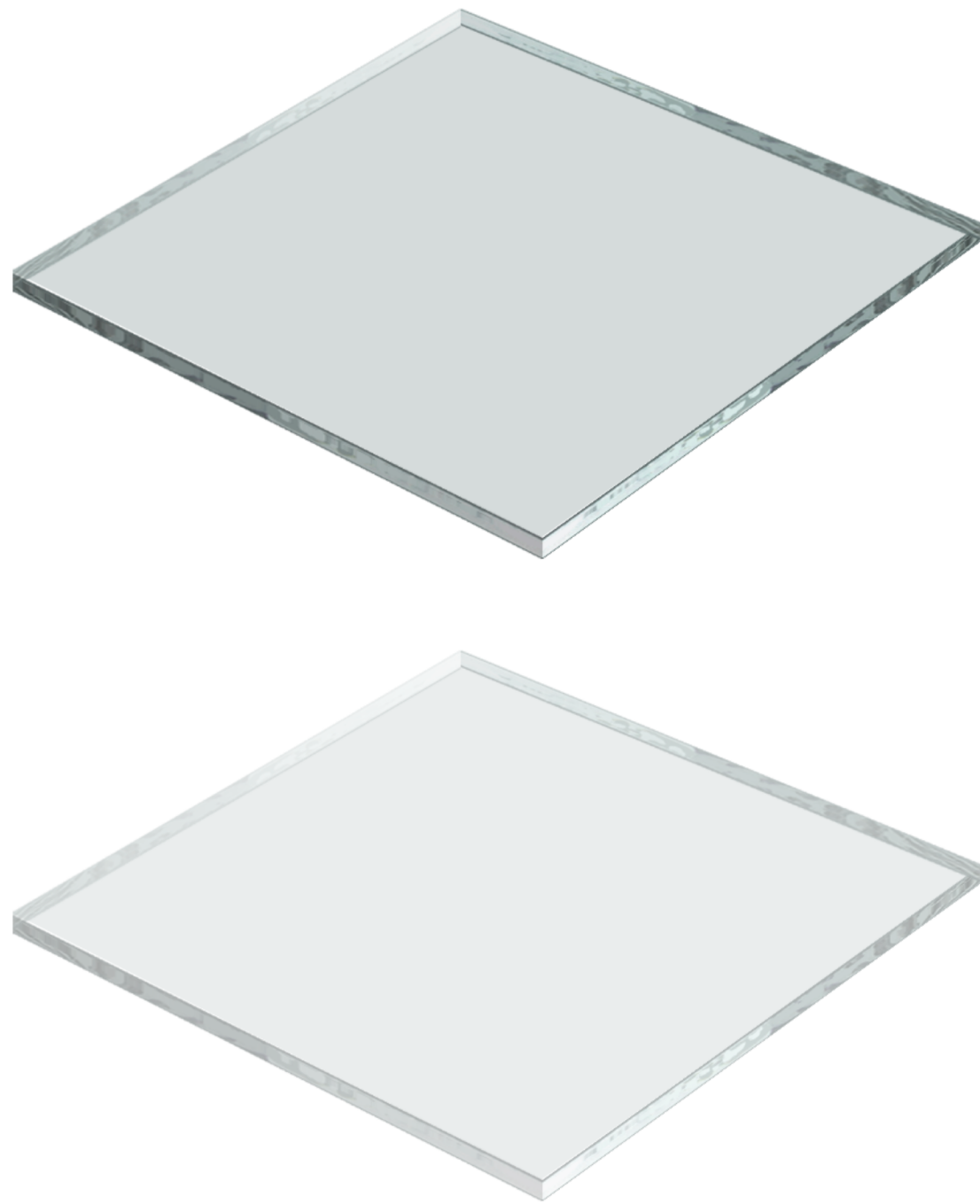
Notes THIS DRAWING SHOULD BE READ IN CONJUNCTION WITH ALL RELEVANT CONTRACTS, SPECIFICATION, REPORTS AND DRAWINGS. DO NOT SCALE DRAWINGS. DIMENSIONS GOVERN. ANY DISCREPANCIES OR CONCERNS SHOULD BE NOTIFIED IN WRITING ASAP. VERIFY ALL DIMENSIONS ON SITE BEFORE CONSTRUCTION. COPYRIGHT OF THIS DRAWING IS VESTED IN ARCHER OFFICE PTY LTD. TO USE THIS DOCUMENT FOR ANY PURPOSE WHATSOEVER IS RESTRICTED TO THE TERMS OF THE AGREEMENT.	Rev A	Drawn AOC	Checked CHK	Issue Name DEVELOPMENT APPLICATION	Date 25/5/2024	Scale / North Point 1:100 @ A1	Acoustic Consultant Acoustic Logic	Arborist Earthscape Horticultural Services	BCA Consultant Design Confidence	Bushfire Consultant Blacklash Bushfire Consulting	Ecologist Slantec	Hazmat and Soil Contamination Tetra Tech Coffey	Heritage Consultant Heritage 21	Landscape Architect Studio Rewild with Emily Simpson	Lighting Consultant Electrolight	Architect ARCHER OFFICE Suite 6, Level 3, 11 Buckingham Street, Surry Hills NSW 2010 ABN 78162692293 P: +612 9191 7326 E: studio@archeroffice.com Nominated Architect: Tomek Archer 9495	Client Mosman Municipal Council Project Address 1110 MIDDLE HEAD RD, MOSMAN NSW	Project Name MIDDLE HEAD OVAL AMENITIES Drawing Name SECTIONS Project Number 1903 Documentation Stage DEVELOPMENT APPLICATION	Drawing Number A301 Revision A
							Planning Consultant Gyde Consulting	QS MBM	Services Engineer JHA Consulting Engineers	Stormwater Engineer JHA Consulting Engineers	Structural Engineer PMI Engineers	Surveyor Total Surveying Solutions	Traffic Headway Traffic and Transport	Visualisation Choi Render	Waste Elephants Foot				



01 CONCRETE, WARM COLOUR



02 TIMBER SCREEN



03 GLAZING

MATERIAL FINISHES KEY

- 01: PRECAST CONCRETE

CR1 PRECAST CONCRETE PANELS, WARM COLOUR
- 02: TIMBER SCREENS

SC1 SLIDING TIMBER BATTEN SCREEN, ALUMINIUM FRAME
- 03: CLEAR GLASS

GL1 FULL HEIGHT FIXED GLAZING, ALUMINIUM FRAME

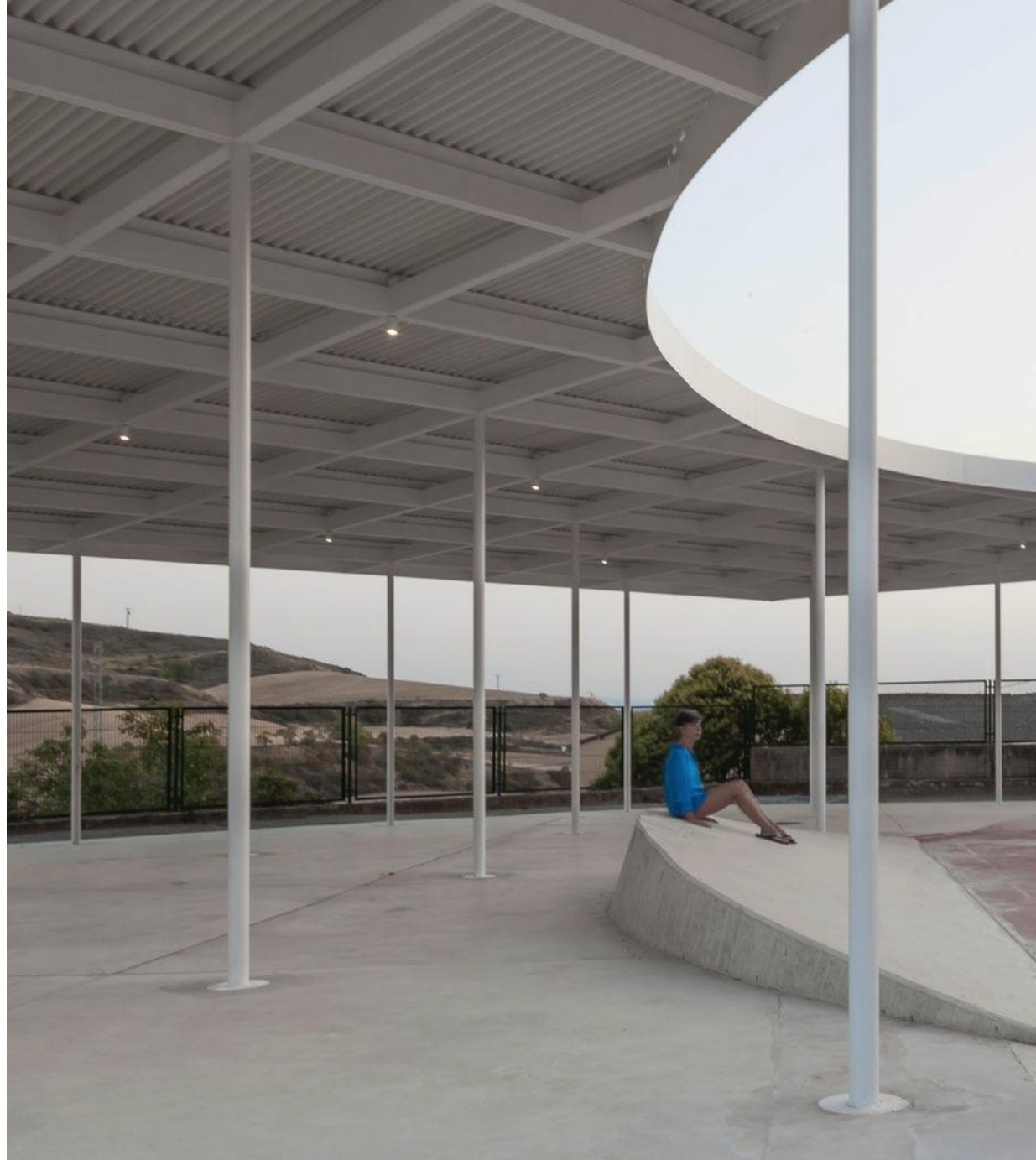
GL2 OBSCURE GLAZING, ALUMINIUM FRAME
- 05: ROOF

RF1 LIGHTWEIGHT CORRUGATED ROOF
- 06: STEEL STRUCTURE

ST1 PREFABRICATED COLUMN AND BEAM STRUCTURE, LIGHT COLOUR



04 LIGHTWEIGHT ROOF



05 EXPOSED ALUMINIUM STRUCTURE, LIGHT COLOUR



06 HIGHLY CRAFTED LANDSCAPE ELEMENTS

Notes
THIS DRAWING SHOULD BE READ IN CONJUNCTION WITH ALL RELEVANT CONTRACTS, SPECIFICATION, REPORTS AND DRAWINGS. DO NOT SCALE DRAWINGS. DIMENSIONS GOVERN. ANY DISCREPANCIES OR CONCERNS SHOULD BE NOTIFIED IN WRITING ASAP. VERIFY ALL DIMENSIONS ON SITE BEFORE CONSTRUCTION. COPYRIGHT OF THIS DRAWING IS VESTED IN ARCHER OFFICE PTY LTD. TO USE THIS DOCUMENT FOR ANY PURPOSE WHATSOEVER IS RESTRICTED TO THE TERMS OF THE AGREEMENT.

Rev	Dwn	Chk	Issue Name	Date
A	AOC		DEVELOPMENT APPLICATION	25/2024

Scale / North Point

Acoustic Consultant
Acoustic Logic

Arborist
Earthscape Horticultural Services

BCA Consultant
Design Confidence

Bushfire Consultant
Blackash Bushfire Consulting

Ecologist
Slantec

Hazmat and Soil Contamination
Tetra Tech Coffey

Heritage Consultant
Heritage 21

Landscape Architect
Studio Rewild with Emily Simpson

Lighting Consultant
Electrolight

Planning Consultant
Gyde Consulting

QS
MBM

Services Engineer
JHA Consulting Engineers

Stormwater Engineer
JHA Consulting Engineers

Structural Engineer
PMI Engineers

Surveyor
Total Surveying Solutions

Traffic
Headway Traffic and Transport

Visualisation
Choi Render

Waste
Elephants Foot

Architect
ARCHER OFFICE

Suite 6, Level 3, 11 Buckingham Street,
Surry Hills NSW 2010
ABN 78162692293
P: +612 9191 7326
E: studio@archeroffice.com
Nominated Architect:
Tomek Archer 9495

Client
Mosman Municipal Council

Project Address
1110 MIDDLE HEAD RD,
MOSMAN NSW

Project Name
MIDDLE HEAD OVAL AMENITIES

Drawing Name
SCHEDULE OF MATERIALS

Project Number
1903
Documentation Stage
DEVELOPMENT APPLICATION

Drawing Number
A401
Revision
A



01 THE PAVILION VIEWED FROM THE SOUTH EAST



02 THE PAVILION VIEWED FROM THE NORTH

Notes
THIS DRAWING SHOULD BE READ IN CONJUNCTION WITH ALL RELEVANT CONTRACTS, SPECIFICATION, REPORTS AND DRAWINGS. DO NOT SCALE DRAWINGS. DIMENSIONS GOVERN. ANY DISCREPANCIES OR CONCERNS SHOULD BE NOTIFIED IN WRITING ASAP. VERIFY ALL DIMENSIONS ON SITE BEFORE CONSTRUCTION. COPYRIGHT OF THIS DRAWING IS VESTED IN ARCHER OFFICE PTY LTD. TO USE THIS DOCUMENT FOR ANY PURPOSE WHATSOEVER IS RESTRICTED TO THE TERMS OF THE AGREEMENT.

Rev	Drawn	Chk	Issue Name	Date
A	AOC		DEVELOPMENT APPLICATION	2/5/2024

Scale / North Point

Acoustic Consultant
Acoustic Logic

Arborist
Earthscape Horticultural Services

BCA Consultant
Design Confidence

Bushfire Consultant
Blackash Bushfire Consulting

Ecologist
Stantec

Hazmat and Soil Contamination
Tetra Tech Coffey

Heritage Consultant
Heritage 21

Landscape Architect
Studio Rewild with Emily Simpson

Lighting Consultant
Electrolight

Architect
ARCHER OFFICE

Suite 6, Level 3, 11 Buckingham Street,
Sunny Hills NSW 2010
ABN 78162692293
P: +612 9191 7326
E: studio@archeroffice.com
Nominated Architect:
Tomek Archer 9495

Client
Mosman Municipal Council

Project Address
**1110 MIDDLE HEAD RD,
MOSMAN NSW**

Project Name
MIDDLE HEAD OVAL AMENITIES

Drawing Name
PHOTOMONTAGE

Project Number
1903

Documentation Stage
DEVELOPMENT APPLICATION

Drawing Number
A501

Revision
A