

ARCHER OFFICE

MOSMAN COUNCIL

MIDDLE HEAD OVAL AMENITIES DESIGN STATEMENT

23.07.24



PREPARED BY ARCHER OFFICE
NOMINATED ARCHITECT: TOMEK ARCHER #9495
CONTACT: 02 9191 7326
STUDIO@ARCHEROFFICE.COM

PROJECT INFORMATION

| | |
|----------------|-------------------------------------|
| PROJECT | MIDDLE HEAD OVAL AMENITIES PAVILION |
| CLIENT | MOSMAN MUNICIPAL COUNCIL |
| PROJECT NUMBER | 1903 |

| REVISION | ISSUE | DATE | CHECKED BY |
|----------|-------------------------|------------|------------|
| A | DEVELOPMENT APPLICATION | 16.05.2024 | TA |
| B | DEVELOPMENT APPLICATION | 23.07.2024 | TA |

PROJECT TEAM

| | |
|------------------------|--------------------------------------------------|
| LAND OWNER: CLIENT: | SYDNEY HARBOUR TRUST MOSMAN MUNICIPAL COUNCIL |
| ARCHITECT: | ARCHER OFFICE |
| ACCESS: | DESIGN CONFIDENCE |
| ACOUSTIC: | ACOUSTIC LOGIC |
| ARBORIST: | EARTHSCAPE |
| BCA / ACCESS: | DESIGN CONFIDENCE |
| BUSHFIRE: | BLACK ASH |
| ECOLOGY: | STANTEC |
| HERITAGE: | HERITAGE 21 |
| LANDSCAPE: | STUDIO REWILD AND EMILY SIMPSON |
| LIGHTING: | ELECTROLIGHT |
| PLANNING: | GYDE |
| QUANTITY SURVEYOR: | MBM GROUP |
| SERVICES ENGINEERING: | JHA ENGINEERS |
| STORMWATER: | JHA ENGINEERS |
| STRUCTURAL ENGINEER: | PMI ENGINEERS |
| TRAFFIC ENGINEERING: | HEADWAY TRAFFIC AND TRANSPORT |
| WASTE MANAGEMENT: | ELEPHANTS FOOT |

CONTACT

TEL. 02 9191 7326
VISIT SUITE SIX, LEVEL 3,
11 BUCKINGHAM ST
SURRY HILLS NSW 2010
WWW. ARCHEROFFICE.COM

CONTENTS

| | |
|----|--------------------|
| 01 | CONTEXT |
| 02 | HISTORY |
| 03 | EXISTING SITUATION |
| 04 | BRIEF DEVELOPMENT |
| 05 | PROPOSAL |

01

CONTEXT

01



FOREWORD

An error was identified in Mosman Council’s originally submitted Statement of Heritage Impact Report. Accordingly, the Statement of Heritage Impact Report and the Planning Permit Application Report have been updated. Further information has been included in the Permit Application Report to reinforce the view that this proposal does not warrant a referral under the EPBC Act.

BACKGROUND

This report has been prepared for Mosman Municipal Council by Archer Office to accompany a Planning Application to Sydney Harbour Trust. The site is located on the edge of Middle Head Oval, Middle Head.

The purpose of this report is to outline the characteristics and performance of the proposal in the context of the project brief, the site and its history.

This report relates to the redevelopment of the pavilion at Middle Head Oval, including:

- The demolition of the existing pavilion, which was constructed in the 1980’s;
- The construction of a new single storey amenities pavilion, comprising of:
 - Two (2) change rooms with shower and toilet facilities;
 - One (1) official room with first aid;
 - Kiosk;
 - Storage areas; and
 - Public amenities.
- The construction of a second structure to provide shade to spectators utilising the existing concrete bleachers;
- A landscaped community space positioned at the centre of the project

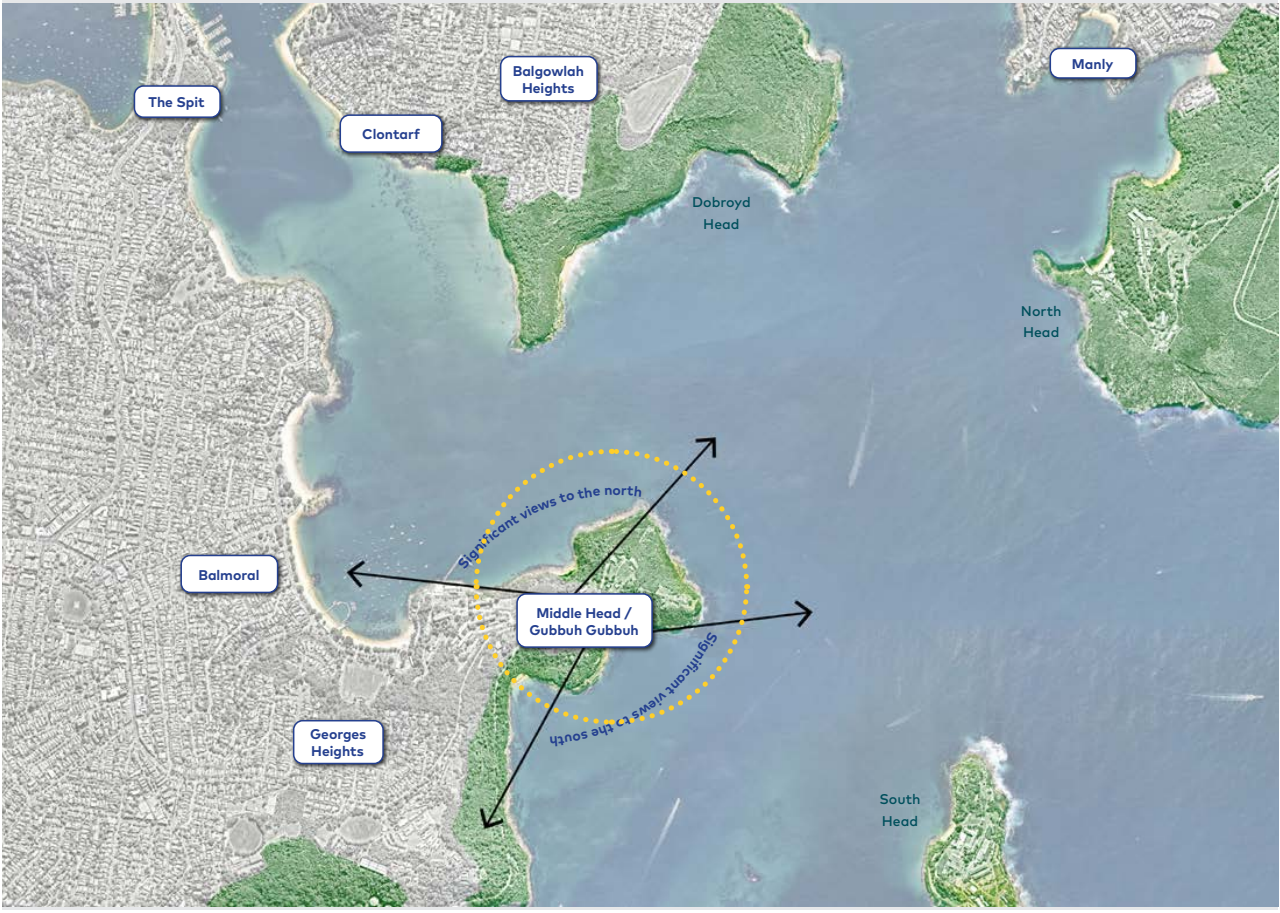
LOCATION

MIDDLE HEAD OVAL

Middle Head is a nationally significant headland in Mosman that overlooks the entrance to Sydney Harbour. Middle Head Oval is special for its elevated outlook towards Manly.



Middle Head is the most Easterly part of the Mosman Council Local Government Area



Aerial illustrating outlook from Middle Head to surrounding areas.
(Source: Revised Middle Head / Gubbuh Gubbuh Master Plan December 2023)



Middle Head Oval in the context of the headland

02

MIDDLE HEAD

SITE HISTORY

Prior to European settlement in 1788, Middle Head (Gubbuh Gubbuh) was home to the Borogegal people.



In the past, the peninsula served as a vantage point for the region, while the foreshore provided the Borogegal people with shelter, food, water and access – via boat – to surrounding shores. Rock engravings around Middle Head provide historical evidence of the social and ceremonial importance of the area. In 1788, Captain John Hunter arrived at Middle Head aboard the HMS Sirius, one of the ships in the First Fleet.

Another interesting layer to the site is the history of Bungaree's farm and the uncovering of a trigonometric survey map by Thomas Florance which shows Bungaree's farm at Middle Head. Bungaree was an Aboriginal community leader and explorer and he was gifted a parcel of land 'Bungaree's Farm' in 1815 by Macquarie.

Bungaree has the distinction of being the first Australian to circumnavigate the continent, completing the historic 13 month voyage aboard Mathew Flinder's HMAS Investigator in 1803.

The Landscape Design Report prepared by Studio Rewild which accompanies this application outlines opportunities of how the history of the site may be interpreted and incorporated into the proposal.

- Text Source:
- Middle Head Management Plan prepared by the Sydney Harbour Federation Trust, 2017.
 - First Nations Stories of Sydney Harbour prepared by Sydney Harbour Trust, Google Arts and Culture.
 - Middle Head / Gubbuh Gubbuh Oval Amenities Building Landscapae Design Report prepared by Studio Rewild in collaboration with Emily Simpson, 9th May 2024.

MIDDLE HEAD OVAL

SITE HISTORY

Middle Head has a long history of both military and recreational use.



As early as 1801, during the Napoleonic War, the area was recognised as an important site for the defence of Sydney Harbour.

In the 1840s, the Middle Head area was selected as the site for defence fortifications that would form part of an outer ring to protect the main harbour and town.

The cessation of World War I resulted in a demobilization of armed forces and reduced military demand for the defense land behind the headlands. The natural areas of Mosman had become a major recreational attraction for locals and visitors, and public access to military areas became expected as a right.

The Mosman Golf Club was established in early 1923 and a 21 year lease from the Commonwealth formalised in 1924.

In the years following World War II, the 21st Construction Regiment, a Citizens' Military Force unit, had its first camp at Middle Head. The regiment carried out earth moving work including the preparation of the ground for Middle Head Oval, which was completed in 1951. The area occupied by the oval was previously used as an informal sports space during World War II. The oval is now managed by Mosman Council and is used by local sporting clubs for summer and winter ball sports.

The existing club and amenities building was constructed in the 1980's.

Additional history of the site can be found in the Statement of Heritage Impact prepared by Heritage 21 which accompanies this application.

- Text Source:
- Middle Head Management Plan prepared by the Sydney Harbour Federation Trust, 2017
 - Statement of Heritage Impact - Middle Head Oval Pavilion, Middle Head prepared by Heritage 21, July 2024

- Image Left:
- Ariel photo of Middle Head taken from Six Maps, 1943
- Images on Previous Page:
- Bungaree farm location according to surveyor Thomas Florance's Trigonometric Survey, 1828.
 - Portrait of Bungaree (c.1830-38), Art Gallery of South Australia

MIDDLE HEAD OVAL

HERITAGE CONSIDERATION

The proposal has been designed to be sensitive to the cultural heritage values of the area.



Established under the EPBC Act, the Commonwealth Heritage List encompasses natural, Indigenous, and historic heritage places. These sites are identified based on their possession of one or more Commonwealth Heritage values and may be situated entirely within a Commonwealth area or owned/leased by the Commonwealth or a Commonwealth Authority outside Australian jurisdiction.

Middle Head Oval is not individually listed under the Commonwealth Heritage List, however, it is located within the boundaries of the following precinct listed under the EPBC Act as Commonwealth Heritage Places:

- Defence Site: Georges Height and Middle Head (Historic Place No. 105541)

The proposal has been designed to be sensitive to the context of Middle Head, its history and its location within the community. Given the prominence of the site and its location within the curtilage of a Commonwealth Listed Place (ID no. 105541), the proposal, with its low profile, muted material palette and broader landscape scheme, has been designed from a position of sensitivity, landscape integration and minimal impact on the surrounding heritage listed items.

The amended Heritage Report which includes a further assessment of the proposal against the Commonwealth Heritage Place Items states: ‘Heritage 21 is of the opinion that the proposed development would be minor in nature and would not engender any ‘significant’ impact on Commonwealth Heritage Place - Defence Site - Georges Height and Middle Head (Historic Place No. 105541) in which it is located. Heritage 21 believe that the proposed development would not require a referral to the Minister under the EPBC Act.

Text Source:

- Statement of Heritage Impact - Middle Head Oval Pavilion, Middle Head prepared by Heritage 21, July 2024

Image Left:

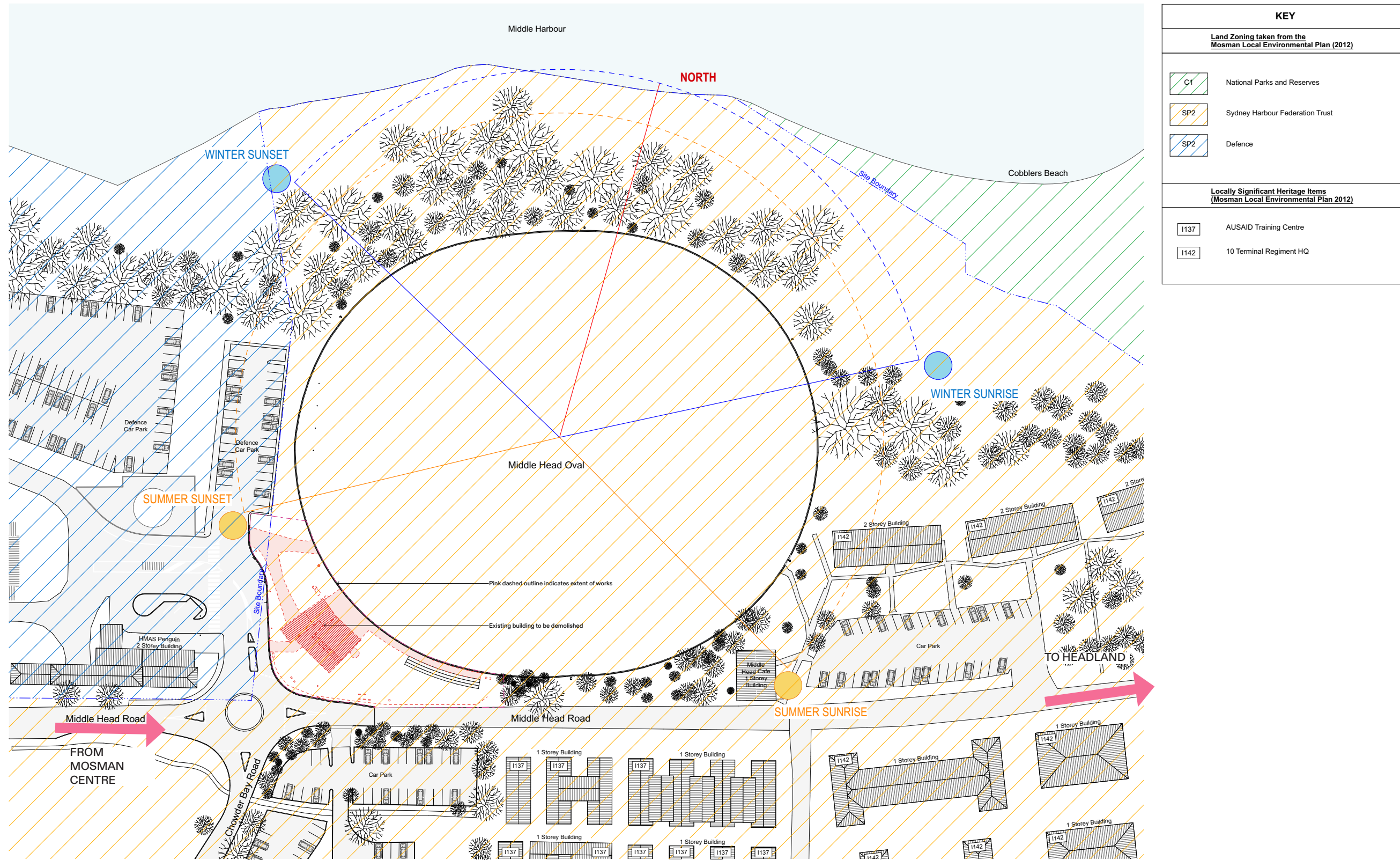
- Ariel photo of Middle Head identifying Middle Head Oval within the curtilage of the Commonwealth Heritage Place - Defence site - Georges Height and Middle Head (Historic Place no. 105541). Imaged sourced from the Department of Climate Change, Energy, the Environment and Water, Australian Government.

03

MIDDLE HEAD OVAL SITE ANALYSIS

The site is located at the South West corner of Middle Head Oval.

The existing amenities building is situated on the corner of Middle Head Road and Chowder Bay Road, obstructing views on approach to Middle Harbour beyond.



EXISTING FACILITIES

CURRENT SITUATION

The existing pavilion has been identified as not fit for purpose and undesirable in the context of its location at the entry point to the Middle Head precinct.



VIEW ON ARRIVAL

The building effectively blocks views to the harbour that would otherwise be visible on arrival to the Middle Head precinct.



VEHICULAR ACCESS

The building is split over multiple levels, with changerooms , club room and amenities over storage located below. The building is broadly non-compliant in terms of accessibility.

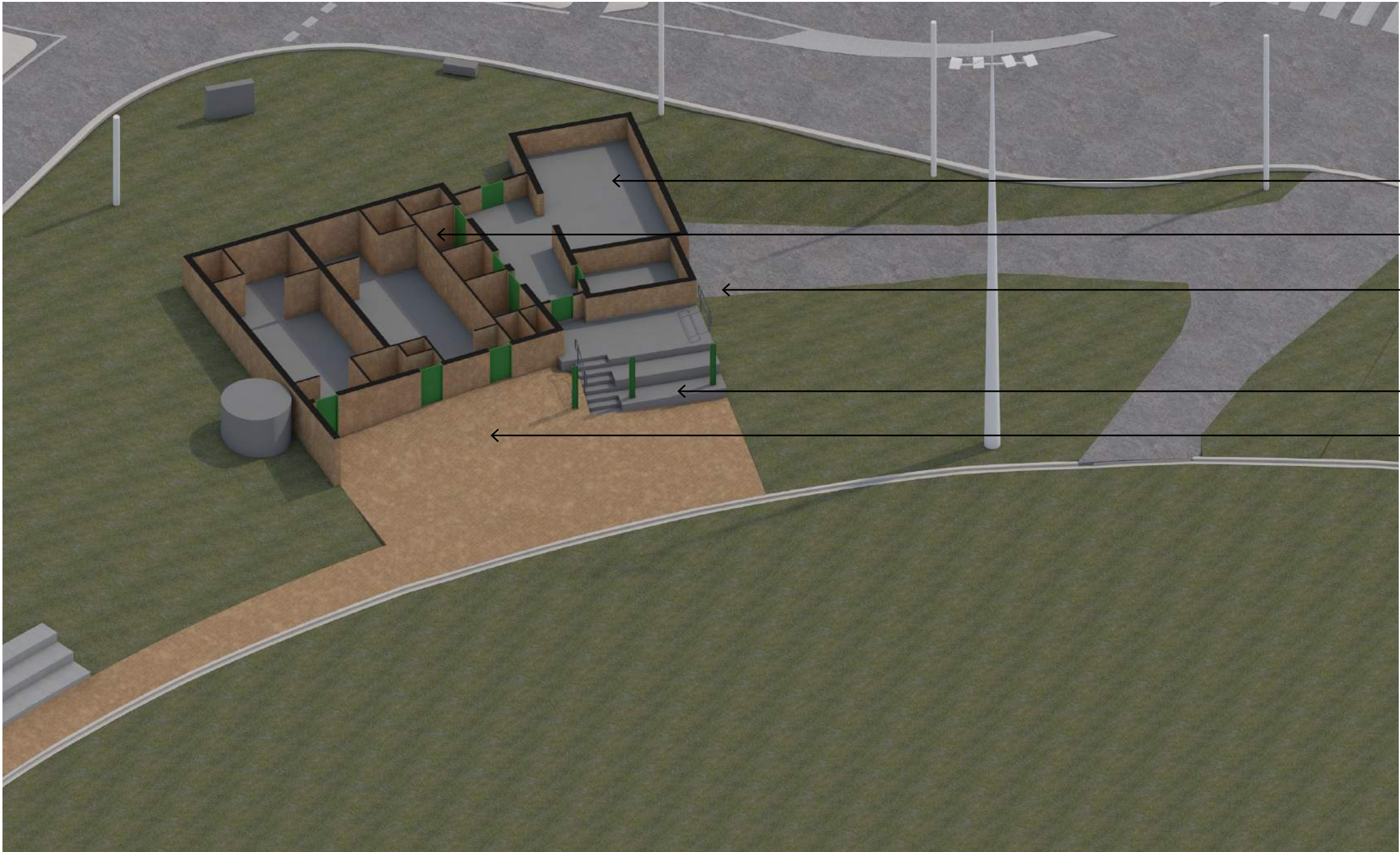


RELATIONSHIP TO FIELD

The building is not located in a suitable position for watching games, and does not provide accessible paths of travel between the building and field.

EXISTING FACILITIES ANALYSIS

Below illustrates operational shortfalls as well as compliance issues identified by BCA Consultant, Design Confidence. A Building Audit and Risk Assessment of the existing building prepared by Design Confidence found “it is evident significant redevelopment of the building would be necessary in order to bring the existing building into compliance with the minimum safety, health and amenity standards to the current BCA.”



- Small social space with limited functionality and no outlook towards field.
- No accessible amenities at all.
- No accessible path to lower level storage. Dramatic level changes created by steep and undesirable driveway.
- Very small spectator area
- Changerooms and entries are not accessible from the street or to the field. No accessible changeroom facilities are provided.

SITE ANALYSIS

OPPORTUNITIES AND CONSTRAINTS

Site analysis based on site observations with reference to proposed actions from the Middle Head / Gubbuh Gubbuh Masterplan prepared by Sydney Harbour Trust.

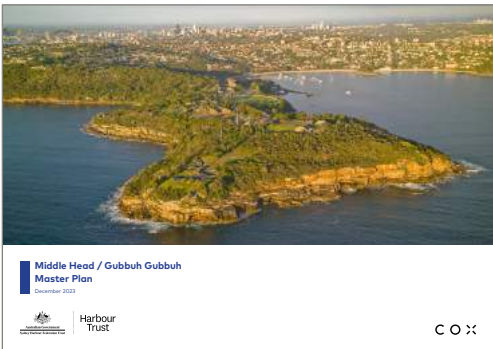


OPPORTUNITIES AND HARBOUR TRUST OBJECTIVES

- Improve site arrival sequence and open up views
- Create an open community space that amplifies the landscape
- Dedicated protected seating viewing area
- Pedestrian connectivity and accessibility

EXISTING OVAL PAVILION

- Non compliant, not fit for purpose
- Intrusive location, blocks arrival view
- Potential to relocate and “free” that space



(*) : PROPOSED ACTIONS FROM MIDDLE HEAD/ GUBBUH GUBBUH MASTERPLAN (DECEMBER 2023)

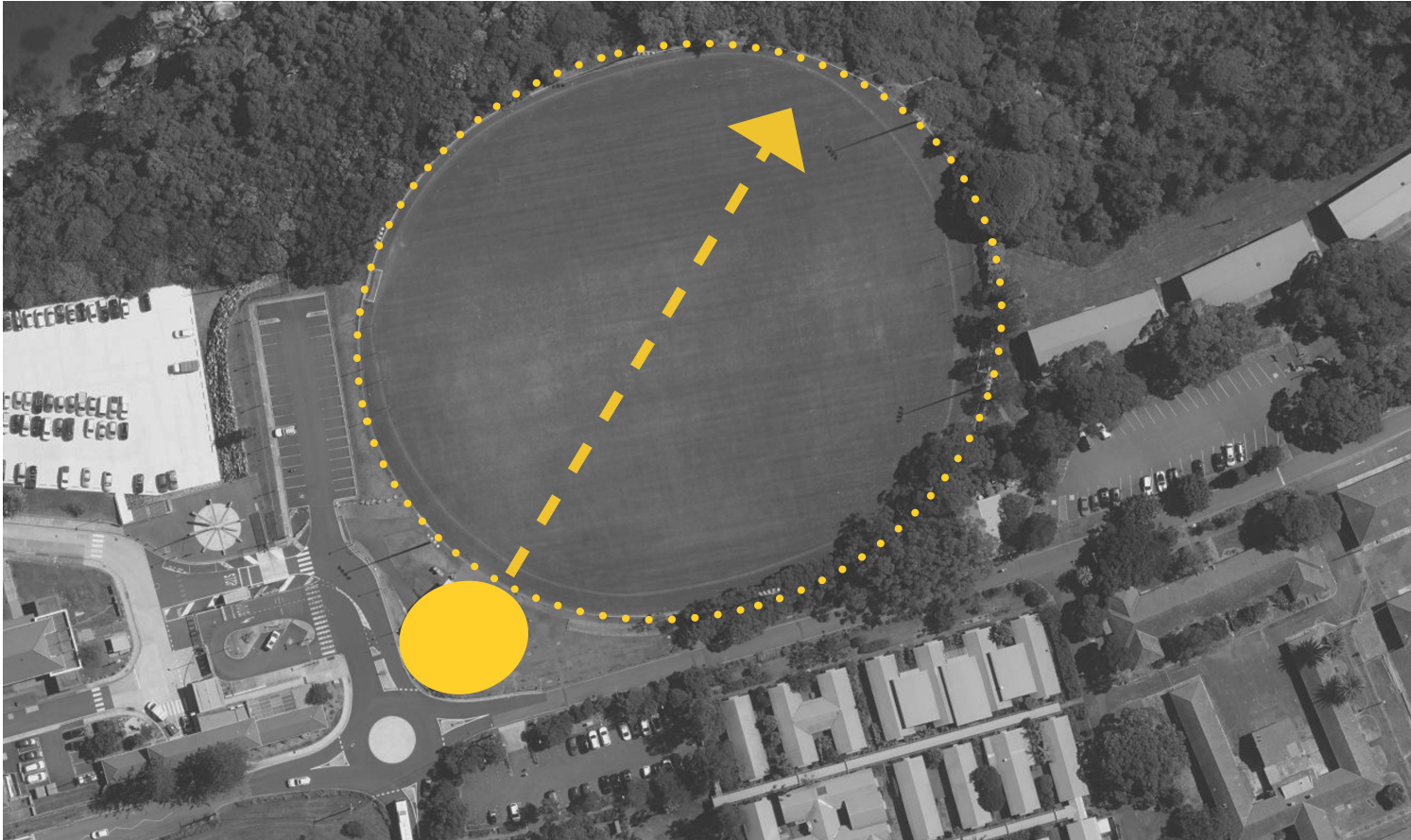
OPPORTUNITY

A PLACE WITH OUTLOOK

Site analysis based on site observations and existing information.



The oval enjoys views over the harbour towards manly

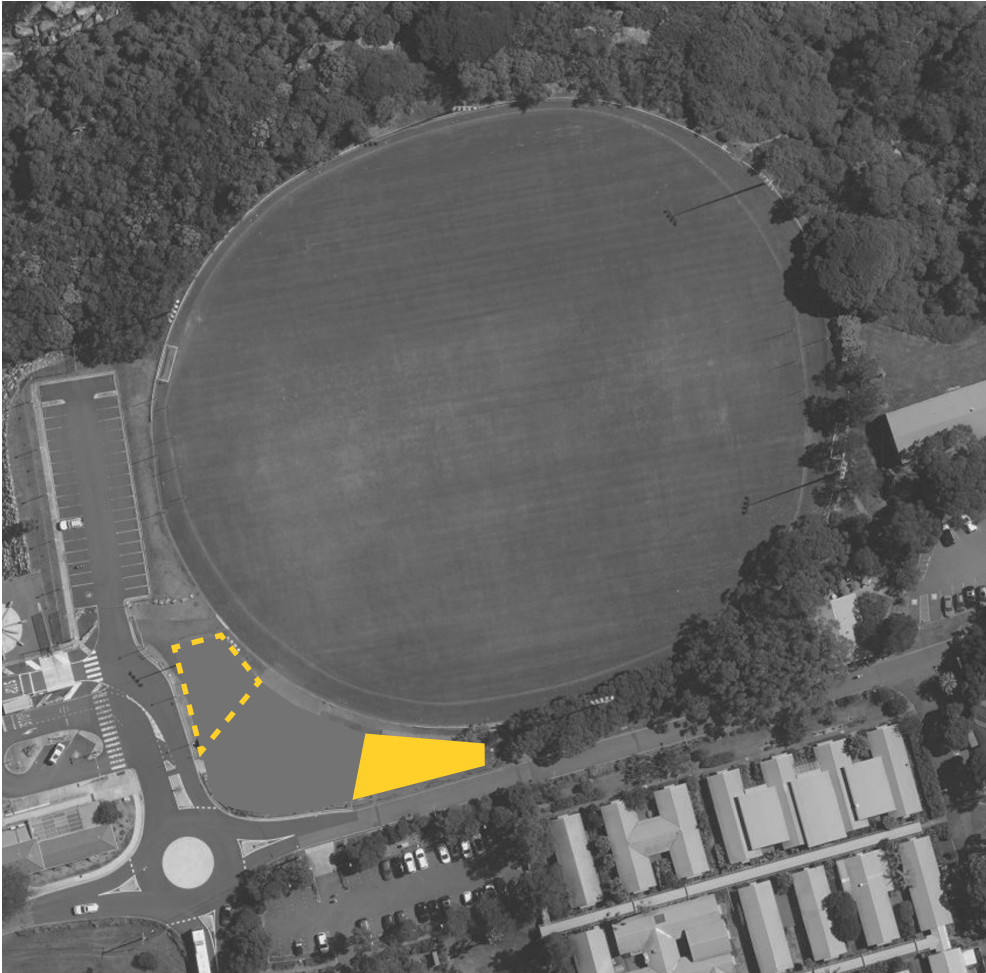


Opportunity to create a community place that amplifies this existing character



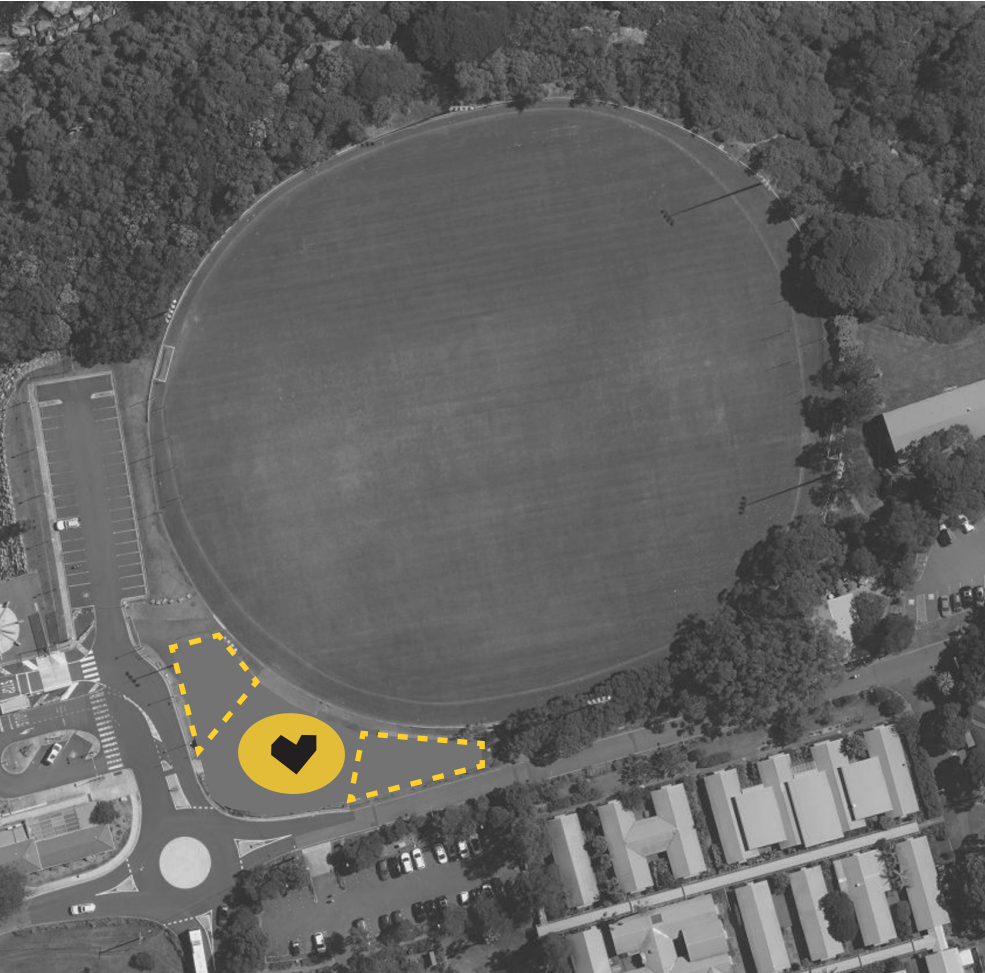
BEST PLACE FOR A SPORTS BUILDING

- Close to same level as field
- Beside vehicular access to field and storage
- Creates separation from military facility



BEST PLACE FOR SHELTERED SPECTATOR STAND

- Close to centre of field
- Existing location of concrete grandstand
- Beside road access for drop off and pickup



CREATION OF A NEW COMMUNITY PLACE

- A central terrain than allows accessible pathways.
- Allows views on approach to the Harbour & Manly Wharf
- Provides a sense of arrival to the Middle Head precinct
- Creates a new public space for complimentary activity

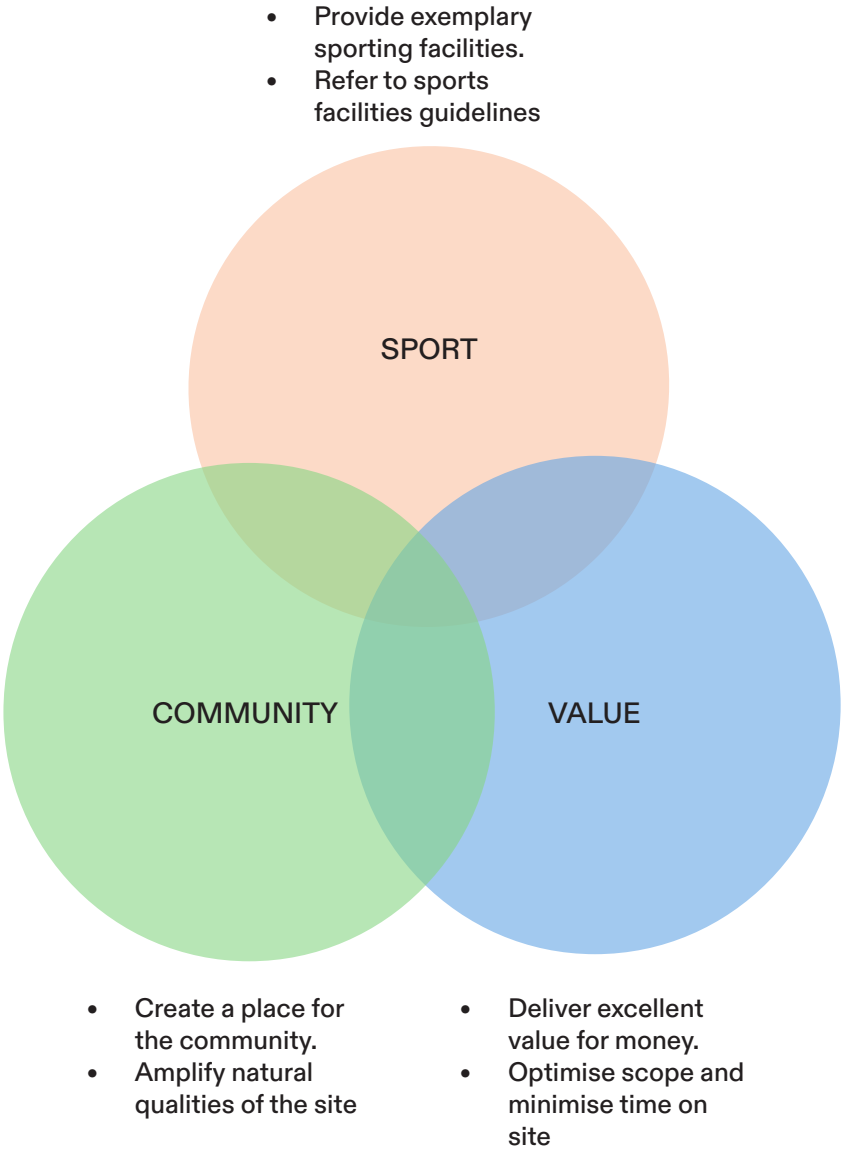
04

THE CHALLENGE

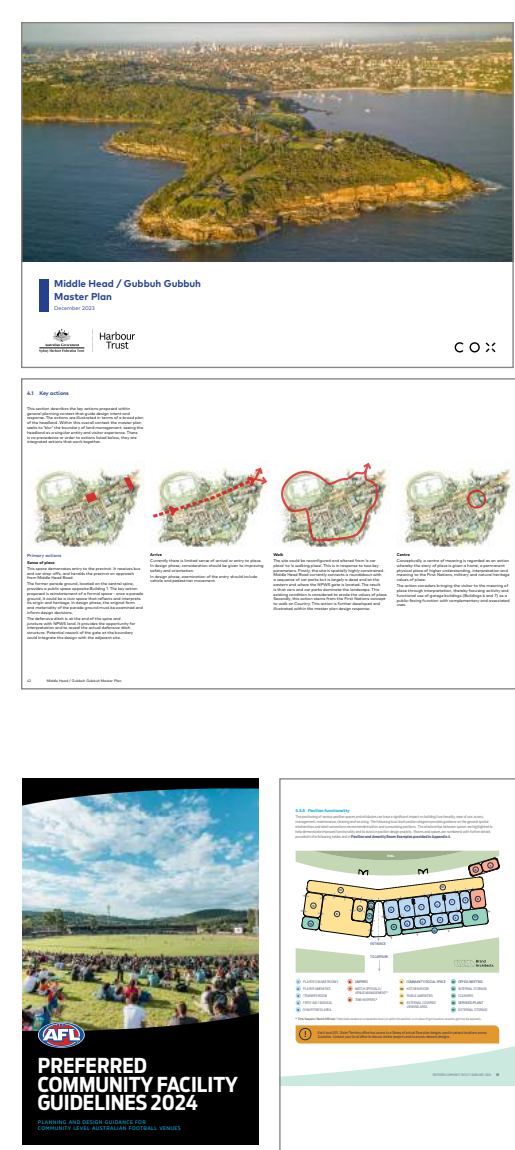
BALANCING PRIORITIES

The project seeks to provide exemplary sports and community facilities within the available budget and with reference to the AFL Preferred Community Guidelines 2024 and Sydney Harbour Trust’s Middle Head / Gubbuh Gubbuh Master Plan.

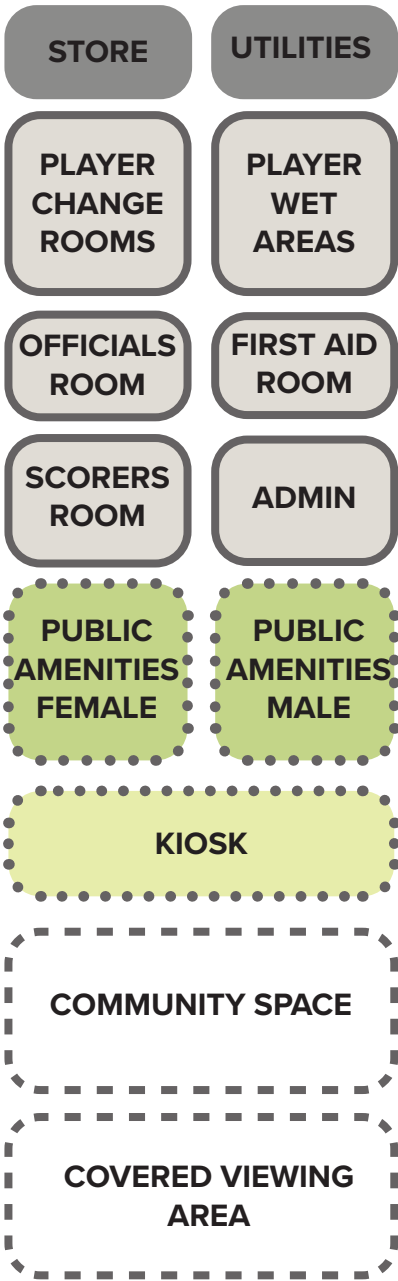
COMPETING DEMANDS



MASTERPLAN AND SPORT GUIDELINES



FUNCTIONAL BRIEF



ACCOMMODATION BRIEF

OPTIMISE BUILDING FOOTPRINT

The spatial requirements brief has been developed through a process of stakeholder engagement with Mosman Council and sporting bodies. In order to minimise the building footprint, some brief components have been consolidated.

BRIEF FROM AFL GUIDELINES (LOCAL)

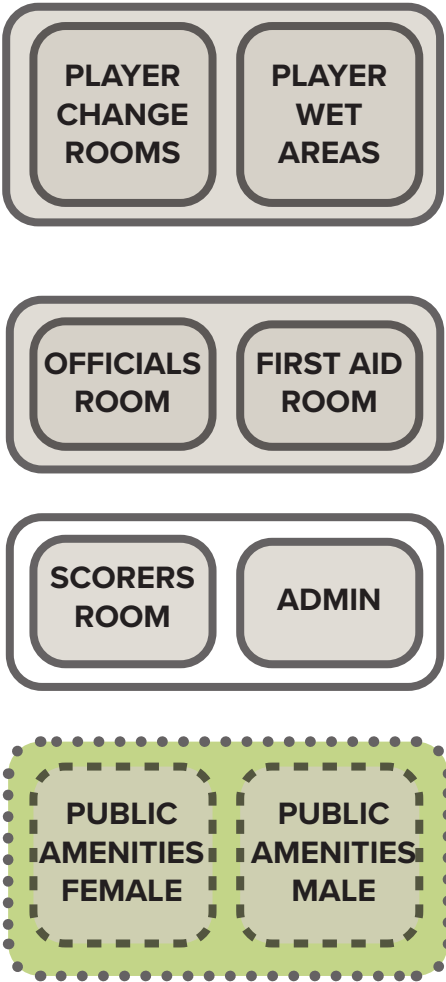
| VENUE COMPONENTS | PREFERRED PROVISION | | | | | | |
|---------------------------------|----------------------------------------|-----------------------------------------------|-----------------------------------------------|-------------------------------------------------------------------------------------|-------------------------------------------------------------------------------------|-------------------------------------|-------------------------------------|
| | STATE | REGIONAL | LOCAL | REMOTE | JUNIOR | SCHOOL | TRAINING |
| PLAYER FACILITIES | | | | | | | |
| 1. Player change rooms | 2 x 75m ² -90m ² | 2 x 55m ² -75m ² | 2 x 45m ² -55m ² | | | n/a | n/a |
| 2. Player amenities (wet areas) | 2 x 35m ² | 2 x 30m ² | 2 x 25m ² | Dedicated change space with access to lockable toilet(s) and shower(s) is desirable | Dedicated change space with access to lockable toilet(s) and shower(s) is desirable | n/a | n/a |
| 2. Number of lockable showers | 5 x lockable showers per amenity | 4 x lockable showers per amenity | 3 x lockable showers per amenity | | | n/a | n/a |
| 2. Number of pan toilets | 5 x toilets per amenity | 4 x toilets per amenity | 3 x toilets per amenity | | | Access to toilets on-site essential | Access to toilets on-site essential |
| 3. Trainers room | 2 x 20m ² | 2 x 15m ² | *2 x 10m ² Optional* | n/a | n/a | n/a | n/a |
| 4. Doctors room | 15m ² | *10m ² Optional* | *10m ² Optional* | n/a | n/a | n/a | n/a |
| 4. First-aid/Medical room | 15m ² | *15m ² Optional* | *15m ² Optional* | n/a | n/a | n/a | n/a |
| 5. Gym/fitness area | 40m ² -50m ² | *25m ² -30m ² Optional* | *20m ² -25m ² Optional* | n/a | n/a | n/a | n/a |

| VENUE COMPONENTS | PREFERRED PROVISION | | | | | | |
|-----------------------------------------|------------------------------------|------------------------------------|------------------------------------|----------------------------------------------------------------------------|----------------------------------------------------------------------------|--------|----------|
| | STATE | REGIONAL | LOCAL | REMOTE | JUNIOR | SCHOOL | TRAINING |
| OFFICIALS FACILITIES | | | | | | | |
| 6. Umpire briefing room | 30m ² -40m ² | 30m ² -40m ² | 20m ² -25m ² | Dedicated space with access to lockable toilet(s) & shower(s) is desirable | Dedicated space with access to lockable toilet(s) & shower(s) is desirable | n/a | n/a |
| 6. Umpire amenities (wet areas) | 24+m ² | 18+m ² | 12+m ² | | | n/a | n/a |
| 6. Number of lockable amenity cubicles | 4 x lockable cubicles | 3 x lockable cubicles | 2 x lockable cubicles | | | n/a | n/a |
| 7. Third umpire / venue management room | 25m ² -30m ² | 20m ² -25m ² | 15m ² -20m ² | n/a | n/a | n/a | n/a |
| 8. Timekeeping / Scorers box | 15+m ² | 10+m ² | 10+m ² | n/a | n/a | n/a | n/a |

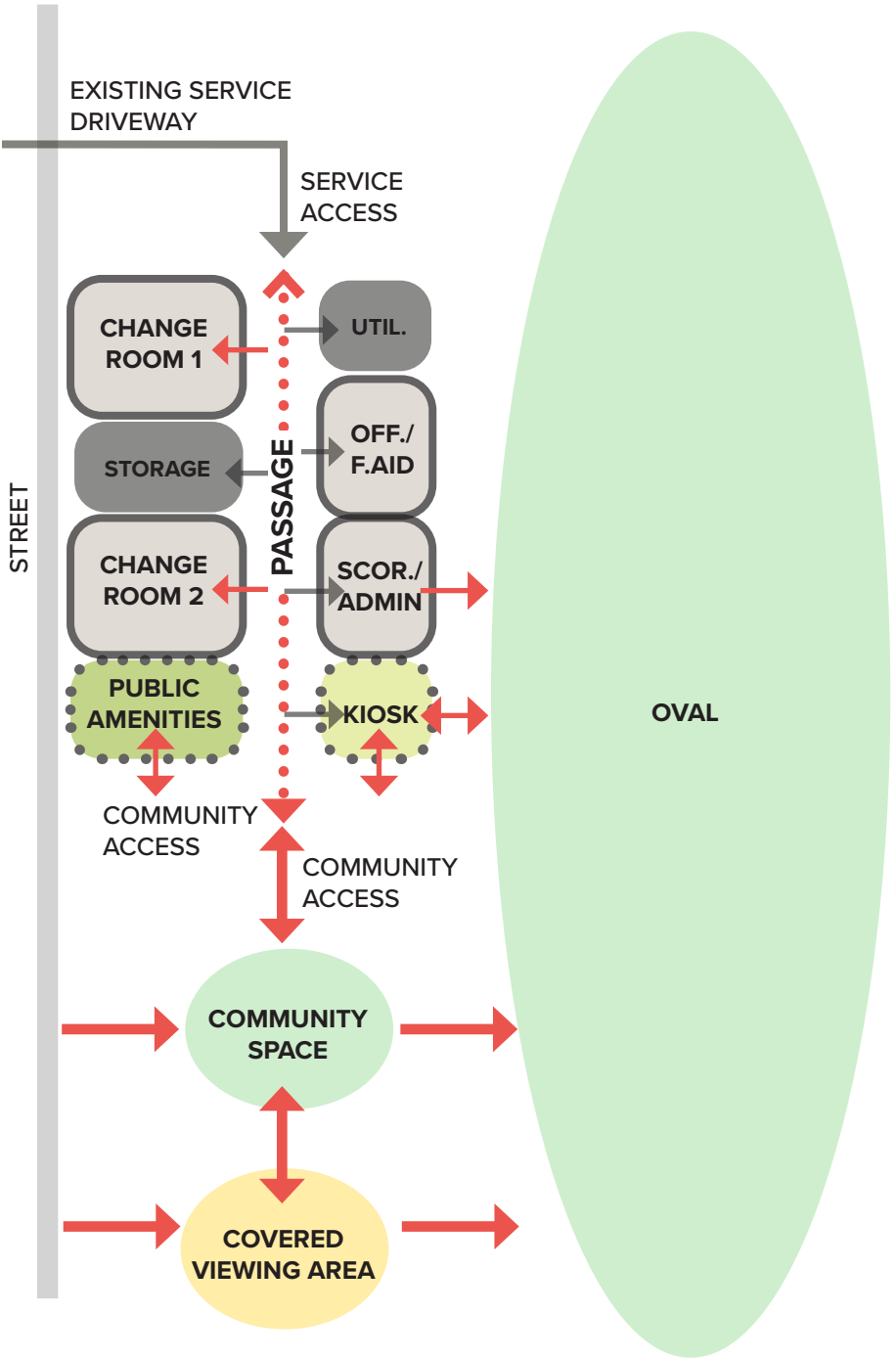
| VENUE COMPONENTS | PREFERRED PROVISION | | | | | | |
|-----------------------------------|--------------------------------------------------------------------------------------------------------------------------|--------------------------------------------------------------------------------------------------------------------------|--------------------------------------------------------------------------------------------------------------------------|--------------|-----------|-----------|-----------|
| | STATE | REGIONAL | LOCAL | REMOTE | JUNIOR | SCHOOL | TRAINING |
| SOCIAL SPACE | | | | | | | |
| 9. Social / Community room | 200m ² | 150m ² | 100m ² | n/a | n/a | n/a | n/a |
| 10. External covered viewing area | 150m ² | 75m ² | 50m ² | n/a | n/a | n/a | n/a |
| 11. Kitchen & Kiosk | 40m ² | 30m ² | 20m ² | n/a | n/a | n/a | n/a |
| 12. Public Toilets | Male 20m ² Female 20m ² Accessible 5m ² (consider all gender toilet provision) | Male 15m ² Female 15m ² Accessible 5m ² (consider all gender toilet provision) | Male 10m ² Female 10m ² Accessible 5m ² (consider all gender toilet provision) | n/a | n/a | n/a | n/a |
| Spectator viewing | Mix of seated & standing desirable | Mix of seated & standing desirable | Standing | Shaded areas | Desirable | Desirable | Desirable |
| Drinking water | Yes | Yes | Yes | Yes | Yes | Yes | Yes |

| VENUE COMPONENTS | PREFERRED PROVISION | | | | | | |
|---------------------------------------|--------------------------------|--------------------------------|--------------------------------|------------------|------------------|------------------|------------------|
| | STATE | REGIONAL | LOCAL | REMOTE | JUNIOR | SCHOOL | TRAINING |
| ANCILLARY SPACES | | | | | | | |
| 13. Office / Administration / Meeting | 25m ² | 20m ² | 15m ² | n/a | n/a | n/a | n/a |
| Family room | As determined by project needs | As determined by project needs | As determined by project needs | n/a | n/a | n/a | n/a |
| Multi faith room | As determined by project needs | As determined by project needs | As determined by project needs | n/a | n/a | n/a | n/a |
| Sensory room | As determined by project needs | As determined by project needs | As determined by project needs | n/a | n/a | n/a | n/a |
| 14. Utility / Cleaners room | 5m ² | 5m ² | 5m ² | n/a | n/a | n/a | n/a |
| 15. Club storage (internal) | 25m ² | 20m ² | 20m ² | n/a | n/a | n/a | n/a |
| 17. Club storage (external) | 25m ² | 20m ² | 15m ² | 15m ² | 15m ² | 15m ² | 15m ² |

POTENTIAL SHARED FACILITIES



SELECTED PROGRAM AND FUNCTIONAL RELATIONSHIPS



05

Below illustrates some of the pillars that form the foundation of the project's design.



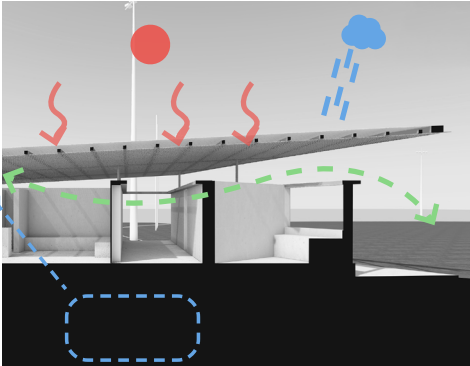
HERITAGE

The proposed development is sited away from the heritage buildings of Item I142, in which heritage curtilage, the proposed development is located. The proposal would not overwhelm or impact any of the heritage buildings located in the vicinity. It would be small scale development, respecting its existing setting and character. The proposed materials of the new amenities building and shading structure would be in line with the buildings observed at HMAS Penguin and the AUSAID Training Centre. The use of sandstone coloured pre-cast concrete panels, sloping metal roof sheeting and timber battens would ensure that the new development seamlessly assimilated with the surrounding heritage items.



LANDSCAPE AT HEART

The central landscape between the pavilions opens up views towards Manly on arrival and also creates a new community space for spectators and social activities adjacent to the field.



SUSTAINABILITY

The pavilion incorporates passive solar design principles including wide eaves that protect from sun and rain. The interior is naturally ventilated and naturally daylight through translucent roofing, while solar panels and rainwater harvesting reduce energy and water consumption. The pavilion has been designed with durable, robust and low maintenance materials with integral finishes.



UNIVERSAL ACCESS

The central landscaped terrain integrates arcing, ramped pathways to provide accessible connections between the various levels of the road, spectator area, field and the pavilion itself.



OPTIMISED CONSTRUCTION

The design has been developed to enable extensive use of prefabricated elements to minimise the duration of construction and impacts on the surrounding environment.

VISION OF PLACE

MIDDLE HEAD / GUBBUH GUBBUH MASTERPLAN

The design responds to the Vision of Place outlined in the Middle Head / Gubbuh Gubbuh Master Plan prepared by Sydney Harbour Trust.

NATURAL SANCTUARY, SUSTAINABILITY AND ENVIRONMENTAL CARE



The proposal aims to enhance Middle Head Oval by re-establishing sight lines towards Manly on approach. The scheme also supports the natural heritage values of place with its low profile, integral material palette and endemic planting proposal.

ENRICHED PUBLIC ACCESS



The proposal has been developed to incorporate the future development of the Plateau Headland Loop Walk. This walk is a key element of public access to be delivered by the Harbour Trust, that will create and complete a whole of headland visitor experience.

ENSHRINED MEMORY, IMMERSIVE LEARNING AND INTERPRETATION EXCELLENCE



Middle Head holds high cultural and heritage values. The proposal aims, through the pavilion and broader landscaping scheme, to help curate, implement and interpret the history of the site to create an immersive experience for all visitors to engage with.

BUILT FORM AND PUBLIC DOMAIN EXCELLENCE



With respect to the cultural heritage values of the area, the proposal, with its low profile, muted material palette and broader landscape scheme, has been designed from a position of sensitivity, minimal impact and landscape integration.

LIFE AND VIBRANCY - A PEOPLE PLACE ON ONE OF SYDNEY'S FINEST HEADLAND



By utilising the existing concrete bleachers and providing a new shading structure and landscaped community space, the proposal aims to create a place that over time becomes woven into the social, recreational and cultural fabric of the city. A place of life and vibrancy - a place to enjoy.

SITE ORGANISATION

A PLACE FOR COMMUNITY AND SPORT



OPEN UP THE VIEW

- Existing building to be demolished in order to re-establish sight lines towards Middle Harbour on approach to the oval.



LIGHTWEIGHT CANOPIES. GROUNDED BUILDING

- Lightweight roof structures to either side of the former building frame the view on arrival.
- The Southern canopy shelters the existing grandstand and provides shade to a new community space.
- The Northern canopy protects the new amenities below.

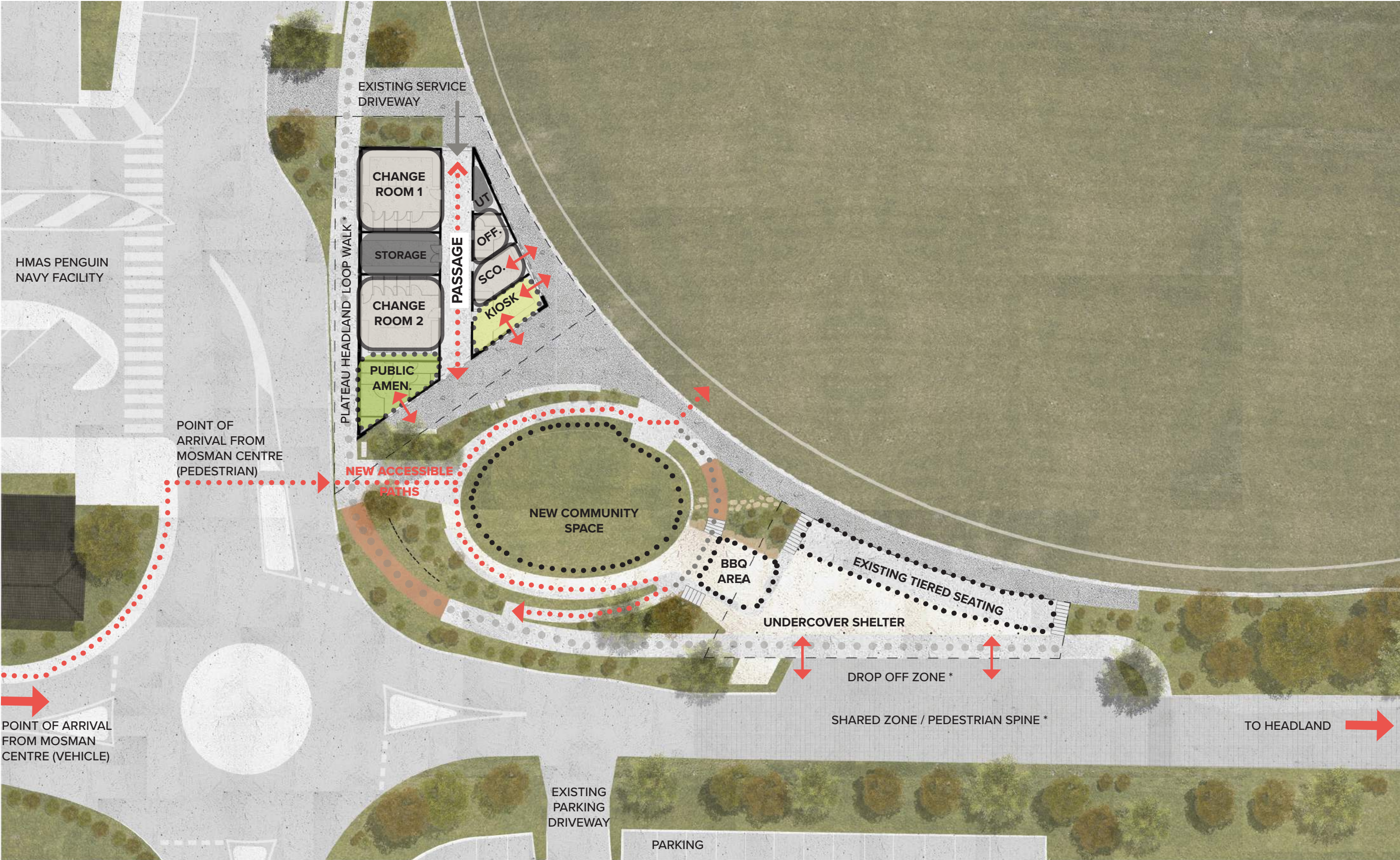


LANDSCAPE AT CENTRE

- The space in between the two pavilions becomes a central landscaped lawn for all of the community to enjoy.

SITE PLAN

A PLACE FOR COMMUNITY AND SPORT



(*) : PROPOSED ACTIONS FROM MIDDLE HEAD/ GUBBUH GUBBUH MASTERPLAN (DECEMBER 2023)

AERIAL VIEW
PROJECT ELEMENTS



AERIAL VIEW

PROJECT ELEMENTS

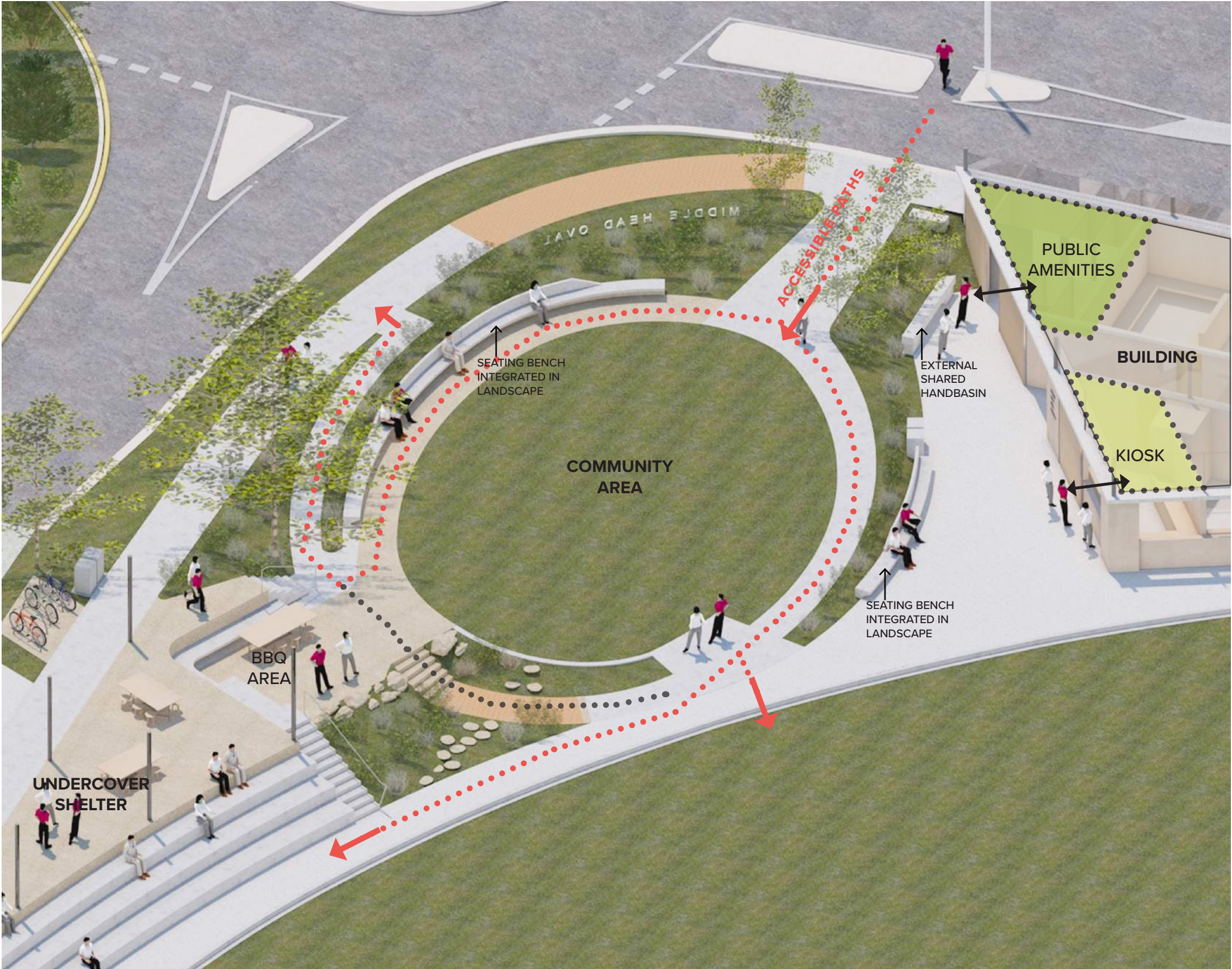


AERIAL VIEW SHELTER



AERIAL VIEW

ACTIVATED COMMUNITY SPACE



AERIAL VIEW
BUILDING

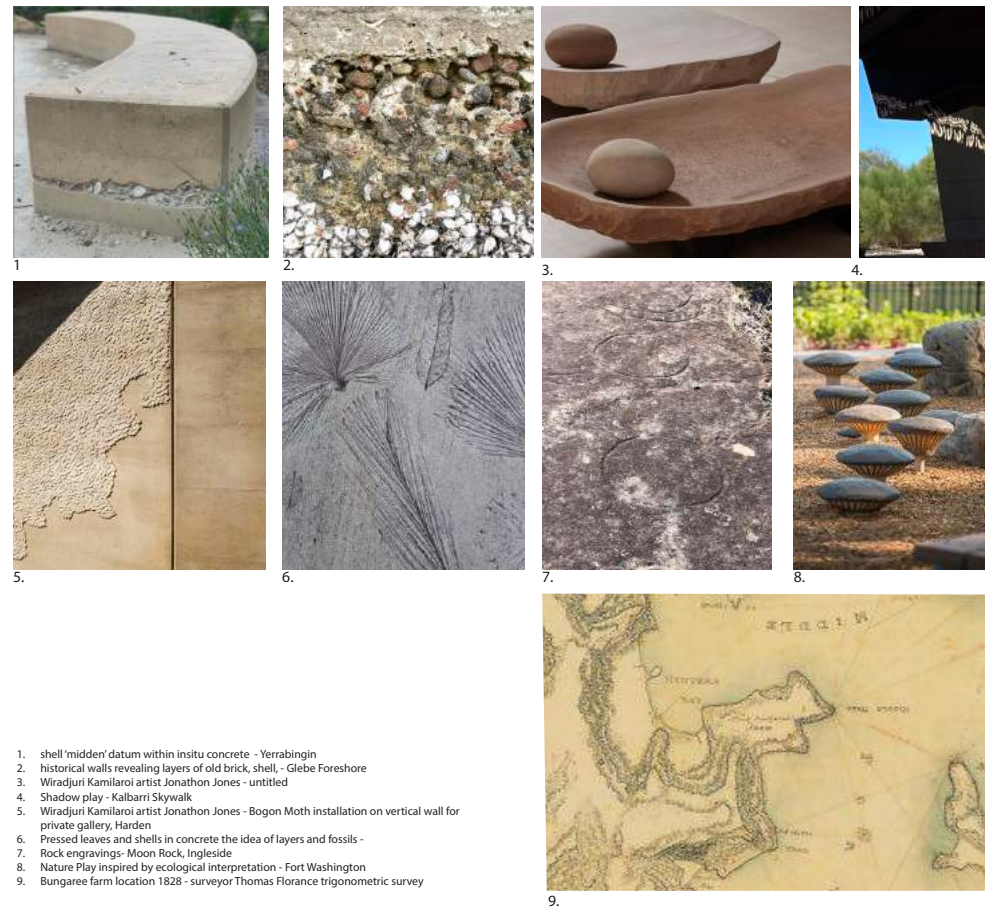


Landscape concept prepared by Studio Rewild in collaboration with Emily Simpson

STAGE
DEVELOPMENT APPLICATION



first nations, ecology, geology, archaeology



- There are layers of history embedded on site from the original natural geology and ecology, indigenous history, military history to the present. The landscape intention is to uncover the past uses of the site by the process of removing, revealing and eroding layers of the site to educate the community and visitors of the rich history of the precinct through inspiring and creative interpretation methods.
- A memory of the underlying sandstone headland geology and ecology to be interpreted on site through the selection of sandstone materiality (sandstone boulders) to retain, create seating, create habitat and play) and the reintroduction of biodiverse ecological planting typologies endemic to the coastal headland.
 - The Aboriginal history and cultural significant values of the site is critical and interpretation techniques will be used to reveal this culturally important site; sandstone outcrops providing shelter, the presence of rock engravings telling stories, midden deposits tell us of what was foraged and hunted, shells to form fish hooks utilised by women are all important stories to be told and can be embedded into the site. Some excavations could be made in concrete, shadows on pavements from structures, layered concrete with embedded shells
 - Another interesting layer to the site is the history of King Bungaree's farm and the uncovering of a new Trigonometric survey map by Thomas Florance in 1828 which shows King Bungaree's Farm at Middle Head. King Bungaree was an Aboriginal community leader and a wonderful explorer and he was gifted a parcel of land 'Bungaree's Farm' in 1815 by Macquarie. 'On a Macquarie family harbour day trip to the site Elizabeth Macquarie contributed a breeding sow, seven pigs, a pair of muscovy ducks and some suits of clothes towards the farming endeavour.' SMH article. Interpretation and education on site could indicate this location and map.
 - 'The healing power of Country is also acknowledged in the military history of Gubbuh Gubbuh. Soldiers returning from war were bought here to become well, both physically and mentally.' Harbour Trust Masterplan

- The hard landscape materials are to be robust and simple and complementary to the new architecture materiality: concrete, sandstone coloured precast concrete, timber screens, translucent roof for natural light.
- Native species are proposed for the different planting areas which include lawn, meadows, angophora groves and rain gardens.

- There are layers of history embedded on site from the original natural geology and ecology, indigenous history, military history to the present. The landscape intention is to uncover the past uses of the site by the process of removing, revealing and eroding layers of the site to educate the community and visitors of the rich history of the precinct through inspiring and creative interpretation methods.

The lighting scheme enhances the landscape and architectural forms, while providing for safety and compliance

1 - Illuminated Signage (Design TBC)

2 - Uplighting to Amenities Building/Spectator Structure providing illumination to surrounds

3 - Handrail lighting to stairs

4 - Uplighting to grove feature trees

5 - Under bench lighting

6 - Up/down column mounted lighting to Spectator Structure

7 - Column mounted spotlighting to BBQ

LANDSCAPE & SPECTATOR SHELTER
LIGHTING LAYOUT

1

2

3

4

5

6

7

1

2

3

4

5

6

7

Electrolight

Middle Head Oval Amenities Building | Lighting DA Report | Revision B

6 May 2024

Page 8

EXTERIOR LIGHTING

- The design of the external landscape lighting shall be a considered and subtle response to the unique local environment of Middle Head. This approach is well aligned to the key design principles for spill lighting mitigation.

Lighting concept prepared by Electrolight

1 - Concealed uplighting to Amenities Building Roof

2 - Linear wall light (mounted at approx 2400 AFFL)

3 - Up/down Wall light to Admin office

4 - Low level wall lights to circulation corridor

5 - Wall mounted LED Batten light to utilities

6 - LED Batten lights mounted to unistrut in store room (mounted at approx 2400 AFFL)

AMENITIES BUILDING
LIGHTING LAYOUT

1

2

3

4

5

6

1

2

3

4

5

6

Electrolight

Middle Head Oval Amenities Building | Lighting DA Report | Revision B

6 May 2024

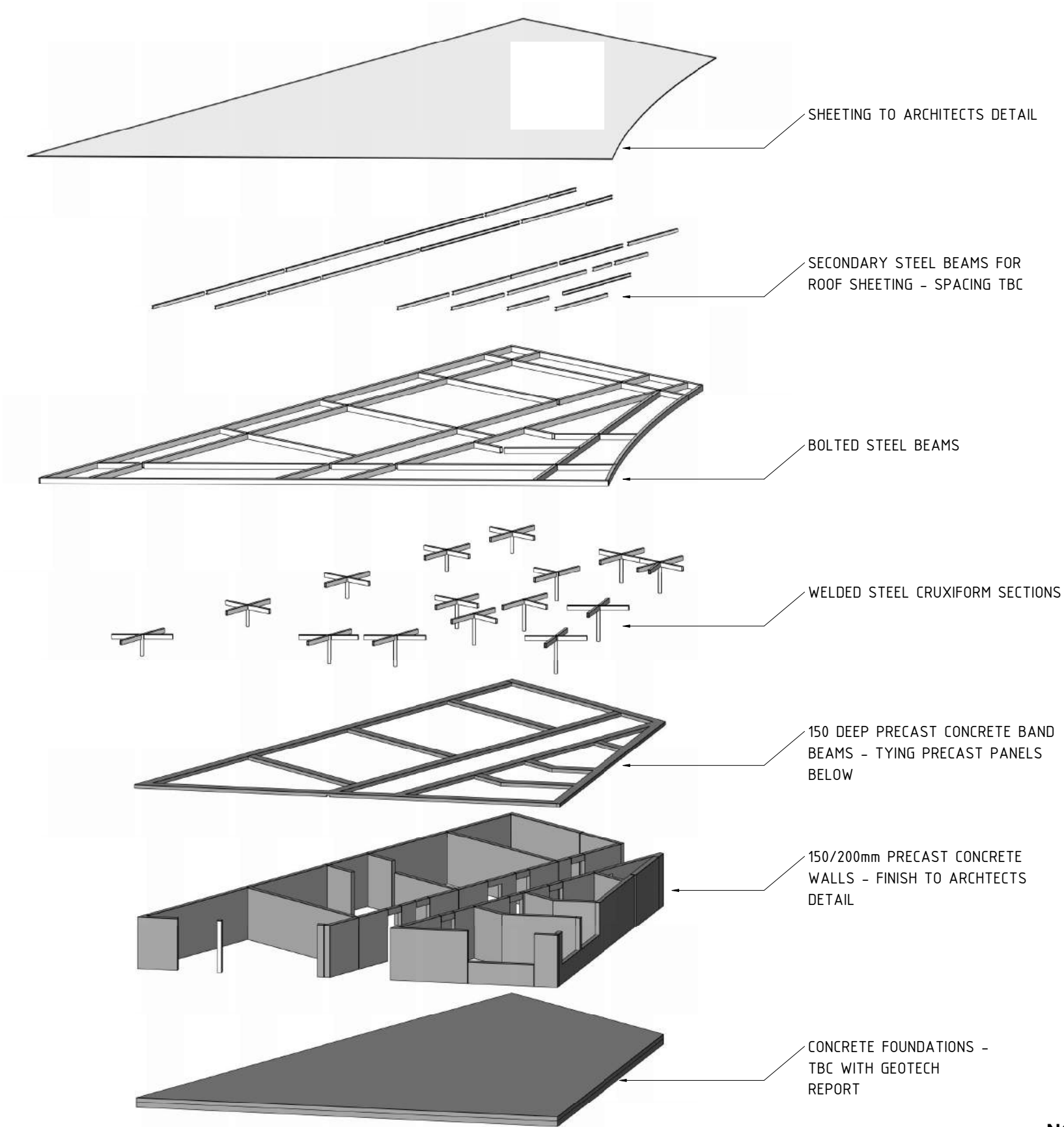
Page 9

INTERIOR LIGHTING

- Central to the design approach is illumination of the underside of the floating roofs, which creates a welcoming “lantern” effect that provides useful illumination within the structures as well as soft circulation light to the surrounding landscape areas.
- The lighting within the Amenities Building is further supplemented by low level lighting interventions (such as mounted wall lights) which provide task illumination to key areas within the building and keep the underside of the roof free of light sources.

OPTIMISED CONSTRUCTION PREFABRICATION

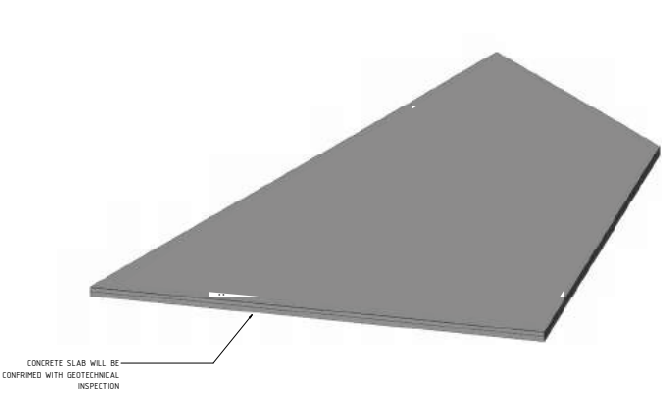
The scheme has been developed for construction utilising prefabricated elements to minimise time on site and associated disruption.



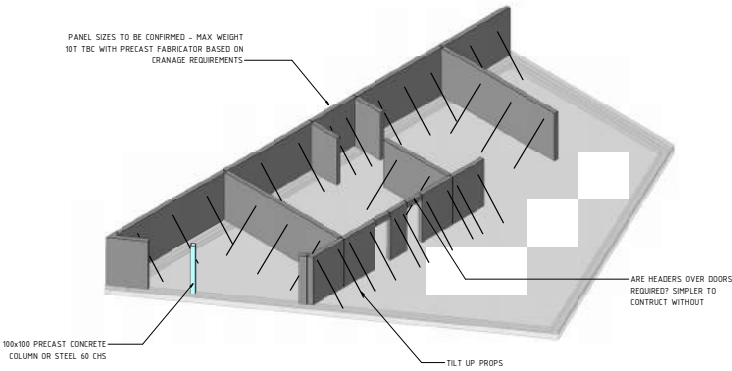
Structural concept prepared by PMI Engineers

OPTIMISED CONSTRUCTION PREFABRICATION

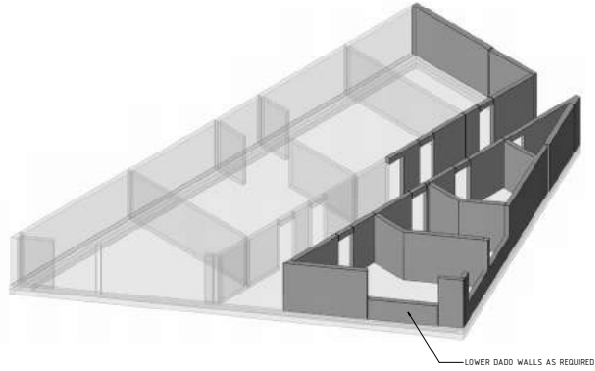
The below diagrams illustrate the intended construction sequence of the main structural prefabricated elements.



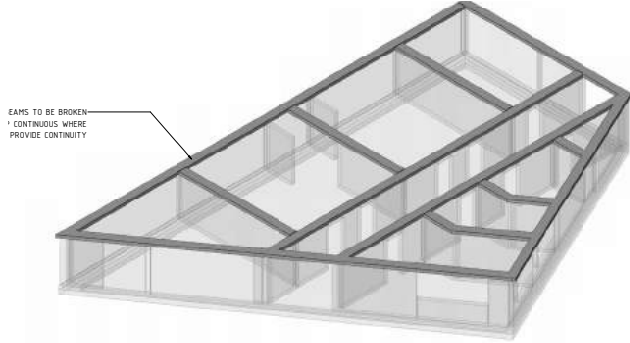
1. CONSTRUCTION OF FOUNDATIONS AND SLAB



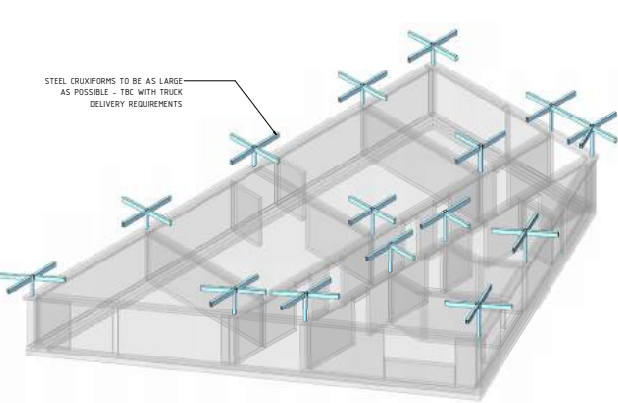
2. ERECTION OF TILT UP PRECAST CONCRETE WALLS



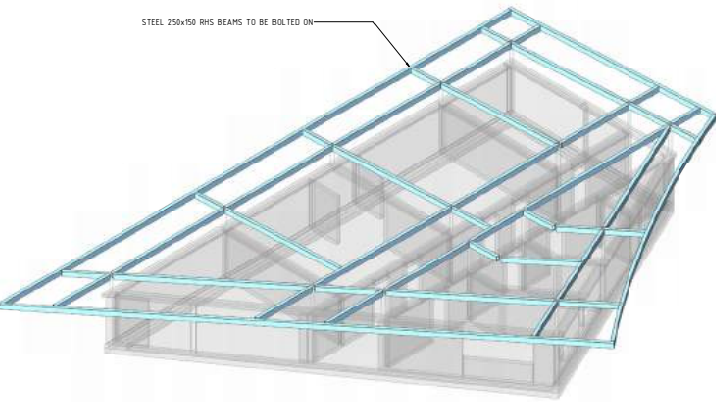
3. ERECTION OF TILT UP PRECAST CONCRETE WALLS



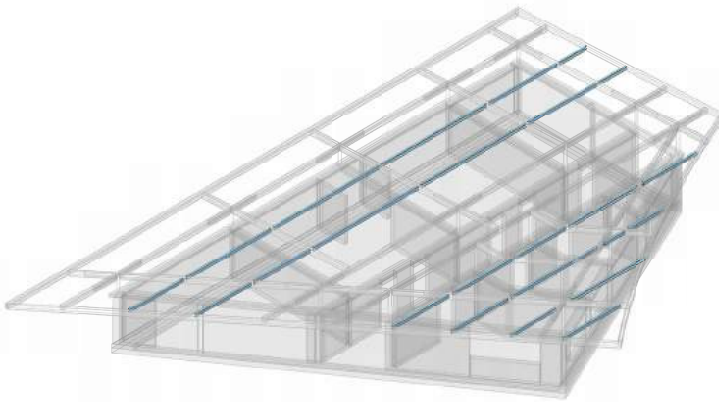
3. PRECAST EDGE BEAM TO RESTRAIN TOP EDGE OF ALL PRECAST WALLS



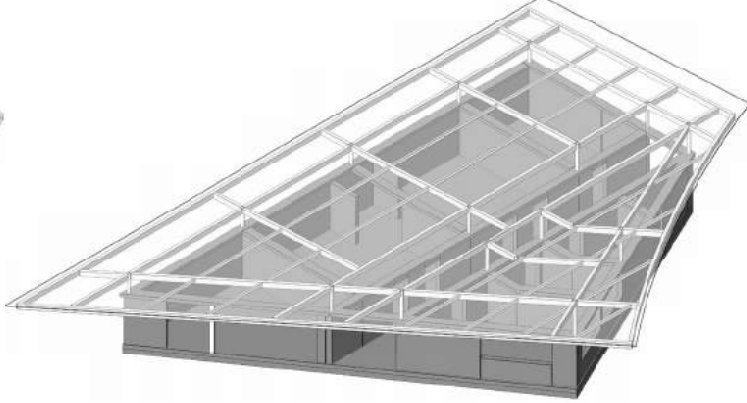
4. PRE WELDED CRUXIFORM POSTS AS SUPPORT POINTS FOR ROOF STRUCTURE



5. FIXING ROOF PRIMARY STEEL STRUCTURE



6. FIXING ROOF SECONDARY STEEL STRUCTURE



8.. THE COMPLETED ASSEMBLY

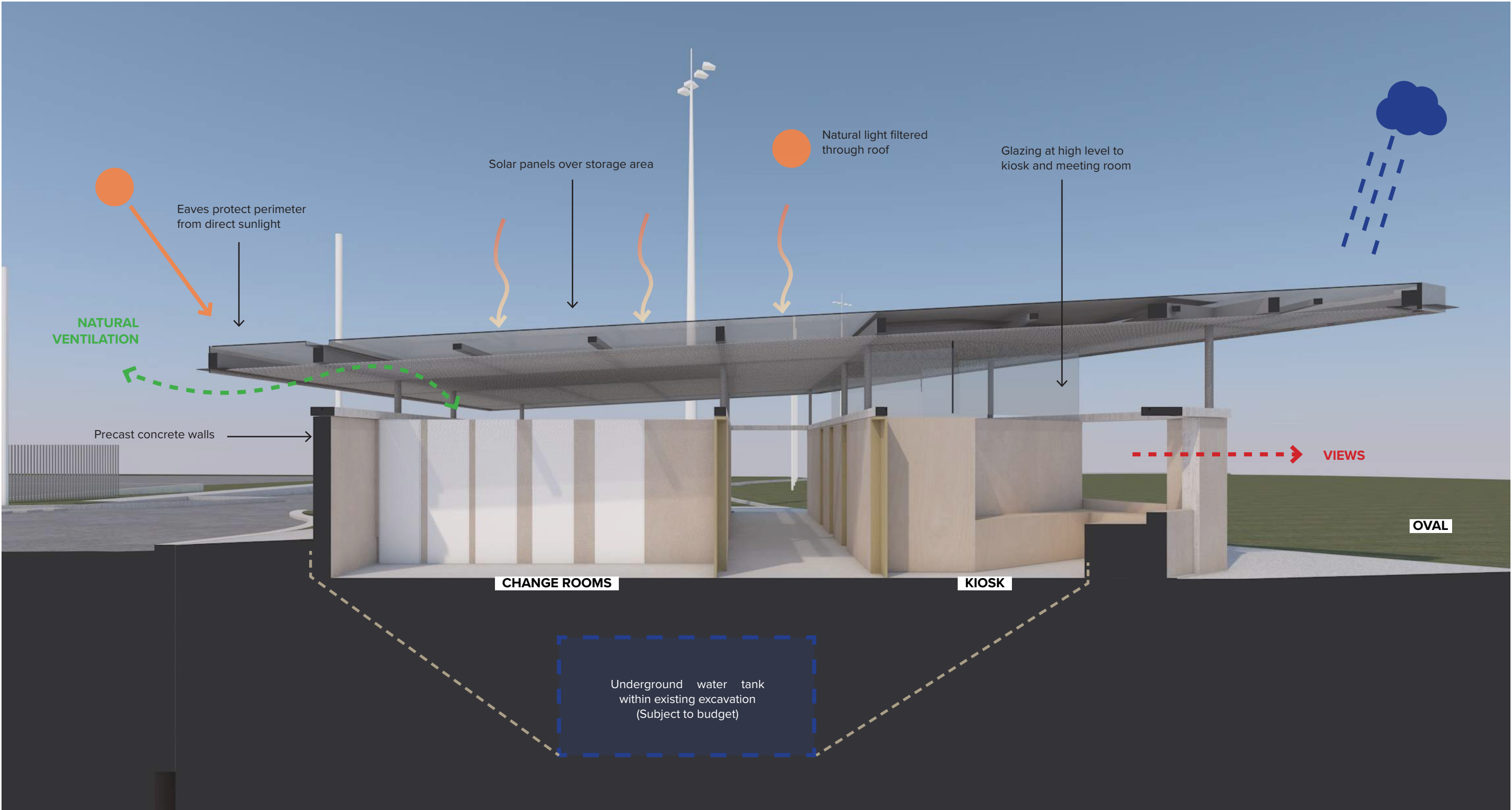
Structural concept prepared by PMI Engineers

NOTE: INDICATIVE ONLY

SUSTAINABILITY

SECTION PERSPECTIVE

The proposal has been developed to deliver functional and environmental performance.



MATERIALITY

HONEST, REFINED, DURABLE

The architecture is constructed using materials selected for their performance, with integral finishes that are authentic, robust and that minimise ongoing maintenance. The warm material palette references the sandstone of the headland, while filtering screens welcome in and reflect the surrounding environment.



Steel-framed canopy with translucent roof and filtering screen beneath for natural light.

Timber-clad exterior sliding screens.

Sandstone-coloured precast panels.

Exposed aggregate concrete slab.

MATERIALITY

MATERIAL PALETTE

The pavilion structures are to be constructed using high quality, prefabricated elements where possible to compliment and minimise impact on the surrounding landscape.



- 01. Sandstone coloured precast concrete
- 02. Native planting to compliment endemic ecology
- 03. Sliding timber screens
- 04. Delicate steel structure to pavilions
- 05. Highly crafted landscape elements
- 06. Sandstone boulders embedded on the site
- 07. Battered screens to provide filtered shade

MIDDLE HEAD OVAL PAVILION

A BUILDING FOR THE COMMUNITY



MIDDLE HEAD OVAL PAVILION

A PUBLIC SPACE FOR THE COMMUNITY



BETTER FIT:

Contextual, local and of its place.

The proposal is sensitive to the context of Middle Head, its history and its location within the community. The simplicity of the building form recognises the contribution of this building to the broader composition of the oval. The robust ground floor of the amenities pavilion provides a variety of contemporary functional requirements that support sports and community activities, sheltered by a singular pitched roof.

BETTER PERFORMANCE:

Sustainable, adaptable, durable.

The proposal incorporates environmental initiatives including passive solar design principles, thermal mass, cross ventilation and natural lighting to reduce energy consumption. The building delivers a range of facilities that are suitable to be shared by a variety of sports and community functions. The building and surrounding landscape provide a terrain that supports multiple planned and unplanned activities that can evolve over time. The project is to be constructed using robust and durable materials that will enable this building to serve the community into the long term.

BETTER FOR COMMUNITY:

Inclusive, connected and diverse.

The proposal is designed to be inclusive of all members of the community. Unisex change rooms are provided that can be used by mens, womens and mixed teams and officials. Accessible amenities and

accessible paths of travel allow equal access to all parts of the building and the landscape. The facilities provide shared amenity for a variety of interconnected activities that can be used by all ages, at various times of the week, both as part of club activities and independently.

BETTER FOR PEOPLE:

Safe, comfortable and liveable.

The proposal provides an environment that is safe and comfortable to use while promoting a healthy, active lifestyle. Safety in design principles have been incorporated in the design, and sight lines between activities support passive surveillance. The proposal integrates community and sporting activities as part of the everyday life for both residents and visitors to the Middle Head Oval.

BETTER WORKING:

Functional, efficient and fit for purpose.

The functional brief has been has been developed in consultation with multiple stakeholders to find a common ground that allows for shared uses wherever possible. The facilities have been designed to minimise their foot print on the park while maximising functional amenity that supports activities far beyond the edges of the building itself.

BETTER VALUE:

Creating and adding value.

The proposal provides significantly improved sporting facilities and amenity to the oval. By providing for broad accessibility and for diverse

user groups, the value of the project extends to a broad user base and will add value to the community for many years to come.

BETTER LOOK AND FEEL:

Engaging, inviting and attractive.

The proposal engages with the precinct on all sides, complimenting and reinforcing existing uses to provide public amenities opening onto a central landscaped lawn, a shading structure to the existing bleachers, and a field-facing elevation activated by a kiosk with views to the field. Each side presents a respectful and quiet elevation, made with a timeless materiality and refined construction detailing that draws together both the history and future of the Middle Head Oval.

