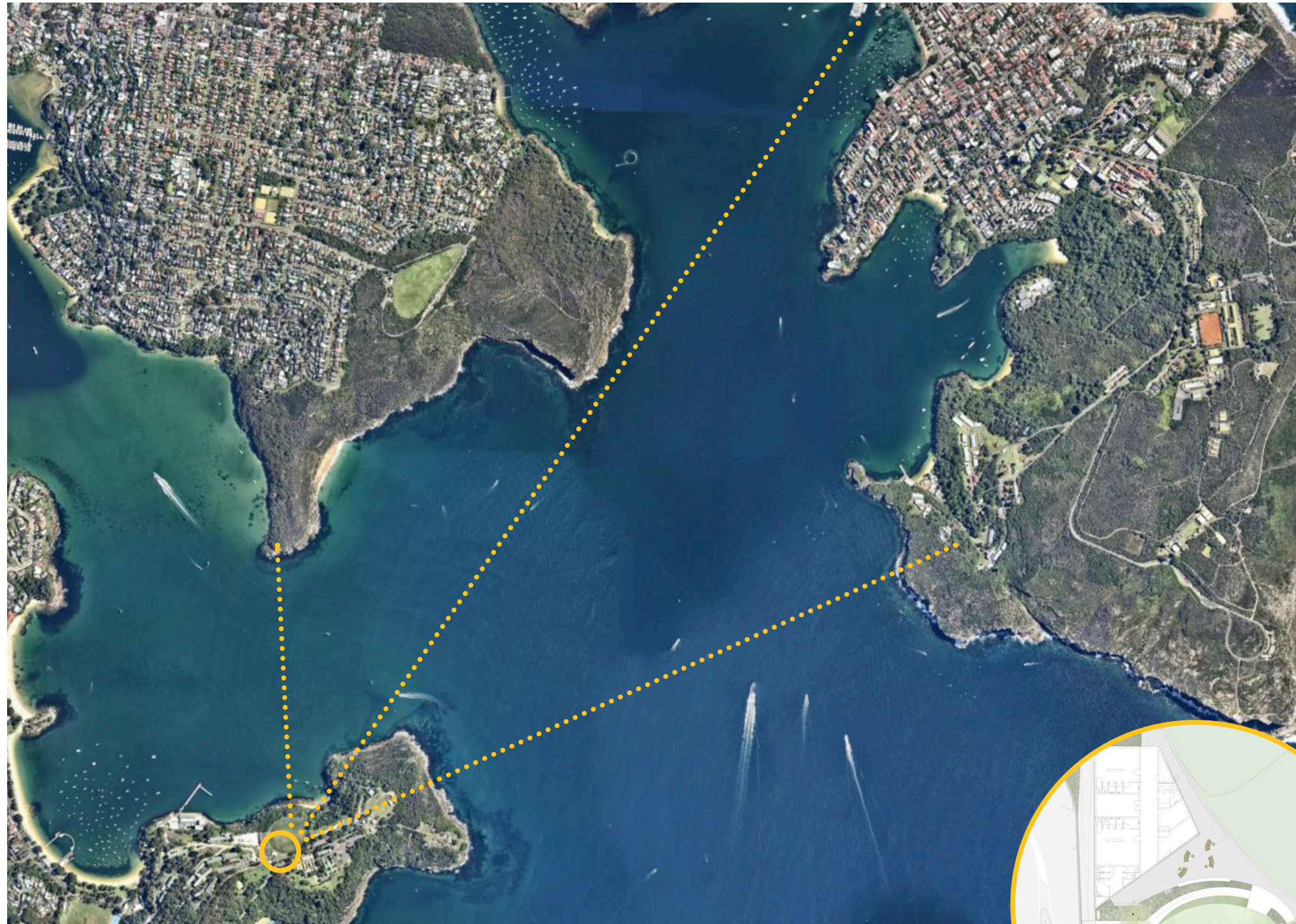


# MIDDLE HEAD/ GUBBUH GUBBUH OVAL AMENITIES BUILDING

## Landscape Design Report

with ARCHER OFFICE  
for Mosman Council



- As one travels down Middle Head Road towards the oval the proposed gathering community park sits in the foreground of important visual connections towards Manly and Dobroyd Headland. The new ovoid shaped park facilitates an inclusive place for the community to come together, to reflect, watch and play sport and enjoy the surrounding bushland and borrowed vista beyond.
- The sculptural trunks and open canopies of Angophora costata frame the views while providing dappled shade and softening the facades of the new amenities building and shelter structure. The corner entry and communal park welcomes one to country - Gubbeh Gubbeh and to the Middle Head precinct with the opportunities to incorporate interpretative elements and Welcome To Country signage as identified in the Harbour Trust Middle Head, Gubbeh Gubbeh Masterplan.

prepared by:

studioRewild  
Kirsty Kendall | Registered Landscape Architect

e: studioRewild@gmail.com  
@studiorewild  
t: 0405 231 418

in collaboration with:









emily simpson  
landscape architecture

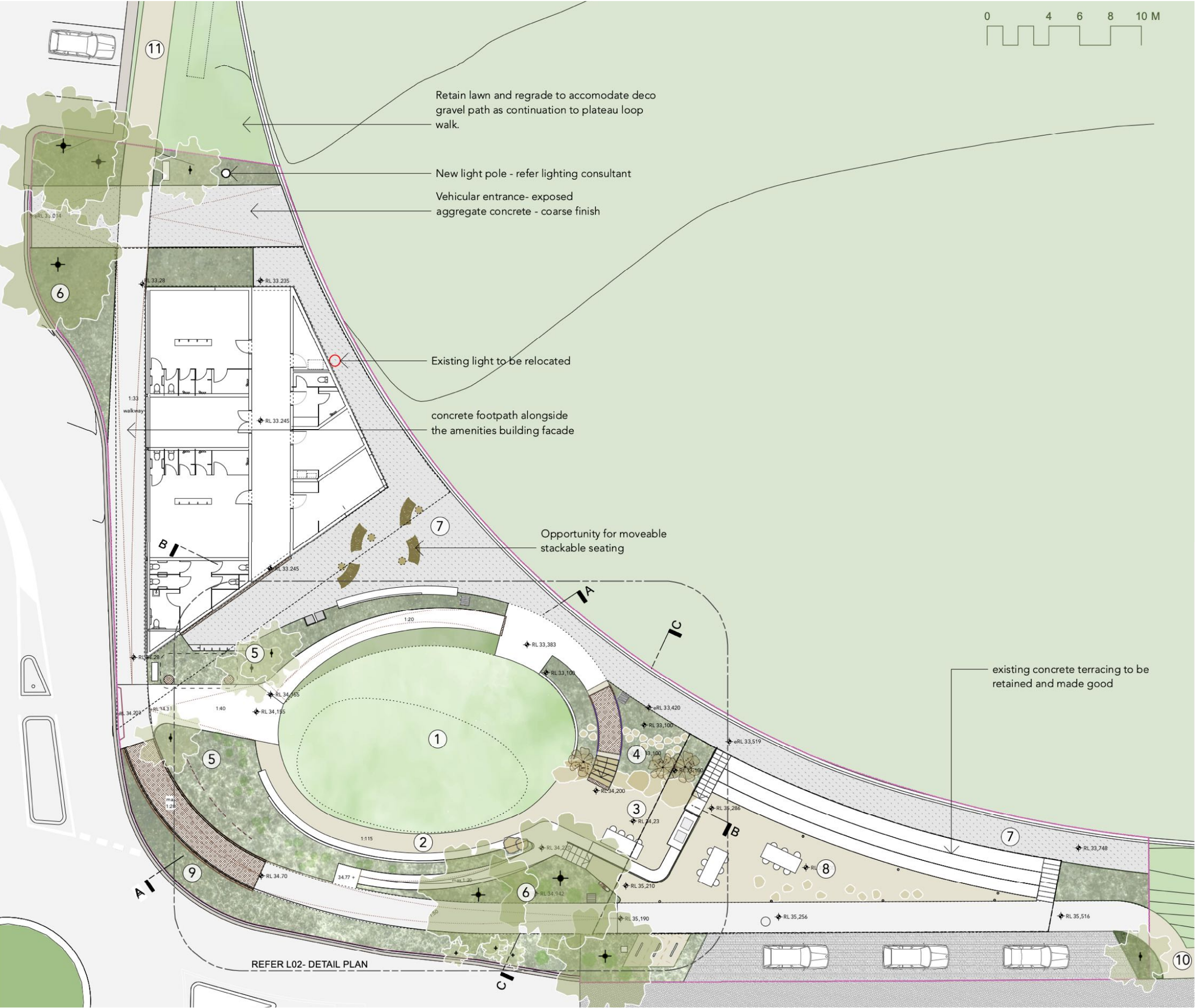
e: emily.mary.simpson@gmail.com  
@eslandarch  
t: 0402 815 735



KEY

1. CENTRAL LAWN  
Sculpted for lounging, banking down from the arcing gravel path to a folded meadow edge and rain garden
2. ARCING SEAT  
A generous insitu concrete seat with back rest and arm rests
3. BBQ TERRACE  
Decomposed granite pavement with bbq's under cover, a long communal table and freeform sandstone shelf retains the edge above the rain garden
4. RAIN GARDEN
5. ABSTRACTED HEATH PLANITNG
6. ANGOPHORA GROVES
7. FIELD-SIDE TERRACE  
Lower concrete terrace forming curtilage to the new building:  
Exposed aggregate concrete. Explore opportunity to use aggregate from crushed site pavers/ salvaged bricks OR salvaged site pavers cut into cobbles and maxi-grouted ie Scarpa Oliveti Showroom.
8. SHELTERED VIEWING TERRACE  
decomposed granite terrace with picnic table and a constellation of flexible seating or salvaged stone seats in a loose configuration which double as bollards
9. ROADSIDE RAIN GARDENS
10. PLATEAU LOOP CONNECTION  
Connect to plateau loop walk and beyond into the headland walk as proposed in the Harbour Trust Middle Head, Gubbah Gubbah Masterplan.
11. PLATEAU LOOP CONNECTION  
Connection to Walk on Country, a curated First Nations walk as proposed in the Harbour Trust Middle Head, Gubbah Gubbah Masterplan - decomposed granite pathway

-  DECOMPOSED GRANITE PAVEMENTS
-  BBQ - Built into concrete bench with timber slatted details
-  PICNIC TABLE
-  FLEXIBLE FURNITURE/ STOOLS / BOLLARDS
-  BIKE RACKS
-  BUBBLER/ WATER REFILL STATION  
- reuse existing + new to match
-  BINS - reuse existing + new to match with option to clad in corten or timber
-  MOVEABLE STACKABLE SEATS





The hard landscape materials are to be robust and simple and complementary to the new architecture materiality: concrete, sandstone coloured precast concrete, timber screens, translucent roof for natural light.

## PATHS & STAIRS

- Primary paths and stairs will be a low carbon concrete with exposed aggregate, stairs with gal steel handrails
- Paths in feature locations to have interpretive texture embedded with sandstone outcrops, shells or stenciled pressings
- Secondary paths to be compacted decomposed granite to create a softer more permeable surface and to define the hierarchy between primary and secondary paths

## BOARDWALKS

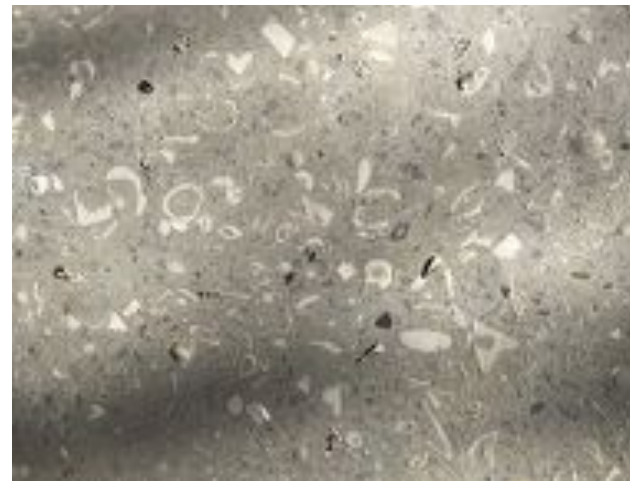
- Boardwalks to float over sunken rain gardens utilising natural stone planks, low carbon concrete or a steel mesh to allow for permeability of views to planting which can grow underneath.

## SANDSTONE

- Sandstone boulders embedded on the site reflecting the geology of the headland. Sandstone boulders to retain levels, formed as steppers to traverse the rain garden and for incidental seating
- Sandstone boulders can be carved out to provide natural bird baths/water source for birds, insects and mammals supporting habitat.
- Sandstone spall and crushed sandstone used as feature rock and mulch through the rain garden areas



1



2



3



4



5



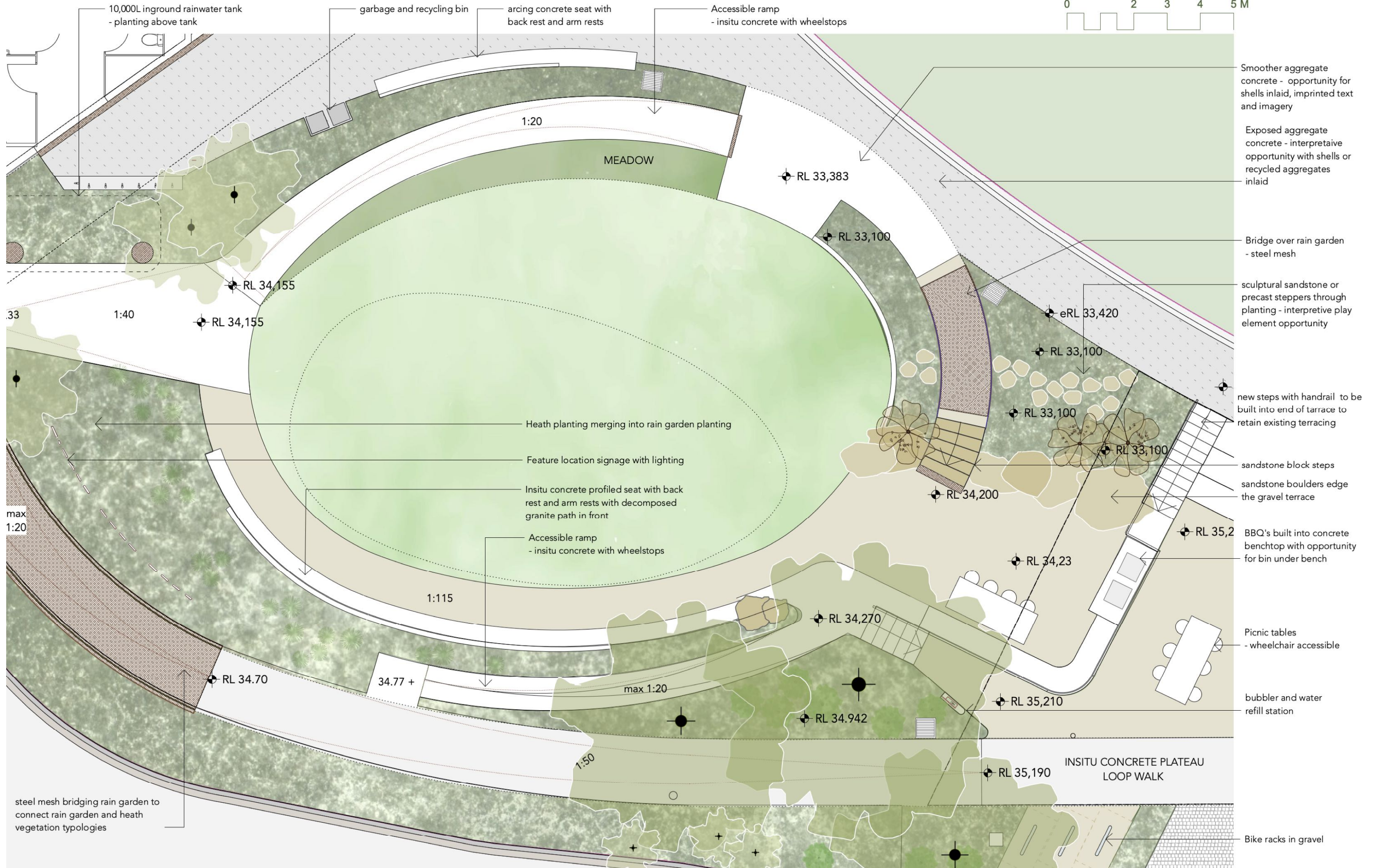
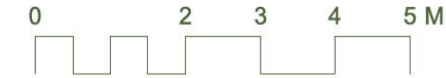
6

1. Low carbon concrete with exposed aggregate
2. Interpretive texture in pavement with exposed shells/middens
3. Sandstone block stair integrated into sandstone outcrop - Dangar Barin Smith
4. Revealing the layers of site in concrete with sandstone outcrops. - Alvaro Siza.
5. Sandstone boardwalk with Carex apressa - sue barnsley design
6. Steel mesh bridging to rain garden
7. Sandstone outcrops, decomposed granite and concrete stair - Ballast Point Park, McGregor Coxall.



7





# MIDDLE HEAD OVAL AMENITIES LANDSCAPE DESIGN REPORT

Rev C/ 9th May, 2024  
Landscape DA

emily simpson  
landscape architecture

studio **Rewild**  
Kirsty Kendall | Registered Landscape Architect



# WALLS & SEATS

## precedent images

- Low carbon concrete ie Boral Envisia™ walls and seats to compliment the amenities building walls.
- Opportunity for interpretive layers expressed in the concrete evoking geological strata ie shells from past middens
- Opportunity to colour match architectural panels.
- Curved profiled concrete seat with back to embrace the ovoid lawn area and to sit comfortably in the landscape overlooking the park and oval.



1



2



3



4

1. Profiled concrete seat with back - Herzog & de Meuron
2. Arcing insitue concrete seat with back rest- studio Rewild with Emily Simpson Landscape architecture
3. Concrete bench seat - Glebe foreshore walk, JMDdesign
4. Opportunity to use rammed earth or concrete layered pours to create sense of strata within walls

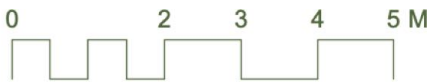
## MIDDLE HEAD OVAL AMENITIES BUILDING LANDSCAPE DESIGN REPORT

Rev C/ 9th May, 2024  
Landscape DA

emily simpson  
landscape architecture

studio **Rewild**  
Kirsty Kendall | Registered Landscape Architect





EXISTING CONCRETE TERRACES TO BE MADE GOOD WITH NEW INSITU CONCRETE STAIR TO THE SIDE

RAIN GARDEN WITH PATH ARCING ACROSS  
- STEEL MESH, SANDSTONE, INSITU CONCRETE

MIDDLE TERRACE WITH BUILT IN SEAT EDGE, BBQS AND PICNIC TABLE  
- decomposed granite pavement

CENTRAL LAWN WITH INSITU CONCRETE ARCING SEAT WITH BACK REST AND ARM RESTS  
- sandstone heath woody meadow behind

PROFILED CONCRETE SEAT  
decomposed granite path in front

PLATEAU WALK:  
steel mesh and insitu concrete through rain gardens and heath



# FURNITURE

seating/drinking/bikes/bins



1



2

## BBQ + BBQ BENCH

Insitu concrete with stainless steel hotplates

## BUBBLERS + WATER FILLING STATION

- one included

## BINS

- recycling, garbage  
one down near kiosk

## BIKE RACKS

- to encourage active transport storage

## FLEXIBLE SEATING

- Loose/flexible seating  
- Long communal timber tables and bench seating for parties/bbq/gatherings



3



4



5



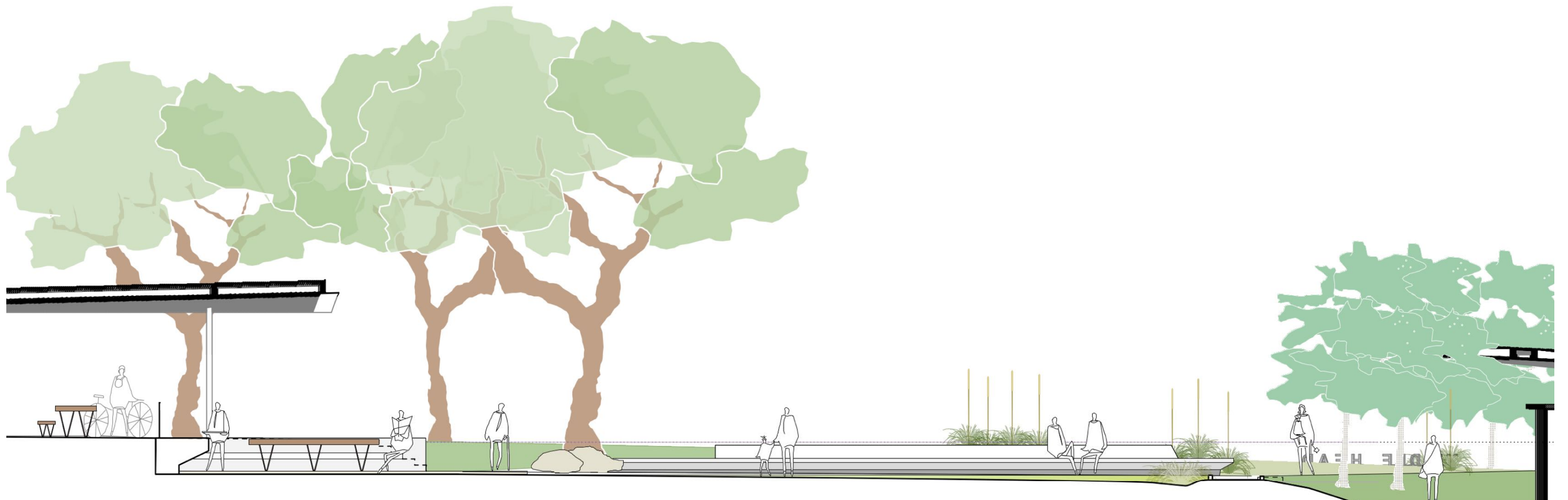
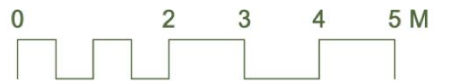
6



7

1. Communal concrete & timber picnic benches - Victoria Park- Hassell
2. Concrete bbq bench- Ballast Point, McGregor Coxall
3. Flexible arcing seating under shelter or kiosk - Hay Palissade
4. Flexible, stackable, recycled aluminum seating under shelter or kiosk - Mass Productions Roadie
5. Flexible seating SANAA, The Drop Chair
6. Simple arching stainless steel bike rack - Prince Alfred Park
7. Corten bin enclosures - Draffin





UPPER TERRACE  
UNDER SHELTER  
- decomposed granite  
pavement

MIDDLE TERRACE WITH BUILT IN SEAT  
EDGE, BBQS AND PICNIC TABLE  
- decomposed granite pavement

ACCESSIBLE INSITU CONCRETE PATH SLIDES  
THROUGH THE PLANTING BEHIND THE  
SEATING WALL

CENTRAL LAWN WITH INSITU CONCRETE ARCING SEAT  
WITH BACK REST AND ARM RESTS  
- sandstone heath woody meadow behind

ACCESSIBLE  
INSITU CONCRETE  
PATH

SANDSTONE HEATH EMBANKMENT  
with Banksia integrifolia



# INTERPRETIVE OPPORTUNITIES

first nations, ecology, geology, archaeology



1.



2.



3.



4.



5.



6.



7.



8.



9.

1. shell 'midden' datum within insitu concrete - Yerrabingin
2. historical walls revealing layers of old brick, shell, - Glebe Foreshore
3. Wiradjuri Kamilaroi artist Jonathon Jones - untitled
4. Shadow play - Kalbarri Skywalk
5. Wiradjuri Kamilaroi artist Jonathon Jones - Bogon Moth installation on vertical wall for private gallery, Harden
6. Pressed leaves and shells in concrete the idea of layers and fossils -
7. Rock engravings- Moon Rock, Ingleside
8. Nature Play inspired by ecological interpretation - Fort Washington
9. Bungaree farm location 1828 - surveyor Thomas Florance trigonometric survey

- There are layers of history embedded on site from the original natural geology and ecology, indigenous history, military history to the present. The landscape intention is to uncover the past uses of the site by the process of removing, revealing and eroding layers of the site to educate the community and visitors of the rich history of the precinct through inspiring and creative interpretation methods.
- A memory of the underlying sandstone headland geology and ecology to be interpreted on site through the selection of sandstone materiality (sandstone boulders used to retain, create seating, create habitat and play) and the reintroduction of biodiverse ecological planting typologies endemic to the coastal headland.
- The Aboriginal history and cultural significant values of the site is critical and interpretation techniques will be used to reveal this culturally important site; sandstone outcrops providing shelter, the presence of rock engravings telling stories, midden deposits tell us of what was foraged and hunted, shells to form fish hooks utilised by women are all important stories to be told and can be embedded into the site. Some examples could be impressions in concrete, shadows on pavements from structures, layered concrete with embedded shells
- Another interesting layer to the site is the history of King Bungaree's farm and the uncovering of a new Triganomic survey map by Thomas Florance in 1828 which shows King Bungaree's Farm at Middle Head. King Bungaree was an Aboriginal community leader and a wonderful explorer and he was gifted a parcel of land 'Bungaree's Farm' in 1815 by Macquarie. 'On a Macquarie family harbour day trip to the site Elizabeth Macquarie contributed a breeding sow, seven pigs, a pair of muscovy ducks and some suits of clothes towards the farming endeavour.' SMH article. Interpretation and education on site could indicate this location and map.
- 'The healing power of Country is also acknowledged in the military history of Gubbeh Gubbeh. Soldiers returning from war were bought here to become well, both physically and mentally.' Harbour Trust Masterplan

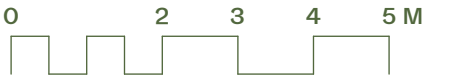
## MIDDLE HEAD OVAL AMENITIES BUILDING LANDSCAPE DESIGN REPORT

Rev C/ 9th May, 2024  
Landscape DA

emily simpson  
landscape architecture

studio **Rewild**  
Kirsty Kendall | Registered Landscape Architect





PLAYING  
FIELD

EXISTING TERRACES  
WITH NEW STAIR  
CONNECTIONS

RAIN GARDEN

BBQ TERRACE WITH  
SHELTER BEYOND  
Decomposed granite pavement  
Built in concrete seat & picnic tables

PLATEAU LOOP WALK THROUGH  
ANGOPHORA GROVES, RAINGARDENS  
AND HEATH  
insitu concrete with section of steel mesh  
bridging rain garden

MIDDLE HEAD ROAD



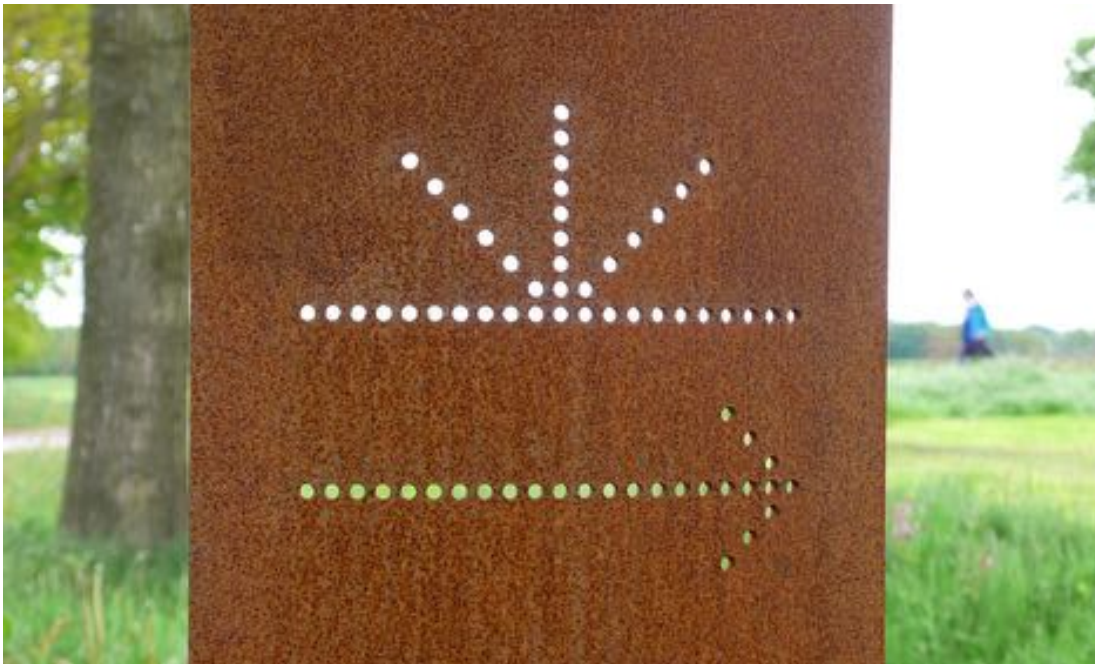
- Signage to be interpretive and to welcome one to site and to acknowledge country.
- Perhaps letter signage in planting Gubbuh Gubbuh
- Wayfinding signage to connect people to the future Middle Head loop walk, interpretation centre
- Interpretive/historical educational signage
- carving or stecilling into pavements



1.



2.



3.



4.

1. Welcoming entry signage to site
2. Corten metal wayfinding
3. Corten metal wayfinding
4. Interpretive and entry signage to site with history embedded



MEADOW TYPOLOGY				
Species	Common Name	Pot Size	Mature Height	Flowering
<b>Perennials/ Herbs</b>				
<i>Coronidium elatum</i>	White Everlasting Daisy	140mm	1-1.5m	Early-Mid Spring
<b>Grasses</b>				
<i>Dichelachne crinita</i>	Plume Grass	140mm	0.6 - 0.75m	Grass Seed Heads: Late Winter
<i>Themeda triandra</i>	Kangaroo Grass	140mm	0.9 - 1.5m	Grass Seed Heads: Summer
<b>Ground Covers</b>				
<i>Wahlenbergia stricta</i>	Sprawling Bluebell	140mm	0.45 - 0.6m	Spring/Summer
<b>Climbers &amp; Scramblers*</b>				
<i>Glycine clandestina</i>	Love Creeper	100mm	1.5 - 3m	All year round/Spring

UPLAND SWAMP TYPOLOGY				
Species	Common Name	Pot Size	Mature Height	Flowering
<b>Shrub</b>				
<i>Banksia robur</i>	Swamp Banksia	300mm	1.2 - 2m	Autumn-Winter
<i>Leptospermum squarrosum</i>	Peach Blossom Teatree	140mm	1.5 - 3m	Autumn-Winter
<b>Grasses</b>				
<i>Baumea articulata</i>	Jointed twig Rush	140mm	1m	Seed Heads: Spring - Autumn
<i>Carex appressa</i>	Tall Sedge	140mm	0.9 - 1.5m	Seed Heads: Spring-Summer
<i>Ficinia nodosa</i>	knobby club-rush	140mm	0.75 - 0.9m	Seed Heads: Spring-Summer

HEATH TYPOLOGY				
Species	Common Name	Pot Size	Mature Height	Flowering
<b>Tree</b>				
<i>Angophora hispida</i>	Dwarf Apple	25L	3 - 5m	Spring
<i>Banksia integrifolia</i>	Coastal Banksia	200L	5 - 10m	Winter
<b>Shrubs</b>				
<i>Acacia ulicifolia</i>	Prickley Moses	140mm	0.9 - 1.5m	Spring/Winter/Autumn
<i>Baeckea imbricata</i>	Heath Myrtle	140mm	0.6 - 0.75m	Spring- Summer
<i>Dillwynia retorta ssp. retorta</i>	Heathy Parrot Pea	140mm	0.9 - 1.5m	Winter- Spring
<i>Epacris longiflora</i>	Native Fushia	140mm	0.9 - 1.5m	Summer- Autumn
<i>Grevillea buxifolia</i>	Grey Spider Flower	140mm	0.9 - 1.5m	Spring-Autumn
<i>Grevillea sericea</i>	Pink Spider Flower	140mm	0.9 - 1.5m	Winter- Spring
<i>Grevillea speciosa</i>	Red Spider Flower	150mm	1.5 - 3m	Winter- Spring
<i>Lambertia formosa</i>	Mountain Devil	150mm	0.9 - 1.5m	Winter- Spring
<i>Melaleuca hypericifolia</i>	Hillock Bush	150mm	1m	Spring- Summer
<i>Pimelea linifolia</i>	Slender Rice-flower	140mm	0.45 - 1.5m	Winter-Summer
<i>Xanthorrhoea media</i>	Grass Tree	200mm	0.9 - 1.5m	Spring/Winter/Autumn

<b>Perennials/ Herbs</b>				
<b>Grasses</b>				
<i>Themeda triandra</i>	Kangaroo Grass	140mm	0.9 - 1.5m	Grass Seed Heads: Summer
<b>Scramblers</b>				
<i>Glycine clandestina</i>	Love Creeper	100mm	1.5 - 3m	All year round/Spring

ANGOPHORA GROVE TYPOLOGY				
Species	Common Name	Pot Size	Mature Height	Flowering
<b>Trees</b>				
<i>Angophora costata</i>	Sydney Red Gum	200L tbc	15 - 20m	Endemic species to Manly; eastern su
<b>Shrub</b>				
<i>Grevillea buxifolia</i>	Grey Spider Flower	140mm	0.9 - 1.5m	Spring-Autumn
<b>Perennials/ Herbs</b>				
<i>Actinotus helianthi</i>	Flannel Flower	140mm	0.3m	Early-Spring-Summer
<i>Coronidium elatum</i>	White Everlasting Daisy	140mm	1-1.5m	Early-Mid Spring
<b>Grasses</b>				
<i>Dichelachne crinita</i>	Plume Grass	140mm	0.6 - 0.75m	Grass Seed Heads: Late Winter
<i>Themeda triandra</i>	Kangaroo Grass	140mm	0.9 - 1.5m	Grass Seed Heads: Summer
<b>Ground Covers</b>				
<i>Viola hederacea</i>	Native Violet	140mm	0.0 - 0.3m	Flowering: Most of the Year
<b>Climbers &amp; Scramblers*</b>				
<i>Billardiera scandens</i>	Apple Berry	140mm	1.5 - 3m	Spring
<i>Hardenbergia violacea</i>	False Sarsaparilla	140mm	0.75 - 0.9m	Winter

RAIN GARDEN TYPOLOGY				
Species	Common Name	Pot Size	Mature Height	Flowering
<b>Shrub</b>				
<i>Baeckea imbricata</i>	Heath Myrtle	140mm	0.6 - 0.75m	Spring- Summer
<i>Banksia robur</i>	Swamp Banksia	300mm	1.2 - 2m	Autumn-Winter
<i>Epacris longiflora</i>	Native Fushia	140mm	0.9 - 1.5m	Summer- Autumn
<i>Leptospermum squarrosum</i>	Peach Blossom Teatree	140mm	1.5 - 3m	Autumn-Winter
<b>Fern</b>				
<i>Hypolepis muelleri</i>	Harsh Ground Fern	150mm	0.3 - 1.0m	-
<b>Grasses</b>				
<i>Baumea articulata</i>	Jointed twig Rush	140mm	1m	Seed Heads: Spring - Autumn
<i>Carex appressa</i>	Tall Sedge	140mm	0.9 - 1.5m	Seed Heads: Spring-Summer
<i>Ficinia nodosa</i>	knobby club-rush	140mm	0.75 - 0.9m	Seed Heads: Spring-Summer
<i>Gahnia sieberiana</i>	Red-fruit Saw Sedge	200mm	0.9 - 1.5m	Seed Heads: Spring-Summer
<b>Climbers &amp; Scramblers*</b>				
<i>Hibbertia scandens</i>	Golden Guinea Flower	140mm	0.0 - 0.3m	Flowers best in full sun

## KEY - TYPOLOGIES

- 1 Lawn
- 2 Native meadow
- 3 Coastal Upland Swamp Rain Garden
- 4 Sandstone Coastal Headland Heath
- 5 Angophora Groves
- 6 Roadside Rain Gardens

## KEY - TREE SPECIES



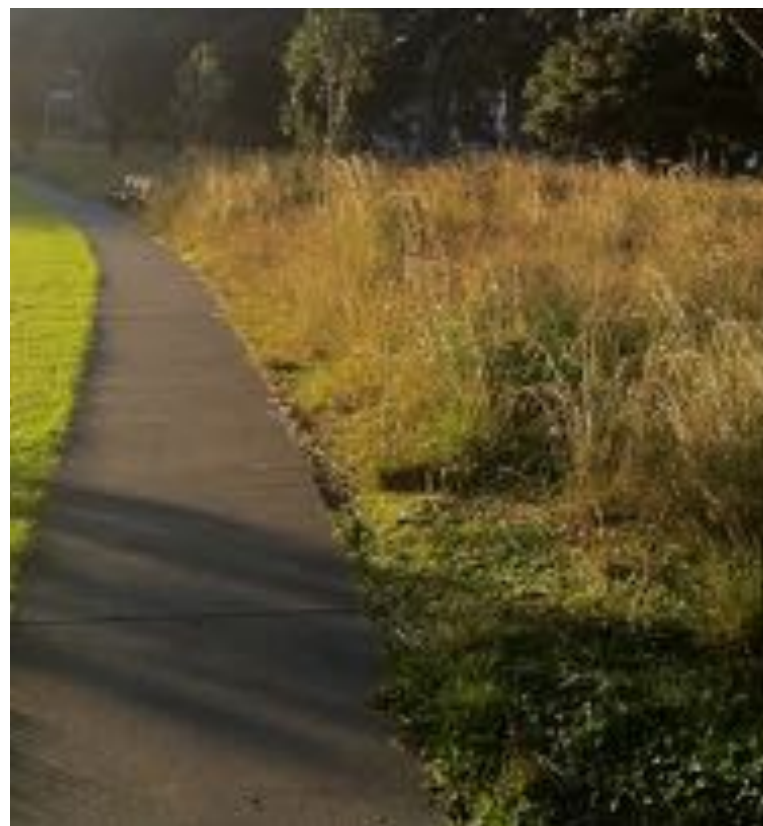


# PLANTING

## Lawn & Native meadow



1.



2.

1. Zoysia 'Nara' native lawn within a central viewing optical shaped lawn
2. Swathe of soft native grasses and flowering scramblers and groundcovers create a biodiverse native meadow

- Zoysia 'Nara' native lawn to be incorporated in the central viewing optical shaped lawn. Zoysia Nara is a very low maintenance lawn requiring less mowing, edging and fertilising.

- Swathe of native grasses & native flowering perennials/scramblers / herbs creating biodiversity and insect habit

### plant species:

- › Zoysia macrantha 'Nara' (lawn)
- › Coronidium elatum- White Everlasting Daisy
- › Dichelachne crinata - Plume Grass
- › Glycine clandestina - Love Creeper
- › Themeda triandra - Kangaroo Grass
- › Wahlenbergia stricta- Native Bluebell

### plant species:

#### Lawn



Zoysia macrantha 'Nara'  
lawn

#### Native Meadow



Coronidium elatum  
White Everlasting Daisy



Dichelachne crinata  
Plume Grass



Glycine clandestina  
Love Creeper



Themeda triandra  
Kangaroo Grass



Wahlenbergia stricta  
Native Bluebell



# PLANTING

## Coastal Upland Swamp Rain Garden

- WSUD principals are woven through the site through the use of rain gardens, permeable pavements, water collection from roofs.
- Rain collected into rain garden from surrounding paths/landscape
- There are opportunities to create opportunities of play and adventure in this environment with jumping through the sunken rain garden hopping from boulder to boulder and connecting with the biodiverse ecosystem
- The planting typology is based on the coastal upland swamps, the plant community occurs primarily on impermeable sandstone plateaus with abundant seepage moisture. Create frog, lizard and water dragon habitat in boggy zones and on sandstone outcrops.

### plant species:

#### Shrubs

- › Bankia robur- Swamp Banksia
- › Leptospermum squarrosum - Peach Blossom Tea Tree

#### Grasses/ Sedges

- › Baumea articulata-Jointed Twig Rush
  - › Carrex appressa- Tall Sedge
  - › Ficinia nodosa- Knobby Club Rush
- 
1. Ballast Point rain garden soak- McGregor Coxall
  2. Victoria Park raingardene, Victoria Park, Hassell
  3. Dry creek bed play in the rain garden- unknown
  4. fissured sandstone plateaus - Kuringai Chase NP
  5. sandstone boulders create habitat, adventure and play
  6. water dragon habitat on sandstone outcrops



1.



2



3



4



5



6

### plant species:

#### Shrubs



Bankia robur  
Swamp Banksia



Leptospermum squarrosum  
Peach Blossom Tea Tree

#### Grasses/Sedges



Baumea articulata  
Jointed Twig Rush



Carrex appressa-  
Tall Sedge



Ficinia nodosa-  
Knobby Club Rush



# PLANTING

## Sandstone Coastal Headland Heath



1.



2.



3.



### plant species:

#### Trees/ Small Trees



Banksia integrifolia  
Coastal Banksia



Angophora hispida  
Dwarf Angophora

#### Shrubs



Acacia ulicifolia  
Prickly Moses



Baeckea imbricata  
Heath Myrtle



Dillwynia retorta  
Small Leaf Parrot Pea



Epacris longifolia  
Native Fuchsia



Grevillea buxifolia  
Grey Spider Grevillea



Grevillea sericea  
Pink Spider Grevillea



Grevillea speciosa  
Red Spider Grevillea



Lambertia formosa  
Mountain Devil



Melaleuca hypericifolia  
Hillock Bush



Pimelia linifolia  
Slender Rice Flower

#### Grasses/ Grass Trees



Themeda australis  
Kangaroo Grass



Xanthorrhoea minor  
Grass Tree

#### Groundcovers/ Scramblers



Glycine clandestina  
Love Creeper



Hibbertia dentata  
Toothed Guinea Flower

- Heathland species provide pollen and nectar amongst a wild tangle of woody heath which attract an array of nectar-feeding birds, mammals and insects attracted by the abundance of flowers and also provides protection and habitat.
- Native bee houses could be incorporated in the planting encouraging pollination and education
- A sandstone boulder water bowl for birds, insects and native bees.

### plant species:

#### Trees/ Small Trees

- › Banksia integrifolia (grove)- Coastal Banksia
- › Angophora hispida- Dwarf Angophora

#### Shrubs

- › Acacia ulicifolia- Prickly Moses
- › Baeckea imbricata- Heath Myrtle
- › Dillwynia retorta- Small Leaf Parrot Pea
- › Epacris longifolia- Native Fuchsia (in shadier zones- undercroft zone)
- › Grevillea buxifolia/sericea/speciosa/linarifolia- Grey/Pink/Red/White Spider Grevillea
- › Hakea teretifolia- Dagger Hakea (habitat)
- › Kunzea ambigua- Tick Bush
- › Lambertia formosa- Mountain Devil
- › Melaleuca hypericifolia- Hillock Bush
- › Pimelia linifolia – Slender Rice Flower

#### Grasses/ Grass Trees

- › Themeda australis- Kangaroo Grass
- › Xanthorrhoea minor- Grass Tree

#### Groundcovers/ Scramblers

- › Glycine clandestina- Love Creeper
- › Hibbertia dentata- Toothed Guinea Flower (dry shade)

1. Sandstone boulder carved bird/ bee/ animal bath
2. Planting to encourage native bees with opportunity to incorporate hives.
3. Layers of Sandstone Coastal headland heath wildflowers

## MIDDLE HEAD OVAL AMENITIES BUILDING LANDSCAPE DESIGN REPORT

Rev C/ 9th May, 2024  
Landscape DA

emily simpson  
landscape architecture

studio **Rewild**  
Kirsty Kendall | Registered Landscape Architect





1.

2

3.

1. Sculptural form and brilliant trunk colour - Angophora costata
1. Winding limbs of the Angophora costata
2. Angophora costata with native grass and Actinotus helianthi - flannel flower understory

plant species:

Trees



Angophora costata  
Sydney Red Gum

Shrubs



Grevillea buxifolia  
Grey Spider Grevillea



Actinotus helianthi  
Flannel Flower



Coronidium elatum  
White Everlasting Daisy



Platylodium formosum  
Handsome Flat Pea

Grasses/Sedges



Dichelachne crinata  
Plume Grass



Themeda australis  
Kangaroo Grass

Scramblers/Groundcovers



Billardiera scandens  
Apple Dumplings



Hardenbergia violacea  
False Sarsparilla



Viola hederacea  
Native Violet

- The sculptural open canopies of Angophora groves frame the Sydney harbour view while providing dappled shade and soften the new amenities.
- Bark colours change seasonally from new salmon pink turning to pale grey. Flowers are white and showy appearing in Summer and attracting birds and pollinators.
- The understory to the Angophora grove typology will be soft and feathery with a mix of native grasses, perennials and scrambling groundcovers.

plant species:

Trees

- › Angophora costata- Sydney Red Gum

Shrubs

- › Grevillea buxifolia- Grey Spider Grevillea

Perennials

- › Actinotus helianthi- Flannel Flower
- › Coronidium elatum- White Everlasting Daisy
- › Platylodium formosum- Handsome Flat Pea

Grasses

- › Dichleachne crinata- Plume Grass
- › Themeda australis- Kangaroo Grass

Scramblers/groundcovers

- › Billardiera scandens- Apple Dumplings (shadier zone)
- › Hardenbergia violacea- False Sarsparilla
- › Viola hederacea- Native Violet (shadier zone)





1.

1. Natural sandstone plateau soak with Banksia robur and Gahnia  
2. Rain garden Henry Lawson Reserve- Sprout Studio  
3. Rain garden- Barcom Park- Sue Barnsley Design



2.



3.

- Water Sensitive Urban Design (WSUD) incorporated on the edges of the site with rainwater collected into rain gardens from surrounding roads, paths and landscape. The water is slowed, filtered through planting and soil substrates to improve water quality from runoff before discharged into Middle Harbour.
- Planting is a mix of feature shrubs, grasses and sedges to give a soft green edge to the corner of the site.

plant species:

Shrubs

- › Banksia robur- Swamp Banksia in appropriate locations not to cover views
- › Baeckea imbricata- Heath Myrtle
- › Epacris longifolia- Native Fuschia (shadier zone)
- › Leptospermum squarrosum- Peach Blossom Tea-Tree

Grasses/ Sedges

- › Carex appressa- Tall Sedge
- › Ficinia nodosa- Knobby Club Rush
- › Gahnia sieberiana- Red-Fruit Saw Sedge- showy black flowers- away from path edges

Ferns

- › Hypolepis muelleri- Harsh Ground Fern

Scrambler

- › Hibbertia scandens- Snake Vine

plant species:

Shrubs



Banksia robur  
Swamp Banksia



Baeckea imbricata  
Heath Myrtle



Epacris longifolia  
Native Fuchsia



Leptospermum squarrosum  
Peach Blossom Tea Tree

Grasses/Sedges



Ficinia nodosa-  
Knobby Club Rush



Gahnia sieberiana  
Red-Fruit Saw Sedge



Carex appressa  
Tall Sedge



Baumea articulata  
Jointed Twig Rush

Ferns



Hypolepis muelleri  
Harsh Ground Fern

Scrambler



Hibbertia scandens  
Snake Vine