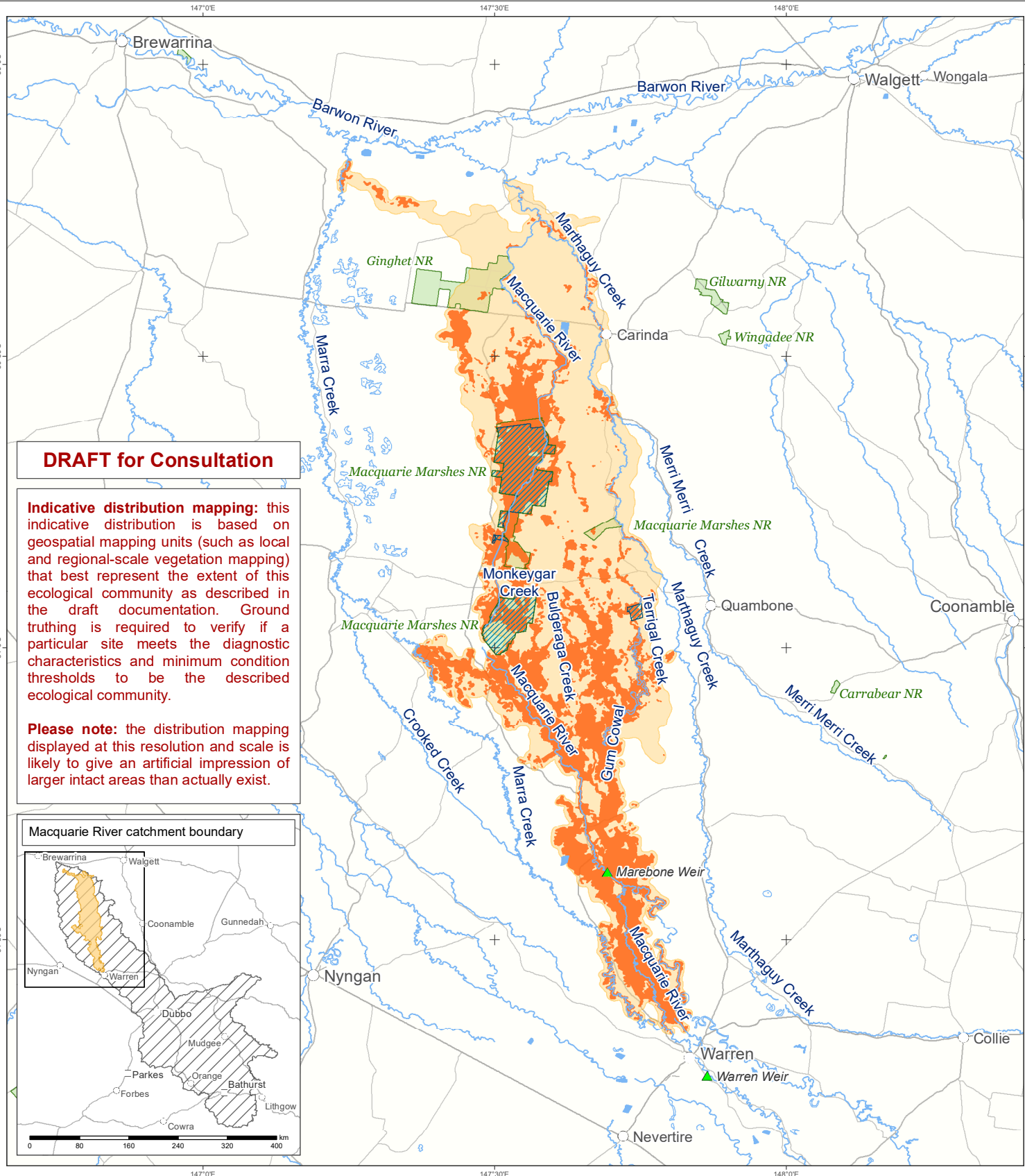


Wetlands and inner floodplains of the Macquarie Marshes (DRAFT)

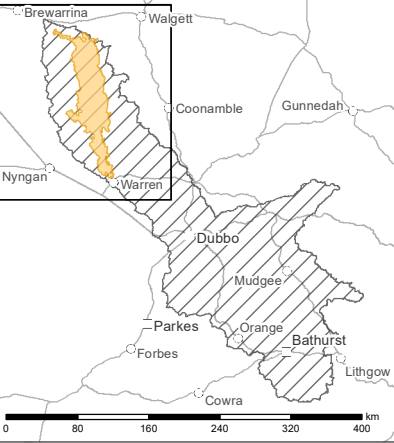


DRAFT for Consultation

Indicative distribution mapping: this indicative distribution is based on geospatial mapping units (such as local and regional-scale vegetation mapping) that best represent the extent of this ecological community as described in the draft documentation. Ground truthing is required to verify if a particular site meets the diagnostic characteristics and minimum condition thresholds to be the described ecological community.

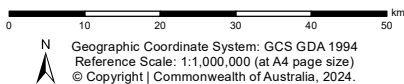
Please note: the distribution mapping displayed at this resolution and scale is likely to give an artificial impression of larger intact areas than actually exist.

Macquarie River catchment boundary



Australian Government

Department of Climate Change, Energy,
the Environment and Water



Indicative distribution mapping

- Ecological community likely to occur
- Ecological community may occur

Reference data

- Weirs
- Ramsar wetlands
- Macquarie River catchment

Contextual data

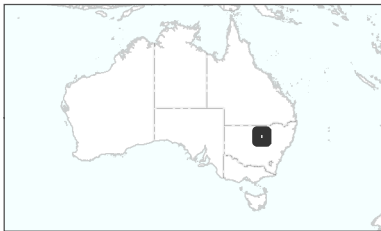
- Towns & Localities
- State Border
- Roads
- Major Rivers
- Lakes/Reservoirs
- Non-perennial Lakes
- Conservation Areas

Distribution data source: The likely to occur mapping category is based on NSW SVTM map units (PCTID's = 36, 454, 241, 247, 204, 181) and NVIS v6.0 extant map units containing *E. camaldulensis*. The may occur mapping category is based on the DIWA wetlands extent for Macquarie Marshes with some additional hydrological areas included.

Contextual data sources: DCCEEW; Geoscience Australia; PSMA Australia; Australian Bureau of Statistics; CSIRO.

Caveat: The information presented in this map has been provided by a range of groups and agencies. While every effort has been made to ensure accuracy and completeness, no guarantee is given, nor responsibility taken by the Commonwealth for errors or omissions, and the Commonwealth does not accept responsibility in respect of any information or advice given in relation to, or as a consequence of, anything containing herein.

This map was produced by the DCCEEW Geospatial Data Assets team.



Map Ref No: ec093_consult_a4map_20240520.1048.MB0059