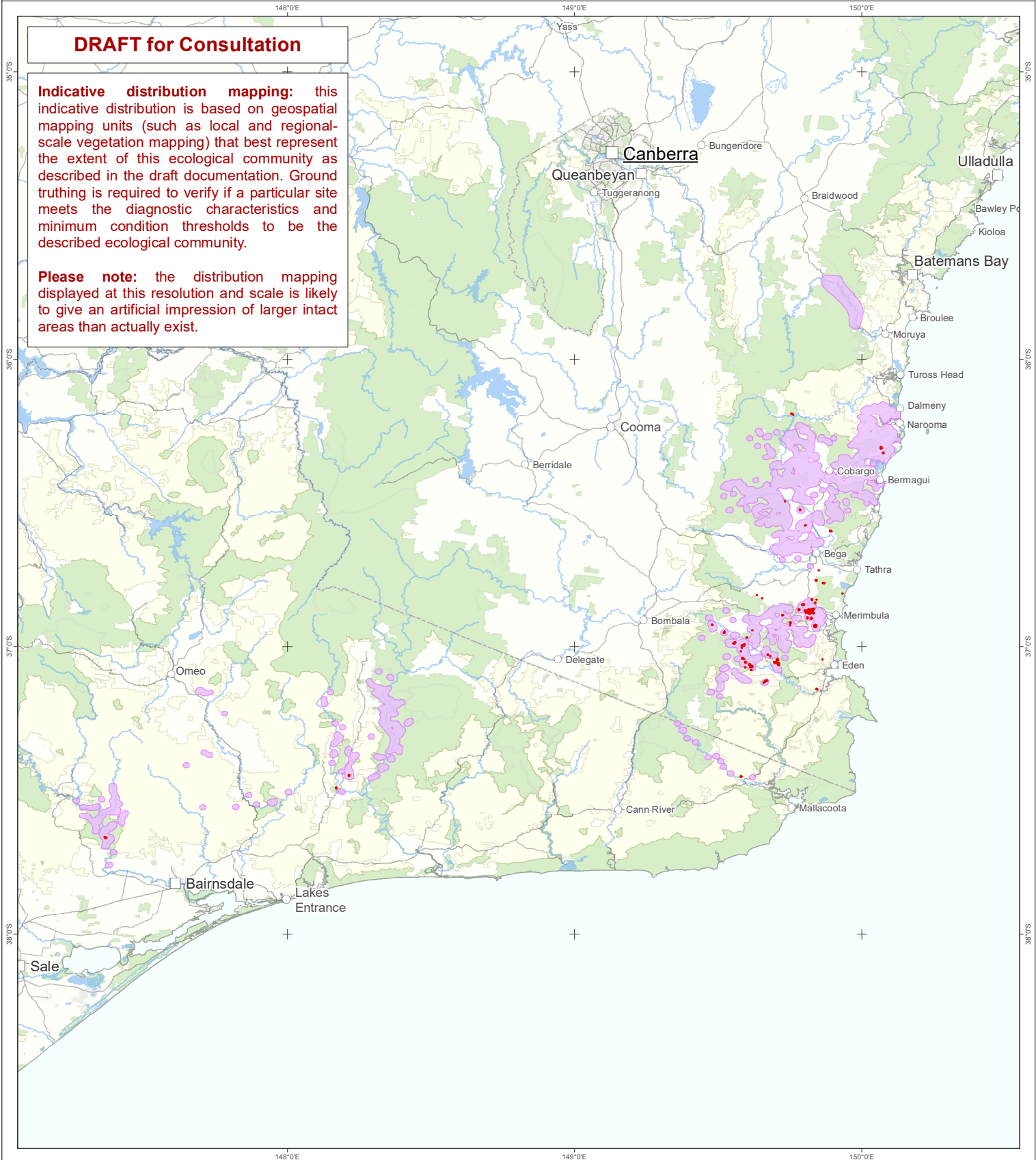


Dry Rainforests of South East New South Wales and East Gippsland (DRAFT)



DRAFT for Consultation

Indicative distribution mapping: this indicative distribution is based on geospatial mapping units (such as local and regional-scale vegetation mapping) that best represent the extent of this ecological community as described in the draft documentation. Ground truthing is required to verify if a particular site meets the diagnostic characteristics and minimum condition thresholds to be the described ecological community.

Please note: the distribution mapping displayed at this resolution and scale is likely to give an artificial impression of larger intact areas than actually exist.



Australian Government

Department of Climate Change, Energy,
the Environment and Water

0 10 20 30 40 50 km

Geographic Coordinate System: GCS GDA 1994
Reference Scale: 1:2,000,000 (at A4 page size)
© Copyright | Commonwealth of Australia, 2024.

Indicative distribution mapping

- Map units most likely to be the ecological community based on initial assessment
- Areas where the ecological community is most likely to occur, or formerly occurred

Contextual data

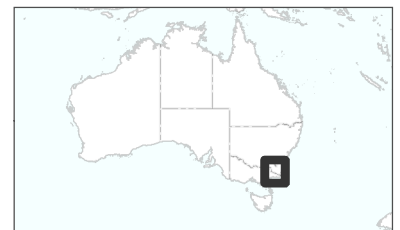
- Cities
- Towns & Localities
- State Border
- Roads
- Urban Areas
- Major Rivers
- Lakes/Reservoirs
- Non-perennial Lakes
- Forestry Reserves
- Conservation Areas

Distribution data source: selected map units from: Victorian Dry Rainforest mapping (known DRF); and SEAP modelled rainforest data (C9s). Areas where the ecological community is most likely to occur are derived from modelled rainforest mapping in Victoria and PCT mapping in NSW (3652 and 4112). Araluen valley added as a possible area from historic location information.

Contextual data sources: DCCEEW; Geoscience Australia; PSMA Australia; Australian Bureau of Statistics; CSIRO.

Caveat: The information presented in this map has been provided by a range of groups and agencies. While every effort has been made to ensure accuracy and completeness, no guarantee is given, nor responsibility taken by the Commonwealth for errors or omissions, and the Commonwealth does not accept responsibility in respect of any information or advice given in relation to, or as a consequence of, anything containing herein.

This map was produced by Environment Information Australia (DCCEEW).



Map Ref No: ec189_consult_a4map01.20241001.1743.A09712