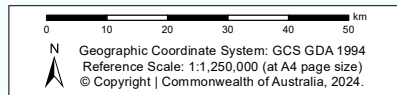
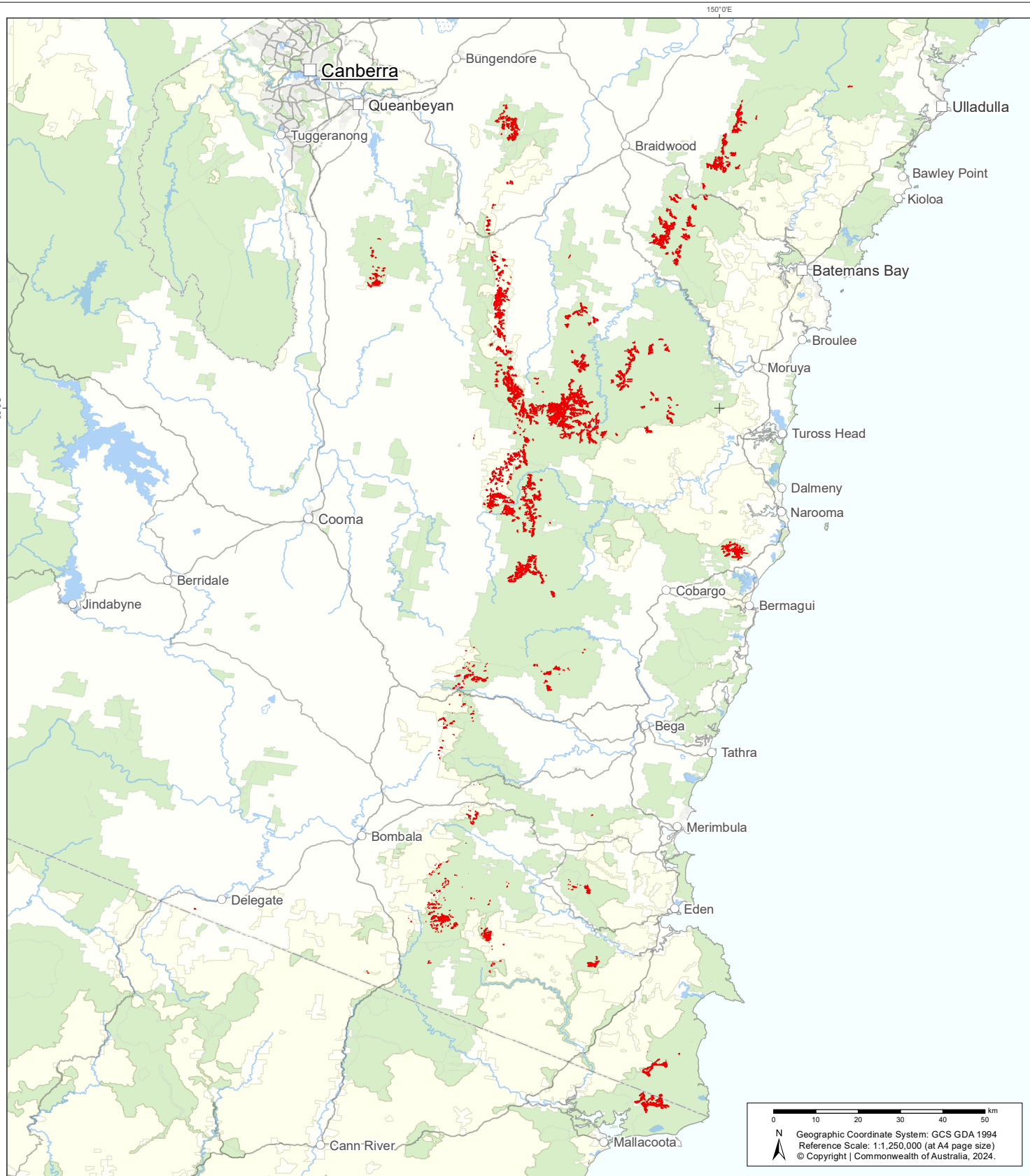


# White ash forests of south-east Australia (DRAFT)



Australian Government

Department of Climate Change, Energy, the Environment and Water

**For Official Use Only**  
**Not for Public Release**

**Indicative distribution mapping:** this indicative distribution is based on geospatial mapping units (such as local and regional-scale vegetation mapping) that best represent the extent of this ecological community as described in the draft Conservation Advice.

**Please note:** the distribution mapping displayed at this resolution and scale is likely to give an artificial impression of larger intact areas than actually exist.

### Indicative distribution mapping

- White ash forests of south-east Australia' map units

### Contextual data

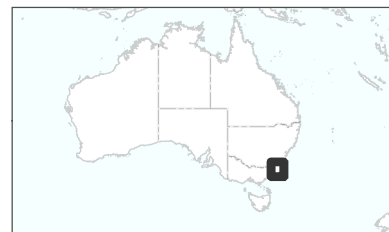
- Cities
- Towns & Localities
- State Border
- Roads
- Major Rivers
- Lakes/Reservoirs
- Non-perennial Lakes
- Forestry Reserves
- Conservation Areas

**Distribution data source:** State-based vegetation mapping (White Ash NSW Montane WSF NSW mapv3 03b class SC, White Ash Keith Bedward MU41 Gellie3a Vic Howe Range with frax ALA GDA)

**Contextual data sources:** DCCEEW; Geoscience Australia; PSMA Australia; Australian Bureau of Statistics; CSIRO.

**Caveat:** The information presented in this map has been provided by a range of groups and agencies. While every effort has been made to ensure accuracy and completeness, no guarantee is given, nor responsibility taken by the Commonwealth for errors or omissions, and the Commonwealth does not accept responsibility in respect of any information or advice given in relation to, or as a consequence of, anything containing herein.

This map was produced by Environment Information Australia (DCCEEW).



Map Ref No: ec190\_tssc\_a4map.20241016.1809\_A09712