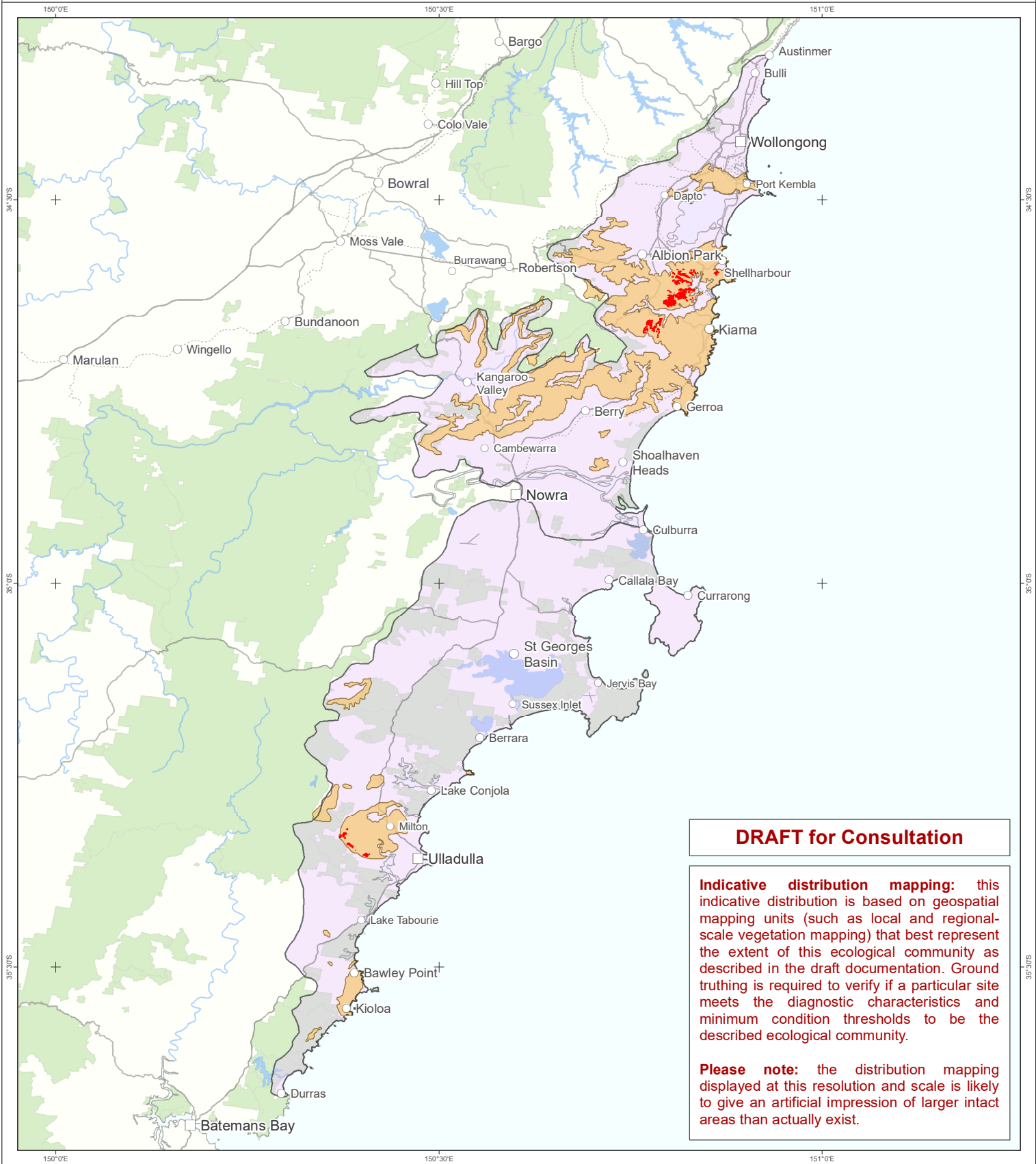


Illawarra-Shoalhaven shrubland on exposed volcanic soils (DRAFT)



DRAFT for Consultation

**Indicative distribution mapping:** this indicative distribution is based on geospatial mapping units (such as local and regional-scale vegetation mapping) that best represent the extent of this ecological community as described in the draft documentation. Ground truthing is required to verify if a particular site meets the diagnostic characteristics and minimum condition thresholds to be the described ecological community.

**Please note:** the distribution mapping displayed at this resolution and scale is likely to give an artificial impression of larger intact areas than actually exist.



Australian Government

Department of Climate Change, Energy,  
the Environment and Water

0 5 10 15 20 25 km

Geographic Coordinate System: GCS GDA 1994  
Reference Scale: 1:750,000 (at A4 page size)  
© Copyright | Commonwealth of Australia, 2025.

Indicative distribution mapping

- Ecological community known and most likely to occur (PCT 3872 and 3873)
- Areas in the IBRA subregions where igneous geology is dominant and where the ecological community is likely to occur
- IBRA subregions where the ecological community may occur

Contextual data

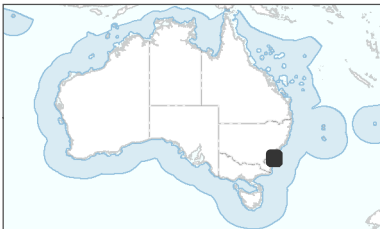
- Cities
- Towns & Localities
- State Border
- Roads
- Major Rivers
- Lakes/Reservoirs
- Non-perennial Lakes
- Conservation Areas

**Distribution data source:** selected NSW SVTM Vegetation Mapping - PCT's 3872 + 3873 (Nov 2024); igneous geology derived from 1M Geology data (Geoscience Australia).

**Contextual data sources:** DCCEEW; Geoscience Australia; PSMA Australia; Australian Bureau of Statistics; CSIRO.

**Caveat:** The information presented in this map has been provided by a range of groups and agencies. While every effort has been made to ensure accuracy and completeness, no guarantee is given, nor responsibility taken by the Commonwealth for errors or omissions, and the Commonwealth does not accept responsibility in respect of any information or advice given in relation to, or as a consequence of, anything containing herein.

This map was produced by Environment Information Australia (DCCEEW).



Map Ref No: ec186\_consult\_a4map.20250625.1419.A09712