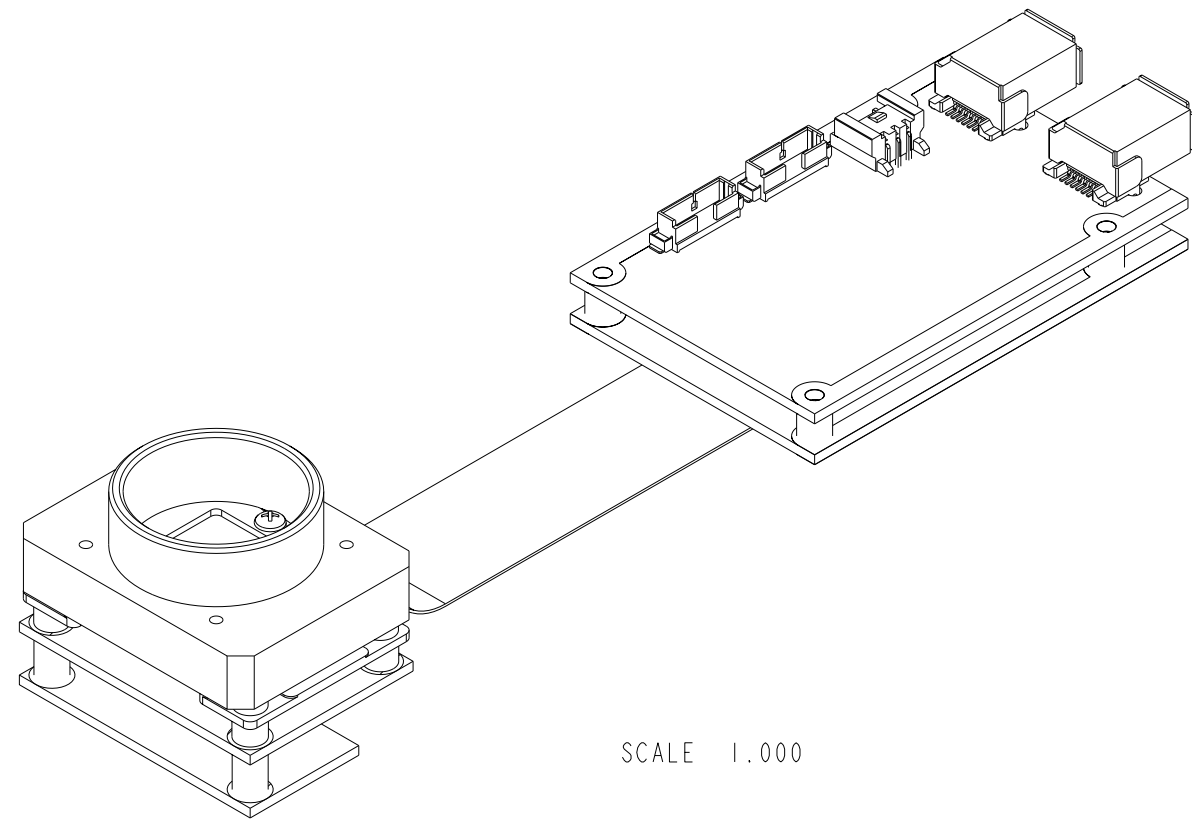
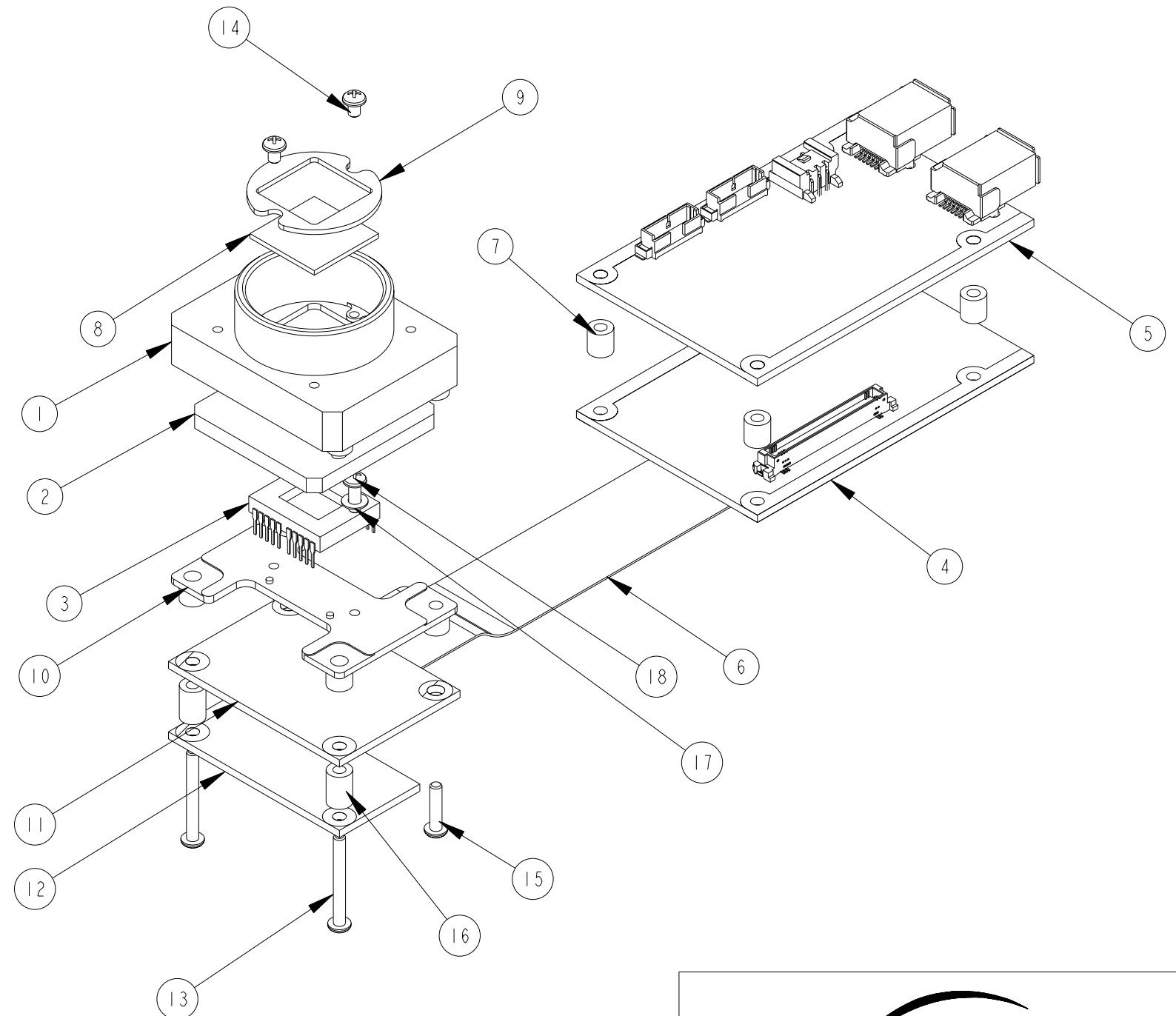


REVISION TABLE

NO.	DESCRIPTION	DATE	INITIALS
01	INITIAL RELEASE	APRIL 26 2007	CMP



SCALE 1.000



18	2-56 X 1/4 INCH PAN HEAD PHILLIPS	2
17	No. 2 NYLON WASHER	2
16	7MM SPACER	2
15	2-56 X 3/8 PAN HEAD PHILIPS	2
14	2-56 X 1/8 INCH PAN HEAD PHILIPS	2
13	2-56 X 3/4 INCH PAN HEAD PHILLIPS	2
12	SEM CCD POWER BOARD	1
11	SEM CCD SENSOR BOARD	1
10	CCD IMAGER MOUNTING PLATE	1
9	CAMERA GLASS CLAMP	1
8	CAMERA GLASS	1
7	5 MM SPACER	4
6	40 PIN FFC	1
5	IFM PCB	1
4	MPU PCB	1
3	CCD CHIP	1
2	IMAGER GASKET	1
1	OEM C-MOUNT	1
ITEM	DESCRIPTION	QTY

BILL OF MATERIALS

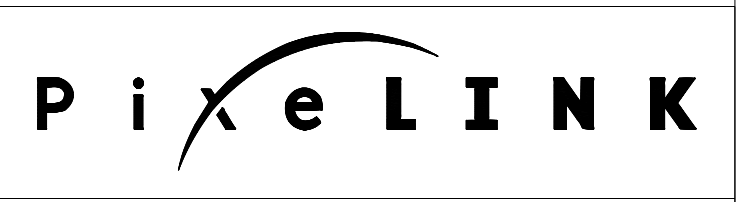
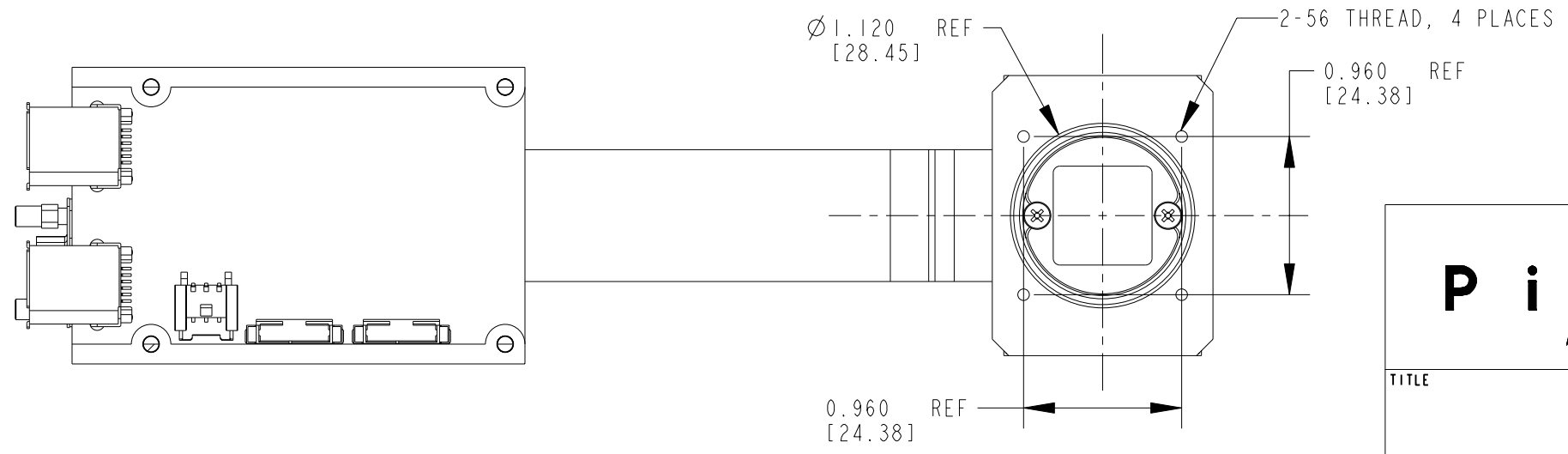
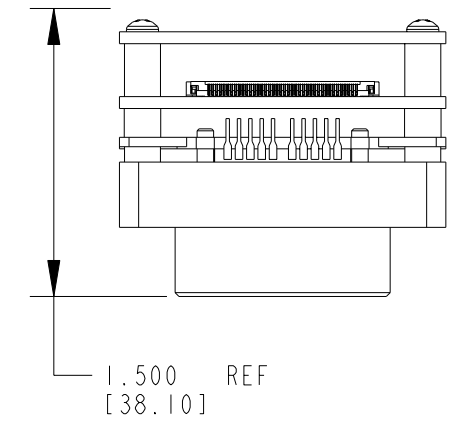
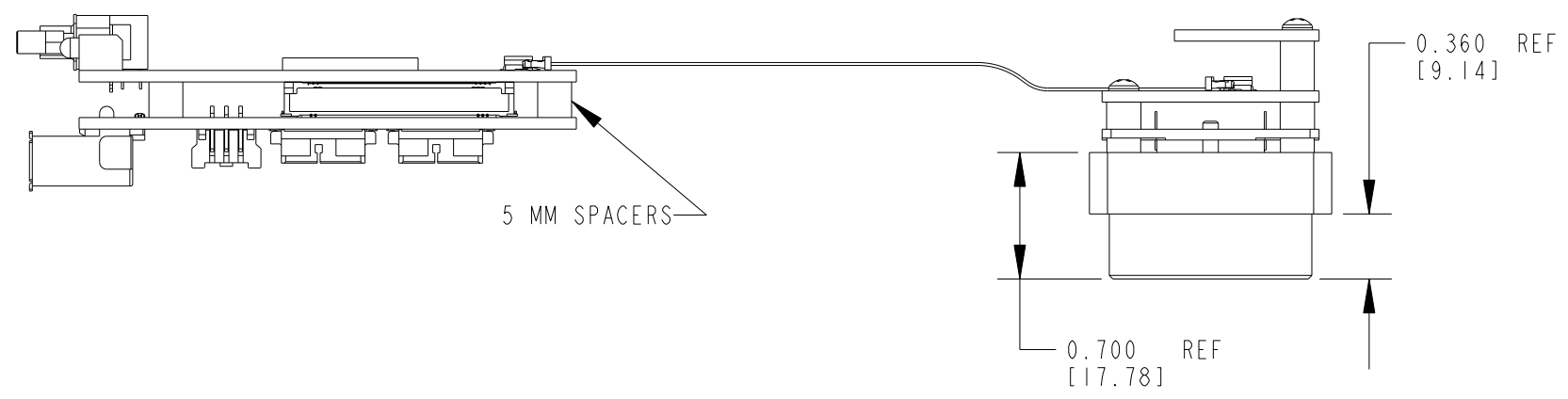
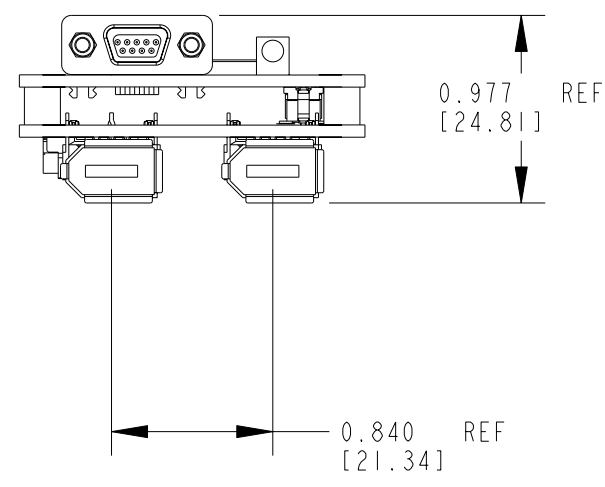
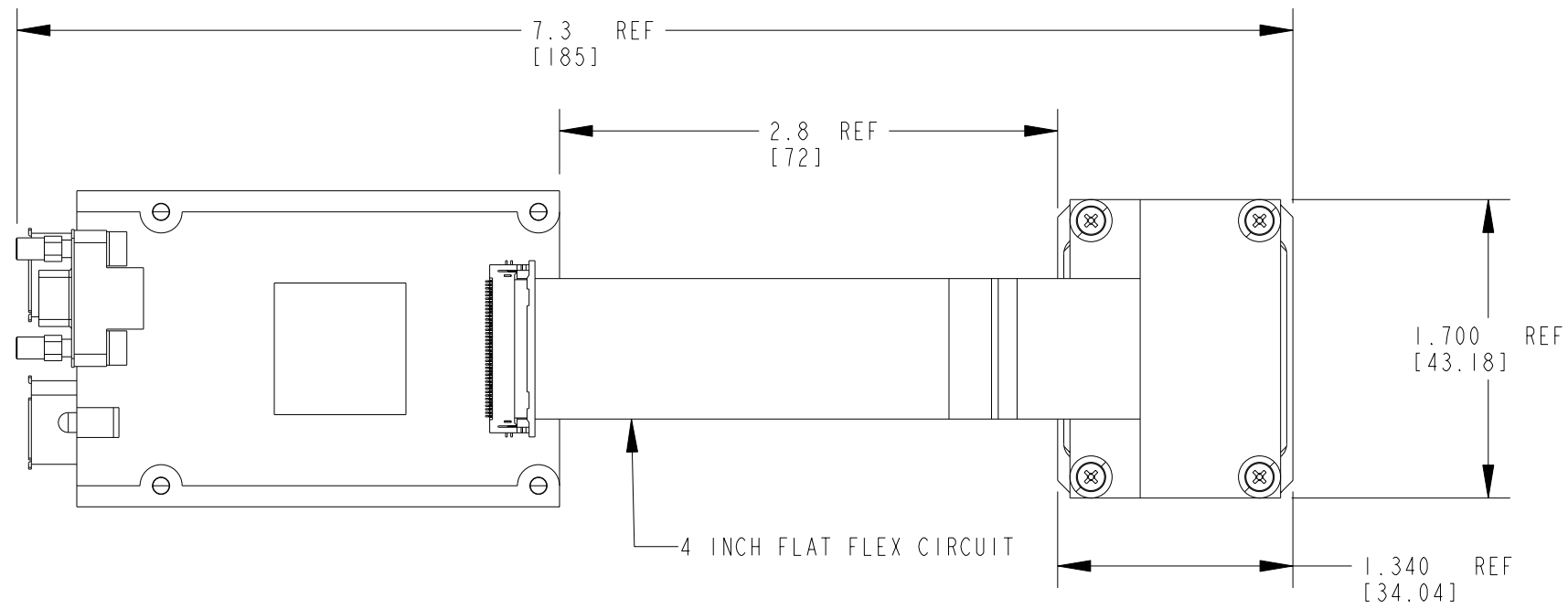
NOTES:

- 1) ALL DIMENSIONS INCHES [MILLIMETERS].
- 2) INTERPRET DRAWING AS PER ASME Y14.5M - 1994.
- 3) SEE ADDITIONAL SHEETS FOR DETAILS.
- 4) FOR FINAL ASSEMBLY:
TORQUE ITEMS 10, 11, 12 TO 2.0±.25 IN-LBS.

THE INFORMATION CONTAINED IN THIS DOCUMENT IS CONFIDENTIAL AND SHALL NOT BE MADE PUBLIC OR COPIED OR USED AS THE BASIS FOR THE MANUFACTURE OR SALE OF ITEMS UNLESS SPECIFICALLY AUTHORIZED IN WRITING BY PixelINK. THIS DOCUMENT IS THE PROPERTY OF PixelINK, OTTAWA, ONTARIO AND IS SUBJECT TO RETURN ON DEMAND



TITLE			PL-B OEM CCD I394 ASSEMBLY		
DRAWN BY:	DRAWING NUMBER	REVISION			
CMP	V0385	01			
APPROVED BY:	SCALE:	SHEET 1 OF 2			
CMP DESIGN	1.000				
DATE PRODUCED:	MODEL REFERENCE:				
APRIL-26-2007					



TITLE
**PL-B OEM CCD
 I394 ASSEMBLY**

THE INFORMATION CONTAINED IN THIS DOCUMENT IS CONFIDENTIAL AND SHALL NOT BE MADE PUBLIC OR COPIED OR USED AS THE BASIS FOR THE MANUFACTURE OR SALE OF ITEMS UNLESS SPECIFICALLY AUTHORIZED IN WRITING BY PixelINK. THIS DOCUMENT IS THE PROPERTY OF PixelINK, OTTAWA, ONTARIO AND IS SUBJECT TO RETURN ON DEMAND

DRAWN BY: CMP	DRAWING NUMBER V0385	REVISION 01
APPROVED BY: CMP DESIGN	SCALE: 1.000	SHEET 2 OF 2
DATE PRODUCED: APRIL-26-2007	MODEL REFERENCE:	