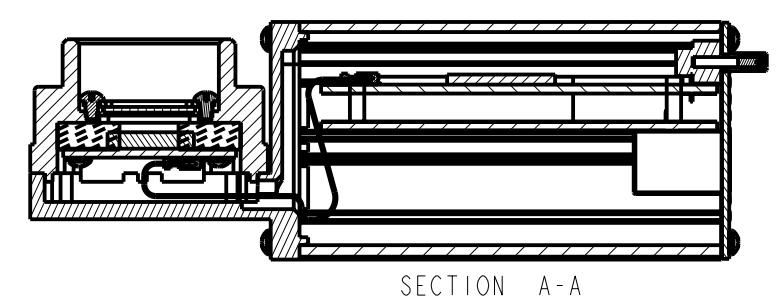
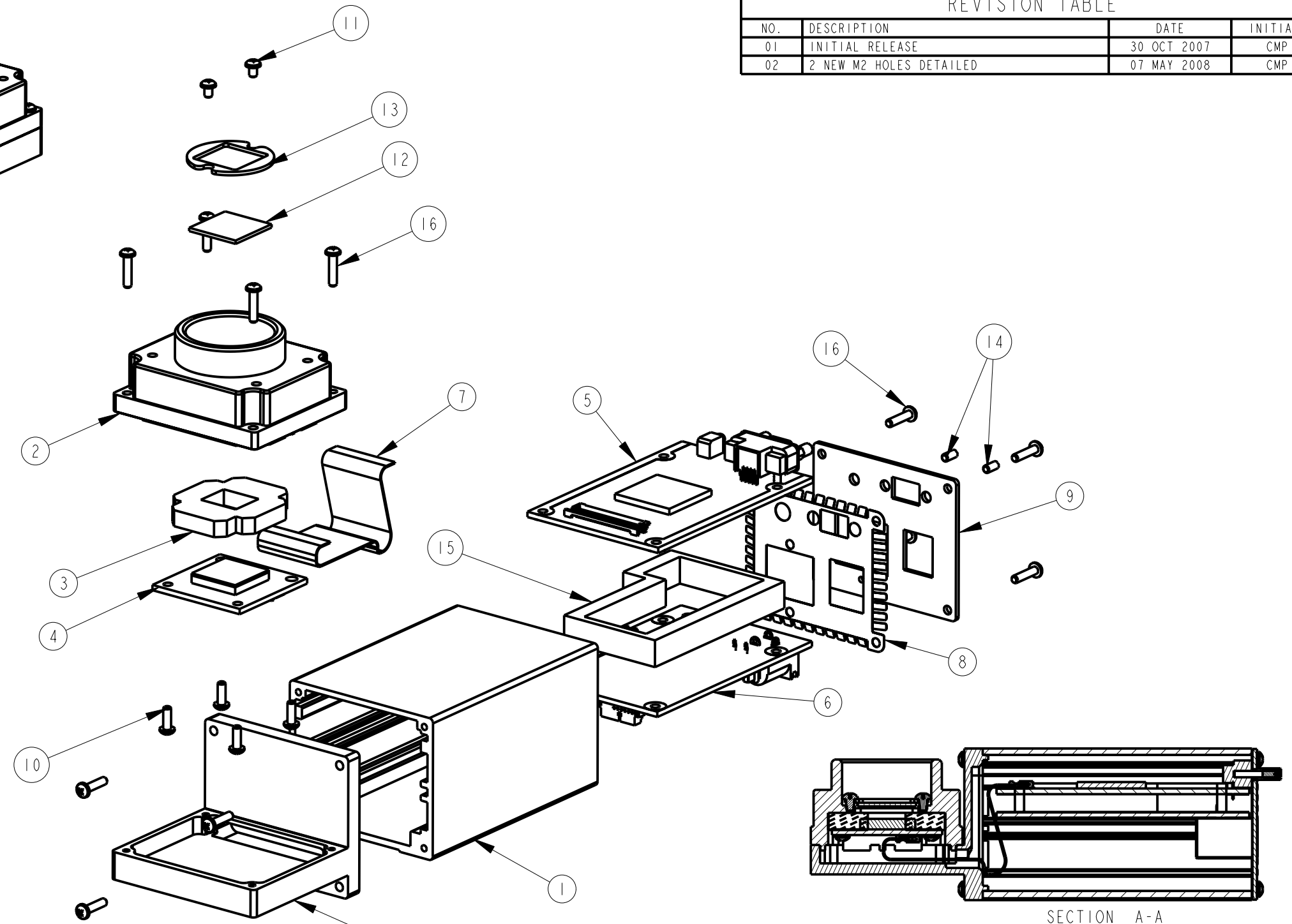
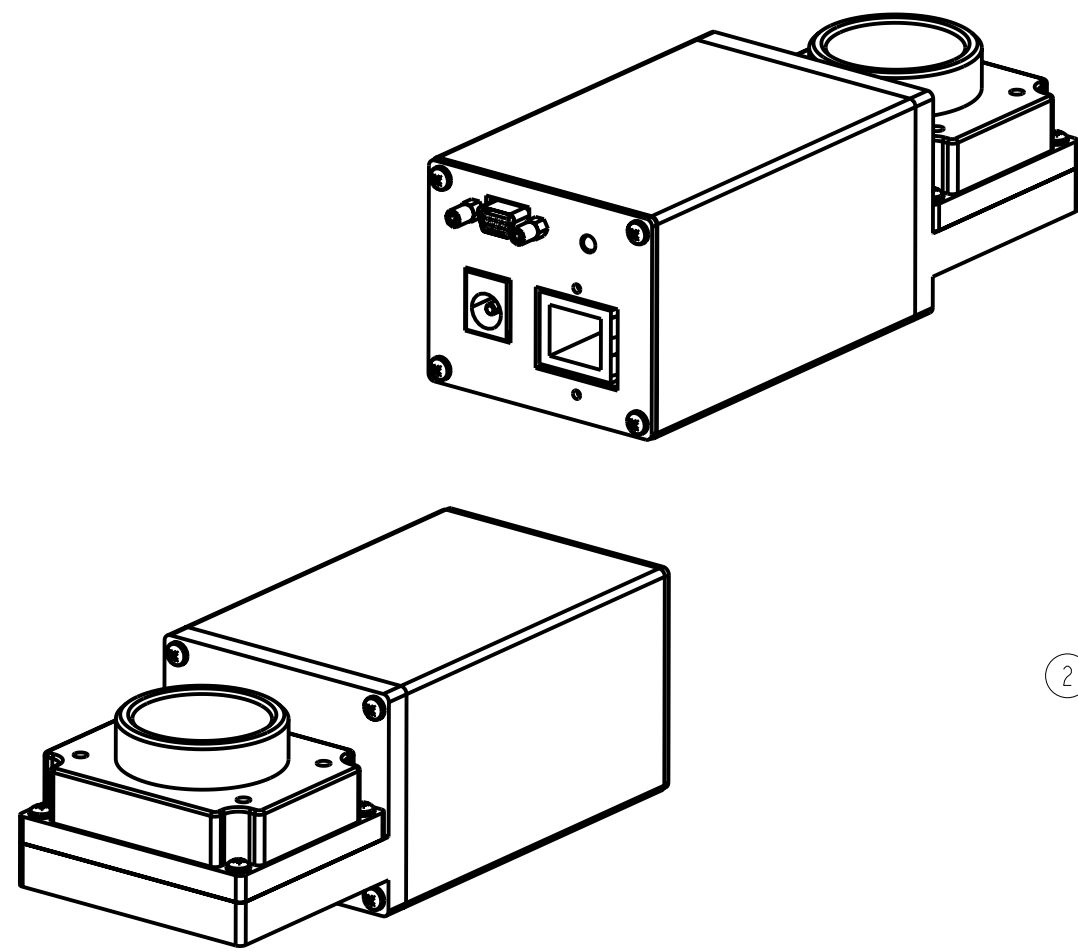


REVISION TABLE

NO.	DESCRIPTION	DATE	INITIALS
01	INITIAL RELEASE	30 OCT 2007	CMP
02	2 NEW M2 HOLES DETAILED	07 MAY 2008	CMP



17	RIGHT ANGLE PANEL	1
16	2-56 X .375 PAN HEAD PHILIPS SCREW	12
15	FOAM SPRING	1
14	SCREW LOCKS FROM MPU CONNECTOR	2
13	CAMERA GLASS CLAMP	1
12	CAMERA GLASS	1
11	2-56 X .125 PAN HEAD PHILIPS SCREW	2
10	2-56 X .250 PAN HEAD PHILIPS SCREW	4
9	BACK PANEL	1
8	BACK EMI SHIELD	1
7	40 PIN FFC	1
6	IFM PCB	1
5	MPU PCB	1
4	SEM PCB	1
3	IMAGER GASKET	1
2	FRONT PANEL	1
1	EXTRUDED CAMERA BODY	1
ITEM	DESCRIPTION	QTY

BILL OF MATERIALS

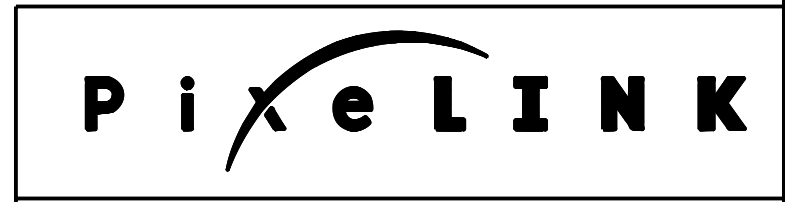
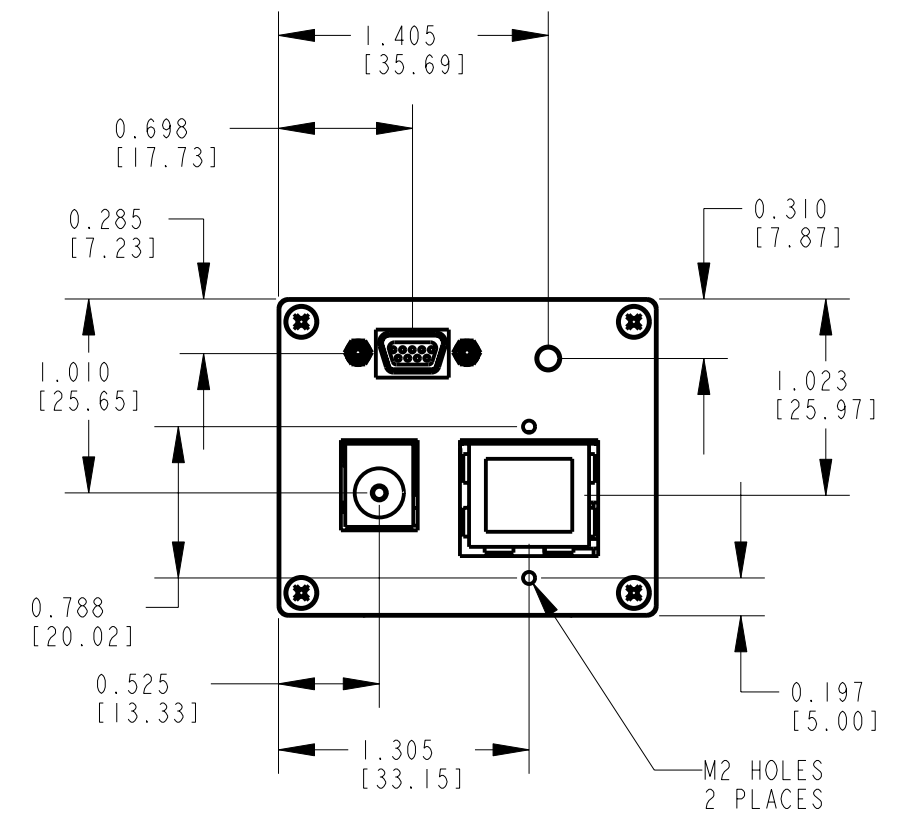
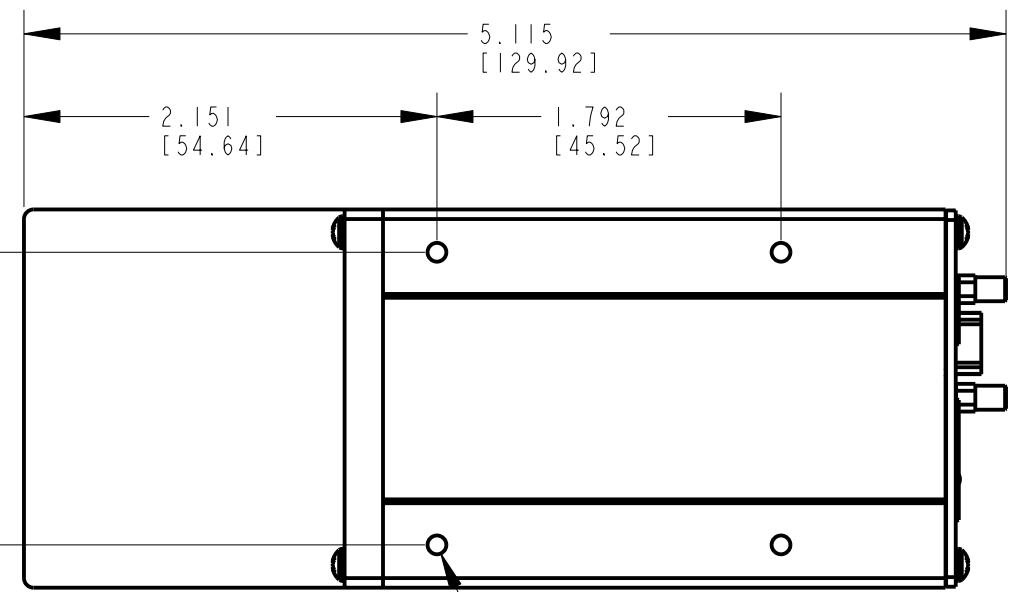
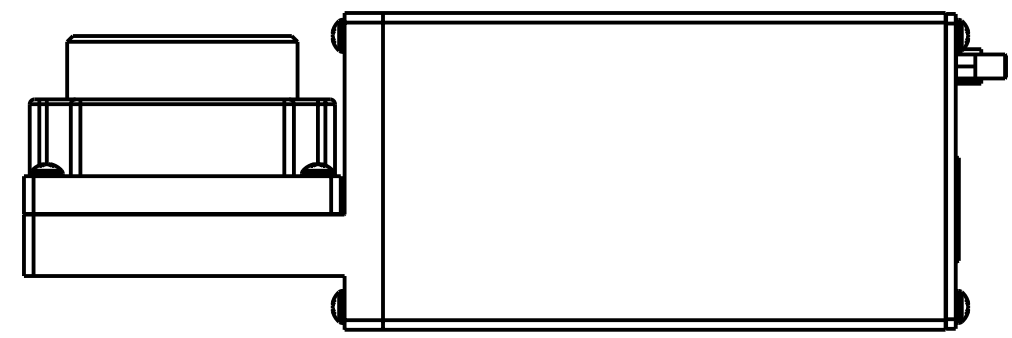
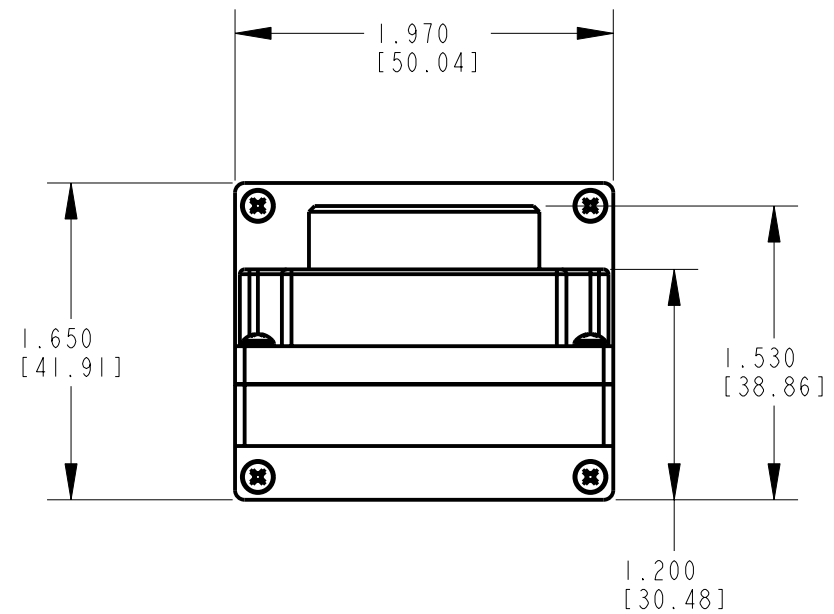
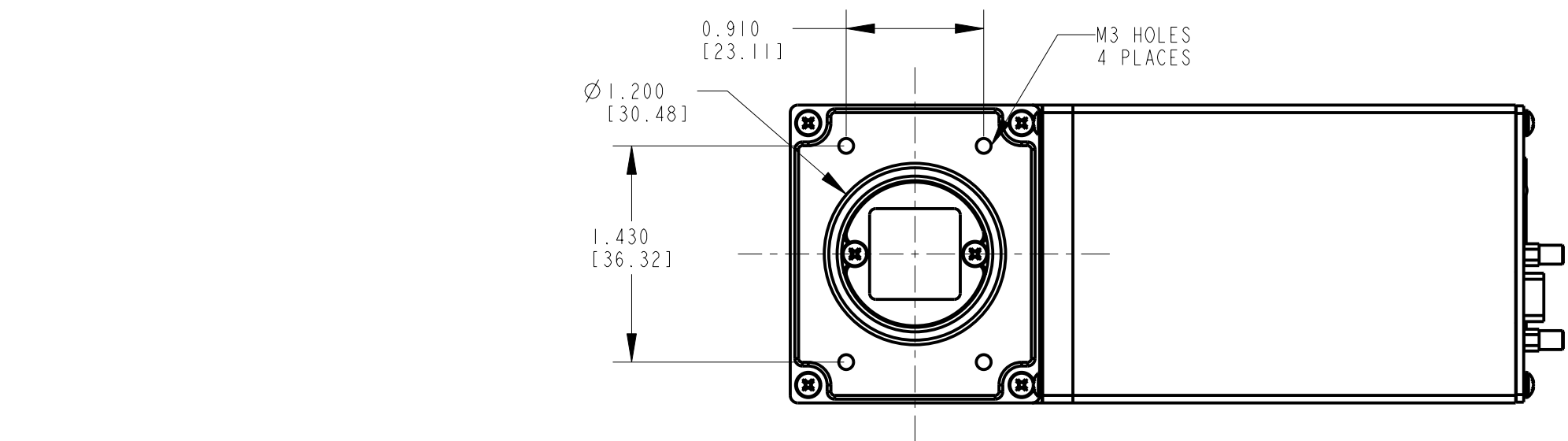
NOTES:

- 1) ALL DIMENSIONS INCHES (MILLIMETERS).
- 2) INTERPRET DRAWING AS PER ASME Y14.5M - 1994.
- 3) SEE ADDITIONAL SHEETS FOR DETAILS.
- 4) FOR FINAL ASSEMBLY:
TORQUE ITEMS 10, 16 TO 2.0±.25 IN-LBS.

THE INFORMATION CONTAINED IN THIS DOCUMENT IS CONFIDENTIAL AND SHALL NOT BE MADE PUBLIC OR COPIED OR USED AS THE BASIS FOR THE MANUFACTURE OR SALE OF ITEMS UNLESS SPECIFICALLY AUTHORIZED IN WRITING BY PixelINK. THIS DOCUMENT IS THE PROPERTY OF PixelINK, OTTAWA, ONTARIO AND IS SUBJECT TO RETURN ON DEMAND



TITLE PL-B-R CAMERA (1.2X1.2 SEM) GIGE ASSEMBLY		
DRAWN BY: CMP	DRAWING NUMBER V0412	REVISION 02
APPROVED BY: CMP DESIGN	SCALE: 0.750	SHEET 1 OF 2
DATE PRODUCED: 30 OCT 2007	SHEET SIZE: B	



TITLE
PL-B-R CAMERA (1.2X1.2 SEM)
 GIGE ASSEMBLY

DRAWN BY: CMP	DRAWING NUMBER V0412	REVISION 02
APPROVED BY: CMP DESIGN	SCALE: 0.750	SHEET 2 OF 2
DATE PRODUCED: 30 OCT 2007	SHEET SIZE: B	

THE INFORMATION CONTAINED IN THIS DOCUMENT IS CONFIDENTIAL AND SHALL NOT BE MADE PUBLIC OR COPIED OR USED AS THE BASIS FOR THE MANUFACTURE OR SALE OF ITEMS UNLESS SPECIFICALLY AUTHORIZED IN WRITING BY Pixelink. THIS DOCUMENT IS THE PROPERTY OF Pixelink, OTTAWA, ONTARIO AND IS SUBJECT TO RETURN ON DEMAND