

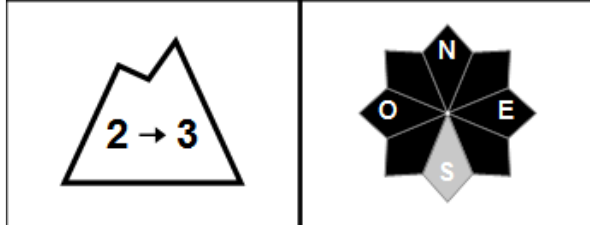
Avalancherisk assessmentbulletin

(valid outside marked and open slopes)

MASSIVE:CHABLAIS

written on Monday, January 11, 2021 at 4 p.m.

Risk estimate until Tuesday, January 12, 2021 in the evening



Risk indices: 5 very strong - 4 strong - 3 marked - 2 limited - 1 weak - In black: the most dangerous slopes

Spontaneous starts: accumulations by the wind

Trips skiers: a few old or new plates

Snowpack stability

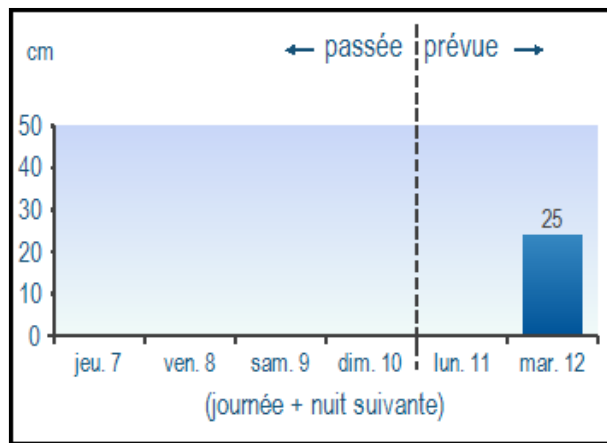
Typical situation: windy snow.

Spontaneous avalanches: unlikely in the morning, then rare friable patches of size 1 to 2 that can fall off in the afternoon on steep slopes, by force of accumulation by the wind.

Triggers by hikers:

- some surface patches formed by the NE wind on Monday.
 - formation of surface patches by the W wind on Tuesday, friable or hard. More numerous and sensitive throughout the day, even at low altitude. Size 1 then quickly 2.
 - rare old hard plates higher than 2200/2300 m, resting on an old persistent fragile sub-layer buried in exposure NW, N, NE.
- Attention, risk sharply increasing on Wednesday, especially in areas that have not been skied much lately.

Fresh snow at 1800 m



Weather preview

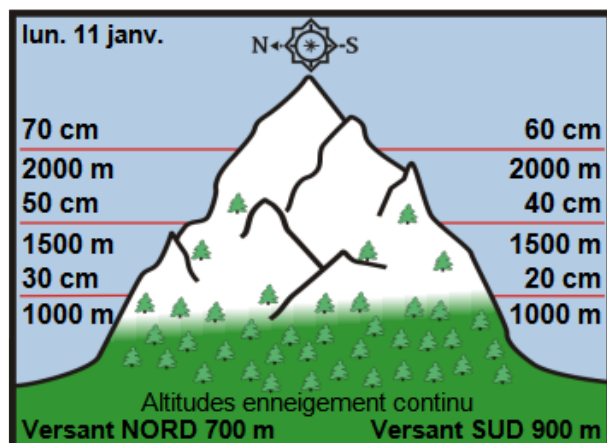
Tuesday 12 January



At 2000 m: -8 / -6 DG.

Rain snow	500 m		
ISO 0 ° C	400 m	800 m	1000 m
Wind 2000 m	↓ 20 km / h	→ 30 km / h	→ 50 km / h
Wind 2500 m	↓ 30 km / h	→ 40 km / h	→ 60 km / h

Off-piste snow depth



Snow quality

Snow deficit, irregular. You can put on skis or snowshoes at around 1000/1200 m. Watch out for hidden pebbles.

Quality: cold snow, powdery snow on a dense background. A little crusty at low altitude, on steep adrets and in areas exposed to the wind which blew from SW then NE. Classic routes have been groomed by hikers. A layer of fresh snow Tuesday afternoon (10 cm) then overnight from Tuesday to Wednesday (cumulative 20/30 cm).

Subsequent risk trend

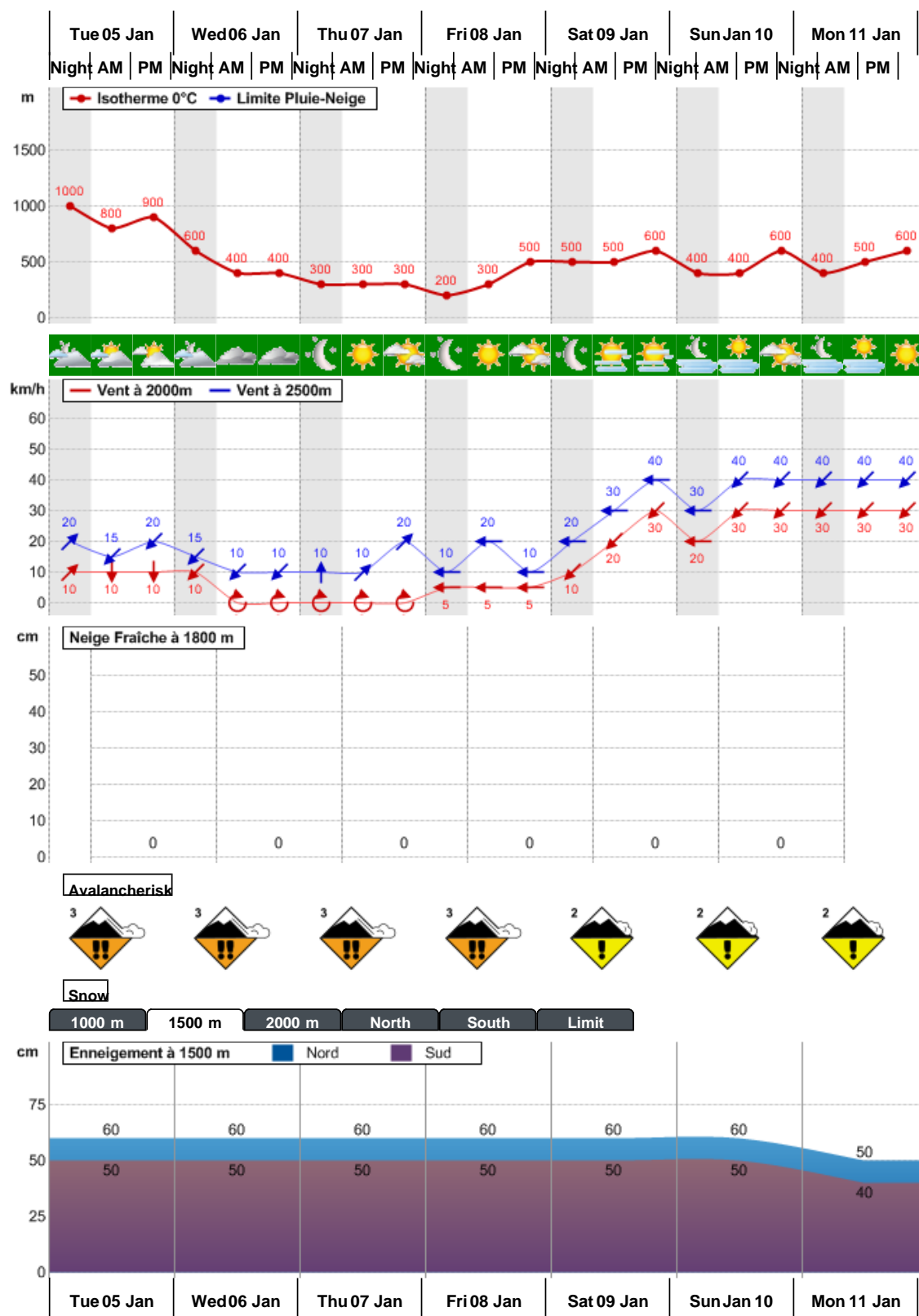
Wednesday 13:



Thursday 14:



Nivo-weather conditions of the last 7 days



Written by Météo-France with the contribution of observers from the snow-meteorological network. Partnership: ANMSM (Mayors of Mountain Stations), DSF (Ski Areas of France), ADSP (Directors of Piste and Safety of Winter Sports Stations) and other mountain players.