

Avalanche risk assessment bulletin

(valid outside marked and open slopes)

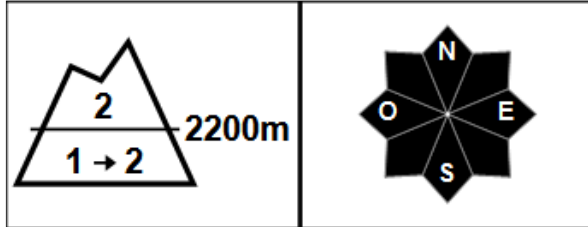
MASSIVE: CHABLAIS

written on Friday, February 19, 2021 at 4 p.m.

Risk estimate until Saturday, February 20, 2021 in the evening



Above 2200 m: Limited risk. Below: Low risk evolving into Limited risk.



Spontaneous departures: wet snowfall in the afternoon.

Triggers skiers: slabs in the North and wet flows in the sun.

Risk indices: 5 very strong - 4 strong - 3 marked - 2 limited - 1 weak - In black: the most dangerous slopes

Snowpack stability

COAT UNDER STABILIZATION

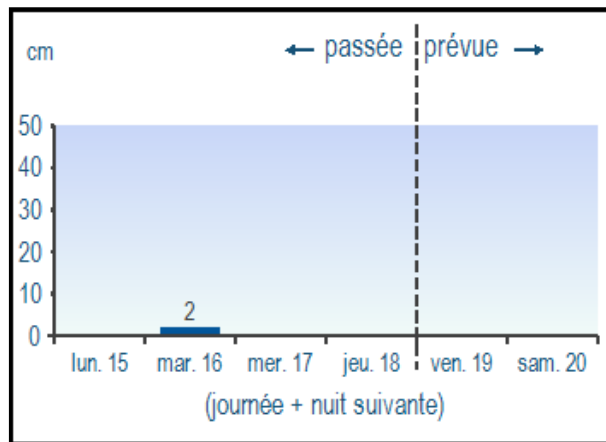
Typical avalanche situation: wet snow.

- Accidental triggers: the snowpack is well stabilized below 2200 / 2400m in the North, and on the southern slopes in the morning.

Above 2200 / 2400m, especially on cold slopes of a large northern sector, beware of surface patches, scattered around the passes and ridges. Be careful also on steep slopes heated by the sun in the afternoon, because flows and small avalanches of wet snow can be triggered under the skis.

- Spontaneous departures: Saturday afternoon on steep slopes in the sun, shallow flows of wet snow or even a medium-sized avalanche rarely possible. Above 2400 / 2600m, the risk is lower. A risk of bottom slabs departing is present and increases over the hours in the afternoon.

Fresh snow at 1800 m



Weather preview

Saturday 20 February

night



morning



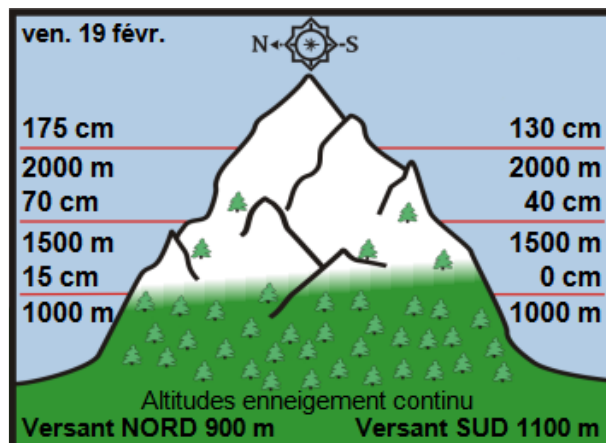
afternoon



Rain snow

ISO 0 ° C	2900 m	3000 m	3300 m
Wind 2000 m	↗ 30 km / h	↑ 20 km / h	↑ 30 km / h
Wind 2500 m	↗ 60 km / h	↗ 50 km / h	↑ 50 km / h

Off-piste snow depth



Snow quality

The snow cover is good for the season. You can put on skis above 900/1200 m depending on the orientation. On Saturday, the snowpack will generally be moist at depth, in particular on the southern slopes, with a thin freeze-up crust which is not always load-bearing (humidification on the slopes in the afternoon sun). On the northern slopes above 1800/2000 m, 20/40 cm of fairly recent snow, often blown in the vicinity of passes and ridges.

Subsequent risk trend

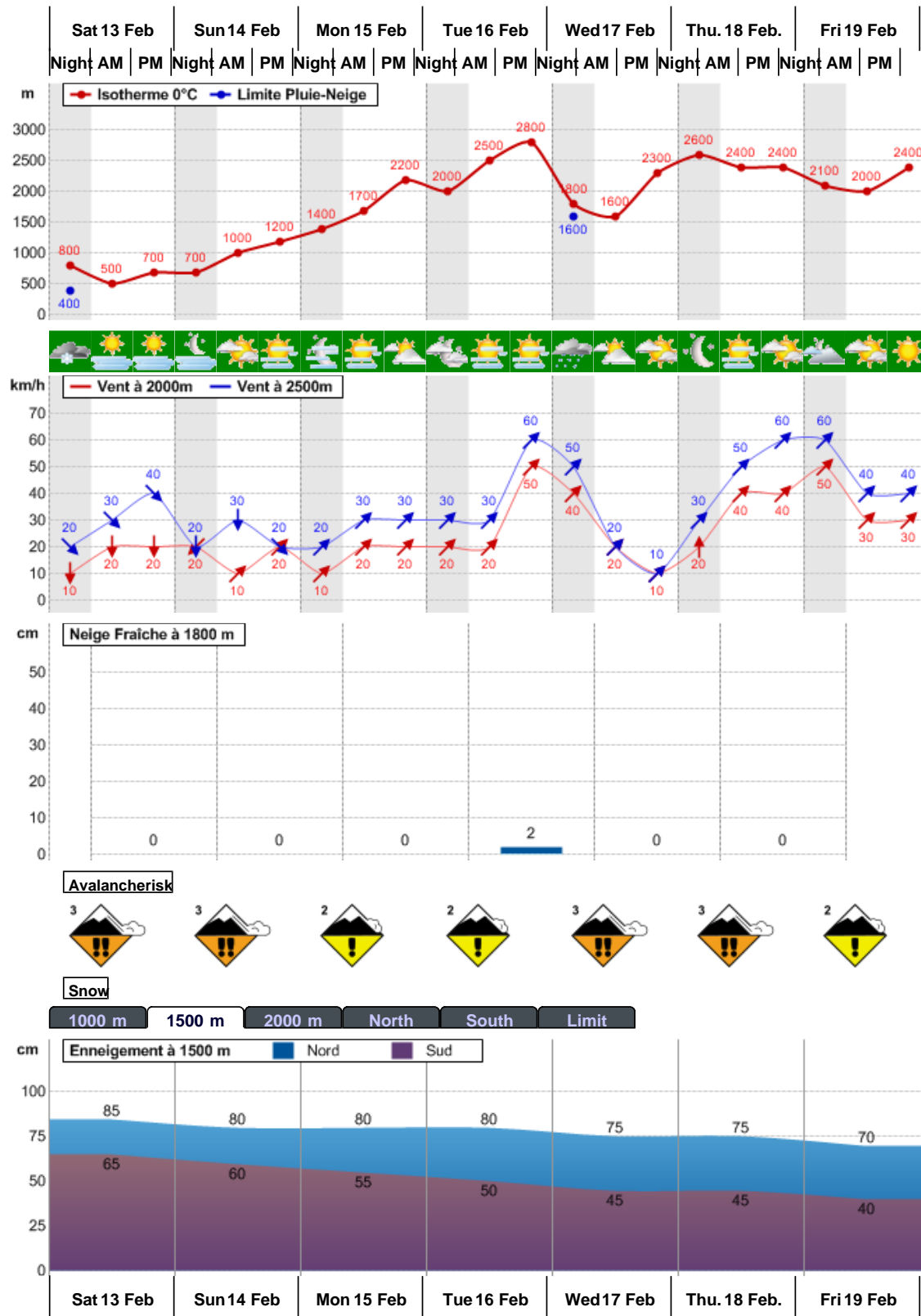
Sunday 21:



Monday 22:



Nivo-weather conditions of the last 7 days



Written by Météo-France with the contribution of observers from the snow-meteorological network. Partnership: ANMSM (Mayors of Mountain Stations), DSF (Ski Areas of France), ADSP (Directors of Piste and Safety of Winter Sports Stations) and other mountain players.