

Avalancherisk assessmentbulletin

(valid outside marked and open slopes)

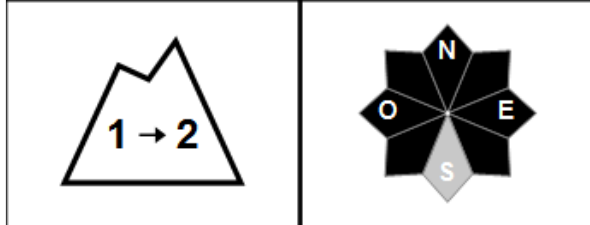
MASSIVE:CHABLAIS

written on Monday, March 01, 2021 at 4 p.m.

Risk estimation until Tuesday 02 March 2021 in the evening



Low risk evolving into Limited risk.



Spontaneous starts: wet snow + rare base plate

Skiers triggering: wet snow

Risk indices: 5 very strong - 4 strong - 3 marked - 2 limited - 1 weak - In black: the most dangerous slopes

Snowpack stability

Typical situations: wet snow, bottom slabs.

Dense snowpack, well stabilized on most slopes.

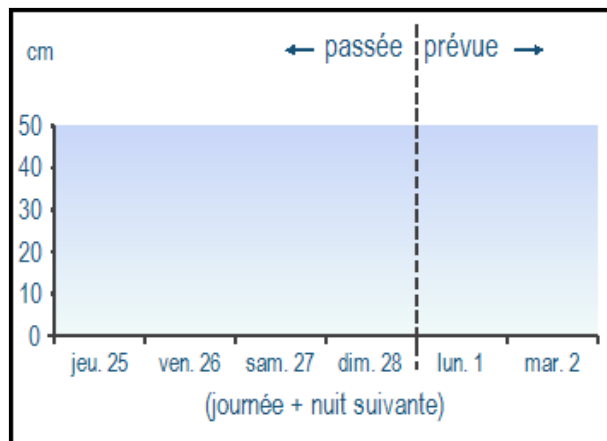
Spontaneous avalanches:

- after a good night freeze-up, rare flows or avalanches of medium-sized wet snow can occur Tuesday on steep slopes warmed by the sun.
- bottom plate always possible, especially under 2400 m in adrets and 2000 m in ubacs.

Trips by skiers:

- possible on steep slopes moistened by the sun if the schedule is too late.
- very rare hard patches, on shaded slopes higher than 2400 m. Triggering difficult.

Fresh snow at 1800 m



Weather overview

Tuesday 02 March

night



morning



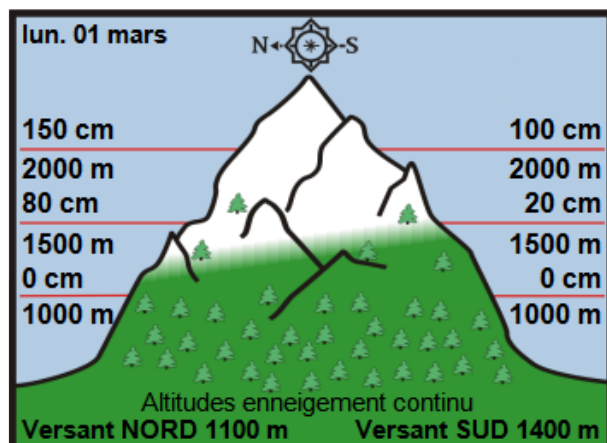
afternoon



Rain snow

| ISO 0 ° C | 2600 m | 2600 m | 2700 m |
|-------------|-------------|-------------|-------------|
| Wind 2000 m | ↑ 10 km / h | ↑ 10 km / h | ↑ 10 km / h |
| Wind 2500 m | ↗ 20 km / h | ↗ 20 km / h | ↗ 20 km / h |

Snow depth off-piste



Snow quality

Correct snowfall, good at altitude. You can put on your skis around 1100/1200 m in N, 1500/1600 m in S.

Very dense spring snowpack, sandy on most slopes. Good night freeze. Humidification in the sun during the day. Higher than 2000 m in ubacs, cold snow, often hard and puffy.

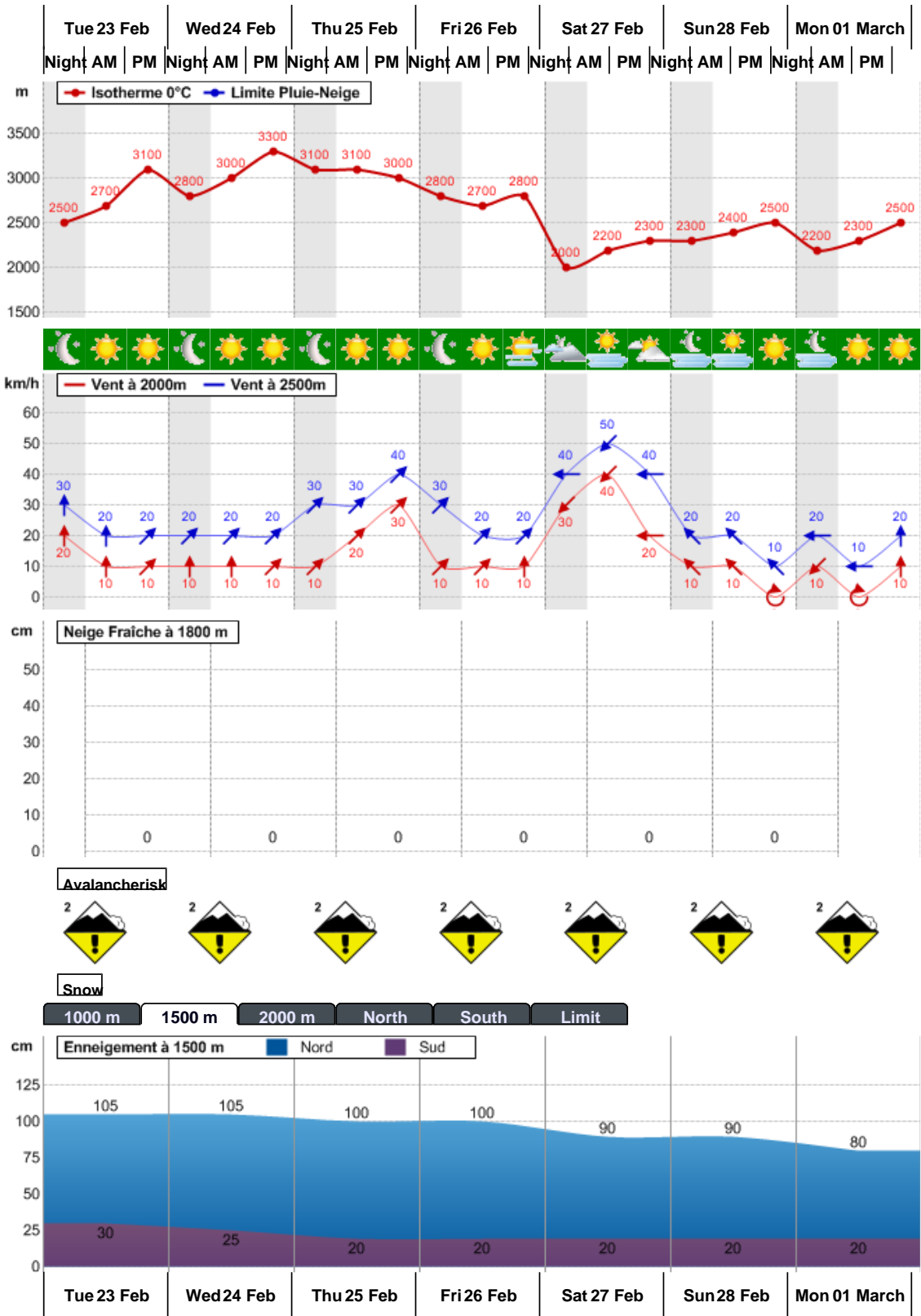
Wednesday 03:



Thursday 04:



Nivo-weather conditions of the last 7 days



Written by Météo-France with the contribution of observers from the snow-meteorological network. Partnership: ANMSM (Mayors of Mountain Stations), DSF (Ski Areas of France), ADSP (Directors of Piste and Safety of Winter Sports Stations) and other mountain players.