

# Avalanche risk assessment bulletin

(valid outside marked and open slopes)

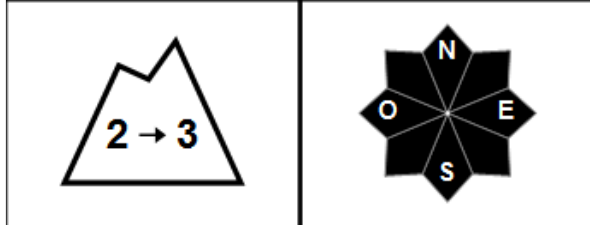
## MASSIVE:CHABLAIS

written on Friday, March 26, 2021 at 4 p.m.

Risk estimate until Saturday, March 27, 2021 in the evening



Limited risk evolving into Marked risk.



**Spontaneous departures:** numerous wet / powdery snow flows depending on the altitude.

**Triggering skiers:** formation of slabs in a south-westerly wind.

Risk indices: 5 very strong - 4 strong - 3 marked - 2 limited - 1 weak - In black: the most dangerous slopes

### Snowpack stability

Bulletin written from reduced information.

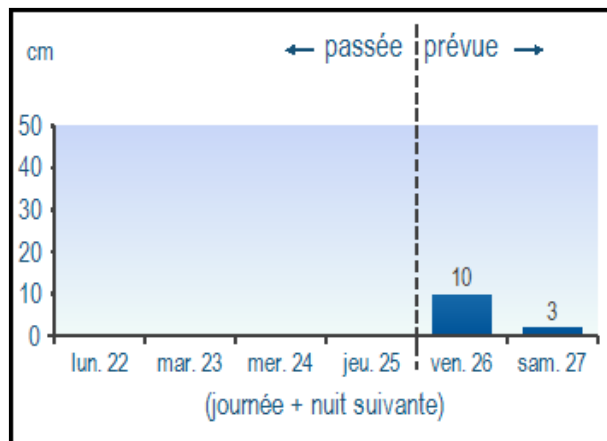
Typical avalanche situation: windy snow, wet snow.

Accidental releases: above 1800 m, 15/20 cm of snow blown by a south-westerly wind is expected. Not very thick, but easy to trigger, accumulations will form. Occasionally by cold pouring at more than 2200 m, it is possible that the triggering of a surface plate will cause an older hard plate to give way in its course, resting on the angular grains present near the layer of sandy snow. In this case, we must expect to mobilize large volumes of snow (break greater than 50/60 cm).

Spontaneous departures: until early Saturday morning: below 1800 m, a few slopes of snow heavier with rain. At higher altitude, small purges of powder snow on steep slopes and couloirs.

During the day on Saturday, the return of the sun will cause numerous spontaneous departures of flows and small avalanches, especially near the rocks.

### Fresh snow at 1800 m



### Weather overview

Saturday March 27

night



morning

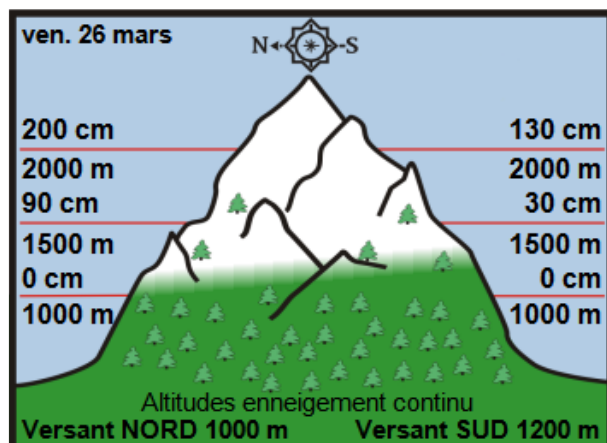


afternoon



Rain snow	1800 m	1200 m	
ISO 0 °C	2100 m	1600 m	1800 m
Wind 2000 m	↗ 50 km / h	↗ 30 km / h	↗ 20 km / h
Wind 2500 m	↗ 60 km / h	↗ 40 km / h	↗ 30 km / h

### Snow depth off-piste



### Snow quality

Good snowfall for the season. You can put on the skis around 1300 m in the north and 1500 m in the south.

Above 1800 m, a small layer of fresh snow is expected by Saturday morning. It will sometimes be hardboarded by the wind, especially near ridges. At lower altitude, the snowpack will be moistened by the rain before being covered with a light dusting at the end of the night.

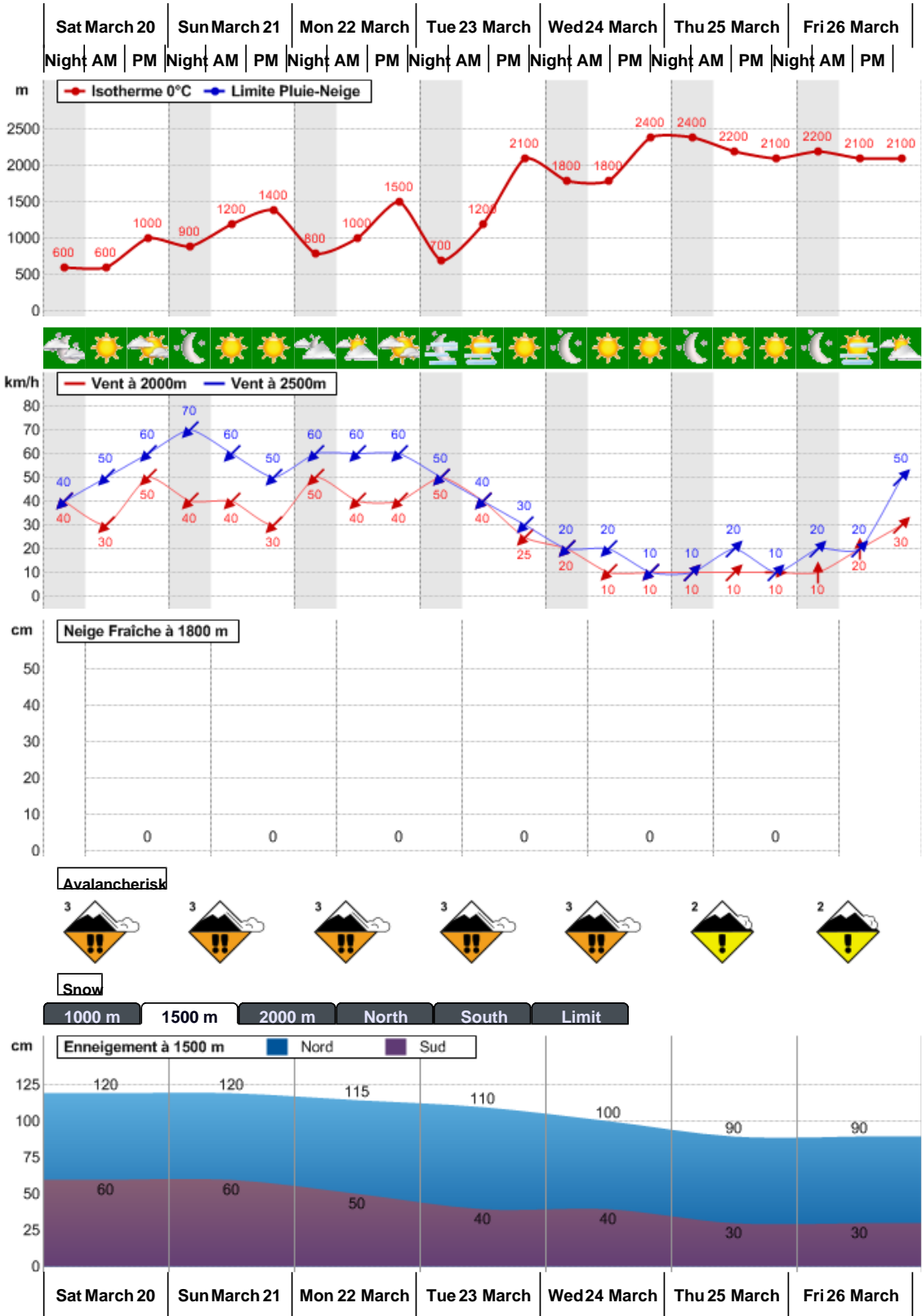
Sunday 28:



Monday 29:



Nivo-weather conditions of the last 7 days



Written by Météo-France with the contribution of observers from the snow-meteorological network. Partnership: ANMSM (Mayors of Mountain Stations), DSF (Ski Areas of France), ADSP (Directors of Piste and Safety of Winter Sports Stations) and other mountain players.