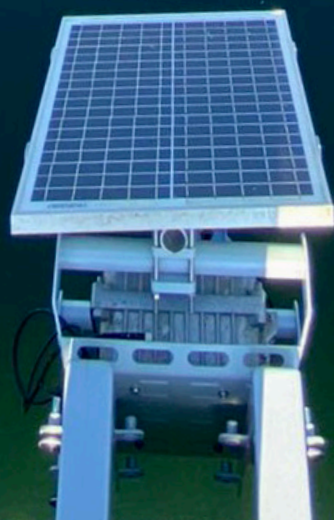


FLUVES

IOT SOLUTIONS FOR FLOW MONITORING



© GEOLUX

FLOW MONITORING

FLUVES: PROVIDING YOUR IoT SOLUTIONS FOR WATER MANAGEMENT

Our IoT sensor platforms monitor **water level, discharge & water quality**. By combining ultralow power consumption with solar panel integration, our systems measure autonomously without extra power supply. We also offer customized IoT solutions, both for sensors & dashboards.

Data is sent wirelessly through GPRS, LoRa, NB-IoT or LTEM to databases and web portals. Our devices are trusted by several water managers in Belgium (Flemish Environment Agency VMM, Belgian Provinces) & Industrial clients.

WATER LEVEL



Water level is measured through ultrasonic signals. Sensor, datalogger and modem are integrated in one compact box. The box can be installed in open water or closed environment (tanks, cisterns, sewers).

WATER DISCHARGE



Water discharge is measured through radar signals, powered by Geolux. Because our systems measure the water velocity contactless, no equipment maintenance is necessary.



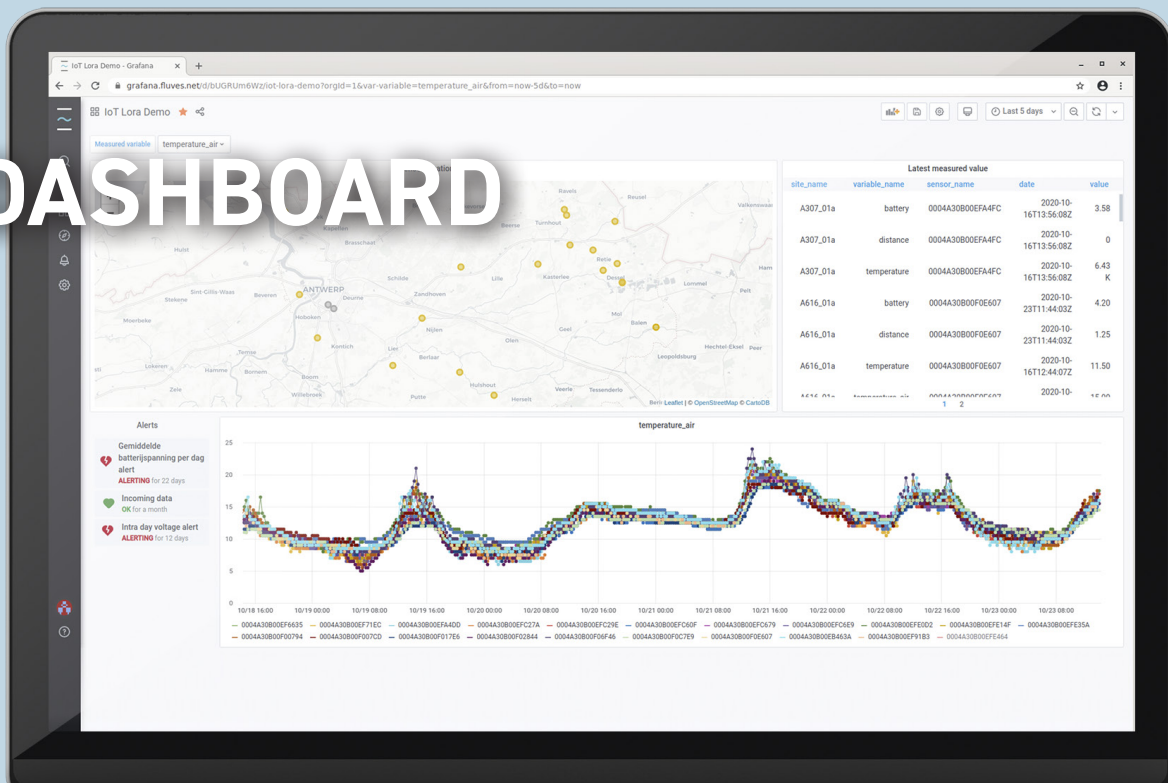
WATER QUALITY



Our water quality sensor powered by Sodaq is a fully autonomous, solar-powered unit that measures electrical conductivity and temperature. The electrical conductivity measurements reveal the purity and the salinity of the water.



DASHBOARD



Fluves develops dashboards for visualization, alarming and reporting of your data. Sensor data is wirelessly sent to (cloud) databases. Data is stored and visualized in our dashboard that can be customized to our clients' needs. We also integrate with other client-specific platforms. Automatic warnings, such as email or SMS can be sent when a given threshold is passed.

**MORE INFORMATION?
PLEASE GET IN TOUCH!**

FLUVES

Kerkstraat 106
9050 Gentbrugge
Belgium

www.fluves.com
T. +32 9 346 85 30
sales@fluves.com

Daan Renders
M. +32 479 18 82 09
daan@fluves.com