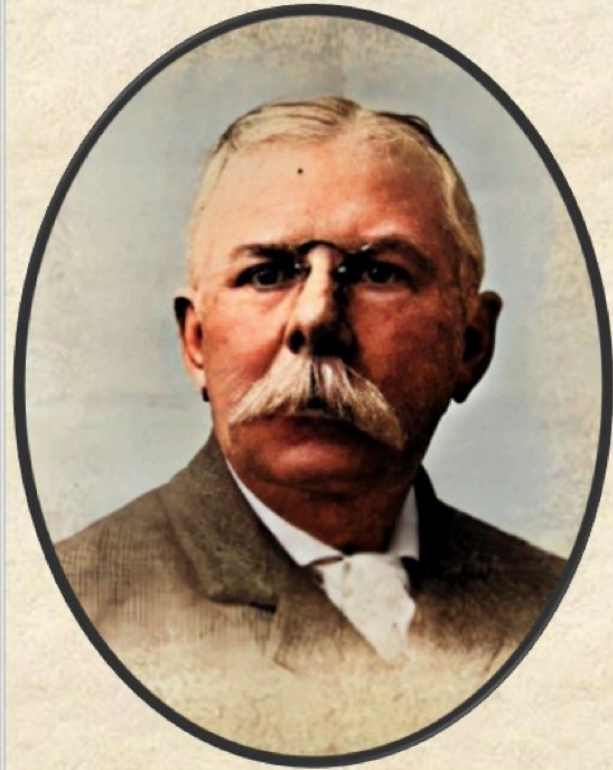
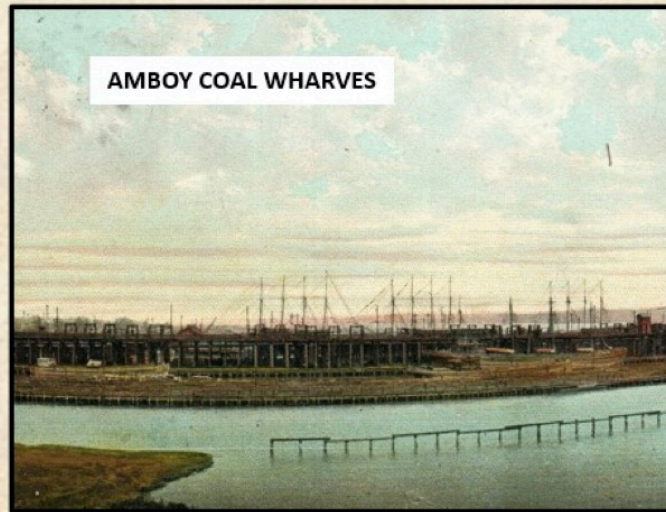


Ezra Brockway Ely (1839-1894) began his career with

Delaware & Raritan towing  
of the Camden & Amboy R.R.  
later had charge of the  
Amboy coal wharves of the



E. B. ELY & CO.,  
SHIPERS OF  
**COAL,**  
33 Trinity Building, 111 Broadway,  
NEW-YORK.  
"Old Company's" Lehigh, J. H. Swayer's Enter-  
prise, Wyoming, Wilkesbarre, and Loenst Mountain  
Bituminous Coal.  
E. B. ELY. S. W. ELY.  
Apr. 24-ly-q



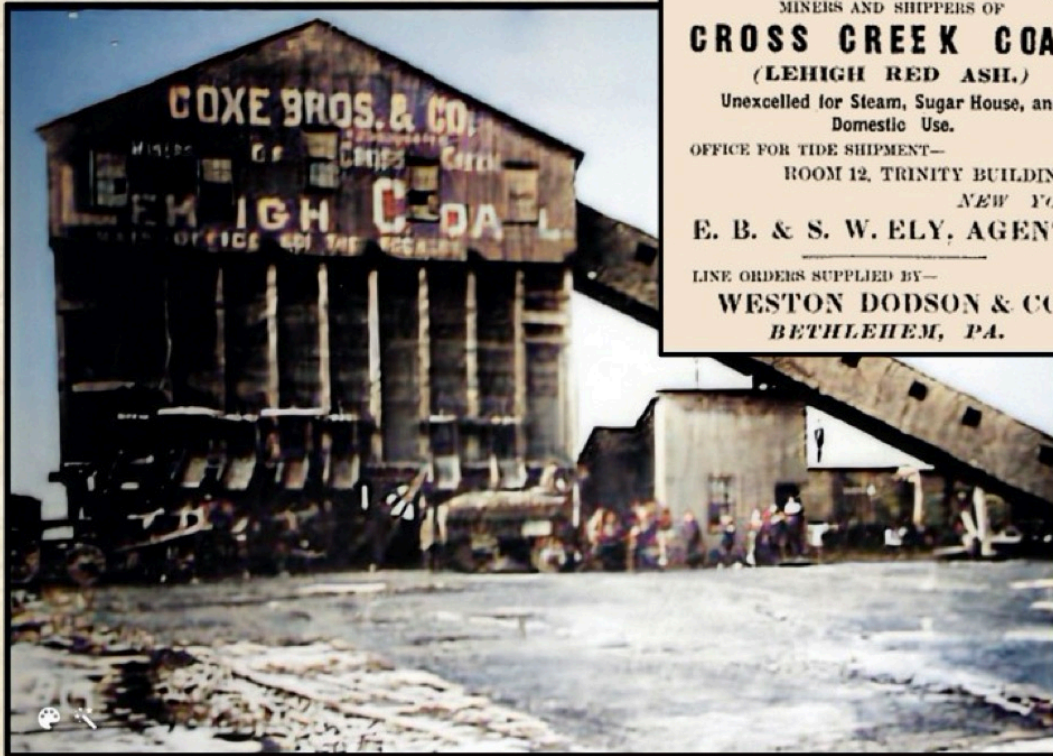
AMBOY COAL WHARVES

Subsequently he went into the  
business himself, as B. F. Ely &  
in 1867, and then as E. B. Ely &





The Beaver Meadow colliery was opened by E. B. Ely & Co. in 1872. The company built a large breaker but were not very successful. They sold the operation to Coxe Brothers & Co. in 1881.



**COXE BROS. & CO.,**  
MINERS AND SHIPPERS OF  
**CROSS CREEK COAL,**  
(LEHIGH RED ASH.)  
Unexcelled for Steam, Sugar House, and  
Domestic Use.  
OFFICE FOR TIDE SHIPMENT—  
ROOM 12, TRINITY BUILDING,  
NEW YORK.  
E. B. & S. W. ELY, AGENTS.  
LINE ORDERS SUPPLIED BY—  
WESTON DODSON & CO.,  
BETHLEHEM, PA.



“E. B. & S. W. Ely, Agents,” became the sales arm of Coxe Bros. & Co. in 1877. They established sales offices in Boston, Buffalo, New York, Chicago, Milwaukee and Philadelphia. This continued until Ezra was made a Partner of Cross Creek Coal, and President of Coxe Bros. & Co in 1893.

