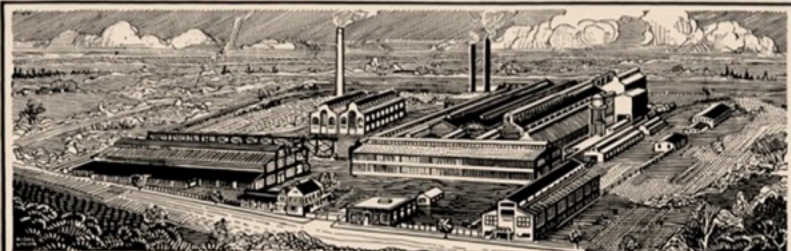
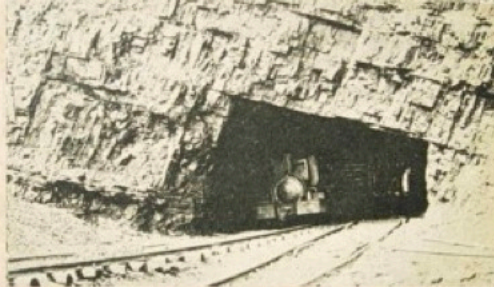
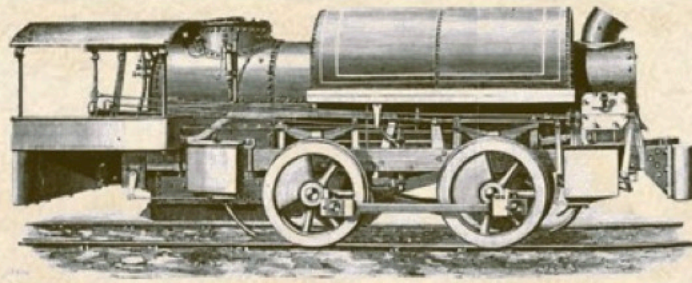


Richard Pennefather Rothwell (1836-1901) was a Canadian-American mechanical, civil, and mining engineer. He was educated at Trinity College, Toronto, the Rensselaer Institute at Troy, NY, the École des Mines, and at Freiberg. He worked for a wire rope manufacturer in London.



In 1864 he began work in the anthracite region of Pennsylvania at Eckley, Drifton and Wilkes-Barre, where he opened an office, his headquarters until 1873. For several years Rothwell was engineer of the Hazard Manufacturing Co., laying out and designing much of the machinery in the Wilkes-Barre Plant.





Mr. Rothwell was the engineer for several collieries and designed and built a number of anthracite coal breakers, in which he introduced important improvements. He advised the Lehigh Coal and Navigation to employ the first underground locomotives in the anthracite region.

In his most valuable work must be included the making of many topographical and railroad-surveys, and the preparation of several important maps. The most famous of these was the contour-map of the highly folded anthracite basin of Panther Creek, made by him in 1869 for the Lehigh Coal and Navigation Co. The remarkable accuracy of this map was shown during important litigation twenty-five years later. According to W. D. Zehner, the LCN superintendent for 25 years, the map was still standard authority, and was frequently used nearly 40 years later



In 1873, Mr. Rothwell's consulting engineering practice, probably the largest of any in his profession in America, had so increased that he moved it to New York. Shortly afterward he acquired an interest in the Engineering and Mining Journal, of which he was editor and general manager. He was President of AIME in 1882.

He founded and began publishing The Mineral Industry, an annual update of worldwide mining and metallurgical progress, in 1893. International recognition of this publication came to him in 1898 with a gold medal of the *Société d'Encouragement pour l'Industrie Nationale de France*.



THE MINERAL INDUSTRY ADVERTISER

THE ENGINEERING AND MINING JOURNAL

EDWARD P. ROTHWELL, C. E., N. Y., Editor
 ROBERT W. BAYBORN, Ph. D., N. Y., Special Contributor
 SOPHIA FRANKLIN, Business Manager
 THE SCIENTIFIC PUBLISHING CO., Publishers

ALL over the world the great army of men who are engaged in developing the mineral resources find the *ENGINEERING AND MINING JOURNAL* indispensable if they wish to keep informed as to the best practice and the most improved machinery used in mining and related work, and the most advantageous markets for buying and selling mineral products of every description.

This journal has correspondents in every important mining district in the world, who keep its readers informed on everything of interest or value to them. The full illustrated descriptions of new mining regions and new plants; the mineral, metal, and mining stock market reports; the weekly list of patents granted in the United States and Great Britain on mining, metallurgical, and chemical processes and machinery; the correspondence columns, open to every one interested in mining; the book notices, which tell of the latest and best in engineering literature—are among the valuable features of the paper.

In short, the *ENGINEERING AND MINING JOURNAL* is the most useful, progressive, widely circulated, and influential paper in the world devoted to the mineral industry, and no one engaged in any department of that industry can afford to be without it.

For the United States, Mexico, and Canada, subscription price \$3 per annum; for all other countries in the Postal Union, \$5.

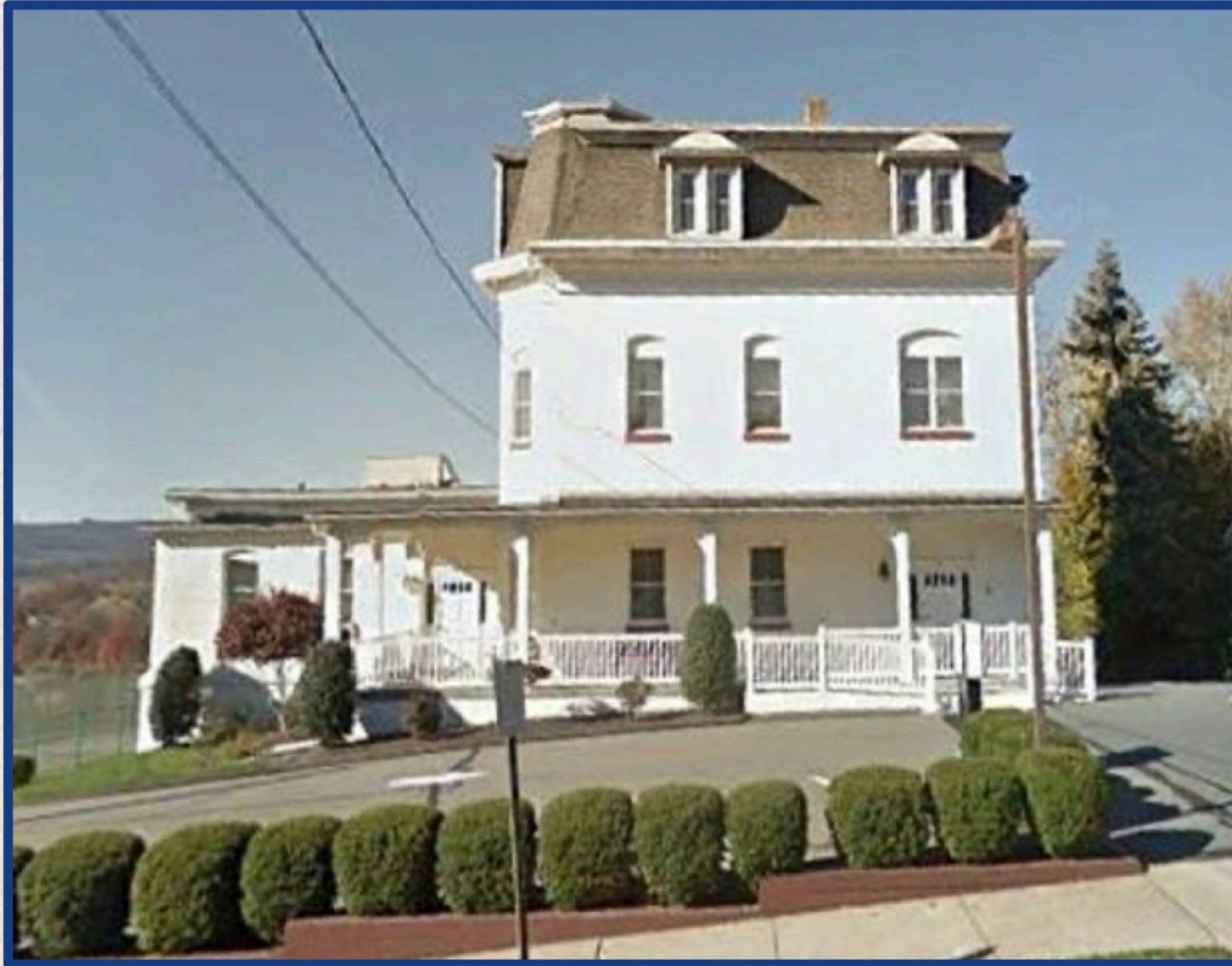
English subscriptions to the journal may be paid at the London office at the rate of £1-6/- 6s. 6d.

253 Broadway, New York.
 20 Bucklersbury, London, England.
 (Founded 1865 and 1867)

Absolutely Indispensable To the Prospector Miner Chemist Engineer Metallurgist Merchant Manufacturer Banker Investor Legislator



Richard Pennefather Rothwell (1836-1901)



WEST PITTSTON (KNIGHT SHAFT) MINE DISASTER MAY 27, 1871



A. A. Rothwell



Harpers Magazine





Richard P. Rothwell gave one of the papers, on mapping the coal seams in the Panther Valley.