



Garry Warren  
2015 President



Michele Lawrie-Munro  
Executive Director

# Report of the 2015 – 2016 AIME Leadership

## The Year in Review

### New Beginnings

In 2015, AIME began a journey down a path of re-discovery. It started with a few task groups analyzing areas of strategic importance: AIME awards, grants, and governance. The good news is that AIME Awards are highly valued by the Member Societies, albeit in different ways, and the processes for nominating and conferring those are working well.

In contrast, the AIME Collaborative Grants process had become competitive, so its task force suggested altering the program to only support efforts in which all 4 Member Societies would engage. Recent examples include the [Emerging Leaders Alliance young leaders training](#) and Engineering Solutions for Sustainability efforts. For the latter, AIME provided a \$40,000 collaborative grant to support a [sustainability symposium](#) (follow-on to 2009 Lausanne workshop) March 18-19 at TMS' 2015 annual meeting in Orlando, FL including speakers from ASCE and AIChE. SME will host the 3<sup>rd</sup> iteration February 18-19, 2017 in Denver, CO.





Also, in recognition of the importance placed on student and young member programs by all 4 Member Societies, the AIME Board voted in December to provide each Member Society with \$10,000 toward those efforts.

AIME continues to provide 50% of surplus to its Member Societies to use as they see fit; this totaled \$28,431 per Society in 2015 (from 2014 surplus). Of the remaining surplus, 20% is used to support collaborative efforts; the Board allocated just over \$45,000 from end 2014. The Board also directed ½ of these dollars each year beginning 2014 to support a 150<sup>th</sup> anniversary celebration in 2021. Out of the \$300,000 estimated costs, \$120,000 has been set aside to date. AIME [2012 President from SME, George Luxbacher](#), chairs the planning committee for this joint Member Society event.



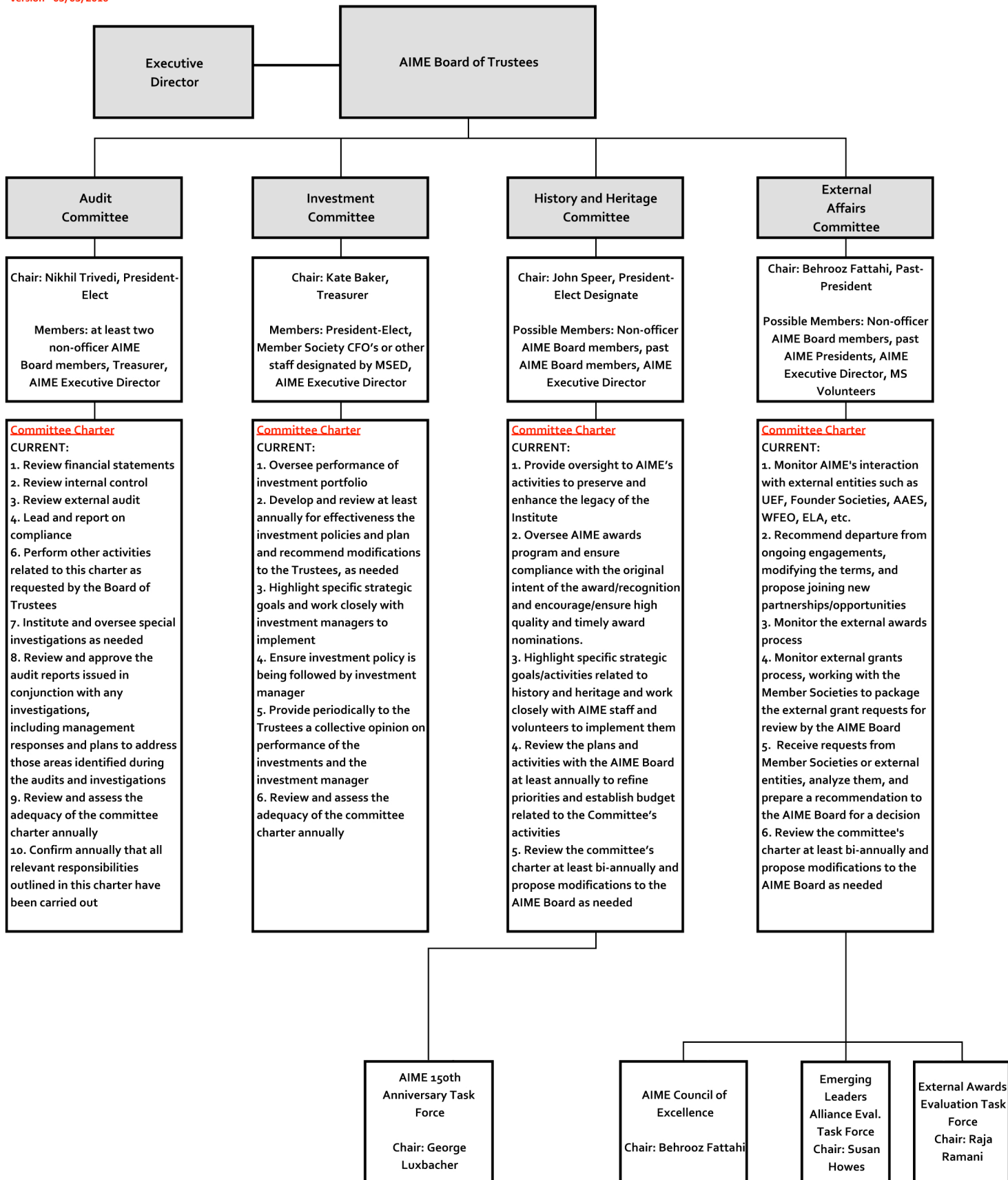
As an outgrowth of the strategic planning process carried out under 2014 President, Behrooz Fattahi, the Board approved two new committees in August 2015, History & Heritage and External Affairs. Their membership and charters were approved in December and the groups are finalizing recruitment, adding sub-task forces as needed.

Under the aegis of the External Affairs Committee three additional sub-task forces have been organized: Council of Excellence (a 'think tank' aimed at identifying cross-cutting technologies or technological gaps), the ELA Evaluation (to generate information for the purpose of maintaining or improving the quality of the ELA event), and External Awards (to establish a process for identifying deserving individuals to nominate for significant awards external to AIME).

This new committee structure will help the board to maintain a more strategic focus with the committees dealing with tactics. Having additional non-trustee volunteers from the Member Societies will also lessen the workload for the board and involve a broader group in the work of the Institute. These groups will begin their first full year of existence in summer 2016, and we look forward to seeing the results of their work. Let us know if you have desire to learn more or volunteer for future openings (chart on next page).

# AIME Governance Structure

version - 03/03/2016



## Outreach

For many years two of the most significant outreach activities of AIME has been participation in the UEF, United Engineering Foundation, and AAES, American Association of Engineering Societies, and 2016 was no different. AIME leadership attended the UEF Board meeting in September. After a change in executive director in 2015 the UEF carried out a strategic planning exercise. AIME was a full participant in that process and provided comments and suggestions from both current and former trustees, several of whom also served on the UEF Board. AIME is one of the 5 Founder Societies of the UEF, and, as a result, it is imperative that AIME



tend this relationship carefully as UEF contemplates changes in the way it operates. AIME President, Garry Warren, and Executive Director (ED), Michele Lawrie-Munro, also attended the fall board meeting of AAES in Reston, VA. AAES and the National Academy of Engineering jointly plan an annual convocation in April where a topic and speakers are selected that have a broad impact on engineering. We're pleased to report that the topic suggested by AIME "The Revolution in Modeling and Simulation for Engineering" was selected for the 2016 convocation. TMS member, Prof. Peter Voorhees of Northwestern University, and AIST member, Prof. Chenn

Zhou of Purdue University, gave powerful talks at the convocation to a broad spectrum of engineering society presidents and leaders. President Elect Nikhil Trivedi also attended this event, along with the AIME President and ED.

AIME also attended joint events in Washington, DC: the Engineering Public Policy Symposium, and [National Engineers Week Family Day](#) outreach. The latter was done with the help of local SME members and National Mining Association staff for the third year in a row. The group reached 750 youth and their parents from the region during this one-day event.





## Awards

Finally, the AIME family submitted more worthy candidates for joint engineering awards than we have in many years and garnered participation by Member Society representatives on key joint committees. Notably, AAES conferred three 2015 awards on TMS members, Jeffrey Wadsworth, Suveen Mathadu, and Diran Apelian: the National Engineering, Norm Augustine, and Joan Hodges Medals, respectively, at their annual banquet April 21 in Washington, DC. We are also excited to share that AAES conferred the 2016 Kenneth Andrew Roe Award on Dr. Brajendra Mishra, a TMS member and also 2011 AIME President. Details can be found at <http://www.aaes.org/awards>.



## Honoring the Legacy

AIME has continued its partnership with other engineering Founder Societies, Society of Women Engineers, and the Society of Petroleum Engineers to add content to the [Engineering and Technology History Wiki \(ETHW\)](#) to share association history and member knowledge with future generations and the general public. A number of oral histories of significance have been recently collected for the ETHW, for example, AIST member, Dick Teets, SME member, Len Harris, and Alex Scott. Alex was the TMS Executive Director for over 30 years and also served one year in 1991 as Interim Executive Director for AIME. AIME will also upload archival photos and documents and solicit articles and educational outreach material contributions from its Member Societies. Thanks to funding from SME, UC-Berkeley also digitized [archival mining legends' oral histories](#) now on AIME's website. These are being reformatted for easier access via [AIME's YouTube channel](#). We appreciate staff and member efforts on this important endeavor to preserve and promote the legacy of AIME and its Member Societies.

---

Garry Warren  
2015 President

---

Michele Lawrie-Munro  
Executive Director

## President's Notes

August 2016

One of the precepts I have always emphasized to students throughout my academic career is that participation in a professional society is not just an obligation but also very rewarding. This past year in my role as 2015 AIME President is a case in point. AIME and TMS have given me so much more in professional growth, technical knowledge, and lifelong friendships than I could possibly enumerate here. Others have said it much more eloquently, but I have come this far in my career because I was able to "stand on the shoulders of giants." One such giant was my Ph.D. advisor, Milton E. Wadsworth, who was 1991 AIME President. I would never have dreamed that I would or could follow him in this role. I am also grateful to all of the AIME Trustees and to the Executive Directors from our four Member Societies. Thank you all for the support and wise counsel you continue to provide to AIME. I am also deeply appreciative of the constant support that our ED, Michele Lawrie-Munro, has provided me over the past year. A special thanks to Behrooz Fattahi, the 2014 AIME President, who has been so gracious.

As an umbrella organization, the relationship between AIME and its Member Societies has evolved since 1985 when the Member Societies became separately incorporated. There are numerous important ties between AIME and its Member Societies. To me the most significant of those ties are the history, heritage, and legacy that we all share. AIME and its Member Societies will continue to uphold and honor that history, for it is upon the shoulders of our forebears that future generations will stand.

I welcome Nikhil Trivedi as 2016 AIME President and pledge to assist him in any way that I can. I am confident that AIME is in good hands, and it is with great anticipation that I look forward to AIME's 150<sup>th</sup> Anniversary celebration in Philadelphia in May 2021!

A handwritten signature in black ink that reads "Gary Warner". The signature is written in a cursive, flowing style with a large, prominent 'G' and 'W'.