



Cedarville Rancheria Geothermal End Uses Challenge: Working with the Indigenous Communities on Sustainable Development Solutions

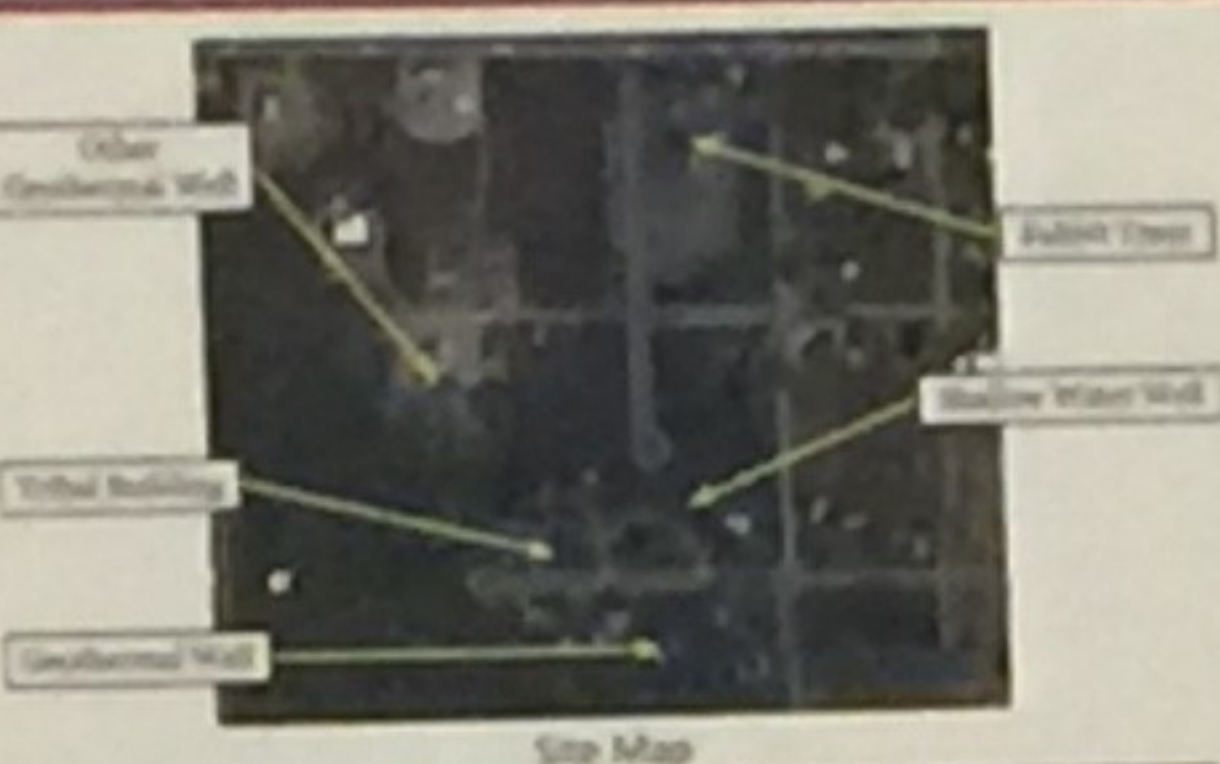
Kekahu Aluli¹ (kaluli@mines.edu), Becky Reeve¹ (rreeve@mines.edu), Travis Terrell Ramos² (tterrell@mines.edu) and Mason Haycock² (mhaycock@mines.edu)
¹ Mechanical Engineering Department, Colorado School of Mines, Golden, CO. ² Environmental Engineering Department, Colorado School of Mines, Golden, CO.



Overview:

The Northern Paiute Tribe located on the Cedarville Rancheria Reservation in Northern California, has a geothermal resource located on their reservation. In a mutual partnership with the Division of Energy and Minerals Extraction (DEMD), and Colorado School of Mines, our senior design team is working to assist the tribe in their efforts to further develop this renewable resource.

GEO PAMAKA



Objectives:

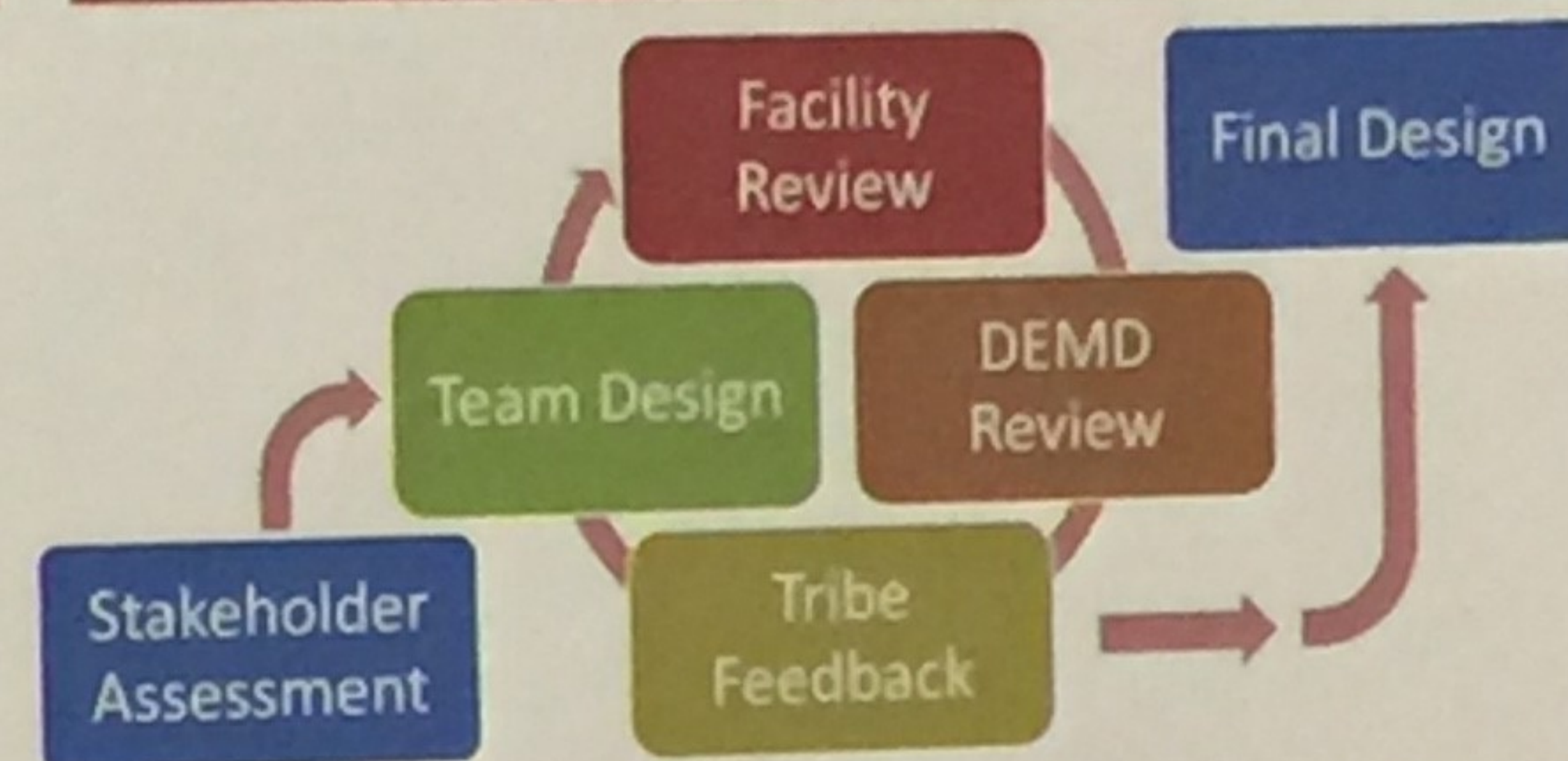
Goal: Ensure that the end product will work to directly benefit the people of the Cedarville Rancheria.

Obj1: Develop four designs for tribe.

Obj2: Receive feedback and final selection from tribe.

Obj3: Further develop chosen plan and present final design to tribe.

Methodology:



Project Timeline

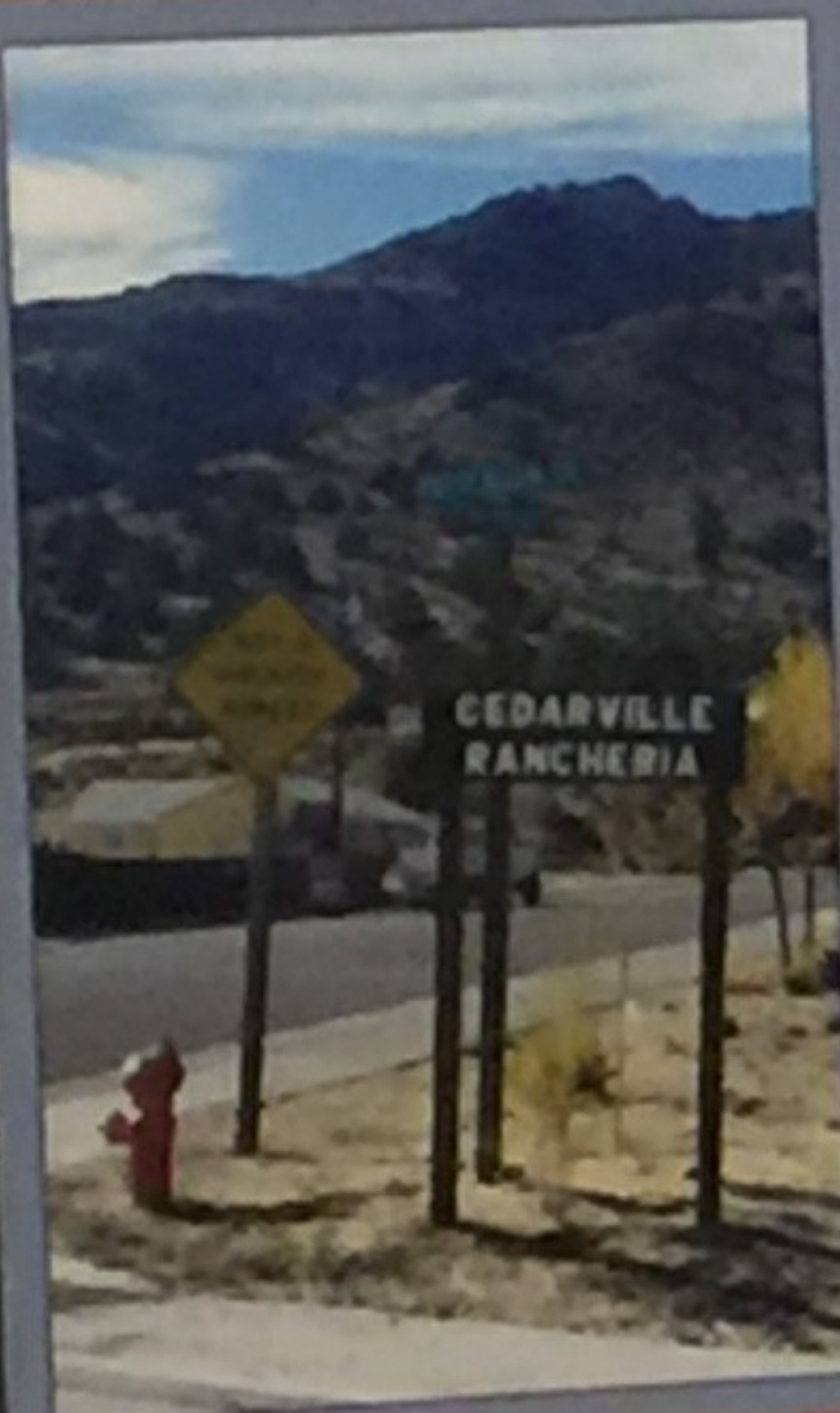
Initial Tribe Visit

Preliminary Design Review

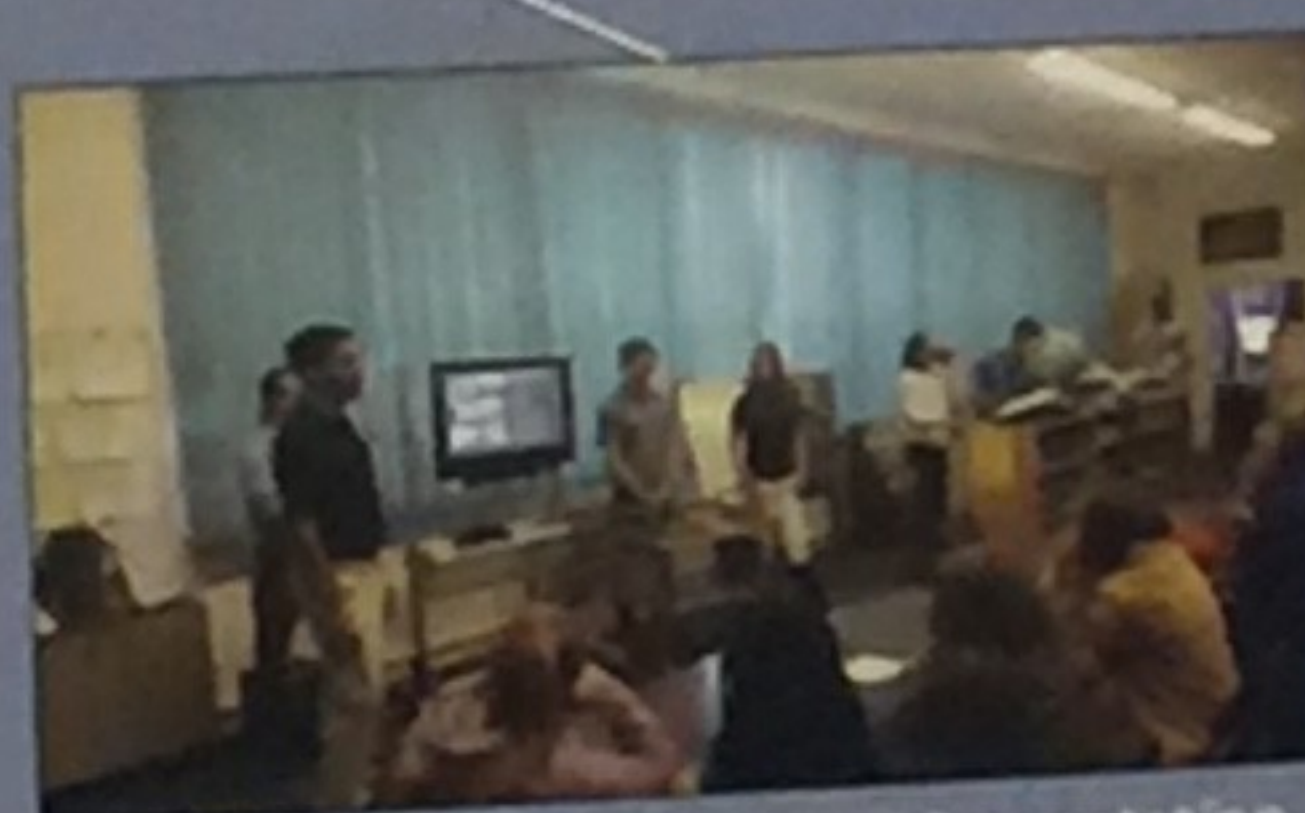
Initial Tribe Decision

Second Design Iteration

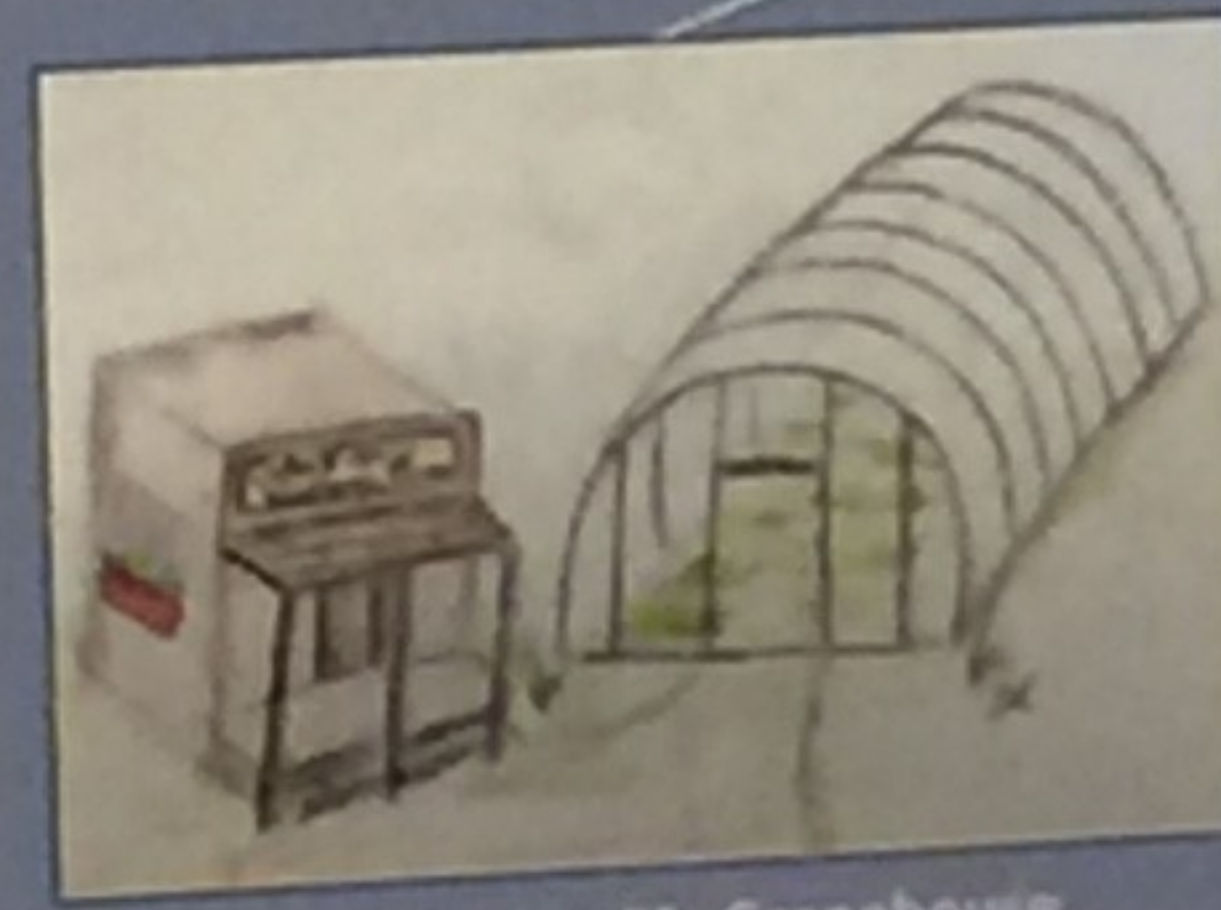
Final Tribe Presentation



Well Head Location



Surprise Valley High-School Presentation



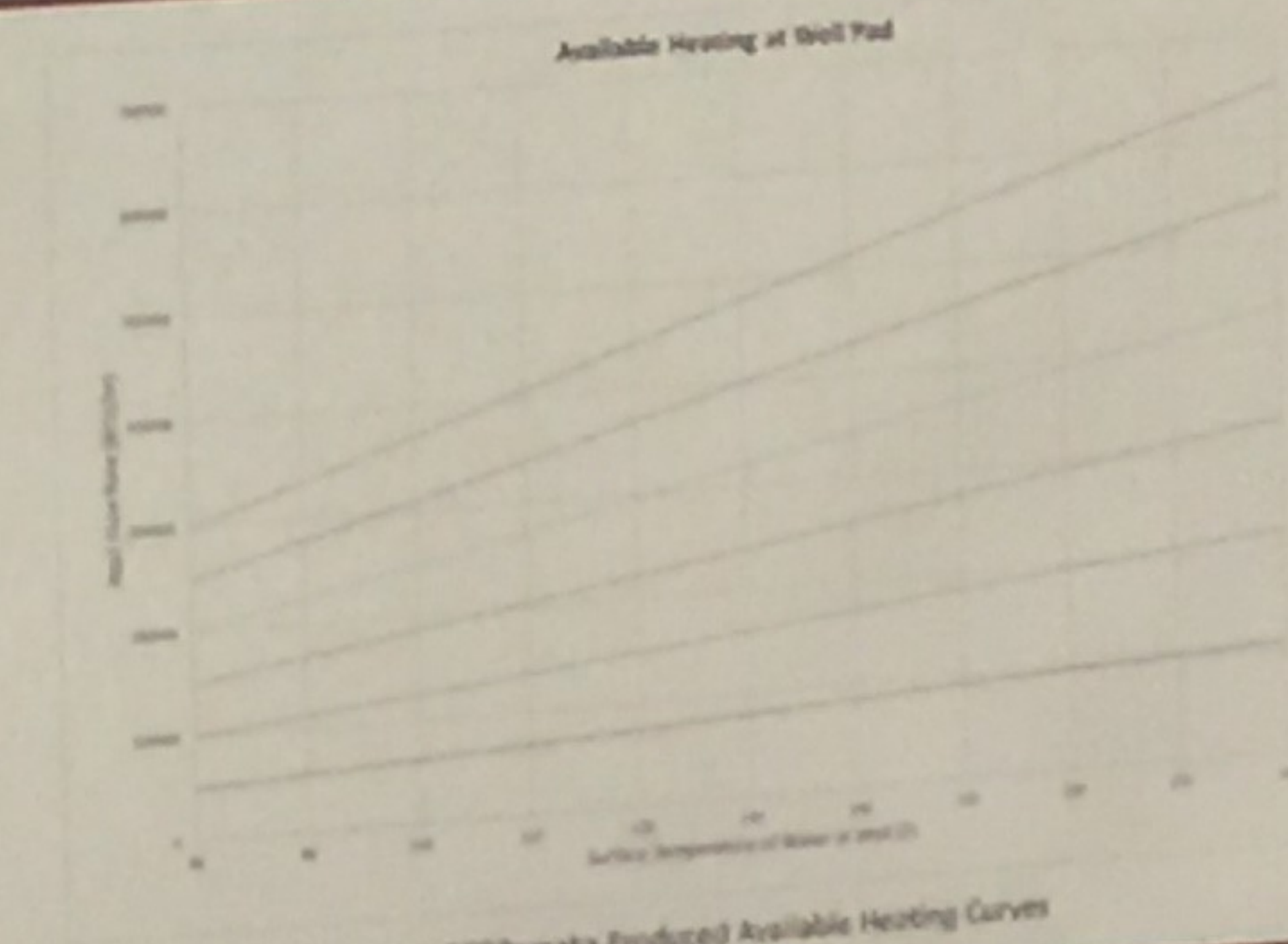
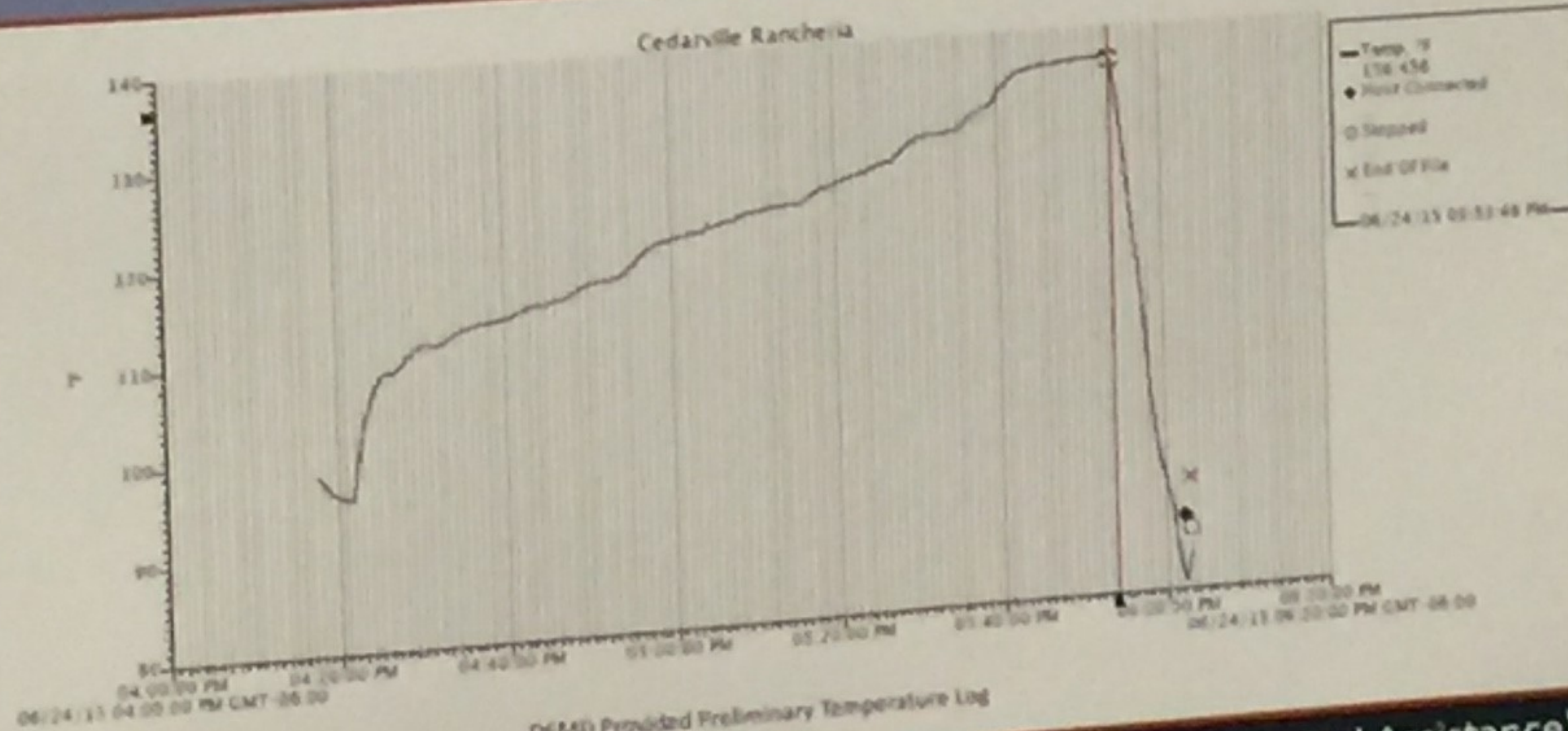
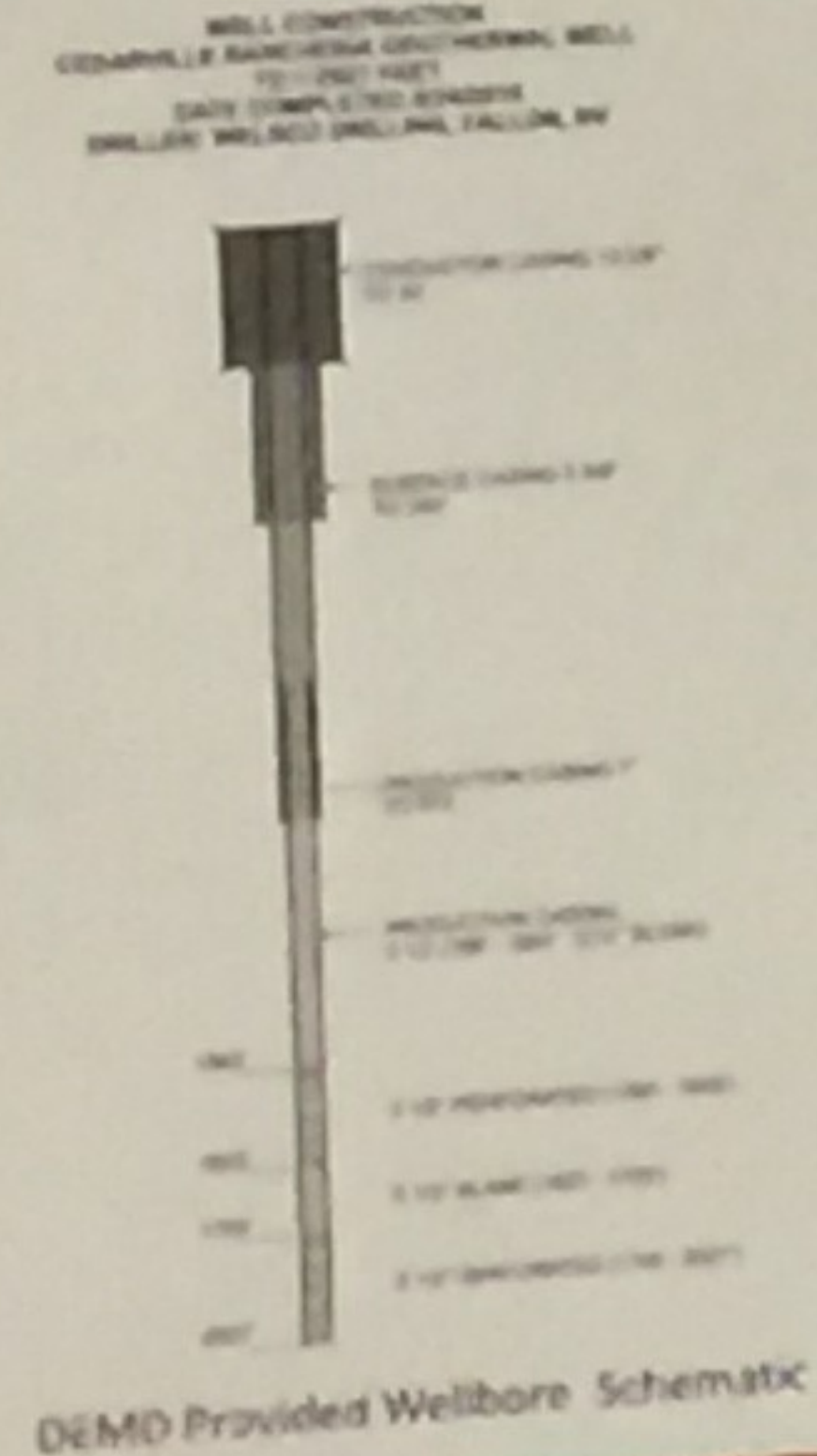
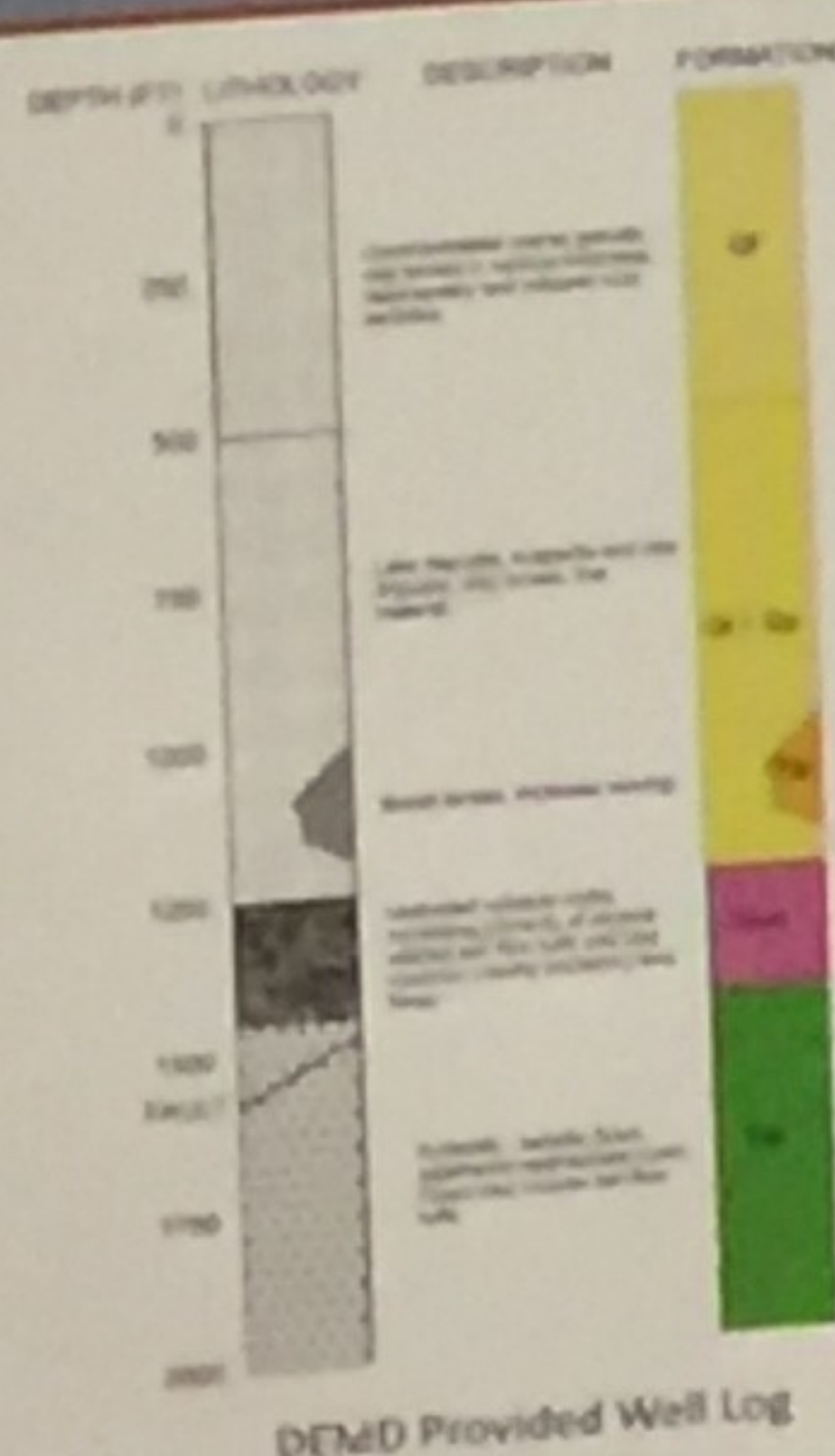
Final Option #1: Greenhouse



Final Option #2: Rabbit Traxx Heating

Final Design Iteration:

After an initial meeting with tribal leaders, our team designed four options for the geothermal well. After a second presentation, the tribe chose two options for us to pursue. Those two options, pictured left, are a greenhouse and space heating of their gas station, Rabbit Traxx. Our hope is that these sustainable heating projects will benefit the tribal members living on the reservation and members of the Cedarville community.



Faculty Advisor, Dr. Nicole Smith (Mentor/Consultant), Dr. Masami Nakagawa (Technical Assistance), Daniel Kaim (DEMD contact), and Bobbie Wells (DEMD contact)