

# **2000 Enrollment Report**



Office of Institutional Research  
January 2001

# Table of Contents

Introduction	4
--------------	---

## ENROLLMENT

Table 1:	Fall 2000 Enrollment	7
Table 2:	Fall Enrollment History 1989-2000	8
Table 3:	Deaf/Hearing & Racial/Ethnic Distribution of Fall 2000 Enrollment	10
Figure 1:	Deaf/Hearing & Racial/Ethnic Distribution of Fall 2000 Enrollment	11
Table 4:	Fall Enrollment History by Racial/Ethnic Distribution 1989-2000	12
Table 5:	Fall 2000 U.S. Enrollment by State	13
Table 6:	Fall 2000 International Enrollment by Country	14
Table 7:	Fall 2000 Full- and Part-Time Enrollment by Gender	15
Table 8:	Fall 2000 Undergraduate Majors by Department	16
Table 9:	Fall 2000 Graduate Majors	17
Table 10:	Total Annual Enrollment Academic Year 1999-2000	18
Table 11:	Annual Unduplicated Headcount Enrollment Academic Years 1994 to 1999	19
Table 12:	Annual Institutional Activity Academic Years 1997-2000	20

## ADMISSIONS

Table 13:	Fall 2000 Undergraduate Admissions Summary and History of Fall Applications, Admissions, and Registrations 1994-2000	24
Table 14:	Fall Graduate Degree-Seeking Applications, Admissions, and Registrations 1994-2000	25
Table 15:	Fall 2000 New Degree-Seeking Undergraduate Students by Demographic Characteristics	26
Figure 2:	Fall 2000 New Degree-Seeking Undergraduate Students by English & Mathematics Placement Test Performance	27
Table 16:	Fall 2000 New Degree-Seeking Graduate Students by Demographic Characteristics and Programs	28

## GRADUATION, PERSISTENCE AND ATTRITION

Table 17:	Undergraduate One-Year Attrition and Persistence	32
Figure 3:	Undergraduate One-Year Attrition Trends 1989-2000	33
Table 18:	Undergraduate One-Year Attrition by Class, Gender, and Race/Ethnicity 1989-2000	33
Table 19:	Long-Term Retention Rate of Entering Undergraduate Classes 1995-1999	34
Table 20:	Degrees Awarded Academic Years 1989-1999	35
Table 21:	Degrees Awarded by Gender and Race/Ethnicity Academic Year 1999-2000	36
Table 22:	Undergraduate Degrees by Discipline Academic Year 1999-2000	37
Table 23:	Graduate Degrees by Discipline Academic Year 1999-2000	38

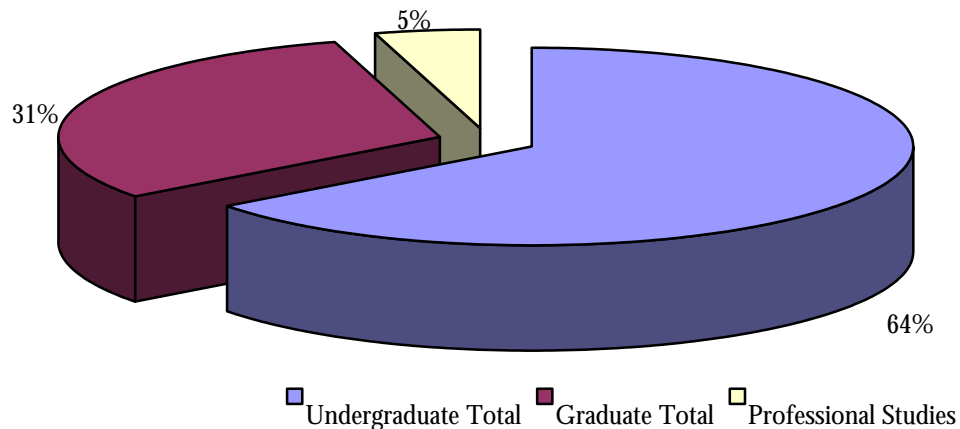
## **INTRODUCTION**

Gallaudet University's total enrollment for fall 2000 is 2,039. This includes 1,321 undergraduate, 625 graduate, and 93 professional studies students. Many of the tables in this report focus on the 1,188 degree-seeking undergraduate and 368 degree-seeking graduate students. The Office of Institutional Research welcomes suggestions from members of the Gallaudet community on how the content and format of this report could be improved.

# Enrollment

**TABLE 1: FALL 2000 ENROLLMENT**

Freshmen	537
Sophomores	210
Juniors	202
Seniors	233
Second Degree	6
Undergraduate Special	41
Exchange	0
Visiting	6
Undergraduate Extension	63
International Interns	0
English Language Institute	23
<b>Undergraduate Total</b>	<b>1,321</b>
Masters	253
Educational Specialist	2
Doctoral	103
Certificate	10
Graduate Special	63
Graduate Extension	194
International Interns	0
<b>Graduate Total</b>	<b>625</b>
<b>Professional Studies</b>	<b>93</b>
<b>TOTAL</b>	<b>2,039</b>



**TABLE 2: FALL ENROLLMENT HISTORY  
1989-2000**

	<b>1989</b>	<b>1990</b>	<b>1991</b>	<b>1992</b>	<b>1993</b>	<b>1994</b>
Preparatory	275	247	196	228	180	161
A.A.S.	27	23	28	27	21	18
Freshmen	614	587	502	507	552	511
Sophomores	350	317	299	285	256	289
Juniors	273	302	299	302	260	265
Seniors	263	304	323	336	315	297
Second Degree				17	11	8
Undergraduate Special	36	39	41	44	51	38
Exchange		1	1	2	2	5
Visiting		5	9	12	12	10
Undergraduate Extension						
International Interns						
English Language Institute						
<b>Undergraduate Total</b>	<b>1,838</b>	<b>1,825</b>	<b>1,698</b>	<b>1,760</b>	<b>1,660</b>	<b>1,602</b>
Masters	222	239	228	243	256	236
Educational Specialist	2	1	0	0	0	2
Doctoral	22	34	37	45	58	65
Summer Study	8	6	6	0	5	9
Certificate						
Graduate Special	72	88	69	69	52	60
Graduate Extension	75	75	75	64	68	89
International Interns						
<b>Graduate Total</b>	<b>401</b>	<b>443</b>	<b>415</b>	<b>421</b>	<b>439</b>	<b>461</b>
<b>Professional Studies</b>	<b>113</b>	<b>116</b>	<b>130</b>	<b>79</b>	<b>102</b>	<b>112</b>
<b>TOTAL</b>	<b>2,352</b>	<b>2,384</b>	<b>2,243</b>	<b>2,260</b>	<b>2,201</b>	<b>2,175</b>

**TABLE 2: FALL ENROLLMENT HISTORY  
1989-2000**

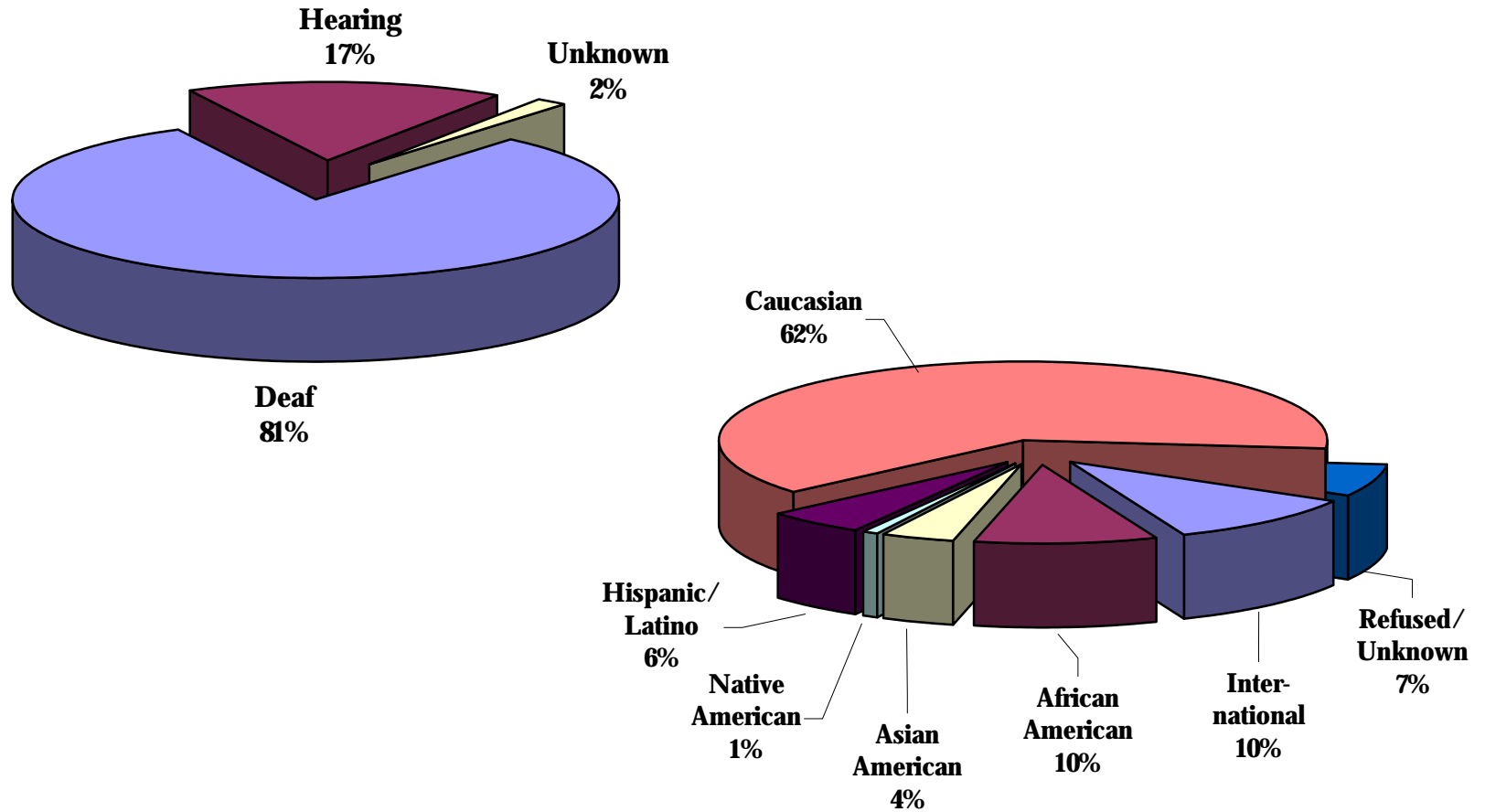
	<b>1995</b>	<b>1996</b>	<b>1997</b>	<b>1998</b>	<b>1999</b>	<b>2000</b>
Preparatory						
A.A.S.	8					
Freshmen	583	481	476	501	503	537
Sophomores	264	243	260	220	221	210
Juniors	274	245	216	240	218	202
Seniors	287	284	256	236	248	233
Second Degree	12	8	11	20	13	6
Undergraduate Special	48	31	27	36	25	41
Exchange	0	1	0	0	0	0
Visiting	10	9	5	10	10	6
Undergraduate Extension		42	88	32	74	63
International Interns				5	6	0
English Language Institute						23
<b>Undergraduate Total</b>	<b>1,486</b>	<b>1,344</b>	<b>1,339</b>	<b>1,300</b>	<b>1,318</b>	<b>1,321</b>
Masters	243	261	280	302	285	253
Educational Specialist	1	0	1	0	2	2
Doctoral	71	71	79	81	95	103
Summer Study	6	11	14	17	0	0
Certificate		1	0	1	0	10
Graduate Special	68	54	72	40	35	63
Graduate Extension	205	178	268	185	124	194
International Interns				2	0	0
<b>Graduate Total</b>	<b>594</b>	<b>576</b>	<b>714</b>	<b>628</b>	<b>541</b>	<b>625</b>
<b>Professional Studies</b>	<b>128</b>	<b>114</b>	<b>92</b>	<b>70</b>	<b>86</b>	<b>93</b>
<b>TOTAL</b>	<b>2,208</b>	<b>2,034</b>	<b>2,145</b>	<b>1,998</b>	<b>1,945</b>	<b>2,039</b>

**TABLE 3: DEAF/HEARING AND RACIAL/ETHNIC CHARACTERISTICS  
OF FALL 2000 ENROLLMENT\***

	Deaf	Hearing	Unknown	Inter- national	African American	Asian American	Native American	Hispanic/ Latino	Caucasian	Refused/ Unknown
Freshman	536	1	0	67	68	24	5	38	322	13
Sophomores	209	0	1	25	19	8	1	14	130	13
Juniors	194	0	8	14	22	9	0	11	134	12
Seniors	223	2	8	33	16	14	2	13	142	13
Second Degree	5	0	1	2	0	1	0	0	3	0
Undergraduate Special	27	13	1	4	2	1	1	1	16	16
Exchange	0	0	0	0	0	0	0	0	0	0
Visiting	2	4	0	0	0	0	0	0	5	1
International Interns	0	0	0	0	0	0	0	0	0	0
English Language Institute	20	0	3	16	0	2	0	1	0	4
<b>Undergraduate Total</b>	<b>1,216</b>	<b>20</b>	<b>22</b>	<b>161</b>	<b>127</b>	<b>59</b>	<b>9</b>	<b>78</b>	<b>752</b>	<b>72</b>
Masters	100	151	2	13	20	3	1	9	193	14
Educational Specialist	0	2	0	0	1	0	0	0	0	1
Doctoral	30	73	0	3	8	4	0	4	69	15
Certificate	6	4	0	0	0	0	0	0	8	2
Graduate Special	23	37	3	3	5	2	1	2	40	10
International Interns	0	0	0	0	0	0	0	0	0	0
<b>Graduate Total</b>	<b>159</b>	<b>267</b>	<b>5</b>	<b>19</b>	<b>34</b>	<b>9</b>	<b>2</b>	<b>15</b>	<b>310</b>	<b>42</b>
<b>TOTAL</b>	<b>1,375</b>	<b>287</b>	<b>27</b>	<b>180</b>	<b>161</b>	<b>68</b>	<b>11</b>	<b>93</b>	<b>1,062</b>	<b>114</b>

\* Numbers do not include extension students.

**FIGURE 1: DEAF/HEARING AND RACIAL/ETHNIC  
DISTRIBUTION OF FALL 2000 ENROLLMENT\***



\* Numbers do not include extension students.

**TABLE 4: FALL ENROLLMENT HISTORY  
BY RACIAL/ETHNIC DISTRIBUTION\*  
1989-2000**

	1989	1990	1991	1992	1993	1994	1995	1996	1997	1998	1999	2000
<b>Undergraduate</b>												
International	14%	14%	15%	16%	11%	11%	13%	13%	12%	13%	12%	13%
African-American	6%	7%	7%	7%	9%	9%	10%	10%	11%	11%	10%	10%
Asian-American	2%	1%	2%	2%	2%	4%	4%	4%	4%	4%	4%	5%
Native-American	0%	0%	0%	0%	1%	1%	1%	1%	1%	1%	1%	1%
Hispanic/Latino	4%	4%	4%	3%	5%	6%	5%	5%	6%	7%	6%	6%
Caucasian	74%	73%	71%	69%	70%	67%	65%	63%	62%	61%	63%	60%
Refused/Unknown	0%	0%	1%	2%	3%	3%	3%	3%	4%	4%	5%	6%
<b>Graduate</b>												
International	10%	10%	11%	9%	10%	8%	8%	9%	6%	5%	4%	4%
African-American	3%	5%	5%	6%	7%	7%	8%	8%	9%	8%	8%	8%
Asian-American	1%	1%	1%	2%	2%	1%	1%	2%	2%	2%	2%	2%
Native-American	0%	0%	0%	0%	0%	1%	0%	0%	0%	1%	0%	0%
Hispanic/Latino	1%	2%	2%	2%	2%	3%	3%	4%	4%	4%	4%	3%
Caucasian	83%	80%	78%	79%	78%	78%	72%	68%	69%	75%	78%	72%
Refused/Unknown	1%	2%	1%	2%	2%	3%	8%	10%	11%	5%	4%	10%
<b>TOTAL ENROLLMENT</b>												
International	14%	14%	15%	15%	11%	10%	12%	12%	11%	11%	10%	10%
African-American	6%	6%	7%	7%	8%	9%	9%	10%	10%	10%	9%	10%
Asian-American	2%	1%	2%	2%	2%	3%	3%	4%	4%	4%	3%	4%
Native-American	0%	0%	0%	0%	1%	1%	1%	1%	1%	1%	1%	1%
Hispanic/Latino	3%	3%	3%	3%	4%	5%	5%	5%	5%	6%	6%	6%
Caucasian	75%	74%	72%	71%	71%	69%	66%	64%	64%	65%	67%	62%
Refused/Unknown	0%	1%	1%	2%	3%	3%	4%	5%	6%	4%	4%	7%

\* Numbers do not include extension students.

**TABLE 5: FALL 2000 U.S. ENROLLMENT BY STATE**

	<b>Undergraduate</b>	<b>Graduate</b>
Alabama	14	4
Alaska	1	1
Arizona	27	7
Arkansas	5	0
California	80	20
Colorado	11	4
Connecticut	14	1
Delaware	7	1
District of Columbia	29	27
Florida	47	11
Georgia	14	4
Guam	2	0
Hawaii	7	1
Idaho	9	4
Illinois	49	6
Indiana	22	1
Iowa	7	3
Kansas	15	3
Kentucky	11	0
Louisiana	12	2
Maine	8	1
Maryland	107	80
Massachusetts	24	11
Michigan	18	4
Minnesota	35	5
Mississippi	5	0

	<b>Undergraduate</b>	<b>Graduate</b>
Missouri	26	5
Montana	1	0
Nebraska	3	1
Nevada	2	1
New Hampshire	5	0
New Jersey	27	4
New Mexico	5	1
New York	87	17
North Carolina	23	6
North Dakota	0	0
Ohio	39	10
Oklahoma	2	0
Oregon	12	2
Pennsylvania	53	13
Rhode Island	7	3
South Carolina	5	3
South Dakota	8	1
Tennessee	11	4
Texas	45	24
Utah	1	1
Vermont	2	0
Virginia	50	43
Washington	13	5
West Virginia	8	2
Wisconsin	29	3
Wyoming	2	2

<b>TOTAL STUDENTS</b>	<b>1,046</b>	<b>352</b>
<b>TOTAL STATES/TER.</b>	<b>51</b>	<b>43</b>

**TABLE 6: FALL 2000 INTERNATIONAL ENROLLMENT BY COUNTRY**

	<b>Undergraduate</b>	<b>Graduate</b>		<b>Undergraduate</b>	<b>Graduate</b>
Argentina	1	0	Korea, Republic of	1	0
Austria	1	0	Latvia	1	0
Belgium	2	0	Lebanon	1	0
Botswana	1	1	Malaysia	1	0
Brazil	3	3	Mexico	1	0
Burundi	2	0	Netherlands	6	0
Cameroon	0	1	New Zealand	0	1
Canada	57	2	Nigeria	2	0
China	8	1	Norway	2	0
Colombia	2	0	Pakistan	2	0
Czech Republic	1	0	Panama	1	0
Ethiopia	1	0	Philippines	1	0
Finland	1	0	Russian Federation	1	0
France	2	0	Rwanda	1	0
Germany	1	0	Saudi Arabia	4	2
Guatemala	1	0	Singapore	5	0
Haiti	1	0	Slovakia	1	0
Hong Kong	2	0	South Africa	3	0
Iceland	2	0	Sri Lanka	1	0
India	3	0	Sweden	9	0
Indonesia	1	0	Taiwan, Province of China	3	1
Iran (Islamic Republic Of)	1	0	Thailand	2	0
Israel	2	0	Trinidad and Tobago	0	1
Italy	1	0	United Arab Emirates	2	1
Jamaica	1	1	United Kingdom	2	1
Japan	3	3	Uzbekistan	1	0
Jordan	1	0			

<b>TOTAL STUDENTS</b>	<b>156</b>	<b>19</b>
<b>TOTAL COUNTRIES</b>	<b>50</b>	<b>13</b>

**TABLE 7: FALL 2000 FULL- AND PART-TIME  
ENROLLMENT BY GENDER**

	<b>Full-time</b>		<b>Part-time</b>	
	<b>Women</b>	<b>Men</b>	<b>Women</b>	<b>Men</b>
Freshman	261	263	6	6
Sophomores	111	93	5	2
Juniors	106	91	5	0
Seniors	120	95	11	7
Second Degree	2	4	0	0
Undergraduate Special	6	2	21	12
Exchange	0	0	0	0
Visiting	4	2	0	0
International Interns	0	0	0	0
English Language Institute	10	13	0	0
<b>Undergraduate Total</b>	<b>620</b>	<b>563</b>	<b>48</b>	<b>27</b>
Masters	176	30	33	14
Educational Specialist	0	1	1	0
Doctoral	51	13	31	8
Certificate	0	1	5	4
Graduate Special	8	4	37	14
International Interns	0	0	0	0
<b>Graduate Total</b>	<b>235</b>	<b>49</b>	<b>107</b>	<b>40</b>
<b>TOTAL</b>	<b>855</b>	<b>612</b>	<b>155</b>	<b>67</b>

**TABLE 8: FALL 2000 UNDERGRADUATE MAJORS  
BY DEPARTMENT**

<b>College of Arts and Sciences</b>		<b>School of Communication</b>	
Art	32	American Sign Language	8
Biology	22	Communication Arts	36
Chemistry	6	Television & Photography	10
Computer Science	19	Theater Arts	4
Deaf Studies	14		
English	16	<b>Subtotal</b>	<b>58</b>
Family & Consumer Studies	21		
French	0	<b>School of Management</b>	
Government	10	Accounting	16
History	13	Business Administration	21
Mathematics	7	Computer Information Systems	17
Philosophy	1	Economics & Finance	8
Psychology	30	Entrepreneurial Studies	1
Social Work	32		
Sociology	6	<b>Subtotal</b>	<b>63</b>
Spanish	3		
<b>Subtotal</b>	<b>232</b>	<b>School of Education &amp; Human Services</b>	
		Education	40
		Physical Education	19
		Recreation & Leisure Studies	11
		<b>Subtotal</b>	<b>70</b>
<b>TOTAL</b>		<b>423</b>	

**TABLE 9: FALL 2000 GRADUATE MAJORS**

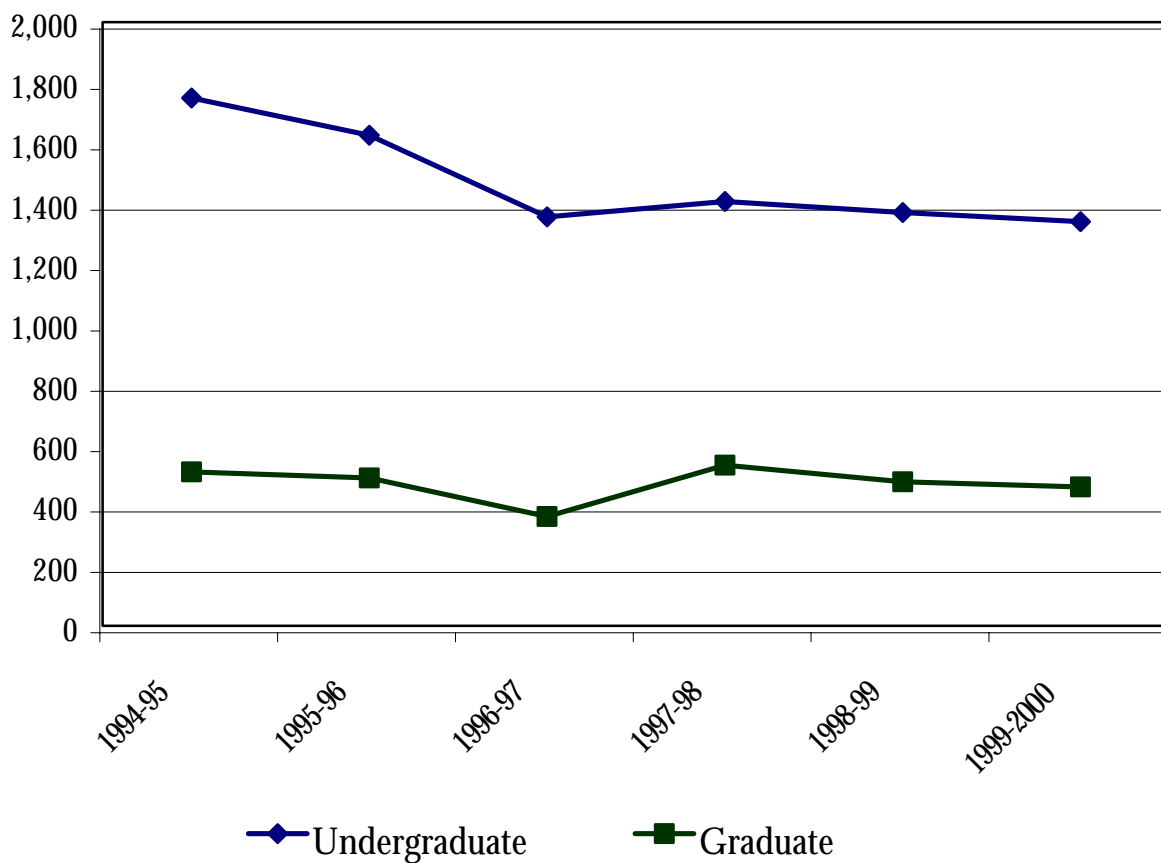
<b>College of Arts and Sciences</b>		<b>School of Education &amp; Human Services</b>	
History		Administration & Supervision	
Deaf History, Cert.	10	Administration, M.S.	8
Psychology		Instructional Supervision, Ed.S.	1
Clinical Psychology, Ph.D.	26	Special Education	
Developmental Psychology,		Administration, Ph.D.	30
M.A./Specialist	21	Counseling	
Social Work, M.S.W.	48	Community Counseling, M.A.	5
		Mental Health, M.A.	18
<b>Subtotal</b>	<b>105</b>	School Guidance, M.A.	21
		Rehabilitation, M.A.	0
		Education: Deafness	
		Advanced Studies, M.A.	5
		Education, Ed.S.	1
		Education, Ph.D.	18
		Elementary, M.A.	21
		Family Centered Early	
		Education, M.A.	14
		Multiple Disabilities, M.A.	11
		Secondary, M.A.	16
		Special Programs in	
		Deafness, M.A.	4
		Recreation & Leisure Studies	
		Leisure Services Administration,	
		M.S.	4
		<b>Subtotal</b>	<b>177</b>
<b>School of Communication</b>			
Audiology & Speech			
Audiology, Au.D.	29		
Speech-Language			
Pathology, M.S.	22		
Linguistics & Interpretation			
Interpretation, M.A.	20		
Linguistics, M.A.	15		
<b>Subtotal</b>	<b>86</b>		
<b>TOTAL</b>			<b>368</b>

**TABLE 10: TOTAL ANNUAL ENROLLMENT  
ACADEMIC YEAR 1999-2000**

	<b>Fall 1999</b>	<b>Spring 2000</b>	<b>Summer 2000</b>
Freshmen	503	419	29
Sophomores	221	220	42
Juniors	218	216	61
Seniors	248	274	95
Second Degree	13	1	0
Undergraduate Special	25	21	12
Exchange	0	0	0
Visiting	10	0	0
Undergraduate Extension	74	74	0
International Interns	6	1	0
<b>Undergraduate Total</b>	<b>1,318</b>	<b>1,226</b>	<b>239</b>
Masters	285	253	80
Educational Specialist	2	0	0
Doctoral	95	88	22
Graduate Special	35	27	14
Graduate Extension	124	124	0
International Interns	0	0	0
<b>Graduate Total</b>	<b>541</b>	<b>492</b>	<b>116</b>
<b>Professional Studies</b>	<b>86</b>	<b>104</b>	<b>376</b>
<b>TOTAL</b>	<b>1,945</b>	<b>1,822</b>	<b>731</b>

**TABLE 11: ANNUAL UNDUPLICATE HEADCOUNT  
ENROLLMENT ACADEMIC YEARS 1994 TO 1999**

	1994-95	1995-96	1996-97	1997-98	1998-99	1999-2000
<b>Undergraduate</b>	1,749	1,625	1,355	1,406	1,369	1,339
<b>Graduate</b>	510	490	362	532	477	460



*Footnote: This is an unduplicated count of the total number of students by level enrolled during the 12-month reporting period in any courses that can lead to a degree or other formal award.*

**TABLE 12: ANNUAL INSTITUTIONAL ACTIVITY  
ACADEMIC YEARS 1997-1999**

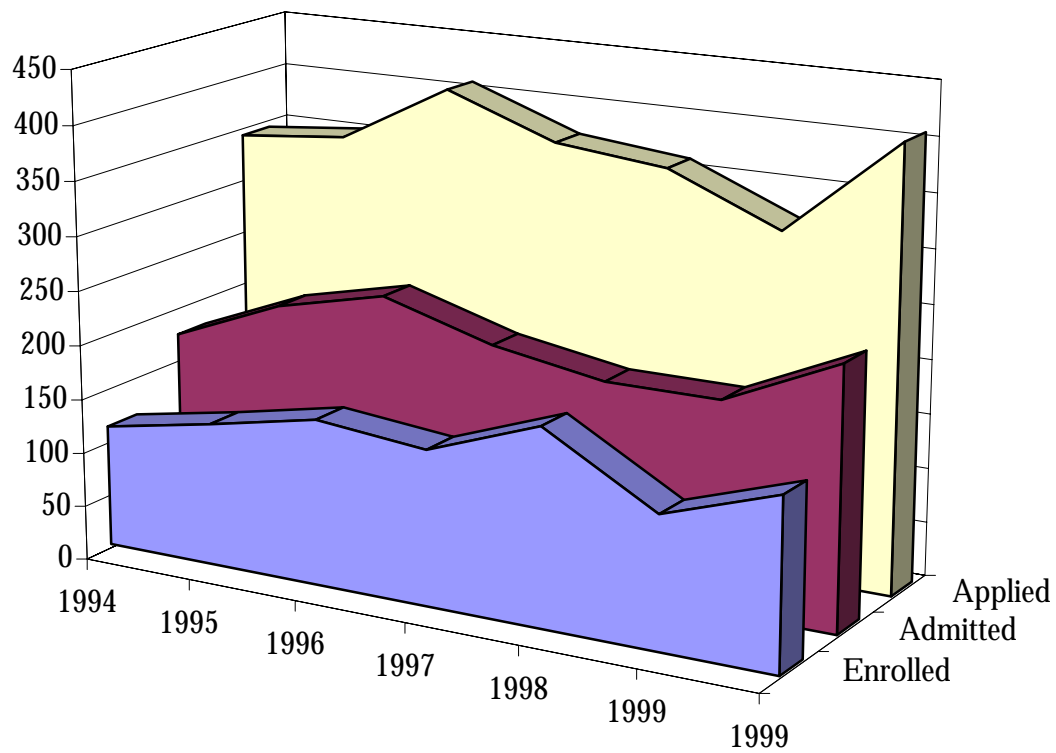
	<b>1997-98</b>	<b>1998-99</b>	<b>1999-2000</b>
<b>Institutional and Degree Credit Hours</b>			
Undergraduate	40,042	39,408	34,558
Graduate	10,269	10,280	9,215
<b>Total</b>	<b>50,311</b>	<b>49,688</b>	<b>43,773</b>
<hr/>			
<b>Student Support Contact Hours</b>			
Tutorial Services	14,385	9,375	6,318
Academic Advising	10,400	12,000	12,500
Career Center	6,575	6,590	7,450
Students with Disabilities	7,300	7,000	7,300
Counseling Services	17,994	17,400	13,723
Student Affairs	77,597	75,250	76,807
<b>Total</b>	<b>134,251</b>	<b>127,615</b>	<b>124,098</b>
<hr/>			
<b>College for Continuing Education Participants</b>			
Extension Online Programs and Continuing Education Units/CEUs	868	1,036	1,063
Center for Global Education	4,617	1,097	1,434
Summer, Evening, and Weekend Programs	1,670	1,996	1,924
Conferences, Training, and Program Support	1,604	4,903	5,337
Regional Centers			
Flagler College, FL	5,399	3,471	6,093
Johnson Co. Community College, KS	11,769	7,097	4,202
Kapiolani Community College, HI	3,026	3,577	2,900
Northern Essex Community College, MA	5,758	5,126	5,287
Ohlone College, CA	3,852	4,055	4,338
<b>Total</b>	<b>38,563</b>	<b>32,358</b>	<b>32,578</b>

# **Admissions**

**TABLE 13: FALL 2000 UNDERGRADUATE ADMISSIONS SUMMARY  
AND HISTORY OF FALL APPLICATIONS, ADMISSIONS, AND  
REGISTRATIONS 1994-2000**

	<b>Applied</b>	<b>Admitted</b>	<b>Enrolled</b>	<b>Enrollment Yield</b>
<b>2000</b>				
New Freshmen	464	309	238	77%
Transfers	145	124	79	64%
Degree-seeking	609	433	317	73%
Special/Others	39	35	28	80%
<b>TOTAL</b>	<b>648</b>	<b>468</b>	<b>345</b>	<b>74%</b>
<hr/>				
<b>1999</b>				
Degree-seeking	642	479	324	68%
Special/Others	48	40	22	55%
<b>TOTAL</b>	<b>690</b>	<b>519</b>	<b>346</b>	<b>67%</b>
<b>1998</b>				
Degree-seeking	554	427	331	78%
Special/Others	44	44	36	82%
<b>TOTAL</b>	<b>598</b>	<b>471</b>	<b>367</b>	<b>78%</b>
<b>1997</b>				
Degree-seeking	688	514	304	59%
Special/Others	74	65	25	38%
<b>TOTAL</b>	<b>762</b>	<b>579</b>	<b>329</b>	<b>57%</b>
<b>1996</b>				
Degree-seeking	733	499	251	50%
Special/Others	70	70	31	44%
<b>TOTAL</b>	<b>803</b>	<b>569</b>	<b>282</b>	<b>50%</b>
<b>1995</b>				
Degree-seeking	738	525	294	56%
Special/Others	76	75	31	41%
<b>TOTAL</b>	<b>814</b>	<b>600</b>	<b>325</b>	<b>54%</b>
<b>1994</b>				
Degree-seeking	838	632	393	62%
Special/Others	90	90	37	41%
<b>TOTAL</b>	<b>928</b>	<b>722</b>	<b>430</b>	<b>60%</b>

**TABLE 14: FALL GRADUATE DEGREE-SEEKING APPLICATIONS, ADMISSIONS, AND REGISTRATIONS 1994-2000**



	1994	1995	1996	1997	1998	1999	1999
<b>Enrolled</b>	112	131	152	142	180	121	156
<b>Admitted</b>	172	214	238	208	191	191	239
<b>Applied</b>	340	350	406	369	358	315	406

**TABLE 15: FALL 2000 NEW DEGREE-SEEKING UNDERGRADUATE STUDENTS BY  
DEMOGRAPHIC CHARACTERISTICS**

**Age**

17	7	2%
18	103	32%
19	100	32%
20	31	10%
21	14	4%
22	15	5%
23-25	22	7%
26-29	3	1%
30 and over	22	7%

**Sex**

Men	161	51%
Women	156	49%

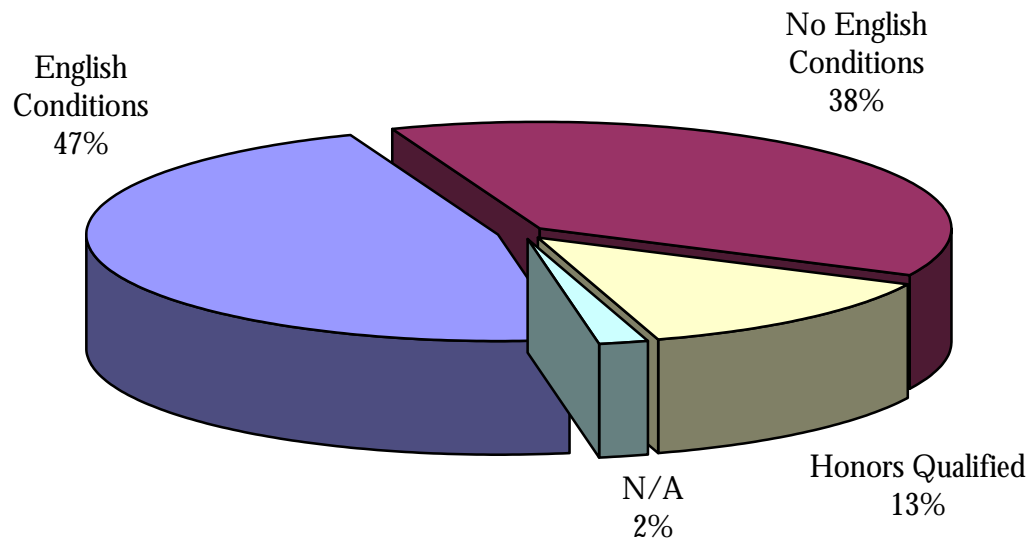
**Deafness in Family**

Deaf Family Member(s)	75	24%
Both Parents	45	14%
One Parent	9	3%
Sibling(s)	63	20%

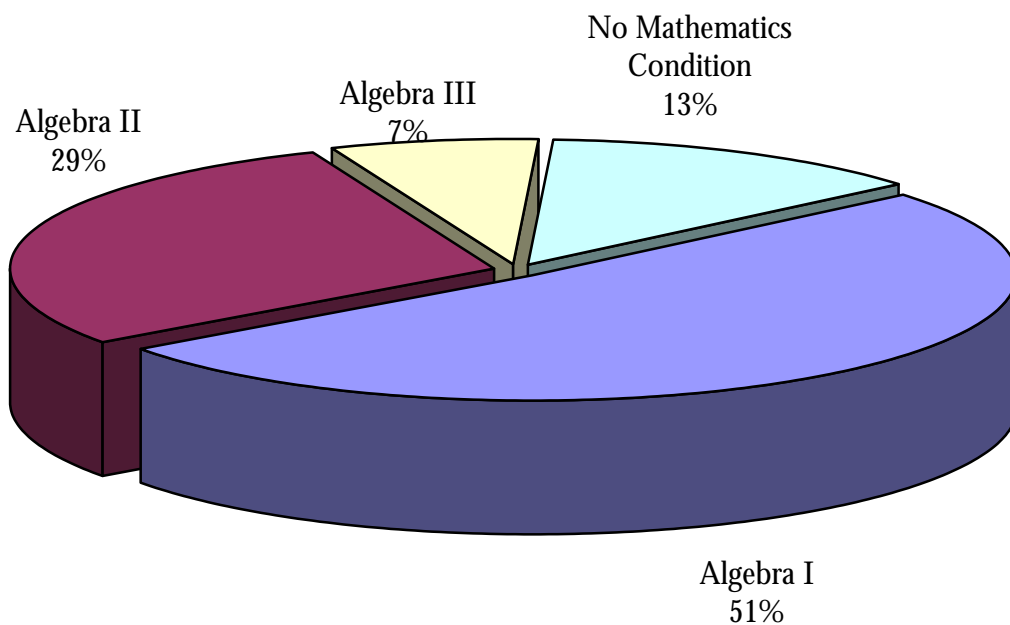
**Ethnic Background**

International	31	10%
African-American	36	11%
Asian-American	22	7%
Native American	4	1%
Hispanic/Latino	23	7%
Caucasian	196	62%
Refused/Unknown	5	2%

**FIGURE 2: FALL 2000 NEW DEGREE-SEEKING  
UNDERGRADUATE STUDENTS BY ENGLISH AND  
MATHEMATICS PLACEMENT TEST PERFORMANCE**



**English Placement Test Performance**



**Mathematics Placement Test Performance**

**TABLE 16: FALL 2000 NEW DEGREE-SEEKING GRADUATE STUDENTS BY  
DEMOGRAPHIC CHARACTERISTICS AND PROGRAMS**

<b>Age</b>			<b>Hearing Status</b>		
20-29	100	64%	Deaf/Hard of Hearing	57	37%
30-39	35	22%	Hearing	99	63%
40-49	15	10%	<b>Ethnic Background</b>		
50 and over	6	4%	International	8	5%
<b>Sex</b>			African-American	17	11%
Men	27	17%	Asian-American	5	3%
Women	129	83%	Native-American	0	0%
			Hispanic/Latino	6	4%
			Caucasian	109	70%
			Refused/Unknown	11	7%

---

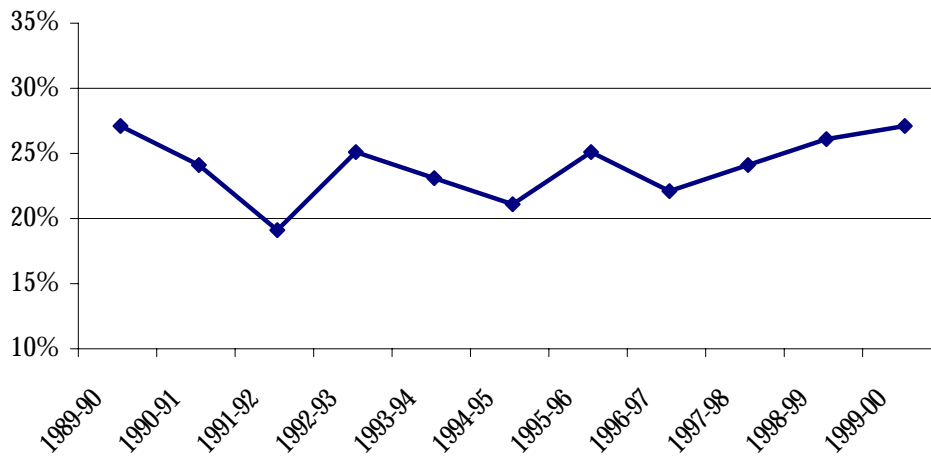
<b>College of Arts and Sciences</b>			<b>School of Education and Human Services</b>		
History	10	6%	Administration & Supervision	13	8%
Pyschology	13	8%	Counseling	17	11%
Social Work	18	12%	Education	35	22%
			Recreation & Leisure Studies	4	3%
<b>School of Communication</b>					
Audiology & Speech-					
Language Pathology	28	18%			
Linguistics and Interpreting	18	12%			

# **Graduation, Persistence and Attrition**

**TABLE 17: UNDERGRADUATE ONE-YEAR GRADUATION,  
ATTRITION AND PERSISTENCE**

	<b>Enrolled Fall 1999</b>	<b>Graduated</b>	<b>Dismissed</b>	<b>Withdrew</b>	<b>Persisted to Fall 2000</b>
<b>TOTAL</b>	<b>1,203</b>	<b>115</b>	<b>40</b>	<b>291</b>	<b>757</b>
<b>Percentage</b>		<b>10%</b>	<b>3%</b>	<b>24%</b>	<b>63%</b>
<i>By Class</i>					
Freshmen	<b>503</b>	0 0%	26 5%	158 31%	319 63%
Sophomores	<b>221</b>	0 0%	10 5%	35 16%	176 80%
Juniors	<b>218</b>	4 2%	3 1%	36 17%	175 80%
Seniors	<b>248</b>	109 44%	1 0%	56 23%	82 33%
Second Degree	<b>13</b>	2 15%	0 0%	6 46%	5 38%
<i>By Gender</i>					
Men	<b>557</b>	54 10%	24 4%	142 25%	337 61%
Women	<b>646</b>	61 9%	16 2%	149 23%	420 65%
<i>By Ethnic Background</i>					
International	<b>139</b>	14 10%	6 4%	26 19%	93 67%
African-American	<b>119</b>	8 7%	5 4%	34 29%	72 61%
Native American	<b>9</b>	2 22%	1 11%	3 33%	3 33%
Asian-American	<b>49</b>	4 8%	0 0%	11 22%	34 69%
Hispanic/Latino	<b>74</b>	7 9%	3 4%	18 24%	46 62%
Caucasian	<b>758</b>	75 10%	19 3%	192 25%	472 62%
Refused/Unknown	<b>55</b>	5 9%	6 11%	7 13%	37 67%

**FIGURE 3: UNDERGRADUATE ONE-YEAR  
ATTRITION TRENDS 1989-2000**



**TABLE 18: UNDERGRADUATE ONE-YEAR ATTRITION BY CLASS,  
GENDER, AND RACE/ETHNICITY 1989-2000**

	1989-90	1990-91	1991-92	1992-93	1993-94	1994-95	1995-96	1996-97	1997-98	1998-99	1999-00
<b>TOTAL</b>	<b>27%</b>	<b>24%</b>	<b>19%</b>	<b>25%</b>	<b>23%</b>	<b>21%</b>	<b>25%</b>	<b>22%</b>	<b>24%</b>	<b>26%</b>	<b>27%</b>
<i>By Class</i>											
Freshmen	32%	31%	28%	36%	34%	33%	38%	35%	38%	36%	36%
Sophomores	21%	16%	17%	22%	15%	19%	22%	19%	20%	16%	21%
Juniors	10%	11%	11%	12%	11%	11%	13%	13%	13%	20%	18%
Seniors	16%	10%	9%	9%	6%	6%	10%	11%	12%	19%	23%
Second Degree	N/A	N/A	N/A	N/A	N/A	N/A	N/A	N/A	N/A	N/A	46%
<i>By Gender</i>											
Men	26%	24%	19%	19%	25%	24%	27%	26%	25%	30%	29%
Women	22%	19%	20%	20%	21%	19%	23%	19%	22%	22%	25%
<i>By Ethnic Background</i>											
Caucasians	24%	21%	19%	25%	23%	21%	25%	23%	23%	25%	28%
Non-white	29%	27%	28%	24%	32%	24%	26%	24%	28%	30%	30%

**TABLE 19: LONG-TERM RETENTION RATE OF ENTERING UNDERGRADUATE CLASSES 1995-1999**

		Number originally enrolled	Retained					Graduated	
			After 1 year	After 2 years	After 3 years	After 4 years	After 5 years	Within 4 years	Within 5 years
<i>All Students</i>									
<b>1995</b>	291	60%	45%	39%	27%	16%	9%	16%	
<b>1996</b>	237	62%	46%	33%	28%		5%		
<b>1997</b>	293	66%	45%	40%					
<b>1998</b>	331	60%	47%						
<b>1999</b>	322	63%							
<i>First-time Students</i>									
<b>1995</b>	229	60%	44%	41%	28%	18%	6%	14%	
<b>1996</b>	183	60%	45%	33%	31%		3%		
<b>1997</b>	215	67%	41%	40%					
<b>1998</b>	230	63%	49%						
<b>1999</b>	254	61%							
<i>Transfer Students</i>									
<b>1995</b>	62	59%	48%	34%	21%	11%	19%	23%	
<b>1996</b>	54	70%	52%	35%	20%		9%		
<b>1997</b>	78	63%	55%	40%					
<b>1998</b>	101	54%	42%						
<b>1999</b>	68	69%							

**TABLE 20: DEGREES AWARDED  
ACADEMIC YEARS 1989-1999**

	<b>Associates</b>	<b>Bachelors</b>	<b>Masters</b>	<b>Specialists</b>	<b>Doctoral</b>	<b>TOTAL</b>
<b>1989-90</b>	5	177	87	1	2	<b>272</b>
<b>1990-91</b>	5	204	106	10	4	<b>329</b>
<b>1991-92</b>	13	230	95	4	3	<b>345</b>
<b>1992-93</b>	7	249	81	6	1	<b>344</b>
<b>1993-94</b>	8	227	113	8	6	<b>362</b>
<b>1994-95</b>	6	231	110	9	9	<b>365</b>
<b>1995-96</b>	8	185	108	7	12	<b>320</b>
<b>1996-97</b>	0	201	102	8	5	<b>316</b>
<b>1997-98</b>	0	174	98	8	5	<b>285</b>
<b>1998-99</b>	0	146	125	8	7	<b>286</b>
<b>1999-00</b>	0	153	132	6	6	<b>297</b>

**TABLE 21: DEGREES AWARDED  
BY GENDER AND RACE/ETHNICITY  
ACADEMIC YEAR 1999-2000**

	<b>Bachelors</b>	<b>Masters</b>	<b>Specialists</b>	<b>Doctoral</b>
Men	73	21	1	1
Women	80	111	5	5
<i>By Ethnic Background</i>				
International	19	4	0	1
African-American	11	4	0	0
Asian-American	5	2	0	0
Native American	2	0	0	0
Hispanic/Latino	7	6	0	0
Caucasian	105	114	6	5
Refused/Unknown	4	2	0	0
<b>TOTAL</b>	<b>153</b>	<b>132</b>	<b>6</b>	<b>6</b>

**TABLE 22: UNDERGRADUATE DEGREES BY DISCIPLINE  
ACADEMIC YEAR 1999-2000**

<b>Bachelor of Arts</b>		<b>Bachelor of Science</b>	
American Sign Language	7	Accounting	6
Art	6	Business Administration	7
Biology	8	Computer Information Systems	13
Chemistry	0	Economics & Finance	1
Communication Arts	16	Entrepreneurial Studies	1
Computer Science	6	Family & Consumer Studies	11
Deaf Studies	9	Physical Education	6
Education	9	Recreation & Leisure Studies	4
English	5		
Government	6		
History	6	<b>Subtotal</b>	<b>49</b>
Mathematics	3		
Philosophy	0		
Physics	1		
Psychology	17		
Sign Communication	0		
Social Work	9		
Sociology	4		
Spanish	4		
Television & Photography	3		
Theater Arts	0		
<b>Subtotal</b>	<b>119</b>		
<hr/> <b>TOTAL*</b>		<hr/> <b>168</b>	

\* Total includes 13 double majors and 1 triple major.

**TABLE 23: GRADUATE DEGREES BY DISCIPLINE  
ACADEMIC YEAR 1999-2000**

<b>Master of Arts</b>		<b>Master of Social Work</b>	
Clinical Psychology	12	Social Work	19
Developmental Psychology	9		
Linguistics	10	<b>Subtotal</b>	<b>19</b>
Interpreting	7		
Mental Health Counseling	8		
School Counseling & Guidance	1	<b>Specialist</b>	
Community Counseling	5	Administration & Supervision	1
Rehabilitation Counseling	0	Educational Specialist	0
Education		School Psychology	5
Advanced Studies in Education	3		
Family-centered Early Education	7	<b>Subtotal</b>	<b>6</b>
Elementary Education	12		
Multiple Disabilities	4		
Non-degree Teacher Certification	0	<b>Doctor of Philosophy</b>	
Secondary	7	Administration & Supervision	1
Special Education in Deafness	2	Clinical Psychology	4
		Deaf Education	1
<b>Subtotal</b>	<b>87</b>	<b>Subtotal</b>	<b>6</b>
<b>Master of Science</b>			
Administration	15		
Audiology	0		
Speech-Language Pathology	11		
<b>Subtotal</b>	<b>26</b>		

---

<b>TOTAL</b>	<b>144</b>
--------------	------------

---