

# 2002 Enrollment Report



# TABLE OF CONTENTS

Introduction	3
--------------	---

## ENROLLMENT

Table 1:	Fall 2002 Enrollment	5
Table 2:	Fall Enrollment History 1991-2002	6
Table 3:	Deaf/Hearing & Racial/Ethnic Characteristics of Fall 2002 Enrollment	8
Figure 1:	Deaf/Hearing & Racial/Ethnic Distribution of Fall 2002 Enrollment	9
Table 4:	Fall Enrollment History by Racial/Ethnic Distribution 1991-2002	10
Table 5:	Fall 2002 U.S. Enrollment by State	11
Table 6:	Fall 2002 International Enrollment by Country	12
Table 7:	Fall 2002 Full- and Part-Time Enrollment by Gender	13
Table 8:	Fall 2002 Undergraduate Majors by Department	14
Table 9:	Fall 2002 Graduate Majors	15
Table 10:	Total Annual Enrollment Academic Year 2001-2002	16
Table 11:	Annual Unduplicated Headcount Enrollment Academic Years 1996-2002	17

## ADMISSIONS

Table 12:	Fall 2002 Undergraduate Admissions Summary and History of Fall Applications, Admissions, and Registrations 1996-2002	19
Table 13:	Fall Graduate Degree-Seeking Applications, Admissions, and Registrations 1996-2002	20
Table 14:	Fall 2002 New Degree-Seeking Undergraduate Students by Demographic Characteristics	21
Figure 2:	Fall 2002 New Degree-Seeking Undergraduate Students by English & Mathematics Placement Test Performance	22
Table 15:	Fall 2002 New Degree-Seeking Graduate Students by Demographic Characteristics and Programs	23

## GRADUATION, PERSISTENCE, AND ATTRITION

Table 16:	Undergraduate One-Year Graduation, Attrition, and Persistence	25
Figure 3:	Undergraduate One-Year Attrition Trends 1991-2002	26
Table 17:	Undergraduate One-Year Attrition by Class, Gender, and Race/Ethnicity 1991-2002	26
Table 18:	Long-Term Retention Rate of Entering Undergraduate Classes 1996-2001	27
Table 19:	Degrees Awarded Academic Years 1990-2001	28
Table 20:	Degrees Awarded by Gender and Race/Ethnicity Academic Year 2001-2002	29
Table 21:	Undergraduate Degrees by Discipline Academic Year 2001-2002	30
Table 22:	Graduate Degrees by Discipline Academic Year 2001-2002	31

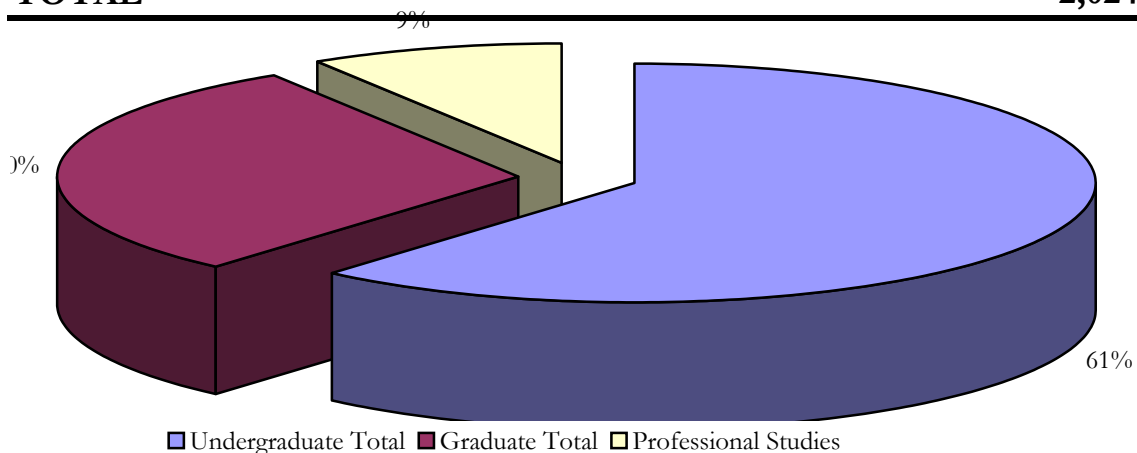
## **INTRODUCTION**

Gallaudet University's total enrollment for fall 2002 is 2,024. This includes 1,243 undergraduate, 602 graduate, and 179 professional studies students. Many of the tables in this report focus on the 1,163 degree-seeking undergraduate and 364 degree-seeking graduate students. The Office of Planning welcomes suggestions from members of the Gallaudet community on how the content and format of this report could be improved.

# Enrollment

**TABLE 1: FALL 2002 ENROLLMENT**

Freshmen	481
Sophomores	214
Juniors	211
Seniors	241
Second Degree	16
Undergraduate Special	24
Exchange	1
Visiting	9
Undergraduate Extension	15
International Interns	8
English Language Institute	23
<b>Undergraduate Total</b>	<b>1,243</b>
Masters	249
Educational Specialist	1
Doctorates	114
Certificate	60
Graduate Special	62
Graduate Extension	115
International Interns	1
<b>Graduate Total</b>	<b>602</b>
<b>Professional Studies</b>	<b>179</b>
<b>TOTAL</b>	<b>2,024</b>



**TABLE 2: FALL ENROLLMENT HISTORY  
1991-2002**

	<b>1991</b>	<b>1992</b>	<b>1993</b>	<b>1994</b>	<b>1995</b>	<b>1996</b>
Preparatory	196	228	180	161		
A.A.S.	28	27	21	18	8	
Freshmen	502	507	552	511	583	481
Sophomores	299	285	256	289	264	243
Juniors	299	302	260	265	274	245
Seniors	323	336	315	297	287	284
Second Degree		17	11	8	12	8
Undergraduate Special	41	44	51	38	48	31
Exchange	1	2	2	5	0	1
Visiting	9	12	12	10	10	9
Undergraduate Extension						42
International Interns						
English Language Institute						
<b>Undergraduate Total</b>	<b>1,698</b>	<b>1,760</b>	<b>1,660</b>	<b>1,602</b>	<b>1,486</b>	<b>1,344</b>
Masters	228	243	256	236	243	261
Educational Specialist	0	0	0	2	1	0
Doctorates	37	45	58	65	71	71
Summer Study	6	0	5	9	6	11
Certificate						1
Graduate Special	69	69	52	60	68	54
Graduate Extension	75	64	68	89	205	178
International Interns						
<b>Graduate Total</b>	<b>415</b>	<b>421</b>	<b>439</b>	<b>461</b>	<b>594</b>	<b>576</b>
<b>Professional Studies</b>	<b>130</b>	<b>79</b>	<b>102</b>	<b>112</b>	<b>128</b>	<b>114</b>
<b>TOTAL</b>	<b>2,243</b>	<b>2,260</b>	<b>2,201</b>	<b>2,175</b>	<b>2,208</b>	<b>2,034</b>

**TABLE 2: FALL ENROLLMENT HISTORY  
1991-2002**

	1997	1998	1999	2000	2001	2002
Preparatory						
A.A.S.						
Freshmen	476	501	503	537	451	481
Sophomores	260	220	221	210	223	214
Juniors	216	240	218	202	212	211
Seniors	256	236	248	233	250	241
Second Degree	11	20	13	6	11	16
Undergraduate Special	27	36	25	41	36	24
Exchange	0	0	0	0	1	1
Visiting	5	10	10	6	13	9
Undergraduate Extension	88	32	74	63	21	15
International Interns		5	6	0	6	8
English Language Institute				23	21	23
<b>Undergraduate Total</b>	<b>1,339</b>	<b>1,300</b>	<b>1,318</b>	<b>1,321</b>	<b>1,245</b>	<b>1,243</b>
Masters	280	302	285	253	233	249
Educational Specialist	1	0	2	2	0	1
Doctorates	79	81	95	103	113	114
Summer Study	14	17	0	0	0	0
Certificate	0	1	0	10	9	60
Graduate Special	72	40	35	63	35	62
Graduate Extension	268	185	124	194	88	115
International Interns		2	0	0	0	1
<b>Graduate Total</b>	<b>714</b>	<b>628</b>	<b>541</b>	<b>625</b>	<b>478</b>	<b>602</b>
<b>Professional Studies</b>	<b>92</b>	<b>70</b>	<b>86</b>	<b>93</b>	<b>103</b>	<b>179</b>
<b>TOTAL</b>	<b>2,145</b>	<b>1,998</b>	<b>1,945</b>	<b>2,039</b>	<b>1,826</b>	<b>2,024</b>

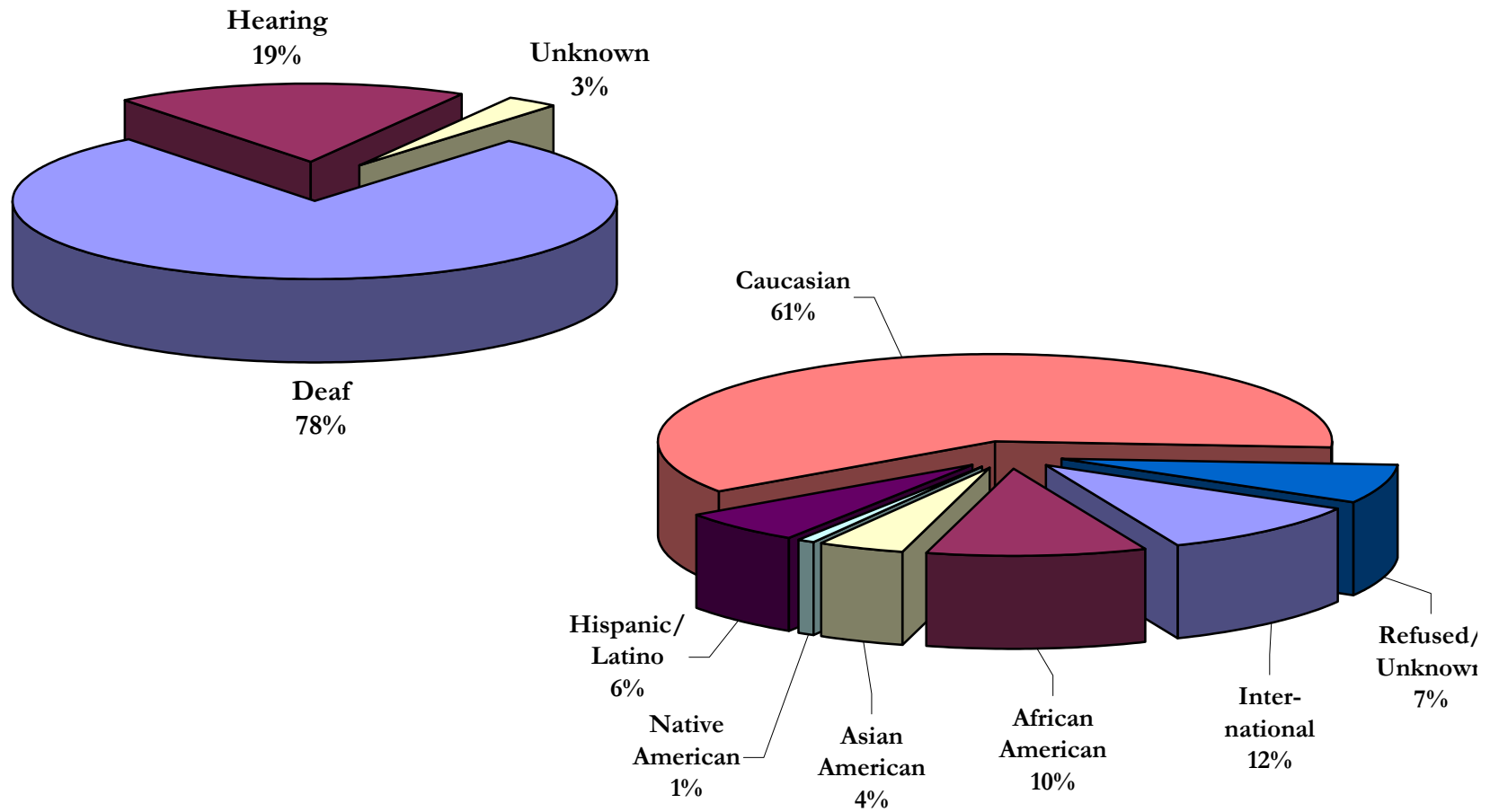
**TABLE 3: DEAF/HEARING AND RACIAL/ETHNIC CHARACTERISTICS  
OF FALL 2002 ENROLLMENT\***

	Deaf	Hearing	Unknown	Inter- national	African American	Asian American	Native American	Hispanic/ Latino	Caucasian	Refused/ Unknown
Freshmen	474	1	6	51	64	30	9	42	269	16
Sophomores	204	6	4	26	24	10	3	15	131	5
Juniors	202	2	7	25	20	8	0	11	142	5
Seniors	235	2	4	22	17	11	2	15	165	9
Second Degree	13	0	3	7	1	0	0	0	7	1
Undergraduate Special	19	5	0	0	2	1	0	0	18	3
Exchange	0	1	0	0	0	0	0	0	1	0
Visiting	1	8	0	0	0	0	0	1	5	3
International Interns	7	0	1	8	0	0	0	0	0	0
English Language Institute	20	0	3	20	0	0	0	0	0	3
<b>Undergraduate Total</b>	<b>1,175</b>	<b>25</b>	<b>28</b>	<b>159</b>	<b>128</b>	<b>60</b>	<b>14</b>	<b>84</b>	<b>738</b>	<b>45</b>
Masters	109	135	5	11	35	3	2	11	170	17
Educational Specialist	0	1	0	0	1	0	0	0	0	0
Doctorates	30	83	1	5	11	6	0	6	75	11
Certificate	6	51	3	0	0	0	0	0	24	36
Graduate Special	25	27	10	2	6	2	0	3	44	5
International Interns	1	0	0	1	0	0	0	0	0	0
<b>Graduate Total</b>	<b>171</b>	<b>297</b>	<b>19</b>	<b>19</b>	<b>53</b>	<b>11</b>	<b>2</b>	<b>20</b>	<b>313</b>	<b>69</b>
<b>TOTAL</b>	<b>1,346</b>	<b>322</b>	<b>47</b>	<b>178</b>	<b>181</b>	<b>71</b>	<b>16</b>	<b>104</b>	<b>1,051</b>	<b>114</b>

\* Numbers do not include extension students.



**FIGURE 1: DEAF/HEARING AND RACIAL/ETHNIC DISTRIBUTION OF FALL 2002 ENROLLMENT\***



\* Numbers do not include extension students.

**TABLE 4: FALL ENROLLMENT HISTORY  
BY RACIAL/ETHNIC DISTRIBUTION\*  
1991-2002**

	1991	1992	1993	1994	1995	1996	1997	1998	1999	2000	2001	2002
<b>Undergraduate</b>												
International	15%	16%	11%	11%	13%	13%	12%	13%	12%	13%	13%	12%
African-American	7%	7%	9%	9%	10%	10%	11%	11%	10%	10%	11%	11%
Asian-American	2%	2%	2%	4%	4%	4%	4%	4%	4%	5%	5%	5%
Native-American	0%	0%	1%	1%	1%	1%	1%	1%	1%	1%	1%	1%
Hispanic/Latino	4%	3%	5%	6%	5%	5%	6%	7%	6%	6%	7%	7%
Caucasian	71%	69%	70%	67%	65%	63%	62%	61%	63%	60%	59%	60%
Refused/Unknown	1%	2%	3%	3%	3%	3%	4%	4%	5%	6%	4%	4%
<b>Graduate</b>												
International	11%	9%	10%	8%	8%	9%	6%	5%	4%	4%	7%	4%
African-American	5%	6%	7%	7%	8%	8%	9%	8%	8%	8%	11%	11%
Asian-American	1%	2%	2%	1%	1%	2%	2%	2%	2%	2%	3%	2%
Native-American	0%	0%	0%	1%	0%	0%	0%	1%	0%	0%	0%	0%
Hispanic/Latino	2%	2%	2%	3%	3%	4%	4%	4%	4%	3%	3%	4%
Caucasian	78%	79%	78%	78%	72%	68%	69%	75%	78%	72%	67%	64%
Refused/Unknown	1%	2%	2%	3%	8%	10%	11%	5%	4%	10%	8%	15%
<b>TOTAL ENROLLMENT</b>												
International	15%	15%	11%	10%	12%	12%	11%	11%	10%	10%	12%	10%
African-American	7%	7%	8%	9%	9%	10%	10%	10%	9%	10%	11%	11%
Asian-American	2%	2%	2%	3%	3%	4%	4%	4%	3%	4%	4%	4%
Native-American	0%	0%	1%	1%	1%	1%	1%	1%	1%	1%	1%	1%
Hispanic/Latino	3%	3%	4%	5%	5%	5%	5%	6%	6%	6%	6%	6%
Caucasian	72%	71%	71%	69%	66%	64%	64%	65%	67%	62%	61%	61%
Refused/Unknown	1%	2%	3%	3%	4%	5%	6%	4%	4%	7%	5%	7%

\* Numbers do not include extension students.

**TABLE 5: FALL 2002 U.S. ENROLLMENT BY STATE\***

	Undergraduate	Graduate	ELI *		Undergraduate	Graduate	ELI *
Alabama	15	1	0	Montana	2	2	0
Alaska	1	1	0	Nebraska	5	0	0
Arizona	30	6	0	Nevada	8	0	0
Arkansas	1	1	0	New Hampshire	1	1	0
California	113	14	0	New Jersey	34	11	0
Colorado	14	2	0	New Mexico	9	1	0
Connecticut	9	8	0	New York	99	15	0
Delaware	4	1	0	North Carolina	26	4	0
District of Columbia	40	36	1	North Dakota	0	1	0
Florida	51	13	1	Ohio	42	9	0
Georgia	23	6	0	Oklahoma	6	1	0
Guam	1	0	0	Oregon	14	0	0
Hawaii	4	1	0	Pennsylvania	38	13	0
Idaho	9	1	0	Puerto Rico	0	1	0
Illinois	48	5	0	Rhode Island	2	2	0
Indiana	27	6	0	South Carolina	12	2	0
Iowa	8	3	0	South Dakota	7	0	0
Kansas	15	2	0	Tennessee	12	1	0
Kentucky	15	1	0	Texas	48	8	0
Louisiana	8	0	0	Utah	4	2	0
Maine	3	1	0	Vermont	2	1	0
Maryland	111	96	0	Virginia	60	48	1
Massachusetts	23	10	0	Washington	17	1	0
Michigan	22	5	0	West Virginia	9	1	0
Minnesota	25	7	0	Wisconsin	20	5	0
Mississippi	8	0	0	Wyoming	1	0	0
Missouri	26	4	0				

<b>TOTAL STUDENTS</b>	<b>1,132</b>	<b>361</b>	<b>3</b>
<b>TOTAL STATES/TER.</b>	<b>51</b>	<b>45</b>	<b>3</b>

\* English Language Institute

**TABLE 6: FALL 2002 INTERNATIONAL ENROLLMENT BY COUNTRY\***

Undergraduate Graduate ELI **				Undergraduate Graduate ELI **			
Barbados	2	0	0	Kenya	1	0	0
Belarus	1	0	0	Korea, Republic of	2	0	2
Belgium	2	0	0	Kuwait	0	0	1
Bermuda	0	0	1	Latvia	0	0	0
Botswana	2	0	0	Lebanon	1	0	1
Brazil	1	0	1	Malaysia	0	0	0
Burundi	0	0	0	Mexico	0	0	0
Cameroon	0	0	0	Mongolia	0	1	0
Canada	51	5	0	Netherlands	3	0	1
Chile	0	0	2	New Zealand	0	0	0
China	9	1	1	Nigeria	3	0	0
Colombia	1	0	0	Norway	1	1	0
Congo	1	0	0	Pakistan	0	0	0
Croatia	0	0	0	Panama	0	0	0
Czech Republic	0	1	0	Philippines	0	0	0
Egypt	1	0	0	Russian Federation	0	0	0
Ethiopia	0	0	0	Rwanda	0	0	0
Finland	0	0	0	Saudi Arabia	2	0	2
France	0	0	0	Singapore	1	0	0
Germany	0	1	0	Slovakia	0	0	0
Guatemala	0	0	0	South Africa	1	0	0
Haiti	1	0	0	Spain	1	0	0
Hong Kong	1	0	0	Sri Lanka	0	0	0
Iceland	1	0	0	Sweden	3	0	0
India	5	0	1	Switzerland	1	0	0
Indonesia	1	0	0	Taiwan, Rep. of China	4	0	1
Iran (Islamic Rep. of)	0	0	0	Thailand	0	0	0
Ireland	0	0	0	Trinidad and Tobago	0	1	0
Israel	2	0	1	Uganda	0	1	0
Italy	1	0	0	United Arab Emirates	1	0	1
Jamaica	0	0	0	United Kingdom	0	0	0
Japan	2	1	1	Uzbekistan	0	0	0
<b>TOTAL STUDENTS</b>				<b>110</b>	<b>13</b>	<b>17</b>	
<b>TOTAL COUNTRIES</b>				<b>32</b>	<b>9</b>	<b>14</b>	

\* The countries of origin for 32 undergraduates, eight graduates, and three ELI student are unknown.

\*\* English Language Institute

**TABLE 7: FALL 2002 FULL- AND PART-TIME  
ENROLLMENT BY GENDER**

	<b>Full-time</b>		<b>Part-time</b>	
	<b>Women</b>	<b>Men</b>	<b>Women</b>	<b>Men</b>
Freshmen	232	233	10	6
Sophomores	114	86	5	9
Juniors	112	91	3	5
Seniors	113	102	14	12
Second Degree	10	6	0	0
Undergraduate Special	0	0	13	11
Exchange	1	0	0	0
Visiting	7	2	0	0
International Interns	5	3	0	0
English Language Institute	5	18	0	0
<b>Undergraduate Total</b>	<b>599</b>	<b>541</b>	<b>45</b>	<b>43</b>
Masters	177	32	30	10
Educational Specialist	0	1	0	0
Doctorates	67	10	27	10
Certificate	1	0	54	5
Graduate Special	0	0	53	9
International Interns	0	0	1	0
<b>Graduate Total</b>	<b>245</b>	<b>43</b>	<b>165</b>	<b>34</b>
<b>TOTAL</b>	<b>844</b>	<b>584</b>	<b>210</b>	<b>77</b>

**TABLE 8: FALL 2002 UNDERGRADUATE MAJORS  
BY DEPARTMENT**

<b>College of Liberal Arts, Sciences, and Technologies</b>		<b>Graduate School and Professional Programs</b>	
Art	48	Accounting	29
Biology	27	American Sign Language	14
Chemistry	5	Business Administration	23
Communication Arts	49	Computer Information Systems	16
Computer Science	15	Economics & Finance	7
Deaf Studies	16	Education	32
Digital Media	0	Entrepreneurial Studies	1
English	11	Physical Education	18
Family & Consumer Studies	28	Recreation & Leisure Studies	10
French	5		
Government	26	<b>Subtotal</b>	<b>150</b>
History	20		
Mathematics	17		
Philosophy	5		
Physics	1		
Psychology	38		
Self-Directed: Religion	1		
Social Work	37		
Sociology	19		
Spanish	8		
Television & Photography	9		
Theatre Arts	13		
<b>Subtotal</b>	<b>398</b>		
<hr/> <b>TOTAL</b> <hr/>		<hr/> <b>548</b> <hr/>	

**TABLE 9: FALL 2002 GRADUATE MAJORS**

College of Liberal Arts, Science, and Technologies		Graduate School and Professional Programs (cont'd)	
<b>Department of Government and History</b>		<b>Counseling</b>	
Deaf History, Certificate	2	Mental Health Counseling, M.A.	26
		Community Counseling, M.A.	0
		School Counseling and Guidance, M.A.	24
<b>Department of Psychology</b>		<b>Education</b>	
Clinical Psychology, Ph.D.	30	Advanced Studies	
Clinical Psychology, M.A.	0	Education, Ph.D.	4
Developmental Psychology, M.A.	5	Deaf Education, Ph.D.	20
School Psychology, M.A. / Specialist	12	Deaf Education, Ed.S.	0
		Family Centered Early Education, Education, M.A.	20
<b>Department of Social Work</b>		Elementary Education, M.A.	20
Social Work, M.S.W.	35	Secondary Education, M.A.	7
		Multiple Disabilities Ed., M.A.	20
<b>Department of Deaf Studies</b>		Special Programs in	
Deaf Studies, M.A.	8	Deafness, M.A.	8
		Educational Technology, M.S.	2
<b>Subtotal</b>	<b>84</b>		
Graduate School and Professional Programs		<b>Educational Foundations and Research</b>	
<b>Administration and Supervision</b>		Integrated Technology, Certificate	14
Administration, M.S.	15		
Instructional Supervision, Ed.S.	0	<b>Linguistics and Interpretation</b>	
Special Education Admin., Ph.D.	27	Linguistics, M.A.	21
Leadership, Certificate	0	Linguistics, Ph.D.	5
Management, Certificate	0	Interpretation, M.A.	22
<b>Audiology and Speech-Language Pathology</b>		<b>Physical Education and Recreation</b>	
Audiology, Au.D.	35	Leisure Services Admin, M.S.	9
Speech-Language Pathology, M.A.	26		
		<b>Subtotal</b>	<b>325</b>
<b>TOTAL</b>			<b>409</b>

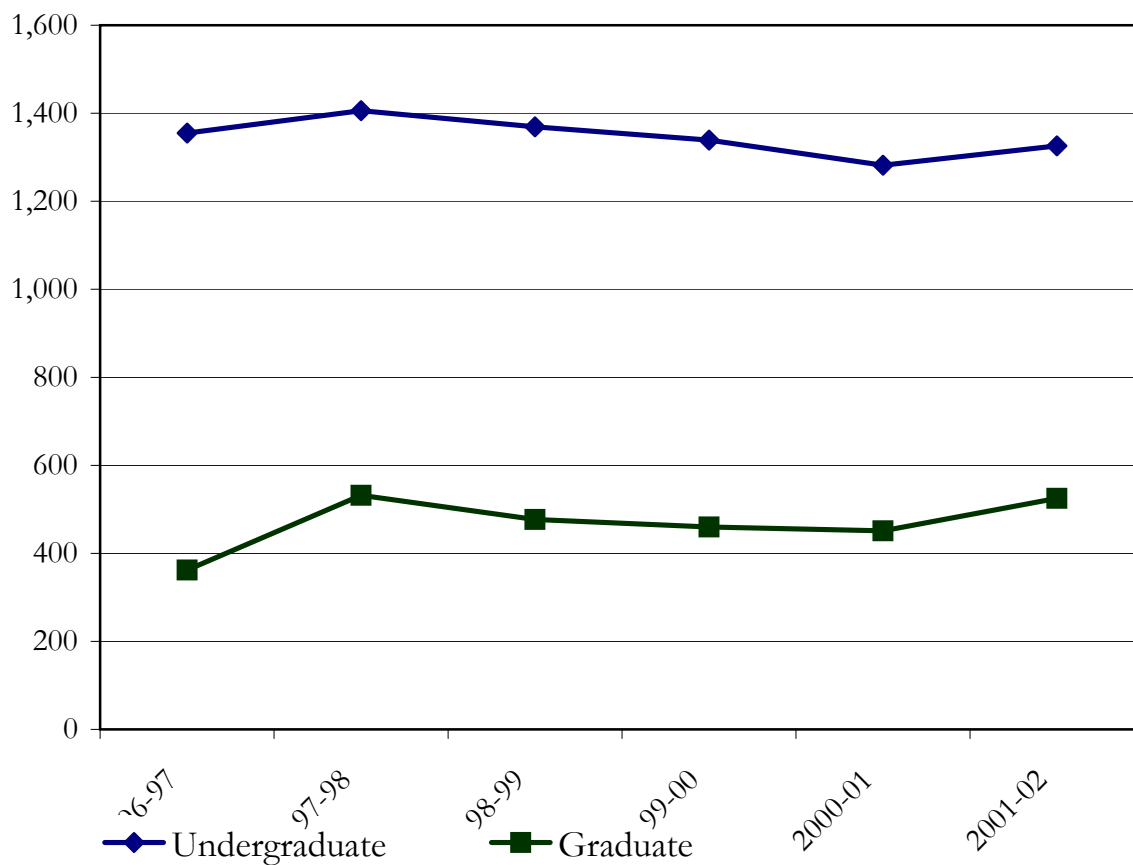
**TABLE 10: TOTAL ANNUAL ENROLLMENT  
ACADEMIC YEAR 2001-2002**

	<b>Fall 2001</b>	<b>Spring 2002</b>	<b>Summer 2002</b>
Freshmen	448	328	19
Sophomores	228	220	31
Juniors	211	193	63
Seniors	252	302	101
Second Degree	11	9	1
Undergraduate Special	55	53	10
Exchange	1	1	0
Visiting	13	7	1
Undergraduate Extension	0	23	4
International Interns	14	13	1
English Language Institute	21	31	7
<b>Undergraduate Total</b>	<b>1,254</b>	<b>1,180</b>	<b>238</b>
Masters	235	249	123
Educational Specialist	2	2	1
Doctorates	126	120	53
Certificate	12	43	5
Graduate Special	62	98	57
Graduate Extension	6	118	17
International Interns	1	2	0
<b>Graduate Total</b>	<b>444</b>	<b>632</b>	<b>256</b>
<b>Professional Studies</b>	<b>116</b>	<b>170</b>	<b>212</b>
<b>TOTAL</b>	<b>1,814</b>	<b>1,982</b>	<b>706</b>



**TABLE 11: ANNUAL UNDUPLICATED  
HEADCOUNT ENROLLMENT ACADEMIC YEARS 1996-2002\***

	1996-97	1997-98	1998-99	1999-00	2000-01	2001-02
<b>Undergraduate</b>	1,355	1,406	1,369	1,339	1,282	1,326
<b>Graduate</b>	362	532	477	460	451	525



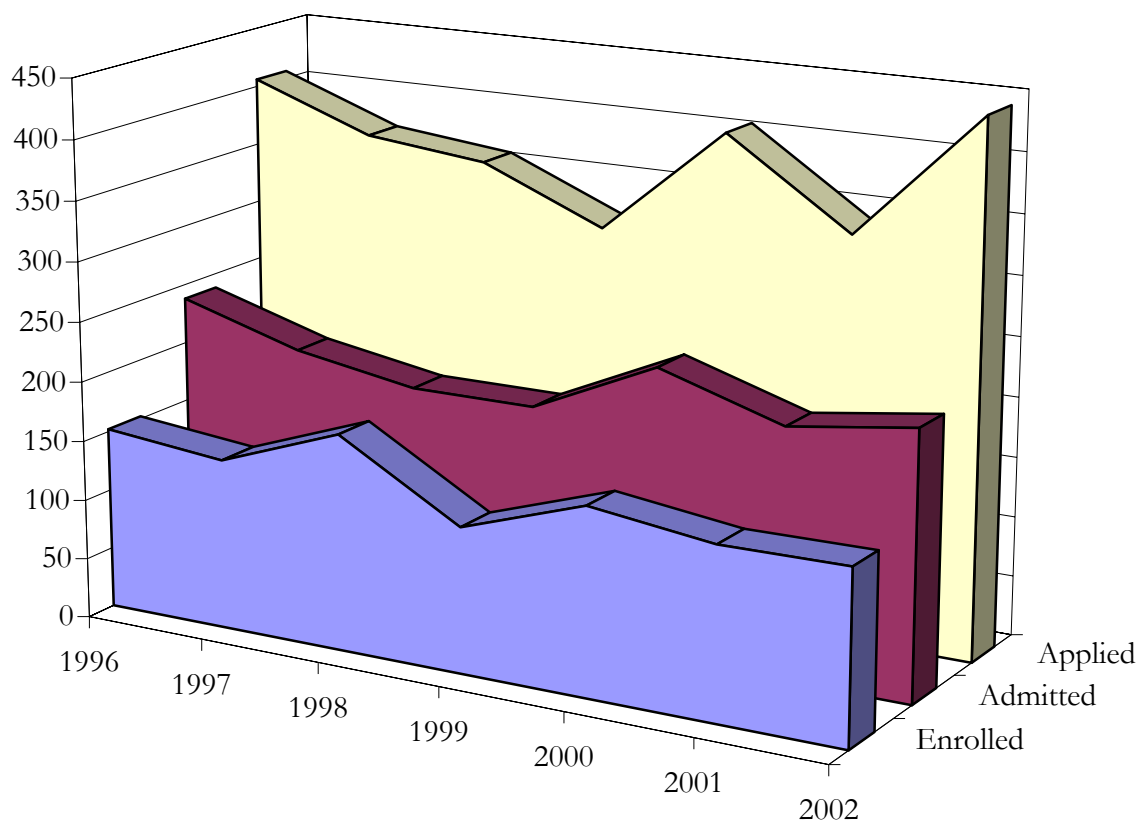
*\* This is an unduplicated count of the total number of students by level enrolled during the 12-month reporting period in any courses that can lead to a degree or other formal award.*

# Admissions

**TABLE 13: FALL 2002 UNDERGRADUATE ADMISSIONS SUMMARY  
AND HISTORY OF FALL APPLICATIONS, ADMISSIONS, AND  
REGISTRATIONS 1996-2002**

	Applied	Admitted	Enrolled	Enrollment Yield
<b>2002</b>				
New Freshmen	603	426	237	56%
Transfers	155	115	78	68%
Degree-seeking	758	541	315	58%
Special/Others	53	53	32	60%
<b>TOTAL</b>	<b>811</b>	<b>594</b>	<b>347</b>	<b>58%</b>
<b>2001</b>				
Degree-seeking	533	387	280	72%
Special/Others	69	61	45	74%
<b>TOTAL</b>	<b>602</b>	<b>448</b>	<b>325</b>	<b>73%</b>
<b>2000</b>				
Degree-seeking	609	433	317	73%
Special/Others	39	35	28	80%
<b>TOTAL</b>	<b>648</b>	<b>468</b>	<b>345</b>	<b>74%</b>
<b>1999</b>				
Degree-seeking	642	479	324	68%
Special/Others	48	40	22	55%
<b>TOTAL</b>	<b>690</b>	<b>519</b>	<b>346</b>	<b>67%</b>
<b>1998</b>				
Degree-seeking	554	427	331	78%
Special/Others	44	44	36	82%
<b>TOTAL</b>	<b>598</b>	<b>471</b>	<b>367</b>	<b>78%</b>
<b>1997</b>				
Degree-seeking	688	514	304	59%
Special/Others	74	65	25	38%
<b>TOTAL</b>	<b>762</b>	<b>579</b>	<b>329</b>	<b>57%</b>
<b>1996</b>				
Degree-seeking	733	499	251	50%
Special/Others	70	70	31	44%
<b>TOTAL</b>	<b>803</b>	<b>569</b>	<b>282</b>	<b>50%</b>

**TABLE 14: FALL GRADUATE DEGREE-SEEKING APPLICATIONS,  
ADMISSIONS, AND REGISTRATIONS 1996-2002**

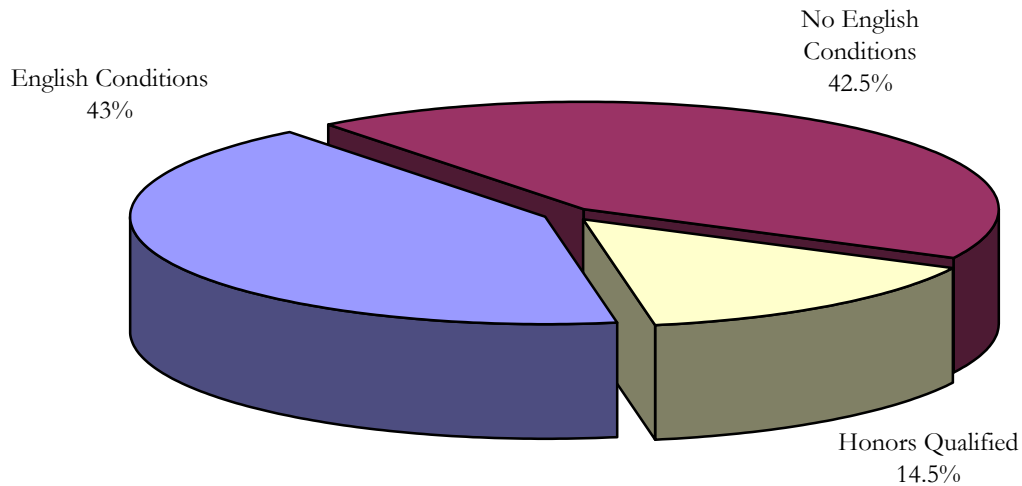


	1996	1997	1998	1999	2000	2001	2002
<b>Enrolled</b>	152	142	180	121	156	143	144
<b>Admitted</b>	238	208	191	191	239	207	222
<b>Applied</b>	406	369	358	315	406	336	443

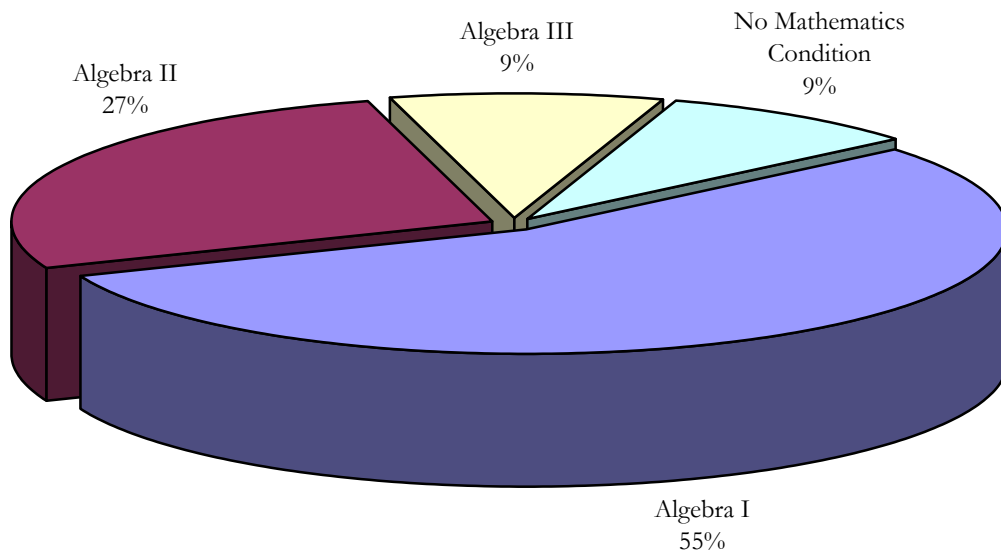
**TABLE 15: FALL 2002 NEW DEGREE-SEEKING UNDERGRADUATE STUDENTS BY  
DEMOGRAPHIC CHARACTERISTICS**

<b>Age</b>			<b>Deafness in Family</b>		
17	2	1%	Deaf Family Member(s)	104	33%
18	75	24%	Both Parents	54	17%
19	79	25%	One Parent	9	3%
20	50	16%	Sibling(s)	75	24%
21	39	12%			
22	9	3%			
23-25	28	9%	<b>Ethnic Background</b>		
26-29	12	4%	International	28	9%
30 and over	20	6%	African-American	36	11%
			Asian-American	19	6%
			Native American	10	3%
			Hispanic/Latino	28	9%
<b>Gender</b>			Caucasian	193	61%
Men	148	47%	Refused/Unknown	2	1%
Women	167	53%			

**FIGURE 2: FALL 2002 NEW DEGREE-SEEKING  
UNDERGRADUATE STUDENTS BY ENGLISH AND  
MATHEMATICS PLACEMENT TEST PERFORMANCE**



**English Placement Test Performance**



**Mathematics Placement Test Performance**

**TABLE 16: FALL 2002 NEW DEGREE-SEEKING GRADUATE STUDENTS BY DEMOGRAPHIC CHARACTERISTICS AND PROGRAMS**

<b>Age</b>			<b>Hearing Status</b>		
20-29	100	70%	Deaf/Hard of Hearing	61	43%
30-39	34	24%	Hearing	76	54%
40-49	5	4%	Refused/Unknown	5	4%
50 and over	3	2%			
<b>Gender</b>			<b>Ethnic Background</b>		
Men	30	21%	International	4	3%
Women	112	79%	African-American	14	10%
			Asian-American	0	0%
			Native-American	1	1%
			Hispanic/Latino	9	6%
			Caucasian	102	72%
			Refused/Unknown	12	8%

<b>College of Liberal Arts, Sciences, and Technologies</b>			<b>Graduate School and Professional Programs</b>		
Deaf Studies	8	6%	Administration & Supervision	4	3%
Psychology	13	9%	Audiology & Speech-Language		
Social Work	16	11%	Pathology	15	11%
			Counseling	15	11%
			Education	20	14%
			Educational Foundations & Research	7	5%
			Linguistics and Interpreting	30	21%
			Integrating Technology	10	6%
			Physical Education & Recreation	4	3%

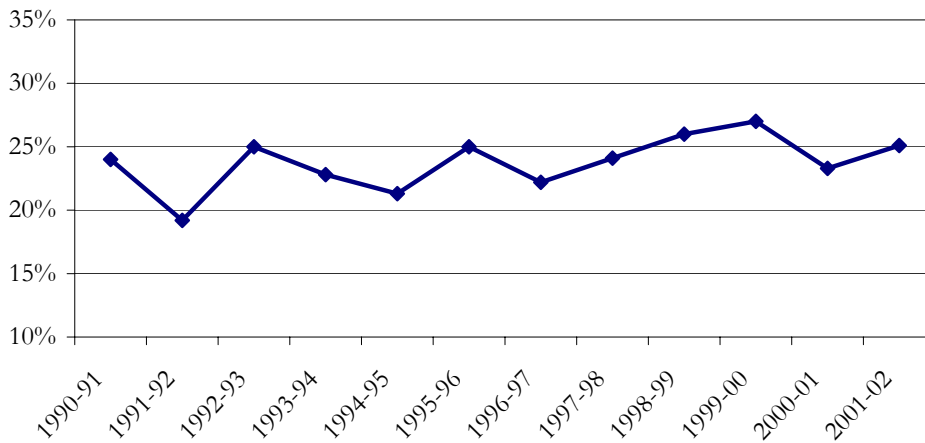
# **Graduation, Persistence and Attrition**



**TABLE 17: UNDERGRADUATE ONE-YEAR GRADUATION,  
ATTRITION, AND PERSISTENCE**

	Enrolled Fall 2001	Graduated	Dismissed	Withdrew	Persisted to Fall 2002
<b>TOTAL</b>	<b>1,150</b>	<b>150</b>	<b>38</b>	<b>255</b>	<b>717</b>
<b>Percentage</b>		<b>13%</b>	<b>3%</b>	<b>22%</b>	<b>62%</b>
<i>By Class</i>					
Freshmen	452	0 0%	16 4%	141 31%	295 65%
Sophomores	225	0 0%	8 4%	52 23%	165 73%
Juniors	212	10 5%	12 6%	29 14%	171 81%
Seniors	250	135 54%	2 1%	30 12%	83 33%
Second Degree	11	5 45%	0 0%	3 27%	3 27%
<i>By Gender</i>					
Men	554	66 12%	22 4%	128 23%	338 61%
Women	596	84 14%	6 1%	127 21%	379 64%
<i>By Ethnic Background</i>					
International	141	22 16%	2 1%	25 18%	92 65%
African-American	129	16 12%	8 6%	29 22%	76 59%
Native American	6	0 0%	0 0%	3 50%	3 50%
Asian-American	59	9 15%	3 5%	10 17%	37 63%
Hispanic/Latino	79	9 11%	2 3%	19 24%	49 62%
Caucasian	696	90 13%	13 2%	155 22%	438 63%
Refused/Unknown	40	4 10%	0 0%	14 35%	22 55%

**FIGURE 3: UNDERGRADUATE ONE-YEAR  
ATTRITION TRENDS 1990-2002**



**TABLE 18: UNDERGRADUATE ONE-YEAR ATTRITION BY CLASS,  
GENDER, AND RACE/ETHNICITY 1990-2002**

	1990-91	1991-92	1992-93	1993-94	1994-95	1995-96	1996-97	1997-98	1998-99	1999-00	2000-01	2001-02
<b>TOTAL</b>	<b>24%</b>	<b>19%</b>	<b>25%</b>	<b>23%</b>	<b>21%</b>	<b>25%</b>	<b>22%</b>	<b>24%</b>	<b>26%</b>	<b>27%</b>	<b>23%</b>	<b>25%</b>
<i>By Class</i>												
Freshmen	31%	28%	36%	34%	33%	38%	35%	38%	36%	36%	36%	35%
Sophomores	16%	17%	22%	15%	19%	22%	19%	20%	16%	21%	20%	27%
Juniors	11%	11%	12%	11%	11%	13%	13%	13%	20%	18%	13%	20%
Seniors	10%	9%	9%	6%	6%	10%	11%	12%	19%	23%	13%	13%
Second Degree	N/A	N/A	N/A	N/A	N/A	N/A	N/A	N/A	N/A	46%	25%	27%
<i>By Gender</i>												
Men	24%	19%	19%	25%	24%	27%	26%	25%	30%	29%	25%	27%
Women	19%	20%	20%	21%	19%	23%	19%	22%	22%	25%	23%	22%
<i>By Ethnic Background</i>												
Caucasians	21%	19%	25%	23%	21%	25%	23%	23%	25%	28%	26%	24%
Non-white	27%	28%	24%	32%	24%	26%	24%	28%	30%	30%	21%	27%

**TABLE 19: LONG-TERM RETENTION RATE OF ENTERING UNDERGRADUATE CLASSES 1996-2001**

Number originally enrolled		Retained						Graduated		
		After 1 year	After 2 years	After 3 years	After 4 years	After 5 years	After 6 years	Within 4 years	Within 5 years	Within 6 years
<i>All Students</i>										
<b>1996</b>	237	62%	46%	33%	28%	16%	11%	6%	14%	22%
<b>1997</b>	293	66%	45%	40%	29%	14%		6%	21%	
<b>1998</b>	331	60%	47%	40%	27%			8%		
<b>1999</b>	322	63%	49%	42%						
<b>2000</b>	313	65%	48%							
<b>2001</b>	270	69%								
<i>First-time Students</i>										
<b>1996</b>	183	60%	45%	33%	31%	17%	N/A	4%	13%	N/A
<b>1997</b>	215	67%	41%	40%	30%	13%		3%	20%	
<b>1998</b>	230	63%	49%	43%	31%			3%		
<b>1999</b>	254	61%	47%	42%						
<b>2000</b>	241	66%	48%							
<b>2001</b>	213	68%								
<i>Transfer Students</i>										
<b>1996</b>	54	70%	52%	35%	20%	13%	N/A	11%	19%	N/A
<b>1997</b>	78	63%	55%	40%	24%	15%		15%		
<b>1998</b>	101	54%	42%	35%	18%					
<b>1999</b>	68	69%	59%	44%						
<b>2000</b>	72	61%	50%							
<b>2001</b>	57	74%								

**TABLE 20: DEGREES AWARDED  
ACADEMIC YEARS 1990-2001**

	<b>Associates</b>	<b>Bachelors</b>	<b>Masters</b>	<b>Specialists</b>	<b>Doctoral</b>	<b>TOTAL</b>
<b>1990-91</b>	5	204	106	10	4	<b>329</b>
<b>1991-92</b>	13	230	95	4	3	<b>345</b>
<b>1992-93</b>	7	249	81	6	1	<b>344</b>
<b>1993-94</b>	8	227	113	8	6	<b>362</b>
<b>1994-95</b>	6	231	110	9	9	<b>365</b>
<b>1995-96</b>	8	185	108	7	12	<b>320</b>
<b>1996-97</b>	0	201	102	8	5	<b>316</b>
<b>1997-98</b>	0	174	98	8	5	<b>285</b>
<b>1998-99</b>	0	146	125	8	7	<b>286</b>
<b>1999-00</b>	0	155	129	6	6	<b>296</b>
<b>2000-01</b>	0	142	104	6	11	<b>263</b>
<b>2001-02*</b>	0	174	92	9	10	<b>285</b>

\* Based on data provided to IPEDS, Fall 2002.

**TABLE 21: DEGREES AWARDED  
BY GENDER AND RACE/ETHNICITY  
ACADEMIC YEAR 2001-2002\***

	Bachelors	Masters	Specialists	Doctorates
<i>By Gender</i>				
Men	72	13	1	2
Women	102	79	8	8
<i>By Ethnic Background</i>				
International	14	4	0	0
African-American	17	5	0	1
Asian-American	11	2	0	0
Native American	1	0	0	0
Hispanic/Latino	11	2	0	1
Caucasian	111	71	8	8
Refused/Unknown	9	8	1	0
<b>TOTAL</b>	<b>174</b>	<b>92</b>	<b>9</b>	<b>10</b>

\* Based on data provided to IPEDS, Fall 2002.

**TABLE 22: UNDERGRADUATE DEGREES BY DISCIPLINE  
ACADEMIC YEAR 2001-2002**

<b>Bachelor of Arts</b>		<b>Bachelor of Science</b>	
American Sign Language	7	Accounting	6
Art	19	Business Administration	13
Biology	9	Computer Information Systems	10
Chemistry	1	Economics	1
Communication Arts	12	Economics & Finance	4
Computer Science	4	Entrepreneurial Studies	0
Deaf Studies	6	Family & Consumer Studies	8
Education	14	Physical Education	0
English	8	Recreation & Leisure Studies	10
Government	4		
History	9		
Journalism	0		
Mathematics	2		
Philosophy	0		
Physics	0	<b>Subtotal</b>	<b>52</b>
Psychology	13		
Sign Communication	0		
Social Work	9		
Sociology	3		
Spanish	0		
Television & Photography	6		
Theater Arts	2		
<b>Subtotal</b>	<b>128</b>		
<hr/> <b>TOTAL*</b>		<hr/> <b>180</b> <hr/>	

\* Total excludes double majors.

**TABLE 23: GRADUATE DEGREES BY DISCIPLINE  
ACADEMIC YEAR 2001-2002**

<b>Master of Arts</b>		<b>Master of Social Work</b>	
Psychology	4	Social Work	24
Developmental Psychology	5		
Linguistics	3	<b>Subtotal</b>	<b>24</b>
Interpreting	10		
Mental Health Counseling	6		
School Counseling & Guidance	8	<b>Specialist</b>	
Community Counseling	0	Administration & Supervision	0
Rehabilitation Counseling	0	Educational Specialist	0
Education		School Psychology	6
Advanced Studies in Education	0		
Family-centered Early Education	3	<b>Subtotal</b>	<b>6</b>
Elementary Education	7		
Multiple Disabilities	3		
Non-degree Teacher Certification	0	<b>Doctor of Philosophy</b>	
Secondary	2	Administration & Supervision	0
Special Education in Deafness	3	Audiology	8
		Clinical Psychology	5
<b>Subtotal</b>	<b>54</b>	Deaf Education	3
		Special Education Admin	2
<b>Master of Science</b>		<b>Subtotal</b>	<b>18</b>
Administration	0		
Audiology	0		
Speech-Language Pathology	8		
<b>Subtotal</b>	<b>8</b>		
<hr/> <b>TOTAL</b> <hr/>		<hr/> <b>110</b> <hr/>	