

2003 Enrollment Report

Gallaudet  University

TABLE OF CONTENTS

Introduction	3
--------------	---

ENROLLMENT

Table 1:	Fall 2003 Enrollment	5
Table 2:	Fall Enrollment History 1992-2003	6
Table 3:	Deaf/Hearing & Racial/Ethnic Characteristics of Fall 2003 Enrollment	8
Figure 1:	Deaf/Hearing & Racial/Ethnic Distribution of Fall 2003 Enrollment	9
Table 4:	Fall Enrollment History by Racial/Ethnic Distribution, 1992-2003	10
Table 5:	Fall 2003 U.S. Enrollment by State	11
Table 6:	Fall 2003 International Enrollment by Country	12
Table 7:	Fall 2003 Full- and Part-Time Enrollment by Gender	13
Table 8:	Fall 2003 Undergraduate Majors by Department	14
Table 9:	Fall 2003 Graduate Majors	15
Table 10:	Total Annual Enrollment, Academic Year 2002-2003	16
Table 11:	Annual Unduplicated Headcount Enrollment, Academic Years 1997-2003	17

ADMISSIONS

Table 12:	Fall 2003 Undergraduate Admissions Summary and History of Fall Applications, Admissions, and Registrations, 1997-2003	19
Table 13:	Fall Graduate Degree-Seeking Applications, Admissions, and Registrations, 1997-2003	20
Table 14:	Fall 2003 New Degree-Seeking Undergraduate Students by Demographic	21
Figure 2:	Fall 2003 New Degree-Seeking Undergraduate Students by English & Mathematics Placement Test Performance	22
Table 15:	Fall 2003 New Degree-Seeking Graduate Students by Demographic Characteristics and Programs	23

GRADUATION, PERSISTENCE, AND ATTRITION

Table 16:	Undergraduate One-Year Graduation, Attrition, and Persistence	25
Figure 3:	Undergraduate One-Year Attrition Trends, 1992-2003	26
Table 17:	Undergraduate One-Year Attrition by Class, Gender, and Race/Ethnicity, 1992-2003	26
Table 18:	Long-Term Retention Rate of Entering Undergraduate Classes, 1998-2003	27
Table 19:	Degrees Awarded, Academic Years 1992-2003	28
Table 20:	Degrees Awarded by Gender and Race/Ethnicity, Academic Year 2002-2003	29
Table 21:	Undergraduate Degrees by Discipline, Academic Year 2002-2003	30
Table 22:	Graduate Degrees by Discipline, Academic Year 2002-2003	31

INTRODUCTION

Gallaudet University's total enrollment for fall 2003 is 1,812. This includes 1,236 undergraduate, 506 graduate, and 70 professional studies students. Many of the tables in this report focus on the 1,154 degree-seeking undergraduate and 405 degree-seeking graduate students. The Office of Planning welcomes suggestions from members of the Gallaudet community on how the content and format of this report could be improved.

The Office of Planning

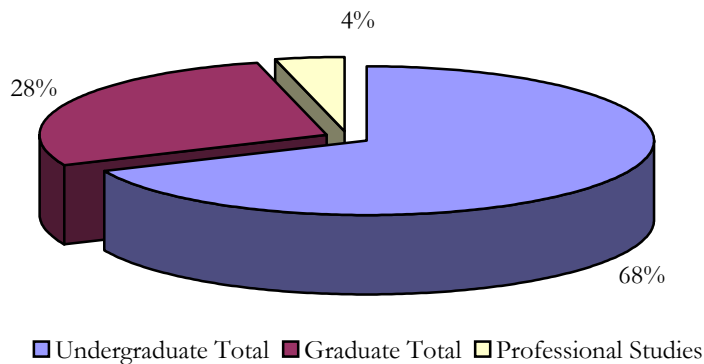
Gallaudet University
800 Florida Avenue, NE
College Hall, Room 203
Washington, DC 20002
(202) 651-5030 v/tty • (202) 651-5508 fax
planning@gallaudet.edu

Enrollment

TABLE 1: FALL 2003 ENROLLMENT

Freshmen	484
Sophomores	216
Juniors	209
Seniors	234
Second Degree	11
Undergraduate Special	24
Exchange	0
Consortium	2
Visiting	5
Undergraduate Extension	23
International Interns	8
English Language Institute	20
Undergraduate Total	1,236
Masters	237
Specialist	20
Doctorates	127
Certificate	21
Graduate Special*	101
Graduate Total	506
Professional Studies	70
TOTAL	1,812

* The Graduate Special count includes Graduate Extension students and International Interns.



**TABLE 2: FALL ENROLLMENT HISTORY
1992-2003**

	1992	1993	1994	1995	1996	1997
Preparatory	228	180	161			
A.A.S.	27	21	18	8		
Freshmen	507	552	511	583	481	476
Sophomores	285	256	289	264	243	260
Juniors	302	260	265	274	245	216
Seniors	336	315	297	287	284	256
Second Degree	17	11	8	12	8	11
Undergraduate Special	44	51	38	48	31	27
Exchange	2	2	5	0	1	0
Consortium						
Visiting	12	12	10	10	9	5
Undergraduate Extension					42	88
International Interns						
English Language Institute						
Undergraduate Total	1,760	1,660	1,602	1,486	1,344	1,339
Masters	243	256	236	243	261	280
Educational Specialist	10	0	2	1	0	1
Doctorates	45	58	65	71	71	79
Summer Study	0	5	9	6	11	14
Certificate					1	0
Graduate Special	69	52	60	68	54	72
Graduate Extension	64	68	89	205	178	268
International Interns						
Graduate Total	431	439	461	594	576	714
Professional Studies	79	102	112	128	114	92
TOTAL	2,270	2,201	2,175	2,208	2,034	2,145

**TABLE 2: FALL ENROLLMENT HISTORY
1992-2003**

	1998	1999	2000	2001	2002	2003
Preparatory						
A.A.S.						
Freshmen	501	503	537	451	481	484
Sophomores	220	221	210	223	214	216
Juniors	240	218	202	212	211	209
Seniors	236	248	233	250	241	234
Second Degree	20	13	6	11	16	11
Undergraduate Special	36	25	41	36	24	24
Exchange	0	0	0	1	1	0
Consortium						2
Visiting	10	10	6	13	9	5
Undergraduate Extension	32	74	63	21	15	23
International Interns	5	6	0	6	8	8
English Language Institute			23	21	23	20
Undergraduate Total	1,300	1,318	1,321	1,245	1,243	1,236
Masters	302	285	253	233	249	237
Specialist	0	2	2	0	1	20
Doctorates	81	95	103	113	114	127
Summer Study	17	0	0	0	0	0
Certificate	1	0	10	9	60	21
Graduate Special	40	35	63	35	62	101
Graduate Extension	185	124	194	88	115	*
International Interns	2	0	0	0	1	*
Graduate Total	628	541	625	478	602	506
Professional Studies	70	86	93	103	179	70
TOTAL	1,998	1,945	2,039	1,826	2,024	1,812

* The Graduate Special count includes Graduate Extension students and International Interns.

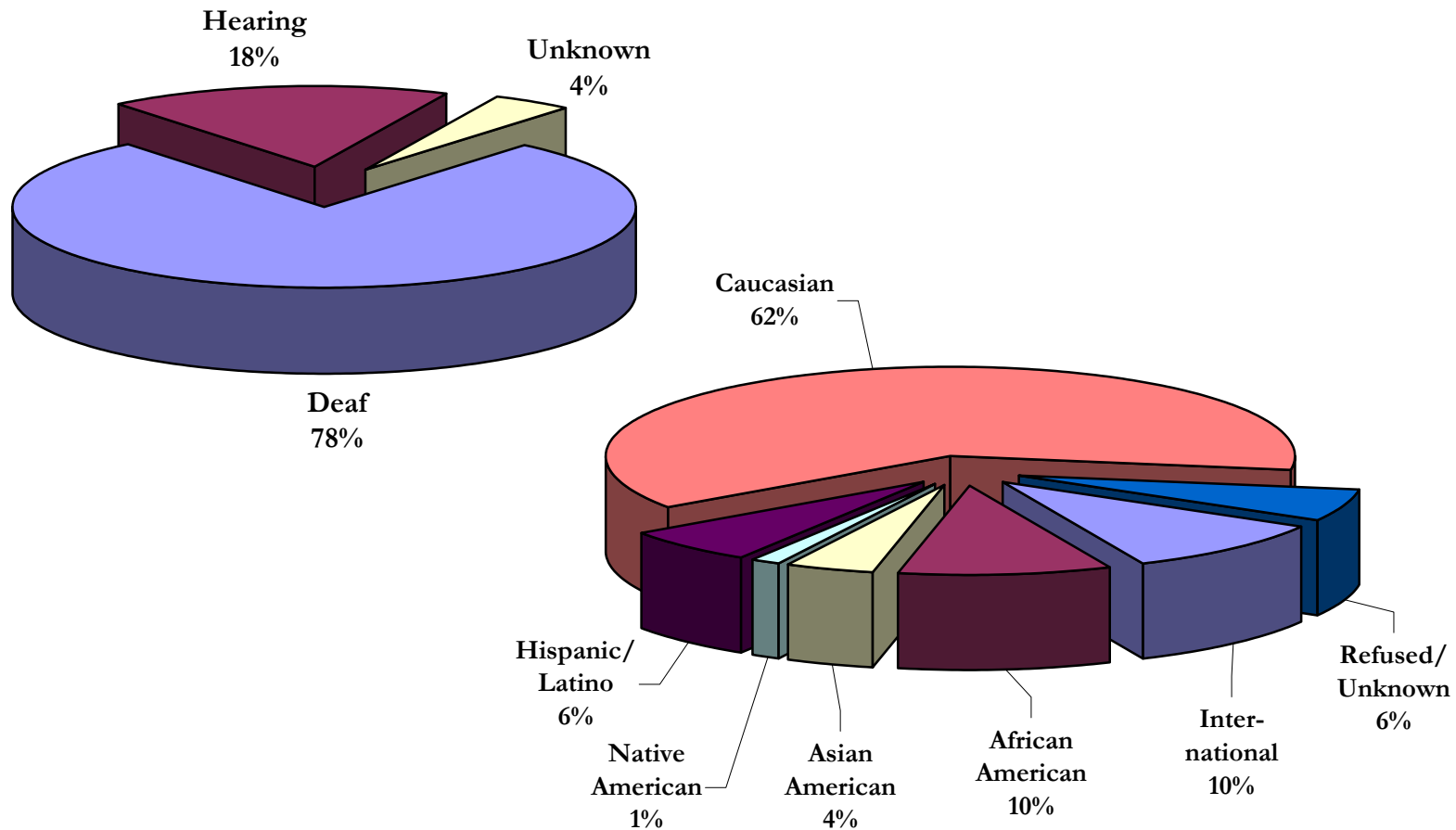
**TABLE 3: DEAF/HEARING AND RACIAL/ETHNIC CHARACTERISTICS
OF FALL 2003 ENROLLMENT***

	Deaf	Hearing	Unknown	Inter- national	African American	Asian American	Native American	Hispanic/ Latino	Caucasian	Refused/ Unknown
Freshmen	475	2	7	43	67	32	12	45	271	14
Sophomores	211	3	2	35	19	8	4	14	130	6
Juniors	192	6	11	19	20	9	1	12	142	6
Seniors	226	3	5	22	20	13	2	13	158	6
Second Degree	10	0	1	3	1	0	0	0	7	0
Undergraduate Special	18	4	2	1	2	0	0	1	18	2
Exchange	0	0	0	0	0	0	0	0	0	0
Consortium	1	1	0	0	0	0	1	0	0	1
Visiting	2	3	0	0	0	0	0	0	4	1
International Interns	5	0	3	8	0	0	0	0	0	0
English Language Institute	19	0	1	17	0	0	0	0	0	3
Undergraduate Total	1,159	22	32	148	129	62	20	85	730	39
Masters	104	127	6	10	23	3	1	15	170	15
Specialists	9	11	0	2	2	0	0	0	15	1
Doctorates	29	96	2	6	13	7	0	7	80	14
Certificate	4	16	1	1	0	0	0	0	15	5
Graduate Special [#]	39	32	30	4	4	3	0	2	62	26
Graduate Total	185	282	39	23	42	13	1	24	342	61
TOTAL	1,344	304	71	171	171	75	21	109	1,072	100

* Numbers do not include extension students.

[#] The Graduate Special count includes International Interns.

FIGURE 1: DEAF/HEARING AND RACIAL/ETHNIC DISTRIBUTION OF FALL 2003 ENROLLMENT*



6

* Numbers do not include extension students.

NB: Due to the rounding of numbers, totals may not add up to 100.

**TABLE 4: FALL ENROLLMENT HISTORY
BY RACIAL/ETHNIC DISTRIBUTION*
1992-2003**

	1992	1993	1994	1995	1996	1997	1998	1999	2000	2001	2002	2003
Undergraduate												
International	16%	11%	11%	13%	13%	12%	13%	12%	13%	13%	12%	12%
African-American	7%	9%	9%	10%	10%	11%	11%	10%	10%	11%	11%	11%
Asian-American	2%	2%	4%	4%	4%	4%	4%	4%	5%	5%	5%	5%
Native-American	0%	1%	1%	1%	1%	1%	1%	1%	1%	1%	1%	2%
Hispanic/Latino	3%	5%	6%	5%	5%	6%	7%	6%	6%	7%	7%	7%
Caucasian	69%	70%	67%	65%	63%	62%	61%	63%	60%	59%	60%	60%
Refused/Unknown	2%	3%	3%	3%	3%	4%	4%	5%	6%	4%	4%	3%
Graduate												
International	9%	10%	8%	8%	9%	6%	5%	4%	4%	7%	4%	5%
African-American	6%	7%	7%	8%	8%	9%	8%	8%	8%	11%	11%	8%
Asian-American	2%	2%	1%	1%	2%	2%	2%	2%	2%	3%	2%	3%
Native-American	0%	0%	1%	0%	0%	0%	1%	0%	0%	0%	0%	0%
Hispanic/Latino	2%	2%	3%	3%	4%	4%	4%	4%	3%	3%	4%	5%
Caucasian	79%	78%	78%	72%	68%	69%	75%	78%	72%	67%	64%	68%
Refused/Unknown	2%	2%	3%	8%	10%	11%	5%	4%	10%	8%	15%	12%
TOTAL ENROLLMENT												
International	15%	11%	10%	12%	12%	11%	11%	10%	10%	12%	10%	10%
African-American	7%	8%	9%	9%	10%	10%	10%	9%	10%	11%	11%	10%
Asian-American	2%	2%	3%	3%	4%	4%	4%	3%	4%	4%	4%	4%
Native-American	0%	1%	1%	1%	1%	1%	1%	1%	1%	1%	1%	1%
Hispanic/Latino	3%	4%	5%	5%	5%	5%	6%	6%	6%	6%	6%	6%
Caucasian	71%	71%	69%	66%	64%	64%	65%	67%	62%	61%	61%	62%
Refused/Unknown	2%	3%	3%	4%	5%	6%	4%	4%	7%	5%	7%	6%

* Numbers do not include extension students.

NB: Due to the rounding of numbers, totals may not add up to 100.

TABLE 5: FALL 2003 U.S. DEGREE SEEKING ENROLLMENT BY STATE*

	Undergraduate Graduate ELI [#]				Undergraduate Graduate ELI [#]		
Alabama	11	1	0	Missouri	17	6	0
Alaska	1	3	0	Montana	1	1	0
Arizona	27	3	0	Nebraska	3	0	0
Arkansas	1	0	0	Nevada	4	0	0
California	103	17	0	New Hampshire	2	2	0
Colorado	13	1	0	New Jersey	30	10	0
Connecticut	15	4	0	New Mexico	7	2	0
Delaware	4	1	0	New York	72	18	0
District of Columbia	43	41	1	North Carolina	17	4	0
Florida	47	18	0	North Dakota	2	0	0
Georgia	14	3	0	Ohio	33	8	0
Guam	1	0	0	Oklahoma	3	1	0
Hawaii	3	1	0	Oregon	9	1	0
Idaho	2	1	0	Pennsylvania	47	19	0
Illinois	40	8	1	Rhode Island	4	0	0
Indiana	26	6	0	South Carolina	11	1	0
Iowa	7	2	0	South Dakota	6	0	0
Kansas	14	2	0	Tennessee	14	1	0
Kentucky	12	4	0	Texas	52	7	0
Louisiana	12	1	0	Utah	4	4	0
Maine	2	0	0	Vermont	1	0	0
Maryland	102	78	0	Virginia	47	52	1
Massachusetts	22	15	0	Washington	24	3	0
Michigan	19	8	0	West Virginia	4	2	0
Minnesota	19	6	0	Wisconsin	21	6	0
Mississippi	3	1	0	Wyoming	2	0	0
				<hr/>			
				TOTAL			
				STUDENTS	1,000	373	3
				TOTAL			
				STATES/TER.	52	42	3

* The state of origin for 32 undergraduate and 12 graduate students is unknown.

English Language Institute

**TABLE 6: FALL 2003 DEGREE SEEKING INTERNATIONAL ENROLLMENT
BY COUNTRY***

	Undergraduate Graduate ELI [#]				Undergraduate Graduate ELI [#]		
Argentina	0	1	0	Kenya	1	0	0
Barbados	2	0	0	Korea, Republic of	2	0	1
Belarus	1	0	0	Kuwait	1	0	0
Belgium	2	0	0	Lebanon	2	0	0
Bermuda	0	0	1	Mexico	0	1	0
Botswana	2	0	0	Netherlands	3	0	0
Canada	49	4	0	New Zealand	1	0	0
Chile	0	0	2	Nigeria	5	1	2
China	8	0	0	Norway	1	0	0
Colombia	1	0	0	Philippines	1	0	0
Congo	1	0	0	Saudi Arabia	1	0	2
Czech Republic	0	1	0	Singapore	1	0	0
Denmark	2	1	0	Slovakia	1	0	0
Iceland	1	0	0	South Africa	1	0	0
India	5	0	0	Sweden	5	0	0
Ireland	0	0	1	Taiwan, Rep. of China	2	0	0
Israel	2	1	0	Thailand	1	0	0
Italy	2	0	0	United Arab Emirates	1	0	1
Japan	2	3	2				
				TOTAL			
				STUDENTS	110	13	12
				TOTAL			
				COUNTRIES	31	8	8

* The country of origin for 12 undergraduate, 7 graduate, and five ELI students is unknown.

[#] English Language Institute

**TABLE 7: FALL 2003 FULL- AND PART-TIME
ENROLLMENT BY GENDER**

	Full-time		Part-time	
	Women	Men	Women	Men
Freshmen	257	221	4	1
Sophomores	111	101	2	2
Juniors	100	104	0	5
Seniors	125	90	9	10
Second Degree	6	4	1	0
Undergraduate Special	0	0	10	14
Consortium	0	0	2	0
Visiting	4	1	0	0
International Interns	5	3	0	0
English Language Institute	8	11	0	0
Undergraduate Total	616	535	28	32
Masters	149	44	39	3
Specialist	17	2	0	1
Doctorates	83	14	20	10
Certificate	1	0	18	2
Graduate Special*	0	0	81	19
Graduate Total	250	60	158	35
TOTAL	866	595	186	67

NB: Genders unknown for one part-time freshman, one ELI, two Masters, and one Graduate Special student.

* Graduate Special count includes International Interns.

**TABLE 8: FALL 2003 UNDERGRADUATE MAJORS
BY DEPARTMENT**

Accounting	20	Government	23
American Sign Language	11	History	15
Art	41	Mathematics	17
Biology	24	Philosophy	6
Business Administration	23	Physical Education	14
Chemistry	3	Physics	1
Communication Studies	37	Psychology	28
Computer Information Systems	15	Recreation & Leisure Studies	9
Computer Science	9	Self-Directed	1
Deaf Studies	12	Social Work	37
Economics & Finance	6	Sociology	18
Education	26	Spanish	6
English	5	Television & Photography	6
Family and Child Studies	24	Theatre Arts	5
French	7		
TOTAL			449

**TABLE 9: FALL 2003 GRADUATE MAJORS
BY DEPARTMENT**

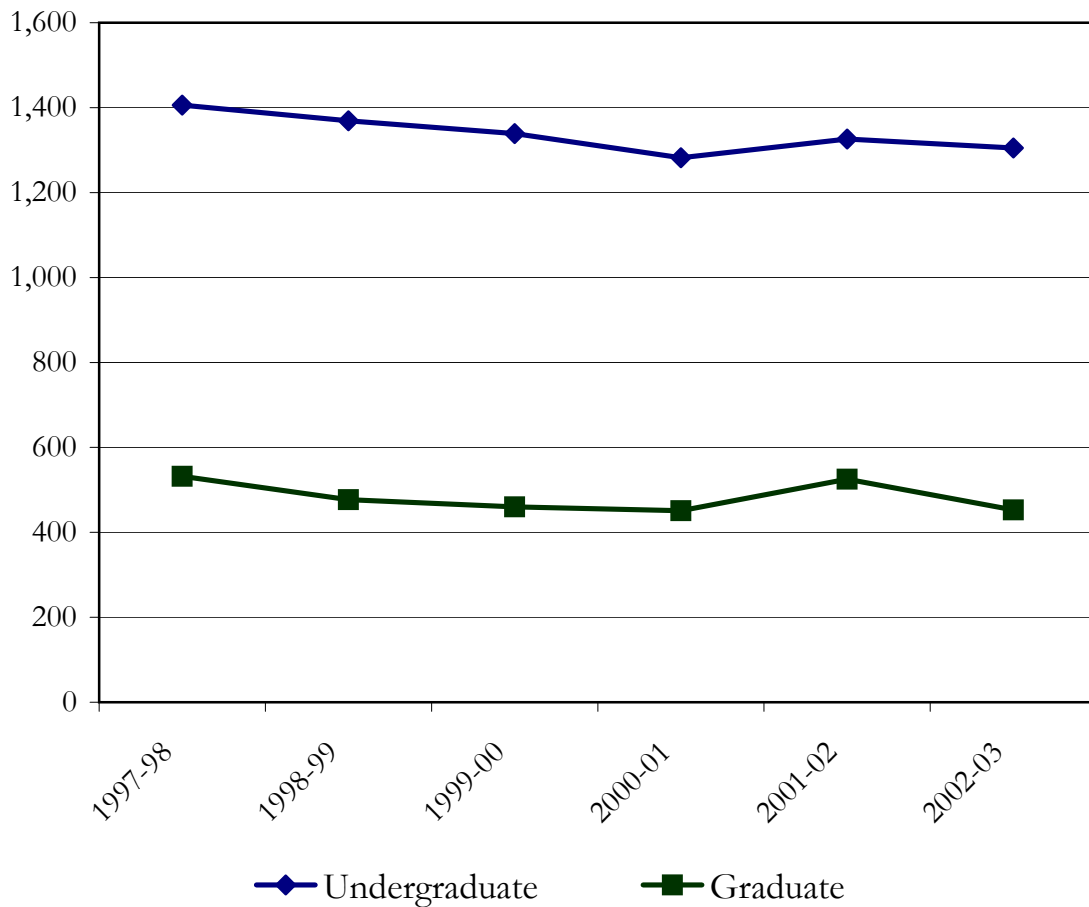
Administration and Supervision		Education (cont'd)	
Administration, M.S.	12	Multiple Disabilities Ed., M.A.	17
Instructional Supervision, Ed.S.	0	Special Programs in Deafness, M.A.	5
Special Education Admin., Ph.D.	27	Educational Technology, M.S.	0
Leadership, Certificate	3		
Management, Certificate	3	Educational Foundations and Research	
		Integrated Technology, Certificate	15
Audiology and Speech-Language Pathology		Government and History	
Audiology, Au.D.	34	Deaf History, Certificate	0
Speech-Language Pathology, M.A.	25		
Counseling		Linguistics and Interpretation	
Mental Health Counseling, M.A.	24	Linguistics, M.A.	19
Community Counseling, M.A.	0	Linguistics, Ph.D.	14
School Counseling and Guidance, M.A.	27	Interpretation, M.A.	17
Deaf Studies		Physical Education and Recreation	
Deaf Studies, M.A.	21	Leisure Services Admin, M.S.	8
Education		Psychology	
Advanced Studies Education, Ph.D.	13	Clinical Psychology, Ph.D.	34
Advanced Studies Education, M.A.	4	Clinical Psychology, M.A.	1
Family Centered Early Education, M.A.	15	Developmental Psychology, M.A.	1
Education, M.A.	0	School Psychology, M.A./Specialist	19
Elementary Education, M.A.	12	Social Work	
Secondary Education, M.A.	4	Social Work, M.S.W.	31
TOTAL			405

**TABLE 10: TOTAL ANNUAL ENROLLMENT
ACADEMIC YEAR 2002-2003**

	Fall 2002	Spring 2003	Summer 2003
Freshmen	481	336	29
Sophomores	214	227	33
Juniors	211	205	39
Seniors	241	287	83
Second Degree	16	13	1
Undergraduate Special	24	34	3
Exchange	1	1	0
Visiting	9	4	0
Undergraduate Extension	15	9	0
International Interns	8	8	3
English Language Institute	23	24	4
Undergraduate Total	1,243	1,148	195
Masters	249	249	71
Educational Specialist	1	1	2
Doctorates	114	112	43
Certificate	60	18	5
Graduate Special	62	62	22
Graduate Extension	115	77	26
International Interns	1	2	0
Graduate Total	602	521	169
Professional Studies	179	125	N/A
TOTAL	2,024	1,794	364

**TABLE 11: ANNUAL UNDUPLICATED HEADCOUNT
ENROLLMENT
ACADEMIC YEARS 1997-2003**

	1997-98	1998-99	1999-00	2000-01	2001-02	2002-03
Undergraduate	1,406	1,369	1,339	1,282	1,326	1,305
Graduate	532	477	460	451	525	453



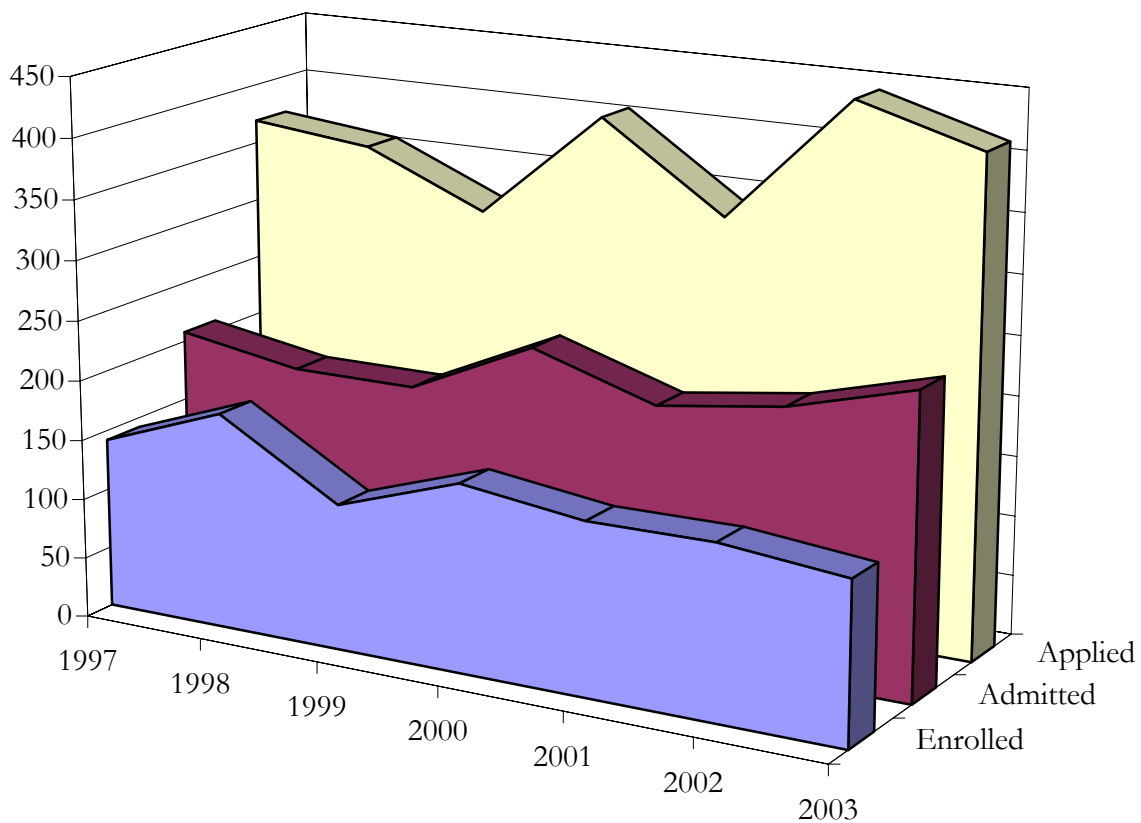
** This is an unduplicated count of the total number of students by level enrolled during the 12-month reporting period in any courses that can lead to a degree or other formal award.*

Admissions

**TABLE 12: FALL 2003 UNDERGRADUATE ADMISSIONS SUMMARY
AND HISTORY OF FALL APPLICATIONS, ADMISSIONS, AND
REGISTRATIONS 1997-2003**

	Applied	Admitted	Enrolled	Enrollment Yield
2003				
New Freshmen	448	308	238	77%
Transfers	135	131	69	53%
Degree-seeking	583	439	307	70%
Special/Others	41	41	35	85%
TOTAL	624	480	342	71%
<hr/> <hr/>				
2002				
Degree-seeking	758	541	315	58%
Special/Others	53	53	32	60%
TOTAL	811	594	347	58%
2001				
Degree-seeking	533	387	280	72%
Special/Others	69	61	45	74%
TOTAL	602	448	325	73%
2000				
Degree-seeking	609	10	433	73%
Special/Others	39		35	80%
TOTAL	648	468	345	74%
1999				
Degree-seeking	642	479	324	68%
Special/Others	48	40	22	55%
TOTAL	690	519	346	67%
1998				
Degree-seeking	554	427	331	78%
Special/Others	44	44	36	82%
TOTAL	598	471	367	78%
1997				
Degree-seeking	688	514	304	59%
Special/Others	74	65	25	38%
TOTAL	762	579	329	57%

TABLE 13: FALL GRADUATE DEGREE-SEEKING APPLICATIONS, ADMISSIONS, AND REGISTRATIONS 1997-2003

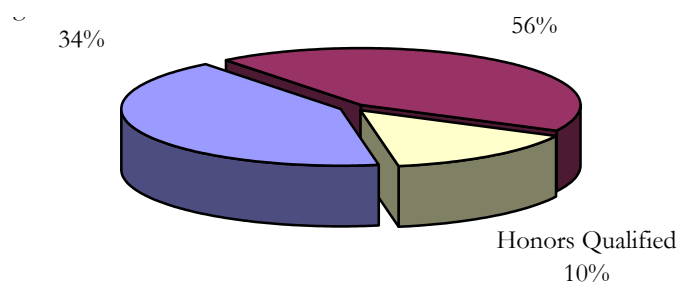


	1997	1998	1999	2000	2001	2002	2003
Enrolled	142	180	121	156	143	144	134
Admitted	208	191	191	239	207	222	251
Applied	369	358	315	406	336	443	413

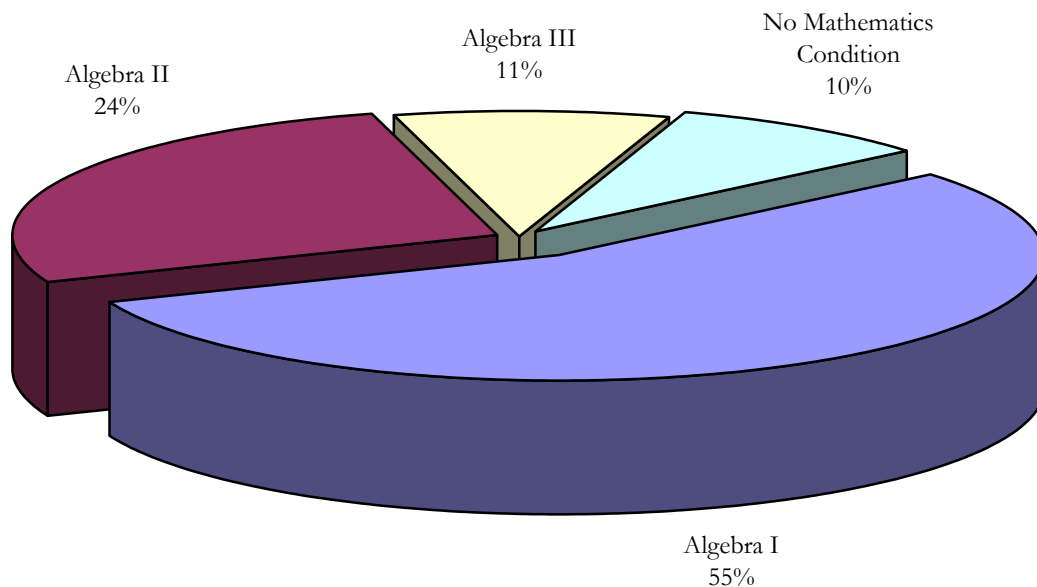
TABLE 14: FALL 2003 NEW DEGREE-SEEKING UNDERGRADUATE STUDENTS BY DEMOGRAPHIC CHARACTERISTICS

Age			Deafness in Family		
17	3	1%	Deaf Family Member(s)	87	28%
18	90	29%	Both Parents	50	16%
19	82	27%	One Parent	6	2%
20	36	12%	Sibling(s)	74	24%
21	19	6%			
22	13	4%			
23-25	29	9%	Ethnic Background		
26-29	17	6%	International	18	6%
30 and over	18	6%	African-American	41	13%
			Asian-American	15	5%
			Native American	11	4%
			Hispanic/Latino	28	9%
Gender			Caucasian	188	61%
Men	140	46%	Refused/Unknown	6	2%
Women	167	54%			

FIGURE 2: FALL 2003 NEW DEGREE-SEEKING UNDERGRADUATE STUDENTS BY ENGLISH AND MATHEMATICS PLACEMENT TEST PERFORMANCE



English Placement Test Performance



Mathematics Placement Test Performance

TABLE 15: FALL 2003 NEW DEGREE-SEEKING GRADUATE STUDENTS BY DEMOGRAPHIC CHARACTERISTICS AND PROGRAMS

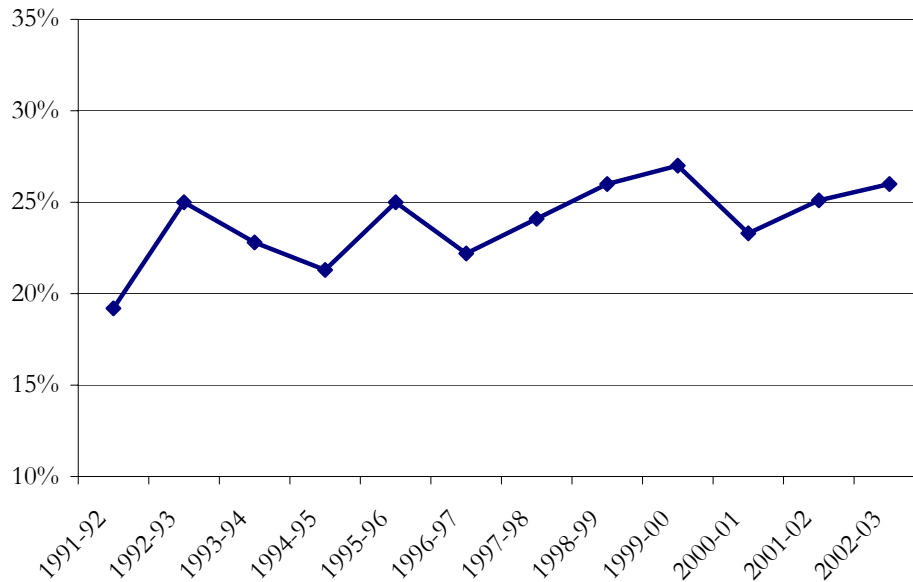
Age		Hearing Status	
20-29	69	Deaf/Hard of Hearing	79
30-39	38	Hearing	40
40-49	19	Refused/Unknown	15
50 and over	8		
Gender		Ethnic Background	
Men	38	International	9
Women	95	African-American	10
Unknown	1	Asian-American	3
		Native American	0
		Hispanic/Latino	7
		Caucasian	92
		Refused/Unknown	13
<hr/> <hr/>			
Programs			
Administration & Supervision	5	Education	19
Administration, Ph.D.	2	Interpretation	6
Audiology & Speech-Language Path	12	Leisure Services Administration	3
Audiology, Ph.D.	9	Linguistics, Ph.D.	9
Certificate	2	Linguistics	9
Clinical Psychology, Ph.D.	5	Social Work	17
Counseling	17	Specialist	5
Deaf Studies	14		

Graduation, Persistence and Attrition

TABLE 16: UNDERGRADUATE ONE-YEAR GRADUATION, ATTRITION, AND PERSISTENCE

	Enrolled Fall 2002	Graduated	Dismissed	Withdrew	Persisted to Fall 2003
TOTAL	1,163	129	28	280	726
Percentage		11%	2%	24%	62%
<i>By Class</i>					
Freshmen	481	0 0%	17 4%	169 35%	295 61%
Sophomores	214	0 0%	9 4%	38 18%	167 78%
Juniors	211	7 3%	1 0%	33 16%	170 81%
Seniors	241	121 50%	1 1%	33 14%	86 36%
Second Degree	16	1 6%	0 0%	7 44%	8 50%
<i>By Gender</i>					
Men	551	56 10%	17 3%	147 27%	331 60%
Women	612	73 12%	11 2%	133 22%	395 65%
<i>By Ethnic Background</i>					
International	130	13 10%	3 2%	24 18%	90 69%
African-American	127	11 9%	7 6%	34 27%	75 59%
Native American	14	0 0%	0 0%	7 50%	7 50%
Asian-American	60	7 12%	1 2%	14 23%	38 63%
Hispanic/Latino	83	9 11%	2 2%	24 29%	48 58%
Caucasian	717	85 12%	15 2%	170 24%	447 62%
Refused/Unknown	32	4 13%	0 0%	7 22%	21 66%

**FIGURE 3: UNDERGRADUATE ONE-YEAR
ATTRITION TRENDS 1992-2003**



**TABLE 17: UNDERGRADUATE ONE-YEAR ATTRITION BY CLASS, GENDER,
AND RACE/ETHNICITY 1992-2003**

	1991-92	1992-93	1993-94	1994-95	1995-96	1996-97	1997-98	1998-99	1999-00	2000-01	2001-02	2002-03
TOTAL	19%	25%	23%	21%	25%	22%	24%	26%	27%	23%	25%	26%
<i>By Class</i>												
Freshmen	28%	36%	34%	33%	38%	35%	38%	36%	36%	36%	35%	39%
Sophomores	17%	22%	15%	19%	22%	19%	20%	16%	21%	20%	27%	22%
Juniors	11%	12%	11%	11%	13%	13%	13%	20%	18%	13%	20%	16%
Seniors	9%	9%	6%	6%	10%	11%	12%	19%	23%	13%	13%	15%
Second Degree	N/A	N/A	N/A	N/A	N/A	N/A	N/A	N/A	46%	25%	27%	44%
<i>By Gender</i>												
Men	19%	19%	25%	24%	27%	26%	25%	30%	29%	25%	27%	30%
Women	20%	20%	21%	19%	23%	19%	22%	22%	25%	23%	22%	24%
<i>By Ethnic Background</i>												
Caucasians	19%	25%	23%	21%	25%	23%	23%	25%	28%	26%	24%	26%
Non-white	28%	24%	32%	24%	26%	24%	28%	30%	30%	21%	27%	28%

TABLE 18: LONG-TERM RETENTION RATE OF ENTERING UNDERGRADUATE CLASSES 1998-2003

	Number originally enrolled	Retained						Graduated		
		After 1 year	After 2 years	After 3 years	After 4 years	After 5 years	After 6 years	Within 4 years	Within 5 years	Within 6 years
<i>All Students</i>										
1997	293	66%	45%	40%	29%	14%	6%	6%	21%	28%
1998	331	60%	47%	40%	27%	17%		8%	20%	
1999	322	63%	49%	42%	31%			9%		
2000	313	65%	48%	40%						
2001	270	69%	44%							
2002	315	67%								
<i>First-time Students</i>										
1997	215	67%	41%	40%	30%	13%	6%	3%	20%	25%
1998	230	63%	49%	43%	31%	19%		3%	16%	
1999	254	61%	47%	42%	33%			6%		
2000	241	66%	48%	39%						
2001	213	68%	44%							
2002	237	61%								
<i>Transfer Students</i>										
1997	78	63%	55%	40%	24%	15%	6%	15%	26%	37%
1998	101	54%	42%	35%	18%	11%		21%	29%	
1999	68	69%	59%	44%	25%			21%		
2000	72	61%	50%	43%						
2001	57	74%	46%							
2002	78	83%								

**TABLE 19: DEGREES AWARDED
ACADEMIC YEARS 1992-2003**

	Associates	Bachelors	Masters	Specialists	Doctoral	TOTAL
1991-92	13	230	95	4	3	345
1992-93	7	249	81	6	1	344
1993-94	8	227	113	8	6	362
1994-95	6	231	110	9	9	365
1995-96	8	185	108	7	12	320
1996-97	0	201	102	8	5	316
1997-98	0	174	98	8	5	285
1998-99	0	146	125	8	7	286
1999-00	0	155	129	6	6	296
2000-01	0	142	104	6	11	263
2001-02*	0	174	92	9	10	285
2002-03	0	147	117	4	16	284

* Based on data provided to IPEDS, Fall 2002.

**TABLE 20: DEGREES AWARDED
BY GENDER AND RACE/ETHNICITY
ACADEMIC YEAR 2002-2003***

	Bachelors	Masters	Specialists	Doctorates
<i>By Gender</i>				
Men	62	17	1	2
Women	80	99	3	14
<i>By Ethnic Background</i>				
International	14	11	0	0
African-American	12	12	1	1
Asian-American	8	4	0	0
Native American	0	1	0	0
Hispanic/Latino	9	1	0	2
Caucasian	94	80	3	13
Refused/Unknown	5	7	0	0
TOTAL	142	116	4	16

* Five undergraduate students and one graduate student were awarded double degrees.

**TABLE 21: UNDERGRADUATE DEGREES BY DISCIPLINE
ACADEMIC YEAR 2002-2003**

Bachelor of Arts		Bachelor of Science	
American Sign Language	3	Accounting	5
Art	12	Business Administration	11
Biology	5	Chemistry	2
Chemistry	0	Computer Information Systems	2
Communication Arts	13	Computer Science	1
Computer Science	1	Economics	0
Deaf Studies	5	Economics & Finance	2
Education	5	Family & Consumer Studies	12
English	2	Physical Education	1
French	1	Recreation & Leisure Studies	1
Government	3		
History	7	Subtotal	37
Journalism	0		
Mathematics	1		
Philosophy	0		
Psychology	18		
Sign Communication	0		
Social Work	10		
Sociology	7		
Spanish	4		
Television & Photography	8		
Theater Arts	5		
Subtotal	110		
<hr/> TOTAL		<hr/> 147 <hr/>	

**TABLE 22: GRADUATE DEGREES BY DISCIPLINE
ACADEMIC YEAR 2002-2003**

Master of Arts		Master of Social Work	
Psychology	5	Social Work	17
Developmental Psychology	3		
Linguistics	11	Subtotal	17
Interpreting	7		
Mental Health Counseling	8	Specialist	
School Counseling & Guidance	7	Administration & Supervision	1
Community Counseling	0	Educational Specialist	2
Rehabilitation Counseling	0	School Psychology	1
Clinical Psychology	3		
Education		Subtotal	4
Advanced Studies in Education	1		
Family-Centered Early Education	6	Doctor of Philosophy	
Elementary Education	10	Administration & Supervision	0
Multiple Disabilities	9	Audiology	8
Non-degree Teacher Certification	0	School Psychology	6
Secondary	2	Deaf Education	1
Special Education in Deafness	5	Special Education Admin	1
Subtotal	77	Subtotal	16
Master of Science			
Administration	11		
Audiology	1		
Speech-Language Pathology	11		
Subtotal	23		
TOTAL			137