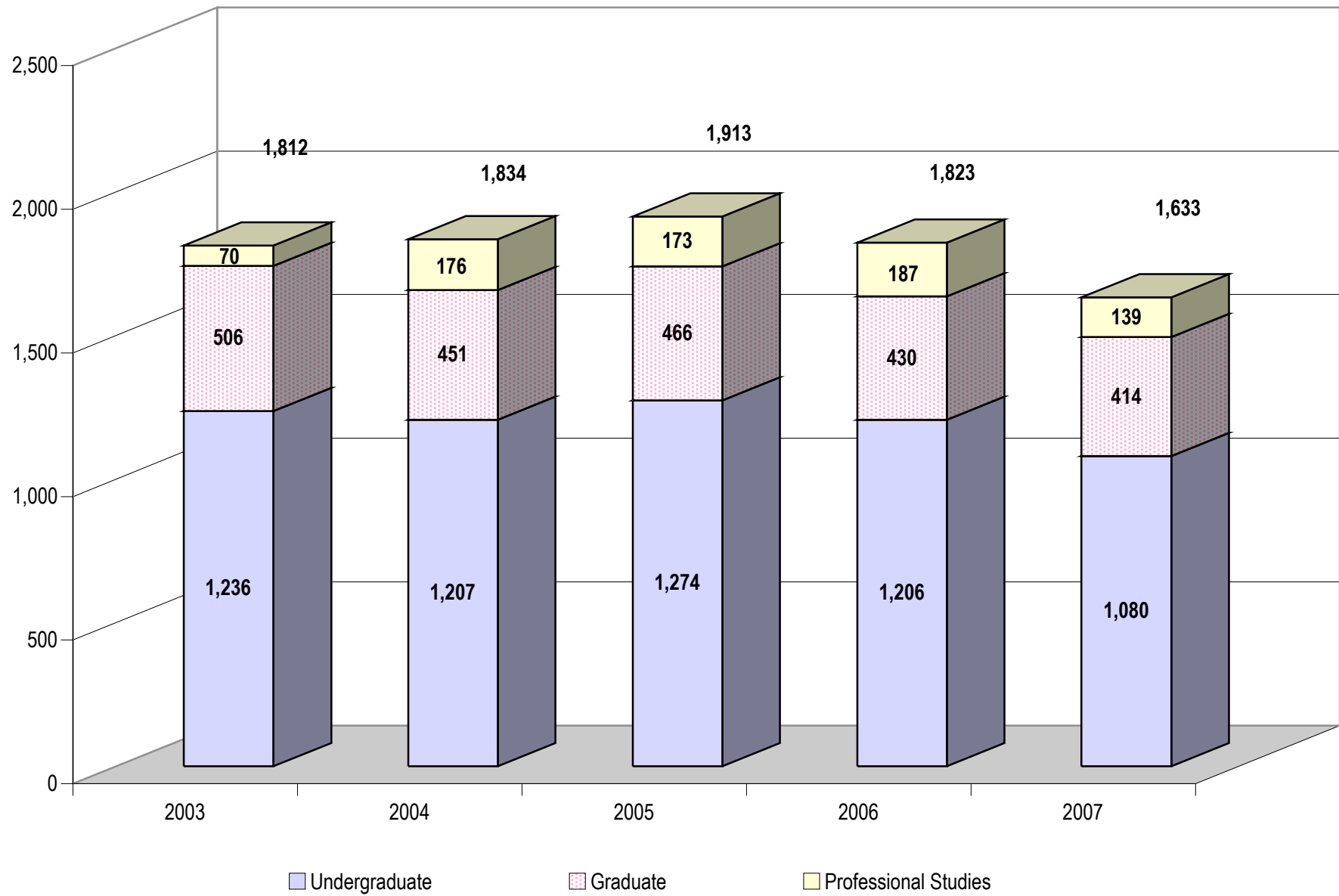


# **2007 Enrollment Report**

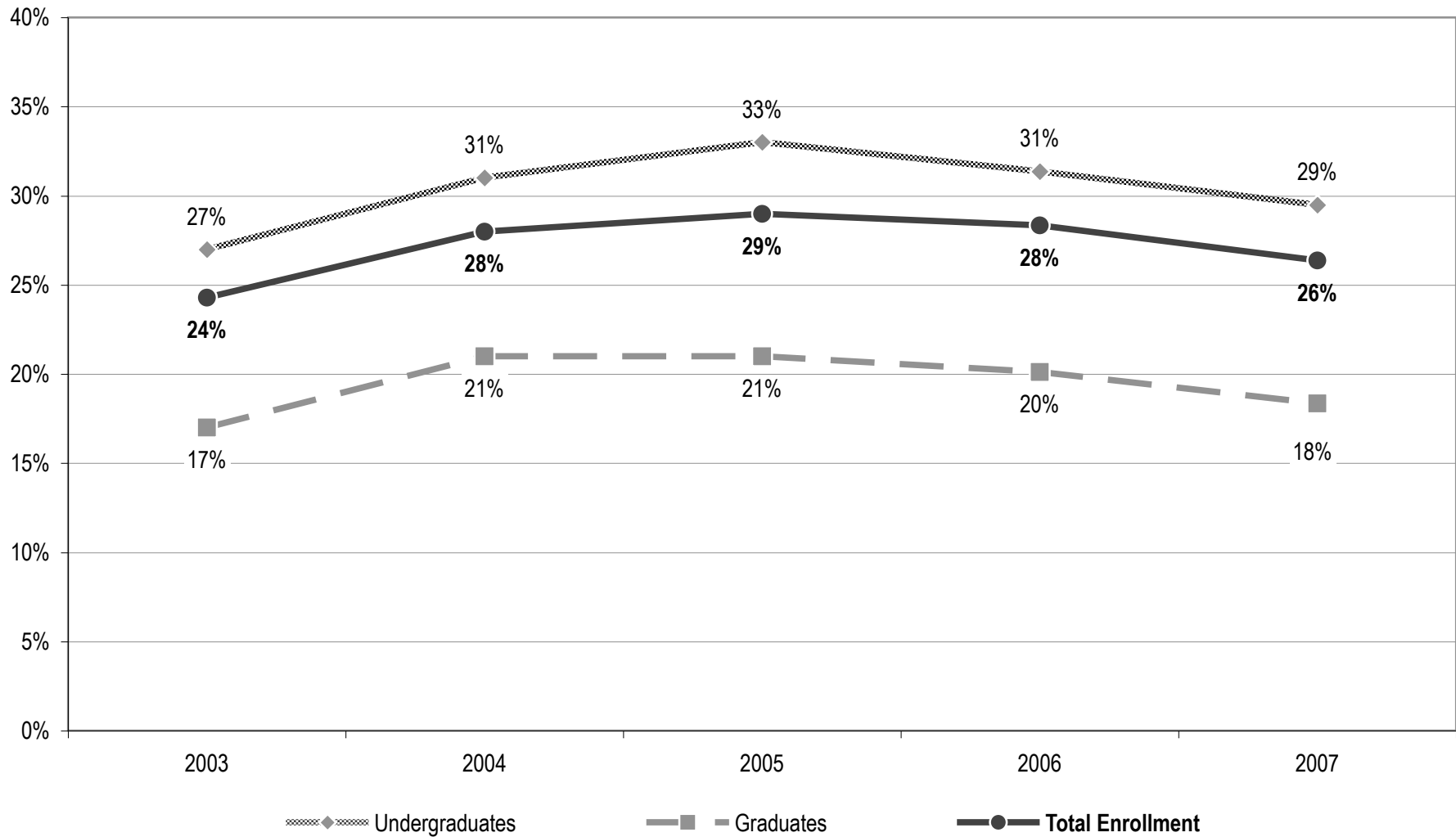
**Gallaudet**  **University**

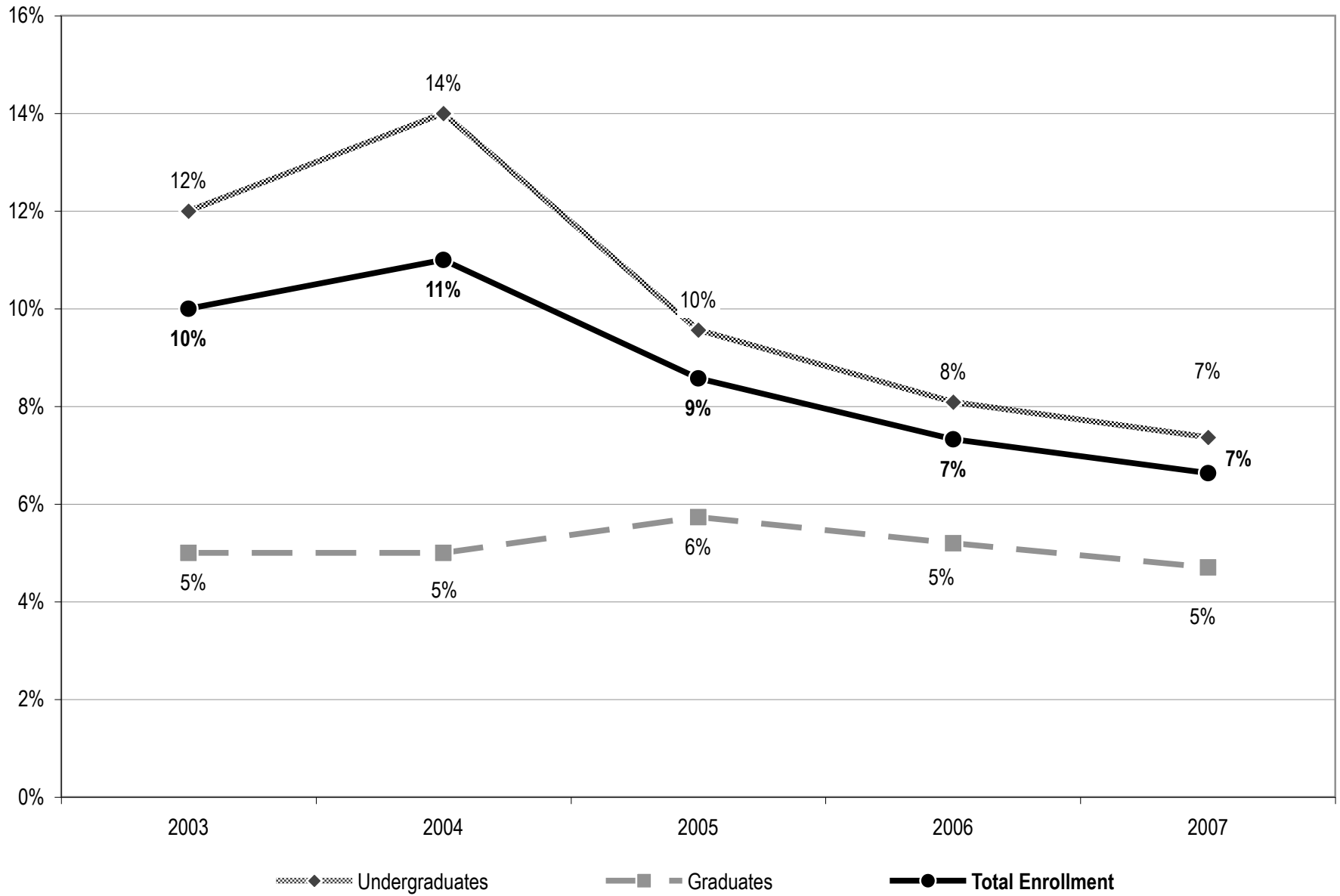
## 2007 Enrollment Report Table of Contents

	Page
Total University Enrollment by Career	3
Percentage of U.S. Students from Racially/Ethnically Diverse Backgrounds	4
Percentage of International Students Enrolled	5
Enrollment by Student Category -- Fall 2006 and Fall 2007	6
New Student Admission -- Fall 2006 and Fall 2007	7
Enrollment by Student Category -- Academic Year 2006-2007	8
Fall 2007 Enrollment Distribution	9
Distribution of U.S. Undergraduate Students by Racial/Ethnic Background -- Fall 2003 to Fall 2007	10
Distribution of U.S. Graduate Students by Racial/Ethnic Background -- Fall 2003 to Fall 2007	11
New Degree Seeking Students -- Fall 2003 to Fall 2007	12
New U.S. Degree-Seeking Students from Racially/Ethnic Diverse Backgrounds -- Fall 2003 to Fall 2007	13
Quality and Diversity Statistics of New Undergraduates -- Fall 2003 to Fall 2007	14
Eligibility of New Undergraduate Students based on English Placement Test -- Fall 2006 and Fall 2007	15
Eligibility of New Undergraduate Students based on Math Placement Test -- Fall 2006 and Fall 2007	16
Graduate Degree Seeking Students by Programs -- Fall 2007	17
First Semester and First Year Retention - Fall 04 to Fall 07	18
Long-Term Rate of Entering Undergraduate Class -- Fall 95 to Fall 07	19



Percentage of U.S. Students from  
Racially/Ethnically Diverse Backgrounds  
Fall 2003 to Fall 2007





**Enrollment by Student Category  
Fall 2006 and Fall 2007**

	<b>Fall 2006 Enrolled</b>	<b>Fall 2007 Enrolled</b>
<b><u>UNDERGRADUATES</u></b>		
Degree-seeking	1,138	1,018
Visiting, Exchange, International Interns and Undergraduate Special	22	22
English Language Institute (ELI)	46	40
<b>UNDERGRADUATE SUBTOTALS</b>	<b>1,206</b>	<b>1,080</b>
<b><u>GRADUATE</u></b>		
Degree-seeking Graduates	404	383
Graduate Special*	26	31
<b>GRADUATE SUBTOTALS</b>	<b>430</b>	<b>414</b>
<b><u>PROFESSIONAL STUDIES</u></b>		
Professional Studies*	187	139
<b>GRAND TOTAL</b>	<b>1,823</b>	<b>1,633</b>

\* The Graduate Special and Professional Studies figures include those students previously categorized as Graduate Extension and International Intern.

**New Student Admissions  
Fall 2006 and Fall 2007**

	Fall 2006 Enrolled	Fall 2007 Enrolled
<b><u>NEW UNDERGRADUATES</u></b>		
Degree-seeking	281	226
<i>First-time Freshmen</i>	212 (75%)	176 (78%)
<i>Transfers</i>	67 (24%)	46 (20%)
<i>Second-degree</i>	2 (1%)	4 (2%)
Visiting, Exchange, International Interns and Undergraduate Special	18	19
English Language Institute (ELI)	18	19
<b>UNDERGRADUATE SUBTOTALS</b>	<b>317</b>	<b>264</b>
<b><u>NEW GRADUATES</u></b>		
Degree-seeking	168	117
Graduate Special	17	17
<b>GRADUATE SUBTOTALS</b>	<b>185</b>	<b>134</b>
<b><u>PROFESSIONAL STUDIES</u></b>		
Professional Studies	58	74
<b>GRAND TOTAL</b>	<b>560</b>	<b>472</b>

*Note: Starting in Fall 2005, ELI new admits were included in the headcount for Undergraduate new admissions.*

**Enrollment by Student Category  
Academic Year 2006-2007**

	Fall 2006 Enrolled	Spring 2007 Enrolled	Summer 2007 Enrolled
<b><u>UNDERGRADUATES</u></b>			
Degree-seeking	1,138	1,032	213
<i>New admissions</i>	281	24	0
Undergraduate Special*	22	29	17
English Language Institute	46	42	16
<b>UNDERGRADUATE SUBTOTALS</b>	<b>1,206</b>	<b>1,103</b>	<b>246</b>
<b><u>GRADUATE</u></b>			
Degree-seeking Graduates	404	369	125
<i>New admissions</i>	168	2	0
Graduate Special <sup>†</sup>	26	26	15
<b>GRADUATE SUBTOTALS</b>	<b>430</b>	<b>395</b>	<b>140</b>
<b><u>PROFESSIONAL STUDIES</u></b>			
Professional Studies <sup>†‡</sup>	287	175	392
<b>GRAND TOTAL</b>	<b>1,923</b>	<b>1,673</b>	<b>778</b>

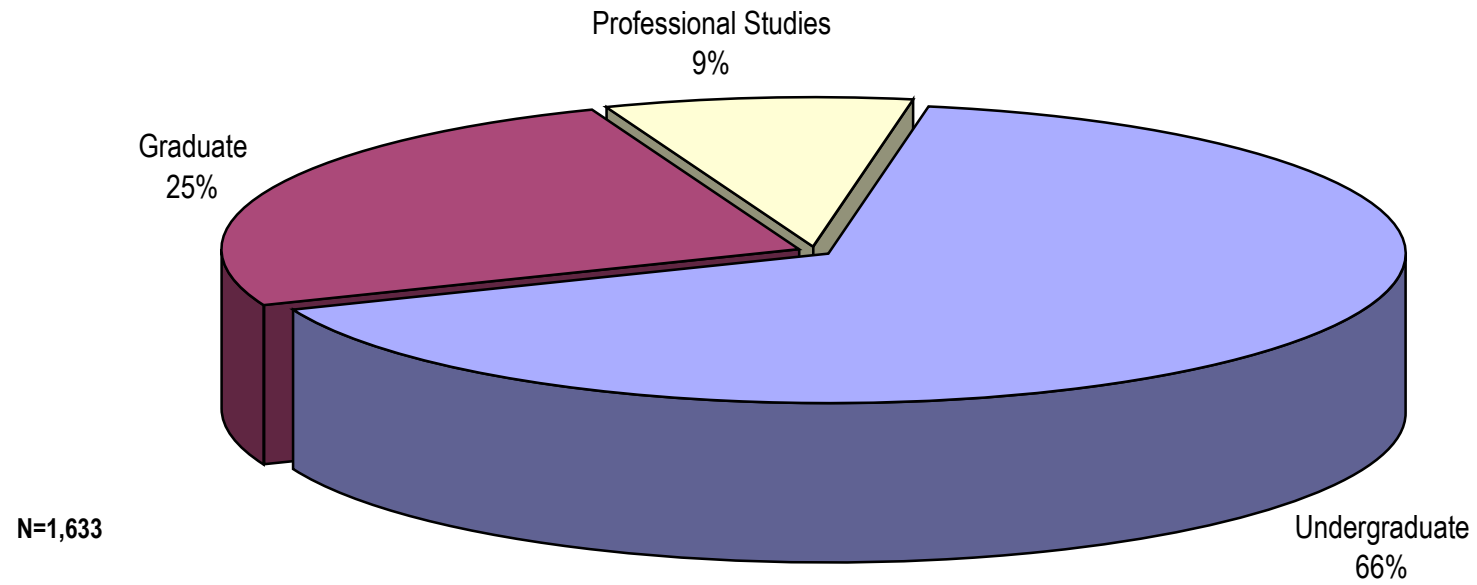
\* The Undergraduate Special figures include those students categorized as Visiting, Exchange, International Interns, and Extension students.

† The Graduate Special and Professional Studies figures include those students previously categorized as Graduate Extension and International Intern.

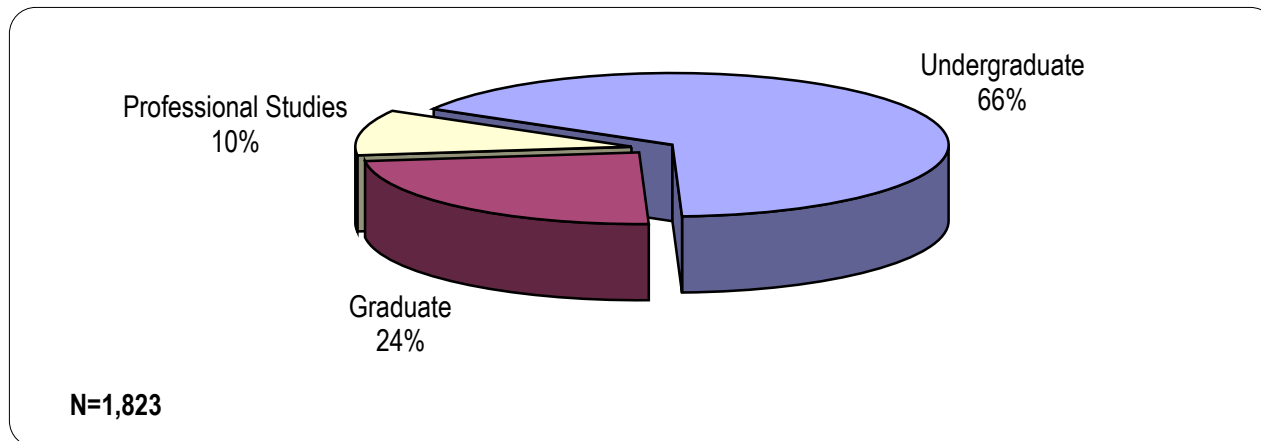
‡ Professional Studies enrollments exclude students who are already matriculated as either graduate or undergraduate students at Gallaudet for that term.



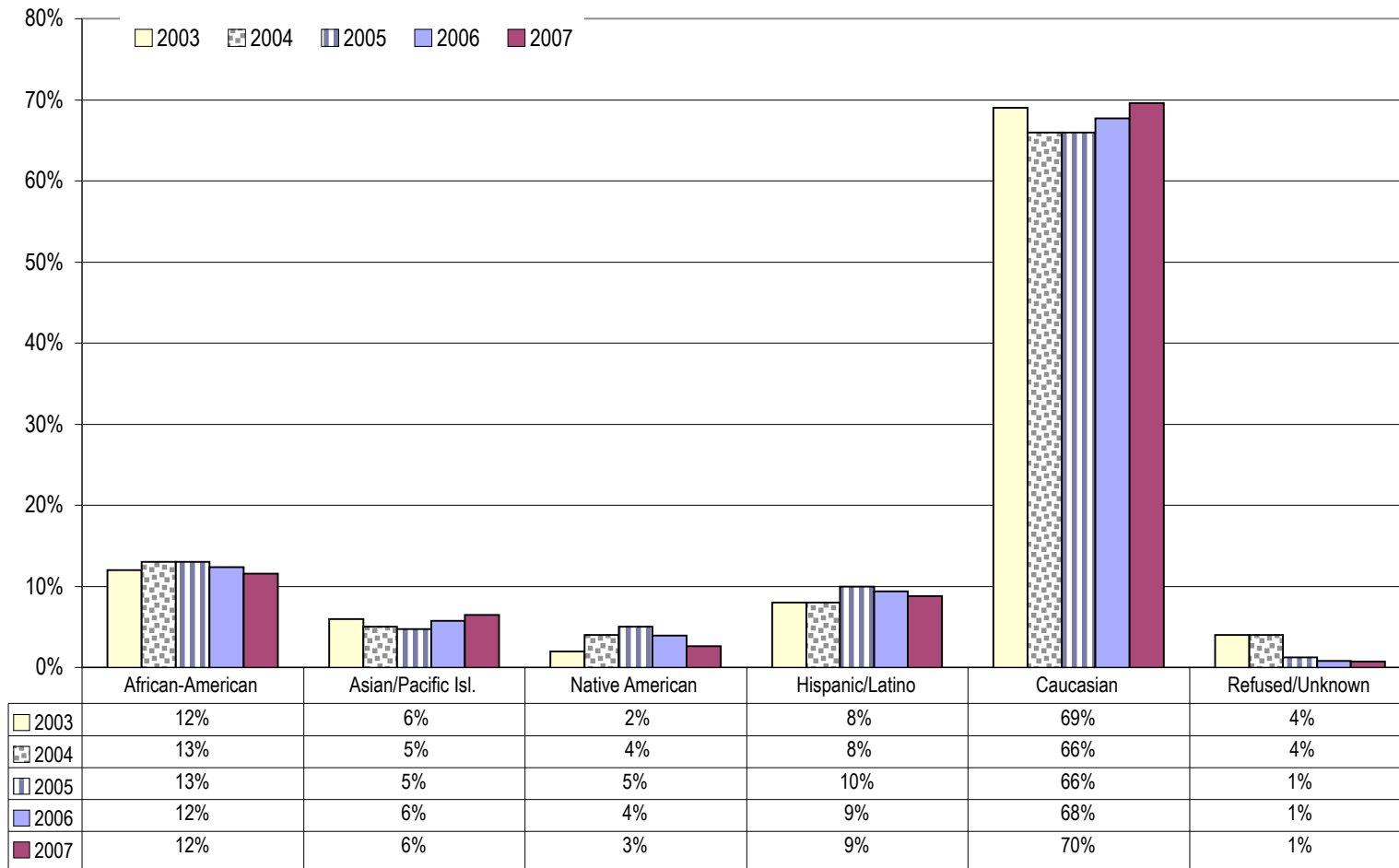
Fall 2007 Enrollment Distribution



Fall 2006 Enrollment Distribution

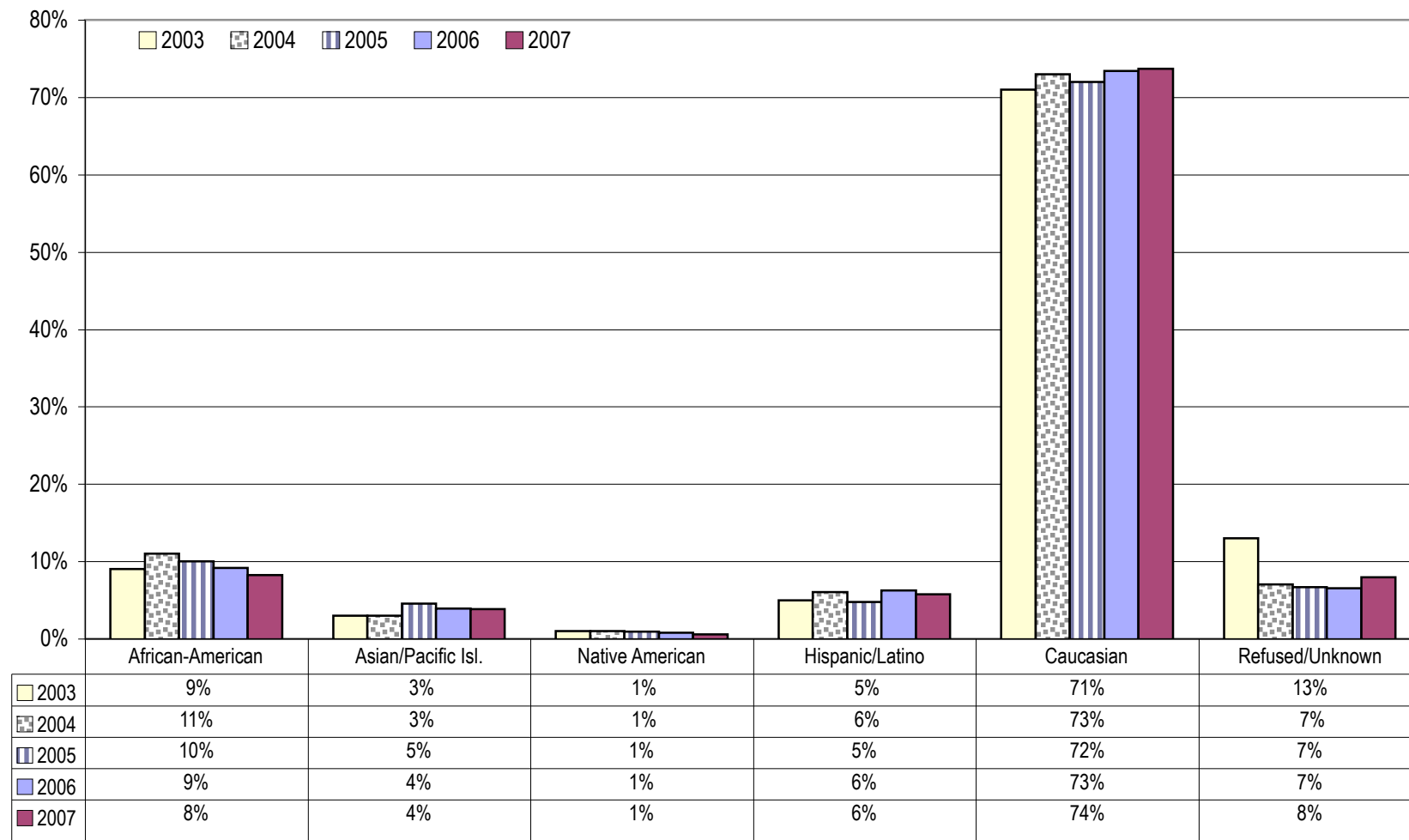


**Distribution of U.S. Undergraduate Students by Racial/Ethnic Background  
Fall 2003 to Fall 2007**



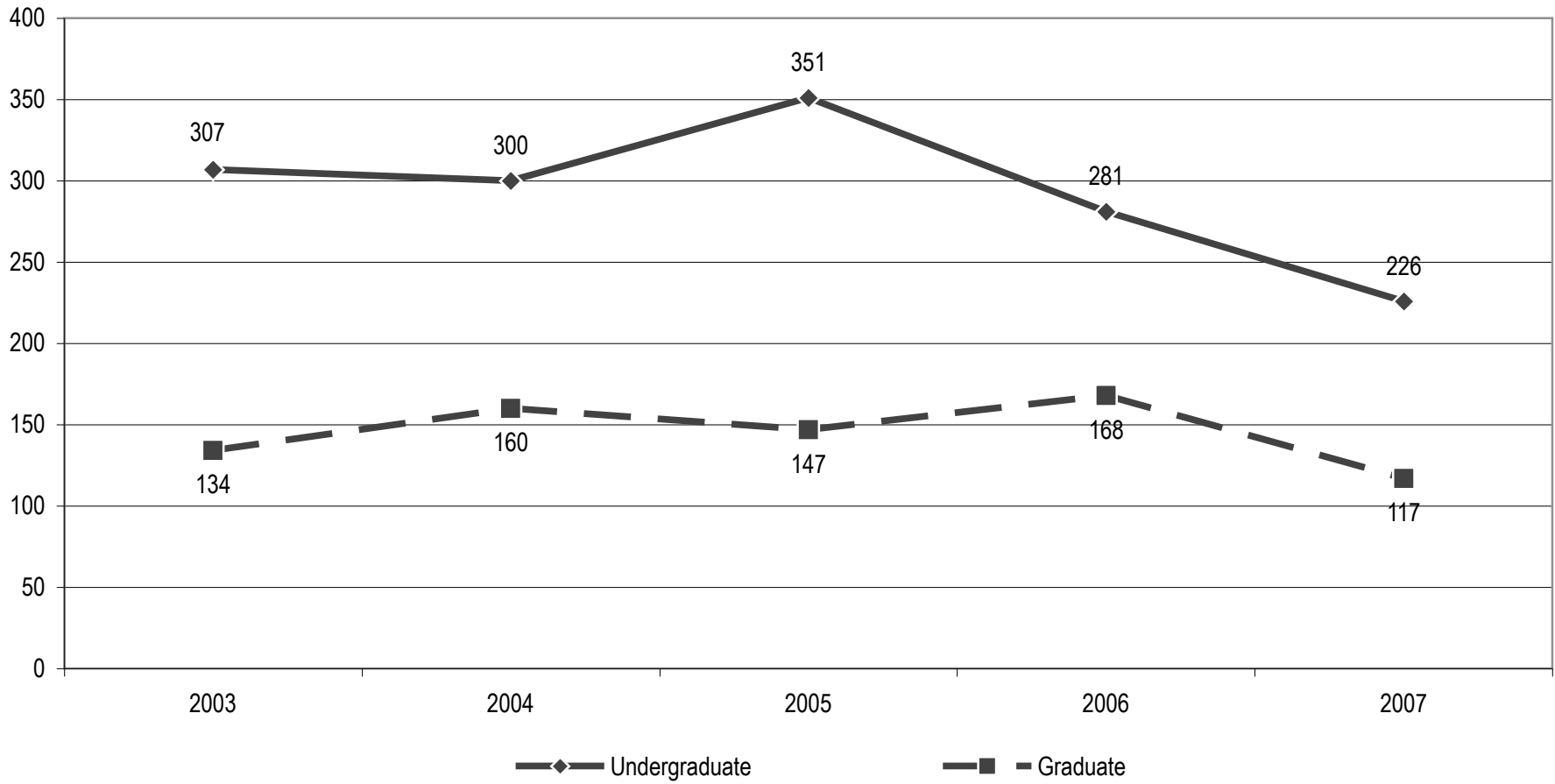
*Note: National distribution statistics reflect 12% African American; 6% Asian/Pacific Islander; 1% Native American; 11% Hispanic/Latino; and 69% Caucasian. These statistics include enrollments from all reporting higher education institutions and are the most recent figures available.  
Source: American Council on Education. (2004, October) Minorities in Higher Education: 2002-2003, Table 6.*

### Distribution of U.S. Graduate Students by Racial/Ethnic Background Fall 2003 to Fall 2007

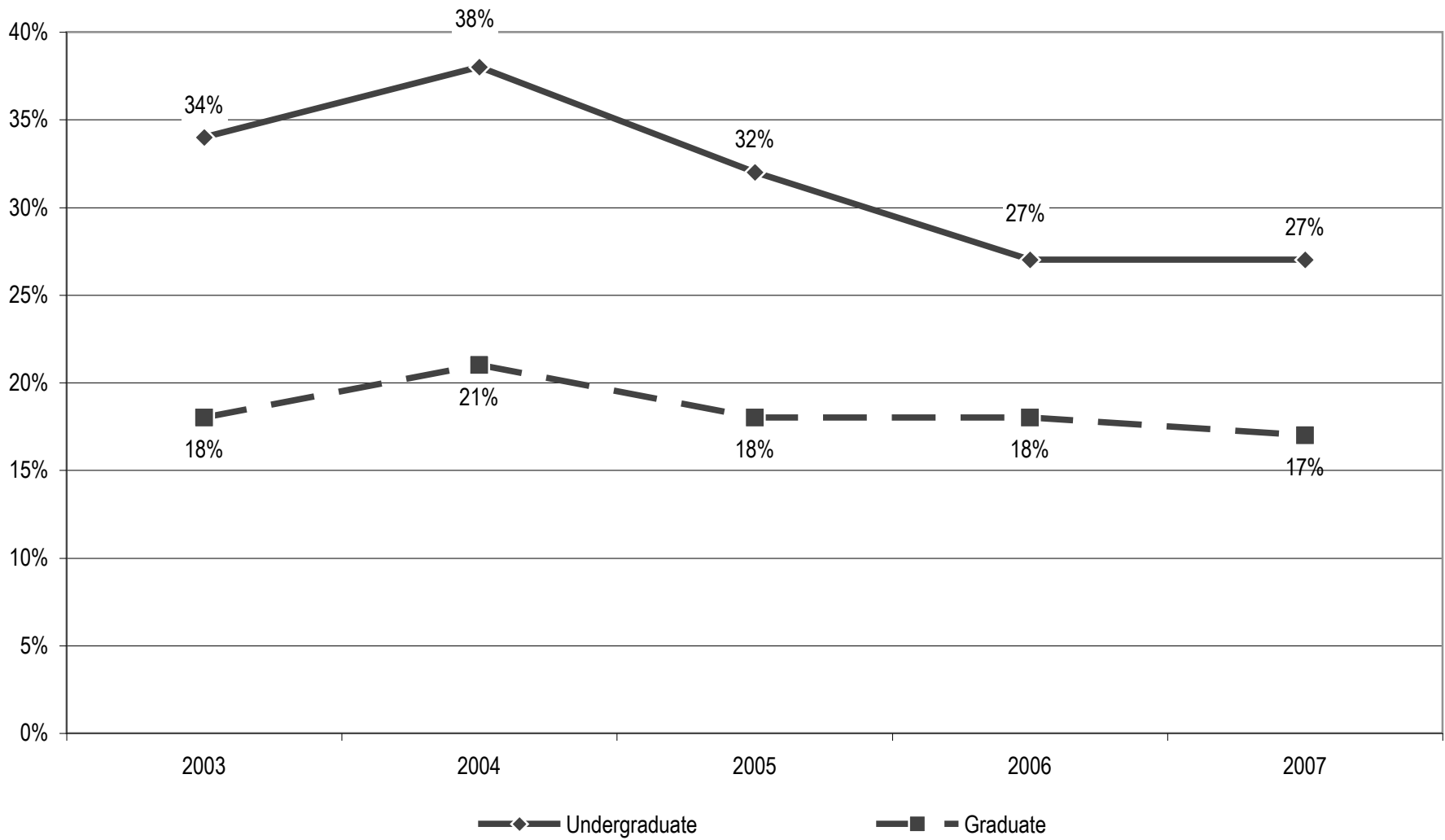


*Note: National distribution statistics reflect 10% African American; 6% Asian/Pacific Islander; 1% Native American; 6% Hispanic/Latino; and 78% Caucasian. These statistics include enrollments from all reporting higher education institutions and are the most recent figures available.  
Source: American Council on Education. (2004, October) Minorities in Higher Education: 2002-2003, Table 6.*

**New Degree-Seeking Students  
Fall 2003 to Fall 2007**



Percentage of New U.S. Degree-Seeking Students from Racially/Ethnically Diverse Backgrounds  
Fall 2003 to Fall 2007



Note: Students with unknown racial/ethnic backgrounds were not included in the calculation of percentages.

**Quality and Diversity Statistics of New Undergraduates  
Fall 2003 to Fall 2007**

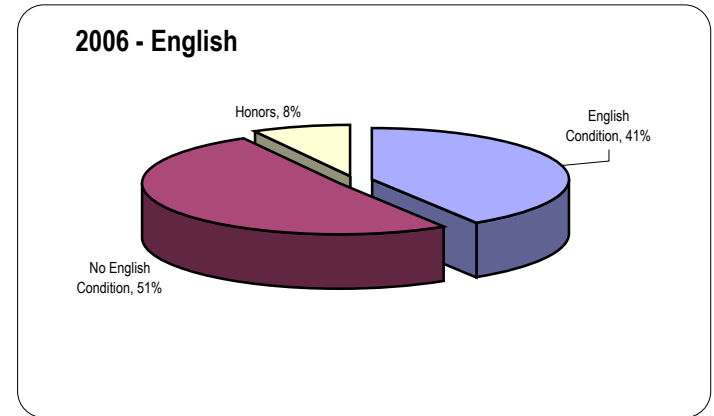
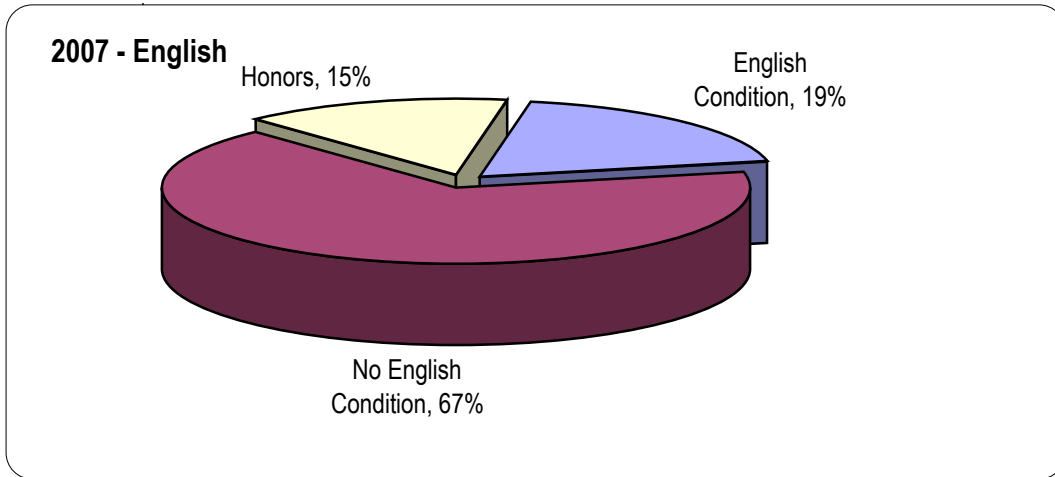
	Fall 2003	Fall 2004	Fall 2005	Fall 2006	Fall 2007
<b>New Undergraduate Students</b>	307	300	351	281	226

<b>Diversity</b>					
<b>U.S. students from racially/ethnically diverse backgrounds</b>	33% ( 95)	38% (105)	32% (103)	27% ( 73)	27% ( 59)
<b>International students</b>	6% ( 19)	8% ( 25)	7% ( 25)	4% ( 12)	4% ( 8)
<b>Transfer students</b>	22% ( 69)	24% ( 73)	20% ( 71)	24% ( 67)	20% ( 46)

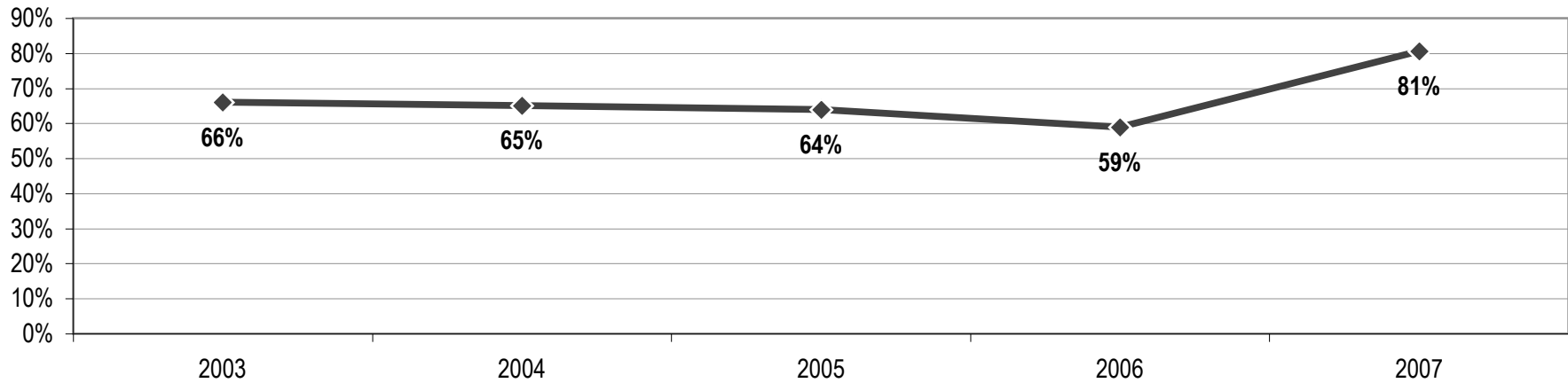
<b>Quality</b>					
<b>No English conditions</b>	66% (204)	65% (196)	64% (226)	59% (166)	81% (149)
<b>Honors*</b>	10% ( 31)	8% ( 25)	10% ( 35)	8% ( 23)	15% ( 33)
<b>Freshman English</b>	56% (173)	57% (171)	54% (191)	51% (143)	67% (149)

\* Honors: Met requirements for Honors-level English, though not necessarily enrolled in the Honors

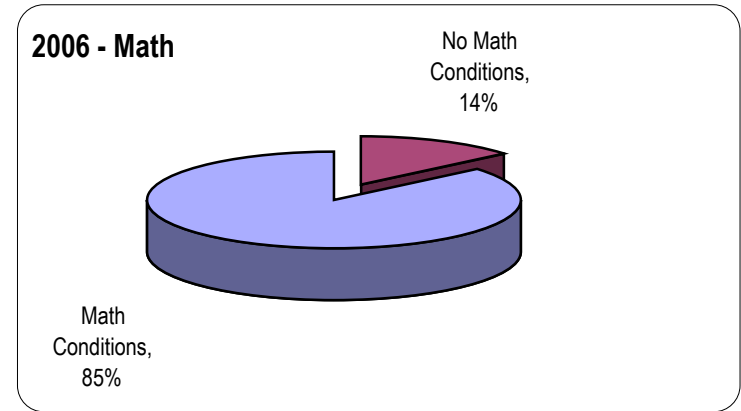
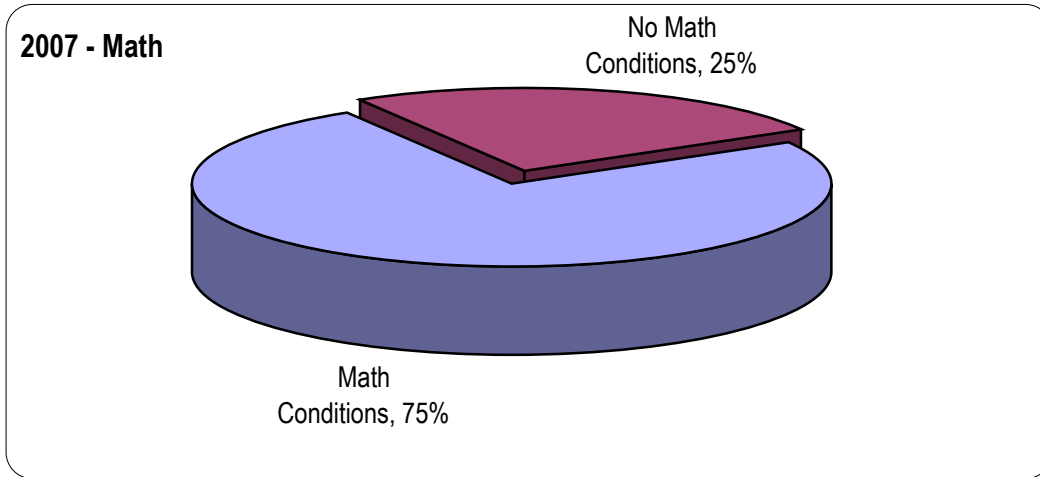
## Eligibility of New Undergraduate Students based on English Placement Test Fall 2006 and Fall 2007



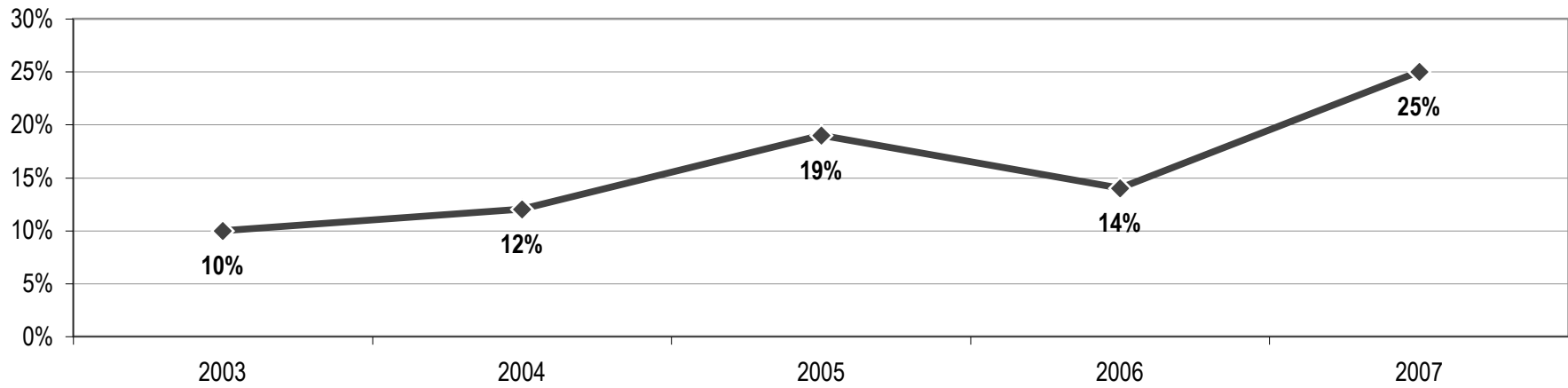
### Percentage of New Undergraduates who Tested into Freshman English or Higher, 2003 - 2007



### Eligibility of New Undergraduate Students based on Math Placement Test Fall 2006 and Fall 2007



#### Percentage of New Undergraduates who Tested into Freshman Math or Higher, 2003 - 2007





**Graduate Degree-seeking Students by Program\***  
**Fall 2007**

<b>Doctoral</b>		<b>Master's</b>	
Administration: Special Education	21	Administration	5
Audiology (Au.D.)	38	Counseling: Mental Health	13
Audiology (Ph.D.)	9	Counseling: School	23
Education	16	Deaf Education: ASL/English Bilingual	11
Linguistics	14	Deaf Studies	21
Psychology: Clinical	38	Education: Advance Studies	1
<b>Sub-total</b>	<b>136</b>	Education: Elementary	11
<b>Specialist</b>		Education: Family-Child Centered	7
Administration & Supervision (Ed.S.)	0	Education: Multiple Disabilities	5
Change Leadership in Education (Ed.S.)	7	Education: Secondary	7
Deaf Education (Ed.S.)	0	Education: Special Programs	6
School Psychology (Psy.S.)	16	International Development	15
<b>Sub-total</b>	<b>23</b>	Interpretation	19
<b>Certificate</b>		Leisure Services	3
Deaf History	1	Linguistics	10
Integrating Technology in the Classroom	0	Social Work	39
International Development	4	Speech-Language Pathology	23
Leadership	0	<b>Sub-total</b>	<b>219</b>
Management	0	<b>Total Degree-Seeking Students</b>	
<b>Sub-total</b>	<b>5</b>	<b>383</b>	

\*Includes dual program registrations.

Source: Data from PeopleSoft, as of September 11, 2007.  
Office of Institutional Research

### First Semester and First Year Retention

	Fall 04 - Spring 05	Fall 05 - Spring 06	Fall 06 - Spring 07	Fall 07 - Spring 08
<b>All Undergraduates</b>				
Enrolled in Fall	1136	1213	1138	1018
Enrolled in Spring or Graduated	1007	1040	974	900
% Persisted	89%	84%	86%	88%
<b>First Time Freshmen in Fall</b>	227	280	212	176
Enrolled in Spring	179	216	169	133
% Persisted	79%	77%	80%	76%
% First Year retention in Fall	70%	75%	64%	54%
<b>GPRA Benchmark</b>				
% First year retention	None	None	70%	70%

% Persisted is the percentage of students who enrolled in the fall, did not graduate, and re-enrolled in the Spring.

