

Gallaudet University

# Fall 2008 Enrollment Report

2004-2008 Enrollment History

Academic Year 2008-2009

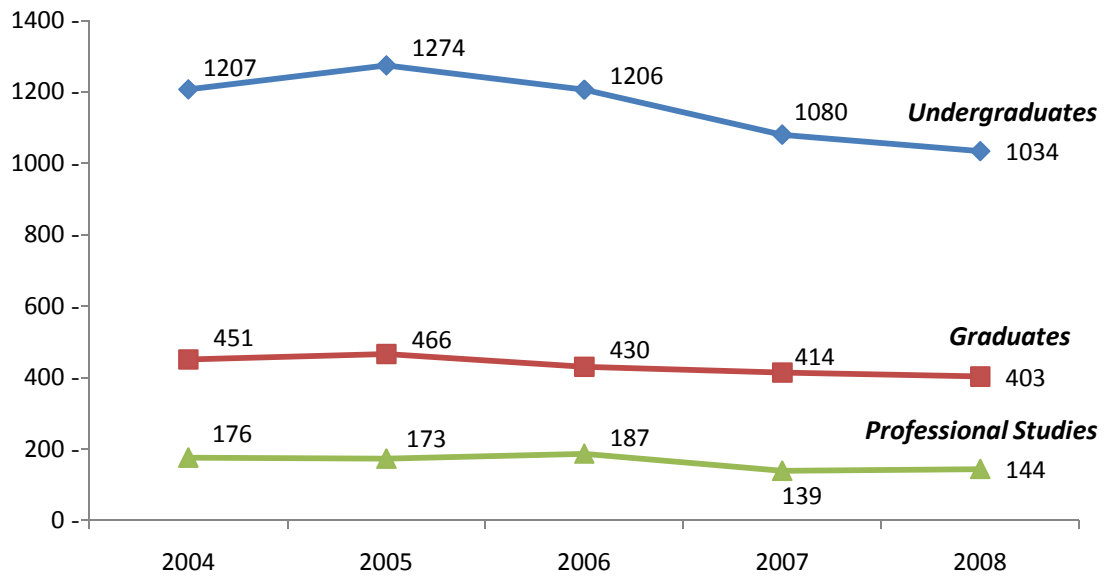
# Table of Contents

	Page
<b>Fall Enrollment</b>	<b>2</b>
Total University Enrollment (degree- and non-degree-seeking)	3
Undergraduate Degree-Seeking Students by Hearing Status	3
Graduate Degree-Seeking Students by Hearing Status	4
Percent age of Women Enrolled of Degree-Seeking Students	4
Percentage of Undergraduate Degree-seeking U.S. Citizens by Race and Ethnicity	5
Percentage of Graduate Degree-seeking U.S. Citizens by Race and Ethnicity	5
Graduate Degree-seeking Enrollment by Degree and Program	6
Undergraduate Degree-seeking U.S. Citizen Enrollment by State, District and Territory	7
Graduate Degree-seeking U.S. Citizen Enrollment by State, District and Territory	8
Undergraduate Degree-seeking International Students by Country of Origin	9
Graduate Degree-seeking International Students by Country of Origin	10
<b>Fall Admissions</b>	<b>11</b>
New Degree-seeking First-time Freshmen by Applied, Admitted and Enrolled	12
New Degree-seeking Graduate Students by Applied, Admitted and Enrolled	12
Percentage of First-time Degree-seeking Freshmen Women and those from Traditionally Under-represented Groups	13
Percentage of New Graduate Degree-seeking Women and those from Traditionally Under-represented Groups	13
First-time Freshmen ACT English Scores by 25 <sup>th</sup> -, 50 <sup>th</sup> - and 75 <sup>th</sup> -percentiles	14
First-time Freshmen ACT Reading Scores by 25 <sup>th</sup> -, 50 <sup>th</sup> - and 75 <sup>th</sup> percentiles	14
First-time Freshmen ACT Mathematics Scores by 25 <sup>th</sup> -, 50 <sup>th</sup> - and 75 <sup>th</sup> percentiles	15
<b>Retention and Graduation</b>	<b>16</b>
First-time Freshmen Cohort Retention Rates by those who Returned Year 2, Year 3 and Year 4	17
First-time Freshmen Cohort by 4-year and 6-year Graduation Rates	17

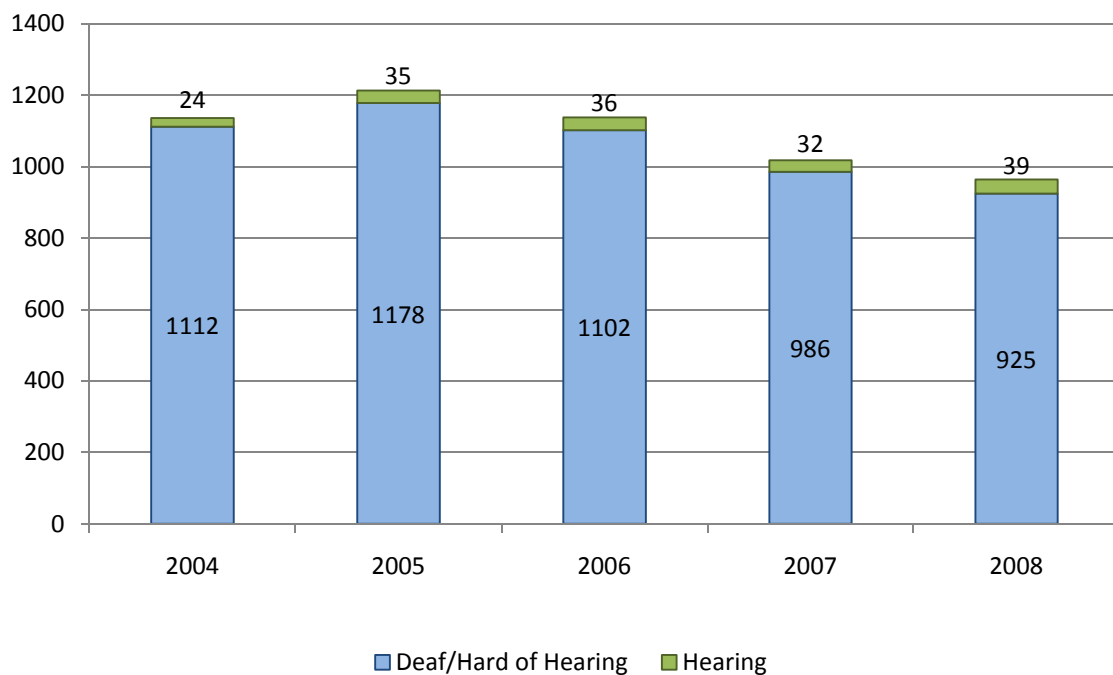
# Fall Enrollment

---

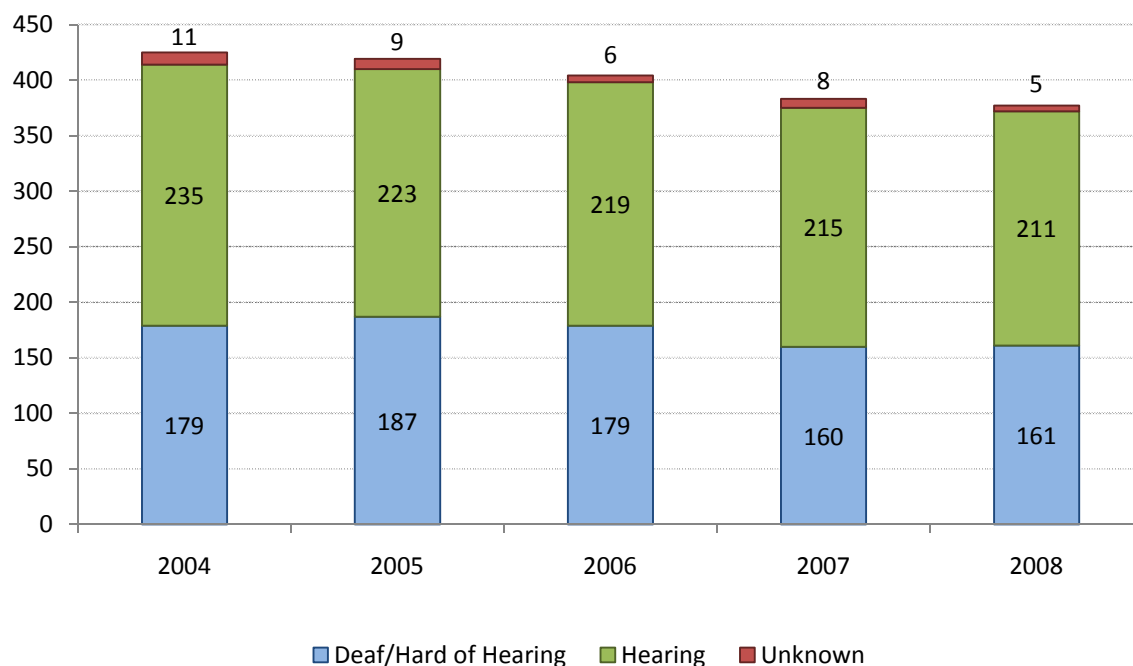
### Total University Enrollment (degree- and non-degree-seeking) -



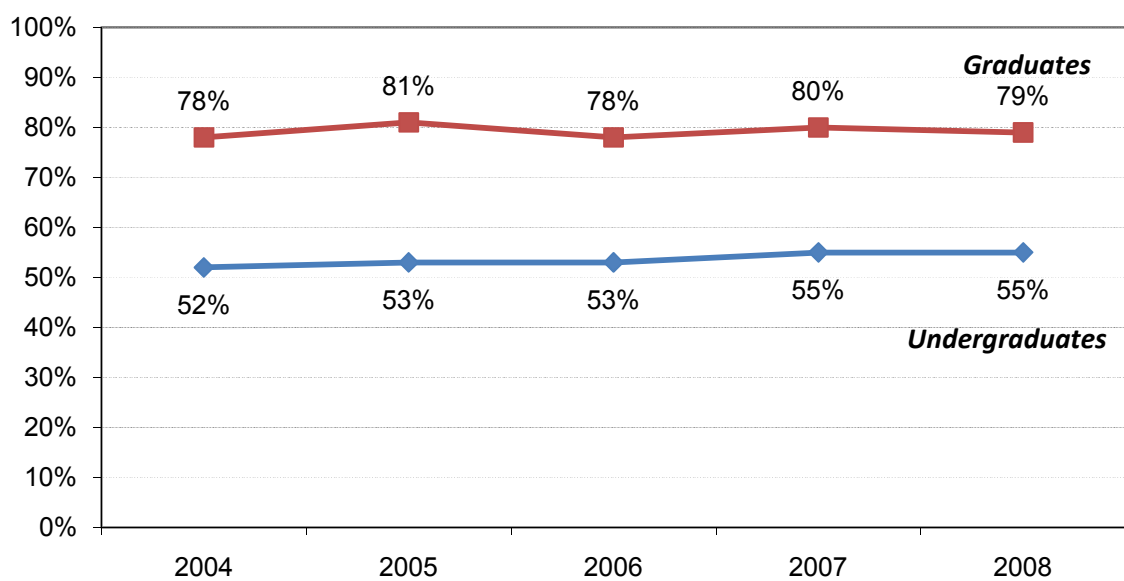
### Undergraduate Degree-seeking Students by Hearing Status



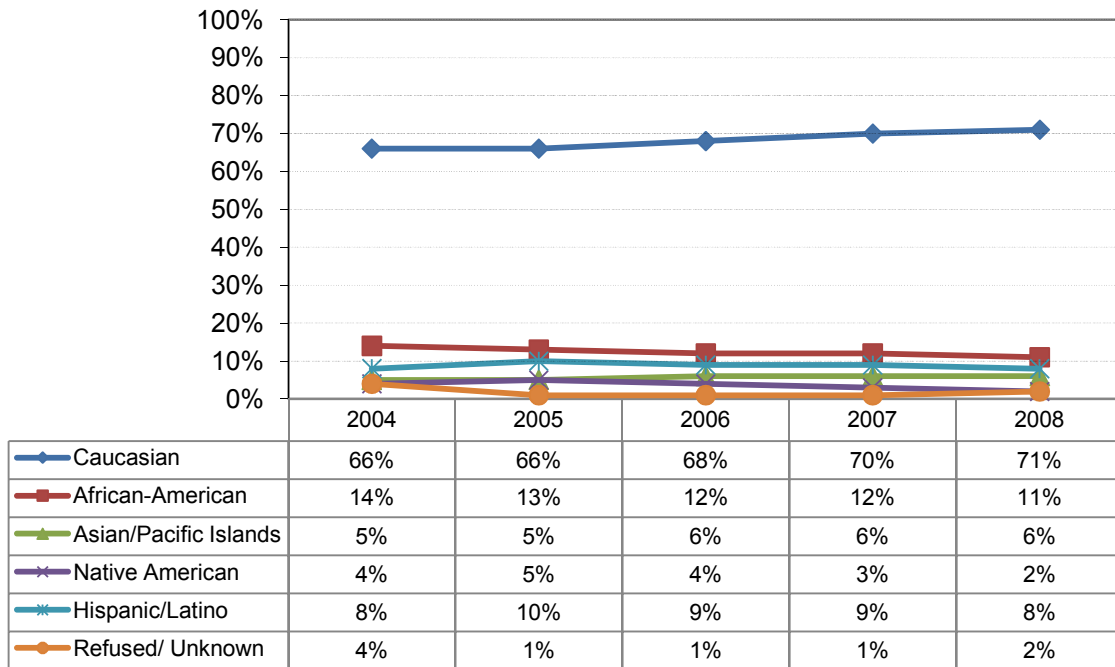
### Graduate Degree-seeking Students by Hearing Status



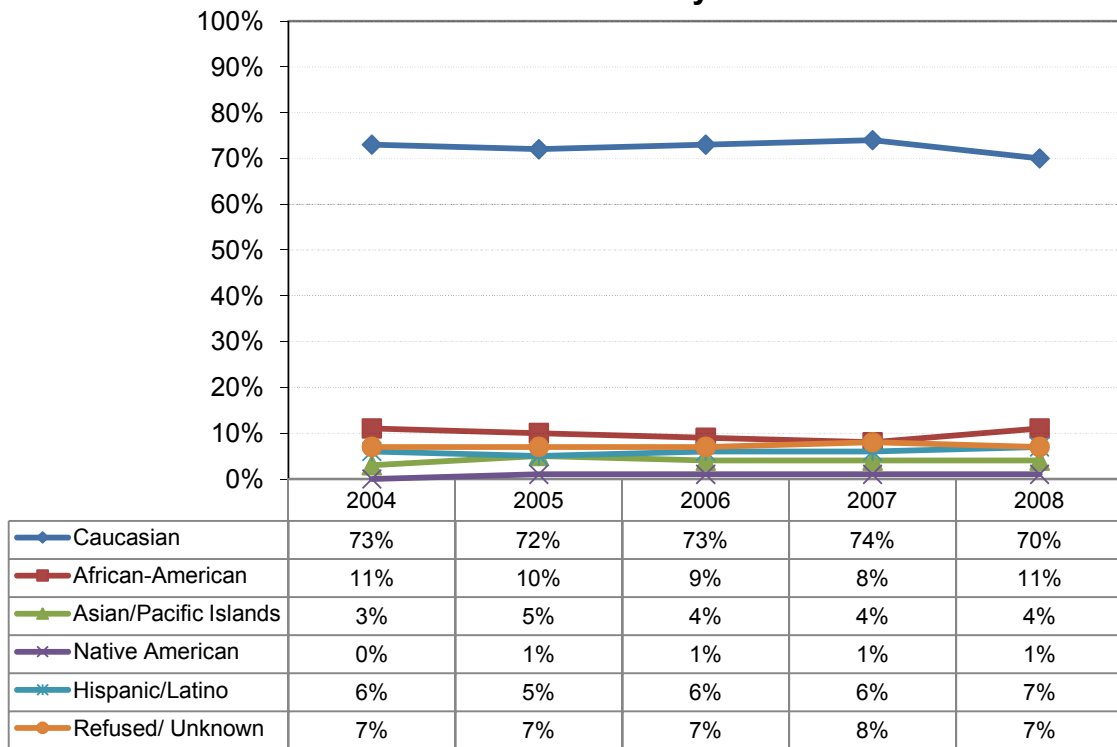
### Percentage of Women Enrolled of Degree-Seeking Students



**Percentage of Undergraduate Degree-seeking U.S. Citizens by Race and Ethnicity**



**Percentage of Graduate Degree-seeking U.S. Citizens by Race and Ethnicity**



Graduate Degree seeking Enrollment by Degree and Program^		2004	2005	2006	2007	2008
<b>Doctoral</b>	Administration: Special Education	28	27	20	21	15
	HSLs: Au.D.	37	33	38	41	44
	HSLs: Ph.D.	3	6	8	9	13
	Education	20	20	20	16	12
	Linguistics	18	18	16	14	15
	Psychology: Clinical	29	32	34	38	36
<b>Master's</b>	Administration	15	12	7	5	5
	Audiology~					7
	Counseling: Mental Health	23	20	17	13	13
	Counseling: School	29	24	25	23	19
	Deaf Education: ASL/ English Bilingual	*	6	9	11	9
	Deaf Studies	28	24	27	21	18
	Developmental Psychology	7	17	6	5	5
	Education: Advanced Studies	2	1	0	1	0
	Education: Elementary	20	16	6	11	9
	Education: Family-Child Centered	11	10	13	7	8
	Education: Multiple Disabilities	17	21	9	5	4
	Education Secondary	4	10	10	7	7
	Education: Special Programs	3	7	5	6	10
	International Development	*	*	8	16	17
	Interpretation	15	10	13	19	22
	Leisure Services	6	6	6	3	8
	Linguistics	12	17	11	11	9
	Psychology~				2	1
	Social Work	32	37	41	40	33
	Speech-Language Pathology	24	24	23	23	24
	<b>Specialist</b> Change Leadership in Education	13	14	14	7	12
	Deaf Education	1	1	1	0	0
	School Psychology	20	21	16	16	16
	<b>Certificate</b> Deaf History	0	4	3	9	1
	International Development	15	16	11	7	2
	Leadership	1	0	0	0	0
	Management	3	2	6	3	1
	Cultural Diversity and Human Services	*	*	*	8	7
	Integrating Technology in the Classroom	9	**	**	**	**
		<b>445</b>	<b>456</b>	<b>423</b>	<b>410</b>	<b>404</b>
^Includes dual enrollments; is not a headcount.						
~En route enrollment counted while student is pursuing another program.						
*Program not begun.						
**Program terminated.						

<b>Undergraduate Degree seeking U.S. Citizen Enrollment by State, District and Territory</b>					
	<b>2004</b>	<b>2005</b>	<b>2006</b>	<b>2007</b>	<b>2008</b>
Alabama	5	5	5	3	4
Alaska	4	2	2	2	1
Arizona	23	25	29	26	16
Arkansas	1	4	4	5	7
California	107	113	104	93	79
Colorado	12	9	6	3	3
Conneticut	15	12	14	13	11
Delaware	6	8	5	6	4
District of Columbia	47	66	66	56	61
Florida	50	54	54	42	49
Georgia	19	21	24	19	24
Hawaii	4	7	8	6	10
Idaho	0	1	0	0	1
Illinois	36	48	49	51	40
Indiana	24	32	27	5	33
Iowa	8	7	5	5	5
Kansas	7	12	11	10	14
Kentucky	10	9	8	7	8
Louisiana	14	13	8	6	13
Maine	0	1	2	0	0
Maryland	94	105	103	86	94
Massachusetts	26	25	30	16	23
Michigan	20	27	23	28	24
Minnesota	24	33	21	27	27
Mississippi	1	2	2	3	2
Missouri	15	13	13	14	15
Montana	1	1	1	1	1
Nebraska	5	3	3	2	3
Nevada	3	1	1	0	1
New Hampshire	2	1	2	1	2
New Jersey	26	35	35	37	35
New Mexico	3	8	7	5	5
New York	74	76	75	60	51
North Carolina	14	14	16	13	9
North Dakota	1	1	1	1	0
Ohio	35	38	32	37	29
Oklahoma	3	1	6	2	1
Oregon	10	10	9	11	13
Pennsylvania	51	55	50	41	37
Rhode Island	3	6	6	4	5
South Carolina	13	14	11	6	7
South Dakota	6	5	5	2	1
Tennessee	11	13	11	10	11
Texas	52	47	45	45	47
Utah	3	3	4	5	3
Vermont	1	2	2	1	2
Virginia	42	41	36	39	42
Washington	21	21	11	10	10
West Virginia	6	3	3	1	2
Wisconsin	27	21	13	13	8
Wyoming	0	0	0	0	0
Unknown	26	23	38	34	10
	<b>1011</b>	<b>1097</b>	<b>1046</b>	<b>943</b>	<b>903</b>



Graduate Degree seeking U.S. Citizen Enrollment by State, District and Territory					
	2004	2005	2006	2007	2008
Alabama	1	4	2	1	0
Alaska	3	2	1	1	0
Arizona	4	5	10	7	5
Arkansas	0	1	2	4	1
California	25	29	29	27	33
Colorado	0	2	3	4	3
Connecticut	1	1	4	2	1
Delaware	3	1	0	0	0
District of Columbia	42	45	37	32	46
Florida	23	17	16	21	11
Georgia	2	3	2	3	6
Hawaii	2	0	0	0	0
Idaho	1	0	0	0	0
Illinois	10	8	7	11	8
Indiana	6	4	2	2	5
Iowa	3	7	4	1	2
Kansas	4	5	1	1	1
Kentucky	4	0	2	2	1
Louisiana	0	0	2	3	2
Maine	0	0	0	0	0
Maryland	75	77	71	71	59
Massachusetts	14	11	10	9	15
Michigan	1	2	5	6	6
Minnesota	6	6	8	6	9
Mississippi	1	0	0	0	0
Missouri	6	0	4	5	3
Montana	0	0	0	1	1
Nebraska	0	2	0	0	1
Nevada	0	3	3	0	2
New Hampshire	0	1	2	2	0
New Jersey	7	10	9	8	6
New Mexico	6	4	1	1	2
New York	25	27	19	19	28
North Carolina	6	6	4	3	4
North Dakota	0	0	0	0	0
Ohio	10	5	9	12	11
Oklahoma	1	0	0	0	0
Oregon	1	4	3	4	2
Pennsylvania	22	18	19	14	14
Puerto Rico	1	1	1	1	1
Rhode Island	4	2	1	0	0
South Carolina	1	0	1	2	0
South Dakota	1	2	1	0	0
Tennessee	0	0	4	2	3
Texas	10	13	8	9	9
Utah	2	1	0	1	4
Vermont	0	2	0	2	0
Virginia	47	38	47	37	28
Virgin Islands	0	0	0	0	1
Washington	6	6	6	6	4
West Virginia	1	0	1	1	1
Wisconsin	7	7	5	5	5
Wyoming	0	0	0	0	0
Unknown	9	13	17	16	6
	<b>404</b>	<b>395</b>	<b>383</b>	<b>365</b>	<b>350</b>

## Undergraduate Degree seeking International Students by Country of Origin

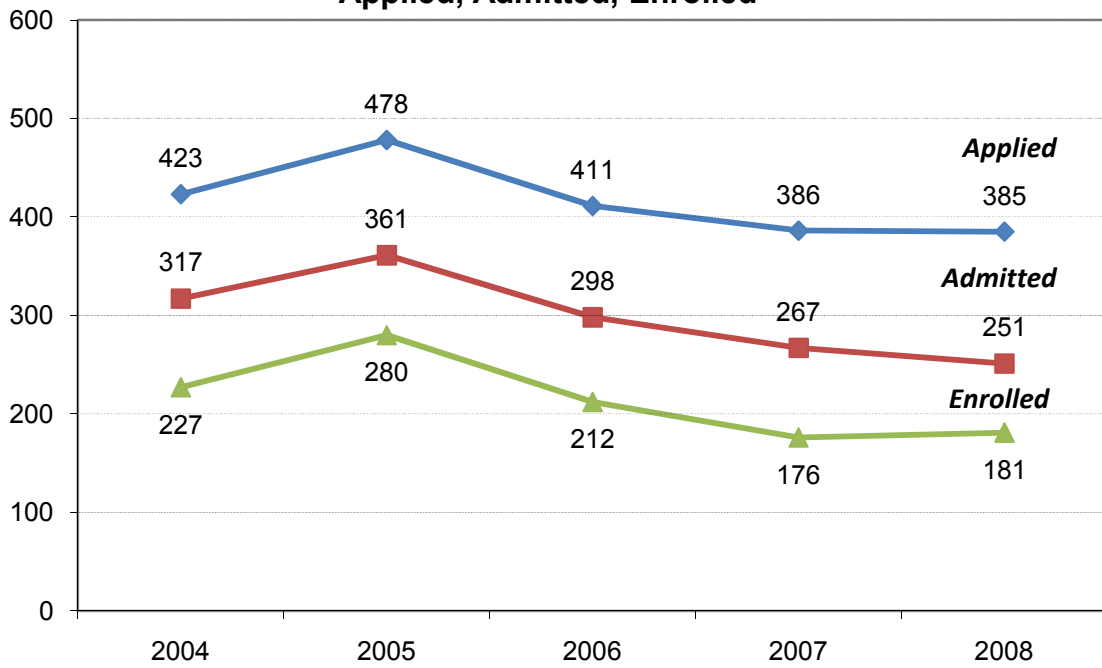
	2004	2005	2006	2007	2008
Argentina	1	0	0	0	1
Bangladesh	0	0	0	1	1
Barbados	1	1	1	0	0
Belarus	1	0	0	0	0
Botswana	2	0	1	0	1
Canada	53	46	40	34	26
Chad	0	0	0	0	1
Chile	2	2	2	2	0
China	6	5	4	4	4
Congo	1	1	0	0	0
Gabon	0	1	1	2	2
Ghana	0	0	0	0	1
Hungary	0	0	0	0	1
India	4	5	3	3	1
Ireland	1	1	1	1	0
Israel	1	0	1	0	0
Jamaica	0	1	1	2	0
Japan	2	5	6	4	2
Kenya	1	0	0	1	1
Korea, Republic of	3	4	2	1	2
Kuwait	1	1	0	0	0
Lebanon	1	1	0	1	1
Mexico	0	0	0	0	0
Netherlands	3	2	1	0	0
Nigeria	4	5	5	3	2
Norway	0	1	1	0	1
Paraguay	0	0	0	0	1
Peru	0	0	0	1	1
Philippines	2	2	2	2	1
Portugal	0	0	0	0	1
Rwanda	1	1	0	0	0
Saudi Arabia	2	2	1	3	3
Singapore	0	0	0	1	1
Slovakia	1	0	0	1	0
Slovenia	0	0	0	1	1
South Africa	1	1	1	0	0
Spain	2	1	0	0	0
Sweden	3	3	2	2	1
Switzerland	0	0	1	2	2
Taiwan, Rep. of China	1	2	1	1	1
Thailand	1	0	0	0	0
Ukraine	0	0	0	1	0
United Arab Emirates	0	3	0	1	0
United Kingdom	1	1	0	0	0
Unknown	22	18	14	0	0
	125	116	92	75	61

Graduate Degree seeking International Students by Country of Origin					
	2004	2005	2006	2007	2008
Argentina	1	1	1	1	0
Cameroon	1	0	0	0	0
Canada	5	6	3	7	9
China	0	1	1	0	0
Congo	0	0	0	1	1
Czech Republic	0	0	0	1	0
Denmark	0	1	0	0	0
Germany	1	0	0	0	0
Greece	0	1	0	0	0
Ireland	1	1	0	0	0
Israel	1	0	0	0	0
Italy	0	0	1	1	0
Jamaica	0	0	0	0	2
Japan	2	0	1	2	4
Kenya	1	2	2	1	1
Korea, Republic of	0	1	1	1	1
Mexico	1	1	1	0	0
Nigeria	1	1	2	2	4
Philippines	1	1	0	1	1
Saudi Arabia	0	0	0	0	1
Thailand	1	1	1	0	0
United Kingdom	0	0	0	0	1
Unknown	4	6	7	0	2
	<b>21</b>	<b>24</b>	<b>21</b>	<b>18</b>	<b>27</b>

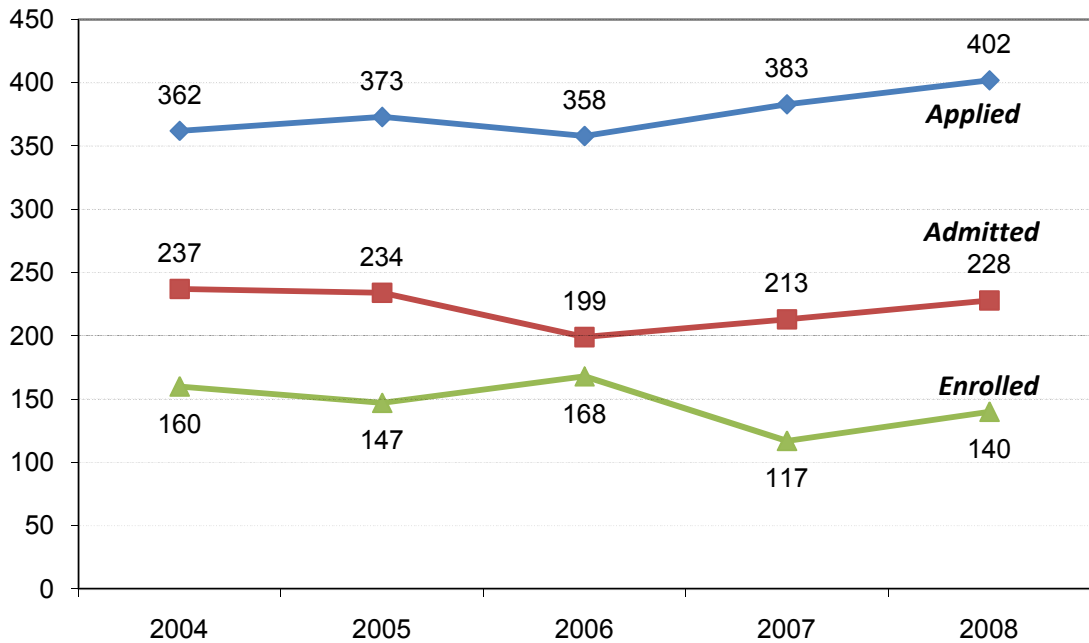
# Fall Admissions

---

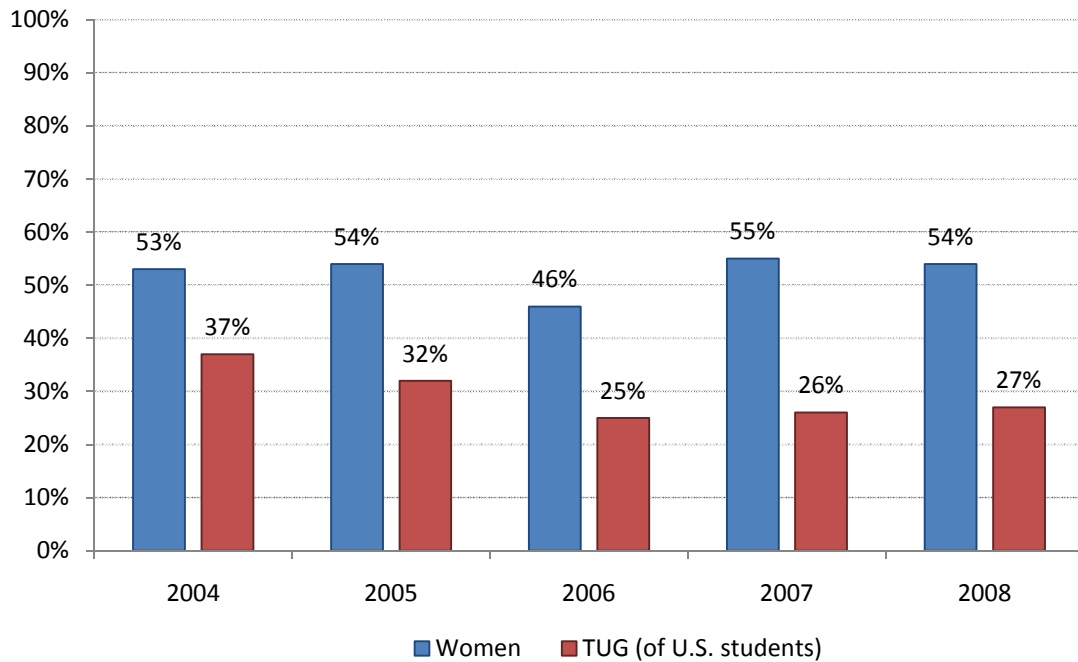
**New Degree-seeking First-time Freshmen by  
Applied, Admitted, Enrolled**



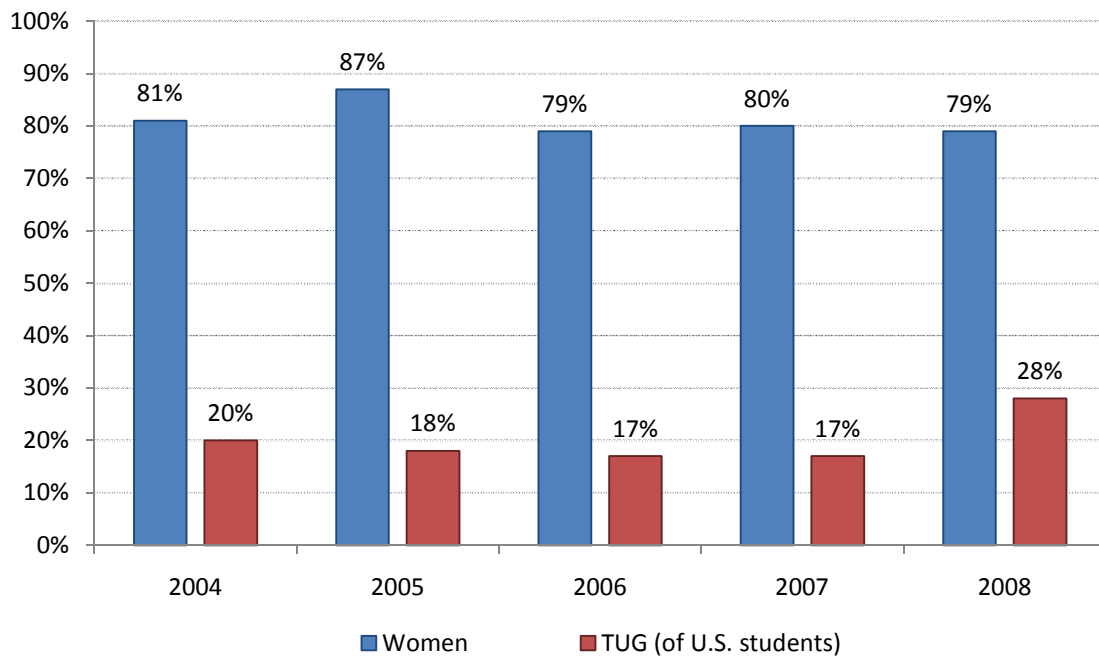
**New Degree-seeking Graduate Students by  
Applied, Admitted and Enrolled**



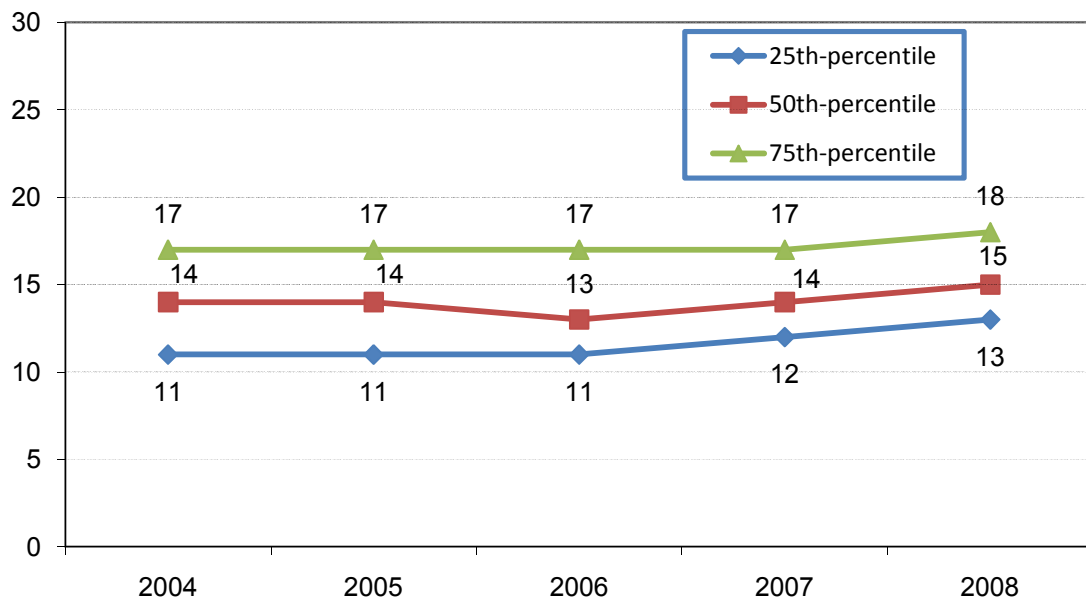
**Percentage of First-time Degree-seeking Freshmen Women and those from Traditionally Underrepresented Groups**



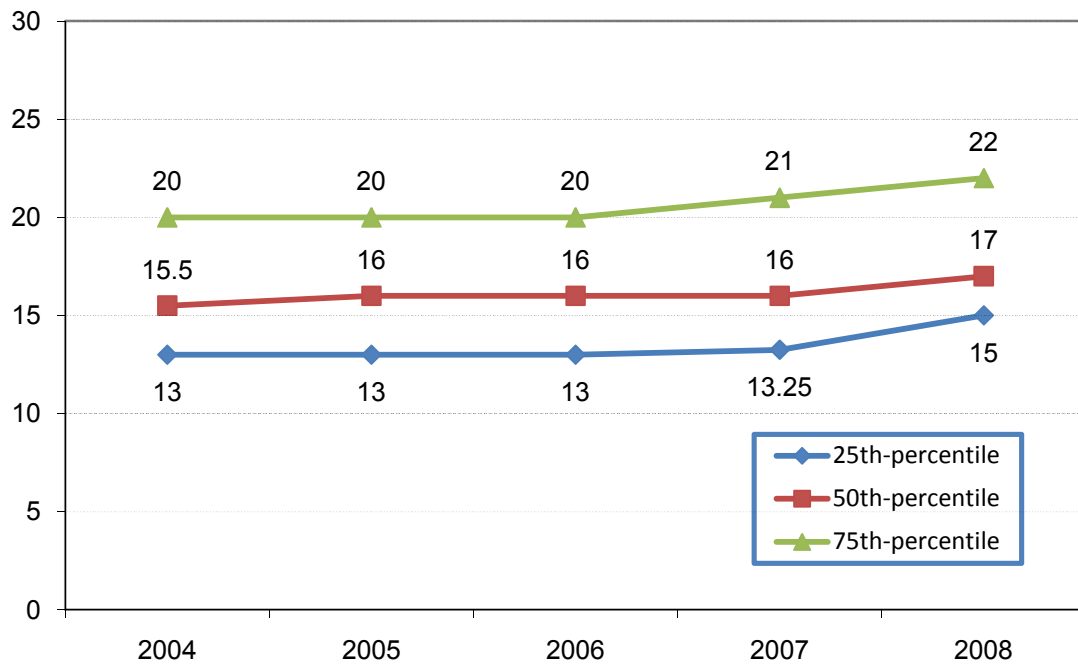
**Percentage of New Graduate Degree-seeking Women and those from Traditionally Underrepresented Groups**



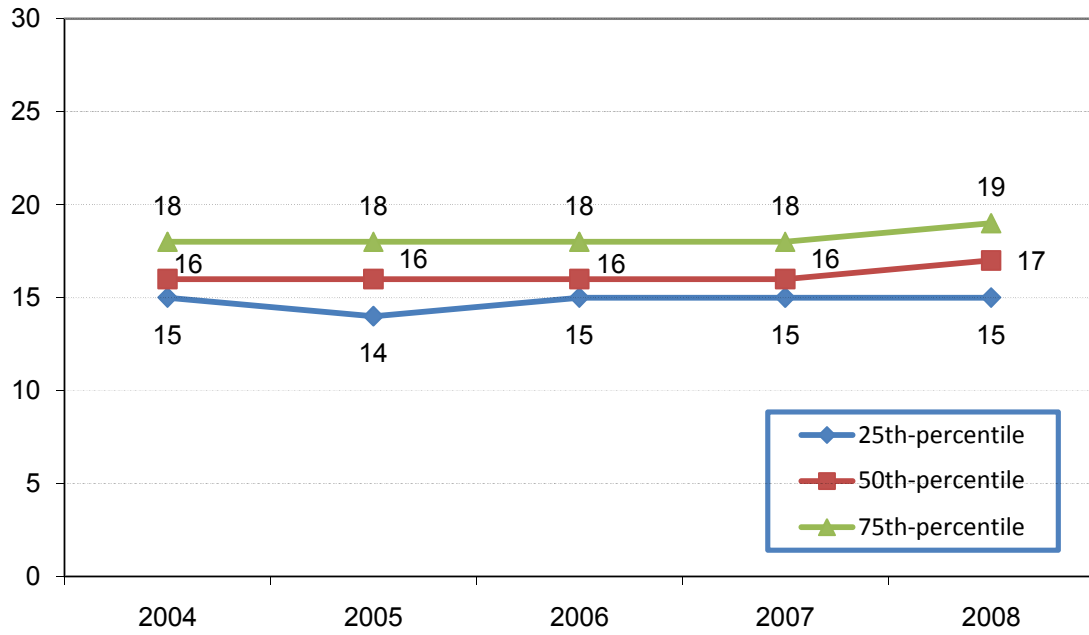
**First-time Freshmen ACT English ACT Scores by  
25th-, 50th- and 75th-percentiles**



**First-time Freshmen ACT Reading Scores by  
25th-, 50th- and 75th-percentiles**



**First-time Freshmen ACT Mathematics Scores by  
25th-, 50th- and 75th-percentiles**

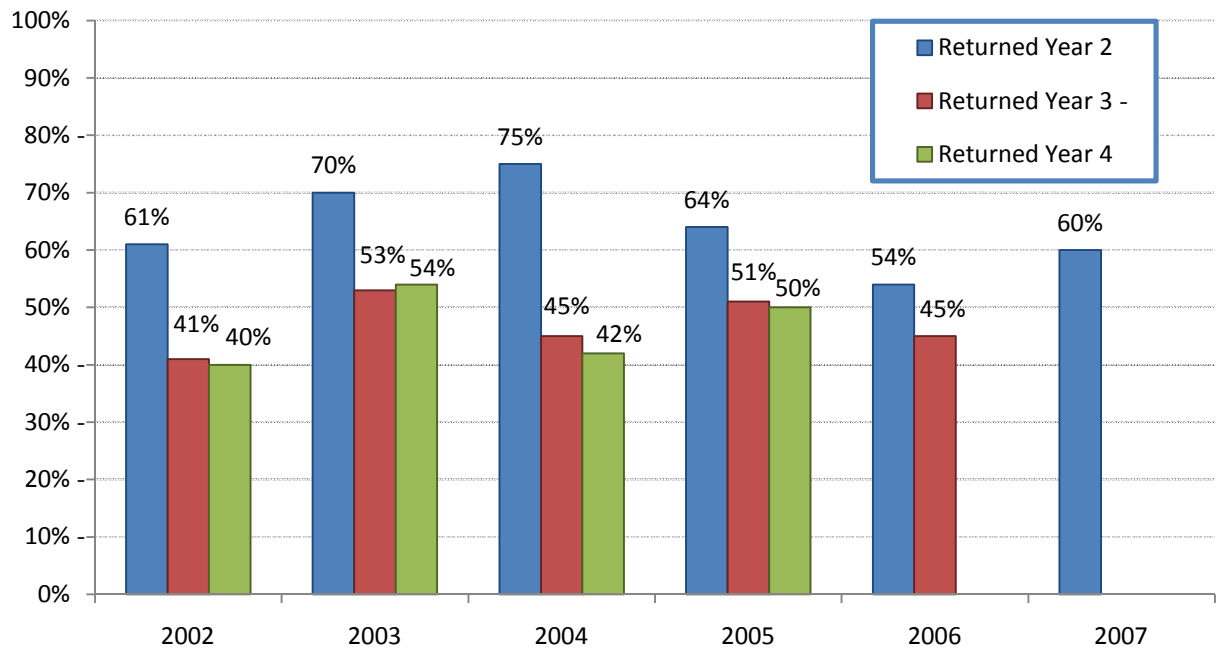




# Retention and Graduation

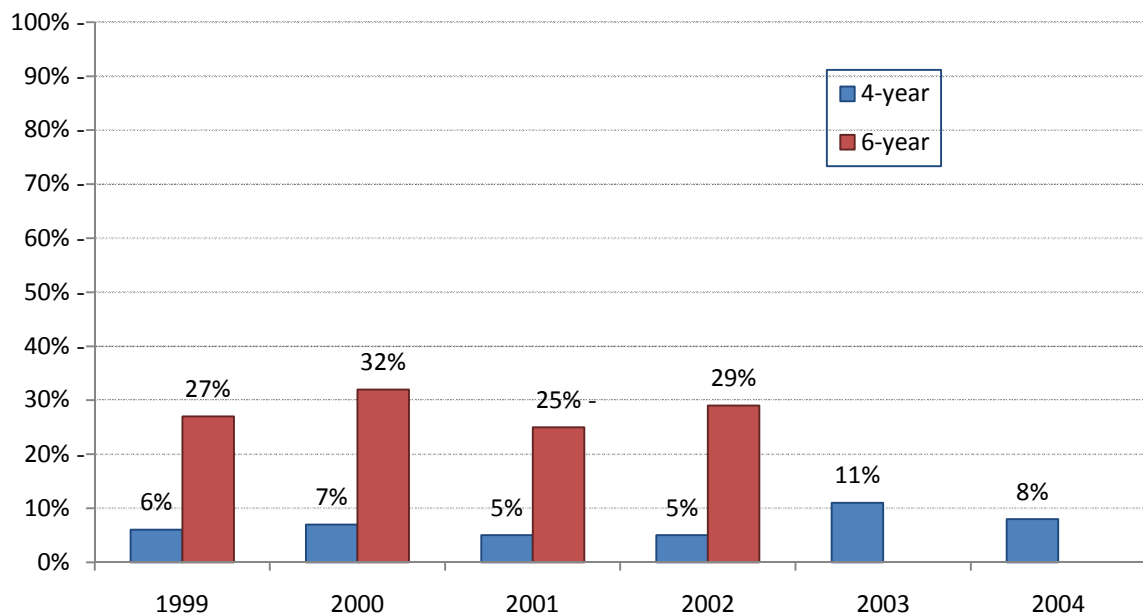
---

### First-time Freshmen Cohort Retention Rates by those who Returned Year 2, Year 3 and Year 4



Note: The rates above include both full-time and part-time students in the cohort.

### First-time Freshmen Cohort by 4-year and 6-year Graduation Rates



Note: The rates above include both full-time and part-time students in the cohort.