

COMPLETE SUITES  
TRR3100-SS

# TROPICAL<sup>RIMLESS</sup>

XL2015WHR

with

## INDIANA CISTERN

XL3001/8310

## CIRCO STAINLESS STEEL

XL5080-SS

**Pan Dimension:** L535 W365 H350

**Type:** Rimless

**Standard:** Complies to AS1172.1 and AS1172.2

**Flush:** 4.5/3.0 LPF 4 Star WER

**Cistern Options:** Indiana with Frame

**Button Options:** CIRCO Stainless Steel

**Waste outlet:** P-Trap 180mm

**Wall outlet:** 223mm nominal

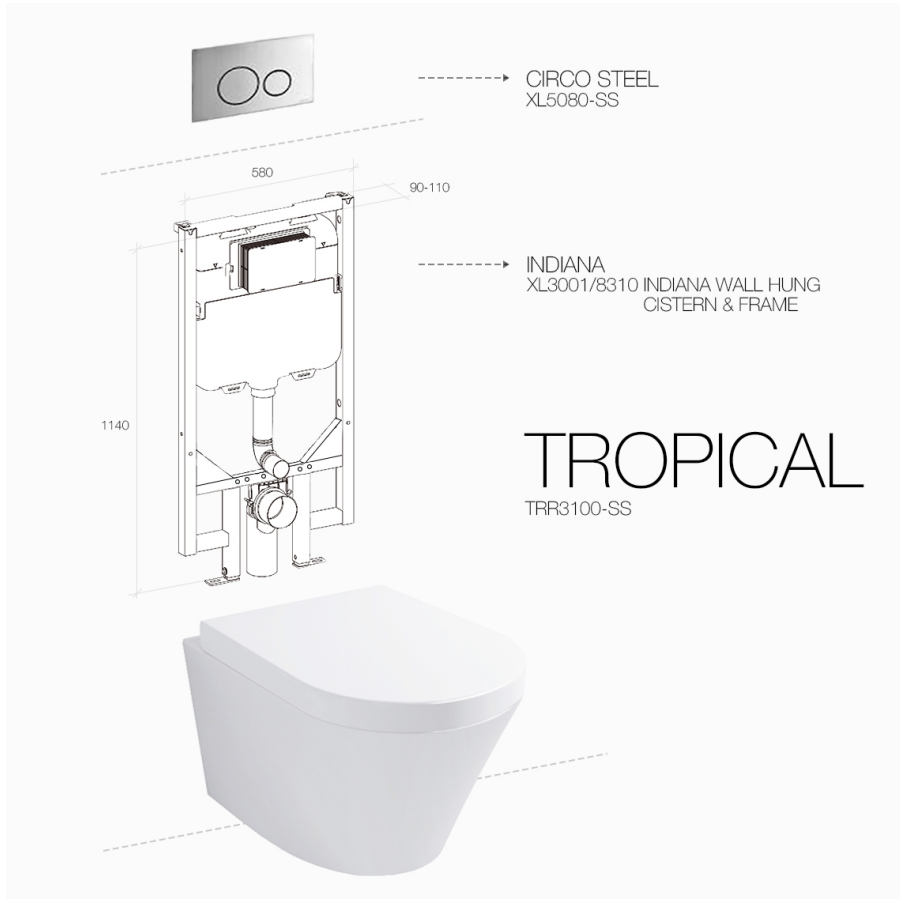
**Seat :** German Engineered Soft Close Seat  
**Order code:** TR/DZ-SEAT

**WELS:** 0016

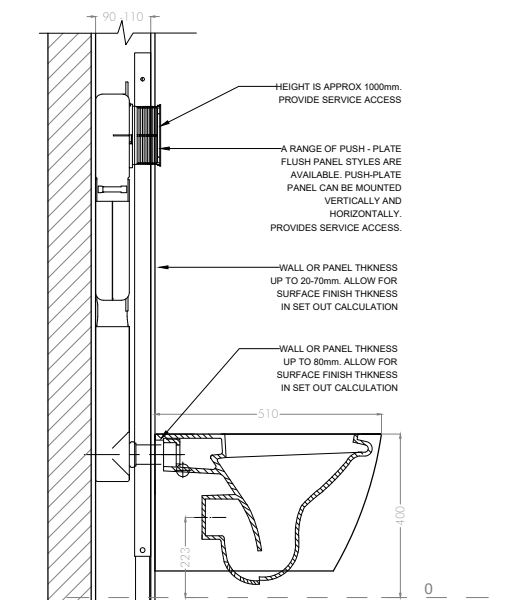
**WM:** 030025

**WARRANTY:** 10 years (Conditions Apply)

All Gallaria inlet valves (concealed cisterns & BTW suites) are warranted to perform under water pressure at up to 500Kpa. Anything above 500Kpa immediately voids warranty.



technical detail



**gallaria**

[gallaria.com.au](http://gallaria.com.au)

P. 1300 961 239

E. [info@gallaria.com.au](mailto:info@gallaria.com.au)

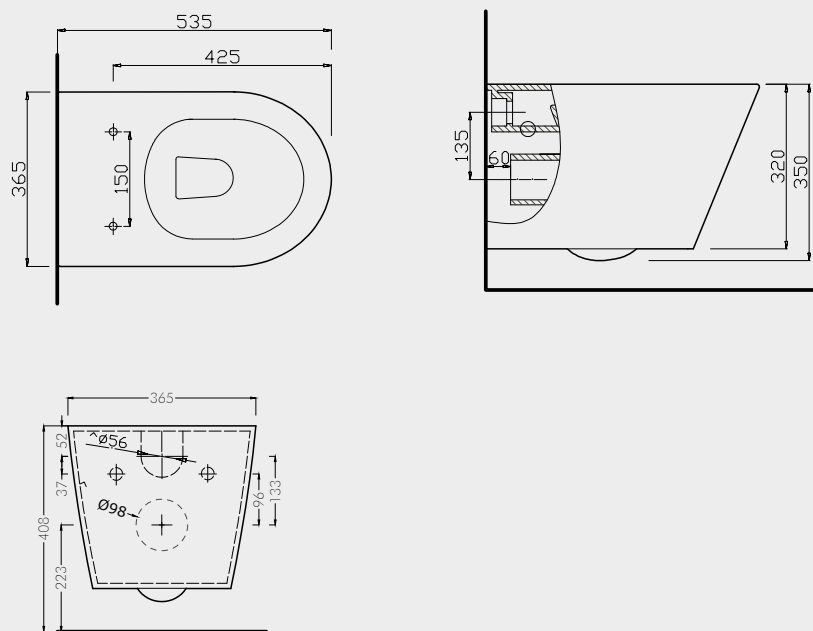


SPECIFICATION

# COMPONENTS

## TOILET PAN: TROPICAL RIMLESS WALL HUNG PAN XL2015WHR

technical detail

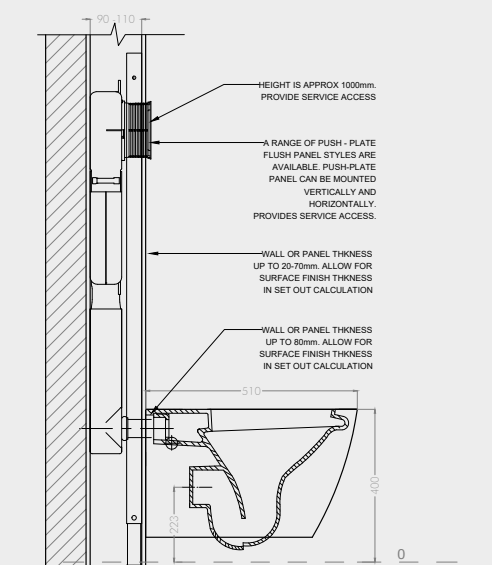


## FLUSH PLATE: CIRCO STAINLESS STEEL XL5080-SS



## CONCEALED CISTERN: INDIANA WITH FRAME XL3001/8310 (Front press flushing)

technical detail



**gallaria**

gallaria.com.au  
P. 1300 961 239  
E. info@gallaria.com.au

SPECIFICATION