

# TROPICAL<sup>RIMLESS</sup>

XL2015WHR

with

## INDIANA CISTERN

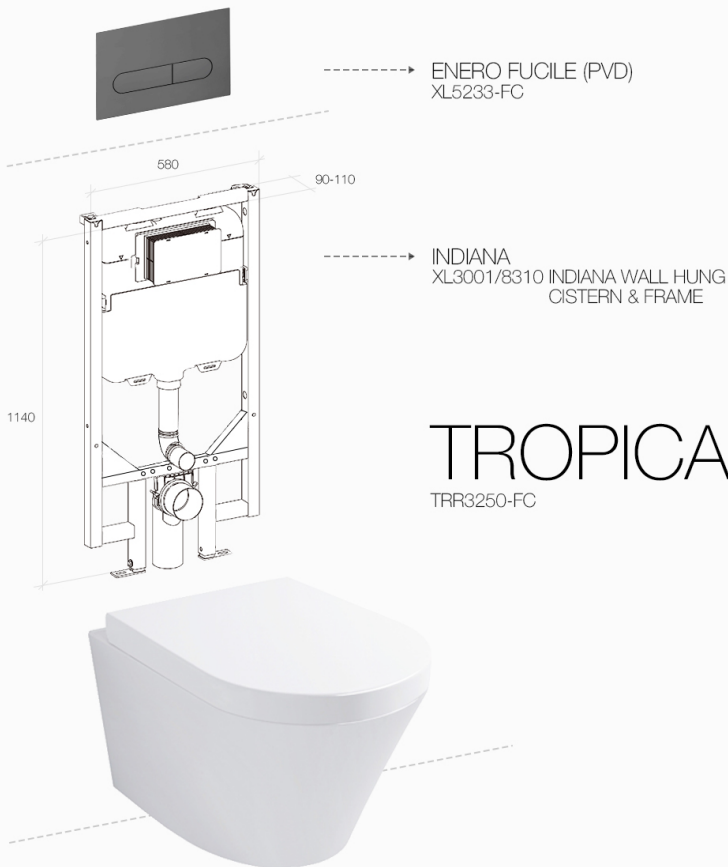
XL3001/8310

## ENERO FUCILE

XL5233-FC

# TROPICAL

TRR3250-FC



**Pan Dimension:** L535 W365 H350

**Type:** Rimless

**Standard:** Complies to AS1172.1 and AS1172.2

**Flush:** 4.5/3.0 LPF 4 Star WER

**Cistern Options:** Indiana with Frame

**Button Options:** ENERO FUCILE(PVD)

**Waste outlet:** P-Trap 180mm

**Wall outlet:** 223mm nominal

**Seat :** German Engineered Soft Close Seat  
**Order code:** TR/DZ-SEAT

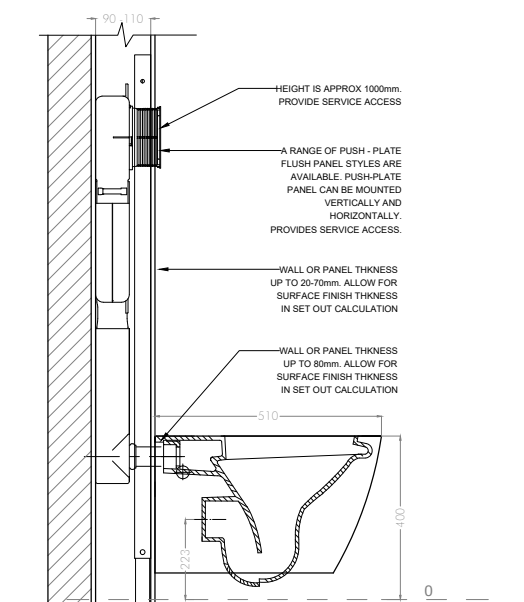
**WELS:** 0016

**WM:** 030025

**WARRANTY:** 10 years (Conditions Apply)

All Gallaria inlet valves (concealed cisterns & BTW suites) are warranted to perform under water pressure at up to 500Kpa. Anything above 500Kpa immediately voids warranty.

### technical detail



**gallaria**

[gallaria.com.au](http://gallaria.com.au)

P. 1300 961 239

E. [info@gallaria.com.au](mailto:info@gallaria.com.au)

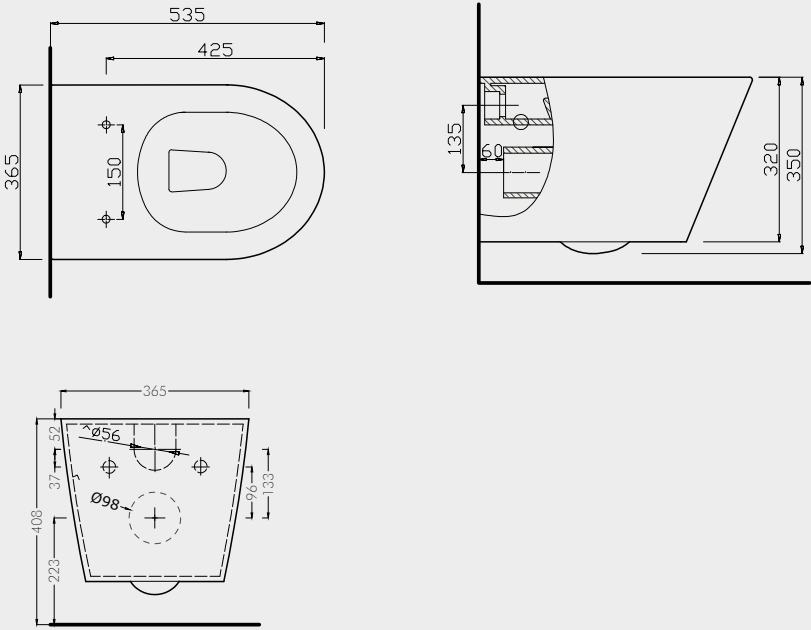


SPECIFICATION

COMPONENTS

TOILET PAN: TROPICAL RIMLESS WALL HUNG PAN  
XL2015WHR

technical detail

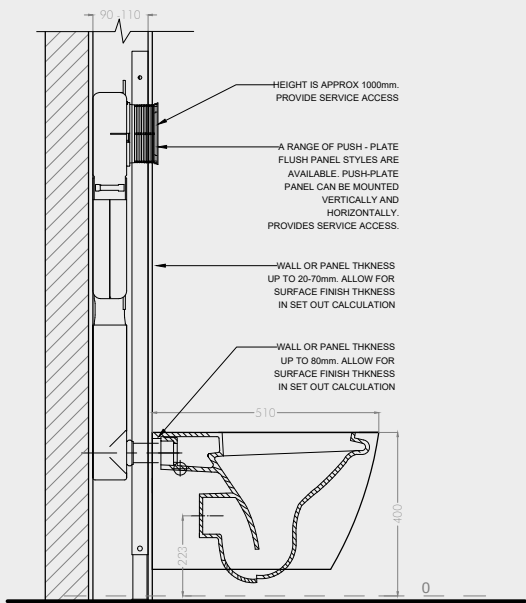


FLUSH PLATE: ENERO FUCILE(PVD)  
XL5233-FC



CONCEALED CISTERN: INDIANA WITH FRAME  
XL3001/8310 (Front press flushing)

technical detail



**gallaria**

gallaria.com.au  
P. 1300 961 239  
E. info@gallaria.com.au

SPECIFICATION