



SOUTH CAROLINA

WOMEN'S GOLF

South Carolina Athletic Media Relations • Women's Golf Contact: Chelsea Carlson • Carlsonc@mailbox.sc.edu
 Rice Athletics Center, 1304 Heyward Street, Columbia, S.C. 29208 • Office: 803-777-8844 • Cell: 440-241-1009

2013-14 SCHEDULE/RESULTS

September

8-10 Cougar Classic 6th of 20
 Yeaman's Hall Club (Hanahan, S.C.)

20-22 Mercedes-Benz Collegiate Championship 2nd of 17
 Holston Hills Country Club (Knoxville, Tenn.)

October

11-13 Tar Heel Invitational T-5th of 18
 UNC Finley Golf Course (Chapel Hill, N.C.)

25-27 The Landfall Tradition 4th of 18
 Country Club of Landfall (Wilmington, N.C.)

February

14-16 Florida State Match-Up 1st of 11
 SouthWood Golf Club (Tallahassee, Fla.)

March

7-9 Darius Rucker Intercollegiate 5th of 17
 Long Cove Club (Hilton Head Island, S.C.)

28-30 Bryan National Collegiate 2nd of 18
 Bryan Park Golf Course (Greensboro, N.C.)

April

4-6 Ping ASU Invitational 1st of 15
 ASU Karsten Golf Course (Tempe, Ariz.)

18-20 SEC Championship 2nd of 14
 Greystone Golf Club (Birmingham, Ala.)

May

8-10 NCAA East Regional 2nd of 14
 SouthWood Golf Club (Tallahassee, Fla.)

20-23 NCAA Championship
 Tulsa Country Club (Tulsa, Okla.)

NCAA CHAMPIONSHIP

Tuesday, May 20 - Friday, May 23

Tulsa Country Club

Tulsa, Okla. • Par 70 • 6,194 Yards



Live Scoring: www.golfstat.com

Carolina Tee Times: Tuesday: 12:55 p.m. CT
 --Paired with Alabama, Washington
 Wednesday: 8:25 a.m. CT (10th tee)
 --Paired with Alabama, Washington
 Thursday: TBD
 --Pairing based on team standing
 Friday: TBD
 --Pairing based on team standing

Host Institution: University of Tulsa

Gamecocks Open Play at NCAA Championship

The South Carolina women's golf team will compete for the program's first-ever national title as it tees off in the NCAA Championship on Tuesday. The Gamecocks are making their fifth-straight appearance in the NCAA Championship and are one of only seven teams in this year's field to do so. South Carolina had one of the best regular seasons in program history with seven-straight top-five finishes and continued that success by claiming second place at both the SEC Championship and the NCAA East Regional.

In The Polls

The Gamecocks are currently No. 4 in the Golfstat Rankings, No. 5 in the Golfworld/WGCA Division I College Coaches' Poll and No. 8 in the Golfweek/Sagarin Rankings.

The Lineup

The same five golfers will be in the lineup that brought home two post-season second-place finishes as Justine Dreher, Samantha Swinehart, Katelyn Dambaugh, Sarah Schmelzel and Suzie Lee will represent the Gamecocks.

Dreher enters the week with team's low stroke average (73.28) after the leading the way at the East Regional with a tie for fourth finish. She earned First Team All-SEC honors and has recorded a team leading eight top-20 finishes this season. Swinehart, a Second Team All-SEC selection, finished in a tie for seventh at the East Regional and enters the Championship with the 73.41 stroke average. Dambaugh, a Second Team All-SEC and SEC All-Freshman Team selection, finished the East Regional in a tie for 24th place. She enters the week with a 73.59 stroke average and has tallied six top-20 finishes this season. Schmelzel tied for 29th at the East Regional and currently has a stroke average of 73.93. Lee finished the East Regional in a tie for 65th and will be making her fourth consecutive appearance in the NCAA Championship.

The Field

All 24 teams in this year's field enter the week ranked in the Golfstat Top-50. Top-ranked and defending National Champion Southern California highlights the field. South Carolina is joined by five other SEC teams as Vanderbilt, Alabama, Mississippi State and Texas A&M all advanced to the championship.

TOURNAMENT FIELD

Team	Golfstat Ranking
Alabama	10
Arizona	11
Arizona State	5
California	25
Campbell	45
Duke	3
Florida	21
Iowa State	24
Kansas	29
Michigan State	20
Mississippi State	27
NC State	17
Northwestern	15
Ohio State	22
Oklahoma	7
South Carolina	4
Southern California	1
Stanford	12
Texas A&M	30
Tulane	31
UCLA	2
Vanderbilt	8
Virginia	18
Washington	6

NCAA Championship History

South Carolina is making its 14th NCAA Championship appearance all-time. At last year's championship, the Gamecocks finished in 20th place and its best finish ever at the event came a year earlier as they claimed fifth place in 2012.

SEC Accolades

Justine Dreher earned first-team All-SEC honors and Samantha Swinehart earned second-team All-SEC honors. Katelyn Dambaugh also received second-team All-SEC honors and was named to the SEC All-Freshman team, as well.

Harris Returns to Tulsa

Head Coach Kalen Harris was a member of the 1999 Duke squad that took home the title the last time NCAA Championship was held at the Tulsa Country Club.

Regular Season Recaps

PING ASU Invitational

The Gamecocks won their second title of season at the PING ASU Invitational in Tempe, Ariz. South Carolina carded its lowest 54-hole score of the season with an 853 (-11), shattering the previous program record of 861, which was set at the 2002 SEC Championship. Four of the five golfers placed in the top-20 including a tie for third place showing by Samantha Swinehart.

Bryan National Collegiate

The Gamecocks battled through tough conditions in Greensboro, N.C., to finish the Bryan National Collegiate in second place with a score of 903 (+39). Justine Dreher finished in seventh place while Samantha Swinehart tied for ninth, give the duo each their third top-10 finish of the season. Dreher carded a 5-over 221 and Swinehart shot a 7-over 223. Sarah Schmelzel finished the tournament in a tie for 27th place after carding a 230 (+14).

Darius Rucker Intercollegiate

South Carolina took fifth place at the third annual Darius Rucker Intercollegiate in Hilton Head Island, S.C. The Gamecocks finished with a total score of 886 (+34). Justine Dreher tied for 12th place after carding a 219 (+6) while Samantha Swinehart and Katelyn Dambaugh both tied for 15th place with a score of 220 (+7).

Florida State Match-Up

The Gamecocks had one of their strongest performances of the season in Tallahassee, Fla. as they won the Florida State Match-Up. South Carolina shot a 7-over 871 and beat out in-state rival Clemson by two strokes. Five golfers finished in the top-20 with Sarah Schmelzel leading the way as she tied for second place. Schmelzel's score of 214 (-4) marked a new career best and her first top-five finish of the season. Katelyn Dambaugh (T-7th), Samantha Swinehart (T-12th), Jia Xin Yang (T-12th) and Justine Dreher (T-16th) also finished in the top-20. Dambaugh's performance that included carding a 5-under 67 in the final round.



QUICK FACTS

Location..... Columbia, S.C.
 Enrollment 29,957
 Founded 1801
 Team Name Gamecocks
 President Dr. Harris Pastides
 Faculty Representative Dr. Zach Kelehear
 Athletics Director Ray Tanner
 Colors Garnet (PMS 202C), Black
 Conference Southeastern
 Home Course Cobblestone Park

COACHING STAFF

Head Coach Kalen Harris
 7th Year (Duke, 2001)
 Director of Golf/Asst Coach.... Puggy Blackmon
 Volunteer Coach..... Scott Barnicle

PROGRAM HISTORY

First Year of Women's Golf..... 1980
 NCAA Champ. Appearances 13
 NCAA Regional Appearances 20
 All-Americans 4
 All-Conference 17
 SEC Championships 1 (2002)

TEAM INFORMATION

2013 SEC Finish 3rd/14
 2013 NCAA Regional Finish..... 4th/24
 2013 NCAA Champ. Finish 20th/24
 Letterwinners R/L 6/1
 Newcomers 2

MEDIA RELATIONS

Assistant AD/Media Relations Steve Fink
 Golf Contact Chelsea Carlson
 E-mail carlsonc@mailbox.sc.edu
 Office 803-777-8844
 Cell 440-241-1009
 Media Relations Fax 803-777-2967
 Official Website GamecocksOnline.com
 Twitter @GamecockWGGolf



2013-14 ROSTER

Name	Class	Hometown	Last School
Katelyn Dambaugh	Freshman	Goose Creek, S.C.	Pinewood Prep
Justine Dreher	Junior	Valbonne, France	Lycée Audiberti
Mary Fran Hillow	Sophomore	Orlando, Fla.	Lake Highland Prep
Suzie Lee	Senior	East Northport, N.Y.	Commack HS
Sarah Schmelzel	Sophomore	Phoenix, Ariz.	Xavier Prep
Samantha Swinehart	Senior	Lancaster, Ohio	Lancaster HS
Karoline Woie	Sophomore	Stavanger, Norway	Wang Toppidrett HS
Jia Xin Yang	Freshman	Beijing, China	Dongfan Basuo

Head Coach: Kalen Harris - 7th year at South Carolina (Duke, 2001)

Director of Golf: Puggy Blackmon - 19th year at South Carolina (Carson-Newman, 1973)

Volunteer Coach: Scott Barnicle - 1st year at South Carolina

Landfall Tradition Recap

The Gamecocks wrapped up their fall schedule at the Landfall Tradition in Wilmington, N.C., securing their fourth straight top-10 finish and third straight top-five finish of the season as they claimed fourth place. South Carolina posted a 904 (+40) through the three rounds of the tournament.

Dambaugh led the way for the Gamecocks carding a 3-over 219 and earning her first career top-five finish as she tied for fourth place. Hillow finished in a tie for 27th place with a total score of 228 (+12) Swinehart tied for 32nd place with a total score of 229 (+13).

Tar Heel Invitational Recap

South Carolina met four of the then top-5 teams in Chapel Hill and came out with then-No. 2 Alabama and ahead of then-No. 5 Florida. After shooting a first-round 11-over 299, the Gamecocks carded second and third rounds of 291 (+3) and 288 (E), respectively, to move up eight spots on the leaderboard and finish in a tie for fifth place. Dreher concluded the tournament in seventh place with a score of 214 (-2). Schmelzel shot a round of par and finished with a 5-over 221 to tie for 32nd place. Dambaugh tallied two rounds of par and finished in a tie for 38th place with a score of 223 (+7).

Mercedes-Benz Collegiate Championship Recap

South Carolina had a stellar performance at the weather-shortened Mercedes-Benz Collegiate Championship in Knoxville, Tenn. The Gamecocks placed second as a team and had four individual top-15 finishes.

Swinehart led the Garnet and Black recording a career-best finish as she tied for second place after shooting a 2-under 140. Hillow also recoded a career-best finish coming in seventh place with a score of 141 (-1) Dambaugh led the tournament after the first round as she shot a 3-under 68, she finished with an even-par 142 to tie for eighth place. Sophomore Sarah Schmelzel, who competed in the tournament as an individual, tied for 12th place with a score of 143 (+1). Senior Suzie Lee tied for 32nd and junior Justine Dreher tied for 39th place after turning in two-round scores of 148 (+6) and 149 (+7), respectively.

Cougar Classic Recap

South Carolina opened fall play with a sixth place finish at the Cougar Classic in Hanahan, S.C., after posting a three-round score of 872 (+8) The Gamecocks shot their best round on the opening day of the tournament turning in a 3-under 285. Swinehart led the way with a 3-under 69, followed by Hillow's 1-under 71. Dreher, who competed as an individual, also finished with a 1-under 71.

After posting a second round score of 298 (+10), the Gamecocks bounced back in round three carding a 1-over 289.

2013-14 SEASON SUPERLATIVES

Low 18-Hole Round - Individual

66 - Samantha Swinehart
PING ASU Invitational, 3rd round, 4/6/14
66 - Justine Dreher
NCAA East Regional, 3rd round, 5/10/14

Low 18-Hole Round - Team

279 - Dambaugh, Dreher, Hillow, Lee, Swinehart
Mercedes-Benz Collegiate Championship, 2nd round, 9/21/14

Low 54-Hole Total - Individual

211 - Samantha Swinehart (75-70-66)
PING ASU Invitational, 4/4-6/14
211 - Justine Dreher (75-70-66)
NCAA East Regional, 5/8-10/14

Low 54-Hole Total - Team

853 - Dambaugh, Dreher, Lee, Schmelzel, Swinehart
PING ASU Invitational, 4/4-6/14

Low First Round

68 - Katelyn Dambaugh
Mercedes-Benz Collegiate Championship, 9/20/13
PING ASU Invitational, 4/4/14

Low Second Round

68 - Sarah Schmelzel
PING ASU Invitational, 4/5/14

Low Third Round

66 - Samantha Swinehart
PING ASU Invitational, 4/6/14
66 - Justine Dreher
NCAA East Regional, 5/10/14

ROUNDS OF PAR OR BETTER

66

Samantha Swinehart, PING ASU Invitational (1)
Justine Dreher, NCAA East Regional (1)

67

Katelyn Dambaugh, Florida State Match-Up (1)

68

Suzie Lee, Cougar Classic (1)
Katelyn Dambaugh, Mercedes-Benz Collegiate Championship (1)
Katelyn Dambaugh, PING ASU Invitational (1)
Sarah Schmelzel, PING ASU Invitational (1)

69

Samantha Swinehart, Cougar Classic (1)
Samantha Swinehart, Mercedes-Benz Collegiate Championship (1)
Samantha Swinehart, NCAA East Regional (1)

70

Justine Dreher, Cougar Classic (1)
Mary Fran Hillow, Mercedes-Benz Collegiate Championship (1)
Sarah Schmelzel, Mercedes-Benz Collegiate Championship (1)
Justine Dreher, Tar Heel Invitational (1)
Sarah Schmelzel, Florida State Match-Up (2)
Samantha Swinehart, PING ASU Invitational (1)
Suzie Lee, PING ASU Invitational (1)
Katelyn Dambaugh, NCAA East Regional (1)
Justine Dreher, NCAA East Regional (1)
Samantha Swinehart, NCAA East Regional (1)

71

Justine Dreher, Cougar Classic (1)
Mary Fran Hillow, Cougar Classic (1)
Samantha Swinehart, Mercedes-Benz Collegiate Championship (1)
Mary Fran Hillow, Mercedes-Benz Collegiate Championship (1)
Justine Dreher, Tar Heel Invitational (1)
Samantha Swinehart, Tar Heel Invitational (1)
Katelyn Dambaugh, Landfall Tradition (1)
Katelyn Dambaugh, Darius Rucker Intercollegiate (1)
Justine Dreher, Darius Rucker Intercollegiate (1)
Samantha Swinehart, Bryan National Collegiate (1)
Mary Fran Hillow, PING ASU Invitational (1)
Justine Dreher, SEC Championship (1)
Katelyn Dambaugh, NCAA East Regional (1)
Sarah Schmelzel, NCAA East Regional (1)

72

Samantha Swinehart, Cougar Classic (1)
Katelyn Dambaugh, Cougar Classic (1)
Sarah Schmelzel, Tar Heel Invitational (1)
Katelyn Dambaugh, Tar Heel Invitational (2)
Mary Fran Hillow, Landfall Tradition (1)
Justine Dreher, Florida State Match-Up (1)
Sarah Schmelzel, Florida State Match-Up (1)
Samantha Swinehart, Florida State Match-Up (1)
Jia Xin Yang, Florida State Match-Up, (2)
Samantha Swinehart, Darius Rucker Intercollegiate (2)
Justine Dreher, Bryan National Collegiate (1)
Justine Dreher, PING ASU Invitational (3)
Suzie Lee, NCAA East Regional (1)

2013-14 SOUTH CAROLINA WOMEN'S GOLF - STATISTICS/RESULTS

TEAM SCHEDULE/RESULTS

Date	Tournament	Team Score	Finish	Low Individual	Low Individual Score	Finish
Sept. 8-10	Cougar Classic	285-298-289=872 (+8)	6th/20	Justine Dreher	71-73-70=214 (-2)	T-6th
Sept. 20-22	Mercedes-Benz Collegiate	279-292= 571(+3)	2nd/17	Samantha Swinehart	69-71=140 (-2)	T-2nd
Oct. 11-13	Tar Heel Invitational	299-291-288= 878 (+14)	T-5th/18	Justine Dreher	70-71-71= 214 (-2)	7th
Oct. 25-27	The Landfall Tradition	300-299-305=904 (+40)	4th/18	Katelyn Dambaugh	71-73-75=219 (+3)	T-4th
Feb. 14-16	Florida State Match-Up	293-293-285=871 (+7)	1/11th	Sarah Schmelzel	70-72-70=212 (-4)	2nd
March 7-9	Darius Rucker Intercollegiate	294-296-296=886 (+34)	4th/17	Justine Dreher	76-71-72=219 (+6)	T12th
March 28-30	Bryan National Collegiate	302-293-308=903 (+39)	2nd/18	Justine Dreher	72-73-76=221 (+5)	7th
April 4-6	Ping ASU Invitational	288-280-285=853 (-11)	1st/15	Samantha Swinehart	75-70-66=211 (-5)	T-3rd
April 18-20	SEC Championship	301-299-290=890 (+26)	2nd/14	Justine Dreher	73-74-71=218 (+2)	4th
May 8-10	NCAA East Regional	291-283-280=854 (-10)	2nd/24	Justine Dreher	75-70-66=211 (-5)	T-4th
May 20-23	NCAA Championship					

INDIVIDUAL TOURNAMENT-BY-TOURNAMENT RESULTS

Cougar Classic (Par 72)

Player	Rounds	Finish
Samantha Swinehart	69-72-75=216 (E)	T10
Suzie Lee	73-77-68=218 (+2)	T19
Katelyn Dambaugh	72-75-74=221 (+5)	T37
Mary Fran Hillow	71-77-73=221 (+5)	T37
Sarah Schmelzel	74-74-74=222 (+6)	T44
*Justine Dreher	71-73-70= 214 (-2)	T6

Bryan National Collegiate (Par 72)

Player	Rounds	Finish
Justine Dreher	72-73-76=221 (+5)	7
Samantha Swinehart	75-71-77=223 (+7)	T9
Sarah Schmelzel	76-74-80=230 (+14)	T27
Katelyn Dambaugh	79-77-77=233 (+17)	T50
Mary Fran Hillow	81-75-78=234 (+18)	T56
*Suzie Lee	73-81-80=234 (+18)	T56

Mercedes-Benz Collegiate (Par 71)

Player	Rounds	Finish
Samantha Swinehart	69-71=140 (-2)	T2
Mary Fran Hillow	70-71=141 (-1)	7
Katelyn Dambaugh	68-74=142 (E)	T8
Suzie Lee	72-76=148 (+6)	T32
Justine Dreher	73-76=149 (+7)	T39
*Sarah Schmelzel	70-73=143 (+1)	T12

PING ASU Invitational (Par 72)

Player	Rounds	Finish
Samantha Swinehart	75-70-66=211 (-5)	T3
Justine Dreher	72-72-72=216 (E)	T12
Katelyn Dambaugh	68-75-73=216 (E)	T12
Sarah Schmelzel	73-68-77=218 (+2)	T20
Suzie Lee	77-70-74=221 (+5)	T33
* Mary Fran Hillow	78-71-75=224 (+8)	T47

Tar Heel Invitational (Par 72)

Player	Rounds	Finish
Justine Dreher	70-71-73=214 (-2)	7
Sarah Schmelzel	75-74-72=221 (+5)	T32
Katelyn Dambaugh	79-72-72=223 (+7)	T38
Samantha Swinehart	80-74-71=225 (+9)	T48
Mary Fran Hillow	75-77-75=227 (+11)	T60
*Suzie Lee	76-75-78=229 (+13)	T68

SEC Championship (Par 72)

Player	Rounds	Finish
Justine Dreher	73-74-71=218 (+2)	4
Sarah Schmelzel	74-75-73=222 (+6)	T10
Katelyn Dambaugh	78-73-73=224 (+8)	T14
Suzie Lee	76-77-77=230 (+14)	T35
Samantha Swinehart	80-78-73=231 (+15)	T40

Landfall Tradititon (Par 72)

Player	Rounds	Finish
Katelyn Dambaugh	71-73-75=219 (+3)	T4
Mary Fran Hillow	77-79-72=228 (+12)	T27
Samantha Swinehart	76-74-79=229 (+13)	T32
Sarah Schmelzel	76-75-80=231 (+15)	T41
Justine Dreher	83-77-79=239 (+23)	T74

NCAA East Regional (Par 72)

Player	Rounds	Finish
Justine Dreher	75-70-66=211 (-5)	T4
Samantha Swinehart	73-70-69=212 (-4)	T7
Katelyn Dambaugh	76-70-71=217 (+1)	T24
Sarah Schmelzel	71-73-74=218 (+2)	T29
Suzie Lee	72-78-74=224 (+8)	T65

Florida State Match-Up (Par 72)

Player	Rounds	Finish
Sarah Schmelzel	70-72-70=212 (-4)	2
Katelyn Dambaugh	74-78-67=219 (+3)	T7
Samantha Swinehart	77-72-73=222 (+6)	T12
Justine Dreher	76-72-76=224 (+8)	T16
Suzie Lee	73-77-75=225 (+9)	T25
*Jia Xin Yang	72-78-72=22 (+6)	T12

* Played as an individual; Score does not count toward team total

Darius Rucker Intercollegiate (Par 71)

Player	Rounds	Finish
Justine Dreher	7671-72=219 (+6)	T12
Samantha Swinehart	72-76-72=220 (+7)	T15
Katelyn Dambaugh	71-73-76=220 (+7)	T15
Sarah Schmelzel	75-76-76=227 (+14)	T42
Jia Xin Yang	77-75-80=233 (+20)	T68
*Suzie Lee	77-76-77=230 (+17)	T54
*Mary Fran Hillow	83-80-75=238 (+25)	T80

2013-14 RECORD VS. OPPONENTS

Alabama	2-1-1	UNCG	3-0
Alabama State	1-0	UNCW	2-0
Arkansas	2-2	UTSA	1-0
Arizona	2-0	Troy	1-0
Arizona State	2-0	Wake Forest	5-0
Auburn	5-0	Washington	1-0
Baylor	3-0	Washington State	1-0
California	1-0	Wisconsin	1-0
Campbell	2-0	Vanderbilt	1-4
Charleston Southern	1-0	Virginia	6-0
Chattanooga	1-0	TOTAL	140-20-2
Clemson	2-2-1		
Coastal Carolina	1-0		
College of Charleston	3-1		
Duke	2-4		
East Carolina	1-0		
East Tennessee State	1-0		
Florida	3-1		
Florida Gulf Coast	1-0		
Florida State	3-0		
Furman	3-0		
Georgia	3-0		
Iowa State	1-0		
Kansas	1-0		
Kansas State	1-0		
Kentucky	3-0		
LSU	3-1		
Louisville	3-0		
Maryland	1-0		
Michigan	1-0		
Michigan State	3-0		
Mississippi	5-0		
Mississippi State	3-1		
Missouri	3-0		
Mercer	1-0		
Murray State	1-0		
NC State	4-1		
North Carolina	4-0		
Nothwestern	1-0		
Notre Dame	3-0		
Ohio State	2-0		
Oklahoma	1-2		
Oklahoma State	1-0		
Oregon	1-0		
Oregon State	1-0		
Penn State	3-0		
Pepperdine	1-0		
Purdue	1-0		
Rollins College	1-0		
Seton Hall	1-0		
Stanford	3-0		
Tennessee	5-0		
Texas	1-0		
Texas State	1-0		
Texas A&M	2-0		
Tulane	1-0		
UC Davis	1-0		
UCF	2-0		
UCLA	1-0		

2013-14 INDIVIDUAL SEASON STATISTICS

Name	Tourn.	Rounds	Low 54	Low 18	Par/Better	Top 5	Top 10	Top 20	Strokes	Avg.
Katelyn Dambaugh	10	29	216	67	10	1	3	6	2134	73.59
Justine Dreher	10	29	211	66	13	2	5	8	2125	73.28
Mary Fran Hillow	7	20	221	70	5	0	1	1	1513	75.65
Suzie Lee	9	26	218	68	3	0	0	1	1959	75.35
Sarah Schmelzel	10	29	212	68	7	1	2	4	2144	73.93
Samantha Swinehart	10	29	211	66	11	2	5	7	2129	73.41
Karoline Woie	--	--	--	--	--	--	--	--	--	--
Jia Xin Yang	2	6	222	72	2	0	0	1	455	75.83
TEAM	10	29	853	279	49	6	16	27	8428	292.48

INDIVIDUAL CARRER STATISTICS

Name	Tourn.	Rounds	Low 54	Low 18	Par/Better	Top 5	Top 10	Top 20	Strokes	Avg.
Katelyn Dambaugh	10	29	216	67	10	1	3	6	2134	73.59
Justine Dreher	29	85	211	66	15	3	6	14	6352	74.73
Mary Fran Hillow	14	42	219	70	6	0	1	2	3220	76.67
Suzie Lee	35	103	216	68	14	0	1	6	7783	75.56
Sarah Schmelzel	21	61	212	68	16	2	4	7	4537	74.37
Samantha Swinehart	37	107	211	66	18	2	5	12	8097	75.67
Karoline Woie	--	--	--	--	--	--	--	--	--	--
Jia Xin Yang	2	6	222	72	2	0	0	1	455	75.83

2013-14 INDIVIDUAL RESULTS

Katelyn Dambaugh (Fr., Goose Creek, S.C.)

Tournament	Rounds	Finish
Cougar Classic	72-75-74=221 (+5)	T37
Mercedes-Benz Collegiate	68-74=142 (E)	T8
Tar Heel Invitational	79-72-72= 223 (+7)	T38
Landfall Tradition	71-73-75=219 (+3)	T4
Florida State Match-Up	74-78-67=219 (+3)	T7
Darius Rucker Intercollegiate	71-73-76=220 (+7)	T15
Bryan National Collegiate	79-77-77=233 (+17)	T50
PING ASU Invitaitoinal	68-75-73=216 (E)	T12
SEC Championship	78-73-73=224 (+8)	T14
NCAA East Regional	76-70-71=217 (+1)	T24

Sarah Schmelzel (So., Phoenix, Ariz.)

Tournament	Rounds	Finish
Cougar Classic	74-74-74=222 (+6)	T44
*Mercedes-Benz Collegiate	70-73=143 (+1)	T12
Tar Heel Invitational	75-74-72=221 (+5)	T32
Landfall Tradition	76-75-80=231 (+15)	T41
Florida State Match-Up	70-72-70=212 (-4)	2
Darius Rucker Intercollegiate	75-76-76=227 (+14)	T42
Bryan National Collegiate	76-74-80=230 (+14)	T27
PING ASU Invitaitoinal	73-68-77=218 (+2)	T20
SEC Championship	74-75-73=222 (+6)	T10
NCAA East Regional	71-73-74=218 (+2)	T29

Justine Dreher (Jr., Valbonne, France)

Tournament	Rounds	Finish
*Cougar Classic	71-73-70=214 (-2)	T6
Mercedes-Benz Collegiate	73-76=149 (+7)	T39
Tar Heel Invitational	70-71-73=214 (-2)	7
Landfall Tradition	83-77-79=239 (+23)	T74
Florida State Match-Up	76-72-76=224 (+8)	T16
Darius Rucker Intercollegiate	76-71-72=219 (+6)	T12
Bryan National Collegiate	72-73-76=221 (+5)	7
PING ASU Invitaitoinal	72-72-72=216 (E)	T12
SEC Championship	73-74-71=218 (+2)	4
NCAA East Regional	75-70-66=211 (-5)	T4

Samantha Swinehart (Sr., Lancaster, Ohio)

Tournament	Rounds	Finish
Cougar Classic	69-72-75=216 (E)	T10
Mercedes-Benz Collegiate	69-71=140 (-2)	T2
Tar Heel Invitational	80-74-71=225 (+9)	T48
Landfall Tradition	76-74-79=229 (+13)	T32
Florida State Match-Up	77-72-73=222 (+6)	T12
Darius Rucker Intercollegiate	72-76-72=220 (+7)	T15
Bryan National Collegiate	75-71-77=223 (+7)	T9
PING ASU Invitaitoinal	75-70-66=211 (-5)	T3
SEC Championship	80-78-73=231 (+15)	T40
NCAA East Regional	73-70-69=212 (-4)	T7

Mary Fran Hillow (So., Orlando, Fla.)

Tournament	Rounds	Finish
Cougar Classic	71-77-73=221 (+5)	T37
Mercedes-Benz Collegiate	70-71=141 (-1)	7
Tar Heel Invitational	75-77-75=227 (+11)	T60
Landfall Tradition	77-79-72=228 (+12)	T27
*Darius Rucker Intercollegiate	83-80-75=238 (+25)	T80
Bryan National Collegiate	81-75-78=234 (+18)	T56
*PING ASU Invitaitoinal	78-71-75=224 (+8)	T47

Karoline Woie (So., Stavanger, Norway)

Tourney	Rounds	Finish
---------	--------	--------

Jia Xin Yang (Fr., Beijing, China)

Tournament	Rounds	Finish
*Florida State Match-Up	72-78-72=222 (+6)	T12
Darius Rucker Intercollegiate	77-76-80=233 (+20)	T68

Suzie Lee (Sr., East Northport, N.Y.)

Tournament	Rounds	Finish
Cougar Classic	73-77-68=218 (+2)	T19
Mercedes-Benz Collegiate	72-76=148 (+6)	T32
*Tar Heel Invitational	76-75-78= 229 (+13)	T68
Florida State Match-Up	73-77-75=225 (+9)	T25
*Darius Rucker Intercollegiate	77-76-77=230 (+17)	T54
*Bryan National Collegiate	73-81-80=234 (+18)	T56
PING ASU Invitaitoinal	77-70-74=221 (+5)	T33
SEC Championship	76-77-77=230 (+14)	T35
NCAA East Regional	72-78-74=224 (+8)	T65

* Played as an individual; Score does not count toward team total

2013-14 TOURNAMENT-BY-TOURNAMENT

Sept. 8-10
Cougar Classic
Yeamans Hall Club
Hanahan, S.C.
Par 72 • 6,204 Yards
285-298-289=872 • 6 of 20

TEAM RESULTS

1. Florida	291-287-281=859	-5
2. Clemson	285-282-293=860	-4
3. Coll. of Charleston	289-285-287=861	-3
4. NC State	287-287-289=863	-1
5. Mississippi State	282-291-298=871	+7
6. South Carolina	285-298-289=872	+8
7. Wake Forest	287-294-298=879	+15
8. Auburn	295-295-291=881	+17
9. Tennessee	299-296-288=883	+19
10. Wisconsin	298-292-294=884	+20
11. LSU	295-291-301=887	+23
12. Baylor	289-299-300=888	+24
13. Penn State	299-302-296=897	+33
14. Mississippi	305-297-298=900	+36
15. Missouri	302-302-304=908	+44
16. Furman	298-312-300=910	+46
17. Coastal Carolina	305-305-306=914	+50
18. Maryland	299-306-310=915	+51
19. UNCG	314-319-316=949	+85
20. Chas. Southern	329-324-314=967	+103

TOP INDIVIDUALS/GAMECOCKS

1. Anna Young (Florida)	73-71-67=211	-5
T2. Ashlan Ramsey (Clemson)	72-69-71=212	-4
T2. Sloan Shanahan (Clemson)	69-69-74=212	-4
T2. Brittany Marchand (NC State)	66-77-69=212	-4
5. Ally McDonald (Miss. State)	66-72-75=213	-3
T6. Justine Dreher (SC)	71-73-70=241	-2
T10. Samantha Swinehart (SC)	69-72-75=216	E

Sept. 20-22
Mercedes-Benz Collegiate Championship
Cherokee Country Club
Knoxville, Tenn.
Par 71 • 5,897 Yards
279-292=571 • 2 of 17

TEAM RESULTS

1. Arkansas	282-281=563	-5
2. South Carolina	279-292=571	+3
3. Tulane	290-289=579	+11
4. Tennessee	285-296=581	+13
5. UCF	286-296=582	+14
6. Louisville	283-302=585	+17
7. Notre Dame	298-290=588	+20
8. Chattanooga	292-299=591	+23
T9. Michigan	296-297=593	+25
T9. Mississippi State	293-300=593	+25
11. Coll. of Charleston	301-297=598	+30
12. Campbell	298-301=599	+31
13. Penn State	292-309=601	+33
14. UTSA	299-303=602	+34
T15. Mississippi	294-309=603	+35
T15. Rollins College	298-305=603	+35
17. Missouri	299-305=604	+36

TOP INDIVIDUALS/GAMECOCKS

1. Emily Tubert (Arkansas)	69-68=137	-3
T2. Chessey Thomas (Tennessee)	70-70=140	-2
T2. Silivia Garces (Tulane)	71-69=140	-2
T2. Gaby Lopez (Arkansas)	72-60=140	-2
T2. Samantha Swinehart (SC)	69-71=140	-2
T2. Regina Plascencia (Arkansas)	69-71=140	-2
7. Mary Fran Hillow (SC)	70-71=141	-1
T8. Katelyn Dambaugh (SC)	68-74=142	E

Oct. 11-13
Tar Heel Invitational
UNC Finley Golf Course
Chapel Hill, N.C.
Par 72 • 6,379 Yards
299-291-288=887 • T5 of 18

TEAM RESULTS

1. Duke	286-282-289=857	-7
2. Vanderbilt	285-299-284=868	+4
3. Oklahoma	292-290-289=871	+7
4. Arkansas	296-291-287=874	+10
T5. Alabama	299-281-298=878	+14
T5. South Carolina	299-291-288=878	+14
T5. Clemson	297-287-294=878	+14
8. Florida	298-288-295=881	+17
9. Wake Forest	297-292-294=883	+19
10. Auburn	291-299-296=883	+22
11. LSU	295-298-294=887	+23
12. NC State	293-297-299=889	+25
T13. Mississippi	292-293-305=890	+26
T13. Michigan State	300-292-298=890	+26
15. Virginia	301-294-300=895	+31
16. North Carolina	297-292-309=898	+34
17. Notre Dame	305-294-303=902	+38
18. Baylor	304-305-299=908	+44

TOP INDIVIDUALS/GAMECOCKS

1. Ashlan Ramsey (Clemson)	68-69-70=207	-9
2. Jenny Hahn (Vanderbilt)	73-71-67=211	-5
T3. Carolina Nistrup (LSU)	73-67-72=212	-4
T3. Celine Boutier (Duke)	73-68-71=212	-4
T3. Laetitia Beck (Duke)	69-71-72=212	-4
7. Justine Dreher (SC)	70-71-73=214	-2
T32. Sarah Schmelzel (SC)	75-74-72=221	+5
T38. Katelyn Dambaugh (SC)	79-72-72=223	+7

Oct. 25-27
Landfall Tradition
Country Club of Landfall - Pete Dye Course
Wilmington, N.C.
Par 72 • 6,204 Yards
300-299-305=904 • 4 of 18

TEAM RESULTS

1. Alabama	285-290-292=867	+3
2. Duke	295-288-292=875	+11
3. Clemson	307-291-299=897	+33
4. South Carolina	300-299-305=904	+40
5. Wake Forest	306-303-297=906	+42
T6. Michigan State	309-308-293=910	+46
T6. Arizona	304-302-304=910	+46
8. Oklahoma State	307-307-299=913	+49
9. Virginia	306-308-300=914	+50
10. NC State	323-305-294=922	+58
T11. Notre Dame	314-305-305=924	+60
T11. Ohio State	316-301-307=924	+60
T11. North Carolina	305-313-306=924	+60
14. Iowa State	321-306-298=925	+61
15. Purdue	316-309-303=928	+64
16. Mississippi	316-321-304=941	+77
17. UNCW	313-315-315=944	+80
18. UNCG	330-332-332=994	+130

TOP INDIVIDUALS/GAMECOCKS

1. Stephanie Meadow (Alabama)	70-71-72=213	-3
2. Yu Liu (Duke)	74-69-72=215	-1
3. Emma Talley (Alabama)	71-73-73=217	+1
T4. Liz Nagel (Michigan State)	77-74-68=219	+3
T4. Laetitia Beck (Duke)	73-74-72=219	+3
T4. Katelyn Dambaugh (SC)	71-73-75=219	+3
T27. Mary Fran Hillow (SC)	77-79-72=228	+12
T32. Samantha Swinehart (SC)	76-74-79=119	+13

Feb. 14-16
Florida State Match-Up
SouthWood Golf Course
Tallahassee, Fla.
Par 72 • 7,172 Yards
293-293-285=871 • 1 of 11

TEAM RESULTS

1. South Carolina	293-293-285=871	+7
2. Clemson	297-292-284=873	+9
3. Florida State	294-298-289=881	+17
4. Virginia	298-296-294=888	+24
5. Texas A&M	293-307-293=893	+29
6. Mississippi State	305-298-292=895	+31
T7. Mercer	298-302-299=900	+36
T7. Furman	302-302-296=900	+36
9. Kansas	309-311-301=921	+57
10. Kansas State	315-304-304=923	+59
11. Florida Gulf Coast	310-310-307=927	+63

TOP INDIVIDUALS/GAMECOCKS

1. Matilda Castren (Florida State)	68-68-70=206	-10
2. Sarah Schmelzel (SC)	70-72-70=212	-4
T3. Ashlan Ramsey (Clemson)	74-68-72=214	-2
T3. Ally McDonald (Miss. State)	75-70-69=214	-2
5. Katerina Ruzickova (Texas A&M)	71-75-69=215	-1
6. McKenzie Talbert (Clemson)	72-75-69=216	E
T7. Katelyn Dambaugh (SC)	74-78-67=219	+3
T7. Lauren Diaz-Yi (Virginia)	76-73-70=219	+3
T7. Lauren Salazar (Clemson)	77-72-70=219	+3
T10. Jession Peng (Miss. State)	75-71-75=221	+5
T10. Laure Castelain (Florida State)	74-75-72=221	+5
T12. Samantha Swinehart (SC)	77-72-73=222	+6
T12. Jia Xin Yang (SC)	72-78-72=222	+6
15. Mary Alice Murphy (Mercer)	74-75-74=223	+7
T16. Justine dreher (SC)	76-72-76=224	+8

March 7-9
Darius Rucker Intercollegiate
Long Cove Club
Hilton Head Island, S.C.
Par 71 • 6,142 Yards
294-296-296=886 • 5 of 17

TEAM RESULTS

1. Duke	284-291-287=862	+10
2. Vanderbilt	293-290-289=872	+20
T3. LSU	297-296-292=885	+33
T3. Oklahoma	298-296-291=885	+33
5. South Carolina	294-296-296=886	+34
6. Wake Forest	299-302-286=887	+35
T7. North Carolina	295-297-300=892	+40
T7. Arkansas	297-300-295=892	+40
9. Alabama	293-306-299=898	+46
T10. Stanford	297-303-299=899	+47
T10. Auburn	305-301-293=899	+47
12. Arizona State	311-299-291=901	+49
13. Virginia	305-294-304=903	+51
14. Tennessee	304-300-300=904	+52
15. Kentucky	307-299-299=905	+53
16. Georgia	317-295-302=914	+62
17. Furman	307-303-310=920	+68

TOP INDIVIDUALS/GAMECOCKS

1. Yu Liu (Duke)	69-72-70=211	-2
2. Caroline Nistrup (LSU)	71-69-71=211	-2
T3. Stephanie Meadow (Alabama)	67-72-73=212	-1
T3. Noemi Jimenez (Ariz. State)	71-72-69=212	-1
T3. Celine Boutier (Duke)	69-71-72=212	-1
T3. Simin Feng (Vanderbilt)	74-69-69=212	-1
T12. Justine Dreher (SC)	76-71-72=219	+6
T15. Samantha Swinehart (SC)	72-76-72=220	+7
T15. Katelyn Dambaugh (SC)	71-73-76=220	+7

2013-14 TOURNAMENT-BY-TOURNAMENT

March 28-30
Bryan National Collegiate
Bryan Park Golf & Enrichment Center
Greensboro, N.C.
Par 72 • 6,386 Yards
302-293-308=903 • 2 of 18

TEAM RESULTS

1. Duke	292-290-300=882	+18
2. South Carolina	302-293-308=903	+39
3. Wake Forest	305-290-310=905	+41
4. Florida State	295-293-318=906	+42
5. Virginia	302-298-309=909	+45
T6. Clemson	300-303-310=913	+49
T6. Louisville	297-296-320=913	+49
8. Ohio State	302-298-323=914	+50
9. Florida	300-298-317=915	+51
T10. Michigan State	294-303-319=916	+52
T10. Penn State	300-297-319=916	+52
12. North Carolina	302-303-315=920	+56
13. NC State	303-297-324=924	+60
14. Northwestern	306-300-320=926	+62
15. Tennessee	303-305-321=929	+65
16. Coll. of Charleston	316-299-319=934	+70
17. UNC Wilmington	305-306-337=948	+84
18. UNC Greensboro	325-338-348=1011	+147

TOP INDIVIDUALS/GAMECOCKS

1. Celine Boutier (Duke)	72-71-73=216	E
2. Ashlan Ramsey (Clemson)	72-71-74=217	+1
T3. Yu Liu (Duke)	74-72-74=220	+4
T3. Sierra Sims (Wake Forest)	71-71-78=220	+4
T3. Laetitia Beck (Duke)	70-74-76=220	+4
T3. Camilla Hedberg (Florida)	75-73-72=220	+4
7. Justine Dreher (SC)	72-73-76=221	+5
T9. Samantha Swinehart (SC)	75-71-77=223	+7
T27. Sarah Schmelzel (SC)	76-74-80=230	+14

May 8-10
NCAA East Regional
SouthWood Golf Club
Tallahassee, Fla.
Par 72 • 6,257 Yards
291-283-280=854 • 2 of 24

TEAM RESULTS

1. Vanderbilt	277-289-274=840	-24
2. South Carolina	291-283-280=854	-10
T3. NC State	286-294-280=860	-4
T3. Duke	284-288-288=860	-4
5. Stanford	291-286-289=866	+2
6. Virginia	283-292-294=869	+5
7. Tulane	280-294-297=871	+7
8. Campbell	291-290-298=879	+15
9. Pepperdine	290-297-293=880	+16
10. Baylor	297-300-284=881	+17
T11. Florida State	290-295-297=882	+18
T11. East Tennessee St.	289-300-293=882	+18
13. Texas State	289-299-297=885	+21
14. East Carolina	297-295-294=886	+22
15. Auburn	293-301-293=887	+23
16. Georgia	298-296-294=888	+24
17. UCF	289-303-298=890	+26
18. Louisville	295-301-300=896	+32
19. Kentucky	295-304-299=898	+34
20. Troy	296-308-303=907	+43
21. Seton Hall	302-301-309=912	+48
22. Coll. of Charleston	299-308-307=914	+50
23. Murray State	307-316-310=933	+69
24. Alabama State	315-314-308=937	+73

TOP INDIVIDUALS/GAMECOCKS

1. Jenny Hahn (Vanderbilt)	68-73-66=207	-9
T2. Kendall Martindale (Vanderbilt)	72-71-67=210	-6
T2. Hayley Davis (Baylor)	72-71-67=210	-6
T4. Justine Dreher (SC)	75-70-66=211	-5
T7. Samantha Swinehart (SC)	73-70-69=212	-4

April 4-6
PING ASU Invitational
ASU Karsten Golf Course
Tempe, Ariz.
Par 72 • 6,223 Yards
288-280-285=853 • 1 of 15

TEAM RESULTS

1. South Carolina	288-280-285=853	-11
T2. Arizona State	287-287-285=859	-5
T2. Washington	284-291-284=859	-5
T2. Duke	290-284-285=859	-5
5. Arizona	288-288-292=868	+4
6. UCLA	291+294-287=872	+8
7. Stanford	295-285-296=876	+12
8. California	291-292-298=881	+17
9. Texas	294-292-297=883	+19
10. Oregon	291-296-297=884	+20
T11. Oklahoma	296-303-294=893	+29
T11. UC Davis	300-298-295=893	+29
13. Vanderbilt	300-302-303=905	+41
14. Oregon State	308-303-301=912	+48
15. Washington State	301-313-303=917	+53

TOP INDIVIDUALS/GAMECOCKS

1. Celine Boutier (Duke)	69-69-70=208	-8
2. Noemi Jimenez (Ariz. State)	72-71-66=209	-7
T3. Samantha Swinehart (SC)	75-70-66=211	-5
T3. Laetitia Beck (Duke)	70-70-71=211	-5
T5. Erynne Lee (UCLA)	75-71-66=212	-4
T5. Hannah Suh (California)	71-69-72=212	-4
7. Yu Liu (Duke)	75-72-66=213	-3
T12. Justine Dreher (SC)	72-72-72=216	E
T12. Katelyn Dambaugh (SC)	68-75-73=216	E
T20. Sarah Schmelzel (SC)	73-68-77=218	+2
T33. Suzie Lee (SC)	77-70-74=221	+5

April 18-20
SEC Championship
Greystone Golf & Country Club
Birmingham, Ala.
Par 72 • xxxx Yards
301-299-290=892 • 2 of 14

TEAM RESULTS

1. Vanderbilt	298-287-294=879	+15
2. South Carolina	301-299-290=890	+26
3. Arkansas	294-291-301=892	+28
4. Alabama	302-293-301=896	+32
5. LSU	295-297-306=898	+34
6. Auburn	296-298-306=900	+36
7. Texas A&M	305-302-301=908	+44
T8. Kentucky	313-296-300=909	+45
T8. Georgia	302-303-304=909	+45
T10. Missouri	303-303-307=913	+49
T10. Florida	304-299-310=913	+49
12. Mississippi State	321-301-296=918	+54
13. Tennessee	314-293-314=921	+57
14. Mississippi	313-305-307=925	+61

TOP INDIVIDUALS/GAMECOCKS

1. Simin Feng (Vanderbilt)	73-70-66=209	-7
T2. Gaby Lopez (Arkansas)	73-72-72=217	+1
T2. Lindsay Gahm (LSU)	73-71-73=217	+1
4. Justine Dreher (SC)	73-74-71=218	+2
T5. Maria Torres (Florida)	72-73-74=219	+3
T5. Stephanie Meadow (Alabama)	75-71-73=219	+3
T5. Janie Jackson (Alabama)	68-75-76=219	+3
8. Marta Sanz (Auburn)	74-73-73=220	+4
9. Jenny Hahn (Vanderbilt)	71-72-78=221	+5
T10. Sarah Schmelzel (SC)	74-75-73=222	+6
T14. Katelyn Dambaugh (SC)	78-73-73=224	+8

SOUTH CAROLINA HISTORY AND RECORDS

GOLF WORLD/WGCA As of 5/7/14

1. Southern California
2. UCLA
3. Duke
4. Arkansas
5. **South Carolina**
6. Stanford
7. Arizona State
8. Oklahoma
9. Arizona
10. Vanderbilt
11. Washington
12. Alabama
13. Pepperdine
14. LSU
15. Clemson
16. UCF
17. Northwestern
18. Oklahoma State
19. Virginia
20. Michigan State
21. Wake Forest
22. Michigan State
23. Ohio State
24. Florida
25. Auburn

GOLFSTAT TOP 25 As of 5/14/14

1. Southern California
2. UCLA
3. Duke
4. **South Carolina**
5. Arizona State
6. Washington
7. Oklahoma
8. Vanderbilt
9. Arkansas
10. Alabama
11. Arizona
12. Stanford
13. Oklahoma State
14. Clemson
15. Northwestern
16. Pepperdine
17. NC State
18. Virginia
19. Wake Forest
20. Michigan State
21. Florida
22. Ohio State
23. UCF
24. Iowa State
25. California

TEAM

Season Scoring Average (18+ Rds)

Year	Rds.	Strokes	Avg.
1. 2013-14	29	8,428	292.48
2. 2011-12	33	9,828	297.82
3. 2009-10	34	10,128	297.88
4. 2012-13	32	9,610	300.31
5. 2010-11	34	10,262	301.82
6. 2002-03	31	9,380	302.58
7. 2006-07	29	8,775	302.59
8. 2008-09	30	9,090	303.00
9. 2005-06	30	9,107	303.57
10. 2001-02	34	10,326	303.71

Low 18-Hole Score

Tournament	Rd.	Score
1. Mercedes-Benz Collegiate, 9/20/13	1	279
Cougar Classic, 9/13/11	3	279
2. NCAA East Regional, 5/10/14	2	280
PING ASU Inv., 4/5/14	2	280
4. NCAA Championship, 5/23/12	2	281
5. SEC Championship, 4/20/02	2	282
6. NCAA East Regional, 5/9/14	2	283
NCAA East Regional, 5/6/10	1	283
8. UCF Challenge, 2/10/13	1	284
UCF Challenge, 2/14/11	2	284
10. PING ASU Inv., 4/6/14	3	285
Florida State Match-Up, 2/16/14	3	285
Cougar Classic, 9/8/13	1	285
NCAA West Regional, 5/10/13	2	285
Liz Murphey Classic, 3/30/12	1	285
Liz Murphey Classic, 4/3/11	3	285

Low 54-Hole Score

Tournament	Score
1. PING ASU Inv., 2014	853
2. NCAA East Regional, 2014	854
3. SEC Championship, 2002	861
4. NCAA East Regional, 2010	864
5. SEC Championship, 2010	867
6. Cougar Classic, 2011	869
7. Florida State Match-Up, 2014	871
8. Cougar Classic, 2013	872
9. NCAA East Regional, 2012	873
Cougar Classic, 2010	873

Low 72-Hole Score

Tournament	Score
1. NCAA Championship, 2012	1176
2. NCAA Championship, 2010	1186
3. NCAA Championship, 1995	1204
4. NCAA Championship, 2013	1211
NCAA Championship, 2011	1211
5. NCAA Championship, 2002	1217
6. NCAA Championship, 1987	1225

INDIVIDUAL

Career Scoring Average (Min. 55 Rounds)

1. Katie Burnett (2008-2012)	74.18
2. Kristy McPherson (1999-03)	74.42
3. Sarah Schmelzel (2012-Pres.)	74.37
4. Bénédicte Toumpsin (2006-10)	74.59
5. Justine Dreher (2011-Pres.)	74.73
6. Suzie Lee (2010-Pres.)	75.56
7. Samantha Swinehart (2010-Pres.)	75.67
8. Adrienne Gautreaux (2001-04)	75.75
9. Amanda Strang (2009-2012)	76.07
10. Siew Ai Lim (1992-96)	76.23

Single-Season Scoring Avg. (Min. 18 Rounds)

1. Katie Burnett (2012)	72.94
2. Kristy McPherson (2003)	73.42
3. Katie Burnett (2010)	73.59
Kristy McPherson (2002)	73.59
5. Kristy McPherson (2001)	73.82
6. Bénédicte Toumpsin (2009)	73.90
7. Bénédicte Toumpsin (2008)	74.03
8. Siew Ai Lim (1995)	74.35
9. Adrienne Gautreaux (2004)	74.44
10. Sarah Schmelzel (2013)	74.78

Low 18-Hole Score

Player/Tournament	Score
1. Justine Dreher, 2014 NCAA East Regional (3)	66
Samantha Swinehart, 2014 PING ASU Inv. (3)	66
Katie Burnett, 2011 Cougar Classic (2)	66
Jenna Pearson, 2007 SEC Champ. (2)	66
5. Katelyn Dambagh, 2013 Florida State Match-Up (3)	67
Katie Burnett, 2012 NCAA Championship (2)	67
Katie Rose Higgins 2011 Cougar Classic (3)	67
Katie Burnett, 2011 UCF Challenge (2)	67
Katie Burnett, 2010 NCAA Regional (1)	67
Corrine Carr, 2010 SEC Champ. (3)	67
Jenna Pearson, 2006 Dick McGuire (2)	67
Kristy McPherson, 2001 SEC Champ. (1)	67
13. Katelyn Dambagh, 2014 PING ASU Inv. (1)	68
Sarah Schmelze, 2014 PING ASU Inv. (2)	68
Katelyn Dambagh, 2013 Mercedes-Benz Collegiate (1)	68
Suzie Lee, 2013 Cougar Classic (3)	68
(14 other occurrences)	

Low 54-Hole Score

Player/Tournament	Score
1. Kristy McPherson, 2001 SEC Championship	207
2. Benedicte Toumpsin, 2009 LSU Classic	209
Kristy McPherson, 2003 NCAA Regional	209
Kristy McPherson, 2002 SEC Championship	209
5. Katie Burnett, 2010 NCAA Regional	210
Siew-Ai Lim, 1994 Carolyn Cudone	210
7. Justine Dreher, 2014 NCAA East Regional	211
Samantha Swinehart, 2014 PING ASU Inv.	211
Kristy McPherson, 2002 Spartan Invitational	211
10. Samantha Swinehart, 2014 NCAA East Regional	212
Sarah Schmelzel, 2013 Florida State Match-Up	212
Katie Burnett, 2012 Liz Murphey Classic	212

Kalen Harris

Head Coach :: Duke, 2001 :: 7th year at South Carolina



Kalen Harris enters her seventh year as the head coach of the South Carolina women's golf team on the heels of three straight NCAA Championship appearances and the 2012 NCAA East Regional title, the program's second in three years.

South Carolina tabbed Harris to mentor its program in January 2008. She joined the

Gamecocks after two years as an assistant at Duke, where she had an All-American career as a player, and a four-year stint as a professional on the FUTURES Tour.

And her philosophy on coaching has led to immediate success for the Carolina program.

"I am dedicated to building a championship program at the University of South Carolina," Harris said. "The Gamecock women's golf team is committed to achieving short-game and scoring game excellence, and our much of our practice time reflects this goal. I also place a strong emphasis on building individual relationships and finding what motivates players on an individual level. I focus on individual skill development within a competitive, supportive team environment. I bring intensity to practices and training, while also creating a structure that allows players to lead a balanced life as a student-athlete."

In six seasons at South Carolina, Harris has overseen a seamless, successful transition from the previous coaching staff, highlighted by the program's first regional title at the 2010 NCAA East Regional. In addition, two players have earned All-America accolades, equaling the number of All-Americans in program history prior to her arrival.

Under Harris, the Gamecocks have won two NCAA East Regional titles (2010, 2012) and have advanced to five NCAA Championships in six seasons; the program had appeared in the NCAA Championship a total of eight times since 1980 before her arrival in 2008.

"I am dedicated to building a championship program at the University of South Carolina. The Gamecock women's golf team is committed to achieving short-game and scoring game excellence, and our much of our practice time reflects this goal. I also place a strong emphasis on building individual relationships and finding what motivates players on an individual level. I focus on individual skill development within a competitive, supportive team environment. I bring intensity to practices and training, while also creating a structure that allows players to lead a balanced life as a student-athlete."

— Kalen Harris

The Harris File

Coaching Career

2008-present: Head Coach, University of South Carolina
2006-07: Assistant Coach, Duke University

Instructional Background

2001-present: Instructor, Private clients and various clinics

Playing Career

2001-05: FUTURES Tour, LPGA Qualifying School
2000: Competed in U.S. Women's Open
1997-2001: Duke women's golf team

Playing Accolades

NGCA Second-Team All-American (2000)
All-Atlantic Coast Conference (1999, 2000, 2001)
ACC Co-Rookie of the Year (1998)
Academic All-America (1999, 2000, 2001)
Liz Murphey Intercollegiate Individual Champion (2001)
NCAA Team National Champion (1999)
ACC Team Champion (2001, 2000, 1999, 1998)

Education

Bachelor of arts in psychology, certificate in markets and management, Duke University, 2001

Personal

Given Name: Kalen Marie Anderson
Born: August 8, 1978 in St. Paul, Minn.
High School: Edina High in Edina, Minn.



Last season Harris and the Gamecocks didn't let the loss of two key pieces to the lineup slow down the program's success. South Carolina made a charge at the SEC Championship and finished in third place, the program's highest finishes since winning the event in 2002. The Gamecocks carried the momentum to the NCAA West Regional, where they finished fourth to secure their fourth-straight NCAA Championship berth. With a lineup of a senior, a junior, a sophomore and two freshmen, the Gamecocks finished 20th at the NCAA Championship in Athens, Ga.

In 2011-12 Harris guided the Gamecocks to new heights as South Carolina claimed the 2012 NCAA East Regional title in State College, Pa., and went on to finish fifth at the NCAA Championship in Franklin, Tenn., which is the best finish in program history at the national championship. Katie Burnett led the way with a fifth-place showing, the best ever by a Gamecock at the event. Burnett wrapped up her career with a scoring average of 74.18, which ranks first all-time at South Carolina, as she earned second team All-America honors from both Golfweek and the National Golf Coaches Association.

What was thought to be a rebuilding year in 2011 - one junior, two sophomores and three freshmen comprised the entire Carolina roster - turned into unforeseen success as the Gamecocks battled through being shipped to the West Coast for their NCAA Regional to finish in sixth place and earn their third NCAA Championship berth in four years. Suzie Lee and Samantha Swinehart led the charge at the West Regional in Auburn, Wash., tying for 15th place after battling through cold, wind and rain for three days. The team would finish in 18th place at the NCAA Championships in College Station, Texas, setting the stage for what could be a very strong 2011-12 campaign.

The 2010 season was a banner year for Harris and the Gamecocks, capped by the team's second NCAA Championship appearance in three years where they earned a tie for 14th place. This followed Burnett's and the Gamecocks' triumph at the NCAA East Regional in Greenville, N.C., where Burnett earned medalist honors in leading Carolina to its first regional title.

In 2009, her first full season at Carolina, the team grew together as the season progressed and earned a spot in the NCAA East Regional in Gainesville, Fla. Highlighting the year was Benedicte Toumpsin's tie for medalist honors at the LSU Golf Classic and the emergence of a freshman star in Burnett.

Her first season in 2008, Harris guided the Gamecocks into the NCAA Championship for the first time since 2003. Team leader Toumpsin earned third-team All-America status from Golfweek and an honorable mention All-America nod from the National Golf Coaches Association, becoming South Carolina's first All-American since Kristy McPherson earned the honor for the third time in her career in 2003.

Harris joined the staff of Duke's Hall of Fame head coach Dan Brooks in the spring of 2006 and helped the Blue Devils to their second-straight national title. Duke went on to add a third title in 2007. Duke also claimed back-to-back Atlantic Coast Conference championships in her time on staff. Harris was the designated coach during several tournaments and saw four Blue Devils earn All-America status in 2006, including three first-team selections.

"In coaching, we work on skills and techniques during practice, so when we get to tournament play, my major role is to help players keep a positive attitude and stay in the right frame of mind to let their hard work and talent shine," Harris said. "In addition to being a resource to help players make smart decisions during competition, I like to use humor to keep them loose while also pushing them toward productivity."

Outside of tournament play, Harris focused on short game, course management and mental coaching with her players. She helped three-time All-ACC selection Jennifer Pandolfi raise her short game from 431st in the nation in December 2005 to 84th in April 2007, while her chipping stats improved from 341st to 15th over the same period. Additionally, Harris helped personalize fitness plans for players and actively participated in team workouts.

Off the course, Harris was just as involved with shaping college players. At Duke, she assisted in arranging community service opportunities and monitored academic progress. She designed practices and skill sets, arranged team travel, ordered and managed equipment and uniforms, and assisted in fundraising projects for the Blue Devils. Harris also worked hard as a recruiter, evaluating top-ranked prospects on the state, national and international level. Organizing and leading recruiting visits, she helped the Blue Devils land the top golfer in the class of 2008.

"I am extremely grateful to have had the opportunity to be mentored by Coach Brooks and be part of an elite program both as a player and a coach," Harris said. "My many experiences at Duke have taught me how to keep players motivated, excited about golf and focused on attaining their goals. I will draw on that experience to help build South Carolina women's golf into a championship program."

Prior to her start in coaching, Harris played golf professionally from 2001 through 2005. She played a total of 56 events on the FUTURES Tour, recording her best finish at the 2002 Florida Hospital FUTURES Golf Classic in Sebring, Fla., where she tied for fourth. Harris also participated in four LPGA Qualifying Schools and played in the 2000 U.S. Women's Open. While playing, she also worked to network and generate sponsorships to support her career, raising \$120,000 of capital.

Harris kicked off her college career by earning Atlantic Coast Conference co-Rookie of the Year honors in 1998. Playing in the NCAA Championship all four years of her career, she helped the Blue Devils to their first national title in 1999, finishing 12th in the individual standings. She captured All-ACC and Academic All-America honors that year, a feat she would repeat over the remaining two years of her career. With the nation's top-rated total short game in 2000, Harris picked up second-team All-America status. Finishing ninth in the NCAA Regional in 2000, she was the Blue Devils' top finisher at the NCAA Championship, claiming 21st place. In all, Harris collected 16 top-10 finishes in her career, including the individual title in the 2001 Liz Murphey Intercollegiate.

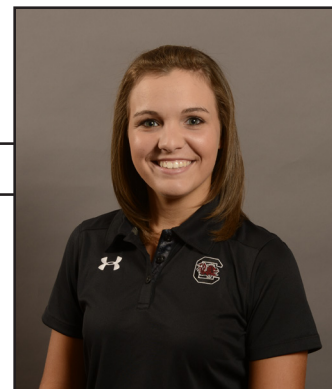
A native of Edina, Minn., Harris earned her bachelor's degree in psychology with a certificate in markets and management from Duke in 2001.



As a player at Duke, Harris was a three-time All-ACC selection. She earned second-team All-America status in 2000 and was part of Duke's first national championship team in 1999.

Katelyn Dambaugh

Freshman :: Goose Creek, S.C. :: Pinewood Prep



**2014 Second-Team All-SEC
2014 SEC All-Freshman Team**

2013-14

Has played in all ten tournaments this season...Stroke average of 73.59 is currently the best stroke average for a freshman in program history... Earned SEC Freshman of the Week honors twice this season... Has tallied 10 rounds of par or better and six top-20 finishes... Shot a round of 67 at the Florida State Match-Up, which ties a school record for fifth best low 18-hole score.

Prior to South Carolina

Earned 11 letters at Pinewood Preparatory School under coach Greg Baechtle, with eight coming on the boys' team and three on the girls'... Played No. 1 for the girls' team and No. 2 for the boys' team...While playing with the girls' team, was a seven-time SCISA Player of the Year selection, three-time All-Region selection, seven-time All-Lowcountry selection and three-time High School Sports Report Player of the Year honoree...Led the Panthers to three-consecutive South Carolina state team championships...Won individual medalist honors on seven occasions...While playing with the boys' team, was a three-time All-State selection, three-time All-Region selection, three-time All-Lowcountry selection and was named the Region Player of the Year...Also received the Leadership Award...Helped lead the team to back-to-back South Carolina state team titles in 2011 and 2012...Was also a four-year letterwinner in basketball...Led the team to three-straight South Carolina state team championships...Two-time All-State and All-Region selection... Post and Courier All-Lowcountry honoree...North/South All-Star Team member...Was a runner-up at the 2010 U.S. Girls' Junior Championship... Made two appearances in the U.S. Women's Amateur Championship... Finished fourth at the 2012 AJGA Junior Girls' Championship...Selected as a member of the Wyndham Cup Championship Team...Won the CGA Vicki DiSantis Junior Championship...Finished second at the CGA Carolina Women's Amateur...Turned in a second-place finish at the WEGA Women's Eastern Amateur...SCISA 2013 Scholar-Athlete Award... Graduated with honors.

Personal

Full name is Katelyn Alyse Dambaugh...Born Oct. 1, 1994...Daughter of Eric and Cindy Dambaugh...Has one sister, Brooke...Uncle Allen Kinard played catcher for the Pittsburgh Pirates...Uncle Gary Kinard was a pitcher for the Philadelphia Phillies...Chose South Carolina because of relationship with the coaching staff, the family atmosphere of the program and the opportunity to win a national championship...Plans to major in political science with a career goal of making it to the LPGA Tour.

Career Bests

18-hole Score: 67
54-hole Score: 216
Tournament Finish: T-4th
Top 10 Finishes: 3
Top 20 Finishes: 6

Career Tournament-by-Tournament Results

2012-13

Cougar Classic.....72-75-74=221 (+5)..... T37
Mercedes-Benz Collegiate.....68-74=142 (E)..... T8
Tar Heel Invitational.....79-72-72=223 (+7)..... T38
The Landfall Tradition.....71-73-75=219 (+3)..... T4
Florida State Match-Up.....74-78-67=219 (+3)..... T7
Darius Rucker Intercollegiate.....71-73-76=220 (+7)..... T15
Bryan National Collegiate.....79-77-77=233 (+17)..... T50
PING ASU Invitational.....68-75-73=216 (E)..... T12
SEC Championship.....78-73-73=224 (+8)..... T14
NCAA East Regional.....76-70-71=217 (+1)..... T24

Dambaugh's Career Totals

Season	Tourn.	Rds.	Strokes	Avg.	Low 18	Best Finish
2013-14	10	29	2,134	73.59	67	T- 4th
Career	10	29	2,134	73.59	67	T-4rd

Justine Dreher

Junior :: Valbonne, France :: Lycée Audiberti



2014 First-Team All-SEC
2012 SEC All-Freshman Team

2013-14

Has played in all ten tournaments this season... Placed fourth at the SEC Championship... Team's top finisher in five tournaments... Leads the team with a 73.28 stroke average... Also leads the team in top-20 finishes with eight and in rounds of par or better with 13... Shot a round of 66 at the NCAA East Regional, which ties a program record for low 18-hole score... Finished the NCAA East Regional with total of 211, which ties a school record for seventh best low 54-hole score... Career scoring average of 74.73 currently ranks fifth all time at South Carolina.

2012-13

Steadying force in the lineup...Played in all 11 tournaments...Ranked third on the team in scoring with an average of 75.47...Career scoring average of 75.48 currently ranks fourth all-time at South Carolina...Tied for the team lead with three top-20 finishes...Recorded back-to-back top-20 finishes with a tie for 15th finish at the weather-shortened Landfall Tradition with a total of 73 (+1) and a tie for 12th showing at the UCF Challenge with a career-best total of 218 (+2)...Matched career low with a first-round 68 at he UCF Challenge...Delivered career-best finish at the SEC Championship, tying for third place with rounds of 74-76-76=226 (+10) to lead the Gamecocks to a third-place finish...Tied for 39th at the NCAA West Regional with rounds of 72-78-73=223 (+10) to help South Carolina finish fourth and secure the program's fourth-straight NCAA Championship berth...Finished tied for 48th at the NCAA Championship with rounds of 77-77-73-73=300 (+12)... Made it to the match-play quarterfinals of the Ladies' British Open Amateur Championship in June.

2011-12

Named to SEC All-Freshman Team...Competed in eight of 11 tournaments...Came on strong in the spring with three top-20 finishes... Produced a tie for 19th finish at the NCAA East Regional with rounds of 70-73-78=221, helping lead the Gamecocks to their second East Regional title in three years...Third on the team with a 75.50 stroke average, which ranks third all-time at South Carolina for a freshman...Best finish of the season was a tie for 12th showing at the SEC Championship with rounds of 77-75-78=230 (+14)...Fired a second-round 68 at the Tar Heel Invitational, which is the lowest round ever by a freshman at South Carolina...Tied for 77th at the NCAA Championship with rounds of 77-77-75-75=304.

Prior to South Carolina

Graduated from Lycée Audiberti in 2010...Has compiled an impressive playing resume in Europe...Ranked the No. 9 golfer in France...After picking up the game in 2002, she was the runner-up at the 2006 French Youth Championship...Earned first tournament victory in 2008 at the Grand Prix de Cap d'Agde, then later that year finished in the top 15 at the Internationaux Juniors Filles and was the top French player in the field... Won the Ladies French International in 2009 and the Ladies Italian International in 2011...Finished in the top 10 in the Ladies European Championship in 2011...Member of the French National Team...Has competed for her country at both the European Girls' Team Championship and European Women's Team Championships.

Personal

Born June 29, 1992...Parents are Freddy and Patricia Dreher...Majoring in sport and entertainment management.

Career Bests

18-hole Score:	66
54-hole Score:	211
Tournament Finish:	T-3rd
Top 10 Finishes:	6
Top 20 Finishes:	14

Career Tournament-by-Tournament Results

2013-14

*Cougar Classic.....	71-73-70=214 (-2)	T6
Mercedes-Benz Collegiate.....	73-76=149(+7)	T39
Tar Heel Invitational.....	70-71-73=214 (-2)	7
The Landfall Tradition.....	83-77-70=239 (+23)	T74
Florida State Match-Up.....	76-72-76=224 (+8)	T16
Darius Rucker Intercollegiate.....	76-71-72=219 (+6)	T12
Bryan National Collegiate.....	72-73-76=221 (+5)	7
PING ASU Invitational.....	72-72-72=216 (E)	T12
SEC Championship.....	73-74-71=218 (+2)	4
NCAA East Regional.....	75-70-66=211 (-5)	T4

2012-13

Cougar Classic.....	79-76-73=228 (+12)	T78
NCAA Fall Preview.....	77-74-76=227 (+11)	T45
Tar Heel Invitational.....	78-77-80=235 (+19)	T73
The Landfall Tradition.....	73 (+1)	T15
UCF Challenge.....	68-76-74=218 (+2)	T12
Darius Rucker Intercollegiate.....	80-75-74=229 (+16)	T39
Bryan National Collegiate.....	72-78-76=226 (+10)	T44
PING ASU Invitational.....	77-79-74=230 (+14)	68
SEC Championship.....	74-76-76=226 (+10)	T3
NCAA West Regional.....	72-78-73=223 (+10)	T39
NCAA Championship.....	77-77-73-73=300 (+12)	T48

2011-12

*Tar Heel Invitational.....	77-68-77=222 (+6)	T37
UCF Challenge.....	74-77-74=225 (+9)	T43
Darius Rucker Intercollegiate.....	77-73=150 (+8)	T20
*Liz Murphey Collegiate Classic.....	78-76-80=234 (+18)	T75
Bryan National Collegiate.....	73-78-75=226 (+10)	T30
SEC Championship.....	77-75-78=230 (+14)	T12

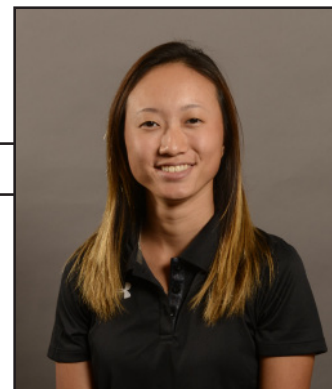
*Competed as an individual

Dreher's Career Totals

Season	Tourn.	Rds.	Strokes	Avg.	Low 18	Best Finish
2011-12	8	24	1,812	75.50	68	T-12th
2012-13	11	32	2,415	75.46	68	T-3rd
2013-14	10	29	2,125	73.28	66	4th
Career	29	85	6,352	74.73	66	T-3rd

Suzie Lee

Senior :: East Northport, N.Y. :: Commack



2011 SEC All-Freshman Team

2013-14

Has played in nine tournaments this season, including three as an individual... Placed in the top-20 once this season... Recorded three rounds of par or better... Career scoring average of 75.56 currently ranks sixth all time at South Carolina.

2012-13

One of the Gamecocks' top golfers... Played in all 11 tournaments... Ranked second on the team in scoring with an average of 75.42... Recorded two top-20 finishes... Tied for 17th in a loaded field at the Darius Rucker Intercollegiate with rounds of 75-75-73=223 (+10)... Helped lead the Gamecocks to a third-place finish at the SEC Championship with a tie for 28th showing, shooting rounds of 78-76-79=233 (+17)... Led the team to a fourth-place finish at the NCAA West Regional, finishing tied for 14th with rounds of 73-71-73=217 (+4)... Finished tied for 68th at the NCAA Championship with rounds of 74-78-75-77=304 (+16) to help lead South Carolina to a 20th-place finish.

2011-12

Played in four of nine tournaments... Missed most of the spring recovering from a surgery... Posted a stroke average of 76.91... Carded rounds of 71-77-77=225 (+9) to record season-best finish of tie for 43rd at UCF Challenge.

2010-11

Named to SEC All-Freshman Team... Competed in nine of 11 tournaments as a freshman... Had three top-20 finishes and one top-10... Top Gamecock finisher in three events... Finished freshman season with 75.39 scoring average, which ranks second in school history among freshmen in a single season... Posted her best round as a Gamecock in the final round of the NCAA Championship, a 1-under-par 71 to finish tied for 80th place at 78-83-76-71=308... Despite opening-round 77, was stellar in her last two rounds at NCAA West Regional, shooting 77-72-73=222 (+6) to tie for 15th... Had her best finish of the year at the SEC Championship, posting a consistent score of 73-73-73=219 (+3) to tie for ninth place... It was her first career top-10 finish as a Gamecock... Opened the fall and her collegiate career in strong fashion with a tie for 17th at the Cougar Classic... Shot three straight rounds of even-par 72 at the Tar Heel Invitational to tie for 24th in a loaded field... Her 54-hole score of 216 was a collegiate-best... Missed first two tournaments of spring season with wrist injury... Medalist at U.S. Women's Amateur Public Links qualifier; will compete at USWAPL for second straight year.

Prior to South Carolina

Ranked No. 21 girls' golfer in the class of 2010, according to Golfweek... Competed for Commack High School, where she was the team MVP for three years... Named all-state and all-county all four years... Was New York girls' state champion in 2008... Helped her team to the state title in 2008 and 2009... Won two AJGA events in 2009 in Kingsmill, Va., and Nemaquin Resort, Pa... Was a 2009 AJGA Rolex All-American... 2009 Future Collegians World Tour First-Team All-American... Had five top-5 finishes, including a third-place showing at Furman University... Won four times on the FCWT and three more on the IJGT... Advanced to the round of 16 in match play at the 2009 U.S. Girls Junior Amateur Championship and tied for 17th place in 2007.

Personal

Born June 28, 1992, in Seoul, South Korea... Moved to the United States when she was three months old... Parents are Sejeah and Jean Lee... Has not declared a major... Chose South Carolina because she felt it was the best place to accomplish her golf goals while obtaining a quality education, and the golf course, facilities and weather were also major factors.

Career Bests

18-hole Score:	68
54-hole Score:	216
Tournament Finish:	T-9th
Top 10 Finishes:	1
Top 20 Finishes:	6

Career Tournament-by-Tournament Results

2013-14

Cougar Classic.....	73-77-68=218 (+2)	T19
Mercedes-Benz Collegiate.....	72-76=148 (+6)	T32
*Tar Heel Invitational.....	76-75-78=229 (+13)	T68
Florida State Match-Up.....	73-77-75=225 (+9)	T25
*Darius Rucker Intercollegiate.....	77-76-77=230 (+17)	T54
*Byran National Collegiate.....	73-81-80=234 (+18)	T56
PING ASU Invitational.....	77-70-74=221 (+5)	T33
SEC Championship.....	76-77-77=230 (+14)	T35
NCAA East Region.....	72-78-74=228 (+8)	T65

2012-13

Cougar Classic.....	75-75-77=227 (+11)	T71
NCAA Fall Preview.....	77-77-WD=154 (+10)	WD
Tar Heel Invitational.....	78-75-81=234 (+18)	T67
The Landfall tradition.....	77 (+5)	T43
UCF Challenge.....	74-78-72=224 (+8)	T36
Darius Rucker Intercollegiate.....	75-75-73=223 (+10)	T17
Bryan National Collegiate.....	73-77-75=225 (+9)	T40
PING ASU Invitational.....	75-73-72=220 (+4)	T38
SEC Championship.....	78-76-79=233 (+17)	T28
NCAA West Regional.....	73-71-73=217 (+4)	T14
NCAA Championship.....	74-78-75-77=304 (+16)	T68

2011-12

Tar Heel Invitational.....	73-77-73=223	T44
SEC/Pac-12 Challenge.....	80-78-82=240	T105
UCF Challenge.....	71-77-77=225	T43
Darius Rucker Intercollegiate.....	80-78=158	T60
NCAA East Regional.....	73-83-68=224 (+8)	T41
NCAA Championship.....	79-70-81-75=305 (+17)	T84

2010-2011

Cougar Classic.....	73-73-74=220	T17th
Tar Heel Invitational.....	72-72-72=216	T24th
The Landfall Tradition.....	74-80-81=235	T63rd
Pac-10/SEC Challenge.....	73-77-79=229	T58th
Bryan National Collegiate.....	74-77-80=231	T28th
Liz Murphey Collegiate Classic.....	78-77-76=231	T58th
SEC Championship.....	73-73-73=219	T9th
NCAA West Regional.....	77-72-73=222	T15th
NCAA Championship.....	78-83-76-71=308	T80th

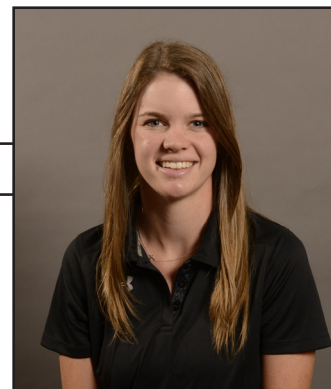
*Competed as an individual

Lee's Career Totals

Season	Tourn.	Rds.	Strokes	Avg.	Low 18	Best Finish
2010-11	9	28	2,111	75.39	71	T-9th
2011-12	6	18	1,375	76.39	68	T-41st
2012-13	11	31	2,338	75.42	71	T-14th
2013-14	9	26	1,959	75.65	68	T-19th
Career	35	103	7,783	75.56	68	T-9th

Sarah Schmelzel

Sophomore :: Phoenix, Ariz. :: Xavier Prep



2013 SEC All-Freshman Team

2013-14

Has played in all ten tournaments this season, including one as an individual... placed in the top-20 four times this season, including once the top-5... Career scoring average of 74.37 currently ranks third all time at South Carolina... Finished the Florida State Match-Up with a 54-hole score of 212, which ties a record for 10th-best low 54-hole score.

2012-13

SEC All-Freshman Team selection...Proved to be one of the Gamecocks' top golfers...Led the team and ranked 22nd in the SEC with a scoring average of 74.78, which is the lowest average by a freshman in school history and is the 10th-best single-season average in program history...Tied for the team lead with three top-20 finishes...Recorded first career top-20 finish with a tie for 20th showing at the NCAA Fall Preview with rounds of 75-71-74=220 (+4)...Best finish of the season was a third-place finish at the Bryan National Collegiate with rounds of 71-73-71=215 (-1) that earned her SEC Freshman of the Week honors...Helped lead the Gamecocks to a third-place finish at the SEC Championship by finishing in a tie for eighth with rounds of 76-76-76=228 (+12)...Finished in a tie for 33rd at the NCAA West Regional with a total of 222 (+9) to help South Carolina finish fourth and secure the program's fourth-straight NCAA Championship berth...Tied for 73rd at the NCAA Championship with rounds of 76-80-70-79=305 (+17)...Named to the SEC First-Year Academic Honor Roll.

Prior to South Carolina

Standout at Xavier Prep in Phoenix, Ariz. ...Highly ranked in both the National Junior Golf Scoreboard rankings and the Golfweek junior rankings...Won medalist honors at the 2011 Arizona State High School Championship...Led Xavier Prep to its third team state title in four years...Carded rounds of 71-66 at the state championship to tie the Arizona state high school record with Amanda Blumenhurst, who was a three-time national collegiate player of the year at Duke...Won the Junior Golf Association Bass Pro Shops/Payne Stewart Championship by 12 strokes with rounds of 69-71-70.

Personal

Full name is Sarah Hawley Schmelzel...Born May 12, 1994...Parents are Dennis and Amy Schmelzel.

Career Bests

18-hole Score:	68
54-hole Score:	212
Tournament Finish:	2nd
Top 10 Finishes:	4
Top 20 Finishes:	7

Career Tournament-by-Tournament Results

2013-14

Cougar Classic.....	74-74-74=222 (=6)	T44
*Mercedes-Benz Collegiate.....	70-73=143 (+1)	T12
Tar Heel Invitational.....	75-74-72=221 (+5)	T32
The Landfall Tradition.....	76-75-80=231 (+15)	T41
Florida State Match-Up.....	70-72-70=212 (-4)	2
Darius Rucker Intercollegiate.....	75-76-76=227 (+14)	T42
Byran National Collegiate.....	76-74-80= 230 (+14)	T27
PING ASU Invitational.....	73-68-77=218 (+2)	T20
SEC Championship..	74-75-73=222 (+6)	T10
NCAA East Regional.....	71-73-74=218 (+2)	T29

2012-13

Cougar Classic.....	75-72-72=219 (+3)	T30
NCAA Fall Preview.....	75-71-74=220 (+4)	T20
Tar Heel Invitational.....	72-73-78=223 (+7)	T25
The Landfall Tradition.....	77 (+5)	T43
UCF Challenge.....	71-80-77=228 (+12)	T54
Darius Rucker Intercollegiate.....	82-77-79=238 (+25)	T64
Bryan National Collegiate.....	71-73-71=215 (-1)	3
PING ASU Invitational.....	70-73-75=218 (+2)	T27
SEC Championship.....	76-76-76=228 (+12)	T8
NCAA West Regional.....	76-72-74=222 (+9)	T33
NCAA Championship.....	765-80-70-79=305 (+17)	T73

*Competed as an individual

Schmelzel's Career Totals

Season	Tourn.	Rds.	Strokes	Avg.	Low 18	Best Finish
2012-13	11	32	2,393	74.78	70	3rd
2013-14	10	26	2,144	73.93	68	2nd
Career	21	61	4,537	74.37	68	2nd

Samantha Swinehart

Senior :: Lancaster, Ohio :: Lancaster



2014 Second-Team All-SEC
2011 SEC All-Freshman Team

2013-14

Has played in all ten tournaments this season... Stroke average of 73.41 currently ranks second on the team... Team's low finished twice this season... Placed in the top-five twice this season, which is tied for a team best... Recorded Shot of round of 66 at the PING ASU Invitational, which ties a program record for low 18-hole score... Finished the PING ASU Invitational with total of 211, which ties a school record for seventh best low 54-hole score... Career scoring average of 75.67 currently ranks seventh all time at South Carolina.

2012-13

Played in eight tournaments, including three as an individual...Finished the year with a stroke average of 76.71...Best performance of the season came at the Tar Heel Invitational...Finished tied for 12th with rounds of 72-76-72=220 (+4)...Came close to a second top-20 finish with a tie for 21st showing at the UCF Challenge with rounds of 71-76-74=221 (+5).

2011-12

Played in eight of 11 tournaments... Finished the year with a stroke average of 77.48...Narrowly missed top-20 showing at the Bryan National Collegiate, finishing tied for 22nd with rounds of 73-75-76=224 playing as an individual...Carded a final-round 71 (-1) against a loaded field at the SEC/Pac-12 Challenge to finish tied for 44th...Recorded two rounds of par or better.

2010-2011

Named to SEC All-Freshman Team...Played in all 11 events for South Carolina as a freshman... Led the team with four top-20 finishes... Finished freshman season with scoring average of 75.74, which ties teammate Amanda Strang for fourth in school history among freshmen...Equaled best round of the season in the final round of the NCAA Championship, shooting a 1-under-par 71 to finish off a 78-77-77-71=303 week and a tie for 55th place... Helped Gamecocks to 18th-place finish... Earned her fourth top-20 finish of the season, tying for 15th place at the NCAA West Regional with rounds of 75-71-76=222 (+6), leading the Gamecocks to an NCAA Championship berth in her first postseason appearance... Set a Carolina freshman record with a second-round 68 (-4) at the UCF Challenge...Round marked the best score ever by a Gamecock freshman and helped team to a 284 (-4), the best single round of the season and third-best in school history... Finished the event in a tie for 11th place at 217 (+1), her best of the year...Opened the year with a tie for 15th at the Cougar Classic, shooting 71-73-75=219 (+3)... Posted scores of 71 in her first and last rounds of the season... Tied for 12th at Bryan National Collegiate with rounds of 73-73-79=225 (+9).

Prior to South Carolina

Ranked No. 32 girls' golfer in the class of 2010, according to Golfweek... Competed for Lancaster High School for four years...2008 Division I OHSAA State Champion...Was named All-Ohio three times...Also named Academic All-Ohio...Won 2008 Hudson Invitational...Had six top-10 finishes in AJGA tournaments...Two runner-up finishes in 2009 on PGA Junior Series...Advanced to match play at U.S. Girls Junior Amateur in 2008...Honor roll students...Member of National Honor Society...Had a hole-in-one in seventh grade...Also played softball.

Personal

Full name is Samantha Rae Swinehart...Born October 9, 1991, in Marietta, Ga....Parents are Steve and Terri Swinehart... Her father, Steve, is a 1980 South Carolina graduate and was a reserve quarterback for the Gamecock football team from 1976-79...Her brother, Dane, plays baseball at Belmont University...Has not declared a major...Chose South

Career Bests

18-hole Score: 66
54-hole Score: 211
Tournament Finish: T-2nd
Top 10 Finishes: 5
Top 20 Finishes: 12

Career Tournament-by-Tournament Results

2013-14

Cougar Classic..... 69-72-75=222 (+6)..... T10
Mercedes-Benz Collegiate.....69=71=140 (-2)..... T2
Tar Heel Invitational.....80-74-71=225 (+9)..... T48
The Landfall Tradition..... 76-74-79=229 (+13)..... T32
Florida State Match-Up..... 77-72-73=222 (+6)..... T12
Darius Rucker Intercollegiate..... 73-76-73=220 (+7)..... T15
Byran National Collegiate.....75-71-77=223 (+7)..... T9
PING ASU Invitational..... 75-70-66=211 (-5)..... T3
SEC Championship..... 80-78-73=231 (+15)..... T40
NCAA East Regoma;..... 73-70-69=212 (-4)..... T7

2012-13

Cougar Classic..... 77-77-72=226 (+10)..... T65
NCAA Fall PReview 77-75-78=230 (+14)..... T61
Tar Heel Invitational 72-76-72=220 (+4)..... T12
The Landfall Tradition 77 (+5)..... T43
UCF Challenge 71-76-72=221 (+5)..... T21
*Darius Rucker Intercollegiate . 81-81-83=251 (+38)..... 78
*Bryan National Collegiate..... 72-75-81=228 (+12)..... T50
*PING ASU Invitational 79-79-WD=158 (+14)..... WD

2011-12

Cougar Classic..... 79-82-74=235 (+19)..... T92
SEC/Pac-12 Challenge..... 78-75-71=224 (+8)..... T44
The Landfall Tradition 81=80-74=235 (+19)..... T34
UCF Challenge 72-75-77=224 (+8)..... T38
Darius Rucker Intercollegiate80-79=159 (+17)..... T62
Liz Murphy Collegiate Classic... 77-84-76=237 (+21)..... T85
*Bryan National Collegiate..... 73-75-76=224 (+8)..... T22
SEC Championship 81-77-86=244 (+28)..... T42

2010-2011

Cougar Classic..... 71-73-75=219 (+3)..... T15
Tar Heel Invitational 73-76-79=228 (+12)..... T73
The Landfall Tradition 77-78-75=230 (+14)..... T40
Pac-10/SEC Challenge..... 78-82-77=237 (+24)..... T91
UCF Challenge 73-68-76=217 (+1)..... T11
LSU Tiger Golf Classic 76-76-81=233 (+17)..... T47
Bryan National Collegiate..... 73-73-79=225 (+9)..... T12
Liz Murphy Collegiate Classic... 76-83-73=232 (+16)..... T63
SEC Championship 77-77-75=229 (+13)..... T32
NCAA West Regional..... 75-71-76=222 (+6)..... T15
NCAA Championship 78-77-77-71=303 (+15)..... T55

*Competed as an individual

Swinehart's Career Totals

Season	Tourn.	Rds.	Strokes	Avg.	Low 18	Best Finish
2010-11	11	34	2,575	75.74	68	T-11th
2011-12	8	23	1,782	77.48	71	T-22nd
2012-13	8	21	1,611	76.71	71	T-12th
2013-14	10	29	2,129	73.41	66	T-2nd
Career	27	107	8,097	75.67	66	T-2nd