



GAMECOCK VOLLEYBALL

SOUTH CAROLINA

UPCOMING OPPONENTS



Kentucky (6-5, 2-1 Away)
Fri., Sept. 25, 7:00 PM
Carolina Volleyball Center

Series Kentucky leads 31-18
Trend UK has won six straight matches in the series
 South Carolina has 12 home wins in the series
Last Meeting UK won 3-1 (9/28/2014)



LSU (4-7, 0-2 Home)
Sun., Sept. 27, 2 PM
Maravich Center

Series LSU leads 22-13
Trend LSU has won four straight, 11 of 12 vs. S.C.
 Carolina has not won at LSU since 2003
Last Meeting LSU won 3-1 (11/29/2014)

TABLE OF CONTENTS

- ✓ Scouting the opponents (p. 2)
- ✓ South Carolina team notes (ps. 3-5)
- ✓ Match-by-match leaders (p. 6)
- ✓ 2015 statistics (p. 7)
- ✓ Match Box Scores (ps. 8-11)
- ✓ Career, match records (ps. 12-15)
- ✓ Head coach Scott Swanson's bio (p. 16)
- ✓ Individual player pages (ps. 17-32)
- ✓ Spot chart (p. 33)

PROJECTED STARTERS (Based on last match)



2015 ROSTER

NO	NAME	HT	POS	YR	EXP	HOMETOWN (LAST SCHOOL)
1	Madison Borowski	5-9	S	FR	HS	Austin, Texas (Westlake)
2	Joely Cabrera	5-6	DS/Libero	JR	TR	Seca, Puerto Rico (Daytona State)
3	Dessaa Legros	5-10	MB/OH	JR	2L	Kennesaw, Ga. (Allatoona)
4	Darian Dozier	6-1	MB/RS	SR	3L	Sandy Spring, Md. (St. Johns College)
5	Aubrey Ezell	5-8	S	FR	HS	Granbury, Texas (Granbury)
6	Sarah Blomgren	5-11	RS/OH	SR	3L	Canyon Country, Calif. (Saugus)
7	Jacqy Angermiller	6-2	MB/RS	JR	2L	Dallas, Texas (LD Bell)
9	Megan Kirkland	5-7	DS/Libero	JR	2L	Lugoff, S.C. (Lugoff-Elgin)
10	Emma Lock	5-9	DS/Libero	FR	HS	Lee's Summit, Mo. (Lee's Summit)
11	Koko Atoa-Williams	5-10	OH	JR	2L	Reno, Nev. (Bishop Manogue)
12	Courtney Furlong	6-3	OH	FR	HS	Oviedo, Fla. (Oviedo)
14	Katlyn McDaniel	6-0	MB	JR	2L	Columbia, S.C. (Spring Valley)
15	Jesse Turner	6-2	MB/RS	FR	HS	Austin, Texas (Westlake)
17	Elizabeth Johnbull	6-0	MB	SR	3L	Pflugerville, Texas (Connally)
22	Claire Blumenthal	5-5	DS/Libero	FR	HS	Tampa, Fla. (Tampa Preparatory)
23	Callie Brown	6-1	MB/RS	FR	HS	Summerfield, N.C. (Rockingham County)
25	Courtney McKeag	6-0	MB/OH	RS FR	RS	San Juan Capistrano, Calif. (San Juan Hills)

Manager: Ridge Sears

2015 SCHEDULE (7-6)

DATE	OPPONENT	RESULT/TIME
8/28	Southeastern Louisiana %	W, 3-0
8/29	NC Central %	W, 3-0
	NC State %	L, 3-0
9/4	vs. Clemson #	W, 3-1
9/5	vs. Winthrop #	W, 3-2
	at Furman #	L, 3-1
9/11	vs. Pittsburgh ^	L, 3-1
	at #24 Michigan ^	L, 3-0
9/12	vs. Western Michigan ^	L, 3-1
9/18	East Carolina &	W, 3-0
9/19	Charleston Southern &	W, 3-1
	Wofford &	W, 3-0
9/22	Coastal Carolina	L, 3-1
9/25	Kentucky*	7 PM
9/27	at LSU*	2 PM
10/2	at Ole Miss*	7:30 PM
10/4	at Mississippi State*	12 PM
10/9	Auburn*	7 PM
10/11	Texas A&M*	1 PM
10/14	at Georgia*	8 PM
10/18	at Tennessee*	1:30 PM
10/25	Arkansas*	1:30 PM
10/30	Florida*	7 PM
11/1	Ole Miss*	1 PM
11/6	at Auburn*	8 PM
11/8	at Alabama*	3 PM
11/11	Tennessee*	6 PM
11/20	Mississippi State*	7 PM
11/22	Alabama*	1:30 PM
11/25	at Arkansas*	8 PM
11/27	at Missouri*	7:30 PM

All times Eastern | Home matches in bold
 % Gamecock Invitational | # Furman Carolina Classic
 ^ Michigan Challenge | & Carolina Classic
 * SEC match

ON THE AIR



TV SEC Network
 Play-by-Play Melissa Lee
 Color Analyst Nell Fortner

GAMECOCK STAFF

Head Coach Scott Swanson
Alma Mater Arizona State, 1995
Overall Record (Years) 118-129 (9th)
Record at Carolina (Years) 68-69 (5th)
Assistant Coach/Rec. Coordinator... Dottie Hampton
Alma Mater IPFW
Year at SC 2nd
Assistant Coach..... Shonda Cole
Alma Mater South Carolina
Year at SC 2nd (1st as full-time assistant)
Volunteer Assistant Tim Walenga
Director of Operations Amanda Brungs
Graduate Assistant Morgan Page

QUICK FACTS

Location Columbia, S.C.
Founded 1801
Enrollment 32,972
Colors Garnet (PMS 202C) & Black
Nickname Gamecocks
Affiliation NCAA Division I
Conference Southeastern (Eastern Division)
President Dr. Harris Pastides
Athletic Director Ray Tanner
Home Court Carolina Volleyball Center
2014 Record 17-14
2014 Conference Record 7-11
2014 Conference Finish T-8th
Starters Returning/Lost +Libero 4/3+Libero
Letterwinners Returning/Lost 10/5
Newcomers 8

MEDIA INFORMATION

Director of Media Relations Steve Fink
Asst. Director/Volleyball Joe Kepler
Office Phone (803) 777-5539
Email keplerj@mailbox.sc.edu
Personal Phone (716) 254-1711
Office Fax (803) 777-2967
Department Website GamecocksOnline.com
Dept. Facebook /GamecocksOnline
Team Facebook /GamecockVolleyball
Dept. Twitter @GamecocksOnline
Team Twitter @GamecockVolley
Mailing Address 1304 Heyward St.
 Rice Athletics Center
 Columbia, SC 29208

PRONUNCIATION GUIDE

KoKo Atoa-Williams Uh-TOE-uh
 Sarah Blomgren BLOHM-grin
 Claire Blumenthal BLUE-men-thall
 Joely Cabrera JOE-elly
 Dessaa Legros Luh-GROSS

ABBREVIATIONS

When needing to abbreviate South Carolina for your scoreboard or broadcast boxes, the preferred shortenings are S. Carolina or SC. Please refrain from using USC or SCAR when referring to the University of South Carolina. Proper logos and wordmarks can be emailed for use by any media outlet upon request. Thank you.

NOTEWORTHY

SCOUTING KENTUCKY (9/25)

- Kentucky returns four starters and its libero from the 2014 team, which finished 27-6 overall (16-4 SEC). It finished the season ranked 17th in the country by the AVCA and advanced to the second round of the NCAA tournament before bowing out to Ohio State in four sets.
- So far this season, the team is 7-5 and are in the midst of a three-match win streak. It comes on the heels of a four-match losing streak where the team faced a pair of top-ten-ranked teams (USC and Illinois).
- Offensively, the team is led by outside hitter Darian Mack and middle blocker Kaz Brown. Mack leads the team with 146 but is struggling with just a .096 hitting percentage over 458 attacks. Brown is a tremendous two-way threat, with 3.02 kills per set (.344 hitting percentage) and 1.41 blocks per set. The sophomore was named the SEC Co-Defensive Player of the Week on Monday after averaging 2.62 blocks per set in wins over Xavier and Louisville. She recorded 13 total blocks against Louisville, a program record for the rally scoring era.
- Thanks in large part to Brown's defensive contributions, the Wildcats rank second in the SEC in blocks per set, with 2.52 as a team. Also leading the way defensively is libero Ashley Dusek, who leads the conference with 4.91 digs per set.

SERIES HISTORY VS. THE WILDCATS

- Friday's meeting will be the 50th all-time between Carolina and Kentucky.
- The Wildcats lead the series 31-18, and have taken the last six matches in the series and 18 of the last 20. Of Carolina's 18 wins, 12 have come at home.
- In the most recent meeting, Kentucky won 3-1 on Sept. 28, 2014.

SCOUTING LSU (9/27)

- The Tigers return four starters and their libero from a 2014 team that finished 20-9 overall (14-4 SEC). They made it to the second round of the NCAA tournament, beating Oklahoma before losing to #16 Oregon, 3-1.
- LSU opens its season Wednesday night against Arkansas on ESPNU. It enters the conference season with a 4-7 overall record but a three-match win streak.
- A major factor behind the team's slow start has been its hitting percentage. Heading into Wednesday, the team has a combined hitting percentage of just .143, the lowest in the SEC.
- Cati Leak and Katie Lindelow lead the way in kills, with 154 and 101, respectively. Leak's average of 3.76 kills per set ranks third in the SEC. She also ranks sixth in service aces, with 16.
- The Gamecocks will be challenged by two of the top liberos in the conference this weekend, as it faces Haley Smith along with Kentucky's Ashley Dusek. Smith ranks just behind Dusek with 4.76 digs per set.
- The Tigers will likely run out a pair of setters on Sunday. Cheyenne Wood and Lindsay Flory each are in the triple digits for assists through 11 matches, with Wood averaging 5.59 assists per set and Flory 3.71. This is Wood's first run as a primary setter, as she and the freshman Flory fill in for Elly Ogle, who set for LSU last season but has not played in the last five matches.

SERIES HISTORY VS. THE TIGERS

- Friday's meeting will be the 36th all-time between Carolina and LSU.
- The Tigers lead the series 22-13, and have won four straight and 11 of 12 against the Gamecocks. Carolina has not won at LSU since the 2003 season.
- In the most recent meeting, LSU won 3-1 on Nov. 29, 2014.

SOUTH CAROLINA AT A GLANCE

- South Carolina enters its fifth season under the direction of head coach Scott Swanson.
- The Gamecocks went 17-14 overall and 7-11 in the SEC in 2014.
- The seven SEC wins are Carolina's most during the Swanson era and the most since going 12-8 in 2008.
- The Gamecocks return 10 letter winners from a year ago, including five players who started 10 or more matches (Koko Atoa-Williams, Darian Dozier, Sarah Blomgren, Jacqy Angermiller, Megan Kirkland).
- The Gamecocks' roster is made up of eight freshmen (seven true freshmen), six juniors, and three seniors.
- A total of nine states - California (2), Florida (2), Georgia (1), Maryland (1), Missouri (1), Nevada (1), North Carolina (1), South Carolina (2), Texas (5) - and Puerto Rico (1) are represented on the Gamecock roster.

AVCA POLL | SEPT. 21

NO	TEAM (1ST PLACE)	Pts	W-L	Prev
1	Penn State (64)	1600	11-0	1
2	Texas	1500	10-1	2
3	Southern California	1472	12-0	3
4	Nebraska	1381	9-1	4
5	Florida	1344	8-1	5
6	Washington	1262	10-0	7
7	Arizona State	1197	11-0	10
8	Stanford	1161	6-2	8
9	Illinois	1074	9-2	6
10	BYU	1061	10-1	9
11	Hawai'i	914	10-1	12
12	Ohio State	895	11-1	13
13	UCLA	845	9-1	14
14	Arizona	725	10-2	16
15	Kansas	711	12-0	17
16	Wisconsin	668	8-2	11
17	Florida State	515	7-4	18
18	Oregon	463	6-3	19
19	Colorado State	445	7-3	15
20	Purdue	341	9-2	22
21	Minnesota	297	8-2	23
22	Michigan	227	10-1	20
23	Pacific	144	9-2	T-24
24	Kentucky	123	7-5	T-24
25	Long Beach State	78	10-3	NR

Dropped Out: San Diego 21

Receiving Votes: SMU 63; Wyoming 55; Western Kentucky 47; North Carolina 36; Michigan State 33; Iowa 24; Texas A&M 21; Arkansas 16; San Diego 12; Colorado 10; San Francisco 7; Creighton 4

Next Poll: September 28

SEC STANDINGS

Team	CONF		ALL	
	W-L	Pct.	W-L	Pct.
Missouri	0-0	.000	12-0	1.000
Tennessee	0-0	.000	14-1	.933
Ole Miss	0-0	.000	14-1	.933
Florida	0-0	.000	8-1	.889
Arkansas	0-0	.000	10-2	.833
Mississippi State	0-0	.000	10-3	.769
Auburn	0-0	.000	8-4	.667
Texas A&M	0-0	.000	7-4	.636
Kentucky	0-0	.000	7-5	.583
South Carolina	0-0	.000	7-6	.538
Georgia	0-0	.000	5-7	.417
Alabama	0-0	.000	5-8	.385
LSU	0-0	.000	4-7	.364

SC'S STAT LEADERS

Kills/Set	Figure	SEC Rank
Dessaa Legros	3.79	3rd
Hitting % (Min. 3 TA/set)		
Darian Dozier	.336	10th
Assists/Set		
Aubrey Ezell	10.51	7th
Digs/Set		
Aubrey Ezell	3.16	N/A
Blocks/Set		
Darian Dozier	0.88	N/A

NOTEWORTHY

LOOK WHO'S BACK

- The Gamecocks return 67.7 percent (986) of their kills from last season. Junior outside hitter Koko Atoa-Williams ranked second on the squad with 304 kills in 2014, averaging 2.51 per set.
- With the departure of setters Kellie McNeil and Allie Monserez, the Gamecocks only return 5.1 percent (70) of their assists from 2014. True freshman Aubrey Ezell will be counted on to fill that role in 2015, with fellow freshman Madison Borowski also available to set.
- Carolina returns 41.8 percent (766) of its digs from last season. Atoa-Williams is the leading returner as she tallied 283 digs in 2014, averaging 2.34 per set.
- The Gamecocks return 71.5 percent (369) of their blocks from 2014. Senior middle blocker Darian Dozier will lead the way after setting a rally-scoring-era school record last season with 141 total blocks.

RECAPPING COASTAL CAROLINA (9/22)

- The Gamecocks closed out the non-conference season Tuesday night, welcoming in another tough test with Coastal Carolina (8-4). The Chanticleers, a NCAA tournament team from a year ago, claimed the 3-1 victory, 25-15, 17-25, 25-15, 25-23. Dessaa Legros led the Gamecocks with 13 kills and Sarah Blomgren added 12 of her own.
- Freshman setter Aubrey Ezell proved why she was named the SEC's setter of the week on Monday, passing out 38 assists with 10 more digs against the Chanticleers. She now has three straight double-doubles and nine for the season.
- Libero Joely Cabrera went over the 20-dig mark for the second time in the last three matches. She now has double-digit digs in each of the last four matches and has upped her average to 3.71 digs per set.
- The Chanticleers kept the Carolina defense off-balance in the match thanks to its strong service. The visitors totaled eight aces in the match, the most by any Gamecock opponent so far this season.

RECAPPING THE CAROLINA CLASSIC (9/18-19)

- The Gamecocks went 3-0 last weekend in the Carolina Classic, held at the Carolina VB Center. They dropped just one set over the weekend while beating East Carolina (3-0), Charleston Southern (3-1) and Wofford (3-0).
- The Gamecocks are now have series records of 8-2 against ECU, 7-0 against CSU and won their first-ever meeting with Wofford. Under coach Scott Swanson, Carolina is now 28-1 in home tournament matches.
- Against the Pirates, senior Sarah Blomgren hit a career-best .609 for the match, with 15 kills. Her kill total is just two off her career high of 17, which was recorded during a four-set match against Georgia last season. Dessaa Legros finished with 12 kills in just 18 swings and also recorded the third solo block of her career. Her .444 hitting percentage is a new season-best.
- In the Charleston Southern match, South Carolina defense held the Buccaneers to just a .054 hitting percentage for the match. It was the lowest percentage allowed all season, beating out the .080 recorded by N.C. Central on Aug. 29. Aubrey Ezell recorded her seventh double-double of the season after finishing with 48 assists and 16 digs. She also set a new career-best with five kills.
- To cap the weekend, the Gamecocks swept upstate rival Wofford thanks to a momentum-shifting effort from senior Darian Dozier. She put down seven kills in the second set, with four of those coming during an 8-0 run that gave the Gamecocks a commanding 17-4 lead. The team would ultimately win the set 25-14 and took the 2-0 lead in the match.
- The Gamecocks hit .284 as a team over the three matches during the Carolina Classic, but held their opponents to just a .099 percentage.

CAROLINA'S ALL-TOURNAMENT ACCOLADES

- Junior outside hitter Dessaa Legros earned her third-straight All-Tournament honor after recording 20 kills, five digs and a career-high four blocks against the Broncos as part of the Michigan Challenge.
- Earlier this month, Legros earned a spot on Furman's Carolina Classic All-Tournament Team as she averaged 4.23 kills and 2.62 digs per set.
- Junior DS/Libero Megan Kirkland was also named to Furman's Carolina Classic All-Tournament Team after averaging 3.92 digs per set and recording five service aces.
- At the Carolina Classic, a home tournament, senior Sarah Blomgren was named the MVP and Darian Dozier made the All-Tournament team. Blomgren recorded 41 kills over the three matches, and Dozier added 33 kills and five blocks.

SC IN SEC/NCAA STATS

NCAA Team Rankings (Through 9/20)

Category	Figure	Rank
Hitting Percentage	.215	146th
Opp. Hitting Percentage	.189	128th
Assists/Set	12.34	93rd
Kills/Set	13.30	68th
Blocks/Set	2.09	132nd
Service Aces/Set	1.09	238th
Digs/Set	15.19	100th

SEC Team Rankings (Overall)

Category	Figure	Rank
Hitting Percentage	.215	8th
Opp. Hitting Percentage	.189	7th
Assists/Set	12.34	8th
Kills/Set	13.30	9th
Blocks/Set	2.09	9th
Service Aces/Set	1.09	11th
Digs/Set	15.19	4th

SEC Team Rankings (SEC Only)

Category	Figure	Rank
Hitting Percentage	-	-
Opp. Hitting Percentage	-	-
Assists/Set	-	-
Kills/Set	-	-
Blocks/Set	-	-
Service Aces/Set	-	-
Digs/Set	-	-

NCAA Individual Rankings (Through 9/20)

Stat	Athlete	Figure	Rank
Kills/Set	Dessaa Legros	3.74	86th
Assists/Set	Aubrey Ezell	10.43	63rd
Blocks/Set	Darian Dozier	0.89	NR
Digs/Set	Joely Cabrera	3.86	NR
Points/Set	Dessaa Legros	4.00	NR

SEC Individual Rankings (Overall)

Stat	Athlete	Figure	Rank
Kills/Set	Dessaa Legros	3.74	4th
Assists/Set	Aubrey Ezell	10.43	8th
Blocks/Set	Darian Dozier	0.89	NR
Digs/Set	Joely Cabrera	3.86	7th
Points/Set	Dessaa Legros	4.00	6th

SEC Individual Rankings (SEC Only)

Stat	Athlete	Figure	Rank
Kills/Set	-	-	-
Assists/Set	-	-	-
Blocks/Set	-	-	-
Digs/Set	-	-	-
Points/Set	-	-	-

NOTEWORTHY

“STATE”ING THEIR CASE

- After earning wins over fellow South Carolina schools Wofford and Charleston Southern in the Carolina Classic, the Gamecocks are now 5-1 against in-state rivals this season.
- The Gamecocks are now 119-57 against South Carolina school in program history, and do not have a losing record against any individual opponent.

LEGROS ENJOYING BREAKOUT YEAR

- Junior outside hitter **Dessaa Legros** has been the team’s biggest breakout star of the 2015 season so far, rocketing past her freshman and sophomore season outputs. Through 13 matches, Legros has 172 kills and is averaging 3.74 kills per set. To contrast that, she had 187 kills in 47 matches over her first two seasons with the team (1.62 kills/set)
- Her increased kills have been a by-product of a higher swing percentage. After posting .111 and .104 attack percentages over her first two seasons, she is currently hitting with a .224 success rate.
- It isn’t just her offense that has come around, she is also seeing career numbers on the receiving end. Her 18 total blocks through 13 matches is just one off the combined total from 2013 and 2014, and her 73 digs in 46 sets (1.59 per set) is already 20 more than she had over the 115 sets as a freshman and sophomore.

SET IT AND FORGET IT

- The Gamecocks entered the 2015 season without a returning setter on the roster, but freshman **Aubrey Ezell** has played like a veteran through her first 13 matches. Her efforts were rewarded on Monday, Sept. 21 when she was named the SEC Setter of the Week. It came on the heels of her performance at the Carolina Classic, where she passed out 140 assists over three wins. Entering Friday, Aubrey has three straight double-doubles (assists and digs) and nine for the season.

“BLOMS” AWAY

- Senior outside hitter Sarah Blomgren is another Gamecock in the midst of a career year, and it is largely thanks to a focus on accuracy. In the Carolina Classic, Sarah finished with 41 kills in three matches, but hit a combined percentage of .474. She committed just five errors in 76 total attacks that weekend. She hit .217 as a junior in 2014, but through 13 matches this season she has hit .300 or better five times.

WHEN CAROLINA WINS

- The Gamecocks out-hit opponents .280-.117.
- Carolina out-digs opponents 16.28-13.2 per set.
- The Gamecocks have out-blocked opponents 55-40 in total blocks and 2.2-1.6 in blocks per set.
- Carolina has 35 service aces, averaging 1.4 per set.

WHEN CAROLINA LOSES

- Carolina’s opponents hold a .271-.146 advantage in hitting percentage.
- Opponents out-dig the Gamecocks 15.27-13.95.
- The Gamecocks still hold a minor edge in blocks (43-40) and blocks per set (1.95-1.82).
- Carolina has committed 41 service errors to just 16 aces and have a serve percentage of .906.

RECORDS WATCH

- Senior middle blocker Darian Dozier continues to climb the school’s career records list for block assists and total blocks. Dozier currently ranks sixth all-time in block assists (328) and eighth in total blocks (363). Against Coastal Carolina, she tied Jennifer Guess (1990-93) in career block assists.

DOING WORK IN THE CLASSROOM AND THE COMMUNITY

- South Carolina had a league-best 12 players on the 2014 SEC Fall Academic Honor Roll.
- The Gamecocks earned the AVCA Team Academic Award for the 2014-15 school year with a cumulative team GPA of 3.34. Carolina has earned the honor four-straight years.
- The volleyball program was also among the top community service teams in terms of hours at South Carolina last year. The Gamecocks compiled a total of 480.5 community service hours, which breaks down to 28.26 hours per player.
- Throughout the 2014-15 school year, the Gamecocks gave back to 25 different events and organizations.
- Senior **Sarah Blomgren** was recently featured for her work this summer, spending four weeks with the International Student Volunteer organization in Costa Rica. ISV is a global volunteer organization that takes college students and other volunteers and places them in community development or wildlife/ecosystem preservation opportunities. In addition to building a road and working on the farm, Blomgren worked at the local elementary school and taught the children some English.

RECORD BREAKDOWN

Overall	7-6
Conference.....	0-0
vs. Ranked Teams	0-1
Home.....	5-2
Away	0-2
Neutral.....	2-2
August.....	2-1
September	5-5
October.....	0-0
November.....	0-0
December.....	0-0
Sundays.....	0-0
Mondays	0-0
Tuesdays	0-1
Wednesdays.....	0-0
Thursdays	0-0
Fridays.....	3-2
Saturdays.....	4-3
Winning set one	4-0
Losing set one.....	3-6
Winning set two.....	6-4
Losing set two	1-2
Winning set three.....	7-0
Losing set three.....	0-6
Winning set four	3-0
Losing set four	0-4
Three-set matches	4-2
Four-set matches.....	2-4
Five-set matches.....	0-1
More kills than opposition.....	7-2
Less kills than opposition.....	0-4
Kills equal.....	0-0
More hitting errors than opposition.....	1-6
Less hitting errors than opposition.....	6-0
Hitting errors equal	0-0
More attacks than opposition	1-4
Less attacks than opposition	5-2
Attacks equal	1-0
Out-hitting opposition	7-0
Out-hit by opposition	0-6
Hitting equal.....	0-0
More assists than opposition.....	7-2
Less assists than opposition.....	0-4
Assists equal.....	0-0
More aces than opposition.....	5-2
Less aces than opposition.....	1-3
Aces equal.....	1-1
More service errors than opposition.....	4-3
Less service errors than opposition.....	3-2
Service errors equal	0-1
More digs than opposition.....	7-1
Less digs than opposition.....	0-5
Digs equal	0-0
More total blocks than opposition	5-3
Less total blocks than opposition	1-1
Total blocks equal.....	0-2
More ball handling errors than opposition..	2-3
Less ball handling errors than opposition....	3-1
Ball handling errors equal	2-2

NOTEWORTHY

COMING HOME

- Former Gamecock great **Shonda Cole** is in her first season as a full-time assistant coach after serving as volunteer assistant last year.
- Cole played at South Carolina from 2003-06 and became the first Gamecock to earn All-America honors, earning a spot on the AVCA Honorable Mention All-America Team in 2006.
- She had a successful professional career, playing one season in Spain, six in Puerto Rico and a half season in France.
- Cole won a league championship with Pinkin de Corozal in 2010 and was named finals MVP after leading Indias de Mayaguez to the league title in 2013.

ALL-TIME RECORDS

- South Carolina holds a 761-588 (.564) record as a program, dating back to its first season in 1973.
- The Gamecocks are 168-226 (.426) in SEC play. The team joined the conference in 1991.
- In matches played at the Carolina Volleyball Center, South Carolina is 170-92 (.649).
- With 68 career wins, head coach Scott Swanson ranks fourth in program history for wins. He is just one win away from matching Kathy Graham (1976-77) for third with 69. Kim Hudson (1993-2004) is the program's winningest coach with 226 wins.

MATCH-BY-MATCH STARTERS

DATE	OPPONENT	W/L	MB	OH	DS/RS	MB	S	OH/RS	LIBERO
8/28	Southeastern La.	W	Darian Dozier	Dessaa Legros	Megan Kirkland	Jacqy Angermiller	Aubrey Ezell	Koko Atoa-Williams	Joely Cabrera
8/29	NC Central	W	Darian Dozier	Dessaa Legros	Megan Kirkland	Jacqy Angermiller	Aubrey Ezell	Koko Atoa-Williams	Joely Cabrera
8/29	NC State	L	Darian Dozier	Dessaa Legros	Sarah Blomgren	Jacqy Angermiller	Aubrey Ezell	Koko Atoa-Williams	Joely Cabrera
9/4	vs. Clemson	W	Darian Dozier	Dessaa Legros	Emma Lock	Jacqy Angermiller	Aubrey Ezell	Sarah Blomgren	Joely Cabrera
9/5	vs. Winthrop	W	Darian Dozier	Dessaa Legros	Megan Kirkland	Jacqy Angermiller	Aubrey Ezell	Koko Atoa-Williams	Joely Cabrera
9/5	at Furman	L	Darian Dozier	Dessaa Legros	Sarah Blomgren	Jacqy Angermiller	Aubrey Ezell	Koko Atoa-Williams	Megan Kirkland
9/11	vs. Pittsburgh	L	Darian Dozier	Dessaa Legros	Sarah Blomgren	Jacqy Angermiller	Aubrey Ezell	Koko Atoa-Williams	Megan Kirkland
9/11	at Michigan	L	Darian Dozier	Dessaa Legros	Courtney Furlong	Jacqy Angermiller	Aubrey Ezell	Sarah Blomgren	Megan Kirkland
9/12	vs. W. Michigan	L	Darian Dozier	Dessaa Legros	Courtney Furlong	Jacqy Angermiller	Aubrey Ezell	Sarah Blomgren	Emma Lock
9/18	East Carolina	W	Darian Dozier	Dessaa Legros	Courtney Furlong	Jacqy Angermiller	Aubrey Ezell	Sarah Blomgren	Joely Cabrera
9/19	Charleston South.	W	Darian Dozier	Dessaa Legros	Courtney Furlong	Jacqy Angermiller	Aubrey Ezell	Sarah Blomgren	Joely Cabrera
9/19	Wofford	W	Darian Dozier	Dessaa Legros	Sarah Blomgren	Elizabeth Johnbull	Aubrey Ezell	Koko Atoa-Williams	Joely Cabrera
9/22	Coastal Carolina	L	Darian Dozier	Sarah Blomgren	Emma Lock	Elizabeth Johnbull	Aubrey Ezell	Koko Atoa-Williams	Joely Cabrera
9/25	Kentucky								
9/27	at LSU								
10/2	at Ole Miss								
10/4	at Mississippi St.								
10/9	Auburn								
10/11	Texas A&M								
10/14	at Georgia								
10/18	at Tennessee								
10/25	Arkansas								
10/30	Florida								
11/1	Ole Miss								
11/6	at Auburn								
11/8	at Alabama								
11/11	Tennessee								
11/20	Mississippi St.								
11/22	Alabama								
11/25	at Arkansas								
11/27	at Missouri								

MATCH-BY-MATCH INDIVIDUAL LEADERS

DATE	OPPONENT	W/L	SCORE	HIGH KILLS	HIGH ASSISTS	HIGH ACES	HIGH DIGS	HIGH BLOCKS
8/28	Southeastern La.	W	3-0	Dessaa Legros (12)	Aubrey Ezell (30)	Aubrey Ezell (3)	Aubrey Ezell (13)	Dozier, Angermiller, Blomgren (2)
8/29	NC Central	W	3-0	Dessaa Legros (18)	Aubrey Ezell (33)	J. Angermiller (2)	Joely Cabrera (13)	Dessaa Legros (3)
8/29	NC State	L	3-0	Dessaa Legros (8)	Aubrey Ezell (23)	Ezell, Atoa-Williams (1)	Joely Cabrera (13)	Dozier, Angermiller (3)
9/4	vs. Clemson	W	3-1	Dessaa Legros (21)	Aubrey Ezell (47)	Kirkland, Cabrera (2)	Dessaa Legros (19)	Jacqy Angermiller (6)
9/5	vs. Winthrop	W	3-2	Legros, Dozier (14)	Aubrey Ezell (48)	Megan Kirkland (2)	Megan Kirkland (23)	Jacqy Angermiller (7)
9/5	at Furman	L	3-1	Dessaa Legros (20)	Aubrey Ezell (45)	Megan Kirkland (1)	Ezell, Kirkland (16)	Sarah Blomgren (5)
9/11	vs. Pittsburgh	L	3-1	Sarah Blomgren (13)	Aubrey Ezell (28)	Team (1)	Megan Kirkland (12)	Darian Dozier (5)
9/11	at Michigan	L	3-0	Furlong, Legros (10)	Aubrey Ezell (29)	Sarah Blomgren (2)	Sarah Blomgren (9)	Darian Dozier (3)
9/12	vs. Western Michigan	L	3-1	Dessaa Legros (20)	Aubrey Ezell (49)	Dozier, Kirkland (1)	Emma Lock (19)	Darian Dozier (7)
9/18	East Carolina	W	3-0	Sarah Blomgren (15)	Aubrey Ezell (35)	Joely Cabrera (3)	Joely Cabrera (14)	Ezell, Angermiller, Furlong (2)
9/19	Charleston Southern	W	3-1	Sarah Blomgren (16)	Aubrey Ezell (48)	Atoa-Williams, Lock (1)	Joely Cabrera (22)	Angermiller, Johnbull (4)
9/19	Wofford	W	3-0	Darian Dozier (13)	Aubrey Ezell (37)	Aubrey Ezell (3)	Joely Cabrera (15)	Legros, Dozier, Atoa-Williams, Johnbull (1)
9/22	Coastal Carolina	L	3-1	Dessaa Legros (13)	Aubrey Ezell (38)	Cabrera, Atoa-Williams (2)	Joely Cabrera (20)	Darian Dozier (4)
9/25	Kentucky							
9/27	at LSU							
10/2	at Ole Miss							
10/4	at Mississippi State							
10/9	Auburn							
10/11	Texas A&M							
10/14	at Georgia							
10/18	at Tennessee							
10/25	Arkansas							
10/30	Florida							
11/1	Ole Miss							
11/6	at Auburn							
11/8	at Alabama							
11/11	Tennessee							
11/20	Mississippi State							
11/22	Alabama							
11/25	at Arkansas							
11/27	at Missouri							

2015 SEASON STATISTICS



2015 South Carolina Volleyball
 South Carolina Overall Individual Statistics (as of Sep 23, 2015)
 All matches



Overall record: 7-6 Conf: 0-0 Home: 5-2 Away: 0-2 Neutral: 2-2

##	Player	sp	mp-ms	Attack					Set				Serve				
				k	k/s	e	ta	pct	a	a/s	ta	pct	sa	sa/s	se	ta	pct
3	Dessaa Legros	46	13-12	172	3.74	75	434	.224	2	0.04	40	.050	1	0.02	8	61	.869
6	Sarah Blomgren	45	13-10	128	2.84	54	301	.246	2	0.04	44	.045	3	0.07	12	59	.797
4	Darian Dozier	45	13-13	105	2.33	32	232	.315	6	0.13	20	.300	4	0.09	4	120	.967
11	Koko Atoa-Williams	42	13-8	63	1.50	35	236	.119	12	0.29	77	.156	7	0.17	8	160	.950
12	Courtney Furlong	36	13-4	53	1.47	30	176	.131	3	0.08	19	.158	1	0.03	0	17	1.00
7	Jacqy Angermiller	40	12-11	48	1.20	21	141	.191	1	0.03	6	.167	2	0.05	1	12	.917
5	Aubrey Ezell	47	13-13	26	0.55	10	61	.262	490	10.4	1101	.445	10	0.21	34	169	.799
17	Elizabeth Johnbull	17	11-2	17	1.00	7	32	.312	1	0.06	3	.333	0	0.00	0	9	1.00
20	Abby Feruck	3	1-0	6	2.00	0	10	.600	0	0.00	0	.000	0	0.00	0	0	.000
23	Callie Brown	5	4-0	4	0.80	0	9	.444	0	0.00	0	.000	0	0.00	0	0	.000
14	Katlyn McDaniel	6	4-0	3	0.50	2	8	.125	0	0.00	0	.000	0	0.00	0	0	.000
21	Jord Wilson-Talmadge	11	5-0	0	0.00	0	0	.000	2	0.18	6	.333	1	0.09	4	25	.840
22	Claire Blumenthal	15	8-0	0	0.00	0	0	.000	3	0.20	23	.130	1	0.07	0	28	1.00
10	Emma Lock	33	10-2	0	0.00	2	6	-.333	18	0.55	89	.202	5	0.15	8	128	.938
1	Madison Borowski	2	2-0	0	0.00	0	0	.000	3	1.50	5	.600	0	0.00	0	2	1.00
15	Jesse Turner	2	2-0	0	0.00	1	4	-.250	0	0.00	0	.000	0	0.00	0	0	.000
9	Megan Kirkland	45	13-3	0	0.00	0	4	.000	18	0.40	81	.222	9	0.20	5	140	.964
2	Joely Cabrera	35	12-0	0	0.00	0	5	.000	19	0.54	94	.202	7	0.20	11	100	.890
SOUTH CAROLINA		47	13-13	625	13.3	269	1659	.215	580	12.3	1608	.361	51	1.09	96	1031	.907
Opponents		47	13-13	570	12.1	258	1652	.189	537	11.4	1602	.335	43	0.91	84	999	.916

##	Player	sp	Recept			Dig		Blocking					Points		
			re	ta	pct	dig	dig/s	bs	ba	total	blk/s	be	bhe	pts	pts/s
3	Dessaa Legros	46	10	117	.915	73	1.59	4	14	18	0.39	2	2	184.0	4.00
6	Sarah Blomgren	45	1	36	.972	37	0.82	1	23	24	0.53	7	0	143.5	3.19
4	Darian Dozier	45	1	7	.857	22	0.49	6	34	40	0.89	3	2	132.0	2.93
11	Koko Atoa-Williams	42	8	166	.952	71	1.69	4	6	10	0.24	4	1	77.0	1.83
12	Courtney Furlong	36	1	49	.980	15	0.42	1	17	18	0.50	2	0	63.5	1.76
7	Jacqy Angermiller	40	0	3	1.000	5	0.12	3	31	34	0.85	2	0	68.5	1.71
5	Aubrey Ezell	47	0	1	1.000	146	3.11	3	16	19	0.40	4	4	47.0	1.00
17	Elizabeth Johnbull	17	0	2	1.000	3	0.18	1	7	8	0.47	2	0	21.5	1.26
20	Abby Feruck	3	0	0	.000	2	0.67	0	1	1	0.33	0	0	6.5	2.17
23	Callie Brown	5	0	0	.000	0	0.00	0	0	0	0.00	0	0	4.0	0.80
14	Katlyn McDaniel	6	0	0	.000	1	0.17	0	0	0	0.00	0	0	3.0	0.50
21	Jord Wilson-Talmadge	11	4	29	.862	7	0.64	0	0	0	0.00	0	0	1.0	0.09
22	Claire Blumenthal	15	0	26	1.000	18	1.20	0	0	0	0.00	0	0	1.0	0.07
10	Emma Lock	33	4	150	.973	70	2.12	0	0	0	0.00	0	1	5.0	0.15
15	Jesse Turner	2	0	0	.000	0	0.00	0	1	1	0.50	0	0	0.5	0.25
9	Megan Kirkland	45	5	169	.970	109	2.42	0	0	0	0.00	0	0	9.0	0.20
2	Joely Cabrera	35	7	157	.955	135	3.86	0	0	0	0.00	0	0	7.0	0.20
1	Madison Borowski	2	0	0	.000	0	0.00	0	0	0	0.00	0	0	0.0	0.00
-	TEAM	-	2	-	-	-	-	-	-	-	-	-	-	-	-
SOUTH CAROLINA.....		47	43	915	.953	714	15.19	23	150	98.0	2.09	26	10	774.0	16.47
Opponents.....		47	51	935	.945	666	14.17	12	136	80.0	1.70	18	11	693.0	14.74

2015 MATCH-BY-MATCH BOXSCORES

COASTAL CAROLINA 3, SOUTH CAROLINA 1 SEPT. 22 • COLUMBIA, S.C.

#	Coastal Carolina	Attack					Serve			Block				Pts		
		S	K	E	TA	Pct	Ast	SA	SE	RE	Dig	BS	BA		BE	BH
3	Natasa Savovic	4	7	3	24	.167	2	0	0	2	10	0	1	0	0	7.5
6	Sara Boothe	4	1	0	2	.500	16	1	1	0	6	0	0	0	1	2.0
9	Lian Bernett	4	5	1	23	.174	5	0	0	0	5	0	3	0	0	6.5
10	Leah Hardeman	4	13	5	45	.178	0	3	4	0	11	2	1	0	0	18.5
13	Eszter Nagy	4	9	1	15	.533	1	3	1	1	6	0	4	0	0	14.0
18	Annayka Legros	2	2	3	5	-.200	0	0	0	0	0	0	0	0	1	2.0
1	Aleksandra Djuric	4	0	1	1	-1.000	13	0	1	0	3	0	0	0	0	0.0
4	Alise Petersone	3	4	2	9	.222	0	0	0	0	1	1	3	0	0	6.5
8	Dora Lulic	4	3	0	7	.429	0	0	0	0	0	0	2	0	0	4.0
16	Carla Cahill	4	0	0	0	.000	3	1	2	0	16	0	0	0	0	1.0
Team										2						
Totals		4	44	16	131	.214	40	8	9	5	58	3	14	0	2	62.0

Set	K	E	TA	Pct	Sideout	Pct
1	13	4	30	.300	11-16	68%
2	10	7	36	.083	12-24	50%
3	12	1	31	.355	14-16	87%
4	9	4	34	.147	12-23	52%
49-79 62%						

TOTAL TEAM BLOCKS: 10.0

SET SCORES	1	2	3	4	Team Records:
Coastal Carolina (3)	25	17	25	25	8-4
South Carolina (1)	15	25	15	23	7-6

#	South Carolina	Attack					Serve			Block				Pts		
		S	K	E	TA	Pct	Ast	SA	SE	RE	Dig	BS	BA		BE	BH
4	Darian Dozier	4	5	4	18	.056	0	0	0	0	2	1	3	0	1	7.5
5	Aubrey Ezell	4	0	2	3	-.667	38	0	3	0	10	0	2	0	0	1.0
6	Sarah Blomgren	4	12	6	29	.207	0	0	0	0	6	0	0	2	0	12.0
10	Emma Lock	4	0	0	1	.000	4	1	2	2	7	0	0	0	0	1.0
11	Koko Atoa-Williams	3	2	9	20	-.350	0	2	2	0	4	0	1	0	0	4.5
17	Elizabeth Johnbull	1	1	0	1	1.000	0	0	0	0	0	0	0	0	0	1.0
2	Joely Cabrera	4	0	0	0	.000	0	2	1	3	20	0	0	0	0	2.0
3	Dessaa Legros	4	13	6	39	.179	0	0	0	0	5	0	0	0	0	13.0
7	Jacqy Angermiller	4	8	3	19	.263	0	0	0	0	0	0	3	1	0	9.5
9	Megan Kirkland	4	0	0	1	.000	1	0	0	1	6	0	0	0	0	0.0
12	Courtney Furlong	3	4	0	10	.400	0	0	0	1	1	0	3	0	0	5.5
22	Claire Blumenthal	3	0	0	0	.000	1	0	0	0	2	0	0	0	0	0.0
Team										1						
Totals		4	45	30	141	.106	44	5	8	8	63	1	12	3	1	57.0

Set	K	E	TA	Pct	Sideout	Pct
1	7	9	30	-.067	10-24	41%
2	12	2	29	.345	13-18	72%
3	11	10	36	.028	13-24	54%
4	15	9	46	.130	12-25	47%
48-91 52%						

TOTAL TEAM BLOCKS: 7.0

Site: Columbia, S.C. (Carolina VB Center)
Date: Sep 22, 2015 Attend: 1233 Time: 1:55
Referees: Leisa Jordan, Michael Gale

	1	2	3	4	Total
Tie scores	0	1	0	12	13
Lead change	0	1	0	7	8

INDIVIDUAL MATCH RECORDS

KILLS

3-SET MATCHES

Rank	Name	Opponent (Date)	Kills
1.	Shonda Cole	Georgia (11/15/2006)	27
2.	Amy Iannocari	Kentucky (10/30/1994)	23
3.	Shonda Cole	Arkansas (10/27/2006)	22
4.	Juliette Thévenin	Montana (8/26/2011)	21
	Cally Plummer	LSU (9/22/2000)	21
	Heather Larkin	North Carolina State (9/6/1997)	21
	Shani Abshier	Kentucky (11/17/1996)	21
	Lori Rowe	USF (10/7/1983)	21
	Lori Rowe	Appalachian State (9/17/1983)	21

4-SET MATCHES

Rank	Name	Opponent (Date)	Kills
1.	Shonda Cole	Florida (9/17/2006)	35
2.	Shonda Cole	College of Charleston (11/22/2006)	29
	Shonda Cole	Tennessee (11/12/2006)	29
4.	Hannah Lawing	Harvard (9/12/2009)	28
	Amy Iannocari	Florida (11/13/1994)	28

5-SET MATCHES

Rank	Name	Opponent (Date)	Kills
1.	Shonda Cole	TCU (8/25/2006)	37
2.	Shonda Cole	Auburn (9/15/2006)	36
	Shonda Cole	Clemson (8/31/2006)	36
4.	Shonda Cole	St. John's (9/8/2006)	32
	Lori Rowe	Louisville (10/28/1983)	32

ATTACKS

3-SET MATCHES

Rank	Name	Opponent (Date)	Attacks
1.	Cally Plummer	Tennessee (11/3/2000)	54
2.	Amy Iannocari	Kentucky (10/30/1994)	53
3.	Shonda Cole	Kentucky (10/8/2006)	52
4.	Juliette Thévenin	Montana (8/26/2011)	50
	Kori Ermigarat	Xavier (9/1/1995)	50

4-SET MATCHES

Rank	Name	Opponent (Date)	Attacks
1.	Shonda Cole	Tennessee (11/12/2006)	73
2.	Shonda Cole	North Carolina (11/27/2004)	72
3.	Shonda Cole	College of Charleston (11/22/2006)	65
	Shonda Cole	Alabama (11/17/2006)	65
	Shonda Cole	Florida (9/17/2006)	65

5-SET MATCHES

Rank	Name	Opponent (Date)	Attacks
1.	Kori Ermigarat	Maryland (9/16/1995)	75
2.	Juliette Thévenin	Clemson (9/6/13)	73
	Juliette Thévenin	Alabama (11/16/2012)	73
	Amy Iannocari	Louisiana Tech (9/19/1992)	73
4.	Shonda Cole	Auburn (9/15/2006)	71
5.	Ivana Kujundzic	Rice (9/11/2009)	70
	Lori Rowe	Louisville (10/28/1983)	70

HITTING PERCENTAGE

3-SET MATCHES (MINIMUM 15 ATTACKS)

Rank	Name	Opponent (Date)	(K-E-A) Pct.
1.	Lori Rowe	Appalachian State (9/17/1983)	(21-1-23) .870
2.	Belita Salters	Mississippi State (11/23/2008)	(15-0-19) .789
3.	Lori Rowe	East Carolina (11/12/1983)	(11-0-15) .733
	Megan Laughlin	South Carolina State (10/23/2008)	(11-0-15) .733
5.	Lori Rowe	Chattanooga (10/8/1983)	(12-0-17) .706

4-SET MATCHES (MINIMUM 20 ATTACKS)

Rank	Name	Opponent (Date)	(K-E-A) Pct.
1.	Berna Dwyer	LSU (10/6/2002)	(17-0-25) .680
2.	Danika Taylor	Mississippi State (9/25/1998)	(16-0-26) .615
3.	Berna Dwyer	Georgia (11/17/2002)	(19-2-29) .586
4.	Niece Curry	LSU (10/6/2002)	(21-3-31) .581
5.	Bethanie Thomas	Elon (9/3/2011)	(16-1-26) .577

5-SET MATCHES (MINIMUM 25 ATTACKS)

Rank	Name	Opponent (Date)	(K-E-A) Pct.
1.	Sam Alban	New Mexico (9/8/2000)	(19-3-28) .571
2.	Niece Curry	Clemson (9/10/2002)	(15-1-25) .560
3.	Belita Salters	UNLV (8/30/2008)	(21-2-35) .543
4.	Belita Salters	Rhode Island (9/5/2008)	(17-2-28) .536
5.	Meredith Moorhead	Kentucky (11/10/2006)	(15-2-25) .520

ASSISTS

3-SET MATCHES

Rank	Name	Opponent (Date)	Assists
1.	Megan Hosp	LSU (9/22/2000)	64
2.	Ashley Edlund	Kentucky (10/20/1995)	59
3.	Megan Hosp	Tennessee (11/3/2000)	55
4.	Jodi Thompson	Kentucky (10/30/1994)	54
5.	Ashley Edlund	Arkansas (11/22/1997)	53
	Kelly Morrow	Appalachian State (9/24/1993)	53

4-SET MATCHES

Rank	Name	Opponent (Date)	Assists
1.	Megan Hosp	Arkansas (9/24/2000)	72
2.	Ashley Edlund	Mississippi State (9/27/1996)	71
3.	Ashley Edlund	Alabama (10/6/1996)	70
	Ashley Edlund	Georgia (11/12/1995)	70
5.	Megan Hosp	Auburn (10/22/1999)	69

5-SET MATCHES

Rank	Name	Opponent (Date)	Assists
1.	Tammy Correll	George Washington (11/12/1988)	84
2.	Julie Morrison	North Carolina State (11/7/1986)	74
3.	Megan Hosp	Northern Illinois (9/8/2000)	65
4.	Iris Santos	Auburn (10/22/2006)	64
	Megan Hosp	Michigan (9/17/1999)	64
	Ashley Edlund	Kentucky (11/5/1995)	64
	Kelly Morrow	Auburn (10/2/1994)	64

ACES

3-SET MATCHES

Rank	Name	Opponent (Date)	Aces
1.	Megan Hosp	Creighton (9/7/2002)	8
	Cally Plummer	Auburn (10/11/1998)	8
3.	Ashley Edlund	Alabama (10/9/1998)	7
4.	Taylor Bruns	Alabama (11/6/2011)	6
	Lynae Vanden Hull	Auburn (10/17/2004)	6
	Megan Hosp	Auburn (9/27/2002)	6
	Berna Dwyer	Auburn (10/26/2001)	6
	Diane Mitchell	Coastal Carolina (9/10/1993)	6
	Lori Rowe	Mississippi State (9/30/1983)	6

4-SET MATCHES

Rank	Name	Opponent (Date)	Aces
1.	Cally Plummer	Clemson (10/10/2001)	8
	Amy Collinsworth	Jacksonville (9/6/1991)	8
3.	Jordan Bradosky	The Citadel (9/26/2010)	6
	Cally Plummer	Arkansas (10/4/2002)	6
	Cally Plummer	North Carolina (11/24/2001)	6
	Cally Plummer	Kentucky (11/8/1998)	6
	Cally Plummer	LSU (10/22/1998)	6
	Cally Plummer	Florida (10/2/1998)	6

5-SET MATCHES

Rank	Name	Opponent (Date)	Aces
1.	Lori Rowe	Cincinnati (10/29/1983)	9
2.	Taylor Bruns	BYU (8/28/2010)	6
	Shonda Cole	Alabama (10/1/2006)	6
	Kim DeNeve	Washington State (9/23/1988)	6
5.	Shonda Cole	LSU (9/23/2005)	5
	Katelyn Panzau	George Washington (9/20/2003)	5
	Lynae Vanden Hull	Santa Clara (9/18/2003)	5
	Cally Plummer	Clemson (9/10/2002)	5
	Cally Plummer	Michigan (9/17/1999)	5
	Dee Dee Fortman	Kentucky (10/24/1997)	5

INDIVIDUAL MATCH RECORDS

DIGS

3-SET MATCHES

Rank	Name	Opponent (Date)	Digs
1.	Kori Ermigarat	Kentucky (10/20/1995)	30
2.	Hannah Lawing	Furman (9/10/2010)	26
	Kori Ermigarat	UNC Greensboro (9/6/1995)	26
	Jodi Thompson	Mercer (9/4/1993)	26
5.	Amy Iannocari	Appalachian State (9/24/1993)	25

4-SET MATCHES

Rank	Name	Opponent (Date)	Digs
1.	Mikaela Christiaansen	Georgia (11/23/2014)	33
2.	Yajaira Cadet	North Carolina (12/6/2002)	30
	Kori Ermigarat	Georgia (11/12/1995)	30
4.	Paige Wheeler	LSU (11/13/2011)	28
	Paige Wheeler	Elon (9/3/2011)	28
	Dinelia Concepcion	Alabama (11/17/2006)	28

5-SET MATCHES

Rank	Name	Opponent (Date)	Digs
1.	Hannah Lawing	Mississippi State (11/13/2010)	38
2.	Sarah Cline	Arkansas (11/2/2007)	36
	Jodi Thompson	Louisiana Tech (9/19/1992)	36
4.	Shani Abshier	Maryland (9/16/1995)	33
5.	Diane Denton	Florida (10/11/1988)	32

BLOCK SOLOS

3-SET MATCHES

Rank	Name	Opponent (Date)	Blocks
1.	Teresa Stenlund	Lipscomb (9/11/2010)	5
	Lori Rowe	Western Carolina (9/24/1983)	5
3.	Belita Salters	Virginia Commonwealth (8/31/2007)	4
	Belita Salters	Boston College (8/25/2007)	4
	Nicole Miller	Mercer (9/3/2005)	4
	Katie Gerst	Davidson (9/12/1994)	4
	Jennifer Guess	Mississippi State (10/3/1993)	4

4-SET MATCHES

Rank	Name	Opponent (Date)	Blocks
1.	Stephanie Pflughaupt	Charlotte (10/5/1988)	9
2.	Stephanie Pflughaupt	Rice (10/18/1986)	5
3.	Heather Larkin	Arkansas (10/5/1997)	4
	Katie Gerst	UNC Asheville (9/25/1993)	4
5.	Darian Dozier	Jacksonville (8/30/2014)	3
	Nicole Miller	Pittsburgh (9/2/2005)	3
	Lauren Ford	Mississippi (10/8/2004)	3
	Berna Dwyer	American (12/5/2002)	3
	Danika Taylor	Mississippi State (9/25/1998)	3
	Heather Larkin	Georgia (9/26/1997)	3
	Heather Larkin	Mississippi (9/29/1996)	3
	Lori Drost	Mississippi State (9/27/1996)	3
	Dee Dee Fortman	Alabama (10/15/1995)	3
	Heather Larkin	Georgia (9/24/1995)	3
	Stephanie Pflughaupt	Georgia (9/14/1988)	3

5-SET MATCHES

Rank	Name	Opponent (Date)	Blocks
1.	Juliette Thévenin	Alabama (11/16/2012)	4
	Lori Rowe	North Carolina (10/7/1983)	4
3.	Bethanie Thomas	East Tennessee State (8/25/2012)	3
	Belita Salters	LSU (10/26/2008)	3
	Megan Laughlin	LSU (10/28/2007)	3
	Megan Laughlin	Maryland (9/11/2007)	3
	Lynae Vanden Hull	Mississippi State (10/15/2006)	3
	Heather Larkin	Alabama (9/30/1994)	3
	Jennifer Guess	College of Charleston (10/20/1993)	3
	Lori Rowe	Memphis (10/14/1983)	3

BLOCK ASSISTS

3-SET MATCHES

Rank	Name	Opponent (Date)	Blocks
1.	Lori Rowe	College of Charleston (10/4/1983)	11
	Lori Rowe	Western Carolina (9/24/1983)	11
3.	Dee Dee Fortman	Kentucky (10/20/2005)	9
	Dee Dee Fortman	Illinois State (12/4/1997)	9
	Jennifer Guess	Alabama (10/1/1993)	9
	Lori Rowe	Virginia Tech (11/18/1983)	9

4-SET MATCHES

Rank	Name	Opponent (Date)	Blocks
1.	Libby Ralston	Jacksonville (9/6/1991)	15
2.	Stephanie Pflughaupt	Georgia (9/14/1988)	13
3.	Belita Salters	North Carolina (9/10/2005)	10
	Lauren Ford	Mississippi (10/8/2004)	10
	Berna Dwyer	Georgia (11/17/2002)	10
	Berna Dwyer	Arizona State (9/6/2002)	10
	Dee Dee Fortman	Georgia (11/12/1995)	10
	Dee Dee Fortman	Tennessee (10/22/1995)	10
	Heather Larkin	Tennessee (10/14/1994)	10

5-SET MATCHES

Rank	Name	Opponent (Date)	Blocks
1.	Heather Larkin	Kentucky (10/7/1994)	12
2.	Jacqy Angermiller	Eastern Kentucky (9/19/2014)	11
	Crystal Johnson	St. John's (9/8/2006)	11
3.	Danika Taylor	Michigan (9/17/1999)	10
	Lori Drost	Maryland (9/16/1995)	10
	Amy Collinsworth	College of Charleston (10/20/1993)	10
	Stephanie Pflughaupt	Memphis (11/22/1986)	10
	Lori Rowe	Louisville (10/28/1983)	10
	Lori Rowe	Georgia (10/1/1983)	10

TOTAL BLOCKS

3-SET MATCHES

Rank	Name	Opponent (Date)	Blocks
1.	Lori Rowe	Western Carolina (9/24/1983)	16
2.	Dee Dee Fortman	Kentucky (10/20/1995)	12
3.	Dee Dee Fortman	Illinois State (12/4/1997)	10
	Jennifer Guess	Alabama (10/1/1993)	10
	Lori Rowe	Virginia Tech (11/18/1983)	10
	Lori Rowe	USF (10/7/1983)	10

4-SET MATCHES

Rank	Name	Opponent (Date)	Blocks
1.	Libby Ralston	Jacksonville (9/6/1991)	16
	Stephanie Pflughaupt	Georgia (9/14/1988)	16
3.	Lauren Ford	Mississippi (10/8/2004)	13
4.	Heather Larkin	Tennessee (10/14/1994)	12
	Katie Gerst	UNC Asheville (9/25/1993)	12

5-SET MATCHES

Rank	Name	Opponent (Date)	Blocks
1.	Crystal Johnson	St. John's (9/8/2006)	13
2.	Heather Larkin	Kentucky (10/7/1994)	12
	Lori Rowe	Memphis (11/22/1986)	12
4.	Jacqy Angermiller	Eastern Kentucky (9/19/2014)	11
	Danika Taylor	Michigan (9/17/1999)	11
	Amy Collinsworth	College of Charleston (10/20/1993)	11
	Lori Rowe	North Carolina (10/7/1983)	11

Note: Box scores are only available from 1993 to the present. Limited historical records prior to 1993 were used to aid in the composition of individual match records as well.

Current players in *italics*

TEAM MATCH RECORDS

KILLS

3-SET MATCHES

Rank	Opponent (Date)	Kills
1.	LSU (9/22/2000)	76
2.	Tennessee (11/3/2000)	74
3.	Kentucky (10/20/1995)	69
4.	Clemson (9/16/1998)	66
	Arkansas (11/22/1997)	66

4-SET MATCHES

Rank	Opponent (Date)	Kills
1.	Georgia (11/12/1995)	88
2.	Arkansas (9/24/2000)	86
3.	Florida (10/31/1997)	83
4.	Florida (9/17/2006)	82
	Houston (9/16/2005)	82
	LSU (10/25/1996)	82
	Alabama (10/6/1996)	82

5-SET MATCHES

Rank	Opponent (Date)	Kills
1.	North Carolina State (11/7/1986)	99
2.	Arkansas (11/23/1996)	86
3.	Arkansas (11/2/2007)	85
	Georgia (11/18/2000)	85
	Northern Illinois (9/8/2000)	85
	Michigan (9/17/1999)	85

TEAM MATCH RECORDS

ATTACKS

3-SET MATCHES		
Rank	Opponent (Date)	Attacks
1.	Arkansas (11/22/1997)	179
2.	Tennessee (11/3/2000)	177
3.	Mississippi State (10/8/1995)	171
4.	San Diego (9/13/2002)	166
5.	LSU (9/22/2000)	165

4-SET MATCHES

Rank	Opponent (Date)	Attacks
1.	USF (9/17/1994)	235
2.	Arkansas (9/24/2000)	223
3.	Kentucky (10/22/1993)	220
4.	LSU (10/25/1996)	219
5.	Mississippi State (9/27/1996)	218
	Georgia (11/12/1995)	218

5-SET MATCHES

Rank	Opponent (Date)	Attacks
1.	Northern Illinois (9/8/2000)	243
2.	Tennessee (11/11/2007)	241
	Maryland (9/16/1995)	241
4.	Arkansas (11/2/2007)	234
5.	Arkansas (11/23/1996)	225

HITTING PERCENTAGE

3-SET MATCHES		
Rank	Opponent (Date)	(K-E-A) Pct.
1.	SC State (10/23/2008)	(50-3-80) .587
2.	Liberty (9/1/2000)	(62-7-98) .561
3.	Mississippi State (11/23/2008)	(48-3-84) .536
4.	Louisville (9/26/1986)	(N/A) .530
5.	Troy (9/7/2007)	(52-6-92) .500
	Auburn (9/27/2002)	(53-8-90) .500

4-SET MATCHES

Rank	Opponent (Date)	(K-E-A) Pct.
1.	Mississippi State (9/25/1998)	(80-8-165) .436
2.	American (9/7/1996)	(44-7-85) .435
3.	Mississippi (10/16/2011)	(61-11-127) .394
4.	Arkansas (10/5/1997)	(73-7-170) .388
5.	North Carolina (11/24/2001)	(78-18-160) .375

5-SET MATCHES

Rank	Opponent (Date)	(K-E-A) Pct.
1.	Arkansas (11/23/2012)	(68-17-143) .357
2.	Kentucky (10/24/1997)	(81-17-187) .342
3.	Michigan State (9/18/2004)	(64-17-143) .329
4.	Clemson (9/10/2002)	(74-22-162) .321
5.	ETSU (8/25/2012)	(70-21-165) .297

ASSISTS

3-SET MATCHES		
Rank	Opponent (Date)	Assists
1.	LSU (9/22/2000)	73
2.	Tennessee (11/3/2000)	69
3.	Kentucky (10/20/1995)	63
4.	Mississippi (11/21/1997)	60
5.	Georgia (11/15/2006)	58
	Mississippi State (11/3/2002)	58

4-SET MATCHES

Rank	Opponent (Date)	Assists
1.	Arkansas (9/24/2000)	81
2.	Florida (9/17/2006)	76
3.	Alabama (10/6/1996)	74
4.	LSU (10/25/1996)	73
	Mississippi State (9/27/1996)	73

5-SET MATCHES

Rank	Opponent (Date)	Assists
1.	North Carolina State (11/7/1986)	95
2.	Arkansas (11/2/2007)	80
3.	Tennessee (11/11/2007)	79
	Northern Illinois (9/8/2000)	79
5.	Auburn (9/14/2007)	76

ACES

3-SET MATCHES		
Rank	Opponent (Date)	Aces
1.	Auburn (10/17/2004)	16
	Alabama (9/29/2002)	16
	Creighton (9/7/2002)	16
	Auburn (10/11/1998)	16
5.	Auburn (9/27/2002)	15
	Tennessee (10/26/1997)	15

4-SET MATCHES

Rank	Opponent (Date)	Aces
1.	Jacksonville (9/6/1991)	22
2.	Kentucky (11/8/1998)	16
	Arkansas (10/5/1997)	16
	Western Carolina (9/3/1993)	16
5.	Mississippi (10/12/1997)	15

5-SET MATCHES

Rank	Opponent (Date)	Aces
1.	Santa Clara (9/18/2003)	15
	New Mexico (9/8/2000)	15
	Washington State (9/23/1988)	15
4.	George Washington (9/20/2003)	14
5.	Indiana (9/13/2003)	13
	Michigan (9/17/1999)	13

DIGS

3-SET MATCHES		
Rank	Opponent (Date)	Digs
1.	Mississippi State (10/8/1995)	96
	UNC Greensboro (9/6/1995)	96
3.	Kentucky (10/30/1994)	92
4.	Appalachian State (9/24/1993)	91
5.	Mississippi State (11/17/1995)	89

4-SET MATCHES

Rank	Opponent (Date)	Digs
1.	Charlotte (10/26/1993)	120
2.	Mississippi State (9/27/1996)	118
3.	LSU (10/25/1996)	113
4.	Kentucky (10/22/1993)	110
5.	Mississippi State (10/22/2000)	109

5-SET MATCHES

Rank	Opponent (Date)	Digs
1.	Maryland (9/16/1995)	136
2.	Mississippi State (11/13/2010)	114
	George Washington (11/12/1988)	114
4.	Arkansas (11/2/2007)	108
5.	Tennessee (11/11/2007)	106
	Alabama (9/30/1994)	106

BLOCK SOLOS

3-SET MATCHES		
Rank	Opponent (Date)	Block Solos
1.	Mercer (9/3/2005)	9
2.	Georgia (10/24/2002)	7
3.	Lipscomb (9/11/2010)	6
	George Washington (9/11/2007)	6
	Tennessee (11/7/1997)	6
	Davidson (9/4/1995)	6

4-SET MATCHES

Rank	Opponent (Date)	Block Solos
1.	Charlotte (10/5/1988)	17
2.	Illinois-Chicago (9/7/1996)	12
3.	Dayton (8/29/2008)	8
	UNC Asheville (9/25/1993)	8
	Florida (9/6/1986)	8

5-SET MATCHES

Rank	Opponent (Date)	Block Solos
1.	Maryland (9/1/2007)	7
2.	Mississippi State (10/15/2006)	6
	Arkansas (9/25/2005)	6
	Memphis (11/22/1986)	6
5.	LSU (10/28/2007)	5
	St. John's (9/8/2006)	5
	Alabama (9/30/1994)	5

BLOCK ASSISTS

3-SET MATCHES		
Rank	Opponent (Date)	Block Assists
1.	Tennessee (11/9/2005)	28
	Kentucky (10/20/1995)	28
3.	Auburn (10/31/2003)	26
	Illinois State (12/4/1997)	26
	Mississippi State (10/8/1995)	26

4-SET MATCHES

Rank	Opponent (Date)	Block Assists
1.	Georgia (11/12/1995)	36
2.	Mississippi (10/8/2004)	34
3.	North Carolina (9/10/2005)	32
4.	Kentucky (10/16/1998)	30
	Tennessee (10/14/1994)	30

5-SET MATCHES

Rank	Opponent (Date)	Block Assists
1.	College of Charleston (9/7/1991)	41
2.	Kentucky (10/7/1994)	36
3.	Eastern Kentucky (9/19/2014)	34
	College of Charleston (10/20/1993)	34
4.	St. John's (9/8/2006)	30
5.	Santa Clara (9/18/2003)	28
	Michigan (9/17/1999)	28
	Colorado State (12/4/1998)	28
	UCF (8/31/1996)	28
	Memphis (11/22/1986)	28

TOTAL BLOCKS

3-SET MATCHES		
Rank	Opponent (Date)	Total Blocks
1.	Kentucky (10/20/1995)	18.0
2.	Mercer (9/3/2005)	17.0
3.	Tennessee (11/9/2005)	16.0
4.	Winthrop (11/26/2005)	14.0
	Auburn (10/31/2003)	14.0
	Illinois State (12/4/1997)	14.0
	Alabama (10/1/1993)	14.0

4-SET MATCHES

Rank	Opponent (Date)	Total Blocks
1.	Tennessee (10/14/1994)	22.0
2.	Mississippi (10/8/2004)	21.0
	Georgia (11/12/1995)	21.0
4.	UNC Asheville (9/25/1993)	20.0
5.	North Carolina (9/10/2005)	19.0
	American (12/5/2002)	19.0

5-SET MATCHES

Rank	Opponent (Date)	Total Blocks
1.	North Carolina (10/19/1988)	22.0
2.	College of Charleston (9/7/1991)	21.5
3.	College of Charleston (10/20/1993)	21.0
4.	St. John's (9/8/2006)	20.0
	Memphis (11/22/1986)	20.0

Note: Box scores are only available from 1993 to the present. Limited historical records prior to 1993 were used to aid in the composition of individual match records as well.



SCOTT SWANSON

Head Coach | Fourth Year at South Carolina

- Coached seven teams that played in the NCAA Tournament (Arizona State 1999, 2000, Minnesota 2006-10)
- Part of staff that coached eight All-Americans
- Recruited three top-10 classes to Minnesota

The 11th head coach in Gamecock Volleyball history, Scott Swanson looks to continue building the South Carolina program into a national contender entering his fifth season in Columbia.

Last season under Swanson's guidance, the Gamecocks posted a 17-14 record, which included seven SEC wins, the program's most since 2008. Libero Mikaela Christiaansen set the program record for most digs in a single season with 535, while middle blocker Darian Dozier set single-season rally scoring era school records for total blocks (141) and block assists (127). The Gamecocks also turned in another strong year in the classroom, as a league-best 12 players made the SEC Fall Academic Honor Roll.

During the 2013 season, outside hitter Juliette Thévenin became just the second Gamecock in school history to earn AVCA All-America honors as she was named honorable mention All-American. Thévenin was also a first-team AVCA All-Southeast Region and All-SEC selection as she left the program ranked in the top 10 in six career categories.

Swanson guided the Gamecocks to an 18-14 record in 2012, the program's second winning season in the last decade. South Carolina got off to a program-best 13-0 start and improved its hitting percentage for a second straight season, ranking second in the SEC with a percentage of .255, an improvement of 29 points from the previous year. Outside hitter Juliette Thévenin garnered second-team All-SEC honors after she ranked second in SEC play with 4.40 kills per set and 4.81 points per set, becoming the first Gamecock since 2008 to receive an All-SEC award.

In Swanson's first season, the Gamecocks went 14-16 and improved its offensive efficiency and its backline defense under his guidance. The team led the SEC with a 16.78 digs average, the best mark in four years for the Gamecocks, and hit .226, a 45-point improvement from the 2011 season. Three times, South Carolina student-athletes garnered an SEC weekly award, with Thévenin picking up the first offensive listing and Paige Wheeler twice gaining the defensive certificate.

Swanson's teams have also proved themselves in the classroom, earning the Team Academic Award from the American Volleyball Coaches Association in 2011-12, 2012-13 and 2013-14. A total of 13 Gamecocks made the SEC Academic Honor Roll in 2013-14, 15 in 2012-13 and 13 received the honor in 2011-12. The team also claimed the department's Life Skills Team of the Year award in 2011-12, honoring the group for its academic achievements, personal development and work in the community.

Prior to his current head coaching job, Swanson spent five years on the sidelines for the Golden Gophers, helping the team to five-consecutive NCAA Tournament appearances and a 125-46 record. Three times, Minnesota finished second in the Big Ten behind perennial power Penn State. The 2009 team advanced to the national semifinals in the NCAA Tournament.

During his tenure in Minneapolis, Swanson helped the Golden Gophers become an elite blocking team. In five years, Minnesota never ranked lower than 35th in NCAA Division I in blocks. The 2007 team set a program record with 3.54 blocks per set. Five Golden Gophers earned All-America accolades during those five years, including 2009 first-team middle blocker and 2012 US National Team pool member Lauren Gibbemeyer.

Swanson also led the Gophers' recruiting efforts, posting three top-10 recruiting classes according to PrepVolleyball.com. The 2009 group earned top honors from the outlet.

The summer of 2009, Swanson spent time with USA Volleyball's A-2 Junior National Team, and he coached the USA Red team to a second-place showing in the 2008 USA Adult Open Championships.

Swanson brings in four years of head coaching experience to Columbia after his tenure at the University of Texas-El Paso. With a 50-61 career record, Swanson had the team on the brink of the NCAA Tournament in 2005, when the Miners went 21-10. Three players earned all-conference honors under Swanson's tutelage, including honorable mention All-American Kari Stacy. He also inked a high school All-American and saw his team improve in the classroom to a department-best 3.2 GPA in 2005.

Prior to UTEP, Swanson spent six years at his alma mater, Arizona State. He helped the team to two NCAA Tournament appearances during his time in Tempe and coached one second-team All-American and two Pac-10 All-Freshman Team players. Two of his Sun Devil players garnered Academic All-America certificates as well.

Swanson started his coaching career at Mountain View (Ariz.) High School, working as an assistant with the varsity team and leading his junior varsity group to a 17-1 record. As a head coach with the Arizona East Valley Juniors club, he led a 16-1s team to a national runner-up finish and earned Cactus Region Coach of the Year honors. He also served as head coach at Camelback High School before landing the job with Arizona State, where he also played club volleyball.

A graduate of ASU, Swanson is married to the former Erin Meier. The couple has two daughters, Rylee Sue and Haylen Rae.

HEAD COACHING RECORD

Year	School	W	L	PCT	W	L	PCT	Finish
2002	UTEP	11	14	.440	6	7	.462	2nd WAC East
2003	UTEP	8	22	.267	2	11	.154	5th WAC East
2004	UTEP	10	15	.400	2	11	.154	4th WAC East
2005	UTEP	21	10	.677	10	6	.625	4th CUSA
2011	South Carolina	14	16	.467	5	15	.250	5th SEC East
2012	South Carolina	18	14	.563	6	14	.300	6th SEC East
2013	South Carolina	12	19	.387	3	15	.167	T-11th SEC
2014	South Carolina	17	14	.548	7	11	.389	T-8th SEC
2015	South Carolina	7	6	.538	--	--	--	--
TOTAL 8+ Years		118	133	.471	41	90	.313	

ASSISTANT COACHING RECORD

Year	School	W	L	PCT	W	L	PCT	Finish
1996	Arizona State	9	15	.375	4	14	.222	8th Pac-10
1997	Arizona State	13	16	.448	4	14	.222	8th Pac-10
1998	Arizona State	11	14	.440	8	10	.444	T-5th Pac-10
1999	Arizona State	14	13	.519	10	8	.556	5th Pac-10
2000	Arizona State	18	12	.600	9	9	.500	T-5th Pac-10
2001	Arizona State	10	16	.385	5	13	.278	7th Pac-10
2006	Minnesota	26	8	.765	17	3	.850	T-2nd Big Ten
2007	Minnesota	18	13	.581	11	9	.550	T-3rd Big Ten
2008	Minnesota	27	7	.794	16	4	.800	2nd Big Ten
2009	Minnesota	28	9	.757	15	5	.750	3rd Big Ten
2010	Minnesota	26	8	.765	14	6	.700	2nd Big Ten
TOTAL 11 Years		200	131	.604	113	95	.543	

THE SWANSON TIMELINE

Coaching	
2011-present	Head coach, South Carolina
2006-2010	Assistant coach, associate head coach, Minnesota
2009	Assistant coach, USA Volleyball A-2 Women's Team
2002-2005	Head coach, UTEP
1996-2001	Assistant coach, associate head coach, Arizona State
1994-1995	Head coach, Camelback High School
1993-2000	Head coach, Arizona East Valley Juniors
1991-1992	Assistant coach, Mountain View High School
Education	
1995	B.A., Family studies and human development, Arizona State



1 - MADISON BOROWSKI

5-9 | Fr. | S | Austin, Texas (Westlake)

SEASON NOTES

- Missed the start of the season due to preseason surgery
- Saw her first action against East Carolina, passing out two assists.

Season Highs

- Kills**
N/A
- Attempts**
N/A
- Hit. % (Min. 12 Att.)**
N/A
- Assists**
2, East Carolina, 9/18
- Service Aces**
N/A
- Digs**
N/A
- Blocks Solo**
N/A
- Block Assists**
N/A
- Total Blocks**
N/A

Match-By-Match Statistics

DATE	OPP	SP	KILL	ERR	ATT	PCT	AST	SA	SE	RE	DIG	BS	BA	BE	TB	BHE	P
8/28	Southeastern La.	--	--	--	--	--	--	--DNP	--	--	--	--	--	--	--	--	--
8/29	NC Central	--	--	--	--	--	--	--DNP	--	--	--	--	--	--	--	--	--
8/29	NC State	--	--	--	--	--	--	--DNP	--	--	--	--	--	--	--	--	--
9/4	vs. Clemson	--	--	--	--	--	--	--DNP	--	--	--	--	--	--	--	--	--
9/5	vs. Winthrop	--	--	--	--	--	--	--DNP	--	--	--	--	--	--	--	--	--
9/5	at Furman	--	--	--	--	--	--	--DNP	--	--	--	--	--	--	--	--	--
9/11	vs. Pittsburgh	--	--	--	--	--	--	--DNP	--	--	--	--	--	--	--	--	--
9/11	at Michigan	--	--	--	--	--	--	--DNP	--	--	--	--	--	--	--	--	--
9/12	vs. Western Michigan	--	--	--	--	--	--	--DNP	--	--	--	--	--	--	--	--	--
9/18	East Carolina	1	0	0	0	.000	2	0	0	0	0	0	0	0	0.0	0	0.0
9/19	Charleston Southern	--	--	--	--	--	--	--DNP	--	--	--	--	--	--	--	--	--
9/19	Wofford	1	0	0	0	.000	1	0	0	0	0	0	0	0	0.0	0	0.0
9/22	Coastal Carolina	--	--	--	--	--	--	--DNP	--	--	--	--	--	--	--	--	--
9/25	Kentucky																
9/27	at LSU																
10/2	at Ole Miss																
10/4	at Mississippi State																
10/9	Auburn																
10/11	Texas A&M																
10/14	at Georgia																
10/18	at Tennessee																
10/25	Arkansas																
10/30	Florida																
11/1	Ole Miss																
11/6	at Auburn																
11/8	at Alabama																
11/11	Tennessee																
11/20	Mississippi State																
11/22	Alabama																
11/25	at Arkansas																
11/27	at Missouri																

CAREER STATISTICS

YEAR	SP	MP	KILL	K/S	ERR	ATT	PCT	AST	A/S	SA	SA/S	SE	DIG	D/S	RE	BS	BA	TB	B/S	BE	BHE	P	P/S
2015	2	2	0	0.00	0	0	.000	3	1.50	0	0.00	0	0	0.00	0	0	0	0	0.00	0	0	0.0	0.00



2 - JOELY CABRERA

5-6 | Jr. | DS/Libero | Seca, Puerto Rico (Daytona State)

SEASON NOTES

- Recorded 12 digs and four assists in Gamecock debut vs. Southeastern Louisiana (8/28)
- Contributed a season-high 13 digs in back-to-back matches vs. NC Central (8/29) and NC State (8/29)
- Totaled four digs over three sets at the Michigan Challenge, seeing time against Pitt and Michigan (9/11)
- Enjoyed a breakout weekend for the team, playing all ten sets at libero as the team went 3-0 at the Carolina Classic. Recorded 14, 22 and 15 in the three tournament matches, respectively
- Was perfect on 18 serve receptions and added 22 digs and three assists in a win over Charleston Southern (9/18)
- Finished with 20 digs and a pair of aces against Coastal Carolina (9/22)

Season Highs

Kills

N/A

Attempts

3, Clemson (9/4)

Hit. % (Min. 12 Att.)

N/A

Assists

4, 2x, last vs. Clemson (9/4)

Service Aces

3, East Carolina (9/18)

Digs

22, Charleston Southern (9/19)

Blocks Solo

N/A

Block Assists

N/A

Total Blocks

N/A

Match-By-Match Statistics

DATE	OPP	SP	KILL	ERR	ATT	PCT	AST	SA	SE	RE	DIG	BS	BA	BE	TB	BHE	P
8/28	Southeastern La.	3	0	0	0	.000	4	0	0	2	12	0	0	0	0.0	0	0.0
8/29	NC Central	3	0	0	0	.000	3	0	1	0	13	0	0	0	0.0	0	0.0
8/29	NC State	3	0	0	0	.000	0	0	0	0	13	0	0	0	0.0	0	0.0
9/4	vs. Clemson	4	0	0	3	.000	4	2	2	0	9	0	0	0	0.0	0	2.0
9/5	vs. Winthrop	3	0	0	0	.000	2	0	2	0	12	0	0	0	0.0	0	0.0
9/5	at Furman	2	0	0	0	.000	0	0	1	1	1	0	0	0	0.0	0	0.0
9/11	vs. Pittsburgh	1	0	0	0	.000	0	0	0	0	3	0	0	0	0.0	0	0.0
9/11	at Michigan	2	0	0	0	.000	0	0	0	0	1	0	0	0	0.0	0	0.0
9/12	vs. Western Michigan	--	--	--	--	--	--	--	--	--	--	--	--	--	--	--	--
9/18	East Carolina	3	0	0	0	.000	2	3	1	0	14	0	0	0	0.0	0	3.0
9/19	Charleston Southern	4	0	0	0	.000	3	0	2	0	22	0	0	0	0.0	0	0.0
9/19	Wofford	3	0	0	2	.000	1	0	1	1	15	0	0	0	0.0	0	0.0
9/22	Coastal Carolina	4	0	0	0	.000	0	2	1	3	20	0	0	0	0.0	0	2.0
9/25	Kentucky																
9/27	at LSU																
10/2	at Ole Miss																
10/4	at Mississippi State																
10/9	Auburn																
10/11	Texas A&M																
10/14	at Georgia																
10/18	at Tennessee																
10/25	Arkansas																
10/30	Florida																
11/1	Ole Miss																
11/6	at Auburn																
11/8	at Alabama																
11/11	Tennessee																
11/20	Mississippi State																
11/22	Alabama																
11/25	at Arkansas																
11/27	at Missouri																

CAREER STATISTICS

YEAR	SP	MP	KILL	K/S	ERR	ATT	PCT	AST	A/S	SA	SA/S	SE	DIG	D/S	RE	BS	BA	TB	B/S	BE	BHE	P	P/S
2013*	135	34	522	3.87	198	1224	.265	4	0.03	36	0.27	54	331	2.45	36	19	8	27	0.20	1	2	581.0	4.30
2014*	85	23	202	2.38	93	575	.190	3	0.04	19	0.22	22	233	2.74	11	8	2	10	0.12	2	0	230.0	2.71
TOTAL	220	57	724	3.29	291	1799	.241	7	0.03	55	0.25	76	564	2.56	47	27	10	37	0.17	3	2	811.0	3.69

*at Daytona State

YEAR	SP	MP	KILL	K/S	ERR	ATT	PCT	AST	A/S	SA	SA/S	SE	DIG	D/S	RE	BS	BA	TB	B/S	BE	BHE	P	P/S
2015	35	12	0	0.00	0	5	.000	19	0.54	7	0.20	11	135	3.86	7	0	0	0	0.00	0	0	7.0	0.20



3 - DESSAA LEGROS

5-10 | Jr. | MB/OH | Kennesaw, Ga. (Allatoona)

SEASON NOTES

- Earned a spot on the Gamecock Invitational All-Tournament Team after averaging 4.22 kills per set in three matches (8/28-29)
- Tallied 12 kills and seven digs vs. Southeastern Louisiana (8/28)
- Produced 18 kills while hitting .424 and a career-high three blocks vs. NC Central (8/29)
- Named to Furman's Carolina Classic All-Tournament Team after averaging 4.23 kills and 2.62 digs per set in three matches (9/4-5)
- Recorded career-highs in kills (21) and digs (19) in win over rival Clemson (9/4)
- Finished with 20 kills and six digs vs. Furman (9/5)
- Set a new career-high in block assists and total blocks (4) against Western Michigan (9/12)
- Posted her third 20-kill match of the season against Western Michigan, finishing with 22 points and a .302 hitting percentage. She made the Michigan Challenge All-Tournament team for her efforts.
- Hit a season-best .444 in the win over East Carolina, finishing with 12 kills total (9/18)
- Put up a pair of blocks with five digs and 12 kills against Charleston Southern (9/19)
- Led the team with 13 kills against Coastal Carolina (9/22)

Season Highs

- Kills**
21, Clemson (9/4)
- Attempts**
54, Clemson (9/4)
- Hit. % (Min. 12 Att.)**
.444, East Carolina (9/18)
- Assists**
1, NC Central (8/29)
W. Michigan (9/12)
- Service Aces**
1, Southeastern La. (8/28)

- Digs**
19, Clemson (9/4)
- Blocks Solo**
1, 4x, last Wofford (9/19)
- Block Assists**
4, W. Michigan (9/12)
- Total Blocks**
4, W. Michigan (9/12)

Career Highs

- Kills**
21, Clemson (9/4/15)
- Attempts**
54, Clemson (9/4/15)
- Hit. % (Min. 12 Att.)**
.667, SC State (8/30/13)
- Assists**
2, Furman (9/7/13)
- Service Aces**
1, 2x, last vs. Southeastern La. (8/29/15)
- Digs**
19, Clemson (9/4/15)
- Blocks Solo**
1, 5x, last Wofford (9/19)
- Block Assists**
4, W. Michigan (9/12/15)
- Total Blocks**
4, W. Michigan (9/12/15)

Match-By-Match Statistics																	
DATE	OPP	SP	KILL	ERR	ATT	PCT	AST	SA	SE	RE	DIG	BS	BA	BE	TB	BHE	P
8/28	Southeastern La.	3	12	2	28	.357	0	1	1	0	7	0	1	0	1.0	0	13.5
8/29	NC Central	3	18	4	33	.424	1	0	0	3	4	0	3	0	3.0	0	19.5
8/29	NC State	3	8	6	24	.083	0	0	1	1	5	0	2	0	2.0	1	9.0
9/4	vs. Clemson	4	21	7	54	.259	0	0	2	4	19	0	2	1	2.0	1	22.0
9/5	vs. Winthrop	5	14	7	48	.146	0	0	1	1	9	1	0	0	1.0	0	15.0
9/5	at Furman	4	20	6	44	.318	0	0	1	0	6	0	1	0	1.0	0	20.5
9/11	vs. Pittsburgh	3	5	9	22	-.182	0	0	0	0	1	0	0	0	0.0	0	5.0
9/11	at Michigan	3	10	4	25	.240	0	0	1	0	4	0	0	0	0.0	0	10.0
9/12	vs. Western Michigan	4	20	7	43	.302	1	0	0	0	5	0	4	1	4.0	0	22.0
9/18	East Carolina	3	12	4	18	.444	0	0	0	0	2	1	0	0	1.0	0	13.0
9/19	Charleston Southern	4	12	7	36	.139	0	0	1	1	5	1	1	0	2.0	0	13.5
9/19	Wofford	3	7	6	20	.050	0	0	0	0	1	1	0	0	1.0	0	8.0
9/22	Coastal Carolina	4	13	6	39	.179	0	0	0	0	5	0	0	0	0.0	0	13.0
9/25	Kentucky																
9/27	at LSU																
10/2	at Ole Miss																
10/4	at Mississippi State																
10/9	Auburn																
10/11	Texas A&M																
10/14	at Georgia																
10/18	at Tennessee																
10/25	Arkansas																
10/30	Florida																
11/1	Ole Miss																
11/6	at Auburn																
11/8	at Alabama																
11/11	Tennessee																
11/20	Mississippi State																
11/22	Alabama																
11/25	at Arkansas																
11/27	at Missouri																

CAREER STATISTICS

YEAR	SP	MP	KILL	K/S	ERR	ATT	PCT	AST	A/S	SA	SA/S	SE	DIG	D/S	RE	BS	BA	TB	B/S	BE	BHE	P	P/S
2013	76	29	131	1.72	83	433	.111	5	0.07	0	0.00	0	30	0.39	4	0	14	14	0.18	2	0	138.0	1.82
2014	39	18	56	1.44	37	182	.104	1	0.03	1	0.03	2	23	0.59	4	1	4	5	0.13	0	0	60.0	1.54
2015	46	13	172	3.74	75	434	.224	2	0.04	1	0.02	8	73	1.59	10	4	14	18	0.39	2	2	184.0	4.00
TOTAL	161	60	359	2.23	195	1049	.156	8	0.05	2	0.01	10	126	0.78	18	5	32	37	0.23	4	2	382.0	2.37



4 - DARIAN DOZIER

6-1 | Sr. | MB/RS | Sandy Spring, Md. (St. Johns College)

SEASON NOTES

- Finished with nine kills while hitting .533 and two blocks vs. Southeastern Louisiana (8/28)
- Produced 13 kills and three blocks in win over rival Clemson (9/4)
- Tallied season-high 14 kills while hitting .481 and four blocks vs. Winthrop (9/5)
- Put down a pair of solo blocks and added four kills against Pittsburgh (9/11).
- Set new season bests in attacks (28), digs (3), total blocks (7) and points (16.5) against Western Michigan (9/12).
- Made the all-tournament team for the Carolina Classic after recording 33 total kills over three matches
- Set a new season best in kills after putting down 15 against Charleston Southern (9/19)
- Hit .688 against Wofford with 13 kills, setting a new career high in hitting percentage (9/19)
- Moved into a tie for fifth in career block assists after finishing with three against Coastal Carolina (9/22)

Season Highs

Kills
15, Charleston Southern (9/19)

Attempts
33, Charleston Southern (9/19)

Hit. % (Min. 12 Att.)
.688, Wofford (9/19)

Assists
2, Winthrop (9/5)

Service Aces
2, Southeastern La. (8/28)

Digs
4, Wofford (9/19)

Blocks Solo
2, Pittsburgh (9/11)

Block Assists
7, W. Michigan (9/12)

Total Blocks
7, W. Michigan (9/12)

Career Highs

Kills
18, Texas A&M (10/6/13)

Attempts
36, Tennessee (11/19/14)

Hit. % (Min. 12 Att.)
.688, Wofford (9/19/14)

Assists
2, 2x, last vs. Winthrop (9/5/15)

Service Aces
2, 3x, last vs. Southeastern La. (8/28/15)

Digs
8, Auburn (11/16/14)

Blocks Solo
3, Jacksonville (8/30/14)

Block Assists
8, 3x, last vs. Furman (9/6/14)

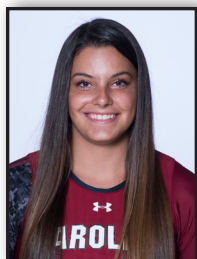
Total Blocks
11, Jacksonville (8/30/14)

Match-By-Match Statistics

DATE	OPP	SP	KILL	ERR	ATT	PCT	AST	SA	SE	RE	DIG	BS	BA	BE	TB	BHE	P
8/28	Southeastern La.	3	9	1	15	.533	0	2	0	1	2	0	2	0	2.0	0	12.0
8/29	NC Central	1	2	0	3	.667	0	0	0	0	0	0	0	0	0.0	0	2.0
8/29	NC State	3	4	2	13	.154	1	0	1	0	1	1	2	1	3.0	0	6.0
9/4	vs. Clemson	4	13	4	26	.346	1	0	0	0	1	1	2	0	3.0	1	15.0
9/5	vs. Winthrop	5	14	1	27	.481	2	0	0	0	2	0	4	0	4.0	0	16.0
9/5	at Furman	4	6	4	19	.105	1	0	1	0	1	0	4	0	4.0	0	8.0
9/11	vs. Pittsburgh	4	4	1	10	.300	0	1	0	0	1	2	3	1	5.0	0	8.5
9/11	at Michigan	3	3	2	12	.083	0	0	0	0	1	0	3	1	3.0	0	4.5
9/12	vs. Western Michigan	4	12	4	28	.286	0	1	1	0	3	0	7	0	7.0	0	16.5
9/18	East Carolina	3	5	1	12	.333	1	0	0	0	3	0	1	0	1.0	0	5.5
9/19	Charleston Southern	4	15	6	33	.273	0	0	1	0	1	1	2	0	3.0	0	17.0
9/19	Wofford	3	13	2	16	.688	0	0	0	0	4	0	1	0	1.0	0	13.5
9/22	Coastal Carolina	4	5	4	18	.056	0	0	0	0	2	1	3	0	4.0	1	7.5
9/25	Kentucky																
9/27	at LSU																
10/2	at Ole Miss																
10/4	at Mississippi State																
10/9	Auburn																
10/11	Texas A&M																
10/14	at Georgia																
10/18	at Tennessee																
10/25	Arkansas																
10/30	Florida																
11/1	Ole Miss																
11/6	at Auburn																
11/8	at Alabama																
11/11	Tennessee																
11/20	Mississippi State																
11/22	Alabama																
11/25	at Arkansas																
11/27	at Missouri																

CAREER STATISTICS

YEAR	SP	MP	KILL	K/S	ERR	ATT	PCT	AST	A/S	SA	SA/S	SE	DIG	D/S	RE	BS	BA	TB	B/S	BE	BHE	P	P/S
2012	96	31	129	1.34	43	325	.265	6	0.06	0	0.00	0	24	0.25	0	7	60	67	0.70	12	0	166.0	1.73
2013	108	31	214	1.98	70	521	.276	6	0.06	8	0.07	24	64	0.59	0	8	107	115	1.06	7	4	283.5	2.62
2014	120	31	218	1.82	90	577	.222	10	0.08	4	0.03	11	80	0.67	1	14	127	141	1.17	12	1	299.5	2.49
2015	45	13	105	2.33	32	232	.315	6	0.13	4	0.09	4	22	0.49	1	6	34	40	0.89	3	2	132.0	2.93
TOTAL	369	106	666	1.80	235	1655	.260	28	0.08	16	0.04	39	190	0.51	2	35	328	363	0.98	34	7	881.0	2.39



5 - AUBREY EZELL

5-8 | Fr. | S | Granbury, Texas (Granbury)

SEASON NOTES

- Recorded a double-double in Gamecock debut vs. Southeastern Louisiana (8/28), finishing with 30 assists, 13 digs and three service aces
- Distributed 47 assists, collected 15 digs and had a season-high three blocks in win over rival Clemson (9/4)
- Finished with 48 assists, 13 digs and matched season highs in kills (4) and blocks (3) vs. Winthrop (9/5)
- Produced third-straight double-double with 48 assists and a season-high 16 digs vs. Furman (9/5)
- Went for four straight double-doubles with 28 and 10 against Pittsburgh, adding three kills and an ace (9/11)
- Passed out a new season-best with 49 assists against Western Michigan
- Went for a pair of double-doubles during the Carolina Classic, with 48 assists and 16 digs against Charleston Southern and 37 assists and 12 digs against Wofford (9/19)
- Recorded a season-best five kills in seven attacks against Charleston Southern (9/19)
- Went for her third straight double-double against Coastal Carolina, with 38 assists and 10 digs (9/22)

Season Highs

Kills

5, Charleston Southern (9/19)

Attempts

9, Winthrop (9/5)

Hit. % (Min. 12 Att.)

N/A

Assists

49, W. Michigan (9/12)

Service Aces

3, Southeastern La. (8/28)

Wofford (9/19)

Digs

16, Furman (9/5)

Charleston Southern (9/19)

Blocks Solo

1, 3x, last East Carolina (9/18)

Block Assists

3, Clemson (9/4)

Total Blocks

3, 2x, last vs. Winthrop (9/5)

Match-By-Match Statistics

DATE	OPP	SP	KILL	ERR	ATT	PCT	AST	SA	SE	RE	DIG	BS	BA	BE	TB	BHE	P
8/28	Southeastern La.	3	1	0	2	.500	30	3	3	0	13	0	1	0	1.0	0	4.5
8/29	NC Central	3	2	1	4	.250	33	0	4	0	11	0	1	1	1.0	1	2.5
8/29	NC State	3	4	0	6	.667	23	1	3	0	7	0	1	0	1.0	1	5.5
9/4	vs. Clemson	4	3	1	8	.250	47	1	3	0	15	0	3	1	3.0	0	5.5
9/5	vs. Winthrop	5	4	2	9	.222	48	0	4	0	13	1	2	0	3.0	0	6.0
9/5	at Furman	4	1	0	3	.333	45	0	3	0	16	0	1	1	1.0	0	1.5
9/11	vs. Pittsburgh	4	3	0	6	.500	28	1	2	0	10	0	1	1	1.0	0	4.5
9/11	at Michigan	3	1	1	4	.000	29	0	3	0	7	0	1	0	1.0	1	1.5
9/12	vs. Western Michigan	4	1	1	4	.000	49	0	1	0	9	1	0	0	1.0	0	2.0
9/18	East Carolina	3	1	0	2	.500	35	1	2	0	7	1	1	0	2.0	0	3.5
9/19	Charleston Southern	4	5	1	7	.571	48	0	0	0	16	0	2	0	2.0	0	6.0
9/19	Wofford	3	0	1	3	-.333	37	3	3	0	12	0	0	0	0.0	1	3.0
9/22	Coastal Carolina	4	0	2	3	-.667	38	0	3	0	10	0	2	0	2.0	0	1.0
9/25	Kentucky																
9/27	at LSU																
10/2	at Ole Miss																
10/4	at Mississippi State																
10/9	Auburn																
10/11	Texas A&M																
10/14	at Georgia																
10/18	at Tennessee																
10/25	Arkansas																
10/30	Florida																
11/1	Ole Miss																
11/6	at Auburn																
11/8	at Alabama																
11/11	Tennessee																
11/20	Mississippi State																
11/22	Alabama																
11/25	at Arkansas																
11/27	at Missouri																

CAREER STATISTICS

YEAR	SP	MP	KILL	K/S	ERR	ATT	PCT	AST	A/S	SA	SA/S	SE	DIG	D/S	RE	BS	BA	TB	B/S	BE	BHE	P	P/S
2015	47	13	26	0.55	10	61	.262	490	10.43	10	0.21	34	146	3.11	0	3	16	19	0.40	4	4	47.0	1.00



6 - SARAH BLOMGREN

5-11 | Sr. | RS/OH | Canyon Country, Calif. (Saugus)

SEASON NOTES

- Produced six kills and two blocks in season opener vs. Southeastern Louisiana (8/28)
- Finished with 11 kills while hitting a season-best .348 in win over rival Clemson (9/4)
- Had eight kills and a career-high six blocks vs. Winthrop (9/5)
- Tallied a season-high 14 kills and five blocks vs. Furman (9/5)
- Matched her career high in digs against Michigan, popping up nine. Also recorded her first solo block of the season (9/11).
- Earned tournament MVP honors at the Carolina Classic after totaling 41 kills in three matches
- Hit a career-high .609 against East Carolina and finished with 15 kills in the three-set match (9/18)
- Went for her fifth-straight match with double-digit kills, finishing with 12 against Coastal Carolina (9/22)

Season Highs

Kills

16, Charleston Southern (9/19)

Attempts

34, Charleston Southern (9/19)

Hit. % (Min. 12 Att.)

.609, East Carolina (9/18)

Assists

1, twice, Southeastern La. (8/28)
W. Michigan (9/12)

Service Aces

N/A

Digs

9, Michigan (9/11)

Blocks Solo

1, Michigan (9/11)

Block Assists

6, Winthrop (9/5)

Total Blocks

6, Winthrop (9/5)

Career Highs

Kills

17, 2x, last vs. Georgia (11/23/14)

Attempts

34, Charleston Southern (9/19)

Hit. % (Min. 12 Att.)

.609, East Carolina (9/18/15)

Assists

5, LSU (10/31/14)

Service Aces

1, Georgia (11/10/13))

Digs

9, twice, Georgia (11/23/14)

Michigan (9/11/15)

Blocks Solo

1, 8x, last vs. Michigan (9/11/15)

Block Assists

6, Winthrop (9/5/15)

Total Blocks

6, Winthrop (9/5/15)

Match-By-Match Statistics

DATE	OPP	SP	KILL	ERR	ATT	PCT	AST	SA	SE	RE	DIG	BS	BA	BE	TB	BHE	P
8/28	Southeastern La.	3	6	2	17	.235	1	0	0	0	1	0	2	0	2.0	0	7.0
8/29	NC Central	1	3	0	3	1.000	0	0	0	0	1	0	0	0	0.0	0	3.0
8/29	NC State	3	5	4	21	.048	0	0	0	0	2	0	2	0	2.0	0	6.0
9/4	vs. Clemson	4	11	3	23	.348	0	0	2	0	1	0	3	0	3.0	0	12.5
9/5	vs. Winthrop	5	8	11	28	-.107	0	0	0	0	2	0	6	0	6.0	0	11.0
9/5	at Furman	4	14	9	33	.152	0	0	0	0	2	0	5	0	5.0	0	16.5
9/11	vs. Pittsburgh	4	13	4	28	.321	0	1	1	0	4	0	0	1	0.0	0	14.0
9/11	at Michigan	3	5	5	18	.000	0	2	3	1	9	1	0	0	1.0	0	8.0
9/12	vs. Western Michigan	4	10	5	25	.200	1	0	1	0	3	0	2	3	2.0	0	11.0
9/18	East Carolina	3	15	1	23	.609	0	0	3	0	1	0	0	0	0.0	0	15.0
9/19	Charleston Southern	4	16	4	34	.353	0	0	2	0	3	0	3	1	3.0	0	17.5
9/19	Wofford	3	10	0	19	.526	0	0	0	0	2	0	0	0	0.0	0	10.0
9/22	Coastal Carolina	4	12	6	29	.207	0	0	0	0	6	0	0	2	0.0	0	12.0
9/25	Kentucky																
9/27	at LSU																
10/2	at Ole Miss																
10/4	at Mississippi State																
10/9	Auburn																
10/11	Texas A&M																
10/14	at Georgia																
10/18	at Tennessee																
10/25	Arkansas																
10/30	Florida																
11/1	Ole Miss																
11/6	at Auburn																
11/8	at Alabama																
11/11	Tennessee																
11/20	Mississippi State																
11/22	Alabama																
11/25	at Arkansas																
11/27	at Missouri																

CAREER STATISTICS

YEAR	SP	MP	KILL	K/S	ERR	ATT	PCT	AST	A/S	SA	SA/S	SE	DIG	D/S	RE	BS	BA	TB	B/S	BE	BHE	P	P/S
2012	24	11	19	0.79	18	68	.015	0	0.00	0	0.00	0	2	0.08	0	1	7	8	0.33	4	0	23.5	0.96
2013	102	30	214	2.10	117	542	.179	7	0.07	1	0.01	2	36	0.35	1	5	60	65	0.64	11	0	250.0	2.45
2014	105	30	207	1.97	94	520	.217	13	0.12	3	0.03	12	72	0.69	4	3	42	45	0.43	13	3	234.0	2.23
2015	45	13	128	2.84	54	301	.246	2	0.04	3	0.07	12	37	0.82	1	1	23	24	0.53	7	0	143.5	3.18
TOTAL	276	84	568	2.06	283	1431	.199	22	0.08	7	0.03	26	147	0.53	6	10	132	142	0.51	35	3	651.0	2.36



7 - JACQY ANGERMILLER

6-2 | Jr. | MB/RS | Dallas, Texas (LD Bell)

SEASON NOTES

- Contributed three kills and a pair of blocks in opener vs. Southeastern Louisiana (8/28)
- Tallied six kills while hitting .667, six blocks and matched career-high with two digs vs. Clemson (9/4)
- Recorded season highs in kills (7) and blocks (7) vs. Winthrop (9/5)
- Set a new career high with 29 attacks against Western Michigan (9/12)
- Had a season-best eight kills and a .263 hitting percentage against Coastal Carolina (9/22)

Season Highs

- Kills**
8, Coastal (9/22)
- Attempts**
29, W. Michigan (9/12)
- Hit. % (Min. 12 Att.)**
.263, Coastal (9/22)

- Assists**
1, NC State (8/29)
- Service Aces**
2, NC Central (8/29)

- Digs**
2, Clemson (9/4)
- Blocks Solo**
2, Winthrop (9/5)

- Block Assists**
5, 2x, last vs. Winthrop (9/5)
- Total Blocks**
7, Winthrop (9/5)

Career Highs

- Kills**
12, Western Carolina (9/20/13)
- Attempts**
29, Western Michigan (9/12/15)
- Hit. % (Min. 12 Att.)**
.583, Liberty (9/13/13)

- Assists**
3, Ole Miss (10/20/13)
- Service Aces**
2, NC Central (8/29/15)

- Digs**
2, 2x, last vs. Clemson (9/4/15)
- Blocks Solo**
2, 4x, last vs. Winthrop (9/5/15)

- Block Assists**
11, Eastern Kentucky (9/19/14)
- Total Blocks**
11, Eastern Kentucky (9/19/14)

Match-By-Match Statistics																	
DATE	OPP	SP	KILL	ERR	ATT	PCT	AST	SA	SE	RE	DIG	BS	BA	BE	TB	BHE	P
8/28	Southeastern La.	3	3	1	6	.333	0	0	0	0	1	0	2	0	2.0	0	4.0
8/29	NC Central	2	1	0	2	.500	0	2	0	0	0	0	2	0	2.0	0	4.0
8/29	NC State	3	4	2	12	.167	1	0	0	0	0	0	3	0	3.0	0	5.5
9/4	vs. Clemson	4	6	0	9	.667	0	0	1	0	2	1	5	0	6.0	0	9.5
9/5	vs. Winthrop	5	7	3	16	.250	0	0	0	0	0	2	5	0	7.0	0	11.5
9/5	at Furman	3	4	0	7	.571	0	0	0	0	0	0	3	0	3.0	0	5.5
9/11	vs. Pittsburgh	4	0	1	7	-.143	0	0	0	0	1	0	1	0	1.0	0	0.5
9/11	at Michigan	3	6	0	16	.375	0	0	0	0	1	0	0	1	0.0	0	6.0
9/12	vs. Western Michigan	4	5	8	29	-.103	0	0	0	0	0	0	1	0	1.0	0	5.5
9/18	East Carolina	3	3	2	13	.077	0	0	0	0	0	0	2	0	2.0	0	4.0
9/19	Charleston Southern	2	1	1	5	.000	0	0	0	0	0	0	4	0	4.0	0	3.0
9/19	Wofford	--	--	--	--	--	--	--	--	--	--	--	--	--	--	--	--
9/22	Coastal Carolina	4	8	3	19	.263	0	0	0	0	0	0	3	1	3.0	0	9.5
9/25	Kentucky																
9/27	at LSU																
10/2	at Ole Miss																
10/4	at Mississippi State																
10/9	Auburn																
10/11	Texas A&M																
10/14	at Georgia																
10/18	at Tennessee																
10/25	Arkansas																
10/30	Florida																
11/1	Ole Miss																
11/6	at Auburn																
11/8	at Alabama																
11/11	Tennessee																
11/20	Mississippi State																
11/22	Alabama																
11/25	at Arkansas																
11/27	at Missouri																

CAREER STATISTICS

YEAR	SP	MP	KILL	K/S	ERR	ATT	PCT	AST	A/S	SA	SA/S	SE	DIG	D/S	RE	BS	BA	TB	B/S	BE	BHE	P	P/S
2013	77	24	121	1.57	50	334	.213	4	0.05	0	0.00	0	13	0.17	1	8	75	83	1.08	8	1	166.5	2.16
2014	76	22	97	1.28	43	254	.213	1	0.01	0	0.00	1	9	0.12	1	6	61	67	0.88	5	2	133.5	1.75
2015	40	12	48	1.20	21	141	.191	1	0.03	2	0.05	1	5	0.12	0	3	31	34	0.85	2	0	68.5	1.70
TOTAL	193	58	266	1.38	114	729	.209	6	0.03	2	0.01	2	27	0.14	2	17	167	184	0.95	15	3	368.5	1.91



9 - MEGAN KIRKLAND

5-7 | Jr. | DS/Libero | Lugoff, S.C. (Lugoff-Elgin)

SEASON NOTES

- Tallied six digs and two service aces in first action of the season vs. Southeastern Louisiana (8/28)
- Named to Furman's Carolina Classic All-Tournament Team after averaging 3.92 digs per set in three matches (9/4-5)
- Recorded a career-high 23 digs and two service aces vs. Winthrop (9/5)
- Collected 16 digs and matched career high with four assists vs. Furman (9/5)
- Posted her fourth-straight game with double-digit digs against Pittsburgh, with 12 (9/11)

Season Highs

Kills

N/A

Attempts

1, 2x, last vs. Furman (9/5)

Hit. % (Min. 12 Att.)

N/A

Assists

4, Furman (9/5)

Service Aces

2, 3x, last vs. Winthrop (9/5)

Digs

23, Winthrop (9/5)

Blocks Solo

N/A

Block Assists

N/A

Total Blocks

N/A

Career Highs

Kills

1, 4x, last vs. Auburn (10/5/14)

Attempts

1, 11x, last vs. Furman (9/5/15)

Hit. % (Min. 12 Att.)

N/A

Assists

4, 2x, last vs. Furman (9/5/15)

Service Aces

3, 2x, last vs. Arkansas (11/14/14)

Digs

23, Winthrop (9/5/15)

Blocks Solo

N/A

Block Assists

N/A

Total Blocks

N/A

Match-By-Match Statistics

DATE	OPP	SP	KILL	ERR	ATT	PCT	AST	SA	SE	RE	DIG	BS	BA	BE	TB	BHE	P
8/28	Southeastern La.	3	0	0	0	.000	0	2	0	0	6	0	0	0	0.0	0	2.0
8/29	NC Central	3	0	0	0	.000	0	1	0	0	8	0	0	0	0.0	0	1.0
8/29	NC State	3	0	0	0	.000	1	0	2	1	3	0	0	0	0.0	0	0.0
9/4	vs. Clemson	4	0	0	0	.000	1	2	0	1	12	0	0	0	0.0	0	2.0
9/5	vs. Winthrop	5	0	0	1	.000	2	2	1	0	23	0	0	0	0.0	0	2.0
9/5	at Furman	4	0	0	1	.000	4	1	0	1	16	0	0	0	0.0	0	1.0
9/11	vs. Pittsburgh	4	0	0	0	.000	4	0	0	0	12	0	0	0	0.0	0	0.0
9/11	at Michigan	3	0	0	0	.000	2	0	1	0	2	0	0	0	0.0	0	0.0
9/12	vs. Western Michigan	4	0	0	0	.000	1	1	0	1	6	0	0	0	0.0	0	1.0
9/18	East Carolina	2	0	0	0	.000	1	0	0	0	5	0	0	0	0.0	0	0.0
9/19	Charleston Southern	3	0	0	0	.000	1	0	0	0	7	0	0	0	0.0	0	0.0
9/19	Wofford	3	0	0	1	.000	0	0	1	0	3	0	0	0	0.0	0	0.0
9/22	Coastal Carolina	4	0	0	1	.000	1	0	0	1	6	0	0	0	0.0	0	0.0
9/25	Kentucky																
9/27	at LSU																
10/2	at Ole Miss																
10/4	at Mississippi State																
10/9	Auburn																
10/11	Texas A&M																
10/14	at Georgia																
10/18	at Tennessee																
10/25	Arkansas																
10/30	Florida																
11/1	Ole Miss																
11/6	at Auburn																
11/8	at Alabama																
11/11	Tennessee																
11/20	Mississippi State																
11/22	Alabama																
11/25	at Arkansas																
11/27	at Missouri																

CAREER STATISTICS

YEAR	SP	MP	KILL	K/S	ERR	ATT	PCT	AST	A/S	SA	SA/S	SE	DIG	D/S	RE	BS	BA	TB	B/S	BE	BHE	P	P/S
2013	36	17	2	0.06	0	3	.667	7	0.19	3	0.08	8	39	1.08	7	0	0	0	0.00	0	0	5.0	0.14
2014	105	28	2	0.02	0	8	.250	22	0.21	15	0.14	20	202	1.92	18	0	0	0	0.00	0	1	17.0	0.16
2015	45	13	0	0.00	0	4	.000	18	0.40	9	0.20	5	109	2.42	5	0	0	0	0.00	0	0	9.0	0.20
TOTAL	186	58	4	0.02	0	15	.267	47	0.25	27	0.15	33	350	1.88	30	0	0	0	0.00	0	1	31.0	0.17



10 - EMMA LOCK

5-9 | Fr. | DS/Libero | Lee's Summit, Mo. (Lee's Summit)

SEASON NOTES

- Made Gamecock debut vs. rival Clemson (9/4) and recorded nine digs and four assists
- Saw extended playing time against Western Michigan and responded with a career day, totaling 19 digs to go with a pair of assists (9/12)
- Had eight digs against Charleston Southern and Wofford (9/19)
- Earned her second career start, against Coastal Carolina, and finished with four assists and seven digs out of the back row.

Season Highs

Kills

N/A

Attempts

2, Furman (9/5)

Hit. % (Min. 12 Att.)

N/A

Assists

4, 2x, last vs. Coastal Carolina (9/22)

Service Aces

1, 2x, last vs. Coastal Carolina (9/22)

Digs

19, W. Michigan (9/12)

Blocks Solo

N/A

Block Assists

N/A

Total Blocks

N/A

Match-By-Match Statistics

DATE	OPP	SP	KILL	ERR	ATT	PCT	AST	SA	SE	RE	DIG	BS	BA	BE	TB	BHE	P
8/28	Southeastern La.	--	--	--	--	--	--	--DNP	--	--	--	--	--	--	--	--	--
8/29	NC Central	--	--	--	--	--	--	--DNP	--	--	--	--	--	--	--	--	--
8/29	NC State	--	--	--	--	--	--	--DNP	--	--	--	--	--	--	--	--	--
9/4	vs. Clemson	3	0	0	1	.000	4	0	0	0	9	0	0	0	0.0	0	0.0
9/5	vs. Winthrop	3	0	0	1	.000	1	1	1	2	2	0	0	0	0.0	0	1.0
9/5	at Furman	3	0	1	2	-.500	0	0	0	0	6	0	0	0	0.0	0	0.0
9/11	vs. Pittsburgh	3	0	0	0	.000	3	0	0	0	4	0	0	0	0.0	1	0.0
9/11	at Michigan	3	0	0	0	.000	1	0	1	0	8	0	0	0	0.0	0	0.0
9/12	vs. Western Michigan	4	0	0	0	.000	2	0	2	0	19	0	0	0	0.0	0	0.0
9/18	East Carolina	3	0	1	1	-1.000	0	1	0	0	2	0	0	0	0.0	0	1.0
9/19	Charleston Southern	4	0	0	0	.000	1	1	1	0	8	0	0	0	0.0	0	1.0
9/19	Wofford	3	0	0	0	.000	2	1	1	0	5	0	0	0	0.0	0	1.0
9/22	Coastal Carolina	4	0	0	1	.000	4	1	2	2	7	0	0	0	0.0	0	1.0
9/25	Kentucky																
9/27	at LSU																
10/2	at Ole Miss																
10/4	at Mississippi State																
10/9	Auburn																
10/11	Texas A&M																
10/14	at Georgia																
10/18	at Tennessee																
10/25	Arkansas																
10/30	Florida																
11/1	Ole Miss																
11/6	at Auburn																
11/8	at Alabama																
11/11	Tennessee																
11/20	Mississippi State																
11/22	Alabama																
11/25	at Arkansas																
11/27	at Missouri																

CAREER STATISTICS

YEAR	SP	MP	KILL	K/S	ERR	ATT	PCT	AST	A/S	SA	SA/S	SE	DIG	D/S	RE	BS	BA	TB	B/S	BE	BHE	P	P/S
2015	33	10	0	0.00	2	6	-.333	18	0.55	5	0.15	8	70	2.12	4	0	0	0	0.00	0	1	5.0	0.15



11 - KOKO ATOA-WILLIAMS

5-10 | Jr. | OH | Reno, Nev. (Bishop Manogue)

SEASON NOTES

- Recorded seven kills and three digs in opener vs. Southeastern Louisiana (8/28)
- Tallied season-high 12 kills while hitting .303, five digs and a season-high three blocks vs. Winthrop (9/5)
- Finished with a double-double vs. Furman (9/5), recording 10 kills and 10 digs
- Popped up a season-high 15 digs and three assists against Charleston Southern (9/19)
- Earned the start against Wofford and responded with 12 kills on 26 swings (9/19)

Season Highs

Kills
12, Winthrop (9/5)
Wofford (9/19)

Attempts

39, Furman (9/5)
Hit. % (Min. 12 Att.)
.385, Wofford (9/19)

Assists

3, Charleston Southern (9/19)

Service Aces

2, 2x, last vs. Coastal Carolina (9/22)

Digs

15, Charleston Southern (9/19)

Blocks Solo

2, Furman (9/5)

Block Assists

2, Winthrop (9/5)

Total Blocks

3, Winthrop (9/5)

Career Highs

Kills
18, 4x, last vs. Auburn (11/16/14)

Attempts

54, Furman (9/6/14)
Hit. % (Min. 12 Att.)
.515, Missouri (10/26/14)

Assists

3, Alabama (10/12/14)

Service Aces

2, 2x, last vs. Coastal Carolina (9/22)

Digs

27, Tennessee (11/19/14)

Blocks Solo

2, 2x, last vs. Furman (9/5/15)

Block Assists

4, 3x, last vs. Alabama (11/9/14)

Total Blocks

4, 3x, last vs. Alabama (11/9/14)

Match-By-Match Statistics

DATE	OPP	SP	KILL	ERR	ATT	PCT	AST	SA	SE	RE	DIG	BS	BA	BE	TB	BHE	P
8/28	Southeastern La.	3	7	2	21	.238	0	0	0	1	3	0	0	0	0.0	0	7.0
8/29	NC Central	1	1	0	2	.500	0	0	0	0	2	0	0	0	0.0	0	1.0
8/29	NC State	3	1	1	13	.000	0	1	0	3	1	0	0	1	0.0	0	2.0
9/4	vs. Clemson	3	5	2	18	.167	0	1	1	0	6	0	0	0	0.0	0	6.0
9/5	vs. Winthrop	5	12	2	33	.303	2	0	2	0	5	1	2	0	3.0	0	14.0
9/5	at Furman	4	10	7	39	.077	2	0	0	2	10	2	0	1	2.0	0	12.0
9/11	vs. Pittsburgh	4	7	5	27	.074	2	0	0	0	5	0	1	1	1.0	1	7.5
9/11	at Michigan	2	0	0	0	.000	1	0	0	0	2	0	0	0	0.0	0	0.0
9/12	vs. Western Michigan	4	0	1	4	-.250	1	0	2	1	8	0	0	0	0.0	0	0.0
9/18	East Carolina	3	2	1	4	.250	0	2	0	0	6	0	0	0	0.0	0	4.0
9/19	Charleston Southern	4	4	3	29	.034	3	1	1	1	15	1	1	0	2.0	0	6.5
9/19	Wofford	3	12	2	26	.385	1	0	0	0	4	0	1	1	1.0	0	12.5
9/22	Coastal Carolina	3	2	9	20	-.350	0	2	2	0	4	0	1	0	1.0	0	4.5
9/25	Kentucky																
9/27	at LSU																
10/2	at Ole Miss																
10/4	at Mississippi State																
10/9	Auburn																
10/11	Texas A&M																
10/14	at Georgia																
10/18	at Tennessee																
10/25	Arkansas																
10/30	Florida																
11/1	Ole Miss																
11/6	at Auburn																
11/8	at Alabama																
11/11	Tennessee																
11/20	Mississippi State																
11/22	Alabama																
11/25	at Arkansas																
11/27	at Missouri																

CAREER STATISTICS

YEAR	SP	MP	KILL	K/S	ERR	ATT	PCT	AST	A/S	SA	SA/S	SE	DIG	D/S	RE	BS	BA	TB	B/S	BE	BHE	P	P/S
2013	56	21	80	1.43	54	286	.091	3	0.05	0	0.00	0	21	0.38	4	0	15	15	0.27	3	2	87.5	1.55
2014	121	31	304	2.51	137	991	.169	14	0.12	9	0.07	14	283	2.34	28	6	42	48	0.40	5	2	340.0	2.81
2015	42	13	63	1.50	35	236	.119	12	0.29	7	0.17	8	71	1.69	8	4	6	10	0.24	4	1	77.0	1.83
TOTAL	219	65	447	2.04	226	1513	.146	29	0.13	16	0.07	22	375	1.71	40	10	63	73	0.33	12	5	504.5	2.30



12 - COURTNEY FURLONG

6-3 | Fr. | OH | Oviedo, Fla. (Oviedo)

SEASON NOTES

- Made Gamecock debut vs. Southeastern Louisiana (8/28) and played in two sets
- Recorded a season-high five kills vs. NC Central (8/29)
- Tallied first career block and had one kill vs. rival Clemson (9/4)
- Blossomed in the team's weekend at the Michigan Challenge, earning two starts and setting career highs across the board
- Went for eight kills, seven digs and four block assists against Pittsburgh (9/11)
- Finished with 31 kills for the weekend, including 13 against Western Michigan (9/12)

Season Highs

Kills

13, W. Michigan (9/12)

Attempts

40, W. Michigan (9/12)

Hit. % (Min. 12 Att.)

.214, Michigan (9/11)

Assists

2, NC Central (8/29)

Service Aces

1, Pittsburgh (9/11)

Digs

7, Pittsburgh (9/11)

Blocks Solo

1, Winthrop (9/5)

Block Assists

4, Pittsburgh (9/11)

Total Blocks

4, Pittsburgh (9/11)

Match-By-Match Statistics

DATE	OPP	SP	KILL	ERR	ATT	PCT	AST	SA	SE	RE	DIG	BS	BA	BE	TB	BHE	P
8/28	Southeastern La.	2	0	0	1	.000	0	0	0	0	1	0	0	0	0.0	0	0.0
8/29	NC Central	3	5	6	18	-.056	2	0	0	0	0	0	0	0	0.0	0	5.0
8/29	NC State	3	4	3	11	.091	0	0	0	0	0	0	0	0	0.0	0	4.0
9/4	vs. Clemson	2	1	1	6	.000	0	0	0	0	0	0	1	0	1.0	0	1.5
9/5	vs. Winthrop	2	0	0	3	.000	0	0	0	0	0	1	0	0	1.0	0	1.0
9/5	at Furman	3	0	0	6	.000	0	0	0	0	0	0	0	0	0.0	0	0.0
9/11	vs. Pittsburgh	4	8	5	27	.111	0	1	0	0	7	0	4	0	4.0	0	11.0
9/11	at Michigan	3	10	4	28	.214	1	0	0	0	3	0	2	0	2.0	0	11.0
9/12	vs. Western Michigan	4	13	6	40	.175	0	0	0	0	1	0	2	2	2.0	0	14.0
9/18	East Carolina	3	6	1	14	.357	0	0	0	0	1	0	2	0	2.0	0	7.0
9/19	Charleston Southern	2	2	4	11	-.182	0	0	0	0	1	0	3	0	3.0	0	3.5
9/19	Wofford	2	0	0	1	.000	0	0	0	0	0	0	0	0	0.0	0	0.0
9/22	Coastal Carolina	3	4	0	10	.400	0	0	0	1	1	0	3	0	3.0	0	5.5
9/25	Kentucky																
9/27	at LSU																
10/2	at Ole Miss																
10/4	at Mississippi State																
10/9	Auburn																
10/11	Texas A&M																
10/14	at Georgia																
10/18	at Tennessee																
10/25	Arkansas																
10/30	Florida																
11/1	Ole Miss																
11/6	at Auburn																
11/8	at Alabama																
11/11	Tennessee																
11/20	Mississippi State																
11/22	Alabama																
11/25	at Arkansas																
11/27	at Missouri																

CAREER STATISTICS

YEAR	SP	MP	KILL	K/S	ERR	ATT	PCT	AST	A/S	SA	SA/S	SE	DIG	D/S	RE	BS	BA	TB	B/S	BE	BHE	P	P/S
2015	36	13	53	1.47	30	176	.131	3	0.08	1	0.03	0	15	0.42	1	1	17	18	0.50	2	0	63.5	1.75



14 - KATLYN MCDANIEL

6-0 | Jr. | MB | Columbia, S.C. (Spring Valley)

SEASON NOTES

- Saw first action of the season against Furman (9/5) and recorded three kills
- Played a set against Michigan (9/11)
- Saw time against East Carolina and Wofford during the Carolina Classic

Season Highs

- Kills**
3, Furman (9/5)
- Attempts**
5, Furman (9/5)
- Hit. % (Min. 12 Att.)**
N/A
- Assists**
N/A
- Service Aces**
N/A
- Digs**
1, Furman (9/5)
- Blocks Solo**
N/A
- Block Assists**
N/A
- Total Blocks**
N/A

Career Highs

- Kills**
9, Missouri (10/26/14)
- Attempts**
16, Kentucky (9/28/14)
- Hit. % (Min. 12 Att.)**
.643, Missouri (10/26/14)
- Assists**
N/A
- Service Aces**
1, Clemson (9/6/13)
- Digs**
3, LSU (10/31/14)
- Blocks Solo**
1, 4x, last vs. Auburn (11/16/14)
- Block Assists**
6, LSU (10/31/14)
- Total Blocks**
6, LSU (10/31/14)

Match-By-Match Statistics

DATE	OPP	SP	KILL	ERR	ATT	PCT	AST	SA	SE	RE	DIG	BS	BA	BE	TB	BHE	P
8/28	Southeastern La.	--	--	--	--	--	--	--DNP	--	--	--	--	--	--	--	--	--
8/29	NC Central	--	--	--	--	--	--	--DNP	--	--	--	--	--	--	--	--	--
8/29	NC State	--	--	--	--	--	--	--DNP	--	--	--	--	--	--	--	--	--
9/4	vs. Clemson	--	--	--	--	--	--	--DNP	--	--	--	--	--	--	--	--	--
9/5	vs. Winthrop	--	--	--	--	--	--	--DNP	--	--	--	--	--	--	--	--	--
9/5	at Furman	3	3	0	5	.600	0	0	0	0	1	0	0	0	0.0	0	3.0
9/11	vs. Pittsburgh	--	--	--	--	--	--	--DNP	--	--	--	--	--	--	--	--	--
9/11	at Michigan	1	0	1	2	-.500	0	0	0	0	0	0	0	0	0.0	0	0.0
9/12	vs. Western Michigan	--	--	--	--	--	--	--DNP	--	--	--	--	--	--	--	--	--
9/18	East Carolina	1	0	1	1	-1.000	0	0	0	0	0	0	0	0	0.0	0	0.0
9/19	Charleston Southern	--	--	--	--	--	--	--DNP	--	--	--	--	--	--	--	--	--
9/19	Wofford	1	0	0	0	.000	0	0	0	0	0	0	0	0	0.0	0	0.0
9/22	Coastal Carolina	--	--	--	--	--	--	--DNP	--	--	--	--	--	--	--	--	--
9/25	Kentucky																
9/27	at LSU																
10/2	at Ole Miss																
10/4	at Mississippi State																
10/9	Auburn																
10/11	Texas A&M																
10/14	at Georgia																
10/18	at Tennessee																
10/25	Arkansas																
10/30	Florida																
11/1	Ole Miss																
11/6	at Auburn																
11/8	at Alabama																
11/11	Tennessee																
11/20	Mississippi State																
11/22	Alabama																
11/25	at Arkansas																
11/27	at Missouri																

CAREER STATISTICS

YEAR	SP	MP	KILL	K/S	ERR	ATT	PCT	AST	A/S	SA	SA/S	SE	DIG	D/S	RE	BS	BA	TB	B/S	BE	BHE	P	P/S
2013	12	7	7	0.58	6	28	.036	0	0.00	1	0.08	0	2	0.17	0	0	5	5	0.42	1	0	10.5	0.83
2014	60	20	60	1.00	21	154	.253	0	0.00	0	0.00	1	12	0.20	0	4	36	40	0.67	4	0	82.0	1.37
2015	6	4	3	0.50	2	8	.125	0	0.00	0	0.00	0	1	0.17	0	0	0	0	0.00	0	0	3.0	0.50
TOTAL	78	31	70	0.90	29	190	.216	0	0.00	1	0.01	1	15	0.19	0	4	41	45	0.58	5	0	95.5	1.22



15 - JESSE TURNER

6-2 | Fr. | MB/RS | Austin, Texas (Westlake)

SEASON NOTES

- Saw first action vs. NC Central (8/29) and recorded a block assist
- Played against Wofford and had two attacks (9/19)

Season Highs

Kills

N/A

Attempts

2, NC Central (8/29)

Hit. % (Min. 12 Att.)

N/A

Assists

N/A

Service Aces

N/A

Digs

N/A

Blocks Solo

N/A

Block Assists

1, NC Central (8/29)

Total Blocks

1, NC Central (8/29)

Match-By-Match Statistics

DATE	OPP	SP	KILL	ERR	ATT	PCT	AST	SA	SE	RE	DIG	BS	BA	BE	TB	BHE	P
8/28	Southeastern La.	--	--	--	--	--	--	--DNP	--	--	--	--	--	--	--	--	--
8/29	NC Central	1	0	0	2	.000	0	0	0	0	0	0	1	0	1.0	0	0.5
8/29	NC State	--	--	--	--	--	--	--DNP	--	--	--	--	--	--	--	--	--
9/4	vs. Clemson	--	--	--	--	--	--	--DNP	--	--	--	--	--	--	--	--	--
9/5	vs. Winthrop	--	--	--	--	--	--	--DNP	--	--	--	--	--	--	--	--	--
9/5	at Furman	--	--	--	--	--	--	--DNP	--	--	--	--	--	--	--	--	--
9/11	vs. Pittsburgh	--	--	--	--	--	--	--DNP	--	--	--	--	--	--	--	--	--
9/11	at Michigan	--	--	--	--	--	--	--DNP	--	--	--	--	--	--	--	--	--
9/12	vs. Western Michigan	--	--	--	--	--	--	--DNP	--	--	--	--	--	--	--	--	--
9/18	East Carolina	--	--	--	--	--	--	--DNP	--	--	--	--	--	--	--	--	--
9/19	Charleston Southern	--	--	--	--	--	--	--DNP	--	--	--	--	--	--	--	--	--
9/19	Wofford	1	0	1	2	-.500	0	0	0	0	0	0	0	0	0.0	0	0.0
9/22	Coastal Carolina	--	--	--	--	--	--	--DNP	--	--	--	--	--	--	--	--	--
9/25	Kentucky																
9/27	at LSU																
10/2	at Ole Miss																
10/4	at Mississippi State																
10/9	Auburn																
10/11	Texas A&M																
10/14	at Georgia																
10/18	at Tennessee																
10/25	Arkansas																
10/30	Florida																
11/1	Ole Miss																
11/6	at Auburn																
11/8	at Alabama																
11/11	Tennessee																
11/20	Mississippi State																
11/22	Alabama																
11/25	at Arkansas																
11/27	at Missouri																

CAREER STATISTICS

YEAR	SP	MP	KILL	K/S	ERR	ATT	PCT	AST	A/S	SA	SA/S	SE	DIG	D/S	RE	BS	BA	TB	B/S	BE	BHE	P	P/S
2015	2	2	0	0.00	1	4	-.250	0	0.00	0	0.00	0	0	0.00	0	0	1	1	0.50	0	0	0.5	0.00



17 - ELIZABETH JOHNBULL

6-0 | Sr. | MB | Pflugerville, Texas (Connally)

SEASON NOTES

- Recorded a season-high three kills and one block assist vs. Winthrop (9/5)
- Knocked down a pair block assists against Pittsburgh (9/11)
- Provided a spark off the bench in a win over Charleston Southern, putting down four kills in seven swings and assisting in four blocks (9/19)
- Earned the start against Wofford and responded with seven kills and a dig (9/19)

Season Highs

Kills
7, Wofford (9/19)
Attempts
11, Wofford (9/19)
Hit. % (Min. 12 Att.)
N/A

Assists
1, Charleston Southern (9/19)

Service Aces
N/A

Digs
2, NC Central (8/29)

Blocks Solo
1, Wofford (9/19)

Block Assists
4, Charleston Southern (9/19)

Total Blocks
4, Charleston Southern (9/19)

Career Highs

Kills
13, Furman (9/7/13)
Attempts
22, Furman, (9/7/13)
Hit. % (Min. 12 Att.)
.500, 2x, last vs. North Florida (9/13/14)

Assists
1, 2x, last vs. Charleston Southern (9/19/15)
Georgia Tech (8/30/14)

Service Aces
N/A

Digs
2, 3x, last vs. NC Central (8/29/15)

Blocks Solo
1, 4x, last vs. Wofford (9/19/15)

Block Assists
7, Georgia Tech (8/30/14)

Total Blocks
7, Georgia Tech (8/30/14)

Match-By-Match Statistics

DATE	OPP	SP	KILL	ERR	ATT	PCT	AST	SA	SE	RE	DIG	BS	BA	BE	TB	BHE	P
8/28	Southeastern La.	1	0	0	2	.000	0	0	0	0	0	0	0	0	0.0	0	0.0
8/29	NC Central	2	1	1	3	.000	0	0	0	0	2	0	0	1	0.0	0	1.0
8/29	NC State	1	0	0	0	.000	0	0	0	0	0	0	0	0	0.0	0	0.0
9/4	vs. Clemson	--	--	--	--	--	--	--	--	--	--	--	--	--	--	--	--
9/5	vs. Winthrop	1	3	1	4	.500	0	0	0	0	0	0	1	0	1.0	0	3.5
9/5	at Furman	1	0	0	0	.000	0	0	0	0	0	0	0	0	0.0	0	0.0
9/11	vs. Pittsburgh	2	0	2	2	-1.000	0	0	0	0	0	0	2	0	2.0	0	1.0
9/11	at Michigan	--	--	--	--	--	--	--	--	--	--	--	--	--	--	--	--
9/12	vs. Western Michigan	1	0	0	1	.000	0	0	0	0	0	0	0	0	0.0	0	0.0
9/18	East Carolina	1	1	0	1	1.000	0	0	0	0	0	0	0	1	0.0	0	1.0
9/19	Charleston Southern	3	4	1	7	.429	1	0	0	0	0	0	4	0	4.0	0	6.0
9/19	Wofford	3	7	2	11	.455	0	0	0	0	1	1	0	0	1.0	0	8.0
9/22	Coastal Carolina	1	1	0	1	1.000	0	0	0	0	0	0	0	0	0.0	0	1.0
9/25	Kentucky																
9/27	at LSU																
10/2	at Ole Miss																
10/4	at Mississippi State																
10/9	Auburn																
10/11	Texas A&M																
10/14	at Georgia																
10/18	at Tennessee																
10/25	Arkansas																
10/30	Florida																
11/1	Ole Miss																
11/6	at Auburn																
11/8	at Alabama																
11/11	Tennessee																
11/20	Mississippi State																
11/22	Alabama																
11/25	at Arkansas																
11/27	at Missouri																

CAREER STATISTICS

YEAR	SP	MP	KILL	K/S	ERR	ATT	PCT	AST	A/S	SA	SA/S	SE	DIG	D/S	RE	BS	BA	TB	B/S	BE	BHE	P	P/S
2012	9	9	8	0.89	3	13	.385	0	0.00	0	0.00	0	0	0.00	0	1	1	2	0.22	0	0	9.5	1.00
2013	37	16	43	1.16	16	104	.260	0	0.00	0	0.00	0	9	0.24	3	1	17	18	0.49	2	1	52.5	1.41
2014	40	17	40	1.00	20	91	.220	2	0.05	0	0.00	0	9	0.22	0	3	19	22	0.55	2	1	52.5	1.30
2015	17	11	17	1.00	7	32	.312	1	0.06	0	0.00	0	3	0.18	0	1	7	8	0.47	2	0	21.5	1.24
TOTAL	103	53	108	1.05	46	240	.258	3	0.03	0	0.00	0	21	0.20	3	6	44	50	0.49	6	2	136.0	1.32



22 - CLAIRE BLUMENTHAL

5-5 • Fr. • DS/Libero • Tampa, Fla. (Tampa Preparatory)

SEASON NOTES

- Made Gamecock debut vs. NC Central (8/29) and recorded one service ace and one dig
- Played all four sets against Western Michigan and recorded an assist and 11 digs

Season Highs

Kills N/A

Attempts N/A

Hit. % (Min. 12 Att.) N/A

Assists 1, twice
Winthrop (9/5) and
W. Michigan (9/12)

Service Aces 1, NC Central (8/29)

Digs 11, W. Michigan (9/12)

Blocks Solo N/A

Block Assists N/A

Total Blocks N/A

Match-By-Match Statistics

DATE	OPP	SP	KILL	ERR	ATT	PCT	AST	SA	SE	RE	DIG	BS	BA	BE	TB	BHE	P
8/28	Southeastern La.	--	--	--	--	--	--	--DNP	--	--	--	--	--	--	--	--	--
8/29	NC Central	1	0	0	0	.000	0	1	0	0	1	0	0	0	0.0	0	1.0
8/29	NC State	--	--	--	--	--	--	--DNP	--	--	--	--	--	--	--	--	--
9/4	vs. Clemson	1	0	0	0	.000	0	0	0	0	0	0	0	0	0.0	0	0.0
9/5	vs. Winthrop	2	0	0	0	.000	1	0	0	0	1	0	0	0	0.0	0	0.0
9/5	at Furman	1	0	0	0	.000	0	0	0	0	0	0	0	0	0.0	0	0.0
9/11	vs. Pittsburgh	--	--	--	--	--	--	--DNP	--	--	--	--	--	--	--	--	--
9/11	at Michigan	1	0	0	0	.000	0	0	0	0	0	0	0	0	0.0	0	0.0
9/12	vs. Western Michigan	4	0	0	0	.000	1	0	0	0	11	0	0	0	0.0	0	0.0
9/18	East Carolina	--	--	--	--	--	--	--DNP	--	--	--	--	--	--	--	--	--
9/19	Charleston Southern	2	0	0	0	.000	0	0	0	0	3	0	0	0	0.0	0	0.0
9/19	Wofford	--	--	--	--	--	--	--DNP	--	--	--	--	--	--	--	--	--
9/22	Coastal Carolina	3	0	0	0	.000	1	0	0	0	2	0	0	0	0.0	0	0.0
9/25	Kentucky																
9/27	at LSU																
10/2	at Ole Miss																
10/4	at Mississippi State																
10/9	Auburn																
10/11	Texas A&M																
10/14	at Georgia																
10/18	at Tennessee																
10/25	Arkansas																
10/30	Florida																
11/1	Ole Miss																
11/6	at Auburn																
11/8	at Alabama																
11/11	Tennessee																
11/20	Mississippi State																
11/22	Alabama																
11/25	at Arkansas																
11/27	at Missouri																

CAREER STATISTICS

YEAR	SP	MP	KILL	K/S	ERR	ATT	PCT	AST	A/S	SA	SA/S	SE	DIG	D/S	RE	BS	BA	TB	B/S	BE	BHE	P	P/S
2015	15	8	0	0.00	0	0	.000	3	0.20	1	0.07	0	18	1.20	0	0	0	0	0.00	0	0	1.0	0.07



23 - CALLIE BROWN

6-1 • Fr. • MB/RS • Summerfield, N.C. (Rockingham County)

SEASON NOTES

- Saw first action as a Gamecock vs. NC Central (8/29) and recorded three kills
- Played a pair of sets against Pittsburgh (9/11)
- Had a kill off the bench in a win over Wofford (9/19)

Season Highs

Kills
3, NC Central (8/29)

Attempts
5, NC Central (8/29)

Hit. % (Min. 12 Att.)
N/A

Assists
N/A

Service Aces
N/A

Digs
N/A

Blocks Solo
N/A

Block Assists
N/A

Total Blocks
N/A

Match-By-Match Statistics

DATE	OPP	SP	KILL	ERR	ATT	PCT	AST	SA	SE	RE	DIG	BS	BA	BE	TB	BHE	P
8/28	Southeastern La.	--	--	--	--	--	--	--DNP	--	--	--	--	--	--	--	--	--
8/29	NC Central	1	3	0	5	.600	0	0	0	0	0	0	0	0	0.0	0	3.0
8/29	NC State	1	0	0	0	.000	0	0	0	0	0	0	0	0	0.0	0	0.0
9/4	vs. Clemson	--	--	--	--	--	--	--DNP	--	--	--	--	--	--	--	--	--
9/5	vs. Winthrop	--	--	--	--	--	--	--DNP	--	--	--	--	--	--	--	--	--
9/5	at Furman	--	--	--	--	--	--	--DNP	--	--	--	--	--	--	--	--	--
9/11	vs. Pittsburgh	2	0	0	0	.000	0	0	0	0	0	0	0	0	0.0	0	0.0
9/11	at Michigan	--	--	--	--	--	--	--DNP	--	--	--	--	--	--	--	--	--
9/12	vs. Western Michigan	--	--	--	--	--	--	--DNP	--	--	--	--	--	--	--	--	--
9/18	East Carolina	--	--	--	--	--	--	--DNP	--	--	--	--	--	--	--	--	--
9/19	Charleston Southern	--	--	--	--	--	--	--DNP	--	--	--	--	--	--	--	--	--
9/19	Wofford	1	1	0	4	.250	0	0	0	0	0	0	0	0	0.0	0	1.0
9/22	Coastal Carolina	--	--	--	--	--	--	--DNP	--	--	--	--	--	--	--	--	--
9/25	Kentucky																
9/27	at LSU																
10/2	at Ole Miss																
10/4	at Mississippi State																
10/9	Auburn																
10/11	Texas A&M																
10/14	at Georgia																
10/18	at Tennessee																
10/25	Arkansas																
10/30	Florida																
11/1	Ole Miss																
11/6	at Auburn																
11/8	at Alabama																
11/11	Tennessee																
11/20	Mississippi State																
11/22	Alabama																
11/25	at Arkansas																
11/27	at Missouri																

CAREER STATISTICS

YEAR	SP	MP	KILL	K/S	ERR	ATT	PCT	AST	A/S	SA	SA/S	SE	DIG	D/S	RE	BS	BA	TB	B/S	BE	BHE	P	P/S
2015	5	4	4	0.80	0	9	.444	0	0.00	0	0.00	0	0	0.00	0	0	0	0	0.00	0	0	4.0	0.80

RADIO/TV SPOT CHART



#1

Madison Borowski
S • 5-9 • Fr.
Austin, Texas



#2

Joely Cabrera
DS/Libero • 5-6 • Jr.
Seca, Puerto Rico



#3

Dessaa Legros
MB/OH • 5-10 • Jr.
Kennesaw, Ga.



#4

Darian Dozier
MB/RS • 6-1 • Sr.
Sandy Spring, Md.



#5

Aubrey Ezell
S • 5-8 • Fr.
Granbury, Texas



#6

Sarah Blomgren
RS/OH • 5-11 • Sr.
Canyon Country, Calif.



#7

Jacqy Angermiller
MB/RS • 6-2 • Jr.
Dallas, Texas



#9

Megan Kirkland
DS/Libero • 5-7 • Jr.
Lugoff, S.C.



#10

Emma Lock
DS/Libero • 5-9 • Fr.
Lee's Summit, Mo.



#11

Koko Atoa-Williams
OH • 5-10 • Jr.
Reno, Nev.



#12

Courtney Furlong
OH • 6-3 • Fr.
Oviedo, Fla.



#14

Katlyn McDaniel
MB • 6-0 • Jr.
Columbia, S.C.



#15

Jesse Turner
MB/RS • 6-2 • Fr.
Austin, Texas



#17

Elizabeth Johnbull
MB • 6-0 • Sr.
Pflugerville, Texas



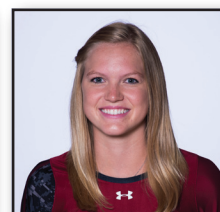
#22

Claire Blumenthal
DS/Libero • 5-5 • Fr.
Tampa, Fla.



#23

Callie Brown
MB/RS • 6-1 • Fr.
Summerfield, N.C.



#25

Courtney McKeag
MB/OH • 6-0 • RS Fr.
San Juan Capistrano, Calif.



Scott Swanson
Head Coach



Dottie Hampton
Assistant Coach/
Recruiting Coordinator



Shonda Cole
Assistant Coach