



# SOUTH CAROLINA VOLLEYBALL

## UPCOMING OPPONENTS

 <b>Tennessee (8-13, 0-7 SEC)</b> <b>Fri., Oct. 25, 7 PM</b> <i>VCF</i> <b>Series History</b> Tennessee leads 33-26 <b>Trend</b> Tennessee won nine of 10 <b>Last Time</b> SC won 3-1 (9/29/13)	 <b>Auburn (12-7, 3-4 SEC)</b> <b>Sun., Oct. 27, 1:30 PM</b> <i>VCF</i> <b>Series History</b> SC leads 21-13 <b>Trend</b> Auburn won two straight <b>Last Time</b> Auburn won 3-0 (10/26/12)	 <b>Coastal Carolina (11-9)</b> <b>Wed., Oct. 30, 6 PM</b> <i>VCF</i> <b>Series History</b> SC leads 11-0 <b>Trend</b> SC won 11 straight <b>Last Time</b> SC won 3-0 (10/16/12)	 <b>Kentucky (13-5, 5-2 SEC)</b> <b>Fri., Nov. 8, 7 PM</b> <i>Memorial Coliseum</i> <b>Series History</b> Kentucky leads 29-18 <b>Trend</b> Kentucky won nine of 10 <b>Last Time</b> Kentucky won 3-0 (10/13/13)
--	---	---	---

## 2013 SCHEDULE (11-9, 3-5 SEC)

DATE	OPPONENT (TV)	RESULT/TIME
8/30	South Carolina State%	W, 3-0
8/30	Florida International%	W, 3-0
8/31	High Point%	W, 3-0
9/6	at Clemson#	L, 3-2
9/7	vs. Furman#	L, 3-1
9/7	vs. Winthrop#	L, 3-2
9/13	vs. Utah State^	W, 3-1
9/13	vs. Liberty^	W, 3-0
9/14	at Duke^	L, 3-1
9/20	Western Carolina&	W, 3-0
9/21	Robert Morris&	W, 3-1
9/21	Presbyterian&	W, 3-0
9/27	at Missouri*	L, 3-0
9/29	at Tennessee*	W, 3-1
10/4	Arkansas*	L, 3-2
10/6	Texas A&M*	W, 3-1
10/11	Georgia*	L, 3-0
10/13	Kentucky*	L, 3-0
10/18	at Mississippi State*	L, 3-0
10/20	at Mississippi*	W, 3-1
10/25	Tennessee*	7 PM
10/27	Auburn*	1:30 PM
10/30	Coastal Carolina	6 PM
11/8	at Kentucky*	7 PM
11/10	at Georgia*	1:30 PM
11/13	at Florida* (ESPNU)	6 PM
11/15	Alabama*	7 PM
11/17	Missouri*	1:30 PM
11/22	at Arkansas	8 PM
11/24	LSU*	1:30 PM
11/27	at Texas A&M	7:30 PM

## INSIDE

### NOTES (p. 2-13)

- ✓ Overview of the Gamecocks (p. 2)
- ✓ Review of last week (p. 2)
- ✓ Scouting Tennessee (p. 2)
- ✓ Scouting Auburn (p. 2-3)
- ✓ Dig Pink (p. 3)
- ✓ Thévenin in the record books (p. 3)
- ✓ Packing the VCF (p. 3)
- ✓ All-time records (p. 4)
- ✓ Double-doubles, double-figure kills, digs (p. 5-6)
- ✓ Season stats, match-by-match leaders, career records, team and individual match records (p. 7-13)

### PERSONNEL PAGES (p. 14-31)

- ✓ Head coach Scott Swanson's bio (p. 14)
- ✓ 2013 active players' individual pages (p. 15-31)

## 2013 ROSTER

NO	NAME	HT	POS	YR	EXP	HOMETOWN (HIGH SCHOOL)
1	Helen Récaborde	5-10	S	Fr.	HS	Atlanta, Ga. (Atlanta International)
2	Erin Neuenfeldt	5-10	OH/DS	Fr.	HS	Birmingham, Mich. (Seaholm)
3	Dessaa Legros	5-10	MB/OH	Fr.	HS	Kennesaw, Ga. (Allatoona)
4	Darian Dozier	6-1	MB/RS	So.	1L	Sandy Spring, Md. (St. Johns College)
6	Sarah Blomgren	5-11	RS/OH	So.	1L	Canyon Country, Calif. (Saugus)
7	Jacqy Angermiller	6-2	MB/RS	Fr.	HS	Dallas, Texas (LD Bell)
8	Kellie McNeil	6-0	S	RS So.	TR	Eagan, Minn. (Lakeville North)
9	Megan Kirkland	5-7	DS/Libero	Fr.	HS	Lugoff, S.C. (Lugoff-Elgin)
10	Michaela Christiaansen	5-9	Libero	Jr.	TR	Tucson, Ariz. (Ironwood Ridge)
12	Juliette Thévenin	6-2	OH	Sr.	3L	Mont-sur-Marchinne, Belgium
13	Gabrielle Rubeis	5-7	DS/S	Fr.	HS	Gainesville, Fla. (Buchholz)
14	Katlyn McDaniel	6-0	MB	Fr.	HS	Columbia, S.C. (Spring Valley)
15	Lindsey Craft	5-7	Libero	Sr.	3L	Alpharetta, Ga. (Chattahoochee)
16	KoKo Atoa-Williams	5-10	OH	Fr.	HS	Reno, Nev. (Bishop Manogue)
17	Elizabeth Johnbull	6-0	MB	So.	1L	Pflugerville, Texas (Connally)
20	Abby Feruck	6-0	MB/RS	Fr.	HS	Atlanta, Ga. (Blessed Trinity)
21	Jordan Wilson-Talmadge	5-7	DS/Libero	Fr.	HS	Orlando, Fla. (First Academy)

Manager: Melissa Kearse

All times Eastern

Home matches in **bold**

% Gamecock Invitational

# Big Orange Bash

^Blue Devil Classic

& Carolina Classic

\* SEC match

## GAMECOCK STAFF

Head Coach.....	Scott Swanson
Alma Mater.....	Arizona State, 1995
Overall Record (Years).....	93-100 (6+)
SC Record (Years).....	43-39 (2+)
Associate Head Coach.....	Julie Darty
Alma Mater.....	Mercer, 2008
Year at SC.....	2nd
Assistant Coach.....	RJ Abella
Alma Mater.....	Wichita State, 2009
Year at SC.....	1st
Volunteer Assistant.....	Drew Burdette
Director of Operations.....	Amanda Brungs
Graduate Assistant.....	Morgan Thomas

**QUICK FACTS**

Location .....Columbia, S.C.  
 Founded .....1801  
 Enrollment..... 31,288  
 Colors ..... Garnet (PMS 202C) & Black  
 Nickname..... Gamecocks  
 Affiliation.....NCAA Division I  
 Conference ..... Southeastern (Eastern Division)  
 President .....Dr. Harris Pastides  
 Athletic Director..... Ray Tanner  
 Home Court..... Volleyball Competition Facility  
 2012 Record..... 18-14  
 2012 Conference Record.....6-14  
 2012 Conference Finish..... 6th East  
 Starters Returning/Lost +Libero..... 2/4+1  
 Letterwinners Returning/Lost ..... 5/11  
 Newcomers .....12

**MEDIA INFORMATION**

Director of Media Relations ..... Steve Fink  
 Asst. Director/Volleyball .....Justin Holt  
 Office Phone .....(803) 777-7872  
 Email ..... jnholt@mailbox.sc.edu  
 Personal Phone..... (803) 447-99559  
 Office Fax .....(803) 777-2967  
 Department Website.....GamecocksOnline.com  
 Dept. Facebook.....facebook.com/GamecocksOnline  
 Team Facebook...facebook.com/GamecockVolleyball  
 Dept. Twitter ..... twitter.com/GamecocksOnline  
 Team Twitter..... twitter.com/GamecockVolley  
 Team Facebook..facebook.com/GamecockVolleyball  
 Mailing Address ..... 1304 Heyward St.  
 Rice Athletics Center  
 Columbia, SC 29208

**PRONUNCIATION GUIDE**

Juliette Thévenin ..... TAY-vah-nah  
 Sarah Blomgren ..... BLOHM-grin  
 Michaela Christiaansen ..... Mi-KAY-la  
 Helen Récaborde..... RECK-uh-board  
 Erin Neuenfeldt.....NEW-en-felt  
 Dessaa Legros.....Luh-GROSS  
 KoKo Atoa-Williams ..... Uh-TOE-uh  
 Gabrielle Rubeis .....ROO-bis  
 Jordan Wilson-Talmdage .....TAL-mehj

**ABBREVIATIONS**

When needing to abbreviate South Carolina for your scoreboard or broadcast boxes, the preferred shortenings are S. Carolina or SC. Please refrain from using USC or SCAR when referring to the University of South Carolina. Proper logos and wordmarks can be emailed for use by any media outlet upon request. Thanks.

**NOTEWORTHY**

**SOUTH CAROLINA QUICK HITS**

- South Carolina enters its third season with head coach Scott Swanson.
- Last year’s team went 18-14, the program’s second winning season in the last decade and the most wins since 2008 (21).
- The Gamecocks return five letterwinners from a year ago, including two starters (senior Juliette Thévenin, sophomore Darian Dozier).
- With the departure of 11 letterwinners, South Carolina lost 97 percent of its production from last season in assists (1,346), 78.1 percent in digs (1,252) and 58.9 percent in kills (876).
- The 2012 Gamecocks improved their offensive efficiency for the second straight year, raising their hitting percentage 29 points to .255, which ranked third in the SEC.
- South Carolina returns its leader in kills (Juliette Thévenin, 453) and its second-leading blocker (Darian Dozier, 67).

**LAST TIME OUT**

The Gamecocks went 1-1 in SEC play last weekend, dropping a three-set decision at Mississippi State and knocking off Ole Miss in four sets in Oxford. With the weekend split, South Carolina is now 11-9 on the season and 3-5 in SEC play. Senior outside hitter Juliette Thévenin had a stellar weekend to lead the way, averaging 6.14 kills per set while hitting .306. Thévenin recorded a match-high 25 kills in Sunday’s win at Ole Miss. As a team the Gamecocks hit .308 against the Rebels. South Carolina is now 6-0 on the season when hitting better than .300. Sophomore Sarah Blomgren contributed 12 kills while hitting .455 against Ole Miss, while sophomore middle blocker Darian Dozier recorded nine kills, hitting .600 with no errors. Sophomore setter Kellie McNeil also had a solid weekend, averaging 1.43 kills, 9.57 assists, 1.57 digs and 1.14 blocks per set on the weekend.

**JOINING THE FIGHT - DIG PINK**

October is Breast Cancer Awareness Month, and South Carolina is teaming with the Side-Out Foundation to host a Dig Pink match when it faces Tennessee on Friday. The Gamecocks are looking to increase breast cancer awareness and fundraise to support further research to combat this disease. This is the seventh-straight year South Carolina has hosted a breast-cancer awareness match.

**SCOUTING TENNESSEE**

The Lady Vols head into Friday’s matchup with an 8-13 overall record and a 0-7 mark in SEC play. Tennessee has lost seven straight matches and nine out of its last 10. Freshman outside hitter Jamie Lea continues to pace Tennessee’s attack, averaging 3.38 kills per set. Sophomore outside hitter Ashley Mariani (2.63) and senior outside hitter Whitney Heeres (2.24) have also made big contributions, averaging more than two kills per set. Sophomore setter Lexi Dempsey has distributed a team-best 9.38 assists per set. Defensively, the Lady Vols rank second nationally in digs, averaging 18.88 per set. Senior libero Ellen Mullins has anchored the back line as she leads the SEC and ranks second in the nation with an average of 6.07 digs per set. Freshman middle blocker Raina Hembry averages 0.95 blocks per set to lead the team.

**SERIES HISTORY VS. TENNESSEE**

Friday’s matchup will be the 60th meeting all-time between South Carolina and Tennessee. The Lady Vols lead the all-time series 33-26. Tennessee has won nine out of the last 10 in the series, with South Carolina’s win coming this season in Knoxville. South Carolina hasn’t won back-to-back matches against Tennessee since defeating the Lady Vols in the last meeting of the 2006 season (11/12/2006) and the first matchup of the 2007 season (10/5/2007). The Gamecocks haven’t swept the season series since winning both matchups during the 2002 season. South Carolina is 14-10 all-time at home against Tennessee.

**LAST TIME VS. TENNESSEE - SEPT. 29, 2013**

South Carolina claimed a 3-1 win at Tennessee in September, winning by the scores of 25-18, 17-25, 25-20 and 25-23. The win was the Gamecocks’ first over Tennessee since Oct. 10, 2008 and their first in Knoxville since Nov. 8, 2002. Blocking played a huge role in the win, as South Carolina out-blocked the Lady Vols 13-8, including seven in the four set. Sophomore setter Kellie McNeil (41 assists, 20 digs) and senior outside hitter Juliette Thévenin (23 kills, 16 digs) led the way with double-doubles.

**SCOUTING AUBURN**

Auburn heads into the weekend with a 12-7 overall record and a 3-4 mark in conference play. The Tigers are riding a three-match winning streak. Senior outside hitter Katherine Culwell and senior middle blocker Camila Jersonsky have led Auburn offensively, averaging 3.26 and 2.67 kills per set, respectively. Both Culwell (sixth) and Jersonsky (eighth) rank in the top 10 on the SEC active career kills list. Senior setter Chelsea Wintzinger averages a team-best 5.94 assists per set, while sophomore setters Alyssa Ivey and Ciara Richards are averaging 4.70 and 4.34 assists per set, respectively. Reigning SEC Defensive Player of the Week Sarah Wroblicky has been key to the Tigers’ defensive efforts. The senior libero averages 4.50 digs per set, which ranks third in the SEC. Jersonsky has been Auburn’s top blocker, averaging 0.94 blocks per set.

**AVCA POLL**

NO	TEAM (1ST PLACE)	Pts	W-L	Prev
1	Texas (44)	1471	13-2	3
2	Penn State (12)	1440	16-2	4
3	Washington (4)	1383	15-1	6
4	Southern California	1300	17-2	1
5	Florida	1201	18-2	2
6	Stanford	1181	13-4	7
7	Minnesota	1129	18-3	10
8	Hawai'i	1090	16-2	9
9	San Diego	950	15-3	11
10	Michigan State	932	17-3	5
11	Missouri	860	23-0	18
12	Colorado State	831	17-0	12
13	Nebraska	804	13-4	8
14	North Carolina	729	18-1	13
15	Kentucky	622	13-4	14
16	Wisconsin	581	16-4	15
17	Michigan	568	13-6	16
18	Florida State	443	14-5	19
19	BYU	424	16-3	20
20	Oregon	364	12-6	21
21	Purdue	280	13-6	25
22	Kansas	246	17-4	23
23	Duke	202	16-3	24
24	Ohio State	108	14-6	17
25	Arizona	89	15-5	NR

RV: Creighton 63; Arizona State 50; Oklahoma 44; UCLA 26; California 20; Cal State Northridge 10; Illinois 9; Western Kentucky 9; Ohio 8; Miami (FL) 7; Northwestern 7; St. Mary's (CA) 6; Iowa State 4

Released: Oct. 21 (Week 8)

**SEC STANDINGS**

Team	CONF		ALL	
	W-L	Pct.	W-L	Pct.
Missouri	7-0	1.000	23-0	1.000
Florida	7-1	.875	18-2	.900
Kentucky	5-2	.714	13-5	.722
Arkansas	6-3	.667	13-7	.650
Alabama	4-3	.571	16-5	.762
Georgia	5-4	.556	15-6	.714
LSU	3-3	.500	13-5	.722
Auburn	3-4	.429	12-7	.632
South Carolina	3-5	.375	11-9	.550
Mississippi State	2-4	.333	11-9	.550
Texas A&M	2-5	.286	10-8	.556
Ole Miss	1-7	.125	11-10	.524
Tennessee	0-7	.000	8-13	.381

**THIS WEEKEND'S MATCHES**

Friday, Oct. 25	
Alabama at Georgia	7 p.m.
Arkansas at Texas A&M	7 p.m.
Auburn at No. 5 Florida	7 p.m.
Mississippi State at No. 15 Kentucky	7 p.m.
No. 11 Missouri at LSU	8 p.m.
Tennessee at South Carolina	7 p.m.

Sunday, Oct. 27	
Alabama at No. 15 Kentucky	1:30 p.m.
Arkansas vs. LSU	2 p.m.
Auburn at South Carolina	1:30 p.m.
Tennessee at No. 5 Florida	1:30 p.m.
Mississippi State at Georgia	1:30 p.m.
No. 11 Missouri at Texas A&M	2 p.m.

All times Eastern

**NOTEWORTHY**

**SERIES HISTORY VS. AUBURN**

South Carolina and Auburn will meet for the 35th time on Sunday. The Gamecocks lead the all-time series 21-13. The Tigers have won two straight in the series and six of the last 10 meetings. South Carolina is 10-7 all-time at home when facing Auburn.

**LAST TIME VS. AUBURN - OCT. 26, 2012**

The Gamecocks dropped a three-set decision to the Tigers on Oct. 26, 2012 at the Volleyball Competition Facility. The Tigers won by the scores of 25-21, 25-15 and 25-19. Darian Dozier led the way with a then-career-high 12 kills, while Juliette Thévenin added 10 kills in the setback. The Tigers out-hit the Gamecocks .474-.228 for the match.

**GAMECOCKS IN THE SEC STATS**

Senior outside hitter Juliette Thévenin has had a stellar start to her final year in Garnet and Black as she currently leads the SEC in both kills (4.95) and points (5.29) per set. In SEC matches only, Thévenin ranks first in kills (4.90) and first in points (5.26). Freshman middle blocker Jacqy Angermiller entered the rankings this week as she ranks fourth in blocks per set (1.22). Sophomore middle blocker Darian Dozier is right behind Angermiller, ranking fifth in the conference in blocks with an average of 1.18 per frame. Sophomore setter Kellie McNeil is seventh in the SEC in assists per set (10.25) and 16th in blocks (0.90), while junior libero Michaela Christiaansen is seventh in digs per set (3.96).

**AND IN THE NCAA STATS**

One Gamecock ranks in the top 50 nationally in the latest NCAA statistics report. Senior Juliette Thévenin is in the top 15 in the nation in two categories, ranking fifth in kills per set (4.95) and 11th in points per set (5.29). Freshman Jacqy Angermiller sits just outside the top 50 in blocks, averaging 1.22 per set.

**LEAVING HER MARK**

Senior outside hitter Juliette Thévenin has been a regular in the starting lineup during her Gamecock career and her name will be scattered throughout the school record book when she's done. She is currently in the top-10 in five career categories, ranking third in kills (1,485), second in kills per set (4.10), third in attacks (3,784), sixth in points (1,629.5) and third in points per set (4.50). On the season she is averaging a league-best 4.95 kills and 5.29 points per set. For a complete list of career records see page 10.

**AMONG THE ACTIVE LEADERS**

Senior outside hitter Juliette Thévenin is among the active career leaders in kills in the SEC and nationally. She ranks second in the SEC with 1,485, trailing only Missouri's Lisa Henning (1,616). She is eighth in career kills (1,485) and kills per set (4.10) among active Division I players. Her career average ranks 14th among all divisions, while her career kills total is 17th among all divisions.

**PACKING THE STANDS**

Gamecock fans have given South Carolina a huge home-court advantage this season by packing the stands at the Volleyball Competition Facility. The Gamecocks have drawn seven crowds of more than 1,000 this season, including a VCF-record five straight, with the Arkansas (1,405) and Texas A&M (1,430) matches being the high marks. The seven matches of 1,000 or more fans is also a VCF record, breaking the previous mark of four, which was set in the 1996 and 2012 seasons.

**WINNING THE HITTING BATTLE**

When South Carolina out-hits its opponents, it is 10-1 on the season. The Gamecocks' lone loss when having a better hitting percentage than their opponent was a five-set loss to Winthrop (.219-.144). South Carolina has hit .276 in wins this season and .210 in losses. Opponents are hitting .139 in Gamecock wins and .275 in Gamecock losses.

**REACHING .300**

The magic hitting number for the Gamecocks this season has been .300. South Carolina is 6-0 on the year when hitting .300 or better.

**GETTING SERVED**

The Gamecocks are a perfect 6-0 when recording more service aces than their opponents. South Carolina averages 1.1 service aces per set in wins and 0.6 in losses.

**BLOCK PARTY**

South Carolina is 9-4 when it finishes with more blocks than its opponent. The Gamecocks out-block the opposition 2.6-1.6 per set in wins and are even at 2.2-2.2 in losses.

**SEEING DOUBLE**

Senior Juliette Thévenin and sophomore setter Kellie McNeil lead the team in double-doubles, with five and four, respectively. The Gamecocks are 4-2 in matches Thévenin and McNeil have recorded double-doubles.



**TEAM STATS**

	SC	AU	UT
<b>ATTACK</b>			
Kills	994	955	916
Errors	370	399	436
Total Attacks	2548	2532	2939
Attack Pct.	.245	.220	.163
Kills/Set	13.6	13.6	12.1
<b>SET</b>			
Assists	923	881	851
Assists/Set	12.6	12.6	11.2
<b>SERVE</b>			
Aces	61	75	62
Errors	113	86	117
Aces/Set	0.8	1.1	0.8
<b>SERVE RECEPTIONS</b>			
Errors	87	73	100
Errors/Set	1.2	1.0	1.3
<b>DEFENSE</b>			
Digs	1050	1132	1435
Digs/Set	14.4	16.2	18.9
<b>BLOCKING</b>			
Block Solo	21	31	28
Block Assist	310	194	232
Total Blocks	176.0	128.0	144.0
Blocks/Set	2.4	1.8	1.9
Block Errors	31	22	45
<b>BALL H. ERRORS</b>	28	29	23

**STAT LEADERS**

**SOUTH CAROLINA**

	Figure	SEC Rank
<b>Kills/Set</b>		
Juliette Thévenin	4.95	1st
<b>Hitting Percentage</b>		
Darian Dozier	.343	11th
<b>Assists/Set</b>		
Kellie McNeil	10.25	7th
<b>Digs/Set</b>		
Michaela Christiaansen	3.96	7th
<b>Blocks/Set</b>		
Jacqy Angermiller	1.22	4th

**TENNESSEE**

	Figure	SEC Rank
<b>Kills/Set</b>		
Jamie Lea	3.38	10th
<b>Hitting Percentage</b>		
Shealyn Kolosky	.213	NR
<b>Assists/Set</b>		
Lexi Dempsey	9.38	9th
<b>Digs/Set</b>		
Ellen Mullins	6.07	1st
<b>Blocks/Set</b>		
Raina Hembry	0.95	13th

**AUBURN**

	Figure	SEC Rank
<b>Kills/Set</b>		
Katherine Culwell	3.26	12th
<b>Hitting Percentage</b>		
Camila Jersonsky	.338	13th
<b>Assists/Set</b>		
Chelsea Wintzinger	5.94	13th
<b>Digs/Set</b>		
Sarah Wroblicky	4.50	3rd
<b>Blocks/Set</b>		
Camila Jersonsky	0.94	14th

**NOTEWORTHY**

**DOING IT ALL**

Sophomore setter Kellie McNeil has been one of South Carolina's most versatile players this season. In the Gamecocks' win at Tennessee, McNeil came up just shy of finishing with a triple double, recording 41 assists and career-highs in digs (20) and blocks (7). A transfer from Minnesota, McNeil is averaging 10.25 assists, 1.93 digs and 0.90 blocks per set this season. McNeil's blocks per set average is on pace to be the second best in school history of record for a setter. She trails setter Shellie Higgins' average of 0.92 in 1983.

**BULL(DOZIER)**

Sophomore middle blocker Darian Dozier played a key role in the Gamecocks' 3-1 win over Texas A&M, recording a career-high 18 kills while hitting .571 and finishing with six block assists. When Dozier has reached double-figures in kills this season, South Carolina has a 3-1 record, with its only loss being in five sets at Clemson. On the season Dozier is averaging 2.10 kills per set and ranks fifth in the SEC with an average of 1.18 blocks per set.

**FILLING A NEED**

Freshman middle blocker Jacqy Angermiller has stepped into the lineup and made her presence felt at the net after missing the first six matches of the season with an injury. Angermiller came up big at the Duke Invitational, averaging a team-best 1.70 blocks per set. She posted a season-high nine blocks to lead the team against Duke. On the season she is averaging 1.78 kills per set and 1.22 blocks per set, which ranks fourth in the SEC.

**THÉVENIN GARNERS SEC HONOR**

Senior outside hitter Juliette Thévenin was named SEC Offensive Player of the Week on Sept. 23. Thévenin earned the award for the third time in her career after leading the Gamecocks to three wins to claim the Carolina Classic title. Thévenin, who was named tournament MVP, averaged 5.70 kills per set while hitting .436 for the tournament and averaged 6.00 points and 2.40 digs per set. In South Carolina's win over Western Carolina, she recorded 20 kills, the most in the league in three sets this season. She hit a career-best .571 to finish with 26 kills in a four-set victory over Robert Morris.

**TOURNEY TOUGHNESS**

The Gamecocks played in four preseason tournaments this season, the Gamecock Invitational, Big Orange Bash, Duke Invitational and Carolina Classic. It's the most tournaments a South Carolina team has played in before conference play since 2003, when the Gamecocks played in four that season. South Carolina won the Gamecock Invitational and Carolina Classic titles.

**ACCUMULATING HARDWARE**

The Gamecocks played in four preseason tournaments this season and have been well represented during the tournament awards ceremonies. Senior Juliette Thévenin was named MVP of the Gamecock Invitational and the Carolina Classic. Sophomore Kellie McNeil earned a spot on the Gamecock Invitational All-Tournament Team. Thévenin was also named to the All-Tournament Team at the Big Orange Bash. At the Duke Invitational, McNeil and sophomore Darian Dozier each earned a sport on the All-Tournament Team. Dozier was also named to the Carolina Classic All-Tournament Team.

**THÉVENIN NAMED PRESEASON ALL-SEC**

Senior outside hitter Juliette Thévenin was named to the Preseason All-SEC squad. Thévenin, a second-team All-SEC selection in 2012, looks to close out her Gamecock career in strong fashion after ranking second in SEC play in both kills per set (4.40) and points per set (4.81) a year ago.

**NEW FACES**

This year's South Carolina squad doesn't have a lot of familiarity to it, as only five letterwinners return from a year ago. Head coach Scott Swanson brought in 12 newcomers this season, including a freshman class of 10 players. The Gamecocks have received some immediate help from transfers Kellie McNeil (Minnesota) and Michaela Christiaansen (Pepperdine).

**YOUNGEST IN THE SEC**

South Carolina is the youngest team in the SEC in terms of both underclassmen and freshman. The Gamecocks have 14 underclassmen and 10 freshmen on the roster. Mississippi State is the next closest in underclassmen with 13, while Arkansas has the second most freshmen with eight.

**GAMECOCKS ON TV**

South Carolina has one match scheduled to be on television this season. The Gamecocks' match at Florida on Wednesday, Nov. 13 will be televised nationally on ESPN.

**ALL-TIME RECORDS**

- South Carolina holds a 735-564 (.566) record.
- The Gamecocks are 195-223 (.467) in SEC play.
- In matches played at the Volleyball Competition Facility, South Carolina is 155-79 (.662).

**SC IN SEC/NCAA STATS**

**NCAA Team Rankings**

Category	Figure	Rank
Hitting Percentage	.245	60th
Assists/Set	12.64	58th
Kills/Set	13.62	61st
Blocks/Set	2.41	78th
Service Aces/Set	0.84	312th
Digs/Set	14.38	183rd

**SEC Team Rankings (Overall)**

Category	Figure	Rank
Hitting Percentage	.245	4th
Opp. Hitting Percentage	.204	11th
Assists/Set	12.64	6th
Kills/Set	13.62	7th
Blocks/Set	2.41	6th
Service Aces/Set	0.84	12th
Digs/Set	14.38	8th

**SEC Team Rankings (SEC Only)**

Category	Figure	Rank
Hitting Percentage	.216	7th
Opp. Hitting Percentage	.258	10th
Assists/Set	12.38	8th
Kills/Set	13.10	8th
Blocks/Set	2.36	4th
Service Aces/Set	0.69	11th
Digs/Set	14.45	9th

**NCAA Individual Rankings**

Name	Figure	Rank
Hitting Percentage		
Darian Dozier	.343	98th
Kills/Set		
Juliette Thévenin	4.95	5th
Assists/Set		
Kellie McNeil	10.25	92nd
Blocks/Set		
Jacqy Angermiller	1.22	59th
Darian Dozier	1.18	79th
Points/Set		
Juliette Thévenin	5.29	11th

**SEC Individual Rankings (Overall)**

Name	Figure	Rank
Hitting Percentage		
Darian Dozier	.343	11th
Kills/Set		
Juliette Thévenin	4.95	1st
Assists/Set		
Kellie McNeil	10.25	7th
Blocks/Set		
Jacqy Angermiller	1.22	4th
Darian Dozier	1.18	5th
Kellie McNeil	0.90	16th
Digs/Set		
Michaela Christiaansen	3.96	7th
Points/Set		
Juliette Thévenin	5.29	1st

**SEC Individual Rankings (SEC Only)**

Name	Figure	Rank
Hitting Percentage		
Darian Dozier	.372	8th
Kills/Set		
Juliette Thévenin	4.90	1st
Assists/Set		
Kellie McNeil	9.86	7th
Service Aces/Set		
Michaela Christiaansen	0.24	19th
Blocks/Set		
Darian Dozier	1.07	7th
Jacqy Angermiller	1.03	8th
Kellie McNeil	0.93	T-12th
Digs/Set		
Michaela Christiaansen	3.79	8th
Points/Set		
Juliette Thévenin	5.26	1st

**NOTEWORTHY**

**DOUBLE-DOUBLES**

These double-doubles have been recorded by the Gamecocks in 2013:

Player (No.)	Opponent	Date	Combination
Juliette Thévenin (5)	Clemson	9/6	30 kills, 10 digs
	Liberty	9/13	16 kills, 14 digs
	Tennessee	9/29	23 kills, 16 digs
	Arkansas	10/4	18 kills, 13 digs
	Texas A&M	10/6	23 kills, 11 digs
Kellie McNeil (4)	Clemson	9/6	54 assists, 10 digs
	Utah State	9/13	46 assists, 11 digs
	Tennessee	9/29	41 assists, 20 digs
	Arkansas	10/4	42 assists, 13 digs

**DOUBLE-FIGURE KILLS**

The following Gamecocks reached double figures in kills in a match in 2013:

Player (No.)	Kills	Opponent	Date
Juliette Thévenin (18)	12	South Carolina State	8/30
	20	FIU	8/30
	30	Clemson	9/6
	25	Furman	9/7
	23	Winthrop	9/7
	14	Utah State	9/13
	16	Liberty	9/13
	15	Duke	9/14
	20	Western Carolina	9/20
	26	Robert Morris	9/21
	11	Presbyterian	9/21
	10	Missouri	9/27
	23	Tennessee	9/29
	18	Arkansas	10/4
	23	Texas A&M	10/6
	16	Georgia	10/11
	18	Mississippi State	10/18
	25	Ole Miss	10/20
Sarah Blomgren (7)	13	Furman	9/7
	14	Winthrop	9/7
	10	Duke	9/14
	11	Arkansas	10/4
	10	Texas A&M	10/6
Darian Dozier (4)	10	Mississippi State	10/18
	12	Ole Miss	10/20
	11	Clemson	9/6
	14	Utah State	9/13
	10	Western Carolina	9/20
Dessaa Legros (2)	18	Texas A&M	10/6
	10	South Carolina State	8/30
	12	Tennessee	9/29
Jacqy Angermiller (1)	12	Western Carolina	9/20

**DOUBLE-FIGURE Digs**

The following Gamecocks reached double figures in digs in a match in 2013:

Player (No.)	Digs	Opponent	Date
Michaela Christiaansen (16)	13	FIU	8/30
	10	High Point	8/31
	19	Clemson	9/6
	16	Furman	9/7
	20	Winthrop	9/7
	20	Utah State	9/13

**RECORD BREAKDOWN**

Overall .....	11-9
Conference .....	3-5
Vs. Ranked Teams.....	0-1
Home.....	7-3
Away .....	2-4
Neutral.....	2-2
August.....	3-0
September.....	6-5
October.....	2-4
November.....	0-0
December.....	0-0
Sundays.....	3-1
Mondays.....	0-0
Tuesdays.....	0-0
Wednesdays.....	0-0
Thursdays.....	0-0
Fridays.....	5-5
Saturdays.....	3-3
Winning set one.....	10-2
Losing set one.....	1-7
Winning set two.....	8-3
Losing set two.....	3-6
Winning set three.....	10-1
Losing set three.....	1-8
Winning set four.....	5-2
Losing set four.....	0-3
Three-set matches.....	6-4
Four-set matches.....	5-2
Five-set matches.....	0-3
More kills than opposition.....	11-2
Less kills than opposition.....	0-7
Kills equal.....	0-0
More hitting errors than opposition.....	4-4
Less hitting errors than opposition.....	7-3
Hitting errors equal.....	0-2
More attacks than opposition.....	3-4
Less attacks than opposition.....	7-5
Attacks equal.....	1-0
Out-hitting opposition.....	10-1
Out-hit by opposition.....	1-8
Hitting equal.....	0-0
More assists than opposition.....	11-1
Less assists than opposition.....	0-8
Assists equal.....	0-0
More aces than opposition.....	6-0
Less aces than opposition.....	4-7
Aces equal.....	1-2
More service errors than opposition.....	6-2
Less service errors than opposition.....	4-6
Service errors equal.....	1-1
More digs than opposition.....	10-3
Less digs than opposition.....	1-6
Digs equal.....	0-0
More total blocks than opposition.....	9-4
Less total blocks than opposition.....	2-3
Total blocks equal.....	0-2
More ball handling errors than opposition.....	6-3
Less ball handling errors than opposition.....	3-5
Ball handling errors equal.....	2-1

**NOTEWORTHY**

	12	Liberty	9/13
	16	Duke	9/14
	17	Western Carolina	9/20
	19	Robert Morris	9/21
	10	Presbyterian	9/21
	19	Tennessee	9/29
	14	Arkansas	10/4
	13	Texas A&M	10/6
	21	Kentucky	10/13
	19	Ole Miss	10/20
Gabrielle Rubeis (7)	11	FIU	8/30
	13	Clemson	9/6
	11	Liberty	9/13
	11	Western Carolina	9/20
	20	Arkansas	10/4
	19	Texas A&M	10/6
	10	Georgia	10/11
Juliette Thévenin (5)	10	Clemson	9/6
	14	Liberty	9/13
	16	Tennessee	9/29
	13	Arkansas	10/4
	11	Texas A&M	10/6
Lindsey Craft (5)	15	Clemson	9/6
	15	Utah State	9/13
	14	Liberty	9/13
	10	Western Carolina	9/20
	16	Ole Miss	10/20
Kellie McNeil (4)	10	Clemson	9/6
	11	Utah State	9/13
	20	Tennessee	9/29
	13	Arkansas	10/4
Megan Kirkland (1)	13	Winthrop	9/7

**MATCH-BY-MATCH INDIVIDUAL LEADERS**

DATE	OPPONENT	W/L	SCORE	HIGH KILLS	HIGH ASSISTS	HIGH ACES	HIGH DIGS	HIGH BLOCKS
8/30	South Carolina State	W	3-0	Thévenin (12)	Récaborde (14)	Récaborde, Christiaansen (2)	Christiaansen (7)	Dozier (6)
8/30	Florida International	W	3-0	Thévenin (20)	McNeil (32)	Christiaansen (3)	Christiaansen (13)	Dozier (2)
8/31	High Point	W	3-0	McNeil, Legros (8)	McNeil (25)	Craft (2)	Christiaansen (10)	Dozier (8)
9/6	at Clemson	L	3-2	Thévenin (30)	McNeil (54)	McDaniel (1)	Christiaansen (19)	Dozier (5)
9/7	vs. Furman	L	3-1	Thévenin (25)	McNeil (56)	Three players (1)	Christiaansen (16)	Dozier, McNeil (2)
9/7	vs. Winthrop	L	3-2	Thévenin (23)	McNeil (49)	Thévenin (2)	Christiaansen (13)	Dozier (5)
9/13	vs. Utah State	W	3-1	Thévenin, Dozier (14)	McNeil (46)	Dozier (2)	Christiaansen (20)	Dozier, Angermiller (4)
9/13	vs. Liberty	W	3-0	Thévenin (16)	McNeil (37)	McNeil (1)	Craft, Thévenin (14)	Dozier (5)
9/14	at Duke	L	3-1	Thévenin (15)	McNeil (24)	Three players (1)	Christiaansen (16)	Angermiller (9)
9/20	Western Carolina	W	3-0	Thévenin (20)	McNeil (44)	McNeil (2)	Christiaansen (17)	Angermiller (4)
9/21	Robert Morris	W	3-1	Thévenin (26)	McNeil (46)	McNeil (2)	Christiaansen (19)	Dozier (7)
9/21	Presbyterian	W	3-0	Thévenin (11)	McNeil (26)	Christiaansen (2)	Christiaansen (10)	Dozier, Blomgren (5)
9/27	at Missouri	L	3-0	Thévenin (10)	McNeil (21)	Thévenin (2)	Christiaansen (6)	Dozier (3)
9/29	at Tennessee	W	3-1	Thévenin (23)	McNeil (41)	Thévenin (2)	McNeil (20)	McNeil (7)
10/4	Arkansas	L	3-2	Thévenin (18)	McNeil (42)	Christiaansen (2)	Rubeis (20)	Dozier (6)
10/6	Texas A&M	W	3-1	Thévenin (23)	McNeil (53)	Three players (1)	Rubeis (19)	Dozier (6)
10/11	Georgia	L	3-0	Thévenin (16)	McNeil (33)	Kirkland, Rubeis (1)	Rubeis (10)	Angermiller (7)
10/13	Kentucky	L	3-0	Thévenin (9)	McNeil (19)	Thévenin (1)	Christiaansen (21)	Dozier, Blomgren (3)
10/18	at Mississippi State	L	3-0	Thévenin (18)	McNeil (22)	Christiaansen (2)	Thévenin, Christiaansen (9)	Dozier (6)
10/20	at Mississippi	W	3-1	Thévenin (25)	McNeil (45)	Craft, Christiaansen (1)	Christiaansen (19)	Angermiller (8)
10/25	Tennessee							
10/27	Auburn							
10/30	Coastal Carolina							
11/8	at Kentucky							
11/10	at Georgia							
11/13	at Florida							
11/15	Alabama							
11/17	Missouri							
11/22	at Arkansas							
11/24	LSU							
11/27	at Texas A&M							

**SOUTH CAROLINA MATCH-BY-MATCH STARTERS**

DATE	OPPONENT	W/L								LIBERO
8/30	South Carolina State	W	Kellie McNeil	Juliette Thévenin	Darian Dozier	Gabrielle Rubeis	Katlyn McDaniel	E. Johnbull	M. Christiaansen	
8/30	Florida International	W	Kellie McNeil	Juliette Thévenin	Darian Dozier	Gabrielle Rubeis	Sarah Blomgren	E. Johnbull	M. Christiaansen	
8/31	High Point	W	Kellie McNeil	Juliette Thévenin	Darian Dozier	Gabrielle Rubeis	Sarah Blomgren	E. Johnbull	M. Christiaansen	
9/6	at Clemson	L	Kellie McNeil	Juliette Thévenin	Darian Dozier	Gabrielle Rubeis	Lindsey Craft	E. Johnbull	M. Christiaansen	
9/7	at Furman	L	Kellie McNeil	Juliette Thévenin	Darian Dozier	Gabrielle Rubeis	Sarah Blomgren	E. Johnbull	M. Christiaansen	
9/7	at Winthrop	L	Kellie McNeil	Juliette Thévenin	Darian Dozier	Gabrielle Rubeis	Sarah Blomgren	E. Johnbull	M. Christiaansen	
9/13	at Utah State	W	Kellie McNeil	Juliette Thévenin	Darian Dozier	Gabrielle Rubeis	Lindsey Craft	E. Johnbull	M. Christiaansen	
9/14	at Liberty	W	Kellie McNeil	Juliette Thévenin	Darian Dozier	Gabrielle Rubeis	Lindsey Craft	J. Angermiller	M. Christiaansen	
9/14	at Duke	L	Kellie McNeil	Juliette Thévenin	Darian Dozier	Gabrielle Rubeis	Sarah Blomgren	J. Angermiller	M. Christiaansen	
9/20	Western Carolina	W	Kellie McNeil	Juliette Thévenin	Darian Dozier	Gabrielle Rubeis	Lindsey Craft	J. Angermiller	M. Christiaansen	
9/21	Robert Morris	W	Kellie McNeil	Juliette Thévenin	Darian Dozier	Gabrielle Rubeis	Lindsey Craft	J. Angermiller	M. Christiaansen	
9/21	Presbyterian	W	Kellie McNeil	Juliette Thévenin	Darian Dozier	Gabrielle Rubeis	Lindsey Craft	J. Angermiller	M. Christiaansen	
9/27	at Missouri	L	Kellie McNeil	Juliette Thévenin	Darian Dozier	Gabrielle Rubeis	Lindsey Craft	J. Angermiller	M. Christiaansen	
9/29	at Tennessee	W	Kellie McNeil	Juliette Thévenin	Darian Dozier	Gabrielle Rubeis	Lindsey Craft	J. Angermiller	M. Christiaansen	
10/4	Arkansas	L	Kellie McNeil	Juliette Thévenin	Darian Dozier	Gabrielle Rubeis	Lindsey Craft	J. Angermiller	M. Christiaansen	
10/6	Texas A&M	W	Kellie McNeil	Juliette Thévenin	Darian Dozier	M. Christiaansen	Megan Kirkland	J. Angermiller	Gabrielle Rubeis	
10/11	Georgia	L	Kellie McNeil	Juliette Thévenin	Darian Dozier	M. Christiaansen	Lindsey Craft	J. Angermiller	Gabrielle Rubeis	
10/13	Kentucky	L	Kellie McNeil	Juliette Thévenin	Darian Dozier	Dessaa Legros	Sarah Blomgren	J. Angermiller	M. Christiaansen	
10/18	at Mississippi State	L	Kellie McNeil	Juliette Thévenin	Darian Dozier	Gabrielle Rubeis	Lindsey Craft	J. Angermiller	M. Christiaansen	
10/20	at Mississippi	W	Kellie McNeil	Juliette Thévenin	Darian Dozier	Gabrielle Rubeis	Lindsey Craft	J. Angermiller	M. Christiaansen	
10/25	Tennessee									
10/27	Auburn									
10/30	Coastal Carolina									
11/8	at Kentucky									
11/10	at Georgia									
11/13	at Florida									
11/15	Alabama									
11/17	Missouri									
11/22	at Arkansas									
11/24	LSU									
11/27	at Texas A&M									

## 2013 SEASON STATISTICS

Overall record: 11-9 Conf: 3-5 Home: 7-3 Away: 2-4 Neutral: 2-2

#	Player	sp	Attack				Set		Serve			re	Dig		Blocking					points		
			k	k/s	e	ta	pct	a	a/s	sa	se		sa/s	dig	dig/s	bs	ba	total	blk/s		be	bhe
12	Juliette Thevenin	73	361	4.95	117	881	.277	17	0.23	12	31	0.16	20	157	2.15	0	26	26	0.36	6	1	386.0
4	Darian Dozier	73	153	2.10	36	341	.343	4	0.05	5	18	0.07	0	49	0.67	3	83	86	1.18	4	3	202.5
6	Sarah Blomgren	67	140	2.09	65	340	.221	5	0.07	0	0	0.00	0	19	0.28	5	44	49	0.73	8	0	167.0
7	Jacqy Angermiller	49	87	1.78	33	227	.238	4	0.08	0	0	0.00	1	8	0.16	5	55	60	1.22	6	0	119.5
3	Dessaa Legros	52	83	1.60	47	263	.137	5	0.10	0	0	0.00	1	18	0.35	0	10	10	0.19	2	0	88.0
8	Kellie McNeil	71	64	0.90	18	173	.266	728	10.25	9	12	0.13	1	137	1.93	7	57	64	0.90	2	14	108.5
16	KoKo Atoa-Williams	38	59	1.55	34	198	.126	1	0.03	0	0	0.00	2	16	0.42	0	13	13	0.34	2	1	65.5
17	Elizabeth Johnbull	27	26	0.96	10	68	.235	0	0.00	0	0	0.00	2	5	0.19	1	12	13	0.48	1	0	33.0
14	Katlyn McDaniel	8	6	0.75	5	19	.053	0	0.00	1	0	0.12	0	1	0.12	0	4	4	0.50	0	0	9.0
20	Abby Feruck	9	5	0.56	1	10	.400	0	0.00	0	0	0.00	2	1	0.11	0	4	4	0.44	0	0	7.0
1	Helen Recaborde	9	3	0.33	1	7	.286	46	5.11	2	1	0.22	0	17	1.89	0	2	2	0.22	0	7	6.0
10	Michae Christiaansen	73	2	0.03	0	5	.400	68	0.93	15	12	0.21	25	289	3.96	0	0	0	0.00	0	1	17.0
13	Gabrielle Rubeis	72	2	0.03	2	9	.000	21	0.29	4	18	0.06	14	160	2.22	0	0	0	0.00	0	0	6.0
15	Lindsey Craft	57	2	0.04	1	6	.167	17	0.30	9	13	0.16	4	139	2.44	0	0	0	0.00	0	1	11.0
9	Megan Kirkland	25	1	0.04	0	1	1.000	6	0.24	3	5	0.12	5	32	1.28	0	0	0	0.00	0	0	4.0
21	Jord Wilson-Talmadge	5	0	0.00	0	0	.000	1	0.20	1	3	0.20	0	2	0.40	0	0	0	0.00	0	0	1.0
SOUTH CAROLINA		73	994	13.62	370	2548	.245	923	12.64	61	113	0.84	87	1050	14.38	21	310	176.0	2.41	31	28	1231.0
Opponents		73	935	12.81	406	2591	.204	876	12.00	89	133	1.22	61	1006	13.78	31	214	138.0	1.89	28	27	1162.0

Team Statistics	SC	OPP
<b>ATTACK</b>		
Kills	994	935
Errors	370	406
Total Attacks	2548	2591
Attack Pct	.245	.204
Kills/Set	13.6	12.8
<b>SET</b>		
Assists	923	876
Attempts	2569	2634
Assist Pct	.359	.333
Assists/Set	12.6	12.0
<b>SERVE</b>		
Aces	61	89
Errors	113	133
Attempts	1633	1559
Serve Pct	.931	.915
Aces/Set	0.8	1.2
<b>SERVE RECEPTIONS</b>		
Errors	87	61
Errors/Set	1.2	0.8
Attempts	1422	1517
Reception Pct	.939	.960
<b>DEFENSE</b>		
Digs	1050	1006
Digs/Set	14.4	13.8
<b>BLOCKING</b>		
Block Solo	21	31
Block Assist	310	214
Total Blocks	176.0	138.0
Blocks/Set	2.4	1.9
Block Errors	31	28
Ball handling errors	28	27
<b>ATTENDANCE</b>		
Total	10177	8282
Dates/Avg Per Date	10/1018	6/1380
Neutral site #/Avg	4/201	
Current win streak	1	-
Home win streak	0	-

Date	Opponent	Score	Score by set	Att.
%8/30/2013	SOUTH CAROLINA STATE	w 3-0	25-14,25-9,25-13	260
%8/30/2013	FIU	w 3-0	25-12,25-22,25-14	1058
%8/31/2013	HIGH POINT	w 3-0	25-18,25-17,25-21	1026
!9/6/2013	at Clemson	L 2-3	25-22,20-25,21-25,25-20,9-15	1840
!9/7/2013	vs Furman	L 1-3	27-29,21-25,26-24,20-25	125
!9/7/2013	vs Winthrop	L 2-3	25-21,25-17,22-25,22-25,12-15	254
#9/13/2013	vs Utah State	w 3-1	16-25,25-22,25-20,25-19	221
#9/13/2013	vs Liberty	w 3-0	25-19,25-21,25-21	205
#9/14/2013	at Duke	L 1-3	22-25,25-20,17-25,21-25	1211
&9/20/2013	WESTERN CAROLINA	w 3-0	25-18,25-18,25-19	903
&9/21/2013	ROBERT MORRIS	w 3-1	26-24,20-25,25-10,25-16	604
&9/21/2013	PRESBYTERIAN	w 3-0	25-12,25-15,25-21	1153
*9/27/2013	at Mizzou	L 0-3	16-25,14-25,18-25	2904
*9/29/2013	at Tennessee	w 3-1	25-18,17-25,25-20,25-23	1437
*10/4/2013	ARKANSAS	L 2-3	22-25,25-23,16-25,25-23,12-15	1405
*10/6/2013	TEXAS A&M	w 3-1	25-23,25-20,20-25,25-23	1430
*10/11/2013	GEORGIA	L 0-3	21-25,20-25,25-27	1211
*10/13/2013	#15 KENTUCKY	L 0-3	13-25,22-25,23-25	1127
*10/18/2013	at Mississippi State	L 0-3	26-28,18-25,20-25	489
*10/20/2013	at Ole Miss	w 3-1	25-20,21-25,25-23,25-18	401

% Gamecock Invitational  
 ! Big Orange Bash  
 # Duke Invitational  
 & Carolina Classic

Record in 3-set matches:6-4 • Record in 4-set matches:5-2 • Record in 5-set matches:0-3



**2013 CONFERENCE ONLY STATISTICS**

<b>RECORD:</b>	<b>OVERALL</b>	<b>HOME</b>	<b>AWAY</b>	<b>NEUTRAL</b>
ALL GAMES	3-5	1-3	2-2	0-0
CONFERENCE	3-5	1-3	2-2	0-0
NON-CONFERENCE	0-0	0-0	0-0	0-0

#	Player	sp	Attack				Set		Serve			re	Dig		Blocking					points		
			k	k/s	e	ta	pct	a	a/s	sa	se		sa/s	dig	dig/s	bs	ba	total	blk/s		be	bhe
12	Juliette Thevenin	29	142	4.90	52	359	.251	3	0.10	6	16	0.21	9	70	2.41	0	9	9	0.31	2	0	152.5
4	Darian Dozier	29	63	2.17	12	137	.372	2	0.07	0	8	0.00	0	19	0.66	2	29	31	1.07	2	2	79.5
6	Sarah Blomgren	26	55	2.12	25	129	.233	1	0.04	0	0	0.00	0	9	0.35	2	15	17	0.65	2	0	64.5
7	Jacqy Angermiller	29	41	1.41	21	128	.156	3	0.10	0	0	0.00	1	4	0.14	4	26	30	1.03	4	0	58.0
3	Dessaa Legros	24	39	1.62	24	135	.111	3	0.12	0	0	0.00	1	10	0.42	0	7	7	0.29	0	0	42.5
8	Kellie McNeil	28	23	0.82	11	80	.150	276	9.86	1	7	0.04	0	61	2.18	3	23	26	0.93	0	8	38.5
16	KoKo Atoa-Williams	10	9	0.90	7	40	.050	1	0.10	0	0	0.00	0	6	0.60	0	2	2	0.20	1	0	10.0
17	Elizabeth Johnbull	6	3	0.50	3	12	.000	0	0.00	0	0	0.00	0	1	0.17	0	3	3	0.50	0	0	4.5
10	Michae Christiaansen	29	2	0.07	0	4	.500	32	1.10	7	4	0.24	12	110	3.79	0	0	0	0.00	0	0	9.0
1	Helen Recaborde	3	1	0.33	0	4	.250	19	6.33	0	1	0.00	0	5	1.67	0	1	1	0.33	0	3	1.5
13	Gabrielle Rubeis	29	1	0.03	1	5	.000	13	0.45	2	9	0.07	10	70	2.41	0	0	0	0.00	0	0	3.0
9	Megan Kirkland	8	1	0.12	0	1	1.000	2	0.25	2	4	0.25	1	9	1.12	0	0	0	0.00	0	0	3.0
15	Lindsey Craft	24	0	0.00	0	1	.000	3	0.12	2	5	0.08	0	44	1.83	0	0	0	0.00	0	1	2.0
21	Jord Wilson-Talmadge	3	0	0.00	0	0	.000	1	0.33	0	2	0.00	0	1	0.33	0	0	0	0.00	0	0	0.0
<b>TEAM</b>		-	-	-	-	-	-	-	-	-	-	-	3	-	-	-	-	-	-	-	-	-
<b>SOUTH CAROLINA</b>		29	380	13.10	156	1035	.216	359	12.38	20	56	0.69	37	419	14.45	11	115	68.5	2.36	11	14	468.5
<b>Opponents</b>		29	408	14.07	141	1034	.258	383	13.21	37	61	1.28	20	427	14.72	13	105	65.5	2.26	17	12	510.5

<b>Team Statistics</b>	<b>SC</b>	<b>OPP</b>	<b>Date</b>	<b>Opponent</b>	<b>Score</b>	<b>Score by set</b>	<b>Att.</b>
<b>ATTACK</b>			*9/27/2013	at Mizzou	L 0-3	16-25,14-25,18-25	2904
Kills	380	408	*9/29/2013	at Tennessee	w 3-1	25-18,17-25,25-20,25-23	1437
Errors	156	141	*10/4/2013	ARKANSAS	L 2-3	22-25,25-23,16-25,25-23,12-15	1405
Total Attacks	1035	1034	*10/6/2013	TEXAS A&M	w 3-1	25-23,25-20,20-25,25-23	1430
Attack Pct	.216	.258	*10/11/2013	GEORGIA	L 0-3	21-25,20-25,25-27	1211
Kills/Set	13.1	14.1	*10/13/2013	#15 KENTUCKY	L 0-3	13-25,22-25,23-25	1127
<b>SET</b>			*10/18/2013	at Mississippi State	L 0-3	26-28,18-25,20-25	489
Assists	359	383	*10/20/2013	at Ole Miss	w 3-1	25-20,21-25,25-23,25-18	401
Attempts	1065	1048	% Gamecock Invitational				
Assist Pct	.337	.365	! Big Orange Bash				
Assists/Set	12.4	13.2	# Duke Invitational				
<b>SERVE</b>			& Carolina Classic				
Aces	20	37	Record in 3-set matches: 0-4				
Errors	56	61	Record in 4-set matches: 3-0				
Attempts	621	676	Record in 5-set matches: 0-1				
Serve Pct	.910	.910					
Aces/Set	0.7	1.3					
<b>SERVE RECEPTIONS</b>							
Errors	37	20					
Errors/Set	1.3	0.7					
Attempts	613	563					
Reception Pct	.940	.964					
<b>DEFENSE</b>							
Digs	419	427					
Digs/Set	14.4	14.7					
<b>BLOCKING</b>							
Block Solo	11	13					
Block Assist	115	105					
Total Blocks	68.5	65.5					
Blocks/Set	2.4	2.3					
Block Errors	11	17					
Ball handling errors	14	12					
<b>ATTENDANCE</b>							
Total	5173	5231					
Dates/Avg Per Date	4/1293	4/1308					
Neutral site #/Avg	0/0						
Current win streak	1	-					
Home win streak	0	-					

**CAREER RECORDS**

**KILLS**

Rank	Name (Years)	Kills
1.	Lori Rowe (1983-86)	1,855
2.	Shonda Cole (2003-06)	1,775
3.	<i>Juliette Thévenin (2010-present)</i>	1,485
4.	Cally Plummer (1998-02)	1,345
5.	Heather Larkin (1994-97)	1,293
6.	Amy Iannocari (1991-94)	1,231
7.	Kim DeNeve (1986-89)	1,179
8.	Ivana Kujundzic (2006-09)	1,133
9.	Berna Dwyer (1999-02)	1,107
10.	Lora Myers (1987-90)	1,100

**KILLS PER SET  
(Minimum 500 Kills)**

Rank	Name (Years)	(K-SP) K/S
1.	Shonda Cole (2003-06)	(1,775-417) 4.26
2.	<i>Juliette Thévenin (2010-present)</i>	(1,485-362) 4.10
3.	Lori Rowe (1983-86)	(1,855-507) 3.66
4.	Kori Ermigarat (1994-95)	(842-233) 3.61
5.	Cally Plummer (1998-02)	(1,345-394) 3.41
6.	Heather Larkin (1994-97)	(1,293-395) 3.27
7.	Crystal Moore (1997-99)	(754-240) 3.14
8.	Kim DeNeve (1986-89)	(1,179-381) 3.09
9.	Berna Dwyer (1999-02)	(1,107-366) 3.02
10.	Ivana Kujundzic (2006-09)	(1,133-389) 2.91

**ATTACKS**

Rank	Name (Years)	Attacks
1.	Shonda Cole (2003-06)	4,181
2.	Lori Rowe (1983-86)	3,874
3.	<i>Juliette Thévenin (2010-present)</i>	3,784
4.	Amy Iannocari (1991-94)	3,487
5.	Cally Plummer (1998-02)	3,288
6.	Ivana Kujundzic (2006-09)	3,047
7.	Heather Larkin (1994-97)	2,958
8.	Caryn Case (1988-91)	2,936
9.	Lora Myers (1987-90)	2,825
10.	Kim DeNeve (1986-89)	2,819

**HITTING PERCENTAGE  
(Minimum 1,000 Attacks)**

Rank	Name (Years)	(K-E-A) Pct.
1.	Lori Rowe (1983-86)	(1,855-298-3,874) .402
2.	Ashley Edlund (1995-98)	(517-92-1,200) .354
3.	Niece Curry (2001-03)	(704-213-1,495) .328
4.	Belita Salters (2005-08)	(892-299-1,903) .312
5.	Libby Ralston (1989-92)	(699-225-1,572) .302
6.	Sam Alban (1999-02)	(844-316-1,877) .281
7.	Heather Larkin (1994-97)	(1,293-463-2,958) .281
8.	S. Pflughaupt (1986-89)	(1,093-432-2,413) .274
9.	Berna Dwyer (1999-02)	(1,107-420-2,533) .271
10.	Toni Venturini (1984-85)	(555-191-1,357) .268

**ASSISTS**

Rank	Name (Years)	Assists
1.	Ashley Edlund (1995-98)	5,177
2.	Megan Hosp (1999-02)	4,689
3.	Tammy Correll (1987-90)	4,563
4.	Julie Morrison (1984-87)	3,602
5.	Jodi Thompson (1991-94)	3,237
6.	Taylor Bruns (2009-12)	2,858
7.	Shellie Higgins (1983-84)	2,544
8.	Kelly Morrow (1993-96)	2,136
9.	Bridget Denson-Dorman (2008-09)	2,044
10.	Iris Santos (2003-06)	2,040

**ASSISTS PER SET  
(Minimum 500 Assists)**

Rank	Name (Years)	(A-SP) A/S
1.	Megan Hosp (1999-02)	(4,689-387) 12.12
2.	Ashley Edlund (1995-98)	(5,177-430) 12.04
3.	Tammy Correll (1987-90)	(4,563-447) 10.21
4.	Shellie Higgins (1983-84)	(2,544-254) 10.02

5.	Katelyn Panzau (2003-04)	(1,857-194) 9.57
6.	Bridget Denson-Dorman (2008-09)	(2,044-215) 9.51
7.	Julie Morrison (1984-87)	(3,602-385) 9.36
8.	Taylor Bruns (2009-12)	(2,858-377) 7.58
9.	Jodi Thompson (1991-94)	(3,237-495) 6.54
10.	Kelly Morrow (1993-96)	(2,136-354) 6.03

**ACES**

Rank	Name (Years)	Aces
1.	Cally Plummer (1998-02)	243
2.	Teri Montoya (1983-84)	214
3.	Tammy Correll (1987-90)	190
4.	Lori Rowe (1983-86)	186
5.	Jodi Thompson (1991-94)	162
6.	Megan Hosp (1999-02)	132
7.	Ashley Edlund (1995-98)	130
8.	Kim Brown (1983-84)	129
9.	Colleen McKenzie (1985-88)	119
10.	Shellie Higgins (1983-84)	116

**ACES PER SET  
(Minimum 75 Aces)**

Rank	Name (Years)	(A-SP) A/S
1.	Teri Montoya (1983-84)	(214-254) 0.84
2.	Cally Plummer (1998-02)	(243-394) 0.62
3.	Kim Brown (1983-84)	(129-254) 0.51
4.	Shellie Higgins (1983-84)	(116-254) 0.46
5.	Tammy Correll (1987-90)	(190-447) 0.43
6.	Lori Rowe (1983-86)	(186-507) 0.37
7.	Crystal Moore (1997-99)	(82-240) 0.34
8.	Megan Hosp (1999-02)	(132-387) 0.34
9.	Jodi Thompson (1991-94)	(162-495) 0.33
10.	Diane Mitchell (1990-93)	(89-275) 0.32

**DIGS**

Rank	Name (Years)	Digs
1.	Sarah Cline (2006-09)	1,464
2.	Diane Denton (1985-88)	1,462
3.	Hannah Lawing (2007-10)	1,334
4.	Jodi Thompson (1991-94)	1,332
5.	Amy Iannocari (1991-94)	1,196
6.	Ashley Edlund (1995-98)	1,160
7.	Megan Hosp (1999-02)	1,079
8.	Shani Abshier (1994-97)	1,049
9.	Paige Wheeler (2010-12)	1,001
10.	Cally Plummer (1998-02)	996

**DIGS PER SET  
(Minimum 500 Digs)**

Rank	Name (Years)	(D-SP) D/S
1.	Fernanda Laires (1996-97)	(839-208) 4.03
2.	Kori Ermigarat (1994-95)	(920-233) 3.95
3.	Paige Wheeler (2010-12)	(1,001-280) 3.58
4.	Sarah Cline (2006-09)	(1,464-422) 3.47
5.	Hannah Lawing (2007-10)	(1,334-398) 3.35
6.	Crystal Moore (1997-99)	(765-240) 3.19
7.	Diane Denton (1985-88)	(1,462-477) 3.06
8.	Katie Gerst (1992-94)	(986-334) 2.95
9.	Shani Abshier (1994-97)	(1,049-357) 2.94
10.	Megan Hosp (1999-02)	(1,079-387) 2.79

**BLOCK SOLOS**

Rank	Name (Years)	Block Solos
1.	Stephanie Pflughaupt (1986-89)	264
2.	Lori Rowe (1983-86)	191
3.	Amy Collinsworth (1990-93)	117
4.	Libby Ralston (1989-92)	110
5.	Jennifer Guess (1990-93)	79
6.	Heather Larkin (1994-97)	74
7.	Belita Salters (2005-08)	65
8.	Lorri Anderson (1984-85)	62
9.	Toni Venturini (1984-85)	49
10.	Megan Laughlin (2007-10)	46
	Berna Dwyer (1999-02)	46

**BLOCK ASSISTS**

Rank	Name (Years)	Block Assists
1.	Stephanie Pflughaupt (1986-89)	461
2.	Lori Rowe (1983-86)	450
3.	Amy Collinsworth (1990-93)	358
4.	Heather Larkin (1994-97)	344
5.	Jennifer Guess (1990-93)	328
6.	Lori Drost (1994-97)	306
7.	Belita Salters (2005-08)	305
8.	Sam Alban (1999-02)	285
9.	Berna Dwyer (1999-02)	278
10.	Cindy Robarge (1995-98)	276

**TOTAL BLOCKS**

Rank	Name (Years)	Total Blocks
1.	Stephanie Pflughaupt (1986-89)	725
2.	Lori Rowe (1983-86)	641
3.	Amy Collinsworth (1990-93)	475
4.	Heather Larkin (1994-97)	418
5.	Jennifer Guess (1990-93)	407
6.	Libby Ralston (1989-92)	383
7.	Belita Salters (2005-08)	370
8.	Lori Drost (1994-97)	349
9.	Sam Alban (1999-02)	328
10.	Berna Dwyer (1999-02)	324

**BLOCKS PER SET  
(Minimum 150 Blocks)**

Rank	Name (Years)	(B-SP) B/S
1.	Stephanie Pflughaupt (1986-89)	(725-455) 1.59
2.	Dec Dec Fortman (1995-97)	(248-196) 1.27
3.	Lori Rowe (1983-86)	(641-507) 1.26
4.	Sue Little (1983)	(162-131) 1.24
5.	Libby Ralston (1989-92)	(383-310) 1.24
6.	Danika Taylor (1998-99)	(238-206) 1.16
7.	Lauren Ford (2003-05)	(280-251) 1.12
8.	Heather Larkin (1994-97)	(418-395) 1.06
9.	Amy Collinsworth (1990-93)	(475-450) 1.06
10.	Lorri Anderson (1984-85)	(186-178) 1.05

**TOTAL POINTS**

Rank	Name (Years)	Points
1.	Lori Rowe (1983-86)	2457.0
2.	Shonda Cole (2003-06)	2029.0
3.	Cally Plummer (1998-2002)	1749.5
4.	Stephanie Pflughaupt (1986-89)	1679.5
5.	Heather Larkin (1994-97)	1636.0
6.	<i>Juliette Thévenin (2010-present)</i>	1,629.5
7.	Kim DeNeve (1986-89)	1401.5
8.	Berna Dwyer (1999-2002)	1399.0
9.	Amy Iannocari (1991-94)	1386.5
10.	Ivana Kujundzic (2006-09)	1345.0

**POINTS PER SET  
(Minimum 500 Points)**

Rank	Name (Years)	(P-SP) P/S
1.	Shonda Cole (2003-06)	(2,029.0-417) 4.87
2.	Lori Rowe (1983-86)	(2,457.0-507) 4.85
3.	<i>Juliette Thévenin (2010-present)</i>	(1,629.5-355) 4.50
4.	Cally Plummer (1998-2002)	(1,749.5-362) 4.44
5.	Heather Larkin (1994-97)	(1,636.0-395) 4.14
6.	Kori Ermigarat (1994-95)	(946.5-233) 4.06
7.	Berna Dwyer (1999-2002)	(1,399.0-366) 3.82
8.	Crystal Moore (1997-99)	(892.5-240) 3.72
9.	Stephanie Pflughaupt (1986-89)	(1,679.5-455) 3.69
10.	Kim DeNeve (1986-89)	(1,401.5-381) 3.68

Note: Season statistics were not kept until 1983.

Current players in *italics*

# INDIVIDUAL MATCH RECORDS

## KILLS

### 3-SET MATCHES

Rank	Name	Opponent (Date)	Kills
1.	Shonda Cole	Georgia (11/15/2006)	27
2.	Amy Iannocari	Kentucky (10/30/1994)	23
3.	Shonda Cole	Arkansas (10/27/2006)	22
4.	<i>Juliette Thévenin</i>	<i>Montana (8/26/2011)</i>	21
	Cally Plummer	LSU (9/22/2000)	21
	Heather Larkin	North Carolina State (9/6/1997)	21
	Shani Abshier	Kentucky (11/17/1996)	21
	Lori Rowe	USF (10/7/1983)	21
	Lori Rowe	Appalachian State (9/17/1983)	21

### 4-SET MATCHES

Rank	Name	Opponent (Date)	Kills
1.	Shonda Cole	Florida (9/17/2006)	35
2.	Shonda Cole	College of Charleston (11/22/2006)	29
	Shonda Cole	Tennessee (11/12/2006)	29
4.	Hannah Lawing	Harvard (9/12/2009)	28
	Amy Iannocari	Florida (11/13/1994)	28

### 5-SET MATCHES

Rank	Name	Opponent (Date)	Kills
1.	Shonda Cole	TCU (8/25/2006)	37
2.	Shonda Cole	Auburn (9/15/2006)	36
	Shonda Cole	Clemson (8/31/2006)	36
4.	Shonda Cole	St. John's (9/8/2006)	32
	Lori Rowe	Louisville (10/28/1983)	32

## ATTACKS

### 3-SET MATCHES

Rank	Name	Opponent (Date)	Attacks
1.	Cally Plummer	Tennessee (11/3/2000)	54
2.	Amy Iannocari	Kentucky (10/30/1994)	53
3.	Shonda Cole	Kentucky (10/8/2006)	52
4.	<i>Juliette Thévenin</i>	<i>Montana (8/26/2011)</i>	50
	Kori Ermigarat	Xavier (9/1/1995)	50

### 4-SET MATCHES

Rank	Name	Opponent (Date)	Attacks
1.	Shonda Cole	Tennessee (11/12/2006)	73
2.	Shonda Cole	North Carolina (11/27/2004)	72
3.	Shonda Cole	College of Charleston (11/22/2006)	65
	Shonda Cole	Alabama (11/17/2006)	65
	Shonda Cole	Florida (9/17/2006)	65

### 5-SET MATCHES

Rank	Name	Opponent (Date)	Attacks
1.	Kori Ermigarat	Maryland (9/16/1995)	75
2.	<i>Juliette Thévenin</i>	<i>Clemson (9/6/13)</i>	73
	<i>Juliette Thévenin</i>	<i>Alabama (11/16/2012)</i>	73
	Amy Iannocari	Louisiana Tech (9/19/1992)	73
4.	Shonda Cole	Auburn (9/15/2006)	71
5.	Ivana Kujundzic	Rice (9/11/2009)	70
	Lori Rowe	Louisville (10/28/1983)	70

## HITTING PERCENTAGE

### 3-SET MATCHES (MINIMUM 15 ATTACKS)

Rank	Name	Opponent (Date)	(K-E-A) Pct.
1.	Lori Rowe	Appalachian State (9/17/1983)	(21-1-23) .870
2.	Belita Salters	Mississippi State (11/23/2008)	(15-0-19) .789
3.	Lori Rowe	East Carolina (11/12/1983)	(11-0-15) .733
	Megan Laughlin	South Carolina State (10/23/2008)	(11-0-15) .733
5.	Lori Rowe	Chattanooga (10/8/1983)	(12-0-17) .706

### 4-SET MATCHES (MINIMUM 20 ATTACKS)

Rank	Name	Opponent (Date)	(K-E-A) Pct.
1.	Berna Dwyer	LSU (10/6/2002)	(17-0-25) .680
2.	Danika Taylor	Mississippi State (9/25/1998)	(16-0-26) .615
3.	Berna Dwyer	Georgia (11/17/2002)	(19-2-29) .586
4.	Niece Curry	LSU (10/6/2002)	(21-3-31) .581
5.	Bethanie Thomas	Elon (9/3/2011)	(16-1-26) .577

## 5-SET MATCHES (MINIMUM 25 ATTACKS)

Rank	Name	Opponent (Date)	(K-E-A) Pct.
1.	Sam Alban	New Mexico (9/8/2000)	(19-3-28) .571
2.	Niece Curry	Clemson (9/10/2002)	(15-1-25) .560
3.	Belita Salters	UNLV (8/30/2008)	(21-2-35) .543
4.	Belita Salters	Rhode Island (9/5/2008)	(17-2-28) .536
5.	Meredith Moorhead	Kentucky (11/10/2006)	(15-2-25) .520

## ASSISTS

### 3-SET MATCHES

Rank	Name	Opponent (Date)	Assists
1.	Megan Hosp	LSU (9/22/2000)	64
2.	Ashley Edlund	Kentucky (10/20/1995)	59
3.	Megan Hosp	Tennessee (11/3/2000)	55
4.	Jodi Thompson	Kentucky (10/30/1994)	54
5.	Ashley Edlund	Arkansas (11/22/1997)	53
	Kelly Morrow	Appalachian State (9/24/1993)	53

### 4-SET MATCHES

Rank	Name	Opponent (Date)	Assists
1.	Megan Hosp	Arkansas (9/24/2000)	72
2.	Ashley Edlund	Mississippi State (9/27/1996)	71
3.	Ashley Edlund	Alabama (10/6/1996)	70
	Ashley Edlund	Georgia (11/12/1995)	70
5.	Megan Hosp	Auburn (10/22/1999)	69

### 5-SET MATCHES

Rank	Name	Opponent (Date)	Assists
1.	Tammy Correll	George Washington (11/12/1988)	84
2.	Julie Morrison	North Carolina State (11/7/1986)	74
3.	Megan Hosp	Northern Illinois (9/8/2000)	65
4.	Iris Santos	Auburn (10/22/2006)	64
	Megan Hosp	Michigan (9/17/1999)	64
	Ashley Edlund	Kentucky (11/5/1995)	64
	Kelly Morrow	Auburn (10/2/1994)	64

## ACES

### 3-SET MATCHES

Rank	Name	Opponent (Date)	Aces
1.	Megan Hosp	Creighton (9/7/2002)	8
	Cally Plummer	Auburn (10/11/1998)	8
3.	Ashley Edlund	Alabama (10/9/1998)	7
4.	Taylor Bruns	Alabama (11/6/2011)	6
	Lynae Vanden Hull	Auburn (10/17/2004)	6
	Megan Hosp	Auburn (9/27/2002)	6
	Berna Dwyer	Auburn (10/26/2001)	6
	Diane Mitchell	Coastal Carolina (9/10/1993)	6
	Lori Rowe	Mississippi State (9/30/1983)	6

### 4-SET MATCHES

Rank	Name	Opponent (Date)	Aces
1.	Cally Plummer	Clemson (10/10/2001)	8
	Amy Collinsworth	Jacksonville (9/6/1991)	8
3.	Jordan Bradosky	The Citadel (9/26/2010)	6
	Cally Plummer	Arkansas (10/4/2002)	6
	Cally Plummer	North Carolina (11/24/2001)	6
	Cally Plummer	Kentucky (11/8/1998)	6
	Cally Plummer	LSU (10/22/1998)	6
	Cally Plummer	Florida (10/2/1998)	6

### 5-SET MATCHES

Rank	Name	Opponent (Date)	Aces
1.	Lori Rowe	Cincinnati (10/29/1983)	9
2.	Taylor Bruns	BYU (8/28/2010)	6
	Shonda Cole	Alabama (10/1/2006)	6
	Kim DeNeve	Washington State (9/23/1988)	6
5.	Shonda Cole	LSU (9/23/2005)	5
	Katelyn Panzau	George Washington (9/20/2003)	5
	Lynae Vanden Hull	Santa Clara (9/18/2003)	5
	Cally Plummer	Clemson (9/10/2002)	5
	Cally Plummer	Michigan (9/17/1999)	5
	Dee Dee Fortman	Kentucky (10/24/1997)	5

## INDIVIDUAL MATCH RECORDS

### DIGS

#### 3-SET MATCHES

Rank	Name	Opponent (Date)	Digs
1.	Kori Ermigarat	Kentucky (10/20/1995)	30
2.	Hannah Lawing	Furman (9/10/2010)	26
	Kori Ermigarat	UNC Greensboro (9/6/1995)	26
	Jodi Thompson	Mercer (9/4/1993)	26
5.	Amy Iannocari	Appalachian State (9/24/1993)	25

#### 4-SET MATCHES

Rank	Name	Opponent (Date)	Digs
1.	Yajaira Cadet	North Carolina (12/6/2002)	30
	Kori Ermigarat	Georgia (11/12/1995)	30
3.	Paige Wheeler	LSU (11/13/2011)	28
	Paige Wheeler	Elon (9/3/2011)	28
	Dinelia Concepcion	Alabama (11/17/2006)	28

#### 5-SET MATCHES

Rank	Name	Opponent (Date)	Digs
1.	Hannah Lawing	Mississippi State (11/13/2010)	38
2.	Sarah Cline	Arkansas (11/2/2007)	36
	Jodi Thompson	Louisiana Tech (9/19/1992)	36
4.	Shani Abshier	Maryland (9/16/1995)	33
5.	Diane Denton	Florida (10/11/1988)	32

### BLOCK SOLOS

#### 3-SET MATCHES

Rank	Name	Opponent (Date)	Blocks
1.	Teresa Stenlund	Lipscomb (9/11/2010)	5
	Lori Rowe	Western Carolina (9/24/1983)	5
3.	Belita Salters	Virginia Commonwealth (8/31/2007)	4
	Belita Salters	Boston College (8/25/2007)	4
	Nicole Miller	Mercer (9/3/2005)	4
	Katie Gerst	Davidson (9/12/1994)	4
	Jennifer Guess	Mississippi State (10/3/1993)	4

#### 4-SET MATCHES

Rank	Name	Opponent (Date)	Blocks
1.	Stephanie Pflughaupt	Charlotte (10/5/1988)	9
2.	Stephanie Pflughaupt	Rice (10/18/1986)	5
3.	Heather Larkin	Arkansas (10/5/1997)	4
	Katie Gerst	UNC Asheville (9/25/1993)	4
5.	Nicole Miller	Pittsburgh (9/2/2005)	3
	Lauren Ford	Mississippi (10/8/2004)	3
	Berna Dwyer	American (12/5/2002)	3
	Danika Taylor	Mississippi State (9/25/1998)	3
	Heather Larkin	Georgia (9/26/1997)	3
	Heather Larkin	Mississippi (9/29/1996)	3
	Lori Drost	Mississippi State (9/27/1996)	3
	Dee Dee Fortman	Alabama (10/15/1995)	3
	Heather Larkin	Georgia (9/24/1995)	3
	Stephanie Pflughaupt	Georgia (9/14/1988)	3

#### 5-SET MATCHES

Rank	Name	Opponent (Date)	Blocks
1.	<i>Juliette Thévenin</i>	<i>Alabama (11/16/2012)</i>	4
	Lori Rowe	North Carolina (10/7/1983)	4
3.	Bethanie Thomas	East Tennessee State (8/25/2012)	3
	Belita Salters	LSU (10/26/2008)	3
	Megan Laughlin	LSU (10/28/2007)	3
	Megan Laughlin	Maryland (9/1/2007)	3
	Lynae Vanden Hull	Mississippi State (10/15/2006)	3
	Heather Larkin	Alabama (9/30/1994)	3
	Jennifer Guess	College of Charleston (10/20/1993)	3
	Lori Rowe	Memphis (10/14/1983)	3

### BLOCK ASSISTS

#### 3-SET MATCHES

Rank	Name	Opponent (Date)	Blocks
1.	Lori Rowe	College of Charleston (10/4/1983)	11
	Lori Rowe	Western Carolina (9/24/1983)	11
3.	Dee Dee Fortman	Kentucky (10/20/2005)	9
	Dee Dee Fortman	Illinois State (12/4/1997)	9
	Jennifer Guess	Alabama (10/1/1993)	9
	Lori Rowe	Virginia Tech (11/18/1983)	9

#### 4-SET MATCHES

Rank	Name	Opponent (Date)	Blocks
1.	Libby Ralston	Jacksonville (9/6/1991)	15
2.	Stephanie Pflughaupt	Georgia (9/14/1988)	13
3.	Belita Salters	North Carolina (9/10/2005)	10
	Lauren Ford	Mississippi (10/8/2004)	10
	Berna Dwyer	Georgia (11/17/2002)	10
	Berna Dwyer	Arizona State (9/6/2002)	10
	Dee Dee Fortman	Georgia (11/12/1995)	10
	Dee Dee Fortman	Tennessee (10/22/1995)	10
	Heather Larkin	Tennessee (10/14/1994)	10

#### 5-SET MATCHES

Rank	Name	Opponent (Date)	Blocks
1.	Heather Larkin	Kentucky (10/7/1994)	12
2.	Crystal Johnson	St. John's (9/8/2006)	11
3.	Danika Taylor	Michigan (9/17/1999)	10
	Lori Drost	Maryland (9/16/1995)	10
	Amy Collinsworth	College of Charleston (10/20/1993)	10
	Stephanie Pflughaupt	Memphis (11/22/1986)	10
	Lori Rowe	Louisville (10/28/1983)	10
	Lori Rowe	Georgia (10/1/1983)	10

### TOTAL BLOCKS

#### 3-SET MATCHES

Rank	Name	Opponent (Date)	Blocks
1.	Lori Rowe	Western Carolina (9/24/1983)	16
2.	Dee Dee Fortman	Kentucky (10/20/1995)	12
3.	Dee Dee Fortman	Illinois State (12/4/1997)	10
	Jennifer Guess	Alabama (10/1/1993)	10
	Lori Rowe	Virginia Tech (11/18/1983)	10
	Lori Rowe	USF (10/7/1983)	10

#### 4-SET MATCHES

Rank	Name	Opponent (Date)	Blocks
1.	Libby Ralston	Jacksonville (9/6/1991)	16
	Stephanie Pflughaupt	Georgia (9/14/1988)	16
3.	Lauren Ford	Mississippi (10/8/2004)	13
4.	Heather Larkin	Tennessee (10/14/1994)	12
	Katie Gerst	UNC Asheville (9/25/1993)	12

#### 5-SET MATCHES

Rank	Name	Opponent (Date)	Blocks
1.	Crystal Johnson	St. John's (9/8/2006)	13
2.	Heather Larkin	Kentucky (10/7/1994)	12
	Lori Rowe	Memphis (11/22/1986)	12
4.	Danika Taylor	Michigan (9/17/1999)	11
	Amy Collinsworth	College of Charleston (10/20/1993)	11
	Lori Rowe	North Carolina (10/7/1983)	11

*Note: Box scores are only available from 1993 to the present. Limited historical records prior to 1993 were used to aid in the composition of individual match records as well.*

Current players in *italics*

## TEAM MATCH RECORDS

### KILLS

#### 3-SET MATCHES

Rank	Opponent (Date)	Kills
1.	LSU (9/22/2000)	76
2.	Tennessee (11/3/2000)	74
3.	Kentucky (10/20/1995)	69
4.	Clemson (9/16/1998)	66
	Arkansas (11/22/1997)	66

#### 4-SET MATCHES

Rank	Opponent (Date)	Kills
1.	Georgia (11/12/1995)	88
2.	Arkansas (9/24/2000)	86
3.	Florida (10/31/1997)	83
4.	Florida (9/17/2006)	82
	Houston (9/16/2005)	82
	LSU (10/25/1996)	82
	Alabama (10/6/1996)	82

#### 5-SET MATCHES

Rank	Opponent (Date)	Kills
1.	North Carolina State (11/7/1986)	99
2.	Arkansas (11/23/1996)	86
3.	Arkansas (11/2/2007)	85
	Georgia (11/18/2000)	85
	Northern Illinois (9/8/2000)	85
	Michigan (9/17/1999)	85



# TEAM MATCH RECORDS

## ATTACKS

### 3-SET MATCHES

Rank	Opponent (Date)	Attacks
1.	Arkansas (11/22/1997)	179
2.	Tennessee (11/3/2000)	177
3.	Mississippi State (10/8/1995)	171
4.	San Diego (9/13/2002)	166
5.	LSU (9/22/2000)	165

### 4-SET MATCHES

Rank	Opponent (Date)	Attacks
1.	USF (9/17/1994)	235
2.	Arkansas (9/24/2000)	223
3.	Kentucky (10/22/1993)	220
4.	LSU (10/25/1996)	219
5.	Mississippi State (9/27/1996)	218
	Georgia (11/12/1995)	218

### 5-SET MATCHES

Rank	Opponent (Date)	Attacks
1.	Northern Illinois (9/8/2000)	243
2.	Tennessee (11/11/2007)	241
	Maryland (9/16/1995)	241
4.	Arkansas (11/2/2007)	234
5.	Arkansas (11/23/1996)	225

## HITTING PERCENTAGE

### 3-SET MATCHES

Rank	Opponent (Date)	(K-E-A) Pct.
1.	SC State (10/23/2008)	(50-3-80) .587
2.	Liberty (9/1/2000)	(62-7-98) .561
3.	Mississippi State (11/23/2008)	(48-3-84) .536
4.	Louisville (9/26/1986)	(N/A) .530
5.	Troy (9/7/2007)	(52-6-92) .500
	Auburn (9/27/2002)	(53-8-90) .500

### 4-SET MATCHES

Rank	Opponent (Date)	(K-E-A) Pct.
1.	Mississippi State (9/25/1998)	(80-8-165) .436
2.	American (9/7/1996)	(44-7-85) .435
3.	Mississippi (10/16/2011)	(61-11-127) .394
4.	Arkansas (10/5/1997)	(73-7-170) .388
5.	North Carolina (11/24/2001)	(78-18-160) .375

### 5-SET MATCHES

Rank	Opponent (Date)	(K-E-A) Pct.
1.	Arkansas (11/23/2012)	(68-17-143) .357
2.	Kentucky (10/24/1997)	(81-17-187) .342
3.	Michigan State (9/18/2004)	(64-17-143) .329
4.	Clemson (9/10/2002)	(74-22-162) .321
5.	ETSU (8/25/2012)	(70-21-165) .297

## ASSISTS

### 3-SET MATCHES

Rank	Opponent (Date)	Assists
1.	LSU (9/22/2000)	73
2.	Tennessee (11/3/2000)	69
3.	Kentucky (10/20/1995)	63
4.	Mississippi (11/21/1997)	60
5.	Georgia (11/15/2006)	58
	Mississippi State (11/3/2002)	58

### 4-SET MATCHES

Rank	Opponent (Date)	Assists
1.	Arkansas (9/24/2000)	81
2.	Florida (9/17/2006)	76
3.	Alabama (10/6/1996)	74
4.	LSU (10/25/1996)	73
	Mississippi State (9/27/1996)	73

### 5-SET MATCHES

Rank	Opponent (Date)	Assists
1.	North Carolina State (11/7/1986)	95
2.	Arkansas (11/2/2007)	80
3.	Tennessee (11/11/2007)	79
	Northern Illinois (9/8/2000)	79
5.	Auburn (9/14/2007)	76

## ACES

### 3-SET MATCHES

Rank	Opponent (Date)	Aces
1.	Auburn (10/17/2004)	16
	Alabama (9/29/2002)	16
	Creighton (9/7/2002)	16
	Auburn (10/11/1998)	16
5.	Auburn (9/27/2002)	15
	Tennessee (10/26/1997)	15

### 4-SET MATCHES

Rank	Opponent (Date)	Aces
1.	Jacksonville (9/6/1991)	22
2.	Kentucky (11/8/1998)	16
	Arkansas (10/5/1997)	16
	Western Carolina (9/3/1993)	16
5.	Mississippi (10/12/1997)	15

### 5-SET MATCHES

Rank	Opponent (Date)	Aces
1.	Santa Clara (9/18/2003)	15
	New Mexico (9/8/2000)	15
	Washington State (9/23/1988)	15
4.	George Washington (9/20/2003)	14
5.	Indiana (9/13/2003)	13
	Michigan (9/17/1999)	13

## DIGS

### 3-SET MATCHES

Rank	Opponent (Date)	Digs
1.	Mississippi State (10/8/1995)	96
	UNC Greensboro (9/6/1995)	96
3.	Kentucky (10/30/1994)	92
4.	Appalachian State (9/24/1993)	91
5.	Mississippi State (11/17/1995)	89

### 4-SET MATCHES

Rank	Opponent (Date)	Digs
1.	Charlotte (10/26/1993)	120
2.	Mississippi State (9/27/1996)	118
3.	LSU (10/25/1996)	113
4.	Kentucky (10/22/1993)	110
5.	Mississippi State (10/22/2000)	109

### 5-SET MATCHES

Rank	Opponent (Date)	Digs
1.	Maryland (9/16/1995)	136
2.	Mississippi State (11/13/2010)	114
	George Washington (11/12/1988)	114
4.	Arkansas (11/2/2007)	108
5.	Tennessee (11/11/2007)	106
	Alabama (9/30/1994)	106

## BLOCK SOLOS

### 3-SET MATCHES

Rank	Opponent (Date)	Block Solos
1.	Mercer (9/3/2005)	9
2.	Georgia (10/24/2002)	7
3.	Lipscomb (9/11/2010)	6
	George Washington (9/1/2007)	6
	Tennessee (11/7/1997)	6
	Davidson (9/4/1995)	6

### 4-SET MATCHES

Rank	Opponent (Date)	Block Solos
1.	Charlotte (10/5/1988)	17
2.	Illinois-Chicago (9/7/1996)	12
3.	Dayton (8/29/2008)	8
	UNC Asheville (9/25/1993)	8
	Florida (9/6/1986)	8

### 5-SET MATCHES

Rank	Opponent (Date)	Block Solos
1.	Maryland (9/1/2007)	7
2.	Mississippi State (10/15/2006)	6
	Arkansas (9/25/2005)	6
	Memphis (11/22/1986)	6
5.	LSU (10/28/2007)	5

St. John's (9/8/2006)	5
Alabama (9/30/1994)	5

## BLOCK ASSISTS

### 3-SET MATCHES

Rank	Opponent (Date)	Block Assists
1.	Tennessee (11/9/2005)	28
	Kentucky (10/20/1995)	28
3.	Auburn (10/31/2003)	26
	Illinois State (12/4/1997)	26
	Mississippi State (10/8/1995)	26

### 4-SET MATCHES

Rank	Opponent (Date)	Block Assists
1.	Georgia (11/12/1995)	36
2.	Mississippi (10/8/2004)	34
3.	North Carolina (9/10/2005)	32
4.	Kentucky (10/16/1998)	30
	Tennessee (10/14/1994)	30

### 5-SET MATCHES

Rank	Opponent (Date)	Block Assists
1.	College of Charleston (9/7/1991)	41
2.	Kentucky (10/7/1994)	36
3.	College of Charleston (10/20/1993)	34
4.	St. John's (9/8/2006)	30
5.	Santa Clara (9/18/2003)	28
	Michigan (9/17/1999)	28
	Colorado State (12/4/1998)	28
	UCF (8/31/1996)	28
	Memphis (11/22/1986)	28

## TOTAL BLOCKS

### 3-SET MATCHES

Rank	Opponent (Date)	Total Blocks
1.	Kentucky (10/20/1995)	18.0
2.	Mercer (9/3/2005)	17.0
3.	Tennessee (11/9/2005)	16.0
4.	Winthrop (11/26/2005)	14.0
	Auburn (10/31/2003)	14.0
	Illinois State (12/4/1997)	14.0
	Alabama (10/1/1993)	14.0

### 4-SET MATCHES

Rank	Opponent (Date)	Total Blocks
1.	Tennessee (10/14/1994)	22.0
2.	Mississippi (10/8/2004)	21.0
	Georgia (11/12/1995)	21.0
4.	UNC Asheville (9/25/1993)	20.0
5.	North Carolina (9/10/2005)	19.0
	American (12/5/2002)	19.0

### 5-SET MATCHES

Rank	Opponent (Date)	Total Blocks
1.	North Carolina (10/19/1988)	22.0
2.	College of Charleston (9/7/1991)	21.5
3.	College of Charleston (10/20/1993)	21.0
4.	St. John's (9/8/2006)	20.0
	Memphis (11/22/1986)	20.0

*Note: Box scores are only available from 1993 to the present. Limited historical records prior to 1993 were used to aid in the composition of individual match records as well.*



# SCOTT SWANSON

## Head Coach • Third Year at South Carolina

- Coached seven teams that played in the NCAA Tournament (Arizona State 1999, 2000, Minnesota 2006-10)
- Part of staff for seven All-Americans
- Recruited three top-10 classes to Minnesota

The 11th head coach in Gamecock Volleyball history, Scott Swanson looks to continue building the South Carolina program into a national contender entering his third season in Columbia.

Swanson guided the Gamecocks to an 18-14 record last season, the program's second winning season in the last decade. South Carolina got off to a program-best 13-0 start and improved its hitting percentage for a second straight season, ranking second in the SEC with a percentage of .255, an improvement of 29 points from the previous year. Outside hitter Juliette Thévenin garnered second-team All-SEC honors after she ranked second in SEC play with 4.40 kills per set and 4.81 points per set, becoming the first Gamecock since 2008 to receive an All-SEC award.

In Swanson's first season, the Gamecocks went 14-16 and improved its offensive efficiency and its backline defense under his guidance. The team led the SEC with a 16.78 digs average, the best mark in four years for the Gamecocks, and hit .226, a 45-point improvement from the 2011 season. Three times, South Carolina student-athletes garnered an SEC weekly award, with Thévenin picking up the first offensive listing and Paige Wheeler twice gaining the defensive certificate.

Swanson's teams have also proved themselves in the classroom, earning the Team Academic Award from the American Volleyball Coaches Association in 2011-12 and 2012-13. A total of 15 Gamecocks made the SEC Academic Honor Rolls in 2012-13, and thirteen received the honor in 2011-12. The team also claimed the department's Life Skills Team of the Year award in 2011-12, honoring the group for its academic achievements, personal development and work in the community.

Prior to his current head coaching job, Swanson spent five years on the sidelines for the Golden Gophers, helping the team to five-consecutive NCAA Tournament appearances and a 125-46 record. Three times, Minnesota finished second in the Big Ten behind perennial power Penn State. The 2009 team advanced to the national semifinals in the NCAA Tournament.

During his tenure in Minneapolis, Swanson helped the Golden Gophers become an elite blocking team. In five years, Minnesota never ranked lower than 35th in NCAA Division I in blocks. The 2007 team set a program record with 3.54 blocks per set. Five Golden Gophers earned All-America accolades during those five years, including 2009 first-team middle blocker and 2012 US National Team pool member Lauren Gibbemeyer.

Swanson also led the Gophers' recruiting efforts, posting three top-10 recruiting classes according to PrepVolleyball.com. The 2009 group earned top honors from the outlet.

The summer of 2009, Swanson spent time with USA Volleyball's A-2 Junior National Team, and he coached the USA Red team to a second-place showing in the 2008 USA Adult Open Championships.

Swanson brings in four years of head coaching experience to Columbia after his tenure at the University of Texas-El Paso. With a 50-61 career record, Swanson had the team on the brink of the NCAA Tournament in 2005, when the Miners went 21-10. Three player earned all-conference honors under Swanson's tutelage, including honorable mention All-American Kari Stacy. He also inked a high school All-American and saw his team improve in the classroom to a department-best 3.2 GPA in 2005.

Prior to UTEP, Swanson spent six years at his alma mater, Arizona State. He helped the team to two NCAA Tournament appearances during his time in Tempe and coached one second-team All-American and two Pac-10 All-Freshman Team players. Two of his Sun Devil players garnered Academic All-America certificates as well.

Swanson started his coaching career at Mountain View (Ariz.) High School, working as an assistant with the varsity team and leading his junior varsity group to a 17-1 record. As a head coach with the Arizona East Valley Juniors club, he led a 16-1s team to a national runner-up finish and earned Cactus Region Coach of the Year honors. He also served as head coach at Camelback High School before landing the job with Arizona State, where he also played club volleyball.

A graduate of ASU, Swanson is married to the former Erin Meier. The couple has one daughter, Rylee Sue.

HEAD COACHING RECORD								
Year	School	W	L	PCT	W	L	PCT	Finish
2002	UTEP	11	14	.440	6	7	.462	2nd WAC East
2003	UTEP	8	22	.267	2	11	.154	5th WAC East
2004	UTEP	10	15	.400	2	11	.154	4th WAC East
2005	UTEP	21	10	.677	10	6	.625	4th CUSA
2011	South Carolina	14	16	.467	5	15	.250	5th SEC East
2012	South Carolina	18	14	.563	6	14	.300	6th SEC East
2013	South Carolina	11	9	.550	3	5	.375	--
<b>TOTAL</b>	<b>6+ Years</b>	<b>93</b>	<b>100</b>	<b>.482</b>	<b>34</b>	<b>69</b>	<b>.330</b>	

ASSISTANT COACHING RECORD								
Year	School	W	L	PCT	W	L	PCT	Finish
1996	Arizona State	9	15	.375	4	14	.222	8th Pac-10
1997	Arizona State	13	16	.448	4	14	.222	8th Pac-10
1998	Arizona State	11	14	.440	8	10	.444	T-5th Pac-10
1999	Arizona State	14	13	.519	10	8	.556	5th Pac-10
2000	Arizona State	18	12	.600	9	9	.500	T-5th Pac-10
2001	Arizona State	10	16	.385	5	13	.278	7th Pac-10
2006	Minnesota	26	8	.765	17	3	.850	T-2nd Big Ten
2007	Minnesota	18	13	.581	11	9	.550	T-3rd Big Ten
2008	Minnesota	27	7	.794	16	4	.800	2nd Big Ten
2009	Minnesota	28	9	.757	15	5	.750	3rd Big Ten
2010	Minnesota	26	8	.765	14	6	.700	2nd Big Ten
<b>TOTAL</b>	<b>11 Years</b>	<b>200</b>	<b>131</b>	<b>.604</b>	<b>113</b>	<b>95</b>	<b>.543</b>	

THE SWANSON TIMELINE	
<b>Coaching</b>	
2011-present	Head coach, South Carolina
2006-2010	Assistant coach, associate head coach, Minnesota
2009	Assistant coach, USA Volleyball A-2 Women's Team
2002-2005	Head coach, UTEP
1996-2001	Assistant coach, associate head coach, Arizona State
1994-1995	Head coach, Camelback High School
1993-2000	Head coach, Arizona East Valley Juniors
1991-1992	Assistant coach, Mountain View High School

<b>Education</b>	
1995	B.A., Family studies and human development, Arizona State



# 1 - HELEN RÉCABORDE

5-10 • Fr. • S • Atlanta, Ga. (Atlanta International)

### SEASON NOTES

Played in all three sets in the season opener vs. South Carolina State (8/30)...Recorded a match-high 14 assists...Filled in at setter mid-way through match vs. Duke (9/14) and recorded 11 assists and five digs in two sets...Saw time in win over Robert Morris (9/21) and registered one kill, two assists, two digs and a block assist...Played in the third set against No. 15 Kentucky and distributed nine assists...Distributed 10 assists and had five digs, one kill and one block assist at Mississippi State (10/18).

### Season Highs

**Kills**

1, 3x, last vs. Mississippi State (10/18)

### Attempts

3, Mississippi State (10/18)

### Hit. % (Min. 12 Att.)

N/A

### Assists

14, SC State (8/30)

### Service Aces

2, SC State (8/30)

### Digs

5, 3x, last vs. Mississippi State (10/18)

### Blocks Solo

N/A

### Block Assists

1, 2x, last vs. Mississippi State (9/21)

### Total Blocks

1, 2x, last vs. Mississippi State (9/21)

### 2013 Match-By-Match Statistics

DATE	OPP	SP	KILL	ERR	ATT	PCT	AST	SA	SE	RE	DIG	BS	BA	BE	TB	BHE	P
8/30	South Carolina State	3	1	1	2	.000	14	2	0	0	5	0	0	0	0.0	3	3.0
8/30	FIU	--	--	--	--	--	--	--	DNP	--	--	--	--	--	--	--	--
8/31	High Point	--	--	--	--	--	--	--	DNP	--	--	--	--	--	--	--	--
9/6	at Clemson	--	--	--	--	--	--	--	DNP	--	--	--	--	--	--	--	--
9/7	vs. Furman	--	--	--	--	--	--	--	DNP	--	--	--	--	--	--	--	--
9/7	vs. Winthrop	--	--	--	--	--	--	--	DNP	--	--	--	--	--	--	--	--
9/13	vs. Utah State	--	--	--	--	--	--	--	DNP	--	--	--	--	--	--	--	--
9/13	vs. Liberty	--	--	--	--	--	--	--	DNP	--	--	--	--	--	--	--	--
9/14	at Duke	2	0	0	0	.000	11	0	0	0	5	0	0	0	0.0	1	0.0
9/20	Western Carolina	--	--	--	--	--	--	--	DNP	--	--	--	--	--	--	--	--
9/21	Robert Morris	1	1	0	1	1.000	2	0	0	0	2	0	1	0	1.0	0	1.5
9/21	Presbyterian	--	--	--	--	--	--	--	DNP	--	--	--	--	--	--	--	--
9/27	at Missouri	--	--	--	--	--	--	--	DNP	--	--	--	--	--	--	--	--
9/29	at Tennessee	--	--	--	--	--	--	--	DNP	--	--	--	--	--	--	--	--
10/4	Arkansas	--	--	--	--	--	--	--	DNP	--	--	--	--	--	--	--	--
10/6	Texas A&M	--	--	--	--	--	--	--	DNP	--	--	--	--	--	--	--	--
10/11	Georgia	--	--	--	--	--	--	--	DNP	--	--	--	--	--	--	--	--
10/13	Kentucky	1	0	0	1	.000	9	0	0	0	0	0	0	0	0.0	2	0.0
10/18	at Mississippi State	2	1	0	3	.333	10	0	1	0	5	0	1	0	1.0	1	1.5
10/20	at Mississippi	--	--	--	--	--	--	--	DNP	--	--	--	--	--	--	--	--
10/25	Tennessee	--	--	--	--	--	--	--	--	--	--	--	--	--	--	--	--
10/27	Auburn	--	--	--	--	--	--	--	--	--	--	--	--	--	--	--	--
10/30	Coastal Carolina	--	--	--	--	--	--	--	--	--	--	--	--	--	--	--	--
11/8	at Kentucky	--	--	--	--	--	--	--	--	--	--	--	--	--	--	--	--
11/10	at Georgia	--	--	--	--	--	--	--	--	--	--	--	--	--	--	--	--
11/13	at Florida	--	--	--	--	--	--	--	--	--	--	--	--	--	--	--	--
11/15	Alabama	--	--	--	--	--	--	--	--	--	--	--	--	--	--	--	--
11/17	Missouri	--	--	--	--	--	--	--	--	--	--	--	--	--	--	--	--
11/22	at Arkansas	--	--	--	--	--	--	--	--	--	--	--	--	--	--	--	--
11/24	LSU	--	--	--	--	--	--	--	--	--	--	--	--	--	--	--	--
11/27	at Texas A&M	--	--	--	--	--	--	--	--	--	--	--	--	--	--	--	--

### CAREER STATISTICS

YEAR	SP	MP	KILL	K/S	ERR	ATT	PCT	AST	A/S	SA	SA/S	SE	DIG	D/S	RE	BS	BA	TB	B/S	BE	BHE	P	P/S
2013	9	5	3	0.33	1	7	.286	46	5.11	2	0.22	1	17	1.89	0	0	2	2	0.22	0	7	6.0	0.67



# 2 - ERIN NEUENFELDT

5-10 • Fr. • OH/DS • Birmingham, Mich. (Seaholm)

**SEASON NOTES**

Has not played.

**Season Highs**

- Kills N/A
- Attempts N/A
- Hit. % (Min. 12 Att.) N/A
- Assists N/A
- Service Aces N/A
- Digs N/A
- Blocks Solo N/A
- Block Assists N/A
- Total Blocks N/A

**2013 Match-By-Match Statistics**

DATE	OPP	SP	KILL	ERR	ATT	PCT	AST	SA	SE	RE	DIG	BS	BA	BE	TB	BHE	P
8/30	South Carolina State	--	--	--	--	--	--	--	DNP	--	--	--	--	--	--	--	--
8/30	FIU	--	--	--	--	--	--	--	DNP	--	--	--	--	--	--	--	--
8/31	High Point	--	--	--	--	--	--	--	DNP	--	--	--	--	--	--	--	--
9/6	at Clemson	--	--	--	--	--	--	--	DNP	--	--	--	--	--	--	--	--
9/7	vs. Furman	--	--	--	--	--	--	--	DNP	--	--	--	--	--	--	--	--
9/7	vs. Winthrop	--	--	--	--	--	--	--	DNP	--	--	--	--	--	--	--	--
9/13	vs. Utah State	--	--	--	--	--	--	--	DNP	--	--	--	--	--	--	--	--
9/13	vs. Liberty	--	--	--	--	--	--	--	DNP	--	--	--	--	--	--	--	--
9/14	at Duke	--	--	--	--	--	--	--	DNP	--	--	--	--	--	--	--	--
9/20	Western Carolina	--	--	--	--	--	--	--	DNP	--	--	--	--	--	--	--	--
9/21	Robert Morris	--	--	--	--	--	--	--	DNP	--	--	--	--	--	--	--	--
9/21	Presbyterian	--	--	--	--	--	--	--	DNP	--	--	--	--	--	--	--	--
9/27	at Missouri	--	--	--	--	--	--	--	DNP	--	--	--	--	--	--	--	--
9/29	at Tennessee	--	--	--	--	--	--	--	DNP	--	--	--	--	--	--	--	--
10/4	Arkansas	--	--	--	--	--	--	--	DNP	--	--	--	--	--	--	--	--
10/6	Texas A&M	--	--	--	--	--	--	--	DNP	--	--	--	--	--	--	--	--
10/11	Georgia	--	--	--	--	--	--	--	DNP	--	--	--	--	--	--	--	--
10/13	Kentucky	--	--	--	--	--	--	--	DNP	--	--	--	--	--	--	--	--
10/18	at Mississippi State	--	--	--	--	--	--	--	DNP	--	--	--	--	--	--	--	--
10/20	at Mississippi	--	--	--	--	--	--	--	DNP	--	--	--	--	--	--	--	--
10/25	Tennessee	--	--	--	--	--	--	--	DNP	--	--	--	--	--	--	--	--
10/27	Auburn	--	--	--	--	--	--	--	DNP	--	--	--	--	--	--	--	--
10/30	Coastal Carolina	--	--	--	--	--	--	--	DNP	--	--	--	--	--	--	--	--
11/8	at Kentucky	--	--	--	--	--	--	--	DNP	--	--	--	--	--	--	--	--
11/10	at Georgia	--	--	--	--	--	--	--	DNP	--	--	--	--	--	--	--	--
11/13	at Florida	--	--	--	--	--	--	--	DNP	--	--	--	--	--	--	--	--
11/15	Alabama	--	--	--	--	--	--	--	DNP	--	--	--	--	--	--	--	--
11/17	Missouri	--	--	--	--	--	--	--	DNP	--	--	--	--	--	--	--	--
11/22	at Arkansas	--	--	--	--	--	--	--	DNP	--	--	--	--	--	--	--	--
11/24	LSU	--	--	--	--	--	--	--	DNP	--	--	--	--	--	--	--	--
11/27	at Texas A&M	--	--	--	--	--	--	--	DNP	--	--	--	--	--	--	--	--

**CAREER STATISTICS**

YEAR	SP	MP	KILL	K/S	ERR	ATT	PCT	AST	A/S	SA	SA/S	SE	DIG	D/S	RE	BS	BA	TB	B/S	BE	BHE	P	P/S
2013	--	--	--	--	--	--	--	--	--	--	--	--	--	--	--	--	--	--	--	--	--	--	--





# 3 - DESSAA LEGROS

5-10 • Fr. • MB/OH • Kennesaw, Ga. (Allatoona)

### SEASON NOTES

Played all nine sets in the Gamecock Invitational...Averaged 2.78 kills per set while hitting .345 for the tournament...Recorded 10 kills on 15 attacks (.667) in the opener vs. South Carolina State (8/30)...Saw action in two sets vs. Utah State (9/13) and recorded one kill... Played in all three matches of the Carolina Classic...Hit .429 to finish with seven kills in win over Robert Morris (9/21)...Finished with seven kills, two digs and a block assist at Missouri (9/27)...Produced career-high 12 kills and four digs in win at Tennessee (9/29)... Contributed a kill, an assist, a dig and a block assist against Arkansas (10/4)...Tallied five kills and a block assist in win over Texas A&M (10/6)...Registered five kills while hitting .348 and recorded a season-high two block assists against Georgia (10/11)...Had four kills and three digs against No. 15 Kentucky (10/13)...Had one kill at Mississippi State (10/18).

- Season Highs**
- Kills**  
12, Tennessee (9/29)
- Attempts**  
35, Tennessee (9/29)
- Hit. % (Min. 12 Att.)**  
.667, SC State (8/30)
- Assists**  
2, Furman (9/7)
- Service Aces**  
N/A
- Digs**  
4, Tennessee (9/29)
- Blocks Solo**  
N/A
- Block Assists**  
2, Georgia (10/11)
- Total Blocks**  
2, Georgia (10/11)

2013 Match-By-Match Statistics																		
DATE	OPP	SP	KILL	ERR	ATT	PCT	AST	SA	SE	RE	DIG	BS	BA	BE	TB	BHE	P	
8/30	South Carolina State	3	10	0	15	.667	0	0	0	0	0	0	0	0	0.0	0	10.0	
8/30	FIU	3	7	3	20	.200	0	0	0	0	0	0	1	0	1.0	0	7.5	
8/31	High Point	3	8	2	23	.261	0	0	0	0	1	0	1	0	1.0	0	8.5	
9/6	at Clemson	3	4	5	18	-.056	0	0	0	0	2	0	1	0	1.0	0	4.5	
9/7	vs. Furman	4	4	3	12	.083	2	0	0	0	3	0	0	1	0.0	0	4.0	
9/7	vs. Winthrop	1	0	0	0	.000	0	0	0	0	0	0	0	0	0.0	0	0.0	
9/13	vs. Utah State	2	1	3	7	-.286	0	0	0	0	1	0	0	0	0.0	0	1.0	
9/13	vs. Liberty	--	--	--	--	--	--	--	DNP	--	--	--	--	--	--	--	--	
9/14	at Duke	2	0	0	1	.000	0	0	0	0	0	0	0	0	0.0	0	0.0	
9/20	Western Carolina	1	1	1	3	.000	0	0	0	0	0	0	0	0	0.0	0	1.0	
9/21	Robert Morris	3	7	1	14	.429	0	0	0	0	1	0	0	1	0.0	0	7.0	
9/21	Presbyterian	3	2	5	15	-.200	0	0	0	0	0	0	0	0	0.0	0	2.0	
9/27	at Missouri	3	7	4	15	.200	0	0	0	0	2	0	1	0	1.0	0	7.5	
9/29	at Tennessee	4	12	3	35	.257	1	0	0	0	4	0	1	0	1.0	0	12.5	
10/4	Arkansas	4	1	4	14	-.214	1	0	0	0	1	0	1	0	1.0	0	1.5	
10/6	Texas A&M	4	5	2	17	.176	0	0	0	0	0	0	1	0	1.0	0	5.5	
10/11	Georgia	3	9	1	23	.348	1	0	0	1	0	0	2	0	2.0	0	10.0	
10/13	Kentucky	3	4	7	26	-.115	0	0	0	0	3	0	1	0	1.0	0	4.5	
10/18	at Mississippi State	2	1	3	4	-.500	0	0	0	0	0	0	0	0	0.0	0	1.0	
10/20	at Mississippi	1	0	0	1	.000	0	0	0	0	0	0	0	0	0.0	0	0.0	
10/25	Tennessee																	
10/27	Auburn																	
10/30	Coastal Carolina																	
11/8	at Kentucky																	
11/10	at Georgia																	
11/13	at Florida																	
11/15	Alabama																	
11/17	Missouri																	
11/22	at Arkansas																	
11/24	LSU																	
11/27	at Texas A&M																	

### CAREER STATISTICS

YEAR	SP	MP	KILL	K/S	ERR	ATT	PCT	AST	A/S	SA	SA/S	SE	DIG	D/S	RE	BS	BA	TB	B/S	BE	BHE	P	P/S
2013	52	19	83	1.60	47	263	.137	5	0.10	0	0.00	0	18	0.35	1	0	10	10	0.19	2	0	88.0	1.69



# 4 - DARIAN DOZIER

**6-1 • So. • MB/RS • Sandy Spring, Md. (St. Johns College)**

### SEASON NOTES

Started all three matches and played all nine sets in the Gamecock Invitational...Averaged 1.78 blocks per set, which leads the SEC... Averaged 2.00 kills per set while hitting .324 for the tournament...Recorded six kills and six block assists in win over South Carolina State (8/30)...Tallied career-high eight blocks in win over High Point (8/31)...Finished with 11 kills (.391) in loss at Clemson (9/6)... Contributed career-high six digs and five block assists against the Tigers...Named to All-Tournament Team at Duke Invitational... Posted 14 kills while hitting .407 and two service aces in win over Utah State (9/13)...Added four digs and four blocks against the Aggies...Hit .353 to record eight kills and produced five blocks in sweep of Liberty (9/13)...Had six kills and four block assists in four-set loss to Duke (9/14)...Earned Carolina Classic All-Tournament honors...Hit career-best .625 to register 10 kills in sweep of Western Carolina (9/20)...Had six kills and seven blocks against Robert Morris (9/21)...Finished with seven kills with a hitting percentage of .375 and five blocks in sweep of Presbyterian (9/21)...Had four kills, three block assists and two digs at Missouri (9/27)...Hit .304 to record nine kills and added six blocks and three digs in win at Tennessee (9/29)...Had seven kills with a hitting percentage of .438 and six block assists against Arkansas (10/4)...Produced a career-high 18 kills while hitting .571 and six block assists in win over Texas A&M (10/6)...Finished with four kills and three digs against Georgia (10/11)...Had eight kills while hitting .385 and three block assists against No. 15 Kentucky (10/13)...Contributed four kills and six blocks at Mississippi State (10/18)...Recorded nine kills while hitting .600 with no errors in win at Ole Miss (10/20).

- Season Highs**
- Kills**  
18, Texas A&M (10/6)
- Attempts**  
28, Texas A&M (10/6)
- Hit. % (Min. 12 Att.)**  
.625, Western Carolina (9/20)
- Assists**  
1, 4x, last vs. Mississippi State (10/18)
- Service Aces**  
2, Utah State (9/13)
- Digs**  
6, Clemson (9/6)
- Blocks Solo**  
1, 3x, last vs. Mississippi State (10/18)
- Block Assists**  
8, High Point (8/31)
- Total Blocks**  
8, High Point (8/31)
- Career Highs**
- Kills**  
18, Texas A&M (10/6/13)
- Attempts**  
28, Texas A&M (10/6/13)
- Hit. % (Min. 12 Att.)**  
.625, Western Carolina (9/20/13)
- Assists**  
2, LSU (9/16/12)
- Service Aces**  
2, Utah State (9/13/13)
- Digs**  
6, Clemson (9/6/13)
- Blocks Solo**  
2, 2x, last Mississippi (9/30/12)
- Block Assists**  
8, High Point (8/31/13)
- Total Blocks**  
8, High Point (8/31/13)

2013 Match-By-Match Statistics																			
DATE	OPP	SP	KILL	ERR	ATT	PCT	AST	SA	SE	RE	DIG	BS	BA	BE	TB	BHE	P		
8/30	South Carolina State	3	6	2	12	.333	0	1	0	0	0	0	6	0	6.0	0	10.0		
8/30	FIU	3	7	2	16	.312	0	0	0	0	2	0	2	0	2.0	0	8.0		
8/31	High Point	3	5	2	9	.333	0	0	1	0	2	0	8	1	8.0	0	9.0		
9/6	at Clemson	5	11	2	23	.391	1	0	2	0	6	0	5	0	5.0	0	13.5		
9/7	vs. Furman	4	6	2	16	.250	0	1	0	0	5	0	2	0	2.0	0	8.0		
9/7	vs. Winthrop	5	4	5	19	-.053	1	0	2	0	1	0	5	0	5.0	0	6.5		
9/13	vs. Utah State	4	14	3	27	.407	0	2	1	0	4	1	3	0	4.0	0	18.5		
9/13	vs. Liberty	3	8	2	17	.353	0	0	0	0	3	0	5	0	5.0	0	10.5		
9/14	at Duke	4	6	2	16	.250	0	1	0	0	0	0	4	0	4.0	0	9.0		
9/20	Western Carolina	3	10	0	16	.625	0	0	1	0	4	0	2	0	2.0	0	11.0		
9/21	vs. Robert Morris	4	6	1	17	.294	0	0	2	0	3	0	7	1	7.0	1	9.5		
9/21	Presbyterian	3	7	1	16	.375	0	0	1	0	0	0	5	0	5.0	0	9.5		
9/27	at Missouri	3	4	1	10	.300	0	0	1	0	2	0	3	0	3.0	0	5.5		
9/29	at Tennessee	4	9	2	23	.304	0	0	2	0	3	1	5	1	6.0	1	12.5		
10/4	Arkansas	5	7	0	16	.438	0	0	1	0	2	0	6	0	6.0	0	10.0		
10/6	Texas A&M	4	18	2	28	.571	1	0	1	0	4	0	6	1	6.0	1	21.0		
10/11	Georgia	3	4	2	15	.133	0	0	2	0	3	0	0	0	0.0	0	4.0		
10/13	Kentucky	3	8	3	13	.385	0	0	1	0	3	0	3	0	3.0	0	9.5		
10/18	at Mississippi State	3	4	2	17	.118	1	0	0	0	0	1	5	0	6.0	0	7.5		
10/20	at Mississippi	4	9	0	15	.600	0	0	0	0	2	0	1	0	1.0	0	9.5		
10/25	Tennessee																		
10/27	Auburn																		
10/30	Coastal Carolina																		
11/8	at Kentucky																		
11/10	at Georgia																		
11/13	at Florida																		
11/15	Alabama																		
11/17	Missouri																		
11/22	at Arkansas																		
11/24	LSU																		
11/27	at Texas A&M																		

### CAREER STATISTICS

YEAR	SP	MP	KILL	K/S	ERR	ATT	PCT	AST	A/S	SA	SA/S	SE	DIG	D/S	RE	BS	BA	TB	B/S	BE	BHE	P	P/S
2012	96	31	129	1.34	43	325	.265	6	0.06	0	0.00	0	24	0.25	0	7	60	67	0.70	12	0	166.0	1.73
2013	73	20	153	2.10	36	341	.343	4	0.05	5	0.07	18	49	0.67	0	3	83	86	1.18	4	3	202.5	2.77
<b>TOTAL</b>	<b>169</b>	<b>51</b>	<b>282</b>	<b>1.67</b>	<b>79</b>	<b>666</b>	<b>.305</b>	<b>10</b>	<b>0.06</b>	<b>5</b>	<b>0.03</b>	<b>18</b>	<b>73</b>	<b>0.43</b>	<b>0</b>	<b>10</b>	<b>143</b>	<b>153</b>	<b>0.91</b>	<b>16</b>	<b>3</b>	<b>368.5</b>	<b>2.18</b>



# 6 - SARAH BLOMGREN

5-11 • So. • RS/OH • Canyon Country, Calif. (Saugus)

## SEASON NOTES

Started two matches in the Gamecock Invitational...Recorded career-high five blocks and seven kills in win over High Point (8/31)... Hit .321 to produce 13 kills in loss to Furman (9/7)...Tallied career-high 14 kills on .357 hitting and a career-high three digs in loss to Winthrop (9/7)...Produced seven kills and three blocks in win over Utah State (9/13)...Played all three sets in sweep up Liberty (9/13), recording three kills and four blocks...Finished with 10 kills and two blocks in loss to Duke (9/14)...Had six kills in sweep of Western Carolina (9/20)...Registered five kills and five blocks in win over Robert Morris (9/21)...Chipped in five kills and matched career high with five blocks against Presbyterian (9/21)...Finished with one kill and a block assist at Missouri (9/27)...Contributed two kills and two block assists in win at Tennessee (9/29)...Had 11 kills and three blocks against Arkansas (10/4)...Tallied 10 kills and two block assists in win over Texas A&M (10/6)...Registered four kills and a pair of block assists against Georgia (10/11)...Had five kills, three digs and three block assists against No. 15 Kentucky (10/13)...Pitched in 10 kills while hitting .318 and two blocks at Mississippi State (10/18)...Hit .455 to record 12 kills in win at Ole Miss (10/20).

**Season Highs**  
**Kills**  
 14, Winthrop (9/7)  
**Attempts**  
 28, 3x, last vs. Duke (9/14)  
**Hit. % (Min. 12 Aff.)**  
 .462, FIU (8/30)  
**Assists**  
 1, 5x, last vs. Mississippi State (10/18)  
**Service Aces**  
 N/A

**Digs**  
 3, 3x, last vs. Mississippi State (10/18)

**Blocks Solo**  
 1, 5x, last vs. Ole Miss (10/20)

**Block Assists**  
 5, 3x, last vs. Presbyterian (9/21)

**Total Blocks**  
 5, 3x, last vs. Presbyterian (9/21)

## Career Highs

**Kills**  
 14, Winthrop (9/7/13)  
**Attempts**  
 28, 3x, last vs. Duke (9/14/13)  
**Hit. % (Min. 12 Aff.)**  
 .462, FIU (8/30/13)  
**Assists**  
 2, LSU (9/16/12)  
**Service Aces**  
 1, SC State (8/30/13)  
**Digs**  
 3, 2x, last vs. Kentucky (10/13/13)  
**Blocks Solo**  
 1, 4x, last vs. Arkansas (10/4/13)  
**Block Assists**  
 5, 3x, last vs. Presbyterian (9/21/13)  
**Total Blocks**  
 5, 3x, last vs. Presbyterian (9/21/13)

2013 Match-By-Match Statistics																		
DATE	OPP	SP	KILL	ERR	ATT	PCT	AST	SA	SE	RE	DIG	BS	BA	BE	TB	BHE	P	
8/30	South Carolina State	--	--	--	--	--	--	--	DNP	--	--	--	--	--	--	--	--	--
8/30	FIU	3	7	1	13	.462	0	0	0	0	1	0	1	0	1.0	0	7.5	
8/31	High Point	3	7	4	16	.188	0	0	0	0	0	0	5	0	5.0	0	9.5	
9/6	at Clemson	5	8	5	20	.150	0	0	0	0	2	0	3	0	3.0	0	9.5	
9/7	vs. Furman	4	13	4	28	.321	1	0	0	0	0	0	1	1	1.0	0	13.5	
9/7	vs. Winthrop	5	14	4	28	.357	1	0	0	0	3	1	1	0	2.0	0	15.5	
9/13	vs. Utah State	4	7	6	18	.056	1	0	0	0	0	1	2	3	3.0	0	9.0	
9/13	vs. Liberty	3	3	2	12	.083	0	0	0	0	1	1	3	0	4.0	0	5.5	
9/14	at Duke	4	10	4	28	.214	0	0	0	0	1	0	2	0	2.0	0	11.0	
9/20	Western Carolina	3	6	3	14	.214	0	0	0	0	1	0	1	0	1.0	0	6.5	
9/21	Robert Morris	4	5	3	20	.100	0	0	0	0	1	0	5	2	5.0	0	7.5	
9/21	Presbyterian	3	5	4	14	.071	1	0	0	0	0	0	5	0	5.0	0	7.5	
9/27	at Missouri	2	1	4	9	-.333	0	0	0	0	0	0	1	0	1.0	0	1.5	
9/29	at Tennessee	2	2	3	7	-.143	0	0	0	0	0	0	2	0	2.0	0	3.0	
10/4	Arkansas	5	11	4	26	.269	0	0	0	0	1	1	2	1	3.0	0	13.0	
10/6	Texas A&M	4	10	5	22	.227	0	0	0	0	0	0	2	0	2.0	0	11.0	
10/11	Georgia	3	4	2	9	.222	0	0	0	0	1	0	2	0	2.0	0	5.0	
10/13	Kentucky	3	5	2	12	.250	0	0	0	0	3	0	3	1	3.0	0	6.5	
10/18	at Mississippi State	3	10	3	22	.318	1	0	0	0	3	0	2	0	2.0	0	11.0	
10/20	at Mississippi	4	12	2	22	.455	0	0	0	0	1	1	1	0	2.0	0	13.5	
10/25	Tennessee																	
10/27	Auburn																	
10/30	Coastal Carolina																	
11/8	at Kentucky																	
11/10	at Georgia																	
11/13	at Florida																	
11/15	Alabama																	
11/17	Missouri																	
11/22	at Arkansas																	
11/24	LSU																	
11/27	at Texas A&M																	

## CAREER STATISTICS

YEAR	SP	MP	KILL	K/S	ERR	ATT	PCT	AST	A/S	SA	SA/S	SE	DIG	D/S	RE	BS	BA	TB	B/S	BE	BHE	P	P/S
2012	24	11	19	0.79	18	68	.015	0	0.00	0	0.00	0	2	0.08	0	1	7	8	0.33	4	0	23.5	0.96
2013	67	19	140	2.09	65	340	.221	5	0.07	0	0.00	0	19	0.28	0	5	44	49	0.73	8	0	167.0	2.49
<b>TOTAL</b>	<b>91</b>	<b>30</b>	<b>159</b>	<b>1.75</b>	<b>83</b>	<b>408</b>	<b>.186</b>	<b>5</b>	<b>0.05</b>	<b>0</b>	<b>0.00</b>	<b>0</b>	<b>21</b>	<b>0.23</b>	<b>0</b>	<b>6</b>	<b>51</b>	<b>57</b>	<b>0.63</b>	<b>12</b>	<b>0</b>	<b>190.5</b>	<b>2.09</b>



# 7 - JACQY ANGERMILLER

**6-2 • Fr. • MB/RS • Dallas, Texas (LD Bell)**

### SEASON NOTES

Made collegiate debut in win over Utah State (9/13) after missing first six matches because of injury...Tallied eight kills while hitting .368 and four block assists against the Aggies...Hit a season-best .583 to record eight kills in sweep of Liberty (9/13)...Also had four blocks against the Flames...Finished with season-high nine blocks in loss to Duke (9/14)...Registered career-high 12 kills while hitting .409 in sweep of Western Carolina (9/20)...Chipped in eight kills and six blocks against Robert Morris (9/21)...Finished with eight kills and two blocks against Presbyterian (9/21)...Had one kill and a block assist at Missouri (9/27)...Chipped in five kills, five block assists and two digs in win at Tennessee (9/29)...Contributed nine kills and four block assists against Arkansas (10/4)...Tallied eight kills and two blocks in win over Texas A&M (10/6)...Registered six kills and seven blocks, including two block solos, against Georgia (10/11)...Had five kills and two block assists against No. 15 Kentucky (10/13)...Tallied one kill and one block assist at Mississippi State (10/18)...Contributed six kills, three digs and eight blocks in win at Ole Miss (10/20).

- Season Highs**
- Kills**  
12, Western Carolina (9/20)
- Attempts**  
26, Tennessee (9/29)
- Hit. % (Min. 12 Att.)**  
.583, Liberty (9/13)
- Assists**  
3, Ole Miss (10/20)
- Service Aces**  
N/A
- Digs**  
2, Tennessee (9/29)
- Blocks Solo**  
2, Georgia (10/11)
- Block Assists**  
9, Duke (9/14)
- Total Blocks**  
9, Duke (9/14)

		2013 Match-By-Match Statistics															
DATE	OPP	SP	KILL	ERR	ATT	PCT	AST	SA	SE	RE	DIG	BS	BA	BE	TB	BHE	P
8/30	South Carolina State	--	--	--	--	--	--	--	DNP	--	--	--	--	--	--	--	--
8/30	FIU	--	--	--	--	--	--	--	DNP	--	--	--	--	--	--	--	--
8/31	High Point	--	--	--	--	--	--	--	DNP	--	--	--	--	--	--	--	--
9/6	at Clemson	--	--	--	--	--	--	--	DNP	--	--	--	--	--	--	--	--
9/7	vs. Furman	--	--	--	--	--	--	--	DNP	--	--	--	--	--	--	--	--
9/7	vs. Winthrop	--	--	--	--	--	--	--	DNP	--	--	--	--	--	--	--	--
9/13	vs. Utah State	3	8	1	19	.368	0	0	0	0	1	0	4	1	4.0	0	10.0
9/13	vs. Liberty	3	8	1	12	.583	1	0	0	0	1	0	4	0	4.0	0	10.0
9/14	at Duke	4	2	2	13	.000	0	0	0	0	1	0	9	1	9.0	0	6.5
9/20	Western Carolina	3	12	3	22	.409	0	0	0	0	1	0	4	0	4.0	0	14.0
9/21	Robert Morris	4	8	5	19	.158	0	0	0	0	0	0	6	0	6.0	0	11.0
9/21	Presbyterian	3	8	0	14	.571	0	0	0	0	0	1	2	0	3.0	0	10.0
9/27	at Missouri	3	1	1	9	.000	0	0	0	0	0	0	1	1	1.0	0	1.5
9/29	at Tennessee	4	5	3	26	.077	0	0	0	0	2	0	5	1	5.0	0	7.5
10/4	Arkansas	5	9	5	21	.190	0	0	0	0	0	0	4	0	4.0	0	11.0
10/6	Texas A&M	4	8	3	19	.263	0	0	0	0	0	1	1	0	2.0	0	9.5
10/11	Georgia	3	6	2	14	.286	0	0	0	1	1	2	5	1	7.0	0	10.5
10/13	Kentucky	3	5	3	16	.125	0	0	0	0	1	0	2	1	2.0	0	6.0
10/18	at Mississippi State	3	1	2	5	-.200	0	0	0	0	0	0	1	0	1.0	0	1.5
10/20	at Mississippi	4	6	2	18	.222	3	0	0	0	0	1	7	0	8.0	0	10.5
10/25	Tennessee																
10/27	Auburn																
10/30	Coastal Carolina																
11/8	at Kentucky																
11/10	at Georgia																
11/13	at Florida																
11/15	Alabama																
11/17	Missouri																
11/22	at Arkansas																
11/24	LSU																
11/27	at Texas A&M																

### CAREER STATISTICS

YEAR	SP	MP	KILL	K/S	ERR	ATT	PCT	AST	A/S	SA	SA/S	SE	DIG	D/S	RE	BS	BA	TB	B/S	BE	BHE	P	P/S
2013	49	14	87	1.78	33	227	.238	4	0.08	0	0.00	0	8	0.16	1	5	55	60	1.22	6	0	119.5	2.43





# 8 - KELLIE MCNEIL

**6-0 • RS-So. • S • Eagan, Minn. (Lakeville North)**

## SEASON NOTES

Started all three matches in the Gamecock Invitational...Named to the All-Tournament Team...Averaged 8.75 assists per set for the tournament...Tallied eight kills, 25 assists and three block assists in win over High Point (8/31)...Turned in first double-double in Garnet and Black, recording 54 assists and 10 digs to go along with five kills and four block assists in loss at Clemson (9/6)...Distributed a season-high 56 assists in loss to Furman (9/7)...Hit .636 to tally seven kills and dish out 49 assists in loss to Winthrop (9/7)...Had four blocks against Eagles...Named to the Duke Invitational All-Tournament Team...Produced second double-double of the season, recording 46 assists and 11 digs in win over Utah State (9/13)...Also hit .364 to tally five kills and had three blocks against the Aggies...Finished with 37 assists, four kills, four blocks and four digs in sweep of Liberty (9/13)...Distributed 24 assists and recorded five blocks in loss to Duke (9/14)...Fell one dig shy of double-double in win over Western Carolina (9/20), finishing with 44 assists and nine digs...Distributed 46 assists and had four blocks against Robert Morris (9/21)...Had 26 assists, eight digs, four blocks and three kills in sweep of Presbyterian (9/21)...Finished with 21 assists at Missouri (9/27)...Recorded third double-double of the season in win at Tennessee (9/29) with 41 assists and a career-high 20 digs...Also had a career-high seven blocks, with two being solo...Finished with second straight double-double against Arkansas (10/4), recording 42 assists and 13 digs along with five blocks...Dished out 53 assists and had nine digs, six kills and three blocks in win over Texas A&M (10/6)...Registered 33 assists, four digs and two block assists against Georgia (10/11)...Played two sets against No. 15 Kentucky (10/13) and had one kill, 19 assists and three digs...Had 22 assists, five digs, four blocks and three kills at Mississippi State (10/18)...Hit career-best .500 to record seven kills along with 45 assists, six digs and four blocks in win at Ole Miss (10/20).

### Season Highs

#### Kills

8, High Point (8/31)

#### Attempts

16, Clemson (9/6)

#### Hit. % (Min. 12 Att.)

.500, Ole Miss (10/20)

#### Assists

56, Furman (9/7)

#### Service Aces

2, 2x, last vs.

Robert Morris (9/21)

#### Digs

20, Tennessee (9/29)

#### Blocks Solo

2, 2x, last vs.

Tennessee (9/29)

#### Block Assists

5, Tennessee (9/29)

#### Total Blocks

7, Tennessee (9/29)

### Career Highs

#### Kills

8, High Point (8/31)

#### Attempts

16, Clemson (9/6)

#### Hit. % (Min. 12 Att.)

.500, Ole Miss

(10/20/13)

#### Assists

\*61, Penn St.

(11/4/11)

#### Service Aces

\*4, 2x, last vs.

Michigan (11/13/11)

#### Digs

20, Tennessee

(9/29/13)

#### Blocks Solo

2, 2x, last vs.

Tennessee (9/29/13)

#### Block Assists

5, Tennessee (9/29/13)

#### Total Blocks

7, Tennessee (9/29/13)

\*at Minnesota

## 2013 Match-By-Match Statistics

DATE	OPP	SP	KILL	ERR	ATT	PCT	AST	SA	SE	RE	DIG	BS	BA	BE	TB	BHE	P
8/30	South Carolina State	2	0	0	3	.000	13	0	0	0	3	0	2	0	2.0	0	1.0
8/30	FIU	3	2	0	5	.400	32	0	1	0	5	0	0	1	0.0	0	2.0
8/31	High Point	3	8	0	10	.800	25	0	1	0	4	0	3	0	3.0	1	9.5
9/6	at Clemson	5	5	2	16	.188	54	0	1	0	10	0	4	0	4.0	0	7.0
9/7	vs. Furman	4	0	1	5	-.200	56	1	1	0	9	2	0	0	2.0	0	3.0
9/7	vs. Winthrop	5	7	0	11	.636	49	0	0	0	5	0	4	0	4.0	2	9.0
9/13	vs. Utah State	4	5	1	11	.364	46	1	0	0	11	0	3	0	3.0	2	7.5
9/13	vs. Liberty	3	4	0	12	.333	37	1	0	1	4	0	4	0	4.0	1	7.0
9/14	at Duke	4	2	0	4	.500	24	0	1	0	6	1	4	0	5.0	0	5.0
9/20	Western Carolina	3	2	1	5	.200	44	2	0	0	9	0	3	1	3.0	0	5.5
9/21	Robert Morris	4	3	1	6	.333	46	2	0	0	2	0	4	0	4.0	0	7.0
9/21	Presbyterian	3	3	1	5	.400	26	1	0	0	8	1	3	0	4.0	0	6.5
9/27	at Missouri	3	1	0	5	.200	21	0	1	0	1	0	1	0	1.0	1	1.5
9/29	at Tennessee	4	2	1	8	.125	41	0	0	0	20	2	5	0	7.0	2	6.5
10/4	Arkansas	5	3	3	15	.000	42	0	2	0	13	1	4	0	5.0	2	6.0
10/6	Texas A&M	4	6	2	15	.267	53	1	0	0	9	0	3	0	3.0	1	8.5
10/11	Georgia	3	0	3	12	-.250	33	0	3	0	4	0	2	0	2.0	0	1.0
10/13	Kentucky	2	1	0	8	.125	19	0	0	0	3	0	0	0	0.0	1	1.0
10/18	at Mississippi State	3	3	1	5	.400	22	0	0	0	5	0	4	0	4.0	0	5.0
10/20	at Mississippi	4	7	1	12	.500	45	0	1	0	6	0	4	0	4.0	1	9.0
10/25	Tennessee																
10/27	Auburn																
10/30	Coastal Carolina																
11/8	at Kentucky																
11/10	at Georgia																
11/13	at Florida																
11/15	Alabama																
11/17	Missouri																
11/22	at Arkansas																
11/24	LSU																
11/27	at Texas A&M																

## CAREER STATISTICS

YEAR	SP	MP	KILL	K/S	ERR	ATT	PCT	AST	A/S	SA	SA/S	SE	DIG	D/S	RE	BS	BA	TB	B/S	BE	BHE	P	P/S
2011*	52	17	23	0.44	9	56	.250	320	6.15	13	0.25	18	64	1.23	0	1	27	28	0.54	3	7	50.5	0.97

\*at Minnesota

YEAR	SP	MP	KILL	K/S	ERR	ATT	PCT	AST	A/S	SA	SA/S	SE	DIG	D/S	RE	BS	BA	TB	B/S	BE	BHE	P	P/S
2013	71	20	64	0.90	18	173	.266	728	10.25	9	0.13	12	137	1.93	1	7	57	64	0.90	2	14	108.5	1.52



# 9 - MEGAN KIRKLAND

**5-7 • Fr. • DS/Libero • Lugoff, S.C. (Lugoff-Elgin)**

**SEASON NOTES**

Played in one set in all three matches in the Gamecock Invitational...Playing time increased at the Big Orange Bash...Recorded five digs in two sets played in loss to Furman (9/7)...Played all five sets in loss to Winthrop, tallying a season-high 13 digs and three assists... Finished with two digs and one assist against Duke (9/14)...Had two digs and a service ace against Presbyterian (9/21)...Had a service ace at Missouri (9/27)...Recorded first career kill and added eight digs and two assists in win over Texas A&M (10/6)...Saw time in two set versus Georgia (10/11) and had a service ace and a dig...Played one set against No. 15 Kentuck (10/13).

- Season Highs**
- Kills**  
1, Texas A&M (10/6)
- Attempts**  
1, Texas A&M (10/6)
- Hit. % (Min. 12 Att.)**  
N/A
- Assists**  
3, Winthrop (9/7)
- Service Aces**  
1, 3x, last vs. Georgia (10/11)
- Digs**  
13, Winthrop (9/7)

- Blocks Solo**  
N/A
- Block Assists**  
N/A
- Total Blocks**  
N/A

		2013 Match-By-Match Statistics															
DATE	OPP	SP	KILL	ERR	ATT	PCT	AST	SA	SE	RE	DIG	BS	BA	BE	TB	BHE	P
8/30	South Carolina State	1	0	0	0	.000	0	0	0	0	0	0	0	0	0.0	0	0.0
8/30	FIU	1	0	0	0	.000	0	0	0	0	0	0	0	0	0.0	0	0.0
8/31	High Point	1	0	0	0	.000	0	0	0	0	0	0	0	0	0.0	0	0.0
9/6	at Clemson	1	0	0	0	.000	0	0	0	0	1	0	0	0	0.0	0	0.0
9/7	vs. Furman	2	0	0	0	.000	0	0	0	0	5	0	0	0	0.0	0	0.0
9/7	vs. Winthrop	5	0	0	0	.000	3	0	1	3	13	0	0	0	0.0	0	0.0
9/13	vs. Utah State	--	--	--	--	--	--	--	DNP	--	--	--	--	--	--	--	--
9/13	vs. Liberty	--	--	--	--	--	--	--	DNP	--	--	--	--	--	--	--	--
9/14	at Duke	3	0	0	0	.000	1	0	0	0	2	0	0	0	0.0	0	0.0
9/20	Western Carolina	--	--	--	--	--	--	--	DNP	--	--	--	--	--	--	--	--
9/21	Robert Morris	--	--	--	--	--	--	--	DNP	--	--	--	--	--	--	--	--
9/21	Presbyterian	3	0	0	0	.000	0	1	0	1	2	0	0	0	0.0	0	1.0
9/27	at Missouri	1	0	0	0	.000	0	1	1	0	0	0	0	0	0.0	0	1.0
9/29	at Tennessee	--	--	--	--	--	--	--	DNP	--	--	--	--	--	--	--	--
10/4	Arkansas	--	--	--	--	--	--	--	DNP	--	--	--	--	--	--	--	--
10/6	Texas A&M	4	1	0	1	1.000	2	0	2	0	8	0	0	0	0.0	0	1.0
10/11	Georgia	2	0	0	0	.000	0	1	0	1	1	0	0	0	0.0	0	1.0
10/13	Kentucky	1	0	0	0	.000	0	0	1	0	0	0	0	0	0.0	0	0.0
10/18	at Mississippi State	--	--	--	--	--	--	--	DNP	--	--	--	--	--	--	--	--
10/20	at Mississippi	--	--	--	--	--	--	--	DNP	--	--	--	--	--	--	--	--
10/25	Tennessee	--	--	--	--	--	--	--	--	--	--	--	--	--	--	--	--
10/27	Auburn	--	--	--	--	--	--	--	--	--	--	--	--	--	--	--	--
10/30	Coastal Carolina	--	--	--	--	--	--	--	--	--	--	--	--	--	--	--	--
11/8	at Kentucky	--	--	--	--	--	--	--	--	--	--	--	--	--	--	--	--
11/10	at Georgia	--	--	--	--	--	--	--	--	--	--	--	--	--	--	--	--
11/13	at Florida	--	--	--	--	--	--	--	--	--	--	--	--	--	--	--	--
11/15	Alabama	--	--	--	--	--	--	--	--	--	--	--	--	--	--	--	--
11/17	Missouri	--	--	--	--	--	--	--	--	--	--	--	--	--	--	--	--
11/22	at Arkansas	--	--	--	--	--	--	--	--	--	--	--	--	--	--	--	--
11/24	LSU	--	--	--	--	--	--	--	--	--	--	--	--	--	--	--	--
11/27	at Texas A&M	--	--	--	--	--	--	--	--	--	--	--	--	--	--	--	--

**CAREER STATISTICS**

YEAR	SP	MP	KILL	K/S	ERR	ATT	PCT	AST	A/S	SA	SA/S	SE	DIG	D/S	RE	BS	BA	TB	B/S	BE	BHE	P	P/S
2013	25	12	1	0.04	0	1	1.000	6	0.24	3	0.12	5	32	1.28	5	0	0	0	0.00	0	0	4.0	0.16



# 10 - MICHAELA CHRISTIAANSEN

5-9 • Jr. • Libero • Tucson, Ariz. (Ironwood Ridge)

### SEASON NOTES

Started all three Gamecock Invitational matches at libero...Recorded 13 digs and three service aces in win over FIU (8/30)...Had five assists against Panthers...Tallied 10 digs in win over High Point (8/31)...Has recorded double-digit digs in last five matches...Collected 20 digs in loss to Winthrop (9/7)...Finished with 20 digs in win over Utah State (9/13)...Collected 12 digs in sweep of Liberty (9/13)...Finished with 16 digs and three assists at Duke (9/14)...Chipped in 17 digs and four assists in win over Western Carolina (9/20)...Led back line with 19 digs and three assists against Robert Morris (9/21)...Had 10 digs and five assists in sweep of Presbyterian (9/21)...Finished with six digs at Missouri (9/27)...Collected 19 digs and a career-high six assists in win at Tennessee (9/29)...Contributed 14 digs, four assists and first career kill against Arkansas (10/4)...Had 13 digs and six assists in win over Texas A&M (10/6)...Chipped in nine digs and three assists against Georgia (10/11)...Finished with a season-high 21 digs and a kill against No. 15 Kentucky (10/13)...Had nine digs and three assists at Mississippi State (10/18)...Tallied 19 digs and a career-high nine assists in win at Ole Miss (10/20).

### Season Highs

**Kills**  
1, 2x, last vs. Kentucky (10/13)

**Attempts**  
2, Mississippi State (10/18)

**Hit. % (Min. 12 Att.)**  
N/A

**Assists**  
9, Ole Miss (10/20)

**Service Aces**  
3, FIU (8/30)

**Digs**  
21, Kentucky (10/13)

**Blocks Solo**  
N/A

**Block Assists**  
N/A

**Total Blocks**  
N/A

### Career Highs

**Kills**  
1, 2x, last vs. Kentucky (10/13/13)

**Attempts**  
2, 2x, last vs. Mississippi State (10/18/13)

**Hit. % (Min. 12 Att.)**  
N/A

**Assists**  
9, Ole Miss (10/20)

**Service Aces**  
\*4, Ole Miss (8/27/11)

**Digs**  
\*27, Miami (9/3/11)

**Blocks Solo**  
N/A

**Block Assists**  
\*1, Gonzaga (10/20/12)

**Total Blocks**  
\*1, Gonzaga (10/20/12)

\*at Pepperdine

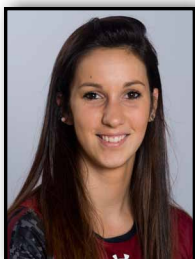
2013 Match-By-Match Statistics																	
DATE	OPP	SP	KILL	ERR	ATT	PCT	AST	SA	SE	RE	DIG	BS	BA	BE	TB	BHE	P
8/30	South Carolina State	3	0	0	0	.000	2	2	0	0	7	0	0	0	0.0	0	2.0
8/30	FIU	3	0	0	0	.000	5	3	1	2	13	0	0	0	0.0	0	3.0
8/31	High Point	3	0	0	0	.000	1	0	1	0	10	0	0	0	0.0	0	0.0
9/6	at Clemson	5	0	0	1	.000	1	0	1	4	19	0	0	0	0.0	0	0.0
9/7	vs. Furman	4	0	0	0	.000	4	1	2	1	16	0	0	0	0.0	0	1.0
9/7	vs. Winthrop	5	0	0	0	.000	3	0	0	2	20	0	0	0	0.0	0	0.0
9/13	vs. Utah State	4	0	0	0	.000	4	0	1	1	20	0	0	0	0.0	0	0.0
9/13	vs. Liberty	3	0	0	0	.000	1	0	1	1	12	0	0	0	0.0	0	0.0
9/14	at Duke	4	0	0	0	.000	3	0	0	0	16	0	0	0	0.0	0	0.0
9/20	Western Carolina	3	0	0	0	.000	4	0	1	1	17	0	0	0	0.0	0	0.0
9/21	Robert Morris	4	0	0	0	.000	3	0	0	1	19	0	0	0	0.0	0	0.0
9/21	Presbyterian	3	0	0	0	.000	5	2	0	0	10	0	0	0	0.0	1	2.0
9/27	at Missouri	3	0	0	0	.000	1	0	0	4	6	0	0	0	0.0	0	0.0
9/29	at Tennessee	4	0	0	0	.000	6	1	1	0	19	0	0	0	0.0	0	1.0
10/4	Arkansas	5	1	0	1	1.000	4	2	0	3	14	0	0	0	0.0	0	3.0
10/6	Texas A&M	4	0	0	0	.000	6	1	0	0	13	0	0	0	0.0	0	1.0
10/11	Georgia	3	0	0	0	.000	3	0	1	2	9	0	0	0	0.0	0	0.0
10/13	Kentucky	3	1	0	1	1.000	0	0	0	0	21	0	0	0	0.0	0	1.0
10/18	at Mississippi State	3	0	0	2	.000	3	2	1	0	9	0	0	0	0.0	0	2.0
10/20	at Mississippi	4	0	0	0	.000	9	1	1	3	19	0	0	0	0.0	0	1.0
10/25	Tennessee																
10/27	Auburn																
10/30	Coastal Carolina																
11/8	at Kentucky																
11/10	at Georgia																
11/13	at Florida																
11/15	Alabama																
11/17	Missouri																
11/22	at Arkansas																
11/24	LSU																
11/27	at Texas A&M																

## CAREER STATISTICS

YEAR	SP	MP	KILL	K/S	ERR	ATT	PCT	AST	A/S	SA	SA/S	SE	DIG	D/S	RE	BS	BA	TB	B/S	BE	BHE	P	P/S
2011*	120	32	0	0.00	0	2	.000	31	0.26	19	0.16	12	267	2.22	22	0	0	0	0.00	0	0	19.0	0.16
2012*	119	32	1	0.01	0	5	.200	66	0.55	12	0.10	20	397	3.34	32	0	1	1	0.01	0	1	13.5	0.11
<b>TOTAL</b>	<b>239</b>	<b>64</b>	<b>1</b>	<b>0.01</b>	<b>0</b>	<b>7</b>	<b>.143</b>	<b>97</b>	<b>0.41</b>	<b>31</b>	<b>0.13</b>	<b>32</b>	<b>664</b>	<b>2.78</b>	<b>54</b>	<b>0</b>	<b>1</b>	<b>1</b>	<b>0.01</b>	<b>0</b>	<b>1</b>	<b>32.5</b>	<b>0.14</b>

\*at Pepperdine

YEAR	SP	MP	KILL	K/S	ERR	ATT	PCT	AST	A/S	SA	SA/S	SE	DIG	D/S	RE	BS	BA	TB	B/S	BE	BHE	P	P/S
2013	73	20	2	0.03	0	5	.400	68	0.93	15	0.21	12	289	3.96	25	0	0	0	0.00	0	1	17.0	0.23



# 12 - JULIETTE THÉVENIN

**6-2 • Sr. • OH • Mont-sur-Marchienne, Belgium (Notre-Dame de Loverval)**

- 2013 Preseason All-SEC
- 2012 All-SEC Second Team
- 2010 SEC All-Freshman Team
- Two-time SEC Academic Honor Roll member (2010-11)
- Four SEC Weekly Awards (Offensive 9/23/13, Offensive 9/17/12, Offensive 8/29/11, Freshman 10/25/10)

**Season Highs**  
**Kills**  
 30, Clemson (9/6)  
**Attempts**  
 73, Clemson (9/6)  
**Hit. % (Min. 12 Att.)**  
 .571, Robert Morris (9/21)  
**Assists**  
 5, High Point (8/31)  
**Service Aces**  
 2, 3x, last vs. Tennessee (9/29)  
**Digs**  
 16, Tennessee (9/29)

**SEASON NOTES**

Currently ranks in the top 10 in school history in kills (third), kills per set (second), attacks (third), points (sixth) and points per set (third)... Ranks first in the SEC in kills (4.95) and points (5.29) per set...Ranks fifth nationally in kills per set...Started all three matches of the Gamecock Invitational...Named tournament MVP after averaging 4.33 kills per set...Tallied 20 kills (.385) and seven digs in win over FIU (8/30)...Recorded team-high 12 kills in win over South Carolina State (8/30)...Named to the Big Orange Bash All-Tournament Team (9/7)...Produced first double-double of the season with career-high 30 kills and 10 digs in loss at Clemson (9/6)...Hit .377 to record 25 kills against Furman (9/7)...Narrowly missed second double-double with 23 kills and nine digs against Winthrop (9/7)...Finished with 14 kills and seven digs in win over Utah State (9/13)...Turned in second double-double of the season with 16 kills and 14 digs against Liberty (9/13)...Had 15 kills, five digs and four blocks at Duke (9/14)...Named Carolina Classic MVP...Led team with 20 kills and nine digs in win over Western Carolina (9/20)...Hit a career-best .571 to record 26 kills and had nine digs and three blocks against Robert Morris (9/21)...Finished with 11 kills and six digs in sweep of Presbyterian (9/21)...Led team with 10 kills, two service aces and two digs at Missouri (9/27)...Produced double-double with 23 kills and 16 digs in win at Tennessee (9/29)...Notched a double-double against Arkansas (10/4), recording 18 kills and 13 digs along with three block assists...Recorded third straight double-double with 23 kills and 11 assists in win over Texas A&M (10/6)...Registered a match-high 16 kills while hitting .324 against Georgia (10/11)...Had nine kills and six digs against No. 15 Kentucky (10/13)...Hit .400 to record 18 kills and added nine digs at Mississippi State (10/18)...Led the way with 25 kills and had five digs in win at Ole Miss (10/20).

**Blocks Solo**  
 N/A  
**Block Assists**  
 4, Duke (9/14)  
**Total Blocks**  
 4, Duke (9/14)

**Career Highs**  
**Kills**  
 30, Clemson (9/6/13)  
**Attempts**  
 73, 2x, last vs. Clemson (9/6/13)  
**Hit. % (Min. 12 Att.)**  
 .571, Robert Morris (9/21/13)  
**Assists**  
 5, 3x, last vs. High Point (8/31/13)  
**Service Aces**  
 4, The Citadel (9/26/10)  
**Digs**  
 23, Mississippi State (11/13/10)  
**Blocks Solo**  
 4, Alabama (11/16/12)  
**Block Assists**  
 4, 3x, last vs. Duke (9/14/13)  
**Total Blocks**  
 6, Alabama (11/16/12)

DATE	OPP	SP	KILL	ERR	ATT	PCT	AST	SA	SE	RE	DIG	BS	BA	BE	TB	BHE	P
8/30	South Carolina State	3	12	5	23	.304	2	1	1	0	3	0	2	0	2.0	0	14.0
8/30	FIU	3	20	5	39	.385	0	0	2	0	7	0	1	1	1.0	0	20.5
8/31	High Point	3	7	3	27	.148	5	0	0	1	4	0	0	0	0.0	0	7.0
9/6	at Clemson	5	30	6	73	.329	0	0	1	0	10	0	2	0	2.0	0	31.0
9/7	vs. Furman	4	25	5	53	.377	0	0	2	1	4	0	1	1	1.0	0	25.5
9/7	vs. Winthrop	5	23	9	54	.259	1	2	2	1	9	0	0	0	0.0	0	25.0
9/13	vs. Utah State	4	14	11	55	.055	2	1	0	2	7	0	1	0	1.0	0	15.5
9/13	vs. Liberty	3	16	7	44	.205	2	0	2	1	14	0	2	0	2.0	0	17.0
9/14	at Duke	4	15	5	44	.227	0	1	1	3	5	0	4	0	4.0	0	18.0
9/20	Western Carolina	3	20	3	43	.395	0	1	1	2	9	0	0	1	0.0	1	21.0
9/21	Robert Morris	4	26	2	42	.571	1	0	2	0	9	0	3	1	3.0	0	27.5
9/21	Presbyterian	3	11	4	25	.280	1	0	1	0	6	0	1	0	1.0	0	11.5
9/27	at Missouri	3	10	5	24	.208	0	2	2	2	2	0	1	0	1.0	0	12.5
9/29	at Tennessee	4	23	7	57	.281	1	2	1	2	16	0	1	1	1.0	0	25.5
10/4	Arkansas	5	18	8	61	.164	0	1	3	0	13	0	3	0	3.0	0	20.5
10/6	Texas A&M	4	23	8	54	.278	1	0	2	1	11	0	1	0	1.0	0	23.5
10/11	Georgia	3	16	4	37	.324	1	0	2	2	8	0	0	0	0.0	0	16.0
10/13	Kentucky	3	9	7	28	.071	0	1	1	0	6	0	1	0	1.0	0	10.5
10/18	at Mississippi State	3	18	2	40	.400	0	0	1	2	9	0	1	0	1.0	0	18.5
10/20	at Mississippi	4	25	11	58	.241	0	0	4	0	5	0	1	1	1.0	0	25.5
10/25	Tennessee																
10/27	Auburn																
10/30	Coastal Carolina																
11/8	at Kentucky																
11/10	at Georgia																
11/13	at Florida																
11/15	Alabama																
11/17	Missouri																
11/22	at Arkansas																
11/24	LSU																
11/27	at Texas A&M																

**CAREER STATISTICS**

YEAR	SP	MP	KILL	K/S	ERR	ATT	PCT	AST	A/S	SA	SA/S	SE	DIG	D/S	RE	BS	BA	TB	B/S	BE	BHE	P	P/S
2010	96	27	350	3.65	141	934	.224	28	0.29	29	0.30	45	226	2.35	23	5	24	29	0.30	6	2	396.0	4.12
2011	88	25	321	3.65	121	896	.223	27	0.31	17	0.19	34	296	3.36	26	4	25	29	0.33	2	1	354.5	4.02
2012	105	32	453	4.31	142	1073	.290	32	0.30	15	0.14	38	265	2.52	29	13	24	37	0.35	6	4	493.0	4.70
2013	73	20	361	4.95	117	881	.277	17	0.23	12	0.16	31	157	2.15	20	0	26	26	0.36	6	1	386.0	5.29
<b>TOTAL</b>	<b>362</b>	<b>104</b>	<b>1485</b>	<b>4.10</b>	<b>521</b>	<b>3784</b>	<b>.255</b>	<b>104</b>	<b>0.29</b>	<b>73</b>	<b>0.20</b>	<b>148</b>	<b>944</b>	<b>2.61</b>	<b>98</b>	<b>22</b>	<b>99</b>	<b>121</b>	<b>0.33</b>	<b>20</b>	<b>81629.5</b>	<b>4.50</b>	





# 13 - GABRIELLE RUBEIS

5-7 • Fr. • DS/S • Gainesville, Fla. (Buchholz)

### SEASON NOTES

Worked way into starting lineup to open the season...Started all three matches of the Gamecock Invitational...Tallied 11 digs in win over FIU (8/30)...Recorded season-high 13 digs at Clemson (9/6)...Had nine digs in win over Utah State (9/13)...Finished with 11 digs and two assists in sweep of Liberty (9/13)...Produced five digs and two assists at Duke (9/14)...Collected 11 digs in sweep of Western Carolina (9/20)...Had five digs and a service error against Robert Morris (9/21)...Finished with two digs against Presbyterian (9/21)...Produced two digs and an assist at Missouri (9/27)...Recorded seven digs in win at Tennessee (9/29)...Collected career-high 20 digs and three assists against Arkansas (10/4)...Had 19 digs, an assists and a service ace in win over Texas A&M (10/6)...Finished with 10 digs and a service ace against Georgia (10/11)...Had four digs versus No. 15 Kentucky (10/13)...Collected three digs and two assists at Mississippi State (10/18)...Tallied five digs and a career-high four assists in win at Ole Miss (10/20).

### Season Highs

**Kills**  
1, 2x, last vs. Arkansas (10/4)

**Attempts**  
2, 3x, last vs. Arkansas (10/4)

**Hit. % (Min. 12 Att.)**  
N/A

**Assists**  
4, Ole Miss (10/20)

**Service Aces**  
1, 4x, last vs. Georgia (10/11)

**Digs**  
20, Arkansas (10/4)

**Blocks Solo**  
N/A

**Block Assists**  
N/A

**Total Blocks**  
N/A

### 2013 Match-By-Match Statistics

DATE	OPP	SP	KILL	ERR	ATT	PCT	AST	SA	SE	RE	DIG	BS	BA	BE	TB	BHE	P
8/30	South Carolina State	3	1	0	1	1.000	0	0	1	1	5	0	0	0	0.0	0	1.0
8/30	FIU	3	0	0	0	.000	0	1	0	0	11	0	0	0	0.0	0	1.0
8/31	High Point	3	0	0	0	.000	0	0	0	0	5	0	0	0	0.0	0	0.0
9/6	at Clemson	5	0	0	2	.000	1	0	1	1	13	0	0	0	0.0	0	0.0
9/7	vs. Furman	4	0	0	0	.000	0	0	0	0	7	0	0	0	0.0	0	0.0
9/7	vs. Winthrop	5	0	0	0	.000	1	0	3	0	6	0	0	0	0.0	0	0.0
9/13	vs. Utah State	4	0	0	0	.000	1	0	1	0	9	0	0	0	0.0	0	0.0
9/13	vs. Liberty	3	0	0	0	.000	2	0	0	0	11	0	0	0	0.0	0	0.0
9/14	at Duke	4	0	1	1	-1.000	2	0	0	0	5	0	0	0	0.0	0	0.0
9/20	Western Carolina	3	0	0	0	.000	1	0	1	0	11	0	0	0	0.0	0	0.0
9/21	Robert Morris	4	0	0	0	.000	0	1	2	2	5	0	0	0	0.0	0	1.0
9/21	Presbyterian	2	0	0	0	.000	0	0	0	0	2	0	0	0	0.0	0	0.0
9/27	at Missouri	3	0	0	2	.000	1	0	0	1	2	0	0	0	0.0	0	0.0
9/29	at Tennessee	4	0	0	0	.000	0	0	2	0	7	0	0	0	0.0	0	0.0
10/4	Arkansas	5	1	1	2	.000	3	0	4	2	20	0	0	0	0.0	0	1.0
10/6	Texas A&M	4	0	0	1	.000	1	1	0	0	19	0	0	0	0.0	0	1.0
10/11	Georgia	3	0	0	0	.000	0	1	2	4	10	0	0	0	0.0	0	1.0
10/13	Kentucky	3	0	0	0	.000	2	0	0	1	4	0	0	0	0.0	0	0.0
10/18	at Mississippi State	3	0	0	0	.000	2	0	0	1	3	0	0	0	0.0	0	0.0
10/20	at Mississippi	4	0	0	0	.000	4	0	1	1	5	0	0	0	0.0	0	0.0
10/25	Tennessee																
10/27	Auburn																
10/30	Coastal Carolina																
11/8	at Kentucky																
11/10	at Georgia																
11/13	at Florida																
11/15	Alabama																
11/17	Missouri																
11/22	at Arkansas																
11/24	LSU																
11/27	at Texas A&M																

### CAREER STATISTICS

YEAR	SP	MP	KILL	K/S	ERR	ATT	PCT	AST	A/S	SA	SA/S	SE	DIG	D/S	RE	BS	BA	TB	B/S	BE	BHE	P	P/S
2013	72	20	2	0.03	2	9	.000	21	0.29	4	0.06	18	160	2.22	14	0	0	0	0.00	0	0	6.0	0.08



# 14 - KATLYN MCDANIEL

**6-0 • Fr. • MB • Columbia, S.C. (Spring Valley)**

**SEASON NOTES**

Played in two matches in the Gamecock Invitational...Recorded season-high five kills and three block assists in win over South Carolina State (8/30)...Had one kill and one block against Western Carolina (9/20).

**Season Highs**

- Kills**  
5, SC State (8/30)
- Attempts**  
12, SC State (8/30)
- Hit. % (Min. 12 Att.)**  
.333, SC State (8/30)
- Assists**  
N/A
- Service Aces**  
1, Clemson (9/6)
- Digs**  
1, SC State (8/30)
- Blocks Solo**  
N/A
- Block Assists**  
3, SC State (8/30)
- Total Blocks**  
3, SC State (8/30)

**2013 Match-By-Match Statistics**

DATE	OPP	SP	KILL	ERR	ATT	PCT	AST	SA	SE	RE	DIG	BS	BA	BE	TB	BHE	P
8/30	South Carolina State	3	5	1	12	.333	0	0	0	0	1	0	3	0	3.0	0	6.5
8/30	FIU	--	--	--	--	--	--	--	DNP	--	--	--	--	--	--	--	--
8/31	High Point	1	0	0	0	.000	0	0	0	0	0	0	0	0	0.0	0	0.0
9/6	at Clemson	2	0	1	3	-.333	0	1	0	0	0	0	0	0	0.0	0	1.0
9/7	vs. Furman	--	--	--	--	--	--	--	DNP	--	--	--	--	--	--	--	--
9/7	vs. Winthrop	--	--	--	--	--	--	--	DNP	--	--	--	--	--	--	--	--
9/13	vs. Utah State	--	--	--	--	--	--	--	DNP	--	--	--	--	--	--	--	--
9/13	vs. Liberty	--	--	--	--	--	--	--	DNP	--	--	--	--	--	--	--	--
9/14	at Duke	--	--	--	--	--	--	--	DNP	--	--	--	--	--	--	--	--
9/20	Western Carolina	2	1	3	4	-.500	0	0	0	0	0	0	1	0	1.0	0	1.5
9/21	Robert Morris	--	--	--	--	--	--	--	DNP	--	--	--	--	--	--	--	--
9/21	Presbyterian	--	--	--	--	--	--	--	DNP	--	--	--	--	--	--	--	--
9/27	at Missouri	--	--	--	--	--	--	--	DNP	--	--	--	--	--	--	--	--
9/29	at Tennessee	--	--	--	--	--	--	--	DNP	--	--	--	--	--	--	--	--
10/4	Arkansas	--	--	--	--	--	--	--	DNP	--	--	--	--	--	--	--	--
10/6	Texas A&M	--	--	--	--	--	--	--	DNP	--	--	--	--	--	--	--	--
10/11	Georgia	--	--	--	--	--	--	--	DNP	--	--	--	--	--	--	--	--
10/13	Kentucky	--	--	--	--	--	--	--	DNP	--	--	--	--	--	--	--	--
10/18	at Mississippi State	--	--	--	--	--	--	--	DNP	--	--	--	--	--	--	--	--
10/20	at Mississippi	--	--	--	--	--	--	--	DNP	--	--	--	--	--	--	--	--
10/25	Tennessee	--	--	--	--	--	--	--	DNP	--	--	--	--	--	--	--	--
10/27	Auburn	--	--	--	--	--	--	--	DNP	--	--	--	--	--	--	--	--
10/30	Coastal Carolina	--	--	--	--	--	--	--	DNP	--	--	--	--	--	--	--	--
11/8	at Kentucky	--	--	--	--	--	--	--	DNP	--	--	--	--	--	--	--	--
11/10	at Georgia	--	--	--	--	--	--	--	DNP	--	--	--	--	--	--	--	--
11/13	at Florida	--	--	--	--	--	--	--	DNP	--	--	--	--	--	--	--	--
11/15	Alabama	--	--	--	--	--	--	--	DNP	--	--	--	--	--	--	--	--
11/17	Missouri	--	--	--	--	--	--	--	DNP	--	--	--	--	--	--	--	--
11/22	at Arkansas	--	--	--	--	--	--	--	DNP	--	--	--	--	--	--	--	--
11/24	LSU	--	--	--	--	--	--	--	DNP	--	--	--	--	--	--	--	--
11/27	at Texas A&M	--	--	--	--	--	--	--	DNP	--	--	--	--	--	--	--	--

**CAREER STATISTICS**

YEAR	SP	MP	KILL	K/S	ERR	ATT	PCT	AST	A/S	SA	SA/S	SE	DIG	D/S	RE	BS	BA	TB	B/S	BE	BHE	P	P/S
2013	8	4	6	0.75	5	19	.053	0	0.00	1	0.12	0	1	0.12	0	0	4	4	0.50	0	0	9.0	1.12



# 15 - LINDSEY CRAFT

**5-7 • Sr. • Libero • Alpharetta, Ga. (Chattahoochee)**

• Three-time SEC Academic Honor Roll member (2010, 2011, 2012)

**SEASON NOTES**

Saw action in all three matches of the Gamecock Invitational...Recorded eight digs and matched career-high with two service aces in win over High Point (8/31)...Tallied season-high 15 digs against Clemson (9/6)...Finished with one kill, one assist and 15 digs in win over Utah State (9/13)...Collected 14 digs and distributed two assists in sweep of Liberty (9/13)...Had two digs and a service ace at Duke (9/14)...Finished with 10 digs in sweep of Western Carolina (9/20)...Had eight digs and two assists against Robert Morris (9/21)...Registered seven digs, one assist and a service ace against Presbyterian (9/21)...Finished with six digs and two assists in win at Tennessee (9/29)...Had seven digs and a service ace against Arkansas (10/4)...Collected four digs against Georgia (10/11)...Tallied five digs versus No. 15 Kentucky (10/13)...Collected five digs at Mississippi State (10/18)...Registered a season-high 16 digs in win at Ole Miss (10/20).

- Season Highs**
- Kills**  
1, 2x, last vs. Utah State (9/13)
- Attempts**  
1, 6x, last vs. Tennessee (9/29)
- Hit. % (Min. 12 Att.)**  
N/A
- Assists**  
2, 6x, last vs. Tennessee (9/29)
- Service Aces**  
2, High Point (8/31)
- Digs**  
16, Ole Miss (10/20)
- Blocks Solo**  
N/A
- Block Assists**  
N/A
- Total Blocks**  
N/A

- Career Highs**
- Kills**  
1, 4x, last vs. Clemson (9/6/13)
- Attempts**  
2, 6x, last Temple (8/24/12)
- Hit. % (Min. 12 Att.)**  
N/A
- Assists**  
2, 9x, last vs. Tennessee (9/29/13)
- Service Aces**  
2, 2x, last vs. High Point (8/31/13)
- Digs**  
22, BYU (8/28/10)
- Blocks Solo**  
N/A
- Block Assists**  
N/A
- Total Blocks**  
N/A

2013 Match-By-Match Statistics																		
DATE	OPP	SP	KILL	ERR	ATT	PCT	AST	SA	SE	RE	DIG	BS	BA	BE	TB	BHE	P	
8/30	South Carolina State	2	0	0	0	.000	1	1	2	0	3	0	0	0	0.0	0	1.0	
8/30	FIU	3	0	0	0	.000	2	1	1	0	7	0	0	0	0.0	0	1.0	
8/31	High Point	3	0	1	1	-1.000	2	2	1	2	8	0	0	0	0.0	0	2.0	
9/6	at Clemson	5	1	0	1	1.000	2	0	1	1	15	0	0	0	0.0	0	1.0	
9/7	vs. Furman	2	0	0	0	.000	0	0	0	0	6	0	0	0	0.0	0	0.0	
9/7	vs. Winthrop	--	--	--	--	--	--	--	DNP	--	--	--	--	--	--	--	--	--
9/13	vs. Utah State	4	1	0	1	1.000	1	0	1	0	15	0	0	0	0.0	0	1.0	
9/13	vs. Liberty	3	0	0	0	.000	2	0	0	0	14	0	0	0	0.0	0	0.0	
9/14	at Duke	1	0	0	1	.000	0	1	0	0	2	0	0	0	0.0	0	1.0	
9/20	Western Carolina	3	0	0	1	.000	1	1	1	0	10	0	0	0	0.0	0	1.0	
9/21	Robert Morris	4	0	0	0	.000	2	0	0	1	8	0	0	0	0.0	0	0.0	
9/21	Presbyterian	3	0	0	0	.000	1	1	1	0	7	0	0	0	0.0	0	1.0	
9/27	at Missouri	2	0	0	0	.000	0	0	1	0	1	0	0	0	0.0	0	0.0	
9/29	at Tennessee	4	0	0	1	.000	2	0	1	0	6	0	0	0	0.0	0	0.0	
10/4	Arkansas	5	0	0	0	.000	0	1	2	0	7	0	0	0	0.0	0	1.0	
10/6	Texas A&M	--	--	--	--	--	--	--	DNP	--	--	--	--	--	--	--	--	--
10/11	Georgia	3	0	0	0	.000	0	0	0	0	4	0	0	0	0.0	0	0.0	
10/13	Kentucky	3	0	0	0	.000	0	0	0	0	5	0	0	0	0.0	0	0.0	
10/18	at Mississippi State	3	0	0	0	.000	1	0	0	0	5	0	0	0	0.0	1	0.0	
10/20	at Mississippi	4	0	0	0	.000	0	1	1	0	16	0	0	0	0.0	0	1.0	
10/25	Tennessee																	
10/27	Auburn																	
10/30	Coastal Carolina																	
11/8	at Kentucky																	
11/10	at Georgia																	
11/13	at Florida																	
11/15	Alabama																	
11/17	Missouri																	
11/22	at Arkansas																	
11/24	LSU																	
11/27	at Texas A&M																	

**CAREER STATISTICS**

YEAR	SP	MP	KILL	K/S	ERR	ATT	PCT	AST	A/S	SA	SA/S	SE	DIG	D/S	RE	BS	BA	TB	B/S	BE	BHE	P	P/S
2010	38	17	2	0.05	1	8	.125	7	0.18	2	0.05	3	66	1.74	4	0	0	0	0.00	0	0	4.0	0.11
2011	55	23	0	0.00	1	9	-.111	9	0.16	2	0.04	5	78	1.42	8	0	0	0	0.00	0	1	2.0	0.04
2012	31	17	1	0.03	0	5	.200	4	0.13	3	0.10	10	61	1.97	2	0	0	0	0.00	0	0	4.0	0.13
2013	57	18	2	0.04	1	6	.167	17	0.30	9	0.16	13	139	2.44	4	0	0	0	0.00	0	1	11.0	0.19
<b>TOTAL</b>	<b>181</b>	<b>75</b>	<b>5</b>	<b>0.03</b>	<b>3</b>	<b>28</b>	<b>.071</b>	<b>37</b>	<b>0.20</b>	<b>16</b>	<b>0.09</b>	<b>31</b>	<b>344</b>	<b>1.90</b>	<b>18</b>	<b>0</b>	<b>0</b>	<b>0</b>	<b>0.00</b>	<b>0</b>	<b>2</b>	<b>21.0</b>	<b>0.12</b>



# 16 - KOKO ATOA-WILLIAMS

5-10 • Fr. • OH • Reno, Nev. (Bishop Manogue)

### SEASON NOTES

Saw time in opening match vs. South Carolina State (8/30)...Recorded one kill and one block assists in win over South Carolina State (8/30)...Earned more playing time at Big Orange Bash...Tallied season-high 12 kills and four block assists against Winthrop...Finished with six kills, two digs and a block in win over Utah State (9/13)...Had nine kills and a pair of digs in sweep of Liberty (9/13)...Produced seven kills, two digs and three blocks at Duke (9/14)...Finished with one kill and one block in sweep of Western Carolina (9/20)...Tallied two kills and a dig against Robert Morris (9/21)...Had two kills against Arkansas (10/4)...Posted three kills and two digs at Mississippi State (10/18)...Produced four kills, a season-high four digs and two block assists in win at Ole Miss (10/20).

- Season Highs**
- Kills**  
12, Winthrop (9/7)
- Attempts**  
37, Winthrop (9/7)
- Hit. % (Min. 12 Att.)**  
.294, Clemson (9/6)
- Assists**  
N/A
- Service Aces**  
N/A
- Digs**  
4, Ole Miss (10/20)
- Blocks Solo**  
N/A
- Block Assists**  
4, Winthrop (9/7)
- Total Blocks**  
4, Winthrop (9/7)

2013 Match-By-Match Statistics																	
DATE	OPP	SP	KILL	ERR	ATT	PCT	AST	SA	SE	RE	DIG	BS	BA	BE	TB	BHE	P
8/30	South Carolina State	1	1	1	2	.000	0	0	0	0	1	0	1	0	1.0	0	1.5
8/30	FIU	--	--	--	--	--	--	--	DNP	--	--	--	--	--	--	--	--
8/31	High Point	--	--	--	--	--	--	--	DNP	--	--	--	--	--	--	--	--
9/6	at Clemson	4	6	1	17	.294	0	0	0	0	1	0	0	0	0.0	0	6.0
9/7	vs. Furman	4	6	3	24	.125	0	0	0	0	0	0	1	1	1.0	0	6.5
9/7	vs. Winthrop	5	12	8	37	.108	0	0	0	0	1	0	4	0	4.0	0	14.0
9/13	vs. Utah State	3	6	3	20	.150	0	0	0	0	2	0	1	0	1.0	0	6.5
9/13	vs. Liberty	3	9	5	25	.160	0	0	0	1	2	0	0	0	0.0	0	9.0
9/14	at Duke	4	7	2	19	.263	0	0	0	1	2	0	3	0	3.0	0	8.5
9/20	Western Carolina	2	1	2	9	-.111	0	0	0	0	0	0	1	0	1.0	0	1.5
9/21	Robert Morris	1	2	1	4	.250	0	0	0	0	1	0	0	0	0.0	1	2.0
9/21	Presbyterian	1	0	1	1	-1.000	0	0	0	0	0	0	0	0	0.0	0	0.0
9/27	at Missouri	--	--	--	--	--	--	--	DNP	--	--	--	--	--	--	--	--
9/29	at Tennessee	--	--	--	--	--	--	--	DNP	--	--	--	--	--	--	--	--
10/4	Arkansas	3	2	3	13	-.077	0	0	0	0	0	0	0	0	0.0	0	2.0
10/6	Texas A&M	--	--	--	--	--	--	--	DNP	--	--	--	--	--	--	--	--
10/11	Georgia	--	--	--	--	--	--	--	DNP	--	--	--	--	--	--	--	--
10/13	Kentucky	--	--	--	--	--	--	--	DNP	--	--	--	--	--	--	--	--
10/18	at Mississippi State	3	3	1	10	.200	0	0	0	0	2	0	0	1	0.0	0	3.0
10/20	at Mississippi	4	4	3	17	.059	1	0	0	0	4	0	2	0	2.0	0	5.0
10/25	Tennessee																
10/27	Auburn																
10/30	Coastal Carolina																
11/8	at Kentucky																
11/10	at Georgia																
11/13	at Florida																
11/15	Alabama																
11/17	Missouri																
11/22	at Arkansas																
11/24	LSU																
11/27	at Texas A&M																

### CAREER STATISTICS

YEAR	SP	MP	KILL	K/S	ERR	ATT	PCT	AST	A/S	SA	SA/S	SE	DIG	D/S	RE	BS	BA	TB	B/S	BE	BHE	P	P/S
2013	38	13	59	1.55	34	198	.126	1	0.03	0	0.00	0	16	0.42	2	0	13	13	0.34	2	1	65.5	1.71





# 17 - ELIZABETH JOHNBULL

6-0 • So. • MB • Pflugerville, Texas (Connally)

### SEASON NOTES

Started all three matches of the Gamecock Invitational...Recorded three kills and a block assists in win over FIU (8/30)...Tallied career-high 13 kills while hitting .500 against Furman (9/7)...Had career-high four block assists against Winthrop (9/7)...Had one kill in win over Utah State (9/13)...Finished with one kills at Duke (9/14)...Produced one dig and one block assist in win at Tennessee (9/29)... Tallied two kills and two block assists at Mississippi State (10/18).

**Season Highs**  
**Kills**  
 13, Furman (9/7)  
**Attempts**  
 22, Furman, (9/7)  
**Hit. % (Min. 12 Att.)**  
 .500, Furman, (9/7)  
**Assists**  
 N/A  
**Service Aces**  
 N/A  
**Digs**  
 1, 5x, last vs. Tennessee (9/29)

**Blocks Solo**  
 1, Clemson (9/6)  
**Block Assists**  
 4, Winthrop (9/7)  
**Total Blocks**  
 4, Winthrop (9/7)

**Career Highs**  
**Kills**  
 13, Furman (9/7/13)  
**Attempts**  
 22, Furman, (9/7/13)  
**Hit. % (Min. 12 Att.)**  
 .500, Furman, (9/7/13)  
**Assists**  
 N/A  
**Service Aces**  
 N/A  
**Digs**  
 1, 5x, last vs. Tennessee (9/29/13)

**Blocks Solo**  
 1, 2x, last vs. Clemson (9/6/13)  
**Block Assists**  
 4, Winthrop (9/7/13)  
**Total Blocks**  
 4, Winthrop (9/7/13)

2013 Match-By-Match Statistics																		
DATE	OPP	SP	KILL	ERR	ATT	PCT	AST	SA	SE	RE	DIG	BS	BA	BE	TB	BHE	P	
8/30	South Carolina State	1	0	0	2	.000	0	0	0	0	0	0	1	0	1.0	0	0.5	
8/30	FIU	3	3	2	8	.125	0	0	0	0	0	0	1	0	1.0	0	3.5	
8/31	High Point	2	1	0	2	.500	0	0	0	0	1	0	0	0	0.0	0	1.0	
9/6	at Clemson	4	3	2	9	.111	0	0	0	0	1	1	2	0	3.0	0	5.0	
9/7	vs. Furman	4	13	2	22	.500	0	0	0	1	1	0	1	0	1.0	0	13.5	
9/7	vs. Winthrop	5	1	0	8	.125	0	0	0	0	1	0	4	1	4.0	0	3.0	
9/13	vs. Utah State	1	1	1	3	.000	0	0	0	1	0	0	0	0	0.0	0	1.0	
9/13	vs. Liberty	--	--	--	--	--	--	--	DNP	--	--	--	--	--	--	--	--	
9/14	at Duke	1	1	0	2	.500	0	0	0	0	0	0	0	0	0.0	0	1.0	
9/20	Western Carolina	--	--	--	--	--	--	--	DNP	--	--	--	--	--	--	--	--	
9/21	Robert Morris	--	--	--	--	--	--	--	DNP	--	--	--	--	--	--	--	--	
9/21	Presbyterian	--	--	--	--	--	--	--	DNP	--	--	--	--	--	--	--	--	
9/27	at Missouri	1	1	0	2	.500	0	0	0	0	0	0	0	0	0.0	0	1.0	
9/29	at Tennessee	3	0	3	7	-.429	0	0	0	0	1	0	1	0	1.0	0	0.5	
10/4	Arkansas	--	--	--	--	--	--	--	DNP	--	--	--	--	--	--	--	--	
10/6	Texas A&M	--	--	--	--	--	--	--	DNP	--	--	--	--	--	--	--	--	
10/11	Georgia	--	--	--	--	--	--	--	DNP	--	--	--	--	--	--	--	--	
10/13	Kentucky	--	--	--	--	--	--	--	DNP	--	--	--	--	--	--	--	--	
10/18	at Mississippi State	2	2	0	3	.667	0	0	0	0	0	0	2	0	2.0	0	3.0	
10/20	at Mississippi	--	--	--	--	--	--	--	DNP	--	--	--	--	--	--	--	--	
10/25	Tennessee	--	--	--	--	--	--	--	--	--	--	--	--	--	--	--	--	
10/27	Auburn	--	--	--	--	--	--	--	--	--	--	--	--	--	--	--	--	
10/30	Coastal Carolina	--	--	--	--	--	--	--	--	--	--	--	--	--	--	--	--	
11/8	at Kentucky	--	--	--	--	--	--	--	--	--	--	--	--	--	--	--	--	
11/10	at Georgia	--	--	--	--	--	--	--	--	--	--	--	--	--	--	--	--	
11/13	at Florida	--	--	--	--	--	--	--	--	--	--	--	--	--	--	--	--	
11/15	Alabama	--	--	--	--	--	--	--	--	--	--	--	--	--	--	--	--	
11/17	Missouri	--	--	--	--	--	--	--	--	--	--	--	--	--	--	--	--	
11/22	at Arkansas	--	--	--	--	--	--	--	--	--	--	--	--	--	--	--	--	
11/24	LSU	--	--	--	--	--	--	--	--	--	--	--	--	--	--	--	--	
11/27	at Texas A&M	--	--	--	--	--	--	--	--	--	--	--	--	--	--	--	--	

## CAREER STATISTICS

YEAR	SP	MP	KILL	K/S	ERR	ATT	PCT	AST	A/S	SA	SA/S	SE	DIG	D/S	RE	BS	BA	TB	B/S	BE	BHE	P	P/S
2012	9	9	8	0.89	3	13	.385	0	0.00	0	0.00	0	0	0.00	0	1	1	2	0.22	0	0	9.5	1.00
2013	27	11	26	0.96	10	68	.235	0	0.00	0	0.00	0	5	0.19	2	1	12	13	0.48	1	0	33.0	1.22
<b>TOTAL</b>	<b>36</b>	<b>20</b>	<b>34</b>	<b>0.94</b>	<b>13</b>	<b>81</b>	<b>.259</b>	<b>0</b>	<b>0.00</b>	<b>0</b>	<b>0.00</b>	<b>0</b>	<b>5</b>	<b>0.14</b>	<b>2</b>	<b>2</b>	<b>13</b>	<b>15</b>	<b>0.42</b>	<b>1</b>	<b>0</b>	<b>42.5</b>	<b>1.17</b>



# 20 - ABBY FERUCK

**6-0 • Fr. • MB/RS • Atlanta, Ga. (Blessed Trinity)**

## SEASON NOTES

Played three sets in two matches of the Gamecock Invitational...Recorded season-high two kills and a block assist in win over High Point (8/31).

### Season Highs

#### Kills

2, High Point (8/31)

#### Attempts

4, Clemson (9/6)

#### Hit. % (Min. 12 Att.)

N/A

#### Assists

N/A

#### Service Aces

N/A

#### Digs

1, 2x, last vs.

Winthrop (9/7)

#### Blocks Solo

N/A

#### Block Assists

2, Clemson (9/6)

#### Total Blocks

2, Clemson (9/6)

## 2013 Match-By-Match Statistics

DATE	OPP	SP	KILL	ERR	ATT	PCT	AST	SA	SE	RE	DIG	BS	BA	BE	TB	BHE	P
8/30	South Carolina State	2	1	0	1	1.000	0	0	0	1	1	0	1	0	1.0	0	1.5
8/30	FIU	--	--	--	--	--	--	--	DNP	--	--	--	--	--	--	--	--
8/31	High Point	1	2	0	2	1.000	0	0	0	0	0	0	1	0	1.0	0	2.5
9/6	at Clemson	3	1	0	4	.250	0	0	0	0	0	0	2	0	2.0	0	2.0
9/7	vs. Furman	1	0	0	0	.000	0	0	0	0	0	0	0	0	0.0	0	0.0
9/7	vs. Winthrop	2	1	1	3	.000	0	0	0	1	0	0	0	0	0.0	0	1.0
9/13	vs. Utah State	--	--	--	--	--	--	--	DNP	--	--	--	--	--	--	--	--
9/13	vs. Liberty	--	--	--	--	--	--	--	DNP	--	--	--	--	--	--	--	--
9/14	at Duke	--	--	--	--	--	--	--	DNP	--	--	--	--	--	--	--	--
9/20	Western Carolina	--	--	--	--	--	--	--	DNP	--	--	--	--	--	--	--	--
9/21	Robert Morris	--	--	--	--	--	--	--	DNP	--	--	--	--	--	--	--	--
9/21	Presbyterian	--	--	--	--	--	--	--	DNP	--	--	--	--	--	--	--	--
9/27	at Missouri	--	--	--	--	--	--	--	DNP	--	--	--	--	--	--	--	--
9/29	at Tennessee	--	--	--	--	--	--	--	DNP	--	--	--	--	--	--	--	--
10/4	Arkansas	--	--	--	--	--	--	--	DNP	--	--	--	--	--	--	--	--
10/6	Texas A&M	--	--	--	--	--	--	--	DNP	--	--	--	--	--	--	--	--
10/11	Georgia	--	--	--	--	--	--	--	DNP	--	--	--	--	--	--	--	--
10/13	Kentucky	--	--	--	--	--	--	--	DNP	--	--	--	--	--	--	--	--
10/18	at Mississippi State	--	--	--	--	--	--	--	DNP	--	--	--	--	--	--	--	--
10/20	at Mississippi	--	--	--	--	--	--	--	DNP	--	--	--	--	--	--	--	--
10/25	Tennessee	--	--	--	--	--	--	--	DNP	--	--	--	--	--	--	--	--
10/27	Auburn	--	--	--	--	--	--	--	DNP	--	--	--	--	--	--	--	--
10/30	Coastal Carolina	--	--	--	--	--	--	--	DNP	--	--	--	--	--	--	--	--
11/8	at Kentucky	--	--	--	--	--	--	--	DNP	--	--	--	--	--	--	--	--
11/10	at Georgia	--	--	--	--	--	--	--	DNP	--	--	--	--	--	--	--	--
11/13	at Florida	--	--	--	--	--	--	--	DNP	--	--	--	--	--	--	--	--
11/15	Alabama	--	--	--	--	--	--	--	DNP	--	--	--	--	--	--	--	--
11/17	Missouri	--	--	--	--	--	--	--	DNP	--	--	--	--	--	--	--	--
11/22	at Arkansas	--	--	--	--	--	--	--	DNP	--	--	--	--	--	--	--	--
11/24	LSU	--	--	--	--	--	--	--	DNP	--	--	--	--	--	--	--	--
11/27	at Texas A&M	--	--	--	--	--	--	--	DNP	--	--	--	--	--	--	--	--

## CAREER STATISTICS

YEAR	SP	MP	KILL	K/S	ERR	ATT	PCT	AST	A/S	SA	SA/S	SE	DIG	D/S	RE	BS	BA	TB	B/S	BE	BHE	P	P/S
2013	9	5	5	0.56	1	10	.400	0	0.00	0	0.00	0	1	0.11	2	0	4	4	0.44	0	0	7.0	0.78



# 21 - JORDAN WILSON-TALMADGE

5-7 • Fr. • DS/Libero • Orlando, Fla. (First Academy)

### SEASON NOTES

Saw time in win over South Carolina State (8/30)...Had a service ace in sweep of Presbyterian (9/21)...Played in two sets in win over Texas A&M (10/6)...Finished with one assist and one dig at Mississippi State (10/18).

### Season Highs

**Kills** N/A

**Attempts** N/A

**Hit. % (Min. 12 Att.)** N/A

**Assists**  
1, Mississippi State (10/18)

**Service Aces**  
1, Presbyterian (9/21)

**Digs**  
1, 2x, last vs. Mississippi State (10/18)

**Blocks Solo** N/A

**Block Assists** N/A

**Total Blocks** N/A

### 2013 Match-By-Match Statistics

DATE	OPP	SP	KILL	ERR	ATT	PCT	AST	SA	SE	RE	DIG	BS	BA	BE	TB	BHE	P
8/30	South Carolina State	1	0	0	0	.000	0	0	0	0	1	0	0	0	0.0	0	0.0
8/30	FIU	--	--	--	--	--	--	--	DNP	--	--	--	--	--	--	--	--
8/31	High Point	--	--	--	--	--	--	--	DNP	--	--	--	--	--	--	--	--
9/6	at Clemson	--	--	--	--	--	--	--	DNP	--	--	--	--	--	--	--	--
9/7	vs. Furman	--	--	--	--	--	--	--	DNP	--	--	--	--	--	--	--	--
9/7	vs. Winthrop	--	--	--	--	--	--	--	DNP	--	--	--	--	--	--	--	--
9/13	vs. Utah State	--	--	--	--	--	--	--	DNP	--	--	--	--	--	--	--	--
9/13	vs. Liberty	--	--	--	--	--	--	--	DNP	--	--	--	--	--	--	--	--
9/14	at Duke	--	--	--	--	--	--	--	DNP	--	--	--	--	--	--	--	--
9/20	Western Carolina	--	--	--	--	--	--	--	DNP	--	--	--	--	--	--	--	--
9/21	Robert Morris	--	--	--	--	--	--	--	DNP	--	--	--	--	--	--	--	--
9/21	Presbyterian	1	0	0	0	.000	0	1	1	0	0	0	0	0	0.0	0	1.0
9/27	at Missouri	--	--	--	--	--	--	--	DNP	--	--	--	--	--	--	--	--
9/29	at Tennessee	--	--	--	--	--	--	--	DNP	--	--	--	--	--	--	--	--
10/4	Arkansas	--	--	--	--	--	--	--	DNP	--	--	--	--	--	--	--	--
10/6	Texas A&M	2	0	0	0	.000	0	0	2	0	0	0	0	0	0.0	0	0.0
10/11	Georgia	--	--	--	--	--	--	--	DNP	--	--	--	--	--	--	--	--
10/13	Kentucky	--	--	--	--	--	--	--	DNP	--	--	--	--	--	--	--	--
10/18	at Mississippi State	1	0	0	0	.000	1	0	0	0	1	0	0	0	0.0	0	0.0
10/20	at Mississippi	--	--	--	--	--	--	--	DNP	--	--	--	--	--	--	--	--
10/25	Tennessee	--	--	--	--	--	--	--	--	--	--	--	--	--	--	--	--
10/27	Auburn	--	--	--	--	--	--	--	--	--	--	--	--	--	--	--	--
10/30	Coastal Carolina	--	--	--	--	--	--	--	--	--	--	--	--	--	--	--	--
11/8	at Kentucky	--	--	--	--	--	--	--	--	--	--	--	--	--	--	--	--
11/10	at Georgia	--	--	--	--	--	--	--	--	--	--	--	--	--	--	--	--
11/13	at Florida	--	--	--	--	--	--	--	--	--	--	--	--	--	--	--	--
11/15	Alabama	--	--	--	--	--	--	--	--	--	--	--	--	--	--	--	--
11/17	Missouri	--	--	--	--	--	--	--	--	--	--	--	--	--	--	--	--
11/22	at Arkansas	--	--	--	--	--	--	--	--	--	--	--	--	--	--	--	--
11/24	LSU	--	--	--	--	--	--	--	--	--	--	--	--	--	--	--	--
11/27	at Texas A&M	--	--	--	--	--	--	--	--	--	--	--	--	--	--	--	--

### CAREER STATISTICS

YEAR	SP	MP	KILL	K/S	ERR	ATT	PCT	AST	A/S	SA	SA/S	SE	DIG	D/S	RE	BS	BA	TB	B/S	BE	BHE	P	P/S
2013	5	4	0	0.00	0	0	.000	1	0.20	1	0.20	3	2	0.40	0	0	0	0	0.00	0	0	1.0	0.20

**RADIO/TV SPOT CHART**



**#1**  
S • 5-10  
Fr.-HS  
Atlanta,  
Ga.

**Helen  
Récaborde**




**#2**  
OH/DS • 5-10  
Fr.-HS  
Birmingham,  
Mich.

**Erin  
Neuenfeldt**




**#3**  
MB/OH • 5-10  
Fr.-HS  
Kennesaw,  
Ga.

**Dessaa  
Legros**



**#4**  
MB/RS • 6-1  
So.-1L  
Sandy Spring,  
Md.

**Darian  
Dozier**



**#6**  
RS/OH • 5-11  
So.-1L  
Canyon  
Country,  
Calif.

**Sarah  
Blomgren**




**#7**  
MB/RS • 6-2  
Fr.-HS  
Dallas,  
Texas

**Jacqy  
Angermiller**



**#8**  
S • 6-0  
R-So.-TR  
Eagan,  
Minn.

**Kellie  
McNeil**



**#9**  
DS/Libero • 5-7  
Fr.-HS  
Lugoff,  
S.C.

**Megan  
Kirkland**




**#10**  
Libero • 5-9  
Jr.-TR  
Tucson,  
Ariz.

**Michaela  
Christiaansen**




**#12**  
OH • 6-2  
Sr.-3L  
Mont-sur-  
Marchinne,  
Belgium

**Juliette  
Thévenin**



**#13**  
DS/S • 5-7  
Fr.-HS  
Gainesville,  
Fla.

**Gabrielle  
Rubels**




**#14**  
MB • 6-0  
Fr.-HS  
Columbia,  
S.C.

**Katlyn  
McDaniel**



**#15**  
Libero • 5-7  
Sr.-3L  
Alpharetta,  
Ga.

**Lindsey  
Craft**



**#16**  
OH • 5-10  
Fr.-HS  
Reno,  
Nev.

**KoKo  
Atoa-Williams**



**#17**  
MB • 6-0  
So.-1L  
Pflugerville,  
Texas

**Elizabeth  
Johnbull**



**#20**  
MB/RS • 6-0  
Fr.-HS  
Atlanta,  
Ga.

**Abby  
Feruck**



**#21**  
DS/Libero • 5-7  
Fr.-HS  
Orlando,  
Fla.

**Jordan  
Wilson-Talmadge**



**HEAD  
COACH**  
3rd Year  
Arizona State,  
1995

**Scott  
Swanson**



**ASSOCIATE  
HEAD COACH**  
2nd Year  
Mercer,  
2008

**Julie  
Darty**



**ASSISTANT  
COACH**  
1st Year  
Wichita State,  
2009

**RJ  
Abella**

**Director of Operations:** Amanda Brungs  
**Graduate Assistant:** Morgan Thomas

**Volunteer Assistant:** Drew Burdette  
**Manager:** Melissa Kearse