



SOUTH CAROLINA BASKETBALL

@GamecockMBB | #Gamecocks | GamecocksOnline.com | #HereSC

RV/RV SOUTH CAROLINA (9-4/0-1 SEC) at OLE MISS (9-5/0-1 SEC)

Saturday, Jan. 10 • Tad Smith Coliseum (8,867) • Oxford, Miss. • 5 p.m. ET

2014-15 SCHEDULE

| DATE | OPPONENT | TIME/BROADCAST |
|----------|-----------------------------------|-----------------|
| O. 26 | Benedict + | W, 92-47 |
| N. 14 | North Florida | W, 81-56 |
| N. 18 | RV/RV Baylor \$ | L, 69-65 |
| N. 20 | vs. Cornell % | W, 69-45 |
| N. 21 | vs. Charlotte % | L, 65-63 |
| N. 23 | vs. Akron % | L, 68-63 |
| N. 26 | UNC Asheville | W, 89-75 |
| D. 1 | at Marshall | W, 77-59 |
| D. 6 | RV/RV Oklahoma State ! | W, 75-49 |
| D. 19 | Clemson | W, 68-45 |
| D. 21 | Coker | W, 78-52 |
| D. 30 | North Carolina A&T | W, 91-54 |
| J. 3 | vs. No. 9/9 Iowa State & | W, 64-60 |
| J. 7 | Florida* | L, 72-68 |
| J. 10 | at Ole Miss* | 5 p.m./FSN |
| J. 13 | Alabama* | 9 p.m./ESPNU |
| J. 17 | at Auburn* | 8:30 p.m./ SECN |
| J. 20 | Tennessee* | 9 p.m./ESPNU |
| J. 24 | Kentucky* | 12 p.m./ESPN/2 |
| J. 28 | at LSU* | 7 p.m./ SECN |
| J. 31 | Georgia* | 4 p.m./ESPNU |
| F. 3 | at Arkansas* | 9 p.m./ SECN |
| F. 7 | at Vanderbilt* | 4 p.m./FSN |
| F. 10 | Missouri* | 7 p.m./ SECN |
| F. 14 | at Kentucky* | 2 p.m./ESPN/2 |
| F. 17 | at Georgia* | 7 p.m./ SECN |
| F. 21 | Texas A&M* | 12 p.m./ SECN |
| F. 24 | at Alabama* | 7 p.m./ SECN |
| F. 28 | Mississippi State* | 6 p.m./ SECN |
| M. 5 | Arkansas* | 7 p.m./ESPN/2 |
| M. 7 | at Tennessee* | 4 p.m./FSN |
| M. 11-15 | SEC Tournament (Nashville, Tenn.) | TBD |

All home games in **bold** | All times listed Eastern
 * indicates SEC contest | + indicates exhibition | FSN - Fox Sports | SECN+ - SEC Network + | SECN - SEC Network | CBSSN - CBS Sports Network | \$ - ESPN College Hoops Marathon (Columbia, S.C.) | % - Charleston Classic (Charleston, S.C.) | ! - SEC/Big 12 Challenge (Columbia, S.C.) | & Brooklyn Hoops Presents (Brooklyn, N.Y.)



Head Coach: Frank Martin (FIU, '93)
Record At Carolina: 37-42 (3rd season)
Career Record: 154-96 (8th season)
Record vs. Ole Miss: 1-3

Top scorer: Notice (12.7)
Top rebounder: Kacinas (6.2)
Top assist maker: Stroman (4.2)
Media Relations: Emily Feeny
Twitter: @GamecockMBB

GAMECOCKS



Head Coach: Andy Kennedy (UAB '91)
Record At UM: 180-106 (9th)
Career Record: 201-119 (10th)
Record vs. S. Carolina: 5-5

Top scorer: Moody (14.7)
Top rebounder: Rhett (6.3)
Top assist maker: Summers (3.8)
Media Relations: Daniel Snowden
Twitter: @OleMissMBB

REBELS

PROBABLE STARTERS

| South Carolina | Ht. | Wt. | Yr. | Hometown | PPG | RPG | MPG |
|-------------------------------|------|-----|-----|---------------------|------|-----|------|
| G - #10 Duane Notice | 6-2 | 221 | So. | Woodbridge, Ontario | 12.7 | 2.9 | 28.2 |
| G - #0 Sindarius Thornwell | 6-5 | 206 | So. | Lancaster, S.C. | 11.0 | 5.5 | 26.7 |
| G - #4 Tyrone Johnson | 6-3 | 195 | Sr. | Plainfield, N.J. | 10.2 | 2.9 | 27.4 |
| F - #21 Demetrius Henry | 6-9 | 215 | So. | Miami, Fla. | 7.3 | 4.2 | 20.9 |
| F - #14 Laimonas Chatkevicius | 6-11 | 251 | Jr. | Klaipeda, Lithuania | 10.0 | 5.5 | 21.2 |

| Ole Miss | Ht. | Wt. | Yr. | Hometown | PPG | RPG | MPG |
|------------------------|------|-----|-----|-----------------|------|-----|------|
| G - #10 LaDarius White | 6-6 | 205 | Sr. | McComb, Miss. | 12.6 | 3.3 | 23.9 |
| G - #32 Jarvis Summers | 6-3 | 186 | Sr. | Jackson, Miss. | 14.0 | 1.9 | 28.9 |
| G - #42 Stefan Moody | 5-10 | 179 | Jr. | Kissimmee, Fla. | 14.7 | 3.2 | 25.9 |
| F - #4 M.J. Rhett | 6-9 | 240 | Sr. | Columbia, S.C. | 6.3 | 5.2 | 21.4 |
| F - #11 Sebastian Saiz | 6-9 | 233 | So. | Madrid, Spain | 7.1 | 4.9 | 22.9 |

TODAY'S GAME

South Carolina travels to Ole Miss on Saturday, continuing Southeastern Conference play vs. the Rebels. The Gamecocks most recently suffered a loss to Florida on in the SEC opener on Wednesday in Columbia, which broke a seven-game win streak for Carolina. Ole Miss lost its league opener in overtime at top-ranked Kentucky last Tuesday. Saturday's matchup will be televised on FSN with Pete Pranica and Sean Tuohy on the call.

GAME INFORMATION

Game Date: Saturday, Jan. 10, 2015
Game Time: 5 p.m. ET
Arena: C.M. "Tad" Smith Coliseum (8,867)
Broadcast: FSN
Talent: Pete Pranica (pxp), Sean Tuohy (analyst)
Radio: Gamecock Radio Network
Talent: Andy Demetra (pxp), Casey Manning (analyst)
Sirius: N/A; **XM:** N/A
Live Stats: GamecocksOnline.com
Tickets: OleMissSports.com
Series: Ole Miss leads 17-15
Last Meeting: 75-71 Ole Miss win on Feb. 1, 2014, in Oxford, Miss.

GAME STORYLINES

- South Carolina is in its 107th season of varsity basketball in 2014-15.
- The Gamecocks are led by third-year head coach Frank Martin. His associate head coach is Matt Figger, his assistant coaches are Perry Clark and Lamont Evans, and his director of operations is Andy Assaley.
- South Carolina is receiving votes in both the AP and USA Today Coaches Top 25 Polls this week (Jan. 5 polls). It marks the first time that Carolina has received votes in the AP Poll since Jan. 2009, and the first time with votes in the Coaches Poll since March 2006.
- South Carolina suffered a 72-68 loss to visiting Florida on Wednesday in the SEC opener for both schools in Columbia. The Gamecocks had just one in double figures, with senior guard Ty Johnson posting 20 points. Carolina made just eight baskets in the second half, however, the Gamecocks hit 23-of-27 from the foul line (85.2%) in the contest.
- The loss to Florida snapped a seven-game South Carolina win streak. That streak was the longest for the Gamecocks since the opening of the 2003-04 campaign when Carolina won eight straight.
- South Carolina has only won once in 12 tries against the Rebels in Oxford. That was an 80-77 win on Feb. 2, 2008.
- South Carolina upset No. 9/9 Iowa State on Jan. 3 in a neutral site matchup vs. the Cyclones at the Barclays Center in Brooklyn, N.Y. Sophomore guard Duane Notice led three Gamecocks in double figures with 15 points,



SOUTH CAROLINA GAMECOCKS

Overall: 9-4; SEC: 0-1; Home: 6-2; Away: 1-0; Neutral: 2-2

| | | | |
|----|--|--|--|
| 0 | | SINDARIUS THORNWELL - So. - G - 6-5 - 215 - Lancaster, S.C. MIN PTS RBS AST FG% 3FG% FT% 26.7 11.0 5.5 1.8 37.2 22.4 69.2 | <ul style="list-style-type: none"> Crucial in Carolina's win vs. Iowa State, posting six points in final two minutes, also with key steal/Jan. 5 SEC Player of the Week Struggled with foul trouble vs. Florida, playing just 18 minutes, 5 points and two assists |
| 1 | | MARCUS STROMAN - Fr. - G - 6-2 - 183 - Columbia, S.C. MIN PTS RBS AST FG% 3FG% FT% 22.8 5.2 3.7 4.2 42.6 12.5 58.3 | <ul style="list-style-type: none"> Leads team with 4.2 assists per game this season Posted a team high five assists, while collecting a team best eight rebounds in win vs. Oklahoma State 7 points, 3 assists, 2 steals in season high 29 min. vs. Florida |
| 4 | | TYRONE JOHNSON - Sr. - G - 6-3 - 195 - Plainfield, N.J. MIN PTS RBS AST FG% 3FG% FT% 27.4 10.2 2.9 3.8 42.7 28.6 81.8 | <ul style="list-style-type: none"> Set career high with 21 points vs. Baylor, hitting 9-of-16 attempts from the field in 37 minutes played 13 points, seven rebounds and three assists vs. Iowa State Second 20-point game of career with 20 points and 3 assists vs. Florida |
| 5 | | TEMARCUS BLANTON - Fr. - G - 6-5 - 209 - Locust Grove, Ga. MIN PTS RBS AST FG% 3FG% FT% - - - - - - - | <ul style="list-style-type: none"> Out for the season after suffering a hip injury which required surgery Averaged 20.2 points and 8.0 rebounds per game as a senior when he helped lead his team to its first region tournament championship victory and state tournament victory |
| 10 | | DUANE NOTICE - So. - G - 6-2 - 212 - Woodbridge, Ontario MIN PTS RBS AST FG% 3FG% FT% 28.2 12.7 2.9 2.8 45.4 40.0 80.4 | <ul style="list-style-type: none"> Dec. 8 co-SEC Player of the Week Has led the team in scoring in five of the last nine games Led team, 15 points, 4 assists, matched career high with 3 stls. vs. ISU Just 1-of-7 from the floor vs. Florida, five points, two assists vs. Gators |
| - | | AUSTIN CONSTABLE - Jr. - G - 5-11 - 178 - West Chester, Pa. MIN PTS RBS AST FG% 3FG% FT% - - - - - - - | <ul style="list-style-type: none"> Out for the season after suffering a knee injury. Saw action in three games last season, attempting one shot. |
| 14 | | LAIMONAS CHATKEVICIUS - Jr. - F - 6-11 - 251 - Klaipeda, Lithuania MIN PTS RBS BLK FG% 3FG% FT% 21.2 10.0 5.5 1.6 59.1 44.4 76.2 | <ul style="list-style-type: none"> 12 points on 6-of-8 shooting and three blocks in win vs. Clemson Foul trouble vs. Iowa State, but four points and three rebounds Eight points and two blocks in SEC opener vs. Florida |
| 15 | | REGGIE THEUS JR. - So. - F - 6-6 - 221 - Los Angeles, Calif. MIN PTS RBS AST FG% 3FG% FT% 2.4 0.4 0.1 0.0 50.0 0.0 0.0 | <ul style="list-style-type: none"> Saw action in 11 games last season. Saw action vs. North Florida in 2014-15 season opener Saw action vs. Cornell, collecting one steal Scored first basket of the season vs. UNC Asheville |
| 20 | | JUSTIN MCKIE - So. - G - 6-4 - 195 - Columbia, S.C. MIN PTS RBS AST FG% 3FG% FT% 13.4 5.3 2.2 0.5 41.9 30.4 78.9 | <ul style="list-style-type: none"> Tallied career high with 12 points on 5-of-8 shooting at Marshall Solid vs. Clemson, posting five points with one steal Scored six points, with an assist, steal and block in win vs. NC A&T Six points and one block in 15 min vs. Florida |
| 21 | | DEMETRIUS HENRY - So. - F - 6-9 - 226 - Miami, Fla. MIN PTS RBS BLK FG% 3FG% FT% 20.9 7.3 4.2 1.2 50.0 0.0 68.0 | <ul style="list-style-type: none"> Career high with 16 points in win vs. Coker, also 5 rebounds 10 points in win vs. NC A&T Seven points and five rebounds in win vs. Iowa State Six points and four rebounds vs. Florida |
| 24 | | MICHAEL CARRERA - Jr. - F - 6-5 - 212 - Anzoátegui, Venezuela MIN PTS RBS BLK FG% 3FG% FT% 15.7 4.8 3.9 0.9 40.5 40.0 63.2 | <ul style="list-style-type: none"> DNP vs. UNC Asheville, Marshall & OK State due to a concussion Returned vs. Clemson, 6 points, 6 rebs., in just 10 minutes Pulled down five rebounds vs. NC A&T |
| 25 | | MINDAUGAS KACINAS - Jr. - F - 6-7 - 227 - Klaipeda, Lithuania MIN PTS RBS BLK FG% 3FG% FT% 21.5 7.1 6.2 0.5 56.4 41.7 80.6 | <ul style="list-style-type: none"> Team high 12 rebounds, along with 9 points and 3 assists vs. OK State. Seven points and seven rebounds with two steals in win vs. Coker Team high 16 points, with 7 rebounds and two steals vs. NC A&T 9 points, including two late 3s, and five rebounds vs. Florida |
| 35 | | BRIAN STEELE - Jr. - F - 6-5 - 194 - Greenville, S.C. MIN PTS RBS AST FG% 3FG% FT% 6.5 1.1 0.7 0.5 23.5 23.1 0.0 | <ul style="list-style-type: none"> Saw action in 22 games last season. Saw 15 minutes of play vs. North Florida, scoring six points with two made 3s in the game Scored three points with three rebounds and two assists vs. Cornell |
| 12 | | SHAMIEK SHEPPARD - Fr. - G - 6-6 - 225 - Brooklyn, N.Y. MIN PTS RBS AST FG% 3FG% FT% 8.0 2.5 2.0 0.0 33.3 1.000 0.0 | <ul style="list-style-type: none"> Suffered a knee injury during the summer which required surgery Cleared to return to practice following the break for the holidays Saw first college action vs. NC A&T, scoring three points and collecting two rebounds in five minutes of play/2 points vs. Iowa State |

INTERVIEW POLICIES

All interview requests must be made in advance to SID Emily Feeney in the South Carolina Media Relations Office. Beginning with the start of practice in October, Feeney will release a weekly coach and student-athlete availability schedule to media on Mondays.

Post-Game Interview Policy: After each home game, the visiting coach will address the media first, followed by South Carolina student-athletes then South Carolina head coach Frank Martin. (Depending on deadline, this may be altered on a game-by-game basis).

Road Interview Policy: Interviews with Coach Martin while on the road will be scheduled according to the home post-game media procedure. No student-athlete interviews are allowed until after the game once the team leaves Columbia.

All interviews are to be coordinated through the Media Relations Office. This allows the staff to arrange the interview when it best suits the student-athlete's and the reporter's schedules. Please contact the Media Relations Office in advance to make your interview requests. Media are not permitted to contact student-athletes on their own at any time.

All interviews will take place at the designated media interview site for that day as listed in the weekly availability schedule or in the Media Relations Office.

Dormitory, apartment and cell phone numbers for student-athletes will not be provided to the media. Should you need to conduct a telephone interview with a student-athlete, a call will be placed to you from the student-athlete at a mutually agreeable time.

SOUTH CAROLINA MEDIA RELATIONS

Emily Feeney, primary contact

Associate Director

cell: 803-727-3284

e-mail: efeeney@mailbox.sc.edu

Twitter: @EmilyFeeneySID

Website: www.GamecocksOnline.com

Facebook: www.Facebook.com/gamecocksonline

Twitter: @GamecockMBB

STAT COMPARISON

| | SC | OLE MISS | NCAA Rank |
|--------------------------------|-------|----------|-----------|
| Record | 9-4 | 9-5 | 82/106 |
| Conference Record | 0-1 | 0-1 | - |
| Current Streak | L1 | L1 | - |
| Scoring Avg. | 73.2 | 74.4 | 62/43 |
| Opponent Scoring Avg. | 59.2 | 66.6 | 36/195 |
| Scoring Margin | +14.0 | +7.7 | 26/89 |
| Field Goal % | .454 | .442 | 92/149 |
| Opponent Field Goal % | .344 | .376 | 5/25 |
| 3-Point Field Goal % | .308 | .360 | 267/108 |
| Opponent 3-Point Field Goal % | .278 | .345 | 19/222 |
| 3-Point Field Goal Made PG | 4.8 | 6.4 | 299/157 |
| 3-Point Field Goal Attempts PG | 15.5 | 17.6 | 317/217% |
| Free Throw % | .734 | .789 | 43/1 |
| Opponent Free Throw % | .705 | .687 | - |
| Rebounding Avg. | 40.1 | 38.4 | - |
| Opponent Rebounding Avg. | 32.7 | 34.9 | - |
| Rebounding Margin | +7.4 | +3.5 | 25/101 |
| Turnovers Avg. | 14.2 | 12.8 | 258/144 |
| Opponent Turnover Avg. | 16.1 | 13.1 | - |
| Assists Avg. | 15.3 | 12.9 | 48/170 |
| Blocks Avg. | 5.6 | 4.2 | 21/99 |
| Steals Avg. | 7.9 | 6.6 | 58/154 |

% indicates total attempts

**** NCAA stats as of Jan. 8

BY THE NUMBERS

5th

South Carolina ranks fifth in the country in field goal percentage defense (34.4%) entering Saturday's matchup vs. Ole Miss. The Gamecocks have peaked at third in the country in the category this season.

3rd

South Carolina ranks third in the SEC and 21st in the nation with 5.6 blocked shots per game this season.

31.1%

One of the keys to Carolina's recent seven-game win streak was holding opponents to a combined 31.1% from the floor, and just 27.2% from 3-point range.

29.9

During the recent seven-game win streak, sophomore guard Duane Notice (17.9 ppg) and junior forward Laimonas Chatkevicius (12.0) combined for 29.9 points per game.

A SOUTH CAROLINA WIN WOULD ...

- Be Carolina's first win over Ole Miss since a 63-62 victory over the Rebels on Feb. 20, 2013.
- Improve Frank Martin's record to 2-3 all-time vs. Ole Miss.
- Be the Gamecocks' second win overall, and first win in Oxford since posting an 80-77 road win at the Tad Smith Coliseum on Feb. 2, 2008.
- Be the Gamecocks' best two-game start to league play since 2011.

while senior guard Ty Johnson and sophomore guard Sindarius Thornwell posted 13 apiece. Thornwell notched six of those points in the final two minutes of the game, also collecting his lone steal of the contest to seal the win for Carolina.

- The Gamecocks, then-ranked fourth in the nation in opponent field goal percentage, held Iowa State to just 35.1 percent (20-57) from the field, which was 15 points below their average entering the game at 50.6 percent.

- Carolina and Iowa State combined for just three made 3s in the contest at the Barclays Center, with the Cyclones hitting just one - well below their season average of 8.7 made 3s per game entering the matchup.

- The Gamecocks are in their 24th season of competition in the Southeastern Conference in 2015. Carolina owns a 138-235 (.369) all-time record in SEC play.

- Frank Martin owns a 59-60 (.495) all-time record in conference games.

- In the Jan. 8 NCAA RPI rankings, the Gamecocks rank 119.

- South Carolina posted its sixth-straight win with a deciding 91-54 victory over visiting North Carolina A&T on Dec. 30 at Colonial Life Arena. Six Gamecocks scored in double figures, including all five starters, with Mindaugas Kacinas posting a team high 16 off the bench. South Carolina held the Aggies to just 16 points in the first half, and NC A&T hit just 32.7% (18-55) from the field for the game.

- Kacinas' 16 points vs. North Carolina A&T marked the first time that he has led Carolina in scoring this season. He was a perfect 5-of-5 from the field and a flawless 6-of-6 from the charity stripe. He also collected seven rebounds to up his team-leading rebounds per game mark to 6.8.

- South Carolina was a perfect 5-0 during the month of December, and has not suffered a loss since a 68-63 decision vs. Akron on Nov. 23 at the Charleston Classic.

- The Gamecocks posted a 26-point win versus visiting Coker College on Dec. 21 with a final score of 78-52. Four Gamecocks scored in double-figures, led by sophomore guard Duane Notice's team-best 19 points. Junior forward Michael Carrera pulled down a team high eight rebounds in his second contest back after missing

three games due to a concussion.

- In its first game in nearly two weeks due to the break for final exams, South Carolina extended its win streak to four games, and snapped a two-game losing streak to instate rival Clemson with a 68-45 victory over the Tigers at Colonial Life Arena on Dec. 19. In front of 11,992 boisterous fans, sophomore guard Duane Notice dropped 19 points, including a career-best five 3s, and senior point guard Ty Johnson dished a career high nine assists, to pace the Gamecocks to victory. The Gamecocks' win over Clemson was their biggest over the Tigers since the 1971 campaign, and the biggest point spread in the series since 1994.

- South Carolina returns 11 letterwinners from last season's 14-20 team, including starters, sophomore guard Sindarius Thornwell, junior forward Michael Carrera, junior forward Mindaugas Kacinas and sophomore forward Demetrius Henry. Senior guard Tyrone Johnson started nine games before being sidelined with an injury as well.

GAMECOCKS IN THE POLLS

South Carolina is receiving votes in both the AP and USA Today Coaches Top 25 Polls this week after their 9-3 non-conference record, capped by an upset win over No. 9/9 Iowa State last Saturday. The Gamecocks appear in the AP poll votes for the first time since Jan. 2009, and in the Coaches poll votes for the first time since March 2006.

BREAKDOWN: IOWA STATE WIN

South Carolina's win vs. ninth-ranked Iowa State was the Gamecocks' first win over a top-10 opponent since Jan. 26, 2010, when Carolina defeated top-ranked Kentucky. It was also the Gamecocks' first neutral site win over a ranked opponent since defeating 14th-ranked Tennessee in the 2006 SEC Tournament. The win propelled South Carolina's RPI 43 points, from 129 to 86, and gave the Gamecocks a 9-3 record for non-conference play this season.

ASSOCIATED PRESS TOP 25

Jan. 5, 2015

| Rk. | Team | Record | Pts. |
|-----|-----------------------|--------|-------|
| 1 | Kentucky (64) | 13-0 | 1,600 |
| 2 | Duke | 13-0 | 1,535 |
| 3 | Virginia | 13-0 | 1,446 |
| 4 | Wisconsin | 14-1 | 1,397 |
| 5 | Louisville | 13-1 | 1,322 |
| 6 | Gonzaga | 14-1 | 1,275 |
| 7 | Arizona | 13-1 | 1,260 |
| 8 | Villanova | 13-1 | 1,089 |
| 9 | Utah | 12-2 | 1,059 |
| 10 | Texas | 12-2 | 976 |
| 11 | Maryland | 14-1 | 966 |
| 12 | Kansas | 11-2 | 884 |
| 13 | Notre Dame | 14-1 | 775 |
| 14 | West Virginia | 13-1 | 712 |
| 15 | Wichita St | 12-2 | 686 |
| 16 | Oklahoma | 10-3 | 674 |
| 17 | Iowa State | 10-2 | 663 |
| 18 | North Carolina | 11-3 | 591 |
| 19 | Seton Hall | 12-2 | 448 |
| 20 | Virginia Commonwealth | 11-3 | 311 |
| 21 | Baylor | 11-2 | 186 |
| 22 | Ohio State | 12-3 | 184 |
| 23 | Arkansas | 11-2 | 103 |
| 24 | St. John's | 11-3 | 92 |
| 25 | Old Dominion | 12-1 | 80 |

Others receiving votes: Northern Iowa 72, Iowa 63, Butler 53, LSU 50, George Washington 39, Temple 33, TCU 33, Colorado St 31, Stanford 29, **South Carolina 16**, Washington 13, Wyoming 11, Indiana 9, Oklahoma St 9, Georgetown 7, Cincinnati 6, Dayton 5, BYU 3, Xavier 2, Hofstra 1, Davidson 1

Dropped from rankings: Washington 21, Northern Iowa 23, Colorado St 24, Georgetown 25

USA TODAY COACHES TOP 25

Jan. 5, 2015

| Rk. | Team | Record | Pts. |
|-----|-----------------------|--------|------|
| 1 | Kentucky (31) | 13-0 | 799 |
| 2 | Duke (1) | 13-0 | 768 |
| 3 | Virginia | 13-0 | 727 |
| 4 | Wisconsin | 14-1 | 703 |
| 5 | Louisville | 13-1 | 649 |
| 6 | Arizona | 13-1 | 634 |
| 7 | Gonzaga | 14-1 | 628 |
| 8 | Villanova | 13-1 | 546 |
| 9 | Maryland | 14-1 | 497 |
| 10 | Texas | 12-2 | 478 |
| 11 | Utah | 12-2 | 470 |
| 12 | Notre Dame | 14-1 | 441 |
| 13 | Kansas | 11-2 | 420 |
| 14 | West Virginia | 13-1 | 381 |
| 15 | Wichita St | 12-2 | 320 |
| 16 | Iowa State | 10-2 | 317 |
| 17 | North Carolina | 11-3 | 297 |
| 18 | Oklahoma | 10-3 | 279 |
| 19 | Seton Hall | 12-2 | 172 |
| 20 | Ohio State | 12-3 | 142 |
| 21 | Virginia Commonwealth | 11-3 | 135 |
| 22 | Baylor | 11-2 | 105 |
| 23 | Northern Iowa | 12-2 | 60 |
| 24 | St. John's | 11-3 | 55 |
| 25 | Arkansas | 11-2 | 50 |

Others receiving votes: Colorado St 35, Georgetown 35, Old Dominion 33, Washington 32, Oklahoma St 27, Indiana 20, Stanford 20, San Diego St 18, TCU 18, Butler 16, Iowa 14, **South Carolina 12**, LSU 12, George Washington 9, Cincinnati 7, Georgia 4, Minnesota 3, California 3, Dayton 3, Temple 2, BYU 1, Saint Mary's 1, Oregon 1, Wyoming 1

Dropped from rankings: Washington 19, Colorado St 24, San Diego St 25



SOUTHEASTERN CONFERENCE STANDINGS

As of Jan. 8

| Team | Conference | Overall |
|-------------------|------------|---------|
| Kentucky | 1-0 | 11-3 |
| Arkansas | 1-0 | 12-2 |
| Florida | 1-0 | 8-6 |
| Kentucky | 1-0 | 14-0 |
| Tennessee | 1-0 | 9-4 |
| Vanderbilt | 1-0 | 11-3 |
| LSU | 0-0 | 11-2 |
| Missouri | 0-0 | 6-7 |
| Auburn | 0-1 | 8-6 |
| Georgia | 0-1 | 9-4 |
| Ole Miss | 0-1 | 9-5 |
| Mississippi State | 0-1 | 7-7 |
| South Carolina | 0-1 | 9-4 |
| Texas A&M | 0-1 | 9-4 |

COACHES TELECONFERENCE

The weekly SEC men's basketball coaches teleconference will be held every Monday beginning Monday, Jan. 6 through Monday, March 9. The 14 Southeastern Conference men's head basketball coaches will be featured from 10:00 -11:38 a.m. (CT).

Media representatives wishing to participate in the teleconference should contact the SEC Media Relations Department for further details. Each coach will appear on the teleconference for seven minutes, according to the following schedule:

ORDER OF APPEARANCE

(All Times Eastern)

| | |
|-------------------|-------------------------------------|
| 11:00 a.m. | Kevin Stallings, Vanderbilt |
| 11:07 a.m. | Billy Donovan, Florida |
| 11:14 a.m. | Frank Martin, South Carolina |
| 11:21 a.m. | Mark Fox, Georgia |
| 11:28 a.m. | Johnny Jones, LSU |
| 11:35 a.m. | John Calipari, Kentucky |
| 11:42 a.m. | Donnie Tyndall, Tennessee |
| 11:49 a.m. | Mike Anderson, Arkansas |
| 11:56 a.m. | Anthony Grant, Alabama |
| 12:03 a.m. | Bruce Pearl, Auburn |
| 12:10 a.m. | Andy Kennedy, Ole Miss |
| 12:17 a.m. | Rick Ray, Miss. State |
| 12:24 a.m. | Kim Anderson, Missouri |
| 12:31 a.m. | Billy Kennedy, Texas A&M |

In addition, the SEC men's basketball teams who make it to postseason will be on a teleconference on Monday, March 16 beginning at 10:00 a.m. CT.

All SEC basketball teleconferences can be listened to on the internet at www.secsports.com shortly after the conclusion of the teleconference.

CAROLINA BENCH PRODUCTION

| GAME | SC-OPP | DIFF. | SC HIGH BENCH SCORER |
|----------------|--------|-------|----------------------|
| North Florida | 35-8 | +27 | Chatkevicius, 11 |
| Baylor | 14-11 | +3 | Stroman, 10 |
| vs. Cornell | 35-12 | +23 | Kacinas, 10 |
| vs. Charlotte | 19-11 | +8 | Kacinas, 11 |
| vs. Akron | 26-19 | +7 | Chatkevicius, 11 |
| UNC Asheville | 21-16 | +5 | McKie, 8 |
| @Marshall | 20-26 | -5 | McKie, 12 |
| Okla. State | 19-21 | -2 | Kacinas, 9 |
| Clemson | 19-12 | +5 | Carrera/Kacinas, 6 |
| Coker | 11-10 | +1 | Kacinas, 7 |
| NC A&T | 33-31 | +2 | Kacinas, 16 |
| vs. Iowa State | 12-15 | -3 | Carrera/Kacinas, 3 |
| Florida | 24-35 | -11 | Kacinas, 9 |
| @Ole Miss | | | |
| Alabama | | | |
| @Auburn | | | |
| Tennessee | | | |
| Kentucky | | | |
| @LSU | | | |
| Georgia | | | |
| @Arkansas | | | |
| @Vanderbilt | | | |
| Missouri | | | |
| @Kentucky | | | |
| @Georgia | | | |
| Texas A&M | | | |
| @Alabama | | | |
| Miss. State | | | |
| Arkansas | | | |
| @Tennessee | | | |
| SEC Tourney | | | |
| NCAA Tourney | | | |

SPECIALTY STATS

(PP) points in paint; (OT) points off turnovers; (2nd) second chance points; (FB) fast break points

(South Carolina-Opponent)

| GAME | PP | OT | 2ND | FB |
|-------------------|-------------|-------------|-------------|-------------|
| North Florida | 42-14 | 16-10 | 11-5 | 11-5 |
| Baylor | 30-22 | 19-15 | 8-10 | 10-4 |
| vs. Cornell | 18-14 | 15-14 | 13-4 | 4-4 |
| vs. Charlotte | 30-24 | 18-10 | 6-7 | 6-0 |
| vs. Akron | 38-24 | 17-19 | 17-4 | 8-6 |
| UNC Asheville | 38-16 | 15-20 | 12-8 | 14-10 |
| @Marshall | 41-20 | 25-18 | 10-17 | 17-4 |
| Okla. State | 32-16 | 13-12 | 9-17 | 16-2 |
| Clemson | 28-20 | 13-14 | 10-13 | 7-2 |
| Coker | 50-20 | 19-13 | 16-17 | 12-4 |
| NC A&T | 42-14 | 21-14 | 17-12 | 14-12 |
| vs. Iowa State | 36-32 | 13-17 | 4-12 | 12-10 |
| Florida | 22-26 | 21-14 | 8-9 | 13-6 |
| @Ole Miss | | | | |
| Alabama | | | | |
| @Auburn | | | | |
| Tennessee | | | | |
| Kentucky | | | | |
| @LSU | | | | |
| Georgia | | | | |
| @Arkansas | | | | |
| @Vanderbilt | | | | |
| Missouri | | | | |
| @Kentucky | | | | |
| @Georgia | | | | |
| Texas A&M | | | | |
| @Alabama | | | | |
| Miss. State | | | | |
| Arkansas | | | | |
| @Tennessee | | | | |
| SEC Tourney | | | | |
| NCAA Tourney | | | | |
| SC Total | 447 | 225 | 141 | 144 |
| SC Average | 34.3 | 17.3 | 10.8 | 11.1 |
| Opp Total | 262 | 190 | 135 | 69 |
| Opp Average | 20.2 | 14.6 | 10.4 | 5.3 |

UNIVERSITY INFORMATION

| | |
|---|----------------------------|
| Location..... | Columbia, S.C. |
| Founded..... | 1801 |
| Enrollment..... | 31,964 |
| Nickname..... | Gamecocks |
| Colors..... | Garnet (PMS 202) and Black |
| National Affiliation..... | NCAA Division I |
| Conference..... | Southeastern (SEC) |
| Athletics Web Address..... | www.GamecocksOnline.com |
| University Web Address..... | www.sc.edu |
| President..... | Dr. Harris Pastides |
| NCAA Representative..... | Dr. Zach Kelehear |
| Athletics Director..... | Ray Tanner |
| Basketball Administrator/Chief Operating Officer..... | Kevin O'Connell |

BASKETBALL STAFF/INFORMATION

| | |
|---|---|
| Head Coach..... | Frank Martin |
| Alma Mater..... | Florida International, '93 |
| Record At South Carolina/Seasons..... | 37-42 (.468), 3rd season |
| Overall Record/Seasons..... | 154-96 (.616), 8th season |
| Assistant Coach..... | Perry Clark (Gettysburg, '74) |
| Assoc. Head Coach/Recruiting Coord..... | Matt Figger (Eastern Kentucky, '95) |
| Assistant Coach..... | Lamont Evans (Kansas State, '09) |
| Director of Basketball Operations..... | Andy Assaley (Cincinnati, '96) |
| Strength & Conditioning Coach..... | Scott Greenawalt (Muskingum College, '98) |
| Athletic Trainer..... | Mark Rodger (Buffalo, '01) |
| Video Coordinator..... | David Kiefer (Kansas State, '07) |
| Student-Athlete Development..... | Doug Edwards (Florida State, '07) |
| Associate Media Relations Director..... | Emily Feeney (Ball State, '03) |
| Home Arena..... | Colonial Life Arena |
| Capacity..... | 18,000 |
| Arena General Manager..... | Lexi Boone |
| Press Row Phone Number..... | 803-777-6182 |

BASKETBALL HISTORY

| | |
|--|---|
| First Year of Basketball..... | 1908 |
| All-Time Record..... | 1,334-1,191-1 (.528) |
| Overall Postseason Record..... | 25-18 |
| NCAA Tournament Appearances..... | 8 (1971, 1972, 1973, 1974, 1989, 1997, 1998, 2004) |
| NCAA Tournament Record..... | 4-9 |
| Last NCAA Tournament Appearance..... | 2004, L vs. Memphis, 59-43 |
| NIT Appearances..... | 11 (1969, 1975, 1978, 1983, 1991, 1996, 2001, 2002, 2005, 2006, 2009) |
| NIT Record..... | 21-9 |
| Last NIT Appearance..... | 2009, L vs. Davidson, 70-63 |
| Conference Championships/Titles. SoCon Regular Season (1927, 1933, 1934, 1945); SoCon Tournament Champion (1933); ACC Regular Season (1970); ACC Champion (1971); SEC Regular Season (1997); SEC East Division Co-Champions (2009) | |

TEAM INFORMATION

| | |
|--|--|
| 2013-14 Record..... | 14-20 |
| Southeastern Conference Record/Finish..... | 5-13/13th |
| SEC Tournament Record..... | 2-1 |
| Postseason..... | None |
| Letterwinners Returning/Lost..... | 11/4 |
| Starters Returning/Lost..... | 4/1 |
| | <i>*based on final game starters from 2013-14 season</i> |
| Newcomers..... | 3 |
| Roster Breakdown..... | 3 freshmen, 5 sophomores, 5 juniors, 1 senior |

SCOUTING OLE MISS

The Rebels nearly defeated top-ranked Kentucky in their SEC opener on Tuesday in Lexington, taking the Wildcats to overtime. Junior guard Stefan Moody led the squad vs. the Wildcats and paces four Rebels averaging double-figures with 14.7 points per outing. He had 25 points vs. Kentucky before sidelined with cramps in his leg. Senior guard Jarvis Summers adds 14.0 points and a team-leading 3.8 assists per game, and senior forward LaDarius White provides 12.6 points per outing. The Rebels have lost two of their last three games entering Saturday's matchup, having lost on the road at Dayton on Dec. 30, before concluding non-conference play with a victory over Austin Peay on Jan. 3. Ole Miss has key victories over Cincinnati and at Oregon, but has suffered losses to Charleston Southern and Western Kentucky also this season. Head Coach Andy Kennedy is in his ninth season in Oxford. Ole Miss leads the nation in free throw percentage, hitting an impressive 78.9 percent from the charity stripe.

OLE MISS SERIES

Ole Miss owns a 17-15 upperhand in the all-time series with the Gamecocks and has won four of the last five meetings, including two contests last season. The Rebels own an 11-1 mark in games played in Oxford. Below is a breakdown of the last 10 meetings between the two schools:

MISSISSIPPI (15-17)

H: 10-2; A: 1-11; N: 4-4

| | | | | |
|-------------|---|-------|---|---|
| F. 24, 2007 | H | 76-63 | W | |
| F. 2, 2008 | A | 80-77 | W | |
| J. 24, 2009 | H | 82-71 | W | |
| J. 20, 2010 | A | 57-66 | | L |
| F. 22, 2011 | H | 79-73 | W | |
| M. 10, 2011 | N | 55-66 | | L |
| J. 28, 2012 | A | 62-66 | | L |
| F. 20, 2013 | H | 63-62 | W | |
| J. 18, 2014 | H | 74-75 | | L |
| F. 1, 2014 | A | 71-75 | | L |

THORNWELL SEC PLAYER OF THE WEEK

Sophomore guard Sindarius Thornwell was named SEC Player of the Week on Jan. 5 after averaging 12 points, 6.5 rebounds and two assists as the Gamecocks downed North Carolina A&T and No. 9 Iowa State. It is the first conference player of the week honor for the Lancaster, S.C., native. He earned SEC Freshman of the Week honors three times last season. Thornwell opened the week posting 11 points, five rebounds and two steals, while matching a season high with four assists, and a career high with two blocks vs. North Carolina A&T. He followed that up with 13 points and eight rebounds against No. 9 Iowa State in the Barclays Center in Brooklyn, N.Y. Of those 13 points, ten would come in the second half, including six points in the final two minutes and a key steal to seal the win with 12 seconds left and the Cyclones looking to tie the game down 63-60. The win was Carolina's first over a top-10 opponent since 2010.

BY THE #'S

-14 - Florida out-rebounded South Carolina by 14 on Wednesday. It was the biggest deficit in the category for the Gamecocks this season.

+7.4 - Despite the rebounding numbers vs. Florida, the Gamecocks rank second in the SEC and 25th nationally with a +7.4 rebound margin.

9-9 - South Carolina senior guard Tyrone Johnson went a perfect 9-of-9 from the free throw line vs. Florida, the nine made free throws marked a career high for the Plainfield, N.J., native. His perfect mark was the best percentage by an individual in the SEC this season.

2.8 - Three different Gamecocks average at least 2.8 assists per game, as Notice (2.8), Johnson (3.8) and Stroman (4.2) all hit the mark.

22 - Sophomore guard Sindarius Thornwell averaged 22.0 points in two games last season vs. Ole Miss. Thornwell posted 24 in the home matchup vs. the Rebels, and posted 20 just two weeks later in the contest in Oxford. He also pulled down 11 rebounds, dished four assists and blocked two shots in the game in Columbia.

SHEPPARD RETURNS FROM INJURY

Freshman forward Shamiel Sheppard made his collegiate debut on Dec. 30 vs. North Carolina A&T, after missing the first 10 games of the season due to a knee injury suffered this summer which required surgery. Sheppard battled through the rehab process and was nearly a month ahead of his projected schedule for return. The Brooklyn, N.Y., native played in his second collegiate game at the Barclays Center in Carolina's upset win over No. 9/9 Iowa State on Jan. 3, scoring two points and collecting two rebounds.

UP NEXT

South Carolina returns to Columbia to host Alabama on Tuesday, Jan. 13, in a contest set to tip at 9 p.m. ET on ESPNU. The Crimson Tide holds a 24-14 upperhand in the all-time series with the Gamecocks, but South Carolina won last season's meeting between the two schools 67-66 on Feb. 15, 2014. South Carolina is 10-6 all-time in home games vs. Alabama.

“QUOTABLE”

“You can't lose at home. Period. You ever want to be any good, you have to be able to hold serve at home. If you start losing home games, you're not going to be very good. We were up 38-32 at one point and we missed four straight lay-ups. They were missing and we just couldn't convert. You have to give them credit, they went 5-for-19 (on 3s), but three of them were bang, bang, bang and that was right when they made their run.” - *South Carolina head coach Frank Martin on being able to win home games in conference play after his team's loss to Florida on Jan. 7*

FLORIDA NOTABLES

- Tyrone Johnson recorded his second 20-point game of the season, the first since scoring a career-high 21 against Baylor.
- South Carolina shot 85.2 percent at the free throw line, the best all season in games with ten or more made free throws. Five different players had perfect nights, with Johnson making all nine for a personal career high.
- Tonight was the first game where the opposition outscored Carolina in the paint. Florida had a 26-22 advantage with a defense that stifled a Gamecock offense that averaged over 35 points in the paint through the first 11 games.

IOWA STATE NOTABLES

- Tonight was the first neutral-site win over a ranked opponent since defeating No. 14 Tennessee in the SEC Tournament on March 10, 2006.
- The win is the team's seventh straight, the most since winning eight in 2003-04.
- Duane Notice scored in double figures for the eight consecutive games and has led the team in scoring five times so far this season. Of his 145 points scored so far in 2014-15, 113 have come in the last six games.
- South Carolina has won six straight games by double figures for the first time since the 1944-45 season.
- In a meeting of top-ten offense versus top-ten defense, it would be South Carolina that would win out all game long. Iowa State was shooting over 50 percent from the field for the season, but the Gamecocks' nationally ranked field goal percentage defense would dictate the pace, holding the Cyclones to just 36 percent overall.

NORTH CAROLINA A&T NOTABLES

- Shamiek Sheppard made his collegiate debut late in the first half. The freshman made a successful return from knee surgery over the summer and played five minutes for the game. He scored his first points in the closing seconds of the game on a corner 3, much to the delight of the crowd at Colonial Life Arena.
- The six-game win streak is the longest by Carolina under Frank Martin and is the most in a row since the 2010-11 campaign.
- Tonight was the third game scoring over 80 points this season for South Carolina and the first game of the season scoring over 90 points.
- South Carolina has won six straight games by double figures for the first time since the 1944-45 season. (note credit to @GamecockRadio)
- The 37-point win is the largest margin of victory this season and the largest since a 38-point win over Longwood Nov. 9, 2013.
- Along with Mindaugas Kacinas, each of the five starters scored in double figures. Those top six scorers combined to shoot 23-of-38 from the field and 24-of-27 at the free throw line. S

CARRERA NOMINEE FOR NABC GOOD WORKS TEAM

The NABC and Allstate Insurance announced on Dec. 3, its nominees for the NABC Good Works Team. The community service based award recognizes a distinguished group of student-athletes who have demonstrated a commitment to enriching the lives of others and contributing to the great good in their communities. During his time at South Carolina, Carrera has participated in numerous community outreach events, including visiting the Ronald McDonald House, several events with the South Carolina Special Olympics, volunteering at Harvest Hope food bank, visiting with Boy Scout troops, and he participated in a wish with the Make-A-Wish Foundation, among his many other service events.

THORNWELL NAMED SECOND TEAM PRESEASON ALL-SEC

Sophomore guard Sindarius Thornwell was honored with selection to the Preseason All-SEC Second Team last Thursday, the first preseason honor of his career. The Lancaster, S.C., native started all 34 games as a freshman, averaging 13.4 points, 4.1 rebounds 3.0 assists and 1.2 steals in 29.6 minutes per game. After leading all SEC freshmen in scoring and assists in conference games, Thornwell was named to the SEC All-Freshman Team last spring.

2015 SEC TOURNAMENT

The 2015 edition of the SEC Tournament will be held in Nashville, Tenn., at Bridgestone Arena. The tournament was last held in the Music City in 2013. South Carolina owns a 4-4 record in Tournament games played in Nashville. The SEC Network will televise the first three days of the SEC Basketball Tournament (March 11-15), while the semifinals and championship game will be broadcast nationally on ESPN.

SEASON TICKETS, MINI-PLANS FOR SALE

Season tickets for Gamecock men's basketball are still on sale via the South Carolina Ticket Office. Fans should call 1-800-4SC-FANS, or visit www.GamecocksOnline.com/Tickets to purchase. Also available are three Mini-Plans, described below.

Football/Basketball Combo Pack (football, men's and women's basketball)

Football/basketball combo ticket package, which includes one ticket to the football game versus South Alabama (Nov. 22), the men's basketball game versus Clemson (Dec. 19) and the women's basketball game versus Southern California (Nov. 15). Cost for the package is just \$39.

Saturday 5-Game Mini-Plan (men's basketball)

The Saturday 5-Game Mini-Plan includes tickets to Oklahoma State, Georgia, Texas A&M, Mississippi State and Kentucky. Package prices start at \$65 for upper level seats and \$85 for lower level seats, which is a savings of 15%.

Flex Plan (men's basketball)

For \$99 fans will receive eight ticket vouchers redeemable for upper deck tickets to any game except Kentucky.

DOZIER, SILVA SIGN WITH GAMECOCKS

University of South Carolina head men's basketball coach Frank Martin announced on Nov. 13 the signing of **P.J. Dozier** (G - 6-6 - 185 - Columbia, S.C. - Spring Valley High School) and **Chris Silva** (F - 6-8 - 205 - Roselle, N.J. - Roselle Catholic High School) to National Letters of Intent. The duo will join the Gamecocks for the 2015-16 campaign and both will have four years of eligibility beginning next fall. Below is a brief capsule and quote from Martin on each signee.

P.J. Dozier - G - 6-7 - 185 - Columbia, S.C. - Spring Valley High School

Noted as one of the top points guard in the nation and a guard that has a great feel for the game ... Rated the No. 21 prospect in the ESPN 100 and the No. 2 point guard ... Rated as the No. 26 prospect overall and the top prospect in the state according to 247sports.com ... Participated in the NBA Top 100 Camp ... Also participated in the 2012 USA Basketball fall minicamp and was invited to the U-18 US National Team training camp ... Father, Perry (1986-88), and uncle, Terry (1986-89), both played basketball at South Carolina ... Sister, Asia, plays for the Gamecock women's basketball team.

Martin on Dozier:

“I couldn't be happier that P.J. Dozier has decided to stay home. Sindarius Thornwell, Marcus Stroman and Justin McKie, those guys have opened the door for local kids to believe in what we do and for P.J. to believe in what those guys did and believe in what we did makes me extremely excited. A 6-7 guard, who is a point guard, who knows how to play off the ball. He has the ability, just like Chris (Silva) to be a tremendous defender. We are super excited for what those two guys will bring to the table. They complement our team in ways that we need and we are lucky to have both of them.”

Chris Silva - F - 6-9 - 205 - Roselle, N.J. - Roselle Catholic High School

Noted as an explosive athlete, good shot blocker and rebounder ... A four-star prospect according to ESPN.com ... Rated the No. 5 prospect in the state and the 96th overall prospect in the ESPN 100 ... A four-star prospect according to 247sports.com, and the No. 4 prospect in the state ... Rated as the No. 21 power forward by 247sports.com ... Averaged 8.8 points, 9.8 rebounds and 2.1 blocks per game during junior season in 2013-14 ... Originally from Gabon.

Martin on Silva:

“Chris Silva is a 6-9 forward from New Jersey, who is an unbelievable athlete and fearless in how strong he plays. He can step out and shoot the basketball and block shots with the best of them. Chris is a tremendous young man who is fully committed to the Gamecocks. I couldn't be more excited to add him to our front line, and add his athleticism, toughness and shot-blocking ability.”

ROSTER BREAKDOWN

RETURNING STARTERS (4)

Demetrius Henry (forward)
Michael Carrera (forward)
Mindaugas Kacinas (forward)
Sindarius Thornwell (guard)
**based on final game of 2013-14 season*

RETURNING LETTERWINNERS (11)

Michael Carrera
Laimonas Chatkevicius
Austin Constable
Demetrius Henry
Tyrone Johnson
Mindaugas Kacinas
Justin McKie
Duane Notice
Brian Steele
Reggie Theus Jr.
Sindarius Thornwell

GUARDS (8)

TeMarcus Blanton
Austin Constable
Tyrone Johnson
Justin McKie
Duane Notice
Shamiek Sheppard
Marcus Stroman
Sindarius Thornwell

FORWARDS (7)

Michael Carrera
Laimonas Chatkevicius
Demetrius Henry
Mindaugas Kacinas
Shamiek Sheppard
Brian Steele
Reggie Theus Jr.

BY HEIGHT

Austin Constable, 5-11
Duane Notice, 6-2
Marcus Stroman, 6-2
Tyrone Johnson, 6-3
Justin McKie, 6-4
TeMarcus Blanton, 6-5
Michael Carrera, 6-5
Brian Steele, 6-5
Sindarius Thornwell, 6-5
Shamiek Sheppard, 6-6
Reggie Theus Jr., 6-6
Mindaugas Kacinas, 6-7
Demetrius Henry, 6-9
Laimonas Chatkevicius, 6-11

PRONUNCIATION

Lie-MOAN-us Ha-KEVA-chus
Min-DAWG-us Kye-chin-iss
Justin MACK-ee

2014-15 SOUTH CAROLINA ROSTER

ALPHABETICAL

| No. | Name | Pos. | Ht. | Wt. | Cl. | Exp. | Hometown/High/Last School |
|-----|-----------------------|------|------|-----|-----|------|---|
| 5 | TeMarcus Blanton | G | 6-5 | 209 | FR | HS | Locust Grove, Ga./Luella |
| 24 | Michael Carrera | F | 6-5 | 212 | JR | 2VL | Anzoátegui, Venezuela/Montrose Christian School |
| 14 | Laimonas Chatkevicius | F | 6-11 | 251 | JR | 2VL | Klaipeda, Lithuania/South Kent School |
| - | Austin Constable | G | 5-11 | 178 | JR | 2VL | West Chester, Pa./Henderson |
| 21 | Demetrius Henry | F/C | 6-9 | 226 | SO | 1VL | Miami, Fla./Faith Baptist Christian School |
| 4 | Tyrone Johnson | G | 6-3 | 195 | SR | 2VL | Plainfield, N.J./Montrose Christian School/Villanova |
| 25 | Mindaugas Kacinas | F | 6-7 | 227 | JR | 2VL | Klaipeda, Lithuania/Word of Life Fire Traditional School |
| 20 | Justin McKie | G | 6-4 | 195 | SO | 1VL | Columbia, S.C./Irmo |
| 10 | Duane Notice | G | 6-2 | 212 | SO | 1VL | Woodbridge, Canada/St. Michael's/St. Thomas More (Oakdale, Conn.) |
| 12 | Shamiek Sheppard | G/F | 6-6 | 225 | FR | HS | Brooklyn, N.Y./South Shore/Fishburne Military School (Waynesboro City, Va.) |
| 35 | Brian Steele | F | 6-5 | 194 | JR | 2VL | Greenville, S.C./Wade Hampton School |
| 1 | Marcus Stroman | G | 6-2 | 183 | FR | HS | Columbia, S.C./Keenan |
| 15 | Reggie Theus Jr. | F | 6-6 | 221 | SO | 1VL | Los Angeles, Calif./Fairfax |
| 0 | Sindarius Thornwell | G | 6-5 | 215 | SO | 1VL | Lancaster, S.C./Oak Hill Academy |

NUMERICAL

| No. | Name | Pos. | Ht. | Wt. | Cl. | Exp. | Hometown/High/Last School |
|-----|-----------------------|------|------|-----|-----|------|---|
| 0 | Sindarius Thornwell | G | 6-5 | 215 | SO | 1VL | Lancaster, S.C./Oak Hill Academy |
| 1 | Marcus Stroman | G | 6-2 | 183 | FR | HS | Columbia, S.C./Keenan |
| 4 | Tyrone Johnson | G | 6-3 | 195 | SR | 2VL | Plainfield, N.J./Montrose Christian School/Villanova |
| 5 | TeMarcus Blanton | G | 6-5 | 209 | FR | HS | Locust Grove, Ga./Luella |
| 10 | Duane Notice | G | 6-2 | 212 | SO | 1VL | Woodbridge, Canada/St. Michael's/St. Thomas More (Oakdale, Conn.) |
| - | Austin Constable | G | 5-11 | 178 | JR | 2VL | West Chester, Pa./Henderson |
| 14 | Laimonas Chatkevicius | F | 6-11 | 251 | JR | 2VL | Klaipeda, Lithuania/South Kent School |
| 15 | Reggie Theus Jr. | F | 6-6 | 221 | SO | 1VL | Los Angeles, Calif./Fairfax |
| 20 | Justin McKie | G | 6-4 | 195 | SO | 1VL | Columbia, S.C./Irmo |
| 21 | Demetrius Henry | F/C | 6-9 | 226 | SO | 1VL | Miami, Fla./Faith Baptist Christian School |
| 24 | Michael Carrera | F | 6-5 | 212 | JR | 2VL | Anzoátegui, Venezuela/Montrose Christian School |
| 25 | Mindaugas Kacinas | F | 6-7 | 227 | JR | 2VL | Klaipeda, Lithuania/Word of Life Traditional School |
| 35 | Brian Steele | F | 6-5 | 194 | JR | 2VL | Greenville, S.C./Wade Hampton School |
| 12 | Shamiek Sheppard | G/F | 6-6 | 225 | FR | HS | Brooklyn, N.Y./South Shore/Fishburne Military School (Waynesboro City, Va.) |

Head Coach: Frank Martin (Florida International, '93)

Associate Head Coach/Recruiting Coordinator: Matt Figger (Eastern Kentucky, '95)

Assistant Coach: Perry Clark (Gettysburg, '74)

Assistant Coach: Lamont Evans (Kansas State, '09)

Director of Basketball Operations: Andy Assaley (Cincinnati, '96)

Strength & Conditioning Coach: Scott Greenawalt (Muskingum College, '98)

Athletic Trainer: Mark Rodger (Buffalo, '01)

Video Coordinator: David Kiefer (Kansas State, '07)

Student-Athlete Development: Doug Edwards (Florida State, '07)

TOP RETURNING...

Scorer..... Sindarius Thornwell, 13.4 ppg
Rebounder..... Michael Carrera, 5.6 rpg
Assist Maker..... Tyrone Johnson, 3.4 apg
FG Shooter *..... Mindaugas Kacinas, 55.6%
3-Point FG Shooter \$..... Sindarius Thornwell, 37.0%
FT Shooter \$..... Tyrone Johnson, 75.3%
Shot Blocker..... Michael Carrera, 0.9 bpg
Steal Maker..... Sindarius Thornwell, 1.17 spg

* at least 100 attempts

\$ at least 50 attempts



HEAD COACH FRANK MARTIN

EIGHTH SEASON OVERALL | 153-96 (.616) | THIRD SEASON AT SOUTH CAROLINA | 37-42 (.468)

THE MARTIN FILE

COACHING

EXPERIENCE

30th year

COLLEGE EXPERIENCE

15th season

COLLEGE HEAD COACH EXPERIENCE

8th season

HIRE DATE AT CAROLINA

March 27, 2012

PERSONAL

HOMETOWN

Miami, Fla.

ALMA MATER

Florida International, 1993 (B.A. Physical Ed.)

FAMILY

Wife, Anya

Children, Brandon, Amalia and Christian

COACHING RESUME

HIGH SCHOOL

Miami Senior High, 1985-93

Varsity Boys' Assistant Coach

Junior Varsity Boys' Head Coach

North Miami High, Head Coach, 1993-95

Miami Senior High, Head Coach, 1995-98

B.T. Washington High, Head Coach, 1999-2000

COLLEGE ASSISTANT COACH

Northeastern, 2000-04

Cincinnati, 2004-06

Kansas State, 2006-07

COLLEGE HEAD COACH

Kansas State, 2007-12

South Carolina, 2012-present

Frank Martin was named the head men's basketball coach at the University of South Carolina on March 27, 2012, becoming the 32nd head coach in the history of the South Carolina program, which enters its 107th season as a varsity sport in 2014-15. Martin owns a 145-92 (.611) overall record as a head coach, entering his eighth season overall, and third season at South Carolina.

Since his appointment as head coach in Columbia, Martin, 48, has become a fixture in the community. He has spoken at numerous events, including Gamecock Club Fan Fests, numerous community council and rotary club events, coaching clinics, and the Fathers and Families Decades of Dads event, among others. He was also selected as a Court Coach for USA Basketball in June 2012, assisting Florida head coach Billy Donovan with the Men's U18 National Team training camp in Colorado Springs, Colo., at the U.S. Olympic Training Center. The camp was used to determine the 12-member roster that represented the USA at the 2012 FIBA Americas U18 Championship in late June.

Martin was honored again during the summer of 2013, serving as an assistant coach for the United States on head coach Bob McKillop's staff alongside Michigan head coach John Beilein for the U.S. Men's World University Games team. The squad spent time in Colorado Springs at training camp, before embarking on a two-week journey to Kazan, Russia, in early July, for the event. He furthered his international coaching experience as head coach of USA East Coast during the summer of 2014, which represented the United States at the Tallinn Cup in Estonia.

During his first season (2012-13) in Columbia, Martin led his squad to a 14-18 record, which included a 4-14 mark in SEC contests. The Garnet and Black captured the Hoops For Hope

Classic tournament crown after posting a 4-0 record competing in the event with home victories over Milwaukee and Rider, before defeating Missouri State in overtime, and UALR in Puerto Vallarta, Mexico, over the Thanksgiving holiday. Freshman forward Michael Carrera was honored after the conclusion of the regular season with selection to the 2013 SEC All-Freshman Team, as voted on by the league's head coaches. During the spring of 2013, the Gamecock coaching staff signed seven freshmen, while welcoming Villanova transfer Ty Johnson to the team, a recruiting class which ranked No. 23 in the nation according to ESPN.com.

Martin's second season (2013-14) leading the Gamecocks saw the squad win four of its final six games of the year, including two games in the SEC Tournament, marking the first Tournament wins for the Gamecocks since the 2008 campaign. Martin and his staff put together a non-conference schedule that challenged his team to prepare for the rigors of the SEC campaign. The Gamecocks posted several quality victories, including a win versus Saint Mary's at the Hawaiian Airlines Diamond Head Classic in December, and home victories versus Alabama, Vanderbilt and No. 17 Kentucky to name a few.

Martin tutored his second SEC All-Freshman Team honoree in as many seasons, as rookie guard Sindarius Thornwell led all freshmen in the SEC in league games in points (15.6) and assists (4.0) to earn a spot on the postseason team. Thornwell also garnered three SEC Freshman of the Week awards, and was named the Feb. 18 Wayman Tisdale National Freshman of the Week.

A native of Miami, Fla., Martin earned his bachelor's degree in physical education from Florida International in 1993. He and his wife, Anya, have three children, Brandon, Amalia and Christian.

MARTIN'S CAREER RECORD, YEAR-BY-YEAR

| YEAR | RECORD | CONFERENCE (FINISH) | POSTSEASON |
|---------------|----------------------|---------------------|--------------------------------|
| 2007-08 | 21-12 | 10-6 (3rd) | 1-1; NCAA 2nd Round |
| 2008-09 | 22-12 | 9-7 (t4th) | 1-1; NIT |
| 2009-10 | 29-8 | 11-5 (t2nd) | 3-1; NCAA Elite Eight |
| 2010-11 | 23-11 | 10-6 (t3rd) | 1-1; NCAA Third Round |
| 2011-12 | 22-11 | 10-8 (5th) | 1-1; NCAA Third Round |
| 2012-13 | 14-18 | 4-14 (t12th) | - |
| 2013-14 | 14-20 | 5-13 (13th) | - |
| 2014-15 | 9-4 | 0-1 | - |
| Totals | 154-96 (.616) | 59-60 (.495) | 7-5 (.583)/4 NCAA/1 NIT |

2014-15 RADIO/TV SPOT CHART



#0

SINDARIUS THORNWELL
So. - G - 6-5 - 215
Lancaster, S.C.
Oak Hill Academy



#1

MARCUS STROMAN
Fr. - G - 6-2 - 183
Columbia, S.C.
Keenan



#4

TYRONE JOHNSON
Sr. - G - 6-3 - 195
Plainfield, N.J.
Montrose Christian/
Villanova



#5

TEMARCUS BLANTON
Fr. - G - 6-5 - 209
Locust Grove, Ga.
Luella



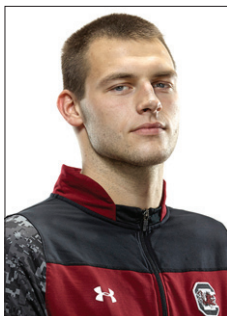
#10

DUANE NOTICE
So. - G - 6-2 - 212
Woodbridge, Ontario
St. Thomas More
(Oakdale, Conn.)



#12

SHAMIEK SHEPPARD
Fr. - G/F - 6-6 - 225
Brooklyn, N.Y.
Fishburne Military
School



#14

LAIMONAS CHATKEVICIUS
Jr. - F - 6-11 - 251
Klaipeda, Lithuania
South Kent School
(South Kent, Conn.)



#15

REGGIE THEUS JR.
So. - F - 6-6 - 221
Los Angeles, Calif.
Fairfax



#20

JUSTIN MCKIE
So. - G - 6-4 - 195
Columbia, S.C.
Irmo



#21

DEMETRIUS HENRY
So. - F - 6-9 - 226
Miami, Fla.
Faith Baptist Christian
School



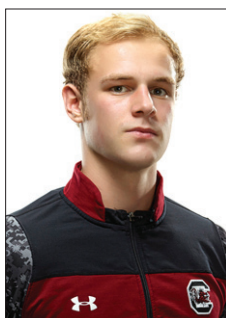
#24

MICHAEL CARRERA
Jr. - F - 6-5 - 212
Anzoátegui, Venezuela
Montrose Christian



#25

MINDAUGAS KACINAS
Jr. - F - 6-7 - 227
Klaipeda, Lithuania
Word of Life Fire



#35

BRIAN STEELE
Jr. - F - 6-5 - 194
Greenville, S.C.
Wade Hampton



#12

AUSTIN CONSTABLE
Jr. - G - 5-11 - 178
West Chester, Pa.
Henderson



FRANK MARTIN
Head Coach

GAMECOCKS' RECORD WHEN ...

| | |
|--|-----|
| At home | 6-2 |
| On the road | 1-0 |
| At neutral sites | 2-2 |
| In overtime | 0-0 |
| vs. Top 25 team | 1-0 |
| vs. Top 10 team | 1-0 |
| vs. Top 3 team | 0-0 |
| Leading at half | 8-2 |
| Trailing at half | 1-2 |
| Tied at half | 0-0 |
| Shooting 50% or better | 3-0 |
| Shooting between 39-49% | 5-4 |
| Shooting less than 39% | 1-0 |
| Opp. shooting 50% or better | 0-0 |
| Opp. shooting between 39-49% | 2-4 |
| Opp. shooting less than 39% | 7-0 |
| Shooting better than opp. | 9-0 |
| Shooting worse than/equal to opp. | 0-4 |
| Starters out-score opp. starters | 7-1 |
| Opp. starters score/equal more | 2-3 |
| Bench out-scores opp. bench | 6-3 |
| Opp. bench scores/equals more | 3-1 |
| Having more FTs than opp. | 7-0 |
| Having equal/less FTs than opp. | 2-4 |
| Have more TOs than opp. | 1-1 |
| Having equal/less TOs than opp. | 8-3 |
| Having more rebounds than opp. | 8-3 |
| Having equal/less rebounds than opp. | 1-1 |
| Making 6 or more 3FGs | 4-0 |
| Having 15 or more assists | 7-0 |
| Score more points in paint than opp. | 9-3 |
| Scoring equal/less points in paint than opp. | 0-1 |
| Scoring more points off TOs than opp. | 7-3 |
| Scoring equal/less points off TOs than opp. | 3-1 |
| Scoring more 2nd-chance points than opp. | 5-1 |
| Scoring equal/less 2nd-chance points than opp. | 5-3 |
| Scoring more fast break points than opp. | 9-4 |
| Scoring equal/less fast break points than opp. | 0-0 |
| Wearing white uniforms | 7-4 |
| Wearing Garnet uniforms | 1-0 |
| Wearing Black uniforms | 1-0 |
| Wearing Gray Uniforms | 0-0 |
| Playing on live TV/live broadcast | 9-4 |
| Playing in November | 3-3 |
| Playing in December | 5-0 |
| Playing in January | 1-1 |
| Playing in February | 0-0 |
| Playing in March | 0-0 |
| Playing a day-game | 2-1 |
| Playing a night-game | 7-3 |
| Playing on Sunday | 1-1 |
| Playing on a Monday | 1-0 |
| Playing on a Tuesday | 1-1 |
| Playing on a Wednesday | 1-1 |
| Playing on a Thursday | 1-0 |
| Playing on a Friday | 2-1 |
| Playing on a Saturday | 2-0 |
| Scoring margin is 5 points or less | 1-4 |
| Margin is between 6-10 | 0-0 |
| Margin is between 11-20 | 2-0 |
| Margin is more than 20 | 6-0 |
| Scoring 59 points or less | 0-0 |
| Scoring 60-69 points | 3-4 |
| Scoring 70-79 points | 3-0 |
| Scoring 80-89 points | 2-0 |
| Scoring 90-99 points | 1-0 |
| Scoring 100+ points | 0-0 |

MISCELLANEOUS

| | |
|----------------------|----|
| Current streak | L1 |
| Home court streak | L1 |
| Away streak | W1 |
| Neutral court streak | W1 |

2014-15 SUPERLATIVES

(tied for team lead also included)

| Scoring Leaders | '14-15 | Career |
|-----------------------|--------|--------|
| Demetrius Henry | 1 | 1 |
| Tyrone Johnson | 3 | 7* |
| Sindarius Thornwell | 3 | 15 |
| Laimonas Chatkevicius | 1 | 1 |
| Duane Notice | 5 | 8 |
| Mindaugas Kacinas | 1 | 3 |

| Rebounding Leaders | '14-15 | Career |
|-----------------------|--------|--------|
| Mindaugas Kacinas | 4 | 17 |
| Demetrius Henry | 2 | 4 |
| Sindarius Thornwell | 4 | 8 |
| Laimonas Chatkevicius | 2 | 8 |
| Michael Carrera | 1 | 28 |
| Tyrone Johnson | 1 | 4* |

| Assists Leaders | '14-15 | Career |
|---------------------|--------|--------|
| Marcus Stroman | 7 | 7 |
| Sindarius Thornwell | 1 | 18 |
| Tyrone Johnson | 4 | 14* |
| Duane Notice | 4 | 19 |

| Blocks Leaders | '14-15 | Career |
|-----------------------|--------|--------|
| Demetrius Henry | 5 | 16 |
| Michael Carrera | 3 | 23 |
| Sindarius Thornwell | 4 | 13 |
| Tyrone Johnson | 2 | 2* |
| Marcus Stroman | 1 | 1 |
| Laimonas Chatkevicius | 7 | 23 |
| Shamiek Sheppard | 1 | 1 |
| Mindaugas Kacinas | 1 | 16 |

| Steals Leaders | '14-15 | Career |
|-----------------------|--------|--------|
| Marcus Stroman | 3 | 3 |
| Sindarius Thornwell | 4 | 14 |
| Tyrone Johnson | 6 | 6* |
| Mindaugas Kacinas | 2 | 12 |
| Justin McKie | 1 | 2 |
| Laimonas Chatkevicius | 1 | 4 |
| Duane Notice | 2 | 6 |

| Double-Figure Scoring | '14-15 | Career |
|-----------------------|--------|--------|
| Tyrone Johnson | 8 | 18* |
| Demetrius Henry | 4 | 7 |
| Laimonas Chatkevicius | 6 | 13 |
| Michael Carrera | 2 | 19 |
| Sindarius Thornwell | 9 | 30 |
| Marcus Stroman | 1 | 1 |
| Mindaugas Kacinas | 3 | 13 |
| Duane Notice | 8 | 21 |
| Justin McKie | 1 | 1 |

| 20+ points | '14-15 | Career |
|---------------------|--------|--------|
| Tyrone Johnson | 2 | 2* |
| Sindarius Thornwell | 1 | 8 |
| Duane Notice | 2 | 3 |

| 30+ points | '14-15 | Career |
|------------|--------|--------|
| - | - | - |

| Double-Figure Rebounding | '14-15 | Career |
|--------------------------|--------|--------|
| Mindaugas Kacinas | 3 | 10 |
| Laimonas Chatkevicius | 1 | 2 |
| Sindarius Thornwell | 1 | 3 |

| 5+ assists | '14-15 | Career |
|----------------|--------|--------|
| Marcus Stroman | 5 | 5 |
| Duane Notice | 1 | 6 |
| Tyrone Johnson | 5 | 8* |

| 3+ steals | '14-15 | Career |
|---------------------|--------|--------|
| Marcus Stroman | 1 | 1 |
| Tyrone Johnson | 2 | 2* |
| Sindarius Thornwell | 2 | 6 |
| Mindaugas Kacinas | 1 | 1 |
| Duane Notice | 2 | 2 |

| 2+ blocks | '14-15 | Career |
|-----------------------|--------|--------|
| Michael Carrera | 2 | 16 |
| Laimonas Chatkevicius | 8 | 17 |
| Demetrius Henry | 4 | 10 |
| Mindaugas Kacinas | 1 | 11 |
| Sindarius Thornwell | 2 | 6 |

| Double-Doubles | '14-15 | Career |
|-----------------------|--------|--------|
| Mindaugas Kacinas | 1 | 3 |
| Laimonas Chatkevicius | 1 | 1 |
| Sindarius Thornwell | 1 | 3 |

| Clutch Free Throws (under 5 min/OT) | FT-FTA | FT% |
|-------------------------------------|--------------|-------------|
| Sindarius Thornwell | 3-4 | .750 |
| Mindaugas Kacinas | 6-7 | .857 |
| Justin McKie | 4-4 | 1.000 |
| Duane Notice | 4-4 | 1.000 |
| Michael Carrera | 3-4 | .750 |
| Marcus Stroman | 9-15 | .600 |
| Laimonas Chatkevicius | 2-4 | .500 |
| Tyrone Johnson | 4-5 | .800 |
| Totals | 35-47 | .745 |

* indicates at South Carolina

| Miscellaneous | | |
|------------------------------|---------------------------------------|--|
| Largest Halftime Lead | | |
| SC | 31, vs. NC A&T (Dec. 30, 2014) | |
| Opp | 5, Akron (Nov. 23, 2014) | |
| Smallest Halftime Lead | | |
| SC | 1, vs. Iowa State (Jan. 3, 2015) | |
| Opp | 2, Clemson (Dec. 19, 2014) | |
| Fewest Points In First Half | | |
| SC | 25, vs. Akron (Nov. 23, 2014) | |
| Opp | 16, NC A&T (Dec. 30, 2014) | |
| Most Points In First Half | | |
| SC | 48, vs. North Florida (Nov. 14, 2014) | |
| Opp | 35, Iowa State (Jan. 3, 2015) | |
| Fewest Points In Second Half | | |
| SC | 27, Charlotte (Nov. 21, 2014) | |
| Opp | 15, Clemson (Dec. 19, 2014) | |
| Most Points In Second Half | | |
| SC | 52, vs. UNC Asheville (Nov. 26, 2014) | |
| Opp | 46, UNC Asheville (Nov. 26, 2014) | |
| Most Points in Overtime | | |
| SC | - | |
| Opp | - | |
| Largest Margin of Victory | | |
| SC | 37, vs. NC A&T (Dec. 30, 2014) | |
| Opp | 5, Akron (Nov. 23, 2014) | |
| Smallest Margin of Victory | | |
| SC | 4, vs. Iowa State (Jan. 3, 2015) | |
| Opp | 2, Charlotte (Nov. 21, 2014) | |

2014-15 GAME BY GAME COMPARISON

| | Date | Result | FG-A | Pct | 3FG-A | Pct | FT-A | Pct | O-D-Total | PF | Pts | A | TO | Blk | Stl | Min | Half |
|--------------------|---------------|----------|-------|------|-------|-------|-------|------|-----------|----|-----|----|----|-----|-----|-----|------|
| North Florida | | | 18-53 | .340 | 10-32 | .313 | 10-16 | .625 | 6-22-28 | 22 | 56 | 9 | 15 | 5 | 2 | 200 | 27 |
| South Carolina | Nov. 14, 2014 | W, 81-56 | 29-57 | .509 | 4-11 | .364 | 19-26 | .731 | 10-32-42 | 15 | 81 | 19 | 9 | 3 | 7 | 200 | 48 |
| RV/RV Baylor | | | 21-47 | .447 | 6-18 | .333 | 21-26 | .808 | 8-21-29 | 20 | 69 | 9 | 11 | 1 | 6 | 200 | 30 |
| South Carolina | Nov. 18, 2014 | L, 69-65 | 22-54 | .407 | 5-21 | .238 | 16-19 | .842 | 13-20-33 | 21 | 65 | 11 | 10 | 3 | 4 | 200 | 27 |
| Cornell & | | | 14-52 | .269 | 5-20 | .250 | 12-16 | .750 | 10-22-32 | 19 | 45 | 6 | 17 | 6 | 6 | 200 | 21 |
| South Carolina | Nov. 20, 2014 | W, 69-45 | 22-58 | .379 | 8-22 | .364 | 17-21 | .810 | 14-30-44 | 15 | 69 | 16 | 11 | 5 | 10 | 200 | 35 |
| Charlotte & | | | 23-53 | .434 | 6-17 | .353 | 13-19 | .684 | 8-24-32 | 13 | 65 | 6 | 17 | 5 | 6 | 200 | 29 |
| South Carolina | Nov. 21, 2014 | L, 65-63 | 26-61 | .426 | 3-18 | .167 | 8-9 | .889 | 11-26-37 | 21 | 63 | 13 | 17 | 7 | 6 | 200 | 36 |
| Akron & | | | 21-50 | .420 | 4-20 | .200 | 22-27 | .815 | 8-24-32 | 19 | 68 | 6 | 15 | 6 | 6 | 200 | 30 |
| South Carolina | Nov. 23, 2014 | L, 68-63 | 25-64 | .391 | 2-10 | .200 | 11-20 | .550 | 21-24-45 | 20 | 63 | 11 | 17 | 2 | 8 | 200 | 25 |
| UNC Asheville | | | 23-63 | .365 | 15-29 | .517 | 14-20 | .700 | 15-20-35 | 21 | 75 | 12 | 22 | 3 | 11 | 200 | 29 |
| South Carolina | Nov. 26, 2014 | W, 89-75 | 31-60 | .517 | 8-17 | .471 | 19-26 | .731 | 12-27-39 | 15 | 89 | 21 | 20 | 10 | 12 | 200 | 37 |
| Marshall | | | 16-56 | .286 | 5-26 | .192 | 22-34 | .647 | 18-25-43 | 20 | 59 | 9 | 19 | 3 | 6 | 200 | 20 |
| South Carolina | Dec. 1, 2014 | W, 77-59 | 30-63 | .476 | 4-20 | .200 | 13-24 | .542 | 14-25-39 | 24 | 77 | 17 | 15 | 3 | 13 | 200 | 39 |
| RV/RV Ok. St. % | | | 16-65 | .246 | 5-24 | .208 | 12-19 | .632 | 16-25-41 | 17 | 49 | 7 | 12 | 5 | 4 | 200 | 24 |
| South Carolina | Dec. 6, 2014 | W, 75-49 | 26-60 | .433 | 6-17 | .353 | 17-22 | .776 | 11-38-49 | 19 | 75 | 14 | 11 | 8 | 6 | 200 | 32 |
| Clemson | | | 17-57 | .298 | 4-18 | .222 | 7-12 | .583 | 11-20-31 | 20 | 45 | 7 | 13 | 5 | 9 | 200 | 30 |
| South Carolina | Dec. 19, 2014 | W, 68-45 | 23-50 | .460 | 7-22 | .318 | 15-20 | .750 | 8-32-40 | 14 | 68 | 17 | 12 | 7 | 7 | 200 | 28 |
| Coker | | | 18-58 | .310 | 7-21 | .333 | 9-14 | .643 | 14-17-31 | 21 | 52 | 8 | 19 | 1 | 8 | 200 | 23 |
| South Carolina | Dec. 21, 2014 | W, 78-52 | 31-64 | .484 | 3-11 | .273 | 13-19 | .684 | 18-29-47 | 16 | 78 | 21 | 15 | 9 | 11 | 200 | 23 |
| North Carolina A&T | | | 18-55 | .327 | 6-22 | .2173 | 12-15 | .800 | 9-11-20 | 26 | 54 | 8 | 19 | 2 | 4 | 200 | 16 |
| South Carolina | Dec. 30, 2014 | W, 91-54 | 29-53 | .547 | 5-9 | .556 | 28-34 | .824 | 12-29-41 | 17 | 91 | 20 | 16 | 7 | 7 | 200 | 47 |
| No. 9 Iowa State ^ | | | 20-57 | .351 | 1-18 | .056 | 19-33 | .573 | 12-22-34 | 21 | 60 | 8 | 13 | 4 | 10 | 200 | 36 |
| South Carolina | Jan. 5, 2015 | W, 64-60 | 23-50 | .460 | 2-10 | .200 | 16-26 | .615 | 11-31-42 | 28 | 64 | 8 | 20 | 4 | 8 | 200 | 35 |
| Florida* | | | 21-49 | .429 | 5-19 | .263 | 25-30 | .833 | 14-23-37 | 24 | 72 | 14 | 17 | 4 | 7 | 200 | 31 |
| South Carolina | Jan. 7, 2015 | L, 72-68 | 20-49 | .408 | 5-13 | .385 | 23-28 | .852 | 7-16-23 | 20 | 68 | 11 | 11 | 5 | 4 | 200 | 34 |

! - ESPN College Hoops Tip-Off Marathon (Columbia, S.C.) | & - Charleston Classic (Charleston, S.C.) | % - SEC/Big 12 Challenge (Columbia, S.C.) | ^ - Brooklyn Hoops Presents (Brooklyn, N.Y.)

2014-15 RESULTS: OVERALL, 9-4; HOME, 6-2; AWAY, 1-0; NEUTRAL, 2-2; SEC, 0-1

| DATE | OPP. | W/L | SCORE | RECORD (SEC) | POINTS | REBOUNDS | ASSISTS | BLOCKS | STEALS | ATTENDANCE |
|---------------|--------------------|-----|-------|--------------|--------------------|---------------------|---------------------|----------------------------|--------------------------|---------------|
| Nov. 14, 2014 | N. Florida | W | 81-56 | 1-0 | Johnson/Henry (12) | Kacinas (11) | Stroman (6) | 3 with 1 | Stroman (2) | 10,473 (paid) |
| Nov. 18, 2014 | RV/RV Baylor ! | L | 69-65 | 1-1 | Johnson (21) | Henry (8) | Thornwell (4) | 3 with 1 | Thornwell (2) | 13,291 (paid) |
| Nov. 20, 2014 | vs. Cornell & | W | 69-45 | 2-1 | Thornwell (14) | Kacinas (11) | Johnson (5) | Carrera/Chatkevicius (2) | Stroman (3) | 2,517 |
| Nov. 21, 2014 | vs. Charlotte & | L | 65-63 | 2-2 | Thornwell (20) | Thornwell (8) | Notice (5) | Chatkevicius (3) | Thornwell (2) | 2,430 |
| Nov. 23, 2014 | vs. Akron & | L | 68-63 | 2-3 | Thornwell (13) | Henry (9) | Notice/Stroman (4) | Henry/Carrera (1) | Johnson (4) | 1,523 |
| Nov. 26, 2014 | UNC Asheville | W | 89-75 | 3-3 | Chatkevicius (17) | Chatkevicius (13) | Stroman/Johnson (6) | Chatkevicius/Henry (3) | Thornwell (6) | 8,330 (paid) |
| Dec. 1, 2014 | at Marshall | W | 77-59 | 4-3 | Notice (27) | Thornwell (10) | Notice (4) | Thornwell (2) | Kacinas (4) | 5,013 |
| Dec. 6, 2014 | RV/RV Okla. St. %W | W | 75-49 | 5-3 | Notice (20) | Kacinas (12) | Stroman (5) | Chatkevicius (3) | McKie (2) | 12,007 |
| Dec. 19, 2014 | Clemson | W | 68-45 | 6-3 | Notice (19) | Thornwell (7) | Johnson (9) | Chatkevicius (3) | Chatkevicius/Johnson (2) | 11,992 (paid) |
| Dec. 21, 2014 | Coker | W | 78-52 | 7-3 | Notice (19) | Carrera (8) | Stroman (8) | Henry (3) | Johnson/Notice (3) | 8,419 (paid) |
| Dec. 30, 2014 | NCA&T | W | 91-54 | 8-3 | Kacinas (16) | Chatkevicius (9) | Stroman (7) | Chatkevicius/Thornwell (2) | Thornwell/Kacinas (2) | 8,156 (paid) |
| Jan. 3, 2015 | No. 9/9 Iowa St. | W | 64-60 | 9-3 | Notice (15) | Thornwell (8) | Notice (4) | 4 with 1 | Notice (3) | N/A |
| Jan. 7, 2015 | Florida* | L | 72-68 | 9-4 (0-1) | Johnson (20) | Johnson/Kacinas (5) | Johnson/Stroman (3) | Chatkevicius (2) | Stroman (3) | 12,181 (paid) |

! - ESPN College Hoops Tip-Off Marathon (Columbia, S.C.) | & - Charleston Classic (Charleston, S.C.) | % - SEC/Big 12 Challenge (Columbia, S.C.)

2014-15 GAME-BY-GAME STARTING LINEUPS

| OPPONENT, RESULT | GUARD | GUARD | GUARD | FORWARD | FORWARD |
|-----------------------|--------|---------|-----------|---------|--------------|
| N. Florida, W | Notice | Johnson | Thornwell | Henry | Carrera |
| Baylor, L | Notice | Johnson | Thornwell | Henry | Carrera |
| vs. Cornell, W | Notice | Johnson | Thornwell | Henry | Carrera |
| vs. Charlotte, L | Notice | Johnson | Thornwell | Henry | Carrera |
| vs. Akron, L | Notice | Johnson | Thornwell | Henry | Carrera |
| Asheville, W | Notice | Johnson | Thornwell | Henry | Chatkevicius |
| @Marshall, W | Notice | Johnson | Thornwell | Henry | Chatkevicius |
| Oklahoma State, W | Notice | Johnson | Thornwell | Henry | Chatkevicius |
| Clemson, W | Notice | Johnson | Thornwell | Henry | Chatkevicius |
| Coker, W | Notice | Johnson | Thornwell | Henry | Chatkevicius |
| North Carolina A&T, W | Notice | Johnson | Thornwell | Henry | Chatkevicius |
| Iowa State, W | Notice | Johnson | Thornwell | Henry | Chatkevicius |
| Florida, L | Notice | Johnson | Thornwell | Henry | Chatkevicius |



#4 - TYRONE JOHNSON

SENIOR | GUARD | 6'3" | 195 | 2 LETTERS

PLAINFIELD, N.J./MONTROSE CHRISTIAN SCHOOL/VILLANOVA

SEASON NOTABLES

- Tallied 23 points on 6-of-11 shooting, including 4-of-6 from 3-point range in exhib. vs. Benedict
- Hit 5-7 shots to lead the team with 12 points against North Florida, adding five rebounds, four assists and no turnovers
- Set a new career high in five different categories against Baylor, including 21 points to lead all scorers
- Matched a career high with four steals against Akron
- Dished out a season-best six assists to go with 12 points in a win over UNC Asheville
- Converted a trio of three-point plays and scored 13 points in a win over Oklahoma State
- Set a new career high with nine assists in a win over Clemson
- Scored 12 points with five assists and three steals against Coker
- Secured a career-high seven rebounds to go with 13 points in a win over No.9 Iowa State
- Recorded his second 20-point game of the season, reaching 20 to lead the team against Florida

JOHNSON'S SUPERLATIVES

POINTS

Career: 21, vs. Baylor (Nov. 18 2014)
Season: 21, vs. Baylor (Nov. 18 2014)

FIELD GOALS

Career: 9, vs. Baylor (Nov. 18 2014)
Season: 9, vs. Baylor (Nov. 18 2014)

FIELD GOAL ATTEMPTS

Career: 16, vs. Baylor (Nov. 18 2014)
Season: 16, vs. Baylor (Nov. 18 2014)

3-POINT FIELD GOALS

Career: 3, vs. Baylor (Nov. 18 2014)
Season: 3, vs. Baylor (Nov. 18 2014)

3-POINT FIELD GOAL ATTEMPTS

Career: 9, vs. Baylor (Nov. 18 2014)
Season: 9, vs. Baylor (Nov. 18 2014)

FREE THROWS

Career: 9, vs. Florida (Jan. 7, 2015)
Season: 9, vs. Florida (Jan. 7, 2015)

FREE THROW ATTEMPTS

Career: 11, vs. Manhattan (Dec. 17, 2013)
Season: 9, vs. Florida (Jan. 7, 2015)

REBOUNDS

Career: 7, vs. Iowa State (Jan. 3, 2015)
Season: 7, vs. Iowa State (Jan. 3, 2015)

ASSISTS

Career: 9, vs. Clemson (Dec. 19, 2014)
Season: 9, vs. Clemson (Dec. 19, 2014)

BLOCKS

Career: 1, 7x, last vs. Iowa State (Jan. 3, 2015)
Season: 1, 4x, last vs. Iowa State (Jan. 3, 2015)

STEALS

Career: 4, twice, last vs. Akron (Nov. 23, 2014)
Season: 4, vs. Akron (Nov. 23, 2014)

MINUTES PLAYED

Career: 41, vs. UCONN (Feb. 20, 2012)
Season: 37, vs. Baylor (Nov. 18 2014)

2014-15

| Opponent | Date | GS | Min | FG-FGA | Pct | 3FG-FGA | Pct | FT-FTA | Pct | Off | Def | Tot | Avg | PF | FO | A | TO | Blk | Stl | Pts | Avg |
|-------------------|----------|----|-----|--------|------|---------|------|--------|-------|-----|-----|-----|-----|----|----|---|----|-----|-----|-----|------|
| North Florida | 11/14/14 | * | 28 | 5-7 | .714 | 0-0 | .000 | 2-3 | .667 | 0 | 5 | 5 | 5.0 | 0 | 0 | 4 | 0 | 0 | 1 | 12 | 12.0 |
| Baylor | 11/18/14 | * | 37 | 9-16 | .563 | 3-9 | .333 | 0-0 | .000 | 0 | 1 | 1 | 3.0 | 2 | 0 | 2 | 3 | 1 | 0 | 21 | 16.5 |
| vs. Cornell | 11/20/14 | * | 25 | 2-7 | .286 | 1-3 | .333 | 2-2 | 1.000 | 0 | 3 | 3 | 4.0 | 2 | 0 | 5 | 2 | 1 | 2 | 7 | 13.3 |
| vs. Charlotte | 11/21/14 | * | 18 | 0-4 | .000 | 0-0 | .000 | 0-0 | .000 | 0 | 0 | 0 | 0.0 | 0 | 0 | 2 | 3 | 0 | 1 | 0 | 10.0 |
| vs. Akron | 11/23/14 | * | 23 | 2-8 | .250 | 0-1 | .000 | 3-5 | .600 | 1 | 3 | 4 | 2.6 | 4 | 0 | 2 | 2 | 0 | 4 | 7 | 9.4 |
| UNC Asheville | 11/26/14 | * | 29 | 3-7 | .429 | 1-3 | .333 | 5-7 | .714 | 1 | 3 | 4 | 2.8 | 1 | 0 | 6 | 3 | 1 | 1 | 12 | 9.8 |
| at Marshall | 12/1/14 | * | 20 | 0-5 | .000 | 0-1 | .000 | 1-2 | .500 | 1 | 1 | 2 | 2.7 | 3 | 0 | 3 | 0 | 0 | 1 | 0 | 8.6 |
| Oklahoma State | 12/6/14 | * | 24 | 5-9 | .556 | 0-3 | .000 | 3-3 | 1.000 | 0 | 2 | 2 | 2.6 | 4 | 0 | 2 | 2 | 0 | 0 | 13 | 9.1 |
| Clemson | 12/19/14 | * | 27 | 1-4 | .250 | 0-2 | .000 | 2-2 | 1.000 | 0 | 1 | 1 | 2.4 | 0 | 0 | 9 | 2 | 0 | 2 | 4 | 8.6 |
| Coker | 12/21/14 | * | 29 | 4-7 | .571 | 1-2 | .500 | 3-5 | .600 | 0 | 3 | 3 | 2.5 | 3 | 0 | 5 | 2 | 1 | 3 | 12 | 8.9 |
| NA&T | 12/30/14 | * | 30 | 3-7 | .429 | 0-0 | .000 | 4-4 | 1.000 | 0 | 1 | 1 | 2.4 | 0 | 0 | 5 | 1 | 0 | 1 | 10 | 9.0 |
| vs. Iowa State | 1/3/15 | * | 35 | 5-12 | .417 | 1-2 | .500 | 2-2 | 1.000 | 1 | 6 | 7 | 2.8 | 2 | 0 | 3 | 1 | 1 | 1 | 13 | 9.3 |
| Florida | 1/7/15 | * | 31 | 5-10 | .500 | 1-2 | .500 | 9-9 | 1.000 | 1 | 4 | 5 | 2.9 | 1 | 0 | 3 | 1 | 0 | 1 | 20 | 10.2 |
| at Ole Miss | 1/10/15 | | | | | | | | | | | | | | | | | | | | |
| Alabama | 1/13/15 | | | | | | | | | | | | | | | | | | | | |
| at Auburn | 1/17/15 | | | | | | | | | | | | | | | | | | | | |
| Tennessee | 1/20/15 | | | | | | | | | | | | | | | | | | | | |
| Kentucky | 1/24/15 | | | | | | | | | | | | | | | | | | | | |
| at LSU | 1/28/15 | | | | | | | | | | | | | | | | | | | | |
| Georgia | 1/31/15 | | | | | | | | | | | | | | | | | | | | |
| at Arkansas | 2/3/15 | | | | | | | | | | | | | | | | | | | | |
| at Vanderbilt | 2/7/15 | | | | | | | | | | | | | | | | | | | | |
| Missouri | 2/10/15 | | | | | | | | | | | | | | | | | | | | |
| at Kentucky | 2/14/15 | | | | | | | | | | | | | | | | | | | | |
| at Georgia | 2/17/15 | | | | | | | | | | | | | | | | | | | | |
| Texas A&M | 2/21/15 | | | | | | | | | | | | | | | | | | | | |
| at Alabama | 2/24/15 | | | | | | | | | | | | | | | | | | | | |
| Mississippi State | 2/28/15 | | | | | | | | | | | | | | | | | | | | |
| Arkansas | 3/5/15 | | | | | | | | | | | | | | | | | | | | |
| at Tennessee | 3/7/15 | | | | | | | | | | | | | | | | | | | | |

| Per 40 Minutes | FGM | FTM | Rebs | Fouls | Assists | Blocks | Steals | Points |
|----------------|-----|-----|------|-------|---------|--------|--------|--------|
| | 4.9 | 4.0 | 4.3 | 2.5 | 5.6 | 0.6 | 2.0 | 14.8 |

CAREER STATISTICS

| Season | GP-GS | Min | Avg | FG | FGA | Pct | 3FG | 3FGA | Pct | FT | FTA | Pct | Off | Def | Tot | Avg | PF | FO | Ast | TO | Blk | Stl | Pts | Avg |
|---------------|----------------|-------------|-------------|------------|------------|-------------|-----------|-----------|-------------|------------|------------|-------------|-----------|------------|------------|------------|-----------|----------|------------|------------|----------|-----------|------------|------------|
| 2011-12* | 32-9 | 567 | 17.7 | 33 | 106 | .311 | 6 | 26 | .230 | 35 | 40 | .875 | 2 | 31 | 33 | 1.0 | 47 | 2 | 65 | 58 | 2 | 19 | 107 | 3.3 |
| 2012-13 | DNP - Transfer | | | | | | | | | | | | | | | | | | | | | | | |
| 2013-14 | 16-9 | 430 | 26.9 | 52 | 142 | .366 | 8 | 19 | .421 | 67 | 89 | .753 | 10 | 37 | 47 | 2.9 | 25 | 0 | 55 | 30 | 1 | 10 | 179 | 11.2 |
| 2014-15 | 13-13 | 356 | 27.4 | 44 | 103 | .427 | 8 | 28 | .286 | 36 | 44 | .818 | 5 | 33 | 38 | 2.9 | 22 | 0 | 50 | 20 | 5 | 18 | 132 | 10.2 |
| Totals | 61-31 | 1353 | 22.2 | 129 | 351 | .368 | 22 | 73 | .301 | 138 | 173 | .798 | 17 | 101 | 118 | 1.9 | 94 | 2 | 170 | 108 | 8 | 47 | 418 | 6.9 |

* indicates at Villanova

CAREER SEC STATISTICS

| Season | GP-GS | Min | Avg | FG | FGA | Pct | 3FG | 3FGA | Pct | FT | FTA | Pct | Off | Def | Tot | Avg | PF | FO | Ast | TO | Blk | Stl | Pts | Avg |
|---------------|------------|-----------|-------------|-----------|-----------|-------------|----------|----------|-------------|-----------|-----------|-------------|----------|-----------|-----------|------------|----------|----------|-----------|----------|----------|----------|-----------|-------------|
| 2014 | 3-0 | 68 | 22.7 | 7 | 26 | .269 | 1 | 3 | .333 | 12 | 15 | .800 | 5 | 9 | 14 | 4.7 | 5 | 0 | 7 | 7 | 0 | 1 | 27 | 9.0 |
| 2015 | 1-1 | 31 | 31.0 | 5 | 10 | .500 | 1 | 2 | .500 | 9 | 9 | 1.000 | 1 | 4 | 5 | 5.0 | 1 | 0 | 3 | 1 | 0 | 1 | 20 | 20.0 |
| Totals | 4-1 | 99 | 24.8 | 12 | 36 | .333 | 2 | 5 | .400 | 21 | 24 | .875 | 6 | 13 | 19 | 4.8 | 6 | 0 | 10 | 8 | 0 | 2 | 47 | 11.8 |



#35 - BRIAN STEELE

JUNIOR | FORWARD | 6'5" | 194 | 2 LETTERS

GREENVILLE, S.C./WADE HAMPTON SCHOOL

SEASON NOTABLES

- Suffered a knee injury prior to the start of preseason, but was available for the first game of the year
- Hit a pair of threes in 15 minutes of action against North Florida
- Scored once in four minutes against Coker

STEELE'S SUPERLATIVES

POINTS

Career: 8, vs. Georgia (Feb. 22, 2014)
 Season: 6, vs. North Florida (Nov. 14, 2014)

FIELD GOALS

Career: 3, at Tennessee (Feb. 8, 2014)
 Season: 2, vs. North Florida (Nov. 14, 2014)

FIELD GOAL ATTEMPTS

Career: 7, 3x, last vs. Cornell (Nov. 20, 2014)
 Season: 4, vs. North Florida (Nov. 14, 2014)

3-POINT FIELD GOALS

Career: 2, 3x, last vs. North Florida (Nov. 14, 2014)
 Season: 2, vs. North Florida (Nov. 14, 2014)

3-POINT FIELD GOAL ATTEMPTS

Career: 5, twice, last vs. Georgia (Feb. 22, 2014)
 Season: 4, vs. North Florida (Nov. 14, 2014)

FREE THROWS

Career: 2, twice, last vs. Georgia (Feb. 22, 2014)
 Season:

FREE THROW ATTEMPTS

Career: 2, 3x, last vs. Georgia (Feb. 22, 2014)
 Season:

REBOUNDS

Career: 7, vs. Miss. State (March 13, 2013)
 Season: 3, vs. Cornell (Nov. 20, 2014)

ASSISTS

Career: 3, twice, last at Auburn (Feb. 26, 2014)
 Season: 2, vs. Cornell (Nov. 20, 2014)

BLOCKS

Career:
 Season:

STEALS

Career: 2, vs. Texas A&M (Jan. 29, 2014)
 Season: 1, 3x, last vs. UNC Asheville (Nov. 26, 2014)

MINUTES PLAYED

Career: 26, at Tennessee (Feb. 8, 2014)
 Season: 16, vs. Cornell (Nov. 20, 2014)

2014-15

| Opponent | Date | GS | Min | FG-FGA | Pct | 3FG-FGA | Pct | FT-FTA | Pct | Off | Def | Tot | Avg | PF | FO | A | TO | Blk | Sd | Pts | Avg |
|-------------------|----------|----|-----|--------|-----|---------|-----|--------|-----|------------------------|-----|-----|-----|----|----|---|----|-----|----|-----|-----|
| North Florida | 11/14/14 | 15 | 2-4 | .500 | 2-4 | .500 | 0-0 | .000 | 0 | 2 | 2 | 2.0 | 0 | 0 | 0 | 0 | 0 | 0 | 0 | 6 | 6.0 |
| Baylor | 11/18/14 | 8 | 0-2 | .000 | 0-2 | .000 | 0-0 | .000 | 0 | 0 | 0 | 1.0 | 1 | 0 | 0 | 0 | 0 | 0 | 0 | 0 | 3.0 |
| vs. Cornell | 11/20/14 | 16 | 1-7 | .143 | 1-4 | .250 | 0-0 | .000 | 0 | 3 | 3 | 1.7 | 1 | 0 | 2 | 1 | 0 | 1 | 3 | 3.0 | |
| vs. Charlotte | 11/21/14 | 8 | 0-1 | .000 | 0-0 | .000 | 0-0 | .000 | 0 | 2 | 2 | 1.8 | 1 | 0 | 0 | 0 | 0 | 0 | 1 | 0 | 2.3 |
| vs. Akron | 11/23/14 | 2 | 0-0 | .000 | 0-0 | .000 | 0-0 | .000 | 0 | 0 | 0 | 1.4 | 1 | 0 | 1 | 0 | 0 | 1 | 0 | 1.8 | |
| UNC Asheville | 11/26/14 | | | | | | | | | DNP - Coach's Decision | | | | | | | | | | | |
| at Marshall | 12/1/14 | 4 | 0-1 | .000 | 0-1 | .000 | 0-0 | .000 | 0 | 0 | 0 | 1.2 | 1 | 0 | 0 | 0 | 0 | 0 | 0 | 0 | 1.5 |
| Oklahoma State | 12/6/14 | 2 | 0-0 | .000 | 0-0 | .000 | 0-0 | .000 | 0 | 0 | 0 | 1.0 | 0 | 0 | 0 | 0 | 0 | 0 | 0 | 0 | 1.3 |
| Clemson | 12/19/14 | 2 | 0-0 | .000 | 0-0 | .000 | 0-0 | .000 | 0 | 0 | 0 | 0.8 | 0 | 0 | 0 | 0 | 0 | 0 | 0 | 0 | 1.1 |
| Coker | 12/21/14 | 4 | 1-2 | .500 | 0-1 | .000 | 0-0 | .000 | 0 | 0 | 0 | 0.8 | 0 | 0 | 1 | 0 | 0 | 0 | 2 | 1.2 | |
| NA&T | 12/30/14 | 4 | 0-0 | .000 | 0-0 | .000 | 0-0 | .000 | 0 | 0 | 0 | 0.7 | 0 | 0 | 0 | 0 | 0 | 0 | 0 | 0 | 1.1 |
| vs. Iowa State | 1/3/15 | | | | | | | | | DNP - Coach's Decision | | | | | | | | | | | |
| Florida | 1/7/15 | | | | | | | | | DNP - Coach's Decision | | | | | | | | | | | |
| at Ole Miss | 1/10/15 | | | | | | | | | | | | | | | | | | | | |
| Alabama | 1/13/15 | | | | | | | | | | | | | | | | | | | | |
| at Auburn | 1/17/15 | | | | | | | | | | | | | | | | | | | | |
| Tennessee | 1/20/15 | | | | | | | | | | | | | | | | | | | | |
| Kentucky | 1/24/15 | | | | | | | | | | | | | | | | | | | | |
| at LSU | 1/28/15 | | | | | | | | | | | | | | | | | | | | |
| Georgia | 1/31/15 | | | | | | | | | | | | | | | | | | | | |
| at Arkansas | 2/3/15 | | | | | | | | | | | | | | | | | | | | |
| at Vanderbilt | 2/7/15 | | | | | | | | | | | | | | | | | | | | |
| Missouri | 2/10/15 | | | | | | | | | | | | | | | | | | | | |
| at Kentucky | 2/14/15 | | | | | | | | | | | | | | | | | | | | |
| at Georgia | 2/17/15 | | | | | | | | | | | | | | | | | | | | |
| Texas A&M | 2/21/15 | | | | | | | | | | | | | | | | | | | | |
| at Alabama | 2/24/15 | | | | | | | | | | | | | | | | | | | | |
| Mississippi State | 2/28/15 | | | | | | | | | | | | | | | | | | | | |
| Arkansas | 3/5/15 | | | | | | | | | | | | | | | | | | | | |
| at Tennessee | 3/7/15 | | | | | | | | | | | | | | | | | | | | |

| Per 40 Minutes | FGM | FTM | Rebs | Fouls | Assists | Blocks | Steals | Points |
|----------------|-----|-----|------|-------|---------|--------|--------|--------|
| 2.5 | 0.0 | 4.3 | 3.1 | 3.1 | 0.0 | 1.8 | 6.8 | |

CAREER STATISTICS

| Season | GP-GS | Min | Avg | FG | FGA | Pct | 3FG | 3FGA | Pct | FT | FTA | Pct | Off | Def | Tot | Avg | PF | FO | Ast | TO | Blk | Stl | Pts | Avg |
|---------------|-------------|------------|------------|-----------|-----------|-------------|-----------|-----------|-------------|----------|----------|-------------|-----------|-----------|-----------|------------|-----------|----------|-----------|-----------|----------|-----------|-----------|------------|
| 2012-13 | 7-4 | 79 | 11.3 | 5 | 19 | .263 | 4 | 14 | .286 | 2 | 3 | .667 | 4 | 11 | 15 | 2.1 | 12 | 1 | 8 | 5 | 0 | 3 | 16 | 2.3 |
| 2013-14 | 22-0 | 218 | 9.9 | 18 | 44 | .409 | 10 | 27 | .370 | 2 | 5 | .400 | 7 | 17 | 24 | 1.1 | 30 | 1 | 11 | 8 | 0 | 5 | 48 | 2.2 |
| 2014-15 | 10-0 | 65 | 6.5 | 4 | 17 | .235 | 3 | 13 | .231 | 0 | 0 | .000 | 0 | 7 | 7 | 0.7 | 5 | 0 | 5 | 2 | 0 | 3 | 11 | 1.1 |
| Totals | 39-4 | 362 | 9.3 | 27 | 80 | .338 | 17 | 54 | .315 | 4 | 8 | .500 | 11 | 35 | 46 | 1.2 | 47 | 2 | 24 | 15 | 0 | 11 | 75 | 1.9 |

CAREER SEC STATISTICS

| Season | GP-GS | Min | Avg | FG | FGA | Pct | 3FG | 3FGA | Pct | FT | FTA | Pct | Off | Def | Tot | Avg | PF | FO | Ast | TO | Blk | Stl | Pts | Avg |
|---------------|-------------|------------|-------------|-----------|-----------|-------------|-----------|-----------|-------------|----------|----------|-------------|----------|-----------|-----------|------------|-----------|----------|-----------|----------|----------|----------|-----------|------------|
| 2013 | 4-3 | 56 | 14.0 | 4 | 11 | .364 | 4 | 10 | .400 | 0 | 0 | .000 | 1 | 6 | 7 | 1.8 | 10 | 1 | 6 | 2 | 0 | 2 | 12 | 3.0 |
| 2014 | 13-0 | 124 | 9.5 | 14 | 35 | .400 | 7 | 21 | .333 | 2 | 5 | .400 | 4 | 12 | 16 | 1.2 | 18 | 0 | 8 | 4 | 0 | 5 | 37 | 2.8 |
| Totals | 17-3 | 180 | 10.6 | 18 | 46 | .391 | 11 | 31 | .355 | 2 | 5 | .400 | 5 | 18 | 23 | 1.4 | 28 | 1 | 14 | 6 | 0 | 7 | 49 | 2.9 |



#20 - JUSTIN MCKIE

SOPHOMORE | GUARD | 6'4" | 195 | 1 LETTER

COLUMBIA, S.C./IRMO

SEASON NOTABLES

- Suffered a concussion during the preseason and was unavailable for the exhib. vs. Benedict
- Hit a career-high three free throws in eight minutes of the season opener against North Florida
- Made both free throws and a pair of threes in a perfect shooting day, scoring a career-high eight points versus Cornell
- Matched his career high with eight points against UNC Asheville, making a pair of 3-pointers in the win
- Played a career-high 22 minutes, scoring 12 points to set a new high-water mark for his career
- Set new career highs in blocks and steals in a win over Oklahoma State

MCKIE'S SUPERLATIVES

POINTS

Career: 12, at Marshall (Dec. 1, 2014)
 Season: 12, at Marshall (Dec. 1, 2014)

FIELD GOALS

Career: 5, at Marshall (Dec. 1, 2014)
 Season: 5, at Marshall (Dec. 1, 2014)

FIELD GOAL ATTEMPTS

Career: 8, at Marshall (Dec. 1, 2014)
 Season: 8, at Marshall (Dec. 1, 2014)

3-POINT FIELD GOALS

Career: 2, twice, last vs. UNC Asheville (Nov. 26, 2014)
 Season: 2, twice, last vs. UNC Asheville (Nov. 26, 2014)

3-POINT FIELD GOAL ATTEMPTS

Career: 3, twice, last at Marshall (Dec. 1, 2014)
 Season: 3, twice, last at Marshall (Dec. 1, 2014)

FREE THROWS

Career: 4, vs. Florida (Jan. 7, 2015)
 Season: 4, vs. Florida (Jan. 7, 2015)

FREE THROW ATTEMPTS

Career: 4, twice, last vs. Florida (Jan. 7, 2015)
 Season: 4, twice, last vs. Florida (Jan. 7, 2015)

REBOUNDS

Career: 4, 5x, last vs. Coker (Dec. 21, 2014)
 Season: 4, 3x, last vs. Coker (Dec. 21, 2014)

ASSISTS

Career: 2, 3x, last vs. Coker (Dec. 21, 2014)
 Season: 2, twice, last vs. Coker (Dec. 21, 2014)

BLOCKS

Career: 1, vs. Oklahoma St. (Dec. 6, 2014)
 Season: 1, vs. Oklahoma St. (Dec. 6, 2014)

STEALS

Career: 2, vs. Oklahoma St. (Dec. 6, 2014)
 Season: 2, vs. Oklahoma St. (Dec. 6, 2014)

MINUTES PLAYED

Career: 22, at Marshall (Dec. 1, 2014)
 Season: 22, at Marshall (Dec. 1, 2014)

2014-15

| Opponent | Date | GS | Min | FG-FGA | Pct | 3FG-FGA | Pct | FF-FTA | Pct | Off | Def | Tot | Avg | PF | FO | A | TO | Blk | Stl | Pts | Avg |
|-------------------|----------|----|-----|--------|-----|---------|-----|--------|-----|------------------------|-----|-----|-----|----|----|---|----|-----|-----|-----|-----|
| North Florida | 11/14/14 | 8 | 0-3 | .000 | 0-2 | .000 | 3-4 | .750 | 0 | 0 | 0 | 0 | 0.0 | 2 | 0 | 0 | 0 | 0 | 0 | 3 | 3.0 |
| Baylor | 11/18/14 | | | | | | | | | DNP - Coach's Decision | | | | | | | | | | | |
| vs. Cornell | 11/20/14 | 8 | 2-2 | 1.000 | 2-2 | 1.000 | 2-2 | 1.000 | 1 | 2 | 3 | 1.5 | 1 | 0 | 0 | 0 | 0 | 0 | 0 | 8 | 5.5 |
| vs. Charlotte | 11/21/14 | 3 | 0-1 | .000 | 0-1 | .000 | 0-0 | .000 | 1 | 0 | 1 | 1.3 | 0 | 0 | 0 | 1 | 0 | 0 | 0 | 0 | 3.7 |
| vs. Akron | 11/23/14 | | | | | | | | | DNP - Coach's Decision | | | | | | | | | | | |
| UNC Asheville | 11/26/14 | 13 | 3-5 | .600 | 2-3 | .667 | 0-0 | .000 | 0 | 1 | 1 | 1.3 | 1 | 0 | 0 | 0 | 0 | 0 | 0 | 8 | 4.8 |
| at Marshall | 12/1/14 | 22 | 5-8 | .625 | 1-3 | .333 | 1-3 | .333 | 0 | 4 | 4 | 1.8 | 1 | 0 | 0 | 1 | 0 | 1 | 0 | 12 | 6.2 |
| Oklahoma State | 12/6/14 | 18 | 2-4 | .500 | 1-2 | .500 | 1-2 | .500 | 0 | 4 | 4 | 2.2 | 1 | 0 | 1 | 0 | 1 | 0 | 1 | 2 | 6.2 |
| Clemson | 12/19/14 | 14 | 1-5 | .200 | 1-4 | .250 | 2-2 | 1.000 | 0 | 2 | 2 | 2.1 | 1 | 0 | 0 | 0 | 0 | 0 | 0 | 5 | 6.0 |
| Coker | 12/21/14 | 14 | 1-6 | .167 | 0-2 | .000 | 0-0 | .000 | 1 | 3 | 4 | 2.4 | 2 | 0 | 2 | 1 | 0 | 1 | 2 | 5.5 | |
| NA&T | 12/30/14 | 20 | 2-5 | .400 | 0-3 | .000 | 2-2 | 1.000 | 0 | 2 | 2 | 2.3 | 0 | 0 | 1 | 0 | 1 | 1 | 1 | 6 | 5.6 |
| vs. Iowa State | 1/3/15 | 12 | 1-2 | .500 | 0-1 | .000 | 0-0 | .000 | 0 | 1 | 1 | 2.2 | 0 | 0 | 0 | 1 | 0 | 0 | 2 | 5.2 | |
| Florida | 1/7/15 | 15 | 1-2 | .500 | 0-0 | .000 | 4-4 | 1.000 | 1 | 1 | 2 | 2.2 | 2 | 0 | 0 | 2 | 1 | 0 | 6 | 5.3 | |
| at Ole Miss | 1/10/15 | | | | | | | | | | | | | | | | | | | | |
| Alabama | 1/13/15 | | | | | | | | | | | | | | | | | | | | |
| at Auburn | 1/17/15 | | | | | | | | | | | | | | | | | | | | |
| Tennessee | 1/20/15 | | | | | | | | | | | | | | | | | | | | |
| Kentucky | 1/24/15 | | | | | | | | | | | | | | | | | | | | |
| at LSU | 1/28/15 | | | | | | | | | | | | | | | | | | | | |
| Georgia | 1/31/15 | | | | | | | | | | | | | | | | | | | | |
| at Arkansas | 2/3/15 | | | | | | | | | | | | | | | | | | | | |
| at Vanderbilt | 2/7/15 | | | | | | | | | | | | | | | | | | | | |
| Missouri | 2/10/15 | | | | | | | | | | | | | | | | | | | | |
| at Kentucky | 2/14/15 | | | | | | | | | | | | | | | | | | | | |
| at Georgia | 2/17/15 | | | | | | | | | | | | | | | | | | | | |
| Texas A&M | 2/21/15 | | | | | | | | | | | | | | | | | | | | |
| at Alabama | 2/24/15 | | | | | | | | | | | | | | | | | | | | |
| Mississippi State | 2/28/15 | | | | | | | | | | | | | | | | | | | | |
| Arkansas | 3/5/15 | | | | | | | | | | | | | | | | | | | | |
| at Tennessee | 3/7/15 | | | | | | | | | | | | | | | | | | | | |

| Per 40 Minutes | FGM | FTM | Rebs | Fouls | Assists | Blocks | Steals | Points |
|----------------|-----|-----|------|-------|---------|--------|--------|--------|
| 4.9 | 4.1 | 6.5 | 3.0 | 1.4 | 0.8 | 1.6 | 15.8 | |

CAREER STATISTICS

| Season | GP-GS | Min | Avg | FG | FGA | Pct | 3FG | 3FGA | Pct | FT | FTA | Pct | Off | Def | Tot | Avg | PF | FO | Ast | TO | Blk | Stl | Pts | Avg |
|---------------|-------------|------------|------------|-----------|-----------|-------------|----------|-----------|-------------|-----------|-----------|-------------|----------|-----------|-----------|------------|-----------|----------|-----------|-----------|----------|----------|-----------|------------|
| 2013-14 | 17-0 | 80 | 4.7 | 3 | 17 | .176 | 1 | 8 | .125 | 2 | 4 | .500 | 4 | 12 | 16 | 0.9 | 8 | 0 | 5 | 5 | 0 | 3 | 9 | 0.5 |
| 2014-15 | 11-0 | 147 | 13.4 | 18 | 43 | .419 | 7 | 23 | .304 | 15 | 19 | .789 | 4 | 20 | 24 | 2.2 | 11 | 0 | 5 | 5 | 3 | 6 | 58 | 5.3 |
| Totals | 28-0 | 227 | 8.1 | 21 | 60 | .350 | 8 | 31 | .258 | 17 | 23 | .739 | 8 | 32 | 40 | 1.4 | 19 | 0 | 10 | 10 | 3 | 9 | 67 | 2.4 |

CAREER SEC STATISTICS

| Season | GP-GS | Min | Avg | FG | FGA | Pct | 3FG | 3FGA | Pct | FT | FTA | Pct | Off | Def | Tot | Avg | PF | FO | Ast | TO | Blk | Stl | Pts | Avg |
|---------------|-------------|-----------|------------|----------|-----------|-------------|----------|----------|-------------|----------|----------|--------------|----------|-----------|-----------|------------|----------|----------|----------|----------|----------|----------|-----------|------------|
| 2014 | 9-0 | 56 | 6.2 | 2 | 11 | .182 | 1 | 5 | .200 | 0 | 0 | .000 | 1 | 9 | 10 | 1.1 | 7 | 0 | 5 | 5 | 0 | 2 | 5 | 0.6 |
| 2015 | 1-0 | 15 | 15.0 | 1 | 2 | .500 | 0 | 0 | .000 | 4 | 4 | 1.000 | 1 | 1 | 2 | 2.0 | 2 | 0 | 0 | 2 | 1 | 0 | 6 | 6.0 |
| Totals | 10-0 | 71 | 7.1 | 3 | 13 | .231 | 1 | 5 | .200 | 4 | 4 | 1.000 | 2 | 10 | 12 | 1.2 | 9 | 0 | 5 | 7 | 1 | 2 | 11 | 1.1 |



#10 - DUANE NOTICE

SOPHOMORE | GUARD | 6'2" | 212 | 1 LETTER

WOODBIDGE, ONTARIO, CANADA / ST. THOMAS MORE (OAKDALE, CONN.)

SEASON NOTABLES

- Dished a team best nine assists and scored 10 points in exhib. win vs. Benedict
- Put together a stacked score line of eight points, four rebounds and five assists vs. North Florida
- Played 35 minutes, committing just one turnover with five assists and nine points against Charlotte
- Scored 12 points with four assists against Akron
- Hit 4-of-6 shots for 12 points in a win over UNC Asheville
- Had a career night at Marshall, scoring 27 points on 10-of-18 shooting to lead the team to a big win
- Notched his second-straight 20-point game in a win over Oklahoma State, scoring 20 on 7-of-13 shooting with four rebounds
- Scored 14 of his game-high 19 points in the second half, connecting on a career-high five 3-pointers in a win over Clemson
- Led the team with 19 points, adding in three assists, three steals and five rebounds
- Reached double figures in scoring for the seventh straight game after scoring 13 points in just 19 minutes against North Carolina A&T
- Matched his career high with 37 minutes played against Iowa State, scoring 15 points with six rebounds, four assists and three steals

NOTICE'S SUPERLATIVES

POINTS

Career: 27, at Marshall (Dec. 1, 2014)
 Season: 27, at Marshall (Dec. 1, 2014)

FIELD GOALS

Career: 10, at Marshall (Dec. 1, 2014)
 Season: 10, at Marshall (Dec. 1, 2014)

FIELD GOAL ATTEMPTS

Career: 18, at Marshall (Dec. 1, 2014)
 Season: 18, at Marshall (Dec. 1, 2014)

3-POINT FIELD GOALS

Career: 5, vs. Clemson (Dec. 20, 2014)
 Season: 5, vs. Clemson (Dec. 20, 2014)

3-POINT FIELD GOAL ATTEMPTS

Career: 9, vs. Clemson (Dec. 20, 2014)
 Season: 9, vs. Clemson (Dec. 20, 2014)

FREE THROWS

Career: 7, at Arkansas (Feb. 19, 2014)
 Season: 5, 3x, last vs. Iowa State (Jan. 3, 2015)

FREE THROW ATTEMPTS

Career: 10, at Georgia (Jan. 22, 2014)
 Season: 9, vs. Iowa State (Jan. 3, 2015)

REBOUNDS

Career: 8, vs. Auburn (March 12, 2014)
 Season: 6, vs. Iowa State (Jan. 3, 2015)

ASSISTS

Career: 8, vs. SC State (Jan. 3, 2014)
 Season: 5, twice, last vs. Charlotte (Nov. 21, 2014)

BLOCKS

Career: 1, 6x, last vs. Clemson (Dec. 20, 2014)
 Season: 1, twice, last vs. Clemson (Dec. 20, 2014)

STEALS

Career: 3, twice, last vs. Iowa State (Jan. 3, 2015)
 Season: 3, twice, last vs. Iowa State (Jan. 3, 2015)

MINUTES PLAYED

Career: 37, vs. Vanderbilt (Feb. 13, 2014)
 Season: 37, vs. Iowa State (Jan. 3, 2015)

2014-15

| Opponent | Date | GS | Min | FG-FGA | Pct | 3FG-FGA | Pct | FT-FTA | Pct | Off | Def | Tot | Avg | PF | FO | A | TO | Blk | Stl | Pts | Avg |
|-------------------|----------|----|-----|--------|------|---------|-------|--------|-------|-----|-----|-----|-----|----|----|---|----|-----|-----|-----|------|
| North Florida | 11/14/14 | * | 21 | 2-5 | .400 | 1-1 | 1.000 | 3-4 | .750 | 0 | 4 | 4 | 4.0 | 1 | 0 | 5 | 1 | 0 | 1 | 8 | 8.0 |
| Baylor | 11/18/14 | * | 15 | 0-2 | .000 | 0-0 | .000 | 0-0 | .000 | 0 | 0 | 0 | 2.0 | 3 | 0 | 0 | 1 | 0 | 1 | 0 | 4.0 |
| vs. Cornell | 11/20/14 | * | 23 | 1-4 | .250 | 0-1 | .000 | 4-5 | .800 | 0 | 1 | 1 | 1.7 | 1 | 0 | 4 | 1 | 0 | 0 | 6 | 4.7 |
| vs. Charlotte | 11/21/14 | * | 35 | 3-10 | .300 | 1-4 | .250 | 2-2 | 1.000 | 1 | 2 | 3 | 2.0 | 1 | 0 | 5 | 1 | 0 | 1 | 9 | 5.8 |
| vs. Akron | 11/23/14 | * | 36 | 5-9 | .556 | 1-3 | .333 | 1-1 | 1.000 | 0 | 2 | 2 | 2.0 | 1 | 0 | 4 | 2 | 0 | 1 | 12 | 7.0 |
| UNC Asheville | 11/26/14 | * | 25 | 4-6 | .667 | 2-4 | .500 | 2-4 | .500 | 0 | 1 | 1 | 1.8 | 2 | 0 | 1 | 3 | 1 | 2 | 12 | 7.8 |
| at Marshall | 12/1/14 | * | 36 | 10-18 | .556 | 2-8 | .250 | 5-5 | 1.000 | 1 | 4 | 5 | 2.3 | 3 | 0 | 4 | 1 | 0 | 2 | 27 | 10.6 |
| Oklahoma State | 12/6/14 | * | 32 | 7-13 | .538 | 3-6 | .500 | 3-3 | 1.000 | 0 | 4 | 4 | 2.5 | 2 | 0 | 2 | 2 | 0 | 1 | 20 | 11.8 |
| Clemson | 12/19/14 | * | 31 | 7-15 | .467 | 5-9 | .556 | 0-0 | .000 | 1 | 3 | 4 | 2.7 | 1 | 0 | 1 | 3 | 1 | 1 | 19 | 12.6 |
| Coker | 12/21/14 | * | 30 | 6-12 | .500 | 2-4 | .500 | 5-6 | .833 | 1 | 4 | 5 | 2.9 | 4 | 0 | 3 | 1 | 0 | 3 | 19 | 13.2 |
| NA&T | 12/30/14 | * | 19 | 3-6 | .500 | 2-3 | .667 | 5-5 | 1.000 | 1 | 0 | 1 | 2.7 | 3 | 0 | 2 | 2 | 0 | 1 | 13 | 13.2 |
| vs. Iowa State | 1/3/15 | * | 37 | 5-12 | .417 | 0-4 | .000 | 5-9 | .556 | 2 | 4 | 6 | 3.0 | 0 | 0 | 4 | 4 | 0 | 3 | 15 | 13.3 |
| Florida | 1/7/15 | * | 27 | 1-7 | .143 | 1-3 | .333 | 2-2 | 1.000 | 0 | 2 | 2 | 2.9 | 1 | 0 | 2 | 2 | 0 | 0 | 5 | 12.7 |
| at Ole Miss | 1/10/15 | | | | | | | | | | | | | | | | | | | | |
| Alabama | 1/13/15 | | | | | | | | | | | | | | | | | | | | |
| at Auburn | 1/17/15 | | | | | | | | | | | | | | | | | | | | |
| Tennessee | 1/20/15 | | | | | | | | | | | | | | | | | | | | |
| Kentucky | 1/24/15 | | | | | | | | | | | | | | | | | | | | |
| at LSU | 1/28/15 | | | | | | | | | | | | | | | | | | | | |
| Georgia | 1/31/15 | | | | | | | | | | | | | | | | | | | | |
| at Arkansas | 2/3/15 | | | | | | | | | | | | | | | | | | | | |
| at Vanderbilt | 2/7/15 | | | | | | | | | | | | | | | | | | | | |
| Missouri | 2/10/15 | | | | | | | | | | | | | | | | | | | | |
| at Kentucky | 2/14/15 | | | | | | | | | | | | | | | | | | | | |
| at Georgia | 2/17/15 | | | | | | | | | | | | | | | | | | | | |
| Texas A&M | 2/21/15 | | | | | | | | | | | | | | | | | | | | |
| at Alabama | 2/24/15 | | | | | | | | | | | | | | | | | | | | |
| Mississippi State | 2/28/15 | | | | | | | | | | | | | | | | | | | | |
| Arkansas | 3/5/15 | | | | | | | | | | | | | | | | | | | | |
| at Tennessee | 3/7/15 | | | | | | | | | | | | | | | | | | | | |

| Per 40 Minutes | FGM | FTM | Rebs | Fouls | Assists | Blocks | Steals | Points |
|----------------|-----|-----|------|-------|---------|--------|--------|--------|
| | 5.9 | 4.0 | 4.1 | 2.5 | 4.0 | 0.2 | 1.9 | 18.0 |

CAREER STATISTICS

| Season | GP-GS | Min | Avg | FG | FGA | Pct | 3FG | 3FGA | Pct | FT | FTA | Pct | Off | Def | Tot | Avg | PF | FO | Ast | TO | Blk | Stl | Pts | Avg |
|---------------|--------------|-------------|-------------|------------|------------|-------------|-----------|------------|-------------|------------|------------|-------------|-----------|-----------|------------|------------|-----------|----------|------------|------------|----------|-----------|------------|------------|
| 2013-14 | 34-22 | 856 | 25.2 | 90 | 237 | .380 | 21 | 58 | .362 | 78 | 116 | .672 | 35 | 64 | 99 | 2.9 | 72 | 2 | 99 | 89 | 4 | 20 | 279 | 8.2 |
| 2014-15 | 13-13 | 367 | 28.2 | 54 | 119 | .454 | 20 | 50 | .400 | 37 | 46 | .804 | 7 | 31 | 38 | 2.9 | 23 | 0 | 37 | 24 | 2 | 17 | 165 | 12.7 |
| Totals | 47-35 | 1223 | 26.0 | 144 | 356 | .404 | 41 | 108 | .380 | 115 | 162 | .710 | 42 | 95 | 137 | 2.9 | 95 | 2 | 136 | 113 | 6 | 37 | 444 | 9.4 |

CAREER SEC STATISTICS

| Season | GP-GS | Min | Avg | FG | FGA | Pct | 3FG | 3FGA | Pct | FT | FTA | Pct | Off | Def | Tot | Avg | PF | FO | Ast | TO | Blk | Stl | Pts | Avg |
|---------------|--------------|------------|-------------|-----------|------------|-------------|----------|-----------|-------------|-----------|-----------|-------------|-----------|-----------|-----------|------------|-----------|----------|-----------|-----------|----------|-----------|------------|------------|
| 2014 | 18-14 | 516 | 28.7 | 48 | 133 | .361 | 8 | 30 | .267 | 46 | 71 | .648 | 19 | 34 | 53 | 2.9 | 41 | 1 | 50 | 58 | 1 | 11 | 150 | 8.3 |
| 2015 | 1-1 | 27 | 27.0 | 1 | 7 | .143 | 1 | 3 | .333 | 2 | 2 | 1.000 | 0 | 2 | 2 | 2.0 | 1 | 0 | 2 | 2 | 0 | 0 | 5 | 5.0 |
| Totals | 19-15 | 543 | 28.6 | 49 | 140 | .350 | 9 | 33 | .273 | 48 | 73 | .658 | 19 | 36 | 55 | 2.9 | 42 | 1 | 52 | 60 | 1 | 11 | 155 | 8.2 |



#15 - REGGIE THEUS JR.

SOPHOMORE | FORWARD | 6'6" | 221 | 1 LETTER

LOS ANGELES, CALIF./FAIRFAX

SEASON NOTABLES

- Scored two points in exhib. win vs. Benedict
- Played four minutes in the season opener against North Florida, picking up one steal
- Scored his first points of the season on a dunk against UNC Asheville

THEUS JR.'S SUPERLATIVES

POINTS

Career: 3, vs. Marshall (Dec. 30, 2013)

Season: 2, twice, last vs. N. Carolina A&T (Dec. 30, 2014)

FIELD GOALS

Career: 1, 4x, last vs. North Carolina A&T (Dec. 30, 2014)

Season: 1, twice, last vs. N. Carolina A&T (Dec. 30, 2014)

FIELD GOAL ATTEMPTS

Career: 2, 3x, last vs. Coker (Dec. 21, 2014)

Season: 2, vs. Coker (Dec. 21, 2014)

3-POINT FIELD GOALS

Career:

Season:

3-POINT FIELD GOAL ATTEMPTS

Career:

Season:

FREE THROWS

Career: 1, 3x, vs. Florida (March 4, 2014)

Season:

FREE THROW ATTEMPTS

Career: 4, vs. Marshall (Dec. 30, 2013)

Season:

REBOUNDS

Career: 3, vs. Marshall (Dec. 30, 2013)

Season: 1, vs. North Carolina A&T (Dec. 30, 2014)

ASSISTS

Career: 1, twice, last at Georgia (Jan. 22, 2014)

Season:

BLOCKS

Career:

Season:

STEALS

Career: 1, 4x, last vs. UNC Asheville (Nov. 26, 2014)

Season: 1, 3x, last vs. UNC Asheville (Nov. 26, 2014)

MINUTES PLAYED

Career: 13, at Georgia (Jan. 22, 2014)

Season: 4, 5x, last vs. N. Carolina A&T (Dec. 30, 2014)

2014-15

| Opponent | Date | GS | Min | FG-FGA | Pct | 3FG-FGA | Pct | FT-FTA | Pct | Off | Def | Tot | Avg | PF | FO | A | TO | Blk | Sd | Pts | Avg | |
|-------------------|----------|----|-----|--------|-----|---------|-----|--------|------------------------|-----|-----|-----|-----|----|----|---|----|-----|----|-----|-----|-----|
| North Florida | 11/14/14 | 4 | 0-0 | .000 | 0-0 | .000 | 0-0 | .000 | 0 0 0 0 0.0 | 1 | 0 | 0 | 0 | 0 | 0 | 0 | 0 | 0 | 1 | 0 | 0.0 | |
| Baylor | 11/18/14 | | | | | | | | DNP - Coach's Decision | | | | | | | | | | | | | |
| vs. Cornell | 11/20/14 | 4 | 0-0 | .000 | 0-0 | .000 | 0-0 | .000 | 0 0 0 0 0.0 | 0 | 0 | 0 | 0 | 0 | 0 | 0 | 0 | 0 | 0 | 1 | 0 | 0.0 |
| vs. Charlotte | 11/21/14 | 0+ | 0-0 | .000 | 0-0 | .000 | 0-0 | .000 | 0 0 0 0 0.0 | 0 | 0 | 0 | 0 | 0 | 0 | 0 | 0 | 0 | 0 | 0 | 0 | 0.0 |
| vs. Akron | 11/23/14 | 1 | 1-1 | 1.000 | 0-0 | .000 | 0-0 | .000 | 0 0 0 0 0.0 | 0 | 0 | 0 | 0 | 0 | 0 | 0 | 1 | 0 | 0 | 2 | 0.5 | |
| UNC Asheville | 11/26/14 | | | | | | | | DNP - Coach's Decision | | | | | | | | | | | | | |
| at Marshall | 12/1/14 | 1 | 0-0 | .000 | 0-0 | .000 | 0-0 | .000 | 0 0 0 0 0.0 | 0 | 0 | 0 | 0 | 0 | 0 | 0 | 0 | 0 | 0 | 0 | 0.4 | |
| Oklahoma State | 12/6/14 | 2 | 0-0 | .000 | 0-0 | .000 | 0-0 | .000 | 0 0 0 0 0.0 | 1 | 0 | 0 | 0 | 0 | 0 | 0 | 0 | 0 | 0 | 0 | 0.3 | |
| Clemson | 12/19/14 | 2 | 0-0 | .000 | 0-0 | .000 | 0-0 | .000 | 0 0 0 0 0.0 | 0 | 0 | 0 | 0 | 0 | 0 | 0 | 0 | 0 | 0 | 0 | 0.3 | |
| Coker | 12/21/14 | 4 | 0-2 | .000 | 0-0 | .000 | 0-0 | .000 | 0 0 0 0 0.0 | 0 | 0 | 0 | 0 | 0 | 0 | 0 | 0 | 0 | 0 | 0 | 0.3 | |
| NA&T | 12/30/14 | 4 | 1-1 | 1.000 | 0-0 | .000 | 0-0 | .000 | 0 1 1 0.1 | 0 | 0 | 0 | 0 | 0 | 0 | 0 | 0 | 0 | 0 | 2 | 0.4 | |
| vs. Iowa State | 1/3/15 | | | | | | | | DNP - Coach's Decision | | | | | | | | | | | | | |
| Florida | 1/7/15 | | | | | | | | DNP - Coach's Decision | | | | | | | | | | | | | |
| at Ole Miss | 1/10/15 | | | | | | | | DNP - Coach's Decision | | | | | | | | | | | | | |
| Alabama | 1/13/15 | | | | | | | | | | | | | | | | | | | | | |
| at Auburn | 1/17/15 | | | | | | | | | | | | | | | | | | | | | |
| Tennessee | 1/20/15 | | | | | | | | | | | | | | | | | | | | | |
| Kentucky | 1/24/15 | | | | | | | | | | | | | | | | | | | | | |
| at LSU | 1/28/15 | | | | | | | | | | | | | | | | | | | | | |
| Georgia | 1/31/15 | | | | | | | | | | | | | | | | | | | | | |
| at Arkansas | 2/3/15 | | | | | | | | | | | | | | | | | | | | | |
| at Vanderbilt | 2/7/15 | | | | | | | | | | | | | | | | | | | | | |
| Missouri | 2/10/15 | | | | | | | | | | | | | | | | | | | | | |
| at Kentucky | 2/14/15 | | | | | | | | | | | | | | | | | | | | | |
| at Georgia | 2/17/15 | | | | | | | | | | | | | | | | | | | | | |
| Texas A&M | 2/21/15 | | | | | | | | | | | | | | | | | | | | | |
| at Alabama | 2/24/15 | | | | | | | | | | | | | | | | | | | | | |
| Mississippi State | 2/28/15 | | | | | | | | | | | | | | | | | | | | | |
| Arkansas | 3/5/15 | | | | | | | | | | | | | | | | | | | | | |
| at Tennessee | 3/7/15 | | | | | | | | | | | | | | | | | | | | | |

| Per 40 Minutes | FGM | FTM | Rebs | Fouls | Assists | Blocks | Steals | Points |
|----------------|-----|-----|------|-------|---------|--------|--------|--------|
| 3.6 | 0.0 | 1.8 | 2.2 | 0.0 | 0.0 | 5.5 | 7.3 | |

CAREER STATISTICS

| Season | GP-GS | Min | Avg | FG | FGA | Pct | 3FG | 3FGA | Pct | FT | FTA | Pct | Off | Def | Tot | Avg | PF | FO | Ast | TO | Blk | Stl | Pts | Avg |
|---------------|-------------|-----------|------------|----------|-----------|-------------|----------|----------|-------------|----------|-----------|-------------|----------|----------|----------|------------|----------|----------|----------|----------|----------|----------|-----------|------------|
| 2013-14 | 11-0 | 39 | 3.5 | 2 | 7 | .286 | 0 | 0 | .000 | 3 | 10 | .300 | 3 | 3 | 6 | 0.5 | 5 | 0 | 2 | 1 | 0 | 1 | 7 | 0.6 |
| 2014-15 | 9-0 | 22 | 2.4 | 2 | 4 | .500 | 0 | 1 | .000 | 0 | 0 | .000 | 0 | 1 | 1 | 0.1 | 1 | 0 | 0 | 2 | 0 | 3 | 4 | 0.4 |
| Totals | 20-0 | 61 | 3.1 | 4 | 11 | .364 | 0 | 1 | .000 | 3 | 10 | .300 | 3 | 4 | 7 | 0.4 | 6 | 0 | 2 | 3 | 0 | 4 | 11 | 0.6 |

CAREER SEC STATISTICS

| Season | GP-GS | Min | Avg | FG | FGA | Pct | 3FG | 3FGA | Pct | FT | FTA | Pct | Off | Def | Tot | Avg | PF | FO | Ast | TO | Blk | Stl | Pts | Avg |
|--------|-------|-----|-----|----|-----|------|-----|------|------|----|-----|------|-----|-----|-----|-----|----|----|-----|----|-----|-----|-----|-----|
| 2014 | 5-0 | 22 | 4.4 | 0 | 1 | .000 | 0 | 0 | .000 | 2 | 6 | .333 | 0 | 1 | 1 | 0.2 | 5 | 0 | 1 | 0 | 0 | 0 | 2 | 0.4 |
| 2015 | | | | | | | | | | | | | | | | | | | | | | | | |

Totals



#12 - SHAMIEK SHEPPARD

FRESHMAN | GUARD | 6'6" | 215 | HS

BROOKLYN, N.Y./SOUTH SHORE/FISHBURNE MILITARY SCHOOL (WAYNESBORO CITY, VA.)

SEASON NOTABLES

- Returned from knee surgery to play against North Carolina A&T, playing five minutes and hitting a three with two rebounds

SHEPPARD'S SUPERLATIVES

POINTS

3, vs. North Carolina A&T (Dec. 30, 2014)

FIELD GOALS

1, twice, last vs. Iowa State (Jan. 5, 2015)

FIELD GOAL ATTEMPTS

4, vs. Iowa State (Jan. 5, 2015)

3-POINT FIELD GOALS

1, vs. North Carolina A&T (Dec. 30, 2014)

3-POINT FIELD GOAL ATTEMPTS

1, vs. North Carolina A&T (Dec. 30, 2014)

FREE THROWS

FREE THROW ATTEMPTS

REBOUNDS

2, twice, last vs. Iowa State (Jan. 5, 2015)

ASSISTS

BLOCKS

1, vs. Iowa State (Jan. 5, 2015)

STEALS

1, vs. Iowa State (Jan. 5, 2015)

MINUTES PLAYED

11, vs. Iowa State (Jan. 5, 2015)

2014-15

| Opponent | Date | GS | Min | FG-FGA | Pct | 3FG-FGA | Pct | FFTA | Pct | Off | Def | Tot | Avg | PF | FO | A | TO | Blk | Stl | Pts | Avg | |
|-------------------|----------|----|-----|--------|------|---------|-------|------|------|-----|-----|-----|-----|----|----|---|----|-----|-----|-----|-----|--|
| North Florida | 11/14/14 | | | | | | | | | | | | | | | | | | | | | |
| Baylor | 11/18/14 | | | | | | | | | | | | | | | | | | | | | |
| vs. Cornell | 11/20/14 | | | | | | | | | | | | | | | | | | | | | |
| vs. Charlotte | 11/21/14 | | | | | | | | | | | | | | | | | | | | | |
| vs. Akron | 11/23/14 | | | | | | | | | | | | | | | | | | | | | |
| UNC Asheville | 11/26/14 | | | | | | | | | | | | | | | | | | | | | |
| at Marshall | 12/1/14 | | | | | | | | | | | | | | | | | | | | | |
| Oklahoma State | 12/6/14 | | | | | | | | | | | | | | | | | | | | | |
| Clemson | 12/19/14 | | | | | | | | | | | | | | | | | | | | | |
| Coker | 12/21/14 | | | | | | | | | | | | | | | | | | | | | |
| NA&T | 12/30/14 | | 5 | 1-2 | .500 | 1-1 | 1.000 | 0-0 | .000 | 1 | 1 | 2 | 2.0 | 0 | 0 | 0 | 1 | 0 | 0 | 3 | 3.0 | |
| vs. Iowa State | 1/3/15 | | 11 | 1-4 | .250 | 0-0 | .000 | 0-0 | .000 | 1 | 1 | 2 | 2.0 | 2 | 0 | 0 | 0 | 1 | 1 | 2 | 2.5 | |
| Florida | 1/7/15 | | | | | | | | | | | | | | | | | | | | | |
| at Ole Miss | 1/10/15 | | | | | | | | | | | | | | | | | | | | | |
| Alabama | 1/13/15 | | | | | | | | | | | | | | | | | | | | | |
| at Auburn | 1/17/15 | | | | | | | | | | | | | | | | | | | | | |
| Tennessee | 1/20/15 | | | | | | | | | | | | | | | | | | | | | |
| Kentucky | 1/24/15 | | | | | | | | | | | | | | | | | | | | | |
| at LSU | 1/28/15 | | | | | | | | | | | | | | | | | | | | | |
| Georgia | 1/31/15 | | | | | | | | | | | | | | | | | | | | | |
| at Arkansas | 2/3/15 | | | | | | | | | | | | | | | | | | | | | |
| at Vanderbilt | 2/7/15 | | | | | | | | | | | | | | | | | | | | | |
| Missouri | 2/10/15 | | | | | | | | | | | | | | | | | | | | | |
| at Kentucky | 2/14/15 | | | | | | | | | | | | | | | | | | | | | |
| at Georgia | 2/17/15 | | | | | | | | | | | | | | | | | | | | | |
| Texas A&M | 2/21/15 | | | | | | | | | | | | | | | | | | | | | |
| at Alabama | 2/24/15 | | | | | | | | | | | | | | | | | | | | | |
| Mississippi State | 2/28/15 | | | | | | | | | | | | | | | | | | | | | |
| Arkansas | 3/5/15 | | | | | | | | | | | | | | | | | | | | | |
| at Tennessee | 3/7/15 | | | | | | | | | | | | | | | | | | | | | |

| Per 40 Minutes | FGM | FTM | Rebs | Fouls | Assists | Blocks | Steals | Points |
|----------------|-----|-----|------|-------|---------|--------|--------|--------|
| | 5.0 | 0.0 | 10.0 | 5.0 | 0.0 | 2.5 | 2.5 | 12.5 |

CAREER STATISTICS

| Season | GP-GS | Min | Avg | FG | FGA | Pct | 3FG | 3FGA | Pct | FT | FTA | Pct | Off | Def | Tot | Avg | PF | FO | Ast | TO | Blk | Stl | Pts | Avg |
|---------|-------|-----|-----|----|-----|------|-----|--------|-----|----|------|-----|-----|-----|-----|-----|----|----|-----|----|-----|-----|-----|-----|
| 2014-15 | 2-0 | 16 | 8.0 | 2 | 6 | .333 | 1 | 11.000 | 0 | 0 | .000 | 2 | 2 | 4 | 2.0 | 2 | 0 | 0 | 1 | 1 | 1 | 5 | 2.5 | |

CAREER SEC STATISTICS

| Season | GP-GS | Min | Avg | FG | FGA | Pct | 3FG | 3FGA | Pct | FT | FTA | Pct | Off | Def | Tot | Avg | PF | FO | Ast | TO | Blk | Stl | Pts | Avg |
|--------|-------|-----|-----|----|-----|-----|-----|------|-----|----|-----|-----|-----|-----|-----|-----|----|----|-----|----|-----|-----|-----|-----|
| 2015 | | | | | | | | | | | | | | | | | | | | | | | | |



#1 MARCUS STROMAN

FRESHMAN | GUARD | 6'2" | 183 | HS

COLUMBIA, S.C./KEENAN

SEASON NOTABLES

- Scored five points in exhibition win vs. Benedict, adding three assists
- Commanded the offense in his first regular season game, scoring six points with six assists and two steals in 25 minutes, all while committing zero turnovers.
- Led the bench scoring with 10 points, adding five rebounds and three assists against Baylor
- Picked up three steals and scored six points with three assists against Cornell
- Stacked the box score with nine points, six rebounds and four assists against Akron
- Scored seven points with six assists and four rebounds in a win over UNC Asheville
- Passed out five assists with four points and a season-high eight rebounds against Oklahoma State
- Set a new career high with eight assist versus just one turnover against Coker

STROMAN'S SUPERLATIVES

POINTS

10, vs. Baylor (Nov. 18, 2014)

FIELD GOALS

4, vs. Akron (Nov. 23, 2014)

FIELD GOAL ATTEMPTS

7, twice, last vs. Akron (Nov. 23, 2014)

3-POINT FIELD GOALS

1, vs. Baylor (Nov. 18, 2014)

3-POINT FIELD GOAL ATTEMPTS

3, vs. Baylor (Nov. 18, 2014)

FREE THROWS

4, vs. Cornell (Nov. 20, 2014)

FREE THROW ATTEMPTS

6, vs. Cornell (Nov. 20, 2014)

REBOUNDS

8, vs. Oklahoma St. (Dec. 6, 2014)

ASSISTS

8, vs. Coker (Dec. 21, 2014)

BLOCKS

1, twice, last vs. N. Carolina A&T (Dec. 30, 2014)

STEALS

3, vs. Cornell (Nov. 20, 2014)

MINUTES PLAYED

29, vs. Florida (Jan. 7, 2015)

2014-15

| Opponent | Date | GS | Min | FG-FGA | Pct | 3FG-FGA | Pct | FT-FTA | Pct | Off | Def | Tot | Avg | PF | FO | A | TO | Blk | Sd | Pts | Avg | |
|-------------------|----------|----|-----|--------|-----|---------|-----|--------|-----|-----|-----|-----|-----|----|----|---|----|-----|----|-----|-----|--|
| North Florida | 11/14/14 | 25 | 3-7 | .429 | 0-1 | .000 | 0-0 | .000 | 0 | 3 | 3 | 3.0 | 1 | 0 | 6 | 0 | 0 | 2 | 6 | 6.0 | | |
| Baylor | 11/18/14 | 27 | 3-6 | .500 | 1-3 | .333 | 3-4 | .750 | 2 | 3 | 5 | 4.0 | 1 | 0 | 3 | 1 | 1 | 1 | 10 | 8.0 | | |
| vs. Cornell | 11/20/14 | 25 | 1-6 | .167 | 0-1 | .000 | 4-6 | .667 | 0 | 1 | 1 | 3.0 | 1 | 0 | 3 | 2 | 0 | 3 | 6 | 7.3 | | |
| vs. Charlotte | 11/21/14 | 22 | 1-2 | .500 | 0-0 | .000 | 2-2 | 1.000 | 0 | 3 | 3 | 3.0 | 3 | 0 | 4 | 1 | 0 | 1 | 4 | 6.5 | | |
| vs. Akron | 11/23/14 | 26 | 4-7 | .571 | 0-0 | .000 | 1-2 | .500 | 2 | 4 | 6 | 3.6 | 3 | 0 | 4 | 3 | 0 | 0 | 9 | 7.0 | | |
| UNC Asheville | 11/26/14 | 25 | 2-3 | .667 | 0-0 | .000 | 3-3 | 1.000 | 0 | 4 | 4 | 3.7 | 3 | 0 | 6 | 5 | 0 | 1 | 7 | 7.0 | | |
| at Marshall | 12/1/14 | 25 | 2-4 | .500 | 0-1 | .000 | 2-4 | .500 | 1 | 3 | 4 | 3.7 | 1 | 0 | 3 | 5 | 0 | 0 | 6 | 6.9 | | |
| Oklahoma State | 12/6/14 | 25 | 2-6 | .333 | 0-0 | .000 | 0-1 | .000 | 2 | 6 | 8 | 4.3 | 2 | 0 | 5 | 2 | 0 | 1 | 4 | 6.5 | | |
| Clemson | 12/19/14 | 19 | 0-2 | .000 | 0-1 | .000 | 2-6 | .333 | 0 | 3 | 3 | 4.1 | 1 | 0 | 2 | 2 | 0 | 0 | 2 | 6.0 | | |
| Coker | 12/21/14 | 22 | 0-2 | .000 | 0-0 | .000 | 0-0 | .000 | 2 | 2 | 4 | 4.1 | 2 | 0 | 8 | 1 | 0 | 0 | 0 | 5.4 | | |
| NA&T | 12/30/14 | 17 | 2-3 | .667 | 0-0 | .000 | 1-3 | .333 | 1 | 4 | 5 | 4.2 | 1 | 0 | 7 | 2 | 1 | 0 | 5 | 5.4 | | |
| vs. Iowa State | 1/3/15 | 9 | 1-1 | 1.000 | 0-0 | .000 | 0-0 | .000 | 1 | 1 | 2 | 4.0 | 3 | 0 | 1 | 3 | 0 | 1 | 2 | 5.1 | | |
| Florida | 1/7/15 | 29 | 2-5 | .400 | 0-1 | .000 | 3-5 | .600 | 0 | 0 | 0 | 3.7 | 3 | 0 | 3 | 4 | 0 | 2 | 7 | 5.2 | | |
| at Ole Miss | 1/10/15 | | | | | | | | | | | | | | | | | | | | | |
| Alabama | 1/13/15 | | | | | | | | | | | | | | | | | | | | | |
| at Auburn | 1/17/15 | | | | | | | | | | | | | | | | | | | | | |
| Tennessee | 1/20/15 | | | | | | | | | | | | | | | | | | | | | |
| Kentucky | 1/24/15 | | | | | | | | | | | | | | | | | | | | | |
| at LSU | 1/28/15 | | | | | | | | | | | | | | | | | | | | | |
| Georgia | 1/31/15 | | | | | | | | | | | | | | | | | | | | | |
| at Arkansas | 2/3/15 | | | | | | | | | | | | | | | | | | | | | |
| at Vanderbilt | 2/7/15 | | | | | | | | | | | | | | | | | | | | | |
| Missouri | 2/10/15 | | | | | | | | | | | | | | | | | | | | | |
| at Kentucky | 2/14/15 | | | | | | | | | | | | | | | | | | | | | |
| at Georgia | 2/17/15 | | | | | | | | | | | | | | | | | | | | | |
| Texas A&M | 2/21/15 | | | | | | | | | | | | | | | | | | | | | |
| at Alabama | 2/24/15 | | | | | | | | | | | | | | | | | | | | | |
| Mississippi State | 2/28/15 | | | | | | | | | | | | | | | | | | | | | |
| Arkansas | 3/5/15 | | | | | | | | | | | | | | | | | | | | | |
| at Tennessee | 3/7/15 | | | | | | | | | | | | | | | | | | | | | |

| Per 40 Minutes | FGM | FTM | Rebs | Fouls | Assists | Blocks | Steals | Points |
|----------------|-----|-----|------|-------|---------|--------|--------|--------|
| | 3.1 | 2.8 | 6.5 | 3.4 | 7.4 | 0.3 | 1.6 | 9.2 |

CAREER STATISTICS

| Season | GP-GS | Min | Avg | FG | FGA | Pct | 3FG | 3FGA | Pct | FT | FTA | Pct | Off | Def | Tot | Avg | PF | FO | Ast | TO | Blk | Stl | Pts | Avg |
|---------|-------|-----|------|----|-----|------|-----|------|------|----|-----|------|-----|-----|-----|-----|----|----|-----|----|-----|-----|-----|-----|
| 2014-15 | 13-0 | 296 | 22.8 | 23 | 54 | .426 | 1 | 8 | .125 | 21 | 36 | .583 | 11 | 37 | 48 | 3.7 | 25 | 0 | 55 | 31 | 2 | 12 | 68 | 5.2 |

CAREER SEC STATISTICS

| Season | GP-GS | Min | Avg | FG | FGA | Pct | 3FG | 3FGA | Pct | FT | FTA | Pct | Off | Def | Tot | Avg | PF | FO | Ast | TO | Blk | Stl | Pts | Avg |
|--------|-------|-----|------|----|-----|------|-----|------|------|----|-----|------|-----|-----|-----|-----|----|----|-----|----|-----|-----|-----|-----|
| 2015 | 1-0 | 29 | 29.0 | 2 | 5 | .400 | 0 | 1 | .000 | 3 | 5 | .600 | 0 | 0 | 0 | 0.0 | 3 | 0 | 3 | 4 | 0 | 2 | 7 | 7.0 |

THE LAST TIME IN SOUTH CAROLINA BASKETBALL ...

AN INDIVIDUAL ...

| | |
|--|--|
| Scored 20 or more points: | South Carolina: Tyrone Johnson (20), vs. Florida, Jan. 7, 2015 in Columbia, S.C. Opponent: Dorian Finney-Smith (20), Florida, Jan. 7, 2015 in Columbia, S.C. |
| Scored 30 or more points: | South Carolina: Brenton Williams (32) at Missouri, Jan. 25, 2014 in Columbia, Mo. Opponent: Andrew Rowsey (30), UNC Asheville, Nov. 26, 2014 in Columbia, S.C. |
| Scored 35 or more points: | South Carolina: Brenton Williams (38) vs. Miss. State, March 6, 2013 in Columbia, S.C. Opponent: Michael Frazier II (37), Florida, March 4, 2014 in Columbia, S.C. |
| Scored 40 or more points: | South Carolina: N/A thru 1992-93 season Opponent: Austin Carr (43), Notre Dame, Dec. 30, 1969 in New Orleans, La. |
| Collected 20 or more rebounds: | South Carolina: Emmett Hall (23), vs. College of Charleston, Dec. 22, 1993 in Columbia, S.C. Opponent: Ekpe Udoh (20), Baylor, Jan. 2, 2010 in Columbia, S.C. |
| Collected 15 or more rebounds: | South Carolina: Lakeem Jackson (15), vs. UALR, Nov. 25, 2012 in Puerto Vallarta, Mexico Opponent: Trey James (15), Coker, Dec. 21, 2014 in Columbia, S.C. |
| Made 12 or more field goals: | South Carolina: Devan Downey (12) vs. Georgia, Jan. 30, 2010 in Columbia, S.C. Opponent: Michael Frazier II (12), Florida, March 4, 2014 in Columbia, S.C. |
| Made 10 or more field goals: | South Carolina: Duane Notice (10), at Marshall Dec. 1, 2014 in Huntington, W.Va. Opponent: Elston Turner (10), Texas A&M, March 2, 2013 in College Station, Texas |
| Attempted 20 or more field goals: | South Carolina: Sindarius Thornwell (24), vs. Charlotte Nov. 21, 2014 in Charleston, S.C. Opponent: Michael Frazier II (21), Florida, March 4, 2014 in Columbia, S.C. |
| Attempted 25 or more field goals: | South Carolina: Devan Downey, 25, at Kentucky, Feb. 25, 2010 in Lexington, Ky. Opponent: Kemmy Burgess (Alaska-Anchorage), 26, Nov. 24, 2005 in Anchorage, Alaska |
| Dished 10 or more assists: | South Carolina: Devan Downey, 11, vs. LSU, March 13, 2008 in Atlanta, Ga. Opponent: 11, Dee Bost, Mississippi State, Feb. 29, 2012 in Columbia, S.C. |
| Swiped 5 or more steals: | South Carolina: Sindarius Thornwell, 6 vs. UNC Asheville, Nov. 26, 2014 in Columbia, S.C. Opponent: 5, Allen Payne, Auburn, Feb. 26, 2014 in Auburn, Ala. |
| Blocked 5 or more shots: | South Carolina: Damontre Harris, 5, vs. Georgia, Feb. 15, 2012 in Columbia, S.C. Opponent: Damian Jones (7), Vanderbilt, Feb. 13, 2014 in Columbia, S.C. |
| Made 5 or more 3-point field goals: | South Carolina: Duane Notice (5), vs. Clemson Dec. 19, 2014 in Columbia, S.C. Opponent: Andrew Rowsey (6), UNC Asheville, Nov. 26, 2014 in Columbia, S.C. |
| Attempted 8 or more 3-point field goals: | South Carolina: Duane Notice (9), vs. Clemson Dec. 19, 2014 in Columbia, S.C. Opponent: Austin Loop (10), Marshall, Dec. 1, 2014 in Huntington, W.Va. |
| Made 10 or more free throws: | South Carolina: Brenton Williams (15), vs. Kentucky, March 1, 2014 in Columbia, S.C. Opponent: Anthony Perez (10), Ole Miss, Jan. 18, 2014 in Columbia, S.C. |
| Attempted 15 or more free throws: | South Carolina: Brenton Williams (16) vs. Kentucky, March 1, 2014 in Columbia, S.C. Opponent: Shawn Smith (15), Marshall (Dec. 30, 2013) in Columbia, S.C. |
| Played all 40 minutes of regulation: | South Carolina: Brenton Williams, at Mississippi State, March 8, 2014 in Starkville, Miss. Opponent: Frank Sullivan, Auburn, Jan. 12, 2013 in Columbia, S.C. |
| A player hit a last-second shot (within 3 seconds) to win a game: | South Carolina: Bruce Ellington vs. Alabama, Jan. 25, 2012 in Columbia, S.C. Opponent: Brian Bryant, Mississippi State, Feb. 29, 2012 in Columbia, S.C. |
| A player had a double-double: | South Carolina: Sindarius Thornwell (10 points, 10 rebounds), at Marshall Dec. 1, 2014 in Huntington, W.Va. Opponent: Julius Randle (10 points, 15 rebounds), Kentucky, March 1, 2014 in Columbia, S.C. |
| Two or more players had a double-double: | S. Carolina: Michael Carrera (23 points, 10 rebounds) and Lakeem Jackson (11 points, 11 rebounds) at LSU, Jan. 16, 2013 in Baton Rouge, La. Opponent: Alex Oriakhi (18 points, 11 rebounds), Earnest Ross (21 points, 10 rebounds) Missouri, Jan. 22, 2013 in Columbia, Mo. |
| A player had a triple-double: | South Carolina: Sam Muldrow (16 points, 14 rebounds, 10 blocks) vs. Vanderbilt, Jan. 8, 2011 in Columbia, S.C. *** Only second triple-double in South Carolina history (Chuck Eidson (25 points, 10 rebounds, 10 assists) vs. SC State, Nov. 29, 2002 in Columbia, S.C. Opponent: Daniel Hackett (Southern California - 22 points, 10 rebounds, 10 assists), Nov. 17, 2007 in Columbia, S.C. |
| Scored 30 or more points in back-to-back games: | South Carolina: Devan Downey, 30 vs. Kentucky, Jan. 26, 2010 in Columbia, S.C. 33 vs. Georgia, Jan. 30, 2010, in Columbia, S.C. |
| Scored 25 or more points in back-to-back games: | South Carolina: Devan Downey, 33 vs. Georgia, Jan. 30, 2010, in Columbia, S.C. 26 at Tennessee, Feb. 6, 2010 in Knoxville, Tenn. |

A TEAM...

| | |
|---|---|
| Scored 100 or more points: | South Carolina: 103 vs. The Citadel, Nov. 12, 2007 in Columbia, S.C. Opponent: 107, Vanderbilt, Feb. 17, 1996 in Nashville, Tenn. |
| Scored 50 points or less: | South Carolina: 46, vs. Florida, March 4, 2014 in Columbia S.C. Opponent: 44, Clemson, Dec. 19, 2014 in Columbia, S.C. |
| Scored 50 points in a half: | South Carolina: 52 (2nd half) vs. UNC Asheville Nov. 26, 2014 in Columbia, S.C. Opponent: 52 (2nd half) vs. Georgia Jan. 22, 2014 in Athens, Ga. |
| Failed to score 25 points in a half: | South Carolina: 20 (2nd half), vs. Florida, March 4, 2014 in Columbia, S.C. Opponent: 16 (1st half), North Carolina A&T, Dec. 30, 2014 in Columbia, S.C. |

| | |
|--|--|
| Collected 50 or more rebounds: | South Carolina: 50, vs. Longwood, Nov. 9, 2013 in Columbia, S.C. Opponent: 52, WKU, Nov. 27, 2010 in Bowling Green, Ky. |
| Shot 60% or better from the field: | South Carolina: 60.8% (31-51) at Western Carolina, Nov. 18, 2005 in Cullowhee, N.C. Opponent: 69.6% (32-46) Missouri, Feb. 28, 2013 in Columbia, S.C. |
| Shot 50% or better from the field: | South Carolina: 54.7% (29-53), vs. North Carolina A&T, Dec. 30, 2014 in Columbia, S.C. Opponent: 52.1% (25-48) Auburn, Feb. 26, 2014 in Auburn, Ala. |
| Shot less than 30% from the field: | South Carolina: 26.3% (15-57), vs. Georgia, Feb. 22, 2014 in Columbia, S.C. Opponent: 28.6% (16-56), Marshall, Dec. 1, 2014 in Huntington, W.Va. |
| Shot 50% or better from 3-point range (at least 10 attempts): | South Carolina: 73.3% (11-15), vs. Auburn, March 12, Atlanta, Ga. Opponent 51.7% (15-29), UNC Asheville, Nov. 26, 2014 in Columbia, S.C. |
| Shot 20% or less from 3-point range (at least 10 attempts): | South Carolina: 20.0% (2-10), vs. Iowa State, Jan. 3, 2015 in Brooklyn, N.Y. Opponent: 5.6 % (1-18), Iowa State, Jan. 3, 2015 in Brooklyn, N.Y. |
| Dished 20 or more assists: | South Carolina: 20, vs. North Carolina A&T, Dec. 30, 2014 in Columbia, S.C. Opponent: 21, Georgia, Jan. 22, 2014 in Athens, Ga. |
| Made 35 or more shots: | South Carolina: 35 vs. Elon, Nov. 19, 2010 in Columbia, S.C. Opponent: 35, vs. Tennessee, March 5, 2009 in Columbia, S.C. |
| Attempted 80 or more shots: | South Carolina: 83 vs. WKU Nov. 27, 2010 in Bowling Green, Ky. Opponent: 83, LSU, Feb. 10, 1996 in Columbia, S.C. |
| Attempted 70 or more shots: | South Carolina: 72, vs. Providence, Dec. 1, 2011 in Columbia, S.C. Opponent: 79, WKU, Nov. 27, 2010 in Bowling Green, Ky. |
| Made 10 or more 3-pointers: | South Carolina: 11 vs. Auburn, March 12, 2014 in Atlanta, Ga. Opponent: 15, UNC Asheville, Nov. 26, 2014 in Columbia, S.C. |
| Did not make a 3-pointer: | South Carolina: 0, vs. Milwaukee, Nov. 11, 2012 in Columbia, S.C. Opponent: 0, Miss. State, Jan. 9, 2013 in Starkville, Miss. |
| Attempted 30 or more 3-pointers: | South Carolina: 31 vs. Alabama, Jan. 25, 2012 in Columbia, S.C. Opponent: 32, North Florida, Nov. 14, 2014 in Columbia, S.C. |
| Attempted 25 or more 3-pointers: | South Carolina: 27 vs. Rider, Nov. 19, 2012 in Columbia, S.C. Opponent: 29, UNC Asheville, Nov. 26, 2014 in Columbia, S.C. |
| Made 30 or more free throws: | South Carolina: 30 vs. Arkansas, March 13, 2014 in Atlanta, Ga. Opponent: 33, Kentucky, March 1, 2014 in Columbia, S.C. |
| Attempted 40 or more free throws: | South Carolina: 41 vs. Arkansas, March 13, 2014 in Atlanta, Ga. Opponent: 42, Kentucky, March 1, 2014 in Columbia, S.C. |
| Swiped 15 or more steals: | South Carolina: 15 vs. Vanderbilt, Jan. 16, 2010 in Columbia, S.C. Opponent: 17, Florida, March 4, 2014 in Columbia, S.C. |
| Blocked 12 or more shots: | South Carolina: 12, vs. Vanderbilt, Jan. 8, 2011 in Columbia, S.C. Opponent: 12, Clemson, Nov. 17, 2013 in Clemson, S.C. |
| Blocked 8 or more shots: | South Carolina: 9, vs. Coker, Dec. 21, 2014 in Columbia, S.C. Opponent: 9, Auburn, March 12, Atlanta, Ga. |
| Won by 30 or more points: | South Carolina: 37, vs. North Carolina A&T, Dec. 30, 2014 in Columbia, S.C. Opponent: 39, Florida, Jan. 30, 2013 in Gainesville, Fla. |
| Won by 20 or more points: | South Carolina: 37, vs. North Carolina A&T, Dec. 30, 2014 in Columbia, S.C. Opponent: 26, Florida, March 4, 2014 in Columbia, S.C. |
| Played a single overtime game: | Win: 82-73 at LSU, Jan. 16, 2013 in Baton Rouge, La. Loss: 62-54 at Georgia, Feb. 23, 2013 in Athens, Ga. |
| Played a double overtime game: | Win: 87-85 vs. WKU, Nov. 27, 2010 in Bowling Green, Ky. Loss: 98-88 vs. Louisville, Feb. 20, 1988 in Columbia, S.C. |
| South Carolina played a No. 1 Team in the country: | Win: 68-62 vs. Kentucky, Jan. 26, 2010 in Columbia, S.C. Loss: 72-46 loss vs. Florida, March. 4, 2014 in Columbia, S.C. |
| South Carolina played a top-5 opponent: | Win: 68-62 vs. No. 1/1 Kentucky, Jan. 26, 2010 in Columbia, S.C. Loss: 75-36 loss to No. 4/4 Florida, Jan. 30, 2013 in Gainesville, Fla. |
| South Carolina played a top-10 opponent: | Win: 64-60 vs. No. 9/9 Iowa State, Jan. 3, 2015 in Brooklyn, N.Y. Loss: 74-58 at No. 10/11 Florida, Jan. 8, 2014 in Gainesville, Fla. |
| South Carolina played a top-25 opponent: | Win: 64-60 vs. No. 9/9 Iowa State, Jan. 3, 2015 in Brooklyn, N.Y. Loss: 79-52 at No. 9/11 Oklahoma State, Dec. 6, 2013 in Stillwater, Okla. |
| South Carolina defeated a ranked opponent: | Home: Win: 72-67 win over No. 17/15 Kentucky, March 1, 2014 in Columbia, S.C. Away: 77-73 at No. 13/19 Vanderbilt, March 6, 2010 in Nashville, Tenn. Neutral: 64-60 vs. No. 9/9 Iowa State, Jan. 3, 2015 in Brooklyn, N.Y. SEC Home: Win: 72-67 win over No. 17/15 Kentucky, March 1, 2014 in Columbia, S.C. SEC Away: 77-73 at No. 13/19 Vanderbilt, March 6, 2010 in Nashville, Tenn. Non-conference away: 85-84 at No. 19/20 Baylor, Jan. 2, 2009 in Waco, Texas |
| A South Carolina win opened the season: | Home: 81-56, vs. North Florida, Nov. 14, 2014 in Columbia, S.C. Away: 81-63 win at Western Carolina, Nov. 12, 2005 in Cullowhee, N.C. Neutral: 74-61 win vs. Chaminade, Nov. 19, 2001 in Maui, Hawaii (Maui Invite) |
| South Carolina opened SEC play: | Home: 72-68 loss vs. Florida, Jan. 7, 2015 in Gainesville, Fla. Away: 74-58 loss at No. 10/11 Florida, Jan. 8, 2014 in Gainesville, Fla. |



South Carolina Basketball
 South Carolina Combined Team Statistics (as of Jan 07, 2015)
 All games

| RECORD: | OVERALL | HOME | AWAY | NEUTRAL |
|----------------|---------|------|------|---------|
| ALL GAMES | 9-4 | 6-2 | 1-0 | 2-2 |
| CONFERENCE | 0-1 | 0-1 | 0-0 | 0-0 |
| NON-CONFERENCE | 9-3 | 6-1 | 1-0 | 2-2 |

| ## | Player | gp-gs | min | avg | Total | | 3-Point | | F-Throw | | Rebounds | | | | pf | dq | a | to | blk | stl | pts | avg | | |
|----------------|--------------------|-------|------|---------|--------|------|---------|-------|---------|------|----------|-----|-----|------|-----|----|-----|-----|-----|-----|-----|------|--|--|
| | | | | | fg-fga | fg% | 3fg-fga | 3fg% | ft-fa | ft% | off | def | tot | avg | | | | | | | | | | |
| 10 | NOTICE, Duane | 13-13 | 367 | 28.2 | 54-119 | .454 | 20-50 | .400 | 37-46 | .804 | 7 | 31 | 38 | 2.9 | 23 | 0 | 37 | 24 | 2 | 17 | 165 | 12.7 | | |
| 00 | THORNWELL, Sindari | 13-13 | 347 | 26.7 | 48-129 | .372 | 11-49 | .224 | 36-52 | .692 | 21 | 50 | 71 | 5.5 | 35 | 2 | 24 | 24 | 8 | 22 | 143 | 11.0 | | |
| 04 | JOHNSON, Tyrone | 13-13 | 356 | 27.4 | 44-103 | .427 | 8-28 | .286 | 36-44 | .818 | 5 | 33 | 38 | 2.9 | 22 | 0 | 50 | 20 | 5 | 18 | 132 | 10.2 | | |
| 14 | CHATKEVICIUS, L. | 13-8 | 275 | 21.2 | 55-93 | .591 | 4-9 | .444 | 16-21 | .762 | 23 | 48 | 71 | 5.5 | 24 | 1 | 8 | 24 | 21 | 4 | 130 | 10.0 | | |
| 21 | HENRY, Demetrius | 13-13 | 272 | 20.9 | 39-78 | .500 | 0-2 | .000 | 17-25 | .680 | 20 | 35 | 55 | 4.2 | 46 | 3 | 4 | 23 | 15 | 3 | 95 | 7.3 | | |
| 25 | KACINAS, Mindaugas | 13-0 | 280 | 21.5 | 31-55 | .564 | 5-12 | .417 | 25-31 | .806 | 36 | 45 | 81 | 6.2 | 26 | 1 | 8 | 16 | 7 | 12 | 92 | 7.1 | | |
| 01 | STROMAN, Marcus | 13-0 | 296 | 22.8 | 23-54 | .426 | 1-8 | .125 | 21-36 | .583 | 11 | 37 | 48 | 3.7 | 25 | 0 | 55 | 31 | 2 | 12 | 68 | 5.2 | | |
| 20 | MCKIE, Justin | 11-0 | 147 | 13.4 | 18-43 | .419 | 7-23 | .304 | 15-19 | .789 | 4 | 20 | 24 | 2.2 | 11 | 0 | 5 | 5 | 3 | 6 | 58 | 5.3 | | |
| 24 | CARRERA, Michael | 10-5 | 157 | 15.7 | 17-42 | .405 | 2-5 | .400 | 12-19 | .632 | 14 | 25 | 39 | 3.9 | 25 | 1 | 3 | 9 | 9 | 2 | 48 | 4.8 | | |
| 35 | STEELE, Brian | 10-0 | 65 | 6.5 | 4-17 | .235 | 3-13 | .231 | 0-0 | .000 | 0 | 7 | 7 | 0.7 | 5 | 0 | 5 | 2 | 0 | 3 | 11 | 1.1 | | |
| 12 | SHEPPARD, Shamiek | 2-0 | 16 | 8.0 | 2-6 | .333 | 1-1 | 1.000 | 0-0 | .000 | 2 | 2 | 4 | 2.0 | 2 | 0 | 0 | 1 | 1 | 1 | 5 | 2.5 | | |
| 15 | THEUS JR., Reggie | 9-0 | 22 | 2.4 | 2-4 | .500 | 0-1 | .000 | 0-0 | .000 | 0 | 1 | 1 | 0.1 | 1 | 0 | 0 | 2 | 0 | 3 | 4 | 0.4 | | |
| Team | | | | | | | | | | | 19 | 25 | 44 | | | | | | | | | | | |
| Total..... | | 13 | 2600 | 337-743 | | .454 | 62-201 | .308 | 215-293 | .734 | 162 | 359 | 521 | 40.1 | 245 | 8 | 199 | 184 | 73 | 103 | 951 | 73.2 | | |
| Opponents..... | | 13 | 2600 | 246-715 | | .344 | 79-284 | .278 | 198-281 | .705 | 149 | 276 | 425 | 32.7 | 263 | - | 110 | 209 | 50 | 85 | 769 | 59.2 | | |

| TEAM STATISTICS | SC | OPP | Date | Opponent | Score | Att. |
|------------------------|---------|---------|--|--------------------|---------|-------|
| SCORING | 951 | 769 | 11/14/14 | UNF | w 81-56 | 10473 |
| Points per game | 73.2 | 59.2 | ! 11/18/14 | BAYLOR | L 65-69 | 13291 |
| Scoring margin | +14.0 | - | & 11/20/14 | vs Cornell | w 69-45 | 2517 |
| FIELD GOALS-ATT | 337-743 | 246-715 | & 11/21/14 | vs Charlotte | L 63-65 | 2430 |
| Field goal pct | .454 | .344 | & 11/23/14 | vs Akron | L 63-68 | 1523 |
| 3 POINT FG-ATT | 62-201 | 79-284 | 11/26/14 | UNC ASHEVILLE | w 89-75 | 8330 |
| 3-point FG pct | .308 | .278 | 12/1/14 | at Marshall | w 77-59 | 5013 |
| 3-pt FG made per game | 4.8 | 6.1 | ^ 12/6/14 | OKLAHOMA STATE | w 75-49 | 12007 |
| FREE THROWS-ATT | 215-293 | 198-281 | 12/19/14 | CLEMSON | w 68-45 | 11992 |
| Free throw pct | .734 | .705 | 12/21/14 | COKER | w 78-52 | 8419 |
| F-Throws made per game | 16.5 | 15.2 | 12/30/14 | NORTH CAROLINA A&T | w 91-54 | 8156 |
| REBOUNDS | 521 | 425 | 01/03/15 | vs Iowa State | w 64-60 | 3546 |
| Rebounds per game | 40.1 | 32.7 | * 1/7/14 | FLORIDA | L 68-72 | 12181 |
| Rebounding margin | +7.4 | - | | | | |
| ASSISTS | 199 | 110 | ! - ESPN College Hoops Tip-Off Marathon (Columbia, S.C.) | | | |
| Assists per game | 15.3 | 8.5 | & - Charleston Classic (Charleston, S.C.) | | | |
| TURNOVERS | 184 | 209 | ^ - SEC/Big 12 Challenge (Columbia, S.C.) | | | |
| Turnovers per game | 14.2 | 16.1 | * = Conference game | | | |
| Turnover margin | +1.9 | - | | | | |
| Assist/turnover ratio | 1.1 | 0.5 | | | | |
| STEALS | 103 | 85 | | | | |
| Steals per game | 7.9 | 6.5 | | | | |
| BLOCKS | 73 | 50 | | | | |
| Blocks per game | 5.6 | 3.8 | | | | |
| ATTENDANCE | 84849 | 15029 | | | | |
| Home games-Avg/Game | 8-10606 | 1-5013 | | | | |
| Neutral site-Avg/Game | - | 4-2504 | | | | |

| Score by Periods | 1st | 2nd | Totals |
|------------------|-----|-----|--------|
| South Carolina | 459 | 492 | 951 |
| Opponents | 345 | 424 | 769 |



South Carolina Basketball
 South Carolina Combined Team Statistics (as of Jan 07, 2015)
 Conference games

| RECORD: | OVERALL | HOME | AWAY | NEUTRAL |
|----------------|---------|------|------|---------|
| ALL GAMES | 0-1 | 0-1 | 0-0 | 0-0 |
| CONFERENCE | 0-1 | 0-1 | 0-0 | 0-0 |
| NON-CONFERENCE | 0-0 | 0-0 | 0-0 | 0-0 |

| ## | Player | gp-gs | min | avg | Total | | 3-Point | | F-Throw | | Rebounds | | | pf | dq | a | to | blk | stl | pts | avg | |
|----------------|--------------------|-------|-----|------|--------|------|---------|------|---------|-------|----------|-----|-----|------|----|---|----|-----|-----|-----|-----|------|
| | | | | | fg-fga | fg% | 3fg-fga | 3fg% | ft-fa | ft% | off | def | tot | | | | | | | | | avg |
| 04 | JOHNSON, Tyrone | 1-1 | 31 | 31.0 | 5-10 | .500 | 1-2 | .500 | 9-9 | 1.000 | 1 | 4 | 5 | 5.0 | 1 | 0 | 3 | 1 | 0 | 1 | 20 | 20.0 |
| 25 | KACINAS, Mindaugas | 1-0 | 23 | 23.0 | 3-6 | .500 | 2-4 | .500 | 1-2 | .500 | 1 | 4 | 5 | 5.0 | 2 | 0 | 1 | 1 | 0 | 0 | 9 | 9.0 |
| 14 | CHATKEVICIUS, L. | 1-1 | 21 | 21.0 | 3-6 | .500 | 0-1 | .000 | 2-2 | 1.000 | 0 | 1 | 1 | 1.0 | 3 | 0 | 0 | 0 | 2 | 0 | 8 | 8.0 |
| 01 | STROMAN, Marcus | 1-0 | 29 | 29.0 | 2-5 | .400 | 0-1 | .000 | 3-5 | .600 | 0 | 0 | 0 | 0.0 | 3 | 0 | 3 | 4 | 0 | 2 | 7 | 7.0 |
| 21 | HENRY, Demetrius | 1-1 | 31 | 31.0 | 3-7 | .429 | 0-0 | .000 | 0-1 | .000 | 1 | 3 | 4 | 4.0 | 1 | 0 | 0 | 0 | 1 | 1 | 6 | 6.0 |
| 20 | MCKIE, Justin | 1-0 | 15 | 15.0 | 1-2 | .500 | 0-0 | .000 | 4-4 | 1.000 | 1 | 1 | 2 | 2.0 | 2 | 0 | 0 | 2 | 1 | 0 | 6 | 6.0 |
| 10 | NOTICE, Duane | 1-1 | 27 | 27.0 | 1-7 | .143 | 1-3 | .333 | 2-2 | 1.000 | 0 | 2 | 2 | 2.0 | 1 | 0 | 2 | 2 | 0 | 0 | 5 | 5.0 |
| 00 | THORNWELL, Sindari | 1-1 | 18 | 18.0 | 1-4 | .250 | 1-2 | .500 | 2-2 | 1.000 | 0 | 0 | 0 | 0.0 | 5 | 1 | 2 | 1 | 0 | 0 | 5 | 5.0 |
| 24 | CARRERA, Michael | 1-0 | 5 | 5.0 | 1-2 | .500 | 0-0 | .000 | 0-0 | .000 | 2 | 0 | 2 | 2.0 | 2 | 0 | 0 | 0 | 1 | 0 | 2 | 2.0 |
| Team | | | | | | | | | | | 1 | 1 | 2 | | | | | | | | | |
| Total..... | | 1 | 200 | | 20-49 | .408 | 5-13 | .385 | 23-27 | .852 | 7 | 16 | 23 | 23.0 | 20 | 1 | 11 | 11 | 5 | 4 | 68 | 68.0 |
| Opponents..... | | 1 | 200 | | 21-49 | .429 | 5-19 | .263 | 25-30 | .833 | 14 | 23 | 37 | 37.0 | 24 | - | 14 | 17 | 4 | 7 | 72 | 72.0 |

| TEAM STATISTICS | SC | OPP | Date | Opponent | Score | Att. |
|------------------------|---------|-------|--|----------|---------|-------|
| SCORING | 68 | 72 | * 1/7/14 | FLORIDA | L 68-72 | 12181 |
| Points per game | 68.0 | 72.0 | ! - ESPN College Hoops Tip-Off Marathon (Columbia, S.C.) | | | |
| Scoring margin | -4.0 | - | & - Charleston Classic (Charleston, S.C.) | | | |
| FIELD GOALS-ATT | 20-49 | 21-49 | ^ - SEC/Big 12 Challenge (Columbia, S.C.) | | | |
| Field goal pct | .408 | .429 | * = Conference game | | | |
| 3 POINT FG-ATT | 5-13 | 5-19 | | | | |
| 3-point FG pct | .385 | .263 | | | | |
| 3-pt FG made per game | 5.0 | 5.0 | | | | |
| FREE THROWS-ATT | 23-27 | 25-30 | | | | |
| Free throw pct | .852 | .833 | | | | |
| F-Throws made per game | 23.0 | 25.0 | | | | |
| REBOUNDS | 23 | 37 | | | | |
| Rebounds per game | 23.0 | 37.0 | | | | |
| Rebounding margin | -14.0 | - | | | | |
| ASSISTS | 11 | 14 | | | | |
| Assists per game | 11.0 | 14.0 | | | | |
| TURNOVERS | 11 | 17 | | | | |
| Turnovers per game | 11.0 | 17.0 | | | | |
| Turnover margin | +6.0 | - | | | | |
| Assist/turnover ratio | 1.0 | 0.8 | | | | |
| STEALS | 4 | 7 | | | | |
| Steals per game | 4.0 | 7.0 | | | | |
| BLOCKS | 5 | 4 | | | | |
| Blocks per game | 5.0 | 4.0 | | | | |
| ATTENDANCE | 12181 | 0 | | | | |
| Home games-Avg/Game | 1-12181 | 0-0 | | | | |
| Neutral site-Avg/Game | - | 0-0 | | | | |

| Score by Periods | 1st | 2nd | Totals |
|------------------|-----|-----|--------|
| South Carolina | 34 | 34 | 68 |
| Opponents | 31 | 41 | 72 |



South Carolina Basketball
 South Carolina Team Game-by-Game Comparison (as of Jan 08, 2015)
 All games

| Opponent | 1st | 2nd | Score | Mar | Total FG | FG Pct | 3-Pointers | 3FG Pct | Free Throws | FT Pct | Rebounds | Assist | T/Over | Block | Steal | Fouls |
|--------------------|-------|-------|-------|-----|-------------|-----------|------------|-----------|-------------|-----------|------------|--------|--------|-------|-------|-------|
| UNF | 48/27 | 33/29 | 81-56 | +25 | 29-57/18-53 | .509/.340 | 4-11/10-32 | .364/.313 | 19-26/10-16 | .731/.625 | 42/28 +14 | 19/9 | 9/15 | 3/5 | 7/2 | 15/22 |
| BAYLOR | 27/30 | 38/39 | 65-69 | (4) | 22-54/21-47 | .407/.447 | 5-21/6-18 | .238/.333 | 16-19/21-26 | .842/.808 | 33/29 +4 | 11/10 | 10/11 | 3/1 | 4/6 | 21/20 |
| Cornell | 35/21 | 34/24 | 69-45 | +24 | 22-58/14-52 | .379/.269 | 8-22/5-20 | .364/.250 | 17-21/12-16 | .810/.750 | 44/32 +12 | 16/6 | 11/17 | 5/6 | 10/6 | 15/19 |
| Charlotte | 36/29 | 27/36 | 63-65 | (2) | 26-61/23-53 | .426/.434 | 3-18/6-17 | .167/.353 | 8-9/13-19 | .889/.684 | 37/32 +5 | 13/6 | 17/17 | 7/5 | 6/6 | 21/13 |
| Akron | 25/30 | 38/38 | 63-68 | (5) | 25-64/21-50 | .391/.420 | 2-10/4-20 | .200/.200 | 11-20/22-27 | .550/.815 | 45/32 +13 | 11/6 | 17/15 | 2/6 | 8/6 | 20/19 |
| UNC ASHEVILLE | 37/29 | 52/46 | 89-75 | +14 | 31-60/23-63 | .517/.365 | 8-17/15-29 | .471/.517 | 19-26/14-20 | .731/.700 | 39/35 +4 | 21/12 | 20/22 | 10/3 | 12/11 | 15/21 |
| Marshall | 39/20 | 38/39 | 77-59 | +18 | 30-63/16-56 | .476/.286 | 4-20/5-26 | .200/.192 | 13-24/22-34 | .542/.647 | 39/43 (4) | 17/9 | 15/19 | 3/3 | 13/6 | 24/20 |
| OKLAHOMA STATE | 32/24 | 43/25 | 75-49 | +26 | 26-60/16-65 | .433/.246 | 6-17/5-24 | .353/.208 | 17-22/12-19 | .773/.632 | 49/41 +8 | 14/7 | 11/12 | 8/5 | 6/4 | 19/17 |
| CLEMSON | 28/30 | 40/15 | 68-45 | +23 | 23-50/17-57 | .460/.298 | 7-22/4-18 | .318/.222 | 15-20/7-12 | .750/.583 | 40/31 +9 | 17/7 | 12/13 | 7/5 | 7/9 | 14/20 |
| COKER | 35/23 | 43/29 | 78-52 | +26 | 31-64/18-58 | .484/.310 | 3-11/7-21 | .273/.333 | 13-19/9-14 | .684/.643 | 47/31 +16 | 21/8 | 15/19 | 9/1 | 11/8 | 16/21 |
| NORTH CAROLINA A&T | 47/16 | 44/38 | 91-54 | +37 | 29-53/18-55 | .547/.327 | 5-9/6-22 | .556/.273 | 28-34/12-15 | .824/.800 | 41/20 +21 | 20/8 | 16/19 | 7/2 | 7/4 | 17/26 |
| Iowa State | 36/35 | 28/25 | 64-60 | +4 | 23-50/20-57 | .460/.351 | 2-10/1-18 | .200/.056 | 16-26/19-33 | .615/.576 | 42/34 +8 | 8/8 | 20/13 | 4/4 | 8/10 | 28/21 |
| FLORIDA | 34/31 | 34/41 | 68-72 | (4) | 20-49/21-49 | .408/.429 | 5-13/5-19 | .385/.263 | 23-27/25-30 | .852/.833 | 23/37 (14) | 11/14 | 11/17 | 5/4 | 4/7 | 20/24 |

Note: Game totals are displayed in the format TEAM/OPPONENT for each category



South Carolina Basketball
South Carolina Category Leaders (as of Jan 08, 2015)
All games

| Points | G | Pts | Pts/G |
|----------------------|----|-----|-------|
| NOTICE, Duane | 13 | 165 | 12.7 |
| THORNWELL, Sindarius | 13 | 143 | 11.0 |
| JOHNSON, Tyrone | 13 | 132 | 10.2 |
| CHATKEVICIUS, L. | 13 | 130 | 10.0 |
| HENRY, Demetrius | 13 | 95 | 7.3 |
| KACINAS, Mindaugas | 13 | 92 | 7.1 |
| STROMAN, Marcus | 13 | 68 | 5.2 |
| MCKIE, Justin | 11 | 58 | 5.3 |
| CARRERA, Michael | 10 | 48 | 4.8 |
| STEELE, Brian | 10 | 11 | 1.1 |
| SHEPPARD, Shamiek | 2 | 5 | 2.5 |
| THEUS JR., Reggie | 9 | 4 | 0.4 |

| FG Percentage | FG | Att | Pct |
|----------------------|----|-----|------|
| CHATKEVICIUS, L. | 55 | 93 | .591 |
| KACINAS, Mindaugas | 31 | 55 | .564 |
| THEUS JR., Reggie | 2 | 4 | .500 |
| HENRY, Demetrius | 39 | 78 | .500 |
| NOTICE, Duane | 54 | 119 | .454 |
| JOHNSON, Tyrone | 44 | 103 | .427 |
| STROMAN, Marcus | 23 | 54 | .426 |
| MCKIE, Justin | 18 | 43 | .419 |
| CARRERA, Michael | 17 | 42 | .405 |
| THORNWELL, Sindarius | 48 | 129 | .372 |
| SHEPPARD, Shamiek | 2 | 6 | .333 |
| STEELE, Brian | 4 | 17 | .235 |

| 3-Point Percentage | 3FG | Att | Pct |
|----------------------|-----|-----|-------|
| SHEPPARD, Shamiek | 1 | 1 | 1.000 |
| CHATKEVICIUS, L. | 4 | 9 | .444 |
| KACINAS, Mindaugas | 5 | 12 | .417 |
| NOTICE, Duane | 20 | 50 | .400 |
| CARRERA, Michael | 2 | 5 | .400 |
| MCKIE, Justin | 7 | 23 | .304 |
| JOHNSON, Tyrone | 8 | 28 | .286 |
| STEELE, Brian | 3 | 13 | .231 |
| THORNWELL, Sindarius | 11 | 49 | .224 |
| STROMAN, Marcus | 1 | 8 | .125 |
| HENRY, Demetrius | 0 | 2 | .000 |
| THEUS JR., Reggie | 0 | 1 | .000 |

| Free Throw Percent | FG | Att | Pct |
|----------------------|----|-----|------|
| JOHNSON, Tyrone | 36 | 44 | .818 |
| KACINAS, Mindaugas | 25 | 31 | .806 |
| NOTICE, Duane | 37 | 46 | .804 |
| MCKIE, Justin | 15 | 19 | .789 |
| CHATKEVICIUS, L. | 16 | 21 | .762 |
| THORNWELL, Sindarius | 36 | 52 | .692 |
| HENRY, Demetrius | 17 | 25 | .680 |
| CARRERA, Michael | 12 | 19 | .632 |
| STROMAN, Marcus | 21 | 36 | .583 |

| Scoring Average | G | Pts | Avg/G |
|----------------------|----|-----|-------|
| NOTICE, Duane | 13 | 165 | 12.7 |
| THORNWELL, Sindarius | 13 | 143 | 11.0 |
| JOHNSON, Tyrone | 13 | 132 | 10.2 |
| CHATKEVICIUS, L. | 13 | 130 | 10.0 |
| HENRY, Demetrius | 13 | 95 | 7.3 |
| KACINAS, Mindaugas | 13 | 92 | 7.1 |
| MCKIE, Justin | 11 | 58 | 5.3 |
| STROMAN, Marcus | 13 | 68 | 5.2 |
| CARRERA, Michael | 10 | 48 | 4.8 |
| SHEPPARD, Shamiek | 2 | 5 | 2.5 |
| STEELE, Brian | 10 | 11 | 1.1 |
| THEUS JR., Reggie | 9 | 4 | 0.4 |

| Field Goal Attempts | G | Att | Att/G |
|----------------------|----|-----|-------|
| THORNWELL, Sindarius | 13 | 129 | 9.9 |
| NOTICE, Duane | 13 | 119 | 9.2 |
| JOHNSON, Tyrone | 13 | 103 | 7.9 |
| CHATKEVICIUS, L. | 13 | 93 | 7.2 |
| HENRY, Demetrius | 13 | 78 | 6.0 |

| Field Goals Made | G | Made | Made/G |
|----------------------|----|------|--------|
| CHATKEVICIUS, L. | 13 | 55 | 4.2 |
| NOTICE, Duane | 13 | 54 | 4.2 |
| THORNWELL, Sindarius | 13 | 48 | 3.7 |
| JOHNSON, Tyrone | 13 | 44 | 3.4 |
| HENRY, Demetrius | 13 | 39 | 3.0 |

| 3-Point FG Attempts | G | Att | Att/G |
|----------------------|----|-----|-------|
| NOTICE, Duane | 13 | 50 | 3.8 |
| THORNWELL, Sindarius | 13 | 49 | 3.8 |
| JOHNSON, Tyrone | 13 | 28 | 2.2 |
| MCKIE, Justin | 11 | 23 | 2.1 |
| STEELE, Brian | 10 | 13 | 1.3 |

| 3-Point FG Made | G | Made | Made/G |
|----------------------|----|------|--------|
| NOTICE, Duane | 13 | 20 | 1.5 |
| THORNWELL, Sindarius | 13 | 11 | 0.8 |
| JOHNSON, Tyrone | 13 | 8 | 0.6 |
| MCKIE, Justin | 11 | 7 | 0.6 |
| KACINAS, Mindaugas | 13 | 5 | 0.4 |

| Free Throw Attempts | G | Att | Att/G |
|----------------------|----|-----|-------|
| THORNWELL, Sindarius | 13 | 52 | 4.0 |
| NOTICE, Duane | 13 | 46 | 3.5 |
| JOHNSON, Tyrone | 13 | 44 | 3.4 |
| STROMAN, Marcus | 13 | 36 | 2.8 |
| KACINAS, Mindaugas | 13 | 31 | 2.4 |

| Free Throws Made | G | Made | Made/G |
|----------------------|----|------|--------|
| NOTICE, Duane | 13 | 37 | 2.8 |
| JOHNSON, Tyrone | 13 | 36 | 2.8 |
| THORNWELL, Sindarius | 13 | 36 | 2.8 |
| KACINAS, Mindaugas | 13 | 25 | 1.9 |
| STROMAN, Marcus | 13 | 21 | 1.6 |



South Carolina Basketball
South Carolina Category Leaders (as of Jan 08, 2015)
All games

| Rebounds | G | Reb | Reb/G |
|----------------------|----|-----|-------|
| KACINAS, Mindaugas | 13 | 81 | 6.2 |
| CHATKEVICIUS, L. | 13 | 71 | 5.5 |
| THORNWELL, Sindarius | 13 | 71 | 5.5 |
| HENRY, Demetrius | 13 | 55 | 4.2 |
| STROMAN, Marcus | 13 | 48 | 3.7 |

| Rebound Average | G | Reb | Avg/G |
|----------------------|----|-----|-------|
| KACINAS, Mindaugas | 13 | 81 | 6.2 |
| CHATKEVICIUS, L. | 13 | 71 | 5.5 |
| THORNWELL, Sindarius | 13 | 71 | 5.5 |
| HENRY, Demetrius | 13 | 55 | 4.2 |
| CARRERA, Michael | 10 | 39 | 3.9 |

| Offensive Rebounds | G | No. | Avg/G |
|----------------------|----|-----|-------|
| KACINAS, Mindaugas | 13 | 36 | 2.8 |
| CHATKEVICIUS, L. | 13 | 23 | 1.8 |
| THORNWELL, Sindarius | 13 | 21 | 1.6 |
| HENRY, Demetrius | 13 | 20 | 1.5 |
| CARRERA, Michael | 10 | 14 | 1.4 |

| Defensive Rebounds | G | No. | Avg/G |
|----------------------|----|-----|-------|
| THORNWELL, Sindarius | 13 | 50 | 3.8 |
| CHATKEVICIUS, L. | 13 | 48 | 3.7 |
| KACINAS, Mindaugas | 13 | 45 | 3.5 |
| STROMAN, Marcus | 13 | 37 | 2.8 |
| HENRY, Demetrius | 13 | 35 | 2.7 |

| Fouls | G | No. | Per/G |
|----------------------|----|-----|-------|
| HENRY, Demetrius | 13 | 46 | 3.5 |
| THORNWELL, Sindarius | 13 | 35 | 2.7 |
| KACINAS, Mindaugas | 13 | 26 | 2.0 |
| CARRERA, Michael | 10 | 25 | 2.5 |
| STROMAN, Marcus | 13 | 25 | 1.9 |

| Foulsouts | G | No. |
|----------------------|----|-----|
| HENRY, Demetrius | 13 | 3 |
| THORNWELL, Sindarius | 13 | 2 |
| CARRERA, Michael | 10 | 1 |
| CHATKEVICIUS, L. | 13 | 1 |
| KACINAS, Mindaugas | 13 | 1 |

| Assists | G | No. | Ast/G |
|----------------------|----|-----|-------|
| STROMAN, Marcus | 13 | 55 | 4.2 |
| JOHNSON, Tyrone | 13 | 50 | 3.8 |
| NOTICE, Duane | 13 | 37 | 2.8 |
| THORNWELL, Sindarius | 13 | 24 | 1.8 |
| CHATKEVICIUS, L. | 13 | 8 | 0.6 |
| KACINAS, Mindaugas | 13 | 8 | 0.6 |

| Steals | G | No. | Stl/G |
|----------------------|----|-----|-------|
| THORNWELL, Sindarius | 13 | 22 | 1.7 |
| JOHNSON, Tyrone | 13 | 18 | 1.4 |
| NOTICE, Duane | 13 | 17 | 1.3 |
| STROMAN, Marcus | 13 | 12 | 0.9 |
| KACINAS, Mindaugas | 13 | 12 | 0.9 |

| Blocked Shots | G | No. | Blk/G |
|----------------------|----|-----|-------|
| CHATKEVICIUS, L. | 13 | 21 | 1.6 |
| HENRY, Demetrius | 13 | 15 | 1.2 |
| CARRERA, Michael | 10 | 9 | 0.9 |
| THORNWELL, Sindarius | 13 | 8 | 0.6 |
| KACINAS, Mindaugas | 13 | 7 | 0.5 |

| Minutes | G | No. | Min/G |
|----------------------|----|-----|-------|
| NOTICE, Duane | 13 | 367 | 28.2 |
| JOHNSON, Tyrone | 13 | 356 | 27.4 |
| THORNWELL, Sindarius | 13 | 347 | 26.7 |
| STROMAN, Marcus | 13 | 296 | 22.8 |
| KACINAS, Mindaugas | 13 | 280 | 21.5 |

| Turnovers | G | No. | TO/G |
|----------------------|----|-----|------|
| STROMAN, Marcus | 13 | 31 | 2.4 |
| THORNWELL, Sindarius | 13 | 24 | 1.8 |
| CHATKEVICIUS, L. | 13 | 24 | 1.8 |
| NOTICE, Duane | 13 | 24 | 1.8 |
| HENRY, Demetrius | 13 | 23 | 1.8 |



South Carolina Basketball
South Carolina Team High/Low Analysis (as of Jan 08, 2015)
All games

South Carolina - TEAM GAME HIGHS

| | | |
|-----------------------|--------------|-------------------------------|
| POINTS | 91 | NORTH CAROLINA A&T (12/30/14) |
| | 89 | UNC ASHEVILLE (11/26/14) |
| | 81 | UNF (11/14/14) |
| | 78 | COKER (12/21/14) |
| | 77 | at Marshall (12/1/14) |
| FIELD GOALS MADE | 31 | COKER (12/21/14) |
| | 31 | UNC ASHEVILLE (11/26/14) |
| FIELD GOAL ATTEMPTS | 64 | COKER (12/21/14) |
| | 64 | vs Akron (11/23/14) |
| FIELD GOAL PERCENTAGE | .547 (29-53) | NORTH CAROLINA A&T (12/30/14) |
| | .517 (31-60) | UNC ASHEVILLE (11/26/14) |
| 3 PT FIELD GOALS MADE | 8 | UNC ASHEVILLE (11/26/14) |
| | 8 | vs Cornell (11/20/14) |
| 3 PT FG ATTEMPTS | 22 | CLEMSON (12/19/14) |
| | 22 | vs Cornell (11/20/14) |
| 3 PT FG PERCENTAGE | .556 (5-9) | NORTH CAROLINA A&T (12/30/14) |
| | .471 (8-17) | UNC ASHEVILLE (11/26/14) |
| FREE THROWS MADE | 28 | NORTH CAROLINA A&T (12/30/14) |
| | 23 | FLORIDA (1/7/14) |
| FREE THROW ATTEMPTS | 34 | NORTH CAROLINA A&T (12/30/14) |
| | 27 | FLORIDA (1/7/14) |
| FREE THROW PERCENTAGE | .889 (8-9) | vs Charlotte (11/21/14) |
| | .852 (23-27) | FLORIDA (1/7/14) |
| REBOUNDS | 49 | OKLAHOMA STATE (12/6/14) |
| | 47 | COKER (12/21/14) |
| ASSISTS | 21 | COKER (12/21/14) |
| | 21 | UNC ASHEVILLE (11/26/14) |
| STEALS | 13 | at Marshall (12/1/14) |
| | 12 | UNC ASHEVILLE (11/26/14) |
| BLOCKED SHOTS | 10 | UNC ASHEVILLE (11/26/14) |
| | 9 | COKER (12/21/14) |
| TURNOVERS | 20 | vs Iowa State (01/03/15) |
| | 20 | UNC ASHEVILLE (11/26/14) |
| FOULS | 28 | vs Iowa State (01/03/15) |
| | 24 | at Marshall (12/1/14) |



South Carolina Basketball
South Carolina High/Low Analysis (as of Jan 08, 2015)
All games

Opponent - GAME HIGHS

| | | |
|-----------------------|--------------|-------------------------------|
| POINTS | 75 | UNC ASHEVILLE (11/26/14) |
| | 72 | FLORIDA (1/7/14) |
| | 69 | BAYLOR (11/18/14) |
| | 68 | vs Akron (11/23/14) |
| | 65 | vs Charlotte (11/21/14) |
| FIELD GOALS MADE | 23 | UNC ASHEVILLE (11/26/14) |
| | 23 | vs Charlotte (11/21/14) |
| FIELD GOAL ATTEMPTS | 65 | OKLAHOMA STATE (12/6/14) |
| | 63 | UNC ASHEVILLE (11/26/14) |
| FIELD GOAL PERCENTAGE | .447 (21-47) | BAYLOR (11/18/14) |
| | .434 (23-53) | vs Charlotte (11/21/14) |
| 3 PT FIELD GOALS MADE | 15 | UNC ASHEVILLE (11/26/14) |
| | 10 | UNF (11/14/14) |
| 3 PT FG ATTEMPTS | 32 | UNF (11/14/14) |
| | 29 | UNC ASHEVILLE (11/26/14) |
| 3 PT FG PERCENTAGE | .517 (15-29) | UNC ASHEVILLE (11/26/14) |
| | .353 (6-17) | vs Charlotte (11/21/14) |
| FREE THROWS MADE | 25 | FLORIDA (1/7/14) |
| | 22 | at Marshall (12/1/14) |
| | 22 | vs Akron (11/23/14) |
| FREE THROW ATTEMPTS | 34 | at Marshall (12/1/14) |
| | 33 | vs Iowa State (01/03/15) |
| FREE THROW PERCENTAGE | .833 (25-30) | FLORIDA (1/7/14) |
| | .815 (22-27) | vs Akron (11/23/14) |
| REBOUNDS | 43 | at Marshall (12/1/14) |
| | 41 | OKLAHOMA STATE (12/6/14) |
| ASSISTS | 14 | FLORIDA (1/7/14) |
| | 12 | UNC ASHEVILLE (11/26/14) |
| STEALS | 11 | UNC ASHEVILLE (11/26/14) |
| | 10 | vs Iowa State (01/03/15) |
| BLOCKED SHOTS | 6 | vs Akron (11/23/14) |
| | 6 | vs Cornell (11/20/14) |
| TURNOVERS | 22 | UNC ASHEVILLE (11/26/14) |
| | 19 | NORTH CAROLINA A&T (12/30/14) |
| | 19 | COKER (12/21/14) |
| | 19 | at Marshall (12/1/14) |
| FOULS | 26 | NORTH CAROLINA A&T (12/30/14) |
| | 24 | FLORIDA (1/7/14) |



South Carolina Basketball
 South Carolina High/Low Analysis (as of Jan 08, 2015)
 All games

South Carolina - GAME LOWS

| | | |
|-----------------------|--------------|-------------------------------|
| POINTS | 63 | vs Charlotte (11/21/14) |
| | 63 | vs Akron (11/23/14) |
| | 64 | vs Iowa State (01/03/15) |
| | 65 | BAYLOR (11/18/14) |
| | 68 | CLEMSON (12/19/14) |
| | 68 | FLORIDA (1/7/14) |
| FIELD GOALS MADE | 20 | FLORIDA (1/7/14) |
| | 22 | BAYLOR (11/18/14) |
| | 22 | vs Cornell (11/20/14) |
| FIELD GOAL ATTEMPTS | 49 | FLORIDA (1/7/14) |
| | 50 | CLEMSON (12/19/14) |
| | 50 | vs Iowa State (01/03/15) |
| FIELD GOAL PERCENTAGE | .379 (22-58) | vs Cornell (11/20/14) |
| | .391 (25-64) | vs Akron (11/23/14) |
| 3 PT FIELD GOALS MADE | 2 | vs Akron (11/23/14) |
| | 2 | vs Iowa State (01/03/15) |
| 3 PT FG ATTEMPTS | 9 | NORTH CAROLINA A&T (12/30/14) |
| | 10 | vs Akron (11/23/14) |
| | 10 | vs Iowa State (01/03/15) |
| 3 PT FG PERCENTAGE | .167 (3-18) | vs Charlotte (11/21/14) |
| | .200 (2-10) | vs Akron (11/23/14) |
| | .200 (2-10) | vs Iowa State (01/03/15) |
| | .200 (4-20) | at Marshall (12/1/14) |
| FREE THROWS MADE | 8 | vs Charlotte (11/21/14) |
| | 11 | vs Akron (11/23/14) |
| FREE THROW ATTEMPTS | 9 | vs Charlotte (11/21/14) |
| | 19 | BAYLOR (11/18/14) |
| | 19 | COKER (12/21/14) |
| FREE THROW PERCENTAGE | .542 (13-24) | at Marshall (12/1/14) |
| | .550 (11-20) | vs Akron (11/23/14) |
| REBOUNDS | 23 | FLORIDA (1/7/14) |
| | 33 | BAYLOR (11/18/14) |
| ASSISTS | 8 | vs Iowa State (01/03/15) |
| | 11 | BAYLOR (11/18/14) |
| | 11 | vs Akron (11/23/14) |
| | 11 | FLORIDA (1/7/14) |
| STEALS | 4 | BAYLOR (11/18/14) |
| | 4 | FLORIDA (1/7/14) |
| BLOCKED SHOTS | 2 | vs Akron (11/23/14) |
| | 3 | UNF (11/14/14) |
| | 3 | BAYLOR (11/18/14) |
| | 3 | at Marshall (12/1/14) |
| TURNOVERS | 9 | UNF (11/14/14) |
| | 10 | BAYLOR (11/18/14) |
| FOULS | 14 | CLEMSON (12/19/14) |
| | 15 | UNF (11/14/14) |
| | 15 | vs Cornell (11/20/14) |
| | 15 | UNC ASHEVILLE (11/26/14) |



South Carolina Basketball
South Carolina High/Low Analysis (as of Jan 08, 2015)
All games

Opponent - GAME LOWS

| | | | |
|-----------------------|------|---------|-------------------------------|
| POINTS | 45 | | vs Cornell (11/20/14) |
| | 45 | | CLEMSON (12/19/14) |
| | 49 | | OKLAHOMA STATE (12/6/14) |
| | 52 | | COKER (12/21/14) |
| | 54 | | NORTH CAROLINA A&T (12/30/14) |
| FIELD GOALS MADE | 14 | | vs Cornell (11/20/14) |
| | 16 | | at Marshall (12/1/14) |
| | 16 | | OKLAHOMA STATE (12/6/14) |
| FIELD GOAL ATTEMPTS | 47 | | BAYLOR (11/18/14) |
| | 49 | | FLORIDA (1/7/14) |
| FIELD GOAL PERCENTAGE | .246 | (16-65) | OKLAHOMA STATE (12/6/14) |
| | .269 | (14-52) | vs Cornell (11/20/14) |
| 3 PT FIELD GOALS MADE | 1 | | vs Iowa State (01/03/15) |
| | 4 | | vs Akron (11/23/14) |
| | 4 | | CLEMSON (12/19/14) |
| 3 PT FG ATTEMPTS | 17 | | vs Charlotte (11/21/14) |
| | 18 | | BAYLOR (11/18/14) |
| | 18 | | CLEMSON (12/19/14) |
| | 18 | | vs Iowa State (01/03/15) |
| 3 PT FG PERCENTAGE | .056 | (1-18) | vs Iowa State (01/03/15) |
| | .192 | (5-26) | at Marshall (12/1/14) |
| FREE THROWS MADE | 7 | | CLEMSON (12/19/14) |
| | 9 | | COKER (12/21/14) |
| FREE THROW ATTEMPTS | 12 | | CLEMSON (12/19/14) |
| | 14 | | COKER (12/21/14) |
| FREE THROW PERCENTAGE | .576 | (19-33) | vs Iowa State (01/03/15) |
| | .583 | (7-12) | CLEMSON (12/19/14) |
| REBOUNDS | 20 | | NORTH CAROLINA A&T (12/30/14) |
| | 28 | | UNF (11/14/14) |
| ASSISTS | 6 | | vs Cornell (11/20/14) |
| | 6 | | vs Charlotte (11/21/14) |
| | 6 | | vs Akron (11/23/14) |
| STEALS | 2 | | UNF (11/14/14) |
| | 4 | | OKLAHOMA STATE (12/6/14) |
| | 4 | | NORTH CAROLINA A&T (12/30/14) |
| BLOCKED SHOTS | 1 | | BAYLOR (11/18/14) |
| | 1 | | COKER (12/21/14) |
| TURNOVERS | 11 | | BAYLOR (11/18/14) |
| | 12 | | OKLAHOMA STATE (12/6/14) |
| FOULS | 13 | | vs Charlotte (11/21/14) |
| | 17 | | OKLAHOMA STATE (12/6/14) |



South Carolina Basketball
 South Carolina Player High/Low Analysis (as of Jan 08, 2015)
 All games

South Carolina - I N D I V I D U A L G A M E H I G H S

| | | | |
|--------------------------|-------|-------|---|
| Points | 27 | | NOTICE, Duane at Marshall (12/1/14) |
| | 21 | | JOHNSON, Tyrone vs Baylor (11/18/14) |
| | 20 | | JOHNSON, Tyrone vs Florida (1/7/14) |
| | 20 | | NOTICE, Duane vs Oklahoma State (12/6/14) |
| | 20 | | THORNWELL, Sindarius vs Charlotte (11/21/14) |
| Field Goals Made | 10 | | NOTICE, Duane at Marshall (12/1/14) |
| | 9 | | JOHNSON, Tyrone vs Baylor (11/18/14) |
| Field Goal Att. | 24 | | THORNWELL, Sindarius vs Charlotte (11/21/14) |
| | 18 | | NOTICE, Duane at Marshall (12/1/14) |
| FG Pct (min 5 made) | 1.000 | (5-5) | KACINAS, Mindaugas vs North Carolina A&T (12/30/14) |
| | 1.000 | (5-5) | KACINAS, Mindaugas vs Charlotte (11/21/14) |
| 3-Point FG Made | 5 | | NOTICE, Duane vs Clemson (12/19/14) |
| | 3 | | NOTICE, Duane vs Oklahoma State (12/6/14) |
| | 3 | | THORNWELL, Sindarius vs Cornell (11/20/14) |
| | 3 | | JOHNSON, Tyrone vs Baylor (11/18/14) |
| 3-Point FG Att. | 10 | | THORNWELL, Sindarius vs Charlotte (11/21/14) |
| | 9 | | NOTICE, Duane vs Clemson (12/19/14) |
| | 9 | | JOHNSON, Tyrone vs Baylor (11/18/14) |
| 3-Pt FG Pct (min 2 made) | 1.000 | (2-2) | CHATKEVICIUS, L. vs UNC Asheville (11/26/14) |
| | 1.000 | (2-2) | MCKIE, Justin vs Cornell (11/20/14) |
| Free Throws Made | 9 | | JOHNSON, Tyrone vs Florida (1/7/14) |
| | 7 | | THORNWELL, Sindarius vs Oklahoma State (12/6/14) |
| Free Throw Att. | 9 | | JOHNSON, Tyrone vs Florida (1/7/14) |
| | 9 | | NOTICE, Duane vs Iowa State (01/03/15) |
| | 9 | | THORNWELL, Sindarius vs Oklahoma State (12/6/14) |
| FT Pct (min 3 made) | 1.000 | (9-9) | JOHNSON, Tyrone vs Florida (1/7/14) |
| | 1.000 | (6-6) | KACINAS, Mindaugas vs North Carolina A&T (12/30/14) |
| | 1.000 | (5-5) | NOTICE, Duane vs North Carolina A&T (12/30/14) |
| | 1.000 | (5-5) | NOTICE, Duane at Marshall (12/1/14) |
| | 1.000 | (4-4) | MCKIE, Justin vs Florida (1/7/14) |
| | 1.000 | (4-4) | THORNWELL, Sindarius vs North Carolina A&T (12/30/14) |
| | 1.000 | (4-4) | JOHNSON, Tyrone vs North Carolina A&T (12/30/14) |
| | 1.000 | (4-4) | THORNWELL, Sindarius vs Akron (11/23/14) |
| | 1.000 | (4-4) | KACINAS, Mindaugas vs Cornell (11/20/14) |
| | 1.000 | (4-4) | CARRERA, Michael vs Baylor (11/18/14) |
| | 1.000 | (3-3) | NOTICE, Duane vs Oklahoma State (12/6/14) |
| | 1.000 | (3-3) | JOHNSON, Tyrone vs Oklahoma State (12/6/14) |
| | 1.000 | (3-3) | STROMAN, Marcus vs UNC Asheville (11/26/14) |
| Rebounds | 13 | | CHATKEVICIUS, L. vs UNC Asheville (11/26/14) |
| | 12 | | KACINAS, Mindaugas vs Oklahoma State (12/6/14) |
| Assists | 9 | | JOHNSON, Tyrone vs Clemson (12/19/14) |
| | 8 | | STROMAN, Marcus vs Coker (12/21/14) |
| Steals | 6 | | THORNWELL, Sindarius vs UNC Asheville (11/26/14) |
| | 4 | | KACINAS, Mindaugas at Marshall (12/1/14) |
| | 4 | | JOHNSON, Tyrone vs Akron (11/23/14) |
| Blocked Shots | 3 | | HENRY, Demetrius vs Coker (12/21/14) |
| | 3 | | CHATKEVICIUS, L. vs Clemson (12/19/14) |
| | 3 | | CHATKEVICIUS, L. vs Oklahoma State (12/6/14) |
| | 3 | | CHATKEVICIUS, L. vs UNC Asheville (11/26/14) |
| | 3 | | HENRY, Demetrius vs UNC Asheville (11/26/14) |
| | 3 | | CHATKEVICIUS, L. vs Charlotte (11/21/14) |
| Turnovers | 7 | | THORNWELL, Sindarius vs Charlotte (11/21/14) |
| | 5 | | STROMAN, Marcus at Marshall (12/1/14) |

| | | |
|---------|----|---|
| | 5 | STROMAN, Marcus vs UNC Asheville (11/26/14) |
| Fouls | 5 | THORNWELL, Sindarius vs Florida (1/7/14) |
| | 5 | CHATKEVICIUS, L. vs Iowa State (01/03/15) |
| | 5 | HENRY, Demetrius vs Iowa State (01/03/15) |
| | 5 | KACINAS, Mindaugas vs Iowa State (01/03/15) |
| | 5 | HENRY, Demetrius at Marshall (12/1/14) |
| | 5 | CARRERA, Michael vs Baylor (11/18/14) |
| | 5 | THORNWELL, Sindarius vs Baylor (11/18/14) |
| | 5 | HENRY, Demetrius vs UNF (11/14/14) |
| Minutes | 37 | NOTICE, Duane vs Iowa State (01/03/15) |
| | 37 | JOHNSON, Tyrone vs Baylor (11/18/14) |



South Carolina Basketball
South Carolina Opponent High/Low Analysis (as of Jan 08, 2015)
All games

OPPONENT INDIVIDUAL GAME HIGHS

| | | | |
|--------------------------|-------|--------|--|
| Points | 30 | | ROWSEY, Andrew vs UNC Asheville (11/26/14) |
| | 21 | | MOORE, Dallas vs UNF (11/14/14) |
| | 20 | | Finney-Smith, Dorian vs Florida (1/7/14) |
| | 20 | | Chery, Kenny vs Baylor (11/18/14) |
| | 17 | | Frazier, Michael vs Florida (1/7/14) |
| | 17 | | Motley, Johnathan vs Baylor (11/18/14) |
| Field Goals Made | 10 | | ROWSEY, Andrew vs UNC Asheville (11/26/14) |
| | 7 | | Finney-Smith, Dorian vs Florida (1/7/14) |
| | 7 | | MOORE, Dallas vs UNF (11/14/14) |
| Field Goal Att. | 18 | | ROWSEY, Andrew vs UNC Asheville (11/26/14) |
| | 16 | | Chery, Kenny vs Baylor (11/18/14) |
| FG Pct (min 5 made) | .667 | (6-9) | Motley, Johnathan vs Baylor (11/18/14) |
| | .583 | (7-12) | Finney-Smith, Dorian vs Florida (1/7/14) |
| 3-Point FG Made | 6 | | ROWSEY, Andrew vs UNC Asheville (11/26/14) |
| | 5 | | ROBERTSON, David vs UNC Asheville (11/26/14) |
| 3-Point FG Att. | 12 | | ROWSEY, Andrew vs UNC Asheville (11/26/14) |
| | 10 | | Forte, Phil vs Oklahoma State (12/6/14) |
| | 10 | | LOOP, Austin at Marshall (12/1/14) |
| 3-Pt FG Pct (min 2 made) | 1.000 | (3-3) | Fallas, JoJo vs Cornell (11/20/14) |
| | 1.000 | (2-2) | KEYES, Denzel vs North Carolina A&T (12/30/14) |
| | 1.000 | (2-2) | Newberry, Jeff vs Oklahoma State (12/6/14) |
| | 1.000 | (2-2) | UBARU, Kem vs UNC Asheville (11/26/14) |
| Free Throws Made | 7 | | McKay, Jameel vs Iowa State (01/03/15) |
| | 7 | | Hogue, Dustin vs Iowa State (01/03/15) |
| Free Throw Att. | 13 | | Hogue, Dustin vs Iowa State (01/03/15) |
| | 10 | | McKay, Jameel vs Iowa State (01/03/15) |
| FT Pct (min 3 made) | 1.000 | (6-6) | IBITAYO, Deji vs Akron (11/23/14) |
| | 1.000 | (6-6) | CHEATHAM, Jr., Kwan vs Akron (11/23/14) |
| | 1.000 | (5-5) | Miller, Shonn vs Cornell (11/20/14) |
| | 1.000 | (5-5) | Motley, Johnathan vs Baylor (11/18/14) |
| | 1.000 | (4-4) | ROPER, Jordan vs Clemson (12/19/14) |
| | 1.000 | (4-4) | LOOP, Austin at Marshall (12/1/14) |
| | 1.000 | (4-4) | MOORE, Dallas vs UNF (11/14/14) |
| | 1.000 | (3-3) | Jalen Watson vs Coker (12/21/14) |
| | 1.000 | (3-3) | BLOSSOMGAME, Jaron vs Clemson (12/19/14) |
| Rebounds | 15 | | Trey James vs Coker (12/21/14) |
| | 11 | | JOHNSON, Jay at Marshall (12/1/14) |
| Assists | 7 | | O'Neale, Royce vs Baylor (11/18/14) |
| | 3 | | Carter, Eli vs Florida (1/7/14) |
| | 3 | | Kurtz, Jacob vs Florida (1/7/14) |
| | 3 | | Niang, Georges vs Iowa State (01/03/15) |
| | 3 | | HAMILTON, Amari vs North Carolina A&T (12/30/14) |
| | 3 | | ABDULLAH, Ahmad vs North Carolina A&T (12/30/14) |
| | 3 | | HALL, Rod vs Clemson (12/19/14) |
| | 3 | | Hickey, Anthony vs Oklahoma State (12/6/14) |
| | 3 | | NIKOLIC, Aleksa at Marshall (12/1/14) |
| | 3 | | VANNATTA, Kevin vs UNC Asheville (11/26/14) |
| | 3 | | ROBERTSON, David vs UNC Asheville (11/26/14) |
| | 3 | | MACKEY, Trent vs UNF (11/14/14) |
| Steals | 4 | | ROWSEY, Andrew vs UNC Asheville (11/26/14) |
| | 3 | | McKay, Jameel vs Iowa State (01/03/15) |
| | 3 | | ROPER, Jordan vs Clemson (12/19/14) |
| | 3 | | Hickey, Anthony vs Oklahoma State (12/6/14) |

| | | |
|---------------|---|---|
| | 3 | TAYLOR, Ryan at Marshall (12/1/14) |
| | 3 | HENRY, Pierria vs Charlotte (11/21/14) |
| | 3 | Chery, Kenny vs Baylor (11/18/14) |
| Blocked Shots | 3 | Walker, Chris vs Florida (1/7/14) |
| | 3 | CHEATHAM, Jr., Kwan vs Akron (11/23/14) |
| | 3 | THORNE JR., Mike vs Charlotte (11/21/14) |
| Turnovers | 8 | HENRY, Pierria vs Charlotte (11/21/14) |
| | 7 | Cherry, Devin vs Cornell (11/20/14) |
| Fouls | 5 | Hill, Kasey vs Florida (1/7/14) |
| | 5 | Chiozza, Chris vs Florida (1/7/14) |
| | 5 | DOBY, Khary vs North Carolina A&T (12/30/14) |
| | 5 | BURROUGH, Steven vs North Carolina A&T (12/30/14) |
| | 5 | DJITTE, Sidy vs Clemson (12/19/14) |
| | 5 | TAYLOR, Ryan at Marshall (12/1/14) |
| | 5 | Miller, Shonn vs Cornell (11/20/14) |
| | 5 | DAVENPORT, Chris vs UNF (11/14/14) |
| | 5 | DANIELS, Demarcus vs UNF (11/14/14) |
| | 5 | BEECH, Beau vs UNF (11/14/14) |