



# SOUTH CAROLINA

## 2009 WOMEN'S SOCCER

**Contact:** Miquel Jacobs • **Office:** (803) 777-1516 • **Cell:** (803) 530-5727 • **Fax:** (803) 777-2967  
**Email:** jacobsm2@mailbox.sc.edu • Roost Building B, 1322 Heyward Street, Columbia, SC 29208  
[www.GamecocksOnline.com](http://www.GamecocksOnline.com)

### 2009 Schedule/Results

DAY	DATE	OPPONENT	TIME/RESULT
Fri.	Aug. 21	Mexican National Team	W, 2-0
<b>Thur.</b>	<b>Aug. 27</b>	<b>College of Charleston</b>	<b>W, 2-0</b>
<b>Sun.</b>	<b>Aug. 30</b>	<b>Western Carolina</b>	<b>W, 2-0</b>
Fri.	Sept. 4	Louisville (1)	W, 3-0
Sun.	Sept. 6	Cincinnati (1)	W, 4-0
Fri.	Sept. 11	Clemson (2)	W, 5-0
Sun.	Sept. 13	UNC Wilmington	W, 2-0
<b>Fri.</b>	<b>Sept. 18</b>	<b>#17 UCF</b>	<b>W, 1-0</b>
<b>Sun.</b>	<b>Sept. 20</b>	<b>South Alabama</b>	<b>W, 6-1</b>
<b>Fri.</b>	<b>Sept. 25</b>	<b>Vanderbilt*</b>	<b>W, 2-1</b>
<b>Sun.</b>	<b>Sept. 27</b>	<b>Kentucky*</b>	<b>W, 1-0</b>
Fri.	Oct. 2	Mississippi*	W, 1-0
Sun.	Oct. 4	Mississippi State*	T, 1-1 (2OT)
<b>Fri.</b>	<b>Oct. 9</b>	<b>Auburn*</b>	<b>W, 1-0 (OT)</b>
<b>Sun.</b>	<b>Oct. 11</b>	<b>Alabama*</b>	<b>W, 2-0</b>
Fri.	Oct. 16	#23 Georgia*	L, 1-2
Sun.	Oct. 18	Tennessee*	W, 2-1
<b>Thur.</b>	<b>Oct. 22</b>	<b>Arkansas*</b>	<b>W, 2-0</b>
Sun.	Oct. 25	#17 LSU* (ESPNU)	L, 0-1
Fri.	Oct. 30	#10 Florida*	L, 0-3
Wed.	Nov. 4	(3) SEC Quarterfinal - #25 Georgia	W, 3-2
Fri.	Nov. 6	(3) SEC Semifinal - #8 Florida	W, 1-0
Sun.	Nov. 8	(3) SEC Final - #13 LSU (ESPNU)	T, 1-1 (8-7 pks)
Fri.	Nov. 13	(4) Davidson	W, 4-0
Sun.	Nov. 15	(4) #12 Rutgers	1 p.m.

Home matches in **BOLD** \*SEC Match  
 1-Louisville Tournament, Louisville, Ky.  
 2-Carolina Cup, Clemson, S.C.  
 3-Orange Beach, Ala.  
 4-NCAA First/Second Round, Columbia, S.C.

Game 24

### #8 South Carolina Meets #12 Rutgers In NCAA Second Round



Eugene E. Stone III Stadium  
 Columbia, S.C.  
 Nov. 15, 2009 • 1 p.m.

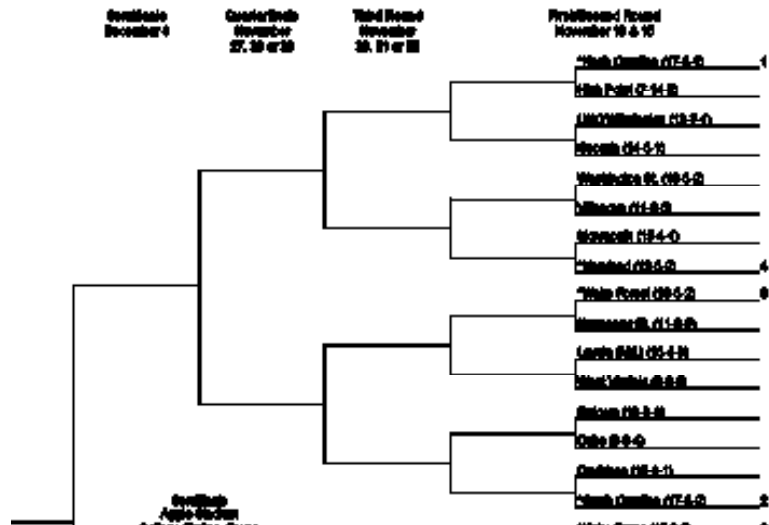


#8 South Carolina  
 (18-3-2, 7-3-1 SEC)

#12 Rutgers  
 (14-3-4, 7-1-3 Big EAST)



### 2009 NCAA Division I Women's SOCCER CHAMPIONSHIP



### South Carolina Probable Starters

#	Name	Pos.	Class	GP-GS	G	A	P	Shots	Notes
21	Brittany Rhoades	D	Jr.	23-22	0	0	0	4	2007 Freshman All-American is team's top lockdown defender
7	Blakely Mattern	D	Sr.	23-23	7	1	15	21	Lowe's Senior CLASS Award finalist with another strong season
20	Ellen Fahey	D	So.	22-22	0	4	4	3	Physical center back has started every game of her career
12	Shannon Bigbie	D	Sr.	21-19	1	1	3	8	Solid senior plays up top and on the backline
5	Kim Miller	M	Sr.	23-23	3	11	17	29	Team engine has five game winning assists this season
16	Lindsay Small	M	Sr.	23-23	4	3	11	38	Consistent player scores and creates as defensive mid
15	Kortney Rhoades	M	So.	23-22	3	2	8	26	Transfer hit GWG to defeat Georgia in SEC Quarters
3	Samantha Diaz-Matosas	F	Sr.	23-23	4	5	13	30	Athletic player can play up top or back
4	Kayla Grimsley	F	So.	23-23	13	7	33	42	One goal shy of tying USC single-season record
27	Brooke Jacobs	F	Jr.	23-22	5	3	13	41	Career SOG% leader has been converting goals this year

No.	Name	Pos.	Yr.	Min.	GA	GAA.	Svs.	W-L	SO	Notes
29	Mollie Patton	GK	R-Jr.	2087:19	13	0.52	59	18-3-2	14	Remains in national top five with 14 shutouts



**2009 NUMERICAL ROSTER**

No.	Name	Pos.	Ht.	Cl/Exp.	Hometown (High School)
0	Alex Holland	GK	5-7	Fr./HS	Cary, Ill. (Cary-Grove)
1	Roya Mojarab	GK	5-4	Soph./1L	Tacoma, Wash. (Curtis)
2	Megan Fligg	D/F	5-6	Fr./HS	Gainesville, Ga. (Chestatee)
3	Samantha Diaz-Matosas	D	5-7	Sr./3L	Lilburn, Ga. (Brookwood)
4	Kayla Grimsley	M/F	5-4	Soph./1L	Lakeland, Fla. (George W. Jenkins)
5	Kim Miller	M	5-2	Sr./3L	Farmingdale, N.Y. (Famingdale)
7	Blakely Mattern	D	5-9	Sr./3L	Simpsonville, S.C. (JL Mann)
8	Christine Watts	M	5-6	Fr./HS	Duluth, Ga. (Peachtree Ridge)
9	Maria Petroni	F	5-10	Soph./1L	Flowery Branch, Ga. (Buford)
10	Natalie Aaron	F	5-5	Soph./1L	Brentwood, Tenn. (Battle Ground Academy)
11	Idana DeCecco	D	5-6	Soph./1L	Sherwood Park, Alberta (Archbishop Jordan)
12	Shannon Bigbie	F/M	5-6	Sr./3L	Lexington, S.C. (Lexington)
13	Jocelyn Spurrier	D	5-8	R-Fr./HS	Lawrenceville, Ga. (Brookwood)
14	Lolly Holland	M	5-4	Soph./1L	Suwanee, Ga. (South Forsyth)
15	Kortney Rhoades	M	5-4	Soph.TR	Wilmington, Del. (Padua // St. Joseph's)
16	Lindsay Small	M/D	5-7	Sr./3L	Suffield, Conn. (Suffield)
17	Maggie Blackwell	D	5-6	R-Soph./SQ	Marietta, S.C. (Travelers Rest)
18	Ali Glemser	D	5-3	R-Fr./HS	Collierville, Tenn. (Collierville)
19	Kira Campbell	M	5-8	Soph./1L	Lexington, S.C. (Lexington)
20	Ellen Fahey	D	5-7	Soph./1L	Fort Wright, Ky. (Notre Dame Academy)
21	Brittany Rhoades	D	5-3	Jr./2L	Wilmington, Del. (Padua)
22	Dani Henry	F/D	5-4	R-Fr./HS	Avondole, Pa. (Padua)
23	Kacie Brewer	F/D	5-5	Sr./3L	Merritt Island, Fla. (Merritt Island)
25	Maddy Kill	M	5-7	Jr./TR	Marietta, Ga. (Marist School // Seton Hall)
26	Rae Wilson	F	5-5	Fr./HS	Greenville, S.C. (JL Mann)
27	Brooke Jacobs	F	5-3	Jr./2L	Chambersburg, Pa. (Chambersburg Area)
28	Brittany DeWitt	D	5-6	Fr./HS	Greensboro, N.C. (N.C. School of Science & Math)
29	Mollie Patton	GK	5-7	R-Jr./1L	Milford, Ohio (Milford)
32	Aly Shattls	M	5-1	Sr./3L	Huntington, W.Va. (Huntington)
35	Darien Vercillo	GK	5-6	Fr./HS	Yorba Linda, Calif. (Mater Dei)

**2009 ALPHABETICAL ROSTER**

No.	Name	Pos.	Ht.	Cl/Exp.	Hometown (High School)
10	Natalie Aaron	F	5-5	Soph./1L	Brentwood, Tenn. (Battle Ground Academy)
12	Shannon Bigbie	F/M	5-6	Sr./3L	Lexington, S.C. (Lexington)
17	Maggie Blackwell	D	5-6	R-Soph./SQ	Marietta, S.C. (Travelers Rest)
23	Kacie Brewer	F/D	5-5	Sr./3L	Merritt Island, Fla. (Merritt Island)
19	Kira Campbell	M	5-8	Soph./1L	Lexington, S.C. (Lexington)
11	Idana DeCecco	D	5-6	Soph./1L	Sherwood Park, Alberta (Archbishop Jordan)
28	Brittany DeWitt	D	5-6	Fr./HS	Greensboro, N.C. (N.C. School of Science & Math)
3	Samantha Diaz-Matosas	D	5-7	Sr./3L	Lilburn, Ga. (Brookwood)
20	Ellen Fahey	D	5-7	Soph./1L	Fort Wright, Ky. (Notre Dame Academy)
2	Megan Fligg	D/F	5-6	Fr./HS	Gainesville, Ga. (Chestatee)
18	Ali Glemser	D	5-3	R-Fr./HS	Collierville, Tenn. (Collierville)
4	Kayla Grimsley	M/F	5-4	Soph./1L	Lakeland, Fla. (George W. Jenkins)
22	Dani Henry	F/D	5-4	R-Fr./HS	Avondole, Pa. (Padua)
0	Alex Holland	GK	5-7	Fr./HS	Cary, Ill. (Cary-Grove)
14	Lolly Holland	M	5-4	Soph./1L	Suwanee, Ga. (South Forsyth)
27	Brooke Jacobs	F	5-3	Jr./2L	Chambersburg, Pa. (Chambersburg Area)
25	Maddy Kill	M	5-7	Jr./TR	Marietta, Ga. (Marist School // Seton Hall)
7	Blakely Mattern	D	5-9	Sr./3L	Simpsonville, S.C. (JL Mann)
5	Kim Miller	M	5-2	Sr./3L	Farmingdale, N.Y. (Famingdale)
1	Roya Mojarab	GK	5-4	Soph./1L	Tacoma, Wash. (Curtis)
29	Mollie Patton	GK	5-7	R-Jr./1L	Milford, Ohio (Milford)
9	Maria Petroni	F	5-10	Soph./1L	Flowery Branch, Ga. (Buford)
21	Brittany Rhoades	D	5-3	Jr./2L	Wilmington, Del. (Padua)
15	Kortney Rhoades	M	5-4	Soph.TR	Wilmington, Del. (Padua // St. Joseph's)
32	Aly Shattls	M	5-1	Sr./3L	Huntington, W.Va. (Huntington)
16	Lindsay Small	M/D	5-7	Sr./3L	Suffield, Conn. (Suffield)
13	Jocelyn Spurrier	D	5-8	R-Fr./HS	Lawrenceville, Ga. (Brookwood)
35	Darien Vercillo	GK	5-6	Fr./HS	Yorba Linda, Calif. (Mater Dei)
8	Christine Watts	M	5-6	Fr./HS	Duluth, Ga. (Peachtree Ridge)
26	Rae Wilson	F	5-5	Fr./HS	Greenville, S.C. (JL Mann)

**PRONUNCIATIONS**

**Kira** Campbell -- KEER-uh  
**Idana DeCecco** -- id-DAN-uh de-CHECK-oh  
 Sam **Diaz-Matosas** -- DIAZ mah-TOE-sas  
 Ellen **Fahey** -- FAYE-he  
**Roya Mojarab** -- ROY-ah mo-JAR-uhb  
 Darien **Vercillo** -- ver-SILL-oh

**SOUTH CAROLINA  
 2009 SEC RANKINGS  
 (as of 11/14/09)**

Category	Pl.	No.
Goals	T-2nd	47
Goals Per Game	T-3rd	2.04
<b>Goals Allowed</b>	<b>1st</b>	<b>13</b>
<b>GAA</b>	<b>1st</b>	<b>0.55</b>
Assists	3rd	41
Assists Per Game	3rd	1.78
Points	3rd	135
Points Per Game	3rd	5.87
Shots	8th	310
Shots Per Game	9th	13.48
Shot %	2nd	.152
<b>Shot on Goal %</b>	<b>1st</b>	<b>.532</b>
Saves	12th	61
Saves Per Game	12th	2.65
<b>Shutouts</b>	<b>1st</b>	<b>14</b>
<b>Shots Allowed</b>	<b>1st</b>	<b>183</b>
<b>SOG Allowed</b>	<b>1st</b>	<b>74</b>
<b>Points Allowed</b>	<b>1st</b>	<b>36</b>
Fouls	10th	186
Corners	3rd	118
Offsides	2nd	51
Yellow Cards	T-7th	9

**INDIVIDUAL**

Name	Category	Pl.	No.
Grimsley	<b>Goals</b>	<b>T-1st</b>	<b>13</b>
	Assists	T-5th	7
	Points	2nd	33
	Points/gm	2nd	1.43
Miller	Assists	2nd	11
	Assists/gm	2nd	0.48
Patton	<b>GAA</b>	<b>1st</b>	<b>0.52</b>
	<b>Shutouts</b>	<b>1st</b>	<b>14</b>
	Save %	4th	.831
	Saves	12th	59



## SEC STANDINGS

EASTERN DIVISION Team	CONF		W-L	ALL Pct.
	W-L	Pts		
Florida	8-1-2	26	16-5-2	.739
<b>South Carolina</b>	<b>7-3-1</b>	<b>22</b>	<b>18-3-2</b>	<b>.826</b>
Georgia	7-4-0	21	15-5-1	.738
Vanderbilt	5-6-0	15	11-8-1	.575
Tennessee	4-5-2	14	8-9-3	.500
Kentucky	2-8-1	7	5-10-4	.368

WESTERN DIVISION Team	CONF		W-L	ALL Pct.
	W-L	Pts		
LSU	8-2-1	25	15-4-4	.739
Ole Miss	7-2-2	23	13-6-2	.667
Auburn	6-5-0	18	10-9-3	.523
Arkansas	2-7-2	8	8-7-4	.526
Alabama	2-8-1	7	6-11-1	.361
Mississippi State	1-8-2	5	9-8-2	.526

Games through November 14

## THIS WEEK IN THE SEC

### Wednesday, November 13

Florida vs. Illinois State (Columbus, Ohio)	UF, 2-0
Ole Miss vs. Washington (Portland, Ore.)	UW, 1-0
South Carolina vs. Davidson (Columbia S.C.)	USC, 4-0
Auburn vs. California (Tallahassee, Fla.)	Cal, 2-1 (OT)
Georgia vs. UNC-Wilmington (Chapel Hill, N.C.)	UGA, 3-0
LSU vs. UAPB (Baton Rouge, La.)	LSU, 7-0

### Sunday, November 15

Florida vs. Oregon State (Columbus, Ohio)	1 p.m.
South Carolina vs. Rutgers (Columbia S.C.)	1 p.m.
Georgia vs. North Carolina (Chapel Hill, N.C.)	1 p.m.
LSU vs. Texas A&M (Baton Rouge, La.)	2 p.m.

All Times Eastern

## SEC PRESEASON POLL

EASTERN DIVISION	WESTERN DIVISION
Florida (11).....66	LSU (8)..... 63
Georgia (1).....53	Auburn (4)..... 58
Tennessee .....43	Ole Miss..... 43
South Carolina .....40	Alabama ..... 39
Vanderbilt .....25	Arkansas..... 25
Kentucky .....19	Mississippi State .... 18

**Overall Champion:** Florida (11), Auburn (1)

## CAROLINA IN THE NCAA TOURNAMENT

South Carolina's won its first NCAA Tournament game Friday night with its 4-0 win against Davidson. Playing in its third consecutive tournament and first time as a national seed (No. 2), the Gamecocks improve to 1-2-1 all-time in NCAA Tournament games. The first bid came in a 2-0 loss at Charlotte in 1998 when the Gamecocks went 11-6-1 in the regular season. In 2007, Carolina earned an at-large bid with a 14-6-2 record when the Gamecocks played Duke to a 1-1 draw at Athens, Ga. Duke advanced with a 4-1 edge in penalty kicks. In 2008, South Carolina dropped a 3-2 overtime decision to William & Mary at Durham, N.C.

## SCOUTING RUTGERS

No. 12 Rutgers advanced to the second round with a 2-0 shutout of Duke Friday night. The Scarlet Knights have consistently been in the Top 25 this season and enter with a 14-3-4 record (7-1-3 Big EAST). Their lone conference loss came to another national No. 2 seed - Notre Dame. The team is led by senior goalkeeper Erin Guthrie - the Big EAST goalkeeper of the year - who sports a 0.44 goals against average to go with 11 shutouts. Missing in action the rest of the season due to injury is Ashley Jones who leads the team with eight goals and three assists for 19 points. Karla Schacher is next in line with five goals and four assists for 14 points.

## CHASING 100

In her ninth season, South Carolina head coach Shelley Smith sports a 99-65-24 record at the helm of the Gamecocks. She is one victory away from earning win No. 100 at South Carolina. Her all-time coaching record is 140-100-26 which includes her 41-35-2 record while coaching Rhode Island for four seasons.

## SMITH NAMED SEC COACH OF THE YEAR, FOUR GAMECOCKS EARN ALL-SEC HONORS

South Carolina head coach **Shelley Smith** was named SEC Coach of the Year, senior **Blakely Mattern** was named SEC Scholar Athlete of the Year, and four Gamecocks earned All-SEC honors to cap the most successful regular season in program history.

It is the first SEC Coach of the Year honor for Smith, who guided South Carolina to school records for conference (seven) and overall (15) victories this season. The Gamecocks recorded a program-best second place finish in the SEC East and came within one game of winning the overall title.

Mattern and sophomore **Kayla Grimsley** were two of only four unanimous First Team All-SEC selections. Seniors **Kim Miller** and **Samantha Diaz-Matosas** earned their first All-SEC honors after the duo made the second team, as voted by the league's coaches.

## SENIOR CLASS SET THE BAR HIGH

The 2009 senior class will leave Columbia as the winningest senior class in program history. Entering weekend play, the group of seniors hold a 54-22-14 (.678) record, the most wins and best win-percentage for a South Carolina senior class. The group of seven has led Carolina to four consecutive SEC tournament appearances, the first SEC title in program history and the first NCAA Tournament national seed in program history.

## SOUTH CAROLINA VS. RANKED TEAMS

Date	Opponent	Result	Date	Opponent	Result
9-18-96	#9 Clemson	W, 3-2	10-2-05	at #20 Tennessee	L, 1-2
10-4-97	at #9 Clemson	L, 0-5	10-7-05	#18 Vanderbilt	L, 0-2
10-26-97	at #9 Florida	L, 2-5	10-29-05	at #16 Florida	L, 0-3
9-11-98	at #17 Georgia	W, 2-0	8-25-06	vs. #13 Illinois	L, 0-1
10-7-98	#13 Clemson	L, 1-3	9-24-06	at #13 Auburn	W, 1-0
11-5-98	vs. #3 Florida	L, 0-6	9-29-06	#16 Tennessee	T, 0-0 (2OT)
10-8-99	at #9 Clemson	L, 0-4	10-27-06	#13 Florida	T, 1-1 (2OT)
10-29-99	at #3 Florida	L, 0-5	9-1-07	at #1 North Carolina	W, 1-0
9-8-00	at #1 UNC	L, 1-9	9-22-07	at #20 Clemson	L, 0-1
9-12-00	vs. #17 Duke	L, 1-5	9-27-07	at #10 Tennessee	L, 2-3 (OT)
10-8-00	at #14 Kentucky	L, 1-5	10-21-07	#25 Auburn	W, 2-0
10-29-00	#16 Florida	L, 0-3	10-25-07	at #20 LSU	T, 1-1 (2OT)
9-30-01	at #20 Florida	L, 0-1	11-2-07	at #22 Florida	L, 0-2
10-2-01	at #9 Clemson	L, 0-3	11-7-07	vs. #15 Tennessee	W, 2-0
10-5-01	#16 Kentucky	L, 0-1	11-9-07	vs. #13 Georgia	L, 0-2
10-21-01	at #25 Tennessee	L, 1-3	9-14-08	vs. #7 Florida State	T, 3-3 (2OT)
9-11-02	#18 Clemson	L, 0-1	10-23-08	#13 LSU	T, 0-0 (2OT)
10-20-02	#13 Tennessee	T, 1-1 (2OT)	10-30-08	#7 Florida	L, 0-1
8-29-03	at #20 Clemson	L, 0-1 (OT)	9-18-09	#17 UCF	W, 1-0
9-12-03	at #5 Texas A&M	L, 1-2 (OT)	10-16-09	at #23 Georgia	L, 1-2
10-3-03	#14 Auburn	T, 0-0 (2OT)	10-25-09	at #14 LSU	L, 0-1
11-1-03	at #10 Florida	L, 0-2	10-30-09	at #10 Florida	L, 0-3
11-7-03	vs. #16 Tennessee	L, 0-1	11-04-09	vs. #25 Georgia	W, 3-2
9-12-04	at #4 Virginia	L, 2-5	11-06-09	vs. #8 Florida	W, 1-0
9-15-04	#7 Clemson	W, 2-0	11-08-09	vs. #13 LSU	T, 1-1
10-3-04	#19 Tennessee	L, 1-3	<b>Overall:</b> 10-34-8	<b>vs. Top 10:</b> 4-13-1	
10-29-04	#18 Florida	L, 1-2 (2OT)	<b>Home:</b> 4-8-5	<b>Road:</b> 3-21-1	<b>Neutral:</b> 3-5-2



## CAROLINA'S RECORD WHEN ...

**Overall** **18-3-2**

Home ..... 10-0-0  
 Away ..... 4-3-1  
 Neutral ..... 4-0-1

Leading At The Half ..... 12-1-0  
 Tied At The Half ..... 5-0-1  
 Trailing At The Half ..... 1-2-1

Scores In The First Half ..... 13-1-0  
 Overtime Games ..... 1-0-2

On Television ..... 1-2-1  
 In Tournaments ..... 7-0-1  
 Against 2008 NCAA Participants ..... 6-3-1

Vs. Top 25 ..... 3-3-1

Longest Winning Streak ..... W11  
 Longest Unbeaten Streak ..... U14  
 Active Streak ..... U4

### Against Opponents

USC Scores First ..... 17-1-1  
 Opponent Scores First ..... 1-2-1

Scores 1 Goal ..... 5-1-2  
 Scores 2 Goals ..... 7-0-0  
 Scores 3+ Goals ..... 6-0-0

Opponent Scores 1 Goal ..... 3-1-2  
 Opponent Scores 2 Goals ..... 1-1-0  
 Opponent Scores 3+ Goals ..... 0-1-0

Is Shutout ..... 0-2-0  
 Shut Out Opponent ..... 14-0-0

Takes More Shots ..... 15-1-2  
 Opponent Takes More Shots ..... 3-2-0

### Time

Day Games ..... 7-1-2  
 Night Games ..... 11-2-0

Mondays ..... 0-0-0  
 Wednesdays ..... 1-0-0  
 Thursdays ..... 2-0-0  
 Fridays ..... 8-2-0  
 Saturdays ..... 0-0-0  
 Sundays ..... 7-1-2

August ..... 2-0-0  
 September ..... 8-0-0  
 October ..... 5-3-1  
 November ..... 3-0-1

After A Win ..... 13-2-2  
 After A Loss ..... 2-1-0  
 After A Tie ..... 2-0-0

Wearing White ..... 12-2-0  
 Wearing Garnet ..... 0-0-2  
 Wearing Black ..... 6-1-0

### THE BEST SEASON EVER?

With a 18-3-2 record and 7-3-1 SEC record, the Gamecocks have already earned program bests for overall and conference wins in a season. The Gamecocks finished a program-best second in the SEC East and came within one game of the winning the SEC title.

### GRIMSLEY JOINS ELITE COMPANY

Sophomore **Kayla Grimsley** became just the fifth player in South Carolina history to register a 10-goal season after scoring in the 63rd minute against Arkansas. Grimsley joins Jennie Ondo, Angela Austin, Debbie Smith and Darcel Mollon as players to reach the plateau. She also needs one goal to tie Ondo for the single-season goals record (14).

### GETTING THE W'S

South Carolina's 18 wins are tied for third in the country behind the top two teams in this week's national polls: #1 Stanford (20) and #2 Portland (19). UCLA, North Carolina, Notre Dame and BYU are the teams that have 18 wins this season along with the Gamecocks.

### PATTON SETS THE SEC RECORD

Patton recently set the SEC record for consecutive shutouts when she notched seven straight, passing the previous record of six held by Kentucky's Carrie Kuhnell (1995) and Auburn's Megan Rivera (2003).

### FIRST TIME OPPONENTS

The match between Rutgers and South Carolina is the first between the programs. South Carolina faced four opponents for the first time in 2009 and went 4-0 in those games. The Gamecocks defeated Louisville (3-0), Cincinnati (4-0), UCF (1-0) and South Alabama (6-1). Last season, Carolina went 0-1-2 against first time opponents, drawing UNC Wilmington and #7 Florida State before dropping a tight game to Western Carolina.

### JACOBS RELISHES POSTSEASON PLAY

Junior Brooke Jacobs annually saves some of her best games for the NCAA Tournament. The Chambersburg, Pa., native had a breakout game against William & Mary in the 2007 first round by knocking in Carolina's first goal and adding an assist for three points total. The striker matched the effort in Friday's first round match by scoring the first goal of the game and adding an assist on the final goal for another three point game. Her six points in NCAA matches are a school record.

### EXCEEDING EXPECTATIONS

For the fourth consecutive year Coach Shelley Smith's squad exceeded preseason expectations by finishing strong in conference play. Picked by the coaches to finish last in 2006, the Gamecocks earned fifth in the Eastern division. Picked to finish last in the East in the 2007 SEC Preseason poll, the Gamecocks tied a program record for wins en route to a fourth place division finish. Carolina was picked fourth in the 2008 preseason poll and again improved in the standings with a third place finish in the Eastern division. Coach Smith's team was again picked fourth in 2009 and responded with an SEC East runner-up finish that earned her SEC Coach of the Year honors.

### THE ROAD TO REDEMPTION

South Carolina lost only three games this season, dropping road matches to No. 23 Georgia (2-1), No. 13 LSU (1-0) and No. 8 Florida (3-0). After earning the fourth seed for the SEC Tournament in Orange Beach, South Carolina's road to the title was setup to allow the Gamecocks to avenge their only three losses of the season. In Wednesday's quarterfinal round, the Gamecocks defeated Georgia 3-2. In Friday's semifinal round, the Gamecocks defeated Florida 1-0. The Gamecocks officially tied LSU (1-1) in the final, but Carolina earned the title with an 8-7 edge in penalty kicks, giving South Carolina the rare chance to post a win or draw against every team on the 2009 schedule (also tied Mississippi State on the road).

### MEXICAN FORESHADOW

South Carolina's incredible run this season may have been foreshadowed by the preseason ending 2-0 shutout win of the Mexican National Team. Since that match, the Mexican team went 4-0 in its collegiate tour and outscored opponents 14-2 with wins at Kennesaw State (5-0), previously ranked TCU (4-1), #14 Southern California (2-0) and Cal State Fullerton (3-1).

### HOME AT THE STONE

South Carolina has been nearly unstoppable at Stone Stadium the past three seasons, posting a 32-2-5 record at home since 2006. The streak included a 15-game unbeaten streak from Aug. 31, 2006-Oct. 5, 2007 and a 13-game unbeaten streak at "The Graveyard" from Oct. 19, 2007-Oct. 23, 2008. The lone blemishes on the record are a double-overtime loss to Vanderbilt (Oct. 7, 2007) and a loss to #7 Florida (Oct. 30, 2008). The season opening win against College of Charleston was **Coach Shelley Smith's** 50th win at Stone Stadium. Carolina is a perfect 10-0-0 at Stone Stadium this season.



## HOME MATCHES UNDER SMITH

DATE	OPPONENT	RESULT
9-4-01	Davidson	W, 4-0
9-17-01	Furman	W, 3-0
9-19-01	SC State	W, 12-0
10-5-01	Kentucky	L, 0-1
10-7-01	Vanderbilt	L, 0-1
10-26-01	Ole Miss	W, 1-0
10-28-01	Mississippi State	L, 1-2 (OT)
11-2-01	UNC Greensboro	W, 2-0
8-30-02	Birmingham Southern	W, 3-0
9-11-02	Clemson	L, 0-1
9-14-02	College of Charleston	W, 3-1
9-29-02	Florida	W, 1-0 (OT)
10-11-02	Arkansas	L, 1-2 (OT)
10-13-02	LSU	W, 2-0
10-18-02	Georgia	L, 1-2 (OT)
10-20-02	Tennessee	T, 1-1 (OT)
10-29-02	Wofford	W, 1-0
9-2-03	Furman	L, 0-1
9-5-03	Charleston Southern	W, 2-1
9-7-03	Darmouth	W, 3-1
9-17-03	Davidson	W, 4-1
9-21-03	NC State	W, 1-0
10-3-03	Auburn	T, 0-0 (OT)
10-5-03	Alabama	W, 2-0
10-17-03	Vanderbilt	L, 0-1
10-19-03	Kentucky	W, 2-1
8-27-04	Georgia State	W, 1-0
9-3-04	Houston	W, 4-1
9-5-04	Iowa State	W, 1-0
9-15-04	Clemson	W, 2-0
9-19-04	Charlotte	W, 2-1 (2 OT)
10-1-04	Georgia	T, 1-1 (OT)
10-3-04	Tennessee	L, 1-3
10-15-04	Ole Miss	L, 0-1
10-17-04	Mississippi State	L, 2-3 (OT)
10-24-04	LSU	W, 2-1
10-29-04	Florida	L, 1-2 (2 OT)
8-26-05	Mercer	W, 7-0
8-29-05	Furman	W, 2-1
9-18-05	Miami (Fla.)	W, 2-1
9-23-05	Auburn	L, 0-1
9-25-05	Alabama	W, 2-0
10-7-05	Vanderbilt	L, 0-2
10-9-05	Kentucky	L, 1-2 (2 OT)
10-21-05	Arkansas	L, 1-2
8-31-06	Francis Marion	W, 2-1
9-3-06	James Madison	W, 3-1
9-5-06	The Citadel	W, 4-0
9-15-06	Clemson	W, 1-0
9-17-06	Jacksonville State	W, 6-0
9-29-06	Tennessee	T, 0-0 (2 OT)
10-1-06	Georgia	W, 2-1
10-13-06	Mississippi State	W, 1-0
10-15-06	Ole Miss	T, 0-0 (2 OT)
10-20-06	LSU	W, 2-1 (2 OT)
10-27-06	Florida	T, 1-1 (2 OT)
9-3-07	East Tennessee State	W, 5-2
9-12-07	Winthrop	W, 5-0
9-23-07	Marshall	W, 4-0
10-5-07	Kentucky	W, 2-0
10-7-07	Vanderbilt	L, 0-1 (2OT)
10-19-07	Alabama	W, 2-0
10-21-07	Auburn	W, 1-0
10-28-07	Arkansas	W, 1-0
8-28-08	East Carolina	W, 1-0
8-31-08	Boston University	W, 1-0
9-5-08	Clemson	W, 1-0
9-7-08	Furman	W, 2-1
9-19-08	East Tennessee State	W, 4-0
9-26-08	Tennessee	W, 2-1
9-28-08	Georgia	T, 1-1
10-10-08	Mississippi State	W, 2-1
10-12-08	Ole Miss	W, 3-2
10-23-08	LSU	T, 0-0
10-30-08	Florida	L, 0-1
8-27-09	College of Charleston	W, 2-0
8-30-09	Western Carolina	W, 2-0
9-18-09	UCF	W, 1-0
9-20-09	South Alabama	W, 6-1
9-25-09	Vanderbilt	W, 2-1
9-27-09	Kentucky	W, 1-0
10-9-09	Auburn	W, 1-0 (OT)
10-11-09	Alabama	W, 2-0
10-22-09	Arkansas	W, 2-0
11-13-09	Davidson	W, 4-0

**TOTAL RECORD: 59-18-8**  
**LONGEST UNBEATEN STREAK: 15**  
**SHUTOUTS RECORDED ..... 43**

## SHUTOUT DEFENSE

South Carolina finished the regular season tied for eighth in the nation with 12 shutouts on the year with only 10 goals allowed. Junior goalkeeper **Mollie Patton** has held the national lead in all three goalkeeping categories for the majority of the season. Going into the NCAA tournament, she is fourth in the nation with 13 solo shutouts and ranks 16th nationally with a 0.54 goals against average.

## IN THE POLLS

South Carolina finishes the season with a unanimous No. 8 ranking, jumping as many as seven spots in one of the three polls after the run to the SEC title. The Gamecocks are No. 8 by the NSCAA, Soccer America and Soccer Times - the first SEC team in the rankings.

## GRABBING THE SCHOOL RECORD

Senior defender **Blakely Mattern** has started every game of her career, and with 90 career starts is officially the school's all-time leader after surpassing Ashley Kirk's record of 81 starts three weeks ago. She, along with **Samantha Diaz-Matosas** and **Kim Miller**, surpassed the games played record of 83 this season as well and all hold the lead with 90 games played.

## AT THE TOP OF THE NCAA LISTS

Noted as one of the top defensive teams in the country under **Shelley Smith**, South Carolina has continued that excellence this season and added a little offensive flair as well. The Gamecocks have the NCAA's 15th-ranked defense with a 0.57 goals against average and 13 shutouts. The team is also No. 46 in scoring offense (1.65 goals/game). With that type of production, South Carolina is also at the top of the SEC lists in half of the statistical categories. The team leads the conference in goals allowed, goals against average, shutouts, shots allowed, shots on goal allowed, points allowed and shot on goal percentage.

## PATTON GETS THE RECORD(S)

Redshirt junior goalkeeper **Mollie Patton** set a new South Carolina single-season shutout record when she grabbed her eighth shutout of the year in the win against Kentucky. She then set the career record in the next game at Ole Miss with her 16th shutout in 33 career games, surpassing the previous mark of 15 set by **Laura Armstrong** and **Elise Matthews**.

## SPREADING THE WEALTH

Goals have been spread around the entire Gamecock team so far with a different player hitting the game-winning goal in nine of Carolina's 18 wins. Fourteen different players have scored a goal this season, and only half of those players have scored multiple goals this season: **Kayla Grimsley**, **Kim Miller**, **Blakely Mattern**, **Samantha Diaz-Matosas**, **Lindsay Small**, **Brooke Jacobs**, **Kortney Rhoades** and **Christine Watts**.

## GAMECOCKS ON TV

Sunday's SEC Championship was South Carolina's fourth televised game in the 2009 season. The team defeated Vanderbilt, 2-1, in the SEC opener on Sept. 25 before falling 1-0 to LSU on ESPNU and Florida (3-0) on Fox Sports Florida. Carolina and LSU played the SEC final on ESPNU, the second game on the network between the teams this season. The first LSU broadcast marked the third consecutive season that the Gamecocks played a game on national television.

## MILLER TIME

Senior **Kim Miller** has been one of the most consistent performers for South Carolina the past four years, and the New York native has stretched that consistency to another part of her game in her final season. Miller is 20th in the NCAA and second in the SEC with 11 assists so far this season, and she currently has the South Carolina record with five game winning goals this season.

## GRIMSLEY'S RECORD PLAY

Sophomore **Kayla Grimsley** has continued the stellar play that she exhibited in her freshman season last year. The flashy player set a new South Carolina record with a nine-match scoring streak, and her goal against South Alabama tied her program record four-match goal scoring streak. She currently is second in the SEC in points (28) and goals (11).

## FIRST HALF LOCKDOWN

LSU's goal 57 seconds into last Sunday's game marked the first time this season that South Carolina has allowed a goal in the first half. Florida and SEC Tournament first round opponent Georgia are the only other teams to notch first half goals against South Carolina.

## LOWE'S SENIOR CLASS AWARD FINALIST BLAKELY MATTERN NEEDS VOTES!

Senior defender **Blakely Mattern** has been named a finalist for the Lowe's Senior CLASS Award, presented annually in eight NCAA Division 1 Sports to a senior student-athlete who excels both on and off the field. Candidates are chosen based on their dedication and achievement in four areas: Classroom, Character, Community and Competition. Fan voting will help decide the



**OVERTIME MATCHES**

DATE	OPPONENT	RESULT
9-15-95	at VCU	W, 1-0
9-29-95	vs. Marquette (Clemson, S.C.)	L, 1-2
10-13-95	Georgia	T, 1-1
10-16-95	Evansville	W, 1-0
10-19-95	College of Charleston	T, 1-1
<b>1995 OVERTIME RECORD: 2-1-2</b>		
9-29-96	at Georgia	L, 1-2
10-27-96	at Auburn	T, 1-1
10-30-96	at Furman	T, 1-1
<b>1996 OVERTIME RECORD: 0-1-2</b>		
9-14-97	Kentucky	L, 3-4
10-10-97	at Georgia Southern	W, 3-2
<b>1997 OVERTIME RECORD: 1-1</b>		
9-4-98	Wake Forest	T, 1-1
9-25-98	at Kentucky	L, 0-1
10-13-98	at Furman	W, 3-2
<b>1998 OVERTIME RECORD: 1-1-1</b>		
9-12-99	Kentucky	L, 1-2
10-12-99	Wofford	W, 2-1
11-4-99	vs. Vanderbilt (SEC Tourn.)	L, 1-2
<b>1999 OVERTIME RECORD: 1-2</b>		
<b>2000 OVERTIME RECORD: 0-0</b>		
9-1-01	at College of Charleston	T, 0-0
9-9-01	vs. UNLV (San Diego, Calif.)	T, 1-1
10-14-01	at LSU	T, 4-4
10-28-01	Mississippi State	L, 1-2
<b>2001 OVERTIME RECORD: 0-1-3</b>		
9-29-02	Florida	W, 1-0
10-11-02	Arkansas	L, 1-2
10-18-02	Georgia	L, 1-2
10-20-02	Tennessee	T, 1-1
10-25-02	at Auburn	T, 1-1
<b>2002 OVERTIME RECORD: 1-2-2</b>		
8-29-03	at Clemson	L, 0-1
9-12-03	at Texas A&M	L, 1-2
9-14-03	at Houston	T, 1-1
10-3-03	Auburn	T, 0-0
10-24-03	at Ole Miss	T, 0-0
<b>2003 OVERTIME RECORD: 0-2-3</b>		
8-31-04	at James Madison	L, 2-3
9-19-04	Charlotte	W, 2-1
10-1-04	Georgia	T, 1-1
10-8-04	at Vanderbilt	T, 1-1
10-17-04	Mississippi State	L, 2-3
10-29-04	Florida	L, 1-2
<b>2004 OVERTIME RECORD: 1-3-2</b>		
10-10-05	Kentucky	L, 1-2
<b>2005 OVERTIME RECORD: 0-1</b>		
9-29-06	Tennessee	T, 0-0
10-16-06	Ole Miss	T, 0-0
10-20-06	LSU	W, 2-1
10-22-06	at Arkansas	T, 1-1
10-27-06	Florida	T, 1-1
11-1-06	vs. Vanderbilt (SEC Tourn.)	T, 1-1
<b>2006 OVERTIME RECORD: 1-0-5</b>		
9-27-07	at Tennessee	L, 2-3
9-30-07	at Georgia	L, 1-2
10-7-07	Vanderbilt	L, 0-1
10-12-07	at Mississippi State	T, 0-0
10-25-07	at LSU	T, 1-1
11-14-07	vs. Duke (NCAA First Rnd.)	T, 1-1
<b>2007 OVERTIME RECORD: 0-3-3</b>		
8-23-08	at UNC Wilmington	T, 0-0
9-7-08	Furman	W, 2-1
9-14-08	vs. Florida State (Auburn, Ala.)	T, 3-3
9-28-08	Georgia	T, 1-1
10-23-08	LSU	T, 0-0
11-14-08	vs. William & Mary (NCAA)	L, 2-3
<b>2008 OVERTIME RECORD: 1-1-4</b>		
10-4-09	at Mississippi State	T, 1-1
10-9-09	Auburn	W, 1-0
11-8-09	vs. LSU	T, 1-1
<b>TOTAL RECORD: 10-19-29</b>		
<b>UNDER SHELLEY SMITH: 5-13-24</b>		

winner. Visit "www.seniorclassaward.com" or text "W6" to 74567 to vote for Mattern.

**ELLEN FAHEY'S STEPPING UP**

Sophomore defender **Ellen Fahey** started every game at centerback last season as a freshman, continuing the legacy of all-conference caliber freshman defenders after **Blakely Mattern** (2006) and **Brittany Rhoades** (2007). Strong and assertive in the back, Fahey added a new dimension to her play thus far after recording her first four career points, three on game-winning assists. Her three game-winning assists tie the South Carolina sophomore single season record.

**HELMET! HELMET! HELMET!**

Junior goalkeeper **Mollie Patton** has learned to embrace the helmet she has had to wear the past two seasons due to previous concussions. This year she has company now that **Lindsay Small** and **Brittany Rhoades** have been confined to wearing headgear due to blows to the head recently. Rhoades began wearing headgear after a blow in the Clemson victory led to her getting stitches on her left brow. Small then had to get headgear after taking an inadvertent elbow in the Vanderbilt victory, causing her to get stitches below her right brow.

**ROCKY TOPPED**

South Carolina's 2-1 win at Tennessee last weekend marked the first win in program history in Knoxville. In addition, the victory extended Carolina's current streak in the series. After going winless in the first 13 matches between the SEC East rivals, South Carolina has now won the last three meetings - one at home, one at the SEC tournament and one in Knoxville.

**SENIOR CLASS BECOMES FIRST TO WIN AT CLEMSON**

South Carolina defeated rival Clemson 5-0 last Sunday for the program's first victory at Historic Riggs Field. In a rivalry that has been played annually since 1995 in a home-and-home series, the Gamecocks not only never won at Riggs Field in seven tries but never scored a goal there until the offensive outburst in a 5-0 win. Senior **Shannon Bigbie** hit the game winner in her first start of the year, classmate **Blakely Mattern** scored two goals and senior **Kim Miller** notched two assists in the victory.

**MATTERN CONTINUES TO PICK UP NATIONAL HONORS**

Senior defender **Blakely Mattern** continues to pick up honors in her final season as a Gamecock. A Lowe's Senior CLASS Award finalist, Mattern has been named the SEC Defensive Player of the Week twice, was selected to the Soccer America National Team of the Week three times, earned Top Drawer Soccer Team of the Week honors once and has also earned CollegeSoccer360.com Primetime Player of the Week honors.

**DIAZ-MATOSAS DELIVERS**

Senior defender **Samantha Diaz-Matosas** has started off strong for South Carolina with a four-point weekend at the Cardinal Classic. Diaz-Matosas earned an assist in the final seconds of the match against Louisville before scoring her first goal of the season and getting the game-winning assist in the 4-0 win against Cincinnati. On Senior Night, she hit the game-winner in overtime to defeat Auburn. A versatile player, Diaz-Matosas can play anywhere on the field, making her a top threat for the Gamecocks in her fourth year.

**MATTERN'S CAREER WEEKEND**

Senior **Blakely Mattern** had a career weekend at the Carolina's Cup when she scored three goals in two games for six points to earn the Carolina's Cup MVP honor. The senior defender also led the Gamecocks to their sixth shutout - tied for the NCAA lead - in the 5-0 win at Clemson and 2-0 win against UNC Wilmington. For her efforts, she was named the SEC Defensive Player of the Week for the second time in three weeks and also earned a spot on the Soccer America and Top Drawer Soccer National Teams of the Week.

**RETURNING CATEGORY LEADERS**

Carolina returns 10 starters from last season's NCAA Tournament team and only lost one senior from the squad that went 11-7-4. South Carolina will enter 2009 as one of the most experienced teams in the nation, and depth will also be available after Coach Shelley Smith signed seven freshmen and landed two transfers for the 2009 season.

**Statistical Category Breakdown**

Category	2008 Leader (Total)	% Returning	Top Returner
Points	Grimsley (22)	93%	Grimsley (22)
Goals	Grimsley (8)	93%	Grimsley (8)
Game-Winning Goals	Grimsley, Miller, Small (2)	91%	Grimsley, Miller, Small (2)
Assists	Grimsley (6)	46%	Grimsley (6)
Shots	Jacobs (38)	94%	Jacobs (38)
Shots on Goal	Jacobs (26)	91%	Jacobs (26)
Saves	Patton (58)	100%	Patton (58)
Goals Against Average	Patton (0.96)	100%	Patton (0.96)



**GOAL SUMMARY**

Player (#)	Opp. (Time)	Asst. (#)
Miller (1)	Col. of Charleston (13:42)	-
Grimsley (1)	Col. of Charleston (29:54)	Small (1)
Grimsley (2)	Western Carolina (22:38)	Fahey (1)
Miller (2)	Western Carolina (26:49)	D-Matosas (1)
Small (1)	Louisville (27:09)	Miller (1)
Watts (1)	Louisville (43:52)	-
Grimsley (3)	Louisville (89:51)	D-Matosas (2)
Mattern (1)	Cincinnati (26:54)	Fahey(2), D-Matosas (3)
Diaz-Matosas (1)	Cincinnati (59:32)	Grimsley (1)
Fligg (1)	Cincinnati (79:09)	Miller (2)
Petroni (1)	Cincinnati (81:13)	Miller (3)
Bigbie (1)	Clemson (3:22)	Miller (4), Jacobs (1)
Mattern (2)	Clemson (35:33)	Miller (5)
Jacobs (2)	Clemson (36:51)	Watts (1)
Grimsley (4)	Clemson (65:44)	-
Mattern (3)	Clemson (71:35)	-
Mattern (4)	UNC-W (55:17)	K. Rhoades (1)
Grimsley (5)	UNC-W (63:52)	Fahey (3), Brewer (1)
Grimsley (6)	UCF (27:18)	Fahey (4)
Small (2)	South Alabama (3:30)	Miller (6)
Diaz-Matosas (2)	South Alabama (19:03)	-
Aaron (1)	South Alabama (27:34)	Jacobs (2)
Grimsley (7)	South Alabama (55:53)	K. Rhoades (2)
Holland (1)	South Alabama (59:32)	Mattern (1)
Brewer (1)	South Alabama (73:39)	Petroni (1), Aaron (1)
K. Rhoades (1)	Vanderbilt (15:47)	Small (2), Grimsley (2)
Jacobs (2)	Vanderbilt (51:38)	Bigbie (1)
Watts (2)	Kentucky (55:24)	-
Small (3)	Ole Miss (67:50)	Miller (7)
Jacobs (3)	Mississippi State (45:50)	Grimsley (3)
Diaz-Matosas (3)	Auburn (97:47)	-
Mattern (5)	Alabama (11:07)	Miller (8)
Mattern (6)	Alabama (12:47)	D-Matosas (4)
Grimsley (8)	Georgia (7:07)	-
Grimsley (9)	Tennessee (32:19)	-
Small (4)	Tennessee (55:38)	Grimsley (4)
K. Rhoades (2)	Arkansas (54:04)	Grimsley (5), Miller (9)
Grimsley (10)	Arkansas (62:39)	Miller (10)
Jacobs (4)	Georgia (11:44)	Miller (11), Small (3)
Grimsley (11)	Georgia (80:20)	-
K. Rhoades (3)	Georgia (88:19)	Grimsley (6)
Miller (3)	Florida (10:36)	-
Mattern (7)	LSU (87:52)	Grimsley (7)
Jacobs (5)	Davidson (29:02)	-
Grimsley (12)	Davidson (51:23)	Diaz-Matosas (5)
Diaz-Matosas (4)	Davidson (54:24)	-
Grimsley (13)	Davidson (55:44)	Jacobs (3)

**GOAL BREAKDOWN**

At home .....	23
On the road .....	13
Neutral Site.....	11
vs. SEC.....	18
vs. Non-Conference.....	29
First Half .....	22
Second Half .....	25

**ALL-TIME USC SCORING LIST**

Rnk.	Name	G	A	Pts.
1.	Jennie Ondo	50	15	115
2.	Morgan McIntyre	29	5	63
3.	<b>Kayla Grimsley</b>	<b>21</b>	<b>13</b>	<b>55</b>
4.	Angela Austin	19	16	54
5.	Mindy Sanders	14	24	52
6.	Debbie Smith	19	11	49
7.	Melinda Carter	15	16	46
8.	<b>Blakely Mattern</b>	<b>16</b>	<b>6</b>	<b>38</b>
9.	Darcell Mollon	15	7	37
10.	Ashley Williams	17	2	36
11.	Lydia Bienias	12	10	34
12.	<b>Kim Miller</b>	<b>8</b>	<b>17</b>	<b>33</b>
T13.	Lexi Tourtelotte	14	3	31
T13.	Ashley Kirk	9	13	31
T13.	Sam Diaz-Matosas	9	13	31

**Current Players**

Kayla Grimsley	21	13	55
Blakely Mattern	16	6	38
Kim Miller	8	17	33
Sam Diaz-Matosas	9	13	31
Brooke Jacobs	9	10	28

**ALL-TIME USC GOALTENDING LIST**

Rnk.	Name	GAA	SHO
1.	<b>Mollie Patton</b>	<b>0.76</b>	<b>21</b>
T2.	Laura Armstrong	0.79	15
T2.	Elise Matthews	1.24	15
T4.	Lindsay Thorstenson	1.33	9
T4.	Carrie Warner	1.58	9
6.	Carolyn Ortega	1.14	6.5
7.	Emily Crain	1.78	6
8.	Amy Toms	1.71	5
9.	Amanda Sandling	2.04	4.5
10.	Jessica Freas	3.01	1

**Current Players**

Mollie Patton	0.76	21
---------------	------	----

**2009 HONOR ROLL**

**Kacie Brewer** - SEC Community Service Team

**Samantha Diaz-Matosas** - Second Team All-SEC

**Kayla Grimsley** - First Team All-SEC, Top Drawer Soccer Team of the Season, SEC All-Tournament Team, Soccer America Team of the Week (Wk5), CollegeSoccer360 Primetime Performer of the Week (Wk5, Wk12), Preseason All-SEC, Cardinal Classic All-Tournament Team, Carolina's Cup All-Tournament Team

**Blakely Mattern** - First Team All-SEC, SEC Tournament MVP, SEC Defensive Player of the Week (Wk2, Wk4), Soccer America Team of the Week (Wk2, Wk4, Wk8, Wk12), Top Drawer Soccer Team of the Week (Wk4), CollegeSoccer360 Primetime Performer of the Week (Wk6, Wk12), Cardinal Classic All-Tournament Team, Carolina's Cup Tournament MVP, Preseason All-SEC, Lowe's Senior CLASS Award Finalist

**Kim Miller** - Second Team All-SEC, SEC All-Tournament Team, Cardinal Classic All-Tournament Team, Carolina's Cup All-Tournament Team

**Mollie Patton** - SEC Defensive Player of the Week (Wk6), Soccer America Team of the Week (Wk3), Cardinal Classic All-Tournament Team

**Lindsay Small** - SEC All-Tournament Team, Carolina's Cup All-Tournament Team

**SEC WEEKLY HONORS**

**Week**

**Defensive POW**

1	Kailey Anders, D (Arkansas)
2	<b>Blakely Mattern, D (South Carolina)</b>
3	Molly Baird, GK (Tennessee)
4	<b>Blakely Mattern, D (South Carolina)</b>
5	Justine Bernier, GK (Alabama)
6	<b>Mollie Patton, GK (South Carolina)</b>
7	Michelle Betos, GK (Georgia)
8	Sydney Hiance, GK (Kentucky)
9	Alley Ronaldi, GK (Ole Miss)
10	Rachel Bachtel, GK (Vanderbilt)
11	Lauren Hyde, D (Florida)

**Offensive POW**

Carrie Patterson, F (Georgia)
Taylor Cunningham, M (Ole Miss)
Molly Kinsella, F (Vanderbilt)
Mick Imgram, M (Tennessee)
Kat Walsh, F (Mississippi State)
Rachel Yopez, F (LSU)
Melissa Clarke, M (LSU)
Danielle Johnson, M (Ole Miss)
Tahnai Annis, M (Florida)
Rebecca Howell, F (Auburn)
Malorie Rutledge, M (LSU)

**Freshman of the Week**

Amy Howard, GK (Auburn)
Rebekah Perry, M (Georgia)
Monica Alvarado, M (Mississippi State)
Brooke Thigpen, M (Florida)
Amy Howard, GK (Auburn)
Carlie Banks, F (LSU)
Amy Harrison, F (Tennessee)
Erika Tymrak, M (Florida)
Carlie Banks, F (LSU)
Amy Howard, GK (Auburn)
McKenzie Barney, M (Florida)

**OPPONENT NOTES****RUTGERS  
(14-3-4, 7-1-3 BIG EAST)****QUICK FACTS**

**Location** .....New Brunswick, N.J.  
**Nickname** .....Scarlet Knights  
**Color** ..... Scarlet  
**Conference**..... Big EAST  
**Head Coach** ..... Glenn Crooks  
**Record at School (Years)** ..... 112-73-25 (10 yrs)  
**Career Record (Years)** ..... 157-128-33 (17 yrs)  
**Assistant Coaches**..... Mike O'Neill  
Karina LeBlanc

**2008 Record**.....13-7-2  
**Conference Finish** ..... 7-3-1 (3rd National Div.)  
**Postseason** ..... NCAA Sweet Sixteen  
**Series Record** .....First Meeting  
**Last Meeting** .....N/A  
**Letterwinners Returning/Lost**.....21/4  
**Starters Returning/Lost**.....8/3  
**Soccer SID** ..... Allison Miller  
**SID E-mail** ..... amiller@scarletknights.com  
**SID Phone** .....(401) 636-1479  
**Website** ..... www.ScarletKnights.com

**PROBABLE STARTERS**

No.	Name	Pos	Yr.	GP	G	A	Pts.	Shots
2	Shannon Woeller	D	R-Fr.	21	0	1	1	1
7	Stefanee Pace	F	R-Fr.	21	3	6	12	29
12	Ashley Medalf	M	Jr.	21	0	0	0	15
14	Jenifer Anzivino	D	Sr.	21	2	0	4	7
17	April Price	F	R-Fr.	20	4	0	8	27
18	Tricia Dipaolo	F	R-So.	19	0	0	0	7
19	Karla Schacher	F	R-Jr.	21	5	4	14	54
21	Becky Wise	D	Sr.	21	0	0	0	5
22	Maura McLaughlin	M	Fr.	21	0	1	1	20
23	Julie Lancos	D	So.	21	2	2	6	12

No.	Name	Pos.	Yr.	Min.	GA	GAA.	Svs.	W-L	SO
1	Erin Guthrie	GK	Sr.	1841:58	9	0.44	72	14-3-3	11

**NSCAA/adidas**

Week 12 (11/10)

No.	School	Rec.
1.	Stanford	20-0-0
2.	Portland	18-1-0
3.	UCLA	17-2-1
4.	North Carolina	17-3-1
5.	Notre Dame	17-3-1
6.	Florida State	16-4-1
7.	Boston College	15-3-2
<b>8.</b>	<b>South Carolina</b>	<b>17-3-2</b>
9.	Florida	15-5-2
10.	LSU	14-4-4
11.	Santa Clara	13-6-1
12.	Rutgers	13-3-4
13.	UCF	16-4-1
14.	Wake Forest	13-5-2
15.	Ohio State	14-3-2
16.	Penn State	12-5-2
17.	Virginia Tech	14-7-0
18.	Washington State	13-5-2
19.	Maryland	12-5-2
20.	BYU	17-3-2
21.	Southern California	12-6-2
22.	Texas A&M	14-6-2
23.	Dayton	16-0-5
24.	Purdue	12-5-3
25.	Marquette	15-5-2

**NSCAA South Region**

Week 12 (11/10)

No.	School	Rec.
<b>1.</b>	<b>South Carolina</b>	<b>17-3-2</b>
2.	LSU	14-4-4
3.	Florida	15-5-2
4.	Auburn	10-8-3
5.	Ole Miss	13-5-2
6.	Georgia	14-5-1
7.	Vanderbilt	11-8-1
8.	Denver	17-5-1
9.	Western Kentucky	14-4-2
10.	FIU	11-6-3

**Soccer America**

Week 12 (11/9)

No.	School	Rec.
1.	Stanford	20-0-0
2.	Portland	18-1-0
3.	North Carolina	17-3-1
4.	UCLA	17-2-1
5.	Notre Dame	17-3-1
6.	Florida State	16-4-1
7.	Boston College	15-3-2
<b>8.</b>	<b>South Carolina</b>	<b>17-3-2</b>
9.	Penn State	12-5-2
10.	Marquette	15-5-2
11.	BYU	17-3-2
12.	UCF	16-4-1
13.	Virginia Tech	14-7-0
14.	LSU	14-4-4
15.	Dayton	16-0-5
16.	San Diego State	14-3-5
17.	Memphis	16-6-0
18.	Ohio State	14-3-2
19.	Florida	15-5-2
20.	Maryland	12-5-2
21.	Wake Forest	13-5-2
22.	Washington State	13-5-2
23.	Rutgers	13-3-4
24.	Southern California	12-6-2
25.	Ole Miss	13-5-2

**Soccer Times**

Week 12 (11/9)

No.	School	Rec.
1.	Stanford	20-0-0
2.	Portland	18-1-0
3.	UCLA	17-2-1
4.	North Carolina	17-3-1
5.	Florida State	16-4-1
6.	Notre Dame	17-3-1
7.	Boston College	15-3-2
<b>8.</b>	<b>South Carolina</b>	<b>17-3-2</b>
T9.	Wake Forest	13-5-2
T9.	Florida	15-5-2
T11.	BYU	17-3-2
T11.	LSU	14-4-4
13.	Ohio State	14-3-2
14.	Washington State	13-5-2
15.	Virginia Tech	14-7-0
16.	UCF	16-4-1
17.	Penn State	12-5-2
18.	Rutgers	13-3-4
19.	Santa Clara	13-6-1
20.	Maryland	12-5-2
21.	Marquette	15-5-2
22.	Southern California	12-6-2
23.	Texas A&M	14-6-2
24.	Dayton	16-0-5
25.	Georgia	14-5-1





### SOUTH CAROLINA WEEKLY RANKINGS

<b>Week</b>	<b>NSCAA</b>	<b>South Region</b>	<b>S. Times</b>	<b>S. America</b>	<b>TOP DRAWER</b>	<b>CollegeSoccer360</b>
Preseason	-	N/A	-	-	45	-
Week 1 (8/24)	rv	4	-	-	43	-
Week 2 (8/31)	rv	2	rv	-	41	-
Week 3 (9/7)	18	2	23	25	26	23
Week 4 (9/14)	13	3	15	12	20	13
Week 5 (9/21)	12	2	13	11	18	11
Week 6 (9/28)	8	2	7	7	15	8
Week 7 (10/5)	7	2	7	8	11	7
Week 8 (10/12)	5	1	5	5	10	6
Week 9 (10/19)	10	2	9	10	11	9
Week 10 (10/26)	13	3	14	15	16	13
Week 11 (11/2)	15	4	14	19	28	-
Reg. Season Final (11/9)	8	1	8	8	17	8



**2009 NCAA First Round  
South Carolina Game Results (as of Nov 13, 2009)  
All games**

Date	Opponent		Score	Overall	Conf	Att.	Goals scored
Aug 27	COL. OF CHARLESTON	W	2-0	1-0-0	0-0-0	612	Kim Miller (unassisted) Kayla Grimsley (Lindsay Small)
Aug 30	WESTERN CAROLINA	W	2-0	2-0-0	0-0-0	489	Kayla Grimsley (Ellen Fahey) Kim Miller (Sam Diaz-Matosas)
09-04-0	at Louisville	W	3-0	3-0-0	0-0-0	1103	Lindsay Small (Kim Miller) Christine Watts (unassisted) Kayla Grimsley (Sam Diaz-Matosas)
09-06-0	vs Cincinnati Bearcats	W	4-0	4-0-0	0-0-0	229	Blakely Mattern (Ellen Fahey;Sam Diaz-Matosas) Sam Diaz-Matosas (Kayla Grimsley) Megan Fligg (Kim Miller) Maria Petroni (Kim Miller)
Sep 11	at Clemson	W	5-0	5-0-0	0-0-0	917	Shannon Bigbie (Kim Miller;Brooke Jacobs) Blakely Mattern (Kim Miller) Brooke Jacobs (Christine Watts) Kayla Grimsley (unassisted) Blakely Mattern (unassisted)
Sep 13	vs UNC Wilmington	W	2-0	6-0-0	0-0-0	155	Blakely Mattern (Kortney Rhoades) Kayla Grimsley (Ellen Fahey;Kacie Brewer)
Sep 18	#17 UCF	W	1-0	7-0-0	0-0-0	1424	Kayla Grimsley (Ellen Fahey)
Sep 20	SOUTH ALABAMA	W	6-1	8-0-0	0-0-0	443	Lindsay Small (Kim Miller) Sam Diaz-Matosas (unassisted) Natalie Aaron (Brooke Jacobs) Kayla Grimsley (Kortney Rhoades) Lolly Holland (Blakely Mattern) Kacie Brewer (Maria Petroni;Natalie Aaron)
* Sep 25	VANDERBILT	W	2-1	9-0-0	1-0-0	756	Kortney Rhoades (Lindsay Small;Kayla Grimsley) Brooke Jacobs (Shannon Bigbie)
* Sep 27	KENTUCKY	W	1-0	10-0-0	2-0-0	672	Christine Watts (unassisted)
* Oct 02	at Ole Miss	W	1-0	11-0-0	3-0-0	513	Lindsay Small (Kim Miller)
* Oct 04	at Mississippi State	TO2	1-1	11-0-1	3-0-1	142	Brooke Jacobs (Kayla Grimsley)
* Oct 09	AUBURN	WOT	1-0	12-0-1	4-0-1	827	Sam Diaz-Matosas (unassisted)
* Oct 11	ALABAMA	W	2-0	13-0-1	5-0-1	1023	Blakely Mattern (Kim Miller) Blakely Mattern (Sam Diaz-Matosas)
* Oct 16	at #16 Georgia	L	1-2	13-1-1	5-1-1	1715	Kayla Grimsley (unassisted)
* Oct 18	at Tennessee	W	2-1	14-1-1	6-1-1	1332	Kayla Grimsley (unassisted) Lindsay Small (Kayla Grimsley)
* Oct 22	ARKANSAS	W	2-0	15-1-1	7-1-1	746	Kortney Rhoades (Kayla Grimsley;Kim Miller) Kayla Grimsley (Kim Miller)
* Oct 25	at #14 LSU	L	0-1	15-2-1	7-2-1	861	-
* Oct 30	at #10 Florida	L	0-3	15-3-1	7-3-1	3104	-
Nov 04	vs Georgia	W	3-2	16-3-1	7-3-1		Brooke Jacobs (Kim Miller;Lindsay Small) Kayla Grimsley (unassisted) Kortney Rhoades (Kayla Grimsley)
Nov 06	vs #10 Florida	W	1-0	17-3-1	7-3-1		Kim Miller (unassisted)
Nov 08	vs #13 LSU	TO2	1-1	17-3-2	7-3-1	1522	Blakely Mattern (Kayla Grimsley)
Nov 13	DAVIDSON						
Nov 13	DAVIDSON	W	4-0	18-3-2	7-3-1	3813	Brooke Jacobs (unassisted) Kayla Grimsley (Sam Diaz-Matosas) Sam Diaz-Matosas (unassisted) Kayla Grimsley (Brooke Jacobs)



**2009 NCAA First Round  
South Carolina Combined Team Statistics (as of Nov 13, 2009)  
All games**

<b>RECORD:</b>	<b>OVERALL</b>	<b>HOME</b>	<b>AWAY</b>	<b>NEUTRAL</b>
ALL GAMES	18-3-2	10-0	4-3-1	4-0-1
CONFERENCE	7-3-1	5-0	2-3-1	0-0
NON-CONFERENCE	11-0-1	5-0	2-0	4-0-1

Date	Opponent	Score	Att.	#	Player	gp	g	a	pts	sh	sh%	sog	sog%	gw	pk-att	
Aug 27	COL. OF CHARLESTON	W	2-0	612	4	Kayla Grimsley	23	13	7	33	42	.310	24	.571	2	0-0
Aug 30	WESTERN CAROLINA	W	2-0	489	5	Kim Miller	23	3	11	17	29	.103	11	.379	2	0-0
09-04-0	at Louisville	W	3-0	1103	7	Blakely Mattern	23	7	1	15	21	.333	15	.714	3	0-0
09-06-0	vs Cincinnati Bearcats	W	4-0	229	27	Brooke Jacobs	23	5	3	13	41	.122	26	.634	2	0-0
Sep 11	at Clemson	W	5-0	917	3	Sam Diaz-Matosas	23	4	5	13	30	.133	16	.533	2	0-0
Sep 13	vs UNC Wilmington	W	2-0	155	16	Lindsay Small	23	4	3	11	38	.105	19	.500	3	0-0
Sep 18	#17 UCF	W	1-0	1424	15	Kortney Rhoades	23	3	2	8	26	.115	13	.500	2	0-0
Sep 20	SOUTH ALABAMA	W	6-1	443	8	Christine Watts	23	2	1	5	19	.105	8	.421	1	0-0
* Sep 25	VANDERBILT	W	2-1	756	20	Ellen Fahey	22	0	4	4	3	.000	2	.667	0	0-0
* Sep 27	KENTUCKY	W	1-0	672	23	Kacie Brewer	23	1	1	3	8	.125	6	.750	0	0-0
* Oct 02	at Ole Miss	W	1-0	513	12	Shannon Bigbie	21	1	1	3	8	.125	5	.625	1	0-0
* Oct 04	at Mississippi State	To2	1-1	142	10	Natalie Aaron	19	1	1	3	8	.125	2	.250	0	0-0
* Oct 09	AUBURN	Wot	1-0	827	9	Maria Petroni	20	1	1	3	4	.250	3	.750	0	0-0
* Oct 11	ALABAMA	W	2-0	1023	14	Lolly Holland	15	1	0	2	7	.143	2	.286	0	0-0
* Oct 16	at #16 Georgia	L	1-2	1715	2	Megan Fligg	16	1	0	2	2	.500	2	1.000	0	0-0
* Oct 18	at Tennessee	W	2-1	1332	19	Kira Campbell	21	0	0	0	10	.000	4	.400	0	0-0
* Oct 22	ARKANSAS	W	2-0	746	18	Ali Glemser	13	0	0	0	6	.000	4	.667	0	0-0
* Oct 25	at #14 LSU	L	0-1	861	21	Brittany Rhoades	23	0	0	0	4	.000	2	.500	0	0-0
* Oct 30	at #10 Florida	L	0-3	3104	22	Dani Henry	15	0	0	0	3	.000	0	.000	0	0-0
Nov 04	vs Georgia	W	3-2	0	25	Maddy Kill	10	0	0	0	1	.000	1	1.000	0	0-0
Nov 06	vs #10 Florida	W	1-0	0	29	Mollie Patton	23	0	0	0	0	.000	0	.000	0	0-0
Nov 08	vs #13 LSU	To2	1-1	1522	28	Brittany DeWitt	4	0	0	0	0	.000	0	.000	0	0-0
Nov 13	DAVIDSON				26	Rae Wilson	6	0	0	0	0	.000	0	.000	0	0-0
Nov 13	DAVIDSON	W	4-0	3813	17	Maggie Blackwell	2	0	0	0	0	.000	0	.000	0	0-0
					11	Idana DeCecco	2	0	0	0	0	.000	0	.000	0	0-0
					6	Samantha Abrahart	1	0	0	0	0	.000	0	.000	0	0-0
					1	Roya Mojarab	1	0	0	0	0	.000	0	.000	0	0-0
						Total	23	47	41	135	310	.152	165	.532	18	0-0
						Opponents	23	13	10	36	183	.071	74	.404	3	1-1

<b>TEAM STATISTICS</b>	<b>SC</b>	<b>OPP</b>
<b>SHOT STATISTICS</b>		
Goals-Shot attempts	47-310	13-183
Goals scored per game	2.04	0.57
Shot pct.	.152	.071
Shots on goal-Attempts	165-310	74-183
SOG pct.	.532	.404
Shots/Game	13.5	8.0
CORNER KICKS	118	75
PENALTY KICKS	0-0	1-1
<b>PENALTIES</b>		
Yellow cards	9	13
Red cards	1	0
<b>ATTENDANCE</b>		
Total	10805	9687
Dates/Avg Per Date	10/1080	8/1211
Neutral Site #/Avg	5/381	

#	Goalie	GP	Min.	GA	GAAvg	Saves	Pct	W-L-T	Sho
29	Mollie Patton	23	2087:19	12	0.52	59	.831	18-3-2	14
1	Roya Mojarab	1	30:28	1	2.95	2	.667	0-0-0	0
	Total	23	2117:47	13	0.55	61	.824	18-3-2	14
	Opponents	23	2117:47	47	2.00	118	.715	3-16-2	2

<b>Goals by Period</b>	1st	2nd	OT	OT2	Total
South Carolina	22	24	1	0	47
Opponents	6	7	0	0	13

<b>Shots by Period</b>	1st	2nd	OT	OT2	Total
South Carolina	161	144	5	0	310
Opponents	72	107	2	2	183

<b>Saves by Period</b>	1st	2nd	OT	OT2	Total
South Carolina	19	42	0	0	61
Opponents	64	53	1	0	118

<b>Corners by Period</b>	1st	2nd	OT	OT2	Total
South Carolina	66	48	1	3	118
Opponents	28	45	0	2	75

<b>Fouls by Period</b>	1st	2nd	OT	OT2	Total
South Carolina	79	102	4	1	186

**SOUTH CAROLINA MATCH-BY-MATCH STATISTICS**

DATE	OPPONENT	G	A	PTS	SH	PCT	SOG	SOG%	CORNERS	FOULS	YC	SAVES	GA
8/27	Col. Charleston	2	2	6	11	.182	7	.636	3	7	0	1	0
8/31	Western Carolina	2	2	6	11	.182	7	.636	6	4	0	0	0
9/4	Louisville	3	2	8	12	.250	8	.667	7	10	0	<b>6</b>	0
9/6	Cincinnati	4	5	13	22	.182	<b>15</b>	.682	7	7	0	5	0
9/11	Clemson	5	4	14	12	<b>.417</b>	7	.583	4	9	1	<b>6</b>	0
9/13	UNC Wilmington	2	3	7	<b>23</b>	.087	9	.391	3	7	0	<b>6</b>	0
9/18	#17 UCF	1	1	3	8	.125	4	.500	6	10	1	3	0
9/20	South Alabama	<b>6</b>	<b>6</b>	<b>18</b>	<b>23</b>	.261	13	.565	6	7	0	3	1
9/25	Vanderbilt	2	3	7	14	.143	6	.429	6	11	0	0	1
9/27	Kentucky	1	0	2	14	.071	8	.571	8	9	0	1	0
10/2	Ole Miss	1	1	3	10	.100	5	.500	1	5	0	5	0
10/4	Mississippi State	1	1	3	14	.071	3	.214	2	11	1	5	1
10/9	Auburn	1	0	2	17	.059	8	.471	4	13	<b>2</b>	3	0
10/11	Alabama	2	2	6	18	.111	11	.611	7	<b>15</b>	0	1	0
10/16	#23 Georgia	1	0	2	12	.083	8	.667	1	4	0	2	<b>2</b>
10/18	Tennessee	2	1	5	16	.125	5	.313	6	14	1	<b>6</b>	1
10/22	Arkansas	2	3	7	15	.133	8	.533	4	7	1	3	0
10/25	#17 LSU	0	0	0	5	.000	3	.600	6	3	<b>2</b>	2	1
10/30	#10 Florida	0	0	0	8	.000	2	.250	3	7	0	0	3
11/4	SEC - #25 Georgia	3	2	8	12	.250	6	.500	8	8	0	1	2
11/6	SEC - #8 Florida	1	0	2	6	.167	3	.500	2	4	0	2	0
11/8	SEC - #13 LSU	1	1	3	11	.091	7	.636	<b>9</b>	6	0	0	1
11/13	NCAA - Davidson	4	2	10	16	.250	12	<b>.750</b>	<b>9</b>	8	0	0	0
<b>South Carolina</b>		<b>47</b>	<b>41</b>	<b>135</b>	<b>310</b>	<b>.152</b>	<b>165</b>	<b>.532</b>	<b>118</b>	<b>186</b>	<b>9</b>	<b>61</b>	<b>13</b>

Bold - Season-High

**OPPONENT MATCH-BY-MATCH STATISTICS**

DATE	OPPONENT	G	A	PTS	SH	PCT	SOG	SOG%	CORNERS	FOULS	YC	SAVES	GA
8/27	Col. Charleston	0	0	0	2	.000	1	.500	3	7	0	5	2
8/31	Western Carolina	0	0	0	0	N/A	0	N/A	1	9	0	5	2
9/4	Louisville	0	0	0	10	.000	6	.600	3	10	0	5	3
9/6	Cincinnati	0	0	0	10	.000	5	.500	2	12	0	<b>11</b>	4
9/11	Clemson	0	0	0	12	.000	6	.500	4	8	1	2	5
9/13	UNC Wilmington	0	0	0	8	.000	6	.750	0	10	0	7	2
9/18	#17 UCF	0	0	0	12	.000	3	.250	3	11	1	3	1
9/20	South Alabama	1	1	3	4	.250	4	<b>1.000</b>	2	9	0	7	<b>6</b>
9/25	Vanderbilt	1	1	3	8	.125	1	.125	4	8	1	4	2
9/27	Kentucky	0	0	0	2	.000	1	.500	4	10	0	7	1
10/2	Ole Miss	0	0	0	8	.000	5	.625	5	4	0	4	1
10/4	Mississippi State	1	0	2	12	.083	<b>6</b>	.500	0	12	<b>2</b>	2	1
10/9	Auburn	0	0	0	7	.000	3	.429	2	15	1	7	1
10/11	Alabama	0	0	0	5	.000	1	.200	6	12	0	9	2
10/16	#23 Georgia	2	1	5	8	.250	4	.500	5	4	0	7	1
10/18	Tennessee	1	0	2	<b>19</b>	.052	<b>7</b>	.368	<b>8</b>	<b>13</b>	0	3	2
10/22	Arkansas	0	0	0	11	.000	3	.273	1	7	1	6	2
10/25	#17 LSU	1	2	4	10	.100	3	.300	4	9	0	3	0
10/30	#10 Florida	<b>3</b>	<b>3</b>	<b>9</b>	11	<b>.273</b>	3	.273	5	8	1	2	0
11/4	SEC - #25 Georgia	2	2	6	8	.250	3	.375	3	11	1	3	3
11/6	SEC - #8 Florida	0	0	0	7	.000	2	.286	1	6	0	2	1
11/8	SEC - #13 LSU	1	0	2	6	.167	1	.167	5	11	1	6	1
11/13	NCAA - Davidson	0	0	0	3	.000	0	.000	4	10	1	8	4
<b>Opponents</b>		<b>13</b>	<b>10</b>	<b>36</b>	<b>183</b>	<b>.071</b>	<b>74</b>	<b>.404</b>	<b>75</b>	<b>216</b>	<b>11</b>	<b>118</b>	<b>47</b>



### GAME-BY-GAME INDIVIDUAL LEADERS

DATE	OPPONENT	W/L	SCORE	HIGH SHOTS	HIGH SOG	HIGH GOALS	HIGH ASSISTS	HIGH POINTS
8/27	Col. Charleston	W	2-0	Miller, K. Rhoades (2)	K. Rhoades (2)	Miller, Grimsley (1)	Small (1)	Miller, Grimsley (2)
8/31	Western Carolina	W	2-0	Diaz, Miller, Grimsley (2)	Diaz, Grimsley (2)	Miller, Grimsley (1)	Fahey, Diaz-Matosas (1)	Miller, Grimsley (2)
9/4	Louisville	W	3-0	Watts (3)	Grimsley, Watts (2)	Small, Grimsley, Watts (1)	Miller, Diaz-Matosas (1)	Small, Watts, Grim (2)
9/6	Cincinnati	W	4-0	Small (5)	Mattern, Small (3)	4 players (1)	Miller (2)	Diaz-Matosas (3)
9/11	Clemson	W	5-0	Campbell (4)	Mattern, Campbell (2)	Mattern (2)	Miller (2)	Mattern (4)
9/13	UNC Wilmington	W	2-0	Jacobs (5)	Jacobs (2)	Mattern, Grimsley (1)	Rhoades, Fahey, Brewer (1)	Mattern, Grimsley (2)
9/18	#17 UCF	W	1-0	Diaz-Matosas (2)	4 players (1)	Grimsley (1)	Fahey (1)	Grimsley (2)
9/20	South Alabama	W	6-1	Jacobs, Grimsley (4)	Brewer (3)	6 players (1)	6 players (1)	6 players (2)
9/25	Vanderbilt	W	2-1	Jacobs (4)	Jacobs (3)	K. Rhoades, Jacobs (1)	Grimsley, Bigbie, Small (1)	K. Rhoades, Jacobs (2)
9/27	Kentucky	W	1-0	Watts, Grimsley (3)	Jacobs, Watts (2)	Watts (1)	-	Watts (2)
10/2	Ole Miss	W	1-0	Small (5)	Small (3)	Small (1)	Miller (1)	Small (2)
10/4	Mississippi State	T	1-1	Miller, Jacobs (3)	Diaz, Fahey, Jacobs (1)	Jacobs (1)	Grimsley (1)	Jacobs (2)
10/9	Auburn	W	1-0	Diaz-Matosas (4)	Jacobs (2)	Diaz-Matosas (1)	-	Diaz-Matosas (2)
10/11	Alabama	W	2-0	Jacobs, Diaz-Matosas (3)	Diaz, Mattern, K. Rh (2)	Mattern (2)	Miller, Diaz-Matosas (2)	Mattern (4)
10/16	#23 Georgia	L	1-2	Jacobs (4)	Jacobs (3)	Grimsley (1)	-	Grimsley (2)
10/18	Tennessee	W	2-1	Grimsley (7)	Grimsley (3)	Grimsley, Small (1)	Grimsley (1)	Grimsley (3)
10/22	Arkansas	W	2-0	Small (4)	Grimsley (2)	Grimsley, K. Rhoades (1)	Miller (2)	Grimsley (3)
10/25	#17 LSU	L	0-1	Miller (2)	Miller, Mattern, Small (1)	-	-	-
10/30	#10 Florida	L	0-3	Grimsley, Miller (2)	Grimsley, Miller (1)	-	-	-
11/4	SEC - #25 Georgia	W	3-2	K. Rhoades (4)	K. Rhoades (2)	K. Rhoades, Grimsley, Jacobs (1)	Small, Grimsley, Miller (1)	Grimsley (3)
11/6	SEC - #8 Florida	W	1-0	Diaz-Matosas (2)	Miller, Small, Diaz (1)	Miller (1)	-	Miller (2)
11/8	SEC - #13 LSU	T	1-1	Mattern (4)	Mattern (3)	Mattern (1)	Grimsley (1)	Mattern (2)
11/13	NCAA - Davidson	W	4-0	Small (4)	Grimsley, Jacobs (3)	Grimsley (2)	Diaz, Jacobs (1)	Grimsley (4)

### GAME-BY-GAME STARTERS

DATE	OPPONENT	W/L	F	F	M/F	M	M	M	D	D	D	D	GK
8/27	Col. Charleston	W	Jacobs	Grimsley	Campbell	Miller	Small	K. Rhoades	Mattern	Diaz-Matosas	Fahey	B. Rhoades	Patton
8/31	Western Carolina	W	Jacobs	Grimsley	Campbell	Miller	Small	K. Rhoades	Mattern	Diaz-Matosas	Fahey	B. Rhoades	Patton
9/4	Louisville	W	Jacobs	Grimsley	Campbell	Miller	Small	K. Rhoades	Mattern	Diaz-Matosas	Fahey	B. Rhoades	Patton
9/6	Cincinnati	W	Jacobs	Grimsley	Campbell	Miller	Small	K. Rhoades	Mattern	Diaz-Matosas	Fahey	B. Rhoades	Patton
9/11	Clemson	W	Jacobs	Grimsley	Campbell	Miller	Small	Bigbie	Mattern	Diaz-Matosas	Fahey	B. Rhoades	Patton
9/13	UNC Wilmington	W	Jacobs	Grimsley	Campbell	Miller	Small	K. Rhoades	Mattern	Diaz-Matosas	Fahey	Bigbie	Patton
9/18	#17 UCF	W	Jacobs	Grimsley	Bigbie	Miller	Small	K. Rhoades	Mattern	Diaz-Matosas	Fahey	B. Rhoades	Patton
9/20	South Alabama	W	Jacobs	Grimsley	Bigbie	Miller	Small	K. Rhoades	Mattern	Fligg	Fahey	B. Rhoades	Patton
9/25	Vanderbilt	W	Jacobs	Grimsley	Bigbie	Miller	Small	K. Rhoades	Mattern	Diaz-Matosas	Fahey	B. Rhoades	Patton
9/27	Kentucky	W	Jacobs	Grimsley	Bigbie	Miller	Small	K. Rhoades	Mattern	Diaz-Matosas	Fahey	B. Rhoades	Patton
10/2	Ole Miss	W	Jacobs	Grimsley	Bigbie	Miller	Small	K. Rhoades	Mattern	Diaz-Matosas	Fahey	B. Rhoades	Patton
10/4	Mississippi State	T	Jacobs	Grimsley	Bigbie	Miller	Small	K. Rhoades	Mattern	Diaz-Matosas	Fahey	B. Rhoades	Patton
10/9	Auburn	W	Brewer	Grimsley	Bigbie	Miller	Small	K. Rhoades	Mattern	Diaz-Matosas	Fahey	B. Rhoades	Patton
10/11	Alabama	W	Jacobs	Grimsley	Bigbie	Miller	Small	K. Rhoades	Mattern	Diaz-Matosas	Fahey	B. Rhoades	Patton
10/16	#23 Georgia	L	Jacobs	Grimsley	Bigbie	Miller	Small	K. Rhoades	Mattern	Diaz-Matosas	Fahey	B. Rhoades	Patton
10/18	Tennessee	W	Jacobs	Grimsley	Bigbie	Miller	Small	K. Rhoades	Mattern	Diaz-Matosas	Fahey	B. Rhoades	Patton
10/22	Arkansas	W	Jacobs	Grimsley	Bigbie	Miller	Small	K. Rhoades	Mattern	Diaz-Matosas	Fahey	B. Rhoades	Patton
10/25	#17 LSU	L	Jacobs	Grimsley	Bigbie	Miller	Small	K. Rhoades	Mattern	Diaz-Matosas	Fahey	B. Rhoades	Patton
10/30	#10 Florida	L	Jacobs	Grimsley	Bigbie	Miller	Campbell	K. Rhoades	Mattern	Diaz-Matosas	Small	B. Rhoades	Patton
11/4	SEC - #25 Georgia	W	Jacobs	Grimsley	Bigbie	Miller	Small	K. Rhoades	Mattern	Diaz-Matosas	Fahey	B. Rhoades	Patton
11/6	SEC - #8 Florida	W	Jacobs	Grimsley	Diaz-Matosas	Miller	Small	K. Rhoades	Mattern	Bigbie	Fahey	B. Rhoades	Patton
11/8	SEC - #13 LSU	T	Jacobs	Grimsley	Diaz-Matosas	Miller	Small	K. Rhoades	Mattern	Bigbie	Fahey	B. Rhoades	Patton
11/13	NCAA - Davidson	W	Jacobs	Grimsley	Diaz-Matosas	Miller	Small	K. Rhoades	Mattern	Bigbie	Fahey	B. Rhoades	Patton



### HOME-ONLY INDIVIDUAL STATISTICS

##	PLAYER	GP-GS	G	A	PTS	SH	PCT	SOG	SOG%	GWG	GWA
2	Megan Fligg	9-1	0	0	0	1	.000	1	1.000	0	0
3	Samantha Diaz-Matosas	10-9	3	3	9	20	.150	11	.550	2	0
4	Kayla Grimsley	10-10	7	2	16	21	.33	14	.667	2	1
5	Kim Miller	10-10	2	4	8	11	.182	3	.273	1	2
7	Blakely Mattern	10-10	2	1	5	6	.333	5	.833	1	0
8	Christine Watts	10-0	1	0	2	10	.100	5	.500	0	1
9	Maria Petroni	8-0	0	1	1	2	.000	1	.500	0	0
10	Natalie Aaron	10-0	1	1	3	5	.200	2	.400	0	0
11	Idana DeCecco	1-0	0	0	0	0	.000	0	.000	0	0
12	Shannon Bigbie	8-8	0	1	1	2	.000	0	.000	0	1
13	Jocelyn Spurrier	0-0	0	0	0	0	.000	0	.000	0	0
14	Lolly Holland	7-0	1	0	2	3	.333	1	.333	0	0
15	Kortney Rhoades	10-10	2	1	5	14	.143	9	.643	1	0
16	Lindsay Small	10-10	1	2	4	15	.067	5	.333	0	0
17	Maggie Blackwell	1-0	0	0	0	0	.000	0	.000	0	0
18	Ali Glemser	8-0	0	0	0	4	.000	3	.750	0	0
19	Kira Campbell	8-2	0	0	0	2	.000	2	1.000	0	0
20	Ellen Fahey	10-10	0	2	2	1	.000	1	1.000	0	2
21	Brittany Rhoades	10-10	0	0	0	2	.000	0	.000	0	0
22	Dani Henry	8-0	0	0	0	2	.000	0	.000	0	0
23	Kacie Brewer	10-1	1	0	2	5	.200	4	.800	0	0
25	Maddy Kill	4-0	0	0	0	1	.000	1	1.000	0	0
26	Rae Wilson	4-0	0	0	0	0	.000	0	.000	0	0
27	Brooke Jacobs	10-9	2	2	6	21	.095	16	.762	1	1
28	Brittany DeWitt	2-0	0	0	0	0	.000	0	.000	0	0
TEAM											
<b>South Carolina</b>		<b>10</b>	<b>23</b>	<b>20</b>	<b>66</b>	<b>147</b>	<b>.156</b>	<b>84</b>	<b>.571</b>	<b>10</b>	<b>6</b>
<b>Opponents</b>		<b>10</b>	<b>2</b>	<b>2</b>	<b>6</b>	<b>54</b>	<b>.037</b>	<b>17</b>	<b>.315</b>	<b>0</b>	<b>0</b>

### GOALKEEPERS

	GP-GS	Min.	GA	GAA.	Svs.	Save %	W-L	SO	
0	Alex Holland	0-0	00:00	0	0.00	0	0-0-0	0	
1	Roya Mojarab	1-0	30:28	1	2.95	2	0-0-0	0	
29	Mollie Patton	10-10	877:19	1	0.10	13	10-0-0	8	
35	Darien Vercillo	0-0	00:00	0	0.00	0	0-0-0	0	
TEAM									
<b>South Carolina</b>		<b>10</b>	<b>907:47</b>	<b>2</b>	<b>0.19</b>	<b>15</b>	<b>.882</b>	<b>10-0-0</b>	<b>8</b>
<b>Opponents</b>		<b>10</b>	<b>907:47</b>	<b>23</b>	<b>2.28</b>	<b>61</b>	<b>.726</b>	<b>0-10-0</b>	<b>0</b>

### HOME-ONLY TEAM STATS

SCORING	USC	OPP
Goals.....	23	2
Assists.....	20	2
Points.....	66	6
<b>SHOTS</b>		
Shots .....	147	54
Pct. ....	.156	.037
Shots On Goal.....	84	17
SOG%.....	.571	.315
<b>FOULS</b>		
Fouls .....	91	98
Cards .....	4	6
<b>GOALKEEPING</b>		
Saves .....	15	61
Goals Against.....	2	23
GAA .....	0.19	2.28



### AWAY-ONLY INDIVIDUAL STATISTICS

##	PLAYER	GP-GS	G	A	PTS	SH	PCT	SOG	SOG%	GWG	GWA
2	Megan Fligg	7-0	1	0	2	1	1.000	1	1.000	0	0
3	Samantha Diaz-Matosas	13-13	1	2	4	10	.100	5	.500	0	1
4	Kayla Grimsley	13-13	6	5	17	21	.286	10	.476	0	2
5	Kim Miller	13-13	1	7	9	18	.056	8	.444	1	3
7	Blakely Mattern	13-13	5	0	10	15	.333	10	.667	2	0
8	Christine Watts	13-0	1	1	3	9	.111	3	.333	0	0
9	Maria Petroni	12-0	1	0	2	2	.500	2	1.000	0	0
10	Natalie Aaron	10-0	0	0	0	3	.000	0	.000	0	0
11	Idana DeCecco	1-0	0	0	0	0	.000	0	.000	0	0
12	Shannon Bigbie	13-11	1	0	2	6	.167	5	.833	1	0
13	Jocelyn Spurrier	0-0	0	0	0	0	.000	0	.000	0	0
14	Lolly Holland	8-0	0	0	0	4	.000	1	.250	0	0
15	Kortney Rhoades	13-12	1	1	3	12	.083	4	.333	1	1
16	Lindsay Small	13-13	3	1	7	24	.125	14	.583	3	0
17	Maggie Blackwell	1-0	0	0	0	0	.000	0	.000	0	0
18	Ali Glemser	5-0	0	0	0	2	.000	1	.500	0	0
19	Kira Campbell	13-5	0	0	0	7	.000	2	.286	0	0
20	Ellen Fahey	12-12	0	2	2	2	.000	1	.500	0	1
21	Brittany Rhoades	13-12	0	0	0	2	.000	2	1.000	0	0
22	Dani Henry	7-0	0	0	0	1	.000	0	.000	0	0
23	Kacie Brewer	13-0	0	1	1	3	.000	2	.667	0	0
25	Maddy Kill	6-0	0	0	0	0	.000	0	.000	0	0
26	Rae Wilson	2-0	0	0	0	0	.000	0	.000	0	0
27	Brooke Jacobs	13-13	3	1	7	20	.150	10	.500	0	1
28	Brittany DeWitt	1-0	0	0	0	0	.000	0	.000	0	0
TEAM											
<b>South Carolina</b>		<b>13</b>	<b>24</b>	<b>21</b>	<b>72</b>	<b>163</b>	<b>.147</b>	<b>81</b>	<b>.497</b>	<b>8</b>	<b>9</b>
<b>Opponents</b>		<b>13</b>	<b>11</b>	<b>8</b>	<b>30</b>	<b>129</b>	<b>.085</b>	<b>57</b>	<b>.442</b>	<b>3</b>	<b>4</b>

### GOALKEEPERS

	GP-GS	Min.	GA	GAA.	Svs.	Save %	W-L	SO	
0	Alex Holland	0-0	00:00	0	0.00	0	0-0-0	0	
1	Roya Mojarab	0-0	00:00	0	0.00	0	0-0-0	0	
29	Mollie Patton	13-13	1210:00	12	0.89	46	8-3-2	6	
35	Darien Vercillo	0-0	00:00	0	0.00	0	0-0-0	0	
TEAM									
<b>South Carolina</b>		<b>13</b>	<b>1210:00</b>	<b>12</b>	<b>0.89</b>	<b>46</b>	<b>.793</b>	<b>8-3-2</b>	<b>6</b>
<b>Opponents</b>		<b>13</b>	<b>1210:00</b>	<b>24</b>	<b>1.79</b>	<b>57</b>	<b>.704</b>	<b>3-8-2</b>	<b>2</b>

### AWAY-ONLY TEAM STATS

SCORING	USC	OPP
Goals.....	24	11
Assists.....	21	8
Points.....	72	30
<b>SHOTS</b>		
Shots .....	163	129
Pct. ....	.147	.085
Shots On Goal.....	81	57
SOG%.....	.497	.442
<b>FOULS</b>		
Fouls .....	95	118
Cards .....	6	6
<b>GOALKEEPING</b>		
Saves .....	46	57
Goals Against.....	12	24
GAA .....	0.89	1.79



### EXHIBITION - MEXICAN NAT'L TEAM (2-0)

#### Soccer Box Score (Final) The Automated ScoreBook For Soccer Mexico U20 vs South Carolina (Aug 21, 2009 at Greenville, S.C.)

Mexico U20 vs. South Carolina
Date: Aug 21, 2009 • Attendance: 3000
Weather:

Table with columns: Po # Player, Sh, SO, G, A, Min. Lists player statistics for Mexico U20.

Goalkeepers table with columns: # Goalkeepers, Min, GA, Saves. Lists Erika VANEGAS.

Shots by period table with columns: #, 1, 2, Total. Shows Mexico U20 leading 5-6.

Corner kicks table with columns: #, 1, 2, Total. Shows Mexico U20 leading 3-1.

Scoring summary table with columns: No., Time, Team, Goal scorer, Assist, Description. Lists Christine Watts scoring.

Cautions and ejections: YC-SC #20 (62:36)
Stadium: MeSA Soccer Complex
Officials:
Offsides: Mexico U20 1, South Carolina 3.

Official's signature

### GAME 2 - WCU (2-0)

#### Soccer Box Score (Final) 2009 South Carolina Women's Soccer Western Carolina vs South Carolina (Aug 30, 2009 at Columbia, S.C.)

Western Carolina (2-1-0) vs. South Carolina (2-0-0)
Date: Aug 30, 2009 • Attendance: 489
Weather:

Western Carolina player statistics table with columns: Po # Player, Sh, SO, G, A, Min.

Goalkeepers table for Western Carolina.

Shots by period table for Western Carolina.

Corner kicks table for Western Carolina.

Scoring summary table for Game 2.

Cautions and ejections:
Stadium: Stone Stadium
Officials: Referee: Joe Balazs; Asst. Referee: Alan Correa; Steve Abbott;
Timekeeper: Adrienne Cunningham; Scorer: Miquel Jacobs;
Offsides: Western Carolina 0, South Carolina 4.

Official's signature

### GAME 1 - CofC (2-0)

#### Soccer Box Score (Final) The Automated ScoreBook For Soccer Col. of Charleston vs South Carolina (Aug 27, 2009 at Columbia, S.C.)

Col. of Charleston (0-1-0) vs. South Carolina (1-0-0)
Date: Aug 27, 2009 • Attendance: 612
Weather:

Col. of Charleston player statistics table with columns: Po # Player, Sh, SO, G, A, Min.

Goalkeepers table for Col. of Charleston.

Shots by period table for Col. of Charleston.

Corner kicks table for Col. of Charleston.

Scoring summary table for Game 1.

Cautions and ejections:
Stadium: Stone Stadium
Officials: Referee: Jeremy Brooks; Asst. Referee: John Tanverdi; Kenneth Ayers;
Timekeeper: Bryan Powell; Scorer: Miquel Jacobs;
Offsides: Col. of Charleston 1, South Carolina 2.

Official's signature

### GAME 3 - Louisville (3-0)

#### Soccer Box Score (Final) 2009 South Carolina Women's Soccer South Carolina vs Louisville (09-04-09 at Louisville, Ky.)

South Carolina (3-0) vs. Louisville (1-2)
Date: 09-04-09 • Attendance: 1103
Weather:

South Carolina player statistics table with columns: Po # Player, Sh, SO, G, A, Min.

Goalkeepers table for South Carolina.

Shots by period table for South Carolina.

Corner kicks table for South Carolina.

Scoring summary table for Game 3.

Cautions and ejections:
Stadium: Cardinal Park
Officials: Referee: Kelly R. Ross; Asst. Referee: Rachel Bramlage; Andy Ellsworth;
Alt. Official: Mike Dutt; Timekeeper: Kent Jennings; Scorer: Garrett Wall;
Offsides: South Carolina 4, Louisville 2.

Official's signature













GAME 20 - #25 Georgia (3-2)

Soccer Box Score (Final)
2009 South Carolina Women's Soccer
Georgia vs South Carolina (Nov 04, 2009 at ORANGE BEACH, AL)

Georgia (14-5-1, 7-4 SEC) vs.
South Carolina (16-3-1, 7-3-1 SEC)
Date: Nov 04, 2009 • Attendance:
Weather: 62 DEGREES F

Georgia player statistics table with columns: Po #, Player, Sh, SO, G, A, Min.

Goals by period table with columns: 1, 2, Total.

South Carolina player statistics table with columns: Po #, Player, Sh, SO, G, A, Min.

Goalkeepers and Saves statistics table.

Goalkeepers and Saves statistics table.

Shots by period table.

Saves by period table.

Corner kicks table.

Fouls table.

Scoring summary table with columns: No., Time Team, Goal scorer, Assist, Description.

Cautions and ejections:
YC-UG #15 (40:16)

Stadium: OB SPORTSPLEX
Officials: Referee: RACHEL WOO; Asst. Referee: DAN PROVENZANO; TED UNKEL;
Alt. Official: ROB MANN; Timekeeper: BRIAN RICE; Scorer: ROBBIE MUNROE;
Offsides: Georgia 0, South Carolina 1.

Official's signature

GAME 21 - #8 Florida (1-0)

Soccer Box Score (Final)
2009 South Carolina Women's Soccer
South Carolina vs #10 Florida (Nov 06, 2009 at Orange Beach, AL)

South Carolina (17-3-1, 7-3-1 SEC) vs.
Florida (15-5-2, 8-1-2 SEC)
Date: Nov 06, 2009 • Attendance:
Weather:

South Carolina player statistics table.

Goals by period table.

Florida player statistics table.

Goalkeepers and Saves statistics table.

Goalkeepers and Saves statistics table.

Shots by period table.

Saves by period table.

Corner kicks table.

Fouls table.

Scoring summary table.

Cautions and ejections:

Stadium: OB Sportsplex
Officials: Referee: Tim Debysingh; Asst. Referee: Matt Drew; Dan Provenzano;
Alt. Official: Tony Russo; Timekeeper: Brian Rice; Scorer: Robbie Munroe;
Offsides: South Carolina 1, Florida 1.

Official's signature

GAME 22 - #13 LSU (1-1)

Soccer Box Score (Final)
2009 South Carolina Women's Soccer
South Carolina vs #13 LSU (Nov 08, 2009 at Orange Beach, AL)

South Carolina (17-3-2, 7-3-1 SEC) vs.
LSU (14-4-4, 8-2-1 SEC)
Date: Nov 08, 2009 • Attendance: 1522
Weather: 79 degrees F, Wind 27 MPH W, Partly Cloudy

South Carolina player statistics table.

Goals by period table.

LSU player statistics table.

Goalkeepers and Saves statistics table.

Goalkeepers and Saves statistics table.

Shots by period table.

Saves by period table.

Corner kicks table.

Fouls table.

Scoring summary table.

Cautions and ejections:
YC-LSU #11 (51:55)

Stadium: OB Sportsplex
SHOOTOUT RESULTS:
South Carolina: 3/Y 5/Y 7/Y 16/Y 4/N 15/Y 21/Y 27/Y 25/Y
LSU: 21/N 16/Y 12/Y 8/Y 10/Y 7/Y 6/Y 0/Y 11/N
South Carolina wins shootout 8-7

Officials: Referee: Cory Rockwell; Asst. Referee: Ted Unkel; Dan Provenzano;
Alt. Official: Tony Russo; Timekeeper: Brian Rice; Scorer: Robbie Munroe;
Offsides: South Carolina 2, LSU 1.

Official's signature

GAME 23 - DAVIDSON (4-0)

Soccer Box Score (Final)
2009 NCAA First Round
Davidson vs #8 South Carolina (Nov 13, 2009 at Columbia, S.C.)

Davidson (12-10-1) vs.
South Carolina (18-3-2)
Date: Nov 13, 2009 • Attendance: 3813
Weather:

Davidson player statistics table.

Goals by period table.

South Carolina player statistics table.

Goalkeepers and Saves statistics table.

Goalkeepers and Saves statistics table.

Shots by period table.

Saves by period table.

Corner kicks table.

Fouls table.

Scoring summary table.

Cautions and ejections:
YC-DAV #26 (55:03)

Stadium: Stone Stadium
Officials: Referee: Eric Proctor; Asst. Referee: Alan Schectman; Jeremy Brooks;
Alt. Official: Don Dickerson; Timekeeper: Calhoun Hipp; Scorer: Miquel Jacobs;
Offsides: Davidson 0, South Carolina 3.

Official's signature



**#0 Alex Holland**  
GK • 5-7 • Fr.

Bests	Season	Career
<b>Saves:</b>	N/A	Same
<b>Minutes:</b>	N/A	Same

**Career Statistics**

YEAR	GP/GS	MIN	SVS	GA	GAA	SHO
2009	0-0	0	0	0	0	0
<b>TOTALS</b>	<b>0-0</b>	<b>0</b>	<b>0</b>	<b>0</b>	<b>0</b>	<b>0</b>



**#1 Roya Mojarab**  
GK • 5-4 • So.

Bests	Season	Career
<b>Saves:</b>	2, (9/20)	Same
<b>Minutes:</b>	30:28, (9/20)	Same

**Career Statistics**

YEAR	GP/GS	MIN	SVS	GA	GAA	SHO
2008	1-0	13:07	0	0	0.00	0
2009	1-0	30:28	2	1	2.95	0
<b>TOTALS</b>	<b>2-0</b>	<b>43:35</b>	<b>2</b>	<b>1</b>	<b>2.06</b>	<b>0</b>



**#2 Megan Fligg**  
D • 5-6 • Fr.

Bests	Season	Career
<b>Goals:</b>	1, (9/6)	Same
<b>Assists:</b>	N/A	Same
<b>Points:</b>	2, (9/6)	Same
<b>Shots:</b>	1, 2x* (9/6)	Same
<b>SOG:</b>	1, (9/6)	Same

**Career Statistics**

YEAR	GP/GS	SH	G	A	PTS	GWG
2009	16-1	2	1	0	2	0
<b>TOTALS</b>	<b>16-1</b>	<b>2</b>	<b>1</b>	<b>0</b>	<b>2</b>	<b>0</b>



**#3 Samantha Diaz-Matosas**  
D • 5-7 • Sr.

Bests	Season	Career
<b>Goals:</b>	1, 4x* (11/13)	1, 9x* (11/13)
<b>Assists:</b>	1, 5x* (11/13)	1, 13x* (11/13)
<b>Points:</b>	3, (11/13)	3, 2x* (11/13)
<b>Shots:</b>	4, (10/9)	Same
<b>SOG:</b>	2, 3x* (11/13)	3, 3x* (9/9/06)

**Career Statistics**

YEAR	GP/GS	SH	G	A	PTS	GWG
2006	22-22	30	2	4	8	0
2007	23-18	9	1	2	4	0
2008	22-22	16	2	2	6	2
2009	23-22	30	4	5	13	2
<b>TOTALS</b>	<b>90-84</b>	<b>85</b>	<b>9</b>	<b>13</b>	<b>31</b>	<b>4</b>



**#4 Kayla Grimsley**  
F • 5-4 • So.

Bests	Season	Career
<b>Goals:</b>	2, (11/13)	2, 2x* (11/13)
<b>Assists:</b>	1, 6x* (11/4)	1, 12x* (11/4)
<b>Points:</b>	4, (11/13)	4, 2x* (11/13)
<b>Shots:</b>	7, (10/18)	Same
<b>SOG:</b>	3, 2x* (11/13)	3, 3x* (11/13)

**Career Statistics**

YEAR	GP/GS	SH	G	A	PTS	GWG
2008	22-20	37	8	6	22	2
2009	23-23	42	13	7	33	2
<b>TOTALS</b>	<b>45-43</b>	<b>79</b>	<b>21</b>	<b>13</b>	<b>55</b>	<b>4</b>



**#5 Kim Miller**  
M • 5-2 • Sr.

Bests	Season	Career
<b>Goals:</b>	1, 3x* (11/6)	2, (10/26/08)
<b>Assists:</b>	2, 3x* (10/22)	2, 3x* (10/22)
<b>Points:</b>	2, 6x* (11/6)	4, (10/26/08)
<b>Shots:</b>	3, 2x* (10/4)	4, (10/28/07)
<b>SOG:</b>	2, (9/6)	2, 8x* (9/6)

**Career Statistics**

YEAR	GP/GS	SH	G	A	PTS	GWG
2006	22-20	9	0	2	2	0
2007	23-23	17	1	1	3	1
2008	22-22	36	4	3	11	2
2009	23-23	29	3	11	17	2
<b>TOTALS</b>	<b>90-88</b>	<b>91</b>	<b>8</b>	<b>17</b>	<b>33</b>	<b>5</b>

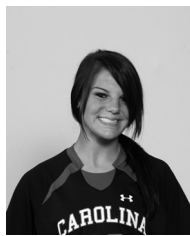


**#7 Blakely Mattern**  
D • 5-9 • Sr.

Bests	Season	Career
<b>Goals:</b>	2, 2x* (10/11)	Same
<b>Assists:</b>	1, (9/20)	1, 6x* (9/20)
<b>Points:</b>	4, 2x* (10/11)	Same
<b>Shots:</b>	4, (11/8)	4, 3x* (11/8)
<b>SOG:</b>	3, 2x* (11/8)	Same

**Career Statistics**

YEAR	GP/GS	SH	G	A	PTS	GWG
2006	22-22	28	3	3	9	2
2007	23-23	18	2	2	6	0
2008	22-22	20	4	0	8	0
2009	23-23	21	7	1	15	3
<b>TOTALS 90-90</b>	<b>87</b>	<b>16</b>	<b>6</b>	<b>38</b>	<b>5</b>	



**#8 Christine Watts**  
M • 5-6 • Fr.

Bests	Season	Career
<b>Goals:</b>	1, 2x* (9/27)	Same
<b>Assists:</b>	1, (9/11)	Same
<b>Points:</b>	2, 2x* (9/27)	Same
<b>Shots:</b>	3, 2x* (9/27)	Same
<b>SOG:</b>	2, 2x* (9/27)	Same

**Career Statistics**

YEAR	GP/GS	SH	G	A	PTS	GWG
2009	23-0	19	2	1	5	1
<b>TOTALS 23-0</b>	<b>19</b>	<b>2</b>	<b>1</b>	<b>5</b>	<b>1</b>	



**#9 Maria Petroni**  
F • 5-10 • So.

Bests	Season	Career
<b>Goals:</b>	1, (9/6)	Same
<b>Assists:</b>	1, (9/20)	1, 3x* (9/20)
<b>Points:</b>	2, (9/6)	Same
<b>Shots:</b>	1, 4x* (10/22)	2, 2x* (10/3/08)
<b>SOG:</b>	1, 3x* (10/22)	1, 6x* (10/22)

**Career Statistics**

YEAR	GP/GS	SH	G	A	PTS	GWG
2008	17-7	8	0	2	2	0
2009	20-0	4	1	1	3	0
<b>TOTALS 37-7</b>	<b>12</b>	<b>1</b>	<b>3</b>	<b>5</b>	<b>0</b>	



**#10 Natalie Aaron**  
F • 5-10 • So.

Bests	Season	Career
<b>Goals:</b>	1, (9/20)	1, 3x* (9/20)
<b>Assists:</b>	1, (9/20)	1, 2x* (9/20)
<b>Points:</b>	3, (9/20)	Same
<b>Shots:</b>	2, (9/20)	5, (10/5/08)
<b>SOG:</b>	1, 2x* (10/11)	4, (10/17/08)

**Career Statistics**

YEAR	GP/GS	SH	G	A	PTS	GWG
2008	21-2	27	2	1	5	1
2009	19-0	8	1	1	3	0
<b>TOTALS 40-2</b>	<b>35</b>	<b>3</b>	<b>2</b>	<b>8</b>	<b>1</b>	



**#11 Idana DeCecco**  
D • 5-6 • So.

Bests	Season	Career
<b>Goals:</b>	N/A	1, (9/14/08)
<b>Assists:</b>	N/A	Same
<b>Points:</b>	N/A	2, (9/14/08)
<b>Shots:</b>	N/A	1, 2x* (10/10/08)
<b>SOG:</b>	N/A	1, (9/14/08)

**Career Statistics**

YEAR	GP/GS	SH	G	A	PTS	GWG
2008	15-0	2	1	0	2	0
2009	2-0	0	0	0	0	0
<b>TOTALS 17-0</b>	<b>2</b>	<b>1</b>	<b>0</b>	<b>2</b>	<b>0</b>	



**#12 Shannon Bigbie**  
F • 5-6 • Sr.

Bests	Season	Career
<b>Goals:</b>	1, (9/11)	1, 3x* (9/11)
<b>Assists:</b>	1, (9/25)	1, 6x* (9/25)
<b>Points:</b>	2, (9/11)	2, 3x* (9/11)
<b>Shots:</b>	2, (10/16)	5, (9/9/07)
<b>SOG:</b>	2, (10/16)	4, (9/9/07)

**Career Statistics**

YEAR	GP/GS	SH	G	A	PTS	GWG
2006	22-5	0	0	0	0	0
2007	23-8	13	1	1	3	1
2008	22-20	24	1	4	6	0
2009	21-19	8	1	1	3	1
<b>TOTALS 88-52</b>	<b>45</b>	<b>3</b>	<b>6</b>	<b>12</b>	<b>2</b>	



**#13 Jocelyn Spurrier**  
D • 5-8 • R-Fr.

Bests	Season	Career
<b>Goals:</b>	N/A	Same
<b>Assists:</b>	N/A	Same
<b>Points:</b>	N/A	Same
<b>Shots:</b>	N/A	Same
<b>SOG:</b>	N/A	Same

**Career Statistics**

YEAR	GP/GS	SH	G	A	PTS	GWG
2008	REDSHIRTED					
2009	0-0	0	0	0	0	0
<b>TOTALS</b>	<b>0-0</b>	<b>0</b>	<b>0</b>	<b>0</b>	<b>0</b>	<b>0</b>



**#14 Lolly Holland**  
M • 5-4 • So.

Bests	Season	Career
<b>Goals:</b>	1, (9/20)	Same
<b>Assists:</b>	N/A	Same
<b>Points:</b>	2, (9/20)	Same
<b>Shots:</b>	4, (9/13)	Same
<b>SOG:</b>	1, 2x* (9/20)	Same

**Career Statistics**

YEAR	GP/GS	SH	G	A	PTS	GWG
2008	15-0	1	0	0	0	0
2009	15-0	7	1	0	2	0
<b>TOTALS</b>	<b>30-0</b>	<b>8</b>	<b>1</b>	<b>0</b>	<b>2</b>	<b>0</b>



**#15 Kortney Rhoades**  
M • 5-4 • So.

Bests	Season	Career
<b>Goals:</b>	1, 3x* (11/4)	1, 6x* (11/4)
<b>Assists:</b>	1, 2x* (9/20)	2, (9/12/08)
<b>Points:</b>	2, 3x* (11/4)	2, 7x* (11/4)
<b>Shots:</b>	4, (11/4)	5, 2x* (10/5/08)
<b>SOG:</b>	2, 4x* (11/4)	2, 6x* (11/4)

**Career Statistics**

YEAR	GP/GS	SH	G	A	PTS	GWG
2008 (SJ)	17-13	34	3	4	10	1
2009	23-22	26	3	2	8	2
<b>TOTALS</b>	<b>40-35</b>	<b>60</b>	<b>6</b>	<b>6</b>	<b>18</b>	<b>3</b>



**#16 Lindsay Small**  
M • 5-7 • Sr.

Bests	Season	Career
<b>Goals:</b>	1, 3x* (10/2)	1, 6x* (10/2)
<b>Assists:</b>	1, 3x* (11/4)	1, 4x* (11/4)
<b>Points:</b>	2, 3x* (10/2)	3, (9/19/08)
<b>Shots:</b>	5, 2x* (10/2)	6, 2x* (10/17/08)
<b>SOG:</b>	3, 2x* (10/2)	Same

**Career Statistics**

YEAR	GP/GS	SH	G	A	PTS	GWG
2006	16-0	4	0	0	0	0
2007	23-0	5	0	0	0	0
2008	22-22	35	3	1	7	2
2009	23-23	37	4	3	11	3
<b>TOTALS</b>	<b>84-45</b>	<b>81</b>	<b>7</b>	<b>4</b>	<b>18</b>	<b>5</b>

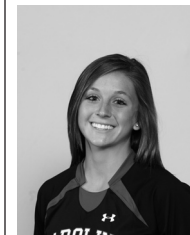


**#17 Maggie Blackwell**  
D • 5-6 • R-So.

Bests	Season	Career
<b>Goals:</b>	N/A	Same
<b>Assists:</b>	N/A	Same
<b>Points:</b>	N/A	Same
<b>Shots:</b>	N/A	Same
<b>SOG:</b>	N/A	Same

**Career Statistics**

YEAR	GP/GS	SH	G	A	PTS	GWG
2007	REDSHIRTED					
2008	0-0	0	0	0	0	0
2009	2-0	0	0	0	0	0
<b>TOTALS</b>	<b>2-0</b>	<b>0</b>	<b>0</b>	<b>0</b>	<b>0</b>	<b>0</b>



**#18 Ali Glemser**  
F • 5-3 • R-Fr.

Bests	Season	Career
<b>Goals:</b>	N/A	Same
<b>Assists:</b>	N/A	Same
<b>Points:</b>	N/A	Same
<b>Shots:</b>	2, (9/20)	Same
<b>SOG:</b>	1, 4x* (9/20)	Same

**Career Statistics**

YEAR	GP/GS	SH	G	A	PTS	GWG
2008	REDSHIRTED					
2009	13-0	6	0	0	0	0
<b>TOTALS</b>	<b>13-0</b>	<b>6</b>	<b>0</b>	<b>0</b>	<b>0</b>	<b>0</b>





**#19 Kira Campbell**  
M • 5-8 • So.

Bests	Season	Career
Goals:	N/A	Same
Assists:	N/A	1, (9/5/08)
Points:	N/A	1, (9/5/08)
Shots:	4, (9/11)	Same
SOG:	2, (9/11)	Same

**Career Statistics**

YEAR	GP/GS	SH	G	A	PTS	GWG
2008	22-12	12	0	1	1	0
2009	21-8	10	0	0	0	0
<b>TOTALS</b>	<b>43-20</b>	<b>22</b>	<b>0</b>	<b>1</b>	<b>1</b>	<b>0</b>

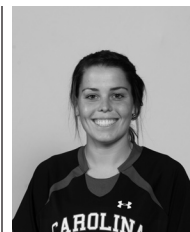


**#20 Ellen Fahey**  
D • 5-7 • So.

Bests	Season	Career
Goals:	N/A	Same
Assists:	1, 4x* (9/18)	Same
Points:	1, 4x* (9/18)	Same
Shots:	2, (10/4)	Same
SOG:	1, 2x* (10/9)	1, 3x* (10/9)

**Career Statistics**

YEAR	GP/GS	SH	G	A	PTS	GWG
2008	22-22	1	0	0	0	0
2009	22-22	3	0	4	4	0
<b>TOTALS</b>	<b>44-44</b>	<b>4</b>	<b>0</b>	<b>4</b>	<b>4</b>	<b>0</b>

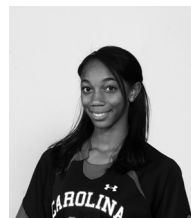


**#21 Brittiny Rhoades**  
D • 5-3 • Jr.

Bests	Season	Career
Goals:	N/A	Same
Assists:	N/A	2, (9/26/08)
Points:	N/A	2, (9/26/08)
Shots:	1, 3x* (9/6)	3, (10/19/07)
SOG:	1, 2x* (9/6)	3, (10/19/07)

**Career Statistics**

YEAR	GP/GS	SH	G	A	PTS	GWG
2007	23-22	5	0	4	4	0
2008	22-22	15	0	5	5	0
2009	23-22	4	0	0	0	0
<b>TOTALS</b>	<b>68-66</b>	<b>24</b>	<b>0</b>	<b>9</b>	<b>9</b>	<b>0</b>



**#22 Dani Henry**  
D • 5-4 • R-Fr.

Bests	Season	Career
Goals:	N/A	Same
Assists:	N/A	Same
Points:	N/A	Same
Shots:	1, 3x* (9/20)	Same
SOG:	N/A	Same

**Career Statistics**

YEAR	GP/GS	SH	G	A	PTS	GWG
2008	REDSHIRTED					
2009	15-0	3	0	0	0	0
<b>TOTALS</b>	<b>15-0</b>	<b>3</b>	<b>0</b>	<b>0</b>	<b>0</b>	<b>0</b>



**#23 Kacie Brewer**  
F • 5-5 • Sr.

Bests	Season	Career
Goals:	1, (9/20)	1, 2x* (9/20)
Assists:	1, (9/13)	1, 2x* (9/13)
Points:	2, (9/20)	2, 2x* (9/20)
Shots:	3, (9/20)	5, (9/12/07)
SOG:	3, (9/20)	3, 2x* (9/20)

**Career Statistics**

YEAR	GP/GS	SH	G	A	PTS	GWG
2006	5-0	1	0	0	0	0
2007	13-0	10	1	1	3	0
2008	9-0	3	0	0	0	0
2009	23-1	8	1	1	3	0
<b>TOTALS</b>	<b>50-1</b>	<b>22</b>	<b>2</b>	<b>2</b>	<b>6</b>	<b>0</b>



**#25 Maddy Kill**  
M • 5-7 • Jr.

Bests	Season	Career
Goals:	N/A	1, 2x* (10/7/07)
Assists:	N/A	2, 3x* (8/30/08)
Points:	N/A	2, 4x* (8/30/08)
Shots:	1, (8/27)	4, 2x* (9/14/08)
SOG:	1, (8/27)	2, 3x* (9/14/08)

**Career Statistics**

YEAR	GP/GS	SH	G	A	PTS	GWG
2007 (SH)	18-5	20	2	5	9	0
2008 (SH)	18-8	17	0	3	3	0
2009	10-0	1	0	0	0	0
<b>TOTALS</b>	<b>46-13</b>	<b>38</b>	<b>2</b>	<b>8</b>	<b>12</b>	<b>0</b>



**#26 Rae Wilson**  
F • 5-5 • Fr.

Bests	Season	Career
<b>Goals:</b>	N/A	Same
<b>Assists:</b>	N/A	Same
<b>Points:</b>	N/A	Same
<b>Shots:</b>	N/A	Same
<b>SOG:</b>	N/A	Same

**Career Statistics**

YEAR	GP/GS	SH	G	A	PTS	GWG
2009	5-0	0	0	0	0	0
<b>TOTALS</b>	<b>5-0</b>	<b>0</b>	<b>0</b>	<b>0</b>	<b>0</b>	<b>0</b>

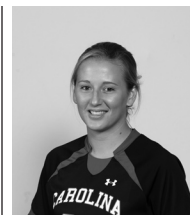


**#27 Brooke Jacobs**  
F • 5-3 • Jr.

Bests	Season	Career
<b>Goals:</b>	1, 5x* (11/13)	1, 9x* (11/13)
<b>Assists:</b>	1, 3x* (11/13)	2, (9/23/07)
<b>Points:</b>	3, (11/13)	3, 2x* (11/13)
<b>Shots:</b>	5, (9/13)	Same
<b>SOG:</b>	3, 3x* (11/13)	3, 5x* (11/13)

**Career Statistics**

YEAR	GP/GS	SH	G	A	PTS	GWG
2007	15-4	11	1	3	5	1
2008	21-15	38	3	4	10	1
2009	23-22	40	5	3	13	2
<b>TOTALS</b>	<b>59-41</b>	<b>89</b>	<b>9</b>	<b>10</b>	<b>28</b>	<b>4</b>



**#28 Brittany DeWitt**  
D • 5-6 • Fr.

Bests	Season	Career
<b>Goals:</b>	N/A	Same
<b>Assists:</b>	N/A	Same
<b>Points:</b>	N/A	Same
<b>Shots:</b>	N/A	Same
<b>SOG:</b>	N/A	Same

**Career Statistics**

YEAR	GP/GS	SH	G	A	PTS	GWG
2009	4-0	0	0	0	0	0
<b>TOTALS</b>	<b>4-0</b>	<b>0</b>	<b>0</b>	<b>0</b>	<b>0</b>	<b>0</b>



**#29 Mollie Patton**  
GK • 5-7 • R-Jr.

Bests	Season	Career
<b>Saves:</b>	6, 3x* (9/13)	8, (9/14/08)
<b>Minutes:</b>	110:00, (10/4)	110:00, 5x* (10/4)

**Career Statistics**

YEAR	GP/GS	MIN	SVS	GA	GAA	SHO
2006	REDSHIRTED					
2007	0-0	0	0	0	0	0
2008	22-22	2053	58	22	0.96	7
2009	23-23	2087	59	13	0.52	14
<b>TOTALS</b>	<b>45-45</b>	<b>4140</b>	<b>117</b>	<b>35</b>	<b>0.76</b>	<b>21</b>



**#35 Darien Vercillo**  
GK • 5-6 • Fr.

Bests	Season	Career
<b>Saves:</b>	N/A	Same
<b>Minutes:</b>	N/A	Same

**Career Statistics**

YEAR	GP/GS	MIN	SVS	GA	GAA	SHO
2009	0-0	0	0	0	0	0
<b>TOTALS</b>	<b>0-0</b>	<b>0</b>	<b>0</b>	<b>0</b>	<b>0</b>	<b>0</b>



### Shelley Smith Ninth Season

Shelley Smith enters her ninth season at the helm of the USC women's soccer program and looks to continue building upon the success that she has brought to the program after taking the team to the first back-to-back NCAA Tournament appearances in program history.

Smith has cemented Carolina's position as a conference title contender and player on the national stage after guiding the Gamecocks in 2008 to their second consecutive NCAA Tournament bid and third consecutive SEC Tournament bid, both program firsts. The Gamecocks went 11-7-4 overall and earned five SEC wins for the third year in a row with only one senior on the roster. Respected as a top defensive team, the Gamecocks finished the regular season second in the SEC with eight shutouts and ranked in the top two in every major defensive category including goals allowed, points allowed, shots allowed and shots on goal allowed.

Blakely Mattern and Kayla Grimsley both earned All-SEC honors with Mattern earning her second first team and Grimsley picking up spots on the second team and freshman team. The duo also picked up Soccer Buzz All-Southeast Region honors while Mattern also earned a nod by the NSCAA.

Carolina's success in the classroom continued last season as her squad earned two Academic All-District honors in Mattern and Mollie Patton. Mattern was also named to the Academic All-America first team, making South Carolina one of only four teams in the nation – and the only in the SEC – to have an Academic All-American selected each of the past four seasons. Her team was also honored with its seventh NSCAA Team Academic Award. The team had 11 players named to the SEC Academic Honor Roll in addition to nine selections to the SEC Freshman Honor Roll. Overall, Smith has coached 131 SEC Academic Honor Roll recipients since coming to USC in 2001.

Smith has coached several top student-athletes at Carolina including Ashley Kirk, USC's first four-time All-SEC honoree, Carolina's first All-American in three-time All-SEC selection Blakely Mattern and two-time All-SEC performers Melinda Carter, Jessica Julin and Sarah Lentz. Julin is currently the captain of the Finland National Team and Carter played in the WUSA. The Gamecocks have earned 20 All-SEC honors in the last eight years.

In her first season as head coach at Carolina (2001), the Gamecocks were the third most improved team in the nation with an 8-7-3 overall record. Carolina also had one of the school's best home records, going 5-3 at Stone Stadium, allowing opponents to score only four goals in eight matches.

The success continued for USC in 2002 with 13 wins in Smith's second season. The year was highlighted with USC's first ever victories against Florida and Kentucky. Smith also led her team to ties against 2002 SEC champion Auburn and Eastern Division champion Tennessee.

Smith led the Gamecocks to another successful season in 2003 with 10 wins including a USC record eight-game unbeaten streak as well as a 6-2-1 record at home in Stone Stadium.

The 2004 season featured a win over No. 7 Clemson, the Gamecocks' first win over a ranked opponent since 1998, as well as a 6-3 mark in non-conference action. Ashley Kirk also became the first freshman soccer player in school history to be named SEC Freshman of the Year. In addition, Carolina set a school record for a home game-winning streak with six consecutive wins.

Following an injury filled 2005 season, the program took a big step forward in 2006 as USC went undefeated at home for the first time in school history with an 8-0-3 mark at Stone Stadium. The team's cumulative goals against average of 0.69 was the lowest ever tallied at Carolina. The season culminated with the Gamecocks advancing to the SEC Tournament semifinals for the first time in Carolina history, as Blakely Mattern became the team's first Freshman All-America selection since 1998.

Smith directed the 2007 Gamecocks to arguably the best season in school history, tying the school record with 14 victories and advancing to the NCAA Tournament for only the second time in program history. Carolina posted a 14-6-3 overall record including a 5-4-2 mark in the SEC after beginning the season by becoming the first team ever to knock off defending national champion and top-ranked North Carolina in a season opening game at Fetzer Field in Chapel Hill. The Gamecocks ran to a 7-0-0 start to the season – program bests for start to a season and winning streak – and peaked at No. 7 in the national polls. For the second consecutive season South Carolina advanced to the SEC Tournament semifinals after knocking off Tennessee for the first time in program history and earned the school's first bid to the NCAA Tournament since 1998. Blakely Mattern became the first sophomore to ever earn SEC Defensive Player of the Year honors in addition to becoming the first All-American in South Carolina history.

In 12 years as a head coach, Smith has compiled an overall record of 122-97-24. Besides her collegiate coaching, Smith was a member of the Region III ODP staff for the past five years, as well as an assistant for the '90 Regional Team. Smith also was a member of the 2003 U-14 National Camp staff for U.S. Soccer.

With a background in both semi-professional and collegiate soccer, Smith previously served as head coach at Rhode Island from 1997-2000. The 2000 NSCAA Northeast Region Coach of the Year, Smith rebuilt the URI women's soccer program, compiling a 41-35-2 overall record. Smith took a

program that was 2-16 her first year to 12-7-1 in her second season, marking the eighth-most improved won-lost record for a team in NCAA history. In 2000, Smith coached URI to its best record ever of 15-4-1, while reaching the Atlantic 10 Semifinals, a first in URI history.

Smith was nominated for the 2000 National Coach of the Year. The New England Women's Soccer Intercollegiate Soccer Association (NEWISA) also named her its Division I Coach of the Year in 2000. She was the 1998 Atlantic 10 Coach of the Year as well.

In addition to her experience as a coach, Smith brings experience from the semi-professional level. From 1996-2000, Smith played for the Boston Renegades in the W-1 League. Smith was captain in 2000 as she led Boston to the semifinals in the W-1 Championship. The Renegades reached the finals in 1998. Smith also had the opportunity to play overseas in 1994 as a member of the Sheffield United Women's Football Club in England.

Smith, a 1993 graduate of the University of Vermont with a degree in nutritional science, received her teacher's certificate from the same institution in 1995. Smith started all four years for the Catamounts. Her primary positions were center midfielder and central defender. She was a regional All-American in both 1992 and '93 in addition to being named First Team All-North Atlantic Conference each year from 1991-93. During her freshman year, the squad won the ECAC Tournament. Vermont was one of the first programs to offer women's soccer as a varsity sport and it competed on a national level. Smith was named to Vermont's Athletic Hall of Fame in the summer of 2004.

Smith worked as an assistant coach at Dartmouth College from 1995-97. The Big Green made the NCAA Tournament in her second season with the program.

Smith is married to USC associate head coach Jamie Smith. They are the proud parents of two sons, Braden James, born on Nov. 25, 2003 and Evan Addison born on Jan. 6, 2006.

Smith has her USSF B license and the NCAA Advanced National Diploma. She is currently a member of the USYSA Regional Olympic Development Staff.

Year-By-Year Results		
Year	Record	School
1997	2-16	Rhode Island
1998	12-7-1	Rhode Island
1999	12-8	Rhode Island
2000	15-4-1	Rhode Island
2001	8-7-3	South Carolina
2002	13-6-2	South Carolina
2003	10-8-3	South Carolina
2004	8-10-2	South Carolina
2005	6-12	South Carolina
2006	11-6-5	South Carolina
2007	14-6-3	South Carolina
2008	11-7-4	South Carolina
2009	18-3-2	South Carolina