



SOUTH CAROLINA

2009 WOMEN'S SOCCER

Contact: Miquel Jacobs • **Office:** (803) 777-1516 • **Cell:** (803) 530-5727 • **Fax:** (803) 777-2967
Email: jacobsm2@mailbox.sc.edu • Roost Building B, 1322 Heyward Street, Columbia, SC 29208
www.GamecocksOnline.com

2009 Schedule/Results

DAY	DATE	OPPONENT	TIME/RESULT
Fri.	Aug. 21	Mexican National Team	W, 2-0
Thur.	Aug. 27	College of Charleston	W, 2-0
Sun.	Aug. 30	Western Carolina	W, 2-0
Fri.	Sept. 4	Louisville (1)	W, 3-0
Sun.	Sept. 6	Cincinnati (1)	W, 4-0
Fri.	Sept. 11	Clemson (2)	W, 5-0
Sun.	Sept. 13	UNC Wilmington	W, 2-0
Fri.	Sept. 18	#17 UCF	W, 1-0
Sun.	Sept. 20	South Alabama	W, 6-1
Fri.	Sept. 25	Vanderbilt*	W, 2-1
Sun.	Sept. 27	Kentucky*	W, 1-0
Fri.	Oct. 2	Mississippi*	W, 1-0
Sun.	Oct. 4	Mississippi State*	T, 1-1 (2OT)
Fri.	Oct. 9	Auburn*	7 p.m.
Sun.	Oct. 11	Alabama*	3:30 p.m.
Fri.	Oct. 16	Georgia*	7 p.m.
Sun.	Oct. 18	Tennessee*	2 p.m.
Thur.	Oct. 22	Arkansas*	7 p.m.
Sun.	Oct. 25	LSU* (ESPNU)	3 p.m.
Fri.	Oct. 30	Florida*	6 p.m.
Wed.	Nov. 4	(3) SEC Championships	TBA
Fri.	Nov. 6	(3) SEC Championships	TBA
Sun.	Nov. 8	(3) SEC Championships	TBA

All Times Eastern
 Home matches in **BOLD** *SEC Match
 1-Louisville Tournament, Louisville, Ky.
 2-Carolina Cup, Clemson, S.C.
 3-Orange Beach, Ala.

Game 13-14

#7 Gamecocks Host Auburn On Senior Day Friday



#7 South Carolina
(11-0-1)

Stone Stadium
 Columbia, S.C.
 Oct. 9, 2009 • 7 p.m.



Auburn
 5-4-3
 2-2-0 SEC

Stone Stadium
 Columbia, S.C.

Oct. 11, 2009 • 3:30 p.m.



Alabama
 5-4-1
 1-1-1 SEC

No. 7 South Carolina will put its unbeaten record on the line this weekend when the team hosts Auburn and Alabama at Stone Stadium. The Gamecocks (11-0-1, 3-0-1 SEC) will take on Auburn (5-4-3, 2-2-0 SEC) Friday night at 7 p.m. on Senior Day, where South Carolina's seven seniors - the winningest senior class in program history - will be honored prior to the match.

South Carolina will then return to the pitch Sunday afternoon in the second match of a double-header with the men's team. The Gamecocks and Crimson Tide (5-4-1, 1-1-1 SEC) are scheduled to kickoff at 3:30 p.m.

South Carolina is 4-5-3 all-time in an evenly matched series with the Tigers. Against Alabama, the Gamecocks hold a 7-3-0 series advantage.

South Carolina Probable Starters

#	Name	Pos.	Class	GS-GP	G	A	P	Shots	Notes
21	Brittany Rhoades	D	Jr.	12-11	0	0	0	3	2007 Freshman All-American returns at left back
7	Blakely Mattern	D	Sr.	12-12	4	1	9	9	Lowe's Senior CLASS Award finalist with another strong season
20	Ellen Fahey	D	So.	12-12	0	4	4	2	Tied USC GW assist season record with third of the year vs. UCF
3	Samantha Diaz-Matosas	D	Sr.	12-12	2	3	7	11	Athletic player can play up top or back
16	Lindsay Small	M	Sr.	12-12	3	2	8	19	Solid midfielder is a mainstay as a defensive mid
5	Kim Miller	M	Sr.	12-12	2	7	11	16	Team engine also has three GW assists this season
12	Shannon Bigbie	M	Sr.	10-8	1	1	3	3	Solid senior plays up top and on the backline
15	Kortney Rhoades	M	So.	12-11	1	2	4	11	Transfer hit first goal as a Gamecock against Vanderbilt
4	Kayla Grimsley	F	So.	12-12	7	3	17	20	Has scored (goal and/or assist) in 10 of 12 games this season
27	Brooke Jacobs	F	Jr.	12-12	3	2	8	24	Career SOG% leader has been converting goals this year

No.	Name	Pos.	Yr.	Min.	GA	GAA.	Svs.	W-L	SO	Notes
29	Mollie Patton	GK	R-Jr.	1069:32	2	0.17	39	11-0-1	9	NCAA leader with nine solo shutouts and 0.17 GAA



2009 NUMERICAL ROSTER

No.	Name	Pos.	Ht.	Cl/Exp.	Hometown (High School)
0	Alex Holland	GK	5-7	Fr./HS	Cary, Ill. (Cary-Grove)
1	Roya Mojarab	GK	5-4	Soph./1L	Tacoma, Wash. (Curtis)
2	Megan Fligg	D/F	5-6	Fr./HS	Gainesville, Ga. (Chestatee)
3	Samantha Diaz-Matosas	D	5-7	Sr./3L	Lilburn, Ga. (Brookwood)
4	Kayla Grimsley	M/F	5-4	Soph./1L	Lakeland, Fla. (George W. Jenkins)
5	Kim Miller	M	5-2	Sr./3L	Farmingdale, N.Y. (Famingdale)
7	Blakely Mattern	D	5-9	Sr./3L	Simpsonville, S.C. (JL Mann)
8	Christine Watts	M	5-6	Fr./HS	Duluth, Ga. (Peachtree Ridge)
9	Maria Petroni	F	5-10	Soph./1L	Flowery Branch, Ga. (Buford)
10	Natalie Aaron	F	5-5	Soph./1L	Brentwood, Tenn. (Battle Ground Academy)
11	Idana DeCecco	D	5-6	Soph./1L	Sherwood Park, Alberta (Archbishop Jordan)
12	Shannon Bigbie	F/M	5-6	Sr./3L	Lexington, S.C. (Lexington)
13	Jocelyn Spurrier	D	5-8	R-Fr./HS	Lawrenceville, Ga. (Brookwood)
14	Lolly Holland	M	5-4	Soph./1L	Suwanee, Ga. (South Forsyth)
15	Kortney Rhoades	M	5-4	Soph.TR	Wilmington, Del. (Padua // St. Joseph's)
16	Lindsay Small	M/D	5-7	Sr./3L	Suffield, Conn. (Suffield)
17	Maggie Blackwell	D	5-6	R-Soph./SQ	Marietta, S.C. (Travelers Rest)
18	Ali Glemser	D	5-3	R-Fr./HS	Collierville, Tenn. (Collierville)
19	Kira Campbell	M	5-8	Soph./1L	Lexington, S.C. (Lexington)
20	Ellen Fahey	D	5-7	Soph./1L	Fort Wright, Ky. (Notre Dame Academy)
21	Brittany Rhoades	D	5-3	Jr./2L	Wilmington, Del. (Padua)
22	Dani Henry	F/D	5-4	R-Fr./HS	Avondole, Pa. (Padua)
23	Kacie Brewer	F/D	5-5	Sr./3L	Merritt Island, Fla. (Merritt Island)
25	Maddy Kill	M	5-7	Jr./TR	Marietta, Ga. (Marist School // Seton Hall)
26	Rae Wilson	F	5-5	Fr./HS	Greenville, S.C. (JL Mann)
27	Brooke Jacobs	F	5-3	Jr./2L	Chambersburg, Pa. (Chambersburg Area)
28	Brittany DeWitt	D	5-6	Fr./HS	Greensboro, N.C. (N.C. School of Science & Math)
29	Mollie Patton	GK	5-7	R-Jr./1L	Milford, Ohio (Milford)
32	Aly Shattls	M	5-1	Sr./3L	Huntington, W.Va. (Huntington)
35	Darien Vercillo	GK	5-6	Fr./HS	Yorba Linda, Calif. (Mater Dei)

2009 ALPHABETICAL ROSTER

No.	Name	Pos.	Ht.	Cl/Exp.	Hometown (High School)
10	Natalie Aaron	F	5-5	Soph./1L	Brentwood, Tenn. (Battle Ground Academy)
12	Shannon Bigbie	F/M	5-6	Sr./3L	Lexington, S.C. (Lexington)
17	Maggie Blackwell	D	5-6	R-Soph./SQ	Marietta, S.C. (Travelers Rest)
23	Kacie Brewer	F/D	5-5	Sr./3L	Merritt Island, Fla. (Merritt Island)
19	Kira Campbell	M	5-8	Soph./1L	Lexington, S.C. (Lexington)
11	Idana DeCecco	D	5-6	Soph./1L	Sherwood Park, Alberta (Archbishop Jordan)
28	Brittany DeWitt	D	5-6	Fr./HS	Greensboro, N.C. (N.C. School of Science & Math)
3	Samantha Diaz-Matosas	D	5-7	Sr./3L	Lilburn, Ga. (Brookwood)
20	Ellen Fahey	D	5-7	Soph./1L	Fort Wright, Ky. (Notre Dame Academy)
2	Megan Fligg	D/F	5-6	Fr./HS	Gainesville, Ga. (Chestatee)
18	Ali Glemser	D	5-3	R-Fr./HS	Collierville, Tenn. (Collierville)
4	Kayla Grimsley	M/F	5-4	Soph./1L	Lakeland, Fla. (George W. Jenkins)
22	Dani Henry	F/D	5-4	R-Fr./HS	Avondole, Pa. (Padua)
0	Alex Holland	GK	5-7	Fr./HS	Cary, Ill. (Cary-Grove)
14	Lolly Holland	M	5-4	Soph./1L	Suwanee, Ga. (South Forsyth)
27	Brooke Jacobs	F	5-3	Jr./2L	Chambersburg, Pa. (Chambersburg Area)
25	Maddy Kill	M	5-7	Jr./TR	Marietta, Ga. (Marist School // Seton Hall)
7	Blakely Mattern	D	5-9	Sr./3L	Simpsonville, S.C. (JL Mann)
5	Kim Miller	M	5-2	Sr./3L	Farmingdale, N.Y. (Famingdale)
1	Roya Mojarab	GK	5-4	Soph./1L	Tacoma, Wash. (Curtis)
29	Mollie Patton	GK	5-7	R-Jr./1L	Milford, Ohio (Milford)
9	Maria Petroni	F	5-10	Soph./1L	Flowery Branch, Ga. (Buford)
21	Brittany Rhoades	D	5-3	Jr./2L	Wilmington, Del. (Padua)
15	Kortney Rhoades	M	5-4	Soph.TR	Wilmington, Del. (Padua // St. Joseph's)
32	Aly Shattls	M	5-1	Sr./3L	Huntington, W.Va. (Huntington)
16	Lindsay Small	M/D	5-7	Sr./3L	Suffield, Conn. (Suffield)
13	Jocelyn Spurrier	D	5-8	R-Fr./HS	Lawrenceville, Ga. (Brookwood)
35	Darien Vercillo	GK	5-6	Fr./HS	Yorba Linda, Calif. (Mater Dei)
8	Christine Watts	M	5-6	Fr./HS	Duluth, Ga. (Peachtree Ridge)
26	Rae Wilson	F	5-5	Fr./HS	Greenville, S.C. (JL Mann)

PRONUNCIATIONS

Kira Campbell -- KEER-uh
Idana DeCecco -- id-DAN-uh de-CHECK-oh
 Sam **Diaz-Matosas** -- DIAZ mah-TOE-sas
 Ellen **Fahey** -- FAYE-he
Roya Mojarab -- ROY-ah mo-JAR-uhb
 Darien **Vercillo** -- ver-SILL-oh

**SOUTH CAROLINA
 2009 SEC RANKINGS
 (as of 10/8/09)**

Category	Pl.	No.
Goals	3rd	30
Goals Per Game	3rd	2.50
Goals Allowed	1st	3
GAA	1st	0.25
Assists	1st	29
Assists Per Game	1st	2.42
Points	2nd	89
Points Per Game	2nd	7.42
Shots	8th	174
Shots Per Game	8th	14.50
Shot %	2nd	.172
Shot on Goal %	1st	.529
Saves	11th	41
Saves Per Game	11th	3.42
Shutouts	1st	9
Shots Allowed	T-1st	88
SOG Allowed	2nd	44
Points Allowed	1st	8
Fouls	12th	97
Corners	T-6th	59
Offsides	4th	29
Yellow Cards	T-9th	3

INDIVIDUAL

Name	Category	Pl.	No.
Fahey	Assists	T-7th	4
Grimsley	Goals	T-1st	7
	Points	T-2nd	17
	Points/gm	4th	1.42
Miller	Assists	2nd	7
Patton	GAA	1st	0.17
	Save %	1st	.951
	Shutouts	1st	9
	Saves	11th	39



SEC STANDINGS

EASTERN DIVISION Team	CONF		ALL	
	W-L	Pts	W-L	Pct.
South Carolina	3-0-1	10	11-0-1	.958
Georgia	3-1-0	9	10-1-1	.875
Florida	2-1-1	7	8-4-1	.654
Tennessee	2-2-0	6	6-5-1	.542
Vanderbilt	1-3-0	3	7-4-1	.625
Kentucky	0-4-0	-	3-6-3	.375

WESTERN DIVISION Team	CONF		ALL	
	W-L	Pts	W-L	Pct.
LSU	4-0-0	12	8-2-2	.750
Auburn	2-2-0	6	5-4-3	.542
Ole Miss	2-1-0	6	8-3-0	.727
Alabama	1-1-1	4	5-4-1	.550
Mississippi State	0-2-2	2	8-2-2	.750
Arkansas	0-3-1	1	6-3-3	.625

Games through October 8

THIS WEEK IN THE SEC

Friday, October 9

Alabama at Florida	7 p.m.
Auburn at South Carolina	7 p.m.
Ole Miss at Georgia	7 p.m.
LSU at Kentucky	7 p.m.
Mississippi State at Tennessee	7 p.m.
Arkansas at Vanderbilt	8 p.m.

Sunday, October 11

Arkansas at Kentucky	1 p.m.
Auburn at Florida	1 p.m.
Mississippi State at Georgia	2 p.m.
LSU at Vanderbilt	2 p.m.
Ole Miss at Tennessee	3 p.m.
Alabama at South Carolina	3:30 p.m.

All Times Eastern

SEC PRESEASON POLL

EASTERN DIVISION	WESTERN DIVISION
Florida (11).....66	LSU (8)..... 63
Georgia (1).....53	Auburn (4)..... 58
Tennessee43	Ole Miss..... 43
South Carolina40	Alabama 39
Vanderbilt.....25	Arkansas..... 25
Kentucky19	Mississippi State 18

Overall Champion: Florida (11), Auburn (1)

ON THE HORIZON

The Gamecocks hit the road to take on traditional SEC East powers Georgia and Tennessee. The Bulldogs are ranked No. 18 this week and will play Carolina Friday at 7 p.m.

SCOUTING AUBURN

Auburn enters the weekend in search of more victories after defeating Mississippi State and Arkansas in conference play in addition to earning a draw against then-No. 1 North Carolina to close out the non-conference slate. The Tigers have only been shutout of three games this season and are led in scoring by 2008 SEC Freshman of the Year Katy Frierson (4 goals, 4 assists, 12 points). True freshman Amy Howard has been solid in goal for Auburn and sports a 1.20 goals against average with 70 saves and two shutouts. She has twice earned SEC Freshman of the Week honors this season.

SCOUTING ALABAMA

Alabama rebounded from a rough start of the season and is unbeaten in four of its last five games. The team is led by junior Victoria Frederick who has four goals and 10 points. Sophomore keeper Justine Bernier holds a 1.24 goals against average with 57 saves and three shutouts.

IN THE POLLS

One week after earning the highest ranking in program history, South Carolina climbed another spot this week to No. 7 in the latest NSCAA coaches poll. The Gamecocks also hold steady at No. 7 by Soccer Times and is ranked No. 8 by Soccer America magazine for a unanimous top 10 ranking for the second consecutive week.

LOWE'S SENIOR CLASS AWARD FINALIST BLAKELY MATTERN NEEDS VOTES!

Senior defender **Blakely Mattern** has been named a finalist for the Lowe's Senior CLASS Award, presented annually in eight NCAA Division 1 Sports to a senior student-athlete who excels both on and off the field. Candidates are chosen based on their dedication and achievement in four areas: Classroom, Character, Community and Competition. Fan voting will help decide the winner. Visit "www.seniorclassaward.com" or text "W6" to 74567 to vote for Mattern.

PATTON GETS THE RECORD(S)

Redshirt junior goalkeeper **Mollie Patton** set a new South Carolina single-season shutout record when she grabbed her eighth shutout of the year in the win against Kentucky. She then set the career record in the next game at Ole Miss with her 16th shutout in 33 career games, surpassing the previous mark of 15 set by **Laura Armstrong** and **Elise Matthews**.

AT THE TOP OF THE NCAA LISTS

Noted as one of the top defensive teams in the country under **Shelley Smith**, South Carolina has continued that excellence this season and added a little offensive flair as well. The Gamecocks are ranked No. 3 in the NCAA in defense (0.245 goals against average) and No. 22 in scoring offense (2.50 goals/game). With that type of production, South Carolina is also at the top of the SEC lists in numerous categories. The team leads the conference in goals allowed, goals against average, shutouts, shots allowed, points allowed, assists, shot on goal percentage.

SOUTH CAROLINA VS. RANKED TEAMS

Date	Opponent	Result	Date	Opponent	Result
9-18-96	#9 Clemson	W, 3-2	9-15-04	#7 Clemson	W, 2-0
10-4-97	at #9 Clemson	L, 0-5	10-3-04	#19 Tennessee	L, 1-3
10-26-97	at #9 Florida	L, 2-5	10-29-04	#18 Florida	L, 1-2 (2OT)
9-11-98	at #17 Georgia	W, 2-0	10-2-05	at #20 Tennessee	L, 1-2
10-7-98	#13 Clemson	L, 1-3	10-7-05	#18 Vanderbilt	L, 0-2
11-5-98	vs. #3 Florida	L, 0-6	10-29-05	at #16 Florida	L, 0-3
10-8-99	at #9 Clemson	L, 0-4	8-25-06	vs. #13 Illinois	L, 0-1
10-29-99	at #3 Florida	L, 0-5	9-24-06	at #13 Auburn	W, 1-0
9-8-00	at #1 UNC	L, 1-9	9-29-06	#16 Tennessee	T, 0-0 (2OT)
9-12-00	vs. #17 Duke	L, 1-5	10-27-06	#13 Florida	T, 1-1 (2OT)
10-8-00	at #14 Kentucky	L, 1-5	9-1-07	at #1 North Carolina	W, 1-0
10-29-00	#16 Florida	L, 0-3	9-22-07	at #20 Clemson	L, 0-1
9-30-01	at #20 Florida	L, 0-1	9-27-07	at #10 Tennessee	L, 2-3 (OT)
10-2-01	at #9 Clemson	L, 0-3	10-21-07	#25 Auburn	W, 2-0
10-5-01	#16 Kentucky	L, 0-1	10-25-07	at #20 LSU	T, 1-1 (2OT)
10-21-01	at #25 Tennessee	L, 1-3	11-2-07	at #22 Florida	L, 0-2
9-11-02	#18 Clemson	L, 0-1	11-7-07	vs. #15 Tennessee	W, 2-0
10-20-02	#13 Tennessee	T, 1-1 (2OT)	11-9-07	vs. #13 Georgia	L, 0-2
8-29-03	at #20 Clemson	L, 0-1 (OT)	9-14-08	vs. #7 Florida State	T, 3-3 (2OT)
9-12-03	at #5 Texas A&M	L, 1-2 (OT)	10-23-08	#13 LSU	T, 0-0 (2OT)
10-3-03	#14 Auburn	T, 0-0 (2OT)	10-30-08	#7 Florida	L, 0-1
11-1-03	at #10 Florida	L, 0-2	9-18-09	#17 UCF	W, 1-0
11-7-03	vs. #16 Tennessee	L, 0-1			
9-12-04	at #4 Virginia	L, 2-5			

Overall: 8-31-7 vs. Top 10: 3-12-1
Home: 4-8-5 Road: 3-18-1 Neutral: 1-5-1



CAROLINA'S RECORD WHEN ...

Overall **11-0-1**

Home 6-0-0
 Away 3-0-1
 Neutral 2-0-0

Leading At The Half 8-0-0
 Tied At The Half 3-0-1
 Trailing At The Half 0-0-0

Scores In The First Half 8-0-0
 Overtime Games 0-0-1

On Television 1-0-0
 In Tournaments 4-0-0
 Against 2008 NCAA Participants 2-0-0

Vs. Top 25 1-0-0

Longest Unbeaten Streak W11
 Active Streak U12

Against Opponents

USC Scores First 11-0-1
 Opponent Scores First 0-0-0

Scores 1 Goal 3-0-1
 Scores 2 Goals 4-0-0
 Scores 3+ Goals 4-0-0

Opponent Scores 1 Goal 2-0-1
 Opponent Scores 2 Goals 0-0-0
 Opponent Scores 3+ Goals 0-0-0

Is Shutout 0-0-0
 Shut Out Opponent 9-0-0

Takes More Shots 11-0-0
 Opponent Takes More Shots 1-0-0

Time

Day Games 5-0-1
 Night Games 6-0-0

Mondays 0-0-0
 Wednesdays 0-0-0
 Thursdays 1-0-0
 Fridays 5-0-0
 Saturdays 0-0-0
 Sundays 5-0-1

August 2-0-0
 September 8-0-0
 October 1-0-1
 November 0-0-0

After A Win 10-0-1
 After A Loss 0-0-0
 After A Tie 0-0-0

Wearing White 8-0-0
 Wearing Garnet 0-0-1
 Wearing Black 3-0-0

SENIOR CLASS SET THE BAR HIGH

The 2009 senior class will leave Columbia as the winningest senior class in program history. Entering weekend play, the group of seniors hold a 47-19-13 (.677) record, the most wins and best win-percentage for a South Carolina senior class. The group of seven have led Carolina to three consecutive SEC tournament appearances and two consecutive NCAA appearances.

APPROACHING THE RECORD

Senior defender **Blakely Mattern** has started every game of her career, and with 79 career starts is currently second all-time at South Carolina. She is on pace to surpass Ashley Kirk's record of 81 starts in the Oct. 16 away game at Georgia. She, along with **Shannon Bigbie**, **Samantha Diaz-Matosas** and **Kim Miller**, could surpass the games played record of 83 on the Oct. 22 home finale against Arkansas.

SHUTOUT DEFENSE

South Carolina is currently tied for the national lead with nine shutouts on the year and have allowed only three goals through the first 12 games of the season. Junior goalkeeper **Mollie Patton** continues to hold the national lead with nine solo shutouts and sports the top goals against average in the nation at 0.17.

SPREADING THE WEALTH

Goals have been spread around the entire Gamecock team so far with a different player hitting the game-winning goal in eight of Carolina's 11 wins. Fourteen different players have scored a goal this season, and only half of those players have scored multiple goals this season: **Kayla Grimsley**, **Kim Miller**, **Blakely Mattern**, **Samantha Diaz-Matosas**, **Lindsay Small**, **Brooke Jacobs** and **Christine Watts**.

GRIMSLEY'S RECORD PLAY

Sophomore **Kayla Grimsley** has continued the stellar play that she exhibited in her freshman season last year. The flashy player set a new South Carolina record with a nine-match scoring streak, and her goal against South Alabama tied her program record four-match goal scoring streak. She currently holds the SEC lead in goals (7) and is second in points (17).

MILLER TIME

Senior **Kim Miller** has been one of the most consistent performers for South Carolina the past four years, and the New York native has stretched that consistency to another part of her game in her final season. Miller jumped up to 18th in the NCAA and second in the SEC with seven assists so far this season, and she tied the South Carolina single-season record with her third assist on a game-winning goal in the Ole Miss game. In a two-game stretch, Miller recorded assists on four consecutive goals for the Gamecocks.

PATTON EARNS NATIONAL HONORS

Redshirt junior goalkeeper **Mollie Patton** earned her first career national honor when she was named to the Soccer America National Team of the Week after her stellar play at the Cardinal Classic. Since then, she has also earned SEC Defensive Player of the Week honors and currently leads the nation in shutouts and goals against average. Patton recently set the SEC record for consecutive shutouts when she notched seven straight, passing the previous record of six held by Kentucky's Carrie Kuhnell (1995) and Auburn's Megan Rivera (2003).

HOME AT THE STONE

South Carolina has been nearly unstoppable at Stone Stadium the past three seasons, posting a 29-2-5 record at home since 2006. The streak included a 15-game unbeaten streak from Aug. 31, 2006-Oct. 5, 2007 and a 13-game unbeaten streak at "The Graveyard" from Oct. 19, 2007-Oct. 23, 2008. The lone blemishes on the record are a double-overtime loss to Vanderbilt (Oct. 7, 2007) and a loss to #7 Florida (Oct. 30, 2008). The season opening win against College of Charleston was **Coach Shelley Smith's** 50th win at Stone Stadium.

ELLEN FAHEY'S STEPPING UP

Sophomore defender **Ellen Fahey** started every game at centerback last season as a freshman, continuing the legacy of all-conference caliber freshman defenders after **Blakely Mattern** (2006) and **Brittany Rhoades** (2007). Strong and assertive in the back, Fahey added a new dimension to her play thus far after recording her first four career points, three on game-winning assists. Her three game-winning assists tie the South Carolina single season record.

HELMET! HELMET! HELMET!

Junior goalkeeper **Mollie Patton** has learned to embrace the helmet she has had to wear the past two seasons due to previous concussions. This year she has company now that **Lindsay Small** and **Brittany Rhoades** have been confined to wearing headgear due to blows to the head recently. Rhoades began wearing headgear after a blow in the Clemson victory led to her getting stitches on her left brow. Small then had to get headgear after taking an inadvertent elbow in the Vanderbilt victory, causing her to get stitches below her right brow.



HOME MATCHES UNDER SMITH

DATE	OPPONENT	RESULT
9-4-01	Davidson	W, 4-0
9-17-01	Furman	W, 3-0
9-19-01	SC State	W, 12-0
10-5-01	Kentucky	L, 0-1
10-7-01	Vanderbilt	L, 0-1
10-26-01	Ole Miss	W, 1-0
10-28-01	Mississippi State	L, 1-2 (OT)
11-2-01	UNC Greensboro	W, 2-0
8-30-02	Birmingham Southern	W, 3-0
9-11-02	Clemson	L, 0-1
9-14-02	College of Charleston	W, 3-1
9-29-02	Florida	W, 1-0 (OT)
10-11-02	Arkansas	L, 1-2 (OT)
10-13-02	LSU	W, 2-0
10-18-02	Georgia	L, 1-2 (OT)
10-20-02	Tennessee	T, 1-1 (OT)
10-29-02	Wofford	W, 1-0
9-2-03	Furman	L, 0-1
9-5-03	Charleston Southern	W, 2-1
9-7-03	Darmouth	W, 3-1
9-17-03	Davidson	W, 4-1
9-21-03	NC State	W, 1-0
10-3-03	Auburn	T, 0-0 (OT)
10-5-03	Alabama	W, 2-0
10-17-03	Vanderbilt	L, 0-1
10-19-03	Kentucky	W, 2-1
8-27-04	Georgia State	W, 1-0
9-3-04	Houston	W, 4-1
9-5-04	Iowa State	W, 1-0
9-15-04	Clemson	W, 2-0
9-19-04	Charlotte	W, 2-1 (2 OT)
10-1-04	Georgia	T, 1-1 (OT)
10-3-04	Tennessee	L, 1-3
10-15-04	Ole Miss	L, 0-1
10-17-04	Mississippi State	L, 2-3 (OT)
10-24-04	LSU	W, 2-1
10-29-04	Florida	L, 1-2 (2 OT)
8-26-05	Mercer	W, 7-0
8-29-05	Furman	W, 2-1
9-18-05	Miami (Fla.)	W, 2-1
9-23-05	Auburn	L, 0-1
9-25-05	Alabama	W, 2-0
10-7-05	Vanderbilt	L, 0-2
10-9-05	Kentucky	L, 1-2 (2 OT)
10-21-05	Arkansas	L, 1-2
8-31-06	Francis Marion	W, 2-1
9-3-06	James Madison	W, 3-1
9-5-06	The Citadel	W, 4-0
9-15-06	Clemson	W, 1-0
9-17-06	Jacksonville State	W, 6-0
9-29-06	Tennessee	T, 0-0 (2 OT)
10-1-06	Georgia	W, 2-1
10-13-06	Mississippi State	W, 1-0
10-15-06	Ole Miss	T, 0-0 (2 OT)
10-20-06	LSU	W, 2-1 (2 OT)
10-27-06	Florida	T, 1-1 (2 OT)
9-3-07	East Tennessee State	W, 5-2
9-12-07	Winthrop	W, 5-0
9-23-07	Marshall	W, 4-0
10-5-07	Kentucky	W, 2-0
10-7-07	Vanderbilt	L, 0-1 (2OT)
10-19-07	Alabama	W, 2-0
10-21-07	Auburn	W, 1-0
10-28-07	Arkansas	W, 1-0
8-28-08	East Carolina	W, 1-0
8-31-08	Boston University	W, 1-0
9-5-08	Clemson	W, 1-0
9-7-08	Furman	W, 2-1
9-19-08	East Tennessee State	W, 4-0
9-26-08	Tennessee	W, 2-1
9-28-08	Georgia	T, 1-1
10-10-08	Mississippi State	W, 2-1
10-12-08	Ole Miss	W, 3-2
10-23-08	LSU	T, 0-0
10-30-08	Florida	L, 0-1
8-27-09	College of Charleston	W, 2-0
8-30-09	Western Carolina	W, 2-0
9-18-09	UCF	W, 1-0
9-20-09	South Alabama	W, 6-1
9-25-09	Vanderbilt	W, 2-1
9-27-09	Kentucky	1-0

TOTAL RECORD: 55-18-8
LONGEST UNBEATEN STREAK: 15
SHUTOUTS RECORDED 39

PADUA PALS

Three players on the South Carolina roster played high school soccer at Padua Academy in Wilmington, Del., and a fourth played club soccer with them for the FC Pennsylvania Strikers. **Dani Henry** along with sisters **Brittany Rhoades** and **Kortney Rhoades** each went to Padua and have seen themselves earn regular playing time - the sisters start and Henry is a regular of the bench. In addition, they struck a strong friendship with **Brooke Jacobs** who played with the elder Rhoades and Henry for the FC Penn Strikers club team. Jacobs is a two-year starter at forward.

MATTERN'S CAREER WEEKEND

Senior **Blakely Mattern** had a career weekend at the Carolina's Cup when she scored three goals in two games for six points to earn the Carolina's Cup MVP honor. The senior defender also led the Gamecocks to their sixth shutout - tied for the NCAA lead - in the 5-0 win at Clemson and 2-0 win against UNC Wilmington. For her efforts, she was named the SEC Defensive Player of the Week for the second time in three weeks and also earned a spot on the Soccer America and Top Drawer Soccer National Teams of the Week.

DIAZ-MATOSAS DELIVERS

Senior defender **Samantha Diaz-Matosas** has started off strong for South Carolina with a four-point weekend at the Cardinal Classic. Diaz-Matosas earned an assist in the final seconds of the match against Louisville before scoring her first goal of the season and getting the game-winning assist in the 4-0 win against Cincinnati. A versatile player, Diaz-Matosas can play anywhere on the field, making her a top threat for the Gamecocks in her fourth year.

MEXICAN EXHIBITION

South Carolina ended its preseason with a 2-0 shutout win of the Mexican National Team, a victory that seems to have foreshadowed the season to come for the Gamecocks. Since that match, the Mexican team went 4-0 in its collegiate tour and outscored opponents 14-2 with wins at Kennesaw State (5-0), previously ranked TCU (4-1), then-#12 Southern California (2-0) and Cal State Fullerton (3-1).

FIRST TIME OPPONENTS

South Carolina faced four opponents for the first time in 2009 and went 4-0 in those games. The Gamecocks defeated Louisville (3-0), Cincinnati (4-0), UCF (1-0) and South Alabama (6-1). Last season, Carolina went 0-1-2 against first time opponents, drawing UNC Wilmington and #7 Florida State before dropping a tight game to Western Carolina.

SENIOR CLASS BECOMES FIRST TO WIN AT CLEMSON

South Carolina defeated rival Clemson 5-0 last Sunday for the program's first victory at Historic Riggs Field. In a rivalry that has been played annually since 1995 in a home-and-home series, the Gamecocks not only never won at Riggs Field in seven tries but never scored a goal there until the offensive outburst in a 5-0 win. Senior **Shannon Bigbie** hit the game winner in her first start of the year, classmate **Blakely Mattern** scored two goals and senior **Kim Miller** notched two assists in the victory.

MATTERN EARNS MULTIPLE WEEKLY HONORS

Senior defender **Blakely Mattern** picked up conference and national honors after South Carolina's shutout wins in the season opening weekend. Mattern was named the SEC Defensive Player of the Week and was selected to the Soccer America National Team of the Week after leading a defense that held two opponents to a combined two shots in shutout victories. She has also earned CollegeSoccer360.com Primetime Player of the Week honors after helping the team hold Vanderbilt and Kentucky two a combined two shots on goal in the SEC opening weekend.

RETURNING CATEGORY LEADERS

Carolina returns 10 starters from last season's NCAA Tournament team and only lost one senior from the squad that went 11-7-4. South Carolina will enter 2009 as one of the most experienced teams in the nation, and depth will also be available after Coach Shelley Smith signed seven freshmen and landed two transfers for the 2009 season.

Statistical Category Breakdown

Category	2008 Leader (Total)	% Returning	Top Returner
Points	Grimsley (22)	93%	Grimsley (22)
Goals	Grimsley (8)	93%	Grimsley (8)
Game-Winning Goals	Grimsley, Miller, Small (2)	91%	Grimsley, Miller, Small (2)
Assists	Grimsley (6)	46%	Grimsley (6)
Shots	Jacobs (38)	94%	Jacobs (38)
Shots on Goal	Jacobs (26)	91%	Jacobs (26)
Saves	Patton (58)	100%	Patton (58)
Goals Against Average	Patton (0.96)	100%	Patton (0.96)



OVERTIME MATCHES

DATE	OPPONENT	RESULT
9-15-95	at VCU	W, 1-0
9-29-95	vs. Marquette (Clemson, S.C.)	L, 1-2
10-13-95	Georgia	T, 1-1
10-16-95	Evansville	W, 1-0
10-19-95	College of Charleston	T, 1-1
1995 OVERTIME RECORD: 2-1-2		
9-29-96	at Georgia	L, 1-2
10-27-96	at Auburn	T, 1-1
10-30-96	at Furman	T, 1-1
1996 OVERTIME RECORD: 0-1-2		
9-14-97	Kentucky	L, 3-4
10-10-97	at Georgia Southern	W, 3-2
1997 OVERTIME RECORD: 1-1		
9-4-98	Wake Forest	T, 1-1
9-25-98	at Kentucky	L, 0-1
10-13-98	at Furman	W, 3-2
1998 OVERTIME RECORD: 1-1-1		
9-12-99	Kentucky	L, 1-2
10-12-99	Wofford	W, 2-1
11-4-99	vs. Vanderbilt (SEC Tourn.)	L, 1-2
1999 OVERTIME RECORD: 1-2		
2000 OVERTIME RECORD: 0-0		
9-1-01	at College of Charleston	T, 0-0
9-9-01	vs. UNLV (San Diego, Calif.)	T, 1-1
10-14-01	at LSU	T, 4-4
10-28-01	Mississippi State	L, 1-2
2001 OVERTIME RECORD: 0-1-3		
9-29-02	Florida	W, 1-0
10-11-02	Arkansas	L, 1-2
10-18-02	Georgia	L, 1-2
10-20-02	Tennessee	T, 1-1
10-25-02	at Auburn	T, 1-1
2002 OVERTIME RECORD: 1-2-2		
8-29-03	at Clemson	L, 0-1
9-12-03	at Texas A&M	L, 1-2
9-14-03	at Houston	T, 1-1
10-3-03	Auburn	T, 0-0
10-24-03	at Ole Miss	T, 0-0
2003 OVERTIME RECORD: 0-2-3		
8-31-04	at James Madison	L, 2-3
9-19-04	Charlotte	W, 2-1
10-1-04	Georgia	T, 1-1
10-8-04	at Vanderbilt	T, 1-1
10-17-04	Mississippi State	L, 2-3
10-29-04	Florida	L, 1-2
2004 OVERTIME RECORD: 1-3-2		
10-10-05	Kentucky	L, 1-2
2005 OVERTIME RECORD: 0-1		
9-29-06	Tennessee	T, 0-0
10-16-06	Ole Miss	T, 0-0
10-20-06	LSU	W, 2-1
10-22-06	at Arkansas	T, 1-1
10-27-06	Florida	T, 1-1
11-1-06	vs. Vanderbilt (SEC Tourn.)	T, 1-1
2006 OVERTIME RECORD: 1-0-5		
9-27-07	at Tennessee	L, 2-3
9-30-07	at Georgia	L, 1-2
10-7-07	Vanderbilt	L, 0-1
10-12-07	at Mississippi State	T, 0-0
10-25-07	at LSU	T, 1-1
11-14-07	vs. Duke (NCAA First Rnd.)	T, 1-1
2007 OVERTIME RECORD: 0-3-3		
8-23-08	at UNC Wilmington	T, 0-0
9-7-08	Furman	W, 2-1
9-14-08	vs. Florida State (Auburn, Ala.)	T, 3-3
9-28-08	Georgia	T, 1-1
10-23-08	LSU	T, 0-0
11-14-08	vs. William & Mary (NCAA)	L, 2-3
2007 OVERTIME RECORD: 1-1-4		
10-4-09	at Mississippi State	T, 1-1
TOTAL RECORD: 9-19-28		
UNDER SHELLEY SMITH: 4-13-23		

GAMECOCKS ON TV

South Carolina will have at least two televised games in the 2009 season. The team defeated Vanderbilt, 2-1, in the SEC opener on Sept. 25. The Gamecocks will also appear on ESPN2 on their October 25 match at LSU slated for 3 p.m. The broadcast will mark the third consecutive season that the Gamecocks will play on national television.

ALL-AMERICAN DEFENSE

The South Carolina defense has been consistently one of the top in the SEC and in the nation, and all signs point to this season being another strong one for the Garnet and Black. The Gamecocks return two former Freshman All-Americans in senior **Blakely Mattern** and junior **Brittany Rhoades**.

Mattern (Simpsonville, S.C.) has started every game of her career at center back, earning Freshman All-America honors in 2006 and becoming Carolina's first All-American after picking up honors in 2007. Mattern also picked up 2007 SEC Defensive Player of the Year honors to become the first sophomore in conference history to earn the honor, and earned a trip to the US U-20 National Team camp in 2008. Rhoades (Wilmington, Del.) set a USC freshman record with 23 games played and 22 games started in her first year at left back, becoming the second Freshman All-American in as many years for the defense.

MATTERN, GRIMSLEY NAMED PRESEASON ALL-SEC

South Carolina senior defender **Blakely Mattern** and sophomore forward **Kayla Grimsley** have been selected to the third annual women's soccer Coaches Preseason All-SEC team.

Mattern (Simpsonville, S.C.) has been named to the list in all three years of its existence. She is a three-time postseason All-SEC selection and in 2007 became the first sophomore to earn SEC Defensive Player of the Year honors. A 2007 Soccer Buzz All-American and 2008 CoSIDA/ESPN The Magazine First Team Academic All-American, Mattern has started every game of her career and is a three-time All-Southeast Region selection. In 2008, she was the leader of a defense that finished the season second in the SEC in shutouts (8) and ranked in the top two in every major defensive category, including goals allowed, points allowed, shots allowed and shots on goal allowed. The Gamecocks led the league in shots allowed (8.45/game) and shots on goal allowed (3.68/game).

Grimsley (Lakeland, Fla.) earns her first preseason honor after a strong freshman campaign that culminated in her earning second team All-SEC honors, SEC All-Freshman team honors and Soccer Buzz All-Southeast Region honors. She led the team in her rookie season with eight goals and six assists for 22 points, making her only the second freshman and seventh player overall to score 20 points in a season at South Carolina. She tied the program record with a six-match scoring streak that began with the start of conference play, and she became the only freshman in Gamecock history to score a goal in four consecutive matches. She twice earned SEC weekly honors and brought home four national team of the week honors last season.

COACHES TAB GAMECOCKS FOURTH IN SEC EAST

The South Carolina women's soccer team was picked to finish fourth in the Eastern division of the 2009 SEC preseason poll, the conference office announced Wednesday. The Gamecocks are coming off an 11-7-4 record in 2008 with a third place finish in the East with a 5-4-2 record.

South Carolina returns 10 starters and lost only one senior from the 2008 squad that advanced to the NCAA Tournament for the second consecutive year. Senior defender Blakely Mattern and sophomore forward Kayla Grimsley were named to the 11-player Preseason All-SEC team last week after both earned All-SEC honors last season.

Florida was selected as the favorite to claim the 2009 women's soccer title in the poll voted on by the league's 12 head coaches. In the East, Georgia and Tennessee were selected behind Florida with Vanderbilt picked to finish fifth and Kentucky picked sixth. LSU was favored to win the Western Division with eight first-place votes followed by Auburn with four first place votes. Ole Miss, Alabama, Arkansas and Mississippi State round out selections three thru six in the division, respectively.



GOAL SUMMARY

Player (#)	Opp. (Time)	Asst. (#)
Miller (1)	Col. of Charleston (13:42)	-
Grimsley (1)	Col. of Charleston (29:54)	Small (1)
Grimsley (2)	Western Carolina (22:38)	Fahey (1)
Miller (2)	Western Carolina (26:49)	D-Matosas (1)
Small (1)	Louisville (27:09)	Miller (1)
Watts (1)	Louisville (43:52)	-
Grimsley (3)	Louisville (89:51)	D-Matosas (2)
Mattern (1)	Cincinnati (26:54)	Fahey(2), D-Matosas (3)
Diaz-Matosas (1)	Cincinnati (59:32)	Grimsley (1)
Fligg (1)	Cincinnati (79:09)	Miller (2)
Petroni (1)	Cincinnati (81:13)	Miller (3)
Bigbie (1)	Clemson (3:22)	Miller (4), Jacobs (1)
Mattern (2)	Clemson (35:33)	Miller (5)
Jacobs (2)	Clemson (36:51)	Watts (1)
Grimsley (4)	Clemson (65:44)	-
Mattern (3)	Clemson (71:35)	-
Mattern (4)	UNC-W (55:17)	K. Rhoades (1)
Grimsley (5)	UNC-W (63:52)	Fahey (3), Brewer (1)
Grimsley (6)	UCF (27:18)	Fahey (4)
Small (2)	South Alabama (3:30)	Miller (6)
Diaz-Matosas (2)	South Alabama (19:03)	-
Aaron (1)	South Alabama (27:34)	Jacobs (2)
Grimsley (7)	South Alabama (55:53)	K. Rhoades (2)
Holland (1)	South Alabama (59:32)	Mattern (1)
Brewer (1)	South Alabama (73:39)	Petroni (1), Aaron (1)
K. Rhoades (1)	Vanderbilt (15:47)	Small (2), Grimsley (2)
Jacobs (2)	Vanderbilt (51:38)	Bigbie (1)
Watts (2)	Kentucky (55:24)	-
Small (3)	Ole Miss (67:50)	Miller (7)
Jacobs (3)	Mississippi State (45:50)	Grimsley (3)

GOAL BREAKDOWN

At home	14
On the road	10
Neutral Site.....	6
vs. SEC.....	5
vs. Non-Conference.....	25
First Half	15
Second Half	15

ALL-TIME USC SCORING LIST

Rnk.	Name	G	A	Pts.
1.	Jennie Ondo	50	15	115
2.	Morgan McIntyre	29	5	63
3.	Angela Austin	19	16	54
4.	Mindy Sanders	14	24	52
5.	Debbie Smith	19	11	49
6.	Melinda Carter	15	16	46
7.	Kayla Grimsley	15	9	39
8.	Darcell Mollon	15	7	37
9.	Ashley Williams	17	2	36
10.	Lydia Bienias	12	10	34
11.	Blakely Mattern	13	6	32
T12.	Lexi Tourtelotte	14	3	31
T12.	Ashley Kirk	9	13	31
T14.	Becca Epstein	10	10	30
T14.	Erin Sullivan	11	8	30

Current Players

Kayla Grimsley	15	9	39
Blakely Mattern	13	6	32
Kim Miller	7	13	27
Sam Diaz-Matosas	7	11	25

ALL-TIME USC GOALTENDING LIST

Rnk.	Name	GAA	SHO
1.	Mollie Patton	0.69	16
T2.	Laura Armstrong	0.79	15
T2.	Elise Matthews	1.24	15
T4.	Lindsay Thorstenson	1.33	9
T4.	Carrie Warner	1.58	9
6.	Carolyn Ortega	1.14	6.5
7.	Emily Crain	1.78	6
8.	Amy Toms	1.71	5
9.	Amanda Sandling	2.04	4.5
10.	Jessica Freas	3.01	1

Current Players

Mollie Patton	0.69	16
---------------	------	----

2009 HONOR ROLL

Kayla Grimsley - Soccer America Team of the Week (Wk5), CollegeSoccer360 Primetime Performer of the Week (Wk5), Preseason All-SEC, Cardinal Classic All-Tournament Team, Carolina's Cup All-Tournament Team

Blakely Mattern - SEC Defensive Player of the Week (Wk2, Wk4), Soccer America Team of the Week (Wk2, Wk4), Top Drawer Soccer Team of the Week (Wk4), CollegeSoccer360 Primetime Performer of the Week (Wk6), Cardinal Classic All-Tournament Team, Carolina's Cup Tournament MVP, Preseason All-SEC, Lowe's Senior CLASS Award Finalist

Kim Miller - Cardinal Classic All-Tournament Team, Carolina's Cup All-Tournament Team

Mollie Patton - SEC Defensive Player of the Week (Wk6), Soccer America Team of the Week (Wk3), Cardinal Classic All-Tournament Team

Lindsay Small - Carolina's Cup All-Tournament Team

SEC WEEKLY HONORS

Week	Defensive POW	Offensive POW	Freshman of the Week
1	Kailey Anders, D (Arkansas)	Carrie Patterson, F (Georgia)	Amy Howard, GK (Auburn)
2	Blakely Mattern, D (South Carolina)	Taylor Cunningham, M (Ole Miss)	Rebekah Perry, M (Georgia)
3	Molly Baird, GK (Tennessee)	Molly Kinsella, F (Vanderbilt)	Monica Alvarado, M (Mississippi State)
4	Blakely Mattern, D (South Carolina)	Mick Imgram, M (Tennessee)	Brooke Thigpen, M (Florida)
5	Justine Bernier, GK (Alabama)	Kat Walsh, F (Mississippi State)	Amy Howard, GK (Auburn)
6	Mollie Patton, GK (South Carolina)	Rachel Yopez, F (LSU)	Carlie Banks, F (LSU)
7	Michelle Betos, GK (Georgia)	Melissa Clarke, M (LSU)	Amy Harrison, F (Tennessee)
8			
9			
10			



OPPONENT NOTES

AUBURN (5-4-3, 2-2-0 SEC)

QUICK FACTS

Location Auburn, Ala.
Nickname Tigers
Colors Burnt Orange & Navy Blue
Conference SEC
Head Coach Karen Hoppa
Record at School (Years) 115-76-16 (10 yrs)
Career Record (Years) 179-120-25 (16 yrs)
Assistant Coaches Keidane McAlpine
 Amy Berbary
2008 Record 12-9-2
Conference Finish 7-3-1 (3rd)
Postseason NCAA Second Round
Series Record Auburn leads, 5-4-3
Last Meeting Auburn, 2-0 (10/19/08)
Letterwinners Returning/Lost 16/8
Starters Returning/Lost 8/3
Soccer SID Dan Froehlich
SID E-mail froehdp@auburn.edu
SID Phone (334) 844-9803
Website www.AuburnTigers.com

PROBABLE STARTERS

No.	Name	Pos	Yr.	GP	G	A	Pts.	Shots
2	Julie King	D	So.	11	1	2	4	7
7	Caitlin King	F	Sr.	12	2	5	9	45
8	Chelsea Yauch	D	Sr.	11	3	0	6	6
9	Sammy Towne	D	Jr.	11	0	0	0	0
10	Christine Schweer	D	Fr.	12	0	0	0	5
11	Rebecca Howell	F	Sr.	9	4	1	9	26
13	Mary Coffed	M	Fr.	12	2	1	5	16
14	Heather Havron	D	So.	12	0	5	5	2
20	Jenni Prescott	M	Sr.	12	1	1	3	12
23	Katy Frierson	M	So.	12	4	4	12	38

No.	Name	Pos.	Yr.	Min.	GA	GAA.	Svs.	W-L	SO
6	Amy Howard	GK	Fr.	1122:06	15	1.20	70	5-3-3	2

NSCAA/adidas

Week 7 (10/6)

No.	School	Rec.
1.	Stanford	11-0-0
2.	North Carolina	10-1-1
3.	UCLA	9-1-1
4.	Portland	11-1-0
5.	Florida State	10-1-0
6.	Boston College	9-2-0
7.	South Carolina	11-0-1
8.	Notre Dame	8-3-1
9.	Purdue	7-2-3
10.	Rutgers	9-1-3
11.	Wake Forest	9-2-1
12.	Virginia Tech	10-2-0
13.	LSU	8-2-2
14.	Florida	8-4-1
15.	Santa Clara	8-4-1
16.	UCF	8-3-1
17.	Texas A&M	7-4-1
18.	Georgia	9-1-1
19.	Maryland	9-2-0
20.	Arizona State	7-1-2
21.	California	6-3-1
22.	St. John's	9-2-1
23.	Southern California	8-3-0
24.	Connecticut	9-3-0
25.	Ohio State	8-2-1

NSCAA South Region

Week 7 (10/6)

No.	School	Rec.
1.	LSU	8-2-2
2.	South Carolina	11-0-1
3.	Florida	8-4-1
4.	Georgia	10-1-1
5.	Ole Miss	8-3-0
6.	Auburn	5-4-3
7.	Denver	8-4-1
8.	Vanderbilt	7-4-1
9.	Tennessee	6-5-1
10.	Mississippi State	8-2-2

Soccer America

Week 7 (10/5)

No.	School	Rec.
1.	Stanford	11-0-0
2.	Portland	11-1-0
3.	North Carolina	10-1-1
4.	UCLA	9-1-1
5.	Florida State	10-1-0
6.	Virginia Tech	10-2-0
7.	Boston College	9-2-0
8.	South Carolina	11-0-1
9.	Notre Dame	8-3-1
10.	Michigan State	7-1-2
11.	St. John's	9-2-1
12.	Rutgers	9-1-3
13.	Connecticut	9-3-0
14.	Southern California	8-3-0
15.	LSU	8-2-2
16.	Georgia	9-1-1
17.	Maryland	9-2-0
18.	BYU	8-3-1
19.	California	6-3-1
20.	Santa Clara	8-4-1
21.	Wake Forest	9-2-1
22.	Purdue	7-2-3
23.	Texas A&M	7-4-1
24.	Ole Miss	8-3-0
25.	Oregon	8-2-1

Soccer Times

Week 7 (10/6)

No.	School	Rec.
1.	Stanford	11-0-0
2.	North Carolina	10-1-1
3.	Portland	11-1-0
4.	UCLA	9-1-1
5.	Florida State	10-1-0
6.	Boston College	9-2-0
7.	South Carolina	11-0-1
8.	Notre Dame	8-3-1
9.	Wake Forest	9-2-1
10.	LSU	8-2-2
11.	Rutgers	9-1-3
12.	Virginia Tech	10-2-0
13.	BYU	10-2-1
14.	Texas A&M	7-4-1
15.	Santa Clara	8-4-1
16.	Georgia	9-1-1
17.	Florida	8-4-1
18.	Purdue	7-2-3
19.	Southern California	8-3-0
20.	Virginia	6-3-2
21.	Ohio State	8-2-1
22.	California	6-3-1
23.	Michigan State	7-1-2
24.	St. John's	9-2-1
25.	UCF	8-3-1



ALABAMA
(5-4-1, 1-1-1 SEC)

QUICK FACTS

Location Tuscaloosa, Ala.
Nickname Crimson Tide
Colors Crimson & White
Conference..... SEC
Head Coach..... Todd Bramble
Record at School (Years).....9-9-2 (1 yr)
Career Record (Years)..... 89-60-19 (8 yrs)
Assistant Coaches.... Tatum Clowney, Jason Lowe

2008 Record.....9-9-2
Conference Finish..... 4-6-1 (8th)
Postseason.....None
Series Record..... USC leads, 7-3-0
Last Meeting Alabama, 1-0 (10/17/08)
Letterwinners Returning/Lost.....11/10
Starters Returning/Lost.....8/5

Soccer SIDSkip Powers
SID E-mail.....spowers@ia.ua.edu
SID Phone.....(205) 348-6734
Website..... www.RollTide.com

PROBABLE STARTERS

No.	Name	Pos	Yr.	GP	G	A	Pts.	Shots
5	Kelsey King	M	Sr.	10-8	2	1	5	8
7	Grace Lawson	D	Jr.	10-10	0	0	0	5
8	Josie Rix	M	Fr.	10-9	0	0	0	9
12	Brooke Rogers	F	Jr.	10-9	2	0	4	24
14	Kaitlyn Smith	M	Fr.	10-10	1	1	3	7
18	Alex Butera	D	Sr.	10-10	0	0	0	0
20	Ashley Willis	D	Fr.	10-10	0	0	0	6
22	Victoria Frederick	F	Jr.	10-10	4	2	10	18
23	Shannon Lathrop	M	Soph.	8-6	0	0	0	5
25	Vernoka Wolfkeil	D	Soph.	10-10	0	0	0	2

No.	Name	Pos.	Yr.	Min.	GA	GAA.	Svs.	W-L	SO
1	Justine Bernier	GK	Soph.	939:58	13	1.24	57	5-4-1	3

SOUTH CAROLINA WEEKLY RANKINGS

Week	NSCAA	South Region	S.Times	S.America	TOP DRAWER	CollegeSoccer360
Preseason	-	N/A	-	-	45	-
Week 1 (8/24)	rv	4	-	-	43	-
Week 2 (8/31)	rv	2	rv	-	41	-
Week 3 (9/7)	18	2	23	25	26	23
Week 4 (9/14)	13	3	15	12	20	13
Week 5 (9/21)	12	2	13	11	18	11
Week 6 (9/28)	8	2	7	7	15	8
Week 7 (10/5)	7	2	7	8	11	7



**2009 South Carolina Women's Soccer
South Carolina Game Results (as of Oct 04, 2009)
All games**

Date	Opponent	Score	Overall	Conf	Att.	Goals scored
Aug 27	COL. OF CHARLESTON	W 2-0	1-0-0	0-0-0	612	Kim Miller (unassisted) Kayla Grimsley (Lindsay Small)
Aug 30	WESTERN CAROLINA	W 2-0	2-0-0	0-0-0	489	Kayla Grimsley (Ellen Fahey) Kim Miller (Sam Diaz-Matosas)
09-04-0	at Louisville	W 3-0	3-0-0	0-0-0	1103	Lindsay Small (Kim Miller) Christine Watts (unassisted) Kayla Grimsley (Sam Diaz-Matosas)
09-06-0	vs Cincinnati Bearcats	W 4-0	4-0-0	0-0-0	229	Blakely Mattern (Ellen Fahey;Sam Diaz-Matosas) Sam Diaz-Matosas (Kayla Grimsley) Megan Fligg (Kim Miller) Maria Petroni (Kim Miller)
Sep 11	at Clemson	W 5-0	5-0-0	0-0-0	917	Shannon Bigbie (Kim Miller;Brooke Jacobs) Blakely Mattern (Kim Miller) Brooke Jacobs (Christine Watts) Kayla Grimsley (unassisted) Blakely Mattern (unassisted)
Sep 13	vs UNC Wilmington	W 2-0	6-0-0	0-0-0	155	Blakely Mattern (Kortney Rhoades) Kayla Grimsley (Ellen Fahey;Kacie Brewer)
Sep 18	#17 UCF	W 1-0	7-0-0	0-0-0	1424	Kayla Grimsley (Ellen Fahey)
Sep 20	SOUTH ALABAMA	W 6-1	8-0-0	0-0-0	443	Lindsay Small (Kim Miller) Sam Diaz-Matosas (unassisted) Natalie Aaron (Brooke Jacobs) Kayla Grimsley (Kortney Rhoades) Lolly Holland (Blakely Mattern) Kacie Brewer (Maria Petroni;Natalie Aaron)
* Sep 25	VANDERBILT	W 2-1	9-0-0	1-0-0	756	Kortney Rhoades (Lindsay Small;Kayla Grimsley) Brooke Jacobs (Shannon Bigbie)
* Sep 27	KENTUCKY	W 1-0	10-0-0	2-0-0	672	Christine Watts (unassisted)
* Oct 02	at Ole Miss	W 1-0	11-0-0	3-0-0	513	Lindsay Small (Kim Miller)
* Oct 04	at Mississippi State	TO2 1-1	11-0-1	3-0-1	142	Brooke Jacobs (Kayla Grimsley)

Team Record	W-L-T	Attendance	Dates	Total	Avg.
Overall:	11-0-1	Total:	12	7455	621
Conference:	3-0-1	Home:	6	4396	733
Home:	6-0	Away:	4	2675	669
Away:	3-0-1	Neutral:	2	384	192
Neutral:	2-0				
Overtime:	0-0-1				



**2009 South Carolina Women's Soccer
South Carolina Combined Team Statistics (as of Oct 04, 2009)
All games**

RECORD:	OVERALL	HOME	AWAY	NEUTRAL
ALL GAMES	11-0-1	6-0	3-0-1	2-0
CONFERENCE	3-0-1	2-0	1-0-1	0-0
NON-CONFERENCE	8-0	4-0	2-0	2-0

Date	Opponent	Score	Att.	#	Player	gp	g	a	pts	sh	sh%	sog	sog%	gw	pk-att
Aug 27	COL. OF CHARLESTON	W 2-0	612	4	Kayla Grimsley	12	7	3	17	20	.350	11	.550	2	0-0
Aug 30	WESTERN CAROLINA	W 2-0	489	5	Kim Miller	12	2	7	11	16	.125	5	.312	1	0-0
09-04-0	at Louisville	W 3-0	1103	7	Blakely Mattern	12	4	1	9	9	.444	6	.667	2	0-0
09-06-0	vs Cincinnati Bearcats	W 4-0	229	27	Brooke Jacobs	12	3	2	8	24	.125	15	.625	1	0-0
Sep 11	at Clemson	W 5-0	917	16	Lindsay Small	12	3	2	8	19	.158	9	.474	2	0-0
Sep 13	vs UNC Wilmington	W 2-0	155	3	Sam Diaz-Matosas	12	2	3	7	11	.182	8	.727	1	0-0
Sep 18	#17 UCF	W 1-0	1424	8	Christine Watts	12	2	1	5	14	.143	6	.429	1	0-0
Sep 20	SOUTH ALABAMA	W 6-1	443	15	Kortney Rhoades	12	1	2	4	11	.091	6	.545	0	0-0
* Sep 25	VANDERBILT	W 2-1	756	20	Ellen Fahey	12	0	4	4	2	.000	1	.500	0	0-0
* Sep 27	KENTUCKY	W 1-0	672	23	Kacie Brewer	12	1	1	3	7	.143	5	.714	0	0-0
* Oct 02	at Ole Miss	W 1-0	513	10	Natalie Aaron	11	1	1	3	6	.167	1	.167	0	0-0
* Oct 04	at Mississippi State	To2 1-1	142	12	Shannon Bigbie	10	1	1	3	3	.333	3	1.000	1	0-0
				9	Maria Petroni	9	1	1	3	3	.333	2	.667	0	0-0
				14	Lolly Holland	8	1	0	2	7	.143	2	.286	0	0-0
				2	Megan Fligg	10	1	0	2	2	.500	2	1.000	0	0-0
				19	Kira Campbell	10	0	0	0	7	.000	3	.429	0	0-0
				18	Ali Glemser	11	0	0	0	6	.000	4	.667	0	0-0
				22	Dani Henry	10	0	0	0	3	.000	0	.000	0	0-0
				21	Brittany Rhoades	12	0	0	0	3	.000	2	.667	0	0-0
				25	Maddy Kill	6	0	0	0	1	.000	1	1.000	0	0-0
				29	Mollie Patton	12	0	0	0	0	.000	0	.000	0	0-0
				28	Brittany DeWitt	4	0	0	0	0	.000	0	.000	0	0-0
				26	Rae Wilson	4	0	0	0	0	.000	0	.000	0	0-0
				17	Maggie Blackwell	2	0	0	0	0	.000	0	.000	0	0-0
				11	Idana DeCecco	2	0	0	0	0	.000	0	.000	0	0-0
				6	Samantha Abrahart	1	0	0	0	0	.000	0	.000	0	0-0
				1	Roya Mojarab	1	0	0	0	0	.000	0	.000	0	0-0
					Total	12	30	29	89	174	.172	92	.529	11	0-0
					Opponents	12	3	2	8	88	.034	44	.500	0	0-0

TEAM STATISTICS	SC	OPP
SHOT STATISTICS		
Goals-Shot attempts	30-174	3-88
Goals scored per game	2.50	0.25
Shot pct.	.172	.034
Shots on goal-Attempts	92-174	44-88
SOG pct.	.529	.500
Shots/Game	14.5	7.3
CORNER KICKS	59	31
PENALTY KICKS	0-0	0-0
PENALTIES		
Yellow cards	3	7
Red cards	0	0
ATTENDANCE		
Total	4396	2675
Dates/Avg Per Date	6/733	4/669
Neutral Site #/Avg	2/192	

#	Goalie	GP	Min.	GA	GAAvg	Saves	Pct	W-L-T	Sh
29	Mollie Patton	12	1069:32	2	0.17	39	.951	9-0-1	
1	Roya Mojarab	1	30:28	1	2.95	2	.667	0-0-0	
	Total	12	1100:00	3	0.25	41	.932	9-0-1	
	Opponents	12	1100:00	30	2.45	62	.674	0-9-1	

Goals by Period	1st	2nd	OT	OT2	Total
South Carolina	15	15	0	0	30
Opponents	0	3	0	0	3

Shots by Period	1st	2nd	OT	OT2	Total
South Carolina	95	76	3	0	174
Opponents	30	54	2	2	88

Saves by Period	1st	2nd	OT	OT2	Total
South Carolina	13	28	0	0	41
Opponents	37	25	0	0	62

Corners by Period	1st	2nd	OT	OT2	Total
South Carolina	33	25	0	1	59
Opponents	10	21	0	0	31

Fouls by Period	1st	2nd	OT	OT2	Total
South Carolina	42	53	2	0	97



SOUTH CAROLINA MATCH-BY-MATCH STATISTICS

DATE	OPPONENT	G	A	PTS	SH	PCT	SOG	SOG%	CORNERS	FOULS	YC	SAVES	GA
8/27	Col. Charleston	2	2	6	11	.182	7	.636	3	7	0	1	0
8/31	Western Carolina	2	2	6	11	.182	7	.636	6	4	0	0	0
9/4	Louisville	3	2	8	12	.250	8	.667	7	10	0	6	0
9/6	Cincinnati	4	5	13	22	.182	15	.682	7	7	0	5	0
9/11	Clemson	5	4	14	12	.417	7	.583	4	9	1	6	0
9/13	UNC Wilmington	2	3	7	23	.087	9	.391	3	7	0	6	0
9/18	#17 UCF	1	1	3	8	.125	4	.500	6	10	1	3	0
9/20	South Alabama	6	6	18	23	.261	13	.565	6	7	0	3	1
9/25	Vanderbilt	2	3	7	14	.143	6	.429	6	11	0	0	1
9/27	Kentucky	1	0	2	14	.071	8	.571	8	9	0	1	0
10/2	Ole Miss	1	1	3	10	.100	5	.500	1	5	0	5	0
10/4	Mississippi State	1	1	3	14	.071	3	.214	2	11	1	5	1
10/9	Auburn												
10/11	Alabama												
10/16	Georgia												
10/18	Tennessee												
10/22	Arkansas												
10/25	LSU												
10/30	Florida												
11/4	SEC Tournament												

South Carolina

Bold - Season-High

OPPONENT MATCH-BY-MATCH STATISTICS

DATE	OPPONENT	G	A	PTS	SH	PCT	SOG	SOG%	CORNERS	FOULS	YC	SAVES	GA
8/27	Col. Charleston	0	0	0	2	.000	1	.500	3	7	0	5	2
8/31	Western Carolina	0	0	0	0	N/A	0	N/A	1	9	0	5	2
9/4	Louisville	0	0	0	10	.000	6	.600	3	10	0	5	3
9/6	Cincinnati	0	0	0	10	.000	5	.500	2	12	0	11	4
9/11	Clemson	0	0	0	12	.000	6	.500	4	8	1	2	5
9/13	UNC Wilmington	0	0	0	8	.000	6	.750	0	10	0	7	2
9/18	#17 UCF	0	0	0	12	.000	3	.250	3	11	1	3	1
9/20	South Alabama	1	1	3	4	.250	4	1.000	2	9	0	7	6
9/25	Vanderbilt	1	1	3	8	.125	1	.125	4	8	1	4	2
9/27	Kentucky	0	0	0	2	.000	1	.500	4	10	0	7	1
10/2	Ole Miss	0	0	0	8	.000	5	.625	5	4	0	4	1
10/4	Mississippi State	1	0	2	12	.083	6	.500	0	12	2	2	1
10/9	Auburn												
10/11	Alabama												
10/16	Georgia												
10/18	Tennessee												
10/22	Arkansas												
10/25	LSU												
10/30	Florida												
11/4	SEC Tournament												

Opponents



GAME-BY-GAME INDIVIDUAL LEADERS

DATE	OPPONENT	W/L	SCORE	HIGH SHOTS	HIGH SOG	HIGH GOALS	HIGH ASSISTS	HIGH POINTS
8/27	Col. Charleston	W	2-0	Miller, K. Rhoades (2)	K. Rhoades (2)	Miller, Grimsley (1)	Small (1)	Miller, Grimsley (2)
8/31	Western Carolina	W	2-0	Diaz, Miller, Grimsley (2)	Diaz, Grimsley (2)	Miller, Grimsley (1)	Fahey, Diaz-Matosas (1)	Miller, Grimsley (2)
9/4	Louisville	W	3-0	Watts (3)	Grimsley, Watts (2)	Small, Grimsley, Watts (1)	Miller, Diaz-Matosas (1)	Small, Watts, Grim (2)
9/6	Cincinnati	W	4-0	Small (5)	Mattern, Small (3)	4 players (1)	Miller (2)	Diaz-Matosas (3)
9/11	Clemson	W	5-0	Campbell (4)	Mattern, Campbell (2)	Mattern (2)	Miller (2)	Mattern (4)
9/13	UNC Wilmington	W	2-0	Jacobs (5)	Jacobs (2)	Mattern, Grimsley (1)	Rhoades, Fahey, Brewer (1)	Mattern, Grimsley (2)
9/18	#17 UCF	W	1-0	Diaz-Matosas (2)	4 players (1)	Grimsley (1)	Fahey (1)	Grimsley (2)
9/20	South Alabama	W	6-1	Jacobs, Grimsley (4)	Brewer (3)	6 players (1)	6 players (1)	6 players (2)
9/25	Vanderbilt	W	2-1	Jacobs (4)	Jacobs (3)	K. Rhoades, Jacobs (1)	Grimsley, Bigbie, Small (1)	K. Rhoades, Jacobs (2)
9/27	Kentucky	W	1-0	Watts, Grimsley (3)	Jacobs, Watts (2)	Watts (1)	-	Watts (2)
10/2	Ole Miss	W	1-0	Small (5)	Small (3)	Small (1)	Miller (1)	Small (2)
10/4	Mississippi State	T	1-1	Miller, Jacobs (3)	Diaz, Fahey, Jacobs (1)	Jacobs (1)	Grimsley (1)	Jacobs (2)
10/9	Auburn							
10/11	Alabama							
10/16	Georgia							
10/18	Tennessee							
10/22	Arkansas							
10/25	LSU							
10/30	Florida							
11/4	SEC Tournament							

GAME-BY-GAME STARTERS

DATE	OPPONENT	W/L	F	F	M/F	M	M	M	D	D	D	D	GK
8/27	Col. Charleston	W	Jacobs	Grimsley	Campbell	Miller	Small	K. Rhoades	Mattern	Diaz-Matosas	Fahey	B. Rhoades	Patton
8/31	Western Carolina	W	Jacobs	Grimsley	Campbell	Miller	Small	K. Rhoades	Mattern	Diaz-Matosas	Fahey	B. Rhoades	Patton
9/4	Louisville	W	Jacobs	Grimsley	Campbell	Miller	Small	K. Rhoades	Mattern	Diaz-Matosas	Fahey	B. Rhoades	Patton
9/6	Cincinnati	W	Jacobs	Grimsley	Campbell	Miller	Small	K. Rhoades	Mattern	Diaz-Matosas	Fahey	B. Rhoades	Patton
9/11	Clemson	W	Jacobs	Grimsley	Campbell	Miller	Small	Bigbie	Mattern	Diaz-Matosas	Fahey	B. Rhoades	Patton
9/13	UNC Wilmington	W	Jacobs	Grimsley	Campbell	Miller	Small	K. Rhoades	Mattern	Diaz-Matosas	Fahey	Bigbie	Patton
9/18	#17 UCF	W	Jacobs	Grimsley	Bigbie	Miller	Small	K. Rhoades	Mattern	Diaz-Matosas	Fahey	B. Rhoades	Patton
9/20	South Alabama	W	Jacobs	Grimsley	Bigbie	Miller	Small	K. Rhoades	Mattern	Fligg	Fahey	B. Rhoades	Patton
9/25	Vanderbilt	W	Jacobs	Grimsley	Bigbie	Miller	Small	K. Rhoades	Mattern	Diaz-Matosas	Fahey	B. Rhoades	Patton
9/27	Kentucky	W	Jacobs	Grimsley	Bigbie	Miller	Small	K. Rhoades	Mattern	Diaz-Matosas	Fahey	B. Rhoades	Patton
10/2	Ole Miss	W	Jacobs	Grimsley	Bigbie	Miller	Small	K. Rhoades	Mattern	Diaz-Matosas	Fahey	B. Rhoades	Patton
10/4	Mississippi State	T	Jacobs	Grimsley	Bigbie	Miller	Small	K. Rhoades	Mattern	Diaz-Matosas	Fahey	B. Rhoades	Patton
10/9	Auburn												
10/11	Alabama												
10/16	Georgia												
10/18	Tennessee												
10/22	Arkansas												
10/25	LSU												
10/30	Florida												
11/4	SEC Tournament												



HOME-ONLY INDIVIDUAL STATISTICS

##	PLAYER	GP-GS	G	A	PTS	SH	PCT	SOG	SOG%	GWG	GWA
2	Megan Fligg	5-1	0	0	0	1	.000	1	1.000	0	0
3	Samantha Diaz-Matosas	6-5	1	1	3	8	.125	6	.750	1	0
4	Kayla Grimsley	6-6	4	1	9	12	.333	7	.583	2	0
5	Kim Miller	6-6	2	1	5	8	.250	2	.250	1	0
7	Blakely Mattern	6-6	0	1	1	1	.000	0	.000	0	0
8	Christine Watts	6-0	1	0	2	7	.143	3	.429	0	1
9	Maria Petroni	4-0	0	1	1	1	.000	0	.000	0	0
10	Natalie Aaron	6-0	1	1	3	4	.250	1	.250	0	0
11	Idana DeCecco	1-0	0	0	0	0	.000	0	.000	0	0
12	Shannon Bigbie	4-4	0	1	1	0	.000	0	.000	0	1
13	Jocelyn Spurrier	0-0	0	0	0	0	.000	0	.000	0	0
14	Lolly Holland	4-0	1	0	2	3	.333	1	.333	0	0
15	Kortney Rhoades	6-6	1	1	3	6	.167	5	.833	0	0
16	Lindsay Small	6-6	1	2	4	5	.200	1	.200	0	0
17	Maggie Blackwell	1-0	0	0	0	0	.000	0	.000	0	0
18	Ali Glemser	6-0	0	0	0	4	.000	3	.750	0	0
19	Kira Campbell	4-2	0	0	0	1	.000	1	1.000	0	0
20	Ellen Fahey	6-6	0	2	2	0	.000	0	.000	0	2
21	Brittany Rhoades	6-6	0	0	0	1	.000	0	.000	0	0
22	Dani Henry	5-0	0	0	0	2	.000	0	.000	0	0
23	Kacie Brewer	6-0	1	0	2	5	.200	4	.800	0	0
25	Maddy Kill	3-0	0	0	0	1	.000	1	1.000	0	0
26	Rae Wilson	2-0	0	0	0	0	.000	0	.000	0	0
27	Brooke Jacobs	6-6	1	1	3	12	.083	9	.750	0	1
28	Brittany DeWitt	2-0	0	0	0	0	.000	0	.000	0	0
TEAM											
South Carolina		6	14	13	41	81	.173	45	.556	6	3
Opponents		6	2	2	6	28	.071	10	.357	0	0

GOALKEEPERS

	GP-GS	Min.	GA	GAA.	Svs.	Save %	W-L	SO	
0	Alex Holland	0-0	00:00	0	0.00	0	0-0-0	0	
1	Roya Mojarab	1-0	30:28	1	2.95	2	0-0-0	0	
29	Mollie Patton	6-6	509:32	1	0.18	3	6-0-0	4	
35	Darien Vercillo	0-0	00:00	0	0.00	0	0-0-0	0	
TEAM									
South Carolina		6	540:00	2	0.33	8	.800	6-0-0	4
Opponents		6	540:00	14	2.33	31	.689	0-6-0	0

HOME-ONLY TEAM STATS

SCORING	USC	OPP
Goals.....	14	2
Assists.....	13	2
Points.....	41	6
SHOTS		
Shots	81	28
Pct.173	.071
Shots On Goal.....	45	10
SOG%.....	.556	.357
FOULS		
Fouls.....	48	54
Cards	1	2
GOALKEEPING		
Saves	8	31
Goals Against.....	2	14
GAA	0.33	2.33



AWAY-ONLY INDIVIDUAL STATISTICS

##	PLAYER	GP-GS	G	A	PTS	SH	PCT	SOG	SOG%	GWG	GWA
2	Megan Fligg	5-0	1	0	2	1	1.000	1	1.000	0	0
3	Samantha Diaz-Matosas	6-6	1	2	4	3	.333	2	.667	0	1
4	Kayla Grimsley	6-6	3	2	8	8	.375	4	.500	0	0
5	Kim Miller	6-6	0	6	6	8	.000	3	.375	0	3
7	Blakely Mattern	6-6	4	0	8	8	.500	6	.750	2	0
8	Christine Watts	6-0	1	1	3	7	.143	3	.429	0	0
9	Maria Petroni	5-0	1	0	2	2	.500	2	1.000	0	0
10	Natalie Aaron	6-0	0	0	0	2	.000	0	.000	0	0
11	Idana DeCecco	1-0	0	0	0	0	.000	0	.000	0	0
12	Shannon Bigbie	6-4	1	0	2	3	.333	3	1.000	1	0
13	Jocelyn Spurrier	0-0	0	0	0	0	.000	0	.000	0	0
14	Lolly Holland	4-0	0	0	0	4	.000	1	.250	0	0
15	Kortney Rhoades	6-5	0	1	1	5	.000	1	.200	0	1
16	Lindsay Small	6-6	2	0	4	15	.133	8	.533	2	0
17	Maggie Blackwell	1-0	0	0	0	0	.000	0	.000	0	0
18	Ali Glemser	5-0	0	0	0	2	.000	1	.500	0	0
19	Kira Campbell	6-4	0	0	0	5	.000	2	.400	0	0
20	Ellen Fahey	6-6	0	2	2	2	.000	1	.500	0	1
21	Brittany Rhoades	6-5	0	0	0	2	.000	2	1.000	0	0
22	Dani Henry	5-0	0	0	0	1	.000	0	.000	0	0
23	Kacie Brewer	6-0	0	1	1	2	.000	1	.500	0	0
25	Maddy Kill	3-0	0	0	0	0	.000	0	.000	0	0
26	Rae Wilson	2-0	0	0	0	0	.000	0	.000	0	0
27	Brooke Jacobs	6-6	2	1	5	12	.167	6	.500	0	1
28	Brittany DeWitt	1-0	0	0	0	0	.000	0	.000	0	0
TEAM											
South Carolina		6	16	16	48	93	.172	47	.505	5	7
Opponents		6	1	0	2	60	.017	34	.567	0	0

GOALKEEPERS

	GP-GS	Min.	GA	GAA.	Svs.	Save %	W-L	SO	
0	Alex Holland	0-0	00:00	0	0.00	0	0-0-0	0	
1	Roya Mojarab	0-0	00:00	0	0.00	0	0-0-0	0	
29	Mollie Patton	6-6	560:00	1	0.16	33	.971	5-0-1	5
35	Darien Vercillo	0-0	00:00	0	0.00	0	0-0-0	0	
TEAM									
South Carolina		6	560:00	1	0.16	33	1.000	5-0-1	5
Opponents		6	560:00	16	2.57	31	.659	0-5-1	0

AWAY-ONLY TEAM STATS

SCORING	USC	OPP
Goals.....	16	1
Assists.....	16	0
Points.....	48	2
SHOTS		
Shots	93	60
Pct.172	.017
Shots On Goal.....	47	34
SOG%.....	.505	.567
FOULS		
Fouls.....	49	56
Cards.....	2	3
GOALKEEPING		
Saves	33	31
Goals Against.....	1	16
GAA	0.16	2.57



EXHIBITION - MEXICAN NAT'L TEAM (2-0)

Soccer Box Score (Final)
The Automated ScoreBook For Soccer
Mexico U20 vs South Carolina (Aug 21, 2009 at Greenville, S.C.)

Mexico U20 vs. South Carolina (1-0-0)
Date: Aug 21, 2009 • Attendance: 3000
Weather:

Po #	Player	Sh	SO	G	A	Min
gk 1	Erika VANEAGAS	-	-	-	-	90
d 3	Marlene SANDOVAL	-	-	-	-	90
d 4	Marilyn DIAZ	-	-	-	-	90
d 5	Maria CASTILLO	1	-	-	-	90
m 6	Monica VERGARA	1	-	-	-	90
f 9	Monica OCAÑO	6	5	-	-	90
d 13	Lourdes GORDILLO	-	-	-	-	90
d 14	Leticia VILLALPANDO	-	-	-	-	90
d 15	Luz SAUCEDO	2	-	-	-	72
m 16	Mirelle ARCONIEGA	-	-	-	-	72
m 17	Tania MORALES	1	-	-	-	90
-- Substitutes --						
8	Asley KOTERO	-	-	-	-	18
10	Norma MENDEZ	-	-	-	-	18
Totals		11	5	0	0	

#	Goalkeepers	Min	GA	Saves
1	Erika VANEAGAS	90:00	2	4

Shots by period	1	2	Total
Mexico U20	5	6	11
South Carolina	7	5	12

Corner kicks	1	2	Total
Mexico U20	3	1	4
South Carolina	2	0	2

Scoring summary:

No.	Time	Team	Goal scorer	Assist	Description
1.	31:43	SC	Christine Watts	Brittany Rhoades	In box
2.	35:12	SC	Sam Diaz-Matosas	Kayla Grimsley	Cross from right into box, inside corner

Cautions and ejections:

YC-SC #20 (62:36)
Stadium: MeSA Soccer Complex
Officials:
Offsides: Mexico U20 1, South Carolina 3.

Official's signature

GAME 2 - WCU (2-0)

Soccer Box Score (Final)
2009 South Carolina Women's Soccer
Western Carolina vs South Carolina (Aug 30, 2009 at Columbia, S.C.)

Western Carolina (2-1-0) vs. South Carolina (2-0-0)
Date: Aug 30, 2009 • Attendance: 489
Weather:

Po #	Player	Sh	SO	G	A	Min
gk 00	Caitlin Williams	-	-	-	-	90
m 7	Liz Eichler	-	-	-	-	34
m 8	Kayla Beaudouy	-	-	-	-	62
f 11	Nikki Collins	-	-	-	-	50
m 14	Samantha Hodge	-	-	-	-	69
f 16	Shannon Fowkes	-	-	-	-	72
d 18	Jenny Matteson	-	-	-	-	90
f 19	Rachael Shomper	-	-	-	-	72
m 21	Renee Anderson	-	-	-	-	57
m 23	Shanna Schmoker	-	-	-	-	78
m 24	Nikki Lombardo	-	-	-	-	78
-- Substitutes --						
5	Bri Cunningham	-	-	-	-	29
10	Kellie Oberholtzer	-	-	-	-	41
12	Hilary Holder	-	-	-	-	56
13	Erin Hamilton	-	-	-	-	18
17	Katie Kole	-	-	-	-	30
20	Elizabeth Kozlowski	-	-	-	-	12
26	Lindsay Carter	-	-	-	-	54
Totals		0	0	0	0	

#	Goalkeepers	Min	GA	Saves
00	Caitlin Williams	90:00	2	5

Shots by period	1	2	Total
Western Carolina	0	0	0
South Carolina	6	5	11

Corner kicks	1	2	Total
Western Carolina	1	0	1
South Carolina	4	2	6

Scoring summary:

No.	Time	Team	Goal scorer	Assist	Description
1.	22:38	SC	Kayla Grimsley	Ellen Fahey	Breakaway at midfield after clearance
2.	26:49	SC	Kim Miller (2)	Sam Diaz-Matosas	#3 shot saved, deflection to #5

Cautions and ejections:

Stadium: Stone Stadium
Officials: Referee: Joe Balazs; Asst. Referee: Alan Correa; Steve Abbott;
Timekeeper: Adrienne Cunningham; Scorer: Miquel Jacobs;
Offsides: Western Carolina 0, South Carolina 4.

Official's signature

GAME 1 - CofC (2-0)

Soccer Box Score (Final)
The Automated ScoreBook For Soccer
Col. of Charleston vs South Carolina (Aug 27, 2009 at Columbia, S.C.)

Col. of Charleston (0-1-0) vs. South Carolina (1-0-0)
Date: Aug 27, 2009 • Attendance: 612
Weather:

Po #	Player	Sh	SO	G	A	Min
gk 0	Sarah Wiggers	-	-	-	-	90
m 2	Hope Atkinson	-	-	-	-	25
d 3	Amanda Raymond	1	-	-	-	90
m 6	Hannah Gmerek	-	-	-	-	55
d 7	Emily Morgan	1	1	-	-	90
m 10	Julie Romanik	-	-	-	-	59
d 11	Brittany Schneider	-	-	-	-	90
m 12	Morgan Benz	-	-	-	-	61
d 20	Annie Pease	-	-	-	-	90
f 21	Alyssa Bearden	-	-	-	-	52
m 26	Sarah Schaldie	-	-	-	-	65
-- Substitutes --						
8	Christy Barrow	-	-	-	-	37
9	Christy Caruso	-	-	-	-	38
13	Lindsay Frey	-	-	-	-	2
14	Christian Patton	-	-	-	-	31
18	Katie Turner	-	-	-	-	27
21	Liz Miller	-	-	-	-	60
25	Haley Hutchens	-	-	-	-	41
28	Betsy Stewart	-	-	-	-	0
Totals		2	1	0	0	

#	Goalkeepers	Min	GA	Saves
0	Sarah Wiggers	90:00	2	5

Shots by period	1	2	Total
Col. of Charleston	0	2	2
South Carolina	6	5	11

Corner kicks	1	2	Total
Col. of Charleston	0	3	3
South Carolina	2	1	3

Scoring summary:

No.	Time	Team	Goal scorer	Assist	Description
1.	13:42	SC	Kim Miller (1)	(unassisted)	Free kick 25 yards out, center, top of net
2.	29:54	SC	Kayla Grimsley (1)	Lindsay Small	Beat defender, ball into far corner

Cautions and ejections:

Stadium: Stone Stadium
Officials: Referee: Jeremy Brooks; Asst. Referee: John Tanverdi; Kenneth Ayers;
Timekeeper: Bryan Powell; Scorer: Miquel Jacobs;
Offsides: Col. of Charleston 1, South Carolina 2.

Official's signature

GAME 3 - LOUISVILLE (3-0)

Soccer Box Score (Final)
2009 South Carolina Women's Soccer
South Carolina vs Louisville (09-04-09 at Louisville, Ky.)

South Carolina (3-0) vs. Louisville (1-2)
Date: 09-04-09 • Attendance: 1103
Weather:

Po #	Player	Sh	SO	G	A	Min
gk 29	Mollie Patton	-	-	-	-	90
d 3	Sam Diaz-Matosas	-	-	-	-	76
f 4	Kayla Grimsley	2	2	1	-	79
m 5	Kim Miller	-	-	-	-	79
d 7	Blakely Mattern	-	-	-	-	90
m 15	Kortney Rhoades	-	-	-	-	22
m 16	Lindsay Small	1	1	1	-	79
m 19	Kira Campbell	1	-	-	-	40
d 20	Ellen Fahey	-	-	-	-	90
d 21	Brittany Rhoades	1	1	-	-	81
f 27	Brooke Jacobs	1	1	-	-	79
-- Substitutes --						
2	Megan Fligg	-	-	-	-	15
8	Christine Watts	3	2	1	-	57
9	Marla Petroni	1	1	-	-	16
10	Natalie Aaron	1	-	-	-	14
12	Shannon Bigbie	-	-	-	-	53
22	Dani Henry	1	-	-	-	15
23	Kacie Brewer	-	-	-	-	14
Totals		12	8	3	2	

#	Goalkeepers	Min	GA	Saves
29	Mollie Patton	90:00	0	6

Shots by period	1	2	Total
South Carolina	7	5	12
Louisville	4	6	10

Corner kicks	1	2	Total
South Carolina	4	3	7
Louisville	0	3	3

Scoring summary:

No.	Time	Team	Goal scorer	Assist	Description
1.	27:09	SC	Lindsay Small	Kim Miller	Header from 3 yards off corner kick.
2.	43:52	SC	Christine Watts	(unassisted)	Upper right corner from 17 yards out.
3.	89:51	SC	Kayla Grimsley	Sam Diaz-Matosas	

Cautions and ejections:

Stadium: Cardinal Park
Officials: Referee: Kelly R. Ross; Asst. Referee: Rachel Bramlage; Andy Ellsworth;
Alt. Official: Mike Dutt; Timekeeper: Kent Jennings; Scorer: Garrett Wall;
Offsides: South Carolina 4, Louisville 2.

Official's signature

GAME 4 - CINCINNATI (4-0)

Soccer Box Score (Final)
2009 South Carolina Women's Soccer
Cincinnati Bearcats vs South Carolina (09-06-09 at Louisville, Ky.)

Cincinnati Bearcats (2-3) vs.
 South Carolina (4-0)
 Date: 09-06-09 • Attendance: 229
 Weather:

Goals by period	1	2	Total
Cincinnati Bearcats	0	0	0
South Carolina	1	3	4

Cincinnati Bearcats	Sh	SO	G	A	Min
gk 0 KAMINSKI, Andrea	-	-	-	-	90
m 2 BARKER, Sydney	-	-	-	-	29
f 3 LOGGINS, Kendall	-	-	-	-	82
d 6 NEISER, Heather	1	-	-	-	90
m 8 BIGG, Melissa	2	1	-	-	90
f 9 MORRISSEY, Julie	2	2	-	-	75
f 10 HEBBELER, Emily	-	-	-	-	73
d 14 BALLINGER, Logan	-	-	-	-	81
d 13 EBERLY, Brooke	-	-	-	-	45
d 14 PAWELKO, Kelli	-	-	-	-	90
d 18 YOUNG, Kay	-	-	-	-	90
-- Substitutes --					
4 BREWER, Christine	1	-	-	-	0
5 DAKERS, Kaylee	-	-	-	-	61
7 RANSON, Evi	-	-	-	-	8
17 HARDIN, Vanessa	-	-	-	-	0
19 JOHNSON, Katie	-	-	-	-	45
20 LUCAS, Lauren	1	-	-	-	9
22 MACDONALD, Erin	1	1	-	-	14
25 KAUFMAN, Erin	2	1	-	-	19
Totals	10	5	0	0	

South Carolina	Sh	SO	G	A	Min
gk 29 Mollie Patton	-	-	-	-	90
d 3 Sam Diaz-Matosas	1	1	1	1	56
f 4 Kayla Grimsley	1	-	-	-	64
m 5 Kim Miller	3	2	-	-	90
d 7 Blakely Mattern	3	3	1	-	81
m 15 Kortney Rhoades	1	-	-	-	33
m 16 Lindsay Small	5	3	-	-	72
m 19 Kira Campbell	-	-	-	-	55
d 20 Ellen Fahey	-	-	-	-	181
d 21 Brittany Rhoades	1	1	-	-	68
f 27 Brooke Jacobs	2	1	-	-	65
-- Substitutes --					
2 Megan Fligg	1	1	1	-	45
8 Christine Watts	2	1	-	-	44
9 Maria Petroni	1	1	1	-	21
10 Natalie Aaron	-	-	-	-	13
12 Shannon Bigbie	-	-	-	-	32
18 Ali Glemser	1	1	-	-	23
22 Dani Henry	-	-	-	-	18
23 Kacie Brewer	-	-	-	-	17
25 Maddy Kill	-	-	-	-	9
26 Rae Wilson	-	-	-	-	13
28 Brittany DeWitt	-	-	-	-	9
Totals	22	15	4	5	

Goalkeepers	Min	GA	Saves
0 KAMINSKI, Andrea	90:00	4	9
TM TEAM	0:00	0	2

Goalkeepers	Min	GA	Saves
29 Mollie Patton	90:00	0	5

Shots by period	1	2	Total
Cincinnati Bearcats	3	7	10
South Carolina	11	11	22

Saves by period	1	2	Total
Cincinnati Bearcats	7	4	11
South Carolina	3	2	5

Corner kicks	1	2	Total
Cincinnati Bearcats	0	2	2
South Carolina	6	1	7

Fouls	1	2	Total
Cincinnati Bearcats	6	6	12
South Carolina	3	4	7

Scoring summary:

No.	Time	Team	Goal scorer	Assist	Description
1.	26:54	SC	Blakely Mattern	Ellen Fahey	Sam Diaz-Matosas
2.	59:32	SC	Sam Diaz-Matosas	Kayla Grimsley	
3.	79:09	SC	Megan Fligg	Kim Miller	
4.	81:13	SC	Maria Petroni	Kim Miller	

Cautions and ejections:

YC-CIN #13 (12:06); YC-CIN #6 (63:07)

Officials: Referee: Brent Heidorn; Asst. Referee: Josh Stoner; Skye Arthur-Banning; Offsides: South Carolina 3, UNC Wilmington 0.

GAME 6 - UNC WILMINGTON (2-0)

Soccer Box Score (Final)
2009 South Carolina Women's Soccer
#18 South Carolina vs UNC Wilmington (Sep 13, 2009 at Clemson, SC)

South Carolina (6-0) vs.
 UNC Wilmington (3-3)
 Date: Sep 13, 2009 • Attendance: 155
 Weather:

Goals by period	1	2	Total
South Carolina	0	2	2
UNC Wilmington	0	0	0

South Carolina	Sh	SO	G	A	Min
gk 29 Mollie Patton	-	-	-	-	90
f 3 Sam Diaz-Matosas	1	-	-	-	73
f 4 Kayla Grimsley	1	1	-	-	61
5 Kim Miller	2	1	-	-	90
f 7 Blakely Mattern	2	1	1	-	90
12 Shannon Bigbie	1	1	-	-	56
15 Kortney Rhoades	3	1	-	-	37
16 Lindsay Small	1	1	-	-	62
19 Kira Campbell	-	-	-	-	31
20 Ellen Fahey	-	-	-	-	179
27 Brooke Jacobs	5	2	-	-	63
-- Substitutes --					
2 Megan Fligg	-	-	-	-	31
8 Christine Watts	2	-	-	-	55
10 Natalie Aaron	-	-	-	-	12
13 Jocelyn Spurrier	-	-	-	-	0
14 Lolly Holland	4	1	-	-	17
18 Ali Glemser	1	-	-	-	27
21 Brittany Rhoades	-	-	-	-	58
22 Dani Henry	-	-	-	-	22
23 Kacie Brewer	-	-	-	-	131
25 Maddy Kill	-	-	-	-	5
Totals	23	9	2	3	

UNC Wilmington	Sh	SO	G	A	Min
gk 1 Follett, Chandler	-	-	-	-	90
2 Henry, Lindsay	-	-	-	-	90
5 Novak, Megan	1	1	-	-	83
6 Panek, Nicole	-	-	-	-	35
7 Pardini, Erin	1	1	-	-	65
8 Myers, Ashley	3	3	-	-	66
9 Croce, Brittany	-	-	-	-	90
11 Froehlich, Heather	-	-	-	-	22
12 Godbout, Chelsea	-	-	-	-	73
14 Rose, Stephanie	-	-	-	-	50
18 Ludemann, Jen	-	-	-	-	90
-- Substitutes --					
3 Dodd, Kelly	-	-	-	-	17
10 Holmes, Amanda	-	-	-	-	25
12 Rodgers, Erica	-	-	-	-	32
15 Simeone, Meagan	1	-	-	-	68
20 Dohrer, Ashley	-	-	-	-	17
21 Tucker, Kristal	-	-	-	-	7
22 Evans, Jenna	1	-	-	-	56
28 Wilson, Laura	1	1	-	-	14
Totals	8	6	0	0	

Goalkeepers	Min	GA	Saves
29 Mollie Patton	90:00	0	6

Goalkeepers	Min	GA	Saves
1 Follett, Chandler	90:00	2	7

Shots by period	1	2	Total
South Carolina	11	12	23
UNC Wilmington	1	7	8

Saves by period	1	2	Total
South Carolina	1	5	6
UNC Wilmington	3	4	7

Corner kicks	1	2	Total
South Carolina	3	0	3
UNC Wilmington	0	0	0

Fouls	1	2	Total
South Carolina	3	4	7
UNC Wilmington	2	8	10

Scoring summary:

No.	Time	Team	Goal scorer	Assist	Description
1.	55:17	SC	Blakely Mattern (4)	Kortney Rhoades	
2.	63:52	SC	Kayla Grimsley (5)	Ellen Fahey	Kacie Brewer

Cautions and ejections:

Stadium: Historic Riggs Field
 Officials: Referee: Brent Heidorn; Asst. Referee: Josh Stoner; Skye Arthur-Banning;
 Offsides: South Carolina 3, UNC Wilmington 0.

Official's signature

GAME 5 - CLEMSON (5-0)

Soccer Box Score (Final)
2009 South Carolina Women's Soccer
#18 South Carolina vs Clemson (Sep 11, 2009 at Clemson, SC)

South Carolina (5-0) vs.
 Clemson (2-3)
 Date: Sep 11, 2009 • Attendance: 917
 Weather:

Goals by period	1	2	Total
South Carolina	3	2	5
Clemson	0	0	0

South Carolina	Sh	SO	G	A	Min
gk 29 Mollie Patton	-	-	-	-	90
f 3 Sam Diaz-Matosas	-	-	-	-	69
f 4 Kayla Grimsley	1	1	1	-	57
5 Kim Miller	3	2	-	-	69
7 Blakely Mattern	3	2	-	-	77
12 Shannon Bigbie	1	1	1	-	61
16 Lindsay Small	2	-	-	-	79
19 Kira Campbell	4	2	-	-	55
20 Ellen Fahey	-	-	-	-	83
21 Brittany Rhoades	-	-	-	-	14
27 Brooke Jacobs	1	1	1	1	64
-- Substitutes --					
2 Megan Fligg	-	-	-	-	45
8 Christine Watts	-	-	-	-	38
9 Maria Petroni	-	-	-	-	11
10 Natalie Aaron	-	-	-	-	23
11 Idana DeCecco	-	-	-	-	5
14 Lolly Holland	-	-	-	-	18
15 Kortney Rhoades	-	-	-	-	33
17 Maggie Blackwell	-	-	-	-	7
18 Ali Glemser	-	-	-	-	11
22 Dani Henry	-	-	-	-	18
23 Kacie Brewer	-	-	-	-	31
25 Maddy Kill	-	-	-	-	12
26 Rae Wilson	-	-	-	-	15
28 Brittany DeWitt	-	-	-	-	5
Totals	12	7	5	4	

Clemson	Sh	SO	G	A	Min
gk 0 Paula Pritzen	-	-	-	-	90
2 K.K. Duffy	-	-	-	-	90
6 Molly Franklin	2	1	-	-	68
9 Jennifer Ficklen	1	1	-	-	90
12 Ashlyne Bass	-	-	-	-	90
18 Heather Marik	-	-	-	-	90
19 Judea Davis	4	3	-	-	53
21 Maddy Elder	1	-	-	-	32
22 Lily Boley	1	-	-	-	35
23 Stefanie Schroeder	-	-	-	-	90
24 Callie Cavanaugh	-	-	-	-	72
-- Substitutes --					
3 Emily Tatum	1	-	-	-	48
7 Tara Cort	-	-	-	-	43
8 Samantha Fortier	1	1	-	-	23
11 Kate Biggerstaff	1	-	-	-	13
13 Katie Vogel	-	-	-	-	53
14 Rachel Hurd	-	-	-	-	10
Totals	12	6	0	0	

Goalkeepers	Min	GA	Saves
29 Mollie Patton	90:00	0	6

Goalkeepers	Min	GA	Saves
0 Paula Pritzen	90:00	5	2

Shots by period	1	2	Total
South Carolina	7	5	12
Clemson	6	6	12

Saves by period	1	2	Total
South Carolina	2	4	6
Clemson	1	1	2

Corner kicks	1	2	Total
South Carolina	0	4	4
Clemson	1	3	4

Fouls	1	2	Total
South Carolina	5	4	9
Clemson	7	1	8

Scoring summary:

No.	Time	Team	Goal scorer	Assist	Description
1.	3:22	SC	Shannon Bigbie (1)	Kim Miller	Brooke Jacobs
2.	35:33	SC	Blakely Mattern (2)	Kim Miller	
3.	36:51	SC	Brooke Jacobs (2)	Christine Watts	
4.	65:44	SC	Kayla Grimsley (4)	(unassisted)	
5.	71:35	SC	Blakely Mattern (3)	(unassisted)	

Cautions and ejections:

YC-CU #13 (64:37); YC-SC #2 (79:36)

Stadium: Historic Riggs Field
 Officials: Referee: Casey Black; Asst. Referee: Stephen A. Middleton; Chris Shanku;
 Offsides: South Carolina 0, Clemson 0.

Official's signature

GAME 7 - #17 UCF (1-0)

Soccer Box Score (Final)
2009 South Carolina Women's Soccer
#17 UCF vs #12 South Carolina (Sep 18, 2009 at Columbia, S.C.)

UCF (5-2-1) vs.
 South Carolina (7-0-0)
 Date: Sep 18, 2009 • Attendance: 1424
 Weather:

Goals by period	1	2	Total
UCF	0	0	0
South Carolina	1	0	1

UCF	Sh	SO	G	A	Min
gk 1 REIS, Aline	-	-	-	-	90



GAME 8 - South Alabama (6-1)

Soccer Box Score (Final) 2009 South Carolina Women's Soccer

South Alabama vs #12 South Carolina (Sep 20, 2009 at Columbia, S.C.)

South Alabama (2-6-0) vs.

South Carolina (8-0-0)

Date: Sep 20, 2009 • Attendance: 443

Weather:

Po	#	Player	Sh	SO	G	A	Min
gk	1	Lythjohan,Cassie	-	-	-	-	90
m	4	Parsons,Natalie	-	-	-	-	84
d	7	Slower,Sam	1	1	-	-	90
f	10	Smith,Brandi	1	1	-	-	74
m	11	Sutton,Kristin	-	-	-	-	29
f	12	Clark,Liz	-	-	-	-	64
d	15	Francis,Shundel	-	-	-	-	78
m	18	Stocker,Sam	1	1	1	-	90
d	21	Frakes,Alle	-	-	-	-	90
d	24	Crowe,Kasey	-	-	-	-	75
m	27	Pannell,Rylee	-	-	-	-	63
-- Substitutes --							
3	Shelton,Whitney	-	-	-	-	1	
5	Sanders,Jasmine	-	-	-	-	35	
6	Falgout,Rebecca	-	-	-	-	43	
8	OWada,Nanae	-	-	-	-	1	
13	Conrad,Kayla	-	-	-	-	15	
14	Hosford,Laura	-	-	-	-	6	
17	Glause,Sandi	-	-	-	-	25	
20	Mcnaughton,Katelyn	-	-	-	-	1	
25	Wilson, Landi	1	1	-	-	59	
Totals		4	4	1	1		

Goals by period	1	2	Total
South Alabama	0	1	1
South Carolina	3	3	6

Po	#	Player	Sh	SO	G	A	Min
gk	29	Mollie Patton	-	-	-	-	60
d	2	Megan Fligg	-	-	-	-	64
f	4	Kayla Grimsley	4	2	1	-	39
m	5	Kim Miller	1	-	-	-	62
d	7	Blakely Mattern	-	-	-	-	60
f	12	Shannon Bigbie	-	-	-	-	38
m	15	Kortney Rhoades	-	-	-	-	31
m	16	Lindsay Small	1	1	1	-	70
d	20	Ellen Fahey	-	-	-	-	60
d	21	Brittany Rhoades	-	-	-	-	39
f	27	Brooke Jacobs	4	2	-	-	46
-- Substitutes --							
1	Roya Mojarab	-	-	-	-	30	
3	Sam Diaz-Matosas	1	1	-	-	31	
8	Christine Watts	1	1	-	-	33	
9	Maria Petroni	1	-	-	-	27	
10	Natalie Aaron	2	1	1	-	47	
11	Idiana DeCecco	-	-	-	-	26	
14	Lolly Holland	2	1	-	-	26	
17	Maggie Blackwell	-	-	-	-	30	
18	Ali Glemser	2	1	-	-	27	
22	Dani Henry	1	-	-	-	53	
23	Kacie Brewer	3	3	1	-	36	
25	Maddie Kill	-	-	-	-	29	
28	Brittany DeWitt	-	-	-	-	26	
Totals		23	13	6	6		

#	Goalkeepers	Min	GA	Saves
29	Mollie Patton	59:32	0	1
1	Roya Mojarab	30:28	1	2

Saves by period	1	2	Total
South Alabama	5	2	7
South Carolina	1	2	3

Fouls	1	2	Total
South Alabama	3	6	9
South Carolina	4	3	7

#	Goalkeepers	Min	GA	Saves
1	Lythjohan,Cassie	90:00	6	7

Shots by period	1	2	Total
South Alabama	1	3	4
South Carolina	13	10	23

Corner kicks	1	2	Total
South Alabama	0	2	2
South Carolina	4	2	6

Scoring summary:

No.	Time	Team	Goal scorer	Assist	Description
1.	3:30	SC	Lindsay Small (2)	Kim Miller	15 yards out
2.	19:03	SC	Sam Diaz-Matosas (2)	Corner kick	In off corner
3.	27:34	SC	Natalie Aaron (1)	Brooke Jacobs	Cross to #10, open shot
4.	55:53	SC	Kayla Grimsley (7)	Kortney Rhoades	lv1 with keeper
5.	59:32	SC	Lolly Holland (1)	Blakely Mattern	Cleared up, alone with keeper
6.	73:39	SC	Kacie Brewer (1)	Maria Petroni	Header in front of goal
7.	85:46	USA	Stocker,Sam (1)	Clark,Liz	Strike from 25 yards out, over keeper hands

Cautions and ejections:

Stadium: Stone Stadium

Officials: Referee: Alan Schechtman; Asst. Referee: Kevin Tempel; Karen Tempel;

Offsides: South Alabama 0, South Carolina 5.

Official's signature

GAME 10 - Kentucky (1-0)

Soccer Box Score (Final) 2009 South Carolina Women's Soccer

Kentucky vs #11 South Carolina (Sep 27, 2009 at Columbia, S.C.)

Kentucky (3-4-3) vs.

South Carolina (10-0-0)

Date: Sep 27, 2009 • Attendance: 672

Weather:

Po	#	Player	Sh	SO	G	A	Min
gk	00	Sydney Hiance	-	-	-	-	90
m	8	Taylor Ray	-	-	-	-	68
d	9	Julie Hull	-	-	-	-	90
d	11	Jenna Goblirsch	-	-	-	-	90
d	15	Kiondra McGehee	-	-	-	-	83
f	16	Katie Fahey	-	-	-	-	60
f	19	Giuleana Lopez	1	-	-	-	61
d	23	Ashley Stack	-	-	-	-	79
m	24	Stefani Kildare	-	-	-	-	52
d	27	Kirsten Robinson	1	1	-	-	71
m	30	Alyssa Telang	-	-	-	-	68
-- Substitutes --							
6	Leslie Twehues	-	-	-	-	32	
12	Jessie Craig	-	-	-	-	1	
13	Sam Au	-	-	-	-	29	
14	Laura Novikoff	-	-	-	-	52	
17	Georgia Ann Swanso	-	-	-	-	1	
20	Alicia Browning	-	-	-	-	27	
21	Kelly Browning	-	-	-	-	36	
28	Brooke Keyes	-	-	-	-	1	
Totals		2	1	0	0		

Goals by period	1	2	Total
Kentucky	0	0	0
South Carolina	0	1	1

Po	#	Player	Sh	SO	G	A	Min
gk	29	Mollie Patton	-	-	-	-	90
d	3	Sam Diaz-Matosas	2	1	-	-	88
f	4	Kayla Grimsley	3	1	-	-	81
m	5	Kim Miller	1	-	-	-	90
d	7	Blakely Mattern	-	-	-	-	90
f	12	Shannon Bigbie	-	-	-	-	58
m	15	Kortney Rhoades	1	1	-	-	17
m	16	Lindsay Small	1	-	-	-	82
d	20	Ellen Fahey	-	-	-	-	90
d	21	Brittany Rhoades	-	-	-	-	90
f	27	Brooke Jacobs	2	2	-	-	81
-- Substitutes --							
8	Christine Watts	3	2	1	-	36	
9	Maria Petroni	-	-	-	-	19	
10	Natalie Aaron	-	-	-	-	19	
14	Lolly Holland	-	-	-	-	17	
18	Ali Glemser	-	-	-	-	6	
19	Kira Campbell	1	1	-	-	15	
22	Dani Henry	-	-	-	-	12	
23	Kacie Brewer	-	-	-	-	9	
Totals		14	8	1	0		

#	Goalkeepers	Min	GA	Saves
29	Mollie Patton	90:00	0	1

Saves by period	1	2	Total
Kentucky	5	2	7
South Carolina	1	0	1

Fouls	1	2	Total
Kentucky	4	6	10
South Carolina	2	7	9

#	Goalkeepers	Min	GA	Saves
00	Sydney Hiance	90:00	1	7

Shots by period	1	2	Total
Kentucky	2	0	2
South Carolina	7	7	14

Corner kicks	1	2	Total
Kentucky	3	1	4
South Carolina	3	5	8

Scoring summary:

No.	Time	Team	Goal scorer	Assist	Description
1.	55:24	SC	Christine Watts (2)	(unassisted)	Drove from midfield, hit left post and in

Cautions and ejections:

Stadium: Stone Stadium

Officials: Referee: Tony Russo; Asst. Referee: Skye Arthur Banning; Melanie Johnson;

Alt. Official: Rob Mann; Scorer: Miquel Jacobs;

Offsides: Kentucky 0, South Carolina 2.

Official's signature

GAME 9 - Vanderbilt (2-1)

Soccer Box Score (Final)

2009 South Carolina Women's Soccer
Vanderbilt vs #11 South Carolina (Sep 25, 2009 at Columbia, S.C.)

Vanderbilt (6-2-1) vs.

South Carolina (9-0-0)

Date: Sep 25, 2009 • Attendance: 756

Weather:

Po	#	Player	Sh	SO	G	A	Min
gk	1	Rachel Bachtel	-	-	-	-	90
f	7	Nicole Lukens	2	1	1	-	77
d	9	Megan Forester	3	-	-	-	88
d	10	Elizabeth Lillie	-	-	-	-	81
d	11	Katherine Dean	-	-	-	-	72
d	13	Amanda Essay	-	-	-	-	40
m	14	Megan Kinsella	-	-	-	-	57
m	17	Chelsea Stewart	-	-	-	-	79
m	19	Candace West	-	-	-	-	75
m	20	Molly Kinsella	1	-	-	-	90
m	23	CJ Rhoades	1	-	-	-	60
-- Substitutes --							
4	Megan Fligg	-	-	-	-	21	
8	Margaux Andrews	1	-	-	-	25	
12	Dana Schwartz	-	-	-	-	43	
21	Bridget Lohmuller	-	-	-	-	28	
22	Emily Grant	-	-	-	-	25	
25	Catherine Wearn	-	-	-	-	10	
Totals		8	1	1	1		

Goals by period	1	2	Total
Vanderbilt	0	1	1
South Carolina	1	1	2

Po	#	Player	Sh	SO	G	A	Min
gk	29	Mollie Patton	-	-	-	-	90
d	3	Sam Diaz-Matosas	1	1	-	-	81
f	4	Kayla Grimsley	1	-	-	-	80
m	5	Kim Miller	1	-	-	-	84
d	7	Blakely Mattern	1	-	-	-	90
f	12	Shannon Bigbie	-	-	-	-	54
m	15	Kortney Rhoades	2	2	1	-	44
m	16	Lindsay Small	-	-	-	-	19
d	20	Ellen Fahey	-	-	-	-	90
d	21	Brittany Rhoades	-	-	-	-	78
f	27	Brooke Jacobs	4	3	1	-	75
-- Substitutes --							
2	Megan Fligg	-	-	-	-	21	
8	Christine Watts	1	-	-	-	58	
9	Maria Petroni	-	-	-	-	14	
10	Natalie Aaron	1	-	-	-	25	
14	Lolly Holland	1	-	-	-	28	
18	Ali Glemser	-	-	-	-	8	
19	Kira Campbell	-	-	-	-	38	
23	Kacie Brewer	1	-	-	-	16	
Totals		14	6	2	3		

#	Goalkeepers	Min	GA	Saves
29	Mollie Patton	90:00	1	0

Saves by period	1	2	Total
Vanderbilt	2	2	4
South Carolina	0	0	0

Fouls	1	2	Total
Vanderbilt	6	2	8
South Carolina	3	8	11

#	Goalkeepers	Min	GA	Saves
1	Rachel Bachtel	90:00	2	4



GAME 12 - Mississippi State (1-1)

GAME 13

Soccer Box Score (Final)

2009 South Carolina Women's Soccer

#8 South Carolina vs Mississippi State (Oct 04, 2009 at Starkville, Miss.)

South Carolina 11-0-1 (3-0-1 SEC) vs.
Mississippi State 8-2-2 (0-2-2 SEC)
Date: Oct 04, 2009 • Attendance: 142
Weather:

Goals by period	1	2	OT	O2	Total
South Carolina	0	1	0	0	1
Mississippi State	0	1	0	0	1

South Carolina

Po ## Player	Sh	SO	G	A	Min
gk 29 Mollie Patton	-	-	-	-	110
d 3 Sam Diaz-Matosas	1	1	-	-	96
f 4 Kayla Grimsley	1	-	1	-	99
m 5 Kim Miller	3	-	-	-	110
d 7 Blakely Mattern	-	-	-	-	110
f 12 Shannon Bigbie	-	-	-	-	59
m 16 Lindsay Small	1	-	-	-	107
d 20 Ellen Fahey	2	1	-	-	110
d 21 Brittny Rhoades	-	-	-	-	102
f 27 Brooke Jacobs	3	1	1	-	77
m 32 Kortney Rhoades	1	-	-	-	35
-- Substitutes --					
2 Megan Fligg	-	-	-	-	16
8 Christine Watts	-	-	-	-	45
9 Maria Petroni	-	-	-	-	37
10 Natalie Aaron	1	-	-	-	8
14 Lilly Holland	-	-	-	-	33
18 Ali Glemser	-	-	-	-	8
19 Kira Campbell	-	-	-	-	31
22 Dani Henry	-	-	-	-	6
23 Kacie Brewer	1	-	-	-	28
Totals	14	3	1	1	

Mississippi State

Po ## Player	Sh	SO	G	A	Min
gk 0 Taryn Holland	-	-	-	-	110
d 4 Danielle Kite	-	-	-	-	110
m 9 Monica Alvarado	-	-	-	-	110
m 15 Lauren Morgan	-	-	-	-	24
d 16 Jasmine Simmons	-	-	-	-	110
f 17 Ashley Hood	-	-	-	-	67
f 18 Andrea Harrison	-	-	-	-	36
d 22 Hannah Tyler	-	-	-	-	110
d 23 Leanna Baldner	-	-	-	-	110
m 24 Madison McKee	-	-	-	-	96
f 25 Kat Walsh	4	3	-	-	110
-- Substitutes --					
5 Kim Pettit	-	-	-	-	65
7 Tarah Henderson	-	-	-	-	24
8 Katy Hoover	2	-	-	-	35
13 Zehra Syed	-	-	-	-	14
91 Rachel Wannek	6	3	1	-	79
Totals	12	6	1	0	

Goalkeepers

##	Min	GA	Saves
29 Mollie Patton	110:00	1	5

Goalkeepers

##	Min	GA	Saves
0 Taryn Holland	110:00	1	2

Shots by period

	1	2	OT	O2	Total
South Carolina	6	5	3	0	14
Mississippi State	1	7	2	2	12

Saves by period

	1	2	OT	O2	Total
South Carolina	1	4	0	0	5
Mississippi State	1	1	0	0	2

Corner kicks

	1	2	OT	O2	Total
South Carolina	0	1	0	1	2
Mississippi State	0	0	0	0	0

Fouls

	1	2	OT	O2	Total
South Carolina	5	4	2	0	11
Mississippi State	5	6	0	1	12

Scoring summary:

No.	Time Team	Goal scorer	Assist	Description
1.	45:50 SC	Brooke Jacobs (3)	Kayla Grimsley	1-v-1 from five yards
2.	70:51 MSU	Rachel Wannek (4)	(unassisted)	25 yards off free kick

Cautions and ejections:

YC-MSU #18 (21:45); YC-SC #10 (30:09); YC-MSU #22 (33:04)

Stadium: MSU Soccer Field

Officials: Referee: Adam Garner; Asst. Referee: Wanda Porter; Peter Valentino;

Alt. Official: Sims Meredith; Scorer: Brock Turnipseed;

Offsides: South Carolina 3, Mississippi State 0.

Official's signature

GAME 14

GAME 15



#0 Alex Holland
GK • 5-7 • Fr.

Bests	Season	Career
Saves:	N/A	Same
Minutes:	N/A	Same

Career Statistics

YEAR	GP/GS	MIN	SVS	GA	GAA	SHO
2009	0-0	0	0	0	0	0
TOTALS	0-0	0	0	0	0	0



#1 Roya Mojarab
GK • 5-4 • So.

Bests	Season	Career
Saves:	2, (9/20)	Same
Minutes:	30:28, (9/20)	Same

Career Statistics

YEAR	GP/GS	MIN	SVS	GA	GAA	SHO
2008	1-0	13:07	0	0	0.00	0
2009	1-0	30:28	2	1	2.95	0
TOTALS	2-0	43:35	2	1	2.06	0



#2 Megan Fligg
D • 5-6 • Fr.

Bests	Season	Career
Goals:	1, (9/6)	Same
Assists:	N/A	Same
Points:	2, (9/6)	Same
Shots:	1, 2x* (9/6)	Same
SOG:	1, (9/6)	Same

Career Statistics

YEAR	GP/GS	SH	G	A	PTS	GWG
2009	10-1	2	1	0	2	0
TOTALS	10-1	2	1	0	2	0



#3 Samantha Diaz-Matosas
D • 5-7 • Sr.

Bests	Season	Career
Goals:	1, 2x* (9/20)	1, 7x* (9/20)
Assists:	1, 3x* (9/6)	1, 11* (9/6)
Points:	2, 2x* (9/20)	3, (10/12/08)
Shots:	2, 4x* (9/27)	3, 3x* (9/9/06)
SOG:	2, (8/30)	3, 3x* (9/9/06)

Career Statistics

YEAR	GP/GS	SH	G	A	PTS	GWG
2006	22-22	30	2	4	8	0
2007	23-18	9	1	2	4	0
2008	22-22	16	2	2	6	2
2009	12-11	11	2	3	7	1
TOTALS	79-73	63	7	11	25	3

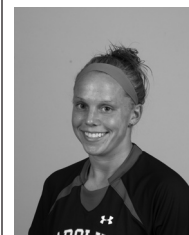


#4 Kayla Grimsley
F • 5-4 • So.

Bests	Season	Career
Goals:	1, 7x* (9/20)	2, (10/3/08)
Assists:	1, 3x* (10/4)	1, 9x* (10/4)
Points:	2, 7x* (9/20)	4, (10/3/08)
Shots:	4, (9/20)	5, (10/5/08)
SOG:	2, 3x* (9/20)	3, (10/5/08)

Career Statistics

YEAR	GP/GS	SH	G	A	PTS	GWG
2008	22-20	37	8	6	22	2
2009	12-12	20	7	3	17	2
TOTALS	34-32	57	15	9	39	4



#5 Kim Miller
M • 5-2 • Sr.

Bests	Season	Career
Goals:	1, 2x* (8/30)	2, (10/26/08)
Assists:	2, 2x* (9/11)	2, 2x* (9/11)
Points:	2, 4x* (9/11)	4, (10/26/08)
Shots:	3, 2x* (10/4)	4, (10/28/07)
SOG:	2, (9/6)	2, 8x* (9/6)

Career Statistics

YEAR	GP/GS	SH	G	A	PTS	GWG
2006	22-20	9	0	2	2	0
2007	23-23	17	1	1	3	1
2008	22-22	36	4	3	11	2
2009	12-12	16	2	7	11	1
TOTALS	79-77	78	7	13	27	4



#7 Blakely Mattern
D • 5-9 • Sr.

Bests	Season	Career
Goals:	2, (9/11)	Same
Assists:	1, (9/20)	1, 6x* (9/20)
Points:	4, (9/11)	Same
Shots:	3, 2x* (9/11)	4, 2x* (11/5/08)
SOG:	3, (9/6)	Same

Career Statistics

YEAR	GP/GS	SH	G	A	PTS	GWG
2006	22-22	28	3	3	9	2
2007	23-23	18	2	2	6	0
2008	22-22	20	4	0	8	0
2009	12-12	9	4	1	9	2
TOTALS	79-79	75	13	6	32	4



#8 Christine Watts
M • 5-6 • Fr.

Bests	Season	Career
Goals:	1, 2x* (9/27)	Same
Assists:	1, (9/11)	Same
Points:	2, 2x* (9/27)	Same
Shots:	3, 2x* (9/27)	Same
SOG:	2, 2x* (9/27)	Same

Career Statistics

YEAR	GP/GS	SH	G	A	PTS	GWG
2009	12-0	14	2	1	5	1
TOTALS	12-0	14	2	1	5	1



#9 Maria Petroni
F • 5-10 • So.

Bests	Season	Career
Goals:	1, (9/6)	Same
Assists:	1, (9/20)	1, 3x* (9/20)
Points:	2, (9/6)	Same
Shots:	1, 3x* (9/20)	2, 2x* (10/3/08)
SOG:	1, 2x* (9/6)	1, 5x* (9/6)

Career Statistics

YEAR	GP/GS	SH	G	A	PTS	GWG
2008	17-7	8	0	2	2	0
2009	9-0	3	1	1	3	0
TOTALS	26-7	11	1	3	5	0



#10 Natalie Aaron
F • 5-10 • So.

Bests	Season	Career
Goals:	1, (9/20)	1, 3x* (9/20)
Assists:	1, (9/20)	1, 2x* (9/20)
Points:	3, (9/20)	Same
Shots:	2, (9/20)	5, (10/5/08)
SOG:	1, (9/20)	4, (10/17/08)

Career Statistics

YEAR	GP/GS	SH	G	A	PTS	GWG
2008	21-2	27	2	1	5	1
2009	11-0	6	1	1	3	0
TOTALS	32-2	33	3	2	8	1



#11 Idana DeCecco
D • 5-6 • So.

Bests	Season	Career
Goals:	N/A	1, (9/14/08)
Assists:	N/A	Same
Points:	N/A	2, (9/14/08)
Shots:	N/A	1, 2x* (10/10/08)
SOG:	N/A	1, (9/14/08)

Career Statistics

YEAR	GP/GS	SH	G	A	PTS	GWG
2008	15-0	2	1	0	2	0
2009	2-0	0	0	0	0	0
TOTALS	17-0	2	1	0	2	0



#12 Shannon Bigbie
F • 5-6 • Sr.

Bests	Season	Career
Goals:	1, (9/11)	1, 3x* (9/11)
Assists:	1, (9/25)	1, 6x* (9/25)
Points:	2, (9/11)	2, 3x* (9/11)
Shots:	1, 3x* (10/2)	5, (9/9/07)
SOG:	1, 3x* (10/2)	4, (9/9/07)

Career Statistics

YEAR	GP/GS	SH	G	A	PTS	GWG
2006	22-5	0	0	0	0	0
2007	23-8	13	1	1	3	1
2008	22-20	24	1	4	6	0
2009	10-8	3	1	1	3	1
TOTALS	77-41	40	3	6	12	2



#13 Jocelyn Spurrier
D • 5-8 • R-Fr.

Bests	Season	Career
Goals:	N/A	Same
Assists:	N/A	Same
Points:	N/A	Same
Shots:	N/A	Same
SOG:	N/A	Same

Career Statistics

YEAR	GP/GS	SH	G	A	PTS	GWG
2008	REDSHIRTED					
2009	0-0	0	0	0	0	0
TOTALS	0-0	0	0	0	0	0



#14 Lolly Holland
M • 5-4 • So.

Bests	Season	Career
Goals:	1, (9/20)	Same
Assists:	N/A	Same
Points:	2, (9/20)	Same
Shots:	4, (9/13)	Same
SOG:	1, 2x* (9/20)	Same

Career Statistics

YEAR	GP/GS	SH	G	A	PTS	GWG
2008	15-0	1	0	0	0	0
2009	8-0	7	1	0	2	0
TOTALS	23-0	8	1	0	2	0



#15 Kortney Rhoades
M • 5-4 • So.

Bests	Season	Career
Goals:	1, (9/25)	1, 4x* (9/25)
Assists:	1, 2x* (9/20)	2, (9/12/08)
Points:	2, (9/25)	2, 5x* (9/25)
Shots:	3, (9/13)	5, 2x* (10/5/08)
SOG:	2, 2x* (9/25)	2, 4x* (9/25)

Career Statistics

YEAR	GP/GS	SH	G	A	PTS	GWG
2008 (SJ)	17-13	34	3	4	10	1
2009	12-11	11	1	2	4	0
TOTALS	29-24	45	4	6	14	1



#16 Lindsay Small
M • 5-7 • Sr.

Bests	Season	Career
Goals:	1, 3x* (10/2)	1, 6x* (10/2)
Assists:	1, 2x* (9/25)	1, 3x* (9/25)
Points:	2, 3x* (10/2)	3, (9/19/08)
Shots:	5, 2x* (10/2)	6, 2x* (10/17/08)
SOG:	3, 2x* (10/2)	Same

Career Statistics

YEAR	GP/GS	SH	G	A	PTS	GWG
2006	16-0	4	0	0	0	0
2007	23-0	5	0	0	0	0
2008	22-22	35	3	1	7	2
2009	12-12	19	3	2	8	2
TOTALS	73-34	63	6	3	15	4

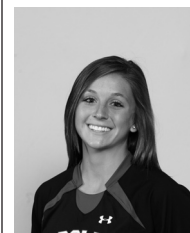


#17 Maggie Blackwell
D • 5-6 • R-So.

Bests	Season	Career
Goals:	N/A	Same
Assists:	N/A	Same
Points:	N/A	Same
Shots:	N/A	Same
SOG:	N/A	Same

Career Statistics

YEAR	GP/GS	SH	G	A	PTS	GWG
2007	REDSHIRTED					
2008	0-0	0	0	0	0	0
2009	2-0	0	0	0	0	0
TOTALS	2-0	0	0	0	0	0



#18 Ali Glemser
F • 5-3 • R-Fr.

Bests	Season	Career
Goals:	N/A	Same
Assists:	N/A	Same
Points:	N/A	Same
Shots:	2, (9/20)	Same
SOG:	1, 4x* (9/20)	Same

Career Statistics

YEAR	GP/GS	SH	G	A	PTS	GWG
2008	REDSHIRTED					
2009	11-0	6	0	0	0	0
TOTALS	11-0	6	0	0	0	0



#19 Kira Campbell
M • 5-8 • So.

Bests	Season	Career
Goals:	N/A	Same
Assists:	N/A	1, (9/5/08)
Points:	N/A	1, (9/5/08)
Shots:	4, (9/11)	Same
SOG:	2, (9/11)	Same

Career Statistics

YEAR	GP/GS	SH	G	A	PTS	GWG
2008	22-12	12	0	1	1	0
2009	10-8	7	0	0	0	0
TOTALS	32-20	19	0	1	1	0

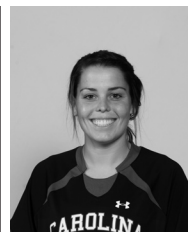


#20 Ellen Fahey
D • 5-7 • So.

Bests	Season	Career
Goals:	N/A	Same
Assists:	1, 4x* (9/18)	Same
Points:	1, 4x* (9/18)	Same
Shots:	2, (10/4)	Same
SOG:	1, (10/4)	1, 2x* (10/4)

Career Statistics

YEAR	GP/GS	SH	G	A	PTS	GWG
2008	22-22	1	0	0	0	0
2009	12-12	2	0	4	4	0
TOTALS	34-34	3	0	4	4	0

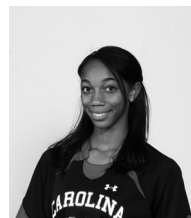


#21 Brittiny Rhoades
D • 5-3 • Jr.

Bests	Season	Career
Goals:	N/A	Same
Assists:	N/A	2, (9/26/08)
Points:	N/A	2, (9/26/08)
Shots:	1, 3x* (9/6)	3, (10/19/07)
SOG:	1, 2x* (9/6)	3, (10/19/07)

Career Statistics

YEAR	GP/GS	SH	G	A	PTS	GWG
2007	23-22	5	0	4	4	0
2008	22-22	15	0	5	5	0
2009	12-11	3	0	0	0	0
TOTALS	56-55	23	0	9	9	0



#22 Dani Henry
D • 5-4 • R-Fr.

Bests	Season	Career
Goals:	N/A	Same
Assists:	N/A	Same
Points:	N/A	Same
Shots:	1, 3x* (9/20)	Same
SOG:	N/A	Same

Career Statistics

YEAR	GP/GS	SH	G	A	PTS	GWG
2008	REDSHIRTED					
2009	10-0	3	0	0	0	0
TOTALS	10-0	3	0	0	0	0

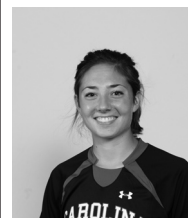


#23 Kacie Brewer
F • 5-5 • Sr.

Bests	Season	Career
Goals:	1, (9/20)	1, 2x* (9/20)
Assists:	1, (9/13)	1, 2x* (9/13)
Points:	2, (9/20)	2, 2x* (9/20)
Shots:	3, (9/20)	5, (9/12/07)
SOG:	3, (9/20)	3, 2x* (9/20)

Career Statistics

YEAR	GP/GS	SH	G	A	PTS	GWG
2006	5-0	1	0	0	0	0
2007	13-0	10	1	1	3	0
2008	9-0	3	0	0	0	0
2009	12-0	7	1	1	3	0
TOTALS	39-0	21	2	2	6	0



#25 Maddy Kill
M • 5-7 • Jr.

Bests	Season	Career
Goals:	N/A	1, 2x* (10/7/07)
Assists:	N/A	2, 3x* (8/30/08)
Points:	N/A	2, 4x* (8/30/08)
Shots:	1, (8/27)	4, 2x* (9/14/08)
SOG:	1, (8/27)	2, 3x* (9/14/08)

Career Statistics

YEAR	GP/GS	SH	G	A	PTS	GWG
2007 (SH)	18-5	20	2	5	9	0
2008 (SH)	18-8	17	0	3	3	0
2009	6-0	1	0	0	0	0
TOTALS	42-13	38	2	8	12	0



#26 Rae Wilson
F • 5-5 • Fr.

Bests	Season	Career
Goals:	N/A	Same
Assists:	N/A	Same
Points:	N/A	Same
Shots:	N/A	Same
SOG:	N/A	Same

Career Statistics

YEAR	GP/GS	SH	G	A	PTS	GWG
2009	4-0	0	0	0	0	0
TOTALS	4-0	0	0	0	0	0



#27 Brooke Jacobs
F • 5-3 • Jr.

Bests	Season	Career
Goals:	1, 3x* (10/4)	1, 7x* (10/4)
Assists:	1, 2x* (9/20)	2, (9/23/07)
Points:	2, 3x* (10/4)	3, (11/14/08)
Shots:	5, (9/13)	Same
SOG:	3, (9/25)	3, 3x* (9/25)

Career Statistics

YEAR	GP/GS	SH	G	A	PTS	GWG
2007	15-4	11	1	3	5	1
2008	21-15	38	3	4	10	1
2009	12-12	24	3	2	8	1
TOTALS	48-31	73	7	9	23	3



#28 Brittany DeWitt
D • 5-6 • Fr.

Bests	Season	Career
Goals:	N/A	Same
Assists:	N/A	Same
Points:	N/A	Same
Shots:	N/A	Same
SOG:	N/A	Same

Career Statistics

YEAR	GP/GS	SH	G	A	PTS	GWG
2009	4-0	0	0	0	0	0
TOTALS	4-0	0	0	0	0	0



#29 Mollie Patton
GK • 5-7 • R-Jr.

Bests	Season	Career
Saves:	6, 3x* (9/13)	8, (9/14/08)
Minutes:	110:00, (10/4)	110:00, 5x* (10/4)

Career Statistics

YEAR	GP/GS	MIN	SVS	GA	GAA	SHO
2006	REDSHIRTED					
2007	0-0	0	0	0	0	0
2008	22-22	2053	58	22	0.96	7
2009	12-12	1070	39	2	0.17	9
TOTALS	34-34	3123	97	24	0.69	16



#35 Darien Vercillo
GK • 5-6 • Fr.

Bests	Season	Career
Saves:	N/A	Same
Minutes:	N/A	Same

Career Statistics

YEAR	GP/GS	MIN	SVS	GA	GAA	SHO
2009	0-0	0	0	0	0	0
TOTALS	0-0	0	0	0	0	0



Shelley Smith Ninth Season

Shelley Smith enters her ninth season at the helm of the USC women's soccer program and looks to continue building upon the success that she has brought to the program after taking the team to the first back-to-back NCAA Tournament appearances in program history.

Smith has cemented Carolina's position as a conference title contender and player on the national stage after guiding the Gamecocks in 2008 to their second consecutive NCAA Tournament bid and third consecutive SEC Tournament bid, both program firsts. The Gamecocks went 11-7-4 overall and earned five SEC wins for the third year in a row with only one senior on the roster. Respected as a top defensive team, the Gamecocks finished the regular season second in the SEC with eight shutouts and ranked in the top two in every major defensive category including goals allowed, points allowed, shots allowed and shots on goal allowed.

Blakely Mattern and Kayla Grimsley both earned All-SEC honors with Mattern earning her second first team and Grimsley picking up spots on the second team and freshman team. The duo also picked up Soccer Buzz All-Southeast Region honors while Mattern also earned a nod by the NSCAA.

Carolina's success in the classroom continued last season as her squad earned two Academic All-District honors in Mattern and Mollie Patton. Mattern was also named to the Academic All-America first team, making South Carolina one of only four teams in the nation – and the only in the SEC – to have an Academic All-American selected each of the past four seasons. Her team was also honored with its seventh NSCAA Team Academic Award. The team had 11 players named to the SEC Academic Honor Roll in addition to nine selections to the SEC Freshman Honor Roll. Overall, Smith has coached 131 SEC Academic Honor Roll recipients since coming to USC in 2001.

Smith has coached several top student-athletes at Carolina including Ashley Kirk, USC's first four-time All-SEC honoree, Carolina's first All-American in three-time All-SEC selection Blakely Mattern and two-time All-SEC performers Melinda Carter, Jessica Julin and Sarah Lentz. Julin is currently the captain of the Finland National Team and Carter played in the WUSA. The Gamecocks have earned 20 All-SEC honors in the last eight years.

In her first season as head coach at Carolina (2001), the Gamecocks were the third most improved team in the nation with an 8-7-3 overall record. Carolina also had one of the school's best home records, going 5-3 at Stone Stadium, allowing opponents to score only four goals in eight matches.

The success continued for USC in 2002 with 13 wins in Smith's second season. The year was highlighted with USC's first ever victories against Florida and Kentucky. Smith also led her team to ties against 2002 SEC champion Auburn and Eastern Division champion Tennessee.

Smith led the Gamecocks to another successful season in 2003 with 10 wins including a USC record eight-game unbeaten streak as well as a 6-2-1 record at home in Stone Stadium.

The 2004 season featured a win over No. 7 Clemson, the Gamecocks' first win over a ranked opponent since 1998, as well as a 6-3 mark in non-conference action. Ashley Kirk also became the first freshman soccer player in school history to be named SEC Freshman of the Year. In addition, Carolina set a school record for a home game-winning streak with six consecutive wins.

Following an injury filled 2005 season, the program took a big step forward in 2006 as USC went undefeated at home for the first time in school history with an 8-0-3 mark at Stone Stadium. The team's cumulative goals against average of 0.69 was the lowest ever tallied at Carolina. The season culminated with the Gamecocks advancing to the SEC Tournament semifinals for the first time in Carolina history, as Blakely Mattern became the team's first Freshman All-America selection since 1998.

Smith directed the 2007 Gamecocks to arguably the best season in school history, tying the school record with 14 victories and advancing to the NCAA Tournament for only the second time in program history. Carolina posted a 14-6-3 overall record including a 5-4-2 mark in the SEC after beginning the season by becoming the first team ever to knock off defending national champion and top-ranked North Carolina in a season opening game at Fetzer Field in Chapel Hill. The Gamecocks ran to a 7-0-0 start to the season – program bests for start to a season and winning streak – and peaked at No. 7 in the national polls. For the second consecutive season South Carolina advanced to the SEC Tournament semifinals after knocking off Tennessee for the first time in program history and earned the school's first bid to the NCAA Tournament since 1998. Blakely Mattern became the first sophomore to ever earn SEC Defensive Player of the Year honors in addition to becoming the first All-American in South Carolina history.

In 12 years as a head coach, Smith has compiled an overall record of 122-97-24. Besides her collegiate coaching, Smith was a member of the Region III ODP staff for the past five years, as well as an assistant for the '90 Regional Team. Smith also was a member of the 2003 U-14 National Camp staff for U.S. Soccer.

With a background in both semi-professional and collegiate soccer, Smith previously served as head coach at Rhode Island from 1997-2000. The 2000 NSCAA Northeast Region Coach of the Year, Smith rebuilt the URI women's soccer program, compiling a 41-35-2 overall record. Smith took a

program that was 2-16 her first year to 12-7-1 in her second season, marking the eighth-most improved won-lost record for a team in NCAA history. In 2000, Smith coached URI to its best record ever of 15-4-1, while reaching the Atlantic 10 Semifinals, a first in URI history.

Smith was nominated for the 2000 National Coach of the Year. The New England Women's Soccer Intercollegiate Soccer Association (NEWISA) also named her its Division I Coach of the Year in 2000. She was the 1998 Atlantic 10 Coach of the Year as well.

In addition to her experience as a coach, Smith brings experience from the semi-professional level. From 1996-2000, Smith played for the Boston Renegades in the W-1 League. Smith was captain in 2000 as she led Boston to the semifinals in the W-1 Championship. The Renegades reached the finals in 1998. Smith also had the opportunity to play overseas in 1994 as a member of the Sheffield United Women's Football Club in England.

Smith, a 1993 graduate of the University of Vermont with a degree in nutritional science, received her teacher's certificate from the same institution in 1995. Smith started all four years for the Catamounts. Her primary positions were center midfielder and central defender. She was a regional All-American in both 1992 and '93 in addition to being named First Team All-North Atlantic Conference each year from 1991-93. During her freshman year, the squad won the ECAC Tournament. Vermont was one of the first programs to offer women's soccer as a varsity sport and it competed on a national level. Smith was named to Vermont's Athletic Hall of Fame in the summer of 2004.

Smith worked as an assistant coach at Dartmouth College from 1995-97. The Big Green made the NCAA Tournament in her second season with the program.

Smith is married to USC associate head coach Jamie Smith. They are the proud parents of two sons, Braden James, born on Nov. 25, 2003 and Evan Addison born on Jan. 6, 2006.

Smith has her USSF B license and the NCAA Advanced National Diploma. She is currently a member of the USYSA Regional Olympic Development Staff.

Year-By-Year Results		
Year	Record	School
1997	2-16	Rhode Island
1998	12-7-1	Rhode Island
1999	12-8	Rhode Island
2000	15-4-1	Rhode Island
2001	8-7-3	South Carolina
2002	13-6-2	South Carolina
2003	10-8-3	South Carolina
2004	8-10-2	South Carolina
2005	6-12	South Carolina
2006	11-6-5	South Carolina
2007	14-6-3	South Carolina
2008	11-7-4	South Carolina