



SOUTH CAROLINA WOMEN'S GOLF

South Carolina Athletic Media Relations • Women's Golf Contact: Scott Waggoner • waggones@mailbox.sc.edu
Rice Athletics Center, 1304 Heyward Street, Columbia, S.C. 29208 • Office: 803-777-1516 • Cell: 860-550-5872

@GamecockWGolf • [Facebook.com/GamecockWGolf](https://www.facebook.com/GamecockWGolf)

2015-16 SCHEDULE / RESULTS

SEPTEMBER

| | | |
|-------|--|---------|
| 18-20 | Mason Rudolph Championship Vanderbilt Legends Club Franklin, Tenn. | 12th/17 |
| 27-29 | ANNIKA Intercollegiate Reunion Resort Reunion, Fla. | 9th/12 |

OCTOBER

| | | |
|-------|--|---------|
| 9-11 | Ruth's Chris Invitational Finley Golf Course Chapel Hill, N.C. | 11th/18 |
| 23-25 | The Landfall Tradition Country Club of Landfall Wilmington, N.C. | 9th/18 |

FEBRUARY

| | | |
|-------|--|--------|
| 12-14 | Florida State Match-Up SouthWood Golf Club Tallahassee, Fla. | 2nd/12 |
|-------|--|--------|

MARCH

| | | |
|-------|---|----------|
| 4-6 | Darius Rucker Intercollegiate Long Cove Club Hilton Head Island, S.C. | T-8th/17 |
| 14-15 | Wildcat Invitational Sewailo Golf Club Tucson, Ariz. | 7th/15 |

APRIL

| | | |
|-------|---|--------|
| 1-3 | Bryan National Collegiate Bryan Park Champions Course Browns Summit, N.C. | 2nd/15 |
| 15-17 | SEC Championship Greystone Golf Club Birmingham, Ala. | 5th/14 |

MAY

| | | |
|-------|--|----------|
| 5-7 | NCAA Baton Rouge Regional University Club Baton Rouge, La. | T-1st/18 |
| 20-25 | NCAA Championship Eugene Country Club Eugene, Ore. | |

NCAA CHAMPIONSHIP



Friday, May 20 - Wednesday, May 25
Eugene Country Club
Eugene, Ore. • Par 72 • 6,369 Yards

Format: 72-hole stroke play and 3 match play rounds
Live Scoring: www.Golfstat.com
Website: www.ncaa.com/DIWomensGolf

NO. 18 GAMECOCKS SET FOR NCAA CHAMPIONSHIP

No. 18 South Carolina is ready to compete in the 2016 NCAA Women's Golf Championship, set for May 20-25 at Eugene Country Club in Eugene, Ore. The Gamecocks and 23 other schools will open the tournament with three rounds of stroke play before the field is cut to 15 teams. A fourth round of stroke play will narrow the field to eight schools that will qualify for the match play portion of the event. The quarterfinals and semifinals of match play will take place on Tuesday, May 24, before the NCAA Champion is determined following the finals of match play on Wednesday, May 25.

THE LINEUP

Representing the Gamecocks in Oregon will be senior Sarah Schmelzel, junior Katelyn Dambaugh, sophomore Ainhoa Olarra and freshmen Marion Veyseyre and Isidora Nilsson. Olarra, Veyseyre and Nilsson will all be making their NCAA Championship debuts for South Carolina.

SOUTH CAROLINA NCAA CHAMPIONSHIP HISTORY

This week will mark South Carolina's 16th NCAA Championship appearance. The Gamecocks, who placed 17th at the event last season, are one of just five schools to qualify for the tournament in each of the last seven years. Head coach Kalen Anderson led South Carolina to its best finish (5th) at the NCAA Championship in 2012, and the Gamecocks also grabbed a top-10 showing at the tournament in 1995. Senior Sarah Schmelzel and junior Katelyn Dambaugh have both made multiple appearances at the event. Dambaugh posted the second-lowest total among Gamecocks at the 2015 NCAA Championship to finish in a tie for 32nd.

BREAKING DOWN THE FIELD

Each of the top five teams in the latest Golfstat rankings qualified for the NCAA Championship, including top-ranked Alabama. The SEC will be well represented in Oregon, as the league makes up one quarter of the 24-team field. Other notable participants this week include 2015 NCAA Champion Stanford and fourth-ranked Florida, which has won five of its last six tournaments. Texas marks the only school in the field that the Gamecocks have not faced this season.

READY FOR THE CAMERAS

For the second-straight year, Golf Channel will provide extensive coverage of the NCAA Women's Golf Championship. The organization is set to broadcast four rounds of the six-day event, starting with the final round of stroke play on Sunday, May 23. The quarterfinals and semifinals of match play will also air on Golf Channel before coverage wraps up with the finals on Wednesday, May 25. Expanded online coverage will also be available on *Golf Channel Digital*.

TOURNAMENT FIELD

- Alabama (1)
 - Arizona (10)
 - Arkansas (11)
 - BYU (26)
 - Duke (5)
 - Florida (4)
 - Florida State (16)
 - Furman (19)
 - Georgia (6)
 - Miami (33)
 - Michigan (47)
 - North Carolina (38)
 - Northwestern (7)
 - Ohio State (25)
 - Oklahoma State (8)
 - Oregon (20)
 - South Carolina (18)
 - Stanford (12)
 - Tennessee (21)
 - Texas (24)
 - UCLA (3)
 - USC (2)
 - Virginia (15)
 - Washington (13)
- (Golfstat Rankings - May 9)

VICTORY ON THE BAYOU

For the second-straight season and the fourth time in the last seven years, the Gamecocks finished atop the leaderboard at an NCAA Regional. South Carolina earned a share of the NCAA Baton Rouge Regional title with Florida after finishing with a three-round total of 857 (-7). Katelyn Dambaugh led the charge, matching the program's lowest 54-hole total (207) on the way to her first career medalist honors. Her second-round 66 (-6) propelled the Gamecocks to their lowest round ever (277, -11) in program history, and the junior led all golfers with 16 birdies at University Club. The win was South Carolina's first victory of the season and the eighth time the Gamecocks finished first at an event under Kalen Anderson. Senior Sarah Schmelzel and freshman Marion Veyseyre also notched top-20 finishes for the Gamecocks, who have posted a top-three showing in each of the last three years at an NCAA Regional.

RECAPPING THE SEC CHAMPIONSHIP

South Carolina notched a top-five finish at the 2016 SEC Championship, placing fifth with a three-day score of 888 (+24). Katelyn Dambaugh turned it on down the stretch, as she erased a six-stroke deficit and climbed to the top of the individual leaderboard before ultimately settling for runner-up honors on Sunday's final round at Greystone Golf and Country Club. Her third-round 66 (-6) marked the low round of the week and was one stroke off the tournament 18-hole score record (65) that she matched last season. Sophomore Ainhoa Olarra shined in her postseason debut, finishing eighth with a career-best 217 (+1). Her opening-round 69 (-3) was the lowest round in Olarra's collegiate career, and her performance on the weekend gave the San Sebastian, Spain, native her second career top-10 finish.

MODEL OF CONSISTENCY

Katelyn Dambaugh has notched top-10 finishes in eight of South Carolina's 10 events this season, including all six tournaments this spring. The Goose Creek, S.C., native has placed in the top-three in each of her last four competitions, and her six top-five finishes are the most by a junior in a season in program history. Dambaugh's 71.60 stroke average, the lowest single-season mark in South Carolina history, ranks second in Division I.

RECORD BOOK WATCH

Senior Sarah Schmelzel and junior Katelyn Dambaugh both enter the NCAA Championship with two of the top scoring averages in program history. Dambaugh sports the lowest average with a career mark of 73.01, while Schmelzel is fourth (74.32) in the statistical category. Both of their 2015-16 stroke averages rank in the top-five in school history for single-season scoring, and the two have combined for 22 career top-10 finishes.

DAMBAUGH NAMED TO 2015-16 PING WGCA PLAYER OF THE YEAR WATCH LIST

South Carolina's Katelyn Dambaugh was one of four golfers named to the 2015-16 PING WGCA Player of the Year Watch List, which was released on May 13. Dambaugh ranks in the top-10 in Division I in three categories - stroke average (2nd), par-5 scoring (5th) and greens in regulation percentage (9th). She also boasts the 12th-best par-4 scoring average, and she is 19th in total birdies. Dambaugh has carded 16 rounds of par or better this season, including all six of South Carolina's rounds during the postseason. The winner of the annual award will be announced during the NCAA Championship.

BUILT FOR THE POSTSEASON

Three South Carolina underclassmen have fared well in their postseason debuts this season. Sophomore Ainhoa Olarra carded a career-best 69 (-3) in her first ever postseason round for the Gamecocks at the SEC Championship on the way to an eighth-place finish at the league tournament. Olarra also posted a second-round 69 (-3) at the Baton Rouge Regional, while freshmen Marion Veyseyre and Isidora Nilsson recorded the best 54-hole totals of their careers in their NCAA postseason debuts. Veyseyre tallied two rounds of par or better, including a career-low 70 (-2) in round one, to finish with a 219 (+3) and earn her first career top-20 finish. Nilsson placed just outside of the top-25 in Baton Rouge after totaling a 223 (+7).

SOUTHEASTERN STANDOUT

For the third-straight season, Katelyn Dambaugh received All-SEC honors, as she was tabbed a First-Team All-SEC selection earlier this month. Dambaugh was the runner-up at the 2016 SEC Championship, and she currently boasts the top scoring average among all conference golfers. She became the eighth Gamecock to be named to the league's First Team, and she is just the fourth player in program history to garner three all-conference laurels. Dambaugh was named the SEC Women's Golfer of the Week earlier this spring (March 16) following her ninth-place finish (216, E) at the Wildcat Invitational. Junior Marianna Monaco was also honored by the league recently, as she was placed on the SEC Community Service Team.

GOING OUT ON TOP

Playing in her final collegiate regular-season tournament, senior Sarah Schmelzel broke through, tallying her first career medalist honors at the Bryan National Collegiate. Schmelzel battled windy conditions all weekend and played her final nine holes at 1-under (34) to secure the individual title. The Phoenix, Ariz., native became the first Gamecock to finish atop the individual leaderboard since Nanna Madsen won the 2014 Mercedes-Benz Collegiate, and she is the sixth medalist under head coach Kalen Anderson.

GOING FOR THE GREEN IN TWO

Katelyn Dambaugh has taken advantage of her distance off the tee throughout her junior campaign, boasting the fifth-best par-5 scoring average (4.69) among Division I golfers. She has carded a team-high three eagles on the season, including one on the par-5 11th at Greystone Golf & Country Club which jumpstarted her final-round 66 (-6) at the SEC Championship earlier this spring.

FALL WRAP-UP

The Gamecocks, who competed in four events during the fall, saw a strong finish to their year when they fired a 283 (-5) in the final round of the Landfall Tradition. South Carolina's ninth-place finish at the event marked the second top-10 showing of the fall for the Gamecocks, who placed ninth at the ANNIKA Intercollegiate (Sept. 27-29). Junior Katelyn Dambaugh paced South Carolina with two top-three finishes and a 71.92 stroke average this fall, while Sarah Schmelzel finished in the top 20 in two events. The senior's 6-under 210 at the ANNIKA Intercollegiate marked the lowest 54-hole total in her collegiate career.

RANKINGS

GOLFSTAT

(May 9)

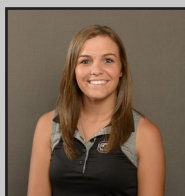
1. Alabama
2. USC
3. UCLA
4. Florida
5. Duke
6. Georgia
7. Northwestern
8. Oklahoma State
9. Arizona State
10. Arizona
11. Arkansas
12. Stanford
13. Washington
14. Kent State
15. Virginia
16. Florida State
17. California
- 18. South Carolina**
19. Furman
20. Oregon
21. Tennessee
22. Iowa State
23. UNLV
24. Texas
25. Ohio State

GOLF WEEK/SAGARIN

(May 8)

1. USC
2. UCLA
3. Alabama
4. Georgia
5. Florida
6. Duke
7. Stanford
8. Northwestern
9. Oklahoma State
10. Arizona
11. Arizona State
12. Arkansas
13. Washington
14. Virginia
15. Kent State
16. California
- 17. South Carolina**
18. Furman
19. UNLV
20. San Diego State
21. Oregon
22. Colorado
23. Tennessee
24. Florida State
25. Iowa State

NCAA CHAMPIONSHIP HISTORY



KATELYN DAMBAUGH

NCAA CHAMPIONSHIP STATS

EVENTS: 2
ROUNDS: 8
AVERAGE: 75.13
LOW 72: 298 (+18)
LOW 54: 225 (+15)
LOW 18: 70 (-2)
TOP FINISH: T32



SARAH SCHMELZEL

NCAA CHAMPIONSHIP STATS

EVENTS: 3
ROUNDS: 11
AVERAGE: 78.00
LOW 72: 298 (+18)
LOW 54: 222 (+12)
LOW 18: 70 (-2)
TOP FINISH: T73



NCAA CHAMPIONSHIP HISTORY

1987 - T-14th of 17
The Championship Course at UNM
May 27-30 • Albuquerque, N.M.
298-303-304-320=1225

| | | |
|------------------|-----------------|---------|
| Marianne Morris | 75-74-72-76=297 | T-15th |
| Truie Timmons | 74-77-78-78=307 | T-60th |
| Kim Belk | 74-76-77-83=310 | T-73rd |
| Kelly Brannon | 75-76-78-83=312 | T-77th |
| Elizabeth Macfie | 80-85-77-83=325 | T-102nd |

1993 - 12th of 17
UGA Golf Course
May 26-29 • Athens, Ga.
309-310-315-304=1238

| | | |
|-----------------|-----------------|--------|
| Tara Joy | 79-79-77-73=308 | T-41st |
| Rachel Bates | 75-76-77-83=310 | T-49th |
| Siew Ai Lim | 77-77-82-76=312 | T-53rd |
| Kerry Zebick | 78-78-79-80=315 | T-61st |
| Clarissa Childs | 83-80-82-75=320 | T-74th |

1995 - T-9th of 18
Pete Dye Course at Landfall
May 24-27 • Wilmington, N.C.
299-300-297-308=1204

| | | |
|-----------------|-----------------|--------|
| Siew Ai Lim | 74-73-73-73=293 | T-9th |
| Clarissa Childs | 71-75-74-76=296 | T-14th |
| Rebekah Lee | 77-74-75-80=306 | T-44th |
| Karin Fries | 77-78-75-81=311 | T-67th |
| Katie Weiss | 83-89-86-79=337 | T-99th |

1996 - 14th of 18
LaQuinta Dunes Golf Resort
May 22-25 • Palm Springs, Calif.
334-311-329-321=1295

| | | |
|-----------------|-----------------|--------|
| Siew Ai Lim | 78-74-84-70=306 | T-6th |
| Libby Howard | 87-76-79-82=324 | T-51st |
| Clarissa Childs | 84-79-81-83=327 | T-61st |
| Rebekah Lee | 87-72-85-86=340 | T-86th |
| Karin Fries | 85-87-90-90=352 | T-94th |

1999 - 14th of 19
Tulsa Country Club
May 19-22 • Tulsa, Okla.
313-313-315=941

| | | |
|-------------------|--------------|--------|
| Cecilia Ekelundh | 78-76-77=231 | T-35th |
| Emma Lofgren | 79-77-80=236 | T-57th |
| Apryl Arrants | 76-78-83=237 | T-63rd |
| Lotte Moeller | 80-82-80=242 | T-77th |
| Stefanie Reynolds | 82-84-78=244 | T-85th |

2001 - 24th of 24
Mission Inn Resort
May 22-25 • Howey-In-The-Hills, Fla.
308-323-311-312=1254

| | | |
|-------------------|-----------------|---------|
| Kristy McPherson | 75-83-72-73=303 | T-44th |
| Marci Robinson | 76-77-81-79=313 | T-88th |
| Stefanie Reynolds | 78-83-78-78=317 | T-100th |
| Sarah Kidd | 79-80-85-84=328 | T-114th |
| Kacy Thompson | 81-86-80-82=329 | T-116th |

2002 - 23rd of 24
Univ. of Washington Golf Course
May 21-24 • Auburn, Wash.
298-298-308-313=1217

| | | |
|--------------------|-----------------|--------|
| Kristy McPherson | 76-71-74-79=300 | T-55th |
| Reetta Laakkonen | 72-74-80-75=301 | T-60th |
| Adrienne Gautreaux | 74-75-78-81=308 | T-95th |
| Kacy Thompson | 76-78-77-78=309 | T-99th |
| Marci Robinson | 76-78-79-81=314 | 112th |

2003 - 17th of 24
Birck Boilermaker Golf Course
May 20-23 • West Lafayette, Ind.
318-318-309-303=1248

| | | |
|---------------------|-----------------|---------|
| Kristy McPherson | 79-78-75-73=305 | T-39th |
| Adrienne Gautreaux | 80-79-75-76=310 | T-61st |
| Tiffany Catafygiotu | 79-81-78-75=313 | T-76th |
| Kacy Thompson | 80-81-81-79=321 | T-90th |
| Marci Robinson | 85-80-81-82=328 | T-115th |



The 2012 Gamecocks posted the best NCAA Championship finish in school history, claiming fifth place at the Vanderbilt Legends Club in Franklin, Tenn.

2008 - 22nd of 24
UNM Championship Course
May 20-23 • Albuquerque, N.M.
306-316-310-303=1235

| | | |
|--------------------|-----------------|---------|
| Camila Mori | 78-73-76-74=301 | T-41st |
| Bénédicte Toumpsin | 76-79-76-72=303 | T-48th |
| Blythe Worley | 75-85-79-76=315 | T-96th |
| Whitney Simons | 77-83-79-82=321 | T-114th |
| Taylor Barrett | 84-81-82-81=328 | T-122nd |

2010 - T-14th of 24
Country Club of Landfall (Dye)
May 18-21 • Wilmington, N.C.
300-297-293-296=1186

| | | |
|--------------------|-----------------|---------|
| Katie Burnett | 72-74-69-71=286 | T-9th |
| Corrine Carr | 76-75-76-71=298 | T-54th |
| Bénédicte Toumpsin | 77-75-72-77=301 | T-67th |
| Amanda Strang | 75-73-81-77=306 | T-99th |
| Taylor Barrett | 77-76-76-78=307 | T-102nd |

2011 - 18th of 24
Texas A&M Traditions Club
May 18-21 • College Station, Texas
302-315-298-296=1211

| | | |
|--------------------|-----------------|---------|
| Katie Burnett | 71-80-70-78=299 | T-37th |
| Samantha Swinehart | 78-77-77-71=303 | T-55th |
| Amanda Strang | 75-79-75-76=305 | T-65th |
| Suzie Lee | 78-83-76-71=308 | T-80th |
| Katie Rose Higgins | 84-79-79-80=322 | T-115nd |

2012 - 5th of 24
Vanderbilt Legends Club
May 22-25 • Franklin, Tenn.
302-281-300-293=1176

| | | |
|------------------|-----------------|--------|
| Katie Burnett | 74-67-74-73=288 | 5th |
| Amanda Strang | 75-73-76-70=294 | T-21st |
| Meredith Swanson | 76-71-75-78=300 | T-59th |
| Justine Dreher | 77-77-75-75=304 | T-77th |
| Suzie Lee | 79-70-81-75=305 | T-84th |

2013 - 20th of 24
UGA Golf Course
May 21-24 • Athens, Ga.
304-305-292-310=1211

| | | |
|------------------|-----------------|---------|
| Justine Dreher | 77-77-73-73=300 | T-48th |
| Suzie Lee | 74-78-75-77=304 | T-68th |
| Sarah Schmelzel | 76-80-70-79=305 | T-73rd |
| Meredith Swanson | 79-74-74-82=309 | T-97th |
| Mary Fran Hillow | 77-76-79-81=313 | T-109th |

2014 - 13th of 24
Tulsa Country Club
May 20-23 • Tulsa, Okla.
301-299-283-281=1164

| | | |
|--------------------|-----------------|--------|
| Samantha Swinehart | 73-76-68-67=284 | T-13th |
| Suzie Lee | 75-78-71-71=295 | T-67th |
| Justine Dreher | 80-73-73-70=296 | T-74th |
| Katelyn Dambaugh | 75-77-73-73=298 | T-80th |
| Sarah Schmelzel | 78-73-71-76=298 | T-80th |

2015 - 17th of 24
The Concession Golf Club
May 22-27 • Bradenton, Fla.
308-322-302=932

| | | |
|------------------|-----------------------|------|
| Justine Dreher | 76-76-74-72=298 (+10) | T16 |
| Katelyn Dambaugh | 70-82-74-77=303 (+15) | T32 |
| Jia Xin Yang | 79-77-74=230 (+14) | T45 |
| Mary Fran Hillow | 83-87-81=251 (+35) | T123 |
| Sarah Schmelzel | 85-90-80=255 (+39) | 128 |

Individual Gamecocks in NCAA Championships

May 28-31, 1986
OSU Golf Course • Columbus, Ohio
 Marianne Morris 76-76-78-75=305 38th

May 23-26, 1990
Arthur Hills GC • Hilton Head, S.C.
 Debbie Eckroth 80-82-77-72=311 35th

May 25-28, 1994
Oregon Golf Club • Eugene, Ore.
 Siew Ai Lim 75-74-79-80=308 20th

May 21-24, 1997
OSU Scarlet Course • Columbus, Ohio
 Rebekah Lee 80-73-76-80=309 61st

May 18-21, 2004
Grand National Lake Course • Auburn, Ala.
 Adrienne Gautreaux 72-78-70=293 22nd

May 17-20, 2005
Meadows Golf Course • Sunriver, Ore.
 Jenna Pearson 79-79-72-73=303 60th

2015-16 ROSTER

| Name | Class | Hometown | Last School |
|-------------------|-----------|--------------------------|-------------------------------|
| Gaby Amos | Freshman | Gainesville, Fla. | Buchholz HS |
| Katelyn Dambaugh | Junior | Goose Creek, S.C. | Pinewood Prep |
| *Marianna Monaco | Junior | Yonkers, N.Y. | Yonkers HS |
| Isidora Nilsson | Freshman | Hilton Head, S.C. | Hilton Head Prep |
| Ainoah Olarra | Sophomore | Pais Vasco, Spain | National School of Golf Blume |
| Sarah Schmelzel | Senior | Phoenix, Ariz. | Xavier Prep |
| *Marion Veysseyre | Freshman | Lachapelle-Auzac, France | CNED Institut de Rennes |
| Karoline Woie | Senior | Stavanger, Norway | Wang Toppidrett HS |
| Jia Xin Yang | Junior | Beijing, China | Dongfan Basuo |

*Joined in Spring of 2016

Head Coach: Kalen Harris - 9th year (Duke, 2001)

Associate Head Coach & Dir. of Operations: Puggy Blackmon - 21st year

Volunteer Coach: Scott Barnicle - 3rd year

2015-16 SEASON SUPERLATIVES

Low 18-Hole Round - Individual

65 - Katelyn Dambaugh
ANNIKA Intercollegiate, 1st Rd, 9/27/15

Low 18-Hole Round - Team

277 - Dambaugh, Schmelzel, Olarra, Nilsson, Veysseyre
NCAA Baton Rouge Regional, 5/5-7/16

Low 54-Hole Total - Individual

207 - Katelyn Dambaugh
ANNIKA Intercollegiate, 9/27-29/15
207 - Katelyn Dambaugh
NCAA Baton Rouge Regional, 5/5-7/16

Low 54-Hole Total - Team

857 - Dambaugh, Schmelzel, Olarra, Nilsson, Veysseyre
NCAA Baton Rouge Regional, 5/5-7/16

Low First Round

65 - Katelyn Dambaugh
ANNIKA Intercollegiate, 9/27/15

Low Second Round

66 - Katelyn Dambaugh
NCAA Baton Rouge Regional, 5/5-7/16

Low Third Round

66 - Katelyn Dambaugh
SEC Championship, 4/17/16

SEC HONORS

First-Team All-SEC

Katelyn Dambaugh

SEC Community Service Team

Marianna Monaco

SEC Women's Golfer of the Week

Katelyn Dambaugh (March 16)

ROUNDS OF PAR OR BETTER

72

Katelyn Dambaugh, Mason Rudolph Champ. (2, 3)
Ainhoa Olarra, Mason Rudolph Championship (3)
Sarah Schmelzel, Ruth's Chris Tar Heel Invite (1)
Katelyn Dambaugh, Landfall Tradition (1,2)
Katelyn Dambaugh, SEC Championship (1)
Sarah Schmelzel, NCAA Baton Rouge Regional (3)
Marion Veysseyre, NCAA Baton Rouge Regional (3)

71

Katelyn Dambaugh, ANNIKA Intercollegiate (2, 3)
Sarah Schmelzel, ANNIKA Intercollegiate (3)
Gaby Amos, Ruth's Chris Tar Heel Invite (3)
Sarah Schmelzel, Landfall Tradition (1)
Katelyn Dambaugh, FSU Match-Up (2)
Sarah Schmelzel, Wildcat Invitational (2)
Sarah Schmelzel, Bryan National Collegiate (2)
Katelyn Dambaugh, SEC Championship (2)
Ainhoa Olarra, SEC Championship (3)
Sarah Schmelzel, SEC Championship (3)
Katelyn Dambaugh, NCAA Baton Rouge Regional (3)

70

Isidora Nilsson, Mason Rudolph Champ. (2)
Sarah Schmelzel, ANNIKA Intercollegiate (1)
Ainhoa Olarra, Landfall Tradition (3)
Sarah Schmelzel, Landfall Tradition (3)
Katelyn Dambaugh, FSU Match-Up (3)
Ainhoa Olarra, FSU Match-Up (2)
Katelyn Dambaugh, Darius Rucker Intercollegiate (3)
Katelyn Dambaugh, Bryan National Collegiate (3)
Katelyn Dambaugh, NCAA Baton Rouge Regional (1)
Marion Veysseyre, NCAA Baton Rouge Regional (1)

69

Sarah Schmelzel, ANNIKA Intercollegiate (1)
Sarah Schmelzel, FSU Match-Up (2)
Katelyn Dambaugh, Wildcat Invitational (1)
Ainhoa Olarra, SEC Championship (1)
Ainhoa Olarra, NCAA Baton Rouge Regional (2)
Sarah Schmelzel, NCAA Baton Rouge Regional (2)

68

Katelyn Dambaugh, Landfall Tradition (3)

66

Katelyn Dambaugh, SEC Championship (3)
Katelyn Dambaugh, NCAA Baton Rouge Regional (2)

65

Katelyn Dambaugh, ANNIKA Intercollegiate (1)

QUICK FACTS

Location Columbia, S.C.
Enrollment 32,972
Founded 1801
Team Name Gamecocks
President Dr. Harris Pastides
Faculty Athletics Rep. Dr. Valinda Littfield
Athletics Director.....Ray Tanner
Colors..... Garnet (PMS 202C), Black
Conference Southeastern
Home Course Cobblestone Park

COACHING STAFF

Head Coach..... Kalen Anderson
9th Year (Duke, 2001)

Assoc. Head Coach and
Director of Golf & Facilities Puggy Blackmon
Volunteer Coach.....Scott Barnicle

PROGRAM HISTORY

First Year of Women's Golf..... 1980
NCAA Champ. Appearances 15
NCAA Regional Appearances 22
All-Americans 6
All-Conference..... 20
SEC Championships..... 1 (2002)

TEAM INFORMATION

2015 SEC Finish..... 2nd/14
2015 NCAA Regional Finish 1st/24
2015 NCAA Champ. Finish 17th/24
Letterwinners R/L..... 5/3
Newcomers 4

MEDIA RELATIONS

Media Relations Director Steve Fink
Golf Contact..... Scott Waggoner
E-mail..... waggones@mailbox.sc.edu
Office..... 803-777-1516
Cell..... 860-550-5872
Media Relations Fax..... 803-777-2967
Official Website GamecocksOnline.com
Twitter @GamecockWGolf

2015-16 SOUTH CAROLINA WOMEN'S GOLF - STATISTICS/RESULTS

TEAM SCHEDULE/RESULTS

| Date | Tournament | Team Score | Finish | Low Individual | Score | Low Indiv. Finish |
|-------------|-------------------------------|-----------------------|----------|------------------|-------------------|-------------------|
| Sept. 18-20 | Mason Rudolph Championship | 302-291-295=888 (+24) | T12th/17 | Katelyn Dambaugh | 74-72-72=218 (+2) | T24th |
| Sept. 27-29 | ANNIKA Intercollegiate | 286-293-293=872 (+8) | 9th/12 | Katelyn Dambaugh | 65-71-71=207 (-9) | 3rd |
| Oct. 9-11 | Ruth's Chris Invitational | 299-310-295=904 (+40) | 11th/18 | Sarah Schmelzel | 72-76-75=223 (+7) | T27th |
| Oct. 23-25 | Landfall Tradition | 301-304-283=888 (+24) | 9th/18 | Katelyn Dambaugh | 75-75-68=212 (-4) | T2 |
| Feb. 12-14 | Florida State Match-Up | 297-285-293=875 (+11) | 2nd/12 | Katelyn Dambaugh | 74-71-70=215 (-1) | T2 |
| March 4-6 | Darius Rucker Intercollegiate | 303-291-293=888 (+35) | T8th/17 | Katelyn Dambaugh | 75-72-70=217 (+4) | T7 |
| March 14-15 | Wildcat Invitational | 297-290-300=887 (+23) | 7th/15 | Katelyn Dambaugh | 69-73-74=216 (E) | 9th |
| April 1-3 | Bryan National Collegiate | 297-299-298=894 (+30) | 2nd/15 | Sarah Schmelzel | 73-71-75=219 (+3) | 1st |
| April 15-17 | SEC Championship | 298-301-289=888 (+24) | 5th/14 | Katelyn Dambaugh | 72-71-66=209 (-7) | 2nd |
| May 5-7 | NCAA Baton Rouge Regional | 290-277-290=857 (-7) | T1st/18 | Katelyn Dambaugh | 70-66-71=207 (-9) | 1st |

INDIVIDUAL TOURNAMENT-BY-TOURNAMENT RESULTS

FALL 2015

Mason Rudolph Champs. (Par 72)

| Player | Rounds | Finish |
|-----------|--------------------|--------|
| Dambaugh | 74-72-72=218 (+2) | T24 |
| Yang | 75-74-76=225 (+9) | T52 |
| Schmelzel | 75-75-75=225 (+9) | T52 |
| Olarra | 80-78-72=230 (+14) | T71 |
| Nilsson | 78-70-DQ=222 (+6) | 88 |

ANNIKA Intercollegiate (Par 72)

| Player | Rounds | Finish |
|-----------|--------------------|--------|
| Dambaugh | 65-71-71=207 (-9) | 3 |
| Schmelzel | 70-69-71=210 (-6) | T7 |
| Olarra | 74-77-73=224 (+8) | T47 |
| Nilsson | 80-76-78=234 (+18) | 57 |
| Yang | 77-77-82=236 (+20) | 58 |

Ruth's Chris Inviational (Par 71)

| Player | Rounds | Finish |
|-----------|--------------------|--------|
| Schmelzel | 72-76-75=223 (+7) | T27 |
| Dambaugh | 75-75-76=226 (+10) | T39 |
| Olarra | 75-78-73=226 (+10) | T39 |
| Amos | 80-81-71=232 (+16) | T64 |
| Nilsson | 77-82-77=236 (+20) | T80 |
| Yang* | 81-W-W | -- |

Landfall Tradition (Par 72)

| Player | Rounds | Finish |
|-----------|--------------------|--------|
| Dambaugh | 72-75-68=212 (-4) | T2 |
| Schmelzel | 71-77-70=218 (+2) | T16 |
| Olarra | 81-77-70=228 (+12) | T53 |
| Nilsson | 78-78-75=231 (+15) | T65 |
| Yang | 80-81-76=237 (+21) | T83 |
| Amos* | 79-84-79=242 (+26) | 92 |

SPRING 2016

Florida State Match-Up (Par 72)

| Player | Rounds | Finish |
|-----------|--------------------|--------|
| Dambaugh | 74-71-70=215 (-1) | T2 |
| Schmelzel | 74-69-73=216 (E) | 4 |
| Olarra | 74-70-75=219 (+3) | T8 |
| Yang | 80-75-77=232 (+16) | T43 |
| Veysseyre | 75-87-75=237 (+21) | T57 |

Darius Rucker Inter. (Par 71)

| Player | Rounds | Finish |
|-----------|--------------------|--------|
| Dambaugh | 75-72-70=217 (+4) | T7 |
| Olarra | 74-74-74=222 (+9) | T26 |
| Schmelzel | 77-72-74=223 (+10) | T35 |
| Veysseyre | 77-73-75=225 (+12) | T39 |
| Monaco* | 79-74-81=234 (+21) | T80 |
| Yang | 79-77-80=236 (+23) | T84 |
| Nilsson* | 82-79-81=242 (+29) | 89 |

Wildcat Invitational (Par 72)

| Player | Rounds | Finish |
|-----------|--------------------|--------|
| Dambaugh | 69-73-74=216 (E) | 9 |
| Schmelzel | 76-71-73=220 (+4) | T18 |
| Yang* | 76-71-74=221 (+5) | T22 |
| Olarra | 75-77-75=227 (+11) | T43 |
| Monaco | 78-73-78=229 (+13) | T52 |
| Veysseyre | 77-73-81=231 (+25) | T59 |

Bryan National Collegiate (Par 72)

| Player | Rounds | Finish |
|-----------|--------------------|--------|
| Schmelzel | 73-71-75=219 (+3) | 1 |
| Dambaugh | 75-76-70=221 (+5) | T2 |
| Olarra | 73-78-75=226 (+10) | T15 |
| Veysseyre | 78-74-78=230 (+14) | T34 |
| Yang | 76-79-79=234 (+18) | T49 |
| Amos* | 82-81-78=241 (+25) | 64 |

POSTSEASON

SEC Championship (Par 72)

| Player | Rounds | Finish |
|-----------|--------------------|--------|
| Dambaugh | 72-71-66=209 (-7) | 2 |
| Olarra | 69-77-71=217 (+1) | 8 |
| Schmelzel | 82-77-71=230 (+14) | T44 |
| Yang | 76-82-81=239 (+23) | T66 |
| Veysseyre | 81-76-86=243 (+27) | 70 |

Baton Rouge Regional (Par 72)

| Player | Rounds | Finish |
|-----------|-------------------|--------|
| Dambaugh | 70-66-71=207 (-9) | 1 |
| Schmelzel | 75-69-72=216 (E) | T12 |
| Veysseyre | 70-77-72=219 (+3) | T19 |
| Olarra | 76-69-77=222 (+6) | 29 |
| Nilsson | 75-73-75=223 (+7) | T30 |

*Played as an individual; score does not count toward team total

2015-16 RECORD VS. OPPONENTS

| | |
|------------------------|----------------|
| Alabama | 0-5 |
| Arizona | 0-2 |
| Arizona State | 1-1 |
| Arkansas | 0-4 |
| Auburn | 3-1 |
| Augusta | 1-0 |
| Baylor | 1-1-1 |
| BYU | 1-0 |
| Cal State Fullerton | 1-0 |
| Clemson | 1-0 |
| Coastal Carolina | 1-0 |
| Colorado | 1-0 |
| Denver | 1-0 |
| Duke | 1-4 |
| East Carolina | 2-0 |
| Elon | 1-0 |
| Fairleigh Dickinson | 1-0 |
| Florida | 0-1-1 |
| Florida State | 1-1 |
| Furman | 2-0 |
| Georgia | 1-2 |
| GRU Augusta | 0-1 |
| Harvard | 1-0 |
| Houston | 1-1 |
| James Madison | 1-0 |
| Kansas | 1-0 |
| Kansas State | 1-0 |
| Kentucky | 5-0 |
| Louisville | 0-2 |
| LSU | 4-2 |
| Miami | 1-1 |
| Michigan | 2-0 |
| Michigan State | 0-3 |
| Mississippi | 1-0 |
| Mississippi State | 2-2 |
| Missouri | 2-0 |
| Middle Tennessee State | 0-0-1 |
| North Carolina | 2-2 |
| NC State | 2-2 |
| New Mexico | 2-0 |
| New Mexico State | 1-0 |
| Northern Arizona | 1-0 |
| North Florida | 1-0 |
| Northwestern | 0-1 |
| Notre Dame | 1-1 |
| Ohio State | 1-0 |
| Oklahoma State | 0-2 |
| Oregon | 2-0 |
| Penn State | 1-0 |
| Purdue | 0-1 |
| Rollins | 1-0 |
| SMU | 1-0 |
| Southern California | 0-1-1 |
| Stanford | 1-0 |
| Tennessee | 3-2 |
| Texas A&M | 1-2 |
| Tulane | 1-0 |
| UCF | 4-0 |
| UCLA | 0-1 |
| UNC Greensboro | 1-0 |
| UNC Wilmington | 2-0 |
| UNLV | 0-1 |
| Vanderbilt | 3-1 |
| Virginia | 2-4 |
| Virginia Tech | 1-0 |
| Wake Forest | 3-1 |
| Washington | 1-1 |
| Washington State | 1-0 |
| Wichita State | 1-0 |
| Yale | 1-0 |
| TOTAL | 86-56-4 |
| SEC | 25-20-1 |

2015-16 INDIVIDUAL SEASON STATISTICS

| Name | Tourn. | Rounds | Low 54 | Low 18 | Par/Better | Top 5 | Top 10 | Top 20 | Strokes | Avg. |
|------------------|-----------|-----------|------------|------------|------------|----------|----------|-----------|--------------|---------------|
| Gaby Amos | 3 | 9 | 232 | 71 | 1 | -- | -- | -- | 715 | 79.44 |
| Katelyn Dambaugh | 10 | 30 | 207 | 65 | 16 | 6 | 8 | 9 | 2,148 | 71.60 |
| Marianna Monaco | 2 | 6 | 229 | 73 | -- | -- | -- | -- | 463 | 77.17 |
| Isidora Nilsson | 6 | 17 | 223 | 70 | 1 | -- | -- | -- | 1,314 | 77.29 |
| Ainhoa Olarra | 10 | 30 | 217 | 69 | 6 | -- | 2 | 3 | 2,241 | 74.70 |
| Sarah Schmelzel | 10 | 30 | 210 | 69 | 12 | 2 | 3 | 6 | 2,200 | 73.33 |
| Marion Veysseyre | 6 | 18 | 219 | 70 | 2 | -- | -- | 1 | 1,385 | 76.94 |
| Jia Xin Yang | 9 | 25 | 221 | 71 | 1 | -- | -- | -- | 1,941 | 77.64 |
| TEAM | 10 | 30 | 857 | 277 | 4 | 4 | 8 | 10 | 8,840 | 294.67 |

INDIVIDUAL CAREER STATISTICS

| Name | Tourn. | Rounds | Low 54 | Low 18 | Par/Better | Top 5 | Top 10 | Top 20 | Strokes | Avg. |
|------------------|--------|--------|--------|--------|------------|-------|--------|--------|---------|-------|
| Gaby Amos | 3 | 9 | 232 | 71 | 1 | -- | -- | -- | 715 | 79.44 |
| Katelyn Dambaugh | 32 | 93 | 207 | 65 | 35 | 10 | 14 | 19 | 6,790 | 73.01 |
| Marianna Monaco | 2 | 6 | 229 | 73 | -- | -- | -- | -- | 463 | 77.17 |
| Isidora Nilsson | 6 | 17 | 223 | 70 | 1 | -- | -- | -- | 1,314 | 77.29 |
| Ainhoa Olarra | 15 | 43 | 217 | 69 | 7 | 0 | 2 | 3 | 3,250 | 75.58 |
| Sarah Schmelzel | 39 | 114 | 210 | 68 | 33 | 4 | 8 | 15 | 8,472 | 74.32 |
| Marion Veysseyre | 6 | 18 | 219 | 70 | 2 | -- | -- | 1 | 1,385 | 76.94 |
| Jia Xin Yang | 21 | 59 | 218 | 69 | 9 | 0 | 0 | 1 | 4,498 | 76.24 |

2015-16 INDIVIDUAL RESULTS

Gaby Amos (Fr., Gainesville, Fla.)

| Tournament | Rounds | Finish |
|------------------------------------|--------------------|--------|
| Ruth's Chris Tar Heel Invitational | 80-81-71=232 (+16) | T64 |
| Landfall Tradition* | 79-84-79=242 (+26) | 92 |
| Bryan National Collegiate* | 82-81-78=241 (+25) | 64 |

Katelyn Dambaugh (Jr., Goose Creek, S.C.)

| Tournament | Rounds | Finish |
|------------------------------------|--------------------|--------|
| Mason Rudolph Championship | 74-72-72=218 (+2) | T24 |
| ANNIKA Intercollegiate | 65-71-71=207 (-9) | 3 |
| Ruth's Chris Tar Heel Invitational | 75-75-76=226 (+10) | T39 |
| Landfall Tradition | 72-72-68=212 (-4) | T2 |
| FSU Match-Up | 74-71-70=215 (-1) | T2 |
| Darius Rucker Intercollegiate | 75-72-70=217 (+4) | T7 |
| Wildcat Invitational | 69-73-74=216 (E) | 9 |
| Bryan National Collegiate | 75-76-70=221 (+5) | T2 |
| SEC Championship | 72-71-66=209 (-7) | 2 |
| NCAA Baton Rouge Regional | 70-66-71=207 (-9) | 1 |

Marianna Monaco (Jr., Yonkers, N.Y.)

| Tournament | Rounds | Finish |
|-------------------------------|--------------------|--------|
| Darius Rucker Intercollegiate | 79-74-81=234 (+21) | T80 |
| Wildcat Invitational | 78-73-78=229 (+13) | T52 |

Isidora Nilsson (Fr., Hilton Head, S.C.)

| Tournament | Rounds | Finish |
|------------------------------------|--------------------|--------|
| Mason Rudolph Championship | 78-70-DQ=DQ | T52 |
| ANNIKA Intercollegiate | 80-76-78=234 (+18) | 57 |
| Ruth's Chris Tar Heel Invitational | 77-82-77=236 (+20) | T80 |
| Landfall Tradition | 78-78-75=231 (+15) | T65 |
| Darius Rucker Intercollegiate* | 82-79-81=242 (+29) | 89 |
| NCAA Baton Rouge Regional | 75-73-75=223 (+7) | T30 |

Ainhoa Olarra (So., San Sebastian, Spain)

| Tournament | Rounds | Finish |
|------------------------------------|--------------------|--------|
| Mason Rudolph Championship | 80-78-72=230 (+14) | T71 |
| ANNIKA Intercollegiate | 74-77-73=224 (+8) | 47 |
| Ruth's Chris Tar Heel Invitational | 75-78-73=226 (+10) | T39 |
| Landfall Tradition | 81-77-70=228 (+12) | T53 |
| FSU Match-Up | 74-70-75=219 (+3) | T8 |
| Darius Rucker Intercollegiate | 74-74-74=222 (+9) | T26 |
| Wildcat Invitational | 75-77-75=227 (+11) | T43 |
| Bryan National Collegiate | 73-78-75=226 (+10) | T15 |
| SEC Championship | 69-77-71=217 (+1) | 8 |
| NCAA Baton Rouge Regional | 76-69-77=222 (+6) | 29 |

Sarah Schmelzel (Sr., Phoenix, Ariz.)

| Tournament | Rounds | Finish |
|------------------------------------|--------------------|--------|
| Mason Rudolph Championship | 75-75-75=225 (+9) | T52 |
| ANNIKA Intercollegiate | 70-69-71=210 (-6) | T7 |
| Ruth's Chris Tar Heel Invitational | 72-76-75=223 (+7) | T27 |
| Landfall Tradition | 71-77-70=218 (+2) | T16 |
| FSU Match-Up | 74-69-73=216 (E) | 4 |
| Darius Rucker Intercollegiate | 77-72-74=223 (+10) | T35 |
| Wildcat Invitational | 76-71-73=220 (+4) | T18 |
| Bryan National Collegiate | 73-71-75=219 (+3) | 1 |
| SEC Championship | 82-77-71=230 (+14) | T44 |
| NCAA Baton Rouge Regional | 75-69-72=216 (E) | T12 |

Marion Veysseyre (Fr., Lachapelle-Auzac, France)

| Tournament | Rounds | Finish |
|-------------------------------|--------------------|--------|
| FSU Match-Up | 75-87-75=237 (+21) | T57 |
| Darius Rucker Intercollegiate | 77-73-75=225 (+12) | T39 |
| Wildcat Invitational | 77-73-81=231 (+15) | T59 |
| Bryan National Collegiate | 78-74-78=230 (+14) | T34 |
| SEC Championship | 81-76-86=243 (+27) | 70 |
| NCAA Baton Rouge Regional | 70-77-72=219 (+3) | T19 |

Jia Xin Yang (So., Beijing, China)

| Tournament | Rounds | Finish |
|-------------------------------------|--------------------|--------|
| Mason Rudolph Championship | 75-74-76=225 (+9) | T52 |
| ANNIKA Intercollegiate | 77-77-82=236 (+20) | 58 |
| Ruth's Chris Tar Heel Invitational* | 81-W-W | -- |
| Landfall Tradition | 80-81-76=237 (+21) | T83 |
| FSU Match-Up | 80-75-77=232 (+16) | T43 |
| Darius Rucker Intercollegiate | 79-79-80=236 (+23) | T84 |
| Wildcat Invitational* | 76-71-74=221 (+5) | T22 |
| Bryan National Collegiate | 76-79-79=234 (+18) | T49 |
| SEC Championship | 76-82-81=239 (+23) | T66 |

* Played as an individual; Score does not count toward team total

2015-16 TOURNAMENT-BY-TOURNAMENT

Mason Rudolph Championship

Sept. 18-20
Vanderbilt Legends Club - South
Franklin, Tenn.
Par 72 • 6,321 Yards

TOP TEAM RESULTS

| | | |
|----------------------------|------------------------|--------------|
| 1. Alabama | 282-280-286=848 | (-16) |
| 2. Northwestern | 283-281-285=849 | (-15) |
| 3. Georgia | 286-275-293=854 | (-10) |
| 4. Virginia | 286-289-298=873 | (+9) |
| LSU | 288-287-298=873 | (+9) |
| 6. Houston | 300-283-292=875 | (+11) |
| 7. Vanderbilt | 296-286-294=876 | (+12) |
| 8. Auburn | 287-288-305=880 | (+16) |
| 9. GRU Augusta | 294-291-298=883 | (+19) |
| 10. Louisville | 288-292-304=884 | (+20) |
| T11. Mich. St. | 295-299-293=887 | (+23) |
| T12. South Carolina | 302-291-295=888 | (+24) |

TOP INDIVIDUALS/GAMECOCKS

| | | |
|-----------------------------------|---------------------|-----------|
| 1. Lakareber Abe (Alabama) | 67-68-69=204 | -12 |
| 2. Lauren Coughlin (Virginia) | 66-71-68=205 | -11 |
| 3. Stephanie Lau (Northwest.) | 68-70-68=206 | -10 |
| 4. Harang Lee (Georgia) | 70-69-72=211 | -5 |
| 5. Ashley Holder (UCF) | 70-72-70=212 | -4 |
| T5. Olivia Cason (Louisville) | 69-70-73=212 | -4 |
| 7. Janie Jackson (Alabama) | 72-70-72=214 | -2 |
| T7. Megan Thothong (Houst.) | 74-69-71=214 | -2 |
| T24. Katelyn Dambaugh (SC) | 74-72-72=218 | +2 |

Landfall Tradition

Oct. 23-25
Country Club of Landfall - Pete Dye Course
Wilmington, N.C.
Par 72 • 6,157 Yards

TOP TEAM RESULTS

| | | |
|--------------------------|------------------------|--------------|
| 1. Duke | 287-284-284=855 | (-9) |
| 2. Notre Dame | 291-294-281=866 | (+2) |
| 3. Oklahoma State | 289-292-286=867 | (+3) |
| 4. Michigan State | 291-306-275=872 | (+8) |
| 5. Alabama | 299-286-297=882 | (+18) |
| 6. NC State | 295-311-279=885 | (+21) |
| 7. Wake Forest | 303-294-289=886 | (+22) |
| 8. Purdue | 296-300-291=887 | (+23) |
| 9. South Carolina | 301-304-283=888 | (+24) |
| 10. UNCW | 290-297-302=889 | (+25) |
| Clemson | 298-306-285=889 | (+25) |
| 12. Virginia | 301-303-286=890 | (+26) |

TOP INDIVIDUALS/GAMECOCKS

| | | |
|----------------------------------|---------------------|-----------|
| 1. Sarah Burnham (Mich. St.) | 71-74-66=211 | -5 |
| T2. Katelyn Dambaugh (SC) | 72-72-68=212 | -4 |
| T2. Ashley Holder (UCF) | 72-69-71=212 | -4 |
| T4. Jennifer Kupcho (Wake) | 74-71-68=213 | -3 |
| T4. Leona Maguire (Duke) | 71-72-70=213 | -3 |
| T4. Maddie McCrary (Ok. St.) | 70-71-72=213 | -3 |
| T4. Celine Boutier (Duke) | 75-69-69=213 | -3 |
| 8. Lauren Coughlin (UVA) | 71-76-67=214 | -2 |
| 9. Lauren Waller (Penn St.) | 75-72-68=215 | -1 |

ANNIKA Intercollegiate

Sept. 27-29
Reunion Resort - Watson Course
Reunion, Fla.
Par 72 • 6,245 Yards

TOP TEAM RESULTS

| | | |
|--------------------------|------------------------|-------------|
| 1. Southern California | 276-271-281=828 | (-36) |
| 2. Arizona | 286-281-284=851 | (-13) |
| 3. Arkansas | 284-286-284=854 | (-10) |
| 4. Duke | 277-291-288=856 | (-8) |
| 5. Texas A&M | 278-286-295=859 | (-5) |
| 6. UCLA | 286-292-284=862 | (-2) |
| 7. Tennessee | 284-288-291=863 | (-1) |
| 8. Washington | 291-290-284=865 | (+1) |
| 9. South Carolina | 286-293-293=872 | (+8) |
| 10. Stanford | 289-287-297=873 | (+9) |
| 11. LSU | 291-292-297=880 | (+16) |
| 12. UCF | 290-294-302=886 | (+22) |

TOP INDIVIDUALS/GAMECOCKS

| | | |
|---------------------------------|---------------------|-----------|
| 1. Karen Chung (USC) | 68-68-68=204 | -12 |
| 2. Robynn Ree (USC) | 68-66-72=206 | -10 |
| 3. Katelyn Dambaugh (SC) | 65-71-71=207 | -9 |
| T4. Gaby Lopez (Arkansas) | 67-70-71=208 | -8 |
| T4. Tiffany Chan (USC) | 71-65-72=208 | -8 |
| 6. Anna Newell (Tennessee) | 69-70-70=209 | -7 |
| T7. Gabriella Then (USC) | 69-72-69=210 | -6 |
| T7. Sarah Schmelzel (SC) | 70-69-71=210 | -6 |
| T9. Leona Maguire (Duke) | 67-72-72=211 | -5 |
| T9. Lindsey Weaver (Arizona) | 70-71-70=211 | -5 |
| T9. Wanasa Zhou (Arizona) | 70-67-74=211 | -5 |

Florida State Match-Up

Feb. 12-14
Don Veller Seminole Golf Course
Tallahassee, Fla.
Par 72 • 6,265 Yards

TOP TEAM RESULTS

| | | |
|--------------------------|------------------------|--------------|
| 1. FSU | 293-293-285=871 | (+7) |
| 2. South Carolina | 297-285-293=875 | (+11) |
| 3. Furman | 290-290-302=890 | (+26) |
| 4. SMU | 297-300-297=894 | (+30) |
| 5. Texas A&M | 298-299-301=898 | (+34) |
| 6. Coastal Carolina | 297-309-293=899 | (+35) |
| 7. Missouri | 309-297-294=900 | (+36) |
| 8. Tennessee | 303-300-302=905 | (+41) |
| 9. Virginia | 305-298-306=909 | (+45) |
| 10. Kansas State | 309-305-304=918 | (+54) |
| 11. Virginia Tech | 307-310-304=921 | (+57) |
| 12. James Madison | 318-318-305=941 | (+77) |

TOP INDIVIDUALS/GAMECOCKS

| | | |
|----------------------------------|---------------------|-----------|
| 1. Maddie Szeryk (TAMU) | 69-72-70=211 | -5 |
| T2. Katelyn Dambaugh (SC) | 74-71-70=215 | -1 |
| T2. Kim Mettraux (FSU) | 72-72-71=215 | -1 |
| 4. Sarah Schmelzel (SC) | 74-69-73=216 | E |
| T5. Jenny Haglund (SMU) | 72-70-75=217 | +1 |
| T5. Alice Chen (Furman) | 73-71-73=217 | +1 |
| 7. Lena Schaeffner (Coastal) | 70-75-73=218 | +2 |
| T8. Lauren Coughlin (UVA) | 76-72-71=219 | +3 |
| T8. Matilda Castren (FSU) | 74-74-71=219 | +3 |
| T8. Lydia Gumm (FSU) | 74-73-72=219 | +3 |
| T8. Ainhoa Olarra (SC) | 74-70-75=219 | +3 |

Ruth's Chris Invitational

Oct. 9-11
Finley Golf Course
Chapel Hill, N.C.
Par 72 • 6,379 Yards

TOP TEAM RESULTS

| | | |
|---------------------------|------------------------|--------------|
| 1. Duke | 285-293-289=867 | (+3) |
| 2. Arkansas | 302-287-291=880 | (+16) |
| 3. Louisville | 292-297-293=882 | (+18) |
| 4. Michigan State | 293-299-291=883 | (+19) |
| 5. NC State | 292-300-292=884 | (+20) |
| 6. Alabama | 289-304-293=886 | (+22) |
| 7. Tennessee | 299-295-293=887 | (+23) |
| 8. North Carolina | 295-303-290=888 | (+24) |
| 9. Virginia | 297-306-295=898 | (+34) |
| 10. LSU | 302-303-298=903 | (+39) |
| 11. South Carolina | 299-310-295=904 | (+40) |
| 12. Auburn | 298-304-303=905 | (+41) |

TOP INDIVIDUALS/GAMECOCKS

| | | |
|----------------------------------|---------------------|-----------|
| 1. Leona Maguire (Duke) | 69-72-71=212 | -4 |
| 2. Sarah Burnham (Mich. St.) | 74-69-70=213 | -3 |
| T3. Leslie Cloots (UNC) | 75-71-68=214 | -2 |
| T3. Molly Skapik (Louisville) | 70-72-72=214 | -2 |
| 5. Jennifer Kupcho (Wk. Forest) | 73-72-71=216 | E |
| 6. Lexi Harkins (UNC) | 73-73-71=217 | +1 |
| T7. Emma Talley (Alabama) | 73-72-73=218 | +2 |
| T7. India Clyburn (NC State) | 73-72-73=218 | +2 |
| T7. Shannon Brooks (Tenn.) | 72-76-70=218 | +2 |
| T7. Virginia Elena Carta (Duke) | 73-74-71=218 | +2 |
| T27. Sarah Schmelzel (SC) | 72-76-75=223 | +7 |

Darius Rucker Intercollegiate

March 4-6
Long Cove Club
Hilton Head Island, S.C.
Par 71 • 6,208 Yards

TOP TEAM RESULTS

| | | |
|---------------------------|------------------------|--------------|
| 1. Alabama | 278-298-292=868 | (+16) |
| 2. Virginia | 281-298-296=875 | (+23) |
| 3. Duke | 299-289-290=878 | (+26) |
| 4. Oklahoma State | 292-290-297=879 | (+27) |
| 5. North Carolina | 290-295-296=881 | (+29) |
| 6. Arkansas | 289-296-297=882 | (+30) |
| 7. Georgia | 301-282-300=883 | (+31) |
| T8. South Carolina | 303-291-293=887 | (+35) |
| T8. USC | 287-293-297=887 | (+35) |
| 10. Tennessee | 295-292-301=888 | (+36) |
| 11. Vanderbilt | 282-300-307=889 | (+37) |
| 12. Furman | 303-302-293=898 | (+46) |

TOP INDIVIDUALS/GAMECOCKS

| | | |
|----------------------------------|---------------------|-----------|
| 1. Cheyenne Knight (Ala.) | 67-74-72=213 | E |
| T2. Alexandra Farnsworth (Vandy) | 67-72-75=214 | +1 |
| T2. Lauren Coughlin (UVA) | 67-72-75=214 | +1 |
| T2. Sandy Choi (Duke) | 71-70-73=214 | +1 |
| T2. Maddie McCrary (Ok. State) | 71-70-73=214 | +1 |
| 6. Harang Lee (Georgia) | 73-69-74=216 | +3 |
| T7. Katelyn Dambaugh (SC) | 75-72-70=217 | +4 |
| T7. Elizabeth Szokol (UVA) | 69-76-72=217 | +4 |
| T9. Maria Fassi (Arkansas) | 71-70-77=218 | +5 |
| T9. Haylee Harford (Furman) | 74-72-72=218 | +5 |
| T9. Leslie Cloots (UNC) | 75-76-67=218 | +5 |
| T9. Robynn Ree (USC) | 72-73-73=218 | +5 |

2015-16 TOURNAMENT-BY-TOURNAMENT

Wildcat Invitational

March 14-15
Sewailo Golf Club
Tuscon, Ariz.
Par 72 • 6,492 Yards

TOP TEAM RESULTS

| | | |
|--------------------------|------------------------|--------------|
| 1. Arizona | 282-293-282=857 | (-7) |
| 2. Arizona State | 285-289-294=868 | (+4) |
| 3. UNLV | 289-295-292=876 | (+12) |
| 4. Miami | 294-291-298=883 | (+19) |
| T5. Purdue | 288-294-302=884 | (+20) |
| T5. Baylor | 292-299-293=884 | (+20) |
| 7. South Carolina | 297-290-300=887 | (+23) |
| 8. Michigan | 294-300-294=888 | (+24) |
| 9. Vanderbilt | 298-292-300=890 | (+26) |
| 10. Colorado | 294-306-295=895 | (+31) |
| 11. New Mexico State | 297-302-297=896 | (+32) |
| 12. Kansas | 301-304-294=899 | (+35) |

TOP INDIVIDUALS/GAMECOCKS

| | | |
|---------------------------------|---------------------|----------|
| 1. Krystal Quihuis (Arizona) | 68-71-70=209 | -7 |
| 2. Linnea Strom (Arizona St.) | 67-68-75=210 | -6 |
| 3. Monica Vaughn (Arizona St.) | 71-72-68=211 | -5 |
| T4. Dewi Weber (Miami) | 71-67-74=212 | -4 |
| T4. Daniela Darquea (Miami) | 69-69-74=212 | -4 |
| T6. Jessica Vasilic (Arizona) | 75-67-72=214 | -2 |
| T6. Haley Moore (Arizona) | 72-71-71=214 | -2 |
| 8. Laura Lonardi (Baylor) | 72-73-70=215 | -1 |
| 9. Katelyn Dambaugh (SC) | 69-73-74=216 | E |

Bryan National Collegiate

April 1-3
Bryan Park Champions Course
Browns Summit, N.C.

TOP TEAM RESULTS

| | | |
|--------------------|-----------------|-------|
| 1. Virginia | 289-295-304=888 | (+24) |
| 2. South Carolina | 289-297-298=894 | (+30) |
| 3. Florida State | 299-290-307=896 | (+32) |
| 4. Wake Forest | 298-297-306=901 | (+37) |
| T5. Notre Dame | 297-303-309=909 | (+45) |
| T5. Kentucky | 306-293-310=909 | (+45) |
| 7. East Carolina | 299-303-308=910 | (+46) |
| 8. NC State | 304-303-304=911 | (+47) |
| 9. Miami | 298-306-310=914 | (+50) |
| 10. North Carolina | 302-304-311=917 | (+53) |
| 11. Michigan | 314-304-308=926 | (+62) |
| 12. UCF | 315-310-317=933 | (+69) |

TOP INDIVIDUALS/GAMECOCKS

| | | |
|----------------------------------|---------------------|-----------|
| 1. Sarah Schmelzel (SC) | 73-71-75=219 | +3 |
| T2. Katelyn Dambaugh (SC) | 75-76-70=221 | +5 |
| T2. Jennifer Kupcho (Wk. Forest) | 72-73-76=221 | +5 |
| T2. Matilda Castren (FSU) | 71-71-79=221 | +5 |
| T5. Lauren Coughlin (UVA) | 72-72-78=222 | +6 |
| T5. Elizabeth Szokol (UVA) | 71-75-76=222 | +6 |
| 7. F. Gustafsson Spang (ECU) | 75-74-74=223 | +7 |
| T8. Taila Campbell (Notre Dame) | 74-75-75=224 | +8 |
| T8. Ayaka Nakayama (UCF) | 76-72-76=224 | +8 |
| T8. Lauren Diaz-Yi (UVA) | 73-74-77=224 | +8 |
| T8. Nico Engstroem Skaug (ECU) | 70-78-76=224 | +8 |
| T8. Anna Redding (UVA) | 77-74-73=224 | +8 |
| T8. Kathy Lim (Michigan) | 76-74-74=224 | +8 |

SEC Championship

April 15-17
Greystone Golf & Country Club
Birmingham, Ala.
Par 72 • 6,190 Yards

TOP TEAM RESULTS

| | | |
|--------------------------|------------------------|--------------|
| 1. Alabama | 286-292-281=859 | (-5) |
| 2. Florida | 292-286-286=864 | (E) |
| 3. Arkansas | 300-294-288=882 | (+18) |
| 4. Texas A&M | 299-291-294=884 | (+20) |
| 5. South Carolina | 298-301-289=888 | (+24) |
| 6. Georgia | 296-296-297=889 | (+25) |
| 7. Mississippi | 301-300-293=894 | (+30) |
| 8. Tennessee | 297-305-294=896 | (+32) |
| 9. Missouri | 295-303-302=900 | (+36) |
| 10. Vanderbilt | 309-304-292=905 | (+41) |
| 11. LSU | 305-303-303=911 | (+47) |
| 12. Mississippi State | 305-303-306=914 | (+50) |

TOP INDIVIDUALS/GAMECOCKS

| | | |
|---------------------------------|---------------------|-----------|
| 1. Maria Torres (Alabama) | 69-68-70=207 | -9 |
| 2. Katelyn Dambaugh (SC) | 72-71-66=209 | -7 |
| 3. Cheyenne Knight (Alabama) | 72-71-69=212 | -4 |
| 4. Emma Talley (Alabama) | 70-73-70=213 | -3 |
| T5. Maria Fassi (Arkansas) | 75-71-69=215 | -1 |
| T5. Lakareber Abe (Alabama) | 70-74-71=215 | -1 |
| 7. Maddie Szeryk (TAMU) | 75-70-71=216 | E |
| 8. Ainboa Olarra (SC) | 69-77-71=217 | +1 |
| T9. Alison Hovatter (Ole Miss) | 74-71-73=218 | +2 |
| T9. Amanda Kim (Missouri) | 70-75-73=218 | +2 |

NCAA Baton Rouge Regional

May 5-7
University Club
Baton Rouge, La.
Par 72 • 6,285 Yards

TOP TEAM RESULTS

| | | |
|---------------------------|------------------------|-------------|
| T1. South Carolina | 290-277-290=857 | (-7) |
| T1. Florida | 293-287-277=857 | (-7) |
| 3. Washington | 286-289-288=863 | (-1) |
| 4. Duke | 298-287-285=870 | (+6) |
| 5. Oregon | 292-296-294=882 | (+18) |
| 6. BYU | 290-290-296=884 | (+20) |
| 7. Houston | 295-300-290=885 | (+21) |
| 8. Arizona State | 296-298-297=891 | (+27) |
| T9. East Carolina | 301-301-302=904 | (+40) |
| T9. Harvard | 308-295-301=904 | (+40) |
| 11. LSU | 299-310-296=905 | (+41) |
| 12. NC State | 307-307-293=907 | (+43) |

TOP INDIVIDUALS/GAMECOCKS

| | | |
|---------------------------------|---------------------|-----------|
| 1. Katelyn Dambaugh (SC) | 70-66-71=207 | -9 |
| 2. Karolina Vickova (Florida) | 74-71-65=210 | -6 |
| 3. Charlotte Thomas (Wash.) | 73-67-71=211 | -5 |
| T4. Elise Bradley (LSU) | 72-72-69=213 | -3 |
| T4. Lea Garner (BYU) | 73-69-71=213 | -3 |
| T4. Sandy Choi (Duke) | 73-69-71=213 | -3 |
| T7. Leonie Harm (Houston) | 69-77-69=215 | -1 |
| T7. Linnea Strom (Ariz. St.) | 71-73-71=215 | -1 |
| T7. Virginia Elena Carta (Duke) | 76-72-67=215 | -1 |
| T7. Leona Maguire Duke | 73-70-72=215 | -1 |
| T7. Maria Torres (Florida) | 71-75-69=215 | -1 |

SOUTH CAROLINA HISTORY AND RECORDS

Season Scoring Avg. (18+ Rds)

| Year | Rds. | Strokes | Avg. |
|-------------------|-----------|--------------|---------------|
| 1. 2013-14 | 29 | 8,428 | 292.30 |
| 2. 2014-15 | 31 | 9,078 | 292.84 |
| 3. 2015-16 | 30 | 8,840 | 294.67 |
| 4. 2011-12 | 33 | 9,828 | 297.82 |
| 5. 2009-10 | 34 | 10,128 | 297.88 |
| 6. 2012-13 | 32 | 9,610 | 300.31 |
| 7. 2010-11 | 34 | 10,262 | 301.82 |
| 8. 2002-03 | 31 | 9,380 | 302.58 |
| 9. 2006-07 | 29 | 8,775 | 302.59 |
| 10. 2008-09 | 30 | 9,090 | 303.00 |

Career Scoring Average

(Min. 55 Rounds)

| | |
|---|--------------|
| 1. Katelyn Dambaugh (2013-Pres.) | 73.01 |
| 2. Justine Dreher (2011-15) | 74.12 |
| 3. Katie Burnett (2008-2012) | 74.18 |
| 4. Sarah Schmelzel (2012-Pres.) | 74.32 |
| 5. Kristy McPherson (1999-03) | 74.42 |
| 6. Bénédicte Toumpsin (2006-10) | 74.59 |
| 7. Suzie Lee (2010-2014) | 75.50 |
| Samantha Swinehart (2010-2014) | 75.50 |
| 9. Adrienne Gautreaux (2001-04) | 75.75 |
| 10. Amanda Strang (2009-2012) | 76.07 |

Single-Season Scoring Avg.

(Min. 18 Rounds)

| | |
|------------------------------------|--------------|
| 1. Katelyn Dambaugh (2016) | 71.60 |
| 2. Justine Dreher (2015) | 72.53 |
| 3. Katie Burnett (2012) | 72.94 |
| 4. Samantha Swinehart (2014) | 73.12 |
| 5. Sarah Schmelzel (2016) | 73.33 |
| 6. Justine Dreher (2014) | 73.36 |
| 7. Kristy McPherson (2003) | 73.42 |
| 8. Katie Burnett (2010) | 73.58 |
| Kristy McPherson (2002) | 73.58 |
| 10. Katelyn Dambaugh (2015) | 73.66 |

Low 18-Hole Score

| Tournament | Rd. | Score |
|--------------------------------------|-----|-------|
| 1. NCAA Baton Rouge Regional, 5/6/16 | 2 | 277 |
| 2. Mercedes-Benz Collegiate, 9/20/13 | 1 | 279 |
| Cougar Classic, 9/13/11 | 3 | |
| 3. NCAA East Regional, 5/10/14 | 2 | 280 |
| PING ASU Inv., 4/5/14 | 2 | |
| SEC Championships, 4/18/15 | 2 | |
| 6. NCAA Championship, 5/23/14 | 4 | 281 |
| NCAA Championship, 5/23/12 | 2 | |
| Mercedes-Benz Collegiate, 10/19/14 | 3 | |
| 9. SEC Championship, 4/20/02 | 2 | 282 |
| ANNIKA Intercollegiate, 9/28/14 | 1 | |
| ANNIKA Intercollegiate, 9/31/14 | 3 | |

Low 54-Hole Score

| Tournament | Score |
|---|-------|
| 1. PING ASU Inv., 2014 | 853 |
| 2. NCAA East Regional, 2014 | 854 |
| ANNIKA Intercollegiate, 2014 | |
| 4. NCAA Baton Rouge Regional, 2016 | 857 |
| 5. SEC Championship, 2002 | 861 |
| 6. SEC Championship, 2015 | 863 |
| 7. NCAA East Regional, 2010 | 864 |
| Tar Heel Invitational, 2014 | 864 |
| 9. Mercedes-Benz Collegiate Champs., 2014 | 865 |
| 10. SEC Championship, 2010 | 867 |

Low 72-Hole Score

| Tournament | Score |
|-----------------------------|-------|
| 1. NCAA Championship, 2014 | 1164 |
| 2. NCAA Championship, 2012 | 1176 |
| 3. NCAA Championship, 2010 | 1186 |
| 4. NCAA Championship, 1995 | 1204 |
| 5. NCAA Championship, 2013 | 1211 |
| NCAA Championship, 2011 | |
| 7. NCAA Championship, 2002 | 1217 |
| 8. NCAA Championship, 1987 | 1225 |
| 9. NCAA Championship, 2008 | 1235 |
| 10. NCAA Championship, 1993 | 1238 |

Low 18-Hole Score

| Player, Tournament | Score |
|--|-----------|
| 1. Katelyn Dambaugh, 2015 ANNIKA Inter. (1) | 65 |
| Katelyn Dambaugh, 2015 SEC Champ. (2) | |
| Mary Fran Hillow, 2014 Mercedes-Benz Collegiate (3) | |
| 4. Katelyn Dambaugh, 2016 NCAA Baton Rouge Reg. (2) | 66 |
| Katelyn Dambaugh, 2016 SEC Champ. (3) | |
| Katelyn Dambaugh, 2014 PING/ASU Invite (2) | |
| Nanna Madsen, 2014 Landfall Tradition (1) | |
| Justine Dreher, 2014 NCAA East Regional (3) | |
| Samantha Swinehart, 2014 PING ASU Inv. (3) | |
| Katie Burnett, 2011 Cougar Classic (2) | |
| Jenna Pearson, 2007 SEC Champ. (2) | |
| 11. Samantha Swinehart, 2014 NCAA Champ. (4) | 67 |
| Katelyn Dambaugh, 2013 FSU Match-Up (3) | |
| Katie Burnett, 2012 NCAA Champ. (2) | |
| Katie Rose Higgins 2011 Cougar Classic (3) | |
| Katie Burnett, 2011 UCF Challenge (2) | |
| Katie Burnett, 2010 NCAA Regional (1) | |
| Corrine Carr, 2010 SEC Champ. (3) | |
| Jenna Pearson, 2006 Dick McGuire (2) | |

Low 54-Hole Score

| Player, Tournament | Score |
|--|------------|
| 1. Katelyn Dambaugh, 2016 NCAA Baton Rouge Reg. | 207 |
| Katelyn Dambaugh, 2015 ANNIKA Inter. | |
| Justine Dreher, 2014 ANNIKA Intercollegiate | |
| Kristy McPherson, 2001 SEC Champ. | |
| 4. Katelyn Dambaugh, 2016 SEC Champ. | 209 |
| Benedicte Toumpsin, 2009 LSU Classic | |
| Kristy McPherson, 2003 NCAA Regional | |
| Kristy McPherson, 2002 SEC Championship | |
| 8. Sarah Schmelzel, 2015 ANNIKA Inter. | 210 |
| Nanna Madsen, 2014 Landfall Tradition | |
| Katie Burnett, 2010 NCAA Regional | |
| Siew-Ai Lim, 1994 Carolyn Cudone | |
| 12. Justine Dreher, 2014 NCAA East Regional | 211 |
| Samantha Swinehart, 2014 PING/ASU Inv. | |
| Kristy McPherson, 2002 Spartan Invitational | |
| 15. Katelyn Dambaugh, 2015 Landfall Tradition | 212 |
| Samantha Swinehart, 2014 NCAA East Reg. | |
| Sarah Schmelzel, 2013 FSU Match-Up | |
| Katie Burnett, 2012 Liz Murphey Classic | |