



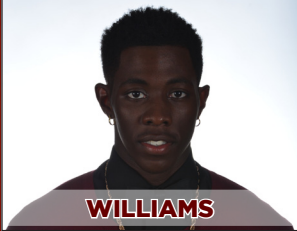
SOUTH CAROLINA MEN'S TRACK AND FIELD

STARTING LINEUP

CONFERENCE CLASH (JAN. 22-23, 2016)



HIGH JUMP



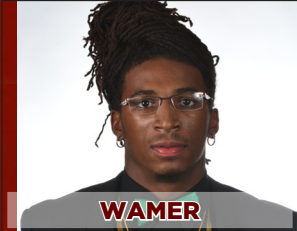
WILLIAMS

60M



WINTERS

TRIPLE JUMP



WAMER

200M



TITI

SHOT PUT



AWOTUNDE

400M



ROBBINS

WEIGHT THROW



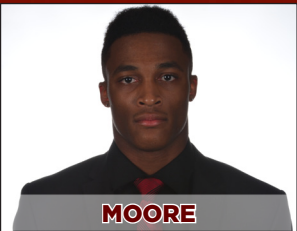
GALLOP

800M



JONES

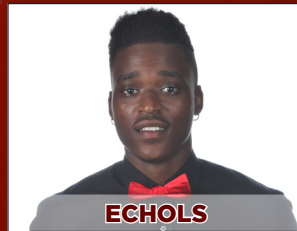
60M HURDLES



MOORE



COLLIER



ECHOLS

1000M



TRUSTY

FIELD EVENTS BEGIN @ 2 P.M. | TRACK EVENTS BEGIN @ 5 P.M.



SOUTH CAROLINA WOMEN'S TRACK AND FIELD

STARTING LINEUP

CONFERENCE CLASH (JAN. 22-23, 2016)



LONG JUMP



MURPHY



STANLEY



PARKS

200M



HAITH

HIGH JUMP



N. GRAY

400M



ABRAMS



EVANS

TRIPLE JUMP



DICKS

800M



VIAN



MUELLER

60M HURDLES



TAYLOR



OLUWOLE



DAVIS

3000M



WESSEL



MCCOY



SPRAGUE

5000M



YORK



KENT



REISER

FIELD EVENTS BEGIN @ 2 P.M. | TRACK EVENTS BEGIN @ 5 P.M.