

2011-12 SEASON REVIEW

2011-12 Season Results/Notes	76
Final Overall/SEC Statistics	77
Superlatives	78
Game-By-Game Comparison	79
Results/Starting Lineup Win/Loss	80
Miscellaneous/Game-By-Game Starting Lineups	81
Team/Opponent Highs and Lows	82
Individual Highs and Lows	83
Final SEC Standings	84
SEC Postseason Awards/Tournament Play	84
Final SEC Team Statistics	85-86
Final SEC Individual Statistics	87-88
The Last Time In South Carolina Basketball	89-90
Season Box Scores	91-96

2011-12 SEASON RECAP

2011-12 SCHEDULE

DATE	OPPONENT (TV)	TIME/RESULT
Nov. 3	Kentucky Wesleyan% (SS)	W, 69-59
Nov. 11	Western Carolina (SS)	W, 75-50
Nov. 15	at Elon (SS)	L, 58-53
<i>Continental Tire Las Vegas Invitational</i>		
Nov. 20	Tennessee State! (SS)	L, 64-63
Nov. 22	Mississippi Valley State! (SS)	W, 61-57
Nov. 25	No. 1/1 North Carolina& (ESPN2)	L, 87-62
Nov. 26	Southern California& (ESPN3.com)	L, 63-60
<i>Big East/SEC Challenge</i>		
Dec. 1	Providence^ (ESPNU)	L, 76-67
Dec. 4	at Clemson (ESPNU)	W, 58-55
Dec. 13	Presbyterian (SS)	W, 66-58
Dec. 17	No. 2/2 Ohio State (ESPN)	L, 74-66
Dec. 21	Southeastern Louisiana (SS)	W, 62-43
Dec. 28	Wofford (CSS)	W, 57-45
Dec. 31	USC Upstate (SS)	W, 72-66
Jan. 3	SC State	W, 79-51
Jan. 7	at No. 2/2 Kentucky * (SECN)	L, 79-64
Jan. 10	Vanderbilt * (ESPNU)	L, 67-57
Jan. 14	No. 19/19 Florida * (CSS)	L, 79-65
Jan. 21	at Auburn * (SECN)	L, 63-52
Jan. 25	Alabama * (SECN)	W, 56-54
Jan. 28	at Ole Miss * (FSN)	L, 66-62
Feb. 2	at No. 12/11 Florida * (ESPN2)	L, 74-66
Feb. 4	No. 1/1 Kentucky * (ESPN)	L, 86-52
Feb. 8	at Tennessee * (SECN)	L, 69-57
Feb. 11	at Arkansas * (SECN)	L, 76-65
Feb. 15	Georgia * (CSS)	W, 57-56
Feb. 18	LSU * (SECN)	L, 68-58
Feb. 22	at Vanderbilt * (SECN)	L, 59-48
Feb. 25	Tennessee * (FSN)	L, 73-64
Feb. 29	Mississippi State * (SECN)	L, 69-67
March 3	at Georgia * (SECN)	L, 67-55
<i>SEC Tournament</i>		
March 8	Alabama + (SECN)	L, 63-57

All home games in **bold** | % - Exhibition Contest | ! - Continental Tire Las Vegas Invitational (Columbia, S.C.) | & - Continental Tire Las Vegas Invitational (Las Vegas, Nev.) | ^ - BIG EAST/SEC Challenge (Columbia, S.C.) | * - Conference Game | + SEC Tournament (New Orleans, La.) | SS-SportSouth | SECN-SEC Network | CSS-CharterSports SE



2011-12 NOTABLES

■ Sophomore forward RJ Slawson had a career night against top-ranked North Carolina on Nov. 25, posting career highs with 13 points, 14 rebounds and four blocks. It was the most rebounds in a game for South Carolina since Sam Muldrow collected 14 vs. Vanderbilt on Jan. 8, 2011.

■ Three Gamecocks registered season highs competing in Las Vegas. Slawson's career high 13 points vs. UNC, sophomore guard Brian Richardson's season high 12 points vs. Southern Cal, and sophomore forward Damontre Harris' career high 15 points against the Trojans.

■ Sophomore guard Bruce Ellington posted the winning point on two clutch free throws with 13.0 seconds on the clock, and R-senior forward Malik Cooke sealed the win with a pair of free throws with 6.7 on the clock in a 58-55 victory at Clemson on Dec. 4. Sophomore guard Eric Smith also sank a crucial jumper with 25.9 on the clock to propel the Gamecocks to their first win at Clemson since the 2003 campaign.

■ South Carolina used 54.2 percent shooting in the opening half to hold a 33-29 lead over No. 2 Ohio State at halftime on Dec. 17 at Colonial Life Arena, however, the Buckeyes rallied around a 20-point second-half effort from Deshaun Thomas to earn a 74-66 win over the Gamecocks.

■ South Carolina senior forward Malik Cooke battled through an eye injury versus No. 2 Ohio State to match a then-season high with 21 points, including an impressive 9-of-10 effort from the charity stripe in the contest. Despite only playing 13 minutes in the second half due to lengthy breaks to tend to a cut above his eye, Cooke matched freshman forward Anthony Gill for a team-best 11 points in the set, including a 7-of-8 performance from the free throw line.

■ South Carolina earned its first SEC victory of the season when it snapped a four-game losing streak with a 56-54 victory over Alabama at Colonial Life Arena on Jan. 25. Sophomore guard Bruce Ellington's layup with 1.3 seconds on the clock propelled the Gamecocks to victory. Fifth-year senior forward Malik Cooke paced the Gamecocks with 18 points, marking the eighth time this season he has led, or shared the team lead, in scoring this season. Sophomore forward Damontre Harris and Ellington both contributed 12 points each in the win.

■ Playing just its fifth home game of the SEC season on Feb. 15, the Gamecocks earned a thrilling 57-56 victory over visiting Georgia on a jumper by senior forward Malik Cooke with just 20 seconds remaining in the contest. Cooke led Carolina with 13 points in the win. The victory snapped a five-game losing streak for South Carolina.

■ Senior forward Malik Cooke tallied the 1,000th point of his career in posting a team high 17 points vs. visiting LSU on Feb. 18, but the Tigers used a stellar shooting effort (24-49, 49.0%) to escape Columbia with a 68-58 victory. South Carolina also shot well in the contest, hitting 42.5 percent (20-47) from the field, but lost momentum following a technical foul called on the Gamecocks midway through the second half saw the Tigers capitalize and earn the win.

■ The Gamecocks had one of the toughest starts to SEC play in 2012, as the squad played Kentucky and Florida twice, and Vanderbilt once, in the first eight games of the league season.

COOKE NAMED TO COMMUNITY SERVICE TEAM

■ Senior forward Malik Cooke was named to the SEC Community Service team in 2012. Cooke participated in numerous hours of community service during his career at South Carolina. During the 2011-12 campaign, Cooke has visited Alcorn Middle School in Columbia to help promote literacy and the importance of reading to the middle school students. He also read to a grade school class, visited with at-risk youth prior to a women's basketball game, participated in the Fourth Annual Darrin Horn Ladies Clinic, a clinic hosted by the South Carolina staff that raised awareness for breast cancer and breast cancer research. Cooke also participated in the World Wide Day of Play, and, along with his teammates and the South Carolina staff, spent a day at Fort Jackson, a military base in Columbia, visiting with soldiers, Wounded Warriors, and also participating in an after school fan experience at Pinckney Elementary School.

BY THE NUMBERS

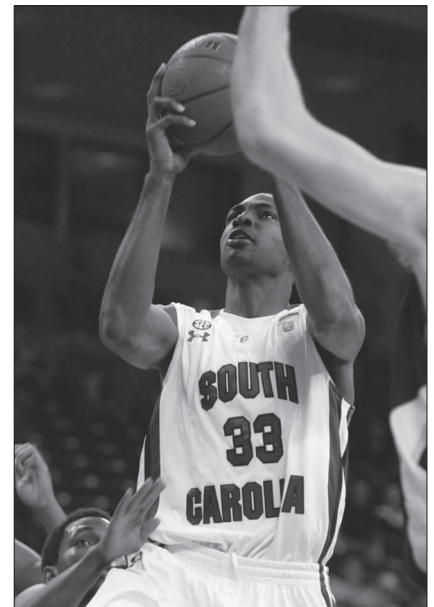
12.3 - Senior forward Malik Cooke paced Carolina in overall games with 12.3 points per contest. He posted 22 double-figure scoring games during the 2011-12 campaign and led, or shared the team lead in scoring 12 times.

+1.42 - The Gamecock ranked fourth in the SEC in overall games in turnover margin with a mark of +1.42.

9 - Nine Gamecocks averaged at least 14.0 minutes per contest in 2011-12.

76.7% - As a team, South Carolina hit 76.7 percent of its free throws with under five minutes to play, and during overtime. Malik Cooke had the most attempts with 38. He hit 29 of those for a 76.3 percent mark.

12.35 - South Carolina ranked third in the SEC in overall games with 12.35 offensive rebounds per contest.



RJ SLAWSON

2011-12 SOUTH CAROLINA BASKETBALL STATISTICS (ALL GAMES)

OVERALL RECORD: 10-21; HOME RECORD: 9-9; AWAY RECORD: 1-9; NEUTRAL RECORD: 0-3; SEC RECORD: 2-14

#	Player	GP-GS	Min.-Avg	FG-FGA	Pct	3FG-FGA	Pct	FT-FTA	Pct	Off	Def	Tot.-Avg	PF-FO	A	TO	Blk	Stl	Pts-Avg	
15	COOKE, Malik	31-31	960-31.0	127-310	.410	29-87	.333	97-121	.802	60	86	146-4.7	74-1	52	69	23	51	380-12.3	
23	ELLINGTON, Bruce	24-15	697-29.0	100-280	.357	39-118	.331	26-34	.765	18	37	55-2.3	53-0	74	54	2	16	265-11.0	
13	GILL, Anthony	31-26	784-25.3	86-190	.453	11-28	.393	53-82	.646	60	86	146-4.7	79-2	35	50	10	17	236-7.6	
24	HARRIS, Damontre	31-30	803-25.9	83-151	.550	0-0	.000	45-56	.804	74	97	171-5.5	86-2	15	38	71	29	211-6.8	
32	LEONARD, Damien	31-20	652-21.0	71-230	.309	54-171	.316	15-25	.600	11	31	42-1.4	45-0	14	36	2	14	211-6.8	
1	WILLIAMS, Brenton	23-0	323-14.0	46-117	.393	26-66	.394	23-28	.821	4	15	19-0.8	27-1	13	19	2	15	141-6.1	
33	SLAWSON, RJ	31-5	553-17	52-119	.437	11-41	.268	23-37	.622	50	73	123-4.0	81-1	18	31	20	23	138-4.5	
5	SMITH, Eric	28-13	399-14.3	42-102	.412	20-50	.400	11-18	.611	3	23	26-0.9	27-1	33	36	0	11	115-4.1	
30	JACKSON, Lakeem	31-12	526-17.0	43-91	.473	0-2	.000	12-32	.375	31	52	83-2.7	35-1	44	36	3	24	98-3.2	
2	RICHARDSON, Brian	25-2	307-2.3	29-97	.299	14-60	.233	7-11	.636	8	17	25-1.0	30-0	10	15	1	6	79-3.2	
12	PHILLIPS, Shane	1-0	2-2.0	0-3	.000	0-2	.000	1-2	.500	0	0	0-0.0	2-0	0	1	0	0	1-1.0	
45	GEATHERS, Carlton	28-1	219-7.8	10-23	.435	0-0	.000	8-12	.667	15	28	43-1.5	24-0	1	7	17	6	28-1.0	
Team										49	42	91			4				
Total		31	6225	689-1713	.402	204-625	.326	321-458	.701	383	587	970-31.3	561-9	309	396	151	212	1903-61.4	
Opponents		31	6225	690-1546	.446	196-517	.379	439-624	.704	353	679	1032-33.3	474	420	440	135	185	2015-65.0	

2011-12 SOUTH CAROLINA BASKETBALL STATISTICS (SEC GAMES)

OVERALL RECORD: 2-14; HOME RECORD: 2-6; AWAY RECORD: 0-8

#	Player	GP-GS	Min.-Avg	FG-FGA	Pct	3FG-FGA	Pct	FT-FTA	Pct	Off	Def	Tot.-Avg	PF-FO	A	TO	Blk	Stl	Pts-Avg
15	COOKE, Malik	16-16	508-31.8	67-175	.383	18-53	.340	39-49	.796	31	47	78-4.9	42-0	23	40	9	23	191-11.9
23	ELLINGTON, Bruce	16-14	511-31.9	72-209	.344	26-85	.306	18-24	.750	14	28	42-2.6	34-0	58	40	1	14	188-11.8
24	HARRIS, Damontre	16-15	443-27.7	49-79	.620	0-0	.000	27-33	.818	48	50	98-6.1	50-2	7	25	40	18	125-7.8
13	GILL, Anthony	16-11	440-27.5	43-108	.398	5-18	.278	25-42	.595	35	40	75-4.7	42-1	14	23	5	11	116-7.3
1	WILLIAMS, Brenton	15-0	230-15.3	32-83	.386	20-50	.400	11-14	.786	4	12	16-1.1	20-1	7	10	2	7	95-6.3
32	LEONARD, Damien	16-12	346-21.6	36-117	.308	25-85	.294	4-7	.571	5	15	20-1.3	22-0	7	14	1	7	101-6.3
33	SLAWSON, RJ	16-5	256-16.0	19-46	.413	3-17	.176	9-14	.643	23	27	50-3.1	40-0	7	16	5	10	50-3.1
2	RICHARDSON, Brian	10-2	92-9.2	8-27	.296	5-17	.294	5-8	.625	2	3	5-0.5	12-0	1	3	0	1	26-2.6
5	SMITH, Eric	13-2	103-7.9	6-26	.231	2-9	.222	6-6	1.000	0	9	9-0.7	4-0	8	8	0	3	20-1.5
30	JACKSON, Lakeem	16-2	198-12.4	10-33	.303	0-0	.000	4-10	.400	10	19	29-1.8	12-0	13	11	0	10	24-1.5
45	GEATHERS, Carlton	13-1	98-7.5	2-7	.286	0-0	.000	5-8	.625	6	7	13-1.0	8-0	0	3	7	5	9-0.7
Team										23	21	44						
Total		16	3225	344-910	.378	104-334	.311	153-215	.712	201	278	479-29.9	286-4	145	195	70	109	945-59.1
Opponents		16	3225	375-801	.468	106-273	.388	249-335	.743	184	373	557-34.8	228	238	222	87	96	1105-69.1

SCORE BY PERIODS (ALL GAMES)

Team	First Half	Second Half	OT	Total
South Carolina	851	1045	7	1903
Opponents	956	1050	9	2015

ATTENDANCE

Home: 159,627 (18 dates - 8,868 avg.)
Away: 119,064 (10 dates - 11,170 avg.)
Neutral: 18,068 (3 dates - 6,022 avg.)
Overall: 296,759 (31 dates - 9,572 avg.)

GAMECOCKS RECORD WHEN ...

At home	9-9
On the road	1-9
At neutral sites	0-3
In overtime	0-0
vs. Top 25 team	0-6
vs. Top 10 team	0-4
vs. Top 3 team	0-4
Leading at half	7-3
Trailing at half	3-17
Tied at half	0-1
Shooting 50% or better	3-1
Shooting between 39-49%	4-12
Shooting less than 39%	3-8
Opp. shooting 50% or better	0-9
Opp. shooting between 39-49%	4-10
Opp. shooting less than 39%	6-2
Shooting better than opp.	7-2
Shooting worse then/equal to opp.	3-19
Starters out-score opp. starters	5-2
Opp. starters score/equal more	5-19
Bench out-scores opp. bench	7-11
Opp. bench scores/equals more	3-10
Having more FTs than opp.	6-2
Having equal/less FTs than opp.	4-19
Have more TOs than opp.	2-10
Having equal/less TOs than opp.	8-11
Having more rebounds than opp.	5-7
Having equal/less rebounds than opp.	5-14
Making 6 or more 3FGs	4-17
Having 15 or more assists	1-1
Having less than 15 assists	9-20
Score more points in paint than opp.	8-5
Scoring equal/less points in paint than opp.	2-17
Scoring more points off TOs than opp.	7-8
Scoring equal/less points off TOs than opp.	3-14
Scoring more 2nd-chance points than opp.	5-11
Scoring equal/less 2nd-chance points than opp.	5-10
Scoring more fast break points than opp.	3-7
Scoring equal/less fast break points than opp.	7-14
Wearing white uniforms	9-7
Wearing Garnet uniforms	0-6
Wearing Black uniforms	1-5
Wearing Gray Uniforms	0-3
Playing on live TV	9-21
Playing in November	2-4
Playing in December	4-2
Playing in January	2-5
Playing in February	1-8
Playing in March	0-2
Playing a day-game	2-8
Playing a night-game	8-13
Playing on Sunday	1-1
Playing on a Monday	0-0
Playing on a Tuesday	3-2
Playing on a Wednesday	4-3
Playing on a Thursday	0-3
Playing on a Friday	1-1
Playing on a Saturday	1-11
Scoring margin is 5 points or less	4-5
Margin is between 6-10	1-7
Margin is between 11-20	2-7
Margin is more than 20	2-2
Scoring 59 points or less	4-9
Scoring 60-69 points	3-12
Scoring 70-79 points	3-0
Scoring 80-89 points	0-0
Scoring 90-99 points	0-0
Scoring 100+ points	0-0

MISCELLANEOUS

Current streak	L6
Home court streak	L3
Away streak	L8
Neutral court streak	L3

2011-12 SUPERLATIVES

(tied for team lead also included)

Scoring Leaders	'11-12	Career
Anthony Gill	5	5
Malik Cooke	12	18*
Eric Smith	1	1
Damontre Harris	4	4
Bruce Ellington	10	20
Damien Leonard	3	3
Brenton Williams	1	1

Rebounding Leaders	'11-12	Career
Lakeem Jackson	1	16
Damontre Harris	13	14
Anthony Gill	6	6
RJ Slawson	6	7
Malik Cooke	7	17*
Bruce Ellington	1	1

Assists Leaders	'11-12	Career
Lakeem Jackson	6	23
Eric Smith	2	6
Damien Leonard	1	1
Anthony Gill	2	2
Malik Cooke	7	7*
Bruce Ellington	16	34
RJ Slawson	1	1
Damontre Harris	1	1

Blocks Leaders	'11-12	Career
Damontre Harris	19	24
Anthony Gill	5	5
Malik Cooke	5	9*
Carlton Geathers	6	6
RJ Slawson	4	5
Bruce Ellington	1	1
Lakeem Jackson	1	3

Steals Leaders	'11-12	Career
Brenton Williams	3	3
Damontre Harris	7	11
Lakeem Jackson	5	17
Damien Leonard	3	3
Malik Cooke	15	28*
Anthony Gill	4	4
Brian Richardson	1	7
RJ Slawson	4	5
Bruce Ellington	5	14

Double-Figure Scoring	'11-12	Career
Anthony Gill	10	10
Malik Cooke	22	36*
Brenton Williams	6	6
Lakeem Jackson	1	18
Eric Smith	2	2
Damien Leonard	8	8
RJ Slawson	2	3
Damontre Harris	9	10
Bruce Ellington	11	28

20+ points	'11-12	Career
Malik Cooke	3	4*
Bruce Ellington	1	8

30+ points	'11-12	Career
-	-	-

Double-Figure Rebounding	'11-12	Career
Lakeem Jackson	1	6
Damontre Harris	3	4
RJ Slawson	1	1
Malik Cooke	2	6*

5+ assists	'11-12	Career
Lakeem Jackson	1	6
Bruce Ellington	3	9

3+ steals	'11-12	Career
Brenton Williams	3	3
Lakeem Jackson	2	7
Malik Cooke	6	11*
RJ Slawson	1	1
Anthony Gill	1	1
Damontre Harris	1	1

2+ blocks	'11-12	Career
Damontre Harris	17	24
Malik Cooke	8	8*
Carlton Geathers	3	3
RJ Slawson	3	3
Anthony Gill	2	2
Lakeem Jackson	1	4

Double-Doubles	'11-12	Career
RJ Slawson	1	1
Malik Cooke	2	3*
Damontre Harris	2	2

Clutch Free Throws (under 5 min/OT)	'11-12	Career
Anthony Gill	19-25	.760
RJ Slawson	2-4	.500
Malik Cooke	29-38	.763
Damien Leonard	4-4	1.000
Damontre Harris	5-6	.833
Eric Smith	2-2	1.000
Brian Richardson	1-2	.500
Brenton Williams	3-4	1.000
Bruce Ellington	11-14	.786
Shane Phillips	1-2	.500
Carlton Geathers	2-2	1.000
Totals	79-103	.767

* indicates at South Carolina

Miscellaneous

Largest Halftime Lead	
SC	22, SC State
Opp	27, Kentucky (Feb. 4)
Smallest Halftime Lead	
SC	1, vs. Florida (Jan. 14)
Opp	2, Alabama, UGA (Feb. 15), Tenn. (Feb. 25)
Fewest Points In First Half	
SC	12, vs. Vanderbilt (Jan. 10)
Opp	16, SE Louisiana
Most Points In First Half	
SC	45, SC State
Opp	52, Kentucky (Feb. 4)
Most Points In Second Half	
SC	47, vs. Presbyterian
Opp	45, Ohio State, Kentucky (Feb. 4), Vandy
Fewest Points In Second Half	
SC	24, at Auburn
Opp	24, Elon, vs. Florida (Jan. 14)
Most Points in Overtime	
SC	7, vs. Mississippi State
Opp	9, Mississippi State
Largest Margin of Victory	
SC	28, vs. SC State
Opp	34, Kentucky (Feb. 4)
Smallest Margin of Victory	
SC	1, Georgia (Feb. 15)
Opp	1, Tennessee State

2011-12 GAME BY GAME COMPARISON

	Date	Result	FG-A	Pct	3FG-A	Pct	FT-A	Pct	O-D-Total	PF	Pts	A	TO	Blk	Stl	Min	Half
Western Carolina			17-47	.362	6-18	.333	10-16	.625	13-16-29	17	50	10	19	4	8	200	25
South Carolina	Nov. 11	W, 75-50	30-59	.508	5-12	.417	10-17	.588	18-19-37	14	75	14	12	5	11	200	35
Elon			16-40	.400	6-16	.375	20-28	.714	8-30-38	18	58	9	14	3	1	200	34
South Carolina	Nov. 15	L, 58-53	20-64	.313	3-27	.111	10-17	.588	18-22-40	24	53	6	7	2	9	200	23
Tennessee State !			21-47	.447	10-22	.455	12-21	.571	6-22-28	23	64	15	13	1	9	200	33
South Carolina	Nov. 20	L, 64-63	22-55	.400	7-26	.269	12-20	.600	12-21-33	21	63	13	16	7	5	200	19
Miss Valley State !			20-49	.408	7-17	.412	10-16	.625	7-23-30	24	57	12	14	5	8	200	26
South Carolina	Nov. 22	W, 61-57	19-48	.396	6-18	.333	17-25	.680	12-24-36	17	61	9	13	7	7	200	30
vs. North Carolina &			31-67	.463	8-16	.500	17-30	.567	15-20-35	15	87	22	10	3	11	200	45
South Carolina	Nov. 25	L, 87-62	23-55	.418	9-23	.391	7-12	.583	14-29-43	25	62	12	25	7	5	200	30
vs. Southern California &			24-48	.500	7-11	.636	8-12	.667	14-14-28	13	63	7	10	1	6	200	30
South Carolina	Nov. 26	L, 63-60	22-42	.524	8-17	.471	8-8	1.000	6-12-18	16	60	10	13	4	4	200	26
Providence ^			24-50	.480	6-11	.545	22-27	.815	7-27-34	10	76	16	15	10	4	200	34
South Carolina	Dec. 1	L, 76-67	26-72	.361	6-30	.200	9-10	.900	20-20-40	19	67	9	13	7	9	200	27
@ Clemson			19-50	.380	5-18	.278	12-16	.750	11-22-33	15	55	13	11	1	3	200	35
South Carolina	Dec. 4	W, 58-55	21-50	.420	5-15	.333	11-17	.647	10-23-33	16	58	8	8	5	6	200	28
Presbyterian			21-45	.467	7-18	.389	9-13	.692	7-17-24	13	58	13	18	2	3	200	25
South Carolina	Dec. 13	W, 66-58	26-56	.464	5-11	.455	9-11	.818	12-21-33	15	66	14	13	7	7	200	19
Ohio State			27-54	.500	5-16	.313	15-20	.750	15-19-34	19	74	16	12	3	7	200	29
South Carolina	Dec. 17	L, 74-66	23-48	.479	6-15	.400	14-18	.778	7-12-19	18	66	9	15	4	3	200	33
SE Louisiana			15-43	.349	6-22	.273	7-13	.538	15-20-35	17	43	9	26	5	3	200	16
South Carolina	Dec. 21	W, 62-43	20-55	.364	6-18	.333	16-24	.667	17-17-34	18	62	9	10	4	11	200	25
Wofford			18-50	.360	5-19	.263	4-10	.400	14-20-34	13	45	10	15	1	4	200	21
South Carolina	Dec. 28	W, 57-45	20-45	.444	11-20	.550	6-10	.600	6-20-26	9	57	14	13	7	6	200	29
USC Upstate			25-63	.397	8-20	.400	8-15	.533	16-15-31	24	66	12	8	2	10	200	31
South Carolina	Dec. 31	W, 72-66	23-45	.511	4-11	.364	22-32	.688	11-26-37	18	72	9	14	6	4	200	40
SC State			18-52	.346	3-15	.200	12-23	.522	15-19-34	13	51	11	17	5	5	200	23
South Carolina	Jan. 3	W, 79-51	28-56	.500	11-23	.478	12-16	.750	10-26-36	20	79	17	13	6	11	200	45
@ Kentucky*			29-49	.592	5-11	.455	16-22	.727	7-23-30	11	79	13	15	8	4	200	34
South Carolina	Jan. 7	L, 79-64	25-64	.391	6-22	.273	8-10	.800	16-16-32	18	64	10	12	3	8	200	18
Vanderbilt*			23-40	.575	13-22	.591	8-8	1.000	7-20-27	15	67	19	18	2	4	200	22
South Carolina	Jan. 10	L, 67-57	22-53	.415	4-13	.308	9-11	.818	12-9-21	11	57	4	9	2	9	200	12
Florida*			25-47	.532	12-24	.500	17-21	.810	7-18-25	17	79	19	10	3	4	200	40
South Carolina	Jan. 14	L, 79-65	23-55	.418	9-24	.375	10-14	.714	14-16-30	22	65	7	12	1	4	200	41
@ Auburn*			22-50	.440	7-18	.389	12-18	.667	12-16-28	13	63	14	14	6	7	200	24
South Carolina	Jan. 21	L, 63-52	20-49	.408	6-18	.333	6-8	.750	12-17-29	15	52	8	23	7	10	200	28
Alabama*			21-49	.429	4-18	.222	8-12	.667	11-28-39	14	54	11	15	6	4	200	29
South Carolina	Jan. 25	W, 56-54	22-68	.324	5-31	.161	7-9	.778	19-18-37	10	56	8	9	4	6	200	27
@ Ole Miss*			24-49	.490	5-13	.385	13-24	.542	14-24-38	12	66	15	18	6	11	200	31
South Carolina	Jan. 28	L, 66-62	24-60	.400	8-21	.381	6-7	.857	12-16-28	17	62	15	13	2	12	200	28
@ Florida*			22-59	.373	7-28	.250	23-32	.719	20-22-42	11	74	12	13	3	6	200	37
South Carolina	Feb. 2	L, 74-66	25-56	.446	6-21	.286	10-14	.714	10-20-30	28	66	8	15	7	4	200	28
Kentucky*			32-62	.516	6-14	.429	16-21	.762	15-26-41	13	86	17	3	10	6	200	52
South Carolina	Feb. 4	L, 86-52	18-59	.305	9-20	.450	7-15	.467	13-17-30	16	52	10	8	9	0	200	25
@ Tennessee*			19-38	.500	10-20	.500	21-26	.808	9-25-34	18	69	14	14	4	4	200	35
South Carolina	Feb. 8	L, 69-57	19-56	.339	7-16	.438	12-19	.632	16-14-30	21	57	12	7	2	4	200	27
@ Arkansas*			30-59	.508	5-13	.385	11-14	.786	10-22-32	18	76	16	17	5	13	200	38
South Carolina	Feb. 11	L, 76-65	23-55	.418	5-25	.200	14-21	.667	13-17-30	18	65	7	21	5	9	200	27
Georgia*			20-57	.351	6-17	.353	10-14	.714	15-22-37	16	56	14	13	2	5	200	26
South Carolina	Feb. 15	W, 57-56	19-49	.388	5-20	.250	14-15	.933	8-21-29	14	57	10	14	8	8	200	28
LSU*			24-49	.490	5-10	.500	15-21	.714	12-24-36	17	68	17	17	3	4	200	25
South Carolina	Feb. 18	L, 68-58	20-47	.426	4-17	.235	14-21	.667	5-18-23	17	58	13	10	4	6	200	22
@ Vanderbilt*			15-39	.385	4-16	.250	25-28	.893	8-26-34	9	59	12	12	9	4	200	22
South Carolina	Feb. 22	L, 59-48	18-55	.327	8-23	.348	4-4	1.000	11-16-27	20	48	9	11	4	5	200	22
Tennessee*			24-46	.522	7-14	.500	18-25	.720	10-28-38	20	73	15	21	6	6	200	34
South Carolina	Feb. 25	L, 73-64	22-68	.324	6-19	.316	14-19	.737	16-16-32	23	64	5	10	3	12	200	32
Mississippi State*			26-58	.448	4-17	.235	13-15	.867	15-23-38	11	69	17	14	5	8	225	33
South Carolina	Feb. 29	L, 69-67	26-66	.394	10-24	.417	5-10	.500	17-20-37	12	67	12	12	6	8	225	26
@ Georgia*			19-50	.380	6-18	.333	23-64	.676	12-26-38	13	67	12	8	7	7	200	30
South Carolina	March 3	L, 67-55	18-49	.367	6-20	.300	13-18	.722	7-27-34	24	55	7	10	6	4	200	23
vs. Alabama +			19-41	.463	1-6	.167	24-29	.828	7-22-29	12	63	7	15	2	7	200	37
South Carolina	March 8	L, 63-57	22-52	.423	8-24	.333	5-6	.833	8-17-25	25	57	11	17	3	5	200	26

! - Continental Tire Las Vegas Invitational (Columbia, S.C.) | & - Continental Tire Las Vegas Invitational (Las Vegas, Nev.) | ^ - BIG EAST/SEC Challenge (Columbia, S.C.) | * - Conference Game | + SEC Tournament (New Orleans, La.)

2011-12 RESULTS: OVERALL, 10-21; HOME, 9-9; AWAY, 1-9; NEUTRAL, 0-3; SEC, 2-14

DATE	OPPONENT	W/L	SCORE	RECORD (SEC)	POINTS	REBOUNDS	ASSISTS	STEALS	ATTENDANCE
Nov. 11	Western Carolina	W	75-50	1-0	Gill (14)	Jackson (10)	Jackson (10)	Williams (5)	9,330 (paid)
Nov. 15	at Elon	L	58-53	1-1	Gill/Cooke (9)	Harris (10)	Leonard/Smith (2)	Harris/Jackson/Leonard (2)	1,589
Nov. 20	Tennessee State !	L	64-63	1-2	Smith (18)	Harris (7)	Gill/Jackson (3)	Cooke/Leonard (2)	9,045 (paid)
Nov. 22	Miss Valley State !	W	61-57	2-2	Cooke (18)	Gill (8)	Cooke (3)	Cooke (3)	6,723 (paid)
Nov. 25	vs. #1 North Carolina &	L	87-62	2-3	Leonard (15)	Slawson (14)	Cooke (4)	Cooke (2)	5,567
Nov. 26	vs. Southern California &	L	63-60	2-4	Harris (15)	Harris (6)	Jackson (4)	Gill (2)	1,798
Dec. 1	Providence ^	L	76-67	2-5	Cooke (21)	Slawson (8)	Cooke (3)	Cooke (4)	7,476 (paid)
Dec. 4	at Clemson	W	58-55	3-5	Gill/Harris (10)	Cooke (8)	Smith (3)	Cooke (4)	7,238
Dec. 13	Presbyterian	W	66-58	4-5	Ellington (15)	Gill (8)	Jackson/Ellington (3)	3 with 2	7,003 (paid)
Dec. 17	#2 Ohio State	L	74-66	4-6	Cooke (21)	Cooke/Gill (4)	Cooke (3)	Cooke (2)	13,654 (paid)
Dec. 21	SE Louisiana	W	62-43	5-6	Cooke/Gill (14)	Harris (7)	Cooke (3)	Cooke (4)	7,972 (paid)
Dec. 28	Wofford	W	57-45	6-6	Ellington (17)	Gill (8)	Jackson (4)	Cooke/Harris (2)	8,152 (paid)
Dec. 31	USC Upstate	W	72-66	7-6	Cooke (24)	Cooke (10)	Cooke (3)	Harris (2)	6,876 (paid)
Jan. 3	SC State	W	79-51	8-6	Cooke/Harris (11)	Slawson (9)	Jackson/Slawson (3)	Slawson (3)	6,557 (paid)
Jan. 7	at #2 Kentucky *	L	79-64	8-7 (0-1)	Leonard (15)	Gill (7)	Ellington (4)	Gill (3)	24,219
Jan. 10	Vanderbilt *	L	67-57	8-8 (0-2)	Ellington (20)	Harris (10)	Ellington (3)	Cooke (3)	8,353 (paid)
Jan. 14	#19 Florida *	L	79-65	8-9 (0-3)	Ellington (17)	Cooke (7)	Ellington (3)	Cooke (2)	11,308 (paid)
Jan. 21	at Auburn *	L	63-52	8-10 (0-4)	Gill/Ellington (9)	Harris (7)	Ellington (4)	Harris/Ellington/Jackson (2)	8,329
Jan. 25	Alabama *	W	56-54	9-10 (1-4)	Cooke (18)	Slawson/Gill (9)	Gill (3)	Cooke (2)	7,807 (paid)
Jan. 28	at Ole Miss *	L	66-62	9-11 (1-5)	Cooke (17)	Cooke (7)	Ellington (5)	Cooke/Williams (3)	7,396
Feb. 2	at # 12/11 Florida *	L	74-66	9-12 (1-6)	Ellington (15)	Harris (9)	Ellington (3)	Harris (3)	10,003
Feb. 4	vs. #1 Kentucky *	L	86-52	9-13 (1-7)	Leonard (19)	Harris (6)	Ellington (3)	-	16,527 (paid)
Feb. 8	at Tennessee *	L	69-57	9-14 (1-8)	Ellington (12)	Harris/Slawson (5)	Ellington (6)	Ellington (2)	14,784
Feb. 11	at Arkansas *	L	76-65	9-15 (1-9)	Harris (12)	Cooke (8)	Ellington (3)	Jackson (3)	16,100
Feb. 15	Georgia *	W	57-56	10-15 (2-9)	Cooke (13)	Harris (8)	Ellington (4)	Cooke/Slawson/Ellington (2)	7,569 (paid)
Feb. 18	LSU *	L	68-58	10-16 (2-10)	Cooke (17)	Ellington (7)	Harris (3)	6 with 1	10,092 (paid)
Feb. 22	at Vanderbilt *	L	59-48	10-17 (2-11)	Ellington (15)	Harris (6)	Ellington (4)	Cooke (2)	13,705
Feb. 25	Tennessee *	L	73-64	10-18 (2-12)	Ellington (19)	Cooke (10)	Ellington (4)	Williams (3)	7,959 (paid)
Feb. 29	Mississippi State *	L	69-67	10-19 (2-13)	Ellington (17)	Harris (11)	Cooke/Ellington (4)	Gill/Harris (2)	7,224 (paid)
March 3	at Georgia *	L	67-55	10-20 (2-14)	Cooke (17)	Harris (9)	Ellington (4)	Ellington (2)	8,336
March 8	vs. Alabama +	L	63-57	10-21	Leonard/Williams (13)	Slawson (9)	Ellington (6)	Slawson (2)	10,703

! - Continental Tire Las Vegas Invitational (Columbia, S.C.)
 & - Continental Tire Las Vegas Invitational (Las Vegas, Nev.)
 ^ - BIG EAST/SEC Challenge (Columbia, S.C.)
 * - Conference Game
 + - SEC Tournament (New Orleans Arena, New Orleans, La.)

2011-12 STARTING LINEUP WIN-LOSS

Guard	Guard	Forward	Forward	Forward	2011-12	Games
Jackson	Leonard	Gill	Harris	Cooke	1-2	3
Smith	Leonard	Gill	Harris	Cooke	1-3	4
Smith	Jackson	Gill	Harris	Cooke	6-3	9
Ellington	Richardson	Gill	Harris	Cooke	0-2	2
Ellington	Leonard	Gill	Harris	Cooke	1-7	8
Ellington	Leonard	Slawson	Harris	Cooke	1-3	4
Ellington	Leonard	Slawson	Geathers	Cooke	0-1	1

SOUTH CAROLINA BENCH PRODUCTION

GAME	SC-OPP	DIFF.	SC HIGH BENCH SCORER
Western Car.	38-16	+22	Williams (13)
@Elon	15-16	-1	Smith (6)
Tenn. State	29-22	7	Smith (18)
Miss. Val. St.	7-11	-4	Slawson (4)
vs. UNC	19-30	-11	Slawson (14)
vs. SoCal	25-4	+21	Richardson (12)
Providence	23-10	+13	Slawson (8)
@Clemson	20-16	+4	Richardson/Ellington (9)
Presbyterian	27-9	+18	Ellington (15)
Ohio State	19-11	+8	Ellington (8)
SE Louisiana	18-23	-5	Leonard (8)
Wofford	40-2	+38	Ellington (17)
USC Upstate	30-16	+14	Williams (11)
SC State	37-10	+27	Ellington/Leonard/Slawson (9)
@Kentucky	28-11	+17	Leonard (15)
Vandy	26-19	+7.0	Ellington (20)
Florida	14-14	-	Williams (9)
@Auburn	20-20	-	Williams/Leonard (6)
Alabama	6-20	-14	Slawson (4)
@Ole Miss	17-15	+2	Williams (15)
@Florida	16-11	+5	Williams (8)
Kentucky	10-19	-9	Williams (3)
@Tennessee	14-15	-1	Williams (11)
@Arkansas	23-51	-28	Williams (8)
Georgia	19-14	+5	Williams (10)
LSU	20-10	+10	Gill (9)
@Vandy	13-2	+11	Harris (6)
Tennessee	17-18	-1	Williams (11)
Miss. State	8-8	-	Williams (3)
@Georgia	10-30	-20	Richardson (6)
vs. Alabama	19-21	-2	Williams (13)

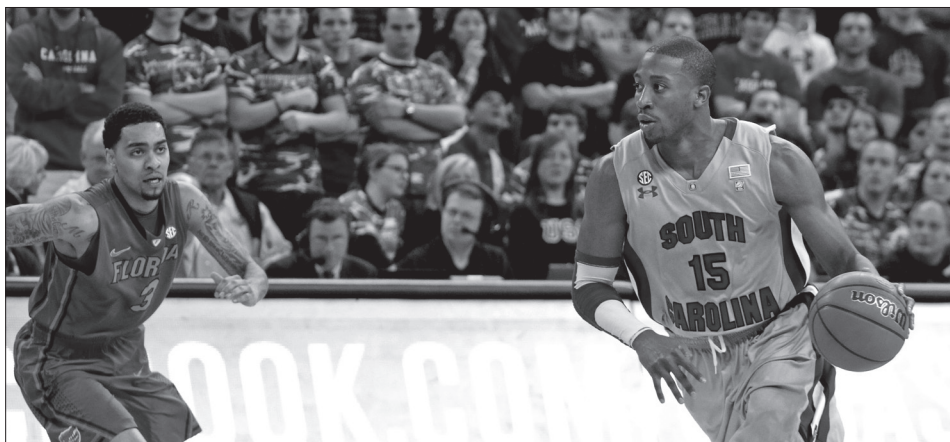
2011-12 GAME-BY-GAME STARTING LINEUPS

OPPONENT	GUARD	GUARD	FORWARD	FORWARD	FORWARD
Western Car.	Jackson	Leonard	Gill	Cooke	Harris
@Elon	Jackson	Leonard	Gill	Cooke	Harris
Tenn. State	Jackson	Leonard	Gill	Cooke	Harris
Miss. Valley State	Smith	Leonard	Gill	Cooke	Harris
vs. UNC	Smith	Leonard	Gill	Cooke	Harris
vs. So. California	Smith	Leonard	Gill	Cooke	Harris
Providence	Smith	Leonard	Gill	Cooke	Harris
@Clemson	Smith	Jackson	Gill	Cooke	Harris
Presbyterian	Smith	Jackson	Gill	Cooke	Harris
Ohio State	Smith	Jackson	Gill	Cooke	Harris
SE Louisiana	Smith	Jackson	Gill	Cooke	Harris
Wofford	Smith	Jackson	Gill	Cooke	Harris
USC Upstate	Smith	Jackson	Gill	Cooke	Harris
SC State	Smith	Jackson	Gill	Cooke	Harris
@Kentucky	Smith	Jackson	Gill	Cooke	Harris
Vanderbilt	Smith	Jackson	Gill	Cooke	Harris
Florida	Ellington	Richardson	Gill	Cooke	Harris
@Auburn	Ellington	Richardson	Gill	Cooke	Harris
Alabama	Ellington	Leonard	Gill	Cooke	Harris
@Ole Miss	Ellington	Leonard	Gill	Cooke	Harris
@Florida	Ellington	Leonard	Gill	Cooke	Harris
Kentucky	Ellington	Leonard	Gill	Cooke	Harris
@Tennessee	Ellington	Leonard	Slawson	Cooke	Harris
@Arkansas	Ellington	Leonard	Slawson	Cooke	Harris
Georgia	Ellington	Leonard	Slawson	Cooke	Harris
LSU	Ellington	Leonard	Slawson	Cooke	Harris
@Vanderbilt	Ellington	Leonard	Slawson	Cooke	Geathers
Tennessee	Ellington	Leonard	Gill	Cooke	Harris
Miss. State	Ellington	Leonard	Gill	Cooke	Harris
@Georgia	Ellington	Leonard	Gill	Cooke	Harris
vs. Alabama	Ellington	Leonard	Gill	Cooke	Harris

SPECIALTY STATS

(PP) points in paint; (OT) points off turnovers; (2nd) second chance points; (FB) fast break points; (South Carolina-Opponent)

GAME	PP	OT	2ND	FB
Western Car.	46-18	22-15	20-9	19-10
@Elon	26-10	8-2	10-7	6-0
Tenn. State	24-14	15-14	9-11	11-6
Miss. Val. St.	22-18	17-15	14-3	13-8
vs. UNC	20-44	8-28	16-16	0-16
vs. SoCal	24-26	12-18	9-17	2-4
Providence	36-34	14-19	21-11	4-16
@Clemson	26-22	13-9	9-8	0-4
Presbyterian	34-26	20-10	12-10	19-4
Ohio State	28-38	16-15	11-19	4-8
SE Louisiana	22-16	30-6	15-10	3-3
Wofford	18-18	11-18	8-8	2-6
USC Upstate	32-28	10-19	16-17	6-8
SC State	32-16	19-7	6-12	6-6
@Kentucky	26-48	16-10	15-4	0-12
Vandy	24-14	14-9	14-12	2-8
Florida	24-26	11-22	16-14	12-13
@Auburn	20-24	19-28	14-13	2-10
Alabama	32-34	10-8	13-13	6-8
@Ole Miss	28-30	19-16	14-12	12-10
@Florida	30-30	17-21	14-17	2-2
Kentucky	14-42	1-8	8-19	10-9
@Tennessee	8-12	18-12	11-13	5-2
@Arkansas	30-46	23-25	17-12	6-11
Georgia	22-20	10-12	8-9	5-10
LSU	26-24	17-7	6-6	6-9
@Vandy	14-22	7-14	8-4	0-6
Tennessee	26-34	23-19	16-7	12-14
Miss. State	28-36	8-19	20-11	12-6
@Georgia	22-22	8-13	6-7	4-11
vs. Alabama	20-32	12-15	5-8	6-4
SC Total	784	448	381	197
SC Average	25.3	14.5	12.3	6.4
Opp Total	804	453	339	244
Opp Average	25.9	14.6	10.9	7.9



SENIOR FORWARD MALIK COOKE POSTED A TEAM HIGH 12.3 POINTS PER GAME DURING THE 2011-12 CAMPAIGN



SOPHOMORE GUARD ERIC SMITH STARTED 13 GAMES DURING THE 2011-12 CAMPAIGN

SOUTH CAROLINA - TEAM GAME HIGHS

POINTS	79 SC STATE (1/3/12)
	75 WESTERN CAROLINA
FIELD GOALS MADE	30 WESTERN CAROLINA (11/11/11)
	28 SC STATE (1/3/12)
FIELD GOAL ATTEMPTS	72 PROVIDENCE COLLEGE (12/1/11)
	69 TENNESSEE (2/25/12)
FIELD GOAL PERCENTAGE	.524 (22-42) vs Southern Cal (11/26/11)
	.511 (23-45) USC UPSTATE (12/31/11)
3 PT FIELD GOALS MADE	11 SC STATE (1/3/12), 11 WOFFORD (12/28/11)
3 PT FG ATTEMPTS	31 ALABAMA (1/25/12)
	30 PROVIDENCE COLLEGE (12/1/11)
3 PT FG PERCENTAGE	.550 (11-20) WOFFORD (12/28/11)
	.478 (11-23) SC STATE (1/3/12)
FREE THROWS MADE	22 USC UPSTATE (12/31/11)
	17 MISS. VALLEY STATE (11/22/11)
FREE THROW ATTEMPTS	32 USC UPSTATE (12/31/11)
	25 MISS. VALLEY STATE (11/22/11)
FREE THROW PERCENTAGE	1.000 (8-8) vs Southern Cal (11/26/11)
	1.000 (4-4) at Vanderbilt (2/22/12)
REBOUNDS	43 vs NC (11/25/11)
	40 PROVIDENCE COLLEGE (12/1/11), 40 at Elon (11/15/11)
ASSISTS	17 SC STATE (1/3/12)
	15 at Ole Miss (01/28/12)
STEALS	12 TENNESSEE (2/25/12), 12 at Ole Miss (01/28/12)
BLOCKED SHOTS	9 KENTUCKY (2/4/12)
	8 GEORGIA (2/15/12)
TURNOVERS	25 vs NC (11/25/11)
	23 at Auburn (01/21/12)
FOULS	28 at Florida (2/2/12)
	25 vs Alabama (03/08/12), 25 vs NC (11/25/11)

SOUTH CAROLINA - TEAM GAME LOWS

POINTS	48 at Vanderbilt (2/22/12)
	52 at Auburn (01/21/12), 52 KENTUCKY (2/4/12)
FIELD GOALS MADE	18 KENTUCKY (2/4/12), at Vanderbilt (2/22/12), at Georgia (03/03/12)
FIELD GOAL ATTEMPTS	42 vs Southern Cal (11/26/11)
	45 WOFFORD (12/28/11), 45 USC UPSTATE (12/31/11)
FIELD GOAL PERCENTAGE	.305 (18-59) KENTUCKY (2/4/12)
	.313 (20-64) at Elon (11/15/11)
3 PT FIELD GOALS MADE	3 at Elon (11/15/11)
3 PT FG ATTEMPTS	11 PRESBYTERIAN (12/13/11), 11 USC UPSTATE (12/31/11)
3 PT FG PERCENTAGE	.111 (3-27) at Elon (11/15/11)
	.161 (5-31) ALABAMA (1/25/12)
FREE THROWS MADE	4 at Vanderbilt (2/22/12)
	5 MISSISSIPPI STATE (2/29/12), 5 vs Alabama (03/08/12)
FREE THROW ATTEMPTS	4 at Vanderbilt (2/22/12)
	6 vs Alabama (03/08/12)
FREE THROW PERCENTAGE	.467 (7-15) KENTUCKY (2/4/12)
	.500 (5-10) MISSISSIPPI STATE (2/29/12)
REBOUNDS	18 vs Southern Cal (11/26/11)
	20 OHIO STATE (12/17/11)
ASSISTS	4 VANDERBILT (1/10/12)
	5 TENNESSEE (2/25/12)
STEALS	0 KENTUCKY (2/4/12)
	3 OHIO STATE (12/17/11)
BLOCKED SHOTS	1 FLORIDA (1/14/12)
	2 at Elon (11/15/11), VANDERBILT (1/10/12), at Ole Miss (01/28/12), at Tennessee (02/08/12)
TURNOVERS	7 at Elon (11/15/11)
	7 at Tennessee (02/08/12)
FOULS	9 WOFFORD (12/28/11)
	10 ALABAMA (1/25/12)

** games in all CAPS indicates home contest

OPPONENT - TEAM GAME HIGHS

POINTS	87 vs NC (11/25/11)
	86 KENTUCKY (2/4/12)
FIELD GOALS MADE	32 KENTUCKY (2/4/12)
	31 vs NC (11/25/11)
FIELD GOAL ATTEMPTS	67 vs NC (11/25/11)
	63 USC UPSTATE (12/31/11)
FIELD GOAL PERCENTAGE	.592 (29-49) at Kentucky (01/07/12)
	.575 (23-40) VANDERBILT (1/10/12)
3 PT FIELD GOALS MADE	13 VANDERBILT (1/10/12)
	12 FLORIDA (1/14/12)
3 PT FG ATTEMPTS	28 at Florida (2/2/12)
	24 FLORIDA (1/14/12)
3 PT FG PERCENTAGE	.636 (7-11) vs Southern Cal (11/26/11)
	.591 (13-22) VANDERBILT (1/10/12)
FREE THROWS MADE	25 at Vanderbilt (2/22/12)
	24 vs Alabama (03/08/12)
FREE THROW ATTEMPTS	34 at Georgia (03/03/12)
	32 at Florida (2/2/12)
FREE THROW PERCENTAGE	1.000 (8-8) VANDERBILT (1/10/12)
	.893 (25-28) at Vanderbilt (2/22/12)
REBOUNDS	42 at Florida (2/2/12)
	41 KENTUCKY (2/4/12)
ASSISTS	22 vs NC (11/25/11)
	19 FLORIDA (1/14/12), 19 VANDERBILT (1/10/12)
STEALS	13 at Arkansas (02-11-12)
	11 at Ole Miss (01/28/12), 11 vs NC (11/25/11)
BLOCKED SHOTS	11 KENTUCKY (2/4/12)
	10 PROVIDENCE COLLEGE (12/1/11)
TURNOVERS	26 SE LOUISIANA (12/21/11)
	21 TENNESSEE (2/25/12)
FOULS	24 USC UPSTATE (12/31/11), 24 MISS. VALLEY STATE (11/22/11)

OPPONENT - TEAM GAME LOWS

POINTS	43 SE LOUISIANA (12/21/11)
	45 WOFFORD (12/28/11)
FIELD GOALS MADE	15 SE LOUISIANA (12/21/11), at Vanderbilt (2/22/12)
FIELD GOAL ATTEMPTS	38 at Tennessee (02/08/12)
	39 at Vanderbilt (2/22/12)
FIELD GOAL PERCENTAGE	.346 (18-52) SC STATE (1/3/12)
	.349 (15-43) SE LOUISIANA (12/21/11)
3 PT FIELD GOALS MADE	1 vs Alabama (03/08/12)
	3 SC STATE (1/3/12)
3 PT FG ATTEMPTS	6 vs Alabama (03/08/12)
	10 LSU (2/18/12)
3 PT FG PERCENTAGE	.167 (1-6) vs Alabama (03/08/12)
	.200 (3-15) SC STATE (1/3/12)
FREE THROWS MADE	4 WOFFORD (12/28/11)
	7 SE LOUISIANA (12/21/11)
FREE THROW ATTEMPTS	8 VANDERBILT (1/10/12)
	10 WOFFORD (12/28/11)
FREE THROW PERCENTAGE	.400 (4-10) WOFFORD (12/28/11)
	.522 (12-23) SC STATE (1/3/12)
REBOUNDS	24 PRESBYTERIAN (12/13/11)
	25 FLORIDA (1/14/12)
ASSISTS	7 vs Southern Cal (11/26/11), 7 vs Alabama (03/08/12)
STEALS	1 at Elon (11/15/11)
	3 at Clemson (12/4/11), PRESBYTERIAN (12/13/11), SE LOUISIANA (12/21/11)
BLOCKED SHOTS	1 TENNESSEE STATE (11/20/11), vs. Southern Cal (11/26/11)
	at Clemson (12/4/11), WOFFORD (12/28/11)
TURNOVERS	3 KENTUCKY (2/4/12)
	8 USC UPSTATE (12/31/11), 8 at Georgia (03/03/12)
FOULS	9 at Vanderbilt (2/22/12)
	10 PROVIDENCE COLLEGE (12/1/11)

** games in all CAPS indicates home contest

SOUTH CAROLINA - INDIVIDUAL GAME HIGHS

Points

24 Cooke, Malik vs USC Upstate (12/31/11)
21 Cooke, Malik vs Ohio State (12/17/11), Cooke, Malik vs Providence (12/1/11)

Field Goals Made

8 Ellington, Bruce vs Vanderbilt (1/10/12)
8 Cooke, Malik vs USC Upstate (12/31/11), 8 Cooke, Malik vs Providence (12/1/11)

Field Goal Att.

20 Ellington, Bruce vs Tennessee (2/25/12)
17 Leonard, Damien at Elon (11/15/11)

FG Pct (min 5 made)

.875 (7-8) Harris, Damontre vs Mississippi State (2/29/12)
.857 (6-7) Gill, Anthony vs Western Carolina (11/11/11)

3-Point FG Made

5 Ellington, Bruce vs Wofford (12/28/11)
5 Leonard, Damien vs NC (11/25/11), 5 Smith, Eric vs Tennessee State (11/20/11)

3-Point FG Att.

11 Leonard, Damien vs NC (11/25/11), 11 Leonard, Damien at Elon (11/15/11)

3-Pt FG Pct (min 2 made)

1.000 (3-3) Williams, Brenton vs Alabama (03/08/12)
1.000 (3-3) Cooke, Malik at Ole Miss (01/28/12)
1.000 (3-3) Ellington, Bruce vs SC State (1/3/12)

Free Throws Made

10 Cooke, Malik vs Miss. Valley State (11/22/11)
9 Cooke, Malik vs Ohio State (12/17/11)

Free Throw Att.

12 Cooke, Malik vs Miss. Valley State (11/22/11)
11 Cooke, Malik vs USC Upstate (12/31/11)

FT Pct (min 3 made)

1.000 (8-8) Williams, Brenton vs USC Upstate (12/31/11)
1.000 (5-5) Gill, Anthony vs Georgia (2/15/12)
1.000 (5-5) Cooke, Malik vs Alabama (1/25/12)

Rebounds

14 Slawson, RJ vs NC (11/25/11)
11 Harris, Damontre vs Mississippi State (2/29/12)

Assists

6 Ellington, Bruce vs Alabama (03/08/12)
6 Ellington, Bruce at Tennessee (02/08/12)

Steals

5 Williams, Brenton vs Western Carolina (11/11/11)
4 Cooke, Malik vs SE Louisiana (12/21/11), 4 Cooke, Malik at Clemson (12/4/11)
4 Cooke, Malik vs Providence College (12/1/11)

Blocked Shots

6 Harris, Damontre at Florida (2/2/12), 6 Harris, Damontre at Auburn (01/21/12)

Turnovers

6 Cooke, Malik at Arkansas (02-11-12), 6 Cooke, Malik at Auburn (01/21/12)

Fouls

5 (9 times)

OPPONENT - INDIVIDUAL GAME HIGHS

Points

30 Thomas, Deshaun vs Ohio State (12/17/11)
28 Jones, Maurice vs Southern Cal (11/26/11)

Field Goals Made

13 Thomas, Deshaun vs Ohio State (12/17/11)
9 Davis, Anthony vs Kentucky (2/4/12), 9 Jones, Maurice vs Southern Cal (11/26/11)

Field Goal Att.

16 Thomas, Deshaun vs Ohio State (12/17/11)
15 (5 times)

FG Pct (min 5 made)

1.000 (6-6) Yeguete, Will vs Florida (1/14/12)
.900 (9-10) Davis, Anthony vs Kentucky (2/4/12)

3-Point FG Made

7 Jones, Maurice vs Southern Cal (11/26/11)
5 P.J. Hairston vs NC (11/25/11)

3-Point FG Att.

11 Sullivan, Frankie at Auburn (01/21/12)
10 Giltner, Kevin vs Wofford (12/28/11)

3-Pt FG Pct (min 2 made)

1.000 (7-7) Jones, Maurice vs Southern Cal (11/26/11)
1.000 (3-3) Lamb, Doron vs Kentucky (2/4/12)
1.000 (3-3) Henton, LaDontae vs Providence (12/1/11)

Free Throws Made

10 Coleman, Gerard vs Providence College (12/1/11)
8 Golden, Trae vs Tennessee (2/25/12), 8 Ezeli, Festus at Vanderbilt (2/22/12)
8 Hamilton, Justin vs LSU (2/18/12), 8 Young, BJ at Arkansas (02-11-12)
8 Boynton, Kenny at Florida (2/2/12)

Free Throw Att.

13 Holloway, Murphy at Ole Miss (01/28/12)
13 Coleman, Gerard vs Providence (12/1/11)

FT Pct (min 3 made)

1.000 (8-8) Ezeli, Festus at Vanderbilt (2/22/12)
1.000 (8-8) Hamilton, Justin vs LSU (2/18/12), 1.000 (8-8) Young, BJ at Arkansas (02-11-12)

Rebounds

14 Renardo Sidney vs Mississippi State (2/29/12)
12 Arnett Moultrie vs Mississippi State (2/29/12)

Assists

14 Kendall Marshall vs NC (11/25/11)
11 Dee Bost vs Mississippi State (2/29/12)

Steals

6 Kendall Marshall vs NC (11/25/11)
4 Nobles, Julysses at Arkansas (02-11-12), 4 Maxey, Jodd vs USC Upstate (12/31/11)

Blocked Shots

8 Davis, Anthony vs Kentucky (2/4/12)
7 Davis, Anthony at Kentucky (01/07/12), 7 Dixon, Bilal vs Providence College (12/1/11)

Turnovers

7 Henry, Terrance at Ole Miss (01/28/12)
6 Golden, Trae vs Tennessee (2/25/12), 6 Washington, Eric vs Presbyterian (12/13/11)

Fouls

5 (10 times)



2012 SOUTHEASTERN CONFERENCE STANDINGS, POSTSEASON AWARDS AND PLAY

TEAM	SEC	PCT.	HOME	AWAY	ALL	PCT.	HOME	AWAY	NEUTRAL	STREAK
Kentucky & %	16-0	1.000	8-0	8-0	38-2	.950	18-0	8-1	12-1	W6
Tennessee	10-6	.625	7-1	3-5	19-15	.559	15-4	3-8	1-3	L1
Vanderbilt [^]	10-6	.625	6-2	4-4	25-11	.694	13-5	6-5	6-1	L1
Florida	10-6	.625	6-2	4-4	26-11	.703	14-2	4-7	8-2	L1
Alabama	9-7	.563	6-2	3-5	21-12	.636	13-3	4-7	4-2	L2
Mississippi State	8-8	.500	6-2	2-6	21-12	.636	15-4	3-6	3-2	L2
Ole Miss	8-8	.500	6-2	2-6	20-14	.588	12-3	4-8	4-3	L2
LSU	7-9	.438	6-2	1-7	18-15	.545	11-4	4-9	3-2	L2
Arkansas	6-10	.375	5-3	1-7	18-14	.563	17-4	1-9	0-1	L3
Auburn	5-11	.313	5-3	0-8	15-16	.484	14-3	1-10	0-3	L1
Georgia	5-11	.313	4-4	1-7	15-17	.469	11-6	2-9	2-2	L1
South Carolina	2-14	.125	2-6	0-8	10-21	.323	9-9	1-9	0-3	L6

& - SEC Champion; ^ - SEC Tournament Champion; % - NCAA Champion

2012 SEC MEN'S BASKETBALL TOURNAMENT NEW ORLEANS ARENA - NEW ORLEANS, LA.

First Round

M8 (Thursday) (8) LSU 70, (9) Arkansas 54 [SECN]
 M8 (Thursday) (5) Alabama 63, (12) S. Carolina 57 [SECN]
 M8 (Thursday) (7) Ole Miss 68, (10) Auburn 54 [SECN]
 M8 (Thursday) (11) Georgia 71, (6) Miss. State 61 [SECN]

Second Round

M9 (Friday) (1) Kentucky 60, (8) LSU 51 [SECN]
 M9 (Friday) (4) Florida 66, (5) Alabama 63 [SECN]
 M9 (Friday) (7) Ole Miss 77, (2) Tennessee 72 ot [SECN]
 M9 (Friday) (3) Vanderbilt 63, (11) Georgia 41 [SECN]

Semifinals

M10 (Saturday) (1) Kentucky 74, (4) Florida 71 [ABC]
 M10 (Saturday) (3) Vanderbilt 65, (7) Ole Miss 53 [ABC]

Championship

M11 (Sunday) (3) Vanderbilt 71, (1) Kentucky 64 [ABC]



NATIONAL INVITATION TOURNAMENT

First Round

M13 (Tuesday) at (1) Tenn. 65, (8) Savannah St. 51 [ESPNU]
 M13 (Tuesday) (5) UMass 101, at (4) Miss. State 96
 2ot [ESPN2]
 M13 (Tuesday) at (3) Oregon 96, (6) LSU 76 [ESPN]
 M14 (Wednesday) (7) Illinois State 96, at (2) Ole Miss 93
 ot [ESPNU]

Second Round

M19 (Monday) (4) Middle Tenn. 71, at (1) Tenn. 64 [ESPN]

NCAA TOURNAMENT

Second Round

South Regional • Louisville, Ky.
 M15 (Thursday) (1) Kentucky 81, (16) Western Ky. 66 [TBS]

East Regional • Albuquerque, N.M.

M15 (Thursday) (5) Vanderbilt 70, (12) Harvard 70 [TNT]

West Regional • Omaha, Neb.

M16 (Friday) (7) Florida 71, (10) Virginia 45 [TNT]

Midwest Regional • Greensboro, N.C.

M16 (Friday) (8) Creighton 58, (9) Alabama 57 [TBS]

Third Round

South Regional • Louisville, Ky.
 M17 (Saturday) (1) Kentucky 87, (8) Iowa State 71 [CBS]

East Regional • Albuquerque, N.M.

M17 (Saturday) (4) Wisconsin 60, (5) Vanderbilt 57 [TNT]

West Regional • Omaha, Neb.

M18 (Sunday) (7) Florida 84, (15) Norfolk State 50 [TNT]

Regional Semifinals

West Region • Phoenix, Ariz.
 M22 (Thursday) (7) Florida 68, (3) Marquette 58 [TBS]

South Region • Atlanta, Ga.

M23 (Friday) (1) Kentucky 102, (4) Indiana 90 [CBS]

Regional Finals

West Region • Phoenix, Ariz.
 M24 (Saturday) (4) Louisville 72, (7) Florida 68 [CBS]

South Region • Atlanta, Ga.

M25 (Sunday) (1) Kentucky 82, (3) Baylor 70 [CBS]

National Semifinals

Mercedes-Benz Superdome • New Orleans, La.
 M31 (Saturday) (1) Kentucky 69, (4) Louisville 61 [CBS]

National Finals

Mercedes-Benz Superdome • New Orleans, La.
 A2 (Monday) (1) Kentucky 67, (2) Kansas 59 [CBS]

2012 COACHES' POSTSEASON AWARDS

First Team All-SEC

Bradley Beal, Florida
 Kenny Boynton, Florida
 Anthony Davis, Kentucky
 Michael Kidd-Gilchrist, Kentucky
 Dee Bost, Mississippi State
 Arnett Moultrie, Mississippi State
 John Jenkins, Vanderbilt
 Jeffrey Taylor, Vanderbilt

Second Team All-SEC

JaMychal Green, Alabama
[^] Trevor Releford, Alabama
 BJ Young, Arkansas
 Erving Walker, Florida
 Terrence Jones, Kentucky
 Doron Lamb, Kentucky
 Justin Hamilton, LSU
[^] Terrance Henry, Ole Miss
 Jeronne Maymon, Tennessee

SEC All-Freshman Team

BJ Young, Arkansas
 Bradley Beal, Florida
 Kentavious Caldwell-Pope, Georgia
 Anthony Davis, Kentucky
 Michael Kidd-Gilchrist, Kentucky
 Anthony Hickey, LSU
 Rodney Hood, Mississippi State
 Jarnell Stokes, Tennessee

SEC All-Defensive Team

Anthony Davis, Kentucky
 Michael Kidd-Gilchrist, Kentucky
 Reginald Buckner, Ole Miss
 Damontre Harris, South Carolina
 Jeffrey Taylor, Vanderbilt

SEC Coach of the Year: John Calipari, Kentucky
SEC Player of the Year: Anthony Davis, Kentucky
SEC Scholar-Athlete of the Year: Patric Young, Florida
SEC Freshman of the Year: Anthony Davis, Kentucky
SEC Sixth-Man of the Year: Darius Miller, Kentucky
SEC Defensive Player of the Year: Anthony Davis, Kentucky

[^] ties are not broken



THE LAST TIME...



AN INDIVIDUAL PLAYER...

Scored 20 or more points:	South Carolina: Bruce Ellington (20) vs. Vanderbilt, Jan. 10, 2012 in Columbia, S.C. Opponent: Gerald Robinson Jr. (23), Georgia, March 3, 2012 in Athens, Ga.
Scored 30 or more points:	South Carolina: Bruce Ellington, 31, at Furman, Dec. 22, 2010 in Greenville, S.C. Opponent: Deshaun Thomas, 30, Ohio State, Dec. 17, 2011 in Columbia, S.C.
Scored 35 or more points:	South Carolina: Devan Downey, 36 at Florida, Jan. 23, 2010 in Gainesville, Fla. Opponent: Joe Crawford (Kentucky), 35, March 5, 2008 in Columbia
Scored 40 or more points:	South Carolina: N/A thru 1992-93 season Opponent: Austin Carr (Notre Dame), 43, Dec. 30, 1969 in New Orleans, La.
Collected 20 or more rebounds:	South Carolina: Emmett Hall, 23 vs. College of Charleston, Dec. 22, 1993 in Columbia Opponent: Ekpe Udoh (Baylor), 20, Jan. 2, 2010 in Columbia
Collected 15 or more rebounds:	South Carolina: Sam Muldrow, 16 at Tennessee, Feb. 6, 2010 in Knoxville, Tenn. Opponent: Jared Sullinger (Ohio State), 19, Dec. 18, 2010 in Columbus, Ohio
Made 12 or more field goals:	South Carolina: Devan Downey, 12 vs. Georgia, Jan. 30, 2010 in Columbia Opponent: Deshaun Thomas, 13, Ohio State, Dec. 17, 2011 in Columbia, S.C.
Made 10 or more field goals:	South Carolina: Bruce Ellington, 11 vs. Furman, Dec. 22, 2010 in Greenville, S.C. Opponent: Deshaun Thomas, 13, Ohio State, Dec. 17, 2011 in Columbia, S.C.
Attempted 20 or more field goals:	South Carolina: Bruce Ellington (20) vs. Tennessee, Feb. 25, 2012, in Columbia, S.C. Opponent: Zach Graham (20), Ole Miss, Feb. 22, 2011 in Columbia
Attempted 25 or more field goals:	South Carolina: Devan Downey, 25, at Kentucky, Feb. 25, 2010 in Lexington, Ky. Opponent: Kemmy Burgess (Alaska-Anchorage), 26, Nov. 24, 2005 in Anchorage, AK
Dished 10 or more assists:	South Carolina: Devan Downey, 11, vs. LSU, March 13, 2008 in Atlanta, Ga. Opponent: 11, Dee Bost, Mississippi State, Feb. 29, 2012 in Columbia, S.C.
Swiped 5 or more steals:	South Carolina: Brenton Williams, 5, vs. Western Carolina, Nov. 11, 2011 in Columbia Opponent: 6, Kendall Marshall, North Carolina, Nov. 25, 2011 in Las Vegas, Nevada
Blocked 5 or more shots:	South Carolina: Damontre Harris, 5, vs. Georgia, Feb. 15, 2012 in Columbia, S.C. Opponent: Festus Ezeli (5), Vanderbilt, Feb. 22, 2012, in Nashville, Tenn.
Made 5 or more 3-point field goals:	South Carolina: Bruce Ellington (5) vs. Wofford, Dec. 28, 2011 in Columbia, S.C. Opponent: Maurice Jones (7) Southern Cal, Nov. 26, 2011 in Las Vegas, Nevada
Attempted 8 or more 3-point field goals:	South Carolina: Damien Leonard (10), vs. Alabama, March 8, 2012 Opponent: Jalen Steele (8), Mississippi State, Feb. 29, 2012 in Columbia, S.C.
Made 10 or more free throws:	South Carolina: Malik Cooke, 10, vs. Miss Valley State, Nov. 22, 2011 in Columbia, S.C. Opponent: Gerard Coleman (10), Providence, Dec. 1, 2011 in Columbia, S.C.
Attempted 15 or more free throws:	South Carolina: Mike Boynton (19) vs. Arkansas, March 11, 2004 in Atlanta, Ga. Opponent: Amu Saaka (Furman), 14, Dec. 22, 2010 in Greenville, S.C.
Played all 40 minutes of regulation:	South Carolina: Devan Downey, 40, vs. Tennessee, March 14, 2008 in Atlanta, Ga. Opponent: Brad Loesing & Kevin Giltner, Wofford, Dec. 28, 2011 in Columbia, S.C.
A player hit a last-second shot to win a game:	South Carolina: Bruce Ellington vs. Alabama (Jan. 25, 2012) in Columbia, S.C. Opponent: Brian Bryant, Mississippi State, Feb. 29, 2012 in Columbia, S.C.
A player had a double-double:	South Carolina: Damontre Harris (14 points, 11 rebounds), vs. Mississippi State, Feb. 29, 2012 in Columbia, S.C. Opponent: Bradley Beal (17 points, 11 rebounds), Florida, Feb. 2, 2012 in Gainesville, Fla.
Two or more players had a double-double:	South Carolina: Dominique Archie (12 points, 10 rebounds) & Mike Holmes (14 points, 13 rebounds) vs. Winthrop, Nov. 16, 2008 in Columbia Opponent: Renardo Sidney (12 points, 14 rebounds), Arnett Moultrie (15 points, 12 rebounds), Mississippi State, Feb. 29, 2012 in Columbia, S.C.
A player had a triple-double:	South Carolina: Sam Muldrow (16 points, 14 rebounds, 10 blocks) vs. Vanderbilt, Jan. 8, 2011 in Columbia *** Only second triple-double in South Carolina history (Chuck Eidson (25 points, 10 rebounds, 10 assists), vs. SC State, Nov. 29, 2002 in Columbia) Opponent: Daniel Hackett (Southern California - 22 points, 10 rebounds, 10 assists), Nov. 17, 2007 in Columbia
Scored 30 or more points in back-to-back games:	South Carolina: Devan Downey, 30 vs. Kentucky (Jan. 26, 2010) in Columbia 33 vs. Georgia (Jan. 30, 2010) in Columbia
Scored 25 or more points in back-to-back games:	South Carolina: Devan Downey, 33 vs. Georgia (Jan. 30, 2010) in Columbia 26 at Tennessee (Feb. 6, 2010) in Knoxville, Tenn.

A TEAM...

Scored 100 or more points:	South Carolina: 103 vs. The Citadel (Nov. 12, 2007) in Columbia Opponent: 107, Vanderbilt (Feb. 17, 1996) in Nashville, Tenn.
Scored 50 points or less:	South Carolina: 48 at Vanderbilt, Feb. 22, 2012, in Nashville, Tenn. Opponent: 45, Wofford, Dec. 28, 2011 in Columbia, S.C.
Scored 50 points in a half:	South Carolina: 51 (2nd half; Nov. 12, 2010) vs. Elon in Columbia Opponent: 52 (1st half), Kentucky, Feb. 4, 2012, in Columbia, S.C.
Failed to score 25 points in a half:	South Carolina: 23 (1st half) at Georgia, March 3, 2012 in Athens, Ga. Opponent: 22 (1st half), Vanderbilt, Feb. 22, 2012, in Nashville, Tenn.

Collected 50 or more rebounds:	South Carolina: 53 vs. WKU, Nov. 27, 2010 in Bowling Green, Ky. Opponent: 52, WKU, Nov. 27, 2010 in Bowling Green, Ky.
Shot 60% or better from the field:	South Carolina: 60.8% (31-51) at Western Carolina (Nov. 18, 2005) in Cullowhee, N.C. Opponent: 61.1% (33-54), Vanderbilt (Jan. 16, 2010) in Columbia
Shot 50% or better from the field:	South Carolina: 50.0% (28-56) vs. SC State, Jan. 3, 2012 in Columbia, S.C. Opponent: 52.2% (24-46), Tennessee, Feb 25, 2012, in Columbia, S.C.
Shot less than 30% from the field:	South Carolina: 29.9% (20-67) vs. Ole Miss, March 10, 2011 in Atlanta, Ga. Opponent: 25.9% (15-58), USC Upstate (Nov. 23, 2010) in Columbia
Shot 50% or better from 3-point range (at least 10 attempts):	South Carolina: 55.0% (11-20) vs. Wofford, Dec. 28, 2011 Opponent: 50.0% (5-10), LSU, Feb. 18, 2012 in Columbia, S.C.
Shot 20% or less from 3-point range (at least 10 attempts):	South Carolina: 20.0% (5-25), at Arkansas, Feb. 11, 2012 in Fayetteville, Ark. Opponent: 20.0% (3-15), SC State, Jan. 3, 2012 in Columbia, S.C.
Dished 20 or more assists:	South Carolina: 23 vs. Elon (Nov. 12, 2010) in Columbia Opponent: 22, vs. North Carolina, Nov. 25, 2011 in Las Vegas, Nevada
Made 35 or more shots:	South Carolina: 35 vs. Elon (Nov. 19, 2010) in Columbia Opponent: 35, Tennessee (March 5, 2009) in Columbia
Attempted 80 or more shots:	South Carolina: 83 vs. WKU (Nov. 27, 2010) in Bowling Green, Ky. Opponent: 83, LSU (Feb. 10, 1996) in Columbia
Attempted 70 or more shots:	South Carolina: 72, vs. Providence, Dec. 1, 2011 in Columbia Opponent: 79, WKU (Nov. 27, 2010) in Bowling Green, Ky.
Made 10 or more 3-pointers:	South Carolina: 10, vs. Mississippi State, Feb. 29, 2012 in Columbia, S.C. Opponent: 10, Tennessee, Feb. 8, 2012 in Knoxville, Tenn.
Did not make a 3-pointer:	South Carolina: 0, vs. Mississippi State (March 2, 2002) in Columbia Opponent: 0, Alabama (Jan. 12, 2011) in Tuscaloosa, Ala.
Attempted 30 or more 3-pointers:	South Carolina: 31 vs. Alabama, Jan. 25, 2012 in Columbia, S.C. Opponent: 32, Boston College (Jan. 1, 2011) in Columbia, S.C.
Attempted 25 or more 3-pointers:	South Carolina: 25, at Arkansas, Feb. 11, 2012 in Fayetteville, Ark. Opponent: 28, Florida, Feb. 2, 2012 in Gainesville, Fla.
Made 30 or more free throws:	South Carolina: 32 vs. Vanderbilt (Jan. 28, 2009) in Columbia Opponent: 31, Florida (Feb. 3, 2009) in Gainesville, Fla.
Attempted 40 or more free throws:	South Carolina: 44 vs. Georgia Southern (Nov. 16, 2009) in Columbia Opponent: 40, Florida (Feb. 3, 2009) in Gainesville, Fla.
Swiped 15 or more steals:	South Carolina: 15 vs. Vanderbilt (Jan. 16, 2010) in Columbia Opponent: 17, Indiana (Nov. 8, 1998) in Indianapolis, Ind.
Blocked 12 or more shots:	South Carolina: 12, vs. Vanderbilt, Jan. 8, 2011 in Columbia Opponent: 13, Syracuse (Jan. 21, 1999) in Syracuse, N.Y.
Blocked 8 or more shots:	South Carolina: 8, vs. Georgia, Feb. 15, 2012 in Columbia, S.C. Opponent: 9, Vanderbilt, Feb. 22, 2012, in Nashville, Tenn.
Won by 30 or more points:	South Carolina: 35 vs. SC State (91-56), Jan. 4, 2011 in Columbia Opponent: 34, 86-52, Kentucky, Feb. 4, 2012, in Columbia, S.C.
Won by 20 or more points:	South Carolina: 28 vs. SC State, Jan. 3, 2012 in Columbia, S.C. Opponent: 34, 86-52, Kentucky, Feb. 4, 2012, in Columbia, S.C.
Played a single overtime game:	Win: 81-74 vs. Arkansas (81-74), Jan. 19, 2011 in Columbia Loss: 69-67, vs. Mississippi State, Feb. 29, 2012 in Columbia, S.C.
Played a double overtime game:	Win: 87-85 vs. WKU (Nov. 27, 2010) in Bowling Green, Ky. Loss: 98-88 vs. Louisville (Feb. 20, 1988) in Columbia
South Carolina played a No. 1 Team in the country:	Win: 68-62 vs. Kentucky (Jan. 26, 2010) in Columbia Loss: 86-52 loss vs. No. 1/1 Kentucky, Feb. 4, 2012, in Columbia, S.C.
South Carolina played a top-5 opponent:	Win: 68-62 vs. No. 1/1 Kentucky (Jan. 26, 2010) in Columbia Loss: 86-52 loss vs. No. 1/1 Kentucky, Feb. 4, 2012, in Columbia, S.C.
South Carolina played a top-10 opponent:	Win: 68-62 vs. No. 1/1 Kentucky (Jan. 26, 2010) in Columbia Loss: 86-52 loss vs. No. 1/1 Kentucky, Feb. 4, 2012, in Columbia, S.C.
South Carolina played a top-25 opponent:	Win: 83-75 (OT) win over No. 22/24 Vanderbilt, Jan. 8, 2011 in Columbia Loss: 86-52 loss vs. No. 1/1 Kentucky, Feb. 4, 2012, in Columbia, S.C.
South Carolina defeated a ranked opponent:	Home: 83-75 vs. No. 22/24 Vanderbilt (Jan. 8, 2011) in Columbia <u>Away: 77-73 at No. 13/19 Vanderbilt (March 6, 2010) in Nashville, Tenn.</u> SEC Home: 83-75 vs. No. 22/24 Vanderbilt (Jan. 8, 2011) in Columbia SEC Away: 77-73 at No. 13/19 Vanderbilt (March 6, 2010) in Nashville, Tenn. Non-conference away: 85-84 at No. 19/20 Baylor (Jan. 2, 2009) in Waco, Texas
A South Carolina win opened up the season:	Home: 75-50 win over Western Carolina (Nov. 11, 2011) in Columbia Away: 81-63 win at Western Carolina (Nov. 12, 2005) in Cullowhee, N.C. Neutral: 74-61 win vs. Chaminade (Nov. 19, 2001) in Maui, Hawaii (Maui Invite)
South Carolina opened up SEC play:	Home: 83-75 win vs. No. 22/24 Vanderbilt (Jan. 8, 2011) in Columbia Away: 79-64 loss vs. No. 2/2 Kentucky (Jan. 7, 2012) in Lexington, Ky.

GAME 13

Official Basketball Box Score -- Game Totals -- Final Statistics
USC Upstate vs South Carolina
12/13/11 12 p.m. at Columbia, S.C. (Colonial Life Arena)



USC Upstate 66 • 8-6

Table with columns for Player, FG-FGA, 3-Pr, FT-FTA, Rebounds, PF, TP, A TO Blk Stl, Min. Includes player stats for Rogers, Green, Glenn, etc.

FG % 1st Half: 14-33 42.4% 2nd half: 11-30 36.7% Game: 25-63 39.7%
3FG % 1st Half: 3-8 37.5% 2nd half: 5-12 41.7% Game: 8-20 40.0%
FT % 1st Half: 0-2 0.0% 2nd half: 8-13 61.5% Game: 8-15 53.3%

South Carolina 72 • 7-6

Table with columns for Player, FG-FGA, 3-Pr, FT-FTA, Rebounds, PF, TP, A TO Blk Stl, Min. Includes player stats for Gill, Cooke, Harris, etc.

FG % 1st Half: 15-25 60.0% 2nd half: 8-20 40.0% Game: 23-45 51.1%
3FG % 1st Half: 2-7 28.6% 2nd half: 2-4 50.0% Game: 4-11 36.4%
FT % 1st Half: 8-11 72.7% 2nd half: 14-21 66.7% Game: 22-32 68.8%

Officials: Joe Lindsay, Mike Nance, Les Jones
Technical fouls: USC Upstate-None, South Carolina-None.
Attendance: 6876

Score by periods table with columns 1st, 2nd, Total and points in paint, fouls, etc.

Last FG - USC 2nd-02:46, SC 2nd-00:25.
Largest lead - UPST by 3 1st-16:06, SC by 12 1st-04:00.

GAME 14

Official Basketball Box Score -- Game Totals -- Final Statistics
SC State vs South Carolina
1/13/12 7 p.m. at Columbia, S.C. (Colonial Life Arena)



SC State 51 • 4-10

Table with columns for Player, FG-FGA, 3-Pr, FT-FTA, Rebounds, PF, TP, A TO Blk Stl, Min. Includes player stats for Sanders, Radovic, Toombs, etc.

FG % 1st Half: 10-26 38.5% 2nd half: 8-26 30.8% Game: 18-52 34.6%
3FG % 1st Half: 0-2 0.0% 2nd half: 3-13 23.1% Game: 3-15 20.0%
FT % 1st Half: 3-9 33.3% 2nd half: 9-14 64.3% Game: 12-23 52.2%

South Carolina 79 • 8-6

Table with columns for Player, FG-FGA, 3-Pr, FT-FTA, Rebounds, PF, TP, A TO Blk Stl, Min. Includes player stats for Gill, Anthony, Cooke, etc.

FG % 1st Half: 17-29 58.6% 2nd half: 11-27 40.7% Game: 28-56 50.0%
3FG % 1st Half: 7-13 53.8% 2nd half: 4-10 40.0% Game: 11-23 47.8%
FT % 1st Half: 4-6 66.7% 2nd half: 8-10 80.0% Game: 12-16 75.0%

Officials: Doug Shous, Michael Stephens, Mike Roberts
Technical fouls: SC State-RADOVIC, Luka, South Carolina-HARRIS, Damontre.
Attendance: 6557

Score by periods table with columns 1st, 2nd, Total and points in paint, fouls, etc.

Last FG - SC 2nd-02:26, SC 2nd-01:42.
Largest lead - SC 2nd-01:42.

GAME 15

Official Basketball Box Score -- Game Totals -- Final Statistics
South Carolina vs Kentucky
01/07/12 4:00 pm at Rupp Arena - Lexington, KY



South Carolina 64 • 8-7, 0-1

Table with columns for Player, FG-FGA, 3-Pr, FT-FTA, Rebounds, PF, TP, A TO Blk Stl, Min. Includes player stats for Gill, Anthony, Cooke, etc.

FG % 1st Half: 8-32 25.0% 2nd half: 17-32 53.1% Game: 25-64 39.1%
3FG % 1st Half: 1-10 10.0% 2nd half: 5-12 41.7% Game: 6-22 27.3%
FT % 1st Half: 0-2 0.0% 2nd half: 7-8 87.5% Game: 8-10 80.0%

Kentucky 79 • 15-1, 0-0

Table with columns for Player, FG-FGA, 3-Pr, FT-FTA, Rebounds, PF, TP, A TO Blk Stl, Min. Includes player stats for Jones, Terrence, Kidd-Gilchrist, etc.

FG % 1st Half: 13-23 56.5% 2nd half: 16-26 61.5% Game: 29-49 59.2%
3FG % 1st Half: 2-5 40.0% 2nd half: 3-6 50.0% Game: 5-11 45.5%
FT % 1st Half: 6-9 66.7% 2nd half: 10-13 76.9% Game: 16-22 72.7%

Officials: Joe Lindsay, Tom Eades, Patrick Evans
Technical fouls: South Carolina-None, Kentucky-None.
Attendance: 24219

Score by periods table with columns 1st, 2nd, Total and points in paint, fouls, etc.

Last FG - SC 2nd-00:19, UK 2nd-01:27.
Largest lead - SC by 4 1st-18:38, UK by 21 2nd-12:53.

GAME 16

Official Basketball Box Score -- Game Totals -- Final Statistics
Vanderbilt vs South Carolina
1/10/12 9 p.m. at Columbia, S.C. (Colonial Life Arena)



Vanderbilt 67 • 12-4, 0-2

Table with columns for Player, FG-FGA, 3-Pr, FT-FTA, Rebounds, PF, TP, A TO Blk Stl, Min. Includes player stats for Ezeli, Festus, Tinsley, etc.

FG % 1st Half: 8-15 53.3% 2nd half: 15-25 60.0% Game: 23-40 57.5%
3FG % 1st Half: 4-7 57.1% 2nd half: 9-15 60.0% Game: 13-22 59.1%
FT % 1st Half: 2-2 100.0% 2nd half: 6-6 100.0% Game: 8-8 100.0%

South Carolina 57 • 8-8, 0-2

Table with columns for Player, FG-FGA, 3-Pr, FT-FTA, Rebounds, PF, TP, A TO Blk Stl, Min. Includes player stats for Gill, Anthony, Cooke, etc.

FG % 1st Half: 5-26 19.2% 2nd half: 17-27 63.0% Game: 22-53 41.5%
3FG % 1st Half: 0-8 0.0% 2nd half: 4-5 80.0% Game: 4-13 30.8%
FT % 1st Half: 2-4 50.0% 2nd half: 7-7 100.0% Game: 9-11 81.8%

Officials: Antonio Petty, Jamie Luckie, Ed Corbett
Technical fouls: Vanderbilt-None, South Carolina-None.
Attendance: 8353

Score by periods table with columns 1st, 2nd, Total and points in paint, fouls, etc.

Last FG - VANDY 2nd-03:49, SC 2nd-00:10.
Largest lead - VANDY by 24 2nd-03:49, SC by 2 1st-19:22.

GAME 17

Official Basketball Box Score -- Game Totals -- Final Statistics
Florida vs South Carolina
1/14/12 7 p.m. at Columbia, S.C. (Colonial Life Arena)



Florida 79 • 14-4, 2-1 SEC

Table with columns for Player, FG-FGA, 3-Pr, FT-FTA, Rebounds, PF, TP, A TO Blk Stl, Min. Includes player stats for Yeguette, Will, Murphy, etc.

FG % 1st Half: 12-22 54.5% 2nd half: 13-25 52.0% Game: 25-47 53.2%
3FG % 1st Half: 8-14 57.1% 2nd half: 4-10 40.0% Game: 12-24 50.0%
FT % 1st Half: 8-10 80.0% 2nd half: 9-11 81.8% Game: 17-21 81.0%

South Carolina 65 • 8-9, 0-3 SEC

Table with columns for Player, FG-FGA, 3-Pr, FT-FTA, Rebounds, PF, TP, A TO Blk Stl, Min. Includes player stats for Gill, Anthony, Cooke, etc.

FG % 1st Half: 15-24 62.5% 2nd half: 8-31 25.8% Game: 23-55 41.8%
3FG % 1st Half: 6-11 54.5% 2nd half: 3-13 23.1% Game: 9-24 37.5%
FT % 1st Half: 5-5 100.0% 2nd half: 5-9 55.6% Game: 10-14 71.4%

Officials: Joe Lindsay, Mark Whitehead, Ron Groover
Technical fouls: Florida-None, South Carolina-None.
Attendance: 11306

Score by periods table with columns 1st, 2nd, Total and points in paint, fouls, etc.

Last FG - UF 2nd-00:30, SC 2nd-00:14.
Largest lead - UF by 17 2nd-02:55, SC by 4 1st-04:46.

GAME 18

Official Basketball Box Score -- Game Totals -- Final Statistics
South Carolina vs Auburn
01/21/12 12:30 p.m. at Auburn, Ala.



South Carolina 52 • 8-10, 0-4

Table with columns for Player, FG-FGA, 3-Pr, FT-FTA, Rebounds, PF, TP, A TO Blk Stl, Min. Includes player stats for Gill, Anthony, Cooke, etc.

FG % 1st Half: 10-23 43.5% 2nd half: 10-26 38.5% Game: 20-49 40.8%
3FG % 1st Half: 3-6 50.0% 2nd half: 3-12 25.0% Game: 6-18 33.3%
FT % 1st Half: 5-6 83.3% 2nd half: 1-2 50.0% Game: 6-8 75.0%

Auburn 63 • 12-7, 2-3

Table with columns for Player, FG-FGA, 3-Pr, FT-FTA, Rebounds, PF, TP, A TO Blk Stl, Min. Includes player stats for Gabriel, Kenny, Chubb, etc.

FG % 1st Half: 9-21 42.9% 2nd half: 13-29 44.8% Game: 22-50 44.0%
3FG % 1st Half: 5-10 50.0% 2nd half: 2-8 25.0% Game: 7-18 38.9%
FT % 1st Half: 1-4 25.0% 2nd half: 11-14 78.6% Game: 12-18 66.7%

Officials: Ted Valentine, Bruce Benedict, Tracy Woodson
Technical fouls: South Carolina-None, Auburn-None.
Attendance: 8329
*AU's Frankie Sullivan ties his season-hi with 22 pts.

Score by periods table with columns 1st, 2nd, Total and points in paint, fouls, etc.

Last FG - SC 2nd-00:33, AU 2nd-04:28.
Largest lead - SC by 6 1st-06:08, AU by 17 2nd-04:28.

GAME 19

Official Basketball Box Score -- Game Totals -- Final Statistics
Alabama vs South Carolina
1/25/12 8 p.m. at Columbia, S.C. (Colonial Life Arena)



Alabama 54 • 13-7, 2-4 SEC

Box score table for Game 19: Alabama vs South Carolina. Columns include Player, FG, 3-PT, FT, Rebounds, PF, TP, A TO, Blk, Stl, Min. Totals: 21-49, 4-18, 8-12, 11 28 39, 14 54, 11 15 6 4, 200.

FG % 1st Half: 11-27 40.7% 2nd half: 10-22 45.5% Game: 21-49 42.9% Deadball Rebounds 1
3FG % 1st Half: 2-9 22.2% 2nd half: 2-9 22.2% Game: 4-18 22.2%
FT % 1st Half: 5-5 100.0 2nd half: 3-7 42.9% Game: 8-12 66.7%

South Carolina 56 • 9-10, 1-4 SEC

Box score table for Game 19: South Carolina. Columns include Player, FG, 3-PT, FT, Rebounds, PF, TP, A TO, Blk, Stl, Min. Totals: 22-68, 5-31, 7-9, 19 18 37, 10 56, 8 9 4 6, 200.

FG % 1st Half: 10-36 27.8% 2nd half: 12-32 37.5% Game: 22-68 32.4% Deadball Rebounds 12
3FG % 1st Half: 3-16 18.8% 2nd half: 5-11 45.5% Game: 8-27 29.6%
FT % 1st Half: 4-6 66.7% 2nd half: 3-3 100.0 Game: 7-9 77.8%

Officials: Ted Valentine, Mike Kitz, Mark Whitehead
Technical fouls: Alabama-None. South Carolina-None.
Attendance: 7807

Score by periods table for Game 19. Alabama: 29, 25, 54. South Carolina: 27, 29, 56.

Last FG - UA 2nd-01:03, SC 2nd-00:01.
Largest lead - UA by 5 1st-19:11, SC by 4 1st-15:46.

GAME 20

Official Basketball Box Score -- Game Totals -- Final Statistics
South Carolina vs Ole Miss
01/28/12 6:00 pm at Oxford, Miss. (Tad Smith Coliseum)



South Carolina 62 • 9-11, 1-5

Box score table for Game 20: South Carolina vs Ole Miss. Columns include Player, FG, 3-PT, FT, Rebounds, PF, TP, A TO, Blk, Stl, Min. Totals: 24-60, 8-21, 6-7, 12 16 28, 17 62, 15 13 2 12, 200.

FG % 1st Half: 11-30 36.7% 2nd half: 13-30 43.3% Game: 24-60 40.0% Deadball Rebounds 0
3FG % 1st Half: 4-10 40.0% 2nd half: 4-11 36.4% Game: 8-21 38.1%
FT % 1st Half: 2-2 100.0 2nd half: 4-5 80.0% Game: 6-7 85.7%

Ole Miss 66 • 14-7, 4-3

Box score table for Game 20: Ole Miss. Columns include Player, FG, 3-PT, FT, Rebounds, PF, TP, A TO, Blk, Stl, Min. Totals: 24-49, 5-13, 13-24, 14 24 38, 12 66, 15 18 6 11, 200.

FG % 1st Half: 13-26 50.0% 2nd half: 11-23 47.8% Game: 24-49 49.0% Deadball Rebounds 6
3FG % 1st Half: 2-7 28.6% 2nd half: 3-6 50.0% Game: 5-13 38.5%
FT % 1st Half: 3-7 42.9% 2nd half: 10-17 58.8% Game: 13-24 54.2%

Officials: Antonio Petty, Patrick Evans, Ron Groover
Technical fouls: South Carolina-None. Ole Miss-None.
Attendance: 7396

Score by periods table for Game 20. South Carolina: 28, 34, 62. Ole Miss: 31, 35, 66.

Last FG - SC 2nd-01:24, UM 2nd-00:00.
Largest lead - SC by 2 1st-17:08, UM by 11 1st-07:57.

GAME 22

Official Basketball Box Score -- Game Totals -- Final Statistics
Kentucky vs South Carolina
2/4/12 6 p.m. ET at Columbia, S.C. (Colonial Life Arena)



Kentucky 86 • 23-1, 9-0

Box score table for Game 22: Kentucky vs South Carolina. Columns include Player, FG, 3-PT, FT, Rebounds, PF, TP, A TO, Blk, Stl, Min. Totals: 32-62, 6-14, 16-21, 15 26 41, 13 86, 17 3 11 6, 200.

FG % 1st Half: 17-29 58.6% 2nd half: 15-33 45.5% Game: 32-62 51.6% Deadball Rebounds 33
3FG % 1st Half: 3-6 50.0% 2nd half: 3-8 37.5% Game: 6-14 42.9%
FT % 1st Half: 15-18 83.3% 2nd half: 1-3 33.3% Game: 16-21 76.2%

South Carolina 52 • 9-13, 1-7

Box score table for Game 22: South Carolina. Columns include Player, FG, 3-PT, FT, Rebounds, PF, TP, A TO, Blk, Stl, Min. Totals: 18-59, 9-20, 7-15, 13 17 30, 16 52, 10 8 9 0, 200.

FG % 1st Half: 9-34 26.5% 2nd half: 9-25 36.0% Game: 18-59 30.5% Deadball Rebounds 7
3FG % 1st Half: 4-9 44.4% 2nd half: 5-11 45.5% Game: 9-20 45.0%
FT % 1st Half: 3-5 60.0% 2nd half: 4-10 40.0% Game: 7-15 46.7%

Officials: Joe Lindsay, Bert Smith, Will Washington
Technical fouls: Kentucky-None. South Carolina-None.
Attendance: 16527

Score by periods table for Game 22. Kentucky: 52, 34, 86. South Carolina: 25, 27, 52.

Last FG - UK 2nd-00:42, SC 2nd-00:24.
Largest lead - UK by 41 2nd-10:14, SC None.

GAME 23

Official Basketball Box Score -- Game Totals -- Final Statistics
South Carolina vs Tennessee
02/08/12 8:00 p.m. at Knoxville, Tenn. (Thompson-Boling Arena)



South Carolina 57 • 9-14, 1-8 SEC

Box score table for Game 23: South Carolina vs Tennessee. Columns include Player, FG, 3-PT, FT, Rebounds, PF, TP, A TO, Blk, Stl, Min. Totals: 19-56, 7-16, 12-19, 16 14 30, 21 57, 12 7 2 4, 200.

FG % 1st Half: 10-27 37.0% 2nd half: 9-29 31.0% Game: 19-56 33.9% Deadball Rebounds 3
3FG % 1st Half: 4-7 57.1% 2nd half: 3-9 33.3% Game: 7-16 43.8%
FT % 1st Half: 3-5 60.0% 2nd half: 9-14 64.3% Game: 12-19 63.2%

Tennessee 69 • 12-12, 4-5 SEC

Box score table for Game 23: Tennessee. Columns include Player, FG, 3-PT, FT, Rebounds, PF, TP, A TO, Blk, Stl, Min. Totals: 19-38, 10-20, 21-26, 9 25 34, 18 69, 14 14 4 4, 200.

FG % 1st Half: 11-23 47.8% 2nd half: 8-15 53.3% Game: 19-38 50.0% Deadball Rebounds 1
3FG % 1st Half: 7-13 53.8% 2nd half: 3-7 42.9% Game: 10-20 50.0%
FT % 1st Half: 6-7 85.7% 2nd half: 15-19 78.9% Game: 21-26 80.8%

Officials: Anthony Jordan, Mike Nance, Ron Groover
Technical fouls: South Carolina-None. Tennessee-None.
Attendance: 14784

Score by periods table for Game 23. South Carolina: 27, 30, 57. Tennessee: 35, 34, 69.

Last FG - SC 2nd-04:07, UT 2nd-02:20.
Largest lead - SC by 5 1st-13:57, UT by 15 2nd-13:44.

GAME 21

Official Basketball Box Score -- Game Totals -- Final Statistics
South Carolina vs Florida
2/2/12 9 p.m. at Stephen C. O'Connell Center



South Carolina 66 • 9-12, 1-6 SEC

Box score table for Game 21: South Carolina vs Florida. Columns include Player, FG, 3-PT, FT, Rebounds, PF, TP, A TO, Blk, Stl, Min. Totals: 25-56, 6-21, 10-14, 10 20 30, 28 66, 8 15 7 4, 200.

FG % 1st Half: 10-22 45.5% 2nd half: 15-34 44.1% Game: 25-56 44.6% Deadball Rebounds 3
3FG % 1st Half: 3-9 33.3% 2nd half: 3-12 25.0% Game: 6-21 28.6%
FT % 1st Half: 5-5 100.0 2nd half: 5-9 55.6% Game: 10-14 71.4%

Florida 74 • 18-4, 6-1 SEC

Box score table for Game 21: Florida. Columns include Player, FG, 3-PT, FT, Rebounds, PF, TP, A TO, Blk, Stl, Min. Totals: 22-59, 7-28, 23-32, 20 22 42, 11 74, 12 13 3 6, 200.

FG % 1st Half: 13-33 39.4% 2nd half: 9-26 34.6% Game: 22-59 37.3% Deadball Rebounds 6
3FG % 1st Half: 6-15 40.0% 2nd half: 1-13 7.7% Game: 7-28 25.0%
FT % 1st Half: 5-11 45.5% 2nd half: 18-21 85.7% Game: 23-32 71.9%

Officials: Mike Stuart, John Cahill, Doug Simmons
Technical fouls: South Carolina-None. Florida-None.
Attendance: 10003
USC #13 fouled out at :09 of second half

Score by periods table for Game 21. South Carolina: 28, 38, 66. Florida: 37, 37, 74.

Last FG - SC 2nd-00:13, UF 2nd-00:53.
Largest lead - SC by 1 1st-19:08, UF by 17 1st-09:55.

GAME 24

Official Basketball Box Score -- Game Totals -- Final Statistics
SC vs Arkansas
02-11-12 12:30 pm at Bud Walton Arena, Fayetteville AR



SC 65 • 9-15, 1-9

Box score table for Game 24: SC vs Arkansas. Columns include Player, FG, 3-PT, FT, Rebounds, PF, TP, A TO, Blk, Stl, Min. Totals: 23-55, 5-25, 14-21, 13 17 30, 18 65, 7 21 5 9, 200.

FG % 1st Half: 10-26 38.5% 2nd half: 13-29 44.8% Game: 23-55 41.8% Deadball Rebounds 3
3FG % 1st Half: 2-11 18.2% 2nd half: 3-14 21.4% Game: 5-25 20.0%
FT % 1st Half: 5-9 55.6% 2nd half: 9-12 75.0% Game: 14-21 66.7%

Arkansas 76 • 17-8, 5-5

Box score table for Game 24: Arkansas. Columns include Player, FG, 3-PT, FT, Rebounds, PF, TP, A TO, Blk, Stl, Min. Totals: 30-59, 5-13, 11-14, 10 22 32, 18 76, 16 17 5 13, 200.

FG % 1st Half: 14-27 51.9% 2nd half: 16-32 50.0% Game: 30-59 50.8% Deadball Rebounds 3
3FG % 1st Half: 3-6 50.0% 2nd half: 2-7 28.6% Game: 5-13 38.5%
FT % 1st Half: 7-10 70.0% 2nd half: 4-4 100.0 Game: 11-14 78.6%

Officials: Doug Shows, Ed Corbett, Bruce Benedict
Technical fouls: SC-None. Arkansas-None.
Attendance: 16100
Fouled Out: SC #1 B. Williams at 0:36.3 in 2nd Half

Score by periods table for Game 24. SC: 27, 38, 65. Arkansas: 38, 38, 76.

Last FG - SC 2nd-00:19, AR 2nd-01:57.
Largest lead - SC by 3 1st-18:23, AR by 23 2nd-06:09.

GAME 31

Official Basketball Box Score -- Game Totals -- Final Statistics
 South Carolina vs Alabama
 03/08/12 2:30pm CT at SEC Men's Basketball Tourney-New Orleans



South Carolina 57 • 10-21 (2-14)

#	Player	Total			3-Ptr		Rebounds		PF	TP	A	TO	Blk	Stl	Min
		FG	FGA	FT	FTA	Off	Def	Tot							
13	GILL, Anthony	f	1-2	0-1	0-0	0	0	0	4	2	0	0	0	0	10
15	COOKE, Malik	f	2-6	0-2	2-2	0	1	1	2	6	1	3	0	0	26
24	HARRIS, Damontre	f	2-3	0-0	2-2	1	2	3	3	6	0	1	1	0	27
23	ELLINGTON, Bruce	g	5-11	1-5	0-0	1	1	2	4	11	6	3	0	0	29
32	LEONARD, Damien	g	4-13	4-10	1-2	1	2	3	2	13	1	2	0	0	37
01	WILLIAMS, Brenton		5-7	3-3	0-0	0	0	0	4	13	2	2	0	1	13
02	RICHARDSON, Brian		1-1	0-0	0-0	0	0	0	0	2	0	1	0	0	5
05	SMITH, Eric		0-1	0-1	0-0	0	0	0	1	0	0	1	0	0	4
30	JACKSON, Lakeem		0-2	0-0	0-0	1	2	3	2	0	1	1	0	1	13
33	SLAWSON, RJ		1-5	0-2	0-0	3	6	9	2	2	0	2	2	2	23
45	GEATHERS, Carlton		1-1	0-0	0-0	0	1	1	1	2	0	1	0	1	13
	Team					1	2	3							
	Totals		22-52	8-24	5-6	8	17	25	25	57	11	17	3	5	200

FG % 1st Half: 10-25 40.0% 2nd half: 12-27 44.4% Game: 22-52 42.3% Deadball Rebounds 1.1
 3FG % 1st Half: 4-11 36.4% 2nd half: 4-13 30.8% Game: 8-24 33.3%
 FT % 1st Half: 2-2 100.0 2nd half: 3-4 75.0% Game: 5-6 83.3%

Alabama 63 • 21-10 (9-7)

#	Player	Total			3-Ptr		Rebounds		PF	TP	A	TO	Blk	Stl	Min
		FG	FGA	FT	FTA	Off	Def	Tot							
01	Green, JaMychal	f	3-4	0-0	6-8	1	6	7	3	12	1	5	2	1	33
15	Jacobs, Nick	f	4-6	0-0	2-4	1	1	2	0	10	0	1	0	0	25
12	Releford, Trevor	g	3-7	0-1	3-3	0	2	2	2	9	0	1	0	1	36
20	Randolph, Levi	g	2-5	0-1	5-6	1	3	4	3	9	2	1	0	1	28
22	Steele, Andrew	g	1-3	0-0	0-0	0	5	5	3	2	3	3	0	1	28
02	Hankerson, Charles		0-2	0-1	0-0	0	1	1	0	0	1	1	0	0	7
03	Lacey, Trevor		4-5	1-1	6-6	0	2	2	0	15	0	1	0	1	17
04	Engstrom, Carl		1-2	0-0	0-0	1	1	2	0	2	0	0	0	0	3
10	Eblen, Ben		0-0	0-0	0-0	0	0	0	0	0	0	0	0	0	4
21	Cooper, Rodney		1-7	0-2	2-2	2	1	3	1	4	0	1	0	2	19
	Team					1	0	1							
	Totals		19-41	1-6	24-29	7	22	29	12	63	7	15	2	7	200

FG % 1st Half: 14-27 51.9% 2nd half: 5-14 35.7% Game: 19-41 46.3% Deadball Rebounds 2
 3FG % 1st Half: 0-3 0.0% 2nd half: 1-3 33.3% Game: 1-6 16.7%
 FT % 1st Half: 9-10 90.0% 2nd half: 15-19 78.9% Game: 24-29 82.8%

Officials: Joe Lindsey, Pat Adams, Lee Cassell
 Technical fouls: South Carolina-None. Alabama-None.
 Attendance:
 Session 1 attendance: 10,703

Score by periods	1st	2nd	Total
South Carolina	26	31	57
Alabama	37	26	63

Points	In	Off	2nd	Fast	
Print	T/O	Chance	Break	Bench	
SC	20	12	5	6	19
ALA	32	15	8	4	21

Last FG - SC 2nd-00:21, ALA 2nd-01:00. Score tied - 4 times.
 Largest lead - SC by 3 1st-18:25, ALA by 14 1st-01:08. Lead changed - 4 times.