

# Staff Information

## Contents

|                                       |    |
|---------------------------------------|----|
| Head Coach Dawn Staley .....          | 6  |
| Staley Era Records.....               | 11 |
| Associate Head Coach Lisa Boyer ..... | 13 |
| Assistant Coach Fred Chmiel.....      | 14 |
| Assistant Coach Jolette Law .....     | 15 |
| Team Support Staff.....               | 16 |
| Medical Staff.....                    | 17 |
| Team Administrative Staff.....        | 18 |
| Athletics Administration.....         | 20 |



# Dawn Staley

## Head Coach

**10th Season at South Carolina**  
**18th Career Season**  
**Virginia, 1992**

When three-time Olympic gold medalist Dawn Staley took the reins of the University of South Carolina women's basketball program on May 10, 2008, the Gamecocks' stature immediately rose not just in the Southeastern Conference but on the national stage as well. Nine seasons later, Staley delivered on those expectations with the program's first NCAA National Championship in 2017. South Carolina is one of seven programs in the nation to be ranked in every Associated Press Top 25 poll since the start of the 2013-14 season, and the Gamecocks boast six straight 25-win seasons, which include four SEC regular-season championships (2014, 2015, 2016, 2017), three SEC Tournament titles (2015, 2016, 2017), two NCAA Final Four appearances (2015, 2017) and three other Sweet 16 seasons (2012, 2014, 2016), the program's first ever No. 1 national ranking and a school-record 34 wins in 2014-15. Staley's success has united every demographic in the state of South Carolina as the Gamecocks' fan base tripled over a span of three seasons, and three times led the nation in home attendance (2014-15, 2015-16, 2016-17).

While her coaching career is blossoming, Staley is still recognized for her body of work as a one of the most decorated participants in United States women's basketball history. The Naismith Memorial Basketball Hall of Fame solidified her legacy with her enshrinement as part of the Class of 2013. The Phoenix Club of Philadelphia established the Dawn Staley Award recognizing the nation's top guard in women's Division I basketball in 2013 as well. Staley

was inducted into the Women's Basketball Hall of Fame as part of the Class of 2012 and was one of the final nominees for induction to the U.S. Olympic Hall of Fame the same year. In the summer of 2011, the WNBA recognized her as one of the league's "Top 15," honoring the most influential players in the league's history.

In 17 seasons as a head coach, Staley has amassed a 393-160 (.711) record, including her 221-80 (.734) slate in her ninth season at South Carolina. She has led her teams to eight 25-win seasons, a total of 13 postseason appearances (two WNIT) and 69 weeks in the Associated Press top 10, including 12 in the No. 1 spot. Also a force in USA Basketball, she was named the U.S. Women's National Team head coach for 2017-20 after leading three other USA Basketball teams to gold medals – 2015 FIBA U19 World Championships, 2014 FIBA U18 Americas Championship, 2007 Pan Am Games – and serving as an assistant on the Senior National Team 2006-08 and again 2014-16, during which the U.S. claimed gold in the 2014 FIBA World Championship and the 2008 and 2016 Olympic Games.

At the helm of the Gamecocks over the last nine seasons, Staley has been named National Coach of the Year (2014, Basketball Times), a Naismith National Coach of the Year Finalist (2014, 2015, 2016), SEC Coach of the Year (2014, Coaches and AP; 2015, Coaches; 2016, Coaches and AP) and BCA Female Coach of the Year (2012). She became the fastest coach to 200

### Staley Year-by-Year

| Year          | School            | Record         | Conf. Rec.    | Conf. Finish | Postseason                        |
|---------------|-------------------|----------------|---------------|--------------|-----------------------------------|
| 2000-01       | Temple            | 19-11          | 11-5          | 2nd East     | WNIT                              |
| 2001-02       | Temple            | 20-11          | 12-4          | 2nd East     | A-10 Tourn. Champ./NCAA 1st Round |
| 2002-03       | Temple            | 14-15          | 9-7           | 2nd East     |                                   |
| 2003-04       | Temple            | 21-10          | 14-2          | 1st East     | A-10 Tourn. Champ./NCAA 1st Round |
| 2004-05       | Temple            | 28-4           | 16-0          | 1st East*    | A-10 Tourn. Champ./NCAA 2nd Round |
| 2005-06       | Temple            | 24-8           | 12-4          | 3rd          | A-10 Tourn. Champ./NCAA 1st Round |
| 2006-07       | Temple            | 25-8           | 13-1          | 2nd          | NCAA 2nd Round                    |
| 2007-08       | Temple            | 21-13          | 12-2          | T-1st        | NCAA 1st Round                    |
| 2008-09       | South Carolina    | 10-18          | 2-12          | 11th         |                                   |
| 2009-10       | South Carolina    | 14-15          | 7-9           | T-7th        |                                   |
| 2010-11       | South Carolina    | 18-15          | 8-8           | T-5th        | WNIT 2nd Round                    |
| 2011-12       | South Carolina    | 25-10          | 10-6          | T-4th        | NCAA Sweet 16                     |
| 2012-13       | South Carolina    | 25-8           | 11-5          | T-4th        | NCAA 2nd Round                    |
| 2013-14       | South Carolina    | 29-5           | 14-2          | 1st          | NCAA Sweet 16                     |
| 2014-15       | South Carolina    | 34-3           | 15-1          | T-1st        | SEC Tourn. Champ./NCAA Final Four |
| 2015-16       | South Carolina    | 33-2           | 16-0          | 1st          | SEC Tourn. Champ./NCAA Sweet 16   |
| 2016-17       | South Carolina    | 33-4           | 14-2          | 1st          | SEC Tourn. Champ./NCAA Champion   |
| <b>Career</b> | <b>17 seasons</b> | <b>393-160</b> | <b>196-70</b> |              |                                   |
| <b>At SC</b>  | <b>9 seasons</b>  | <b>221-80</b>  | <b>97-45</b>  |              |                                   |

\* indicates final season of divisional play

# HEAD COACH DAWN STALEY



wins in program history, needing just 277 games at South Carolina to reach the plateau.

Under Staley's leadership, four Gamecocks have collected eight All-America selections, two have picked up four SEC Player of the Year honors, two have earned SEC Defensive Player of the Year recognition, one has been the SEC 6th Player of the Year and three were named SEC Freshman of the Year. She has coached 10 Gamecocks who earned All-SEC honors a combined 21 times, including 11 first-team selections, and five Gamecocks have been selected in the WNBA Draft in the last three seasons, including 2016 selection Tiffany Mitchell who went on to earn WNBA All-Rookie Team honors and Alaina Coates who, as the No. 2 pick in the 2017 draft, became the highest pick in program history.

On Staley's watch, the Gamecocks are enjoying the most sustained success in program history, especially standing out among their 26 seasons in the SEC. After posting back-to-back 25-win seasons in 2011-12 and 2012-13 for the first time in more than 30 years, the 2014-15 team broke the school record with 34 wins. South Carolina won more SEC games than the season before in each of Staley's first seven seasons, culminating in the 2015-16 team recording just the second 16-0 conference record in league history. Staley's 97 SEC wins are more than any other Gamecock coach, accounting for 60.2 percent of the program's total 161 wins over its 26 seasons in the league. She has delivered the only SEC championships in program history, lifting that trophy four times

## The Staley Capsule

### Coaching Experience

#### 393-160 (.711) – 17 seasons

*South Carolina, head coach 2008-present*

- 221-80 (.734) – nine seasons
- Six NCAA Tournament appearances, 2012 (Sweet 16), 2013, 2014 (Sweet 16), 2015 (Final Four), 2016 (Sweet 16), 2017 (Champion)
- One Women's NIT appearance, 2011
- Four SEC Regular-Season Championships, 2014, 2015, 2016, 2017
- Three SEC Tournament Championships, 2015, 2016, 2017
- Three 30-win Seasons, 2014-15, 2015-16, 2016-17
- Three-Time Naismith National Coach of the Year Finalist, 2014, 2015, 2016
- Basketball Times National Coach of the Year, 2014
- Three-time WBCA Region 3 Coach of the Year, 2014, 2015, 2016
- Three-time SEC Coach of the Year, 2014, 2015, 2016
- BCA Female Coach of the Year, 2012

*Temple University, head coach, 2000-08*

- 172-80 (.683) – eight seasons
- Six seasons of 20 or more wins
- Four Atlantic 10 Tournament titles, 2002, 2004, 2005, 2006
- Six NCAA Tournament appearances, 2002, 2004, 2005, 2006, 2007, 2008
- One Women's NIT appearance, 2001
- WBCA Region 1 Coach of the Year, 2005
- Two-time Atlantic 10 Conference Coach of the Year, 2004, 2005

*USA Basketball, Senior National Team head coach, 2017-present*

*USA Basketball, U19 National Team head coach, 2015*

- FIBA U19 World Championship gold medal, 2015
- USA Basketball Co-National Coach of the Year, 2015

*USA Basketball, U18 Nat'l. Team head coach, 2014*

- FIBA U18 Americas Championship gold medal, 2014

*USA Basketball, Pan Am Games head coach, 2007*

- Pan American Games gold medal, 2007

*USA Basketball, Select Team court coach, Summer 2010*

*USA Basketball, Sr. Nat'l. Team asst. coach, 2006-08, 2014-present*

- Rio Olympics gold medal, 2016
- FIBA World Championship gold medal, 2014
- Beijing Olympics gold medal, 2008
- FIBA Americas Championship gold medal, 2007
- FIBA World Championship bronze medal, 2006

### Playing Experience

*Houston Comets, WNBA, 2005-06*

- Two-time All Star, 2005, 2006
- WNBA Kim Perrot Sportsmanship Award, 2006

*Charlotte Sting, WNBA, 1999-2005*

- Three-time All-Star, 2001, 2002, 2003
- WNBA All-Decade Team
- WNBA Entrepreneurial Spirit Award, 1999
- WNBA Kim Perrot Sportsmanship Award, 1999

*Richmond/Philadelphia Rage, ABL, 1997-98*

- Two-time All-Star, 1997, 1998

*Various international teams, 1992-94*

*USA Basketball, 1994-2004*

- Three Olympic gold medals, 1996, 2000, 2004
  - Two-time USA Basketball Female Athlete of the Year, 1994, 2004
  - Flag bearer for the United States in Olympic Games Opening Ceremony, 2004
  - Goodwill Games Most Valuable Player, 1994
- University of Virginia, 1989-92*
- Three-time Kodak All-American, 1990, 1991, 1992
  - Honda-Broderick Cup Award for Collegiate Female Athlete of the Year, 1991

- *Sports Illustrated* Player of the Year, 1991
  - Two-time ACC Player of the Year, 1991, 1992
  - NCAA Tournament Most Outstanding Player, 1991
  - ACC Rookie of the Year, 1989
- Dobbins Tech, 1985-88*
- *USA Today* National High School Player of the Year, 1988

### Other Notables

- Naismith Memorial Basketball Hall of Fame, Class of 2013
- Order of the Palmetto Recipient, 2013 (highest civilian honor from South Carolina governor granted to those who have displayed significant achievement and service to the state)
- Women's Basketball Hall of Fame, Class of 2012
- Named to WNBA's Top 15 as one of most influential players in league history, 2011
- Philadelphia Sports Hall of Fame, Class of 2011
- Virginia Sports Hall of Fame, Class of 2008
- Two-time Wanamaker Award winner, 1997, 2005
- Henry P. Iba Citizenship Award Female recipient, 2007
- NCAA Division I "Top Players of the Past 25 Years" selection by *ESPN.com*
- Institute for International Sport "The 100 Most Influential Sports Educators in America" selection
- One of four UVa players to have her jersey retired

### Education

Bachelor of arts in rhetoric and communication studies, University of Virginia, 1992



# HEAD COACH DAWN STALEY

in as many seasons, and she has helped the Gamecocks to six of the program's seven top-four finishes in the SEC. Off the court, Staley's Gamecocks have been active in the community and thriving in the classroom. Every student-athlete who completed her eligibility under Staley at South Carolina has graduated or is on track to graduate, and the team GPA has been over 3.0 for seven of the last eight semesters.

After a humbling beginning to Staley's South Carolina tenure in 2008-09 (10-18, 2-12 SEC), the Gamecocks posted three wins over nationally ranked teams in 2009-10 and lifted their SEC record to 7-9, the largest one-season percentage jump for the program since the 2005-06 group turned a 2-12 mark the previous season into a 7-7 league slate. Staley's postseason debut with South Carolina came the next season as the Gamecocks played into the second round of the 2011 WNIT. The berth was small consolation to a young team that, in late February, had been on track to earn an NCAA Tournament berth after defeating a pair of nationally ranked league opponents and finishing fifth in the SEC.

The tide shifted significantly in 2011-12, as the Gamecocks proved they were odds-beaters in the image of their head coach. Staley rallied a team that had lost its top two scorers to a 14-2 record through the first week in January.

South Carolina closed the regular season with 20 wins with four of those coming over nationally ranked opponents, including the program's first ever win at Tennessee. The Gamecocks pushed their way into the SEC Tournament semifinals for the first time in school history, which all but confirmed their place in the NCAA Tournament, where they were unfazed by the pressure of taking down a higher-seeded team on its home court en route to the first Sweet 16 appearance of Staley's coaching career. Ranked No. 25 at season's end, it was the first of three straight seasons with a final national ranking and the program's first since 2002-03.

Staley's 2012-13 team posted a series of new milestones for the program in the SEC era – second-best overall winning percentage (25-8, .758), a school-record 11 SEC victories and the highest final ranking (17 by the Associated Press) since the 2002-03 team finished 16th. A loss in the second round of the NCAA Tournament suddenly felt unacceptable for the program, and the 2013-14 team immediately set about righting that wrong. Despite their youth – no four-year student-athletes on the roster – the Gamecocks took a 12-1 record into SEC action and proceeded to rattle off four wins to open that slate. Winning 10 of their last 12 games, the Gamecocks secured their first SEC regular-season championship, which they celebrated with over 10,000 fans at each of their final two home games. South Carolina had surpassed its win total of the previous two seasons before the regular-season had even finished and spent four weeks ranked among the top five teams in the nation (AP), peaking at No. 4 to match the program's highest ranking since Jan. 10, 1982. The Gamecocks dominated the league postseason awards, as Staley's first SEC Coach of the Year recognition joined a chorus of others – the second sophomore to earn SEC Player of the Year honors in league history and the first SEC Freshman of the Year to also earn another of the highest individual honors with SEC Co-Sixth Player of the Year. The team experienced yet another program first when it earned a No. 1 seed in the NCAA Tournament, and the Gamecocks advanced to the Sweet 16 before their historic season ended – a new standard clearly set for the future.

For 2014-15, Staley added the nation's No. 2 recruiting class, including the top-ranked player in the class, to a roster that lost just two letterwinners from the SEC championship campaign. The combination catapulted South Carolina to No. 2 in the preseason polls, and the newcomers blended seamlessly with the veterans to move the Gamecocks into their first No. 1 ranking on Nov. 24, 2014, making Staley just the second woman in history to both play for and coach a No. 1-ranked team. Staley guided her team through a perfect non-conference slate, including a win at No. 9/8 Duke that kept the program atop the national rankings heading into SEC action. The Gamecocks' win streak more than doubled the previous school record of 10, stretching to 22 to extend their time at No. 1 to 12 weeks, the third-longest stay by any program in five seasons. A 15-1 SEC record secured a share of the regular-season title and put the Gamecocks into the SEC Tournament as the top seed for the second-straight year. The league coaches again showered South Carolina with awards – co-Coach of the Year, Player of the Year, Freshman of the Year, Scholar-Athlete of the Year and four all-conference selections, including three on the first team. The Gamecocks celebrated with a dominating run to their first SEC Tournament championship game, which they proceeded to win with a commanding performance that also set the stage for a second-consecutive No. 1 seed in the NCAA Tournament. The 2014-15 team was on a mission to surpass the program's best ever finish in the event, and South Carolina overpowered its first two opponents despite the pressure of hosting games for the first time since 2002. The Gamecocks used the determination and guile they learned from Staley to rally past first North Carolina in the Sweet 16 and then Florida State in the Elite Eight to win the Greensboro Regional and advance to the first NCAA Final Four in program history.

In 2015-16, Staley became the first SEC coach to earn league Coach of the Year honors in three straight seasons after she led the Gamecocks to just the second 16-0 conference record in league history. South Carolina also became the first SEC program to capture league Player of the Year honors in three straight seasons and answered the barrage of awards by repeating as SEC Tournament champions. The Gamecocks recorded a school-record 13 wins over ranked opponents and were ranked among the top three in the nation throughout the season. The program posted its first official sellout of Colonial Life Arena, welcoming 18,000 rowdy fans for the No. 1 vs. No. 2 battle against

## Staley vs. Opponents

|                   |      |                   |       |                      |      |
|-------------------|------|-------------------|-------|----------------------|------|
| Alabama           | 13-0 | Hartford          | 0-1   | Presbyterian         | 2-0  |
| Alabama A&M       | 1-0  | Hawai'i           | 1-0   | Princeton            | 1-0  |
| Appalachian State | 1-0  | High Point        | 2-0   | Purdue               | 2-0  |
| Arizona State     | 2-1  | Illinois          | 2-0   | Quinnipiac           | 1-0  |
| Arkansas          | 9-3  | Iona              | 1-0   | Rhode Island         | 9-3  |
| Auburn            | 10-3 | Iowa State        | 0-1   | Richmond             | 9-2  |
| Ball State        | 1-0  | Jacksonville      | 2-0   | Rider                | 1-0  |
| Boise State       | 1-0  | James Madison     | 0-1   | Rutgers              | 3-5  |
| Boston College    | 0-1  | Kansas            | 0-1   | Saint Joseph's       | 16-4 |
| Boston University | 0-1  | Kansas State      | 1-1   | Saint Louis          | 3-0  |
| Bowling Green     | 0-1  | Kent State        | 1-0   | Saint Peter's (N.J.) | 1-0  |
| Brown             | 3-0  | Kentucky          | 13-10 | San Diego State      | 3-0  |
| Butler            | 1-0  | La Salle          | 10-0  | Santa Clara          | 1-1  |
| CSU Bakersfield   | 1-0  | Lehigh            | 1-0   | Savannah State       | 7-0  |
| CSU Northridge    | 1-0  | Liberty           | 1-0   | Seton Hall           | 3-1  |
| Central Michigan  | 2-0  | Louisiana Tech    | 3-0   | South Carolina       | 0-2  |
| Charleston Sthrn. | 2-0  | Louisville        | 1-0   | SC State             | 5-0  |
| Charlotte         | 6-1  | LSU               | 8-7   | South Dakota St.     | 1-0  |
| Clemson           | 7-2  | Maine             | 1-0   | Southern Cal         | 2-0  |
| C. of Charleston  | 2-0  | Marist            | 1-0   | St. Bonaventure      | 12-1 |
| Connecticut       | 0-4  | Maryland          | 0-2   | Stanford             | 1-5  |
| Davidson          | 1-0  | Md.-Eastrn. Shore | 3-0   | Stony Brook          | 1-1  |
| Dayton            | 8-3  | Massachusetts     | 11-2  | Syracuse             | 2-1  |
| DePaul            | 1-0  | Miami (Ohio)      | 1-1   | TCU                  | 0-1  |
| Drexel            | 4-0  | Michigan          | 1-0   | Tennessee            | 4-11 |
| Duke              | 2-3  | Michigan State    | 0-1   | Texas                | 1-0  |
| Duquesne          | 10-0 | Minnesota         | 1-0   | Texas A&M            | 4-3  |
| East Carolina     | 1-0  | Mississippi       | 12-3  | Toledo               | 1-0  |
| East Tenn. State  | 2-0  | Mississippi State | 11-3  | UC Davis             | 0-1  |
| Eastern Michigan  | 1-0  | Missouri          | 3-2   | UCLA                 | 2-0  |
| Elon              | 2-0  | Morgan State      | 1-0   | UNC Asheville        | 1-0  |
| Evansville        | 0-1  | Nebraska          | 1-0   | UNC Greensboro       | 1-0  |
| Fair. Dickinson   | 1-0  | New Mexico        | 0-1   | UNC Wilm.            | 1-0  |
| Florida           | 9-8  | North Carolina    | 2-4   | USC-Upstate          | 1-0  |
| Fla. Gulf Coast   | 1-0  | NC Central        | 2-0   | Vanderbilt           | 9-4  |
| Florida Int'l.    | 1-0  | NC State          | 3-4   | Villanova            | 5-3  |
| Florida State     | 2-0  | Notre Dame        | 0-3   | Virginia             | 0-2  |
| Fordham           | 13-1 | Ohio              | 1-0   | Wake Forest          | 1-1  |
| Furman            | 2-0  | Ohio State        | 2-0   | Western Carolina     | 1-0  |
| Geo. Washington   | 5-9  | Oklahoma          | 0-1   | Western Michigan     | 0-2  |
| Georgia           | 11-7 | Oregon            | 1-0   | Winthrop             | 2-0  |
| Georgia State     | 1-0  | Oregon State      | 1-0   | Wisconsin            | 1-0  |
| Georgia Tech      | 1-1  | Penn              | 7-1   | Xavier               | 8-5  |
| Hampton           | 6-0  | Penn State        | 1-3   |                      |      |

## HEAD COACH DAWN STALEY

UConn on Feb. 8, 2016, and the Gamecocks played in front of no fewer than 10,000 fans in any of its 17 home games on the season.

The program's climb reached its pinnacle in 2016-17 with its first NCAA National Championship. The Gamecocks proved their resilience throughout the season, learning and adapting after each of their four losses and overcoming what proved to be a season-ending injury to First-Team All-SEC center Alaina Coates in the final game of the regular season. Staley's commitment to having her team focus on what it could control paid off as the Gamecocks capitalized on nearly homecourt conditions to win their third-straight SEC Tournament in Greenville, S.C., with a dominant fourth quarter. Staley adjusted her tactics with her abbreviated lineup in the NCAA Tournament and, after avoiding a second-round scare against under-seeded Arizona State, the Gamecocks stormed through the next four games to earn the program's first NCAA National Championship.

In her first coaching position, Staley helped Temple reach the postseason seven times in her eight seasons on the bench, including six NCAA Tournament appearances. The Owls posted 20 or more wins in a season six times, collected the first A-10 Tournament title in school history in Staley's second season (2002) and captured the program's first national ranking. The Owls became just the second team in A-10 history to collect three straight conference tournament titles, winning the event in 2004, 2005 and 2006, as well.

With a 172-80 record, Staley left Temple as the winningest coach in its women's basketball history and was the fastest to reach 100 victories. En route to that .683 winning percentage, Staley earned WBCA Region 1 Coach of the Year honors in 2005, was twice named A-10 Coach of the Year (2004, 2005), and guided the team to a share of the regular-season A-10 title in 2007-08. She built that success on a foundation of discipline and caring.

"A lot of people think that X's and O's are the biggest part of coaching, but it's actually very little," Staley said. "It's about relationships and discipline. I truly believe that the disciplined person can do anything, so I try to set up a platform on which student-athletes can be disciplined. With that, I want to build a family atmosphere that includes both the staff and the student-athletes. Once those things are in place, the basketball part becomes very easy because everyone wants to win for each other. We want to work for one another; we want to prepare people to be successful."

Staley has carried that coaching philosophy to USA Basketball, where her presence on the coaching staff has become as ubiquitous as it was on the court for nearly a decade beginning in 1994. In an international coaching tenure that began in 2006, Staley has thrived both in the head chair and as an assistant,



helping the U.S. amass seven gold medals. After two terms as an assistant coach with the Senior National Team, first joining that group in 2006, and three head coaching assignments in the organization, Staley was named head coach of the Senior National Team for 2017-20.

Her first coaching role on a national team level was as an assistant with the 2006 World Championship team, and, following that team's success, she was asked to stay with the team through the Beijing Olympics in 2008. The U.S. won its fourth-straight Olympic gold medal -- all with Staley involved in some capacity -- that year. In between those two events, she helped the U.S. to a gold medal at the 2007 FIBA Americas Championship in Chile. While she worked with the Senior National Team, Staley also took on a head coaching role for the 2007 USA Pan American Games Team, leading the college players to a perfect 5-0 record and a gold medal against more veteran international squads.

After stepping away from USA Basketball during the next Olympic cycle, Staley returned to the fold in 2014, again taking on dual roles within the organization. She kicked off the stretch with her second head coaching gold medal, leading the U.S. to gold in the FIBA U18 Americas Championship and closed the year as an assistant on the 2014 FIBA World Championship gold-medal team. In 2015, she added to her coaching gold-medal count with a U.S. victory in the FIBA U19 World Championships, which earned her USA Basketball Co-National Coach of the Year honors and made her the first person to earn both Coach and Athlete of the Year selections from the organization. In 2016, Staley picked up another gold medal as she was an assistant on the Rio Olympic team that captured its sixth-straight Olympic gold medal.

As a player, success came early in Staley's career, beginning with being named *USA Today's* National High School Player of the year in 1988 as a senior at Dobbins Tech. She went on to a four-year career at the University of Virginia that featured three trips to the NCAA Final Four, including a championship game appearance in 1991 after which she was named Most Outstanding Player. A two-time National Player of the Year (1991, 1992) and three-time Kodak All-American (1990, 1991, 1992), Staley was the ACC Player of the Year in 1991 and 1992 and the league's Rookie of the Year in 1989. Finishing her career as the only player in ACC history -- male or female -- to record more than 2,000 points, 700 rebounds, 700 assists and 400 steals, Staley is one of three players at Virginia to have her jersey retired. She was named to the ACC's 50th Anniversary Women's Basketball Team in 2002 and earned a spot on ESPN.com's "Top Players of the Past 25 Years." In April 2008, she was inducted into the Virginia Sports Hall of Fame.

On the international scene, Staley made her first appearance in a USA Basketball uniform as a member of the 1989 Junior World Championship Team and 15 years later played her final international game after helping the organization to a 196-10 record. Olympic gold medals in 1996, 2000 and 2004 highlight her collection of 10 gold medals and one bronze on the world stage.





# HEAD COACH DAWN STALEY

Staley was also on two FIBA World Championship gold-medal teams (1998, 2002). Twice named USA Basketball's Female Athlete of the Year (1994, 2004), Staley counts carrying the U.S. flag in front of the United States delegation in the 2004 Olympic Games Opening Ceremony among her most gratifying moments on the international stage.

Following the 1996 Olympic Games, Staley joined the Richmond Rage of the ABL, one of two women's basketball professional leagues started in the wake of USA Basketball's success on the world stage. After two all-star seasons with the organization, she switched leagues, signing with the WNBA's Charlotte Sting in 1999. Including the 2005 and 2006 seasons with the Houston Comets, Staley played in the WNBA All-Star game five times and was the first player in league history to represent both the East and West teams during her career. A member of the WNBA's All-Decade Team, as selected by a panel of national and WNBA-market media as well as the league's players and coaches, Staley twice earned the Kim Perrot Sportsmanship Award (1999, 2006) and won the WNBA Entrepreneurial Spirit Award in 1999. Following her retirement from the league, the WNBA began awarding the Dawn Staley Community

Leadership Award in 2007, honoring the player who best exemplifies the characteristics of a leader in the community in which she works or lives.

Staley lives that mantra daily not only through individual appearances and in encouraging her teams to pursue community services opportunities, but also through co-founding INNERSOLE. After creating The Dawn Staley Foundation in Philadelphia, which was aimed at giving inner-city children positive input through after-school programs, Staley was eager to find a way to fill a need in her new hometown. She continued to invest time with various projects in Columbia, but found that she craved one hallmark initiative that could provide sustained assistance and create lasting change in one of her favorite constituencies – children. In July 2013, Staley found that in the creation of INNERSOLE, which aims to provide new sneakers to children who are homeless and children who are in need. Remembering the feeling of confidence and pride she felt as a child whenever she wore new sneakers, Staley initially launched the organization via social media, and her broad network of friends, fans and colleagues immediately leapt into action. Shoes poured in from all around the country, and a movement was born.

Local and national organizations have recognized Staley's commitment to giving back, most recently with the Columbia Chamber naming her its 2017 Ambassador of the Year. In 2013, then-South Carolina Governor Nikki Haley tabbed Staley to receive the Order of the Palmetto, the highest civilian honor from the governor bestowed on those who have displayed significant achievement and service to the state. Staley has twice been presented the Wanamaker Award (1997, 2005), presented annually to the athlete, team or organization that has done the most to reflect credit upon Philadelphia and to the team or sport in which he/she excels. She is the only individual woman to ever win the award and joins Joe Frazier and Steve Carlton as the only individuals to capture the honor twice. In 2007, the Rotary Club of Tulsa named Staley its female recipient of the Henry P. Iba Citizenship Award, which is presented annually to the male and female athlete who has excelled in both their sport and their service to others.

Staley was honored by the University of Virginia Women's Center in 2006 with the Center's Distinguished Alumna Award, which honors a female graduate of the University who has demonstrated excellence, leadership and extraordinary commitment to her field and who has used her talents as a positive force for change. The University further recognized Staley's standing in the community when it asked her to give the valedictory address at the 2009 Valedictory Exercises.



## Naismith Memorial Basketball Hall of Fame

On September 8, 2013, Dawn Staley was enshrined in the Naismith Memorial Basketball Hall of Fame, becoming just the 15th female player to gain entrée based on her individual merits.

South Carolina women's basketball coaches and staff joined Staley's family and the myriad of other supporters helping her enjoy the weekend-long celebration that included a ring ceremony on Friday night; a press conference, during which the inductees received their Hall of Fame blazers, and dinner on Saturday; and the enshrinement ceremony as well as receptions before and after the event on Sunday.



*"I knew I made the right decision to coach when I started to care more about our players than about the wins – and I really like wins."*

With her presenters Katrina McClain (Class of 2012) and Teresa Edwards (Class of 2011), Staley delivered an artful speech, reflecting on her playing and coaching careers as she had while carrying the American flag ahead of the U.S. Olympic delegation in 2004.

# STALEY ERA RECORD BOOK

## Scoring

### Most Points

| Game                             | Points |
|----------------------------------|--------|
| 1. vs. Savannah State, 12/14/14  | 111    |
| 2. at Alabama, 1/8/15            | 102    |
| 3. vs. Quinnipiac, 3/25/17       | 100    |
| 4. vs. Clemson, 11/20/14         | 99     |
| vs. Ole Miss, 1/30/14            | 99     |
| vs. Charleston Southern, 11/9/13 | 99     |

### Fewest Points

| Game                             | Points |
|----------------------------------|--------|
| 1. at Stanford, 11/26/10         | 32     |
| 2. vs. Georgia, 3/4/11           | 34     |
| 3. vs. Mississippi State, 3/5/09 | 39     |
| 4. at Georgia, 1/13/13           | 40     |
| 5. at Mississippi State, 2/26/09 | 41     |

### Fewest Points Allowed

| Game                                  | Points |
|---------------------------------------|--------|
| 1. vs. South Carolina State, 12/14/11 | 21     |
| 2. vs. Presbyterian, 11/27/11         | 24     |
| 3. vs. NC Central, 12/1/14            | 26     |
| vs. SC State, 12/22/13                | 26     |
| 5. vs. NC Central, 12/2/13            | 27     |

### Most Points Allowed

| Game                            | Points |
|---------------------------------|--------|
| 1. at Clemson, 11/19/09         | 94     |
| 2. vs. North Carolina, 12/20/09 | 93     |
| 3. vs. Kentucky, 2/25/17        | 87     |
| at Connecticut, 2/9/15          | 87     |
| 5. vs. Xavier, 11/12/10         | 84     |

## Margin of Outcome

### Largest Margin of Victory

| Game                                | Score  | Margin |
|-------------------------------------|--------|--------|
| 1. vs. Charleston Southern, 11/8/13 | 99-29  | +70    |
| 2. vs. NC Central, 12/1/14          | 90-26  | +64    |
| 3. vs. Savannah State, 12/14/14     | 111-49 | +62    |
| 4. vs. Clemson, 11/20/14            | 99-41  | +58    |
| 5. vs. Saint Peter's, 11/22/16      | 93-38  | +55    |

### Largest Margin of Defeat

| Game                         | Score | Margin |
|------------------------------|-------|--------|
| 1. at Stanford, 11/26/10     | 32-70 | -38    |
| 2. vs. Georgia, 3/4/11       | 34-66 | -32    |
| 3. vs. Stanford, 12/19/08    | 47-78 | -31    |
| 4. at Penn State, 11/21/10   | 48-78 | -30    |
| 5. vs. Connecticut, 12/28/08 | 48-77 | -29    |

## Field Goals

### Made

| Game                                | FGM |
|-------------------------------------|-----|
| 1. vs. Charleston Southern, 11/8/13 | 39  |
| 2. vs. Minnesota, 12/11/16          | 38  |
| vs. Savannah State, 12/14/14        | 38  |
| vs. Clemson, 11/20/14               | 38  |
| 5. vs. UNC Asheville, 3/17/17       | 37  |
| vs. Saint Peter's, 11/22/16         | 37  |
| Three other times                   | 37  |

### Attempted

| Game                           | FGA |
|--------------------------------|-----|
| 1. vs. Penn State, 11/20/11    | 76  |
| 2. at Clemson, 11/19/09        | 74  |
| 3. vs. Tennessee, 1/20/11      | 73  |
| 4. vs. Minnesota, 12/11/16     | 72  |
| vs. Central Michigan, 12/20/14 | 72  |
| vs. Clemson, 11/20/14          | 72  |
| vs. Kansas, 3/25/13            | 72  |

### Highest Percentage (Min. 40 FGA)

| Game                           | FGM-A | Pct  |
|--------------------------------|-------|------|
| 1. vs. Savannah State, 3/20/15 | 34-53 | .642 |
| 2. at Alabama, 1/8/15          | 37-58 | .638 |
| 3. vs. Kentucky, 2/26/17       | 34-55 | .618 |
| 4. vs. Florida State, 3/29/15  | 30-49 | .612 |
| 5. vs. Quinnipiac, 3/25/17     | 36-59 | .610 |

### Lowest Percentage (Min. 40 FGA)

| Game                     | FGM-A | Pct  |
|--------------------------|-------|------|
| 1. at Stanford, 11/26/10 | 12-55 | .218 |
| 2. vs. Georgia, 3/4/11   | 12-52 | .231 |
| 3. at Florida, 1/20/13   | 15-64 | .234 |
| 4. at Kentucky, 2/5/09   | 13-55 | .236 |
| 5. at Georgia, 1/2/11    | 13-54 | .241 |

### Lowest Percentage Allowed (Min. 40 FGA)

| Game                                  | FGM-A | Pct  |
|---------------------------------------|-------|------|
| 1. vs. South Carolina State, 12/14/11 | 6-48  | .125 |
| 2. vs. NC Central, 12/2/13            | 8-50  | .160 |
| 3. vs. Charleston Southern, 11/8/13   | 10-54 | .185 |
| 4. vs. Arkansas, 3/6/15               | 11-57 | .193 |
| vs. Hampton, 11/22/12                 | 11-57 | .193 |

### Highest Percentage Allowed (Min. 40 FGA)

| Game                         | FGM-A | Pct  |
|------------------------------|-------|------|
| 1. vs. Connecticut, 12/28/08 | 35-62 | .565 |
| vs. Florida, 1/9/11          | 26-46 | .565 |
| 3. vs. Xavier, 11/12/10      | 34-61 | .557 |
| 4. at Connecticut, 2/9/15    | 31-56 | .554 |
| 5. at Kentucky, 1/13/11      | 30-55 | .545 |

## 3-Point Field Goals

### Made

| Game                       | 3FGM |
|----------------------------|------|
| 1. vs. Minnesota, 12/11/16 | 16   |
| 2. at Auburn, 1/5/17       | 14   |
| 3. vs. Kentucky, 3/5/16    | 12   |
| 4. vs. Arkansas, 1/3/16    | 11   |
| at Alabama, 1/8/15         | 11   |

### Attempted

| Game                                | 3FGA |
|-------------------------------------|------|
| 1. vs. Minnesota, 12/11/16          | 33   |
| 2. vs. Syracuse, 3/25/16            | 32   |
| 3. vs. Penn State, 11/20/11         | 29   |
| 4. at Auburn, 1/5/17                | 28   |
| vs. College of Charleston, 11/14/13 | 28   |
| vs. North Carolina, 12/19/10        | 28   |

# STALEY ERA RECORD BOOK

## Highest Percentage (Min. 5 3FGA)

| Game                           | 3FGM-A | Pct  |
|--------------------------------|--------|------|
| 1. vs. Kentucky, 3/4/17        | 4-6    | .667 |
| vs. Oregon State, 3/25/14      | 4-6    | .667 |
| vs. Ole Miss, 1/30/14          | 4-6    | .667 |
| vs. Savannah State, 12/28/13   | 4-6    | .667 |
| vs. Western Carolina, 12/29/12 | 6-9    | .667 |
| at Alabama, 1/10/10            | 8-12   | .667 |
| vs. Charlotte, 12/21/08        | 8-12   | .667 |

## Free Throws

### Made

| Game                            | FTM |
|---------------------------------|-----|
| 1. vs. Savannah State, 12/14/14 | 34  |
| vs. Oregon State, 3/25/14       | 34  |
| 3. vs. Missouri, 1/10/16        | 32  |
| vs. Ole Miss, 1/30/14           | 32  |
| at Mississippi State, 1/6/12    | 32  |

### Attempted

| Game                               | FTM |
|------------------------------------|-----|
| 1. at Mississippi State, 1/6/13    | 50  |
| 2. vs. Savannah State, 12/28/13    | 48  |
| 3. vs. Savannah State, 12/14/14    | 47  |
| 4. vs. Missouri, 2/2/14            | 46  |
| 5. vs. Seton Hall, 11/17/13        | 44  |
| vs. South Carolina State, 12/21/12 | 44  |

## Highest Percentage (Min. 10 FTA)

| Game                       | FTM-A | Pct  |
|----------------------------|-------|------|
| 1. vs. Quinnipiac, 3/25/17 | 18-19 | .947 |
| 2. at Texas A&M, 2/23/17   | 15-16 | .938 |
| 3. vs. Alabama, 1/19/14    | 10-11 | .909 |
| 4. at Arkansas, 2/5/17     | 18-20 | .900 |
| 5. vs. Auburn, 1/2/09      | 23-26 | .885 |

## Rebounding

### Total

| Game                                   | Rebs |
|--|------|
| 1. vs. College of Charleston, 11/14/13 | 62   |
| 2. at Florida, 1/20/13                 | 59   |
| 3. at Alabama, 2/22/16                 | 58   |
| 4. vs. Hampton, 11/22/12               | 57   |
| 5. vs. Savannah State, 12/14/14        | 56   |

### Margin

| Game                            | Rebs  | Margin |
|---------------------------------|-------|--------|
| 1. vs. Savannah State, 12/14/14 | 56-21 | +35    |
| 2. vs. Hampton, 12/16/15        | 52-19 | +33    |
| 3. at Alabama, 2/7/13           | 53-24 | +29    |
| 4. at Alabama, 2/22/16          | 58-31 | +28    |
| vs. Hampton, 12/17/14           | 48-21 | +27    |

## Offensive

| Game                                   | Off. Rebs |
|--|-----------|
| 1. vs. Elon, 11/9/12                   | 29        |
| 2. vs. College of Charleston, 11/23/11 | 27        |
| 3. vs. Kansas, 3/25/13                 | 26        |
| at Florida, 1/20/13                    | 26        |
| 5. vs. Savannah State, 11/15/12        | 25        |
| vs. Penn State, 11/20/11               | 25        |
| at Penn State, 11/21/10                | 25        |

## Defensive

| Game                                | Def. Rebs |
|-------------------------------------|-----------|
| 1. vs. East Carolina, 12/20/15      | 39        |
| vs. College of Charleston, 11/14/13 | 39        |
| vs. Hampton, 11/22/12               | 39        |
| 4. at Arkansas, 1/2/14              | 38        |
| 5. vs. UCLA, 12/18/16               | 37        |
| at Alabama, 2/22/16                 | 37        |
| vs. CSU Northridge, 3/23/14         | 37        |
| at Texas A&M, 1/16/14               | 37        |

## Turnovers

### Fewest

| Game                          | TOs |
|-------------------------------|-----|
| 1. at Tennessee, 2/2/12       | 4   |
| 2. vs. UNC Asheville, 3/17/17 | 5   |
| vs. Vanderbilt, 2/16/17       | 5   |
| vs. CSU Bakersfield, 11/28/15 | 5   |
| at Clemson, 11/18/15          | 5   |
| vs. Syracuse, 11/28/14        | 5   |
| vs. Tennessee, 2/23/15        | 5   |
| at Missouri, 2/28/13          | 5   |
| vs. Georgia, 3/2/12           | 5   |
| vs. Ole Miss, 3/3/11          | 5   |

### Most

| Game                       | TOs |
|----------------------------|-----|
| 1. at Wake Forest, 12/3/08 | 32  |
| 2. at Ole Miss, 2/25/16    | 29  |
| vs. Hampton, 11/22/12      | 29  |
| vs. Kentucky, 1/15/12      | 29  |
| 4. at Kentucky, 1/13/11    | 28  |

## Other Stats

### Assists

| Game                             | Assists |
|----------------------------------|---------|
| 1. vs. Minnesota, 12/11/16       | 29      |
| 2. vs. NC Central, 12/1/14       | 26      |
| 3. vs. Winthrop, 12/13/15        | 25      |
| vs. UNCG, 11/15/15               | 25      |
| vs. San Diego State, 11/23/14    | 25      |
| vs. Clemson, 11/20/14            | 25      |
| vs. Alabama, 1/19/14             | 25      |
| vs. Charleston Southern, 11/8/13 | 25      |

### Steals

| Game                             | Steals |
|----------------------------------|--------|
| 1. vs. NC Central, 12/1/14       | 21     |
| vs. Furman, 12/11/11             | 21     |
| 3. vs. San Diego State, 11/23/14 | 18     |
| 4. vs. Saint Peter's, 11/22/16   | 17     |
| vs. Charleston Southern, 11/8/13 | 17     |

## Blocked Shots

| Game                             | Blocks |
|----------------------------------|--------|
| 1. vs. Winthrop, 12/13/15        | 16     |
| 2. vs. Arkansas, 3/6/15          | 15     |
| 3. at Mississippi State, 2/6/14  | 14     |
| vs. Kentucky, 1/9/14             | 14     |
| 5. at Kentucky, 3/1/15           | 12     |
| vs. Charleston Southern, 11/8/13 | 12     |



# Lisa Boyer

## Associate Head Coach

### 10th Season at South Carolina Ithaca, 1979

Lisa Boyer joined the South Carolina staff in May 2008, shortly after head coach Dawn Staley announced her intention to join the Gamecocks. Boyer has been the lead assistant on a Staley-led staff since the 2002-03 season when she returned to the college ranks after five seasons coaching at the professional level. Named associate head coach in May 2010, Boyer is the Gamecocks' recruiting coordinator and works directly with South Carolina's guards. Her experience and analytic mind have helped guide South Carolina to six straight 25-win seasons, highlighted four SEC regular-season championships (2014, 2015, 2016, 2017), three SEC Tournament titles (2015, 2016, 2017), the program's first NCAA Final Four appearance (2015) and first NCAA National Championship (2017).

Through nine seasons at South Carolina, Boyer has helped the Gamecocks to six consecutive 25-win seasons, including the program's first back-to-back 30-win seasons (2014-15 and 2015-16) and six NCAA Tournament appearances (2012, 2013, 2014, 2015, 2016, 2017). The last four seasons have seen South Carolina realize its lofty ambitions – capped by the 2017 National Championship. The Gamecocks followed a 29-win season in 2013-14, during which they earned their first No. 1 seed in the NCAA Tournament, with a school-record 34 wins and a spot in the NCAA Final Four in 2014-15 and a third-straight SEC regular-season championship and 33 wins in 2015-16. The program swept the available titles in 2016-17, rallying late in the season for the SEC regular-season championship, storming through the SEC Tournament in nearby Greenville, S.C., and powering through the NCAA Tournament to the national title in Dallas, Texas. South Carolina has finished among the SEC's top four each of the last six seasons, and under Boyer's watchful eye, five South Carolina guards have earned All-SEC honors, including the program's first SEC Player of the Year in Tiffany Mitchell in 2014 and 2015. Boyer's leadership also helped land the No. 2 recruiting class in the nation in 2014.

Boyer helped Staley lead Temple to five NCAA Tournaments and three Atlantic 10 Tournament titles in six seasons. She also keyed the recruitment of two players that would go on to be Temple's first WNBA First-Round Draft Picks. In 2005, the Owls became the first team in A-10 history to go undefeated in the regular season when they posted a 16-0 mark in league play. That team went on to capture its second-straight A-10 Tournament championship and finished the season in the second round of the NCAA Tournament with a school-record 28 wins. Prior to falling in the second-round game against Rutgers, Temple had rattled off 25 consecutive victories, the nation's longest winning streak of any men's or women's team that season.

Prior to her stint at Temple, Boyer spent six seasons coaching in first the ABL and then the WNBA. She began her career at the professional level in 1996 as the head coach of the Richmond (later Philadelphia) Rage. After guiding her first team to a 21-19 record, Boyer welcomed the arrival of Staley to the 1997 squad. Boyer left the Rage to take an assistant coach position with the WNBA's Cleveland Rockers in 1998. During her five years with the club, the Rockers advanced to the WNBA semifinals (1998) and the conference final (2000). As part of her work with the Rockers, Boyer had the opportunity to serve on John Lucas' Cleveland Cavaliers' staff in 2001-02, becoming the first woman on an NBA coaching staff.

Boyer took the position with the Rage after 10 seasons as Bradley University's

head coach. With a 100 percent graduation rate throughout her tenure, she guided the Braves to a 15-13 record in her first season (1986-87). Boyer also posted winning records in 1989-90 (16-12) and 1991-92 (17-11) before leaving the program following the 1995-96 season. In her final four seasons at Bradley, she also served as the department's senior women's administrator and compliance coordinator.

Bradley was not Boyer's first head coaching stop, however. She led Converse in 1982-83, just one year after getting her start in coaching as an assistant at Davidson. Following her single season at Converse, Boyer served as an assistant coach for one season at East Carolina, Miami (Ohio) and Virginia Tech, respectively.

A native of Ogdensburg, N.Y., Boyer was a standout forward for Ithaca College, from which she graduated with a bachelor of science degree in 1979. She also earned a master of education degree from UNC Greensboro in 1982. For her 30+ years in coaching and shaping both professional and collegiate players, Boyer's alma mater honored her with induction into the Ithaca College Athletics Hall of Fame in 2014.

### The Boyer Capsule

#### Coaching Experience

South Carolina, associate head coach, 2010-present  
South Carolina, assistant coach, 2008-10  
Temple, assistant coach, 2002-08  
Cleveland Rockers, WNBA, assistant coach, 1998-2002  
Cleveland Cavaliers, NBA, volunteer assistant coach, 2001-02  
Richmond/Philadelphia Rage, ABL, head coach, 1996-97

- 34-50 (.405) – 2 seasons

Bradley University, head coach, 1986-1996

- 124-149 (.454) – 10 seasons

Virginia Tech, assistant coach, 1985-86  
University of Miami (Ohio), assistant coach, 1984-85  
East Carolina, assistant coach, 1983-84  
Converse College, head coach, 1982-83  
Davidson College, assistant coach, 1981-82

#### Playing Experience

Ithaca College, 1975-79

#### Other Notables

Ithaca College Athletics Hall of Fame, Class of 2014

#### Education

Bachelor of science, Ithaca College, 1979  
Master of education, UNC Greensboro, 1982



# Fred Chmiel

## Assistant Coach



### 3rd Season at South Carolina Excelsior College, 2001

Fred Chmiel reunited with South Carolina head coach Dawn Staley in June 2015, marking their third partnership, including one season in which he coached Staley in the WNBA. In 11 seasons as an assistant coach at the college level, Chmiel has been part of eight conference regular-season titles, three conference tournament titles, 10 NCAA Tournament appearances, including three Sweet 16 berths and the 2017 National Championship, and his teams have produced eight WNBA draft picks.

Working most closely with the frontcourt, Chmiel has spent the last two seasons guiding the most daunting starting tandem in women's basketball—Alaina Coates and A'ja Wilson. The two First-Team All-SEC selections dominated the league in scoring, rebounding and blocked shots. Coates averaged a double-double each of her final two seasons at South Carolina, ranking among the nation's top 20 in rebounding average each season (19th in 2015-16; 13th in 2016-17), becoming the first Gamecock since 1993 to average a double-double on the season. Wilson pulled in SEC Player of the Year honors in 2016 and 2017, adding SEC Defensive Player of the Year recognition in 2016. She is a two-time First-Team All-American and finalist for every national player of the year award. Chmiel's frontcourt helped the team to just the second 16-0 league record in SEC history (2016) and, in 2017, the program's fourth-straight SEC regular-season title, third-consecutive SEC Tournament crown and first NCAA National Championship.

Chmiel spent the 2014-15 season at Minnesota where he served as the Golden Gophers' defensive coordinator while also working with the guards. Despite a season-ending injury to a key member of his group, Chmiel helped the Gophers rank eighth in the nation in assists per game and 26th in the country in assist-to-turnover ratio. He also lent his WNBA experience to center Amanda Zahui B. as she prepared for her future in the league, beginning with being the No. 2 pick in the draft.

In a similar role for four seasons at Penn State, Chmiel was part of three straight Big Ten regular-season championship teams and saw the Lady Lions advance to the NCAA Sweet 16 twice in their three tournament appearances. Two of his guards went on earn All-America status and be drafted into the WNBA, and a third earned Big Ten Defensive Player of the Year honors.

Chmiel worked with perimeter players and served as the academic liaison at San Diego State for two seasons, during which the Aztecs won back-to-back Mountain West Conference regular-season titles and the 2010 Mountain West Conference Tournament championship. In his first season, 2008-09, San Diego State earned its first NCAA Tournament bid in 13 years, and Chmiel mentored another eventual WNBA Draft pick to win MWC Defensive Player of the Year honors in consecutive seasons.

Staley tapped Chmiel for his first women's college assistant coaching role during her penultimate season at Temple (2006-07), following his lone season as the head coach of the San Jose Spiders in the National Women's Basketball League

(2006). The two combined to guide the Owls to a pair of NCAA Tournament appearances and a share of the 2008 Atlantic 10 regular-season title.

Chmiel first impressed Staley in 2005 when the then-Temple head coach was playing for the WNBA's Charlotte Sting, for which he was an assistant coach. He also spent time in the league serving as an advance scout for the Indiana Fever and Detroit Shock.

Chmiel's coaching career began at Feather River College (Calif.), where he had also begun his college playing career. After one season as an assistant coach for Feather River's men's team, Chmiel accepted the head position and led the program for four seasons (1995-99). He moved on to become the head coach at Lassen College (Calif.) and guided his teams to three Golden Valley Conference titles in his six seasons.

As a player, Chmiel thrived at Feather River, earning First-Team All-Golden Valley Conference honors before continuing his career and education at the University of Alaska-Fairbanks.

A graduate of Excelsior College in Albany, N.Y., where he earned his bachelor's degree in liberal studies, Chmiel and his wife, Julie, have two daughters Skylar and Ivy.

### The Chmiel Capsule

#### Coaching Experience

South Carolina, assistant coach, 2015-present  
Minnesota, assistant coach, 2014-15  
Penn State, assistant coach, 2010-14  
San Diego State, assistant coach, 2008-10  
Temple, assistant coach, 2006-08  
San Jose Spiders, NWBL, head coach, 2006

- NWBL Runner-Up, 2006

Charlotte Sting, WNBA, assistant coach, 2005  
Lassen College (Calif.), men's head coach, 1999-2005

- Three Golden Valley Conference titles, 2000, 2002, 2004

Feather River College (Calif.), men's head coach, 1995-99  
Feather River College (Calif.), men's assistant coach, 1994-95

#### Playing Experience

Alaska-Fairbanks, 1993-94 (2)  
Feather River College (Calif.), 1991-92 (2)

- All-Golden Valley Conference First Team, 1992

#### Education

Excelsior College, bachelor of arts in liberal studies, 2001

# Jolette Law

## Assistant Coach

### 1st Season at South Carolina Iowa, 1990

With 23 seasons of coaching experience, Jolette Law returned to her homestate to join the Gamecocks in June 2017, reuniting with her long-time friend in South Carolina head coach Dawn Staley. Law has been a head coach, an associate head coach and an assistant for four different programs, including some of the most successful seasons at a pair of long-time women's basketball powers.

In 23 seasons in the coaching profession, Law has been tied to success throughout her career at Tennessee (2012-17), Illinois (2007-12), Rutgers (1995-2007) and Ball State (1994-95). She has coached 19 players who were selected in the WNBA draft and seen 11 NCAA Sweet 16 appearances, seven Elite 8 seasons, two Final Fours and one national runner-up finish to go with four regular-season conference championships. As a recruiter, she played a key role in Tennessee landing the Nos. 1, 3 and 6 ranked classes in 2017, 2013 and 2014, respectively. As the Illinois head coach, she secured the No. 3 class in 2008.

In her most recent stop, Jolette helped Tennessee to a 128-46 overall record and a 60-20 SEC slate over five seasons. During her stay, the Lady Vols won two SEC regular-season championships and one SEC Tournament and made five NCAA Tournament appearances, including three Elite 8 appearances. Working primarily with the guards at Tennessee, she saw four taken in the WNBA draft (2013, 2014, 2015, 2017), including two-time SEC Player of the Year Meighan Simmons. Law played a pivotal role in recruiting, helping the Lady Vols land the top class in 2017.

Prior to her time at Tennessee, Law was named the head coach at Illinois, where she spent five seasons helping the Illini to a pair of WNIT appearances and a march to the title game of the 2008 Big Ten Tournament as Illinois posted its first 20-win season since 1999-2000. Her 2009-10 team advanced to the WNIT quarterfinals before dropping a tough game at in-state rival Illinois State. Her recruiting prowess showed early at Illinois as the Illini inked the No. 3 class in 2009, the highest rated signing class in program history. Illinois welcomed two more top-100 recruits in 2010 and one more in 2011. Law's coaching helped develop Illinois' highest WNBA draft pick – the 14th pick in 2010.

Law spent a bulk of her coaching career at Rutgers under legendary head coach C. Vivian Stringer. After eight seasons as an assistant coach, Law was promoted to associate head coach prior to the 2003-04 season. In her 12-year tenure, the Scarlet Knights posted a 257-125 record that included nine NCAA Tournament appearances, which were highlighted by a runner-up finish, two Final Fours, four Elite Eights and six Sweet 16s. Rutgers claimed the BIG EAST regular-season championship in 2005 and 2006 and the BIG EAST Tournament in 2007. Law worked with seven All-America selections and had eight players drafted in the WNBA.

The two-time All-Big Ten player launched her coaching career with on season as an assistant coach at Ball State after complete three worldwide tours with the Harlem Globetrotters (1990-94) as the only female member of the team at that

time. During her time with the organization, she appeared with her teammates on Wheaties cereal boxes and in M.C. Hammer's video for the song "Too Legit to Quit."

At Iowa, Law helped Stringers' Hawkeyes to four Big Ten titles and a four-year record of 105-18, earning First-Team All-Big Ten status in her junior and senior seasons. She continues to be widely known and respected in her hometown of Florence, S.C., after a four-year career at Wilson High during which she earned All-America status three times (1984, 1985, 1986) in basketball while also lettering in softball and track. Inducted into her high school hall of fame in 2002, she was part of the Florence Athletic Hall of Fame Class of 2006. In September 2008, she was honored as the Florence School District One Distinguished Graduate.

Law holds a bachelor of science degree in sports studies/corporate fitness from the University of Iowa, class of 1990.

### The Law Capsule

#### Coaching Experience

South Carolina, assistant coach, 2017-present

Tennessee, assistant coach, 2012-17 (5)

Illinois, head coach, 2007-12

- 69-93 – 5 seasons
- Two WNIT appearances, 2008, 2010

Rutgers, associate head coach, 2003-07; assistant coach, 1995-2003 (12)

Ball State, assistant coach, 1994-95 (1)

#### Playing Experience

Harlem Globetrotters, 1990-94

Iowa, 1987-90

- Four-time Big Ten regular-season champion
- Two-time All-Big Ten First Team, 1989, 1990
- Kodak District V All-America, 1990

USA Basketball, Jones Cup Team, 1988

Wilson High School (Florence, S.C.), 1983-86

- Three-time All-America, 1984, 1985, 1986

#### Other Notables

Wilson High School Jersey Retired, only boys' or girls' player with this honor

Wilson High School Hall of Fame, Class of 2002

Florence, S.C., Hall of Fame, Class of 2006

#### Education

Bachelor of science in sports studies/corporate fitness, Iowa, 1990





## TEAM SUPPORT STAFF

# Freddy Ready

## Dir. of Player Development

19th Season at South Carolina • South Carolina, 2002

Freddy Ready has been a presence in the South Carolina Athletics Department since August 1999 and joined the women's basketball program in December 2002 as an assistant to the director of basketball operations. Since then, he has been an invaluable member of the staff as a head manager then as a graduate assistant prior to his first full-time appointment as director of player development in July 2010.

As director of player development, Ready will continue to manage the male practice squad and serve as summer camp director. He will also prepare several scouting reports, serve as an academic liaison for several players and prepare materials for all home and official visits.



The Aiken, S.C., native earned a bachelor's degree from South Carolina in hotel, restaurant and tourism management with a focus on sport and entertainment and a minor in business administration in 2002. He also earned his master's degree in sport and entertainment management December 2009.



# Cynthia Jordan

## Dir. of Basketball Operations

9th Season at South Carolina • Temple, 2004

Cynthia Jordan was named director of basketball operations prior to the 2011-12 season after spending her first three seasons on the staff as the video coordinator. She began her career in college athletics as a graduate assistant at Temple University in 2007-08.

Jordan coordinates all team activities, including all aspects of the team's travel arrangements. She is responsible for communicating all scheduling

items to the team and serves as the program's liaison with various other areas within the athletics department.

As the video coordinator at South Carolina, Jordan was responsible for taping games and practices, breaking down film and coordinating the ongoing video needs of the coaching staff. As a GA at Temple, she began working with editing opponent films for the coaching staff while also evaluating high school prospect videos.

A four-year letterwinner on the Temple women's basketball team, Jordan played for head coach Dawn Staley before pursuing a professional basketball career overseas. She earned her bachelor's degree in business administration and marketing in 2004 and her master's degree in sports and recreation administration in 2009, both from Temple.

# Katie Fowler

## Sports Performance Coach

3rd Season at South Carolina • Truman State, 2008

Katie Fowler brought boundless energy and a passion for women's basketball and supporting student-athlete performance when she joined the South Carolina staff in July 2015.

In her first season with the Gamecocks, Fowler worked closely with eventual WNBA first-round draft pick Tiffany Mitchell as she overcame offseason foot surgery to be fully cleared to practice by the regular-season opener. Her expertise helped South Carolina sustain its physical dominance through a perfect 16-0 SEC season and its second-straight SEC Tournament title, winning three games in three days, including facing nationally ranked opponents in the semifinals and final.

During three seasons as the assistant director for basketball performance at Maryland, Fowler helped the women's team to two NCAA Final Fours. Her impact on the Terps included more than the current roster as the program's WNBA alumnae returned to campus to work with her in their offseason.

After two years as a personal trainer and one as an assistant coach at Illinois-Springfield, Fowler got her start at the NCAA Division I level at Virginia. She was part of the sports performance staff, which was directed by former



Gamecock strength and conditioning coach Mike Curtis, and spent the 2011-12 season working with the Cavaliers' men's and women's basketball teams.

A four-year member of the women's basketball team at Truman State, Fowler received her bachelor's degree in exercise science in 2008. She earned her master's degree in intercollegiate athletic leadership from University of Washington in 2009.

Fowler is a Certified Strength and Conditioning Specialist (C.S.C.S.) through the National Strength and Conditioning Association (NSCA) and is a member of the Collegiate Strength and Conditioning Coaches Association (CSCCA). She has Level 1 certification in precision nutrition and as a fascial stretch therapist.



# Marcella Shorty

## Athletic Trainer

**3rd Season at South Carolina • New Mexico, 1990**

With now 20 years of experience as an NCAA Division I women's basketball athletic trainer, Marcella Shorty joined the South Carolina staff in July 2015.

and message therapist. In addition to her work with women's basketball, Shorty was a co-director of the Advanced Athletic Training Fellowship Program and coordinated the NCAA Drug Testing program on campus.

The move reunited Shorty with Gamecock head coach Dawn Staley, with whom she worked at Temple.

After earning her master's degree from Temple in August 1997, Shorty was named assistant athletic trainer at the university. She worked with the Owls' women's basketball program for five seasons, including the first two seasons of Staley's tenure. Shorty also worked with men's and women's soccer, baseball and softball during her time at Temple and served as an adjunct professor as well.

Prior to coming to South Carolina, Shorty spent 13 seasons at Stanford working with its women's basketball program. During that time, she saw the Cardinal reach two NCAA championship games, four NCAA Final Fours, three Elite Eights and two Sweet 16s. Shorty coordinated the team's total health care with a team physician, nutritionist, performance coach, physical therapist

Shorty is a certified member of the National Athletic Trainers Association along with being certified by the American Red Cross in CPR/AED. She earned her bachelor's degree in athletic training from the University of New Mexico in 1990.



# Dr. Jeffrey Guy

## Medical Director

Jeffrey Guy, MD, a native of California, earned his undergraduate degree from San Diego State where he also played baseball. He received his medical degree and residency training at Harvard. While in Boston, he completed fellowships in

Science. As medical director and team physician of the University of South Carolina Athletics, Guy oversees all of the athletics teams at the University. In addition to USC, he is the team physician to more than 20 Columbia area high schools, 10 area middle schools, two professional dance companies and six colleges and universities. His interest in improving the health of athletes in the community inspired him to establish and serve as director of the S.M.A.R.T. program at the University of South Carolina, a community effort that reaches out to athletic programs in the greater Columbia area and provides free pre-participation physicals to schools and their student-athletes.

trauma at Massachusetts General Hospital and pediatric sports medicine at Boston Children's Hospital. He finished his training with a fellowship in sports medicine under the direction of Drs. James Andrews and Bill Clancy at the American Sports Medicine Institute in Birmingham, Ala.

Guy sits on many professional associations, including The American Orthopaedic Society for Sports Medicine, American Sports Medicine Institute Fellowship Society, Clinical Orthopaedic Society, and the South Carolina Medical Association. He has also presented at over 130 symposiums for professional associations including the American Orthopaedic Society for Sports Medicine, South Orthopaedic Association, College of Athletic Trainers Society, American College of Sports Medicine, and the National Athletic Trainers Association. In August of 2008, he was a team surgeon for the Olympic Games in Beijing, China. In 2011, he was honored by the South Carolina Medical Association with the Physician of the Year award.

Guy is currently an assistant professor within the Department of Orthopaedic Surgery and Sports Medicine at the University of South Carolina School of Medicine and Director of the University of South Carolina Sports Medicine Center. In addition, he serves as medical director of the Athletic Training Education Program in the College of Education, and adjunct professor within the USC Arnold School of Public Health Department of Exercise



# Dr. Tenley Murphy

## Team Physician

Tenley E. Murphy, MD, FAAPF, CAQSM, joined the faculty of the University of South Carolina School of Medicine in September 2015. She also serves as the director of the Palmetto Health Primary Care Sports Medicine Fellowship program. She earned a bachelor of science in

biological sciences from Clemson, where she was a member of the rowing team. She earned a doctor of medicine from University of South Carolina School of Medicine. Murphy is a graduate of the Family Medicine Residency program at Palmetto Health Richland and also completed a sports medicine fellowship at AnMed Health/Clemson University. Prior to joining the University of South Carolina School of Medicine as a faculty member and team physician, Murphy worked Clemson as a physician working with their collegiate sports teams.



# Dr. Patrick Jenkins

## Primary Care Sports Medicine Fellow

Patrick Jenkins, MD, is a Kentucky native who began his primary care sports medicine fellowship at the Palmetto Health-USC Medical Group in 2017. Jenkins ran cross country and track at Western Kentucky, from which he earned his bachelor of science degree. His doctor

of medicine is from the University of Kentucky, and he completed his family medicine residency at Palmetto Health-USC Medical Group.

## TEAM SUPPORT STAFF



### Xavier Shannon

Assistant Director of Academics

6th Season at South Carolina  
Florida International, 2007

Xavier Shannon joined the academic staff at South Carolina in February 2013 and was promoted to assistant director in Summer 2017. He currently serves as the academic advisor for the

women's basketball team.

Prior to joining the Gamecocks, Shannon served as an assistant academic coordinator at the USF in Tampa, Fla., after working at Turner Guilford Knight Correctional Center in Miami, Fla., where he counseled and advised juveniles.

A native of Miami, Shannon graduated from Florida International (FIU) in 2007 with a bachelor's in sports management. During his time at FIU, he was a three-year starter on the football team. In 2008, with a year of eligibility remaining, Shannon decided to transfer to the University of Miami where he started at center on the football team. In 2010, he graduated with a master's degree in higher education/enrollment management.



### Mary Wooley

Dir. of Recruiting Ops./Administration

1st Season at South Carolina  
USC Aiken, 2002

Dawn Staley added Mary Wooley to the South Carolina staff in Summer 2017 to solidify the program's recruiting efforts. It is Wooley's second time on Staley's staff after getting her start at Temple

as a graduate extern and director of basketball operations before spending the next eight seasons on the coaching staffs of three other programs.

Most recently, Wooley was an assistant coach at Loyola (Md.) in 2016-17, following four seasons at Hawaii (2012-16), including the last three as the associate head coach. She helped the Rainbow Wahine to the postseason all four seasons of her tenure, including the 2016 NCAA Tournament after they won the Big West Conference Tournament. Wooley's first college coaching position came as an assistant coach at Southern Cal. In her three seasons in Los Angeles (2009-12), the Women of Troy went 61-37 overall and were the WNIT runner-up in 2010.

After Wooley's own basketball career at USC Aiken closed with her 2002 graduation with a bachelor's degree in experimental psychology, Staley welcomed her to the Temple staff (2003-09) as Wooley pursued her master's in counseling psychology, which she completed in 2005. She served as the program's director of basketball operations for three of the six seasons she was on Staley's staff.



### Ariana Moore

Special Asst. to the Head Coach

5th Season at South Carolina  
Temple, 2005

Ariana Moore joined the staff in Spring 2013 to assist with coordinating head coach Dawn Staley's schedule, organizing team community outreach opportunities and overseeing the Mentors Program.

Prior to coming to South Carolina, Moore worked for a real estate investment organization. She was a four-year letterwinner under Staley at Temple.

Moore graduated from Temple in 2005 with a bachelor's degree in tourism and hospitality management with a specialization in sport and recreation management. She has two sons, Madden and Mason Collins.



### Hudson Jacobs

Video Coordinator

7th Season at South Carolina  
NC State, 2007

South Carolina women's basketball added Hudson Jacobs to the staff in Fall 2011 as the team's video coordinator. He joined the staff after spending the previous season in that role

for both the Charlotte 49ers men's and women's basketball teams. Jacobs will be responsible for taping games and practices, exchanging scouting tapes with opponents, breaking down film, producing team highlight videos and supervising the day-to-day video needs of the staff.

Jacobs started in the Charlotte athletics department as an administrative assistant, working with the women's basketball and volleyball teams as well as sports information and other athletic administrators. A graduate of NC State, Jacobs worked as a team manager for the Wolfpack women's basketball team under then-head coach Kay Yow.

Jacobs earned his bachelor's in political science from NC State in 2007.



### Diana Koval

Dir. of Communications/PR

11th Season at South Carolina  
North Carolina, 1993

Diana Koval came to South Carolina in Fall 2007 as an assistant director. Promoted to associate director in July 2013 and director in July 2017, she has worked with the women's basketball program throughout her tenure, helping target the program's communications and working with student-athletes on scheduling and executing interviews for internal, local and national media.

Koval has worked with a variety of sports throughout her communications career, which includes stops at three other universities. In nine years at Saint Louis (1999-2007), she worked most closely with men's basketball, women's soccer and baseball, with the latter two collecting multiple Atlantic 10 titles and NCAA Tournament appearances. Her first full-time position was as the women's sports information director at Western Carolina (1998-99) where she oversaw all six women's sports in addition to supervising the interns and the department's budget. During her internship at Elon (1997-98), she was part of a staff that helped the athletics department transition into NCAA Division I.

After earning a bachelor's in business administration from North Carolina (1993), Koval worked for three years at a brokerage firm in Charlotte before changing career paths by pursuing her master's in sport management at Connecticut (1997).



### Dianne Palmer

Administrative Assistant

7th Season at South Carolina  
Norfolk State, 2000

Dianne Palmer became the women's basketball administrative assistant in the summer of 2011. Prior to joining the staff, Palmer worked for 20 years at International Ocean Exports.

Palmer oversees the day-to-day operations of the women's basketball office, helping to keep the coaching staff organized and the office running smoothly.

A 2000 graduate of Norfolk State with a bachelor's degree in political science, Palmer and her husband, James, have three children and two grandchildren.



## TEAM SUPPORT STAFF



### Danielle Pierce

Graduate Assistant

2nd Season at South Carolina

After serving one season as a manager, graduate student Danielle Pierce was named graduate assistant for the 2017-18 season. After earning her bachelor's degree in sports management

with a minor in business from Texas A&M, the Austin, Texas, native came to South Carolina to pursue a master's degree in sport and entertainment management.

Prior to joining the Gamecock program, Pierce served as a manager for the Aggie's women's basketball team for two seasons. In addition to organizing team logistics for practices and game days, including arranging meals and corresponding with hotel personnel and other managers, she was responsible for the fundraising logistics and operations of the head coach Gary Blair's annual charity golf tournament. Upon graduation in May 2016, Pierce was an intern at the Athletic Performance Ranch in Fort Worth, Texas, where she created leadership programs for inner city youth and managed the organizations digital and social media efforts.

As an undergraduate, Pierce earned the Coach Kevin Sumlin Diversity Award for her contribution to the diversity, climate and equity goals at Texas A&M. She was also part of the Excellence Unity Culture, Education and Leadership (ExCel) community at the university.



### Chris Matlock

Dir. of Equipment Operations

18th Season at South Carolina  
Chattanooga, 1986

Chris Matlock is in his 17th season at South Carolina and his first with women's basketball after spending 16 seasons with the football team.

Prior to joining the Gamecocks in 2000, Matlock was part of the Notre Dame staff for nine seasons. He worked as the assistant equipment manager for the NFL's Indianapolis Colts for five years. He was the assistant equipment manager at his alma mater, Chattanooga, for one year and worked as a student assistant for the Moccasin program as an undergraduate.

Matlock has been an active certified member of the Athletic Equipment Manager Association for 21 years and is the secretary of the SEC Equipment Managers Association. Since his arrival in Columbia, he has been involved with the Palmetto Chapter of the Juvenile Diabetes Research Foundation, serving on the Board of Directors.

While in South Bend, Matlock was a chairperson for the Dream Course Foundation golf outing also raising money for JDRE.

He earned his bachelor's degree in psychology from Chattanooga in 1986. He is a 2002 graduate of The Sports Management Institute.

## Student Managers



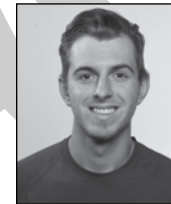
### Hunter Lindell

Palatine, Ill.  
Sophomore  
Sport and Entertainment  
Management  
2nd Year



### Payten Martin

Damascus, Md.  
Junior  
Sport and Entertainment  
Management  
2nd Year



### Matthew Miller

Charlotte, N.C.  
Sophomore  
Public Health  
1st Year

# ATHLETICS ADMINISTRATION



University President  
**Dr. Harris Pastides**



Faculty Athletics  
Representative  
**Dr. Valinda Littlefield**



Athletics Director  
**Ray Tanner**



Chief Operating Officer  
**Kevin O'Connell**



Deputy Athletics Director  
**Charles Waddell**



Chief Financial Officer  
**Jeff Tallant**



Exec. Assoc. AD/Chief of  
Staff/COO  
**Charles Bloom**



Exec. Assoc. AD/  
Development  
**Jeff Crane**



Exec. Assoc. AD/Sport &  
Risk Management/SWA  
**Judy Van Horn**



Assoc. AD/Development  
**Steve Eigenbrot**



Sr. Assoc. AD/Academics  
and Student Development  
**Maria Hickman**



Sr. Assoc. AD/Compliance  
Services  
**Chance Miller**



Sr. Assoc. AD/Marketing  
and Branding/CMO  
**Eric Nichols**



Sr. Assoc. AD/  
Administration  
**Chris Rogers**



Assoc. AD/Ops and Facilities  
**Jeff Davis**



Assoc. AD/Ticket Ops and  
Customer Relations  
**Lance Grantham**



Assoc. AD/Sports Medicine  
**John Kasik**



Assoc. AD/New & Creative  
Media  
**Justin King**



Asst. AD/Ops & Event  
Mgmt.  
**Shawn Burke**



Asst. AD/Sports Turf &  
Landscaping  
**Clark Cox**



Asst. AD/Marketing & Fan  
Experience  
**Blake Edmunds**



Asst. AD/Media Relations  
**Steve Fink**



Asst. AD/Facilities Services  
**Duane Grooms**



Asst. AD/Video  
Operations  
**Joe Lisle**



Asst. AD/Compliance  
Services  
**Jeff Whitehead**



Exec. Director Gamecock  
Club  
**Patrick McFarland**