



The Players

Contents

Returning Players

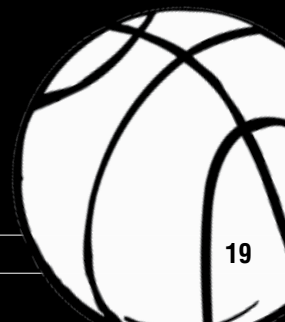
Tiffany Davis	20
Asia Dozier	22
Elem Ibiam	24
Tiffany Mitchell.....	28
Wilka Montout.....	30
Tina Roy.....	32
Khadijah Sessions.....	34
Aleighsa Welch.....	36

Newcomers

Alaina Coates	40
India Farmer	41
Olivia Gaines	42
LeAnna Morrison	43

Letterwinners Lost

2012-13 Seniors.....	44
----------------------	----





Introduction

Staff

Players

12-13 Review

Records

History

The University



TIFFANY DAVIS

Freshman Year (2012-13)

Suffered a season-ending knee injury against Savannah State (Nov. 15), three games into the season ... scored a season-high six points in her collegiate debut against Elon (Nov. 9) while swiping five steals and grabbing three rebounds in 20 minutes of action.

High School

Played senior season for Josh Bailey's Westbury Christian Wildcats after spending three seasons at Westside High ... rated 29th-best point guard in 2012 class by ESPN Hoopgurlz ... averaged 22.4 points, 6.9 rebounds and 4.1 assists per game as a senior in 2011-12, helping team to perfect 11-0 league record ... guided Westside to District 20-5A title game as a junior (2010-11), earning TABC All-Region and first-team all-district honors behind 16.0 points per game.

Personal

Born April 26, 1994 ... daughter of Nitza and Emanuel Davis ... has an older sister, Jennifer ... father enjoyed a six-year NBA career, playing for Houston, Seattle and Atlanta ... majoring in retailing.

5-7 • R-Freshman Guard
Houston, Texas
Westbury Christian

#15



Career Highs

Points6 vs. Elon, 11/9/12
FG2 vs. Elon, 11/9/12
FGA4 vs. Elon, 11/9/12
FG %500 (2-4) vs. Elon, 11/9/12
3FG1 at Louisiana Tech, 11/12/12
3FGA2 vs. Savannah State, 11/15/12
FT2 vs. Elon, 11/9/12
FTA2, 2x, last at Louisiana Tech, 11/12/12
FT %1.000 (2-2) vs. Elon, 11/9/12
Rebounds3 vs. Elon, 11/9/12
Off Rebounds1 vs. Elon, 11/9/12
Def Rebounds2 vs. Elon, 11/9/12
Steals5 vs. Elon, 11/9/12
Assists3 vs. Elon, 11/9/12
Minutes20 vs. Elon, 11/9/12





PLAYER PROFILES – DAVIS



Career Game-by-Game

Freshman Year (2012-13)

Date	Opponent	GS	MIN	FG-A	3FG-A	FT-A	Reb	PF	A	TO	B	S	TP
11/9	Elon	20	2-4	0-1	2-2	3	1	3	2	0	5	6	
11/12	at Louisiana Tech	6	1-1	1-1	1-2	1	0	0	0	0	0	4	
11/15	Savanna State	14	1-3	0-2	0-0	0	1	1	0	0	0	2	

Introduction

Staff



12-13 Review

Records

History

The University



Career Stats at South Carolina

All Games

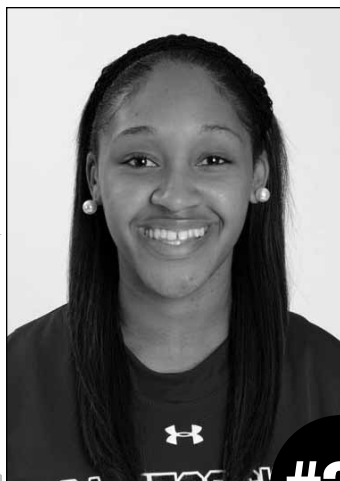
Year	GP	GS	Min	Avg	FG	FGA	Pct	3FG	FGA	Pct	FT	FTA	Pct	Off	Def	Tot	Avg	PF	FO	A	TO	Blk	Stl	Pts	Avg
2012-13	3	0	40	13.3	4	8	.500	1	4	.250	3	4	.750	1	3	4	1.3	1	0	4	2	0	5	12	4.0

SEC Games

Year	GP	GS	Min	Avg	FG	FGA	Pct	3FG	FGA	Pct	FT	FTA	Pct	Off	Def	Tot	Avg	PF	FO	A	TO	Blk	Stl	Pts	Avg
2012-13	— Did Not Play —																								

Postseason Games

Year	GP	GS	Min	Avg	FG	FGA	Pct	3FG	FGA	Pct	FT	FTA	Pct	Off	Def	Tot	Avg	PF	FO	A	TO	Blk	Stl	Pts	Avg
2012-13	— Did Not Play —																								



#31

**6-0 • Sophomore
Guard/Forward
Columbia, S.C.
Spring Valley**



ASIA DOZIER

Freshman Year (2012-13)

Played in all but two games (Kentucky, at Missouri) ... scored in double figures two times ... tied for second on team with six rebounds at Ole Miss (Feb. 17) ... poured in 10 points as part of 12-4 run to close first half at Kentucky (Feb. 14), including a pair of 3s ... scored all five of her points during a 10-3 first-half run at Alabama (Feb. 7) ... hit a first-half 3 to give Gamecocks 10-point lead against LSU (Jan. 17) ... drove from the wing for a basket as part of Gamecocks' 25-5 first-half surge that deflated Vanderbilt (Jan. 10) and was solid defensively to earn 20 minutes of playing time, the most by a Gamecock off the bench ... buried a 3-pointer as part of team's 12-4 run to close the first half and establish a substantial lead over SC State (Dec. 21) ... hit a huge second-half 3-pointer against #1/1 Stanford (Dec. 19) to pull within two points ... posted her first double-digit scoring game with 11 points against Savannah State (Nov. 15) ... handed out five assists at Louisiana Tech (Nov. 12) ... pulled down 10 rebounds in her college debut against Elon (Nov. 9).

High School

Played four seasons for Anne Long's Spring Valley Vikings ... rated a four-star player by ESPN Hoopgurlz and the 33rd-best guard in the class of 2012 ... named Gatorade South Carolina Player of the Year and South Carolina Miss Basketball in 2011-12 ... earned South Carolina player of the year honors four times, landing on the all-state team all four seasons as well ... averaged 18.6 points, 4.5 assists and 4.0 steals as a senior (2011-12) ... helped team to two state championships ... was part of perfect 27-0 record for team her junior year (2010-11).

Personal

Born Nov. 13, 1993 ... daughter of Theresa and Perry Dozier ... has an older sister, Amelia, and a younger brother, Perry Jr. ... father and uncle, Terry Dozier, both played basketball at South Carolina with Terry going on to a career in the NBA and overseas ... majoring in business and sport and entertainment management.

Career Highs

Points	11 vs. Savannah State, 11/15/12
FG	4, 2x, last at Kentucky, 2/14/13
FGA	10, 2x, last at Ole Miss, 2/17/13
FG %	1.000 (4-4) at Kentucky, 2/14/13
3FG	3 vs. Savannah State, 11/15/12
3FGA	9, 2x, last vs. SC State, 12/21/12
3FG %	1.000 (2-2) at Kentucky, 2/14/13
FT	4 vs. Elon, 11/9/12
FTA	7 vs. Elon, 11/9/12
FT %	1.000 (2-2), 2x, last vs. SDSU, 3/23/12
Rebounds	10 vs. Elon, 11/9/12
Off Rebounds	4 vs. Elon, 11/9/12
Def Rebounds	6 vs. Elon, 11/9/12
Blocks	1, 4x, last at Mississippi State, 1/6/13
Steals	2 at Louisiana Tech, 11/12/12
Assists	5 at Louisiana Tech, 11/12/12
Minutes	26 vs. Elon, 11/9/12





Miscellaneous Stats

	Career Games	Team Record
10+ Points	2	1-1
10+ Rebounds	1	1-0
5+ Assists	1	1-0
Tm-High Assts.	1	1-0

Career Game-by-Game

Freshman Year (2012-13)

Date	Opponent	GS	MIN	FG-A	3FG-A	FT-A	Reb	PF	A	TO	B	S	TP
11/9	Elon	26	0-8	0-6	4-7	10	4	0	2	1	0	4	
11/12	at LA Tech	22	2-5	1-4	0-0	2	2	5	0	0	2	5	
11/15	Savannah State	24	4-10	3-9	0-0	3	4	2	1	0	0	11	
11/18	Clemson	18	0-4	0-3	0-0	5	0	1	1	0	1	0	
11/22	vs. Hampton	19	1-8	1-4	2-2	3	3	0	2	0	0	5	
11/23	vs. Fla. Gulf Coast	16	1-6	0-5	0-0	1	5	1	2	0	0	2	
11/24	vs. DePaul	4	0-1	0-1	0-0	1	0	0	0	0	0	0	
11/28	Drexel	14	1-8	1-6	0-0	1	0	1	0	0	1	3	
12/2	at Seton Hall	10	0-1	0-0	0-0	1	0	0	0	0	0	0	
12/9	vs Furman	21	1-5	1-5	1-2	2	2	0	0	1	0	4	
12/19	#1/1 Stanford	8	2-4	1-3	0-0	0	1	0	0	0	0	5	
12/21	SC State	21	1-9	1-9	0-2	4	1	3	2	0	1	3	
12/29	Western Carolina	17	2-6	1-1	0-3	2	1	1	2	1	1	5	
1/3	#12/13 Tennessee	17	1-7	1-5	0-0	2	0	0	1	0	0	3	
1/6	at Mississippi State	9	0-0	0-0	1-2	2	0	0	0	1	0	1	
1/10	Vanderbilt	20	1-5	0-3	0-0	1	1	1	1	0	0	2	
1/13	at #13/12 Georgia	6	0-2	0-1	0-0	0	0	0	0	0	0	0	
1/17	LSU	12	1-4	1-3	0-0	1	2	0	0	0	0	3	
1/20	at Florida	7	0-6	0-4	0-0	1	0	2	0	0	0	0	
1/24	#5/4 Kentucky	— DNP (Coach's Decision) —											
1/27	at Arkansas	6	0-1	0-1	0-0	1	0	0	0	0	0	0	
2/3	Auburn	4	0-2	0-1	0-0	1	1	0	0	0	0	0	
2/7	at Alabama	8	2-3	1-2	0-0	2	1	1	1	0	1	5	
2/10	#14/16 Texas A&M	4	0-1	0-1	0-0	0	1	0	1	0	0	0	
2/14	at #9/7 Kentucky	15	4-4	2-2	0-0	4	2	1	0	0	0	10	
2/17	at Ole Miss	19	2-10	0-6	0-1	6	0	3	1	0	0	4	
2/24	Mississippi State	3	0-1	0-0	0-0	0	1	1	0	0	0	0	
2/28	at Missouri	— DNP (Coach's Decision) —											
3/3	Florida	4	0-2	0-2	0-0	1	0	0	0	0	0	0	
3/7	vs. Alabama	18	1-5	0-1	1-3	3	2	1	0	0	0	3	
3/8	vs. #19/19 TX A&M^	6	0-2	0-1	0-0	1	0	0	0	0	0	0	
3/23	vs. South Dakota St.\$	20	1-4	1-2	2-2	0	1	1	3	0	1	5	
3/25	vs. Kansas\$	0	0-0	0-0	0-0	0	0	0	0	0	0	0	

^ indicates SEC Tournament
\$ indicates NCAA Tournament

Career Stats at South Carolina

All Games

Year	GP	GS	Min	Avg	FG	FGA	Pct	3FG	FGA	Pct	FT	FTA	Pct	Off	Def	Tot	Avg	PF	FO	A	TO	Blk	Stl	Pts	Avg
2012-13	31	0	398	12.8	28	134	.209	16	91	.176	11	24	.458	19	42	61	2.0	35	1	25	20	4	8	83	2.7

SEC Games

Year	GP	GS	Min	Avg	FG	FGA	Pct	3FG	FGA	Pct	FT	FTA	Pct	Off	Def	Tot	Avg	PF	FO	A	TO	Blk	Stl	Pts	Avg
2012-13	14	0	134	9.6	11	48	.229	5	31	.161	1	3	.333	6	16	22	1.6	9	0	9	5	1	1	28	2.0

Postseason Games

Year	GP	GS	Min	Avg	FG	FGA	Pct	3FG	FGA	Pct	FT	FTA	Pct	Off	Def	Tot	Avg	PF	FO	A	TO	Blk	Stl	Pts	Avg
2012-13	4	0	44	11.0	2	11	.182	1	4	.250	3	5	.600	1	3	4	1.0	3	0	2	3	0	1	8	2.0



Introduction

Staff

Players

12-13 Review

Records

History

The University



ELEM IBIAM

Sophomore Year (2012-13)

Played in 30 games, missing three due to injury ... led the team in scoring two times (at Kentucky, vs. Alabama) and rebounding four times (Elon, Furman, Western Carolina, Kentucky) ... scored in double figures seven times and grabbed double-digit rebounds twice ... was team's second-leading rebounder and third-highest scorer in postseason play ... posted first career double-double in NCAA Tournament Second Round against Kansas (March 25), including a hook shot that knotted the game midway through the second half ... handed out a career-high three assists against South Dakota State (March 23) in the NCAA Tournament First Round ... came one rebound shy of first career double-double with stellar 19-point, nine-rebound effort against Alabama at SEC Tournament (March 7) ... scored eight of her 11 points against Mississippi State (Feb. 24) in second half to help hold off Bulldogs ... posted 13 points in a six-minute span of the first half at No. 9/7 Kentucky (Feb. 14) to help Gamecocks to 14-point lead at halftime, finishing with career-high 15 points on 6-of-7 shooting ... netted all of her 12 points during an eight-minute second-half stretch at Alabama (Feb. 7) to help hold off a charge by the Crimson Tide ... scored six of her eight points against #5/4 Kentucky (Jan. 24) during a 12-4 run that turned a six-point deficit into a two-point lead that helped deliver the win ... Also tied for team-high honors with eight boards, including four offensive ... blocked two shots midway through the second half at Florida (Jan. 20) to help a 10-0 Gamecock run that kept the Gators at bay ... grabbed four of her seven rebounds against LSU (Jan. 17) on the offensive end ... scored eight of her nine points against Vanderbilt (Jan. 10) during 25-5 first-half surge that propelled team to victory, hitting all four of her shot attempts in the run ... netted all five of her points at Mississippi State (Jan. 6) in second half as team pulled away, blocking two shots as well ... tied her career high with five blocks against Western Carolina (Dec. 29), tying for third most in Colonial Life Arena history ... also led team with nine rebounds and scored six of team's last eight first-half points against the Catamounts ... posted seven of her career-high 11 points in the first half against SC State (Dec. 21), including five as part of team's 12-4 run to close the first half to finally establish a substantial lead ... scored career-high eight points against Furman (Dec. 9), hitting 4-of-8 from the field while grabbing team-high nine rebounds ... posted her first career double-digit rebound game in season opener against Elon (Nov. 9), pulling in six of her 11 boards on the offensive end.

#33

6-4 • Junior
Center
Fayetteville, Ga.
Fayette County



Career Highs

Points	19 vs. Alabama, 3/7/13
FG	8 vs. Alabama, 3/7/13
FGA	12 vs. Alabama, 3/7/13
FG %	1.00 (2-2) vs. Tennessee, 3/3/12
FT	5 vs. Mississippi State, 2/24/13
FTA	8 vs. Mississippi State, 2/24/13
FT %	1.00 (2-2), 2x, last, vs. E. Mich., 3/17/12
Rebounds	11 vs. Elon, 11/9/12
Off Rebounds	6 vs. Elon, 11/9/12
Def Rebounds	7 vs. South Dakota State, 3/23/13
Blocks	5, 2x, last vs. Western Carolina, 12/29/12
Steals	2, 2x, last vs. Texas A&M, 3/8/13
Assists	3 vs. South Dakota State, 3/23/13
Minutes	29 vs. South Dakota State, 3/23/13





Miscellaneous Stats

	Career Games	Team Record
Double-Double	1	0-1
10+ Points	7	5-2
10+ Rebounds	2	1-1
5+ Blocks	2	2-0
Tim-High Pts.	2	1-1
Tim-High Rebs.	5	5-0

Freshman Year (2011-12)

Come off the bench in 25 games, including 10 SEC contests and five postseason games ... was the team's top rebounder one time (Miss. State) ... tied South Carolina freshman record with five blocks in first-round win over Eastern Michigan, the most blocks by any Gamecock in program's history in the NCAA Tournament ... was perfect from the floor in SEC Tournament semifinal against #13/10 Tennessee ... played a season-high 16 minutes in first round SEC Tournament game vs. Alabama ... was solid presence in middle of zone that held Alabama to just 27.7 percent shooting at Colonial Life Arena, the lowest by an SEC opponent this season ... posted six points and team-high six rebounds against Mississippi State, all during her 10 minutes of second-half play ... was solid at Auburn, adding a basket and two rebounds in just three minutes of action late in the first half ... pulled down season-high seven rebounds against SC State in 15 minutes of action ... netted season-best seven points against Furman on 3-of-6 shooting ... swatted away three shots at Xavier ... made her Gamecock debut in season opener at Illinois.



Career Stats at South Carolina

All Games

Year	GP	GS	Min	Avg	FG	FGA	Pct	3FG	FGA	Pct	FT	FTA	Pct	Off	Def	Tot	Avg	PF	FO	A	TO	Blk	Stl	Pts	Avg
2011-12	25	0	197	7.9	26	59	.441	0	1	.000	22	35	.629	34	40	74	3.0	33	0	4	16	17	2	74	3.0
2012-13	30	0	472	15.7	64	131	.489	0	0	—	32	64	.500	52	83	135	4.5	48	1	8	20	30	11	160	5.3
Career Totals	55	0	669	12.2	90	190	.474	0	1	.000	54	99	.545	86	123	209	3.8	81	1	12	36	47	13	234	4.3

SEC Games

Year	GP	GS	Min	Avg	FG	FGA	Pct	3FG	FGA	Pct	FT	FTA	Pct	Off	Def	Tot	Avg	PF	FO	A	TO	Blk	Stl	Pts	Avg
2011-12	10	0	58	5.8	5	11	.455	0	0	—	8	10	.800	9	12	21	2.1	6	0	1	3	1	0	18	1.8
2012-13	15	0	210	14.0	28	56	.500	0	0	—	15	30	.500	22	31	53	3.5	26	1	1	13	13	3	71	4.7
Career Totals	25	0	268	10.7	33	67	.493	0	0	—	23	40	.575	31	43	74	3.0	32	1	2	16	14	3	89	3.6

Postseason Games

Year	GP	GS	Min	Avg	FG	FGA	Pct	3FG	FGA	Pct	FT	FTA	Pct	Off	Def	Tot	Avg	PF	FO	A	TO	Blk	Stl	Pts	Avg
2011-12	5	0	46	9.2	7	13	.538	0	0	—	7	9	.778	5	7	12	2.4	9	0	2	2	7	1	21	4.2
2012-13	4	0	101	25.3	19	32	.594	0	0	—	8	14	.571	10	24	34	8.5	8	0	5	1	6	5	46	11.5
Career Totals	9	0	147	16.3	26	45	.578	0	0	—	15	23	.652	15	31	46	5.1	17	0	7	3	13	6	67	7.4

PLAYER PROFILES – IBIAM

High School

Earned four letters for Coach John Strickland's Tigers ... rated among the top 15 post players in the 2011 class by ESPN HoopGurlz and the overall No. 57 recruit in the class, according to *Blue Star Basketball* ... earned a spot on the Atlanta Tip-Off Club All-Metro team and was a 4A second-team selection as a senior after helping her team to a 28-5 record and region and state titles ... was named to the All-Metro Southside Second Team by the *Atlanta Journal Constitution* and first-team All-Fayette County by the *Fayette County News* as a junior

Personal

Born May 7, 1993 ... daughter of Shunda Guider ... majoring in criminal justice.



Career Game-by-Game

Sophomore Year (2012-13)

Date	Opponent	GS	MIN	FG-A	3FG-A	FT-A	Reb	PF	A	TO	B	S	TP
11/11	at Illinois	9	2-5	0-0	1-2	4	3	0	1	0	0	5	
11/9	Elon	17	2-7	0-0	0-2	11	0	0	3	2	1	4	
11/12	at LA Tech	— DNP (Injury) —											
11/15	Savannah State	— DNP (Injury) —											
11/18	Clemson	13	2-3	0-0	2-3	0	3	0	1	0	0	6	
11/22	vs. Hampton	8	0-1	0-0	1-2	5	1	0	0	1	0	11	
1/23	vs. Fla. Gulf Coast	15	0-3	0-0	2-4	4	0	0	0	0	0	2	
11/24	vs. DePaul	10	0-0	0-0	0-0	1	1	0	0	0	0	0	
11/28	Drexel	12	1-2	0-0	1-2	3	0	0	0	0	0	3	
12/2	at Seton Hall	12	0-4	0-0	0-0	1	1	0	0	1	0	0	
12/9	vs. Furman	22	4-8	0-0	0-2	9	2	1	1	1	0	8	
12/19	#1/1 Stanford	8	0-2	0-0	0-0	3	1	0	1	0	1	0	
12/21	SC State	19	4-5	0-0	3-4	2	3	0	0	1	0	11	
12/29	Western Carolina	25	4-8	0-0	0-1	9	2	1	0	5	1	8	
1/3	#12/13 Tennessee	17	0-4	0-0	0-0	3	2	0	0	1	0	0	
1/6	at Mississippi State	19	1-6	0-0	3-5	3	0	0	0	2	0	5	
1/10	Vanderbilt	13	4-5	0-0	1-3	2	4	0	2	0	0	9	
1/13	at #13/12 Georgia	12	1-2	0-0	0-0	1	2	0	2	0	1	2	
1/17	LSU	12	0-3	0-0	0-0	7	1	0	1	2	0	0	
1/20	at Florida	16	0-3	0-0	1-2	5	1	0	1	2	0	1	
1/24	#5/4 Kentucky	18	4-5	0-0	0-2	8	0	0	0	0	1	8	
1/27	at Arkansas	7	1-2	0-0	0-0	1	2	0	1	0	0	2	
2/3	Auburn	10	0-0	0-0	0-0	3	2	0	0	0	0	0	
2/7	at Alabama	17	5-8	0-0	2-4	5	0	0	2	1	0	12	
2/10	#14/16 Texas A&M	5	1-3	0-0	0-2	2	5	0	1	0	0	2	
2/14	at #9/7 Kentucky	22	6-7	0-0	3-3	5	2	0	2	2	0	15	
2/17	at Ole Miss	— DNP (Injury) —											
2/24	Mississippi State	19	3-6	0-0	5-8	3	3	0	0	2	0	11	
2/28	at Missouri	12	0-0	0-0	0-1	4	1	1	0	1	0	0	
3/3	Florida	11	2-2	0-0	0-0	1	1	0	1	0	1	4	
3/7	vs. Alabama^	26	8-12	0-0	3-7	9	1	1	0	2	2	19	
3/8	vs. #19/19 TX A&M^	22	1-3	0-0	0-0	7	3	0	0	1	2	2	
3/23	vs. South Dakota St.\$	29	5-9	0-0	3-4	8	2	3	0	2	1	13	
3/25	vs. Kansas\$	24	5-8	0-0	2-3	10	2	1	1	1	0	12	



Freshman Year (2011-12)

Date	Opponent	GS	MIN	FG-A	3FG-A	FT-A	Reb	PF	A	TO	B	S	TP
11/11	at Illinois	9	2-5	0-0	1-2	4	3	0	1	0	0	5	
11/14	Alabama A&M	4	0-2	0-0	0-0	1	0	0	2	1	0	0	
11/17	at Clemson	8	2-5	0-0	0-0	4	1	0	2	0	0	4	
11/23	Coll. of Charleston	11	1-2	0-0	2-2	4	2	0	1	0	0	4	
11/27	Presbyterian	5	1-3	0-0	0-0	3	2	0	1	1	0	2	
11/30	at Xavier	9	1-3	0-1	1-2	6	2	0	0	3	0	3	
12/11	Furman	12	3-6	0-0	1-5	2	4	0	1	2	1	7	
12/14	South Carolina State	15	1-2	0-0	0-1	7	2	1	2	0	0	2	
12/18	vs. #18/16 N. Carolina	8	1-4	0-0	0-0	5	1	0	0	0	0	2	
12/21	Savannah State	12	2-3	0-0	2-4	5	1	0	1	2	0	6	
1/1	Alabama	9	0-1	0-0	3-4	2	1	0	0	0	0	3	
1/5	#24/21 Vanderbilt	1	0-0	0-0	0-0	0	0	0	0	0	0	0	
1/19	at Auburn	3	1-2	0-0	0-0	2	0	0	0	0	0	2	
1/22	at #25/22 Vanderbilt	2	0-0	0-0	0-0	1	0	0	0	0	0	0	
1/26	Ole Miss	8	0-1	0-0	0-0	1	2	0	2	1	0	0	
1/29	Mississippi State	14	2-3	0-0	2-2	6	1	0	1	0	0	6	
2/9	at Arkansas	7	0-1	0-0	2-3	4	1	1	0	0	0	2	
2/16	#18/15 Georgia	1	0-0	0-0	0-0	0	0	0	0	0	0	0	
2/19	at Alabama	10	2-3	0-0	1-1	4	1	0	0	0	0	5	
2/23	at #13/10 Kentucky	3	0-0	0-0	0-0	1	0	0	0	0	0	0	
3/1	vs. Alabama^	16	2-6	0-0	2-3	4	2	0	1	1	1	6	
3/3	vs. #13/10 Tennessee^	8	2-2	0-0	1-2	2	3	0	0	0	0	5	
3/17	vs. Eastern Michigan\$	12	2-4	0-0	2-2	4	4	2	1	5	0	6	
3/19	at #13/15 Purdue\$	4	0-0	0-0	0-0	0	0	0	0	0	0	0	
3/24	vs. #2/2 Stanford\$	6	1-1	0-0	2-2	2	0	0	0	1	0	4	

^ indicates SEC Tournament
\$ indicates NCAA Tournament



TIFFANY MITCHELL

Freshman Year (2012-13)

Earned a spot on the SEC All-Freshman Team ... started 30 games and came off the bench in the other three ... led the team in scoring seven times (Clemson, Drexel, Furman, SC State, WCU, Tennessee, at Ole Miss) ... led the team in rebounding six times (at LA Tech, vs. FGCU, at Seton Hall, at Georgia, Auburn) ... posted two double-doubles (at Seton Hall, SC State) ... scored in double figures 14 times and pulled down double-digit rebounds five times ... swiped three steals to go with seven points and six boards, including three offensive against Kansas (March 25) in NCAA Tournament Second Round ... turned in six points and six boards in second half of second-round SEC Tournament game against Alabama (March 7) ... scored five of her seven points against Florida (March 3) in the second half, including a key 3-pointer after the Gators cut the lead to three in second half ... hit a career-best 4-of-4 free throws at Missouri (Feb. 28) ... came off bench for first time at Ole Miss (Feb. 17) and responded with team-high 15 points, including 13 in 15 minutes of first-half action ... snagged team-high eight rebounds at Arkansas (Jan. 27), including one in final 10 seconds to help secure win ... earned second SEC Freshman of the Week honor for key effort in wins over Florida and LSU ... tied career high with 11 boards at Florida (Jan. 20), including six offensive, and hit two free throws to make it a two-possession game with 15 seconds to go ... grabbed key offensive rebound on missed free throw late in second half to help hold off LSU (Jan. 17) ... led team with 10 rebounds at #13/12 Georgia (Jan. 13) ... hit clutch 3-pointer in second half to stop surge by Vanderbilt (Jan. 10) ... snagged five offensive boards en route to team-high 14 points against Tennessee (Jan. 3) ... shot career-best 83.3 percent (5-of-6) from field for team-high 12 points against Western Carolina ... posted season's first 20-point game and her second career double-double with 21 points and 11 rebounds (tying career high) against SC State (Dec. 21) ... swiped five steals against Furman (Dec. 9) while leading offense with 16 points ... posted first career double-double with 13-point, 11-rebound effort at Seton Hall (Dec. 2) ... hit a pair of 3s against Drexel (Nov. 28), including one late in second half to help force overtime ... named SEC Freshman of the Week after averaging 13.0 points and 6.3 rebounds over three-game span (13 at LA Tech, 10 vs. Savannah State, 16 vs. Clemson) ... recorded first career double-digit scoring game at Louisiana Tech (Nov. 12).

#25

5-9 • Sophomore
Guard
Charlotte, N.C.
Providence Day



High School

Played four years for Josh Springer's Providence Day Chargers ... was a four-star recruit rated the 15th-best guard and top 46 player overall in the 2012 class by ESPN Hoopgurlz ... named Gatorade North Carolina Player of the Year, Miss Basketball North Carolina and Parade All-America as a senior after averaging 19.6 points and 7.0 rebounds ... earned all-state and all-conference honors all

Career Highs

Points21 vs. South Carolina State, 12/21/12
FG8 vs. Furman, 12/9/12
FGA17 vs. Tennessee, 1/3/13
FG %833 (5-6) vs. Western Carolina, 12/29/12
3FG2, 5x, last vs. Texas A&M, 2/10/13
3FGA4 vs. Savannah State, 11/15/12
3FG %1.000 (2-2), 3x, last vs. WCU, 12/29/12
FT9 vs. South Carolina State, 12/21/12
FTA13 vs. South Carolina State, 12/21/12
FT %1.000 (4-4) at Missouri, 2/28/13
Rebounds11, 4x, last at Florida, 1/20/13
Off Rebounds6 at Florida, 1/20/13
Def Rebounds8, 2x, last at Seton Hall, 12/2/12
Steals5 vs. Furman, 12/9/12
Assists4 vs. Savannah State, 11/15/12
Minutes36, 2x, last at Arkansas, 1/13/13



PLAYER PROFILES – MITCHELL



Miscellaneous Stats

	Career Games	Team Record
Double-Double	2	2-0
20+ Points	1	1-0
10+ Points	14	12-2
10+ Rebounds	5	4-1
Tm-High Points	7	6-1
Tm-High Rebs.	6	5-1
Tm-High Assts.	2	2-0

four years ... helped team to three straight North Carolina Independent Schools Athletic Association Class 3A state championships in 2011-12.

Personal

Born September 23, 1994 ... daughter of Cheryl Mitchell ... has an older brother, Tory ... majoring in retailing.

Career Game-by-Game

Freshman Year (2012-13)

Date	Opponent	GS	MIN	FG-A	3FG-A	FT-A	Reb	PF	A	TO	B	S	TP
11/9	Elon	*	23	4-6	0-1	1-2	2	1	3	1	0	1	9
11/12	at LA Tech	*	25	5-11	0-2	3-4	8	2	0	2	0	0	13
11/15	Savannah State	*	25	4-11	1-4	1-3	5	1	4	0	0	1	10
11/18	Clemson	*	32	7-11	0-1	2-6	6	3	2	1	0	2	16
11/22	vs. Hampton	*	27	2-9	1-3	2-4	8	3	2	4	0	1	7
11/23	vs. Fla. Gulf Coast	*	28	3-7	0-0	2-2	11	1	3	3	0	1	8
11/24	vs. DePaul	*	29	1-5	0-0	4-8	6	1	0	4	0	2	6
11/28	Drexel	*	29	6-12	2-2	0-0	2	3	1	2	0	3	14
12/2	at Seton Hall	*	28	4-7	2-2	3-9	11	3	1	4	0	1	13
12/9	vs. Furman	*	29	8-13	0-1	0-2	4	1	1	2	0	5	16
12/19	#1/1 Stanford	*	34	1-13	0-3	0-0	5	3	0	3	1	2	2
12/21	SC State	*	31	5-11	2-3	9-13	11	1	2	3	0	2	21
12/29	Western Carolina	*	23	5-6	2-2	0-3	2	4	1	2	0	0	12
1/3	#12/13 Tennessee	*	35	5-17	1-3	3-3	5	0	1	1	0	1	14
1/6	at Mississippi State	*	35	0-4	0-0	5-6	5	2	0	2	0	1	5
1/10	Vanderbilt	*	20	3-6	1-1	0-0	3	4	0	5	1	0	7
1/13	at #13/12 Georgia	*	36	3-10	0-2	0-1	10	1	2	5	0	1	6
1/17	LSU	*	35	3-9	0-3	6-10	7	1	3	3	1	3	12
1/20	at Florida	*	30	2-12	0-2	2-2	11	0	1	3	0	1	6
1/24	#5/4 Kentucky	*	32	2-7	1-1	2-4	2	3	2	4	0	1	7
1/27	at Arkansas	*	36	3-9	0-2	2-2	8	2	2	5	0	1	8
2/3	Auburn	*	34	3-9	1-2	3-5	4	2	0	2	0	2	10
2/7	at Alabama	*	15	1-6	0-2	0-0	2	3	1	2	0	0	2
2/10	#14/16 Texas A&M	*	27	3-6	2-3	2-5	2	0	1	2	0	1	10
2/14	at #9/7 Kentucky	*	19	3-5	0-1	0-0	2	5	1	4	0	0	6
2/17	at Ole Miss	*	30	7-12	1-1	0-0	2	0	2	1	0	2	15
2/24	Mississippi State	*	21	1-5	0-2	0-0	3	0	1	1	0	2	2
2/28	at Missouri	*	19	1-7	1-3	4-4	2	3	1	1	0	2	7
3/3	Florida	*	24	2-6	1-2	2-2	3	2	2	1	0	1	7
3/7	vs. Alabama^	*	33	3-9	1-1	2-2	6	2	2	1	1	1	9
3/8	vs. #19/19 TX A&M^	*	27	2-6	0-2	2-2	1	3	1	3	0	0	6
3/23	vs. South Dakota St.\$	*	24	3-7	1-1	4-5	4	1	0	2	0	0	11
3/25	vs. Kansas\$	*	32	2-8	1-2	2-2	6	3	0	3	0	3	7

^ indicates SEC Tournament

\$ indicates NCAA Tournament

Career Stats at South Carolina

All Games

Year	GP	GS	Min	Avg	FG	FGA	Pct	3FG	FGA	Pct	FT	FTA	Pct	Off	Def	Tot	Avg	PF	FO	A	TO	Blk	Stl	Pts	Avg
2012-13	33	30	927	28.1	107	282	.379	22	60	.367	68	111	.613	60	109	169	5.1	64	1	43	82	4	44	304	9.2

SEC Games

Year	GP	GS	Min	Avg	FG	FGA	Pct	3FG	FGA	Pct	FT	FTA	Pct	Off	Def	Tot	Avg	PF	FO	A	TO	Blk	Stl	Pts	Avg
2012-13	16	13	448	28.0	42	130	.323	9	30	.300	31	44	.705	26	45	71	4.4	28	1	20	42	2	19	124	7.8

Postseason Games

Year	GP	GS	Min	Avg	FG	FGA	Pct	3FG	FGA	Pct	FT	FTA	Pct	Off	Def	Tot	Avg	PF	FO	A	TO	Blk	Stl	Pts	Avg
2012-13	4	4	116	29.0	10	30	.333	3	6	.500	10	11	.909	7	10	17	4.3	9	0	3	9	1	4	33	8.3



Introduction

Staff

Players

12-13 Review

Records

History

The University



WILKA MONTOUT

Junior Year (2012-13)

Played in all but four games ... scored in double figures two times ... hit back-to-back baseline jumpers at Missouri (Feb. 28) to help loosen up the zone in the second half ... buried a 3-pointer to cap a 25-5 first-half surge against Vanderbilt (Jan. 10) and handed out a pair of assists ... swatted away a pair of shots against Furman (Dec. 9) while contributing 10 points to the offensive effort ... grabbed five of her six rebounds against Savannah State (Nov. 15) on the offensive end, helping her to nine points ... scored eight of her 10 points at Louisiana Tech (Nov. 12) during an 11-5 second-half run that put the game out of reach ... named to the SEC Winter Honor Roll.

#12

6-3 • Senior

Forward

Cayenne, French Guiana
Northeastern Okla. A&M

Prior to South Carolina

Played two seasons for Jim Rowland's Northeastern Oklahoma A&M College Lady Norse ... earned Third-Team All-America honors from NJCAA behind team-best 18.6 points and 8.2 rebounds per game ... helped team to Region II Tournament title and spot in the NJCAA National Tournament ... named Region II MVP for both the regular season and the tournament... graduated from Lycée Honoré d'Estienne d'Orves in Nice, France, before pursuing her college basketball career in the United States.

Personal

Born September 20, 1990 ... daughter of Rismène Montout and Roger Pierre-Louis ... has two older brothers, Sobner and Gregory Pierre-Louis ... majoring in business.



Career Highs

Points	12 vs. Louisiana Tech, 11/12/12
FG	4, 3x, last vs. Furman, 12/9/12
FGA	13 vs. Savannah State, 11/15/12
FG %	.667 (2-3) at Missouri, 2/28/13
3FG	1, 5x, last vs. Auburn, 2/3/13
3FGA	3, 3x, last at Alabama, 2/7/13
3FG %	.500 (1-2) at Louisiana Tech, 11/12/12
FT	3 at Louisiana Tech, 11/12/12
FTA	4, 2x, last at Louisiana Tech, 11/12/12
FT %	1.00 (2-2), 4x, last at Mississippi St., 1/6/13
Rebounds	6 vs. Savannah State, 11/15/12
Off Rebounds	5 vs. Savannah State, 11/15/12
Def Rebounds	3 at Mississippi State, 1/6/13
Blocks	2 vs. Furman, 12/9/12
Steals	1, 3x, last vs. Hampton, 11/22/12
Assists	2, 2x, last vs. Vanderbilt, 1/10/13
Minutes	24 vs. Savannah State, 11/15/12



PLAYER PROFILES – MONTOUT

Miscellaneous Stats

	Career Games	Team Record
10+ Points	2	2-0

Career Game-by-Game

Junior Year (2012-13)

Date	Opponent	GS	MIN	FG-A	3FG-A	FT-A	Reb	PF	A	TO	B	S	TP
11/9	Elon	18	0-3	0-2	1-4	2	2	2	1	0	1	1	1
11/12	at LA Tech	23	4-10	1-2	3-4	3	3	0	1	0	0	12	
11/15	Savannah State	24	4-13	1-3	0-0	6	2	0	2	1	0	9	
11/18	Clemson	18	1-6	0-2	2-2	1	3	1	1	0	1	4	
11/22	vs. Hampton	14	1-3	1-1	0-0	2	0	0	2	0	1	3	
11/23	vs. Fla. Gulf Coast	16	1-4	0-0	0-0	5	3	1	1	0	0	2	
11/24	vs. DePaul	6	1-2	0-0	0-0	1	1	0	1	1	0	2	
11/28	Drexel	3	0-1	0-1	0-0	0	0	0	0	0	0	0	
12/2	at Seton Hall	11	1-4	0-1	0-1	1	0	0	0	0	0	2	
12/9	vs. Furman	23	4-9	0-2	2-2	3	1	1	0	2	0	10	
12/19	#1/1 Stanford	3	0-0	0-0	0-0	0	2	0	0	0	0	0	
12/21	SC State	16	0-3	0-2	2-2	1	0	0	2	0	0	2	
12/29	Western Carolina	19	3-8	0-1	0-0	2	0	0	0	0	0	6	
1/3	#12/13 Tennessee	12	0-2	0-1	0-0	2	1	0	1	0	0	0	
1/6	at Mississippi State	15	0-1	0-0	2-2	4	0	0	0	0	0	2	
1/10	Vanderbilt	8	1-3	1-3	0-0	2	1	2	0	1	0	3	
1/13	at #13/12 Georgia	1	0-0	0-0	0-0	0	0	0	0	0	0	0	
1/17	LSU	4	0-3	0-0	0-0	1	0	0	0	0	0	0	
1/20	at Florida	4	0-1	0-0	0-0	0	0	0	0	0	0	0	
1/24	#5/4 Kentucky	— DNP (Coach's Decision) —											
1/27	at Arkansas	2	0-1	0-1	0-0	0	0	0	0	0	0	0	
2/3	Auburn	5	1-2	1-2	0-0	2	0	0	0	0	0	3	
2/7	at Alabama	6	0-3	0-3	0-0	2	0	0	1	0	0	0	
2/10	#14/16 Texas A&M	— DNP (Coach's Decision) —											
2/14	at #9/7 Kentucky	— DNP (Coach's Decision) —											
2/17	at Ole Miss	11	0-3	0-1	0-0	0	2	0	0	1	0	0	
2/24	Mississippi State	7	1-2	0-0	1-2	1	0	0	0	0	0	3	
2/28	at Missouri	6	2-3	0-0	0-0	0	3	0	0	1	0	4	
3/3	Florida	1	0-0	0-0	0-0	0	0	0	0	0	0	0	
3/7	vs. Alabama^	11	1-3	1-3	0-0	2	1	1	1	0	0	3	
3/8	vs. #19/19 TX A&M^	— DNP (Coach's Decision) —											
3/23	vs. South Dakota St.\$	6	0-1	0-1	0-0	0	1	0	2	0	0	0	
3/25	vs. Kansas\$	0	0-0	0-0	0-0	0	0	0	0	0	0	0	

^ indicates SEC Tournament
\$ indicates NCAA Tournament

Career Stats at South Carolina

All Games

Year	GP	GS	Min	Avg	FG	FGA	Pct	3FG	FGA	Pct	FT	FTA	Pct	Off	Def	Tot	Avg	PF	FO	A	TO	Blk	Stl	Pts	Avg
2012-13	29	0	293	10.1	26	94	.277	6	32	.188	13	19	.684	27	16	43	1.5	26	0	8	16	7	3	71	2.4

SEC Games

Year	GP	GS	Min	Avg	FG	FGA	Pct	3FG	FGA	Pct	FT	FTA	Pct	Off	Def	Tot	Avg	PF	FO	A	TO	Blk	Stl	Pts	Avg
2012-13	13	0	82	6.3	5	21	.208	2	11	.182	3	4	.750	8	6	14	1.1	7	0	2	2	3	0	15	1.2

Postseason Games

Year	GP	GS	Min	Avg	FG	FGA	Pct	3FG	FGA	Pct	FT	FTA	Pct	Off	Def	Tot	Avg	PF	FO	A	TO	Blk	Stl	Pts	Avg
2012-13	3	0	17	5.7	1	4	.250	1	4	.250	0	0	—	2	0	2	0.7	2	0	1	3	0	0	3	1.0



TINA ROY

Sophomore Year (2012-13)

Suffered a knee injury in the summer and surgery kept her out for the season ... named to the SEC Winter Academic Honor Roll.

Freshman Year (2011-12)

Played in 34 games ... was second on team in 3-pointers made ... was the team's top scorer twice (Presbyterian, SC State) and handed out the most assists once (vs. Alabama) ... scored in double figures five times ... capped sharp-shooting first half of NCAA Tournament first-round win over Eastern Michigan with a 3-pointer just before halftime ... was third on team with 8.7 points per game in SEC Tournament ... hit one of her two 3s to give team an early lead in SEC Tournament semifinal against #13/10 Tennessee ... gave team four-point halftime lead with late 3 in SEC Tournament second round vs. #16/15 Georgia ... hit back-to-back 3-pointers to cap a 22-4 run in the final 10 minutes of the first half in the SEC Tournament first-round win over Alabama, while tying her career highs in assists and minutes played ... shot 3-of-5 from 3-point range against Florida, including two in the final three minutes of the first half to help build a 10-point halftime lead ... pulled down career-high five rebounds at LSU, including three on the offensive end ... scored 10 points in her SEC debut against Alabama ... shot 5-of-9 from 3-point range en route to 15 points against Presbyterian (Nov. 27), playing a season-high 22 minutes ... named to the SEC First-Year Academic Honor Roll.

High School

Earned four letters for Coach Danielle Greene's Pirates... earned 2011 Farm Bureau/Miss Basketball honors from the Louisiana Sports Writers Association after turning in 31.3 points and 20.0 rebounds per game as a senior ... was a three-time Class 3A all-state selection (2009, 2010, 2011) and was twice named Class 3A MVP (2010, 2011) ... finished her career at Kaplan with 2,646 points and 1,941 rebounds ... picked up four district MVP and parish MVP awards in her career.

Personal

Born May 16, 1993 ... daughter of Noah Williams and Marcelite R. Hopkins ... has four brothers, Jeremy, James, Grettney, and Jesus and three sisters, Raven, Dana, and Reca ... is majoring in physical education.

Career Highs

Points15 vs. Presbyterian, 11/27/11
FG 5, 2x, last, vs. SC State, 12/14/11
FGA 12 vs. Georgia, 3/2/12
FG %667 (2-3) at Florida, 1/8/12
3FG5 vs. Presbyterian, 11/27/11
3FGA9 vs. Presbyterian, 11/27/11
3FG %600 (3-5) vs. Florida, 2/12/12
FT3 vs. College of Charleston, 11/23/11
FTA4, 2x, last, vs. Coll. of Charleston, 11/23/11
FT %1.000 (2-2) vs. Alabama, 1/1/12
Rebounds 5 at LSU, 1/12/12
Off Rebounds 3 at LSU, 1/12/12
Def Rebounds4 vs. Presbyterian, 11/27/11
Assists 2, 3x, last, vs. Eastern Michigan, 3/17/12
Steals2 vs. Presbyterian, 11/27/11
Minutes 22, 3x, last, vs. Georgia, 3/2/12

5-11 • R-Sophomore
Guard
Kaplan, La.
Kaplan

#23





Miscellaneous Stats

	Career Games	Team Record
10+ Points	5	4-1
Tm-High Points	2	2-0
Tm-High Assts.	1	1-0

Career Game-by-Game

Freshman Year (2011-12)

Date	Opponent	GS	MIN	FG-A	3FG-A	FT-A	Reb	PF	A	TO	B	S	TP
11/11	at Illinois	10	2-4	1-2	0-0	0	0	0	0	1	0	0	5
11/14	Alabama A&M	5	0-1	0-1	0-0	1	0	0	0	0	0	0	0
11/17	at Clemson	17	3-6	1-3	2-4	2	2	0	1	0	0	0	9
11/20	#11/12 Penn State	7	2-7	1-6	0-0	0	0	0	0	0	0	0	5
11/23	Coll. of Charleston	16	2-8	2-6	3-4	3	0	0	1	0	1	1	9
11/27	Presbyterian	22	5-10	5-9	0-2	4	0	0	1	0	2	15	
11/30	at Xavier	14	1-4	0-3	0-0	2	0	0	0	0	0	0	2
12/4	at NC State	6	0-4	0-3	0-0	1	0	0	0	0	0	0	0
12/11	Furman	13	1-5	0-4	0-0	1	2	0	0	0	1	2	
12/14	South Carolina State	14	5-8	2-5	0-0	4	0	0	1	1	0	0	12
12/18	vs. #18/16 N. Carolina	13	1-8	1-4	0-0	2	0	1	1	0	0	3	
12/21	Savannah State	20	1-5	0-3	0-0	2	0	0	1	0	0	0	2
12/28	at Drexel	11	0-6	0-4	0-0	1	0	0	0	0	0	0	0
1/1	Alabama	17	3-7	2-5	2-2	2	0	2	0	0	0	0	10
1/5	#24/21 Vanderbilt	4	0-2	0-0	0-0	3	1	0	1	0	0	0	0
1/8	at Florida	6	2-3	1-1	0-0	0	1	1	0	0	0	1	5
1/12	at LSU	18	0-8	0-7	0-1	5	2	0	0	0	0	1	0
1/15	#9/8 Kentucky	2	1-4	1-4	2-3	1	0	0	0	0	0	0	5
1/19	at Auburn	8	2-5	1-4	0-0	0	0	0	1	0	0	0	5
1/26	Ole Miss	6	1-4	0-2	0-0	2	1	0	0	0	0	0	2
1/29	Mississippi State	15	2-8	1-6	0-0	0	2	0	1	0	0	0	5
2/2	at #8/8 Tennessee	5	0-2	0-1	0-0	1	0	0	0	0	0	0	0
2/9	at Arkansas	16	1-6	1-5	0-3	2	3	1	1	0	1	3	
2/12	Florida	13	4-9	3-5	0-1	0	0	1	0	0	0	0	11
2/16	#18/15 Georgia	7	1-5	1-4	0-0	1	0	0	0	0	0	0	3
2/19	at Alabama	4	0-1	0-1	0-0	0	1	0	1	0	0	0	0
2/23	at #13/10 Kentucky	0	0-0	0-0	0-0	0	0	0	0	0	0	0	0
2/26	Arkansas	6	0-0	0-0	0-0	0	0	0	0	0	1	0	
3/1	vs. Alabama^	22	2-7	2-5	1-2	3	1	2	0	0	0	0	7
3/2	vs. #16/15 Georgia^	22	4-12	1-8	0-0	4	1	0	0	0	1	1	9
3/3	vs. #13/10 Tennessee^	12	4-8	2-4	0-0	1	0	0	1	0	0	0	10
3/17	vs. Eastern Michigan\$	20	2-9	2-7	0-0	1	2	2	1	0	0	0	6
3/19	at #13/15 Purdue\$	8	1-4	1-4	0-0	0	1	0	1	0	0	0	3
3/24	vs. #2/2 Stanford\$	4	0-1	0-1	0-0	0	0	0	0	0	0	0	0

^ indicates SEC Tournament
\$ indicates NCAA Tournament

Career Stats at South Carolina

All Games

Year	GP	GS	Min	Avg	FG	FGA	Pct	3FG	FGA	Pct	FT	FTA	Pct	Off	Def	Tot	Avg	PF	FO	A	TO	Blk	Stl	Pts	Avg
2011-12	34	0	383	11.3	53	181	.293	32	127	.252	10	22	.455	20	29	49	1.4	20	0	10	15	1	9	148	4.4
2012-13	— Did Not Play —																								

SEC Games

Year	GP	GS	Min	Avg	FG	FGA	Pct	3FG	FGA	Pct	FT	FTA	Pct	Off	Def	Tot	Avg	PF	FO	A	TO	Blk	Stl	Pts	Avg
2011-12	15	0	127	8.5	17	64	.266	11	45	.244	4	10	.400	7	10	17	1.1	11	0	5	5	0	4	49	3.3
2012-13	— Did Not Play —																								

Postseason Games

Year	GP	GS	Min	Avg	FG	FGA	Pct	3FG	FGA	Pct	FT	FTA	Pct	Off	Def	Tot	Avg	PF	FO	A	TO	Blk	Stl	Pts	Avg
2011-12	6	0	88	14.7	13	41	.317	8	29	.276	1	2	.500	4	5	9	1.5	5	0	4	3	0	1	35	5.8
2012-13	— Did Not Play —																								



Introduction

Staff

Players

12-13 Review

Records

History

The University



#5

**5-8 • Sophomore
Guard
Myrtle Beach, S.C.
Myrtle Beach**



KHADIJAH SESSIONS

Freshman Year (2012-13)

Played in every game, starting three SEC contests ... led the team in scoring three times (at Florida, Auburn, at Missouri) ... led the team in assists three times (Furman, at Florida, at Missouri) ... scored in double figures six times ... shot career-best 4-of-5 in second-round SECTournament game against Alabama (March 7), scoring seven of her 11 points in the second half ... drained a 3 from the right corner to start a personal 5-0 run after Florida (March 3) had come within two midway through the second half, adding 5-of-6 free throw attempts in the period ... scored 11 of her team-high 14 points at Missouri (Feb. 28) in the second half ... swiped all of her career-high four steals in the first half against Mississippi State (Feb. 24), including three in the game's first three minutes ... earned first career start at Ole Miss (Feb. 17), adding 11 points on 4-of-7 shooting ... scored 14 of her career-high 19 points against Auburn (Feb. 3) in the second half, shooting 8-of-9 from free throw line for the game, including 6-of-7 in final 90 seconds to help seal victory ... was solid secondary ball-handler against the pressure of #5/4 Kentucky (Jan. 24), committing no turnovers in 26 minutes off the bench, while adding eight pints, including a free throw in the final 11 seconds to help seal the victory ... took advantage of a career-high 28 minutes at Florida (Jan. 20) to lead the team in scoring, hitting 6-of-10 from the free throw line, including three in the final 30 seconds to help seal the victory ... hit all four free throws in the final two minutes against Vanderbilt (Jan. 10) to stymie any ideas of a late comeback for the Commodores ... swiped a pair of steals at Seton Hall (Dec. 2) ... hit her first career 3-pointer against Florida Gulf Coast (Nov. 23) ... had a well-rounded game against Savannah State (Nov. 15) with four assists, three steals and six points ... scored her eight points in just 10 minutes on the court against Elon (Nov. 9)

High School

Played six seasons for Brian Kiper's Myrtle Beach High Seahawks ... rated the No. 7 point guard in the class of 2012 and the No. 40 player overall by ESPN Hoopgurlz ... earned Parade All-America honors in 2012 ... averaged 29.5 points and 9.0 rebounds as a senior (2011-12) to be named Class AAA Player of the Year by both the South Carolina Basketball Coaches Association and the South Carolina Coaches Association for Women's Sports ... four-time SCBCA All-State selection ... became first player to be selected Miss Hoop Zone by WPDE-TV three times (2009, 2010, 2012) ... helped team to back-to-back Class AAA state championships as a sophomore and junior ... ranked fifth in state history with 3,020 career points.

Career Highs

Points	19 vs. Auburn, 2/3/13
FG	6 at Missouri, 2/28/13
FGA	15 at Missouri, 2/28/13
FG %	.800 (4-5) vs. Alabama, 3/7/13
3FG	3 at Florida, 1/20/13
3FGA	6, 2x, last at Missouri, 2/28/13
3FG %	.500 (3-6) at Florida, 1/20/13
FT	8 vs. Auburn, 2/3/13
FTA	10 at Florida, 1/20/13
FT %	1.000 (4-4), 2x, last vs. Miss. St., 2/24/13
Rebounds	5 at Florida, 1/20/13
Off Rebounds	3 at Missouri, 2/28/13
Def Rebounds	3 at Florida, 1/20/13
Assists	4 vs. Savannah State, 11/15/12
Steals	4 vs. Mississippi State, 2/24/13
Minutes	35 at Missouri, 2/28/13





Miscellaneous Stats

	Career Games	Team Record
10+ Points	6	5-1
Tm-High Points	3	2-1
Tm-High Assts.	3	2-1

Personal

Born November 2, 1993 ... daughter of Michelle Sessions and Troy McCollum ... has an older sister, Dasha McCollum, and two younger brothers, Tre McCollum and Keyonte' Sessions ... majoring in hospitality management.

Career Game-by-Game

Freshman Year (2012-13)

Date	Opponent	GS	MIN	FG-A	3FG-A	FT-A	Reb	PF	A	TO	B	S	TP
11/9	Elon		10	3-7	0-1	2-3	0	1	0	1	0	0	8
11/12	at LA Tech		8	1-1	0-0	1-2	1	0	1	1	0	1	3
11/15	Savannah State		19	3-4	0-1	0-0	3	1	4	1	0	3	6
11/18	Clemson		15	0-3	0-2	3-5	1	1	1	2	0	0	3
11/22	vs. Hampton		9	1-2	0-0	0-0	1	0	1	3	0	0	2
11/23	vs. Fla. Gulf Coast		21	2-5	1-3	0-0	1	2	2	1	0	1	5
11/24	vs. DePaul		21	2-8	0-1	2-3	1	1	0	0	0	0	6
11/28	Drexel		7	1-1	1-1	0-2	0	0	0	1	0	1	3
12/2	at Seton Hall		15	1-5	0-2	1-3	1	0	1	0	0	2	3
12/9	vs. Furman		23	2-5	0-3	3-4	2	1	2	1	1	1	7
12/19	#1/1 Stanford		9	0-1	0-1	0-0	0	1	0	0	0	0	0
12/21	SC State		17	1-2	0-0	6-8	1	0	1	2	0	1	8
12/29	Western Carolina		18	3-6	1-2	0-0	2	0	2	2	1	0	7
1/3	#12/13 Tennessee		9	0-1	0-1	1-2	1	1	0	1	0	1	1
1/6	at Mississippi State		12	0-1	0-1	5-7	0	2	1	3	0	0	5
1/10	Vanderbilt		14	0-2	0-2	4-4	2	1	1	0	0	0	4
1/13	at #13/12 Georgia		1	0-1	0-1	0-0	0	0	0	1	0	0	0
1/17	LSU		6	0-1	0-1	0-0	0	1	2	1	0	0	0
1/20	Florida		28	3-9	3-6	6-10	5	2	2	2	0	0	15
1/24	#5/4 Kentucky		26	3-8	0-1	2-4	2	4	0	0	0	1	8
1/27	at Arkansas		14	1-3	0-0	1-2	2	1	0	1	0	0	3
2/3	Auburn		25	5-9	1-3	8-9	3	1	3	2	0	0	19
2/7	at Alabama		24	1-8	0-1	2-2	1	1	2	1	0	0	4
2/10	#14/16 Texas A&M		27	0-8	0-3	3-7	4	2	2	2	0	2	3
2/14	at #9/7 Kentucky		18	1-4	0-0	1-3	1	4	1	6	0	1	3
2/17	at Ole Miss	*	24	4-7	1-3	2-3	0	3	0	2	0	0	11
2/24	Mississippi State	*	25	3-6	1-2	4-4	2	1	1	4	0	4	11
2/28	at Missouri	*	35	6-15	2-6	0-1	3	2	2	2	0	1	14
3/3	Florida		22	1-4	1-2	6-8	1	2	0	3	0	0	9
3/7	vs. Alabama^		23	4-5	1-1	2-5	2	2	1	1	0	1	11
3/8	vs. #19 TX A&M^		11	0-4	0-1	0-0	2	3	0	0	0	0	0
3/23	vs. South Dakota St.\$		20	0-2	0-1	5-6	1	2	2	2	1	0	5
3/25	vs. Kansas\$		14	1-3	0-1	2-2	0	0	1	0	0	0	4

^ indicates SEC Tournament

\$ indicates NCAA Tournament

Career Stats at South Carolina

All Games

Year	GP	GS	Min	Avg	FG	FGA	Pct	3FG	FGA	Pct	FT	FTA	Pct	Off	Def	Tot	Avg	PF	FO	A	TO	Blk	Stl	Pts	Avg
2012-13	33	3	570	17.3	53	151	.351	13	54	.241	72	109	.661	22	24	46	1.4	43	0	36	49	3	21	191	5.8

SEC Games

Year	GP	GS	Min	Avg	FG	FGA	Pct	3FG	FGA	Pct	FT	FTA	Pct	Off	Def	Tot	Avg	PF	FO	A	TO	Blk	Stl	Pts	Avg
2012-13	16	3	310	19.4	28	87	.322	9	33	.273	45	66	.682	11	16	27	1.7	28	0	17	31	0	10	110	6.9

Postseason Games

Year	GP	GS	Min	Avg	FG	FGA	Pct	3FG	FGA	Pct	FT	FTA	Pct	Off	Def	Tot	Avg	PF	FO	A	TO	Blk	Stl	Pts	Avg
2012-13	4	0	68	17.0	5	14	.357	1	4	.250	9	13	.692	3	2	5	1.3	7	0	4	3	1	1	20	5.0



ALEIGHSA WELCH

Sophomore Year (2012-13)

Earned her first All-SEC nod with a spot on the second team ... started every game ... ranked second in school history with 131 offensive rebounds on the season, becoming one of three Gamecocks all-time to have multiple seasons with at least 100 ... set the school record with 56 offensive boards in the SEC regular season while ranking fourth in minutes played (530) and fifth in games started (33) in league play ... has 10 double-doubles (Savannah St., vs. Hampton, vs. FGCU, Drexel, at Seton Hall, SC State, at Alabama, Miss. St., Florida, vs. Kansas) ... led the SEC in offensive rebounds per game (4.0), ranked eighth in total rebounds per game and was 22nd in scoring ... led the team in scoring 11 times (Savannah St., vs. Hampton, at Seton Hall, Stanford, Miss. St., Vandy, at Georgia, at Alabama, at Kentucky, Miss. St., vs. Kansas) ... led the team in rebounding 10 times (at LA Tech, Savannah St., vs. FGCU, Drexel, SC State, Miss. St., at Florida, Miss. St., at Missouri, Florida) ... scored in double figures 21 times, including a 20-point game, and pulled down double-digit rebounds 12 times ... scored nine of her 16 points against Kansas (March 25) in the NCAA Tournament Second Round in the second half, including a personal 6-0 run that tied the game at 65-65 with 6:39 left to play ... went 7-of-8 from the free throw line in the second-round SEC Tournament game against Alabama (March 7) ... scored 10 of her 14 points against Florida (March 3) in the second half, highlighted by six during an 8-0 run that put the game away, and finished with her ninth double-double of the season ... netted career-high 20 points against Mississippi State (Feb. 24), including 8-of-12 from free throw line, and complete her eighth double-double with six offensive boards among her 11 rebounds ... was perfect from the field and FT line at Ole Miss (Feb. 17) en route to 11 points ... scored 10 of team-high 15 points at No. 9/7 Kentucky (Feb. 14) to hold off Wildcat surge early in second half ... grabbed six of her eight rebounds against No. 14/16 Texas A&M (Feb. 10) on offensive end, her eighth game of the season with at least six offensive boards ... scored team's first six points in 13-3 run that opened second half at Alabama (Feb. 7) to finish with double-double, including 11 points and seven rebounds in second half ... hit a pair of free throws in final minute to seal win over Auburn (Feb. 3) ... blocked three shots at Arkansas (Jan. 27), including potential game-tying attempt in final 10 seconds ... rallied against #5/4 Kentucky (Jan. 24) with eight points and five boards of her totals coming in second half ... reeled in nine of her 12 rebounds at Florida (Jan. 20) in the second half and tied her career high with eight offensive ... hit four free throws in final minute to seal win against LSU (Jan. 17) to cap off 14-point, seven-rebound effort ... tied her then-career high with 19 points at #13/12 Georgia (Jan. 13), hitting 8-of-10 from the field, and

#24

6-0 • Junior
Forward
Goose Creek, S.C.
Goose Creek



Career Highs

Points	20 vs. Mississippi State, 2/24/13
FG	8 at Georgia, 1/13/13
FGA	14 vs. Kansas, 3/25/13
FG %	1.000 (4-4) , 2x, last at Ole Miss, 2/17/13
FT	10 at Xavier, 11/30/11
FTA	15 at Xavier, 11/30/11
FT %	1.000 (4-4) at Seton hall, 12/2/12
Rebounds	15 vs. Drexel, 11/28/12
Off Rebounds	8, 5x, last vs. Kansas, 3/25/13
Def Rebounds	8, 2x, last vs. Florida, 3/3/13
Steals	3, 3x, last vs. Florida, 3/3/13
Assists	4 at Kentucky, 2/14/13
Blocks	4 at NC State, 12/4/11
Minutes	42 vs. Drexel, 11/28/12





Miscellaneous Stats

	Career Games	Team Record
Double-Doubles	10	9-1
20+ Points	1	1-0
10+ Points	31	25-6
10+ Rebounds	14	12-2
Tm-High Points	15	9-6
Tm-High Rebs.	26	22-4
Tm-High Assts.	4	2-2

made the play that resulted in a pair of Sancheon White free throws to pull Gamecocks within a point in the final 45 seconds ... scored eight of her team-high 13 points against Vanderbilt (Jan. 10) in just 11 minutes of first-half action ... led team in points, rebounds and assists at Mississippi State (Jan. 6) ... limited by foul trouble to just nine minutes in first half against #12/13 Tennessee (Jan. 3), finishing with just six points and five rebounds... tied her career high with eight offensive rebounds among her 14 against SC State (Dec. 21) while also adding 16 points for her sixth double-double of the season ... scored 13 of her 17 points against #1/1 Stanford (Dec. 19) in the second half, including a free throw to tie the game with 1:14 left to play ... snagged a career-high 15 rebounds against Drexel (Nov. 28), the second-most in the SEC this season ... named Paradise Jam MOP, averaging 10.3 points and 9.3 rebounds to guide team to Reef Division title ... scored 10 of team's first 13 second-half points to pull away from Hampton (Nov. 22) ... posted first career double-double with 13 points and 12 rebounds against Savannah State (Nov. 15) ... was great on the inside at Louisiana Tech (Nov. 12), to finish with 14 points, eight rebounds, two blocks and two steals ... named to the SEC Winter Academic Honor Roll.

Freshman Year (2011-12)

Named to the SEC All-Freshman Team by the league's coaches ... played in 33 games, including two starts ... was 13th in the SEC in rebounding, second among league freshmen ... ranks seventh in school history with 104 offensive rebounds on the season ... pulled in six or more offensive rebounds five times (Penn State, at Xavier, Furman, Vanderbilt, vs. Stanford), all of which are among the top-five performances by a freshman in South Carolina history ... led the team in rebounding a team-high 16 times (Alabama A&M, at Clemson, CofC, at Xavier, Furman, SC State, vs. North Carolina, Alabama, at Vanderbilt, at Tennessee, at Arkansas, Florida, vs. Alabama, vs. Eastern Michigan, at Purdue, vs. Stanford) and was the team's top scorer four times (at NC State, Savannah State, Vanderbilt, at LSU) ... posted double-figure points 10 times ... pulled down double-digit rebounds twice (Alabama, vs. Stanford) ... led team with 7.0 rebounds per NCAA Tournament game with 12 of her 21 boards coming

Career Stats at South Carolina

All Games

Year	GP	GS	Min	Avg	FG	FGA	Pct	3FG	FGA	Pct	FT	FTA	Pct	Off	Def	Tot	Avg	PF	FO	A	TO	Blk	Stl	Pts	Avg
2011-12	33	2	694	21.0	98	167	.587	0	1	.000	56	98	.571	104	96	200	6.1	41	0	18	40	22	19	252	7.6
2012-13	33	33	981	29.7	134	224	.598	1	11	.000	126	178	.708	131	124	255	7.7	56	0	34	53	23	26	395	12.0
Career Totals	66	35	1675	25.4	232	391	.593	1	2	.500	182	276	.659	235	220	455	6.9	97	0	52	93	45	45	647	9.8

SEC Games

Year	GP	GS	Min	Avg	FG	FGA	Pct	3FG	FGA	Pct	FT	FTA	Pct	Off	Def	Tot	Avg	PF	FO	A	TO	Blk	Stl	Pts	Avg
2011-12	14	2	341	24.4	48	86	.558	0	0	—	20	40	.500	42	46	88	6.3	19	0	9	25	8	8	116	8.3
2012-13	16	16	530	33.1	64	112	.571	0	0	—	66	91	.725	56	53	109	6.8	33	0	21	22	16	15	194	12.1
Career Totals	30	18	871	29.0	112	198	.566	0	0	—	86	131	.656	98	99	197	6.6	52	0	30	47	24	23	310	10.3

Postseason Games

Year	GP	GS	Min	Avg	FG	FGA	Pct	3FG	FGA	Pct	FT	FTA	Pct	Off	Def	Tot	Avg	PF	FO	A	TO	Blk	Stl	Pts	Avg
2011-12	6	0	112	18.7	13	25	.250	0	0	—	5	9	.556	20	15	35	5.8	4	0	1	3	0	3	31	5.2
2012-13	4	4	104	26.0	12	27	.444	0	0	—	17	24	.708	13	13	26	6.5	8	0	5	7	4	1	41	10.3
Career Totals	10	4	216	21.6	25	52	.401	0	0	—	22	33	.667	33	28	61	6.1	12	0	6	10	4	4	72	7.2

PLAYER PROFILES – WELCH

on the offensive end ... ripped down a career-high 12 rebounds against #2/2 Stanford's vaunted front line in the NCAA Tournament Sweet 16 game with eight of those on the offensive end, the second-most by a Gamecock freshman in school history ... turned in 4.7 rebounds and 3.7 points per SEC Tournament game after missing last two of regular season with injury ... grabbed three of her four rebounds on offensive end in SEC Tournament second-round win over #16/15 Georgia ... tied for team-high rebound honors, playing nine minutes in SEC Tournament first-round win over Alabama ... earned SEC Freshman of the Week honors on Jan. 9 for her week of 14.5 points and 6.5 rebounds per game to help team defeat Vanderbilt and Florida ... scored transition layup to pull within one inside three minutes to go at #8/8 Tennessee while leading team in rebounds ... led the team with nine rebounds at #25/22 Vanderbilt, including two in heavy traffic in the waning seconds of overtime to help secure the victory ... paced offense with 13 points at LSU, including six of the team's 21 in the second half ... scored a season-high 19 points in win over #24/21 Vanderbilt, thanks largely to six offensive rebounds against a taller Vanderbilt front line ... posted her first career double-digit rebound game in her SEC debut against Alabama, also scoring nine points in the contest to narrowly miss her first career double-double ... tied for fourth in South Carolina freshman history with four blocked shots at NC State ... scored 16 points at Xavier, hitting 10 free throws – second-most ever by a Gamecock freshman – on 15 attempts – tied for the South Carolina freshman record ... named to the SEC First-Year Academic Honor Roll.

High School

Played four years for Coach Tim Baldwin's Gators... named South Carolina Miss Basketball ... drew 4A player of the year honors ... was a three-time all-state and four-time all-region selection ... earned Player of the Year honors from the *Charleston Post & Courier* three times ... was tabbed Lowcountry player of the year as a senior ... turned in 19 points and 11 rebounds per game her final season at Goose Creek ... guided team to its first state basketball championship



with a 36-point, 15-rebound effort against Spring Valley in the title game her junior year ... played in the state title game in 2011 as well ... helped team to 20 or more wins all four seasons she played, compiling a 102-11 record.

Personal

Born July 23, 1993 ... daughter of Ernesto and Sharell Welch ... has an older brother, Ernesto, who played football at North Greenville University ... is majoring in sport and entertainment management.



Career Game-by-Game

Sophomore Year (2012-13)

Date	Opponent	GS	MIN	FG-A	3FG-A	FT-A	Reb	PF	A	TO	B	S	TP
11/9	Elon	*	25	4-6	0-0	1-2	9	1	1	2	0	3	9
11/12	at LA Tech	*	26	4-6	0-0	6-8	8	3	1	0	2	2	14
11/15	Savannah State	*	22	5-6	0-0	3-3	12	0	0	1	0	0	13
11/18	Clemson	*	25	2-4	0-0	3-5	6	2	0	3	1	1	7
11/22	vs. Hampton	*	31	6-7	0-0	4-6	11	0	1	7	0	1	16
11/23	vs. Fla. Gulf Coast	*	23	6-7	0-0	2-3	11	1	0	1	0	0	14
11/24	vs. DePaul	*	26	3-7	0-0	3-6	10	3	1	2	0	0	9
11/28	Drexel	*	42	5-7	1-1	1-3	15	1	0	2	0	0	12
12/2	at Seton Hall	*	32	5-11	0-0	4-4	10	1	0	2	0	1	14
12/9	vs. Furman	*	17	3-4	0-0	5-6	3	0	0	0	0	0	11
12/19	#1/1 Stanford	*	34	7-10	0-0	3-6	5	3	2	0	0	0	17
12/21	SC State	*	26	5-6	0-0	6-9	14	0	0	2	0	1	16
12/29	Western Carolina	*	18	3-4	0-0	2-2	6	0	2	1	0	1	8
1/3	#12/13 Tennessee	*	22	3-7	0-0	0-1	5	2	0	1	0	0	6
1/6	at Mississippi State	*	31	5-9	0-0	6-8	7	4	3	0	0	0	16
1/10	Vanderbilt	*	29	6-8	0-0	1-2	5	2	1	1	0	1	13
1/13	at #13/12 Georgia	*	33	8-10	0-0	3-5	5	2	1	2	0	1	19
1/17	LSU	*	32	4-7	0-0	6-9	3	3	2	2	0	1	14
1/20	at Florida	*	38	2-8	0-0	4-5	12	1	0	0	1	1	8
1/24	#5/4 Kentucky	*	36	4-7	0-0	3-5	7	2	1	1	1	2	11
1/27	at Arkansas	*	39	3-5	0-0	1-1	5	0	2	1	3	0	7
2/3	Auburn	*	37	2-4	0-0	6-8	3	2	1	1	1	2	10
2/7	at Alabama	*	35	6-8	0-0	4-5	10	1	1	1	1	1	16
2/10	#14/16 Texas A&M	*	36	2-9	0-0	2-2	8	0	0	1	1	0	6
2/14	at #9/7 Kentucky	*	34	4-7	0-0	7-9	4	3	4	3	3	0	15
2/17	at Ole Miss	*	23	4-4	0-0	3-3	5	4	2	2	1	0	11
2/24	Mississippi State	*	33	6-9	0-0	8-12	11	2	0	3	2	0	20
2/28	at Missouri	*	36	1-5	0-0	6-7	5	2	2	0	2	3	8
3/3	Florida	*	36	4-5	0-0	6-9	10	3	1	3	0	3	14
3/7	vs. Alabama^	*	18	1-3	0-0	7-8	4	1	1	1	0	0	9
3/8	vs. #19 TX A&M^	*	31	2-6	0-0	4-6	6	4	3	3	0	0	8
3/23	vs. South Dakota St.\$	*	21	3-4	0-0	2-2	5	0	0	0	1	0	8
3/25	vs. Kansas\$	*	34	6-14	0-0	4-8	11	3	1	3	3	1	16



Freshman Year (2011-12)

Date	Opponent	GS	MIN	FG-A	3FG-A	FT-A	Reb	PF	A	TO	B	S	TP
11/11	at Illinois		16	1-2	0-0	0-0	3	2	0	1	0	0	2
11/14	Alabama A&M		21	4-6	0-0	4-6	9	1	1	2	1	0	12
11/17	at Clemson		16	2-4	0-0	2-2	5	3	1	0	0	0	6
11/20	#11/12 Penn State		20	1-4	0-0	0-0	6	2	0	0	0	1	2
11/23	Coll. of Charleston		17	1-3	0-0	3-4	9	2	0	2	1	0	5
11/27	Presbyterian		21	4-4	0-0	1-2	3	0	1	0	3	0	9
11/30	at Xavier		23	3-4	0-0	10-15	8	1	1	1	2	3	16
12/4	at NC State		24	6-7	0-0	2-3	5	1	0	0	4	0	14
12/11	Furman		22	2-6	0-0	1-2	8	1	2	1	2	2	5
12/14	South Carolina State		19	3-3	0-0	3-3	9	0	1	1	1	0	9
12/18	vs. #18/16 N. Carolina		18	5-7	0-1	0-4	6	2	1	1	0	1	10
12/21	Savannah State		13	5-6	0-0	5-6	5	0	0	3	0	1	15
12/28	at Drexel		11	0-0	0-0	0-2	1	3	0	0	0	0	0
1/1	Alabama		19	4-5	0-0	1-2	10	1	1	1	0	1	9
1/5	#24/21 Vanderbilt		23	7-10	0-0	5-6	7	1	1	1	0	0	19
1/8	at Florida		30	5-9	0-0	0-3	6	1	0	1	2	1	10
1/12	at LSU		30	5-10	0-0	3-5	7	2	1	3	0	1	13
1/15	#9/8 Kentucky		31	4-8	0-0	3-7	7	1	0	3	0	0	11
1/19	at Auburn		19	2-5	0-0	0-0	2	2	0	2	0	0	4
1/22	at #25/22 Vanderbilt		30	3-9	0-0	5-7	9	3	1	2	2	0	11
1/26	Ole Miss		25	2-5	0-0	0-0	4	0	0	2	0	2	4
1/29	Mississippi State		23	3-3	0-0	0-0	5	0	0	0	0	0	6
2/2	at #8/8 Tennessee		26	3-3	0-0	0-2	9	3	1	0	1	0	6
2/9	at Arkansas		21	3-3	0-0	1-1	5	1	1	4	0	1	7
2/12	Florida	*	28	1-4	0-0	0-2	7	1	1	3	2	2	2
2/16	#18/15 Georgia	*	24	2-6	0-0	1-4	5	1	1	2	1	0	5
2/19	at Alabama		12	4-6	0-0	1-1	5	2	1	1	0	0	9
3/1	vs. Alabama^		9	0-2	0-0	0-0	5	1	0	2	0	0	0
3/2	vs. #16/15 Georgia^		25	4-5	0-0	1-1	4	0	0	0	0	0	9
3/3	vs. #13/10 Tennessee^		22	1-3	0-0	0-0	5	0	1	0	0	0	2
3/17	vs. Eastern Michigan\$		10	2-3	0-0	4-5	1	1	0	0	0	2	8
3/19	at #13/15 Purdue\$		24	2-4	0-0	0-3	8	1	0	1	0	1	4
3/24	vs. #2/2 Stanford\$		22	4-8	0-0	0-0	12	1	0	0	0	0	8

^ indicates SEC Tournament
\$ indicates NCAA Tournament



ALAINA COATES

High School

Played five seasons for Coach Faye Norris' Silver Foxes ... Named a McDonald's and a *Parade* All-American, Gatorade South Carolina Player of the Year, South Carolina Basketball Coaches Association (SCBCA) Class 4A Player of the Year and Charlotte Observer South Carolina Miss Basketball in 2012-13 ... Posted 20.1 points, 11.6 rebounds and 3.6 blocks per game as a senior ... Was a three-time SCBCA Class 4A all-state selection ... Helped team to back-to-back state championships (2012, 2013), including an undefeated 29-0 season as a senior ... Played for Coach Jerome Dickerson's Palmetto 76ers in AAU.

Personal

Born Apr. 7, 1995 ... Daughter of Pamela and Gary Coates ... has an older brother, Gary ... Uncle Ben Coates played in the NFL in the 1990s for the New England Patriots and one season for the Baltimore Ravens.

#41

6-4 • Freshman
Center
Irmo, S.C.
Dutch Fork



INDIA FARMER

High School

Played for Coach Jude Hunt's Chiefs ... Named Toast of the Coast Player of the Year by *The Sun News* and all-state as a senior ... Helped team to its first region title in eight seasons, including a perfect 10-0 record against Region VII-AAA competition ... Earned all-conference honors three times (2011, 2012, 2013) ... Posted 16 points, 11 rebounds, four assists and four steals per game as a senior ... Played for Jerome Dickerson's 76ers in AAU.

Personal

Born Dec. 24, 1994 ... Daughter of Chrissy and Tim Farmer ... has a younger sister, Faith, and two younger brothers, Timothy and Zane.



#0

6-4 • Freshman

Forward

North Myrtle Beach, S.C.

North Myrtle Beach



Introduction

Staff

Players

12-13 Review

Records

History

The University



Introduction

Staff

Players

12-13 Review

Records

History

The University



OLIVIA GAINES

At Louisburg College

Played two seasons for Coach Brett Vana's Hurricanes ... Named Junior/Community College Player of the Year by the Women's Basketball Coaches Association as a sophomore ... Helped team to NJCAA Division II National Championship in 2013 ... Averaged 18.6 points, 6.0 rebounds, 2.4 assists and 2.5 steals en route to NJCAA All-America honors in 2012-13, guiding team to a 32-3 record ... Posted 10.0 points per game as a freshman.

High School

Played for Coach Marilyn Milton's Cyclones ... Earned all-region honors three times (2009, 2010, 2011) ... Helped team to a 21-4 record as a junior.

Personal

Born Mar. 29, 1993 ... Daughter of Florence Crank and Theodore Gaines ... has a younger brother, Summer Harrison.

#2

5-7 • Junior
Guard
Chester, S.C.
Chester



LeANNA MORRISON

At Charlotte

Ran track for two seasons at Charlotte ... Qualified for the 2013 NCAA East Preliminary Outdoor Championship in the 400-meter hurdles ... Posted a school-record time in the 400m hurdles (58.99) in prelims at the 2013 Atlantic 10 Outdoor meet and went on to finish second in the finals to earn Second-Team All-A-10 honors ... Was a member of the school-record setting 4x400m relay team that won the 2012 Atlantic 10 Indoor title (3:40.69).

High School

Played five seasons for Coach Crystal Peace's Stags ... Named All-Lowcountry Female Athlete of the Year in 2011 by *The Post and Courier* ... Earned All-Lowcountry honors three seasons and was an all-state selection as a senior ... Finished her basketball career with more than 1,200 points ... Was Berkeley's most decorated track performer, winning four gold medals at the state meet, including a state-record time in the 400-meter hurdles ... Named Gatorade South Carolina Athlete of the Year for track and was South Carolina Miss Track as a senior (2011).

Personal

Born July 11, 1993 ... Daughter of Tracy and Carlton Morrison ... has two older sisters, Carlia and Catrina, and a younger brother Carlantré ... Cousin Marsha Williams is ninth in Gamecock history with 1,585 career points (1990-93), playing in two NCAA Tournaments, including a run to the 1990 Sweet 16 ... Cousin Russel Williams played football at Auburn.



#21

**5-5 • R-Sophomore
Guard
Monck's Corner, S.C.
Berkeley**



Introduction

Staff

Players

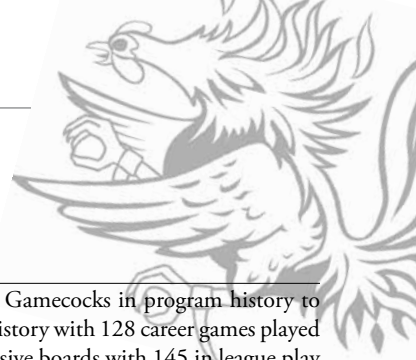
12-13 Review

Records

History

The University

LETTERWINNERS LOST



Introduction



Ashley Bruner

6-0 • Forward • Norman, Okla.

Career Capsule

Named All-SEC Second Team by the league's coaches as a senior (2013) ... is one of just 14 Gamecocks in program history to amass 700 career rebounds, ranking 14th in school history with 701 ... ranks fourth in school history with 128 career games played ... holds a spot among the program's top rebounders in SEC play, ranking third in career offensive boards with 145 in league play and fifth in career rebounds with 312 in SEC regular-season action ... played in 63 SEC games, the second most in school history.

Career Stats at South Carolina

Year	GP	GS	Min	Avg	FG	FGA	Pct	3FG	FGA	Pct	FT	FTA	Pct	Off	Def	Tot	Avg	PF	FO	A	TO	Blk	Stl	Pts	Avg
2009-10	27	0	304	11.3	25	59	.424	0	1	.000	17	36	.472	38	38	76	2.8	32	1	5	27	9	12	67	2.5
2010-11	33	8	727	22.0	116	215	.540	0	0	—	44	88	.500	98	77	175	5.3	64	1	21	5	21	24	276	8.4
2011-12	35	3	772	22.1	100	225	.444	0	0	—	53	138	.384	96	87	183	5.2	69	0	39	54	25	47	253	7.2
2012-13	33	33	1000	30.3	145	330	.439	0	6	.000	50	163	.307	106	161	267	8.1	64	0	55	77	18	47	340	10.3
Career Totals	128	44	2803	21.9	386	829	.466	0	7	.000	164	425	.386	338	363	701	5.5	229	2	120	213	73	130	936	7.3

Staff

Players

12-13 Review



Leasia Walker

5-8 • Guard • Amityville, N.Y.

Career Capsule

Three-time All-SEC selection (first team in 2013; second team in 2011, 2012) who earned the program's first player of the year award from the SEC's coaches when they named her Defensive Player of the Year in 2013 ... is one of just three Gamecocks all-time to amass at least 1,000 career points, 250 career assists and 250 career steals, joining Shannon Johnson (1993-96; 2230 pts, 467 assts, 260 stls) and Martha Parker (1986-89; 1728 pts, 543 assts, 284 stls) ... in school history, ranks 21st in scoring (1,157), fourth in steals (258) and third in games played (130) ... holds school record for SEC regular-season games played with 64 ... is

among the program's top 10 in 10 different career statistics including 3-point field goals made (118, eighth), 3-point attempts (405, eighth), games started (103, eighth), career assists in SEC play (159, fourth) and career steals in SEC games (128, second).

Career Stats at South Carolina

Year	GP	GS	Min	Avg	FG	FGA	Pct	3FG	FGA	Pct	FT	FTA	Pct	Off	Def	Tot	Avg	PF	FO	A	TO	Blk	Stl	Pts	Avg
2009-10	29	6	589	20.3	57	174	.328	17	47	.362	26	40	.650	31	44	75	2.6	55	0	35	58	8	26	157	5.4
2010-11	33	31	991	30.0	137	389	.352	38	132	.288	91	146	.623	37	90	127	3.8	81	2	56	82	10	79	403	12.2
2011-12	35	33	1040	29.7	98	310	.316	20	85	.235	59	89	.663	35	116	151	4.3	72	1	113	90	19	63	275	7.9
2012-13	33	33	1086	32.9	114	335	.340	43	141	.305	51	90	.567	33	96	129	3.9	56	0	108	89	15	90	322	9.8
Career Totals	130	103	3706	28.5	406	1208	.336	118	405	.291	227	365	.622	136	346	482	3.7	264	3	312	319	52	258	1157	8.9

Records

History



Sancheon White

5-10 • Guard • Hammond, Ind.

Career Capsule

Enjoyed two seasons in the Garnet and Black, playing largely as a defensive stopper ... started every game of senior season ... key part of defense that finished the season ranked first in the SEC and fifth in the nation in 2012-13.

Career Stats at South Carolina

Year	GP	GS	Min	Avg	FG	FGA	Pct	3FG	FGA	Pct	FT	FTA	Pct	Off	Def	Tot	Avg	PF	FO	A	TO	Blk	Stl	Pts	Avg
2011-12	35	1	460	13.1	45	131	.344	7	30	.233	25	43	.581	31	54	86	2.4	49	0	21	30	7	30	122	3.5
2012-13	33	33	858	26.0	58	190	.305	10	53	.189	20	29	.690	55	80	135	4.1	72	1	30	36	15	33	146	4.4
Career Totals	68	34	1318	19.4	103	321	.321	17	83	.205	45	72	.625	86	134	220	3.2	121	1	51	66	22	63	268	3.9

The University