



SOUTH CAROLINA

2009 WOMEN'S SOCCER

Contact: Miquel Jacobs • **Office:** (803) 777-1516 • **Cell:** (803) 530-5727 • **Fax:** (803) 777-2967
Email: jacobsm2@mailbox.sc.edu • Roost Building B, 1322 Heyward Street, Columbia, SC 29208
www.GamecocksOnline.com

2009 Schedule/Results

DAY	DATE	OPPONENT	TIME/RESULT
Fri.	Aug. 21	Mexican National Team	W, 2-0
Thur.	Aug. 27	College of Charleston	7 p.m.
Sun.	Aug. 30	Western Carolina	2 p.m.
Fri.	Sept. 4	Louisville (1)	7 p.m.
Sun.	Sept. 6	Cincinnati (1)	11 a.m.
Fri.	Sept. 11	Clemson (2)	7:30 p.m.
Sun.	Sept. 13	UNC Wilmington	12 p.m.
Fri.	Sept. 18	UCF	7 p.m.
Sun.	Sept. 20	South Alabama	2 p.m.
Sun.	Sept. 25	Vanderbilt*	7 p.m.
Fri.	Sept. 27	Kentucky*	1:30 p.m.
Sun.	Oct. 2	Mississippi*	8 p.m.
Fri.	Oct. 4	Mississippi State*	2 p.m.
Sun.	Oct. 9	Auburn*	7 p.m.
Fri.	Oct. 11	Alabama*	3:30 p.m.
Sun.	Oct. 16	Georgia*	7 p.m.
Fri.	Oct. 18	Tennessee*	2 p.m.
Thur.	Oct. 22	Arkansas*	7 p.m.
Sun.	Oct. 25	LSU* (ESPNU)	3 p.m.
Fri.	Oct. 30	Florida*	6 p.m.
Wed.	Nov. 4	(3) SEC Championships	TBA
Fri.	Nov. 6	(3) SEC Championships	TBA
Sun.	Nov. 8	(3) SEC Championships	TBA

All Times Eastern
 Home matches in **BOLD** *SEC Match
 1-Louisville Tournament, Louisville, Ky.
 2-Carolina Cup, Clemson, S.C.
 3-Orange Beach, Ala.

Gamecocks Open Season Against CofC



South Carolina
(0-0-0)

Stone Stadium
Columbia, S.C.

Aug. 27, 2009 • 7 p.m.



College of Charleston
(0-0-0)

The South Carolina women's soccer team opens its 2009 season at home Thursday night when the College of Charleston visits Stone Stadium for a 7 p.m. match. The meeting is the first between the intra-state rivals since the 2002 season. South Carolina holds the series advantage, 3-1-2.

The Gamecocks return 10 starters from last season's NCAA Tournament team that went 11-7-4. Seniors Blakely Mattern and Kim Miller return as co-captains for a team that recently defeated the Mexico National Team, 2-0, in an exhibition friendly last Friday night in Greenville, S.C. Mexico has since gone on to defeat Kennesaw State (5-0) and TCU (4-1).

PROMOTIONS

Thursday's match is deemed Faculty/Staff Night, but the party also extends to all South Carolina students. All students with proper student ID's will receive FREE PIZZA at the game. Arrive early to be sure you are not left out!

PARKING NOTICE

Fans are reminded that due to construction on the Dodie Academic Enrichment Center, parking has changed for the 2009 season and the gravel lot in front of the stadium will not be available for fans. Plenty of parking will be available throughout the block, including at The Roost parking lot, in the diagonal spots along Heyward Street marked "Contractor Parking," on Marion Street (between Stone Stadium and the Indoor Fieldhouse), and along Sumter Street (West side of stadium).

USC Probable Starters (2008 Stats)

#	Name	Pos.	Class	GS-GP	G	A	P	Shots	Notes
21	Brittany Rhoades	D	Jr.	22-22	0	5	5	15	2007 Freshman All-American returns at left back
7	Blakely Mattern	D	Sr.	22-22	4	0	8	20	Preseason All-SEC, 2007 SEC Defensive Player of the Year
20	Ellen Fahey	D	So.	22-22	0	0	0	1	Started every game as a freshman
3	Samantha Diaz-Matosas	D	Sr.	22-22	2	2	6	16	Four-year starter can play up top or on backline
16	Lindsay Small	M	Sr.	22-22	3	1	7	35	Returns from a breakout junior campaign at midfield
5	Kim Miller	M	Sr.	22-22	4	3	11	36	Team engine and four-year starter leads at defensive mid
15	Kortney Rhoades	M	So.	17-13	3	4	10	34	Transfer from St. Joseph's (Pa.) earned starting nod
12	Shannon Bigbie	F	Sr.	22-20	1	4	6	24	Will probably miss the 2009 season opener to injury
4	Kayla Grimsley	F	So.	22-20	8	6	22	37	Preseason All-SEC, Team's leading scorer as a freshman
27	Brooke Jacobs	F	Jr.	21-15	3	4	10	38	Looks to become second goal scoring threat up top

No.	Name	Pos.	Yr.	Min.	GA	GAA.	Svs.	W-L	SO	Notes
29	Mollie Patton	GK	R-Jro.	2052:34	22	0.96	58	11-7-4	7	Tied Gamecock single season shutout record in 2008



2009 NUMERICAL ROSTER

No.	Name	Pos.	Ht.	Cl/Exp.	Hometown (High School)
0	Alex Holland	GK	5-7	Fr./HS	Cary, Ill. (Cary-Grove)
1	Roya Mojarab	GK	5-4	Soph./1L	Tacoma, Wash. (Curtis)
2	Megan Fligg	D/F	5-6	Fr./HS	Gainesville, Ga. (Chestatee)
3	Samantha Diaz-Matosas	D	5-7	Sr./3L	Lilburn, Ga. (Brookwood)
4	Kayla Grimsley	M/F	5-4	Soph./1L	Lakeland, Fla. (George W. Jenkins)
5	Kim Miller	M	5-2	Sr./3L	Farmingdale, N.Y. (Famingdale)
6	Samantha Abrahamt	F/M	5-10	Fr./HS	Duluth, Ga. (Greater Atlanta Christian School)
7	Blakely Mattern	D	5-9	Sr./3L	Simpsonville, S.C. (JL Mann)
8	Christine Watts	M	5-6	Fr./HS	Duluth, Ga. (Peachtree Ridge)
9	Maria Petroni	F	5-10	Soph./1L	Flowery Branch, Ga. (Buford)
10	Natalie Aaron	F	5-5	Soph./1L	Brentwood, Tenn. (Battle Ground Academy)
11	Idana DeCecco	D	5-6	Soph./1L	Sherwood Park, Alberta (Archbishop Jordan)
12	Shannon Bigbie	F/M	5-6	Sr./3L	Lexington, S.C. (Lexington)
13	Jocelyn Spurrier	D	5-8	R-Fr./HS	Lawrenceville, Ga. (Brookwood)
14	Lolly Holland	M	5-4	Soph./1L	Suwanee, Ga. (South Forsyth)
15	Kortney Rhoades	M	5-4	Soph.TR	Wilmington, Del. (Padua // St. Joseph's)
16	Lindsay Small	M/D	5-7	Sr./3L	Suffield, Conn. (Suffield)
17	Maggie Blackwell	D	5-6	R-Soph./SQ	Marietta, S.C. (Travelers Rest)
18	Ali Glemser	D	5-3	R-Fr./HS	Collierville, Tenn. (Collierville)
19	Kira Campbell	M	5-8	Soph./1L	Lexington, S.C. (Lexington)
20	Ellen Fahey	D	5-7	Soph./1L	Fort Wright, Ky. (Notre Dame Academy)
21	Brittany Rhoades	D	5-3	Jr./2L	Wilmington, Del. (Padua)
22	Dani Henry	F/D	5-4	R-Fr./HS	Avondole, Pa. (Padua)
23	Kacie Brewer	F/D	5-5	Sr./3L	Merritt Island, Fla. (Merritt Island)
24	Bonny Lepley	M	5-5	Soph./1L	Birmingham, Ala. (Mountain Brook)
25	Maddy Kill	M	5-7	Jr./TR	Marietta, Ga. (Marist School // Seton Hall)
26	Rae Wilson	F	5-5	Fr./HS	Greenville, S.C. (JL Mann)
27	Brooke Jacobs	F	5-3	Jr./2L	Chambersburg, Pa. (Chambersburg Area)
28	Brittany DeWitt	D	5-6	Fr./HS	Greensboro, N.C. (N.C. School of Science & Math)
29	Mollie Patton	GK	5-7	R-Jr./1L	Milford, Ohio (Milford)
32	Aly Shattls	M	5-1	Sr./3L	Huntington, W.Va. (Huntington)
35	Darien Vercillo	GK	5-6	Fr./HS	Yorba Linda, Calif. (Mater Dei)

PRONUNCIATIONS

Kira Campbell -- KEER-uh
Idana DeCecco -- id-DAN-uh de-CHECK-oh
 Sam **Diaz-Matosas** -- DIAZ mah-TOE-sas
 Ellen **Fahey** -- FAYE-he
Roya Mojarab -- ROY-ah mo-JAR-uhb
 Darien **Vercillo** -- ver-SILL-oh

2009 ALPHABETICAL ROSTER

No.	Name	Pos.	Ht.	Cl/Exp.	Hometown (High School)
10	Natalie Aaron	F	5-5	Soph./1L	Brentwood, Tenn. (Battle Ground Academy)
6	Samantha Abrahamt	F/M	5-10	Fr./HS	Duluth, Ga. (Greater Atlanta Christian School)
12	Shannon Bigbie	F/M	5-6	Sr./3L	Lexington, S.C. (Lexington)
17	Maggie Blackwell	D	5-6	R-Soph./SQ	Marietta, S.C. (Travelers Rest)
23	Kacie Brewer	F/D	5-5	Sr./3L	Merritt Island, Fla. (Merritt Island)
19	Kira Campbell	M	5-8	Soph./1L	Lexington, S.C. (Lexington)
11	Idana DeCecco	D	5-6	Soph./1L	Sherwood Park, Alberta (Archbishop Jordan)
28	Brittany DeWitt	D	5-6	Fr./HS	Greensboro, N.C. (N.C. School of Science & Math)
3	Samantha Diaz-Matosas	D	5-7	Sr./3L	Lilburn, Ga. (Brookwood)
20	Ellen Fahey	D	5-7	Soph./1L	Fort Wright, Ky. (Notre Dame Academy)
2	Megan Fligg	D/F	5-6	Fr./HS	Gainesville, Ga. (Chestatee)
18	Ali Glemser	D	5-3	R-Fr./HS	Collierville, Tenn. (Collierville)
4	Kayla Grimsley	M/F	5-4	Soph./1L	Lakeland, Fla. (George W. Jenkins)
22	Dani Henry	F/D	5-4	R-Fr./HS	Avondole, Pa. (Padua)
0	Alex Holland	GK	5-7	Fr./HS	Cary, Ill. (Cary-Grove)
14	Lolly Holland	M	5-4	Soph./1L	Suwanee, Ga. (South Forsyth)
27	Brooke Jacobs	F	5-3	Jr./2L	Chambersburg, Pa. (Chambersburg Area)
25	Maddy Kill	M	5-7	Jr./TR	Marietta, Ga. (Marist School // Seton Hall)
24	Bonny Lepley	M	5-5	Soph./1L	Birmingham, Ala. (Mountain Brook)
7	Blakely Mattern	D	5-9	Sr./3L	Simpsonville, S.C. (JL Mann)
5	Kim Miller	M	5-2	Sr./3L	Farmingdale, N.Y. (Famingdale)
1	Roya Mojarab	GK	5-4	Soph./1L	Tacoma, Wash. (Curtis)
29	Mollie Patton	GK	5-7	R-Jr./1L	Milford, Ohio (Milford)
9	Maria Petroni	F	5-10	Soph./1L	Flowery Branch, Ga. (Buford)
21	Brittany Rhoades	D	5-3	Jr./2L	Wilmington, Del. (Padua)
15	Kortney Rhoades	M	5-4	Soph.TR	Wilmington, Del. (Padua // St. Joseph's)
32	Aly Shattls	M	5-1	Sr./3L	Huntington, W.Va. (Huntington)
16	Lindsay Small	M/D	5-7	Sr./3L	Suffield, Conn. (Suffield)
13	Jocelyn Spurrier	D	5-8	R-Fr./HS	Lawrenceville, Ga. (Brookwood)
35	Darien Vercillo	GK	5-6	Fr./HS	Yorba Linda, Calif. (Mater Dei)
8	Christine Watts	M	5-6	Fr./HS	Duluth, Ga. (Peachtree Ridge)
26	Rae Wilson	F	5-5	Fr./HS	Greenville, S.C. (JL Mann)



SEC STANDINGS

EASTERN DIVISION

Team	CONF		ALL	
	W-L	Pts	W-L	Pct.
Florida	0-0	-	1-0	1.000
Georgia	0-0	-	1-0	1.000
Kentucky	0-0	-	1-0	1.000
Tennessee	0-0	-	1-0	1.000
Vanderbilt	0-0	-	1-0	1.000
South Carolina	0-0	-	0-0	.000

WESTERN DIVISION

Team	CONF		ALL	
	W-L	Pts	W-L	Pct.
Arkansas	0-0	-	1-0	1.000
Auburn	0-0	-	0-0-1	.000
Mississippi State	0-0	-	0-0	.000
Alabama	0-0	-	0-1	.000
LSU	0-0	-	0-1	.000
Mississippi	0-0	-	0-1	.000

Games through August 26

THIS WEEK IN THE SEC

Thursday, Aug. 27

College of Charleston @ South Carolina 7 p.m.

Friday, Aug. 28

Jackson State vs. Mississippi State	5 p.m.
FIU at Florida	7 p.m.
Minnesota at Georgia	7 p.m.
Alabama at Samford	8 p.m.
Air Force at Arkansas	8 p.m.
Dayton at Auburn	8 p.m.
Southern Miss at LSU	8 p.m.
Morehead State at Ole Miss	8 p.m.
Arizona State at Tennessee	8 p.m.
Mercer at Vanderbilt	8 p.m.

Saturday, Aug. 29

Louisville at Kentucky 7 p.m.

Sunday, Aug. 30

Morehead State vs. Mississippi State	11:30 a.m.
USF at Florida	1 p.m.
Mercer at Georgia	1 p.m.
Western Carolina at South Carolina	2 p.m.
Missouri State at Arkansas	2:30 p.m.
Jackson State at Ole Miss	2:30 p.m.
South Alabama at Auburn	3 p.m.
Pepperdine at Tennessee	3 p.m.
Murray State at Vanderbilt	3 p.m.

All Times Eastern

SEC PRESEASON POLL

EASTERN DIVISION

Florida (11).....66	LSU (8)..... 63
Georgia (1).....53	Auburn (4)..... 58
Tennessee43	Ole Miss..... 43
South Carolina40	Alabama 39
Vanderbilt25	Arkansas..... 25
Kentucky19	Mississippi State 18

Overall Champion: Florida (11), Auburn (1)

ON THE HORIZON

The Gamecocks will take on Western Carolina Sunday at 2 p.m. in Columbia in the second meeting between the schools. The Catamounts upset the 20th-ranked Gamecocks last season 1-0 in Cullowhee, N.C.

SOUTH CAROLINA IN SEASON OPENERS

South Carolina enters 2009 with an all-time record of 7-5-2 in season openers. Three games have gone to overtime - College of Charleston (2001), Clemson (2003) and UNC Wilmington (2008). In home contests, the Gamecocks boast a perfect 5-0 record, outscoring opponents 17-2. When heading on the road to open the season, Carolina carries a 2-4-2 record overall after tying UNC Wilmington last season. The Gamecocks are 1-2 against ranked opponents, falling to #20 and #13 but defeating #1 UNC in 2007. Under Coach Smith, the Gamecocks have gone 4-2-2 in season openers.

Year-By-Year Season Openers

Date	Opponent	Location	Results
9-2-1995	Furman	Columbia	W, 1-0
9-1-1996	Davidson	Davidson, N.C.	L, 1-2
8-31-1997	Davidson	Columbia	W, 5-2
9-1-1998	Davidson	Davidson, N.C.	W, 5-0
8-27-1999	Wake Forest	Winston-Salem, N.C.	L, 0-5
8-27-2000	UNC-Greensboro	Greensboro, N.C.	L, 0-2
9-1-2001	College of Charleston	Charleston, S.C.	T, 0-0 (OT)
8-30-2002	Birmingham Southern	Columbia	W, 3-0
8-29-2003	#20 Clemson	Clemson, S.C.	L, 0-1 (OT)
8-27-2004	Georgia State	Columbia	W, 1-0
8-26-2005	Mercer	Columbia	W, 7-0
8-25-2006	#13 Illinois	Columbia, Mo.	L, 0-1
9-1-2007	#1 North Carolina	Chapel Hill, N.C.	W, 1-0
8-23-2008	UNC Wilmington	Wilmington, N.C.	T, 0-0 (OT)

LOWE'S SENIOR CLASS AWARD CANDIDATE BLAKELY MATTERN

Senior defender Blakely Mattern has been selected as one of 30 candidates for the 2009 Lowe's Senior CLASS Award for women's soccer, presented annually in eight NCAA Division 1 Sports to a senior student-athlete who excels both on and off the field. Candidates are chosen based on their dedication and achievement in four areas: Classroom, Character, Community and Competition.

An acronym for Celebrating Loyalty and Achievement for Staying in School, the Lowe's Senior CLASS Award focuses on the total student-athlete and encourages students to use their platform in athletics to make a positive impact as leaders in their communities.

From the list of 30 candidates, 10 finalists will be selected midway through the regular season and placed on the official ballot for a nationwide vote. Fan balloting will be coupled with votes from coaches and media to determine the recipient of the award. Winners will be announced during the 2009 NCAA Division I Women's College Cup in College Station, Texas.

SOUTH CAROLINA VS. RANKED TEAMS

Date	Opponent	Result	Date	Opponent	Result
9-18-96	#9 Clemson	W, 3-2	9-12-04	at #4 Virginia	L, 2-5
10-4-97	at #9 Clemson	L, 0-5	9-15-04	#7 Clemson	W, 2-0
10-26-97	at #9 Florida	L, 2-5	10-3-04	#19 Tennessee	L, 1-3
9-11-98	at #17 Georgia	W, 2-0	10-29-04	#18 Florida	L, 1-2 (2OT)
10-7-98	#13 Clemson	L, 1-3	10-2-05	at #20 Tennessee	L, 1-2
11-5-98	vs. #3 Florida	L, 0-6	10-7-05	#18 Vanderbilt	L, 0-2
10-8-99	at #9 Clemson	L, 0-4	10-29-05	at #16 Florida	L, 0-3
10-29-99	at #3 Florida	L, 0-5	8-25-06	vs. #13 Illinois	L, 0-1
9-8-00	at #1 UNC	L, 1-9	9-24-06	at #13 Auburn	W, 1-0
9-12-00	vs. #17 Duke	L, 1-5	9-29-06	#16 Tennessee	T, 0-0 (2OT)
10-8-00	at #14 Kentucky	L, 1-5	10-27-06	#13 Florida	T, 1-1 (2OT)
10-29-00	#16 Florida	L, 0-3	9-1-07	at #1 North Carolina	W, 1-0
9-30-01	at #20 Florida	L, 0-1	9-22-07	at #20 Clemson	L, 0-1
10-2-01	at #9 Clemson	L, 0-3	9-27-07	at #10 Tennessee	L, 2-3 (OT)
10-5-01	#16 Kentucky	L, 0-1	10-21-07	#25 Auburn	W, 2-0
10-21-01	at #25 Tennessee	L, 1-3	10-25-07	at #20 LSU	T, 1-1 (2OT)
9-11-02	#18 Clemson	L, 0-1	11-2-07	at #22 Florida	L, 0-2
10-20-02	#13 Tennessee	T, 1-1 (2OT)	11-7-07	vs. #15 Tennessee	W, 2-0
8-29-03	at #20 Clemson	L, 0-1 (OT)	11-9-07	vs. #13 Georgia	L, 0-2
9-12-03	at #5 Texas A&M	L, 1-2 (OT)	9-14-08	vs. #7 Florida State	T, 3-3 (2OT)
10-3-03	#14 Auburn	T, 0-0 (2OT)	10-23-08	#13 LSU	T, 0-0 (2OT)
11-1-03	at #10 Florida	L, 0-2	10-30-08	#7 Florida	L, 0-1
11-7-03	vs. #16 Tennessee	L, 0-1			

Overall: 7-31-7 vs. Top 10: 3-12-1
Home: 3-8-5 Road: 3-18-1 Neutral: 1-5-1



CAROLINA'S RECORD WHEN ...

Overall

Home	0-0-0
Away	0-0-0
Neutral	0-0-0
Leading At The Half	0-0-0
Tied At The Half	0-0-0
Trailing At The Half	0-0-0
Scores In The First Half	0-0-0
Overtime Games	0-0-0
On Television	0-0-0
In Tournaments	0-0-0
Against 2008 NCAA Participants	0-0-0
Vs. Top 25	0-0-0
Vs. South Region Ranked Teams	0-0-0

Longest Unbeaten Streak	N/A
Active Streak	N/A

Against Opponents

USC Scores First	0-0-0
Opponent Scores First	0-0-0
Scores 1 Goal	0-0-0
Scores 2 Goals	0-0-0
Scores 3+ Goals	0-0-0
Opponent Scores 1 Goal	0-0-0
Opponent Scores 2 Goals	0-0-0
Opponent Scores 3+ Goals	0-0-0
Is Shutout	0-0-0
Shut Out Opponent	0-0-0
Takes More Shots	0-0-0
Opponent Takes More Shots	0-0-0

Time

Day Games	0-0-0
Night Games	0-0-0
Mondays	0-0-0
Wednesdays	0-0-0
Thursdays	0-0-0
Fridays	0-0-0
Saturdays	0-0-0
Sundays	0-0-0
September	0-0-0
October	0-0-0
November	0-0-0
After A Win	0-0-0
After A Loss	0-0-0
After A Tie	0-0-0
Wearing White	0-0-0
Wearing Garnet	0-0-0
Wearing Black	0-0-0

RETURNING CATEGORY LEADERS

Carolina returns 10 starters from last season's NCAA Tournament team and only lost one senior from the squad that went 11-7-4. South Carolina will enter 2009 as one of the most experienced teams in the nation, and depth will also be available after Coach Shelley Smith signed seven freshmen and landed two transfers for the 2009 season.

Statistical Category Breakdown

Category	2008 Leader (Total)	% Returning	Top Returner
Points	Grimsley (22)	93%	Grimsley (22)
Goals	Grimsley (8)	93%	Grimsley (8)
Game-Winning Goals	Grimsley, Miller, Small (2)	91%	Grimsley, Miller, Small (2)
Assists	Grimsley (6)	46%	Grimsley (6)
Shots	Jacobs (38)	94%	Jacobs (38)
Shots on Goal	Jacobs (26)	91%	Jacobs (26)
Saves	Patton (58)	100%	Patton (58)
Goals Against Average	Patton (0.96)	100%	Patton (0.96)

SCOUTING COLLEGE OF CHARLESTON

The Cougars, picked to finish sixth in the SoCon, return 11 letterwinners and eight starters from last year's 12-5-4 squad. It will be the first meeting between South Carolina and CofC since the 2002 season when the Gamecocks took a 3-1 victory at Stone Stadium.

MATTERN, GRIMSLEY NAMED PRESEASON ALL-SEC

South Carolina senior defender **Blakely Mattern** and sophomore forward **Kayla Grimsley** have been selected to the third annual women's soccer Coaches Preseason All-SEC team.

Mattern (Simpsonville, S.C.) has been named to the list in all three years of its existence. She is a three-time postseason All-SEC selection and in 2007 became the first sophomore to earn SEC Defensive Player of the Year honors. A 2007 Soccer Buzz All-American and 2008 CoSIDA/ESPN The Magazine First Team Academic All-American, Mattern has started every game of her career and is a three-time All-Southeast Region selection. In 2008, she was the leader of a defense that finished the season second in the SEC in shutouts (8) and ranked in the top two in every major defensive category, including goals allowed, points allowed, shots allowed and shots on goal allowed. The Gamecocks led the league in shots allowed (8.45/game) and shots on goal allowed (3.68/game).

Grimsley (Lakeland, Fla.) earns her first preseason honor after a strong freshman campaign that culminated in her earning second team All-SEC honors, SEC All-Freshman team honors and Soccer Buzz All-Southeast Region honors. She led the team in her rookie season with eight goals and six assists for 22 points, making her only the second freshman and seventh player overall to score 20 points in a season at South Carolina. She tied the program record with a six-match scoring streak that began with the start of conference play, and she became the only freshman in Gamecock history to score a goal in four consecutive matches. She twice earned SEC weekly honors and brought home four national team of the week honors last season.

COACHES TAB GAMECOCKS FOURTH IN SEC EAST

The South Carolina women's soccer team was picked to finish fourth in the Eastern division of the 2009 SEC preseason poll, the conference office announced Wednesday. The Gamecocks are coming off an 11-7-4 record in 2008 with a third place finish in the East with a 5-4-2 record.

South Carolina returns 10 starters and lost only one senior from the 2008 squad that advanced to the NCAA Tournament for the second consecutive year. Senior defender Blakely Mattern and sophomore forward Kayla Grimsley were named to the 11-player Preseason All-SEC team last week after both earned All-SEC honors last season.

Florida was selected as the favorite to claim the 2009 women's soccer title in the poll voted on by the league's 12 head coaches. In the East, Georgia and Tennessee were selected behind Florida with Vanderbilt picked to finish fifth and Kentucky picked sixth. LSU was favored to win the Western Division with eight first-place votes followed by Auburn with four first place votes. Ole Miss, Alabama, Arkansas and Mississippi State round out selections three thru six in the division, respectively.

GAMECOCKS SHUTOUT MEXICAN NATIONAL TEAM IN EXHIBITION, 2-0

GREENVILLE, S.C. - The South Carolina women's soccer team defeated the Mexican women's full national team 2-0 in an exhibition friendly Friday night in front of 3,000 fans at the MeSA Soccer Complex in Greenville, S.C.

Freshman **Christine Watts** opened the scoring in the 32nd minute with a goal courtesy of assists from **Brittany Rhoades** and **Kayla Grimsley**. Less than four minutes later, senior **Samantha Diaz-Matosas** hit the insurance goal following a cross from **Brooke Jacobs** for the 2-0 lead at 35:12.

South Carolina led the game in shots, 12-11, and Gamecock keeper **Mollie Patton** notched a strong game between the pipes in securing the shutout. The redshirt junior recorded five saves, including three on consecutive 1v1 attacks by Mexico's Monica Ocampo that tested Patton in the second half. She came away with three diving saves in the two-minute span.



HOME MATCHES UNDER SMITH

DATE	OPPONENT	RESULT
9-4-01	Davidson	W, 4-0
9-17-01	Furman	W, 3-0
9-19-01	SC State	W, 12-0
10-5-01	Kentucky	L, 0-1
10-7-01	Vanderbilt	L, 0-1
10-26-01	Ole Miss	W, 1-0
10-28-01	Mississippi State	L, 1-2 (OT)
11-2-01	UNC Greensboro	W, 2-0
8-30-02	Birmingham Southern	W, 3-0
9-11-02	Clemson	L, 0-1
9-14-02	College of Charleston	W, 3-1
9-29-02	Florida	W, 1-0 (OT)
10-11-02	Arkansas	L, 1-2 (OT)
10-13-02	LSU	W, 2-0
10-18-02	Georgia	L, 1-2 (OT)
10-20-02	Tennessee	T, 1-1 (OT)
10-29-02	Wofford	W, 1-0
9-2-03	Furman	L, 0-1
9-5-03	Charleston Southern	W, 2-1
9-7-03	Darmouth	W, 3-1
9-17-03	Davidson	W, 4-1
9-21-03	NC State	W, 1-0
10-3-03	Auburn	T, 0-0 (OT)
10-5-03	Alabama	W, 2-0
10-17-03	Vanderbilt	L, 0-1
10-19-03	Kentucky	W, 2-1
8-27-04	Georgia State	W, 1-0
9-3-04	Houston	W, 4-1
9-5-04	Iowa State	W, 1-0
9-15-04	Clemson	W, 2-0
9-19-04	Charlotte	W, 2-1 (2 OT)
10-1-04	Georgia	T, 1-1 (OT)
10-3-04	Tennessee	L, 1-3
10-15-04	Ole Miss	L, 0-1
10-17-04	Mississippi State	L, 2-3 (OT)
10-24-04	LSU	W, 2-1
10-29-04	Florida	L, 1-2 (2 OT)
8-26-05	Mercer	W, 7-0
8-29-05	Furman	W, 2-1
9-18-05	Miami (Fla.)	W, 2-1
9-23-05	Auburn	L, 0-1
9-25-05	Alabama	W, 2-0
10-7-05	Vanderbilt	L, 0-2
10-9-05	Kentucky	L, 1-2 (2 OT)
10-21-05	Arkansas	L, 1-2
8-31-06	Francis Marion	W, 2-1
9-3-06	James Madison	W, 3-1
9-5-06	The Citadel	W, 4-0
9-15-06	Clemson	W, 1-0
9-17-06	Jacksonville State	W, 6-0
9-29-06	Tennessee	T, 0-0 (2 OT)
10-1-06	Georgia	W, 2-1
10-13-06	Mississippi State	W, 1-0
10-15-06	Ole Miss	T, 0-0 (2 OT)
10-20-06	LSU	W, 2-1 (2 OT)
10-27-06	Florida	T, 1-1 (2 OT)
9-3-07	East Tennessee State	W, 5-2
9-12-07	Winthrop	W, 5-0
9-23-07	Marshall	W, 4-0
10-5-07	Kentucky	W, 2-0
10-7-07	Vanderbilt	L, 0-1 (2OT)
10-19-07	Alabama	W, 2-0
10-21-07	Auburn	W, 1-0
10-28-07	Arkansas	W, 1-0
8-28-08	East Carolina	W, 1-0
8-31-08	Boston University	W, 1-0
9-5-08	Clemson	W, 1-0
9-7-08	Furman	W, 2-1
9-19-08	East Tennessee State	W, 4-0
9-26-08	Tennessee	W, 2-1
9-28-08	Georgia	T, 1-1
10-10-08	Mississippi State	W, 2-1
10-12-08	Ole Miss	W, 3-2
10-23-08	LSU	T, 0-0
10-30-08	Florida	L, 0-1

TOTAL RECORD: 48-18-8
LONGEST UNBEATEN STREAK: 15
SHUTOUTS RECORDED..... 35

Always a strong unit, the Carolina defense was led by senior captain **Blakely Mattern**, who returned to the fields where she played her club soccer as a member of CESA, the club that sponsored the exhibition between the two teams.

Mexico opened the game on a strong offensive with two shots in the opening eight minutes of competition, but a header by Gamecock **Shannon Bigbie** that was saved in the ninth minute changed the momentum for South Carolina. The Gamecocks began to control the run of play, and on its next best look was able to score after Watts scored at 31:43.

At the restart, South Carolina continued to move on the attack with successive shots and a corner kick in the next two minutes before Diaz-Matosas placed one into the inside corner of the net at 35:12 to give South Carolina the cushion it needed. The remainder of the half saw a shot by both teams as Watts attempted another that was saved by Mexico keeper Erika Vanegas and Patton saved an attempt by Ocampo before the half.

In the second half, Mexico was able to string together flurries of shots, but none would break the plane against the Carolina defense.

FIRST TIME OPPONENTS

South Carolina will face four opponents for the first time in 2009, starting with Louisville and Cincinnati in the second week of the season at the Louisville Tournament. The Gamecocks also will see UCF and South Alabama later in the non-conference for the first meetings between the teams. Last season, Carolina went 0-1-2 against first time opponents, drawing UNC Wilmington and #7 Florida State before dropping a tight game to Western Carolina for the Gamecocks' first loss of the season.

ALL-AMERICAN DEFENSE

The South Carolina defense has been consistently one of the top in the SEC and in the nation, and all signs point to this season being another strong one for the Garnet and Black. The Gamecocks return two former Freshman All-Americans in senior **Blakely Mattern** and junior **Brittany Rhoades**.

Mattern (Simpsonville, S.C.) has started every game of her career at center back, earning Freshman All-America honors in 2006 and becoming Carolina's first All-American after picking up honors in 2007. Mattern also picked up 2007 SEC Defensive Player of the Year honors to become the first sophomore in conference history to earn the honor, and earned a trip to the US U-20 National Team camp in 2008. Rhoades (Wilmington, Del.) set a USC freshman record with 23 games played and 22 games started in her first year at left back, becoming the second Freshman All-American in as many years for the defense.

HOME AT THE STONE

South Carolina has been nearly unstoppable at Stone Stadium the past two seasons, posting a 23-2-5 record at home since 2006. The streak included a 15-game unbeaten streak from Aug. 31, 2006-Oct. 5, 2007 and a 13-game unbeaten streak at "The Graveyard" from Oct. 19, 2007-Oct. 23, 2008. The lone blemishes on the record are a double-overtime loss to Vanderbilt (Oct. 7, 2007) and a loss to #7 Florida (Oct. 30, 2008).

2008 SEASON OPENER: SOUTH CAROLINA 0, UNC WILMINGTON 0

WILMINGTON, N.C. - The South Carolina women's soccer team opened the 2008 campaign with a scoreless draw Saturday against UNC Wilmington at a windy UNCW Soccer Stadium.

South Carolina outshot the Seahawks 17-4 but couldn't capitalize on their looks as the match moves the Gamecocks to 7-5-2 all-time in season openers. The overtime match was the first for South Carolina against a non-conference opponent in the regular season since they battled Charlotte to a 2-1 victory on Sept. 19, 2004.

"It was a team effort," South Carolina head coach Shelley Smith said. "We improved from the beginning of the match, so we'll take that into the next game. We created a lot of opportunities but couldn't put it away, so that was a disappointment. Wilmington played a tough match and got lucky on a couple, and we were unfortunate to not put those away. We are still experimenting with our lineups and will keep working hard. We were able to see what alot of people could do and could play many of our players. To hold them off is a positive thing we can take from this. We'll learn from it and go home and get ready for next week."

The Gamecocks controlled the pace of the match for the opening 25 minutes. Brooke Jacobs recorded the first shot of the season for South Carolina in the fifth minute that missed the mark, but a Blakely Mattern strike off a Brittany Rhoades corner kick was spot on before UNC Wilmington keeper Emily Pratt recorded the save. Jacobs saw herself behind the Seahawk defense again in the 15th minute on a pass played by Danila Monteiro, but her open shot on goal was saved by the keeper.

Four minutes later, Shannon Bigbie split the defense with a dribble move on the left flank and centered to Monteiro whose shot was also stopped by Pratt. The Seahawks used the momentum to attack the Carolina defense, getting their first shot on goal in the 25th minute that was saved by Mollie Patton. A redshirt sophomore playing in her first game for the Gamecocks, Patton was tested in the 37th minute when Wilmington's Nicole Panek stole the ball in the penalty area for a point-blank shot from eight yards out. Patton saved the shot to end the Seahawk threat. She ended the game with four saves, all on close range shots.



OVERTIME MATCHES

DATE	OPPONENT	RESULT
9-15-95	at VCU	W, 1-0
9-29-95	vs. Marquette (Clemson, S.C.)	L, 1-2
10-13-95	Georgia	T, 1-1
10-16-95	Evansville	W, 1-0
10-19-95	College of Charleston	T, 1-1
1995 OVERTIME RECORD: 2-1-2		
9-29-96	at Georgia	L, 1-2
10-27-96	at Auburn	T, 1-1
10-30-96	at Furman	T, 1-1
1996 OVERTIME RECORD: 0-1-2		
9-14-97	Kentucky	L, 3-4
10-10-97	at Georgia Southern	W, 3-2
1997 OVERTIME RECORD: 1-1		
9-4-98	Wake Forest	T, 1-1
9-25-98	at Kentucky	L, 0-1
10-13-98	at Furman	W, 3-2
1998 OVERTIME RECORD: 1-1-1		
9-12-99	Kentucky	L, 1-2
10-12-99	Wofford	W, 2-1
11-4-99	vs. Vanderbilt (SEC Tourn.)	L, 1-2
1999 OVERTIME RECORD: 1-2		
2000 OVERTIME RECORD: 0-0		
9-1-01	at College of Charleston	T, 0-0
9-9-01	vs. UNLV (San Diego, Calif.)	T, 1-1
10-14-01	at LSU	T, 4-4
10-28-01	Mississippi State	L, 1-2
2001 OVERTIME RECORD: 0-1-3		
9-29-02	Florida	W, 1-0
10-11-02	Arkansas	L, 1-2
10-18-02	Georgia	L, 1-2
10-20-02	Tennessee	T, 1-1
10-25-02	at Auburn	T, 1-1
2002 OVERTIME RECORD: 1-2-2		
8-29-03	at Clemson	L, 0-1
9-12-03	at Texas A&M	L, 1-2
9-14-03	at Houston	T, 1-1
10-3-03	Auburn	T, 0-0
10-24-03	at Ole Miss	T, 0-0
2003 OVERTIME RECORD: 0-2-3		
8-31-04	at James Madison	L, 2-3
9-19-04	Charlotte	W, 2-1
10-1-04	Georgia	T, 1-1
10-8-04	at Vanderbilt	T, 1-1
10-17-04	Mississippi State	L, 2-3
10-29-04	Florida	L, 1-2
2004 OVERTIME RECORD: 1-3-2		
10-10-05	Kentucky	L, 1-2
2005 OVERTIME RECORD: 0-1		
9-29-06	Tennessee	T, 0-0
10-16-06	Ole Miss	T, 0-0
10-20-06	LSU	W, 2-1
10-22-06	at Arkansas	T, 1-1
10-27-06	Florida	T, 1-1
11-1-06	vs. Vanderbilt (SEC Tourn.)	T, 1-1
2006 OVERTIME RECORD: 1-0-5		
9-27-07	at Tennessee	L, 2-3
9-30-07	at Georgia	L, 1-2
10-7-07	Vanderbilt	L, 0-1
10-12-07	at Mississippi State	T, 0-0
10-25-07	at LSU	T, 1-1
11-14-07	vs. Duke (NCAA First Rnd.)	T, 1-1
2007 OVERTIME RECORD: 0-3-3		
8-23-08	at UNC Wilmington	T, 0-0
9-7-08	Furman	W, 2-1
9-14-08	vs. Florida State (Auburn, Ala.)	T, 3-3
9-28-08	Georgia	T, 1-1
10-23-08	LSU	T, 0-0
11-14-08	vs. William & Mary (NCAA)	L, 2-3
TOTAL RECORD: 9-19-27		
UNDER SHELLEY SMITH: 4-13-22		

"Mollie had a great game," Smith said. "She saved us in the first half when we gave them an opportunity out the back. That's what you need out of your goalkeeper. It was a great game for her and I'm glad she had a chance to get her first collegiate game out of the way, as well as many of our other newcomers."

Neither team was able to keep control of the ball for the majority of the second half before UNC Wilmington got two good looks on goal in a 10 minute span. In the 64th, a free kick bounced around the box before Patton was able to catch it in the air. Ten minutes later another free kick landed in the box, but Patton again saved the header.

Carolina got its best look on goal in the 85th after Kayla Grimsley was fouled just outside the penalty box. Shortly after, Grimsley had two consecutive looks on goal from 10 yards out. The first was saved by Pratt and the second went high to end the attacking opportunities in regulation.

The Gamecocks wasted no time in the first overtime period and almost ended the game when Grimsley played a ball to Monteiro behind the defense in the 92nd minute. One on one with the keeper, Monteiro snuck a shot past her, but the shot banged off the left post to keep the Seahawks alive. UNC Wilmington then gave the Gamecocks a scare of their own as a cross bounced high in the wind and grazed Patton's fingertips. A Seahawk attacker had an open chance on the back post but was denied by junior defender Blakely Mattern.

The game encountered a 15-minute delay in the first overtime period when Wilmington's Jenna Evans went down with a leg injury in the 98th minute. Following the delay, neither team saw a chance on goal until Jacobs hit two shots in a one-minute span in the 108th minute that were both saved by Pratt.



GOAL SUMMARY

Player (#) Opp. (Time) Asst. (#)

GOAL BREAKDOWN

At home 0
 On the road 0
 Neutral Site..... 0
 vs. SEC..... 0
 vs. Non-Conference..... 0
 First Half 0
 Second Half 0

**ALL-TIME
USC SCORING LIST**

Rnk.	Name	G	A	Pts.
1.	Jennie Ondo	50	15	115
2.	Morgan McIntyre	29	5	63
3.	Angela Austin	19	16	54
4.	Mindy Sanders	14	24	52
5.	Debbie Smith	19	11	49
6.	Melinda Carter	15	16	46
7.	Darcell Mollon	15	7	37
8.	Ashley Williams	17	2	36
9.	Lydia Bienias	12	10	34
T10.	Lexi Tourtelotte	14	3	31
T10.	Ashley Kirk	9	13	31
T12.	Becca Epstein	10	10	30
T12.	Erin Sullivan	11	8	30
14.	Jess Julin	9	9	27
T15.	Sarah Lentz	9	8	26
T15.	Linda Greene	11	4	26

Current Players

Blakely Mattern	9	5	23
Kayla Grimsley	8	6	22
Sam Diaz-Matosas	5	8	18

**ALL-TIME
USC GOALTENDING LIST**

Rnk.	Name	GAA	SHO
T1.	Elise Matthews	1.24	15
T1.	Laura Armstrong	0.79	15
T3.	Carrie Warner	1.58	9
T3.	Lindsay Thorstenson	1.33	9
5.	Mollie Patton	0.96	7
6.	Carolyn Ortega	1.14	6.5
7.	Emily Crain	1.78	6
8.	Amy Toms	1.71	5
9.	Amanda Sandling	2.04	4.5
10.	Jessica Freas	3.01	1

Current Players

Mollie Patton	0.96	7
---------------	------	---

2009 HONOR ROLL

SEC WEEKLY HONORS

Week	Defensive POW	Offensive POW	Freshman of the Week
1	Kailey Anders, D (Arkansas)	Carrie Patterson, F (Georgia)	Amy Howard, GK (Auburn)
2			
3			
4			
5			
6			
7			
8			
9			
10			



**2008 South Carolina Women's Soccer
South Carolina Game Results (as of Nov 17, 2008)
All games**

Date	Opponent	Score	Overall	Conf	Att.	Goals scored
Aug 23	at UNCW	TO2 0-0	0-0-1	0-0-0	225	-
Aug 28	EAST CAROLINA	W 1-0	1-0-1	0-0-0	118	Samantha Diaz-Matosa (penalty kick)
Aug 31	BOSTON U	W 1-0	2-0-1	0-0-0	404	Lindsay Small (Kim Miller;Shannon Bigbie)
Sep 05	CLEMSON	W 1-0	3-0-1	0-0-0	1254	Lindsay Small (Kira Campbell;Brooke Jacobs)
Sep 07	FURMAN	WOT 2-1	4-0-1	0-0-0	610	Kayla Grimsley (Natalie Aaron) Kim Miller (penalty kick)
Sep 12	vs Marquette	W 1-0	5-0-1	0-0-0	789	Kayla Grimsley (Shannon Bigbie)
Sep 14	vs #4 Florida State	TO2 3-3	5-0-2	0-0-0	247	Kim Miller (Maria Petroni) Kayla Grimsley (Danila Monteiro) Idana DeCecco (Danila Monteiro)
Sep 18	EAST TENNESSEE STATE	W 4-0	6-0-2	0-0-0	450	Danila Monteiro (Brooke Jacobs) Lindsay Small (Kayla Grimsley) Kayla Grimsley (Kim Miller;Lindsay Small) Blakely Mattern (Brittany Rhoades)
Sep 21	at Western Carolina	L 0-1	6-1-2	0-0-0	500	-
* Sep 26	TENNESSEE	W 2-1	7-1-2	1-0-0	282	Blakely Mattern (Brittany Rhoades) Natalie Aaron (Brittany Rhoades;Kayla Grimsley)
* Sep 28	GEORGIA	TO2 1-1	7-1-3	1-0-1	641	Natalie Aaron (Kayla Grimsley)
* Oct 03	at Kentucky	W 2-0	8-1-3	2-0-1	869	Kayla Grimsley (Maria Petroni) Kayla Grimsley (Brooke Jacobs)
* Oct 05	at Vanderbilt	L 1-2	8-2-3	2-1-1	723	Kayla Grimsley (unassisted)
* Oct 10	MISSISSIPPI STATE	W 2-1	9-2-3	3-1-1	607	Kayla Grimsley (Samantha Diaz-Matosa) Brooke Jacobs (Shannon Bigbie)
* Oct 12	OLE MISS	W 3-2	10-2-3	4-1-1	482	Blakely Mattern (Brittany Rhoades) Shannon Bigbie (Samantha Diaz-Matosa;Kayla Grimsley) Samantha Diaz-Matosa (unassisted)
* Oct 17	at Alabama	L 0-1	10-3-3	4-2-1	648	-
* Oct 19	at Auburn	L 0-2	10-4-3	4-3-1	437	-
* Oct 23	#13 LSU	TO2 0-0	10-4-4	4-3-2	391	-
* Oct 26	at Arkansas	W 3-1	11-4-4	5-3-2	912	Kim Miller (unassisted) Kim Miller (unassisted) Brooke Jacobs (Shannon Bigbie)
* Oct 30	#7 FLORIDA	L 0-1	11-5-4	5-4-2	944	-
Nov 05	vs Georgia	L 1-2	11-6-4	5-4-2	1200	Blakely Mattern (Kayla Grimsley;Brittany Rhoades)
Nov 14	vs William & Mary	LOT 2-3	11-7-4	5-4-2	273	Brooke Jacobs (Kim Miller) Danila Monteiro (Brooke Jacobs;Kayla Grimsley)

Team Record	W-L-T	Attendance	Dates	Total	Avg.
Overall:	11-7-4	Total:	22	13006	591
Conference:	5-4-2	Home:	11	6183	562
Home:	8-1-2	Away:	7	4314	616
Away:	2-4-1	Neutral:	4	2509	627
Neutral:	1-2-1				
Overtime:	1-1-4				



**2008 South Carolina Women's Soccer
South Carolina Combined Team Statistics (as of Nov 17, 2008)
All games**

RECORD:	OVERALL	HOME	AWAY	NEUTRAL
ALL GAMES	11-7-4	8-1-2	2-4-1	1-2-1
CONFERENCE	5-4-2	3-1-2	2-3-0	0-0-0
NON-CONFERENCE	6-3-2	5-0-0	0-1-1	1-2-1

Date	Opponent	Score	Att.	#	Player	gp	g	a	pts	sh	sh%	sog	sog%	gw	pk-att
Aug 23	at UNCW	0-0	225	4	Kayla Grimsley	22	8	6	22	37	.216	17	.459	2	0-0
Aug 28	EAST CAROLINA	W 1-0	118	5	Kim Miller	22	4	3	11	36	.111	16	.444	2	1-1
Aug 31	BOSTON U	W 1-0	404	27	Brooke Jacobs	21	3	4	10	38	.079	26	.684	1	0-0
Sep 05	CLEMSON	W 1-0	1254	7	Blakely Mattern	22	4	0	8	20	.200	11	.550	0	0-0
Sep 07	FURMAN	W 2-1	610	16	Lindsay Small	22	3	1	7	35	.086	11	.314	2	0-0
Sep 12	vs Marquette	W 1-0	789	8	Danila Monteiro	16	2	2	6	24	.083	12	.500	1	0-0
Sep 14	vs Florida State	3-3	247	3	Samantha Diaz-Matosa	22	2	2	6	16	.125	11	.688	2	1-1
Sep 18	EAST TENNESSEE STATE	W 4-0	450	12	Shannon Bigbie	22	1	4	6	24	.042	13	.542	0	0-0
Sep 21	at Western Carolina	L 0-1	500	10	Natalie Aaron	21	2	1	5	27	.074	18	.667	1	0-0
* Sep 26	TENNESSEE	W 2-1	282	21	Brittany Rhoades	22	0	5	5	15	.000	5	.333	0	0-0
* Sep 28	GEORGIA	1-1	641	11	Idana DeCecco	15	1	0	2	2	.500	1	.500	0	0-0
* Oct 03	at Kentucky	W 2-0	869	9	Maria Petroni	17	0	2	2	8	.000	3	.375	0	0-0
* Oct 05	at Vanderbilt	L 1-2	723	19	Kira Campbell	22	0	1	1	12	.000	5	.417	0	0-0
* Oct 10	MISSISSIPPI STATE	W 2-1	607	24	Bonny Lepley	19	0	0	0	6	.000	2	.333	0	0-0
* Oct 12	OLE MISS	W 3-2	482	23	Kacie Brewer	9	0	0	0	3	.000	1	.333	0	0-0
* Oct 17	at Alabama	L 0-1	648	25	Courtney Bowen	3	0	0	0	1	.000	1	1.000	0	0-0
* Oct 19	at Auburn	L 0-2	437	20	Ellen Fahey	22	0	0	0	1	.000	1	1.000	0	0-0
* Oct 23	LSU	0-0	391	14	Lolly Holland	15	0	0	0	1	.000	0	.000	0	0-0
* Oct 26	at Arkansas	W 3-1	912	6	Alison Bagley	6	0	0	0	1	.000	1	1.000	0	0-0
* Oct 30	FLORIDA	L 0-1	944	2	Sydney Hill	14	0	0	0	1	.000	0	.000	0	0-0
Nov 05	vs Georgia	L 1-2	1200	29	Mollie Patton	22	0	0	0	0	.000	0	.000	0	0-0
Nov 14	vs William & Mary	L 2-3	273	26	Aly Shattis	1	0	0	0	0	.000	0	.000	0	0-0
				1	Roya Mojarab	1	0	0	0	0	.000	0	.000	0	0-0
TEAM STATISTICS															
			SC	OPP											
SHOT STATISTICS															
Goals-Shot attempts	30-308		22-186												
Goals scored per game	1.36		1.00												
Shot pct.	.097		.118												
Shots on goal-Attempts	155-308		81-186												
SOG pct.	.503		.435												
Shots/Game	14.0		8.5												
CORNER KICKS	108		70												
PENALTY KICKS	2-2		0-2												
PENALTIES															
Yellow cards	7		14												
Red cards	2		0												
ATTENDANCE															
Total	6183		4314												
Dates/Avg Per Date	11/562		7/616												
Neutral Site #/Avg	4/627														

#	Goalie	GP	Min.	GA	GAAvg	Saves	Pct	W-L-T	Sh
1	Roya Mojarab	1	13:07	0	0.00	0	.000	0-0-0	
29	Mollie Patton	22	2052:34	22	0.96	58	.725	11-7-4	
Total		22	2065:41	22	0.96	59	.728	11-7-4	
Opponents		22	2065:41	30	1.31	125	.806	7-11-4	

Goals by Period	1st	2nd	OT	OT2	Total
South Carolina	15	14	1	0	30
Opponents	8	13	1	0	22

Shots by Period	1st	2nd	OT	OT2	Total
South Carolina	142	149	12	5	308
Opponents	79	104	2	1	186

Saves by Period	1st	2nd	OT	OT2	Total
South Carolina	25	34	0	0	59
Opponents	58	57	6	4	125

Corners by Period	1st	2nd	OT	OT2	Total
South Carolina	52	52	3	1	108
Opponents	31	38	1	0	70

Fouls by Period	1st	2nd	OT	OT2	Total
South Carolina	92	93	4	4	193
Opponents	98	113	2	3	216

Soccer Box Score (Final)
 The Automated ScoreBook For Soccer
 Mexican National vs South Carolina (Aug 21, 2009 at Greenville, S.C.)

Mexican National vs.
 South Carolina
 Date: Aug 21, 2009 • Attendance: 3000
 Weather:

Goals by period	1	2	Total
Mexican National	0	0	0
South Carolina	2	0	2

Mexican National

Po	##	Player	Sh	SO	G	A	Min
gk	1	Erika VANEGAS	-	-	-	-	90
d	3	Marlene SANDOVAL	-	-	-	-	90
d	4	Marilyn DIAZ	-	-	-	-	90
d	5	Maria CASTILLO	1	-	-	-	90
m	6	Monica VERGARA	1	-	-	-	90
f	9	Monica OCAMPO	6	5	-	-	90
d	13	Lourdes GORDILLO	-	-	-	-	90
d	14	Leticia VILLALPANDO	-	-	-	-	90
d	15	Luz SAUCEDO	2	-	-	-	72
m	16	Mirelle ARCINIEGA	-	-	-	-	72
m	17	Tania MORALES	1	-	-	-	90
-- Substitutes --							
	2	Cynthia TORRES	-	-	-	-	0
	8	Asley KOTERO	-	-	-	-	18
	10	Norma MENDEZ	-	-	-	-	18
Totals			11	5	0	0	

South Carolina

Po	##	Player	Sh	SO	G	A	Min
gk	29	Mollie Patton	-	-	-	-	90
d	3	Sam Diaz-Matosas	2	1	1	-	45
f	4	Kayla Grimsley	2	-	-	1	80
m	5	Kim Miller	1	-	-	-	72
d	7	Blakely Mattern	-	-	-	-	90
f	12	Shannon Bigbie	1	1	-	-	45
m	15	Kortney Rhoades	-	-	-	-	24
m	16	Lindsay Small	-	-	-	-	90
d	20	Ellen Fahey	-	-	-	-	42
d	21	Brittany Rhoades	1	-	-	1	90
f	27	Brooke Jacobs	1	-	-	1	54
-- Substitutes --							
	0	Alex Holland	-	-	-	-	0
	1	Roya Mojarab	-	-	-	-	0
	2	Megan Fligg	-	-	-	-	45
	6	Samantha Abraham	-	-	-	-	0
	8	Christine Watts	2	2	1	-	21
	10	Natalie Aaron	-	-	-	-	10
	17	Maggie Blackwell	-	-	-	-	8
	18	Ali Glemser	-	-	-	-	26
	19	Kira Campbell	1	1	-	-	40
	22	Dani Henry	-	-	-	-	26
	23	Kacie Brewer	-	-	-	-	10
	25	Maddy Kill	1	1	-	-	45
	26	Rae Wilson	-	-	-	-	37
Totals			12	6	2	3	

##	Goalkeepers	Min	GA	Saves
1	Erika VANEGAS	90:00	2	4
17	Tania MORALES	0:00	0	0

##	Goalkeepers	Min	GA	Saves
29	Mollie Patton	90:00	0	5

Shots by period	1	2	Total
Mexican National	5	6	11
South Carolina	7	5	12

Saves by period	1	2	Total
Mexican National	3	1	4
South Carolina	2	3	5

Corner kicks	1	2	Total
Mexican National	3	1	4
South Carolina	2	0	2

Fouls	1	2	Total
Mexican National	2	1	3
South Carolina	2	5	7

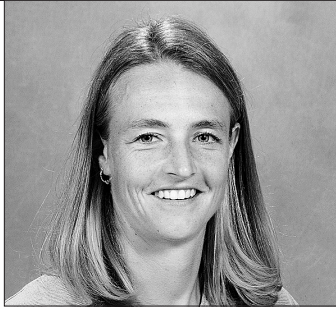
Scoring summary:

No.	Time	Team	Goal scorer	Assist	Description
1.	31:43	SC	Christine Watts	Brittany Rhoades Kayla Grimsley	In box
2.	35:12	SC	Sam Diaz-Matosas	Brooke Jacobs	Cross from right into box, inside corner

Cautions and ejections:
 YC-SC #20 (62:36)

Stadium: MeSA Soccer Complex
 Officials:
 Offsides: Mexican National 1, South Carolina 3.

 Official's signature



SHELLEY SMITH

Head Coach

Ninth Season at South Carolina

13th Season Overall

Vermont, 1993

Shelley Smith enters her ninth season at the helm of the USC women's soccer program and looks to continue building upon the success that she has brought to the program after taking the team to the first back-to-back NCAA Tournament appearances in program history.

Smith has cemented Carolina's position as a conference title contender and player on the national stage after guiding the Gamecocks in 2008 to their second consecutive NCAA Tournament bid and third consecutive SEC Tournament bid, both program firsts. The Gamecocks went 11-7-4 overall and earned five SEC wins for the third year in a row with only one senior on the roster. Respected as a top defensive team, the Gamecocks finished the regular season second in the SEC with eight shutouts and ranked in the top two in every major defensive category including goals allowed, points allowed, shots allowed and shots on goal allowed.

Blakely Mattern and Kayla Grimsley both earned All-SEC honors with Mattern earning her second first team and Grimsley picking up spots on the second team and freshman team. The duo also picked up Soccer Buzz All-Southeast Region honors while Mattern also earned a nod by the NSCAA.

Carolina's success in the classroom continued last season as her squad earned two Academic All-District honors in Mattern and Mollie Patton. Mattern was also named to the Academic All-America first team, making South Carolina one of only four teams in the nation – and the only in the SEC – to have an Academic All-American selected each of the past four seasons. Her team was also honored with its seventh NSCAA Team Academic Award. The team had 11 players named to the SEC Academic Honor Roll in addition to nine selections to the SEC Freshman Honor Roll. Overall, Smith has coached 131 SEC Academic Honor Roll recipients since coming to USC in 2001.

Smith has coached several top student-athletes at Carolina including Ashley Kirk, USC's first four-time All-SEC honoree, Carolina's first All-American in three-time All-SEC selection Blakely Mattern and two-time All-SEC performers Melinda Carter, Jessica Julin and Sarah Lentz. Julin is currently the captain of the Finland National Team and Carter played in the WUSA. The Gamecocks have earned 20 All-SEC honors in the last eight years.

In her first season as head coach at Carolina (2001), the Gamecocks were the third most improved team in the nation with an 8-7-3 overall record. Carolina also had one of the school's best home records, going 5-3 at Stone Stadium, allowing opponents to score only four goals in eight matches.

The success continued for USC in 2002 with 13 wins in Smith's second season. The year was highlighted with USC's first ever victories against Florida and Kentucky. Smith also led her team to ties against 2002 SEC champion Auburn and Eastern Division champion Tennessee.

Smith led the Gamecocks to another successful season in 2003 with 10 wins including a USC record eight-game unbeaten streak as well as a 6-2-1 record at home in Stone Stadium.

The 2004 season featured a win over No. 7 Clemson, the Gamecocks' first win over a ranked opponent since 1998, as well as a 6-3 mark in non-conference action. Ashley Kirk also became the first freshman soccer player in school history to be named SEC Freshman of the Year. In addition, Carolina set a school record for a home game-winning streak with six consecutive wins.



THE SHELLEY SMITH FILE

Full Name: Shelley Addison Smith
Hometown: Shaftsbury, Vt.
Education: B.S. Nutritional Science, Univ. of Vermont, 1993
Family: Husband, Jamie; Sons, Braden (5) and Evan (3)
Playing Experience: Univ. of Vermont, 1990-93
 Sheffield United FC, 1994
 Boston Renegades, 1996-2000
Coaching Experience: Dartmouth (Asst.), 1995-97
 Rhode Island, 1997-2000
 South Carolina, 2001-present

Playing Honors: Two-time All-New England
 Three-time 1st Team All-North Atlantic Conference
 Two-time NSCAA Northeast Region All-American
 Two-time NAC Academic Honor Roll
 Seventh on all-time career GWG list
Coaching Honors: Atlantic 10 Coach of the Year, 1998
 Nation's Most Improved W-L, 1998 (Rhode Island)
 NSCAA Northeast Region Coach of the Year, 2000
 National Coach of the Year Finalist, 2000
 Vermont Athletic Hall of Fame, 2004
 USYSA Regional III ODP Staff

Following an injury filled 2005 season, the program took a big step forward in 2006 as USC went undefeated at home for the first time in school history with an 8-0-3 mark at Stone Stadium. The team's cumulative goals against average of 0.69 was the lowest ever tallied at Carolina. The season culminated with the Gamecocks advancing to the SEC Tournament semifinals for the first time in Carolina history, as Blakely Mattern became the team's first Freshman All-America selection since 1998.

Smith directed the 2007 Gamecocks to arguably the best season in school history, tying the school record with 14 victories and advancing to the NCAA Tournament for only the second time in program history. Carolina posted a 14-6-3 overall record including a 5-4-2 mark in the SEC after beginning the season by becoming the first team ever to knock off defending national champion and top-ranked North Carolina in a season opening game at Fetzer Field in Chapel Hill. The Gamecocks ran to a 7-0-0 start to the season – program bests for start to a season and winning streak – and peaked at No. 7 in the national polls. For the second consecutive season South Carolina advanced to the SEC Tournament semifinals after knocking off Tennessee for the first time in program history and earned the school's first bid to the NCAA Tournament since 1998. Blakely Mattern became the first sophomore to ever earn SEC Defensive Player of the Year honors in addition to becoming the first All-American in South Carolina history.

In 12 years as a head coach, Smith has compiled an overall record of 122-97-24. Besides her collegiate coaching, Smith was a member of the Region III ODP staff for the past five years, as well as an assistant for the '90 Regional Team. Smith also was a member of the 2003 U-14 National Camp staff for U.S. Soccer.

With a background in both semi-professional and collegiate soccer, Smith previously served as head coach at Rhode Island from 1997-2000. The 2000 NSCAA Northeast Region Coach of the Year, Smith rebuilt the URI women's soccer program, compiling a 41-35-2 overall record. Smith took a program that was 2-16 her first year to 12-7-1 in her second season, marking the eighth-most improved won-lost record for a team in NCAA history. In 2000, Smith coached URI to its best record ever of 15-4-1, while reaching the Atlantic 10 Semifinals, a first in URI history.

Smith was nominated for the 2000 National Coach of the Year. The New England Women's Soccer Intercollegiate Soccer Association (NEWISA) also named her its Division I Coach of the Year in 2000. She was the 1998 Atlantic 10 Coach of the Year as well.

In addition to her experience as a coach, Smith brings experience from the semi-professional level. From 1996-2000, Smith played for the Boston Renegades in the W-1 League. Smith was captain in 2000 as she led Boston to the semifinals in the W-1 Championship. The Renegades reached the finals in 1998. Smith also had the opportunity to play overseas in 1994 as a member of the Sheffield United Women's Football Club in England.

Smith, a 1993 graduate of the University of Vermont with a degree in nutritional science, received her teacher's certificate from the same institution in 1995. Smith started all four years for the Catamounts. Her primary positions were center midfielder and central defender. She was a regional All-American in both 1992 and '93 in addition to being named First Team All-North Atlantic Conference each year from 1991-93. During her freshman year, the squad won the ECAC Tournament. Vermont was one of the first programs to offer women's soccer as a varsity sport and it competed on a national level. Smith was named to Vermont's Athletic Hall of Fame in the summer of 2004.

Smith worked as an assistant coach at Dartmouth College from 1995-97. The Big Green made the NCAA Tournament in her second season with the program.

Smith is married to USC associate head coach Jamie Smith, a 1994 graduate of Providence College. They are the proud parents of two sons, Braden James, born on Nov. 25, 2003 and Evan Addison born on Jan. 6, 2006. The family resides in Columbia, S.C.

Smith has her USSF B license and the NCAA Advanced National Diploma. She is currently a member of the USYSA Regional Olympic Development Staff.

A native of Shaftsbury, Vt., Smith graduated from Mount Anthony Union High School in 1989.

SMITH'S CAREER RECORD

Year	Record	School
1997	2-16	Rhode Island
1998	12-7-1	Rhode Island
1999	12-8	Rhode Island
2000	15-4-1	Rhode Island
2001	8-7-3	South Carolina
2002	13-6-2	South Carolina
2003	10-8-3	South Carolina
2004	8-10-2	South Carolina
2005	6-12	South Carolina
2006	11-6-5	South Carolina
2007	14-6-3	South Carolina
2008	11-7-4	South Carolina
Totals	122-97-24	
	41-35-2	Rhode Island
	81-62-22	South Carolina

COACHING HONOR ROLL

All-SEC Players	Team	
2001	Jessica Julin Melinda Carter	1st 2nd
2002	Melinda Carter Alison Jarrow	2nd 2nd
2003	Sarah Lentz	2nd
2004	Sarah Lentz	1st
2005	Ashley Kirk	2nd
2006	Courtney Cobbs Ashley Kirk Blakely Mattern	2nd 2nd 2nd
2007	Ashley Kirk Blakely Mattern Darcel Mollon	1st 1st 2nd
2008	Blakely Mattern Kayla Grimsley	1st 2nd

All-SEC Freshman Team	
2003	M.A. Foster Shelley Hodgeson
2004	Ashley Kirk*
2006	Blakely Mattern
2007	Brittany Rhoades
2008	Kayla Grimsley
*SEC Co-Freshman of the Year	

All-Southeast Region	Team	
2001	Melinda Carter	NSCAA-3
2002	Melinda Carter	NSCAA-3
		S.B.-3
2006	Courtney Cobbs Ashley Kirk Blakely Mattern	S.B.-3 S.B.-3 S.B.-3
		S.B.-Fr.
2007	Blakely Mattern	S.B.-1
		NSCAA-2
	Darcel Mollon	NSCAA-2
		S.B.-3
	Ashley Kirk	S.B.-3
	Brittany Rhoades	S.B.-Fr.
2008	Blakely Mattern	S.B.-2
		NSCAA-3
	Kayla Grimsley	S.B.-Fr.

All-America Honors	Team	
2003	Kanika McAlpine	Acad.
2005	Kimmy Criss	Acad.
2006	Annie Galloway Blakely Mattern	Acad. Frosh
2007	Blakely Mattern Brittany Rhoades	S.B.-4 Frosh
	Erin Sullivan	Acad.
2008	Blakely Mattern	Acad.

BACK-TO-BACK NCAA TOURNAMENT APPEARANCES