



SOUTH CAROLINA MEN'S BASKETBALL



OPENING TIP

Date: Tuesday, Dec. 17, 2013

Tipoff: 7 p.m. ET

Location: Columbia, S.C.

Arena: Colonial Life Arena (18,000)

Series: South Carolina leads 6-2

Last Meeting: South Carolina win, 63-57, Dec. 22, 2012, in Brooklyn, N.Y. (Brooklyn Hoops Holiday Invitational)

Broadcast: GamecocksOnline.com All-Access

Radio: Gamecock Radio Network/107.5 The Game in Columbia

Sirius: 108; XM: 199

Talent: Andy Demetra (ppx), Casey Manning (analyst)

Tickets: GamecocksOnline.com

Live Stats: GamecocksOnline.com

GAME 6



SOUTH CAROLINA
GAMECOCKS
(2-3)

- VS -

MANHATTAN COLLEGE
JASPERS
(7-2)



Ranking: AP/Coaches (-/-)
Head Coach: Frank Martin
Record at SC: 16-21 (2nd)
Career Rec.: 133-75 (7th)
vs. Manhattan: 1-0
SID: Emily Feeny

Stat Leaders (per game):
Points: Johnson (12.2)
Rebounds: Kacinas (8.4)
Assists: Johnson (4.4)
Blocks: Carrera (1.2)
Steals: Thornwell/Carrera (1.2)

Ranking: AP/Coaches (-/-)
Head Coach: Steve Masiello
Record at Manh.: 42-33 (3rd)
Career Rec.: Same
vs. SC: 0-1
SID: Peter McHugh

Stat Leaders (per game):
Points: Beamon (20.7)
Rebounds: Beamon (7.3)
Assists: Alvarado (3.9)
Blocks: Brown (4.2)
Steals: Stores (1.6)

2013-14 SCHEDULE

DATE	OPPONENT (TV)	TIME/RESULT
N. 3	USC Aiken (exhib.)	W, 84-72
N. 9	Longwood	W, 82-44
N. 12	at No. 23/25 Baylor \$ (ESPN)	L, 66-64
N. 17	at Clemson (ESPN3)	L, 71-57
N. 24	FIU (SPSO/FSCR)	W, 84-72
D. 6	at No. 9/11 Oklahoma State ! (ESPNU)	L, 79-52
D. 17	Manhattan	7 p.m.
D. 19	USC Upstate (SPSO/FSCR)	4 p.m.
D. 22	vs. Saint Mary's % (ESPNU)	11 p.m.
D. 23	Hawaii/Boise State %	TBA
D. 25	TBA %	TBA
D. 28	Akron (ESPN)	4 p.m.
D. 30	Marshall (CSS)	7 p.m.
J. 3	SC State (SPSO/FSCR)	7 p.m.
J. 8	at Florida* (CSS)	7 p.m.
J. 11	LSU* (SECTV)	1:30 p.m.
J. 15	at Texas A&M* (SECTV)	8 p.m.
J. 18	Ole Miss* (FSN)	4:30 p.m.
J. 22	at Georgia* (SECTV)	8 p.m.
J. 25	at Missouri* (SECTV)	4 p.m.
J. 29	Texas A&M* (ESPN3)	7 p.m.
F. 1	at Ole Miss* (SECTV)	1:30 p.m.
F. 5	Auburn* (ESPN3)	7:30 p.m.
F. 8	at Tennessee* (ESPNU)	3 p.m.
F. 12	Vanderbilt* (SECTV)	8 p.m.
F. 15	Alabama* (SECTV)	4 p.m.
F. 19	at Arkansas* (CSS)	9 p.m.
F. 22	Georgia* (SECTV)	1:30 p.m.
F. 26	at Auburn* (FSN)	9 p.m.
M. 1	Kentucky* (ESPN/2)	6 p.m.
M. 4	Florida* (ESPN)	7 p.m.
M. 8	at Mississippi State* (SECTV)	4 p.m.
M.	at SEC Tournament (Atlanta, Ga.)	TBA

All home games in bold | All times listed Eastern
* indicates SEC contest | + indicates exhibition | SPSO/FSCR - SportSouth/Fox Sports Carolinas | SECTV-SEC TV | CSS- CharterSports SE | FSN - Fox Sports | \$ - ESPN College Hoops Marathon (Waco, Texas) | ! - Big 12/SEC Challenge (Stillwater, Okla.) | % - Hawaiian Airlines Diamond Head Classic (Honolulu, HI.)

PROBABLE STARTERS

South Carolina	Ht.	Wt.	Yr.	Hometown	PPG	RPG	MPG
G - #0 Sindarius Thornwell	6-5	206	Fr.	Lancaster, S.C.	11.8	3.2	27.0
G - #4 Tyrone Johnson	6-3	194	Jr.	Plainfield, N.J.	12.2	2.4	31.0
F - #24 Michael Carrera	6-5	214	So.	Anzoátegui, Venezuela	6.6	6.0	21.6
F - #21 Demetrius Henry	6-9	215	Fr.	Miami, Fla.	8.4	5.6	28.0
F - #25 Mindaugas Kacinas	6-7	210	So.	Klaipeda, Lithuania	7.6	8.4	29.0

Manhattan	Ht.	Wt.	Yr.	Hometown	PPG	RPG	MPG
G - #12 RaShawn Stores	5-11	190	Jr.	Bronx, N.Y.	3.8	1.3	20.9
G - #24 George Beamon	6-4	175	Sr.	Roslyn, N.Y.	20.7	7.3	34.1
G - #31 Michael Alvarado	6-2	180	Sr.	Bronx, N.Y.	11.0	3.9	25.1
F - #23 Rich Williams	6-5	190	Fr.	Brooklyn, N.Y.	2.7	1.9	8.0
C - #5 Rhameil Brown	6-7	230	Sr.	Brooklyn, N.Y.	9.8	6.6	24.9

TODAY'S GAME

South Carolina returns from an 11-day break due to final exams when it hosts Manhattan at Colonial Life Arena on Tuesday. The contest begins a stretch of five games over the course of the next nine days, including three contests competing in the Hawaiian Airlines Diamond Head Classic in Honolulu, Dec. 22-25. South Carolina looks to rebound after falling at No. 9/11 Oklahoma State in its most previous contest on Dec. 6.

CAROLINA QUICK HITS

- South Carolina is in its 106th season of basketball.
- The Gamecocks are led by Frank Martin in his second year. Matt Figger is the associate head coach, and Perry Clark and Lamont Evans are assistant coaches. Andy Assaley is in his second year as the director of operations for the Gamecocks.
- Senior guard Bruce Ellington and junior forward Carlton Geathers both participated in winter graduation ceremonies on Monday. Both earned their degree in sociology.
- South Carolina most recently suffered a 79-52 road loss at No. 9/11 Oklahoma State on Dec. 6, competing in the Big 12/SEC Challenge. Rookie guard Jaylen Shaw once again shined for Carolina off the bench, hitting 4-of-5 attempts from the floor, which included three 3s for 13 points.
- Over the course of the last two games (win vs. FIU, loss at Ok. State), Shaw is averaging 14.5 points, 1.5 rebounds, 4.0 assists, and has hit 66.7 percent from the field overall, including a 63.6 (7-11) mark from 3-point range, in 23.0 minutes per game off the bench.
- Looking ahead, South Carolina hosts USC Upstate on Thursday at 4 p.m. ET (televised on Fox Sports Carolinas/SportSouth), before beginning travels for the Hawaiian Airlines Diamond Head Classic on Friday with an early morning flight. The Gamecocks' first game in Hawaii is versus Saint Mary's on Dec. 22 at 11 p.m. ET. Carolina will then face either host Hawaii or Boise State in the event's second round.
- Senior guard Bruce Ellington began practice with the Gamecock men's basketball team on Dec. 3, and saw 17 minutes of action, scoring two points from the free throw line in the contest vs. Oklahoma State. Ellington led the Gamecock football team in receiving yards this season, collecting 635 yards on 43 catches and scoring six touchdowns. On the basketball court, Ellington owns career averages of 11.3 points, 2.8 rebounds and 3.0 assists in 30.6 minutes per game (78 games played).
- Junior guard Tyrone Johnson matched a career high with 18 points, and freshman guard Jaylen Shaw exploded for 16 points off the bench, in South Carolina's victory over Florida International on Nov. 24. Johnson contributed seven assists, and Shaw added five, in propelling Carolina to 19 team assists in the victory.
- The Gamecocks are winless in three road contests this season, suffering a 66-64 loss at then-No. 23 Baylor on Nov. 12, before a 71-57 loss at Clemson on Nov. 17, and the Dec. 6 loss at then-No. 9 Oklahoma State, 79-52. South Carolina



SOUTH CAROLINA GAMECOCKS

OVERALL: 2-3; SEC: 0-0; HOME: 2-0; AWAY: 0-3; NEUTRAL: 0-0

0		SINDARIUS THORNWELL - Fr. - G - 6-5 - 206 - Lancaster, S.C.	<u>MIN</u> 27.0	<u>PTS</u> 11.8	<u>RBS</u> 3.2	<u>AST</u> 1.4	<u>FG%</u> 42.2	<u>3FG%</u> 40.0	<u>FT%</u> 70.8	<ul style="list-style-type: none"> • First 20-point game of his career at No. 23/25 Baylor; also team high 3 steals • Posted 10 points and two steals, with 4 rebounds at Clemson • Dished four assists vs. FIU, adding 8 points • Struggled at Ok. State, 4 fouls, 7 points in 20 minutes vs. Cowboys
1		BRENTON WILLIAMS - Sr. - G - 5-11 - 172 - Kissimmee, Fla.	<u>MIN</u> 18.0	<u>PTS</u> 8.4	<u>RBS</u> 2.0	<u>AST</u> 1.0	<u>FG%</u> 38.7	<u>3FG%</u> 31.6	<u>FT%</u> 1.000	<ul style="list-style-type: none"> • Solid in season opener with 14 points, four rebounds vs. Longwood • Scored 12 points at No. 23/25 Baylor • Has made all 12 of his free throw attempts this season • Posted 16 points, including 6-of-6 from free throw line, vs. FIU; 2 assts, 2 stls.
4		TYRONE JOHNSON - Jr. - G - 6-3 - 194 - Plainfield, N.J.	<u>MIN</u> 31.0	<u>PTS</u> 12.2	<u>RBS</u> 2.4	<u>AST</u> 4.4	<u>FG%</u> 39.1	<u>3FG%</u> 28.6	<u>FT%</u> 76.7	<ul style="list-style-type: none"> • Added eight points and eight assists, a new career high, at No. 23/25 Baylor • Matched career high with 18 points vs. FIU; 7 assists, one steal • Team leader with 12.2 points per game • Posted 12 points and three assists at Ok. State
5		JAYLEN SHAW - Fr. - G - 6-0 - 182 - Hartsville, S.C.	<u>MIN</u> 12.5	<u>PTS</u> 7.8	<u>RBS</u> 0.8	<u>AST</u> 2.5	<u>FG%</u> 62.5	<u>3FG%</u> 58.3	<u>FT%</u> 80.0	<ul style="list-style-type: none"> • Burst onto the scene, scoring 16 points off the bench, hitting 6-of-10 attempts overall and 4-of-7 from 3-point range in win vs. FIU; also five assists in 26 minutes played • Solid vs. Ok State, 4-of-5 from field, three 3s, team high 13 points
10		DUANE NOTICE - Fr. - G - 6-2 - 221 - Woodbridge, Ontario	<u>MIN</u> 13.6	<u>PTS</u> 2.8	<u>RBS</u> 2.8	<u>AST</u> 1.8	<u>FG%</u> 31.6	<u>3FG%</u> 33.3	<u>FT%</u> 0.0	<ul style="list-style-type: none"> • Posted eight points and dished a team high four assists in 19 minutes vs. Longwood; hit two 3s • Two assists, one steal and two points in 12 minutes at Baylor • Earned start at Clemson; 2 assists, 2 points
12		AUSTIN CONSTABLE - So. - G - 5-11 - 180 - West Chester, Pa.	<u>MIN</u> -	<u>PTS</u> -	<u>RBS</u> -	<u>BLK</u> -	<u>FG%</u> -	<u>3FG%</u> -	<u>FT%</u> -	<ul style="list-style-type: none"> • Walk-on guard who saw limited action last season as a freshman • 1,000-point scorer during high school career at Henderson High School
14		LAIMONAS CHATKEVICIUS - So. - F - 6-11 - 250 - Klaipeda, Lithuania	<u>MIN</u> 9.5	<u>PTS</u> 2.0	<u>RBS</u> 2.3	<u>BLK</u> 0.8	<u>FG%</u> 57.1	<u>3FG%</u> 0.0	<u>FT%</u> 0.0	<ul style="list-style-type: none"> • Double-double vs. Aiken in exhibition, 10 points, 11 rebounds • In 14 minutes at Baylor, two points, one block and one steal • Scored on 2-of-3 attempts for 4 points, 1 block at Clemson
15		REGGIE THEUS JR. - Fr. - F - 6-6 - 210 - Los Angeles, Calif.	<u>MIN</u> 1.5	<u>PTS</u> 0.0	<u>RBS</u> 0.5	<u>AST</u> 0.0	<u>FG%</u> 0.0	<u>3FG%</u> 0.0	<u>FT%</u> 0.0	<ul style="list-style-type: none"> • Freshman forward who hails from Los Angeles, Calif. • Son of Reggie Theus, current coach at Cal State Northridge, and former NBA All-Star • Averaged nearly 18.0 points per game as a senior at Fairfax High School
20		JUSTIN MCKIE - Fr. - G - 6-4 - 195 - Columbia, S.C.	<u>MIN</u> 1.7	<u>PTS</u> 0.3	<u>RBS</u> 0.3	<u>BLK</u> 0.0	<u>FG%</u> 0.0	<u>3FG%</u> 0.0	<u>FT%</u> 50.0	<ul style="list-style-type: none"> • Columbia, S.C., native who helped lead his Irmo High School squad to a state championship last season at CLA, scoring 20 points in the win • Son of Gamecock great BJ McKie • Named South Carolina Mr. Basketball, Gatorade SC Boys' Player of the Year
21		DEMETRIUS HENRY - Fr. - F - 6-9 - 215 - Miami, Fla.	<u>MIN</u> 28.0	<u>PTS</u> 8.4	<u>RBS</u> 5.6	<u>BLK</u> 1.0	<u>FG%</u> 47.5	<u>3FG%</u> 0.0	<u>FT%</u> 33.3	<ul style="list-style-type: none"> • 9 points and six rebounds, adding two blocks in 30 minutes at No. 23/25 Baylor • Scored 9 points, collected 5 rebounds in 22 minutes at Clemson • 14 points and six rebounds vs. FIU • Six points, five rebounds at Ok. State
23		BRUCE ELLINGTON - Sr. - G - 5-9 - 196 - Moncks Corner, S.C.	<u>MIN</u> 17.0	<u>PTS</u> 2.0	<u>RBS</u> 1.0	<u>AST</u> 1.0	<u>FG%</u> 0.0	<u>3FG%</u> 0.0	<u>FT%</u> 1.000	<ul style="list-style-type: none"> • Joined the basketball team for practice on Tuesday after catching four passes for 51 yards in South Carolina football's 31-17 win over Clemson • Saw 17 minutes of action off the bench at Ok. State, scored two points, one steal, one assist
24		MICHAEL CARRERA - So. - F - 6-5 - 212 - Anzoátegui, Venezuela	<u>MIN</u> 21.6	<u>PTS</u> 6.6	<u>RBS</u> 6.0	<u>BLK</u> 1.2	<u>FG%</u> 32.3	<u>3FG%</u> 25.0	<u>FT%</u> 62.5	<ul style="list-style-type: none"> • 12 points and nine rebounds vs. Longwood; 2 blocks, 2 steals • 8 points, 7 rebounds; 6-of-6 from free throw line at No. 23/25 Baylor • Scored nine points and collected two steals at Clemson • Team high 7 rebounds vs. Ok State
25		MINDAUGAS KACINAS - So. - F - 6-7 - 210 - Klaipeda, Lithuania	<u>MIN</u> 29.0	<u>PTS</u> 7.6	<u>RBS</u> 8.4	<u>BLK</u> 0.4	<u>FG%</u> 53.6	<u>3FG%</u> 0.0	<u>FT%</u> 66.7	<ul style="list-style-type: none"> • First double-double of the season with 13 points, 12 rebounds at Clemson • Team high 9 rebounds, 4 offensive, vs. FIU • Among SEC leaders, leads team with 8.4 rebounds per game, including 4.0 offensive per game
32		DESMOND RINGER - Fr. - F - 6-9 - 255 - McDonough, Ga.	<u>MIN</u> 9.0	<u>PTS</u> 1.6	<u>RBS</u> 1.6	<u>BLK</u> 0.0	<u>FG%</u> 25.0	<u>3FG%</u> 0.0	<u>FT%</u> 66.7	<ul style="list-style-type: none"> • Helped lead his high school squad to its first-ever state championship last spring, scoring 17 points and collecting 14 rebounds in the title game • Saw action vs. Baylor; contributed four points at Clemson • Three points and a season high 5 rebounds at Ok. State
35		BRIAN STEELE - So. - F - 6-5 - 200 - Greenville, S.C.	<u>MIN</u> 1.0	<u>PTS</u> 0.0	<u>RBS</u> 0.0	<u>AST</u> 0.0	<u>FG%</u> 0.0	<u>3FG%</u> 0.0	<u>FT%</u> 0.0	<ul style="list-style-type: none"> • Walk-on forward who saw action in seven games last season, starting the final four contests of the year • Scored 16 points for a 2.3 points per game average • 1,000-point scorer during high school career

INTERVIEW POLICIES

All interview requests must be made in advance to SID Emily Feeney in the South Carolina Media Relations Office. Beginning with the start of practice in October, Feeney will release a weekly coach and student-athlete availability schedule to media on Mondays.

Post-Game Interview Policy: After each home game, the visiting coach will address the media first, followed by South Carolina student-athletes then South Carolina head coach Frank Martin. (Depending on deadline, this may be altered on a game-by-game basis).

Road Interview Policy: Interviews with Coach Martin while on the road will be scheduled according to the home post-game media procedure. No student-athlete interviews are allowed until after the game once the team leaves Columbia.

All interviews are to be coordinated through the Media Relations Office. This allows the staff to arrange the interview when it best suits the student-athlete's and the reporter's schedules. Please contact the Media Relations Office in advance to make your interview requests. Media are not permitted to contact student-athletes on their own at any time.

All interviews will take place at the designated media interview site for that day as listed in the weekly availability schedule or in the Media Relations Office.

Dormitory, apartment and cell phone numbers for student-athletes will not be provided to the media. Should you need to conduct a telephone interview with a student-athlete, a call will be placed to you from the student-athlete at a mutually agreeable time.

SOUTH CAROLINA MEDIA RELATIONS



Emily Feeney, primary contact
Associate Director
cell: 803-727-3284
e-mail: efeeney@mailbox.sc.edu
Twitter: @EmilyFeeneySID

Website: www.GamecocksOnline.com

Facebook: www.Facebook.com/gamecocksonline

Twitter: @GamecockMBB

STAT COMPARISON

	SC	MANHATTAN
Record	2-3	7-2
Conference Record	-	2-0
Current Streak	-	-
Scoring Avg.	67.8	76.2
Opponent Scoring Avg.	66.4	71.7
Scoring Margin	+1.4	+4.6
Field Goal %	.417	.423
Opponent Field Goal %	.391	.413
3-Point Field Goal %	.353	.326
Opponent 3-Point Field Goal %	.286	.316
3-Point Field Goal Made PG	4.8	6.3
3-Point Field Goal Attempts PG	13.6	19.4
Free Throw %	.702	.688
Opponent Free Throw %	.718	.683
Rebounding Avg.	38.6	38.2
Opponent Rebounding Avg.	33.0	36.2
Rebounding Margin	+5.6	+2.0
Turnovers Avg.	14.6	14.3
Opponent Turnover Avg.	12.6	14.7
Assists Avg.	12.6	13.3
Blocks Avg.	4.2	6.1
Steals Avg.	5.6	7.4

WEEKLY MEDIA AVAILABILITY (DEC. 1-7)

SUNDAY Dec. 15	MONDAY Dec. 16	TUESDAY Dec. 17	WEDNESDAY Dec. 18	THURSDAY Dec. 19	FRIDAY Dec. 20	SATURDAY Dec. 21
No Availability	2:45 p.m. Martin press conference/ freshman avail.	vs. Manhattan 7 p.m. ET Colonial Life Arena	No Availability Carolina Calls (Wild Wing/ Sandhills, 7 pm)	vs. USC Upstate 4 p.m. ET CLA Sport/South	Travel to Hawaii	No Availability Hawaii Trip

* All practices are closed * please contact SID Emily Feeney for all media requests

A SOUTH CAROLINA WIN WOULD ...

- Be the Gamecocks first since the Nov. 24 contest vs. FIU
- Be Carolina's third-straight over the Jaspers and first in Columbia since the 1980-81 campaign
- Improve the Gamecocks' record to 3-0 in games played at Colonial Life Arena this season

has hit just 35.6% (57-160) from the field, and is averaging 57.7 points per game on the road.

■ Sophomore forward Mindaguas Kacinas posted his first double-double of the season and the second of his career with team highs of 13 points and 12 rebounds vs. Clemson on Nov. 17.

■ Kacinas currently leads the Gamecocks and ranks tied for sixth in the SEC with 8.4 rebounds per contest. His 4.0 offensive rebounds per contest are a team best and also rank tied for first in the league with Kentucky's Julius Randle.

■ The Gamecocks rank fourth in the SEC in field goal percentage defense, as Carolina opponents have hit just 39.1 percent of shot attempts this season.

■ South Carolina suffered a two-point road loss at No. 23/25 Baylor on Nov. 12 in non-conference action, falling 66-64 to the Bears. Sophomore forward Michael Carrera was fouled on a shot attempt at the buzzer, but the officials determined the infraction occurred after time expired. Thornwell posted the first 20-point game of his young career in the Garnet and Black, and classmate, forward Demetrius Henry posted nine points, six rebounds and two blocks in the contest. Baylor now holds a 3-2 upperhand in the all-time series between the two schools.

■ The Gamecocks used an 18-point effort from junior guard Ty Johnson to defeat visiting Longwood by 38 points, 82-44, on Nov. 9 in the season opener at Colonial Life Arena. Thornwell and senior guard Brenton Williams both added 14 points, sophomore forward Michael Carrera added 12 and sophomore forward Mindaguas Kacinas pulled down a career high 14 rebounds in the win. It marked the 13th-straight season-opening victory for the Gamecocks.

■ South Carolina shot 62.5% (15-24) during the second half of the Nov. 9 contest vs. Longwood, the best one-half percentage for the Gamecocks since hitting 71.9% (23-32) during the first half vs. Jacksonville on Dec. 7, 2012.

■ South Carolina returns seven letterwinners to its squad this season, including senior guard Brenton Williams, the team's top returning scorer from a year ago when he averaged 11.0 points per game. Also returning to the bench this season for the Garnet and Black are senior guard Bruce Ellington, who will join the team at the conclusion of the football season, sophomore forwards Michael Carrera, a 2013 SEC All-Freshman Team selection, Laimonas Chatkevicius and Mindaugas Kacinas. Sophomore guard Austin Constables and forward Brian Steele also return for Carolina.

■ The Gamecocks will hold a young roster this season, welcoming seven freshmen to Columbia in forwards Demetrius Henry, Desmond Ringer, Reggie Theus Jr., and guards Duane Notice, Justin McKie, Jaylen Shaw and Sindarius Thornwell. Transfer guard Ty Johnson joined the program last January via Villanova.

■ Johnson received word prior to the Nov. 9 season opener that he had been granted a waiver from the NCAA allowing him to compete effectively immediately. Johnson has been eligible to practice since he transferred to South Carolina from Villanova in January 2013.

■ Justin McKie, son of Gamecock great BJ McKie, was named South Carolina Mr. Basketball, and also the Graduate South Carolina Boys' Basketball Player of the Year last spring after leading his Irmo squad to the state championship behind a 20-point, 10-rebound performance at Colonial Life Arena.

■ Entering the season, senior guard Brenton Williams ranked fourth all-time in the Gamecock record book in 3-point field goal percentage, hitting 39.5 percent of his attempts. He paced the Gamecocks last season hitting just shy of 40 percent from beyond the arc.

■ South Carolina's non-conference schedule features 14 games, including seven home contests. Highlighting the non-conference schedule is a holiday tournament at the Hawaiian Airlines Diamond Head Classic in late December, and a mid-day contest at Baylor as part of the ESPN College Hoops Marathon in early November. South Carolina also travels to Oklahoma State in early December for the Big 12/SEC Challenge.

SCOUTING MANHATTAN

The Jaspers enter Tuesday's contest having won four-straight games overall, including most recently a 77-72 decision at UNC Wilmington on Sunday ... The squad has a stellar 6-0 record on the road this season, including wins at LaSalle, Columbia, Illinois State, Hofstra, Marist and Wilmington ... Manhattan is led by head coach Steve Masiello in his third season ... The Jaspers returns the majority of their lineup from last season, including senior guard/forward George Beamon, who saw action in four contests last season before suffering a season-ending injury ... Beamon paces the squad with 20.7 points (third in the MAAC) and 7.3 rebounds (6th in the MAAC) per contest ... Senior center Rhameil Brown leads the conference with 4.2 blocks per game ... Brown blocked a season high nine blocks in the Jaspers' loss vs. Fordham, and blocked eight in the win vs. Monmouth.

ELLINGTON RETURNS

Senior guard Bruce Ellington returned to the Gamecock basketball team on Dec. 3 for practice and saw 17 minutes of action in Carolina's Dec. 6 contest at No. 9 Oklahoma State. The Moncks Corner, S.C., native, missed the first four games, and all of preseason practice due to competition with the 8th-ranked Gamecock football team. On the gridiron, Ellington led the Garnet and Black with 635 receiving yards on 43 catches, including six touchdowns.

► ASSOCIATED PRESS TOP 25

Dec. 9, 2013

Rk.	Team	Record	Pts.
1	Arizona (63)	9-0	1,623
2	Syracuse (2)	9-0	1,522
3	Ohio State	8-0	1,453
4	Wisconsin	10-0	1,318
5	Michigan State	7-1	1,311
6	Louisville	8-1	1,262
7	Oklahoma State	8-1	1,160
8	Duke	7-2	1,040
9	Connecticut	9-0	981
10	Villanova	9-0	938
11	Kentucky	7-2	926
12	Wichita State	9-0	884
13	Kansas	6-2	862
14	Baylor	8-1	843
15	Oregon	8-0	831
16	Memphis	6-1	768
17	Iowa State	7-0	606
18	North Carolina	6-2	450
19	Florida	6-2	434
20	Gonzaga	8-1	365
21	Colorado	9-1	330
22	Massachusetts	8-0	326
23	Iowa	9-1	207
24	Missouri	9-0	203
25	San Diego State	7-1	159

Others receiving votes: UCLA 104, New Mexico 62, Pittsburgh 47, Boise State 34, Michigan 26, Virginia Commonwealth 17, Dayton 11, Cincinnati 5, Harvard 5, Saint Mary's 3, Indiana 3, George Washington 2, Creighton 2, Oklahoma 1, Toledo 1

Dropped from rankings: UCLA 18, Michigan 22, Dayton 25

► ESPN/USA TODAY TOP 25

Dec. 9, 2013

Rk.	Team	Record	Pts.
1	Arizona (30)	9-0	797
2	Ohio State (1)	8-0	749
3	Syracuse (1)	9-0	746
4	Louisville	8-1	684
5	Michigan State	7-1	655
6	Wisconsin	10-0	600
7	Duke	7-2	562
8	Wichita State	9-0	542
9	Oklahoma State	8-1	518
10	Kentucky	7-2	491
11	Oregon	8-0	462
12	Connecticut	9-0	455
13	Kansas	6-2	445
14	Villanova	9-0	333
15	Memphis	6-1	323
16	Iowa State	7-0	298
16	Gonzaga	8-1	298
18	Baylor	8-1	278
19	Florida	6-2	258
20	Massachusetts	8-0	192
21	North Carolina	6-2	172
22	Iowa	9-1	103
23	UCLA	8-1	86
24	San Diego State	7-1	65
25	Michigan	6-3	50

Others receiving votes: Missouri 46, Colorado 42, Pittsburgh 38, New Mexico 28, Boise State 19, Saint Mary's 18, Indiana 15, Virginia Commonwealth 13, Creighton 8, Virginia 5, Saint Louis 5, George Washington 1

Dropped from rankings: Indiana 23



SOUTHEASTERN CONFERENCE STANDINGS

As of Dec. 16

Team	Conference	Overall
Missouri	0-0	10-0
Texas A&M	0-0	8-2
Arkansas	0-0	7-2
Florida	0-0	7-2
Ole Miss	0-0	7-2
LSU	0-0	6-2
Mississippi State	0-0	6-2
Kentucky	0-0	8-3
Tennessee	0-0	6-3
Vanderbilt	0-0	5-3
Auburn	0-0	4-3
Alabama	0-0	5-4
Georgia	0-0	4-4
South Carolina	0-0	2-3

COACHES TELECONFERENCE

The weekly SEC men's basketball coaches teleconference will be held every Monday beginning Monday, Jan. 6 through Monday, March 10. The 14 Southeastern Conference men's head basketball coaches will be featured from 10:00 -11:38 a.m. (CT).

Media representatives wishing to participate in the teleconference should contact the SEC Media Relations Department for further details. Each coach will appear on the teleconference for seven minutes, according to the following schedule:

ORDER OF APPEARANCE

(All Times Eastern)

11:00 a.m.	Kevin Stallings, Vanderbilt
11:07 a.m.	Billy Donovan, Florida
11:14 a.m.	Frank Martin, South Carolina
11:21 a.m.	Mark Fox, Georgia
11:28 a.m.	Johnny Jones, LSU
11:35 a.m.	John Calipari, Kentucky
11:42 a.m.	Cuonzo Martin, Tennessee
11:49 a.m.	Mike Anderson, Arkansas
11:56 a.m.	Anthony Grant, Alabama
12:03 a.m.	Tony Barbee, Auburn
12:10 a.m.	Andy Kennedy, Ole Miss
12:17 a.m.	Rick Ray, Miss. State
12:24 a.m.	Frank Haith, Missouri
12:31 a.m.	Billy Kennedy, Texas A&M

In addition, the SEC men's basketball teams who make it to postseason will be on a teleconference on Monday, March 17 beginning at 11:00 a.m. ET.

All SEC basketball teleconferences can be listened to on the internet at www.secsports.com shortly after the conclusion of the teleconference

SOUTH CAROLINA BENCH PRODUCTION

GAME	SC-OPP	DIFF.	SC HIGH BENCH SCORER
Longwood	30-18	+12	Williams, 14
@Baylor	17-36	-19	Williams, 12
@Clemson	18-34	-16	Carrera, 9
FIU	32-18	+14	Shaw/Williams, 16
@Okla. St.	20-19	+1	Shaw, 13
Manhattan			
USC Upstate			
vs. Saint Mary's			
vs. TBA			
vs. TBA			
Akron			
Marshall			
SC State			
@Florida			
LSU			
@Texas A&M			
Ole Miss			
@Georgia			
@Missouri			
Texas A&M			
@Ole Miss			
Auburn			
@Tennessee			
Vanderbilt			
Alabama			
@Arkansas			
Georgia			
@Auburn			
Kentucky			
Florida			
@Miss. St.			
SEC Tourney			
NCAA Tourney			

SPECIALTY STATS

(PP) points in paint; (OT) points off turnovers; (2nd) second chance points; (FB) fast break points

(South Carolina-Opponent)

GAME	PP	OT	2ND	FB
Longwood	36-18	19-9	11-10	14-0
@Baylor	22-20	19-4	5-16	2-0
@Clemson	40-26	10-13	15-8	4-4
FIU	34-32	13-11	10-8	21-10
@Okla. St.	16-32	11-33	9-19	9-10
Manhattan				
USC Upstate				
vs. Saint Mary's				
vs. TBA				
vs. TBA				
Akron				
Marshall				
SC State				
@Florida				
LSU				
@Texas A&M				
Ole Miss				
@Georgia				
@Missouri				
Texas A&M				
@Ole Miss				
Auburn				
@Tennessee				
Vanderbilt				
Alabama				
@Arkansas				
Georgia				
@Auburn				
Kentucky				
Florida				
@Miss. St.				
SEC Tourney				
NCAA Tourney				
SC Total	148	72	50	50
SC Average	29.6	14.4	10.0	10.0
Opp Total	128	70	61	24
Opp Average	25.6	14.0	12.2	4.8

UNIVERSITY INFORMATION

Location Columbia, S.C.
 Founded 1801
 Enrollment 31,288
 Nickname Gamecocks
 Colors Garnet (PMS 202) and Black
 National Affiliation NCAA Division I
 Conference Southeastern (SEC)
 Athletics Web Address www.GamecocksOnline.com
 University Web Address www.sc.edu
 President Dr. Harris Pastides
 NCAA Representative Dr. Zach Kelehear
 Athletics Director Ray Tanner
 Basketball Administrator/Chief Operating Officer Kevin O'Connell

BASKETBALL STAFF/INFORMATION

Head Coach Frank Martin
 Alma Mater Florida International, '93
 Record At South Carolina/Seasons 16-21, 2nd Season
 Overall Record/Seasons 133-75 (.639), 7th season
 Assoc. Head Coach/Recruiting Coord. . Matt Figger (Eastern Kentucky, '95)
 Assistant Coach Perry Clark (Gettysburg, '74)
 Assistant Coach Lamont Evans (Kansas State, '09)
 Director of Basketball Operations Andy Assaley (Cincinnati, '96)
 Strength & Conditioning Scott Greenawalt (Muskingum College, '98)
 Athletic Trainer Mark Rodger (Buffalo, '01)
 Video Coordinator Dylan Lockwood (Cazenovia, '05)
 Grad. Student Mgr./Student-Athlete Dev. Doug Edwards (Florida State, '07)
 Associate Media Relations Director Emily Feeney (Ball State, '03)
 Home Arena Colonial Life Arena
 Capacity 18,000
 Arena General Manager Lexi Boone
 Press Row Phone Number 803-777-6182
 Team Twitter Account: @GamecockMBB
 Coach Martin Twitter Account: @FrankMartin_SC

BASKETBALL HISTORY

First Year of Basketball 1908
 All-Time Record 1,313-1,169-1 (.529)
 Overall Postseason Record 25-18
 NCAA Tournament Appearances 1971, 1972, 1973, 1974, 1989, 1997, 1998, 2004
 NCAA Tournament Record 4-9
 Last NCAA Tournament Appearance 2004, L vs. Memphis, 59-43
 NIT Appearances 1969, 1975, 1978, 1983, 1991, 1996, 2001, 2002, 2005, 2006, 2009
 NIT Record 21-9
 NIT Champion 2005, 2006
 Last NIT Appearance 2009, L vs. Davidson, 70-63
 Conference Championships/Titles/SoCon Regular Season (1927, 1933, 1934, 1945); SoCon Tournament Champion (1933); ACC Regular Season (1970); ACC Champion (1971); SEC Regular Season (1997); SEC East Division Co-Champions (2009)

TEAM INFORMATION

2012-13 Record 14-18
 Southeastern Conference Record/Finish 4-14/12th
 Postseason None
 Letterwinners Returning/Lost 7/6
 Starters Returning/Lost 3/2
**based on final game starters from 2012-13 season*
 Newcomers 8
 Roster Breakdown 7 freshmen, 5 sophomores, 2 juniors, 2 seniors



HEAD COACH FRANK MARTIN

COACHING CAREER

KANSAS STATE (2007-12)

2007-08	21-12	NCAA, 2nd Round
2008-09	22-12	NIT, 2nd Round
2009-10	29-8	NCAA, Elite Eight
2010-11	23-11	NCAA, 3rd Round
2011-12	22-11	NCAA, 3rd Round
5 years	117-54 (.684)	7-5 postseason record

SOUTH CAROLINA (2012-PRESENT)

2012-13	14-18	-
2013-14	2-3	-
2nd year	16-21 (.432)	
Career Total	133-75 (.639)	



COACHING

EXPERIENCE

29th season

COLLEGE EXPERIENCE

14th season

COLLEGE HEAD COACH EXPERIENCE

7th season

HIRE DATE AT CAROLINA

March 27, 2012

PERSONAL

HOMETOWN

Miami, Fla.

ALMA MATER

Florida International, 1993 (B.A. Physical Education)

FAMILY

Wife, Anya

Children, Brandon, Amalia and Christian

COACHING RESUME

HIGH SCHOOL

Miami Senior High, 1985-93

Varsity Boys' Assistant Coach

Junior Varsity Boys' Head Coach

North Miami High, Head Coach, 1993-95

Miami Senior High, Head Coach, 1995-98

B.T. Washington High, Head Coach, 1999-2000

COLLEGE ASSISTANT COACH

Northeastern, 2000-04

Cincinnati, 2004-06

Kansas State, 2006-07

COLLEGE HEAD COACH

Kansas State, 2007-12

South Carolina, 2012-present

SERIES VS. MANHATTAN

South Carolina owns a 6-2 record in the all-time series with Manhattan, including a 4-1 mark in games played in Columbia. Tuesday's contest marks the first in Columbia since a Gamecock win on Jan. 15, 1981. Below is a breakdown of the series between the two schools.

MANHATTAN (6-2)

H: 4-1; A: 0-0; N: 2-1

J. 12, 1972	H	116-78	W
D. 28, 1972	N	79-69	W
J. 12, 1974	H	75-61	W
J. 4, 1975	H	82-63	W
D. 29, 1975	N	73-87	L
J. 12, 1977	H	67-70	L
J. 15, 1981	H	90-62	W
D. 22, 2012	N	63-57	W

BY THE NUMBERS

83.0 - The Gamecocks have played just two home contests this season, averaging 83.0 points per games in those matchups. Carolina scored 82 points in the season-opening win vs. Longwood, and posted 84 in the victory vs. FIU.

50% - The Gamecocks are hitting 50.0% (58-116) from the field in games played in Colonial Life Arena this season. Junior guard Ty Johnson paces the team with 18.0 points per game in home contests, and he has hit 57.9 percent of his attempts from the field.

14.5 - Over the course of the last two games freshman guard Jaylen Shaw has averaged 14.5 points, 1.5 rebounds, 4.0 assists and has hit 66.7 of his at-

tempts from the field in 23.0 minutes per game. Shaw came off the bench in both of those contests, and has gone a combined 7-of-11 (63.6%) from 3-point range in those games.

8 in 18 - The Gamecocks begin a stretch of eight games over the course of the next 18 days in Tuesday's game vs. Manhattan. The stretch ends with the Jan. 3 contest vs. SC State, which concludes non-conference play for Carolina.

TREND SETTING

Gamecock trends under Frank Martin ...

■ South Carolina is 11-10 when posting at least six made 3s in a game.

- South Carolina hit a season high eight 3s in the win vs. FIU on Nov. 24

■ South Carolina is 11-6 when scoring more points in the paint than its opponent.

- The Gamecocks average 29.6 points in the paint per game, compared to 25.6 from opponents. Carolina posted a season high 40 points in the paint vs. Clemson on Nov. 17.

■ South Carolina is 11-10 when holding its opponents to under 45 percent from the field.

- The Gamecocks have held each opponent except FIU under 45% shooting this season. Longwood managed to hit just 22.8% of its attempts.

■ South Carolina is 12-10 when out-rebounding its opponent.

- The Gamecocks have out-rebounded three opponents this season, holding a +23 margin vs. Longwood and a +8 mark vs. Clemson.

UP NEXT

South Carolina hosts USC Upstate on Thursday in a contest set to begin at 4 p.m. ET. The matchup between the Gamecocks and Spartans will be televised on Fox Sports Carolinas/SportSouth.

SEC TOURNAMENT

Fresh off hosting the 2013 Final Four, the Georgia Dome will be the site for the 2014 SEC Tournament, March 12-16 in Atlanta. The Georgia Dome first hosted the tourney in 1995 and the 2014 event will mark the 11th time the venue has hosted the league's postseason tournament. The winner of the 13-game tournament receives the SEC's automatic bid to the NCAA Tournament. The tournament seeds are determined by the 18-game conference schedule during the regular season. Teams are seeded 1-14 based on their regular-season conference finish.

MARTIN'S STAFF BOASTS OVER 90 YEARS OF EXPERIENCE AT THE COLLEGE LEVEL

South Carolina head coach Frank Martin has a very experienced staff with him on the sideline this season. Perry Clark joins the team as an assistant coach with over 30 years of college coaching experience, including stops as the head coach at Tulane, Miami (Fla.) and Texas A&M-Corpus Christi. Former assistant Matt Figger was promoted to associate head coach during the offseason, and Lamont Evans returns for his second season as an assistant on Martin's staff in Columbia.

GAMECOCKS SIGN STROMAN AND BLANTON DURING FALL SIGNING PERIOD

University of South Carolina head men's basketball coach Frank Martin announced on Nov. 19 the signing of Marcus Stroman (G - 6-2 - 170 - Columbia, S.C./Keenan High School) and TeMarcus Blanton (G - 6-4 - 185 - Locust Grove, Georgia/Luella High School) to National Letters of Intent. The duo will join the Gamecocks for the 2014-15 campaign and both will have four years of eligibility beginning next fall. Below are brief comments from Coach Martin on each signee.

Martin on Blanton

"I'm extremely excited about TeMarcus Blanton. He is a 6-5 wing that is ultra-competitive on both ends of the floor. He fits exactly the kind of guard that we want to build our program around. He's a slasher, a defender and an athletic finisher that loves every opportunity that he gets to compete."

Martin on Stroman

"Marcus is a consummate point guard. He understands the position at his age as well as, if not better, than most. Every time I watch him play, I leave games thinking that the four guys with him are better than they actually are, because he is so good at making others look good. He is an ultra-competitive, hometown kid, who grew up a Gamecock fan, and we are extremely excited to have him become part of our program."

GAMECOCKS TO COMPETE IN 2014 CHARLESTON CLASSIC

The Charleston Classic presented by Gildan announced six of the eight-team field for the 2014 tournament to be held Thursday, Friday and Sunday, Nov. 20, 21 and 23, at TD Arena in Charleston, S.C. South Carolina will compete in the event for the second time, and for the first time since the 2009 campaign. The other participating teams announced are Akron, Cornell, Miami (Fla.), Penn State and Southern California. The final two teams will be announced at a later date. During the 2009 event, the Gamecocks defeated La Salle in the tournament's opening round, earned a win over USF to advance to the finals, and lost to Miami in the championship game. The 2014 Charleston Classic will feature a bracket format with 12 games over three days. Each team will compete in one game per day, advancing through the bracket. The two teams that remain undefeated throughout will face off in a championship game on the final day of competition.

CITY CHAPTER DAYS ANNOUNCED FOR GAMECOCK BASKETBALL

The University of South Carolina Athletics Department, along with The Gamecock Club and My Carolina Alumni Association, have partnered in creating several City Chapter Days throughout the 2013-14 basketball season for both the Gamecock men's and women's teams.

The City Chapter Days will give Gamecock Club and Alumni Chapters a game at Colonial Life Arena that is dedicated specifically to their respective members and local business. During each game different chapter leaders and business owners will be recognized for their contributions and support of Gamecock Athletics.

- Jan. 11, 2014 - Men's Basketball vs. LSU at 1:30 PM
Charlotte, York & Rock Hill Day
- Jan. 18, 2014 - Men's Basketball vs. Ole Miss at 4:30 PM, Greenville Day
- Jan. 29, 2014 - Men's Basketball vs. Texas A&M at 7 PM, Irmo Night
- Feb. 5, 2014 - Men's Basketball vs. Auburn at 7 PM
Richland County Night
- Feb. 12, 2014 - Men's Basketball vs. Vanderbilt at 8 PM,
Lexington Night
- Feb. 15, 2014 - Men's Basketball vs. Alabama at 8 PM
Spartanburg Night
- Feb. 22, 2014 - Men's Basketball vs. Georgia at 1:30 PM, Charleston Day
- Feb. 27, 2014 - Women's Basketball vs. Georgia 7 PM, Gamecock Club and My Carolina Alumni Association Appreciation Night
- March 4 2014 - Men's Basketball vs. Florida at 7 PM
Gamecock Club and My Carolina Alumni Association Appreciation Night

HAWAIIAN AIRLINES DIAMOND HEAD CLASSIC
HOSTED BY THE ESPN AND THE UNIVERSITY OF HAWAII
DECEMBER 22, 23 & 25, 2013 - STAN SHERIFF CENTER • HONOLULU, HAWAII

*All times listed in Hawaii's Aleutian Standard Time (HT)
Home team is listed on the bottom of each matchup*

STATE
IOWA STATE
GAME #1
SUN., DEC. 22
12:30 p.m.

MASON
GEORGE MASON
GAME #5
MON., DEC. 23
9:30 a.m.

OREGON STATE
GAME #2
SUN., DEC. 22
2:30 p.m.

AKRON
GAME #10
WED., DEC. 25
11:00 a.m.

SOUTH CAROLINA
GAME #3
SUN., DEC. 22
6:00 p.m.

SAINT MARY'S
GAME #8
MON., DEC. 23
6:30 p.m.

BOISE STATE
GAME #4
SUN., DEC. 22
8:00 p.m.

HAWAII
GAME #9
WED., DEC. 25
8:30 a.m.

GAME #6
MON., DEC. 23
11:30 a.m.

GAME #7
MON., DEC. 23
4:00 p.m.

GAME #11
WED., DEC. 25
1:30 p.m.

5TH PLACE **CHAMPIONSHIP**

7TH PLACE **3RD PLACE**

Non-Bracketed Game: Akron at South Carolina (Dec 28)

Visit HawaiianAirlinesDiamondHeadClassic.com for more information
To purchase tickets visit our website or call 808-523-3688

f /ESPNEvents @DiamondHeadCisc

ROSTER BREAKDOWN

RETURNING STARTERS (3)

Michael Carrera
 Brian Steele
 Bruce Ellington
**based on final game of 2012-13 season*

RETURNING LETTERWINNERS (7)

Michael Carrera
 Laimonas Chatkevicius
 Austin Constable
 Bruce Ellington
 Mindaugas Kacinas
 Brian Steele
 Brenton Williams

GUARDS (8)

Austin Constable
 Bruce Ellington
 Tyrone Johnson
 Justin McKie
 Duane Notice
 Jaylen Shaw
 Sindarius Thornwell
 Brenton Williams

FORWARDS (8)

Michael Carrera
 Laimonas Chatkevicius
 Carlton Geathers
 Demetrius Henry
 Mindaugas Kacinas
 Desmond Ringer
 Brian Steele
 Reggie Theus Jr.

BY HEIGHT

Bruce Ellington, 5-9
 Austin Constable, 5-11
 Brenton Williams, 5-11
 Jaylen Shaw, 6-0
 Duane Notice, 6-2
 Tyrone Johnson, 6-3
 Justin McKie, 6-4
 Michael Carrera, 6-5
 Brian Steele, 6-5
 Sindarius Thornwell, 6-5
 Reggie Theus Jr., 6-6
 Mindaugas Kacinas, 6-7
 Demetrius Henry, 6-9
 Desmond Ringer, 6-9
 Carlton Geathers, 6-10
 Laimonas Chatkevicius, 6-11

PRONUNCIATION

Lie-MOAN-us Ha-KEVA-chus
 Min-DAWG-us Kye-chin-iss

2013-14 SOUTH CAROLINA ROSTER

ALPHABETICAL

No.	Name	Pos.	Ht.	Wt.	Cl.	Exp.	Hometown/High/Last School
24	Michael Carrera	F	6-5	214	SO	1VL	Anzoátegui, Venezuela/Montrose Christian School
14	Laimonas Chatkevicius	F	6-11	250	SO	1VL	Klaipeda, Lithuania/South Kent School
12	Austin Constable	G	5-11	180	SO	1VL	West Chester, Pa./Henderson
23	Bruce Ellington	G	5-9	196	SR	3VL	Moncks Corner, S.C./Berkeley
45	Carlton Geathers	F	6-10	255	RS JR	1VL	Georgetown, S.C./Carvers Bay
21	Demetrius Henry	F/C	6-9	215	FR	HS	Miami, Fla./Faith Baptist Christian School
4	Tyrone Johnson	G	6-3	194	JR	1VL	Plainfield, N.J./Montrose Christian School/Villanova
25	Mindaugas Kacinas	F	6-7	210	SO	1VL	Klaipeda, Lithuania/Word of Life Fire Traditional School
20	Justin McKie	G	6-4	195	FR	HS	Columbia, S.C./Irmo
10	Duane Notice	G	6-2	221	FR	HS	Woodbridge, Canada/St. Thomas More (Oakdale, Conn.)
32	Desmond Ringer	F/C	6-9	255	FR	HS	McDonough, Ga./Eagle's Landing
5	Jaylen Shaw	G	6-0	182	FR	HS	Hartsville, S.C./Hartsville
35	Brian Steele	F	6-5	200	SO	1VL	Greenville, S.C./Wade Hampton School
15	Reggie Theus Jr.	F	6-6	210	FR	HS	Los Angeles, Calif./Fairfax
0	Sindarius Thornwell	G	6-5	206	FR	HS	Lancaster, S.C./Oak Hill Academy
1	Brenton Williams	G	5-11	172	SR	2VL	Kissimmee, Fla./Osceola High School/Santa Fe College

NUMERICAL

No.	Name	Pos.	Ht.	Wt.	Cl.	Exp.	Hometown/High/Last School
0	Sindarius Thornwell	G	6-5	206	FR	HS	Lancaster, S.C./Oak Hill Academy
1	Brenton Williams	G	5-11	172	SR	1VL	Kissimmee, Fla./Osceola High School/Santa Fe College
4	Tyrone Johnson	G	6-3	194	JR	1VL	Plainfield, N.J./Montrose Christian School/Villanova
5	Jaylen Shaw	G	6-0	182	FR	HS	Hartsville, S.C./Hartsville
10	Duane Notice	G	6-2	221	FR	HS	Woodbridge, Canada/St. Thomas More (Oakdale, Conn.)
12	Austin Constable	G	5-11	180	SO	HS	West Chester, Pa./Henderson
14	Laimonas Chatkevicius	F	6-11	250	SO	HS	Klaipeda, Lithuania/South Kent School
15	Reggie Theus Jr.	F	6-6	210	FR	HS	Los Angeles, Calif./Fairfax
20	Justin McKie	G	6-4	195	FR	HS	Columbia, S.C./Irmo
21	Demetrius Henry	F/C	6-9	215	FR	HS	Miami, Fla./Faith Baptist Christian School
23	Bruce Ellington	G	5-9	196	SR	2VL	Moncks Corner, S.C./Berkeley
24	Michael Carrera	F	6-5	214	SO	HS	Anzoátegui, Venezuela/Montrose Christian School
25	Mindaugas Kacinas	F	6-7	210	SO	HS	Klaipeda, Lithuania/Word of Life Fire Traditional School
32	Desmond Ringer	F/C	6-9	255	FR	HS	McDonough, Ga./Eagle's Landing
35	Brian Steele	F	6-5	200	SO	HS	Greenville, S.C./Wade Hampton School
45	Carlton Geathers	F	6-10	255	RS JR	1VL	Georgetown, S.C./Carvers Bay

Head Coach: Frank Martin (Florida International, '93)

Associate Head Coach/Recruiting Coordinator: Matt Figger (Eastern Kentucky, '95)

Assistant Coach: Perry Clark (Gettysburg, '74)

Assistant Coach: Lamont Evans (Kansas State, '09)

Director of Basketball Operations: Andy Assaley (Cincinnati, '96)

Strength & Conditioning Coach: Scott Greenawalt (Muskingum College, '98)

Athletic Trainer: Mark Rodger (Buffalo, '01)

Video Coordinator: Dylan Lockwood (Cazenovia, '05)

Graduate Student Manager/Student-Athlete Development: Doug Edwards (Florida State, '07)

TOP RETURNING...

Scorer	Williams, 11.0 ppg
Rebounder	Carrera, 7.2 rpg
Assist Maker	Ellington, 2.7 apg
FG Shooter	Kacinas, 51.8%
3-Point FG Shooter	Williams, 39.7%
FT Shooter	Williams, 84.2%
Shot Blocker	Carrera, 0.6 bpg
Steal Maker	Ellington, 1.3 spg

RADIO/TV SPOT CHART



#0

SINDARIUS THORNWELL

Fr. - G - 6-5 - 206
Lancaster, S.C.
Oak Hill Academy



#1

BRENTON WILLIAMS

Sr. - G - 5-11 - 172
Kissimmee, Fla.
Santa Fe College



#4

TYRONE JOHNSON

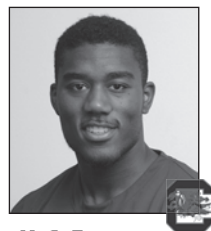
Jr. - G - 6-3 - 194
Plainfield, N.J.
Montrose Christian/
Villanova



#5

JAYLEN SHAW

Fr. - G - 6-0 - 182
Hartsville, S.C.
Hartsville



#10

DUANE NOTICE

Fr. - G - 6-2 - 221
Woodbridge, Ontario
St. Thomas More
(Oakdale, Conn.)



#12

AUSTIN CONSTABLE

So. - G - 5-11 - 180
West Chester, Pa.
Henderson



#14

LAIMONAS CHATKEVICIUS

So. - F - 6-11 - 250
Klaipeda, Lithuania
South Kent School
(South Kent, Conn.)



#15

REGGIE THEUS JR.

Fr. - F - 6-6 - 210
Los Angeles, Calif.
Fairfax



#20

JUSTIN MCKIE

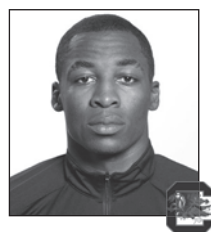
Fr. - G - 6-4 - 195
Columbia, S.C.
Irmo



#21

DEMETRIUS HENRY

Fr. - F - 6-9 - 215
Miami, Fla.
Faith Baptist Christian
School



#23

BRUCE ELLINGTON

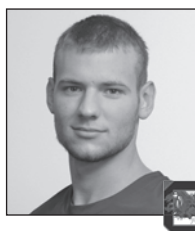
Sr. - G - 5-9 - 196
Moncks Corner, S.C.
Berkeley



#24

MICHAEL CARRERA

So. - F - 6-5 - 214
Anzoátegui, Venezuela
Montrose Christian School



#25

MINDAUGAS KACINAS

So. - F - 6-7 - 210
Klaipeda, Lithuania
Word of Life Fire
Traditional School



#32

DESMOND RINGER

Fr. - F - 6-9 - 255
McDonough, Ga.
Eagle's Landing



#35

BRIAN STEELE

So. - F - 6-5 - 200
Greenville, S.C.
Wade Hampton School



#45

CARLTON GEATHERS

R-Jr. - F - 6-10 - 255
Georgetown, S.C.
Carvers Bay



FRANK MARTIN
Head Coach



MATT FIGGER
Assoc. Head Coach/
Recruiting Coordinator



PERRY CLARK
Assistant Coach



LAMONT EVANS
Assistant Coach



ANDY ASSALEY
Director of Basketball
Operations



SCOTT GREENAWALT
Strength & Conditioning
Coach



MARK RODGER
Athletic Trainer



DOUG EDWARDS
Student-Athlete
Development



DYLAN LOCKWOOD
Video Coordinator



EMILY FEENEY
Associate Director
Media Relations

GAMECOCKS RECORD WHEN ...

At home	2-0
On the road	0-3
At neutral sites	0-0
In overtime	0-0
vs. Top 25 team	0-2
vs. Top 10 team	0-1
vs. Top 3 team	0-0
Leading at half	1-1
Trailing at half	1-2
Tied at half	0-0
Shooting 50% or better	1-0
Shooting between 39-49%	1-1
Shooting less than 39%	0-2
Opp. shooting 50% or better	0-0
Opp. shooting between 39-49%	1-2
Opp. shooting less than 39%	1-1
Shooting better than opp.	2-0
Shooting worse then/equal to opp.	0-3
Starters out-score opp. starters	1-2
Opp. starters score/equal more	1-1
Bench out-scores opp. bench	2-1
Opp. bench scores/equals more	0-2
Having more FTs than opp.	1-0
Having equal/less FTs than opp.	1-3
Have more TOs than opp.	1-2
Having equal/less TOs than opp.	1-1
Having more rebounds than opp.	2-2
Having equal/less rebounds than opp.	0-1
Making 6 or more 3FGs	2-1
Having 15 or more assists	1-0
Having less than 15 assists	1-3
Score more points in paint than opp.	2-2
Scoring equal/less points in paint than opp.	0-1
Scoring more points off TOs than opp.	2-1
Scoring equal/less points off TOs than opp.	0-2
Scoring more 2nd-chance points than opp.	2-1
Scoring equal/less 2nd-chance points than opp.	0-2
Scoring more fast break points than opp.	2-1
Scoring equal/less fast break points than opp.	0-2
Wearing white uniforms	2-0
Wearing Garnet uniforms	0-1
Wearing Black uniforms	0-2
Wearing Gray Uniforms	0-0
Playing on live TV	1-2
Playing in November	2-2
Playing in December	0-1
Playing in January	0-0
Playing in February	0-0
Playing in March	0-0
Playing a day-game	2-1
Playing a night-game	0-2
Playing on Sunday	1-1
Playing on a Monday	0-0
Playing on a Tuesday	0-1
Playing on a Wednesday	0-0
Playing on a Thursday	0-0
Playing on a Friday	0-1
Playing on a Saturday	1-0
Scoring margin is 5 points or less	0-1
Margin is between 6-10	0-0
Margin is between 11-20	1-1
Margin is more than 20	1-1
Scoring 59 points or less	0-2
Scoring 60-69 points	0-1
Scoring 70-79 points	0-0
Scoring 80-89 points	2-0
Scoring 90-99 points	0-0
Scoring 100+ points	0-0

MISCELLANEOUS

Current streak	L1
Home court streak	W2
Away streak	L3
Neutral court streak	-

2013-14 SUPERLATIVES

(tied for team lead also included)

Scoring Leaders	'13-14	Career
Tyrone Johnson	2*	2*
Sindarius Thornwell	1	1
Mindaugas Kacinas	1	1
Jaylen Shaw	1	1

Rebounding Leaders	'13-14	Career
Mindaugas Kacinas	3	6
Michael Carrera	2	15

Assists Leaders	'13-14	Career
Duane Notice	2	2
Tyrone Johnson	4*	4*
Jaylen Shaw	1	1

Blocks Leaders	'13-14	Career
Michael Carrera	2	11
Sindarius Thornwell	1	1
Mindaugas Kacinas	1	7
Demetrius Henry	3	3
Laimonas Chatkevicius	1	6

Steals Leaders	'13-14	Career
Michael Carrera	3	6
Sindarius Thornwell	2	2
Brenton Williams	1	12
Mindaugas Kacinas	1	4
Bruce Ellington	1	25

Double-Figure Scoring	'13-14	Career
Tyrone Johnson	3*	3*
Sindarius Thornwell	3	3
Brenton Williams	3	26
Michael Carrera	1	13
Mindaugas Kacinas	1	6
Demetrius Henry	1	1
Jaylen Shaw	2	2

20+ points	'13-14	Career
Sindarius Thornwell	1	1

30+ points	'13-14	Career
-		

Double-Figure Rebounding	'13-14	Career
Mindaugas Kacinas	2	5

5+ assists	'13-14	Career
Tyrone Johnson	2*	2*
Jaylen Shaw	1	1

3+ steals	'13-14	Career
Sindarius Thornwell	1	1

2+ blocks	'13-14	Career
Mindaugas Kacinas	1	6
Michael Carrera	2	7
Sindarius Thornwell	1	1
Demetrius Henry	2	2

Double-Doubles	'13-14	Career
Mindaugas Kacinas	1	2

Clutch Free Throws (under 5 min/OT)

Demetrius Henry	0-2	.000
Tyrone Johnson	7-8	.875
Brenton Williams	6-6	1.000
Michael Carrera	0-1	.000
Bruce Ellington	2-2	1.000
Mindaugas Kacinas	1-1	1.000
Justin McKie	1-2	.500
Jaylen Shaw	2-2	1.000
Totals	19-24	.792

* indicates at South Carolina

Miscellaneous

Largest Halftime Lead	
SC	22, vs. Longwood (Nov. 9, 2013)
Opp	24, Oklahoma State (Dec. 6, 2013)
Smallest Halftime Lead	
SC	1, at Baylor (Nov. 12, 2013)
Opp	3, FIU (Nov. 24, 2013)
Fewest Points In First Half	
SC	15, vs. Oklahoma State (Dec. 6, 2013)
Opp	15, Longwood (Nov. 9, 2013)
Most Points In First Half	
SC	39, twice, last vs. FIU (Nov. 24, 2013)
Opp	42, FIU (Nov. 24, 2013)
Most Points In Second Half	
SC	45, twice, last vs. FIU (Nov. 24, 2013)
Opp	40, Oklahoma State (Dec. 6, 2013)
Fewest Points In Second Half	
SC	25, at Baylor (Nov. 12, 2013)
Opp	28, Baylor (Nov. 12, 2013)
Most Points in Overtime	
SC	-
Opp	-
Largest Margin of Victory	
SC	38, vs. Longwood (Nov. 9, 2013)
Opp	27, Oklahoma State (Dec. 6, 2013)
Smallest Margin of Victory	
SC	12, vs. FIU (Nov. 24, 2013)
Opp	2, Baylor (Nov. 12, 2013)

2013-14 GAME BY GAME COMPARISON

	Date	Result	FG-A	Pct	3FG-A	Pct	FT-A	Pct	O-D-Total	PF	Pts	A	TO	Blk	Stl	Min	Half
Longwood			13-57	.228	4-22	.182	14-22	.636	9-18-27	19	44	7	13	0	9	200	15
South Carolina	Nov. 9, 2013	W, 82-44	28-57	.491	6-20	.300	20-24	.833	12-38-50	18	82	13	15	8	5	200	37
Baylor			19-50	.380	6-17	.353	22-41	.537	18-28-46	26	66	12	15	6	4	200	38
South Carolina	Nov. 12, 2013	L, 64-66	18-50	.360	3-8	.375	25-36	.694	11-24-35	29	64	14	8	4	9	200	39
Clemson			21-48	.438	5-14	.357	24-26	.923	7-26-33	20	71	14	12	12	8	200	35
South Carolina	Nov. 17, 2013	L, 57-71	23-65	.354	1-10	.110	10-18	.556	21-20-41	21	57	7	13	2	6	200	26
FIU			24-50	.480	6-16	.375	18-21	.857	7-20-27	18	72	13	16	3	9	200	42
South Carolina	Nov. 24, 2013	W, 84-72	30-59	.508	8-19	.421	16-21	.762	12-19-31	15	84	19	13	3	5	200	39
Oklahoma State			25-56	.446	5-22	.227	24-32	.750	14-18-32	17	79	13	7	4	10	200	39
South Carolina	Dec. 6, 2013	L, 52-79	16-45	.356	6-11	.545	14-22	.636	14-22-36	26	52	10	24	4	3	200	15

2013-14 RESULTS: OVERALL, 2-3; HOME, 2-0; AWAY, 0-3; NEUTRAL, 0-0; SEC, 0-0

DATE	OPPONENT	W/L	SCORE	RECORD (SEC)	POINTS	REBOUNDS	ASSISTS	BLOCKS	STEALS	ATTENDANCE
Nov. 9	Longwood	W	82-44	1-0 (0-0)	Johnson (18)	Kacinas (14)	Notice (4)	3 with 2	Carrera (2)	8,536 (paid)
Nov. 12	at No. 23/25 Baylor	L	64-66	1-1 (0-0)	Thornwell (20)	Carrera (7)	Johnson (8)	Henry (2)	Thornwell (3)	5,706
Nov. 17	at Clemson	L	71-57	1-2 (0-0)	Kacinas (13)	Kacinas (12)	Johnson/Notice (2)	Henry/Chatkevicius (1)	Thornwell/Carrera (2)	7,283
Nov. 24	FIU	W	84-72	2-2 (0-0)	Johnson (18)	Kacinas (9)	Johnson (7)	Carrera (2)	Williams (2)	9,869 (paid)
Dec. 6	at No. 9/11 Okla. St.	L	79-52	2-3 (0-0)	Shaw (13)	Carrera (7)	Johnson/Shaw (3)	Henry (2)	3 with 1	13,611

2013-14 STARTING LINEUP WIN-LOSS

Guard	Guard	Guard/Forward	Forward	Forward	2013-14	Games
Johnson	Thornwell	Notice (g)	Henry	Kacinas	1-1	2
Johnson	Thornwell	Carrera (f)	Henry	Kacinas	1-2	3

2013-14 GAME-BY-GAME STARTING LINEUPS

OPPONENT, RESULT	GUARD	GUARD	FORWARD / GUARD	FORWARD	FORWARD
Longwood, W	Notice	Johnson	Thornwell (g)	Henry	Kacinas
@Baylor, L	Johnson	Thornwell	Carrera (f)	Henry	Kacinas
@Clemson, L	Johnson	Thornwell	Notice (g)	Henry	Kacinas
FIU, W	Johnson	Thornwell	Carrera (f)	Henry	Kacinas
@Okla. St.	Johnson	Thornwell	Carrera (f)	Henry	Kacinas
Manhattan					
USC Upstate					
vs. Saint Mary's					
vs. TBA					
vs. TBA					
Akron					
Marshall					
SC State					
@Florida					
LSU					
@Texas A&M					
Ole Miss					
@Georgia					
@Missouri					
Texas A&M					
@Ole Miss					
Auburn					
@Tennessee					
Vanderbilt					
Alabama					
@Arkansas					
Georgia					
@Auburn					
Kentucky					
Florida					
@Miss. St.					
SEC Tourney					
NCAA Tourney					



#23 - BRUCE ELLINGTON

SENIOR | GUARD | 5'9" | 196 | 3VL

MONCKS CORNER, S.C./BERKELEY

ELLINGTON'S CAREER HIGHS

POINTS

31, at Furman (Dec. 22, 2010)

FIELD GOALS

11, at Furman (Dec. 22, 2010)

FIELD GOAL ATTEMPTS

23, at Furman (Dec. 22, 2010)

3-POINT FIELD GOALS

6, twice, last vs. Vanderbilt (Jan. 8, 2011)

3-POINT FIELD GOAL ATTEMPTS

13, twice, last vs. Tennessee (Feb. 16, 2011)

FREE THROWS

7, twice, last vs. Kentucky (Feb. 5, 2013)

FREE THROW ATTEMPTS

11, vs. Arkansas (Jan. 19, 2011)

REBOUNDS

9, vs. Missouri (Jan. 22, 2013)

ASSISTS

8, vs. WKU (Nov. 27, 2010)

BLOCKS

2, vs. LSU (Feb. 14, 2013)

STEALS

4, at Michigan State (Nov. 16, 2010)

MINUTES PLAYED

46, vs. WKU (Nov. 27, 2010)

ELLINGTON'S SEASON HIGHS

POINTS

2, at Oklahoma State (Dec. 6, 2013)

FIELD GOALS

-

FIELD GOAL ATTEMPTS

2, at Oklahoma State (Dec. 6, 2013)

3-POINT FIELD GOALS

-

3-POINT FIELD GOAL ATTEMPTS

1, at Oklahoma State (Dec. 6, 2013)

FREE THROWS

2, at Oklahoma State (Dec. 6, 2013)

FREE THROW ATTEMPTS

2, at Oklahoma State (Dec. 6, 2013)

REBOUNDS

1, at Oklahoma State (Dec. 6, 2013)

ASSISTS

1, at Oklahoma State (Dec. 6, 2013)

BLOCKS

-

STEALS

1, at Oklahoma State (Dec. 6, 2013)

MINUTES PLAYED

17, at Oklahoma State (Dec. 6, 2013)

2013-14

Opponent	Date	GS	Min	FG-FGA	Pct	3FG-FGA	Pct	FT-FTA	Pct	Off	Def	Tot	Avg	PF	FO	A	TO	Blk	Stl	Pts	Avg	
Longwood	11/9/13	-	-	-	-	-	-	-	-	-	-	-	-	-	-	-	-	-	-	-	-	-
at Baylor	11/12/13	-	-	-	-	-	-	-	-	-	-	-	-	-	-	-	-	-	-	-	-	-
at Clemson	11/17/13	-	-	-	-	-	-	-	-	-	-	-	-	-	-	-	-	-	-	-	-	-
Fla. International	11/24/13	-	-	-	-	-	-	-	-	-	-	-	-	-	-	-	-	-	-	-	-	-
at Oklahoma St.	12/6/13	17	0-2	.000	0-1	.000	2-2	1.000	1	0	1	1.0	2	0	1	1	0	1	2	2.0		
Manhattan	12/17/13																					
USC Upstate	12/19/13																					
vs. Saint Mary's	12/22/13																					
vs. Boise/Hawaii	12/23/13																					
vs. TBA	12/25/13																					
Akron	12/28/13																					
Marshall	12/30/13																					
SC State	1/3/14																					
at Florida	1/8/14																					
LSU	1/11/14																					
at Texas A&M	1/15/14																					
Ole Miss	1/18/14																					
at Georgia	1/22/14																					
at Missouri	1/25/14																					
Texas A&M	1/29/14																					
at Ole Miss	2/1/14																					
Auburn	2/5/14																					
at Tennessee	2/8/14																					
Vanderbilt	2/12/14																					
Alabama	2/15/14																					
at Arkansas	2/19/14																					
Georgia	2/22/14																					
at Auburn	2/26/14																					
Kentucky	3/1/14																					
Florida	3/4/14																					
at Miss. State	3/8/14																					

SEASON NOTES

Joined the men's basketball squad for practice on Tuesday, Dec. 2 ... Posted two points in first contest of the season at No. 9/11 Oklahoma State (Dec. 6) ...

CAREER STATISTICS

Season	GP-GS	Min	Avg	FG	FGA	Pct	3FG	3FGA	Pct	FT	FTA	Pct	Off	Def	Tot	Avg	PF	FO	Ast	TO	Blk	Stl	Pts	Avg
2010-11	30-30	928	30.9	138	423	.326	61	198	.308	47	74	.635	25	75	100	3.3	75	0	97	87	0	31	384	12.8
2011-12	24-15	697	29.0	100	280	.357	39	118	.331	26	34	.765	18	37	55	2.3	53	0	74	54	2	16	265	11.0
2012-13	23-19	741	32.2	78	233	.335	23	82	.280	48	74	.649	16	43	59	2.6	64	2	62	66	5	29	227	9.9
2013-14	1-0	17	17.0	0	2	.000	0	1	.000	2	2	1.000	1	0	1	1.0	2	0	1	1	0	1	2	2.0
Totals	78-64	2383	30.6	316	938	.337	123	399	.308	123	184	.668	60	155	215	2.8	194	2	234	208	7	77	878	11.3

CAREER SEC STATISTICS

Season	GP-GS	Min	Avg	FG	FGA	Pct	3FG	3FGA	Pct	FT	FTA	Pct	Off	Def	Tot	Avg	PF	FO	Ast	TO	Blk	Stl	Pts	Avg
2011	16-16	500	31.3	69	237	.291	31	122	.254	23	35	.657	18	32	50	3.1	41	0	42	43	0	14	192	12.0
2012	16-14	511	31.9	72	209	.344	26	85	.306	18	24	.750	14	28	42	2.6	34	0	58	40	1	14	188	11.8
2013	18-18	606	33.7	61	191	.319	19	68	.279	34	54	.630	13	33	46	2.6	50	2	57	52	4	26	175	9.7
Totals	50-48	1617	32.3	202	637	.317	76	275	.276	75	113	.664	45	93	138	2.8	125	2	157	135	5	54	555	11.1



#1 - BRENTON WILLIAMS

SENIOR | GUARD | 5'11" | 172 | 2VL
KISSIMMEE, FLA./OSCEOLA HIGH SCHOOL/
SANTA FE COLLEGE

WILLIAMS' CAREER HIGHS

- POINTS**
38, vs. Miss. State (March 6, 2013)
- FIELD GOALS**
10, vs. Miss. State (March 6, 2013)
- FIELD GOAL ATTEMPTS**
17, vs. Miss. State (March 6, 2013)
- 3-POINT FIELD GOALS**
6, vs. Miss. State (March 6, 2013)
- 3-POINT FIELD GOAL ATTEMPTS**
11, vs. Miss. State (March 13, 2013)
- FREE THROWS**
12, vs. Miss. State (March 6, 2013)
- FREE THROW ATTEMPTS**
12, vs. Miss. State (March 6, 2013)
- REBOUNDS**
5, twice, last vs. Vandy (March 9, 2013)
- ASSISTS**
4, twice, last vs. Miss. State (March 13, 2013)
- BLOCKS**
1, 5 times, last vs. App State (Dec. 19, 2012)
- STEALS**
5, vs. Western Carolina (Nov. 11, 2011)
- MINUTES PLAYED**
38, vs. Rider (Nov. 19, 2012)

WILLIAMS' SEASON HIGHS

- POINTS**
16, vs. FIU (Nov. 24, 2013)
- FIELD GOALS**
5, vs. Longwood (Nov. 9, 2013)
- FIELD GOAL ATTEMPTS**
11, vs. Longwood (Nov. 9, 2013)
- 3-POINT FIELD GOALS**
2, 3x, last vs. FIU (Nov. 24, 2013)
- 3-POINT FIELD GOAL ATTEMPTS**
7, vs. Longwood (Nov. 9, 2013)
- FREE THROWS**
6, vs. FIU (Nov. 24, 2013)
- FREE THROW ATTEMPTS**
6, vs. FIU (Nov. 24, 2013)
- REBOUNDS**
4, vs. Longwood (Nov. 9, 2013)
- ASSISTS**
2, vs. FIU (Nov. 24, 2013)
- BLOCKS**
-
- STEALS**
2, vs. FIU (Nov. 24, 2013)
- MINUTES PLAYED**
29, at Baylor (Nov. 12, 2013)

2013-14

Opponent	Date	GS	Min	FG-FGA	Pct	3FG-FGA	Pct	FT-FTA	Pct	Off	Def	Tot	Avg	PF	FO	A	TO	Blk	Stl	Pts	Avg	
Longwood	11/9/13	22	5-11	.454	2-7	.285	2-2	1.000	0	4	4	4.0	0	0	1	0	0	0	14	14.0		
at Baylor	11/12/13	29	3-7	.428	2-5	.400	4-4	1.000	0	2	2	3.0	2	0	1	0	0	1	12	13.0		
at Clemson	11/17/13	19	0-5	.000	0-2	.000	0-0	.000	0	2	2	2.7	0	0	1	0	0	0	0	0	8.7	
Fla. International	11/24/13	18	4-8	.500	2-5	.400	6-6	1.000	1	1	2	2.5	2	0	2	2	0	2	16	10.5		
at Oklahoma St.	12/6/13	2	0-0	.000	0-0	.000	0-0	.000	0	0	0	2.0	0	0	0	0	0	0	0	0	8.4	
Manhattan	12/17/13																					
USC Upstate	12/19/13																					
vs. Saint Mary's	12/22/13																					
vs. Boise/Hawaii	12/23/13																					
vs. TBA	12/25/13																					
Akron	12/28/13																					
Marshall	12/30/13																					
SC State	1/3/14																					
at Florida	1/8/14																					
LSU	1/11/14																					
at Texas A&M	1/15/14																					
Ole Miss	1/18/14																					
at Georgia	1/22/14																					
at Missouri	1/25/14																					
Texas A&M	1/29/14																					
at Ole Miss	2/1/14																					
Auburn	2/5/14																					
at Tennessee	2/8/14																					
Vanderbilt	2/12/14																					
Alabama	2/15/14																					
at Arkansas	2/19/14																					
Georgia	2/22/14																					
at Auburn	2/26/14																					
Kentucky	3/1/14																					
Florida	3/4/14																					
at Miss. State	3/8/14																					

SEASON NOTES

Scored 10 points, hitting 7-of-8 from the free throw line in exhibition vs. USC Aiken (Nov. 3) ... Scored 14 points off the bench in season opener vs. Longwood (Nov. 9) ... Just one rebound shy of matching career high vs. the Lancers ... Posted 12 points, including a perfect 4-of-4 effort from the free throw line at Baylor (Nov. 12) ... Struggled from the floor at Clemson (Nov. 17), going 0-of-5 from the field ... Hit 4-of-8 attempts, including two 3s, and all six attempts from the free throw line for 16 points, while adding two assists and two steals vs. FIU (Nov. 24) ...

CAREER STATISTICS

Season	GP-GS	Min	Avg	FG	FGA	Pct	3FG	3FGA	Pct	FT	FTA	Pct	Off	Def	Tot	Avg	PF	FO	Ast	TO	Blk	Stl	Pts	Avg
2011-12	23-0	323	14.0	46	117	.393	26	66	.394	23	28	.821	4	15	19	0.8	27	1	13	19	2	15	141	6.1
2012-13	31-7	652	21.0	105	238	.441	50	126	.397	80	95	.842	9	47	56	1.8	44	1	42	37	4	22	340	11.0
2013-14	5-0	90	18.0	12	31	.387	6	19	.316	12	12	1.000	1	9	10	2.0	4	0	5	2	0	3	42	8.4
Totals	59-7	1065	18.1	163	386	.422	82	211	.389	115	135	.852	14	71	85	1.4	75	2	60	58	6	40	523	8.9

CAREER SEC STATISTICS

Season	GP-GS	Min	Avg	FG	FGA	Pct	3FG	3FGA	Pct	FT	FTA	Pct	Off	Def	Tot	Avg	PF	FO	Ast	TO	Blk	Stl	Pts	Avg
2012	15-0	230	15.3	32	83	.386	20	50	.400	11	14	.786	4	12	16	1.1	20	1	7	10	2	7	95	6.3
2013	17-1	305	17.9	50	127	.394	25	66	.379	39	44	.886	5	24	29	1.7	22	1	20	15	0	10	164	9.6
Totals	32-1	535	16.7	82	210	.390	45	116	.388	50	58	.862	9	36	45	1.4	42	2	27	25	2	17	259	8.1



#4 - TYRONE JOHNSON

JUNIOR | GUARD | 6'3" | 194 | 1VL
PLAINFIELD, N.J./MONTROSE CHRISTIAN
SCHOOL/VILLANOVA

2013-14

Opponent	Date	GS	Min	FG-FGA	Pct	3FG-FGA	Pct	FT-FTA	Pct	Off	Def	Tot	Avg	PF	FO	A	TO	Blk	Stl	Pts	Avg
Longwood	11/9/13	*	24	6-9	.667	0-1	.000	6-7	.857	0	2	2	2.0	2	0	2	4	1	1	18	18.0
at Baylor	11/12/13	*	33	1-7	.142	0-0	.000	6-9	.667	0	4	4	3.0	2	0	8	2	0	2	8	13.0
at Clemson	11/17/13	*	32	2-11	.181	0-2	.000	1-2	.500	1	2	3	3.0	2	0	2	2	0	1	5	10.3
Fla. International	11/24/13	*	37	5-10	.500	1-2	.500	7-8	.875	0	0	0	2.3	1	0	7	1	0	1	18	12.3
at Oklahoma St.	12/6/13	*	29	4-9	.444	1-2	.500	3-4	.750	1	2	3	2.4	1	0	3	2	0	0	12	12.2
Manhattan	12/17/13																				
USC Upstate	12/19/13																				
vs. Saint Mary's	12/22/13																				
vs. Boise/Hawaii	12/23/13																				
vs. TBA	12/25/13																				
Akron	12/28/13																				
Marshall	12/30/13																				
SC State	1/3/14																				
at Florida	1/8/14																				
LSU	1/11/14																				
at Texas A&M	1/15/14																				
Ole Miss	1/18/14																				
at Georgia	1/22/14																				
at Missouri	1/25/14																				
Texas A&M	1/29/14																				
at Ole Miss	2/1/14																				
Auburn	2/5/14																				
at Tennessee	2/8/14																				
Vanderbilt	2/12/14																				
Alabama	2/15/14																				
at Arkansas	2/19/14																				
Georgia	2/22/14																				
at Auburn	2/26/14																				
Kentucky	3/1/14																				
Florida	3/4/14																				
at Miss. State	3/8/14																				

CAREER STATISTICS

Season	GP-GS	Min	Avg	FG	FGA	Pct	3FG	3FGA	Pct	FT	FTA	Pct	Off	Def	Tot	Avg	PF	FO	Ast	TO	Blk	Stl	Pts	Avg
2011-12*	32-9	567	17.7	33	106	.311	6	26	.230	35	40	.875	2	31	33	1.0	47	2	65	58	2	19	107	3.3
2012-13	DNP - Transfer																							
2013-14	5-5	155	31.0	18	46	.391	2	7	.286	23	30	.767	2	10	12	2.4	8	0	22	11	1	5	61	12.2
Totals	37-14	722	19.5	51	152	.335	8	33	.242	58	70	.828	4	41	45	1.2	55	2	87	69	3	24	168	4.5

* indicates at Villanova

JOHNSON'S CAREER HIGHS

POINTS

18, twice, last vs. FIU (Nov. 24, 2013)

FIELD GOALS

6, vs. Longwood (Nov. 9, 2013)

FIELD GOAL ATTEMPTS

13, vs. Notre Dame (Feb. 18, 2012)

3-POINT FIELD GOALS

2, vs. Syracuse (Jan. 11, 2012)

3-POINT FIELD GOAL ATTEMPTS

3, twice, last vs. Notre Dame (Feb. 18, 2012)

FREE THROWS

7, vs. FIU (Nov. 24, 2013)

FREE THROW ATTEMPTS

8, vs. FIU (Nov. 24, 2013)

REBOUNDS

5, twice, last vs. Syracuse (Jan. 22, 2012)

ASSISTS

8, at Baylor (Nov. 12, 2013)

BLOCKS

1, 3x, vs. Longwood (Nov. 9, 2013)

STEALS

4, vs. USF (Feb. 15, 2012)

MINUTES PLAYED

41, vs. UCONN (Feb. 20, 2012)

JOHNSON'S SEASON HIGHS

POINTS

18, twice, last vs. FIU (Nov. 24, 2013)

FIELD GOALS

6, vs. Longwood (Nov. 9, 2013)

FIELD GOAL ATTEMPTS

11, at Clemson (Nov. 13, 2013)

3-POINT FIELD GOALS

1, twice, last at Oklahoma State (Dec. 6, 2013)

3-POINT FIELD GOAL ATTEMPTS

2, 3x, last at Oklahoma State (Dec. 6, 2013)

FREE THROWS

7, vs. FIU (Nov. 24, 2013)

FREE THROW ATTEMPTS

9, at Baylor (Nov. 12, 2013)

REBOUNDS

4, at Baylor (Nov. 12, 2013)

ASSISTS

8, at Baylor (Nov. 12, 2013)

BLOCKS

1, vs. Longwood (Nov. 9, 2013)

STEALS

2, at Baylor (Nov. 12, 2013)

MINUTES PLAYED

37, vs. FIU (Nov. 24, 2013)

SEASON NOTES

Semester transfer from Villanova ... Received waiver from NCAA on Nov. 8 to play effective immediately ... Scored a game high 18 points on 6-of-9 shooting and a 6-of-7 effort from the free throw line in season opener vs. Longwood (Nov. 9), which was first regular season competition since the 2011-12 campaign at Villanova ... Struggled from the floor, hitting just 1-of-7 attempts, but dished a career high eight assists at Baylor (Nov. 12) ... Struggled from the floor at Clemson (Nov. 17), hitting just 2-of-11 attempts ... Matched career high with 18 points, hitting 7-of-8 from the free throw line, and nearly matching career high with seven assists in win vs. FIU (Nov. 24) ... Posted 12 points and three assists at No. 9/11 Oklahoma State (Dec. 6) ...



#24 - MICHAEL CARRERA

SOPHOMORE | FORWARD | 6'5" | 214 | 1VL
ANZOÁTEGUI, VENEZUELA/MONTROSE CHRISTIAN

CARRERA'S CAREER HIGHS

POINTS

23, vs. LSU (Jan. 16, 2013)

FIELD GOALS

7, vs. LSU (Jan. 16, 2013)

FIELD GOAL ATTEMPTS

13, twice, last vs. Texas A&M (March 2, 2013)

3-POINT FIELD GOALS

2, 3x, last vs. Longwood (Nov. 9, 2013)

3-POINT FIELD GOAL ATTEMPTS

5, vs. Longwood (Nov. 9, 2013)

FREE THROWS

9, vs. LSU (Jan. 16, 2013)

FREE THROW ATTEMPTS

10, vs. LSU (Jan. 16, 2013)

REBOUNDS

15, vs. Milwaukee (Nov. 1, 2012)

ASSISTS

5, vs. Auburn (Jan. 12, 2013)

BLOCKS

3, twice, last vs. Ole Miss (Feb. 20, 2013)

STEALS

3, vs. Georgia (Feb. 2, 2013)

MINUTES PLAYED

36, vs. LSU (Jan. 16, 2013)

CARRERA'S SEASON HIGHS

POINTS

12, vs. Longwood (Nov. 9, 2013)

FIELD GOALS

4, twice, last at Clemson (Nov. 13, 2013)

FIELD GOAL ATTEMPTS

9, at Clemson (Nov. 13, 2013)

3-POINT FIELD GOALS

2, vs. Longwood (Nov. 9, 2013)

3-POINT FIELD GOAL ATTEMPTS

5, vs. Longwood (Nov. 9, 2013)

FREE THROWS

6, at Baylor (Nov. 12, 2013)

FREE THROW ATTEMPTS

6, at Baylor (Nov. 12, 2013)

REBOUNDS

9, vs. Longwood (Nov. 9, 2013)

ASSISTS

2, at Baylor (Nov. 12, 2013)

BLOCKS

2, twice, last vs. FIU (Nov. 24, 2013)

STEALS

2, twice, last at Clemson (Nov. 13, 2013)

MINUTES PLAYED

25, vs. Longwood (Nov. 9, 2013)

2013-14

Opponent	Date	GS	Min	FG-FGA	Pct	3FG-FGA	Pct	FT-FTA	Pct	Off	Def	Tot	Avg	Pf	FO	A	TO	Blk	Stl	Pts	Avg
Longwood	11/9/13		25	4-7	.571	2-5	.400	2-4	.500	2	7	9	9.0	3	0	1	0	2	2	12	12.0
at Baylor	11/12/13	*	23	1-5	.200	0-1	.000	6-6	1.000	4	3	7	8.0	4	0	2	0	1	0	8	10.0
at Clemson	11/17/13		21	4-9	.444	0-2	.000	1-3	.333	1	1	2	6.0	1	0	0	1	0	2	9	9.7
Fla. International	11/24/13	*	22	1-6	.167	1-4	.250	0-1	.000	1	4	5	5.8	0	0	0	2	2	1	3	8.0
at Oklahoma St.	12/6/13	*	17	0-4	.000	0-0	.000	1-2	.500	3	4	7	6.0	2	0	0	6	1	1	1	6.6
Manhattan	12/17/13																				
USC Upstate	12/19/13																				
vs. Saint Mary's	12/22/13																				
vs. Boise/Hawaii	12/23/13																				
vs. TBA	12/25/13																				
Akron	12/28/13																				
Marshall	12/30/13																				
SC State	1/3/14																				
at Florida	1/8/14																				
LSU	1/11/14																				
at Texas A&M	1/15/14																				
Ole Miss	1/18/14																				
at Georgia	1/22/14																				
at Missouri	1/25/14																				
Texas A&M	1/29/14																				
at Ole Miss	2/1/14																				
Auburn	2/5/14																				
at Tennessee	2/8/14																				
Vanderbilt	2/12/14																				
Alabama	2/15/14																				
at Arkansas	2/19/14																				
Georgia	2/22/14																				
at Auburn	2/26/14																				
Kentucky	3/1/14																				
Florida	3/4/14																				
at Miss. State	3/8/14																				

SEASON NOTES

Scored 14 points and collected five rebounds in exhibition vs. USC Aiken (Nov. 3) ... Scored 12 points and just one rebound shy of a double-double with nine boards in season opener vs. Longwood (Nov. 9) ... Matched career high with two made 3s vs. the Lancers, also a team high two blocks and two steals ... Scored nine points off the bench at Clemson (Nov. 17), collected just two rebounds ... Blocked a team high two shots vs. FIU (Nov. 24) ... Struggled at No. 9/11 Oklahoma State (Dec. 6), posting four turnovers, with one point and a team high seven rebounds ...

CAREER STATISTICS

Season	GP-GS	Min	Avg	FG	FGA	Pct	3FG	3FGA	Pct	FT	FTA	Pct	Off	Def	Tot	Avg	Pf	FO	Ast	TO	Blk	Stl	Pts	Avg
2012-13	27-22	572	21.2	89	201	.443	7	20	.350	83	112	.741	80	115	195	7.2	85	5	17	51	17	9	268	9.9
2013-14	5-3	108	21.6	10	31	.323	3	12	.250	10	16	.625	11	19	30	6.0	10	0	3	9	6	6	33	6.6
Totals	32-25	680	21.3	99	232	.427	10	32	.313	93	128	.727	91	134	225	7.0	95	5	20	60	23	15	301	9.4

CAREER SEC STATISTICS

Season	GP-GS	Min	Avg	FG	FGA	Pct	3FG	3FGA	Pct	FT	FTA	Pct	Off	Def	Tot	Avg	Pf	FO	Ast	TO	Blk	Stl	Pts	Avg
2013	18-15	394	21.9	59	139	.424	5	15	.333	53	74	.716	54	77	131	7.3	57	4	11	32	8	8	176	9.8



#14 - LAIMONAS CHATKEVICIUS

SO. | FORWARD | 6'11" | 250 | 1VL
 KLAIPEDA, LITHUANIA/SOUTH KENT SCHOOL
 (CONN.)

CHATKEVICIUS' CAREER HIGHS

POINTS
 11, twice, last vs. Miss. State (March 13, 2013)

FIELD GOALS
 5, vs. Miss. State (March 13, 2013)

FIELD GOAL ATTEMPTS
 9, vs. Miss. State (March 13, 2013)

3-POINT FIELD GOALS
 1, 3x, last vs. Vandy (March 9, 2013)

3-POINT FIELD GOAL ATTEMPTS
 2, twice, last vs. Miss. State (March 13, 2013)

FREE THROWS
 4, vs. Missouri (Jan. 22, 2013)

FREE THROW ATTEMPTS
 7, vs. Alabama (Feb. 16, 2013)

REBOUNDS
 10, vs. Georgia (Feb. 23, 2013)

ASSISTS
 4, vs. Jacksonville (Dec. 7, 2012)

BLOCKS
 3, vs. Georgia (Feb. 23, 2013)

STEALS
 1, 3 times, last vs. Miss. St (March 13, 2013)

MINUTES PLAYED
 34, vs. Georgia (Feb. 23, 2013)

CHATKEVICIUS' SEASON HIGHS

POINTS
 4, at Clemson (Nov. 13, 2013)

FIELD GOALS
 2, at Clemson (Nov. 13, 2013)

FIELD GOAL ATTEMPTS
 3, twice, last at Clemson (Nov. 13, 2013)

3-POINT FIELD GOALS
 -

3-POINT FIELD GOAL ATTEMPTS
 -

FREE THROWS
 -

FREE THROW ATTEMPTS
 -

REBOUNDS
 4, vs. Longwood (Nov. 9, 2013)

ASSISTS
 1, at Oklahoma State (Dec. 6, 2013)

BLOCKS
 1, 3x, last at Clemson (Nov. 13, 2013)

STEALS
 1, at Baylor (Nov. 12, 2013)

MINUTES PLAYED
 14, at Baylor (Nov. 12, 2013)

2013-14

Opponent	Date	GS	Min	FG-FGA	Pct	3FG-FGA	Pct	FT-FTA	Pct	Off	Def	Tot	Avg	PF	FO	A	TO	Blk	Stl	Pts	Avg
Longwood	11/9/13	8	1-1	1.000	0-0	.000	0-0	.000	1	3	4	4.0	0	0	0	0	1	0	2	2.0	
at Baylor	11/12/13	14	1-3	.333	0-0	.000	0-0	.000	0	2	2	3.0	2	0	0	1	1	1	2	2.0	
at Clemson	11/17/13	10	2-3	.667	0-0	.000	0-0	.000	2	0	2	2.7	3	0	0	1	1	0	4	2.7	
Fla. International	11/24/13	-	-	-	-	-	-	-	-	-	-	-	-	-	-	-	-	-	-	-	-
at Oklahoma St.	12/6/13	6	0-0	.000	0-0	.000	0-0	.000	0	1	1	2.3	0	0	1	0	0	0	0	2.0	
Manhattan	12/17/13																				
USC Upstate	12/19/13																				
vs. Saint Mary's	12/22/13																				
vs. Boise/Hawaii	12/23/13																				
vs. TBA	12/25/13																				
Akron	12/28/13																				
Marshall	12/30/13																				
SC State	1/3/14																				
at Florida	1/8/14																				
LSU	1/11/14																				
at Texas A&M	1/15/14																				
Ole Miss	1/18/14																				
at Georgia	1/22/14																				
at Missouri	1/25/14																				
Texas A&M	1/29/14																				
at Ole Miss	2/1/14																				
Auburn	2/5/14																				
at Tennessee	2/8/14																				
Vanderbilt	2/12/14																				
Alabama	2/15/14																				
at Arkansas	2/19/14																				
Georgia	2/22/14																				
at Auburn	2/26/14																				
Kentucky	3/1/14																				
Florida	3/4/14																				
at Miss. State	3/8/14																				

SEASON NOTES

Posted a double-double with 10 points and 11 rebounds in exhibition contest vs. USC Aiken (Nov. 3) ... Scored his only attempt and blocked one shot in season opener vs. Longwood (Nov. 9) ... Scored two points and pulled down two rebounds, with one block and a steal at Baylor (Nov. 12) ... Scored four points, hitting 2-of-3 attempts at Clemson (Nov. 17) ...

CAREER STATISTICS

Season	GP-GS	Min	Avg	FG	FGA	Pct	3FG	3FGA	Pct	FT	FTA	Pct	Off	Def	Tot	Avg	PF	FO	Ast	TO	Blk	Stl	Pts	Avg
2012-13	23-10	304	13.2	38	85	.447	3	10	.300	22	36	.611	28	46	74	3.2	42	1	12	32	13	3	101	4.4
2013-14	4-0	38	9.5	4	7	.571	0	0	.000	0	0	.000	3	6	9	2.3	5	0	1	2	3	1	8	2.0
Totals	27-10	342	12.7	42	92	.457	3	10	.300	22	36	.611	31	52	83	3.1	47	1	13	34	16	4	109	4.0

CAREER SEC STATISTICS

Season	GP-GS	Min	Avg	FG	FGA	Pct	3FG	3FGA	Pct	FT	FTA	Pct	Off	Def	Tot	Avg	PF	FO	Ast	TO	Blk	Stl	Pts	Avg
2013	15-10	213	14.2	23	59	.390	2	7	.286	19	28	.679	17	35	52	3.5	30	1	5	22	11	2	67	4.5



#12 - AUSTIN CONSTABLE

SOPHOMORE | GUARD | 5'11" | 180 | 1VL

WEST CHESTER, PA./HENDERSON

CONSTABLE'S CAREER HIGHS

POINTS	-
FIELD GOALS	-
FIELD GOAL ATTEMPTS	2, vs. Presbyterian (Dec. 29, 2012)
3-POINT FIELD GOALS	-
3-POINT FIELD GOAL ATTEMPTS	1, vs. Presbyterian (Dec. 29, 2012)
FREE THROWS	-
FREE THROW ATTEMPTS	-
REBOUNDS	-
ASSISTS	-
BLOCKS	-
STEALS	-
MINUTES PLAYED	2, vs. Presbyterian (Dec. 29, 2012)

CONSTABLE'S SEASON HIGHS

POINTS	-
FIELD GOALS	-
FIELD GOAL ATTEMPTS	-
3-POINT FIELD GOALS	-
3-POINT FIELD GOAL ATTEMPTS	-
FREE THROWS	-
FREE THROW ATTEMPTS	-
REBOUNDS	-
ASSISTS	-
BLOCKS	-
STEALS	-
MINUTES PLAYED	-

2013-14

Opponent	Date	GS	Min	FG-FGA	Pct	3FG-FGA	Pct	FT-FTA	Pct	Off	Def	Tot	Avg	PF	FO	A	TO	Blk	Stl	Pts	Avg	
Longwood	11/9/13	-	-	-	-	-	-	-	-	-	-	-	-	-	-	-	-	-	-	-	-	-
at Baylor	11/12/13	-	-	-	-	-	-	-	-	-	-	-	-	-	-	-	-	-	-	-	-	-
at Clemson	11/17/13	-	-	-	-	-	-	-	-	-	-	-	-	-	-	-	-	-	-	-	-	-
Fla. International	11/24/13	-	-	-	-	-	-	-	-	-	-	-	-	-	-	-	-	-	-	-	-	-
at Oklahoma St.	12/6/13	-	-	-	-	-	-	-	-	-	-	-	-	-	-	-	-	-	-	-	-	-
Manhattan	12/17/13	-	-	-	-	-	-	-	-	-	-	-	-	-	-	-	-	-	-	-	-	-
USC Upstate	12/19/13	-	-	-	-	-	-	-	-	-	-	-	-	-	-	-	-	-	-	-	-	-
vs. Saint Mary's	12/22/13	-	-	-	-	-	-	-	-	-	-	-	-	-	-	-	-	-	-	-	-	-
vs. Boise/Hawaii	12/23/13	-	-	-	-	-	-	-	-	-	-	-	-	-	-	-	-	-	-	-	-	-
vs. TBA	12/25/13	-	-	-	-	-	-	-	-	-	-	-	-	-	-	-	-	-	-	-	-	-
Akron	12/28/13	-	-	-	-	-	-	-	-	-	-	-	-	-	-	-	-	-	-	-	-	-
Marshall	12/30/13	-	-	-	-	-	-	-	-	-	-	-	-	-	-	-	-	-	-	-	-	-
SC State	1/3/14	-	-	-	-	-	-	-	-	-	-	-	-	-	-	-	-	-	-	-	-	-
at Florida	1/8/14	-	-	-	-	-	-	-	-	-	-	-	-	-	-	-	-	-	-	-	-	-
LSU	1/11/14	-	-	-	-	-	-	-	-	-	-	-	-	-	-	-	-	-	-	-	-	-
at Texas A&M	1/15/14	-	-	-	-	-	-	-	-	-	-	-	-	-	-	-	-	-	-	-	-	-
Ole Miss	1/18/14	-	-	-	-	-	-	-	-	-	-	-	-	-	-	-	-	-	-	-	-	-
at Georgia	1/22/14	-	-	-	-	-	-	-	-	-	-	-	-	-	-	-	-	-	-	-	-	-
at Missouri	1/25/14	-	-	-	-	-	-	-	-	-	-	-	-	-	-	-	-	-	-	-	-	-
Texas A&M	1/29/14	-	-	-	-	-	-	-	-	-	-	-	-	-	-	-	-	-	-	-	-	-
at Ole Miss	2/1/14	-	-	-	-	-	-	-	-	-	-	-	-	-	-	-	-	-	-	-	-	-
Auburn	2/5/14	-	-	-	-	-	-	-	-	-	-	-	-	-	-	-	-	-	-	-	-	-
at Tennessee	2/8/14	-	-	-	-	-	-	-	-	-	-	-	-	-	-	-	-	-	-	-	-	-
Vanderbilt	2/12/14	-	-	-	-	-	-	-	-	-	-	-	-	-	-	-	-	-	-	-	-	-
Alabama	2/15/14	-	-	-	-	-	-	-	-	-	-	-	-	-	-	-	-	-	-	-	-	-
at Arkansas	2/19/14	-	-	-	-	-	-	-	-	-	-	-	-	-	-	-	-	-	-	-	-	-
Georgia	2/22/14	-	-	-	-	-	-	-	-	-	-	-	-	-	-	-	-	-	-	-	-	-
at Auburn	2/26/14	-	-	-	-	-	-	-	-	-	-	-	-	-	-	-	-	-	-	-	-	-
Kentucky	3/1/14	-	-	-	-	-	-	-	-	-	-	-	-	-	-	-	-	-	-	-	-	-
Florida	3/4/14	-	-	-	-	-	-	-	-	-	-	-	-	-	-	-	-	-	-	-	-	-
at Miss. State	3/8/14	-	-	-	-	-	-	-	-	-	-	-	-	-	-	-	-	-	-	-	-	-

SEASON NOTES

Has not seen game action this season.

CAREER STATISTICS

Season	GP-GS	Min	Avg	FG	FGA	Pct	3FG	3FGA	Pct	FT	FTA	Pct	Off	Def	Tot	Avg	PF	FO	Ast	TO	Blk	Stl	Pts	Avg
2012-13	4-0	6	1.5	0	2	.000	0	1	.000	0	0	.000	1	0	1	0.3	0	0	0	1	0	0	0	0.0
2013-14	-	-	-	-	-	-	-	-	-	-	-	-	-	-	-	-	-	-	-	-	-	-	-	-
Totals	4-0	6	1.5	0	2	.000	0	1	.000	0	0	.000	1	0	1	0.3	0	0	0	1	0	0	0	0.0

CAREER SEC STATISTICS

Season	GP-GS	Min	Avg	FG	FGA	Pct	3FG	3FGA	Pct	FT	FTA	Pct	Off	Def	Tot	Avg	PF	FO	Ast	TO	Blk	Stl	Pts	Avg
2013	1-0	1	1.0	0	0	.000	0	0	.000	0	0	.000	0	0	0	0.0	0	0	0	0	0	0	0	0.0



#25 - MINDAUGAS KACINAS

SOPHOMORE | FORWARD | 6'7" | 210 | 1VL
KLAIPEDA, LITHUANIA/WORD OF LIFE FIRE TRADI-
TIONAL SCHOOL

KACINAS' CAREER HIGHS

POINTS
18, vs. Rider (Nov. 19, 2012)

FIELD GOALS
8, vs. Rider (Nov. 19, 2012)

FIELD GOAL ATTEMPTS
11, 3x, last at Clemson (Nov. 13, 2013)

3-POINT FIELD GOALS
1, 3 times, last vs. Clemson (Dec. 2, 2012)

3-POINT FIELD GOAL ATTEMPTS
3, twice, last vs. App State (Dec. 19, 2012)

FREE THROWS
6, vs. Milwaukee (Nov. 11, 2012)

FREE THROW ATTEMPTS
8, vs. Milwaukee (Nov. 11, 2012)

REBOUNDS
14, vs. Longwood (Nov. 9, 2013)

ASSISTS
3, twice, last vs. App State (Dec. 19, 2012)

BLOCKS
3, vs. Appalachian State (Dec. 19, 2012)

STEALS
2, vs. UALR (Nov. 25, 2012)

MINUTES PLAYED
35, twice, last vs. FIU (Nov. 24, 2013)

KACINAS' SEASON HIGHS

POINTS
12, at Clemson (Nov. 13, 2013)

FIELD GOALS
6, at Clemson (Nov. 13, 2013)

FIELD GOAL ATTEMPTS
11, at Clemson (Nov. 13, 2013)

3-POINT FIELD GOALS
-

3-POINT FIELD GOAL ATTEMPTS
-

FREE THROWS
4, at Oklahoma State (Dec. 6, 2013)

FREE THROW ATTEMPTS
6, at Oklahoma State (Dec. 6, 2013)

REBOUNDS
14, vs. Longwood (Nov. 9, 2013)

ASSISTS
-

BLOCKS
2, vs. Longwood (Nov. 9, 2013)

STEALS
1, 3x, last at Oklahoma State (Dec. 6, 2013)

MINUTES PLAYED
35, vs. FIU (Nov. 24, 2013)

2013-14

Opponent	Date	GS	Min	FG-FGA	Pct	3FG-FGA	Pct	FT-FTA	Pct	Off	Def	Tot	Avg	PF	FO	A	TO	Blk	Stl	Pts	Avg
Longwood	11/9/13	*	29	4-6	.667	0-0	.000	0-0	.000	5	9	14	14.0	2	0	0	3	2	0	8	8.0
at Baylor	11/12/13	*	18	1-2	.500	0-0	.000	0-0	.000	1	1	2	8.0	5	1	0	1	0	1	2	5.0
at Clemson	11/17/13	*	31	6-11	.545	0-0	.000	1-2	.500	7	5	12	9.3	4	0	0	2	0	1	13	7.7
Fla. International	11/24/13	*	35	3-5	.600	0-0	.000	3-4	.750	4	5	9	9.3	2	0	0	3	0	0	9	8.0
at Oklahoma St.	12/6/13	*	32	1-4	.250	0-0	.000	4-6	.667	3	2	5	8.4	4	0	0	4	0	1	6	7.6
Manhattan	12/17/13																				
USC Upstate	12/19/13																				
vs. Saint Mary's	12/22/13																				
vs. Boise/Hawaii	12/23/13																				
vs. TBA	12/25/13																				
Akron	12/28/13																				
Marshall	12/30/13																				
SC State	1/3/14																				
at Florida	1/8/14																				
LSU	1/11/14																				
at Texas A&M	1/15/14																				
Ole Miss	1/18/14																				
at Georgia	1/22/14																				
at Missouri	1/25/14																				
Texas A&M	1/29/14																				
at Ole Miss	2/1/14																				
Auburn	2/5/14																				
at Tennessee	2/8/14																				
Vanderbilt	2/12/14																				
Alabama	2/15/14																				
at Arkansas	2/19/14																				
Georgia	2/22/14																				
at Auburn	2/26/14																				
Kentucky	3/1/14																				
Florida	3/4/14																				
at Miss. State	3/8/14																				

SEASON NOTES

Scored eight points and dished one assist in exhibition vs. USC Aiken (Nov. 3) ... Set a career high with 14 rebounds, while adding eight points and matching for a team high two blocks in contest vs. Longwood (Nov. 9) ... Also earned the start vs. the Lancers ... In foul trouble most of the game at Baylor (Nov. 12), contributed two points, two rebounds and a steal vs. the Bears ... Continues to impress on the boards, collecting a team high 12 rebounds, including seven on the offensive glass, at Clemson (Nov. 17), also posted team high 13 points for first double-double of the season and second of his career ... Near double-double with nine points and nine rebounds vs. FIU (Nov. 24) ... Scored six points, and collected five rebounds in a team high 32 minutes played at No. 9/11 Oklahoma State (Dec. 6) ...

CAREER STATISTICS

Season	GP-GS	Min	Avg	FG	FGA	Pct	3FG	3FGA	Pct	FT	FTA	Pct	Off	Def	Tot	Avg	PF	FO	Ast	TO	Blk	Stl	Pts	Avg
2012-13	31-9	606	19.5	57	110	.518	4	20	.200	34	50	.680	50	66	116	3.7	67	1	21	46	15	10	152	4.9
2013-14	5-5	145	29.0	15	28	.536	0	0	.000	8	12	.667	20	22	42	8.4	17	1	0	13	2	3	38	7.6
Totals	36-14	751	20.9	72	138	.522	4	20	.200	42	62	.677	70	88	158	4.4	84	2	21	59	17	13	190	5.3

CAREER SEC STATISTICS

Season	GP-GS	Min	Avg	FG	FGA	Pct	3FG	3FGA	Pct	FT	FTA	Pct	Off	Def	Tot	Avg	PF	FO	Ast	TO	Blk	Stl	Pts	Avg
2013	17-4	255	15.0	16	40	.400	1	7	.143	11	16	.688	14	27	41	2.4	32	0	7	18	2	4	44	2.6



#35 - BRIAN STEELE

SOPHOMORE | FORWARD | 6'5" | 200 | 1VL

GREENVILLE, S.C./WADE HAMPTON SCHOOL

STEELE'S CAREER HIGHS

POINTS

6, vs. Miss State (March 6, 2013)

FIELD GOALS

2, vs. Miss State (March 6, 2013)

FIELD GOAL ATTEMPTS

7, vs. Miss State (March 13, 2013)

3-POINT FIELD GOALS

2, vs. Miss State (March 6, 2013)

3-POINT FIELD GOAL ATTEMPTS

5, vs. Miss State (March 6, 2013)

FREE THROWS

2, vs. Presbyterian (Dec. 29, 2012)

FREE THROW ATTEMPTS

2, vs. Presbyterian (Dec. 29, 2012)

REBOUNDS

7, vs. Miss. State (March 13, 2013)

ASSISTS

3, vs. Vandy (March 9, 2013)

BLOCKS

-

STEALS

1, twice, last vs. Texas A&M (March 2, 2013)

MINUTES PLAYED

25, vs. Texas A&M (March 2, 2013)

STEELE'S SEASON HIGHS

POINTS

-

FIELD GOALS

-

FIELD GOAL ATTEMPTS

-

3-POINT FIELD GOALS

-

3-POINT FIELD GOAL ATTEMPTS

-

FREE THROWS

-

FREE THROW ATTEMPTS

-

REBOUNDS

-

ASSISTS

-

BLOCKS

-

STEALS

-

MINUTES PLAYED

1, at Clemson (Nov. 13, 2013)

2013-14

Opponent	Date	GS	Min	FG-FGA	Pct	3FG-FGA	Pct	FT-FTA	Pct	Off	Def	Tot	Avg	PF	FO	A	TO	Blk	Stl	Pts	Avg	
Longwood	11/9/13	-	-	-	-	-	-	-	-	-	-	-	-	-	-	-	-	-	-	-	-	-
at Baylor	11/12/13	-	-	-	-	-	-	-	-	-	-	-	-	-	-	-	-	-	-	-	-	-
at Clemson	11/17/13	1	0-0	.000	0-0	.000	0-0	.000	0-0	0	0	0	0.0	0	0	0	0	0	0	0	0	0.0
Fla. International	11/24/13	-	-	-	-	-	-	-	-	-	-	-	-	-	-	-	-	-	-	-	-	-
at Oklahoma St.	12/6/13	-	-	-	-	-	-	-	-	-	-	-	-	-	-	-	-	-	-	-	-	-
Manhattan	12/17/13	-	-	-	-	-	-	-	-	-	-	-	-	-	-	-	-	-	-	-	-	-
USC Upstate	12/19/13	-	-	-	-	-	-	-	-	-	-	-	-	-	-	-	-	-	-	-	-	-
vs. Saint Mary's	12/22/13	-	-	-	-	-	-	-	-	-	-	-	-	-	-	-	-	-	-	-	-	-
vs. Boise/Hawaii	12/23/13	-	-	-	-	-	-	-	-	-	-	-	-	-	-	-	-	-	-	-	-	-
vs. TBA	12/25/13	-	-	-	-	-	-	-	-	-	-	-	-	-	-	-	-	-	-	-	-	-
Akron	12/28/13	-	-	-	-	-	-	-	-	-	-	-	-	-	-	-	-	-	-	-	-	-
Marshall	12/30/13	-	-	-	-	-	-	-	-	-	-	-	-	-	-	-	-	-	-	-	-	-
SC State	1/3/14	-	-	-	-	-	-	-	-	-	-	-	-	-	-	-	-	-	-	-	-	-
at Florida	1/8/14	-	-	-	-	-	-	-	-	-	-	-	-	-	-	-	-	-	-	-	-	-
LSU	1/11/14	-	-	-	-	-	-	-	-	-	-	-	-	-	-	-	-	-	-	-	-	-
at Texas A&M	1/15/14	-	-	-	-	-	-	-	-	-	-	-	-	-	-	-	-	-	-	-	-	-
Ole Miss	1/18/14	-	-	-	-	-	-	-	-	-	-	-	-	-	-	-	-	-	-	-	-	-
at Georgia	1/22/14	-	-	-	-	-	-	-	-	-	-	-	-	-	-	-	-	-	-	-	-	-
at Missouri	1/25/14	-	-	-	-	-	-	-	-	-	-	-	-	-	-	-	-	-	-	-	-	-
Texas A&M	1/29/14	-	-	-	-	-	-	-	-	-	-	-	-	-	-	-	-	-	-	-	-	-
at Ole Miss	2/1/14	-	-	-	-	-	-	-	-	-	-	-	-	-	-	-	-	-	-	-	-	-
Auburn	2/5/14	-	-	-	-	-	-	-	-	-	-	-	-	-	-	-	-	-	-	-	-	-
at Tennessee	2/8/14	-	-	-	-	-	-	-	-	-	-	-	-	-	-	-	-	-	-	-	-	-
Vanderbilt	2/12/14	-	-	-	-	-	-	-	-	-	-	-	-	-	-	-	-	-	-	-	-	-
Alabama	2/15/14	-	-	-	-	-	-	-	-	-	-	-	-	-	-	-	-	-	-	-	-	-
at Arkansas	2/19/14	-	-	-	-	-	-	-	-	-	-	-	-	-	-	-	-	-	-	-	-	-
Georgia	2/22/14	-	-	-	-	-	-	-	-	-	-	-	-	-	-	-	-	-	-	-	-	-
at Auburn	2/26/14	-	-	-	-	-	-	-	-	-	-	-	-	-	-	-	-	-	-	-	-	-
Kentucky	3/1/14	-	-	-	-	-	-	-	-	-	-	-	-	-	-	-	-	-	-	-	-	-
Florida	3/4/14	-	-	-	-	-	-	-	-	-	-	-	-	-	-	-	-	-	-	-	-	-
at Miss. State	3/8/14	-	-	-	-	-	-	-	-	-	-	-	-	-	-	-	-	-	-	-	-	-

SEASON NOTES

Scored two points and collected one rebound in exhibition vs. USC Aiken (Nov. 3) ... Did not see action in the season opener vs. Longwood (Nov. 9) ...

CAREER STATISTICS

Season	GP-GS	Min	Avg	FG	FGA	Pct	3FG	3FGA	Pct	FT	FTA	Pct	Off	Def	Tot	Avg	PF	FO	Ast	TO	Blk	Stl	Pts	Avg
2012-13	7-4	79	11.3	5	19	.263	4	14	.286	2	3	.667	4	11	15	2.1	12	1	8	5	0	3	16	2.3
2013-14	1-0	1	1.0	0	0	.000	0	0	.000	0	0	.000	0	0	0	0.0	0	0	0	0	0	0	0	0.0
Totals	8-4	80	10.0	5	19	.263	4	14	.286	2	3	.667	4	11	15	2.1	12	1	8	5	0	3	16	2.3

CAREER SEC STATISTICS

Season	GP-GS	Min	Avg	FG	FGA	Pct	3FG	3FGA	Pct	FT	FTA	Pct	Off	Def	Tot	Avg	PF	FO	Ast	TO	Blk	Stl	Pts	Avg
2013	4-3	56	14.0	4	11	.364	4	10	.400	0	0	.000	1	6	7	1.8	10	1	6	2	0	2	12	3.0



#21 - DEMETRIUS HENRY

FRESHMAN | FORWARD | 6'9" | 215 | HS
 MIAMI, FLA./FAITH BAPTIST CHRISTIAN SCHOOL

HENRY'S SEASON HIGHS

POINTS

14, vs. FIU (Nov. 24, 2013)

FIELD GOALS

7, vs. FIU (Nov. 24, 2013)

FIELD GOAL ATTEMPTS

10, twice, last vs. FIU (Nov. 24, 2013)

3-POINT FIELD GOALS

-

3-POINT FIELD GOAL ATTEMPTS

-

FREE THROWS

2, vs. Longwood (Nov. 9, 2013)

FREE THROW ATTEMPTS

4, twice, last at Clemson (Nov. 13, 2013)

REBOUNDS

6, 3x, last vs. FIU (Nov. 24, 2013)

ASSISTS

2, at Oklahoma State (Dec. 6, 2013)

BLOCKS

2, twice, last at Oklahoma State (Dec. 6, 2013)

STEALS

1, vs. FIU (Nov. 24, 2013)

MINUTES PLAYED

31, twice, last vs. FIU (Nov. 24, 2013)

2013-14

Opponent	Date	GS	Min	FG-FGA	Pct	3FG-FGA	Pct	FT-FTA	Pct	Off	Def	Tot	Avg	PF	FO	A	TO	Blk	Stl	Pts	Avg
Longwood	11/9/13	*	31	1-5	.200	0-0	.000	2-2	1.000	2	4	6	6.0	2	0	1	0	0	0	4	4.0
at Baylor	11/12/13	*	30	4-10	.400	0-0	.000	1-4	.250	3	3	6	6.0	4	0	1	0	2	0	9	6.5
at Clemson	11/17/13	*	22	4-9	.444	0-0	.000	1-4	.250	3	2	5	5.7	5	1	0	1	1	0	9	7.3
Fla. International	11/24/13	*	31	7-10	.700	0-0	.000	0-0	.000	3	3	6	5.8	3	0	0	0	0	1	14	9.0
at Oklahoma St.	12/6/13	*	26	3-6	.500	0-0	.000	0-2	.000	0	5	5	5.6	5	1	2	4	2	0	6	8.4
Manhattan	12/17/13																				
USC Upstate	12/19/13																				
vs. Saint Mary's	12/22/13																				
vs. Boise/Hawaii	12/23/13																				
vs. TBA	12/25/13																				
Akron	12/28/13																				
Marshall	12/30/13																				
SC State	1/3/14																				
at Florida	1/8/14																				
LSU	1/11/14																				
at Texas A&M	1/15/14																				
Ole Miss	1/18/14																				
at Georgia	1/22/14																				
at Missouri	1/25/14																				
Texas A&M	1/29/14																				
at Ole Miss	2/1/14																				
Auburn	2/5/14																				
at Tennessee	2/8/14																				
Vanderbilt	2/12/14																				
Alabama	2/15/14																				
at Arkansas	2/19/14																				
Georgia	2/22/14																				
at Auburn	2/26/14																				
Kentucky	3/1/14																				
Florida	3/4/14																				
at Miss. State	3/8/14																				

SEASON NOTES

Earned the start and scored eight points and collected five rebounds in exhibition contest vs. USC Aiken (Nov. 3) ... Earned the start in first-career contest vs. Longwood (Nov. 9) ... Scored four points and collected six rebounds vs. the Lancers ... Scored nine points and collected six rebounds, posting first two blocks of the season at Baylor (Nov. 12) ... Scored nine points and collected five rebounds, including three on the offensive glass, in start at Clemson (Nov. 17) ... First career double-figure scoring game with 14 points in win vs. FIU (Nov. 24) ... Hit 7-of-10 from the field vs. the Panthers ... Matched season high with two blocks, and posted season high with two assists at No. 9/11 Oklahoma State (Dec. 6) ...

CAREER STATISTICS

Season	GP-GS	Min	Avg	FG	FGA	Pct	3FG	3FGA	Pct	FT	FTA	Pct	Off	Def	Tot	Avg	PF	FO	Ast	TO	Blk	Stl	Pts	Avg
2013-14	5-5	140	28.0	19	40	.475	0	0	.000	4	12	.333	11	17	28	5.6	19	2	4	5	5	1	42	8.4

CAREER SEC STATISTICS

Season	GP-GS	Min	Avg	FG	FGA	Pct	3FG	3FGA	Pct	FT	FTA	Pct	Off	Def	Tot	Avg	PF	FO	Ast	TO	Blk	Stl	Pts	Avg
2014																								



#20 - JUSTIN MCKIE

FRESHMAN | GUARD | 6'4" | 195 | HS
COLUMBIA, S.C./IRMO

MCKIE'S SEASON HIGHS

POINTS

1, at Clemson (Nov. 13, 2013)

FIELD GOALS

-

FIELD GOAL ATTEMPTS

1, twice, last at Clemson (Nov. 13, 2013)

3-POINT FIELD GOALS

-

3-POINT FIELD GOAL ATTEMPTS

1, at Clemson (Nov. 13, 2013)

FREE THROWS

1, at Clemson (Nov. 13, 2013)

FREE THROW ATTEMPTS

2, at Clemson (Nov. 13, 2013)

REBOUNDS

1, at Clemson (Nov. 13, 2013)

ASSISTS

-

BLOCKS

-

STEALS

-

MINUTES PLAYED

4, vs. Longwood (Nov. 9, 2013)

2013-14

Opponent	Date	GS	Min	FG-FGA	Pct	3FG-FGA	Pct	FT-FTA	Pct	Off	Def	Tot	Avg	PF	FO	A	TO	Blk	Stl	Pts	Avg
Longwood	11/9/13	4	0-1	.000	0-0	.000	0-0	.000	0	0	0	0.0	0	0	0	0	0	0	0	0	0.0
at Baylor	11/12/13	0+	0.0	.000	0-0	.000	0-0	.000	0	0	0	0.0	0	0	0	0	0	0	0	0	0.0
at Clemson	11/17/13	1	0-1	.000	0-1	.000	1-2	.500	1	0	1	0.3	0	0	0	0	0	0	0	1	0.3
Fla. International	11/24/13	-	-	-	-	-	-	-	-	-	-	-	-	-	-	-	-	-	-	-	-
at Oklahoma St.	12/6/13	-	-	-	-	-	-	-	-	-	-	-	-	-	-	-	-	-	-	-	-
Manhattan	12/17/13																				
USC Upstate	12/19/13																				
vs. Saint Mary's	12/22/13																				
vs. Boise/Hawaii	12/23/13																				
vs. TBA	12/25/13																				
Akron	12/28/13																				
Marshall	12/30/13																				
SC State	1/3/14																				
at Florida	1/8/14																				
LSU	1/11/14																				
at Texas A&M	1/15/14																				
Ole Miss	1/18/14																				
at Georgia	1/22/14																				
at Missouri	1/25/14																				
Texas A&M	1/29/14																				
at Ole Miss	2/1/14																				
Auburn	2/5/14																				
at Tennessee	2/8/14																				
Vanderbilt	2/12/14																				
Alabama	2/15/14																				
at Arkansas	2/19/14																				
Georgia	2/22/14																				
at Auburn	2/26/14																				
Kentucky	3/1/14																				
Florida	3/4/14																				
at Miss. State	3/8/14																				

SEASON NOTES

Played 21 minutes, scoring six points and collecting four rebounds in exhibition action vs. USC Aiken (Nov. 3) ... Saw action in season opener vs. Longwood (Nov. 9), attempted one shot ... Scored first point of his career at Clemson (Nov. 17) ...

CAREER STATISTICS

Season	GP-GS	Min	Avg	FG	FGA	Pct	3FG	3FGA	Pct	FT	FTA	Pct	Off	Def	Tot	Avg	PF	FO	Ast	TO	Blk	Stl	Pts	Avg
2013-14	3-0	5	1.7	0	2	.000	0	1	.000	1	2	.500	1	0	1	0.3	0	0	0	0	0	0	1	0.3

CAREER SEC STATISTICS

Season	GP-GS	Min	Avg	FG	FGA	Pct	3FG	3FGA	Pct	FT	FTA	Pct	Off	Def	Tot	Avg	PF	FO	Ast	TO	Blk	Stl	Pts	Avg
2014																								



#10 - DUANE NOTICE

FRESHMAN | GUARD | 6'2" | 221 | HS
 WOODBRIDGE, ONTARIO, CANADA/ST. THOMAS
 MORE (OAKDALE, CONN.)

2013-14

Opponent	Date	GS	Min	FG-FGA	Pct	3FG-FGA	Pct	FT-FTA	Pct	Off	Def	Tot	Avg	PF	FO	A	TO	Blk	Stl	Pts	Avg
Longwood	11/9/13	*	19	3-6	.500	2-3	.667	0-0	.000	1	4	5	5.0	5	1	4	3	0	1	8	8.0
at Baylor	11/12/13		12	1-2	.500	0-0	.000	0-0	.000	0	1	1	3.0	3	0	2	1	0	1	2	5.0
at Clemson	11/17/13	*	20	1-7	.142	0-2	.000	0-0	.000	2	1	3	3.0	2	0	2	4	0	0	2	4.0
Fla. International	11/24/13		1	0-0	.000	0-0	.000	0-0	.000	0	0	0	2.3	0	0	1	0	0	0	0	3.0
at Oklahoma St.	12/6/13		16	1-4	.250	0-1	.000	0-0	.000	2	3	5	2.8	2	0	0	2	1	0	2	2.8
Manhattan	12/17/13																				
USC Upstate	12/19/13																				
vs. Saint Mary's	12/22/13																				
vs. Boise/Hawaii	12/23/13																				
vs. TBA	12/25/13																				
Akron	12/28/13																				
Marshall	12/30/13																				
SC State	1/3/14																				
at Florida	1/8/14																				
LSU	1/11/14																				
at Texas A&M	1/15/14																				
Ole Miss	1/18/14																				
at Georgia	1/22/14																				
at Missouri	1/25/14																				
Texas A&M	1/29/14																				
at Ole Miss	2/1/14																				
Auburn	2/5/14																				
at Tennessee	2/8/14																				
Vanderbilt	2/12/14																				
Alabama	2/15/14																				
at Arkansas	2/19/14																				
Georgia	2/22/14																				
at Auburn	2/26/14																				
Kentucky	3/1/14																				
Florida	3/4/14																				
at Miss. State	3/8/14																				

CAREER STATISTICS

Season	GP-GS	Min	Avg	FG	FGA	Pct	3FG	3FGA	Pct	FT	FTA	Pct	Off	Def	Tot	Avg	PF	FO	Ast	TO	Blk	Stl	Pts	Avg
2013-14	5-2	68	13.6	6	19	.316	2	6	.333	0	0	.000	5	9	14	2.8	12	1	9	10	1	2	14	2.8

CAREER SEC STATISTICS

Season	GP-GS	Min	Avg	FG	FGA	Pct	3FG	3FGA	Pct	FT	FTA	Pct	Off	Def	Tot	Avg	PF	FO	Ast	TO	Blk	Stl	Pts	Avg
2014																								

NOTICE'S SEASON HIGHS

POINTS

8, vs. Longwood (Nov. 9, 2013)

FIELD GOALS

3, vs. Longwood (Nov. 9, 2013)

FIELD GOAL ATTEMPTS

7, at Clemson (Nov. 13, 2013)

3-POINT FIELD GOALS

2, vs. Longwood (Nov. 9, 2013)

3-POINT FIELD GOAL ATTEMPTS

3, vs. Longwood (Nov. 9, 2013)

FREE THROWS

-

FREE THROW ATTEMPTS

-

REBOUNDS

5, twice, last at Oklahoma State (Dec. 6, 2013)

ASSISTS

4, vs. Longwood (Nov. 9, 2013)

BLOCKS

1, at Oklahoma State (Dec. 6, 2013)

STEALS

1, twice, last at Baylor (Nov. 12, 2013)

MINUTES PLAYED

20, at Clemson (Nov. 13, 2013)

SEASON NOTES

Dished six assists in 19 minutes before hampered by cramps in exhibition contest vs. USC Aiken (Nov. 3) ... Posted four assists and scored eight points, including two made 3s, in season opener vs. Longwood (Nov. 9) ... Earned the start vs. the Lancers in college debut ... Dished two assists, adding two points and a steal at Baylor (Nov. 12) ... Scored four points and dished two assists at Clemson (Nov. 17) ... Matched season high with five rebounds at No. 9/11 Oklahoma State (Dec. 6) ...



#32 - DESMOND RINGER

FRESHMAN | FORWARD | 6'9" | 255 | HS
MCDONOUGH, GA. / EAGLE'S LANDING

RINGER'S SEASON HIGHS

POINTS

4, at Clemson (Nov. 13, 2013)

FIELD GOALS

1, twice, last at Oklahoma State (Dec. 6, 2013)

FIELD GOAL ATTEMPTS

4, at Oklahoma State (Dec. 6, 2013)

3-POINT FIELD GOALS

-

3-POINT FIELD GOAL ATTEMPTS

-

FREE THROWS

2, at Clemson (Nov. 13, 2013)

FREE THROW ATTEMPTS

3, at Baylor (Nov. 12, 2013)

REBOUNDS

5, at Oklahoma State (Dec. 6, 2013)

ASSISTS

1, at Clemson (Nov. 13, 2013)

BLOCKS

-

STEALS

-

MINUTES PLAYED

15, at Oklahoma State (Dec. 6, 2013)

2013-14

Opponent	Date	GS	Min	FG-FGA	Pct	3FG-FGA	Pct	FT-FTA	Pct	Off	Def	Tot	Avg	PF	FO	A	TO	Blk	Stl	Pts	Avg
Longwood	11/9/13	7	0-0	.000	0-0	.000	0-0	.000	0	0	0	0.0	0	0	0	1	0	0	0	0	0.0
at Baylor	11/12/13	9	0-1	.000	0-0	.000	1-3	.333	1	0	1	0.5	3	0	0	0	0	0	0	1	0.5
at Clemson	11/17/13	10	1-3	.333	0-0	.000	2-2	1.000	0	1	1	0.7	3	0	1	0	0	0	4	1.7	
Fla. International	11/24/13	4	0-0	.000	0-0	.000	0-0	.000	1	0	1	0.8	2	0	0	1	0	0	0	1.3	
at Oklahoma St.	12/6/13	15	1-4	.250	0-0	.000	1-2	.000	2	3	5	1.6	4	0	0	1	0	0	3	1.6	
Manhattan	12/17/13																				
USC Upstate	12/19/13																				
vs. Saint Mary's	12/22/13																				
vs. Boise/Hawaii	12/23/13																				
vs. TBA	12/25/13																				
Akron	12/28/13																				
Marshall	12/30/13																				
SC State	1/3/14																				
at Florida	1/8/14																				
LSU	1/11/14																				
at Texas A&M	1/15/14																				
Ole Miss	1/18/14																				
at Georgia	1/22/14																				
at Missouri	1/25/14																				
Texas A&M	1/29/14																				
at Ole Miss	2/1/14																				
Auburn	2/5/14																				
at Tennessee	2/8/14																				
Vanderbilt	2/12/14																				
Alabama	2/15/14																				
at Arkansas	2/19/14																				
Georgia	2/22/14																				
at Auburn	2/26/14																				
Kentucky	3/1/14																				
Florida	3/4/14																				
at Miss. State	3/8/14																				

SEASON NOTES

Earned one steal and collected three rebounds in exhibition contest vs. USC Aiken (Nov. 3) ... Saw action vs. Longwood (Nov. 9) ... Posted one point at the free throw line vs. Baylor (Nov. 12) ... Posted four points and collected an assists at Clemson (Nov. 17) ... Collected season high five rebounds in 15 minutes played at No. 9/11 Oklahoma State (Dec. 6) ...

CAREER STATISTICS

Season	GP-GS	Min	Avg	FG	FGA	Pct	3FG	3FGA	Pct	FT	FTA	Pct	Off	Def	Tot	Avg	PF	FO	Ast	TO	Blk	Stl	Pts	Avg
2013-14	5-0	45	9.0	2	8	.250	0	0	.000	4	6	.667	4	4	8	1.6	12	0	1	3	0	0	8	1.6

CAREER SEC STATISTICS

Season	GP-GS	Min	Avg	FG	FGA	Pct	3FG	3FGA	Pct	FT	FTA	Pct	Off	Def	Tot	Avg	PF	FO	Ast	TO	Blk	Stl	Pts	Avg
2014																								



#5 - JAYLEN SHAW

FRESHMAN | GUARD | 6'0" | 182 | HS
HARTSVILLE, S.C./HARTSVILLE

SHAW'S SEASON HIGHS

POINTS

16, vs. FIU (Nov. 24, 2013)

FIELD GOALS

6, vs. FIU (Nov. 24, 2013)

FIELD GOAL ATTEMPTS

10, vs. FIU (Nov. 24, 2013)

3-POINT FIELD GOALS

4, vs. FIU (Nov. 24, 2013)

3-POINT FIELD GOAL ATTEMPTS

7, vs. FIU (Nov. 24, 2013)

FREE THROWS

2, twice, last at Oklahoma State (Dec. 6, 2013)

FREE THROW ATTEMPTS

3, at Oklahoma State (Dec. 6, 2013)

REBOUNDS

2, vs. FIU (Nov. 24, 2013)

ASSISTS

5, vs. FIU (Nov. 24, 2013)

BLOCKS

-

STEALS

-

MINUTES PLAYED

26, vs. FIU (Nov. 24, 2013)

2013-14

Opponent	Date	GS	Min	FG-FGA	Pct	3FG-FGA	Pct	FT-FTA	Pct	Off	Def	Tot	Avg	PF	FO	A	TO	Blk	Stl	Pts	Avg
Longwood	11/9/13		3	0-1	.000	0-1	.000	2-2	1.000	0	0	0	0.0	1	0	1	0	0	0	2	2.0
at Baylor	11/12/13		-	-	-	-	-	-	-	-DNP - Coaches Decision-											
at Clemson	11/17/13		1	0-0	.000	0-0	.000	0-0	.000	0	0	0	0.0	0	0	1	0	0	0	0	1.0
Fla. International	11/24/13		26	6-10	.600	4-7	.571	0-0	.000	0	2	2	0.7	2	0	5	2	0	0	16	6.0
at Oklahoma St.	12/6/13		20	4-5	.800	3-4	.750	2-3	.667	0	1	1	0.8	2	0	3	0	0	0	13	7.8
Manhattan	12/17/13																				
USC Upstate	12/19/13																				
vs. Saint Mary's	12/22/13																				
vs. Boise/Hawaii	12/23/13																				
vs. TBA	12/25/13																				
Akron	12/28/13																				
Marshall	12/30/13																				
SC State	1/3/14																				
at Florida	1/8/14																				
LSU	1/11/14																				
at Texas A&M	1/15/14																				
Ole Miss	1/18/14																				
at Georgia	1/22/14																				
at Missouri	1/25/14																				
Texas A&M	1/29/14																				
at Ole Miss	2/1/14																				
Auburn	2/5/14																				
at Tennessee	2/8/14																				
Vanderbilt	2/12/14																				
Alabama	2/15/14																				
at Arkansas	2/19/14																				
Georgia	2/22/14																				
at Auburn	2/26/14																				
Kentucky	3/1/14																				
Florida	3/4/14																				
at Miss. State	3/8/14																				

SEASON NOTES

Posted six points and one assist in exhibition contest vs. USC Aiken (Nov. 3) ... Scored two points at the free throw line and dished one assist in college debut vs. Longwood (Nov. 9) ... Collected an assist at Clemson (Nov. 17) ... Huge off the bench with 16 points on 6-of-10 shooting, including four 3s in win vs. FIU (Nov. 24) ... Also dished five assists vs. the Panthers ... Scored double-digits off the bench for second-straight game, posting 13 points at No. 9/11 Oklahoma State (Dec. 6) ... Also dished three assists vs. the Cowboys ...

CAREER STATISTICS

Season	GP-GS	Min	Avg	FG	FGA	Pct	3FG	3FGA	Pct	FT	FTA	Pct	Off	Def	Tot	Avg	PF	FO	Ast	TO	Blk	Stl	Pts	Avg
2013-14	4-0	50	12.5	10	16	.625	7	12	.583	4	5	.800	0	3	3	0.8	5	0	10	3	0	0	31	7.8

CAREER SEC STATISTICS

Season	GP-GS	Min	Avg	FG	FGA	Pct	3FG	3FGA	Pct	FT	FTA	Pct	Off	Def	Tot	Avg	PF	FO	Ast	TO	Blk	Stl	Pts	Avg
2014																								



#15 - REGGIE THEUS JR.

FRESHMAN | FORWARD | 6'6" | 210 | HS

LOS ANGELES, CALIF./FAIRFAX

THEUS JR.'S SEASON HIGHS

POINTS

-

FIELD GOALS

-

FIELD GOAL ATTEMPTS

1, at Clemson (Nov. 13, 2013)

3-POINT FIELD GOALS

-

3-POINT FIELD GOAL ATTEMPTS

-

FREE THROWS

-

FREE THROW ATTEMPTS

-

REBOUNDS

1, at Clemson (Nov. 13, 2013)

ASSISTS

-

BLOCKS

-

STEALS

-

MINUTES PLAYED

2, vs. Longwood (Nov. 9, 2013)

2013-14

Opponent	Date	GS	Min	FG-FGA	Pct	3FG-FGA	Pct	FT-FTA	Pct	Off	Def	Tot	Avg	PF	FO	A	TO	Blk	Stl	Pts	Avg
Longwood	11/9/13	2	0-0	.000	0-0	.000	0-0	.000	0	0	0	0.0	0	0	0	0	0	0	0	0	0.0
at Baylor	11/12/13	-	-	-	-	-	-	-	-	-	-	-	-	-	-	-	-	-	-	-	-
at Clemson	11/17/13	1	0-1	.000	0-0	.000	0-0	.000	0	1	1	0.5	0	0	0	0	0	0	0	0	0.0
Fla. International	11/24/13	-	-	-	-	-	-	-	-	-	-	-	-	-	-	-	-	-	-	-	-
at Oklahoma St.	12/6/13	-	-	-	-	-	-	-	-	-	-	-	-	-	-	-	-	-	-	-	-
Manhattan	12/17/13																				
USC Upstate	12/19/13																				
vs. Saint Mary's	12/22/13																				
vs. Boise/Hawaii	12/23/13																				
vs. TBA	12/25/13																				
Akron	12/28/13																				
Marshall	12/30/13																				
SC State	1/3/14																				
at Florida	1/8/14																				
LSU	1/11/14																				
at Texas A&M	1/15/14																				
Ole Miss	1/18/14																				
at Georgia	1/22/14																				
at Missouri	1/25/14																				
Texas A&M	1/29/14																				
at Ole Miss	2/1/14																				
Auburn	2/5/14																				
at Tennessee	2/8/14																				
Vanderbilt	2/12/14																				
Alabama	2/15/14																				
at Arkansas	2/19/14																				
Georgia	2/22/14																				
at Auburn	2/26/14																				
Kentucky	3/1/14																				
Florida	3/4/14																				
at Miss. State	3/8/14																				

SEASON NOTES

Saw action in exhibition contest vs. USC Aiken (Nov. 3) ... Saw action vs. Longwood (Nov. 9) ... Collected one rebound at Clemson (Nov. 17) ...

CAREER STATISTICS

Season	GP-GS	Min	Avg	FG	FGA	Pct	3FG	3FGA	Pct	FT	FTA	Pct	Off	Def	Tot	Avg	PF	FO	Ast	TO	Blk	Stl	Pts	Avg
2013-14	2-0	3	1.5	0	1	.000	0	0	.000	0	0	.000	0	1	1	0.5	0	0	0	1	0	0	0	0.0

CAREER SEC STATISTICS

Season	GP-GS	Min	Avg	FG	FGA	Pct	3FG	3FGA	Pct	FT	FTA	Pct	Off	Def	Tot	Avg	PF	FO	Ast	TO	Blk	Stl	Pts	Avg
2014																								



#0 - SINDARIUS THORNWELL

FRESHMAN | GUARD | 6'5" | 206 | HS
LANCASTER, S.C./OAK HILL ACADEMY (WILSON, VA.)

THORNWELL'S SEASON HIGHS

POINTS

20, at Baylor (Nov. 12, 2013)

FIELD GOALS

6, at Baylor (Nov. 12, 2013)

FIELD GOAL ATTEMPTS

13, at Baylor (Nov. 12, 2013)

3-POINT FIELD GOALS

2, at Oklahoma State (Dec. 6, 2013)

3-POINT FIELD GOAL ATTEMPTS

3, twice, last at Oklahoma State (Dec. 6, 2013)

FREE THROWS

7, at Baylor (Nov. 12, 2013)

FREE THROW ATTEMPTS

10, at Baylor (Nov. 12, 2013)

REBOUNDS

4, 3x, last at Clemson (Nov. 13, 2013)

ASSISTS

4, vs. FIU (Nov. 24, 2013)

BLOCKS

2, vs. Longwood (Nov. 9, 2013)

STEALS

3, at Baylor (Nov. 12, 2013)

MINUTES PLAYED

32, at Baylor (Nov. 12, 2013)

2013-14

Opponent	Date	GS	Min	FG-FGA	Pct	3FG-FGA	Pct	FT-FTA	Pct	Off	Def	Tot	Avg	PF	FO	A	TO	Blk	Stl	Pts	Avg
Longwood	11/9/13	*	26	4-10	.400	0-3	.000	6-7	.857	1	3	4	4.0	3	0	3	2	2	1	14	14.0
at Baylor	11/12/13	*	32	6-13	.461	1-2	.500	7-10	.700	1	3	4	4.0	4	0	0	2	0	3	20	17.0
at Clemson	11/17/13	*	31	3-5	.600	1-1	1.000	3-3	1.000	1	3	4	4.0	1	0	0	1	0	2	10	14.7
Fla. International	11/24/13	*	26	4-10	.400	0-1	.000	0-2	.000	1	2	3	3.8	3	0	4	1	1	0	8	13.0
at Oklahoma St.	12/6/13	*	20	2-7	.285	2-3	.667	1-2	.500	1	0	1	3.2	4	0	0	4	0	0	7	11.8
Manhattan	12/17/13																				
USC Upstate	12/19/13																				
vs. Saint Mary's	12/22/13																				
vs. Boise/Hawaii	12/23/13																				
vs. TBA	12/25/13																				
Akron	12/28/13																				
Marshall	12/30/13																				
SC State	1/3/14																				
at Florida	1/8/14																				
LSU	1/11/14																				
at Texas A&M	1/15/14																				
Ole Miss	1/18/14																				
at Georgia	1/22/14																				
at Missouri	1/25/14																				
Texas A&M	1/29/14																				
at Ole Miss	2/1/14																				
Auburn	2/5/14																				
at Tennessee	2/8/14																				
Vanderbilt	2/12/14																				
Alabama	2/15/14																				
at Arkansas	2/19/14																				
Georgia	2/22/14																				
at Auburn	2/26/14																				
Kentucky	3/1/14																				
Florida	3/4/14																				
at Miss. State	3/8/14																				

SEASON NOTES

Played 25 minutes, earning the start, posting 12 points and five rebounds in exhibition contest vs. USC Aiken (Nov. 3) ... Marked nearly every stat column with 14 points, all in the second half, four rebounds, three assists, two blocks and one steal in college debut vs. Longwood (Nov. 9) ... Earned the start vs. the Lancers, and went 6-of-7 from the charity stripe in the game ... Scored first 20-point game of his career at Baylor (Nov. 12), posting 20 on 6-of-13 shooting from the field and a 7-of-10 effort from the free throw line ... Also collected a team high three steals vs. the Bears ... Scored 10 points, and collected two steals in first-career game vs. archival Clemson (Nov. 17) ... Dished four assists vs. FIU (Nov. 24) ... Was in foul trouble at No. 9/11 Oklahoma State (Dec. 6); posted seven points, hitting two 3s in the contest vs. the Cowboys ...

CAREER STATISTICS

Season	GP-GS	Min	Avg	FG	FGA	Pct	3FG	3FGA	Pct	FT	FTA	Pct	Off	Def	Tot	Avg	PF	FO	Ast	TO	Blk	Stl	Pts	Avg
2013-14	5-5	135	27.0	19	45	.422	4	10	.400	17	24	.708	5	11	16	3.2	15	0	7	10	3	6	59	11.8

CAREER SEC STATISTICS

Season	GP-GS	Min	Avg	FG	FGA	Pct	3FG	3FGA	Pct	FT	FTA	Pct	Off	Def	Tot	Avg	PF	FO	Ast	TO	Blk	Stl	Pts	Avg
2014																								



AN INDIVIDUAL ...

Scored 20 or more points:	South Carolina: Sindarius Thornwell (20) at Baylor, Nov. 12, 2013, in Waco, Texas Opponent: Tymell Murphy (22), FIU, Nov. 24, 2013 in Columbia, S.C.
Scored 30 or more points:	South Carolina: Brenton Williams (38) Miss. State, March 6, 2013 in Columbia, S.C. Opponent: Johnny O'Bryant III (30), LSU, Feb. 14, 2013 in Columbia, S.C.
Scored 35 or more points:	South Carolina: Brenton Williams (38) vs. Miss. State, March 6, 2013 in Columbia, S.C. Opponent: Joe Crawford (Kentucky), 35, March 5, 2008 in Columbia
Scored 40 or more points:	South Carolina: N/A thru 1992-93 season Opponent: Austin Carr (Notre Dame), 43, Dec. 30, 1969 in New Orleans, La.
Collected 20 or more rebounds:	South Carolina: Emmett Hall, 23 vs. College of Charleston, Dec. 22, 1993 in Columbia Opponent: Ekpe Udoh (Baylor), 20, Jan. 2, 2010 in Columbia
Collected 15 or more rebounds:	South Carolina: Lakeem Jackson, 15, vs. UALR, Nov. 25, 2012 in Puerto Vallarta, Mexico Opponent: Jared Sullinger (Ohio State), 19, Dec. 18, 2010 in Columbus, Ohio
Made 12 or more field goals:	South Carolina: Devan Downey, 12 vs. Georgia, Jan. 30, 2010 in Columbia Opponent: Johnny O'Bryant III, 13, LSU, Feb. 14, 2013 in Columbia, S.C.
Made 10 or more field goals:	South Carolina: Brenton Williams (10) vs. Miss. State, March 6, 2013 in Columbia, S.C. Opponent: Elston Turner (10), Texas A&M, March 2, 2013 in College Station, Texas
Attempted 20 or more field goals:	South Carolina: Bruce Ellington (20) vs. Tennessee, Feb 25, 2012, in Columbia, S.C. Opponent: Tristan Carey (20), Longwood, Nov. 9, 2013 in Columbia, S.C.
Attempted 25 or more field goals:	South Carolina: Devan Downey, 25, at Kentucky, Feb. 25, 2010 in Lexington, Ky. Opponent: Kemmy Burgess (Alaska-Anchorage), 26, Nov. 24, 2005 in Anchorage, AK
Dished 10 or more assists:	South Carolina: Devan Downey, 11, vs. LSU, March 13, 2008 in Atlanta, Ga. Opponent: 11, Dee Bost, Mississippi State, Feb. 29, 2012 in Columbia, S.C.
Swiped 5 or more steals:	South Carolina: Brenton Williams, 5, vs. Western Carolina, Nov. 11, 2011 in Columbia Opponent: 5, DeWayne Jackson, Morgan State, Nov. 16, 2012 in Columbia, S.C.
Blocked 5 or more shots:	South Carolina: Damontre Harris, 5, vs. Georgia, Feb. 15, 2012 in Columbia, S.C. Opponent: K.J. McDaniel (7), Clemson, Nov. 17, 2013
Made 5 or more 3-point field goals:	South Carolina: Brenton Williams (6) vs. Miss. State, March 6, 2013 in Columbia, S.C. Opponent: Brady Heslip (5), Baylor, Nov. 12, 2013, in Waco, Texas
Attempted 8 or more 3-point field goals:	South Carolina: Brenton Williams (8) at Vanderbilt, March 9, 2013 in Nashville, Tenn. Opponent: Brady Heslip (10), Baylor, Nov. 12, 2013, in Waco, Texas
Made 10 or more free throws:	South Carolina: Brenton Williams (12) vs. Miss. State, March 6, 2013 in Columbia, S.C. Opponent: Kedren Johnson (10) Vanderbilt, March 9, 2013 in Nashville, Tenn.
Attempted 15 or more free throws:	South Carolina: Mike Boynton (19) vs. Arkansas, March 11, 2004 in Atlanta, Ga. Opponent: Amu Saaka (Furman), 14, Dec. 22, 2010 in Greenville, S.C.
Played all 40 minutes of regulation:	South Carolina: Devan Downey, 40, vs. Tennessee, March 14, 2008 in Atlanta, Ga. Opponent: Frank Sullivan, Auburn, Jan. 12, 2013 in Columbia, S.C.
A player hit a last-second shot (within 3 seconds) to win a game:	South Carolina: Bruce Ellington vs. Alabama (Jan. 25, 2012) in Columbia, S.C. Opponent: Brian Bryant, Mississippi State, Feb. 29, 2012 in Columbia, S.C.
A player had a double-double:	South Carolina: Mindaugas Kacinas (13 points, 12 rebounds), at Clemson, Nov. 17, 2013 Opponent: Murphy Holloway (19 points, 13 rebounds) Ole Miss, Feb. 20, 2013 in Columbia, S.C.
Two or more players had a double-double:	S. Carolina: Michael Carrera (23 points, 10 rebounds) and Lakeem Jackson (11 points, 11 rebounds) at LSU, Jan. 16, 2013 in Baton Rouge, La. Opponent: Alex Oriakhi (18 points, 11 rebounds), Earnest Ross (21 points, 10 rebounds) Missouri, Jan. 22, 2013 in Columbia, Mo.
A player had a triple-double:	South Carolina: Sam Muldrow (16 points, 14 rebounds, 10 blocks) vs. Vanderbilt, Jan. 8, 2011 in Columbia *** Only second triple-double in South Carolina history (Chuck Eidson (25 points, 10 rebounds, 10 assists), vs. SC State, Nov. 29, 2002 in Columbia) Opponent: Daniel Hackett (Southern California - 22 points, 10 rebounds, 10 assists), Nov. 17, 2007 in Columbia
Scored 30 or more points in back-to-back games:	South Carolina: Devan Downey, 30 vs. Kentucky (Jan. 26, 2010) in Columbia 33 vs. Georgia (Jan. 30, 2010) in Columbia
Scored 25 or more points in back-to-back games:	South Carolina: Devan Downey, 33 vs. Georgia (Jan. 30, 2010) in Columbia 26 at Tennessee (Feb. 6, 2010) in Knoxville, Tenn.

A TEAM...

Scored 100 or more points:	South Carolina: 103 vs. The Citadel (Nov. 12, 2007) in Columbia Opponent: 107, Vanderbilt (Feb. 17, 1996) in Nashville, Tenn.
Scored 50 points or less:	South Carolina: 36, vs. Florida, Jan. 30, 2013 in Gainesville, Fla. Opponent: 44, Longwood, Nov. 9, 2013 in Columbia, S.C.
Scored 50 points in a half:	South Carolina: 57 (1st half; Dec. 7, 2012) vs. Jacksonville, Dec. 7, 2012 in Columbia, S.C. Opponent: 51 (2nd half; Nov. 29, 2012) St. John's in Queens, N.Y.
Failed to score 25 points in a half:	South Carolina: 15 (1st half), at Oklahoma State (Dec. 6, 2013) in Stillwater, Okla. Opponent: 15 (1st half) Longwood, Nov. 9, 2013 in Columbia, S.C.

Collected 50 or more rebounds:	South Carolina: 50, Longwood, Nov. 9, 2013 in Columbia, S.C. Opponent: 52, WKU, Nov. 27, 2010 in Bowling Green, Ky.
Shot 60% or better from the field:	South Carolina: 60.8% (31-51) at Western Carolina (Nov. 18, 2005) in Cullowhee, N.C. Opponent: 69.6% (32-46) Missouri, Feb. 28, 2013 in Columbia, S.C.
Shot 50% or better from the field:	South Carolina: 50.8 (30-59), vs. FIU, Nov. 24, 2013 in Columbia, S.C. Opponent: 51.1% (24-47) Miss. State, March 6, 2013 in Columbia, S.C.
Shot less than 30% from the field:	South Carolina: 28.1% (18-64), LSU, Feb. 14, 2013 in Columbia, S.C. Opponent: 22.8% (13-57), Longwood, Nov. 9, 2013 in Columbia, S.C.
Shot 50% or better from 3-point range (at least 10 attempts):	South Carolina: 54.5% (6-11), at Oklahoma State (Dec. 6, 2013) in Stillwater, Okla. Opponent 57.1%(12-21) Florida, Jan. 30, 2013 in Gainesville, Fla.
Shot 20% or less from 3-point range (at least 10 attempts):	South Carolina: 10.0% (1-10), at Clemson, Nov. 17, 2013 Opponent: 18.2% (4-22) Longwood, Nov. 9, 2013 in Columbia, S.C.
Dished 20 or more assists:	South Carolina: 20, vs. Auburn, Jan. 12, 2013 in Columbia, S.C. Opponent: 22, vs. North Carolina, Nov. 25, 2011 in Las Vegas, Nevada
Made 35 or more shots:	South Carolina: 35 vs. Elon (Nov. 19, 2010) in Columbia Opponent: 35, Tennessee (March 5, 2009) in Columbia
Attempted 80 or more shots:	South Carolina: 83 vs. WKU (Nov. 27, 2010) in Bowling Green, Ky. Opponent: 83, LSU (Feb. 10, 1996) in Columbia
Attempted 70 or more shots:	South Carolina: 72, vs. Providence, Dec. 1, 2011 in Columbia Opponent: 79, WKU (Nov. 27, 2010) in Bowling Green, Ky.
Made 10 or more 3-pointers:	South Carolina: 10 vs. Jacksonville, Dec. 7, 2012 in Columbia, S.C. Opponent: 12, Florida, Jan. 30, 2013 in Gainesville, Fla.
Did not make a 3-pointer:	South Carolina: 0, vs. Milwaukee, Nov. 11, 2012 in Columbia, S.C. Opponent: 0, Miss. State, Jan. 9, 2013 in Starkville, Miss.
Attempted 30 or more 3-pointers:	South Carolina: 31 vs. Alabama, Jan. 25, 2012 in Columbia, S.C. Opponent: 33, Milwaukee, Nov. 11, 2012 in Columbia, S.C.
Attempted 25 or more 3-pointers:	South Carolina: 27 vs. Rider, Nov. 19, 2012 in Columbia, S.C. Opponent: 27, Missouri, Jan. 22, 2013 in Columbia, Mo..
Made 30 or more free throws:	South Carolina: 32 vs. Vanderbilt (Jan. 28, 2009) in Columbia Opponent: 31, Florida (Feb. 3, 2009) in Gainesville, Fla.
Attempted 40 or more free throws:	South Carolina: 44 vs. Georgia Southern (Nov. 16, 2009) in Columbia Opponent: 41, Baylor, Nov. 12, 2013, in Waco, Texas
Swiped 15 or more steals:	South Carolina: 15 vs. Vanderbilt (Jan. 16, 2010) in Columbia Opponent: 17, Indiana (Nov. 8, 1998) in Indianapolis, Ind.
Blocked 12 or more shots:	South Carolina: 12, vs. Vanderbilt, Jan. 8, 2011 in Columbia Opponent: 12, Clemson, Nov. 17, 2013
Blocked 8 or more shots:	South Carolina: 8, vs. Longwood, Nov. 9, 2013 in Columbia, S.C. Opponent: 12, Clemson, Nov. 17, 2013
Won by 30 or more points:	South Carolina: 38, vs. Longwood, Nov. 9, 2013 in Columbia, S.C. Opponent: 39, Florida, Jan. 30, 2013 in Gainesville, Fla.
Won by 20 or more points:	South Carolina: 38, vs. Longwood, Nov. 9, 2013 in Columbia, S.C. Opponent: 27, Oklahoma State (Dec. 6, 2013) in Stillwater, Okla.
Played a single overtime game:	Win: 82-73 at LSU, Jan. 16, 2013 in Baton Rouge, La. Loss: 62-54 at Georgia, Feb. 23, 2013 in Athens, Ga.
Played a double overtime game:	Win: 87-85 vs. WKU (Nov. 27, 2010) in Bowling Green, Ky. Loss: 98-88 vs. Louisville (Feb. 20, 1988) in Columbia
South Carolina played a No. 1 Team in the country:	Win: 68-62 vs. Kentucky (Jan. 26, 2010) in Columbia Loss: 86-52 loss vs. No. 1/1 Kentucky, Feb. 4, 2012, in Columbia, S.C.
South Carolina played a top-5 opponent:	Win: 68-62 vs. No. 1/1 Kentucky (Jan. 26, 2010) in Columbia Loss: 75-36 loss to No. 4/4 Florida (Jan. 30, 2013) in Gainesville, Fla.
South Carolina played a top-10 opponent:	Win: 68-62 vs. No. 1/1 Kentucky (Jan. 26, 2010) in Columbia Loss: 79-52 at No. 9/11 Oklahoma State (Dec. 6, 2013) in Stillwater, Okla.
South Carolina played a top-25 opponent:	Win: 83-75 (OT) win over No. 22/24 Vanderbilt, Jan. 8, 2011 in Columbia Loss: 79-52 at No. 9/11 Oklahoma State (Dec. 6, 2013) in Stillwater, Okla.
South Carolina defeated a ranked opponent:	Home: 83-75 vs. No. 22/24 Vanderbilt (Jan. 8, 2011) in Columbia <u>Away: 77-73 at No. 13/19 Vanderbilt (March 6, 2010) in Nashville, Tenn.</u> SEC Home: 83-75 vs. No. 22/24 Vanderbilt (Jan. 8, 2011) in Columbia SEC Away: 77-73 at No. 13/19 Vanderbilt (March 6, 2010) in Nashville, Tenn. Non-conference away: 85-84 at No. 19/20 Baylor (Jan. 2, 2009) in Waco, Texas
A South Carolina win opened the season:	Home: 82-44, vs. Longwood, Nov. 9, 2013 in Columbia, S.C. Away: 81-63 win at Western Carolina (Nov. 12, 2005) in Cullowhee, N.C. Neutral: 74-61 win vs. Chaminade (Nov. 19, 2001) in Maui, Hawaii (Maui Invite)
South Carolina opened SEC play:	Home: 83-75 win vs. No. 22/24 Vanderbilt (Jan. 8, 2011) in Columbia Away: 56-54 loss at Miss. State (Jan. 9, 2013) in Starkville, Miss.



2013-14 South Carolina Men's Basketball
 South Carolina Combined Team Statistics (as of Dec 16, 2013)
 All games

RECORD:	OVERALL	HOME	AWAY	NEUTRAL
ALL GAMES	2-3	2-0	0-3	0-0
CONFERENCE	0-0	0-0	0-0	0-0
NON-CONFERENCE	2-3	2-0	0-3	0-0

##	Player	gp-gs	min	avg	Total		3-Point		F-Throw		Rebounds				pf	dq	a	to	blk	stl	pts	avg
					fg-fga	fg%	3fg-fga	3fg%	ft-fta	ft%	off	def	tot	avg								
04	JOHNSON, Tyrone	5-5	155	31.0	18-46	.391	2-7	.286	23-30	.767	2	10	12	2.4	8	0	22	11	1	5	61	12.2
00	THORNWELL, Sindari	5-5	135	27.0	19-45	.422	4-10	.400	17-24	.708	5	11	16	3.2	15	0	7	10	3	6	59	11.8
21	HENRY, Demetrius	5-5	140	28.0	19-40	.475	0-0	.000	4-12	.333	11	17	28	5.6	19	2	4	5	5	1	42	8.4
01	WILLIAMS, Brenton	5-0	90	18.0	12-31	.387	6-19	.316	12-12	1.000	1	9	10	2.0	4	0	5	2	0	3	42	8.4
05	SHAW, Jaylen	4-0	50	12.5	10-16	.625	7-12	.583	4-5	.800	0	3	3	0.8	5	0	10	3	0	0	31	7.8
25	KACINAS, Mindaugas	5-5	145	29.0	15-28	.536	0-0	.000	8-12	.667	20	22	42	8.4	17	1	0	13	2	3	38	7.6
24	CARRERA, Michael	5-3	108	21.6	10-31	.323	3-12	.250	10-16	.625	11	19	30	6.0	10	0	3	9	6	6	33	6.6
10	NOTICE, Duane	5-2	68	13.6	6-19	.316	2-6	.333	0-0	.000	5	9	14	2.8	12	1	9	10	1	2	14	2.8
14	CHATKEVICIUS, L.	4-0	38	9.5	4-7	.571	0-0	.000	0-0	.000	3	6	9	2.3	5	0	1	2	3	1	8	2.0
23	ELLINGTON, Bruce	1-0	17	17.0	0-2	.000	0-1	.000	2-2	1.000	1	0	1	1.0	2	0	1	1	0	1	2	2.0
32	RINGER, Desmond	5-0	45	9.0	2-8	.250	0-0	.000	4-6	.667	4	4	8	1.6	12	0	1	3	0	0	8	1.6
20	MCKIE, Justin	3-0	5	1.7	0-2	.000	0-1	.000	1-2	.500	1	0	1	0.3	0	0	0	0	0	0	1	0.3
35	STEELE, Brian	1-0	1	1.0	0-0	.000	0-0	.000	0-0	.000	0	0	0	0.0	0	0	0	0	0	0	0	0.0
15	THEUS JR., Reggie	2-0	3	1.5	0-1	.000	0-0	.000	0-0	.000	0	1	1	0.5	0	0	0	1	0	0	0	0.0
Team											6	12	18				3					
Total.....		5	1000		115-276	.417	24-68	.353	85-121	.702	70	123	193	38.6	109	4	63	73	21	28	339	67.8
Opponents.....		5	1000		102-261	.391	26-91	.286	102-142	.718	55	110	165	33.0	100	-	59	63	25	40	332	66.4

TEAM STATISTICS	SC	OPP	Date	Opponent	Score	Att.
SCORING	339	332	11/9/13	LONGWOOD	w 82-44	8536
Points per game	67.8	66.4	11/12/13	at Baylor	L 64-66	5706
Scoring margin	+1.4	-	11/17/13	at Clemson	L 57-71	7283
FIELD GOALS-ATT	115-276	102-261	11/24/13	FIU	w 84-72	9869
Field goal pct	.417	.391	12-06-13	at Oklahoma State	L 52-79	13611
3 POINT FG-ATT	24-68	26-91	* = Conference game			
3-point FG pct	.353	.286				
3-pt FG made per game	4.8	5.2				
FREE THROWS-ATT	85-121	102-142				
Free throw pct	.702	.718				
F-Throws made per game	17.0	20.4				
REBOUNDS	193	165				
Rebounds per game	38.6	33.0				
Rebounding margin	+5.6	-				
ASSISTS	63	59				
Assists per game	12.6	11.8				
TURNOVERS	73	63				
Turnovers per game	14.6	12.6				
Turnover margin	-2.0	-				
Assist/turnover ratio	0.9	0.9				
STEALS	28	40				
Steals per game	5.6	8.0				
BLOCKS	21	25				
Blocks per game	4.2	5.0				
ATTENDANCE	18405	26600				
Home games-Avg/Game	2-9202	3-8867				
Neutral site-Avg/Game	-	0-0				

Score by Periods	1st	2nd	Totals
South Carolina	156	183	339
Opponents	169	163	332



2013-14 South Carolina Men's Basketball
 South Carolina Team Game-by-Game Comparison (as of Dec 16, 2013)
 All games

Opponent	1st	2nd	Score	Mar	Total FG	FG Pct	3-Pointers	3FG Pct	Free Throws	FT Pct	Rebounds	Assist	T/Over	Block	Steal	Fouls
LONGWOOD	37/15	45/29	82-44	+38	28-57/13-57	.491/.228	6-20/4-22	.300/.182	20-24/14-22	.833/.636	50/27 +23	13/7	15/13	8/0	5/9	18/19
Baylor	39/38	25/28	64-66	(2)	18-50/19-50	.360/.380	3-8/6-17	.375/.353	25-36/22-41	.694/.537	35/46 (11)	14/12	8/15	4/6	9/4	29/26
Clemson	26/35	31/36	57-71	(14)	23-65/21-48	.354/.438	1-10/5-14	.100/.357	10-18/24-26	.556/.923	41/33 +8	7/14	13/12	2/12	6/8	21/20
FIU	39/42	45/30	84-72	+12	30-59/24-50	.508/.480	8-19/6-16	.421/.375	16-21/18-21	.762/.857	31/27 +4	19/13	13/16	3/3	5/9	15/18
Oklahoma State	15/39	37/40	52-79	(27)	16-45/25-56	.356/.446	6-11/5-22	.545/.227	14-22/24-32	.636/.750	36/32 +4	10/13	24/7	4/4	3/10	26/17

Note: Game totals are displayed in the format TEAM/OPPONENT for each category



2013-14 South Carolina Men's Basketball
 South Carolina Category Leaders (as of Dec 16, 2013)
 All games

Points	G	Pts	Pts/G
JOHNSON, Tyrone	5	61	12.2
THORNWELL, Sindarius	5	59	11.8
HENRY, Demetrius	5	42	8.4
WILLIAMS, Brenton	5	42	8.4
KACINAS, Mindaugas	5	38	7.6
CARRERA, Michael	5	33	6.6
SHAW, Jaylen	4	31	7.8
NOTICE, Duane	5	14	2.8
RINGER, Desmond	5	8	1.6
CHATKEVICIUS, L.	4	8	2.0
ELLINGTON, Bruce	1	2	2.0
MCKIE, Justin	3	1	0.3

FG Percentage	FG	Att	Pct
SHAW, Jaylen	10	16	.625
CHATKEVICIUS, L.	4	7	.571
KACINAS, Mindaugas	15	28	.536
HENRY, Demetrius	19	40	.475
THORNWELL, Sindarius	19	45	.422
JOHNSON, Tyrone	18	46	.391
WILLIAMS, Brenton	12	31	.387
CARRERA, Michael	10	31	.323
NOTICE, Duane	6	19	.316
RINGER, Desmond	2	8	.250
THEUS JR., Reggie	0	1	.000
ELLINGTON, Bruce	0	2	.000
MCKIE, Justin	0	2	.000

3-Point Percentage	3FG	Att	Pct
SHAW, Jaylen	7	12	.583
THORNWELL, Sindarius	4	10	.400
NOTICE, Duane	2	6	.333
WILLIAMS, Brenton	6	19	.316
JOHNSON, Tyrone	2	7	.286
CARRERA, Michael	3	12	.250
MCKIE, Justin	0	1	.000
ELLINGTON, Bruce	0	1	.000

Free Throw Percent	FG	Att	Pct
ELLINGTON, Bruce	2	2	1.000
WILLIAMS, Brenton	12	12	1.000
SHAW, Jaylen	4	5	.800
JOHNSON, Tyrone	23	30	.767
THORNWELL, Sindarius	17	24	.708
RINGER, Desmond	4	6	.667
KACINAS, Mindaugas	8	12	.667
CARRERA, Michael	10	16	.625
MCKIE, Justin	1	2	.500
HENRY, Demetrius	4	12	.333

Scoring Average	G	Pts	Avg/G
JOHNSON, Tyrone	5	61	12.2
THORNWELL, Sindarius	5	59	11.8
HENRY, Demetrius	5	42	8.4
WILLIAMS, Brenton	5	42	8.4
SHAW, Jaylen	4	31	7.8
KACINAS, Mindaugas	5	38	7.6
CARRERA, Michael	5	33	6.6
NOTICE, Duane	5	14	2.8
CHATKEVICIUS, L.	4	8	2.0
ELLINGTON, Bruce	1	2	2.0
RINGER, Desmond	5	8	1.6
MCKIE, Justin	3	1	0.3

Field Goal Attempts	G	Att	Att/G
JOHNSON, Tyrone	5	46	9.2
THORNWELL, Sindarius	5	45	9.0
HENRY, Demetrius	5	40	8.0
WILLIAMS, Brenton	5	31	6.2
CARRERA, Michael	5	31	6.2

Field Goals Made	G	Made	Made/G
THORNWELL, Sindarius	5	19	3.8
HENRY, Demetrius	5	19	3.8
JOHNSON, Tyrone	5	18	3.6
KACINAS, Mindaugas	5	15	3.0
WILLIAMS, Brenton	5	12	2.4

3-Point FG Attempts	G	Att	Att/G
WILLIAMS, Brenton	5	19	3.8
CARRERA, Michael	5	12	2.4
SHAW, Jaylen	4	12	3.0
THORNWELL, Sindarius	5	10	2.0
JOHNSON, Tyrone	5	7	1.4

3-Point FG Made	G	Made	Made/G
SHAW, Jaylen	4	7	1.8
WILLIAMS, Brenton	5	6	1.2
THORNWELL, Sindarius	5	4	0.8
CARRERA, Michael	5	3	0.6
JOHNSON, Tyrone	5	2	0.4
NOTICE, Duane	5	2	0.4

Free Throw Attempts	G	Att	Att/G
JOHNSON, Tyrone	5	30	6.0
THORNWELL, Sindarius	5	24	4.8
CARRERA, Michael	5	16	3.2
WILLIAMS, Brenton	5	12	2.4
KACINAS, Mindaugas	5	12	2.4
HENRY, Demetrius	5	12	2.4

Free Throws Made	G	Made	Made/G
JOHNSON, Tyrone	5	23	4.6
THORNWELL, Sindarius	5	17	3.4
WILLIAMS, Brenton	5	12	2.4
CARRERA, Michael	5	10	2.0
KACINAS, Mindaugas	5	8	1.6



2013-14 South Carolina Men's Basketball
 South Carolina Category Leaders (as of Dec 16, 2013)
 All games

Rebounds	G	Reb	Reb/G
KACINAS, Mindaugas	5	42	8.4
CARRERA, Michael	5	30	6.0
HENRY, Demetrius	5	28	5.6
THORNWELL, Sindarius	5	16	3.2
NOTICE, Duane	5	14	2.8

Rebound Average	G	Reb	Avg/G
KACINAS, Mindaugas	5	42	8.4
CARRERA, Michael	5	30	6.0
HENRY, Demetrius	5	28	5.6
THORNWELL, Sindarius	5	16	3.2
NOTICE, Duane	5	14	2.8

Offensive Rebounds	G	No.	Avg/G
KACINAS, Mindaugas	5	20	4.0
HENRY, Demetrius	5	11	2.2
CARRERA, Michael	5	11	2.2
NOTICE, Duane	5	5	1.0
THORNWELL, Sindarius	5	5	1.0

Defensive Rebounds	G	No.	Avg/G
KACINAS, Mindaugas	5	22	4.4
CARRERA, Michael	5	19	3.8
HENRY, Demetrius	5	17	3.4
THORNWELL, Sindarius	5	11	2.2
JOHNSON, Tyrone	5	10	2.0

Fouls	G	No.	Per/G
HENRY, Demetrius	5	19	3.8
KACINAS, Mindaugas	5	17	3.4
THORNWELL, Sindarius	5	15	3.0
NOTICE, Duane	5	12	2.4
RINGER, Desmond	5	12	2.4

Foulsouts	G	No.
HENRY, Demetrius	5	2
NOTICE, Duane	5	1
KACINAS, Mindaugas	5	1

Assists	G	No.	Ast/G
JOHNSON, Tyrone	5	22	4.4
SHAW, Jaylen	4	10	2.5
NOTICE, Duane	5	9	1.8
THORNWELL, Sindarius	5	7	1.4
WILLIAMS, Brenton	5	5	1.0

Steals	G	No.	Stl/G
THORNWELL, Sindarius	5	6	1.2
CARRERA, Michael	5	6	1.2
JOHNSON, Tyrone	5	5	1.0
WILLIAMS, Brenton	5	3	0.6
KACINAS, Mindaugas	5	3	0.6

Blocked Shots	G	No.	Blk/G
CARRERA, Michael	5	6	1.2
HENRY, Demetrius	5	5	1.0
CHATKEVICIUS, L.	4	3	0.8
THORNWELL, Sindarius	5	3	0.6
KACINAS, Mindaugas	5	2	0.4

Minutes	G	No.	Min/G
JOHNSON, Tyrone	5	155	31.0
KACINAS, Mindaugas	5	145	29.0
HENRY, Demetrius	5	140	28.0
THORNWELL, Sindarius	5	135	27.0
CARRERA, Michael	5	108	21.6

Turnovers	G	No.	TO/G
KACINAS, Mindaugas	5	13	2.6
JOHNSON, Tyrone	5	11	2.2
NOTICE, Duane	5	10	2.0
THORNWELL, Sindarius	5	10	2.0
CARRERA, Michael	5	9	1.8



2013-14 South Carolina Men's Basketball
South Carolina Team High/Low Analysis (as of Dec 16, 2013)
All games

South Carolina - TEAM GAME HIGHS

POINTS	84	FIU (11/24/13)
	82	LONGWOOD (11/9/13)
	64	at Baylor (11/12/13)
	57	at Clemson (11/17/13)
	52	at Oklahoma State (12-06-13)
FIELD GOALS MADE	30	FIU (11/24/13)
	28	LONGWOOD (11/9/13)
FIELD GOAL ATTEMPTS	65	at Clemson (11/17/13)
	59	FIU (11/24/13)
FIELD GOAL PERCENTAGE	.508 (30-59)	FIU (11/24/13)
	.491 (28-57)	LONGWOOD (11/9/13)
3 PT FIELD GOALS MADE	8	FIU (11/24/13)
	6	at Oklahoma State (12-06-13)
	6	LONGWOOD (11/9/13)
3 PT FG ATTEMPTS	20	LONGWOOD (11/9/13)
	19	FIU (11/24/13)
3 PT FG PERCENTAGE	.545 (6-11)	at Oklahoma State (12-06-13)
	.421 (8-19)	FIU (11/24/13)
FREE THROWS MADE	25	at Baylor (11/12/13)
	20	LONGWOOD (11/9/13)
FREE THROW ATTEMPTS	36	at Baylor (11/12/13)
	24	LONGWOOD (11/9/13)
FREE THROW PERCENTAGE	.833 (20-24)	LONGWOOD (11/9/13)
	.762 (16-21)	FIU (11/24/13)
REBOUNDS	50	LONGWOOD (11/9/13)
	41	at Clemson (11/17/13)
ASSISTS	19	FIU (11/24/13)
	14	at Baylor (11/12/13)
STEALS	9	at Baylor (11/12/13)
	6	at Clemson (11/17/13)
BLOCKED SHOTS	8	LONGWOOD (11/9/13)
	4	at Oklahoma State (12-06-13)
	4	at Baylor (11/12/13)
TURNOVERS	24	at Oklahoma State (12-06-13)
	15	LONGWOOD (11/9/13)
FOULS	29	at Baylor (11/12/13)
	26	at Oklahoma State (12-06-13)



2013-14 South Carolina Men's Basketball
South Carolina High/Low Analysis (as of Dec 16, 2013)
All games

Opponent - GAME HIGHS

POINTS	79	at Oklahoma State (12-06-13)
	72	FIU (11/24/13)
	71	at Clemson (11/17/13)
	66	at Baylor (11/12/13)
	44	LONGWOOD (11/9/13)
FIELD GOALS MADE	25	at Oklahoma State (12-06-13)
	24	FIU (11/24/13)
FIELD GOAL ATTEMPTS	57	LONGWOOD (11/9/13)
	56	at Oklahoma State (12-06-13)
FIELD GOAL PERCENTAGE	.480 (24-50)	FIU (11/24/13)
	.446 (25-56)	at Oklahoma State (12-06-13)
3 PT FIELD GOALS MADE	6	FIU (11/24/13)
	6	at Baylor (11/12/13)
3 PT FG ATTEMPTS	22	at Oklahoma State (12-06-13)
	22	LONGWOOD (11/9/13)
3 PT FG PERCENTAGE	.375 (6-16)	FIU (11/24/13)
	.357 (5-14)	at Clemson (11/17/13)
FREE THROWS MADE	24	at Oklahoma State (12-06-13)
	24	at Clemson (11/17/13)
FREE THROW ATTEMPTS	41	at Baylor (11/12/13)
	32	at Oklahoma State (12-06-13)
FREE THROW PERCENTAGE	.923 (24-26)	at Clemson (11/17/13)
	.857 (18-21)	FIU (11/24/13)
REBOUNDS	46	at Baylor (11/12/13)
	33	at Clemson (11/17/13)
ASSISTS	14	at Clemson (11/17/13)
	13	at Oklahoma State (12-06-13)
	13	FIU (11/24/13)
STEALS	10	at Oklahoma State (12-06-13)
	9	FIU (11/24/13)
	9	LONGWOOD (11/9/13)
BLOCKED SHOTS	12	at Clemson (11/17/13)
	6	at Baylor (11/12/13)
TURNOVERS	16	FIU (11/24/13)
	15	at Baylor (11/12/13)
FOULS	26	at Baylor (11/12/13)
	20	at Clemson (11/17/13)



2013-14 South Carolina Men's Basketball
South Carolina High/Low Analysis (as of Dec 16, 2013)
All games

South Carolina - GAME LOWS

POINTS	52	at Oklahoma State (12-06-13)
	57	at Clemson (11/17/13)
	64	at Baylor (11/12/13)
	82	LONGWOOD (11/9/13)
	84	FIU (11/24/13)
FIELD GOALS MADE	16	at Oklahoma State (12-06-13)
	18	at Baylor (11/12/13)
FIELD GOAL ATTEMPTS	45	at Oklahoma State (12-06-13)
	50	at Baylor (11/12/13)
FIELD GOAL PERCENTAGE	.354 (23-65)	at Clemson (11/17/13)
	.356 (16-45)	at Oklahoma State (12-06-13)
3 PT FIELD GOALS MADE	1	at Clemson (11/17/13)
	3	at Baylor (11/12/13)
3 PT FG ATTEMPTS	8	at Baylor (11/12/13)
	10	at Clemson (11/17/13)
3 PT FG PERCENTAGE	.100 (1-10)	at Clemson (11/17/13)
	.300 (6-20)	LONGWOOD (11/9/13)
FREE THROWS MADE	10	at Clemson (11/17/13)
	14	at Oklahoma State (12-06-13)
FREE THROW ATTEMPTS	18	at Clemson (11/17/13)
	21	FIU (11/24/13)
FREE THROW PERCENTAGE	.556 (10-18)	at Clemson (11/17/13)
	.636 (14-22)	at Oklahoma State (12-06-13)
REBOUNDS	31	FIU (11/24/13)
	35	at Baylor (11/12/13)
ASSISTS	7	at Clemson (11/17/13)
	10	at Oklahoma State (12-06-13)
STEALS	3	at Oklahoma State (12-06-13)
	5	LONGWOOD (11/9/13)
	5	FIU (11/24/13)
BLOCKED SHOTS	2	at Clemson (11/17/13)
	3	FIU (11/24/13)
TURNOVERS	8	at Baylor (11/12/13)
	13	at Clemson (11/17/13)
	13	FIU (11/24/13)
FOULS	15	FIU (11/24/13)
	18	LONGWOOD (11/9/13)



2013-14 South Carolina Men's Basketball
South Carolina High/Low Analysis (as of Dec 16, 2013)
All games

Opponent - GAME LOWS

POINTS	44	LONGWOOD (11/9/13)
	66	at Baylor (11/12/13)
	71	at Clemson (11/17/13)
	72	FIU (11/24/13)
	79	at Oklahoma State (12-06-13)
FIELD GOALS MADE	13	LONGWOOD (11/9/13)
	19	at Baylor (11/12/13)
FIELD GOAL ATTEMPTS	48	at Clemson (11/17/13)
	50	at Baylor (11/12/13)
	50	FIU (11/24/13)
FIELD GOAL PERCENTAGE	.228 (13-57)	LONGWOOD (11/9/13)
	.380 (19-50)	at Baylor (11/12/13)
3 PT FIELD GOALS MADE	4	LONGWOOD (11/9/13)
	5	at Clemson (11/17/13)
	5	at Oklahoma State (12-06-13)
3 PT FG ATTEMPTS	14	at Clemson (11/17/13)
	16	FIU (11/24/13)
3 PT FG PERCENTAGE	.182 (4-22)	LONGWOOD (11/9/13)
	.227 (5-22)	at Oklahoma State (12-06-13)
FREE THROWS MADE	14	LONGWOOD (11/9/13)
	18	FIU (11/24/13)
FREE THROW ATTEMPTS	21	FIU (11/24/13)
	22	LONGWOOD (11/9/13)
FREE THROW PERCENTAGE	.537 (22-41)	at Baylor (11/12/13)
	.636 (14-22)	LONGWOOD (11/9/13)
REBOUNDS	27	LONGWOOD (11/9/13)
	27	FIU (11/24/13)
ASSISTS	7	LONGWOOD (11/9/13)
	12	at Baylor (11/12/13)
STEALS	4	at Baylor (11/12/13)
	8	at Clemson (11/17/13)
BLOCKED SHOTS	0	LONGWOOD (11/9/13)
	3	FIU (11/24/13)
TURNOVERS	7	at Oklahoma State (12-06-13)
	12	at Clemson (11/17/13)
FOULS	17	at Oklahoma State (12-06-13)
	18	FIU (11/24/13)



2013-14 South Carolina Men's Basketball
South Carolina Player High/Low Analysis (as of Dec 16, 2013)
All games

South Carolina - I N D I V I D U A L G A M E H I G H S

Points	20		THORNWELL, Sindarius at Baylor (11/12/13)
	18		JOHNSON, Tyrone vs FIU (11/24/13)
	18		JOHNSON, Tyrone vs Longwood (11/9/13)
	16		WILLIAMS, Brenton vs FIU (11/24/13)
	16		SHAW, Jaylen vs FIU (11/24/13)
Field Goals Made	7		HENRY, Demetrius vs FIU (11/24/13)
	6		SHAW, Jaylen vs FIU (11/24/13)
	6		KACINAS, Mindaugas at Clemson (11/17/13)
	6		THORNWELL, Sindarius at Baylor (11/12/13)
	6		JOHNSON, Tyrone vs Longwood (11/9/13)
Field Goal Att.	13		THORNWELL, Sindarius at Baylor (11/12/13)
	11		JOHNSON, Tyrone at Clemson (11/17/13)
	11		KACINAS, Mindaugas at Clemson (11/17/13)
	11		WILLIAMS, Brenton vs Longwood (11/9/13)
FG Pct (min 5 made)	.700	(7-10)	HENRY, Demetrius vs FIU (11/24/13)
	.667	(6-9)	JOHNSON, Tyrone vs Longwood (11/9/13)
3-Point FG Made	4		SHAW, Jaylen vs FIU (11/24/13)
	3		SHAW, Jaylen at Oklahoma State (12-06-13)
3-Point FG Att.	7		SHAW, Jaylen vs FIU (11/24/13)
	7		WILLIAMS, Brenton vs Longwood (11/9/13)
3-Pt FG Pct (min 2 made)	.750	(3-4)	SHAW, Jaylen at Oklahoma State (12-06-13)
	.667	(2-3)	THORNWELL, Sindarius at Oklahoma State (12-06-13)
	.667	(2-3)	NOTICE, Duane vs Longwood (11/9/13)
Free Throws Made	7		JOHNSON, Tyrone vs FIU (11/24/13)
	7		THORNWELL, Sindarius at Baylor (11/12/13)
Free Throw Att.	10		THORNWELL, Sindarius at Baylor (11/12/13)
	9		JOHNSON, Tyrone at Baylor (11/12/13)
FT Pct (min 3 made)	1.000	(6-6)	WILLIAMS, Brenton vs FIU (11/24/13)
	1.000	(6-6)	CARRERA, Michael at Baylor (11/12/13)
	1.000	(4-4)	WILLIAMS, Brenton at Baylor (11/12/13)
	1.000	(3-3)	THORNWELL, Sindarius at Clemson (11/17/13)
Rebounds	14		KACINAS, Mindaugas vs Longwood (11/9/13)
	12		KACINAS, Mindaugas at Clemson (11/17/13)
Assists	8		JOHNSON, Tyrone at Baylor (11/12/13)
	7		JOHNSON, Tyrone vs FIU (11/24/13)
Steals	3		THORNWELL, Sindarius at Baylor (11/12/13)
	2		WILLIAMS, Brenton vs FIU (11/24/13)
	2		THORNWELL, Sindarius at Clemson (11/17/13)
	2		CARRERA, Michael at Clemson (11/17/13)
	2		JOHNSON, Tyrone at Baylor (11/12/13)
	2		CARRERA, Michael vs Longwood (11/9/13)
Blocked Shots	2		HENRY, Demetrius at Oklahoma State (12-06-13)
	2		CARRERA, Michael vs FIU (11/24/13)
	2		HENRY, Demetrius at Baylor (11/12/13)
	2		CARRERA, Michael vs Longwood (11/9/13)
	2		KACINAS, Mindaugas vs Longwood (11/9/13)
	2		THORNWELL, Sindarius vs Longwood (11/9/13)
Turnovers	6		CARRERA, Michael at Oklahoma State (12-06-13)
	4		HENRY, Demetrius at Oklahoma State (12-06-13)
	4		KACINAS, Mindaugas at Oklahoma State (12-06-13)
	4		THORNWELL, Sindarius at Oklahoma State (12-06-13)
	4		NOTICE, Duane at Clemson (11/17/13)
	4		JOHNSON, Tyrone vs Longwood (11/9/13)

Fouls	5	HENRY, Demetrius at Oklahoma State (12-06-13)
	5	HENRY, Demetrius at Clemson (11/17/13)
	5	KACINAS, Mindaugas at Baylor (11/12/13)
	5	NOTICE, Duane vs Longwood (11/9/13)



2013-14 South Carolina Men's Basketball
 South Carolina Opponent High/Low Analysis (as of Dec 16, 2013)
 All games

OPPONENT INDIVIDUAL GAME HIGHS

Points	22		MURPHY, Tymell vs FIU (11/24/13)
	21		McDANIELS, K.J. at Clemson (11/17/13)
	18		Heslip, Brady at Baylor (11/12/13)
	16		Nash, Le'Bryan at Oklahoma State (12-06-13)
	15		PORCHER JIMENEZ, M. vs FIU (11/24/13)
	15		ROPER, Jordan at Clemson (11/17/13)
Field Goals Made	9		MURPHY, Tymell vs FIU (11/24/13)
	7		McDANIELS, K.J. at Clemson (11/17/13)
Field Goal Att.	20		CAREY, Tristan vs Longwood (11/9/13)
	13		MURPHY, Tymell vs FIU (11/24/13)
FG Pct (min 5 made)	.833	(5-6)	Cobbins, Michael at Oklahoma State (12-06-13)
	.714	(5-7)	Nash, Le'Bryan at Oklahoma State (12-06-13)
3-Point FG Made	5		Heslip, Brady at Baylor (11/12/13)
	2		Smart, Marcus at Oklahoma State (12-06-13)
	2		Forte, Phil at Oklahoma State (12-06-13)
	2		PORCHER JIMENEZ, M. vs FIU (11/24/13)
	2		FILER, Adonis at Clemson (11/17/13)
	2		CAREY, Tristan vs Longwood (11/9/13)
3-Point FG Att.	10		Heslip, Brady at Baylor (11/12/13)
	10		CAREY, Tristan vs Longwood (11/9/13)
3-Pt FG Pct (min 2 made)	1.000	(2-2)	FILER, Adonis at Clemson (11/17/13)
	.500	(5-10)	Heslip, Brady at Baylor (11/12/13)
Free Throws Made	8		HALL, Rod at Clemson (11/17/13)
	8		ROPER, Jordan at Clemson (11/17/13)
Free Throw Att.	9		Nash, Le'Bryan at Oklahoma State (12-06-13)
	9		HALL, Rod at Clemson (11/17/13)
FT Pct (min 3 made)	1.000	(8-8)	ROPER, Jordan at Clemson (11/17/13)
	1.000	(6-6)	BUCKLES, Rakeem vs FIU (11/24/13)
	1.000	(6-6)	McDANIELS, K.J. at Clemson (11/17/13)
	1.000	(4-4)	FRINK, Jerome vs FIU (11/24/13)
	1.000	(3-3)	Smart, Marcus at Oklahoma State (12-06-13)
	1.000	(3-3)	PORCHER JIMENEZ, M. vs FIU (11/24/13)
Rebounds	12		Prince, Taurean at Baylor (11/12/13)
	10		McDANIELS, K.J. at Clemson (11/17/13)
Assists	5		Smart, Marcus at Oklahoma State (12-06-13)
	5		MURPHY, Tymell vs FIU (11/24/13)
Steals	3		Williams, Brian at Oklahoma State (12-06-13)
	3		BELTON, Isaac vs Longwood (11/9/13)
Blocked Shots	7		McDANIELS, K.J. at Clemson (11/17/13)
	3		Austin, Isaiah at Baylor (11/12/13)
Turnovers	5		BUCKLES, Rakeem vs FIU (11/24/13)
	5		FRINK, Jerome vs FIU (11/24/13)
Fouls	4		MURPHY, Tymell vs FIU (11/24/13)
	4		NNOKO, Landry at Clemson (11/17/13)
	4		Jefferson, Cory at Baylor (11/12/13)
	4		Prince, Taurean at Baylor (11/12/13)
	4		Chery, Kenny at Baylor (11/12/13)