



SOUTH CAROLINA

2009 WOMEN'S SOCCER

Contact: Miquel Jacobs • **Office:** (803) 777-1516 • **Cell:** (803) 530-5727 • **Fax:** (803) 777-2967
Email: jacobsm2@mailbox.sc.edu • Roost Building B, 1322 Heyward Street, Columbia, SC 29208
www.GamecocksOnline.com

2009 Schedule/Results

DAY	DATE	OPPONENT	TIME/RESULT
Fri.	Aug. 21	Mexican National Team	W, 2-0
Thur.	Aug. 27	College of Charleston	W, 2-0
Sun.	Aug. 30	Western Carolina	W, 2-0
Fri.	Sept. 4	Louisville (1)	W, 3-0
Sun.	Sept. 6	Cincinnati (1)	W, 4-0
Fri.	Sept. 11	Clemson (2)	W, 5-0
Sun.	Sept. 13	UNC Wilmington	W, 2-0
Fri.	Sept. 18	#17 UCF	W, 1-0
Sun.	Sept. 20	South Alabama	W, 6-1
Fri.	Sept. 25	Vanderbilt*	W, 2-1
Sun.	Sept. 27	Kentucky*	W, 1-0
Fri.	Oct. 2	Mississippi*	W, 1-0
Sun.	Oct. 4	Mississippi State*	T, 1-1 (2OT)
Fri.	Oct. 9	Auburn*	W, 1-0 (OT)
Sun.	Oct. 11	Alabama*	W, 2-0
Fri.	Oct. 16	#23 Georgia*	L, 1-2
Sun.	Oct. 18	Tennessee*	W, 2-1
Thur.	Oct. 22	Arkansas*	W, 2-0
Sun.	Oct. 25	#17 LSU* (ESPNU)	L, 0-1
Fri.	Oct. 30	#10 Florida*	L, 0-3
Wed.	Nov. 4	(3) SEC Championships - Georgia	W, 3-2
Fri.	Nov. 6	(3) SEC Championships - Florida	W, 1-0
Sun.	Nov. 8	(3) SEC Championships - LSU	3 p.m.

All Times Eastern
 Home matches in **BOLD** *SEC Match
 1-Louisville Tournament, Louisville, Ky.
 2-Carolina Cup, Clemson, S.C.
 3-Orange Beach, Ala.

South Carolina And LSU To Meet In SEC Title Match



#4 South Carolina
 (17-3-1, 7-3-1 SEC)

Orange Beach Soccer Complex
 Orange Beach, Ala.
 Nov. 8, 2009 • 3 p.m.

ESPNU



#2 LSU
 (14-4-3, 8-2-1 SEC)

A new SEC Champion will be crowned Sunday when fourth-seeded South Carolina (No. 15 NSCAA) takes on second-seeded LSU (No. 13 NSCAA) in the SEC Championship match at 3 p.m. on ESPNU. The title match is the first for each program after the teams both earned 1-0 shutout victories in the semifinal round. LSU defeated Auburn in the first semifinal before South Carolina earned the program's second ever victory against Florida courtesy of a Kim Miller penalty kick in the 11th minute.

THE ROAD TO REDEMPTION

South Carolina (17-3-1) lost only three games this season, dropping road matches to No. 23 Georgia (2-1), No. 13 LSU (1-0) and No. 8 Florida (3-0). After earning the fourth seed for the SEC Tournament in Orange Beach, South Carolina's road to the title was setup to allow the Gamecocks to avenge their only three losses of the season. In Wednesday's quarterfinal round, the Gamecocks defeated Georgia 3-2. In Friday's semifinal round, the Gamecocks defeated Florida 1-0. Sunday's championship match is a chance for South Carolina to earn the final victory and give the Gamecocks the rare chance to beat every team on the 2009 schedule.

Game 22

South Carolina Probable Starters

#	Name	Pos.	Class	GP-GS	G	A	P	Shots	Notes
21	Brittany Rhoades	D	Jr.	21-20	0	0	0	4	2007 Freshman All-American is team's top lockdown defender
7	Blakely Mattern	D	Sr.	21-21	6	1	13	16	Lowe's Senior CLASS Award finalist with another strong season
20	Ellen Fahey	D	So.	20-20	0	4	4	3	Physical center back has started every game of her career
3	Samantha Diaz-Matosas	D	Sr.	21-21	3	4	10	25	Athletic player can play up top or back
5	Kim Miller	M	Sr.	21-21	3	11	17	28	Team engine has five game winning assists this season
16	Lindsay Small	M	Sr.	21-21	4	3	11	32	Consistent player scores and creates as defensive mid
15	Kortney Rhoades	M	So.	21-20	3	2	8	24	Transfer hit GWG to defeat Georgia in SEC Quarters
12	Shannon Bigbie	F	Sr.	19-17	1	1	3	8	Solid senior plays up top and on the backline
4	Kayla Grimsley	F	So.	21-21	11	6	28	39	Fifth player in Gamecock history with a 10-goal season
27	Brooke Jacobs	F	Jr.	21-2	4	2	10	37	Career SOG% leader has been converting goals this year

No.	Name	Pos.	Yr.	Min.	GA	GAA.	Svs.	W-L	SO	Notes
29	Mollie Patton	GK	R-Jr.	1887:19	12	0.57	59	17-3-1	13	Third in the nation with 13 shutouts



2009 NUMERICAL ROSTER

No.	Name	Pos.	Ht.	Cl/Exp.	Hometown (High School)
0	Alex Holland	GK	5-7	Fr./HS	Cary, Ill. (Cary-Grove)
1	Roya Mojarab	GK	5-4	Soph./1L	Tacoma, Wash. (Curtis)
2	Megan Fligg	D/F	5-6	Fr./HS	Gainesville, Ga. (Chestatee)
3	Samantha Diaz-Matosas	D	5-7	Sr./3L	Lilburn, Ga. (Brookwood)
4	Kayla Grimsley	M/F	5-4	Soph./1L	Lakeland, Fla. (George W. Jenkins)
5	Kim Miller	M	5-2	Sr./3L	Farmingdale, N.Y. (Famingdale)
7	Blakely Mattern	D	5-9	Sr./3L	Simpsonville, S.C. (JL Mann)
8	Christine Watts	M	5-6	Fr./HS	Duluth, Ga. (Peachtree Ridge)
9	Maria Petroni	F	5-10	Soph./1L	Flowery Branch, Ga. (Buford)
10	Natalie Aaron	F	5-5	Soph./1L	Brentwood, Tenn. (Battle Ground Academy)
11	Idana DeCecco	D	5-6	Soph./1L	Sherwood Park, Alberta (Archbishop Jordan)
12	Shannon Bigbie	F/M	5-6	Sr./3L	Lexington, S.C. (Lexington)
13	Jocelyn Spurrier	D	5-8	R-Fr./HS	Lawrenceville, Ga. (Brookwood)
14	Lolly Holland	M	5-4	Soph./1L	Suwanee, Ga. (South Forsyth)
15	Kortney Rhoades	M	5-4	Soph.TR	Wilmington, Del. (Padua // St. Joseph's)
16	Lindsay Small	M/D	5-7	Sr./3L	Suffield, Conn. (Suffield)
17	Maggie Blackwell	D	5-6	R-Soph./SQ	Marietta, S.C. (Travelers Rest)
18	Ali Glemser	D	5-3	R-Fr./HS	Collierville, Tenn. (Collierville)
19	Kira Campbell	M	5-8	Soph./1L	Lexington, S.C. (Lexington)
20	Ellen Fahey	D	5-7	Soph./1L	Fort Wright, Ky. (Notre Dame Academy)
21	Brittany Rhoades	D	5-3	Jr./2L	Wilmington, Del. (Padua)
22	Dani Henry	F/D	5-4	R-Fr./HS	Avondole, Pa. (Padua)
23	Kacie Brewer	F/D	5-5	Sr./3L	Merritt Island, Fla. (Merritt Island)
25	Maddy Kill	M	5-7	Jr./TR	Marietta, Ga. (Marist School // Seton Hall)
26	Rae Wilson	F	5-5	Fr./HS	Greenville, S.C. (JL Mann)
27	Brooke Jacobs	F	5-3	Jr./2L	Chambersburg, Pa. (Chambersburg Area)
28	Brittany DeWitt	D	5-6	Fr./HS	Greensboro, N.C. (N.C. School of Science & Math)
29	Mollie Patton	GK	5-7	R-Jr./1L	Milford, Ohio (Milford)
32	Aly Shattls	M	5-1	Sr./3L	Huntington, W.Va. (Huntington)
35	Darien Vercillo	GK	5-6	Fr./HS	Yorba Linda, Calif. (Mater Dei)

2009 ALPHABETICAL ROSTER

No.	Name	Pos.	Ht.	Cl/Exp.	Hometown (High School)
10	Natalie Aaron	F	5-5	Soph./1L	Brentwood, Tenn. (Battle Ground Academy)
12	Shannon Bigbie	F/M	5-6	Sr./3L	Lexington, S.C. (Lexington)
17	Maggie Blackwell	D	5-6	R-Soph./SQ	Marietta, S.C. (Travelers Rest)
23	Kacie Brewer	F/D	5-5	Sr./3L	Merritt Island, Fla. (Merritt Island)
19	Kira Campbell	M	5-8	Soph./1L	Lexington, S.C. (Lexington)
11	Idana DeCecco	D	5-6	Soph./1L	Sherwood Park, Alberta (Archbishop Jordan)
28	Brittany DeWitt	D	5-6	Fr./HS	Greensboro, N.C. (N.C. School of Science & Math)
3	Samantha Diaz-Matosas	D	5-7	Sr./3L	Lilburn, Ga. (Brookwood)
20	Ellen Fahey	D	5-7	Soph./1L	Fort Wright, Ky. (Notre Dame Academy)
2	Megan Fligg	D/F	5-6	Fr./HS	Gainesville, Ga. (Chestatee)
18	Ali Glemser	D	5-3	R-Fr./HS	Collierville, Tenn. (Collierville)
4	Kayla Grimsley	M/F	5-4	Soph./1L	Lakeland, Fla. (George W. Jenkins)
22	Dani Henry	F/D	5-4	R-Fr./HS	Avondole, Pa. (Padua)
0	Alex Holland	GK	5-7	Fr./HS	Cary, Ill. (Cary-Grove)
14	Lolly Holland	M	5-4	Soph./1L	Suwanee, Ga. (South Forsyth)
27	Brooke Jacobs	F	5-3	Jr./2L	Chambersburg, Pa. (Chambersburg Area)
25	Maddy Kill	M	5-7	Jr./TR	Marietta, Ga. (Marist School // Seton Hall)
7	Blakely Mattern	D	5-9	Sr./3L	Simpsonville, S.C. (JL Mann)
5	Kim Miller	M	5-2	Sr./3L	Farmingdale, N.Y. (Famingdale)
1	Roya Mojarab	GK	5-4	Soph./1L	Tacoma, Wash. (Curtis)
29	Mollie Patton	GK	5-7	R-Jr./1L	Milford, Ohio (Milford)
9	Maria Petroni	F	5-10	Soph./1L	Flowery Branch, Ga. (Buford)
21	Brittany Rhoades	D	5-3	Jr./2L	Wilmington, Del. (Padua)
15	Kortney Rhoades	M	5-4	Soph.TR	Wilmington, Del. (Padua // St. Joseph's)
32	Aly Shattls	M	5-1	Sr./3L	Huntington, W.Va. (Huntington)
16	Lindsay Small	M/D	5-7	Sr./3L	Suffield, Conn. (Suffield)
13	Jocelyn Spurrier	D	5-8	R-Fr./HS	Lawrenceville, Ga. (Brookwood)
35	Darien Vercillo	GK	5-6	Fr./HS	Yorba Linda, Calif. (Mater Dei)
8	Christine Watts	M	5-6	Fr./HS	Duluth, Ga. (Peachtree Ridge)
26	Rae Wilson	F	5-5	Fr./HS	Greenville, S.C. (JL Mann)

PRONUNCIATIONS

Kira Campbell -- KEER-uh
Idana DeCecco -- id-DAN-uh de-CHECK-oh
 Sam **Diaz-Matosas** -- DIAZ mah-TOE-sas
 Ellen **Fahey** -- FAYE-he
Roya Mojarab -- ROY-ah mo-JAR-uhb
 Darien **Vercillo** -- ver-SILL-oh

**SOUTH CAROLINA
 2009 SEC RANKINGS
 (as of 11/2/09)**

Category	Pl.	No.
Goals	4th	38
Goals Per Game	4th	2.00
Goals Allowed	1st	10
GAA	1st	0.52
Assists	T-4th	35
Assists Per Game	T-4th	1.84
Points	4th	111
Points Per Game	4th	5.84
Shots	10th	265
Shots Per Game	9th	13.95
Shot %	2nd	.143
Shot on Goal %	1st	.517
Saves	12th	58
Saves Per Game	12th	3.05
Shutouts	1st	12
Shots Allowed	1st	159
SOG Allowed	1st	68
Points Allowed	1st	28
Fouls	11th	160
Corners	T-8th	90
Offsides	3rd	44
Yellow Cards	T-7th	9

INDIVIDUAL

Name	Category	Pl.	No.
Grimsley	Goals	T-2nd	10
	Assists	T-10th	5
	Points	3rd	25
	Points/gm	4th	1.32
Miller	Assists	2nd	10
	GAA	1st	0.47
Patton	Save %	1st	.862
	Shutouts	1st	12
	Saves	12th	58



SEC STANDINGS

EASTERN DIVISION

Team	CONF		W-L	ALL Pct.
	W-L	Pts		
Florida	8-1-2	26	15-4-2	.762
South Carolina	7-3-1	22	16-3-1	.825
Georgia	7-4-0	21	14-5-1	.725
Vanderbilt	5-6-0	15	11-8-1	.575
Tennessee	4-5-2	14	8-9-3	.500
Kentucky	2-8-1	7	5-10-4	.368

WESTERN DIVISION

Team	CONF		W-L	ALL Pct.
	W-L	Pts		
LSU	8-2-1	25	13-4-3	.725
Ole Miss	7-2-2	23	13-5-2	.700
Auburn	6-5-0	18	10-7-3	.575
Arkansas	2-7-2	8	8-7-4	.526
Alabama	2-8-1	7	6-10-1	.361
Mississippi State	1-8-2	5	9-8-2	.526

Games through November 5

THIS WEEK IN THE SEC

Wednesday, November 4

[7] Vanderbilt vs. [2] LSU	LSU, 4-2
[6] Auburn vs. [3] Ole Miss	Auburn, 1-0
[8] Tennessee vs. [1] Florida	Florida, 1-0 (OT)
[5] Georgia vs. [4] South Carolina	USC, 3-2

Friday, November 6

[6] Auburn vs. [2] LSU	LSU, 1-0
[4] South Carolina vs. [1] Florida	USC, 1-0

Sunday, November 8

Championship Match	3 p.m. (ESPN)
--------------------	---------------

All Times Eastern

SEC PRESEASON POLL

EASTERN DIVISION	WESTERN DIVISION
Florida (11).....66	LSU (8)..... 63
Georgia (1).....53	Auburn (4)..... 58
Tennessee43	Ole Miss..... 43
South Carolina40	Alabama 39
Vanderbilt25	Arkansas..... 25
Kentucky19	Mississippi State 18

Overall Champion: Florida (11), Auburn (1)

CAROLINA IN THE SEC TOURNAMENT

South Carolina is advancing to its fourth consecutive SEC Tournament and eighth overall. With Friday's win over Florida, South Carolina is advancing to its first ever SEC Championship match. The Gamecocks are 3-7-1 all-time in the tournament, but the team has advanced to the semifinal round three times in the past four seasons. South Carolina had a draw against Vanderbilt in 2006 leading to a 4-3 decision in penalty kicks. The Gamecocks then won their first tournament match in 2007 with a 2-0 win against Tennessee. Sunday's game will be the first time the team will meet LSU in the tourney. South Carolina has met Florida the most, going 1-3-0 against the Gators. They have also met Georgia (1-2-0), Tennessee (1-1-0) and Vanderbilt (0-1-1).

SCOUTING LSU

LSU won the SEC West with an 8-2-1 conference record and finished one point behind Florida for the overall title. The Tigers advanced to the championship match with a 4-2 win against Vanderbilt in the quarterfinals and a 1-0 win against Auburn in the semis. The team is led by SEC Offensive Player of the Year Malorie Rutledge who has 10 goals and 12 assists for 32 points. Melissa Clarke also has 10 goals on the season, and she has added four assists for 24 points. Senior striker Rachel Yepez has returned to the lineup after missing action - including the last game between these teams - with an ankle injury. Sophomore goalkeeper Mo Isom has 11 shutouts on the year.

CHASING 100

In her ninth season, South Carolina head coach Shelley Smith sports a 98-65-23 record at the helm of the Gamecocks. She is two victories away from earning win No. 100 at South Carolina. Her all-time coaching record is 139-100-25 which includes her 41-35-2 record while coaching Rhode Island for four seasons.

SMITH NAMED SEC COACH OF THE YEAR, FOUR GAMECOCKS EARN ALL-SEC HONORS

South Carolina head coach **Shelley Smith** was named SEC Coach of the Year, senior **Blakely Mattern** was named SEC Scholar Athlete of the Year, and four Gamecocks earned All-SEC honors to cap the most successful regular season in program history.

It is the first SEC Coach of the Year honor for Smith, who guided South Carolina to school records for conference (seven) and overall (15) victories this season. The Gamecocks recorded a program-best second place finish in the SEC East and came within one game of winning the overall title.

Mattern and sophomore **Kayla Grimsley** were two of only four unanimous First Team All-SEC selections. Seniors **Kim Miller** and **Samantha Diaz-Matosas** earned their first All-SEC honors after the duo made the second team, as voted by the league's coaches.

SENIOR CLASS SET THE BAR HIGH

The 2009 senior class will leave Columbia as the winningest senior class in program history. Entering weekend play, the group of seniors hold a 53-22-13 (.676) record, the most wins and best win-percentage for a South Carolina senior class. The group of seven has led Carolina to four consecutive SEC tournament appearances and will likely head to its third consecutive NCAA Tournament.

SOUTH CAROLINA VS. RANKED TEAMS

Date	Opponent	Result	Date	Opponent	Result
9-18-96	#9 Clemson	W, 3-2	10-2-05	at #20 Tennessee	L, 1-2
10-4-97	at #9 Clemson	L, 0-5	10-7-05	#18 Vanderbilt	L, 0-2
10-26-97	at #9 Florida	L, 2-5	10-29-05	at #16 Florida	L, 0-3
9-11-98	at #17 Georgia	W, 2-0	8-25-06	vs. #13 Illinois	L, 0-1
10-7-98	#13 Clemson	L, 1-3	9-24-06	at #13 Auburn	W, 1-0
11-5-98	vs. #3 Florida	L, 0-6	9-29-06	#16 Tennessee	T, 0-0 (2OT)
10-8-99	at #9 Clemson	L, 0-4	10-27-06	#13 Florida	T, 1-1 (2OT)
10-29-99	at #3 Florida	L, 0-5	9-1-07	at #1 North Carolina	W, 1-0
9-8-00	at #1 UNC	L, 1-9	9-22-07	at #20 Clemson	L, 0-1
9-12-00	vs. #17 Duke	L, 1-5	9-27-07	at #10 Tennessee	L, 2-3 (OT)
10-8-00	at #14 Kentucky	L, 1-5	10-21-07	#25 Auburn	W, 2-0
10-29-00	#16 Florida	L, 0-3	10-25-07	at #20 LSU	T, 1-1 (2OT)
9-30-01	at #20 Florida	L, 0-1	11-2-07	at #22 Florida	L, 0-2
10-2-01	at #9 Clemson	L, 0-3	11-7-07	vs. #15 Tennessee	W, 2-0
10-5-01	#16 Kentucky	L, 0-1	11-9-07	vs. #13 Georgia	L, 0-2
10-21-01	at #25 Tennessee	L, 1-3	9-14-08	vs. #7 Florida State	T, 3-3 (2OT)
9-11-02	#18 Clemson	L, 0-1	10-23-08	#13 LSU	T, 0-0 (2OT)
10-20-02	#13 Tennessee	T, 1-1 (2OT)	10-30-08	#7 Florida	L, 0-1
8-29-03	at #20 Clemson	L, 0-1 (OT)	9-18-09	#17 UCF	W, 1-0
9-12-03	at #5 Texas A&M	L, 1-2 (OT)	10-16-09	at #23 Georgia	L, 1-2
10-3-03	#14 Auburn	T, 0-0 (2OT)	10-25-09	at #14 LSU	L, 0-1
11-1-03	at #10 Florida	L, 0-2	10-30-09	at #10 Florida	L, 0-3
11-7-03	vs. #16 Tennessee	L, 0-1	11-04-09	vs. #25 Georgia	W, 3-2
9-12-04	at #4 Virginia	L, 2-5	11-06-09	vs. #8 Florida	W, 1-0
9-15-04	#7 Clemson	W, 2-0			
10-3-04	#19 Tennessee	L, 1-3			
10-29-04	#18 Florida	L, 1-2 (2OT)			

Overall: 10-34-7 **vs. Top 10:** 4-13-1
Home: 4-8-5 **Road:** 3-21-1 **Neutral:** 3-5-1



CAROLINA'S RECORD WHEN ...

Overall **17-3-1**

Home 9-0-0
 Away 4-3-1
 Neutral 4-0-0

Leading At The Half 11-1-0
 Tied At The Half 5-0-1
 Trailing At The Half 1-2-0

Scores In The First Half 12-1-0
 Overtime Games 1-0-1

On Television 1-2-0
 In Tournaments 6-0-0
 Against 2008 NCAA Participants 6-3-0

Vs. Top 25 3-3-0

Longest Winning Streak W11
 Longest Unbeaten Streak U14
 Active Streak W2

Against Opponents

USC Scores First 16-1-1
 Opponent Scores First 1-2-0

Scores 1 Goal 5-1-1
 Scores 2 Goals 7-0-0
 Scores 3+ Goals 5-0-0

Opponent Scores 1 Goal 3-1-1
 Opponent Scores 2 Goals 1-1-0
 Opponent Scores 3+ Goals 0-1-0

Is Shutout 0-2-0
 Shut Out Opponent 13-0-0

Takes More Shots 14-1-1
 Opponent Takes More Shots 3-2-0

Time

Day Games 7-1-1
 Night Games 10-2-0

Mondays 0-0-0
 Wednesdays 1-0-0
 Thursdays 2-0-0
 Fridays 7-2-0
 Saturdays 0-0-0
 Sundays 7-1-1

August 2-0-0
 September 8-0-0
 October 5-3-1
 November 2-0-0

After A Win 13-2-1
 After A Loss 2-1-0
 After A Tie 1-0-0

Wearing White 11-2-0
 Wearing Garnet 0-0-1
 Wearing Black 6-1-0

THE BEST SEASON EVER?

With a 17-3-1 record and 7-3-1 SEC record, the Gamecocks have already earned program bests for overall and conference wins in a season. The Gamecocks finished a program-best second in the SEC East and came within one game of the winning the SEC title.

GRIMSLEY JOINS ELITE COMPANY

Sophomore **Kayla Grimsley** became just the fifth player in South Carolina history to register a 10-goal season after scoring in the 63rd minute against Arkansas last Thursday. Grimsley joins Jennie Ondo, Angela Austin, Debbie Smith and Darcel Mollon as players to reach the plateau.

GETTING THE W'S

South Carolina's 17 wins are tied for third in the country behind the top two teams in this week's national polls: #1 Stanford (19) and #2 Portland (18).

EXCEEDING EXPECTATIONS

For the fourth consecutive year Coach Shelley Smith's squad exceeded preseason expectations by finishing strong in conference play. Picked by the coaches to finish last in 2006, the Gamecocks earned fifth in the Eastern division. Picked to finish last in the East in the 2007 SEC Preseason poll, the Gamecocks tied a program record for wins en route to a fourth place division finish. Carolina was picked fourth in the 2008 preseason poll and again improved in the standings with a third place finish in the Eastern division. Coach Smith's team was again picked fourth in 2009 and responded with an SEC East runner-up finish that earned her SEC Coach of the Year honors.

GAMECOCKS ON TV

Sunday's championship is South Carolina's fourth televised game in the 2009 season. The team defeated Vanderbilt, 2-1, in the SEC opener on Sept. 25 before falling 1-0 to LSU on ESPNU and Florida (3-0) on Fox Sports Florida. Carolina and LSU will play on ESPNU for the second time this season Sunday. The first LSU broadcast marked the third consecutive season that the Gamecocks played a game on national television.

MEXICAN FORESHADOW

South Carolina's incredible run this season may have been foreshadowed by the preseason ending 2-0 shutout win of the Mexican National Team. Since that match, the Mexican team went 4-0 in its collegiate tour and outscored opponents 14-2 with wins at Kennesaw State (5-0), previously ranked TCU (4-1), #14 Southern California (2-0) and Cal State Fullerton (3-1).

SHUTOUT DEFENSE

South Carolina finished the regular season tied for eighth in the nation with 12 shutouts on the year with only 10 goals allowed. Junior goalkeeper **Mollie Patton** has held the national lead in all three goalkeeping categories for the majority of the season. Going into the SEC tournament, she is fifth in the nation with 12 solo shutouts, ranks eighth nationally with a 0.47 goals against average and is in the Top 25 nationally with a .862 save percentage.

IN THE POLLS

South Carolina stayed put at No. 14 in the Soccer Times poll, moved to No. 15 in the NSCAA coaches poll and comes in at No. 19 by Soccer America, marking the eighth straight week South Carolina has been ranked in the Top 20 of all three polls. Carolina also comes in at No. 17 in the final NCAA RPI report of the regular season, behind only Florida in the SEC.

ELLEN FAHEY RETURNS TO THE BACKLINE

Sophomore defender **Ellen Fahey** returned to her starting spot at centerback after missing the regular season finale at Florida due to a red card she earned in the prior match. Fahey has started all 42 games of her career, but the Gamecocks had to experiment with a new lineup against the Gators with senior midfielder **Lindsay Small** playing on the backline and sophomore midfielder **Kira Campbell** earning Small's midfield spot.

GRABBING THE SCHOOL RECORD

Senior defender **Blakely Mattern** has started every game of her career, and with 88 career starts is officially the school's all-time leader after surpassing Ashley Kirk's record of 81 starts three weeks ago. She, along with **Samantha Diaz-Matosas** and **Kim Miller**, surpassed the games played record of 83 this season as well and all hold the lead with 88 games played.

AT THE TOP OF THE NCAA LISTS

Noted as one of the top defensive teams in the country under **Shelley Smith**, South Carolina has continued that excellence this season and added a little offensive flair as well. The Gamecocks have the NCAA's ninth-ranked defense with a 0.51 goals against average and 12 shutouts. The team is also No. 44 in scoring offense (2.00 goals/game). With that type of production, South Carolina is also at the top of the SEC lists in half of the statistical categories. The team leads the conference in goals allowed, goals against average, shutouts, shots allowed, shots on



HOME MATCHES UNDER SMITH

DATE	OPPONENT	RESULT
9-4-01	Davidson	W, 4-0
9-17-01	Furman	W, 3-0
9-19-01	SC State	W, 12-0
10-5-01	Kentucky	L, 0-1
10-7-01	Vanderbilt	L, 0-1
10-26-01	Ole Miss	W, 1-0
10-28-01	Mississippi State	L, 1-2 (OT)
11-2-01	UNC Greensboro	W, 2-0
8-30-02	Birmingham Southern	W, 3-0
9-11-02	Clemson	L, 0-1
9-14-02	College of Charleston	W, 3-1
9-29-02	Florida	W, 1-0 (OT)
10-11-02	Arkansas	L, 1-2 (OT)
10-13-02	LSU	W, 2-0
10-18-02	Georgia	L, 1-2 (OT)
10-20-02	Tennessee	T, 1-1 (OT)
10-29-02	Wofford	W, 1-0
9-2-03	Furman	L, 0-1
9-5-03	Charleston Southern	W, 2-1
9-7-03	Darmouth	W, 3-1
9-17-03	Davidson	W, 4-1
9-21-03	NC State	W, 1-0
10-3-03	Auburn	T, 0-0 (OT)
10-5-03	Alabama	W, 2-0
10-17-03	Vanderbilt	L, 0-1
10-19-03	Kentucky	W, 2-1
8-27-04	Georgia State	W, 1-0
9-3-04	Houston	W, 4-1
9-5-04	Iowa State	W, 1-0
9-15-04	Clemson	W, 2-0
9-19-04	Charlotte	W, 2-1 (2 OT)
10-1-04	Georgia	T, 1-1 (OT)
10-3-04	Tennessee	L, 1-3
10-15-04	Ole Miss	L, 0-1
10-17-04	Mississippi State	L, 2-3 (OT)
10-24-04	LSU	W, 2-1
10-29-04	Florida	L, 1-2 (2 OT)
8-26-05	Mercer	W, 7-0
8-29-05	Furman	W, 2-1
9-18-05	Miami (Fla.)	W, 2-1
9-23-05	Auburn	L, 0-1
9-25-05	Alabama	W, 2-0
10-7-05	Vanderbilt	L, 0-2
10-9-05	Kentucky	L, 1-2 (2 OT)
10-21-05	Arkansas	L, 1-2
8-31-06	Francis Marion	W, 2-1
9-3-06	James Madison	W, 3-1
9-5-06	The Citadel	W, 4-0
9-15-06	Clemson	W, 1-0
9-17-06	Jacksonville State	W, 6-0
9-29-06	Tennessee	T, 0-0 (2 OT)
10-1-06	Georgia	W, 2-1
10-13-06	Mississippi State	W, 1-0
10-15-06	Ole Miss	T, 0-0 (2 OT)
10-20-06	LSU	W, 2-1 (2 OT)
10-27-06	Florida	T, 1-1 (2 OT)
9-3-07	East Tennessee State	W, 5-2
9-12-07	Winthrop	W, 5-0
9-23-07	Marshall	W, 4-0
10-5-07	Kentucky	W, 2-0
10-7-07	Vanderbilt	L, 0-1 (2OT)
10-19-07	Alabama	W, 2-0
10-21-07	Auburn	W, 1-0
10-28-07	Arkansas	W, 1-0
8-28-08	East Carolina	W, 1-0
8-31-08	Boston University	W, 1-0
9-5-08	Clemson	W, 1-0
9-7-08	Furman	W, 2-1
9-19-08	East Tennessee State	W, 4-0
9-26-08	Tennessee	W, 2-1
9-28-08	Georgia	T, 1-1
10-10-08	Mississippi State	W, 2-1
10-12-08	Ole Miss	W, 3-2
10-23-08	LSU	T, 0-0
10-30-08	Florida	L, 0-1
8-27-09	College of Charleston	W, 2-0
8-30-09	Western Carolina	W, 2-0
9-18-09	UCF	W, 1-0
9-20-09	South Alabama	W, 6-1
9-25-09	Vanderbilt	W, 2-1
9-27-09	Kentucky	W, 1-0
10-9-09	Auburn	W, 1-0 (OT)
10-11-09	Alabama	W, 2-0
10-22-09	Arkansas	W, 2-0

TOTAL RECORD: 58-18-8
LONGEST UNBEATEN STREAK: 15
SHUTOUTS RECORDED: 42

goal allowed, points allowed and shot on goal percentage.

PATTON GETS THE RECORD(S)

Redshirt junior goalkeeper **Mollie Patton** set a new South Carolina single-season shutout record when she grabbed her eighth shutout of the year in the win against Kentucky. She then set the career record in the next game at Ole Miss with her 16th shutout in 33 career games, surpassing the previous mark of 15 set by **Laura Armstrong** and **Elise Matthews**.

SPREADING THE WEALTH

Goals have been spread around the entire Gamecock team so far with a different player hitting the game-winning goal in nine of Carolina's 17 wins. Fourteen different players have scored a goal this season, and only half of those players have scored multiple goals this season: **Kayla Grimsley, Kim Miller, Blakely Mattern, Samantha Diaz-Matosas, Lindsay Small, Brooke Jacobs, Kortney Rhoades** and **Christine Watts**.

MILLER TIME

Senior **Kim Miller** has been one of the most consistent performers for South Carolina the past four years, and the New York native has stretched that consistency to another part of her game in her final season. Miller is 20th in the NCAA and second in the SEC with 11 assists so far this season, and she currently has the South Carolina record with five game winning goals this season.

GRIMSLEY'S RECORD PLAY

Sophomore **Kayla Grimsley** has continued the stellar play that she exhibited in her freshman season last year. The flashy player set a new South Carolina record with a nine-match scoring streak, and her goal against South Alabama tied her program record four-match goal scoring streak. She currently is second in the SEC in points (28) and goals (11).

FIRST HALF LOCKDOWN

LSU's goal 57 seconds into last Sunday's game marked the first time this season that South Carolina has allowed a goal in the first half. Florida and SEC Tournament first round opponent Georgia are the only other teams to notch first half goals against South Carolina.

LOWE'S SENIOR CLASS AWARD FINALIST BLAKELY MATTERN NEEDS VOTES!

Senior defender **Blakely Mattern** has been named a finalist for the Lowe's Senior CLASS Award, presented annually in eight NCAA Division 1 Sports to a senior student-athlete who excels both on and off the field. Candidates are chosen based on their dedication and achievement in four areas: Classroom, Character, Community and Competition. Fan voting will help decide the winner. Visit "www.seniorclassaward.com" or text "W6" to 74567 to vote for Mattern.

ELLEN FAHEY'S STEPPING UP

Sophomore defender **Ellen Fahey** started every game at centerback last season as a freshman, continuing the legacy of all-conference caliber freshman defenders after **Blakely Mattern** (2006) and **Brittany Rhoades** (2007). Strong and assertive in the back, Fahey added a new dimension to her play thus far after recording her first four career points, three on game-winning assists. Her three game-winning assists tie the South Carolina sophomore single season record.

HELMET! HELMET! HELMET!

Junior goalkeeper **Mollie Patton** has learned to embrace the helmet she has had to wear the past two seasons due to previous concussions. This year she has company now that **Lindsay Small** and **Brittany Rhoades** have been confined to wearing headgear due to blows to the head recently. Rhoades began wearing headgear after a blow in the Clemson victory led to her getting stitches on her left brow. Small then had to get headgear after taking an inadvertent elbow in the Vanderbilt victory, causing her to get stitches below her right brow.

HOME AT THE STONE

South Carolina has been nearly unstoppable at Stone Stadium the past three seasons, posting a 31-2-5 record at home since 2006. The streak included a 15-game unbeaten streak from Aug. 31, 2006-Oct. 5, 2007 and a 13-game unbeaten streak at "The Graveyard" from Oct. 19, 2007-Oct. 23, 2008. The lone blemishes on the record are a double-overtime loss to Vanderbilt (Oct. 7, 2007) and a loss to #7 Florida (Oct. 30, 2008). The season opening win against College of Charleston was **Coach Shelley Smith's** 50th win at Stone Stadium.

ROCKY TOPPED

South Carolina's 2-1 win at Tennessee last weekend marked the first win in program history in Knoxville. In addition, the victory extended Carolina's current streak in the series. After going winless in the first 13 matches between the SEC East rivals, South Carolina has now won the last three meetings - one at home, one at the SEC tournament and one in Knoxville.

SENIOR CLASS BECOMES FIRST TO WIN AT CLEMSON

South Carolina defeated rival Clemson 5-0 last Sunday for the program's first victory at Historic



OVERTIME MATCHES

DATE	OPPONENT	RESULT
9-15-95	at VCU	W, 1-0
9-29-95	vs. Marquette (Clemson, S.C.)	L, 1-2
10-13-95	Georgia	T, 1-1
10-16-95	Evansville	W, 1-0
10-19-95	College of Charleston	T, 1-1
1995 OVERTIME RECORD: 2-1-2		
9-29-96	at Georgia	L, 1-2
10-27-96	at Auburn	T, 1-1
10-30-96	at Furman	T, 1-1
1996 OVERTIME RECORD: 0-1-2		
9-14-97	Kentucky	L, 3-4
10-10-97	at Georgia Southern	W, 3-2
1997 OVERTIME RECORD: 1-1		
9-4-98	Wake Forest	T, 1-1
9-25-98	at Kentucky	L, 0-1
10-13-98	at Furman	W, 3-2
1998 OVERTIME RECORD: 1-1-1		
9-12-99	Kentucky	L, 1-2
10-12-99	Wofford	W, 2-1
11-4-99	vs. Vanderbilt (SEC Tourn.)	L, 1-2
1999 OVERTIME RECORD: 1-2		
2000 OVERTIME RECORD: 0-0		
9-1-01	at College of Charleston	T, 0-0
9-9-01	vs. UNLV (San Diego, Calif.)	T, 1-1
10-14-01	at LSU	T, 4-4
10-28-01	Mississippi State	L, 1-2
2001 OVERTIME RECORD: 0-1-3		
9-29-02	Florida	W, 1-0
10-11-02	Arkansas	L, 1-2
10-18-02	Georgia	L, 1-2
10-20-02	Tennessee	T, 1-1
10-25-02	at Auburn	T, 1-1
2002 OVERTIME RECORD: 1-2-2		
8-29-03	at Clemson	L, 0-1
9-12-03	at Texas A&M	L, 1-2
9-14-03	at Houston	T, 1-1
10-3-03	Auburn	T, 0-0
10-24-03	at Ole Miss	T, 0-0
2003 OVERTIME RECORD: 0-2-3		
8-31-04	at James Madison	L, 2-3
9-19-04	Charlotte	W, 2-1
10-1-04	Georgia	T, 1-1
10-8-04	at Vanderbilt	T, 1-1
10-17-04	Mississippi State	L, 2-3
10-29-04	Florida	L, 1-2
2004 OVERTIME RECORD: 1-3-2		
10-10-05	Kentucky	L, 1-2
2005 OVERTIME RECORD: 0-1		
9-29-06	Tennessee	T, 0-0
10-16-06	Ole Miss	T, 0-0
10-20-06	LSU	W, 2-1
10-22-06	at Arkansas	T, 1-1
10-27-06	Florida	T, 1-1
11-1-06	vs. Vanderbilt (SEC Tourn.)	T, 1-1
2006 OVERTIME RECORD: 1-0-5		
9-27-07	at Tennessee	L, 2-3
9-30-07	at Georgia	L, 1-2
10-7-07	Vanderbilt	L, 0-1
10-12-07	at Mississippi State	T, 0-0
10-25-07	at LSU	T, 1-1
11-14-07	vs. Duke (NCAA First Rnd.)	T, 1-1
2007 OVERTIME RECORD: 0-3-3		
8-23-08	at UNC Wilmington	T, 0-0
9-7-08	Furman	W, 2-1
9-14-08	vs. Florida State (Auburn, Ala.)	T, 3-3
9-28-08	Georgia	T, 1-1
10-23-08	LSU	T, 0-0
11-14-08	vs. William & Mary (NCAA)	L, 2-3
2008 OVERTIME RECORD: 1-1-4		
10-4-09	at Mississippi State	T, 1-1
10-9-09	Auburn	W, 1-0
TOTAL RECORD: 10-19-28		
UNDER SHELLEY SMITH: 5-13-23		

Riggs Field. In a rivalry that has been played annually since 1995 in a home-and-home series, the Gamecocks not only never won at Riggs Field in seven tries but never scored a goal there until the offensive outburst in a 5-0 win. Senior **Shannon Bigbie** hit the game winner in her first start of the year, classmate **Blakely Mattern** scored two goals and senior **Kim Miller** notched two assists in the victory.

MATTERN CONTINUES TO PICK UP NATIONAL HONORS

Senior defender **Blakely Mattern** continues to pick up honors in her final season as a Gamecock. A Lowe's Senior CLASS Award finalist, Mattern has been named the SEC Defensive Player of the Week twice, was selected to the Soccer America National Team of the Week three times, earned Top Drawer Soccer Team of the Week honors once and has also earned CollegeSoccer360.com Primetime Player of the Week honors.

DIAZ-MATOSAS DELIVERS

Senior defender **Samantha Diaz-Matosas** has started off strong for South Carolina with a four-point weekend at the Cardinal Classic. Diaz-Matosas earned an assist in the final seconds of the match against Louisville before scoring her first goal of the season and getting the game-winning assist in the 4-0 win against Cincinnati. On Senior Night, she hit the game-winner in overtime to defeat Auburn. A versatile player, Diaz-Matosas can play anywhere on the field, making her a top threat for the Gamecocks in her fourth year.

PATTON EARNS NATIONAL HONORS

Redshirt junior goalkeeper **Mollie Patton** earned her first career national honor when she was named to the Soccer America National Team of the Week after her stellar play at the Cardinal Classic. Since then, she has also earned SEC Defensive Player of the Week honors and currently leads the nation in shutouts and goals against average. Patton recently set the SEC record for consecutive shutouts when she notched seven straight, passing the previous record of six held by Kentucky's Carrie Kuhnell (1995) and Auburn's Megan Rivera (2003).

MATTERN'S CAREER WEEKEND

Senior **Blakely Mattern** had a career weekend at the Carolina's Cup when she scored three goals in two games for six points to earn the Carolina's Cup MVP honor. The senior defender also led the Gamecocks to their sixth shutout - tied for the NCAA lead - in the 5-0 win at Clemson and 2-0 win against UNC Wilmington. For her efforts, she was named the SEC Defensive Player of the Week for the second time in three weeks and also earned a spot on the Soccer America and Top Drawer Soccer National Teams of the Week.

FIRST TIME OPPONENTS

South Carolina faced four opponents for the first time in 2009 and went 4-0 in those games. The Gamecocks defeated Louisville (3-0), Cincinnati (4-0), UCF (1-0) and South Alabama (6-1). Last season, Carolina went 0-1-2 against first time opponents, drawing UNC Wilmington and #7 Florida State before dropping a tight game to Western Carolina.

RETURNING CATEGORY LEADERS

Carolina returns 10 starters from last season's NCAA Tournament team and only lost one senior from the squad that went 11-7-4. South Carolina will enter 2009 as one of the most experienced teams in the nation, and depth will also be available after Coach Shelley Smith signed seven freshmen and landed two transfers for the 2009 season.

Statistical Category Breakdown

Category	2008 Leader (Total)	% Returning	Top Returner
Points	Grimsley (22)	93%	Grimsley (22)
Goals	Grimsley (8)	93%	Grimsley (8)
Game-Winning Goals	Grimsley, Miller, Small (2)	91%	Grimsley, Miller, Small (2)
Assists	Grimsley (6)	46%	Grimsley (6)
Shots	Jacobs (38)	94%	Jacobs (38)
Shots on Goal	Jacobs (26)	91%	Jacobs (26)
Saves	Patton (58)	100%	Patton (58)
Goals Against Average	Patton (0.96)	100%	Patton (0.96)

ALL-AMERICAN DEFENSE

The South Carolina defense has been consistently one of the top in the SEC and in the nation, and all signs point to this season being another strong one for the Garnet and Black. The Gamecocks return two former Freshman All-Americans in senior **Blakely Mattern** and junior **Brittany Rhoades**.



GOAL SUMMARY

Player (#)	Opp. (Time)	Asst. (#)
Miller (1)	Col. of Charleston (13:42)	-
Grimsley (1)	Col. of Charleston (29:54)	Small (1)
Grimsley (2)	Western Carolina (22:38)	Fahey (1)
Miller (2)	Western Carolina (26:49)	D-Matosas (1)
Small (1)	Louisville (27:09)	Miller (1)
Watts (1)	Louisville (43:52)	-
Grimsley (3)	Louisville (89:51)	D-Matosas (2)
Mattern (1)	Cincinnati (26:54)	Fahey(2), D-Matosas (3)
Diaz-Matosas (1)	Cincinnati (59:32)	Grimsley (1)
Fligg (1)	Cincinnati (79:09)	Miller (2)
Petroni (1)	Cincinnati (81:13)	Miller (3)
Bigbie (1)	Clemson (3:22)	Miller (4), Jacobs (1)
Mattern (2)	Clemson (35:33)	Miller (5)
Jacobs (2)	Clemson (36:51)	Watts (1)
Grimsley (4)	Clemson (65:44)	-
Mattern (3)	Clemson (71:35)	-
Mattern (4)	UNC-W (55:17)	K. Rhoades (1)
Grimsley (5)	UNC-W (63:52)	Fahey (3), Brewer (1)
Grimsley (6)	UCF (27:18)	Fahey (4)
Small (2)	South Alabama (3:30)	Miller (6)
Diaz-Matosas (2)	South Alabama (19:03)	-
Aaron (1)	South Alabama (27:34)	Jacobs (2)
Grimsley (7)	South Alabama (55:53)	K. Rhoades (2)
Holland (1)	South Alabama (59:32)	Mattern (1)
Brewer (1)	South Alabama (73:39)	Petroni (1), Aaron (1)
K. Rhoades (1)	Vanderbilt (15:47)	Small (2), Grimsley (2)
Jacobs (2)	Vanderbilt (51:38)	Bigbie (1)
Watts (2)	Kentucky (55:24)	-
Small (3)	Ole Miss (67:50)	Miller (7)
Jacobs (3)	Mississippi State (45:50)	Grimsley (3)
Diaz-Matosas (3)	Auburn (97:47)	-
Mattern (5)	Alabama (11:07)	Miller (8)
Mattern (6)	Alabama (12:47)	D-Matosas (4)
Grimsley (8)	Georgia (7:07)	-
Grimsley (9)	Tennessee (32:19)	-
Small (4)	Tennessee (55:38)	Grimsley (4)
K. Rhoades (2)	Arkansas (54:04)	Grimsley (5), Miller (9)
Grimsley (10)	Arkansas (62:39)	Miller (10)
Jacobs (4)	Georgia (11:44)	Miller (11), Small (3)
Grimsley (11)	Georgia (80:20)	-
K. Rhoades (3)	Georgia (88:19)	Grimsley (6)
Miller (3)	Florida (10:36)	-

GOAL BREAKDOWN

At home	19
On the road	13
Neutral Site.....	10
vs. SEC.....	17
vs. Non-Conference.....	25
First Half	21
Second Half	21

ALL-TIME USC SCORING LIST

Rnk.	Name	G	A	Pts.
1.	Jennie Ondo	50	15	115
2.	Morgan McIntyre	29	5	63
3.	Angela Austin	19	16	54
4.	Mindy Sanders	14	24	52
5.	Kayla Grimsley	19	12	50
6.	Debbie Smith	19	11	49
7.	Melinda Carter	15	16	46
8.	Darcell Mollon	15	7	37
T9.	Blakely Mattern	15	6	36
T9.	Ashley Williams	17	2	36
11.	Lydia Bienias	12	10	34
12.	Kim Miller	8	17	33
T13.	Lexi Tourtelotte	14	3	31
T13.	Ashley Kirk	9	13	31
T15.	Becca Epstein	10	10	30
T15.	Erin Sullivan	11	8	30

Current Players

Kayla Grimsley	19	12	50
Blakely Mattern	15	6	36
Kim Miller	8	17	33
Sam Diaz-Matosas	8	12	28

ALL-TIME USC GOALTENDING LIST

Rnk.	Name	GAA	SHO
1.	Mollie Patton	0.77	20
T2.	Laura Armstrong	0.79	15
T2.	Elise Matthews	1.24	15
T4.	Lindsay Thorstenson	1.33	9
T4.	Carrie Warner	1.58	9
6.	Carolyn Ortega	1.14	6.5
7.	Emily Crain	1.78	6
8.	Amy Toms	1.71	5
9.	Amanda Sandling	2.04	4.5
10.	Jessica Freas	3.01	1

Current Players

Mollie Patton	0.77	20
---------------	------	----

2009 HONOR ROLL

Samantha Diaz-Matosas - Second Team All-SEC

Kayla Grimsley - First Team All-SEC, Soccer America Team of the Week (Wk5), CollegeSoccer360 Primetime Performer of the Week (Wk5), Preseason All-SEC, Cardinal Classic All-Tournament Team, Carolina's Cup All-Tournament Team

Blakely Mattern - First Team All-SEC, SEC Defensive Player of the Week (Wk2, Wk4), Soccer America Team of the Week (Wk2, Wk4, Wk8), Top Drawer Soccer Team of the Week (Wk4), CollegeSoccer360 Primetime Performer of the Week (Wk6), Cardinal Classic All-Tournament Team, Carolina's Cup Tournament MVP, Preseason All-SEC, Lowe's Senior CLASS Award Finalist

Kim Miller - Second Team All-SEC, Cardinal Classic All-Tournament Team, Carolina's Cup All-Tournament Team

Mollie Patton - SEC Defensive Player of the Week (Wk6), Soccer America Team of the Week (Wk3), Cardinal Classic All-Tournament Team

Lindsay Small - Carolina's Cup All-Tournament Team

SEC WEEKLY HONORS

Week

1
2
3
4
5
6
7
8
9
10
11

Defensive POW

Kailey Anders, D (Arkansas)
Blakely Mattern, D (South Carolina)
Molly Baird, GK (Tennessee)
Blakely Mattern, D (South Carolina)
Justine Bernier, GK (Alabama)
Mollie Patton, GK (South Carolina)
Michelle Betos, GK (Georgia)
Sydney Hiance, GK (Kentucky)
Alley Ronaldi, GK (Ole Miss)
Rachel Bachtel, GK (Vanderbilt)
Lauren Hyde, D (Florida)

Offensive POW

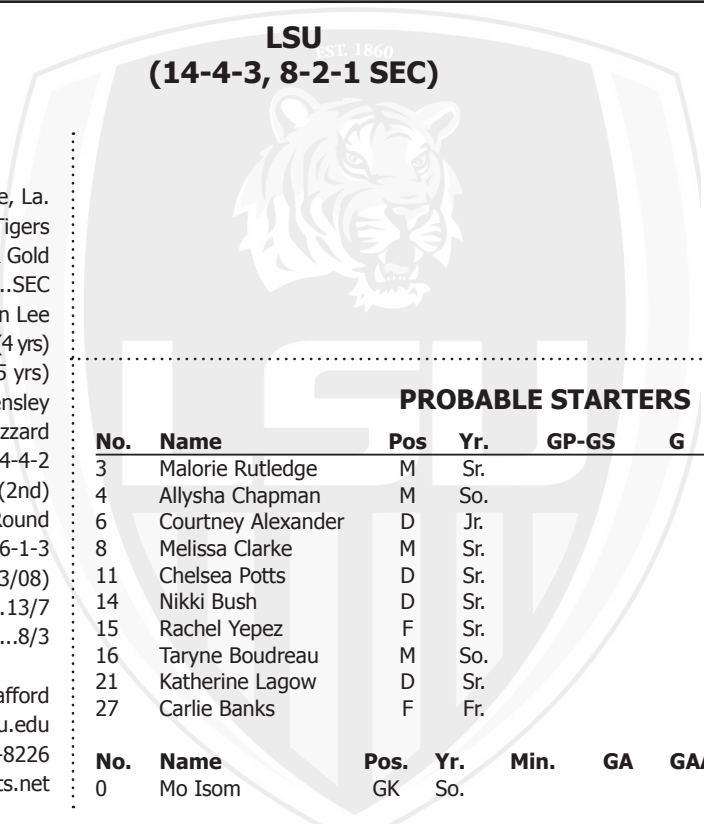
Carrie Patterson, F (Georgia)
Taylor Cunningham, M (Ole Miss)
Molly Kinsella, F (Vanderbilt)
Mick Imgram, M (Tennessee)
Kat Walsh, F (Mississippi State)
Rachel Yopez, F (LSU)
Melissa Clarke, M (LSU)
Danielle Johnson, M (Ole Miss)
Tahnai Annis, M (Florida)
Rebecca Howell, F (Auburn)
Malorie Rutledge, M (LSU)

Freshman of the Week

Amy Howard, GK (Auburn)
Rebekah Perry, M (Georgia)
Monica Alvarado, M (Mississippi State)
Brooke Thigpen, M (Florida)
Amy Howard, GK (Auburn)
Carlie Banks, F (LSU)
Amy Harrison, F (Tennessee)
Erika Tymrak, M (Florida)
Carlie Banks, F (LSU)
Amy Howard, GK (Auburn)
McKenzie Barney, M (Florida)



OPPONENT NOTES



LSU
(14-4-3, 8-2-1 SEC)

QUICK FACTS

Location Baton Rouge, La.
Nickname Tigers
Colors Purple & Gold
Conference SEC
Head Coach Brian Lee
Record at School (Years) 43-27-14 (4 yrs)
Career Record (Years) 187-107-24 (15 yrs)
Assistant Coaches Debbie Hensley
 Daniel Brizzard

2008 Record 14-4-2
Conference Finish 7-3-0 (2nd)
Postseason NCAA First Round
Series Record USC leads, 6-1-3
Last Meeting Tied, 0-0 (10/23/08)
Letterwinners Returning/Lost 13/7
Starters Returning/Lost 8/3

Soccer SID Will Stafford
SID E-mail wstaff2@tigers.lsu.edu
SID Phone (225) 578-8226
Website www.LSUsports.net

PROBABLE STARTERS

No.	Name	Pos	Yr.	GP-GS	G	A	Pts.	Shots
3	Malorie Rutledge	M	Sr.					
4	Allysha Chapman	M	So.					
6	Courtney Alexander	D	Jr.					
8	Melissa Clarke	M	Sr.					
11	Chelsea Potts	D	Sr.					
14	Nikki Bush	D	Sr.					
15	Rachel Yopez	F	Sr.					
16	Taryne Boudreau	M	So.					
21	Katherine Lagow	D	Sr.					
27	Carlie Banks	F	Fr.					

No.	Name	Pos.	Yr.	Min.	GA	GAA.	Svs.	W-L	SO
0	Mo Isom	GK	So.						

NCAA/adidas

Week 11 (11/3)

No.	School	Rec.
1.	Stanford	19-0-0
2.	Portland	17-1-0
3.	UCLA	15-2-1
4.	Notre Dame	15-3-1
5.	North Carolina	14-3-1
6.	Florida State	14-3-1
7.	Boston College	15-2-1
8.	Florida	14-4-2
9.	UCF	15-3-1
10.	Wake Forest	13-4-2
11.	Ohio State	14-2-2
12.	Rutgers	13-3-4
13.	LSU	12-4-3
14.	Santa Clara	12-6-1
15.	South Carolina	15-3-1
16.	Maryland	12-4-2
17.	BYU	16-2-2
18.	Washington State	13-4-1
19.	Virginia Tech	13-6-0
20.	Texas A&M	12-5-2
21.	Southern California	12-6-0
22.	Penn State	11-5-2
23.	Purdue	10-5-3
24.	Dayton	14-0-5
25.	Georgia	14-4-1

NCAA South Region

Week 11 (11/2)

No.	School	Rec.
1.	Florida	14-4-2
2.	LSU	12-4-3
3.	Ole Miss	13-4-2
4.	South Carolina	15-3-1
T5.	Auburn	9-7-3
T5.	Georgia	14-4-1
7.	Vanderbilt	11-7-1
8.	Denver	14-5-1
T9.	Western Kentucky	14-4-1
T9.	FIU	11-5-3

Soccer America

Week 11 (11/2)

No.	School	Rec.
1.	Stanford	19-0-0
2.	Portland	17-1-0
3.	Florida State	14-3-1
4.	North Carolina	14-3-1
5.	UCLA	15-2-1
6.	Boston College	15-2-1
7.	Notre Dame	15-3-1
8.	BYU	16-2-2
9.	UCF	15-3-1
10.	Marquette	14-4-2
11.	Ohio State	14-2-2
12.	Florida	14-4-2
13.	Maryland	12-4-2
14.	Virginia Tech	13-6-0
15.	Wake Forest	13-4-2
16.	LSU	12-4-3
17.	Washington State	13-4-1
18.	Dayton	14-0-5
19.	South Carolina	15-3-1
20.	Southern California	12-6-0
21.	Ole Miss	13-4-2
22.	Penn State	11-5-2
23.	Rutgers	13-3-4
24.	West Virginia	9-5-6
25.	Virginia	9-5-4

Soccer Times

Week 11 (11/2)

No.	School	Rec.
1.	Stanford	19-0-0
2.	Portland	17-1-0
3.	UCLA	15-2-1
4.	North Carolina	14-3-1
5.	Florida State	14-3-1
6.	Boston College	15-2-1
7.	Notre Dame	15-3-1
8.	Wake Forest	13-4-2
9.	BYU	16-2-2
10.	Florida	14-4-2
11.	Ohio State	14-2-2
12.	UCF	15-3-1
13.	Washington State	13-4-1
T14.	South Carolina	15-3-1
T14.	Rutgers	13-3-4
16.	LSU	12-4-3
17.	Maryland	12-4-2
18.	Virginia Tech	13-6-0
19.	Southern California	12-6-0
20.	Texas A&M	12-5-2
21.	Santa Clara	12-6-1
22.	Georgia	14-4-1
23.	Marquette	14-4-2
24.	Dayton	14-0-5
25.	Penn State	11-5-2



SOUTH CAROLINA WEEKLY RANKINGS

Week	NSCAA	South Region	S. Times	S. America	TOP DRAWER	CollegeSoccer360
Preseason	-	N/A	-	-	45	-
Week 1 (8/24)	rv	4	-	-	43	-
Week 2 (8/31)	rv	2	rv	-	41	-
Week 3 (9/7)	18	2	23	25	26	23
Week 4 (9/14)	13	3	15	12	20	13
Week 5 (9/21)	12	2	13	11	18	11
Week 6 (9/28)	8	2	7	7	15	8
Week 7 (10/5)	7	2	7	8	11	7
Week 8 (10/12)	5	1	5	5	10	6
Week 9 (10/19)	10	2	9	10	11	9
Week 10 (10/26)	13	3	14	15	16	13
Week 11 (11/2)	15	4	14	19	28	-



**2009 South Carolina Women's Soccer
South Carolina Game Results (as of Nov 07, 2009)
All games**

Date	Opponent		Score	Overall	Conf	Att.	Goals scored
Aug 27	COL. OF CHARLESTON	W	2-0	1-0-0	0-0-0	612	Kim Miller (unassisted) Kayla Grimsley (Lindsay Small)
Aug 30	WESTERN CAROLINA	W	2-0	2-0-0	0-0-0	489	Kayla Grimsley (Ellen Fahey) Kim Miller (Sam Diaz-Matosas)
09-04-0	at Louisville	W	3-0	3-0-0	0-0-0	1103	Lindsay Small (Kim Miller) Christine Watts (unassisted) Kayla Grimsley (Sam Diaz-Matosas)
09-06-0	vs Cincinnati Bearcats	W	4-0	4-0-0	0-0-0	229	Blakely Mattern (Ellen Fahey;Sam Diaz-Matosas) Sam Diaz-Matosas (Kayla Grimsley) Megan Fligg (Kim Miller) Maria Petroni (Kim Miller)
Sep 11	at Clemson	W	5-0	5-0-0	0-0-0	917	Shannon Bigbie (Kim Miller;Brooke Jacobs) Blakely Mattern (Kim Miller) Brooke Jacobs (Christine Watts) Kayla Grimsley (unassisted) Blakely Mattern (unassisted)
Sep 13	vs UNC Wilmington	W	2-0	6-0-0	0-0-0	155	Blakely Mattern (Kortney Rhoades) Kayla Grimsley (Ellen Fahey;Kacie Brewer)
Sep 18	#17 UCF	W	1-0	7-0-0	0-0-0	1424	Kayla Grimsley (Ellen Fahey)
Sep 20	SOUTH ALABAMA	W	6-1	8-0-0	0-0-0	443	Lindsay Small (Kim Miller) Sam Diaz-Matosas (unassisted) Natalie Aaron (Brooke Jacobs) Kayla Grimsley (Kortney Rhoades) Lolly Holland (Blakely Mattern) Kacie Brewer (Maria Petroni;Natalie Aaron)
* Sep 25	VANDERBILT	W	2-1	9-0-0	1-0-0	756	Kortney Rhoades (Lindsay Small;Kayla Grimsley) Brooke Jacobs (Shannon Bigbie)
* Sep 27	KENTUCKY	W	1-0	10-0-0	2-0-0	672	Christine Watts (unassisted)
* Oct 02	at Ole Miss	W	1-0	11-0-0	3-0-0	513	Lindsay Small (Kim Miller)
* Oct 04	at Mississippi State	TO2	1-1	11-0-1	3-0-1	142	Brooke Jacobs (Kayla Grimsley)
* Oct 09	AUBURN	WOT	1-0	12-0-1	4-0-1	827	Sam Diaz-Matosas (unassisted)
* Oct 11	ALABAMA	W	2-0	13-0-1	5-0-1	1023	Blakely Mattern (Kim Miller) Blakely Mattern (Sam Diaz-Matosas)
* Oct 16	at #16 Georgia	L	1-2	13-1-1	5-1-1	1715	Kayla Grimsley (unassisted)
* Oct 18	at Tennessee	W	2-1	14-1-1	6-1-1	1332	Kayla Grimsley (unassisted) Lindsay Small (Kayla Grimsley)
* Oct 22	ARKANSAS	W	2-0	15-1-1	7-1-1	746	Kortney Rhoades (Kayla Grimsley;Kim Miller) Kayla Grimsley (Kim Miller)
* Oct 25	at #14 LSU	L	0-1	15-2-1	7-2-1	861	-
* Oct 30	at #10 Florida	L	0-3	15-3-1	7-3-1	3104	-
Nov 04	vs Georgia	W	3-2	16-3-1	7-3-1		Brooke Jacobs (Kim Miller;Lindsay Small) Kayla Grimsley (unassisted) Kortney Rhoades (Kayla Grimsley)
Nov 06	vs #10 Florida	W	1-0	17-3-1	7-3-1		Kim Miller (unassisted)

Team Record	W-L-T	Attendance	Dates	Total	Avg.
Overall:	17-3-1	Total:	21	17063	813
Conference:	7-3-1	Home:	9	6992	777
Home:	9-0	Away:	8	9687	1211
Away:	4-3-1	Neutral:	4	384	96



**2009 South Carolina Women's Soccer
South Carolina Combined Team Statistics (as of Nov 07, 2009)
All games**

RECORD:	OVERALL	HOME	AWAY	NEUTRAL
ALL GAMES	17-3-1	9-0	4-3-1	4-0
CONFERENCE	7-3-1	5-0	2-3-1	0-0
NON-CONFERENCE	10-0	4-0	2-0	4-0

Date	Opponent	Score	Att.	#	Player	gp	g	a	pts	sh	sh%	sog	sog%	gw	pk-att	
Aug 27	COL. OF CHARLESTON	W	2-0	612	4	Kayla Grimsley	21	11	6	28	39	.282	21	.538	2	0-0
Aug 30	WESTERN CAROLINA	W	2-0	489	5	Kim Miller	21	3	11	17	28	.107	10	.357	2	0-0
09-04-0	at Louisville	W	3-0	1103	7	Blakely Mattern	21	6	1	13	16	.375	11	.688	3	0-0
09-06-0	vs Cincinnati Bearcats	W	4-0	229	16	Lindsay Small	21	4	3	11	32	.125	16	.500	3	0-0
Sep 11	at Clemson	W	5-0	917	27	Brooke Jacobs	21	4	2	10	37	.108	23	.622	1	0-0
Sep 13	vs UNC Wilmington	W	2-0	155	3	Sam Diaz-Matosas	21	3	4	10	25	.120	13	.520	2	0-0
Sep 18	#17 UCF	W	1-0	1424	15	Kortney Rhoades	21	3	2	8	24	.125	12	.500	2	0-0
Sep 20	SOUTH ALABAMA	W	6-1	443	8	Christine Watts	21	2	1	5	19	.105	8	.421	1	0-0
* Sep 25	VANDERBILT	W	2-1	756	20	Ellen Fahey	20	0	4	4	3	.000	2	.667	0	0-0
* Sep 27	KENTUCKY	W	1-0	672	12	Shannon Bigbie	19	1	1	3	8	.125	5	.625	1	0-0
* Oct 02	at Ole Miss	W	1-0	513	10	Natalie Aaron	18	1	1	3	8	.125	2	.250	0	0-0
* Oct 04	at Mississippi State	To2	1-1	142	23	Kacie Brewer	21	1	1	3	7	.143	5	.714	0	0-0
* Oct 09	AUBURN	Wot	1-0	827	9	Maria Petroni	18	1	1	3	4	.250	3	.750	0	0-0
* Oct 11	ALABAMA	W	2-0	1023	14	Lolly Holland	15	1	0	2	7	.143	2	.286	0	0-0
* Oct 16	at #16 Georgia	L	1-2	1715	2	Megan Fligg	14	1	0	2	2	.500	2	1.000	0	0-0
* Oct 18	at Tennessee	W	2-1	1332	19	Kira Campbell	19	0	0	0	10	.000	4	.400	0	0-0
* Oct 22	ARKANSAS	W	2-0	746	18	Ali Glemser	13	0	0	0	6	.000	4	.667	0	0-0
* Oct 25	at #14 LSU	L	0-1	861	21	Brittany Rhoades	21	0	0	0	4	.000	2	.500	0	0-0
* Oct 30	at #10 Florida	L	0-3	3104	22	Dani Henry	14	0	0	0	3	.000	0	.000	0	0-0
Nov 04	vs Georgia	W	3-2	0	25	Maddy Kill	8	0	0	0	1	.000	1	1.000	0	0-0
Nov 06	vs #10 Florida	W	1-0	0	29	Mollie Patton	21	0	0	0	0	.000	0	.000	0	0-0
					28	Brittany DeWitt	4	0	0	0	0	.000	0	.000	0	0-0
					26	Rae Wilson	5	0	0	0	0	.000	0	.000	0	0-0
					17	Maggie Blackwell	2	0	0	0	0	.000	0	.000	0	0-0
					11	Idana DeCecco	2	0	0	0	0	.000	0	.000	0	0-0
					6	Samantha Abrahart	1	0	0	0	0	.000	0	.000	0	0-0
					1	Roya Mojarab	1	0	0	0	0	.000	0	.000	0	0-0
						Total	21	42	38	122	283	.148	146	.516	17	0-0
						Opponents	21	12	10	34	174	.069	73	.420	3	1-1

TEAM STATISTICS	SC	OPP
SHOT STATISTICS		
Goals-Shot attempts	42-283	12-174
Goals scored per game	2.00	0.57
Shot pct.	.148	.069
Shots on goal-Attempts	146-283	73-174
SOG pct.	.516	.420
Shots/Game	13.5	8.3
CORNER KICKS	100	66
PENALTY KICKS	0-0	1-1
PENALTIES		
Yellow cards	9	11
Red cards	1	0
ATTENDANCE		
Total	6992	9687
Dates/Avg Per Date	9/777	8/1211
Neutral Site #/Avg	4/96	

#	Goalie	GP	Min.	GA	GAAvg	Saves	Pct	W-L-T	Sho
29	Mollie Patton	21	1887:19	11	0.52	59	.843	17-3-1	13
1	Roya Mojarab	1	30:28	1	2.95	2	.667	0-0-0	0
	Total	21	1917:47	12	0.56	61	.836	17-3-1	13
	Opponents	21	1917:47	42	1.97	104	.712	3-15-1	2

Goals by Period	1st	2nd	OT	OT2	Total
South Carolina	21	20	1	0	42
Opponents	5	7	0	0	12

Shots by Period	1st	2nd	OT	OT2	Total
South Carolina	149	130	4	0	283
Opponents	66	104	2	2	174

Saves by Period	1st	2nd	OT	OT2	Total
South Carolina	19	42	0	0	61
Opponents	58	46	0	0	104

Corners by Period	1st	2nd	OT	OT2	Total
South Carolina	56	43	0	1	100
Opponents	24	42	0	0	66

Fouls by Period	1st	2nd	OT	OT2	Total
South Carolina	75	93	4	0	172



SOUTH CAROLINA MATCH-BY-MATCH STATISTICS

DATE	OPPONENT	G	A	PTS	SH	PCT	SOG	SOG%	CORNERS	FOULS	YC	SAVES	GA
8/27	Col. Charleston	2	2	6	11	.182	7	.636	3	7	0	1	0
8/31	Western Carolina	2	2	6	11	.182	7	.636	6	4	0	0	0
9/4	Louisville	3	2	8	12	.250	8	.667	7	10	0	6	0
9/6	Cincinnati	4	5	13	22	.182	15	.682	7	7	0	5	0
9/11	Clemson	5	4	14	12	.417	7	.583	4	9	1	6	0
9/13	UNC Wilmington	2	3	7	23	.087	9	.391	3	7	0	6	0
9/18	#17 UCF	1	1	3	8	.125	4	.500	6	10	1	3	0
9/20	South Alabama	6	6	18	23	.261	13	.565	6	7	0	3	1
9/25	Vanderbilt	2	3	7	14	.143	6	.429	6	11	0	0	1
9/27	Kentucky	1	0	2	14	.071	8	.571	8	9	0	1	0
10/2	Ole Miss	1	1	3	10	.100	5	.500	1	5	0	5	0
10/4	Mississippi State	1	1	3	14	.071	3	.214	2	11	1	5	1
10/9	Auburn	1	0	2	17	.059	8	.471	4	13	2	3	0
10/11	Alabama	2	2	6	18	.111	11	.611	7	15	0	1	0
10/16	#23 Georgia	1	0	2	12	.083	8	.667	1	4	0	2	2
10/18	Tennessee	2	1	5	16	.125	5	.313	6	14	1	6	1
10/22	Arkansas	2	3	7	15	.133	8	.533	4	7	1	3	0
10/25	#17 LSU	0	0	0	5	.000	3	.600	6	3	2	2	1
10/30	Florida	0	0	0	8	.000	2	.250	3	7	0	0	3
11/4	SEC - Georgia	3	2	8	12	.250	6	.500	8	8	0	1	2
11/6	SEC - Florida	1	0	2	6	.167	3	.500	2	4	0	2	0
South Carolina		42	37	121	281	.149	146	.520	100	172	9	61	12

Bold - Season-High

OPPONENT MATCH-BY-MATCH STATISTICS

DATE	OPPONENT	G	A	PTS	SH	PCT	SOG	SOG%	CORNERS	FOULS	YC	SAVES	GA
8/27	Col. Charleston	0	0	0	2	.000	1	.500	3	7	0	5	2
8/31	Western Carolina	0	0	0	0	N/A	0	N/A	1	9	0	5	2
9/4	Louisville	0	0	0	10	.000	6	.600	3	10	0	5	3
9/6	Cincinnati	0	0	0	10	.000	5	.500	2	12	0	11	4
9/11	Clemson	0	0	0	12	.000	6	.500	4	8	1	2	5
9/13	UNC Wilmington	0	0	0	8	.000	6	.750	0	10	0	7	2
9/18	#17 UCF	0	0	0	12	.000	3	.250	3	11	1	3	1
9/20	South Alabama	1	1	3	4	.250	4	1.000	2	9	0	7	6
9/25	Vanderbilt	1	1	3	8	.125	1	.125	4	8	1	4	2
9/27	Kentucky	0	0	0	2	.000	1	.500	4	10	0	7	1
10/2	Ole Miss	0	0	0	8	.000	5	.625	5	4	0	4	1
10/4	Mississippi State	1	0	2	12	.083	6	.500	0	12	2	2	1
10/9	Auburn	0	0	0	7	.000	3	.429	2	15	1	7	1
10/11	Alabama	0	0	0	5	.000	1	.200	6	12	0	9	2
10/16	#23 Georgia	2	1	5	8	.250	4	.500	5	4	0	7	1
10/18	Tennessee	1	0	2	19	.052	7	.368	8	13	0	3	2
10/22	Arkansas	0	0	0	11	.000	3	.273	1	7	1	6	2
10/25	#17 LSU	1	2	4	10	.100	3	.300	4	9	0	3	0
10/30	#10 Florida	3	3	9	11	.273	3	.273	5	8	1	2	0
11/4	SEC - Georgia	2	2	6	8	.250	3	.375	3	11	1	3	3
11/6	SEC - Florida	0	0	0	7	.000	2	.286	1	6	0	2	1
Opponents		12	10	34	174	.069	73	.420	66	195	9	104	42



GAME-BY-GAME INDIVIDUAL LEADERS

DATE	OPPONENT	W/L	SCORE	HIGH SHOTS	HIGH SOG	HIGH GOALS	HIGH ASSISTS	HIGH POINTS
8/27	Col. Charleston	W	2-0	Miller, K. Rhoades (2)	K. Rhoades (2)	Miller, Grimsley (1)	Small (1)	Miller, Grimsley (2)
8/31	Western Carolina	W	2-0	Diaz, Miller, Grimsley (2)	Diaz, Grimsley (2)	Miller, Grimsley (1)	Fahey, Diaz-Matosas (1)	Miller, Grimsley (2)
9/4	Louisville	W	3-0	Watts (3)	Grimsley, Watts (2)	Small, Grimsley, Watts (1)	Miller, Diaz-Matosas (1)	Small, Watts, Grim (2)
9/6	Cincinnati	W	4-0	Small (5)	Mattern, Small (3)	4 players (1)	Miller (2)	Diaz-Matosas (3)
9/11	Clemson	W	5-0	Campbell (4)	Mattern, Campbell (2)	Mattern (2)	Miller (2)	Mattern (4)
9/13	UNC Wilmington	W	2-0	Jacobs (5)	Jacobs (2)	Mattern, Grimsley (1)	Rhoades, Fahey, Brewer (1)	Mattern, Grimsley (2)
9/18	#17 UCF	W	1-0	Diaz-Matosas (2)	4 players (1)	Grimsley (1)	Fahey (1)	Grimsley (2)
9/20	South Alabama	W	6-1	Jacobs, Grimsley (4)	Brewer (3)	6 players (1)	6 players (1)	6 players (2)
9/25	Vanderbilt	W	2-1	Jacobs (4)	Jacobs (3)	K. Rhoades, Jacobs (1)	Grimsley, Bigbie, Small (1)	K. Rhoades, Jacobs (2)
9/27	Kentucky	W	1-0	Watts, Grimsley (3)	Jacobs, Watts (2)	Watts (1)	-	Watts (2)
10/2	Ole Miss	W	1-0	Small (5)	Small (3)	Small (1)	Miller (1)	Small (2)
10/4	Mississippi State	T	1-1	Miller, Jacobs (3)	Diaz, Fahey, Jacobs (1)	Jacobs (1)	Grimsley (1)	Jacobs (2)
10/9	Auburn	W	1-0	Diaz-Matosas (4)	Jacobs (2)	Diaz-Matosas (1)	-	Diaz-Matosas (2)
10/11	Alabama	W	2-0	Jacobs, Diaz-Matosas (3)	Diaz, Mattern, K. Rh (2)	Mattern (2)	Miller, Diaz-Matosas (2)	Mattern (4)
10/16	Georgia	L	1-2	Jacobs (4)	Jacobs (3)	Grimsley (1)	-	Grimsley (2)
10/18	Tennessee	W	2-1	Grimsley (7)	Grimsley (3)	Grimsley, Small (1)	Grimsley (1)	Grimsley (3)
10/22	Arkansas	W	2-0	Small (4)	Grimsley (2)	Grimsley, K. Rhoades (1)	Miller (2)	Grimsley (3)
10/25	#17 LSU	L	0-1	Miller (2)	Miller, Mattern, Small (1)	-	-	-
10/30	#10 Florida	L	0-3	Grimsley, Miller (2)	Grimsley, Miller (1)	-	-	-
11/4	SEC - Georgia	W	3-2	K. Rhoades (4)	K. Rhoades (2)	K. Rhoades, Grimsley, Jacobs (1)	Small, Grimsley, Miller (1)	Grimsley (3)
11/6	SEC - Florida	W	1-0	Diaz-Matosas (2)	Miller, Small, Diaz (1)	Miller (1)	-	Miller (2)

GAME-BY-GAME STARTERS

DATE	OPPONENT	W/L	F	F	M/F	M	M	M	D	D	D	D	GK
8/27	Col. Charleston	W	Jacobs	Grimsley	Campbell	Miller	Small	K. Rhoades	Mattern	Diaz-Matosas	Fahey	B. Rhoades	Patton
8/31	Western Carolina	W	Jacobs	Grimsley	Campbell	Miller	Small	K. Rhoades	Mattern	Diaz-Matosas	Fahey	B. Rhoades	Patton
9/4	Louisville	W	Jacobs	Grimsley	Campbell	Miller	Small	K. Rhoades	Mattern	Diaz-Matosas	Fahey	B. Rhoades	Patton
9/6	Cincinnati	W	Jacobs	Grimsley	Campbell	Miller	Small	K. Rhoades	Mattern	Diaz-Matosas	Fahey	B. Rhoades	Patton
9/11	Clemson	W	Jacobs	Grimsley	Campbell	Miller	Small	Bigbie	Mattern	Diaz-Matosas	Fahey	B. Rhoades	Patton
9/13	UNC Wilmington	W	Jacobs	Grimsley	Campbell	Miller	Small	K. Rhoades	Mattern	Diaz-Matosas	Fahey	Bigbie	Patton
9/18	#17 UCF	W	Jacobs	Grimsley	Bigbie	Miller	Small	K. Rhoades	Mattern	Diaz-Matosas	Fahey	B. Rhoades	Patton
9/20	South Alabama	W	Jacobs	Grimsley	Bigbie	Miller	Small	K. Rhoades	Mattern	Fligg	Fahey	B. Rhoades	Patton
9/25	Vanderbilt	W	Jacobs	Grimsley	Bigbie	Miller	Small	K. Rhoades	Mattern	Diaz-Matosas	Fahey	B. Rhoades	Patton
9/27	Kentucky	W	Jacobs	Grimsley	Bigbie	Miller	Small	K. Rhoades	Mattern	Diaz-Matosas	Fahey	B. Rhoades	Patton
10/2	Ole Miss	W	Jacobs	Grimsley	Bigbie	Miller	Small	K. Rhoades	Mattern	Diaz-Matosas	Fahey	B. Rhoades	Patton
10/4	Mississippi State	T	Jacobs	Grimsley	Bigbie	Miller	Small	K. Rhoades	Mattern	Diaz-Matosas	Fahey	B. Rhoades	Patton
10/9	Auburn	W	Brewer	Grimsley	Bigbie	Miller	Small	K. Rhoades	Mattern	Diaz-Matosas	Fahey	B. Rhoades	Patton
10/11	Alabama	W	Jacobs	Grimsley	Bigbie	Miller	Small	K. Rhoades	Mattern	Diaz-Matosas	Fahey	B. Rhoades	Patton
10/16	#23 Georgia	L	Jacobs	Grimsley	Bigbie	Miller	Small	K. Rhoades	Mattern	Diaz-Matosas	Fahey	B. Rhoades	Patton
10/18	Tennessee	W	Jacobs	Grimsley	Bigbie	Miller	Small	K. Rhoades	Mattern	Diaz-Matosas	Fahey	B. Rhoades	Patton
10/22	Arkansas	W	Jacobs	Grimsley	Bigbie	Miller	Small	K. Rhoades	Mattern	Diaz-Matosas	Fahey	B. Rhoades	Patton
10/25	#17 LSU	L	Jacobs	Grimsley	Bigbie	Miller	Small	K. Rhoades	Mattern	Diaz-Matosas	Fahey	B. Rhoades	Patton
10/30	#10 Florida	L	Jacobs	Grimsley	Bigbie	Miller	Campbell	K. Rhoades	Mattern	Diaz-Matosas	Small	B. Rhoades	Patton
11/4	SEC - Georgia	W	Jacobs	Grimsley	Bigbie	Miller	Small	K. Rhoades	Mattern	Diaz-Matosas	Fahey	B. Rhoades	Patton
11/6	SEC - Florida	W	Jacobs	Grimsley	Bigbie	Miller	Small	K. Rhoades	Mattern	Diaz-Matosas	Fahey	B. Rhoades	Patton



HOME-ONLY INDIVIDUAL STATISTICS

##	PLAYER	GP-GS	G	A	PTS	SH	PCT	SOG	SOG%	GWG	GWA
2	Megan Fligg	8-1	0	0	0	1	.000	1	1.000	0	0
3	Samantha Diaz-Matosas	9-8	2	2	6	17	.118	9	.529	2	0
4	Kayla Grimsley	9-9	5	2	12	18	.278	11	.611	2	1
5	Kim Miller	9-9	2	4	8	10	.200	2	.200	1	2
7	Blakely Mattern	9-9	2	1	5	5	.400	4	.800	1	0
8	Christine Watts	9-0	1	0	2	10	.100	5	.500	0	1
9	Maria Petroni	7-0	0	1	1	2	.000	1	.500	0	0
10	Natalie Aaron	9-0	1	1	3	5	.200	2	.400	0	0
11	Idana DeCecco	1-0	0	0	0	0	.000	0	.000	0	0
12	Shannon Bigbie	7-7	0	1	1	2	.000	0	.000	0	1
13	Jocelyn Spurrier	0-0	0	0	0	0	.000	0	.000	0	0
14	Lolly Holland	7-0	1	0	2	3	.333	1	.333	0	0
15	Kortney Rhoades	9-9	2	1	5	13	.154	9	.692	1	0
16	Lindsay Small	9-9	1	2	4	11	.091	3	.273	0	0
17	Maggie Blackwell	1-0	0	0	0	0	.000	0	.000	0	0
18	Ali Glemser	8-0	0	0	0	4	.000	3	.750	0	0
19	Kira Campbell	7-2	0	0	0	2	.000	2	1.000	0	0
20	Ellen Fahey	9-9	0	2	2	1	.000	1	1.000	0	2
21	Brittany Rhoades	9-9	0	0	0	2	.000	0	.000	0	0
22	Dani Henry	7-0	0	0	0	2	.000	0	.000	0	0
23	Kacie Brewer	9-1	1	0	2	5	.200	4	.800	0	0
25	Maddy Kill	3-0	0	0	0	1	.000	1	1.000	0	0
26	Rae Wilson	3-0	0	0	0	0	.000	0	.000	0	0
27	Brooke Jacobs	9-8	1	1	3	18	.056	13	.722	0	1
28	Brittany DeWitt	2-0	0	0	0	0	.000	0	.000	0	0
TEAM											
South Carolina		9	19	18	56	131	.145	72	.550	9	6
Opponents		9	2	2	6	51	.039	17	.333	0	0

GOALKEEPERS

	GP-GS	Min.	GA	GAA.	Svs.	Save %	W-L	SO	
0	Alex Holland	0-0	00:00	0	0.00	0	0-0-0	0	
1	Roya Mojarab	1-0	30:28	1	2.95	2	0-0-0	0	
29	Mollie Patton	9-9	787:19	1	0.11	13	9-0-0	7	
35	Darien Vercillo	0-0	00:00	0	0.00	0	0-0-0	0	
TEAM									
South Carolina		9	817:47	2	0.22	15	.882	9-0-0	7
Opponents		9	817:47	19	2.09	53	.736	0-9-0	0

HOME-ONLY TEAM STATS

SCORING	USC	OPP
Goals.....	19	2
Assists.....	18	2
Points.....	56	6
SHOTS		
Shots	131	51
Pct.145	.039
Shots On Goal.....	72	17
SOG%.....	.550	.33
FOULS		
Fouls.....	83	88
Cards	4	4
GOALKEEPING		
Saves	15	53
Goals Against.....	2	19
GAA	0.22	2.09



AWAY-ONLY INDIVIDUAL STATISTICS

##	PLAYER	GP-GS	G	A	PTS	SH	PCT	SOG	SOG%	GWG	GWA
2	Megan Fligg	6-0	1	0	2	1	1.000	1	1.000	0	0
3	Samantha Diaz-Matosas	12-12	1	2	4	8	.125	4	.500	0	1
4	Kayla Grimsley	12-12	6	4	16	21	.286	10	.476	0	2
5	Kim Miller	12-12	1	7	9	18	.056	8	.444	1	3
7	Blakely Mattern	12-12	4	0	8	11	.364	7	.636	2	0
8	Christine Watts	12-0	1	1	3	9	.111	3	.333	0	0
9	Maria Petroni	11-0	1	0	2	2	.500	2	1.000	0	0
10	Natalie Aaron	10-0	0	0	0	3	.000	0	.000	0	0
11	Idana DeCecco	1-0	0	0	0	0	.000	0	.000	0	0
12	Shannon Bigbie	12-10	1	0	2	6	.167	5	.833	1	0
13	Jocelyn Spurrier	0-0	0	0	0	0	.000	0	.000	0	0
14	Lolly Holland	8-0	0	0	0	4	.000	1	.250	0	0
15	Kortney Rhoades	12-11	1	1	3	11	.091	3	.273	1	1
16	Lindsay Small	12-12	3	1	7	22	.136	13	.591	3	0
17	Maggie Blackwell	1-0	0	0	0	0	.000	0	.000	0	0
18	Ali Glemser	5-0	0	0	0	2	.000	1	.500	0	0
19	Kira Campbell	12-5	0	0	0	7	.000	2	.286	0	0
20	Ellen Fahey	11-11	0	2	2	2	.000	1	.500	0	1
21	Brittany Rhoades	12-11	0	0	0	2	.000	2	1.000	0	0
22	Dani Henry	7-0	0	0	0	1	.000	0	.000	0	0
23	Kacie Brewer	12-0	0	1	1	2	.000	1	.500	0	0
25	Maddy Kill	5-0	0	0	0	0	.000	0	.000	0	0
26	Rae Wilson	2-0	0	0	0	0	.000	0	.000	0	0
27	Brooke Jacobs	12-12	3	1	7	19	.158	10	.526	0	1
28	Brittany DeWitt	1-0	0	0	0	0	.000	0	.000	0	0
TEAM											
South Carolina		12	23	20	69	152	.151	74	.487	8	9
Opponents		12	10	8	28	123	.081	56	.455	3	4

GOALKEEPERS

	GP-GS	Min.	GA	GAA.	Svs.	Save %	W-L	SO
0	Alex Holland	0-0	00:00	0	0.00	0	0-0-0	0
1	Roya Mojarab	0-0	00:00	0	0.00	0	0-0-0	0
29	Mollie Patton	12-12	1100:00	11	0.90	46	8-3-1	6
35	Darien Vercillo	0-0	00:00	0	0.00	0	0-0-0	0
TEAM								
South Carolina		12	1100:00	11	0.90	46	8-3-1	6
Opponents		12	1100:00	23	1.88	51	3-8-1	2

AWAY-ONLY TEAM STATS

SCORING	USC	OPP
Goals.....	23	10
Assists.....	20	8
Points.....	69	28
SHOTS		
Shots	152	123
Pct.151	.081
Shots On Goal.....	74	56
SOG%.....	.487	.455
FOULS		
Fouls.....	89	107
Cards	6	5
GOALKEEPING		
Saves	46	51
Goals Against.....	11	23
GAA	0.90	1.88



GAME 8 - SOUTH ALABAMA (6-1)

GAME 9 - VANDERBILT (2-1)

Soccer Box Score (Final)
2009 South Carolina Women's Soccer
South Alabama vs #12 South Carolina (Sep 20, 2009 at Columbia, S.C.)

Soccer Box Score (Final)
2009 South Carolina Women's Soccer
Vanderbilt vs #11 South Carolina (Sep 25, 2009 at Columbia, S.C.)

South Alabama (2-6-0) vs.
South Carolina (8-0-0)
Date: Sep 20, 2009 • Attendance: 443
Weather:

Table with columns: South Alabama, Po ## Player, Sh, SO, G, A, Min. Lists player stats for 25 players and totals.

Goals by period 1 2 Total
South Alabama 0 1 1
South Carolina 3 3 6

South Carolina Po ## Player Sh SO G A Min. Lists player stats for 25 players and totals.

Goalkeepers Min GA Saves
1 Lythjohan, Cassie 90:00 6 7

Goalkeepers Min GA Saves
29 Mollie Patton 59:32 0 1
1 Roya Mojarab 30:28 1 2

Shots by period 1 2 Total
South Alabama 1 3 4
South Carolina 13 10 23

Saves by period 1 2 Total
South Alabama 5 2 7
South Carolina 1 2 3

Corner kicks 1 2 Total
South Alabama 0 2 2
South Carolina 4 2 6

Fouls 1 2 Total
South Alabama 3 6 9
South Carolina 4 3 7

Scoring summary:

Table with columns: No., Time Team, Goal scorer, Assist, Description. Lists 7 scoring events.

Cautions and ejections:

Stadium: Stone Stadium
Officials: Referee: Alan Schechtman; Asst. Referee: Kevin Tempel; Karen Tempel;
Offsides: South Alabama 0, South Carolina 5.

Vanderbilt (6-2-1) vs.
South Carolina (9-0-0)
Date: Sep 25, 2009 • Attendance: 756
Weather:

Vanderbilt Po ## Player Sh SO G A Min. Lists player stats for 23 players and totals.

Goals by period 1 2 Total
Vanderbilt 0 1 1
South Carolina 1 1 2

South Carolina Po ## Player Sh SO G A Min. Lists player stats for 23 players and totals.

Goalkeepers Min GA Saves
1 Rachel Bachtel 90:00 2 4

Goalkeepers Min GA Saves
29 Mollie Patton 90:00 1 0

Shots by period 1 2 Total
Vanderbilt 5 3 8
South Carolina 8 6 14

Saves by period 1 2 Total
Vanderbilt 2 2 4
South Carolina 0 0 0

Corner kicks 1 2 Total
Vanderbilt 1 3 4
South Carolina 3 3 6

Fouls 1 2 Total
Vanderbilt 6 2 8
South Carolina 3 8 11

Scoring summary:

Table with columns: No., Time Team, Goal scorer, Assist, Description. Lists 3 scoring events.

Cautions and ejections:

YC-VU #7 (90:46)
Stadium: Stone Stadium
Officials: Referee: Rachel Woo; Asst. Referee: Steve Abbott; Chris Shanku;

GAME 10 - KENTUCKY (1-0)

GAME 11 - Ole Miss (1-0)

Soccer Box Score (Final)
2009 South Carolina Women's Soccer
Kentucky vs #11 South Carolina (Sep 27, 2009 at Columbia, S.C.)

Soccer Box Score (Final)
2009 South Carolina Women's Soccer
#7 South Carolina vs Ole Miss (Oct 02, 2009 at Oxford, Miss.)

Kentucky (3-4-3) vs.
South Carolina (10-0-0)
Date: Sep 27, 2009 • Attendance: 672
Weather:

Kentucky Po ## Player Sh SO G A Min. Lists player stats for 28 players and totals.

Goals by period 1 2 Total
Kentucky 0 0 0
South Carolina 0 1 1

South Carolina Po ## Player Sh SO G A Min. Lists player stats for 23 players and totals.

Goalkeepers Min GA Saves
00 Sydney Hiance 90:00 1 7

Goalkeepers Min GA Saves
29 Mollie Patton 90:00 0 1

Shots by period 1 2 Total
Kentucky 2 0 2
South Carolina 7 7 14

Saves by period 1 2 Total
Kentucky 5 2 7
South Carolina 1 0 1

Corner kicks 1 2 Total
Kentucky 3 1 4
South Carolina 3 5 8

Fouls 1 2 Total
Kentucky 4 6 10
South Carolina 2 7 9

Scoring summary:

Table with columns: No., Time Team, Goal scorer, Assist, Description. Lists 1 scoring event.

Cautions and ejections:

Stadium: Stone Stadium
Officials: Referee: Tony Russo; Asst. Referee: Skye Arthur Banning; Melanie Johnson;
Alt. Official: Rob Mann; Scorer: Miquel Jacobs;
Offsides: Kentucky 0, South Carolina 2.

South Carolina (11-0, 3-0 SEC) vs.
Ole Miss (7-3, 1-1 SEC)
Date: Oct 02, 2009 • Attendance: 513
Weather: Low 70s, clear skies, full moon

South Carolina Po ## Player Sh SO G A Min. Lists player stats for 23 players and totals.

Goals by period 1 2 Total
South Carolina 0 1 1
Ole Miss 0 0 0

Ole Miss Po ## Player Sh SO G A Min. Lists player stats for 26 players and totals.

Goalkeepers Min GA Saves
29 Mollie Patton 90:00 0 5

Goalkeepers Min GA Saves
1 Alley Ronaldi 90:00 1 4

Shots by period 1 2 Total
South Carolina 6 4 10
Ole Miss 4 4 8

Saves by period 1 2 Total
South Carolina 1 4 5
Ole Miss 3 1 4

Corner kicks 1 2 Total
South Carolina 0 1 1
Ole Miss 2 3 5

Fouls 1 2 Total
South Carolina 3 2 5
Ole Miss 3 1 4

Scoring summary:

Table with columns: No., Time Team, Goal scorer, Assist, Description. Lists 1 scoring event.

Cautions and ejections:

Stadium: Ole Miss Soccer Stad
Officials: Referee: Daniel Radford; Asst. Referee: Kyle Borne; John White;
Alt. Official: Steve Walker; Timekeeper: Yamika Barnes; Scorer: Joey Jones;
Offsides: South Carolina 2, Ole Miss 1.



GAME 12 - Mississippi State (1-1)

Soccer Box Score (Final)
2009 South Carolina Women's Soccer

#8 South Carolina vs Mississippi State (Oct 04, 2009 at Starkville, Miss.)

South Carolina 11-0-1 (3-0-1 SEC) vs.
Mississippi State 8-2-2 (0-2-2 SEC)
Date: Oct 04, 2009 • Attendance: 142
Weather: Oct

Table with columns: Po #, Player, Sh, SO, G, A, Min. Lists player statistics for South Carolina.

Goals by period table with columns: 1, 2, OT, O2, Total. Shows 0-0-0-1 for SC and 0-1-0-1 for MS.

Mississippi State Po #, Player, Sh, SO, G, A, Min. Lists player statistics for Mississippi State.

Goalkeepers table with columns: #, Name, Min, GA, Saves. Lists Mollie Patton.

Goalkeepers table with columns: #, Name, Min, GA, Saves. Lists Taryn Holland.

Shots by period table with columns: 1, 2, OT, O2, Total. Shows shot counts for SC and MS.

Saves by period table with columns: 1, 2, OT, O2, Total. Shows save counts for SC and MS.

Corner kicks table with columns: 1, 2, OT, O2, Total. Shows corner counts for SC and MS.

Fouls table with columns: 1, 2, OT, O2, Total. Shows foul counts for SC and MS.

Scoring summary table with columns: No., Time, Team, Goal scorer, Assist, Description. Lists Brooke Jacobs and Rachel Wannek.

Cautions and ejections: YC-MSU #18 (21:45); YC-SC #10 (30:09); YC-MSU #22 (33:04)

Stadium: MSU Soccer Field
Officials: Referee: Adam Garner; Asst. Referee: Wanda Porter; Peter Valentino;
Alt. Official: Sims Meredith; Scorer: Brock Turmipseed;
Offsides: South Carolina 3, Mississippi State 0.

Official's signature

GAME 14 - ALABAMA (2-0)

Soccer Box Score (Final)
2009 South Carolina Women's Soccer

Alabama vs #7 South Carolina (Oct 11, 2009 at Columbia, S.C.)

Alabama (5-6-1, 1-3-1 SEC) vs.
South Carolina (13-0-1, 5-0-1 SEC)
Date: Oct 11, 2009 • Attendance: 1023
Weather: Oct

South Carolina Po #, Player, Sh, SO, G, A, Min. Lists player statistics for South Carolina.

Goals by period table with columns: 1, 2, Total. Shows 0-0-0 for SC and 2-0-2 for AL.

Alabama Po #, Player, Sh, SO, G, A, Min. Lists player statistics for Alabama.

Goalkeepers table with columns: #, Name, Min, GA, Saves. Lists Justine Bernier.

Goalkeepers table with columns: #, Name, Min, GA, Saves. Lists Mollie Patton.

Shots by period table with columns: 1, 2, Total. Shows shot counts for SC and AL.

Saves by period table with columns: 1, 2, Total. Shows save counts for SC and AL.

Corner kicks table with columns: 1, 2, Total. Shows corner counts for SC and AL.

Fouls table with columns: 1, 2, Total. Shows foul counts for SC and AL.

Scoring summary table with columns: No., Time, Team, Goal scorer, Assist, Description. Lists Blakely Mattern and Sam Diaz-Matosas.

Cautions and ejections:

Stadium: Stone Stadium
Officials: Referee: Tim Deby Singh; Asst. Referee: Mark Sauro; Melvin Machado;
Alt. Official: John Tanverdi;
Offsides: Alabama 0, South Carolina 2.

Official's signature

GAME 13 - AUBURN (1-0)

Soccer Box Score (Final)

2009 South Carolina Women's Soccer
Auburn vs #7 South Carolina (Oct 09, 2009 at Columbia, S.C.)

Auburn (5-5-3, 2-3-0 SEC) vs.
South Carolina (12-0-1, 4-0-1 SEC)
Date: Oct 09, 2009 • Attendance: 827
Weather: Oct

South Carolina Po #, Player, Sh, SO, G, A, Min. Lists player statistics for South Carolina.

Goals by period table with columns: 1, 2, OT, Total. Shows 0-0-0 for Auburn and 0-0-1 for SC.

Auburn Po #, Player, Sh, SO, G, A, Min. Lists player statistics for Auburn.

Goalkeepers table with columns: #, Name, Min, GA, Saves. Lists Amy Howard.

Goalkeepers table with columns: #, Name, Min, GA, Saves. Lists Mollie Patton.

Shots by period table with columns: 1, 2, OT, Total. Shows shot counts for Auburn and SC.

Saves by period table with columns: 1, 2, OT, Total. Shows save counts for Auburn and SC.

Corner kicks table with columns: 1, 2, OT, Total. Shows corner counts for Auburn and SC.

Fouls table with columns: 1, 2, OT, Total. Shows foul counts for Auburn and SC.

Scoring summary table with columns: No., Time, Team, Goal scorer, Assist, Description. Lists Sam Diaz-Matosas.

Cautions and ejections: YC-AU #8 (47:39); YC-SC #21 (66:41); YC-SC #23 (74:59)

Stadium: Stone Stadium
Officials: Referee: Robb Mann; Asst. Referee: Casey Black; Michael Sabatelle;
Alt. Official: Georges-Frantz Louis; Timekeeper: Sarah Stephens; Scorer: Miquel Jacobs;
Offsides: Auburn 2, South Carolina 2.

Official's signature

GAME 15 - #23 Georgia (1-2)

Soccer Box Score (Final)

2009 South Carolina Women's Soccer
#5 South Carolina vs #16 Georgia (Oct 16, 2009 at Athens, Ga.)

South Carolina 13-1-1 (4-1-1) vs.
Georgia 12-2-1 (5-2-0)
Date: Oct 16, 2009 • Attendance: 1715
Weather: Oct

South Carolina Po #, Player, Sh, SO, G, A, Min. Lists player statistics for South Carolina.

Goals by period table with columns: 1, 2, Total. Shows 1-0-1 for SC and 0-2-2 for GA.

Georgia Po #, Player, Sh, SO, G, A, Min. Lists player statistics for Georgia.

Goalkeepers table with columns: #, Name, Min, GA, Saves. Lists Mollie Patton.

Goalkeepers table with columns: #, Name, Min, GA, Saves. Lists Michelle Betos.

Shots by period table with columns: 1, 2, Total. Shows shot counts for SC and GA.

Saves by period table with columns: 1, 2, Total. Shows save counts for SC and GA.

Corner kicks table with columns: 1, 2, Total. Shows corner counts for SC and GA.

Fouls table with columns: 1, 2, Total. Shows foul counts for SC and GA.

Scoring summary table with columns: No., Time, Team, Goal scorer, Assist, Description. Lists Carrie Patterson and Ashley Miller.

Cautions and ejections:

Stadium: UGA Soccer Stadium
Officials: Referee: Ted Unkel; Asst. Referee: Rob Mauws; Kirt Hinkle; Alt. Official: Will Whitlow;
Timekeeper: Patrick Feldton; Scorer: Kate Burkholder;
Offsides: South Carolina 1, Georgia 3.

Official's signature



GAME 20 - #25 Georgia (3-2)

GAME 21 - #8 Florida (1-0)

Soccer Box Score (Final) 2009 South Carolina Women's Soccer Georgia vs South Carolina (Nov 04, 2009 at ORANGE BEACH, AL)

Georgia (14-5-1, 7-4 SEC) vs.
South Carolina (16-3-1, 7-3-1 SEC)
Date: Nov 04, 2009 • Attendance:
Weather: 62 DEGREES F

Goals by period	1	2	Total
Georgia	2	0	2
South Carolina	1	2	3

Georgia							
Po	#	Player	Sh	SO	G	A	Min
gk	00	Michelle Betos	-	-	-	-	90
mf	4	Jamie Pollock	2	-	-	-	76
f	7	Ashley Miller	1	-	-	1	59
d	8	Natalie Farley	-	-	-	-	62
d	14	Laura Eddy	-	-	-	-	90
d	15	Kelli Corless	2	2	1	-	90
d	17	Bailey Powell	-	-	-	-	90
mf	18	Rebekah Perry	-	-	-	1	62
mf	19	Susannah Dennis	-	-	-	-	90
mf	21	Caroline Simpson	-	-	-	-	51
f	27	Carrie Patterson	2	1	1	-	84
-- Substitutes --							
	9	Marah Falle	-	-	-	-	15
	12	Leslie McConnell	-	-	-	-	13
	13	Alex Hooker	1	-	-	-	39
	16	Traci Dreesen	-	-	-	-	11
	22	Lindsay Stein	-	-	-	-	28
	23	Mariah Kruse	-	-	-	-	9
	24	Lauren Glancy	-	-	-	-	31
Totals			8	3	2	2	

South Carolina							
Po	#	Player	Sh	SO	G	A	Min
gk	29	Mollie Patton	-	-	-	-	90
d	3	Sam Diaz-Matosas	1	-	-	-	82
f	4	Kayla Grimsley	2	1	1	1	84
mf	5	Kim Miller	2	1	-	1	90
d	7	Blakely Mattern	-	-	-	-	90
f	12	Shannon Bigbie	-	-	-	-	77
mf	15	Kortney Rhoades	4	2	1	-	67
mf	16	Lindsay Small	2	1	-	1	66
d	20	Ellen Fahey	-	-	-	-	88
d	21	Brittany Rhoades	-	-	-	-	90
f	27	Brooke Jacobs	1	1	1	-	36
-- Substitutes --							
	8	Christine Watts	-	-	-	-	26
	9	Marah Petroni	-	-	-	-	21
	14	Lolly Holland	-	-	-	-	6
	19	Kira Campbell	-	-	-	-	15
	22	Dani Henry	-	-	-	-	9
	23	Kacie Brewer	-	-	-	-	9
Totals			12	6	3	3	

#	Goalkeepers	Min	GA	Saves
00	Michelle Betos	90:00	3	3

#	Goalkeepers	Min	GA	Saves
29	Mollie Patton	90:00	2	1

Shots by period	1	2	Total
Georgia	3	5	8
South Carolina	5	7	12

Saves by period	1	2	Total
Georgia	1	2	3
South Carolina	0	1	1

Corner kicks	1	2	Total
Georgia	1	2	3
South Carolina	5	3	8

Fouls	1	2	Total
Georgia	4	7	11
South Carolina	3	5	8

Scoring summary:

No.	Time	Team	Goal scorer	Assist	Description
1.	4:11	UG	Carrie Patterson (10)	Rebekah Perry	6-YARDER
2.	11:44	SC	Brooke Jacobs (4)	Ashley Miller	6-YARD OFF LOOSE BALL IN BOX
3.	28:39	UG	Kelli Corless (2)	Lindsay Small	CORNER KICK
4.	80:20	SC	Kayla Grimsley (11)	(unassisted)	BENT INTO THE NET
5.	88:19	SC	Kortney Rhoades (3)	Kayla Grimsley	7-YARDER
					8-YARDER

Cautions and ejections:

YC-UG #15 (40:16)

Stadium: OB SPORTSPLEX
Officials: Referee: RACHEL WOO; Asst. Referee: DAN PROVENZANO; TED UNKEL;
Alt. Official: ROB MANN; Timekeeper: BRIAN RICE; Scorer: ROBBIE MUNROE;
Offsides: Georgia 0, South Carolina 1.

Official's signature

GAME 22

GAME 23



#0 Alex Holland
GK • 5-7 • Fr.

Bests	Season	Career
Saves:	N/A	Same
Minutes:	N/A	Same

Career Statistics

YEAR	GP/GS	MIN	SVS	GA	GAA	SHO
2009	0-0	0	0	0	0	0
TOTALS	0-0	0	0	0	0	0

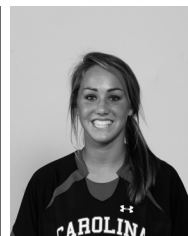


#1 Roya Mojarab
GK • 5-4 • So.

Bests	Season	Career
Saves:	2, (9/20)	Same
Minutes:	30:28, (9/20)	Same

Career Statistics

YEAR	GP/GS	MIN	SVS	GA	GAA	SHO
2008	1-0	13:07	0	0	0.00	0
2009	1-0	30:28	2	1	2.95	0
TOTALS	2-0	43:35	2	1	2.06	0



#2 Megan Fligg
D • 5-6 • Fr.

Bests	Season	Career
Goals:	1, (9/6)	Same
Assists:	N/A	Same
Points:	2, (9/6)	Same
Shots:	1, 2x* (9/6)	Same
SOG:	1, (9/6)	Same

Career Statistics

YEAR	GP/GS	SH	G	A	PTS	GWG
2009	14-1	2	1	0	2	0
TOTALS	14-1	2	1	0	2	0



#3 Samantha Diaz-Matosas
D • 5-7 • Sr.

Bests	Season	Career
Goals:	1, 3x* (10/9)	1, 8x* (10/9)
Assists:	1, 4x* (10/11)	1, 12x* (10/11)
Points:	2, 3x* (10/9)	3, (10/12/08)
Shots:	4, (10/9)	Same
SOG:	2, 2x* (10/11)	3, 3x* (9/9/06)

Career Statistics

YEAR	GP/GS	SH	G	A	PTS	GWG
2006	22-22	30	2	4	8	0
2007	23-18	9	1	2	4	0
2008	22-22	16	2	2	6	2
2009	21-20	25	3	4	10	2
TOTALS	88-82	80	8	12	28	4



#4 Kayla Grimsley
F • 5-4 • So.

Bests	Season	Career
Goals:	1, 11x* (11/4)	2, (10/3/08)
Assists:	1, 6x* (11/4)	1, 12x* (11/4)
Points:	3, 3x* (11/4)	4, (10/3/08)
Shots:	7, (10/18)	Same
SOG:	3, (10/18)	3, 2x* (10/18)

Career Statistics

YEAR	GP/GS	SH	G	A	PTS	GWG
2008	22-20	37	8	6	22	2
2009	21-21	39	11	6	28	2
TOTALS	43-41	76	19	12	50	4



#5 Kim Miller
M • 5-2 • Sr.

Bests	Season	Career
Goals:	1, 3x* (11/6)	2, (10/26/08)
Assists:	2, 3x* (10/22)	2, 3x* (10/22)
Points:	2, 6x* (11/6)	4, (10/26/08)
Shots:	3, 2x* (10/4)	4, (10/28/07)
SOG:	2, (9/6)	2, 8x* (9/6)

Career Statistics

YEAR	GP/GS	SH	G	A	PTS	GWG
2006	22-20	9	0	2	2	0
2007	23-23	17	1	1	3	1
2008	22-22	36	4	3	11	2
2009	21-21	28	3	11	17	2
TOTALS	88-86	90	8	17	33	5

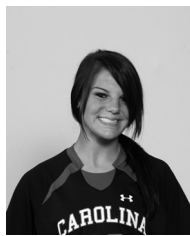


#7 Blakely Mattern
D • 5-9 • Sr.

Bests	Season	Career
Goals:	2, 2x* (10/11)	Same
Assists:	1, (9/20)	1, 6x* (9/20)
Points:	4, 2x* (10/11)	Same
Shots:	3, 2x* (9/11)	4, 2x* (11/5/08)
SOG:	3, (9/6)	Same

Career Statistics

YEAR	GP/GS	SH	G	A	PTS	GWG
2006	22-22	28	3	3	9	2
2007	23-23	18	2	2	6	0
2008	22-22	20	4	0	8	0
2009	21-21	15	6	1	13	3
TOTALS	88-88	81	15	6	36	5



#8 Christine Watts
M • 5-6 • Fr.

Bests	Season	Career
Goals:	1, 2x* (9/27)	Same
Assists:	1, (9/11)	Same
Points:	2, 2x* (9/27)	Same
Shots:	3, 2x* (9/27)	Same
SOG:	2, 2x* (9/27)	Same

Career Statistics

YEAR	GP/GS	SH	G	A	PTS	GWG
2009	21-0	19	2	1	5	1
TOTALS	21-0	19	2	1	5	1



#9 Maria Petroni
F • 5-10 • So.

Bests	Season	Career
Goals:	1, (9/6)	Same
Assists:	1, (9/20)	1, 3x* (9/20)
Points:	2, (9/6)	Same
Shots:	1, 4x* (10/22)	2, 2x* (10/3/08)
SOG:	1, 3x* (10/22)	1, 6x* (10/22)

Career Statistics

YEAR	GP/GS	SH	G	A	PTS	GWG
2008	17-7	8	0	2	2	0
2009	18-0	4	1	1	3	0
TOTALS	35-7	12	1	3	5	0



#10 Natalie Aaron
F • 5-10 • So.

Bests	Season	Career
Goals:	1, (9/20)	1, 3x* (9/20)
Assists:	1, (9/20)	1, 2x* (9/20)
Points:	3, (9/20)	Same
Shots:	2, (9/20)	5, (10/5/08)
SOG:	1, 2x* (10/11)	4, (10/17/08)

Career Statistics

YEAR	GP/GS	SH	G	A	PTS	GWG
2008	21-2	27	2	1	5	1
2009	18-0	8	1	1	3	0
TOTALS	39-2	35	3	2	8	1



#11 Idana DeCecco
D • 5-6 • So.

Bests	Season	Career
Goals:	N/A	1, (9/14/08)
Assists:	N/A	Same
Points:	N/A	2, (9/14/08)
Shots:	N/A	1, 2x* (10/10/08)
SOG:	N/A	1, (9/14/08)

Career Statistics

YEAR	GP/GS	SH	G	A	PTS	GWG
2008	15-0	2	1	0	2	0
2009	2-0	0	0	0	0	0
TOTALS	17-0	2	1	0	2	0



#12 Shannon Bigbie
F • 5-6 • Sr.

Bests	Season	Career
Goals:	1, (9/11)	1, 3x* (9/11)
Assists:	1, (9/25)	1, 6x* (9/25)
Points:	2, (9/11)	2, 3x* (9/11)
Shots:	2, (10/16)	5, (9/9/07)
SOG:	2, (10/16)	4, (9/9/07)

Career Statistics

YEAR	GP/GS	SH	G	A	PTS	GWG
2006	22-5	0	0	0	0	0
2007	23-8	13	1	1	3	1
2008	22-20	24	1	4	6	0
2009	19-17	8	1	1	3	1
TOTALS	86-50	45	3	6	12	2



#13 Jocelyn Spurrier
D • 5-8 • R-Fr.

Bests	Season	Career
Goals:	N/A	Same
Assists:	N/A	Same
Points:	N/A	Same
Shots:	N/A	Same
SOG:	N/A	Same

Career Statistics

YEAR	GP/GS	SH	G	A	PTS	GWG
2008	REDSHIRTED					
2009	0-0	0	0	0	0	0
TOTALS	0-0	0	0	0	0	0



#14 Lolly Holland
M • 5-4 • So.

Bests	Season	Career
Goals:	1, (9/20)	Same
Assists:	N/A	Same
Points:	2, (9/20)	Same
Shots:	4, (9/13)	Same
SOG:	1, 2x* (9/20)	Same

Career Statistics

YEAR	GP/GS	SH	G	A	PTS	GWG
2008	15-0	1	0	0	0	0
2009	15-0	7	1	0	2	0
TOTALS	30-0	8	1	0	2	0



#15 Kortney Rhoades
M • 5-4 • So.

Bests	Season	Career
Goals:	1, 3x* (11/4)	1, 6x* (11/4)
Assists:	1, 2x* (9/20)	2, (9/12/08)
Points:	2, 3x* (11/4)	2, 7x* (11/4)
Shots:	4, (11/4)	5, 2x* (10/5/08)
SOG:	2, 4x* (11/4)	2, 6x* (11/4)

Career Statistics

YEAR	GP/GS	SH	G	A	PTS	GWG
2008 (SJ)	17-13	34	3	4	10	1
2009	21-20	24	3	2	8	2
TOTALS	38-33	58	6	6	18	3

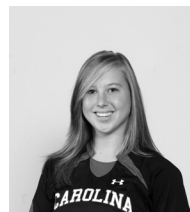


#16 Lindsay Small
M • 5-7 • Sr.

Bests	Season	Career
Goals:	1, 3x* (10/2)	1, 6x* (10/2)
Assists:	1, 3x* (11/4)	1, 4x* (11/4)
Points:	2, 3x* (10/2)	3, (9/19/08)
Shots:	5, 2x* (10/2)	6, 2x* (10/17/08)
SOG:	3, 2x* (10/2)	Same

Career Statistics

YEAR	GP/GS	SH	G	A	PTS	GWG
2006	16-0	4	0	0	0	0
2007	23-0	5	0	0	0	0
2008	22-22	35	3	1	7	2
2009	21-21	31	4	3	11	3
TOTALS	82-43	75	7	4	18	5

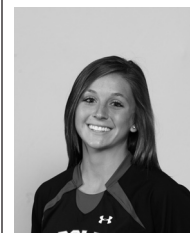


#17 Maggie Blackwell
D • 5-6 • R-So.

Bests	Season	Career
Goals:	N/A	Same
Assists:	N/A	Same
Points:	N/A	Same
Shots:	N/A	Same
SOG:	N/A	Same

Career Statistics

YEAR	GP/GS	SH	G	A	PTS	GWG
2007	REDSHIRTED					
2008	0-0	0	0	0	0	0
2009	2-0	0	0	0	0	0
TOTALS	2-0	0	0	0	0	0



#18 Ali Glemser
F • 5-3 • R-Fr.

Bests	Season	Career
Goals:	N/A	Same
Assists:	N/A	Same
Points:	N/A	Same
Shots:	2, (9/20)	Same
SOG:	1, 4x* (9/20)	Same

Career Statistics

YEAR	GP/GS	SH	G	A	PTS	GWG
2008	REDSHIRTED					
2009	13-0	6	0	0	0	0
TOTALS	13-0	6	0	0	0	0



#19 Kira Campbell
M • 5-8 • So.

Bests	Season	Career
Goals:	N/A	Same
Assists:	N/A	1, (9/5/08)
Points:	N/A	1, (9/5/08)
Shots:	4, (9/11)	Same
SOG:	2, (9/11)	Same

Career Statistics

YEAR	GP/GS	SH	G	A	PTS	GWG
2008	22-12	12	0	1	1	0
2009	19-7	10	0	0	0	0
TOTALS	41-19	22	0	1	1	0

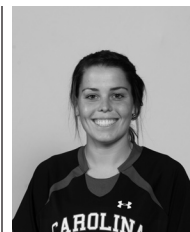


#20 Ellen Fahey
D • 5-7 • So.

Bests	Season	Career
Goals:	N/A	Same
Assists:	1, 4x* (9/18)	Same
Points:	1, 4x* (9/18)	Same
Shots:	2, (10/4)	Same
SOG:	1, 2x* (10/9)	1, 3x* (10/9)

Career Statistics

YEAR	GP/GS	SH	G	A	PTS	GWG
2008	22-22	1	0	0	0	0
2009	20-20	3	0	4	4	0
TOTALS	42-42	4	0	4	4	0

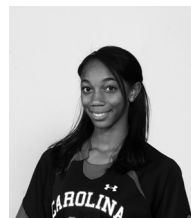


#21 Brittiny Rhoades
D • 5-3 • Jr.

Bests	Season	Career
Goals:	N/A	Same
Assists:	N/A	2, (9/26/08)
Points:	N/A	2, (9/26/08)
Shots:	1, 3x* (9/6)	3, (10/19/07)
SOG:	1, 2x* (9/6)	3, (10/19/07)

Career Statistics

YEAR	GP/GS	SH	G	A	PTS	GWG
2007	23-22	5	0	4	4	0
2008	22-22	15	0	5	5	0
2009	21-20	4	0	0	0	0
TOTALS	66-64	24	0	9	9	0



#22 Dani Henry
D • 5-4 • R-Fr.

Bests	Season	Career
Goals:	N/A	Same
Assists:	N/A	Same
Points:	N/A	Same
Shots:	1, 3x* (9/20)	Same
SOG:	N/A	Same

Career Statistics

YEAR	GP/GS	SH	G	A	PTS	GWG
2008	REDSHIRTED					
2009	14-0	3	0	0	0	0
TOTALS	14-0	3	0	0	0	0



#23 Kacie Brewer
F • 5-5 • Sr.

Bests	Season	Career
Goals:	1, (9/20)	1, 2x* (9/20)
Assists:	1, (9/13)	1, 2x* (9/13)
Points:	2, (9/20)	2, 2x* (9/20)
Shots:	3, (9/20)	5, (9/12/07)
SOG:	3, (9/20)	3, 2x* (9/20)

Career Statistics

YEAR	GP/GS	SH	G	A	PTS	GWG
2006	5-0	1	0	0	0	0
2007	13-0	10	1	1	3	0
2008	9-0	3	0	0	0	0
2009	21-1	7	1	1	3	0
TOTALS	48-1	21	2	2	6	0



#25 Maddy Kill
M • 5-7 • Jr.

Bests	Season	Career
Goals:	N/A	1, 2x* (10/7/07)
Assists:	N/A	2, 3x* (8/30/08)
Points:	N/A	2, 4x* (8/30/08)
Shots:	1, (8/27)	4, 2x* (9/14/08)
SOG:	1, (8/27)	2, 3x* (9/14/08)

Career Statistics

YEAR	GP/GS	SH	G	A	PTS	GWG
2007 (SH)	18-5	20	2	5	9	0
2008 (SH)	18-8	17	0	3	3	0
2009	8-0	1	0	0	0	0
TOTALS	44-13	38	2	8	12	0



#26 Rae Wilson
F • 5-5 • Fr.

Bests	Season	Career
Goals:	N/A	Same
Assists:	N/A	Same
Points:	N/A	Same
Shots:	N/A	Same
SOG:	N/A	Same

Career Statistics

YEAR	GP/GS	SH	G	A	PTS	GWG
2009	5-0	0	0	0	0	0
TOTALS	5-0	0	0	0	0	0

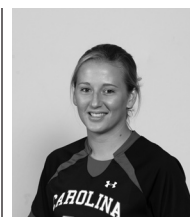


#27 Brooke Jacobs
F • 5-3 • Jr.

Bests	Season	Career
Goals:	1, 4x* (11/4)	1, 8x* (11/4)
Assists:	1, 2x* (9/20)	2, (9/23/07)
Points:	2, 4x* (11/4)	3, (11/14/08)
Shots:	5, (9/13)	Same
SOG:	3, 2x* (10/16)	3, 4x* (10/16)

Career Statistics

YEAR	GP/GS	SH	G	A	PTS	GWG
2007	15-4	11	1	3	5	1
2008	21-15	38	3	4	10	1
2009	21-20	36	4	2	10	1
TOTALS	57-39	85	8	9	25	3



#28 Brittany DeWitt
D • 5-6 • Fr.

Bests	Season	Career
Goals:	N/A	Same
Assists:	N/A	Same
Points:	N/A	Same
Shots:	N/A	Same
SOG:	N/A	Same

Career Statistics

YEAR	GP/GS	SH	G	A	PTS	GWG
2009	4-0	0	0	0	0	0
TOTALS	4-0	0	0	0	0	0



#29 Mollie Patton
GK • 5-7 • R-Jr.

Bests	Season	Career
Saves:	6, 3x* (9/13)	8, (9/14/08)
Minutes:	110:00, (10/4)	110:00, 5x* (10/4)

Career Statistics

YEAR	GP/GS	MIN	SVS	GA	GAA	SHO
2006	REDSHIRTED					
2007	0-0	0	0	0	0	0
2008	22-22	2053	58	22	0.96	7
2009	21-21	1887	59	12	0.57	13
TOTALS	43-43	3940	117	34	0.77	20



#35 Darien Vercillo
GK • 5-6 • Fr.

Bests	Season	Career
Saves:	N/A	Same
Minutes:	N/A	Same

Career Statistics

YEAR	GP/GS	MIN	SVS	GA	GAA	SHO
2009	0-0	0	0	0	0	0
TOTALS	0-0	0	0	0	0	0



Shelley Smith Ninth Season

Shelley Smith enters her ninth season at the helm of the USC women's soccer program and looks to continue building upon the success that she has brought to the program after taking the team to the first back-to-back NCAA Tournament appearances in program history.

Smith has cemented Carolina's position as a conference title contender and player on the national stage after guiding the Gamecocks in 2008 to their second consecutive NCAA Tournament bid and third consecutive SEC Tournament bid, both program firsts. The Gamecocks went 11-7-4 overall and earned five SEC wins for the third year in a row with only one senior on the roster. Respected as a top defensive team, the Gamecocks finished the regular season second in the SEC with eight shutouts and ranked in the top two in every major defensive category including goals allowed, points allowed, shots allowed and shots on goal allowed.

Blakely Mattern and Kayla Grimsley both earned All-SEC honors with Mattern earning her second first team and Grimsley picking up spots on the second team and freshman team. The duo also picked up Soccer Buzz All-Southeast Region honors while Mattern also earned a nod by the NSCAA.

Carolina's success in the classroom continued last season as her squad earned two Academic All-District honors in Mattern and Mollie Patton. Mattern was also named to the Academic All-America first team, making South Carolina one of only four teams in the nation – and the only in the SEC – to have an Academic All-American selected each of the past four seasons. Her team was also honored with its seventh NSCAA Team Academic Award. The team had 11 players named to the SEC Academic Honor Roll in addition to nine selections to the SEC Freshman Honor Roll. Overall, Smith has coached 131 SEC Academic Honor Roll recipients since coming to USC in 2001.

Smith has coached several top student-athletes at Carolina including Ashley Kirk, USC's first four-time All-SEC honoree, Carolina's first All-American in three-time All-SEC selection Blakely Mattern and two-time All-SEC performers Melinda Carter, Jessica Julin and Sarah Lentz. Julin is currently the captain of the Finland National Team and Carter played in the WUSA. The Gamecocks have earned 20 All-SEC honors in the last eight years.

In her first season as head coach at Carolina (2001), the Gamecocks were the third most improved team in the nation with an 8-7-3 overall record. Carolina also had one of the school's best home records, going 5-3 at Stone Stadium, allowing opponents to score only four goals in eight matches.

The success continued for USC in 2002 with 13 wins in Smith's second season. The year was highlighted with USC's first ever victories against Florida and Kentucky. Smith also led her team to ties against 2002 SEC champion Auburn and Eastern Division champion Tennessee.

Smith led the Gamecocks to another successful season in 2003 with 10 wins including a USC record eight-game unbeaten streak as well as a 6-2-1 record at home in Stone Stadium.

The 2004 season featured a win over No. 7 Clemson, the Gamecocks' first win over a ranked opponent since 1998, as well as a 6-3 mark in non-conference action. Ashley Kirk also became the first freshman soccer player in school history to be named SEC Freshman of the Year. In addition, Carolina set a school record for a home game-winning streak with six consecutive wins.

Following an injury filled 2005 season, the program took a big step forward in 2006 as USC went undefeated at home for the first time in school history with an 8-0-3 mark at Stone Stadium. The team's cumulative goals against average of 0.69 was the lowest ever tallied at Carolina. The season culminated with the Gamecocks advancing to the SEC Tournament semifinals for the first time in Carolina history, as Blakely Mattern became the team's first Freshman All-America selection since 1998.

Smith directed the 2007 Gamecocks to arguably the best season in school history, tying the school record with 14 victories and advancing to the NCAA Tournament for only the second time in program history. Carolina posted a 14-6-3 overall record including a 5-4-2 mark in the SEC after beginning the season by becoming the first team ever to knock off defending national champion and top-ranked North Carolina in a season opening game at Fetzer Field in Chapel Hill. The Gamecocks ran to a 7-0-0 start to the season – program bests for start to a season and winning streak – and peaked at No. 7 in the national polls. For the second consecutive season South Carolina advanced to the SEC Tournament semifinals after knocking off Tennessee for the first time in program history and earned the school's first bid to the NCAA Tournament since 1998. Blakely Mattern became the first sophomore to ever earn SEC Defensive Player of the Year honors in addition to becoming the first All-American in South Carolina history.

In 12 years as a head coach, Smith has compiled an overall record of 122-97-24. Besides her collegiate coaching, Smith was a member of the Region III ODP staff for the past five years, as well as an assistant for the '90 Regional Team. Smith also was a member of the 2003 U-14 National Camp staff for U.S. Soccer.

With a background in both semi-professional and collegiate soccer, Smith previously served as head coach at Rhode Island from 1997-2000. The 2000 NSCAA Northeast Region Coach of the Year, Smith rebuilt the URI women's soccer program, compiling a 41-35-2 overall record. Smith took a

program that was 2-16 her first year to 12-7-1 in her second season, marking the eighth-most improved won-lost record for a team in NCAA history. In 2000, Smith coached URI to its best record ever of 15-4-1, while reaching the Atlantic 10 Semifinals, a first in URI history.

Smith was nominated for the 2000 National Coach of the Year. The New England Women's Soccer Intercollegiate Soccer Association (NEWISA) also named her its Division I Coach of the Year in 2000. She was the 1998 Atlantic 10 Coach of the Year as well.

In addition to her experience as a coach, Smith brings experience from the semi-professional level. From 1996-2000, Smith played for the Boston Renegades in the W-1 League. Smith was captain in 2000 as she led Boston to the semifinals in the W-1 Championship. The Renegades reached the finals in 1998. Smith also had the opportunity to play overseas in 1994 as a member of the Sheffield United Women's Football Club in England.

Smith, a 1993 graduate of the University of Vermont with a degree in nutritional science, received her teacher's certificate from the same institution in 1995. Smith started all four years for the Catamounts. Her primary positions were center midfielder and central defender. She was a regional All-American in both 1992 and '93 in addition to being named First Team All-North Atlantic Conference each year from 1991-93. During her freshman year, the squad won the ECAC Tournament. Vermont was one of the first programs to offer women's soccer as a varsity sport and it competed on a national level. Smith was named to Vermont's Athletic Hall of Fame in the summer of 2004.

Smith worked as an assistant coach at Dartmouth College from 1995-97. The Big Green made the NCAA Tournament in her second season with the program.

Smith is married to USC associate head coach Jamie Smith. They are the proud parents of two sons, Braden James, born on Nov. 25, 2003 and Evan Addison born on Jan. 6, 2006.

Smith has her USSF B license and the NCAA Advanced National Diploma. She is currently a member of the USYSA Regional Olympic Development Staff.

Year-By-Year Results		
Year	Record	School
1997	2-16	Rhode Island
1998	12-7-1	Rhode Island
1999	12-8	Rhode Island
2000	15-4-1	Rhode Island
2001	8-7-3	South Carolina
2002	13-6-2	South Carolina
2003	10-8-3	South Carolina
2004	8-10-2	South Carolina
2005	6-12	South Carolina
2006	11-6-5	South Carolina
2007	14-6-3	South Carolina
2008	11-7-4	South Carolina
2009	17-3-1	South Carolina