



SOUTH CAROLINA

2009 WOMEN'S SOCCER

Contact: Miquel Jacobs • **Office:** (803) 777-1516 • **Cell:** (803) 530-5727 • **Fax:** (803) 777-2967
Email: jacobsm2@mailbox.sc.edu • Roost Building B, 1322 Heyward Street, Columbia, SC 29208
www.GamecocksOnline.com

2009 Schedule/Results

DAY	DATE	OPPONENT	TIME/RESULT
Fri.	Aug. 21	Mexican National Team	W, 2-0
Thur.	Aug. 27	College of Charleston	W, 2-0
Sun.	Aug. 30	Western Carolina	W, 2-0
Fri.	Sept. 4	Louisville (1)	W, 3-0
Sun.	Sept. 6	Cincinnati (1)	W, 4-0
Fri.	Sept. 11	Clemson (2)	W, 5-0
Sun.	Sept. 13	UNC Wilmington	W, 2-0
Fri.	Sept. 18	#17 UCF	W, 1-0
Sun.	Sept. 20	South Alabama	W, 6-1
Fri.	Sept. 25	Vanderbilt*	W, 2-1
Sun.	Sept. 27	Kentucky*	W, 1-0
Fri.	Oct. 2	Mississippi*	W, 1-0
Sun.	Oct. 4	Mississippi State*	T, 1-1 (2OT)
Fri.	Oct. 9	Auburn*	W, 1-0 (OT)
Sun.	Oct. 11	Alabama*	W, 2-0
Fri.	Oct. 16	#23 Georgia*	L, 1-2
Sun.	Oct. 18	Tennessee*	W, 2-1
Thur.	Oct. 22	Arkansas*	W, 2-0
Sun.	Oct. 25	#17 LSU* (ESPN)	L, 0-1
Fri.	Oct. 30	#10 Florida*	L, 0-3
Wed.	Nov. 4	(3) SEC Championships - Georgia	W, 3-2
Fri.	Nov. 6	(3) SEC Championships - Florida	8:30 p.m.
Sun.	Nov. 8	(3) SEC Championships	TBA

All Times Eastern
 Home matches in **BOLD** *SEC Match
 1-Louisville Tournament, Louisville, Ky.
 2-Carolina Cup, Clemson, S.C.
 3-Orange Beach, Ala.

South Carolina To Face Top Seed Florida In SEC Semis



#4 South Carolina
 (16-3-1, 7-3-1 SEC)

Orange Beach Soccer Complex
 Orange Beach, Ala.

Nov. 4, 2009 • 8:30 p.m.

Fox Sports Florida



#1 Florida
 (15-4-2, 8-1-2 SEC)

South Carolina advanced to Friday's SEC Tournament semifinal where the team will take on top-seeded Florida at 8:30 p.m.

The Gamecocks (16-3-1) defeated Georgia 3-2 in the quarterfinals after coming back from an early deficit by scoring two goals in the final 10 minutes of the match. Florida (15-4-2) advanced by defeating Tennessee 1-0 in overtime.

Florida handed South Carolina a 3-0 loss in the regular season finale at Gainesville, the most goals allowed by the South Carolina defense in an SEC game since a game against Vanderbilt in the 2006 season. The winner of the South Carolina-Florida match will face the winner of the LSU-Auburn match Sunday for the SEC Championship.

Game 21

South Carolina Probable Starters

#	Name	Pos.	Class	GP-GS	G	A	P	Shots	Notes
21	Brittany Rhoades	D	Jr.	20-19	0	0	0	4	2007 Freshman All-American is team's top lockdown defender
7	Blakely Mattern	D	Sr.	20-20	6	1	13	16	Lowe's Senior CLASS Award finalist with another strong season
20	Ellen Fahey	D	So.	19-19	0	4	4	3	Physical center back has started every game of her career
3	Samantha Diaz-Matosas	D	Sr.	20-20	3	4	10	23	Athletic player can play up top or back
5	Kim Miller	M	Sr.	20-20	2	11	15	27	Team engine has five game winning assists this season
16	Lindsay Small	M	Sr.	20-20	4	3	11	31	Consistent player scores and creates as defensive mid
15	Kortney Rhoades	M	So.	20-19	3	2	8	24	Transfer hit GWG to defeat Georgia in SEC Quarters
12	Shannon Bigbie	F	Sr.	18-16	1	1	3	8	Solid senior plays up top and on the backline
4	Kayla Grimsley	F	So.	20-20	11	6	28	38	Fifth player in Gamecock history with a 10-goal season
27	Brooke Jacobs	F	Jr.	20-19	4	2	10	37	Career SOG% leader has been converting goals this year

No.	Name	Pos.	Yr.	Min.	GA	GAA.	Svs.	W-L	SO	Notes
29	Mollie Patton	GK	R-Jr.	1797:19	12	0.55	57	16-3-1	12	Third in the nation with 12 shutouts



2009 NUMERICAL ROSTER

No.	Name	Pos.	Ht.	Cl/Exp.	Hometown (High School)
0	Alex Holland	GK	5-7	Fr./HS	Cary, Ill. (Cary-Grove)
1	Roya Mojarab	GK	5-4	Soph./1L	Tacoma, Wash. (Curtis)
2	Megan Fligg	D/F	5-6	Fr./HS	Gainesville, Ga. (Chestatee)
3	Samantha Diaz-Matosas	D	5-7	Sr./3L	Lilburn, Ga. (Brookwood)
4	Kayla Grimsley	M/F	5-4	Soph./1L	Lakeland, Fla. (George W. Jenkins)
5	Kim Miller	M	5-2	Sr./3L	Farmingdale, N.Y. (Famingdale)
7	Blakely Mattern	D	5-9	Sr./3L	Simpsonville, S.C. (JL Mann)
8	Christine Watts	M	5-6	Fr./HS	Duluth, Ga. (Peachtree Ridge)
9	Maria Petroni	F	5-10	Soph./1L	Flowery Branch, Ga. (Buford)
10	Natalie Aaron	F	5-5	Soph./1L	Brentwood, Tenn. (Battle Ground Academy)
11	Idana DeCecco	D	5-6	Soph./1L	Sherwood Park, Alberta (Archbishop Jordan)
12	Shannon Bigbie	F/M	5-6	Sr./3L	Lexington, S.C. (Lexington)
13	Jocelyn Spurrier	D	5-8	R-Fr./HS	Lawrenceville, Ga. (Brookwood)
14	Lolly Holland	M	5-4	Soph./1L	Suwanee, Ga. (South Forsyth)
15	Kortney Rhoades	M	5-4	Soph.TR	Wilmington, Del. (Padua // St. Joseph's)
16	Lindsay Small	M/D	5-7	Sr./3L	Suffield, Conn. (Suffield)
17	Maggie Blackwell	D	5-6	R-Soph./SQ	Marietta, S.C. (Travelers Rest)
18	Ali Glemser	D	5-3	R-Fr./HS	Collierville, Tenn. (Collierville)
19	Kira Campbell	M	5-8	Soph./1L	Lexington, S.C. (Lexington)
20	Ellen Fahey	D	5-7	Soph./1L	Fort Wright, Ky. (Notre Dame Academy)
21	Brittany Rhoades	D	5-3	Jr./2L	Wilmington, Del. (Padua)
22	Dani Henry	F/D	5-4	R-Fr./HS	Avondole, Pa. (Padua)
23	Kacie Brewer	F/D	5-5	Sr./3L	Merritt Island, Fla. (Merritt Island)
25	Maddy Kill	M	5-7	Jr./TR	Marietta, Ga. (Marist School // Seton Hall)
26	Rae Wilson	F	5-5	Fr./HS	Greenville, S.C. (JL Mann)
27	Brooke Jacobs	F	5-3	Jr./2L	Chambersburg, Pa. (Chambersburg Area)
28	Brittany DeWitt	D	5-6	Fr./HS	Greensboro, N.C. (N.C. School of Science & Math)
29	Mollie Patton	GK	5-7	R-Jr./1L	Milford, Ohio (Milford)
32	Aly Shattls	M	5-1	Sr./3L	Huntington, W.Va. (Huntington)
35	Darien Vercillo	GK	5-6	Fr./HS	Yorba Linda, Calif. (Mater Dei)

2009 ALPHABETICAL ROSTER

No.	Name	Pos.	Ht.	Cl/Exp.	Hometown (High School)
10	Natalie Aaron	F	5-5	Soph./1L	Brentwood, Tenn. (Battle Ground Academy)
12	Shannon Bigbie	F/M	5-6	Sr./3L	Lexington, S.C. (Lexington)
17	Maggie Blackwell	D	5-6	R-Soph./SQ	Marietta, S.C. (Travelers Rest)
23	Kacie Brewer	F/D	5-5	Sr./3L	Merritt Island, Fla. (Merritt Island)
19	Kira Campbell	M	5-8	Soph./1L	Lexington, S.C. (Lexington)
11	Idana DeCecco	D	5-6	Soph./1L	Sherwood Park, Alberta (Archbishop Jordan)
28	Brittany DeWitt	D	5-6	Fr./HS	Greensboro, N.C. (N.C. School of Science & Math)
3	Samantha Diaz-Matosas	D	5-7	Sr./3L	Lilburn, Ga. (Brookwood)
20	Ellen Fahey	D	5-7	Soph./1L	Fort Wright, Ky. (Notre Dame Academy)
2	Megan Fligg	D/F	5-6	Fr./HS	Gainesville, Ga. (Chestatee)
18	Ali Glemser	D	5-3	R-Fr./HS	Collierville, Tenn. (Collierville)
4	Kayla Grimsley	M/F	5-4	Soph./1L	Lakeland, Fla. (George W. Jenkins)
22	Dani Henry	F/D	5-4	R-Fr./HS	Avondole, Pa. (Padua)
0	Alex Holland	GK	5-7	Fr./HS	Cary, Ill. (Cary-Grove)
14	Lolly Holland	M	5-4	Soph./1L	Suwanee, Ga. (South Forsyth)
27	Brooke Jacobs	F	5-3	Jr./2L	Chambersburg, Pa. (Chambersburg Area)
25	Maddy Kill	M	5-7	Jr./TR	Marietta, Ga. (Marist School // Seton Hall)
7	Blakely Mattern	D	5-9	Sr./3L	Simpsonville, S.C. (JL Mann)
5	Kim Miller	M	5-2	Sr./3L	Farmingdale, N.Y. (Famingdale)
1	Roya Mojarab	GK	5-4	Soph./1L	Tacoma, Wash. (Curtis)
29	Mollie Patton	GK	5-7	R-Jr./1L	Milford, Ohio (Milford)
9	Maria Petroni	F	5-10	Soph./1L	Flowery Branch, Ga. (Buford)
21	Brittany Rhoades	D	5-3	Jr./2L	Wilmington, Del. (Padua)
15	Kortney Rhoades	M	5-4	Soph.TR	Wilmington, Del. (Padua // St. Joseph's)
32	Aly Shattls	M	5-1	Sr./3L	Huntington, W.Va. (Huntington)
16	Lindsay Small	M/D	5-7	Sr./3L	Suffield, Conn. (Suffield)
13	Jocelyn Spurrier	D	5-8	R-Fr./HS	Lawrenceville, Ga. (Brookwood)
35	Darien Vercillo	GK	5-6	Fr./HS	Yorba Linda, Calif. (Mater Dei)
8	Christine Watts	M	5-6	Fr./HS	Duluth, Ga. (Peachtree Ridge)
26	Rae Wilson	F	5-5	Fr./HS	Greenville, S.C. (JL Mann)

PRONUNCIATIONS

Kira Campbell -- KEER-uh
Idana DeCecco -- id-DAN-uh de-CHECK-oh
 Sam **Diaz-Matosas** -- DIAZ mah-TOE-sas
 Ellen **Fahey** -- FAYE-he
Roya Mojarab -- ROY-ah mo-JAR-uhb
 Darien **Vercillo** -- ver-SILL-oh

**SOUTH CAROLINA
 2009 SEC RANKINGS
 (as of 11/2/09)**

Category	Pl.	No.
Goals	4th	38
Goals Per Game	4th	2.00
Goals Allowed	1st	10
GAA	1st	0.52
Assists	T-4th	35
Assists Per Game	T-4th	1.84
Points	4th	111
Points Per Game	4th	5.84
Shots	10th	265
Shots Per Game	9th	13.95
Shot %	2nd	.143
Shot on Goal %	1st	.517
Saves	12th	58
Saves Per Game	12th	3.05
Shutouts	1st	12
Shots Allowed	1st	159
SOG Allowed	1st	68
Points Allowed	1st	28
Fouls	11th	160
Corners	T-8th	90
Offsides	3rd	44
Yellow Cards	T-7th	9

INDIVIDUAL

Name	Category	Pl.	No.
Grimsley	Goals	T-2nd	10
	Assists	T-10th	5
	Points	3rd	25
	Points/gm	4th	1.32
Miller	Assists	2nd	10
	GAA	1st	0.47
Patton	Save %	1st	.862
	Shutouts	1st	12
	Saves	12th	58



SEC STANDINGS

EASTERN DIVISION Team	CONF		ALL	
	W-L	Pts	W-L	Pct.
Florida	8-1-2	23	15-4-2	.762
South Carolina	7-3-1	22	16-3-1	.825
Georgia	7-4-0	21	14-5-1	.725
Vanderbilt	5-6-0	15	11-8-1	.575
Tennessee	4-5-2	14	8-9-3	.500
Kentucky	2-8-1	7	5-10-4	.368

WESTERN DIVISION Team	CONF		ALL	
	W-L	Pts	W-L	Pct.
LSU	8-2-1	25	13-4-3	.725
Ole Miss	7-2-2	23	13-5-2	.700
Auburn	6-5-0	18	10-7-3	.575
Arkansas	2-7-2	8	8-7-4	.526
Alabama	2-8-1	7	6-10-1	.361
Mississippi State	1-8-2	5	9-8-2	.526

Games through November 5

THIS WEEK IN THE SEC

Wednesday, November 4

[7] Vanderbilt vs. [2] LSU	LSU, 4-2
[6] Auburn vs. [3] Ole Miss	Auburn, 1-0
[8] Tennessee vs. [1] Florida	Florida, 1-0 (OT)
[5] Georgia vs. [4] South Carolina	USC, 3-2

Friday, November 6

[6] Auburn vs. [2] LSU	6 p.m.
[4] South Carolina vs. [1] Florida	8:30 p.m.

Sunday, November 8

Championship Match	3 p.m. (ESPNU)
--------------------	----------------

All Times Eastern

SEC PRESEASON POLL

EASTERN DIVISION	WESTERN DIVISION
Florida (11).....66	LSU (8)..... 63
Georgia (1).....53	Auburn (4)..... 58
Tennessee43	Ole Miss..... 43
South Carolina40	Alabama 39
Vanderbilt.....25	Arkansas..... 25
Kentucky19	Mississippi State 18

Overall Champion: Florida (11), Auburn (1)

CAROLINA IN THE SEC TOURNAMENT

South Carolina is advancing to its fourth consecutive SEC Tournament and eighth overall. With Wednesday's win against Georgia, the Gamecocks are 2-7-1 in the tournament, but the team has advanced to the semifinal round three times in the past four seasons. South Carolina had a draw against Vanderbilt in 2006 leading to a 4-3 decision in penalty kicks. The Gamecocks then won their first tournament match in 2007 with a 2-0 win against Tennessee. Friday's game will be the fourth against Florida at the tourney. South Carolina has met Florida the most, going 0-3-0 against the Gators. They have also met Georgia (1-2-0), Tennessee (1-1-0) and Vanderbilt (0-1-1).

SCOUTING FLORIDA

Florida rebounded from a shaky start to claim the SEC regular season title for the fourth consecutive season. Balanced by a slew of All-SEC and All-Freshman team members, the Gators went 8-1-2 in the conference with the only loss coming to Ole Miss. In the SEC Quarterfinals, Florida knocked off eight-seed Tennessee 1-0 with a golden goal by Lindsay Thompson in the first overtime period.

SMITH NAMED SEC COACH OF THE YEAR, FOUR GAMECOCKS EARN ALL-SEC HONORS

South Carolina head coach **Shelley Smith** was named SEC Coach of the Year, senior **Blakely Mattern** was named SEC Scholar Athlete of the Year, and four Gamecocks earned All-SEC honors to cap the most successful regular season in program history.

It is the first SEC Coach of the Year honor for Smith, who guided South Carolina to school records for conference (seven) and overall (15) victories this season. The Gamecocks recorded a program-best second place finish in the SEC East and came within one game of winning the overall title.

Mattern and sophomore **Kayla Grimsley** were two of only four unanimous First Team All-SEC selections. Seniors **Kim Miller** and **Samantha Diaz-Matosas** earned their first All-SEC honors after the duo made the second team, as voted by the league's coaches.

EXCEEDING EXPECTATIONS

For the fourth consecutive year Coach Shelley Smith's squad exceeded preseason expectations by finishing strong in conference play. Picked by the coaches to finish last in 2006, the Gamecocks earned fifth in the Eastern division. Picked to finish last in the East in the 2007 SEC Preseason poll, the Gamecocks tied a program record for wins en route to a fourth place division finish. Carolina was picked fourth in the 2008 preseason poll and again improved in the standings with a third place finish in the Eastern division. Coach Smith's team was again picked fourth in 2009 and responded with an SEC East runner-up finish that earned her SEC Coach of the Year honors.

IN THE POLLS

South Carolina stayed put at No. 14 in the Soccer Times poll, moved to No. 15 in the NSCAA coaches poll and comes in at No. 19 by Soccer America, marking the eighth straight week South Carolina has been ranked in the Top 20 of all three polls. Carolina also comes in at No. 17 in the final NCAA RPI report of the regular season, behind only Florida in the SEC.

SOUTH CAROLINA VS. RANKED TEAMS

Date	Opponent	Result	Date	Opponent	Result
9-18-96	#9 Clemson	W, 3-2	10-29-04	#18 Florida	L, 1-2 (2OT)
10-4-97	at #9 Clemson	L, 0-5	10-2-05	at #20 Tennessee	L, 1-2
10-26-97	at #9 Florida	L, 2-5	10-7-05	#18 Vanderbilt	L, 0-2
9-11-98	at #17 Georgia	W, 2-0	10-29-05	at #16 Florida	L, 0-3
10-7-98	#13 Clemson	L, 1-3	8-25-06	vs. #13 Illinois	L, 0-1
11-5-98	vs. #3 Florida	L, 0-6	9-24-06	at #13 Auburn	W, 1-0
10-8-99	at #9 Clemson	L, 0-4	9-29-06	#16 Tennessee	T, 0-0 (2OT)
10-29-99	at #3 Florida	L, 0-5	10-27-06	#13 Florida	T, 1-1 (2OT)
9-8-00	at #1 UNC	L, 1-9	9-1-07	at #1 North Carolina	W, 1-0
9-12-00	vs. #17 Duke	L, 1-5	9-22-07	at #20 Clemson	L, 0-1
10-8-00	at #14 Kentucky	L, 1-5	9-27-07	at #10 Tennessee	L, 2-3 (OT)
10-29-00	#16 Florida	L, 0-3	10-21-07	#25 Auburn	W, 2-0
9-30-01	at #20 Florida	L, 0-1	10-25-07	at #20 LSU	T, 1-1 (2OT)
10-2-01	at #9 Clemson	L, 0-3	11-2-07	at #22 Florida	L, 0-2
10-5-01	#16 Kentucky	L, 0-1	11-7-07	vs. #15 Tennessee	W, 2-0
10-21-01	at #25 Tennessee	L, 1-3	11-9-07	vs. #13 Georgia	L, 0-2
9-11-02	#18 Clemson	L, 0-1	9-14-08	vs. #7 Florida State	T, 3-3 (2OT)
10-20-02	#13 Tennessee	T, 1-1 (2OT)	10-23-08	#13 LSU	T, 0-0 (2OT)
8-29-03	at #20 Clemson	L, 0-1 (OT)	10-30-08	#7 Florida	L, 0-1
9-12-03	at #5 Texas A&M	L, 1-2 (OT)	9-18-09	#17 UCF	W, 1-0
10-3-03	#14 Auburn	T, 0-0 (2OT)	10-16-09	at #23 Georgia	L, 1-2
11-1-03	at #10 Florida	L, 0-2	10-25-09	at #14 LSU	L, 0-1
11-7-03	vs. #16 Tennessee	L, 0-1	10-30-09	at #10 Florida	L, 0-3
9-12-04	at #4 Virginia	L, 2-5	11-04-09	vs. #25 Georgia	W, 3-2
9-15-04	#7 Clemson	W, 2-0	Overall: 9-34-7	vs. Top 10: 3-13-1	
10-3-04	#19 Tennessee	L, 1-3	Home: 4-8-5	Road: 3-21-1	Neutral: 2-5-1



CAROLINA'S RECORD WHEN ...

Overall	16-3-1
Home	9-0-0
Away	4-3-1
Neutral	3-0-0
Leading At The Half	10-1-0
Tied At The Half	5-0-1
Trailing At The Half	1-2-0
Scores In The First Half	11-1-0
Overtime Games	1-0-1
On Television	1-2-0
In Tournaments	5-0-0
Against 2008 NCAA Participants	5-3-0
Vs. Top 25	2-3-0
Longest Winning Streak	W11
Longest Unbeaten Streak	U14
Active Streak	W1
Against Opponents	
USC Scores First	15-1-1
Opponent Scores First	1-2-0
Scores 1 Goal	4-1-1
Scores 2 Goals	7-0-0
Scores 3+ Goals	5-0-0
Opponent Scores 1 Goal	3-1-1
Opponent Scores 2 Goals	1-1-0
Opponent Scores 3+ Goals	0-1-0
Is Shutout	0-2-0
Shut Out Opponent	12-0-0
Takes More Shots	14-1-1
Opponent Takes More Shots	2-2-0
Time	
Day Games	7-1-1
Night Games	9-2-0
Mondays	0-0-0
Wednesdays	1-0-0
Thursdays	2-0-0
Fridays	6-2-0
Saturdays	0-0-0
Sundays	7-1-1
August	2-0-0
September	8-0-0
October	5-3-1
November	1-0-0
After A Win	12-2-1
After A Loss	2-1-0
After A Tie	1-0-0
Wearing White	11-2-0
Wearing Garnet	0-0-1
Wearing Black	5-1-0

LOWE'S SENIOR CLASS AWARD FINALIST BLAKELY MATTERN NEEDS VOTES!

Senior defender **Blakely Mattern** has been named a finalist for the Lowe's Senior CLASS Award, presented annually in eight NCAA Division 1 Sports to a senior student-athlete who excels both on and off the field. Candidates are chosen based on their dedication and achievement in four areas: Classroom, Character, Community and Competition. Fan voting will help decide the winner. Visit "www.seniorclassaward.com" or text "W6" to 74567 to vote for Mattern.

SENIOR CLASS SET THE BAR HIGH

The 2009 senior class will leave Columbia as the winningest senior class in program history. Entering weekend play, the group of seniors hold a 52-22-13 (.672) record, the most wins and best win-percentage for a South Carolina senior class. The group of seven has led Carolina to four consecutive SEC tournament appearances and will likely head to its third consecutive NCAA Tournament.

SHUTOUT DEFENSE

South Carolina finished the regular season tied for eighth in the nation with 12 shutouts on the year with only 10 goals allowed. Junior goalkeeper **Mollie Patton** has held the national lead in all three goalkeeping categories for the majority of the season. Going into the SEC tournament, she is fifth in the nation with 12 solo shutouts, ranks eighth nationally with a 0.47 goals against average and is in the Top 25 nationally with a .862 save percentage.

THE BEST SEASON EVER?

With a 16-3-1 record and 7-3-1 SEC record, the Gamecocks have already matched program bests for overall and conference wins in a season. The Gamecocks finished a program-best second in the SEC East and came within one game of the winning the SEC title.

GRIMSLEY JOINS ELITE COMPANY

Sophomore **Kayla Grimsley** became just the fifth player in South Carolina history to register a 10-goal season after scoring in the 63rd minute against Arkansas last Thursday. Grimsley joins Jennie Ondo, Angela Austin, Debbie Smith and Darcel Mollon as players to reach the plateau.

GETTING THE W'S

South Carolina's 16 wins are tied for fourth in the country behind the three of the top teams in this week's national polls: #1 Stanford (19), #2 Portland (17) and #17 BYU (16).

ELLEN FAHEY RETURNS TO THE BACKLINE

Sophomore defender **Ellen Fahey** will return to her starting spot at centerback after missing the regular season finale at Florida due to a red card she earned in the prior match. Fahey has started all 41 games of her career, but the Gamecocks had to experiment with a new lineup against the Gators with senior midfielder **Lindsay Small** playing on the backline and sophomore midfielder **Kira Campbell** earning Small's midfield spot.

GRABBING THE SCHOOL RECORD

Senior defender **Blakely Mattern** has started every game of her career, and with 87 career starts is officially the school's all-time leader after surpassing Ashley Kirk's record of 81 starts three weeks ago. She, along with **Samantha Diaz-Matosas** and **Kim Miller**, surpassed the games played record of 83 this season as well and all hold the lead with 86 games played.

AT THE TOP OF THE NCAA LISTS

Noted as one of the top defensive teams in the country under **Shelley Smith**, South Carolina has continued that excellence this season and added a little offensive flair as well. The Gamecocks have the NCAA's ninth-ranked defense with a 0.51 goals against average and 12 shutouts. The team is also No. 44 in scoring offense (2.00 goals/game). With that type of production, South Carolina is also at the top of the SEC lists in half of the statistical categories. The team leads the conference in goals allowed, goals against average, shutouts, shots allowed, shots on goal allowed, points allowed and shot on goal percentage.

MEXICAN FORESHADOW

South Carolina's incredible run this season may have been foreshadowed by the preseason ending 2-0 shutout win of the Mexican National Team. Since that match, the Mexican team went 4-0 in its collegiate tour and outscored opponents 14-2 with wins at Kennesaw State (5-0), previously ranked TCU (4-1), #14 Southern California (2-0) and Cal State Fullerton (3-1).

PATTON GETS THE RECORD(S)

Redshirt junior goalkeeper **Mollie Patton** set a new South Carolina single-season shutout record when she grabbed her eighth shutout of the year in the win against Kentucky. She then set the career record in the next game at Ole Miss with her 16th shutout in 33 career games, surpassing the previous mark of 15 set by **Laura Armstrong** and **Elise Matthews**.



HOME MATCHES UNDER SMITH

DATE	OPPONENT	RESULT
9-4-01	Davidson	W, 4-0
9-17-01	Furman	W, 3-0
9-19-01	SC State	W, 12-0
10-5-01	Kentucky	L, 0-1
10-7-01	Vanderbilt	L, 0-1
10-26-01	Ole Miss	W, 1-0
10-28-01	Mississippi State	L, 1-2 (OT)
11-2-01	UNC Greensboro	W, 2-0
8-30-02	Birmingham Southern	W, 3-0
9-11-02	Clemson	L, 0-1
9-14-02	College of Charleston	W, 3-1
9-29-02	Florida	W, 1-0 (OT)
10-11-02	Arkansas	L, 1-2 (OT)
10-13-02	LSU	W, 2-0
10-18-02	Georgia	L, 1-2 (OT)
10-20-02	Tennessee	T, 1-1 (OT)
10-29-02	Wofford	W, 1-0
9-2-03	Furman	L, 0-1
9-5-03	Charleston Southern	W, 2-1
9-7-03	Darmouth	W, 3-1
9-17-03	Davidson	W, 4-1
9-21-03	NC State	W, 1-0
10-3-03	Auburn	T, 0-0 (OT)
10-5-03	Alabama	W, 2-0
10-17-03	Vanderbilt	L, 0-1
10-19-03	Kentucky	W, 2-1
8-27-04	Georgia State	W, 1-0
9-3-04	Houston	W, 4-1
9-5-04	Iowa State	W, 1-0
9-15-04	Clemson	W, 2-0
9-19-04	Charlotte	W, 2-1 (2 OT)
10-1-04	Georgia	T, 1-1 (OT)
10-3-04	Tennessee	L, 1-3
10-15-04	Ole Miss	L, 0-1
10-17-04	Mississippi State	L, 2-3 (OT)
10-24-04	LSU	W, 2-1
10-29-04	Florida	L, 1-2 (2 OT)
8-26-05	Mercer	W, 7-0
8-29-05	Furman	W, 2-1
9-18-05	Miami (Fla.)	W, 2-1
9-23-05	Auburn	L, 0-1
9-25-05	Alabama	W, 2-0
10-7-05	Vanderbilt	L, 0-2
10-9-05	Kentucky	L, 1-2 (2 OT)
10-21-05	Arkansas	L, 1-2
8-31-06	Francis Marion	W, 2-1
9-3-06	James Madison	W, 3-1
9-5-06	The Citadel	W, 4-0
9-15-06	Clemson	W, 1-0
9-17-06	Jacksonville State	W, 6-0
9-29-06	Tennessee	T, 0-0 (2 OT)
10-1-06	Georgia	W, 2-1
10-13-06	Mississippi State	W, 1-0
10-15-06	Ole Miss	T, 0-0 (2 OT)
10-20-06	LSU	W, 2-1 (2 OT)
10-27-06	Florida	T, 1-1 (2 OT)
9-3-07	East Tennessee State	W, 5-2
9-12-07	Winthrop	W, 5-0
9-23-07	Marshall	W, 4-0
10-5-07	Kentucky	W, 2-0
10-7-07	Vanderbilt	L, 0-1 (2OT)
10-19-07	Alabama	W, 2-0
10-21-07	Auburn	W, 1-0
10-28-07	Arkansas	W, 1-0
8-28-08	East Carolina	W, 1-0
8-31-08	Boston University	W, 1-0
9-5-08	Clemson	W, 1-0
9-7-08	Furman	W, 2-1
9-19-08	East Tennessee State	W, 4-0
9-26-08	Tennessee	W, 2-1
9-28-08	Georgia	T, 1-1
10-10-08	Mississippi State	W, 2-1
10-12-08	Ole Miss	W, 3-2
10-23-08	LSU	T, 0-0
10-30-08	Florida	L, 0-1
8-27-09	College of Charleston	W, 2-0
8-30-09	Western Carolina	W, 2-0
9-18-09	UCF	W, 1-0
9-20-09	South Alabama	W, 6-1
9-25-09	Vanderbilt	W, 2-1
9-27-09	Kentucky	W, 1-0
10-9-09	Auburn	W, 1-0 (OT)
10-11-09	Alabama	W, 2-0
10-22-09	Arkansas	W, 2-0

TOTAL RECORD: 58-18-8
LONGEST UNBEATEN STREAK: 15
SHUTOUTS RECORDED 42

SPREADING THE WEALTH

Goals have been spread around the entire Gamecock team so far with a different player hitting the game-winning goal in nine of Carolina's 16 wins. Fourteen different players have scored a goal this season, and only half of those players have scored multiple goals this season: **Kayla Grimsley, Kim Miller, Blakely Mattern, Samantha Diaz-Matosas, Lindsay Small, Brooke Jacobs, Kortney Rhoades** and **Christine Watts**.

MILLER TIME

Senior **Kim Miller** has been one of the most consistent performers for South Carolina the past four years, and the New York native has stretched that consistency to another part of her game in her final season. Miller is 20th in the NCAA and second in the SEC with 11 assists so far this season, and she currently has the South Carolina record with five game winning goals this season.

GRIMSLEY'S RECORD PLAY

Sophomore **Kayla Grimsley** has continued the stellar play that she exhibited in her freshman season last year. The flashy player set a new South Carolina record with a nine-match scoring streak, and her goal against South Alabama tied her program record four-match goal scoring streak. She currently is second in the SEC in points (28) and goals (11).

FIRST HALF LOCKDOWN

LSU's goal 57 seconds into last Sunday's game marked the first time this season that South Carolina has allowed a goal in the first half. Florida and SEC Tournament first round opponent Georgia are the only other teams to notch first half goals against South Carolina.

GAMECOCKS ON TV

South Carolina will have at least three televised games in the 2009 season. The team defeated Vanderbilt, 2-1, in the SEC opener on Sept. 25 before falling 1-0 to LSU on ESPN and Florida (3-0) on Fox Sports Florida. The LSU broadcast marked the third consecutive season that the Gamecocks played a game on national television.

ELLEN FAHEY'S STEPPING UP

Sophomore defender **Ellen Fahey** started every game at centerback last season as a freshman, continuing the legacy of all-conference caliber freshman defenders after **Blakely Mattern** (2006) and **Brittany Rhoades** (2007). Strong and assertive in the back, Fahey added a new dimension to her play thus far after recording her first four career points, three on game-winning assists. Her three game-winning assists tie the South Carolina sophomore single season record.

HELMET! HELMET! HELMET!

Junior goalkeeper **Mollie Patton** has learned to embrace the helmet she has had to wear the past two seasons due to previous concussions. This year she has company now that **Lindsay Small** and **Brittany Rhoades** have been confined to wearing headgear due to blows to the head recently. Rhoades began wearing headgear after a blow in the Clemson victory led to her getting stitches on her left brow. Small then had to get headgear after taking an inadvertent elbow in the Vanderbilt victory, causing her to get stitches below her right brow.

HOME AT THE STONE

South Carolina has been nearly unstoppable at Stone Stadium the past three seasons, posting a 31-2-5 record at home since 2006. The streak included a 15-game unbeaten streak from Aug. 31, 2006-Oct. 5, 2007 and a 13-game unbeaten streak at "The Graveyard" from Oct. 19, 2007-Oct. 23, 2008. The lone blemishes on the record are a double-overtime loss to Vanderbilt (Oct. 7, 2007) and a loss to #7 Florida (Oct. 30, 2008). The season opening win against College of Charleston was **Coach Shelley Smith's** 50th win at Stone Stadium.

ROCKY TOPPED

South Carolina's 2-1 win at Tennessee last weekend marked the first win in program history in Knoxville. In addition, the victory extended Carolina's current streak in the series. After going winless in the first 13 matches between the SEC East rivals, South Carolina has now won the last three meetings - one at home, one at the SEC tournament and one in Knoxville.

SENIOR CLASS BECOMES FIRST TO WIN AT CLEMSON

South Carolina defeated rival Clemson 5-0 last Sunday for the program's first victory at Historic Riggs Field. In a rivalry that has been played annually since 1995 in a home-and-home series, the Gamecocks not only never won at Riggs Field in seven tries but never scored a goal there until the offensive outburst in a 5-0 win. Senior **Shannon Bigbie** hit the game winner in her first start of the year, classmate **Blakely Mattern** scored two goals and senior **Kim Miller** notched two assists in the victory.



OVERTIME MATCHES

DATE	OPPONENT	RESULT
9-15-95	at VCU	W, 1-0
9-29-95	vs. Marquette (Clemson, S.C.)	L, 1-2
10-13-95	Georgia	T, 1-1
10-16-95	Evansville	W, 1-0
10-19-95	College of Charleston	T, 1-1
1995 OVERTIME RECORD: 2-1-2		
9-29-96	at Georgia	L, 1-2
10-27-96	at Auburn	T, 1-1
10-30-96	at Furman	T, 1-1
1996 OVERTIME RECORD: 0-1-2		
9-14-97	Kentucky	L, 3-4
10-10-97	at Georgia Southern	W, 3-2
1997 OVERTIME RECORD: 1-1		
9-4-98	Wake Forest	T, 1-1
9-25-98	at Kentucky	L, 0-1
10-13-98	at Furman	W, 3-2
1998 OVERTIME RECORD: 1-1-1		
9-12-99	Kentucky	L, 1-2
10-12-99	Wofford	W, 2-1
11-4-99	vs. Vanderbilt (SEC Tourn.)	L, 1-2
1999 OVERTIME RECORD: 1-2		
2000 OVERTIME RECORD: 0-0		
9-1-01	at College of Charleston	T, 0-0
9-9-01	vs. UNLV (San Diego, Calif.)	T, 1-1
10-14-01	at LSU	T, 4-4
10-28-01	Mississippi State	L, 1-2
2001 OVERTIME RECORD: 0-1-3		
9-29-02	Florida	W, 1-0
10-11-02	Arkansas	L, 1-2
10-18-02	Georgia	L, 1-2
10-20-02	Tennessee	T, 1-1
10-25-02	at Auburn	T, 1-1
2002 OVERTIME RECORD: 1-2-2		
8-29-03	at Clemson	L, 0-1
9-12-03	at Texas A&M	L, 1-2
9-14-03	at Houston	T, 1-1
10-3-03	Auburn	T, 0-0
10-24-03	at Ole Miss	T, 0-0
2003 OVERTIME RECORD: 0-2-3		
8-31-04	at James Madison	L, 2-3
9-19-04	Charlotte	W, 2-1
10-1-04	Georgia	T, 1-1
10-8-04	at Vanderbilt	T, 1-1
10-17-04	Mississippi State	L, 2-3
10-29-04	Florida	L, 1-2
2004 OVERTIME RECORD: 1-3-2		
10-10-05	Kentucky	L, 1-2
2005 OVERTIME RECORD: 0-1		
9-29-06	Tennessee	T, 0-0
10-16-06	Ole Miss	T, 0-0
10-20-06	LSU	W, 2-1
10-22-06	at Arkansas	T, 1-1
10-27-06	Florida	T, 1-1
11-1-06	vs. Vanderbilt (SEC Tourn.)	T, 1-1
2006 OVERTIME RECORD: 1-0-5		
9-27-07	at Tennessee	L, 2-3
9-30-07	at Georgia	L, 1-2
10-7-07	Vanderbilt	L, 0-1
10-12-07	at Mississippi State	T, 0-0
10-25-07	at LSU	T, 1-1
11-14-07	vs. Duke (NCAA First Rnd.)	T, 1-1
2007 OVERTIME RECORD: 0-3-3		
8-23-08	at UNC Wilmington	T, 0-0
9-7-08	Furman	W, 2-1
9-14-08	vs. Florida State (Auburn, Ala.)	T, 3-3
9-28-08	Georgia	T, 1-1
10-23-08	LSU	T, 0-0
11-14-08	vs. William & Mary (NCAA)	L, 2-3
2008 OVERTIME RECORD: 1-1-4		
10-4-09	at Mississippi State	T, 1-1
10-9-09	Auburn	W, 1-0
TOTAL RECORD: 10-19-28		
UNDER SHELLEY SMITH: 5-13-23		

MATTERN CONTINUES TO PICK UP NATIONAL HONORS

Senior defender **Blakely Mattern** continues to pick up honors in her final season as a Gamecock. A Lowe's Senior CLASS Award finalist, Mattern has been named the SEC Defensive Player of the Week twice, was selected to the Soccer America National Team of the Week three times, earned Top Drawer Soccer Team of the Week honors once and has also earned CollegeSoccer360.com Primetime Player of the Week honors.

DIAZ-MATOSAS DELIVERS

Senior defender **Samantha Diaz-Matosas** has started off strong for South Carolina with a four-point weekend at the Cardinal Classic. Diaz-Matosas earned an assist in the final seconds of the match against Louisville before scoring her first goal of the season and getting the game-winning assist in the 4-0 win against Cincinnati. On Senior Night, she hit the game-winner in overtime to defeat Auburn. A versatile player, Diaz-Matosas can play anywhere on the field, making her a top threat for the Gamecocks in her fourth year.

PATTON EARNS NATIONAL HONORS

Redshirt junior goalkeeper **Mollie Patton** earned her first career national honor when she was named to the Soccer America National Team of the Week after her stellar play at the Cardinal Classic. Since then, she has also earned SEC Defensive Player of the Week honors and currently leads the nation in shutouts and goals against average. Patton recently set the SEC record for consecutive shutouts when she notched seven straight, passing the previous record of six held by Kentucky's Carrie Kuhnell (1995) and Auburn's Megan Rivera (2003).

MATTERN'S CAREER WEEKEND

Senior **Blakely Mattern** had a career weekend at the Carolina's Cup when she scored three goals in two games for six points to earn the Carolina's Cup MVP honor. The senior defender also led the Gamecocks to their sixth shutout - tied for the NCAA lead - in the 5-0 win at Clemson and 2-0 win against UNC Wilmington. For her efforts, she was named the SEC Defensive Player of the Week for the second time in three weeks and also earned a spot on the Soccer America and Top Drawer Soccer National Teams of the Week.

FIRST TIME OPPONENTS

South Carolina faced four opponents for the first time in 2009 and went 4-0 in those games. The Gamecocks defeated Louisville (3-0), Cincinnati (4-0), UCF (1-0) and South Alabama (6-1). Last season, Carolina went 0-1-2 against first time opponents, drawing UNC Wilmington and #7 Florida State before dropping a tight game to Western Carolina.

RETURNING CATEGORY LEADERS

Carolina returns 10 starters from last season's NCAA Tournament team and only lost one senior from the squad that went 11-7-4. South Carolina will enter 2009 as one of the most experienced teams in the nation, and depth will also be available after Coach Shelley Smith signed seven freshmen and landed two transfers for the 2009 season.

Statistical Category Breakdown

Category	2008 Leader (Total)	% Returning	Top Returner
Points	Grimsley (22)	93%	Grimsley (22)
Goals	Grimsley (8)	93%	Grimsley (8)
Game-Winning Goals	Grimsley, Miller, Small (2)	91%	Grimsley, Miller, Small (2)
Assists	Grimsley (6)	46%	Grimsley (6)
Shots	Jacobs (38)	94%	Jacobs (38)
Shots on Goal	Jacobs (26)	91%	Jacobs (26)
Saves	Patton (58)	100%	Patton (58)
Goals Against Average	Patton (0.96)	100%	Patton (0.96)

ALL-AMERICAN DEFENSE

The South Carolina defense has been consistently one of the top in the SEC and in the nation, and all signs point to this season being another strong one for the Garnet and Black. The Gamecocks return two former Freshman All-Americans in senior **Blakely Mattern** and junior **Brittany Rhoades**.

Mattern (Simpsonville, S.C.) has started every game of her career at center back, earning Freshman All-America honors in 2006 and becoming Carolina's first All-American after picking up honors in 2007. Mattern also picked up 2007 SEC Defensive Player of the Year honors to become the first sophomore in conference history to earn the honor, and earned a trip to the US U-20 National Team camp in 2008. Rhoades (Wilmington, Del.) set a USC freshman record with 23 games played and 22 games started in her first year at left back, becoming the second Freshman All-American in as many years for the defense.



GOAL SUMMARY

Player (#)	Opp. (Time)	Asst. (#)
Miller (1)	Col. of Charleston (13:42)	-
Grimsley (1)	Col. of Charleston (29:54)	Small (1)
Grimsley (2)	Western Carolina (22:38)	Fahey (1)
Miller (2)	Western Carolina (26:49)	D-Matosas (1)
Small (1)	Louisville (27:09)	Miller (1)
Watts (1)	Louisville (43:52)	-
Grimsley (3)	Louisville (89:51)	D-Matosas (2)
Mattern (1)	Cincinnati (26:54)	Fahey(2), D-Matosas (3)
Diaz-Matosas (1)	Cincinnati (59:32)	Grimsley (1)
Fligg (1)	Cincinnati (79:09)	Miller (2)
Petroni (1)	Cincinnati (81:13)	Miller (3)
Bigbie (1)	Clemson (3:22)	Miller (4), Jacobs (1)
Mattern (2)	Clemson (35:33)	Miller (5)
Jacobs (2)	Clemson (36:51)	Watts (1)
Grimsley (4)	Clemson (65:44)	-
Mattern (3)	Clemson (71:35)	-
Mattern (4)	UNC-W (55:17)	K. Rhoades (1)
Grimsley (5)	UNC-W (63:52)	Fahey (3), Brewer (1)
Grimsley (6)	UCF (27:18)	Fahey (4)
Small (2)	South Alabama (3:30)	Miller (6)
Diaz-Matosas (2)	South Alabama (19:03)	-
Aaron (1)	South Alabama (27:34)	Jacobs (2)
Grimsley (7)	South Alabama (55:53)	K. Rhoades (2)
Holland (1)	South Alabama (59:32)	Mattern (1)
Brewer (1)	South Alabama (73:39)	Petroni (1), Aaron (1)
K. Rhoades (1)	Vanderbilt (15:47)	Small (2), Grimsley (2)
Jacobs (2)	Vanderbilt (51:38)	Bigbie (1)
Watts (2)	Kentucky (55:24)	-
Small (3)	Ole Miss (67:50)	Miller (7)
Jacobs (3)	Mississippi State (45:50)	Grimsley (3)
Diaz-Matosas (3)	Auburn (97:47)	-
Mattern (5)	Alabama (11:07)	Miller (8)
Mattern (6)	Alabama (12:47)	D-Matosas (4)
Grimsley (8)	Georgia (7:07)	-
Grimsley (9)	Tennessee (32:19)	-
Small (4)	Tennessee (55:38)	Grimsley (4)
K. Rhoades (2)	Arkansas (54:04)	Grimsley (5), Miller (9)
Grimsley (10)	Arkansas (62:39)	Miller (10)
Jacobs (4)	Georgia (11:44)	Miller (11), Small (3)
Grimsley (11)	Georgia (80:20)	-
K. Rhoades (3)	Georgia (88:19)	Grimsley (6)

GOAL BREAKDOWN

At home	19
On the road	13
Neutral Site.....	9
vs. SEC.....	16
vs. Non-Conference.....	25
First Half	20
Second Half	21

ALL-TIME USC SCORING LIST

Rnk.	Name	G	A	Pts.
1.	Jennie Ondo	50	15	115
2.	Morgan McIntyre	29	5	63
3.	Angela Austin	19	16	54
4.	Mindy Sanders	14	24	52
5.	Kayla Grimsley	19	12	50
6.	Debbie Smith	19	11	49
7.	Melinda Carter	15	16	46
8.	Darcell Mollon	15	7	37
T9.	Blakely Mattern	15	6	36
T9.	Ashley Williams	17	2	36
11.	Lydia Bienias	12	10	34
T12.	Lexi Tourtelotte	14	3	31
T12.	Ashley Kirk	9	13	31
T12.	Kim Miller	7	17	31
T15.	Becca Epstein	10	10	30
T15.	Erin Sullivan	11	8	30

Current Players

Kayla Grimsley	19	12	50
Blakely Mattern	15	6	36
Kim Miller	7	17	31
Sam Diaz-Matosas	8	12	28

ALL-TIME USC GOALTENDING LIST

Rnk.	Name	GAA	SHO
1.	Mollie Patton	0.74	19
T2.	Laura Armstrong	0.79	15
T2.	Elise Matthews	1.24	15
T4.	Lindsay Thorstenson	1.33	9
T4.	Carrie Warner	1.58	9
6.	Carolyn Ortega	1.14	6.5
7.	Emily Crain	1.78	6
8.	Amy Toms	1.71	5
9.	Amanda Sandling	2.04	4.5
10.	Jessica Freas	3.01	1

Current Players

Mollie Patton	0.74	19
---------------	------	----

2009 HONOR ROLL

Samantha Diaz-Matosas - Second Team All-SEC

Kayla Grimsley - First Team All-SEC, Soccer America Team of the Week (Wk5), Colleg-eSoccer360 Primetime Performer of the Week (Wk5), Preseason All-SEC, Cardinal Classic All-Tournament Team, Carolina's Cup All-Tournament Team

Blakely Mattern - First Team All-SEC, SEC Defensive Player of the Week (Wk2, Wk4), Soccer America Team of the Week (Wk2, Wk4, Wk8), Top Drawer Soccer Team of the Week (Wk4), CollegeSoccer360 Primetime Performer of the Week (Wk6), Cardinal Classic All-Tournament Team, Carolina's Cup Tournament MVP, Preseason All-SEC, Lowe's Senior CLASS Award Finalist

Kim Miller - Second Team All-SEC, Cardinal Classic All-Tournament Team, Carolina's Cup All-Tournament Team

Mollie Patton - SEC Defensive Player of the Week (Wk6), Soccer America Team of the Week (Wk3), Cardinal Classic All-Tournament Team

Lindsay Small - Carolina's Cup All-Tournament Team

SEC WEEKLY HONORS

Week

Defensive POW

1	Kailey Anders, D (Arkansas)
2	Blakely Mattern, D (South Carolina)
3	Molly Baird, GK (Tennessee)
4	Blakely Mattern, D (South Carolina)
5	Justine Bernier, GK (Alabama)
6	Mollie Patton, GK (South Carolina)
7	Michelle Betos, GK (Georgia)
8	Sydney Hiance, GK (Kentucky)
9	Alley Ronaldi, GK (Ole Miss)
10	Rachel Bachtel, GK (Vanderbilt)
11	Lauren Hyde, D (Florida)

Offensive POW

Carrie Patterson, F (Georgia)
Taylor Cunningham, M (Ole Miss)
Molly Kinsella, F (Vanderbilt)
Mick Imgram, M (Tennessee)
Kat Walsh, F (Mississippi State)
Rachel Yopez, F (LSU)
Melissa Clarke, M (LSU)
Danielle Johnson, M (Ole Miss)
Tahnai Annis, M (Florida)
Rebecca Howell, F (Auburn)
Malorie Rutledge, M (LSU)

Freshman of the Week

Amy Howard, GK (Auburn)
Rebekah Perry, M (Georgia)
Monica Alvarado, M (Mississippi State)
Brooke Thigpen, M (Florida)
Amy Howard, GK (Auburn)
Carlie Banks, F (LSU)
Amy Harrison, F (Tennessee)
Erika Tymrak, M (Florida)
Carlie Banks, F (LSU)
Amy Howard, GK (Auburn)
McKenzie Barney, M (Florida)



SOUTH CAROLINA WEEKLY RANKINGS

Week	NSCAA	South Region	S. Times	S. America	TOP DRAWER	CollegeSoccer360
Preseason	-	N/A	-	-	45	-
Week 1 (8/24)	rv	4	-	-	43	-
Week 2 (8/31)	rv	2	rv	-	41	-
Week 3 (9/7)	18	2	23	25	26	23
Week 4 (9/14)	13	3	15	12	20	13
Week 5 (9/21)	12	2	13	11	18	11
Week 6 (9/28)	8	2	7	7	15	8
Week 7 (10/5)	7	2	7	8	11	7
Week 8 (10/12)	5	1	5	5	10	6
Week 9 (10/19)	10	2	9	10	11	9
Week 10 (10/26)	13	3	14	15	16	13
Week 11 (11/2)	15	4	14	19	28	-



**2009 South Carolina Women's Soccer
South Carolina Game Results (as of Nov 05, 2009)
All games**

Date	Opponent		Score	Overall	Conf	Att.	Goals scored
Aug 27	COL. OF CHARLESTON	W	2-0	1-0-0	0-0-0	612	Kim Miller (unassisted) Kayla Grimsley (Lindsay Small)
Aug 30	WESTERN CAROLINA	W	2-0	2-0-0	0-0-0	489	Kayla Grimsley (Ellen Fahey) Kim Miller (Sam Diaz-Matosas)
09-04-0	at Louisville	W	3-0	3-0-0	0-0-0	1103	Lindsay Small (Kim Miller) Christine Watts (unassisted) Kayla Grimsley (Sam Diaz-Matosas)
09-06-0	vs Cincinnati Bearcats	W	4-0	4-0-0	0-0-0	229	Blakely Mattern (Ellen Fahey;Sam Diaz-Matosas) Sam Diaz-Matosas (Kayla Grimsley) Megan Fligg (Kim Miller) Maria Petroni (Kim Miller)
Sep 11	at Clemson	W	5-0	5-0-0	0-0-0	917	Shannon Bigbie (Kim Miller;Brooke Jacobs) Blakely Mattern (Kim Miller) Brooke Jacobs (Christine Watts) Kayla Grimsley (unassisted) Blakely Mattern (unassisted)
Sep 13	vs UNC Wilmington	W	2-0	6-0-0	0-0-0	155	Blakely Mattern (Kortney Rhoades) Kayla Grimsley (Ellen Fahey;Kacie Brewer)
Sep 18	#17 UCF	W	1-0	7-0-0	0-0-0	1424	Kayla Grimsley (Ellen Fahey)
Sep 20	SOUTH ALABAMA	W	6-1	8-0-0	0-0-0	443	Lindsay Small (Kim Miller) Sam Diaz-Matosas (unassisted) Natalie Aaron (Brooke Jacobs) Kayla Grimsley (Kortney Rhoades) Lolly Holland (Blakely Mattern) Kacie Brewer (Maria Petroni;Natalie Aaron)
* Sep 25	VANDERBILT	W	2-1	9-0-0	1-0-0	756	Kortney Rhoades (Lindsay Small;Kayla Grimsley) Brooke Jacobs (Shannon Bigbie)
* Sep 27	KENTUCKY	W	1-0	10-0-0	2-0-0	672	Christine Watts (unassisted)
* Oct 02	at Ole Miss	W	1-0	11-0-0	3-0-0	513	Lindsay Small (Kim Miller)
* Oct 04	at Mississippi State	TO2	1-1	11-0-1	3-0-1	142	Brooke Jacobs (Kayla Grimsley)
* Oct 09	AUBURN	WOT	1-0	12-0-1	4-0-1	827	Sam Diaz-Matosas (unassisted)
* Oct 11	ALABAMA	W	2-0	13-0-1	5-0-1	1023	Blakely Mattern (Kim Miller) Blakely Mattern (Sam Diaz-Matosas)
* Oct 16	at #16 Georgia	L	1-2	13-1-1	5-1-1	1715	Kayla Grimsley (unassisted)
* Oct 18	at Tennessee	W	2-1	14-1-1	6-1-1	1332	Kayla Grimsley (unassisted) Lindsay Small (Kayla Grimsley)
* Oct 22	ARKANSAS	W	2-0	15-1-1	7-1-1	746	Kortney Rhoades (Kayla Grimsley;Kim Miller) Kayla Grimsley (Kim Miller)
* Oct 25	at #14 LSU	L	0-1	15-2-1	7-2-1	861	-
* Oct 30	at #10 Florida	L	0-3	15-3-1	7-3-1	3104	-
Nov 04	vs Georgia	W	3-2	16-3-1	7-3-1		Brooke Jacobs (Kim Miller;Lindsay Small) Kayla Grimsley (unassisted) Kortney Rhoades (Kayla Grimsley)

Team Record	W-L-T	Attendance	Dates	Total	Avg.
Overall:	16-3-1	Total:	20	17063	853
Conference:	7-3-1	Home:	9	6992	777
Home:	9-0	Away:	8	9687	1211
Away:	4-3-1	Neutral:	3	384	128
Neutral:	3-0				



**2009 South Carolina Women's Soccer
South Carolina Combined Team Statistics (as of Nov 05, 2009)
All games**

RECORD:	OVERALL	HOME	AWAY	NEUTRAL
ALL GAMES	16-3-1	9-0	4-3-1	3-0
CONFERENCE	7-3-1	5-0	2-3-1	0-0
NON-CONFERENCE	9-0	4-0	2-0	3-0

Date	Opponent	Score	Att.	#	Player	gp	g	a	pts	sh	sh%	sog	sog%	gw	pk-att	
Aug 27	COL. OF CHARLESTON	W	2-0	612	4	Kayla Grimsley	20	11	6	28	38	.289	21	.553	2	0-0
Aug 30	WESTERN CAROLINA	W	2-0	489	5	Kim Miller	20	2	11	15	27	.074	9	.333	1	0-0
09-04-0	at Louisville	W	3-0	1103	7	Blakely Mattern	20	6	1	13	16	.375	11	.688	3	0-0
09-06-0	vs Cincinnati Bearcats	W	4-0	229	16	Lindsay Small	20	4	3	11	31	.129	15	.484	3	0-0
Sep 11	at Clemson	W	5-0	917	27	Brooke Jacobs	20	4	2	10	37	.108	23	.622	1	0-0
Sep 13	vs UNC Wilmington	W	2-0	155	3	Sam Diaz-Matosas	20	3	4	10	23	.130	12	.522	2	0-0
Sep 18	#17 UCF	W	1-0	1424	15	Kortney Rhoades	20	3	2	8	24	.125	12	.500	2	0-0
Sep 20	SOUTH ALABAMA	W	6-1	443	8	Christine Watts	20	2	1	5	18	.111	8	.444	1	0-0
* Sep 25	VANDERBILT	W	2-1	756	20	Ellen Fahey	19	0	4	4	3	.000	2	.667	0	0-0
* Sep 27	KENTUCKY	W	1-0	672	12	Shannon Bigbie	18	1	1	3	8	.125	5	.625	1	0-0
* Oct 02	at Ole Miss	W	1-0	513	10	Natalie Aaron	18	1	1	3	8	.125	2	.250	0	0-0
* Oct 04	at Mississippi State	To2	1-1	142	23	Kacie Brewer	20	1	1	3	7	.143	5	.714	0	0-0
* Oct 09	AUBURN	Wot	1-0	827	9	Maria Petroni	17	1	1	3	4	.250	3	.750	0	0-0
* Oct 11	ALABAMA	W	2-0	1023	14	Lolly Holland	15	1	0	2	7	.143	2	.286	0	0-0
* Oct 16	at #16 Georgia	L	1-2	1715	2	Megan Fligg	13	1	0	2	2	.500	2	1.000	0	0-0
* Oct 18	at Tennessee	W	2-1	1332	19	Kira Campbell	18	0	0	0	10	.000	4	.400	0	0-0
* Oct 22	ARKANSAS	W	2-0	746	18	Ali Glemser	13	0	0	0	6	.000	4	.667	0	0-0
* Oct 25	at #14 LSU	L	0-1	861	21	Brittany Rhoades	20	0	0	0	4	.000	2	.500	0	0-0
* Oct 30	at #10 Florida	L	0-3	3104	22	Dani Henry	14	0	0	0	3	.000	0	.000	0	0-0
Nov 04	vs Georgia	W	3-2	0	25	Maddy Kill	7	0	0	0	1	.000	1	1.000	0	0-0
					29	Mollie Patton	20	0	0	0	0	.000	0	.000	0	0-0
					28	Brittany DeWitt	4	0	0	0	0	.000	0	.000	0	0-0
					26	Rae Wilson	5	0	0	0	0	.000	0	.000	0	0-0
					17	Maggie Blackwell	2	0	0	0	0	.000	0	.000	0	0-0
					11	Idana DeCecco	2	0	0	0	0	.000	0	.000	0	0-0
					6	Samantha Abrahart	1	0	0	0	0	.000	0	.000	0	0-0
					1	Roya Mojarab	1	0	0	0	0	.000	0	.000	0	0-0
						Total	20	41	38	120	277	.148	143	.516	16	0-0
						Opponents	20	12	10	34	167	.072	71	.425	3	1-1

TEAM STATISTICS	SC	OPP
SHOT STATISTICS		
Goals-Shot attempts	41-277	12-167
Goals scored per game	2.05	0.60
Shot pct.	.148	.072
Shots on goal-Attempts	143-277	71-167
SOG pct.	.516	.425
Shots/Game	13.9	8.4
CORNER KICKS	98	65
PENALTY KICKS	0-0	1-1
PENALTIES		
Yellow cards	9	11
Red cards	1	0
ATTENDANCE		
Total	6992	9687
Dates/Avg Per Date	9/777	8/1211
Neutral Site #/Avg	3/128	

#	Goalie	GP	Min.	GA	GAAvg	Saves	Pct	W-L-T	Sho
29	Mollie Patton	20	1797:19	11	0.55	57	.838	16-3-1	12
1	Roya Mojarab	1	30:28	1	2.95	2	.667	0-0-0	0
	Total	20	1827:47	12	0.59	59	.831	16-3-1	12
	Opponents	20	1827:47	41	2.02	102	.713	3-14-1	2

Goals by Period	1st	2nd	OT	OT2	Total
South Carolina	20	20	1	0	41
Opponents	5	7	0	0	12

Shots by Period	1st	2nd	OT	OT2	Total
South Carolina	145	128	4	0	277
Opponents	64	99	2	2	167

Saves by Period	1st	2nd	OT	OT2	Total
South Carolina	19	40	0	0	59
Opponents	56	46	0	0	102

Corners by Period	1st	2nd	OT	OT2	Total
South Carolina	55	42	0	1	98
Opponents	24	41	0	0	65

Fouls by Period	1st	2nd	OT	OT2	Total
South Carolina	73	91	4	0	168

**SOUTH CAROLINA MATCH-BY-MATCH STATISTICS**

DATE	OPPONENT	G	A	PTS	SH	PCT	SOG	SOG%	CORNERS	FOULS	YC	SAVES	GA
8/27	Col. Charleston	2	2	6	11	.182	7	.636	3	7	0	1	0
8/31	Western Carolina	2	2	6	11	.182	7	.636	6	4	0	0	0
9/4	Louisville	3	2	8	12	.250	8	.667	7	10	0	6	0
9/6	Cincinnati	4	5	13	22	.182	15	.682	7	7	0	5	0
9/11	Clemson	5	4	14	12	.417	7	.583	4	9	1	6	0
9/13	UNC Wilmington	2	3	7	23	.087	9	.391	3	7	0	6	0
9/18	#17 UCF	1	1	3	8	.125	4	.500	6	10	1	3	0
9/20	South Alabama	6	6	18	23	.261	13	.565	6	7	0	3	1
9/25	Vanderbilt	2	3	7	14	.143	6	.429	6	11	0	0	1
9/27	Kentucky	1	0	2	14	.071	8	.571	8	9	0	1	0
10/2	Ole Miss	1	1	3	10	.100	5	.500	1	5	0	5	0
10/4	Mississippi State	1	1	3	14	.071	3	.214	2	11	1	5	1
10/9	Auburn	1	0	2	17	.059	8	.471	4	13	2	3	0
10/11	Alabama	2	2	6	18	.111	11	.611	7	15	0	1	0
10/16	#23 Georgia	1	0	2	12	.083	8	.667	1	4	0	2	2
10/18	Tennessee	2	1	5	16	.125	5	.313	6	14	1	6	1
10/22	Arkansas	2	3	7	15	.133	8	.533	4	7	1	3	0
10/25	#17 LSU	0	0	0	5	.000	3	.600	6	3	2	2	1
10/30	Florida	0	0	0	8	.000	2	.250	3	7	0	0	3
11/4	SEC - Georgia	3	2	8	12	.250	6	.500	8	8	0	1	2
South Carolina		41	37	119	275	.149	143	.520	98	168	9	59	12

Bold - Season-High

OPPONENT MATCH-BY-MATCH STATISTICS

DATE	OPPONENT	G	A	PTS	SH	PCT	SOG	SOG%	CORNERS	FOULS	YC	SAVES	GA
8/27	Col. Charleston	0	0	0	2	.000	1	.500	3	7	0	5	2
8/31	Western Carolina	0	0	0	0	N/A	0	N/A	1	9	0	5	2
9/4	Louisville	0	0	0	10	.000	6	.600	3	10	0	5	3
9/6	Cincinnati	0	0	0	10	.000	5	.500	2	12	0	11	4
9/11	Clemson	0	0	0	12	.000	6	.500	4	8	1	2	5
9/13	UNC Wilmington	0	0	0	8	.000	6	.750	0	10	0	7	2
9/18	#17 UCF	0	0	0	12	.000	3	.250	3	11	1	3	1
9/20	South Alabama	1	1	3	4	.250	4	1.000	2	9	0	7	6
9/25	Vanderbilt	1	1	3	8	.125	1	.125	4	8	1	4	2
9/27	Kentucky	0	0	0	2	.000	1	.500	4	10	0	7	1
10/2	Ole Miss	0	0	0	8	.000	5	.625	5	4	0	4	1
10/4	Mississippi State	1	0	2	12	.083	6	.500	0	12	2	2	1
10/9	Auburn	0	0	0	7	.000	3	.429	2	15	1	7	1
10/11	Alabama	0	0	0	5	.000	1	.200	6	12	0	9	2
10/16	#23 Georgia	2	1	5	8	.250	4	.500	5	4	0	7	1
10/18	Tennessee	1	0	2	19	.052	7	.368	8	13	0	3	2
10/22	Arkansas	0	0	0	11	.000	3	.273	1	7	1	6	2
10/25	#17 LSU	1	2	4	10	.100	3	.300	4	9	0	3	0
10/30	#10 Florida	3	3	9	11	.273	3	.273	5	8	1	2	0
11/4	SEC - Georgia	2	2	6	8	.250	3	.375	3	11	1	3	3
Opponents		12	10	34	167	.072	71	.425	65	189	9	102	41



GAME-BY-GAME INDIVIDUAL LEADERS

DATE	OPPONENT	W/L	SCORE	HIGH SHOTS	HIGH SOG	HIGH GOALS	HIGH ASSISTS	HIGH POINTS
8/27	Col. Charleston	W	2-0	Miller, K. Rhoades (2)	K. Rhoades (2)	Miller, Grimsley (1)	Small (1)	Miller, Grimsley (2)
8/31	Western Carolina	W	2-0	Diaz, Miller, Grimsley (2)	Diaz, Grimsley (2)	Miller, Grimsley (1)	Fahey, Diaz-Matosas (1)	Miller, Grimsley (2)
9/4	Louisville	W	3-0	Watts (3)	Grimsley, Watts (2)	Small, Grimsley, Watts (1)	Miller, Diaz-Matosas (1)	Small, Watts, Grim (2)
9/6	Cincinnati	W	4-0	Small (5)	Mattern, Small (3)	4 players (1)	Miller (2)	Diaz-Matosas (3)
9/11	Clemson	W	5-0	Campbell (4)	Mattern, Campbell (2)	Mattern (2)	Miller (2)	Mattern (4)
9/13	UNC Wilmington	W	2-0	Jacobs (5)	Jacobs (2)	Mattern, Grimsley (1)	Rhoades, Fahey, Brewer (1)	Mattern, Grimsley (2)
9/18	#17 UCF	W	1-0	Diaz-Matosas (2)	4 players (1)	Grimsley (1)	Fahey (1)	Grimsley (2)
9/20	South Alabama	W	6-1	Jacobs, Grimsley (4)	Brewer (3)	6 players (1)	6 players (1)	6 players (2)
9/25	Vanderbilt	W	2-1	Jacobs (4)	Jacobs (3)	K. Rhoades, Jacobs (1)	Grimsley, Bigbie, Small (1)	K. Rhoades, Jacobs (2)
9/27	Kentucky	W	1-0	Watts, Grimsley (3)	Jacobs, Watts (2)	Watts (1)	-	Watts (2)
10/2	Ole Miss	W	1-0	Small (5)	Small (3)	Small (1)	Miller (1)	Small (2)
10/4	Mississippi State	T	1-1	Miller, Jacobs (3)	Diaz, Fahey, Jacobs (1)	Jacobs (1)	Grimsley (1)	Jacobs (2)
10/9	Auburn	W	1-0	Diaz-Matosas (4)	Jacobs (2)	Diaz-Matosas (1)	-	Diaz-Matosas (2)
10/11	Alabama	W	2-0	Jacobs, Diaz-Matosas (3)	Diaz, Mattern, K. Rh (2)	Mattern (2)	Miller, Diaz-Matosas (2)	Mattern (4)
10/16	Georgia	L	1-2	Jacobs (4)	Jacobs (3)	Grimsley (1)	-	Grimsley (2)
10/18	Tennessee	W	2-1	Grimsley (7)	Grimsley (3)	Grimsley, Small (1)	Grimsley (1)	Grimsley (3)
10/22	Arkansas	W	2-0	Small (4)	Grimsley (2)	Grimsley, K. Rhoades (1)	Miller (2)	Grimsley (3)
10/25	#17 LSU	L	0-1	Miller (2)	Miller, Mattern, Small (1)	-	-	-
10/30	#10 Florida	L	0-3	Grimsley, Miller (2)	Grimsley, Miller (1)	-	-	-
11/4	SEC - Georgia	W	3-2	K. Rhoades (4)	K. Rhoades (2)	K. Rhoades, Grimsley, Jacobs (1)	Small, Grimsley, Miller (1)	Grimsley (3)

GAME-BY-GAME STARTERS

DATE	OPPONENT	W/L	F	F	M/F	M	M	M	D	D	D	D	GK
8/27	Col. Charleston	W	Jacobs	Grimsley	Campbell	Miller	Small	K. Rhoades	Mattern	Diaz-Matosas	Fahey	B. Rhoades	Patton
8/31	Western Carolina	W	Jacobs	Grimsley	Campbell	Miller	Small	K. Rhoades	Mattern	Diaz-Matosas	Fahey	B. Rhoades	Patton
9/4	Louisville	W	Jacobs	Grimsley	Campbell	Miller	Small	K. Rhoades	Mattern	Diaz-Matosas	Fahey	B. Rhoades	Patton
9/6	Cincinnati	W	Jacobs	Grimsley	Campbell	Miller	Small	K. Rhoades	Mattern	Diaz-Matosas	Fahey	B. Rhoades	Patton
9/11	Clemson	W	Jacobs	Grimsley	Campbell	Miller	Small	Bigbie	Mattern	Diaz-Matosas	Fahey	B. Rhoades	Patton
9/13	UNC Wilmington	W	Jacobs	Grimsley	Campbell	Miller	Small	K. Rhoades	Mattern	Diaz-Matosas	Fahey	Bigbie	Patton
9/18	#17 UCF	W	Jacobs	Grimsley	Bigbie	Miller	Small	K. Rhoades	Mattern	Diaz-Matosas	Fahey	B. Rhoades	Patton
9/20	South Alabama	W	Jacobs	Grimsley	Bigbie	Miller	Small	K. Rhoades	Mattern	Fligg	Fahey	B. Rhoades	Patton
9/25	Vanderbilt	W	Jacobs	Grimsley	Bigbie	Miller	Small	K. Rhoades	Mattern	Diaz-Matosas	Fahey	B. Rhoades	Patton
9/27	Kentucky	W	Jacobs	Grimsley	Bigbie	Miller	Small	K. Rhoades	Mattern	Diaz-Matosas	Fahey	B. Rhoades	Patton
10/2	Ole Miss	W	Jacobs	Grimsley	Bigbie	Miller	Small	K. Rhoades	Mattern	Diaz-Matosas	Fahey	B. Rhoades	Patton
10/4	Mississippi State	T	Jacobs	Grimsley	Bigbie	Miller	Small	K. Rhoades	Mattern	Diaz-Matosas	Fahey	B. Rhoades	Patton
10/9	Auburn	W	Brewer	Grimsley	Bigbie	Miller	Small	K. Rhoades	Mattern	Diaz-Matosas	Fahey	B. Rhoades	Patton
10/11	Alabama	W	Jacobs	Grimsley	Bigbie	Miller	Small	K. Rhoades	Mattern	Diaz-Matosas	Fahey	B. Rhoades	Patton
10/16	#23 Georgia	L	Jacobs	Grimsley	Bigbie	Miller	Small	K. Rhoades	Mattern	Diaz-Matosas	Fahey	B. Rhoades	Patton
10/18	Tennessee	W	Jacobs	Grimsley	Bigbie	Miller	Small	K. Rhoades	Mattern	Diaz-Matosas	Fahey	B. Rhoades	Patton
10/22	Arkansas	W	Jacobs	Grimsley	Bigbie	Miller	Small	K. Rhoades	Mattern	Diaz-Matosas	Fahey	B. Rhoades	Patton
10/25	#17 LSU	L	Jacobs	Grimsley	Bigbie	Miller	Small	K. Rhoades	Mattern	Diaz-Matosas	Fahey	B. Rhoades	Patton
10/30	#10 Florida	L	Jacobs	Grimsley	Bigbie	Miller	Campbell	K. Rhoades	Mattern	Diaz-Matosas	Small	B. Rhoades	Patton
11/4	SEC - Georgia	W	Jacobs	Grimsley	Bigbie	Miller	Small	K. Rhoades	Mattern	Diaz-Matosas	Fahey	B. Rhoades	Patton



HOME-ONLY INDIVIDUAL STATISTICS

##	PLAYER	GP-GS	G	A	PTS	SH	PCT	SOG	SOG%	GWG	GWA
2	Megan Fligg	8-1	0	0	0	1	.000	1	1.000	0	0
3	Samantha Diaz-Matosas	9-8	2	2	6	17	.118	9	.529	2	0
4	Kayla Grimsley	9-9	5	2	12	18	.278	11	.611	2	1
5	Kim Miller	9-9	2	4	8	10	.200	2	.200	1	2
7	Blakely Mattern	9-9	2	1	5	5	.400	4	.800	1	0
8	Christine Watts	9-0	1	0	2	10	.100	5	.500	0	1
9	Maria Petroni	7-0	0	1	1	2	.000	1	.500	0	0
10	Natalie Aaron	9-0	1	1	3	5	.200	2	.400	0	0
11	Idana DeCecco	1-0	0	0	0	0	.000	0	.000	0	0
12	Shannon Bigbie	7-7	0	1	1	2	.000	0	.000	0	1
13	Jocelyn Spurrier	0-0	0	0	0	0	.000	0	.000	0	0
14	Lolly Holland	7-0	1	0	2	3	.333	1	.333	0	0
15	Kortney Rhoades	9-9	2	1	5	13	.154	9	.692	1	0
16	Lindsay Small	9-9	1	2	4	11	.091	3	.273	0	0
17	Maggie Blackwell	1-0	0	0	0	0	.000	0	.000	0	0
18	Ali Glemser	8-0	0	0	0	4	.000	3	.750	0	0
19	Kira Campbell	7-2	0	0	0	2	.000	2	1.000	0	0
20	Ellen Fahey	9-9	0	2	2	1	.000	1	1.000	0	2
21	Brittany Rhoades	9-9	0	0	0	2	.000	0	.000	0	0
22	Dani Henry	7-0	0	0	0	2	.000	0	.000	0	0
23	Kacie Brewer	9-1	1	0	2	5	.200	4	.800	0	0
25	Maddy Kill	3-0	0	0	0	1	.000	1	1.000	0	0
26	Rae Wilson	3-0	0	0	0	0	.000	0	.000	0	0
27	Brooke Jacobs	9-8	1	1	3	18	.056	13	.722	0	1
28	Brittany DeWitt	2-0	0	0	0	0	.000	0	.000	0	0
TEAM											
South Carolina		9	19	18	56	131	.145	72	.550	9	6
Opponents		9	2	2	6	51	.039	17	.333	0	0

GOALKEEPERS

	GP-GS	Min.	GA	GAA.	Svs.	Save %	W-L	SO	
0	Alex Holland	0-0	00:00	0	0.00	0	0-0-0	0	
1	Roya Mojarab	1-0	30:28	1	2.95	2	0-0-0	0	
29	Mollie Patton	9-9	787:19	1	0.11	13	9-0-0	7	
35	Darien Vercillo	0-0	00:00	0	0.00	0	0-0-0	0	
TEAM									
South Carolina		9	817:47	2	0.22	15	.882	9-0-0	7
Opponents		9	817:47	19	2.09	53	.736	0-9-0	0

HOME-ONLY TEAM STATS

SCORING	USC	OPP
Goals.....	19	2
Assists.....	18	2
Points.....	56	6
SHOTS		
Shots	131	51
Pct.145	.039
Shots On Goal.....	72	17
SOG%.....	.550	.33
FOULS		
Fouls	83	88
Cards	4	4
GOALKEEPING		
Saves	15	53
Goals Against.....	2	19
GAA	0.22	2.09



AWAY-ONLY INDIVIDUAL STATISTICS

##	PLAYER	GP-GS	G	A	PTS	SH	PCT	SOG	SOG%	GWG	GWA
2	Megan Fligg	5-0	1	0	2	1	1.000	1	1.000	0	0
3	Samantha Diaz-Matosas	11-11	1	2	4	6	.167	3	.500	0	1
4	Kayla Grimsley	11-11	6	4	16	20	.300	10	.500	0	2
5	Kim Miller	11-11	0	7	7	17	.000	7	.412	0	3
7	Blakely Mattern	11-11	4	0	8	11	.364	7	.636	2	0
8	Christine Watts	11-0	1	1	3	8	.125	3	.375	0	0
9	Maria Petroni	10-0	1	0	2	2	.500	2	1.000	0	0
10	Natalie Aaron	10-0	0	0	0	3	.000	0	.000	0	0
11	Idana DeCecco	1-0	0	0	0	0	.000	0	.000	0	0
12	Shannon Bigbie	11-9	1	0	2	6	.167	5	.833	1	0
13	Jocelyn Spurrier	0-0	0	0	0	0	.000	0	.000	0	0
14	Lolly Holland	8-0	0	0	0	4	.000	1	.250	0	0
15	Kortney Rhoades	11-10	1	1	3	11	.091	3	.273	1	1
16	Lindsay Small	11-11	3	1	7	21	.143	12	.571	3	0
17	Maggie Blackwell	1-0	0	0	0	0	.000	0	.000	0	0
18	Ali Glemser	5-0	0	0	0	2	.000	1	.500	0	0
19	Kira Campbell	11-5	0	0	0	7	.000	2	.286	0	0
20	Ellen Fahey	10-10	0	2	2	2	.000	1	.500	0	1
21	Brittany Rhoades	11-10	0	0	0	2	.000	2	1.000	0	0
22	Dani Henry	7-0	0	0	0	1	.000	0	.000	0	0
23	Kacie Brewer	11-0	0	1	1	2	.000	1	.500	0	0
25	Maddy Kill	4-0	0	0	0	0	.000	0	.000	0	0
26	Rae Wilson	2-0	0	0	0	0	.000	0	.000	0	0
27	Brooke Jacobs	11-11	3	1	7	19	.158	10	.526	0	1
28	Brittany DeWitt	1-0	0	0	0	0	.000	0	.000	0	0
TEAM											
South Carolina		11	22	20	67	146	.151	71	.486	7	9
Opponents		11	10	8	28	116	.086	54	.466	3	4

GOALKEEPERS

	GP-GS	Min.	GA	GAA.	Svs.	Save %	W-L	SO	
0	Alex Holland	0-0	00:00	0	0.00	0	0-0-0	0	
1	Roya Mojarab	0-0	00:00	0	0.00	0	0-0-0	0	
29	Mollie Patton	11-11	1010:00	11	0.98	44	7-3-1	5	
35	Darien Vercillo	0-0	00:00	0	0.00	0	0-0-0	0	
TEAM									
South Carolina		11	1010:00	11	0.98	44	.800	7-3-1	5
Opponents		11	1010:00	22	1.96	49	.690	3-7-1	2

AWAY-ONLY TEAM STATS

SCORING	USC	OPP
Goals.....	22	10
Assists.....	20	8
Points.....	67	28
SHOTS		
Shots	146	116
Pct.151	.086
Shots On Goal.....	71	54
SOG%.....	.486	.466
FOULS		
Fouls.....	85	101
Cards	6	5
GOALKEEPING		
Saves	44	49
Goals Against.....	11	22
GAA	0.98	1.96



EXHIBITION - MEXICAN NAT'L TEAM (2-0)

Soccer Box Score (Final)
The Automated ScoreBook For Soccer
Mexico U20 vs South Carolina (Aug 21, 2009 at Greenville, S.C.)

Mexico U20 vs. South Carolina
Date: Aug 21, 2009 • Attendance: 3000
Weather:

Po ## Player	Sh	SO	G	A	Min
gk 1 Erika VANEAGAS	-	-	-	-	90
d 3 Marlene SANDOVAL	-	-	-	-	90
d 4 Marilyn DIAZ	-	-	-	-	90
d 5 Maria CASTILLO	1	-	-	-	90
m 6 Monica VERGARA	1	-	-	-	90
f 9 Monica OCAÑO	6	5	-	-	90
d 13 Lourdes GORDILLO	-	-	-	-	90
d 14 Leticia VILLALPANDO	-	-	-	-	90
d 15 Luz SAUCEDO	2	-	-	-	72
m 16 Mirella ARCIENEGA	-	-	-	-	72
m 17 Tania MORALES	1	-	-	-	90
-- Substitutes --					
8 Asley KOTERO	-	-	-	-	18
10 Norma MENDEZ	-	-	-	-	18
Totals	11	5	0	0	

## Goalkeepers	Min	GA	Saves
1 Erika VANEAGAS	90:00	2	4

Shots by period	1	2	Total
Mexico U20	5	6	11
South Carolina	7	5	12

Corner kicks	1	2	Total
Mexico U20	3	1	4
South Carolina	2	0	2

Scoring summary:

No.	Time	Team	Goal scorer	Assist	Description
1.	31:43	SC	Christine Watts	Brittany Rhoades	In box
2.	35:12	SC	Sam Diaz-Matosas	Kayla Grimsley	Cross from right into box, inside corner

Cautions and ejections:
YC-SC #20 (62:36)

Stadium: MeSA Soccer Complex
Officials:
Offsides: Mexico U20 1, South Carolina 3.

Official's signature

GAME 2 - WCU (2-0)

Soccer Box Score (Final)
2009 South Carolina Women's Soccer
Western Carolina vs South Carolina (Aug 30, 2009 at Columbia, S.C.)

Western Carolina (2-1-0) vs. South Carolina (2-0-0)
Date: Aug 30, 2009 • Attendance: 489
Weather:

Po ## Player	Sh	SO	G	A	Min
gk 00 Caitlin Williams	-	-	-	-	90
m 7 Liz Eichler	-	-	-	-	34
m 8 Kayla Beaudouy	-	-	-	-	62
f 11 Nikki Collins	-	-	-	-	50
m 14 Samantha Hodge	-	-	-	-	69
f 16 Shannon Fowkes	-	-	-	-	72
d 18 Jenny Matteson	-	-	-	-	90
f 19 Rachael Shomper	-	-	-	-	72
m 21 Renee Anderson	-	-	-	-	57
m 23 Shanna Schmoker	-	-	-	-	78
m 24 Nikki Lombardo	-	-	-	-	78
-- Substitutes --					
5 Bri Cunningham	-	-	-	-	29
10 Kellie Oberholtzer	-	-	-	-	41
12 Hilary Holder	-	-	-	-	56
13 Erin Hamilton	-	-	-	-	18
17 Katie Kole	-	-	-	-	30
20 Elizabeth Kozlowski	-	-	-	-	12
26 Lindsay Carter	-	-	-	-	54
Totals	0	0	0	0	

## Goalkeepers	Min	GA	Saves
00 Caitlin Williams	90:00	2	5

Shots by period	1	2	Total
Western Carolina	0	0	0
South Carolina	6	5	11

Corner kicks	1	2	Total
Western Carolina	1	0	1
South Carolina	4	2	6

Scoring summary:

No.	Time	Team	Goal scorer	Assist	Description
1.	22:38	SC	Kayla Grimsley	Ellen Fahey	Breakaway at midfield after clearance
2.	26:49	SC	Kim Miller (2)	Sam Diaz-Matosas	#3 shot saved, deflection to #5

Cautions and ejections:

Stadium: Stone Stadium
Officials: Referee: Joe Balazs; Asst. Referee: Alan Correa; Steve Abbott;
Timekeeper: Adrienne Cunningham; Scorer: Miquel Jacobs;
Offsides: Western Carolina 0, South Carolina 4.

Official's signature

GAME 1 - CofC (2-0)

Soccer Box Score (Final)
The Automated ScoreBook For Soccer
Col. of Charleston vs South Carolina (Aug 27, 2009 at Columbia, S.C.)

Col. of Charleston (0-1-0) vs. South Carolina (1-0-0)
Date: Aug 27, 2009 • Attendance: 612
Weather:

Po ## Player	Sh	SO	G	A	Min
gk 0 Sarah Wiggers	-	-	-	-	90
m 2 Hope Atkinson	-	-	-	-	25
d 3 Amanda Raymond	1	-	-	-	90
m 6 Hannah Gmerek	-	-	-	-	55
d 7 Emily Morgan	1	1	-	-	90
m 10 Julie Romanik	-	-	-	-	59
d 11 Brittany Schneider	-	-	-	-	90
m 16 Lindsay Small	-	-	-	-	61
d 20 Annie Pease	-	-	-	-	90
f 23 Alyssa Bearden	-	-	-	-	52
m 26 Sarah Schaidle	-	-	-	-	65
-- Substitutes --					
8 Christy Barrow	-	-	-	-	37
9 Chrissy Caruso	-	-	-	-	38
13 Lindsay Frey	-	-	-	-	2
14 Christian Patton	-	-	-	-	31
18 Katie Turner	-	-	-	-	27
21 Liz Miller	-	-	-	-	60
25 Haley Hutchens	-	-	-	-	41
28 Betsy Stewart	-	-	-	-	0
Totals	2	1	0	0	

## Goalkeepers	Min	GA	Saves
0 Sarah Wiggers	90:00	2	5

Shots by period	1	2	Total
Col. of Charleston	0	2	2
South Carolina	6	5	11

Corner kicks	1	2	Total
Col. of Charleston	0	3	3
South Carolina	2	1	3

Scoring summary:

No.	Time	Team	Goal scorer	Assist	Description
1.	13:42	SC	Kim Miller (1)	(unassisted)	Free Kick 25 yards out, center, top of net
2.	29:54	SC	Kayla Grimsley (1)	Lindsay Small	Beat defender, ball into far corner

Cautions and ejections:

Stadium: Stone Stadium
Officials: Referee: Jeremy Brooks; Asst. Referee: John Tanverdi; Kenneth Ayers;
Timekeeper: Bryan Powell; Scorer: Miquel Jacobs;
Offsides: Col. of Charleston 1, South Carolina 2.

Official's signature

GAME 3 - Louisville (3-0)

Soccer Box Score (Final)
2009 South Carolina Women's Soccer
South Carolina vs Louisville (09-04-09 at Louisville, Ky.)

South Carolina (3-0) vs. Louisville (1-2)
Date: 09-04-09 • Attendance: 1103
Weather:

Po ## Player	Sh	SO	G	A	Min
gk 29 Mollie Patton	-	-	-	-	90
d 3 Sam Diaz-Matosas	-	-	-	-	76
f 4 Kayla Grimsley	2	2	1	-	79
m 5 Kim Miller	-	-	-	-	79
d 7 Blakely Mattern	-	-	-	-	90
m 15 Kortney Rhoades	-	-	-	-	22
m 16 Lindsay Small	1	1	1	-	79
m 19 Kira Campbell	1	-	-	-	40
d 20 Ellen Fahey	-	-	-	-	90
d 21 Brittany Rhoades	1	1	-	-	81
f 27 Brooke Jacobs	1	1	-	-	79
-- Substitutes --					
2 Megan Fligg	-	-	-	-	15
8 Christine Watts	3	2	1	-	57
9 Maria Petroni	1	1	-	-	16
10 Natalie Aaron	1	-	-	-	14
12 Shannon Bigbie	-	-	-	-	53
22 Dani Henry	1	-	-	-	15
23 Kacie Brewer	-	-	-	-	14
Totals	12	8	3	2	

## Goalkeepers	Min	GA	Saves
29 Mollie Patton	90:00	0	6

Shots by period	1	2	Total
South Carolina	7	5	12
Louisville	4	6	10

Corner kicks	1	2	Total
South Carolina	4	3	7
Louisville	0	3	3

Scoring summary:

No.	Time	Team	Goal scorer	Assist	Description
1.	27:09	SC	Lindsay Small	Kim Miller	Header from 3 yards off corner kick.
2.	43:52	SC	Christine Watts	(unassisted)	Upper right corner from 17 yards out.
3.	89:51	SC	Kayla Grimsley	Sam Diaz-Matosas	

Cautions and ejections:

Stadium: Cardinal Park
Officials: Referee: Kelly R. Ross; Asst. Referee: Rachel Bramlage; Andy Ellsworth;
Alt. Official: Mike Dutt; Timekeeper: Kent Jennings; Scorer: Garrett Wall;
Offsides: South Carolina 4, Louisville 2.

Official's signature

GAME 4 - Cincinnati (4-0)

Soccer Box Score (Final)
2009 South Carolina Women's Soccer
Cincinnati Bearcats vs South Carolina (09-06-09 at Louisville, Ky.)

Cincinnati Bearcats (2-3) vs.
South Carolina (4-0)
Date: 09-06-09 • Attendance: 229
Weather:

Po #	Player	Sh	SO	G	A	Min
gk 0	KAMINSKI, Andrea	-	-	-	-	90
m 2	BARKER, Sydney	-	-	-	-	29
f 3	LOGGINS, Kendall	-	-	-	-	82
d 6	NEISER, Heather	1	-	-	-	90
m 8	BIGG, Melissa	2	1	-	-	90
f 9	MORRISSEY, Julie	2	2	-	-	75
f 10	HEBBELER, Emily	-	-	-	-	73
d 11	BALLINGER, Logan	-	-	-	-	81
d 13	EBERLY, Brooke	-	-	-	-	45
d 14	PAWELKO, Kelli	-	-	-	-	90
d 18	YOUNG, Kay	-	-	-	-	90
-- Substitutes --						
4	BREWER, Christine	1	-	-	-	0
5	DAKERS, Kaylee	-	-	-	-	61
7	RANSON, Evi	-	-	-	-	8
17	HARDIN, Vanessa	-	-	-	-	0
19	JOHNSON, Katie	-	-	-	-	45
20	LUCAS, Lauren	1	-	-	-	9
22	MACDONALD, Erin	1	1	-	-	14
25	KAUFMAN, Erin	2	1	-	-	19
Totals		10	5	0	0	

#	Goalkeepers	Min	GA	Saves
0	KAMINSKI, Andrea	90:00	4	9
TM	TEAM	0:00	0	2

Shots by period	1	2	Total
Cincinnati Bearcats	3	7	10
South Carolina	11	11	22

Corner kicks	1	2	Total
Cincinnati Bearcats	0	2	2
South Carolina	6	1	7

Scoring summary:

No.	Time	Team	Goal scorer	Assist	Description
1.	26:54	SC	Blakely Mattern	Ellen Fahey	Sam Diaz-Matosas
2.	59:32	SC	Sam Diaz-Matosas	Kayla Grimsley	
3.	79:09	SC	Megan Fligg	Kim Miller	
4.	81:13	SC	Maria Petroni	Kim Miller	

Cautions and ejections:

YC-CIN #13 (12:06); YC-CIN #6 (63:07)

Goals by period	1	2	Total
Cincinnati Bearcats	0	0	0
South Carolina	1	3	4

Po #	Player	Sh	SO	G	A	Min
gk 29	Mollie Patton	-	-	-	-	90
d 3	Sam Diaz-Matosas	1	1	1	1	56
f 4	Kayla Grimsley	1	-	-	-	64
m 5	Kim Miller	3	2	-	-	90
d 7	Blakely Mattern	3	3	1	-	81
m 15	Kortney Rhoades	1	-	-	-	33
m 16	Lindsay Small	5	3	-	-	72
m 19	Kira Campbell	-	-	-	-	55
d 20	Ellen Fahey	-	-	-	-	181
d 21	Brittany Rhoades	1	1	-	-	68
f 27	Brooke Jacobs	2	1	-	-	65
-- Substitutes --						
2	Megan Fligg	1	1	-	-	45
8	Christine Watts	2	1	-	-	44
9	Maria Petroni	1	1	-	-	21
10	Natalie Aaron	-	-	-	-	13
12	Shannon Bigbie	-	-	-	-	32
18	Ali Glemser	1	1	-	-	23
22	Dani Henry	-	-	-	-	18
23	Kacie Brewer	-	-	-	-	17
25	Maddy Kill	-	-	-	-	9
26	Rae Wilson	-	-	-	-	13
28	Brittany DeWitt	-	-	-	-	9
Totals		22	15	4	5	

#	Goalkeepers	Min	GA	Saves
29	Mollie Patton	90:00	0	5

Saves by period	1	2	Total
Cincinnati Bearcats	7	4	11
South Carolina	3	2	5

Fouls	1	2	Total
Cincinnati Bearcats	6	6	12
South Carolina	3	4	7

GAME 5 - Clemson (5-0)

Soccer Box Score (Final)
2009 South Carolina Women's Soccer
#18 South Carolina vs Clemson (Sep 11, 2009 at Clemson, SC)

South Carolina (5-0) vs.
Clemson (2-3)
Date: Sep 11, 2009 • Attendance: 917
Weather:

Po #	Player	Sh	SO	G	A	Min
gk 29	Mollie Patton	-	-	-	-	90
3	Sam Diaz-Matosas	-	-	-	-	69
4	Kayla Grimsley	1	1	1	1	57
5	Kim Miller	-	-	-	-	69
7	Blakely Mattern	3	2	-	-	77
12	Shannon Bigbie	1	1	-	-	61
16	Lindsay Small	2	-	-	-	79
19	Kira Campbell	4	2	-	-	55
20	Ellen Fahey	-	-	-	-	83
21	Brittany Rhoades	-	-	-	-	14
27	Brooke Jacobs	1	1	1	1	64
-- Substitutes --						
2	Megan Fligg	-	-	-	-	45
8	Christine Watts	-	-	-	-	38
9	Maria Petroni	-	-	-	-	11
10	Natalie Aaron	-	-	-	-	23
11	Idana DeCecco	-	-	-	-	5
14	Lolly Holland	-	-	-	-	18
15	Kortney Rhoades	-	-	-	-	33
17	Maggie Blackwell	-	-	-	-	7
18	Ali Glemser	-	-	-	-	11
22	Dani Henry	-	-	-	-	18
23	Kacie Brewer	-	-	-	-	31
25	Maddy Kill	-	-	-	-	12
26	Rae Wilson	-	-	-	-	15
28	Brittany DeWitt	-	-	-	-	5
Totals		12	7	5	4	

#	Goalkeepers	Min	GA	Saves
29	Mollie Patton	90:00	0	6

Shots by period	1	2	Total
South Carolina	7	5	12
Clemson	6	6	12

Corner kicks	1	2	Total
South Carolina	0	4	4
Clemson	1	3	4

Scoring summary:

No.	Time	Team	Goal scorer	Assist	Description
1.	3:22	SC	Shannon Bigbie (1)	Kim Miller	
2.	35:33	SC	Blakely Mattern (2)	Brooke Jacobs	
3.	36:51	SC	Brooke Jacobs (2)	Christine Watts	
4.	65:44	SC	Kayla Grimsley (4)	(unassisted)	
5.	71:35	SC	Blakely Mattern (3)	(unassisted)	

Cautions and ejections:

YC-CU #13 (64:37); YC-SC #2 (79:36)

Stadium: Historic Riggs Field

Officials: Referee: Casey Black; Asst. Referee: Stephen A. Middleton; Chris Shanku;

Offsides: South Carolina 0, Clemson 0.

Goals by period	1	2	Total
South Carolina	3	2	5
Clemson	0	0	0

Po #	Player	Sh	SO	G	A	Min
gk 0	Paula Pritzen	-	-	-	-	90
2	K.K. Duffy	-	-	-	-	90
6	Molly Franklin	2	1	-	-	68
9	Jennifer Ficklen	1	1	-	-	90
12	Ashlyne Bass	-	-	-	-	90
18	Heather Marik	-	-	-	-	90
19	Judea Davis	4	3	-	-	53
21	Maddy Elder	1	-	-	-	32
22	Lily Boley	1	-	-	-	35
23	Stefanie Schroeder	-	-	-	-	90
24	Callie Cavanaugh	-	-	-	-	72
-- Substitutes --						
3	Emily Tatum	1	-	-	-	48
7	Tara Cort	-	-	-	-	43
8	Samantha Fortier	1	1	-	-	23
11	Kate Biggerstaff	1	-	-	-	13
13	Katie Vogel	-	-	-	-	53
14	Rachel Hurd	-	-	-	-	10
Totals		12	6	0	0	

#	Goalkeepers	Min	GA	Saves
0	Paula Pritzen	90:00	5	2

Saves by period	1	2	Total
South Carolina	2	4	6
Clemson	1	1	2

Fouls	1	2	Total
South Carolina	5	4	9
Clemson	7	1	8

Official's signature

GAME 6 - UNC Wilmington (2-0)

Soccer Box Score (Final)
2009 South Carolina Women's Soccer
#18 South Carolina vs UNC Wilmington (Sep 13, 2009 at Clemson, SC)

South Carolina (6-0) vs.
UNC Wilmington (3-3)
Date: Sep 13, 2009 • Attendance: 155
Weather:

Po #	Player	Sh	SO	G	A	Min
gk 29	Mollie Patton	-	-	-	-	90
3	Sam Diaz-Matosas	1	-	-	-	73
4	Kayla Grimsley	1	1	-	-	61
5	Kim Miller	2	1	-	-	90
7	Blakely Mattern	2	1	-	-	90
12	Shannon Bigbie	1	1	-	-	56
15	Kortney Rhoades	3	1	-	-	37
16	Lindsay Small	1	1	-	-	62
19	Kira Campbell	-	-	-	-	31
20	Ellen Fahey	-	-	-	-	79
27	Brooke Jacobs	5	2	-	-	63
-- Substitutes --						
2	Megan Fligg	-	-	-	-	31
8	Christine Watts	2	-	-	-	55
10	Natalie Aaron	1	1	-	-	12
13	Jocelyn Spurrier	-	-	-	-	0
14	Lolly Holland	4	1	-	-	17
18	Ali Glemser	1	-	-	-	27
21	Brittany Rhoades	-	-	-	-	58
22	Dani Henry	-	-	-	-	22
23	Kacie Brewer	-	-	-	-	31
25	Maddy Kill	-	-	-	-	5
Totals		23	9	2	3	

#	Goalkeepers	Min	GA	Saves
29	Mollie Patton	90:00	0	6

Shots by period	1	2	Total
South Carolina	11	12	23
UNC Wilmington	1	7	8

Corner kicks	1	2	Total
South Carolina	3	0	3
UNC Wilmington	0	0	0

Scoring summary:

No.	Time	Team	Goal scorer	Assist	Description
1.	55:17	SC	Blakely Mattern (4)	Kortney Rhoades	
2.	63:52	SC	Kayla Grimsley (5)	Ellen Fahey	Kacie Brewer

Cautions and ejections:

Stadium: Historic Riggs Field

Officials: Referee: Brent Heidorn; Asst. Referee: Josh Stoner; Skye Arthur-Banning;

Offsides: South Carolina 3, UNC Wilmington 0.

Official's signature

GAME 7 - #17 UCF (1-0)

Soccer Box Score (Final)
2009 South Carolina Women's Soccer
#17 UCF vs #12 South Carolina (Sep 18, 2009 at Columbia, S.C.)

UCF (5-2-1) vs.
South Carolina (7-0-0)
Date: Sep 18, 2009 • Attendance: 1424
Weather:

Po #	Player	Sh	SO	G	A	Min
gk 1	REIS, Aline	-	-	-	-	90
f 2	WHIDDEN, Courtney	-	-	-	-	41
f 3	GEORGE, Yvonne	-	-	-	-	61
m 4	THOMAS, Becca	4	1	-	-	90
d 8	HALBERT, Lauren	-	-	-	-	90
d 13	MAYNARD, Emily	-	-	-	-	82
d 17	MOORE, Nikki	-	-	-	-	56
m 20	HUBBARD, Stacie	1	-	-	-	79
d 22	PETRUCCO, Christina	-	-	-	-	90
f 23	RADOVICIC, Nicolette	3	-	-	-	62
m 29	JOSWIAK, Bianca	-	-	-	-	90
-- Substitutes --						
6	MARTORANA, Amand	1	1	-	-	15
14	NEWSOME, Kim	-	-	-	-	42
15	JACKSON, Katie	1	-	-	-	11
26	JEWELL, Tishia	-	-	-	-	36
27	BRANDT, Alex	2	1	-	-	42
Totals		12	3	0	0	

#	Goalkeepers	Min	GA	Saves
1	REIS, Aline	90:00	1	3

Shots by period	1	2	Total
UCF	3	9	12
South Carolina	7	1	8

Corner kicks	1	2	Total
UCF	2	1	3</



GAME 8 - SOUTH ALABAMA (6-1)

GAME 9 - VANDERBILT (2-1)

Soccer Box Score (Final)
2009 South Carolina Women's Soccer

South Alabama vs #12 South Carolina (Sep 20, 2009 at Columbia, S.C.)

South Alabama (2-6-0) vs.
South Carolina (8-0-0)
Date: Sep 20, 2009 • Attendance: 443
Weather:

Goals by period	1	2	Total
South Alabama	0	1	1
South Carolina	3	3	6

South Alabama	Po	#	Player	Sh	SO	G	A	Min
gk	1	Lythjohan, Cassie	-	-	-	-	-	90
m	4	Parsons, Natalie	-	-	-	-	-	84
d	7	Slower, Sam	1	-	-	-	-	90
f	10	Smith, Brandi	1	1	-	-	-	74
f	11	Sutton, Kristin	-	-	-	-	-	29
f	12	Clark, Liz	-	-	-	-	-	64
d	15	Francis, Shundel	-	-	-	-	-	78
m	18	Stocker, Sam	1	1	1	-	-	90
d	21	Frakes, Alle	-	-	-	-	-	90
d	24	Crowe, Kasey	-	-	-	-	-	75
m	27	Pannell, Rylee	-	-	-	-	-	63
-- Substitutes --								
3	Shelton, Whitney	-	-	-	-	-	-	1
5	Sanders, Jasmine	-	-	-	-	-	-	35
6	Falgout, Rebecca	-	-	-	-	-	-	43
8	OWada, Nanae	-	-	-	-	-	-	1
13	Conrad, Kayla	-	-	-	-	-	-	15
14	Hosford, Laura	-	-	-	-	-	-	6
17	Glause, Sandi	-	-	-	-	-	-	25
20	Mcnaughton, Katelyn	-	-	-	-	-	-	1
25	Wilson, Landi	1	1	-	-	-	-	59
Totals								

South Carolina	Po	#	Player	Sh	SO	G	A	Min
gk	29	Mollie Patton	-	-	-	-	-	60
d	2	Megan Fligg	-	-	-	-	-	64
f	4	Kayla Grimsley	4	2	1	-	-	39
m	5	Kim Miller	1	-	-	-	-	62
d	7	Blakely Mattern	-	-	-	-	-	60
f	12	Shannon Bigbie	-	-	-	-	-	38
m	15	Kortney Rhoades	-	-	-	-	-	31
m	16	Lindsay Small	1	1	1	-	-	70
d	20	Ellen Fahey	-	-	-	-	-	60
d	21	Brittany Rhoades	-	-	-	-	-	39
f	27	Brooke Jacobs	4	2	-	-	-	46
-- Substitutes --								
1	Roya Mojarab	-	-	-	-	-	-	30
3	Sam Diaz-Matosas	1	1	1	-	-	-	31
8	Christine Watts	1	1	-	-	-	-	33
9	Maria Petroni	1	-	-	-	-	-	27
10	Natalie Aaron	2	1	1	1	-	-	47
11	Idiana DeCocco	-	-	-	-	-	-	26
14	Lolly Holland	2	1	1	-	-	-	26
17	Maggie Blackwell	-	-	-	-	-	-	30
18	Ali Glemser	2	1	-	-	-	-	27
22	Dani Henry	1	-	-	-	-	-	53
23	Kacie Brewer	3	3	1	-	-	-	36
25	Maddy Kill	-	-	-	-	-	-	29
28	Brittany DeWitt	-	-	-	-	-	-	26
Totals								

#	Goalkeepers	Min	GA	Saves
1	Lythjohan, Cassie	90:00	6	7

#	Goalkeepers	Min	GA	Saves
29	Mollie Patton	59:32	0	1
1	Roya Mojarab	30:28	1	2

Shots by period	1	2	Total
South Alabama	1	3	4
South Carolina	13	10	23

Saves by period	1	2	Total
South Alabama	5	2	7
South Carolina	1	2	3

Corner kicks	1	2	Total
South Alabama	0	2	2
South Carolina	4	2	6

Fouls	1	2	Total
South Alabama	3	6	9
South Carolina	4	3	7

Scoring summary:

No.	Time	Team	Goal scorer	Assist	Description
1.	3:30	SC	Lindsay Small (2)	Kim Miller	15 yards out
2.	19:03	SC	Sam Diaz-Matosas (2)	Corner kick	In off corner
3.	27:34	SC	Natalie Aaron (1)	Brooke Jacobs	Cross to #10, open shot
4.	55:53	SC	Kayla Grimsley (7)	Kortney Rhoades	lv1 with keeper
5.	59:32	SC	Lolly Holland (1)	Blakely Mattern	Cleared up, alone with keeper
6.	73:39	SC	Kacie Brewer (1)	Maria Petroni	Header in front of goal
7.	85:46	USA	Stocker, Sam (1)	Clark, Liz	Strike from 25 yards out, over keeper hands

Cautions and ejections:

Stadium: Stone Stadium
Officials: Referee: Alan Schechtman; Asst. Referee: Kevin Tempel; Karen Tempel;
Offsides: South Alabama 0, South Carolina 5.

Official's signature

GAME 10 - KENTUCKY (1-0)

Soccer Box Score (Final)
2009 South Carolina Women's Soccer
Kentucky vs #11 South Carolina (Sep 27, 2009 at Columbia, S.C.)

Kentucky (3-4-3) vs.
South Carolina (10-0-0)
Date: Sep 27, 2009 • Attendance: 672
Weather:

Goals by period	1	2	Total
Kentucky	0	0	0
South Carolina	0	1	1

Kentucky	Po	#	Player	Sh	SO	G	A	Min
gk	00	Sydney Hiance	-	-	-	-	-	90
m	8	Taylor Ray	-	-	-	-	-	68
d	9	Julie Hull	-	-	-	-	-	90
d	11	Jenna Goblirsch	-	-	-	-	-	90
d	15	Kiondra Mc Gee	-	-	-	-	-	83
f	16	Katie Fahey	-	-	-	-	-	60
f	19	Giuleana Lopez	1	-	-	-	-	61
d	23	Ashley Stack	-	-	-	-	-	79
m	24	Stefani Kildare	-	-	-	-	-	52
d	27	Kirsten Robinson	1	1	-	-	-	71
m	30	Alyssa Telang	-	-	-	-	-	68
-- Substitutes --								
6	Leslie Twehues	-	-	-	-	-	-	32
12	Jessie Craig	-	-	-	-	-	-	1
13	Sam Au	-	-	-	-	-	-	29
14	Laura Novikoff	-	-	-	-	-	-	52
17	Georgia Ann Swanso	-	-	-	-	-	-	1
20	Alicia Browning	-	-	-	-	-	-	27
21	Kelly Browning	-	-	-	-	-	-	36
28	Brooke Keyes	-	-	-	-	-	-	1
Totals								

South Carolina	Po	#	Player	Sh	SO	G	A	Min
gk	29	Mollie Patton	-	-	-	-	-	90
d	3	Sam Diaz-Matosas	2	1	-	-	-	88
f	4	Kayla Grimsley	3	1	-	-	-	81
m	5	Kim Miller	1	-	-	-	-	90
d	7	Blakely Mattern	-	-	-	-	-	90
f	12	Shannon Bigbie	-	-	-	-	-	58
m	15	Kortney Rhoades	1	1	-	-	-	17
m	16	Lindsay Small	1	-	-	-	-	82
d	20	Ellen Fahey	-	-	-	-	-	90
d	21	Brittany Rhoades	-	-	-	-	-	90
f	27	Brooke Jacobs	2	2	-	-	-	81
-- Substitutes --								
8	Christine Watts	3	2	1	-	-	-	36
9	Maria Petroni	-	-	-	-	-	-	19
10	Natalie Aaron	-	-	-	-	-	-	19
14	Lolly Holland	-	-	-	-	-	-	17
18	Ali Glemser	-	-	-	-	-	-	6
19	Kira Campbell	1	1	-	-	-	-	15
22	Dani Henry	-	-	-	-	-	-	12
23	Kacie Brewer	-	-	-	-	-	-	9
Totals								

#	Goalkeepers	Min	GA	Saves
00	Sydney Hiance	90:00	1	7

#	Goalkeepers	Min	GA	Saves
29	Mollie Patton	90:00	0	1

Shots by period	1	2	Total
Kentucky	2	0	2
South Carolina	7	7	14

Saves by period	1	2	Total
Kentucky	5	2	7
South Carolina	1	0	1

Corner kicks	1	2	Total
Kentucky	3	1	4
South Carolina	3	5	8

Fouls	1	2	Total
Kentucky	4	6	10
South Carolina	2	7	9

Scoring summary:

No.	Time	Team	Goal scorer	Assist	Description
1.	55:24	SC	Christine Watts (2)	(unassisted)	Drove from midfield, hit left post and in

Cautions and ejections:

Stadium: Stone Stadium
Officials: Referee: Tony Russo; Asst. Referee: Skye Arthur Banning; Melanie Johnson;
Alt. Official: Rob Mann; Scorer: Miquel Jacobs;
Offsides: Kentucky 0, South Carolina 2.

Official's signature

Soccer Box Score (Final)
2009 South Carolina Women's Soccer
Vanderbilt vs #11 South Carolina (Sep 25, 2009 at Columbia, S.C.)

Vanderbilt (6-2-1) vs.
South Carolina (9-0-0)
Date: Sep 25, 2009 • Attendance: 756
Weather:

Goals by period	1	2	Total
Vanderbilt	0	1	1
South Carolina	1	1	2

Vanderbilt	Po	#	Player	Sh	SO	G	A	Min
gk	1	Rachel Bachtel	-	-	-	-	-	90
f	7	Nicole Lukens	2	1	1	-	-	77
d	9	Megan Forester	3	-	-	-	-	88
d	10	Elizabeth Lillie	-	-	-	-	-	81
d	11	Katherine Dean	-	-	-	-	-	72
f	13	Amanda Essay	-	-	-	-	-	40
m	14	Megan Kinsella	-	-	-	-	-	57
m	17	Chelsea Stewart	-	-	-	-	-	79
m	19	Candace West	-	-	-	-	-	75
m	20	Molly Kinsella	1	-	-	-	-	90
m	23	CJ Rhoades	1	-	-	-	-	60
-- Substitutes --								
2	Megan Fligg	-	-	-	-	-	-	21
8	Margaux Andrews	1	-	-	-	-	-	25
12	Dana Schwartz	-	-	-	-	-	-	43
21	Bridget Lohmuller	-	-	-	-	-	-	28
22	Emily Grant	-	-	-	-	-	-	25
25	Catherine Wearn	-	-	-	-	-	-	10
Totals								

South Carolina	Po	#	Player	Sh	SO	G	A	Min
gk	29	Mollie Patton	-	-	-	-	-	90
d	3	Sam Diaz-Matosas	1	1	-	-	-	81
f	4	Kayla Grimsley	1	-	-	-	-	80
m	5	Kim Miller	1	-	-	-	-	84
d	7	Blakely Mattern	1	-	-	-	-	90
f	12	Shannon Bigbie	-	-	-	-	-	54
m	15	Kortney Rhoades	2	2	1	-	-	44
m	16	Lindsay Small	-	-	-	-	-	19
d	20	Ellen Fahey	-	-	-	-	-	90
d	21	Brittany Rhoades	-	-	-	-	-	78
f	27	Brooke Jacobs	4	3	1	-	-	75
-- Substitutes --								
2	Megan Fligg	-	-	-	-	-	-	21
8	Christine Watts	1	-	-	-	-	-	58
9	Maria Petroni	-	-	-	-	-	-	14
10	Natalie Aaron	1	-	-	-	-	-	25
14	Lolly Holland	1	-	-	-	-	-	28
18	Ali Glemser	-	-	-	-	-	-	8
19	Kira Campbell	-	-	-	-	-	-	38
23	Kacie Brewer	1	-	-	-	-	-	16
Totals								

#	Goalkeepers	Min	GA	Saves



GAME 12 - Mississippi State (1-1)

Soccer Box Score (Final)
2009 South Carolina Women's Soccer
#8 South Carolina vs Mississippi State (Oct 04, 2009 at Starkville, Miss.)

South Carolina11-0-1 (3-0-1 SEC) vs.
 Mississippi State8-2-2 (0-2-2 SEC)
 Date: Oct 04, 2009 • Attendance: 142
 Weather:

Goals by period	1	2	OT	O2	Total
South Carolina	0	1	0	0	1
Mississippi State	0	1	0	0	1

South Carolina	Po #	Sh	SO	G	A	Min
gk	29	Mollie Patton	-	-	-	110
d	3	Sam Diaz-Matosas	1	1	-	96
f	4	Kayla Grimsley	1	-	1	99
m	5	Kim Miller	3	-	-	110
d	7	Blakely Mattern	-	-	-	110
f	12	Shannon Bigbie	-	-	-	59
m	16	Lindsay Small	1	-	-	107
d	20	Ellen Fahey	2	1	-	110
d	21	Brittany Rhoades	-	-	-	102
f	27	Brooke Jacobs	3	1	1	77
d	23	Kortney Rhoades	1	-	-	35
-- Substitutes --						
2	Megan Fligg	-	-	-	-	16
8	Christine Watts	-	-	-	-	45
9	Maria Petroni	-	-	-	-	37
10	Natalie Aaron	1	-	-	-	8
14	Lolly Holland	-	-	-	-	33
18	Ali Glemser	-	-	-	-	8
19	Kira Campbell	-	-	-	-	31
22	Dani Henry	-	-	-	-	6
23	Kacie Brewer	1	-	-	-	28
Totals						

Mississippi State	Po #	Sh	SO	G	A	Min
gk	0	Taryn Holland	-	-	-	110
d	4	Danielle Kite	-	-	-	110
m	9	Monica Alvarado	-	-	-	110
m	15	Lauren Morgan	-	-	-	24
d	16	Jasmine Simmons	-	-	-	110
f	17	Ashley Hood	-	-	-	67
f	18	Andrea Harrison	-	-	-	36
d	22	Hannah Tyler	-	-	-	110
d	23	Leanna Baldner	-	-	-	110
m	24	Madison McKee	-	-	-	96
f	25	Kat Walsh	4	3	-	110
-- Substitutes --						
5	Kim Pettit	-	-	-	-	65
7	Tarah Henderson	-	-	-	-	24
8	Katy Hoover	2	-	-	-	35
13	Zehra Syed	-	-	-	-	14
91	Rachel Wannek	6	3	1	-	79
Totals						

# Goalkeepers	Min	GA	Saves
29 Mollie Patton	110:00	1	5

# Goalkeepers	Min	GA	Saves
0 Taryn Holland	110:00	1	2

Shots by period	1	2	OT	O2	Total
South Carolina	6	5	3	0	14
Mississippi State	1	1	0	0	2

Saves by period	1	2	OT	O2	Total
South Carolina	1	4	0	0	5
Mississippi State	1	1	0	0	2

Corner kicks	1	2	OT	O2	Total
South Carolina	0	1	0	0	1
Mississippi State	0	0	0	0	0

Fouls	1	2	OT	O2	Total
South Carolina	5	4	2	0	11
Mississippi State	5	6	0	1	12

Scoring summary:

No.	Time Team	Goal scorer	Assist	Description
1.	45:50 SC	Brooke Jacobs (3)	Kayla Grimsley	1-v-1 from five yards
2.	70:51 MSU	Rachel Wannek (4)	(unassisted)	25 yards off free kick

Cautions and ejections:

YC-MSU #18 (21:45); YC-SC #10 (30:09); YC-MSU #22 (33:04)

Stadium: MSU Soccer Field

Officials: Referee: Adam Garner; Asst. Referee: Wanda Porter; Peter Valentino;

Alt. Official: Sims Meredith; Scorer: Brock Turmipseid;

Offsides: South Carolina 3, Mississippi State 0.

Official's signature

GAME 13 - AUBURN (1-0)

Soccer Box Score (Final)
2009 South Carolina Women's Soccer
Auburn vs #7 South Carolina (Oct 09, 2009 at Columbia, S.C.)

Auburn (5-5-3, 2-3-0 SEC) vs.
 South Carolina (12-0-1, 4-0-1 SEC)
 Date: Oct 09, 2009 • Attendance: 827
 Weather:

Goals by period	1	2	OT	Total
Auburn	0	0	0	0
South Carolina	0	0	1	1

Auburn	Po #	Sh	SO	G	A	Min
gk	6	Amy Howard	-	-	-	98
d	2	Julie King	-	-	-	98
f	7	Caitlin King	1	1	-	68
m	8	Chelsea Yauch	1	-	-	93
d	9	Sammy Towne	-	-	-	98
d	10	Christine Schweer	-	-	-	98
f	11	Rebecca Howell	2	-	-	70
d	14	Heather Havron	-	-	-	98
m	15	Ana Cate	-	-	-	49
m	20	Jenni Prescott	-	-	-	98
f	23	Katy Frierson	1	1	-	98
-- Substitutes --						
1	Ashley Marks	-	-	-	-	25
5	Monica Afanador	-	-	-	-	38
13	Mary Coffed	2	1	-	-	47
Totals						

South Carolina	Po #	Sh	SO	G	A	Min
gk	29	Mollie Patton	-	-	-	98
d	3	Sam Diaz-Matosas	4	1	1	81
f	4	Kayla Grimsley	2	1	-	87
m	5	Kim Miller	1	-	-	98
d	7	Blakely Mattern	1	1	-	98
f	12	Shannon Bigbie	1	-	-	78
m	15	Kortney Rhoades	3	1	-	45
m	16	Lindsay Small	1	-	-	79
d	20	Ellen Fahey	1	1	-	98
d	21	Brittany Rhoades	-	-	-	97
f	23	Kacie Brewer	-	-	-	16
-- Substitutes --						
2	Megan Fligg	-	-	-	-	15
8	Christine Watts	-	-	-	-	38
9	Maria Petroni	-	-	-	-	25
10	Natalie Aaron	-	-	-	-	1
14	Lolly Holland	-	-	-	-	5
19	Kira Campbell	1	1	-	-	33
27	Brooke Jacobs	2	2	-	-	84
Totals						

# Goalkeepers	Min	GA	Saves
6 Amy Howard	97:47	1	7

# Goalkeepers	Min	GA	Saves
29 Mollie Patton	97:47	0	3

Shots by period	1	2	OT	Total
Auburn	2	5	0	7
South Carolina	7	9	1	17

Shots by period	1	2	OT	Total
Auburn	2	5	0	7
South Carolina	1	2	0	3

Corner kicks	1	2	OT	Total
Auburn	1	1	0	2
South Carolina	0	4	0	4

Fouls	1	2	OT	Total
Auburn	7	8	0	15
South Carolina	5	6	2	13

Scoring summary:

No.	Time Team	Goal scorer	Assist	Description
1.	97:47 SC	Sam Diaz-Matosas (3)	(unassisted)	Shot from 20 yards out into far post

Cautions and ejections:

YC-AU #8 (47:39); YC-SC #21 (66:41); YC-SC #23 (74:59)

Stadium: Stone Stadium

Officials: Referee: Robb Mann; Asst. Referee: Casey Black; Michael Sabatelle;

Alt. Official: Georges-Franz Louis; Timekeeper: Sarah Stephens; Scorer: Miquel Jacobs;

Offsides: Auburn 2, South Carolina 2.

Official's signature

GAME 14 - ALABAMA (2-0)

Soccer Box Score (Final)
2009 South Carolina Women's Soccer
Alabama vs #7 South Carolina (Oct 11, 2009 at Columbia, S.C.)

Alabama (5-6-1, 1-3-1 SEC) vs.
 South Carolina (13-0-1, 5-0-1 SEC)
 Date: Oct 11, 2009 • Attendance: 1023
 Weather:

Goals by period	1	2	Total
Alabama	0	0	0
South Carolina	2	0	2

Alabama	Po #	Sh	SO	G	A	Min
gk	1	Justine Bernier	-	-	-	90
f	3	Kelly King	-	-	-	49
f	5	Kelsy King	-	-	-	57
d	7	Grace Lawson	-	-	-	90
m	11	Rosalyn Petriello	2	-	-	77
f	12	Brooke Rogers	-	-	-	72
d	14	Kaitlyn Smith	1	-	-	77
d	18	Alex Butera	-	-	-	78
m	20	Ashley Willis	1	-	-	90
d	22	Victoria Frederick	-	-	-	76
f	25	Veronika Wolfkeil	-	-	-	90
-- Substitutes --						
2	Katie Woolbright	-	-	-	-	12
8	Josie Rix	-	-	-	-	13
9	Amranda Orteson	-	-	-	-	32
10	Megan Petersen	-	-	-	-	14
21	Tia King	1	-	-	-	41
23	Shannon Lathrop	-	-	-	-	32
Totals						

South Carolina	Po #	Sh	SO	G	A	Min
gk	29	Mollie Patton	-	-	-	90
d	3	Sam Diaz-Matosas	3	2	-	74
f	4	Kayla Grimsley	1	1	-	73
m	5	Kim Miller	1	-	-	58
d	7	Blakely Mattern	2	2	-	90
f	12	Shannon Bigbie	1	-	-	59
m	15	Kortney Rhoades	2	2	-	31
m	16	Lindsay Small	1	1	-	66
d	20	Ellen Fahey	-	-	-	90
d	21	Brittany Rhoades	1	-	-	74
f	27	Brooke Jacobs	3	1	-	62
-- Substitutes --						
2	Megan Fligg	-	-	-	-	12
8	Christine Watts	2	1	-	-	39
9	Maria Petroni	-	-	-	-	30
10	Natalie Aaron	1	1	-	-	44
14	Lolly Holland	-	-	-	-	9
18	Ali Glemser	-	-	-	-	7
19	Kira Campbell	-	-	-	-	41
22	Dani Henry	-	-	-	-	9
23	Kacie Brewer	-	-	-	-	12
Totals						

# Goalkeepers	Min	GA	Saves
1 Justine Bernier	90:00	2	9

# Goalkeepers	Min	GA	Saves
29 Mollie Patton	90:00	0	1

Shots by period	1	2	Total
Alabama	2	3	5
South Carolina	10	8	18

Saves by period	1	2	Total
Alabama	5	4	9
South Carolina	1	0	1

Corner kicks	1	2	Total
Alabama	4	2	6
South Carolina	3	4	7

Fouls	1	2	Total
Alabama	7	5	12
South Carolina	6	9	15

Scoring summary:

No.	Time Team	Goal scorer	Assist	Description
1.	11:07 SC	Blakely Mattern (5)	Kim Miller	Header off free kick
2.	12:47 SC	Blakely Mattern (6)	Sam Diaz-Matosas	Header off CK

Cautions and ejections:

Stadium: Stone Stadium

Officials: Referee: Tim Deby Singh; Asst. Referee: Mark Sauro; Melvin Machayo;

Alt. Official: John Tanverdi;

Offsides: Alabama 0, South Carolina 2.

Official's signature

GAME 15 - #23 Georgia (1-2)

Soccer Box Score (Final)
2009 South Carolina Women's Soccer
#5 South Carolina vs #16 Georgia (Oct 16, 2009 at Athens, Ga.)

South Carolina13-1-1 (4-1-1) vs.
 Georgia12-2-1 (5-2-0)
 Date: Oct 16, 2009 • Attendance: 1715
 Weather:

Goals by period	1</
-----------------	-----



GAME 16 - Tennessee (2-1)

Soccer Box Score (Final) 2009 South Carolina Women's Soccer

#5 South Carolina vs Tennessee (Oct 18, 2009 at Knoxville, Tenn.)

South Carolina (14-1-1, 6-1-1 SEC) vs.
Tennessee (7-6-3, 3-3-2 SEC)
Date: Oct 18, 2009 • Attendance: 1332
Weather: 50 degrees and partly cloudy, wind N at 9 mph

Goals by period	1	2	Total
South Carolina	1	1	2
Tennessee	0	1	1

South Carolina	Po	#	Player	Sh	SO	G	A	Min
gk	29	Mollie Patton	-	-	-	-	-	90
d	3	Sam Diaz-Matosas	-	-	-	-	-	90
f	4	Kayla Grimsley	7	3	1	1	82	
m	5	Kim Miller	1	-	-	-	75	
d	7	Blakely Mattern	1	-	-	-	90	
f	12	Shannon Bigbie	1	-	-	-	65	
m	15	Kortney Rhoades	1	-	-	-	55	
m	16	Lindsay Small	3	2	1	-	82	
d	20	Ellen Fahey	-	-	-	-	90	
d	21	Brittany Rhoades	-	-	-	-	79	
f	27	Brooke Jacobs	1	-	-	-	76	
-- Substitutes --								
8	Christine Watts	-	-	-	-	-	10	
9	Maria Petroni	-	-	-	-	-	8	
10	Natalie Aaron	-	-	-	-	-	3	
14	Lolly Holland	-	-	-	-	-	16	
19	Kira Campbell	1	-	-	-	-	46	
23	Kacie Brewer	-	-	-	-	-	11	
25	Maddy Kill	-	-	-	-	-	22	
Totals								

Tennessee	Po	#	Player	Sh	SO	G	A	Min
gk	0	Molly Baird	-	-	-	-	-	90
d	4	Sarah Jackyra	-	-	-	-	-	90
f	6	Chelsea Hatcher	6	2	-	-	82	
m	10	Emily Shore	2	1	-	-	90	
m	12	Mick Imgram	5	3	1	-	60	
m	18	Lara Langworthy	1	-	-	-	71	
d	21	Grace Cuenin	-	-	-	-	90	
m	22	Amy Harrison	-	-	-	-	90	
f	24	Jayden Barrett	1	-	-	-	63	
d	33	Melissa Speros	1	-	-	-	90	
m	42	Tanya Emerson	1	-	-	-	31	
-- Substitutes --								
5	Julie Edwards	-	-	-	-	-	53	
8	Kylie Bono	-	-	-	-	-	22	
9	All Hall	1	-	-	-	-	30	
20	Emily Dowd	1	1	-	-	-	35	
23	Alexis Owens	-	-	-	-	-	4	
Totals								

# Goalkeepers	Min	GA	Saves
29 Mollie Patton	90:00	1	6

# Goalkeepers	Min	GA	Saves
0 Molly Baird	90:00	2	3

Shots by period	1	2	Total
South Carolina	9	7	16
Tennessee	8	11	19

Saves by period	1	2	Total
South Carolina	2	4	6
Tennessee	2	1	3

Corner kicks	1	2	Total
South Carolina	5	1	6
Tennessee	4	4	8

Fouls	1	2	Total
South Carolina	7	7	14
Tennessee	6	7	13

Scoring summary:				
No.	Time Team	Goal scorer	Assist	Description
1.	32:19 SC	Kayla Grimsley (9)	(unassisted)	Long run up right wing, beat Baird at touch an
2.	55:38 SC	Lindsay Small (4)	Kayla Grimsley	Cross from #4, header by #16 from 6 yards o middle
3.	69:38 TN	Mick Imgram (10)	(unassisted)	Free kick from left wing about 16 yards

Cautions and ejections:
YC-SC #12 (86:59)

Stadium: Regal Soccer Stadium
Officials: Referee: Timothy Debysingh; Asst. Referee: Chad Collins; Chip Fuller;
Alt. Official: Michael Fitzpatrick; Timekeeper: Craig Fain; Scorer: Brian Davis;
Offsides: South Carolina 2, Tennessee 1.

Official's signature

GAME 17 - ARKANSAS (2-0)

Soccer Box Score (Final)

2009 South Carolina Women's Soccer
Arkansas vs #10 South Carolina (Oct 22, 2009 at Columbia, S.C.)

Arkansas (8-5-4, 2-5-2 SEC) vs.
South Carolina (15-1-1, 7-1-1 SEC)
Date: Oct 22, 2009 • Attendance: 746
Weather: Partly Cloudy

Goals by period	1	2	Total
Arkansas	0	0	0
South Carolina	0	2	2

Arkansas	Po	#	Player	Sh	SO	G	A	Min
gk	1	Britni Williams	-	-	-	-	-	90
f	2	Laurel Pastor	1	-	-	-	63	
m	5	Rachel Carlson	-	-	-	-	38	
d	7	Kim Schliefl	2	1	-	-	86	
d	10	Kelly O'Connor	-	-	-	-	90	
f	11	Ally Atkins	1	-	-	-	79	
m	15	Kathleen Paulsen	-	-	-	-	30	
m	18	Beth McVean	-	-	-	-	48	
m	19	Kelsey Allison	-	-	-	-	75	
d	22	Kailey Anders	-	-	-	-	79	
d	23	Lauren Hallauer	-	-	-	-	18	
-- Substitutes --								
8	Allie Chandler	3	1	-	-	-	61	
9	Camille Flores	1	-	-	-	-	60	
13	Sophie Wentz	2	-	-	-	-	29	
16	Erin Moskos	1	1	-	-	-	42	
17	Kate Singleton	-	-	-	-	-	72	
28	Anna Heintz	-	-	-	-	-	30	
Totals								

South Carolina	Po	#	Player	Sh	SO	G	A	Min
gk	29	Mollie Patton	-	-	-	-	-	90
d	3	Sam Diaz-Matosas	2	-	-	-	62	
f	4	Kayla Grimsley	3	2	1	1	60	
m	5	Kim Miller	-	-	-	-	81	
d	7	Blakely Mattern	1	1	-	-	90	
f	12	Shannon Bigbie	-	-	-	-	76	
m	15	Kortney Rhoades	2	1	1	-	34	
m	16	Lindsay Small	4	1	-	-	67	
d	20	Ellen Fahey	-	-	-	-	81	
d	21	Brittany Rhoades	-	-	-	-	81	
f	27	Brooke Jacobs	1	1	-	-	51	
-- Substitutes --								
2	Megan Fligg	-	-	-	-	-	18	
8	Christine Watts	1	1	-	-	-	42	
9	Maria Petroni	1	1	-	-	-	14	
10	Natalie Aaron	-	-	-	-	-	17	
14	Lolly Holland	-	-	-	-	-	17	
18	Ali Glemser	-	-	-	-	-	9	
19	Kira Campbell	-	-	-	-	-	37	
22	Dani Henry	-	-	-	-	-	19	
23	Kacie Brewer	-	-	-	-	-	21	
26	Rae Wilson	-	-	-	-	-	25	
Totals								

# Goalkeepers	Min	GA	Saves
1 Britni Williams	90:00	2	6

# Goalkeepers	Min	GA	Saves
29 Mollie Patton	90:00	0	3

Shots by period	1	2	Total
Arkansas	7	4	11
South Carolina	7	8	15

Saves by period	1	2	Total
Arkansas	4	2	6
South Carolina	2	1	3

Corner kicks	1	2	Total
Arkansas	1	0	1
South Carolina	3	1	4

Fouls	1	2	Total
Arkansas	1	6	7
South Carolina	3	4	7

Scoring summary:				
No.	Time Team	Goal scorer	Assist	Description
1.	54:04 SC	Kortney Rhoades (2)	Kayla Grimsley	Open in front of goal
			Kim Miller	
2.	62:39 SC	Kayla Grimsley (10)	Kim Miller	Streak from 30 yds out

Cautions and ejections:
YC-SC #7 (42:12); YC-ARK #9 (88:49)

Stadium: Stone Stadium
Officials: Referee: Corey Rockwell; Asst. Referee: Georges-Frantz Louis;
Mark Cleland; Alt. Official: Steve Abbott; Timekeeper: Calhoun Hipp; Scorer: Bryan Powell;
Offsides: Arkansas 0, South Carolina 7.

Official's signature

GAME 18 - #17 LSU (0-1)

Soccer Box Score (Final)

2009 South Carolina Women's Soccer

#10 South Carolina vs #14 LSU (Oct 25, 2009 at Baton Rouge, La.)

South Carolina (15-2-1, 7-2-1 SEC) vs.
LSU (11-4-3, 7-2-1 SEC)
Date: Oct 25, 2009 • Attendance: 861
Weather: Partly cloudy skies, temperatures in low 70s

Goals by period	1	2	Total
South Carolina	0	0	0
LSU	1	0	1

South Carolina	Po	#	Player	Sh	SO	G	A	Min
gk	29	Mollie Patton	-	-	-	-	-	90
d	3	Sam Diaz-Matosas	-	-	-	-	65	
f	4	Kayla Grimsley	-	-	-	-	77	
m	5	Kim Miller	2	1	-	-	90	
d	7	Blakely Mattern	1	1	-	-	90	
f	12	Shannon Bigbie	-	-	-	-	90	
m	15	Kortney Rhoades	-	-	-	-	43	
m	16	Lindsay Small	1	1	-	-	76	
d	20	Ellen Fahey	-	-	-	-	61	
d	21	Brittany Rhoades	-	-	-	-	90	
f	27	Brooke Jacobs	1	-	-	-	67	
-- Substitutes --								
8	Christine Watts	-	-	-	-	-	35	
9	Maria Petroni	-	-	-	-	-	23	
10	Natalie Aaron	-	-	-	-	-	11	
19	Kira Campbell	-	-	-	-	-	40	
23	Kacie Brewer	-	-	-	-	-	13	
Totals								

LSU	Po	#	Player	Sh	SO	G	A	Min
gk	0	Isom, Mo	-	-	-	-	-	90
f	3	Rutledge, Malorie	1	-	-	-	82	
m	4	Chapman, Allysha	1	-	-	-	90	
d	6	Alexander, Courtney	1	-	-	-	90	
f	8	Clarke, Melissa	3	2	1	-	90	
d	11	Potts, Chelsea	1	-	-	-	90	
d	14	Bush, Nikki	1	-	-	-	90	
m	16	Boudreau, Taryne	1	-	-	-	83	
d	21	Lagow, Katherine	-	-	-	-	90	
m	22	Murphy, Kellie	2	1	-	-	70	
f	27	Banks, Carlie	-	-	-	-	55	
-- Substitutes --								
10	Carreno, Amanda	-	-	-	-	-	43	
12	Low, Brittany	-	-	-	-	-	14	
25	Lubin, Reyna	-	-	-	-	-	13	
Totals								

# Goalkeepers	Min	GA	Saves
29 Mollie Patton	90:00	1	2

# Goalkeepers	Min	GA	Saves
0 Isom, Mo	90:00	0	2
TM TEAM	0:00	0	1

Shots by period	1	2	Total
South Carolina	1	4	5
LSU	4	6	10

Saves by period	1	2	Total
South Carolina	0	2	2
LSU	1	2	3

Corner kicks	1	2	Total
South Carolina	3	3	6
LSU	2	2	4

Fouls	1	2	Total
South Carolina	2	1	3
LSU	3	6	9

Scoring summary:				
No.	Time Team	Goal scorer	Assist	Description
1.	0:57 LSU	Clarke, Melissa (9)	Rutledge, Malorie	
			Banks, Carlie	

Cautions and ejections:
YC-SC #7 (15:06); YC-SC #5 (29:31); RC-SC #20 (57:20)

Stadium: LSU Soccer Complex
Officials: Referee: Daniel Radford



GAME 20 - Georgia (3-2)

Soccer Box Score (Final)

2009 South Carolina Women's Soccer

Georgia vs South Carolina (Nov 04, 2009 at ORANGE BEACH, AL)

Georgia (14-5-1, 7-4 SEC) vs.
 South Carolina (16-3-1, 7-3-1 SEC)
 Date: Nov 04, 2009 • Attendance:
 Weather: 62 DEGREES F

Goals by period	1	2	Total
Georgia	2	0	2
South Carolina	1	2	3

Georgia	Sh	SO	G	A	Min
gk 00 Michelle Betos	-	-	-	-	90
mf 4 Jamie Pollock	2	-	-	-	76
f 7 Ashley Miller	1	-	-	1	59
d 8 Natalie Farley	-	-	-	-	62
d 14 Laura Eddy	-	-	-	-	90
d 15 Kelli Corless	2	2	1	-	90
d 17 Bailey Powell	-	-	-	-	90
mf 18 Rebekah Perry	-	-	-	1	62
mf 19 Susannah Dennis	-	-	-	-	90
mf 21 Caroline Simpson	-	-	-	-	51
f 27 Carrie Patterson	2	1	1	-	84
-- Substitutes --					
9 Marah Falle	-	-	-	-	15
12 Leslie McConnell	-	-	-	-	13
13 Alex Hooker	1	-	-	-	39
16 Traci Dreesen	-	-	-	-	11
22 Lindsay Stein	-	-	-	-	28
23 Mariah Kruse	-	-	-	-	9
24 Lauren Glancy	-	-	-	-	31
Totals	8	3	2	2	

# Goalkeepers	Min	GA	Saves
00 Michelle Betos	90:00	3	3

Shots by period	1	2	Total
Georgia	3	5	8
South Carolina	5	7	12

Corner kicks	1	2	Total
Georgia	1	2	3
South Carolina	5	3	8

Scoring summary:

No.	Time	Team	Goal scorer	Assist	Description
1.	4:11	UG	Carrie Patterson (10)	Rebekah Perry	6-YARDER
2.	11:44	SC	Brooke Jacobs (4)	Ashley Miller	6-YARD OFF LOOSE BALL IN BOX
3.	28:39	UG	Kelli Corless (2)	Lindsay Small	CORNER KICK
4.	80:20	SC	Kayla Grimsley (11)	(unassisted)	BENT INTO THE NET
5.	88:19	SC	Kortney Rhoades (3)	Kayla Grimsley	7-YARDER
					8-YARDER

Cautions and ejections:

YC-UG #15 (40:16)

Stadium: OB SPORTSPLEX

Officials: Referee: RACHEL WOO; Asst. Referee: DAN PROVENZANO; TED UNKEL;

Alt. Official: ROB MANN; Timekeeper: BRIAN RICE; Scorer: ROBBIE MUNROE;

Offsides: Georgia 0, South Carolina 1.

Official's signature

GAME 22

GAME 21

GAME 23



#0 Alex Holland
GK • 5-7 • Fr.

Bests	Season	Career
Saves:	N/A	Same
Minutes:	N/A	Same

Career Statistics

YEAR	GP/GS	MIN	SVS	GA	GAA	SHO
2009	0-0	0	0	0	0	0
TOTALS	0-0	0	0	0	0	0



#1 Roya Mojarab
GK • 5-4 • So.

Bests	Season	Career
Saves:	2, (9/20)	Same
Minutes:	30:28, (9/20)	Same

Career Statistics

YEAR	GP/GS	MIN	SVS	GA	GAA	SHO
2008	1-0	13:07	0	0	0.00	0
2009	1-0	30:28	2	1	2.95	0
TOTALS	2-0	43:35	2	1	2.06	0



#2 Megan Fligg
D • 5-6 • Fr.

Bests	Season	Career
Goals:	1, (9/6)	Same
Assists:	N/A	Same
Points:	2, (9/6)	Same
Shots:	1, 2x* (9/6)	Same
SOG:	1, (9/6)	Same

Career Statistics

YEAR	GP/GS	SH	G	A	PTS	GWG
2009	13-1	2	1	0	2	0
TOTALS	13-1	2	1	0	2	0



#3 Samantha Diaz-Matosas
D • 5-7 • Sr.

Bests	Season	Career
Goals:	1, 3x* (10/9)	1, 8x* (10/9)
Assists:	1, 4x* (10/11)	1, 12x* (10/11)
Points:	2, 3x* (10/9)	3, (10/12/08)
Shots:	4, (10/9)	Same
SOG:	2, 2x* (10/11)	3, 3x* (9/9/06)

Career Statistics

YEAR	GP/GS	SH	G	A	PTS	GWG
2006	22-22	30	2	4	8	0
2007	23-18	9	1	2	4	0
2008	22-22	16	2	2	6	2
2009	20-19	23	3	4	10	2
TOTALS	87-81	78	8	12	28	4

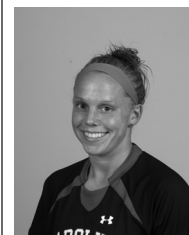


#4 Kayla Grimsley
F • 5-4 • So.

Bests	Season	Career
Goals:	1, 11x* (11/4)	2, (10/3/08)
Assists:	1, 6x* (11/4)	1, 12x* (11/4)
Points:	3, 3x* (11/4)	4, (10/3/08)
Shots:	7, (10/18)	Same
SOG:	3, (10/18)	3, 2x* (10/18)

Career Statistics

YEAR	GP/GS	SH	G	A	PTS	GWG
2008	22-20	37	8	6	22	2
2009	20-20	38	11	6	28	2
TOTALS	42-40	75	19	12	50	4



#5 Kim Miller
M • 5-2 • Sr.

Bests	Season	Career
Goals:	1, 2x* (8/30)	2, (10/26/08)
Assists:	2, 3x* (10/22)	2, 3x* (10/22)
Points:	2, 5x* (10/22)	4, (10/26/08)
Shots:	3, 2x* (10/4)	4, (10/28/07)
SOG:	2, (9/6)	2, 8x* (9/6)

Career Statistics

YEAR	GP/GS	SH	G	A	PTS	GWG
2006	22-20	9	0	2	2	0
2007	23-23	17	1	1	3	1
2008	22-22	36	4	3	11	2
2009	20-20	27	2	11	15	1
TOTALS	87-85	89	7	17	31	4



#7 Blakely Mattern
D • 5-9 • Sr.

Bests	Season	Career
Goals:	2, 2x* (10/11)	Same
Assists:	1, (9/20)	1, 6x* (9/20)
Points:	4, 2x* (10/11)	Same
Shots:	3, 2x* (9/11)	4, 2x* (11/5/08)
SOG:	3, (9/6)	Same

Career Statistics

YEAR	GP/GS	SH	G	A	PTS	GWG
2006	22-22	28	3	3	9	2
2007	23-23	18	2	2	6	0
2008	22-22	20	4	0	8	0
2009	20-20	15	6	1	13	3
TOTALS	87-87	81	15	6	36	5



#8 Christine Watts
M • 5-6 • Fr.

Bests	Season	Career
Goals:	1, 2x* (9/27)	Same
Assists:	1, (9/11)	Same
Points:	2, 2x* (9/27)	Same
Shots:	3, 2x* (9/27)	Same
SOG:	2, 2x* (9/27)	Same

Career Statistics

YEAR	GP/GS	SH	G	A	PTS	GWG
2009	20-0	18	2	1	5	1
TOTALS	20-0	18	2	1	5	1



#9 Maria Petroni
F • 5-10 • So.

Bests	Season	Career
Goals:	1, (9/6)	Same
Assists:	1, (9/20)	1, 3x* (9/20)
Points:	2, (9/6)	Same
Shots:	1, 4x* (10/22)	2, 2x* (10/3/08)
SOG:	1, 3x* (10/22)	1, 6x* (10/22)

Career Statistics

YEAR	GP/GS	SH	G	A	PTS	GWG
2008	17-7	8	0	2	2	0
2009	17-0	4	1	1	3	0
TOTALS	34-7	12	1	3	5	0



#10 Natalie Aaron
F • 5-10 • So.

Bests	Season	Career
Goals:	1, (9/20)	1, 3x* (9/20)
Assists:	1, (9/20)	1, 2x* (9/20)
Points:	3, (9/20)	Same
Shots:	2, (9/20)	5, (10/5/08)
SOG:	1, 2x* (10/11)	4, (10/17/08)

Career Statistics

YEAR	GP/GS	SH	G	A	PTS	GWG
2008	21-2	27	2	1	5	1
2009	18-0	8	1	1	3	0
TOTALS	39-2	35	3	2	8	1



#11 Idana DeCecco
D • 5-6 • So.

Bests	Season	Career
Goals:	N/A	1, (9/14/08)
Assists:	N/A	Same
Points:	N/A	2, (9/14/08)
Shots:	N/A	1, 2x* (10/10/08)
SOG:	N/A	1, (9/14/08)

Career Statistics

YEAR	GP/GS	SH	G	A	PTS	GWG
2008	15-0	2	1	0	2	0
2009	2-0	0	0	0	0	0
TOTALS	17-0	2	1	0	2	0



#12 Shannon Bigbie
F • 5-6 • Sr.

Bests	Season	Career
Goals:	1, (9/11)	1, 3x* (9/11)
Assists:	1, (9/25)	1, 6x* (9/25)
Points:	2, (9/11)	2, 3x* (9/11)
Shots:	2, (10/16)	5, (9/9/07)
SOG:	2, (10/16)	4, (9/9/07)

Career Statistics

YEAR	GP/GS	SH	G	A	PTS	GWG
2006	22-5	0	0	0	0	0
2007	23-8	13	1	1	3	1
2008	22-20	24	1	4	6	0
2009	18-16	8	1	1	3	1
TOTALS	85-49	45	3	6	12	2



#13 Jocelyn Spurrier
D • 5-8 • R-Fr.

Bests	Season	Career
Goals:	N/A	Same
Assists:	N/A	Same
Points:	N/A	Same
Shots:	N/A	Same
SOG:	N/A	Same

Career Statistics

YEAR	GP/GS	SH	G	A	PTS	GWG
2008	REDSHIRTED					
2009	0-0	0	0	0	0	0
TOTALS	0-0	0	0	0	0	0



#14 Lolly Holland
M • 5-4 • So.

Bests	Season	Career
Goals:	1, (9/20)	Same
Assists:	N/A	Same
Points:	2, (9/20)	Same
Shots:	4, (9/13)	Same
SOG:	1, 2x* (9/20)	Same

Career Statistics

YEAR	GP/GS	SH	G	A	PTS	GWG
2008	15-0	1	0	0	0	0
2009	15-0	7	1	0	2	0
TOTALS	30-0	8	1	0	2	0



#15 Kortney Rhoades
M • 5-4 • So.

Bests	Season	Career
Goals:	1, 3x* (11/4)	1, 6x* (11/4)
Assists:	1, 2x* (9/20)	2, (9/12/08)
Points:	2, 3x* (11/4)	2, 7x* (11/4)
Shots:	4, (11/4)	5, 2x* (10/5/08)
SOG:	2, 4x* (11/4)	2, 6x* (11/4)

Career Statistics

YEAR	GP/GS	SH	G	A	PTS	GWG
2008 (SJ)	17-13	34	3	4	10	1
2009	20-19	24	3	2	8	2
TOTALS	37-32	58	6	6	18	3



#16 Lindsay Small
M • 5-7 • Sr.

Bests	Season	Career
Goals:	1, 3x* (10/2)	1, 6x* (10/2)
Assists:	1, 3x* (11/4)	1, 4x* (11/4)
Points:	2, 3x* (10/2)	3, (9/19/08)
Shots:	5, 2x* (10/2)	6, 2x* (10/17/08)
SOG:	3, 2x* (10/2)	Same

Career Statistics

YEAR	GP/GS	SH	G	A	PTS	GWG
2006	16-0	4	0	0	0	0
2007	23-0	5	0	0	0	0
2008	22-22	35	3	1	7	2
2009	20-20	30	4	3	11	3
TOTALS	81-42	74	7	4	18	5



#17 Maggie Blackwell
D • 5-6 • R-So.

Bests	Season	Career
Goals:	N/A	Same
Assists:	N/A	Same
Points:	N/A	Same
Shots:	N/A	Same
SOG:	N/A	Same

Career Statistics

YEAR	GP/GS	SH	G	A	PTS	GWG
2007	REDSHIRTED					
2008	0-0	0	0	0	0	0
2009	2-0	0	0	0	0	0
TOTALS	2-0	0	0	0	0	0



#18 Ali Glemser
F • 5-3 • R-Fr.

Bests	Season	Career
Goals:	N/A	Same
Assists:	N/A	Same
Points:	N/A	Same
Shots:	2, (9/20)	Same
SOG:	1, 4x* (9/20)	Same

Career Statistics

YEAR	GP/GS	SH	G	A	PTS	GWG
2008	REDSHIRTED					
2009	13-0	6	0	0	0	0
TOTALS	13-0	6	0	0	0	0



#19 Kira Campbell
M • 5-8 • So.

Bests	Season	Career
Goals:	N/A	Same
Assists:	N/A	1, (9/5/08)
Points:	N/A	1, (9/5/08)
Shots:	4, (9/11)	Same
SOG:	2, (9/11)	Same

Career Statistics

YEAR	GP/GS	SH	G	A	PTS	GWG
2008	22-12	12	0	1	1	0
2009	18-7	10	0	0	0	0
TOTALS	40-19	22	0	1	1	0

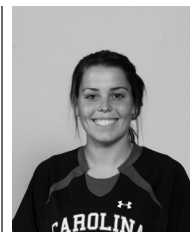


#20 Ellen Fahey
D • 5-7 • So.

Bests	Season	Career
Goals:	N/A	Same
Assists:	1, 4x* (9/18)	Same
Points:	1, 4x* (9/18)	Same
Shots:	2, (10/4)	Same
SOG:	1, 2x* (10/9)	1, 3x* (10/9)

Career Statistics

YEAR	GP/GS	SH	G	A	PTS	GWG
2008	22-22	1	0	0	0	0
2009	19-19	3	0	4	4	0
TOTALS	41-41	4	0	4	4	0

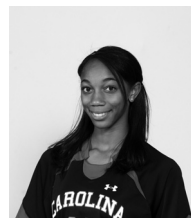


#21 Brittiny Rhoades
D • 5-3 • Jr.

Bests	Season	Career
Goals:	N/A	Same
Assists:	N/A	2, (9/26/08)
Points:	N/A	2, (9/26/08)
Shots:	1, 3x* (9/6)	3, (10/19/07)
SOG:	1, 2x* (9/6)	3, (10/19/07)

Career Statistics

YEAR	GP/GS	SH	G	A	PTS	GWG
2007	23-22	5	0	4	4	0
2008	22-22	15	0	5	5	0
2009	20-19	4	0	0	0	0
TOTALS	65-63	24	0	9	9	0



#22 Dani Henry
D • 5-4 • R-Fr.

Bests	Season	Career
Goals:	N/A	Same
Assists:	N/A	Same
Points:	N/A	Same
Shots:	1, 3x* (9/20)	Same
SOG:	N/A	Same

Career Statistics

YEAR	GP/GS	SH	G	A	PTS	GWG
2008	REDSHIRTED					
2009	14-0	3	0	0	0	0
TOTALS	14-0	3	0	0	0	0



#23 Kacie Brewer
F • 5-5 • Sr.

Bests	Season	Career
Goals:	1, (9/20)	1, 2x* (9/20)
Assists:	1, (9/13)	1, 2x* (9/13)
Points:	2, (9/20)	2, 2x* (9/20)
Shots:	3, (9/20)	5, (9/12/07)
SOG:	3, (9/20)	3, 2x* (9/20)

Career Statistics

YEAR	GP/GS	SH	G	A	PTS	GWG
2006	5-0	1	0	0	0	0
2007	13-0	10	1	1	3	0
2008	9-0	3	0	0	0	0
2009	20-1	7	1	1	3	0
TOTALS	47-1	21	2	2	6	0



#25 Maddy Kill
M • 5-7 • Jr.

Bests	Season	Career
Goals:	N/A	1, 2x* (10/7/07)
Assists:	N/A	2, 3x* (8/30/08)
Points:	N/A	2, 4x* (8/30/08)
Shots:	1, (8/27)	4, 2x* (9/14/08)
SOG:	1, (8/27)	2, 3x* (9/14/08)

Career Statistics

YEAR	GP/GS	SH	G	A	PTS	GWG
2007 (SH)	18-5	20	2	5	9	0
2008 (SH)	18-8	17	0	3	3	0
2009	7-0	1	0	0	0	0
TOTALS	43-13	38	2	8	12	0



#26 Rae Wilson
F • 5-5 • Fr.

Bests	Season	Career
Goals:	N/A	Same
Assists:	N/A	Same
Points:	N/A	Same
Shots:	N/A	Same
SOG:	N/A	Same

Career Statistics

YEAR	GP/GS	SH	G	A	PTS	GWG
2009	5-0	0	0	0	0	0
TOTALS	5-0	0	0	0	0	0

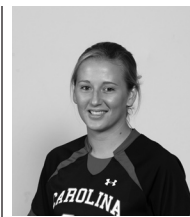


#27 Brooke Jacobs
F • 5-3 • Jr.

Bests	Season	Career
Goals:	1, 4x* (11/4)	1, 8x* (11/4)
Assists:	1, 2x* (9/20)	2, (9/23/07)
Points:	2, 4x* (11/4)	3, (11/14/08)
Shots:	5, (9/13)	Same
SOG:	3, 2x* (10/16)	3, 4x* (10/16)

Career Statistics

YEAR	GP/GS	SH	G	A	PTS	GWG
2007	15-4	11	1	3	5	1
2008	21-15	38	3	4	10	1
2009	20-19	36	4	2	10	1
TOTALS	56-38	85	8	9	25	3



#28 Brittany DeWitt
D • 5-6 • Fr.

Bests	Season	Career
Goals:	N/A	Same
Assists:	N/A	Same
Points:	N/A	Same
Shots:	N/A	Same
SOG:	N/A	Same

Career Statistics

YEAR	GP/GS	SH	G	A	PTS	GWG
2009	4-0	0	0	0	0	0
TOTALS	4-0	0	0	0	0	0



#29 Mollie Patton
GK • 5-7 • R-Jr.

Bests	Season	Career
Saves:	6, 3x* (9/13)	8, (9/14/08)
Minutes:	110:00, (10/4)	110:00, 5x* (10/4)

Career Statistics

YEAR	GP/GS	MIN	SVS	GA	GAA	SHO
2006	REDSHIRTED					
2007	0-0	0	0	0	0	0
2008	22-22	2053	58	22	0.96	7
2009	20-20	1797	57	12	0.60	12
TOTALS	42-42	3850	115	34	0.79	19



#35 Darien Vercillo
GK • 5-6 • Fr.

Bests	Season	Career
Saves:	N/A	Same
Minutes:	N/A	Same

Career Statistics

YEAR	GP/GS	MIN	SVS	GA	GAA	SHO
2009	0-0	0	0	0	0	0
TOTALS	0-0	0	0	0	0	0



Shelley Smith Ninth Season

Shelley Smith enters her ninth season at the helm of the USC women's soccer program and looks to continue building upon the success that she has brought to the program after taking the team to the first back-to-back NCAA Tournament appearances in program history.

Smith has cemented Carolina's position as a conference title contender and player on the national stage after guiding the Gamecocks in 2008 to their second consecutive NCAA Tournament bid and third consecutive SEC Tournament bid, both program firsts. The Gamecocks went 11-7-4 overall and earned five SEC wins for the third year in a row with only one senior on the roster. Respected as a top defensive team, the Gamecocks finished the regular season second in the SEC with eight shutouts and ranked in the top two in every major defensive category including goals allowed, points allowed, shots allowed and shots on goal allowed.

Blakely Mattern and Kayla Grimsley both earned All-SEC honors with Mattern earning her second first team and Grimsley picking up spots on the second team and freshman team. The duo also picked up Soccer Buzz All-Southeast Region honors while Mattern also earned a nod by the NSCAA.

Carolina's success in the classroom continued last season as her squad earned two Academic All-District honors in Mattern and Mollie Patton. Mattern was also named to the Academic All-America first team, making South Carolina one of only four teams in the nation – and the only in the SEC – to have an Academic All-American selected each of the past four seasons. Her team was also honored with its seventh NSCAA Team Academic Award. The team had 11 players named to the SEC Academic Honor Roll in addition to nine selections to the SEC Freshman Honor Roll. Overall, Smith has coached 131 SEC Academic Honor Roll recipients since coming to USC in 2001.

Smith has coached several top student-athletes at Carolina including Ashley Kirk, USC's first four-time All-SEC honoree, Carolina's first All-American in three-time All-SEC selection Blakely Mattern and two-time All-SEC performers Melinda Carter, Jessica Julin and Sarah Lentz. Julin is currently the captain of the Finland National Team and Carter played in the WUSA. The Gamecocks have earned 20 All-SEC honors in the last eight years.

In her first season as head coach at Carolina (2001), the Gamecocks were the third most improved team in the nation with an 8-7-3 overall record. Carolina also had one of the school's best home records, going 5-3 at Stone Stadium, allowing opponents to score only four goals in eight matches.

The success continued for USC in 2002 with 13 wins in Smith's second season. The year was highlighted with USC's first ever victories against Florida and Kentucky. Smith also led her team to ties against 2002 SEC champion Auburn and Eastern Division champion Tennessee.

Smith led the Gamecocks to another successful season in 2003 with 10 wins including a USC record eight-game unbeaten streak as well as a 6-2-1 record at home in Stone Stadium.

The 2004 season featured a win over No. 7 Clemson, the Gamecocks' first win over a ranked opponent since 1998, as well as a 6-3 mark in non-conference action. Ashley Kirk also became the first freshman soccer player in school history to be named SEC Freshman of the Year. In addition, Carolina set a school record for a home game-winning streak with six consecutive wins.

Following an injury filled 2005 season, the program took a big step forward in 2006 as USC went undefeated at home for the first time in school history with an 8-0-3 mark at Stone Stadium. The team's cumulative goals against average of 0.69 was the lowest ever tallied at Carolina. The season culminated with the Gamecocks advancing to the SEC Tournament semifinals for the first time in Carolina history, as Blakely Mattern became the team's first Freshman All-America selection since 1998.

Smith directed the 2007 Gamecocks to arguably the best season in school history, tying the school record with 14 victories and advancing to the NCAA Tournament for only the second time in program history. Carolina posted a 14-6-3 overall record including a 5-4-2 mark in the SEC after beginning the season by becoming the first team ever to knock off defending national champion and top-ranked North Carolina in a season opening game at Fetzer Field in Chapel Hill. The Gamecocks ran to a 7-0-0 start to the season – program bests for start to a season and winning streak – and peaked at No. 7 in the national polls. For the second consecutive season South Carolina advanced to the SEC Tournament semifinals after knocking off Tennessee for the first time in program history and earned the school's first bid to the NCAA Tournament since 1998. Blakely Mattern became the first sophomore to ever earn SEC Defensive Player of the Year honors in addition to becoming the first All-American in South Carolina history.

In 12 years as a head coach, Smith has compiled an overall record of 122-97-24. Besides her collegiate coaching, Smith was a member of the Region III ODP staff for the past five years, as well as an assistant for the '90 Regional Team. Smith also was a member of the 2003 U-14 National Camp staff for U.S. Soccer.

With a background in both semi-professional and collegiate soccer, Smith previously served as head coach at Rhode Island from 1997-2000. The 2000 NSCAA Northeast Region Coach of the Year, Smith rebuilt the URI women's soccer program, compiling a 41-35-2 overall record. Smith took a

program that was 2-16 her first year to 12-7-1 in her second season, marking the eighth-most improved won-lost record for a team in NCAA history. In 2000, Smith coached URI to its best record ever of 15-4-1, while reaching the Atlantic 10 Semifinals, a first in URI history.

Smith was nominated for the 2000 National Coach of the Year. The New England Women's Soccer Intercollegiate Soccer Association (NEWISA) also named her its Division I Coach of the Year in 2000. She was the 1998 Atlantic 10 Coach of the Year as well.

In addition to her experience as a coach, Smith brings experience from the semi-professional level. From 1996-2000, Smith played for the Boston Renegades in the W-1 League. Smith was captain in 2000 as she led Boston to the semifinals in the W-1 Championship. The Renegades reached the finals in 1998. Smith also had the opportunity to play overseas in 1994 as a member of the Sheffield United Women's Football Club in England.

Smith, a 1993 graduate of the University of Vermont with a degree in nutritional science, received her teacher's certificate from the same institution in 1995. Smith started all four years for the Catamounts. Her primary positions were center midfielder and central defender. She was a regional All-American in both 1992 and '93 in addition to being named First Team All-North Atlantic Conference each year from 1991-93. During her freshman year, the squad won the ECAC Tournament. Vermont was one of the first programs to offer women's soccer as a varsity sport and it competed on a national level. Smith was named to Vermont's Athletic Hall of Fame in the summer of 2004.

Smith worked as an assistant coach at Dartmouth College from 1995-97. The Big Green made the NCAA Tournament in her second season with the program.

Smith is married to USC associate head coach Jamie Smith. They are the proud parents of two sons, Braden James, born on Nov. 25, 2003 and Evan Addison born on Jan. 6, 2006.

Smith has her USSF B license and the NCAA Advanced National Diploma. She is currently a member of the USYSA Regional Olympic Development Staff.

Year-By-Year Results		
Year	Record	School
1997	2-16	Rhode Island
1998	12-7-1	Rhode Island
1999	12-8	Rhode Island
2000	15-4-1	Rhode Island
2001	8-7-3	South Carolina
2002	13-6-2	South Carolina
2003	10-8-3	South Carolina
2004	8-10-2	South Carolina
2005	6-12	South Carolina
2006	11-6-5	South Carolina
2007	14-6-3	South Carolina
2008	11-7-4	South Carolina
2009	16-3-1	South Carolina