



2015-16 TEAM RESULTS

Date	Tournament	Team Score	Finish	Low Individual	Score	Low Individual Finish
Sept. 18-20	Mason Rudolph Championship	302-291-295=888 (+24)	T12th/17	Katelyn Dambaugh	74-72-72=218 (+2)	T24th
Sept. 27-29	ANNIKA Intercollegiate	286-293-293=872 (+8)	9th/12	Katelyn Dambaugh	65-71-71=207 (-9)	3rd
Oct. 9-11	Ruth's Chris Invitational	299-310-295=904 (+40)	11th/18	Sarah Schmelzel	72-76-75=223 (+7)	T27th
Oct. 23-25	The Landfall Tradition	301-304-283=888 (+24)	9th/18	Katelyn Dambaugh	75-75-68=212 (-4)	T2nd
Feb. 12-14	Florida State Match-Up	297-285-293=875 (+11)	2nd/12	Katelyn Dambaugh	74-71-70=215 (-1)	T2nd
March 4-6	Darius Rucker Intercollegiate	303-291-293=887 (+35)	T8th/17	Katelyn Dambaugh	75-72-70=217 (+4)	T7th
March 14-15	Wildcat Invitational	297-290-300=887 (+23)	7th/15	Katelyn Dambaugh	69-73-74=216 (E)	9th
April 1-3	Bryan National Collegiate	297-299-298=894 (+30)	2nd/15	Sarah Schmelzel	73-71-75=219 (+3)	1st
April 15-17	SEC Championship	290-301-289=888 (+24)	5th/14	Katelyn Dambaugh	72-71-66=209 (-7)	2nd
May 5-7	NCAA Baton Rouge Regional	290-277-290=857 (-7)	T1st/18	Katelyn Dambaugh	70-66-71=207 (-9)	1st
May 20-25	NCAA Championship	293-289-290-290=1162 (+10)	7th/24	Katelyn Dambaugh	69-73-71-74=287 (-1)	T11th

2015-16 INDIVIDUAL STATISTICS

Name	Tourn.	Rounds	Low 54	Low 18	Par/Better	Top 5	Top 10	Top 20	Strokes	Avg.
Gaby Amos	3	9	232	71	1	--	--	--	715	79.44
Katelyn Dambaugh	11	34	207	65	18	6	8	10	2435	71.62
Marianna Monaco	2	6	229	73	--	--	--	--	463	77.17
Isidora Nilsson	7	21	223	70	1	--	--	--	1626	77.43
Ainhoa Olarra	11	34	217	69	8	--	2	4	2529	74.38
Sarah Schmelzel	11	34	210	69	15	2	3	7	2489	73.21
Marion Veysseyre	7	22	219	70	2	--	--	1	1690	76.82
Jia Xin Yang	9	25	221	71	1	--	--	--	1941	77.64
TEAM	11	34	857	277	4	4	9	11	10,002	294.18



The Gamecocks continued their recent tradition of strong postseason play during the 2015-16 season, capturing their fourth NCAA Regional title in the last seven years. First-Team All-American Katelyn Dambaugh earned medalist honors at the 54-hole event after matching a program record with a 207 (-9).



Mason Rudolph Championship

Vanderbilt Legends Club - South
 Sept. 18-20 • Franklin, Tenn.
 Par 72 • 6,321 Yards
 T12th of 17

TEAM SCORES

1. Alabama	282-280-286=848	(-16)
2. Northwestern	283-281-285=849	(-15)
3. Georgia	286-275-293=854	(-10)
4. Virginia	286-289-298=873	(+9)
5. LSU	288-287-298=873	(+9)
6. Houston	300-283-292=875	(+11)
7. Vanderbilt	296-286-294=876	(+12)
8. Auburn	287-288-305=880	(+16)
9. GRU Augusta	294-291-298=883	(+19)
10. Louisville	288-292-304=884	(+20)
T11. Mich. St.	295-299-293=887	(+23)
T12. South Carolina	302-291-295=888	(+24)
T12. Middle Tennessee	297-295-296=888	(+24)
T12. Baylor	298-293-297=888	(+24)
15. UCF	293-301-295=889	(+25)
16. Tulane	299-296-300=895	(+31)
17. Yale	310-313-327=950	(+86)

INDIVIDUAL MEDALIST

Lakareber, Alabama 67-68-69=204 -12

GAMECOCKS

T24. Katelyn Dambaugh	74-72-72=218	+2
T52. Jia Xin Yang	75-74-76=225	+9
T52. Sarah Schmelzel	75-75-75=225	+9
T71. Ainhua Olarra	80-78-72=230	+14
88. Isidora Nilsson	78-70-DQ	DQ

FRANKLIN, Tenn. - The South Carolina women's golf team concluded play at the Mason Randolph Championship on Sunday, finishing tied for 12th after shooting a 295 (+7) on the final day of competition. The Gamecocks recorded a score of 888 (+24) for the tournament, which was held at the Vanderbilt Legends Club.

Katelyn Dambaugh's steady play continued on Sunday, as the junior carded her second straight round of even par (72) despite bogeys on the final two holes. She finished 24th overall (+2) and recorded three birdies on the tournament's last day.

Senior Sarah Schmelzel and junior Jia Xin Yang both placed 52nd in the field with an overall score of 9-over. Schmelzel recorded a three-over (75) for the third straight day, while Yang carded a 4-over (76), recording pars on 14 of 18 holes.

Ainhua Olarra turned in her best performance of the week on the final day, tallying birdies on No. 1 and No. 10 to shoot an even 72. The sophomore finished 71st with a combined score of +14. Freshman Isidora Nilsson, who fired a 2-under (70) on Saturday, finished the tournament tied for 90th after being disqualified on the final day.

Alabama won the tournament with a score of 848 (-16) after posting a 2-under 286 on Sunday. Northwestern (-15) finished second, while Georgia (-10) rounded out the top three. The Crimson Tide's Lakareber Abe took home medalist honors with an overall score of 12-under.

ANNIKA Intercollegiate

Reunion Resort - Watson Course
 Sept. 27-29 • Reunion, Fla.
 Par 72 • 6,245 Yards
 9th of 12

TEAM SCORES

1. USC	276-271-281=828	(-36)
2. Arizona	286-281-284=851	(-13)
3. Arkansas	284-286-284=854	(-10)
4. Duke	277-291-288=856	(-8)
5. Texas A&M	278-286-295=859	(-5)
6. UCLA	286-292-284=862	(-2)
7. Tennessee	284-288-291=863	(-1)
8. Washington	291-290-284=865	(+1)
9. South Carolina	286-293-293=872	(+8)
10. Stanford	289-287-297=873	(+9)
11. LSU	291-292-297=880	(+16)
12. UCF	290-294-302=886	(+22)

INDIVIDUAL MEDALIST

Karen Chung, USC 68-68-68=204 -12

GAMECOCKS

3. Katelyn Dambaugh	65-71-71=207	-9
T7. Sarah Schmelzel	70-69-71=210	-6
T47. Ainhua Olarra	74-77-73=224	+8
57. Isidora Nilsson	80-76-78=234	+18
58. Jia Xin Yang	77-77-82=236	+20

REUNION, Fla. - South Carolina women's golfer Katelyn Dambaugh took home third place at the ANNIKA Intercollegiate in Reunion, Fla., after firing a 71 (-1) on the final day of the event for a three-day score of 65-71-71=207 (-9). As a team, the Gamecocks finished 8-over at the tournament, taking home ninth-place in an elite field that contained the top 11 teams from Golfweek's 2014-15 final rankings.

Senior Sarah Schmelzel (T7) joined Dambaugh in the top 10 as she recorded a three-day score of 70-69-71=210 (-6). Schmelzel and Dambaugh were under-par on all three days of the event. South Carolina was one of only three teams with two or more golfers finishing in the top 10 on the leaderboard.

Sophomore Ainhua Olarra finished strong, posting a 1-over 73 on Tuesday, her best round of the event. She turned in a three-day total of 74-77-73=224 (+8) to finish in the top 50. Freshman Isi Nilsson finished the tournament at +18 while junior Jia Xin Yang was +20.

Southern California claimed the team title. It held a 17-stroke lead entering the final day and shot a 281 (-7) in its final round to finish 23 strokes ahead of second-place Arizona (-13). Arkansas (-10) settled for third.



Ruth's Chris Tar Heel Invitational

UNC Finley Golf Course
Oct. 9-11 • Chapel Hill, N.C.
Par 72 • 6,379 Yards
11th of 18

TEAM SCORES

1. Duke	285-293-289=867	(+3)
2. Arkansas	302-287-291=880	(+16)
3. Louisville	292-297-293=882	(+18)
4. Michigan State	293-299-291=883	(+19)
5. NC State	292-300-292=884	(+20)
6. Alabama	289-304-293=886	(+22)
7. Tennessee	299-295-293=887	(+23)
8. North Carolina	295-303-290=888	(+24)
9. Virginia	297-306-295=898	(+34)
10. LSU	302-303-298=903	(+39)
11. South Carolina	299-310-295=904	(+40)
12. Auburn	298-304-303=905	(+41)
T13. Oregon	302-306-300=908	(+44)
T13. Wake Forest	305-307-296=908	(+44)
15. Baylor	306-314-296=916	(+52)
16. Rollins College	307-311-311=929	(+65)
17. UNC Wilmington	305-320-307=932	(+68)
18. Kentucky	308-319-306=933	(+69)

The Landfall Tradition

Country Club of Landfall - Pete Dye Course
Oct. 23-25 • Wilmington, N.C.
Par 72 • 6,157 Yards
9th of 18

TEAM SCORES

1. Duke	287-284-284=855	(-9)
2. Notre Dame	291-294-281=866	(+2)
3. Oklahoma State	289-292-286=867	(+3)
4. Michigan State	291-306-275=872	(+8)
5. Alabama	299-286-297=882	(+18)
6. NC State	295-311-279=885	(+21)
7. Wake Forest	303-294-289=886	(+22)
8. Purdue	296-300-291=887	(+23)
9. South Carolina	301-304-283=888	(+24)
T10. UNCW	290-297-302=889	(+25)
T10. Clemson	298-306-285=889	(+25)
12. Virginia	301-303-286=890	(+26)
13. Penn State	305-302-285=892	(+28)
14. North Carolina	308-303-290=901	(+37)
15. Ohio State	303-303-297=903	(+39)
16. UCF	308-307-295=910	(+46)
17. Kentucky	307-323-292=922	(+58)
18. Elon	303-316-308=927	(+63)

INDIVIDUAL MEDALIST

Leona Maguire, Duke 69-72-71=212 -4

GAMECOCKS

T27. Sarah Schmelzel	72-76-75=223	+7
T39. Katelyn Dambaugh	75-75-76=226	+10
T39. Ainhua Olarra	75-78-73=226	+10
T64. Gaby Amos	80-81-71=232	+16
T80. Isidora Nilsson	77-82-77=236	+20
WD Jia Xin Yang*	81-WD	WD

*Played as an individual

INDIVIDUAL MEDALIST

Sarah Burnham, Mich. St. 71-74-66=211 -5

GAMECOCKS

T2. Katelyn Dambaugh	72-75-68=212	-4
T16. Sarah Schmelzel	71-77-70=218	+2
T53. Ainhua Olarra	81-77-70=228	+12
T65. Isidora Nilsson	78-78-75=231	+15
T83. Jia Xin Yang	80-81-76=237	+21
92. Gaby Amos	79-84-79=242	+26

CHAPEL HILL, N.C. - Freshman Gaby Amos carded her first collegiate round under par (71, 1-under) on Sunday for the South Carolina women's golf team, which earned an 11th-place finish (40-over) at the Ruth's Chris Tar Heel Invitational. The Gamecocks posted a 7-over (295) in the final round of three-day tournament.

Amos, who finished in a tie for 64th with a final score of 16-over, saw a strong finish to her weekend after tallying four birdies. The Gainesville, Fla., native made the turn at 1-over after birdies on No. 13 and 18, and she posted an even (35) over her final nine holes. Amos was one of just 12 golfers to record a round under par on Sunday.

Sarah Schmelzel fired a 3-over (75) in the final round, as she finished the tournament in a tie for 27th (7-over). The South Carolina senior, who totaled four birdies throughout the tournament, birdied No. 5 and ended her round even over her final five holes.

A pair of Gamecocks, junior Katelyn Dambaugh and sophomore Ainhua Olarra, both notched 39th-place finishes after recording overall scores of 10-over. Olarra turned in her best performance of the weekend on Sunday, carding a 1-over (73), while Dambaugh posted a 4-over (76). Freshman Isidora Nilsson fired a 5-over (77) in her final round and ended the tournament in a tie for 80th at 20-over.

Duke earned first-place honors after boasting a total score of 3-over for the tournament. Arkansas (16-over) and Louisville (18-over) rounded out the top three, while Leona Maguire of the Blue Devils ended the week with the low individual score (4-under).

WILMINGTON, N.C. - South Carolina women's golf posted its best round of the fall on Sunday at the Landfall Tradition as the team shot 283 (-5) in the third round, finishing the event in ninth place (888, +24). Three Gamecocks were under-par in the final round, led by junior Katelyn Dambaugh (68, -4), who finished in a tie for second on the individual leaderboard.

After consecutive rounds of 72 to open the event, Dambaugh fired six birdies on Sunday, including four on the front-nine, to surge up the leaderboard. Her Par-5 scoring average (4.33) led the field, and her 14 birdies were second most at the three-day event. It was Dambaugh's second top-five finish of the fall and sixth of her career.

Senior Sarah Schmelzel had an impressive final round as well, carding a 2-under (70) to move up seven spots in the individual standings. After opening the tournament with a 1-under (71) and a 5-over (77), she connected on six birdies Sunday to finish tied for 16th for the tournament at 2-over. This marks the second time this fall Schmelzel has earned a top-20 finish.

Sophomore Ainhua Olarra provided another bright spot for the Gamecocks Sunday as she recorded four back-nine birdies on her way to a career-best round of 70 (-2). Her third round moved her up 21 spots on the individual leaderboard into a tie for 53rd.

Freshman Isidora Nilsson connected on four birdies in the third round and was at 1-under (35) at the turn, carding a +3 (75) on the day. She finished tied for 65th at +15. Meanwhile, junior Jia Xin Yang (76, +4) shot her best round of the weekend Sunday to close the event at +21, tied for 83rd.

No. 2 Duke posted a three-day score of 287-284-284 (-9), winning the event by 11 strokes over second-place Notre Dame. Michigan State's Sarah Burnham claimed the top spot on the individual leaderboard after firing a 66 in the third round.



Florida State Match-Up
Don Veller Seminole Golf Course
Feb. 12-14 • Tallahassee, Fla.
Par 72 • 6,265 Yards
2nd of 15

TEAM SCORES

1. FSU	293-293-285=871	(+7)
2. South Carolina	297-285-293=875	(+11)
3. Furman	290-290-302=890	(+26)
4. SMU	297-300-297=894	(+30)
5. Texas A&M	298-299-301=898	(+34)
6. Coastal Carolina	297-309-293=899	(+35)
7. Missouri	309-297-294=900	(+36)
8. Tennessee	303-300-302=905	(+41)
9. Virginia	305-298-306=909	(+45)
10. Kansas State	309-305-304=918	(+54)
11. Virginia Tech	307-310-304=921	(+57)
12. James Madison	318-318-305=941	(+77)

INDIVIDUAL MEDALIST

Maddie Szeryk, Texas A&M 66-72-70=211 -5

GAMECOCKS

T2. Katelyn Dambaugh	74-71-70=215	-1
4. Sarah Schmelzel	74-69-73=216	E
T8. Ainhoa Olarra	74-70-75=219	+3
T43. Jia Xin Yang	80-75-77=232	+16
T57. Marion Veysseyre	75-87-75=237	+21

TALLAHASSEE, Fla. - The South Carolina women's golf team posted its best finish of the 2015-16 season, earning second-place honors at the FSU Match-Up with an overall score of 11-over 875. The Gamecocks, who began the final round atop the leaderboard, fired a 5-over 293 on Sunday and finished four strokes behind tournament champion Florida State.

Two South Carolina golfers, junior Katelyn Dambaugh and senior Sarah Schmelzel, notched top-five finishes in the 54-hole event. Dambaugh totaled a score of 215 (-1) to finish in a tie for second on the individual leaderboard, while Schmelzel was fourth after boasting a three-day total of 216 (E).

Dambaugh turned in her best round of the weekend on Sunday, tallying a 2-under 70. She played her opening nine holes at even after recording two birdies and two bogeys, and the Goose Creek, S.C., native opened the back nine with a birdie on the par-5 10th. An eagle on hole No. 15 dropped her to 2-under on the day, and she responded to a bogey on No. 16 with her fourth birdie of the day on the par-3 17th. Dambaugh's performance this weekend marked the seventh top-five finish of her career.

Schmelzel continued her steady play at South Carolina's spring opener, as she registered pars on 13 of 18 holes in the final round. She made the turn at 1-over 37 and notched her 10th birdie of the tournament on the par-4 16th to finish the day with a 73 (+1). Her fourth-place showing was the senior's best finish of the season.

Ainhoa Olarra's impressive week concluded with a top-10 finish, as she ended the tournament in a tie for eighth place. The sophomore shook off a pair of early bogeys with a birdie on the par-3 eighth, and another birdie on No. 10 helped her record a score of 3-over 75 on the final day. Olarra's three-day score of 219 (+3) was the lowest 54-hole total in her career.

Junior Jia Xin Yang finished in a tie for 43rd with an overall score of 16-over 232, while freshman Marion Veysseyre tallied a three-day total of 237 (+21) to finish in a tie for 57th in her first tournament as a Gamecock. Yang recovered from a 6-over 42 on her front nine on Sunday, notching four birdies over her final nine holes to post a 5-over 77. Veysseyre registered two birdies on her way to a final-round score of 3-over 75.

The host Seminoles posted a 3-under 285 on Sunday, as they rallied to move past South Carolina and finish first at 7-over 871. Furman (890, +26) ended in third place, while SMU (894, +3) and Texas A&M (898, +34) rounded out the top five. The Aggies' Maddie Szeryk won medalist honors after totaling a score of 5-under 211 for the tournament.

Darius Rucker Intercollegiate
Long Cove Club
March 4-6 • Hilton Head Island, S.C.
Par 71 • 6,208 Yards
T8th of 17

TEAM SCORES

1. Alabama	278-298-292=868	(+16)
2. Virginia	281-298-296=875	(+23)
3. Duke	299-289-290=878	(+26)
4. Oklahoma State	292-290-297=879	(+27)
5. North Carolina	290-295-296=881	(+29)
6. Arkansas	289-296-297=882	(+30)
7. Georgia	301-282-300=883	(+31)
T8. South Carolina	303-291-293=887	(+35)
T8. USC	287-293-297=887	(+35)
10. Tennessee	295-292-301=888	(+36)
11. Vanderbilt	282-300-307=889	(+37)
12. Furman	303-302-293=898	(+46)
13. Auburn	296-289-316=901	(+49)
14. Wake Forest	300-300-303=903	(+51)
T15. LSU	303-301-308=912	(+60)
T15. Mississippi State	303-300-309=912	(+60)
17. Kentucky	307-300-306=913	(+61)

INDIVIDUAL MEDALIST

Cheyenne Knight, Alabama 67-74-72=213 E

GAMECOCKS

T7. Katelyn Dambaugh	75-72-70=217	+4
T26. Ainhoa Olarra	74-74-74=222	+9
T35. Sarah Schmelzel	77-72-74=223	+10
T39. Marion Veysseyre	77-73-75=225	+12
T80. Marianna Monaco*	79-74-81=234	+21
T84. Jia Xin Yang	79-77-80=236	+23
89. Isidora Nilsson*	82-79-81=242	+29

*Played as an individual

HILTON HEAD ISLAND, S.C. - South Carolina women's golfer Katelyn Dambaugh finished in a tie for seventh (217, +4) at the Darius Rucker Intercollegiate after firing a 1-under 70 in the event's final round at Long Cove Club. The Gamecocks, who posted a 9-over 293 on Sunday, moved up the leaderboard in the third round and finished the tournament in a tie for eighth place at 35-over (887).

Alabama won the 54-hole event with a final score of 868 (+16), while Crimson Tide freshman Cheyenne Knight earned medalist honors after totaling a 213 to finish even.

Dambaugh notched three birdies on Sunday, starting on the par-4 12th. She made the turn at even (35) before adding birdies on holes No. 1 and 3. The Goose Creek, S.C., native, who boasts four top-10 finishes this season, recorded just two bogeys in the final round, and her 1-under 70 marked the low 18-hole score for the Gamecocks during the week.

Ainhoa Olarra (T-26, +9) finished just outside the top 25 after carding her third-straight 3-over 74. The sophomore shook off three early bogeys, registering birdies on No. 13 and 15, and she made the turn at 3-over 38. Olarra's final birdie of the day came on the par-4 fifth, and she closed her round with four straight pars.

Senior Sarah Schmelzel also recorded a 3-over 74, as she collected two birdies on Sunday's third round. Following a 3-over 38 on her front nine, the Phoenix, Ariz., native settled down and turned in an even 36 on her final nine holes. Schmelzel finished in a tie for 35th with a three-round total of 223 (+10).

Marion Veysseyre (T-39) concluded her impressive week with a final-round score of 75 (+4). Back-to-back birdies on No. 15 and 16 helped her recover from multiple early bogeys, and the freshman recorded her last birdie of the week on the par-5 third. Veysseyre's three-day score of 225 (+12) marked her best 54-hole total for the Gamecocks.



Wildcat Invitational
 Sewailo Golf Club
 March 14-15 • Tucson, Ariz.
 Par 72 • 6,492 Yards
 7th of 15

TEAM SCORES

1. Arizona	282-293-282=857	(-7)
2. Arizona State	285-289-294=868	(+4)
3. UNLV	289-295-292=876	(+12)
4. Miami	294-291-298=883	(+19)
T5. Purdue	288-294-302=884	(+20)
T5. Baylor	292-299-293=884	(+20)
7. South Carolina	297-290-300=887	(+23)
8. Michigan	294-300-294=888	(+24)
9. Vanderbilt	298-292-300=890	(+26)
10. Colorado	294-306-295=895	(+31)
11. New Mexico State	297-302-297=896	(+32)
12. Kansas	301-304-294=899	(+35)
13. Northern Arizona	298-296-311=905	(+41)
14. Washington State	301-298-311=910	(+46)
15. New Mexico	301-307-303=911	(+47)

INDIVIDUAL MEDALIST

Krystal Quihuis, Arizona 68-71-70=209 -7

GAMECOCKS

9. Katelyn Dambaugh	69-73-74=216	E
T18. Sarah Schmelzel	76-71-73=220	+4
T22. Jia Xin Yang*	76-71-74=221	+5
T43. Ainhua Olarra	75-77-75=227	+11
T52. Marianna Monaco	78-73-78=229	+13
T59. Marion Veysseyre	77-73-81=231	+25

*Played as an individual

TUCSON, Ariz. - Three South Carolina women's golfers tallied Top-25 finishes at the Wildcat Invitational, which wrapped up on Tuesday at the Sewailo Golf Club. The Gamecocks posted a final-round score of 300 (+12) to place seventh in the 54-hole event with a two-day total of 887 (+23). Host Arizona, which boasted the only round under par (282, -6) on Tuesday, claimed the tournament title, finishing 11 strokes clear of the field at 7-under (857).

Katelyn Dambaugh notched her fourth-straight top-10 finish, as she earned ninth-place honors with an overall score of 216 (E). The junior fired a 2-over 74 in the third round, collecting three birdies over her final 18 holes of tournament play. Starting on the par-5 fourth, the Goose Creek, S.C., native carded a pair of early birdies and played her first nine holes at even. She added another birdie on the par-4 18th and finished her week tied for first in par-4 scoring (3.93).

Fellow junior Jia Xin Yang, who competed as an individual, turned in her best showing of the season, placing 22nd with a three-round total of 221 (+5). After opening her day at 3-over through three holes, Yang settled in and rattled off eight-straight pars. Her round continued to improve following birdies on No. 8 and 10, and her final birdie of the day came on the par-4 12th.

Sarah Schmelzel marked the other Gamecock to finish in the top 25. The senior ended her week in a tie for 18th (220, +4) following her 1-over 73 on Tuesday. She recorded 12 pars in the third round to go along with a birdie on the par-4 18th and an eagle on the par-5 fifth. Her performance this week earned the Phoenix, Ariz., native her fourth top-20 finish of the season.

Sophomore Ainhua Olarra placed in a tie for 43rd (227, +11) after posting a 3-over 75 in the third round. A birdie on the par-5 fifth helped her play her final nine holes and 1-under, and Olarra finished the week with 10 birdies. Junior Marianna Monaco recorded a third-round score of 78 (+6) to finish in a tie for 52nd (229, +13), while Marion Veysseyre ended the tournament in a tie for 59th at 15-over (231).

Arizona State, which began the day with a one-stroke lead, finished second with a three-round score of 868 (+4), while UNLV was third after totaling a score of 876 (+12). Arizona's Krystal Quihuis finished at 7-under 209 to capture medalist honors.

Bryan National Collegiate
 Bryan Park Champions Course
 April 1-3 • Browns Summit, N.C.
 Par 72 • 6,386 Yards
 2nd of 15

TEAM SCORES

1. Virginia	289-295-304=888	(+24)
2. South Carolina	289-297-298=894	(+30)
3. Florida State	299-290-307=896	(+32)
4. Wake Forest	298-297-306=901	(+37)
T5. Notre Dame	297-303-309=909	(+45)
T5. Kentucky	306-293-310=909	(+45)
7. East Carolina	299-303-308=910	(+46)
8. NC State	304-303-304=911	(+47)
9. Miami	298-306-310=914	(+50)
10. North Carolina	302-304-311=917	(+53)
11. Michigan	314-304-308=926	(+62)
12. UCF	315-310-317=933	(+69)
13. Penn State	319-315-312=946	(+82)
14. Cal State Fullerton	307-312-334=953	(+89)
15. UNC Greensboro	326-317-326=969	(+105)

INDIVIDUAL MEDALIST

Sarah Schmelzel, South Carolina 73-71-75=219 +3

GAMECOCKS

1. Sarah Schmelzel	73-71-75=219	+3
T2. Katelyn Dambaugh	75-76-70=221	+5
T15. Ainhua Olarra	73-78-75=226	+10
T34. Marion Veysseyre	78-74-78=230	+14
T49. Jia Xin Yang	76-79-79=234	+18
64. Gaby Amos*	82-81-78=241	+25

*Played as an individual

BROWNS SUMMIT, N.C. - South Carolina women's golf senior Sarah Schmelzel captured her first career medalist honors on Sunday, winning the individual title at the Bryan National Collegiate after firing a 3-over 75 in the final round of the 54-hole event.

Schmelzel finished two strokes clear of the field with a three-day total of 219 (+3), while the Gamecocks climbed up the leaderboard and earned a second-place finish (894, +30). Junior Katelyn Dambaugh carded the only round under par (70, -2) on the final day, as she moved up 26 spots to finish in a tie for second at 5-over (221).

South Carolina's third-round total of 298 (+10) marked the low round of the day and was six strokes lower than Virginia, which won the tournament with a score of 888 (+24). Schmelzel became the first Gamecock to earn medalist honors since Nanna Madsen won the individual title at the 2014 Mercedes-Benz Collegiate, and the senior is the fifth player to finish first in an event under head coach Kalen Anderson.

As she did all weekend, Schmelzel battled the windy conditions and found her stroke down the stretch on Sunday at the Bryan Park Champions Course. Following a front-nine 4-over (41), the Phoenix, Ariz., native recovered with birdies on holes No. 15 and 17. She recorded just one bogey following the turn and carded a back-nine 1-under (34).

Dambaugh notched her 10th round of par or better this season on Sunday, tallying three birdies on the final day. After opening with a par on the par-4 fifth, the junior birdied No. 6 before making the turn at 1-under (34). She tallied back-to-back birdies on No. 15 and 16 and closed her round with six-straight pars. This weekend marked Dambaugh's fourth top-three finish of the season.

Ainhua Olarra grabbed her second top-20 showing of the spring after finishing with a 54-hole total of 226 (+10). She collected two birdies and recorded a 3-over 75 on Sunday to end the tournament in a tie for 15th place. The sophomore shot a 37 (+2) on her front nine and tallied her final birdie of the tournament on the par-4 17th.

Freshman Marion Veysseyre wrapped up a successful weekend with a third-round 6-over (78) to earn her lowest career finish (T35). She totaled a three-round score of 230 (+14) and tallied three birdies on Sunday, the last one coming on the par-4 second.

Jia Xin Yang ended the weekend in a tie for 47th place (234, +18) after shooting a 79 (+7) in round three, while freshman Gaby Amos, who competed as an individual, placed 64th with a three-round total of 241 (+25).

Florida State finished third (896, +32), while host Wake Forest (901, +37) and Notre Dame (909, +45) and Kentucky (909, +45) rounded out the top five. The Demon Deacons' Jennifer Kupcho and Florida State's Matilda Castren finished second individually along with Dambaugh.



SEC Championship

Greystone Golf Club

April 15-17 • Birmingham, Ala.

Par 72 • 6,190 Yards

5th of 14

TEAM SCORES

1. Alabama	286-292-281=859	(-5)
2. Florida	292-286-286=864	(E)
3. Arkansas	300-294-288=882	(+18)
4. Texas A&M	299-291-294=884	(+20)
5. South Carolina	298-301-289=888	(+24)
6. Georgia	296-296-297=889	(+25)
7. Mississippi	301-300-293=894	(+30)
8. Tennessee	297-305-294=896	(+32)
9. Missouri	295-303-302=900	(+36)
10. Vanderbilt	309-304-292=905	(+41)
11. LSU	305-303-303=911	(+47)
12. Mississippi State	305-303-306=914	(+50)
13. Auburn	304-311-304=919	(+55)
14. Kentucky	312-312-297=921	(+57)

INDIVIDUAL MEDALIST

Maria Torres, Florida 69-68-70=207 -9

GAMECOCKS

2. Katelyn Dambaugh	72-71-66=209	-7
8. Ainhoa Olarra	67-77-71=217	+1
T44. Sarah Schmelzel	82-77-71=230	+14
T66. Jia Xin Yang	76-82-81=239	+23
70. Marion Veysseyre	81-76-86=243	+27

BIRMINGHAM, Ala. - South Carolina junior women's golfer Katelyn Dambaugh erased a six-stroke deficit and climbed to the top of the individual leaderboard before ultimately settling for runner-up honors at the SEC Championship on Sunday at Greystone Golf and Country Club. Dambaugh posted the low round of the week, a 6-under 66, in the final round to finish the tournament at 7-under 209 and two strokes off the lead.

Three Gamecocks notched rounds under par on Sunday for South Carolina, which moved up two spots to finish fifth (888, +24) at the 54-hole event. Alabama posted a final-round 281 (-7) to win the tournament with a three-day score of 859 (-5), while Florida (864, E) and Arkansas (882, +18) rounded out the top three. The Gators' Maria Torres edged out Dambaugh for the individual title with an overall score of 207 (-9).

Dambaugh's second-place showing was the highest finish for a South Carolina golfer at the SEC Championship since 2009, and her 209 fell two strokes short of the league tournament 54-hole record. The Goose Creek, S.C., native, who matched the conference championship's 18-hole mark last season with a 65, has finished par or better in four of her last five rounds at the event.

After making the turn at 1-under 35, Dambaugh caught fire and closed her tournament with a back-nine 31 (-5). An eagle on the par-5 11th jumpstarted the junior's run, and Dambaugh carried that momentum down the stretch, as she birdied each of her final three holes. For the second-straight day, she reached the par-5 18th in two and had a putt for eagle that would of equaled her record-matching 65 from a year ago. Dambaugh settled for birdie and became the clubhouse leader before Torres carded a back-nine 33 (-3) to secure the individual title.

Ainhoa Olarra capped off her impressive postseason debut with a 1-under 71 on Sunday to finish eighth (217, +1). Olarra's three-day score of 217 marked a career low for the San Sebastian, Spain, native, who earned a top-10 finish for the second time this spring. She boasted 12 pars and one birdie through her first 13 holes in round three, and the sophomore ended her back nine with birdies on No. 15 and 18.

Senior Sarah Schmelzel marked the third Gamecock to post a score under par in the final round. She carded a 1-under 71 to move up 14 spots and finish in a tie for 44th place (230, +14). Playing in her final round at the SEC Championship, the Phoenix, Ariz., native turned in a near-flawless performance. Her lone bogey of the day came on the par-4 fourth, and she played her final 14 holes at 2-under following birdies on No. 5 and 8.

Junior Jia Xin Yang ended the tournament in a tie for 66th (239, +23) after shooting a final round 81 (+9). Freshman Marion Veysseyre shot a 14-over 86 in round three to place 70th (243, +27) in her postseason debut.

NCAA Baton Rouge Regional

University Club

May 5-7 • Baton Rouge, La.

Par 72 • 6,285 Yards

T1st of 18

TEAM SCORES

T1. South Carolina	290-277-290=857	(-7)
T1. Florida	293-287-277=857	(-7)
3. Washington	286-289-288=863	(-1)
4. Duke	298-287-285=870	(+6)
5. Oregon	292-296-294=882	(+18)
6. BYU	290-290-296=884	(+20)
7. Houston	295-300-290=885	(+21)
8. Arizona State	296-298-297=891	(+27)
T9. East Carolina	301-301-302=904	(+40)
T9. Harvard	308-295-301=904	(+40)
11. LSU	299-310-296=905	(+41)
12. NC State	307-307-293=907	(+43)
13. Augusta	311-301-301=913	(+49)
14. North Florida	322-300-303=925	(+61)
15. Denver	315-304-307=926	(+62)
16. New Mexico	313-309-305=927	(+63)
17. Wichita State	312-308-315=935	(+71)
18. Fairleigh Dickinson	322-313-321=956	(+92)

INDIVIDUAL MEDALIST

Katelyn Dambaugh, South Carolina 70-66-71=207 -9

GAMECOCKS

1. Katelyn Dambaugh	70-66-71=207	-9
T12. Sarah Schmelzel	75-69-72=216	E
T19. Marion Veysseyre	70-77-72=219	+3
29. Ainhoa Olarra	76-69-77=222	+16
T30. Isidora Nilsson	77-73-75=223	+21

BATON ROUGE, La. - For the second-straight season and the fourth time in the last seven years, the South Carolina women's golf program finished atop the leaderboard at an NCAA Regional. The No. 24 Gamecocks posted a final-round 290 (+2) on Saturday to earn a share of the NCAA Baton Rouge Regional title with a three-day total of 857 (-7). No. 5 Florida converted a birdie on its final hole of the tournament and fired a 277 (-11) in round three to rally from a 13-stroke deficit and match South Carolina's 54-hole total at University Club.

Junior Katelyn Dambaugh powered the Gamecocks to victory in historic fashion, matching the program's top 54-hole individual score (207, -9) on the way to her first career medalist honors. The Goose Creek, S.C., native tallied a tournament-best 16 birdies and finished under par in all three rounds throughout the week.

The Gamecocks, who distanced themselves from the field with a program-record 277 (-11) in round two, finished just four strokes off the school 54-hole record. Three golfers finished par or better for South Carolina on Saturday, including senior Sarah Schmelzel, who converted a clutch birdie putt on No. 17 to help secure the win. With the victory, the Gamecocks earned a spot in the 24-team field at the NCAA Championships, set for May 20-25 at Eugene Country Club in Eugene, Ore. No. 13 Washington, No. 4 Duke, No. 20 Oregon and BYU marked the other schools to qualify for the women's golf national championship event from the Baton Rouge Regional.

This week was the first victory of the season for South Carolina and the eighth time the Gamecocks have won a tournament under head coach Halen Anderson. Dambaugh becomes the 16th player in program history to earned medalist honors, and she is the third Gamecock to accomplish the feat at an NCAA postseason event. All four of South Carolina's NCAA Regional victories have come under Anderson.

Dambaugh carded a final-round 71 (-1), with all three of her birdies coming on the front nine. The junior finished her week ranked second in par-4 scoring and third in par-3 scoring, and her performance marked her third-straight top-three finish.

Schmelzel finished in a tie for 12th following her final-round 72 (E). The Phoenix, Ariz., native collected three birdies and played her last nine holes at 1-under (35) to end her week with a 216 (E). Schmelzel has placed in the top-15 at the NCAA regionals in each of the last two seasons.

Freshman Marion Veysseyre (T19), one of three South Carolina golfers making their NCAA postseason debut this week, marked the other Gamecock to garner a top-20 finish. She totaled a career-best 219 (+3) and finished par or better in two of her three rounds. Veysseyre registered six birdies in the final round, including three over her final six holes.

Sophomore Ainhoa Olarra and freshman Isidora Nilsson both ended their week just outside of the top-25 for the Gamecocks. Olarra (29th) posted a 77 (+5) on day three to finish with a 222 (+6), while Nilsson (T30) turned in her best 54-hole performance ever, a 7-over 223.



2016 NCAA CHAMPIONSHIP

May 20-25 • Eugene Country Club • Eugene, Ore. • Par 72 • 6,369 Yards
293-289-290-290=1162 • 7th of 24

TEAM RESULTS

- 1. *UCLA 286-291-285-282=1144 (-8)
- 2. *Stanford 295-283-290-279=1147 (-5)
- 3. *USC 289-280-290-291=1150 (-2)
- 4. *^Washington 289-285-292-286=1152 (E)
- 5. *Virginia 293-294-286-282=1155 (+3)
- 6. *Duke 299-280-296-296=1158 (+6)
- 7. ***South Carolina** **293-289-290-290=1162 (+10)**
- 8. *Oregon 297-282-291-296=1166 (+14)
- T9. Northwestern 292-289-295-291=1167 (+15)
- T9. Arizona 291-289-293-294=1167 (+15)
- 11. Oklahoma State 284-295-297-292=1168 (+16)
- T12. Arkansas 292-291-298-292=1173 (+21)
- T12. Alabama 300-292-290-291=1173 (+21)
- 14. North Carolina 298-292-291-294=1175 (+23)
- 15. Florida State 295-290-298-293=1176 (+24)
- 16. Tennessee 297-285-303=885 (+21)
- 17. Florida 297-293-296=886 (+22)
- T18. Michigan 296-299-292=887 (+23)
- T18. Georgia 298-291-298=887 (+23)
- 20. Furman 298-297-293=888 (+24)
- 21. Miami 299-292-299=890 (+26)
- 22. Ohio State 293-293-306=892 (+28)
- 23. Texas 301-290-306=897 (+33)
- 24. Brigham Young 294-306-298=898 (+34)

* Qualified for match play
^ 2016 NCAA Champions



T-11th • Katelyn Dambaugh

69-73-71-74=287 (-1)

--Earned First Team WGCA and *Golfweek* All-America honors, set the program record for single-season stroke average (71.62) and earned First Team All-SEC honors



T-16th • Ainhoa Olarra

73-71-73-71=288 (+E)

--Notched two top-20 finishes during the postseason, placing eighth at the SEC Championship and T-16th at the NCAA Championship



T-20th • Sarah Schmelzel

77-71-72-71=289 (+1)

--Received *Golfweek* All-America Honorable Mention accolades and recorded the program's fifth-lowest single-season stroke average (73.21)



T-73rd • Marion Veyseyre

78-79-74-74=305 (+17)

--Carded her lowest career 54-hole total (219) in her NCAA postseason debut at the Baton Rouge Regional on the way to a T-19th finish



81st • Isidora Nilsson

76-74-81-81=312 (+24)

--Appeared in seven tournaments played and earned her best career finish (T-30) at the NCAA Baton Rouge Regional





Gaby Amos (Fr., Gainesville, Fla.)

Tournament	Rounds	Finish
Ruth's Chris Tar Heel Invitational	80-81-71=232 (+16)	T64
Landfall Tradition*	79-84-79=242 (+26)	92
Bryan National Collegiate*	82-81-78=241 (+25)	64

Katelyn Dambaugh (Jr., Goose Creek, S.C.)

Tournament	Rounds	Finish
Mason Rudolph Championship	74-72-72=218 (+2)	T24
ANNIKA Intercollegiate	65-71-71=207 (-9)	3
Ruth's Chris Tar Heel Invitational	75-75-76=226 (+10)	T39
Landfall Tradition	72-72-68=212 (-4)	T2
FSU Match-Up	74-71-70=215 (-1)	T2
Darius Rucker Intercollegiate	75-72-70=217 (+4)	T7
Wildcat Invitational	69-73-74=216 (E)	9
Bryan National Collegiate	75-76-70=221 (+5)	T2
SEC Championship	72-71-66=209 (-7)	2
NCAA Baton Rouge Regional	70-66-71=207 (-9)	1
NCAA Championship	69-73-71-74=287 (-1)	T11

Marianna Monaco (Jr., Yonkers, N.Y.)

Tournament	Rounds	Finish
Darius Rucker Intercollegiate	79-74-81=234 (+21)	T80
Wildcat Invitational	78-73-78=229 (+13)	T52

Isidora Nilsson (Fr., Hilton Head, S.C.)

Tournament	Rounds	Finish
Mason Rudolph Championship	78-70-DQ=DQ	T52
ANNIKA Intercollegiate	80-76-78=234 (+18)	57
Ruth's Chris Tar Heel Invitational	77-82-77=236 (+20)	T80
Landfall Tradition	78-78-75=231 (+15)	T65
Darius Rucker Intercollegiate*	82-79-81=242 (+29)	89
NCAA Baton Rouge Regional	75-73-75=223 (+7)	T30
NCAA Championship	76-74-81-81=312 (+24)	81

Ainhua Olarra (So., San Sebastian, Spain)

Tournament	Rounds	Finish
Mason Rudolph Championship	80-78-72=230 (+14)	T71
ANNIKA Intercollegiate	74-77-73=224 (+8)	47
Ruth's Chris Tar Heel Invitational	75-78-73=226 (+10)	T39
Landfall Tradition	81-77-70=228 (+12)	T53
FSU Match-Up	74-70-75=219 (+3)	T8
Darius Rucker Intercollegiate	74-74-74=222 (+9)	T26
Wildcat Invitational	75-77-75=227 (+11)	T43
Bryan National Collegiate	73-78-75=226 (+10)	T15
SEC Championship	69-77-71=217 (+1)	8
NCAA Baton Rouge Regional	76-69-77=222 (+6)	29
NCAA Championship	73-71-73-71=288 (E)	T16



Katelyn Dambaugh's six top-five finishes were the most by a junior in program history.

Sarah Schmelzel (Sr., Phoenix, Ariz.)

Tournament	Rounds	Finish
Mason Rudolph Championship	75-75-75=225 (+9)	T52
ANNIKA Intercollegiate	70-69-71=210 (-6)	T7
Ruth's Chris Tar Heel Invitational	72-76-75=223 (+7)	T27
Landfall Tradition	71-77-70=218 (+2)	T16
FSU Match-Up	74-69-73=216 (E)	4
Darius Rucker Intercollegiate	77-72-74=223 (+10)	T35
Wildcat Invitational	76-71-73=220 (+4)	T18
Bryan National Collegiate	73-71-75=219 (+3)	1
SEC Championship	82-77-71=230 (+14)	T44
NCAA Baton Rouge Regional	75-69-72=216 (E)	T12
NCAA Championship	75-71-72-71=289 (+1)	T20

Marion Veysseyre (Fr., Lachapelle-Auzac, France)

Tournament	Rounds	Finish
FSU Match-Up	75-87-75=237 (+21)	T57
Darius Rucker Intercollegiate	77-73-75=225 (+12)	T39
Wildcat Invitational	77-73-81=231 (+15)	T59
Bryan National Collegiate	78-74-78=230 (+14)	T34
SEC Championship	81-76-86=243 (+27)	70
NCAA Baton Rouge Regional	70-77-72=219 (+3)	T19
NCAA Championship	78-79-74-74=305 (+17)	T73

Jia Xin Yang (So., Beijing, China)

Tournament	Rounds	Finish
Mason Rudolph Championship	75-74-76=225 (+9)	T52
ANNIKA Intercollegiate	77-77-82=236 (+20)	58
Ruth's Chris Tar Heel Invitational*	81-W-W	--
Landfall Tradition	80-81-76=237 (+21)	T83
FSU Match-Up	80-75-77=232 (+16)	T43
Darius Rucker Intercollegiate	79-79-80=236 (+23)	T84
Wildcat Invitational*	76-71-74=221 (+5)	T22
Bryan National Collegiate	76-79-79=234 (+18)	T49
SEC Championship	76-82-81=239 (+23)	T66

* Played as an individual; Score does not count toward team total



Sarah Schmelzel earned her first career medalist honors at the 2016 Bryan National Collegiate



2016 NCAA Baton Rouge Regional Champions

South Carolina collects its fourth NCAA Regional title in the last seven years

BATON ROUGE, La. - For the second-straight season and the fourth time in the last seven years, the South Carolina women's golf program finished atop the leaderboard at an NCAA Regional. The No. 24 Gamecocks posted a final-round 290 (+2) on Saturday to earn a share of the NCAA Baton Rouge Regional title with a three-day total of 857 (-7). No. 5 Florida converted a birdie on its final hole of the tournament and fired a 277 (-11) in round three to rally from a 13-stroke deficit and match South Carolina's 54-hole total at University Club.

Junior Katelyn Dambaugh powered the Gamecocks to victory in historic fashion, matching the program's top 54-hole individual score (207, -9) on the way to her first career medalist honors. The Goose Creek, S.C., native tallied a tournament-best 16 birdies and finished under par in all three rounds throughout the week.

The Gamecocks, who distanced themselves from the field with a program-record 277 (-11) in round two, finished just four strokes off the school 54-hole record. Three golfers finished par or better for South Carolina on Saturday, including senior Sarah Schmelzel, who converted a clutch birdie putt on No. 17 to help secure the win. With the victory, the Gamecocks earned a spot in the 24-team field at the NCAA Championships, set for May 20-25 at Eugene Country Club in Eugene, Ore. No. 13 Washington, No. 4 Duke, No. 20 Oregon and BYU marked the other schools to qualify for the women's golf national championship event from the Baton Rouge Regional.

This week was the first victory of the season for South Carolina and the eighth time the Gamecocks have won a tournament under head coach Kalen Anderson. Dambaugh becomes the 16th player in program history to earn medalist honors, and she is the third Gamecock to accomplish the feat at an NCAA postseason event. All four of South Carolina's NCAA Regional victories have come under Anderson.

Dambaugh carded a final-round 71 (-1), with all three of her birdies coming on the front nine. The junior finished her week ranked second in par-4 scoring and third in par-3 scoring, and her performance marked her third-straight top-three finish.

Schmelzel finished in a tie for 12th following her final-round 72 (E). The Phoenix, Ariz., native collected three birdies and played her last nine holes at 1-under (35) to end her week with a 216 (E). Schmelzel has placed in the top-15 at the NCAA regionals in each of the last two seasons.

Freshman Marion Veyseyre (T19), one of three South Carolina golfers making their NCAA postseason debut this week, marked the other Gamecock to garner a top-20 finish. She totaled a career-best 219 (+3) and finished par or better in two of her three rounds. Veyseyre registered six birdies in the final round, including three over her final six holes.

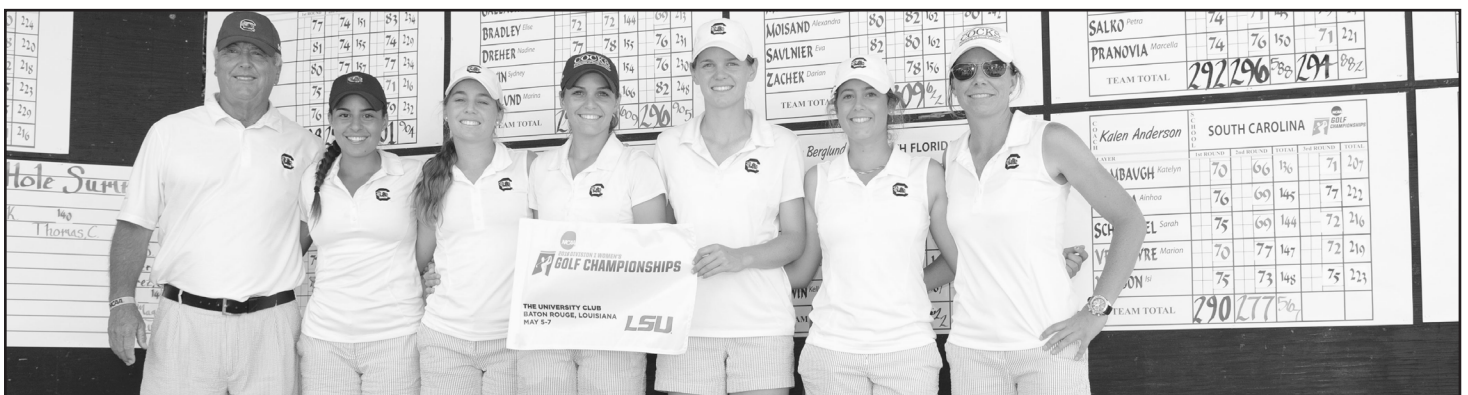
Sophomore Ainhoa Olarra and freshman Isidora Nilsson both ended their week just outside of the top-25 for the Gamecocks. Olarra (29th) posted a 77 (+5) on day three to finish with a 222 (+6), while Nilsson (T30) turned in her best 54-hole performance ever, a 7-over 223.



Katelyn Dambaugh matched the program's lowest 54-hole individual score (207) in Baton Rouge on the way to her first collegiate medalist honors

NOTABLES

- South Carolina's 857 was its second-lowest 54-hole total in NCAA Regional history.
- The Gamecocks are one of five schools to reach the NCAA Championship in each of the last seven years
- South Carolina was one of just three schools to have three golfers finish in the top-20 at University Club.





2015 NCAA East Regional Champions

South Carolina captures third NCAA East Regional crown since 2010 with a stellar second round

RALEIGH, N.C. - Top-seeded South Carolina fired a final-round 296 (+8) to clinch its third NCAA East Regional title since 2010 on Saturday at the Lonnie Poole Golf Course in Raleigh, N.C. The Gamecocks finished the tournament with a 54-hole score of 877 (+13) and captured the win by eight strokes to advance to their sixth-straight NCAA Championship. Senior Justine Dreher earned her sixth top-five finish of the season, finishing the weekend at even-par.

The Gamecocks entered the day with an eight-stroke lead after posting the only under-par team score of the tournament (-2, 286) on Friday. Alabama and LSU each made runs at the Gamecocks, particularly on the front nine when Alabama drew within five on a few occasions, but South Carolina fought its way through a difficult back nine to stay on top.

Dreher continued her career of strong postseason play, registering her second-straight top-five finish and her sixth of the season. Her 54-hole score of 216 (E) tied her for fifth with two others. After making the turn at 1-over, the senior played bogey-free on the back nine and holed a birdie on No. 15 to finish the day with a 72 (E).

Sophomore Katelyn Dambaugh turned in her best round of the weekend with a 2-under 70 on Saturday. She did not post a bogey on the front nine and made the turn at 3-under. She went 1-over on her final nine holes and posted her best career regional result in a tie for 12th at 5-over (221).

Junior Sarah Schmelzel also posted her best NCAA Regional finish. The Gamecock struggled after the turn and carded a final-round 77 (+5). With a three-round score of 220 (+4), Schmelzel captured 11th place, her best result since the season-opening Florida State Match-Up (T9) in February.

After a solid front nine, junior Mary Fran Hillow was 5-over on the back to card a third-round 77 (+5). Hillow was the fourth Gamecock to earn a top-25 result, tying for 22nd with a 54-hole score of 224 (+8).

After making the turn at 6-over, sophomore Jia Xin Yang battled on the back nine, carding eight pars and a birdie to also end the day at 5-over (77). Yang finished with a three-round score of 229 (+13, T48).

Also advancing to the NCAA Championships in Bradenton, Fla., are Northwestern (+21), host NC State (+23), Alabama (+24), LSU (+24) and Campbell (+28).

LSU's Madeline Sagstrom captured medalist honors by six strokes, finishing the weekend at 8-under (208). Coastal Carolina's Lena Schaeffner and LSU's Caroline Nistrup took second at 2-under, and Alabama's Emma Talley was fourth at 1-under. Dreher, Furman's Taylor Totland and NC State's Rachael Taylor tie for fifth (E).



The Gamecocks capture the moment after earning the 2015 NCAA East Regional championship and their sixth-straight trip to the NCAA Championships.

NOTABLES

- The Gamecocks depth was on display this week with a different Gamecock carding the low individual round each day of the regional.
- Each of South Carolina's three regional titles have come when the Gamecocks were placed in the East Regional.
- South Carolina has posted 10 top-five finishes this season, a new school record.





2012 NCAA East Regional Champions

South Carolina leads wire-to-wire to claim second East Regional title in three seasons.

STATE COLLEGE, Pa. – For the second time in three years, the South Carolina women's golf team claimed the NCAA East Regional title. The Gamecocks led wire-to-wire and wrapped up the tournament with a final-round 291 (+3) to win by five strokes on Saturday at the Penn State Golf Course.

Carolina held a seven-shot lead heading into the round and was never threatened as it went on to post a three-day total of 873 (+9), which ties for the fifth lowest 54-hole total in school history. The win is the Gamecocks' first since claiming the 2010 NCAA East Regional.

"It's unbelievable. To come out on top in such a deep regional, we just did a phenomenal job," South Carolina head coach Kalen Harris said. "We are lucky to come away with it. The team played so solid. They were mentally tough every day and just stayed in the present. That's more than we can ask for, and we just need to do that going into the NCAA Championship."

Texas A&M and Texas finished tied for second with a score of 878 (+14) to clinch two of the eight available spots for the NCAA Championships, while Alabama (879), Florida (879), Arizona State (887), Michigan State (887) and Duke (887) will also advance.

Sophomore Suzie Lee made sure the Gamecocks held on to first place by firing a career-low 68 (-4), which ties for the third lowest score by a sophomore in school history. Lee bounced back from Friday's 83 to climb the leaderboard and finish in a tie for 41st with a score of 224 (+8). She played her best golf of the season on the front nine, shooting a 4-under 32. The highlight of her round came on the par-4 sixth when she sank her approach shot from 127 yards for eagle.

"That's so impressive," Harris said. "She got off to a 1-under start. Then the eagle at No. 6 got her to 3-under, and she just kept it going. I couldn't be prouder of her for her comeback after an 83 (on Friday)."

Senior Katie Burnett carded a 1-over 73 and finished in a tie for third with a score of 216 (E). She came up three shots shy of forcing a playoff to play for her second medalist honor at the NCAA East Regional in three years. After shooting even par on the front side, she struggled at times on the back nine with three bogeys as she fell back to 2-over heading to the 18th tee box. However, she closed out the round on a positive note by making birdie on the final hole to secure the seventh top-five finish of her career, which moves her into a tie for fourth in top-five finishes all-time at South Carolina.

Junior Amanda Strang shot an even-par 72 to post a career-best NCAA Regional finish of a tie for 14th with a score of 220 (+4). After shooting a 3-over 39 on the front nine, she settled down to play her best nine holes of the tournament on the back side, recording birdies on three of her first four holes and making par the rest of the way to get back to even for the round.

Freshman Justine Dreher wrapped up an impressive NCAA Regional debut with a final-round 78 (+6). She finished the tournament in a tie for 19th with a score of 221 (+5). On the day, Dreher carded one birdie, three bogeys, two double bogeys and 13 pars. She played a key role in building Carolina's cushion heading into the final day with rounds of 70 (-2) and 73 (+1) on the first two days.

Junior Meredith Swanson turned in an 80 (+8) to finish in a tie for 87th. She produced one birdie on the day as she sank a three-foot putt on the par-4 13th after narrowly holing out on her approach shot from the rough.

Texas A&M's Katerina Ruzickova shot a 1-over 73 to hold on to win medalist honors with a score of 213 (-3).

The Gamecocks will now advance to the NCAA Championship for the fourth time in five years. This year's tournament will be held May 23-26 at the Vanderbilt Legends Club in Franklin, Tenn. South Carolina will be joined by SEC foes Alabama, Arkansas, Florida, LSU, Tennessee and Vanderbilt. The Gamecocks finished 18th at last year's NCAA Championship.

2012 NCAA WOMEN'S GOLF EAST REGIONALS CHAMPIONSHIPS LEADERS		
	TODAY	TOTAL
SOUTH CAROLINA	3	9
TEXAS A&M	2	14
TEXAS	6	14
ALABAMA	E	15
FLORIDA	2	15
ARIZONA STATE	E	23
MICHIGAN STATE	5	23
DUKE	4	23
ARIZONA	5	27
CAMPBELL	2	29
OKLAHOMA STATE	1	32
KENT STATE	1	32
WAKE FOREST	E	32
CENTRAL FLORIDA	3	35
M. ND		35
N. ESTEFAN	1	36
ROST. IT		36
	4	67

The Gamecocks won the 2012 NCAA East Regional title by five strokes with a three-round total of 873, which tied for the fifth lowest 54-hole total in school history.



2010 NCAA East Regional Champions

South Carolina holds off Tennessee by two strokes to win first regional title in program history; Burnett shoots 210 (-6) to take medalist honors.

GREENVILLE, N.C. – It finally all came together.

After going five years without a team tournament victory of any kind, the South Carolina women's golf team took down some of the nation's best teams in winning the NCAA East Regional on Saturday, posting a 54-hole score of 864 (E) to defeat Tennessee by two shots.

The key component of the Gamecocks' team victory came in the person of sophomore Katie Burnett, who shot a closing round of 71 (-1) to earn medalist honors for the first time in her collegiate career with a 3-day total of 210 (-6), one shot ahead of Auburn's Carlie Yadloczky.

"I'm really proud of them," coach Kalen Harris said. "They played really steady for three days, and played very well under really windy conditions today. We've been knocking on the door for a couple of tournaments now where they've been close and just haven't finished one, but they finished one at the right time (today) and I'm really proud of them."

The Gamecocks posted the best team round of the final day at 290 (+2) to overcome a five-shot deficit entering Saturday's third round. Duke, who led after two rounds of play, fell back to a tie for third after a closing round of 300 (+12). Tennessee, meanwhile, traded the lead with South Carolina and Duke for most of the day, but struggled down the stretch to post a final-day score of 296 (+8).

Carolina traded the lead back and forth with Duke, Tennessee, Auburn and Pepperdine throughout the day, but it appeared late in the day that it would come down to a duel with the Lady Vols. But the Gamecocks, as a team, were 3-under over their final three holes of the day while Tennessee was 1-over in that same stretch on the back nine, including one double-bogey at 18 that proved to be the difference.

Burnett was steady as a rock throughout the day and throughout the tournament. On a day when par was a very good score, the sophomore from Brunswick, Ga., had 15 of them. She first moved into red figures with a birdie at the dogleg-left par-4 14th, then saw a putt at the 18th just miss as she made the turn at 1-under. She faced a tough start to the more-exposed front nine as she fought her way out of a fairway bunker to make bogey at No. 2, then had a birdie putt at No. 4 lip out. She took dead aim at the par-5 seventh hole to card what would be the clinching birdie, then made pars at the eighth and ninth to hold on for the victory.

"To be honest, I don't think it's really hit me yet," Burnett said. "I'm still a little speechless at the moment. But I really couldn't be happier. I missed a few putts here and there, but I knew that if I kept playing the way I was playing, a few putts would fall coming down to the end."

Coming to the ninth and final hole, Burnett hit her approach past the flag to about 12 feet, but didn't know if she needed to make it to secure the victory. It turned out that all she needed was a two-putt for par, and that's what she managed to do as the awaiting Gamecock team stormed the green for hugs and high-fives all around.

Burnett's round of 210 ties for the fifth-best 54-hole individual total in school history, equaling an effort by Siew-Ai Lim at the 1994 Carolyn Cudone Invitational. In addition to becoming the 12th different Gamecock women's golfer to win an individual title, she is the third to win an NCAA East Regional. Teammate Benedicte Toumpsin won the 2008 event in Athens, Ga., and Lim was the medalist at the 1995 regional in Memphis, Tenn.

But it wasn't just Burnett's effort that led to the 17th team title in program history. Toumpsin turned in her second-straight round of even-par 72 to post a three-day total of 218 (+2) and a likely top-20 finish. She started off her final round with eight consecutive pars before coming to the 18th hole that had been a death trap for the Gamecocks all week. The pond down the left side claimed Toumpsin's tee shot, and she settled for a bogey to make the turn at 1-over. She would get that stroke right back at No. 1 with a birdie, then rolled off five more pars before running into trouble at No. 7. After an errant drive forced a layup, she hit her third shot into the hazard. But somehow, she was able to get up and down for bogey to minimize the damage. And once again, she fought right back for a birdie at No. 8 to get back to even par; a par at the ninth finished a strong day.

Senior Corrine Carr was the second-highest finisher for the Gamecocks, fighting her way to a closing 74 (+2) to finish at 217 (+1) overall, also a likely top-20 placement. Carr fought off bogeys at 12 and 13 by making back-to-back birdies at 14 and 15, then dropped another shot after a three-putt bogey at 16. She would hold on to par 17 and 18, then rolled off three more pars before bogeys at the windswept fourth and fifth holes. She would get one shot back with birdie at the seventh, then made two pars to close. Her 54-hole total of 217 equals a career-best, which previously came at the Mercedes-Benz Collegiate earlier this season.

Amanda Strang recovered from a tough 79 in Friday's second round to sign for a 73 (+1) Saturday, a six-shot improvement for the freshman. Standing 2-over after bogeys at 11 and 18, she finally got one stroke back with a birdie at the par-4 fifth. A bogey at No. 6 dropped her back to 2-over, then she made back-to-back birdies at the par-5 seventh and the lengthy par-3 eighth. However, a missed four-footer at nine kept her from level par as she finished 1-over for the day, 6-over for the week.

Taylor Barrett, the third senior on the Gamecock roster, was consistent throughout the week as she carded rounds of 76 (+4) all three days. A bogey-birdie start preceded six straight pars to keep her even as she came to the 18th. As with two of her teammates, she found rough going on the course's closing hole and made bogey to make the turn at 1-over. The wind got the best of her on the opening holes of the front nine as she made bogey on Nos. 1, 2 and 5, but recovered to post four straight pars to close a solid tournament.

South Carolina joined fellow SEC schools Tennessee, Auburn and Vanderbilt in advancing to the NCAA Championship, which runs May 18-21 at the Country Club of Landfall in Wilmington, N.C. Other schools advancing from the East Regional included Duke, Tulane, Pepperdine and TCU. Burnett's victory came by one shot over Auburn's Carlie Yadloczky, with Texas Tech's Rosalyn Kim earning the individual invitation to the NCAA Championships with her third-place finish at 4-under. First-round leader Nina Muehl of East Tennessee State tied for fourth place at 3-under with Tennessee freshman Erica Popson, the SEC runner-up.



Head Coach Kalen Anderson, Taylor Barrett, Benedicte Toumpsin, Katie Burnett, Amanda Strang, Corrine Carr, Director of Golf Puggy Blackmon.



1993 - 7th of 18
Santa Maria Golf Course
May 13-15 • Baton Rouge, La.
308-305-307=920

Siew Ai Lim	71-78-75=224	10th
Clarissa Childs	82-76-72=230	29th
Kerry Zebick	76-77-79=232	34th
Rachel Bates	79-78-81=238	62nd
Tara Joy	82-74-84=240	71st

1994 - 10th of 19
Forest Akers Country Club
May 12-14 • East Lansing, Mich.
326-313-320=959

Siew Ai Lim	75-75-77=227	6th
Rebekah Lee	82-80-79=241	T-42nd
Clarissa Childs	84-79-79=242	T-46th
Jill Darr	86-79-89=254	T-90th
Lea Bagwell	85-86-85=256	96th

1995 - 4th of 19
Quail Ridge Country Club
May 11-13 • Memphis, Tenn.
298-307-306=911

Siew Ai Lim	73-71-70=214	1st
Clarissa Childs	79-76-78=233	T-46th
Rebekah Lee	73-80-82=235	T-57th
Julie Norris	75-80-82=237	T-67th
Karin Fries	77-84-76=237	T-67th

1996 - T-5th of 19
Grand National Lakes Course
May 9-11 • Auburn, Ala.
307-303-309=919

Clarissa Childs	77-71-78=226	T-12th
Siew Ai Lim	76-75-77=228	T-18th
Rebekah Lee	77-75-81=233	T-32nd
Karin Fries	77-82-76=235	T-40th
Libby Howard	87-82-78=247	T-83rd

1997 - 13th of 18
Prairie Vista Golf Course
May 8-10 • Normal, Ill.
320-333-317=970

Rebekah Lee	74-82-77=233	T-9th
C. Faaborg-Andersen	84-84-77=245	T-57th
Emma Lofgren	82-85-78=245	T-57th
Libby Howard	80-83-85=248	T-75th
Karin Fries	84-84-86=254	T-97th

1999 - 7th of 19
The University Club
May 6-8 • Blythewood, S.C.
299-302-307=908

Cecilia Ekelundh	73-79-75=227	T-27th
Emma Lofgren	75-74-79=228	T-33rd
Lotte Moeller	79-70-79=228	T-33rd
Stefanie Reynolds	76-80-74=230	T-47th
Apryl Arrants	75-79-79=233	T-60th

2000 - 18th of 24
OSU Scarlet Course
May 11-13 • Columbus, Ohio
306-314-314=934

Kristy McPherson	73-81-76=230	T-40th
Stefanie Reynolds	79-76-79=234	T-65th
Kacy Thompson	77-78-79=234	T-65th
Emma Lofgren	77-79-84=240	T-94th
Apryl Arrants	79-91-80=250	T-118th

2001 - 6th of 21
Finley Golf Course
May 10-12 • Chapel Hill, N.C.
305-293-306=904

Kristy McPherson	73-69-72=214	3rd
Stefanie Reynolds	78-72-78=228	T-30th
Marci Robinson	75-75-78=228	T-30th
Sarah Kidd	80-77-85=242	T-70th
Kacy Thompson	79-88-78=245	T-73rd

2002 - 6th of 21
The University Club
May 9-11 • Baton Rouge, La.
298-293-298=889

Adrienne Gautreaux	75-69-74=218	T-9th
Marci Robinson	74-74-76=224	T-41st
Kacy Thompson	78-74-73=225	T-45th
Kristy McPherson	75-76-75=226	T-54th
Reetta Laakkonen	74-77-80=231	T-70th

2003 - 7th of 21
Salem Glen Country Club
May 8-10 • Clemmons, N.C.
303-287-294=884

Kristy McPherson	68-71-70=209	2nd
Adrienne Gautreaux	80-72-73=225	T-40th
Marci Robinson	81-70-76=227	T-54th
Kacy Thompson	80-74-75=229	T-64th
Tiffany Catafygiotu	75-82-76=233	T-79th

2004 - 15th of 21
Mission Inn Resort
May 6-8 • Howey-In-The-Hills, Fla.
303-287-294=884

Adrienne Gautreaux	71-77-74=222	T-9th
Jenna Pearson	83-76-82=241	T-69th
Erica Battle	84-82-77=243	T-78th
Marci Robinson	79-85-81=245	T-83rd
Kory Thompson	83-85-84=252	T-92nd

2005 - 9th of 21
University of Florida Golf Course
May 5-7 • Gainesville, Fla.
293-307-303=903

Jenna Pearson	70-77-72=219	14th
Whitney Simons	73-75-76=224	T-28th
Erica Battle	72-78-79=229	T-51st
Caroline Rominger	81-77-77=235	T-77th
Blythe Worley	78-81-78=237	T-81st

2006 - 13th of 21
Bryan Park Champions Course
May 11-13 • Browns Summit, N.C.
296-297-304=897

Blythe Worley	75-74-73=222	34th
Laura Raffo	73-75-78=226	T-54th
Erica Battle	72-74-81=227	T-61st
Jenna Pearson	76-74-77=227	T-61st
Whitney Simons	76-80-76=232	T-86th

2007 - T-9th of 21
The University Club
May 10-12 • Baton Rouge, La.
290-289-295=875

Bénédicte Toumpsin	72-73-72=217	T-26th
Camila Mori	73-72-73=218	T-36th
Blythe Worley	72-72-74=218	T-36th
Whitney Simons	73-73-76=222	T-56th
Jenna Pearson	73-72-78=223	T-59th

2008 - T-6th of 21
UGA Golf Course
May 8-10 • Athens, Ga.
291-303-305=899

Bénédicte Toumpsin	68-70-76=214	1st
Camila Mori	74-76-75=225	T-24th
Blythe Worley	75-78-77=230	T-48th
Whitney Simons	78-79-77=234	T-68th
Taylor Barrett	74-80-81=235	T-68th

2009 - 12th of 21
Mark Bostick Golf Course
May 7-9 • Gainesville, Fla.
308-290-299=897

Bénédicte Toumpsin	79-71-71=221	T-30th
Katie Burnett	75-72-75=222	T-34th
Corrine Carr	75-76-76=227	T-58th
Taylor Barrett	80-72-77=229	T-67th
Meredith Taylor	79-75-81=235	T-84th

2010 - 1st of 24
Ironwood Golf & Country Club
May 6-8 • Greenville, N.C.
283-291-290=864

Katie Burnett	67-72-71=210	1st
Corrine Carr	72-71-74=217	T-13th
Bénédicte Toumpsin	74-72-72=218	T-19th
Amanda Strang	70-79-73=222	T-39th
Taylor Barrett	76-76-76=228	T-73rd

2011 - 6th of 24
Washington National Golf Course
May 5-7 • Auburn, Wash.
303-299-300=902

Suzie Lee	77-72-73=222	T-15th
Samantha Swinehart	75-71-76=222	T-15th
Katie Rose Higgins	76-78-76=230	T-49th
Katie Burnett	75-81-75=231	T-52nd
Amanda Strang	79-78-81=238	T-84th

2012 - 1st of 24
Penn State Golf Course
May 10-12 • State College, Pa.
288-294-291=873

Katie Burnett	72-71-73=216	T-3
Amanda Strang	73-75-72=220	T-14th
Justine Dreher	70-73-78=221	T-19th
Suzie Lee	73-83-68=224	T-41st
Meredith Swanson	78-75-80=233	T-87th

2013 - 4th of 24
Stanford Golf Course
May 9-11 • Stanford, Calif.
296-285-293=874

Suzie Lee	73-71-73=217	T-14th
Meredith Swanson	75-70-73=218	T-18th
Sarah Schmelzel	76-72-74=222	T-33th
Justine Dreher	72-78-73=223	T-39th
Mary Fran Hillow	82-72-78=232	T-85th

2014 - 2nd of 24
SouthWood Golf Club
May 8-10 • Tallahassee, Fla.
291-283-285=854

Justine Dreher	75-70-66=211	T-4th
Samantha Swinehart	73-70-69=212	T-7th
Katelyn Dambaugh	76-70-71=217	T-24th
Sarah Schmelzel	71-73-74=218	T-29th
Suzie Lee	72-78-74=224	T-65th

2015 - 1st of 18
Lonnie Poole Golf Course
May 7-9 • Raleigh, N.C.
295-286-296=877

Justine Dreher	71-73-72=216	T-5th
Sarah Schmelzel	74-69-77=220	11th
Katelyn Dambaugh	78-73-70=221	T-12th
Mary Fran Hillow	76-71-77=224	T-22nd
Jia Xin Yang	74-78-77=229	T-48th

2016 - T-1st of 18
University Club
May 5-7 • Baton Rouge, La.
290-277-290=857

Katelyn Dambaugh	70-66-71=207	1st
Sarah Schmelzel	75-69-72=216	T-12th
Marion Veyseyre	70-77-72=219	T-19th
Ainhoa Olarra	76-69-77=222	29th
Isidora Nilsson	75-73-75=223	T-30th



1987 - T-14th of 17
The Championship Course at UNM
May 27-30 • Albuquerque, N.M.
298-303-304-320=1225

Marianne Morris	75-74-72-76=297	T-15th
Truie Timmons	74-77-78-78=307	T-60th
Kim Belk	74-76-77-83=310	T-73rd
Kelly Brannon	75-76-78-83=312	T-77th
Elizabeth Macfie	80-85-77-83=325	T-102nd

1993 - 12th of 17
UGA Golf Course
May 26-29 • Athens, Ga.
309-310-315-304=1238

Tara Joy	79-79-77-73=308	T-41st
Rachel Bates	75-76-77-83=311	T-49th
Siew Ai Lim	77-77-82-76=312	T-53rd
Kerry Zebick	78-78-79-80=315	T-61st
Clarissa Childs	83-80-82-75=320	T-74th

1995 - T-9th of 18
Pete Dye Course at Landfall
May 24-27 • Wilmington, N.C.
299-300-297-308=1204

Siew Ai Lim	74-73-73-73=293	T-9th
Clarissa Childs	71-75-74-76=296	T-14th
Rebekah Lee	77-74-75-80=306	T-44th
Karin Fries	77-78-75-81=311	T-67th
Katie Weiss	83-89-86-79=337	T-99th

1996 - 14th of 18
LaQuinta Dunes Golf Resort
May 22-25 • Palm Springs, Calif.
334-311-329-321=1295

Siew Ai Lim	78-74-84-70=306	T-6th
Libby Howard	87-76-79-82=324	T-51st
Clarissa Childs	84-79-81-83=327	T-61st
Rebekah Lee	87-72-85-86=340	T-86th
Karin Fries	85-87-90-90=352	T-94th

1999 - 14th of 19
Tulsa Country Club
May 19-22 • Tulsa, Okla.
313-313-315=941

Cecilia Ekelundh	78-76-77=231	T-35th
Emma Lofgren	79-77-80=236	T-57th
Apryl Arrants	76-78-83=237	T-63rd
Lotte Moeller	80-82-80=242	T-77th
Stefanie Reynolds	82-84-78=244	T-85th

2001 - 24th of 24
Mission Inn Resort
May 22-25 • Howey-In-The-Hills, Fla.
308-323-311-312=1254

Kristy McPherson	75-83-72-73=303	T-44th
Marci Robinson	76-77-81-79=313	T-88th
Stefanie Reynolds	78-83-78-78=317	T-100th
Sarah Kidd	79-80-85-84=328	T-114th
Kacy Thompson	81-86-80-82=329	T-116th

2002 - 23rd of 24
Univ. of Washington Golf Course
May 21-24 • Auburn, Wash.
298-298-308-313=1217

Kristy McPherson	76-71-74-79=300	T-55th
Reetta Laakkonen	72-74-80-75=301	T-60th
Adrienne Gautreaux	74-75-78-81=308	T-95th
Kacy Thompson	76-78-77-78=309	T-99th
Marci Robinson	76-78-79-81=314	112th

2003 - 17th of 24
Birck Boilermaker Golf Course
May 20-23 • West Lafayette, Ind.
318-318-309-303=1248

Kristy McPherson	79-78-75-73=305	T-39th
Adrienne Gautreaux	80-79-75-76=310	T-61st
Tiffany Catafygiotu	79-81-78-75=313	T-76th
Kacy Thompson	80-81-81-79=321	T-90th
Marci Robinson	85-80-81-82=328	T-115th



The 2012 Gamecocks posted the best NCAA Championship finish in school history, claiming fifth place at the Vanderbilt Legends Club in Franklin, Tenn.

2008 - 22nd of 24
UNM Championship Course
May 20-23 • Albuquerque, N.M.
306-316-310-303=1235

Camila Mori	78-73-76-74=301	T-41st
Bénédicte Toumpsin	76-79-76-72=303	T-48th
Blythe Worley	75-85-79-76=315	T-96th
Whitney Simons	77-83-79-82=321	T-114th
Taylor Barrett	84-81-82-81=328	T-122nd

2010 - T-14th of 24
Country Club of Landfall (Dye)
May 18-21 • Wilmington, N.C.
300-297-293-296=1186

Katie Burnett	72-74-69-71=286	T-9th
Corrine Carr	76-75-76-71=298	T-54th
Bénédicte Toumpsin	77-75-72-77=301	T-67th
Amanda Strang	75-73-81-77=306	T-99th
Taylor Barrett	77-76-76-78=307	T-102nd

2011 - 18th of 24
Texas A&M Traditions Club
May 18-21 • College Station, Texas
302-315-298-296=1211

Katie Burnett	71-80-70-78=299	T-37th
Samantha Swinechart	78-77-77-71=303	T-55th
Amanda Strang	75-79-75-76=305	T-65th
Suzie Lee	78-83-76-71=308	T-80th
Katie Rose Higgins	84-79-79-80=322	T-115nd

2012 - 5th of 24
Vanderbilt Legends Club
May 22-25 • Franklin, Tenn.
302-281-300-293=1176

Katie Burnett	74-67-74-73=288	5th
Amanda Strang	75-73-76-70=294	T-21st
Meredith Swanson	76-71-75-78=300	T-59th
Justine Dreher	77-77-75-75=304	T-77th
Suzie Lee	79-70-81-75=305	T-84th

2013 - 20th of 24
UGA Golf Course
May 21-24 • Athens, Ga.
304-305-292-310=1211

Justine Dreher	77-77-73-73=300	T-48th
Suzie Lee	74-78-75-77=304	T-68th
Sarah Schmelzel	76-80-70-79=305	T-73rd
Meredith Swanson	79-74-74-82=309	T-97th
Mary Fran Hillow	77-76-79-81=313	T-109th

2014 - 13th of 24
Tulsa Country Club
May 20-23 • Tulsa, Okla
301-299-283-281=1164

Samantha Swinechart	73-76-68-67=284	T-13th
Suzie Lee	75-78-71-71=295	T-67th
Justine Dreher	80-73-73-70=296	T-74th
Katelyn Dambaugh	75-77-73-73=298	T-80th
Sarah Schmelzel	78-73-71-76=298	T-80th

2015 - 17th of 24
The Concession Golf Club
May 22-27 • Bradenton, Fla.
308-322-302=932

Justine Dreher	76-76-74-72=298 (+10)	T-16th
Katelyn Dambaugh	70-82-74-77=303 (+13)	T-32nd
Jia Xin Yang	79-77-74=230 (+14)	T-45th
Mary Fran Hillow	83-87-81=251 (+35)	T-123rd
Sarah Schmelzel	85-90-80=255 (+39)	128th

2016 - 7th of 24
Eugene Country Club
May 20-25 • Eugene, Ore.
308-322-302=932

Katelyn Dambaugh	69-73-71-74=287 (-1)	T-11th
Ainhóa Olarra	73-71-73-71=288 (E)	T-16th
Sarah Schmelzel	77-71-72-71=289 (+1)	T-20th
Marion Veyseyre	78-79-74-74=305 (+17)	T-73rd
Isidora Nilsson	76-74-81-81=312 (+24)	81st

Individual Gamecocks in NCAA Championships

May 28-31, 1986
OSU Golf Course • Columbus, Ohio
 Marianne Morris 76-76-78-75=305 38th

May 23-26, 1990
Arthur Hills GC • Hilton Head, S.C.
 Debbie Eckroth 80-82-77-72=311 35th

May 25-28, 1994
Oregon Golf Club • Eugene, Ore.
 Siew Ai Lim 75-74-79-80=308 20th

May 21-24, 1997
OSU Scarlet Course • Columbus, Ohio
 Rebekah Lee 80-73-76-80=309 61st

May 18-21, 2004
Grand National Lake Course • Auburn, Ala.
 Adrienne Gautreaux 72-78-70=293 22nd

May 17-20, 2005
Meadows Golf Course • Sunriver, Ore.
 Jenna Pearson 79-79-72-73=303 60th



2002 SEC Champions

South Carolina knocks off top-ranked Auburn by three strokes to claim first SEC crown; McPherson earns medalist honors for second-straight year.

No. 25 South Carolina captured the women's golf program's first Southeastern Conference Championship behind a school-record three-day total of 861. The Gamecocks finished three shots ahead of Auburn after entering the final round tied with the top-ranked team.

While the Gamecocks were posting their first team title, junior All-American Kristy McPherson made it a clean sweep as she became just the second player in SEC women's golf history to win back-to-back individual titles. She carded a three-day 209 to win the title by two strokes over Vanderbilt's Nicki Cutler. McPherson continued her mastery of the SEC Tournament by posting her sixth-straight sub-par round in the event and, after opening last year's tournament with a five-under 67, has led each round in the SEC Championship over the last two seasons. The only other SEC women's golfer to earn back-to-back SEC individual titles was Florida's Deb Richard, who won three-consecutive crowns from 1982-84.

"I'm so proud of the ladies," said head coach Kristi Coggins. "They played with so much heart and fought until the final putt dropped. Our goal was to be in contention coming into the final round because we have played so well all spring on the last day.

The Gamecocks picked the right time to crush the previous school record for team tournament score, topping it by 23 strokes. The 861 was also three strokes better than the SEC Championship record of 864 set by Georgia at the 1988 event at Gulf Breeze, Fla. Prior to posting 290 or lower in all three rounds at the event, Carolina had turned in just four sub-300 rounds all season.

South Carolina shot its highest score of the tournament in the final round, but played a solid back nine to recapture the lead and hold on. USC stood at five-over par after the first nine holes and fell three strokes behind No. 9 Tennessee, which was eight-under at the turn. But the Lady Vols cooled down, and the Gamecocks played the back nine collectively at three-under to win the title. Carolina handed Auburn its fifth second-place showing on the year to go along with its five tournament victories. Tennessee finished third, five shots off the pace.

In the individual competition, McPherson got a scare from Vanderbilt's Nicki Cutler, who finished before her and was in the clubhouse with a five-under 211 after a final-round 67. Tied with Cutler entering the final six holes, McPherson carded three birdies down the stretch and earned the win. Her 209 was the second-best individual three-round score in SEC Tournament history, two strokes off the previous record of 207, which she shot in 2001.

"Every putt ... every shot ... all I wanted to do was make it for the team," McPherson said. "(Winning the individual title) this year is so much better because the team won. It was awesome last year – don't get me wrong – but I get to share it with the team this season. I was thinking about team honors all weekend, and it just so happened that the individual victory came around."

Junior Kacy Thompson of Columbia fell from fourth to 15th place with a final-round 79 (219 total). Junior Adrienne Gautreaux had a three-over 75 on the last day and finished tied for 17th place at 222. Reetta Laakkonen had a three-day total of 223 and finished tied for 18th place, thanks to second- and third-round 71s, which tied her lowest career rounds. Sophomore Marci Robinson had a one-over 73 in the last round and tied for 22nd place.



Head coach Kristi Coggins, Adrienne Gautreaux, Marci Robinson, Kristy McPherson, Reeta Laakkonen, Kacy Thompson and assistant coach Clarissa Childs.

2002 SEC Championship

Univ. of Georgia Golf Course :: Par 72 :: 6,104 yards

Team Standings

1. South Carolina	289-282-290=861
2. Auburn	280-291-293=864
3. Tennessee	295-282-289=866
4. Vanderbilt	300-294-281=875
5. Georgia	298-302-288=888
6. Florida	298-295-304=897
7. Alabama	305-306-307=918
8. LSU	303-313-305=921
9. Mississippi State	317-310-302=929
Ole Miss	310-314-305=929
11. Arkansas	320-301-313=934
12. Kentucky	312-317-315=944

Individual Top 25

1. Kristy McPherson (S. Car.)	69-69-71=209 (-7)
2. Nicki Cutler (Vanderbilt)	72-72-67=211 (-5)
3. Celeste Troche (Auburn)	70-71-71=212 (-4)
Young-A Yang (Tennessee)	69-72-71=212 (-4)
5. Meredith Duncan (LSU)	69-75-71=215 (-1)
Mary Jan Fernandez (Tenn.)	77-66-72=215 (-1)
Tina Schneeberger (Tenn.)	71-71-73=215 (-1)
8. Danielle Downey (Auburn)	69-76-72=217 (+1)
9. Angela Jerman (Georgia)	74-74-70=218 (+2)
10. Sarah Jacobs (Vanderbilt)	76-71-72=219 (+3)
Diana Ramage (Auburn)	70-75-74=219 (+3)
Summer Sirmons (Georgia)	73-75-71=219 (+3)
Courtney Swaim (Auburn)	71-72-76=219 (+3)
14. Sarah Johnston (Alabama)	75-72-73=220 (+4)
15. Kacy Thompson (S. Carolina)	72-70-79=221 (+5)
Courtney Wood (Vanderbilt)	78-75-68=221 (+5)
17. Adrienne Gautreaux (S. Car.)	75-72-75=222 (+6)
18. Jeanne Cho (Florida)	76-75-72=223 (+7)
Whitney Code (Florida)	70-73-80=223 (+7)
Elizabeth Hoffman (Ole Miss)	76-76-71=223 (+7)
Reetta Laakkonen (S. Carolina)	81-71-71=223 (+7)
22. Natalia Nicholls (Georgia)	76-75-74=225 (+9)
Marci Robinson (S. Carolina)	73-79-73=225 (+9)
Brittany Straza (Florida)	76-74-75=225 (+9)
Meredith Ward (Vanderbilt)	74-77-74=225 (+9)





Metro Conference

1988-91

1988 - 2nd of 4 Sandestin Resort
May 4-6 • Destin, Fla.
315-312-304=931

Elizabeth Macfie	75-77-75=227	3rd
Kim Belk	79-78-77=234	6th
Liz Galbraith	82-78-75=235	T-7th
Cathy Rumpfelt	84-79-77=240	T-9th
Aileen Robertson	79-85-82=246	14th

1989 - 2nd of 4 Sandestin Resort
May 5-7 • Destin, Fla.
308-307-304=919

Debbie Eckroth	78-72-72=222	1st
Kim Belk	74-73-79=226	3rd
Cathy Rumpfelt	79-80-76=235	T-8th
Aileen Robertson	77-82-77=236	10th
Vikki Valentine	84-84-80=248	13th

1990 - 1st of 5 Sandestin Resort
May 4-6 • Destin, Fla.
304-310-304=918

Aileen Robertson	75-77-73=225	2nd
Vikki Valentine	74-77-77=228	4th
Debbie Eckroth	77-78-75=230	5th
Sofia Gervas	78-78-79=235	8th
Cathy Rumpfelt	85-79-80=244	11th

1991 - 3rd of 5 Sandestin Resort
April 27-28 • Destin, Fla.
313-333=646

Debbie Eckroth	77-82=159	9th
Aileen Robertson	79-81=160	10th
Rachel Bates	77-86=163	11th
Vikki Valentine	80-84=164	12th
Sofia Gervas	84-86=170	16th

1992 - 3rd of 10 Santa Maria Golf Course
May 11-13 • Baton Rouge, La.
304-304-304=912

Vikki Valentine	76-74-72=222	5th
Lea Bagwell	76-75-76=227	11th
Debbie Eckroth	79-74-78=231	T-16th
Margaret Hickey	73-81-78=232	18th
Rachel Bates	84-86-78=248	T-42nd

Southeastern Conference

1992-present

1993 - 3rd of 11 Colonial Country Club
April 30-May 2 • Jackson, Miss.
301-315=616

Rachel Bates	75-79=154	T-11th
Clarissa Childs	72-82=154	T-11th
Siew Ai Lim	76-80=156	T-15th
Tara Joy	81-76=157	T-18th
Kerry Zebick	78-80=158	T-21st

1994 - 5th of 11 Old Waverly Golf Club
April 29-May 1 • West Point, Miss.
291-292-321=904

Lea Bagwell	73-73-78=224	T-7th
Siew Ai Lim	71-72-81=224	T-7th
Rebekah Lee	75-73-78=226	T-12th
Clarissa Childs	72-74-84=230	T-20th
Jill Darr	83-80-86=249	T-50th

1995 - 2nd of 11 Legends Club of Tennessee
April 21-23 • Franklin, Tenn.
310-303-308=921

Clarissa Childs	76-72-77=225	T-3rd
Siew Ai Lim	81-73-73=227	5th
Rebekah Lee	83-75-76=234	T-12th
Karin Fries	74-83-83=240	25th
Julie Norris	79-85-82=246	T-37th

1996 - T-3rd of 12 Willow Creek Golf Club
April 19-21 • Knoxville, Tenn.
310-300=610

Siew Ai Lim	74-72=146	T-2nd
Rebekah Lee	78-76=154	T-11th
Clarissa Childs	78-78=156	T-22nd
Libby Howard	80-76=156	T-22nd
Karin Fries	84-76=160	T-32nd

1997 - 4th of 12 The University Club
April 18-20 • Blythewood, S.C.
317-294-299=910

C. Faaborg-Andersen	80-74-71=225	T-6th
Rebekah Lee	78-72-75=225	T-6th
Libby Howard	79-74-75=228	T-14th
Karin Fries	85-75-78=238	T-35th
Emma Lofgren	80-74-85=239	T-38th

1998 - 8th of 12 Riverchase Country Club
April 17-19 • Tuscaloosa, Ala.
318-312-303=933

Lotte Moeller	77-74-75=226	11th
Emma Lofgren	81-80-72=233	T-27th
Apryl Arrants	77-80-78=235	29th
Libby Howard	84-78-78=240	T-43rd
Abby Derman	83-84-84=251	T-56th

1999 - 10th of 12 Grand National Lake Course
April 16-18 • Opelika, Ala.
318-314-320=952

Cecilia Ekelundh	77-73-80=230	T-9th
Emma Lofgren	78-79-80=237	T-27th
Stefanie Reynolds	80-80-78=238	T-32nd
Lotte Moeller	83-82-83=248	T-46th
Apryl Arrants	84-83-82=249	51st

2000 - 8th of 12 Pinnacle Country Club
April 21-23 • Rogers, Ark.
314-326-319=959

Kristy McPherson	77-79-74=230	T-11th
Apryl Arrants	80-82-81=243	T-37th
Emma Lofgren	79-86-79=244	T-41st
Stefanie Reynolds	78-84-85=247	T-45th
Kacy Thompson	86-81-85=252	T-52nd



Kristy McPherson won the 2001 and 2002 SEC Championships, becoming just the second two-time medalist in SEC Championship history.



**2001 - T-3rd of 12
Univ. of Florida Golf Course
April 20-22 • Gainesville, Fla.
295-290-302=887**

Kristy McPherson	67-70-70=207	1st
Sarah Kidd	75-74-77=226	T-20th
Marci Robinson	75-73-78=226	T-20th
Stefanie Reynolds	78-73-77=228	T-26th
Kacy Thompson	86-77-81=244	T-51st

**2002 - 1st of 12
UGA Golf Course
April 19-21 • Athens, Ga.
289-282-290=861**

Kristy McPherson	69-69-71=209	1st
Kacy Thompson	72-70-79=221	T-15th
Adrienne Gautreaux	75-72-75=222	T-17th
Reetta Laakkonen	81-71-71=223	T-18th
Marci Robinson	73-79-73=225	T-22nd

**2003 - 4th of 12
University Club
April 18-20 • Lexington, Ky.
295-308-311=914**

Kristy McPherson	68-71-81=220	3rd
Adrienne Gautreaux	73-77-74=224	T-8th
Marci Robinson	84-80-73=237	T-29th
Kacy Thompson	76-80-85=241	T-38th
Tiffany Catafygiotu	78-82-83=243	T-42nd

**2004 - 7th of 12
UGA Golf Course
April 16-18 • Athens, Ga.
303-300-296=899**

Erica Battle	79-74-71=224	T-20th
Adrienne Gautreaux	75-74-75=224	T-20th
Marci Robinson	73-77-75=225	T-26th
Jenna Pearson	76-75-76=227	T-31st
Kory Thompson	79-80-75=234	T-42nd

**2005 - 7th of 12
Tunica National Golf Course
April 15-17 • Tunica, Miss.
313-301-300=914**

Whitney Simons	76-73-78=227	T-12th
Erica Battle	80-78-70=228	T-15th
Caroline Rominger	79-76-73=228	T-15th
Jenna Pearson	78-74-82=234	T-34th
Tiffany Catafygiotu	80-83-79=242	T-51st

**2006 - 8th of 12
Vanderbilt Legends Club
April 14-16 • Franklin, Tenn.
310-293-300=903**

Jenna Pearson	75-74-72=221	T-7th
Whitney Simons	75-73-75=223	T-16th
Erica Battle	79-73-78=230	T-35th
Blythe Worley	84-73-75=232	T-41st
Laura Raffo	81-81-78=240	T-53rd

**2007 - 4th of 12
Old Waverly Golf Club
April 20-22 • West Point, Miss.
295-289-303=887**

Jenna Pearson	74-66-77=217	T-5th
Blythe Worley	70-74-76=220	10th
Camila Mori	76-70-77=223	T-18th
Benedicte Toumpsin	75-79-73=227	T-25th
Whitney Simons	81-81-77=239	T-49th

**2008 - 5th of 12
Tennessee National
April 18-20 • Loudon, Tenn.
300-319-296=915**

Benedicte Toumpsin	72-72-72=216	3rd
Taylor Barrett	76-79-71=226	14th
Camila Mori	78-84-75=237	T-36th
Blythe Worley	77-84-80=241	T-46th
Whitney Simons	75-DQ-78	DQ

**2009 - 9th of 12
Cobblestone Park Golf Club
April 17-19 • Blythewood, S.C.
299-300-298=897**

Bénédicte Toumpsin	72-69-73=213	2nd
Katie Burnett	74-78-74=226	T-32nd
Corrine Carr	73-77-76=226	T-32nd
Taylor Barrett	80-78-75=233	44th
Cayci Ruppe	82-76-84=242	57th

**2010 - 7th of 12
NorthRiver Yacht Club
April 16-18 • Tuscaloosa, Ala.
289-290-288=867**

Katie Burnett	72-70-72=214	15th
Benedicte Toumpsin	68-72-77=217	20th
Corrine Carr	76-75-67=218	T-21st
Amanda Strang	74-74-72=220	T-28th
Taylor Barrett	75-74-78=227	T-44th

**2011 - 5th of 12
Auburn University Club
April 15-17 • Auburn, Ala.
302-304-287=893**

Suzie Lee	73-73-73=219	T-9th
Katie Burnett	75-79-73=227	T-24th
Katie Rose Higgins	77-78-72=227	T-24th
Amanda Strang	83-76-69=228	T-29th
Samantha Swinehart	77-77-75=229	T-32nd

**2012 - 6th of 12
Blessings Golf Club
April 20-22 • Fayetteville, Ark.
315-308-313=936**

Katie Burnett	80-75-75=230	T-12th
Justine Dreher	77-75-78=230	T-12th
Amanda Strang	77-81-77=235	T-26th
Samantha Swinehart	81-77-86=244	T-42nd
Meredith Swanson	81-82-83=246	T-46th

**2013 - 3rd of 14
Greystone Golf Club
April 19-21 • Birmingham, Ala.
306-309-303=918**

Justine Dreher	74-76-76=226	T-3rd
Sarah Schmelzel	76-76-76=228	T-8th
Suzie Lee	78-76-79=233	T-28th
Meredith Swanson	78-81-76=235	T-37th
Mary Fran Hillow	86-83-75=244	63rd

**2014 - 2nd of 14
Greystone Golf Club
April 18-20 • Birmingham, Ala.
301-299-290=890**

Justine Dreher	73-74-71=218	4th
Sarah Schmelzel	74-75-73=222	T-10th
Katelyn Dambaugh	78-73-73=224	T-14th
Suzie Lee	76-77-77=230	T-35th
Samantha Swinehart	80-78-73=231	T-40th

**2015 - 2nd of 14
Greystone Golf Club
April 18-20 • Birmingham, Ala.
301-299-290=890**

Justine Dreher	70-72-70=212	T-4th
Katelyn Dambaugh	73-65-74=212	T-4th
Sarah Schmelzel	77-72-72=221	T-21st
Jia Xin Yang	80-71-70=221	T-21st
Mary Fran Hillow	79-75-72=226	T-39th

**2016 - 5th of 14
Greystone Golf Club
April 15-17 • Birmingham, Ala.
298-301-289=888**

Katelyn Dambaugh	72-71-66=209	2nd
Ainhoo Olarra	69-77-71=217	8th
Sarah Schmelzel	82-77-71=230	T-44th
Jia Xin Yang	76-82-81=239	T-66th
Marion Veysseyre	81-76-86=243	70th



The Gamecocks' home course of Cobblestone Park played host to the SEC Women's Championship in 1997 and 2009.



1980-81 Head Coach: Bobby Foster

1980-81	Purdue Invitational (Fall).....	317-298=615	1	of 9	
1980-81	Duke Fall Invitational.....	321	2	of 12
1980-81	Lady Tar Heel Invitational (Fall).....	326-302-321=949	4	of 27	
9/22-24	Lady Seminole Invitational.....	313-321-308=942	10	of 17	
10/13-15	Georgia Invitational.....	346-344-325=1015	10	of 22	
3/6-8	Tiger-Tide Invitational.....	337-324-318=979	4	of 13	
3/20-22	Duke Spring Invitational.....	311-322-329=962	2	of 18	
3/26-28	Lady Paladin Invitational.....	306-318-305=929	10	of 23	
4/3-5	Lady Gamecock Invitational.....	306-307-312=925	1	of 5	
4/6-7	Wake Forest-App. St.-S. Carolina.....	326-312=638	1	of 3	
4/13-15	Lady Kat Invitational.....	325-315-319=959	6	of 18	
4/17-18	Marshall Invitational.....	315-320=635	3	of 11	
6/17-20	AIAW Invitational.....	311-331-305-320=1267	16	of 25	

1981-82 Head Coach: Bobby Foster

1981-82	Lady Gator Invitational.....	316-316-304=936	10	of 15	
1981-82	Memphis State Invitational (Fall).....	314-311-318=943	7	of 15	
9/18-20	Lady Seminole Invitational.....	961	13	of 17
10/1-2	Dick McGuire Tournament.....	316-318-315=949	14	of 24	
2/28-3/2	Peggy Kirk Bell Invitational.....	Scores Unavailable	NA	
3/8-10	NC State Invitational.....	Scores Unavailable	NA	
3/25-27	Lady Paladin Invitational.....	310-324-314=948	12	of 21	
4/9-22	Lady Gamecock Invitational.....	295-293-309=897	1	of 12	
4/23-25	Duke Spring Invitational.....	319-314-316=949	2		
4/30-5/2	Women's Southern Intercollegiate.....	Scores Unavailable	NA	

1982-83 Head Coach: Jeff Howell

1982-83	University of Alabama Tournament.....	308-324=632	6		
2/11-12	Lady Gator Invitational.....	656	14	of 18
1982-83	Peggy Kirk Bell Invitational (Spring).....	990	13	of 17
1982-83	Azalea Invitational (Spring).....	967	3	of 8
1982-83	Duke Spring Invitational.....	1009	11	of 15
4/29-5/1	Women's Southern Invitational.....	1007	16	of 17

1983-84 Head Coach: Donna Noonan

9/25-27	Lady Seminole Classic.....	308-318-319=945	12	of 16	
10/7-9	Duke Invitational.....	312-321-306=939	5	of 12	
10/15-17	Lady Kat Invitational.....	316-313=629	4	of 15	
10/21-23	Lady Tar Heel Tournament.....	322-315=637	7	of 19
11/6-8	Alabama Seascape Tournament.....	340-336-323=999	14	of 18	
11/13-15	Pat Bradley Invitational.....	338-331-336=1005	16	of 17	
2/24-26	Lady Gator Invitational.....	322-331-332=985	16	of 17	
3/9-11	Lady Trojan Invitational.....	336-327-336=999	11	of 18	
3/22-24	Lady Paladin.....	Scores Unavailable	13	of 20
4/6-8	Duke Spring Invitational.....	318-316-312=946	3	of 15	
4/15-17	Fall Creek Falls Cancelled Classic.....	318-344-316=978	8	of 11	
4/27-29	Women's Southern Intercollegiate.....	321-325-315=961	9	of 17	

1984-85 Head Coach: Donna Noonan

9/23-25	Lady Seminole Classic.....	307-309-309=925	11	of 17	
10/8-9	Lady Tiger Invitational.....	320-319=639	5	of 18	
10/15-17	Lady Kat Invitational.....	312-319-322=953	11	of 17	
10/26-28	Lady Tar Heel Tournament.....	320-317-310=947	9	of 14	
11/3-5	Alabama Seascape Tournament.....	304-319=623	4	of 18
1/25-27	OSU/Guadalajara Invitational.....	309-324-326=959	14	of 16	
2/22-24	Lady Gator Invitational.....	321-314-307=942	12	of 15	
3/8-10	Hudson Industries Invitational.....	313-311-314=938	10	of 23	
3/21-23	Lady Paladin Invitational.....	316-341-320=977	12	of 23	
3/29-31	South Carolina Invitational.....	313-304-307=924	1	of 14	
4/26-28	Women's Southern Intercollegiate.....	319-319-324=962	13	of 16	

1985-86 Head Coach: Donna Noonan

9/20-22	Lady Seminole Classic.....	315-299-309=923	9	of 19
10/6-8	Memphis Women's Intercollegiate.....	308-313-310=931	2	of 17
10/25-27	Lady Tar Heel Invitational.....	307-311-302=920	5	of 14
11/1-3	Ford Collegiate Invitational.....	312-316-316=944	6	of 12
1/26-28	OSU/Guadalajara Invitational.....	320-312-295=927	9	of 15
3/9-10	Hudson Industries Invitational.....	312-306-313=931	4	of 21
3/20-22	Lady Paladin Invitational.....	324-329-317=970	9	of 14
3/28-30	South Carolina Invitational.....	308-306-303=917	2	of 13
4/11-13	TPC Invitational.....	297-311-296=904	3	of 7
4/25-27	Women's Southern Intercollegiate.....	320-312-319=951	10	of 16

1986-87 Head Coach: Donna Noonan

9/19-21	Ford Collegiate Invitational.....	306-313-301=920	2	of 12	
9/26-28	Lady Seminole Invitational.....	311-305-318=934	4	of 17	
10/5-7	Memphis Women's Intercollegiate.....	302-309-310=921	3	of 15	
10/24-26	Lady Tar Heel Tournament.....	300-322-305=927	6	of 16	
11/17-19	U.S. International Invitational.....	303-309-312=924	5	of 15	
2/27-28	LSU Intercollegiate.....	311-308=619	2	of 15
3/6-8	Hudson Industries Invitational.....	296-316-307=919	1	of 14	
3/27-29	South Carolina Invitational.....	305-304-301=910	2	of 12	
4/17-19	Woodbridge Collegiate.....	291-300-299=890	1	of 10	
4/24-26	Southern Intercollegiate.....	312-309-306=927	2	of 17	
5/27-30	NCAA Championship.....	298-303-304-320=1225	14	of 17	

1987-88 Head Coach: Linda Mescan

9/25-27	Lady Seminole Invitational.....	318-320-314=952	7	of 19	
10/4-6	Memphis Women's Intercollegiate.....	955	6	of 16
10/23-25	Lady Tar Heel Invitational.....	328-327-331=986	13	of 18	
11/23-25	UCLA Desert Classic.....	315-305-346=966	14	of 15	
3/4-6	Hudson Industries Invitational.....	310-309-314=933	5	of 14	
3/25-27	South Carolina Invitational.....	318-318-326=962	6	of 15	
4/8-10	Lady Mustang Roundup.....	330-334-362=1026	12	of 12	
4/15-17	Woodbridge Collegiate.....	312-304-327=943	8	of 10	
4/22-24	Women's Southern Intercollegiate.....	314-328-312=954	10	of 16	
5/6-8	Metro Conference Championship.....	315-312-304=931	2	of 4	

1988-89 Head Coach: Linda Mescan

9/16-18	Lady Tar Heel Invitational.....	321-335-320=976	11	of 17
9/23-25	Lady Seminole Invitational.....	303-317-318=939	4	of 15
10/2-4	Memphis Women's Invitational.....	314-314-319=947	5	of 17
10/21-23	Lady Lion Invitational.....	317-315-313=945	1	of 10
10/30-11/1	Pat Bradley Championship.....	322-328-317=967	12	of 17
3/3-5	Hudson Industries Invitational.....	328-311-326=965	9	of 18
3/24-26	South Carolina Invitational.....	316-314-319=949	7	of 13
3/31-4/1	Duke Invitational.....	326-325-317=966	11	of 19
4/14-16	Woodbridge Collegiate Invitational.....	331-316-325=972	8	of 9
5/5-7	Metro Conference Championship.....	308-307-304=919	2	of 4

1989-90 Head Coach: Linda Mescan

9/18-19	Lady Tar Heel Invitational.....	307-312-307=926	5	of 16
9/22-24	Duke Classic.....	317-314-313=944	2	of 5
10/1-3	Memphis Women's Invitational.....	311-312-303=926	4	of 15
10/27-29	Tiger Tide Invitational.....	318-314-302=929	11	of 20
11/12-14	Pat Bradley Championship.....	337-327-327=991	11	of 18
1/19-20	Guadalajara Intercollegiate.....	316-323-312=951	5	of 15
3/3-5	Hudson Industries Invitational.....	315-318-319=953	2	of 10
3/23-25	South Carolina Invitational.....	313-304-310=927	3	of 14
3/30-10/2	Memphis Women's Invitational.....	321-307-316=944	6	of 15
4/7-8	Furman Invitational.....	327-325-324=972	5	of 11
4/20-22	Woodbridge Invitational.....	314-305-318=937	4	of 10
5/4-6	Metro Conference Championship.....	304-310-304=918	1	of 5

1990-91 Head Coach: Linda Mescan

9/7-9	Lady Tar Heel Invitational.....	306-304-300=910	4	of 17
9/21-23	James Madison Invitational.....	305-297-314=916	1	of 10
11/3-5	Tiger Tide Intercollegiate.....	325-322-325=972	13	of 19
3/1-3	Alabama Invitational.....	312-300=612	1	of 8
3/29-31	South Carolina Invitational.....	307-312-308=927	2	of 13
4/6-7	Lady Paladin Tournament.....	316-310-304=930	5	of 9
4/19-21	Woodbridge Invitational.....	318-313-312=943	4	of 9
4/26-28	Metro Conference Championship.....	313-333=646	3	of 5

1991-92 Head Coach: Kim Erickson

9/7-9	Lady Tar Heel Invitational.....	311-307-310=928	7	of 18
9/16-17	Lady Kat Invitational.....	306-309-320=935	5	of 8
9/29-10/1	Memphis Intercollegiate.....	314-314-312=940	1	of 14
10/18-20	Lady Paladin Invitational.....	309-302-316=927	5	of 15
3/8-10	Alabama Invitational.....	306-317-308=931	2	of 10
3/27-29	South Carolina Invitational.....	318-305-320=943	5	of 14
4/10-12	Woodbridge Invitational.....	313-306-299=918	7	of 10
4/17-19	Southern Intercollegiate.....	313-306-320=939	4	of 17
5/11-13	SEC Championship.....	304-304-304=912	3	of 10



1992-93 **Head Coach: Kim Erickson**

9/11-13	Lady Tar Heel Invitational.....	315-304-296=915	4	of 17
9/27-29	Memphis Intercollegiate.....	318-318-332=968	5	of 17
10/9-11	Lady Kat Invitational.....	320-307-303=930	5	of 18
10/16-18	Lady Paladin Intercollegiate.....	310-304-314=928	4	of 9
11/13-15	Carolyn Cudone Intercollegiate.....	326-325-325=976	7	of 15
2/22-23	Arizona Invitational.....	299-312-307=918	6	of 14
3/26-28	Lady Gamecock Classic.....	311-300-299=910	2	of 18
4/16-18	Southern Intercollegiate.....	336-331-318=985	11	of 19
4/30-5/2	SEC Championship.....	301-315=616	3	of 11
5/13-15	NCAA East Regional.....	308-305-307=920	7	of 18
5/26-29	NCAA Championship.....	309-310-315-304=1238	12	of 17

1993-94 **Head Coach: Kim Erickson**

9/10-12	Lady Tar Heel Invitational.....	312-326-310=948	6	of 18
10/8-10	Lady Kat Invitational.....	312-309-321=945	6	of 14
10/22-24	Lady Paladin Tournament.....	316-309-313=938	6	of 14
11/12-14	Carolyn Cudone Intercollegiate.....	305-311-294=910	1	of 16
2/21-23	Chris Johnson Arizona Invitational.....	319-309-317=945	15	of 19
3/13-15	Spalding/Peggy Bell Invitational.....	319-309-308=936	2	of 18
3/25-27	Lady Gamecock Classic.....	318-306-315=939	8	of 14
4/15-17	Women's Southern Intercollegiate.....	315-324-319=958	7	of 20
4/29-5/1	SEC Championship.....	291-292-321=904	5	of 11
5/12-14	NCAA East Regional.....	326-313-320=959	10	of 19

1994-95 **Head Coach: Kristi Coggins**

9/30-10/2	Lady Tar Heel Invitational.....	312-311-304=927	4	of 15
10/22-23	Lady Paladin Invitational.....	307-308-308=923	11	of 23
11/4-6	Carolyn Cudone Intercollegiate.....	295-307-305=907	6	of 12
11/11-13	National Collegiate Tournament.....	318-310-313=941	3	of 22
2/20-22	Chris Johnson Invitational.....	317-301-302=920	2	of 19
3/3-5	Lady Gator Invitational.....	314-304-317=935	5	of 13
3/24-26	Lady Gamecock Classic.....	303-306-307=916	5	of 15
4/14-16	Liz Murphey Collegiate.....	313-305-316=934	3	of 15
4/21-23	SEC Championships.....	310-303-308=921	2	of 11
5/11-13	NCAA East Regional.....	298-307-306=911	4	of 19
5/24-27	NCAA Championship.....	299-300-297-308=1204	9	of 18

1995-96 **Head Coach: Kristi Coggins**

9/15-17	Rolex NCAA Preview.....	322-307-305=934	14	of 19
9/28-30	Dick McGuire Invitational.....	307-307-302=916	5	of 18
10/20-22	Lady Paladin Invitational.....	311-314-301=926	7	of 23
11/10-12	Golf World Invitational.....	305-305-318=928	9	of 12
2/26-28	Conquistadores Intercollegiate.....	319-312-298=929	14	of 21
3/8-10	Fripp Island Intercollegiate.....	321-340=625	2	of 24
3/22-24	Lady Gamecock Classic.....	308-302-294=904	3	of 17
4/12-14	Liz Murphey Collegiate Classic.....	311-307-310=928	9	of 22
4/19-21	SEC Championship.....	310-300=610	3	of 12
5/9-11	NCAA East Regional.....	307-303-309=919	5	of 19
5/22-25	NCAA Championship.....	334-311-329-321=1295	14	of 18

1996-97 **Head Coach: Kristi Coggins**

9/19-21	Dick McGuire Invitational.....	312-321-316=949	14	of 18
10/4-9	Rolex NCAA Preview.....	329-325-330=984	19	of 21
10/18-20	Lady Paladin Invitational.....	322-314-309=945	13	of 21
2/9-11	Miami Preview Classic.....	303-313-320=936	1	of 17
3/1-2	Lady Gator Invitational.....	306-299-315=920	5	of 15
3/7-9	Fripp Island Invitational.....	310-316-316=942	5	of 17
3/22-24	Lady Gamecock Classic.....	315-308-310=933	11	of 19
4/11-13	Liz Murphey Collegiate Classic.....	320-310-315=945	8	of 19
4/18-20	SEC Championship.....	317-294-299=910	4	of 12
5/8-10	NCAA East Regional.....	320-333-317=970	13	of 18

1997-98 **Head Coach: Kristi Coggins**

9/12-14	Lady Seminole Invitational.....	332-315-314=961	12	of 14
9/26-28	Mercedes-Benz Intercollegiate.....	335-325-324=984	17	of 18
10/17-19	Lady Paladin Invitational.....	324-320-326=970	14	of 21
2/27-3/1	Lady Gator Invitational.....	309-307-307=923	13	of 19
3/6-8	Fripp Island Invitational.....	316-315-312=943	3	of 18
3/20-22	Lady Gamecock Classic.....	310-315-315=940	5	of 12
3/27-29	Bryan Cup Invitational.....	314-314-320=948	11	of 15
4/10-12	Liz Murphey Collegiate Classic.....	331-318-319=968	13	of 17
4/17-19	SEC Championship.....	318-312-303=933	8	of 12

1998-99 **Head Coach: Kristi Coggins**

9/18-20	Lady Seminole Invitational.....	296-302-293=891	5	of 21
9/25-27	Lady Tar Heel Invitational.....	303-300-299=902	3	of 17
10/16-18	Mercedes-Benz Intercollegiate.....	323-306-315=944	13	of 17
10/23-25	Lady Paladin Invitational.....	314-307-300=921	4	of 18
2/26-27	Lady Gator Invitational.....	311-304=615	3	of 19
3/12-13	Casa De Campo Invitational.....	317-312-309=938	1	of 13
3/19-21	Lady Gamecock Classic.....	300-296=596	2	of 16
4/2-4	Liz Murphey Intercollegiate.....	313-315-310=938	10	of 18
4/16-18	SEC Championship.....	318-314-320=952	10	of 12
5/6-8	NCAA East Regional.....	299-302-307=908	7	of 19
5/19-22	NCAA Championship.....	313-313-315=941	14	of 19

1999-2000 **Head Coach: Kristi Coggins**

9/12-15	NCAA Preview.....	322-309-298=929	13	of 20
10/8-10	Lady Tar Heel Invitational.....	313-315-302=930	4	of 15
10/15-17	Mercedes-Benz Invitational.....	300-300-311=911	4	of 18
10/29-31	Lady Paladin Invitational.....	311-304-302=917	5	of 24
2/7-9	SMU/OSU Regional Challenge.....	314-308-316=938	17	of 18
2/25-27	Lady Gator Invitational.....	313-301-305=919	2	of 15
3/17-19	Lady Gamecock Classic.....	321-320-300=937	3	of 11
3/31-4/2	Liz Murphey Collegiate.....	310-302-310=922	6	of 17
4/21-23	SEC Championship.....	314-326-319=959	9	of 12
5/11-13	NCAA East Regional.....	306-314-314=934	18	of 24

2000-01 **Head Coach: Kristi Coggins**

9/29-10/1	ACC/SEC Shootout.....	316-305-309=930	4	of 12
10/6-8	Lady Tar Heel Invitational.....	308-317-321=946	9	of 17
10/20-22	Lady Paladin Invitational.....	296-296-292=884	2	of 22
2/12-14	TRW Regional Challenge.....	313-319-307=939	13	of 18
2/23-25	Lady Gator Invitational.....	309-304-302=915	10	of 17
3/16-18	Lady Gamecock Classic.....	309-311-316=936	5	of 11
3/30-4/1	Liz Murphey Classic.....	321-320-320=961	12	of 18
4/6-8	Bryan National Collegiate.....	303-313-308=924	12	of 18
4/20-22	SEC Championship.....	295-290-302=887	3	of 12
5/10-12	NCAA East Regional.....	305-293-306=904	6	of 21
5/22-25	NCAA Championship.....	308-323-311-312=1254	24	of 24

2001-02 **Head Coach: Kristi Coggins**

9/29-10/1	ACC/SEC Shootout.....	299-302-306=907	4	of 11
10/12-14	Mercedes-Benz Championship.....	318-310-334=962	13	of 14
10/26-28	Lady Paladin Invitational.....	325-310-304=939	14	of 21
2/22-24	Lady Gator Invitational.....	316-305-309=930	2	of 15
3/4-6	Spartan Invitational.....	302-309-302=913	10	of 16
3/15-17	Lady Gamecock Classic.....	295-300-300=895	3	of 15
3/22-24	Liz Murphey Collegiate Classic.....	305-299-298=902	4	of 18
4/5-7	LSU/Cleveland Classic.....	303-306-302=911	3	of 13
4/19-21	SEC Championship.....	289-282-290=861	1	of 12
5/9-11	NCAA East Regional.....	298-293-298=889	6	of 21
5/21-24	NCAA Championship.....	298-298-308-313=1217	23	of 24

2002-03 **Head Coach: Kristi Coggins**

9/15-17	NCAA Fall Preview.....	312-318-301=931	15	of 18
10/4-6	Tar Heel Invitational.....	300-299-303=902	8	of 15
10/25-27	Lady Paladin Invitational.....	300-291-291=884	2	of 16
11/1-3	Auburn Tiger Derby Invitational.....	299-300-301=900	8	of 13
2/28-3/1	Lady Puerto Rico Classic.....	303-302-303=908	7	of 15
3/14	Lady Gamecock Classic.....	302	4	of 15
3/28-30	Bryan National Tournament.....	294-307=601	6	of 18
4/4-6	Liz Murphey Classic.....	295-305-306=906	10	of 17
4/18-20	SEC Championship.....	295-308-311=914	4	of 12
5/8-10	NCAA East Regional.....	303-287-294=884	7	of 21
5/20-23	NCAA Championship.....	318-318-309-303=1248	17	of 24

2003-04 **Head Coach: Kristi Coggins**

9/9-11	TOPY Cup of Japan.....	307-301-317=925	3	of 5
9/26-28	Mason Rudolph Championships.....	305-303-304=912	11	of 17
10/19-21	Mercedes-Benz Collegiate Champs.....	304-307-315=926	12	of 16
2/9-11	Northrop Grumman Challenge.....	302-333-317=952	15	of 15
3/5-7	LSU/Cleveland Classic.....	305-321-302=928	7	of 17
3/12-14	Lady Gamecock Classic.....	298-309-307=914	2	of 11
3/26-28	Liz Murphey Collegiate Classic.....	311-312-293=916	11	of 18
4/2-4	Bryan National Collegiate.....	310-300-318=928	14	of 18
4/16-18	SEC Championship.....	303-300-296=899	7	of 12
5/6-8	NCAA East Regional.....	316-320-314=950	15	of 21



2004-05..... Head Coach: Kristi Coggins

9/20-22	NCAA Fall Preview.....	303-302-298=903	17	of 21
10/1-3	Mason Rudolph Championship.....	312-310-302=924	17	of 18
10/8-10	Franklin Street Partners Invitational.....	315-313-305=933	7	of 9
10/29-31	ACC/SEC Challenge.....	297-299-300=895	7	of 16
3/4-6	Sun Trust Lady Gator Invitational.....	309-310-310=929	9	of 18
3/11-13	Lady Gamecock Classic.....	313-315-319=947	4	of 12
3/25-27	Liz Murphey Collegiate Classic.....	313-310-322=945	14	of 18
4/1-3	Bryan National Collegiate.....	310-321-329=950	15	of 17
4/15-17	SEC Championship.....	313-301-300=914	7	of 12
5/5-7	NCAA East Regional.....	293-307-303=903	9	of 21

2005-06 Head Coach: Kristi Coggins

9/26-28	Branch Law Firm/Dick McGuire Inter....	300-312-294=906	9	of 18
10/7-9	Lady Tar Heel Invitational.....	325-303-293=921	9	of 18
10/28-30	ACC/SEC Challenge.....	297-290-316=903	1	of 7
11/4-6	The Derby Invitational.....	301-310-298=909	7	of 17
2/24-26	Lady Puerto Rico Classic.....	306-312-304=922	11	of 16
3/10-12	Lady Gamecock Classic.....	314-297-303=914	8	of 11
3/24-26	Liz Murphey Collegiate Classic.....	317-309-301=927	6	of 18
3/31-4/2	Bryan National Collegiate.....	309-295-301=905	7	of 17
4/14-16	SEC Championship.....	310-293-300=903	8	of 12
5/11-13	NCAA East Regional.....	296-297-304=897	13	of 21

2006-07 Head Coach: Kristi Coggins

9/11-12	Branch Law Firm/Dick McGuire Inter....	295-288-307=890	5	of 17
10/6-8	Lady Tar Heel Invitational.....	309-323-304=936	15	of 17
10/28-29	The Derby Invitational.....	311-299=610	5	of 17
11/3-5	NGCA Match Play Champ. .. L, Duke 5-0; L, Florida 2-1.....			
2/23-25	Lady Puerto Rico Classic.....	294-295-303=892	5	of 16
3/9-11	“Mo” Morial Invitational.....	319-312-322=953	7	of 16
3/16-18	LSU Cleveland Classic.....	310-297-300=907	9	of 21
3/23-25	Liz Murphey Collegiate Classic.....	302-300-307=909	9	of 18
4/6-8	Bryan National Collegiate.....	297-310-310=917	8	of 18
4/20-22	SEC Championship.....	295-289-303=887	4	of 12
5/10-12	NCAA East Regional.....	290-289-295=874	9	of 21

2007-08 Head Coach: Kristi Coggins/Kalen Anderson*

9/9-11	Cougar Classic.....	291-298-300=889	6	of 20
9/14-16	Mason Rudolph Championship.....	294-311-300=905	14	of 17
10/5-7	Lady Tar Heel Invitational.....	311-296-295=902	13	of 18
10/26-28	UA-Ann Rhoades Intercollegiate.....	300-308-297=905	7	of 18
11/4-5	NGCA Match Play Champ. L, Auburn 4-0-1; L, N. Mex. 3-2.....			
2/24-26*	Lady Puerto Rico Classic.....	299-295-296=890	7	of 18
3/14-16	LSU Cleveland Classic.....	306-306-302=914	10	of 17
3/21-23	Liz Murphey Collegiate Classic.....	316-319-307=942	13	of 18
3/28-30	Bryan National Collegiate.....	321-338-321=980	7	of 18
4/18-20	SEC Championship.....	300-319-296=915	5	of 12
5/8-10	NCAA East Regional.....	291-303-305=899	6	of 21
5/20-23	NCAA Championship.....	306-316-310-303=1235	22	of 24

* Kalen Anderson took over as head coach in February 2008

2008-09 Head Coach: Kalen Anderson

9/14-16	Cougar Classic.....	290-296-296=882	6	of 22
10/3-5	Lady Tar Heel Invitational.....	310-307-309-926	13	of 18
10/10-12	Mercedes-Benz Collegiate.....	297-313-302=912	15	of 18
10/24-26	The Derby Invitational.....	310-304-306=920	T-8	of 17
2/16-17	Central District Invitational.....	309-319-308=936	11	of 15
3/13-15	LSU Golf Classic.....	292-305-287=884	T-10	of 18
3/20-22	Betsy Rawls Longhorn Invitational.....	310-311-308=929	T-12	of 18
4/3-5	Bryan National Collegiate.....	311-301-295=907	6	of 18
4/17-19	SEC Championship.....	299-300-298=897	9	of 12
5/7-9	NCAA East Regional.....	308-290-299=897	12	of 21

2009-10 Head Coach: Kalen Anderson

9/6	NGCA Match Play Qualifying.....	292-294=586	2	of 16
9/7-8	NGCA Match Play - vs. Virginia.....		L, 2-1-2	
	NGCA Match Play - vs. Alabama.....		L, 3-1-1	
	NGCA Match Play - vs. Chattanooga.....		W, 3-2	7 of 16
9/25-27	Mason Rudolph Championship.....	300-296=596	17	of 17
10/9-11	Tar Heel Invitational.....	295-296-302=893	13	of 18
10/16-18	Mercedes-Benz Collegiate.....	302-290-297=889	3	of 18
2/22-23	Central District Invitational.....	301-309-305=915	11	of 15
3/1-2	Kinderlou Challenge.....	304-308-307=919	11	of 18
3/26-28	Liz Murphey Collegiate Classic.....	324-309-299=932	T-11	of 23
4/2-4	Bryan National Collegiate.....	294-302-297=893	9	of 18
4/16-18	SEC Championship.....	289-290-288=867	7	of 12
4/24	ECU/Duke Tri-Match.....	295-293=588	2	of 3
5/6-8	NCAA East Regional.....	283-291-290=864	1	of 24
5/18-21	NCAA Championship.....	300-297-293-296=1186	T-14	of 24

2010-11 Head Coach: Kalen Anderson

9/12-14	Cougar Classic.....	291-288-294=873	4	of 21
10/8-10	Tar Heel Invitational.....	291-297-290=878	T-11	of 18
10/22-24	The Landfall Tradition.....	299-307-313=919	T-11	of 18
11/5-7	Pac-10/SEC Challenge.....	299-303-310=912	T-15	of 21
2/13-15	UCF Challenge.....	294-284-304=882	T-5	of 17
3/11-13	LSU Tiger Golf Classic.....	319-307-308=934	14	of 21
3/25-27	Bryan National Collegiate.....	305-305-319=929	T-9	of 17
4/1-3	Liz Murphey Classic.....	296-313-285=894	18	of 23
4/15-17	SEC Championship.....	302-304-287=893	5	of 12
5/5-7	NCAA West Regional.....	303-299-300=902	6	of 24
5/18-21	NCAA Championship.....	302-315-298-296=1211	18	of 24

2011-12 Head Coach: Kalen Anderson

9/11-13	Cougar Classic.....	307-283-279=869	10	of 22
10/7-9	Tar Heel Invitational.....	289-299-294=882	11	of 18
10/21-23	SEC/Pac 12 Challenge.....	310-305-293=908	17	of 23
10/28-30	The Landfall Tradition.....	307-314-301=922	4	of 18
2/12-14	UCF Challenge.....	290-299-300=889	7	of 18
3/2-4	Darius Rucker Intercollegiate.....	303-301=604	8	of 15
3/30-4/1	Liz Murphy Collegiate Classic.....	285-292-298=875	5	of 18
4/6-8	Bryan National Collegiate.....	292-300-302=894	6	of 17
4/20-22	SEC Championship.....	315-308-313=936	6	of 12
5/10-12	NCAA East Regional.....	288-294-291=873	1	of 24
5/22-25	NCAA Championship.....	302-281-300-293=1176	5	of 24

2012-13 Head Coach: Kalen Anderson

9/9-11	Cougar Classic.....	306-299-294=899	16	of 24
10/5-7	NCAA Fall Preview.....	305-297-309=911	18	of 18
10/12-14	Tar Heel Invitational.....	298-301-311=910	T-12	of 18
10/26-28	The Landfall Tradition.....	304	13	of 17
2/10-12	UCF Challenge.....	284-306-293=883	7	of 18
3/8-10	Darius Rucker Intercollegiate.....	314-305-302=921	11	of 15
3/29-31	Bryan National Collegiate.....	296-301-296=893	8	of 17
4/12-14	Ping ASU Invitational.....	291-299-296=886	13	of 17
4/19-21	SEC Championship.....	306-309-303=918	3	of 14
5/9-11	NCAA West Regional.....	296-285-293=874	4	of 24
5/21-24	NCAA Championship.....	304-305-292-310=1211	20	of 24

2013-14 Head Coach: Kalen Anderson

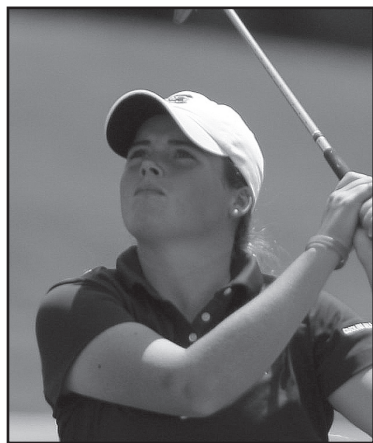
9/8-10	Cougar Classic.....	285-298-289=872	6	of 20
9/20-22	Mercedes-Benz Coll. Champ.....	279-292=571	2	of 17
10/11-13	Tar Heel Invitational.....	299-291-288=878	T-5	of 18
10/25-27	The Landfall Tradition.....	300-299-305=904	4	of 18
2/14-16	Florida State Match-Up.....	293-293-285=871	1	of 11
3/7-9	Darius Rucker Intercollegiate.....	294-296-296=886	5	of 17
3/28-30	Bryan National Collegiate.....	302-293-308=903	2	of 18
4/4-6	Ping ASU Invitational.....	288-280-285=853	1	of 15
4/18-20	SEC Championship.....	301-299-290=890	2	of 14
5/8-10	NCAA East Regional.....	291-283-280=854	2	of 24
5/20-23	NCAA Championship.....	301-299-283-281=1164	13	of 24

2014-15 Head Coach: Kalen Anderson

9/28-30	ANNIKA Intercollegiate.....	282-290-282=854	1	of 12
10/10-12	Tar Heel Invitational.....	287-288-289=864	2	of 18
10/17-19	Mercedes-Benz Coll. Champ.....	295-289-281=865	1	of 16
10/24-26	The Landfall Tradition.....	293-287-291=871	T-3	of 18
2/13-15	Florida State Match-Up.....	292-299-293=884	4	of 12
3/6-8	Darius Rucker Intercollegiate.....	299-293-298=890	T-5	of 17
3/27	Liz Murphy Collegiate Classic (Stroke).....	308	2	of 12
3/28-29	Liz Murphy Collegiate Classic Match Play vs. Georgia.....		L, 2-3	
	Liz Murphy Collegiate Classic Match Play vs. Arkansas.....		W, 3.5-1.5	
	Liz Murphy Collegiate Classic Match Play vs. Baylor.....		L, 2-3	
4/10-12	PING ASU Invitational.....	288-284-298=870	T-4	of 15
4/17-19	SEC Championship.....	299-280-284=863	2	of 14
5/7-9	NCAA East Regional.....	295-286-296=877	1	of 18
5/22-25	NCAA Championship.....	308-322-302=932	17	of 24

2015-16 Head Coach: Kalen Anderson

9/18-20	Mason Rudolph Championship.....	302-291-295=888	T-12	of 17
9/27-29	ANNIKA Intercollegiate.....	286-293-293=872	9	of 12
10/9-11	Ruth's Chris Tar Heel Invitational.....	299-310-295=904	11	of 18
10/23-25	The Landfall Tradition.....	301-304-283=888	9	of 18
2/12-14	Florida State Match-Up.....	297-285-293=875	2	of 12
3/4-6	Darius Rucker Intercollegiate.....	303-291-293=887	T-8	of 17
3/14-15	Wildcat Invitational.....	297-290-300=887	7	of 15
4/1-3	Bryan National Collegiate.....	297-299-298=894	2	of 15
4/15-17	SEC Championship.....	298-301-289=888	5	of 14
5/5-7	NCAA Baton Rouge Regional.....	290-277-290=857	T-1	of 18
5/20-25	NCAA Championship.....	293-289-290-290=1162	7	of 24



Katie Burnett

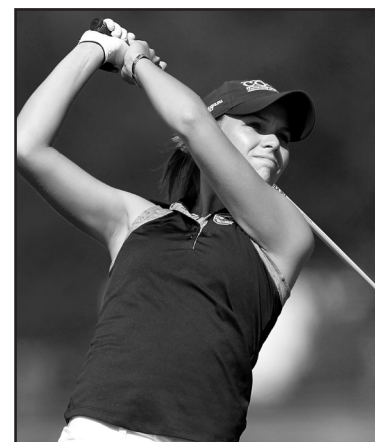
2010 - Hon. Mention (Golfweek, NGCA) • 2012 - Second Team (Golfweek, NGCA)

Katie Burnett put together a stellar career that saw her win the 2010 NCAA East Regional, post the best NCAA Championship finish in school history (fifth place) and become the career scoring average leader at South Carolina (74.18). Burnett led the Gamecocks to a team title at the NCAA East Regional in Greenville, N.C., the first regional team title in program history and the first team victory of any kind in five years. In her sophomore season, she amassed a pair of top-five finishes, three top-10s and nine top-20 showings. As a senior, she guided the Gamecocks to a second NCAA East Regional title in three years and a fifth-place showing at the NCAA Championship, which was the best finish in school history at the national championship.

Katelyn Dambaugh

**2015 - Honorable Mention (Golfweek)
2016 - First Team (WGCA, Golfweek)**

Katelyn Dambaugh turned in one of the finest seasons in program history in her third year at South Carolina, setting school records for single-season stroke average (71.62) and top-five finishes (6) by a junior. She caught fire in the spring and finished the season with top-10 finishes in six of her last seven events. The Goose Creek, S.C., native claimed her first career medalist honors at the 2016 NCAA Baton Rouge Regional, as she matched the program record with a 207 (-9) to help the Gamecocks finish atop the leaderboard. Dambaugh, the school's current career stroke average leader (72.96), shot par or better in eight of her 10 postseason rounds to lead South Carolina to its second-best finish ever (7th) at the NCAA Championship. As a sophomore, Dambaugh earned three top-five finishes, including her second-straight top-five showing at the SEC Championship. Her performance led to Second-Team All-SEC honors for the second year in a row.



Justine Dreher

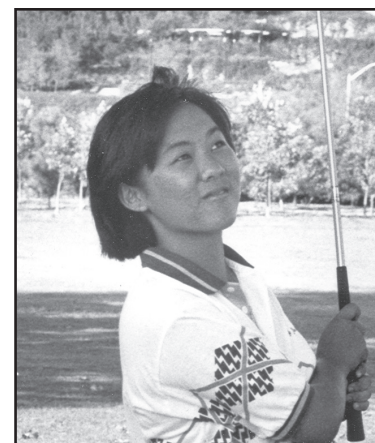
**2014 - Honorable Mention (WGCA, Golfweek)
2015 - First Team (WGCA, Golfweek)**

Justine Dreher was a cornerstone of Kalen Anderson's developing program both on and off the course. After improving each season, she graduated with the second-lowest career scoring average (74.12) in program history. Dreher played a key role in the Gamecocks' postseason success, posting five of her nine career top-five results in 12 postseason appearances. After kicking off her senior season with a win at the inaugural ANNIIKA Intercollegiate, Dreher collected six top-five results and posted the then lowest single-season scoring average in South Carolina history (72.53). A fourth place result propelled the Gamecocks to their second-straight SEC Championship runner-up finish. The French native was a key part of two NCAA East Regional titles, four-straight NCAA Tournament appearances and a pair of SEC Championship runner-up results. Dreher closed out her career with back-to-back First Team All-SEC recognitions and 2015 SEC Scholar Athlete of the Year honors, and she was just the third Gamecock to earn First-Team All-America honors.

Siew Ai Lim

1994 - Second Team (NGCA) • 1995 - First Team (NGCA)

Siew Ai Lim completed her career in 1995 as the only Gamecock women's golfer to compete in the NCAA Championship four times. She has the best record of any South Carolina player at the national championship, posting three top-20 efforts - including a tie for sixth place in 1996 and a tie for ninth in 1995 - in her four appearances. She propelled the Gamecocks to the 1995 NCAA Championship by winning the NCAA East Regional - the first NCAA Regional title for Gamecock women's golf - and helped the team to its best-ever NCAA finish, a tie for ninth. Named the 1995 SEC Player of the Year, her regional title was one of two individual medalist honors claimed by the Kuala Lumpur, Malaysia, native; the other being a win at the 1994 Carolyn Cudone Intercollegiate. She completed her career as the all-time scoring leader at South Carolina; she now ranks fifth all-time with a 76.23 career stroke average.





Kristy McPherson

2001, 2002, 2003 - First Team (NGCA)

The most decorated golfer in South Carolina history, Kristy McPherson remains one of only two players in Southeastern Conference history to win back-to-back SEC Women's Golf Championship titles, claiming medalist honors in 2001 and 2002. The second year, her 7-under-par 209 helped lead the Gamecocks to its first team SEC Championship, defeating Auburn by three strokes. She led the Gamecocks to the NCAA Championship each year from 2001 to 2003 and was the team's top finisher each time. McPherson is the all-time leader in individual victories at South Carolina, winning six tournaments in her four years. A four-time All-SEC selection and the 2003 SEC Player of the Year, McPherson left USC with the all-time lead in scoring average at 74.42; she currently ranks second all-time. She also posted the top three individual seasons, her best being her senior year of 2002-03 with a 73.42 stroke average.



Sarah Schmelzel

2016 - Honorable Mention (Golfweek)

Sarah Schmelzel collected three top-10 finishes in her final season at South Carolina, including her first career medalist honors at the 2016 Bryan National Collegiate. The Phoenix, Ariz., native's 73.21 stroke average stands as the fifth-lowest single-season mark in school history, and she finished her collegiate career with the fourth-best career scoring average (74.25). Schmelzel save her best for last, as she shot par or better in five of her final six rounds of the season. She ranked second on the team with 15 rounds of par or better, and she was one of two Gamecocks to total multiple top-five finishes.

Samantha Swinehart

2014 - Second Team (WGCA); Honorable Mention (Golfweek)

Samantha Swinehart wrapped up her career with an incredible senior season that helped propel the Gamecocks to their fifth consecutive NCAA Championship. Swinehart poseted a scoring average of 73.12 in 2014, which ranks second all time at for a single season South Carolina. She also earned Second Team All-SEC honors and was named to the WGCA East All-Region Team. During her time as a Gamecock she recorded 13 top-20 finishes including two in the top-five, both of which came during her senior campaign. Swinehart's career scoirng avergae of 75.70 ties for fifth best in school history.



Benedicte Toumpsin

2008 - Third Team (Golfweek); Honorable Mention (NGCA)

Benedicte Toumpsin was named an All-American following a stellar sophomore campaign in 2008 when she captured medalist honors at the NCAA East Regional, propelling South Carolina into the NCAA Championship for the first time in five seasons. Also a two-time All-SEC selection, Toumpsin won at least a share of medalist honors twice in her career - the 2008 regional and the 2009 LSU Golf Classic. She finished her career with an NCAA Championship appearance in 2010, helping the team to a tie for 14th place



**Metro
Conference
(1988-1991)**

**Southeastern
Conference
(1992-present)**

ALL-METRO CONFERENCE

Debbie Eckroth

1989 - First Team
1990 - First Team

Aileen Robertson

1990 - First Team

Vikki Valentine

1990 - First Team

COACH OF THE YEAR

Kristi Coggins

1999

Kalen Anderson

2015

PLAYER OF THE YEAR

Siew Ai Lim

1995

Kristy McPherson

2003

SCHOLAR-ATHLETE OF THE YEAR

Whitney Simons

2006

Justine Dreher

2015

ALL-SEC

Libby Bagwell

1994 - Second Team

Rachel Bates

1993 - First Team

Katie Burnett

2010 - Second Team
2012 - Second Team

Clarissa Childs

1993 - Second Team
1994 - First Team
1995 - First Team
1996 - Second Team

Katelyn Dambaugh

2014 - Second Team
2015 - Second Team
2016 - First Team

Justine Dreher

2014 - First Team
2015 - First Team

Adrienne Gautreaux

2002 - Second Team
2004 - First Team

Libby Howard

1996 - Second Team

Siew Ai Lim

1993 - Second Team
1994 - First Team
1995 - First Team
1996 - First Team



Emma Lofgren

1999 - Second Team

Kristy McPherson

2000 - Second Team
2001 - First Team
2002 - First Team
2003 - First Team

Jenna Pearson

2007 - Second Team

Samantha Swinehart

2014 - Second Team

Benedicte Toumpsin

2008 - First Team
2009 - Second Team

ALL-FRESHMAN TEAM

Katelyn Dambaugh

2014

Sarah Schmelzel

2013

Justine Dreher

2012

Suzie Lee

2011

Amanda Strang

2011

Samantha Swinehart

2011 - Freshman Team

SEC PLAYERS OF THE WEEK

Adrienne Gautreaux

March 19, 2004

Kristy McPherson

Feb. 23, 2000
March 14, 2002
March 21, 2002
Third week, 2003

Sarah Schmelzel

April 3, 2013 (Freshman of the Week)

Katelyn Dambaugh

Feb. 19, 2014 (Fr. of the Week)
April 9, 2014 (Fr. of the Week)
April 14, 2015
March 16, 2016

SEC Players of the Year

1995 - Siew Ai Lim

2003 - Kristy McPherson



WGCA/NGCA ALL-AMERICAN SCHOLARS

2016

Katelyn Dambaugh
Isidora Nilsson
Ainhoa Olarra
Jia Xin Yang

2015

Justine Dreher
Ainhoa Olarra
Jia Xin Yang

2014

Justine Dreher
Samantha Swinehart

2013

Chelsey Couch
Justine Dreher
Samantha Swinehart

2012

Katie Burnett
Justine Dreher
Katie Rose Higgins
Amanda Strang
Samantha Swinehart

2011

Katie Burnett
Katie Rose Higgins
Amanda Strang
Samantha Swinehart

2010

Taylor Barrett
Katie Burnett
Corrine Carr
Amanda Strang

2009

Taylor Barrett
Katie Burnett
Corrine Carr

2008

Taylor Barrett
Whitney Simons
Blythe Worley

2007

Taylor Barrett
Jenna Pearson
Laura Raffo
Whitney Simons
Blythe Worley

2006

Erica Battle
Laura McCaslin
Jenna Pearson
Laura Raffo
Whitney Simons
Blythe Worley

2005

Erica Battle
Tiffany Catafygiotu
Jenna Pearson
Caroline Rominger
Whitney Simons
Blythe Worley

2004

Erica Battle
Tiffany Catafygiotu
Adrienne Gautreaux
Laura McCaslin
Jenna Pearson
Kory Thompson

2003

Kacy Thompson
Kory Thompson

2002

Reetta Laakkonen

2001

Stephanie Reynolds
Kacy Thompson

SOUTHEASTERN CONFERENCE ACADEMIC HONOR ROLL

**2016**

Gaby Amos
Katelyn Dambaugh
Isidora Nilsson
Ainhoa Olarra
Sarah Schmelzel
Karoline Woie
Jia Xin Yang

2015

Katelyn Dambaugh
Justine Dreher
Mary Fran Hillow
Ainhoa Olarra
Sarah Schmelzel
Karoline Woie
Jia Xin Yang

2014

Katelyn Dambaugh
Justine Dreher
Mary Fran Hillow
Sarah Schmelzel
Samantha Swinehart
Karoline Woie
Jia Xin Yang

2013

Chelsey Couch
Justine Dreher
Mary Fran Hillow
Sarah Schmelzel
Samantha Swinehart
Karoline Woie

2012

Katie Burnett
Justine Dreher
Katie Rose Higgins
Cayci Ruppe
Amanda Strang
Meredith Swanson
Samantha Swinehart

2011

Katie Burnett
Corrine Carr
Katie Rose Higgins
Cayci Ruppe
Amanda Strang
Samantha Swinehart

2010

Taylor Barrett
Corrine Carr
Katie Burnett
Cayci Ruppe
Amanda Strang
Meredith Swanson
Benedicte Toumpsin

2009

Taylor Barrett
Katie Burnett
Corrine Carr
Cayci Ruppe

2008

Taylor Barrett
Erika Holmen
Camila Mori

Laura Raffo
Whitney Simons
Meredith Taylor
Blythe Worley

2007

Taylor Barrett
Camila Mori
Jenna Pearson
Laura Raffo
Whitney Simons
Meredith Taylor
Benedicte Toumpsin
Blythe Worley

2006

Erica Battle
Laura McCaslin
Jenna Pearson
Laura Raffo
Whitney Simons
Meredith Taylor
Blythe Worley

2005

Erica Battle
Tiffany Catafygiotu
Lauren Huhnerkock
Laura McCaslin
Jenna Pearson
Laura Raffo
Caroline Rominger
Whitney Simons
Blythe Worley

2004

Erica Battle
Tiffany Catafygiotu
Adrienne Gautreaux
Laura McCaslin
Megan Miller
Jenna Pearson
Kory Thompson

2003

Tiffany Catafygiotu
Adrienne Gautreaux
Kristy McPherson
Marc Robinson
Kacy Thompson
Kory Thompson

2002

Sarah Kidd
Reetta Laakkonen
Kristy McPherson
Kristen Ruble
Kacy Thompson

2001

Abby Derman
Apryl Arrants
Sarah Kidd
Emma Lofgren
Stefanie Reynolds
Kristin Ruble
Kacy Thompson

2000

Apryl Arrants
Abby Derman
Sarah Kidd

Emma Lofgren
Stefanie Reynolds

1999

Apryl Arrants
Emma Lofgren
Abby Derman
Lotte Moeller

1999

Apryl Arrants
Libby Howard
Emma Lofgren
Katy Schlotman
1997
Karin Fries
Apryl Arrants
Libby Howard

1996

Clarissa Childs
Karen Fries
Libby Howard
Siew Ai Lim
Julie Norris

1995

Siew Ai Lim
Julie Norris

1994

Jill Darr
Siew Ai Lim
Julie Norris

1993

Rachel Bates
Jill Darr
Margaret Hickey
Tara Joy

Justine Dreher 2015 SEC Scholar-Athlete of the Year



Adrienne Gautreaux 2004 CoSIDA 1st-Team Academic All-American



Katie Burnett 2012 Capital One 3rd-Team Academic All-American





DINAH SHORE TROPHY



Adrienne Gautreaux
2004 Dinah Shore Trophy



Erica Battle
2006 Dinah Shore Trophy

The Dinah Shore Trophy Award, a part of the Dinah Shore Scholarship Fund, is a cooperative effort between The LPGA Foundation, the Friends of Golf (FOG), and the Nabisco Dinah Shore, one of the LPGA's four major championships and the largest contributor to the Dinah Shore Scholarship Fund.

The LPGA Foundation introduced the Dinah Shore Scholarship Fund in March 1994 in honor of the late Dinah Shore, and together with FOG and the Nabisco Dinah Shore, developed the Dinah Shore Trophy Award and its criteria. A fundraising organization administered by Eddie Merrins, head golf professional at Bel Air Golf Club in Beverly Hills, CA, FOG contributes annually to collegiate, high school and junior golf programs throughout the country, and Dinah Shore was considered the "First Lady" of FOG.

A selection committee of The LPGA Foundation chooses the Dinah Shore Trophy Award recipient from nominations submitted by the National Golf Coaches Association. Nominees for the award must meet the following criteria:

- * An overall grade point average (GPA) of at least 3.2 on a 4.0 scale;
- * Played in at least 50% of her team's scheduled events;
- * Maintained a scoring average of 78 or less; and
- * Demonstrated leadership skills and/or extraordinary community affairs work.

The perpetual Dinah Shore Trophy is a crystal trophy, created by Tiffany & Co. with an engraving of Dinah Shore. The trophy is housed at Mission Hills Country Club, site of the annual Nabisco Dinah Shore.

2014 - Emily Tubert
 2013 - Caroline Powers
 2012 - Amy Anderson
 2011 - Pia Halbig
 2010 - Katie Detlefsen
 2009 - Amanda Blumenherst
 2008 - Amanda Blumenherst
 2007 - Stacy Lewis
2006 - Erica Battle
 2005 - Karin Sjodin
2004 - Adrienne Gautreaux

Arkansas
 Michigan State
 North Dakota State
 University of California, Berkeley
 Central Florida
 Duke
 Duke
 Arkansas
South Carolina
 Oklahoma State
South Carolina

2003 - Katherine Hull
 2002 - Meredith Duncan
 2001 - Melanie Hagewood
 2000 - Lisette Lee
 1999 - Mallory Crosland
 1998 - Riko Higashio
 1997 - Kellee Booth
 1996 - Marcie Clemens
 1995 - Stephanie Neil

Pepperdine
 LSU
 Baylor
 LSU
 Vanderbilt
 Florida
 Arizona State
 Auburn
 Wake Forest



Season Average

Year	Rds.	Strokes	Avg.
1. 2013-14	33	9,646	292.30
2. 2014-15	31	9,078	292.84
3. 2015-16	34	10,002	294.18
4. 2011-12	33	9,828	297.82
5. 2009-10	34	10,128	297.88
6. 2012-13	32	9,610	300.31
7. 2010-11	34	10,262	301.82
8. 2006-07	29	8,775	302.59
9. 2002-03	31	9,380	302.71
10. 2008-09	30	9,090	303.00

Single-Season Top-5 Finishes

1. 2014-15	10
2. 2013-14	9
1989-90	9
1986-87	9
5. 1994-95	8
1980-81	8
7. 1991-92	7
1990-91	7
9. 2001-02	6
1998-99	6
1992-93	6

Team Championships

NCAA Baton Rouge Regional 5/5-7/16	290-277-290=857
NCAA East Regional 5/7-9/15	295-286-296=877
Mercedes-Benz Collegiate 10/17-19/14	295-289-281=865
ANNIKA Intercollegiate 9/28-30/14	282-290-282=854
PING ASU Invitational, 4/4-6/14	288-280-285=853
Florida State MatchUp, 2/14-16/14	293-293-285=871
NCAA East Regional, 5/10-12/12	288-294-291=873
NCAA East Regional, 5/6-8/10	283-291-290=864
ACC/SEC Challenge, 10/28-30/05	297-290-316=903
SEC Championship, 4/19-21/02	289-282-290=861
Casa De Campo Inv., 3/12-13/99	317-312-309=938
Miami Preview Classic, 2/9-11/97	303-313-320=936
Carolyn Cudone Inter., 11/12-14/93	305-311-294=910
Memphis Inter., 9/29-10/1/91	314-314-312=940
Alabama Invitational, 3/1-3/91	312-300=612
James Madison Inv., 9/21-23/90	305-297-314=916
Metro Conf. Champ., 5/4-6/90	304-310-304=918
Lady Lion Inv., 10/21-23/88	317-315-313=945
Woodbridge Collegiate, 4/17-19/87	291-300-299=890
Hudson Industries Inv., 3/6-8/87	296-316-307=919
South Carolina Inv., 3/29-31/85	313-304-307=924
Lady Gamecock Inv., 4/9-11/82	295-293-309=897
Lady Gamecock Inv., 4/3-5/81	306-307-312=925
Purdue Invitational, 1980-81	317-298=615



The 2014-15 Gamecocks kick off their campaign in fashion, posting the first of their school record 10 top-five finishes with a win at the inaugural ANNIKA Intercollegiate.

18-Hole Score

1. NCAA Baton Rouge Regional, 2nd Rd., 5/6/16	277
1. Mercedes-Benz Collegiate Championship, 1st Rd., 9/20/13	279
Cougar Classic, 3rd Rd., 9/13/11	
3. NCAA East Regional, 2nd Rd., 5/10/14	280
PING ASU Invitational, 2nd Rd., 4/5/14	
SEC Championship, 2nd Rd., 4/18/15	
6. NCAA Championship, 2nd Rd., 5/23/12	281
NCAA Championship, 4th Rd., 5/23/14	
Mercedes-Benz Collegiate Championship, 3rd Rd., 10/19/14	

54-Hole Tournament

1. PING ASU Invitational, 4/4-6/14	853 (288-280-285)
2. NCAA East Regional, 5/8-10/14	854 (291-283-280)
ANNIKA Intercollegiate 9/29-30/14	854 (282-290-282)
4. NCAA Baton Rouge Regional 5/5-7/16	857 (290-277-290)
5. SEC Championship, 4/19-21/02	861 (289-282-290)
6. SEC Championship 4/17-19/15	863 (299-280-284)
7. NCAA East Regional, 5/6-8/10	864 (283-291-290)
Tar Heel Invitational, 10/10-12/14	864 (287-288-289)
9. Mercedes-Benz Collegiate Champ., 10/17-19/14	865 (295-289-281)
10. SEC Championship, 4/16-18/10	867 (289-290-288)

36-Hole Tournament

1. Mercedes-Benz Collegiate Championship, 9/20-22/13	571 (279-292)
2. NGCA Match Play Qualifying, 9/6/09	586 (292-294)
3. ECU/Duke Tri-Match, 4/24/10	588 (295-293)
4. Mason Rudolph Championship, 9/25-27/09	596 (300-296)
Lady Gamecock Classic, 3/19-21/99	596 (300-296)
6. Bryan Park National Coll., 3/28-30/03	601 (294-307)
7. Darius Rucker Intercollegiate, 3/2-4/12	604 (303-301)
8. The Derby Inv., 10/28-29/06	610 (311-299)
SEC Championship, 4/19-21/96	610 (310-300)
10. Alabama Inv., 3/1-3/91	612 (312-300)

72-Hole Tournament

1. NCAA Championship, 5/20-25/16	1,162 (293-289-290-290)
2. NCAA Championship, 5/20-23/14	1,164 (301-299-283-281)
3. NCAA Championship, 5/22-25/12	1,176 (302-281-300-293)
4. NCAA Championship, 5/18-21/10	1,186 (300-297-293-296)
5. NCAA Championship, 5/24-27/95	1,204 (299-300-297-308)
6. NCAA Championship, 5/21-24/13	1,211 (304-305-292-310)
NCAA Championship, 5/18-21/11	1,211 (302-315-298-296)
8. NCAA Championship, 5/21-24/02	1,217 (298-298-308-313)
9. NCAA Championship, 5/27-30/87	1,225 (298-303-304-320)
10. NCAA Championship, 5/20-23/08	1,235 (306-316-310-303)

First-Round Score

1. Mercedes-Benz Collegiate, 9/20/13	279
2. ANNIKA Intercollegiate 9/28/14	282
3. NCAA East Regional, 5/6/10	283
4. Cougar Classic, 9/8/13	285
Liz Murphey Collegiate Classic, 3/30/12	
6. ANNIKA Intercollegiate, 9/27/16	286
7. Tar Heel Invitational, 10/10/14	287
8. PING ASU Invitational, 4/4/14	288
NCAA East Regional, 5/10/12	
10. Tar Heel Invitational, 10/7/11	289
SEC Championship, 4/16/10	
SEC Championship, 4/19/02	

Second-Round Score

1. NCAA Baton Rouge Regional, 5/6/16	277
2. PING ASU Invitational, 4/5/14	280
SEC Championship, 4/18/15	
4. NCAA Championship, 5/22/12	281
5. SEC Championship, 4/20/02	282
6. NCAA East Regional, 5/9/14	283
Cougar Classic, 9/11/11	283
8. UCF Challenge, 2/14/11	284
9. Florida State Match-Up, 2/13/16	285
10. NCAA East Regional, 5/8/15	286

Final-Round Score

1. Cougar Classic, 9/13/11	279
2. NCAA East Regional, 5/10/14	280
3. NCAA Championship, 5/23/14	281
Mercedes-Benz Collegiate, 10/19/14	
5. ANNIKA Intercollegiate, 9/30/14	282
6. Landfall Tradition, 10/25/15	283
7. SEC Championship, 4/19/15	284
8. PING ASU Invitational, 4/6/14	285
Florida State Match-Up 2/16/14	285
Liz Murphey Classic, 4/3/11	285



Career Average (Min. 55 rds. and two years)

Player	Years	Rds.	Strokes	Avg.
1. Katelyn Dambaugh	2013-Pres.	97	7,077	72.96
2. Justine Dreher	2011-15	121	8,969	74.12
3. Katie Burnett	2008-12	130	9,643	74.18
4. Sarah Schmelzel	2012-16	118	8,761	74.25
5. Kristy McPherson	1999-03	129	9,600	74.42
6. Bénédicte Toumpsin	2006-10	122	9,100	74.59
7. Suzie Lee	2010-14	107	8,078	75.50
Samantha Swinehart	2010-14	111	8,381	75.50
9. Adrienne Gautreaux	2001-04	100	7,575	75.75
10. Amanda Strang	2009-12	101	7,683	76.07
11. Siew Ai Lim	1992-96	130	9,910	76.23
12. Jia Xin Yang	2013-Pres.	59	4,498	76.24
13. Corrine Carr	2008-10	58	4,431	76.39
14. Jenna Pearson	2003-07	114	8,723	76.52
15. Camila Mori	2005-08	73	5,627	77.08
16. Meredith Swanson	2009-13	86	6,635	77.15
17. Erica Battle	2002-06	94	7,260	77.23
18. Whitney Simons	2004-08	101	7,810	77.33
19. Blythe Worley	2004-08	96	7,426	77.35
20. Debbie Eckroth	1988-92	110	8,535	77.59

Season Average (Min. 18 rounds)

Player	Year	Rds.	Strokes	Avg.
1. Katelyn Dambaugh	2015-16	34	2,435	71.62
2. Justine Dreher	2014-15	32	2,231	72.53
3. Katie Burnett	2011-12	33	2,407	72.94
4. Samantha Swinehart	2013-14	33	2,413	73.12
5. Sarah Schmelzel	2015-16	34	2,489	73.21
6. Justine Dreher	2013-14	33	2,421	73.36
7. Kristy McPherson	2002-03	31	2,276	73.42
8. Katie Burnett	2009-10	34	2,502	73.58
Kristy McPherson	2001-02	34	2,502	73.58
10. Katelyn Dambaugh	2014-15	30	2,210	73.66
11. Katelyn Dambaugh	2013-14	33	2,432	73.70
12. Kristy McPherson	2000-01	34	2,510	73.82
13. Bénédicte Toumpsin	2008-09	30	2,217	73.90
14. Sarah Schmelzel	2013-14	33	2,442	74.00
15. Bénédicte Toumpsin	2007-08	34	2,517	74.03
16. Siew Ai Lim	1994-95	31	2,305	74.35
17. Ainhoa Olarra	2015-16	34	2,529	74.38
18. Adrienne Gautreaux	2003-04	34	2,531	74.44
19. Sarah Schmelzel	2012-13	32	2,393	74.78
20. Jenna Pearson	2006-07	29	2,169	74.79

Individual Medalists

Katie Burnett	NCAA East Regional, 5/6-8/10	67-72-71=210
Clarissa Childs	Carolyn Cudone Inter., 11/12-14/93	79-74-76=224
Katelyn Dambaugh	NCAA Baton Rouge Regional, 5/5-7/16	70-66-71=207
Justine Dreher	ANNIKA Intercollegiate, 9/28-30/14	68-68-71=207
Debbie Eckroth	Metro Conference Champ., 5/5-7/89	78-72-72=222
Siew Ai Lim	Carolyn Cudone Inter., 11/6/94	68-72-70=210
Siew Ai Lim	NCAA East Regional, 5/11-13/95	73-71-70=214
Kristy McPherson	SEC Championship, 4/20-22/01	67-70-70=207
Kristy McPherson	ACC/SEC Shootout, 9/29-10/1/01	71-70-76=217
Kristy McPherson	Spartan Invitational, 3/4-6/02	71-69-71=211
Kristy McPherson	SEC Championship, 4/19-21/02	69-69-71=209
Kristy McPherson	Bryan Park National Coll., 3/28-30/03	69-73=142
Kristy McPherson	Lady Boilermaker Inv., 4/11-12/03	70-78-70=218
Nana Madsen	Mercedes-Benz Collegiate, 10/17-19/14	72-69-71=212
Lotte Moeller	Casa De Campo Inv., 3/12-13/99	79-78-71=228
Marianne Morris	Hudson Industries Inv., 3/6-8/87	72-76-74=222
Jan Rikard	Lady Gamecock Inv., 4/9-11/82	73-69-77=219
Sarah Schmelzel	Bryan National Collegiate, 4/1-3/16	73-71-75=219
Lynn Stiffler	Lady Gamecock Inv., 4/3-5/81	69-73-76=218
Kacy Thompson	Lady Gamecock Classic, 3/14/03	72
Bénédicte Toumpsin	NCAA East Regional, 5/8-10/08	68-70-76=214
Bénédicte Toumpsin	LSU Golf Classic, 3/13-15/09	70-71-68=209
Vikki Valentine	Alabama Invitational, 3/1-3/91	75-74=149



Kristy McPherson was the individual medalist in a school-record six events during her four-year career (1999-2003), including two SEC Championships.

Career Top-5 Finishes

1. Kristy McPherson	1999-2003	18
2. Katelyn Dambaugh	2013-Pres.	10
3. Justine Dreher	2011-15	9
Siew Ai Lim	1992-96	
5. Katie Burnett	2008-12	8
B. Toumpsin	2006-10	
7. Clarissa Childs	1992-96	7
Debbie Eckroth	1988-92	
9. Vikki Valentine	1988-92	6
Trueie Timmons	1984-88	

Career Top-10 Finishes

1. Kristy McPherson	1999-2003	25
2. Siew Ai Lim	1992-96	24
3. Debbie Eckroth	1988-92	20
4. Marianne Morris	1983-87	16
5. Katelyn Dambaugh	2013-Pres.	14
Katie Burnett	2008-12	
7. Justine Dreher	2011-15	13
8. Clarissa Childs	1992-96	11
Vikki Valentine	1988-92	11
10. Elizabeth Macfie	1985-88	10

Single-Season Top-5 Finishes

1. Kristy McPherson	2002-03	7
2. Katelyn Dambaugh	2015-16	6
Justine Dreher	2014-15	
4. Katie Burnett	2011-12	5
B. Toumpsin	2007-08	
Kristy McPherson	2001-02	
Kristy McPherson	2000-01	
Debbie Eckroth	1989-90	
9. Siew Ai Lim	1994-95	4
Lynn Stiffler	1980-81	
Robin Abare	1980-81	

Single-Season Top-10 Finishes

1. Siew Ai Lim	1994-95	10
2. Katelyn Dambaugh	2015-16	8
Kristy McPherson	2002-03	
Kristy McPherson	2000-01	
Debbie Eckroth	1989-90	
6. Justine Dreher	2014-15	7
Katie Burnett	2011-12	
Kristy McPherson	2001-02	
9. Siew Ai Lim	1993-94	6
Debbie Eckroth	1991-92	
Marianne Morris	1985-86	
Lynn Stiffler	1980-81	



72-Hole Tournament Total

1. Samantha Swinehart	NCAA Championship, 5/20-23/14	284 (76-76-68-67)
2. Katie Burnett	NCAA Championship, 5/18-21/10	286 (72-74-69-71)
3. Katelyn Dambaugh	NCAA Championship, 5/20-25/16	287 (69-73-71-74)
4. Ainhoa Olarra	NCAA Championship, 5/20-25/16	288 (73-71-73-71)
Katie Burnett	NCAA Championship, 5/22-25/12	
6. Sarah Schmelzel	NCAA Championship, 5/20-25/16	289 (77-71-72-71)
7. Adrienne Gautreaux	NCAA Championship, 5/18-21/04	293 (73-72-78-70)
Siew Ai Lim	NCAA Championship, 5/24-27/95	293 (74-73-73-73)
9. Amanda Strang	NCAA Championship, 5/22-25/12	294 (75-73-76-70)
10. Suzie Lee	NCAA Championship, 5/20-23/14	295 (75-78-71-71)

54-Hole Tournament Total

1. Katelyn Dambaugh	ANNIKA Intercollegiate, 9/27-29/15	207 (65-71-71)
Katelyn Dambaugh	NCAA Baton Rouge Regional, 5/5-7/16	207 (70-66-71)
Justine Dreher	ANNIKA Intercollegiate, 9/28-30/14	207 (68-68-71)
Kristy McPherson	SEC Championship, 4/20-22/01	207 (67-70-70)
5. Katelyn Dambaugh	SEC Championship, 4/15-17/16	209 (72-61-66)
Bénédicte Toumpsin	LSU Golf Classic, 3/13-15/09	209 (70-71-68)
Kristy McPherson	NCAA East Regional, 5/8-10/03	209 (68-71-70)
Kristy McPherson	SEC Championship, 4/19-21/02	209 (69-69-71)
9. Sarah Schmelzel	ANNIKA Intercollegiate, 9/27-29/15	210 (70-69-71)
Nanna Madsen	Landfall Tradition, 10/24-26/14	210 (66-72-72)
Katie Burnett	NCAA East Regional, 5/6-8/10	210 (67-72-71)
Siew Ai Lim	Carolyn Cudone Inter., 11/4-6/94	210 (68-72-70)

36-Hole Tournament Total

1. Samantha Swinehart	Mercedes Benz Coll. Champ. 9/20-22/13	140 (69-71)
2. Mary Fran Hillow	Mercedes Benz Coll. Champ. 9/20-22/13	141 (70-71)
3. Katelyn Dambaugh	Mercedes Benz Coll. Champ. 9/20-22/13	142 (68-74)
Katie Burnett	Mason Rudolph W. Champ., 9/25-27/09	142 (69-73)
Kristy McPherson	Bryan Park National Coll., 3/28-30/03	142 (69-73)
6. Katie Burnett	Darius Rucker Intercollegiate, 3/2-4/12	143 (72-71)
7. Katie Burnett	NGCA Match Play Qualifying, 9/6/09	144 (69-75)
Amanda Strang	NGCA Match Play Qualifying, 9/6/09	144 (72-72)
9. Katie Burnett	ECU/Duke Tri-Match, 4/24/10	145 (72-73)
Corrine Carr	ECU/Duke Tri-Match, 4/24/10	145 (71-74)
Corrine Carr	NGCA Match Play Qualifying, 9/6/09	145 (72-73)

18-Hole Score

1. Katelyn Dambaugh	ANNIKA Intercollegiate, 1st Rd., 9/27/15	65
Katelyn Dambaugh	SEC Championship, 2nd Rd., 4/18/15	
Mary Fran Hillow	Mercedes-Benz Collegiate, 3rd Rd., 10/19/14	
4. Katelyn Dambaugh	NCAA Baton Rouge Regional, 2nd Rd., 5/6/16	66



Katelyn Dambaugh shares the program record for 18-hole score (65) and holds the school record for first-round score (65) and second-round score (65)

Katelyn Dambaugh	SEC Championship, 3rd Rd., 4/17/16	
Katelyn Dambaugh	PING ASU Invitational, 2nd Rd., 4/11/15	
Nanna Madsen	Landfall Tradition, 1st Rd., 10/24/14	
Justine Dreher	NCAA East Regional, 3rd Rd., 5/10/14	
Samantha Swinehart	PING ASU Invitational, 3rd Rd., 4/6/14	
Katie Burnett	Cougar Classic, 2nd Rd., 9/12/11	
Jenna Pearson	SEC Championship, 2nd Rd., 4/21/07	
12. Samantha Swinehart	NCAA Championship, 4th Rd., 5/23/14	67
Katelyn Dambaugh	Florida State Match-Up, 3rd Rd., 2/16/14	
Katie Burnett	NCAA Championship, 2nd Rd., 5/23/12	
Katie Rose Higgins	Cougar Classic, 3rd Rd., 9/13/11	
Katie Burnett	UCF Challenge, 2nd Rd., 2/14/11	
Corrine Carr	SEC Championship, 3rd Rd., 4/18/10	
Katie Burnett	NCAA East Regional, 1st Rd., 5/6/10	
Jenna Pearson	Dick McGuire Inter., 2nd Rd., 9/11/06	
Kristy McPherson	SEC Championship, 1st Rd., 4/20/01	

First-Round Score

1. Katelyn Dambaugh	ANNIKA Intercollegiate, 9/27/15	65
2. Nanna Madsen	Landfall Tradition, 10/24/14	66
3. Katie Burnett	NCAA East Regional, 5/6/10	67
Kristy McPherson	SEC Championship, 4/20/01	
5. Justine Dreher	ANNIKA Intercollegiate, 9/28/14	68
Katelyn Dambaugh	PING ASU Inv., 4/4/14	
Katelyn Dambaugh	Mercedes Benz Coll. Champ. 9/20/13	
Justine Dreher	UCF Challenge, 2/10/13	
Katie Burnett	Tar Heel Invitational, 10/7/11	
Bénédicte Toumpsin	SEC Championship, 4/16/10	
Bénédicte Toumpsin	NCAA East Regional, 5/8/08	
Jenna Pearson	Bryan Park National Coll., 4/6/07	
Kristy McPherson	NCAA East Regional, 5/8/03	
Kristy McPherson	SEC Championship, 4/18/03	
Siew Ai Lim	Carolyn Cudone Inter., 11/4/04	

Second-Round Score

1. Katelyn Dambaugh	SEC Championship, 4/8/15	65
2. Katelyn Dambaugh	NCAA Baton Rouge Regional, 5/6/16	66
Katelyn Dambaugh	PING ASU Invitational, 4/11/15	
Katie Burnett	Cougar Classic, 9/12/11	
Jenna Pearson	SEC Championship, 4/21/07	
6. Katie Burnett	NCAA Championship, 5/23/12	67
Katie Burnett	UCF Challenge, 2/14/11	
Jenna Pearson	Dick McGuire Inter., 9/11/06	
9. Justine Dreher	ANNIKA Intercollegiate, 9/29/14	68
Sarah Schmelzel	PING ASU Inv., 4/5/14	
Samantha Swinehart	UCF Challenge, 2/14/11	
Bénédicte Toumpsin	Lady Puerto Rico Classic, 2/25/08	
Marianne Morris	Lady Seminole Classic, 9/21/85	

Third-Round Score

1. Mary Fran Hillow	Mercedes-Benz Collegiate, 10/19/14	65
2. Katelyn Dambaugh	SEC Championship, 4/17/16	66
Justine Dreher	NCAA East Regional, 5/10/14	
Samantha Swinehart	PING ASU Inv., 4/6/14	
5. Katelyn Dambaugh	Florida State Match-Up, 2/16/14	67
Katie Rose Higgins	Cougar Classic, 9/13/11	
Corrine Carr	SEC Championship, 4/18/10	
8. Katelyn Dambaugh	The Landfall Tradition, 10/25/15	68
Katelyn Dambaugh	Tar Heel Invitational, 10/12/14	
Samantha Swinehart	NCAA Championship, 5/22/14	
Suzie Lee	Cougar Classic, 9/8/13	
Suzie Lee	NCAA East Regional, 5/12/12	
Meredith Swanson	Cougar Classic, 9/13/11	



Senior

Season Average (Min. 18 rounds)

Player	Year	Rds.	Strokes	Avg.
1. Justine Dreher	2014-15	32	2321	72.53
2. Katie Burnett	2011-12	33	2407	72.94
3. Samantha Swinehart	2013-14	33	2413	73.12
4. Sarah Schmelzel	2015-16	34	2489	73.21
5. Kristy McPherson	2002-03	31	2276	73.42

54-Hole Tournament Total

1. Justine Dreher	ANNIKA Intercollegiate, 9/28-30/14	207 (68-68-71)
Kristy McPherson	NCAA East Regional, 5/8-10/03	209 (68-71-70)
3. Sarah Schmelzel	ANNIKA Intercollegiate, 9/27-29/15	210 (70-69-71)
4. Samantha Swinehart	PING ASU Inv., 4/4-6/14	211 (75-70-66)
5. Justine Dreher	SEC Championship, 4/17-19/15	212 (70-72-70)
Samantha Swinehart	NCAA East Regional, 5/8-10/14	212 (73-70-69)
Katie Burnett	Liz Murphey Coll. Classic, 3/30-4/1/12	212 (70-70-72)

18-Hole Score

1. Samantha Swinehart	PING ASU Inv., 3rd Rd., 4/6/14	66
Katie Burnett	Cougar Classic, 2nd Rd., 9/11/11	
Jenna Pearson	SEC Championship, 2nd Rd., 4/21/07	
4. Samantha Swinehart	NCAA Championship, 4th Rd., 5/23/14	67
Katie Burnett	NCAA Championship, 2nd Rd., 5/23/12	
Corrine Carr	SEC Championship, 3rd Rd., 4/18/10	
Jenna Pearson	Dick McGuire Inter., 2nd Rd., 9/11/06	

Single-Season Top-5 Finishes

1. Kristy McPherson	2002-03	7
2. Justine Dreher	2014-15	6
3. Katie Burnett	2011-12	5
4. Jenna Pearson	2006-07	3
Vikki Valentine	1991-92	
Kim Belk	1988-89	
Marianne Morris	1986-87	

Sophomore

Season Average (Min. 18 rounds)

Player	Year	Rds.	Strokes	Avg.
1. Katie Burnett	2009-10	34	2502	73.59
2. Katelyn Dambaugh	2014-15	30	2210	73.66
3. Kristy McPherson	2000-01	34	2510	73.82
4. Sarah Schmelzel	2013-14	33	2442	74.00
5. Bénédicte Toumpsin	2007-08	34	2517	74.03

54-Hole Tournament Total

1. Kristy McPherson	SEC Championship, 4/20-22/01	207 (67-70-70)
2. Katie Burnett	NCAA East Regional, 5/6-8/10	210 (67-72-71)
3. Katelyn Dambaugh	SEC Championship, 4/17-19/15	212 (73-65-74)
Sarah Schmelzel	Florida State Match-Up, 2/14-16/14	212 (70-72-70)
5. Katelyn Dambaugh	PING ASU Invite., 4/10-12/15	213 (73-66-74)

18-Hole Score

1. Katelyn Dambaugh	SEC Championship, 2nd Rd., 4/18/15	65
2. Katelyn Dambaugh	PING ASU Invite., 2nd Rd., 4/11/15	66
3. Katie Rose Higgins	Cougar Classic, 3rd Rd., 9/13/11	67
Katie Burnett	NCAA East Regional, 1st Rd., 5/6/10	
Kristy McPherson	SEC Championship, 1st Rd., 4/20/01	

Single-Season Top-5 Finishes

1. Bénédicte Toumpsin	2007-08	5
Kristy McPherson	2001-02	
Debbie Eckroth	1989-90	
4. Katelyn Dambaugh	2014-15	3
Clarissa Childs	1993-94	
Siew Ai Lim	1993-94	

Junior

Season Average (Min. 18 rounds)

Player	Year	Rds.	Strokes	Avg.
1. Katelyn Dambaugh	2015-16	34	2435	71.62
2. Justine Dreher	2013-14	33	2421	73.36
3. Kristy McPherson	2001-02	34	2502	73.59
4. Siew Ai Lim	1994-95	31	2305	74.35
5. Katie Burnett	2010-11	33	2476	75.03

54-Hole Tournament Total

1. Katelyn Dambaugh	NCAA Baton Rouge Regional, 5/5-7/16	207 (70-66-71)
Katelyn Dambaugh	ANNIKA Intercollegiate, 9/27-29/15	207 (65-71-71)
3. Katelyn Dambaugh	SEC Championship, 4/15-17/16	209 (72-71-66)
Kristy McPherson	SEC Championship, 4/19-21/02	209 (69-69-71)
5. Siew Ai Lim	Carolyn Cudone Inter., 11/4-6/94	210 (68-72-70)

18-Hole Score

1. Katelyn Dambaugh	ANNIKA Intercollegiate, 1st Rd., 9/27/15	65
Mary Fran Hillow	Mercedes-Benz Collegiate, 3rd Rd., 10/19/14	
3. Katelyn Dambaugh	NCAA Baton Rouge Regional, 2nd Rd., 5/6/16	66
Katelyn Dambaugh	SEC Championship, 3rd Rd., 4/17/16	
Justine Dreher	NCAA Regional, 3rd Rd., 5/10/14	
6. Katie Burnett	UCF Challenge, 2nd Rd., 2/14/11	67

Single-Season Top-5 Finishes

1. Katelyn Dambaugh	2015-16	6
2. Kristy McPherson	2001-02	5
3. Siew Ai Lim	1994-95	4
4. Clarissa Childs	1994-95	3
Truie Timmons	1986-87	3
6. Justine Dreher	2013-14	2
Vikki Valentine	1990-91	2
Emma Lofgren	1998-99	2

Freshman

Season Average (Min. 18 rounds)

Player	Year	Rds.	Strokes	Avg.
1. Katelyn Dambaugh	2013-14	33	2434	73.30
2. Sarah Schmelzel	2012-13	32	2393	74.78
3. Katie Burnett	2008-09	30	2258	75.27
4. Suzie Lee	2010-11	28	2111	75.39
5. Justine Dreher	2011-12	24	1812	75.50

54-Hole Tournament Total

1. Nanna Madsen	Landfall Tradition, 10/24-26/14	210 (66-72-72)
2. Nanna Madsen	Mercedes-Benz Collegiate, 10/17-19/14	212 (72-69-71)
3. Katie Burnett	Cougar Classic, 9/14-16/08	213 (70-70-73)
4. Nanna Madsen	ANNIKA Intercollegiate, 9/28-30/14	214 (69-75-70)
5. Sarah Schmelzel	Bryan National Collegiate, 3/29-31/13	215 (71-73-71)
Bénédicte Toumpsin	Dick McGuire Inter., 9/11-12/06	215 (71-69-75)

18-Hole Score

1. Nanna Madsen	Landfall Tradition, 1st Rd., 10/24/14	66
2. Katelyn Dambaugh	Florida State Match-Up, 3rd Rd., 2/16/14	67
3. Katelyn Dambaugh	PING ASU Inv., 1st Rd., 4/4/14	68
Katelyn Dambaugh	Mercedes-Benz Collegiate, 1st Rd. 9/20/14	
Justine Dreher	Tar Heel Invitational, 2nd Rd., 10/8/11	

Single-Season Top-5 Finishes

1. Lynn Stiffler	1980-81	4
2. Nanna Madsen	2014-15	3
Robin Abare	1980-81	
4. Debbie Eckroth	1988-89	2
5. Katelyn Dambaugh	2013-14	1



Meredith Taylor

Year	Tourn.Rds.	Strokes	Avg.	Low	Low	Low	Top	Top	Top	Best Finish	
				18	36	54	5	10	20		
2007-08	2	6	505	84.17	76	—	241	0	0	0	60th
2008-09	8	24	1868	77.83	74	—	229	0	0	0	40th
Career	10	30	2373	79.10	74	—	229	0	0	0	40th

Kacy Thompson

Year	Tourn.Rds.	Strokes	Avg.	Low	Low	Low	Top	Top	Top	Best Finish	
				18	36	54	5	10	20		
1999-2000	9	27	2134	79.04	73	—	227	0	1	2	6th
2000-01	11	34	2689	79.09	71	—	222	0	0	2	15th
2001-02	11	34	2637	77.56	70	—	221	0	1	3	7th
2002-03	8	22	1710	77.73	74	153	228	1	1	1	1st
Career	39	117	9170	78.38	70	153	221	1	3	8	1st

Kory Thompson

Year	Tourn.Rds.	Strokes	Avg.	Low	Low	Low	Top	Top	Top	Best Finish	
				18	36	54	5	10	20		
2000-01	6	18	1445	80.28	74	—	224	0	0	0	21st
2001-02	4	12	951	79.25	73	—	235	0	0	0	35th
2002-03	6	15	1144	76.27	73	157	221	1	2	2	4th
2003-04	8	24	1931	80.46	74	—	232	0	0	0	27th
Career	24	69	5471	79.29	73	157	221	1	2	2	4th

Truie Timmons

Year	Tourn.Rds.	Strokes	Avg.	Low	Low	Low	Top	Top	Top	Best Finish	
				18	36	54	5	10	20		
1984-85	11	31	2420	78.06	72	149	226	2	2	4	3rd
1985-86	7	21	1643	78.24	72	—	225	1	2	4	4th
1986-87	10	31	2375	76.61	72	—	222	3	5	7	2nd
1987-88	3	9	706	78.44	75	—	232	0	0	2	14th
Career	31	92	7144	77.65	72	149	222	6	9	17	2nd

Bénédicte Toumpsin

Year	Tourn.Rds.	Strokes	Avg.	Low	Low	Low	Top	Top	Top	Best Finish	
				18	36	54	5	10	20		
2006-07	12	28	2117	75.61	69	162	215	1	1	2	2nd
2007-08	13	34	2517	74.03	68	—	214	5	5	6	1st
2008-09	10	30	2217	73.90	68	—	209	2	2	6	1st
2009-10	10	30	2249	74.96	68	154	217	0	0	4	15th
Career	45	122	9100	74.59	68	154	209	8	8	18	1st

Vikki Valentine

Year	Tourn.Rds.	Strokes	Avg.	Low	Low	Low	Top	Top	Top	Best Finish	
				18	36	54	5	10	20		
1988-89	9	27	2221	82.26	75	—	237	0	1	3	7th
1989-90	11	33	2619	79.36	74	—	228	1	4	4	4th
1990-91	9	24	1879	78.29	73	149	226	2	4	6	1st
1991-92	9	27	2088	77.33	71	—	222	3	3	6	3rd
Career	38	111	8807	79.34	71	149	222	6	12	19	1st

Marion Veyseyre

Year	Tourn.Rds.	Strokes	Avg.	Low	Low	Low	Top	Top	Top	Best Finish	
				18	36	54	5	10	20		
2015-16	7	22	1690	76.82	70	—	219	0	0	1	19th
Career	7	22	1690	76.82	70	—	219	0	0	1	19th

Beth Ward

Year	Tourn.Rds.	Strokes	Avg.	Low	Low	Low	Top	Top	Top	Best Finish	
				18	36	54	5	10	20		
1983-84	5	15	1309	87.27	78	—	251	0	0	0	48th
1984-85	7	19	1554	81.79	78	162	239	0	0	0	26th
Career	12	34	2863	84.21	78	162	239	0	0	0	26th

Taylor Weaver

Year	Tourn.Rds.	Strokes	Avg.	Low	Low	Low	Top	Top	Top	Best Finish	
				18	36	54	5	10	20		
2008-09	1	3	232	77.33	76	—	232	0	0	0	81st
2009-10	1	2	161	80.50	80	161	—	0	0	0	88th
Career	2	5	393	78.60	76	161	232	0	0	0	81st

Katie Weiss

Year	Tourn.Rds.	Strokes	Avg.	Low	Low	Low	Top	Top	Top	Best Finish	
				18	36	54	5	10	20		
1993-94	3	9	773	85.89	82	—	253	0	0	0	64th
1994-95	5	16	1318	82.38	77	—	242	0	0	0	42nd
1995-96	5	15	1208	80.53	74	—	230	0	0	0	22nd
1996-97	2	6	492	82.00	78	—	241	0	0	0	59th
Career	15	46	3791	82.41	74	—	230	0	0	0	22nd

Lee Whittemore

Year	Tourn.Rds.	Strokes	Avg.	Low	Low	Low	Top	Top	Top	Best Finish	
				18	36	54	5	10	20		
1980-81	13	35	2828	80.80	76	163	239	1	1	3	4th
1981-82	2	6	472	78.67	76	—	233	0	0	1	16th
Career	15	41	3300	80.49	76	163	233	1	1	4	4th

Blythe Worley

Year	Tourn.Rds.	Strokes	Avg.	Low	Low	Low	Top	Top	Top	Best Finish	
				18	36	54	5	10	20		
2004-05	6	18	1419	78.83	73	c	226	0	0	0	26th
2005-06	6	18	1382	76.78	73	—	222	0	0	0	36th
2006-07	11	26	1998	76.85	70	149	218	0	2	2	7th
2007-08	13	34	2627	77.26	73	—	222	0	0	1	15th
Career	36	96	7426	77.35	70	149	218	0	2	3	7th

Jia Xin Yang

Year	Tourn.Rds.	Strokes	Avg.	Low	Low	Low	Top	Top	Top	Best Finish	
				18	36	54	5	10	20		
2013-14	2	6	455	75.83	72	—	222	0	0	1	12th
2014-15	10	28	2102	75.07	69	—	218	0	0	0	21st
2015-16	9	25	1941	77.64	71	—	221	0	0	0	22nd
Career	21	59	4498	76.24	69	—	218	0	0	1	12th

Kerry Zebick

Year	Tourn.Rds.	Strokes	Avg.	Low	Low	Low	Top	Top	Top	Best Finish	
				18	36	54	5	10	20		
1992-93	8	24	1903	79.29	73	158	221	1	0	2	4th
1993-94	4	12	962	80.17	69	—	228	0	1	1	7th
Career	12	36	2865	79.58	69	158	221	1	1	3	4th



Former Gamecocks on Tour

Kristy McPherson

Siew-Ai Lim



LPGA Tour: 2007-present

2009 U.S. Solheim Cup Team
 Top-10 finishes in first three majors of 2009
 T-2 at Kraft Nabisco; T-5 at LPGA Championship
 T-7 at Women's British Open

Duramed FUTURES Tour: 2003-2006

Two career wins; 14 career top-10 finishes
 Never missed a cut in 60 events entered

University of South Carolina: 1999-2003

Two-time SEC Champion (2001, 2002)
 School-record six career wins
 School-record 18 career top-five finishes
 School-record 25 career top-10 finishes

LPGA Tour: 1999-2008

T-2nd at 2004 Kellogg/Keebler Classic
 Earned career-best \$177,377 in 2004

Duramed FUTURES Tour: 1997-2000

Won 2000 Carolina National FUTURES Classic
 15 career top-10 finishes

University of South Carolina: 1993-1997

First Gamecock to win NCAA Regional title (1995)
 Nine career top-five finishes
 Career average of 76.23, fifth-best in school history
 Only Gamecock to compete in four NCAA Championships
 T-9th at 1995 NCAA Championship; then-best finish in school history



Katie Burnett
 LPGA, Ladies
 European Tour



Clarissa Childs
 LPGA, Duramed
 FUTURES



Justine Dreher
 Ladies European
 Tour



Debbie Eckroth
 Duramed
 FUTURES



Cecilia Ekelundh
 Ladies European
 Tour



Adrienne Gautreaux
 Duramed
 FUTURES



Tara Joy
 Duramed
 FUTURES



Siew-Ai Lim
 LPGA, Duramed
 FUTURES



Rebekah Lee-Owens
 Duramed
 FUTURES



Nanna Madsen
 Ladies European
 Tour



Kristy McPherson
 LPGA, Duramed
 FUTURES



Camila Mori
 Duramed
 FUTURES



Marianne Morris
 LPGA, Duramed
 FUTURES



Jenna Pearson
 Duramed
 FUTURES



Aileen Robertson
 Duramed
 FUTURES



**Bénédicte
 Toumpsin**
 Ladies European
 Tour



Vikki Valentine
 Duramed
 FUTURES



Katie Weiss
 Duramed
 FUTURES