



Twitter: @GamecockWSoccer | Facebook: Facebook.com/GamecockWSoccer | Instagram: @GamecockWSoccer | Shelley & Jamie Smith on Twitter: @SoccerSmithsSC



2015 GAMECOCK WOMEN'S SOCCER

GAME INFORMATION

at Florida

Date: Thurs., Oct. 22, 2015
 Kickoff: 7 p.m. ET
 Location: Gainesville, Fla.
 Stadium: James G. Pressley Stadium
 Series: UF leads 20-5-1
 Live Video: SEC Network
 Live Stats: GatorZone.com



at LSU

Date: Sun., Oct. 25, 2015
 Kickoff: 2 p.m. ET
 Location: Baton Rouge, La.
 Stadium: LSU Soccer Stadium
 Series: SC leads 10-2-5
 Live Stats: LSUSports.net



#17 SOUTH CAROLINA
 Gamecocks
 11-3-1, 5-2-1 SEC

- AT -



NO. 8 FLORIDA
 Gators

11-3-1, 5-2-1 SEC

- AT -



LSU
 Tigers

9-4-3, 3-4-1 SEC

Head Coach: Shelley Smith
 Record at SC: 169-99-39 (15th)
 Career Record: 210-133-41 (19th)
 WSOC Conference: SEC

Head Coach: Becky Burleigh
 Record at UF: 337-90-28 (10th)
 Career Record: 436-117-36 (26th)
 WSOC Conference: SEC

Head Coach: Brian Lee
 Record at Alabama: 102-77-33 (11th)
 Career Record: 246-157-43 (21st)
 WSOC Conference: SEC

The South Carolina women's soccer team begins a two-game road stretch at Florida on Thurs., Oct. 22 with kickoff set for 7 p.m. from James G. Pressley Stadium in Gainesville, Fla. The contest will be televised on the SEC Network. The Gamecocks then travel to LSU on Sun., Oct. 25 for their final road match of the season. Action from LSU Soccer Stadium in Baton Rouge, La. will begin at 2 p.m. ET.

PLAYING FOR A CROWD

Through nine games at Stone Stadium, the Gamecocks rank second in the nation in home attendance with 24,512 total fans. South Carolina's average of 2,946 fans per contest ranks third. The Gamecocks sold 1,000 season tickets for the first time in program history. (Men and women's soccer season tickets are sold together as one ticket)

THREE'S COMPANY

South Carolina is in a three-way tie with Florida and Missouri for first place in the SEC standings with 16 points. Ole Miss, Auburn and Texas A&M are all just one point behind with 15.

OFFENSE ON FIRE

Through 15 games this season South Carolina has scored 36 goals compared to last year's squad that netted 32 all season. The Gamecocks have had 15 different goal scorers.

IN THE RANKINGS

The Gamecocks are No. 17 in the latest NSCAA and TopDrawerSoccer.com rankings and ranked 23rd by Soccer America. South Carolina is No. 25 in the latest RPI released by the NCAA.

BY THE NUMBERS

South Carolina holds a 237-104 shot advantage over opponents through 15 games. The Gamecocks have put 120 of 2137 shots on target, compared to opponents getting just 44 shots on goal. South Carolina averages 15.8 shots per game and is outscoring opponents 36-15. Averaging 2.40 goals per contest, the Gamecocks have 15th highest scoring offense in the country while their 108 points and 36 goals tie for 14th and 17th, respectively.

South Carolina's 108 points and 36 goals rank second and third, respectively, in the SEC. The Gamecocks rank first in assists (34) and assists per game (2.33), second in goals per game (2.40) and their 237 shots tie for the seventh most in the league. South Carolina ranks fifth in fewest goals allowed with 15 and has the seventh best goals against average (0.97).

In SEC contests the Gamecocks are tied for third in fewest goals allowed with eight, boast the third lowest goals against average of 0.96 and one of only five teams to record three shutouts against league opponents. South Carolina is tied for fourth in points (42), tied for third in assists (14) and assists per game (1.75), goals (14) and

2015 SCHEDULE

DATE	OPPONENT	TIME/RESULT
A. 14	at NC State (exhib.)	W, 3-0
A. 21	vs. Northeastern SECN+	W, 4-1
A. 23	vs. Oklahoma SECN+	W, 2-1 (2OT)
A. 28	at Clemson	L, 2-1
A. 30	vs. Coastal Carolina SECN+	W, 3-2
S. 4	vs. Colgate SECN+	W, 2-0
S. 7	at Charlotte	W, 4-1
S. 11	at Georgia* SECN+	W, 3-1
S. 14	vs. Kennesaw State SECN+	W, 6-0
S. 20	at Missouri* ESPNU	W, 1-0
S. 24	vs. Texas A&M* SEC Network	W, 2-1
S. 27	vs. Alabama* SECN+	W, 3-0
O. 2	at Arkansas* SECN+	T, 2-2 (2OT)
O. 8	Auburn* SEC Network	W, 2-0
O. 11	at Ole Miss* SECN+	L, 0-2
O. 16	vs. Vanderbilt SECN+	L, 1-2 (OT)
O. 22	at Florida* SEC Network	7 p.m.
O. 25	at LSU*	2 p.m.
O. 29	vs. Tennessee* SECN+	7 p.m.

SEC Championships (Orange Beach, Ala.)

N. 2-8 TBA TBA

all home games in bold | * indicates SEC contest | all times listed in Eastern | all dates and times subject to change | all home games played at Stone Stadium

Contact: Chelsea Carlson • Office: (803) 777-8844 • Cell: (440) 241-1009 • Email: carlsonc@mailbox.sc.edu
 1304 Heyward St., Columbia, S.C. 29208 • Fax: (803) 777-2967 • GamecocksOnline.com

2015 NUMERICAL ROSTER

No.	Name	Pos.	Ht.	Cl/Exp.	Hometown (High School / Last School)
1	Hunter Peifer	GK	5-8	Fr./HS	Colorado Springs, Colo. (Cheyenne Mountain)
2	Anna Conklin	M	5-5	So./1L	Randolph, N.J. (Randolph)
3	Caroline Gray	D	5-4	Sr./3L	McLean, Va. (McLean)
4	Raina Johnson	F	5-0	Sr./3L	Charlotte, N.C. (Charlotte Country Day)
5	Sophie Groff	F	5-8	Jr./2L	Grapevine, Texas (Southlake Carroll)
6	Kaleigh Kurtz	D	5-8	Jr./1L	Greer, S.C. (Riverside / Richmond)
7	Savannah McCaskill	M	5-4	So./1L	Chapin, S.C. (Irmo)
9	Carly Ray	D	5-7	Sr./3L	Evans, Ga. (Greenbrier)
10	Emily Bollinger	D	5-6	Sr./3L	St. Louis, Mo. (Cor Jesu Academy)
11	Chelsea Drennan	M	5-9	Jr./2L	Anderson, S.C. (T.L. Hanna)
12	Dominique Babbitt	D	5-5	So./1L	Holly Springs, N.C. (Holly Springs)
13	Simone Wark	F	5-9	Fr./HS	Whitby, Ontario, Canada (Bill Crothers Secondary)
14	Daija Griffin	F	5-7	Jr./2L	Piscataway, N.J. (Piscataway)
15	Claire Studebaker	M	5-8	Jr./2L	Summerfield, N.C. (Northwest Guilford)
16	Evelyn Robinson	D	5-4	Jr./1L	McLean, Va. (McLean)
17	Alexis Pendergraft	M	5-10	So./SQ	Raleigh, N.C. (Millbrook)
18	Stevi Parker	M	5-2	Sr./3L	Perkasie, Pa. (Pennridge)
19	Iris Dayton	M	5-6	Jr./2L	Montpelier, Vt. (Westminster School, Simsbury, Conn.)
20	Lauren Jankowski	F	5-3	So./1L	Berkley Heights, N.J. (Governor Livingston)
22	Kiley Burns	M	5-10	Fr./HS	Plano, Texas (Plano West Senior)
23	Caroline Kelly	GK	5-9	Sr./TR	Alexandria, Va. (West Potomac/Virginia Tech)
25	Carrie Lawrence	M	5-7	Fr./HS	Orlando, Fla. (Timber Creek)
27	Bay Daniel	F	5-9	Jr./2L	Evans, Ga. (Greenbrier)
28	Coryn Bajema	F	5-10	Sr./3L	Lynden, Wash. (Lynden Christian)
29	Abbey Crider	GK	5-6	So./1L	Pinehurst, N.C. (Pinecrest)
30	Jacky Huchler	F	5-6	Fr./HS	Weston, Fla. (Cypress Bay)
31	Courtney Kaplan	F	5-10	Fr./HS	St. Louis, Mo. (Mary Institute and St. Louis Country Day)
55	Katelyn Houston	GK	5-6	Jr./SQ	Anchorage, Alaska (Grace Christian School)
73	Lindsey Lane	M	5-3	So./1L	Lusby, Md. (Patuxent)
88	Paige Bendell	D	5-10	Jr./2L	Orland Park, Ill. (Carl Sandburg)
99	Vanessa Kovar	F	5-6	Jr./2L	Manassas, Va. (Forest Park)
	Emily Ball*	GK	5-9	Sr./SQ	Tampa, Fla. (Freedom)

2015 ALPHABETICAL ROSTER

No.	Name	Pos.	Ht.	Cl/Exp.	Hometown (High School / Last School)
12	Dominique Babbitt	D	5-5	So./1L	Holly Springs, N.C. (Holly Springs)
28	Coryn Bajema	F	5-10	Sr./3L	Lynden, Wash. (Lynden Christian)
	Emily Ball*	GK	5-9	Sr./SQ	Tampa, Fla. (Freedom)
88	Paige Bendell	D	5-10	Jr./2L	Orland Park, Ill. (Carl Sandburg)
10	Emily Bollinger	D	5-6	Sr./3L	St. Louis, Mo. (Cor Jesu Academy)
22	Kiley Burns	M	5-10	Fr./HS	Plano, Texas (Plano West Senior)
2	Anna Conklin	M	5-5	So./1L	Randolph, N.J. (Randolph)
29	Abbey Crider	GK	5-6	So./1L	Pinehurst, N.C. (Pinecrest)
27	Bay Daniel	F	5-9	Jr./2L	Evans, Ga. (Greenbrier)
19	Iris Dayton	M	5-6	Jr./2L	Montpelier, Vt. (Westminster School, Simsbury, Conn.)
11	Chelsea Drennan	M	5-9	Jr./2L	Anderson, S.C. (T.L. Hanna)
3	Caroline Gray	D	5-4	Sr./3L	McLean, Va. (McLean)
14	Daija Griffin	F	5-7	Jr./2L	Piscataway, N.J. (Piscataway)
5	Sophie Groff	F	5-8	Jr./2L	Grapevine, Texas (Southlake Carroll)
55	Katelyn Houston	GK	5-6	Jr./SQ	Anchorage, Alaska (Grace Christian School)
30	Jacky Huchler	F	5-6	Fr./HS	Weston, Fla. (Cypress Bay)
20	Lauren Jankowski	F	5-3	So./1L	Berkley Heights, N.J. (Governor Livingston)
4	Raina Johnson	F	5-0	Sr./3L	Charlotte, N.C. (Charlotte Country Day)
31	Courtney Kaplan	F	5-10	Fr./HS	St. Louis, Mo. (Mary Institute and St. Louis Country Day)
23	Caroline Kelly	GK	5-9	Sr./TR	Alexandria, Va. (West Potomac/Virginia Tech)
99	Vanessa Kovar	F	5-6	Jr./2L	Manassas, Va. (Forest Park)
6	Kaleigh Kurtz	D	5-8	Jr./1L	Greer, S.C. (Riverside / Richmond)
73	Lindsey Lane	M	5-3	So./1L	Lusby, Md. (Patuxent)
25	Carrie Lawrence	M	5-7	Fr./HS	Orlando, Fla. (Timber Creek)
7	Savannah McCaskill	M	5-4	So./1L	Chapin, S.C. (Irmo)
18	Stevi Parker	M	5-2	Sr./3L	Perkasie, Pa. (Pennridge)
1	Hunter Peifer	GK	5-8	Fr./HS	Colorado Springs, Colo. (Cheyenne Mountain)
17	Alexis Pendergraft	M	5-10	So./SQ	Raleigh, N.C. (Millbrook)
9	Carly Ray	D	5-7	Sr./3L	Evans, Ga. (Greenbrier)
16	Evelyn Robinson	D	5-4	Jr./1L	McLean, Va. (McLean)
15	Claire Studebaker	M	5-8	Jr./2L	Summerfield, N.C. (Northwest Guilford)
13	Simone Wark	F	5-9	Fr./HS	Whitby, Ontario, Canada (Bill Crothers Secondary)

* Medically ineligible for 2015 season

PRONUNCIATIONS

Coryn Bajema -- core-INN BADGE-eh-muh
 Paige **Bendell** - ben-DELL
 Emily **Bollinger** -- BOWL-injure
Daija Griffin -- DAY-zhuh

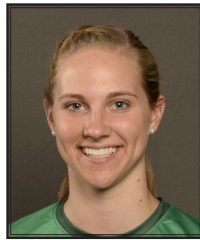
Jacky **Huchler** -- HUCK-ler
Raina Johnson -- RAIN-uh
 Hunter **Peifer** -- PIE-fer
 Simone **Wark** -- WAR-k



#12 Dominique
Babbitt
So. - D



#28 Coryn
Bajema
Sr. - F



Emily
Ball
Sr. - GK



#88 Paige
Bendell
Jr. - D



#10 Emily
Bollinger
Sr. - D



#22 Kiley
Burns
Fr. - M



#2 Anna
Conklin
So. - M



#29 Abbey
Crider
So. - GK



#27 Bay
Daniel
Sr. - M



#19 Iris
Dayton
JR. - M



#11 Chelsea
Drennan
Jr. - M



#3 Caroline
Gray
Sr. - D



#14 Daija
Griffin
Jr. - F



#5 Sophie
Groff
Jr. - F



#55 Katelyn
Houston
Jr. - GK



#30 Jacky
Huckler
Fr. - F



#20 Lauren
Jankowski
So. - F



#4 Raina
Johnson
Sr. - F



#31 Courtney
Kaplan
Fr. - F



#23 Carolina
Kelly
Sr. - GK



#99 Vanessa
Kovar
Jr. - F



#6 Kaleigh
Kurtz
Jr. - D



#73 - Lindsey
Lane
So. - M



#25 Carrie
Lawrence
Fr. - M



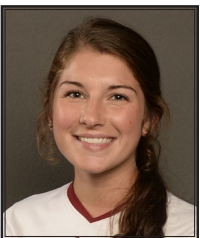
#7 Savannah
McCaskill
So. - F



#18 Stevi
Parker
Sr. - M



#1 Hunter
Peifer
Fr. - GK



#17 Alexis
Pendergraft
So. - M



#9 Carly
Ray
Sr. - D



#16 Evelyn
Robinson
Jr. - D



#15 Claire
Studebaker
Jr. - M



#13 Simone
Wark
Fr. - F

2015 SEC STANDINGS

Team	SEC Only				Pts.	Overall					
	W-L-T	Home	Away			W-L-T	Pct.	Home	Away	Neutral	Streak
South Carolina	5-2-1	3-1-0	2-1-1		16	11-3-1	.767	8-1-0	3-2-1	0-0-0	L2
Florida	5-2-1	2-1-1	3-1-0		16	11-3-1	.767	4-1-1	7-2-0	0-0-0	W3
Missouri	5-2-1	4-1-0	1-1-1		16	7-4-4	.600	5-2-2	2-1-2	0-1-0	W2
Ole Miss	5-3-0	4-1-0	1-2-0		15	11-3-2	.750	9-1-1	2-2-1	0-0-0	W3
Auburn	5-3-0	3-0-0	2-3-0		15	12-3-0	.800	8-0-0	4-3-0	0-0-0	L1
Texas A&M	5-3-0	3-0-0	2-3-0		15	12-4-0	.750	8-0-0	4-4-0	0-0-0	W1
Vanderbilt	3-2-3	2-1-1	1-1-2		12	7-5-4	.563	5-2-2	2-3-2	0-0-0	W2
Tennessee	3-3-2	1-2-0	2-1-2		11	7-3-5	.633	5-2-1	2-1-4	0-0-0	W2
Kentucky	3-3-2	1-2-1	2-1-1		11	9-4-3	.656	7-3-2	2-1-1	0-0-0	L2
LSU	3-4-1	2-0-1	1-4-0		10	9-4-3	.656	7-0-3	2-4-0	0-0-0	W1
Mississippi St.	2-4-2	1-1-2	1-3-0		8	4-8-3	.367	2-3-3	2-4-0	0-1-0	L1
Alabama	2-6-0	1-3-0	1-3-0		6	5-9-2	.375	4-3-1	1-6-1	0-0-0	W1
Georgia	2-6-0	2-3-0	0-3-0		6	3-10-1	.250	2-4-0	1-6-1	0-0-0	L2
Arkansas	1-6-1	0-4-1	1-2-0		4	5-9-1	.367	3-5-1	2-4-0	0-0-0	L3

2015 HONORS

Abbey Crider - SEC Defensive Player of the Week (Sept. 28)

Chelsea Drennan - SEC Preseason Watch List

Raina Johnson - SEC Preseason Watch List

Savannah McCaskill - SEC Preseason Watch List

Stevie Parker - SEC Preseason Watch List

Simone Wark - SEC Freshman of the Week (Sept. 21)

goals per game (1.75), and has tallied the fifth most shots (112).

TEN STRAIGHT

The Gamecocks had a 10-game unbeaten streak this season that ended with a 2-0 loss at Ole Miss. During the 10-game stretch the Gamecocks won eight consecutive matches, went unbeaten in six-straight SEC contests and were 9-0-1 overall.

GAMECOCK SEASON LEADERS

Goals	Total	Assists	Total	Points	Total	Shutouts	Total
Savannah McCaskill	9	Chelsea Drennan	8	Savannah McCaskill	24	Crider	3/1
Sophie Groff	6	Savannah McCaskill	6	Sophie Groff	16	Kelly	1/1
Raina Johnson	5	Raina Johnson	5	Raina Johnson	15		
		Sophie Groff	4	Chelsea Drennan	10		

THIS WEEK IN THE SEC

Thursday, October 22, 2015

South Carolina at Florida SEC Network 7:00 pm

Friday, October 23, 2015

Ole Miss at Tennessee SECN+ 7:00 pm
 Missouri at Alabama SECN+ 8:00 pm
 Arkansas at Texas A&M SECN+ 8:00 pm
 Kentucky at Auburn SECN+ 8:00 pm
 Georgia at Vanderbilt SECN+ 8:00 pm
 Mississippi State at LSU 8:00 pm

Sunday, October 25, 2015

Missouri at Vanderbilt SECN+ 2:00 pm
 South Carolina at LSU 2:00 pm
 Mississippi State at Alabama ESPNU 3:00 pm
 Georgia at Auburn SECN+ 3:00 pm
 Kentucky at Tennessee SEC Network 5:00 pm
 Arkansas at Florida SECN+ 6:00 pm
 Ole Miss at Texas A&M SECN+ 7:00 pm

UP NEXT

The Gamecocks close out the 2015 regular season on Thurs. Oct. 29, hosting Tennessee at Stone Stadium. Kickoff is set for 7 p.m. and the match will be available on SEC Network+. South Carolina will honor eight seniors prior to the contest.

LOOKING BACK

The Gamecocks suffered their first home loss of the season, falling 2-1 (OT) to Vanderbilt last Friday. South Carolina senior forward Raina Johnson and the Gamecocks opened the scoring in the 27th minute following a series of successful passes. Junior midfielder Chelsea Drennan found some space in the attacking third and threaded a pass to sophomore Savannah McCaskill near the right side of the box. The South Carolina forward's cross in front of net connected with the outstretched leg of Johnson, who tallied her fifth goal of the season. Vanderbilt drew even with South Carolina out of the break following forward Taylor Elliot's third goal of the season in the 46th minute. Elliot found the back of the net from the top of the box, as she fired the ball into the top half of the goal past Kelly. Junior forward Simone Charley provided the game-winner for the Commodores in the 97th minute.

SCOUTING FLORIDA

The Gators are 11-3-1 on the season and 5-2-1 in the SEC after a 2-1 win at Mississippi State last week. Junior forward Savannah Jordan leads the team and the SEC with 33 points and 14 goals. Freshman Kaylan Marckese and junior Valerie Tysinger have split time in the net. The duo have recorded a combined 40 saves and two shutouts.

SERIES HISTORY

Florida leads the all-time series 20-5-1. The Gamecocks have won the last two contests with the Gators, including a 3-2 win on Oct. 16, 2014 in which Savannah McCaskill netted the game-winner.

SCOUTING LSU

The Tigers are 9-4-3 on the year and 3-4-1 in the league after a 1-0 win at Arkansas last week. Freshman Jorida Baucom leads the team with 26 points and 12 goals, including 4 game-winners. Senior keeper Catalina Rubiano has tallied 61 saves, five shutouts and has a goals against average of 1.13.

SERIES HISTORY

The Gamecocks lead the all-time series with the Tigers 10-2-5. South Carolina has a five-game unbeaten streak, including three straight wins over LSU. In the last meeting between the two squads (Oct. 5, 2014), Daija Griffin netted the game-winner to lead the Gamecocks to a 1-0 victory.

175

The Gamecocks' 3-1 victory over Georgia on Sept. 11 was Head Coach Shelley Smith 175th win at South Carolina. With the Gamecocks' victory over Auburn she has 180 wins at South Carolina and 221 in her

CAROLINA'S RECORD WHEN...

Overall 11-3-1

Home.....	8-1-0
Away.....	3-2-1
Neutral.....	0-0-0
Leading At The Half.....	9-1-0
Tied At The Half.....	1-0-0
Trailing At The Half.....	1-2-1
Scores In The First Half.....	10-2-0
Overtime Games.....	1-0-1
On Television.....	3-0-0
In Tournaments.....	0-0-0
Against 2014 NCAA Participants.....	6-1-1
Vs. Top 25.....	2-1-0
Longest Winning Streak.....	8
Longest Unbeaten Streak.....	10 (9-0-1)
Active Streak.....	L2

Against Opponents

SC Scores First.....	10-2-0
Opponent Scores First.....	1-1-1
Scores 1 Goal.....	1-2-0
Scores 2 Goals.....	4-0-1
Scores 3+ Goals.....	6-0-0
Opponent Scores 1 Goal.....	4-0-0
Opponent Scores 2 Goals.....	2-2-1
Opponent Scores 3+ Goals.....	0-0-0
Is Shutout.....	0-1-0
Shut Out Opponent.....	5-0-0
Takes More Shots.....	10-2-1
Opponent Takes More Shots.....	1-1-0

Time

Day Games.....	1-0-0
Night Games.....	10-3-1
Mondays.....	2-0-0
Wednesdays.....	0-0-0
Thursdays.....	2-0-0
Fridays.....	3-2-1
Sundays.....	4-1-0
August.....	3-1-0
September.....	7-0-0
October.....	1-2-1
November.....	0-0-0
After A Win.....	9-1-1
After A Loss.....	1-1-0
After A Tie.....	1-0-0
Wearing White.....	6-2-0
Wearing Garnet.....	5-1-1

career.

MCCASKILL IN THE LEAD

Forward Savannah McCaskill leads South Carolina in goals (9), points (24), shots (35), and shots on goal (21). The sophomore has also tallied six assists, the second most on the team. She is tied for fifth in the SEC in goals and third in points. McCaskill, who was named SEC Freshman of the Year in 2014, has nearly doubled her scoring output of five goals from her rookie campaign. Against conference opponents, her nine points rank sixth and she is tied for seventh with three goals. She has tallied three assists against SEC opponents, which tie for third in the league.

ASSISTED BY DRENNAN

Junior midfielder Chelsea Drennan has recorded a team-high eight assists. Her 27 career assists rank second all-time in school history and she just six shy of the school record (33). Drennan's eight assists tie for first in the league and tie for 19th in the nation. She has tallied three assists against conference opponents, which tie for third in the league.

JOHNSON WINS THE GAME

Senior forward Raina Johnson netted the game-winner in South Carolina's matches against Texas A&M and Alabama. Johnson scored in the 89th minute to break a 1-1 tie in the Gamecocks' 2-1 victory over the Aggies and opened scoring in the sixth minute in a 3-0 win over the Crimson Tide. In league contests, she is tied for fourth with 11 points and four goals. She has tallied three assists against SEC opponents, which tie for third in the conference.

TWO FOR GROFF

Junior forward Sophie Groff scored a pair of goals in two games this season (Coastal Carolina and Kennesaw State), including a game-winner in both contests. Groff also scored in the Gamecocks 3-0 win over Alabama. Her six goals and 16 points rank 10th in the SEC. Groff is likely to miss the remainder of the 2015 season with a partial ACL tear to her right knee.

ROOKIES ARE ROLLING

Newcomers Carrie Lawrence, Courtney Kaplan and Simone Wark have found the back of the net early in their freshman campaigns, each tallying at least one goal this season. Wark scored the game-winner in the Gamecocks' 1-0 win at Missouri and earned SEC Freshman of the Week honors for her efforts. She also netted the equalizer in a 2-2 draw at Arkansas.

ROOM FOR TWO

Senior Caroline Kelly and sophomore Abbey Crider have split time in the net this season. Crider is 6-1-0 on the year with three shutouts. She has made 13 saves and has a goals against average of 0.80. Crider earned SEC Defensive Player of the Week honors for her performance against Texas A&M and Alabama. Kelly is 5-2-1 on the year with one shutout. She has made 15 saves and has a goals against average of 1.13. In SEC contests, Crider leads the league with a goals against average of 0.75 while Kelly ranks seventh (1.16). Crider's two shutouts against conference opponents tie for fifth.

HOME FIELD ADVANTAGE

The Gamecocks won eight-straight matches and are 9-1-0 at Stone Stadium in 2015. South Carolina posted an 8-3-1 record at "The Graveyard" last season and in 2013 the Gamecocks streaked to a perfect 11-0-0 record at home, the first in program history.

IT'S A FIRST

Sophomores Anna Conklin and Dominique Babbitt and junior Kaleigh Kurtz have all scored their first career goal this season.

THE FAST LANE

Sophomore midfielder Lindsey Lane netted the game winner in the Gamecocks' double overtime victory over Oklahoma. Three of Lane's four career goals have been game- winners.

GRAY FOR THE WIN

Senior defender Caroline Gray secured South Carolina's win in the season opener, scoring her first career goal against Northeastern.

HISTORY MAKERS

The Gamecocks reached the NCAA Elite Eight for the first time in program history in 2014 and the No. 9 ranking at the end of the year matched the 2009 team's mark for the best season-ending rank in school history.

PRESEASON SEC

The SEC coaches selected South Carolina to finish fourth in the league with Florida, Texas A&M and Kentucky claiming the top three spots.

GAMECOCK RECORD BOOK

GOALS - CAREER

	Name	Yrs.	No.
1.	Jennie Ondo	1996-99	50
2.	Kayla Grimsley	2008-11	43
3.	Morgan McIntyre	1998-2002	29
4.	Danielle Au	2010-13	23
5.	Raina Johnson	2012-Pres.	21
	Angela Austin	1996-99	19
	Debbie Smith	1995-96	19
	Brooke Jacobs	2007-10	17
	Ashley Williams	2001-04	17
10.	Savannah McCaskill	2014-Pres.	16
	Blakely Mattern	2006-09	16

ASSISTS - CAREER

	Name	Yrs	No.
1.	Kayla Grimsley	2008-11	33
2.	Chelsea Drennan	2013-Pres.	27
3.	Mindy Sanders	1996-99	24
4.	Kim Miller	2006-2009	17
5.	Angela Austin	1996-99	16
	Melinda Carter	1998-02	16
7.	Jennie Ondo	1996-99	15
8.	Brooke Jacobs	2007-10	14
9.	Danielle Au	2010-2013	13
	Ashley Kirk	2004-07	13

GAME-WINNING GOALS - CAREER

	Name	Yrs	No.
1.	Jennie Ondo	1996-99	16
2.	Kayla Grimsley	2008-11	14
3.	Raina Johnson	2012-Pres.	11
	Danielle Au	2010-2013	11
	Becca Epstein	2000-03	9
6.	Brooke Jacobs	2007-10	5
	Blakely Mattern	2006-09	5
	Kim Miller	2006-09	5
	Lindsay Small	2006-09	5
	Felicia Schroeder	2005-06	5
	Jessica Julin	2000-03	5
	Sarah Lentz	2000-04	5
	Mindy Sanders	1996-99	5
	Debbie Smith	1995-96	5

GAME-WINNING ASSISTS - CAREER

	Name	Yrs	No.
1.	Kayla Grimsley	2008-11	12
2.	Chelsea Drennan	2013-Pres.	9
3.	Kim Miller	2006-09	8
4.	Andie Romness	2011-14	6
	Ashley Kirk	2004-07	6
6.	Ellen Fahey	2008-11	5
	Brooke Jacobs	2007-10	5
	Shannon Bigbie	2006-09	5
	Sam Diaz-Matosas	2006-09	5
	Jessi Swaim	2003-05	5
	Melinda Carter	1998-02	5

STATISTICAL CATEGORY BREAKDOWN

Category	2014 Leader (Total)	% Returning	Top Returner
Points	Groff/McCaskill (15)	87%	Groff/McCaskill (15)
Goals	Groff (6)	88%	Groff (6)
Game-Winning Goals	Johnson (4)	93%	Johnson (4)
Assists	Drennan (11)	87%	Drennan (11)
Shots	McCaskill (60)	85%	McCaskill (60)
Shots on Goal	McCaskill (27)	86%	McCaskill (27)
Saves	D'Angelo (54)	16%	Crider (10)

GUESS WHO'S BACK

All five of South Carolina's top scorers from a year ago return to action this fall.

Chelsea Drennan led the Gamecocks in assists in each of the past two seasons and finished her 2014 campaign with 13 points on three goals and seven assists. The junior standout has totaled 27 points in her first two seasons at South Carolina.

Sophie Groff was the top goal-scorer of 2014 as she netted six throughout the season. The junior forward added three assists to cap off the year with 15 points.

Raina Johnson tallied a team-best four game-winners in 2014. She finished her junior season with five goals and was one of four players to record double-digit points (11). Johnson has started in all but one match for the Gamecocks over the last two seasons.

Reigning SEC Freshman of the Year Savannah McCaskill finished with a team-high 15 points (5G, 5A) last season. The forward led the Gamecocks with 60 shots and was one of nine South Carolina players to record a game-winner in 2014. Her 25 games started last season matched a program freshman record, and she was one of three Gamecocks to receive All-SEC honors.

Stevi Parker, a 2014 SEC All-Tournament Team selection, started all 25 matches last season. She was voted South Carolina's team MVP last season after recording a career-high seven points on three goals and one assist.

2015 RANKINGS

Week	NSCAA	South Region	S. America	TopDrawerSoccer	OurGame Magazine	RPI
Preseason	11	N/A	15	12	N/A	N/A
Week 1	8	2	9	12	8	N/A
Week 2	16	4	18	17	11	N/A
Week 3	17	4	16	15	10	N/A
Week 4	16	4	15	15	10	N/A
Week 5	17	4	15	15	10	18
Week 6	10	2	8	11	8	12
Week 7	10	2	7	12	9	15
Week 8	8	1	12	10	9	17
Week 9	17	4	23	17	10	25
Week 10						
Week 11						
Week 12						

SOUTH CAROLINA VS. RANKED TEAMS

Date	Opponent	Result	Date	Opponent	Result
9-18-96	#9 Clemson	W, 3-2	10-16-09	at #23 Georgia	L, 1-2
10-4-97	at #9 Clemson	L, 0-5	10-25-09	at #14 LSU	L, 0-1
10-26-97	at #9 Florida	L, 2-5	10-30-09	at #10 Florida	L, 0-3
9-11-98	at #17 Georgia	W, 2-0	11-04-09	vs. #25 Georgia	W, 3-2
10-7-98	#13 Clemson	L, 1-3	11-06-09	vs. #8 Florida	W, 1-0
11-5-98	vs. #3 Florida	L, 0-6	11-08-09	vs. #13 LSU	T, 1-1
10-8-99	at #9 Clemson	L, 0-4	11-15-09	#12 Rutgers	W, 1-0
10-29-99	at #3 Florida	L, 0-5	11-20-09	#14 Wake Forest	L, 0-1
9-8-00	at #1 North Carolina	L, 1-9	9-16-10	#23 Minnesota	L, 1-3
9-12-00	vs. #17 Duke	L, 1-5	9-19-10	at #22 Wake Forest	W, 1-0
10-8-00	at #14 Kentucky	L, 1-5	10-15-10	#20 Georgia	L, 0-1
10-29-00	#16 Florida	L, 0-3	10-29-10	#8 Florida	L, 0-1
9-30-01	at #20 Florida	L, 0-1	11-7-10	vs. #6 Florida	L, 0-1
10-2-01	at #9 Clemson	L, 0-3	8-21-11	at #12 Duke	L, 0-2
10-5-01	#16 Kentucky	L, 0-1	9-18-11	#13 Wake Forest	L, 0-2
10-21-01	at #25 Tennessee	L, 1-3	9-23-11	at #11 Tennessee	W, 2-1 (2OT)
9-11-02	#18 Clemson	L, 0-1	10-9-11	#22 Auburn	W, 3-1
10-20-02	#13 Tennessee	T, 1-1 (2OT)	10-28-11	at #18 Florida	W, 2-1
8-29-03	at #20 Clemson	L, 0-1 (OT)	11-18-11	at #1 Stanford	L, 0-2
9-12-03	at #5 Texas A&M	L, 1-2 (OT)	9-16-12	#17 Missouri	L, 0-1
10-3-03	#14 Auburn	T, 0-0 (2OT)	9-21-12	at #10 Texas A&M	L, 0-2
11-1-03	at #10 Florida	L, 0-2	10-25-12	#11 Florida	L, 0-3
11-7-03	vs. #16 Tennessee	L, 0-1	10-31-12	vs. #13 Texas A&M	L, 0-1 (OT)
9-12-04	at #4 Virginia	L, 2-5	8-25-13	#7 Duke	W, 1-0
9-15-04	#7 Clemson	W, 2-0	10-4-13	at #8 Florida	W, 2-1 (2OT)
10-3-04	#19 Tennessee	L, 1-3	10-20-13	at #24 Ole Miss	T, 1-1 (2OT)
10-29-04	#18 Florida	L, 1-2 (2OT)	11-8-13	vs. #21 Texas A&M	L, 1-2
10-2-05	at #20 Tennessee	L, 1-2	11-22-13	at #17 Stanford	L, 0-1 (OT)
10-7-05	#18 Vanderbilt	L, 0-2	8-29-14	#22 Boston Univ.	W, 1-0 (2OT)
10-29-05	at #16 Florida	L, 0-3	9-28-14	#22 Georgia	L, 0-1
8-25-06	vs. #13 Illinois	L, 0-1	10-16-14	#5 Florida	W, 3-2
9-24-06	at #13 Auburn	W, 1-0	10-26-14	at #6 Texas A&M	T, 1-1 (2OT)
9-29-06	#16 Tennessee	T, 0-0 (2OT)	11-7-14	vs. #7 Texas A&M	L, 0-1
10-27-06	#13 Florida	T, 1-1 (2OT)	11-14-14	#22 Clemson	T, 1-1 (SC adv. 4-3 PKs)
9-1-07	at #1 North Carolina	W, 1-0	11-23-14	at #6 North Carolina	W, 1-0
9-22-07	at #20 Clemson	L, 0-1	11-28-14	at #2 Florida State	L, 0-5
9-27-07	at #10 Tennessee	L, 2-3 (OT)	8-28-15	at #23 Clemson	L, 1-2
10-21-07	#25 Auburn	W, 2-0	9-24-15	vs. #4 Texas A&M	W, 2-1
10-25-07	at # 20 LSU	T, 1-1 (2OT)	10-8-15	vs. #8 Auburn	W, 2-0
11-2-07	at #22 Florida	L, 0-2			
11-7-07	vs. #15 Tennessee	W, 2-0			
11-9-07	vs. #13 Georgia	L, 0-2			
9-14-08	vs. #7 Florida State	T, 3-3 (2OT)			
10-23-08	#13 LSU	T, 0-0 (2OT)			
10-30-08	#7 Florida	L, 0-1			
9-18-09	#17 UCF	W, 1-0			

Overall: 22-53-11 vs. Top 10: 14-21-2
 Home: 11-17-6 Road: 8-28-3 Neutral: 3-8-2

**SOUTH CAROLINA
2015 SEC RANKINGS
(Through Oct. 19 Games)**

TEAM - ALL GAMES

Category	Pl.	No.
Goals	3	36
Assists	1	35
Points	2	107
Shots	T7	237
Saves	14	29
Shutouts	T7	5
Goals Allowed	T5	15
Goals Against Average	4	0.82
Fouls	2	178
Corners	8	84
Offsides	1	45

INDIVIDUAL - ALL GAMES

Name	Category	Pl.	No.
Crider	Goals Against Avg.	4	0.80
	Shutouts	T8	3
Drennan	Assists	1	8
	Goals	T10	6
Groff	Points	T10	16
	Assists	T7	5
Johnson	Points	3	24
	Goals	T6	9
McCaskill	Assists	T4	6

TEAM - CONFERENCE GAMES

Category	Pl.	No.
Goals	T3	14
Assists	T3	14
Points	T4	42
Shots	5	112
Saves	14	21
Shutouts	T2	3
Goals Allowed	T3	8
Goals Against Average	3	0.96
Fouls	T1	106
Corners	6	43
Offsides	1	124

INDIVIDUAL - CONFERENCE GAMES

Name	Category	Pl.	No.
Crider	Goals Against Avg.	1	0.75
	Shutouts	T5	2
Drennan	Assists	T3	3
	Game-Winning Goals	T3	2
Johnson	Points	T4	11
	Goals	T4	4
	Assists	T2	3
	Goals Against Avg.	7	1.16
Kelly	Shutouts	T8	1
	Goals	T7	3
McCaskill	Points	6	9
	Assists	T3	3

GOAL SUMMARY

Player (#)	Opp. (Time)	Asst. (#)
McCaskill (1)	Northeastern (1:29)	Drennan (1)
Gray (1)	Northeastern (53:21)	Lane (1)
Johnson (1)	Northeastern (63:05)	Drennan (2)
Drennan (1)	Northeastern (74:22)	Wark (1)
Kaplan (1)	Oklahoma (36:23)	Griffin (1)
Lane (1)	Oklahoma (105:24)	McCaskill (1)
McCaskill (2)	Clemson (9:48)	Groff (1)
Kurtz (1)	Coastal Carolina (25:43)	Drennan (3)
Groff (1)	Coastal Carolina (53:33)	
Groff (2)	Coastal Carolina (62:21)	McCaskill (2)
		Johnson (1)
Bajema (1)	Colgate (41:09)	Bendell (1)
Lane (2)	Colgate (47:20)	Groff (2)
		Ray (1)
McCaskill (3)	Charlotte (2:12)	Drennan (4)
Babbitt (1)	Charlotte (5:30)	Kurtz (1)
McCaskill (4)	Charlotte (53:38)	Drennan (5)
Griffin (1)	Charlotte (68:24)	Babbitt (1)
Groff (3)	Georiga (20:51)	Johnson (2)
Conklin (1)	Georiga (41:25)	Griffin (2)
McCaskill (5)	Georgia (46:52)	Johnson (3)
Groff (4)	Kennesaw State (1:08)	Ray (2)
McCaskill (6)	Kennesaw State (4:54)	
McCaskill (7)	Kennesaw State (8:59)	Johnson (4)
Groff (5)	Kennesaw State (51:41)	Lane (2)
		McCaskill (3)
Daniel (1)	Kennesaw State (75:00)	
Lawrence (1)	Kennesaw State (81:15)	
Wark (1)	Missouri (36:07)	
Griffin (2)	Texas A&M (73:10)	Wark (2)
Johnson (2)	Texas A&M (88:12)	Groff (2)
		Parker (1)
Johnson (3)	Alabama (5:42)	Groff (3)
McCaskill (8)	Alabama (14:53)	Drennan (6)
Groff (6)	Alabama (54:24)	Drennan (7)
Conklin (2)	Arkansas (46:07)	Johnson (5)
Wark (2)	Arkansas (52:53)	McCaskill (4)
McCaskill (9)	Auburn (9:25)	Gray (1)
Johnson (4)	Auburn (17:37)	McCaskill (5)
		Drennan (8)
Johnson (5)	Vanderbilt (26:30)	McCaskill (6)

Goal Summary

At home	25
On the road	11
Neutral site.....	0
vs. SEC.....	14
vs. Non-Conf	22
First Half.....	18
Second Half	17

SEC WEEKLY HONORS

Week	Offensive POW	Defensive POW	Freshman of the Week
1	Sarah Le Beau (Auburn)	Haley Pound (Texas A&M)	Kate Hajdu (Texas A&M)
2	Savannah Jordan (Florida)	Julie Eckel (Tennessee)	Sarah Troccoli (Florida)
3	Brooke Sharpe (Florida)/Katy Keen (Kentucky)	Kala Faulkner (Auburn)	CeCe Kizer (Ole Miss)
4	Jorian Baucom (LSU)	Julie Eckel (Tennessee)	Emily Bates (Texas A&M)
5	Mallory Eubanks (Mississippi State)	Natalie Gomez-Junco (LSU)	Simone Wark (South Carolina)
6	Cassie Ramsier (Auburn)	Abbey Crider (South Carolina)	Sarah Le Beau (Auburn)
7	Jana Cousineau (Texas A&M)	Katelyn Jensen (Kentucky)	Taylor Troutman (Auburn)
8	Taylor Elliott (Vanderbilt)	Jessica Hiskey (Ole Miss)/Catalina Rubiano (LSU)	Ally Watt (Texas A&M)

South Carolina Combined Team Statistics (as of Oct 19, 2015)
All games

RECORD:	OVERALL	HOME	AWAY	NEUTRAL
ALL GAMES	11-3-1	8-1	3-2-1	0-0
CONFERENCE	5-2-1	3-1	2-1-1	0-0
NON-CONFERENCE	6-1	5-0	1-1	0-0

Date	Opponent	Score	Att.	#	Player	gp	g	a	pts	sh	sh%	sog	sog%	gw	pk-att	
Aug 21	NORTHEASTERN	w	4-1	5875	7	Savannah McCaskill	15	9	6	24	35	.257	21	.600	1	0-0
Aug 23	OKLAHOMA	wo2	2-1	5460	11	Chelsea Drennan	15	1	8	10	25	.040	13	.520	0	0-0
Aug 28	at #17 Clemson	L	1-2	1823	4	Raina Johnson	15	5	5	15	24	.208	13	.542	2	0-0
Aug 30	COASTAL CAROLINA	w	3-2	2150	5	Sophie Groff	12	6	4	16	22	.273	16	.727	2	0-0
Sep 04	COLGATE	w	2-0	3558	13	Simone Wark	15	2	2	6	19	.105	3	.158	1	0-0
Sep 07	at Charlotte	w	4-1	1087	14	Daija Griffin	15	2	2	6	16	.125	7	.438	0	0-0
* Sep 11	at Georgia	w	3-1	1924	27	Bay Daniel	14	1	0	2	12	.083	9	.750	0	0-0
Sep 14	KENNESAW STATE	w	6-0	2431	18	Stevi Parker	15	0	1	1	11	.000	5	.455	0	0-0
* Sep 20	at Mizzou	w	1-0	1523	2	Anna Conklin	15	2	0	4	10	.200	2	.200	1	0-0
* Sep 24	#4 TEXAS A&M	w	2-1	1720	28	Coryn Bajema	15	1	0	2	9	.111	5	.556	1	0-0
* Sep 27	ALABAMA	w	3-0	2279	31	Courtney Kaplan	10	1	0	2	9	.111	4	.444	0	0-0
* Oct 02	at Arkansas	To2	2-2	1619	12	Dominique Babbitt	14	1	1	3	9	.111	3	.333	1	0-0
* Oct 08	#8 AUBURN	w	2-0	1191	88	Paige Bendell	13	0	1	1	8	.000	4	.500	0	0-0
* Oct 11	at Ole Miss	L	0-2	839	25	Carrie Lawrence	15	1	0	2	8	.125	3	.375	0	0-0
* Oct 16	VANDERBILT	Lot	1-2	1848	73	Lindsey Lane	14	2	2	6	6	.333	3	.500	1	0-0

TEAM STATISTICS	SC	OPP
SHOT STATISTICS		
Goals-Shot attempts	36-237	15-104
Goals scored per game	2.40	1.00
Shot pct.	.152	.144
Shots on goal-Attempts	120-237	44-104
SOG pct.	.506	.423
Shots/Game	15.8	6.9
CORNER KICKS	84	70
PENALTY KICKS	0-0	0-0
PENALTIES		
Yellow cards	9	17
Red cards	0	2
ATTENDANCE		
Total	26512	8815
Dates/Avg Per Date	9/2946	6/1469
Neutral Site #/Avg	0/0	

6	Kaleigh Kurtz	15	1	1	3	5	.200	2	4.00	0	0-0
3	Caroline Gray	15	1	1	3	3	.333	3	1.00	1	0-0
9	Carly Ray	12	0	2	2	2	.000	1	.500	0	0-0
15	Claire Studebaker	9	0	0	0	2	.000	1	.500	0	0-0
99	Vanessa Kovar	6	0	0	0	1	.000	1	1.00	0	0-0
30	Jacky Huchler	2	0	0	0	1	.000	1	1.00	0	0-0
29	Abby Crider	10	0	0	0	0	.000	0	.000	0	0-0
10	Emily Bollinger	2	0	0	0	0	.000	0	.000	0	0-0
16	Evelyn Robinson	4	0	0	0	0	.000	0	.000	0	0-0
22	Kiley Burns	3	0	0	0	0	.000	0	.000	0	0-0
19	Iris Dayton	4	0	0	0	0	.000	0	.000	0	0-0
17	Alexis Pendergraft	4	0	0	0	0	.000	0	.000	0	0-0
Total		15	36	36	108	237	.152	120	.506	11	0-0
Opponents		15	15	13	43	104	.144	44	.423	3	0-0

#	Goalie	GP	Min.	GA	GAAvg	Saves	Pct	W-L-T	Sho
29	Abby Crider	10	675:00	6	0.80	13	.684	6-1-0	3/1
23	Caroline Kelly	10	717:03	9	1.13	15	.625	5-2-1	1/1
Total		15	1392:03	15	0.97	29	.659	11-3-1	5
Opponents		15	1392:03	36	2.33	84	.700	3-11-1	1

Goals by Period	1st	2nd	OT	OT2	Total
South Carolina	18	17	0	1	36
Opponents	8	6	1	0	15

Shots by Period	1st	2nd	OT	OT2	Total
South Carolina	119	112	4	2	237
Opponents	47	51	3	3	104

Saves by Period	1st	2nd	OT	OT2	Total
South Carolina	11	16	0	2	29
Opponents	42	42	0	0	84

Corners by Period	1st	2nd	OT	OT2	Total
South Carolina	39	41	2	2	84
Opponents	26	40	3	1	70

Fouls by Period	1st	2nd	OT	OT2	Total
South Carolina	87	84	3	4	178
Opponents	64	83	2	1	150

Game 1 - vs. Northeastern, 4-1

Soccer Box Score (Final)

Northeastern vs #11 South Carolina (Aug 21, 2015 at Columbia, S.C.)

Northeastern (0-1) vs. South Carolina (1-0)
Date: Aug 21, 2015 • Attendance: 5875
Weather:

No.	Time	Team	Goal scorer	Assist	Description
1.	1:29	SC	Savannah McCaskill (1)	Chelsea Drennan	Header off the corner kick
2.	6:09	NU	Taylor Caparo (1)	Kimberly Slade	From 8 yards out
3.	53:21	SC	Caroline Gray (1)	Mackenzie Dowd	left corner over the goalkeeper's head from yards out
4.	63:05	SC	Raina Johnson (1)	Chelsea Drennan	in the box, over the keeper, left corner
5.	74:22	SC	Chelsea Drennan (1)	Simone Wark	cross, shot from five yards out

Goals by period	1	2	Total
Northeastern	1	0	1
South Carolina	1	3	4

No.	Time	Team	Goal scorer	Assist	Description
1.	1:29	SC	Savannah McCaskill (1)	Chelsea Drennan	Header off the corner kick
2.	6:09	NU	Taylor Caparo (1)	Kimberly Slade	From 8 yards out
3.	53:21	SC	Caroline Gray (1)	Mackenzie Dowd	left corner over the goalkeeper's head from yards out
4.	63:05	SC	Raina Johnson (1)	Chelsea Drennan	in the box, over the keeper, left corner
5.	74:22	SC	Chelsea Drennan (1)	Simone Wark	cross, shot from five yards out

#	Goalkeepers	Min	GA	Saves
9	Jill Quinn	72:07	3	5
00	Nathalie Nidetch	17:53	1	1
TM	TEAM	0:00	0	1

Shots by period	1	2	Total
Northeastern	3	4	7
South Carolina	9	8	17

Corner kicks	1	2	Total
Northeastern	4	4	8
South Carolina	4	2	6

No.	Time	Team	Goal scorer	Assist	Description
1.	1:29	SC	Savannah McCaskill (1)	Chelsea Drennan	Header off the corner kick
2.	6:09	NU	Taylor Caparo (1)	Kimberly Slade	From 8 yards out
3.	53:21	SC	Caroline Gray (1)	Mackenzie Dowd	left corner over the goalkeeper's head from yards out
4.	63:05	SC	Raina Johnson (1)	Chelsea Drennan	in the box, over the keeper, left corner
5.	74:22	SC	Chelsea Drennan (1)	Simone Wark	cross, shot from five yards out

Cautions and ejections:
YC-NU #25 (19:48)
Win-Caroline Kelly (1-0). Loss-Jill Quinn (0-1).
Stadium: Stone Stadium
Officials: Referee: Don Cooper; Asst. Referee: Richonne Clark; Anelise Cimino;
Alt. Official: Steve Abbott;
Offsides: Northeastern 0, South Carolina 2.

Official's signature

Game 3 - at No. 17 Clemson, 1-2

Soccer Box Score (Final)

#8 South Carolina vs #17 Clemson (Aug 28, 2015 at Clemson, S.C.)

South Carolina (2-0-0) vs. Clemson (1-0-0)
Dates Aug 28, 2015 • Attendance: 1823
Weather: 84 degrees, 45% humidity, 4mph winds, sunny

No.	Time	Team	Goal scorer	Assist	Description
1.	9:48	SC	Savannah McCaskill (2)	Sophie Groff	corner, header 6 yards out
2.	13:49	CU	Shannon Horgan (1)	Samantha Staab	off a rebound, 5 yards out
3.	38:44	CU	Catrina Azanda (1)	Samantha Staab	4 to 7 on right side, cross to far post

#	Goalkeepers	Min	GA	Saves
23	Caroline Kelly	90:00	2	1

Shots by period	1	2	Total
South Carolina	10	4	14
Clemson	4	4	8

Corner kicks	1	2	Total
South Carolina	3	0	3
Clemson	1	1	2

No.	Time	Team	Goal scorer	Assist	Description
1.	9:48	SC	Savannah McCaskill (2)	Sophie Groff	corner, header 6 yards out
2.	13:49	CU	Shannon Horgan (1)	Samantha Staab	off a rebound, 5 yards out
3.	38:44	CU	Catrina Azanda (1)	Samantha Staab	4 to 7 on right side, cross to far post

Cautions and ejections:
YC-SC #7 (72:15)
Win-Kaiten Sheridan (2-0). Loss-Caroline Kelly (2-1).
Stadium: Historic Riggs Field
Officials: Referee: Larry Stroud Jr.; Asst. Referee: Brian Marshall; Roni Canales;
Offsides: South Carolina 0, Clemson 1.

Official's signature

Game 2 - vs. Oklahoma, 2-1 (2OT)

Soccer Box Score (Final)

Oklahoma vs #11 South Carolina (Aug 23, 2015 at Columbia, S.C.)

Oklahoma (0-2) vs. South Carolina (2-0)
Date: Aug 23, 2015 • Attendance: 5460
Weather:

No.	Time	Team	Goal scorer	Assist	Description
1.	36:23	SC	Courtney Kaplan (1)	Daija Griffin	Off the cross
2.	85:23	OU	Liz Keester (1)	Paige Welch	inside the box past the keeper
3.	105:24	SC	Lindsay Lane (1)	Savannah McCaskill	after the free kick, loose ball in the

#	Goalkeepers	Min	GA	Saves
34	Kassidie Stade	105:24	2	2

Shots by period	1	2	OT	O2	Total
Oklahoma	2	4	2	0	8
South Carolina	4	4	2	1	11

Corner kicks	1	2	OT	O2	Total
Oklahoma	1	2	1	0	4
South Carolina	2	3	0	0	5

No.	Time	Team	Goal scorer	Assist	Description
1.	36:23	SC	Courtney Kaplan (1)	Daija Griffin	Off the cross
2.	85:23	OU	Liz Keester (1)	Paige Welch	inside the box past the keeper
3.	105:24	SC	Lindsay Lane (1)	Savannah McCaskill	after the free kick, loose ball in the

Cautions and ejections:
YC-OU #14 (88:12); YC-OU #27 (105:18)
Win-Caroline Kelly (2-0). Loss-Kassidie Stade (0-2).
Stadium: Stone Stadium
Officials: Referee: Gus St. Silva; Asst. Referee: Joel Barber; Brian Bozard;
Alt. Official: Kaylib Robinson;
Offsides: Oklahoma 7, South Carolina 2.

Official's signature

Game 4 - vs. Coastal Carolina, 3-2

Soccer Box Score (Final)

Coastal Carolina vs #8 South Carolina (Aug 30, 2015 at Columbia, S.C.)

Coastal Carolina (2-2-0) vs. South Carolina (3-1-0)
Date: Aug 30, 2015 • Attendance: 2150
Weather:

No.	Time	Team	Goal scorer	Assist	Description
1.	25:43	SC	Kaleigh Kurtz (1)	Chelsea Drennan (unassisted)	corner, header 6 yards out
2.	53:33	SC	Sophie Groff (1)	Savannah McCaskill	off a rebound, 5 yards out
3.	62:21	SC	Sophie Groff (2)	Raina Johnson	4 to 7 on right side, cross to far post
4.	72:52	COASTA	FAMILI, Daniella (2)	KELLEY, Darbie	off of a rebound, 10 yards out
5.	86:17	COASTA	CHRISTIAN, Kayla (1)	ADAMS, Amber	header off a corner

#	Goalkeepers	Min	GA	Saves
1	AUSTIN, Becca	90:00	3	9
TM	TEAM	0:00	0	2

Shots by period	1	2	Total
Coastal Carolina	3	5	8
South Carolina	14	10	24

Corner kicks	1	2	Total
Coastal Carolina	1	8	9
South Carolina	6	3	9

No.	Time	Team	Goal scorer	Assist	Description
1.	25:43	SC	Kaleigh Kurtz (1)	Chelsea Drennan (unassisted)	corner, header 6 yards out
2.	53:33	SC	Sophie Groff (1)	Savannah McCaskill	off a rebound, 5 yards out
3.	62:21	SC	Sophie Groff (2)	Raina Johnson	4 to 7 on right side, cross to far post
4.	72:52	COASTA	FAMILI, Daniella (2)	KELLEY, Darbie	off of a rebound, 10 yards out
5.	86:17	COASTA	CHRISTIAN, Kayla (1)	ADAMS, Amber	header off a corner

Cautions and ejections:
YC-COASTAL #16 (18:10); YC-COASTAL #9 (57:57)
Win-Abby Crider (1-0-0). Loss-AUSTIN, Becca (2-2-0).
Stadium: Stone Stadium
Officials: Referee: Kaylib Robinson; Asst. Referee: Kevin Roberts; Marion Shull;
Alt. Official: Wayne Paulischek;
Offsides: Coastal Carolina 0, South Carolina 1.

Official's signature

Game 5 - vs. Colgate, 3-2

Soccer Box Score (Final)
Colgate vs #16 South Carolina (Sep 04, 2015 at Columbia, S.C.)

Colgate (1-4-0) vs. South Carolina (4-1-0)
Date: Sep 04, 2015 • Attendance: 3558
Weather: --

Colgate player stats table with columns: Po #, Player, Sh, SO, G, A, Min

Goals by period table with columns: 1, 2, Total

South Carolina player stats table with columns: Po #, Player, Sh, SO, G, A, Min

Goalkeepers table with columns: #, Goalkeepers, Min, GA, Saves

Shots by period table with columns: 1, 2, Total

Corner kicks table with columns: 1, 2, Total

Scoring summary:

Scoring summary table with columns: No., Time, Team, Goal scorer, Assist, Description

Cautions and ejections:
YC-SC #14 (36:34)

Win-Abby Crider (2-0-0). Loss-Cummings, Erin (1-4-0).
Stadium: Stone Stadium
Officials: Referee: John Collins; Asst. Referee: Jason Kent; William Bethea;
Alt. Official: John Tanverdi;
Offsides: Colgate 2, South Carolina 5.

Official's signature

Game 6 - at Charlotte, 4-1

Soccer Box Score (Final)
#16 South Carolina vs Charlotte (Sep 07, 2015 at Charlotte, N.C.)

South Carolina (5-1) vs. Charlotte (4-2)
Date: Sep 07, 2015 • Attendance:
Weather: 81 deg., overcast, variable winds

South Carolina player stats table with columns: Po #, Player, Sh, SO, G, A, Min

Goals by period table with columns: 1, 2, Total

Charlotte player stats table with columns: Po #, Player, Sh, SO, G, A, Min

Goalkeepers table with columns: #, Goalkeepers, Min, GA, Saves

Shots by period table with columns: 1, 2, Total

Corner kicks table with columns: 1, 2, Total

Scoring summary:

Scoring summary table with columns: No., Time, Team, Goal scorer, Assist, Description

Cautions and ejections:
YC-CHA #24 (60:20)

Win-Caroline Kelly (3-1). Loss-MCHENRY, Annika (4-2).
Stadium: Transamerica Field
Officials: Referee: Robert Mann; Asst. Referee: Brian Marshall; John Tanverdi;
Alt. Official: Denis Bonilla;
Offsides: South Carolina 5, Charlotte 0.

Official's signature

Game 7 - at Georgia, 3-1

Soccer Box Score (Final)
2015 UGA Soccer
#17 South Carolina vs Georgia (Sep 11, 2015 at Athens, Ga.)

South Carolina(6-1-0 (1-0) vs. Georgia(0-5-1 (0-1)
Date: Sep 11, 2015 • Attendance: 1924
Weather: --

South Carolina player stats table with columns: Po #, Player, Sh, SO, G, A, Min

Goals by period table with columns: 1, 2, Total

Georgia player stats table with columns: Po #, Player, Sh, SO, G, A, Min

Goalkeepers table with columns: #, Goalkeepers, Min, GA, Saves

Shots by period table with columns: 1, 2, Total

Corner kicks table with columns: 1, 2, Total

Scoring summary:

Scoring summary table with columns: No., Time, Team, Goal scorer, Assist, Description

Cautions and ejections:
YC-SC #25 (44:31); YC-UGA #6 (79:24); YC-SC #88 (82:15); YC-SC #7 (84:34);
RC-UGA #8 (84:34)

Win-Abby Crider (3-0). Loss-Louise Hogrell (0-5-1).
Stadium: Turner Soccer Cmplx
Officials: Referee: Amanda Ross; Asst. Referee: David Mock; Megan Hitch;
Offsides: South Carolina 2, Georgia 1.

Official's signature

Game 8 - vs. Kennesaw State, 6-0

Soccer Box Score (Final)
Kennesaw State vs #17 South Carolina (Sep 14, 2015 at Columbia, S.C.)

Kennesaw State (3-4-1) vs. South Carolina (7-1-0)
Date: Sep 14, 2015 • Attendance: 2431
Weather: --

Kennesaw State player stats table with columns: Po #, Player, Sh, SO, G, A

Goals by period table with columns: 1, 2, Total

South Carolina player stats table with columns: Po #, Player, Sh, SO, G, A

Goalkeepers table with columns: #, Goalkeepers, Min, GA, Saves

Shots by period table with columns: 1, 2, Total

Corner kicks table with columns: 1, 2, Total

Scoring summary:

Scoring summary table with columns: No., Time, Team, Goal scorer, Assist, Description

Cautions and ejections:
YC-KSU #17 (61:08); YC-KSU #12 (76:57)

Win-Caroline Kelly (4-1-0). Loss-ZAMBETTI, Ashley (1-3-1).
Stadium: Stone Stadium
Officials: Referee: Rob Mann; Asst. Referee: Kenneth Ayers; Joel Barber;
Alt. Official: Bradley Meekins;
Offsides: Kennesaw State 0, South Carolina 6.

Official's signature

Game 9 - at Missouri, 1-0

Soccer Box Score (Final)

#16 South Carolina vs Mizzou (Sep 20, 2015 at Columbia, Mo.)

South Carolina (8-1-0, 2-0-0) vs. Mizzou (3-3-3, 1-1-0) Date: Sep 20, 2015 • Attendance: 1523 Weather:

Goals by period table with columns for 1, 2, and Total goals.

South Carolina player statistics table with columns for Player, Sh, SO, G, A.

Mizzou player statistics table with columns for Player, Sh, SO, G, A.

Goalkeepers statistics table with columns for #, Name, Min, GA, Saves.

Goalkeepers statistics table for Mizzou with columns for #, Name, Min, GA, Saves.

Shots by period table with columns for 1, 2, Total.

Saves by period table with columns for 1, 2, Total.

Corner kicks table with columns for 1, 2, Total.

Scoring summary:

Scoring summary table with columns for No., Time, Team, Goal scorer, Assist, Description.

Cautions and ejections:

Win-Caroline Kelly (5-1-0). Loss-Rivers, Kristen (1-1-0). Stadium: Walton Stadium. Officials: Referee: Andrew Ellsworth; Asst. Referee: Emily Fletcher; Justin Tomich; Alt. Official: Jerry Cova;

Official's signature

Game 10 - vs. No.4 Texas A&M. 2-1

Soccer Box Score (Final)

#4 Texas A&M vs #17 South Carolina (Sep 24, 2015 at Columbia, S.C.)

Texas A&M (9-2-0 (2-1-0) vs. South Carolina (9-1-0 (3-0-0)) Date: Sep 24, 2015 • Attendance: 1720 Weather:

Goals by period table with columns for 1, 2, and Total goals.

Texas A&M player statistics table with columns for Player, Sh, SO, G, A.

South Carolina player statistics table with columns for Player, Sh, SO, G, A.

Goalkeepers statistics table with columns for #, Name, Min, GA, Saves.

Goalkeepers statistics table for South Carolina with columns for #, Name, Min, GA, Saves.

Shots by period table with columns for 1, 2, Total.

Saves by period table with columns for 1, 2, Total.

Corner kicks table with columns for 1, 2, Total.

Scoring summary:

Scoring summary table with columns for No., Time, Team, Goal scorer, Assist, Description.

Cautions and ejections: YC-TAMU #16 (53:44); YC-SC #7 (61:17); YC-SC #18 (83:06)

Win-Abby Crider (4-0-0). Loss-Saucier, Taylor (9-2-0). Stadium: Stone Stadium. Officials: Referee: Aaron Hernandez; Asst. Referee: Eric Proctor; Rick Rogers; Alt. Official: Steve Abbott;

Official's signature

Game 11 - vs. Alabama, 3-0

Soccer Box Score (Final)

Alabama vs #17 South Carolina (Sep 27, 2015 at Columbia, S.C.)

Alabama (6-2-1 (3-3-0)) vs. South Carolina (10-1-1 (4-0-0)) Date: Sep 27, 2015 • Attendance: 2279 Weather:

Goals by period table with columns for 1, 2, and Total goals.

Alabama player statistics table with columns for Player, Sh, SO, G, A.

South Carolina player statistics table with columns for Player, Sh, SO, G, A.

Goalkeepers statistics table with columns for #, Name, Min, GA, Saves.

Goalkeepers statistics table for South Carolina with columns for #, Name, Min, GA, Saves.

Shots by period table with columns for 1, 2, Total.

Saves by period table with columns for 1, 2, Total.

Corner kicks table with columns for 1, 2, Total.

Scoring summary table with columns for No., Time, Team, Goal scorer, Assist, Description.

Cautions and ejections: YC-UA #88 (27:31); RC-UA #88 (30:12)

Win-Abby Crider (5-0-0). Loss-Rusk, Emily (4-5-2). Stadium: Stone Stadium. Officials: Referee: Lance Vanhoutsma; Asst. Referee: Tony Obas; Jason Kent; Alt. Official: Kenneth Ayers;

Official's signature

Game 12 - at Arkansas, 2-2 (2OT)

Soccer Box Score (Final)

#10 South Carolina vs Arkansas (Oct 02, 2015 at Fayetteville, Ark.)

South Carolina (10-1-1, 4-0-1) vs. Arkansas (5-6-1, 1-3-13) Date: Oct 02, 2015 • Attendance: 1619 Weather: 68 degrees, clear

Goals by period table with columns for 1, 2, OT, O2, Total goals.

South Carolina player statistics table with columns for Player, Sh, SO, G, A.

Arkansas player statistics table with columns for Player, Sh, SO, G, A.

Goalkeepers statistics table with columns for #, Name, Min, GA, Saves.

Goalkeepers statistics table for Arkansas with columns for #, Name, Min, GA, Saves.

Shots by period table with columns for 1, 2, OT, O2, Total.

Saves by period table with columns for 1, 2, OT, O2, Total.

Corner kicks table with columns for 1, 2, OT, O2, Total.

Scoring summary table with columns for No., Time, Team, Goal scorer, Assist, Description.

Cautions and ejections: YC-AR #7 (26:39); YC-SC #13 (51:11)

South Carolina-Caroline Kelly (5-1-1). Arkansas-Jordan Harris (3-1-1). Stadium: Razorback Field. Officials: Referee: Jonathan Weiner; Asst. Referee: Abdel Kutubaineh; Joshua Madison; Alt. Official: Michael Cap; Timekeeper: Lauren Dedman; Score: Bryan Fyalkowski;

Official's signature

