



# SOUTH CAROLINA WOMEN'S GOLF

South Carolina Athletic Media Relations • Women's Golf Contact: Scott Waggoner • [waggones@mailbox.sc.edu](mailto:waggones@mailbox.sc.edu)  
Rice Athletics Center, 1304 Heyward Street, Columbia, S.C. 29208 • Office: 803-777-1516 • Cell: 860-550-5872

[@GamecockWGolf](#) • [Facebook.com/GamecockWGolf](#)

## 2015-16 SCHEDULE / RESULTS

### SEPTEMBER

18-20	Mason Rudolph Championship Vanderbilt Legends Club Franklin, Tenn.	12th/17
27-29	ANNIKA Intercollegiate Reunion Resort Reunion, Fla.	9th/12

### OCTOBER

9-11	Ruth's Chris Invitational Finley Golf Course Chapel Hill, N.C.	11th/18
23-25	The Landfall Tradition Country Club of Landfall Wilmington, N.C.	9th/18

### FEBRUARY

12-14	Florida State Match-Up SouthWood Golf Club Tallahassee, Fla.	2nd/12
-------	--	--------

### MARCH

4-6	Darius Rucker Intercollegiate Long Cove Club Hilton Head Island, S.C.	T-8th/17
14-15	Wildcat Invitational Sewailo Golf Club Tucson, Ariz.	7th/15

### APRIL

1-3	Bryan National Collegiate Bryan Park Champions Course Browns Summit, N.C.	2nd/15
15-17	SEC Championship Greystone Golf Club Birmingham, Ala.	5th/14

### MAY

5-7	NCAA Baton Rouge Regional University Club Baton Rouge, La.	
20-25	NCAA Championships Eugene Country Club Eugene, Ore.	

## NCAA BATON ROUGE REGIONAL



Thursday, May 5 - Saturday, May 7  
University Club  
Baton Rouge, La. • Par 72 • 6,285 Yards

**Format:** 54-hole stroke play  
**Live Scoring:** [www.Golfstat.com](http://www.Golfstat.com)  
**Website:** [www.LSUports.net/16NCAAWG](http://www.LSUports.net/16NCAAWG)

### NO. 24 GAMECOCKS READY FOR NCAA BATON ROUGE REGIONAL

No. 24 South Carolina is set to make its 18th-straight NCAA postseason experience when it opens play at the Baton Rouge Regional at University Club. The 54-hole event, which takes place May 5-7, features an 18-team field and six individual players from schools that did not qualify for the postseason. The top-six teams at the end of the tournament will advance to the NCAA Championship, set for May 20-25 at Eugene Country Club in Eugene, Ore.

### THE LINEUP

Representing the Gamecocks this weekend will be senior Sarah Schmelzel, junior Katelyn Dambaugh, sophomore Ainhoa Olarra and freshmen Marion Veyseyre and Isidora Nilsson. Olarra, Veyseyre and Nilsson will all be making their NCAA postseason debuts for South Carolina.

### SOUTH CAROLINA NCAA REGIONAL HISTORY

This week will mark South Carolina's 23rd NCAA Regional appearance. The Gamecocks have captured a regional title three times in program history, with each championship coming under head coach Kalen Anderson. South Carolina won the 2010 and 2012 East Regional Titles before besting the field at last season's East Regional. Three South Carolina golfers have claimed individual titles at regionals, and the Gamecocks have advanced to the NCAA Championship in each of the last six seasons. Junior Katelyn Dambaugh boasts two top-25 finishes at the NCAA Regionals, while senior Sarah Schmelzel placed just outside the top-10 (11th) at the event last season with a three-day total of 220 (+4).

### BREAKING DOWN THE FIELD

The NCAA Baton Rouge Regional will feature six teams currently ranked in Golfstat's Top-25. No. 4 Duke highlights the field as one of three Top-10 schools (No. 5 Florida, No. 10 Arizona State) in action, while No. 13 Washington and No. 20 Oregon will also be vying for a spot in the NCAA Championship along with the No. 24 Gamecocks. The Gators, one of 10 SEC schools in the NCAA postseason field, enter regionals with six tournament victories this season, and 12th-seeded LSU marks the other league member in the Baton Rouge Regional. South Carolina has notched three head-to-head victories over the Tigers this season.

### RECAPPING THE SEC CHAMPIONSHIP

For the fourth-straight season, South Carolina notched a top-five finish at the SEC Championship, placing fifth with a three-day score of 888 (+24). Katelyn Dambaugh led the charge for the Gamecocks, as the junior erased a six-stroke deficit and climbed to the top of the individual leaderboard before ultimately settling for runner-up honors on Sunday's final round at Greystone Golf and Country Club. Her third-round 66 (-6) marked the low round of the week and was one stroke off the tournament 18-hole score record (65) that she matched last season. Sophomore Ainhoa Olarra shined in her postseason debut, finishing eighth with a career-best 217 (+1). Her opening-round 69 (-3) was the lowest round in Olarra's collegiate career, and her performance on the weekend gave the San Sebastian, Spain, native her second career top-10 finish.

### TOURNAMENT FIELD

- Duke (1)
- Florida (2)
- Arizona State (3)
- Washington (4)
- Oregon (5)
- South Carolina (6)
- East Carolina (7)
- NC State (8)
- Houston (9)
- BYU (10)
- Augusta (11)
- LSU (12)
- New Mexico (13)
- Denver (14)
- Harvard (15)
- North Florida (16)
- Wichita State (17)
- Fairleigh Dickinson (18)
- (Baton Rouge Regional Seed)

## MODEL OF CONSISTENCY

Katelyn Dambaugh has notched top-10 finishes in seven of South Carolina's nine events this season, including all five tournaments this spring. The Goose Creek, S.C., native has placed second in each of her last two competitions, and her five top-five finishes have matched the program record for most by a junior in a season. Dambaugh's 71.89 stroke average, the lowest single-season mark in South Carolina history, ranks 12th in Division I.

## RECORD BOOK WATCH

Senior Sarah Schmelzel and junior Katelyn Dambaugh both enter the NCAA Baton Rouge Regional with two of the top scoring averages in program history. Dambaugh sports the lowest average with a career mark of 73.14, while Schmelzel is fourth (74.38) in the statistical category. Both of their stroke averages for South Carolina's 2015-16 campaign rank in the top-10 in school history for single-season scoring, and the two have combined for 63 career rounds of par or better.

## RECAPPING THE BRYAN NATIONAL COLLEGIATE

South Carolina notched its second runner-up finish (894, +30) of the spring in its regular-season finale at the Bryan National Collegiate (April 1-3). Senior Sarah Schmelzel claimed medalist honors after finishing with a three-day total of 219 (+3), while junior Katelyn Dambaugh totaled a 5-over 221 to place in a tie for second and grab her fifth-straight top-10 finish. Ainhoa Olarra (T15) also turned in a successful weekend, as the sophomore shot a 226 (+10) on the way to her second top-20 showing of the season for the Gamecocks, who have finished second in two of their last three appearances at the event.

## GOING OUT ON TOP

Playing in her final collegiate regular-season tournament, senior Sarah Schmelzel broke through, tallying her first career medalist honor at the Bryan National Collegiate. Schmelzel battled windy conditions all weekend and played her final nine holes at 1-under (34) to secure the individual title. The Phoenix, Ariz., native became the first Gamecock to finish atop the individual leaderboard since Nanna Madsen won the 2014 Mercedes-Benz Collegiate, and she is the fifth medalist under head coach Kalen Anderson.

## GOING FOR THE GREEN IN TWO

Katelyn Dambaugh has taken advantage of par-5 holes throughout her junior campaign, boasting the fifth-best par-5 scoring average (4.69) among Division I golfers. She has carded a team-high three eagles on the season, including one on the par-5 11th at Greystone Golf & Country Club which jumpstarted her final-round 66 (-6) at the SEC Championship earlier this month.

## RECAPPING THE WILDCAT INVITATIONAL

South Carolina tallied its fourth-straight top-10 finish following its seventh-place showing at the Wildcat Invitational in Tucson, Ariz., last month. Three Gamecocks finished in the Top 25, including junior Jia Xin Yang (221, +5), who posted her lowest 54-hole total since the 2014 ANNIKA Intercollegiate. Senior Sarah Schmelzel placed in a tie for 18th with a 220 (+4), while junior Katelyn Dambaugh grabbed another top-10 finish after ending in seventh (216, E). Junior Marianna Monaco made her debut in South Carolina's lineup and finished in a tie for 52nd following her two-day total of 229 (+13).

## SOUTHEASTERN STANDOUT

Junior Katelyn Dambaugh was tabbed the SEC Women's Golfer of the Week earlier this spring (March 16) following her ninth-place finish (216, E) at the Wildcat Invitational. Dambaugh has recorded top-10 finishes in each of her last six tournaments, and her 71.89 stroke average this season ranks second in the league. The accolade marked the fourth career weekly conference honor for Dambaugh.

## RECAPPING THE DARIUS RUCKER INTERCOLLEGIATE

South Carolina climbed up the leaderboard on the final day of the fifth annual Darius Rucker Intercollegiate to finish in a tie for eighth (887, +35) at the 54-hole event. The host Gamecocks were led by junior Katelyn Dambaugh (T-7), who notched her fourth top-10 finish of the season after posting a three-day total of 217 (+4). Sophomore Ainhoa Olarra continued her strong play this spring with a 26th-place finish (222, +9), while freshman Marion Veysseyre placed in a tie for 39th after tallying a career-best 225 (+12).

## STRONG START TO THE SPRING

The Gamecocks opened their spring slate with their best finish of the 2015-16 season, a second-place showing at the FSU Match-Up (Feb. 12-14). South Carolina totaled a three-day score of 875 (+11), and three Gamecock golfers notched top-10 finishes, including junior Katelyn Dambaugh, who placed second at 1-under 215. Senior Sarah Schmelzel was fourth after totaling an even 216, while Ainhoa Olarra tied for eighth (219, +3). Olarra's performance marked her lowest career 54-hole total and the first top-10 finish for the sophomore.

## FALL WRAP-UP

The Gamecocks, who competed in four events during the fall, saw a strong finish to their year when they fired a season-low 283 (-5) in the final round of the Landfall Tradition. South Carolina's ninth-place finish at the event marked the second top-10 showing of the fall for the Gamecocks, who placed ninth at the ANNIKA Intercollegiate (Sept. 27-29). Junior Katelyn Dambaugh paced South Carolina with two top-three finishes and a 71.92 stroke average this fall, while Sarah Schmelzel finished in the top 20 in two events. The senior's 6-under 210 at the ANNIKA Intercollegiate marked the lowest 54-hole total in her collegiate career.

## UP NEXT FOR THE GAMECOCKS

With a top-six finish at the NCAA Baton Rouge Regional, South Carolina will advance to the NCAA Championship (May 20-25) in Eugene, Ore. The Gamecocks have qualified for the NCAA Championship 15 times in program history.

## RANKINGS

### GOLFSTAT

(April 26)

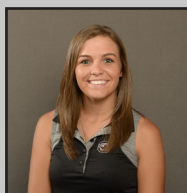
- Alabama
- USC
- UCLA
- Duke
- Florida
- Georgia
- Arkansas
- Northwestern
- Oklahoma State
- Arizona State
- Arizona
- Stanford
- Washington
- Kent State
- Virginia
- California
- Iowa State
- UNLV
- Furman
- Oregon
- San Diego State
- Florida State
- Texas A&M
- 24. South Carolina**
- Tennessee

### GOLFWEEEK/SAGARIN

(April 24)

- UCLA
- USC
- Alabama
- Georgia
- Duke
- Florida
- Arizona State
- Oklahoma State
- Stanford
- Arizona
- Northwestern
- Arkansas
- Washington
- Virginia
- Kent State
- California
- UNLV
- San Diego State
- Iowa State
- Furman
- Colorado
- 22. South Carolina**
- Oregon
- Texas A&M
- Tennessee

## NCAA REGIONAL HISTORY



KATELYN DAMBAUGH

### NCAA REGIONAL STATS

EVENTS: 2  
ROUNDS: 6  
AVERAGE: 73.00  
LOW 54: 217 (+1)  
LOW 18: 70 (-2)  
TOP FINISH: T12



SARAH SCHMELZEL

### NCAA REGIONAL STATS

EVENTS: 3  
ROUNDS: 9  
AVERAGE: 73.33  
LOW 54: 218 (+2)  
LOW 18: 69 (-3)  
TOP FINISH: 11



# NCAA REGIONAL HISTORY

**1993 - 7th of 18**  
**Santa Maria Golf Course**  
**May 13-15 • Baton Rouge, La.**  
**308-305-307=920**

Siew Ai Lim	71-78-75=224	10th
Clarissa Childs	82-76-72=230	29th
Kerry Zebick	76-77-79=232	34th
Rachel Bates	79-78-81=238	62nd
Tara Joy	82-74-84=240	71st

**1994 - 10th of 19**  
**Forest Akers Country Club**  
**May 12-14 • East Lansing, Mich.**  
**326-313-320=959**

Siew Ai Lim	75-75-77=227	6th
Rebekah Lee	82-80-79=241	T-42nd
Clarissa Childs	84-79-79=242	T-46th
Jill Darr	86-79-89=254	T-90th
Lea Bagwell	85-86-85=256	96th

**1995 - 4th of 19**  
**Quail Ridge Country Club**  
**May 11-13 • Memphis, Tenn.**  
**298-307-306=911**

Siew Ai Lim	73-71-70=214	1st
Clarissa Childs	79-76-78=233	T-46th
Rebekah Lee	73-80-82=235	T-57th
Julie Norris	75-80-82=237	T-67th
Karin Fries	77-84-76=237	T-67th

**1996 - T-5th of 19**  
**Grand National Lakes Course**  
**May 9-11 • Auburn, Ala.**  
**307-303-309=919**

Clarissa Childs	77-71-78=226	T-12th
Siew Ai Lim	76-75-77=228	T-18th
Rebekah Lee	77-75-81=233	T-32nd
Karin Fries	77-82-76=235	T-40th
Libby Howard	87-82-78=247	T-83rd

**1997 - 13th of 18**  
**Prairie Vista Golf Course**  
**May 8-10 • Normal, Ill.**  
**320-333-317=970**

Rebekah Lee	74-82-77=233	T-9th
C. Faaborg-Andersen	84-84-77=245	T-57th
Emma Lofgren	82-85-78=245	T-57th
Libby Howard	80-83-85=248	T-75th
Karin Fries	84-84-86=254	T-97th

**1999 - 7th of 19**  
**The University Club**  
**May 6-8 • Blythewood, S.C.**  
**299-302-307=908**

Cecilia Ekelundh	73-79-75=227	T-27th
Emma Lofgren	75-74-79=228	T-33rd
Lotte Moeller	79-70-79=228	T-33rd
Stefanie Reynolds	76-80-74=230	T-47th
Apryl Arrants	75-79-79=233	T-60th

**2000 - 18th of 24**  
**OSU Scarlet Course**  
**May 11-13 • Columbus, Ohio**  
**306-314-314=934**

Kristy McPherson	73-81-76=230	T-40th
Stefanie Reynolds	79-76-79=234	T-65th
Kacy Thompson	77-78-79=234	T-65th
Emma Lofgren	77-79-84=240	T-94th
Apryl Arrants	79-91-80=250	T-118th

**2001 - 6th of 21**  
**Finley Golf Course**  
**May 10-12 • Chapel Hill, N.C.**  
**305-293-306=904**

Kristy McPherson	73-69-72=214	3rd
Stefanie Reynolds	78-72-78=228	T-30th
Marci Robinson	75-75-78=228	T-30th
Sarah Kidd	80-77-85=242	T-70th
Kacy Thompson	79-88-78=245	T-73rd

**2002 - 6th of 21**  
**The University Club**  
**May 9-11 • Baton Rouge, La.**  
**298-293-298=889**

Adrienne Gautreaux	75-69-74=218	T-9th
Marci Robinson	74-74-76=224	T-41st
Kacy Thompson	78-74-73=225	T-45th
Kristy McPherson	75-76-75=226	T-54th
Reetta Laakkonen	74-77-80=231	T-70th

**2003 - 7th of 21**  
**Salem Glen Country Club**  
**May 8-10 • Clemmons, N.C.**  
**303-287-294=884**

Kristy McPherson	68-71-70=209	2nd
Adrienne Gautreaux	80-72-73=225	T-40th
Marci Robinson	81-70-76=227	T-54th
Kacy Thompson	80-74-75=229	T-64th
Tiffany Catafygiotu	75-82-76=233	T-79th

**2004 - 15th of 21**  
**Mission Inn Resort**  
**May 6-8 • Howey-In-The-Hills, Fla.**  
**303-287-294=884**

Adrienne Gautreaux	71-77-74=222	T-9th
Jenna Pearson	83-76-82=241	T-69th
Erica Battle	84-82-77=243	T-78th
Marci Robinson	79-85-81=245	T-83rd
Kory Thompson	83-85-84=252	T-92nd

**2005 - 9th of 21**  
**University of Florida Golf Course**  
**May 5-7 • Gainesville, Fla.**  
**293-307-303=903**

Jenna Pearson	70-77-72=219	14th
Whitney Simons	73-75-76=224	T-28th
Erica Battle	72-78-79=229	T-51st
Caroline Rominger	81-77-77=235	T-77th
Blythe Worley	78-81-78=237	T-81st

**2006 - 13th of 21**  
**Bryan Park Champions Course**  
**May 11-13 • Browns Summit, N.C.**  
**296-297-304=897**

Blythe Worley	75-74-73=222	34th
Laura Raffo	73-75-78=226	T-54th
Erica Battle	72-74-81=227	T-61st
Jenna Pearson	76-74-77=227	T-61st
Whitney Simons	76-80-76=232	T-86th

**2007 - T-9th of 21**  
**The University Club**  
**May 10-12 • Baton Rouge, La.**  
**290-289-295=875**

Bénédicte Toumpsin	72-73-72=217	T-26th
Camila Mori	73-72-73=218	T-36th
Blythe Worley	72-72-74=218	T-36th
Whitney Simons	73-73-76=222	T-56th
Jenna Pearson	73-72-78=223	T-59th

**2008 - T-6th of 21**  
**UGA Golf Course**  
**May 8-10 • Athens, Ga.**  
**291-303-305=899**

Bénédicte Toumpsin	68-70-76=214	1st
Camila Mori	74-76-75=225	T-24th
Blythe Worley	75-78-77=230	T-48th
Whitney Simons	78-79-77=234	T-68th
Taylor Barrett	74-80-81=235	T-68th

**2009 - 12th of 21**  
**Mark Bostick Golf Course**  
**May 7-9 • Gainesville, Fla.**  
**308-290-299=897**

Bénédicte Toumpsin	79-71-71=221	T-30th
Katie Burnett	75-72-75=222	T-34th
Corrine Carr	75-76-76=227	T-58th
Taylor Barrett	80-72-77=229	T-67th
Meredith Taylor	79-75-81=235	T-84th

**2010 - 1st of 24**  
**Ironwood Golf & Country Club**  
**May 6-8 • Greenville, N.C.**  
**283-291-290=864**

Katie Burnett	67-72-71=210	1st
Corrine Carr	72-71-74=217	T-13th
Bénédicte Toumpsin	74-72-72=218	T-19th
Amanda Strang	70-79-73=222	T-39th
Taylor Barrett	76-76-76=228	T-73rd

**2011 - 6th of 24**  
**Washington National Golf Course**  
**May 5-7 • Auburn, Wash.**  
**303-299-300=902**

Suzie Lee	77-72-73=222	T-15th
Samantha Swinehart	75-71-76=222	T-15th
Katie Rose Higgins	76-78-76=230	T-49th
Katie Burnett	75-81-75=231	T-52nd
Amanda Strang	79-78-81=238	T-84th

**2012 - 1st of 24**  
**Penn State Golf Course**  
**May 10-12 • State College, Pa.**  
**288-294-291=873**

Katie Burnett	72-71-73=216	T-3
Amanda Strang	73-75-72=220	T-14th
Justine Dreher	70-73-78=221	T-19th
Suzie Lee	73-83-68=224	T-41st
Meredith Swanson	78-75-80=233	T-87th

**2013 - 4th of 24**  
**Stanford Golf Course**  
**May 9-11 • Stanford, Calif.**  
**296-285-293=874**

Suzie Lee	73-71-73=217	T-14th
Meredith Swanson	75-70-73=218	T-18th
Sarah Schmelzel	76-72-74=222	T-33th
Justine Dreher	72-78-73=223	T-39th
Mary Fran Hillow	82-72-78=232	T-85th

**2014 - 2nd of 24**  
**SouthWood Golf Club**  
**May 8-10 • Tallahassee, Fla.**  
**291-283-285=854**

Justine Dreher	75-70-66=211	T-4th
Samantha Swinehart	73-70-69=212	T-7th
Katelyn Dambaugh	76-70-71=217	T-24th
Sarah Schmelzel	71-73-74=218	T-29th
Suzie Lee	72-78-74=224	T-65th

**2015 - 1st of 18**  
**Lonnie Poole Golf Course**  
**May 7-9 • Raleigh, N.C.**  
**295-286-296=877**

Justine Dreher	71-73-72=216	T-5th
Sarah Schmelzel	74-69-77=220	11th
Katelyn Dambaugh	78-73-70=221	T-12th
Mary Fran Hillow	76-71-77=224	T-22nd
Jia Xin Yang	74-78-77=229	T-48th

# 2015-16 ROSTER

Name	Class	Hometown	Last School
Gaby Amos	Freshman	Gainesville, Fla.	Buchholz HS
Katelyn Dambaugh	Junior	Goose Creek, S.C.	Pinewood Prep
*Marianna Monaco	Junior	Yonkers, N.Y.	Yonkers HS
Isidora Nilsson	Freshman	Hilton Head, S.C.	Hilton Head Prep
Ainoah Olarra	Sophomore	Pais Vasco, Spain	National School of Golf Blume
Sarah Schmelzel	Senior	Phoenix, Ariz.	Xavier Prep
*Marion Veysseyre	Freshman	Lachapelle-Auzac, France	CNED Institut de Rennes
Karoline Woie	Senior	Stavanger, Norway	Wang Toppidrett HS
Jia Xin Yang	Junior	Beijing, China	Dongfan Basuo

\*Joined in Spring of 2016

**Head Coach:** Kalen Harris - 9th year (Duke, 2001)

**Associate Head Coach & Dir. of Operations:** Puggy Blackmon - 21st year

**Volunteer Coach:** Scott Barnicle - 3rd year

## 2015-16 SEASON SUPERLATIVES

### Low 18-Hole Round - Individual

65 - Katelyn Dambaugh  
ANNIKA Intercollegiate, 1st Rd, 9/27/15

### Low 18-Hole Round - Team

283 - Dambaugh, Schmelzel, Olarra, Nilsson, Yang  
Landfall Tradition, 3rd Rd., 10/25/15

### Low 54-Hole Total - Individual

207 - Katelyn Dambaugh  
ANNIKA Intercollegiate, 9/27-29/15

### Low 54-Hole Total - Team

872 - Dambaugh, Yang, Schmelzel, Olarra, Nilsson  
ANNIKA Intercollegiate, 9/27-29/15

### Low First Round

65 - Katelyn Dambaugh  
ANNIKA Intercollegiate, 9/27/15

### Low Second Round

69 - Sarah Schmelzel  
ANNIKA Intercollegiate, 9/28/15  
69 - Sarah Schmelzel  
FSU Match-Up, 2/13/16

### Low Third Round

66 - Katelyn Dambaugh  
SEC Championship, 4/17/16

## WEEKLY SEC HONORS

### SEC Women's Golfer of the Week

Katelyn Dambaugh (March 16)

## ROUNDS OF PAR OR BETTER

### 72

Katelyn Dambaugh, Mason Rudolph Champ. (2, 3)  
Ainhoa Olarra, Mason Rudolph Championship (3)  
Sarah Schmelzel, Ruth's Chris Tar Heel Invite (1)  
Katelyn Dambaugh, Landfall Tradition (1,2)  
Katelyn Dambaugh, SEC Championship (1)

### 71

Katelyn Dambaugh, ANNIKA Intercollegiate (2, 3)  
Sarah Schmelzel, ANNIKA Intercollegiate (3)  
Gaby Amos, Ruth's Chris Tar Heel Invite (3)  
Sarah Schmelzel, Landfall Tradition (1)  
Katelyn Dambaugh, FSU Match-Up (2)  
Sarah Schmelzel, Wildcat Invitational (2)  
Sarah Schmelzel, Bryan National Collegiate (2)  
Katelyn Dambaugh, SEC Championship (2)  
Ainhoa Olarra, SEC Championship (3)  
Sarah Schmelzel, SEC Championship (3)

### 70

Isidora Nilsson, Mason Rudolph Champ. (2)  
Sarah Schmelzel, ANNIKA Intercollegiate (1)  
Ainhoa Olarra, Landfall Tradition (3)  
Sarah Schmelzel, Landfall Tradition (3)  
Katelyn Dambaugh, FSU Match-Up (3)  
Ainhoa Olarra, FSU Match-Up (2)  
Katelyn Dambaugh, Darius Rucker Intercollegiate (3)  
Katelyn Dambaugh, Bryan National Collegiate (3)

### 69

Sarah Schmelzel, ANNIKA Intercollegiate (1)  
Sarah Schmelzel, FSU Match-Up (2)  
Katelyn Dambaugh, Wildcat Invitational (1)  
Ainhoa Olarra, SEC Championship (1)

### 68

Katelyn Dambaugh, Landfall Tradition (3)

### 66

Katelyn Dambaugh, SEC Championship (3)

### 65

Katelyn Dambaugh, ANNIKA Intercollegiate (1)

## QUICK FACTS

Location ..... Columbia, S.C.  
Enrollment ..... 32,972  
Founded ..... 1801  
Team Name ..... Gamecocks  
President ..... Dr. Harris Pastides  
Faculty Athletics Rep. .... Dr. Valinda Littfield  
Athletics Director.....Ray Tanner  
Colors..... Garnet (PMS 202C), Black  
Conference ..... Southeastern  
Home Course ..... Cobblestone Park

## COACHING STAFF

Head Coach..... Kalen Anderson  
9th Year (Duke, 2001)

Assoc. Head Coach and  
Director of Golf & Facilities ..... Puggy Blackmon  
Volunteer Coach.....Scott Barnicle

## PROGRAM HISTORY

First Year of Women's Golf..... 1980  
NCAA Champ. Appearances ..... 15  
NCAA Regional Appearances ..... 22  
All-Americans ..... 6  
All-Conference..... 20  
SEC Championships..... 1 (2002)

## TEAM INFORMATION

2015 SEC Finish..... 2nd/14  
2015 NCAA Regional Finish ..... 1st/24  
2015 NCAA Champ. Finish ..... 17th/24  
Letterwinners R/L..... 5/3  
Newcomers ..... 4

## MEDIA RELATIONS

Media Relations Director ..... Steve Fink  
Golf Contact..... Scott Waggoner  
E-mail..... waggones@mailbox.sc.edu  
Office..... 803-777-1516  
Cell..... 860-550-5872  
Media Relations Fax..... 803-777-2967  
Official Website ..... GamecocksOnline.com  
Twitter ..... @GamecockWGolf

# 2015-16 SOUTH CAROLINA WOMEN'S GOLF - STATISTICS/RESULTS

## TEAM SCHEDULE/RESULTS

Date	Tournament	Team Score	Finish	Low Individual	Score	Low Indiv. Finish
Sept. 18-20	Mason Rudolph Championship	302-291-295=888 (+24)	T12th/17	Katelyn Dambaugh	74-72-72=218 (+2)	T24th
Sept. 27-29	ANNIKA Intercollegiate	286-293-293=872 (+8)	9th/12	Katelyn Dambaugh	65-71-71=207 (-9)	3rd
Oct. 9-11	Ruth's Chris Invitational	299-310-295=904 (+40)	11th/18	Sarah Schmelzel	72-76-75=223 (+7)	T27th
Oct. 23-25	Landfall Tradition	301-304-283=888 (+24)	9th/18	Katelyn Dambaugh	75-75-68=212 (-4)	T2
Feb. 12-14	Florida State Match-Up	297-285-293=875 (+11)	2nd/12	Katelyn Dambaugh	74-71-70=215 (-1)	T2
March 4-6	Darius Rucker Intercollegiate	303-291-293=887 (+35)	T8th/17	Katelyn Dambaugh	75-72-70=217 (+4)	T7
March 14-15	Wildcat Invitational	297-290-300=887 (+23)	7th/15	Katelyn Dambaugh	69-73-74=216 (E)	9th
April 1-3	Bryan National Collegiate	297-299-298=894 (+30)	2nd/15	Sarah Schmelzel	73-71-75=219 (+3)	1st
April 15-17	SEC Championship	298-301-289=888 (+24)	5th/14	Katelyn Dambaugh	72-71-66=209 (-7)	2nd

## INDIVIDUAL TOURNAMENT-BY-TOURNAMENT RESULTS

### FALL 2015

#### Mason Rudolph Champs. (Par 72)

Player	Rounds	Finish
Dambaugh	74-72-72=218 (+2)	T24
Yang	75-74-76=225 (+9)	T52
Schmelzel	75-75-75=225 (+9)	T52
Olarra	80-78-72=230 (+14)	T71
Nilsson	78-70-DQ=222 (+6)	88

#### ANNIKA Intercollegiate (Par 72)

Player	Rounds	Finish
Dambaugh	65-71-71=207 (-9)	3
Schmelzel	70-69-71=210 (-6)	T7
Olarra	74-77-73=224 (+8)	T47
Nilsson	80-76-78=234 (+18)	57
Yang	77-77-82=236 (+20)	58

#### Ruth's Chris Inviational (Par 71)

Player	Rounds	Finish
Schmelzel	72-76-75=223 (+7)	T27
Dambaugh	75-75-76=226 (+10)	T39
Olarra	75-78-73=226 (+10)	T39
Amos	80-81-71=232 (+16)	T64
Nilsson	77-82-77=236 (+20)	T80
Yang*	81-W-W	--

#### Landfall Tradition (Par 72)

Player	Rounds	Finish
Dambaugh	72-75-68=212 (-4)	T2
Schmelzel	71-77-70=218 (+2)	T16
Olarra	81-77-70=228 (+12)	T53
Nilsson	78-78-75=231 (+15)	T65
Yang	80-81-76=237 (+21)	T83
Amos*	79-84-79=242 (+26)	92

\*Played as an individual; score does not count toward team total

### SPRING 2016

#### Florida State Match-Up (Par 72)

Player	Rounds	Finish
Dambaugh	74-71-70=215 (-1)	T2
Schmelzel	74-69-73=216 (E)	4
Olarra	74-70-75=219 (+3)	T8
Yang	80-75-77=232 (+16)	T43
Veyseyre	75-87-75=237 (+21)	T57

#### Darius Rucker Inter. (Par 71)

Player	Rounds	Finish
Dambaugh	75-72-70=217 (+4)	T7
Olarra	74-74-74=222 (+9)	T26
Schmelzel	77-72-74=223 (+10)	T35
Veyseyre	77-73-75=225 (+12)	T39
Monaco*	79-74-81=234 (+21)	T80
Yang	79-77-80=236 (+23)	T84
Nilsson*	82-79-81=242 (+29)	89

#### Wildcat Invitational (Par 72)

Player	Rounds	Finish
Dambaugh	69-73-74=216 (E)	9
Schmelzel	76-71-73=220 (+4)	T18
Yang*	76-71-74=221 (+5)	T22
Olarra	75-77-75=227 (+11)	T43
Monaco	78-73-78=229 (+13)	T52
Veyseyre	77-73-81=231 (+25)	T59

#### Bryan National Collegiate (Par 72)

Player	Rounds	Finish
Schmelzel	73-71-75=219 (+3)	1
Dambaugh	75-76-70=221 (+5)	T2
Olarra	73-78-75=226 (+10)	T15
Veyseyre	78-74-78=230 (+14)	T34
Yang	76-79-79=234 (+18)	T49
Amos*	82-81-78=241 (+25)	64

\*Played as an individual; score does not count toward team total

## POSTSEASON

#### SEC Championship (Par 72)

Player	Rounds	Finish
Dambaugh	72-71-66=209 (-7)	2
Olarra	69-77-71=217 (+1)	8
Schmelzel	82-77-71=230 (+14)	T44
Yang	76-82-81=239 (+23)	T66
Veyseyre	81-76-86=243 (+27)	70

## 2015-16 RECORD VS. OPPONENTS

Alabama	0-5
Arizona	0-2
Arizona State	0-1
Arkansas	0-4
Auburn	3-1
Baylor	1-1-1
Cal State Fullerton	1-0
Clemson	1-0
Coastal Carolina	1-0
Colorado	1-0
Duke	0-4
East Carolina	1-0
Elon	1-0
Florida	0-1
Florida State	1-1
Furman	2-0
Georgia	1-2
GRU Augusta	0-1
Houston	0-1
James Madison	1-0
Kansas	1-0
Kansas State	1-0
Kentucky	5-0
Louisville	0-2
LSU	3-2
Miami	1-1
Michigan	2-0
Michigan State	0-3
Mississippi	1-0
Mississippi State	2-2
Missouri	2-0
Middle Tennessee State	0-0-1
North Carolina	2-2
NC State	1-2
New Mexico	1-0
New Mexico State	1-0
Northern Arizona	1-0
Northwestern	0-1
Notre Dame	1-1
Ohio State	1-0
Oklahoma State	0-2
Oregon	1-0
Penn State	1-0
Purdue	0-1
Rollins	1-0
SMU	1-0
Southern California	0-1-1
Stanford	1-0
Tennessee	3-2
Texas A&M	1-2
Tulane	1-0
UCF	4-0
UCLA	0-1
UNC Greensboro	1-0
UNC Wilmington	2-0
UNLV	0-1
Vanderbilt	3-1
Virginia	2-4
Virginia Tech	1-0
Wake Forest	3-1
Washington	0-1
Washington State	1-0
Yale	1-0
<b>TOTAL</b>	<b>70-56-3</b>
<b>SEC</b>	<b>24-20</b>

## 2015-16 INDIVIDUAL SEASON STATISTICS

Name	Tourn.	Rounds	Low 54	Low 18	Par/Better	Top 5	Top 10	Top 20	Strokes	Avg.
Gaby Amos	3	9	232	71	1	--	--	--	715	79.44
Katelyn Dambaugh	9	27	207	65	13	5	7	8	1,941	71.89
Marianna Monaco	2	6	229	73	--	--	--	--	463	77.17
Isidora Nilsson	5	14	231	70	1	--	--	--	1,091	77.93
Ainhoa Olarra	9	27	217	69	5	--	2	3	2,019	74.78
Sarah Schmelzel	9	27	210	69	10	2	3	5	1,984	73.48
Marion Veysseyre	5	15	225	73	--	--	--	--	1,166	77.73
Jia Xin Yang	9	25	221	71	1	--	--	--	1,941	77.64
<b>TEAM</b>	<b>9</b>	<b>27</b>	<b>872</b>	<b>283</b>	<b>3</b>	<b>3</b>	<b>7</b>	<b>9</b>	<b>7,983</b>	<b>295.67</b>

## INDIVIDUAL CAREER STATISTICS

Name	Tourn.	Rounds	Low 54	Low 18	Par/Better	Top 5	Top 10	Top 20	Strokes	Avg.
Gaby Amos	3	9	232	71	1	--	--	--	715	79.44
Katelyn Dambaugh	31	90	207	65	32	9	13	18	6,583	73.14
Marianna Monaco	2	6	229	73	--	--	--	--	463	77.17
Isidora Nilsson	5	14	231	70	1	0	0	0	1,091	77.93
Ainhoa Olarra	14	40	217	69	6	0	2	3	3,028	75.70
Sarah Schmelzel	38	111	210	68	31	4	8	14	8,256	74.38
Marion Veysseyre	5	15	225	73	--	--	--	--	1,166	77.73
Jia Xin Yang	21	59	218	69	9	0	0	1	4,498	76.24

## 2015-16 INDIVIDUAL RESULTS

### Gaby Amos (Fr., Gainesville, Fla.)

Tournament	Rounds	Finish
Ruth's Chris Tar Heel Invitational	80-81-71=232 (+16)	T64
Landfall Tradition*	79-84-79=242 (+26)	92
Bryan National Collegiate*	82-81-78=241 (+25)	64

### Katelyn Dambaugh (Jr., Goose Creek, S.C.)

Tournament	Rounds	Finish
Mason Rudolph Championship	74-72-72=218 (+2)	T24
ANNIKA Intercollegiate	65-71-71=207 (-9)	3
Ruth's Chris Tar Heel Invitational	75-75-76=226 (+10)	T39
Landfall Tradition	72-72-68=212 (-4)	T2
FSU Match-Up	74-71-70=215 (-1)	T2
Darius Rucker Intercollegiate	75-72-70=217 (+4)	T7
Wildcat Invitational	69-73-74=216 (E)	9
Bryan National Collegiate	75-76-70=221 (+5)	T2
SEC Championship	72-71-66=209 (-7)	2

### Marianna Monaco (Jr., Yonkers, N.Y.)

Tournament	Rounds	Finish
Darius Rucker Intercollegiate	79-74-81=234 (+21)	T80
Wildcat Invitational	78-73-78=229 (+13)	T52

### Isidora Nilsson (Fr., Hilton Head, S.C.)

Tournament	Rounds	Finish
Mason Rudolph Championship	78-70-DQ=DQ	T52
ANNIKA Intercollegiate	80-76-78=234 (+18)	57
Ruth's Chris Tar Heel Invitational	77-82-77=236 (+20)	T80
Landfall Tradition	78-78-75=231 (+15)	T65
Darius Rucker Intercollegiate*	82-79-81=242 (+29)	89

### Ainhoa Olarra (So., San Sebastian, Spain)

Tournament	Rounds	Finish
Mason Rudolph Championship	80-78-72=230 (+14)	T71
ANNIKA Intercollegiate	74-77-73=224 (+8)	47
Ruth's Chris Tar Heel Invitational	75-78-73=226 (+10)	T39
Landfall Tradition	81-77-70=228 (+12)	T53
FSU Match-Up	74-70-75=219 (+3)	T8
Darius Rucker Intercollegiate	74-74-74=222 (+9)	T26
Wildcat Invitational	75-77-75=227 (+11)	T43
Bryan National Collegiate	73-78-75=226 (+10)	T15
SEC Championship	69-77-71=217 (+1)	8

### Sarah Schmelzel (Sr., Phoenix, Ariz.)

Tournament	Rounds	Finish
Mason Rudolph Championship	75-75-75=225 (+9)	T52
ANNIKA Intercollegiate	70-69-71=210 (-6)	T7
Ruth's Chris Tar Heel Invitational	72-76-75=223 (+7)	T27
Landfall Tradition	71-77-70=218 (+2)	T16
FSU Match-Up	74-69-73=216 (E)	4
Darius Rucker Intercollegiate	77-72-74=223 (+10)	T35
Wildcat Invitational	76-71-73=220 (+4)	T18
Bryan National Collegiate	73-71-75=219 (+3)	1
SEC Championship	82-77-71=230 (+14)	T44

### Marion Veysseyre (Fr., Lachapelle-Auzac, France)

Tournament	Rounds	Finish
FSU Match-Up	75-87-75=237 (+21)	T57
Darius Rucker Intercollegiate	77-73-75=225 (+12)	T39
Wildcat Invitational	77-73-81=231 (+15)	T59
Bryan National Collegiate	78-74-78=230 (+14)	T34
SEC Championship	81-76-86=243 (+27)	70

### Jia Xin Yang (So., Beijing, China)

Tournament	Rounds	Finish
Mason Rudolph Championship	75-74-76=225 (+9)	T52
ANNIKA Intercollegiate	77-77-82=236 (+20)	58
Ruth's Chris Tar Heel Invitational*	81-W-W	--
Landfall Tradition	80-81-76=237 (+21)	T83
FSU Match-Up	80-75-77=232 (+16)	T43
Darius Rucker Intercollegiate	79-79-80=236 (+23)	T84
Wildcat Invitational*	76-71-74=221 (+5)	T22
Bryan National Collegiate	76-79-79=234 (+18)	T49
SEC Championship	76-82-81=239 (+23)	T66

\* Played as an individual; Score does not count toward team total

# 2015-16 TOURNAMENT-BY-TOURNAMENT

## Mason Rudolph Championship

Sept. 18-20  
Vanderbilt Legends Club - South  
Franklin, Tenn.  
Par 72 • 6,321 Yards

### TOP TEAM RESULTS

1. Alabama	282-280-286=848	(-16)
2. Northwestern	283-281-285=849	(-15)
3. Georgia	286-275-293=854	(-10)
4. Virginia	286-289-298=873	(+9)
LSU	288-287-298=873	(+9)
6. Houston	300-283-292=875	(+11)
7. Vanderbilt	296-286-294=876	(+12)
8. Auburn	287-288-305=880	(+16)
9. GRU Augusta	294-291-298=883	(+19)
10. Louisville	288-292-304=884	(+20)
T11. Mich. St.	295-299-293=887	(+23)
<b>T12. South Carolina</b>	<b>302-291-295=888</b>	<b>(+24)</b>

### TOP INDIVIDUALS/GAMECOCKS

1. Lakareber Abe (Alabama)	67-68-69=204	-12
2. Lauren Coughlin (Virginia)	66-71-68=205	-11
3. Stephanie Lau (Northwest.)	68-70-68=206	-10
4. Harang Lee (Georgia)	70-69-72=211	-5
5. Ashley Holder (UCF)	70-72-70=212	-4
T5. Olivia Cason (Louisville)	69-70-73=212	-4
7. Janie Jackson (Alabama)	72-70-72=214	-2
T7. Megan Thothong (Houst.)	74-69-71=214	-2
<b>T24. Katelyn Dambaugh (SC)</b>	<b>74-72-72=218</b>	<b>+2</b>

## Landfall Tradition

Oct. 23-25  
Country Club of Landfall - Pete Dye Course  
Wilmington, N.C.  
Par 72 • 6,157 Yards

### TOP TEAM RESULTS

1. Duke	287-284-284=855	(-9)
2. Notre Dame	291-294-281=866	(+2)
3. Oklahoma State	289-292-286=867	(+3)
4. Michigan State	291-306-275=872	(+8)
5. Alabama	299-286-297=882	(+18)
6. NC State	295-311-279=885	(+21)
7. Wake Forest	303-294-289=886	(+22)
8. Purdue	296-300-291=887	(+23)
<b>9. South Carolina</b>	<b>301-304-283=888</b>	<b>(+24)</b>
10. UNCW	290-297-302=889	(+25)
Clemson	298-306-285=889	(+25)
12. Virginia	301-303-286=890	(+26)

### TOP INDIVIDUALS/GAMECOCKS

1. Sarah Burnham (Mich. St.)	71-74-66=211	-5
<b>T2. Katelyn Dambaugh (SC)</b>	<b>72-72-68=212</b>	<b>-4</b>
T2. Ashley Holder (UCF)	72-69-71=212	-4
T4. Jennifer Kupcho (Wake)	74-71-68=213	-3
T4. Leona Maguire (Duke)	71-72-70=213	-3
T4. Maddie McCrary (Ok. St.)	70-71-72=213	-3
T4. Celine Boutier (Duke)	75-69-69=213	-3
8. Lauren Coughlin (UVA)	71-76-67=214	-2
9. Lauren Waller (Penn St.)	75-72-68=215	-1

## ANNIKA Intercollegiate

Sept. 27-29  
Reunion Resort - Watson Course  
Reunion, Fla.  
Par 72 • 6,245 Yards

### TOP TEAM RESULTS

1. Southern California	276-271-281=828	(-36)
2. Arizona	286-281-284=851	(-13)
3. Arkansas	284-286-284=854	(-10)
4. Duke	277-291-288=856	(-8)
5. Texas A&M	278-286-295=859	(-5)
6. UCLA	286-292-284=862	(-2)
7. Tennessee	284-288-291=863	(-1)
8. Washington	291-290-284=865	(+1)
<b>9. South Carolina</b>	<b>286-293-293=872</b>	<b>(+8)</b>
10. Stanford	289-287-297=873	(+9)
11. LSU	291-292-297=880	(+16)
12. UCF	290-294-302=886	(+22)

### TOP INDIVIDUALS/GAMECOCKS

1. Karen Chung (USC)	68-68-68=204	-12
2. Robynn Ree (USC)	68-66-72=206	-10
<b>3. Katelyn Dambaugh (SC)</b>	<b>65-71-71=207</b>	<b>-9</b>
T4. Gaby Lopez (Arkansas)	67-70-71=208	-8
T4. Tiffany Chan (USC)	71-65-72=208	-8
6. Anna Newell (Tennessee)	69-70-70=209	-7
T7. Gabriella Then (USC)	69-72-69=210	-6
<b>T7. Sarah Schmelzel (SC)</b>	<b>70-69-71=210</b>	<b>-6</b>
T9. Leona Maguire (Duke)	67-72-72=211	-5
T9. Lindsey Weaver (Arizona)	70-71-70=211	-5
T9. Wanasa Zhou (Arizona)	70-67-74=211	-5

## Florida State Match-Up

Feb. 12-14  
Don Veller Seminole Golf Course  
Tallahassee, Fla.  
Par 72 • 6,265 Yards

### TOP TEAM RESULTS

1. FSU	293-293-285=871	(+7)
<b>2. South Carolina</b>	<b>297-285-293=875</b>	<b>(+11)</b>
3. Furman	290-290-302=890	(+26)
4. SMU	297-300-297=894	(+30)
5. Texas A&M	298-299-301=898	(+34)
6. Coastal Carolina	297-309-293=899	(+35)
7. Missouri	309-297-294=900	(+36)
8. Tennessee	303-300-302=905	(+41)
9. Virginia	305-298-306=909	(+45)
10. Kansas State	309-305-304=918	(+54)
11. Virginia Tech	307-310-304=921	(+57)
12. James Madison	318-318-305=941	(+77)

### TOP INDIVIDUALS/GAMECOCKS

1. Maddie Szeryk (TAMU)	69-72-70=211	-5
<b>T2. Katelyn Dambaugh (SC)</b>	<b>74-71-70=215</b>	<b>-1</b>
T2. Kim Mettraux (FSU)	72-72-71=215	-1
<b>4. Sarah Schmelzel (SC)</b>	<b>74-69-73=216</b>	<b>E</b>
T5. Jenny Haglund (SMU)	72-70-75=217	+1
T5. Alice Chen (Furman)	73-71-73=217	+1
7. Lena Schaeffner (Coastal)	70-75-73=218	+2
T8. Lauren Coughlin (UVA)	76-72-71=219	+3
T8. Matilda Castren (FSU)	74-74-71=219	+3
T8. Lydia Gumm (FSU)	74-73-72=219	+3
<b>T8. Ainhoa Olarra (SC)</b>	<b>74-70-75=219</b>	<b>+3</b>

## Ruth's Chris Invitational

Oct. 9-11  
Finley Golf Course  
Chapel Hill, N.C.  
Par 72 • 6,379 Yards

### TOP TEAM RESULTS

1. Duke	285-293-289=867	(+3)
2. Arkansas	302-287-291=880	(+16)
3. Louisville	292-297-293=882	(+18)
4. Michigan State	293-299-291=883	(+19)
5. NC State	292-300-292=884	(+20)
6. Alabama	289-304-293=886	(+22)
7. Tennessee	299-295-293=887	(+23)
8. North Carolina	295-303-290=888	(+24)
9. Virginia	297-306-295=898	(+34)
10. LSU	302-303-298=903	(+39)
<b>11. South Carolina</b>	<b>299-310-295=904</b>	<b>(+40)</b>
12. Auburn	298-304-303=905	(+41)

### TOP INDIVIDUALS/GAMECOCKS

1. Leona Maguire (Duke)	69-72-71=212	-4
2. Sarah Burnham (Mich. St.)	74-69-70=213	-3
T3. Leslie Cloots (UNC)	75-71-68=214	-2
T3. Molly Skapik (Louisville)	70-72-72=214	-2
5. Jennifer Kupcho (Wk. Forest)	73-72-71=216	E
6. Lexi Harkins (UNC)	73-73-71=217	+1
T7. Emma Talley (Alabama)	73-72-73=218	+2
T7. India Clyburn (NC State)	73-72-73=218	+2
T7. Shannon Brooks (Tenn.)	72-76-70=218	+2
T7. Virginia Elena Carta (Duke)	73-74-71=218	+2
<b>T27. Sarah Schmelzel (SC)</b>	<b>72-76-75=223</b>	<b>+7</b>

## Darius Rucker Intercollegiate

March 4-6  
Long Cove Club  
Hilton Head Island, S.C.  
Par 71 • 6,208 Yards

### TOP TEAM RESULTS

1. Alabama	278-298-292=868	(+16)
2. Virginia	281-298-296=875	(+23)
3. Duke	299-289-290=878	(+26)
4. Oklahoma State	292-290-297=879	(+27)
5. North Carolina	290-295-296=881	(+29)
6. Arkansas	289-296-297=882	(+30)
7. Georgia	301-282-300=883	(+31)
<b>T8. South Carolina</b>	<b>303-291-293=887</b>	<b>(+35)</b>
T8. USC	287-293-297=887	(+35)
10. Tennessee	295-292-301=888	(+36)
11. Vanderbilt	282-300-307=889	(+37)
12. Furman	303-302-293=898	(+46)

### TOP INDIVIDUALS/GAMECOCKS

1. Cheyenne Knight (Ala.)	67-74-72=213	E
T2. Alexandra Farnsworth (Vandy)	67-72-75=214	+1
T2. Lauren Coughlin (UVA)	67-72-75=214	+1
T2. Sandy Choi (Duke)	71-70-73=214	+1
T2. Maddie McCrary (Ok. State)	71-70-73=214	+1
6. Harang Lee (Georgia)	73-69-74=216	+3
<b>T7. Katelyn Dambaugh (SC)</b>	<b>75-72-70=217</b>	<b>+4</b>
T7. Elizabeth Szokol (UVA)	69-76-72=217	+4
T9. Maria Fassi (Arkansas)	71-70-77=218	+5
T9. Haylee Harford (Furman)	74-72-72=218	+5
T9. Leslie Cloots (UNC)	75-76-67=218	+5
T9. Robynn Ree (USC)	72-73-73=218	+5

# 2015-16 TOURNAMENT-BY-TOURNAMENT

## Wildcat Invitational

March 14-15  
Sewailo Golf Club  
Tuscon, Ariz.  
Par 72 • 6,492 Yards

### TOP TEAM RESULTS

1. Arizona	282-293-282=857	(-7)
2. Arizona State	285-289-294=868	(+4)
3. UNLV	289-295-292=876	(+12)
4. Miami	294-291-298=883	(+19)
T5. Purdue	288-294-302=884	(+20)
T5. Baylor	292-299-293=884	(+20)
<b>7. South Carolina</b>	<b>297-290-300=887</b>	<b>(+23)</b>
8. Michigan	294-300-294=888	(+24)
9. Vanderbilt	298-292-300=890	(+26)
10. Colorado	294-306-295=895	(+31)
11. New Mexico State	297-302-297=896	(+32)
12. Kansas	301-304-294=899	(+35)

### TOP INDIVIDUALS/GAMECOCKS

1. Krystal Quihuis (Arizona)	68-71-70=209	-7
2. Linnea Strom (Arizona St.)	67-68-75=210	-6
3. Monica Vaughn (Arizona St.)	71-72-68=211	-5
T4. Dewi Weber (Miami)	71-67-74=212	-4
T4. Daniela Darquea (Miami)	69-69-74=212	-4
T6. Jessica Vasilic (Arizona)	75-67-72=214	-2
T6. Haley Moore (Arizona)	72-71-71=214	-2
8. Laura Lonardi (Baylor)	72-73-70=215	-1
<b>9. Katelyn Dambaugh (SC)</b>	<b>69-73-74=216</b>	<b>E</b>

## Bryan National Collegiate

April 1-3  
Bryan Park Champions Course  
Browns Summit, N.C.

### TOP TEAM RESULTS

1. Virginia	289-295-304=888	(+24)
2. South Carolina	289-297-298=894	(+30)
3. Florida State	299-290-307=896	(+32)
4. Wake Forest	298-297-306=901	(+37)
T5. Notre Dame	297-303-309=909	(+45)
T5. Kentucky	306-293-310=909	(+45)
7. East Carolina	299-303-308=910	(+46)
8. NC State	304-303-304=911	(+47)
9. Miami	298-306-310=914	(+50)
10. North Carolina	302-304-311=917	(+53)
11. Michigan	314-304-308=926	(+62)
12. UCF	315-310-317=933	(+69)

### TOP INDIVIDUALS/GAMECOCKS

<b>1. Sarah Schmelzel (SC)</b>	<b>73-71-75=219</b>	<b>+3</b>
<b>T2. Katelyn Dambaugh (SC)</b>	<b>75-76-70=221</b>	<b>+5</b>
T2. Jennifer Kupcho (Wk. Forest)	72-73-76=221	+5
T2. Matilda Castren (FSU)	71-71-79=221	+5
T5. Lauren Coughlin (UVA)	72-72-78=222	+6
T5. Elizabeth Szokol (UVA)	71-75-76=222	+6
7. F. Gustafsson Spang (ECU)	75-74-74=223	+7
T8. Taila Campbell (Notre Dame)	74-75-75=224	+8
T8. Ayaka Nakayama (UCF)	76-72-76=224	+8
T8. Lauren Diaz-Yi (UVA)	73-74-77=224	+8
T8. Nico Engstroem Skaug (ECU)	70-78-76=224	+8
T8. Anna Redding (UVA)	77-74-73=224	+8
T8. Kathy Lim (Michigan)	76-74-74=224	+8

## SEC Championship

April 15-17  
Greystone Golf & Country Club  
Birmingham, Ala.  
Par 72 • 6,190 Yards

### TOP TEAM RESULTS

1. Alabama	286-292-281=859	(-5)
2. Florida	292-286-286=864	(E)
3. Arkansas	300-294-288=882	(+18)
4. Texas A&M	299-291-294=884	(+20)
<b>5. South Carolina</b>	<b>298-301-289=888</b>	<b>(+24)</b>
6. Georgia	296-296-297=889	(+25)
7. Mississippi	301-300-293=894	(+30)
8. Tennessee	297-305-294=896	(+32)
9. Missouri	295-303-302=900	(+36)
10. Vanderbilt	309-304-292=905	(+41)
11. LSU	305-303-303=911	(+47)
12. Mississippi State	305-303-306=914	(+50)

### TOP INDIVIDUALS/GAMECOCKS

1. Maria Torres (Alabama)	69-68-70=207	-9
<b>2. Katelyn Dambaugh (SC)</b>	<b>72-71-66=209</b>	<b>-7</b>
3. Cheyenne Knight (Alabama)	72-71-69=212	-4
4. Emma Talley (Alabama)	70-73-70=213	-3
T5. Maria Fassi (Arkansas)	75-71-69=215	-1
T5. Lakareber Abe (Alabama)	70-74-71=215	-1
7. Maddie Szeryk (TAMU)	75-70-71=216	E
<b>8. Ainboa Olarra (SC)</b>	<b>69-77-71=217</b>	<b>+1</b>
T9. Alison Hovatter (Ole Miss)	74-71-73=218	+2
T9. Amanda Kim (Missouri)	70-75-73=218	+2



# SOUTH CAROLINA HISTORY AND RECORDS

## Season Scoring Avg. (18+ Rds)

Year	Rds.	Strokes	Avg.
1. 2013-14	29	8,428	292.30
2. 2014-15	31	9,078	292.84
<b>3. 2015-16</b>	<b>27</b>	<b>7,983</b>	<b>295.67</b>
4. 2011-12	33	9,828	297.82
5. 2009-10	34	10,128	297.88
6. 2012-13	32	9,610	300.31
7. 2010-11	34	10,262	301.82
8. 2002-03	31	9,380	302.58
9. 2006-07	29	8,775	302.59
10. 2008-09	30	9,090	303.00

## Career Scoring Average

(Min. 55 Rounds)

1. <b>Katelyn Dambaugh (2013-Pres.)</b>	<b>73.14</b>
2. Justine Dreher (2011-15)	74.12
3. Katie Burnett (2008-2012)	74.18
<b>4. Sarah Schmelzel (2012-Pres.)</b>	<b>74.38</b>
5. Kristy McPherson (1999-03)	74.42
6. Bénédicte Toumpsin (2006-10)	74.59
7. Suzie Lee (2010-2014)	75.50
Samantha Swinehart (2010-2014)	75.50
9. Adrienne Gautreaux (2001-04)	75.75
10. Amanda Strang (2009-2012)	76.07

## Single-Season Scoring Avg.

(Min. 18 Rounds)

1. <b>Katelyn Dambaugh (2016)</b>	<b>71.89</b>
2. Justine Dreher (2015)	72.53
3. Katie Burnett (2012)	72.94
4. Samantha Swinehart (2014)	73.12
5. Justine Dreher (2014)	73.36
6. Kristy McPherson (2003)	73.42
<b>7. Sarah Schmelzel (2016)</b>	<b>73.48</b>
8. Katie Burnett (2010)	73.58
Kristy McPherson (2002)	73.58
<b>10. Katelyn Dambaugh (2015)</b>	<b>73.66</b>

## Low 18-Hole Score

Tournament	Rd.	Score
1. Mercedes-Benz Collegiate, 9/20/13	1	279
Cougar Classic, 9/13/11	3	
3. NCAA East Regional, 5/10/14	2	280
PING ASU Inv., 4/5/14	2	
SEC Championships, 4/18/15	2	
6. NCAA Championship, 5/23/14	4	281
NCAA Championship, 5/23/12	2	
Mercedes-Benz Collegiate, 10/19/14	3	
9. SEC Championship, 4/20/02	2	282
ANNIKA Intercollegiate, 9/28/14	1	
ANNIKA Intercollegiate, 9/31/14	3	

## Low 54-Hole Score

Tournament	Score
1. PING ASU Inv., 2014	853
2. NCAA East Regional, 2014	854
ANNIKA Intercollegiate, 2014	
4. SEC Championship, 2002	861
5. SEC Championship, 2015	863
6. NCAA East Regional, 2010	864
Tar Heel Invitational, 2014	864
8. Mercedes-Benz Collegiate Champs., 2014	865
9. SEC Championship, 2010	867
10. Cougar Classic, 2011	869

## Low 72-Hole Score

Tournament	Score
1. NCAA Championship, 2014	1164
2. NCAA Championship, 2012	1176
3. NCAA Championship, 2010	1186
4. NCAA Championship, 1995	1204
5. NCAA Championship, 2013	1211
NCAA Championship, 2011	
7. NCAA Championship, 2002	1217
8. NCAA Championship, 1987	1225
9. NCAA Championship, 2008	1235
10. NCAA Championship, 1993	1238

## Low 18-Hole Score

Player, Tournament	Score
1. <b>Katelyn Dambaugh, 2015 ANNIKA Inter. (1)</b>	<b>65</b>
<b>Katelyn Dambaugh, 2015 SEC Champ. (2)</b>	
Mary Fran Hillow, 2014 Mercedes-Benz Collegiate (3)	
4. <b>Katelyn Dambaugh, 2016 SEC Champ. (3)</b>	<b>66</b>
<b>Katelyn Dambaugh, 2014 PING/ASU Invite (2)</b>	
Nanna Madsen, 2014 Landfall Tradition (1)	
Justine Dreher, 2014 NCAA East Regional (3)	
Samantha Swinehart, 2014 PING ASU Inv. (3)	
Katie Burnett, 2011 Cougar Classic (2)	
Jenna Pearson, 2007 SEC Champ. (2)	
11. Samantha Swinehart, 2014 NCAA Champ. (4)	<b>67</b>
<b>Katelyn Dambaugh, 2013 FSU Match-Up (3)</b>	
Katie Burnett, 2012 NCAA Champ. (2)	
Katie Rose Higgins 2011 Cougar Classic (3)	
Katie Burnett, 2011 UCF Challenge (2)	
Katie Burnett, 2010 NCAA Regional (1)	
Corrine Carr, 2010 SEC Champ. (3)	
Jenna Pearson, 2006 Dick McGuire (2)	
Kristy McPherson, 2001 SEC Champ. (1)	

## Low 54-Hole Score

Player, Tournament	Score
1. <b>Katelyn Dambaugh, 2015 ANNIKA Inter.</b>	<b>207</b>
Justine Dreher, 2014 ANNIKA Intercollegiate	
Kristy McPherson, 2001 SEC Champ.	
4. <b>Katelyn Dambaugh, 2016 SEC Champ.</b>	<b>209</b>
Benedicte Toumpsin, 2009 LSU Classic	
Kristy McPherson, 2003 NCAA Regional	
Kristy McPherson, 2002 SEC Championship	
8. <b>Sarah Schmelzel, 2015 ANNIKA Inter.</b>	<b>210</b>
Nanna Madsen, 2014 Landfall Tradition	
Katie Burnett, 2010 NCAA Regional	
Siew-Ai Lim, 1994 Carolyn Cudone	
12. Justine Dreher, 2014 NCAA East Regional	211
Samantha Swinehart, 2014 PING/ASU Inv.	
Kristy McPherson, 2002 Spartan Invitational	
15. <b>Katelyn Dambaugh, 2015 Landfall Tradition</b>	<b>212</b>
Samantha Swinehart, 2014 NCAA East Reg.	
<b>Sarah Schmelzel, 2013 FSU Match-Up</b>	