



GAMECOCK VOLLEYBALL

SOUTH CAROLINA

UPCOMING OPPONENTS



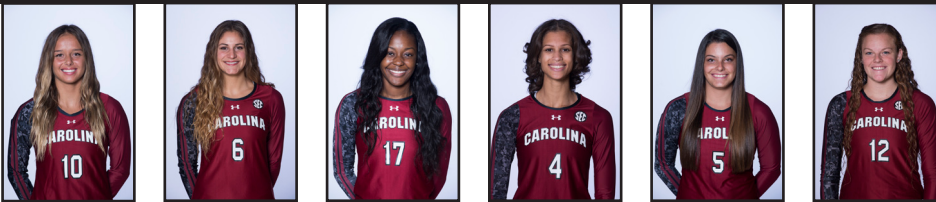
Tennessee (20-9, 4-6 Away, 6-8 SEC)
Wed., November 11, 6:00 PM
Carolina Volleyball Center

Series Tennessee leads, 37-27 (Since 1973)
Trend Tennessee won five straight at Carolina, dating back to October 2008
 The Volunteers are 10-3 in the series since Carolina's last home win
Last Meeting Tennessee won 3-2 at home (10/18/2015)

TABLE OF CONTENTS

- ✓ Scouting the opponents (p. 2)
- ✓ South Carolina team notes (ps. 3-5)
- ✓ Match-by-match leaders (p. 6)
- ✓ Match-by-match leaders (p. 7)
- ✓ 2015 statistics (p. 8-9)
- ✓ Box Scores (ps. 10-16)
- ✓ Career, match records (ps. 17-21)
- ✓ Head coach Scott Swanson's bio (p. 22)
- ✓ Individual player pages (ps. 23-37)
- ✓ Spot chart (p. 38)

PROJECTED STARTERS (Based on last match)



2015 ROSTER

NO	NAME	HT	POS	YR	EXP	HOMETOWN (LAST SCHOOL)
1	Madison Borowski	5-9	S	FR	HS	Austin, Texas (Westlake)
2	Joely Cabrera	5-6	DS/Libero	JR	TR	Seca, Puerto Rico (Daytona State)
3	Dessaa Legros	5-10	MB/OH	JR	2L	Kennesaw, Ga. (Allatoona)
4	Darian Dozier	6-1	MB/RS	SR	3L	Sandy Spring, Md. (St. Johns College)
5	Aubrey Ezell	5-8	S	FR	HS	Granbury, Texas (Granbury)
6	Sarah Blomgren	5-11	RS/OH	SR	3L	Canyon Country, Calif. (Saugus)
7	Jacqy Angermiller	6-2	MB/RS	JR	2L	Dallas, Texas (LD Bell)
9	Megan Kirkland	5-7	DS/Libero	JR	2L	Lugoff, S.C. (Lugoff-Elgin)
10	Emma Lock	5-9	DS/Libero	FR	HS	Lee's Summit, Mo. (Lee's Summit)
11	Koko Atoa-Williams	5-10	OH	JR	2L	Reno, Nev. (Bishop Manogue)
12	Courtney Furlong	6-3	OH	FR	HS	Oviedo, Fla. (Oviedo)
14	Katlyn McDaniel	6-0	MB	JR	2L	Columbia, S.C. (Spring Valley)
15	Jesse Turner	6-2	MB/RS	FR	HS	Austin, Texas (Westlake)
17	Elizabeth Johnbull	6-0	MB	SR	3L	Pflugerville, Texas (Connally)
23	Callie Brown	6-1	MB/RS	FR	HS	Summerfield, N.C. (Rockingham County)
25	Courtney McKeag	6-0	MB/OH	RS FR	RS	San Juan Capistrano, Calif. (San Juan Hills)

2015 SCHEDULE (10-16, 3-10 SEC)

DATE	OPPONENT	RESULT/TIME
8/28	Southeastern Louisiana %	W, 3-0
8/29	NC Central %	W, 3-0
	NC State %	L, 3-0
9/4	vs. Clemson #	W, 3-1
9/5	vs. Winthrop #	W, 3-2
	at Furman #	L, 3-1
9/11	vs. Pittsburgh ^	L, 3-1
	at #24 Michigan ^	L, 3-0
9/12	vs. Western Michigan ^	L, 3-1
9/18	East Carolina &	W, 3-0
9/19	Charleston Southern &	W, 3-1
	Wofford &	W, 3-0
9/22	Coastal Carolina	L, 3-1
9/25	Kentucky*	L, 3-0
9/27	at LSU*	L, 3-0
10/2	at Ole Miss*	L, 3-1
10/4	at Mississippi State*	L, 3-2
10/9	Auburn*	L, 3-0
10/11	Texas A&M*	L, 3-2
10/14	at Georgia*	W, 3-0
10/18	at Tennessee*	L, 3-2
10/25	Arkansas*	W, 3-1
10/30	Florida*	L, 3-0
11/1	Ole Miss*	W, 3-0
11/6	at Auburn*	L, 3-1
11/8	at Alabama*	L, 3-1
11/11	Tennessee*	6 PM
11/20	Mississippi State*	7 PM
11/22	Alabama*	1:30 PM
11/25	at Arkansas*	8 PM
11/27	at Missouri*	7:30 PM

All times Eastern | Home matches in bold
 % Gamecock Invitational | # Furman Carolina Classic
 ^ Michigan Challenge | & Carolina Classic
 * SEC match

ON THE AIR



TV ESPNU
 Play-by-Play Cara Capuano
 Color Analyst Jenny Hazelwood

GAMECOCK STAFF

Head Coach Scott Swanson
Alma Mater Arizona State, 1995
Overall Record (Years) 122-139 (9th)
Record at Carolina (Years) 71-79 (5th)
Assistant Coach/Rec. Coordinator... Dottie Hampton
Alma Mater IPFW
Year at SC 2nd
Assistant Coach Shonda Cole
Alma Mater South Carolina
Year at SC 2nd (1st as full-time assistant)
Volunteer Assistant Tim Walenga
Director of Operations Amanda Brungs
Graduate Assistant Morgan Page

QUICK FACTS

Location Columbia, S.C.
Founded 1801
Enrollment 32,972
Colors Garnet (PMS 202C) & Black
Nickname Gamecocks
Affiliation NCAA Division I
Conference Southeastern (Eastern Division)
President Dr. Harris Pastides
Athletic Director Ray Tanner
Home Court Carolina Volleyball Center
2014 Record 17-14
2014 Conference Record 7-11
2014 Conference Finish T-8th
Starters Returning/Lost +Libero 4/3+Libero
Letterwinners Returning/Lost 10/5
Newcomers 8

MEDIA INFORMATION

Director of Media Relations Steve Fink
Asst. Director/Volleyball Joe Kepler
Office Phone (803) 777-5539
Email keplerj@mailbox.sc.edu
Personal Phone (716) 254-1711
Office Fax (803) 777-2967
Department Website GamecocksOnline.com
Dept. Facebook /GamecocksOnline
Team Facebook /GamecockVolleyball
Dept. Twitter @GamecocksOnline
Team Twitter @GamecockVolley
Mailing Address 1304 Heyward St.
 Rice Athletics Center
 Columbia, SC 29208

PRONUNCIATION GUIDE

KoKo Atoa-Williams Uh-TOE-uh
 Sarah Blomgren BLOHM-grin
 Joely Cabrera JOE-elly
 Dessaa Legros Dess-ah Luh-GROSS

ABBREVIATIONS

When needing to abbreviate South Carolina for your scoreboard or broadcast boxes, the preferred shortenings are S. Carolina or SC. Please refrain from using USC or SCAR when referring to the University of South Carolina. Proper logos and wordmarks can be emailed for use by any media outlet upon request. Thank you.

NOTEWORTHY

SCOUTING TENNESSEE

- Volunteers are coached by Rob Patrick, the program’s all-time wins leader and longest-tenured coach.
- The team took its lumps last season with just one senior and are reaping the benefits in 2015, highlighted by a 14-0 winning streak to begin the year. The Vols enter the week with a 20-9 overall record and six conference wins. Last weekend, the team lost 3-0 to Texas A&M and 3-1 to Arkansas.
- A big reason for the turnaround this season has been the team defense. Opponents are hitting just .173 against them, second behind only Florida among SEC schools. The team also ranks third in total digs per set, popping up 15.36.
- Individually, Kanisha Jimenez leads the team with 2.92 kills per set, and Erica Treiber adds in 228 kills with a .347 hitting percentage and 1.13 blocks per set. Junior libero Bridgette Villano is third in the SEC with 4.52 digs per set.

SERIES HISTORY VS. THE VOLUNTEERS

- Sunday will be another installment in what is the longest-running series in South Carolina history. The two met in the Gamecock’s first season of existence in 1973. Tennessee leads the series 37-27.
- Tennessee has won five straight at Carolina, dating back to October 2008. The Volunteers are 10-3 in the series since Carolina’s last home win.
- In the most recent meeting, despite record-setting performances up and down the lineup, the South Carolina volleyball team could not hold off Tennessee on Oct. 18, losing 3-2 in Knoxville. The Gamecocks were led by career bests from hitters Dessaa Legros (22 kills), Sarah Blomgren (20) and Jacqy Angermiller (14).

SOUTH CAROLINA AT A GLANCE

- South Carolina enters its fifth season under the direction of head coach Scott Swanson.
- The Gamecocks went 17-14 overall and 7-11 in the SEC in 2014. The seven SEC wins were Carolina’s most during under Swanson and the most since 2008 (12).
- The Gamecocks return 10 letter winners, including five who started 10 or more matches (Koko Atoa-Williams, Darian Dozier, Sarah Blomgren, Jacqy Angermiller, Megan Kirkland).
- Nine states - California (2), Florida (1), Georgia (1), Maryland (1), Missouri (1), Nevada (1), North Carolina (1), South Carolina (2), Texas (5) - and Puerto Rico (1) are represented on the roster.

LOOK WHO’S BACK

- The Gamecocks return 67.7 percent (986) of their kills from last season. Junior outside hitter Koko Atoa-Williams ranked second on the squad with 304 kills in 2014, averaging 2.51 per set.
- With the departure of setters Kellie McNeil and Allie Monserez, the Gamecocks only returned 5.1 percent (70) of their assists from 2014.
- Carolina returns 41.8 percent (766) of its digs from last season, with a key loss in libero
- The Gamecocks return 71.5 percent (369) of their blocks from 2014. Senior middle blocker Darian Dozier will lead the way after setting a rally-scoring-era school record last season with 141 total blocks.

RECAPPING ALABAMA (11/8)

- The Gamecock volleyball team continued their late-season surge Sunday afternoon, winning their third match in the last five outings with a 3-0 sweep of Ole Miss, 26-24, 25-21, 26-24. Senior Sarah Blomgren finished with 15 kills to drive the offense. Blomgren now has hit double-digit kills in six straight matches and has six 15-kill performances. In her last five matches, she is leading the team with 3.78 kills per set and is hitting .314.
- The Gamecocks were able to win in the serve-receive game, recording six aces with just eight errors. Ole Miss, who entered the match averaging a SEC-best 1.65 aces per set, had just four aces against Carolina while committing nine errors.
- Kirkland continues to play strong since taking over the role of libero. In the six matches since earning the job, she is averaging 4.26 digs per set and has a serve reception percentage of .968.
- In her return after missing the match against Florida, Darian Dozier had six kills with a pair of blocks. She now moves into a tie for third in school history in block assists, with 358.
- This is the second straight win where the team has been outhit by the opposition. Before the win over Arkansas, the team was 0-12 when hitting at a lower percentage.

QUOTABLE: HEAD COACH SCOTT SWANSON AT ALABAMA

On the play of Blomgren and Dozier

“Darian had an unbelievable match, she had 17 kills and no errors, Sarah Blomgren hit in the 300s with 22 kills, they both tried to carry us as much as they could. We have to pass a little bit better to get everyone else more involved. We mentally get in our own way sometimes when it comes to passing and handling that first ball. It’s probably the reason why we lost tonight, I thought we were playing well at times but just not consistent enough with our ball control.”

AVCA POLL | NOV. 9

#	Team (1st-Place)	Pts	W-L	Prev
1	Penn State (35)	1551	23-2	1
2	Southern Calif. (23)	1542	25-1	2
3	Washington (6)	1490	22-2	3
4	Minnesota	1404	21-3	4
5	Texas	1323	20-2	5
6	Stanford	1216	17-5	7
7	Hawai'i	1200	22-1	6
8	Nebraska	1161	20-4	8
9	UCLA	1123	20-4	9
10	Kansas	1073	22-1	10
11	Wisconsin	961	18-6	13
12	BYU	870	21-3	14
13	Colorado State	779	21-3	15
14	Ohio State	687	20-6	12
15	Florida	681	18-5	11
16	Illinois	577	17-8	18
17	Purdue	572	18-7	16
18	Kentucky	460	18-7	21
19	Arizona	406	16-10	19
20	Florida State	380	19-6	17
21	Arizona State	366	18-7	20
22	Louisville	253	19-5	22
23	San Diego	194	18-7	22
24	Western Kentucky	122	26-3	24
25	North Carolina	94	15-8	NR

Others receiving votes: Arkansas State 71; SMU 69; Texas A&M 62; Michigan 46; Long Beach State 21; Creighton 14; Colorado 11; Missouri 11

Next Poll: Nov. 16

SEC STANDINGS (11/9)

Team	CONF		ALL	
	W-L	Pct.	W-L	Pct.
Kentucky	11-2	.846	18-7	.720
Texas A&M	10-2	.833	17-6	.739
Missouri	9-3	.750	21-4	.840
Florida	10-4	.714	18-5	.783
Alabama	7-5	.583	13-13	.500
Ole Miss	6-6	.500	20-7	.741
Auburn	6-6	.500	14-10	.583
Tennessee	6-8	.429	20-9	.690
Arkansas	5-7	.417	15-9	.625
LSU	5-7	.417	9-14	.391
Mississippi State	3-9	.250	14-12	.538
South Carolina	3-10	.231	10-16	.385
Georgia	0-12	.000	5-19	.208

NOTEWORTHY

RECAPPING AUBURN (11/6)

- Despite season-best performances from their middle hitters, the Gamecocks were unable to rally back from an early deficit in a 3-1 loss at Auburn (25-16, 25-23, 21-25, 25-23) Friday night. Darian Dozier recorded her first career double-double with 16 kills and 11 blocks, and Liz Johnbull recorded the most kills in a match for her in over two years.
- For as strong as Carolina was up the middle, the Tigers were able to counteract that with a strong night from their outside hitters. Courtney Crable and Breanna McIlroy each went for 16 kills. Auburn finished with a plus-18 margin in kills for the match.
- Thanks to her big night on the block, Dozier surpassed Amy Collinsworth (1990-93) for third in program history in block assists. Also, in career milestones, Dozier surpassed 400 total blocks for her career. She is one of only six Gamecocks to reach the mark. The last player to reach it was Heather Larkin in 1997.
- As a team, Carolina finished with 15 blocks. It was the most in a four-set match this season and the second-most all season. The last time the team had 15 or more block against a SEC opponent was Oct. 24, 2014 against Mississippi State.
- Emma Lock set a new career high with a pair of aces. As a team, the Gamecocks committed just four errors on serve, the fewest since Sept. 11 against Pittsburgh.

OVER THE LAST FIVE MATCHES...

- The Gamecocks are 2-3, all in conference play.
- **Sarah Blomgren** leads the team with 65 kills (3.72 per set) and is hitting .238.
- **Darian Dozier** has committed just nine hitting errors over 15 total sets played in this stretch, averaging 3.20 kills per set with a .386 hitting percentage
- As a team, Carolina has been out-hit .270-.214 by opponents
- The Gamecocks are averaging 2.28 blocks and 1.17 aces per set

"STATE"ING THEIR CASE

- After earning wins over fellow South Carolina schools Wofford and Charleston Southern in the Carolina Classic, the Gamecocks are now 4-2 against in-state rivals this season.
- The Gamecocks are 119-57 all-time against in-state school, and do not have a losing record against any individual opponent.

LEGROS ENJOYING BREAKOUT YEAR

- Junior outside hitter **Dessaa Legros** has been the team's biggest breakout star of the 2015 season so far, rocketing past her freshman and sophomore season outputs. At Alabama Sunday, Legros passed 300 kills for the season. To contrast that, she had 187 kills in 47 matches over her first two seasons with the team (1.62 kills/set) and had just 56 all of last season.
- Against Tennessee, Dessaa hit 22 kills on the day, her fifth 20-kill game of the season. If you add up her total from those four matches (103), it is 47 more than she had over 18 matches as a sophomore.
- It isn't just her offense that has come around, she is also seeing career numbers on the receiving end. Her 34 total blocks through 26 matches is 14 more than the combined total from 2013 and 2014, and her 163 digs in 93 sets (1.75 per set) is more than three times as many as she had over the 115 sets as a freshman and sophomore.

SET IT AND FORGET IT

- The Gamecocks entered the 2015 season without a returning setter on the roster, but freshman **Aubrey Ezell** has played like a veteran, starting every match so far without missing a single set. Her efforts have already been recognized on the conference level three times, earning SEC Setter of the Week on Sept. 21 and Oct. 5 and Freshman of the Week on Oct. 19.
- On the road against Tennessee, she went for a new best with 62 assists. The last time a Gamecock setter had 60 or more in a match was on Sept. 14, 2007, when Jordan Bradosky had 60 vs. Auburn.
- At Alabama, she recorded her 15th double-double of the season. She is now tied for 8th in program history for a single season, and needs just one more to enter the top 20 for career double-doubles.

"BLOMS" AWAY

- Senior outside hitter **Sarah Blomgren** is another Gamecock in the midst of a career year, and it is largely thanks to a focus on accuracy. She hit .217 as a junior in 2014, but through 26 matches this season she has hit .300 or better eleven times and has a season average of .251.
- Against Mississippi State on Oct. 4, she went for a 20 kills and hit .545 in the five-set loss. It was the third-best hitting percentage in program history for a five-setter.
- On Sunday at Alabama, she recorded her third 20-kill effort in a ten-game stretch, finishing with a new career high of 22. On top of that, she recorded her first career double-double after tallying another career high with 10 digs.

SC IN SEC/NCAA STATS

NOTEWORTHY

NCAA Team Rankings

Category	Figure	Rank
Hitting Percentage	.210	146th
Opp. Hitting Percentage	.216	231st
Assists/Set	12.10	127th
Kills/Set	12.98	131st
Blocks/Set	2.03	165th
Service Aces/Set	1.17	197th
Digs/Set	14.86	157th

SEC Team Rankings (Overall)

Category	Figure	Rank
Hitting Percentage	.210	9th
Opp. Hitting Percentage	.216	11th
Assists/Set	12.10	8th
Kills/Set	12.98	9th
Blocks/Set	2.03	9th
Service Aces/Set	1.17	7th
Digs/Set	14.86	4th

SEC Team Rankings (SEC Only)

Category	Figure	Rank
Hitting Percentage	.206	7th
Opp. Hitting Percentage	.242	10th
Assists/Set	11.88	7th
Kills/Set	12.67	8th
Blocks/Set	1.98	9th
Service Aces/Set	1.24	5th
Digs/Set	14.55	4th

NCAA Individual Rankings

Stat	Athlete	Figure	Rank
Kills/Set	Dessaa Legros	3.26	8th
Assists/Set	Aubrey Ezell	10.42	68th
Blocks/Set	Darian Dozier	1.04	N/R
Aces/Set	Aubrey Ezell	0.40	42nd
Digs/Set	Joely Cabrera	2.99	N/R
Points/Set	Dessaa Legros	3.54	N/R

SEC Individual Rankings (Overall)

Stat	Athlete	Figure	Rank
Kills/Set	Dessaa Legros	3.26	8th
Assists/Set	Aubrey Ezell	10.42	7th
Blocks/Set	Darian Dozier	1.04	8th
Aces/Set	Aubrey Ezell	0.40	2nd
Digs/Set	Joely Cabrera	2.99	N/R
Points/Set	Dessaa Legros	3.54	N/R

SEC Individual Rankings (SEC Only)

Stat	Athlete	Figure	Rank
Kills/Set	Sarah Blomgren	3.33	7th
Assists/Set	Aubrey Ezell	10.41	5th
Blocks/Set	Darian Dozier	1.20	6th
Aces/Set	Aubrey Ezell	0.57	1st
Digs/Set	Megan Kirkland	3.50	N/R
Points/Set	Sarah Blomgren	3.65	10th

WHEN CAROLINA WINS

- Six wins have come in three sets, three in four sets and one (Arkansas) in five.
- The Gamecocks out-hit opponents .260-.140. The team is 8-1 when out-hitting the opposition.
- Carolina out-digs opponents 16.69-14.20 per set and averages 3.5 more kills per set.
- The Gamecocks have out-blocked opponents 75-65 in total blocks and 2.14-1.86 in blocks per set.
- Carolina has 50 service aces, averaging 1.43 per set.

WHEN CAROLINA LOSES

- Carolina's opponents hold a .261-.180 advantage in hitting percentage. The Gamecocks are 2-14 when being out hit in a match.
- The Gamecocks allow almost two kills and a dig more per set. The team is just 1-11 when being out-killed and out-dug.
- Carolina has committed 124 service errors to just 62 aces, the opposition has 72 aces with 119 errors.

DOING WORK IN THE CLASSROOM AND THE COMMUNITY

- South Carolina had a league-best 12 players on the 2014 SEC Fall Academic Honor Roll.
- The Gamecocks earned the AVCA Team Academic Award for the 2014-15 school year with a cumulative team GPA of 3.34. Carolina has earned the honor four-straight years.
- The volleyball program was also among the top community service teams in terms of hours at South Carolina last year. The Gamecocks compiled 480.5 community service hours, 28.26 hours per player.
- Through the 2014-15 school year, the Gamecocks gave back to 25 different events or organizations.
- Senior **Sarah Blomgren** was recently featured on the SEC Network for her work this summer, spending four weeks with the International Student Volunteer organization in Costa Rica. ISV is a global volunteer organization that takes volunteers and places them in community development or wildlife/ecosystem preservation work.
- After the recent storm that flooded the midlands of South Carolina, the team joined others from the Athletics Department to give their time to help others. The group spent time at NewSpring Church, processing food donations and helping load bottles of water. In just the first few days after the storm, student-athletes across all sports combined for over 900 hours of community service.

BULL "DOZ"ING HER WAY THROUGH THE RECORD BOOKS

- Senior middle blocker **Darian Dozier** is steadily climbing the school's career records list in blocks. Dozier ranks third all-time in block assists (366) and fifth in total blocks (408).
- Against Auburn, she matched her career high with 11 blocks and passed Amy Collinsworth (1990-93) for third in block assists. She became the sixth Gamecock ever to pass 400 career blocks, and the first since 1997.

DOUBLE-DOUBLE THE TROUBLE

- Aubrey Ezell recorded her 15th double-double of the season Sunday at Alabama, putting her into a tie for 8th in program history for a single season. It is the most by any Gamecock since Ivana Kujundzic in 2008. She now is one away from entering the program's career list for the category.

CAREER

1. Ashley Edlund (1995-98)	53
2. Megan Hosp (1999-2002).....	49
3. Kori Ermigarat (1994-95)	43
4. Juliette Thévenin (2010-2013)	40
5. Ivana Kujundzic (2006-2009)	36
6. Amy Iannocari (1991-94)	34
7. Fernanda Laires (1996-97)	27
Heather Larkin (1994-97)	27
9. Taylor Bruns (2009-12).....	25
Cally Plummer (1998-2002)	25
Crystal Moore (1997-99)	25
Iris Santos (2003-06).....	25
13. Jodi Thompson (1991-94).....	24
14. Hannah Lawing (2007-10).....	23
15. Katelyn Panzau (2003-04).....	22
16. Kelly Morrow (1993-96).....	20
17. Bridget Denson-Dorman (2008-09).....	19
18. Shani Abshier (1994-97)	18
Shonda Cole (2003-06).....	17
20. Katie Gerst (1992-94).....	16
- - Aubrey Ezell	15
- - Koko Atoa-Williams	13

SEASON

1. Kori Ermigarat (1994)	24
2. Amy Iannocari (1994)	23
3. Ashley Edlund (1995)	20
4. Fernanda Laires (1996).....	19
Kori Emigarat (1995).....	19
6. Ashley Edlund (1996)	16
Megan Hosp (2000).....	16
8. Aubrey Ezell (2015)	15
Ivana Kujundzic (2008).....	15
Megan Hosp (2002).....	15
10. Juliette Thévenin (2011).....	14
Katie Gerst (1994)	14
12. Kelly Morrow (1993)	13
13. Taylor Bruns (2011).....	12
Hannah Lawing (2009).....	12
Ivana Kujundzic (2007).....	12
Jodi Thompson (1993).....	12
Jodi Thompson (1994)	12
Katelyn Panzau (2004).....	12
Megan Hosp (1999).....	12
20. Koko Atoa-Williams (2014)	11
Five others with.....	11

RECORD BREAKDOWN

Overall	10-16
Conference.....	3-10
vs. Ranked Teams	0-3
Home.....	7-6
Away	1-8
Neutral.....	2-2
August.....	2-1
September	5-7
October.....	2-6
November.....	1-2
December.....	0-0
Sundays	2-5
Mondays	0-0
Tuesdays	0-1
Wednesdays.....	1-0
Thursdays	0-0
Fridays.....	3-7
Saturdays.....	4-3
Winning set one.....	6-3
Losing set one.....	4-13
Winning set two.....	9-5
Losing set two	1-11
Winning set three.....	10-4
Losing set three.....	0-12
Winning set four	4-1
Losing set four	0-8
Three-set matches	6-6
Four-set matches.....	3-7
Five-set matches.....	0-4
More kills than opposition.....	9-4
Less kills than opposition.....	1-11
Kills equal.....	0-1
More hitting errors than opposition.....	4-12
Less hitting errors than opposition.....	6-4
Hitting errors equal	0-0
More attacks than opposition	3-9
Less attacks than opposition	5-7
Attacks equal	2-0
Out-hitting opposition	8-2
Out-hit by opposition	2-14
Hitting equal.....	0-0
More assists than opposition.....	9-5
Less assists than opposition.....	1-11
Assists equal.....	0-0
More aces than opposition.....	8-5
Less aces than opposition.....	1-7
Aces equal.....	1-4
More service errors than opposition.....	5-7
Less service errors than opposition.....	5-7
Service errors equal	0-2
More digs than opposition.....	9-4
Less digs than opposition.....	1-11
Digs equal	0-1
More total blocks than opposition	7-9
Less total blocks than opposition	3-5
Total blocks equal.....	0-2
More ball handling errors than opposition..	2-5
Less ball handling errors than opposition....	4-5
Ball handling errors equal	3-6

NOTEWORTHY

A SEC ANNIVERSARY

The Gamecocks celebrated a special anniversary on Sunday, Oct. 11 against Texas A&M. It was the program's 400th SEC match of all time, dating back to 1991. In the ensuing years, the team has won double-digit conference matches in six of those seasons and made the NCAA tournament six times as well. The team's best finish ever came in 2002 under coach Kim Hudson, when it went 14-2 and finished second in the SEC East.

COMING HOME

- Former Gamecock great **Shonda Cole** is in her first season as a full-time assistant coach after serving as volunteer assistant last year.
- Cole played at South Carolina from 2003-06 and became the first Gamecock to earn All-America honors, earning a spot on the AVCA Honorable Mention All-America Team in 2006.
- Professionally, she played one season in Spain, six in Puerto Rico and a half season in France.
- Cole won a league championship with Pinkin de Corozal in 2010 and was named finals MVP after leading Indias de Mayaguez to the league title in 2013.

ALL-TIME RECORDS

- South Carolina holds a 764-598 (.563) record as a program, dating back to its first season in 1973.
- In matches played at the Carolina Volleyball Center, South Carolina is 172-94 (.646).
- With 71 career wins, head coach Scott Swanson ranks third in program history for wins. Versus Arkansas on Oct. 25, he broke a tie with Kathy Graham (1976-77) for third all-time. Kim Hudson (1993-2004) is the program's wins leader, with 226.

SOUTH CAROLINA HONORS ITS "FIRST 18"

The Gamecocks are celebrating the history of its women athletes in the week of Oct. 12. After the implementation of Title IX, South Carolina made 18 scholarships available for female student-athletes for the first time in school history in 1975, with three going to each of the six sports. The teams were also under the direction of the athletics department for the first time. Annette Gibson Leshner, Lee Branch Marks, and Cheryl Grindle were the volleyball program's first recipients. That 1975 team would win 10 matches under the direction of head coach Vicki Hamilton.

THE LAST TIME THE TEAM...

Lost the first game in a win Oct. 25, 2015 (vs. Arkansas, 3-1)
 Lost the first 2 games in a win Sept. 5, 2015 (vs. Winthrop)
 Was down 2-1 in a win Sept. 5, 2015 (vs. Winthrop)
 Won the first game in a loss Nov. 8, 2015 (at Alabama, 3-1)
 Won the first two games in a loss Sept. 7, 2013 (vs. Winthrop)
 Was up 2-1 in a loss Oct. 18, 2015 (at Tennessee, 3-2)
 Beat a ranked opponent Sept. 17, 2006 (vs. #6 Florida, 3-1)
 Beat a top-10 opponent Sept. 17, 2006 (vs. #6 Florida, 3-1)
 Started a season 8-0 2012 (Started 13-0)
 Opponent with < 40 points in a match* Aug. 30, 2013 (vs. S.C. State, 36)
 Opponent with < 10 points* Aug. 30, 2013 (vs. S.C. State, 9)
 Opponent with < 15 points* Sept. 19, 2015 (Wofford, 14)
 Longest SEC Win Streak Sept. 27 - Oct. 25, 2002 (9)
 Ranked in the top-25 Dec. 5, 2002
 Highest ranking 18th (Nov. 22, 2002)

KILLS

75 or more kills Nov. 11, 2007 (at Tennessee, 82)
 85 or more kills Nov. 2, 2007 (vs. Arkansas, 85)
 95 or more kills Nov. 7, 1986 (vs. North Carolina State, 99)
 200 or more attacks Nov. 13, 2010 (vs. Mississippi St., 220)
 225 or more attacks Nov. 11, 2007 (at Tennessee, 241)
 Opponent had less than 20 kills Aug. 30, 2013 (vs. S.C. State, 16)

DIGS

80+ digs Oct. 18, 2015 (at Tennessee, 80)
 90+ digs Nov. 19, 2014 (at Tennessee, 91)
 100+ digs Sept. 10, 2011 (at College of Charleston, 101)

BLOCKS

15+ blocks Nov. 6, 2015 (at Auburn, 15.0)
 20+ blocks Sept. 8, 2006 (vs. St. John's, 20.0)
 Outblocked and won Oct. 25, 2015 (vs. Arkansas, 10.0-9.0)

ACES

10+ aces Nov. 6, 2011 (vs. Alabama, 11)
 20+ aces Sept. 6, 1991 (vs. Jacksonville, 22)

HITTING PERCENTAGE

Hit over .300 10 times in a season 2012
 Hit over .400 as a team Sept. 20, 2014 (vs. The Citadel, .404)
 Hit over .500 as a team Nov. 23, 2008 (vs. Mississippi St., .536)
 Opponent hit over .300 as a team Nov. 8, 2015 (vs. Alabama, .303)
 Opponent hit over .350 as a team Oct. 30, 2015 (at Florida, .440)
 Opponent hit over .450 as a team Nov. 26, 2014 (at Florida, .450)
 Opponent hit < .100 as a team Sept. 19, 2015 (vs. Charleston Southern, .085)
 Hit less than .100 Sept. 27, 2015 (at LSU, .073)
 Hit less than .200 Oct. 30, 2015 (vs. Florida, .190)
 Hit less than .200 and won Sept. 19, 2015 (vs. Charleston Southern, .198)
 Hit less than .150 and won Nov. 7, 2004 (vs. Arkansas, .138)
 Ouhit the opponent and lost Nov. 8, 2015 (at Alabama)
 Was outhit and won Nov. 1, 2015 (vs. Ole Miss)
 Opponent w/ negative hitting % Sept. 21, 2013 (vs. Presbyterian, -.011)

ASSISTS

80+ assists Nov. 2, 2007 (vs. Arkansas, 80)
 90+ assists Nov. 7, 1986 (vs. North Carolina St., 95)
 100+ assists N/A

**In a standard 25-point game, best-of-five match*

THE LAST TIME A GAMECOCK HAD...

KILLS

Five with 10+ kills Aug. 24, 2012 (vs. East Tennessee State)
 Three with 15+ kills Sept. 5, 2008 (at Rhode Island)
 Two with 20+ kills Oct. 18, 2015 (at Tennessee)
 No player w/10+ kills Sept. 27, 2015 (at LSU)
 20 or more kills Oct. 11, 2015 (Dessaa Legros, 20 vs. Texas A&M)
 25 or more kills Oct. 30, 2013 (Juliette Thevenin, 25 vs. Coastal Car.)
 30 or more kills Sept. 6, 2013 (Juliette Thevenin, 30 at Clemson)
 20+ kills and 20+ digs Sept. 6, 2014
 (Taylr McNeil, 22 kills, 23 digs vs. Furman)
 Had a triple-double Sept. 16, 2005
 (Iris Santos, 12 K, 57 A, 13 D vs. Houston)
 50 or more attempts Nov. 8, 2015 (Sarah Blomgren, 52 at Alabama)
 60 or more attempts Oct. 4, 2013 (Juliette Thevenin, 61 vs. Arkansas)
 70 or more attempts Sept. 6, 2013 (Juliette Thevenin, 73 at Clemson)

DIGS

Five with 10+ digs Sept. 6, 2014 (vs. Furman)
 Three with 15+ digs Sept. 6, 2014 (vs. Furman)
 Two with 20+ digs Nov. 19, 2014 (Koko Atoa-Williams 27/
 Mikaela Christiaansen 22 at Tennessee)
 20 or more digs Oct. 18, 2015 (Megan Kirkland, 22 at Tennessee)
 25 or more digs Nov. 23, 2014 (M. Christiaansen, 33 at Georgia)
 30 or more digs Nov. 23, 2014 (M. Christiaansen, 33 at Georgia)

BLOCKS

10 or more blocks Nov. 6, 2015 (Darlan Dozier, 11 at Auburn)
 15 or more blocks Sept. 6, 1991 (Libby Ralston, 16 vs. Jacksonville)
 5+ solo blocks Sept. 11, 2010 (Teresa Stenlund, 5 vs. Lipscomb)

ACES

3 or more aces Nov. 1, 2015 (Aubrey Ezell, 3 vs. Ole Miss)
 5 or more aces Oct. 2, 2015 (Aubrey Ezell, 5 at Ole Miss)
 6+ aces Nov. 6, 2011 (Taylor Bruns, 6 vs. Alabama)
 7+ aces Sept. 7, 2002 (Megan Hosp, 8 vs. Creighton)

HITTING PERCENTAGE (Min. 10 Kills)

.400 hitting percentage Nov. 1, 2015 (Sarah Blomgren, .444 vs. Ole Miss)
 .500 hitting percentage Oct. 4, 2015 (Sarah Blomgren, .545 at Mississippi St.)
 .600 hitting percentage Sept. 19, 2015 (Darlan Dozier, .688 vs. Wofford)
 .700 hitting percentage Nov. 8, 2008 (Darlan Dozier, .708 at Alabama)
 .800 hitting percentage Sept. 17, 1983 (Lori Rowe, .870 vs. Appalachian St.)

ASSISTS

50 or more assists Oct. 18, 2015 (Aubrey Ezell, 62 at Tennessee)
 60 or more assists Oct. 18, 2015 (Aubrey Ezell, 62 at Tennessee)
 70 or more assists Sept. 24, 2000 (Megan Hosp, 72 vs. Arkansas)
 80+ assists Nov. 12, 1988 (Correll, 84 vs. G. Washington)
 Two with 20+ assists Nov. 23, 2014 (Kellie McNeil 25/
 Allie Monserez 24 vs. Georgia)

Box scores are only available from 1993 to the present. Limited historical records prior to 1993 were used to aid in the composition of team match records as well.

MATCH-BY-MATCH STARTERS

DATE	OPPONENT	W/L	MB	OH	DS/RS	MB	S	OH/RS	LIBERO
8/28	Southeastern La.	W	Darian Dozier	Dessaa Legros	Megan Kirkland	Jacqy Angermiller	Aubrey Ezell	Koko Atoa-Williams	Joely Cabrera
8/29	NC Central	W	Darian Dozier	Dessaa Legros	Megan Kirkland	Jacqy Angermiller	Aubrey Ezell	Koko Atoa-Williams	Joely Cabrera
8/29	NC State	L	Darian Dozier	Dessaa Legros	Sarah Blomgren	Jacqy Angermiller	Aubrey Ezell	Koko Atoa-Williams	Joely Cabrera
9/4	vs. Clemson	W	Darian Dozier	Dessaa Legros	Emma Lock	Jacqy Angermiller	Aubrey Ezell	Sarah Blomgren	Joely Cabrera
9/5	vs. Winthrop	W	Darian Dozier	Dessaa Legros	Megan Kirkland	Jacqy Angermiller	Aubrey Ezell	Koko Atoa-Williams	Joely Cabrera
9/5	at Furman	L	Darian Dozier	Dessaa Legros	Sarah Blomgren	Jacqy Angermiller	Aubrey Ezell	Koko Atoa-Williams	Megan Kirkland
9/11	vs. Pittsburgh	L	Darian Dozier	Dessaa Legros	Sarah Blomgren	Jacqy Angermiller	Aubrey Ezell	Koko Atoa-Williams	Megan Kirkland
9/11	at Michigan	L	Darian Dozier	Dessaa Legros	Courtney Furlong	Jacqy Angermiller	Aubrey Ezell	Sarah Blomgren	Megan Kirkland
9/12	vs. W. Michigan	L	Darian Dozier	Dessaa Legros	Courtney Furlong	Jacqy Angermiller	Aubrey Ezell	Sarah Blomgren	Emma Lock
9/18	East Carolina	W	Darian Dozier	Dessaa Legros	Courtney Furlong	Jacqy Angermiller	Aubrey Ezell	Sarah Blomgren	Joely Cabrera
9/19	Charleston South.	W	Darian Dozier	Dessaa Legros	Courtney Furlong	Jacqy Angermiller	Aubrey Ezell	Sarah Blomgren	Joely Cabrera
9/19	Wofford	W	Darian Dozier	Dessaa Legros	Sarah Blomgren	Elizabeth Johnbull	Aubrey Ezell	Koko Atoa-Williams	Joely Cabrera
9/22	Coastal Carolina	L	Darian Dozier	Sarah Blomgren	Emma Lock	Elizabeth Johnbull	Aubrey Ezell	Koko Atoa-Williams	Joely Cabrera
9/25	Kentucky	L	Darian Dozier	Dessaa Legros	Sarah Blomgren	Jacqy Angermiller	Aubrey Ezell	Koko Atoa-Williams	Joely Cabrera
9/27	at LSU	L	Courtney Furlong	Dessaa Legros	Sarah Blomgren	Jacqy Angermiller	Aubrey Ezell	Koko Atoa-Williams	Joely Cabrera
10/2	at Ole Miss	L	Darian Dozier	Dessaa Legros	Sarah Blomgren	Jacqy Angermiller	Aubrey Ezell	Koko Atoa-Williams	Joely Cabrera
10/4	at Mississippi St.	L	Darian Dozier	Dessaa Legros	Megan Kirkland	Jacqy Angermiller	Aubrey Ezell	Koko Atoa-Williams	Joely Cabrera
10/9	Auburn	L	Darian Dozier	Dessaa Legros	Sarah Blomgren	Jacqy Angermiller	Aubrey Ezell	Koko Atoa-Williams	Joely Cabrera
10/11	Texas A&M	L	Darian Dozier	Dessaa Legros	Sarah Blomgren	Jacqy Angermiller	Aubrey Ezell	Koko Atoa-Williams	Megan Kirkland
10/14	at Georgia	W	Darian Dozier	Dessaa Legros	Joely Cabrera	Jacqy Angermiller	Aubrey Ezell	Koko Atoa-Williams	Megan Kirkland
10/18	at Tennessee	L	Liz Johnbull	Dessaa Legros	Sarah Blomgren	Jacqy Angermiller	Aubrey Ezell	Koko Atoa-Williams	Megan Kirkland
10/25	Arkansas	W	Darian Dozier	Dessaa Legros	Sarah Blomgren	Elizabeth Johnbull	Aubrey Ezell	Koko Atoa-Williams	Megan Kirkland
10/30	Florida	L	Jesse Turner	Dessaa Legros	Sarah Blomgren	Elizabeth Johnbull	Aubrey Ezell	Koko Atoa-Williams	Megan Kirkland
11/1	Ole Miss	W	Darian Dozier	Dessaa Legros	Sarah Blomgren	Elizabeth Johnbull	Aubrey Ezell	Koko Atoa-Williams	Megan Kirkland
11/6	at Auburn	L	Darian Dozier	Dessaa Legros	Sarah Blomgren	Elizabeth Johnbull	Aubrey Ezell	Koko Atoa-Williams	Megan Kirkland
11/8	at Alabama	L	Darian Dozier	Courtney Furlong	Emma Lock	Elizabeth Johnbull	Aubrey Ezell	Sarah Blomgren	Megan Kirkland
11/11	Tennessee								
11/20	Mississippi St.								
11/22	Alabama								
11/25	at Arkansas								
11/27	at Missouri								

MATCH-BY-MATCH INDIVIDUAL LEADERS

DATE	OPPONENT	W/L	SCORE	HIGH KILLS	HIGH ASSISTS	HIGH ACES	HIGH DIGS	HIGH BLOCKS
8/28	Southeastern La.	W	3-0	Dessaa Legros (12)	Aubrey Ezell (30)	Aubrey Ezell (3)	Aubrey Ezell (13)	Dozier, Angermiller, Blomgren (2)
8/29	NC Central	W	3-0	Dessaa Legros (18)	Aubrey Ezell (33)	J. Angermiller (2)	Joely Cabrera (13)	Dessaa Legros (3)
8/29	NC State	L	3-0	Dessaa Legros (8)	Aubrey Ezell (23)	Ezell, Atoa-Williams (1)	Joely Cabrera (13)	Dozier, Angermiller (3)
9/4	vs. Clemson	W	3-1	Dessaa Legros (21)	Aubrey Ezell (47)	Kirkland, Cabrera (2)	Dessaa Legros (19)	Jacqy Angermiller (6)
9/5	vs. Winthrop	W	3-2	Legros, Dozier (14)	Aubrey Ezell (48)	Megan Kirkland (2)	Megan Kirkland (23)	Jacqy Angermiller (7)
9/5	at Furman	L	3-1	Dessaa Legros (20)	Aubrey Ezell (45)	Megan Kirkland (1)	Ezell, Kirkland (16)	Sarah Blomgren (5)
9/11	vs. Pittsburgh	L	3-1	Sarah Blomgren (13)	Aubrey Ezell (28)	Team (1)	Megan Kirkland (12)	Darian Dozier (5)
9/11	at Michigan	L	3-0	Furlong, Legros (10)	Aubrey Ezell (29)	Sarah Blomgren (2)	Sarah Blomgren (9)	Darian Dozier (3)
9/12	vs. Western Michigan	L	3-1	Dessaa Legros (20)	Aubrey Ezell (49)	Dozier, Kirkland (1)	Emma Lock (19)	Darian Dozier (7)
9/18	East Carolina	W	3-0	Sarah Blomgren (15)	Aubrey Ezell (35)	Joely Cabrera (3)	Joely Cabrera (14)	Ezell, Angermiller, Furlong (2)
9/19	Charleston Southern	W	3-1	Sarah Blomgren (16)	Aubrey Ezell (48)	Atoa-Williams, Lock (1)	Joely Cabrera (22)	Angermiller, Johnbull (4)
9/19	Wofford	W	3-0	Darian Dozier (13)	Aubrey Ezell (37)	Aubrey Ezell (3)	Joely Cabrera (15)	Legros, Dozier, Atoa-Williams, Johnbull (1)
9/22	Coastal Carolina	L	3-1	Dessaa Legros (13)	Aubrey Ezell (38)	Cabrera, Atoa-Williams (2)	Joely Cabrera (20)	Darian Dozier (4)
9/25	Kentucky	L	3-0	Jacqy Angermiller (10)	Aubrey Ezell (19)	Aubrey Ezell (2)	Cabrera, Ezell (9)	Jacqy Angermiller (4)
9/27	at LSU	L	3-0	Sarah Blomgren (8)	Aubrey Ezell (17)	Sarah Blomgren (1)	Ezell, Lock (11)	Blomgren, Dozier (2)
10/2	at Ole Miss	L	3-0	Dessaa Legros (18)	Aubrey Ezell (50)	Aubrey Ezell (5)	Legros, Cabrera (13)	Five with (2)
10/4	at Mississippi State	L	3-2	Sarah Blomgren (20)	Aubrey Ezell (49)	Aubrey Ezell (4)	Joely Cabrera (18)	Darian Dozier (8)
10/9	Auburn	L	3-0	Koko Atoa-Williams (16)	Aubrey Ezell (37)	Ezell, Atoa-Williams (1)	Megan Kirkland (14)	Jacqy Angermiller (3)
10/11	Texas A&M	L	3-2	Dessaa Legros (20)	Aubrey Ezell (50)	Ezell, Kirkland (2)	Megan Kirkland (21)	Darian Dozier (8)
10/14	at Georgia	W	3-0	Dessaa Legros (15)	Aubrey Ezell (49)	Four with (1)	Megan Kirkland (19)	Dozier, Johnbull (2)
10/18	at Tennessee	L	3-2	Dessaa Legros (22)	Aubrey Ezell (62)	Aubrey Ezell (4)	Megan Kirkland (22)	Jacqy Angermiller (5)
10/25	Arkansas	W	3-1	Legros, Blomgren (13)	Aubrey Ezell (41)	Aubrey Ezell (3)	Aubrey Ezell (13)	Darian Dozier (6)
10/30	Florida	L	3-0	Dessaa Legros (11)	Aubrey Ezell (30)	Joely Cabrera (2)	Megan Kirkland (9)	Turner, Blomgren (1)
11/1	Ole Miss	W	3-0	Sarah Blomgren (15)	Aubrey Ezell (33)	Aubrey Ezell (3)	Megan Kirkland (16)	Elizabeth Johnbull (5)
11/6	at Auburn	L	3-1	Darian Dozier (16)	Aubrey Ezell (33)	Emma Lock (2)	Megan Kirkland (19)	Darian Dozier (11)
11/8	at Alabama	L	3-1	Sarah Blomgren (22)	Aubrey Ezell (40)	Three with (1)	Aubrey Ezell (11)	Elizabeth Johnbull (4)
11/11	Tennessee							
11/20	Mississippi State							
11/22	Alabama							
11/25	at Arkansas							
11/27	at Missouri							

2015 SEASON STATISTICS



2015 South Carolina Volleyball South Carolina Combined Team Statistics (as of Nov 08, 2015) All matches



Overall record: 10-16 Conf: 3-10 Home: 7-6 Away: 1-8 Neutral: 2-2

#	Player	sp	Attack				Set		Serve			Dig		Blocking					points			
			k	k/s	e	ta	pct	a	a/s	sa	se	sa/s	re	dig	dig/s	bs	ba	total		blk/s	be	bhe
3	Dessaa Legros	93	303	3.26	148	843	.184	7	0.08	5	18	0.05	15	163	1.75	9	25	34	0.37	3	4	329.5
6	Sarah Blomgren	94	291	3.10	114	704	.251	6	0.06	6	19	0.06	7	88	0.94	2	47	49	0.52	12	0	322.5
4	Darian Dozier	85	203	2.39	53	446	.336	7	0.08	7	10	0.08	1	48	0.56	13	75	88	1.04	4	2	260.5
11	Koko Atoa-Williams	88	130	1.48	76	479	.113	20	0.23	13	15	0.15	23	161	1.83	5	15	20	0.23	5	1	155.5
7	Jacqy Angermiller	70	106	1.51	44	275	.225	1	0.01	2	1	0.03	0	7	0.10	6	45	51	0.73	5	0	136.5
12	Courtney Furlong	71	91	1.28	48	297	.145	3	0.04	2	0	0.03	2	28	0.39	3	24	27	0.38	3	0	108.0
17	Elizabeth Johnbull	46	60	1.30	25	139	.252	2	0.04	0	0	0.00	0	13	0.28	4	25	29	0.63	3	0	76.5
5	Aubrey Ezell	96	42	0.44	20	123	.179	1000	10.42	38	76	0.40	0	264	2.75	3	39	42	0.44	10	8	102.5
20	Abby Feruck	3	6	2.00	0	10	.600	0	0.00	0	0	0.00	0	2	0.67	0	1	1	0.33	0	0	6.5
23	Callie Brown	15	4	0.27	0	11	.364	0	0.00	0	0	0.00	0	1	0.07	0	2	2	0.13	0	0	5.0
15	Jesse Turner	5	3	0.60	1	16	.125	0	0.00	0	0	0.00	0	2	0.40	0	2	2	0.40	0	0	4.0
14	Katlyn McDaniel	6	3	0.50	2	8	.125	0	0.00	0	0	0.00	0	1	0.17	0	0	0	0.00	0	0	3.0
10	Emma Lock	75	2	0.03	3	15	-.067	25	0.33	10	13	0.13	10	130	1.73	0	0	0	0.00	0	2	12.0
2	Joely Cabrera	73	1	0.01	1	8	.000	32	0.44	12	34	0.16	13	218	2.99	0	0	0	0.00	0	0	13.0
9	Megan Kirkland	91	1	0.01	1	7	.000	44	0.48	15	15	0.16	12	270	2.97	0	0	0	0.00	0	0	16.0
1	Madison Borowski	4	0	0.00	0	0	.000	10	2.50	0	0	0.00	0	1	0.25	0	0	0	0.00	0	1	0.0
21	Jord Wilson-Talmadge	11	0	0.00	0	0	.000	2	0.18	1	4	0.09	4	7	0.64	0	0	0	0.00	0	0	1.0
22	Claire Blumenthal	24	0	0.00	0	0	.000	3	0.12	1	0	0.04	2	23	0.96	0	0	0	0.00	0	0	1.0
SOUTH CAROLINA		96	1246	12.98	536	3381	.210	1162	12.10	112	206	1.17	100	1427	14.86	45	300	195.0	2.03	45	18	1553.0
Opponents		96	1240	12.92	507	3393	.216	1154	12.02	100	197	1.04	112	1396	14.54	32	285	174.5	1.82	44	25	1514.5

Team Statistics	SC	OPP	Date	Opponent	Score	Score by set	Att.	
ATTACK								
Kills	1246	1240	%Aug 28	SOUTHEASTERN LA.	w	3-0	25-17,25-18,25-12	1363
Errors	536	507	%Aug 29	N.C. CENTRAL	w	3-0	25-12,25-16,25-19	1375
Total Attacks	3381	3393	%Aug 29	NC STATE	L	0-3	25-27,16-25,14-25	1554
Attack Pct	.210	.216	#Sep 04	vs Clemson	w	3-1	24-26,25-23,25-23,25-15	122
Kills/Set	13.0	12.9	#Sep 05	vs Winthrop	w	3-2	24-26,19-25,25-21,25-20,15-12	127
SET								
Assists	1162	1154	#Sep 05	at Furman	L	1-3	14-25,30-28,17-25,22-25	400
Attempts	3316	3315	&Sep 11	vs Pittsburgh	L	1-3	18-25,25-20,15-25,12-25	452
Assist Pct	.350	.348	&Sep 11	at #24 Michigan	L	0-3	19-25,12-25,22-25	1462
Assists/Set	12.1	12.0	&Sep 12	vs Western Michigan	L	1-3	22-25,25-21,22-25,19-25	75
SERVE								
Aces	112	100	^Sep 18	EAST CAROLINA	w	3-0	25-22,25-14,25-8	1365
Errors	206	197	^Sep 19	CHARLESTON SOUTHERN	w	3-1	23-25,25-21,25-13,25-20	1111
Attempts	2115	2114	^Sep 19	WOFFORD	w	3-0	25-19,25-14,25-19	851
Serve Pct	.903	.907	Sep 22	COASTAL CAROLINA	L	1-3	15-25,25-17,15-25,23-25	1233
Aces/Set	1.2	1.0	*Sep 25	#24 KENTUCKY	L	0-3	15-25,22-25,18-25	1365
SERVE RECEPTIONS								
Errors	100	112	*Sep 27	at LSU	L	0-3	19-25,18-25,19-25	898
Errors/Set	1.0	1.2	*Oct 2	at Ole Miss	L	1-3	23-25,19-25,25-17,23-25	595
Attempts	1916	1906	*Oct 04	at Mississippi State	L	2-3	23-25,25-13,23-25,25-20,13-15	253
Reception Pct	.948	.941	*Oct 09	AUBURN	L	0-3	23-25,20-25,29-31	712
DEFENSE								
Digs	1427	1396	*Oct 10	TEXAS A&M	L	2-3	29-27,23-25,25-22,21-25,4-15	845
Digs/Set	14.9	14.5	*Oct 14	at Georgia	w	3-0	25-17,25-22,25-20	613
BLOCKING								
Block Solo	45	32	*Oct 18	at Tennessee	L	2-3	25-20,24-26,25-21,21-25,9-15	660
Block Assist	300	285	*Oct 25	ARKANSAS	w	3-1	23-25,25-23,25-20,28-26	836
Total Blocks	195.0	174.5	*Oct 30	#12 FLORIDA	L	0-3	22-25,14-25,21-25	1107
Blocks/Set	2.0	1.8	*Nov 01	OLE MISS	w	3-0	26-24,25-21,26-24	819
Block Errors	45	44	*Nov 06	at Auburn	L	1-3	16-25,23-25,25-21,23-25	556
			*Nov 08	at Alabama	L	1-3	25-16,20-25,19-25,23-25	1078

% Gamecock Invitational
Furman Carolina Classic
& Michigan Challenge
^ Carolina Classic

2015 CONFERENCE-ONLY STATISTICS



2015 South Carolina Volleyball South Carolina Combined Team Statistics (as of Nov 08, 2015) Conference matches



Overall record: 3-10 Conf: 3-10 Home: 2-4 Away: 1-6 Neutral: 0-0

#	Player	sp	Attack				pct	Set		Serve			Dig		Blocking					points		
			k	k/s	e	ta		a	a/s	sa	se	sa/s	re	dig	dig/s	bs	ba	total	blk/s		be	bhe
6	Sarah Blomgren	49	163	3.33	60	403	.256	4	0.08	3	7	0.06	6	51	1.04	1	24	25	0.51	5	0	179.0
3	Dessaa Legros	47	131	2.79	73	409	.142	5	0.11	4	10	0.09	5	90	1.91	5	11	16	0.34	1	2	145.5
4	Darian Dozier	40	98	2.45	21	214	.360	1	0.03	3	6	0.08	0	26	0.65	7	41	48	1.20	1	0	128.5
11	Koko Atoa-Williams	46	67	1.46	41	243	.107	8	0.17	6	7	0.13	15	90	1.96	1	9	10	0.22	1	0	78.5
7	Jacqy Angermiller	30	58	1.93	23	134	.261	0	0.00	0	0	0.00	0	2	0.07	3	14	17	0.57	3	0	68.0
17	Elizabeth Johnbull	29	43	1.48	18	107	.234	1	0.03	0	0	0.00	0	10	0.34	3	18	21	0.72	1	0	55.0
12	Courtney Furlong	35	38	1.09	18	121	.165	0	0.00	1	0	0.03	1	13	0.37	2	7	9	0.26	1	0	44.5
5	Aubrey Ezell	49	16	0.33	10	62	.097	510	10.41	28	42	0.57	0	118	2.41	0	23	23	0.47	6	4	55.5
15	Jesse Turner	3	3	1.00	0	12	.250	0	0.00	0	0	0.00	0	2	0.67	0	1	1	0.33	0	0	3.5
10	Emma Lock	42	2	0.05	1	9	.111	7	0.17	5	5	0.12	6	60	1.43	0	0	0	0.00	0	1	7.0
2	Joely Cabrera	38	1	0.03	1	3	.000	13	0.34	5	23	0.13	6	83	2.18	0	0	0	0.00	0	0	6.0
9	Megan Kirkland	46	1	0.02	1	3	.000	26	0.57	6	10	0.13	7	161	3.50	0	0	0	0.00	0	0	7.0
23	Callie Brown	10	0	0.00	0	2	.000	0	0.00	0	0	0.00	0	1	0.10	0	2	2	0.20	0	0	1.0
22	Claire Blumenthal	9	0	0.00	0	0	.000	0	0.00	0	0	0.00	2	5	0.56	0	0	0	0.00	0	0	0.0
1	Madison Borowski	2	0	0.00	0	0	.000	7	3.50	0	0	0.00	0	1	0.50	0	0	0	0.00	0	1	0.0
SOUTH CAROLINA		49	621	12.67	267	1722	.206	582	11.88	61	110	1.24	57	713	14.55	22	150	97.0	1.98	19	8	779.0
Opponents		49	670	13.67	249	1741	.242	617	12.59	57	113	1.16	61	730	14.90	20	149	94.5	1.93	26	14	821.5

Team Statistics	SC	OPP
ATTACK		
Kills	621	670
Errors	267	249
Total Attacks	1722	1741
Attack Pct	.206	.242
Kills/Set	12.7	13.7
SET		
Assists	582	617
Attempts	1708	1713
Assist Pct	.341	.360
Assists/Set	11.9	12.6
SERVE		
Aces	61	57
Errors	110	113
Attempts	1084	1115
Serve Pct	.899	.899
Aces/Set	1.2	1.2
SERVE RECEPTIONS		
Errors	57	61
Errors/Set	1.2	1.2
Attempts	1001	971
Reception Pct	.943	.937
DEFENSE		
Digs	713	730
Digs/Set	14.6	14.9
BLOCKING		
Block Solo	22	20
Block Assist	150	149
Total Blocks	97.0	94.5
Blocks/Set	2.0	1.9
Block Errors	19	26
Ball handling errors	8	14
ATTENDANCE		
Total	5684	4653

Date	Opponent	Score	Score by set	Att.
*Sep 25	#24 KENTUCKY	L 0-3	15-25,22-25,18-25	1365
*Sep 27	at LSU	L 0-3	19-25,18-25,19-25	898
*Oct 2	at Ole Miss	L 1-3	23-25,19-25,25-17,23-25	595
*Oct 04	at Mississippi State	L 2-3	23-25,25-13,23-25,25-20,13-15	253
*Oct 09	AUBURN	L 0-3	23-25,20-25,29-31	712
*Oct 10	TEXAS A&M	L 2-3	29-27,23-25,25-22,21-25,4-15	845
*Oct 14	at Georgia	w 3-0	25-17,25-22,25-20	613
*Oct 18	at Tennessee	L 2-3	25-20,24-26,25-21,21-25,9-15	660
*Oct 25	ARKANSAS	w 3-1	23-25,25-23,25-20,28-26	836
*Oct 30	#12 FLORIDA	L 0-3	22-25,14-25,21-25	1107
*Nov 01	OLE MISS	w 3-0	26-24,25-21,26-24	819
*Nov 06	at Auburn	L 1-3	16-25,23-25,25-21,23-25	556
*Nov 08	at Alabama	L 1-3	25-16,20-25,19-25,23-25	1078

% Gamecock Invitational
Furman Carolina Classic
& Michigan Challenge
^ Carolina Classic

Record in 3-set matches:2-4 • Record in 4-set matches:1-3 • Record in 5-set matches:0-3

2015 MATCH-BY-MATCH BOXSCORES

COASTAL CAROLINA 3, SOUTH CAROLINA 1
SEPT. 22 • COLUMBIA, S.C.

Boxscore table for Coastal Carolina vs South Carolina match, showing player statistics for attack, serve, and block.

Team Attack By Set

Team Attack By Set table showing set-by-set attack performance for Coastal Carolina.

TOTAL TEAM BLOCKS: 10.0

SET SCORES

Set scores for Coastal Carolina (3) and South Carolina (1).

Team Attack By Set

Team Attack By Set table showing set-by-set attack performance for South Carolina.

TOTAL TEAM BLOCKS: 7.0

Site: Columbia, S.C. (Carolina VB Center)
Date: Sep 22, 2015 Attend: 1233 Time: 1:55
Referees: Leisa Jordan, Michael Gale

Tie scores and lead change table for the Coastal Carolina vs South Carolina match.

#24 KENTUCKY 3, SOUTH CAROLINA 0
SEPT. 25 • COLUMBIA, S.C.

Boxscore table for Kentucky vs South Carolina match, showing player statistics for attack, serve, and block.

Team Attack By Set

Team Attack By Set table showing set-by-set attack performance for Kentucky.

TOTAL TEAM BLOCKS: 8.5

SET SCORES

Set scores for Kentucky (3) and South Carolina (0).

Team Attack By Set

Team Attack By Set table showing set-by-set attack performance for South Carolina.

TOTAL TEAM BLOCKS: 7.0

Site: Columbia, S.C. (Carolina VB Center)
Date: Sep 25, 2015 Attend: 1365 Time: 1:28
Referees: Doug Darling, Scott Thompson

Tie scores and lead change table for the Kentucky vs South Carolina match.

LSU 3, SOUTH CAROLINA 0
SEPT. 27 • BATON ROUGE, LA.

Boxscore table for LSU vs South Carolina match, showing player statistics for attack, serve, and block.

Team Attack By Set

Team Attack By Set table showing set-by-set attack performance for LSU.

TOTAL TEAM BLOCKS: 3.0

SET SCORES

Set scores for LSU (3) and South Carolina (0).

Team Attack By Set

Team Attack By Set table showing set-by-set attack performance for South Carolina.

TOTAL TEAM BLOCKS: 9.0

Site: Baton Rouge, La. (Maravich Center)
Date: Sep 27, 2015 Attend: 898 Time: 1:26
Referees: Steve Owen, Steve Kenyon

Tie scores and lead change table for the LSU vs South Carolina match.

OLE MISS 3, SOUTH CAROLINA 1
OCT. 2 • OXFORD, MISS.

Boxscore table for Ole Miss vs South Carolina match, showing player statistics for attack, serve, and block.

Team Attack By Set

Team Attack By Set table showing set-by-set attack performance for Ole Miss.

TOTAL TEAM BLOCKS: 8.0

SET SCORES

Set scores for Ole Miss (3) and South Carolina (1).

Team Attack By Set

Team Attack By Set table showing set-by-set attack performance for South Carolina.

TOTAL TEAM BLOCKS: 7.0

Site: Oxford, MS (Gillom Sports Center)
Date: Oct 2, 2015 Attend: 595 Time: 2:08
Referees: Ron Stahl, Anthony Marshall

Tie scores and lead change table for the Ole Miss vs South Carolina match.

2015 MATCH-BY-MATCH BOXSCORES

AUBURN 3, SOUTH CAROLINA 1 NOV. 6 • AUBURN, ALA.

#	South Carolina	Attack					Serve			Dig	Block				Pts	
		S	K	E	TA	Pct	Ast	SA	SE		RE	BS	BA	BE		BH
3	Dessaa Legros	4	5	4	29	.034	0	0	0	1	0	3	0	0	6.5	
4	Darian Dozier	4	16	3	34	.382	0	0	1	0	5	3	8	0	23.0	
5	Aubrey Ezell	4	1	0	5	.200	33	1	1	0	8	0	5	1	4.5	
6	Sarah Blomgren	4	7	11	40	-.100	0	1	0	1	6	0	1	3	8.5	
11	Koko Atoa-Williams	4	1	2	13	-.077	2	0	0	1	13	0	1	0	1.5	
17	Elizabeth Johnbull	4	11	1	17	.588	0	0	0	1	0	3	0	0	12.5	
2	Joely Cabrera	2	0	0	0	.000	0	0	2	1	4	0	0	0	0.0	
9	Megan Kirkland	4	0	0	0	.000	2	0	0	2	19	0	0	0	0.0	
10	Emma Lock	4	0	0	0	.000	0	2	0	0	7	0	0	0	2.0	
12	Courtney Furlong	3	3	1	10	.200	0	0	0	2	1	1	0	0	4.5	
23	Callie Brown	1	0	0	0	.000	0	0	0	0	0	0	0	0	0.0	
Totals		4	44	22	148	.149	37	4	4	5	66	4	22	4	2	63.0

Team Attack By Set

Set	K	E	TA	Pct	Sideout	Pct
1	9	5	37	.108	11-24	45%
2	11	5	34	.176	14-25	56%
3	12	6	42	.143	12-21	57%
4	12	6	35	.171	15-25	60%
52-95						54%

SET SCORES 1 2 3 4 **Team Records:**
 South Carolina (1) 16 23 25 23 10-14, 3-9 SEC
 Auburn (3) 25 25 21 25 13-10, 5-6 SEC

#	Auburn	Attack					Serve			Dig	Block				Pts
		S	K	E	TA	Pct	Ast	SA	SE		RE	BS	BA	BE	
7	Crabble, Courtney	4	16	8	42	.190	0	0	0	3	1	0	0	0	17.0
8	McIlroy, Brenna	4	16	4	42	.286	0	1	4	0	8	0	1	1	17.5
11	Barksdale, Breanna	4	10	5	22	.227	0	0	0	0	0	0	1	0	10.5
18	Ivey, Alyssa	4	0	0	0	.000	1	0	1	1	16	0	0	0	0.0
21	Filley, Alexa	4	5	1	14	.286	49	0	0	0	7	0	2	0	6.0
32	Campbell, Stephanie	3	2	3	16	-.062	0	2	0	0	5	0	1	0	4.5
1	Stewart, Kelly	4	0	0	0	.000	0	1	2	1	9	0	0	0	1.0
2	Schill, Taylor	3	0	0	0	.000	3	0	0	0	4	0	0	0	0.0
3	Earl, Jesse	4	0	0	0	.000	4	1	1	1	19	0	0	0	1.0
4	Arrington, Mary Hann	2	0	0	0	.000	0	0	1	0	1	0	0	0	0.0
5	Klitzke, Emily	4	13	7	29	.207	0	0	1	0	0	1	2	0	15.0
19	Silva, Cici	1	0	0	5	.000	0	0	0	0	0	0	0	0	0.0
33	Reece, Macy	1	0	0	1	.000	0	0	0	0	0	0	1	0	0.5
Team										1					
Totals		4	62	28	171	.199	57	5	10	4	72	2	8	1	73.0

Team Attack By Set

Set	K	E	TA	Pct	Sideout	Pct
1	16	4	40	.300	12-17	70%
2	15	10	37	.135	14-23	60%
3	14	9	54	.093	12-25	47%
4	17	5	40	.300	15-23	65%
53-88						60%

SET SCORES 1 2 3 4 **Total**
 Auburn (3) 2 14 2 2 20
 South Carolina (1) 16 23 25 23 10-14, 3-9 SEC

Site: Auburn, Alabama (Auburn Arena)
 Date: Nov 06, 2015 Attend: 556 Time: 2:01
 Referees: Bill Zehler, Wade Brence

Tie scores 1 2 3 4 Total
 Lead change 0 7 0 1 8

ALABAMA 3, SOUTH CAROLINA 1 NOV. 8 • TUSCALOOSA, ALA.

#	South Carolina	Attack					Serve			Dig	Block				Pts
		S	K	E	TA	Pct	Ast	SA	SE		RE	BS	BA	BE	
4	Darian Dozier	4	17	0	24	.708	0	0	1	0	2	0	3	0	18.5
5	Aubrey Ezell	4	0	0	3	.000	40	1	1	0	11	0	2	0	2.0
6	Sarah Blomgren	4	22	4	52	.346	0	1	2	1	10	0	2	0	24.0
10	Emma Lock	4	0	0	0	.000	0	1	1	1	9	0	0	0	1.0
12	Courtney Furlong	3	3	0	6	.500	0	0	0	0	0	0	1	0	3.5
17	Elizabeth Johnbull	4	2	3	12	-.083	0	0	0	0	1	1	3	0	4.5
2	Joely Cabrera	1	0	0	0	.000	0	0	0	0	2	0	0	0	0.0
3	Dessaa Legros	4	4	4	24	.000	0	0	0	0	5	2	1	0	6.5
9	Megan Kirkland	4	0	0	0	.000	4	0	0	0	10	0	0	0	0.0
11	Koko Atoa-Williams	4	2	0	4	.500	2	0	1	1	6	0	0	0	2.0
23	Callie Brown	1	0	0	0	.000	0	0	0	0	0	0	0	0	0.0
Totals		4	50	11	125	.312	46	3	6	3	56	3	12	0	62.0

Team Attack By Set

Set	K	E	TA	Pct	Sideout	Pct
1	14	0	28	.500	13-16	81%
2	9	1	28	.286	13-25	51%
3	12	4	30	.267	14-24	58%
4	15	6	39	.231	18-25	72%
58-90						64%

SET SCORES 1 2 3 4 **Team Records:**
 South Carolina (1) 25 20 19 23 10-16, 3-10 SEC
 Alabama (3) 16 25 25 25 13-13, 7-5 SEC

#	Alabama	Attack					Serve			Dig	Block				Pts
		S	K	E	TA	Pct	Ast	SA	SE		RE	BS	BA	BE	
1	Sierra Wilson	4	0	0	3	.000	54	0	0	0	6	0	0	0	0.0
3	Kat Hutson	4	19	8	42	.262	1	0	5	0	2	2	1	0	21.5
9	Brittany Thomas	4	9	4	29	.172	0	1	0	0	2	0	0	1	10.0
13	Krystal Rivers	4	24	5	47	.404	0	0	2	0	7	0	0	1	24.0
15	Leah Lawrence	4	5	0	10	.500	1	1	1	0	4	0	1	0	6.5
20	Bruna Evangelista	4	9	3	20	.300	0	0	0	0	3	0	0	0	9.0
2	Natalie Murison	4	0	0	0	.000	1	0	2	1	14	0	0	0	0.0
4	Quincey Gary	4	0	0	1	.000	1	0	0	1	5	0	0	0	1.0
6	Kryssi Daniels	4	0	0	0	.000	1	1	1	0	12	0	0	0	1.0
Team										1					
Totals		4	66	20	152	.303	59	3	11	3	55	2	2	2	72.0

Team Attack By Set

Set	K	E	TA	Pct	Sideout	Pct
1	12	8	41	.098	13-25	51%
2	20	4	37	.432	13-20	64%
3	18	3	36	.417	15-20	75%
4	16	5	38	.289	18-23	78%
59-88						67%

SET SCORES 1 2 3 4 **Total**
 Alabama (3) 2 2 7 8 19
 South Carolina (1) 25 20 19 23 10-16, 3-10 SEC

Site: Tuscaloosa, AL (Foster Auditorium)
 Date: Nov 08, 2015 Attend: 1078 Time: 1:48
 Referees: David Dufrene, Brian Hemeigarn

Tie scores 1 2 3 4 Total
 Lead change 1 0 2 1 4

CAREER RECORDS

KILLS

Rank	Name (Years)	Kills
1.	Lori Rowe (1983-86)	1,855
2.	Shonda Cole (2003-06)	1,775
3.	Juliette Thévenin (2010-13)	1,590
4.	Cally Plummer (1998-02)	1,345
5.	Heather Larkin (1994-97)	1,293
6.	Amy Iannocari (1991-94)	1,231
7.	Kim DeNeve (1986-89)	1,179
8.	Ivana Kujundzic (2006-09)	1,133
9.	Berna Dwyer (1999-02)	1,107
10.	Lora Myers (1987-90)	1,100

KILLS PER SET (Minimum 500 Kills)

Rank	Name (Years)	(K-SP) K/S
1.	Shonda Cole (2003-06)	(1,775-417) 4.26
2.	Juliette Thévenin (2010-13)	(1,590-391) 4.07
3.	Lori Rowe (1983-86)	(1,855-507) 3.66
4.	Kori Ermigarat (1994-95)	(842-233) 3.61
5.	Cally Plummer (1998-02)	(1,345-394) 3.41
6.	Heather Larkin (1994-97)	(1,293-395) 3.27
7.	Crystal Moore (1997-99)	(754-240) 3.14
8.	Kim DeNeve (1986-89)	(1,179-381) 3.09
9.	Berna Dwyer (1999-02)	(1,107-366) 3.02
10.	Ivana Kujundzic (2006-09)	(1,133-389) 2.91

ATTACKS

Rank	Name (Years)	Attacks
1.	Shonda Cole (2003-06)	4,181
2.	Juliette Thévenin (2010-13)	4,076
3.	Lori Rowe (1983-86)	3,874
4.	Amy Iannocari (1991-94)	3,487
5.	Cally Plummer (1998-02)	3,288
6.	Ivana Kujundzic (2006-09)	3,047
7.	Heather Larkin (1994-97)	2,958
8.	Caryn Case (1988-91)	2,936
9.	Lora Myers (1987-90)	2,825
10.	Kim DeNeve (1986-89)	2,819

HITTING PERCENTAGE (Minimum 1,000 Attacks)

Rank	Name (Years)	(K-E-A) Pct.
1.	Lori Rowe (1983-86)	(1,855-298-3,874) .402
2.	Ashley Edlund (1995-98)	(517-92-1,200) .354
3.	Niece Curry (2001-03)	(704-213-1,495) .328
4.	Belita Salters (2005-08)	(892-299-1,903) .312
5.	Libby Ralston (1989-92)	(699-225-1,572) .302
6.	Sam Alban (1999-02)	(844-316-1,877) .281
7.	Heather Larkin (1994-97)	(1,293-463-2,958) .281
8.	S. Pflughaupt (1986-89)	(1,093-432-2,413) .274
9.	Berna Dwyer (1999-02)	(1,107-420-2,533) .271
10.	Toni Venturini (1984-85)	(555-191-1,357) .268

ASSISTS

Rank	Name (Years)	Assists
1.	Ashley Edlund (1995-98)	5,177
2.	Megan Hosp (1999-02)	4,689
3.	Tammy Correll (1987-90)	4,563
4.	Julie Morrison (1984-87)	3,602
5.	Jodi Thompson (1991-94)	3,237
6.	Taylor Bruns (2009-12)	2,858
7.	Shellie Higgins (1983-84)	2,544
8.	Kelly Morrow (1993-96)	2,136
9.	Bridget Denson-Dorman (2008-09)	2,044
10.	Iris Santos (2003-06)	2,040

ASSISTS PER SET (Minimum 500 Assists)

Rank	Name (Years)	(A-SP) A/S
1.	Megan Hosp (1999-02)	(4,689-387) 12.12
2.	Ashley Edlund (1995-98)	(5,177-430) 12.04
3.	Tammy Correll (1987-90)	(4,563-447) 10.21
4.	Shellie Higgins (1983-84)	(2,544-254) 10.02
5.	Katelyn Panzau (2003-04)	(1,857-194) 9.57
6.	B. Denson-Dorman (2008-09)	(2,044-215) 9.51
7.	Julie Morrison (1984-87)	(3,602-385) 9.36
8.	Taylor Bruns (2009-12)	(2,858-377) 7.58
9.	Jodi Thompson (1991-94)	(3,237-495) 6.54
10.	Kelly Morrow (1993-96)	(2,136-354) 6.03

ACES

Rank	Name (Years)	Aces
1.	Cally Plummer (1998-02)	243
2.	Teri Montoya (1983-84)	214
3.	Tammy Correll (1987-90)	190
4.	Lori Rowe (1983-86)	186
5.	Jodi Thompson (1991-94)	162
6.	Megan Hosp (1999-02)	132
7.	Ashley Edlund (1995-98)	130
8.	Kim Brown (1983-84)	129
9.	Colleen McKenzie (1985-88)	119
10.	Shellie Higgins (1983-84)	116

ACES PER SET (Minimum 75 Aces)

Rank	Name (Years)	(A-SP) A/S
1.	Teri Montoya (1983-84)	(214-254) 0.84
2.	Cally Plummer (1998-02)	(243-394) 0.62
3.	Kim Brown (1983-84)	(129-254) 0.51
4.	Shellie Higgins (1983-84)	(116-254) 0.46
5.	Tammy Correll (1987-90)	(190-447) 0.43
6.	Lori Rowe (1983-86)	(186-507) 0.37
7.	Crystal Moore (1997-99)	(82-240) 0.34
8.	Megan Hosp (1999-02)	(132-387) 0.34
9.	Jodi Thompson (1991-94)	(162-495) 0.33
10.	Diane Mitchell (1990-93)	(89-275) 0.32

DIGS

Rank	Name (Years)	Digs
1.	Sarah Cline (2006-09)	1,464
2.	Diane Denton (1985-88)	1,462
3.	Hannah Lawing (2007-10)	1,334
4.	Jodi Thompson (1991-94)	1,332
5.	Amy Iannocari (1991-94)	1,196
6.	Ashley Edlund (1995-98)	1,160
7.	Megan Hosp (1999-02)	1,079
8.	Shani Abshier (1994-97)	1,049
9.	Juliette Thévenin (2010-13)	1,012
10.	Paige Wheeler (2010-12)	1,001

DIGS PER SET (Minimum 500 Digs)

Rank	Name (Years)	(D-SP) D/S
1.	Fernanda Laires (1996-97)	(839-208) 4.03
2.	M. Christiaansen (2013-14)	(921-231) 3.99
3.	Kori Ermigarat (1994-95)	(920-233) 3.95
4.	Paige Wheeler (2010-12)	(1,001-280) 3.58
5.	Sarah Cline (2006-09)	(1,464-422) 3.47
6.	Hannah Lawing (2007-10)	(1,334-398) 3.35
7.	Crystal Moore (1997-99)	(765-240) 3.19
8.	Diane Denton (1985-88)	(1,462-477) 3.06
9.	Katie Gerst (1992-94)	(986-334) 2.95
10.	Shani Abshier (1994-97)	(1,049-357) 2.94

BLOCK SOLOS

Rank	Name (Years)	Block Solos
1.	Stephanie Pflughaupt (1986-89)	264
2.	Lori Rowe (1983-86)	191
3.	Amy Collinsworth (1990-93)	117
4.	Libby Ralston (1989-92)	110
5.	Jennifer Guess (1990-93)	79
6.	Heather Larkin (1994-97)	74

7.	Belita Salters (2005-08)	65
8.	Lorri Anderson (1984-85)	62
9.	Toni Venturini (1984-85)	49
10.	Megan Laughlin (2007-10)	46
	Berna Dwyer (1999-02)	46

BLOCK ASSISTS

Rank	Name (Years)	Block Assists
1.	Stephanie Pflughaupt (1986-89)	461
2.	Lori Rowe (1983-86)	450
3.	<i>Darian Dozier (2012-Present)</i>	369
4.	Amy Collinsworth (1990-93)	358
5.	Heather Larkin (1994-97)	344
6.	Jennifer Guess (1990-93)	328
7.	Lori Drost (1994-97)	306
8.	Belita Salters (2005-08)	305
9.	Sam Alban (1999-02)	285
10.	Berna Dwyer (1999-02)	278

TOTAL BLOCKS

Rank	Name (Years)	Total Blocks
1.	Stephanie Pflughaupt (1986-89)	725
2.	Lori Rowe (1983-86)	641
3.	Amy Collinsworth (1990-93)	475
4.	Heather Larkin (1994-97)	418
5.	<i>Darian Dozier (2012-Present)</i>	411
6.	Jennifer Guess (1990-93)	407
7.	Libby Ralston (1989-92)	383
8.	Belita Salters (2005-08)	370
9.	Lori Drost (1994-97)	349
10.	Sam Alban (1999-02)	328

BLOCKS PER SET (Minimum 150 Blocks)

Rank	Name (Years)	(B-SP) B/S
1.	Stephanie Pflughaupt (1986-89)	(725-455) 1.59
2.	Dee Dee Fortman (1995-97)	(248-196) 1.27
3.	Lori Rowe (1983-86)	(641-507) 1.26
4.	Sue Little (1983)	(162-131) 1.24
5.	Libby Ralston (1989-92)	(383-310) 1.24
6.	Danika Taylor (1998-99)	(238-206) 1.16
7.	Lauren Ford (2003-05)	(280-251) 1.12
8.	Heather Larkin (1994-97)	(418-395) 1.06
9.	Amy Collinsworth (1990-93)	(475-450) 1.06
10.	Lorri Anderson (1984-85)	(186-178) 1.05

TOTAL POINTS

Rank	Name (Years)	Points
1.	Lori Rowe (1983-86)	2457.0
2.	Shonda Cole (2003-06)	2029.0
3.	Cally Plummer (1998-2002)	1749.5
4.	Juliette Thévenin (2010-13)	1,744.5
5.	Stephanie Pflughaupt (1986-89)	1679.5
6.	Heather Larkin (1994-97)	1636.0
7.	Kim DeNeve (1986-89)	1401.5
8.	Berna Dwyer (1999-2002)	1399.0
9.	Amy Iannocari (1991-94)	1386.5
10.	Ivana Kujundzic (2006-09)	1345.0

POINTS PER SET (Minimum 500 Points)

Rank	Name (Years)	(P-SP) P/S
1.	Shonda Cole (2003-06)	(2,029.0-417) 4.87
2.	Lori Rowe (1983-86)	(2,457.0-507) 4.85
3.	Juliette Thévenin (2010-13)	(1,744.5-391) 4.46
4.	Cally Plummer (1998-2002)	(1,749.5-362) 4.44
5.	Heather Larkin (1994-97)	(1,636.0-395) 4.14
6.	Kori Ermigarat (1994-95)	(946.5-233) 4.06
7.	Berna Dwyer (1999-2002)	(1,399.0-366) 3.82
8.	Crystal Moore (1997-99)	(892.5-240) 3.72
9.	Stephanie Pflughaupt (1986-89)	(1,679.5-455) 3.69
10.	Kim DeNeve (1986-89)	(1,401.5-381) 3.68

Note: Season statistics were not kept until 1983.
Current players in *italics*

INDIVIDUAL MATCH RECORDS

KILLS

3-SET MATCHES

Rank	Name	Opponent (Date)	Kills
1.	Shonda Cole	Georgia (11/15/2006)	27
2.	Amy Iannocari	Kentucky (10/30/1994)	23
3.	Shonda Cole	Arkansas (10/27/2006)	22
4.	Juliette Thévenin	Montana (8/26/2011)	21
	Cally Plummer	LSU (9/22/2000)	21
	Heather Larkin	North Carolina State (9/6/1997)	21
	Shani Abshier	Kentucky (11/17/1996)	21
	Lori Rowe	USF (10/7/1983)	21
	Lori Rowe	Appalachian State (9/17/1983)	21

4-SET MATCHES

Rank	Name	Opponent (Date)	Kills
1.	Shonda Cole	Florida (9/17/2006)	35
2.	Shonda Cole	College of Charleston (11/22/2006)	29
	Shonda Cole	Tennessee (11/12/2006)	29
4.	Hannah Lawing	Harvard (9/12/2009)	28
	Amy Iannocari	Florida (11/13/1994)	28

5-SET MATCHES

Rank	Name	Opponent (Date)	Kills
1.	Shonda Cole	TCU (8/25/2006)	37
2.	Shonda Cole	Auburn (9/15/2006)	36
	Shonda Cole	Clemson (8/31/2006)	36
4.	Shonda Cole	St. John's (9/8/2006)	32
	Lori Rowe	Louisville (10/28/1983)	32

ATTACKS

3-SET MATCHES

Rank	Name	Opponent (Date)	Attacks
1.	Cally Plummer	Tennessee (11/3/2000)	54
2.	Amy Iannocari	Kentucky (10/30/1994)	53
3.	Shonda Cole	Kentucky (10/8/2006)	52
4.	Juliette Thévenin	Montana (8/26/2011)	50
	Kori Ermigarat	Xavier (9/1/1995)	50

4-SET MATCHES

Rank	Name	Opponent (Date)	Attacks
1.	Shonda Cole	Tennessee (11/12/2006)	73
2.	Shonda Cole	North Carolina (11/27/2004)	72
3.	Shonda Cole	College of Charleston (11/22/2006)	65
	Shonda Cole	Alabama (11/17/2006)	65
	Shonda Cole	Florida (9/17/2006)	65

5-SET MATCHES

Rank	Name	Opponent (Date)	Attacks
1.	Kori Ermigarat	Maryland (9/16/1995)	75
2.	Juliette Thévenin	Clemson (9/6/13)	73
	Juliette Thévenin	Alabama (11/16/2012)	73
	Amy Iannocari	Louisiana Tech (9/19/1992)	73
4.	Shonda Cole	Auburn (9/15/2006)	71
5.	Ivana Kujundzic	Rice (9/11/2009)	70
	Lori Rowe	Louisville (10/28/1983)	70

HITTING PERCENTAGE

3-SET MATCHES (MINIMUM 15 ATTACKS)

Rank	Name	Opponent (Date)	(K-E-A) Pct.
1.	Lori Rowe	Appalachian State (9/17/1983)	(21-1-23) .870
2.	Belita Salters	Mississippi State (11/23/2008)	(15-0-19) .789
3.	Lori Rowe	East Carolina (11/12/1983)	(11-0-15) .733
	Megan Laughlin	South Carolina State (10/23/2008)	(11-0-15) .733
5.	Lori Rowe	Chattanooga (10/8/1983)	(12-0-17) .706

4-SET MATCHES (MINIMUM 20 ATTACKS)

Rank	Name	Opponent (Date)	(K-E-A) Pct.
1.	Darian Dozier	Alabama (11/8/2015)	(17-0-24) .708
2.	Berna Dwyer	LSU (10/6/2002)	(17-0-25) .680
3.	Danika Taylor	Mississippi State (9/25/1998)	(16-0-26) .615
4.	Berna Dwyer	Georgia (11/17/2002)	(19-2-29) .586
5.	Niece Curry	LSU (10/6/2002)	(21-3-31) .581

5-SET MATCHES (MINIMUM 25 ATTACKS)

Rank	Name	Opponent (Date)	(K-E-A) Pct.
1.	Sam Alban	New Mexico (9/8/2000)	(19-3-28) .571
2.	Niece Curry	Clemson (9/10/2002)	(15-1-25) .560
3.	Sarah Blomgren	Mississippi State (10/4/2014)	(20-2-33) .545
4.	Belita Salters	UNLV (8/30/2008)	(21-2-35) .543
5.	Belita Salters	Rhode Island (9/5/2008)	(17-2-28) .536

ASSISTS

3-SET MATCHES

Rank	Name	Opponent (Date)	Assists
1.	Megan Hosp	LSU (9/22/2000)	64
2.	Ashley Edlund	Kentucky (10/20/1995)	59
3.	Megan Hosp	Tennessee (11/3/2000)	55
4.	Jodi Thompson	Kentucky (10/30/1994)	54
5.	Ashley Edlund	Arkansas (11/22/1997)	53
	Kelly Morrow	Appalachian State (9/24/1993)	53

4-SET MATCHES

Rank	Name	Opponent (Date)	Assists
1.	Megan Hosp	Arkansas (9/24/2000)	72
2.	Ashley Edlund	Mississippi State (9/27/1996)	71
3.	Ashley Edlund	Alabama (10/6/1996)	70
	Ashley Edlund	Georgia (11/12/1995)	70
5.	Megan Hosp	Auburn (10/22/1999)	69

5-SET MATCHES

Rank	Name	Opponent (Date)	Assists
1.	Tammy Correll	George Washington (11/12/1988)	84
2.	Julie Morrison	North Carolina State (11/7/1986)	74
3.	Megan Hosp	Northern Illinois (9/8/2000)	65
4.	Iris Santos	Auburn (10/22/2006)	64
	Megan Hosp	Michigan (9/17/1999)	64
	Ashley Edlund	Kentucky (11/5/1995)	64
	Kelly Morrow	Auburn (10/2/1994)	64

ACES

3-SET MATCHES

Rank	Name	Opponent (Date)	Aces
1.	Megan Hosp	Creighton (9/7/2002)	8
	Cally Plummer	Auburn (10/11/1998)	8
3.	Ashley Edlund	Alabama (10/9/1998)	7
4.	Taylor Bruns	Alabama (11/6/2011)	6
	Lynae Vanden Hull	Auburn (10/17/2004)	6
	Megan Hosp	Auburn (9/27/2002)	6
	Berna Dwyer	Auburn (10/26/2001)	6
	Diane Mitchell	Coastal Carolina (9/10/1993)	6
	Lori Rowe	Mississippi State (9/30/1983)	6

4-SET MATCHES

Rank	Name	Opponent (Date)	Aces
1.	Cally Plummer	Clemson (10/10/2001)	8
	Amy Collinsworth	Jacksonville (9/6/1991)	8
3.	Jordan Bradosky	The Citadel (9/26/2010)	6
	Cally Plummer	Arkansas (10/4/2002)	6
	Cally Plummer	North Carolina (11/24/2001)	6
	Cally Plummer	Kentucky (11/8/1998)	6
	Cally Plummer	LSU (10/22/1998)	6
	Cally Plummer	Florida (10/2/1998)	6

5-SET MATCHES

Rank	Name	Opponent (Date)	Aces
1.	Lori Rowe	Cincinnati (10/29/1983)	9
2.	Taylor Bruns	BYU (8/28/2010)	6
	Shonda Cole	Alabama (10/1/2006)	6
	Kim DeNeve	Washington State (9/23/1988)	6
5.	Shonda Cole	LSU (9/23/2005)	5
	Katelyn Panzau	George Washington (9/20/2003)	5
	Lynae Vanden Hull	Santa Clara (9/18/2003)	5
	Cally Plummer	Clemson (9/10/2002)	5
	Cally Plummer	Michigan (9/17/1999)	5
	Dee Dee Fortman	Kentucky (10/24/1997)	5

INDIVIDUAL MATCH RECORDS

DIGS			
3-SET MATCHES			
Rank	Name	Opponent (Date)	Digs
1.	Kori Ermigarat	Kentucky (10/20/1995)	30
2.	Hannah Lawing	Furman (9/10/2010)	26
	Kori Ermigarat	UNC Greensboro (9/6/1995)	26
	Jodi Thompson	Mercer (9/4/1993)	26
5.	Amy Iannoccarri	Appalachian State (9/24/1993)	25

4-SET MATCHES			
Rank	Name	Opponent (Date)	Digs
1.	Mikaela Christiaansen	Georgia (11/23/2014)	33
2.	Yajaira Cadet	North Carolina (12/6/2002)	30
	Kori Ermigarat	Georgia (11/12/1995)	30
4.	Paige Wheeler	LSU (11/13/2011)	28
	Paige Wheeler	Elon (9/3/2011)	28
	Dinelia Concepcion	Alabama (11/17/2006)	28

5-SET MATCHES			
Rank	Name	Opponent (Date)	Digs
1.	Hannah Lawing	Mississippi State (11/13/2010)	38
2.	Sarah Cline	Arkansas (11/2/2007)	36
	Jodi Thompson	Louisiana Tech (9/19/1992)	36
4.	Shani Abshier	Maryland (9/16/1995)	33
5.	Diane Denton	Florida (10/11/1988)	32

BLOCK SOLOS			
3-SET MATCHES			
Rank	Name	Opponent (Date)	Blocks
1.	Teresa Stenlund	Lipscomb (9/11/2010)	5
	Lori Rowe	Western Carolina (9/24/1983)	5
3.	Belita Salters	Virginia Commonwealth (8/31/2007)	4
	Belita Salters	Boston College (8/25/2007)	4
	Nicole Miller	Mercer (9/3/2005)	4
	Katie Gerst	Davidson (9/12/1994)	4
	Jennifer Guess	Mississippi State (10/3/1993)	4

4-SET MATCHES			
Rank	Name	Opponent (Date)	Blocks
1.	Stephanie Pflughaupt	Charlotte (10/5/1988)	9
2.	Stephanie Pflughaupt	Rice (10/18/1986)	5
3.	Heather Larkin	Arkansas (10/5/1997)	4
	Katie Gerst	UNC Asheville (9/25/1993)	4
5.	Darian Dozier	Auburn (11/6/2015)	3
	Darian Dozier	Jacksonville (8/30/2014)	3
	Nicole Miller	Pittsburgh (9/2/2005)	3
	Lauren Ford	Mississippi (10/8/2004)	3
	Berna Dwyer	American (12/5/2002)	3
	Danika Taylor	Mississippi State (9/25/1998)	3
	Heather Larkin	Georgia (9/26/1997)	3
	Heather Larkin	Mississippi (9/29/1996)	3
	Lori Drost	Mississippi State (9/27/1996)	3
	Dee Dee Fortman	Alabama (10/15/1995)	3
	Heather Larkin	Georgia (9/24/1995)	3
	Stephanie Pflughaupt	Georgia (9/14/1988)	3

5-SET MATCHES			
Rank	Name	Opponent (Date)	Blocks
1.	Juliette Thévenin	Alabama (11/16/2012)	4
	Lori Rowe	North Carolina (10/7/1983)	4
3.	Bethanie Thomas	East Tennessee State (8/25/2012)	3
	Belita Salters	LSU (10/26/2008)	3
	Megan Laughlin	LSU (10/28/2007)	3
	Megan Laughlin	Maryland (9/11/2007)	3
	Lynae Vanden Hull	Mississippi State (10/15/2006)	3
	Heather Larkin	Alabama (9/30/1994)	3
	Jennifer Guess	College of Charleston (10/20/1993)	3
	Lori Rowe	Memphis (10/14/1983)	3

BLOCK ASSISTS			
3-SET MATCHES			
Rank	Name	Opponent (Date)	Blocks
1.	Lori Rowe	College of Charleston (10/4/1983)	11
	Lori Rowe	Western Carolina (9/24/1983)	11
3.	Dee Dee Fortman	Kentucky (10/20/2005)	9
	Dee Dee Fortman	Illinois State (12/4/1997)	9
	Jennifer Guess	Alabama (10/11/1993)	9
	Lori Rowe	Virginia Tech (11/18/1983)	9

4-SET MATCHES			
Rank	Name	Opponent (Date)	Blocks
1.	Libby Ralston	Jacksonville (9/6/1991)	15
2.	Stephanie Pflughaupt	Georgia (9/14/1988)	13
3.	Belita Salters	North Carolina (9/10/2005)	10
	Lauren Ford	Mississippi (10/8/2004)	10
	Berna Dwyer	Georgia (11/17/2002)	10
	Berna Dwyer	Arizona State (9/6/2002)	10
	Dee Dee Fortman	Georgia (11/12/1995)	10
	Dee Dee Fortman	Tennessee (10/22/1995)	10
	Heather Larkin	Tennessee (10/14/1994)	10

5-SET MATCHES			
Rank	Name	Opponent (Date)	Blocks
1.	Heather Larkin	Kentucky (10/7/1994)	12
2.	Jacqy Angermiller	Eastern Kentucky (9/19/2014)	11
	Crystal Johnson	St. John's (9/8/2006)	11
3.	Danika Taylor	Michigan (9/17/1999)	10
	Lori Drost	Maryland (9/16/1995)	10
	Amy Collinsworth	College of Charleston (10/20/1993)	10
	Stephanie Pflughaupt	Memphis (11/22/1986)	10
	Lori Rowe	Louisville (10/28/1983)	10
	Lori Rowe	Georgia (10/1/1983)	10

TOTAL BLOCKS			
3-SET MATCHES			
Rank	Name	Opponent (Date)	Blocks
1.	Lori Rowe	Western Carolina (9/24/1983)	16
2.	Dee Dee Fortman	Kentucky (10/20/1995)	12
3.	Dee Dee Fortman	Illinois State (12/4/1997)	10
	Jennifer Guess	Alabama (10/11/1993)	10
	Lori Rowe	Virginia Tech (11/18/1983)	10
	Lori Rowe	USF (10/7/1983)	10

4-SET MATCHES			
Rank	Name	Opponent (Date)	Blocks
1.	Libby Ralston	Jacksonville (9/6/1991)	16
	Stephanie Pflughaupt	Georgia (9/14/1988)	16
3.	Lauren Ford	Mississippi (10/8/2004)	13
4.	Heather Larkin	Tennessee (10/14/1994)	12
	Katie Gerst	UNC Asheville (9/25/1993)	12

5-SET MATCHES			
Rank	Name	Opponent (Date)	Blocks
1.	Crystal Johnson	St. John's (9/8/2006)	13
2.	Heather Larkin	Kentucky (10/7/1994)	12
	Lori Rowe	Memphis (11/22/1986)	12
4.	Jacqy Angermiller	Eastern Kentucky (9/19/2014)	11
	Danika Taylor	Michigan (9/17/1999)	11
	Amy Collinsworth	College of Charleston (10/20/1993)	11
	Lori Rowe	North Carolina (10/7/1983)	11

Note: Box scores are only available from 1993 to the present. Limited historical records prior to 1993 were used to aid in the composition of individual match records as well.

Current players in *italics*

TEAM MATCH RECORDS

KILLS		
3-SET MATCHES		
Rank	Opponent (Date)	Kills
1.	LSU (9/22/2000)	76
2.	Tennessee (11/3/2000)	74
3.	Kentucky (10/20/1995)	69
4.	Clemson (9/16/1998)	66
	Arkansas (11/22/1997)	66

4-SET MATCHES		
Rank	Opponent (Date)	Kills
1.	Georgia (11/12/1995)	88
2.	Arkansas (9/24/2000)	86
3.	Florida (10/31/1997)	83
4.	Florida (9/17/2006)	82
	Houston (9/16/2005)	82
	LSU (10/25/1996)	82
	Alabama (10/6/1996)	82

5-SET MATCHES		
Rank	Opponent (Date)	Kills
1.	North Carolina State (11/7/1986)	99
2.	Arkansas (11/23/1996)	86
3.	Arkansas (11/2/2007)	85
	Georgia (11/18/2000)	85
	Northern Illinois (9/8/2000)	85
	Michigan (9/17/1999)	85

TEAM MATCH RECORDS

ATTACKS

3-SET MATCHES

Rank	Opponent (Date)	Attacks
1.	Arkansas (11/22/1997)	179
2.	Tennessee (11/3/2000)	177
3.	Mississippi State (10/8/1995)	171
4.	San Diego (9/13/2002)	166
5.	LSU (9/22/2000)	165

4-SET MATCHES

Rank	Opponent (Date)	Attacks
1.	USF (9/17/1994)	235
2.	Arkansas (9/24/2000)	223
3.	Kentucky (10/22/1993)	220
4.	LSU (10/25/1996)	219
5.	Mississippi State (9/27/1996)	218
	Georgia (11/12/1995)	218

5-SET MATCHES

Rank	Opponent (Date)	Attacks
1.	Northern Illinois (9/8/2000)	243
2.	Tennessee (11/11/2007)	241
	Maryland (9/16/1995)	241
4.	Arkansas (11/2/2007)	234
5.	Arkansas (11/23/1996)	225

HITTING PERCENTAGE

3-SET MATCHES

Rank	Opponent (Date)	(K-E-A) Pct.
1.	SC State (10/23/2008)	(50-3-80) .587
2.	Liberty (9/1/2000)	(62-7-98) .561
3.	Mississippi State (11/23/2008)	(48-3-84) .536
4.	Louisville (9/26/1986)	(N/A) .530
5.	Troy (9/7/2007)	(52-6-92) .500
	Auburn (9/27/2002)	(53-8-90) .500

4-SET MATCHES

Rank	Opponent (Date)	(K-E-A) Pct.
1.	Mississippi State (9/25/1998)	(80-8-165) .436
2.	American (9/7/1996)	(44-7-85) .435
3.	Mississippi (10/16/2011)	(61-11-127) .394
4.	Arkansas (10/5/1997)	(73-7-170) .388
5.	North Carolina (11/24/2001)	(78-18-160) .375

5-SET MATCHES

Rank	Opponent (Date)	(K-E-A) Pct.
1.	Arkansas (11/23/2012)	(68-17-143) .357
2.	Kentucky (10/24/1997)	(81-17-187) .342
3.	Michigan State (9/18/2004)	(64-17-143) .329
4.	Clemson (9/10/2002)	(74-22-162) .321
5.	ETSU (8/25/2012)	(70-21-165) .297

ASSISTS

3-SET MATCHES

Rank	Opponent (Date)	Assists
1.	LSU (9/22/2000)	73
2.	Tennessee (11/3/2000)	69
3.	Kentucky (10/20/1995)	63
4.	Mississippi (11/21/1997)	60
5.	Georgia (11/15/2006)	58
	Mississippi State (11/3/2002)	58

4-SET MATCHES

Rank	Opponent (Date)	Assists
1.	Arkansas (9/24/2000)	81
2.	Florida (9/17/2006)	76
3.	Alabama (10/6/1996)	74
4.	LSU (10/25/1996)	73
	Mississippi State (9/27/1996)	73

5-SET MATCHES

Rank	Opponent (Date)	Assists
1.	North Carolina State (11/7/1986)	95
2.	Arkansas (11/2/2007)	80
3.	Tennessee (11/11/2007)	79
	Northern Illinois (9/8/2000)	79
5.	Auburn (9/14/2007)	76

ACES

3-SET MATCHES

Rank	Opponent (Date)	Aces
1.	Auburn (10/17/2004)	16
	Alabama (9/29/2002)	16
	Creighton (9/7/2002)	16
	Auburn (10/11/1998)	16
5.	Auburn (9/27/2002)	15
	Tennessee (10/26/1997)	15

4-SET MATCHES

Rank	Opponent (Date)	Aces
1.	Jacksonville (9/6/1991)	22
2.	Kentucky (11/8/1998)	16
	Arkansas (10/5/1997)	16
	Western Carolina (9/3/1993)	16
5.	Mississippi (10/12/1997)	15

5-SET MATCHES

Rank	Opponent (Date)	Aces
1.	Santa Clara (9/18/2003)	15
	New Mexico (9/8/2000)	15
	Washington State (9/23/1988)	15
4.	George Washington (9/20/2003)	14
5.	Indiana (9/13/2003)	13
	Michigan (9/17/1999)	13

DIGS

3-SET MATCHES

Rank	Opponent (Date)	Digs
1.	Mississippi State (10/8/1995)	96
	UNC Greensboro (9/6/1995)	96
3.	Kentucky (10/30/1994)	92
4.	Appalachian State (9/24/1993)	91
5.	Mississippi State (11/17/1995)	89

4-SET MATCHES

Rank	Opponent (Date)	Digs
1.	Charlotte (10/26/1993)	120
2.	Mississippi State (9/27/1996)	118
3.	LSU (10/25/1996)	113
4.	Kentucky (10/22/1993)	110
5.	Mississippi State (10/22/2000)	109

5-SET MATCHES

Rank	Opponent (Date)	Digs
1.	Maryland (9/16/1995)	136
2.	Mississippi State (11/13/2010)	114
	George Washington (11/12/1988)	114
4.	Arkansas (11/2/2007)	108
5.	Tennessee (11/11/2007)	106
	Alabama (9/30/1994)	106

BLOCK SOLOS

3-SET MATCHES

Rank	Opponent (Date)	Block Solos
1.	Mercer (9/3/2005)	9
2.	Georgia (10/24/2002)	7
3.	Lipscomb (9/11/2010)	6
	George Washington (9/1/2007)	6
	Tennessee (11/7/1997)	6
	Davidson (9/4/1995)	6

4-SET MATCHES

Rank	Opponent (Date)	Block Solos
1.	Charlotte (10/5/1988)	17
2.	Illinois-Chicago (9/7/1996)	12
3.	Dayton (8/29/2008)	8
	UNC Asheville (9/25/1993)	8
	Florida (9/6/1986)	8

5-SET MATCHES

Rank	Opponent (Date)	Block Solos
1.	Maryland (9/1/2007)	7
2.	Mississippi State (10/15/2006)	6
	Arkansas (9/25/2005)	6
	Memphis (11/22/1986)	6
5.	LSU (10/28/2007)	5
	St. John's (9/8/2006)	5
	Alabama (9/30/1994)	5

BLOCK ASSISTS

3-SET MATCHES

Rank	Opponent (Date)	Block Assists
1.	Tennessee (11/9/2005)	28
	Kentucky (10/20/1995)	28
3.	Auburn (10/31/2003)	26
	Illinois State (12/4/1997)	26
	Mississippi State (10/8/1995)	26

4-SET MATCHES

Rank	Opponent (Date)	Block Assists
1.	Georgia (11/12/1995)	36
2.	Mississippi (10/8/2004)	34
3.	North Carolina (9/10/2005)	32
4.	Kentucky (10/16/1998)	30
	Tennessee (10/14/1994)	30

5-SET MATCHES

Rank	Opponent (Date)	Block Assists
1.	College of Charleston (9/7/1991)	41
2.	Kentucky (10/7/1994)	36
3.	Eastern Kentucky (9/19/2014)	34
	College of Charleston (10/20/1993)	34
4.	St. John's (9/8/2006)	30
5.	Santa Clara (9/18/2003)	28
	Michigan (9/17/1999)	28
	Colorado State (12/4/1998)	28
	UCF (8/31/1996)	28
	Memphis (11/22/1986)	28

TOTAL BLOCKS

3-SET MATCHES

Rank	Opponent (Date)	Total Blocks
1.	Kentucky (10/20/1995)	18.0
2.	Mercer (9/3/2005)	17.0
3.	Tennessee (11/9/2005)	16.0
4.	Winthrop (11/26/2005)	14.0
	Auburn (10/31/2003)	14.0
	Illinois State (12/4/1997)	14.0
	Alabama (10/1/1993)	14.0

4-SET MATCHES

Rank	Opponent (Date)	Total Blocks
1.	Tennessee (10/14/1994)	22.0
2.	Mississippi (10/8/2004)	21.0
	Georgia (11/12/1995)	21.0
4.	UNC Asheville (9/25/1993)	20.0
5.	North Carolina (9/10/2005)	19.0
	American (12/5/2002)	19.0

5-SET MATCHES

Rank	Opponent (Date)	Total Blocks
1.	North Carolina (10/19/1988)	22.0
2.	College of Charleston (9/7/1991)	21.5
3.	College of Charleston (10/20/1993)	21.0
4.	St. John's (9/8/2006)	20.0
	Memphis (11/22/1986)	20.0

Note: Box scores are only available from 1993 to the present. Limited historical records prior to 1993 were used to aid in the composition of individual match records as well.

FRESHMAN RECORDS

Matches Played: Lori Rowe (1983), 38
Sets Played: Three tied at 132

Kills

- Lori Rowe, 1983 553
- Fernanda Lares, 1996 357
- Cally Plummer, 1998 353

Kills Per Set

- Lori Rowe, 1983 4.22
- Juliette Thévenin, 2010 3.65
- Fernanda Lares, 1996 3.52

Attacks

- Lori Rowe, 1983 1,145
- Fernanda Lares, 1996 994
- Taylr McNeil, 2014 935

Hitting Percentage (Min. 250 Attacks)

- Lori Rowe, 1983 (.437)
- Libby Ralston, 1990 (.351)
- Ashley Edlund, 1995 (.321)

Assists

- Ashley Edlund, 1995 1,404
- Kelly Morrow, 1993 1,238
- Jodi Thompson, 1991 1,228

Assists Per Set (Min. 125 Assists)

- Ashley Edlund, 1995 12.76
- Megan Hosp, 1999 11.35
- Kelly Morrow, 1993 10.77

Aces

- Cally Plummer, 1998 86
- Lori Rowe, 1983 61
- Jodi Thompson, 1991 52

Aces Per Set (Min. 25 Aces)

- Cally Plummer, 1998 0.77
- Lori Rowe, 1983 0.47
- Berna Dwyer, 1999 0.44

Digs

- Fernanda Lares, 1996 470
- Ashley Edlund, 1995 351
- Kelly Morrow, 1993 306

Digs Per Set (Min. 125 Digs)

- Fernanda Lares, 1996 4.27
- Ashley Edlund, 1995 3.19
- Hannah Lawing, 2007 2.93

Block Solos

- Libby Ralston, 1990 56
- Stephanie Pflugaupt, 1986 49
- Lori Rowe, 1983 46
- Amy Collinsworth, 1990 46

Block Assists

- Lori Rowe, 1983 195
- Libby Ralston, 1990 115
- Amy Collinsworth, 1990 99

Total Blocks

- Lori Rowe, 1983 241
- Libby Ralston, 1990 171
- Amy Collinsworth, 1990 145

Blocks Per Set (Min. 50 Blocks)

- Lori Rowe, 1983 1.84
- Dee Dee Fortman, 1995 1.52
- Libby Ralston, 1990 1.40

SOPHOMORE RECORDS

Matches Played: A. Collinsworth (1991), 37
Sets Played: Tammy Correll (1988), 133

Kills

- Shonda Cole, 2004 379
- Ivana Kujundzic, 2007 349
- Lori Rowe, 1984 346
- Kim DeNeve, 1988 346

Kills Per Set

- Shonda Cole, 2004 4.03
- Juliette Thévenin, 2011 3.65
- Cally Plummer, 2000 3.57

Attacks

- Koko Atoa-Williams, 2014 991
- Shonda Cole, 2004 976
- Ivana Kujundzic, 2007 954

Hitting Percentage (Min. 250 Attacks)

- Niece Curry, 2002404
- Berna Dwyer, 2000378
- Lori Rowe, 1984354

Assists

- Tammy Correll, 1988 1,597
- Julie Morrison, 1985 1,291
- Megan Hosp, 2000 1,280

Assists Per Set (Min. 125 Assists)

- Megan Hosp, 2000 12.67
- Tammy Correll, 1988 12.01
- Ashley Edlund, 1996 11.46

Aces

- Tammy Correll, 1988 58
- Julie Morrison, 1985 57
- Cally Plummer, 2000 47

Aces Per Set (Min. 25 Aces)

- Cally Plummer, 2000 0.54
- Julie Morrison, 1985 0.45
- Tammy Correll, 1988 0.44

Digs

- Paige Wheeler, 2011 475
- Shani Abshier, 1995 395
- Fernanda Lares, 1997 369

Digs Per Set (Min. 125 Digs)

- Paige Wheeler, 2011 4.57
- Fernanda Lares, 1997 3.77
- Sarah Cline, 2007 3.76

Block Solos

- Stephanie Pflugaupt, 1987 64
- Lori Rowe, 1984 41
- Amy Collinsworth, 1991 38

Block Assists

- Amy Collinsworth, 1991 128
- Jennifer Guess, 1991 111
- Darian Dozier, 2013 107

Total Blocks

- Amy Collinsworth, 1991 166
- Stephanie Pflugaupt, 1987 153
- Jennifer Guess, 1991 130

Blocks Per Set (Min. 50 Blocks)

- Libby Ralston, 1991 1.42
- Stephanie Pflugaupt, 1987 1.34
- Amy Collinsworth, 1991 1.27

JUNIOR RECORDS

Matches Played: Four (1983) tied at 38
Sets Played: Lori Rowe (1985), 132

Kills

- Kori Ermigarat, 1994 477
- Caryn Case, 1990 462
- Lori Rowe, 1985 459

Kills Per Set

- Juliette Thévenin, 2012 4.31
- Shonda Cole, 2005 4.18
- Cally Plummer, 2001 3.68

Attacks

- Caryn Case, 1990 1,281
- Kori Ermigarat, 1994 1,248
- Juliette Thévenin, 2012 1,073

Hitting Percentage (Min. 250 Attacks)

- Lori Rowe, 1985 (.431)
- Ashley Edlund, 1997 (.411)
- Belita Salters, 2007 (.330)

Assists

- Julie Morrison, 1986 1,597
- Ashley Edlund, 1997 1,276
- Shellie Higgins, 1983 1,243

Assists Per Set (Min. 125 Assists)

- Ashley Edlund, 1997 12.89
- Megan Hosp, 2001 12.10
- Tammy Correll, 1989 11.60

Aces

- Teri Montoya, 1983 141
- Shellie Higgins, 1983 80
- Kim Brown, 1983 77

Aces Per Set (Min. 25 Aces)

- Teri Montoya, 1983 1.08
- Shellie Higgins, 1983 0.61
- Kim Brown, 1983 0.59

Digs

- Diane Denton, 1987 525
- Kori Ermigarat, 1994 479
- Paige Wheeler, 2012 414

Digs Per Set (Min. 125 Digs)

- Diane Denton, 1987 4.61
- Paige Wheeler, 2012 3.91
- Sarah Cline, 2008 3.84

Block Solos

- Stephanie Pflugaupt, 1988 95
- Lori Rowe, 1985 65
- Belita Salters, 2007 33

Block Assists

- Stephanie Pflugaupt, 1988 175
- Darian Dozier, 2014 127
- Shellie Higgins, 1983 109

Total Blocks

- Stephanie Pflugaupt, 1988 270
- Lori Rowe, 1985 151
- Darian Dozier, 2014 141

Blocks Per Set (Min. 50 Blocks)

- Stephanie Pflugaupt, 1988 2.06
- Lauren Ford, 2004 1.27
- Belita Salters, 2007 1.21

SENIOR RECORDS

Matches Played: Sue Little (1983), 38
Sets Played: Amy Iannocari (1994), 132

Kills

- Shonda Cole, 2006 703
- Amy Iannocari, 1994 542
- Lori Rowe, 1986 497

Kills Per Set

- Shonda Cole, 2006 5.76
- Juliette Thévenin, 2013 4.57
- Lori Rowe, 1986 4.11
- Amy Iannocari, 1994 4.11

Attacks

- Shonda Cole, 2006 1,541
- Amy Iannocari, 1994 1,338
- Lora Myers, 1990 1,184

Hitting Percentage (Min. 250 Attacks)

- Stephanie Pflugaupt, 1989 (.400)
- Belita Salters, 2008 (.389)
- Lori Rowe, 1986 (.378)

Assists

- Tammy Correll, 1990 1,482
- Shellie Higgins, 1984 1,301
- Ashley Edlund, 1998 1,236

Assists Per Set (Min. 125 Assists)

- Megan Hosp, 2002 12.30
- Iris Santos, 2006 11.37
- Tammy Correll, 1990 11.31

Aces

- Teri Montoya, 1984 73
- Tammy Correll, 1990 66
- Lora Myers, 1990 62

Aces Per Set (Min. 25 Aces)

- Teri Montoya, 1984 0.59
- Cally Plummer, 2002 0.57
- Megan Hosp, 2002 0.54

Digs

- Mikaela Christiaansen, 2014 535
- Hannah Lawing, 2010 523
- Sarah Cline, 2009 498

Digs Per Set (Min. 125 Digs)

- Hannah Lawing, 2010 4.89
- Sarah Cline, 2009 4.57
- Mikaela Christiaansen, 2014 4.35

Block Solos

- Stephanie Pflugaupt, 1989 56
- Lori Rowe, 1986 39
- Jennifer Guess, 1993 25
- Sue Little, 1983 25

Block Assists

- Sue Little, 1983 137
- Cindy Robarge, 1998 108
- Jennifer Guess, 1993 106

Total Blocks

- Sue Little, 1983 162
- Stephanie Pflugaupt, 1988 159
- Jennifer Guess, 1993 131

Blocks Per Set (Min. 50 Blocks)

- Stephanie Pflugaupt, 1988 1.61
- Sue Little, 1983 1.24
- Danika Taylor, 1999 1.20



SCOTT SWANSON

Head Coach | Fifth Year at South Carolina

- Third in program history for career wins
- Coached seven teams that played in the NCAA Tournament (Arizona State 1999, 2000, Minnesota 2006-10)
- Part of staff that coached eight All-Americans
- Recruited three top-10 classes to Minnesota

The 11th head coach in Gamecock Volleyball history, Scott Swanson looks to continue building the South Carolina program into a national contender entering his fifth season in Columbia.

Last season under Swanson's guidance, the Gamecocks posted a 17-14 record, which included seven SEC wins, the program's most since 2008. Libero Mikaela Christiaansen set the program record for most digs in a single season with 535, while middle blocker Darian Dozier set single-season rally scoring era school records for total blocks (141) and block assists (127). The Gamecocks also turned in another strong year in the classroom, as a league-best 12 players made the SEC Fall Academic Honor Roll.

During the 2013 season, outside hitter Juliette Thévenin became just the second Gamecock in school history to earn AVCA All-America honors as she was named honorable mention All-American. Thévenin was also a first-team AVCA All-Southeast Region and All-SEC selection as she left the program ranked in the top 10 in six career categories.

Swanson guided the Gamecocks to an 18-14 record in 2012, the program's second winning season in the last decade. South Carolina got off to a program-best 13-0 start and improved its hitting percentage for a second straight season, ranking second in the SEC with a percentage of .255, an improvement of 29 points from the previous year. Outside hitter Juliette Thévenin garnered second-team All-SEC honors after she ranked second in SEC play with 4.40 kills per set and 4.81 points per set, becoming the first Gamecock since 2008 to receive an All-SEC award.

In Swanson's first season, the Gamecocks went 14-16 and improved its offensive efficiency and its backline defense under his guidance. The team led the SEC with a 16.78 digs average, the best mark in four years for the Gamecocks, and hit .226, a 45-point improvement from the 2011 season. Three times, South Carolina student-athletes garnered an SEC weekly award, with Thévenin picking up the first offensive listing and Paige Wheeler twice gaining the defensive certificate.

Swanson's teams have also proved themselves in the classroom, earning the Team Academic Award from the American Volleyball Coaches Association in 2011-12, 2012-13 and 2013-14. A total of 13 Gamecocks made the SEC Academic Honor Roll in 2013-14, 15 in 2012-13 and 13 received the honor in 2011-12. The team also claimed the department's Life Skills Team of the Year award in 2011-12, honoring the group for its academic achievements, personal development and work in the community.

Prior to his current head coaching job, Swanson spent five years on the sidelines for the Golden Gophers, helping the team to five-consecutive NCAA Tournament appearances and a 125-46 record. Three times, Minnesota finished second in the Big Ten behind perennial power Penn State. The 2009 team advanced to the national semifinals in the NCAA Tournament.

During his tenure in Minneapolis, Swanson helped the Golden Gophers become an elite blocking team. In five years, Minnesota never ranked lower than 35th in NCAA Division I in blocks. The 2007 team set a program record with 3.54 blocks per set. Five Golden Gophers earned All-America accolades during those five years, including 2009 first-team middle blocker and 2012 US National Team pool member Lauren Gibbemeyer.

Swanson also led the Gophers' recruiting efforts, posting three top-10 recruiting classes according to PrepVolleyball.com. The 2009 group earned top honors from the outlet.

The summer of 2009, Swanson spent time with USA Volleyball's A-2 Junior National Team, and he coached the USA Red team to a second-place showing in the 2008 USA Adult Open Championships.

Swanson brings in four years of head coaching experience to Columbia after his tenure at the University of Texas-El Paso. With a 50-61 career record, Swanson had the team on the brink of the NCAA Tournament in 2005, when the Miners went 21-10. Three player earned all-conference honors under Swanson's tutelage, including honorable mention All-American Kari Stacy. He also inked a high school All-American and saw his team improve in the classroom to a department-best 3.2 GPA in 2005.

Prior to UTEP, Swanson spent six years at his alma mater, Arizona State. He helped the team to two NCAA Tournament appearances during his time in Tempe and coached one second-team All-American and two Pac-10 All-Freshman Team players. Two of his Sun Devil players garnered Academic All-America certificates as well.

Swanson started his coaching career at Mountain View (Ariz.) High School, working as an assistant with the varsity team and leading his junior varsity group to a 17-1 record. As a head coach with the Arizona East Valley Juniors club, he led a 16-1s team to a national runner-up finish and earned Cactus Region Coach of the Year honors. He also served as head coach at Camelback High School before landing the job with Arizona State, where he also played club volleyball.

A graduate of ASU, Swanson is married to the former Erin Meier. The couple has two daughters, Rylee Sue and Haylen Rae.

HEAD COACHING RECORD

Year	School	W	L	PCT	W	L	PCT	Finish
2002	UTEP	11	14	.440	6	7	.462	2nd WAC East
2003	UTEP	8	22	.267	2	11	.154	5th WAC East
2004	UTEP	10	15	.400	2	11	.154	4th WAC East
2005	UTEP	21	10	.677	10	6	.625	4th CUSA
2011	South Carolina	14	16	.467	5	15	.250	5th SEC East
2012	South Carolina	18	14	.563	6	14	.300	6th SEC East
2013	South Carolina	12	19	.387	3	15	.167	T-11th SEC
2014	South Carolina	17	14	.548	7	11	.389	T-8th SEC
2015	South Carolina	10	16	.385	3	10	.231	--
TOTAL 8+ Years		121	139	.467	44	98	.312	

ASSISTANT COACHING RECORD

Year	School	W	L	PCT	W	L	PCT	Finish
1996	Arizona State	9	15	.375	4	14	.222	8th Pac-10
1997	Arizona State	13	16	.448	4	14	.222	8th Pac-10
1998	Arizona State	11	14	.440	8	10	.444	T-5th Pac-10
1999	Arizona State	14	13	.519	10	8	.556	5th Pac-10
2000	Arizona State	18	12	.600	9	9	.500	T-5th Pac-10
2001	Arizona State	10	16	.385	5	13	.278	7th Pac-10
2006	Minnesota	26	8	.765	17	3	.850	T-2nd Big Ten
2007	Minnesota	18	13	.581	11	9	.550	T-3rd Big Ten
2008	Minnesota	27	7	.794	16	4	.800	2nd Big Ten
2009	Minnesota	28	9	.757	15	5	.750	3rd Big Ten
2010	Minnesota	26	8	.765	14	6	.700	2nd Big Ten
TOTAL 11 Years		200	131	.604	113	95	.543	

THE SWANSON TIMELINE

Coaching	
2011-present	Head coach, South Carolina
2006-2010	Assistant coach, associate head coach, Minnesota
2009	Assistant coach, USA Volleyball A-2 Women's Team
2002-2005	Head coach, UTEP
1996-2001	Assistant coach, associate head coach, Arizona State
1994-1995	Head coach, Camelback High School
1993-2000	Head coach, Arizona East Valley Juniors
1991-1992	Assistant coach, Mountain View High School
Education	
1995	B.A., Family studies and human development, Arizona State



1 - MADISON BOROWSKI

5-9 | Fr. | S | Business Major | Austin, Texas (Westlake)

SEASON NOTES

- Missed the start of the season due to preseason surgery
- Saw her first action against East Carolina, passing out two assists.
- Played in the conference opener against Kentucky
- Passed out five assists in the first set of the team's match at LSU

Season Highs

Kills
N/A

Attempts
N/A

Hit. % (Min. 12 Att.)
N/A

Assists

5, Kentucky, 9/27

Service Aces

N/A

Digs

1, Kentucky, 9/25

Blocks Solo

N/A

Block Assists

N/A

Total Blocks

N/A

Match-By-Match Statistics

DATE	OPP	SP	KILL	ERR	ATT	PCT	AST	SA	SE	RE	DIG	BS	BA	BE	TB	BHE	P
8/28	Southeastern La.	--	--	--	--	--	--	--DNP	--	--	--	--	--	--	--	--	--
8/29	NC Central	--	--	--	--	--	--	--DNP	--	--	--	--	--	--	--	--	--
8/29	NC State	--	--	--	--	--	--	--DNP	--	--	--	--	--	--	--	--	--
9/4	vs. Clemson	--	--	--	--	--	--	--DNP	--	--	--	--	--	--	--	--	--
9/5	vs. Winthrop	--	--	--	--	--	--	--DNP	--	--	--	--	--	--	--	--	--
9/5	at Furman	--	--	--	--	--	--	--DNP	--	--	--	--	--	--	--	--	--
9/11	vs. Pittsburgh	--	--	--	--	--	--	--DNP	--	--	--	--	--	--	--	--	--
9/11	at Michigan	--	--	--	--	--	--	--DNP	--	--	--	--	--	--	--	--	--
9/12	vs. Western Michigan	--	--	--	--	--	--	--DNP	--	--	--	--	--	--	--	--	--
9/18	East Carolina	1	0	0	0	.000	2	0	0	0	0	0	0	0	0.0	0	0.0
9/19	Charleston Southern	--	--	--	--	--	--	--DNP	--	--	--	--	--	--	--	--	--
9/19	Wofford	1	0	0	0	.000	1	0	0	0	0	0	0	0	0.0	0	0.0
9/22	Coastal Carolina	--	--	--	--	--	--	--DNP	--	--	--	--	--	--	--	--	--
9/25	Kentucky	1	0	0	0	.000	2	0	0	0	1	0	0	0	0.0	1	0.0
9/27	at LSU	1	0	0	0	.000	5	0	0	0	0	0	0	0	0.0	0	0.0
10/2	at Ole Miss	--	--	--	--	--	--	--DNP	--	--	--	--	--	--	--	--	--
10/4	at Mississippi State	--	--	--	--	--	--	--DNP	--	--	--	--	--	--	--	--	--
10/9	Auburn	--	--	--	--	--	--	--DNP	--	--	--	--	--	--	--	--	--
10/11	Texas A&M	--	--	--	--	--	--	--DNP	--	--	--	--	--	--	--	--	--
10/14	at Georgia	--	--	--	--	--	--	--DNP	--	--	--	--	--	--	--	--	--
10/18	at Tennessee	--	--	--	--	--	--	--DNP	--	--	--	--	--	--	--	--	--
10/25	Arkansas	--	--	--	--	--	--	--DNP	--	--	--	--	--	--	--	--	--
10/30	Florida	--	--	--	--	--	--	--DNP	--	--	--	--	--	--	--	--	--
11/1	Ole Miss	--	--	--	--	--	--	--DNP	--	--	--	--	--	--	--	--	--
11/6	at Auburn	--	--	--	--	--	--	--DNP	--	--	--	--	--	--	--	--	--
11/8	at Alabama	--	--	--	--	--	--	--	--	--	--	--	--	--	--	--	--
11/11	Tennessee	--	--	--	--	--	--	--	--	--	--	--	--	--	--	--	--
11/20	Mississippi State	--	--	--	--	--	--	--	--	--	--	--	--	--	--	--	--
11/22	Alabama	--	--	--	--	--	--	--	--	--	--	--	--	--	--	--	--
11/25	at Arkansas	--	--	--	--	--	--	--	--	--	--	--	--	--	--	--	--
11/27	at Missouri	--	--	--	--	--	--	--	--	--	--	--	--	--	--	--	--

CAREER STATISTICS

YEAR	SP	MP	KILL	K/S	ERR	ATT	PCT	AST	A/S	SA	SA/S	SE	DIG	D/S	RE	BS	BA	TB	B/S	BE	BHE	P	P/S
2015	4	4	0	0.00	0	0	.000	10	2.50	0	0.00	0	1	0.25	0	0	0	0	0.00	0	1	0.0	0.00



2 - JOELY CABRERA

5-6 | Jr. | DS/Libero | Exercise Science Major | Seca, Puerto Rico (Daytona State)

SEASON NOTES

- Recorded 12 digs and four assists in Gamecock debut vs. Southeastern Louisiana (8/28)
- Contributed a season-high 13 digs in back-to-back matches vs. NC Central (8/29) and NC State (8/29)
- Totaled four digs over three sets at the Michigan Challenge, seeing time against Pitt and Michigan (9/11)
- Enjoyed a breakout weekend for the team, playing all ten sets at libero as the team went 3-0 at the Carolina Classic. Recorded 14, 22 and 15 in the three tournament matches, respectively
- Was perfect on 18 serve receptions and added 22 digs and three assists in a win over Charleston Southern (9/18)
- Finished with 20 digs and a pair of aces against Coastal Carolina (9/22)

Season Highs

Kills
1, Arkansas (10/25)

Attempts
3, Clemson (9/4)

Hit. % (Min. 12 Att.)
N/A

Assists
4, 2x, last vs. Clemson (9/4)

Service Aces
3, East Carolina (9/18)

Digs
22, Charleston Southern (9/19)

Blocks Solo
N/A

Block Assists
N/A

Total Blocks
N/A

Match-By-Match Statistics

DATE	OPP	SP	KILL	ERR	ATT	PCT	AST	SA	SE	RE	DIG	BS	BA	BE	TB	BHE	P
8/28	Southeastern La.	3	0	0	0	.000	4	0	0	2	12	0	0	0	0.0	0	0.0
8/29	NC Central	3	0	0	0	.000	3	0	1	0	13	0	0	0	0.0	0	0.0
8/29	NC State	3	0	0	0	.000	0	0	0	0	13	0	0	0	0.0	0	0.0
9/4	vs. Clemson	4	0	0	3	.000	4	2	2	0	9	0	0	0	0.0	0	2.0
9/5	vs. Winthrop	3	0	0	0	.000	2	0	2	0	12	0	0	0	0.0	0	0.0
9/5	at Furman	2	0	0	0	.000	0	0	1	1	1	0	0	0	0.0	0	0.0
9/11	vs. Pittsburgh	1	0	0	0	.000	0	0	0	0	3	0	0	0	0.0	0	0.0
9/11	at Michigan	2	0	0	0	.000	0	0	0	0	1	0	0	0	0.0	0	0.0
9/12	vs. Western Michigan	--	--	--	--	--	--	--	--	--	--	--	--	--	--	--	--
9/18	East Carolina	3	0	0	0	.000	2	3	1	0	14	0	0	0	0.0	0	3.0
9/19	Charleston Southern	4	0	0	0	.000	3	0	2	0	22	0	0	0	0.0	0	0.0
9/19	Wofford	3	0	0	2	.000	1	0	1	1	15	0	0	0	0.0	0	0.0
9/22	Coastal Carolina	4	0	0	0	.000	0	2	1	3	20	0	0	0	0.0	0	2.0
9/25	Kentucky	3	0	0	0	.000	4	0	1	0	9	0	0	0	0.0	0	0.0
9/27	at LSU	3	0	0	0	.000	2	0	2	1	9	0	0	0	0.0	0	0.0
10/2	at Ole Miss	4	0	0	0	.000	1	1	3	0	13	0	0	0	0.0	0	1.0
10/4	at Mississippi State	5	0	0	0	.000	3	0	3	1	18	0	0	0	0.0	0	0.0
10/9	Auburn	2	0	0	0	.000	1	0	2	1	1	0	0	0	0.0	0	0.0
10/11	Texas A&M	5	0	0	0	.000	1	0	3	0	1	0	0	0	0.0	0	0.0
10/14	at Georgia	3	0	1	1	-1.000	0	1	2	1	7	0	0	0	0.0	0	1.0
10/18	at Tennessee	--	--	--	--	--	--	--	--	--	--	--	--	--	--	--	--
10/25	Arkansas	4	1	0	2	.500	0	1	1	0	11	0	0	0	0.0	0	2.0
10/30	Florida	3	0	0	0	.000	1	2	3	0	0	0	0	0	0.0	0	2.0
11/1	Ole Miss	3	0	0	0	.000	0	0	1	1	8	0	0	0	0.0	0	0.0
11/6	at Auburn	2	0	0	0	.000	0	0	2	1	4	0	0	0	0.0	0	0.0
11/8	at Alabama	1	0	0	0	.000	0	0	0	0	2	0	0	0	0.0	0	0.0
11/11	Tennessee																
11/20	Mississippi State																
11/22	Alabama																
11/25	at Arkansas																
11/27	at Missouri																

CAREER STATISTICS

YEAR	SP	MP	KILL	K/S	ERR	ATT	PCT	AST	A/S	SA	SA/S	SE	DIG	D/S	RE	BS	BA	TB	B/S	BE	BHE	P	P/S
2013*	135	34	522	3.87	198	1224	.265	4	0.03	36	0.27	54	331	2.45	36	19	8	27	0.20	1	2	581.0	4.30
2014*	85	23	202	2.38	93	575	.190	3	0.04	19	0.22	22	233	2.74	11	8	2	10	0.12	2	0	230.0	2.71
TOTAL	220	57	724	3.29	291	1799	.241	7	0.03	55	0.25	76	564	2.56	47	27	10	37	0.17	3	2	811.0	3.69

*at Daytona State

YEAR	SP	MP	KILL	K/S	ERR	ATT	PCT	AST	A/S	SA	SA/S	SE	DIG	D/S	RE	BS	BA	TB	B/S	BE	BHE	P	P/S
2015	73	24	1	0.01	1	8	.000	32	0.44	12	0.16	34	218	2.99	13	0	0	0	0.00	0	0	13.0	0.18



3 - DESSAA LEGROS

5-10 | Jr. | MB/OH | Business Major | Kennesaw, Ga. (Allatoona)

SEASON NOTES

- Earned a spot on the Gamecock Invitational All-Tournament Team after averaging 4.22 kills per set in three matches (8/28-29)
- Tallied 12 kills and seven digs vs. Southeastern Louisiana (8/28)
- Produced 18 kills while hitting .424 and a career-high three blocks vs. NC Central (8/29)
- Named to Furman's Carolina Classic All-Tournament Team after averaging 4.23 kills and 2.62 digs per set in three matches (9/4-5)
- Recorded career-highs in kills (21) and digs (19) in win over rival Clemson (9/4)
- Finished with 20 kills and six digs vs. Furman (9/5)
- Posted her third 20-kill match of the season against Western Michigan, finishing with 22 points and a .302 hitting percentage. She made the Michigan Challenge All-Tournament team for her efforts.
- Hit a season-best .444 in the win over East Carolina, finishing with 12 kills total (9/18)
- Put up a pair of blocks with five digs and 12 kills against Charleston Southern (9/19)
- Led the team with 13 kills against Coastal Carolina (9/22)
- Went for her 11th double-digit kill match of the season at Ole Miss, finishing with 18 (10/2)
- Finished with 20 kills and a career-high six total blocks against Texas A&M. Her two solo blocks were a career high (10/11)
- Put up her third double-double of the season at Georgia, with 15 kills and 16 digs (10/14)
- Set new career highs with 22 kills and 57 attacks at Tennessee (10/18)

Season Highs

Kills
22, Tennessee (10/18)

Attempts
57, Tennessee (10/18)

Hit. % (Min. 12 Att.)
.444, East Carolina (9/18)

Assists
1, 4x, last vs. Texas A&M (10/11)

Service Aces
1, 4x, last at Georgia (10/14)

Digs
19, Clemson (9/4)

Blocks Solo
2, Texas A&M (10/11)

Block Assists
4, 2x,
W. Michigan (9/12)
Texas A&M (10/11)

Total Blocks
6, Texas A&M (10/11)

Career Highs

Kills
22, Tennessee (10/18/15)

Attempts
57, Tennessee (10/18/15)

Hit. % (Min. 12 Att.)
.667, SC State (8/30/13)

Assists
2, Furman (9/7/13)

Service Aces
1, 5x, last at Georgia (10/14/15)

Digs
19, Clemson (9/4/15)

Blocks Solo
2, Texas A&M (10/11/2015)

Block Assists
Alabama (11/8/2015)

Total Blocks
6, Texas A&M (10/11/15)

Match-By-Match Statistics

DATE	OPP	SP	KILL	ERR	ATT	PCT	AST	SA	SE	RE	DIG	BS	BA	BE	TB	BHE	P
8/28	Southeastern La.	3	12	2	28	.357	0	1	1	0	7	0	1	0	1.0	0	13.5
8/29	NC Central	3	18	4	33	.424	1	0	0	3	4	0	3	0	3.0	0	19.5
8/29	NC State	3	8	6	24	.083	0	0	1	1	5	0	2	0	2.0	1	9.0
9/4	vs. Clemson	4	21	7	54	.259	0	0	2	4	19	0	2	1	2.0	1	22.0
9/5	vs. Winthrop	5	14	7	48	.146	0	0	1	1	9	1	0	0	1.0	0	15.0
9/5	at Furman	4	20	6	44	.318	0	0	1	0	6	0	1	0	1.0	0	20.5
9/11	vs. Pittsburgh	3	5	9	22	-.182	0	0	0	0	1	0	0	0	0.0	0	5.0
9/11	at Michigan	3	10	4	25	.240	0	0	1	0	4	0	0	0	0.0	0	10.0
9/12	vs. Western Michigan	4	20	7	43	.302	1	0	0	0	5	0	4	1	4.0	0	22.0
9/18	East Carolina	3	12	4	18	.444	0	0	0	0	2	1	0	0	1.0	0	13.0
9/19	Charleston Southern	4	12	7	36	.139	0	0	1	1	5	1	1	0	2.0	0	13.5
9/19	Wofford	3	7	6	20	.050	0	0	0	0	1	1	0	0	1.0	0	8.0
9/22	Coastal Carolina	4	13	6	39	.179	0	0	0	0	5	0	0	0	0.0	0	13.0
9/25	Kentucky	2	1	6	20	-.250	0	0	1	0	1	0	0	0	0.0	0	1.0
9/27	at LSU	3	7	5	27	.074	0	0	0	0	2	0	1	0	1.0	0	7.5
10/2	at Ole Miss	4	18	9	47	.191	1	0	0	1	13	0	0	0	0.0	1	18.0
10/4	at Mississippi State	4	6	4	19	.105	0	1	2	1	8	0	0	0	0.0	0	7.0
10/9	Auburn	3	4	2	15	.133	0	0	2	0	5	0	0	0	0.0	0	4.0
10/11	Texas A&M	5	20	9	49	.224	1	1	0	1	7	2	4	0	6.0	1	25.0
10/14	at Georgia	3	15	7	38	.211	1	1	1	0	16	0	1	0	1.0	0	16.5
10/18	at Tennessee	5	22	6	57	.281	1	1	4	1	18	1	1	0	2.0	0	24.5
10/25	Arkansas	4	13	6	38	.184	1	0	0	0	7	0	0	1	0.0	0	13.0
10/30	Florida	3	11	8	30	.100	0	0	0	0	3	0	0	0	0.0	0	11.0
11/1	Ole Miss	3	5	3	16	.125	0	0	0	1	4	0	0	0	0.0	0	5.0
11/6	at Auburn	4	5	4	29	.034	0	0	0	0	1	0	3	0	3.0	0	6.5
11/8	at Alabama	4	4	4	24	.000	0	0	0	0	5	2	1	0	3.0	0	6.5
11/11	Tennessee																
11/20	Mississippi State																
11/22	Alabama																
11/25	at Arkansas																
11/27	at Missouri																

CAREER STATISTICS

YEAR	SP	MP	KILL	K/S	ERR	ATT	PCT	AST	A/S	SA	SA/S	SE	DIG	D/S	RE	BS	BA	TB	B/S	BE	BHE	P	P/S
2013	76	29	131	1.72	83	433	.111	5	0.07	0	0.00	0	30	0.39	4	0	14	0.18	2	0	138.0	1.82	
2014	39	18	56	1.44	37	182	.104	1	0.03	1	0.03	2	23	0.59	4	1	4	0.13	0	0	60.0	1.54	
2015	93	26	303	3.26	148	843	.184	7	0.08	5	0.05	18	163	1.75	15	9	25	0.37	3	4	329.5	3.54	
TOTAL	208	73	490	2.36	268	1458	.152	13	0.06	6	0.03	20	216	1.04	23	10	43	0.25	5	4	527.5	2.53	



4 - DARIAN DOZIER

6-1 | Sr. | MB/RS | Marketing/Management Major | Sandy Spring, Md. (St. Johns College)

SEASON NOTES

- Finished with nine kills while hitting .533 and two blocks vs. Southeastern Louisiana (8/28)
- Produced 13 kills and three blocks in win over rival Clemson (9/4)
- Tallied season-high 14 kills while hitting .481 and four blocks vs. Winthrop (9/5)
- Put down a pair of solo blocks and added four kills against Pittsburgh (9/11).
- Set new season bests in attacks (28), digs (3), total blocks (7) and points (16.5) against Western Michigan (9/12).
- Made the all-tournament team for the Carolina Classic after recording 33 total kills over three matches
- Set a new season best in kills after putting down 15 against Charleston Southern (9/19)
- Hit .688 against Wofford with 13 kills, setting a new career high in hitting percentage (9/19)
- Hit .364 with ten kills at Ole Miss (10/2)
- Put down a pair of solo blocks and finished with eight total at Mississippi State (10/4)
- Hit .400 with 12 kills in a win at Georgia (10/14)
- Moved into third in career block assists after finishing with two against Ole Miss (11/1)
- Had a career day at Auburn, with her first career double-double. She matched her career high with 11 blocks, and added in 16 kills with a season-high five digs, all while hitting .382 (11/6)
- Hit .708 with 17 kills at Alabama. It was the highest hitting percentage in program history for a four-setter, and it was the first time since Belita Salters in 2008 that a Gamecock hit over .700 in a match (11/8)

Season Highs

- Kills**
17, Alabama (11/8)
- Attempts**
34, Auburn (11/6)
- Hit. % (Min. 12 Att.)**
.708, Alabama (11/8)
- Assists**
2, Winthrop (9/5)
- Service Aces**
2, twice, last at Miss. State (10/04/15)
- Digs**
5, Auburn (11/6)
- Blocks Solo**
3, Auburn (11/6)
- Block Assists**
8, Auburn (11/6)
- Total Blocks**
11, Auburn (11/6)

Career Highs

- Kills**
18, Texas A&M (10/6/13)
- Attempts**
36, Tennessee (11/19/14)
- Hit. % (Min. 12 Att.)**
.708, Alabama (11/8/15)
- Assists**
2, 2x, last vs. Winthrop (9/5/15)
- Service Aces**
2, 4x, last at Miss. State (10/04/15)
- Digs**
8, Auburn (11/16/14)
- Blocks Solo**
3, Jacksonville (8/30/14)
- Block Assists**
8, 4x, last at Auburn (11/6/15)
- Total Blocks**
11, Jacksonville (8/30/14)
- Auburn (11/6/15)

Match-By-Match Statistics																	
DATE	OPP	SP	KILL	ERR	ATT	PCT	AST	SA	SE	RE	DIG	BS	BA	BE	TB	BHE	P
8/28	Southeastern La.	3	9	1	15	.533	0	2	0	1	2	0	2	0	2.0	0	12.0
8/29	NC Central	1	2	0	3	.667	0	0	0	0	0	0	0	0	0.0	0	2.0
8/29	NC State	3	4	2	13	.154	1	0	1	0	1	1	2	1	3.0	0	6.0
9/4	vs. Clemson	4	13	4	26	.346	1	0	0	0	1	1	2	0	3.0	1	15.0
9/5	vs. Winthrop	5	14	1	27	.481	2	0	0	0	2	0	4	0	4.0	0	16.0
9/5	at Furman	4	6	4	19	.105	1	0	1	0	1	0	4	0	4.0	0	8.0
9/11	vs. Pittsburgh	4	4	1	10	.300	0	1	0	0	1	2	3	1	5.0	0	8.5
9/11	at Michigan	3	3	2	12	.083	0	0	0	0	1	0	3	1	3.0	0	4.5
9/12	vs. Western Michigan	4	12	4	28	.286	0	1	1	0	3	0	7	0	7.0	0	16.5
9/18	East Carolina	3	5	1	12	.333	1	0	0	0	3	0	1	0	1.0	0	5.5
9/19	Charleston Southern	4	15	6	33	.273	0	0	1	0	1	1	2	0	3.0	0	17.0
9/19	Wofford	3	13	2	16	.688	0	0	0	0	4	0	1	0	1.0	0	13.5
9/22	Coastal Carolina	4	5	4	18	.056	0	0	0	0	2	1	3	0	4.0	1	7.5
9/25	Kentucky	3	3	1	7	.286	0	0	1	0	4	0	3	0	3.0	0	4.5
9/27	at LSU	3	6	2	16	.250	0	0	0	0	1	0	2	0	2.0	0	7.0
10/2	at Ole Miss	4	10	2	22	.364	0	0	0	0	2	1	1	0	2.0	0	11.5
10/4	at Mississippi State	4	5	1	13	.308	0	2	0	0	2	2	6	0	8.0	0	12.0
10/9	Auburn	3	7	2	18	.278	1	0	0	0	1	0	1	0	1.0	0	7.5
10/11	Texas A&M	5	7	0	17	.412	0	1	0	0	3	1	7	0	8.0	0	12.5
10/14	at Georgia	3	12	4	20	.400	0	0	1	0	2	0	2	0	2.0	0	13.0
10/18	at Tennessee	--	--	--	--	--	--	--	--	--	--	--	--	--	--	--	--
10/25	Arkansas	4	9	4	26	.192	0	0	2	0	4	0	6	1	6.0	0	12.0
10/30	Florida	--	--	--	--	--	--	--	--	--	--	--	--	--	--	--	--
11/1	Ole Miss	3	6	2	17	.235	0	0	0	0	0	0	2	0	2.0	0	7.0
11/6	at Auburn	4	16	3	34	.382	0	0	1	0	5	3	8	0	11.0	0	23.0
11/8	at Alabama	4	17	0	24	.708	0	0	1	0	2	0	3	0	3.0	0	18.5
11/11	Tennessee																
11/20	Mississippi State																
11/22	Alabama																
11/25	at Arkansas																
11/27	at Missouri																

CAREER STATISTICS

YEAR	SP	MP	KILL	K/S	ERR	ATT	PCT	AST	A/S	SA	SA/S	SE	DIG	D/S	RE	BS	BA	TB	B/S	BE	BHE	P	P/S
2012	96	31	129	1.34	43	325	.265	6	0.06	0	0.00	0	24	0.25	0	7	60	67	0.70	12	0	166.0	1.73
2013	108	31	214	1.98	70	521	.276	6	0.06	8	0.07	24	64	0.59	0	8	107	115	1.06	7	4	283.5	2.62
2014	120	31	218	1.82	90	577	.222	10	0.08	4	0.03	11	80	0.67	1	14	127	141	1.17	12	1	299.5	2.49
2015	85	24	203	2.39	53	446	.336	7	0.08	7	0.08	10	48	0.56	1	13	75	88	1.04	4	2	260.5	3.06
TOTAL	409	117	764	1.87	256	1869	.272	29	0.07	19	0.05	45	216	0.53	2	42	369	411	1.00	35	71009.5	2.47	



5 - AUBREY EZELL

5-8 | Fr. | S | Exercise Science Major | Granbury, Texas (Granbury)

SEASON NOTES

- Recorded a double-double in debut vs. Southeastern Louisiana (8/28), finishing with 30 assists, 13 digs and three service aces
- Distributed 47 assists, collected 15 digs and had a season-high three blocks in win over rival Clemson (9/4)
- Finished with 48 assists, 13 digs and matched season highs in kills (4) and blocks (3) vs. Winthrop (9/5)
- Produced third-straight double-double with 48 assists and a season-high 16 digs vs. Furman (9/5)
- Went for four straight double-doubles with 28 and 10 against Pittsburgh, adding three kills and an ace (9/11)
- Passed out a new season-best with 49 assists against Western Michigan
- Went for a pair of double-doubles during the Carolina Classic, with 48 assists and 16 digs against Charleston Southern and 37 assists and 12 digs against Wofford (9/19)
- Recorded a season-best five kills in seven attacks against Charleston Southern (9/19)
- Went for her third straight double-double against Coastal Carolina, with 38 assists and 10 digs (9/22)
- Had a career day at Ole Miss, with 50 assists and five service aces (10/2)
- Went for her 11th double-double of the season at Mississippi State, with 49 assists, 13 digs and four more aces
- Earned SEC Setter of the Week for her efforts in Mississippi
- Matched her season best with 50 assists against Texas A&M, adding in 11 digs for her 12th double-double
- Almost reached 50 assists in just a three-setter at Georgia, finishing with 49 assists and 12 digs (10/14)
- Passed out 62 assists at Tennessee, the most by any Gamecock since 2007 (10/18)
- Set a new career best with five total blocks at Auburn (11/6)

Season Highs

Kills
5, twice,
Charleston Southern (9/19)

Arkansas (10/25)

Attempts

9, Winthrop (9/5)

Hit. % (Min. 12 Att.)

N/A

Assists

62, Tennessee (10/18)

Service Aces

5, Ole Miss (10/2)

Digs

16, Furman (9/5)

Charleston So. (9/19)

Blocks Solo

1, 3x, last East Carolina (9/18)

Block Assists

5, Auburn (11/6)

Total Blocks

5, Auburn (11/6)

Match-By-Match Statistics

DATE	OPP	SP	KILL	ERR	ATT	PCT	AST	SA	SE	RE	DIG	BS	BA	BE	TB	BHE	P
8/28	Southeastern La.	3	1	0	2	.500	30	3	3	0	13	0	1	0	1.0	0	4.5
8/29	NC Central	3	2	1	4	.250	33	0	4	0	11	0	1	1	1.0	1	2.5
8/29	NC State	3	4	0	6	.667	23	1	3	0	7	0	1	0	1.0	1	5.5
9/4	vs. Clemson	4	3	1	8	.250	47	1	3	0	15	0	3	1	3.0	0	5.5
9/5	vs. Winthrop	5	4	2	9	.222	48	0	4	0	13	1	2	0	3.0	0	6.0
9/5	at Furman	4	1	0	3	.333	45	0	3	0	16	0	1	1	1.0	0	1.5
9/11	vs. Pittsburgh	4	3	0	6	.500	28	1	2	0	10	0	1	1	1.0	0	4.5
9/11	at Michigan	3	1	1	4	.000	29	0	3	0	7	0	1	0	1.0	1	1.5
9/12	vs. Western Michigan	4	1	1	4	.000	49	0	1	0	9	1	0	0	1.0	0	2.0
9/18	East Carolina	3	1	0	2	.500	35	1	2	0	7	1	1	0	2.0	0	3.5
9/19	Charleston Southern	4	5	1	7	.571	48	0	0	0	16	0	2	0	2.0	0	6.0
9/19	Wofford	3	0	1	3	-.333	37	3	3	0	12	0	0	0	0.0	1	3.0
9/22	Coastal Carolina	4	0	2	3	-.667	38	0	3	0	10	0	2	0	2.0	0	1.0
9/25	Kentucky	3	1	1	4	.000	19	2	3	0	9	0	0	0	0.0	0	3.0
9/27	at LSU	3	1	1	3	.000	17	0	3	0	11	0	0	0	0.0	1	1.0
10/2	at Ole Miss	4	1	2	5	-.200	50	5	1	0	7	0	2	0	2.0	0	7.0
10/4	at Mississippi State	5	1	0	5	.200	49	4	4	0	13	0	4	1	4.0	0	7.0
10/9	Auburn	3	1	0	3	.333	37	1	4	0	6	0	1	1	1.0	0	2.5
10/11	Texas A&M	5	0	0	4	.000	50	2	6	0	11	0	0	0	0.0	0	2.0
10/14	at Georgia	3	2	0	7	.286	49	1	4	0	12	0	1	2	1.0	0	3.5
10/18	at Tennessee	5	0	3	7	-.429	62	4	3	0	9	0	3	0	3.0	0	5.5
10/25	Arkansas	4	5	1	8	.500	41	3	5	0	13	0	4	1	4.0	0	10.0
10/30	Florida	3	1	1	3	.000	30	1	1	0	2	0	0	0	0.0	0	2.0
11/1	Ole Miss	3	2	1	5	.200	33	3	6	0	6	0	1	0	1.0	0	5.5
11/6	at Auburn	4	1	0	5	.200	33	1	1	0	8	0	5	1	5.0	1	4.5
11/8	at Alabama	4	0	0	3	.000	40	1	1	0	11	0	2	0	2.0	2	2.0
11/11	Tennessee																
11/20	Mississippi State																
11/22	Alabama																
11/25	at Arkansas																
11/27	at Missouri																

CAREER STATISTICS

YEAR	SP	MP	KILL	K/S	ERR	ATT	PCT	AST	A/S	SA	SA/S	SE	DIG	D/S	RE	BS	BA	TB	B/S	BE	BHE	P	P/S
2015	96	26	42	0.44	20	123	.179	1000	10.42	38	0.40	76	264	2.75	0	3	39	42	0.44	10	8	102.5	1.06



6 - SARAH BLOMGREN

5-11 | Sr. | RS/OH | Exercise Science Major | Canyon Country, Calif. (Saugus)

SEASON NOTES

- Produced six kills and two blocks in season opener vs. Southeastern Louisiana (8/28)
- Finished with 11 kills while hitting a season-best .348 in win over rival Clemson (9/4)
- Had eight kills and a career-high six blocks vs. Winthrop (9/5)
- Tallied a season-high 14 kills and five blocks vs. Furman (9/5)
- Matched her career high in digs against Michigan, popping up nine. Also recorded her first solo block of the season (9/11).
- Earned tournament MVP honors at the Carolina Classic after totaling 41 kills in three matches
- Hit a career-high .609 against East Carolina and finished with 15 kills in the three-set match (9/18)
- Went for her fifth-straight match with double-digit kills, finishing with 12 against Coastal Carolina (9/22)
- Hit .545 with a career-high 20 kills at Mississippi State. That percentage is third-highest in program history for a five-set match.
- Tied a career high with 34 attacks against Texas A&M, and finished with 15 kills (10/11)
- Set a new career high with 44 attacks and matched a career high with 20 kills in a five-setter at Tennessee (10/18)
- Went for 10 kills against Florida, including six in the third set alone (10/30)
- Hit 15 kills with a .444 attack percentage in a sweep of Ole Miss at home (11/1)
- Broke her career high again after posting 22 kills in four sets at Alabama, hitting .346 with a career-high 52 attacks. Also went for a double-double thanks to another career high of 10 digs (11/8)

Season Highs

Kills
22, Alabama (11/8)

Attempts
52, Alabama (11/8)

Hit. % (Min. 12 Att.)
.609, East Carolina (9/18)

Assists

1, 3x, last at Miss. State (10/4)

Service Aces

2, Michigan (9/11)

Digs

10, Alabama (11/8)

Blocks Solo

1, 2x, Michigan (9/11)
Ole Miss (10/2)

Block Assists

6, Winthrop (9/5)

Total Blocks

6, Winthrop (9/5)

Career Highs

Kills
22, Alabama (11/8/15)

Attempts

52, Alabama (11/8/15)

Hit. % (Min. 12 Att.)

.609, East Carolina (9/18/15)

Assists

5, LSU (10/31/14)

Service Aces

2, Michigan (9/11/15)

Digs

10, Alabama (11/8/15)

Blocks Solo

1, 9x, last vs. Ole Miss (10/2/15)

Block Assists

6, Winthrop (9/5/15)

Total Blocks

6, Winthrop (9/5/15)

Match-By-Match Statistics

DATE	OPP	SP	KILL	ERR	ATT	PCT	AST	SA	SE	RE	DIG	BS	BA	BE	TB	BHE	P
8/28	Southeastern La.	3	6	2	17	.235	1	0	0	0	1	0	2	0	2.0	0	7.0
8/29	NC Central	1	3	0	3	1.000	0	0	0	0	1	0	0	0	0.0	0	3.0
8/29	NC State	3	5	4	21	.048	0	0	0	0	2	0	2	0	2.0	0	6.0
9/4	vs. Clemson	4	11	3	23	.348	0	0	2	0	1	0	3	0	3.0	0	12.5
9/5	vs. Winthrop	5	8	11	28	-.107	0	0	0	0	2	0	6	0	6.0	0	11.0
9/5	at Furman	4	14	9	33	.152	0	0	0	0	2	0	5	0	5.0	0	16.5
9/11	vs. Pittsburgh	4	13	4	28	.321	0	1	1	0	4	0	0	1	0.0	0	14.0
9/11	at Michigan	3	5	5	18	.000	0	2	3	1	9	1	0	0	1.0	0	8.0
9/12	vs. Western Michigan	4	10	5	25	.200	1	0	1	0	3	0	2	3	2.0	0	11.0
9/18	East Carolina	3	15	1	23	.609	0	0	3	0	1	0	0	0	0.0	0	15.0
9/19	Charleston Southern	4	16	4	34	.353	0	0	2	0	3	0	3	1	3.0	0	17.5
9/19	Wofford	3	10	0	19	.526	0	0	0	0	2	0	0	0	0.0	0	10.0
9/22	Coastal Carolina	4	12	6	29	.207	0	0	0	0	6	0	0	2	0.0	0	12.0
9/25	Kentucky	3	7	1	18	.333	0	0	0	1	0	0	3	0	3.0	0	8.5
9/27	at LSU	3	8	6	29	.069	0	1	1	1	7	0	2	0	2.0	0	10.0
10/2	at Ole Miss	4	7	5	24	.083	0	0	1	0	3	1	0	0	1.0	0	8.0
10/4	at Mississippi State	5	20	2	33	.545	1	0	0	1	6	0	2	2	2.0	0	21.0
10/9	Auburn	3	9	5	20	.200	1	0	0	0	1	0	0	0	0.0	0	9.0
10/11	Texas A&M	5	15	6	34	.265	0	0	0	1	1	0	4	0	4.0	0	17.0
10/14	at Georgia	3	10	3	29	.241	0	0	0	0	3	0	1	0	1.0	0	10.5
10/18	at Tennessee	5	20	6	44	.318	0	0	2	0	4	0	3	0	3.0	0	21.5
10/25	Arkansas	4	13	4	30	.300	1	0	0	0	4	0	3	0	3.0	0	14.5
10/30	Florida	3	10	4	23	.261	1	0	1	0	3	0	1	0	1.0	0	10.5
11/1	Ole Miss	3	15	3	27	.444	0	0	0	0	3	0	2	0	2.0	0	16.0
11/6	at Auburn	4	7	11	40	-.100	0	1	0	1	6	0	1	3	1.0	0	8.5
11/8	at Alabama	4	22	4	52	.346	0	1	2	1	10	0	2	0	2.0	0	24.0
11/11	Tennessee																
11/20	Mississippi State																
11/22	Alabama																
11/25	at Arkansas																
11/27	at Missouri																

CAREER STATISTICS

YEAR	SP	MP	KILL	K/S	ERR	ATT	PCT	AST	A/S	SA	SA/S	SE	DIG	D/S	RE	BS	BA	TB	B/S	BE	BHE	P	P/S
2012	24	11	19	0.79	18	68	.015	0	0.00	0	0.00	0	2	0.08	0	1	7	8	0.33	4	0	23.5	0.96
2013	102	30	214	2.10	117	542	.179	7	0.07	1	0.01	2	36	0.35	1	5	60	65	0.64	11	0	250.0	2.45
2014	105	30	207	1.97	94	520	.217	13	0.12	3	0.03	12	72	0.69	4	3	42	45	0.43	13	3	234.0	2.23
2015	94	26	291	3.10	114	704	.251	6	0.06	6	0.06	19	88	0.94	7	2	47	49	0.52	12	0	322.5	3.43
TOTAL	325	97	731	2.25	343	1834	.212	26	0.08	10	0.03	33	198	0.61	12	11	156	167	0.51	40	3	830.0	2.55



7 - JACQY ANGERMILLER

6-2 | Jr. | MB/RS | Fashion Marketing Major | Dallas, Texas (LD Bell)

SEASON NOTES

- Contributed three kills and a pair of blocks in opener vs. Southeastern Louisiana (8/28)
- Tallied six kills while hitting .667, six blocks and matched career-high with two digs vs. Clemson (9/4)
- Recorded season highs in kills (7) and blocks (7) vs. Winthrop (9/5)
- Set a new career high with 29 attacks against Western Michigan (9/12)
- Had eight kills and a .263 hitting percentage against Coastal Carolina (9/22)
- Led the team with 10 kills on just 20 swings against Kentucky (9/25)
- Set a new career high with 14 kills at Tennessee (10/18)

Season Highs

Kills
14, Tennessee (10/18)

Attempts
29, W. Michigan (9/12)

Hit. % (Min. 12 Att.)
.500, Kentucky (9/25)

Assists
1, NC State (8/29)

Service Aces
2, NC Central (8/29)

Digs
2, Clemson (9/4)

Blocks Solo
2, Winthrop (9/5)

Block Assists
5, 3x, last vs. Tennessee (10/18)

Total Blocks
7, Winthrop (9/5)

Career Highs

Kills
14, Tennessee (10/18/15)

Attempts
29, Western Michigan (9/12/15)

Hit. % (Min. 12 Att.)
.583, Liberty (9/13/13)

Assists
3, Ole Miss (10/20/13)

Service Aces
2, NC Central (8/29/15)

Digs
2, 2x, last vs. Clemson (9/4/15)

Blocks Solo
2, 4x, last vs. Winthrop (9/5/15)

Block Assists
11, Eastern Kentucky (9/19/14)

Total Blocks
11, Eastern Kentucky (9/19/14)

Match-By-Match Statistics

DATE	OPP	SP	KILL	ERR	ATT	PCT	AST	SA	SE	RE	DIG	BS	BA	BE	TB	BHE	P
8/28	Southeastern La.	3	3	1	6	.333	0	0	0	0	1	0	2	0	2.0	0	4.0
8/29	NC Central	2	1	0	2	.500	0	2	0	0	0	0	2	0	2.0	0	4.0
8/29	NC State	3	4	2	12	.167	1	0	0	0	0	0	3	0	3.0	0	5.5
9/4	vs. Clemson	4	6	0	9	.667	0	0	1	0	2	1	5	0	6.0	0	9.5
9/5	vs. Winthrop	5	7	3	16	.250	0	0	0	0	0	2	5	0	7.0	0	11.5
9/5	at Furman	3	4	0	7	.571	0	0	0	0	0	0	3	0	3.0	0	5.5
9/11	vs. Pittsburgh	4	0	1	7	-.143	0	0	0	0	1	0	1	0	1.0	0	0.5
9/11	at Michigan	3	6	0	16	.375	0	0	0	0	1	0	0	1	0.0	0	6.0
9/12	vs. Western Michigan	4	5	8	29	-.103	0	0	0	0	0	0	1	0	1.0	0	5.5
9/18	East Carolina	3	3	2	13	.077	0	0	0	0	0	0	2	0	2.0	0	4.0
9/19	Charleston Southern	2	1	1	5	.000	0	0	0	0	0	0	4	0	4.0	0	3.0
9/19	Wofford	--	--	--	--	--	--	--	--	--	--	--	--	--	--	--	--
9/22	Coastal Carolina	4	8	3	19	.263	0	0	0	0	0	0	3	1	3.0	0	9.5
9/25	Kentucky	3	10	0	20	.500	0	0	0	0	0	1	3	0	4.0	0	12.5
9/27	at LSU	3	3	2	11	.091	0	0	0	0	1	0	1	1	1.0	0	3.5
10/2	at Ole Miss	4	9	4	17	.294	0	0	0	0	0	1	1	0	2.0	0	10.5
10/4	at Mississippi State	5	6	5	20	.050	0	0	0	0	1	0	0	0	0.0	0	6.0
10/9	Auburn	3	5	2	14	.214	0	0	0	0	0	1	2	1	3.0	0	7.0
10/11	Texas A&M	5	8	5	21	.143	0	0	0	0	0	0	2	1	2.0	0	9.0
10/14	at Georgia	2	3	0	6	.500	0	0	0	0	0	0	0	0	0.0	0	3.0
10/18	at Tennessee	5	14	5	25	.360	0	0	0	0	0	0	5	0	5.0	0	16.5
10/25	Arkansas	--	--	--	--	--	--	--	--	--	--	--	--	--	--	--	--
10/30	Florida	--	--	--	--	--	--	--	--	--	--	--	--	--	--	--	--
11/1	Ole Miss	--	--	--	--	--	--	--	--	--	--	--	--	--	--	--	--
11/6	at Auburn	--	--	--	--	--	--	--	--	--	--	--	--	--	--	--	--
11/8	at Alabama	--	--	--	--	--	--	--	--	--	--	--	--	--	--	--	--
11/11	Tennessee																
11/20	Mississippi State																
11/22	Alabama																
11/25	at Arkansas																
11/27	at Missouri																

CAREER STATISTICS

YEAR	SP	MP	KILL	K/S	ERR	ATT	PCT	AST	A/S	SA	SA/S	SE	DIG	D/S	RE	BS	BA	TB	B/S	BE	BHE	P	P/S
2013	77	24	121	1.57	50	334	.213	4	0.05	0	0.00	0	13	0.17	1	8	75	83	1.08	8	2	166.5	2.16
2014	76	22	97	1.28	43	254	.213	1	0.01	0	0.00	1	9	0.12	1	6	61	67	0.88	5	2	133.5	1.75
2015	70	20	106	1.51	44	275	.225	1	0.01	2	0.03	1	7	0.10	0	6	45	51	0.73	5	0	136.5	1.94
TOTAL	223	66	324	1.45	137	863	.217	6	0.03	2	0.01	2	29	0.13	2	20	181	201	0.90	18	3	436.5	1.96



9 - MEGAN KIRKLAND

5-7 | Jr. | DS/Libero | Exercise Science Major | Lugoff, S.C. (Lugoff-Elgin)

SEASON NOTES

- Tallied six digs and two service aces in first action of the season vs. Southeastern Louisiana (8/28)
- Named to Furman's Carolina Classic All-Tournament Team after averaging 3.92 digs per set in three matches (9/4-5)
- Recorded a career-high 23 digs and two service aces vs. Winthrop (9/5)
- Collected 16 digs and matched career high with four assists vs. Furman (9/5)
- Posted her fourth-straight game with double-digit digs against Pittsburgh, with 12 (9/11)
- Had a pair of aces at Ole Miss, her fourth multi-ace match of the season
- Earned the start at Mississippi State and had ten digs
- Stepped in as libero for the second and third sets against Auburn, finishing with 14 digs (10/9)
- Earned the start at libero against Texas A&M, and responded with 21 digs and a pair of aces (10/11)
- Went for a fifth-straight game with an ace, and fourth-straight with double digit digs (19) at Georgia (10/14)
- Had her third 20-dig game of the season at Tennessee, finishing with 22 (10/18)
- Set a new career high with five assists and added 16 digs in a three-set sweep of Ole Miss (11/1)

Season Highs

Kills
1, Ole Miss (11/1)

Attempts
1, 6x, last vs. Tennessee (10/18)

Hit. % (Min. 12 Att.)
N/A

Assists

5, Ole Miss (11/1)

Service Aces

2, 5x, last vs. Texas A&M (10/11)

Digs

23, Winthrop (9/5)

Blocks Solo

N/A

Block Assists

N/A

Total Blocks

N/A

Career Highs

Kills
1, 5x, last vs. Ole Miss (11/1/15)

Attempts
1, 16x, last vs. Texas A&M (10/11/15)

Hit. % (Min. 12 Att.)
N/A

Assists

5, Ole Miss (11/1/15)

Service Aces

3, 2x, last vs. Arkansas (11/14/14)

Digs

23, Winthrop (9/5/15)

Blocks Solo

N/A

Block Assists

N/A

Total Blocks

N/A

Match-By-Match Statistics

DATE	OPP	SP	KILL	ERR	ATT	PCT	AST	SA	SE	RE	DIG	BS	BA	BE	TB	BHE	P
8/28	Southeastern La.	3	0	0	0	.000	0	2	0	0	6	0	0	0	0.0	0	2.0
8/29	NC Central	3	0	0	0	.000	0	1	0	0	8	0	0	0	0.0	0	1.0
8/29	NC State	3	0	0	0	.000	1	0	2	1	3	0	0	0	0.0	0	0.0
9/4	vs. Clemson	4	0	0	0	.000	1	2	0	1	12	0	0	0	0.0	0	2.0
9/5	vs. Winthrop	5	0	0	1	.000	2	2	1	0	23	0	0	0	0.0	0	2.0
9/5	at Furman	4	0	0	1	.000	4	1	0	1	16	0	0	0	0.0	0	1.0
9/11	vs. Pittsburgh	4	0	0	0	.000	4	0	0	0	12	0	0	0	0.0	0	0.0
9/11	at Michigan	3	0	0	0	.000	2	0	1	0	2	0	0	0	0.0	0	0.0
9/12	vs. Western Michigan	4	0	0	0	.000	1	1	0	1	6	0	0	0	0.0	0	1.0
9/18	East Carolina	2	0	0	0	.000	1	0	0	0	5	0	0	0	0.0	0	0.0
9/19	Charleston Southern	3	0	0	0	.000	1	0	0	0	7	0	0	0	0.0	0	0.0
9/19	Wofford	3	0	0	1	.000	0	0	1	0	3	0	0	0	0.0	0	0.0
9/22	Coastal Carolina	4	0	0	1	.000	1	0	0	1	6	0	0	0	0.0	0	0.0
9/25	Kentucky	2	0	0	0	.000	1	0	0	0	5	0	0	0	0.0	0	0.0
9/27	at LSU	1	0	0	0	.000	2	0	0	0	0	0	0	0	0.0	0	0.0
10/2	at Ole Miss	4	0	0	0	.000	0	2	1	1	5	0	0	0	0.0	0	2.0
10/4	at Mississippi State	5	0	0	0	.000	0	0	1	0	10	0	0	0	0.0	0	0.0
10/9	Auburn	3	0	0	0	.000	3	0	3	0	14	0	0	0	0.0	0	0.0
10/11	Texas A&M	5	0	0	1	.000	3	2	1	0	21	0	0	0	0.0	0	2.0
10/14	at Georgia	3	0	0	0	.000	1	0	1	1	19	0	0	0	0.0	0	0.0
10/18	at Tennessee	5	0	1	1	-1.000	1	0	1	0	22	0	0	0	0.0	0	0.0
10/25	Arkansas	4	0	0	0	.000	3	1	1	1	11	0	0	0	0.0	0	1.0
10/30	Florida	3	0	0	0	.000	1	0	1	1	9	0	0	0	0.0	0	0.0
11/1	Ole Miss	3	1	0	1	1.000	5	1	0	1	16	0	0	0	0.0	0	2.0
11/6	at Auburn	4	0	0	0	.000	2	0	0	2	19	0	0	0	0.0	0	0.0
11/8	at Alabama	4	0	0	0	.000	4	0	0	0	10	0	0	0	0.0	0	0.0
11/11	Tennessee																
11/20	Mississippi State																
11/22	Alabama																
11/25	at Arkansas																
11/27	at Missouri																

CAREER STATISTICS

YEAR	SP	MP	KILL	K/S	ERR	ATT	PCT	AST	A/S	SA	SA/S	SE	DIG	D/S	RE	BS	BA	TB	B/S	BE	BHE	P	P/S
2013	36	17	2	0.06	0	3	.667	7	0.19	3	0.08	8	39	1.08	7	0	0	0	0.00	0	0	5.0	0.14
2014	105	28	2	0.02	0	8	.250	22	0.21	15	0.14	20	202	1.92	18	0	0	0	0.00	0	1	17.0	0.16
2015	91	26	1	0.01	1	7	.000	44	0.48	15	0.16	15	270	2.97	12	0	0	0	0.00	0	0	16.0	0.18
TOTAL	232	71	5	0.02	1	18	.222	73	0.31	33	0.14	43	511	2.20	37	0	0	0	0.00	0	1	38.0	0.16



10 - EMMA LOCK

5-9 | Fr. | DS/Libero | Lee's Summit, Mo. (Lee's Summit)

SEASON NOTES

- Made Gamecock debut vs. rival Clemson (9/4) and recorded nine digs and four assists
- Saw extended playing time against Western Michigan and responded with a career day, totaling 19 digs to go with a pair of assists (9/12)
- Had eight digs against Charleston Southern and Wofford (9/19)
- Earned her second career start, against Coastal Carolina, and finished with four assists and seven digs out of the back row (9/22)
- Went for double-digit digs at LSU, putting up 11 over three sets (9/27)
- Recorded a pair of service aces against Auburn (11/6)

Season Highs

Kills
1, Florida (10/30)

Attempts
5, LSU (9/27)

Hit. % (Min. 12 Att.)
N/A

Assists
4, 2x, last vs. Coastal Carolina (9/22)

Service Aces
2, Auburn (11/6)

Digs
19, W. Michigan (9/12)

Blocks Solo
N/A

Block Assists
N/A

Total Blocks
N/A

Match-By-Match Statistics

DATE	OPP	SP	KILL	ERR	ATT	PCT	AST	SA	SE	RE	DIG	BS	BA	BE	TB	BHE	P
8/28	Southeastern La.	--	--	--	--	--	--	--DNP	--	--	--	--	--	--	--	--	--
8/29	NC Central	--	--	--	--	--	--	--DNP	--	--	--	--	--	--	--	--	--
8/29	NC State	--	--	--	--	--	--	--DNP	--	--	--	--	--	--	--	--	--
9/4	vs. Clemson	3	0	0	1	.000	4	0	0	0	9	0	0	0	0.0	0	0.0
9/5	vs. Winthrop	3	0	0	1	.000	1	1	1	2	2	0	0	0	0.0	0	1.0
9/5	at Furman	3	0	1	2	-.500	0	0	0	0	6	0	0	0	0.0	0	0.0
9/11	vs. Pittsburgh	3	0	0	0	.000	3	0	0	0	4	0	0	0	0.0	1	0.0
9/11	at Michigan	3	0	0	0	.000	1	0	1	0	8	0	0	0	0.0	0	0.0
9/12	vs. Western Michigan	4	0	0	0	.000	2	0	2	0	19	0	0	0	0.0	0	0.0
9/18	East Carolina	3	0	1	1	-1.000	0	1	0	0	2	0	0	0	0.0	0	1.0
9/19	Charleston Southern	4	0	0	0	.000	1	1	1	0	8	0	0	0	0.0	0	1.0
9/19	Wofford	3	0	0	0	.000	2	1	1	0	5	0	0	0	0.0	0	1.0
9/22	Coastal Carolina	4	0	0	1	.000	4	1	2	2	7	0	0	0	0.0	0	1.0
9/25	Kentucky	3	0	0	0	.000	0	0	1	0	4	0	0	0	0.0	0	0.0
9/27	at LSU	3	1	0	5	.200	0	0	0	0	11	0	0	0	0.0	0	1.0
10/2	at Ole Miss	3	0	0	0	.000	0	0	0	2	3	0	0	0	0.0	0	0.0
10/4	at Mississippi State	4	0	0	1	.000	0	0	1	0	6	0	0	0	0.0	0	0.0
10/9	Auburn	3	0	0	0	.000	2	0	0	0	4	0	0	0	0.0	0	0.0
10/11	Texas A&M	3	0	0	0	.000	0	0	0	1	0	0	0	0	0.0	0	0.0
10/14	at Georgia	--	--	--	--	--	--	--DNP	--	--	--	--	--	--	--	--	--
10/18	at Tennessee	5	0	0	0	.000	0	1	0	2	6	0	0	0	0.0	0	1.0
10/25	Arkansas	4	0	0	0	.000	3	0	1	0	2	0	0	0	0.0	0	0.0
10/30	Florida	3	1	0	1	1.000	0	0	1	0	6	0	0	0	0.0	0	1.0
11/1	Ole Miss	3	0	1	2	-.500	2	1	0	0	2	0	0	0	0.0	0	1.0
11/6	at Auburn	4	0	0	0	.000	0	2	0	0	7	0	0	0	0.0	1	2.0
11/8	at Alabama	4	0	0	0	.000	0	1	1	1	9	0	0	0	0.0	0	1.0
11/11	Tennessee																
11/20	Mississippi State																
11/22	Alabama																
11/25	at Arkansas																
11/27	at Missouri																

CAREER STATISTICS

YEAR	SP	MP	KILL	K/S	ERR	ATT	PCT	AST	A/S	SA	SA/S	SE	DIG	D/S	RE	BS	BA	TB	B/S	BE	BHE	P	P/S
2015	75	22	2	0.03	3	15	-.067	25	0.33	10	0.13	13	130	1.73	10	0	0	0	0.00	0	2	12.0	0.16



11 - KOKO ATOA-WILLIAMS

5-10 | Jr. | OH | Exercise Science Major | Reno, Nev. (Bishop Manogue)

SEASON NOTES

- Recorded seven kills and three digs in opener vs. Southeastern Louisiana (8/28)
- Tallied season-high 12 kills while hitting .303, five digs and a season-high three blocks vs. Winthrop (9/5)
- Finished with a double-double vs. Furman (9/5), recording 10 kills and 10 digs
- Popped up a season-high 15 digs and three assists against Charleston Southern (9/19)
- Earned the start against Wofford and responded with 12 kills on 26 swings (9/19)
- Recorded her second double-double of the season at Mississippi State, with 10 kills and 15 digs (10/4)
- Led the team with 16 kills against Auburn, a new season high. It was just two off her career high (10/9)

Season Highs

Kills
16, Auburn (10/9)
Attempts
39, Furman (9/5)
Hit. % (Min. 12 Att.)
.385, Wofford (9/19)

Assists
3, Charleston Southern (9/19)

Service Aces
2, 2x, last vs. Coastal Carolina (9/22)

Digs
15, twice
Charleston Southern (9/19)

Miss. State (10/4)
Blocks Solo
2, Furman (9/5)

Block Assists
2, twice,
Winthrop (9/5)
Kentucky (9/25)

Total Blocks
3, Winthrop (9/5)

Career Highs

Kills
18, 4x, last vs. Auburn (11/16/14)
Attempts
54, Furman (9/6/14)

Hit. % (Min. 12 Att.)
.515, Missouri (10/26/14)

Assists
3, Alabama (10/12/14)

Service Aces
2, 2x, last vs. Coastal Carolina (9/22)

Digs
27, Tennessee (11/19/14)

Blocks Solo
2, 2x, last vs. Furman (9/5/15)

Block Assists
4, 3x, last vs. Alabama (11/9/14)

Total Blocks
4, 3x, last vs. Alabama (11/9/14)

Match-By-Match Statistics

DATE	OPP	SP	KILL	ERR	ATT	PCT	AST	SA	SE	RE	DIG	BS	BA	BE	TB	BHE	P
8/28	Southeastern La.	3	7	2	21	.238	0	0	0	1	3	0	0	0	0.0	0	7.0
8/29	NC Central	1	1	0	2	.500	0	0	0	0	2	0	0	0	0.0	0	1.0
8/29	NC State	3	1	1	13	.000	0	1	0	3	1	0	0	1	0.0	0	2.0
9/4	vs. Clemson	3	5	2	18	.167	0	1	1	0	6	0	0	0	0.0	0	6.0
9/5	vs. Winthrop	5	12	2	33	.303	2	0	2	0	5	1	2	0	3.0	0	14.0
9/5	at Furman	4	10	7	39	.077	2	0	0	2	10	2	0	1	2.0	0	12.0
9/11	vs. Pittsburgh	4	7	5	27	.074	2	0	0	0	5	0	1	1	1.0	1	7.5
9/11	at Michigan	2	0	0	0	.000	1	0	0	0	2	0	0	0	0.0	0	0.0
9/12	vs. Western Michigan	4	0	1	4	-.250	1	0	2	1	8	0	0	0	0.0	0	0.0
9/18	East Carolina	3	2	1	4	.250	0	2	0	0	6	0	0	0	0.0	0	4.0
9/19	Charleston Southern	4	4	3	29	.034	3	1	1	1	15	1	1	0	2.0	0	6.5
9/19	Wofford	3	12	2	26	.385	1	0	0	0	4	0	1	1	1.0	0	12.5
9/22	Coastal Carolina	3	2	9	20	-.350	0	2	2	0	4	0	1	0	1.0	0	4.5
9/25	Kentucky	3	2	5	9	-.333	0	0	0	1	1	0	2	0	2.0	0	3.0
9/27	at LSU	2	3	3	11	.000	0	0	0	1	7	0	0	0	0.0	0	3.0
10/2	at Ole Miss	2	3	1	9	.222	0	0	0	1	3	1	1	0	2.0	0	4.5
10/4	at Mississippi State	5	10	3	35	.200	1	1	1	2	15	0	0	0	0.0	0	11.0
10/9	Auburn	3	16	6	33	.303	0	1	1	1	4	0	1	0	1.0	0	17.5
10/11	Texas A&M	5	6	5	24	.042	0	1	1	2	2	0	0	1	0.0	0	7.0
10/14	at Georgia	3	6	6	30	.000	0	1	0	0	9	0	1	0	1.0	0	7.5
10/18	at Tennessee	5	5	3	28	.071	1	1	1	2	14	0	1	0	1.0	0	6.5
10/25	Arkansas	4	6	4	25	.080	1	0	0	1	9	0	0	0	0.0	0	6.0
10/30	Florida	3	2	1	6	.167	1	0	1	1	6	0	0	0	0.0	0	2.0
11/1	Ole Miss	3	5	2	16	.188	0	1	1	1	1	0	2	0	2.0	0	7.0
11/6	at Auburn	4	1	2	13	-.077	2	0	0	1	13	0	1	0	1.0	0	1.5
11/8	at Alabama	4	2	0	4	.500	2	0	1	1	6	0	0	0	0.0	0	2.0
11/11	Tennessee																
11/20	Mississippi State																
11/22	Alabama																
11/25	at Arkansas																
11/27	at Missouri																

CAREER STATISTICS

YEAR	SP	MP	KILL	K/S	ERR	ATT	PCT	AST	A/S	SA	SA/S	SE	DIG	D/S	RE	BS	BA	TB	B/S	BE	BHE	P	P/S
2013	56	21	80	1.43	54	286	.091	3	0.05	0	0.00	0	21	0.38	4	0	15	15	0.27	3	2	87.5	1.55
2014	121	31	304	2.51	137	991	.169	14	0.12	9	0.07	14	283	2.34	28	6	42	48	0.40	5	2	340.0	2.81
2015	88	26	130	1.48	76	479	.113	20	0.23	13	0.15	15	161	1.83	23	5	15	20	0.23	5	1	155.5	1.76
TOTAL	265	78	514	1.94	267	1756	.141	37	0.14	22	0.08	29	465	1.75	55	11	72	83	0.31	13	5	583.0	2.20



12 - COURTNEY FURLONG

6-3 | Fr. | OH | Education Major | Oviedo, Fla. (Oviedo)

SEASON NOTES

- Made Gamecock debut vs. Southeastern Louisiana (8/28) and played in two sets
- Recorded a season-high five kills vs. NC Central (8/29)
- Tallied first career block and had one kill vs. rival Clemson (9/4)
- Blossomed in the team's weekend at the Michigan Challenge, earning two starts and setting career highs across the board
- Went for eight kills, seven digs and four block assists against Pittsburgh (9/11)
- Finished with 31 kills for the weekend, including 13 against Western Michigan (9/12)
- Hit .500 with nine kills over two sets at Ole Miss (10/2)

Season Highs Kills

13, W. Michigan (9/12)

Attempts

40, W. Michigan (9/12)

Hit. % (Min. 12 Att.)

.500, Ole Miss (10/2)

Assists

2, NC Central (8/29)

Service Aces

1, Pittsburgh (9/11)

Digs

7, Pittsburgh (9/11)

Blocks Solo

1, Winthrop (9/5)

Ole Miss (10/2)

Block Assists

4, Pittsburgh (9/11)

Total Blocks

4, Pittsburgh (9/11)

Match-By-Match Statistics

DATE	OPP	SP	KILL	ERR	ATT	PCT	AST	SA	SE	RE	DIG	BS	BA	BE	TB	BHE	P
8/28	Southeastern La.	2	0	0	1	.000	0	0	0	0	1	0	0	0	0.0	0	0.0
8/29	NC Central	3	5	6	18	-.056	2	0	0	0	0	0	0	0	0.0	0	5.0
8/29	NC State	3	4	3	11	.091	0	0	0	0	0	0	0	0	0.0	0	4.0
9/4	vs. Clemson	2	1	1	6	.000	0	0	0	0	0	0	1	0	1.0	0	1.5
9/5	vs. Winthrop	2	0	0	3	.000	0	0	0	0	0	1	0	0	1.0	0	1.0
9/5	at Furman	3	0	0	6	.000	0	0	0	0	0	0	0	0	0.0	0	0.0
9/11	vs. Pittsburgh	4	8	5	27	.111	0	1	0	0	7	0	4	0	4.0	0	11.0
9/11	at Michigan	3	10	4	28	.214	1	0	0	0	3	0	2	0	2.0	0	11.0
9/12	vs. Western Michigan	4	13	6	40	.175	0	0	0	0	1	0	2	2	2.0	0	14.0
9/18	East Carolina	3	6	1	14	.357	0	0	0	0	1	0	2	0	2.0	0	7.0
9/19	Charleston Southern	2	2	4	11	-.182	0	0	0	0	1	0	3	0	3.0	0	3.5
9/19	Wofford	2	0	0	1	.000	0	0	0	0	0	0	0	0	0.0	0	0.0
9/22	Coastal Carolina	3	4	0	10	.400	0	0	0	1	1	0	3	0	3.0	0	5.5
9/25	Kentucky	3	2	3	12	-.083	0	1	0	1	2	0	1	0	1.0	0	3.5
9/27	at LSU	3	1	3	8	-.250	0	0	0	0	2	0	0	0	0.0	0	1.0
10/2	at Ole Miss	2	9	0	18	.500	0	0	0	0	1	1	1	0	2.0	0	10.5
10/4	at Mississippi State	3	5	1	15	.267	0	0	0	0	0	0	0	0	0.0	0	5.0
10/9	Auburn	2	4	1	10	.300	0	0	0	0	0	0	0	0	0.0	0	4.0
10/11	Texas A&M	4	1	2	4	-.250	0	0	0	0	0	0	1	0	1.0	0	1.5
10/14	at Georgia	1	0	0	0	.000	0	0	0	0	0	0	0	0	0.0	0	0.0
10/18	at Tennessee	3	1	1	3	.000	0	0	0	0	0	0	0	0	0.0	0	1.0
10/25	Arkansas	2	1	3	9	-.222	0	0	0	0	2	0	1	0	1.0	0	1.5
10/30	Florida	3	5	1	13	.308	0	0	0	0	3	0	0	1	0.0	0	5.0
11/1	Ole Miss	3	3	2	13	.077	0	0	0	0	1	0	1	0	1.0	0	3.5
11/6	at Auburn	3	3	1	10	.200	0	0	0	0	2	1	1	0	2.0	0	4.5
11/8	at Alabama	3	3	0	6	.500	0	0	0	0	0	0	1	0	1.0	0	3.5
11/11	Tennessee																
11/20	Mississippi State																
11/22	Alabama																
11/25	at Arkansas																
11/27	at Missouri																

CAREER STATISTICS

YEAR	SP	MP	KILL	K/S	ERR	ATT	PCT	AST	A/S	SA	SA/S	SE	DIG	D/S	RE	BS	BA	TB	B/S	BE	BHE	P	P/S
2015	71	26	91	1.28	48	297	.145	3	0.04	2	0.03	0	28	0.39	2	3	24	27	0.38	3	0	108.0	1.52



14 - KATLYN MCDANIEL

6-0 | Jr. | MB | Psychology Major | Columbia, S.C. (Spring Valley)

SEASON NOTES

- Saw first action of the season against Furman (9/5) and recorded three kills
- Played a set against Michigan (9/11)
- Saw time against East Carolina and Wofford during the Carolina Classic

Season Highs

- Kills**
3, Furman (9/5)
- Attempts**
5, Furman (9/5)
- Hit. % (Min. 12 Att.)**
N/A
- Assists**
N/A
- Service Aces**
N/A
- Digs**
1, Furman (9/5)
- Blocks Solo**
N/A
- Block Assists**
N/A
- Total Blocks**
N/A

Career Highs

- Kills**
9, Missouri (10/26/14)
- Attempts**
16, Kentucky (9/28/14)
- Hit. % (Min. 12 Att.)**
.643, Missouri (10/26/14)
- Assists**
N/A
- Service Aces**
1, Clemson (9/6/13)
- Digs**
3, LSU (10/31/14)
- Blocks Solo**
1, 4x, last vs. Auburn (11/16/14)
- Block Assists**
6, LSU (10/31/14)
- Total Blocks**
6, LSU (10/31/14)

Match-By-Match Statistics

DATE	OPP	SP	KILL	ERR	ATT	PCT	AST	SA	SE	RE	DIG	BS	BA	BE	TB	BHE	P
8/28	Southeastern La.	--	--	--	--	--	--	--DNP	--	--	--	--	--	--	--	--	--
8/29	NC Central	--	--	--	--	--	--	--DNP	--	--	--	--	--	--	--	--	--
8/29	NC State	--	--	--	--	--	--	--DNP	--	--	--	--	--	--	--	--	--
9/4	vs. Clemson	--	--	--	--	--	--	--DNP	--	--	--	--	--	--	--	--	--
9/5	vs. Winthrop	--	--	--	--	--	--	--DNP	--	--	--	--	--	--	--	--	--
9/5	at Furman	3	3	0	5	.600	0	0	0	0	1	0	0	0	0.0	0	3.0
9/11	vs. Pittsburgh	--	--	--	--	--	--	--DNP	--	--	--	--	--	--	--	--	--
9/11	at Michigan	1	0	1	2	-.500	0	0	0	0	0	0	0	0	0.0	0	0.0
9/12	vs. Western Michigan	--	--	--	--	--	--	--DNP	--	--	--	--	--	--	--	--	--
9/18	East Carolina	1	0	1	1	-1.000	0	0	0	0	0	0	0	0	0.0	0	0.0
9/19	Charleston Southern	--	--	--	--	--	--	--DNP	--	--	--	--	--	--	--	--	--
9/19	Wofford	1	0	0	0	.000	0	0	0	0	0	0	0	0	0.0	0	0.0
9/22	Coastal Carolina	--	--	--	--	--	--	--DNP	--	--	--	--	--	--	--	--	--
9/25	Kentucky	--	--	--	--	--	--	--DNP	--	--	--	--	--	--	--	--	--
9/27	at LSU	--	--	--	--	--	--	--DNP	--	--	--	--	--	--	--	--	--
10/2	at Ole Miss	--	--	--	--	--	--	--DNP	--	--	--	--	--	--	--	--	--
10/4	at Mississippi State	--	--	--	--	--	--	--DNP	--	--	--	--	--	--	--	--	--
10/9	Auburn	--	--	--	--	--	--	--DNP	--	--	--	--	--	--	--	--	--
10/11	Texas A&M	--	--	--	--	--	--	--DNP	--	--	--	--	--	--	--	--	--
10/14	at Georgia	--	--	--	--	--	--	--DNP	--	--	--	--	--	--	--	--	--
10/18	at Tennessee	--	--	--	--	--	--	--DNP	--	--	--	--	--	--	--	--	--
10/25	Arkansas	--	--	--	--	--	--	--DNP	--	--	--	--	--	--	--	--	--
10/30	Florida	--	--	--	--	--	--	--DNP	--	--	--	--	--	--	--	--	--
11/1	Ole Miss	--	--	--	--	--	--	--DNP	--	--	--	--	--	--	--	--	--
11/6	at Auburn	--	--	--	--	--	--	--DNP	--	--	--	--	--	--	--	--	--
11/8	at Alabama	--	--	--	--	--	--	--DNP	--	--	--	--	--	--	--	--	--
11/11	Tennessee	--	--	--	--	--	--	--	--	--	--	--	--	--	--	--	--
11/20	Mississippi State	--	--	--	--	--	--	--	--	--	--	--	--	--	--	--	--
11/22	Alabama	--	--	--	--	--	--	--	--	--	--	--	--	--	--	--	--
11/25	at Arkansas	--	--	--	--	--	--	--	--	--	--	--	--	--	--	--	--
11/27	at Missouri	--	--	--	--	--	--	--	--	--	--	--	--	--	--	--	--

CAREER STATISTICS

YEAR	SP	MP	KILL	K/S	ERR	ATT	PCT	AST	A/S	SA	SA/S	SE	DIG	D/S	RE	BS	BA	TB	B/S	BE	BHE	P	P/S
2013	12	7	7	0.58	6	28	.036	0	0.00	1	0.08	0	2	0.17	0	0	5	5	0.42	1	0	10.5	0.83
2014	60	20	60	1.00	21	154	.253	0	0.00	0	0.00	1	12	0.20	0	4	36	40	0.67	4	0	82.0	1.37
2015	6	4	3	0.50	2	8	.125	0	0.00	0	0.00	0	1	0.17	0	0	0	0	0.00	0	0	3.0	0.50
TOTAL	78	31	70	0.90	29	190	.216	0	0.00	1	0.01	1	15	0.19	0	4	41	45	0.58	5	0	95.5	1.22



15 - JESSE TURNER

6-2 | Fr. | MB/RS | Chemistry Major | Austin, Texas (Westlake)

SEASON NOTES

- Saw first action vs. NC Central (8/29) and recorded a block assist
- Played against Wofford and had two attacks (9/19)
- Filled in to an injury-depleted lineup against Florida, and set new season bests in kills and digs in her SEC debut (10/30)

Season Highs

Kills

3, Florida (10/30)

Attempts

12, Florida (10/30)

Hit. % (Min. 12 Att.)

.250, Florida (10/30)

Assists

N/A

Service Aces

N/A

Digs

2, Florida (10/30)

Blocks Solo

N/A

Block Assists

1, twice, Florida (10/30)

NC Central (8/29)

Total Blocks

1, twice, Florida (10/30)

NC Central (8/29)

Match-By-Match Statistics

DATE	OPP	SP	KILL	ERR	ATT	PCT	AST	SA	SE	RE	DIG	BS	BA	BE	TB	BHE	P
8/28	Southeastern La.	--	--	--	--	--	--	--DNP	--	--	--	--	--	--	--	--	--
8/29	NC Central	1	0	0	2	.000	0	0	0	0	0	0	1	0	1.0	0	0.5
8/29	NC State	--	--	--	--	--	--	--DNP	--	--	--	--	--	--	--	--	--
9/4	vs. Clemson	--	--	--	--	--	--	--DNP	--	--	--	--	--	--	--	--	--
9/5	vs. Winthrop	--	--	--	--	--	--	--DNP	--	--	--	--	--	--	--	--	--
9/5	at Furman	--	--	--	--	--	--	--DNP	--	--	--	--	--	--	--	--	--
9/11	vs. Pittsburgh	--	--	--	--	--	--	--DNP	--	--	--	--	--	--	--	--	--
9/11	at Michigan	--	--	--	--	--	--	--DNP	--	--	--	--	--	--	--	--	--
9/12	vs. Western Michigan	--	--	--	--	--	--	--DNP	--	--	--	--	--	--	--	--	--
9/18	East Carolina	--	--	--	--	--	--	--DNP	--	--	--	--	--	--	--	--	--
9/19	Charleston Southern	--	--	--	--	--	--	--DNP	--	--	--	--	--	--	--	--	--
9/19	Wofford	1	0	1	2	-.500	0	0	0	0	0	0	0	0	0.0	0	0.0
9/22	Coastal Carolina	--	--	--	--	--	--	--DNP	--	--	--	--	--	--	--	--	--
9/25	Kentucky	--	--	--	--	--	--	--DNP	--	--	--	--	--	--	--	--	--
9/27	at LSU	--	--	--	--	--	--	--DNP	--	--	--	--	--	--	--	--	--
10/2	at Ole Miss	--	--	--	--	--	--	--DNP	--	--	--	--	--	--	--	--	--
10/4	at Mississippi State	--	--	--	--	--	--	--DNP	--	--	--	--	--	--	--	--	--
10/9	Auburn	--	--	--	--	--	--	--DNP	--	--	--	--	--	--	--	--	--
10/11	Texas A&M	--	--	--	--	--	--	--DNP	--	--	--	--	--	--	--	--	--
10/14	at Georgia	--	--	--	--	--	--	--DNP	--	--	--	--	--	--	--	--	--
10/18	at Tennessee	--	--	--	--	--	--	--DNP	--	--	--	--	--	--	--	--	--
10/25	Arkansas	--	--	--	--	--	--	--DNP	--	--	--	--	--	--	--	--	--
10/30	Florida	3	3	0	12	.250	0	0	0	0	2	0	1	0	1.0	0	3.5
11/1	Ole Miss	--	--	--	--	--	--	--DNP	--	--	--	--	--	--	--	--	--
11/6	at Auburn	--	--	--	--	--	--	--DNP	--	--	--	--	--	--	--	--	--
11/8	at Alabama	--	--	--	--	--	--	--DNP	--	--	--	--	--	--	--	--	--
11/11	Tennessee																
11/20	Mississippi State																
11/22	Alabama																
11/25	at Arkansas																
11/27	at Missouri																

CAREER STATISTICS

YEAR	SP	MP	KILL	K/S	ERR	ATT	PCT	AST	A/S	SA	SA/S	SE	DIG	D/S	RE	BS	BA	TB	B/S	BE	BHE	P	P/S
2015	5	3	3	0.60	1	16	.125	0	0.00	0	0.00	0	2	0.40	0	0	2	2	0.40	0	0	4.0	0.80



17 - ELIZABETH JOHNBULL

6-0 | Sr. | MB | Public Health Major | Pflugerville, Texas (Connally)

SEASON NOTES

- Recorded a season-high three kills and one block assist vs. Winthrop (9/5)
- Knocked down a pair block assists against Pittsburgh (9/11)
- Provided a spark off the bench in a win over Charleston Southern, putting down four kills in seven swings and assisting in four blocks (9/19)
- Earned the start against Wofford and responded with seven kills and a dig (9/19)
- Came off the bench at Georgia and hit .625 with five kills, a career-best three digs and a pair of blocks (10/14)
- Started against Arkansas and had season highs in kills (8) while hitting .357 (10/25)
- Set a season high with five total blocks against Ole Miss (11/1)
- Enjoyed her best game in over two years, posting 11 kills with a .588 hitting percentage at Auburn (11/6)

Season Highs

Kills
11, Auburn (11/6)

Attempts
21, Tennessee (10/18)

Hit. % (Min. 12 Att.)
.588, Auburn (11/6)

Assists
1, Charleston Southern (9/19)

Service Aces
N/A

Digs
3, at Georgia (10/14)

Blocks Solo
1, 4x, last vs. Alabama (11/8)

Block Assists
4, Charleston Southern (9/19)

Ole Miss (11/1)

Total Blocks
5, Ole Miss (11/1)

Career Highs

Kills
13, Furman (9/7/13)

Attempts
22, Furman, (9/7/13)

Hit. % (Min. 12 Att.)
.588, Auburn (11/6/15)

Assists
1, 2x, last vs. Charleston Southern (9/19/15)

Georgia Tech (8/30/14)

Service Aces
N/A

Digs
3, at Georgia (10/14)

Blocks Solo
1, 7x, last vs. Alabama (11/8)

Block Assists
7, Georgia Tech (8/30/14)

Total Blocks
7, Georgia Tech (8/30/14)

Match-By-Match Statistics

DATE	OPP	SP	KILL	ERR	ATT	PCT	AST	SA	SE	RE	DIG	BS	BA	BE	TB	BHE	P
8/28	Southeastern La.	1	0	0	2	.000	0	0	0	0	0	0	0	0	0.0	0	0.0
8/29	NC Central	2	1	1	3	.000	0	0	0	0	2	0	0	1	0.0	0	1.0
8/29	NC State	1	0	0	0	.000	0	0	0	0	0	0	0	0	0.0	0	0.0
9/4	vs. Clemson	--	--	--	--	--	--	--	--	--	--	--	--	--	--	--	--
9/5	vs. Winthrop	1	3	1	4	.500	0	0	0	0	0	0	1	0	1.0	0	3.5
9/5	at Furman	1	0	0	0	.000	0	0	0	0	0	0	0	0	0.0	0	0.0
9/11	vs. Pittsburgh	2	0	2	2	-1.000	0	0	0	0	0	0	2	0	2.0	0	1.0
9/11	at Michigan	--	--	--	--	--	--	--	--	--	--	--	--	--	--	--	--
9/12	vs. Western Michigan	1	0	0	1	.000	0	0	0	0	0	0	0	0	0.0	0	0.0
9/18	East Carolina	1	1	0	1	1.000	0	0	0	0	0	0	0	1	0.0	0	1.0
9/19	Charleston Southern	3	4	1	7	.429	1	0	0	0	0	0	4	0	4.0	0	6.0
9/19	Wofford	3	7	2	11	.455	0	0	0	0	1	1	0	0	1.0	0	8.0
9/22	Coastal Carolina	1	1	0	1	1.000	0	0	0	0	0	0	0	0	0.0	0	1.0
9/25	Kentucky	--	--	--	--	--	--	--	--	--	--	--	--	--	--	--	--
9/27	at LSU	--	--	--	--	--	--	--	--	--	--	--	--	--	--	--	--
10/2	at Ole Miss	--	--	--	--	--	--	--	--	--	--	--	--	--	--	--	--
10/4	at Mississippi State	3	2	1	4	.250	0	0	0	0	1	0	0	0	0.0	0	2.0
10/9	Auburn	--	--	--	--	--	--	--	--	--	--	--	--	--	--	--	--
10/11	Texas A&M	1	0	0	1	.000	0	0	0	0	0	0	0	0	0.0	0	0.0
10/14	at Georgia	2	5	0	8	.625	0	0	0	0	3	0	2	0	2.0	0	6.0
10/18	at Tennessee	5	5	4	21	.048	0	0	0	0	1	1	3	0	4.0	0	7.5
10/25	Arkansas	4	8	3	14	.357	1	0	0	0	2	0	3	0	3.0	0	9.5
10/30	Florida	3	5	3	17	.118	0	0	0	0	1	0	0	1	0.0	0	5.0
11/1	Ole Miss	3	5	3	13	.154	0	0	0	0	0	1	4	0	5.0	0	8.0
11/6	at Auburn	4	11	1	17	.588	0	0	0	0	1	0	3	0	3.0	0	12.5
11/8	at Alabama	4	2	3	12	-.083	0	0	0	0	1	1	3	0	4.0	0	4.5
11/11	Tennessee																
11/20	Mississippi State																
11/22	Alabama																
11/25	at Arkansas																
11/27	at Missouri																

CAREER STATISTICS

YEAR	SP	MP	KILL	K/S	ERR	ATT	PCT	AST	A/S	SA	SA/S	SE	DIG	D/S	RE	BS	BA	TB	B/S	BE	BHE	P	P/S
2012	9	9	8	0.89	3	13	.385	0	0.00	0	0.00	0	0	0.00	0	1	1	2	0.22	0	0	9.5	1.00
2013	37	16	43	1.16	16	104	.260	0	0.00	0	0.00	0	9	0.24	3	1	17	18	0.49	2	1	52.5	1.41
2014	40	17	40	1.00	20	91	.220	2	0.05	0	0.00	0	9	0.22	0	3	19	22	0.55	2	1	52.5	1.30
2015	46	20	60	1.30	25	139	.252	2	0.04	0	0.00	0	13	0.28	0	4	25	29	0.63	3	0	76.5	1.65
TOTAL	132	62	151	1.14	64	347	.251	4	0.03	0	0.00	0	31	0.23	3	9	62	71	0.54	7	2	191.0	1.45



23 - CALLIE BROWN

6-1 | Fr. | MB/RS | Summerfield, N.C. (Rockingham County)

SEASON NOTES

- Saw first action as a Gamecock vs. NC Central (8/29) and recorded three kills
- Played a pair of sets against Pittsburgh (9/11)
- Had a kill off the bench in a win over Wofford (9/19)
- Made two attacks against Kentucky (9/25)
- Assisted on a block against Auburn, the first of her college career (10/9)

Season Highs

Kills
3, NC Central (8/29)

Attempts
5, NC Central (8/29)

Hit. % (Min. 12 Att.)
N/A

Assists
N/A

Service Aces
N/A

Digs
1, Tennessee (10/18)

Blocks Solo
N/A

Block Assists
1, twice, Auburn (10/9)
Arkansas (10/25)

Total Blocks
1, twice, Auburn (10/9)
Arkansas (10/25)

Match-By-Match Statistics

DATE	OPP	SP	KILL	ERR	ATT	PCT	AST	SA	SE	RE	DIG	BS	BA	BE	TB	BHE	P
8/28	Southeastern La.	--	--	--	--	--	--	--DNP	--	--	--	--	--	--	--	--	--
8/29	NC Central	1	3	0	5	.600	0	0	0	0	0	0	0	0	0.0	0	3.0
8/29	NC State	1	0	0	0	.000	0	0	0	0	0	0	0	0	0.0	0	0.0
9/4	vs. Clemson	--	--	--	--	--	--	--DNP	--	--	--	--	--	--	--	--	--
9/5	vs. Winthrop	--	--	--	--	--	--	--DNP	--	--	--	--	--	--	--	--	--
9/5	at Furman	--	--	--	--	--	--	--DNP	--	--	--	--	--	--	--	--	--
9/11	vs. Pittsburgh	2	0	0	0	.000	0	0	0	0	0	0	0	0	0.0	0	0.0
9/11	at Michigan	--	--	--	--	--	--	--DNP	--	--	--	--	--	--	--	--	--
9/12	vs. Western Michigan	--	--	--	--	--	--	--DNP	--	--	--	--	--	--	--	--	--
9/18	East Carolina	--	--	--	--	--	--	--DNP	--	--	--	--	--	--	--	--	--
9/19	Charleston Southern	--	--	--	--	--	--	--DNP	--	--	--	--	--	--	--	--	--
9/19	Wofford	1	1	0	4	.250	0	0	0	0	0	0	0	0	0.0	0	1.0
9/22	Coastal Carolina	--	--	--	--	--	--	--DNP	--	--	--	--	--	--	--	--	--
9/25	Kentucky	1	0	0	2	.000	0	0	0	0	0	0	0	0	0.0	0	0.0
9/27	at LSU	--	--	--	--	--	--	--DNP	--	--	--	--	--	--	--	--	--
10/2	at Ole Miss	--	--	--	--	--	--	--DNP	--	--	--	--	--	--	--	--	--
10/4	at Mississippi State	--	--	--	--	--	--	--DNP	--	--	--	--	--	--	--	--	--
10/9	Auburn	1	0	0	0	.000	0	0	0	0	0	0	1	0	1.0	0	0.5
10/11	Texas A&M	1	0	0	0	.000	0	0	0	0	0	0	0	0	0.0	0	0.0
10/14	at Georgia	--	--	--	--	--	--	--DNP	--	--	--	--	--	--	--	--	--
10/18	at Tennessee	2	0	0	0	.000	0	0	0	0	1	0	0	0	0.0	0	0.0
10/25	Arkansas	2	0	0	0	.000	0	0	0	0	0	0	1	0	1.0	0	0.5
10/30	Florida	--	--	--	--	--	--	--DNP	--	--	--	--	--	--	--	--	--
11/1	Ole Miss	1	0	0	0	.000	0	0	0	0	0	0	0	0	0.0	0	0.0
11/6	at Auburn	1	0	0	0	.000	0	0	0	0	0	0	0	0	0.0	0	0.0
11/8	at Alabama	1	0	0	0	.000	0	0	0	0	0	0	0	0	0.0	0	0.0
11/11	Tennessee																
11/20	Mississippi State																
11/22	Alabama																
11/25	at Arkansas																
11/27	at Missouri																

CAREER STATISTICS

YEAR	SP	MP	KILL	K/S	ERR	ATT	PCT	AST	A/S	SA	SA/S	SE	DIG	D/S	RE	BS	BA	TB	B/S	BE	BHE	P	P/S
2015	15	12	4	0.27	0	11	.364	0	0.00	0	0.00	0	1	0.07	0	0	2	2	0.13	0	0	5.0	0.33

RADIO/TV SPOT CHART



#1

Madison Borowski
S • 5-9 • Fr.
Austin, Texas



#2

Joely Cabrera
DS/Libero • 5-6 • Jr.
Seca, Puerto Rico



#3

Dessaa Legros
MB/OH • 5-10 • Jr.
Kennesaw, Ga.



#4

Darian Dozier
MB/RS • 6-1 • Sr.
Sandy Spring, Md.



#5

Aubrey Ezell
S • 5-8 • Fr.
Granbury, Texas



#6

Sarah Blomgren
RS/OH • 5-11 • Sr.
Canyon Country, Calif.



#7

Jacqy Angermiller
MB/RS • 6-2 • Jr.
Dallas, Texas



#9

Megan Kirkland
DS/Libero • 5-7 • Jr.
Lugoff, S.C.



#10

Emma Lock
DS/Libero • 5-9 • Fr.
Lee's Summit, Mo.



#11

Koko Atoa-Williams
OH • 5-10 • Jr.
Reno, Nev.



#12

Courtney Furlong
OH • 6-3 • Fr.
Oviedo, Fla.



#14

Katlyn McDaniel
MB • 6-0 • Jr.
Columbia, S.C.



#15

Jesse Turner
MB/RS • 6-2 • Fr.
Austin, Texas



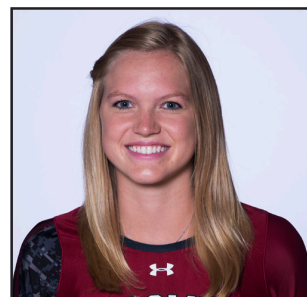
#17

Elizabeth Johnbull
MB • 6-0 • Sr.
Pflugerville, Texas



#23

Callie Brown
MB/RS • 6-1 • Fr.
Summerfield, N.C.



#25

Courtney McKeag
MB/OH • 6-0 • RS Fr.
San Juan Capistrano, Calif.