



SOUTH CAROLINA MEN'S BASKETBALL



OPENING TIP

Date: Friday, Dec. 6, 2013

Tipoff: 9:30 p.m. ET

Location: Stillwater, Okla.

Arena: Gallagher-Iba Arena (13,611)

Series: South Carolina leads 1-0

Last Meeting: South Carolina win, 70-61, Dec. 23, 1975, in Columbia, S.C. (Carolina Classic Tournament)

Broadcast: ESPNU

Talent: Mitch Holthuis (pxp), Reid Gettys (analyst)

Radio: Gamecock Radio Network/107.5 The Game in Columbia

Sirius: N/A; XM: N/A

Talent: Andy Demetra (pxp), Casey Manning (analyst)

Tickets: okstate.com

Live Stats: GamecocksOnline.com

GAME 5

2013-14 SCHEDULE

DATE	OPPONENT (TV)	TIME/RESULT
N. 3	USC Aiken (exhib.)	W, 84-72
N. 9	Longwood	W, 82-44
N. 12	at No. 23/25 Baylor \$ (ESPN)	L, 66-64
N. 17	at Clemson (ESPN3)	L, 71-57
N. 24	FIU (SPSO/FSCR)	W, 84-72
D. 6	at Oklahoma State ! (ESPNU)	9:30 p.m.
D. 17	Manhattan	7 p.m.
D. 19	USC Upstate (SPSO/FSCR)	4 p.m.
D. 22	vs. Saint Mary's % (ESPNU)	12 a.m.
D. 23	Hawaii/Boise State %	TBA
D. 25	TBA %	TBA
D. 28	Akron (ESPNU)	4 p.m.
D. 30	Marshall (CSS)	7 p.m.
J. 3	SC State (SPSO/FSCR)	7 p.m.
J. 8	at Florida* (CSS)	7 p.m.
J. 11	LSU* (SECTV)	1:30 p.m.
J. 15	at Texas A&M* (SECTV)	8 p.m.
J. 18	Ole Miss* (FSN)	4:30 p.m.
J. 22	at Georgia* (SECTV)	8 p.m.
J. 25	at Missouri* (SECTV)	4 p.m.
J. 29	Texas A&M* (ESPN3)	7 p.m.
F. 1	at Ole Miss* (SECTV)	1:30 p.m.
F. 5	Auburn* (ESPN3)	7:30 p.m.
F. 8	at Tennessee* (ESPNU)	3 p.m.
F. 12	Vanderbilt* (SECTV)	8 p.m.
F. 15	Alabama* (SECTV)	4 p.m.
F. 19	at Arkansas* (CSS)	9 p.m.
F. 22	Georgia* (SECTV)	1:30 p.m.
F. 26	at Auburn* (FSN)	9 p.m.
M. 1	Kentucky* (ESPN/2)	6 p.m.
M. 4	Florida* (ESPNU)	7 p.m.
M. 8	at Mississippi State* (SECTV)	4 p.m.
M.	at SEC Tournament (Atlanta, Ga.)	TBA

All home games in **bold** | All times listed Eastern
 * indicates SEC contest | + indicates exhibition | **SPSO/FSCR** - SportSouth/Fox Sports Carolinas | **SECTV**-SEC TV | **CSS**- CharterSports SE | **FSN** - Fox Sports | \$ - ESPN College Hoops Marathon (Waco, Texas) | ! - Big 12/SEC Challenge (Stillwater, Okla.) | % - Hawaiian Airlines Diamond Head Classic (Honolulu, HI.)



SOUTH CAROLINA
GAMECOCKS
 (2-2)

- VS -

NO. 9/11 OKLAHOMA STATE
COWBOYS
 (7-1)



Ranking: AP/Coaches (-/-)
 Head Coach: Frank Martin
 Record at SC: 16-20 (2nd)
 Career Rec.: 133-74 (7th)
 vs. OKSt.: 4-3
 SID: Emily Feeny

Stat Leaders (per game):
 Points: Thornwell (13.0)
 Rebounds: Kacinas (9.3)
 Assists: Johnson (4.8)
 Blocks: Carrera (1.3)
 Steals: Thornwell (1.5)

Ranking: AP/Coaches (9/11)
 Head Coach: Travis Ford
 Record at OKSt.: 111-64 (6th)
 Career Rec.: 301-211 (17th)
 vs. SC: 0-0
 SID: Mike Noteware

Stat Leaders (per game):
 Points: Smart (20.5)
 Rebounds: Murphy (6.3)
 Assists: Smart (3.6)
 Blocks: Brown (1.5)
 Steals: Smart (3.0)

PROBABLE STARTERS

South Carolina	Ht.	Wt.	Yr.	Hometown	PPG	RPG	MPG
G - #0 Sindarius Thornwell	6-5	206	Fr.	Lancaster, S.C.	13.0	3.8	28.8
G - #4 Tyrone Johnson	6-3	194	Jr.	Plainfield, N.J.	12.3	2.3	31.5
F - #24 Michael Carrera	6-5	214	So.	Anzoátegui, Venezuela	8.0	5.8	22.8
F - #21 Demetrius Henry	6-9	215	Fr.	Miami, Fla.	9.0	5.8	28.5
F - #25 Mindaugas Kacinas	6-7	210	So.	Klaipeda, Lithuania	8.0	9.3	28.3

Oklahoma State	Ht.	Wt.	Yr.	Hometown	PPG	RPG	MPG
G - #33 Marcus Smart	6-4	220	So.	Flower Mound, Texas	20.5	5.0	29.8
F - #2 Le'Bryan Nash	6-7	235	Jr.	Dallas, Texas	12.5	5.9	24.8
F - #4 Brian Williams	6-5	210	R-Jr.	Baton Rouge, La.	10.3	4.1	28.0
F - #20 Michael Cobbins	6-8	230	R-Jr.	Amarillo, Texas	4.5	5.0	22.0
F - #22 Markel Brown	6-3	190	Sr.	Alexandria, La.	16.9	4.3	32.2

TODAY'S GAME

South Carolina returns from a near two-week break from games when it travels to No. 9/11 Oklahoma State on Friday as part of ESPN's Big 12/SEC Challenge. The meeting marks just the second all-time between the two schools and the first since the 1975-76 season. The contest will be televised on ESPNU with tip time set for 9:30 p.m. ET.

CAROLINA QUICK HITS




- South Carolina is in its 106th season of basketball.
- The Gamecocks are led by Frank Martin in his second year. Matt Figger is the associate head coach, and Perry Clark and Lamont Evans are assistant coaches. Andy Assaley is in his second year as the director of operations for the Gamecocks.
- Friday's game marks the first for South Carolina since the Nov. 24, 84-72 win vs. FIU, a 12-day span in between games.
- Frank Martin owns a 4-3 all-time record vs. Oklahoma State, having faced the Cowboys several times during his head coaching stay at Kansas State. Martin owns a 1-2 record in games played in Stillwater.
- South Carolina owns an 8-11 all-time record against current schools in the Big 12, including an 0-1 mark this season after the Nov. 12 loss at Baylor.
- Senior guard Bruce Ellington began practice with the Gamecock men's basketball team on Tuesday, and is expected to see playing time in Friday's contest at Oklahoma State. Ellington led the Gamecock football team in receiving yards this season, collecting 635 yards on 43 catches and scoring six touchdowns. On the basketball court, Ellington owns career averages of 11.4 points, 2.8 rebounds and 3.0 assists in 30.7 minutes per game (77 games played).
- Junior guard Tyrone Johnson matched a career high with 18 points, and freshman guard Jaylen Shaw exploded for 16 points off the bench, in South Carolina's victory over Florida International on Nov. 24. Johnson contributed seven assists, and Shaw added five, in propelling Carolina to 19 team assists in the victory.
- Following Friday's game, South Carolina will have a 10-day break for final exams, before hosting Manhattan on Dec. 17. The game vs. the Jaspers marks the start of a 14-day stretch where the Gamecocks will play seven games, including three at the Diamond Head Classic in Honolulu, Hawaii, from Dec. 22-25.
- The Gamecocks are winless in two road contests this season, suffering a 66-64 loss at then-No. 23 Baylor on Nov. 12, before a 71-57 loss at Clemson on Nov. 17. The Gamecocks were unable to find an offensive rhythm in the contest vs. the Tigers, hitting just 35.4% (23-65) from the floor, and just 1-of-10 from 3-point.
- In two road contests this season, South Carolina has hit just 35.7% (41-115) from the field, and is averaging 60.5 points per game.





SOUTH CAROLINA GAMECOCKS

OVERALL: 2-2; SEC: 0-0; HOME: 2-0; AWAY: 0-2; NEUTRAL: 0-0

0		SINDARIUS THORNWELL - Fr. - G - 6-5 - 206 - Lancaster, S.C. <u>MIN</u> <u>PTS</u> <u>RBS</u> <u>AST</u> <u>FG%</u> <u>3FG%</u> <u>FT%</u> 28.8 13.0 3.8 1.8 44.7 28.6 72.7	<ul style="list-style-type: none"> • First 20-point game of his career at No. 23/25 Baylor; also team high 3 steals • Posted 10 points and two steals, with 4 rebounds at Clemson • Team leader with 13.0 points and 1.5 steals per game • Dished four assists vs. FIU, adding 8 points
1		BRENTON WILLIAMS - Sr. - G - 5-11 - 172 - Kissimmee, Fla. <u>MIN</u> <u>PTS</u> <u>RBS</u> <u>AST</u> <u>FG%</u> <u>3FG%</u> <u>FT%</u> 22.0 10.5 2.5 1.3 38.7 31.6 1.000	<ul style="list-style-type: none"> • Solid in season opener with 14 points, four rebounds vs. Longwood • Scored 12 points at No. 23/25 Baylor • Has made all 12 of his free throw attempts this season • Posted 16 points, including 6-of-6 from free throw line, vs. FIU; 2 assts, 2 stls.
4		TYRONE JOHNSON - Jr. - G - 6-3 - 194 - Plainfield, N.J. <u>MIN</u> <u>PTS</u> <u>RBS</u> <u>AST</u> <u>FG%</u> <u>3FG%</u> <u>FT%</u> 31.5 12.3 2.3 4.8 37.8 20.0 76.9	<ul style="list-style-type: none"> • Scored a game high 18 points, hitting 6-of-9 from the field and 6-of-7 from the free throw line vs. Longwood • Added eight points and eight assists, a new career high, at No. 23/25 Baylor • Matched career high with 18 points vs. FIU; 7 assists, one steal
5		JAYLEN SHAW - Fr. - G - 6-0 - 182 - Hartsville, S.C. <u>MIN</u> <u>PTS</u> <u>RBS</u> <u>AST</u> <u>FG%</u> <u>3FG%</u> <u>FT%</u> 10.0 6.0 0.7 2.3 54.5 50.0 1.000	<ul style="list-style-type: none"> • Saw action vs. Longwood • Burst onto the scene, scoring 16 points off the bench, hitting 6-of-10 attempts overall and 4-of-7 from 3-point range in win vs. FIU; also five assists in 26 minutes played
10		DUANE NOTICE - Fr. - G - 6-2 - 221 - Woodbridge, Ontario <u>MIN</u> <u>PTS</u> <u>RBS</u> <u>AST</u> <u>FG%</u> <u>3FG%</u> <u>FT%</u> 13.0 3.0 2.3 2.3 33.3 40.0 0.0	<ul style="list-style-type: none"> • Posted eight points and dished a team high four assists in 19 minutes vs. Longwood; hit two 3s • Two assists, one steal and two points in 12 minutes at Baylor • Earned start at Clemson; 2 assists, 2 points
12		AUSTIN CONSTABLE - So. - G - 5-11 - 180 - West Chester, Pa. <u>MIN</u> <u>PTS</u> <u>RBS</u> <u>BLK</u> <u>FG%</u> <u>3FG%</u> <u>FT%</u> - - - - - - -	<ul style="list-style-type: none"> • Walk-on guard who saw limited action last season as a freshman • 1,000-point scorer during high school career at Henderson High School
14		LAIMONAS CHATKEVICIUS - So. - F - 6-11 - 250 - Klaipeda, Lithuania <u>MIN</u> <u>PTS</u> <u>RBS</u> <u>BLK</u> <u>FG%</u> <u>3FG%</u> <u>FT%</u> 10.7 2.7 2.7 1.0 57.1 0.0 0.0	<ul style="list-style-type: none"> • Double-double vs. Aiken in exhibition, 10 points, 11 rebounds • In 14 minutes at Baylor, two points, one block and one steal • Scored on 2-of-3 attempts for 4 points, 1 block at Clemson
15		REGGIE THEUS JR. - Fr. - F - 6-6 - 210 - Los Angeles, Calif. <u>MIN</u> <u>PTS</u> <u>RBS</u> <u>AST</u> <u>FG%</u> <u>3FG%</u> <u>FT%</u> 1.5 0.0 0.5 0.0 0.0 0.0 0.0	<ul style="list-style-type: none"> • Freshman forward who hails from Los Angeles, Calif. • Son of Reggie Theus, current coach at Cal State Northridge, and former NBA All-Star • Averaged nearly 18.0 points per game as a senior at Fairfax High School
20		JUSTIN MCKIE - Fr. - G - 6-4 - 195 - Columbia, S.C. <u>MIN</u> <u>PTS</u> <u>RBS</u> <u>BLK</u> <u>FG%</u> <u>3FG%</u> <u>FT%</u> 1.7 0.3 0.3 0.0 0.0 0.0 50.0	<ul style="list-style-type: none"> • Columbia, S.C., native who helped lead his Irmo High School squad to a state championship last season at CLA, scoring 20 points in the win • Son of Gamecock great BJ McKie • Named South Carolina Mr. Basketball, Gatorade SC Boys' Player of the Year
21		DEMETRIUS HENRY - Fr. - F - 6-9 - 215 - Miami, Fla. <u>MIN</u> <u>PTS</u> <u>RBS</u> <u>BLK</u> <u>FG%</u> <u>3FG%</u> <u>FT%</u> 28.5 9.0 5.8 0.8 47.1 0.0 40.0	<ul style="list-style-type: none"> • 9 points and six rebounds, adding two blocks in 30 minutes at No. 23/25 Baylor • Scored 9 points, collected 5 rebounds in 22 minutes at Clemson • 14 points and six rebounds vs. FIU • Has committed just one turnover this season (114 minutes played)
23		BRUCE ELLINGTON - Sr. - G - 5-9 - 196 - Moncks Corner, S.C. <u>MIN</u> <u>PTS</u> <u>RBS</u> <u>AST</u> <u>FG%</u> <u>3FG%</u> <u>FT%</u> 32.2 9.9 2.6 2.7 33.5 28.0 64.9	<ul style="list-style-type: none"> • Joined the basketball team for practice on Tuesday after catching four passes for 51 yards in South Carolina football's 31-17 win over Clemson last Saturday. • Stats based on 2012-13 season
24		MICHAEL CARRERA - So. - F - 6-5 - 212 - Anzoátegui, Venezuela <u>MIN</u> <u>PTS</u> <u>RBS</u> <u>BLK</u> <u>FG%</u> <u>3FG%</u> <u>FT%</u> 22.8 8.0 5.8 1.3 37.0 215.0 64.3	<ul style="list-style-type: none"> • 12 points and nine rebounds vs. Longwood; 2 blocks, 2 steals • 8 points, 7 rebounds; 6-of-6 from free throw line at No. 23/25 Baylor • Scored nine points and collected two steals at Clemson • Collected five rebounds and two blocks vs. FIU
25		MINDAUGAS KACINAS - So. - F - 6-7 - 210 - Klaipeda, Lithuania <u>MIN</u> <u>PTS</u> <u>RBS</u> <u>BLK</u> <u>FG%</u> <u>3FG%</u> <u>FT%</u> 28.3 8.0 9.3 0.5 58.3 0.0 66.7	<ul style="list-style-type: none"> • Collected a game high and career high 14 rebounds, adding eight points in season opener vs. Longwood • First double-double of the season with 13 points, 12 rebounds at Clemson • Team high 9 rebounds, 4 offensive, vs. FIU
32		DESMOND RINGER - Fr. - F - 6-9 - 255 - McDonough, Ga. <u>MIN</u> <u>PTS</u> <u>RBS</u> <u>BLK</u> <u>FG%</u> <u>3FG%</u> <u>FT%</u> 7.5 1.3 0.8 0.0 25.0 0.0 60.0	<ul style="list-style-type: none"> • Helped lead his high school squad to its first-ever state championship last spring, scoring 17 points and collecting 14 rebounds in the title game • Very strong, will provide a solid presence underneath • Saw action vs. Baylor; contributed four points at Clemson
35		BRIAN STEELE - So. - F - 6-5 - 200 - Greenville, S.C. <u>MIN</u> <u>PTS</u> <u>RBS</u> <u>AST</u> <u>FG%</u> <u>3FG%</u> <u>FT%</u> 1.0 0.0 0.0 0.0 0.0 0.0 0.0	<ul style="list-style-type: none"> • Walk-on forward who saw action in seven games last season, starting the final four contests of the year • Scored 16 points for a 2.3 points per game average • 1,000-point scorer during high school career

INTERVIEW POLICIES

All interview requests must be made in advance to SID Emily Feeney in the South Carolina Media Relations Office. Beginning with the start of practice in October, Feeney will release a weekly coach and student-athlete availability schedule to media on Mondays.

Post-Game Interview Policy: After each home game, the visiting coach will address the media first, followed by South Carolina student-athletes then South Carolina head coach Frank Martin. (Depending on deadline, this may be altered on a game-by-game basis).

Road Interview Policy: Interviews with Coach Martin while on the road will be scheduled according to the home post-game media procedure. No student-athlete interviews are allowed until after the game once the team leaves Columbia.

All interviews are to be coordinated through the Media Relations Office. This allows the staff to arrange the interview when it best suits the student-athlete's and the reporter's schedules. Please contact the Media Relations Office in advance to make your interview requests. Media are not permitted to contact student-athletes on their own at any time.

All interviews will take place at the designated media interview site for that day as listed in the weekly availability schedule or in the Media Relations Office.

Dormitory, apartment and cell phone numbers for student-athletes will not be provided to the media. Should you need to conduct a telephone interview with a student-athlete, a call will be placed to you from the student-athlete at a mutually agreeable time.

SOUTH CAROLINA MEDIA RELATIONS



Emily Feeney, primary contact
Associate Director
cell: 803-727-3284
e-mail: efeeney@mailbox.sc.edu
Twitter: @EmilyFeeneySID

Website: www.GamecocksOnline.com

Facebook: www.Facebook.com/gamecocksonline

Twitter: @GamecockMBB

STAT COMPARISON

	SC	OK STATE
Record	2-2	7-1
Conference Record	-	-
Current Streak	W1	L1
Scoring Avg.	71.8	91.9
Opponent Scoring Avg.	63.2	67.4
Scoring Margin	+8.5	+24.5
Field Goal %	.429	.513
Opponent Field Goal %	.376	.396
3-Point Field Goal %	.316	.436
Opponent 3-Point Field Goal %	.304	.304
3-Point Field Goal Made PG	4.5	8.5
3-Point Field Goal Attempts PG	14.3	19.5
Free Throw %	.717	.720
Opponent Free Throw %	.709	.645
Rebounding Avg.	39.2	39.2
Opponent Rebounding Avg.	33.2	35.0
Rebounding Margin	+6.0	+4.3
Turnovers Avg.	12.3	10.8
Opponent Turnover Avg.	14.0	15.1
Assists Avg.	13.3	14.8
Blocks Avg.	4.3	6.3
Steals Avg.	6.3	9.1

WEEKLY MEDIA AVAILABILITY (DEC. 1-7)

SUNDAY Dec. 1	MONDAY Dec. 2	TUESDAY Dec. 3	WEDNESDAY Dec. 4	THURSDAY Dec. 5	FRIDAY Dec. 6	SATURDAY Dec. 7
No Availability	No Availability	Martin/Players Press Conference 1:45 PM, CLA	No Availability	No Availability Travel to Oklahoma St.	Big 12/SEC Challenge at Okla. State 9:30 p.m. ET/ESPNU	No Availability

* All practices are closed * please contact SID Emily Feeney for all media requests

A SOUTH CAROLINA WIN WOULD ...

- Improve the Gamecocks' record vs. Oklahoma State to 2-0
- Be Carolina's first victory over a ranked opponent since an 83-75 overtime win vs. No. 22/24 Vanderbilt at Colonial Life Arena on Jan. 8, 2011
- Be Frank Martin's second-straight win in Stillwater

■ Sophomore forward Mindaguas Kacinas posted his first double-double of the season and the second of his career with team highs of 13 points and 12 rebounds vs. Clemson on Nov. 17.

■ Kacinas currently leads the Gamecocks and ranks fifth in the SEC with 9.3 rebounds per contest. His 4.3 offensive rebounds per contest are a team best and also rank second in the league.

■ The Gamecocks rank third in the SEC and 21st in the nation (Dec. 2 rankings) in field goal percentage defense, as Carolina opponents have hit just 37.6 percent of shot attempts this season. Carolina ranks third in the SEC and 35th in the nation in scoring defense, as Gamecock opponents are averaging just 63.2 points per game.

■ South Carolina suffered a two-point road loss at No. 23/25 Baylor on Nov. 12 in non-conference action, falling 66-64 to the Bears. Sophomore forward Michael Carrera was fouled on a shot attempt at the buzzer, but the officials determined the infraction occurred after time expired. Thornwell posted the first 20-point game of his young career in the Garnet and Black, and classmate, forward Demetrius Henry posted nine points, six rebounds and two blocks in the contest. Baylor now holds a 3-2 upperhand in the all-time series between the two schools.

■ The Gamecocks used an 18-point effort from junior guard Ty Johnson to defeat visiting Longwood by 38 points, 82-44, on Nov. 9 in the season opener at Colonial Life Arena. Thornwell and senior guard Brenton Williams both added 14 points, sophomore forward Michael Carrera added 12 and sophomore forward Mindaguas Kacinas pulled down a career high 14 rebounds in the win. It marked the 13th-straight season-opening victory for the Gamecocks.

■ South Carolina shot 62.5% (15-24) during the second half of the Nov. 9 contest vs. Longwood, the best one-half percentage for the Gamecocks since hitting 71.9% (23-32) during the first half vs. Jacksonville on Dec. 7, 2012.

■ South Carolina returns seven letterwinners to its squad this season, including senior guard Brenton Williams, the team's top returning scorer from a year ago when he averaged 11.0 points per game. Also returning to the bench this season for the Garnet and Black are senior guard Bruce Ellington, who will join the team at the conclusion of the football season, sophomore forwards Michael Carrera, a 2013 SEC All-Freshman Team selection, Laimonas Chatkevicius and Mindaugas Kacinas. Sophomore guard Austin Constables and forward Brian Steele also return for Carolina.

■ The Gamecocks will hold a young roster this season, welcoming seven freshmen to Columbia in forwards Demetrius Henry, Desmond Ringer, Reggie Theus Jr., and guards Duane Notice, Justin McKie, Jaylen Shaw and Sindarius Thornwell. Transfer guard Ty Johnson joined the program last January via Villanova.

■ Johnson received word prior to the Nov. 9 season opener that he had been granted a waiver from the NCAA allowing him to compete effectively immediately. Johnson has been eligible to practice since he transferred to South Carolina from Villanova in January 2013.

■ Justin McKie, son of Gamecock great BJ McKie, was named South Carolina Mr. Basketball, and also the Graduate South Carolina Boys' Basketball Player of the Year last spring after leading his Irmo squad to the state championship behind a 20-point, 10-rebound performance at Colonial Life Arena.

■ Entering the season, senior guard Brenton Williams ranked fourth all-time in the Gamecock record book in 3-point field goal percentage, hitting 39.5 percent of his attempts. He paced the Gamecocks last season hitting just shy of 40 percent from beyond the arc.

■ South Carolina's non-conference schedule features 14 games, including seven home contests. Highlighting the non-conference schedule is a holiday tournament at the Hawaiian Airlines Diamond Head Classic in late December, and a mid-day contest at Baylor as part of the ESPN College Hoops Marathon in early November. South Carolina also travels to Oklahoma State in early December for the Big 12/SEC Challenge.

SCOUTING OKLAHOMA STATE

The Cowboys enter Friday's contest with a 7-1 overall record, having most recently suffered a 73-68 loss to No. 21 Memphis on Sunday competing at the Old Spice Classic ... The Cowboys are led by head coach Travis Ford in his sixth season ... Oklahoma State is 4-0 in games played in Stillwater this season, averaging 102.0 points per game in those contests ... In the Dec. 2 national rankings, OK State ranks fourth in the country in scoring offense (91.9 ppg) and fifth in scoring margin (+24.5) ... Over the course of the last five games, OK State has made 50% of its shot attempts, and 41.6% of its 3-point shot attempts ... Sophomore guard Marcus Smart, the preseason Big 12 Player of the Year, paces the team with 20.5 points per game, which ranks 47th nationally ... Smart leads the Big 12 with 3.0 steals per game, ranking eighth nationally in the category ... Sophomore guard Will Forte ranks 11th nationally in 3-point field goal percentage, hitting 56.1 (23-41) of his attempts this season.

ELLINGTON RETURNS

Senior guard Bruce Ellington returns to the Gamecock basketball team for this week's trip to Oklahoma State. The Moncks Corner, S.C., native, missed the first four games, and all of preseason practice due to competition with the 8th-ranked Gamecock football team. On the gridiron, Ellington led the Garnet and Black with 635 receiving yards on 43 catches, including six touchdowns. Ellington's schedule between the basketball and football squads will be finalized following bowl announcements on Dec. 8.

SERIES VS. OKLAHOMA STATE

Friday's meeting marks just the second all-time between the Gamecocks and Cowboys, and the first since the 1975-76 campaign. South Carolina won that contest, 70-61, competing in the Carolina Classic in Columbia. Friday's trip to Stillwater will be the first for the Gamecocks.

► ASSOCIATED PRESS TOP 25

Dec. 2, 2013

Rk.	Team	Record	Pts.
1	Michigan State (63)	7-0	1,623
2	Arizona (2)	7-0	1,547
3	Kentucky	7-1	1,473
4	Syracuse	7-0	1,375
5	Ohio State	6-0	1,340
6	Kansas	6-1	1,240
7	Louisville	6-1	1,139
8	Wisconsin	8-0	1,094
9	Oklahoma State	7-1	1,070
10	Duke	6-2	1,021
11	Wichita State	8-0	911
12	Connecticut	7-0	836
13	Oregon	7-0	801
14	Villanova	7-0	785
15	Florida	6-1	758
16	Memphis	5-1	748
17	Iowa State	5-0	623
18	UCLA	7-0	548
19	Gonzaga	7-1	380
20	Baylor	7-1	377
21	Massachusetts	6-0	274
22	Michigan	5-2	223
23	Iowa	7-1	171
24	San Diego State	5-1	150
25	Dayton	6-1	90

Others receiving votes: Indiana 74, Virginia 73, New Mexico 71, North Carolina 62, Florida State 40, Boise State 36, Pittsburgh 36, Virginia Commonwealth 30, Charlotte 20, Creighton 17, Colorado 17, Missouri 16, Harvard 10, Illinois 10, Cincinnati 8, Ole Miss 3, George Washington 2, Saint Mary's 2, Xavier 1

Dropped from rankings: North Carolina 16, Creighton 20, Marquette 25

► ESPN/USA TODAY TOP 25

Dec. 2, 2013

Rk.	Team	Record	Pts.
1	Michigan State (31)	7-0	799
2	Arizona (1)	7-0	758
3	Ohio State	6-0	695
4	Kentucky	7-1	683
5	Syracuse	7-0	682
6	Louisville	6-1	607
7	Kansas	6-1	597
8	Duke	6-2	547
9	Wisconsin	8-0	517
10	Wichita State	8-0	484
11	Oklahoma State	7-1	476
12	Florida	6-1	426
13	Oregon	7-0	417
14	Connecticut	7-0	410
15	Memphis	5-1	311
15	Gonzaga	7-1	311
17	UCLA	7-0	261
18	Iowa State	5-0	245
19	Villanova	7-0	201
20	Baylor	7-1	195
21	Michigan	5-2	156
22	Massachusetts	6-0	122
23	Indiana	6-1	76
24	Iowa	7-1	63
25	North Carolina	4-2	62

Others receiving votes: Virginia 42, New Mexico 36, San Diego State 35, Virginia Commonwealth 35, Pittsburgh 33, Dayton 26, Boise State 21, Creighton 17, Saint Mary's 13, Florida State 10, Missouri 10, Colorado 8, Charlotte 6, Marquette 4, Notre Dame 2, George Washington 1

Dropped from rankings: Creighton 18, Virginia Commonwealth 24



SOUTHEASTERN CONFERENCE STANDINGS

As of Dec. 4

Team	Conference	Overall
Missouri	0-0	7-0
Ole Miss	0-0	6-0
Kentucky	0-0	7-1
Mississippi State	0-0	5-1
Florida	0-0	6-2
Texas A&M	0-0	6-2
Arkansas	0-0	5-2
LSU	0-0	5-2
Tennessee	0-0	5-2
Auburn	0-0	4-2
Vanderbilt	0-0	4-3
Alabama	0-0	3-3
South Carolina	0-0	2-2
Georgia	0-0	3-4

COACHES TELECONFERENCE

The weekly SEC men's basketball coaches teleconference will be held every Monday beginning Monday, Jan. 6 through Monday, March 10. The 14 Southeastern Conference men's head basketball coaches will be featured from 10:00 -11:38 a.m. (CT).

Media representatives wishing to participate in the teleconference should contact the SEC Media Relations Department for further details. Each coach will appear on the teleconference for seven minutes, according to the following schedule:

ORDER OF APPEARANCE

(All Times Eastern)

11:00 a.m.	Kevin Stallings, Vanderbilt
11:07 a.m.	Billy Donovan, Florida
11:14 a.m.	Frank Martin, South Carolina
11:21 a.m.	Mark Fox, Georgia
11:28 a.m.	Johnny Jones, LSU
11:35 a.m.	John Calipari, Kentucky
11:42 a.m.	Cuonzo Martin, Tennessee
11:49 a.m.	Mike Anderson, Arkansas
11:56 a.m.	Anthony Grant, Alabama
12:03 a.m.	Tony Barbee, Auburn
12:10 a.m.	Andy Kennedy, Ole Miss
12:17 a.m.	Rick Ray, Miss. State
12:24 a.m.	Frank Haith, Missouri
12:31 a.m.	Billy Kennedy, Texas A&M

In addition, the SEC men's basketball teams who make it to postseason will be on a teleconference on Monday, March 17 beginning at 11:00 a.m. ET.

All SEC basketball teleconferences can be listened to on the internet at www.secsports.com shortly after the conclusion of the teleconference

SOUTH CAROLINA BENCH PRODUCTION

GAME	SC-OPP	DIFF.	SC HIGH BENCH SCORER
Longwood	30-18	+12	Williams, 14
@Baylor	17-36	-19	Williams, 12
@Clemson	18-34	-16	Carrera, 9
FIU	32-18	+14	Shaw/Williams, 16

@Okla. St.
Manhattan
USC Upstate
vs. Saint Mary's
vs. TBA
vs. TBA
Akron
Marshall
SC State
@Florida
LSU
@Texas A&M
Ole Miss
@Georgia
@Missouri
Texas A&M
@Ole Miss
Auburn
@Tennessee
Vanderbilt
Alabama
@Arkansas
Georgia
@Auburn
Kentucky
Florida
@Miss. St.
SEC Tourney
NCAA Tourney

SPECIALTY STATS

(PP) points in paint; (OT) points off turnovers; (2nd) second chance points; (FB) fast break points

(South Carolina-Opponent)

GAME	PP	OT	2ND	FB
Longwood	36-18	19-9	11-10	14-0
@Baylor	22-20	19-4	5-16	2-0
@Clemson	40-26	10-13	15-8	4-4
FIU	34-32	13-11	10-8	21-10

@Okla. St.
Manhattan
USC Upstate
vs. Saint Mary's
vs. TBA
vs. TBA
Akron
Marshall
SC State
@Florida
LSU
@Texas A&M
Ole Miss
@Georgia
@Missouri
Texas A&M
@Ole Miss
Auburn
@Tennessee
Vanderbilt
Alabama
@Arkansas
Georgia
@Auburn
Kentucky
Florida
@Miss. St.
SEC Tourney
NCAA Tourney

SC Total	132	61	41	41
SC Average	33.0	15.3	10.3	10.3
Opp Total	96	37	42	14
Opp Average	24.0	9.3	10.5	3.5

UNIVERSITY INFORMATION

Location Columbia, S.C.
 Founded 1801
 Enrollment 31,288
 Nickname Gamecocks
 Colors Garnet (PMS 202) and Black
 National Affiliation NCAA Division I
 Conference Southeastern (SEC)
 Athletics Web Address www.GamecocksOnline.com
 University Web Address www.sc.edu
 President Dr. Harris Pastides
 NCAA Representative Dr. Zach Kelehear
 Athletics Director Ray Tanner
 Basketball Administrator/Chief Operating Officer Kevin O'Connell

BASKETBALL STAFF/INFORMATION

Head Coach Frank Martin
 Alma Mater Florida International, '93
 Record At South Carolina/Seasons 16-19, 2nd Season
 Overall Record/Seasons 133-74 (.642), 7th season
 Assoc. Head Coach/Recruiting Coord. . Matt Figger (Eastern Kentucky, '95)
 Assistant Coach Perry Clark (Gettysburg, '74)
 Assistant Coach Lamont Evans (Kansas State, '09)
 Director of Basketball Operations Andy Assaley (Cincinnati, '96)
 Strength & Conditioning Scott Greenawalt (Muskingum College, '98)
 Athletic Trainer Mark Rodger (Buffalo, '01)
 Video Coordinator Dylan Lockwood (Cazenovia, '05)
 Grad. Student Mgr./Student-Athlete Dev. Doug Edwards (Florida State, '07)
 Associate Media Relations Director Emily Feeney (Ball State, '03)
 Home Arena Colonial Life Arena
 Capacity 18,000
 Arena General Manager Lexi Boone
 Press Row Phone Number 803-777-6182
 Team Twitter Account: @GamecockMBB
 Coach Martin Twitter Account: @FrankMartin_SC

BASKETBALL HISTORY

First Year of Basketball 1908
 All-Time Record 1,313-1,168-1 (.529)
 Overall Postseason Record 25-18
 NCAA Tournament Appearances 1971, 1972, 1973, 1974, 1989, 1997, 1998, 2004
 NCAA Tournament Record 4-9
 Last NCAA Tournament Appearance 2004, L vs. Memphis, 59-43
 NIT Appearances 1969, 1975, 1978, 1983, 1991, 1996, 2001, 2002, 2005, 2006, 2009
 NIT Record 21-9
 NIT Champion 2005, 2006
 Last NIT Appearance 2009, L vs. Davidson, 70-63
 Conference Championships/Titles/SoCon Regular Season (1927, 1933, 1934, 1945); SoCon Tournament Champion (1933); ACC Regular Season (1970); ACC Champion (1971); SEC Regular Season (1997); SEC East Division Co-Champions (2009)

TEAM INFORMATION

2012-13 Record 14-18
 Southeastern Conference Record/Finish 4-14/12th
 Postseason None
 Letterwinners Returning/Lost 7/6
 Starters Returning/Lost 3/2
**based on final game starters from 2012-13 season*
 Newcomers 8
 Roster Breakdown 7 freshmen, 5 sophomores, 2 juniors, 2 seniors



HEAD COACH FRANK MARTIN

COACHING CAREER

KANSAS STATE (2007-12)

2007-08	21-12	NCAA, 2nd Round
2008-09	22-12	NIT, 2nd Round
2009-10	29-8	NCAA, Elite Eight
2010-11	23-11	NCAA, 3rd Round
2011-12	22-11	NCAA, 3rd Round
5 years	117-54 (.684)	7-5 postseason record

SOUTH CAROLINA (2012-PRESENT)

2012-13	14-18	-
2013-14	2-2	-
2nd year	16-20 (.444)	
Career Total	133-74 (.642)	



COACHING

EXPERIENCE

29th season

COLLEGE EXPERIENCE

14th season

COLLEGE HEAD COACH EXPERIENCE

7th season

HIRE DATE AT CAROLINA

March 27, 2012

PERSONAL

HOMETOWN

Miami, Fla.

ALMA MATER

Florida International, 1993 (B.A. Physical Education)

FAMILY

Wife, Anya

Children, Brandon, Amalia and Christian

COACHING RESUME

HIGH SCHOOL

Miami Senior High, 1985-93

Varsity Boys' Assistant Coach

Junior Varsity Boys' Head Coach

North Miami High, Head Coach, 1993-95

Miami Senior High, Head Coach, 1995-98

B.T. Washington High, Head Coach, 1999-2000

COLLEGE ASSISTANT COACH

Northeastern, 2000-04

Cincinnati, 2004-06

Kansas State, 2006-07

COLLEGE HEAD COACH

Kansas State, 2007-12

South Carolina, 2012-present

BY THE NUMBERS

21 - South Carolina more than doubled its season average with 21 fast break points in the Nov. 24 victory vs. FIU. Carolina's previous high in the category this season was 14 in the season opener vs. Longwood.

9+ - Sophomore forward Mindaguas Kacinas has collected at least nine rebounds in three out of four contests this season, including a career high of 14 in the season opener vs. Longwood. He has led Carolina in rebounding three times this season, and six times in his career in the Garnet and Black.

50.8% - South Carolina shot a season high 50.8% (30-59) in the win vs. FIU. It was the highest percentage for Carolina since hitting 57.7% (30-52) in a win vs. Arkansas on Jan. 26, 2013.

14 - Freshman forward Demetrius Henry hit 7-of-10 attempts for 14 points, and pulled down six rebounds in matching a season high of 31 minutes played vs. FIU on Nov. 24.

TREND SETTING

Gamecock trends under Frank Martin ...

■ South Carolina is 11-9 when posting at least six made 3s in a game.

- South Carolina hit a season high eight 3s in the win vs. FIU on Nov. 24

■ South Carolina is 11-6 when scoring more points in the paint than its opponent.

- The Gamecocks average 33.0 points in the paint per game, compared to 24.0 from opponents. Carolina posted a season high 40 points in the paint vs.

Clemson on Nov. 17.

■ South Carolina is 11-9 when holding its opponents to under 45 percent from the field.

- The Gamecocks have held each opponent except FIU under 45% shooting this season. Longwood managed to hit just 22.8% of its attempts.

■ South Carolina is 12-9 when out-rebounding its opponent.

- The Gamecocks have out-rebounded three opponents this season, holding a +23 margin vs. Longwood and a +8 mark vs. Clemson.

UP NEXT

South Carolina will have a 10-day break before hosting Manhattan at Colonial Life Arena on Dec. 17. That game will not be televised, but will be available via the All-Access package on GamecocksOnline.com.

SEC TOURNAMENT

Fresh off hosting the 2013 Final Four, the Georgia Dome will be the site for the 2014 SEC Tournament, March 12-16 in Atlanta. The Georgia Dome first hosted the tourney in 1995 and the 2014 event will mark the 11th time the venue has hosted the league's postseason tournament. The winner of the 13-game tournament receives the SEC's automatic bid to the NCAA Tournament. The tournament seeds are determined by the 18-game conference schedule during the regular season. Teams are seeded 1-14 based on their regular-season conference finish.

MARTIN'S STAFF BOASTS OVER 90 YEARS OF EXPERIENCE AT THE COLLEGE LEVEL

South Carolina head coach Frank Martin has a very experienced staff with him on the sideline this season. Perry Clark joins the team as an assistant coach with over 30 years of college coaching experience, including stops as the head coach at Tulane, Miami (Fla.) and Texas A&M-Corpus Christi. Former assistant Matt Figger was promoted to associate head coach during the offseason, and Lamont Evans returns for his second season as an assistant on Martin's staff in Columbia.

GAMECOCKS SIGN STROMAN AND BLANTON DURING FALL SIGNING PERIOD

University of South Carolina head men's basketball coach Frank Martin announced on Nov. 19 the signing of Marcus Stroman (G - 6-2 - 170 - Columbia, S.C./Keenan High School) and TeMarcus Blanton (G - 6-4 - 185 - Locust Grove, Georgia/Luella High School) to National Letters of Intent. The duo will join the Gamecocks for the 2014-15 campaign and both will have four years of eligibility beginning next fall. Below are brief comments from Coach Martin on each signee.

Martin on Blanton

"I'm extremely excited about TeMarcus Blanton. He is a 6-5 wing that is ultra-competitive on both ends of the floor. He fits exactly the kind of guard that we want to build our program around. He's a slasher, a defender and an athletic finisher that loves every opportunity that he gets to compete."

Martin on Stroman

"Marcus is a consummate point guard. He understands the position at his age as well as, if not better, than most. Every time I watch him play, I leave games thinking that the four guys with him are better than they actually are, because he is so good at making others look good. He is an ultra-competitive, hometown kid, who grew up a Gamecock fan, and we are extremely excited to have him become part of our program."

GAMECOCKS TO COMPETE IN 2014 CHARLESTON CLASSIC

The Charleston Classic presented by Gildan announced six of the eight-team field for the 2014 tournament to be held Thursday, Friday and Sunday, Nov. 20, 21 and 23, at TD Arena in Charleston, S.C. South Carolina will compete in the event for the second time, and for the first time since the 2009 campaign. The other participating teams announced are Akron, Cornell, Miami (Fla.), Penn State and Southern California. The final two teams will be announced at a later date. During the 2009 event, the Gamecocks defeated La Salle in the tournament's opening round, earned a win over USF to advance to the finals, and lost to Miami in the championship game. The 2014 Charleston Classic will feature a bracket format with 12 games over three days. Each team will compete in one game per day, advancing through the bracket. The two teams that remain undefeated throughout will face off in a championship game on the final day of competition.

CITY CHAPTER DAYS ANNOUNCED FOR GAMECOCK BASKETBALL

The University of South Carolina Athletics Department, along with The Gamecock Club and My Carolina Alumni Association, have partnered in creating several City Chapter Days throughout the 2013-14 basketball season for both the Gamecock men's and women's teams.

The City Chapter Days will give Gamecock Club and Alumni Chapters a game at Colonial Life Arena that is dedicated specifically to their respective members and local business. During each game different chapter leaders and business owners will be recognized for their contributions and support of Gamecock Athletics.

Jan. 11, 2014 - Men's Basketball vs. LSU at 1:30 PM

Charlotte, York & Rock Hill Day

Jan. 18, 2014 - Men's Basketball vs. Ole Miss at 4:30 PM, Greenville Day

Jan. 29, 2014 - Men's Basketball vs. Texas A&M at 7 PM, Irmo Night

Feb. 5, 2014 - Men's Basketball vs. Auburn at 7 PM

Richland County Night

Feb. 12, 2014 - Men's Basketball vs. Vanderbilt at 8 PM,

Lexington Night

Feb. 15, 2014 - Men's Basketball vs. Alabama at 8 PM

Spartanburg Night

Feb. 22, 2014 - Men's Basketball vs. Georgia at 1:30 PM, Charleston Day

Feb. 27, 2014 - Women's Basketball vs. Georgia 7 PM, Gamecock Club and My Carolina Alumni Association Appreciation Night

March 4 2014 - Men's Basketball vs. Florida at 7 PM

Gamecock Club and My Carolina Alumni Association Appreciation Night

ROSTER BREAKDOWN

RETURNING STARTERS (3)

Michael Carrera
 Brian Steele
 Bruce Ellington
**based on final game of 2012-13 season*

RETURNING LETTERWINNERS (7)

Michael Carrera
 Laimonas Chatkevicius
 Austin Constable
 Bruce Ellington
 Mindaugas Kacinas
 Brian Steele
 Brenton Williams

GUARDS (8)

Austin Constable
 Bruce Ellington
 Tyrone Johnson
 Justin McKie
 Duane Notice
 Jaylen Shaw
 Sindarius Thornwell
 Brenton Williams

FORWARDS (8)

Michael Carrera
 Laimonas Chatkevicius
 Carlton Geathers
 Demetrius Henry
 Mindaugas Kacinas
 Desmond Ringer
 Brian Steele
 Reggie Theus Jr.

BY HEIGHT

Bruce Ellington, 5-9
 Austin Constable, 5-11
 Brenton Williams, 5-11
 Jaylen Shaw, 6-0
 Duane Notice, 6-2
 Tyrone Johnson, 6-3
 Justin McKie, 6-4
 Michael Carrera, 6-5
 Brian Steele, 6-5
 Sindarius Thornwell, 6-5
 Reggie Theus Jr., 6-6
 Mindaugas Kacinas, 6-7
 Demetrius Henry, 6-9
 Desmond Ringer, 6-9
 Carlton Geathers, 6-10
 Laimonas Chatkevicius, 6-11

PRONUNCIATION

Lie-MOAN-us Ha-KEVA-chus
 Min-DAWG-us Kye-chin-iss

2013-14 SOUTH CAROLINA ROSTER

ALPHABETICAL

No.	Name	Pos.	Ht.	Wt.	Cl.	Exp.	Hometown/High/Last School
24	Michael Carrera	F	6-5	214	SO	1VL	Anzoátegui, Venezuela/Montrose Christian School
14	Laimonas Chatkevicius	F	6-11	250	SO	1VL	Klaipeda, Lithuania/South Kent School
12	Austin Constable	G	5-11	180	SO	1VL	West Chester, Pa./Henderson
23	Bruce Ellington	G	5-9	196	SR	3VL	Moncks Corner, S.C./Berkeley
45	Carlton Geathers	F	6-10	255	RS JR	1VL	Georgetown, S.C./Carvers Bay
21	Demetrius Henry	F/C	6-9	215	FR	HS	Miami, Fla./Faith Baptist Christian School
4	Tyrone Johnson	G	6-3	194	JR	1VL	Plainfield, N.J./Montrose Christian School/Villanova
25	Mindaugas Kacinas	F	6-7	210	SO	1VL	Klaipeda, Lithuania/Word of Life Fire Traditional School
20	Justin McKie	G	6-4	195	FR	HS	Columbia, S.C./Irmo
10	Duane Notice	G	6-2	221	FR	HS	Woodbridge, Canada/St. Thomas More (Oakdale, Conn.)
32	Desmond Ringer	F/C	6-9	255	FR	HS	McDonough, Ga./Eagle's Landing
5	Jaylen Shaw	G	6-0	182	FR	HS	Hartsville, S.C./Hartsville
35	Brian Steele	F	6-5	200	SO	1VL	Greenville, S.C./Wade Hampton School
15	Reggie Theus Jr.	F	6-6	210	FR	HS	Los Angeles, Calif./Fairfax
0	Sindarius Thornwell	G	6-5	206	FR	HS	Lancaster, S.C./Oak Hill Academy
1	Brenton Williams	G	5-11	172	SR	2VL	Kissimmee, Fla./Osceola High School/Santa Fe College

NUMERICAL

No.	Name	Pos.	Ht.	Wt.	Cl.	Exp.	Hometown/High/Last School
0	Sindarius Thornwell	G	6-5	206	FR	HS	Lancaster, S.C./Oak Hill Academy
1	Brenton Williams	G	5-11	172	SR	1VL	Kissimmee, Fla./Osceola High School/Santa Fe College
4	Tyrone Johnson	G	6-3	194	JR	1VL	Plainfield, N.J./Montrose Christian School/Villanova
5	Jaylen Shaw	G	6-0	182	FR	HS	Hartsville, S.C./Hartsville
10	Duane Notice	G	6-2	221	FR	HS	Woodbridge, Canada/St. Thomas More (Oakdale, Conn.)
12	Austin Constable	G	5-11	180	SO	HS	West Chester, Pa./Henderson
14	Laimonas Chatkevicius	F	6-11	250	SO	HS	Klaipeda, Lithuania/South Kent School
15	Reggie Theus Jr.	F	6-6	210	FR	HS	Los Angeles, Calif./Fairfax
20	Justin McKie	G	6-4	195	FR	HS	Columbia, S.C./Irmo
21	Demetrius Henry	F/C	6-9	215	FR	HS	Miami, Fla./Faith Baptist Christian School
23	Bruce Ellington	G	5-9	196	SR	2VL	Moncks Corner, S.C./Berkeley
24	Michael Carrera	F	6-5	214	SO	HS	Anzoátegui, Venezuela/Montrose Christian School
25	Mindaugas Kacinas	F	6-7	210	SO	HS	Klaipeda, Lithuania/Word of Life Fire Traditional School
32	Desmond Ringer	F/C	6-9	255	FR	HS	McDonough, Ga./Eagle's Landing
35	Brian Steele	F	6-5	200	SO	HS	Greenville, S.C./Wade Hampton School
45	Carlton Geathers	F	6-10	255	RS JR	1VL	Georgetown, S.C./Carvers Bay

Head Coach: Frank Martin (Florida International, '93)

Associate Head Coach/Recruiting Coordinator: Matt Figger (Eastern Kentucky, '95)

Assistant Coach: Perry Clark (Gettysburg, '74)

Assistant Coach: Lamont Evans (Kansas State, '09)

Director of Basketball Operations: Andy Assaley (Cincinnati, '96)

Strength & Conditioning Coach: Scott Greenawalt (Muskingum College, '98)

Athletic Trainer: Mark Rodger (Buffalo, '01)

Video Coordinator: Dylan Lockwood (Cazenovia, '05)

Graduate Student Manager/Student-Athlete Development: Doug Edwards (Florida State, '07)

TOP RETURNING...

Scorer	Williams, 11.0 ppg
Rebounder	Carrera, 7.2 rpg
Assist Maker	Ellington, 2.7 apg
FG Shooter	Kacinas, 51.8%
3-Point FG Shooter	Williams, 39.7%
FT Shooter	Williams, 84.2%
Shot Blocker	Carrera, 0.6 bpg
Steal Maker	Ellington, 1.3 spg

RADIO/TV SPOT CHART



#0

SINDARIUS THORNWELL

Fr. - G - 6-5 - 206
Lancaster, S.C.
Oak Hill Academy



#1

BRENTON WILLIAMS

Sr. - G - 5-11 - 172
Kissimmee, Fla.
Santa Fe College



#4

TYRONE JOHNSON

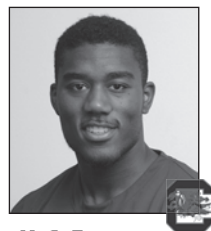
Jr. - G - 6-3 - 194
Plainfield, N.J.
Montrose Christian/
Villanova



#5

JAYLEN SHAW

Fr. - G - 6-0 - 182
Hartsville, S.C.
Hartsville



#10

DUANE NOTICE

Fr. - G - 6-2 - 221
Woodbridge, Ontario
St. Thomas More
(Oakdale, Conn.)



#12

AUSTIN CONSTABLE

So. - G - 5-11 - 180
West Chester, Pa.
Henderson



#14

LAIMONAS CHATKEVICIUS

So. - F - 6-11 - 250
Klaipeda, Lithuania
South Kent School
(South Kent, Conn.)



#15

REGGIE THEUS JR.

Fr. - F - 6-6 - 210
Los Angeles, Calif.
Fairfax



#20

JUSTIN MCKIE

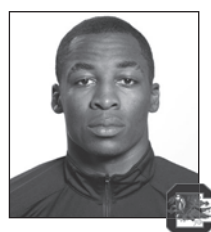
Fr. - G - 6-4 - 195
Columbia, S.C.
Irmo



#21

DEMETRIUS HENRY

Fr. - F - 6-9 - 215
Miami, Fla.
Faith Baptist Christian
School



#23

BRUCE ELLINGTON

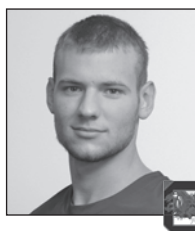
Sr. - G - 5-9 - 196
Moncks Corner, S.C.
Berkeley



#24

MICHAEL CARRERA

So. - F - 6-5 - 214
Anzoátegui, Venezuela
Montrose Christian School



#25

MINDAUGAS KACINAS

So. - F - 6-7 - 210
Klaipeda, Lithuania
Word of Life Fire
Traditional School



#32

DESMOND RINGER

Fr. - F - 6-9 - 255
McDonough, Ga.
Eagle's Landing



#35

BRIAN STEELE

So. - F - 6-5 - 200
Greenville, S.C.
Wade Hampton School



#45

CARLTON GEATHERS

R-Jr. - F - 6-10 - 255
Georgetown, S.C.
Carvers Bay



FRANK MARTIN
Head Coach



MATT FIGGER
Assoc. Head Coach/
Recruiting Coordinator



PERRY CLARK
Assistant Coach



LAMONT EVANS
Assistant Coach



ANDY ASSALEY
Director of Basketball
Operations



SCOTT GREENAWALT
Strength & Conditioning
Coach



MARK RODGER
Athletic Trainer



DOUG EDWARDS
Student-Athlete
Development



DYLAN LOCKWOOD
Video Coordinator



EMILY FEENEY
Associate Director
Media Relations

GAMECOCKS RECORD WHEN ...

At home	2-0
On the road	0-2
At neutral sites	0-0
In overtime	0-0
vs. Top 25 team	0-1
vs. Top 10 team	0-0
vs. Top 3 team	0-0
Leading at half	1-1
Trailing at half	1-1
Tied at half	0-0
Shooting 50% or better	1-0
Shooting between 39-49%	1-0
Shooting less than 39%	0-2
Opp. shooting 50% or better	0-0
Opp. shooting between 39-49%	1-1
Opp. shooting less than 39%	1-1
Shooting better than opp.	2-0
Shooting worse then/equal to opp.	0-2
Starters out-score opp. starters	1-2
Opp. starters score/equal more	1-0
Bench out-scores opp. bench	2-0
Opp. bench scores/equals more	0-2
Having more FTs than opp.	1-0
Having equal/less FTs than opp.	1-2
Have more TOs than opp.	1-1
Having equal/less TOs than opp.	1-1
Having more rebounds than opp.	2-1
Having equal/less rebounds than opp.	0-1
Making 6 or more 3FGs	2-0
Having 15 or more assists	1-0
Having less than 15 assists	1-2
Score more points in paint than opp.	2-2
Scoring equal/less points in paint than opp.	0-0
Scoring more points off TOs than opp.	2-1
Scoring equal/less points off TOs than opp.	0-1
Scoring more 2nd-chance points than opp.	2-1
Scoring equal/less 2nd-chance points than opp.	0-1
Scoring more fast break points than opp.	2-1
Scoring equal/less fast break points than opp.	0-1
Wearing white uniforms	2-0
Wearing Garnet uniforms	0-1
Wearing Black uniforms	0-1
Wearing Gray Uniforms	0-0
Playing on live TV	1-1
Playing in November	2-2
Playing in December	0-0
Playing in January	0-0
Playing in February	0-0
Playing in March	0-0
Playing a day-game	2-1
Playing a night-game	0-1
Playing on Sunday	1-1
Playing on a Monday	0-0
Playing on a Tuesday	0-1
Playing on a Wednesday	0-0
Playing on a Thursday	0-0
Playing on a Friday	0-0
Playing on a Saturday	1-0
Scoring margin is 5 points or less	0-1
Margin is between 6-10	0-0
Margin is between 11-20	1-1
Margin is more than 20	1-0
Scoring 59 points or less	0-1
Scoring 60-69 points	0-1
Scoring 70-79 points	0-0
Scoring 80-89 points	2-0
Scoring 90-99 points	0-0
Scoring 100+ points	0-0

MISCELLANEOUS

Current streak	W1
Home court streak	W2
Away streak	L2
Neutral court streak	-

2013-14 SUPERLATIVES

(tied for team lead also included)

Scoring Leaders	'13-14	Career
Tyrone Johnson	2*	2*
Sindarius Thornwell	1	1
Mindaugas Kacinas	1	1

Rebounding Leaders	'13-14	Career
Mindaugas Kacinas	3	6
Michael Carrera	1	14

Assists Leaders	'13-14	Career
Duane Notice	2	2
Tyrone Johnson	3*	3*

Blocks Leaders	'13-14	Career
Michael Carrera	2	11
Sindarius Thornwell	1	1
Mindaguas Kacinas	1	7
Demetrius Henry	2	2
Laimonas Chatkevicius	1	6

Steals Leaders	'13-14	Career
Michael Carrera	2	5
Sindarius Thornwell	2	2
Brenton Williams	1	12

Double-Figure Scoring	'13-14	Career
Tyrone Johnson	2*	2*
Sindarius Thornwell	3	3
Brenton Williams	3	26
Michael Carrera	1	13
Mindaugas Kacinas	1	6
Demetrius Henry	1	1
Jaylen Shaw	1	1

20+ points	'13-14	Career
Sindarius Thornwell	1	1

30+ points	'13-14	Career
-		

Double-Figure Rebounding	'13-14	Career
Mindaugas Kacinas	2	5

5+ assists	'13-14	Career
Tyrone Johnson	2*	2*
Jaylen Shaw	1	1

3+ steals	'13-14	Career
Sindarius Thornwell	1	1

2+ blocks	'13-14	Career
Mindaugas Kacinas	1	6
Michael Carrera	2	7
Sindarius Thornwell	1	1
Demetrius Henry	1	1

Double-Doubles	'13-14	Career
Mindaugas Kacinas	1	2

Clutch Free Throws (under 5 min/OT)

Demetrius Henry	0-2	.000
Tyrone Johnson	7-8	.875
Brenton Williams	6-6	1.000
Michael Carrera	0-1	.000
Mindaugas Kacinas	1-1	1.000
Justin McKie	1-2	.500
Jaylen Shaw	2-2	1.000
Totals	17-22	.773

* indicates at South Carolina

Miscellaneous

Largest Halftime Lead	
SC	22, vs. Longwood (Nov. 9, 2013)
Opp	9, Clemson (Nov. 17, 2013)
Smallest Halftime Lead	
SC	1, at Baylor (Nov. 12, 2013)
Opp	3, FIU (Nov. 24, 2013)
Fewest Points In First Half	
SC	26, vs. Clemson (Nov. 17, 2013)
Opp	15, Longwood (Nov. 9, 2013)
Most Points In First Half	
SC	39, twice, last vs. FIU (Nov. 24, 2013)
Opp	42, FIU (Nov. 24, 2013)
Most Points In Second Half	
SC	45, twice, last vs. FIU (Nov. 24, 2013)
Opp	36, Clemson (Nov. 17, 2013)
Fewest Points In Second Half	
SC	25, at Baylor (Nov. 12, 2013)
Opp	28, Baylor (Nov. 12, 2013)
Most Points in Overtime	
SC	-
Opp	-
Largest Margin of Victory	
SC	38, vs. Longwood (Nov. 9, 2013)
Opp	14, Clemson (Nov. 17, 2013)
Smallest Margin of Victory	
SC	12, vs. FIU (Nov. 24, 2013)
Opp	2, Baylor (Nov. 12, 2013)

2013-14 GAME BY GAME COMPARISON

	Date	Result	FG-A	Pct	3FG-A	Pct	FT-A	Pct	O-D-Total	PF	Pts	A	TO	Blk	Stl	Min	Half
Longwood			13-57	.228	4-22	.182	14-22	.636	9-18-27	19	44	7	13	0	9	200	15
South Carolina	Nov. 9, 2013	W, 82-44	28-57	.491	6-20	.300	20-24	.833	12-38-50	18	82	13	15	8	5	200	37
Baylor			19-50	.380	6-17	.353	22-41	.537	18-28-46	26	66	12	15	6	4	200	38
South Carolina	Nov. 12, 2013	L, 64-66	18-50	.360	3-8	.375	25-36	.694	11-24-35	29	64	14	8	4	9	200	39
Clemson			21-48	.438	5-14	.357	24-26	.923	7-26-33	20	71	14	12	12	8	200	35
South Carolina	Nov. 17, 2013	L, 57-71	23-65	.354	1-10	.110	10-18	.556	21-20-41	21	57	7	13	2	6	200	26
FIU			24-50	.480	6-16	.375	18-21	.857	7-20-27	18	72	13	16	3	9	200	42
South Carolina	Nov. 24, 2013	W, 84-72	30-59	.508	8-19	.421	16-21	.762	12-19-31	15	84	19	13	3	5	200	39

2013-14 RESULTS: OVERALL, 2-2; HOME, 2-0; AWAY, 0-2; NEUTRAL, 0-0; SEC, 0-0

DATE	OPPONENT	W/L	SCORE	RECORD (SEC)	POINTS	REBOUNDS	ASSISTS	BLOCKS	STEALS	ATTENDANCE
Nov. 9	Longwood	W	82-44	1-0 (0-0)	Johnson (18)	Kacinas (14)	Notice (4)	3 with 2	Carrera (2)	8,536 (paid)
Nov. 12	at No. 23/25 Baylor	L	64-66	1-1 (0-0)	Thornwell (20)	Carrera (7)	Johnson (8)	Henry (2)	Thornwell (3)	5,706
Nov. 17	at Clemson	L	71-57	1-2 (0-0)	Kacinas (13)	Kacinas (12)	Johnson/Notice (2)	Henry/Chatkevicius (1)	Thornwell/Carrera (2)	7,283
Nov. 24	FIU	W	84-72	2-2 (0-0)	Johnson (18)	Kacinas (9)	Johnson (7)	Carrera (2)	Williams (2)	9,869 (paid)

2013-14 STARTING LINEUP WIN-LOSS

Guard	Guard	Guard/Forward	Forward	Forward	2013-14	Games
Johnson	Thornwell	Notice (g)	Henry	Kacinas	1-1	2
Johnson	Thornwell	Carrera (f)	Henry	Kacinas	1-1	2

2013-14 GAME-BY-GAME STARTING LINEUPS

OPPONENT, RESULT	GUARD	GUARD	FORWARD/GUARD	FORWARD	FORWARD
Longwood, W	Notice	Johnson	Thornwell (g)	Henry	Kacinas
@Baylor, L	Johnson	Thornwell	Carrera (f)	Henry	Kacinas
@Clemson, L	Johnson	Thornwell	Notice (g)	Henry	Kacinas
FIU, W	Johnson	Thornwell	Carrera (f)	Henry	Kacinas
@Okla. St.					
Manhattan					
USC Upstate					
vs. Saint Mary's					
vs. TBA					
vs. TBA					
Akron					
Marshall					
SC State					
@Florida					
LSU					
@Texas A&M					
Ole Miss					
@Georgia					
@Missouri					
Texas A&M					
@Ole Miss					
Auburn					
@Tennessee					
Vanderbilt					
Alabama					
@Arkansas					
Georgia					
@Auburn					
Kentucky					
Florida					
@Miss. St.					
SEC Tourney					
NCAA Tourney					



#23 - BRUCE ELLINGTON

SENIOR | GUARD | 5'9" | 196 | 3VL

MONCKS CORNER, S.C./BERKELEY

ELLINGTON'S CAREER HIGHS

POINTS	31, at Furman (Dec. 22, 2010)
FIELD GOALS	11, at Furman (Dec. 22, 2010)
FIELD GOAL ATTEMPTS	23, at Furman (Dec. 22, 2010)
3-POINT FIELD GOALS	6, twice, last vs. Vanderbilt (Jan. 8, 2011)
3-POINT FIELD GOAL ATTEMPTS	13, twice, last vs. Tennessee (Feb. 16, 2011)
FREE THROWS	7, twice, last vs. Kentucky (Feb. 5, 2013)
FREE THROW ATTEMPTS	11, vs. Arkansas (Jan. 19, 2011)
REBOUNDS	9, vs. Missouri (Jan. 22, 2013)
ASSISTS	8, vs. WKU (Nov. 27, 2010)
BLOCKS	2, vs. LSU (Feb. 14, 2013)
STEALS	4, at Michigan State (Nov. 16, 2010)
MINUTES PLAYED	46, vs. WKU (Nov. 27, 2010)

ELLINGTON'S SEASON HIGHS

POINTS	-
FIELD GOALS	-
FIELD GOAL ATTEMPTS	-
3-POINT FIELD GOALS	-
3-POINT FIELD GOAL ATTEMPTS	-
FREE THROWS	-
FREE THROW ATTEMPTS	-
REBOUNDS	-
ASSISTS	-
BLOCKS	-
STEALS	-
MINUTES PLAYED	-

2013-14

Opponent	Date	GS	Min	FG-FGA	Pct	3FG-FGA	Pct	FT-FTA	Pct	Off	Def	Tot	Avg	PF	FO	A	TO	Blk	Stl	Pts	Avg	
Longwood	11/9/13	-	-	-	-	-	-	-	-	-	-	-	-	-	-	-	-	-	-	-	-	-
at Baylor	11/12/13	-	-	-	-	-	-	-	-	-	-	-	-	-	-	-	-	-	-	-	-	-
at Clemson	11/17/13	-	-	-	-	-	-	-	-	-	-	-	-	-	-	-	-	-	-	-	-	-
Fla. International	11/24/13	-	-	-	-	-	-	-	-	-	-	-	-	-	-	-	-	-	-	-	-	-
at Oklahoma St.	12/6/13																					
Manhattan	12/17/13																					
USC Upstate	12/19/13																					
vs. Saint Mary's	12/22/13																					
vs. Boise/Hawaii	12/23/13																					
vs. TBA	12/25/13																					
Akron	12/28/13																					
Marshall	12/30/13																					
SC State	1/3/14																					
at Florida	1/8/14																					
LSU	1/11/14																					
at Texas A&M	1/15/14																					
Ole Miss	1/18/14																					
at Georgia	1/22/14																					
at Missouri	1/25/14																					
Texas A&M	1/29/14																					
at Ole Miss	2/1/14																					
Auburn	2/5/14																					
at Tennessee	2/8/14																					
Vanderbilt	2/12/14																					
Alabama	2/15/14																					
at Arkansas	2/19/14																					
Georgia	2/22/14																					
at Auburn	2/26/14																					
Kentucky	3/1/14																					
Florida	3/4/14																					
at Miss. State	3/8/14																					

SEASON NOTES

Joined the men's basketball squad for practice on Tuesday, Dec. 2, and is expected to see playing time in Friday's contest at Oklahoma State.

CAREER STATISTICS

Season	GP-GS	Min	Avg	FG	FGA	Pct	3FG	3FGA	Pct	FT	FTA	Pct	Off	Def	Tot	Avg	PF	FO	Ast	TO	Blk	Stl	Pts	Avg
2010-11	30-30	928	30.9	138	423	.326	61	198	.308	47	74	.635	25	75	100	3.3	75	0	97	87	0	31	384	12.8
2011-12	24-15	697	29.0	100	280	.357	39	118	.331	26	34	.765	18	37	55	2.3	53	0	74	54	2	16	265	11.0
2012-13	23-19	741	32.2	78	233	.335	23	82	.280	48	74	.649	16	43	59	2.6	64	2	62	66	5	29	227	9.9
Totals	77-64	2366	30.7	316	936	.337	123	398	.309	121	182	.664	59	155	214	2.8	192	2	233	207	7	76	876	11.4

CAREER SEC STATISTICS

Season	GP-GS	Min	Avg	FG	FGA	Pct	3FG	3FGA	Pct	FT	FTA	Pct	Off	Def	Tot	Avg	PF	FO	Ast	TO	Blk	Stl	Pts	Avg
2011	16-16	500	31.3	69	237	.291	31	122	.254	23	35	.657	18	32	50	3.1	41	0	42	43	0	14	192	12.0
2012	16-14	511	31.9	72	209	.344	26	85	.306	18	24	.750	14	28	42	2.6	34	0	58	40	1	14	188	11.8
2013	18-18	606	33.7	61	191	.319	19	68	.279	34	54	.630	13	33	46	2.6	50	2	57	52	4	26	175	9.7
Totals	50-48	1617	32.3	202	637	.317	76	275	.276	75	113	.664	45	93	138	2.8	125	2	157	135	5	54	555	11.1



#1 - BRENTON WILLIAMS

SENIOR | GUARD | 5'11" | 172 | 2VL
 KISSIMMEE, FLA./OSCEOLA HIGH SCHOOL/
 SANTA FE COLLEGE

WILLIAMS' CAREER HIGHS

POINTS
38, vs. Miss. State (March 6, 2013)

FIELD GOALS
10, vs. Miss. State (March 6, 2013)

FIELD GOAL ATTEMPTS
17, vs. Miss. State (March 6, 2013)

3-POINT FIELD GOALS
6, vs. Miss. State (March 6, 2013)

3-POINT FIELD GOAL ATTEMPTS
11, vs. Miss. State (March 13, 2013)

FREE THROWS
12, vs. Miss. State (March 6, 2013)

FREE THROW ATTEMPTS
12, vs. Miss. State (March 6, 2013)

REBOUNDS
5, twice, last vs. Vandy (March 9, 2013)

ASSISTS
4, twice, last vs. Miss. State (March 13, 2013)

BLOCKS
1, 5 times, last vs. App State (Dec. 19, 2012)

STEALS
5, vs. Western Carolina (Nov. 11, 2011)

MINUTES PLAYED
38, vs. Rider (Nov. 19, 2012)

WILLIAMS' SEASON HIGHS

POINTS
16, vs. FIU (Nov. 24, 2013)

FIELD GOALS
5, vs. Longwood (Nov. 9, 2013)

FIELD GOAL ATTEMPTS
11, vs. Longwood (Nov. 9, 2013)

3-POINT FIELD GOALS
2, 3x, last vs. FIU (Nov. 24, 2013)

3-POINT FIELD GOAL ATTEMPTS
7, vs. Longwood (Nov. 9, 2013)

FREE THROWS
6, vs. FIU (Nov. 24, 2013)

FREE THROW ATTEMPTS
6, vs. FIU (Nov. 24, 2013)

REBOUNDS
4, vs. Longwood (Nov. 9, 2013)

ASSISTS
2, vs. FIU (Nov. 24, 2013)

BLOCKS
-

STEALS
2, vs. FIU (Nov. 24, 2013)

MINUTES PLAYED
29, at Baylor (Nov. 12, 2013)

2013-14

Opponent	Date	GS	Min	FG-FA	Pct	3FG-FA	Pct	FT-FTA	Pct	Off	Def	Tot	Avg	PF	FO	A	TO	Blk	Stl	Pts	Avg
Longwood	11/9/13	22	5-11	.454	2-7	.285	2-2	1.000	0	4	4	4.0	0	0	1	0	0	0	14	14.0	
at Baylor	11/12/13	29	3-7	.428	2-5	.400	4-4	1.000	0	2	2	3.0	2	0	1	0	0	1	12	13.0	
at Clemson	11/17/13	19	0-5	.000	0-2	.000	0-0	.000	0	2	2	2.7	0	0	1	0	0	0	0	0	8.7
Fla. International	11/24/13	18	4-8	.500	2-5	.400	6-6	1.000	1	1	2	2.5	2	0	2	2	0	2	16	10.5	
at Oklahoma St.	12/6/13																				
Manhattan	12/17/13																				
USC Upstate	12/19/13																				
vs. Saint Mary's	12/22/13																				
vs. Boise/Hawaii	12/23/13																				
vs. TBA	12/25/13																				
Akron	12/28/13																				
Marshall	12/30/13																				
SC State	1/3/14																				
at Florida	1/8/14																				
LSU	1/11/14																				
at Texas A&M	1/15/14																				
Ole Miss	1/18/14																				
at Georgia	1/22/14																				
at Missouri	1/25/14																				
Texas A&M	1/29/14																				
at Ole Miss	2/1/14																				
Auburn	2/5/14																				
at Tennessee	2/8/14																				
Vanderbilt	2/12/14																				
Alabama	2/15/14																				
at Arkansas	2/19/14																				
Georgia	2/22/14																				
at Auburn	2/26/14																				
Kentucky	3/1/14																				
Florida	3/4/14																				
at Miss. State	3/8/14																				

SEASON NOTES

Scored 10 points, hitting 7-of-8 from the free throw line in exhibition vs. USC Aiken (Nov. 3) ... Scored 14 points off the bench in season opener vs. Longwood (Nov. 9) ... Just one rebound shy of matching career high vs. the Lancers ... Posted 12 points, including a perfect 4-of-4 effort from the free throw line at Baylor (Nov. 12) ... Struggled from the floor at Clemson (Nov. 17), going 0-of-5 from the field ... Hit 4-of-8 attempts, including two 3s, and all six attempts from the free throw line for 16 points, while adding two assists and two steals vs. FIU (Nov. 24) ...

CAREER STATISTICS

Season	GP-GS	Min	Avg	FG	FGA	Pct	3FG	3FGA	Pct	FT	FTA	Pct	Off	Def	Tot	Avg	PF	FO	Ast	TO	Blk	Stl	Pts	Avg
2011-12	23-0	323	14.0	46	117	.393	26	66	.394	23	28	.821	4	15	19	0.8	27	1	13	19	2	15	141	6.1
2012-13	31-7	652	21.0	105	238	.441	50	126	.397	80	95	.842	9	47	56	1.8	44	1	42	37	4	22	340	11.0
2013-14	4-0	88	22.0	12	31	.387	6	19	.316	12	12	1.000	1	9	10	2.5	4	0	5	2	0	3	42	10.5
Totals	58-7	1063	18.3	163	386	.422	82	211	.389	115	135	.852	14	71	85	1.5	75	2	60	58	6	40	523	9.0

CAREER SEC STATISTICS

Season	GP-GS	Min	Avg	FG	FGA	Pct	3FG	3FGA	Pct	FT	FTA	Pct	Off	Def	Tot	Avg	PF	FO	Ast	TO	Blk	Stl	Pts	Avg
2012	15-0	230	15.3	32	83	.386	20	50	.400	11	14	.786	4	12	16	1.1	20	1	7	10	2	7	95	6.3
2013	17-1	305	17.9	50	127	.394	25	66	.379	39	44	.886	5	24	29	1.7	22	1	20	15	0	10	164	9.6
Totals	32-1	535	16.7	82	210	.390	45	116	.388	50	58	.862	9	36	45	1.4	42	2	27	25	2	17	259	8.1



#4 - TYRONE JOHNSON

JUNIOR | GUARD | 6'3" | 194 | 1VL
PLAINFIELD, N.J./MONTROSE CHRISTIAN
SCHOOL/VILLANOVA

2013-14

Opponent	Date	GS	Min	FG-FGA	Pct	3FG-FGA	Pct	FT-FTA	Pct	Off	Def	Tot	Avg	PF	FO	A	TO	Blk	Stl	Pts	Avg
Longwood	11/9/13	*	24	6-9	.667	0-1	.000	6-7	.857	0	2	2	2.0	2	0	2	4	1	1	18	18.0
at Baylor	11/12/13	*	33	1-7	.142	0-0	.000	6-9	.667	0	4	4	3.0	2	0	8	2	0	2	8	13.0
at Clemson	11/17/13	*	32	2-11	.181	0-2	.000	1-2	.500	1	2	3	3.0	2	0	2	0	1	5	10.3	
Fla. International	11/24/13	*	37	5-10	.500	1-2	.500	7-8	.875	0	0	0	2.3	1	0	7	1	0	1	18	12.3
at Oklahoma St.	12/6/13																				
Manhattan	12/17/13																				
USC Upstate	12/19/13																				
vs. Saint Mary's	12/22/13																				
vs. Boise/Hawaii	12/23/13																				
vs. TBA	12/25/13																				
Akron	12/28/13																				
Marshall	12/30/13																				
SC State	1/3/14																				
at Florida	1/8/14																				
LSU	1/11/14																				
at Texas A&M	1/15/14																				
Ole Miss	1/18/14																				
at Georgia	1/22/14																				
at Missouri	1/25/14																				
Texas A&M	1/29/14																				
at Ole Miss	2/1/14																				
Auburn	2/5/14																				
at Tennessee	2/8/14																				
Vanderbilt	2/12/14																				
Alabama	2/15/14																				
at Arkansas	2/19/14																				
Georgia	2/22/14																				
at Auburn	2/26/14																				
Kentucky	3/1/14																				
Florida	3/4/14																				
at Miss. State	3/8/14																				

CAREER STATISTICS

Season	GP-GS	Min	Avg	FG	FGA	Pct	3FG	3FGA	Pct	FT	FTA	Pct	Off	Def	Tot	Avg	PF	FO	Ast	TO	Blk	Stl	Pts	Avg
2011-12*	32-9	567	17.7	33	106	.311	6	26	.230	35	40	.875	2	31	33	1.0	47	2	65	58	2	19	107	3.3
2012-13	DNP - Transfer																							
2013-14	4-4	126	31.5	14	37	.378	1	5	.200	20	26	.769	1	8	9	2.3	7	0	19	9	1	5	49	12.3
Totals	36-13	693	19.3	47	143	.328	7	31	.225	55	66	.833	3	39	42	1.2	54	2	84	67	3	24	156	4.3

* indicates at Villanova

JOHNSON'S CAREER HIGHS

POINTS
18, twice, last vs. FIU (Nov. 24, 2013)

FIELD GOALS
6, vs. Longwood (Nov. 9, 2013)

FIELD GOAL ATTEMPTS
13, vs. Notre Dame (Feb. 18, 2012)

3-POINT FIELD GOALS
2, vs. Syracuse (Jan. 11, 2012)

3-POINT FIELD GOAL ATTEMPTS
3, twice, last vs. Notre Dame (Feb. 18, 2012)

FREE THROWS
7, vs. FIU (Nov. 24, 2013)

FREE THROW ATTEMPTS
8, vs. FIU (Nov. 24, 2013)

REBOUNDS
5, twice, last vs. Syracuse (Jan. 22, 2012)

ASSISTS
8, at Baylor (Nov. 12, 2013)

BLOCKS
1, 3x, vs. Longwood (Nov. 9, 2013)

STEALS
4, vs. USF (Feb. 15, 2012)

MINUTES PLAYED
41, vs. UCONN (Feb. 20, 2012)

JOHNSON'S SEASON HIGHS

POINTS
18, twice, last vs. FIU (Nov. 24, 2013)

FIELD GOALS
6, vs. Longwood (Nov. 9, 2013)

FIELD GOAL ATTEMPTS
11, at Clemson (Nov. 13, 2013)

3-POINT FIELD GOALS
1, vs. FIU (Nov. 24, 2013)

3-POINT FIELD GOAL ATTEMPTS
2, twice, last vs. FIU (Nov. 24, 2013)

FREE THROWS
7, vs. FIU (Nov. 24, 2013)

FREE THROW ATTEMPTS
9, at Baylor (Nov. 12, 2013)

REBOUNDS
4, at Baylor (Nov. 12, 2013)

ASSISTS
8, at Baylor (Nov. 12, 2013)

BLOCKS
1, vs. Longwood (Nov. 9, 2013)

STEALS
2, at Baylor (Nov. 12, 2013)

MINUTES PLAYED
37, vs. FIU (Nov. 24, 2013)

SEASON NOTES

Semester transfer from Villanova ... Received waiver from NCAA on Nov. 8 to play effective immediately ... Scored a game high 18 points on 6-of-9 shooting and a 6-of-7 effort from the free throw line in season opener vs. Longwood (Nov. 9), which was first regular season competition since the 2011-12 campaign at Villanova ... Struggled from the floor, hitting just 1-of-7 attempts, but dished a career high eight assists at Baylor (Nov. 12) ... Struggled from the floor at Clemson (Nov. 17), hitting just 2-of-11 attempts ... Matched career high with 18 points, hitting 7-of-8 from the free throw line, and nearly matching career high with seven assists in win vs. FIU (Nov. 24) ...



#14 - LAIMONAS CHATKEVICIUS

SO. | FORWARD | 6'11" | 250 | 1VL
 KLAIPEDA, LITHUANIA/SOUTH KENT SCHOOL
 (CONN.)

2013-14

Opponent	Date	GS	Min	FG-FGA	Pct	3FG-FGA	Pct	FT-FTA	Pct	Off	Def	Tot	Avg	PF	FO	A	TO	Blk	Stl	Pts	Avg
Longwood	11/9/13	8	1-1	1.000	0-0	.000	0-0	.000	1	3	4	4.0	0	0	0	1	0	2	2.0		
at Baylor	11/12/13	14	1-3	.333	0-0	.000	0-0	.000	0	2	2	3.0	2	0	0	1	1	1	2	2.0	
at Clemson	11/17/13	10	2-3	.667	0-0	.000	0-0	.000	2	0	2	2.7	3	0	0	1	1	0	4	2.7	
Fla. International	11/24/13	-	-	-	-	-	-	-	-	-	-	-	-	-	-	-	-	-	-	-	-
at Oklahoma St.	12/6/13																				
Manhattan	12/17/13																				
USC Upstate	12/19/13																				
vs. Saint Mary's	12/22/13																				
vs. Boise/Hawaii	12/23/13																				
vs. TBA	12/25/13																				
Akron	12/28/13																				
Marshall	12/30/13																				
SC State	1/3/14																				
at Florida	1/8/14																				
LSU	1/11/14																				
at Texas A&M	1/15/14																				
Ole Miss	1/18/14																				
at Georgia	1/22/14																				
at Missouri	1/25/14																				
Texas A&M	1/29/14																				
at Ole Miss	2/1/14																				
Auburn	2/5/14																				
at Tennessee	2/8/14																				
Vanderbilt	2/12/14																				
Alabama	2/15/14																				
at Arkansas	2/19/14																				
Georgia	2/22/14																				
at Auburn	2/26/14																				
Kentucky	3/1/14																				
Florida	3/4/14																				
at Miss. State	3/8/14																				

CHATKEVICIUS' CAREER HIGHS

POINTS
 11, twice, last vs. Miss. State (March 13, 2013)

FIELD GOALS
 5, vs. Miss. State (March 13, 2013)

FIELD GOAL ATTEMPTS
 9, vs. Miss. State (March 13, 2013)

3-POINT FIELD GOALS
 1, 3x, last vs. Vandy (March 9, 2013)

3-POINT FIELD GOAL ATTEMPTS
 2, twice, last vs. Miss. State (March 13, 2013)

FREE THROWS
 4, vs. Missouri (Jan. 22, 2013)

FREE THROW ATTEMPTS
 7, vs. Alabama (Feb. 16, 2013)

REBOUNDS
 10, vs. Georgia (Feb. 23, 2013)

ASSISTS
 4, vs. Jacksonville (Dec. 7, 2012)

BLOCKS
 3, vs. Georgia (Feb. 23, 2013)

STEALS
 1, 3 times, last vs. Miss. St (March 13, 2013)

MINUTES PLAYED
 34, vs. Georgia (Feb. 23, 2013)

CHATKEVICIUS' SEASON HIGHS

POINTS
 4, at Clemson (Nov. 13, 2013)

FIELD GOALS
 2, at Clemson (Nov. 13, 2013)

FIELD GOAL ATTEMPTS
 3, twice, last at Clemson (Nov. 13, 2013)

3-POINT FIELD GOALS
 -

3-POINT FIELD GOAL ATTEMPTS
 -

FREE THROWS
 -

FREE THROW ATTEMPTS
 -

REBOUNDS
 4, vs. Longwood (Nov. 9, 2013)

ASSISTS
 -

BLOCKS
 1, 3x, last at Clemson (Nov. 13, 2013)

STEALS
 1, at Baylor (Nov. 12, 2013)

MINUTES PLAYED
 14, at Baylor (Nov. 12, 2013)

SEASON NOTES

Posted a double-double with 10 points and 11 rebounds in exhibition contest vs. USC Aiken (Nov. 3) ... Scored his only attempt and blocked one shot in season opener vs. Longwood (Nov. 9) ... Scored two points and pulled down two rebounds, with one block and a steal at Baylor (Nov. 12) ... Scored four points, hitting 2-of-3 attempts at Clemson (Nov. 17) ...

CAREER STATISTICS

Season	GP-GS	Min	Avg	FG	FGA	Pct	3FG	3FGA	Pct	FT	FTA	Pct	Off	Def	Tot	Avg	PF	FO	Ast	TO	Blk	Stl	Pts	Avg
2012-13	23-10	304	13.2	38	85	.447	3	10	.300	22	36	.611	28	46	74	3.2	42	1	12	32	13	3	101	4.4
2013-14	3-0	32	10.7	4	7	.571	0	0	.000	0	0	.000	3	5	8	2.7	5	0	0	2	3	1	8	2.7
Totals	26-10	336	12.9	42	92	.457	3	10	.300	22	36	.611	31	51	82	3.2	47	1	12	34	16	4	109	4.2

CAREER SEC STATISTICS

Season	GP-GS	Min	Avg	FG	FGA	Pct	3FG	3FGA	Pct	FT	FTA	Pct	Off	Def	Tot	Avg	PF	FO	Ast	TO	Blk	Stl	Pts	Avg
2013	15-10	213	14.2	23	59	.390	2	7	.286	19	28	.679	17	35	52	3.5	30	1	5	22	11	2	67	4.5



#12 - AUSTIN CONSTABLE

SOPHOMORE | GUARD | 5'11" | 180 | 1VL

WEST CHESTER, PA./HENDERSON

CONSTABLE'S CAREER HIGHS

POINTS	-
FIELD GOALS	-
FIELD GOAL ATTEMPTS	2, vs. Presbyterian (Dec. 29, 2012)
3-POINT FIELD GOALS	-
3-POINT FIELD GOAL ATTEMPTS	1, vs. Presbyterian (Dec. 29, 2012)
FREE THROWS	-
FREE THROW ATTEMPTS	-
REBOUNDS	-
ASSISTS	-
BLOCKS	-
STEALS	-
MINUTES PLAYED	2, vs. Presbyterian (Dec. 29, 2012)

CONSTABLE'S SEASON HIGHS

POINTS	-
FIELD GOALS	-
FIELD GOAL ATTEMPTS	-
3-POINT FIELD GOALS	-
3-POINT FIELD GOAL ATTEMPTS	-
FREE THROWS	-
FREE THROW ATTEMPTS	-
REBOUNDS	-
ASSISTS	-
BLOCKS	-
STEALS	-
MINUTES PLAYED	-

2013-14

Opponent	Date	GS	Min	FG-FGA	Pct	3FG-FGA	Pct	FT-FTA	Pct	Off	Def	Tot	Avg	PF	FO	A	TO	Blk	Stl	Pts	Avg	
Longwood	11/9/13	-	-	-	-	-	-	-	-	-	-	-	-	-	-	-	-	-	-	-	-	-
at Baylor	11/12/13	-	-	-	-	-	-	-	-	-	-	-	-	-	-	-	-	-	-	-	-	-
at Clemson	11/17/13	-	-	-	-	-	-	-	-	-	-	-	-	-	-	-	-	-	-	-	-	-
Fla. International	11/24/13	-	-	-	-	-	-	-	-	-	-	-	-	-	-	-	-	-	-	-	-	-
at Oklahoma St.	12/6/13	-	-	-	-	-	-	-	-	-	-	-	-	-	-	-	-	-	-	-	-	-
Manhattan	12/17/13	-	-	-	-	-	-	-	-	-	-	-	-	-	-	-	-	-	-	-	-	-
USC Upstate	12/19/13	-	-	-	-	-	-	-	-	-	-	-	-	-	-	-	-	-	-	-	-	-
vs. Saint Mary's	12/22/13	-	-	-	-	-	-	-	-	-	-	-	-	-	-	-	-	-	-	-	-	-
vs. Boise/Hawaii	12/23/13	-	-	-	-	-	-	-	-	-	-	-	-	-	-	-	-	-	-	-	-	-
vs. TBA	12/25/13	-	-	-	-	-	-	-	-	-	-	-	-	-	-	-	-	-	-	-	-	-
Akron	12/28/13	-	-	-	-	-	-	-	-	-	-	-	-	-	-	-	-	-	-	-	-	-
Marshall	12/30/13	-	-	-	-	-	-	-	-	-	-	-	-	-	-	-	-	-	-	-	-	-
SC State	1/3/14	-	-	-	-	-	-	-	-	-	-	-	-	-	-	-	-	-	-	-	-	-
at Florida	1/8/14	-	-	-	-	-	-	-	-	-	-	-	-	-	-	-	-	-	-	-	-	-
LSU	1/11/14	-	-	-	-	-	-	-	-	-	-	-	-	-	-	-	-	-	-	-	-	-
at Texas A&M	1/15/14	-	-	-	-	-	-	-	-	-	-	-	-	-	-	-	-	-	-	-	-	-
Ole Miss	1/18/14	-	-	-	-	-	-	-	-	-	-	-	-	-	-	-	-	-	-	-	-	-
at Georgia	1/22/14	-	-	-	-	-	-	-	-	-	-	-	-	-	-	-	-	-	-	-	-	-
at Missouri	1/25/14	-	-	-	-	-	-	-	-	-	-	-	-	-	-	-	-	-	-	-	-	-
Texas A&M	1/29/14	-	-	-	-	-	-	-	-	-	-	-	-	-	-	-	-	-	-	-	-	-
at Ole Miss	2/1/14	-	-	-	-	-	-	-	-	-	-	-	-	-	-	-	-	-	-	-	-	-
Auburn	2/5/14	-	-	-	-	-	-	-	-	-	-	-	-	-	-	-	-	-	-	-	-	-
at Tennessee	2/8/14	-	-	-	-	-	-	-	-	-	-	-	-	-	-	-	-	-	-	-	-	-
Vanderbilt	2/12/14	-	-	-	-	-	-	-	-	-	-	-	-	-	-	-	-	-	-	-	-	-
Alabama	2/15/14	-	-	-	-	-	-	-	-	-	-	-	-	-	-	-	-	-	-	-	-	-
at Arkansas	2/19/14	-	-	-	-	-	-	-	-	-	-	-	-	-	-	-	-	-	-	-	-	-
Georgia	2/22/14	-	-	-	-	-	-	-	-	-	-	-	-	-	-	-	-	-	-	-	-	-
at Auburn	2/26/14	-	-	-	-	-	-	-	-	-	-	-	-	-	-	-	-	-	-	-	-	-
Kentucky	3/1/14	-	-	-	-	-	-	-	-	-	-	-	-	-	-	-	-	-	-	-	-	-
Florida	3/4/14	-	-	-	-	-	-	-	-	-	-	-	-	-	-	-	-	-	-	-	-	-
at Miss. State	3/8/14	-	-	-	-	-	-	-	-	-	-	-	-	-	-	-	-	-	-	-	-	-

SEASON NOTES

Has not seen game action this season.

CAREER STATISTICS

Season	GP-GS	Min	Avg	FG	FGA	Pct	3FG	3FGA	Pct	FT	FTA	Pct	Off	Def	Tot	Avg	PF	FO	Ast	TO	Blk	Stl	Pts	Avg
2012-13	4-0	6	1.5	0	2	.000	0	1	.000	0	0	.000	1	0	1	0.3	0	0	0	1	0	0	0	0.0
2013-14	-	-	-	-	-	-	-	-	-	-	-	-	-	-	-	-	-	-	-	-	-	-	-	-
Totals	4-0	6	1.5	0	2	.000	0	1	.000	0	0	.000	1	0	1	0.3	0	0	0	1	0	0	0	0.0

CAREER SEC STATISTICS

Season	GP-GS	Min	Avg	FG	FGA	Pct	3FG	3FGA	Pct	FT	FTA	Pct	Off	Def	Tot	Avg	PF	FO	Ast	TO	Blk	Stl	Pts	Avg
2013	1-0	1	1.0	0	0	.000	0	0	.000	0	0	.000	0	0	0	0.0	0	0	0	0	0	0	0	0.0



#25 - MINDAUGAS KACINAS

SOPHOMORE | FORWARD | 6'7" | 210 | 1VL
KLAIPEDA, LITHUANIA/WORD OF LIFE FIRE TRADI-
TIONAL SCHOOL

KACINAS' CAREER HIGHS

POINTS
 18, vs. Rider (Nov. 19, 2012)

FIELD GOALS
 8, vs. Rider (Nov. 19, 2012)

FIELD GOAL ATTEMPTS
 11, 3x, last at Clemson (Nov. 13, 2013)

3-POINT FIELD GOALS
 1, 3 times, last vs. Clemson (Dec. 2, 2012)

3-POINT FIELD GOAL ATTEMPTS
 3, twice, last vs. App State (Dec. 19, 2012)

FREE THROWS
 6, vs. Milwaukee (Nov. 11, 2012)

FREE THROW ATTEMPTS
 8, vs. Milwaukee (Nov. 11, 2012)

REBOUNDS
 14, vs. Longwood (Nov. 9, 2013)

ASSISTS
 3, twice, last vs. App State (Dec. 19, 2012)

BLOCKS
 3, vs. Appalachian State (Dec. 19, 2012)

STEALS
 2, vs. UALR (Nov. 25, 2012)

MINUTES PLAYED
 35, twice, last vs. FIU (Nov. 24, 2013)

KACINAS' SEASON HIGHS

POINTS
 12, at Clemson (Nov. 13, 2013)

FIELD GOALS
 6, at Clemson (Nov. 13, 2013)

FIELD GOAL ATTEMPTS
 11, at Clemson (Nov. 13, 2013)

3-POINT FIELD GOALS
 -

3-POINT FIELD GOAL ATTEMPTS
 -

FREE THROWS
 3, vs. FIU (Nov. 24, 2013)

FREE THROW ATTEMPTS
 4, vs. FIU (Nov. 24, 2013)

REBOUNDS
 14, vs. Longwood (Nov. 9, 2013)

ASSISTS
 -

BLOCKS
 2, vs. Longwood (Nov. 9, 2013)

STEALS
 1, twice, last at Clemson (Nov. 13, 2013)

MINUTES PLAYED
 35, vs. FIU (Nov. 24, 2013)

2013-14

Opponent	Date	GS	Min	FG-FGA	Pct	3FG-3FGA	Pct	FT-FTA	Pct	Off	Def	Tot	Avg	PF	FO	A	TO	Blk	Stl	Pts	Avg
Longwood	11/9/13	*	29	4-6	.667	0-0	.000	0-0	.000	5	9	14	14.0	2	0	0	3	2	0	8	8.0
at Baylor	11/12/13	*	18	1-2	.500	0-0	.000	0-0	.000	1	1	2	8.0	5	1	0	1	0	1	2	5.0
at Clemson	11/17/13	*	31	6-11	.545	0-0	.000	1-2	.500	7	5	12	9.3	4	0	0	2	0	1	13	7.7
Fla. International	11/24/13	*	35	3-5	.600	0-0	.000	3-4	.750	4	5	9	9.3	2	0	0	3	0	0	9	8.0
at Oklahoma St.	12/6/13																				
Manhattan	12/17/13																				
USC Upstate	12/19/13																				
vs. Saint Mary's	12/22/13																				
vs. Boise/Hawaii	12/23/13																				
vs. TBA	12/25/13																				
Akron	12/28/13																				
Marshall	12/30/13																				
SC State	1/3/14																				
at Florida	1/8/14																				
LSU	1/11/14																				
at Texas A&M	1/15/14																				
Ole Miss	1/18/14																				
at Georgia	1/22/14																				
at Missouri	1/25/14																				
Texas A&M	1/29/14																				
at Ole Miss	2/1/14																				
Auburn	2/5/14																				
at Tennessee	2/8/14																				
Vanderbilt	2/12/14																				
Alabama	2/15/14																				
at Arkansas	2/19/14																				
Georgia	2/22/14																				
at Auburn	2/26/14																				
Kentucky	3/1/14																				
Florida	3/4/14																				
at Miss. State	3/8/14																				

SEASON NOTES

Scored eight points and dished one assist in exhibition vs. USC Aiken (Nov. 3) ... Set a career high with 14 rebounds, while adding eight points and matching for a team high two blocks in contest vs. Longwood (Nov. 9) ... Also earned the start vs. the Lancers ... In foul trouble most of the game at Baylor (Nov. 12), contributed two points, two rebounds and a steal vs. the Bears ... Continues to impress on the boards, collecting a team high 12 rebounds, including seven on the offensive glass, at Clemson (Nov. 17), also posted team high 13 points for first double-double of the season and second of his career ... Near double-double with nine points and nine rebounds vs. FIU (Nov. 24) ...

CAREER STATISTICS

Season	GP-GS	Min	Avg	FG	FGA	Pct	3FG	3FGA	Pct	FT	FTA	Pct	Off	Def	Tot	Avg	PF	FO	Ast	TO	Blk	Stl	Pts	Avg
2012-13	31-9	606	19.5	57	110	.518	4	20	.200	34	50	.680	50	66	116	3.7	67	1	21	46	15	10	152	4.9
2013-14	4-4	113	28.3	14	24	.583	0	0	.000	4	6	.667	17	20	37	9.3	13	1	0	9	2	2	32	8.0
Totals	35-13	719	20.5	71	134	.530	4	20	.200	38	56	.679	67	86	153	4.4	80	2	21	55	17	12	184	5.3

CAREER SEC STATISTICS

Season	GP-GS	Min	Avg	FG	FGA	Pct	3FG	3FGA	Pct	FT	FTA	Pct	Off	Def	Tot	Avg	PF	FO	Ast	TO	Blk	Stl	Pts	Avg
2013	17-4	255	15.0	16	40	.400	1	7	.143	11	16	.688	14	27	41	2.4	32	0	7	18	2	4	44	2.6



#35 - BRIAN STEELE

**SOPHOMORE | FORWARD | 6'5" | 200 | 1VL
GREENVILLE, S.C./WADE HAMPTON SCHOOL**

STEELE'S CAREER HIGHS

POINTS	6, vs. Miss State (March 6, 2013)
FIELD GOALS	2, vs. Miss State (March 6, 2013)
FIELD GOAL ATTEMPTS	7, vs. Miss State (March 13, 2013)
3-POINT FIELD GOALS	2, vs. Miss State (March 6, 2013)
3-POINT FIELD GOAL ATTEMPTS	5, vs. Miss State (March 6, 2013)
FREE THROWS	2, vs. Presbyterian (Dec. 29, 2012)
FREE THROW ATTEMPTS	2, vs. Presbyterian (Dec. 29, 2012)
REBOUNDS	7, vs. Miss. State (March 13, 2013)
ASSISTS	3, vs. Vandy (March 9, 2013)
BLOCKS	-
STEALS	1, twice, last vs. Texas A&M (March 2, 2013)
MINUTES PLAYED	25, vs. Texas A&M (March 2, 2013)

STEELE'S SEASON HIGHS

POINTS	-
FIELD GOALS	-
FIELD GOAL ATTEMPTS	-
3-POINT FIELD GOALS	-
3-POINT FIELD GOAL ATTEMPTS	-
FREE THROWS	-
FREE THROW ATTEMPTS	-
REBOUNDS	-
ASSISTS	-
BLOCKS	-
STEALS	-
MINUTES PLAYED	1, at Clemson (Nov. 13, 2013)

2013-14

Opponent	Date	GS	Min	FG-FGA	Pct	3FG-FGA	Pct	FT-FTA	Pct	Off	Def	Tot	Avg	PF	FO	A	TO	Blk	Stl	Pts	Avg	
Longwood	11/9/13	-	-	-	-	-	-	-	-	-	-	-	-	-	-	-	-	-	-	-	-	-
at Baylor	11/12/13	-	-	-	-	-	-	-	-	-	-	-	-	-	-	-	-	-	-	-	-	-
at Clemson	11/17/13	1	0-0	.000	0-0	.000	0-0	.000	0-0	0	0	0	0.0	0	0	0	0	0	0	0	0	0.0
Fla. International	11/24/13	-	-	-	-	-	-	-	-	-	-	-	-	-	-	-	-	-	-	-	-	-
at Oklahoma St.	12/6/13																					
Manhattan	12/17/13																					
USC Upstate	12/19/13																					
vs. Saint Mary's	12/22/13																					
vs. Boise/Hawaii	12/23/13																					
vs. TBA	12/25/13																					
Akron	12/28/13																					
Marshall	12/30/13																					
SC State	1/3/14																					
at Florida	1/8/14																					
LSU	1/11/14																					
at Texas A&M	1/15/14																					
Ole Miss	1/18/14																					
at Georgia	1/22/14																					
at Missouri	1/25/14																					
Texas A&M	1/29/14																					
at Ole Miss	2/1/14																					
Auburn	2/5/14																					
at Tennessee	2/8/14																					
Vanderbilt	2/12/14																					
Alabama	2/15/14																					
at Arkansas	2/19/14																					
Georgia	2/22/14																					
at Auburn	2/26/14																					
Kentucky	3/1/14																					
Florida	3/4/14																					
at Miss. State	3/8/14																					

SEASON NOTES

Scored two points and collected one rebound in exhibition vs. USC Aiken (Nov. 3) ... Did not see action in the season opener vs. Longwood (Nov. 9) ...

CAREER STATISTICS

Season	GP-GS	Min	Avg	FG	FGA	Pct	3FG	3FGA	Pct	FT	FTA	Pct	Off	Def	Tot	Avg	PF	FO	Ast	TO	Blk	Stl	Pts	Avg
2012-13	7-4	79	11.3	5	19	.263	4	14	.286	2	3	.667	4	11	15	2.1	12	1	8	5	0	3	16	2.3
2013-14	1-0	1	1.0	0	0	.000	0	0	.000	0	0	.000	0	0	0	0.0	0	0	0	0	0	0	0	0.0
Totals	8-4	80	10.0	5	19	.263	4	14	.286	2	3	.667	4	11	15	2.1	12	1	8	5	0	3	16	2.3

CAREER SEC STATISTICS

Season	GP-GS	Min	Avg	FG	FGA	Pct	3FG	3FGA	Pct	FT	FTA	Pct	Off	Def	Tot	Avg	PF	FO	Ast	TO	Blk	Stl	Pts	Avg
2013	4-3	56	14.0	4	11	.364	4	10	.400	0	0	.000	1	6	7	1.8	10	1	6	2	0	2	12	3.0



#21 - DEMETRIUS HENRY

FRESHMAN | FORWARD | 6'9" | 215 | HS
 MIAMI, FLA./FAITH BAPTIST CHRISTIAN SCHOOL

HENRY'S SEASON HIGHS

- POINTS**
14, vs. FIU (Nov. 24, 2013)
- FIELD GOALS**
7, vs. FIU (Nov. 24, 2013)
- FIELD GOAL ATTEMPTS**
10, twice, last vs. FIU (Nov. 24, 2013)
- 3-POINT FIELD GOALS**
-
- 3-POINT FIELD GOAL ATTEMPTS**
-
- FREE THROWS**
2, vs. Longwood (Nov. 9, 2013)
- FREE THROW ATTEMPTS**
4, twice, last at Clemson (Nov. 13, 2013)
- REBOUNDS**
6, 3x, last vs. FIU (Nov. 24, 2013)
- ASSISTS**
1, twice, last at Baylor (Nov. 12, 2013)
- BLOCKS**
2, at Baylor (Nov. 12, 2013)
- STEALS**
1, vs. FIU (Nov. 24, 2013)
- MINUTES PLAYED**
31, twice, last vs. FIU (Nov. 24, 2013)

2013-14

Opponent	Date	GS	Min	FG-FGA	Pct	3FG-FGA	Pct	FT-FTA	Pct	Off	Def	Tot	Avg	PF	FO	A	TO	Blk	Stl	Pts	Avg
Longwood	11/9/13	*	31	1-5	.200	0-0	.000	2-2	1.000	2	4	6	6.0	2	0	1	0	0	0	4	4.0
at Baylor	11/12/13	*	30	4-10	.400	0-0	.000	1-4	.250	3	3	6	6.0	4	0	1	0	2	0	9	6.5
at Clemson	11/17/13	*	22	4-9	.444	0-0	.000	1-4	.250	3	2	5	5.7	5	1	0	1	1	0	9	7.3
Fla. International	11/24/13	*	31	7-10	.700	0-0	.000	0-0	.000	3	3	6	5.8	3	0	0	0	0	1	14	9.0
at Oklahoma St.	12/6/13																				
Manhattan	12/17/13																				
USC Upstate	12/19/13																				
vs. Saint Mary's	12/22/13																				
vs. Boise/Hawaii	12/23/13																				
vs. TBA	12/25/13																				
Akron	12/28/13																				
Marshall	12/30/13																				
SC State	1/3/14																				
at Florida	1/8/14																				
LSU	1/11/14																				
at Texas A&M	1/15/14																				
Ole Miss	1/18/14																				
at Georgia	1/22/14																				
at Missouri	1/25/14																				
Texas A&M	1/29/14																				
at Ole Miss	2/1/14																				
Auburn	2/5/14																				
at Tennessee	2/8/14																				
Vanderbilt	2/12/14																				
Alabama	2/15/14																				
at Arkansas	2/19/14																				
Georgia	2/22/14																				
at Auburn	2/26/14																				
Kentucky	3/1/14																				
Florida	3/4/14																				
at Miss. State	3/8/14																				

SEASON NOTES

Earned the start and scored eight points and collected five rebounds in exhibition contest vs. USC Aiken (Nov. 3) ... Earned the start in first-career contest vs. Longwood (Nov. 9) ... Scored four points and collected six rebounds vs. the Lancers ... Scored nine points and collected six rebounds, posting first two blocks of the season at Baylor (Nov. 12) ... Scored nine points and collected five rebounds, including three on the offensive glass, in start at Clemson (Nov. 17) ... First career double-figure scoring game with 14 points in win vs. FIU (Nov. 24) ... Hit 7-of-10 from the field vs. the Panthers ...

CAREER STATISTICS

Season	GP-GS	Min	Avg	FG	FGA	Pct	3FG	3FGA	Pct	FT	FTA	Pct	Off	Def	Tot	Avg	PF	FO	Ast	TO	Blk	Stl	Pts	Avg
2013-14	4-4	114	28.5	16	34	.471	0	0	.000	4	10	.400	11	12	23	5.8	14	1	2	1	3	1	36	9.0

CAREER SEC STATISTICS

Season	GP-GS	Min	Avg	FG	FGA	Pct	3FG	3FGA	Pct	FT	FTA	Pct	Off	Def	Tot	Avg	PF	FO	Ast	TO	Blk	Stl	Pts	Avg
2014																								



#20 - JUSTIN MCKIE

FRESHMAN | GUARD | 6'4" | 195 | HS

COLUMBIA, S.C./IRMO

MCKIE'S SEASON HIGHS

POINTS

1, at Clemson (Nov. 13, 2013)

FIELD GOALS

-

FIELD GOAL ATTEMPTS

1, twice, last at Clemson (Nov. 13, 2013)

3-POINT FIELD GOALS

-

3-POINT FIELD GOAL ATTEMPTS

1, at Clemson (Nov. 13, 2013)

FREE THROWS

1, at Clemson (Nov. 13, 2013)

FREE THROW ATTEMPTS

2, at Clemson (Nov. 13, 2013)

REBOUNDS

1, at Clemson (Nov. 13, 2013)

ASSISTS

-

BLOCKS

-

STEALS

-

MINUTES PLAYED

4, vs. Longwood (Nov. 9, 2013)

2013-14

Opponent	Date	GS	Min	FG-FGA	Pct	3FG-FGA	Pct	FT-FTA	Pct	Off	Def	Tot	Avg	PF	FO	A	TO	Blk	Stl	Pts	Avg
Longwood	11/9/13	4	0-1	.000	0-0	.000	0-0	.000	0	0	0	0.0	0	0	0	0	0	0	0	0	0.0
at Baylor	11/12/13	0+	0.0	.000	0.0	.000	0.0	.000	0	0	0	0.0	0	0	0	0	0	0	0	0	0.0
at Clemson	11/17/13	1	0-1	.000	0-1	.000	1-2	.500	1	0	1	0.3	0	0	0	0	0	0	0	1	0.3
Fla. International	11/24/13	-	-	-	-	-	-	-	-	-	-	-	-	-	-	-	-	-	-	-	-
at Oklahoma St.	12/6/13																				
Manhattan	12/17/13																				
USC Upstate	12/19/13																				
vs. Saint Mary's	12/22/13																				
vs. Boise/Hawaii	12/23/13																				
vs. TBA	12/25/13																				
Akron	12/28/13																				
Marshall	12/30/13																				
SC State	1/3/14																				
at Florida	1/8/14																				
LSU	1/11/14																				
at Texas A&M	1/15/14																				
Ole Miss	1/18/14																				
at Georgia	1/22/14																				
at Missouri	1/25/14																				
Texas A&M	1/29/14																				
at Ole Miss	2/1/14																				
Auburn	2/5/14																				
at Tennessee	2/8/14																				
Vanderbilt	2/12/14																				
Alabama	2/15/14																				
at Arkansas	2/19/14																				
Georgia	2/22/14																				
at Auburn	2/26/14																				
Kentucky	3/1/14																				
Florida	3/4/14																				
at Miss. State	3/8/14																				

SEASON NOTES

Played 21 minutes, scoring six points and collecting four rebounds in exhibition action vs. USC Aiken (Nov. 3) ... Saw action in season opener vs. Longwood (Nov. 9), attempted one shot ... Scored first point of his career at Clemson (Nov. 17) ...

CAREER STATISTICS

Season	GP-GS	Min	Avg	FG	FGA	Pct	3FG	3FGA	Pct	FT	FTA	Pct	Off	Def	Tot	Avg	PF	FO	Ast	TO	Blk	Stl	Pts	Avg
2013-14	3-0	5	1.7	0	2	.000	0	1	.000	1	2	.500	1	0	1	0.3	0	0	0	0	0	0	1	0.3

CAREER SEC STATISTICS

Season	GP-GS	Min	Avg	FG	FGA	Pct	3FG	3FGA	Pct	FT	FTA	Pct	Off	Def	Tot	Avg	PF	FO	Ast	TO	Blk	Stl	Pts	Avg
2014																								



#10 - DUANE NOTICE

FRESHMAN | GUARD | 6'2" | 221 | HS
 WOODBRIDGE, ONTARIO, CANADA/ST. THOMAS
 MORE (OAKDALE, CONN.)

2013-14

Opponent	Date	GS	Min	FG-FGA	Pct	3FG-FGA	Pct	FT-FTA	Pct	Off	Def	Tot	Avg	PF	FO	A	TO	Blk	Stl	Pts	Avg
Longwood	11/9/13	*	19	3-6	.500	2-3	.667	0-0	.000	1	4	5	5.0	5	1	4	3	0	1	8	8.0
at Baylor	11/12/13		12	1-2	.500	0-0	.000	0-0	.000	0	1	1	3.0	3	0	2	1	0	1	2	5.0
at Clemson	11/17/13	*	20	1-7	.142	0-2	.000	0-0	.000	2	1	3	3.0	2	0	2	4	0	0	2	4.0
Fla. International	11/24/13		1	0-0	.000	0-0	.000	0-0	.000	0	0	0	2.3	0	0	1	0	0	0	0	3.0
at Oklahoma St.	12/6/13																				
Manhattan	12/17/13																				
USC Upstate	12/19/13																				
vs. Saint Mary's	12/22/13																				
vs. Boise/Hawaii	12/23/13																				
vs. TBA	12/25/13																				
Akron	12/28/13																				
Marshall	12/30/13																				
SC State	1/3/14																				
at Florida	1/8/14																				
LSU	1/11/14																				
at Texas A&M	1/15/14																				
Ole Miss	1/18/14																				
at Georgia	1/22/14																				
at Missouri	1/25/14																				
Texas A&M	1/29/14																				
at Ole Miss	2/1/14																				
Auburn	2/5/14																				
at Tennessee	2/8/14																				
Vanderbilt	2/12/14																				
Alabama	2/15/14																				
at Arkansas	2/19/14																				
Georgia	2/22/14																				
at Auburn	2/26/14																				
Kentucky	3/1/14																				
Florida	3/4/14																				
at Miss. State	3/8/14																				

CAREER STATISTICS

Season	GP-GS	Min	Avg	FG	FGA	Pct	3FG	3FGA	Pct	FT	FTA	Pct	Off	Def	Tot	Avg	PF	FO	Ast	TO	Blk	Stl	Pts	Avg
2013-14	4-2	52	13.0	5	15	.333	2	5	.400	0	0	.000	3	6	9	2.3	10	1	9	8	0	2	12	3.0

CAREER SEC STATISTICS

Season	GP-GS	Min	Avg	FG	FGA	Pct	3FG	3FGA	Pct	FT	FTA	Pct	Off	Def	Tot	Avg	PF	FO	Ast	TO	Blk	Stl	Pts	Avg
2014																								

NOTICE'S SEASON HIGHS

POINTS

8, vs. Longwood (Nov. 9, 2013)

FIELD GOALS

3, vs. Longwood (Nov. 9, 2013)

FIELD GOAL ATTEMPTS

7, at Clemson (Nov. 13, 2013)

3-POINT FIELD GOALS

2, vs. Longwood (Nov. 9, 2013)

3-POINT FIELD GOAL ATTEMPTS

3, vs. Longwood (Nov. 9, 2013)

FREE THROWS

-

FREE THROW ATTEMPTS

-

REBOUNDS

5, vs. Longwood (Nov. 9, 2013)

ASSISTS

4, vs. Longwood (Nov. 9, 2013)

BLOCKS

-

STEALS

1, twice, last at Baylor (Nov. 12, 2013)

MINUTES PLAYED

20, at Clemson (Nov. 13, 2013)

SEASON NOTES

Dished six assists in 19 minutes before hampered by cramps in exhibition contest vs. USC Aiken (Nov. 3) ... Posted four assists and scored eight points, including two made 3s, in season opener vs. Longwood (Nov. 9) ... Earned the start vs. the Lancers in college debut ... Dished two assists, adding two points and a steal at Baylor (Nov. 12) ... Scored four points and dished two assists at Clemson (Nov. 17) ...



#32 - DESMOND RINGER

FRESHMAN | FORWARD | 6'9" | 255 | HS
MCDONOUGH, GA. / EAGLE'S LANDING

RINGER'S SEASON HIGHS

POINTS

4, at Clemson (Nov. 13, 2013)

FIELD GOALS

1, at Clemson (Nov. 13, 2013)

FIELD GOAL ATTEMPTS

3, at Clemson (Nov. 13, 2013)

3-POINT FIELD GOALS

-

3-POINT FIELD GOAL ATTEMPTS

-

FREE THROWS

2, at Clemson (Nov. 13, 2013)

FREE THROW ATTEMPTS

3, at Baylor (Nov. 12, 2013)

REBOUNDS

1, 3x, last vs. FIU (Nov. 24, 2013)

ASSISTS

1, at Clemson (Nov. 13, 2013)

BLOCKS

-

STEALS

-

MINUTES PLAYED

10, at Clemson (Nov. 13, 2013)

2013-14

Opponent	Date	GS	Min	FG-FGA	Pct	3FG-FGA	Pct	FT-FTA	Pct	Off	Def	Tot	Avg	PF	FO	A	TO	Blk	Stl	Pts	Avg
Longwood	11/9/13	7	0-0	.000	0-0	.000	0-0	.000	0	0	0	0.0	0	0	0	1	0	0	0	0	0.0
at Baylor	11/12/13	9	0-1	.000	0-0	.000	1-3	.333	1	0	1	0.5	3	0	0	0	0	0	0	1	0.5
at Clemson	11/17/13	10	1-3	.333	0-0	.000	2-2	1.000	0	1	1	0.7	3	0	1	0	0	0	4	1.7	
Fla. International	11/24/13	4	0-0	.000	0-0	.000	0-0	.000	1	0	1	0.8	2	0	0	1	0	0	0	0	1.3
at Oklahoma St.	12/6/13																				
Manhattan	12/17/13																				
USC Upstate	12/19/13																				
vs. Saint Mary's	12/22/13																				
vs. Boise/Hawaii	12/23/13																				
vs. TBA	12/25/13																				
Akron	12/28/13																				
Marshall	12/30/13																				
SC State	1/3/14																				
at Florida	1/8/14																				
LSU	1/11/14																				
at Texas A&M	1/15/14																				
Ole Miss	1/18/14																				
at Georgia	1/22/14																				
at Missouri	1/25/14																				
Texas A&M	1/29/14																				
at Ole Miss	2/1/14																				
Auburn	2/5/14																				
at Tennessee	2/8/14																				
Vanderbilt	2/12/14																				
Alabama	2/15/14																				
at Arkansas	2/19/14																				
Georgia	2/22/14																				
at Auburn	2/26/14																				
Kentucky	3/1/14																				
Florida	3/4/14																				
at Miss. State	3/8/14																				

SEASON NOTES

Earned one steal and collected three rebounds in exhibition contest vs. USC Aiken (Nov. 3) ... Saw action vs. Longwood (Nov. 9) ... Posted one point at the free throw line vs. Baylor (Nov. 12) ... Posted four points and collected an assists at Clemson (Nov. 17) ...

CAREER STATISTICS

Season	GP-GS	Min	Avg	FG	FGA	Pct	3FG	3FGA	Pct	FT	FTA	Pct	Off	Def	Tot	Avg	PF	FO	Ast	TO	Blk	Stl	Pts	Avg
2013-14	4-0	30	7.5	1	4	.250	0	0	.000	3	5	.600	2	1	3	0.8	8	0	1	2	0	0	5	1.3

CAREER SEC STATISTICS

Season	GP-GS	Min	Avg	FG	FGA	Pct	3FG	3FGA	Pct	FT	FTA	Pct	Off	Def	Tot	Avg	PF	FO	Ast	TO	Blk	Stl	Pts	Avg
2014																								



#5 - JAYLEN SHAW

FRESHMAN | GUARD | 6'0" | 182 | HS
HARTSVILLE, S.C./HARTSVILLE

SHAW'S SEASON HIGHS

POINTS

16, vs. FIU (Nov. 24, 2013)

FIELD GOALS

6, vs. FIU (Nov. 24, 2013)

FIELD GOAL ATTEMPTS

10, vs. FIU (Nov. 24, 2013)

3-POINT FIELD GOALS

4, vs. FIU (Nov. 24, 2013)

3-POINT FIELD GOAL ATTEMPTS

7, vs. FIU (Nov. 24, 2013)

FREE THROWS

2, vs. Longwood (Nov. 9, 2013)

FREE THROW ATTEMPTS

2, vs. Longwood (Nov. 9, 2013)

REBOUNDS

2, vs. FIU (Nov. 24, 2013)

ASSISTS

5, vs. FIU (Nov. 24, 2013)

BLOCKS

-

STEALS

-

MINUTES PLAYED

26, vs. FIU (Nov. 24, 2013)

2013-14

Opponent	Date	GS	Min	FG-FGA	Pct	3FG-3FGA	Pct	FT-FTA	Pct	Off	Def	Tot	Avg	PF	FO	A	TO	Blk	Stl	Pts	Avg
Longwood	11/9/13	3	0-1	.000	0-1	.000	2-2	1.000	0	0	0	0.0	1	0	1	0	0	2	2.0		
at Baylor	11/12/13	-	-	-	-	-	-	-	-	-DNP - Coaches Decision-											
at Clemson	11/17/13	1	0-0	.000	0-0	.000	0-0	.000	0	0	0	0.0	0	0	1	0	0	0	0	1.0	
Fla. International	11/24/13	26	6-10	.600	4-7	.571	0-0	.000	0	2	2	0.7	2	0	5	2	0	0	16	6.0	
at Oklahoma St.	12/6/13																				
Manhattan	12/17/13																				
USC Upstate	12/19/13																				
vs. Saint Mary's	12/22/13																				
vs. Boise/Hawaii	12/23/13																				
vs. TBA	12/25/13																				
Akron	12/28/13																				
Marshall	12/30/13																				
SC State	1/3/14																				
at Florida	1/8/14																				
LSU	1/11/14																				
at Texas A&M	1/15/14																				
Ole Miss	1/18/14																				
at Georgia	1/22/14																				
at Missouri	1/25/14																				
Texas A&M	1/29/14																				
at Ole Miss	2/1/14																				
Auburn	2/5/14																				
at Tennessee	2/8/14																				
Vanderbilt	2/12/14																				
Alabama	2/15/14																				
at Arkansas	2/19/14																				
Georgia	2/22/14																				
at Auburn	2/26/14																				
Kentucky	3/1/14																				
Florida	3/4/14																				
at Miss. State	3/8/14																				

SEASON NOTES

Posted six points and one assist in exhibition contest vs. USC Aiken (Nov. 3) ... Scored two points at the free throw line and dished one assist in college debut vs. Longwood (Nov. 9) ... Collected an assist at Clemson (Nov. 17) ... Huge off the bench with 16 points on 6-of-10 shooting, including four 3s in win vs. FIU (Nov. 24) ... Also dished five assists vs. the Panthers ...

CAREER STATISTICS

Season	GP-GS	Min	Avg	FG	FGA	Pct	3FG	3FGA	Pct	FT	FTA	Pct	Off	Def	Tot	Avg	PF	FO	Ast	TO	Blk	Stl	Pts	Avg
2013-14	3-0	30	10.0	6	11	.545	4	8	.500	2	2	1.000	0	2	2	0.7	3	0	7	3	0	0	18	6.0

CAREER SEC STATISTICS

Season	GP-GS	Min	Avg	FG	FGA	Pct	3FG	3FGA	Pct	FT	FTA	Pct	Off	Def	Tot	Avg	PF	FO	Ast	TO	Blk	Stl	Pts	Avg
2014																								



#15 - REGGIE THEUS JR.

FRESHMAN | FORWARD | 6'6" | 210 | HS

LOS ANGELES, CALIF./FAIRFAX

THEUS JR.'S SEASON HIGHS

POINTS

-

FIELD GOALS

-

FIELD GOAL ATTEMPTS

1, at Clemson (Nov. 13, 2013)

3-POINT FIELD GOALS

-

3-POINT FIELD GOAL ATTEMPTS

-

FREE THROWS

-

FREE THROW ATTEMPTS

-

REBOUNDS

1, at Clemson (Nov. 13, 2013)

ASSISTS

-

BLOCKS

-

STEALS

-

MINUTES PLAYED

2, vs. Longwood (Nov. 9, 2013)

2013-14

Opponent	Date	GS	Min	FG-FGA	Pct	3FG-FGA	Pct	FT-FTA	Pct	Off	Def	Tot	Avg	PF	FO	A	TO	Blk	Stl	Pts	Avg
Longwood	11/9/13	2	0-0	.000	0-0	.000	0-0	.000	0	0	0	0.0	0	0	0	0	0	0	0	0	0.0
at Baylor	11/12/13	-	-	-	-	-	-	-	-	-	-	-	-	-	-	-	-	-	-	-	-
at Clemson	11/17/13	1	0-1	.000	0-0	.000	0-0	.000	0	1	1	0.5	0	0	0	0	0	0	0	0	0.0
Fla. International	11/24/13	-	-	-	-	-	-	-	-	-	-	-	-	-	-	-	-	-	-	-	-
at Oklahoma St.	12/6/13																				
Manhattan	12/17/13																				
USC Upstate	12/19/13																				
vs. Saint Mary's	12/22/13																				
vs. Boise/Hawaii	12/23/13																				
vs. TBA	12/25/13																				
Akron	12/28/13																				
Marshall	12/30/13																				
SC State	1/3/14																				
at Florida	1/8/14																				
LSU	1/11/14																				
at Texas A&M	1/15/14																				
Ole Miss	1/18/14																				
at Georgia	1/22/14																				
at Missouri	1/25/14																				
Texas A&M	1/29/14																				
at Ole Miss	2/1/14																				
Auburn	2/5/14																				
at Tennessee	2/8/14																				
Vanderbilt	2/12/14																				
Alabama	2/15/14																				
at Arkansas	2/19/14																				
Georgia	2/22/14																				
at Auburn	2/26/14																				
Kentucky	3/1/14																				
Florida	3/4/14																				
at Miss. State	3/8/14																				

SEASON NOTES

Saw action in exhibition contest vs. USC Aiken (Nov. 3) ... Saw action vs. Longwood (Nov. 9) ... Collected one rebound at Clemson (Nov. 17) ...

CAREER STATISTICS

Season	GP-GS	Min	Avg	FG	FGA	Pct	3FG	3FGA	Pct	FT	FTA	Pct	Off	Def	Tot	Avg	PF	FO	Ast	TO	Blk	Stl	Pts	Avg
2013-14	2-0	3	1.5	0	1	.000	0	0	.000	0	0	.000	0	1	1	0.5	0	0	0	1	0	0	0	0.0

CAREER SEC STATISTICS

Season	GP-GS	Min	Avg	FG	FGA	Pct	3FG	3FGA	Pct	FT	FTA	Pct	Off	Def	Tot	Avg	PF	FO	Ast	TO	Blk	Stl	Pts	Avg
2014																								



#0 - SINDARIUS THORNWELL

FRESHMAN | GUARD | 6'5" | 206 | HS
LANCASTER, S.C./OAK HILL ACADEMY (WILSON, VA.)

THORNWELL'S SEASON HIGHS

POINTS

20, at Baylor (Nov. 12, 2013)

FIELD GOALS

6, at Baylor (Nov. 12, 2013)

FIELD GOAL ATTEMPTS

13, at Baylor (Nov. 12, 2013)

3-POINT FIELD GOALS

1, twice, last at Clemson (Nov. 13, 2013)

3-POINT FIELD GOAL ATTEMPTS

3, vs. Longwood (Nov. 9, 2013)

FREE THROWS

7, at Baylor (Nov. 12, 2013)

FREE THROW ATTEMPTS

10, at Baylor (Nov. 12, 2013)

REBOUNDS

4, 3x, last at Clemson (Nov. 13, 2013)

ASSISTS

4, vs. FIU (Nov. 24, 2013)

BLOCKS

2, vs. Longwood (Nov. 9, 2013)

STEALS

3, at Baylor (Nov. 12, 2013)

MINUTES PLAYED

32, at Baylor (Nov. 12, 2013)

2013-14

Opponent	Date	GS	Min	FG-FGA	Pct	3FG-3FGA	Pct	FT-FTA	Pct	Off	Def	Tot	Avg	PF	FO	A	TO	Blk	Stl	Pts	Avg
Longwood	11/9/13	*	26	4-10	.400	0-3	.000	6-7	.857	1	3	4	4.0	3	0	3	2	2	1	14	14.0
at Baylor	11/12/13	*	32	6-13	.461	1-2	.500	7-10	.700	1	3	4	4.0	4	0	0	2	0	3	20	17.0
at Clemson	11/17/13	*	31	3-5	.600	1-1	1.000	3-3	1.000	1	3	4	4.0	1	0	0	1	0	2	10	14.7
Fla. International	11/24/13	*	26	4-10	.400	0-1	.000	0-2	.000	1	2	3	3.8	3	0	4	1	1	0	8	13.0
at Oklahoma St.	12/6/13																				
Manhattan	12/17/13																				
USC Upstate	12/19/13																				
vs. Saint Mary's	12/22/13																				
vs. Boise/Hawaii	12/23/13																				
vs. TBA	12/25/13																				
Akron	12/28/13																				
Marshall	12/30/13																				
SC State	1/3/14																				
at Florida	1/8/14																				
LSU	1/11/14																				
at Texas A&M	1/15/14																				
Ole Miss	1/18/14																				
at Georgia	1/22/14																				
at Missouri	1/25/14																				
Texas A&M	1/29/14																				
at Ole Miss	2/1/14																				
Auburn	2/5/14																				
at Tennessee	2/8/14																				
Vanderbilt	2/12/14																				
Alabama	2/15/14																				
at Arkansas	2/19/14																				
Georgia	2/22/14																				
at Auburn	2/26/14																				
Kentucky	3/1/14																				
Florida	3/4/14																				
at Miss. State	3/8/14																				

SEASON NOTES

Played 25 minutes, earning the start, posting 12 points and five rebounds in exhibition contest vs. USC Aiken (Nov. 3) ... Marked nearly every stat column with 14 points, all in the second half, four rebounds, three assists, two blocks and one steal in college debut vs. Longwood (Nov. 9) ... Earned the start vs. the Lancers, and went 6-of-7 from the charity stripe in the game ... Scored first 20-point game of his career at Baylor (Nov. 12), posting 20 on 6-of-13 shooting from the field and a 7-of-10 effort from the free throw line ... Also collected a team high three steals vs. the Bears ... Scored 10 points, and collected two steals in first-career game vs. archrival Clemson (Nov. 17) ... Dished four assists vs. FIU (Nov. 24) ...

CAREER STATISTICS

Season	GP-GS	Min	Avg	FG	FGA	Pct	3FG	3FGA	Pct	FT	FTA	Pct	Off	Def	Tot	Avg	PF	FO	Ast	TO	Blk	Stl	Pts	Avg
2013-14	4-4	115	28.8	17	38	.447	2	7	.286	16	22	.727	4	11	15	3.8	11	0	7	6	3	6	52	13.0

CAREER SEC STATISTICS

Season	GP-GS	Min	Avg	FG	FGA	Pct	3FG	3FGA	Pct	FT	FTA	Pct	Off	Def	Tot	Avg	PF	FO	Ast	TO	Blk	Stl	Pts	Avg
2014																								



AN INDIVIDUAL ...

Scored 20 or more points:	South Carolina: Sindarius Thornwell (20) at Baylor, Nov. 12, 2013, in Waco, Texas Opponent: Tymell Murphy (22), FIU, Nov. 24, 2013 in Columbia, S.C.
Scored 30 or more points:	South Carolina: Brenton Williams (38) Miss. State, March 6, 2013 in Columbia, S.C. Opponent: Johnny O'Bryant III (30), LSU, Feb. 14, 2013 in Columbia, S.C.
Scored 35 or more points:	South Carolina: Brenton Williams (38) vs. Miss. State, March 6, 2013 in Columbia, S.C. Opponent: Joe Crawford (Kentucky), 35, March 5, 2008 in Columbia
Scored 40 or more points:	South Carolina: N/A thru 1992-93 season Opponent: Austin Carr (Notre Dame), 43, Dec. 30, 1969 in New Orleans, La.
Collected 20 or more rebounds:	South Carolina: Emmett Hall, 23 vs. College of Charleston, Dec. 22, 1993 in Columbia Opponent: Ekpe Udoh (Baylor), 20, Jan. 2, 2010 in Columbia
Collected 15 or more rebounds:	South Carolina: Lakeem Jackson, 15, vs. UALR, Nov. 25, 2012 in Puerto Vallarta, Mexico Opponent: Jared Sullinger (Ohio State), 19, Dec. 18, 2010 in Columbus, Ohio
Made 12 or more field goals:	South Carolina: Devan Downey, 12 vs. Georgia, Jan. 30, 2010 in Columbia Opponent: Johnny O'Bryant III, 13, LSU, Feb. 14, 2013 in Columbia, S.C.
Made 10 or more field goals:	South Carolina: Brenton Williams (10) vs. Miss. State, March 6, 2013 in Columbia, S.C. Opponent: Elston Turner (10), Texas A&M, March 2, 2013 in College Station, Texas
Attempted 20 or more field goals:	South Carolina: Bruce Ellington (20) vs. Tennessee, Feb 25, 2012, in Columbia, S.C. Opponent: Tristan Carey (20), Longwood, Nov. 9, 2013 in Columbia, S.C.
Attempted 25 or more field goals:	South Carolina: Devan Downey, 25, at Kentucky, Feb. 25, 2010 in Lexington, Ky. Opponent: Kemmy Burgess (Alaska-Anchorage), 26, Nov. 24, 2005 in Anchorage, AK
Dished 10 or more assists:	South Carolina: Devan Downey, 11, vs. LSU, March 13, 2008 in Atlanta, Ga. Opponent: 11, Dee Bost, Mississippi State, Feb. 29, 2012 in Columbia, S.C.
Swiped 5 or more steals:	South Carolina: Brenton Williams, 5, vs. Western Carolina, Nov. 11, 2011 in Columbia Opponent: 5, DeWayne Jackson, Morgan State, Nov. 16, 2012 in Columbia, S.C.
Blocked 5 or more shots:	South Carolina: Damontre Harris, 5, vs. Georgia, Feb. 15, 2012 in Columbia, S.C. Opponent: K.J. McDaniels (7), Clemson, Nov. 17, 2013
Made 5 or more 3-point field goals:	South Carolina: Brenton Williams (6) vs. Miss. State, March 6, 2013 in Columbia, S.C. Opponent: Brady Heslip (5), Baylor, Nov. 12, 2013, in Waco, Texas
Attempted 8 or more 3-point field goals:	South Carolina: Brenton Williams (8) at Vanderbilt, March 9, 2013 in Nashville, Tenn. Opponent: Brady Heslip (10), Baylor, Nov. 12, 2013, in Waco, Texas
Made 10 or more free throws:	South Carolina: Brenton Williams (12) vs. Miss. State, March 6, 2013 in Columbia, S.C. Opponent: Kedren Johnson (10) Vanderbilt, March 9, 2013 in Nashville, Tenn.
Attempted 15 or more free throws:	South Carolina: Mike Boynton (19) vs. Arkansas, March 11, 2004 in Atlanta, Ga. Opponent: Amu Saaka (Furman), 14, Dec. 22, 2010 in Greenville, S.C.
Played all 40 minutes of regulation:	South Carolina: Devan Downey, 40, vs. Tennessee, March 14, 2008 in Atlanta, Ga. Opponent: Frank Sullivan, Auburn, Jan. 12, 2013 in Columbia, S.C.
A player hit a last-second shot (within 3 seconds) to win a game:	South Carolina: Bruce Ellington vs. Alabama (Jan. 25, 2012) in Columbia, S.C. Opponent: Brian Bryant, Mississippi State, Feb. 29, 2012 in Columbia, S.C.
A player had a double-double:	South Carolina: Mindaugas Kacinas (13 points, 12 rebounds), at Clemson, Nov. 17, 2013 Opponent: Murphy Holloway (19 points, 13 rebounds) Ole Miss, Feb. 20, 2013 in Columbia, S.C.
Two or more players had a double-double:	S. Carolina: Michael Carrera (23 points, 10 rebounds) and Lakeem Jackson (11 points, 11 rebounds) at LSU, Jan. 16, 2013 in Baton Rouge, La. Opponent: Alex Oriakhi (18 points, 11 rebounds), Earnest Ross (21 points, 10 rebounds) Missouri, Jan. 22, 2013 in Columbia, Mo.
A player had a triple-double:	South Carolina: Sam Muldrow (16 points, 14 rebounds, 10 blocks) vs. Vanderbilt, Jan. 8, 2011 in Columbia *** Only second triple-double in South Carolina history (Chuck Eidson (25 points, 10 rebounds, 10 assists), vs. SC State, Nov. 29, 2002 in Columbia) Opponent: Daniel Hackett (Southern California - 22 points, 10 rebounds, 10 assists), Nov. 17, 2007 in Columbia
Scored 30 or more points in back-to-back games:	South Carolina: Devan Downey, 30 vs. Kentucky (Jan. 26, 2010) in Columbia 33 vs. Georgia (Jan. 30, 2010) in Columbia
Scored 25 or more points in back-to-back games:	South Carolina: Devan Downey, 33 vs. Georgia (Jan. 30, 2010) in Columbia 26 at Tennessee (Feb. 6, 2010) in Knoxville, Tenn.

A TEAM...

Scored 100 or more points:	South Carolina: 103 vs. The Citadel (Nov. 12, 2007) in Columbia Opponent: 107, Vanderbilt (Feb. 17, 1996) in Nashville, Tenn.
Scored 50 points or less:	South Carolina: 36, vs. Florida, Jan. 30, 2013 in Gainesville, Fla. Opponent: 44, Longwood, Nov. 9, 2013 in Columbia, S.C.
Scored 50 points in a half:	South Carolina: 57 (1st half; Dec. 7, 2012) vs. Jacksonville, Dec. 7, 2012 in Columbia, S.C. Opponent: 51 (2nd half; Nov. 29, 2012) St. John's in Queens, N.Y.
Failed to score 25 points in a half:	South Carolina: 24 (2nd half), at Texas A&M, March 2, 2013 in College Station, Texas Opponent: 15 (1st half) Longwood, Nov. 9, 2013 in Columbia, S.C.

Collected 50 or more rebounds:	South Carolina: 50, Longwood, Nov. 9, 2013 in Columbia, S.C. Opponent: 52, WKU, Nov. 27, 2010 in Bowling Green, Ky.
Shot 60% or better from the field:	South Carolina: 60.8% (31-51) at Western Carolina (Nov. 18, 2005) in Cullowhee, N.C. Opponent: 69.6% (32-46) Missouri, Feb. 28, 2013 in Columbia, S.C.
Shot 50% or better from the field:	South Carolina: 50.8 (30-59), vs. FIU, Nov. 24, 2013 in Columbia, S.C. Opponent: 51.1% (24-47) Miss. State, March 6, 2013 in Columbia, S.C.
Shot less than 30% from the field:	South Carolina: 28.1% (18-64), LSU, Feb. 14, 2013 in Columbia, S.C. Opponent: 22.8% (13-57), Longwood, Nov. 9, 2013 in Columbia, S.C.
Shot 50% or better from 3-point range (at least 10 attempts):	South Carolina: 58.3% (7-12) vs. Arkansas, Jan. 26, 2013 in Columbia, S.C. Opponent 57.1%(12-21) Florida, Jan. 30, 2013 in Gainesville, Fla.
Shot 20% or less from 3-point range (at least 10 attempts):	South Carolina: 10.0% (1-10), at Clemson, Nov. 17, 2013 Opponent: 18.2% (4-22) Longwood, Nov. 9, 2013 in Columbia, S.C.
Dished 20 or more assists:	South Carolina: 20, vs. Auburn, Jan. 12, 2013 in Columbia, S.C. Opponent: 22, vs. North Carolina, Nov. 25, 2011 in Las Vegas, Nevada
Made 35 or more shots:	South Carolina: 35 vs. Elon (Nov. 19, 2010) in Columbia Opponent: 35, Tennessee (March 5, 2009) in Columbia
Attempted 80 or more shots:	South Carolina: 83 vs. WKU (Nov. 27, 2010) in Bowling Green, Ky. Opponent: 83, LSU (Feb. 10, 1996) in Columbia
Attempted 70 or more shots:	South Carolina: 72, vs. Providence, Dec. 1, 2011 in Columbia Opponent: 79, WKU (Nov. 27, 2010) in Bowling Green, Ky.
Made 10 or more 3-pointers:	South Carolina: 10 vs. Jacksonville, Dec. 7, 2012 in Columbia, S.C. Opponent: 12, Florida, Jan. 30, 2013 in Gainesville, Fla.
Did not make a 3-pointer:	South Carolina: 0, vs. Milwaukee, Nov. 11, 2012 in Columbia, S.C. Opponent: 0, Miss. State, Jan. 9, 2013 in Starkville, Miss.
Attempted 30 or more 3-pointers:	South Carolina: 31 vs. Alabama, Jan. 25, 2012 in Columbia, S.C. Opponent: 33, Milwaukee, Nov. 11, 2012 in Columbia, S.C.
Attempted 25 or more 3-pointers:	South Carolina: 27 vs. Rider, Nov. 19, 2012 in Columbia, S.C. Opponent: 27, Missouri, Jan. 22, 2013 in Columbia, Mo..
Made 30 or more free throws:	South Carolina: 32 vs. Vanderbilt (Jan. 28, 2009) in Columbia Opponent: 31, Florida (Feb. 3, 2009) in Gainesville, Fla.
Attempted 40 or more free throws:	South Carolina: 44 vs. Georgia Southern (Nov. 16, 2009) in Columbia Opponent: 41, Baylor, Nov. 12, 2013, in Waco, Texas
Swiped 15 or more steals:	South Carolina: 15 vs. Vanderbilt (Jan. 16, 2010) in Columbia Opponent: 17, Indiana (Nov. 8, 1998) in Indianapolis, Ind.
Blocked 12 or more shots:	South Carolina: 12, vs. Vanderbilt, Jan. 8, 2011 in Columbia Opponent: 12, Clemson, Nov. 17, 2013
Blocked 8 or more shots:	South Carolina: 8, vs. Longwood, Nov. 9, 2013 in Columbia, S.C. Opponent: 12, Clemson, Nov. 17, 2013
Won by 30 or more points:	South Carolina: 38, vs. Longwood, Nov. 9, 2013 in Columbia, S.C. Opponent: 39, Florida, Jan. 30, 2013 in Gainesville, Fla.
Won by 20 or more points:	South Carolina: 38, vs. Longwood, Nov. 9, 2013 in Columbia, S.C. Opponent: 22, Missouri, Feb. 28, 2013 in Columbia, S.C.
Played a single overtime game:	Win: 82-73 at LSU, Jan. 16, 2013 in Baton Rouge, La. Loss: 62-54 at Georgia, Feb. 23, 2013 in Athens, Ga.
Played a double overtime game:	Win: 87-85 vs. WKU (Nov. 27, 2010) in Bowling Green, Ky. Loss: 98-88 vs. Louisville (Feb. 20, 1988) in Columbia
South Carolina played a No. 1 Team in the country:	Win: 68-62 vs. Kentucky (Jan. 26, 2010) in Columbia Loss: 86-52 loss vs. No. 1/1 Kentucky, Feb. 4, 2012, in Columbia, S.C.
South Carolina played a top-5 opponent:	Win: 68-62 vs. No. 1/1 Kentucky (Jan. 26, 2010) in Columbia Loss: 75-36 loss to No. 4/4 Florida (Jan. 30, 2013) in Gainesville, Fla.
South Carolina played a top-10 opponent:	Win: 68-62 vs. No. 1/1 Kentucky (Jan. 26, 2010) in Columbia Loss: 75-36 loss to No. 4/4 Florida (Jan. 30, 2013) in Gainesville, Fla.
South Carolina played a top-25 opponent:	Win: 83-75 (OT) win over No. 22/24 Vanderbilt, Jan. 8, 2011 in Columbia Loss: 75-36 loss to No. 4/4 Florida (Jan. 30, 2013) in Gainesville, Fla.
South Carolina defeated a ranked opponent:	Home: 83-75 vs. No. 22/24 Vanderbilt (Jan. 8, 2011) in Columbia <u>Away: 77-73 at No. 13/19 Vanderbilt (March 6, 2010) in Nashville, Tenn.</u> SEC Home: 83-75 vs. No. 22/24 Vanderbilt (Jan. 8, 2011) in Columbia SEC Away: 77-73 at No. 13/19 Vanderbilt (March 6, 2010) in Nashville, Tenn. Non-conference away: 85-84 at No. 19/20 Baylor (Jan. 2, 2009) in Waco, Texas
A South Carolina win opened the season:	Home: 82-44, vs. Longwood, Nov. 9, 2013 in Columbia, S.C. Away: 81-63 win at Western Carolina (Nov. 12, 2005) in Cullowhee, N.C. Neutral: 74-61 win vs. Chaminade (Nov. 19, 2001) in Maui, Hawaii (Maui Invite)
South Carolina opened SEC play:	Home: 83-75 win vs. No. 22/24 Vanderbilt (Jan. 8, 2011) in Columbia Away: 56-54 loss at Miss. State (Jan. 9, 2013) in Starkville, Miss.



2013-14 South Carolina Men's Basketball
 South Carolina Combined Team Statistics (as of Dec 03, 2013)
 All games

RECORD:	OVERALL	HOME	AWAY	NEUTRAL
ALL GAMES	2-2	2-0	0-2	0-0
CONFERENCE	0-0	0-0	0-0	0-0
NON-CONFERENCE	2-2	2-0	0-2	0-0

##	Player	gp-gs	min	avg	Total		3-Point		F-Throw		Rebounds				pf	dq	a	to	blk	stl	pts	avg
					fg-fga	fg%	3fg-fga	3fg%	ft-fta	ft%	off	def	tot	avg								
00	THORNWELL, Sindari	4-4	115	28.8	17-38	.447	2-7	.286	16-22	.727	4	11	15	3.8	11	0	7	6	3	6	52	13.0
04	JOHNSON, Tyrone	4-4	126	31.5	14-37	.378	1-5	.200	20-26	.769	1	8	9	2.3	7	0	19	9	1	5	49	12.3
01	WILLIAMS, Brenton	4-0	88	22.0	12-31	.387	6-19	.316	12-12	1.000	1	9	10	2.5	4	0	5	2	0	3	42	10.5
21	HENRY, Demetrius	4-4	114	28.5	16-34	.471	0-0	.000	4-10	.400	11	12	23	5.8	14	1	2	1	3	1	36	9.0
24	CARRERA, Michael	4-2	91	22.8	10-27	.370	3-12	.250	9-14	.643	8	15	23	5.8	8	0	3	3	5	5	32	8.0
25	KACINAS, Mindaugas	4-4	113	28.3	14-24	.583	0-0	.000	4-6	.667	17	20	37	9.3	13	1	0	9	2	2	32	8.0
05	SHAW, Jaylen	3-0	30	10.0	6-11	.545	4-8	.500	2-2	1.000	0	2	2	0.7	3	0	7	3	0	0	18	6.0
10	NOTICE, Duane	4-2	52	13.0	5-15	.333	2-5	.400	0-0	.000	3	6	9	2.3	10	1	9	8	0	2	12	3.0
14	CHATKEVICIUS, L.	3-0	32	10.7	4-7	.571	0-0	.000	0-0	.000	3	5	8	2.7	5	0	0	2	3	1	8	2.7
32	RINGER, Desmond	4-0	30	7.5	1-4	.250	0-0	.000	3-5	.600	2	1	3	0.8	8	0	1	2	0	0	5	1.3
20	MCKIE, Justin	3-0	5	1.7	0-2	.000	0-1	.000	1-2	.500	1	0	1	0.3	0	0	0	0	0	0	1	0.3
35	STEELE, Brian	1-0	1	1.0	0-0	.000	0-0	.000	0-0	.000	0	0	0	0.0	0	0	0	0	0	0	0	0.0
15	THEUS JR., Reggie	2-0	3	1.5	0-1	.000	0-0	.000	0-0	.000	0	1	1	0.5	0	0	0	1	0	0	0	0.0
Team											5	11	16				3					
Total.....		4	800		99-231	.429	18-57	.316	71-99	.717	56	101	157	39.2	83	3	53	49	17	25	287	71.8
Opponents.....		4	800		77-205	.376	21-69	.304	78-110	.709	41	92	133	33.2	83	-	46	56	21	30	253	63.2

TEAM STATISTICS	SC	OPP	Date	Opponent	Score	Att.
SCORING	287	253	11/9/13	LONGWOOD	w 82-44	8536
Points per game	71.8	63.2	11/12/13	at Baylor	L 64-66	5706
Scoring margin	+8.5	-	11/17/13	at Clemson	L 57-71	7283
FIELD GOALS-ATT	99-231	77-205	11/24/13	FIU	w 84-72	9869
Field goal pct	.429	.376	* = Conference game			
3 POINT FG-ATT	18-57	21-69				
3-point FG pct	.316	.304				
3-pt FG made per game	4.5	5.3				
FREE THROWS-ATT	71-99	78-110				
Free throw pct	.717	.709				
F-Throws made per game	17.8	19.5				
REBOUNDS	157	133				
Rebounds per game	39.2	33.2				
Rebounding margin	+6.0	-				
ASSISTS	53	46				
Assists per game	13.3	11.5				
TURNOVERS	49	56				
Turnovers per game	12.3	14.0				
Turnover margin	+1.8	-				
Assist/turnover ratio	1.1	0.8				
STEALS	25	30				
Steals per game	6.3	7.5				
BLOCKS	17	21				
Blocks per game	4.3	5.3				
ATTENDANCE	18405	12989				
Home games-Avg/Game	2-9202	2-6494				
Neutral site-Avg/Game	-	0-0				

Score by Periods	1st	2nd	Totals
South Carolina	141	146	287
Opponents	130	123	253



2013-14 South Carolina Men's Basketball
 South Carolina Team Game-by-Game Comparison (as of Dec 03, 2013)
 All games

Opponent	1st	2nd	Score	Mar	Total FG	FG Pct	3-Pointers	3FG Pct	Free Throws	FT Pct	Rebounds	Assist	T/Over	Block	Steal	Fouls
LONGWOOD	37/15	45/29	82-44	+38	28-57/13-57	.491/.228	6-20/4-22	.300/.182	20-24/14-22	.833/.636	50/27 +23	13/7	15/13	8/0	5/9	18/19
Baylor	39/38	25/28	64-66	(2)	18-50/19-50	.360/.380	3-8/6-17	.375/.353	25-36/22-41	.694/.537	35/46 (11)	14/12	8/15	4/6	9/4	29/26
Clemson	26/35	31/36	57-71	(14)	23-65/21-48	.354/.438	1-10/5-14	.100/.357	10-18/24-26	.556/.923	41/33 +8	7/14	13/12	2/12	6/8	21/20
FIU	39/42	45/30	84-72	+12	30-59/24-50	.508/.480	8-19/6-16	.421/.375	16-21/18-21	.762/.857	31/27 +4	19/13	13/16	3/3	5/9	15/18

Note: Game totals are displayed in the format TEAM/OPPONENT for each category



2013-14 South Carolina Men's Basketball
 South Carolina Category Leaders (as of Dec 03, 2013)
 All games

Points	G	Pts	Pts/G
THORNWELL, Sindarius	4	52	13.0
JOHNSON, Tyrone	4	49	12.3
WILLIAMS, Brenton	4	42	10.5
HENRY, Demetrius	4	36	9.0
KACINAS, Mindaugas	4	32	8.0
CARRERA, Michael	4	32	8.0
SHAW, Jaylen	3	18	6.0
NOTICE, Duane	4	12	3.0
CHATKEVICIUS, L.	3	8	2.7
RINGER, Desmond	4	5	1.3
MCKIE, Justin	3	1	0.3

FG Percentage	FG	Att	Pct
KACINAS, Mindaugas	14	24	.583
CHATKEVICIUS, L.	4	7	.571
SHAW, Jaylen	6	11	.545
HENRY, Demetrius	16	34	.471
THORNWELL, Sindarius	17	38	.447
WILLIAMS, Brenton	12	31	.387
JOHNSON, Tyrone	14	37	.378
CARRERA, Michael	10	27	.370
NOTICE, Duane	5	15	.333
RINGER, Desmond	1	4	.250
MCKIE, Justin	0	2	.000
THEUS JR., Reggie	0	1	.000

3-Point Percentage	3FG	Att	Pct
SHAW, Jaylen	4	8	.500
NOTICE, Duane	2	5	.400
WILLIAMS, Brenton	6	19	.316
THORNWELL, Sindarius	2	7	.286
CARRERA, Michael	3	12	.250
JOHNSON, Tyrone	1	5	.200
MCKIE, Justin	0	1	.000

Free Throw Percent	FG	Att	Pct
WILLIAMS, Brenton	12	12	1.000
SHAW, Jaylen	2	2	1.000
JOHNSON, Tyrone	20	26	.769
THORNWELL, Sindarius	16	22	.727
KACINAS, Mindaugas	4	6	.667
CARRERA, Michael	9	14	.643
RINGER, Desmond	3	5	.600
MCKIE, Justin	1	2	.500
HENRY, Demetrius	4	10	.400

Scoring Average	G	Pts	Avg/G
THORNWELL, Sindarius	4	52	13.0
JOHNSON, Tyrone	4	49	12.3
WILLIAMS, Brenton	4	42	10.5
HENRY, Demetrius	4	36	9.0
CARRERA, Michael	4	32	8.0
KACINAS, Mindaugas	4	32	8.0
SHAW, Jaylen	3	18	6.0
NOTICE, Duane	4	12	3.0
CHATKEVICIUS, L.	3	8	2.7
RINGER, Desmond	4	5	1.3
MCKIE, Justin	3	1	0.3
STEELE, Brian	1	0	0.0
THEUS JR., Reggie	2	0	0.0

Field Goal Attempts	G	Att	Att/G
THORNWELL, Sindarius	4	38	9.5
JOHNSON, Tyrone	4	37	9.3
HENRY, Demetrius	4	34	8.5
WILLIAMS, Brenton	4	31	7.8
CARRERA, Michael	4	27	6.8

Field Goals Made	G	Made	Made/G
THORNWELL, Sindarius	4	17	4.3
HENRY, Demetrius	4	16	4.0
JOHNSON, Tyrone	4	14	3.5
KACINAS, Mindaugas	4	14	3.5
WILLIAMS, Brenton	4	12	3.0

3-Point FG Attempts	G	Att	Att/G
WILLIAMS, Brenton	4	19	4.8
CARRERA, Michael	4	12	3.0
SHAW, Jaylen	3	8	2.7
THORNWELL, Sindarius	4	7	1.8
NOTICE, Duane	4	5	1.3
JOHNSON, Tyrone	4	5	1.3

3-Point FG Made	G	Made	Made/G
WILLIAMS, Brenton	4	6	1.5
SHAW, Jaylen	3	4	1.3
CARRERA, Michael	4	3	0.8
THORNWELL, Sindarius	4	2	0.5
NOTICE, Duane	4	2	0.5

Free Throw Attempts	G	Att	Att/G
JOHNSON, Tyrone	4	26	6.5
THORNWELL, Sindarius	4	22	5.5
CARRERA, Michael	4	14	3.5
WILLIAMS, Brenton	4	12	3.0
HENRY, Demetrius	4	10	2.5

Free Throws Made	G	Made	Made/G
JOHNSON, Tyrone	4	20	5.0
THORNWELL, Sindarius	4	16	4.0
WILLIAMS, Brenton	4	12	3.0
CARRERA, Michael	4	9	2.3
HENRY, Demetrius	4	4	1.0
KACINAS, Mindaugas	4	4	1.0



2013-14 South Carolina Men's Basketball
South Carolina Category Leaders (as of Dec 03, 2013)
All games

<u>Rebounds</u>	<u>G</u>	<u>Reb</u>	<u>Reb/G</u>
KACINAS, Mindaugas	4	37	9.3
CARRERA, Michael	4	23	5.8
HENRY, Demetrius	4	23	5.8
THORNWELL, Sindarius	4	15	3.8
WILLIAMS, Brenton	4	10	2.5

<u>Rebound Average</u>	<u>G</u>	<u>Reb</u>	<u>Avg/G</u>
KACINAS, Mindaugas	4	37	9.3
CARRERA, Michael	4	23	5.8
HENRY, Demetrius	4	23	5.8
THORNWELL, Sindarius	4	15	3.8
CHATKEVICIUS, L.	3	8	2.7

<u>Offensive Rebounds</u>	<u>G</u>	<u>No.</u>	<u>Avg/G</u>
KACINAS, Mindaugas	4	17	4.3
HENRY, Demetrius	4	11	2.8
CARRERA, Michael	4	8	2.0
THORNWELL, Sindarius	4	4	1.0
NOTICE, Duane	4	3	0.8
CHATKEVICIUS, L.	3	3	1.0

<u>Defensive Rebounds</u>	<u>G</u>	<u>No.</u>	<u>Avg/G</u>
KACINAS, Mindaugas	4	20	5.0
CARRERA, Michael	4	15	3.8
HENRY, Demetrius	4	12	3.0
THORNWELL, Sindarius	4	11	2.8
WILLIAMS, Brenton	4	9	2.3

<u>Fouls</u>	<u>G</u>	<u>No.</u>	<u>Per/G</u>
HENRY, Demetrius	4	14	3.5
KACINAS, Mindaugas	4	13	3.3
THORNWELL, Sindarius	4	11	2.8
NOTICE, Duane	4	10	2.5
RINGER, Desmond	4	8	2.0
CARRERA, Michael	4	8	2.0

<u>Foulsouts</u>	<u>G</u>	<u>No.</u>
KACINAS, Mindaugas	4	1
HENRY, Demetrius	4	1
NOTICE, Duane	4	1

<u>Assists</u>	<u>G</u>	<u>No.</u>	<u>Ast/G</u>
JOHNSON, Tyrone	4	19	4.8
NOTICE, Duane	4	9	2.3
THORNWELL, Sindarius	4	7	1.8
SHAW, Jaylen	3	7	2.3
WILLIAMS, Brenton	4	5	1.3

<u>Steals</u>	<u>G</u>	<u>No.</u>	<u>Stl/G</u>
THORNWELL, Sindarius	4	6	1.5
JOHNSON, Tyrone	4	5	1.3
CARRERA, Michael	4	5	1.3
WILLIAMS, Brenton	4	3	0.8
NOTICE, Duane	4	2	0.5
KACINAS, Mindaugas	4	2	0.5

<u>Blocked Shots</u>	<u>G</u>	<u>No.</u>	<u>Blk/G</u>
CARRERA, Michael	4	5	1.3
HENRY, Demetrius	4	3	0.8
THORNWELL, Sindarius	4	3	0.8
CHATKEVICIUS, L.	3	3	1.0
KACINAS, Mindaugas	4	2	0.5

<u>Minutes</u>	<u>G</u>	<u>No.</u>	<u>Min/G</u>
JOHNSON, Tyrone	4	126	31.5
THORNWELL, Sindarius	4	115	28.8
HENRY, Demetrius	4	114	28.5
KACINAS, Mindaugas	4	113	28.3
CARRERA, Michael	4	91	22.8

<u>Turnovers</u>	<u>G</u>	<u>No.</u>	<u>TO/G</u>
KACINAS, Mindaugas	4	9	2.3
JOHNSON, Tyrone	4	9	2.3
NOTICE, Duane	4	8	2.0
THORNWELL, Sindarius	4	6	1.5
SHAW, Jaylen	3	3	1.0
CARRERA, Michael	4	3	0.8



2013-14 South Carolina Men's Basketball
South Carolina Team High/Low Analysis (as of Dec 03, 2013)
All games

South Carolina - TEAM GAME HIGHS

POINTS	84	FIU (11/24/13)
	82	LONGWOOD (11/9/13)
	64	at Baylor (11/12/13)
	57	at Clemson (11/17/13)
FIELD GOALS MADE	30	FIU (11/24/13)
	28	LONGWOOD (11/9/13)
FIELD GOAL ATTEMPTS	65	at Clemson (11/17/13)
	59	FIU (11/24/13)
FIELD GOAL PERCENTAGE	.508 (30-59)	FIU (11/24/13)
	.491 (28-57)	LONGWOOD (11/9/13)
3 PT FIELD GOALS MADE	8	FIU (11/24/13)
	6	LONGWOOD (11/9/13)
3 PT FG ATTEMPTS	20	LONGWOOD (11/9/13)
	19	FIU (11/24/13)
3 PT FG PERCENTAGE	.421 (8-19)	FIU (11/24/13)
	.375 (3-8)	at Baylor (11/12/13)
FREE THROWS MADE	25	at Baylor (11/12/13)
	20	LONGWOOD (11/9/13)
FREE THROW ATTEMPTS	36	at Baylor (11/12/13)
	24	LONGWOOD (11/9/13)
FREE THROW PERCENTAGE	.833 (20-24)	LONGWOOD (11/9/13)
	.762 (16-21)	FIU (11/24/13)
REBOUNDS	50	LONGWOOD (11/9/13)
	41	at Clemson (11/17/13)
ASSISTS	19	FIU (11/24/13)
	14	at Baylor (11/12/13)
STEALS	9	at Baylor (11/12/13)
	6	at Clemson (11/17/13)
BLOCKED SHOTS	8	LONGWOOD (11/9/13)
	4	at Baylor (11/12/13)
TURNOVERS	15	LONGWOOD (11/9/13)
	13	FIU (11/24/13)
	13	at Clemson (11/17/13)
FOULS	29	at Baylor (11/12/13)
	21	at Clemson (11/17/13)



2013-14 South Carolina Men's Basketball
South Carolina High/Low Analysis (as of Dec 03, 2013)
All games

Opponent - GAME HIGHS

POINTS	72	FIU (11/24/13)
	71	at Clemson (11/17/13)
	66	at Baylor (11/12/13)
	44	LONGWOOD (11/9/13)
FIELD GOALS MADE	24	FIU (11/24/13)
	21	at Clemson (11/17/13)
FIELD GOAL ATTEMPTS	57	LONGWOOD (11/9/13)
	50	FIU (11/24/13)
	50	at Baylor (11/12/13)
FIELD GOAL PERCENTAGE	.480 (24-50)	FIU (11/24/13)
	.438 (21-48)	at Clemson (11/17/13)
3 PT FIELD GOALS MADE	6	FIU (11/24/13)
	6	at Baylor (11/12/13)
3 PT FG ATTEMPTS	22	LONGWOOD (11/9/13)
	17	at Baylor (11/12/13)
3 PT FG PERCENTAGE	.375 (6-16)	FIU (11/24/13)
	.357 (5-14)	at Clemson (11/17/13)
FREE THROWS MADE	24	at Clemson (11/17/13)
	22	at Baylor (11/12/13)
FREE THROW ATTEMPTS	41	at Baylor (11/12/13)
	26	at Clemson (11/17/13)
FREE THROW PERCENTAGE	.923 (24-26)	at Clemson (11/17/13)
	.857 (18-21)	FIU (11/24/13)
REBOUNDS	46	at Baylor (11/12/13)
	33	at Clemson (11/17/13)
ASSISTS	14	at Clemson (11/17/13)
	13	FIU (11/24/13)
STEALS	9	FIU (11/24/13)
	9	LONGWOOD (11/9/13)
BLOCKED SHOTS	12	at Clemson (11/17/13)
	6	at Baylor (11/12/13)
TURNOVERS	16	FIU (11/24/13)
	15	at Baylor (11/12/13)
FOULS	26	at Baylor (11/12/13)
	20	at Clemson (11/17/13)



2013-14 South Carolina Men's Basketball
South Carolina High/Low Analysis (as of Dec 03, 2013)
All games

South Carolina - GAME LOWS

POINTS	57	at Clemson (11/17/13)
	64	at Baylor (11/12/13)
	82	LONGWOOD (11/9/13)
	84	FIU (11/24/13)
FIELD GOALS MADE	18	at Baylor (11/12/13)
	23	at Clemson (11/17/13)
FIELD GOAL ATTEMPTS	50	at Baylor (11/12/13)
	57	LONGWOOD (11/9/13)
FIELD GOAL PERCENTAGE	.354 (23-65)	at Clemson (11/17/13)
	.360 (18-50)	at Baylor (11/12/13)
3 PT FIELD GOALS MADE	1	at Clemson (11/17/13)
	3	at Baylor (11/12/13)
3 PT FG ATTEMPTS	8	at Baylor (11/12/13)
	10	at Clemson (11/17/13)
3 PT FG PERCENTAGE	.100 (1-10)	at Clemson (11/17/13)
	.300 (6-20)	LONGWOOD (11/9/13)
FREE THROWS MADE	10	at Clemson (11/17/13)
	16	FIU (11/24/13)
FREE THROW ATTEMPTS	18	at Clemson (11/17/13)
	21	FIU (11/24/13)
FREE THROW PERCENTAGE	.556 (10-18)	at Clemson (11/17/13)
	.694 (25-36)	at Baylor (11/12/13)
REBOUNDS	31	FIU (11/24/13)
	35	at Baylor (11/12/13)
ASSISTS	7	at Clemson (11/17/13)
	13	LONGWOOD (11/9/13)
STEALS	5	LONGWOOD (11/9/13)
	5	FIU (11/24/13)
BLOCKED SHOTS	2	at Clemson (11/17/13)
	3	FIU (11/24/13)
TURNOVERS	8	at Baylor (11/12/13)
	13	at Clemson (11/17/13)
	13	FIU (11/24/13)
FOULS	15	FIU (11/24/13)
	18	LONGWOOD (11/9/13)



2013-14 South Carolina Men's Basketball
South Carolina High/Low Analysis (as of Dec 03, 2013)
All games

Opponent - GAME LOWS

POINTS	44	LONGWOOD (11/9/13)
	66	at Baylor (11/12/13)
	71	at Clemson (11/17/13)
	72	FIU (11/24/13)
FIELD GOALS MADE	13	LONGWOOD (11/9/13)
	19	at Baylor (11/12/13)
FIELD GOAL ATTEMPTS	48	at Clemson (11/17/13)
	50	at Baylor (11/12/13)
	50	FIU (11/24/13)
FIELD GOAL PERCENTAGE	.228 (13-57)	LONGWOOD (11/9/13)
	.380 (19-50)	at Baylor (11/12/13)
3 PT FIELD GOALS MADE	4	LONGWOOD (11/9/13)
	5	at Clemson (11/17/13)
3 PT FG ATTEMPTS	14	at Clemson (11/17/13)
	16	FIU (11/24/13)
3 PT FG PERCENTAGE	.182 (4-22)	LONGWOOD (11/9/13)
	.353 (6-17)	at Baylor (11/12/13)
FREE THROWS MADE	14	LONGWOOD (11/9/13)
	18	FIU (11/24/13)
FREE THROW ATTEMPTS	21	FIU (11/24/13)
	22	LONGWOOD (11/9/13)
FREE THROW PERCENTAGE	.537 (22-41)	at Baylor (11/12/13)
	.636 (14-22)	LONGWOOD (11/9/13)
REBOUNDS	27	LONGWOOD (11/9/13)
	27	FIU (11/24/13)
ASSISTS	7	LONGWOOD (11/9/13)
	12	at Baylor (11/12/13)
STEALS	4	at Baylor (11/12/13)
	8	at Clemson (11/17/13)
BLOCKED SHOTS	0	LONGWOOD (11/9/13)
	3	FIU (11/24/13)
TURNOVERS	12	at Clemson (11/17/13)
	13	LONGWOOD (11/9/13)
FOULS	18	FIU (11/24/13)
	19	LONGWOOD (11/9/13)



2013-14 South Carolina Men's Basketball
 South Carolina Player High/Low Analysis (as of Dec 03, 2013)
 All games

South Carolina - I N D I V I D U A L G A M E H I G H S

Points	20		THORNWELL, Sindarius at Baylor (11/12/13)
	18		JOHNSON, Tyrone vs FIU (11/24/13)
	18		JOHNSON, Tyrone vs Longwood (11/9/13)
	16		SHAW, Jaylen vs FIU (11/24/13)
	16		WILLIAMS, Brenton vs FIU (11/24/13)
Field Goals Made	7		HENRY, Demetrius vs FIU (11/24/13)
	6		SHAW, Jaylen vs FIU (11/24/13)
	6		KACINAS, Mindaugas at Clemson (11/17/13)
	6		THORNWELL, Sindarius at Baylor (11/12/13)
	6		JOHNSON, Tyrone vs Longwood (11/9/13)
Field Goal Att.	13		THORNWELL, Sindarius at Baylor (11/12/13)
	11		KACINAS, Mindaugas at Clemson (11/17/13)
	11		JOHNSON, Tyrone at Clemson (11/17/13)
	11		WILLIAMS, Brenton vs Longwood (11/9/13)
FG Pct (min 5 made)	.700	(7-10)	HENRY, Demetrius vs FIU (11/24/13)
	.667	(6-9)	JOHNSON, Tyrone vs Longwood (11/9/13)
3-Point FG Made	4		SHAW, Jaylen vs FIU (11/24/13)
	2		WILLIAMS, Brenton vs FIU (11/24/13)
	2		WILLIAMS, Brenton at Baylor (11/12/13)
	2		WILLIAMS, Brenton vs Longwood (11/9/13)
	2		NOTICE, Duane vs Longwood (11/9/13)
	2		CARRERA, Michael vs Longwood (11/9/13)
3-Point FG Att.	7		SHAW, Jaylen vs FIU (11/24/13)
	7		WILLIAMS, Brenton vs Longwood (11/9/13)
3-Pt FG Pct (min 2 made)	.667	(2-3)	NOTICE, Duane vs Longwood (11/9/13)
	.571	(4-7)	SHAW, Jaylen vs FIU (11/24/13)
Free Throws Made	7		JOHNSON, Tyrone vs FIU (11/24/13)
	7		THORNWELL, Sindarius at Baylor (11/12/13)
Free Throw Att.	10		THORNWELL, Sindarius at Baylor (11/12/13)
	9		JOHNSON, Tyrone at Baylor (11/12/13)
FT Pct (min 3 made)	1.000	(6-6)	WILLIAMS, Brenton vs FIU (11/24/13)
	1.000	(6-6)	CARRERA, Michael at Baylor (11/12/13)
	1.000	(4-4)	WILLIAMS, Brenton at Baylor (11/12/13)
	1.000	(3-3)	THORNWELL, Sindarius at Clemson (11/17/13)
Rebounds	14		KACINAS, Mindaugas vs Longwood (11/9/13)
	12		KACINAS, Mindaugas at Clemson (11/17/13)
Assists	8		JOHNSON, Tyrone at Baylor (11/12/13)
	7		JOHNSON, Tyrone vs FIU (11/24/13)
Steals	3		THORNWELL, Sindarius at Baylor (11/12/13)
	2		WILLIAMS, Brenton vs FIU (11/24/13)
	2		CARRERA, Michael at Clemson (11/17/13)
	2		THORNWELL, Sindarius at Clemson (11/17/13)
	2		JOHNSON, Tyrone at Baylor (11/12/13)
	2		CARRERA, Michael vs Longwood (11/9/13)
Blocked Shots	2		CARRERA, Michael vs FIU (11/24/13)
	2		HENRY, Demetrius at Baylor (11/12/13)
	2		CARRERA, Michael vs Longwood (11/9/13)
	2		THORNWELL, Sindarius vs Longwood (11/9/13)
	2		KACINAS, Mindaugas vs Longwood (11/9/13)
Turnovers	4		NOTICE, Duane at Clemson (11/17/13)
	4		JOHNSON, Tyrone vs Longwood (11/9/13)
Fouls	5		HENRY, Demetrius at Clemson (11/17/13)
	5		KACINAS, Mindaugas at Baylor (11/12/13)



2013-14 South Carolina Men's Basketball
South Carolina Opponent High/Low Analysis (as of Dec 03, 2013)
All games

OPPONENT INDIVIDUAL GAME HIGHS

Points	22	MURPHY, Tymell vs FIU (11/24/13)
	21	McDANIELS, K.J. at Clemson (11/17/13)
	18	Heslip, Brady at Baylor (11/12/13)
	15	PORCHER JIMENEZ, M. vs FIU (11/24/13)
	15	ROPER, Jordan at Clemson (11/17/13)
Field Goals Made	9	MURPHY, Tymell vs FIU (11/24/13)
	7	McDANIELS, K.J. at Clemson (11/17/13)
Field Goal Att.	20	CAREY, Tristan vs Longwood (11/9/13)
	13	MURPHY, Tymell vs FIU (11/24/13)
FG Pct (min 5 made)	.692 (9-13)	MURPHY, Tymell vs FIU (11/24/13)
	.625 (5-8)	PORCHER JIMENEZ, M. vs FIU (11/24/13)
3-Point FG Made	5	Heslip, Brady at Baylor (11/12/13)
	2	PORCHER JIMENEZ, M. vs FIU (11/24/13)
	2	FILER, Adonis at Clemson (11/17/13)
	2	CAREY, Tristan vs Longwood (11/9/13)
3-Point FG Att.	10	Heslip, Brady at Baylor (11/12/13)
	10	CAREY, Tristan vs Longwood (11/9/13)
3-Pt FG Pct (min 2 made)	1.000 (2-2)	FILER, Adonis at Clemson (11/17/13)
	.500 (5-10)	Heslip, Brady at Baylor (11/12/13)
Free Throws Made	8	HALL, Rod at Clemson (11/17/13)
	8	ROPER, Jordan at Clemson (11/17/13)
Free Throw Att.	9	HALL, Rod at Clemson (11/17/13)
	8	ROPER, Jordan at Clemson (11/17/13)
	8	O'Neale, Royce at Baylor (11/12/13)
FT Pct (min 3 made)	1.000 (8-8)	ROPER, Jordan at Clemson (11/17/13)
	1.000 (6-6)	BUCKLES, Rakeem vs FIU (11/24/13)
	1.000 (6-6)	McDANIELS, K.J. at Clemson (11/17/13)
	1.000 (4-4)	FRINK, Jerome vs FIU (11/24/13)
	1.000 (3-3)	PORCHER JIMENEZ, M. vs FIU (11/24/13)
Rebounds	12	Prince, Taurean at Baylor (11/12/13)
	10	McDANIELS, K.J. at Clemson (11/17/13)
Assists	5	MURPHY, Tymell vs FIU (11/24/13)
	4	HALL, Rod at Clemson (11/17/13)
	4	ROPER, Jordan at Clemson (11/17/13)
	4	O'Neale, Royce at Baylor (11/12/13)
	4	Wainright, Ish at Baylor (11/12/13)
	4	WOODHOUSE, Lucas vs Longwood (11/9/13)
Steals	3	BELTON, Isaac vs Longwood (11/9/13)
	2	BOSWELL, Jason vs FIU (11/24/13)
	2	BUCKLES, Rakeem vs FIU (11/24/13)
	2	McDANIELS, K.J. at Clemson (11/17/13)
	2	HALL, Rod at Clemson (11/17/13)
	2	O'Neale, Royce at Baylor (11/12/13)
	2	Heslip, Brady at Baylor (11/12/13)
	2	CAREY, Tristan vs Longwood (11/9/13)
	2	FISHER, Leron vs Longwood (11/9/13)
	2	ZIEGLER, Karl vs Longwood (11/9/13)
Blocked Shots	7	McDANIELS, K.J. at Clemson (11/17/13)
	3	Austin, Isaiah at Baylor (11/12/13)
Turnovers	5	FRINK, Jerome vs FIU (11/24/13)
	5	BUCKLES, Rakeem vs FIU (11/24/13)
Fouls	4	MURPHY, Tymell vs FIU (11/24/13)
	4	NNOKO, Landry at Clemson (11/17/13)

4	Chery, Kenny at Baylor (11/12/13)
4	Jefferson, Cory at Baylor (11/12/13)
4	Prince, Taurean at Baylor (11/12/13)

South Carolina (2-2)
Men's Basketball National Ranking Summary
Thru Games 12/01/2013

[Back to team selections](#)
[Southeastern - All Teams](#)

Category	Rank	Actual	National Leader	Actual
Won-Lost Percentage (345 ranked)	188	50.0	Arizona Boise St. Cincinnati Illinois Iowa St. Massachusetts Michigan St. Missouri Ohio St. Ole Miss Oregon Pittsburgh St. Mary's (CA) Syracuse Toledo UCLA UConn Utah Villanova Wichita St. Wisconsin	100.0 100.0
Final Points (345 ranked)	339	287.0	Valparaiso	774.0
Scoring Offense (345 ranked)	216	71.8	Boise St.	97.7
Scoring Defense (345 ranked)	35	63.3	Clemson	51.3
Scoring Margin (345 ranked)	96	8.5	Utah	33.8
Field-Goal Percentage (345 ranked)	239	42.9	Gonzaga	55.8
Field-Goal Percentage Defense (345 ranked)	21	37.6	Iowa	34.0
Three-Point Field Goals Per Game (345 ranked)	304	4.5	Colgate	13.3
Three-Point Field-Goal Percentage (345 ranked)			Colgate	51.0
Three Pt FG Defense (345 ranked)	78	30.4	Utah	18.2
Free-Throw Percentage (345 ranked)	111	71.7	Boston College	84.3
Rebound Margin (345 ranked)	63	6.0	Indiana	18.0
Assists Per Game (345 ranked)	151	13.3	Michigan St.	22.0
Assist Turnover Ratio (345 ranked)	145	1.08	Michigan St.	2.14
Blocked Shots Per Game (345 ranked)	107	4.3	St. John's (NY)	10.6
Steals Per Game (345 ranked)	188	6.3	VCU	13.0
Final Opp Points (345 ranked)	343	253.0	UT Martin	803.0
Turnovers Per Game (345 ranked)	141	12.3	Colorado St.	7.9
Turnover Margin (345 ranked)	98	1.8	Louisville	11.0
Personal Fouls Per Game (345 ranked)	215	20.8	Utah	13.0
Total Blocks (345 ranked)	273	17.0	St. John's (NY)	74.0
Total Assists (345 ranked)	334	53.0	UC Irvine	160.0
Total Rebounds (345 ranked)	332	157.0	FIU	415.0
Free Throw Attempts (345 ranked)	329	99.0	New Mexico St.	310.0
Free Throws Made (345 ranked)	322	71.0	New Mexico St.	212.0
3-pt Field Goal Attempts (345 ranked)	343	57.0	Cornell	230.0
Total 3-point FGM (345 ranked)	340	18.0	Gonzaga	87.0
Total Steals (345 ranked)	326	25.0	VCU	104.0
Fewest Turnovers (345 ranked)	4	49.0	Weber St.	39.0

Category	Player	Rank	Actual	National Leader	Actual
Points Per Game (250 ranked)				Antoine Mason, Niagra	31.6
Field-Goal Percentage (250 ranked)				Delon Wright, Utah	74.5
Three-Point Field Goals Per Game (250 ranked)				Travis Bader, Oaklnd	4.63
Three-Point Field-Goal Percentage (250 ranked)				Riley Grabau, Wyo.	67.7
Free-Throw Percentage (250 ranked)	Brenton Williams	1	100.0	Chris Hansen, Ida.St Anthony Jackson, SBrook Jeff Mullahey, Troy Brenton Williams, S.Caro	100.0 100.0 100.0 100.0
Rebounds Per Game (250 ranked)	Mindaugas Kacinas	51	9.3	Roscoe Smith, UNLV	16.2
Assists Per Game (250 ranked)	Tyrone Johnson	89	4.8	Jason Brickman, LIU	10.3
Blocked Shots Per Game (250 ranked)	Michael Carrera	230	1.25	Chris Obekpa, StJohn	5.71
Steals Per Game (250 ranked)	Sindarius Thornwell	242	1.5	Briante Weber, VCU	3.63
Total Points (250 ranked)				Antoine Mason, Niagra	221.0
Total Rebounds (250 ranked)				Chad Posthumus, Morehd	113.0
Assist Turnover Ratio (250 ranked)	Tyrone Johnson	159	2.11	Zalmico Harmon, UCSB	8.0
Double Doubles (100 ranked)				Jordan Bachynski, ArizSt Julius Randle, Ky	7.0 7.0
Triple Doubles (30 ranked)				Kyle Anderson, UCLA Alec Brown, UW-GB Aaric Murray, TexSo. Shabazz Napier, UConn	1.0 1.0 1.0 1.0
Total Assists (250 ranked)				Jason Brickman, LIU	62.0
Total Blocks (250 ranked)				Chris Obekpa, StJohn	40.0
Total Field Goals Made (100 ranked)				Antoine Mason, Niagra	69.0
Total Minutes (100 ranked)				Tymell Murphy, FlaInt	20040.0
Minutes Per Game (100 ranked)				Billy Baron, Cnsius	2340.0
3-pt Field Goal Attempts (100 ranked)				Travis Bader, Oaklnd Reger Dowell, UT-Arl	87.0 87.0
Total 3-point FGM (250 ranked)				Travis Bader, Oaklnd	37.0
Total Steals (250 ranked)				Kendrick Perry, Yngtwn Briante Weber, VCU	29.0 29.0
Total Field Goal Attempts (100 ranked)				James Daniel, Howard	154.0