



SOUTH CAROLINA MEN'S BASKETBALL



OPENING TIP

Date: Thursday, Dec. 19, 2013

Tipoff: 4 p.m. ET

Location: Columbia, S.C.

Arena: Colonial Life Arena (18,000)

Series: South Carolina leads 3-0

Last Meeting: South Carolina win, 72-66, Dec. 31, 2011 in Columbia, S.C.

Broadcast: Fox Sports Carolinas/SportSouth

Talent: Andy Demetra (pxp), Eddie Fogler (analyst)

Radio: Gamecock Radio Network/107.5 The Game in Columbia
Sirius: 108; **XM:** 199

Talent: Derek Scott (pxp), Casey Manning (analyst)

Tickets: GamecocksOnline.com

Live Stats: GamecocksOnline.com

GAME 7



**SOUTH CAROLINA
GAMECOCKS**
(2-4)

- VS -

**USC UPSTATE
SPARTANS**
(5-5)



Ranking: AP/Coaches (-/-)
Head Coach: Frank Martin
Record at SC: 16-22 (2nd)
Career Rec.: 133-76 (7th)
vs. Upstate: 0-0
SID: Emily Feeney

Stat Leaders (per game):
Points: Thornwell (12.7)
Rebounds: Kacinas (7.8)
Assists: Johnson (4.2)
Blocks: Carrera (1.0)
Steals: Thornwell/Carrera (1.2)

Ranking: AP/Coaches (-/-)
Head Coach: Eddie Payne
Record at Upstate: 162-181 (12th)
Career Rec.: 422-414 (29th)
vs. SC: 0-3
SID: Jay D'Ambro

Stat Leaders (per game):
Points: Craig (18.2)
Rebounds: Craig (7.1)
Assists: Greene (3.3)
Blocks: Maxey (1.4)
Steals: Maxey (1.6)

2013-14 SCHEDULE

DATE	OPPONENT (TV)	TIME/RESULT
N. 3	USC Aiken (exhib.)	W, 84-72
N. 9	Longwood	W, 82-44
N. 12	at No. 23/25 Baylor \$ (ESPN)	L, 66-64
N. 17	at Clemson (ESPN3)	L, 71-57
N. 24	FIU (SPSO/FSCR)	W, 84-72
D. 6	at No. 9/11 Oklahoma State ! (ESPNU)	L, 79-52
D. 17	Manhattan	L, 86-68
D. 19	USC Upstate (SPSO/FSCR)	4 p.m.
D. 22	vs. Saint Mary's % (ESPNU)	11 p.m.
D. 23	Hawaii/Boise State %	TBA
D. 25	TBA %	TBA
D. 28	Akron (ESPNU)	4 p.m.
D. 30	Marshall (CSS)	7 p.m.
J. 3	SC State (SPSO/FSCR)	7 p.m.
J. 8	at Florida* (CSS)	7 p.m.
J. 11	LSU* (SECTV)	1:30 p.m.
J. 15	at Texas A&M* (SECTV)	8 p.m.
J. 18	Ole Miss* (FSN)	4:30 p.m.
J. 22	at Georgia* (SECTV)	8 p.m.
J. 25	at Missouri* (SECTV)	4 p.m.
J. 29	Texas A&M* (ESPN3)	7 p.m.
F. 1	at Ole Miss* (SECTV)	1:30 p.m.
F. 5	Auburn* (ESPN3)	7:30 p.m.
F. 8	at Tennessee* (ESPNU)	3 p.m.
F. 12	Vanderbilt* (SECTV)	8 p.m.
F. 15	Alabama* (SECTV)	4 p.m.
F. 19	at Arkansas* (CSS)	9 p.m.
F. 22	Georgia* (SECTV)	1:30 p.m.
F. 26	at Auburn* (FSN)	9 p.m.
M. 1	Kentucky* (ESPN/2)	6 p.m.
M. 4	Florida* (ESPNU)	7 p.m.
M. 8	at Mississippi State* (SECTV)	4 p.m.
M.	at SEC Tournament (Atlanta, Ga.)	TBA

All home games in **bold** | All times listed Eastern

* indicates SEC contest | + indicates exhibition | **SPSO/FSCR** - SportSouth/Fox Sports Carolinas | **SECTV**-SEC TV | **CSS**- CharterSports SE | **FSN** - Fox Sports | \$ - ESPN College Hoops Marathon (Waco, Texas) | ! - Big 12/SEC Challenge (Stillwater, Okla.) | % - Hawaiian Airlines Diamond Head Classic (Honolulu, HI.)

PROBABLE STARTERS

South Carolina	Ht.	Wt.	Yr.	Hometown	PPG	RPG	MPG
G - #0 Sindarius Thornwell	6-5	206	Fr.	Lancaster, S.C.	12.7	3.5	28.5
G - #4 Tyrone Johnson	6-3	194	Jr.	Plainfield, N.J.	12.2	2.3	30.3
G - #23 Bruce Ellington	5-9	196	Sr.	Moncks Corner, S.C.	4.5	1.0	20.0
F - #21 Demetrius Henry	6-9	215	Fr.	Miami, Fla.	7.7	5.0	26.5
F - #25 Mindaugas Kacinas	6-7	210	So.	Klaipeda, Lithuania	7.5	7.8	28.2

USC Upstate	Ht.	Wt.	Yr.	Hometown	PPG	RPG	MPG
G - #5 Ty Greene	6-3	185	Jr.	Knoxville, Tenn.	14.9	2.9	35.3
G - #31 Mario Blessing	6-2	165	Jr.	Kusterdingen, Germany	4.9	2.4	27.9
F - #12 Ricardo Glenn	6-8	246	Sr.	Augusta, Ga.	11.6	5.3	25.7
F - #23 Torrey Craig	6-6	215	Sr.	Great Falls, S.C.	18.2	7.1	31.0
F - #24 Jodd Maxey	6-8	200	Sr.	Statham, Ga.	8.0	6.8	27.4

TODAY'S GAME

South Carolina hosts intrastate rival USC Upstate on Thursday in a quick turnaround after the Manhattan contest on Tuesday evening. Thursday's contest will tip at 4 p.m. ET, as the Gamecocks begin travels for the Diamond Head Classic following the game vs. the Spartans. Fox Sports Carolinas/SportSouth will televise Thursday's matchup. The Gamecocks are in the midst of a stretch of eight games in 18 days beginning with Tuesday's loss to Manhattan.

CAROLINA QUICK HITS

- South Carolina is in its 106th season of basketball.
- The Gamecocks are led by Frank Martin in his second year. Matt Figger is the associate head coach, and Perry Clark and Lamont Evans are assistant coaches. Andy Assaley is in his second year as the director of operations for the Gamecocks.
- Senior guard Bruce Ellington and junior forward Carlton Geathers both participated in winter graduation ceremonies on Monday. Both earned their degree in sociology.
- Free throw shooting was the difference in Tuesday's game vs. Manhattan, as the Jaspers escaped Colonial Life Arena with an 86-68 win over the Gamecocks. The victory was Manhattan's seventh-straight on the road. The Jaspers hit a stellar 34-of-39 from the free throw line, a mark of 87.2 percent. The Gamecocks attempted just one less from the line, but hit just 22-of-38 for the game, including 9-of-19 in the opening half. Freshman guard Sindarius Thornwell led the Gamecocks with 17 points in the game, including 10 from the charity stripe.
- Looking ahead, South Carolina travels for the Hawaiian Airlines Diamond Head Classic on Friday with an early morning flight. The Gamecocks' first game in Hawaii is versus Saint Mary's on Dec. 22 at 11 p.m. ET (ESPNU). Carolina will then face either host Hawaii or Boise State in the event's second round.
- South Carolina recently suffered a 79-52 road loss at No. 9/11 Oklahoma State on Dec. 6, competing in the Big 12/SEC Challenge. Rookie guard Jaylen Shaw once again shined for Carolina off the bench, hitting 4-of-5 attempts from the floor, which included three 3s for 13 points.
- Senior guard Bruce Ellington began practice with the Gamecock men's basketball team on Dec. 3, and saw 17 minutes of action, scoring two points from the free throw line in the contest vs. Oklahoma State. Ellington led the Gamecock football team in receiving yards this season, collecting 635 yards on 43 catches and scoring six touchdowns. On the basketball court, Ellington owns career averages of 11.2 points, 2.7 rebounds and 3.0 assists in 30.5 minutes per game (79 games played).
- Junior guard Tyrone Johnson matched a career high with 18 points, and freshman guard Jaylen Shaw exploded for 16 points off the bench, in South Carolina's victory over Florida International on Nov. 24. Johnson contributed seven assists, and Shaw added five, in propelling Carolina to 19 team assists in the victory.
- The Gamecocks are winless in three road contests this season, suffering a 66-64 loss at then-No. 23 Baylor on Nov.



SOUTH CAROLINA GAMECOCKS

OVERALL: 2-4; SEC: 0-0; HOME: 2-1; AWAY: 0-3; NEUTRAL: 0-0

0		SINDARIUS THORNWELL - Fr. - G - 6-5 - 206 - Lancaster, S.C. <table><tr><th>MIN</th><th>PTS</th><th>RBS</th><th>AST</th><th>FG%</th><th>3FG%</th><th>FT%</th></tr><tr><td>28.5</td><td>12.7</td><td>3.5</td><td>1.6</td><td>40.7</td><td>41.7</td><td>73.0</td></tr></table>	MIN	PTS	RBS	AST	FG%	3FG%	FT%	28.5	12.7	3.5	1.6	40.7	41.7	73.0	<ul style="list-style-type: none">• First 20-point game of his career at No. 23/25 Baylor; also team high 3 steals• Dished four assists vs. FIU, adding 8 points• Struggled at Ok. State, 4 fouls, 7 points in 20 minutes vs. Cowboys• Team high 17 points, hitting 10-of-13 from the foul line, vs. Manhattan
MIN	PTS	RBS	AST	FG%	3FG%	FT%											
28.5	12.7	3.5	1.6	40.7	41.7	73.0											
1		BRENTON WILLIAMS - Sr. - G - 5-11 - 172 - Kissimmee, Fla. <table><tr><th>MIN</th><th>PTS</th><th>RBS</th><th>AST</th><th>FG%</th><th>3FG%</th><th>FT%</th></tr><tr><td>16.0</td><td>7.0</td><td>1.7</td><td>1.0</td><td>37.5</td><td>30.0</td><td>1.000</td></tr></table>	MIN	PTS	RBS	AST	FG%	3FG%	FT%	16.0	7.0	1.7	1.0	37.5	30.0	1.000	<ul style="list-style-type: none">• Solid in season opener with 14 points, four rebounds vs. Longwood• Scored 12 points at No. 23/25 Baylor• Has made all 12 of his free throw attempts this season• Posted 16 points, including 6-of-6 from free throw line, vs. FIU; 2 assts, 2 stls.
MIN	PTS	RBS	AST	FG%	3FG%	FT%											
16.0	7.0	1.7	1.0	37.5	30.0	1.000											
4		TYRONE JOHNSON - Jr. - G - 6-3 - 194 - Plainfield, N.J. <table><tr><th>MIN</th><th>PTS</th><th>RBS</th><th>AST</th><th>FG%</th><th>3FG%</th><th>FT%</th></tr><tr><td>30.3</td><td>12.2</td><td>2.3</td><td>4.2</td><td>38.9</td><td>28.6</td><td>70.7</td></tr></table>	MIN	PTS	RBS	AST	FG%	3FG%	FT%	30.3	12.2	2.3	4.2	38.9	28.6	70.7	<ul style="list-style-type: none">• Added eight points and eight assists, a new career high, at No. 23/25 Baylor• Matched career high with 18 points vs. FIU; 7 assists, one steal• Posted 12 points and three assists at Ok. State• Posted 12 points and three assists vs. Manhattan
MIN	PTS	RBS	AST	FG%	3FG%	FT%											
30.3	12.2	2.3	4.2	38.9	28.6	70.7											
5		JAYLEN SHAW - Fr. - G - 6-0 - 182 - Hartsville, S.C. <table><tr><th>MIN</th><th>PTS</th><th>RBS</th><th>AST</th><th>FG%</th><th>3FG%</th><th>FT%</th></tr><tr><td>13.0</td><td>6.2</td><td>0.8</td><td>2.4</td><td>55.6</td><td>58.3</td><td>80.0</td></tr></table>	MIN	PTS	RBS	AST	FG%	3FG%	FT%	13.0	6.2	0.8	2.4	55.6	58.3	80.0	<ul style="list-style-type: none">• Burst onto the scene, scoring 16 points off the bench, hitting 6-of-10 attempts overall and 4-of-7 from 3-point range in win vs. FIU; also five assists in 26 minutes played• Solid vs. Ok State, 4-of-5 from field, three 3s, team high 13 points
MIN	PTS	RBS	AST	FG%	3FG%	FT%											
13.0	6.2	0.8	2.4	55.6	58.3	80.0											
10		DUANE NOTICE - Fr. - G - 6-2 - 221 - Woodbridge, Ontario <table><tr><th>MIN</th><th>PTS</th><th>RBS</th><th>AST</th><th>FG%</th><th>3FG%</th><th>FT%</th></tr><tr><td>12.5</td><td>2.3</td><td>2.3</td><td>1.2</td><td>31.6</td><td>33.3</td><td>0.0</td></tr></table>	MIN	PTS	RBS	AST	FG%	3FG%	FT%	12.5	2.3	2.3	1.2	31.6	33.3	0.0	<ul style="list-style-type: none">• Posted eight points and dished a team high four assists in 19 minutes vs. Longwood; hit two 3s• Two assists, one steal and two points in 12 minutes at Baylor• Earned start at Clemson; 2 assists, 2 points
MIN	PTS	RBS	AST	FG%	3FG%	FT%											
12.5	2.3	2.3	1.2	31.6	33.3	0.0											
12		AUSTIN CONSTABLE - So. - G - 5-11 - 180 - West Chester, Pa. <table><tr><th>MIN</th><th>PTS</th><th>RBS</th><th>BLK</th><th>FG%</th><th>3FG%</th><th>FT%</th></tr><tr><td>-</td><td>-</td><td>-</td><td>-</td><td>-</td><td>-</td><td>-</td></tr></table>	MIN	PTS	RBS	BLK	FG%	3FG%	FT%	-	-	-	-	-	-	-	<ul style="list-style-type: none">• Walk-on guard who saw limited action last season as a freshman• 1,000-point scorer during high school career at Henderson High School
MIN	PTS	RBS	BLK	FG%	3FG%	FT%											
-	-	-	-	-	-	-											
14		LAIMONAS CHATKEVICIUS - So. - F - 6-11 - 250 - Klaipeda, Lithuania <table><tr><th>MIN</th><th>PTS</th><th>RBS</th><th>BLK</th><th>FG%</th><th>3FG%</th><th>FT%</th></tr><tr><td>10.8</td><td>3.0</td><td>2.6</td><td>0.6</td><td>53.8</td><td>0.0</td><td>50.0</td></tr></table>	MIN	PTS	RBS	BLK	FG%	3FG%	FT%	10.8	3.0	2.6	0.6	53.8	0.0	50.0	<ul style="list-style-type: none">• Double-double vs. Aiken in exhibition, 10 points, 11 rebounds• In 14 minutes at Baylor, two points, one block and one steal• Scored on 2-of-3 attempts for 4 points, 1 block at Clemson• Scored seven points and pulled down four rebounds vs. Manhattan
MIN	PTS	RBS	BLK	FG%	3FG%	FT%											
10.8	3.0	2.6	0.6	53.8	0.0	50.0											
15		REGGIE THEUS JR. - Fr. - F - 6-6 - 210 - Los Angeles, Calif. <table><tr><th>MIN</th><th>PTS</th><th>RBS</th><th>AST</th><th>FG%</th><th>3FG%</th><th>FT%</th></tr><tr><td>1.7</td><td>0.0</td><td>0.3</td><td>0.0</td><td>0.0</td><td>0.0</td><td>0.0</td></tr></table>	MIN	PTS	RBS	AST	FG%	3FG%	FT%	1.7	0.0	0.3	0.0	0.0	0.0	0.0	<ul style="list-style-type: none">• Freshman forward who hails from Los Angeles, Calif.• Son of Reggie Theus, current coach at Cal State Northridge, and former NBA All-Star• Averaged nearly 18.0 points per game as a senior at Fairfax High School
MIN	PTS	RBS	AST	FG%	3FG%	FT%											
1.7	0.0	0.3	0.0	0.0	0.0	0.0											
20		JUSTIN MCKIE - Fr. - G - 6-4 - 195 - Columbia, S.C. <table><tr><th>MIN</th><th>PTS</th><th>RBS</th><th>BLK</th><th>FG%</th><th>3FG%</th><th>FT%</th></tr><tr><td>2.3</td><td>0.3</td><td>0.3</td><td>0.0</td><td>0.0</td><td>0.0</td><td>50.0</td></tr></table>	MIN	PTS	RBS	BLK	FG%	3FG%	FT%	2.3	0.3	0.3	0.0	0.0	0.0	50.0	<ul style="list-style-type: none">• Columbia, S.C., native who helped lead his Irmo High School squad to a state championship last season at CLA, scoring 20 points in the win• Son of Gamecock great BJ McKie• Named South Carolina Mr. Basketball, Gatorade SC Boys' Player of the Year
MIN	PTS	RBS	BLK	FG%	3FG%	FT%											
2.3	0.3	0.3	0.0	0.0	0.0	50.0											
21		DEMETRIUS HENRY - Fr. - F - 6-9 - 215 - Miami, Fla. <table><tr><th>MIN</th><th>PTS</th><th>RBS</th><th>BLK</th><th>FG%</th><th>3FG%</th><th>FT%</th></tr><tr><td>26.5</td><td>7.7</td><td>5.0</td><td>0.8</td><td>45.7</td><td>0.0</td><td>28.6</td></tr></table>	MIN	PTS	RBS	BLK	FG%	3FG%	FT%	26.5	7.7	5.0	0.8	45.7	0.0	28.6	<ul style="list-style-type: none">• 9 points and six rebounds, adding two blocks in 30 minutes at No. 23/25 Baylor• Scored 9 points, collected 5 rebounds in 22 minutes at Clemson• 14 points and six rebounds vs. FIU• Six points, five rebounds at Ok. State
MIN	PTS	RBS	BLK	FG%	3FG%	FT%											
26.5	7.7	5.0	0.8	45.7	0.0	28.6											
23		BRUCE ELLINGTON - Sr. - G - 5-9 - 196 - Moncks Corner, S.C. <table><tr><th>MIN</th><th>PTS</th><th>RBS</th><th>AST</th><th>FG%</th><th>3FG%</th><th>FT%</th></tr><tr><td>20.0</td><td>4.5</td><td>1.0</td><td>1.5</td><td>37.5</td><td>20.0</td><td>1.000</td></tr></table>	MIN	PTS	RBS	AST	FG%	3FG%	FT%	20.0	4.5	1.0	1.5	37.5	20.0	1.000	<ul style="list-style-type: none">• Joined the basketball team for practice on Tuesday after catching four passes for 51 yards in South Carolina football's 31-17 win over Clemson• Saw 17 minutes of action off the bench at Ok. State, scored two points, one steal, one assist
MIN	PTS	RBS	AST	FG%	3FG%	FT%											
20.0	4.5	1.0	1.5	37.5	20.0	1.000											
24		MICHAEL CARRERA - So. - F - 6-5 - 212 - Anzoátegui, Venezuela <table><tr><th>MIN</th><th>PTS</th><th>RBS</th><th>BLK</th><th>FG%</th><th>3FG%</th><th>FT%</th></tr><tr><td>20.3</td><td>7.5</td><td>5.7</td><td>1.0</td><td>33.3</td><td>25.0</td><td>70.0</td></tr></table>	MIN	PTS	RBS	BLK	FG%	3FG%	FT%	20.3	7.5	5.7	1.0	33.3	25.0	70.0	<ul style="list-style-type: none">• 12 points and nine rebounds vs. Longwood; 2 blocks, 2 steals• 8 points, 7 rebounds; 6-of-6 from free throw line at No. 23/25 Baylor• Scored nine points and collected two steals at Clemson• Team high 7 rebounds vs. Ok State
MIN	PTS	RBS	BLK	FG%	3FG%	FT%											
20.3	7.5	5.7	1.0	33.3	25.0	70.0											
25		MINDAUGAS KACINAS - So. - F - 6-7 - 210 - Klaipeda, Lithuania <table><tr><th>MIN</th><th>PTS</th><th>RBS</th><th>BLK</th><th>FG%</th><th>3FG%</th><th>FT%</th></tr><tr><td>28.2</td><td>7.5</td><td>7.8</td><td>0.5</td><td>56.3</td><td>0.0</td><td>56.3</td></tr></table>	MIN	PTS	RBS	BLK	FG%	3FG%	FT%	28.2	7.5	7.8	0.5	56.3	0.0	56.3	<ul style="list-style-type: none">• First double-double of the season with 13 points, 12 rebounds at Clemson• Team high 9 rebounds, 4 offensive, vs. FIU• Among SEC leaders, leads team with 7.8 rebounds per game• Pulled down five rebounds vs. Manhattan
MIN	PTS	RBS	BLK	FG%	3FG%	FT%											
28.2	7.5	7.8	0.5	56.3	0.0	56.3											
32		DESMOND RINGER - Fr. - F - 6-9 - 255 - McDonough, Ga. <table><tr><th>MIN</th><th>PTS</th><th>RBS</th><th>BLK</th><th>FG%</th><th>3FG%</th><th>FT%</th></tr><tr><td>8.3</td><td>2.0</td><td>1.3</td><td>0.0</td><td>40.0</td><td>0.0</td><td>50.0</td></tr></table>	MIN	PTS	RBS	BLK	FG%	3FG%	FT%	8.3	2.0	1.3	0.0	40.0	0.0	50.0	<ul style="list-style-type: none">• Helped lead his high school squad to its first-ever state championship last spring, scoring 17 points and collecting 14 rebounds in the title game• Saw action vs. Baylor; contributed four points at Clemson• Three points and a season high 5 rebounds at Ok. State
MIN	PTS	RBS	BLK	FG%	3FG%	FT%											
8.3	2.0	1.3	0.0	40.0	0.0	50.0											
35		BRIAN STEELE - So. - F - 6-5 - 200 - Greenville, S.C. <table><tr><th>MIN</th><th>PTS</th><th>RBS</th><th>AST</th><th>FG%</th><th>3FG%</th><th>FT%</th></tr><tr><td>1.5</td><td>0.0</td><td>0.0</td><td>0.0</td><td>0.0</td><td>0.0</td><td>0.0</td></tr></table>	MIN	PTS	RBS	AST	FG%	3FG%	FT%	1.5	0.0	0.0	0.0	0.0	0.0	0.0	<ul style="list-style-type: none">• Walk-on forward who saw action in seven games last season, starting the final four contests of the year• Scored 16 points for a 2.3 points per game average• 1,000-point scorer during high school career
MIN	PTS	RBS	AST	FG%	3FG%	FT%											
1.5	0.0	0.0	0.0	0.0	0.0	0.0											

INTERVIEW POLICIES

All interview requests must be made in advance to SID Emily Feeney in the South Carolina Media Relations Office. Beginning with the start of practice in October, Feeney will release a weekly coach and student-athlete availability schedule to media on Mondays.

Post-Game Interview Policy: After each home game, the visiting coach will address the media first, followed by South Carolina student-athletes then South Carolina head coach Frank Martin. (Depending on deadline, this may be altered on a game-by-game basis).

Road Interview Policy: Interviews with Coach Martin while on the road will be scheduled according to the home post-game media procedure. No student-athlete interviews are allowed until after the game once the team leaves Columbia.

All interviews are to be coordinated through the Media Relations Office. This allows the staff to arrange the interview when it best suits the student-athlete's and the reporter's schedules. Please contact the Media Relations Office in advance to make your interview requests. Media are not permitted to contact student-athletes on their own at any time.

All interviews will take place at the designated media interview site for that day as listed in the weekly availability schedule or in the Media Relations Office.

Dormitory, apartment and cell phone numbers for student-athletes will not be provided to the media. Should you need to conduct a telephone interview with a student-athlete, a call will be placed to you from the student-athlete at a mutually agreeable time.

SOUTH CAROLINA MEDIA RELATIONS



Emily Feeney, primary contact

Associate Director

cell: 803-727-3284

e-mail: efeeney@mailbox.sc.edu

Twitter: @EmilyFeeneySID

Website: www.GamecocksOnline.com

Facebook: www.Facebook.com/gamecocksonline

Twitter: @GamecockMBB

STAT COMPARISON

	SC	UPSTATE
Record	2-4	5-5
Conference Record	-	-
Current Streak	-	-
Scoring Avg.	67.8	71.6
Opponent Scoring Avg.	69.7	72.0
Scoring Margin	-1.8	-0.4
Field Goal %	.418	.439
Opponent Field Goal %	.403	.404
3-Point Field Goal %	.347	.306
Opponent 3-Point Field Goal %	.308	.360
3-Point Field Goal Made PG	4.3	5.4
3-Point Field Goal Attempts PG	12.6	17.7
Free Throw %	.673	.693
Opponent Free Throw %	.751	.742
Rebounding Avg.	36.7	37.8
Opponent Rebounding Avg.	33.0	34.0
Rebounding Margin	+3.7	+3.8
Turnovers Avg.	14.8	12.0
Opponent Turnover Avg.	13.2	10.4
Assists Avg.	13.0	14.5
Blocks Avg.	4.0	3.7
Steals Avg.	5.2	4.6

WEEKLY MEDIA AVAILABILITY (DEC. 15-21)

SUNDAY Dec. 15	MONDAY Dec. 16	TUESDAY Dec. 17	WEDNESDAY Dec. 18	THURSDAY Dec. 19	FRIDAY Dec. 20	SATURDAY Dec. 21
No Availability	2:45 p.m. Martin press conference/ freshman avail.	vs. Manhattan L, 86-68	No Availability Carolina Calls (Wild Wing/ Sandhills, 7 pm)	vs. USC Upstate 4 p.m. ET CLA Sport/South	Travel to Hawaii	No Availability Hawaii Trip

* All practices are closed * please contact SID Emily Feeney for all media requests

A SOUTH CAROLINA WIN WOULD ...

- Snap a two-game losing streak for the Gamecocks
- Improve Carolina's record to 4-0 all-time vs. the Spartans
- Be the Gamecocks' first over an opponent from the Atlantic Sun since a 91-74 win over Jacksonville on Dec. 7, 2012

12, before a 71-57 loss at Clemson on Nov. 17, and the Dec. 6 loss at then-No. 9 Oklahoma State, 79-52. South Carolina has hit just 35.6% (57-160) from the field, and is averaging 57.7 points per game on the road.

■ Sophomore forward Mindaguas Kacinas posted his first double-double of the season and the second of his career with team highs of 13 points and 12 rebounds vs. Clemson on Nov. 17.

■ Kacinas currently leads the Gamecocks and ranks eighth in the SEC with 7.8 rebounds per contest. His 3.5 offensive rebounds per contest are a team best and also rank tied for fifth in the league.

■ The Gamecocks rank sixth in the SEC in field goal percentage defense, as Carolina opponents have hit just 40.3 percent of shot attempts this season.

■ South Carolina suffered a two-point road loss at No. 23/25 Baylor on Nov. 12 in non-conference action, falling 66-64 to the Bears. Sophomore forward Michael Carrera was fouled on a shot attempt at the buzzer, but the officials determined the infraction occurred after time expired. Thornwell posted the first 20-point game of his young career in the Garnet and Black, and classmate, forward Demetrius Henry posted nine points, six rebounds and two blocks in the contest. Baylor now holds a 3-2 upperhand in the all-time series between the two schools.

■ The Gamecocks used an 18-point effort from junior guard Ty Johnson to defeat visiting Longwood by 38 points, 82-44, on Nov. 9 in the season opener at Colonial Life Arena. Thornwell and senior guard Brenton Williams both added 14 points, sophomore forward Michael Carrera added 12 and sophomore forward Mindaguas Kacinas pulled down a career high 14 rebounds in the win. It marked the 13th-straight season-opening victory for the Gamecocks.

■ South Carolina shot 62.5% (15-24) during the second half of the Nov. 9 contest vs. Longwood, the best one-half percentage for the Gamecocks since hitting 71.9% (23-32) during the first half vs. Jacksonville on Dec. 7, 2012.

■ South Carolina returns seven letterwinners to its squad this season, including senior guard Brenton Williams, the team's top returning scorer from a year ago when he averaged 11.0 points per game. Also returning to the bench this season for the Garnet and Black are senior guard Bruce Elington, who will join the team at the conclusion of the football season, sophomore forwards Michael Carrera, a 2013 SEC All-Freshman Team selection, Laimonas Chatkevicius and Mindaguas Kacinas. Sophomore guard Austin Constables and forward Brian Steele also return for Carolina.

■ The Gamecocks will hold a young roster this season, welcoming seven freshmen to Columbia in forwards Demetrius Henry, Desmond Ringer, Reggie Theus Jr., and guards Duane Notice, Justin McKie, Jaylen Shaw and Sindarius Thornwell. Transfer guard Ty Johnson joined the program last January via Villanova.

■ Johnson received word prior to the Nov. 9 season opener that he had been granted a waiver from the NCAA allowing him to compete effectively immediately. Johnson has been eligible to practice since he transferred to South Carolina

from Villanova in January 2013.

■ Justin McKie, son of Gamecock great BJ McKie, was named South Carolina Mr. Basketball, and also the Gatorade South Carolina Boys' Basketball Player of the Year last spring after leading his Irmo squad to the state championship behind a 20-point, 10-rebound performance at Colonial Life Arena.

■ Entering the season, senior guard Brenton Williams ranked fourth all-time in the Gamecock record book in 3-point field goal percentage, hitting 39.5 percent of his attempts. He paced the Gamecocks last season hitting just shy of 40 percent from beyond the arc.

■ South Carolina's non-conference schedule features 14 games, including seven home contests. Highlighting the non-conference schedule is a holiday tournament at the Hawaiian Airlines Diamond Head Classic in late December, and a mid-day contest at Baylor as part of the ESPN College Hoops Marathon in early November. South Carolina also travels to Oklahoma State in early December for the Big 12/SEC Challenge.

SCOUTING USC UPSTATE

USC Upstate enters Thursday's contest with a 5-5 record after most recently suffering a 73-63 loss to UNC Asheville last Sunday ... The team is led by Eddie Payne in his 12th season in the Upstate ... Payne was an assistant at South Carolina from 1987-89 and was the associate head coach from 1990-91 ... The Spartans began their season with a 64-63 road win at Virginia Tech, and have compiled a 1-4 record in road games this season ... The squad is paced by senior guard Craig Torrey, who averages 18.2 points and 7.1 rebounds per contest, which leads the Atlantic Sun Conference in both categories ... Torrey has led the league in scoring in each of the past two seasons ... Junior guard Ty Greene (14.9) and senior forward Ricardo Glenn (11.6) are both averaging double-figure points entering Thursday's contest.

SERIES VS. UPSTATE

South Carolina leads the all-time series vs. USC Upstate 3-0, with all three of those contests coming in Columbia. In the most recent meeting, a 72-66 Gamecock win on Dec. 31, 2011, Carolina led late in the contest, but the Spartans cut the lead to just two with 44 seconds remaining. A tip-in and two made Gamecock free throws sealed the win for Carolina. Below is a breakdown of the series between the two schools:

USC UPSTATE (3-0)

H: 3-0; A: 0-0; N: 0-0

N. 22, 2008	H	75-53	W
N. 23, 2010	H	57-41	W
D. 31, 2011	H	72-66	W

► ASSOCIATED PRESS TOP 25

Dec. 16, 2013

Rk.	Team	Record	Pts.
1	Arizona (63)	11-0	1,623
2	Syracuse (2)	10-0	1,528
3	Ohio State	10-0	1,464
4	Wisconsin	12-0	1,381
5	Michigan State	8-1	1,297
6	Louisville	9-1	1,264
7	Oklahoma State	9-1	1,165
8	Villanova	10-0	1,053
8	Duke	7-2	1,053
10	Connecticut	9-0	1,035
11	Wichita State	10-0	923
12	Baylor	8-1	898
13	Oregon	9-0	834
14	North Carolina	7-2	792
15	Memphis	7-1	755
16	Florida	7-2	699
17	Iowa State	8-0	698
18	Kansas	7-3	482
19	Kentucky	8-3	414
20	Colorado	10-1	405
21	Gonzaga	10-1	376
22	Massachusetts	9-0	351
23	Missouri	10-0	222
24	San Diego State	7-1	176
25	Iowa	10-2	72

Others receiving votes: UCLA 69, Pittsburgh 66, Saint Mary's 11, George Washington 5, Harvard 4, Oklahoma 4, Toledo 3, Michigan 3

Dropped from rankings:

► ESPN/USA TODAY TOP 25

Dec. 16, 2013

Rk.	Team	Record	Pts.
1	Arizona (30)	11-0	798
2	Syracuse (1)	10-0	748
2	Ohio State (1)	10-0	748
4	Louisville	9-1	676
5	Michigan State	8-1	653
6	Wisconsin	12-0	645
7	Oklahoma State	9-1	555
8	Duke	7-2	553
9	Wichita State	10-0	545
10	Connecticut	9-0	494
11	Oregon	9-0	490
12	Villanova	10-0	413
13	Iowa State	8-0	351
14	Memphis	7-1	349
15	Baylor	8-1	311
15	Gonzaga	10-1	311
17	Florida	7-2	296
18	North Carolina	7-2	288
19	Kansas	7-3	232
20	Massachusetts	9-0	229
21	Kentucky	8-3	217
22	UCLA	9-1	91
23	San Diego State	7-1	90
24	Colorado	10-1	88
25	Missouri	10-0	76

Others receiving votes: Iowa 53, Pittsburgh 48, Saint Mary's 24, Creighton 9, Michigan 7, George Washington 5, New Mexico 3, Virginia 3, Oklahoma 1

Dropped from rankings: Iowa 22, Michigan 25



SOUTHEASTERN CONFERENCE STANDINGS

As of Dec. 18

Team	Conference	Overall
Missouri	0-0	10-0
Florida	0-0	8-2
Texas A&M	0-0	8-2
Arkansas	0-0	7-2
Ole Miss	0-0	7-2
Mississippi State	0-0	7-2
LSU	0-0	6-2
Kentucky	0-0	8-3
Tennessee	0-0	6-3
Vanderbilt	0-0	6-3
Auburn	0-0	4-3
Alabama	0-0	5-5
Georgia	0-0	4-4
South Carolina	0-0	2-4

COACHES TELECONFERENCE

The weekly SEC men's basketball coaches teleconference will be held every Monday beginning Monday, Jan. 6 through Monday, March 10. The 14 Southeastern Conference men's head basketball coaches will be featured from 10:00 -11:38 a.m. (CT).

Media representatives wishing to participate in the teleconference should contact the SEC Media Relations Department for further details. Each coach will appear on the teleconference for seven minutes, according to the following schedule:

ORDER OF APPEARANCE

(All Times Eastern)

11:00 a.m.	Kevin Stallings, Vanderbilt
11:07 a.m.	Billy Donovan, Florida
11:14 a.m.	Frank Martin, South Carolina
11:21 a.m.	Mark Fox, Georgia
11:28 a.m.	Johnny Jones, LSU
11:35 a.m.	John Calipari, Kentucky
11:42 a.m.	Cuonzo Martin, Tennessee
11:49 a.m.	Mike Anderson, Arkansas
11:56 a.m.	Anthony Grant, Alabama
12:03 a.m.	Tony Barbee, Auburn
12:10 a.m.	Andy Kennedy, Ole Miss
12:17 a.m.	Rick Ray, Miss. State
12:24 a.m.	Frank Haith, Missouri
12:31 a.m.	Billy Kennedy, Texas A&M

In addition, the SEC men's basketball teams who make it to postseason will be on a teleconference on Monday, March 17 beginning at 11:00 a.m. ET.

All SEC basketball teleconferences can be listened to on the internet at www.secsports.com shortly after the conclusion of the teleconference

SOUTH CAROLINA BENCH PRODUCTION

GAME	SC-OPP	DIFF.	SC HIGH BENCH SCORER
Longwood	30-18	+12	Williams, 14
@Baylor	17-36	-19	Williams, 12
@Clemson	18-34	-16	Carrera, 9
FIU	32-18	+14	Shaw/Williams, 16
@Okla. St.	20-19	+1	Shaw, 13
Manhattan	24-21	-3	Carrera, 10

USC Upstate
vs. Saint Mary's
vs. TBA
vs. TBA
Akron
Marshall
SC State
@Florida
LSU
@Texas A&M
Ole Miss
@Georgia
@Missouri
Texas A&M
@Ole Miss
Auburn
@Tennessee
Vanderbilt
Alabama
@Arkansas
Georgia
@Auburn
Kentucky
Florida
@Miss. St.
SEC Tourney
NCAA Tourney

SPECIALTY STATS

(PP) points in paint; (OT) points off turnovers; (2nd) second chance points; (FB) fast break points

(South Carolina-Opponent)

GAME	PP	OT	2ND	FB
Longwood	36-18	19-9	11-10	14-0
@Baylor	22-20	19-4	5-16	2-0
@Clemson	40-26	10-13	15-8	4-4
FIU	34-32	13-11	10-8	21-10
@Okla. St.	16-32	11-33	9-19	9-10
Manhattan	34-32	21-22	11-15	6-12

USC Upstate
vs. Saint Mary's
vs. TBA
vs. TBA
Akron
Marshall
SC State
@Florida
LSU
@Texas A&M
Ole Miss
@Georgia
@Missouri
Texas A&M
@Ole Miss
Auburn
@Tennessee
Vanderbilt
Alabama
@Arkansas
Georgia
@Auburn
Kentucky
Florida
@Miss. St.
SEC Tourney
NCAA Tourney

SC Total	182	93	61	56
SC Average	30.3	15.5	10.2	9.3
Opp Total	160	92	76	36
Opp Average	26.7	15.3	12.7	6.0

UNIVERSITY INFORMATION

Location Columbia, S.C.
 Founded 1801
 Enrollment 31,288
 Nickname Gamecocks
 Colors Garnet (PMS 202) and Black
 National Affiliation NCAA Division I
 Conference Southeastern (SEC)
 Athletics Web Address www.GamecocksOnline.com
 University Web Address www.sc.edu
 President Dr. Harris Pastides
 NCAA Representative Dr. Zach Kelehear
 Athletics Director Ray Tanner
 Basketball Administrator/Chief Operating Officer Kevin O'Connell

BASKETBALL STAFF/INFORMATION

Head Coach Frank Martin
 Alma Mater Florida International, '93
 Record At South Carolina/Seasons 16-22, 2nd Season
 Overall Record/Seasons 133-76 (.636), 7th season
 Assoc. Head Coach/Recruiting Coord. . Matt Figger (Eastern Kentucky, '95)
 Assistant Coach Perry Clark (Gettysburg, '74)
 Assistant Coach Lamont Evans (Kansas State, '09)
 Director of Basketball Operations Andy Assaley (Cincinnati, '96)
 Strength & Conditioning Scott Greenawalt (Muskingum College, '98)
 Athletic Trainer Mark Rodger (Buffalo, '01)
 Video Coordinator Dylan Lockwood (Cazenovia, '05)
 Grad. Student Mgr./Student-Athlete Dev. Doug Edwards (Florida State, '07)
 Associate Media Relations Director Emily Feeney (Ball State, '03)
 Home Arena Colonial Life Arena
 Capacity 18,000
 Arena General Manager Lexi Boone
 Press Row Phone Number 803-777-6182
 Team Twitter Account: @GamecockMBB
 Coach Martin Twitter Account: @FrankMartin_SC

BASKETBALL HISTORY

First Year of Basketball 1908
 All-Time Record 1,313-1,170-1 (.529)
 Overall Postseason Record 25-18
 NCAA Tournament Appearances 1971, 1972, 1973, 1974, 1989, 1997, 1998, 2004
 NCAA Tournament Record 4-9
 Last NCAA Tournament Appearance 2004, L vs. Memphis, 59-43
 NIT Appearances 1969, 1975, 1978, 1983, 1991, 1996, 2001, 2002, 2005, 2006, 2009
 NIT Record 21-9
 NIT Champion 2005, 2006
 Last NIT Appearance 2009, L vs. Davidson, 70-63
 Conference Championships/Titles/SoCon Regular Season (1927, 1933, 1934, 1945); SoCon Tournament Champion (1933); ACC Regular Season (1970); ACC Champion (1971); SEC Regular Season (1997); SEC East Division Co-Champions (2009)

TEAM INFORMATION

2012-13 Record 14-18
 Southeastern Conference Record/Finish 4-14/12th
 Postseason None
 Letterwinners Returning/Lost 7/6
 Starters Returning/Lost 3/2
**based on final game starters from 2012-13 season*
 Newcomers 8
 Roster Breakdown 7 freshmen, 5 sophomores, 2 juniors, 2 seniors



HEAD COACH FRANK MARTIN

COACHING CAREER

KANSAS STATE (2007-12)

2007-08	21-12	NCAA, 2nd Round
2008-09	22-12	NIT, 2nd Round
2009-10	29-8	NCAA, Elite Eight
2010-11	23-11	NCAA, 3rd Round
2011-12	22-11	NCAA, 3rd Round
5 years	117-54 (.684)	7-5 postseason record

SOUTH CAROLINA (2012-PRESENT)

2012-13	14-18	-
2013-14	2-4	-
2nd year	16-22 (.421)	
Career Total	133-76 (.636)	



COACHING

EXPERIENCE

29th season

COLLEGE EXPERIENCE

14th season

COLLEGE HEAD COACH EXPERIENCE

7th season

HIRE DATE AT CAROLINA

March 27, 2012

PERSONAL

HOMETOWN

Miami, Fla.

ALMA MATER

Florida International, 1993 (B.A. Physical Education)

FAMILY

Wife, Anya

Children, Brandon, Amalia and Christian

COACHING RESUME

HIGH SCHOOL

Miami Senior High, 1985-93

Varsity Boys' Assistant Coach

Junior Varsity Boys' Head Coach

North Miami High, Head Coach, 1993-95

Miami Senior High, Head Coach, 1995-98

B.T. Washington High, Head Coach, 1999-2000

COLLEGE ASSISTANT COACH

Northeastern, 2000-04

Cincinnati, 2004-06

Kansas State, 2006-07

COLLEGE HEAD COACH

Kansas State, 2007-12

South Carolina, 2012-present

ELLINGTON RETURNS

Senior guard Bruce Ellington returned to the Gamecock basketball team on Dec. 3 for practice and saw 17 minutes of action in Carolina's Dec. 6 contest at No. 9 Oklahoma State. The Moncks Corner, S.C., native, missed the first four games, and all of preseason practice due to competition with the 8th-ranked Gamecock football team. On the gridiron, Ellington led the Garnet and Black with 635 receiving yards on 43 catches, including six touchdowns.

BY THE NUMBERS

16.0 - Junior guard Tyrone Johnson is averaging 16.0 points per game in home games this season (3) and he has hit 51.9 percent of his shot attempts.

81.6% - Carolina's last two opponents have combined to hit 58-of-71 from the free throw line, with then-No. 9 Oklahoma State connecting on 24-of-32, and Manhattan hitting a stellar 34-of-39 from the line in Tuesday's win.

13 - Freshman guard Sindarius Thornwell attempted 13 free throws vs. Manhattan on Tuesday, marking the most attempts in a game for a Carolina player since Devan Downey attempted 14 at Tennessee on Feb. 6, 2010. It marked the most attempts in a game by a Carolina freshman since then-rookie Michael Carrera attempted 10 last season in a road win at LSU on Jan. 16, 2013.

10 - 10 different Gamecocks average at least 10.8 minutes per contest, with Ty Johnson's 30.3 minutes per game leading the squad.

TREND SETTING

Gamecock trends under Frank Martin ...

■ South Carolina is 11-10 when posting at least six made 3s in a game.

- South Carolina hit a season high eight 3s in the win vs. FIU on Nov. 24

■ South Carolina is 11-7 when scoring more points in the paint than its opponent.

- The Gamecocks average 30.3 points in the paint per game, compared to 26.7 from opponents. Carolina posted a season high 40 points in the paint vs. Clemson on Nov. 17.

■ South Carolina is 11-10 when holding its opponents to under 45 percent from the field.

- Longwood managed to hit just 22.8% of its attempts.

■ South Carolina is 12-10 when out-rebounding its opponent.

- The Gamecocks have out-rebounded three opponents this season, holding a +23 margin vs. Longwood and a +8 mark vs. Clemson.

UP NEXT

South Carolina embarks on a near 5,000 mile journey to Honolulu, Hawaii, to participate in the 2013 Hawaiian Airlines Diamond Head Classic, Dec. 22-25. The Gamecocks will play Saint Mary's in the event's opening round on Dec. 22 at 11 p.m. ET on ESPNU.

SEC TOURNAMENT

Fresh off hosting the 2013 Final Four, the Georgia Dome will be the site for the 2014 SEC Tournament, March 12-16 in Atlanta. The Georgia Dome first hosted the tourney in 1995 and the 2014 event will mark the 11th time the venue has hosted the league's postseason tournament. The winner of the 13-game tournament receives the SEC's automatic bid to the NCAA Tournament. The tournament seeds are determined by the 18-game conference schedule during the regular season. Teams are seeded 1-14 based on their regular-season conference finish.

MARTIN'S STAFF BOASTS OVER 90 YEARS OF EXPERIENCE AT THE COLLEGE LEVEL

South Carolina head coach Frank Martin has a very experienced staff with him on the sideline this season. Perry Clark joins the team as an assistant coach with over 30 years of college coaching experience, including stops as the head coach at Tulane, Miami (Fla.) and Texas A&M-Corpus Christi. Former assistant Matt Figger was promoted to associate head coach during the offseason, and Lamont Evans returns for his second season as an assistant on Martin's staff in Columbia.

GAMECOCKS SIGN STROMAN AND BLANTON DURING FALL SIGNING PERIOD

University of South Carolina head men's basketball coach Frank Martin announced on Nov. 19 the signing of Marcus Stroman (G - 6-2 - 170 - Columbia, S.C./Keenan High School) and TeMarcus Blanton (G - 6-4 - 185 - Locust Grove, Georgia/Luella High School) to National Letters of Intent. The duo will join the Gamecocks for the 2014-15 campaign and both will have four years of eligibility beginning next fall. Below are brief comments from Coach Martin on each signee.

Martin on Blanton

"I'm extremely excited about TeMarcus Blanton. He is a 6-5 wing that is ultra-competitive on both ends of the floor. He fits exactly the kind of guard that we want to build our program around. He's a slasher, a defender and an athletic finisher that loves every opportunity that he gets to compete."

Martin on Stroman

"Marcus is a consummate point guard. He understands the position at his age as well as, if not better, than most. Every time I watch him play, I leave games thinking that the four guys with him are better than they actually are, because he is so good at making others look good. He is an ultra-competitive, hometown kid, who grew up a Gamecock fan, and we are extremely excited to have him become part of our program."

GAMECOCKS TO COMPETE IN 2014 CHARLESTON CLASSIC

The Charleston Classic presented by Gildan announced six of the eight-team field for the 2014 tournament to be held Thursday, Friday and Sunday, Nov. 20, 21 and 23, at TD Arena in Charleston, S.C. South Carolina will compete in the event for the second time, and for the first time since the 2009 campaign. The other participating teams announced are Akron, Cornell, Miami (Fla.), Penn State and Southern California. The final two teams will be announced at a later date. During the 2009 event, the Gamecocks defeated La Salle in the tournament's opening round, earned a win over USF to advance to the finals, and lost to Miami in the championship game. The 2014 Charleston Classic will feature a bracket format with 12 games over three days. Each team will compete in one game per day, advancing through the bracket. The two teams that remain undefeated throughout will face off in a championship game on the final day of competition.

CITY CHAPTER DAYS ANNOUNCED FOR GAMECOCK BASKETBALL

The University of South Carolina Athletics Department, along with The Gamecock Club and My Carolina Alumni Association, have partnered in creating several City Chapter Days throughout the 2013-14 basketball season for both the Gamecock men's and women's teams.

The City Chapter Days will give Gamecock Club and Alumni Chapters a game at Colonial Life Arena that is dedicated specifically to their respective members and local business. During each game different chapter leaders and business owners will be recognized for their contributions and support of Gamecock Athletics.

Jan. 11, 2014 - Men's Basketball vs. LSU at 1:30 PM

Charlotte, York & Rock Hill Day

Jan. 18, 2014 - Men's Basketball vs. Ole Miss at 4:30 PM, Greenville Day

Jan. 29, 2014 - Men's Basketball vs. Texas A&M at 7 PM, Irmo Night

Feb. 5, 2014 - Men's Basketball vs. Auburn at 7 PM

Richland County Night

Feb. 12, 2014 - Men's Basketball vs. Vanderbilt at 8 PM,

Lexington Night

Feb. 15, 2014 - Men's Basketball vs. Alabama at 8 PM

Spartanburg Night

Feb. 22, 2014 - Men's Basketball vs. Georgia at 1:30 PM, Charleston Day

Feb. 27, 2014 - Women's Basketball vs. Georgia 7 PM, Gamecock Club and My Carolina Alumni Association Appreciation Night

March 4 2014 - Men's Basketball vs. Florida at 7 PM

Gamecock Club and My Carolina Alumni Association Appreciation Night



HAWAIIAN AIRLINES DIAMOND HEAD CLASSIC

HOSTED BY THE ESPN AND THE UNIVERSITY OF HAWAII
DECEMBER 22, 23 & 25, 2013 • STAN SHERIFF CENTER • HONOLULU, HAWAII

All times listed in Hawaii's Aleutian Standard Time (HT)
Home team is listed on the bottom of each matchup



STATE
TOWA STATE
GAME #1
SUN., DEC. 22
12:30 p.m.

GAME #5
MON., DEC. 23
9:30 a.m.

GAME #6
MON., DEC. 23
11:30 a.m.

OREGON STATE
GAME #2
SUN., DEC. 22
2:30 p.m.

AKRON
GAME #10
WED., DEC. 25
11:00 a.m.

5TH PLACE

GAME #12
WED., DEC. 25
3:30 p.m.

CHAMPIONSHIP

SOUTH CAROLINA
GAME #3
SUN., DEC. 22
6:00 p.m.

GAME #8
MON., DEC. 23
6:30 p.m.

SAINT MARY'S
GAME #7
MON., DEC. 23
4:00 p.m.

BOISE STATE
GAME #4
SUN., DEC. 22
8:00 p.m.

GAME #9
WED., DEC. 25
8:30 a.m.

7TH PLACE

HAWAII
GAME #11
WED., DEC. 25
1:30 p.m.

3RD PLACE

Non-Bracketed Game: Akron at South Carolina (Dec 28)



**Visit HawaiianAirlinesDiamondHeadClassic.com
for more information**

To purchase tickets visit our website or call 808-523-3688

 /ESPNEvents  @DiamondHeadCisc

ROSTER BREAKDOWN

RETURNING STARTERS (3)

Michael Carrera
Brian Steele
Bruce Ellington
**based on final game of 2012-13 season*

RETURNING LETTERWINNERS (7)

Michael Carrera
Laimonas Chatkevicius
Austin Constable
Bruce Ellington
Mindaugas Kacinas
Brian Steele
Brenton Williams

GUARDS (8)

Austin Constable
Bruce Ellington
Tyrone Johnson
Justin McKie
Duane Notice
Jaylen Shaw
Sindarius Thornwell
Brenton Williams

FORWARDS (8)

Michael Carrera
Laimonas Chatkevicius
Carlton Geathers
Demetrius Henry
Mindaugas Kacinas
Desmond Ringer
Brian Steele
Reggie Theus Jr.

BY HEIGHT

Bruce Ellington, 5-9
Austin Constable, 5-11
Brenton Williams, 5-11
Jaylen Shaw, 6-0
Duane Notice, 6-2
Tyrone Johnson, 6-3
Justin McKie, 6-4
Michael Carrera, 6-5
Brian Steele, 6-5
Sindarius Thornwell, 6-5
Reggie Theus Jr., 6-6
Mindaugas Kacinas, 6-7
Demetrius Henry, 6-9
Desmond Ringer, 6-9
Carlton Geathers, 6-10
Laimonas Chatkevicius, 6-11

PRONUNCIATION

Lie-MOAN-us Ha-KEVA-chus
Min-DAWG-us Kye-chin-iss

2013-14 SOUTH CAROLINA ROSTER

ALPHABETICAL

No.	Name	Pos.	Ht.	Wt.	Cl.	Exp.	Hometown/High/Last School
24	Michael Carrera	F	6-5	214	SO	1VL	Anzoátegui, Venezuela/Montrose Christian School
14	Laimonas Chatkevicius	F	6-11	250	SO	1VL	Klaipeda, Lithuania/South Kent School
12	Austin Constable	G	5-11	180	SO	1VL	West Chester, Pa./Henderson
23	Bruce Ellington	G	5-9	196	SR	3VL	Moncks Corner, S.C./Berkeley
45	Carlton Geathers	F	6-10	255	RS JR	1VL	Georgetown, S.C./Carvers Bay
21	Demetrius Henry	F/C	6-9	215	FR	HS	Miami, Fla./Faith Baptist Christian School
4	Tyrone Johnson	G	6-3	194	JR	1VL	Plainfield, N.J./Montrose Christian School/Villanova
25	Mindaugas Kacinas	F	6-7	210	SO	1VL	Klaipeda, Lithuania/Word of Life Fire Traditional School
20	Justin McKie	G	6-4	195	FR	HS	Columbia, S.C./Irmo
10	Duane Notice	G	6-2	221	FR	HS	Woodbridge, Canada/St. Thomas More (Oakdale, Conn.)
32	Desmond Ringer	F/C	6-9	255	FR	HS	McDonough, Ga./Eagle's Landing
5	Jaylen Shaw	G	6-0	182	FR	HS	Hartsville, S.C./Hartsville
35	Brian Steele	F	6-5	200	SO	1VL	Greenville, S.C./Wade Hampton School
15	Reggie Theus Jr.	F	6-6	210	FR	HS	Los Angeles, Calif./Fairfax
0	Sindarius Thornwell	G	6-5	206	FR	HS	Lancaster, S.C./Oak Hill Academy
1	Brenton Williams	G	5-11	172	SR	2VL	Kissimmee, Fla./Osceola High School/Santa Fe College

NUMERICAL

No.	Name	Pos.	Ht.	Wt.	Cl.	Exp.	Hometown/High/Last School
0	Sindarius Thornwell	G	6-5	206	FR	HS	Lancaster, S.C./Oak Hill Academy
1	Brenton Williams	G	5-11	172	SR	1VL	Kissimmee, Fla./Osceola High School/Santa Fe College
4	Tyrone Johnson	G	6-3	194	JR	1VL	Plainfield, N.J./Montrose Christian School/Villanova
5	Jaylen Shaw	G	6-0	182	FR	HS	Hartsville, S.C./Hartsville
10	Duane Notice	G	6-2	221	FR	HS	Woodbridge, Canada/St. Thomas More (Oakdale, Conn.)
12	Austin Constable	G	5-11	180	SO	HS	West Chester, Pa./Henderson
14	Laimonas Chatkevicius	F	6-11	250	SO	HS	Klaipeda, Lithuania/South Kent School
15	Reggie Theus Jr.	F	6-6	210	FR	HS	Los Angeles, Calif./Fairfax
20	Justin McKie	G	6-4	195	FR	HS	Columbia, S.C./Irmo
21	Demetrius Henry	F/C	6-9	215	FR	HS	Miami, Fla./Faith Baptist Christian School
23	Bruce Ellington	G	5-9	196	SR	2VL	Moncks Corner, S.C./Berkeley
24	Michael Carrera	F	6-5	214	SO	HS	Anzoátegui, Venezuela/Montrose Christian School
25	Mindaugas Kacinas	F	6-7	210	SO	HS	Klaipeda, Lithuania/Word of Life Fire Traditional School
32	Desmond Ringer	F/C	6-9	255	FR	HS	McDonough, Ga./Eagle's Landing
35	Brian Steele	F	6-5	200	SO	HS	Greenville, S.C./Wade Hampton School
45	Carlton Geathers	F	6-10	255	RS JR	1VL	Georgetown, S.C./Carvers Bay

Head Coach: Frank Martin (Florida International, '93)

Associate Head Coach/Recruiting Coordinator: Matt Figger (Eastern Kentucky, '95)

Assistant Coach: Perry Clark (Gettysburg, '74)

Assistant Coach: Lamont Evans (Kansas State, '09)

Director of Basketball Operations: Andy Assaley (Cincinnati, '96)

Strength & Conditioning Coach: Scott Greenawalt (Muskingum College, '98)

Athletic Trainer: Mark Rodger (Buffalo, '01)

Video Coordinator: Dylan Lockwood (Cazenovia, '05)

Graduate Student Manager/Student-Athlete Development: Doug Edwards (Florida State, '07)

TOP RETURNING...

ScorerWilliams, 11.0 ppg
Rebounder.....Carrera, 7.2 rpg
Assist Maker.....Ellington, 2.7 apg
FG Shooter.....Kacinas, 51.8%
3-Point FG Shooter.....Williams, 39.7%
FT Shooter.....Williams, 84.2%
Shot Blocker.....Carrera, 0.6 bpg
Steal Maker.....Ellington, 1.3 spg

RADIO/TV SPOT CHART



#0

SINDARIUS THORNWELL

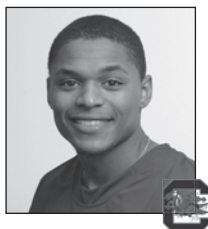
Fr. - G - 6-5 - 206
Lancaster, S.C.
Oak Hill Academy



#1

BRENTON WILLIAMS

Sr. - G - 5-11 - 172
Kissimmee, Fla.
Santa Fe College



#4

TYRONE JOHNSON

Jr. - G - 6-3 - 194
Plainfield, N.J.
Montrose Christian/
Villanova



#5

JAYLEN SHAW

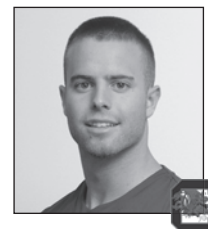
Fr. - G - 6-0 - 182
Hartsville, S.C.
Hartsville



#10

DUANE NOTICE

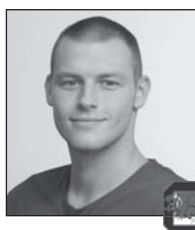
Fr. - G - 6-2 - 221
Woodbridge, Ontario
St. Thomas More
(Oakdale, Conn.)



#12

AUSTIN CONSTABLE

So. - G - 5-11 - 180
West Chester, Pa.
Henderson



#14

LAIMONAS CHATKEVICIUS

So. - F - 6-11 - 250
Klaipeda, Lithuania
South Kent School
(South Kent, Conn.)



#15

REGGIE THEUS JR.

Fr. - F - 6-6 - 210
Los Angeles, Calif.
Fairfax



#20

JUSTIN MCKIE

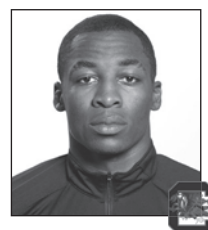
Fr. - G - 6-4 - 195
Columbia, S.C.
Irmo



#21

DEMETRIUS HENRY

Fr. - F - 6-9 - 215
Miami, Fla.
Faith Baptist Christian
School



#23

BRUCE ELLINGTON

Sr. - G - 5-9 - 196
Moncks Corner, S.C.
Berkeley



#24

MICHAEL CARRERA

So. - F - 6-5 - 214
Anzoátegui, Venezuela
Montrose Christian School



#25

MINDAUGAS KACINAS

So. - F - 6-7 - 210
Klaipeda, Lithuania
Word of Life Fire
Traditional School



#32

DESMOND RINGER

Fr. - F - 6-9 - 255
McDonough, Ga.
Eagle's Landing



#35

BRIAN STEELE

So. - F - 6-5 - 200
Greenville, S.C.
Wade Hampton School



#45

CARLTON GEATHERS

R-Jr. - F - 6-10 - 255
Georgetown, S.C.
Carvers Bay



FRANK MARTIN
Head Coach



MATT FIGGER
Assoc. Head Coach/
Recruiting Coordinator



PERRY CLARK
Assistant Coach



LAMONT EVANS
Assistant Coach



ANDY ASSALEY
Director of Basketball
Operations



SCOTT GREENAWALT
Strength & Conditioning
Coach



MARK RODGER
Athletic Trainer



DOUG EDWARDS
Student-Athlete
Development



DYLAN LOCKWOOD
Video Coordinator



EMILY FEENEY
Associate Director
Media Relations

GAMECOCKS RECORD WHEN ...

At home	2-1
On the road	0-3
At neutral sites	0-0
In overtime	0-0
vs. Top 25 team	0-2
vs. Top 10 team	0-1
vs. Top 3 team	0-0
Leading at half	1-1
Trailing at half	1-3
Tied at half	0-0
Shooting 50% or better	1-0
Shooting between 39-49%	1-2
Shooting less than 39%	0-2
Opp. shooting 50% or better	0-0
Opp. shooting between 39-49%	1-3
Opp. shooting less than 39%	1-1
Shooting better than opp.	2-0
Shooting worse then/equal to opp.	0-4
Starters out-score opp. starters	1-2
Opp. starters score/equal more	1-2
Bench out-scores opp. bench	2-1
Opp. bench scores/equals more	0-3
Having more FTs than opp.	1-0
Having equal/less FTs than opp.	1-4
Have more TOs than opp.	1-2
Having equal/less TOs than opp.	1-2
Having more rebounds than opp.	2-2
Having equal/less rebounds than opp.	0-2
Making 6 or more 3FGs	2-1
Having 15 or more assists	1-1
Having less than 15 assists	1-3
Score more points in paint than opp.	2-3
Scoring equal/less points in paint than opp.	0-1
Scoring more points off TOs than opp.	2-1
Scoring equal/less points off TOs than opp.	0-3
Scoring more 2nd-chance points than opp.	2-1
Scoring equal/less 2nd-chance points than opp.	0-3
Scoring more fast break points than opp.	2-1
Scoring equal/less fast break points than opp.	0-3
Wearing white uniforms	2-1
Wearing Garnet uniforms	0-1
Wearing Black uniforms	0-2
Wearing Gray Uniforms	0-0
Playing on live TV	1-2
Playing in November	2-2
Playing in December	0-2
Playing in January	0-0
Playing in February	0-0
Playing in March	0-0
Playing a day-game	2-1
Playing a night-game	0-3
Playing on Sunday	1-1
Playing on a Monday	0-0
Playing on a Tuesday	0-2
Playing on a Wednesday	0-0
Playing on a Thursday	0-0
Playing on a Friday	0-1
Playing on a Saturday	1-0
Scoring margin is 5 points or less	0-1
Margin is between 6-10	0-0
Margin is between 11-20	1-2
Margin is more than 20	1-1
Scoring 59 points or less	0-2
Scoring 60-69 points	0-2
Scoring 70-79 points	0-0
Scoring 80-89 points	2-0
Scoring 90-99 points	0-0
Scoring 100+ points	0-0

MISCELLANEOUS

Current streak	L2
Home court streak	L1
Away streak	L3
Neutral court streak	-

2013-14 SUPERLATIVES

(tied for team lead also included)

Scoring Leaders	'13-14	Career
Tyrone Johnson	2*	2*
Sindarius Thornwell	2	2
Mindaugas Kacinas	1	1
Jaylen Shaw	1	1

Rebounding Leaders	'13-14	Career
Mindaugas Kacinas	4	7
Michael Carrera	2	15
Sindarius Thornwell	1	1

Assists Leaders	'13-14	Career
Duane Notice	2	2
Tyrone Johnson	5*	5*
Jaylen Shaw	1	1
Sindarius Thornwell	1	1

Blocks Leaders	'13-14	Career
Michael Carrera	2	11
Sindarius Thornwell	2	2
Mindaguas Kacinas	2	8
Demetrius Henry	3	3
Laimonas Chatkevicius	1	6
Bruce Ellington	1	3

Steals Leaders	'13-14	Career
Michael Carrera	4	7
Sindarius Thornwell	3	3
Brenton Williams	1	12
Mindaugas Kacinas	2	5
Bruce Ellington	1	25

Double-Figure Scoring	'13-14	Career
Tyrone Johnson	4*	4*
Sindarius Thornwell	4	4
Brenton Williams	3	26
Michael Carrera	1	13
Mindaugas Kacinas	1	6
Demetrius Henry	1	1
Jaylen Shaw	2	2

20+ points	'13-14	Career
Sindarius Thornwell	1	1

30+ points	'13-14	Career
-		

Double-Figure Rebounding	'13-14	Career
Mindaguas Kacinas	2	5

5+ assists	'13-14	Career
Tyrone Johnson	2*	2*
Jaylen Shaw	1	1

3+ steals	'13-14	Career
Sindarius Thornwell	1	1

2+ blocks	'13-14	Career
Mindaguas Kacinas	1	6
Michael Carrera	2	7
Sindarius Thornwell	1	1
Demetrius Henry	2	2

Double-Doubles	'13-14	Career
Mindaugas Kacinas	1	2

Clutch Free Throws (under 5 min/OT)

Demetrius Henry	0-2	.000
Tyrone Johnson	8-12	.667
Desmond Ringer	0-2	.000
Brenton Williams	6-6	1.000
Michael Carrera	0-1	.000
Bruce Ellington	2-2	1.000
Mindaugas Kacinas	1-1	1.000
Justin McKie	1-2	.500
Jaylen Shaw	2-2	1.000
Totals	20-30	.667

* indicates at South Carolina

Miscellaneous

Largest Halftime Lead	
SC	22, vs. Longwood (Nov. 9, 2013)
Opp	24, Oklahoma State (Dec. 6, 2013)
Smallest Halftime Lead	
SC	1, at Baylor (Nov. 12, 2013)
Opp	3, FIU (Nov. 24, 2013)
Fewest Points In First Half	
SC	15, vs. Oklahoma State (Dec. 6, 2013)
Opp	15, Longwood (Nov. 9, 2013)
Most Points In First Half	
SC	39, twice, last vs. FIU (Nov. 24, 2013)
Opp	45, Manhattan (Dec. 17, 2013)
Most Points In Second Half	
SC	45, twice, last vs. FIU (Nov. 24, 2013)
Opp	41, Manhattan (Dec. 17, 2013)
Fewest Points In Second Half	
SC	25, at Baylor (Nov. 12, 2013)
Opp	28, Baylor (Nov. 12, 2013)
Most Points in Overtime	
SC	-
Opp	-
Largest Margin of Victory	
SC	38, vs. Longwood (Nov. 9, 2013)
Opp	27, Oklahoma State (Dec. 6, 2013)
Smallest Margin of Victory	
SC	12, vs. FIU (Nov. 24, 2013)
Opp	2, Baylor (Nov. 12, 2013)

2013-14 GAME BY GAME COMPARISON

	Date	Result	FG-A	Pct	3FG-A	Pct	FT-A	Pct	O-D-Total	PF	Pts	A	TO	Blk	Stl	Min	Half
Longwood			13-57	.228	4-22	.182	14-22	.636	9-18-27	19	44	7	13	0	9	200	15
South Carolina	Nov. 9, 2013	W, 82-44	28-57	.491	6-20	.300	20-24	.833	12-38-50	18	82	13	15	8	5	200	37
Baylor			19-50	.380	6-17	.353	22-41	.537	18-28-46	26	66	12	15	6	4	200	38
South Carolina	Nov. 12, 2013	L, 64-66	18-50	.360	3-8	.375	25-36	.694	11-24-35	29	64	14	8	4	9	200	39
Clemson			21-48	.438	5-14	.357	24-26	.923	7-26-33	20	71	14	12	12	8	200	35
South Carolina	Nov. 17, 2013	L, 57-71	23-65	.354	1-10	.110	10-18	.556	21-20-41	21	57	7	13	2	6	200	26
FIU			24-50	.480	6-16	.375	18-21	.857	7-20-27	18	72	13	16	3	9	200	42
South Carolina	Nov. 24, 2013	W, 84-72	30-59	.508	8-19	.421	16-21	.762	12-19-31	15	84	19	13	3	5	200	39
Oklahoma State			25-56	.446	5-22	.227	24-32	.750	14-18-32	17	79	13	7	4	10	200	39
South Carolina	Dec. 6, 2013	L, 52-79	16-45	.356	6-11	.545	14-22	.636	14-22-36	26	52	10	24	4	3	200	15
Manhattan			23-49	.469	6-13	.462	34-39	.872	12-21-33	30	86	13	16	9	11	200	45
South Carolina	Dec. 17, 2013	L, 68-86	22-52	.423	2-7	.286	22-38	.579	12-15-27	23	68	15	16	3	3	200	34

2013-14 RESULTS: OVERALL, 2-4; HOME, 2-1; AWAY, 0-3; NEUTRAL, 0-0; SEC, 0-0

DATE	OPPONENT	W/L	SCORE	RECORD (SEC)	POINTS	REBOUNDS	ASSISTS	BLOCKS	STEALS	ATTENDANCE
Nov. 9	Longwood	W	82-44	1-0 (0-0)	Johnson (18)	Kacinas (14)	Notice (4)	3 with 2	Carrera (2)	8,536 (paid)
Nov. 12	at No. 23/25 Baylor	L	64-66	1-1 (0-0)	Thornwell (20)	Carrera (7)	Johnson (8)	Henry (2)	Thornwell (3)	5,706
Nov. 17	at Clemson	L	71-57	1-2 (0-0)	Kacinas (13)	Kacinas (12)	Johnson/Notice (2)	Henry/Chatkevicius (1)	Thornwell/Carrera (2)	7,283
Nov. 24	FIU	W	84-72	2-2 (0-0)	Johnson (18)	Kacinas (9)	Johnson (7)	Carrera (2)	Williams (2)	9,869 (paid)
Dec. 6	at No. 9/11 Okla. St.	L	79-52	2-3 (0-0)	Shaw (13)	Carrera (7)	Johnson/Shaw (3)	Henry (2)	3 with 1	13,611
Dec. 17	Manhattan	L	86-68	2-4 (0-0)	Thornwell (17)	Thornwell/Kacinas (5)	Thornwell/Johnson (3)	3 with 1	3 with 1	7,573 (paid)

2013-14 STARTING LINEUP WIN-LOSS

Guard	Guard	Guard/Forward	Forward	Forward	2013-14	Games
Johnson	Thornwell	Notice (g)	Henry	Kacinas	1-1	2
Johnson	Thornwell	Carrera (f)	Henry	Kacinas	1-2	3
Johnson	Thornwell	Ellington (g)	Henry	Kacinas	0-1	1

2013-14 GAME-BY-GAME STARTING LINEUPS

OPPONENT, RESULT	GUARD	GUARD	FORWARD / GUARD	FORWARD	FORWARD
Longwood, W	Notice	Johnson	Thornwell (g)	Henry	Kacinas
@Baylor, L	Johnson	Thornwell	Carrera (f)	Henry	Kacinas
@Clemson, L	Johnson	Thornwell	Notice (g)	Henry	Kacinas
FIU, W	Johnson	Thornwell	Carrera (f)	Henry	Kacinas
@Okla. St., L	Johnson	Thornwell	Carrera (f)	Henry	Kacinas
Manhattan, L	Johnson	Thornwell	Ellington (g)	Henry	Kacinas
USC Upstate					
vs. Saint Mary's					
vs. TBA					
vs. TBA					
Akron					
Marshall					
SC State					
@Florida					
LSU					
@Texas A&M					
Ole Miss					
@Georgia					
@Missouri					
Texas A&M					
@Ole Miss					
Auburn					
@Tennessee					
Vanderbilt					
Alabama					
@Arkansas					
Georgia					
@Auburn					
Kentucky					
Florida					
@Miss. St.					
SEC Tourney					
NCAA Tourney					

GAME 3 - CLEMSON 71, SOUTH CAROLINA 57
NOV. 17, 2013/LITTLEJOHN COLISEUM/CLEMSON, S.C.

CLEMSON, S.C. - After valiantly fighting back to within one point midway through the second half, South Carolina (1-2) was unable to sustain its come-back bid on the road, falling to Clemson (3-0) 71-57 at Littlejohn Coliseum. Gamecock sophomore forward Mindaugas Kacinas recorded his first double-double of the season with 13 points and 12 rebounds, while Tiger junior forward K.J. McDaniels led all scorers 21 points and grabbing 10 rebounds.

The teams traded lead baskets through the first media timeout of the opening half, before back-to-back 3s from Clemson's Adonis Filer and Jordan Roper pushed the Tiger lead to 17-9 at the 12-minute mark.

Laimonas Chatkevicius responded out of the media timeout with a dunk courtesy of an assist from freshman guard Duane Notice, but the Tigers put together a 7-4 run to lead by 11 at 24-13 with 8:54 remaining in the half.

South Carolina suffered a near seven-minute scoring drought through the middle portion of the first half until a 3 from Sindarius Thornwell at the 3:42 mark halted the stretch. Thornwell added a floater on the next possession and another layup with 30 seconds remaining in the half to fuel a 13-9 Gamecock run over the final 3:42 to put the score at 35-26 Clemson at the break.

Clemson scored its last nine points of the first half at the foul line, hitting 9-of-10 attempts during the final 2:51 of the half.

South Carolina hit 33.3 percent (12-36) of its attempts from the floor during the opening half, with the Gamecocks having just three free throw attempts. The Tigers hit 10-of-24 attempts (41.7 percent) and 12-of-14 attempts from the free throw line.

A dunk and jumper from Demetrius Henry sparked an 8-5 Gamecock run out of the break, but Henry was called for his third foul of the second half at the first media timeout, with Carolina trailing the Tigers by six at 40-34 as 15:16 remained on the clock.

Michael Carrera connected for a dunk out of the break, and Tyrone Johnson added a tally from the foul line, as the Gamecocks continued to battle back from a 13-point deficit to trail by just three at 40-37 with 14:21 to play.

The Gamecocks pulled within one at 40-39 following a continuation call on a floater from Carrera in the lane, but the Tigers responded with a 10-1 run over the next three minutes forcing a Gamecock timeout with 10:02 to play, and a 50-40 Clemson advantage.

The Tigers increased their lead to 54-43 at the under-eight minute media timeout and the score stood at 61-49 Clemson following two free throws from Desmond Ringer with 5:37 on the clock.

The Clemson lead climbed to 14 at 63-49, before a 3-point play from Kacinas pulled Carolina within nine at 63-52 and 4:10 on the clock. The Tigers scored five straight from that point to push the lead back to 16.

Clemson's run in the second half was aided by its shooting from the free throw line, hitting nine of its second-half free throws after the Gamecocks closed to within one. The Tigers were 12-12 from the line in the second half and 24-26 (92.3 percent) for the game. On the defensive end, they totaled 12 blocks on the day, with seven coming from McDaniels.

GAME 3



Official Basketball Box Score -- Game Totals -- Final Statistics
South Carolina vs Clemson
 11/17/13 5:00 PM at Clemson, SC (Littlejohn Coliseum)

South Carolina 57 • 1-2

##	Player	Total		3-Ptr		Rebounds		PF	TP	A	TO	Blk	Stl	Min
		FG	FGA	FG	FGA	FT	FTA							
21	HENRY, Demetrius	f	4-9	0-0	1-4	3	2	5	9	0	1	1	0	22
25	KACINAS, Mindaugas	f	6-11	0-0	1-2	7	5	12	4	13	0	2	0	31
00	THORNWELL, Sindarius	g	3-5	1-1	3-3	1	3	4	1	10	0	1	0	31
04	JOHNSON, Tyrone	g	2-11	0-2	1-2	1	2	3	2	5	2	2	0	32
10	NOTICE, Duane	g	1-7	0-2	0-0	2	1	3	2	2	2	4	0	20
01	WILLIAMS, Brenton	g	0-5	0-2	0-0	0	2	2	0	1	0	0	0	19
05	SHAW, Jaylen	g	0-0	0-0	0-0	0	0	0	0	1	0	0	0	1
14	CHATKEVICIUS, L.	g	2-3	0-0	0-0	2	2	3	4	0	1	1	0	10
15	THEUS JR., Reggie	g	0-1	0-0	0-0	0	1	1	0	0	0	0	0	1
20	MCKIE, Justin	g	0-1	0-1	1-2	1	0	1	0	1	0	0	0	1
4	CARRERA, Michael	g	4-9	0-2	1-3	1	1	2	1	9	0	1	0	21
13	RINGER, Desmond	g	1-3	0-0	2-2	0	1	1	3	4	1	0	0	10
35	STEELE, Brian	g	0-0	0-0	0-0	0	0	0	0	0	0	0	0	1
Team						3	2	5			1			
Totals			23-65	1-10	10-18	21	20	41	21	57	7	13	2	200

FG % 1st Half: 12-36 33.3% 2nd half: 11-29 37.9% Game: 23-65 35.4%
 3FG % 1st Half: 1-5 20.0% 2nd half: 0-5 0.0% Game: 1-10 10.0%
 FT % 1st Half: 1-3 33.3% 2nd half: 9-15 60.0% Game: 10-18 55.6%

Clemson 71 • 3-0

##	Player	Total		3-Ptr		Rebounds		PF	TP	A	TO	Blk	Stl	Min
		FG	FGA	FG	FGA	FT	FTA							
05	BLOSSOMGAME, Jaron	f	0-1	0-0	0-0	1	1	2	1	0	1	1	2	0
12	McDANIELS, K.J.	f	7-12	1-2	6-6	2	8	10	2	21	1	3	7	26
35	NOKO, Landry	c	1-2	0-0	0	3	1	4	2	0	0	1	1	14
12	HALL, Rod	g	3-7	0-1	8-9	0	3	3	2	14	4	1	0	32
01	HARRISON, Damarcus	g	0-4	0-2	0-0	0	2	2	0	0	3	1	0	13
01	AJUKWA, Austin	g	0-0	0-0	0-0	0	0	0	1	0	0	1	0	0
03	FILER, Adonis	g	3-3	2-2	0-0	0	0	0	2	8	0	3	0	1
10	ROPER, Jordan	g	3-8	1-3	8-8	0	5	5	1	15	4	0	1	30
3	SMITH, Josh	g	1-3	0-0	1-2	0	1	1	3	3	0	1	0	17
42	DJAMBO, Ibrahim	g	3-7	1-4	1-1	0	1	1	2	8	1	0	1	20
50	DJITTE, Sidy	g	0-1	0-0	0-0	1	3	4	2	0	0	0	0	9
Totals			21-48	5-14	24-26	7	26	33	20	71	14	12	12	8

FG % 1st Half: 10-24 41.7% 2nd half: 11-24 45.8% Game: 21-48 43.8%
 3FG % 1st Half: 3-5 60.0% 2nd half: 2-8 25.0% Game: 5-14 35.7%
 FT % 1st Half: 12-14 85.7% 2nd half: 12-12 100.0 Game: 24-26 92.3%

Officials: Bryan Kersey, Mike Eades, Joe Lindsay
 Technical fouls: South Carolina-None. Clemson-None.
 Attendance: 7283

Score by periods		1st	2nd	Total
South Carolina		26	31	57
Clemson		35	36	71

GAME 4 - SOUTH CAROLINA 84, FIU 72
NOV. 24, 2013/COLONIAL LIFE ARENA

COLUMBIA, S.C. - Trailing at the half, South Carolina (2-2) put on the defensive clamps in the second half as they defeated FIU (6-3), 84-72, at Colonial Life Arena this afternoon as four Gamecocks scored in double figures for the second time this season.

Junior Tyrone Johnson matched his season high with 18 points and recorded seven assists, while freshmen Jaylen Shaw and Demetrius Henry had career days with 16 and 14 points, respectively. Shaw went 4-7 from 3-point range. Senior guard Brenton Williams also chipped in 16 points as well.

After forward Rakeem Buckles hit a 3-pointer in the opening minute from the right side to give FIU a 3-1 lead, the Gamecocks answered with six points over the next two minutes to take a four point lead and force the Panthers to call a timeout. FIU guard Jason Boswell cut the deficit to one though with a 3 out of the timeout.

After a long jumper from Buckles gave FIU an 11-9 lead at the 13:56 mark, Shaw responded with back-to-back 3-pointers to give Carolina a 15-11 advantage.

The Panthers though scored six points over a one-minute span to knot it up at 17-17, but Johnson hit a 3 for Carolina just before the under-12 media timeout to give the Gamecocks a 20-17 lead.

After a 3 from Williams for the Gamecocks out of a 30-second timeout at the 10:11 mark, the Panthers went on an 8-0 run in less than two minutes to take a 27-23 lead.

Carolina was able to equalize at 31-31 with 4:39 remaining in the half after Johnson split the defense and hit a floater with seconds left on the shot clock after pulling the ball back out with under 10 on the clock.

The Gamecocks grabbed a 34-33 lead with 3:10 left after Williams found Shaw in the right corner for his third 3-point of the half. Johnson then found sophomore forward Michael Carrera in the same spot minutes later to give the Gamecocks a four-point advantage with under two minutes in the half.

FIU was able to take a one-point lead with 27 seconds left, before Tymell Murphy went the length of the court in the final seconds and laid it in at the buzzer to give the Panthers a 42-39 lead at the break. The Panther guard recorded 13 of his game-high 22 points in the first half.

Both teams shot well throughout the half, giving above their season averages in the opening half with South Carolina shooting 16-31 (51.6 percent) from the floor, while FIU shot 14-25 (56 percent) from the field and hit 11-13 (84.6 percent) from the free throw line.

With the two teams trading points throughout the early going in the second half that saw three lead changes, a pair of free throws by sophomore forward Mindaugas Kacinas tied the game up at 51-51 at the 15-minute mark. Following a missed jumper from Murphy, freshman guard Sindarius Thornwell found an open Shaw on the right side for his fourth 3 of the game, forcing FIU to call a timeout.

Out of the timeout, Williams stole the ball from Marvin Dennis before finding Shaw for a lay-in at the other end to give the Gamecocks a 56-51 lead with 12:03 remaining. The bucket capped a 9-2 run for Carolina.

After a lay-up by Dennis cut South Carolina's lead to three, Williams hit his second 3-pointer of the game to extend the lead to six. The Panthers answered back though with a pair of 3s over the next two minutes from Dominique Williams and Murphy to cut the Gamecocks lead to 65-61 with 8:24 remaining.

Thornwell ended a three-minute drought with a jumper at the 5:24 mark, which extended South Carolina's lead to six after both teams turned up the defensive pressure. With just under four minutes remaining, Williams turned Murphy over in the backcourt and took it in for a one-handed dunk to push the lead to 69-61.

After Marco Porcher Jimenez cut South Carolina's lead to four with under two minutes to play, Johnson scored five points over the next minute, going 5-6 from free throw line to push the lead to nine.

The Gamecocks hit eight free throws over the final minute and Thornwell added a dunk with seconds remaining to give South Carolina the 84-72 win. The 84 points was the most scored this season by the Gamecocks.

South Carolina held FIU to just 10-25 (27.3 percent) from the field in the second half after the Panthers shot over 55 percent during the first 20 minutes. The Gamecocks shot 30-59 (50.8 percent) from the field for the game, and hit a season-high 8-19 (42.1 percent) from the beyond on arc.

Along with Henry, Johnson, Shaw and Williams who were in double figures, Kacinas recorded nine points and nine rebounds.

GAME 4



Official Basketball Box Score -- Game Totals -- Final Statistics
FIU vs South Carolina
 11/24/13 1 p.m. at Columbia, S.C. (Colonial Life Arena)

FIU 72 • 6-3

##	Player	Total		3-Ptr		Rebounds		PF	TP	A	TO	Blk	Stl	Min
		FG	FGA	FG	FGA	FT	FTA							
03	FRINK, Jerome	f	2-4	0-0	4-4	0	3	3	3	8	1	5	2	32
15	MURPHY, Tymell	f	9-13	1-2	3-4	1	4	5	4	22	5	2	0	39
2	BUCKLES, Rakeem	f	2-9	1-4	6-6	2	6	8	2	11	0	5	1	33
01	BOSWELL, Jason	g	1-3	1-2	0-0	0	1	1	3	1	1	0	2	22
22	MAVIN, Dennis	g	4-9	0-1	2-4	1	2	3	3	10	3	0	1	33
12	WILLIAMS, Dominique	g	1-4	1-2	0-0	1	0	1	2	3	2	0	0	18
13	PORCHER JIMENEZ, M.	g	5-8	2-5	3-3	0	2	2	3	15	1	0	0	23
Team						2	2	4			1			
Totals			24-50	6-16	18-21	7	20	27	18	72	13	16	3	200

FG % 1st Half: 14-25 56.0% 2nd half: 10-25 40.0% Game: 24-50 48.0%
 3FG % 1st Half: 3-5 60.0% 2nd half: 3-11 27.3% Game: 6-16 37.5%
 FT % 1st Half: 11-13 84.6% 2nd half: 7-8 87.5% Game: 18-21 85.7%

South Carolina 84 • 2-2

##	Player	Total		3-Ptr		Rebounds		PF	TP	A	TO	Blk	Stl	Min
		FG	FGA	FG	FGA	FT	FTA							
21	HENRY, Demetrius	f	7-10	0-0	0	3	6	3	14	0	0	0	1	31
4	CARRERA, Michael	f	1-6	1-4	0-1	1	4	5	0	3	0	2	2	1
25	KACINAS, Mindaugas	f	3-5	0-0	3-4	4	5	9	2	9	0	3	0	35
00	THORNWELL, Sindarius	g	4-10	1-1	0-2	1	2	3	3	8	4	1	1	26
4	JOHNSON, Tyrone	g	5-10	1-2	7-8	0	0	0	1	18	7	1	0	37
01	WILLIAMS, Brenton	g	4-8	2-5	6-6	1	1	2	16	2	2	0	2	18
05	SHAW, Jaylen	g	6-10	4-7	0-0	0	2	2	16	5	2	0	0	26
10	NOTICE, Duane	g	0-0	0-0	0	0	0	0	0	1	0	0	0	1
32	RINGER, Desmond	g	0-0	0-0	0-0	1	0	1	2	0	1	0	0	4
Team						1	2	3			1			
Totals			30-59	8-19	16-21	12	19	31	15	84	19	13	3	200

FG % 1st Half: 16-31 51.6% 2nd half: 14-28 50.0% Game: 30-59 50.8%
 3FG % 1st Half: 6-12 50.0% 2nd half: 2-7 28.6% Game: 8-19 42.1%
 FT % 1st Half: 1-2 50.0% 2nd half: 15-19 78.9% Game: 16-21 76.2%

Officials: Tony Greene, Chuck Jones, Nathan Quick
 Technical fouls: FIU-None. South Carolina-None.
 Attendance: 9869

Score by periods		1st	2nd	Total
FIU		42	30	72
South Carolina		39	45	84

Last FG - FIU 2nd-00:38, SC 2nd-00:05.
 Largest lead - FIU by 5 2nd-19:22, SC by 12 2nd-00:05.

Points In Off 2nd Fast
 FIU 32 11 8 10 18
 SC 34 13 10 21 32

Score tied - 9 times.
 Lead changed - 12 times.

GAME 5 - NO. 9/11 OK. STATE 79, S. CAROLINA 52
DEC. 6, 2013/GALLAGHER-IBA ARENA/STILLWATER, OK.

STILLWATER, Okla. - Unable to solve the hot shooting and defensive pressure of No. 9 Oklahoma State (8-1) in the first half, South Carolina (2-3) fell tonight, 79-52, at Gallagher-Iba Arena.

The Gamecocks were led by a strong performance in the second half from freshman guard Jaylen Shaw, who posted 13 points, going 4-5 from the field went 3-4 from 3-point range. Junior Tyrone Johnson chipped in 12 points as well. The combined 25 points though was not enough as the Cowboys' starters, led by Le'Bryan Nash, who had a game-high 16 points, combined for 60 points as all five were in double figures.

Forward Demetrius Henry opened up the game by giving the Gamecocks an early 2-0. Oklahoma State though clamped down on defense after the early bucket holding South Carolina to only one point over the next five-plus minutes as the Cowboys when on a 16-1 run led by the guards Marcus Smart and Markel Brown.

<

GAME 6 - MANHATTAN 86, SOUTH CAROLINA 68
DEC. 17, 2013/COLONIAL LIFE ARENA

COLUMBIA, S.C. - South Carolina was unable to overcome the timely shooting and 34 made free throws from Manhattan tonight as the Gamecocks fell 86-68 to the Jaspers at Colonial Life Arena.

Manhattan's George Beamon scored 26 points on night, while fellow senior Michael Alvarado added 20 points, hitting 10-11 from the free throw line. Freshman guard Sindarius Thornwell led the Gamecocks with 17 points and five rebounds as junior Tyrone Johnson added 12 points.

South Carolina (2-4) opened up the game quick as senior guard Bruce Ellington scored five points in a 20-second span after the Jaspers scored the opening basket. Johnson followed that with lay-in and added a free throw to give the Gamecocks an early 8-2 advantage.

From that point on, Manhattan (8-2) raced out to a 10-2 run to reclaim the lead less than three minutes into the game. Carolina was able to tie it up at 18-18 after a Johnson hit a 16-footer as the shot clock expired. After a quick Jasper turnover, Johnson drove through the lane and added a lay-up after a taking a hard foul. The junior hit one of two ensuing free throws to give the Gamecocks a three-point lead.

Beamon responded for the Jaspers, knocking down a 3-pointer on their next possession to tie-up the game at 21-21 with just over 10 minutes remaining in the half.

Tied at 28-28 with 7:01 remaining in the half, Manhattan went on an 8-0 run, going 8-8 from the free throw line. Senior guard Brenton Williams then found freshman Demitrius Henry on the back door for a dunk to end the drought, but Shane Richards answered with a 3-pointer on the Jaspers' next trip.

Manhattan took a 45-34 lead into the half, due in part to going 18-19 (94.7 percent) from the free throw line, outscoring South Carolina by nine from the line.

After only scoring four of his 17 points in the first half, Thornwell asserted himself in the second half, trying to bring the Gamecocks back, but the Jaspers had an answer each time.

Thornwell cut the deficit to five with a pair from the line at 15:32. The Jaspers responded though with five quick points on a 3-pointer from Alvarado and a pair of free throws from Emmy Andujar.

With under 13 minutes to play, Thornwell squared up and hit an open 3. Alavardo responded though with a two free throws to push Manhattan's lead back to 10.

At the 11:31 mark, Mindaugas Kacinas found Michael Carrera sitting underneath for a lay-in as he was fouled. The sophomore converted the three-point play, but again the Manhattan answered from the line. Beamon followed that up with his second 3-pointer of the night to give the Jaspers a 63-53 lead.

Manhattan maintained its lead throughout the remainder of game to end the night with their seventh road win of the season, 86-68. As a team, Manhattan shot a 34-39 (87.2 percent) from the free throw line as the Gamecocks hit 22-52 (42.3 percent) from the field and went 22-38 (57.9 percent) from the line.

GAME 6



Official Basketball Box Score -- Game Totals -- Final Statistics
Manhattan vs South Carolina
 12/17/13 7 p.m. ET at Columbia, S.C. (Colonial Life Arena)

Manhattan 86 • 8-2

#	Player		Total		3-Ptr		Rebounds			PF	TP	A	TO	Bk	Sl	Min	
			FG-FGA	FG-FGA	FT-FTA	Off	Def	Tot									
24	Beamon, George	f	8-13	3-4	7-7	2	3	5	2	26	1	0	0	4	29		
05	Brown, Rhamel	c	2-4	0-0	1-2	1	4	5	4	5	0	0	4	0	16		
12	Stores, RaShawn	g	0-2	0-2	2-2	0	2	2	4	2	1	0	0	1	16		
23	Williams, Rich	g	4-4	0-0	1-1	1	1	2	4	9	0	2	0	0	7		
31	Alvarado, Michael	g	4-8	2-2	10-11	1	2	3	2	20	6	2	0	1	30		
00	Richards, Shane		1-5	1-5	0-0	0	2	2	2	3	0	2	0	2	14		
02	Wilson, Tyler		1-2	0-0	0-0	1	0	1	4	2	1	1	0	0	11		
13	Andujar, Emmy		1-5	0-0	2-2	2	3	5	2	4	3	5	1	2	26		
30	Pankey, Ashton		2-6	0-0	5-8	3	2	5	5	9	0	1	4	0	24		
32	Allen, Carlton		0-0	0-0	0-0	0	0	0	0	0	0	0	0	1	2		
33	Kates, Donovan		0-0	0-0	6-6	0	1	1	1	6	1	3	0	0	25		
Team						1	1	2									
Totals			23-49	6-13	34-39	12	21	33	30	86	13	16	9	11	200		
FG % 1st Half: 12-28 42.9% 2nd half: 11-21 52.4% Game: 23-49 46.9%																	
3FG % 1st Half: 3-8 37.5% 2nd half: 3-5 60.0% Game: 6-13 46.2%																	
FT % 1st Half: 16-19 94.7% 2nd half: 16-20 80.0% Game: 34-39 87.2%																	
Deadball Rebounds 2.2																	

South Carolina 68 • 2-4

#	Player	Total		3-Ptr		Rebounds			PF	TP	A	To	Bk	Sl	Min
		FG	FTA	FG	FTA	Off	Def	Tot							
21	HENRY, Demetrius	f	2-6	0-0	0-2	1	1	2	4	4	0	1	0	0	19
25	KACINAS, Mindaugas	f	3-4	0-0	1-4	1	4	5	5	7	2	1	1	1	24
00	THORNWELL, Sindarius	g	3-9	1-2	10-13	2	3	5	0	17	3	1	1	1	36
04	JOHNSON, Tyrone	g	3-8	0-0	6-11	1	1	2	2	12	3	3	0	0	27
23	ELLINGTON, Bruce	g	3-6	1-4	0-0	1	0	1	3	7	2	3	1	0	23
01	WILLIAMS, Brenton		0-1	0-1	0-0	0	0	0	0	1	0	1	1	0	6
05	SHAW, Jaylen		0-2	0-0	0-0	0	1	1	1	0	2	2	0	0	15
10	NOTTICE, Duane		0-0	0-0	0-0	0	0	0	0	1	0	1	3	0	7
14	CHATKEVICIUS, L.		3-6	0-0	1-2	1	3	4	2	7	0	0	0	0	16
15	THEUS JR., Reggie		0-0	0-0	0-0	0	0	0	0	0	0	0	0	0	2
20	MCKIE, Justin		0-0	0-0	0-0	0	0	0	0	0	0	0	0	0	4
24	CARRERA, Michael		3-8	0-0	4-4	3	1	4	4	10	1	0	0	1	14
32	RINGER, Desmond		2-2	0-0	0-2	0	0	0	0	4	0	0	0	0	5
35	STEELE, Brian		0-0	0-0	0-0	0	0	0	0	0	0	0	0	0	2
	Team					2	1	3			1				200
Totals			22-52	2-7	22-38	12	15	27	23	68	15	16	3	3	200
FG % 1st Half: 12-26 46.2%		2nd half: 10-26 38.5%		Game: 22-52 42.3%		Deadball									
3FG % 1st Half: 1-3 33.3%		2nd half: 1-4 25.0%		Game: 2-7 28.6%		Rebounds									
FT % 1st Half: 9-19 47.4%		2nd half: 13-19 68.4%		Game: 22-38 57.9%		11.2									

Officials: Doug Shows, Anthony Jordan, Michael Stephens
 Technical Fouls: Manhattan-None. South Carolina-None.
 Attendance: 7573

Score by periods	1st	2nd	Total
Manhattan	45	41	86
South Carolina	34	34	68

Points	In	Off	2nd	Fast
MAN	32	22	15	12
SC	34	21	11	6

Last FG - MAN 2nd-00:18, SC 2nd-01:00.
 Largest lead - MAN by 18 2nd-01:21, SC by 6 1st-18:31.

Score tied - 6 times.
 Lead changed - 6 times.



#23 - BRUCE ELLINGTON

SENIOR | GUARD | 5'9" | 196 | 3VL

MONCK'S CORNER, S.C./BERKELEY

ELLINGTON'S CAREER HIGHS

POINTS

31, at Furman (Dec. 22, 2010)

FIELD GOALS

11, at Furman (Dec. 22, 2010)

FIELD GOAL ATTEMPTS

23, at Furman (Dec. 22, 2010)

3-POINT FIELD GOALS

6, twice, last vs. Vanderbilt (Jan. 8, 2011)

3-POINT FIELD GOAL ATTEMPTS

13, twice, last vs. Tennessee (Feb. 16, 2011)

FREE THROWS

7, twice, last vs. Kentucky (Feb. 5, 2013)

FREE THROW ATTEMPTS

11, vs. Arkansas (Jan. 19, 2011)

REBOUNDS

9, vs. Missouri (Jan. 22, 2013)

ASSISTS

8, vs. WKU (Nov. 27, 2010)

BLOCKS

2, vs. LSU (Feb. 14, 2013)

STEALS

4, at Michigan State (Nov. 16, 2010)

MINUTES PLAYED

46, vs. WKU (Nov. 27, 2010)

ELLINGTON'S SEASON HIGHS

POINTS

7, vs. Manhattan (Dec. 17, 2013)

FIELD GOALS

3, vs. Manhattan (Dec. 17, 2013)

FIELD GOAL ATTEMPTS

6, vs. Manhattan (Dec. 17, 2013)

3-POINT FIELD GOALS

1, vs. Manhattan (Dec. 17, 2013)

3-POINT FIELD GOAL ATTEMPTS

4, vs. Manhattan (Dec. 17, 2013)

FREE THROWS

2, at Oklahoma State (Dec. 6, 2013)

FREE THROW ATTEMPTS

2, at Oklahoma State (Dec. 6, 2013)

REBOUNDS

1, twice, last vs. Manhattan (Dec. 17, 2013)

ASSISTS

2, vs. Manhattan (Dec. 17, 2013)

BLOCKS

1, vs. Manhattan (Dec. 17, 2013)

STEALS

1, at Oklahoma State (Dec. 6, 2013)

MINUTES PLAYED

23, vs. Manhattan (Dec. 17, 2013)

2013-14

Opponent	Date	GS	Min	FG-FGA	Pct	3FG-FGA	Pct	FT-FTA	Pct	Off	Def	Tot	Avg	PF	FO	A	TO	Blk	Stl	Pts	Avg
Longwood	11/9/13	-	-	-	-	-	-	-	-	-	-	-	-	-	-	-	-	-	-	-	-
at Baylor	11/12/13	-	-	-	-	-	-	-	-	-	-	-	-	-	-	-	-	-	-	-	-
at Clemson	11/17/13	-	-	-	-	-	-	-	-	-	-	-	-	-	-	-	-	-	-	-	-
Fla. International	11/24/13	-	-	-	-	-	-	-	-	-	-	-	-	-	-	-	-	-	-	-	-
at Oklahoma St.	12/6/13	17	0-2	.000	0-1	.000	2-2	1.000	1	0	1	1.0	2	0	1	1	0	1	2	2.0	
Manhattan	12/17/13	*	23	3-6	.500	1-4	.250	0-0	1.000	1	0	1	1.0	3	0	2	3	1	0	7	4.5
USC Upstate	12/19/13																				
vs. Saint Mary's	12/22/13																				
vs. Boise/Hawaii	12/23/13																				
vs. TBA	12/25/13																				
Akron	12/28/13																				
Marshall	12/30/13																				
SC State	1/3/14																				
at Florida	1/8/14																				
LSU	1/11/14																				
at Texas A&M	1/15/14																				
Ole Miss	1/18/14																				
at Georgia	1/22/14																				
at Missouri	1/25/14																				
Texas A&M	1/29/14																				
at Ole Miss	2/1/14																				
Auburn	2/5/14																				
at Tennessee	2/8/14																				
Vanderbilt	2/12/14																				
Alabama	2/15/14																				
at Arkansas	2/19/14																				
Georgia	2/22/14																				
at Auburn	2/26/14																				
Kentucky	3/1/14																				
Florida	3/4/14																				
at Miss. State	3/8/14																				

SEASON NOTES

Joined the men's basketball squad for practice on Tuesday, Dec. 2 ... Posted two points in first contest of the season at No. 9/11 Oklahoma State (Dec. 6) ... Posted seven points, including the first five of the game, vs. Manhattan (Dec. 17) ...

CAREER STATISTICS

Season	GP-GS	Min	Avg	FG	FGA	Pct	3FG	3FGA	Pct	FT	FTA	Pct	Off	Def	Tot	Avg	PF	FO	Ast	TO	Blk	Stl	Pts	Avg
2010-11	30-30	928	30.9	138	423	.326	61	198	.308	47	74	.635	25	75	100	3.3	75	0	97	87	0	31	384	12.8
2011-12	24-15	697	29.0	100	280	.357	39	118	.331	26	34	.765	18	37	55	2.3	53	0	74	54	2	16	265	11.0
2012-13	23-19	741	32.2	78	233	.335	23	82	.280	48	74	.649	16	43	59	2.6	64	2	62	66	5	29	227	9.9
2013-14	2-1	40	20.0	3	8	.375	1	5	.200	2	2	1.000	2	0	2	1.0	5	0	3	4	1	1	9	4.5
Totals	79-65	2406	30.5	319	944	.338	124	403	.308	123	184	.668	61	155	216	2.7	197	2	236	211	8	77	885	11.2

CAREER SEC STATISTICS

Season	GP-GS	Min	Avg	FG	FGA	Pct	3FG	3FGA	Pct	FT	FTA	Pct	Off	Def	Tot	Avg	PF	FO	Ast	TO	Blk	Stl	Pts	Avg
2011	16-16	500	31.3	69	237	.291	31	122	.254	23	35	.657	18	32	50	3.1	41	0	42	43	0	14	192	12.0
2012	16-14	511	31.9	72	209	.344	26	85	.306	18	24	.750	14	28	42	2.6	34	0	58	40	1	14	188	11.8
2013	18-18	606	33.7	61	191	.319	19	68	.279	34	54	.630	13	33	46	2.6	50	2	57	52	4	26	175	9.7
Totals	50-48	1617	32.3	202	637	.317	76	275	.276	75	113	.664	45	93	138	2.8	125	2	157	135	5	54	555	11.1



#1 - BRENTON WILLIAMS

SENIOR | GUARD | 5'11" | 172 | 2VL
KISSIMMEE, FLA./OSCEOLA HIGH SCHOOL/
SANTA FE COLLEGE

2013-14

Opponent	Date	GS	Min	FG-FGA	Pct	3FG-FGA	Pct	FT-FTA	Pct	Off	Def	Tot	Avg	PF	FO	A	TO	Blk	Stl	Pts	Avg
Longwood	11/9/13	22	5-11	.454	2-7	.285	2-2	1.000	0	4	4	4.0	0	0	1	0	0	0	14	14.0	
at Baylor	11/12/13	29	3-7	.428	2-5	.400	4-4	1.000	0	2	2	3.0	2	0	1	0	0	1	12	13.0	
at Clemson	11/17/13	19	0-5	.000	0-2	.000	0-0	.000	0	2	2	2.7	0	0	1	0	0	0	0	8.7	
Fla. International	11/24/13	18	4-8	.500	2-5	.400	6-6	1.000	1	1	2	2.5	2	0	2	2	0	2	16	10.5	
at Oklahoma St.	12/6/13	2	0-0	.000	0-0	.000	0-0	.000	0	0	0	2.0	0	0	0	0	0	0	0	8.4	
Manhattan	12/17/13	6	0-1	.000	0-1	.000	0-0	.000	0	0	0	1.7	1	0	1	1	0	0	0	7.0	
USC Upstate	12/19/13																				
vs. Saint Mary's	12/22/13																				
vs. Boise/Hawaii	12/23/13																				
vs. TBA	12/25/13																				
Akron	12/28/13																				
Marshall	12/30/13																				
SC State	1/3/14																				
at Florida	1/8/14																				
LSU	1/11/14																				
at Texas A&M	1/15/14																				
Ole Miss	1/18/14																				
at Georgia	1/22/14																				
at Missouri	1/25/14																				
Texas A&M	1/29/14																				
at Ole Miss	2/1/14																				
Auburn	2/5/14																				
at Tennessee	2/8/14																				
Vanderbilt	2/12/14																				
Alabama	2/15/14																				
at Arkansas	2/19/14																				
Georgia	2/22/14																				
at Auburn	2/26/14																				
Kentucky	3/1/14																				
Florida	3/4/14																				
at Miss. State	3/8/14																				

CAREER STATISTICS

Season	GP-GS	Min	Avg	FG	FGA	Pct	3FG	3FGA	Pct	FT	FTA	Pct	Off	Def	Tot	Avg	PF	FO	Ast	TO	Blk	Stl	Pts	Avg
2011-12	23-0	323	14.0	46	117	.393	26	66	.394	23	28	.821	4	15	19	0.8	27	1	13	19	2	15	141	6.1
2012-13	31-7	652	21.0	105	238	.441	50	126	.397	80	95	.842	9	47	56	1.8	44	1	42	37	4	22	340	11.0
2013-14	6-0	96	16.0	12	32	.375	6	20	.300	12	12	1.000	1	9	10	1.7	5	0	6	3	0	3	42	7.0
Totals	60-7	1071	17.9	163	3687	.421	82	212	.387	115	135	.852	14	71	85	1.4	76	2	61	59	6	40	523	8.7

CAREER SEC STATISTICS

Season	GP-GS	Min	Avg	FG	FGA	Pct	3FG	3FGA	Pct	FT	FTA	Pct	Off	Def	Tot	Avg	PF	FO	Ast	TO	Blk	Stl	Pts	Avg
2012	15-0	230	15.3	32	83	.386	20	50	.400	11	14	.786	4	12	16	1.1	20	1	7	10	2	7	95	6.3
2013	17-1	305	17.9	50	127	.394	25	66	.379	39	44	.886	5	24	29	1.7	22	1	20	15	0	10	164	9.6
Totals	32-1	535	16.7	82	210	.390	45	116	.388	50	58	.862	9	36	45	1.4	42	2	27	25	2	17	259	8.1

WILLIAMS' CAREER HIGHS

POINTS

38, vs. Miss. State (March 6, 2013)

FIELD GOALS

10, vs. Miss. State (March 6, 2013)

FIELD GOAL ATTEMPTS

17, vs. Miss. State (March 6, 2013)

3-POINT FIELD GOALS

6, vs. Miss. State (March 6, 2013)

3-POINT FIELD GOAL ATTEMPTS

11, vs. Miss. State (March 13, 2013)

FREE THROWS

12, vs. Miss. State (March 6, 2013)

FREE THROW ATTEMPTS

12, vs. Miss. State (March 6, 2013)

REBOUNDS

5, twice, last vs. Vandy (March 9, 2013)

ASSISTS

4, twice, last vs. Miss. State (March 13, 2013)

BLOCKS

1, 5 times, last vs. App State (Dec. 19, 2012)

STEALS

5, vs. Western Carolina (Nov. 11, 2011)

MINUTES PLAYED

38, vs. Rider (Nov. 19, 2012)

WILLIAMS' SEASON HIGHS

POINTS

16, vs. FIU (Nov. 24, 2013)

FIELD GOALS

5, vs. Longwood (Nov. 9, 2013)

FIELD GOAL ATTEMPTS

11, vs. Longwood (Nov. 9, 2013)

3-POINT FIELD GOALS

2, 3x, last vs. FIU (Nov. 24, 2013)

3-POINT FIELD GOAL ATTEMPTS

7, vs. Longwood (Nov. 9, 2013)

FREE THROWS

6, vs. FIU (Nov. 24, 2013)

FREE THROW ATTEMPTS

6, vs. FIU (Nov. 24, 2013)

REBOUNDS

4, vs. Longwood (Nov. 9, 2013)

ASSISTS

2, vs. FIU (Nov. 24, 2013)

BLOCKS

-

STEALS

2, vs. FIU (Nov. 24, 2013)

MINUTES PLAYED

29, at Baylor (Nov. 12, 2013)

SEASON NOTES

Scored 10 points, hitting 7-of-8 from the free throw line in exhibition vs. USC Aiken (Nov. 3) ... Scored 14 points off the bench in season opener vs. Longwood (Nov. 9) ... Just one rebound shy of matching career high vs. the Lancers ... Posted 12 points, including a perfect 4-of-4 effort from the free throw line at Baylor (Nov. 12) ... Struggled from the floor at Clemson (Nov. 17), going 0-of-5 from the field ... Hit 4-of-8 attempts, including two 3s, and all six attempts from the free throw line for 16 points, while adding two assists and two steals vs. FIU (Nov. 24) ...



#4 - TYRONE JOHNSON

JUNIOR | GUARD | 6'3" | 194 | 1VL

PLAINFIELD, N.J./MONTROSE CHRISTIAN

SCHOOL/VILLANOVA

2013-14

Opponent	Date	GS	Min	FG-FGA	Pct	3FG-FGA	Pct	FT-FTA	Pct	Off	Def	Tot	Avg	PF	FO	A	TO	Blk	Stl	Pts	Avg
Longwood	11/9/13	*	24	6-9	.667	0-1	.000	6-7	.857	0	2	2	2.0	2	0	2	4	1	1	18	18.0
at Baylor	11/12/13	*	33	1-7	.142	0-0	.000	6-9	.667	0	4	4	3.0	2	0	8	2	0	2	8	13.0
at Clemson	11/17/13	*	32	2-11	.181	0-2	.000	1-2	.500	1	2	3	3.0	2	0	2	2	0	1	5	10.3
Fla. International	11/24/13	*	37	5-10	.500	1-2	.500	7-8	.875	0	0	0	2.3	1	0	7	1	0	1	18	12.3
at Oklahoma St.	12/6/13	*	29	4-9	.444	1-2	.500	3-4	.750	1	2	3	2.4	1	0	3	2	0	0	12	12.2
Manhattan	12/17/13	*	27	3-8	.375	0-0	.000	6-11	.545	1	1	2	2.3	2	0	3	3	0	0	12	12.2
USC Upstate	12/19/13																				
vs. Saint Mary's	12/22/13																				
vs. Boise/Hawaii	12/23/13																				
vs. TBA	12/25/13																				
Akron	12/28/13																				
Marshall	12/30/13																				
SC State	1/3/14																				
at Florida	1/8/14																				
LSU	1/11/14																				
at Texas A&M	1/15/14																				
Ole Miss	1/18/14																				
at Georgia	1/22/14																				
at Missouri	1/25/14																				
Texas A&M	1/29/14																				
at Ole Miss	2/1/14																				
Auburn	2/5/14																				
at Tennessee	2/8/14																				
Vanderbilt	2/12/14																				
Alabama	2/15/14																				
at Arkansas	2/19/14																				
Georgia	2/22/14																				
at Auburn	2/26/14																				
Kentucky	3/1/14																				
Florida	3/4/14																				
at Miss. State	3/8/14																				

CAREER STATISTICS

Season	GP-GS	Min	Avg	FG	FGA	Pct	3FG	3FGA	Pct	FT	FTA	Pct	Off	Def	Tot	Avg	PF	FO	Ast	TO	Blk	Stl	Pts	Avg
2011-12*	32-9	567	17.7	33	106	.311	6	26	.230	35	40	.875	2	31	33	1.0	47	2	65	58	2	19	107	3.3
2012-13	DNP - Transfer																							
2013-14	6-6	182	30.3	21	54	.389	2	7	.286	29	41	.707	3	11	14	2.3	10	0	25	14	1	5	73	12.2
Totals	38-15	749	19.7	54	160	.337	8	33	.242	64	81	.790	5	42	47	1.2	57	2	90	72	3	24	180	4.7

* indicates at Villanova

JOHNSON'S CAREER HIGHS

POINTS

18, twice, last vs. FIU (Nov. 24, 2013)

FIELD GOALS

6, vs. Longwood (Nov. 9, 2013)

FIELD GOAL ATTEMPTS

13, vs. Notre Dame (Feb. 18, 2012)

3-POINT FIELD GOALS

2, vs. Syracuse (Jan. 11, 2012)

3-POINT FIELD GOAL ATTEMPTS

3, twice, last vs. Notre Dame (Feb. 18, 2012)

FREE THROWS

7, vs. FIU (Nov. 24, 2013)

FREE THROW ATTEMPTS

11, vs. Manhattan (Dec. 17, 2013)

REBOUNDS

5, twice, last vs. Syracuse (Jan. 22, 2012)

ASSISTS

8, at Baylor (Nov. 12, 2013)

BLOCKS

1, 3x, vs. Longwood (Nov. 9, 2013)

STEALS

4, vs. USF (Feb. 15, 2012)

MINUTES PLAYED

41, vs. UCONN (Feb. 20, 2012)

JOHNSON'S SEASON HIGHS

POINTS

18, twice, last vs. FIU (Nov. 24, 2013)

FIELD GOALS

6, vs. Longwood (Nov. 9, 2013)

FIELD GOAL ATTEMPTS

11, at Clemson (Nov. 13, 2013)

3-POINT FIELD GOALS

1, twice, last at Oklahoma State (Dec. 6, 2013)

3-POINT FIELD GOAL ATTEMPTS

2, 3x, last at Oklahoma State (Dec. 6, 2013)

FREE THROWS

7, vs. FIU (Nov. 24, 2013)

FREE THROW ATTEMPTS

11, vs. Manhattan (Dec. 17, 2013)

REBOUNDS

4, at Baylor (Nov. 12, 2013)

ASSISTS

8, at Baylor (Nov. 12, 2013)

BLOCKS

1, vs. Longwood (Nov. 9, 2013)

STEALS

2, at Baylor (Nov. 12, 2013)

MINUTES PLAYED

37, vs. FIU (Nov. 24, 2013)

SEASON NOTES

Semester transfer from Villanova ... Received wavier from NCAA on Nov. 8 to play effective immediately ... Scored a game high 18 points on 6-of-9 shooting and a 6-of-7 effort from the free throw line in season opener vs. Longwood (Nov. 9), which was first regular season competition since the 2011-12 campaign at Villanova ... Struggled from the floor, hitting just 1-of-7 attempts, but dished a career high eight assists at Baylor (Nov. 12) ... Struggled from the floor at Clemson (Nov. 17), hitting just 2-of-11 attempts ... Matched career high with 18 points, hitting 7-of-8 from the free throw line, and nearly matching career high with seven assists in win vs. FIU (Nov. 24) ... Posted 12 points and three assists at No. 9/11 Oklahoma State (Dec. 6) ... Posted 12 points, and dished three assists vs. Manhattan (Dec. 17) ...



#24 - MICHAEL CARRERA

SOPHOMORE | FORWARD | 6'5" | 214 | 1VL

ANZOÁTEGUI, VENEZUELA/MONTROSE CHRISTIAN

CARRERA'S CAREER HIGHS

POINTS

23, vs. LSU (Jan. 16, 2013)

FIELD GOALS

7, vs. LSU (Jan. 16, 2013)

FIELD GOAL ATTEMPTS

13, twice, last vs. Texas A&M (March 2, 2013)

3-POINT FIELD GOALS

2, 3x, last vs. Longwood (Nov. 9, 2013)

3-POINT FIELD GOAL ATTEMPTS

5, vs. Longwood (Nov. 9, 2013)

FREE THROWS

9, vs. LSU (Jan. 16, 2013)

FREE THROW ATTEMPTS

10, vs. LSU (Jan. 16, 2013)

REBOUNDS

15, vs. Milwaukee (Nov. 1, 2012)

ASSISTS

5, vs. Auburn (Jan. 12, 2013)

BLOCKS

3, twice, last vs. Ole Miss (Feb. 20, 2013)

STEALS

3, vs. Georgia (Feb. 2, 2013)

MINUTES PLAYED

36, vs. LSU (Jan. 16, 2013)

CARRERA'S SEASON HIGHS

POINTS

12, vs. Longwood (Nov. 9, 2013)

FIELD GOALS

4, twice, last at Clemson (Nov. 13, 2013)

FIELD GOAL ATTEMPTS

9, at Clemson (Nov. 13, 2013)

3-POINT FIELD GOALS

2, vs. Longwood (Nov. 9, 2013)

3-POINT FIELD GOAL ATTEMPTS

5, vs. Longwood (Nov. 9, 2013)

FREE THROWS

6, at Baylor (Nov. 12, 2013)

FREE THROW ATTEMPTS

6, at Baylor (Nov. 12, 2013)

REBOUNDS

9, vs. Longwood (Nov. 9, 2013)

ASSISTS

2, at Baylor (Nov. 12, 2013)

BLOCKS

2, twice, last vs. FIU (Nov. 24, 2013)

STEALS

2, twice, last at Clemson (Nov. 13, 2013)

MINUTES PLAYED

25, vs. Longwood (Nov. 9, 2013)

2013-14

Opponent	Date	GS	Min	FG-FGA	Pct	3FG-FGA	Pct	FT-FTA	Pct	Off	Def	Tot	Avg	PF	FO	A	TO	Blk	Stl	Pts	Avg
Longwood	11/9/13		25	4-7	.571	2-5	.400	2-4	.500	2	7	9	9.0	3	0	1	0	2	2	12	12.0
at Baylor	11/12/13	*	23	1-5	.200	0-1	.000	6-6	1.000	4	3	7	8.0	4	0	2	0	1	0	8	10.0
at Clemson	11/17/13		21	4-9	.444	0-2	.000	1-3	.333	1	1	2	6.0	1	0	0	1	0	2	9	9.7
Fla. International	11/24/13	*	22	1-6	.167	1-4	.250	0-1	.000	1	4	5	5.8	0	0	0	2	2	1	3	8.0
at Oklahoma St.	12/6/13	*	17	0-4	.000	0-0	.000	1-2	.500	3	4	7	6.0	2	0	0	6	1	1	1	6.6
Manhattan	12/17/13		14	3-8	.375	0-0	.000	4-4	1.000	3	1	4	5.7	4	0	1	0	0	1	10	7.2
USC Upstate	12/19/13																				
vs. Saint Mary's	12/22/13																				
vs. Boise/Hawaii	12/23/13																				
vs. TBA	12/25/13																				
Akron	12/28/13																				
Marshall	12/30/13																				
SC State	1/3/14																				
at Florida	1/8/14																				
LSU	1/11/14																				
at Texas A&M	1/15/14																				
Ole Miss	1/18/14																				
at Georgia	1/22/14																				
at Missouri	1/25/14																				
Texas A&M	1/29/14																				
at Ole Miss	2/1/14																				
Auburn	2/5/14																				
at Tennessee	2/8/14																				
Vanderbilt	2/12/14																				
Alabama	2/15/14																				
at Arkansas	2/19/14																				
Georgia	2/22/14																				
at Auburn	2/26/14																				
Kentucky	3/1/14																				
Florida	3/4/14																				
at Miss. State	3/8/14																				

SEASON NOTES

Scored 14 points and collected five rebounds in exhibition vs. USC Aiken (Nov. 3) ... Scored 12 points and just one rebound shy of a double-double with nine boards in season opener vs. Longwood (Nov. 9) ... Matched career high with two made 3s vs. the Lancers, also a team high two blocks and two steals ... Scored nine points off the bench at Clemson (Nov. 17), collected just two rebounds ... Blocked a team high two shots vs. FIU (Nov. 24) ... Struggled at No. 9/11 Oklahoma State (Dec. 6), posting four turnovers, with one point and a team high seven rebounds ... Scored 10 points vs. Manhattan (Dec. 17) ...

CAREER STATISTICS

Season	GP-GS	Min	Avg	FG	FGA	Pct	3FG	3FGA	Pct	FT	FTA	Pct	Off	Def	Tot	Avg	PF	FO	Ast	TO	Blk	Stl	Pts	Avg
2012-13	27-22	572	21.2	89	201	.443	7	20	.350	83	112	.741	80	115	195	7.2	85	5	17	51	17	9	268	9.9
2013-14	6-3	122	20.3	13	39	.333	3	12	.250	14	20	.700	14	20	34	5.7	14	0	4	9	6	7	43	7.2
Totals	33-25	694	21.0	102	240	.425	10	32	.313	97	132	.735	94	135	229	6.9	99	5	21	60	23	16	311	9.4

CAREER SEC STATISTICS

Season	GP-GS	Min	Avg	FG	FGA	Pct	3FG	3FGA	Pct	FT	FTA	Pct	Off	Def	Tot	Avg	PF	FO	Ast	TO	Blk	Stl	Pts	Avg
2013	18-15	394	21.9	59	139	.424	5	15	.333	53	74	.716	54	77	131	7.3	57	4	11	32	8	8	176	9.8



#14 - LAIMONAS CHATKEVICIUS

SO. | FORWARD | 6'11" | 250 | 1VL
KLAIPEDA, LITHUANIA/SOUTH KENT SCHOOL
(CONN.)

2013-14

Opponent	Date	GS	Min	FG-FGA	Pct	3FG-FGA	Pct	FT-FTA	Pct	Off	Def	Tot	Avg	PF	FO	A	TO	Blk	Stl	Pts	Avg
Longwood	11/9/13	8	1-1	1.000	0-0	.000	0-0	.000	1	3	4	4.0	0	0	0	0	1	0	2	2.0	
at Baylor	11/12/13	14	1-3	.333	0-0	.000	0-0	.000	0	2	2	3.0	2	0	0	1	1	1	2	2.0	
at Clemson	11/17/13	10	2-3	.667	0-0	.000	0-0	.000	2	0	2	2.7	3	0	0	1	1	0	4	2.7	
Fla. International	11/24/13	-	-	-	-	-	-	-	-	-	-	-	-	-	-	-	-	-	-	-	
at Oklahoma St.	12/6/13	6	0-0	.000	0-0	.000	0-0	.000	0	1	1	2.3	0	0	1	0	0	0	0	2.0	
Manhattan	12/17/13	16	3-6	.500	0-0	.000	1-2	.500	1	3	4	2.6	2	0	0	0	0	0	0	7	3.0
USC Upstate	12/19/13																				
vs. Saint Mary's	12/22/13																				
vs. Boise/Hawaii	12/23/13																				
vs. TBA	12/25/13																				
Akron	12/28/13																				
Marshall	12/30/13																				
SC State	1/3/14																				
at Florida	1/8/14																				
LSU	1/11/14																				
at Texas A&M	1/15/14																				
Ole Miss	1/18/14																				
at Georgia	1/22/14																				
at Missouri	1/25/14																				
Texas A&M	1/29/14																				
at Ole Miss	2/1/14																				
Auburn	2/5/14																				
at Tennessee	2/8/14																				
Vanderbilt	2/12/14																				
Alabama	2/15/14																				
at Arkansas	2/19/14																				
Georgia	2/22/14																				
at Auburn	2/26/14																				
Kentucky	3/1/14																				
Florida	3/4/14																				
at Miss. State	3/8/14																				

CHATKEVICIUS' CAREER HIGHS

POINTS	11, twice, last vs. Miss. State (March 13, 2013)
FIELD GOALS	5, vs. Miss. State (March 13, 2013)
FIELD GOAL ATTEMPTS	9, vs. Miss. State (March 13, 2013)
3-POINT FIELD GOALS	1, 3x, last vs. Vandy (March 9, 2013)
3-POINT FIELD GOAL ATTEMPTS	2, twice, last vs. Miss. State (March 13, 2013)
FREE THROWS	4, vs. Missouri (Jan. 22, 2013)
FREE THROW ATTEMPTS	7, vs. Alabama (Feb. 16, 2013)
REBOUNDS	10, vs. Georgia (Feb. 23, 2013)
ASSISTS	4, vs. Jacksonville (Dec. 7, 2012)
BLOCKS	3, vs. Georgia (Feb. 23, 2013)
STEALS	1, 3 times, last vs. Miss. St (March 13, 2013)
MINUTES PLAYED	34, vs. Georgia (Feb. 23, 2013)

CHATKEVICIUS' SEASON HIGHS

POINTS	7, vs. Manhattan (Dec. 17, 2013)
FIELD GOALS	3, vs. Manhattan (Dec. 17, 2013)
FIELD GOAL ATTEMPTS	6, vs. Manhattan (Dec. 17, 2013)
3-POINT FIELD GOALS	-
3-POINT FIELD GOAL ATTEMPTS	-
FREE THROWS	1, vs. Manhattan (Dec. 17, 2013)
FREE THROW ATTEMPTS	2, vs. Manhattan (Dec. 17, 2013)
REBOUNDS	4, twice, last vs. Manhattan (Dec. 17, 2013)
ASSISTS	1, at Oklahoma State (Dec. 6, 2013)
BLOCKS	1, 3x, last at Clemson (Nov. 13, 2013)
STEALS	1, at Baylor (Nov. 12, 2013)
MINUTES PLAYED	16, vs. Manhattan (Dec. 17, 2013)

SEASON NOTES

Posted a double-double with 10 points and 11 rebounds in exhibition contest vs. USC Aiken (Nov. 3) ... Scored his only attempt and blocked one shot in season opener vs. Longwood (Nov. 9) ... Scored two points and pulled down two rebounds, with one block and a steal at Baylor (Nov. 12) ... Scored four points, hitting 2-of-3 attempts at Clemson (Nov. 17) ... Scored a season high seven points, collecting four rebounds, vs. Manhattan (Dec. 17) ...

CAREER STATISTICS

Season	GP-GS	Min	Avg	FG	FGA	Pct	3FG	3FGA	Pct	FT	FTA	Pct	Off	Def	Tot	Avg	PF	FO	Ast	TO	Blk	Stl	Pts	Avg
2012-13	23-10	304	13.2	38	85	.447	3	10	.300	22	36	.611	28	46	74	3.2	42	1	12	32	13	3	101	4.4
2013-14	5-0	54	10.8	7	13	.538	0	0	.0000	1	2	.500	4	9	13	2.6	7	0	1	2	3	1	15	3.0
Totals	28-10	358	12.8	45	98	.459	3	10	.300	23	38	.605	32	55	87	3.1	49	1	13	34	16	4	116	4.1

CAREER SEC STATISTICS

Season	GP-GS	Min	Avg	FG	FGA	Pct	3FG	3FGA	Pct	FT	FTA	Pct	Off	Def	Tot	Avg	PF	FO	Ast	TO	Blk	Stl	Pts	Avg
2013	15-10	213	14.2	23	59	.390	2	7	.286	19	28	.679	17	35	52	3.5	30	1	5	22	11	2	67	4.5



#12 - AUSTIN CONSTABLE

SOPHOMORE | GUARD | 5'11" | 180 | 1VL

WEST CHESTER, PA. / HENDERSON

CONSTABLE'S CAREER HIGHS

POINTS

-

FIELD GOALS

-

FIELD GOAL ATTEMPTS

2, vs. Presbyterian (Dec. 29, 2012)

3-POINT FIELD GOALS

-

3-POINT FIELD GOAL ATTEMPTS

1, vs. Presbyterian (Dec. 29, 2012)

FREE THROWS

-

FREE THROW ATTEMPTS

-

REBOUNDS

-

ASSISTS

-

BLOCKS

-

STEALS

-

MINUTES PLAYED

2, vs. Presbyterian (Dec. 29, 2012)

CONSTABLE'S SEASON HIGHS

POINTS

-

FIELD GOALS

-

FIELD GOAL ATTEMPTS

-

3-POINT FIELD GOALS

-

3-POINT FIELD GOAL ATTEMPTS

-

FREE THROWS

-

FREE THROW ATTEMPTS

-

REBOUNDS

-

ASSISTS

-

BLOCKS

-

STEALS

-

MINUTES PLAYED

-

2013-14

Opponent	Date	GS	Min	FG-FGA	Pct	3FG-FGA	Pct	FT-FTA	Pct	Off	Def	Tot	Avg	PF	FO	A	TO	Blk	Stl	Pts	Avg
Longwood	11/9/13	-	-	-	-	-	-	-	-	-	-	-	-	-	-	-	-	-	-	-	-
at Baylor	11/12/13	-	-	-	-	-	-	-	-	-	-	-	-	-	-	-	-	-	-	-	-
at Clemson	11/17/13	-	-	-	-	-	-	-	-	-	-	-	-	-	-	-	-	-	-	-	-
Fla. International	11/24/13	-	-	-	-	-	-	-	-	-	-	-	-	-	-	-	-	-	-	-	-
at Oklahoma St.	12/6/13	-	-	-	-	-	-	-	-	-	-	-	-	-	-	-	-	-	-	-	-
Manhattan	12/17/13	-	-	-	-	-	-	-	-	-	-	-	-	-	-	-	-	-	-	-	-
USC Upstate	12/19/13	-	-	-	-	-	-	-	-	-	-	-	-	-	-	-	-	-	-	-	-
vs. Saint Mary's	12/22/13	-	-	-	-	-	-	-	-	-	-	-	-	-	-	-	-	-	-	-	-
vs. Boise/Hawaii	12/23/13	-	-	-	-	-	-	-	-	-	-	-	-	-	-	-	-	-	-	-	-
vs. TBA	12/25/13	-	-	-	-	-	-	-	-	-	-	-	-	-	-	-	-	-	-	-	-
Akron	12/28/13	-	-	-	-	-	-	-	-	-	-	-	-	-	-	-	-	-	-	-	-
Marshall	12/30/13	-	-	-	-	-	-	-	-	-	-	-	-	-	-	-	-	-	-	-	-
SC State	1/3/14	-	-	-	-	-	-	-	-	-	-	-	-	-	-	-	-	-	-	-	-
at Florida	1/8/14	-	-	-	-	-	-	-	-	-	-	-	-	-	-	-	-	-	-	-	-
LSU	1/11/14	-	-	-	-	-	-	-	-	-	-	-	-	-	-	-	-	-	-	-	-
at Texas A&M	1/15/14	-	-	-	-	-	-	-	-	-	-	-	-	-	-	-	-	-	-	-	-
Ole Miss	1/18/14	-	-	-	-	-	-	-	-	-	-	-	-	-	-	-	-	-	-	-	-
at Georgia	1/22/14	-	-	-	-	-	-	-	-	-	-	-	-	-	-	-	-	-	-	-	-
at Missouri	1/25/14	-	-	-	-	-	-	-	-	-	-	-	-	-	-	-	-	-	-	-	-
Texas A&M	1/29/14	-	-	-	-	-	-	-	-	-	-	-	-	-	-	-	-	-	-	-	-
at Ole Miss	2/1/14	-	-	-	-	-	-	-	-	-	-	-	-	-	-	-	-	-	-	-	-
Auburn	2/5/14	-	-	-	-	-	-	-	-	-	-	-	-	-	-	-	-	-	-	-	-
at Tennessee	2/8/14	-	-	-	-	-	-	-	-	-	-	-	-	-	-	-	-	-	-	-	-
Vanderbilt	2/12/14	-	-	-	-	-	-	-	-	-	-	-	-	-	-	-	-	-	-	-	-
Alabama	2/15/14	-	-	-	-	-	-	-	-	-	-	-	-	-	-	-	-	-	-	-	-
at Arkansas	2/19/14	-	-	-	-	-	-	-	-	-	-	-	-	-	-	-	-	-	-	-	-
Georgia	2/22/14	-	-	-	-	-	-	-	-	-	-	-	-	-	-	-	-	-	-	-	-
at Auburn	2/26/14	-	-	-	-	-	-	-	-	-	-	-	-	-	-	-	-	-	-	-	-
Kentucky	3/1/14	-	-	-	-	-	-	-	-	-	-	-	-	-	-	-	-	-	-	-	-
Florida	3/4/14	-	-	-	-	-	-	-	-	-	-	-	-	-	-	-	-	-	-	-	-
at Miss. State	3/8/14	-	-	-	-	-	-	-	-	-	-	-	-	-	-	-	-	-	-	-	-

SEASON NOTES

Has not seen game action this season.

CAREER STATISTICS

Season	GP-GS	Min	Avg	FG	FGA	Pct	3FG	3FGA	Pct	FT	FTA	Pct	Off	Def	Tot	Avg	PF	FO	Ast	TO	Blk	Stl	Pts	Avg
2012-13	4-0	6	1.5	0	2	.000	0	1	.000	0	0	.000	1	0	1	0.3	0	0	0	1	0	0	0	0.0
2013-14	-	-	-	-	-	-	-	-	-	-	-	-	-	-	-	-	-	-	-	-	-	-	-	-
Totals	4-0	6	1.5	0	2	.000	0	1	.000	0	0	.000	1	0	1	0.3	0	0	0	1	0	0	0	0.0

CAREER SEC STATISTICS

Season	GP-GS	Min	Avg	FG	FGA	Pct	3FG	3FGA	Pct	FT	FTA	Pct	Off	Def	Tot	Avg	PF	FO	Ast	TO	Blk	Stl	Pts	Avg
2013	1-0	1	1.0	0	0	.000	0	0	.000	0	0	.000	0	0	0	0.0	0	0	0	0	0	0	0	0.0



#25 - MINDAUGAS KACINAS

SOPHOMORE | FORWARD | 6'7" | 210 | 1VL
KLAIPEDA, LITHUANIA/WORD OF LIFE FIRE TRADI-
TIONAL SCHOOL

2013-14

Opponent	Date	GS	Min	FG-FGA	Pct	3FG-FGA	Pct	FT-FTA	Pct	Off	Def	Tot	Avg	PF	FO	A	TO	Blk	Stl	Pts	Avg
Longwood	11/9/13	*	29	4-6	.667	0-0	.000	0-0	.000	5	9	14	14.0	2	0	0	3	2	0	8	8.0
at Baylor	11/12/13	*	18	1-2	.500	0-0	.000	0-0	.000	1	1	2	8.0	5	1	0	1	0	1	2	5.0
at Clemson	11/17/13	*	31	6-11	.545	0-0	.000	1-2	.500	7	5	12	9.3	4	0	0	2	0	1	13	7.7
Fla. International	11/24/13	*	35	3-5	.600	0-0	.000	3-4	.750	4	5	9	9.3	2	0	0	3	0	0	9	8.0
at Oklahoma St.	12/6/13	*	32	1-4	.250	0-0	.000	4-6	.667	3	2	5	8.4	4	0	0	4	0	1	6	7.6
Manhattan	12/17/13	*	24	3-4	.750	0-0	.000	1-4	.250	1	4	5	7.8	5	1	2	1	1	1	7	7.5
USC Upstate	12/19/13																				
vs. Saint Mary's	12/22/13																				
vs. Boise/Hawaii	12/23/13																				
vs. TBA	12/25/13																				
Akron	12/28/13																				
Marshall	12/30/13																				
SC State	1/3/14																				
at Florida	1/8/14																				
LSU	1/11/14																				
at Texas A&M	1/15/14																				
Ole Miss	1/18/14																				
at Georgia	1/22/14																				
at Missouri	1/25/14																				
Texas A&M	1/29/14																				
at Ole Miss	2/1/14																				
Auburn	2/5/14																				
at Tennessee	2/8/14																				
Vanderbilt	2/12/14																				
Alabama	2/15/14																				
at Arkansas	2/19/14																				
Georgia	2/22/14																				
at Auburn	2/26/14																				
Kentucky	3/1/14																				
Florida	3/4/14																				
at Miss. State	3/8/14																				

CAREER STATISTICS

Season	GP-GS	Min	Avg	FG	FGA	Pct	3FG	3FGA	Pct	FT	FTA	Pct	Off	Def	Tot	Avg	PF	FO	Ast	TO	Blk	Stl	Pts	Avg
2012-13	31-9	606	19.5	57	110	.518	4	20	.200	34	50	.680	50	66	116	3.7	67	1	21	46	15	10	152	4.9
2013-14	6-6	169	28.2	18	32	.563	0	0	.000	9	16	.563	21	26	47	7.8	22	2	2	14	3	4	45	7.5
Totals	37-15	775	20.9	75	142	.528	4	20	.200	43	66	.652	71	92	163	4.4	89	3	23	60	18	14	197	5.3

CAREER SEC STATISTICS

Season	GP-GS	Min	Avg	FG	FGA	Pct	3FG	3FGA	Pct	FT	FTA	Pct	Off	Def	Tot	Avg	PF	FO	Ast	TO	Blk	Stl	Pts	Avg
2013	17-4	255	15.0	16	40	.400	1	7	.143	11	16	.688	14	27	41	2.4	32	0	7	18	2	4	44	2.6

KACINAS' CAREER HIGHS

POINTS

18, vs. Rider (Nov. 19, 2012)

FIELD GOALS

8, vs. Rider (Nov. 19, 2012)

FIELD GOAL ATTEMPTS

11, 3x, last at Clemson (Nov. 13, 2013)

3-POINT FIELD GOALS

1, 3 times, last vs. Clemson (Dec. 2, 2012)

3-POINT FIELD GOAL ATTEMPTS

3, twice, last vs. App State (Dec. 19, 2012)

FREE THROWS

6, vs. Milwaukee (Nov. 11, 2012)

FREE THROW ATTEMPTS

8, vs. Milwaukee (Nov. 11, 2012)

REBOUNDS

14, vs. Longwood (Nov. 9, 2013)

ASSISTS

3, twice, last vs. App State (Dec. 19, 2012)

BLOCKS

3, vs. Appalachian State (Dec. 19, 2012)

STEALS

2, vs. UALR (Nov. 25, 2012)

MINUTES PLAYED

35, twice, last vs. FIU (Nov. 24, 2013)

KACINAS' SEASON HIGHS

POINTS

12, at Clemson (Nov. 13, 2013)

FIELD GOALS

6, at Clemson (Nov. 13, 2013)

FIELD GOAL ATTEMPTS

11, at Clemson (Nov. 13, 2013)

3-POINT FIELD GOALS

-

3-POINT FIELD GOAL ATTEMPTS

-

FREE THROWS

4, at Oklahoma State (Dec. 6, 2013)

FREE THROW ATTEMPTS

6, at Oklahoma State (Dec. 6, 2013)

REBOUNDS

14, vs. Longwood (Nov. 9, 2013)

ASSISTS

2, vs. Manhattan (Dec. 17, 2013)

BLOCKS

2, vs. Longwood (Nov. 9, 2013)

STEALS

1, 3x, last vs. Manhattan (Dec. 17, 2013)

MINUTES PLAYED

35, vs. FIU (Nov. 24, 2013)

SEASON NOTES

Scored eight points and dished one assist in exhibition vs. USC Aiken (Nov. 3) ... Set a career high with 14 rebounds, while adding eight points and matching for a team high two blocks in contest vs. Longwood (Nov. 9) ... Also earned the start vs. the Lancers ... In foul trouble most of the game at Baylor (Nov. 12), contributed two points, two rebounds and a steal vs. the Bears ... Continues to impress on the boards, collecting a team high 12 rebounds, including seven on the offensive glass, at Clemson (Nov. 17), also posted team high 13 points for first double-double of the season and second of his career ... Near double-double with nine points and nine rebounds vs. FIU (Nov. 24) ... Scored six points, and collected five rebounds in a team high 32 minutes played at No. 9/11 Oklahoma State (Dec. 6) ... Scored seven points and pulled down five rebounds vs. Manhattan (Dec. 17) ...



#35 - BRIAN STEELE

SOPHOMORE | FORWARD | 6'5" | 200 | 1VL

GREENVILLE, S.C./WADE HAMPTON SCHOOL

STEELE'S CAREER HIGHS

POINTS

6, vs. Miss State (March 6, 2013)

FIELD GOALS

2, vs. Miss State (March 6, 2013)

FIELD GOAL ATTEMPTS

7, vs. Miss State (March 13, 2013)

3-POINT FIELD GOALS

2, vs. Miss State (March 6, 2013)

3-POINT FIELD GOAL ATTEMPTS

5, vs. Miss State (March 6, 2013)

FREE THROWS

2, vs. Presbyterian (Dec. 29, 2012)

FREE THROW ATTEMPTS

2, vs. Presbyterian (Dec. 29, 2012)

REBOUNDS

7, vs. Miss. State (March 13, 2013)

ASSISTS

3, vs. Vandy (March 9, 2013)

BLOCKS

-

STEALS

1, twice, last vs. Texas A&M (March 2, 2013)

MINUTES PLAYED

25, vs. Texas A&M (March 2, 2013)

STEELE'S SEASON HIGHS

POINTS

-

FIELD GOALS

-

FIELD GOAL ATTEMPTS

-

3-POINT FIELD GOALS

-

3-POINT FIELD GOAL ATTEMPTS

-

FREE THROWS

-

FREE THROW ATTEMPTS

-

REBOUNDS

-

ASSISTS

-

BLOCKS

-

STEALS

-

MINUTES PLAYED

2, vs. Manhattan (Dec. 17, 2013)

2013-14

Opponent	Date	GS	Min	FG-FGA	Pct	3FG-FGA	Pct	FT-FTA	Pct	Off	Def	Tot	Avg	PF	FO	A	TO	Blk	Stl	Pts	Avg
Longwood	11/9/13	-	-	-	-	-	-	-	-	-	-	-	-	-	-	-	-	-	-	-	-
at Baylor	11/12/13	-	-	-	-	-	-	-	-	-	-	-	-	-	-	-	-	-	-	-	-
at Clemson	11/17/13	1	0-0	.000	0-0	.000	0-0	.000	0	0	0	0	0.0	0	0	0	0	0	0	0	0.0
Fla. International	11/24/13	-	-	-	-	-	-	-	-	-	-	-	-	-	-	-	-	-	-	-	-
at Oklahoma St.	12/6/13	-	-	-	-	-	-	-	-	-	-	-	-	-	-	-	-	-	-	-	-
Manhattan	12/17/13	2	0-0	.000	0-0	.000	0-0	.000	0	0	0	0	0.0	0	0	0	0	0	0	0	0.0
USC Upstate	12/19/13																				
vs. Saint Mary's	12/22/13																				
vs. Boise/Hawaii	12/23/13																				
vs. TBA	12/25/13																				
Akron	12/28/13																				
Marshall	12/30/13																				
SC State	1/3/14																				
at Florida	1/8/14																				
LSU	1/11/14																				
at Texas A&M	1/15/14																				
Ole Miss	1/18/14																				
at Georgia	1/22/14																				
at Missouri	1/25/14																				
Texas A&M	1/29/14																				
at Ole Miss	2/1/14																				
Auburn	2/5/14																				
at Tennessee	2/8/14																				
Vanderbilt	2/12/14																				
Alabama	2/15/14																				
at Arkansas	2/19/14																				
Georgia	2/22/14																				
at Auburn	2/26/14																				
Kentucky	3/1/14																				
Florida	3/4/14																				
at Miss. State	3/8/14																				

SEASON NOTES

Scored two points and collected one rebound in exhibition vs. USC Aiken (Nov. 3) ... Did not see action in the season opener vs. Longwood (Nov. 9) ... Saw time vs. Manhattan (Dec. 17) ...

CAREER STATISTICS

Season	GP-GS	Min	Avg	FG	FGA	Pct	3FG	3FGA	Pct	FT	FTA	Pct	Off	Def	Tot	Avg	PF	FO	Ast	TO	Blk	Stl	Pts	Avg
2012-13	7-4	79	11.3	5	19	.263	4	14	.286	2	3	.667	4	11	15	2.1	12	1	8	5	0	3	16	2.3
2013-14	2-0	3	1.5	0	0	.000	0	0	.000	0	0	.000	0	0	0	0.0	0	0	0	0	0	0	0	0.0
Totals	9-4	82	9.1	5	19	.263	4	14	.286	2	3	.667	4	11	15	1.7	12	1	8	5	0	3	16	1.8

CAREER SEC STATISTICS

Season	GP-GS	Min	Avg	FG	FGA	Pct	3FG	3FGA	Pct	FT	FTA	Pct	Off	Def	Tot	Avg	PF	FO	Ast	TO	Blk	Stl	Pts	Avg
2013	4-3	56	14.0	4	11	.364	4	10	.400	0	0	.000	1	6	7	1.8	10	1	6	2	0	2	12	3.0



#21 - DEMETRIUS HENRY

FRESHMAN | FORWARD | 6'9" | 215 | HS
MIAMI, FLA./FAITH BAPTIST CHRISTIAN SCHOOL

HENRY'S SEASON HIGHS

POINTS

14, vs. FIU (Nov. 24, 2013)

FIELD GOALS

7, vs. FIU (Nov. 24, 2013)

FIELD GOAL ATTEMPTS

10, twice, last vs. FIU (Nov. 24, 2013)

3-POINT FIELD GOALS

-

3-POINT FIELD GOAL ATTEMPTS

-

FREE THROWS

2, vs. Longwood (Nov. 9, 2013)

FREE THROW ATTEMPTS

4, twice, last at Clemson (Nov. 13, 2013)

REBOUNDS

6, 3x, last vs. FIU (Nov. 24, 2013)

ASSISTS

2, at Oklahoma State (Dec. 6, 2013)

BLOCKS

2, twice, last at Oklahoma State (Dec. 6, 2013)

STEALS

1, vs. FIU (Nov. 24, 2013)

MINUTES PLAYED

31, twice, last vs. FIU (Nov. 24, 2013)

2013-14

Opponent	Date	GS	Min	FG-FGA	Pct	3FG-FGA	Pct	FT-FTA	Pct	Off	Def	Tot	Avg	PF	FO	A	TO	Blk	Stl	Pts	Avg
Longwood	11/9/13	*	31	1-5	.200	0-0	.000	2-2	1.000	2	4	6	6.0	2	0	1	0	0	4	4.0	
at Baylor	11/12/13	*	30	4-10	.400	0-0	.000	1-4	.250	3	3	6	6.0	4	0	1	0	2	0	9	6.5
at Clemson	11/17/13	*	22	4-9	.444	0-0	.000	1-4	.250	3	2	5	5.7	5	1	0	1	1	0	9	7.3
Fla. International	11/24/13	*	31	7-10	.700	0-0	.000	0-0	.000	3	3	6	5.8	3	0	0	0	0	1	14	9.0
at Oklahoma St.	12/6/13	*	26	3-6	.500	0-0	.000	0-2	.000	0	5	5	5.6	5	1	2	4	2	0	6	8.4
Manhattan	12/17/13																				
USC Upstate	12/19/13																				
vs. Saint Mary's	12/22/13																				
vs. Boise/Hawaii	12/23/13																				
vs. TBA	12/25/13																				
Akron	12/28/13																				
Marshall	12/30/13																				
SC State	1/3/14																				
at Florida	1/8/14																				
LSU	1/11/14																				
at Texas A&M	1/15/14																				
Ole Miss	1/18/14																				
at Georgia	1/22/14																				
at Missouri	1/25/14																				
Texas A&M	1/29/14																				
at Ole Miss	2/1/14																				
Auburn	2/5/14																				
at Tennessee	2/8/14																				
Vanderbilt	2/12/14																				
Alabama	2/15/14																				
at Arkansas	2/19/14																				
Georgia	2/22/14																				
at Auburn	2/26/14																				
Kentucky	3/1/14																				
Florida	3/4/14																				
at Miss. State	3/8/14																				

SEASON NOTES

Earned the start and scored eight points and collected five rebounds in exhibition contest vs. USC Aiken (Nov. 3) ... Earned the start in first-career contest vs. Longwood (Nov. 9) ... Scored four points and collected six rebounds vs. the Lancers ... Scored nine points and collected six rebounds, posting first two blocks of the season at Baylor (Nov. 12) ... Scored nine points and collected five rebounds, including three on the offensive glass, in start at Clemson (Nov. 17) ... First career double-figure scoring game with 14 points in win vs. FIU (Nov. 24) ... Hit 7-of-10 from the field vs. the Panthers ... Matched season high with two blocks, and posted season high with two assists at No. 9/11 Oklahoma State (Dec. 6) ...

CAREER STATISTICS

Season	GP-GS	Min	Avg	FG	FGA	Pct	3FG	3FGA	Pct	FT	FTA	Pct	Off	Def	Tot	Avg	PF	FO	Ast	TO	Blk	Stl	Pts	Avg
2013-14	5-5	140	28.0	19	40	.475	0	0	.000	4	12	.333	11	17	28	5.6	19	2	4	5	5	1	42	8.4

CAREER SEC STATISTICS

Season	GP-GS	Min	Avg	FG	FGA	Pct	3FG	3FGA	Pct	FT	FTA	Pct	Off	Def	Tot	Avg	PF	FO	Ast	TO	Blk	Stl	Pts	Avg
2014																								



#20 - JUSTIN MCKIE

FRESHMAN | GUARD | 6'4" | 195 | HS

COLUMBIA, S.C./IRMO

MCKIE'S SEASON HIGHS

POINTS

1, at Clemson (Nov. 13, 2013)

FIELD GOALS

-

FIELD GOAL ATTEMPTS

1, twice, last at Clemson (Nov. 13, 2013)

3-POINT FIELD GOALS

-

3-POINT FIELD GOAL ATTEMPTS

1, at Clemson (Nov. 13, 2013)

FREE THROWS

1, at Clemson (Nov. 13, 2013)

FREE THROW ATTEMPTS

2, at Clemson (Nov. 13, 2013)

REBOUNDS

1, at Clemson (Nov. 13, 2013)

ASSISTS

-

BLOCKS

-

STEALS

-

MINUTES PLAYED

4, twice, last vs. Manhattan (Dec. 17, 2013)

2013-14

Opponent	Date	GS	Min	FG-FGA	Pct	3FG-FGA	Pct	FT-FTA	Pct	Off	Def	Tot	Avg	PF	FO	A	TO	Blk	Stl	Pts	Avg
Longwood	11/9/13	4		0-1	.000	0-0	.000	0-0	.000	0	0	0	0.0	0	0	0	0	0	0	0	0.0
at Baylor	11/12/13	0+		0-0	.000	0-0	.000	0-0	.000	0	0	0	0.0	0	0	0	0	0	0	0	0.0
at Clemson	11/17/13	1		0-1	.000	0-1	.000	1-2	.500	1	0	1	0.3	0	0	0	0	0	0	1	0.3
Fla. International	11/24/13	-		-	-	-	-	-	-	-	-	-	-	-	-	-	-	-	-	-	-
at Oklahoma St.	12/6/13	-		-	-	-	-	-	-	-	-	-	-	-	-	-	-	-	-	-	-
Manhattan	12/17/13	4		0-0	.000	0-0	.000	0-0	.000	0	0	0	0.3	0	0	0	0	0	0	0	0.3
USC Upstate	12/19/13																				
vs. Saint Mary's	12/22/13																				
vs. Boise/Hawaii	12/23/13																				
vs. TBA	12/25/13																				
Akron	12/28/13																				
Marshall	12/30/13																				
SC State	1/3/14																				
at Florida	1/8/14																				
LSU	1/11/14																				
at Texas A&M	1/15/14																				
Ole Miss	1/18/14																				
at Georgia	1/22/14																				
at Missouri	1/25/14																				
Texas A&M	1/29/14																				
at Ole Miss	2/1/14																				
Auburn	2/5/14																				
at Tennessee	2/8/14																				
Vanderbilt	2/12/14																				
Alabama	2/15/14																				
at Arkansas	2/19/14																				
Georgia	2/22/14																				
at Auburn	2/26/14																				
Kentucky	3/1/14																				
Florida	3/4/14																				
at Miss. State	3/8/14																				

SEASON NOTES

Played 21 minutes, scoring six points and collecting four rebounds in exhibition action vs. USC Aiken (Nov. 3) ... Saw action in season opener vs. Longwood (Nov. 9), attempted one shot ... Scored first point of his career at Clemson (Nov. 17) ... Saw action vs. Manhattan (Dec. 17) ...

CAREER STATISTICS

Season	GP-GS	Min	Avg	FG	FGA	Pct	3FG	3FGA	Pct	FT	FTA	Pct	Off	Def	Tot	Avg	PF	FO	Ast	TO	Blk	Stl	Pts	Avg
2013-14	4-0	9	2.3	0	2	.000	0	1	.000	1	2	.500	1	0	1	0.3	0	0	0	0	0	0	1	0.3

CAREER SEC STATISTICS

Season	GP-GS	Min	Avg	FG	FGA	Pct	3FG	3FGA	Pct	FT	FTA	Pct	Off	Def	Tot	Avg	PF	FO	Ast	TO	Blk	Stl	Pts	Avg
2014																								



#10 - DUANE NOTICE

FRESHMAN | GUARD | 6'2" | 221 | HS
WOODBIDGE, ONTARIO, CANADA/ST. THOMAS
MORE (OAKDALE, CONN.)

2013-14

Opponent	Date	GS	Min	FG-FGA	Pct	3FG-FGA	Pct	FT-FTA	Pct	Off	Def	Tot	Avg	PF	FO	A	TO	Blk	Stl	Pts	Avg
Longwood	11/9/13	*	19	3-6	.500	2-3	.667	0-0	.000	1	4	5	5.0	5	1	4	3	0	1	8	8.0
at Baylor	11/12/13		12	1-2	.500	0-0	.000	0-0	.000	0	1	1	3.0	3	0	2	1	0	1	2	5.0
at Clemson	11/17/13	*	20	1-7	.142	0-2	.000	0-0	.000	2	1	3	3.0	2	0	2	4	0	0	2	4.0
Fla. International	11/24/13		1	0-0	.000	0-0	.000	0-0	.000	0	0	0	2.3	0	0	1	0	0	0	3.0	
at Oklahoma St.	12/6/13		16	1-4	.250	0-1	.000	0-0	.000	2	3	5	2.8	2	0	0	2	1	0	2	2.8
Manhattan	12/17/13		7	0-0	.000	0-0	.000	0-0	.000	0	0	0	2.3	1	0	1	3	0	0	7	2.3
USC Upstate	12/19/13																				
vs. Saint Mary's	12/22/13																				
vs. Boise/Hawaii	12/23/13																				
vs. TBA	12/25/13																				
Akron	12/28/13																				
Marshall	12/30/13																				
SC State	1/3/14																				
at Florida	1/8/14																				
LSU	1/11/14																				
at Texas A&M	1/15/14																				
Ole Miss	1/18/14																				
at Georgia	1/22/14																				
at Missouri	1/25/14																				
Texas A&M	1/29/14																				
at Ole Miss	2/1/14																				
Auburn	2/5/14																				
at Tennessee	2/8/14																				
Vanderbilt	2/12/14																				
Alabama	2/15/14																				
at Arkansas	2/19/14																				
Georgia	2/22/14																				
at Auburn	2/26/14																				
Kentucky	3/1/14																				
Florida	3/4/14																				
at Miss. State	3/8/14																				

NOTICE'S SEASON HIGHS

POINTS

8, vs. Longwood (Nov. 9, 2013)

FIELD GOALS

3, vs. Longwood (Nov. 9, 2013)

FIELD GOAL ATTEMPTS

7, at Clemson (Nov. 13, 2013)

3-POINT FIELD GOALS

2, vs. Longwood (Nov. 9, 2013)

3-POINT FIELD GOAL ATTEMPTS

3, vs. Longwood (Nov. 9, 2013)

FREE THROWS

-

FREE THROW ATTEMPTS

-

REBOUNDS

5, twice, last at Oklahoma State (Dec. 6, 2013)

ASSISTS

4, vs. Longwood (Nov. 9, 2013)

BLOCKS

1, at Oklahoma State (Dec. 6, 2013)

STEALS

1, twice, last at Baylor (Nov. 12, 2013)

MINUTES PLAYED

20, at Clemson (Nov. 13, 2013)

SEASON NOTES

Dished six assists in 19 minutes before hampered by cramps in exhibition contest vs. USC Aiken (Nov. 3) ... Posted four assists and scored eight points, including two made 3s, in season opener vs. Longwood (Nov. 9) ... Earned the start vs. the Lancers in college debut ... Dished two assists, adding two points and a steal at Baylor (Nov. 12) ... Scored four points and dished two assists at Clemson (Nov. 17) ... Matched season high with five rebounds at No. 9/11 Oklahoma State (Dec. 6) ...

CAREER STATISTICS

Season	GP-GS	Min	Avg	FG	FGA	Pct	3FG	3FGA	Pct	FT	FTA	Pct	Off	Def	Tot	Avg	PF	FO	Ast	TO	Blk	Stl	Pts	Avg
2013-14	6-2	75	12.5	6	19	.316	2	6	.333	0	0	.000	5	9	14	2.3	13	1	10	13	1	2	14	2.3

CAREER SEC STATISTICS

Season	GP-GS	Min	Avg	FG	FGA	Pct	3FG	3FGA	Pct	FT	FTA	Pct	Off	Def	Tot	Avg	PF	FO	Ast	TO	Blk	Stl	Pts	Avg
2014																								



#32 - DESMOND RINGER

FRESHMAN | FORWARD | 6'9" | 255 | HS
MCDONOUGH, GA./EAGLE'S LANDING

RINGER'S SEASON HIGHS

POINTS

4, twice, last vs. Manhattan (Dec. 17, 2013)

FIELD GOALS

2, vs. Manhattan (Dec. 17, 2013)

FIELD GOAL ATTEMPTS

4, at Oklahoma State (Dec. 6, 2013)

3-POINT FIELD GOALS

-

3-POINT FIELD GOAL ATTEMPTS

-

FREE THROWS

2, at Clemson (Nov. 13, 2013)

FREE THROW ATTEMPTS

3, at Baylor (Nov. 12, 2013)

REBOUNDS

5, at Oklahoma State (Dec. 6, 2013)

ASSISTS

1, at Clemson (Nov. 13, 2013)

BLOCKS

-

STEALS

-

MINUTES PLAYED

15, at Oklahoma State (Dec. 6, 2013)

2013-14

Opponent	Date	GS	Min	FG-FGA	Pct	3FG-FGA	Pct	FT-FTA	Pct	Off	Def	Tot	Avg	PF	FO	A	TO	Blk	Stl	Pts	Avg
Longwood	11/9/13	7	0-0	.000	0-0	.000	0-0	.000	0	0	0	0	0.0	0	0	0	1	0	0	0	0.0
at Baylor	11/12/13	9	0-1	.000	0-0	.000	1-3	.333	1	0	1	0.5	3	0	0	0	0	0	1	0.5	
at Clemson	11/17/13	10	1-3	.333	0-0	.000	2-2	1.000	0	1	1	0.7	3	0	1	0	0	0	4	1.7	
Fla. International	11/24/13	4	0-0	.000	0-0	.000	0-0	.000	1	0	1	0.8	2	0	0	1	0	0	0	1.3	
at Oklahoma St.	12/6/13	15	1-4	.250	0-0	.000	1-2	.000	2	3	5	1.6	4	0	0	1	0	0	3	1.6	
Manhattan	12/17/13	5	2-2	1.000	0-0	.000	0-2	.000	0	0	0	1.3	0	0	0	0	0	0	4	2.0	
USC Upstate	12/19/13																				
vs. Saint Mary's	12/22/13																				
vs. Boise/Hawaii	12/23/13																				
vs. TBA	12/25/13																				
Akron	12/28/13																				
Marshall	12/30/13																				
SC State	1/3/14																				
at Florida	1/8/14																				
LSU	1/11/14																				
at Texas A&M	1/15/14																				
Ole Miss	1/18/14																				
at Georgia	1/22/14																				
at Missouri	1/25/14																				
Texas A&M	1/29/14																				
at Ole Miss	2/1/14																				
Auburn	2/5/14																				
at Tennessee	2/8/14																				
Vanderbilt	2/12/14																				
Alabama	2/15/14																				
at Arkansas	2/19/14																				
Georgia	2/22/14																				
at Auburn	2/26/14																				
Kentucky	3/1/14																				
Florida	3/4/14																				
at Miss. State	3/8/14																				

SEASON NOTES

Earned one steal and collected three rebounds in exhibition contest vs. USC Aiken (Nov. 3) ... Saw action vs. Longwood (Nov. 9) ... Posted one point at the free throw line vs. Baylor (Nov. 12) ... Posted four points and collected an assists at Clemson (Nov. 17) ... Collected season high five rebounds in 15 minutes played at No. 9/11 Oklahoma State (Dec. 6) ... Scored four points vs. Manhattan (Dec. 17) ...

CAREER STATISTICS

Season	GP-GS	Min	Avg	FG	FGA	Pct	3FG	3FGA	Pct	FT	FTA	Pct	Off	Def	Tot	Avg	PF	FO	Ast	TO	Blk	Stl	Pts	Avg
2013-14	6-0	50	8.3	4	10	.400	0	0	.000	4	8	.500	4	4	8	1.3	12	0	1	3	0	0	12	2.0

CAREER SEC STATISTICS

Season	GP-GS	Min	Avg	FG	FGA	Pct	3FG	3FGA	Pct	FT	FTA	Pct	Off	Def	Tot	Avg	PF	FO	Ast	TO	Blk	Stl	Pts	Avg
2014																								



#5 - JAYLEN SHAW

FRESHMAN | GUARD | 6'0" | 182 | HS
HARTSVILLE, S.C./HARTSVILLE

SHAW'S SEASON HIGHS

POINTS

16, vs. FIU (Nov. 24, 2013)

FIELD GOALS

6, vs. FIU (Nov. 24, 2013)

FIELD GOAL ATTEMPTS

10, vs. FIU (Nov. 24, 2013)

3-POINT FIELD GOALS

4, vs. FIU (Nov. 24, 2013)

3-POINT FIELD GOAL ATTEMPTS

7, vs. FIU (Nov. 24, 2013)

FREE THROWS

2, twice, last at Oklahoma State (Dec. 6, 2013)

FREE THROW ATTEMPTS

3, at Oklahoma State (Dec. 6, 2013)

REBOUNDS

2, vs. FIU (Nov. 24, 2013)

ASSISTS

5, vs. FIU (Nov. 24, 2013)

BLOCKS

-

STEALS

-

MINUTES PLAYED

26, vs. FIU (Nov. 24, 2013)

2013-14

Opponent	Date	GS	Min	FG-FGA	Pct	3FG-FGA	Pct	FT-FTA	Pct	Off	Def	Tot	Avg	PF	FO	A	TO	Blk	Stl	Pts	Avg
Longwood	11/9/13	3		0-1	.000	0-1	.000	2-2	1.000	0	0	0	0.0	1	0	1	1	0	0	2	2.0
at Baylor	11/12/13	-	-	-	-	-	-	-	-	-	-	-	-	-	-	-	-	-	-	-	-
-DNP - Coaches Decision-																					
at Clemson	11/17/13	1	0-0	.000	0-0	.000	0-0	.000	0	0	0	0	0.0	0	0	1	0	0	0	0	1.0
Fla. International	11/24/13	26	6-10	.600	4-7	.571	0-0	.000	0	2	2	0.7	2	0	5	2	0	0	0	16	6.0
at Oklahoma St.	12/6/13	20	4-5	.800	3-4	.750	2-3	.667	0	1	1	0.8	2	0	3	0	0	0	13	7.8	
Manhattan	12/17/13	15	0-2	.000	0-0	.000	0-0	.000	0	1	1	0.8	1	0	2	2	0	0	0	0	6.2
USC Upstate	12/19/13																				
vs. Saint Mary's	12/22/13																				
vs. Boise/Hawaii	12/23/13																				
vs. TBA	12/25/13																				
Akron	12/28/13																				
Marshall	12/30/13																				
SC State	1/3/14																				
at Florida	1/8/14																				
LSU	1/11/14																				
at Texas A&M	1/15/14																				
Ole Miss	1/18/14																				
at Georgia	1/22/14																				
at Missouri	1/25/14																				
Texas A&M	1/29/14																				
at Ole Miss	2/1/14																				
Auburn	2/5/14																				
at Tennessee	2/8/14																				
Vanderbilt	2/12/14																				
Alabama	2/15/14																				
at Arkansas	2/19/14																				
Georgia	2/22/14																				
at Auburn	2/26/14																				
Kentucky	3/1/14																				
Florida	3/4/14																				
at Miss. State	3/8/14																				

SEASON NOTES

Posted six points and one assist in exhibition contest vs. USC Aiken (Nov. 3) ... Scored two points at the free throw line and dished one assist in college debut vs. Longwood (Nov. 9) ... Collected an assist at Clemson (Nov. 17) ... Huge off the bench with 16 points on 6-of-10 shooting, including four 3s in win vs. FIU (Nov. 24) ... Also dished five assists vs. the Panthers ... Scored double-digits off the bench for second-straight game, posting 13 points at No. 9/11 Oklahoma State (Dec. 6) ... Also dished three assists vs. the Cowboys ...

CAREER STATISTICS

Season	GP-GS	Min	Avg	FG	FGA	Pct	3FG	3FGA	Pct	FT	FTA	Pct	Off	Def	Tot	Avg	PF	FO	Ast	TO	Blk	Stl	Pts	Avg
2013-14	5-0	65	13.0	10	18	.556	7	12	.583	4	5	.800	0	4	4	0.8	6	0	12	5	0	0	31	6.2

CAREER SEC STATISTICS

Season	GP-GS	Min	Avg	FG	FGA	Pct	3FG	3FGA	Pct	FT	FTA	Pct	Off	Def	Tot	Avg	PF	FO	Ast	TO	Blk	Stl	Pts	Avg
2014																								



#15 - REGGIE THEUS JR.

FRESHMAN | FORWARD | 6'6" | 210 | HS

LOS ANGELES, CALIF./FAIRFAX

THEUS JR.'S SEASON HIGHS

POINTS

-

FIELD GOALS

-

FIELD GOAL ATTEMPTS

1, at Clemson (Nov. 13, 2013)

3-POINT FIELD GOALS

-

3-POINT FIELD GOAL ATTEMPTS

-

FREE THROWS

-

FREE THROW ATTEMPTS

-

REBOUNDS

1, at Clemson (Nov. 13, 2013)

ASSISTS

-

BLOCKS

-

STEALS

-

MINUTES PLAYED

2, twice, last vs. Manhattan (Dec. 17, 2013)

2013-14

Opponent	Date	GS	Min	FG-FGA	Pct	3FG-FGA	Pct	FT-FTA	Pct	Off	Def	Tot	Avg	PF	FO	A	TO	Blk	Stl	Pts	Avg
Longwood	11/9/13		2	0-0	.000	0-0	.000	0-0	.000	0	0	0	0.0	0	0	0	0	0	0	0	0.0
at Baylor	11/12/13	-	-	-	-	-	-	-DNP - Coaches Decision-	-	-	-	-	-	-	-	-	-	-	-	-	-
at Clemson	11/17/13	1	0-1	.000	0-0	.000	0-0	.000	0	1	1	0.5	0	0	0	0	0	0	0	0	0.0
Fla. International	11/24/13	-	-	-	-	-	-	-DNP - Coaches Decision-	-	-	-	-	-	-	-	-	-	-	-	-	-
at Oklahoma St.	12/6/13	-	-	-	-	-	-	-DNP - Coaches Decision-	-	-	-	-	-	-	-	-	-	-	-	-	-
Manhattan	12/17/13	2	0-0	.000	0-0	.000	0-0	.000	0	0	0	0.3	0	0	0	0	0	0	0	0	0.0
USC Upstate	12/19/13																				
vs. Saint Mary's	12/22/13																				
vs. Boise/Hawaii	12/23/13																				
vs. TBA	12/25/13																				
Akron	12/28/13																				
Marshall	12/30/13																				
SC State	1/3/14																				
at Florida	1/8/14																				
LSU	1/11/14																				
at Texas A&M	1/15/14																				
Ole Miss	1/18/14																				
at Georgia	1/22/14																				
at Missouri	1/25/14																				
Texas A&M	1/29/14																				
at Ole Miss	2/1/14																				
Auburn	2/5/14																				
at Tennessee	2/8/14																				
Vanderbilt	2/12/14																				
Alabama	2/15/14																				
at Arkansas	2/19/14																				
Georgia	2/22/14																				
at Auburn	2/26/14																				
Kentucky	3/1/14																				
Florida	3/4/14																				
at Miss. State	3/8/14																				

SEASON NOTES

Saw action in exhibition contest vs. USC Aiken (Nov. 3) ... Saw action vs. Longwood (Nov. 9) ... Collected one rebound at Clemson (Nov. 17) ...

CAREER STATISTICS

Season	GP-GS	Min	Avg	FG	FGA	Pct	3FG	3FGA	Pct	FT	FTA	Pct	Off	Def	Tot	Avg	PF	FO	Ast	TO	Blk	Stl	Pts	Avg
2013-14	3-0	5	1.7	0	1	.000	0	0	.000	0	0	.000	0	1	1	0.3	0	0	0	1	0	0	0	0.0

CAREER SEC STATISTICS

Season	GP-GS	Min	Avg	FG	FGA	Pct	3FG	3FGA	Pct	FT	FTA	Pct	Off	Def	Tot	Avg	PF	FO	Ast	TO	Blk	Stl	Pts	Avg
2014																								



#0 - SINDARIUS THORNWELL

FRESHMAN | GUARD | 6'5" | 206 | HS
LANCASTER, S.C./OAK HILL ACADEMY (WILSON, VA.)

THORNWELL'S SEASON HIGHS

POINTS

20, at Baylor (Nov. 12, 2013)

FIELD GOALS

6, at Baylor (Nov. 12, 2013)

FIELD GOAL ATTEMPTS

13, at Baylor (Nov. 12, 2013)

3-POINT FIELD GOALS

2, at Oklahoma State (Dec. 6, 2013)

3-POINT FIELD GOAL ATTEMPTS

3, twice, last at Oklahoma State (Dec. 6, 2013)

FREE THROWS

10, vs. Manhattan (Dec. 17, 2013)

FREE THROW ATTEMPTS

13, vs. Manhattan (Dec. 17, 2013)

REBOUNDS

5, vs. Manhattan (Dec. 17, 2013)

ASSISTS

4, vs. FIU (Nov. 24, 2013)

BLOCKS

2, vs. Longwood (Nov. 9, 2013)

STEALS

3, at Baylor (Nov. 12, 2013)

MINUTES PLAYED

36, vs. Manhattan (Dec. 17, 2013)

2013-14

Opponent	Date	GS	Min	FG-FGA	Pct	3FG-3FGA	Pct	FT-FTA	Pct	Off	Def	Tot	Avg	PF	FO	A	TO	Blk	Stl	Pts	Avg
Longwood	11/9/13	*	26	4-10	.400	0-3	.000	6-7	.857	1	3	4	4.0	3	0	3	2	2	1	14	14.0
at Baylor	11/12/13	*	32	6-13	.461	1-2	.500	7-10	.700	1	3	4	4.0	4	0	0	2	0	3	20	17.0
at Clemson	11/17/13	*	31	3-5	.600	1-1	1.000	3-3	1.000	1	3	4	4.0	1	0	0	1	0	2	10	14.7
Fla. International	11/24/13	*	26	4-10	.400	0-1	.000	0-2	.000	1	2	3	3.8	3	0	4	1	1	0	8	13.0
at Oklahoma St.	12/6/13	*	20	2-7	.285	2-3	.667	1-2	.500	1	0	1	3.2	4	0	0	4	0	0	7	11.8
Manhattan	12/17/13	*	36	3-9	.333	1-2	.500	10-13	.769	2	3	5	3.5	0	0	3	1	1	1	17	12.7
USC Upstate	12/19/13																				
vs. Saint Mary's	12/22/13																				
vs. Boise/Hawaii	12/23/13																				
vs. TBA	12/25/13																				
Akron	12/28/13																				
Marshall	12/30/13																				
SC State	1/3/14																				
at Florida	1/8/14																				
LSU	1/11/14																				
at Texas A&M	1/15/14																				
Ole Miss	1/18/14																				
at Georgia	1/22/14																				
at Missouri	1/25/14																				
Texas A&M	1/29/14																				
at Ole Miss	2/1/14																				
Auburn	2/5/14																				
at Tennessee	2/8/14																				
Vanderbilt	2/12/14																				
Alabama	2/15/14																				
at Arkansas	2/19/14																				
Georgia	2/22/14																				
at Auburn	2/26/14																				
Kentucky	3/1/14																				
Florida	3/4/14																				
at Miss. State	3/8/14																				

SEASON NOTES

Played 25 minutes, earning the start, posting 12 points and five rebounds in exhibition contest vs. USC Aiken (Nov. 3) ... Marked nearly every stat column with 14 points, all in the second half, four rebounds, three assists, two blocks and one steal in college debut vs. Longwood (Nov. 9) ... Earned the start vs. the Lancers, and went 6-of-7 from the charity stripe in the game ... Scored first 20-point game of his career at Baylor (Nov. 12), posting 20 on 6-of-13 shooting from the field and a 7-of-10 effort from the free throw line ... Also collected a team high three steals vs. the Bears ... Scored 10 points, and collected two steals in first-career game vs. archival Clemson (Nov. 17) ... Dished four assists vs. FIU (Nov. 24) ... Was in foul trouble at No. 9/11 Oklahoma State (Dec. 6); posted seven points, hitting two 3s in the contest vs. the Cowboys ... Played a season high 36 minutes vs. Manhattan (Dec. 17), scoring a team high 17 points, hitting 10-of-13 attempts from the free throw line ...

CAREER STATISTICS

Season	GP-GS	Min	Avg	FG	FGA	Pct	3FG	3FGA	Pct	FT	FTA	Pct	Off	Def	Tot	Avg	PF	FO	Ast	TO	Blk	Stl	Pts	Avg
2013-14	6-6	171	28.5	22	54	.407	5	12	.417	27	37	.730	7	14	21	3.5	15	0	10	11	4	7	76	12.7

CAREER SEC STATISTICS

Season	GP-GS	Min	Avg	FG	FGA	Pct	3FG	3FGA	Pct	FT	FTA	Pct	Off	Def	Tot	Avg	PF	FO	Ast	TO	Blk	Stl	Pts	Avg
2014																								



AN INDIVIDUAL ...

Scored 20 or more points:	South Carolina: Sindarius Thornwell (20) at Baylor, Nov. 12, 2013, in Waco, Texas Opponent: George Beamon (26)/Michael Alvarado (20), Manhattan, Dec. 17, 2013 in Columbia, S.C.
Scored 30 or more points:	South Carolina: Brenton Williams (38) Miss. State, March 6, 2013 in Columbia, S.C. Opponent: Johnny O'Bryant III (30), LSU, Feb. 14, 2013 in Columbia, S.C.
Scored 35 or more points:	South Carolina: Brenton Williams (38) vs. Miss. State, March 6, 2013 in Columbia, S.C. Opponent: Joe Crawford (Kentucky), 35, March 5, 2008 in Columbia
Scored 40 or more points:	South Carolina: N/A thru 1992-93 season Opponent: Austin Carr (Notre Dame), 43, Dec. 30, 1969 in New Orleans, La.
Collected 20 or more rebounds:	South Carolina: Emmett Hall, 23 vs. College of Charleston, Dec. 22, 1993 in Columbia Opponent: Ekpe Udoh (Baylor), 20, Jan. 2, 2010 in Columbia
Collected 15 or more rebounds:	South Carolina: Lakeem Jackson, 15, vs. UALR, Nov. 25, 2012 in Puerto Vallarta, Mexico Opponent: Jared Sullinger (Ohio State), 19, Dec. 18, 2010 in Columbus, Ohio
Made 12 or more field goals:	South Carolina: Devan Downey, 12 vs. Georgia, Jan. 30, 2010 in Columbia Opponent: Johnny O'Bryant III, 13, LSU, Feb. 14, 2013 in Columbia, S.C.
Made 10 or more field goals:	South Carolina: Brenton Williams (10) vs. Miss. State, March 6, 2013 in Columbia, S.C. Opponent: Elston Turner (10), Texas A&M, March 2, 2013 in College Station, Texas
Attempted 20 or more field goals:	South Carolina: Bruce Ellington (20) vs. Tennessee, Feb 25, 2012, in Columbia, S.C. Opponent: Tristan Carey (20), Longwood, Nov. 9, 2013 in Columbia, S.C.
Attempted 25 or more field goals:	South Carolina: Devan Downey, 25, at Kentucky, Feb. 25, 2010 in Lexington, Ky. Opponent: Kemmy Burgess (Alaska-Anchorage), 26, Nov. 24, 2005 in Anchorage, AK
Dished 10 or more assists:	South Carolina: Devan Downey, 11, vs. LSU, March 13, 2008 in Atlanta, Ga. Opponent: 11, Dee Bost, Mississippi State, Feb. 29, 2012 in Columbia, S.C.
Swiped 5 or more steals:	South Carolina: Brenton Williams, 5, vs. Western Carolina, Nov. 11, 2011 in Columbia Opponent: 5, DeWayne Jackson, Morgan State, Nov. 16, 2012 in Columbia, S.C.
Blocked 5 or more shots:	South Carolina: Damontre Harris, 5, vs. Georgia, Feb. 15, 2012 in Columbia, S.C. Opponent: K.J. McDaniels (7), Clemson, Nov. 17, 2013
Made 5 or more 3-point field goals:	South Carolina: Brenton Williams (6) vs. Miss. State, March 6, 2013 in Columbia, S.C. Opponent: Brady Heslip (5), Baylor, Nov. 12, 2013, in Waco, Texas
Attempted 8 or more 3-point field goals:	South Carolina: Brenton Williams (8) at Vanderbilt, March 9, 2013 in Nashville, Tenn. Opponent: Brady Heslip (10), Baylor, Nov. 12, 2013, in Waco, Texas
Made 10 or more free throws:	South Carolina: Sindarius Thornwell (10), vs. Manhattan, Dec. 17, 2013 in Columbia, S.C. Opponent: Michael Alvarado (10), Manhattan, Dec. 17, 2013 in Columbia, S.C.
Attempted 15 or more free throws:	South Carolina: Mike Boynton (19) vs. Arkansas, March 11, 2004 in Atlanta, Ga. Opponent: Amu Saaka (Furman), 14, Dec. 22, 2010 in Greenville, S.C.
Played all 40 minutes of regulation:	South Carolina: Devan Downey, 40, vs. Tennessee, March 14, 2008 in Atlanta, Ga. Opponent: Frank Sullivan, Auburn, Jan. 12, 2013 in Columbia, S.C.
A player hit a last-second shot (within 3 seconds) to win a game:	South Carolina: Bruce Ellington vs. Alabama (Jan. 25, 2012) in Columbia, S.C. Opponent: Brian Bryant, Mississippi State, Feb. 29, 2012 in Columbia, S.C.
A player had a double-double:	South Carolina: Mindaugas Kacinas (13 points, 12 rebounds), at Clemson, Nov. 17, 2013 Opponent: Murphy Holloway (19 points, 13 rebounds) Ole Miss, Feb. 20, 2013 in Columbia, S.C.
Two or more players had a double-double:	S. Carolina: Michael Carrera (23 points, 10 rebounds) and Lakeem Jackson (11 points, 11 rebounds) at LSU, Jan. 16, 2013 in Baton Rouge, La. Opponent: Alex Oriakhi (18 points, 11 rebounds), Earnest Ross (21 points, 10 rebounds) Missouri, Jan. 22, 2013 in Columbia, Mo.
A player had a triple-double:	South Carolina: Sam Muldrow (16 points, 14 rebounds, 10 blocks) vs. Vanderbilt, Jan. 8, 2011 in Columbia *** Only second triple-double in South Carolina history (Chuck Eidson (25 points, 10 rebounds, 10 assists, vs. SC State, Nov. 29, 2002 in Columbia) Opponent: Daniel Hackett (Southern California - 22 points, 10 rebounds, 10 assists), Nov. 17, 2007 in Columbia
Scored 30 or more points in back-to-back games:	South Carolina: Devan Downey, 30 vs. Kentucky (Jan. 26, 2010) in Columbia 33 vs. Georgia (Jan. 30, 2010) in Columbia
Scored 25 or more points in back-to-back games:	South Carolina: Devan Downey, 33 vs. Georgia (Jan. 30, 2010) in Columbia 26 at Tennessee (Feb. 6, 2010) in Knoxville, Tenn.

A TEAM...

Scored 100 or more points:	South Carolina: 103 vs. The Citadel (Nov. 12, 2007) in Columbia Opponent: 107, Vanderbilt (Feb. 17, 1996) in Nashville, Tenn.
Scored 50 points or less:	South Carolina: 36, vs. Florida, Jan. 30, 2013 in Gainesville, Fla. Opponent: 44, Longwood, Nov. 9, 2013 in Columbia, S.C.
Scored 50 points in a half:	South Carolina: 57 (1st half; Dec. 7, 2012) vs. Jacksonville, Dec. 7, 2012 in Columbia, S.C. Opponent: 51 (2nd half; Nov. 29, 2012) St. John's in Queens, N.Y.
Failed to score 25 points in a half:	South Carolina: 15 (1st half), at Oklahoma State (Dec. 6, 2013) in Stillwater, Okla. Opponent: 15 (1st half) Longwood, Nov. 9, 2013 in Columbia, S.C.

Collected 50 or more rebounds:	South Carolina: 50, Longwood, Nov. 9, 2013 in Columbia, S.C. Opponent: 52, WKU, Nov. 27, 2010 in Bowling Green, Ky.
Shot 60% or better from the field:	South Carolina: 60.8% (31-51) at Western Carolina (Nov. 18, 2005) in Cullowhee, N.C. Opponent: 69.6% (32-46) Missouri, Feb. 28, 2013 in Columbia, S.C.
Shot 50% or better from the field:	South Carolina: 50.8 (30-59), vs. FIU, Nov. 24, 2013 in Columbia, S.C. Opponent: 51.1% (24-47) Miss. State, March 6, 2013 in Columbia, S.C.
Shot less than 30% from the field:	South Carolina: 28.1% (18-64), LSU, Feb. 14, 2013 in Columbia, S.C. Opponent: 22.8% (13-57), Longwood, Nov. 9, 2013 in Columbia, S.C.
Shot 50% or better from 3-point range (at least 10 attempts):	South Carolina: 54.5% (6-11), at Oklahoma State (Dec. 6, 2013) in Stillwater, Okla. Opponent 57.1%(12-21) Florida, Jan. 30, 2013 in Gainesville, Fla.
Shot 20% or less from 3-point range (at least 10 attempts):	South Carolina: 10.0% (1-10), at Clemson, Nov. 17, 2013 Opponent: 18.2% (4-22) Longwood, Nov. 9, 2013 in Columbia, S.C.
Dished 20 or more assists:	South Carolina: 20, vs. Auburn, Jan. 12, 2013 in Columbia, S.C. Opponent: 22, vs. North Carolina, Nov. 25, 2011 in Las Vegas, Nevada
Made 35 or more shots:	South Carolina: 35 vs. Elon (Nov. 19, 2010) in Columbia Opponent: 35, Tennessee (March 5, 2009) in Columbia
Attempted 80 or more shots:	South Carolina: 83 vs. WKU (Nov. 27, 2010) in Bowling Green, Ky. Opponent: 83, LSU (Feb. 10, 1996) in Columbia
Attempted 70 or more shots:	South Carolina: 72, vs. Providence, Dec. 1, 2011 in Columbia Opponent: 79, WKU (Nov. 27, 2010) in Bowling Green, Ky.
Made 10 or more 3-pointers:	South Carolina: 10 vs. Jacksonville, Dec. 7, 2012 in Columbia, S.C. Opponent: 12, Florida, Jan. 30, 2013 in Gainesville, Fla.
Did not make a 3-pointer:	South Carolina: 0, vs. Milwaukee, Nov. 11, 2012 in Columbia, S.C. Opponent: 0, Miss. State, Jan. 9, 2013 in Starkville, Miss.
Attempted 30 or more 3-pointers:	South Carolina: 31 vs. Alabama, Jan. 25, 2012 in Columbia, S.C. Opponent: 33, Milwaukee, Nov. 11, 2012 in Columbia, S.C.
Attempted 25 or more 3-pointers:	South Carolina: 27 vs. Rider, Nov. 19, 2012 in Columbia, S.C. Opponent: 27, Missouri, Jan. 22, 2013 in Columbia, Mo..
Made 30 or more free throws:	South Carolina: 32 vs. Vanderbilt (Jan. 28, 2009) in Columbia Opponent: 34, Manhattan, Dec. 17, 2013 in Columbia, S.C.
Attempted 40 or more free throws:	South Carolina: 44 vs. Georgia Southern (Nov. 16, 2009) in Columbia Opponent: 41, Baylor, Nov. 12, 2013, in Waco, Texas
Swiped 15 or more steals:	South Carolina: 15 vs. Vanderbilt (Jan. 16, 2010) in Columbia Opponent: 17, Indiana (Nov. 8, 1998) in Indianapolis, Ind.
Blocked 12 or more shots:	South Carolina: 12, vs. Vanderbilt, Jan. 8, 2011 in Columbia Opponent: 12, Clemson, Nov. 17, 2013
Blocked 8 or more shots:	South Carolina: 8, vs. Longwood, Nov. 9, 2013 in Columbia, S.C. Opponent: 9, Manhattan, Dec. 17, 2013 in Columbia, S.C.
Won by 30 or more points:	South Carolina: 38, vs. Longwood, Nov. 9, 2013 in Columbia, S.C. Opponent: 39, Florida, Jan. 30, 2013 in Gainesville, Fla.
Won by 20 or more points:	South Carolina: 38, vs. Longwood, Nov. 9, 2013 in Columbia, S.C. Opponent: 27, Oklahoma State (Dec. 6, 2013) in Stillwater, Okla.
Played a single overtime game:	Win: 82-73 at LSU, Jan. 16, 2013 in Baton Rouge, La. Loss: 62-54 at Georgia, Feb. 23, 2013 in Athens, Ga.
Played a double overtime game:	Win: 87-85 vs. WKU (Nov. 27, 2010) in Bowling Green, Ky. Loss: 98-88 vs. Louisville (Feb. 20, 1988) in Columbia
South Carolina played a No. 1 Team in the country:	Win: 68-62 vs. Kentucky (Jan. 26, 2010) in Columbia Loss: 86-52 loss vs. No. 1/1 Kentucky, Feb. 4, 2012, in Columbia, S.C.
South Carolina played a top-5 opponent:	Win: 68-62 vs. No. 1/1 Kentucky (Jan. 26, 2010) in Columbia Loss: 75-36 loss to No. 4/4 Florida (Jan. 30, 2013) in Gainesville, Fla.
South Carolina played a top-10 opponent:	Win: 68-62 vs. No. 1/1 Kentucky (Jan. 26, 2010) in Columbia Loss: 79-52 at No. 9/11 Oklahoma State (Dec. 6, 2013) in Stillwater, Okla.
South Carolina played a top-25 opponent:	Win: 83-75 (OT) win over No. 22/24 Vanderbilt, Jan. 8, 2011 in Columbia Loss: 79-52 at No. 9/11 Oklahoma State (Dec. 6, 2013) in Stillwater, Okla.
South Carolina defeated a ranked opponent:	Home: 83-75 vs. No. 22/24 Vanderbilt (Jan. 8, 2011) in Columbia <u>Away: 77-73 at No. 13/19 Vanderbilt (March 6, 2010) in Nashville, Tenn.</u> SEC Home: 83-75 vs. No. 22/24 Vanderbilt (Jan. 8, 2011) in Columbia SEC Away: 77-73 at No. 13/19 Vanderbilt (March 6, 2010) in Nashville, Tenn. Non-conference away: 85-84 at No. 19/20 Baylor (Jan. 2, 2009) in Waco, Texas
A South Carolina win opened the season:	Home: 82-44, vs. Longwood, Nov. 9, 2013 in Columbia, S.C. Away: 81-63 win at Western Carolina (Nov. 12, 2005) in Cullowhee, N.C. Neutral: 74-61 win vs. Chaminade (Nov. 19, 2001) in Maui, Hawaii (Maui Invite)
South Carolina opened SEC play:	Home: 83-75 win vs. No. 22/24 Vanderbilt (Jan. 8, 2011) in Columbia Away: 56-54 loss at Miss. State (Jan. 9, 2013) in Starkville, Miss.



South Carolina Basketball

South Carolina Combined Team Statistics (as of Dec 17, 2013)

All games

RECORD:	OVERALL	HOME	AWAY	NEUTRAL
ALL GAMES	2-4	2-1	0-3	0-0
CONFERENCE	0-0	0-0	0-0	0-0
NON-CONFERENCE	2-4	2-1	0-3	0-0

##	Player	gp-gs	min	avg	Total		3-Point		F-Throw		Rebounds				pf	dq	a	to	blk	stl	pts	avg
					fg-fga	fg%	3fg-fga	3fg%	ft-fa	ft%	off	def	tot	avg								
00	THORNWELL, Sindari	6-6	171	28.5	22-54	.407	5-12	.417	27-37	.730	7	14	21	3.5	15	0	10	11	4	7	76	12.7
04	JOHNSON, Tyrone	6-6	182	30.3	21-54	.389	2-7	.286	29-41	.707	3	11	14	2.3	10	0	25	14	1	5	73	12.2
21	HENRY, Demetrius	6-6	159	26.5	21-46	.457	0-0	.000	4-14	.286	12	18	30	5.0	23	2	4	6	5	1	46	7.7
25	KACINAS, Mindaugas	6-6	169	28.2	18-32	.563	0-0	.000	9-16	.563	21	26	47	7.8	22	2	2	14	3	4	45	7.5
24	CARRERA, Michael	6-3	122	20.3	13-39	.333	3-12	.250	14-20	.700	14	20	34	5.7	14	0	4	9	6	7	43	7.2
01	WILLIAMS, Brenton	6-0	96	16.0	12-32	.375	6-20	.300	12-12	1.000	1	9	10	1.7	5	0	6	3	0	3	42	7.0
05	SHAW, Jaylen	5-0	65	13.0	10-18	.556	7-12	.583	4-5	.800	0	4	4	0.8	6	0	12	5	0	0	31	6.2
23	ELLINGTON, Bruce	2-1	40	20.0	3-8	.375	1-5	.200	2-2	1.000	2	0	2	1.0	5	0	3	4	1	1	9	4.5
14	CHATKEVICIUS, L.	5-0	54	10.8	7-13	.538	0-0	.000	1-2	.500	4	9	13	2.6	7	0	1	2	3	1	15	3.0
10	NOTICE, Duane	6-2	75	12.5	6-19	.316	2-6	.333	0-0	.000	5	9	14	2.3	13	1	10	13	1	2	14	2.3
32	RINGER, Desmond	6-0	50	8.3	4-10	.400	0-0	.000	4-8	.500	4	4	8	1.3	12	0	1	3	0	0	12	2.0
20	MCKIE, Justin	4-0	9	2.3	0-2	.000	0-1	.000	1-2	.500	1	0	1	0.3	0	0	0	0	0	0	1	0.3
35	STEELE, Brian	2-0	3	1.5	0-0	.000	0-0	.000	0-0	.000	0	0	0	0.0	0	0	0	0	0	0	0	0.0
15	THEUS JR., Reggie	3-0	5	1.7	0-1	.000	0-0	.000	0-0	.000	0	1	1	0.3	0	0	0	1	0	0	0	0.0
Team											8	13	21					4				
Total.....		6	1200		137-328	.418	26-75	.347	107-159	.673	82	138	220	36.7	132	5	78	89	24	31	407	67.8
Opponents.....		6	1200		125-310	.403	32-104	.308	136-181	.751	67	131	198	33.0	130	-	72	79	34	51	418	69.7

TEAM STATISTICS	SC	OPP
SCORING	407	418
Points per game	67.8	69.7
Scoring margin	-1.8	-
FIELD GOALS-ATT	137-328	125-310
Field goal pct	.418	.403
3 POINT FG-ATT	26-75	32-104
3-point FG pct	.347	.308
3-pt FG made per game	4.3	5.3
FREE THROWS-ATT	107-159	136-181
Free throw pct	.673	.751
F-Throws made per game	17.8	22.7
REBOUNDS	220	198
Rebounds per game	36.7	33.0
Rebounding margin	+3.7	-
ASSISTS	78	72
Assists per game	13.0	12.0
TURNOVERS	89	79
Turnovers per game	14.8	13.2
Turnover margin	-1.7	-
Assist/turnover ratio	0.9	0.9
STEALS	31	51
Steals per game	5.2	8.5
BLOCKS	24	34
Blocks per game	4.0	5.7
ATTENDANCE	25978	26600
Home games-Avg/Game	3-8659	3-8867
Neutral site-Avg/Game	-	0-0

Date	Opponent		Score	Att.
11/9/13	LONGWOOD	W	82-44	8536
11/12/13	at Baylor	L	64-66	5706
11/17/13	at Clemson	L	57-71	7283
11/24/13	FIU	W	84-72	9869
12-06-13	at Oklahoma State	L	52-79	13611
12/17/13	MANHATTAN	L	68-86	7573

* - Conference game

Score by Periods	1st	2nd	Totals
South Carolina	190	217	407
Opponents	214	204	418



2013-14 South Carolina Men's Basketball
South Carolina Team Game-by-Game Comparison (as of Dec 18, 2013)
All games

Opponent	1st	2nd	Score	Mar	Total FG	FG Pct	3-Pointers	3FG Pct	Free Throws	FT Pct	Rebounds	Assist	T/Over	Block	Steal	Fouls
LONGWOOD	37/15	45/29	82-44	+38	28-57/13-57	.491/.228	6-20/4-22	.300/.182	20-24/14-22	.833/.636	50/27 +23	13/7	15/13	8/0	5/9	18/19
Baylor	39/38	25/28	64-66	(2)	18-50/19-50	.360/.380	3-8/6-17	.375/.353	25-36/22-41	.694/.537	35/46 (11)	14/12	8/15	4/6	9/4	29/26
Clemson	26/35	31/36	57-71	(14)	23-65/21-48	.354/.438	1-10/5-14	.100/.357	10-18/24-26	.556/.923	41/33 +8	7/14	13/12	2/12	6/8	21/20
FIU	39/42	45/30	84-72	+12	30-59/24-50	.508/.480	8-19/6-16	.421/.375	16-21/18-21	.762/.857	31/27 +4	19/13	13/16	3/3	5/9	15/18
Oklahoma State	15/39	37/40	52-79	(27)	16-45/25-56	.356/.446	6-11/5-22	.545/.227	14-22/24-32	.636/.750	36/32 +4	10/13	24/7	4/4	3/10	26/17
MANHATTAN	34/45	34/41	68-86	(18)	22-52/23-49	.423/.469	2-7/6-13	.286/.462	22-38/34-39	.579/.872	27/33 (6)	15/13	16/16	3/9	3/11	23/30

Note: Game totals are displayed in the format TEAM/OPPONENT for each category



2013-14 South Carolina Men's Basketball
South Carolina Category Leaders (as of Dec 18, 2013)
All games

Points	G	Pts	Pts/G
THORNWELL, Sindarius	6	76	12.7
JOHNSON, Tyrone	6	73	12.2
HENRY, Demetrius	6	46	7.7
KACINAS, Mindaugas	6	45	7.5
CARRERA, Michael	6	43	7.2
WILLIAMS, Brenton	6	42	7.0
SHAW, Jaylen	5	31	6.2
CHATKEVICIUS, L.	5	15	3.0
NOTICE, Duane	6	14	2.3
RINGER, Desmond	6	12	2.0
ELLINGTON, Bruce	2	9	4.5
MCKIE, Justin	4	1	0.3

FG Percentage	FG	Att	Pct
KACINAS, Mindaugas	18	32	.563
SHAW, Jaylen	10	18	.556
CHATKEVICIUS, L.	7	13	.538
HENRY, Demetrius	21	46	.457
THORNWELL, Sindarius	22	54	.407
RINGER, Desmond	4	10	.400
JOHNSON, Tyrone	21	54	.389
WILLIAMS, Brenton	12	32	.375
ELLINGTON, Bruce	3	8	.375
CARRERA, Michael	13	39	.333
NOTICE, Duane	6	19	.316
THEUS JR., Reggie	0	1	.000
MCKIE, Justin	0	2	.000

3-Point Percentage	3FG	Att	Pct
SHAW, Jaylen	7	12	.583
THORNWELL, Sindarius	5	12	.417
NOTICE, Duane	2	6	.333
WILLIAMS, Brenton	6	20	.300
JOHNSON, Tyrone	2	7	.286
CARRERA, Michael	3	12	.250
ELLINGTON, Bruce	1	5	.200
MCKIE, Justin	0	1	.000

Free Throw Percent	FG	Att	Pct
WILLIAMS, Brenton	12	12	1.000
ELLINGTON, Bruce	2	2	1.000
SHAW, Jaylen	4	5	.800
THORNWELL, Sindarius	27	37	.730
JOHNSON, Tyrone	29	41	.707
CARRERA, Michael	14	20	.700
KACINAS, Mindaugas	9	16	.563
RINGER, Desmond	4	8	.500
MCKIE, Justin	1	2	.500
CHATKEVICIUS, L.	1	2	.500
HENRY, Demetrius	4	14	.286

Scoring Average	G	Pts	Avg/G
THORNWELL, Sindarius	6	76	12.7
JOHNSON, Tyrone	6	73	12.2
HENRY, Demetrius	6	46	7.7
KACINAS, Mindaugas	6	45	7.5
CARRERA, Michael	6	43	7.2
WILLIAMS, Brenton	6	42	7.0
SHAW, Jaylen	5	31	6.2
ELLINGTON, Bruce	2	9	4.5
CHATKEVICIUS, L.	5	15	3.0
NOTICE, Duane	6	14	2.3
RINGER, Desmond	6	12	2.0
MCKIE, Justin	4	1	0.3

Field Goal Attempts	G	Att	Att/G
JOHNSON, Tyrone	6	54	9.0
THORNWELL, Sindarius	6	54	9.0
HENRY, Demetrius	6	46	7.7
CARRERA, Michael	6	39	6.5
WILLIAMS, Brenton	6	32	5.3
KACINAS, Mindaugas	6	32	5.3

Field Goals Made	G	Made	Made/G
THORNWELL, Sindarius	6	22	3.7
JOHNSON, Tyrone	6	21	3.5
HENRY, Demetrius	6	21	3.5
KACINAS, Mindaugas	6	18	3.0
CARRERA, Michael	6	13	2.2

3-Point FG Attempts	G	Att	Att/G
WILLIAMS, Brenton	6	20	3.3
THORNWELL, Sindarius	6	12	2.0
CARRERA, Michael	6	12	2.0
SHAW, Jaylen	5	12	2.4
JOHNSON, Tyrone	6	7	1.2

3-Point FG Made	G	Made	Made/G
SHAW, Jaylen	5	7	1.4
WILLIAMS, Brenton	6	6	1.0
THORNWELL, Sindarius	6	5	0.8
CARRERA, Michael	6	3	0.5
JOHNSON, Tyrone	6	2	0.3
NOTICE, Duane	6	2	0.3

Free Throw Attempts	G	Att	Att/G
JOHNSON, Tyrone	6	41	6.8
THORNWELL, Sindarius	6	37	6.2
CARRERA, Michael	6	20	3.3
KACINAS, Mindaugas	6	16	2.7
HENRY, Demetrius	6	14	2.3

Free Throws Made	G	Made	Made/G
JOHNSON, Tyrone	6	29	4.8
THORNWELL, Sindarius	6	27	4.5
CARRERA, Michael	6	14	2.3
WILLIAMS, Brenton	6	12	2.0
KACINAS, Mindaugas	6	9	1.5



2013-14 South Carolina Men's Basketball
South Carolina Category Leaders (as of Dec 18, 2013)
All games

Rebounds	G	Reb	Reb/G
KACINAS, Mindaugas	6	47	7.8
CARRERA, Michael	6	34	5.7
HENRY, Demetrius	6	30	5.0
THORNWELL, Sindarius	6	21	3.5
JOHNSON, Tyrone	6	14	2.3
NOTICE, Duane	6	14	2.3

Rebound Average	G	Reb	Avg/G
KACINAS, Mindaugas	6	47	7.8
CARRERA, Michael	6	34	5.7
HENRY, Demetrius	6	30	5.0
THORNWELL, Sindarius	6	21	3.5
CHATKEVICIUS, L.	5	13	2.6

Offensive Rebounds	G	No.	Avg/G
KACINAS, Mindaugas	6	21	3.5
CARRERA, Michael	6	14	2.3
HENRY, Demetrius	6	12	2.0
THORNWELL, Sindarius	6	7	1.2
NOTICE, Duane	6	5	0.8

Defensive Rebounds	G	No.	Avg/G
KACINAS, Mindaugas	6	26	4.3
CARRERA, Michael	6	20	3.3
HENRY, Demetrius	6	18	3.0
THORNWELL, Sindarius	6	14	2.3
JOHNSON, Tyrone	6	11	1.8

Fouls	G	No.	Per/G
HENRY, Demetrius	6	23	3.8
KACINAS, Mindaugas	6	22	3.7
THORNWELL, Sindarius	6	15	2.5
CARRERA, Michael	6	14	2.3
NOTICE, Duane	6	13	2.2

Foulsouts	G	No.
HENRY, Demetrius	6	2
KACINAS, Mindaugas	6	2
NOTICE, Duane	6	1

Assists	G	No.	Ast/G
JOHNSON, Tyrone	6	25	4.2
SHAW, Jaylen	5	12	2.4
NOTICE, Duane	6	10	1.7
THORNWELL, Sindarius	6	10	1.7
WILLIAMS, Brenton	6	6	1.0

Steals	G	No.	Stl/G
CARRERA, Michael	6	7	1.2
THORNWELL, Sindarius	6	7	1.2
JOHNSON, Tyrone	6	5	0.8
KACINAS, Mindaugas	6	4	0.7
WILLIAMS, Brenton	6	3	0.5

Blocked Shots	G	No.	Blk/G
CARRERA, Michael	6	6	1.0
HENRY, Demetrius	6	5	0.8
THORNWELL, Sindarius	6	4	0.7
CHATKEVICIUS, L.	5	3	0.6
KACINAS, Mindaugas	6	3	0.5

Minutes	G	No.	Min/G
JOHNSON, Tyrone	6	182	30.3
THORNWELL, Sindarius	6	171	28.5
KACINAS, Mindaugas	6	169	28.2
HENRY, Demetrius	6	159	26.5
CARRERA, Michael	6	122	20.3

Turnovers	G	No.	TO/G
JOHNSON, Tyrone	6	14	2.3
KACINAS, Mindaugas	6	14	2.3
NOTICE, Duane	6	13	2.2
THORNWELL, Sindarius	6	11	1.8
CARRERA, Michael	6	9	1.5



2013-14 South Carolina Men's Basketball
South Carolina Team High/Low Analysis (as of Dec 18, 2013)
All games

South Carolina - TEAM GAME HIGHS

POINTS	84	FIU (11/24/13)
	82	LONGWOOD (11/9/13)
	68	MANHATTAN (12/17/13)
	64	at Baylor (11/12/13)
	57	at Clemson (11/17/13)
FIELD GOALS MADE	30	FIU (11/24/13)
	28	LONGWOOD (11/9/13)
FIELD GOAL ATTEMPTS	65	at Clemson (11/17/13)
	59	FIU (11/24/13)
FIELD GOAL PERCENTAGE	.508 (30-59)	FIU (11/24/13)
	.491 (28-57)	LONGWOOD (11/9/13)
3 PT FIELD GOALS MADE	8	FIU (11/24/13)
	6	at Oklahoma State (12-06-13)
	6	LONGWOOD (11/9/13)
3 PT FG ATTEMPTS	20	LONGWOOD (11/9/13)
	19	FIU (11/24/13)
3 PT FG PERCENTAGE	.545 (6-11)	at Oklahoma State (12-06-13)
	.421 (8-19)	FIU (11/24/13)
FREE THROWS MADE	25	at Baylor (11/12/13)
	22	MANHATTAN (12/17/13)
FREE THROW ATTEMPTS	38	MANHATTAN (12/17/13)
	36	at Baylor (11/12/13)
FREE THROW PERCENTAGE	.833 (20-24)	LONGWOOD (11/9/13)
	.762 (16-21)	FIU (11/24/13)
REBOUNDS	50	LONGWOOD (11/9/13)
	41	at Clemson (11/17/13)
ASSISTS	19	FIU (11/24/13)
	15	MANHATTAN (12/17/13)
STEALS	9	at Baylor (11/12/13)
	6	at Clemson (11/17/13)
BLOCKED SHOTS	8	LONGWOOD (11/9/13)
	4	at Oklahoma State (12-06-13)
	4	at Baylor (11/12/13)
TURNOVERS	24	at Oklahoma State (12-06-13)
	16	MANHATTAN (12/17/13)
FOULS	29	at Baylor (11/12/13)
	26	at Oklahoma State (12-06-13)



2013-14 South Carolina Men's Basketball
South Carolina High/Low Analysis (as of Dec 18, 2013)
All games

Opponent - GAME HIGHS

POINTS	86	MANHATTAN (12/17/13)
	79	at Oklahoma State (12-06-13)
	72	FIU (11/24/13)
	71	at Clemson (11/17/13)
	66	at Baylor (11/12/13)
FIELD GOALS MADE	25	at Oklahoma State (12-06-13)
	24	FIU (11/24/13)
FIELD GOAL ATTEMPTS	57	LONGWOOD (11/9/13)
	56	at Oklahoma State (12-06-13)
FIELD GOAL PERCENTAGE	.480 (24-50)	FIU (11/24/13)
	.469 (23-49)	MANHATTAN (12/17/13)
3 PT FIELD GOALS MADE	6	MANHATTAN (12/17/13)
	6	FIU (11/24/13)
	6	at Baylor (11/12/13)
3 PT FG ATTEMPTS	22	at Oklahoma State (12-06-13)
	22	LONGWOOD (11/9/13)
3 PT FG PERCENTAGE	.462 (6-13)	MANHATTAN (12/17/13)
	.375 (6-16)	FIU (11/24/13)
FREE THROWS MADE	34	MANHATTAN (12/17/13)
	24	at Oklahoma State (12-06-13)
	24	at Clemson (11/17/13)
FREE THROW ATTEMPTS	41	at Baylor (11/12/13)
	39	MANHATTAN (12/17/13)
FREE THROW PERCENTAGE	.923 (24-26)	at Clemson (11/17/13)
	.872 (34-39)	MANHATTAN (12/17/13)
REBOUNDS	46	at Baylor (11/12/13)
	33	MANHATTAN (12/17/13)
	33	at Clemson (11/17/13)
ASSISTS	14	at Clemson (11/17/13)
	13	MANHATTAN (12/17/13)
	13	at Oklahoma State (12-06-13)
	13	FIU (11/24/13)
STEALS	11	MANHATTAN (12/17/13)
	10	at Oklahoma State (12-06-13)
BLOCKED SHOTS	12	at Clemson (11/17/13)
	9	MANHATTAN (12/17/13)
TURNOVERS	16	MANHATTAN (12/17/13)
	16	FIU (11/24/13)
FOULS	30	MANHATTAN (12/17/13)
	26	at Baylor (11/12/13)



2013-14 South Carolina Men's Basketball
South Carolina High/Low Analysis (as of Dec 18, 2013)
All games

South Carolina - GAME LOWS

POINTS	52	at Oklahoma State (12-06-13)
	57	at Clemson (11/17/13)
	64	at Baylor (11/12/13)
	68	MANHATTAN (12/17/13)
	82	LONGWOOD (11/9/13)
FIELD GOALS MADE	16	at Oklahoma State (12-06-13)
	18	at Baylor (11/12/13)
FIELD GOAL ATTEMPTS	45	at Oklahoma State (12-06-13)
	50	at Baylor (11/12/13)
FIELD GOAL PERCENTAGE	.354 (23-65)	at Clemson (11/17/13)
	.356 (16-45)	at Oklahoma State (12-06-13)
3 PT FIELD GOALS MADE	1	at Clemson (11/17/13)
	2	MANHATTAN (12/17/13)
3 PT FG ATTEMPTS	7	MANHATTAN (12/17/13)
	8	at Baylor (11/12/13)
3 PT FG PERCENTAGE	.100 (1-10)	at Clemson (11/17/13)
	.286 (2-7)	MANHATTAN (12/17/13)
FREE THROWS MADE	10	at Clemson (11/17/13)
	14	at Oklahoma State (12-06-13)
FREE THROW ATTEMPTS	18	at Clemson (11/17/13)
	21	FIU (11/24/13)
FREE THROW PERCENTAGE	.556 (10-18)	at Clemson (11/17/13)
	.579 (22-38)	MANHATTAN (12/17/13)
REBOUNDS	27	MANHATTAN (12/17/13)
	31	FIU (11/24/13)
ASSISTS	7	at Clemson (11/17/13)
	10	at Oklahoma State (12-06-13)
STEALS	3	at Oklahoma State (12-06-13)
	3	MANHATTAN (12/17/13)
BLOCKED SHOTS	2	at Clemson (11/17/13)
	3	FIU (11/24/13)
	3	MANHATTAN (12/17/13)
TURNOVERS	8	at Baylor (11/12/13)
	13	at Clemson (11/17/13)
	13	FIU (11/24/13)
FOULS	15	FIU (11/24/13)
	18	LONGWOOD (11/9/13)



2013-14 South Carolina Men's Basketball
South Carolina High/Low Analysis (as of Dec 18, 2013)
All games

Opponent - GAME LOWS

POINTS	44	LONGWOOD (11/9/13)
	66	at Baylor (11/12/13)
	71	at Clemson (11/17/13)
	72	FIU (11/24/13)
	79	at Oklahoma State (12-06-13)
FIELD GOALS MADE	13	LONGWOOD (11/9/13)
	19	at Baylor (11/12/13)
FIELD GOAL ATTEMPTS	48	at Clemson (11/17/13)
	49	MANHATTAN (12/17/13)
FIELD GOAL PERCENTAGE	.228 (13-57)	LONGWOOD (11/9/13)
	.380 (19-50)	at Baylor (11/12/13)
3 PT FIELD GOALS MADE	4	LONGWOOD (11/9/13)
	5	at Clemson (11/17/13)
	5	at Oklahoma State (12-06-13)
3 PT FG ATTEMPTS	13	MANHATTAN (12/17/13)
	14	at Clemson (11/17/13)
3 PT FG PERCENTAGE	.182 (4-22)	LONGWOOD (11/9/13)
	.227 (5-22)	at Oklahoma State (12-06-13)
FREE THROWS MADE	14	LONGWOOD (11/9/13)
	18	FIU (11/24/13)
FREE THROW ATTEMPTS	21	FIU (11/24/13)
	22	LONGWOOD (11/9/13)
FREE THROW PERCENTAGE	.537 (22-41)	at Baylor (11/12/13)
	.636 (14-22)	LONGWOOD (11/9/13)
REBOUNDS	27	LONGWOOD (11/9/13)
	27	FIU (11/24/13)
ASSISTS	7	LONGWOOD (11/9/13)
	12	at Baylor (11/12/13)
STEALS	4	at Baylor (11/12/13)
	8	at Clemson (11/17/13)
BLOCKED SHOTS	0	LONGWOOD (11/9/13)
	3	FIU (11/24/13)
TURNOVERS	7	at Oklahoma State (12-06-13)
	12	at Clemson (11/17/13)
FOULS	17	at Oklahoma State (12-06-13)
	18	FIU (11/24/13)



2013-14 South Carolina Men's Basketball
South Carolina Player High/Low Analysis (as of Dec 18, 2013)
All games

South Carolina - INDIVIDUAL GAME HIGHS

Points	20	THORNWELL, Sindarius at Baylor (11/12/13)
	18	JOHNSON, Tyrone vs FIU (11/24/13)
	18	JOHNSON, Tyrone vs Longwood (11/9/13)
	17	THORNWELL, Sindarius vs Manhattan (12/17/13)
	16	WILLIAMS, Brenton vs FIU (11/24/13)
	16	SHAW, Jaylen vs FIU (11/24/13)
Field Goals Made	7	HENRY, Demetrius vs FIU (11/24/13)
	6	SHAW, Jaylen vs FIU (11/24/13)
	6	KACINAS, Mindaugas at Clemson (11/17/13)
	6	THORNWELL, Sindarius at Baylor (11/12/13)
	6	JOHNSON, Tyrone vs Longwood (11/9/13)
Field Goal Att.	13	THORNWELL, Sindarius at Baylor (11/12/13)
	11	KACINAS, Mindaugas at Clemson (11/17/13)
	11	JOHNSON, Tyrone at Clemson (11/17/13)
	11	WILLIAMS, Brenton vs Longwood (11/9/13)
FG Pct (min 5 made)	.700 (7-10)	HENRY, Demetrius vs FIU (11/24/13)
	.667 (6-9)	JOHNSON, Tyrone vs Longwood (11/9/13)
3-Point FG Made	4	SHAW, Jaylen vs FIU (11/24/13)
	3	SHAW, Jaylen at Oklahoma State (12-06-13)
3-Point FG Att.	7	SHAW, Jaylen vs FIU (11/24/13)
	7	WILLIAMS, Brenton vs Longwood (11/9/13)
3-Pt FG Pct (min 2 made)	.750 (3-4)	SHAW, Jaylen at Oklahoma State (12-06-13)
	.667 (2-3)	THORNWELL, Sindarius at Oklahoma State (12-06-13)
	.667 (2-3)	NOTICE, Duane vs Longwood (11/9/13)
Free Throws Made	10	THORNWELL, Sindarius vs Manhattan (12/17/13)
	7	JOHNSON, Tyrone vs FIU (11/24/13)
	7	THORNWELL, Sindarius at Baylor (11/12/13)
Free Throw Att.	13	THORNWELL, Sindarius vs Manhattan (12/17/13)
	11	JOHNSON, Tyrone vs Manhattan (12/17/13)
FT Pct (min 3 made)	1.000 (6-6)	WILLIAMS, Brenton vs FIU (11/24/13)
	1.000 (6-6)	CARRERA, Michael at Baylor (11/12/13)
	1.000 (4-4)	CARRERA, Michael vs Manhattan (12/17/13)
	1.000 (4-4)	WILLIAMS, Brenton at Baylor (11/12/13)
	1.000 (3-3)	THORNWELL, Sindarius at Clemson (11/17/13)
Rebounds	14	KACINAS, Mindaugas vs Longwood (11/9/13)
	12	KACINAS, Mindaugas at Clemson (11/17/13)
Assists	8	JOHNSON, Tyrone at Baylor (11/12/13)
	7	JOHNSON, Tyrone vs FIU (11/24/13)
Steals	3	THORNWELL, Sindarius at Baylor (11/12/13)
	2	WILLIAMS, Brenton vs FIU (11/24/13)
	2	THORNWELL, Sindarius at Clemson (11/17/13)
	2	CARRERA, Michael at Clemson (11/17/13)
	2	JOHNSON, Tyrone at Baylor (11/12/13)
	2	CARRERA, Michael vs Longwood (11/9/13)
Blocked Shots	2	HENRY, Demetrius at Oklahoma State (12-06-13)
	2	CARRERA, Michael vs FIU (11/24/13)
	2	HENRY, Demetrius at Baylor (11/12/13)
	2	CARRERA, Michael vs Longwood (11/9/13)
	2	KACINAS, Mindaugas vs Longwood (11/9/13)
	2	THORNWELL, Sindarius vs Longwood (11/9/13)
Turnovers	6	CARRERA, Michael at Oklahoma State (12-06-13)
	4	HENRY, Demetrius at Oklahoma State (12-06-13)
	4	KACINAS, Mindaugas at Oklahoma State (12-06-13)

	4	THORNWELL, Sindarius at Oklahoma State (12-06-13)
	4	NOTICE, Duane at Clemson (11/17/13)
	4	JOHNSON, Tyrone vs Longwood (11/9/13)
Fouls	5	KACINAS, Mindaugas vs Manhattan (12/17/13)
	5	HENRY, Demetrius at Oklahoma State (12-06-13)
	5	HENRY, Demetrius at Clemson (11/17/13)
	5	KACINAS, Mindaugas at Baylor (11/12/13)
	5	NOTICE, Duane vs Longwood (11/9/13)



2013-14 South Carolina Men's Basketball
South Carolina Opponent High/Low Analysis (as of Dec 18, 2013)
All games

OPPONENT INDIVIDUAL GAME HIGHS

Points	26	Beamon, George vs Manhattan (12/17/13)
	22	MURPHY, Tymell vs FIU (11/24/13)
	21	McDANIELS, K.J. at Clemson (11/17/13)
	20	Alvarado, Michael vs Manhattan (12/17/13)
	18	Heslip, Brady at Baylor (11/12/13)
Field Goals Made	9	MURPHY, Tymell vs FIU (11/24/13)
	8	Beamon, George vs Manhattan (12/17/13)
Field Goal Att.	20	CAREY, Tristan vs Longwood (11/9/13)
	13	Beamon, George vs Manhattan (12/17/13)
	13	MURPHY, Tymell vs FIU (11/24/13)
FG Pct (min 5 made)	.833 (5-6)	Cobbins, Michael at Oklahoma State (12-06-13)
	.714 (5-7)	Nash, Le'Bryan at Oklahoma State (12-06-13)
3-Point FG Made	5	Heslip, Brady at Baylor (11/12/13)
	3	Beamon, George vs Manhattan (12/17/13)
3-Point FG Att.	10	Heslip, Brady at Baylor (11/12/13)
	10	CAREY, Tristan vs Longwood (11/9/13)
3-Pt FG Pct (min 2 made)	1.000 (2-2)	Alvarado, Michael vs Manhattan (12/17/13)
	1.000 (2-2)	FILER, Adonis at Clemson (11/17/13)
Free Throws Made	10	Alvarado, Michael vs Manhattan (12/17/13)
	8	HALL, Rod at Clemson (11/17/13)
	8	ROPER, Jordan at Clemson (11/17/13)
Free Throw Att.	11	Alvarado, Michael vs Manhattan (12/17/13)
	9	Nash, Le'Bryan at Oklahoma State (12-06-13)
	9	HALL, Rod at Clemson (11/17/13)
FT Pct (min 3 made)	1.000 (8-8)	ROPER, Jordan at Clemson (11/17/13)
	1.000 (7-7)	Beamon, George vs Manhattan (12/17/13)
	1.000 (6-6)	Kates, Donovan vs Manhattan (12/17/13)
	1.000 (6-6)	BUCKLES, Rakeem vs FIU (11/24/13)
	1.000 (6-6)	McDANIELS, K.J. at Clemson (11/17/13)
	1.000 (4-4)	FRINK, Jerome vs FIU (11/24/13)
	1.000 (3-3)	Smart, Marcus at Oklahoma State (12-06-13)
	1.000 (3-3)	PORCHER JIMENEZ, M. vs FIU (11/24/13)
Rebounds	12	Prince, Taurean at Baylor (11/12/13)
	10	McDANIELS, K.J. at Clemson (11/17/13)
Assists	6	Alvarado, Michael vs Manhattan (12/17/13)
	5	Smart, Marcus at Oklahoma State (12-06-13)
	5	MURPHY, Tymell vs FIU (11/24/13)
Steals	4	Beamon, George vs Manhattan (12/17/13)
	3	Williams, Brian at Oklahoma State (12-06-13)
	3	BELTON, Isaac vs Longwood (11/9/13)
Blocked Shots	7	McDANIELS, K.J. at Clemson (11/17/13)
	4	Pankey, Ashton vs Manhattan (12/17/13)
	4	Brown, Rhameil vs Manhattan (12/17/13)
Turnovers	5	Andujar, Emmy vs Manhattan (12/17/13)
	5	BUCKLES, Rakeem vs FIU (11/24/13)
	5	FRINK, Jerome vs FIU (11/24/13)
Fouls	5	Pankey, Ashton vs Manhattan (12/17/13)
	4	Brown, Rhameil vs Manhattan (12/17/13)
	4	Stores, RaShawn vs Manhattan (12/17/13)
	4	Williams, Rich vs Manhattan (12/17/13)
	4	Wilson, Tyler vs Manhattan (12/17/13)
	4	MURPHY, Tymell vs FIU (11/24/13)
	4	NNOKO, Landry at Clemson (11/17/13)

4	Prince, Taurean at Baylor (11/12/13)
4	Chery, Kenny at Baylor (11/12/13)
4	Jefferson, Cory at Baylor (11/12/13)